

# Strategic Environmental Assessment



## Moreton on Lugg Neighbourhood Area

Scoping Report

June 2015

## Consultation on the Scoping Report

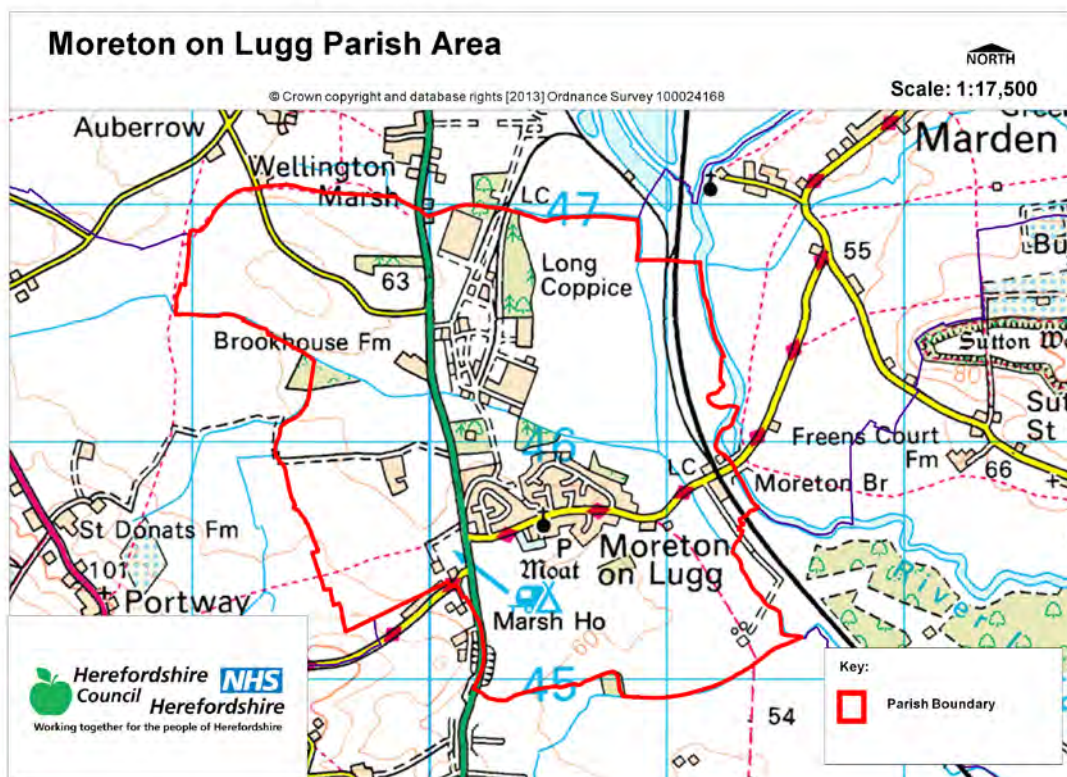
The aim of the consultation process is to involve and engage with statutory consultees and other relevant bodies on the scope of the appraisal. In particular, it seeks to:

- Ensure the SEA is both comprehensive and sufficiently robust to support the Neighbourhood Development Plan during the later stages of full public consultation;
- Seek advice on the completeness of the plan review and baseline data and gain further information where appropriate;
- Seek advice on the suitability of key sustainability issues;
- Seek advice on the suitability of the sustainability objectives.

Comments on this Scoping Report have been invited from the three consultation bodies as required by the SEA regulations, together with the Natural Resources Wales.

The three consultation bodies are as follows:

1. Natural England;
2. Historic England;
3. Environment Agency.



Plans and Programmes	Type of document	Date	Overview	Key message, target/objective/indicator	SEA topic(s) <sup>1</sup>	Implications for the NDP and SEA
The EC Conservation of Habitats and Species Regulations	European Union Legislation	2010	These regulations transpose the Habitats Directive in England, Wales and to a limited extent Scotland by ensuring that activities are carried out in accordance with the Habitats Directive, which is to protect biodiversity through the conservation of natural habitats and species of wild flora and fauna.	The Regulations make it an offence (subject to exceptions) to deliberately capture, kill, disturb, or trade in the animals listed in Schedule 2, or pick, collect, cut, uproot, destroy, or trade in the plants listed in Schedule 4. However, these actions can be made lawful through the granting of licenses by the appropriate authorities.	<ul style="list-style-type: none"> <li>Biodiversity</li> <li>Cultural heritage and the landscape</li> </ul>	The Neighbourhood Plan should be compliant with all the relevant legislation and regulations.
The EC Water Framework Directive	European Union	2000	Commits all EU member states to achieve good qualitative and quantitative status of all water courses by 2015.	Aims for 'good status' for all ground and surface waters (rivers, lakes, transitional waters, and coastal waters) in the EU	<ul style="list-style-type: none"> <li>Water</li> </ul>	The Neighbourhood Plan should be compliant with all the relevant legislation and regulations.

<sup>1</sup> Derived from the LDF General Scoping Report (June 2007)

Plans and Programmes	Type of document	Date	Overview	Key message, target/objective/indicator	SEA topic(s) <sup>1</sup>	Implications for the NDP and SEA
The Wildlife and Countryside Act (1981)	Domestic Legislation	1981	The major legal instrument for wildlife protection in Britain, although other significant acts have been passed since. It has numerous parts and supplementary lists and schedules many of which have been amended since publication.	The principle mechanism for the legislative protection of wildlife in Great Britain.	<ul style="list-style-type: none"> <li>• Biodiversity</li> <li>• Cultural heritage and the landscape</li> <li>• Flora and fauna</li> <li>• Material assets</li> <li>• Soil</li> </ul>	The Neighbourhood Plan should be compliant with all the relevant legislation and regulations.
The Countryside and Right of Way Act (2000)	Domestic Legislation	2000	Creates a statutory right of access on foot to certain types of open land, to modernise the public rights of way system, to strengthen nature conservation legislation, and to facilitate better management of AONBs.	<p>The Act provides for a new right of access on foot to areas of open land comprising: Mountain (land over 600 metres); Moorland; Heath; Downland; Registered common land.</p> <p>There are provisions to consider extending the right in the future to coastal land, but not woodland despite some early publicity suggesting this.</p>	<ul style="list-style-type: none"> <li>• Biodiversity</li> <li>• Cultural heritage and the landscape</li> <li>• Flora and fauna</li> <li>• Material assets</li> <li>• Soil</li> </ul>	The Neighbourhood Plan should be compliant with all the relevant legislation and regulations.

Plans and Programmes	Type of document	Date	Overview	Key message, target/objective/indicator	SEA topic(s) <sup>1</sup>	Implications for the NDP and SEA
The Natural Environment and Rural Communities Act (2006)	Domestic Legislation	2006	Designed to help achieve a rich and diverse natural environment and thriving rural communities through modernised and simplified arrangements for delivering Government policy.	Provides that any public body or statutory undertaker in England and Wales must have regard to the purpose of conservation of biological diversity in the exercise of their functions.	<ul style="list-style-type: none"> <li>• Biodiversity</li> <li>• Cultural heritage and the landscape</li> <li>• Flora and fauna</li> <li>• Material assets</li> <li>• Soil</li> </ul>	The Neighbourhood Plan should be compliant with all the relevant legislation and regulations.

Plans and Programmes	Type of document	Date	Overview	Key message, target/objective/indicator	SEA topic(s) <sup>1</sup>	Implications for the NDP and SEA
Revised EU Sustainable Development strategy	European Union Strategy	2009	Sets out a single strategy on how the EU will more effectively meet its long-standing commitment to meet the challenges of sustainable development.	Recognises the need to gradually change current unsustainable consumption and production patterns and move towards a better integrated approach to policy making. The Strategy sets overall objectives, targets and concrete actions for seven key priority challenges, predominantly environmental: <ul style="list-style-type: none"> <li>• Climate change and clean energy;</li> <li>• Sustainable transport</li> <li>• Sustainable production and consumption;</li> <li>• Public health threats;</li> <li>• Better management of natural resources;</li> <li>• Social inclusion, demography and migration;</li> <li>• Fighting global poverty.</li> </ul>	<ul style="list-style-type: none"> <li>• Air</li> <li>• Climate factors</li> <li>• Cultural heritage and the landscape</li> <li>• Population and human health</li> </ul>	The Neighbourhood Plan should take into account the objectives of the strategy. The aim of sustainable development should be implicit in its approach.

Plans and Programmes	Type of document	Date	Overview	Key message, target/objective/indicator	SEA topic(s) <sup>1</sup>	Implications for the NDP and SEA
Biodiversity 2020: A strategy for England's wildlife and ecosystem services	National Strategy	2011	Forms part of the UK's Post-2010 Biodiversity Framework by setting out England's contribution towards the UK's commitments under the United Nations Convention of Biological Diversity.	Sets out to halt overall biodiversity loss, support healthy well-functioning ecosystems and establish coherent ecological networks, with more and better places for nature for the benefit of wildlife and people.	<ul style="list-style-type: none"> <li>• Biodiversity</li> </ul>	The NDP should take account of the provisions of the strategy, making the most of opportunities to enhance wildlife habitats or restore degraded ecosystems in the process.
National Planning Policy Framework (NPPF)	National planning policy.	2012	Consolidates the suite of PPG/PPS into one succinct planning policy document.	Aims to make the planning system less complex, more accessible and able to promote growth within the ethos of sustainable development. The presumption is in favour of sustainable development.	<ul style="list-style-type: none"> <li>• Air</li> <li>• Biodiversity</li> <li>• Climatic factors</li> <li>• Cultural heritage</li> <li>• Flora and fauna</li> <li>• Material assets</li> <li>• Population</li> <li>• Soil</li> <li>• Water</li> </ul>	The guidance contained within the section on Neighbourhood Planning should be borne in mind during the preparation of the NDP.

Plans and Programmes	Type of document	Date	Overview	Key message, target/objective/indicator	SEA topic(s) <sup>1</sup>	Implications for the NDP and SEA
Planning Practice Guidance	Government Guidance	2014	Provides guidance to local planning authorities and others on the operation of the planning system.	Offers up-to-date, electronic guidance on every aspect of planning from air quality and design to land stability and rural housing.	<ul style="list-style-type: none"> <li>• Air</li> <li>• Biodiversity</li> <li>• Climatic factors</li> <li>• Cultural heritage</li> <li>• Flora and fauna</li> <li>• Material assets</li> <li>• Population</li> <li>• Soil</li> <li>• Water</li> </ul>	The NDP must be pro-growth and facilitate the provision and development of sustainable development.
Herefordshire Core Strategy, Pre-submission document 2011-2031	Development Plan Document (DPD)	2013	Sets out the vision, objectives and policies for the Herefordshire Local Plan (Core Strategy), which will guide development across the county up to 2031.	<p>Outlines the emerging suite of countywide planning policies relating to housing, economic development and the environment, which the NDP will need to be in conformity with where relevant.</p> <p>The Core Strategy includes a range of objectives, five of which directly relate to rural areas:</p> <ul style="list-style-type: none"> <li>• To meet the housing needs of all sections of the community</li> <li>• To improve access to services in rural areas</li> </ul>	<ul style="list-style-type: none"> <li>• Air</li> <li>• Biodiversity</li> <li>• Climate factors</li> <li>• Cultural heritage and the landscape</li> <li>• Flora and fauna</li> <li>• Material assets</li> <li>• Population and human health</li> <li>• Soil</li> <li>• Water</li> </ul>	<p>The NDP should take account of relevant policies set within in the Core Strategy.</p> <p>Where necessary, the NDP should provide services, facilities and employment opportunities that are accessible to both local and neighbouring communities.</p>



Plans and Programmes	Type of document	Date	Overview	Key message, target/objective/indicator	SEA topic(s) <sup>1</sup>	Implications for the NDP and SEA
				<ul style="list-style-type: none"> <li>• To strengthen the economic viability of the villages and their rural hinterlands</li> <li>• To achieve sustainable communities and protect the environment</li> <li>• To conserve, promote, utilise and enjoy our natural, built, historic and cultural assets for the fullest benefit of the whole community.</li> </ul> <p>To achieve a thriving rural Herefordshire, the Core Strategy seeks to enhance the role the villages have traditionally played in as accessible, sustainable centres for their rural catchments.</p> <p>Seeks proportional growth of 18% in Moreton on Lugg (Hereford HMA) over the plan period.</p>		<p>The following settlements are the focus for proportionate growth: Moreton-on-Lugg.</p>

Plans and Programmes	Type of document	Date	Overview	Key message, target/objective/indicator	SEA topic(s) <sup>1</sup>	Implications for the NDP and SEA
Herefordshire Local Transport Plan 3 (LTP) 2013-2015	Corporate	2013	Sets out the Council's strategy for supporting economic growth, social inclusion and reducing the environmental impacts of transport, as well as the program of investment for the period April 2013 to April 2015.	The document includes three key objectives, one which seeks to maintain access for rural residents and people without access to a car. Intrinsic to this is the retention of a 'core network' of bus services which focus on journeys between Hereford and the market towns, along with main transport corridors close to larger rural settlements. To this end, the strategy aims to increase the number of bus users by 1.3% (4,700 journeys) by 2015.	<ul style="list-style-type: none"> <li>• Air</li> <li>• Climate factors</li> <li>• Population and human health</li> </ul>	The LTP does not explore current transport issues in the Moreton on Lugg Neighbourhood Plan area, but any new development proposed through the NDP should seek to reduce the environmental impacts of transport.

<b>Plans and Programmes</b>	<b>Type of document</b>	<b>Date</b>	<b>Overview</b>	<b>Key message, target/objective/indicator</b>	<b>SEA topic(s)<sup>1</sup></b>	<b>Implications for the NDP and SEA</b>
Understanding Herefordshire Report	Built and natural environment	2014	Important to understand the place such as the local economy natural and built environment in which people live, learn and work as part of understanding their quality of life Enable development for economy and housing to required levels. Growth should be supported by sustainable transport measures.	An air quality management plan is in place to tackle this. Destination Hereford project is in place to give locals more sustainable transport options.	Improve air quality. Have a more diverse range of transport options.	None identified.

Plans and Programmes	Type of document	Date	Overview	Key message, target/objective/indicator	SEA topic(s) <sup>1</sup>	Implications for the NDP and SEA
Herefordshire Economic Development Strategy 2011-2016	Corporate	2011	Aims to increase the economic wealth of Herefordshire by setting out proposals and to support business growth up to 2016.	<p>The document outlines the path and direction to foster economic vitality within Herefordshire. Key objectives therefore include:</p> <ul style="list-style-type: none"> <li>• Sustaining business survival and growth</li> <li>• Increasing wage levels, range and quality of jobs</li> <li>• Having a skilled population to meet future work needs</li> <li>• Developing the county's built infrastructure so enterprise can flourish.</li> </ul>	<ul style="list-style-type: none"> <li>• Cultural heritage and the landscape</li> <li>• Material assets</li> <li>• Population and human health</li> </ul>	None of merit.

Plans and Programmes	Type of document	Date	Overview	Key message, target/objective/indicator	SEA topic(s) <sup>1</sup>	Implications for the NDP and SEA
Herefordshire Employment Land Study	Evidence	2012	Includes employment land assessments for the plan period 2011-2031. The study includes Quantitative and Qualitative assessments of employment land, assessment of market demand and need, as well as providing forecasts and recommendations for future employment need over the plan period.	<p>This study covers existing employment sites in Hereford, the five market towns and their rural hinterlands.</p> <p>There are 7.5 hectares of Employment Land allocated to the Moreton on Lugg NDP area.</p> <p>This is found in the Depot (Moreton Business Park) area. This is considered to have a market attractiveness score of 3 and a planning score of 2 (potential top mark 3). This means that whilst there are some planning constraints it is suitable for inward investment and/or locally based employment needs. It performs moderately well in the environmental sustainability and strategic planning analysis. There are considerable mineral interests involved in or adjacent to the site.</p>	<ul style="list-style-type: none"> <li>• Material assets</li> <li>• Population and human health</li> </ul>	The NDP process may have to explore whether there is any employment need locally and if so whether there is any scope for providing employment land and premises.

This document is copyright of Herefordshire Council. Please contact the Neighbourhood Planning team if you wish to reuse it in whole or part.

Plans and Programmes	Type of document	Date	Overview	Key message, target/objective/indicator	SEA topic(s) <sup>1</sup>	Implications for the NDP and SEA
Herefordshire Strategic Housing Land Availability Assessment (SHLAA)	Evidence	2009	<p>The SHLAA aims to justify site allocations in plans by:</p> <ul style="list-style-type: none"> <li>Identifying sites which are capable of delivering housing development</li> <li>Assessing sites for their housing potential; and</li> <li>Predicting when a site could be developed for housing.</li> </ul>	<p>In terms of Moreton on Lugg previous SHLAA identifies that:</p> <ul style="list-style-type: none"> <li>295 additional dwellings could be provided on 5 sites in and around the existing settlement</li> <li>Of the 295 dwellings, 180 could be provided in 1-10 years, and 115 in 11-20 years.</li> </ul>	<ul style="list-style-type: none"> <li>Air</li> <li>Biodiversity</li> <li>Climate factors</li> <li>Cultural heritage and the landscape</li> <li>Flora and fauna</li> <li>Population and human health</li> <li>Soil</li> <li>Water</li> </ul>	<p>The SHLAA assesses the potential availability of land for housing in Moreton on Lugg.</p> <p>Site allocations should be informed by a housing land assessment, undertaken in line with Guidance Note 21: Site assessment and allocation sites.</p>

Plans and Programmes	Type of document	Date	Overview	Key message, target/objective/indicator	SEA topic(s) <sup>1</sup>	Implications for the NDP and SEA
Herefordshire Local Housing Market Assessment (LHMA)	Evidence	2013	Builds on an earlier Strategic Housing Market Assessment (SHMA) developed for Herefordshire and Shropshire. Its purpose is to inform the Local Plan's policies regarding housing need and demand (for market and affordable housing) within each of the 7 Housing Market Areas (HMAs) in Herefordshire between 2011 and 2031.	<p>Moreton on Lugg falls within the Hereford HMA. Here, the study reveals that:</p> <ul style="list-style-type: none"> <li>• 58% of households are unable to afford market housing.</li> <li>• There is an annual requirement for 417 affordable dwellings between 2012 and 2017.</li> </ul> <p>The study identifies that, in rural parts of the HMA, there is a need for:</p> <ul style="list-style-type: none"> <li>• 1215 market houses</li> <li>• 654 affordable houses.</li> </ul> <p>The study highlights that within the Hereford HMA the overall estimated housing need by size 2012-2017 is as follows:</p> <p>1 Bed - 57.3%  2 bed -18.6%  3 bed – 18.5%  4 bed – 5.7%</p>	<ul style="list-style-type: none"> <li>• Air</li> <li>• Biodiversity</li> <li>• Climate factors</li> <li>• Cultural heritage and the landscape</li> <li>• Flora and fauna</li> <li>• Population and human health</li> <li>• Soil</li> <li>• Water</li> </ul>	<p>The LHMA provides an indication of housing needs and affordability within the Hereford HMA.</p> <p>It provides evidence that could be used to inform policies or market and affordable housing requirements in the NDP.</p>

This document is copyright of Herefordshire Council. Please contact the Neighbourhood Planning team if you wish to reuse it in whole or part.

Plans and Programmes	Type of document	Date	Overview	Key message, target/objective/indicator	SEA topic(s) <sup>1</sup>	Implications for the NDP and SEA
Herefordshire Local Housing Requirements Study	Evidence	2012	Technical assessment of the housing market and potential future local housing requirements which supports planning policy regarding the amount of growth, housing tenure and housing type needed within Herefordshire up to 2031.	<p>The delivery of 5,300 homes in the rural areas would:</p> <ul style="list-style-type: none"> <li>• Support growth in the rural population by 6%</li> <li>• Increase the number of households by 14.5%</li> </ul> <p>Forecasts also predict that growth in the population of the rural areas is likely to be primarily through an increase in those aged over 75.</p> <p>Moderate growth is expected in the 30-44 and 60-74 age brackets.</p> <p>The Local Housing Requirements Study therefore anticipates continuing improvements in life expectancy; significant growth is expected of those in their 80s, with the existing population in their 40s and 50s moving into</p>	<ul style="list-style-type: none"> <li>• Air</li> <li>• Biodiversity</li> <li>• Climate factors</li> <li>• Cultural heritage and the landscape</li> <li>• Flora and fauna</li> <li>• Material assets</li> <li>• Population and human health</li> <li>• Soil</li> <li>• Water</li> </ul>	<p>This study provides an indication of housing requirements in the rural areas and the Hereford HMA.</p> <p>This evidence can be used to inform the content of the Moreton on Lugg NDP, which could include policies to facilitate the provision of the right types of homes in the right places.</p>



Plans and Programmes	Type of document	Date	Overview	Key message, target/objective/indicator	SEA topic(s) <sup>1</sup>	Implications for the NDP and SEA
				retirement.		
Herefordshire Rural Housing Background Report	Evidence	2013	Provides the justification for the proportional housing growth targets outlined in the Core Strategy	The village of Moreton on Lugg is an RA1 settlement. It is considered a sustainable location for proportional growth of 18%.	<ul style="list-style-type: none"> <li>• Air</li> <li>• Biodiversity</li> <li>• Climate factors</li> <li>• Cultural heritage and the landscape</li> <li>• Flora and fauna</li> <li>• Material assets</li> <li>• Population and human health</li> <li>• Soil</li> <li>• Water</li> </ul>	The Moreton on Lugg NDP will need to be in conformity with the provisions of Policy RA1.

Plans and Programmes	Type of document	Date	Overview	Key message, target/objective/indicator	SEA topic(s) <sup>1</sup>	Implications for the NDP and SEA
Herefordshire Draft Gypsies and Travellers Assessment	Evidence	2013	Assesses the accommodation needs of Gypsies and Travellers across Herefordshire.	<p>Key findings from the survey of Gypsy and Traveller households in 2012 found that:</p> <ul style="list-style-type: none"> <li>• 31% of households surveyed have some sort of accommodation need</li> <li>• Of the 17 households with an accommodation need, 7 had a requirement for at least one additional pitch</li> <li>• 10 households had a requirement for bricks and mortar housing</li> <li>• There is an additional requirement for 7 pitches and 9 units of Registered Social Landlord accommodation within Herefordshire.</li> </ul>	<ul style="list-style-type: none"> <li>• Air</li> <li>• Biodiversity</li> <li>• Climate factors</li> <li>• Cultural heritage and the landscape</li> <li>• Flora and fauna</li> <li>• Material assets</li> <li>• Population and human health</li> <li>• Soil</li> <li>• Water</li> </ul>	The Moreton on Lugg NDP should establish whether any of the need identified in this assessment falls within the neighbourhood area and seek appropriate pitches and provision.

Plans and Programmes	Type of document	Date	Overview	Key message, target/objective/indicator	SEA topic(s) <sup>1</sup>	Implications for the NDP and SEA
Herefordshire Local Biodiversity Action Plan	Evidence	2007	Focuses conservation efforts on the areas within Herefordshire that will result in the greatest benefit for ecological networks, habitats and species.	Integrating biodiversity objectives with other environmental, social and economic needs can provide a sustainable living and working environment that benefits both people and nature.	<ul style="list-style-type: none"> <li>• Biodiversity</li> </ul>	The NDP can help to achieve the LBAP priorities.
Building Biodiversity into the LDF	Evidence	2009	Provides the Council's Local Plan (Core Strategy) with evidence in respect of biodiversity and geodiversity, identifying both opportunities and constraints across Herefordshire.	This document provides useful information in respect of Hereford and the market towns only.	<ul style="list-style-type: none"> <li>• Air</li> <li>• Biodiversity</li> <li>• Climate factors</li> <li>• Cultural heritage and the landscape</li> <li>• Flora and fauna</li> <li>• Material assets</li> <li>• Population and human health</li> <li>• Soil</li> <li>• Water</li> </ul>	There is a lack of information about rural areas which means it will be necessary to gather and assess existing biodiversity and geodiversity data, in order to ensure that the Moreton on Lugg NDP can overcome any existing constraints and capitalise on opportunities to enhance habitats and their networks.

Plans and Programmes	Type of document	Date	Overview	Key message, target/objective/indicator	SEA topic(s) <sup>1</sup>	Implications for the NDP and SEA
Herefordshire Green Infrastructure Strategy	Evidence	2010	Develops a framework of natural and culturally important features and functions so that planning for a sustainable future is at the heart of planning within Herefordshire.	Establishes policies and principles for the protection and enhancement of those features and functions that contributes to the environment of Herefordshire across a range of scales.	<ul style="list-style-type: none"> <li>• Air</li> <li>• Biodiversity</li> <li>• Climate factors</li> <li>• Cultural heritage and the landscape</li> <li>• Flora and fauna</li> <li>• Material assets</li> <li>• Population and human health</li> <li>• Soil</li> <li>• Water</li> </ul>	The study provides evidence that could be taken into account when preparing policies for the Moreton on Lugg NDP.
Renewable Energy Study	Evidence	2010	Assesses the energy demand within Herefordshire and the ability for the county to accommodate renewable and low carbon energy technologies.	<p>The total energy demand excluding transport for Herefordshire, at that point in time, was calculated as being:</p> <ul style="list-style-type: none"> <li>• Electrical: 731 GWh/yr</li> <li>• Heat: 1,810 GWh/yr</li> <li>• Total: 2,541 GWh/yr</li> </ul> <p>There is scope for all types of renewable energy production.</p>	<ul style="list-style-type: none"> <li>• Air</li> <li>• Biodiversity</li> <li>• Climate factors</li> <li>• Cultural heritage and the landscape</li> <li>• Flora and fauna</li> <li>• Material assets</li> <li>• Population and human health</li> <li>• Soil</li> <li>• Water</li> </ul>	The study provides evidence that could be taken into account when preparing policies for the Moreton on Lugg NDP.

Plans and Programmes	Type of document	Date	Overview	Key message, target/objective/indicator	SEA topic(s) <sup>1</sup>	Implications for the NDP and SEA
Herefordshire Playing Pitch Assessment	Evidence	2012	Produces a strategic framework, audit and assessment and needs analysis of outdoor sports pitches and facilities for Herefordshire. The document arises as a result of a recommendation in the Herefordshire and Worcestershire Sports Facilities Framework to develop local standards for playing fields and sports pitches throughout Herefordshire.	<p>The study updates components of the Herefordshire and Worcestershire Sports Facilities Framework 2010 such as updating population forecasts, setting local standards for synthetic turf pitches and grass playing fields within Herefordshire. It identifies any current gaps in provision, and looks forward to 2031 to assess what facilities are likely to be required by that date.</p> <p>In terms of Moreton on Lugg parish itself, the study reveals that the football pitch is below the 60% minimum standard threshold so should be a priority for future investment depending upon local needs and aspirations.</p> <p>It is unclear from this study how much of the pitch space available possessed secure community use.</p>	<ul style="list-style-type: none"> <li>• Biodiversity</li> <li>• Cultural heritage and the landscape</li> <li>• Flora and fauna</li> <li>• Material assets</li> <li>• Population and human health</li> </ul>	<p>The study provides evidence that could be taken into account when preparing policies for the Moreton on Lugg NDP.</p> <p>Additional local evidence may be required to identify if there is a need for any secured playing pitch facilities within the Group Parish.</p>

Plans and Programmes	Type of document	Date	Overview	Key message, target/objective/indicator	SEA topic(s) <sup>1</sup>	Implications for the NDP and SEA
Open Spaces Study	Evidence	2006	The 2006 space audit and assessment of need is a snap shot of the quality, quantity and distribution of open space across Herefordshire.	<p>The study reveals that within the Moreton on Lugg</p> <ul style="list-style-type: none"> <li>• Extensive over provision of parks and gardens</li> <li>• Extensive over provision of natural and semi-natural green space</li> <li>• Under provision of amenity green space</li> <li>• Extensive under provision for outdoor sport</li> <li>• Average provision for children and young people.</li> </ul>	<ul style="list-style-type: none"> <li>• Biodiversity</li> <li>• Climate factors</li> <li>• Cultural heritage and the landscape</li> <li>• Flora and fauna</li> <li>• Material assets</li> <li>• Population and human health</li> </ul>	The open space audit and assessment does not give a specific indication of open space shortfalls and surpluses in Moreton on Lugg

Plans and Programmes	Type of document	Date	Overview	Key message, target/objective/indicator	SEA topic(s) <sup>1</sup>	Implications for the NDP and SEA
Play Facilities Study	Evidence	2012	The Play Facilities Study 2012 updates the previous play facilities analysis under the Open Spaces Study 2006 and provides guidance and a framework for the development, delivery and continued sustainability of providing new and improved play facilities for children and young people in Herefordshire to 2031.	In terms of Moreton on Lugg itself, the study reveals that there is facility for infants up to 6yrs old and that the Parish Council seeks to improve this and possibly develop a youth shelter.	<ul style="list-style-type: none"> <li>• Biodiversity</li> <li>• Climate factors</li> <li>• Cultural heritage and the landscape</li> <li>• Flora and fauna</li> <li>• Material assets</li> <li>• Population and human health</li> </ul>	The study provides evidence that could be taken into account when preparing policies for the Moreton on Lugg NDP.

Plans and Programmes	Type of document	Date	Overview	Key message, target/objective/indicator	SEA topic(s) <sup>1</sup>	Implications for the NDP and SEA
Strategic Flood Risk Assessment (SFRA) and Water Cycle Study	Evidence	2009	<p>The Strategic Flood Risk Assessment (SFRA) provides a summary of flood risk in Herefordshire to inform the location of future development.</p> <p>The Water Cycle Study examines how water resources and water supply infrastructure, wastewater treatment, water quality, sewerage and flood risk could constrain growth across Herefordshire.</p>	<p>The Lower Lugg sub catchment is classified as the 4<sup>th</sup> highest at risk of fluvial flood in the county, with 7714 properties at risk along its length.</p> <p>Moreton on Lugg NDP lies within the Herefordshire CU Water Resource Zone (WRZ).</p> <ul style="list-style-type: none"> <li>Both the 'Annual Average' and 'Critical Period' scenarios are in surplus throughout the planning period.</li> </ul> <p>The overall Water Directive Framework status of the River Lugg in the Moreton on Lugg area is 'poor' whereas other water courses in the parish are rated 'moderate'.</p>	<ul style="list-style-type: none"> <li>Biodiversity</li> <li>Climate factors</li> <li>Material assets</li> <li>Population and human health</li> <li>Water</li> </ul>	<p>New development proposed through the Moreton on Lugg NDP should be assessed against the capacity of local infrastructure.</p> <p>Up-to-date flood risk information should be gathered from the Environment Agency, in order to ensure that any flood risks are considered when preparing the Moreton on Lugg NDP.</p>



**Appendix A2 – Baseline information for Moreton on Lugg**

*N.B. This is based on countywide baseline information with some additions relevant to Moreton on Lugg (in red). Where no locally specific data is available for current status, trends and targets, only countywide data is reported. Any gaps in data may be filled following additional research.*

SA Objective <sup>1</sup>	SA Theme	Proposed indicator	Current status	Trends	Targets	Issues and constraints	Baseline (information) source
SEA Topic covered by objective: <i>Biodiversity, flora and fauna</i>							
13. Value, maintain, restore and expand county biodiversity.	Natural environment	Net change in condition of SSSIs across Herefordshire.	The 2011-2013 AMR does not contain updated conservation data.  2010/11: 27% of Herefordshire's SSSI land was in favourable condition.  <i>Within Moreton on Lugg Parish there is 1 SSSI; River Lugg (Unfavourable Recovering).</i>	2006: 22% 2007: 22% 2008: 22% 2010: 24 %  Proportion of SSSI land that was in unfavourable condition but recovering increased between 2010 and 2012 going from 41% to 65%. Proportion in unfavourable and declining condition had also decreased from 4% to 1%.	% of SSSI land in favourable condition (Increase)  % of SSSI land in unfavourable condition but recovering (Increase)  % of SSSI land in unfavourable condition and declining (Decrease)	Herefordshire's SSSIs are in extremely poor condition relative to England as whole, where 96.1% of all SSSI land was in favourable condition in April 2014.  The proportion of SSSI in unfavourable condition but recovering is greater than England as a whole, where the figure currently stands at 58.6%.	Understanding Herefordshire: An integrated needs assessment (June 2013).  NE & DEFRA Website March 2015

<sup>1</sup> Derived from the Pre Submission Core Strategy Sustainability Appraisal Assessment (May 2014)

SA Objective <sup>1</sup>	SA Theme	Proposed indicator	Current status	Trends	Targets	Issues and constraints	Baseline (information) source
13. Value, maintain, restore and expand county biodiversity.	Natural environment	After use of mineral sites especially wildlife habitat creation	<i>There is no countywide or locally specific data available at present.</i>	-	Percentage of opportunities taken	Should be monitored through AMR following the adoption of the Core Strategy, in line with SA recommendations.	-
13. Value, maintain, restore and expand county biodiversity.	Natural environment	Phosphate levels within the River Wye SAC and adjoining tributaries that receive increased phosphates from proportional growth.	Countywide data is available.  The River Lugg section of the SAC is currently exceeding the phosphate targets, and is therefore failing its conservation objectives.	The River Wye SAC was subject to a review of consents in 2010, as a number of sections of the river were found to have greater phosphate levels than those identified in Natural England's favourable condition tables.	Successful completion of the Nutrient Management Plan will provide future targets	New development within the area could lead to the water quality failing the phosphate levels and conservation objectives.	Nutrient Management Plan 2014

SA Objective <sup>1</sup>	SA Theme	Proposed indicator	Current status	Trends	Targets	Issues and constraints	Baseline (information) source
13. Value, maintain, restore and expand county biodiversity.	Natural environment	Changes to protected habitats and impacts of species within the Herefordshire Local Biodiversity Action Plan.	<p>The 2011-2013 AMR does not contain updated conservation data.</p> <p>2010/11: 17 Habitat Action Plans and 14 Species Action Plans are currently in operation across Herefordshire.</p> <p><i>There is no locally specific data available at present.</i></p>	<p>There are no formal records of any unacceptable adverse impacts on habitats or protected species.</p> <p>Originally 156 Priority Species were identified for inclusion in Herefordshire's LBAP.</p> <p>Similarly Herefordshire's LBAP covered 23 habitats with Action Plans.</p>	<p>To protect and where possible enhance the habitats of protected species identified.</p> <p>No net losses.</p>	<p>Herefordshire Biological Records Centre (HBRC) holds limited data on some individual sites.</p>	<p>Herefordshire Council AMR (2010/11)</p>

SA Objective <sup>1</sup>	SA Theme	Proposed indicator	Current status	Trends	Targets	Issues and constraints	Baseline (information) source
13. Value, maintain, restore and expand county biodiversity.	Natural environment	Changes in the areas of designated nature conservation sites as a consequence of planning permission.	<p>Moreton on Lugg has:</p> <p>SSSI: 1 SWS: 2: River Lugg, Wellington Marsh (border)</p> <p>There is one SAC (River Wye, including the Lugg).</p> <p>There are no NNRs, SINC and LNRs within the parish.</p>	As of 2012, there had been no change in the areas of designated nature conservation sites as a consequence of the planning permissions granted.	To capitalise on opportunities to enhance the areas of value to nature conservation as much as possible.	Herefordshire Biological Records Centre (HBRC) holds limited data on some individual sites.	Herefordshire Council Initial Screening Report for the Neighbourhood Plan 2013

SA Objective <sup>1</sup>	SA Theme	Proposed indicator	Current status	Trends	Targets	Issues and constraints	Baseline (information) source
13. Value, maintain, restore and expand county biodiversity.	Natural environment	Proportion of local sites where positive conservation management has or is being implemented.	<b>The Parish Area has the following landscape types:</b>  <b>Riverside meadows; Principal Settled Farmlands; Wet pasture meadows.</b>	-	No specific targets identified.	Should be monitored through AMR following the adoption of the Core Strategy, in line with SA recommendations.	Herefordshire Landscape Character Assessment (2004 updated 2009)
SEA Topic covered by objectives: <i>Material assets</i>							
14. Use natural resources and energy more efficiently.	Resource consumption and climate change	Maintaining Herefordshire Council's County Site and Monuments Register.	Countywide data would be too large to incorporate into this template.  <b>Whilst there is no qualitative, locally specific data available at present, there are numerous listed buildings and 1 scheduled</b>	-	No specific targets identified, but need to ensure that the register is kept up to date.	Should be monitored through AMR following the adoption of the Core Strategy, in line with SA recommendations.	Herefordshire Environmental Records Register (search June 2014).

SA Objective <sup>1</sup>	SA Theme	Proposed indicator	Current status	Trends	Targets	Issues and constraints	Baseline (information) source
			monument in Moreton on Lugg according to the latest version of the register.				
14. Use natural resources and energy more efficiently.	Resource consumption and climate change	Monitoring changes to historic landscapes.	Historic Landscape Character assessments have only been undertaken for Hereford City.  Rapid townscape Assessments (2010) were only undertaken for Hereford, Ledbury and Ross.	-	No specific targets identified.	Should be monitored through AMR following the adoption of the Core Strategy, in line with SA recommendations.	Historic Landscape Character Assessment for Hereford.  Rapid townscape Assessments (2010)
SEA Topic covered by objective: <i>Population, Biodiversity, Flora and Fauna</i>							

SA Objective <sup>1</sup>	SA Theme	Proposed indicator	Current status	Trends	Targets	Issues and constraints	Baseline (information) source
15. Value, protect, enhance and restore the landscape quality of Herefordshire, including its rural areas and open spaces.	Natural environment	Number of developments meeting and surpassing national design standards.	<i>There is no countywide or locally specific data available at present.</i>	-	No specific targets identified.	Should be monitored through AMR following the adoption of the Core Strategy, in line with SA recommendations.	-

SA Objective <sup>1</sup>	SA Theme	Proposed indicator	Current status	Trends	Targets	Issues and constraints	Baseline (information) source
15. Value, protect, enhance and restore the landscape quality of Herefordshire, including its rural areas and open spaces.	Natural environment	The need for, frequency and outcomes of planning enforcement investigations/ planning appeals concerning aspects of local loss of heritage assets and locally important buildings particularly within a conservation area.	<p>Countywide data would be too large to incorporate into this template.</p> <p>There is no conservation area present within the parish of Moreton on Lugg.</p> <p>There are no outstanding enforcement actions or appeals concerning local loss of heritage assets and locally important buildings within the parish</p>	No historic records of any planning enforcement action or appeals concerning locally important buildings within the parish.	To wherever possible improve upon or otherwise maintain current status.	Current status must be verified by Dvt Mgt and Enforcement Officers, but the NDP can help to avoid enforcement action and appeals during the plan period.	Council Dvt Mgt records (searched March 2015)
SEA Topic covered by objective: <i>Climatic Factors</i>							



SA Objective <sup>1</sup>	SA Theme	Proposed indicator	Current status	Trends	Targets	Issues and constraints	Baseline (information) source
16. Reduce Herefordshire's vulnerability to the impacts of climate change as well as its contribution to the problem.	Resource consumption and climate change.	Transport patronage by mode	<p>% of Herefordshire residents who travel to work by:</p> <p>Car: 70.1%  Foot: 14.7%  Bicycle: 4.3%  Bus: 2%  Train: 0.8%  Motorbike: 0.8%  Taxi: 0.3%  Other: 7%</p> <p><i>There is no locally specific data available at present</i></p>	The number of people cycling or travelling by bus as the main form transport to get to work declined between 2001 and 2011 – across England and Wales there was little change in either. Walking or driving a car or van on the other hand increased.	To encourage the take up of lesser polluting modes of transport.	There are a lack of transport options for many rural communities and therefore high car ownership and dependency – the last decade has seen a 15 per cent increase in household car ownership, although this is not reflected in traffic flows of recent years with volumes in Hereford City and wider county having decreased. The proportion of people working from home increased over the decade from 15 per cent in 2001 to 17 per cent in 2011.	2011 Census

SA Objective <sup>1</sup>	SA Theme	Proposed indicator	Current status	Trends	Targets	Issues and constraints	Baseline (information) source
16. Reduce Herefordshire's vulnerability to the impacts of climate change as well as its contribution to the problem.	Resource consumption and climate change.	Number of decentralised energy schemes granted permission.	<i>There is no countywide or locally specific data available at present.</i>	-	To contribute towards the national target.	Should be monitored through AMR following the adoption of the Core Strategy, in line with SA recommendations.	-

SA Objective <sup>1</sup>	SA Theme	Proposed indicator	Current status	Trends	Targets	Issues and constraints	Baseline (information) source
16. Reduce Herefordshire's vulnerability to the impacts of climate change as well as its contribution to the problem.	Resource consumption and climate	Total CO2 emissions per capita	<p>Latest figure dates back to 2010: 1.61 million tonnes (mtCO<sub>2</sub>)</p> <p>There is no locally specific data available at present.</p>	<p>Between 2005 and 2010 Herefordshire's total and per capita carbon emission reduced by 7% and 8% respectively; while UK's total and per capita carbon emission reduced by 8% and 12% respectively within the same period. This trend hides an increase in emissions between 2009 and 2010 when total emissions in the county increased by 5% the same as across the UK (+5%).</p>	To reduce the overall carbon emissions.	CO <sub>2</sub> emissions produced are decreasing.	Understanding Herefordshire: An integrated needs assessment (June 2013).

SA Objective <sup>1</sup>	SA Theme	Proposed indicator	Current status	Trends	Targets	Issues and constraints	Baseline (information) source
SEA Topic covered by objective: <i>Water</i>							
17. Reduce the risk of flooding and the resulting detriment to public wellbeing, the economy and the environment.	Natural environment	Number of planning permissions granted contrary to the advice of the Environment Agency on flood defence grounds.	2010/11: None 2011/13: Not specified 2013/14: None <i>There is no locally specific data available at present.</i>	There have been no approvals contrary to EA advice since reporting began in 2004.	To have no applications permitted contrary to EA advice.	None identified.	Herefordshire Council AMR (2010/11), (2011/13) & (2013/14)
SEA Topic covered by objective: <i>Water, air, soil, material assets</i>							
18. Minimise local and global pollution and protect or enhance environmental resources.	Natural environment	Agricultural land usage by quality . LA to monitor the number of hectares of the best and most versatile agricultural land (grades 3a and higher) lost to development.	<b>The agricultural land classification around Moreton on Lugg is mainly Grade 2 (Very Good) with an area of Good to Moderate (Grade 3) in the central north of the parish and a strip of Poor (grade 4) bordering the River Lugg.</b>	-	Measure the number of hectares of best and most versatile soil lost through development.	Should be monitored through AMR following the adoption of the Core Strategy, in line with SA recommendations.	DEFRA 'Magic' website for land classification 2015

SA Objective <sup>1</sup>	SA Theme	Proposed indicator	Current status	Trends	Targets	Issues and constraints	Baseline (information) source
18. Minimise local and global pollution and protect or enhance environmental resources.	Natural environment	Percentage of river length assessed as good or very good chemical quality and ecological quality as required by the Water Framework Directive	Latest figures for the county as a whole dates back to 2005 when there was considered to be 84% assessed as good or very good. This represents a decrease in the % since 2002  <i>There is no locally specific data available at present.</i>	Figure steadily improved before going into decline:  Herefordshire 1999 85.9%, 2000 89.5%, 2001 92.2%, 2002 91.8%	To ensure that rivers meet their conservation objectives and do not fall below the required standard of quality.	None identified.	The State of Herefordshire (2007)  Water Framework Directive (2000)
SEA Topic covered by objective: <i>Soil</i>							
19. Ensure integrated, efficient and balanced land use.	Built environment	Percentage of all new development completed on previously developed land.	2010/11: 67% 2011-13: 57% 2013-14: 65%  <i>There is no locally specific data available at present.</i>	Completions on PDL had risen to 71% by 2005.	To increase the number of homes built on PDL in line with the provisions of national planning policy.	The number of brownfield completions has fallen slightly in recent years, though this is probably the offshoot of tough market conditions.	Herefordshire Council AMR (2010/11),(2011-2013) and (2013-2014)

SA Objective <sup>1</sup>	SA Theme	Proposed indicator	Current status	Trends	Targets	Issues and constraints	Baseline (information) source
19. Ensure integrated, efficient and balanced land use.	Built environment	Housing densities in urban and rural areas	<i>There is no countywide or locally specific data available at present.</i>	-	No specific targets identified.	Should be monitored through AMR following the adoption of the Core Strategy, in line with SA recommendations.	-
19. Ensure integrated, efficient and balanced land use.	Built environment	Level of development in urban areas compared to rural.	<i>There is no countywide or locally specific data available at present.</i>  This indicator would not be applicable to rural NDPs.	N/A	N/A	N/A	N/A
SEA Topic covered by objective: <i>Cultural heritage</i>							

SA Objective <sup>1</sup>	SA Theme	Proposed indicator	Current status	Trends	Targets	Issues and constraints	Baseline (information) source
20. Value, protect and enhance the character and built quality of settlements and neighbourhoods and the county's heritage assets, including conservation areas, historic environment and cultural heritage.	Built environment	Number and percentage of listed buildings and Scheduled Ancient Monuments on Buildings at Risk Register (English Heritage).	Up-to-date countywide information will be presented in the next AMR and which is due to be published in 2014. However, this data would be too large to incorporate into this template.  There are numerous listed buildings within the parish and one SAMs. None are currently recorded in the Buildings at Risk Register.	There were 79 heritage assets in Herefordshire that were considered to be at high risk and included in the Heritage at Risk Register 2014.	To wherever possible improve upon or otherwise maintain current status.	None of Moreton on Lugg's listed buildings or SAMs are considered to be at risk at present.	Buildings at Risk Register (English Heritage; search March 2015)

SA Objective <sup>1</sup>	SA Theme	Proposed indicator	Current status	Trends	Targets	Issues and constraints	Baseline (information) source
20. Value, protect and enhance the character and built quality of settlements and neighbourhoods and the county's heritage assets, including conservation areas, historic environment and cultural heritage.	Built environment	The need for, frequency and outcomes of planning enforcement investigations/ planning appeals concerning aspects of local loss of heritage assets, locally important buildings within the parish and particularly within a conservation area.	Countywide data would be too large to incorporate into this template.  There is no Conservation Area within the Moreton on Lugg Parish.  There are no outstanding enforcement actions or appeals concerning local loss of heritage assets or locally important buildings within Moreton on Lugg.	No historic records of any planning enforcement action or appeals concerning locally important buildings within the two conservation areas.	To wherever possible improve upon or otherwise maintain current status	Current status must be verified by Dvt Mgt and Enforcement Officers, but the NDP can help to avoid enforcement action and appeals during the plan period.	Council Dvt Mgt records (searched March 2015)



**Appendix A3 – Environmental issues identified from the Moreton on Lugg baseline**

These environmental issues are the same as most of those identified for the Herefordshire Core Strategy<sup>1</sup>

SEA Topic		Environmental issue	SA objectives
1	Air	High reliance upon the private car causing high levels of air pollution and in Hereford in particular	Objective 16
		Need to reduce carbon emissions by encouraging alternative modes of travel.	
2	Biodiversity	Habitats and species of national, regional and local importance are under pressure from the adaptation and diversification of farming and forestry employment.	Objectives 13 &15
		Habitats and species of national, regional and local importance are under pressure from development	
		Minimise loss of biodiversity and expand opportunities for wildlife everywhere.	
3	Climatic factors	Reduce greenhouse gas emissions through planning, design and build.	Objective 16
4	Cultural heritage	Moreton on Lugg has numerous listed buildings and a Scheduled Ancient Monument, all of which require ongoing protection and maintenance.	Objective 20
5	Flora and fauna	Conserve and enhance the character and quality of historic landscapes, including all types of natural flora and fauna.	Objective 15
6	Material assets	How the countryside can continue to be managed in an economically, socially and environmentally beneficial way in the face of continuing pressures on traditional farming.	Objectives 14 & 18
7	Population	Minimise energy waste through good designs, which help to reduce energy consumption and maximise efficiency.	Objective 15
		Need to avoid enforcement investigations/action concerning locally important buildings and those within conservation areas in particular.	
8	Soil	Promoting development of previously developed land and buildings as opposed to greenfield sites or agricultural land of the highest quality.	Objectives 18 & 19

<sup>1</sup> Derived from the Pre-submission Core Strategy Sustainability Appraisal Assessment (May 2014) and LDF General Scoping Report (June 2007)

9	Water	Issues relating to availability of resources, foul drainage, pollution, and abstraction in a county which supports water dependent biodiversity of international and national importance, given the predicted climate change consequences for water availability and demanding projections for new housing.	Objectives 17 & 18
		Steady decline in the chemical quality of rivers over the last 10 years.	

SEA Topics	SA Objective	SEA Objective	Sub-objectives / Appraisal Questions	Indicators	Targets
Nature Conservation (Biodiversity, flora and fauna)	Value, maintain, restore or expand county biodiversity. Value, protect, enhance or restore the landscape quality of Herefordshire, including its rural areas and open spaces.	To maintain and enhance nature conservation (biodiversity, flora and fauna)	<ul style="list-style-type: none"> <li>Protect or enhance habitats of international, national, regional or local importance.</li> <li>Protect international, national, regional or locally important terrestrial or aquatic species.</li> <li>Maintain wildlife corridors and minimise fragmentation of ecological areas and green spaces.</li> <li>Manage access to sites in a sustainable way that protects or enhances their nature conservation value.</li> <li>Create new appropriate habitats.</li> <li>Value, enhance and protect natural environmental assets including AONB's, historic landscapes, open spaces, parks and gardens and their settings.</li> </ul>	Net change in condition of SSSIs across Herefordshire.	% of SSSI land in favourable condition (Increase) % of SSSI land in unfavourable condition but recovering (Increase) % of SSSI land in unfavourable condition and declining (Decrease)
				After use of mineral sites especially wildlife habitat creation	Percentage of opportunities taken
				Changes to protected habitats and impacts of species within the Herefordshire Local Biodiversity Action Plan.	To protect and where possible enhance the habitats of protected species identified.  No net losses

SEA Topics	SA Objective	SEA Objective	Sub-objectives / Appraisal Questions	Indicators	Targets
			<ul style="list-style-type: none"> <li>Encourage local stewardship of local environments, for example by promoting best practices in agricultural management</li> <li>Ensure that environmental impacts caused by mineral operations and the transport of minerals are minimised.</li> <li>Promote the use of rural areas and open space by all, encourage easy non-car based access, and accommodate the needs of disabled users.</li> </ul>		
Landscape	Not covered in SA	To maintain and enhance the quality of landscapes and townscapes	<ul style="list-style-type: none"> <li>Protect and enhance the landscape everywhere and particularly in designated areas</li> </ul>	Changes in the areas of designated nature conservation sites as a consequence of planning permission.	To capitalise on opportunities to enhance the areas of value to nature conservation as much as possible.
		To improve quality of surroundings	<ul style="list-style-type: none"> <li>Value and protect diversity and local distinctiveness</li> <li>Improve landscape and ecological quality and character of the countryside</li> <li>Improve the quantity and quality of publicly accessible open space</li> </ul>	Proportion of local sites where positive conservation management has or is being implemented.	No specific targets identified.
				Monitoring changes to historic landscapes.	No specific targets identified.
				Area resulting in a loss of open space as a result of planning permission.	No specific targets identified

SEA Topics	SA Objective	SEA Objective	Sub-objectives / Appraisal Questions	Indicators	Targets
			<ul style="list-style-type: none"> <li>• Improve satisfaction of people with their neighbourhoods as places to live</li> <li>• Decrease litter and graffiti in towns and countryside</li> <li>• Result in the loss of open space</li> </ul>		

SEA Topics	SA Objective	SEA Objective	Sub-objectives / Appraisal Questions	Indicators	Targets
Heritage	Value, protect or enhance the character and built quality of settlements and neighbourhoods and the county's heritage assets, historic environment and cultural heritage.	To conserve and where appropriate enhance the historic environment, heritage assets and culture heritage	<ul style="list-style-type: none"> <li>• Preserve, protect and enhance heritage assets including conservation areas, listed buildings, archaeological sites and other culturally important features in both urban and rural settings.</li> <li>• Prevent development which is inappropriate in scale, form or design to its setting or to its function or local area.</li> <li>• Encourage development that creates and sustains well-designed, high quality built environments that incorporate green space, encourage biodiversity and promote local distinctiveness and sense of place.</li> <li>• Encourage cleanliness and/or improve the general appearance of the area.</li> </ul>	The need for, frequency and outcomes of planning enforcement investigations/ planning appeals concerning the aspects of local loss of locally important buildings within a conservation area.	To improve upon or otherwise maintain current status.
				Number and percentage of listed buildings and Scheduled Ancient Monuments on Buildings at Risk Register (English Heritage).	To improve upon or otherwise maintain current status.
				Ensure that Herefordshire Council's Sites and Monuments Register is kept up to date.	No specific targets identified, but need to ensure that the register is kept up to date.

SEA Topics	SA Objective	SEA Objective	Sub-objectives / Appraisal Questions	Indicators	Targets
Air and Climate	<p>Minimise local and global pollution and protect or enhance environmental resources.</p> <p>Reduce Herefordshire's vulnerability to the impacts of climate change as well as its contribution to the problem.</p>	To improve air quality	<ul style="list-style-type: none"> <li>Minimise water, air, soil, groundwater, noise and light pollution from current activities and the potential for such pollution.</li> <li>Protect or enhance the quality of watercourses.</li> <li>Provide opportunities to improve soil quality or reduce contaminated land.</li> <li>Reduce the county's contribution to climate change by reducing greenhouse gas emissions from transport, domestic, commercial and industrial sources.</li> <li>Increase the proportion of energy generated from renewable and low carbon sources including by micro-generation, Combined Heat and Power (CHP), district heating and in transportation.</li> </ul>	Transport patronage by mode	To increase the take up of alternative modes to the private car.
		To reduce the effect of traffic on the environment		Number of decentralised energy schemes granted permission.	To contribute towards the national target.
		To reduce contributions to climate change		Total CO2 emissions per capita	To reduce the overall carbon emissions.
		To reduce vulnerability to climate change			

SEA Topics	SA Objective	SEA Objective	Sub-objectives / Appraisal Questions	Indicators	Targets
Water	Reduce the risk of flooding and the resulting detriment to public well-being, the economy and the environment. Minimise local and global pollution and protect or enhance environmental resources.	To improve water quality	<ul style="list-style-type: none"> <li>Reduce flood risk both presently and taking into account climate change.</li> <li>Prevent inappropriate development of the floodplain, and include flood protection systems.</li> <li>Include sustainable urban drainage systems where appropriate.</li> <li>Minimise water, air, soil, groundwater, noise and light pollution from current activities and the potential for such pollution.</li> <li>Protect or enhance the quality of watercourses.</li> </ul>	Number of planning permissions granted contrary to the advice of the Environment Agency on flood defence grounds.	To have no applications permitted contrary to EA advice.
		To provide for sustainable sources of water supply		Percentage of river length assessed as good or very good chemical quality and ecological quality	To ensure that rivers meet their conservation objectives and do not fall below the required standard of quality as set out in the Water Framework Directive.
		To avoid, reduce and manage flood risk		Phosphate levels within the River Wye SAC and adjoining tributaries that receive increased phosphates from proportional growth.	To meet the targets set out in the Nutrient Management Plan (2014)



SEA Topics	SA Objective	SEA Objective	Sub-objectives / Appraisal Questions	Indicators	Targets
Soil	Minimise local and global pollution and protect or enhance environmental resources.	To conserve soil resources and quality	<ul style="list-style-type: none"> <li>Minimise water, air, soil, groundwater, noise and light pollution from current activities and the potential for such pollution.</li> <li>Provide opportunities to improve soil quality or reduce contaminated land.</li> <li>Ensure new developments are in appropriate locations, optimising the use of previously developed land and buildings, primarily focussed on the urban areas and are accessible by walking, cycling or sustainable transport and/or will increase the share of these transport modes, thereby reducing the need to travel.</li> </ul>	Percentage of all new development completed on previously developed land.	To increase the number of homes built on PDL in line with the provisions of national planning policy.
	Ensure integrated, efficient and balanced land use.	Ensure integrated, efficient and balanced land use.		Amount of land identified as best and most versatile agricultural land lost to development.	Measure the number of hectares of best and most versatile soil lost through development.

SEA Topics	SA Objective	SEA Objective	Sub-objectives / Appraisal Questions	Indicators	Targets
Population and Human Health	Value, protect, enhance or restore the landscape quality of Herefordshire, including its rural areas and open spaces.	To improve health of the population  To reduce crime and nuisance	<ul style="list-style-type: none"> <li>Value, enhance and protect natural environmental assets including AONB's, historic landscapes, open spaces, parks and gardens and their settings.</li> <li>Encourage local stewardship of local environments, for example by promoting best practices in agricultural management.</li> <li>Ensure that environmental impacts caused by mineral operations and the transport of minerals are minimised.</li> <li>Promote the use of rural areas and open space by all, encourage easy non-car based access, and accommodate the needs of disabled users.</li> </ul>	Number of developments meeting and surpassing national design	No specific targets identified.

SEA Topics	SA Objective	SEA Objective	Sub-objectives / Appraisal Questions	Indicators	Targets
Material Assets	Use natural resources and energy more efficiently.  Minimise local and global pollution and protect or enhance environmental resources.	To conserve natural and manmade resources	<ul style="list-style-type: none"> <li>• Maximise energy efficiency and minimise the consumption of non-renewable energy i.e. from fossil fuels.</li> <li>• Minimise the consumption of water, land, soil, minerals, aggregates and other raw materials by all? E.g. through integrated transport, sustainable resource-efficient design, local sourcing of food, goods, materials.</li> <li>• Encourage the re-use/enhancement (to high standards of sustainable resource-efficient design) of existing buildings and minimise the need for new build.</li> <li>• Encourage the use of clean technologies and water minimisation techniques.</li> </ul>	The need for, frequency and outcomes of planning enforcement investigations/ planning appeals concerning the aspects of local loss of locally important buildings within a conservation area.	Measure the number of hectares of best and most versatile soil lost through development. No specific targets identified.
				Maintaining Herefordshire Council's County Site and Monuments Register.	No specific targets identified, but need to ensure that the register is kept up to date.
				Monitoring changes to historic landscapes.	No specific targets identified.
				Agricultural land usage by quality	Measure the number of hectares of best and most versatile soil lost through development.

# Appendix 1

---

**Initial Habitat Regulations Assessment and Strategic Environmental  
Assessment Screening Notification**

**The Neighbourhood Planning (General) Regulation 2012 (Reg. 32)**

**Conservation of Habitats and Species Regulations 2010 (d)**

---

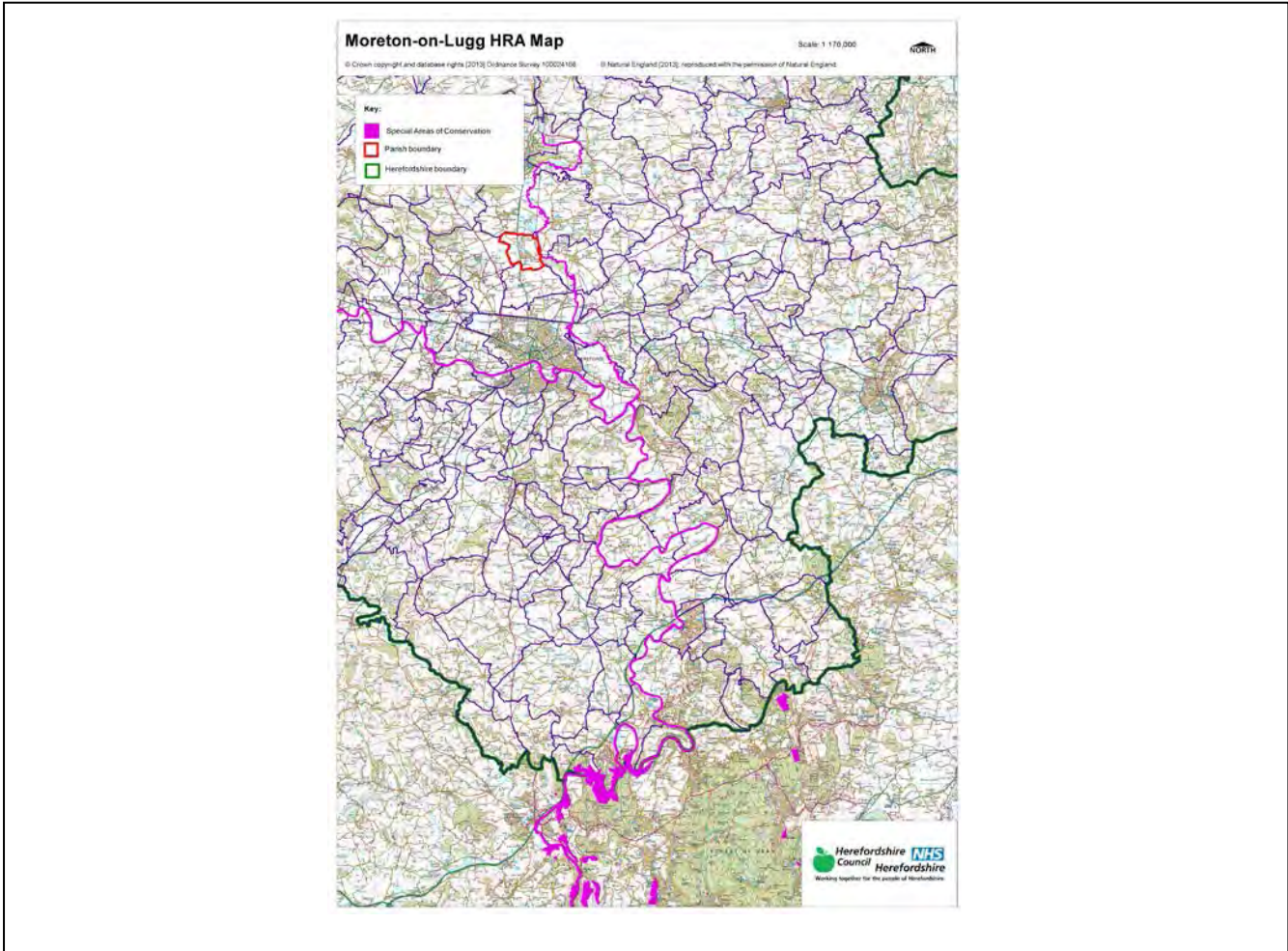
<b>Neighbourhood Area:</b>	Moreton-on-Lugg Neighbourhood Area
<b>Parish Council:</b>	Moreton-on-Lugg Parish Council
<b>Neighbourhood Area Designation Date:</b>	14/10/2013

### **Introduction**

This Initial Habitat Regulations Assessment (HRA) and Strategic Environmental Assessment (SEA) Screening has been undertaken to assess whether any European Sites exist within or in proximity to the Neighbourhood Area which could be affected by any future proposals or policies.

Through continual engagement the outcomes of any required assessments will help to ensure that proposed developments will not lead to Likely Significant Effects upon a European Site or cause adverse impacts upon other environmental assets, such as the built historic or local natural environment.

**HRA Initial Screening: Map showing relationship of Neighbourhood Area with European Sites  
(not to scale)**



**Initial HRA Screening**

**River Wye (including the River Lugg) SAC:**

Does the Neighbourhood Area have the River Wye (including the River Lugg) in or next to its boundary?	Y	The River Lugg runs along the eastern borders of the Parish
Is the Neighbourhood Area in the hydrological catchment of the River Wye (including the River Lugg) SAC?	Y	The Parish is within the hydrological catchment of the River Lugg
If yes above, does the Neighbourhood Area have mains drainage to deal with foul sewage?	Y	There is mains drainage at Moreton-on-Lugg

**Downton Gorge SAC:**

Is the Neighbourhood Area within 10km of Downton Gorge SAC?	N	Downton Gorge is 26.6km away from the Parish
---	---	--

**River Clun SAC:**

Does the Neighbourhood Area include: Border Group Parish Council or Leintwardine Group Parish Council?	N	River Clun does not border the Parish
--	---	---------------------------------------

**Usk Bat Sites SAC:**

Is the Neighbourhood Area within 10km of the SAC boundary?	N	Usk Bat Sites are 41.5km away from the Parish
--	---	---

**Wye Valley & Forest of Dean Bat Sites SAC:**

Is the Neighbourhood Area within 10km of any of the individual sites that make up the Wye Valley & Forest of Dean Bat Sites?	N	The Parish is 28.5km away from Wye Valley and Forest of Dean Bat Sites
--	---	--

**Wye Valley Woodlands SAC:**

Is the Neighbourhood Area within 10km of any of the individual sites that make up the Wye Valley Woodlands Site?	N	The Parish is 30.9km away from the Wye Valley Woodlands
--	---	---

**HRA Conclusion:**

The assessment above highlights that the following European Sites will need to be taken into account in the future Neighbourhood Development Plan for the Moreton on Lugg Neighbourhood Area and a Full HRA Screening will be required.

**European Site**

*(List only those which are relevant from above)*

River Wye (including the River Lugg) SAC

**Strategic Environmental Assessment Initial Screening for nature conservation landscape and heritage features**

The following environmental features are within or in general proximity to the Moreton-on-Lugg Neighbourhood Area and would need to be taken into account within a Strategic Environmental Assessment. In addition, the NDP will also need to consider the other SEA topics set out in Guidance Note 9a to ensure that the plan does not cause adverse impacts.

SEA features	Total	Explanation	SEA required
Air Quality Management Areas	0	There are no AQMA's within the Parish	N
Ancient Woodland	1	Long Coppice	Y
Areas of Archaeological Interest	0	There are no AAls within the Parish	N
Areas of Outstanding Natural Beauty	0	There are no AONBs within the Parish	N
Conservation Areas	0	There are no Conservation Areas within the Parish	N
European Sites	1	River Lugg	Y
Flood Areas		Flood Zones 2 & 3 run along the River Lugg and a stream/brook running off it	Y
Listed Buildings	Numerous	There are numerous Listed Buildings within the Parish	Y
Local Sites (SWS/SINCS/RIGS)	2 (SWS)	River Lugg; Wellington Marsh (border)	Y
Long distance footpaths/trails	1	Three Rivers Ride	Y
Mineral Reserves	7	South of Moreton-on-Lugg x 2; Portway (border); West and south of Portway, east of Burghill down Canon Pyon Road (border); Auberrow to Wellington (border); Area 1 Moreton-on-Lugg and Wellington; Upper Paradise Farm to Marden Court, Marden (border)	Y
National Nature Reserve	0	There are no NNRs within the Parish	N
Registered & Unregistered parks and gardens	0	There are no Registered or Unregistered Parks and Gardens within the Parish	N
Scheduled Ancient Monuments	1	Freens Court Magnate's residence, moat and fishponds, Sutton St Michael (border)	Y
Sites of Special Scientific Interest	1	River Lugg (Unfavourable Recovering)	Y

**Decision Notification:**

The initial screening highlights that the Neighbourhood Development Plan for the Moreton-on-Lugg Neighbourhood Area:

- a) Will require further environmental assessment for Habitat Regulations Assessment and Strategic Environmental Assessment.

**Assessment date: 29/08/2013**

**Assessed by: James Latham**



## Appendix 1: European Sites

The table below provides the name of each European Site, which has been screened in for the purposes of neighbourhood planning in Herefordshire; includes their site features of integrity; and vulnerability data. This is based on the sites individual features of integrity and their vulnerabilities, which could include distance criteria. This has been used in identifying which parishes are likely to require a full HRA Screening of their future Neighbourhood Development Plan, to establish if their plan might have Likely Significant Effects on a European Site.

<b>Downton Gorge</b>
<b>Site Features:</b> <i>Tilio-Acerion</i> forests of slopes, screes and ravines
<b>Vulnerability data:</b> 10km for air quality associated with poultry units or other intensive agricultural practices.
<b>River Clun</b>
<b>Site Features:</b> Freshwater pearl mussel <i>Margaritifera margaritifera</i>
<b>Vulnerability data:</b> Water quality is important to maintain the site feature. Parishes either side of the River Clun will be affected.
<b>River Wye</b>
<b>Site Features:</b> Water courses of plain to montane levels with the <i>Ranunculion fluitantis</i> and <i>Callitricho-Batrachion</i> vegetation. Transition mires and quaking bogs. White-clawed (or Atlantic Stream) crayfish <i>Austropotamobius pallipes</i> . Sea lamprey <i>Petromyzon marinus</i> . Brook lamprey <i>Lampetra planeri</i> . River lamprey <i>Lampetra fluviatilis</i> . Twaite shad <i>Alosa fallax</i> . Atlantic salmon <i>Salmo salar</i> . Bullhead <i>Cottus gobio</i> . Otter <i>Lutra lutra</i> . Allis shad <i>Alosa alosa</i>
<b>Vulnerability data:</b> Proximity: Developments should not be within 100m of the designated bank. Some developments beyond 100m may also have impacts based on proximity and these issues should be addressed where possible when developing NDP policy and choosing site allocations. Water Quality: Within the whole catchment of the River Wye, which includes the River Lugg, mains drainage issues with regards to water quality are being resolved through the Core Strategy / Local Plan and development of a Nutrient Management Plan. Welsh Water should be consulted to ensure that the proposed growth will be within the limit of their consents. Otters: "An otter will occupy a 'home range', which on fresh waters usually includes a stretch of river as well as associated tributary streams, ditches, ponds, lakes and woodland. The size of a home range depends largely on the availability of food and shelter, and the presence of neighbouring otters. On rivers, a male's home range may be up to 40km or more of watercourse and associated areas; females have smaller ranges (roughly half the size) and favour quieter locations for breeding, such as tributary streams. Otters without an established home range are known as 'transients'. They are mostly juveniles looking for a territory of their own, or adults that have been pushed out of their territories. Transient otters may use an area for a short while, but they will move on if conditions are not suitable or if they are driven away by resident otters. Transients will have been important in extending the range of otters, but they are very difficult to identify from field signs. Within a home range an otter may use many resting sites. These include above-ground shelters, such as stands of scrub or areas of rank grass, and underground 'holts' – for example, cavities under tree roots and dry drainage pipes." (Source: EA website: <a href="http://www.environmentagency.gov.uk/static/documents/Business/Otters_the_facts.pdf">http://www.environmentagency.gov.uk/static/documents/Business/Otters_the_facts.pdf</a> accessed 09/04/2013)

### Usk Bat Site

**Site Features:** Annex I habitats present as a qualifying feature, but not a primary reason for site selection: European dry heaths, Degraded raised bogs still capable of natural regeneration, Blanket bogs, Calcareous rocky slopes with chasmophytic vegetation, Caves not open to the public, *Tilio-Acerion* forests of slopes, screes and ravines. Annex II species of primary reason for site selection: Lesser horseshoe bat *Rhinolophus hipposideros*, UK population 5%, although it is suggested this is an underestimate.

**Vulnerability data:** Lesser Horseshoe bats are known to migrate between 5km and 10km between their summer and winter roosts. The Lesser Horseshoe Bat is vulnerable to disturbance; light pollution; and habitat loss. Check with the planning ecologist for other issues.

### Wye Valley and Forest of Dean Bat Sites

**Site Features:** Annex II species that are a primary reason for site selection: Lesser horseshoe bat *Rhinolophus hipposideros*. Greater horseshoe bat *Rhinolophus ferrumequinum*

**Vulnerability data:** Lesser Horseshoe bats are known to migrate between 5km and 10km between their summer and winter roosts. The Lesser Horseshoe Bat is vulnerable to disturbance; light pollution; and habitat loss. Check with the planning ecologist for other issues.

Greater Horseshoe bats are known to migrate between 20-30km between their summer and winter roosts.

NDPs closest to the European Site will need to consider:  
Woodland habitat buffer.

Lesser Horseshoe Bat: Old buildings; woodland locations; sheltered valleys, extensive deciduous woods or dense scrub, close to roost sites. In areas of fragmented habitats, linear habitats such as hedgerows are important corridors. Vulnerable to loss or disturbance of both summer and winter roosts and removal of linear habitat.

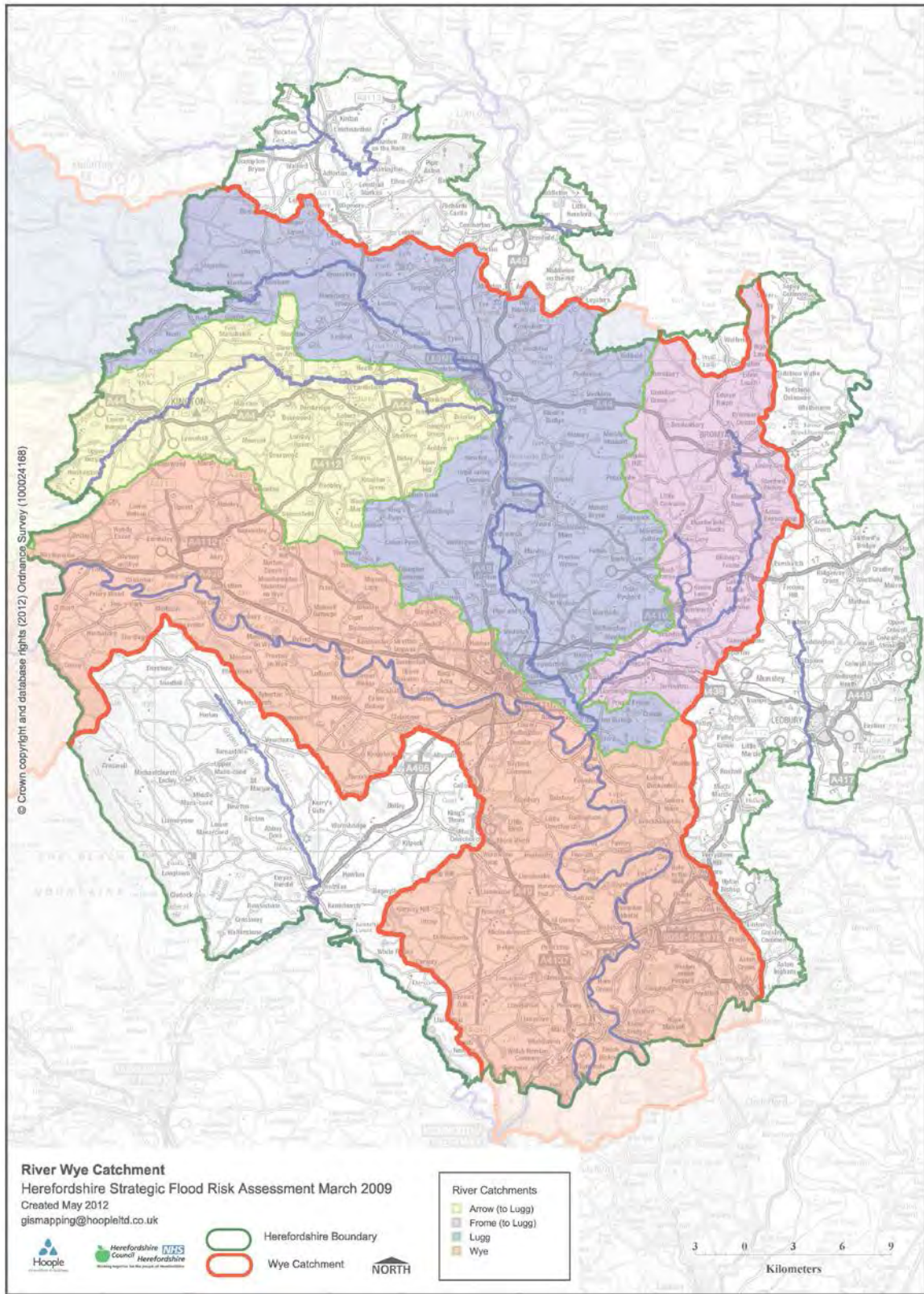
Greater Horseshoe Bat: Large buildings, pasture, edge of mixed deciduous woodland and hedgerows. Mixed land-use especially south-facing slopes, favours beetles, moths and insects they feed on. During the winter they depend on caves, abandoned mines and other underground sites for undisturbed hibernation. A system/series of sites required. Vulnerable to loss of insect food supply, due to insecticide use, changing farming practices and loss of broad-leaved tree-cover and loss / disturbance of underground roosts sites.

### Wye Valley Woodlands

**Site Features:** Annex I habitats that are a primary reason for site selection: Beech forests *Asperulo-Fagetum*, *Tilio-Acerion* forests of slopes, screes and ravines, *Taxus baccata* woods of the British Isles. Annex II species present as a qualifying feature, but not a primary reason for site selection: Lesser horseshoe bat *Rhinolophus hipposideros*, 51-100 residents

**Vulnerability data:** Lesser Horseshoe bats are known to migrate between 5km and 10km between their summer and winter roosts. The Lesser Horseshoe Bat is vulnerable to disturbance; light pollution; and habitat loss. Check with the planning ecologist for other issues. NDPs closest to the European Site will need to consider: Woodland habitat buffer. Lesser Horseshoe Bat: Old buildings; woodland locations; sheltered valleys, extensive deciduous woods or dense scrub, close to roost sites. In areas of fragmented habitats, linear habitats such as hedgerows are important corridors. Vulnerable to loss or disturbance of both summer and winter roosts and removal of linear habitat.

## Appendix 2: Wye Catchment Map

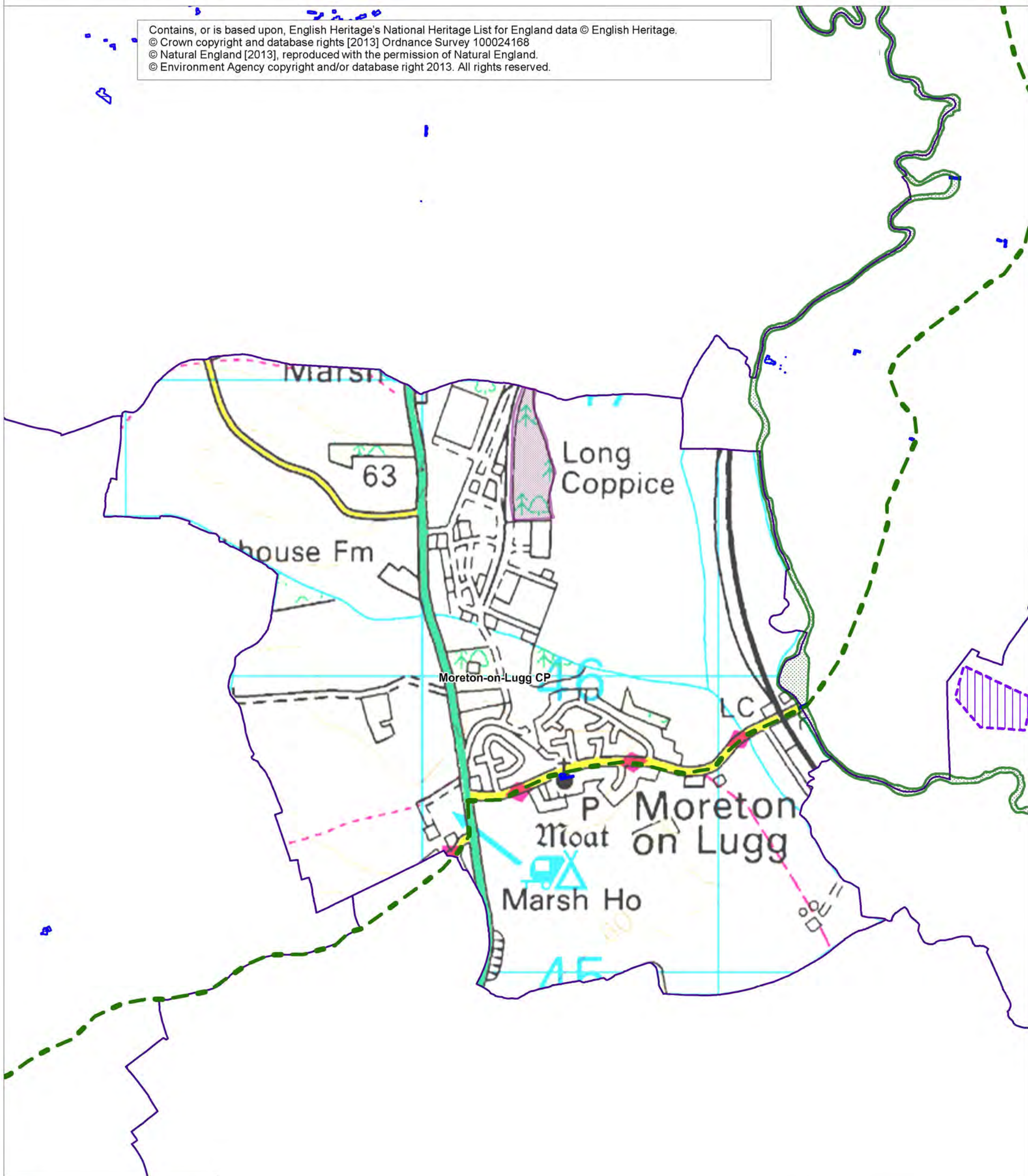


# Moreton-on\_Lugg SEA Map 1

Scale: 1:12,000



Contains, or is based upon, English Heritage's National Heritage List for England data © English Heritage.  
© Crown copyright and database rights [2013] Ordnance Survey 100024168  
© Natural England [2013], reproduced with the permission of Natural England.  
© Environment Agency copyright and/or database right 2013. All rights reserved.



**Key:**

- Ancient Woodlands
- Special Areas of Conservation
- Three Rivers Ride
- Scheduled Ancient Monuments
- Listed Buildings
- Parish Boundaries



**Herefordshire  
Council**

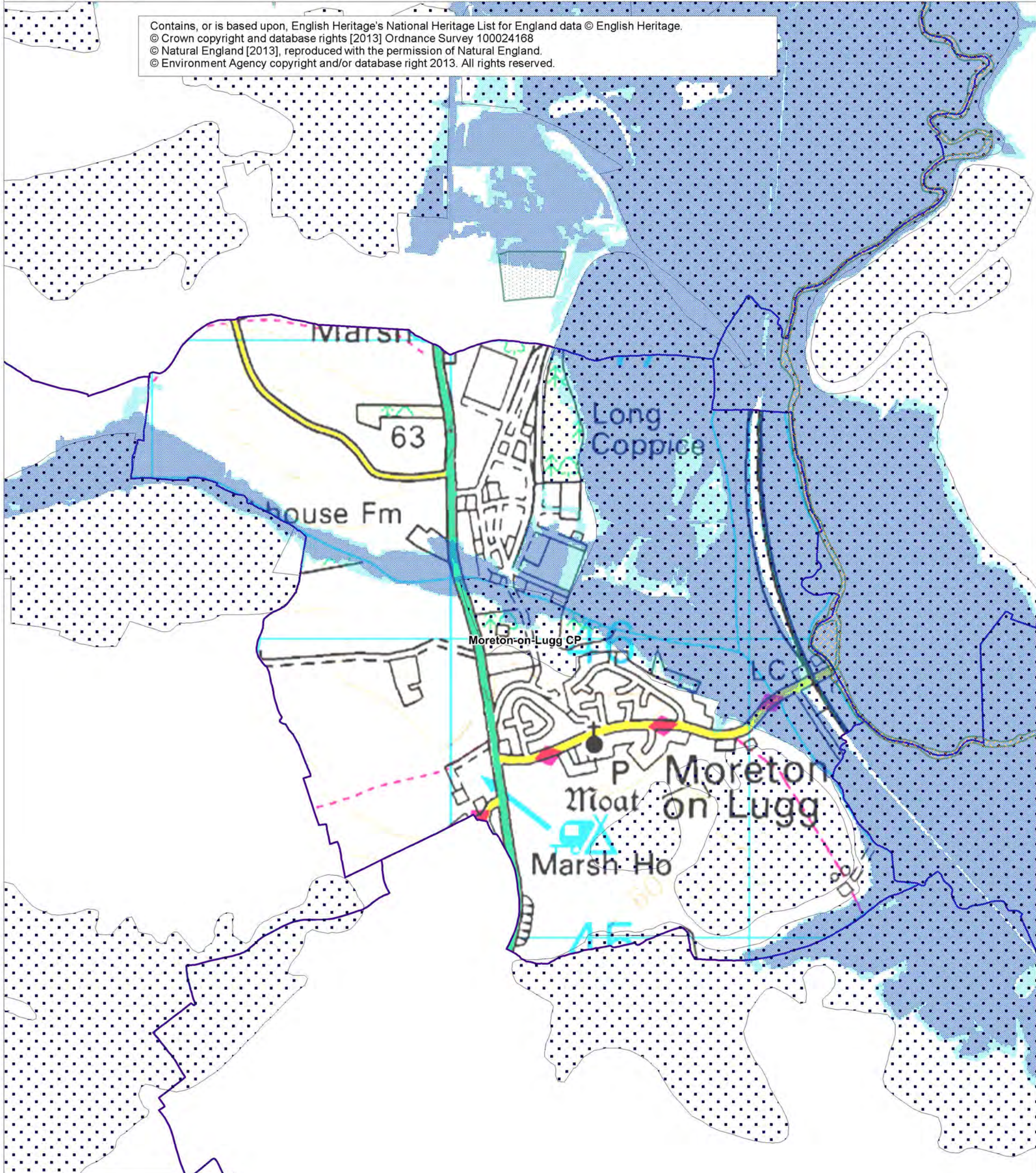
Pipe and Lyde C

# Moreton-on-Lugg SEA Map 2

Scale: 1:12,000



Contains, or is based upon, English Heritage's National Heritage List for England data © English Heritage.  
© Crown copyright and database rights [2013] Ordnance Survey 100024168  
© Natural England [2013], reproduced with the permission of Natural England.  
© Environment Agency copyright and/or database right 2013. All rights reserved.



**Key:**

- Minerals Sites
- Sites of Special Scientific Interest
- Special Wildlife Sites
- Flood Zone 2
- Flood Zone 3
- Parish Boundaries

Pipe and Ly

**Herefordshire Council**