

# **Public consultation on children's centres buildings**

Version 1.0  
Herefordshire Council Intelligence Unit

August 2017

## **Contents**

Contents .....	2
Introduction .....	3
Methodology .....	3
Results .....	4
Appendix A: Map of respondents to consultation.....	25
Appendix B: List of comments .....	25
Appendix C: The questionnaire .....	25

## Introduction

The public consultation on children's centres buildings outlined the initial proposals for the future use of the children's centre buildings. The children's centres have historically been used to deliver services which include activities, help, guidance support and healthcare. Much of this work now also takes place through outreach in the community.

The consultation sought the views of children centre users and residents of Herefordshire about how they will be affected by the proposals.

## Methodology

An online questionnaire was published on the Herefordshire Council website and all Herefordshire residents, children centre service users and stakeholders were invited to complete it between 12 June 2017 and 17 July 2017. The link to access the online questionnaire was also displayed at children centres, libraries and customer centres across the county. The survey was also promoted on the council's Facebook page and Twitter, and bookmarks (see left).



This report presents the results of the responses to the questionnaire. The base used for calculating percentages is specified for each question. Note that percentages are rounded to the nearest whole number in the tables. If Respondents could select more than one answer to a particular question (for an example Q1), percentages may add up to more than 100 per cent.

All comments provided by respondents are listed in full in the appendix B.

## Results

There were 513 responses to the questionnaire; 93 per cent of which were submitted online and seven per cent were completed on paper.

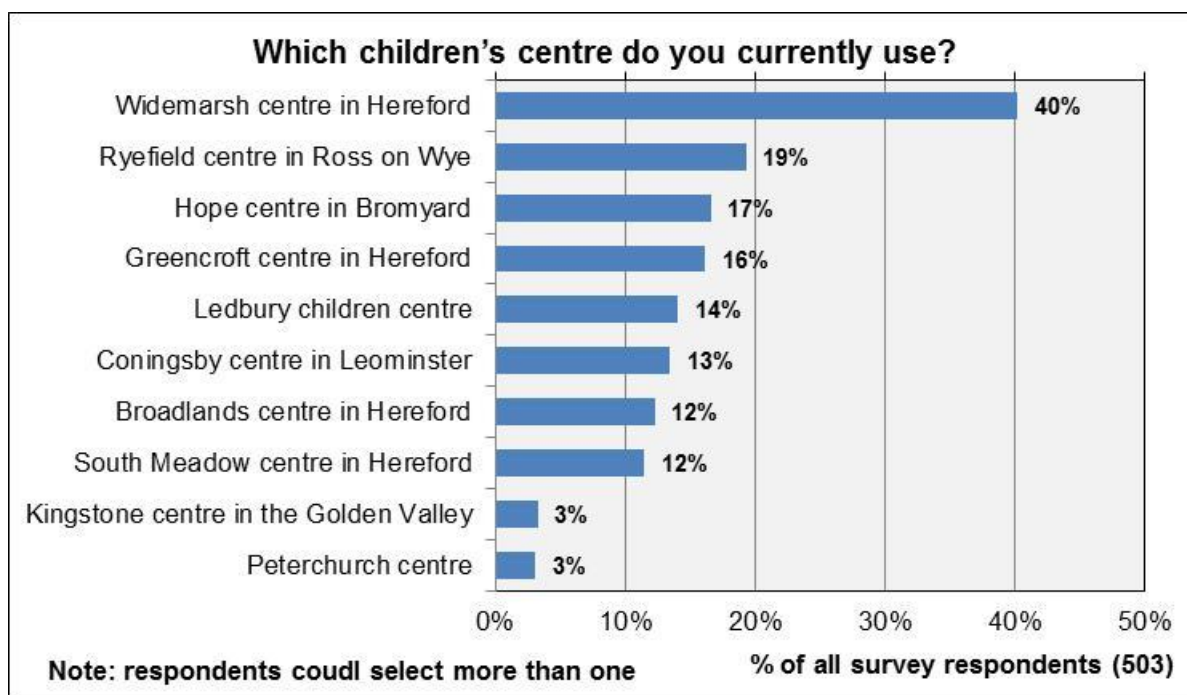
### Current use of designated children's centres

#### Q1a. Which children's centre do you currently use? Please tick all that apply:

Forty per cent of all survey respondents currently use 'Widemarsh centre' followed by around 20 per cent who use 'Ryefield centre in Ross-on-Wye', most of the other centres are used by around 15 per cent of respondents. Fewer than five per cent of respondents use 'kingstone centre in Golden Valley' and 'Peterchurch centre'.

	Number of respondents	Per cent of respondents*
Widemarsh centre in Hereford	206	40%
Ryefield centre in Ross on Wye	99	19%
Hope centre in Bromyard	85	17%
Greencroft centre in Hereford	83	16%
Ledbury children centre	72	14%
Coningsby centre in Leominster	69	13%
Broadlands centre in Hereford	63	12%
South Meadow centre in Hereford	59	12%
Kingstone centre in the Golden Valley	17	3%
Peterchurch centre	16	3%
All survey respondents*	513	100%
Not answered	10	

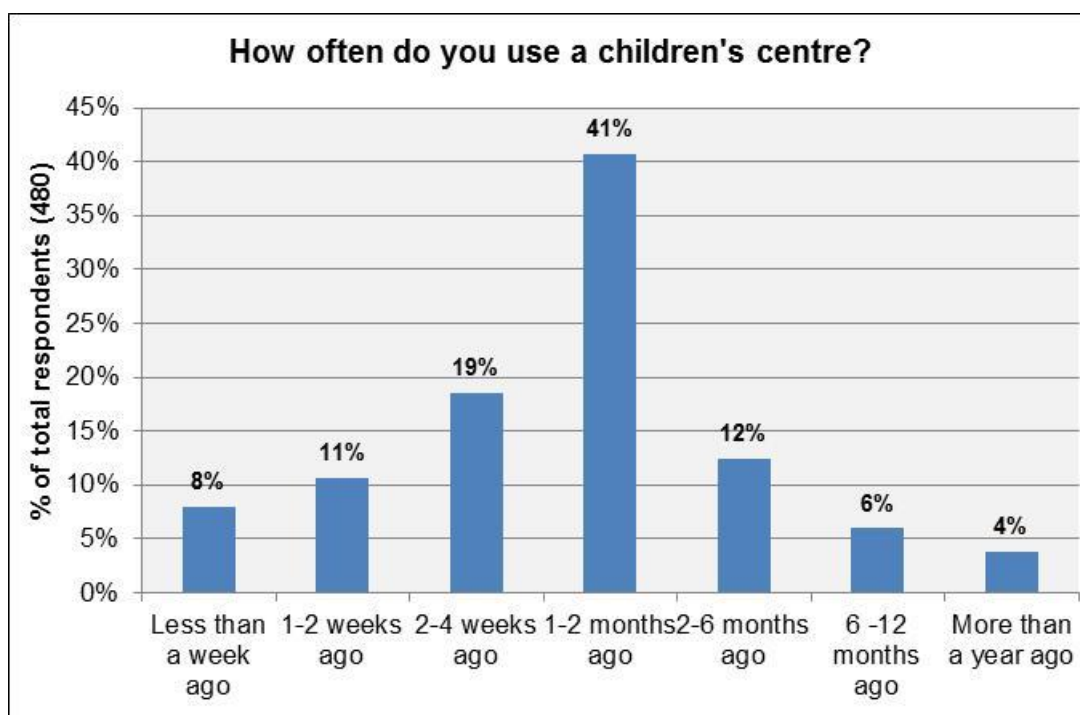
\*Base= all survey respondents



### Q1b. When did you last use a designated children's centre?

Of the respondents who provided a valid date, 78 per cent used their designated centre within the last two months of the closing date of this consultation (17 July 2017): 8 per cent used one less than a week ago; 30 per cent used one between one and four weeks ago and 41 per cent between last 1-2 months.

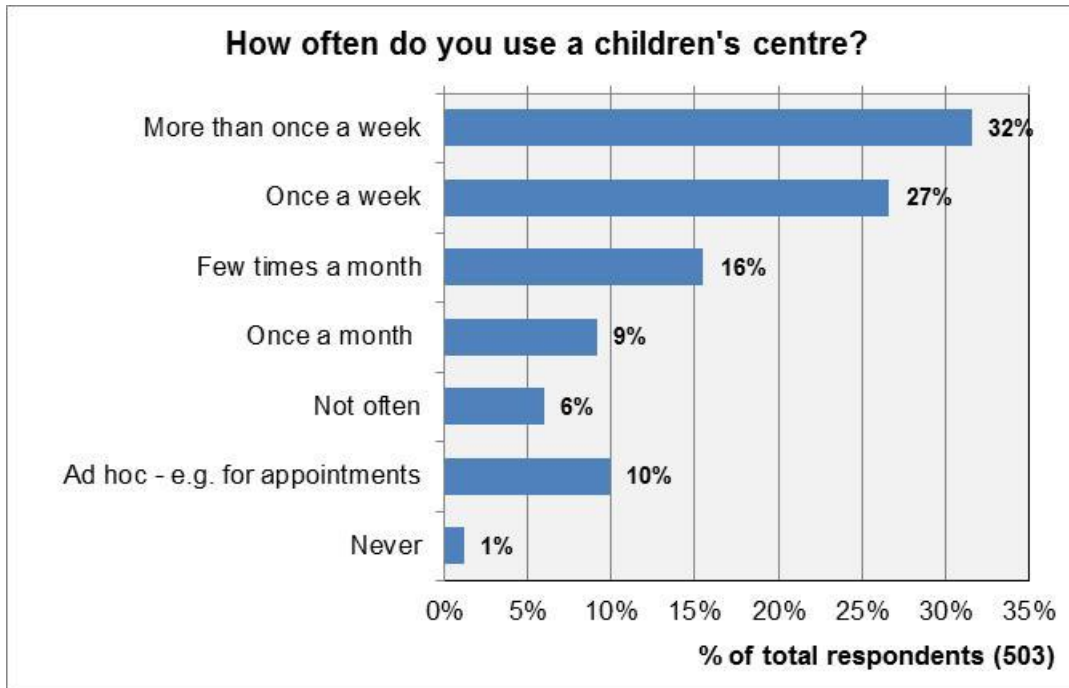
	Number of respondents	Per cent of respondents
Less than a week ago	36	8%
1-2 weeks ago	48	11%
2-4 weeks ago	84	19%
1-2 months ago	184	41%
2-6 months ago	56	12%
6 -12 months ago	27	6%
More than a year ago	17	4%
Total respondents	452	100%
Not answered	61	



**Q1c. How often do you use a children's centre?**

Fifty eight per cent of respondents used a children's centre at least once a week; over half of them used it more than once a week. A further 20 per cent used a children's centre at least once a month and 16 per cent did not use one often or used one on an ad hoc basis for appointments for example One per cent of respondents never used a children's centre.

	Number of respondents	Per cent of respondents
More than once a week	159	32%
Once a week	134	27%
Few times a month	78	16%
Once a month	46	9%
Not often	30	6%
Ad hoc - e.g. for appointments	50	10%
Never	6	1%
Total respondents	503	100%
Not answered	10	



**Q1d. Why did you use a children's centre(s)?**

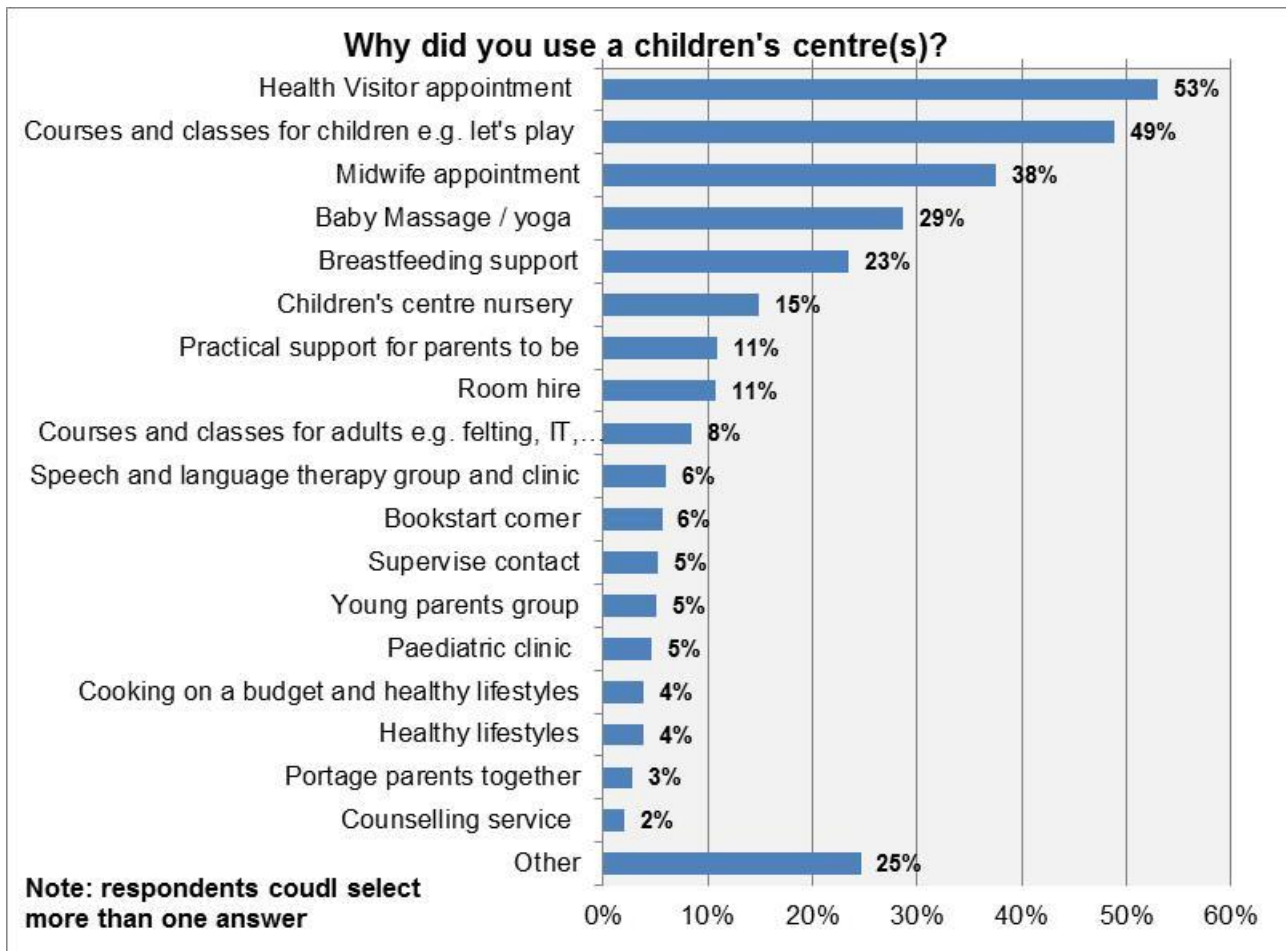
Among the most common uses of a children's centre, 'Health visitor appointment' and 'Courses and classes for children' were stated by around 50 per cent of respondents. 'Midwife appointment', 'baby massage/yoga' and 'breastfeeding support' were among the next most common uses of children centres a stated by 38 per cent, 29 per cent and 23 per cent of respondents.

Among the other uses of children centres following were frequently stated:

- "Baby and toddler groups"*
- "Bounce and Rhyme"*
- "Café"*
- "Childminders group"*
- "Multi Agency Office"*
- "Meetings"*
- "Play groups"*
- "Story time"*
- "Therapy sessions"*
- "Work/employment"*

	<b>Number of respondents</b>	<b>Per cent of respondents</b>
Health Visitor appointment	263	53%
Courses and classes for children e.g. let's play	242	49%
Midwife appointment	186	38%
Baby Massage / yoga	142	29%
Breastfeeding support	116	23%
Children's centre nursery	74	15%
Practical support for parents to be	54	11%
Room hire	53	11%
Courses and classes for adults e.g. felting, IT, English	42	8%
Speech and language therapy group and clinic	30	6%
Bookstart corner	28	6%
Supervise contact	26	5%
Young parents group	25	5%
Paediatric clinic	23	5%
Cooking on a budget and healthy lifestyles	19	4%
Healthy lifestyles	19	4%
Portage parents together	14	3%
Counselling service	10	2%
Other	122	25%
Total respondents	496	100%
Not answered	17	





## Proposals for each site

The base used for calculating percentages in this section is the number of respondents who ticked either 'Yes' or 'No' in response to a particular question. Respondents who did not express an opinion (i.e. ticked 'Don't know') were excluded as it is not known whether the lack of an opinion was because the respondent did not use the service/centre.

Please note that the number of comments made specifying the reasons why respondents do not agree ('If no, why not?') are sometimes higher than the number of respondents who ticked 'No'. This is because some respondents who ticked either 'Yes' or 'Don't know' occasionally provided comments.

### Greencroft centre, Hereford

To be managed by Marlbrook Primary School as part of a combined family centre that caters for children at the school and their parents, as well as the wider local community. To continue to provide facilities for midwife and health visitor clinics as part of an integrated service, and the activities on site.

#### Q2a. Do you agree with these proposals?

Over three quarters of respondents (78 per cent) agreed with the proposal.

	Number of respondents	Per cent of respondents
Yes	180	78%
No	51	22%
Base*	231	100%
Don't know	135	
Total respondents	366	
Not answered	147	

#### Q2b. If no, why not?

Analysis of this question indicated that there were three recurring areas of concern that related to the school having control of the centre, the lack of space, and wanting to see a continuation of services.

**The school** – there was a number of concern over the school taking on the running of the children centres, specifically that only children attending the school would benefit: “I’m worried the focus will be taken off those who are not of school age yet” and “they would only care primarily about children that go to that school”. Those services should be run by the council not the school “we need independent services to keep their own groups to allow parents a range of services with children NOT at Marlbrook”, “school staff not trained to run multi-disciplinary teams”, “an already stretched primary school”, plus comments suggesting the school already has too much local control.

**Space** – for some people it felt the proposals would reduce space and hence services: “the proposals for Greencroft give the children centre very little space for any activities”, “I worry that room availability will impact on what they can offer in the way of children’s play sessions” and “why we have to take spaces made for the smallest. School has lots of

rooms to use. There were comment in favour of retaining the nursery: “as long as merry go round at Greencroft is okay and will not have to move unnecessarily”.

**No change** – comments were made to keep the centre as it is due to appreciation of the services: “I think it’s important to keep the groups going there as it helps parents and children mix”, “parent visit these places regularly to help support their children in learning and socialising”, “there’s already limited activities for the children, my daughter comes here regularly with other children and has helped her develop in herself”, along with comments for more services “children centres are invaluable resources and should stay as they are and run more services”.

Please see appendix B-Q2b for full list of comments.

### **Widemarsh centre, Hereford**

For the council to continue to operate the centre as a combined facility with the possible longer term aim of a partner organisation taking on the management of the site. To let part of the building on the ground floor as a private nursery and for the community garden and kitchen area to be retained as a facility for people with learning difficulties, and the forest school for visiting groups. For the facility to encourage and promote wider use and hire of the community room made easy through an electronic booking facility.

### **Q3a. Do you agree with these proposals?**

Over a half of respondents (56 per cent) agreed with the proposal for Widemarsh centre.

	<b>Number of respondents</b>	<b>Per cent of respondents</b>
Yes	144	56%
No	113	44%
Base*	257	100%
Don't know	113	
Total respondents	370	
Not answered	143	

### **Q3b. If no, why not?**

Analysis of this question indicated that there were three recurring themes as to why people did not agree with the proposals specially that a private nursery would take the space and hence reduce services, general point that people did not want to see change, and concerns over “privatisation”.

**Nursery:** the key concern seemed to be that a private nursery would take up too much space and not allow for other activities to take place: “the nursery will affect the classes beginning run”, “agree with it all apart from the private nursery. Access there is difficult as it is when arriving with children. And I think to lose the valuable floorspace would be a shame”, “it would be a real shame, not just for myself, but for the who community if the facility was taken away from the community to make way for a private nursery”, “I think having part of the centre for a nursery would inhibit what the centre can then offer and provide for everyone.” There was also comments over if a nursery is needed at all and cost to users “there are plenty of nurseries out there that have closed or are struggling with numbers because there's so many about”.

**Partner organisation:** The term *partner organisation* as option for long term management of the centre raised some concerns: “I'm concerned by the phrase "partner organisation" and the implication of privatisation”, “I do not agree with it being run by a partner organisation or being a private nursery”, “we do not want [partner] organisation running the site. We want council services, our services, to be run by u, our council. A private nursery will not serve the vulnerable and poor of our county”, “sounds like the partner organisation is going to change the current format, or why would they be doing this? Sounds like a back-handed way of selling it off and probably reducing the services offered”.

**Don't change:** a strong number of points advocated the continuation of the services with request for improvement on what is currently offered: “the centre is perfect now. There is no need to change it”, “I am a grandmother caring for two 2 year old. This session provides an interesting activity morning for them and enables them to mix with other children and for me to mix with other adults”, “it offers amazing opportunities for children to socialise, learn and have fun. Parents can gain support from dedicated staff members. It is vital that the reception remains manned and that people are able to book sessions

via a number of methods; whether this is in person, telephone and online”. Some comments welcomed change: “I don't know how big is the building and would be nice to make into nursery and people with difficulties would have a space too. Only is no word about baby's, moms and other services very popular centre and loved by many”, “the building is well set up for this, and sounds a sensible step forward, but I hope this will not result in people having to travel here to come for a service when their areas are being deprived of a very reduced use of a children centre in their own locality. I am glad to hear that the adults with learning disabilities would remain and that good use can be made from nurseries”.

Please see appendix B-Q3b for full list of comments.

### **Broadlands centre, Hereford**

For services currently provided at Broadlands to be offered at the Widemarsh centre, and to explore the future options for the building including available as a private nursery, becoming a multi-use office for council or offered to the school for their use.

#### **Q4a. Do you agree with these proposals?**

Forty five per cent of respondents agreed with the proposal for Broadland centre.

	<b>Number of respondents</b>	<b>Per cent of respondents</b>
Yes	86	45%
No	106	55%
Base*	192	100%
Don't know	163	
Total respondents	355	
Not answered	158	

#### **Q4b. If no, why not?**

This site had several options with the proposals with feedback reflecting on those options along with a key issue of travel and transport.

**Travel and transport:** the concern was around how people would get to a different location: “this isn't fair for people who live on this side of town, it might be difficult to get to Widemarsh particularly for those who don't have a car”, “because people who use this facility and have no transport what are they going to do? It's a long way to walk from there”, “Widemarsh is difficult for some people to get to and it would therefore take the facilities away. Also the parking at Widemarsh isn't big enough to cater for all that attend especially when classes are running”, “people in this less affluent area don't all have access to transport. I walked to the centre for playgroups and yoga when I couldn't afford to run a car” and “nice idea but parking, getting there etc.”

**Options:** there was a mix of views regarding the options: “multi-agency centre will be good”, “the nursery together with many other uses is essential for the number of young families living in the area”, “it should be children's centre or nursery”, “plenty of nurseries and offices around by community centres like this are so useful and would be sorely missed”, “have used this group over the years and again think it would be such a shame to turn into a nursery or offices. These groups and services are essential for parents, parents to be and children”, “as a parent who lives locally I have struggled to find an outstanding nursery which can take all my children from a young age in our community”. There was also support for the school to run the centre “offered to the school for their use would be good”, “why can Marlbrook have a children's centre on site if Broadlands can't?”, “I feel the building should be given to the school as they already have a nursery which is nearby”, “this should be given to Broadlands school to be used as they see fit, possibly as a pastoral/behaviour management facility”.

Please see appendix B-Q4b for full list of comments.

### South Meadow centre, Hereford

To recognise the current practice with the site largely operating as a supervised contact centre and base for the Children's wellbeing team.

#### Q5a. Do you agree with these proposals?

A large majority of respondents (91 per cent) agreed with the proposal for South Meadow centre.

	Number of respondents	Per cent of respondents
Yes	178	91%
No	18	9%
Base*	196	100%
Don't know	142	
Total respondents	338	
Not answered	175	

#### Q5b. If no, why not?

There were only a few comments regarding this centre as not see significant change. There was particular support to retain the sensory room: "it has a fab sensory room that needs more promotion and the speech and language therapy being there highlights its potential for other use" and "for the sensory room to continue to be made available for families and this facility promoted".

Please see appendix B-Q5b for full list.

### **Kingstone centre, Golden Valley**

The nursery on site to extend their provision, though retain health clinics and midwife areas for use when needed.

#### **Q6a. Do you agree with these proposals?**

The majority of respondents (85 per cent) agreed with the proposal for Kingstone centre.

	<b>Number of respondents</b>	<b>Per cent of respondents</b>
Yes	144	85%
No	25	15%
Base*	169	100%
Don't know	160	
Total respondents	329	
Not answered	184	

#### **Q6b. If no, why not?**

The key concern of non-support for this option was to ensure services can still be accessed: “not fair to get rid of the services that are provided just for the nursery to expand. What about people who don't drive?”, “need somewhere families can have access to healthy living info and play groups support groups etc.” and “centre used occasionally to run activities / coffee mornings to support families with disabled children - will this still be available?”.

Please see appendix B-Q6b for full list comments provided.



## HOPE centre, Bromyard

The building to be retained for children centre services which is currently being provided externally from the local authority on the site by the HOPE centre.

### Q7a. Do you agree with these proposals?

A large majority of respondents (94 per cent) agreed with the proposal for HOPE centre.

	Number of respondents	Per cent of respondents
Yes	208	94%
No	14	6%
Base*	222	100%
Don't know	132	
Total respondents	354	
Not answered	159	

### Q7b. If no, why not?

The repeat comments for this proposal were based on the use of space and not wanting to see change to the facilities provided, and some points also made travel impacts if services changed.

**Don't change:** comments called for not changing what is viewed as a valuable service: "Hope centre is an excellent provision for the area and should remain so", "it needs to stay the same or have services extended. It is essential to Bromyard", "I'm not sure whether this will result in less group activities such as bumps and babies as these are so important to new mums. I also don't want to lose it as a place to meet up with other mums". There were some calls for improvement "HOPE have cut a lot of services and the place has not been the same since. It needs to concentrate on working for the community as it was intended!" and "HOPE needs some intervention via the council. The website says they offer all the above you have listed but there is no adults courses, groups, no breastfeeding support now the cafe hours have reduced - I thought it had opened for the community?"

**Transport and travel:** travel to services was a concern for local parents and carers: "there are very few places in Bromyard where you can get help and support without driving" and "there is nothing else in the Bromyard area, I have no transport and two young children".

**Use of space:** the Multi Agency Office (MAO) was supported as an issue most likely rose by staff: “I hope they keep the MAO as again it provides social workers to opportunity to use their time wisely and plan better instead of driving around the county unnecessarily”.

Please see appendix B-Q7b for full list.

### **Ledbury centre, Ledbury**

For the primary school to operate the current children's centre building as part of the collection of buildings on the site. This will be linked to future development of the school to enable an increase in school places. The school will work with the community who use the site, to plan/run activities and provide access to rooms used by midwives and health visitors. That activities for children also be promoted at the Masters House as part of the library and wider community projects.

### **Q8a. Do you agree with these proposals?**

Two thirds of respondents (66 per cent) agreed with the proposal for Ledbury centre.

	<b>Number of respondents</b>	<b>Per cent of respondents</b>
Yes	120	66%
No	61	34%
Base*	181	100%
Don't know	171	
Total respondents	352	
Not answered	161	

### **Q8b. If no, why not?**

The comments provided mainly expressed concern over changing the service offer, the priorities of the school and highlighting the Masters House would not be suitable for activities.

**Change:** comments were made on changes to the service having a negative effect on families: “the services and structure will be altered. I plan on having another baby soon and therefore will be using the centre for my midwife appoints and using the centre a lot more for groups etc.”, “the children centre is excellent where it is. I personally do not drive and this is the only place in decent walking space that myself and my daughter can go to. It's right next to the primary school so good for drop my son off at school then head to the

children's centre straight after", "the children's services offers a range off valuable activities for new parents. Especially for those live locally who do not have other transport. It should continue to be a place of meeting and support for new mums and should be expanding its services, not having to share with competing elements" and "don't object to school management, but do object to loss of a children's centre and provision"

**The school:** there was feeling that the school would operate the building to meet their own requirements: "if there is a promise that nothing will change then I can't see a problem, but I assume the school will be using the building more often and therefore the services will be even less available and even hard to come by/arrange/attend", "I think the school is big enough and that the building should be left as a children's centre for babies and pre-school children", "I think it's important to have a facility that is independent from the school as it's dedicated services are currently fantastic", "the school will simply take the building over and use it solely for their own purpose. Do not believe there would be much on offer for young mothers (desperate to get out of the house and socialise), or the little ones play time, or baby massage/yoga etc.", "I understand the need for cuts and the school needing more space but it is so sad and worrying to lose the children's centre itself - when I moved to Ledbury the children's centre was a life line, I don't know what I would have done without it", "if Herefordshire Council cannot afford to maintain our Ledbury Children's Centre then the primary school running the building is a better option than the centre closing or being taken over by a third provider".

**Masters House:** Feedback regarding the Masters House indicates people felt it was not appropriate for children centre services: "I do not use the Masters House, I do not find it at all child friendly, someone I know was asked to be quiet when reading her child a story. I take my children to the Hive Library in Worcester which is much more playful, fun and comfortable", "this would also fragment the early years community (that currently works well in my opinion) and jeopardise opportunities and important social networking that allows families to access sessions, advice and support from health professionals, volunteers and other parents and caregivers. Keep it all together!", "it is not appropriate to further devalue the role of libraries", "the Masters House is a beautifully restored building-how would this fit in with messy play? Parking has to be paid for at the Masters house and could be problematic".

Please see appendix B-Q8b for full list of comments.

### **Coningsby centre, Leominster**

Opportunity for the adjacent nursery to expand to cater for local demand and need, whilst retaining spaces for health visitors, midwives and supervised contact in the building for next door linked to the council's multi-use office. To increase universal service provision for children at Leominster library

#### **Q9a. Do you agree with these proposals?**

Nearly two thirds of respondents (63 per cent) agreed with the proposal for Coningsby centre.

	<b>Number of respondents</b>	<b>Per cent of respondents</b>
Yes	114	63%
No	67	37%
Base*	181	100%
Don't know	167	
Total respondents	348	
Not answered	165	

#### **Q9b. If no, why not?**

The two main issues of concern centred on space available to continue activity and how feasible to operate from the library and secondly not wanting to change the services provided.

**Space and place:** issues raised over where activity would take place: "I can't see enough space for midwife and health visitors and contact at building next door. Also there will be no encouragement for women to book onto baby massage or stay and play sessions as it's no longer inviting or welcoming to use", "I don't believe we would all fit in the library", though some support for making use of the library "I am glad that the library is being used as a community resource and a place for families".

**Don't change:** feedback on non-agreement with the proposals centred on the lost on current services: "it would be a shame to lose the play groups. Lots of mums use these as a chance to get out and meet other mums after they have had babies. Without this

group I would have never met anyone”, “Leominster needs a children's centre for the large numbers of children and families who rely on the support it offers and the much needed contact with other families they are able to receive there. I am in contact with many parents who use the centre and who are devastated at the thought of it closing”, “this plan does not retain the service the site was intended for- families in this area have poor transport to other part of Herefordshire and so cannot easily access services elsewhere”. There was also criticism of recent changes to withdrawal reception area: “access has been appalling since getting rid of reception staff, it's not very easy to book appointments now as sometimes no one answers”, “recently they have removed the receptionist and thus has caused lots of disruption for midwives and health visitors to do their job”. With some calls for more services “it needs more classes that you can take babies and toddlers to or a lot of mums can't come. It is one of the few places mums who can't drive can access”. Along with feedback to support nursery to expand “Honeybees is fantastic and should expand”.

Please see appendix B-Q9b for full list.

### **Ryefields centre, Ross on Wye**

In the longer term, the children’s centre would form part of a new school site, as presented within the emerging Ross Neighbourhood Plan. In the short term (within 12 months) the space at Ross library would be reconfigured to include children's centre services. This would free up the Ryefields building for development opportunity.

### **Q10a. Do you agree with these proposals?**

Over two thirds of respondents (62 per cent) did not agree with the proposal for Ryefield centre.

	<b>Number of respondents</b>	<b>Per cent of respondents</b>
Yes	75	38%
No	121	62%
Base*	196	100%
Don't know	169	
Total respondents	365	
Not answered	148	

### **Q10b. If no, why not?**

There were particular strong comments regarding the proposals for the Ryefield Centre. These were based on general points of not changing the current offer along with concerns the library would not be able to accommodate activities, and practical issues over travel and car parking.

**Don't change:** interest groups felt that the service currently provided was a good one and should not change: "the Ryefield centre has particular facilities that my baby likes which I doubt could be catered for at the library - i.e. soft play room and sensory room. It is because of these great facilities (plus the onsite parking and large rooms which are great for baby classes) that I prefer to travel the longer distance from my home to Ross than to the children's centres which are actually near my home", "the Ryefield Centre offers an open, welcoming, secure and non-judgemental environment where families can use services and facilities in complete confidence. It also provides a central location where families can access information, attend training/courses, meet with professionals in an entirely appropriate setting".

**Use of the Library:** there was concern that the library would not be able to support the current range of services: "I haven't seen the plan for what provision will be made at Ross library, so I don't know whether what is planned will cover the needs to children and families adequately", "the library is far too small, and it would be very disruptive to other library users. Potentially causing a child safety concern with the public in close proximity. Also there is limited free parking compared with the Ryefield centre. There is a beautiful garden space at the Ryefield centre that the children would lose at the library and their time at the library would have no outdoor play opportunities", "library already overcrowded and full of things happening and not a nice place to go but further division will make it a nightmare and will therefore not be used effectively. Already this is not a quiet working space. As for children being confined inside this building with limited natural light", "a lot of parents come to clinics at the Ryefield centre not just to get their baby weighed but to socialise with other parents and get help and support from children's centre workers or attend breast feeding support group. The library will not have enough rooms to cater for all of these groups, it may alienate some parents as they may feel it is not such an open welcoming place as the children's centre", "a library tends to be a place that people expect to be quiet, this would be a problem with a new mother with a lively 2

year with her”, “the session I attend currently (breastfeeding support) runs alongside a group for pre-school children and a health visitor clinic. I cannot see that the services will be able to remain so diverse in the library. Parking when using the library would also be an issue”, “long term plan I agree with, a new build would be good, but the number of groups that run just couldn't be accommodated in the library. The sensory room would be lost. I've never been there when two groups weren't running at the same time plus additional services by Health care Professionals”, “it's bad enough that over the years other support centre have closed and located at the library. Where is everyone going to fit?? How would the children centre run their support and courses for families on a very small room at the library”, “it does not have the right resources or atmosphere. Where would the midwives and health visitors have their appointments?, and “library space is important to function solely for the purpose of a library”

**Parking** – linked to comments regarding the library was the lack of parking: “insufficient space at the library. A new school site will be out of town and inaccessible to parents, especially those without cars”, “makes it more difficult for parents to attend. Cost of parking would deter users. The centre serves a rural and widespread community. Parking and ease of access are essential to encouraging and enabling people to access and use the facility”, and “I would also be concerned at the location of the new build, many local families that need to use the centre don't drive and therefore the current location is easy to access on foot”.

Please see appendix B-Q10b for full list of comments.

### **Peterchurch centre, Peterchurch**

Support the community operated building through its use for children's centre outreach activity, community library and wider community programme.

#### **Q11a. Do you agree with these proposals?**

A large majority of respondents (90 per cent) agreed with the proposal for Peterchurch centre.

	<b>Number of respondents</b>	<b>Per cent of respondents</b>
Yes	142	90%
No	15	10%
Base*	157	100%
Don't know	163	
Total respondents	320	
Not answered	193	

#### **Q11b. If no, why not?**

Comments regarding proposal for Peterchurch were mainly concerned with the keeping current services and lack of service: "much needed in rural areas. Council should support the service", "what support is there currently? A health visitor goes in once a term!!! And when contacted she couldn't even say when she would next be there. There is a playgroup run by parents but no advice or support from anyone for them. There wouldn't even be the playgroup if the parents hadn't agreed to run it and the church, agree to support them in that use of the space. The library is run by volunteers. There are few buses so families here are isolated and are clearly lacking in support", "I don't use it as not in my area but I do have friends that use it and they like how it is already!"

Alternative comments were made concerning the allocation of resources "this is an expensive although good facility to run but in the lowest area of needs in the county. Should this not be subsidised by other sources rather than council funds?"

Please see appendix B-Q11b for full list of comments



## About the respondents

- Five per cent of respondents were male and 95 per cent were female (Herefordshire population profile: 51 percent to 49 percent)<sup>1</sup>
- One per cent of respondents were aged 65 years and over, 78 per cent were aged 25-44 years, 13 per cent were aged 45-64 years and 7 per cent were 24 years or younger. According to Herefordshire's population age profile (27 per cent of the population were aged 25-44 years) it is clear that people aged 25-44 years were over represented in the consultation.
- Six per cent of respondents' day-to-day activities were limited a little or limited a lot because of a health problem or disability which has lasted, or is expected to last, at least 12 months.
- Seventy seven per cent of respondents identified themselves as English, twenty three per cent as British, three per cent as Welsh and four per cent identified themselves as another national identity (respondents could select more than one answer for this question).
- Of the respondents who answered the question about their ethnicity, 95 per cent identified themselves as 'white', four per cent as 'other white' and one per cent as 'other ethnic group'.
- Two per cent of respondents felt that they had been treated differently (positively or negatively) because of who they are.
- 379 respondents provided their full postcode- please see map (appendix A- map of respondents to consultation)

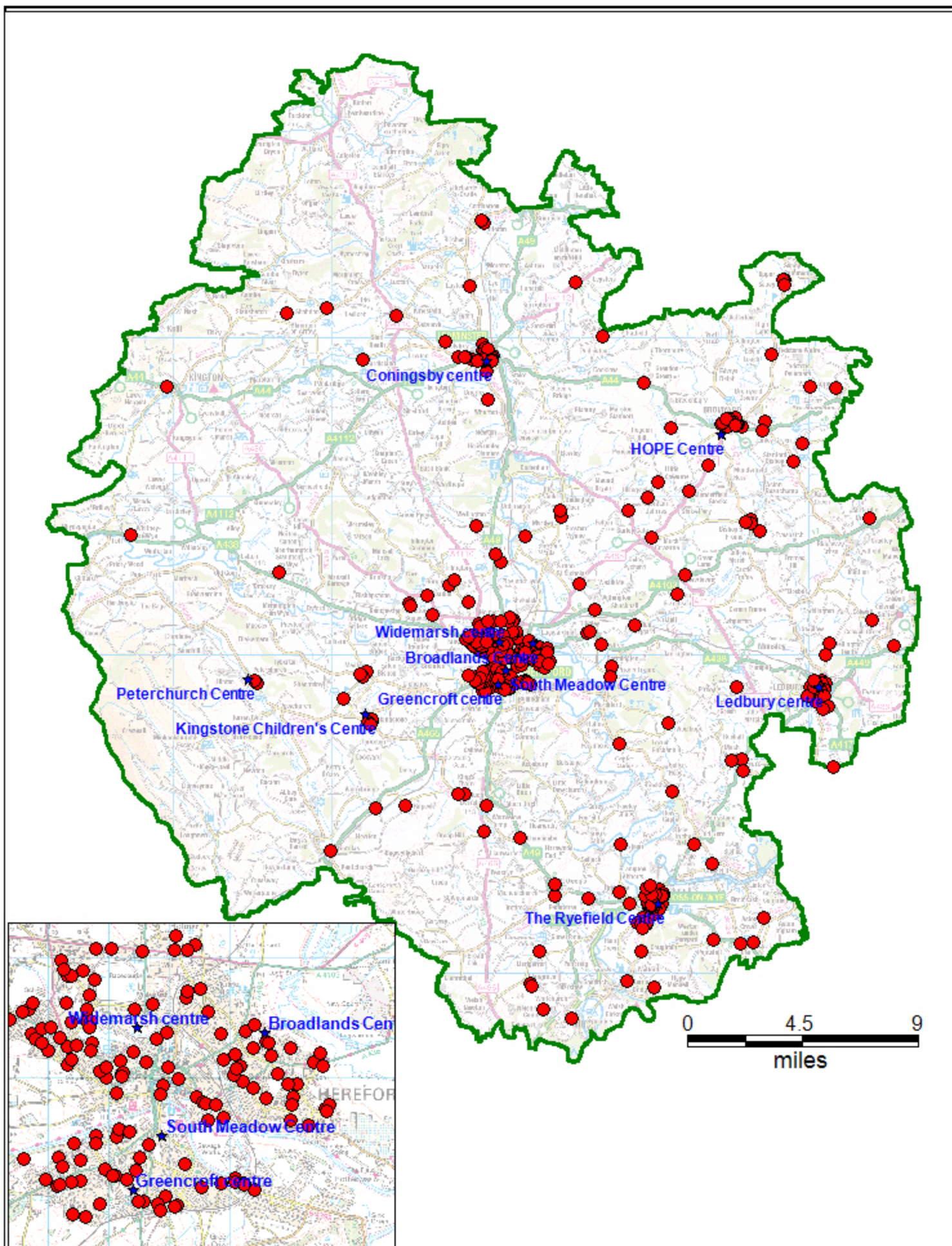
## Appendix A: Map of respondents to consultation

## Appendix B: List of comments

## Appendix C: The questionnaire

---

<sup>1</sup> Annual Mid-2016 Population Estimates for Herefordshire, Office for National Statistics © Crown Copyright 2017



## Appendix B-Full list of comments

Some of the comments have been edited to preserve anonymity, where this has been done the changes are marked within < >.

Note: Some of the comments refer to the statement number in the questionnaire. Where necessary, please refer to the questionnaire in appendix C.

### Q2b Proposal for Greencroft centre, Hereford

#### Do you agree with these proposals? If no, why not?

Comments:
And speech and language. This is already a service stretch beyond capacity. They do an amazing job under very difficult circumstances/lack of funding. Don't leave them without decent rooms as well!
It will be difficult to manage hygiene issues with washroom facilities available to children and adults How will safeguarding be managed in relation to the above? The meeting room is used for social care core group meetings, training, as well as the multi-agency group meetings. The multi-agency group meetings have already been pushed around to various venues, we are running out of places to go. They need to be held in the locality where the children live; who are being discussed
Marlbrook School already has control of a majority of other schools and groups. We need independent services to keep their own groups to allow parents a range of services with children Not at Marlbrook.
I'm worried the focus will be taken off those who are not of school age yet
It is taken people away from the centre which offers some amazing services for women families and babies.
It shouldn't be up to the schools to run these places they should remain council run
Keep as children's centre
The head teacher already runs three primary schools and is an Ofsted inspector how can she also run a children's centre? Doesn't she have her hands full already!
Not sure whether Marlbrook's intentions will be fully met. They could propose this and use it for a completely different purpose which the school is known to do.
I home educate and feel I usually have to explain or justify my choice to people that work in schools, I prefer to speak to the children's centre staff, they are friendly, non-judgemental, great to talk to for advice and support, I don't feel a school worker would provide this. They would only care primarily about children that go to that school.
I do not agree, because this will result in a drastic cut to services used by the whole community, but in particular, those who need help most.
There is no mention of the Merry Go Round nursery for 0-pre-school age. Is this going to be closed down as part of these proposals? If so, I do not agree with them as my child attends this nursery and we value it so much. We live in HR4 but are willing to travel to this nursery because it is so good. Please do not close it down.
What will happen to merry go round nursery?
National Health Service (NHS) should fund it with council
Should remain a publically owned children centre
Parents visit these places regularly to help support their children in learning and socialising , there's already limited activities for the children, my daughter comes here regularly with other children and has helped her developed in herself
Children's centre should be linked to all playgroups/ Nurseries and schools in the local area, early intervention is going to make the difference to the outcomes for children and need to be targeted and supported to improve before school.

<b>Comments:</b>
I use the Multi Agency Office (MAO) there as this is the only one available south of the river as Thorn Office have already closed. The MAO is part of Better Ways of Working as came into force a few years ago. It is very important to have a facility that we can use on the south side of the river. I use this at least twice a week.
There is a large demand in south city and very little places to go to for support and socialisation. The proposals for Greencroft give the children centre very little space for any activities, and any intervention to occur. For parents in the south city area the children centre offers a confidential safe area whereby parents can come and play with new opportunities that they would not be able to do at home. Greencroft is the prime example of early intervention and a way of supporting those in critical positions!!
There is limited community space for the south wye community, 2 children's centres have already been taken out of the community.
Why would you attach a children's centre to one large inner primary school and not the others? Marlbrook wields too much power already in the south wye community.
It needs to be widespread
The area needs a centre for mums to meet, exchange ideas and get information and help from other mums and centre staff.
The multi-agency hub is very useful here
Children's centres are a fundamental support to the disadvantaged and vulnerable they should resource and supported well. Closing them is a short sighted money saving option that in the long run will cost us the citizens of Herefordshire dearly? School staff are not trained to run multi-disciplinary teams and in the long run does not work.
As long as adequate facilities & staff are actually provide for U5's I would agree. This is the most deprived area of the county and the building location is where it needs to be i.e. easily accessible for a facility to use and to find the help and support when needed.
I worry that room availability will impact on what they can offer in the way of children's play sessions.
I don't think this should be taken over for the exclusive use of one primary school, there are many needy families in this area that don't attend Marlbrook primary school.
Am worried that it will b
Marlbrook primary school surely is for education. It does not have the management skills required to manage such a complex range to activities that are held in the centre. The school is struggling as it is!
Sufficient Multi Agency Office facilitates are still needed, the current MAO is used to hold meetings such as Child Protection Conferences or core groups, as well as Looked After Children Reviews and so facilities are still needed for these. Also hot desking facilities are needed, more than 4 desks. This is currently the only children's centre in south city (as South Meadow is used for supervised contact) and it is vital this resource remains in the area where it is needed most.
Unacceptable school funding is stretched enough and there is no clear explanation how This will be funded. Many parents who live next to Marlbrook can't get in as a result of its popularity so the same will happen with this.
Why we have to take last spaces made for the smallest. School has lots of rooms to use us family centre and older children. What percent of the site would be for health visitor clinics or baby's?
This is the centre that families from other South Wye schools are encouraged to use due to limited provision elsewhere. At Riverside school, the facilities are not big enough to cater for the needs of the families there and so they are missing out. Many of the families don't travel very far, even as far as Greencroft, for various reasons; this is why some provisions have been made at Riverside. Families and children from all schools should have the same opportunities.
I feel it is very important for CC services to continue! The school should not trample over other independent & small businesses in their desire to build empires.
It is the removal of free and easily accessible child services that many people benefit from. Myself & my daughter benefitted tremendously from advice and support
would not go into school grounds
Children's centres are invaluable resources and should stay as they are and run more services

<b>Comments:</b>
Don't use this centre
Too much pressure and time taken away from the primary school
This centre is great now because they have programs let's play for young children whose can't be at nursery. This plays develop children ability to be in society and learn, play with another children. This will be very bad if this centre will be change.
As long as the group's improve, at the moment they have unofficially stopped the Thursday group, which is the ideal group for me and my children, also I'd like to see the same staff as they have been working with me for the last 7 years and do a fantastic job. If Marlbrook can help with providing a better service than the council then it should work well.
I believe there still needs to be a range of groups available for babies and the support will not be the same.
Not enough information as to what courses available as have used it for varying services previously
I'm not sure how this will work. Will it have its own reception? This is really needed. Will outside providers be able to offer services such as baby yoga and massage? These types' community groups have been essential to me and my family as a great support over the past 9 years.
I used Greencroft weekly whilst on maternity leave, and live in Wormelow. Therefore it was great to integrate with other mums and babies who were from all parts of Herefordshire, as well as from immediately around Greencroft. It meant I didn't have to travel into town etc. too which can be a pain. I also think it's healthier if different communities engage together in centres, and the proposed plans would not allow that coming together.
It's not clear if the proposals include continued support for early years children such as post-natal groups and other activities - these activities are essential for new mothers and are not provided elsewhere.
Will the family room and parent room still be available? As a professional I have been booking room(s) on a monthly basis for Early Years (EY) family support group and joint Speech And Language Therapy (SALT) sessions with visiting professional from Birmingham. Already lack of receptionist - does not make centre a welcoming experience for families (who are often quiet venerable). - causes difficulties with room management such as allocation, furniture/ room set up. - means who is responsible for safety and in the event of fire alarm the evacuation, and giving the all clear to return to the building etc.?
As long as merry go round at Greencroft is okay and will not have to move unnecessarily.
Where will new mums go to be provided with activities for their babies and a chance to meet other mums at a reasonable cost that is accessible to most people?
I feel it is important that the centre is still used as a base for families to turn up on the doorstep requesting support/ activities. If it is predominantly seen as a nursery facility without the opportunity for staff and groups to be operating on site then I feel that families will be put off from accessing support and advice at the moment that they need it.
I think it's important to keep the groups going there as it helps parents and children mix
This building is a massive asset to the families on south side. The way it is run is why it is so busy. If you lose this building many families will struggle.
What about children in that area who do not attend Marlbrook School? Why should they have the monopoly on services?
schools have enough to do and not enough experience in needs of the families
I don't agree that these services should be pushed into an already over stretched primary school. It will have an effect on the quality of playgroups



### Q3b Proposal for Widemarsh centre, Hereford

Do you agree with these proposals? If no, why not?

Comments:
I think having part of the centre for a nursery would inhibit what the centre can then offer and provide for everyone. Possibly having smaller age ranged activities at times would be more appropriate and encourage further participation.
All the services here have been cut back and if some of the area is used as a nursery this will make less room and activities happen that have already been cut.
In my experience, changing management from public to private never benefits the users of the service. I think the whole building is used effectively now, as far as I can see, so I'm not sure there would be space for a nursery. The other proposals seem ok.
It will be difficult with parking to have a nursery there as well
It shouldn't be up to outside organisations to run these places they should remain council run
Keep as children's centre
A children's centre is an essential resource
As a health care professional and a mother this is a centre that is well attended my members of the local community. Maternal mental health problems are on the rise and research has shown spending time with other parents who are experiencing similar problems to yourself can aid in the mother feeling more supported and less isolated with an increased chance of remission faster than if that mother is not supported by others in a similar situation.
My two daughters regularly attend groups at the centre. My partner is also a childminder and it's used weekly by the Herefordshire Childminding Association (HCMA)
It should still allow for new mums to meet and play - nursery comes with payment and people won't go. It was an amazing venue to meet and communicate. But seems to have lost this recently with further budget cuts. I no longer make use of Widemarsh although my daughter is down to start speech therapy at the end of June, the only reason was due to going back to work, so daughter in nursery. I would still use Widemarsh otherwise but found that they cater for babies but not really much beyond the age of 2, which is hard, not all parents use. It's wry when they are. Not working! It would be a shame to see it go, this is where I met friends as a new person into the county, these friends I still see and meet regularly, Widemarsh facilitates the opportunity to meet other people, it would be a real shame to see it go, it was relevant and a good price, most outside groups are £3 plus which can get quite costly over a week, when money is short/tight.
Hereford has so many young parents and families who need these facilities.
No provision for midwives clinics
Will this encroach on the portage sessions
Widemarsh should retain its use now and be open up again offering support for not just vulnerable families and for children over the age of two. Re start singing groups and goes back to having regular staff working there who know the families. There's nothing for families with small children is so sad what has happened to the centre due to underfunding. Support should be offer universally not just to the vulnerable people in our society!
Another nursery is not needed, early years support is needed which happens in children centres
It would be a great shame to lose the children's groups at Widemarsh as they were really important to me with my first child who was born in 2013, I used to walk there twice a day sometimes to meet up with friends who are still very close, and it was somewhere to go if u needed support & advice. Unfortunately I now have a second child but as there are hardly any activities there anymore I don't attend the centre as much which I find hard because it is a great place to go with babies.
The nursery will affect the classes beginning run
Usefulness local service providing baby groups and health visitor appointments which I attend regularly and this facility would be missed
There are childcare settings closing because of this new 30 hrs funding and not enough funding to cover the basic hourly rate of the space provided. Why do we need more nurseries? Help those that are struggling first.

<b>Comments:</b>
As long as it still able to provide and promote baby groups free of charge. These invaluable to low income households.
It should stay as is but be given better funding
Seems like it is trying to do too much. It is already a busy centre and runs wonderfully with so much going on. Adding more usage will be in Practical and Sparing of the already stretched resource
Spouse the council have to claw some money in from somewhere, however are there but enough private nurseries already?
I do feel mummy groups are important as it helped me socialise and meet new people. Also groups for older children and groups with more than one child allowed. Also price is a factor as it gets expensive paying for more than one child.
I use the soft play regularly
I'm concerned by the phrase "partner organisation" and the implication of privatisation
This may mean the removal of children and baby groups for parents who rely on the centre to meet other parents and to educate and encourage their child's development. In some circumstances for parents without transport, this is the only place that provides these services in their local area.
Would Widemarsh continue to have the facilities and activities they currently do/
Should remain as publicly owned children centre
I am not sure what is meant by "partner organisation" however I think the wide marsh centre do fantastic work. They were instrumental in helping me with my son before his autistic diagnoses. The garden, I believe should be available to many children groups. Not just those with learning difficulties. As long as they get the funding they deserve with no complications for the many parents that they help.
Agree with it all apart from the private nursery. Access there is difficult as it is when arriving with children. And I think to lose the valuable floor space would be a shame
As long as it still able to provide and promote baby groups free of charge. These invaluable to low income households.
It would be a real shame, not just for me, but for the whole community if the facility was taken away from the community to make way for a private nursery. It is a superb site which is well used by local childminders and parents on a frequent basis. The children I care for would miss it tremendously as it provides us a safe environment for further play and social opportunities. The groups that are offered out to families to attend are just fantastic and the whole community would lose out if it was no longer available for us to visit.
I feel that there won't be enough flexibility to ensure all families and groups such as our childminding groups to use the centre as they are currently. A lot of groups had already been stopped when it used to be so busy. It's a wonderful children's centre that has helped me and the children I care for to provide a varied learning environment.
There are hardly any places for parents to take their children now to encourage them to socialise and learn ,there are plenty of nurseries out there that have closed or are struggling with numbers because there's so many about .
It's nice to have somewhere easily accessible with young children to go to groups and meet people at a reasonable cost
Parking is very tight and don't think private nursery should use it, if it is a children's centre then use it for that purpose only and close others in the city
Vital service for local parents, support for all new parents that helps them meet other parents, helps them get out of the house (only parents will understand why this is needed). A benefit for new parent's mental health.
Children's centres are should be independent, funded by government and for all, to help those that need it before poor outcomes are ingrained and a pattern developed. No private Nursery. Glad the community garden and kitchen to be retained and forest school.

<b>Comments:</b>
Children's centres offer a unique- non stigmatised qualitative opportunity for parents and carers to meet and for children to make friends. I feel this centre is particularly well used- I often booked it in my role as Family Support worker, I attend here with family when they visit. I would want the council to retain complete operations as any private partnership becomes money focussed in its targets, which would alienate those on lower or non-budgets. But also mean more costs long term for social services dept. who need to book for supervised contacts. I am aware that there is now a designated contact centre...but that in itself is isolationist.
A nursery would be great although it would be also good to see the activities continuing as usual
There will be very little space for groups to occur, with just one room to run courses and lets plays etc. is impossible to keep all the activities running as they do! The outdoor area is precious and should not be sold off so that the centre cannot use it. In 'let's play' and 'behaviour courses' that the centre runs the outdoor play is vital if we did not have that opportunity to use it then it would disadvantage so many families. In Hereford we have so many families that do not go outside their houses, their garden is never used and they do not know how to play outside.
I would hope the classes would continue to be available and not removed by the private nursery!!
Widemarsh caters for a large number of the community and all of the space is needed.
I love the fact that the centre can be used by anyone, and if privatised it will become exclusive
The ground floor is used for at least two fostering support groups and I feel it is wrong to change this a private nursery can be accommodated elsewhere
I am a grandmother caring for two 2 year olds. This session provides an interesting activity morning for them and enables them to mix with other children and for me to mix with other adults. It's a good well run group and would be seriously missed if stopped.
Should be kept as children's centre
Needs to be for everyone
Really important to have open access groups so families from a wide range of backgrounds can be together and share experiences and learn from each other. Lots of these groups have already been sadly lost e.g. singing with Chris.
Mums that do not go out to work or put their children in a nursery need places such as Widemarsh to go to for companionship, help and advice.
I do not agree with it being run by a partner organisation or being a private nursery. it would be a good sport for a multi-agency office
Children's centres are a fundamental support to the disadvantaged and vulnerable they should resource and supported well. Closing them is a short sighted money saving option that in the long run will cost us the citizens of herefordshire dearly. We do not want partner organisation running the site. We want council services, our services, to be run by u, our council. A private nursery will not serve the vulnerable and poor of our county
Would need further clarity of the split to private nursery. What does this actually mean? Use of space required etc., will it impact on ability to freely use the centre, will a private facility take precedent?
We really need a place where mums can meet regularly and at a reasonable cost. I personally would be willing to pay more than the suggested £2 per family. Feel part of the community by supporting our local centre, packed glasses run by Chris at Widemarsh says it all. The members are fully committed and helpful staff which as a first time mum was a huge support, lovely to support those with learning difficulties by purchasing their food in the cafe.
Will the current groups running in the rooms such as let's play, soft play etc. still continue and work alongside these plans as these groups are essential to most new and older mums for many valuable reasons socially, interaction, learning, making friends, meeting new people, somewhere cheap and easy to access for low income parents or people who have no money but want to do something worthwhile with their babies and toddlers the reasons are endless!!
It would be a shame to loose low cost groups, support for mums, for paid for nursery care. I'd be concerned about the most vulnerable



<b>Comments:</b>
The building is well set up for this, and sounds a sensible step forward, but I hope this will not result in people having to travel here to come for a service when their areas are being deprived of a much reduced use of a children centre in their own locality. I am glad to hear that the adults with learning disabilities would remain and that good use can be made from nurseries.
This facility should be kept as a public building offering the range of classes and services now available. They are free or affordable for local families. It is a centre many can walk to and parking is already a problem. If a nursery is added it should not be a private business but a place to provide childcare for families on low incomes e.g. funded places for 2 year olds
I agree with part of it but not opening a private nursery. There are a lot of other nurseries within the area, lollipops, Noah's ark, Holmer, Highmore hedgehogs and St. Thomas Cantilupe opening another at Widemarsh will impact on those provisions already offering good or outstanding provision. Perhaps Home start etc. Would work well there and some provision for children with special needs, now no1 Ledbury road has wrongly been closed.
I don't fully understand what the proposal would mean for the children's groups etc. that I currently attend at Widemarsh. We use the groups, the cafe (which is very reasonably priced for parents) the garden etc. So long as none of these are affected in a negative way then I agree, but personally I have used this children's centre most weeks for the past 6 years, and have found it to be an invaluable service. Certainly in the first few months of my eldest son's life, it was a real lifeline for me, getting me out to meet other mums and children and I know that has been the case for a lot of my friends too. My children and I have the fondest memories of Widemarsh and it would be such a shame to see it change for the worse or disappear completely, or make it too expensive to go.
Currently this is the most widely used Childrens Centre; it offers amazing opportunities for children to socialise learn and have fun. Parents can gain support from dedicated staff members. It is vital that the reception remains manned and that people are able to book sessions via a number of methods; whether this is in person, telephone and online.
Would rather see more classes for pre-schoolers and a wider range of groups for parents with young babies / children to meet. No objection to the learning difficulties facility.
The site needs to remain as a 'welcome', 'friendly' and approachable place to meet with those that are in similar situations; to build new friendships and have a safe place to go; where they ensure the safety of the child. Groups run from the facility will be highly missed; if cuts were made. Can the 'partner organisation' guarantee that these facilities will remain running, at an affordable cost.
Sounds like fewer things to go with parent and pre-schooler!
Where will the community offered services go? How will they do contact and one to one session without more than one community space.
Lack of continuity of staff. I found having a good relationship with the staff over time helped me with continuous support.
Taking away groups and community outreach that is needed.
As long as baby/toddler classes are kept running.
You're just trying to cover up what you are actually doing. Mums dad's and children need these facilities. If you want schools and nurseries then build some
Against external management.
I don't understand the possible impacts of these options. For the centre to work it needs to be a safe secure facility for parents and children in order for them to be able to relax and get the most out of the setting. Happy for it to continue working with those with learning difficulties. Love the forest school being open to local schools and groups. It is a very child friendly space to hire out but this could cause more work for the staff to ensure it is fit for purpose after use which is a risk.
What about Speech and Language clinic - where will that be held?
As long as we can still attend activities for our children (happy to pay for them). I used Widemarsh CC a lot when my toddler was a baby for groups such as baby massage, sensory play and bounce and rhyme and it was really beneficial.
Sounds like the partner organisation is going to change the current format, or why would they are doing this? Sounds like a back-handed way of selling it off and probably reducing the services offered.

<b>Comments:</b>
I don't know how big the building would be nice to make into nursery and people with difficulties would have a space too. Only is no word about baby's, moms and other services very popular centre and loved by many.
I fundamentally disagree with the rise in private provision of services which ought to be public
It is the removal of free and easily accessible child services that many people benefit from. Myself & my daughter benefitted tremendously from advice and support
As a childminder I have made use of the soft play crèche and cafe every Tuesday and other times for many years. We meet there with other childminders which gives the children I care for the opportunity to mix and socialize with others. This would be a great loss to us.
Concerned that space will be reduced to facilitate services. Will put a squeeze on Widemarsh if no Broadlands centre.
As a childminder it is at Widemarsh that I meet with other childminders and Health Visitor's
Children's centres are invaluable resources and should stay as they are and run more services
The whole space is currently being used, other avenues could be explored to raise revenues
Letting out parts of the building will add complexity to those who wish to use it with physical barriers and minimal options of groups/ activities and equipment. Partner organisations may change its operation completely and it would be such a shame to lose the centre for those that need it most.
This centre saved my life as both a new and experienced parent. I am an educated, middle class, white parent of, now three children and I did not suffer from diagnosed post-natal depression. However I needed this service. Without it my time as a parent of young children would have been much harder.
The centre is perfect now. There is no need to change it.
The range of classes & support offered are vital to parents. Keeping this as a support facility for families is important - this will be limited & non-existent with a private nursery. The quality of classes is also very high - the level of knowledge & experience of staff is a life line to mothers. Young mothers/new parents will feel isolated & lack support - this will create pressure on other services (GP, A&E etc...)
The rent on these rooms is too much. I have a 6 month old and already services have stopped because the rent is too high. The cafe is fab to visit as it is cheap so will this will now shut to general public?
Because I would have to travel a lot further for my sons speech therapy class currently held at Widemarsh
Failed facility, let it go.
Although need to ensure enough space set aside for parents to meet Cutbacks will only cause more families to hit crisis point as they will be unable to access services previously provided and they will not have the vital interaction with other parents who are in similar situations as themselves which will be of huge detriment to some families and they will need to rely heavily on much more expensive services
There is not the capacity for a private nursery. All of the space is needed to continue providing its current services. The centre is vital for parents and children and privatisation will reduce its offerings.
The building needs to continue to offer midwife appointments as well as baby groups.
I had many midwife appointments here would they stop? There must have been a reason I was having midwife appointments here and not at my surgery (not enough rooms at surgery). I did parents to be courses here would they continue?
Too Much, too many different needs, private doesn't work
The needs of families with preschool children need to be preserved. With cut backs on the length of midwife input, and so few health visitor visits after birth, where are families to turn for help and advice? If parents struggle, the children are at risk. Parents need the support. Do not sell off time or space at these centres - cutting Childrens services puts children at risk.
Electronic booking is not accessible and not inclusive to all. We need a reception. Real people for us to speak to/help us/direct us.
The council need to retain responsibility and management of this site. Too many council responsibilities are being sold off to private partners to manage and services suffer for it.

<b>Comments:</b>
Partner organisation running site equals reduced priority for things that do not generate income like antenatal class provision.
Letting part of the building as a private nursery takes away from the space available but keeping the community garden and kitchen is a good idea. on line booking a good idea
It has been an invaluable resource for baby groups so I would hate to see these disappear
all of the facilities are needed for its current use
The outside space at Widemarsh has been a real draw for families who want a safe space to engage with their children in the past. There have been some very dedicated parent volunteers helping and running their own activities in the past. It's a real shame that the service has been cut so much that this is no longer possible.
I worry this is the start of a process of closing this wonderful centre to the public - the suggestion of a partner organisation taking over running of the site is the section that concerns me the most.
The range of classes offered and groups for families in a central location to Hereford is ideal. Plenty of nursery's in the area i.e. Lolly pops. White cross nursery. Busy bees?
It is difficult to find alternative rooms suitable for seeing children and families.
Believe the centre is beneficial as it is
I often visit this centre with my daughter for children's activities e.g. soft play and lovely place to meet up with friends and other mum's that doesn't cost too much. It is the only site north of river that I am aware offers this service still.
I would agree with the proposal as long as the centre still provides some activities/support to parents and parents to be
Within the plans would need to be consideration for supervised contact where currently several families use this facility.
I would hope that there will still be scope for the full range of groups to run alongside the nursery. I also hope that the garden and cafe area will still be available for children and parents to use.
This centre has been key to me accessing services which were not available closer to home. It is an asset to the community.
More mums and toys groups would be nice
Centre used occasionally to run activities / coffee mornings to support families with disabled children - will this still be available?
Will the suggested private nursery run the site? If so I agree as long as the community use is still used and groups for families maintained, with salt and midwife staff having groups still.
If Broadlands centre is moving its services to Widemarsh they will need all the space it currently has to accommodate these services
As above. Feel that since I had first baby in 2014 the cuts to provision of groups and activities at children's centres have been massive. Such a shame many children will miss out and mothers, especially from lower income families will suffer.
I feel that it is important to offer early year's spaces that are not nurseries to our communities. Widemarsh currently offers a lovely facility for parents to spend time with each other and their children. I support the retention of the facilities for the adults with learning difficulties to remain. I feel it is important that the centre is still used as a base for families to turn up on the doorstep requesting support/ activities. If it is predominantly seen as a nursery facility without the opportunity for staff and groups to be operating on site then I feel that families will be put off from accessing support and advice at the moment that they need it. Face to face contact with families is really important and encourage that someone is available at reception to offer this. All families need help at times not just the targeted groups.
I think it works well as it already runs no need to change!
There are activities here that I enjoy going to and a lot of other mums go to. It's convenient where it is. It's a shame to lose any of the buildings.
It is run perfectly well now.
The baby groups at Widemarsh have been invaluable to me and my child and I don't think they should be stopped.

**Comments:**

The proposal would mean the loss of a well-used community facility. The relatively low cost of the facility to poorer users means disadvantaged children can access healthy activities. Childcare professionals such as health visitors, midwives and childminders can meet here and valuable interaction will be lost if the proposal goes ahead. Many nurseries are finding it very difficult to survive financially and another one here would put additional strain on nurseries.

**Q4b Proposal for Broadlands centre, Hereford****Do you agree with these proposals? If no, why not?****Comments:**

Too many facilities closing for the use of people who are unable to travel.

This isn't fair for people who live on this side of town, it might be difficult to get to Widemarsh particularly for those who don't have a car or e.g. Mums who have had a caesarean and can't drive. Also Widemarsh will be overloaded and people will have to wait ages for appointments. We had my son's 2 year review at 27 months, I assume this means Herefordshire is behind on its target already

This isn't fair for people who live on this side of town, it might be difficult to get to Widemarsh particularly for those who don't have a car or e.g. Mums who have had a caesarean and can't drive. Also Widemarsh will be overloaded and people will have to wait ages for appointments. We had my son's 2 year review at 27 months, I assume this means Herefordshire is behind on its target already

There's a great need in this area of town for parent and toddler groups. These should be expanded not taken away altogether.

As above. It is unbelievable that in a city such as Hereford which is relatively rural with poor transport links that have large pockets of deprivation that these resources are closing.

There needs to be as many accessible groups for people in all areas. Not everybody has two vehicles at home or can drive

Keep it as a children's centre - a centre for children

Do they need more nurseries?

I often use the Broadlands centre and I feel like it is a shame that there aren't more classes available there which are promoted more in the local area. Clinics there do seem popular at times.

Because there is no facility close by that offers the same services

It should continue to be used to deliver what it does already but with a hire out option to other groups when not being used. Not everyone wants to go to a larger centre.

Widemarsh will be too stretched and not big enough

What services are provided at Broadlands?

I think community groups and children centres are brilliant tools to help the community. Obviously, if the cuts to funding affect these groups negatively than it may not be wise to continue. But the cuts should be made elsewhere, including looking centrally at how Hereford council operates.

I often use the Broadlands centre and I feel like it is a shame that there aren't more classes available there which are promoted more in the local area. Clinics there do seem popular at times.

Keeping venues for families to visit with their children to encourage social interaction and enhance development and learning is crucial - if you take our children's centres away many families will lose the opportunity to get out and about with their children

It's nice to have somewhere easily accessible with young children to go to groups and meet people at a reasonable cost

It's a great facility but it's not close enough to its community at present. The original one was closed due to sale of land and so this service has already been partly dismantled.

Offered to the school for their use would be good.

As I work at a childcare setting. I think this area is in need to keep the children's centre. It provides a place for parents to take their children and offers a wide range of activities. I think for this community they would definitely miss this centre.

It's location is better than having to go through town, parking is easy and facilities are good

<b>Comments:</b>
I think Bright Sparks nursery would benefit from this centre. They currently are situated in the old Broadlands school grounds and having this building could maybe enable them to extend from having children at a younger age. As a parent who lives locally I have struggled to find an outstanding nursery which can take all my children from a young age in our community. I have to travel to use alternative childcare settings which are a shame as I would much prefer to support my local community nursery.
Broadlands is a building that is used so much by the Broadlands community. As there is no building in the Broadlands community that we would be able to use in the Broadlands area, it would disadvantage so many of the general public who use the centre as a support system. Parents who use the centre come straight after having a baby for support in care, their mental health and for socialisation and many more reasons. Without the centre a lot of parents would be disadvantaged using doctor surgeries more, hospital more, mental health would be on an increase.
Because people who use this facility and have no transport what are they going to do?? It's a long way to walk from there.
Because it seems that the centre it is now will be lost.
Wide marsh is difficult for some people to get to and it would therefore take the facilities away. Also the parking at wide marsh isn't big enough to cater for all that attend especially when classes are running.
<u>Losing the support for young families</u>
There is limited community space in this area of the city to travel to Widemarsh is impractical and unrealistic if you are unable to drive. Many voluntary run groups have recently stopped and this would be another blow to the community.
<u>Why can Marlbrook have a children's centre on site if Broadlands can't?</u>
Should be kept as children's centre
I particularly like going to this smaller centre. It's also more convenient to get to with more parking than Widemarsh.
Great space for babies and toddlers. More people able to walk and attend. If groups move some people would be unable to travel further or less willing to attend appointments
I take my son every Tuesday and it's a busy little playgroup. I have a very close circle of friends, all of who I met at this group. Before that, I found it very difficult to go out on my own with my little boy. I really think it's important that this centre remains as it is.
It should be children's centre or nursery
<u>Multi -agency centre will be good</u>
Children's centres are a fundamental support to the disadvantaged and vulnerable they should resource and supported well. Closing them is a short sighted money saving option that in the long run will cost us the citizens of herefordshire dearly. A private nursery will not serve the vulnerable and poor of our county.
Parking is better at Broadlands then Widemarsh. It can be a real struggle at Widemarsh especially with two little ones in tow??
Plenty of nurseries and offices around by community centres like this are so useful and would be sorely missed
People have to commute across town to be able to access a centre if you were to move everything to Widemarsh. Families need places they can access easily in their community
Widemarsh is far away for a lot of people. Living in Hampton dean it's the only centre I can easily get to.
I understand Broadlands is small and perhaps not so well used but can Widemarsh absorb all the courses and services if that centre is being reduced in size and used as a private nursery?
Again agree with part, but this isn't a new proposal... as I'm sure Council nearly 2years ago already planned for the school to use it for their own nursery provision /community use building on plans submitted when Broadlands Primary moved over to Aylestone grounds... However it would be too small for these types of provision.
I have used this group over the years and again think it would be such a shame to turn into a nursery or offices. These groups and services are essential for parents, parents to be and children.
I have not accessed Broadlands so do not feel informed to be able to make a decision.

<b>Comments:</b>
Because it is limiting the services that are available to the wider community; which impacts on the spaces available, upon groups being run. Therefore disadvantaging the 'youth' of today and the experiences in which support develop growth and confidence.
I cannot get to Widemarsh, these local services are invaluable at Broadlands and it already has all the facilities to meet its needs. It would be completely inappropriate for office use as it is joined onto the school grounds and overlooking the playgrounds and anybody could access the school making it unsafe. There are already plenty of private nurseries in and around this area. This children centre is well used by a lot of families and well loved by a lot of children please don't close it or turn it into something else.
People in the area use it! Plus Widemarsh is no good sadly for those of us who don't drive!
This is an essential community resource in a deprived area. Parents here need a children's centre!!
People who may live by Broadlands children's centre may not be able to travel to Widemarsh as there is quite a distance between the two
There won't be enough room at wide marsh children centre because you just rented half of the building out. This is just cutting more services hidden by building changes!
Wide Marsh offering is already limited due to space.
Living in Tupsley and not driving, Broadlands is a lot closer and more convenient to get to
The travel to Widemarsh would put parents off; therefore those with higher needs are less likely to use the services.
Another way of selling the facility off. Families and children will miss out.
The Nursery together with many other uses is essential for the number of young families living in the area
I find it abhorrent that a significant amount of money was invested in the setting up of children's centres, which all gave a fantastic service for all families in their reach and now buildings, equipment, staff and services are redundant and it's the most vulnerable families who once again miss out.
It is so nice to come to this centre 2-3 times a week and find easy drive from home, good parking and safe part of town. Time of programs are perfect and my baby is very happy not to be in big space with lots of children but smaller rooms with calm and happy space for very small babies. I can come to see health visitor or baby group and fantastic massage lessons. Love the centre, all the staff is so helpful and welcoming, I am happy to see the same moms and babies and new too. It is so important to invest into babies now and such opportunity for me to meet other people. Widemarsh centre is another side of town; traffic is bad and would be too much families pushed to small space of time. You can't have nursery, spec. children and normal baby centre at the best's time for all.
Too far for people to travel if no transport
as 3b (I fundamentally disagree with the rise in private provision of services which ought to be public)
People in this less affluent area don't all have access to transport. I walked to the centre for playgroups and yoga when I couldn't afford to run a car.
A very popular venue. Where will the Health Visiting (HV) team run their clinics? Why attach a team to a non-existent children's centre?
This centre is only small but the services that are provided have been brilliant. I haven't used them lately because the children I care for haven't needed them but with new minded children on the way I would return
Widemarsh is not within easy walking distance for me; I can go to the HV clinic at South Meadow (Hinton community centre) but Monday morning is not always practical. If there was more than one HV clinic there a week or it was later in the week I would prefer that
Too far a distance for parents to travel, especially those on lower incomes who currently walk to the Centre
Children's centres are invaluable resources and should stay as they are and run more services
I feel the building should be given to the school as they already have a nursery which is nearby.
It is such a vital facility and if it goes there isn't anywhere nearby

<b>Comments:</b>
Again these children's centres were built for children... and although children may benefit from nursery provision, the nature of children's centres was to provide opportunities for children and families from vulnerable backgrounds and those under one for parents to socialise with other mums and lose the risk of being isolated.
The Widemarsh centre is already very busy and well used. There won't be enough space.
Definitely not as the groups available here at the moment have been great to access for me as a mum with a young baby. It's so close to town and having the group on a Wednesday has been a great support to myself, we have met other mums and my daughter loves going.
This should be given to Broadlands school to be used as they see fit, possibly as a pastoral/behaviour management facility.
This centre offers a lifeline for parents of babies and toddlers where they can come and relax with other parents and for their children to play and explore in a fun safe environment.
Close Widemarsh. Keep Broadlands. It's not good, but it's better than Widemarsh.
Geographically this is not plausible as the wide marsh centre is much more challenging for those without transport to attend.
no more offices needed
The Widemarsh centre will struggle to provide its services with increased numbers of people from across town. This will impact on service and current offerings. It's not a practical solution and purely looks like a cash saving exercise.
There is already a local nursery facility and it should remain as it is as some parents cannot access Widemarsh centre
Continue to use for baby groups and not office space.
Not everyone can get into town. This may also put pressure on services at Widemarsh street. An office for the council? Absolutely not! This is a children's centre - keep services for children and their families. Maybe share the space with the school but keep preschool free services available. If you turn it into council office space there will be backlash I am sure. How about building more places for the needs rather than robbing peter to pay Paul??
The local community need these services.
Widemarsh already busy
It seems that you want to do more outreach work which I personally feel is more beneficial to the community. But with this service you aim to reduce the outreach work...
I prefer Broadlands to Widemarsh
Broadlands and Widemarsh are a very long distance from each other and on other sides of the river. You will be taking away this service from the south side. I found the south side children centres a lifeline when my children were very young and without them I would have felt very isolated - and I was lucky to have a lot of family support nearby.
Lovely friendly group. Great setting in the right place
Widemarsh is a long way away from the broad lands area, thus making us inaccessible for some.
It's a populous area and without transport Widemarsh would be too far to access. With very few local groups for parents or nurseries in walking distance. Also. Broadlands used by outlying villages that access Hereford from Worcester road.
The council have plenty of other buildings; vulnerable mothers in the community may only be able to access this centre.
Nice idea but parking, getting there etc.
Most convenient location for my family. I have used Widemarsh centre and it is very busy on weighing days and you get little time with the HV. Ideally shared use to retain the current services but allow school to use the centre too
What about people who walk to the centre? Or have social issues and are used to using this centre?
Don't know the current facility and arrangements enough to comment.

<b>Comments:</b>
If services move to Widemarsh, there needs to be transport offered. Many parents in the area do not drive and this is their only suitable community building available for them to use. Also Tupsley is in an area of deprivation and parents need this support. However if it is a private nursery this option may still be available if the manager is willing, open and already works with this ethos in mind, but more space will be needed to enable them to expand their possible offer if needed and additional outdoor green space would be needed also. Another question... why offer to school to use when they moved because of having more than enough space on the old site. Bright Sparks Nursery needs a home.
I feel it is important that the centre is still used as a base for families to turn up on the doorstep requesting support/ activities. If it is predominantly seen as a nursery facility without the opportunity for staff and groups to be operating on site then I feel that families will be put off from accessing support and advice at the moment that they need it. Moving services from the centre would isolate the families living in this area.
I think it already works well as it is!
Why use it as a multi-use office? How is that more beneficial than helping families with their children?
What about parents in that area who have no means of transport to get to Widemarsh?
Needed in the Tupsley area for families with no transport. Could be run by the local outstanding playgroup already in the area.
I don't believe that the building will be used for anything else. There are already a lot of empty council buildings in Hereford- why aren't you using these first?
This is closer to where I live. It is comfortable and offers a small and not overbearing or foreboding venue for both new parents and babies. It is easy to find and easy to park.

## Q5b Proposal for South Meadow centre, Hereford

### Do you agree with these proposals? If no, why not?

<b>Comments:</b>
Such a shame this centre will have restricted use. Whenever I go there for an appointment, the main part of the building often appears unused.
Been told twice in no uncertain terms whilst trying to go there for advice that is a private run contact centre and has no facilities as a children's centre so I was not even allowed through the doors although signage clearly states children's centre
This hasn't been a great Centre that has provided so much for the community it would be a huge shame to see it just used for contact
It has a fab sensory room that needs more promotion and the speech and language therapy being there highlights its potential for other use,
Again, used to attend a variety of groups here that were stopped. A lovely centre that has a lot more to offer
Vital service for local parents, support for all new parents that helps them meet other parents, helps them get out of the house (only parents will understand why this is needed). A benefit for new parent's mental health.
Its already happened
What is the 'current practice' - there is an assumption that we know what this means. Why should the offer here be different than the offer anywhere else?
Waste of other resources that are at the Centre
Seeing as it has already been stolen from the community, what is the point of saying it's a bad idea!?
You are turning a service for public into an office for staff. Not very helpful.
Make separate entrances for parents and carers to avoid difficulties
insufficient explanation of proposal



<b>Comments:</b>
You could include your council offices in here as well as it's a big building that doesn't require any work where you can plan more cuts!
Don't use this centre
the sensory room is fantastic so would be good to still be made available for all or moved to a centre where it can be accessed
Same reasons as Widemarsh. I don't feel that you are using the great skills that your staffs have.
Don't know the current facility and arrangements enough to comment.
For the sensory room to continue to be made available for families and this facility promoted
Hinton - for such a busy place, I would be disgusted if this centre closed for some unnecessary reason. These groups and centres focuses on bringing new mums together. They create relationships and healthy environments. If you take away any of these opportunities you are taking away from our children.

## **Q6b Proposal for Kingstone centre, Golden Valley**

### **Do you agree with these proposals? If no, why not?**

<b>Comments:</b>
Not if it comes at the expense of playgroups for parents and children to attend.
Why being held by the nursery again?
There is a massive demand in the Golden Valley area for baby/toddler activities. I met a great network of 'baby friends' at the Kingstone Baby Group with Jody; the activities each week were second to none and with the combination of health visitor and CC worker it was a really supportive group. Now that it is just HV led it does not have the buzz/vibe that it used to. In addition, I attended baby massage there, now the nearest private baby massage is in Ewyas Harold which is not easy to get to (apart from going in to town). I do however take my son to the KES Country kids group which he loves and I appreciate the work that Kim is putting into getting the play area and book room in to a fit state again. It is a shame that the Council are making such cuts, should have thought about the money before they expanded and raised the expectations of families in Herefordshire.
Again, where will the multi-agency group meeting go?
Not fair to get rid of the services that are provided just for the nursery to expand. What about people who don't drive - what other facilities are available in Kingstone.
Keep as a children's centre
Again this is a rural village with poor transport links this centre is very much needed to be continued to be used the way it has.
There are already two nurseries providing childcare I think the space is better used for new parents to be supported and for baby/children's groups.
it has been an invaluable source, the friendships we made through mother and baby groups especially at a time when I felt very vulnerable
We would lose the children's centre. People that don't drive or don't live close to family or friends will miss out and the children will miss out on meeting other children and having other influences.
The Friday group are a really great support.
Insufficient information
When needed, always needed.
Rural areas highly in need of provision
It will be a shame to lose the MAO office for workers. The MAO helps you to organise your diary for effectively so you aren't wasting time coming back and to Hereford.
Again, this building is used for more than just midwife and HV clinics.

<b>Comments:</b>
Need somewhere families can have access to healthy living info and play groups support groups etc. As Kingstone and surrounding area is a community area.
Extend their provision how?
These are not very well explained proposals
Children's centres are invaluable resources and should stay as they are and run more services
Close the nursery
Free services for support to young families must be preserved.
Would love to keep the drop in session on a Friday morning.
I agree
Centre used occasionally to run activities / coffee mornings to support families with disabled children - will this still be available?
As long as this will not impact on other early years settings in the area.
I think it should be kept as it is!

### **Q7b Proposal for HOPE centre, Bromyard**

**Do you agree with these proposals? If no, why not?**

<b>Comments:</b>
Again this is a rural village with poor transport links this centre is very much needed to be continued to be used the way it has.
Why does Bromyard retain the use of a building as a children's centre? Alternative use should be found for this space as with the other centres. The contract should go out to tender again as another provider may be better and also work in a more innovative way without having to have the building.
Rural areas highly in need of provision
I hope they keep the MAO as again it provides social workers to opportunity to use their time wisely and plan better instead of driving around the county unnecessarily.
The hope centre has been a very useful base during visit and outreach work
I assume that they receive equitable funding to the other children centres from the Local Authority? If so I say yes. Otherwise funding needs to be equitable across the county and in accordance with need.
HOPE does excellent work. But this need not be the flagship model. They fight tooth and nail to do what they do - Great as it is this system is this system is flawed!
I'm not sure whether this will result in less group activities such as bumps and babies as these are so important to new mums. I also don't want to lose it as a place to meet up with other mums.
Where are very few places in Bromyard where you can get help and support without driving
The hope centre is a valuable resource for the local community a lifeline to some it is a great facility we don't want to lose
Bromyard residents should have no HOPE.
This is a very important centre for Bromyard
Bromyard is a very rural community. The Hope centre is vital in supporting families in this area
There is nothing else in the Bromyard area, I have no transport and two young children
Fantastic staff at Hope great place to meet other mums and visit sensory room and cafe
It needs to stay the same or have services extended. It is essential to Bromyard.
HOPE has cut a lot of services and the place has not been the same since. It needs to concentrate on working for the community as it was intended!!!!

<b>Comments:</b>
HOPE needs some intervention via the council. The website says they offer all the above you have listed but there is no adults courses, groups, no breastfeeding support now the cafe hours have reduced - I thought it had opened for the community?
Hope centre is an excellent provision for the area and should remain so.

## Q8b Proposal for Ledbury centre, Ledbury

### Do you agree with these proposals? If no, why not?

<b>Comments:</b>
You are removing a children's centre ,it was built and initially funded as a children's centre you are now selling/giving it over to a school as the council has refused to build another school despite agreeing to build another housing estate .Early years losing out due to more housing ,enlarging an already big school ,they have already had to force an outstanding private setting out of its premises
I do think the master's house could be better utilised for baby/toddler activities as I'm a strong believer in getting children familiar with books and libraries...however, activity sessions need to be in a dedicated room where the children have space to play. The current children's section at the Masters House library is very small, uninviting for children and generally underwhelming!
The services and structure will be altered. I plan on having another baby soon and therefore will be using the centre for my midwife appoints and using the centre a lot more for groups etc. If there is a promise that nothing will change then I can't see a problem, but I assume the school will be using the building more often and therefore the services will be even less available and even hard to come by/arrange/attend.
I think the school is big enough and that the building should be left as a children's centre for babies and preschool children.
We must do time to provide centres that are not linked to schools. They are able to operate a far better system all year round allowing a wide range of care and precious activities for new mums, dads, babies and families. Take these away and they'll be an increase in mental health issues, child protection and child care issues.
I understand the need for cuts and the school needing more space but it is so sad and worrying to lose the children's centre itself - when I moved to Ledbury the children's centre was a life line, I don't know what I would have done without it. Worrying for other people in this situation - how will they be supported/reached?
The children's services offer a range off valuable activities for new parents. Especially for those locally who do not have other transport? It should continue to be a place of meeting and support for new mums and should be expanding its services, not having to share with competing elements.
Keep as a children's centre
I agree with this on the assumption that the number of activities doesn't decline as groups like baby massage are so important for new parents
If you need to ask why not for every single question that you are asking I suggest you review IQ of commissioners/managers who made the decision
Ledbury Children's Centre was a life line to me when I had my first child and was a major factor in stopping me getting Postnatal Depression (PND). The centre is much needed in our community and people travel from a variety of villages far and wide to use it; also Ledbury itself has pockets of deprivation that need this centre. It is terrible that you have stopped the midwives visiting the village surgeries and now can't provide them with a proper base!
I think it's important to have a facility that is independent from the school as its dedicated services are currently fantastic.
The children centre is excellent where it is. I personally do not drive and the is the only place in decent walking space that myself and my daughter can go to. Its right next to the primary school so good for drop my son off at school then head to the children's centre straight after.

<b>Comments:</b>
I use this centre 2/3 times a week. Have met new mums and made friends, it's safe, it's secure, it's child friendly. The children have had enrichment from the centre and staff. The Masters house is not child friend nor does it have any outside space. 100% would be a huge impact on new parents in Ledbury and surrounding villages!
I would prefer it if things stayed as they are and the centre was left to function as just a children's centre as it works so well and I value it so much. I think despite this consultation that won't be the case whatever anyone says so feel this is a bit of a pointless box ticking exercise and you will continue to do as you wish. However I fully understand the need for the school to expand as it needs to provide more school places and so, what I would like to see are an integrated school, nursery and children's centre, with the school providing the space needed to carry on sessions. Having a decent play area and outdoor space is vital and this could well be improved upon with the school. I do not use the Masters House, I do not find it at all child friendly, and someone I know was asked to be quiet when reading her child a story. I take my children to the Hive Library in Worcester which is much more playful, fun and comfortable. It's a shame these considerations weren't made when the Masters House was being built. Promoting sessions at the Masters House I agree with, but not running sessions there. This would also fragment the early year's community (that currently works well in my opinion) and jeopardise opportunities and important social networking that allows families to access sessions, advice and support from health professionals, volunteers and other parents and caregivers. Keep it all together! Many of the children using the sessions will be going to Ledbury Primary so it's surely in the schools interest to have children entering the school who have enriched early years experiences and 'strong and stable' parent / caregiver relationships. At Storytime perhaps the babies could be encouraged to read the book by themselves to practice their phonics, and if the cooking sessions could continue, children could cook their own hot lunch at school then at least they'll get one when theirs is taken off them, and hey, why wait till they're 5 before giving them homework and spelling tests, if they can start earlier, then they'll be ready for their SATs by year 1! Result.
Would be concerned that the many services and massively needed support wouldn't be available I'd run by school as agenda would be different. Centre helped me hugely after a traumatic birth and I continue to rely on it as do many others.
I think it all works fine as it is; a change is not needed unless it's to make the children's centre bigger.
I think it would be better run as it is. Also, reading between the lines, "future development of the school to enable an increase in school places" sounds like the children's centre being put at risk of closure when the school needs a couple of extra classrooms
Don't object to school management, but do object to loss of a children's centre and provision
Maintain as is. Build separate school capacity
The school will simply take the building over and use it solely for their own purpose. Do not believe there would be much on offer for young mothers (desperate to get out of the house and socialise), or the little ones play time, or baby massage/yoga etc. The school needs to expand and they will use the building as a school building, very disappointing.
Families need support and places to go before school.
I agree as long as service provision is not lost. This is a well accessed vibrant centre and conveniently catches parents and children due to its location with the school. I hope this will not be over ridden by the schools needs and lose the original aims.
Ledbury is a well-used centre that works extremely well on site of a school. Ledbury is a small community that has very little other activities and without a car it is limited to move around out the city! A lot of struggling parents use the centre as a base and wish for more activities to take place at the centre. It would cause a lot of issues not having a centre for the Ledbury community.
The children's centre is at risk of being absorbed by the school and used for their own purposes rather than for the children's centre.
Because I know from working in a school, that the school would take over and the classes and activities that are already in places would be pushed out. This is wonderful area for parents to come with their children for rest bite, advice, and time with other mums, fun activities and a place to make friends for both the children and adults!

<b>Comments:</b>
Ledbury children's centre is a busy and thriving centre which is vital for supporting local families; if it was run by the school with dwindling council funding it would not be able to function as it does currently. It would be a real shame if this centre goes and would have a detrimental impact on the community's most vulnerable families.
The children's centre is essential in Ledbury. It is a friendly, welcoming environment that encourages parents and children to meet and participate in activities and seek information. It is at the heart of our community. As a Mum, it would be devastating to lose the children's centre.
Who will staff and actually run/organise and liaise? I cannot see the school having the time or resources for this.
I hope they keep the MAO as again it provides social workers to opportunity to use their time wisely and plan better instead of driving around the county unnecessarily
Putting a children's centre on a primary school site assumes the children and families will use the school concerned. Unless all schools have this facility, it puts those hosting the children's centre at an advantage when it comes to recruiting pupils.
As an ex teacher locally I feel that the school has enough to do as it is without expecting them to operate a children's centre building as well, and expand future increasing numbers on that site. I feel this is yet another cop out for the local authority, an example of passing the buck! If there is new housing that requires more school places, this should not be at the expense of the children's centre, 609plus houses should justify a new school in addition to the present one which is already extremely large for a rural primary school.
The centre provides a place for mums to meet with professionals and centre staff - people living in rural areas is often isolated and may need encouragement and help to go out to children centres and mix with other parents and children.
It is not appropriate to further devalue the role of libraries.
An entire town with no designated space for baby groups etc. such a shame
I agree in principle. It is unclear how much space is going to be provided for the children centre at the school and would this phase out over time? The Masters house is a beautifully restored building-how would this fit in with messy play? Parking has to be paid for at the Masters house and could be problematic. Does this mean there are no children centre staff left to support, simply the reliant on the community as this seems unclear. The facility is valued by all sectors of the community.
Should be for community use and families in need, not for the primary school to have control over. Early intervention is needed as a priority, being run by the school may put some families off, especially as Ledbury has a high number of families in disadvantage and young families. You need people at the front that have been in this role and know what is needed, or you will miss families that need help.
The centre was purpose built and was always exceptionally busy. Local families appreciated the facilities and accessed them. Trusting relationships were forged with the multi-agency professionals who worked out of the building.
It shouldn't be used exclusively for the primary school
School is big enough; the children centre should stay as it is. This centre is amazing and I have used it for all sorts of things since becoming pregnant last year. The information and support provided is so crucial for our community.
It sounds like it will be less available for mums with young children, especially if the school is managing it with a view to enabling more school places. New mums rely on this centre for classes, support and meets. I am going irregularly at the moment, but with a new baby due in November, I plan to use it 2-3 times a week as I did with my first child.
Again, as with Marlbrook and Greencroft, I am concerned that the children's centre will disappear, the school will expand and only essential services will be delivered, on a rental basis.
This is covering up that once the school expands this will no longer be used by community groups. Very little services are offered in Ledbury. This is the once space that parents and children in most need rely on and use. Why remove something as successful as this? Once this relationship with the community is lost it will never be regained. The school will not be able to provide the same service long term. More long term cuts in the pipeline.

<b>Comments:</b>
Ledbury children's centre needs to stay as a children's centre there is hardly any places already in Ledbury that you can take your children, when I was heavily pregnant I found it a lot easier going to the children's centre to see a midwife! You're always made to feel welcome! Ledbury needs the children centre we need a place for our children to play learn and develop!
You would be losing services for the public. School needs are likely to come before the communities if it is their building, and there is no other option in Ledbury but travel into Hereford.
As long as Sing & Sign (paid private group) still runs as it's an excellent group for young children. I have been attending Sing & Sign on a weekly basis in Ledbury since my toddler was a baby (although it would be very useful if it were based in Hereford!) I am now pregnant again and intend to sign up for my new baby so it would be a huge shame if this service were to cease. I have no issue with it moving to Ledbury library or elsewhere, as long as it continues.
Children's centres are invaluable resources and should stay as they are and run more services
See previous comments regarding access to services and peers - Although need to ensure enough space set aside for parents to meet. Cutbacks will only cause more families to hit crisis point as they will be unable to access services previously provided and they will not have the vital interaction with other parents who are in similar situations as themselves which will be of huge detriment to some families and they will need to rely heavily on much more expensive services.
Loss of focus as trying to achieve too much from one building
Ensure support for young families is freely available, this plan runs the risk of those services being squeezed out as numbers of school children rise.
Issues around access to midwife are for expectant mothers in a school. Appropriateness of this is questionable due to potential sensitivity for pregnant women.
The Masters house work is a short term project, which cannot meet the needs of the families most in need in Ledbury.
Consideration would need to be given around supervised contact; although not often occasionally this children's centre is used for this purpose.
I think that the community will lose a valuable asset and that there will be limited availability for the sessions that currently take place especially as the needs of the school increase. Having said that I would not want to lose the use of the centre altogether if sharing with the school was the only option.
As long as the school work in partnership and not dictate.
I feel it is important that the centre is still used as a base for families to turn up on the doorstep requesting support/ activities. If it is predominantly seen as a nursery facility without the opportunity for staff and groups to be operating on site then I feel that families will be put off from accessing support and advice at the moment that they need it.
What happens to the playgroup already on site?
When I first moved to this area, the centre was my lifeline. I made new friends and found a place that my boy loved playing. I then had my second child and used the centre for a place to meet new mums; I was always welcomed and it was just one 'safe' place you could go without being judged! I am now expecting my third child and will use it even more-I will be absolutely gutted if it closes as it has been such a big part of my life since moving here and I know that's the case for lots of families.
Ledbury Children's Centre since its inception has provided very valuable services to under-fives and their families for the community of Ledbury for the almost 10 years that it has been open. These services need to continue and although I believe that the School is supportive of the existing services run at the Centre and wants to work with the Centre and the Friends of the Centre this change will lead to a reduction in services for families with under-fives in the community of Ledbury, not least because there will be less space available. The Masters House is not an appropriate building for services for under-fives and should not be considered as such. However, if Herefordshire Council cannot afford to maintain our Ledbury Children's Centre then the Primary School running the building is a better option than the Centre closing or being taken over by a third provider.

## Q9b Proposal for Coningsby centre, Leominster

Do you agree with these proposals? If no, why not?

Comments:
I live in Kington and this centre is convenient for me to use
I don't agree with cutting any children's centre services
It would be a shame to lose the play groups. Lots of mums use these as a chance to get out and meet other mums after they have had babies. Without this group I would have never met anyone.
No space to carry out health check- room with washing facilities. Access to use room out of office hours to run classes for parents to be. Further change of service, less people using Coningsby because of no reception and easy access point, change of venue will further deter access. No waiting area, play area currently available at council building.
Access has been appalling since getting rid of reception staff; it's not very easy to book appointments now as sometimes no one answers. I can't see enough space for midwife and health visitors and contact at building next door. Also there will be no encouragement for women to book onto baby massage or stay and play sessions as it's no longer inviting or welcoming to use. Appalling and very short sighted of council to cut back children's centre this way!! Long term it helps families and not just those who are financially compromised but for example mental health of women who use the centre for social activities. The council will pay long term and will cost them more eventually. These children's centres are vital to the community and should be opening more and not closing them down for short term financial gain. Leominster in particular has many diverse needs and children s centres have improved many families' lives. Appalling how you have treated you staff. <named person> was a valuable asset to the children's centre and always had a lovely welcoming smile to greet all, its a huge loss. Any more changes like this will be detrimental to young families who live in the area!!
No, taken services away from women families and babies that really needs the extra support.
The classes run at Leominster are a valuable asset to parents and families, this space is currently used my those who need it most in the community
The centre has loads of people through the door lately why does it have to change??
Because where else is there to take our children to groups and have access to family support needs
Leominster needs these facilities
I feel the location of the centre benefited everyone, with car parking near. I have been to groups where space was an issue because so many people accesses the baby groups etc., I don't believe we would all fit in the library. Recently they have removed the receptionist and thus have caused lots of disruption for midwives and health visitors to do their job. Also parents are now unsure where to go for support and social interaction for themselves and baby. I personally can't state how important the baby groups were for me, for my state of mind and able to talk to others parents who were having similar queries etc. . . .
The service I work for provides essential services in Leominster and relies on room hire in the Coningsby centre. Children in Leominster would be disadvantaged if this facility were to end.
The service I work for provides essential services in Leominster and relies on room hire in the Coningsby centre. Children in Leominster would be disadvantaged if this facility were to end.
Concerned about loss of children's centre and provision
Private nursery should pay for own expansion
It's not all about health visitors and mid wives it's about getting together sharing experience and learning parenting skills and identifying the needs of children. There are lots of nursery places but and we provide a valuable place to identify need but we need the support of the children centres to help our families make changes and give children the best chance. I am sad to hear that this is being considered and I work in a Nursery. I am glad that the library is being used as a community resource and a place for families.

<b>Comments:</b>
Because this plan does not retain the service the site was intended for- families in this area have poor transport to other part of Herefordshire and so cannot easily access services elsewhere. Leominster is one area recognised as deprived in Herefordshire (Facts and Figures 2014) as being in greater need than some other parts - this service should be retained. It is easily accessed from the town and as such more available to families in need.
Leominster demands are high and always increasing, at the centre you meet so many parents that are struggling or need support by taking away a base of support the demand and struggle for parents is only going to get worse; which would then increase the pressure on social workers and family support.
Local community in need of this space
It's been important to access the groups I have been going to. It has helped everybody in my family without any doubt. More than anyone would know. Would miss this.
As long as current services are retained. Ledbury needs a sound infrastructure with the population increase of the pending new estate. The children's centre is vital for that and should operate independently of the school as not all Ledbury children get to go to the school and have to go to the 'pyramid' schools in neighbouring villages.
I hope they keep the MAO as again it provides social workers to opportunity to use their time wisely and plan better instead of driving around the county unnecessarily
not if it takes it out of Leominster as I can't drive and have a husband who works nights Monday-Friday so can't rely on him to take me to a different area, and this is my way of getting out of the house local to me
Multi-use offices are useless and a false economy. They lead to low morale in staff and are a by word for a poor quality working environment. How's your staff properly with space and resources to do their job.
I am totally blind and about to have my first baby. I live very close to the Coningsby centre and it is a perfect place for me to learn my way around the building in order to be confident in gaining access to services. If the services in the children's centre were moved to different locations in Leominster, it would make access difficult and create a lot of anxiety for me due to me needing to learn different locations. I am already finding the lack of receptionist at the centre means I do not feel confident and able to attend appointments independently. I am worried that these changes could lead to real isolation and difficulties in reaching out to other parents and professionals.
I am not familiar with Leominster Library building.
Children's Centres are about socialisation for parents and babies/toddlers/pre-schoolers, not just appointments with professionals!! This is so backward! This is about cost saving in the short term. Yet the long term implications will be far more expensive. This is a disgrace.
Very little space already, it's already had its reception closed. Where will support services go? More families unhappy with the lack of support by no reception will be reduced again. Where are you expecting your staff to work with the families that are most vulnerable, without putting staff at risk by not providing them with suitable places?
Would you still run the classes and courses there? It was such a crucial centre for me and my friends when we were expecting our babies and when they were little. Such a fabulous resource.
There are already minimal facilities for new parents in Leominster. Why reduce them even more seems absurd to me. We used the centre to attend parent craft sessions, baby massage and baby let's play sessions as well as midwife appointments and drop in clinic.
The rooms are perfectly set up for groups etc. & the centre is a lifeline for many people in Leominster. It needs a better manager to advertise services & find out what the community wants. The groups already run are badly needed in the area.



<b>Comments:</b>
<p>This centre is a hub for local families it has play groups support groups healthy eating sessions and training sessions here. Where will this all happen if you take the centre away? Will you pay for those from Leominster area who have money issues to travel to Hereford to access the things I've stated above so they can still have access to these facilities? This is the only service in Leominster and would be incredibly unfair to remove it. It's bad enough you took the crèche from there then cut funding for groups I attended now you want to take it completely away but still expect parents and families etc. to continue as normal and get all the info they would be supported with here either by your website (if they internet access and know how to use a computer - something they can learn at the centre as it happens) or a measly leaflet they pick up. Put families first!!!</p>
<p>I think the Coningsby centre should be kept for the same use it is used for now. It is so useful, having a place to see the HV and midwives. The nursery should find different premises to expand into.</p>
<p>'Honeybees' is fantastic and should expand. Shame that halo will lose income from those parking there for those attending for service provision it's also very handy having the 15 minute free drop off in car park.</p>
<p>Unfortunately if this happens it seems likely that the already reduced services offered at Coningsby would reduce further and this would be a real shame as we would often go to the centre once or twice a week when my son was a baby. We found it a great place to go and meet other mums and get advice and help from midwives and health visitors</p>
<p>Losing what children's centres are about and again turning some of it into office space for LAs and health professional as opposed to parents with young children. Leominster library is not designed to be as safe and secure as a children's centre therefore parents can't relax and access support as they would do at a children's centre.</p>
<p>This whole process is running down essential provision. It is already on its knees in Leominster - we need to be adding to the service provision not taking it away.</p>
<p>This sounds extremely confusing and I have been told that access can already be an issue with these buildings.</p>
<p>Children's centres are invaluable resources and should stay as they are and run more services</p>
<p>The "universal service provision" needs to be expanded and much improved from what currently exists. It also needs to continue to be held under the one umbrella and one name of the "Leominster's Children's Centre". The Centre should be seen as a beacon of excellence in Leominster where mothers, fathers, grandparents and other close family members are actively invited to meet to focus on the welfare and support of the child within the family. By distributing provision to the library, or any other community building within Leominster, the focus, pride and ethos behind the idea of a children's centre for Leominster is lost.</p>
<p>Really good baby groups and drop in health visitor at the same time. Came for breastfeeding support and felt really comfortable because I'd already met most of the staff/HVs at previous visits. Also attended antenatal classes here.</p>
<p>One of the main uses for Coningsby at present is supervised contact and the environment in which children see their parents is important. Placing this service in an office environment is not in the best interests of LAC children who can already find this an emotive experience. The presence of a child care provision within the layout of Coningsby may prove difficult alongside providing respectful care and confidentiality.</p>
<p>Activities in Leominster are essential e.g. baby let's play and messy for parents to meet each other and to be educated</p>
<p>The centre is a lifeline for some parents, who may be isolated. The opportunity to meet with other parents or professionals for advice or help with a range of issues may be invaluable. If this doesn't exist anymore then there could be more child protection/ safeguarding issues.</p>

Comments:
Most of the play groups in Leominster have a waiting list so it was a great place to drop in on play sessions without having to commit to going every week. It is great for first time mums to get out of the house and meet new friends at baby yoga and massage. It needs more classes that you can take babies and toddlers to or a lot of mums can't come. It is one of the few places mums who can't drive can access. It is handy for meeting midwives and health visitors for questions and weight checks, freeing up GP surgeries. It has so many fantastic toys and a lovely outside area. Local foster carers use it for supervised contact instead of having to go to the other side of Hereford in rush hour traffic at 9am. Leominster mums can pop in for talks on breastfeeding and weaning. It needs classes run by an employee as its too much for a mum to run a class as she would have to commit to the whole sessions as a baby may be ill or need to leave early for a nap, but someone needs to be there to open up and pack away (and this is hard if you have 2 young children to supervise or are pregnant). Needs more afternoon sessions as most babies sleep in the morning. Needs more classes that toddlers can attend. Nursery isn't a substitute as it's expensive and the mums want to come along and join in the playing. many mums tie in a visit to the centre to lunch/swim/play at halo opposite and its great parking facilities, unlike many groups
No more space for the nursery. Increase library space.
Health visitors and missiles should be retained in the building. Happy for nursery to expand.
There are many families in Leominster that are in need of the facilities that the Coningsby Centre offer such as let's play and messy play and music and rhyme times. This allows those stay at home mums or childminders to introduce their children to other children and increase their social development skills along with allowing them to participate in activities like messy play that they probably wouldn't get an opportunity to do otherwise until they get to school. I have seen and heard many parents at these groups saying "there's no way I'd have this mess in my home"!
It's good that the nursery has more space but there a lot of families that need support in Leominster that won't get it if there is nowhere to go to.
I agree as long as there was still provision for breastfeeding support
The Coningsby centre is a critical part of the community, it opens up a whole world for parents to socialise and learn, without this centre I wouldn't have made as much progress as I have! They facilitate young parents group which I have attended and varied course which I have also attended! The support I've received from the Coningsby centre has had a dramatic impact on my life and my confidence! It will be such a loss for our community in Leominster if it is going to be closed!
It is helpful to have small rooms to use in the Children's centre to see children and families I work with. It is a friendly welcoming place where children feel at ease.
Children's centre for groups parent and toddler and to see family support workers
We need this centre for groups for our children especially in the summer holidays
Whilst the nursery next door is a very good one the services available in terms of baby classes etc. are very good and affordable. Which activities would be available for people not in nursery?
I think it will be a great shame to lose the children's groups that are current and previously. We attended bounce and rhyme on a wed and still miss the session as it was so beneficial. As a mum who suffers with anxiety a structured group took the pressure off having to mix with other mums for a full session. Also gave me more confidence to sing and carry out activities at home for my daughter.
Library will not be able to offer the current range of services
If it has to close as a children's centre then it would be good to enable the nursery to expand into it, but the multi-use office is not a helpful space for supervised contact or other activities where children are present as it is office space and not in any way child friendly or appropriate. Leominster needs a children's centre for the large numbers of children and families who rely on the support it offers and the much needed contact with other families they are able to receive there. I am in contact with many parents who use the centre and who are devastated at the thought of it closing. This will be very bad news for vulnerable families in Leominster. When my children were younger I used the centre several times a week and was very appreciative of being able to do so.
What will happen with groups some people are very isolated and only get to see people here if it is mainly a nursery where can they go?
Don't know the current facility and arrangements enough to comment.

<b>Comments:</b>
As long as the expansion of the nursery talked about does not impact on other nurseries in the area.
To lose the space currently being used for several children's groups will be such a shame for Leominster as there isn't much else going on around town for people who don't drive to get too
I feel it is important that the centre is still used as a base for families to turn up on the doorstep requesting support/ activities. If it is predominantly seen as a nursery facility without the opportunity for staff and groups to be operating on site then I feel that families will be put off from accessing support and advice at the moment that they need it.
Extra charges for use of rooms for supervised contact
We need a children's centre in Leominster there is nowhere for parents with young children to visit.

## Q10b Proposal for Ryefields centre, Ross on Wye

### Do you agree with these proposals? If no, why not?

<b>Comments:</b>
This building has provided a one stop shop for families with children under 5, including very well attended surgeries for the paediatric consultant and midwife.
This building provides a one stop shop for families with children under 5. There are well attended surgeries with Paediatrician and Midwife. The centre also offers remote working base for Council employees and a venue for MAG meetings
This basically means scrapping all of the CC resources?
I'm not sure what you mean by new school site, and couldn't find a reference online, but the centre provides a fundamental service to new parents in the area, with the convenience of easy parking. The removal or reduction of any of these current services would be detrimental to the area and a real disappointment for new parents.
Contact with birth parents need to be in a private area away from general public foot traffic
The Ryefield centre has particular facilities that my baby likes which I doubt could be catered for at the library - i.e. Soft play room and sensory room. It is because of these great facilities ( plus the onsite parking and large rooms which are great for baby classes) that I prefer to travel the longer distance from my home to Ross than to the children's centres which are actually near my home. Ideally baby/toddler classes need to be in a large room where the babies can explore around without escaping elsewhere! The rooms at the Ryefield are perfect for this. If this proposal is to just use the baby section of Ross library I'd probably stop attending many of the sessions we go to. Also the rooms at the Ryefield have tea/coffee making facilities which are so useful - whilst this might seem a trivial and unnecessary thing the reality is that the baby/toddler sessions are not just about giving the children something to do, they are equally (sometimes more) important for providing mums with an opportunity to chat and share experiences in an informal, friendly environment.
Again, if there is no Ryefields building, where will the multi-agency meeting go?
We desperately need this centre to remain. It is a wonderful place for new mums and offers so much to enable a good start to a child's life. These centres and libraries are needed to remain. They are always oversubscribed. Where will new mums turn to without these valuable places?
A lot of parents come to clinics at the Ryefield centre not just to get their baby weighed but to socialise with other parents and get help and support from children's centre workers or attend breast feeding support group. The library will not have enough rooms to cater for all of these groups, it may alienate some parents as they may feel it is not such an open welcoming place as the children's centre, which was custom built for clinics and the social aspects. A library tends to be a place that people expect to be quiet; this would be a problem with a new mother with a lively 2 year with her.

<b>Comments:</b>
The breastfeeding support group at the Ryefield centre is the most successful in Herefordshire. To move it to a less suitable room would risk its future. Moving to Ashfield in the long term will also be too far for mothers from Brampton area to access. The Ryefield is as central as can be.
The session I attend currently (breastfeeding support) runs alongside a group for preschool children and a health visitor clinic. I cannot see that the services will be able to remain so diverse in the library. Parking when using the library would also be an issue.
Long term plan I agree with, a new build would be good, but the number of groups that run just couldn't be accommodated in the library. The sensory room would be lost. I've never been there when two groups weren't running at the same time plus additional services by Health care Professionals. There is no way the library can take on the children's centre in addition to house the job centre/ contact centre and function as a library!!! I would also be concerned at the location of the new build, many local families that need to use the centre don't drive and therefore the current location is easy to access on foot.
There is no room at the library for all the activities which take place at the children's centre. Consequently these activities won't be offered anymore. The children's centre has been a life line to me.
Keep as children's centre
Only if the need for school places is great enough.
Ross needs the children's centre
I don't agree with a move of Ashfield park school, it should remain where it is. The library is not a suitable location for many of the activities that are held at the children's centre. The centre is fantastic as it is.
Would lose midwives clinics
this building has huge potential and should be promoted to other groups it needs using more to help it recognizes it potential
There would never be enough space at the library to run any of the activities at the children's centre, by closing the centre for a year you would drastically damage the support network for families in ross, the library is a great facility for a library not a children's centre!
The library would not be able to offer the same space and facilities available at the Ryefield centre in the short term. This also doesn't explain whether all of the facilities would still be available at a new site.
The children's centre in Ryefields offers mothers (and fathers) and babies a unique support package that helps provide the best start to parenting. The centre provides a number of facilities (including the soft play and sensory rooms) which are unlikely to be available at others sites (at least in the short term). There is not enough information provided in terms of which services would be moved and catered for and which services would become obsolete as a result of the changes. The focus should be on the services that are provided and how they would change as a result of any move- this info is key to be able to identify if any such move is supported or not.
Ross Library is tiny as it is. Adding extra services into this building will not work. It's bad enough that over the years other support centre have closed and located at the library. Where is everyone going to fit?? How would the children centre run their support and courses for families on a very small room at the library? This will not work at all.
Parking issues
A lot of the services offered would be lost which are vital to parents and children. I suffered with Postnatal Depression (PND) and the classes / groups and facilities that the children centre offered have helped me cope.
The entire library isn't big enough to accommodate even a quarter that goes on at the children's centre! As such, many of the groups would have to cease. I absolutely dependent on them when I had both my children. I have no doubt I would have struggled if it weren't for daily contact with the people that worked there and the groups they put on. There is no parking at the library; large numbers of people go to the children's groups. Indeed there is nowhere to park near the library.
I feel all of the facilities and groups which currently run from the children's centre would not be able to run from the new location. Ross is not particularly well located to access similar provision nearby without travelling a considerable distance e.g. Hereford.

Comments:
Can't imagine feeling comfortable, relaxed, less anxious taking my 3yr old whilst having a melt down and new born through a quiet library to get advice or to make an appointment. Also parking with 2 and a long walk to avoid cost whilst on mat leave would mean purchasing a double pram. Weather could be an issue hot sun or rain, if I have the c section which is recommended a long walk after the recovery period wouldn't be something I would want to do. Loss of sensory room and outdoor space. Buggy space for all the prams because there will be more numbers than currently at Ryefield because people will need to walk to get there? Health & safety limits being met meaning people may be turned away from using facilities. More appointments would need to be made at doctors following birth due to parking therefore putting more strain at doctors.
You are shrinking too many services into one corner of a library. There is no way you would be able to offer all of the services currently provided. I have witnessed a decline in staff and services over the last 6 years and it's so sad. The Ryefield centre was a lifeline for me after I had my children. I would have suffered depression without it.
There is very little in the way of facilities in the area, the children's centre is needed
Should be left for mums dads and young children it is a very important place, I don't know what I would have done without it when I had my first child! There are plenty of amazing schools in and around Ross we don't need another.
It doesn't have as much potential as the Ryefield centre.
The space is needed for dedicated children's services. The library does not offer the same resources and facilities.
There would be no space for all the amazing groups held at the centre for a start! Parents rely on these groups; they prevented me from my post-natal depression getting worse. I made lots of new friends and so did/do my children. It would be a great shame if the children's centre closed. It would affect a lot of families. The centre is all about prevention. Preventing post-natal depression, preventing poor parenting, preventing abuse. If we lose these services even more money will be needed to be spent on cures than they would have on prevention it's so silly!!! The centre, workers and groups are amazing and there will. E lots of disappointed and let down families if this changes.
There is not nearly enough room in the library to cover all the activities and groups that are held in the Ryefield. Parents and children need to be encouraged to use these facilities and the opportunities they offer. This will have the opposite effect. It does not have the right resources or atmosphere. Where would the midwives and HVs have their appointments? Would you not have a sensory room anymore? What about the outside play area?
The children's centre was a life saver when my daughter was small. It helped me meet new parents and friends and help with my anxiety. would be a shame for thaw resources to disappear
Child needs space and equipment. There a safe outside area, clean and safe environment for children. The library has no space and when should be teaching our children how to use the library respectfully not as a play park. We need the Ryefield as it easy access for people, feels welcoming and vital for ross on wye as within the time of being a parent the number of clubs has drastically reduced. If the centre goes to the library this will fall again.
There is limited space in the Library and all the activities could not take place in there comfortably, it seems the library site is being used as the go to site for all council services, what next the tip going in there as well?
I think it's vital for parents to have this centre. It's full of knowledge, opportunities and friendly staff. To lose it would be terrible. It's somewhere to go to meet new friends for yourself and your children. Experiences and confidence levels can be increased here.
This is such an important place for the Ross community
As above for Coningsby Centre. Hire of rooms at Ryefields is essential for the ongoing provision of the children's service offered by my organisation.
The Centre offers a fantastic space to hold lots of groups from, the faculties there are fantastic, and to move it would be a waste of resource. An established garden and sensory room would not be offered at the library. The centre also has convenient parking for new mums, and is in a safe location. Previously before moving to Herefordshire from Monmouthshire, I never had a facility likes this for me and my children and I believe to lose it would be an error.
As above for Coningsby Centre. Hire of rooms at Ryefields is essential for the ongoing provision of the children's service offered by my organisation.

<b>Comments:</b>
This would eventually push us out as we need a room and storage for our equipment. There is nowhere close for a new school and this is not the right place to locate one.
Our links with the Childrens Centre have been long term and it is by using this space and interacting with other users and staff that we strengthen our place in the community. The library provides no venue.
For the amount of classes/services the Ryefields centre provides, the library would not be an appropriate place to hold these. Everything has been moved into the library, such as the council offices, job centre, is there anything that isn't going in there? The Ryefield centre has been brilliant especially since I have had my baby. It would be such a shame for it to be moved.
Should be left for mums dads and young children it is a very important place, I don't know what I would have done without it when I had my first child! There are plenty of amazing schools in and around Ross we don't need another.
Should be left for mums dads and young children it is a very important place, I don't know what I would have done without it when I had my first child! There are plenty of amazing schools in and around Ross we don't need another.
Not happy with the proposals for Ryefields. Ross library is busy already, and I fail to see how the same level of service will be provided
Library space is important to function solely for the purpose of a library
Remain as is. Libraries aren't specifically designed for babies and children
The Ryefield centre is a wonderful place to go with the babies. Along with the sensory room which my daughter loves it's also a chance for me and my friends with children to get together in a relaxed environment and also meet other mums. The Ryefield centre is also really easy for everyone to get to
The library is just not big enough to accommodate all that needs to be accommodated.
The library is a brilliant space; however, it is a quiet space. Having children's play groups etc. is not a quiet business! The amount of room at the Ryefield centre is great for all purposes and, I found, especially useful when I had my baby; from being able to socialise with other parents and also experts such as Health Visitors. It would be a great loss to the town
The library does not offer a big enough space for the sessions that run at the children's centre if having to see a health visitor there again waiting space may be an issue as there is already so many services squashed into a small space at the library also is there really a need for another primary school in Ross there are always spaces in the intake in at least 3 if the local primary schools
Vital service for local parents, support for all new parents that helps them meet other parents, helps them get out of the house (only parents will understand why this is needed). A benefit for new parent's mental health.
If there isn't a permanent relocation site decided at this moment in time then the site should remain where it is to give easy access to parents and children that use the facilities.
The children's centre has been amazing for us as a family and helped us a huge amount. I do not believe things should change it should continue its good work.
Ross has poor transport (no train) and as such this service cannot be easily accessed elsewhere....a good Neighbourhood plan should recognise its future- families!
The library is far too small, and it would be very disruptive to other library users. Potentially causing a child safety concern with the public in close proximity. Also there is limited free parking compared with the Ryefield centre. There is a beautiful garden space at the Ryefield centre that the children would lose at the library and their time at the library would have no outdoor play opportunities.
Lack of parking - makes it more difficult for parents to attend. Cost of parking would deter users. The centre serves a rural and widespread community. Parking and ease of access are essential to encouraging and enabling people to access and use the facility.
The centre provides a place for mums to meet with professionals and centre staff - people living in rural areas are often isolated and may need encouragement and help to go out to children centres and mix with other parents and children.

<b>Comments:</b>
I don't know how I would have survived the first seven months with my now three year old. She was small, didn't take properly to bf and furthermore I was new to the area. The support received from staff and the friends I meet and made (and continue to see weekly) seriously stopped me slipping into postnatal depression. Just because we are mothers does not mean we find it easy the first time. Surely it will be the children who miss out as every mum (or dad) needs to spend time out of the house with the support of others experiencing the same life changes.
I hope they keep the MAO as again it provides social workers to opportunity to use their time wisely and plan better instead of driving around the county unnecessarily.
Not convinced space in library for all activities, also parking is a lot harder.
A new school site would be good but I don't know how it will affect our rehearsals - would we still have somewhere to practice??
This is a pipe dream. Any school would be years away. Ross library is a library - rejigging and squeezing additional services into one space dilutes the effectiveness of all. Keep the library a library and provide sufficient space and r sources elsewhere for your essential staff to do their job There is no "big society" to take on council functions.
Although the need is to reduce council buildings due to cost there is not the capacity in Ross currently to accommodate the services that the Children Centre Service run with partners such as musiclusive, baby sign, baby massage, breastfeeding etc. The partners are vital in the outreach and functioning of the service and there is minimal accommodation for this to happen in the Ross town area, especially on the Brampton area of town where the needs are greatest. Ross has a growing population with social housing increasing. Please consider the equality across the county where facilities are limited and our vulnerable families are restricted in accessing services if they have to travel to Hereford. The doctor's surgeries are overcrowded and families are not keen on going to the hospital to see the Health visitor- how does this fit? This interim period sounds like it could be a tight fit! Parking and pushchair access needs thinking through. Unsure about the space and appropriateness of services being run from the library in its current configuration. Value for money, building aside- The children centre fulfils this.
<u>As long as this not impact on Ross preschool playgroup</u>
There is no outdoor space that can be used at the library confined children to inside. There won't be enough room for all the classes and as it's a library it's not the best place for new-born babies and toddlers. There's no sense of security in the library as it's a public place whereas the Rye field you feel like your child can be themselves freely and be safe in their environment
Although work has been done on Ross Library I am not convinced it is best suited to run Childrens groups from.
Because it is limiting the services that are available to the wider community; which impacts on the spaces available, upon groups being run. Therefore disadvantaging the 'youth' of today and the experiences in which support develop growth and confidence. You will not be utilizing the sensory room; which is fabulous, and highly recommended to those that have not used this service. By closing the services at the Ryefield centre you are losing the contact from a multi-disciplinary point of view; which impacts on the ability to provide a 'Person Centred Approach'.
The library already appears to be overstretched space wise as they have already taken on the additional role of the council offices and registry office. The library does not have an outdoor space. The Ryefield centre provides a wonderful outside space for the children to play in, not only children but a separate garden for adults with learning difficulties and special needs. The Ryefield centre not only helps the children to grow and learn in a safe and fun environment, but it helps a lot of mums and dads who often just need some company, someone to talk to or ask advice of. To see this facility move to the library (which I would suggest is just a token gesture to all of us who use and love the Ryefield centre) would be devastating! Health visitor and midwife appointments also take place here - the library simply does not have the facility/ space to be able to accommodate the users of the Ryefield centre.
<u>Children's centres need to be saved not put to development</u>
This is a crying shame so many local charities and business provide essential Services in this space. Jumpstart being one! 10% of the most deprived communities in the UK use this centre regularly for its services.

<b>Comments:</b>
The Ryefield centre is an asset in Ross on wye and by not offering all the facilities there in the wonderful centre would be a huge shame to all. It's accessible to all parents/carers who walk or drive and something on offer for all. Me and my daughter over 4 years have spent a huge amount of time at the centre doing all manner of groups
Oh come on! The library does not have the facilities or the space to provide anymore additional services. It's rammed with too many organisations as it is. Think Herefordshire Council. This is not a long term solution to your financial problems. All very short sighted.
The Ryefield is a wonderful welcoming purpose built facility. The library does not have rooms that are as suitable for small groups and a feeling of privacy for courses like baby massage or health visitor clinic. There is no convenient car parking and I am not sure the layout of the building would encourage use from the more vulnerable groups within the Ross area.
Only if it was as safe as a children's centre, where children can't just run through the automatic doors straight onto the busy road with many bus stops.
The area the Ryefield has is perfect. It helps to teach young children about the environment. I do believe by moving the groups to the library we would end up losing a lot of them.
Sounds like more being sold off. Development opportunity meaning what?
For many of our families in need a trip to Hereford is too much.
The library would not be large enough, well equipped enough or have the necessary staff to run this. At the moment the Ryefield hosts a huge range of fundamental classes, courses and groups which are hugely necessary. As a new parent the Ryefield enabled me to meet new Mums, receive support and advice, fantastic courses for my child and still provides a great service which I could not do without. Many other parents feel strongly about this too! The qualified staff, resources and rooms at the Ryefield is a huge part of Ross and its community and need to stay for good!
I haven't seen the plan for what provision will be made at Ross Library, so I don't know whether what is planned will cover the needs to children and families adequately. What I do know is that The Ryefield Centre offers an open, welcoming, secure and non-judgemental environment where families can use services and facilities in complete confidence. It also provides a central location where families can access information, attend training/courses, and meet with professionals in an entirely appropriate setting.
These aims could get lost when delays occur. No move should be considered until the redevelopment of the school site has been completed and the facilities can be moved once, not multiple times.
Children's centres are invaluable resources and should stay as they are and run more services
A library should remain as a library.
It's fine as it is why change it it's a great area for parents to meet and u could ruin a lot of parents groups by moving it
Unspecified development of Ryefield site. Full facts or don't ask. Sack whoever wrote this questionnaire.
The area is very much a deprived area in terms of parental support mechanisms and vital charity support mechanisms are also in threat. Many families will hit crisis point sooner rather than later.
Will no doubt impact on services, at least in the short term, which will have a negative impact
I use the centre for let's play, music/club, baby sensory room and soft play. They also have breastfeeding support which is essential as nobody tells you how painful breastfeeding can be. We love the centre but would like to see the cafe re opened; I cannot see how all of this could be retained at a new site. Would be very disappointing to lose the support and play sessions baby sensory room, soft play for my little boy as most children's classes are not very affordable,
If you need more school spaces, is this going to be at the cost of services to those with young families? Is the library able to cope with sharing space in this way?
Where will we do baby yoga, massage, breastfeeding support and other baby and parent support groups? Parents need support and this is somewhere for them to go. Without this more new mums may become isolated and not know where to go. This is a lovely place with a sensory room, soft play area, family room. Families would greatly miss out on this.
It should not be sold for profit at the expense of reducing children's services within the area.
Why develop the Ryefields building?



**Comments:**

Multi use of this type in one place. Potential safety/ confidentiality issues for mothers and babies in a physically accessible space such as the library. Unnecessary pressure on library teams.

Library already overcrowded and full of things happening and not a nice place to go but further division will make it a nightmare and will therefore not be used effectively. Already not a quiet working space. As for children being confined inside this building with limited natural light. What a horrid place for needy future generation. Dreadful. Dangerous road outside and little parking available. Nightmare for all concerned, who on earth came up with this silly idea. Then let's think about new school idea! Oh yes Ashfield park was a temporary building!!!! How long ago!!!! No new hood ever came forward and as we are the Cinderella and overlooked market town I doubt we will ever see a new school

As long as there is space for staff to carry out work they need to do. Shoehorning people into spaces often means that all their requirements are not met.

Currently the children's centre at the Ryefield provides an excellent service with spacious facilities several rooms as well as outdoor space. This would not be possible at the library. I recognise that long term with the construction of a new primary school it may be logical to provide these specialist facilities in one location which has been designed appropriately. I feel strongly that you would be doing a disservice to the town by relocating it to a corner of the library. The location of the Ryefield also works well in terms of accessibility for local residents using childcare at the Larraperz and is close to a play area and residential areas. For many new mothers this is a time when they value support in terms of specialists; midwives, the experienced children's centre workers and the opportunity to share experiences with other mothers. I recognise savings need to be made however I am concerned that by not thinking through cost cutting measures the long term implications may result in more expenditure.

There isn't anywhere near enough space at Ross Library to accommodate all of the services that are run from the Ryefields building - whether for children or the learning disability support there. Things like there aren't enough space for people to arrive with buggies for a children's group or for room hire for other children's centre activities. A lot of the activities there are overseen by social working linked children's centre staff - without this I think some of the issues for some vulnerable families will be missed. Equally, the support that new and repeat mothers get from the children centres for children under 2 is invaluable - even for groups that are not council run any longer, there needs to be a reasonable set of good groups for families to attend in the first 2 years to get the support and activities needed for early years education. I don't know what I would have done without the support of the children's centre in Ross in the first 6 months after my little girl was born - I was at the Ryefield Centre 3-4 times per week (now less often but still go) and so were many of the other new mothers. The children's centre is a safe space with all of the right facilities and support for this - to not have this (or have a very, very cut down service at the library where there aren't the facilities or space for it) would be a real crime - as you are effectively taking away from 0-2 years support to provide support for older children which is robbing peter to pay Paul. Nurseries are commercial ventures generally where providers would find and source their own property (e.g. Oak House, Abacus nurseries in Ross) so it's unclear why a local government organisation would be providing nursery accommodation space and removing other essential children's services to provide this.

**Comments:**

1. The proposal is lacking in detail about how the current children's centre services will be provided in the library and this is the reason for my objection. 2. For example, there are currently 3 events on a Thursday morning (breastfeeding support group, soft play and health visitor clinic). It is not feasible that this could be offered in the library in the available space, so the proposal needs to be transparent about which services will continue and which will be cut. This should then form the basis for a much more detailed consultation that allows people to make an informed judgement. 3. There is a child protection and privacy issue with services being provided in a public space such as the library. Access to the children's centre is monitored and the centre itself is secure. Parents and carers have to be buzzed in and mobile phone and camera use is not allowed. This is not possible in a public building, so there is a risk to children's safety. The children's centre also offers a private location for midwife appointments, health visitor appointments and breastfeeding. I would have felt uneasy and uncomfortable about visiting such a public place as the library for such appointments. 4. There are a number of facilities at the children's centre that seemingly cannot be included in the library: the garden, the sensory room, the health room and simply storage for all the toys. How will this be accommodated? If the plan is to remove these facilities, this should be clear and transparent in the consultation. 5. The library opening hours are shorter than those of the children's centre, so again, how will the services be accommodated? The library cannot continue to include council services indefinitely - it is a limited space with an original purpose that is at risk of being seriously undermined. 6. There are simple considerations also around parking - there is a dedicated car park at the children's centre making it a straightforward place to visit with young children. This is not the case in the library. 7. Although there may be merit to a longer term plan to include children's centre services in a new primary school as proposed by the draft neighbourhood plan, this plan has not yet been agreed and may not be in its current form (my understanding is that the local population will vote on this proposal at some stage). There is therefore no guarantee that this will happen, meaning that children's services could be jeopardised in the future. 8. There needs to be a much more detailed consultation that sets out exactly how this proposal would work in practice, only then will it be clear how services will be affected. The current level of detail in the consultation is minimal and provides no reassurance that the programme offered by the children's centre will be continued. If services are to be discontinued, what evaluation has taken place to decide how and when this should be done? 9. The proposal references services taking place through outreach in the community. Although midwives and health visitors do visit families at home, this is not the general approach nor is it the only function provided by the children's centre. The great benefit of having a dedicated children's centre from my point of view is for parents to meet and support each other; something that does not readily happen in the community, particularly a predominantly rural community. 10. The children's centre is just one part of the Ryefield's centre. Are the other services being consulted on? If not and they are continuing in their current location, why is there a pressing need to move children's services in the next 12 months? If the Ryefield's Centre itself is the focus of the future re-development, there should be a holistic approach to considering the future of all the services the centre currently offers.

We enjoyed the combined play and stay of baby let's play and health visitor. However understand the need for the nursery to expand. Library in a much easier location to access in town and would enjoy a better range of activities that are on offer in different centres.

The location of the library in Ross is on a busy road where the bus station is situated; this would provide no parking for anyone using the building and would be an unsuitable venue for supervised contact to take place due to the location being on a busy main road.;

Ross as like other places has areas of deprivation, these families and children need support advice and to know someone will be there when they need it. Having a space at Ross library would be inadequate.

The library has such limited space, it wouldn't be able to accommodate all of those wanting to use the wonderful services the Ryefield centre provide

Because it am amazing support network for all parents. It wouldn't work in the library.

Library not suitable for supervised contact, right next to a main road, no parking and a safety issue. The lack of suitable activities may also cause difficulties

Insufficient space at the library. A new school site will be out of town and inaccessible to parents, especially those without cars.

<b>Comments:</b>
Although I can understand the longer term aim, I would be concerned about the impact in the short term. I attended quite a few midwife appointments at Ryefields as her clinic at Pandeen Surgery was often fully booked. I would therefore encourage you to think about provision of such services in the interim. This would also apply to the health visitor clinic currently operating out of Ryefields. Is there sufficient space at the library to accommodate these? The lack of onsite parking at the library could also cause problems for some expectant mothers / parents with babies etc. As long as adequate provision is made in the interim period, I would agree with these proposals but there is too little information at this stage for me to draw a conclusion hence my response of "don't know".
Because in effect they constitute an inevitable cut in public services. The library couldn't possibly do what the Ryefield does - there isn't space - nor should it - it is a library not a children's centre and we have a purpose built children's centre already. The Library will not be able to offer the confidential appointments of the children's centre; it does not have secure monitored entrances and exits or signing in system which will compromise the security and safety of the parents and children who use it. I think we are all tired of cuts to services that ordinary people use being dressed up as some sort of opportunity. Why not fund public services instead of cutting them and making it look like you're doing us all some kind of favour!

### **Q11b Proposal for Peterchurch centre, Peterchurch**

**Do you agree with these proposals? If no, why not?**

<b>Comments:</b>
The children centre offer very important services for young families; I have no idea how I would survive the early days with babies without their support
Only if the money put into this resource is in proportion to the rest of the county.
Much needed in rural areas. Council should support the service.
This is not very clear
A community operated building is a cop out - fund proper professional services. The people of Herefordshire do not deserve second best.
This is an expensive although good facility to run but in the lowest area of needs in the county. Should this not be subsidised by other sources rather than council funds?
This sounds like that same as happens now?
These are not very well explained proposals
I have only used the services of the church as far as I am aware the community hall is now used by the primary school.
What support is there currently? A health visitor goes in once a term!!! And when contacted she couldn't even say when she would next be there. There is a playgroup run by parents but no advice or support from anyone for them. There wouldn't even be the playgroup if the parents hadn't agreed to run it and the church agrees to support them in that use of the space. The library is run by volunteers. There are few buses so families here are isolated and are clearly lacking in support.
I think it should be run by a nursery nurse due to the lack of transportation and the number of parents without a car or very little support
Don't know the current facility and arrangements enough to comment.
Constant change and cuts is not good for families that thrive from these centres
I don't use it as it is not in my area but I do have friends that use it and they like how it is already!

# Public consultation on children's centres buildings

## 12 June - 17 July 2017

There are 10 children's centre bases (includes main sites and satellite sites) across Herefordshire which support children under the age of five and their families. The centres historically have been used to deliver services which include activities, help, guidance, support and healthcare but more recently, much of this work now also takes place outreach in the community. These centres are largely council buildings and are in addition to services organised or commissioned by the council at other venues, such as community halls and home visits. This consultation outlines initial proposals for the future use of the children's centre buildings that accommodates some of these services.

The children centre buildings being considered in this consultation are:

Widemarsh centre in Hereford  
Greencroft centre in Hereford  
Broadlands centre in Hereford  
South Meadow centre in Hereford  
Coningsby centre in Leominster  
Ledbury children centre  
Ryefield centre in Ross on Wye  
Kingstone centre in the Golden Valley  
Peterchurch centre  
Hope centre in Bromyard

If you need help to understand this document, would like it in another format or language, or help completing this form please e-mail:  
[educationandbusiness@herefordshire.gov.uk](mailto:educationandbusiness@herefordshire.gov.uk).

Please visit [www.herefordshire.gov.uk/childrenscentres](http://www.herefordshire.gov.uk/childrenscentres) for more information on children centres.

We'd like to hear how any of these proposals will affect you and your family. A summary of recurring comments will be published on the council website in September 2017 to help inform future plans and feedback will be included in a report being prepared for the Cabinet of Herefordshire Council.

Please note that any information you provide will be treated as strictly confidential and will only be used for the purposes described above. It will not be shared with any other parties. Any comments provided may be included in anonymous form in any published results.

Any personal information you choose to provide will be held and used in accordance with the Data Protection Act 1998. The council will not disclose such information to any unauthorised person or body, but where appropriate, will use such information when improving its various functions and services.

## Current use of designated children's centres

### 1.a Which children's centre do you currently use? Please tick all that apply:

- |   |  |
|---|--|
| <input type="checkbox"/> Widemarsh centre in Hereford   | <input type="checkbox"/> Ryefield centre in Ross on Wye        |
| <input type="checkbox"/> Coningsby centre in Leominster | <input type="checkbox"/> Peterchurch centre                    |
| <input type="checkbox"/> Greencroft centre in Hereford  | <input type="checkbox"/> Broadlands centre in Hereford         |
| <input type="checkbox"/> Ledbury children centre        | <input type="checkbox"/> Kingstone centre in the Golden Valley |
| <input type="checkbox"/> Hope centre in Bromyard        | <input type="checkbox"/> South Meadow centre in Hereford       |

### 1.b When did you last use a designated children's centre? (DD/MM/YY)

### 1.c How often do you use a children's centre?

- |   |  |
|---|--|
| <input type="radio"/> More than once a week | <input type="radio"/> Not often                      |
| <input type="radio"/> Once a week           | <input type="radio"/> Ad hoc - e.g. for appointments |
| <input type="radio"/> Few times a month     | <input type="radio"/> Never                          |
| <input type="radio"/> Once a month          |  |

### 1.d Why did you use a children's centre(s)? please select all that apply:

- Health Visitor appointment
- Midwife appointment
- Supervise contact
- Room hire
- Baby Massage / yoga
- Breastfeeding support
- Cooking on a budget and healthy lifestyles
- Counselling service
- Healthy lifestyles
- Paediatric clinic
- Portage parents together
- Courses and classes for adults e.g. felting, IT, English
- Courses and classes for children e.g. let's play
- Children's centre nursery
- Practical support for parents to be
- Speech and language therapy group and clinic
- Bookstart corner
- Young parents group
- Other, please specify:

## Proposals for each site

You can comment on all of the proposals or just the centres you are interested in.

### Greencroft centre, Hereford

To be managed by Marlbrook Primary School as part of a combined family centre that caters for children at the school and their parents, as well as the wider local community. To continue to provide facilities for midwife and health visitor clinics as part of an integrated service, and the activities on site.

#### 2.a Do you agree with these proposals?

Yes

No

Don't know

#### 2.b If no, why not?

### Widemarsh centre, Hereford

For the council to continue to operate the centre as a combined facility with the possible longer term aim of a partner organisation taking on the management of the site. To let part of the building on the ground floor as a private nursery and for the community garden and kitchen area to be retained as a facility for people with learning difficulties, and the forest school for visiting groups. For the facility to encourage and promote wider use and hire of the community room made easy through an electronic booking facility.

#### 3.a Do you agree with these proposals?

Yes

No

Don't know

#### 3.b If no, why not?

### Broadlands centre, Hereford

For services currently provided at Broadlands to be offered at the Widemarsh centre, and to explore the future options for the building including available as a private nursery, becoming a multi-use office for council or offered to the school for their use.

#### 4.a Do you agree with these proposals?

Yes

No

Don't know

#### 4.b If no, why not?

**South Meadow centre, Hereford**

To recognise the current practice with the site largely operating as a supervised contact centre and base for the Children’s wellbeing team.

**5.a Do you agree with these proposals?**

- Yes  No  Don't know

**5.b If no, why not?**

**Kingstone centre, Golden Valley**

The nursery on site to extend their provision, though retain health clinics and midwife areas for use when needed.

**6.a Do you agree with these proposals?**

- Yes  No  Don't know

**6.b If no, why not?**

**HOPE centre, Bromyard**

The building to be retained for children centre services which is currently being provided externally from the local authority on the site by the HOPE centre.

**7.a Do you agree with these proposals?**

- Yes  No  Don't know

**7.b If no, why not?**

**Ledbury centre, Ledbury**

For the primary school to operate the current children's centre building as part of the collection of buildings on the site. This will be linked to future development of the school to enable an increase in school places. The school will work with the community who use the site, to plan/run activities and provide access to rooms used by midwives and health visitors. That activities for children also be promoted at the Masters House as part of the library and wider community projects.

**8.a Do you agree with these proposals?**

- Yes  No  Don't know

**8.b If no, why not?**

**Coningsby centre, Leominster**

Opportunity for the adjacent nursery to expand to cater for local demand and need, whilst retaining spaces for health visitors, midwives and supervised contact in the building for next door linked to the council's multi-use office. To increase universal service provision for children at Leominster library.

**9.a Do you agree with these proposals?**

- Yes                                       No                                       Don't know

**9.b If no, why not?**

**Ryefields centre, Ross on Wye**

In the longer term, the children's centre would form part of a new school site, as presented within the emerging Ross Neighbourhood Plan. In the short term (within 12 months) the space at Ross library would be reconfigured to include children's centre services. This would free up the Ryefields building for development opportunity.

**10.a Do you agree with these proposals?**

- Yes                                       No                                       Don't know

**10.b If no, why not?**

**Peterchurch centre, Peterchurch**

Support the community operated building through its use for children's centre outreach activity, community library and wider community programme.

**11.a Do you agree with these proposals?**

- Yes                                       No                                       Don't know

**11.b If no, why not?**



## About you

This information helps us to ensure that our services are accessible to all. It will only be used for the purpose of statistical monitoring, treated as confidential and will not be used to identify you.

### What is your gender?

- Male  Female

### What is your age?

- 0-15 years  25-44 years  65-74 years  
 16-24 years  45-64 years  75+ years

### Are your day-to-day activities limited because of a health problem or disability which has lasted, or is expected to last, at least 12 months?

- Yes - limited a little  Yes - limited a lot  No

If yes, please specify any particular requirements when using this service

### How would you describe your national identity? (please tick all that apply)

- English  Scottish  British  
 Welsh  Northern Irish  Irish  
 Other, please specify:

### How would you describe your ethnic group?

- White British/English/Welsh/Scottish/Northern Irish  
 Other White (please specify)  
 Any other ethnic group (please specify)

### Do you feel that you were treated differently (positively or negatively) because of who you are? (e.g. your age, gender, disability or ethnicity)

- Yes  No

If 'Yes', please specify:

Your postcode:

Your name and contact details: (optional, this will not be published)

**Thank you for your time**