

# Strategic Environmental Assessment



## Putley Neighbourhood Area

Scoping Report

April 2017



**Herefordshire  
Council**

## Consultation on the Scoping Report

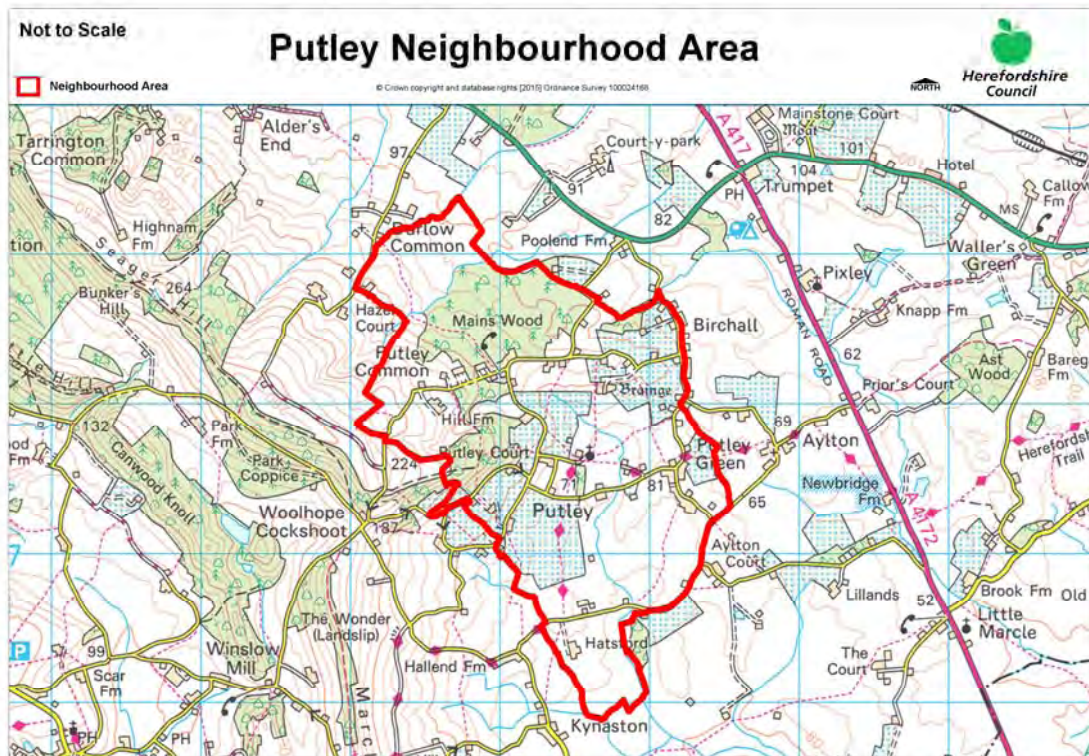
The aim of the consultation process is to involve and engage with statutory consultees and other relevant bodies on the scope of the appraisal. In particular, it seeks to:

- Ensure the SEA is both comprehensive and sufficiently robust to support the Neighbourhood Development Plan during the later stages of full public consultation;
- Seek advice on the completeness of the plan review and baseline data and gain further information where appropriate;
- Seek advice on the suitability of key sustainability issues;
- Seek advice on the suitability of the sustainability objectives.

Comments on this Scoping Report have been invited from the three consultation bodies as required by the SEA regulations, together with Natural Resources Wales.

The three consultation bodies are as follows:

1. Natural England;
2. Historic England;
3. Environment Agency.



## Template A1: Identification and review of local Neighbourhood Area relevant plans, policies and programmes

**Parish Council Name:** Putley Parish

**Neighbourhood Development Plan Name:** Putley Parish Neighbourhood Development Plan

**Date completed:** January 2017

Plans and Programmes	Type of document	Date	Overview	Key message, target/objective/indicator	SEA topic(s) <sup>1</sup>	Implications for the NDP and SEA
The EC Conservation of Habitats and Species Regulations	European Union Legislation	2010	These regulations transpose the Habitats Directive in England, Wales and to a limited extent Scotland by ensuring that activities are carried out in accordance with the Habitats Directive, which is to protect biodiversity through the conservation of natural habitats and species of wild flora and fauna.	The Regulations make it an offence (subject to exceptions) to deliberately capture, kill, disturb, or trade in the animals listed in Schedule 2, or pick, collect, cut, uproot, destroy, or trade in the plants listed in Schedule 4. However, these actions can be made lawful through the granting of licenses by the appropriate authorities.	<ul style="list-style-type: none"> <li>Biodiversity</li> <li>Cultural heritage and the landscape</li> </ul>	The Neighbourhood Plan should be compliant with all the relevant legislation and regulations.
The EC Water Framework Directive	European Union	2000	Commits all EU member states to achieve good qualitative and quantitative status of all water courses by 2015	Aims for 'good status' for all ground and surface waters (rivers, lakes, transitional waters, and coastal waters) in the EU	<ul style="list-style-type: none"> <li>Water</li> </ul>	The Neighbourhood Plan should be compliant with all the relevant legislation and regulations.
The Wildlife	Domestic	1981	The major legal	The principle mechanism for	<ul style="list-style-type: none"> <li>Biodiversity</li> </ul>	The Neighbourhood

<sup>1</sup> Derived from the LDF General Scoping Report (June 2007)

Plans and Programmes	Type of document	Date	Overview	Key message, target/objective/indicator	SEA topic(s) <sup>1</sup>	Implications for the NDP and SEA
and Countryside Act (1981)	Legislation		instrument for wildlife protection in Britain, although other significant acts have been passed since. It has numerous parts and supplementary lists and schedules many of which have been amended since publication.	the legislative protection of wildlife in Great Britain.	<ul style="list-style-type: none"> <li>• Cultural heritage and the landscape</li> <li>• Flora and fauna</li> <li>• Material assets</li> <li>• Soil</li> </ul>	Plan should be compliant with all the relevant legislation and regulations.

Plans and Programmes	Type of document	Date	Overview	Key message, target/objective/indicator	SEA topic(s) <sup>1</sup>	Implications for the NDP and SEA
The Countryside and Right of Way Act (2000)	Domestic Legislation	2000	Creates a statutory right of access on foot to certain types of open land, to modernise the public rights of way system, to strengthen nature conservation legislation, and to facilitate better management of AONBs.	<p>The Act provides for a new right of access on foot to areas of open land comprising: Mountain (land over 600 metres); Moorland; Heath; Downland; Registered common land.</p> <p>There are provisions to consider extending the right in the future to coastal land, but not woodland despite some early publicity suggesting this.</p>	<ul style="list-style-type: none"> <li>• Biodiversity</li> <li>• Cultural heritage and the landscape</li> <li>• Flora and fauna</li> <li>• Material assets</li> <li>• Soil</li> </ul>	The Neighbourhood Plan should be compliant with all the relevant legislation and regulations.
The Natural Environment and Rural Communities Act (2006)	Domestic Legislation	2006	Designed to help achieve a rich and diverse natural environment and thriving rural communities through modernised and simplified arrangements for delivering	Provides that any public body or statutory undertaker in England and Wales must have regard to the purpose of conservation of biological diversity in the exercise of their functions.	<ul style="list-style-type: none"> <li>• Biodiversity</li> <li>• Cultural heritage and the landscape</li> <li>• Flora and fauna</li> <li>• Material assets</li> <li>• Soil</li> </ul>	The Neighbourhood Plan should be compliant with all the relevant legislation and regulations.

Plans and Programmes	Type of document	Date	Overview	Key message, target/objective/indicator	SEA topic(s) <sup>1</sup>	Implications for the NDP and SEA
			Government policy.			
Revised EU Sustainable Development strategy	European Union Strategy	2009	Sets out a single strategy on how the EU will more effectively meet its long-standing commitment to meet the challenges of sustainable development.	Recognises the need to gradually change current unsustainable consumption and production patterns and move towards a better integrated approach to policy making. The Strategy sets overall objectives, targets and concrete actions for seven key priority challenges, predominantly environmental: <ul style="list-style-type: none"> <li>• Climate change and clean energy;</li> <li>• Sustainable transport</li> <li>• Sustainable production and consumption;</li> <li>• Public health threats;</li> <li>• Better management of natural resources;</li> <li>• Social inclusion, demography and migration;</li> <li>• Fighting global poverty.</li> </ul>	<ul style="list-style-type: none"> <li>• Air</li> <li>• Climate factors</li> <li>• Cultural heritage and the landscape</li> <li>• Population and human health</li> </ul>	The Neighbourhood Plan should take into account the objectives of the strategy. The aim of sustainable development should be implicit in its approach.

Plans and Programmes	Type of document	Date	Overview	Key message, target/objective/indicator	SEA topic(s) <sup>1</sup>	Implications for the NDP and SEA
Biodiversity 2020: A strategy for England's wildlife and ecosystem services	National Strategy	2011	Forms part of the UK's Post-2010 Biodiversity Framework by setting out England's contribution towards the UK's commitments under the United Nations Convention of Biological Diversity.	Sets out to halt overall biodiversity loss, support healthy well-functioning ecosystems and establish coherent ecological networks, with more and better places for nature for the benefit of wildlife and people.	<ul style="list-style-type: none"> <li>• Biodiversity</li> </ul>	The NDP should take account of the provisions of the strategy, making the most of opportunities to enhance wildlife habitats or restore degraded ecosystems in the process.
National Planning Policy Framework (NPPF)	National planning policy.	2012	Consolidates the suite of PPG/PPS into one succinct planning policy document.		<ul style="list-style-type: none"> <li>• Air</li> <li>• Biodiversity</li> <li>• Climate factors</li> <li>• Cultural heritage and the landscape</li> <li>• Flora and fauna</li> <li>• Material assets</li> <li>• Population and human health</li> <li>• Soil</li> <li>• Water</li> </ul>	The NDP should take into account the relevant policies set within the NPPF.
Planning Practice Guidance	Government Guidance	2014	Provides guidance to local planning authorities and others on the		<ul style="list-style-type: none"> <li>• Air</li> <li>• Biodiversity</li> <li>• Climate factors</li> <li>• Cultural heritage</li> </ul>	The NDP should take into account the planning guidance provided within these

Plans and Programmes	Type of document	Date	Overview	Key message, target/objective/indicator	SEA topic(s) <sup>1</sup>	Implications for the NDP and SEA
			operation of the planning system.		and the landscape <ul style="list-style-type: none"> <li>• Flora and fauna</li> <li>• Material assets</li> <li>• Population and human health</li> <li>• Soil</li> <li>• Water</li> </ul>	documents.
Adopted Herefordshire Core Strategy, 2011-2031  (Adopted October 2015)	Development Plan Document (DPD)	2015	Sets out the vision, objectives and policies for the Herefordshire Local Plan (Core Strategy), which will guide development across the county up to 2031.	Outlines the suite of countywide planning policies relating to housing, economic development and the environment, which the NDP will need to be in conformity with where relevant.  The Core Strategy includes a range of objectives, five of which directly relate to rural areas: <ul style="list-style-type: none"> <li>• To meet the housing needs of all sections of the</li> </ul>	<ul style="list-style-type: none"> <li>• Air</li> <li>• Biodiversity</li> <li>• Climate factors</li> <li>• Cultural heritage and the landscape</li> <li>• Flora and fauna</li> <li>• Material assets</li> <li>• Population and human health</li> <li>• Soil</li> <li>• Water</li> </ul>	The NDP should take account of relevant policies set within in the Core Strategy.  Where necessary, the NDP should provide services, facilities and employment opportunities that are accessible to both local and neighbouring communities.  Putley is listed under the Ledbury HMA as: Putley – Figure 4.14



Plans and Programmes	Type of document	Date	Overview	Key message, target/objective/indicator	SEA topic(s) <sup>1</sup>	Implications for the NDP and SEA
				<p>community</p> <ul style="list-style-type: none"> <li>• To improve access to services in rural areas</li> <li>• To strengthen the economic viability of the villages and their rural hinterlands</li> <li>• To achieve sustainable communities and protect the environment</li> <li>• To conserve, promote, utilise and enjoy our natural, built, historic and cultural assets for the fullest benefit of the whole community</li> </ul> <p>To achieve a thriving rural Herefordshire, the Core Strategy seeks to enhance the role the villages have traditionally played in as accessible, sustainable centres for their rural catchments.</p> <p>Seeks proportional growth of up to 14% in Putley (Ledbury)</p>		<p>This means the NDP should take into consideration the criteria set within Policy RA1 and RA2.</p> <p>The neighbourhood plan should allocate a minimum of 15 dwellings within Putley Parish within the plan period of 2011 to 2031.</p> <p>Completions from 2011 – 2016 and Commitments as at April 1 2016, totalling 8, leaves a minimum figure of 7 dwellings to allocate.</p>

Plans and Programmes	Type of document	Date	Overview	Key message, target/objective/indicator	SEA topic(s) <sup>1</sup>	Implications for the NDP and SEA
				HMA) over the plan period.		
Herefordshire Local Transport Plan 3 (LTP) 2013-2015	Corporate	2013	Sets out the Council's strategy for supporting economic growth, social inclusion and reducing the environmental impacts of transport, as well as the program of investment for the period April 2013 to April 2015.	The document includes three key objectives, one which seeks to maintain access for rural residents and people without access to a car. Intrinsic to this is the retention of a 'core network' of bus services which focus on journeys between Hereford and the market towns, along with main transport corridors close to larger rural settlements. To this end, the strategy aims to increase the number of bus users by 1.3% (4,700 journeys) by 2015.	<ul style="list-style-type: none"> <li>• Air</li> <li>• Climate factors</li> <li>• Population and human health</li> </ul>	The LTP does not explore current transport issues in the Putley Plan NDP area, but any new development proposed through the NDP should seek to reduce the environmental impacts of transport.

Plans and Programmes	Type of document	Date	Overview	Key message, target/objective/indicator	SEA topic(s) <sup>1</sup>	Implications for the NDP and SEA
Understanding Herefordshire Report	Built and natural environment	2016	<p>Important to understand the place such as the local economy natural and built environment in which people live, learn and work as part of understanding their quality of life</p> <p>Promotion of healthy lifestyle choices.</p> <p>Enable development for economy and housing to required levels.</p> <p>Growth should be supported by sustainable transport measures.</p>	<p>An air quality management plan is in place to tackle this. Destination Hereford project is in place to give locals more sustainable transport options.</p> <p>Sustainable transport measures will also help to promote active lifestyles within Herefordshire.</p>	<p>Improve air quality.</p> <p>Have a more diverse range of transport options.</p>	None identified.

Plans and Programmes	Type of document	Date	Overview	Key message, target/objective/indicator	SEA topic(s) <sup>1</sup>	Implications for the NDP and SEA
Malvern Hills AONB Management Plan 2014-2019	Corporate	2014	Identifies the issues and challenges facing the special features of the area and contains 24 guiding principles and 46 strategic objectives which will help address them.	Identifies the issues and challenges facing the special features of the area and contains 21 guiding principles and 14 strategic objectives and 76 policies which will help address them.	<ul style="list-style-type: none"> <li>• Air</li> <li>• Biodiversity</li> <li>• Climate factors</li> <li>• Cultural heritage and the landscape</li> <li>• Flora and fauna</li> <li>• Material assets</li> <li>• Population and human health</li> <li>• Soil</li> <li>• Water</li> </ul>	The Putley Neighbourhood Plan Area is not within or adjacent to the Malvern Hills AONB.
Wye Valley AONB management Plan 2015-2020	Corporate	2015	The Management Plan is the prime document which sets out the vision for the area and the priorities for its management.	Sets out a range of objectives which seek to reconcile the competing interests of the environment, the ecology and the social and economic well-being of the AONB.	<ul style="list-style-type: none"> <li>• Air</li> <li>• Biodiversity</li> <li>• Climate factors</li> <li>• Cultural heritage and the landscape</li> <li>• Flora and fauna</li> <li>• Material assets</li> <li>• Population and human health</li> <li>• Soil</li> <li>• Water</li> </ul>	The Putley Neighbourhood Plan Area is not within the Wye Valley AONB.

Plans and Programmes	Type of document	Date	Overview	Key message, target/objective/indicator	SEA topic(s) <sup>1</sup>	Implications for the NDP and SEA
Herefordshire Economic Development Strategy 2011-2016	Corporate	2011	Aims to increase the economic wealth of Herefordshire by setting out proposals and to support business growth up to 2016.	<p>The document outlines the path and direction to foster economic vitality within Herefordshire. Key objectives therefore include:</p> <ul style="list-style-type: none"> <li>• Sustaining business survival and growth</li> <li>• Increasing wage levels, range and quality of jobs</li> <li>• Having a skilled population to meet future work needs</li> <li>• Developing the county's built infrastructure so enterprise can flourish.</li> </ul>	<ul style="list-style-type: none"> <li>• Cultural heritage and the landscape</li> <li>• Material assets</li> <li>• Population and human health</li> </ul>	None of merit.

Plans and Programmes	Type of document	Date	Overview	Key message, target/objective/indicator	SEA topic(s) <sup>1</sup>	Implications for the NDP and SEA
Herefordshire Employment Land Study	Evidence	2012	Includes employment land assessments for the plan period 2011-2031. The study includes Quantitative and Qualitative assessments of employment land, assessment of market demand and need, as well as providing forecasts and recommendations for future employment need over the plan period.	<p>This study covers existing employment sites in Hereford, the five market towns and their rural hinterlands.</p> <p>There are no employment land allocations within Putley at present and so the study does not identify sites which are worthy of continued protection from alternative uses. Nor does it make any recommendations in respect of employment need within the neighbourhood area.</p>	<ul style="list-style-type: none"> <li>• Material assets</li> <li>• Population and human health</li> </ul>	None of merit.

Plans and Programmes	Type of document	Date	Overview	Key message, target/objective/indicator	SEA topic(s) <sup>1</sup>	Implications for the NDP and SEA
Herefordshire Strategic Housing Land Availability Assessment (SHLAA)	Evidence	2009	<p>The SHLAA aims to justify site allocations in plans by:</p> <ul style="list-style-type: none"> <li>Identifying sites which are capable of delivering housing development</li> <li>Assessing sites for their housing potential; and</li> <li>Predicting when a site could be developed for housing.</li> </ul>	<p>In terms of Putley previous SHLAA identifies that:</p> <ul style="list-style-type: none"> <li>There are no allocated SHLAA sites in Putley</li> </ul>	<ul style="list-style-type: none"> <li>Air</li> <li>Biodiversity</li> <li>Climate factors</li> <li>Cultural heritage and the landscape</li> <li>Flora and fauna</li> <li>Population and human health</li> <li>Soil</li> <li>Water</li> </ul>	<p>The SHLAA assesses the potential availability of land for housing in the wider HMA, however does not directly allocate land for development in Putley Parish.</p> <p>Putley Parish NDP should be informed by the findings of the SHLAA.</p>

Plans and Programmes	Type of document	Date	Overview	Key message, target/objective/indicator	SEA topic(s) <sup>1</sup>	Implications for the NDP and SEA
Herefordshire Local Housing Market Assessment (LHMA)	Evidence	2013	Builds on an earlier Strategic Housing Market Assessment (SHMA) developed for Herefordshire and Shropshire. Its purpose is to inform the Local Plan's policies regarding housing need and demand (for market and affordable housing) within each of the 7 Housing Market Areas (HMAs) in Herefordshire between 2011 and 2031.	<p>The LHMA uses 7 HMAs as the geography for presenting data.</p> <p>Putley Parish falls within the Ledbury HMA.</p> <ul style="list-style-type: none"> <li>53% of households are unable to afford market housing.</li> <li>There is an annual requirement for 90 affordable dwellings between 2012 and 2017.</li> </ul> <p>The study identifies that, in rural parts of Ledbury LHMA, between 2011-2031 there is a need for:</p> <ul style="list-style-type: none"> <li>339 market houses</li> <li>226 affordable houses.</li> </ul> <p>The study highlights that within the Ledbury HMA the overall estimated housing need by size 2012-2017 is as follows: 1 Bed - 46.8%, 2 bed -22.3%, 3 bed – 22.7%, 4 bed-8.2%.</p>	<ul style="list-style-type: none"> <li>Air</li> <li>Biodiversity</li> <li>Climate factors</li> <li>Cultural heritage and the landscape</li> <li>Flora and fauna</li> <li>Population and human health</li> <li>Soil</li> <li>Water</li> </ul>	<p>The LHMA provides an indication of housing needs and affordability within the Ledbury HMA.</p> <p>It provides evidence that could be used to inform policies or market and affordable housing requirements in the NDP.</p>



Plans and Programmes	Type of document	Date	Overview	Key message, target/objective/indicator	SEA topic(s) <sup>1</sup>	Implications for the NDP and SEA
Herefordshire Local Housing Requirements Study	Evidence	2012	Technical assessment of the housing market and potential future local housing requirements which supports planning policy regarding the amount of growth, housing tenure and housing type needed within Herefordshire up to 2031.	<p>The delivery of 5,300 homes in the rural areas would:</p> <ul style="list-style-type: none"> <li>• Support growth in the rural population by 6%</li> <li>• Increase the number of households by 14.5%</li> </ul> <p>Forecasts also predict that growth in the population of the rural areas is likely to be primarily through an increase in those aged over 75.</p> <p>Moderate growth is expected in the 30-44 and 60-74 age brackets.</p> <p>The Local Housing Requirements Study therefore anticipates continuing improvements in life expectancy; significant growth is expected of those in their 80s, with the existing population in their 40s and 50s moving into retirement. As a consequence, the rural</p>	<ul style="list-style-type: none"> <li>• Air</li> <li>• Biodiversity</li> <li>• Climate factors</li> <li>• Cultural heritage and the landscape</li> <li>• Flora and fauna</li> <li>• Material assets</li> <li>• Population and human health</li> <li>• Soil</li> <li>• Water</li> </ul>	<p>This study provides an indication of housing requirements in the rural areas and the Ledbury HMA.</p> <p>This evidence can be used to inform the content of the Putley NDP, which could include policies to facilitate the provision of the right types of homes in the right places.</p>

Plans and Programmes	Type of document	Date	Overview	Key message, target/objective/indicator	SEA topic(s) <sup>1</sup>	Implications for the NDP and SEA
				areas will face an increasing urgency to provide more 3 bedroom homes, with more 1 and 2 bed homes required in the affordable sector.		
Herefordshire Rural Housing Background Report	Evidence	2013	Provides the justification for the proportional housing growth targets outlined in the Core Strategy	Putley is listed under the Ledbury HMA as a figure 4.14 settlement, which means it is considered a sustainable location for proportional growth of up to 14% across the parish.	<ul style="list-style-type: none"> <li>• Air</li> <li>• Biodiversity</li> <li>• Climate factors</li> <li>• Cultural heritage and the landscape</li> <li>• Flora and fauna</li> <li>• Material assets</li> <li>• Population and human health</li> <li>• Soil</li> <li>• Water</li> </ul>	The Putley NDP will need to be in conformity with the provisions of policy RA1 and RA2.

Plans and Programmes	Type of document	Date	Overview	Key message, target/objective/indicator	SEA topic(s) <sup>1</sup>	Implications for the NDP and SEA
Herefordshire Draft Gypsies and Travellers Assessment	Evidence	2013	Assesses the accommodation needs of Gypsies and Travellers across Herefordshire.	<p>Key findings from the survey of Gypsy and Traveller households in 2012 found that:</p> <ul style="list-style-type: none"> <li>• 31% of households surveyed have some sort of accommodation need</li> <li>• Of the 17 households with an accommodation need, 7 had a requirement for at least one additional pitch</li> <li>• 10 households had a requirement for bricks and mortar housing</li> <li>• There is an additional requirement for 7 pitches and 9 units of Registered Social Landlord accommodation within Herefordshire.</li> </ul>	<ul style="list-style-type: none"> <li>• Air</li> <li>• Biodiversity</li> <li>• Climate factors</li> <li>• Cultural heritage and the landscape</li> <li>• Flora and fauna</li> <li>• Material assets</li> <li>• Population and human health</li> <li>• Soil</li> <li>• Water</li> </ul>	<b>The Putley NDP must establish whether any of the need identified in this assessment falls within the neighbourhood area and make appropriate provisions for it.</b>

Plans and Programmes	Type of document	Date	Overview	Key message, target/objective/indicator	SEA topic(s) <sup>1</sup>	Implications for the NDP and SEA
Herefordshire Local Biodiversity Action Plan	Evidence	2007	Focuses conservation efforts on the areas within Herefordshire that will result in the greatest benefit for ecological networks, habitats and species.	Integrating biodiversity objectives with other environmental, social and economic needs can provide a sustainable living and working environment that benefits both people and nature.	<ul style="list-style-type: none"> <li>Biodiversity</li> </ul>	<p>The NDP can help to achieve the LBAP priorities.</p> <p>'Putley has a Parish Biodiversity Plan European Protected Species that regularly are seen throughout Putley and the adjacent parishes are Dormice, Great Crested Newts, Lesser Horseshoe and other bats. Otters are a possibility too although we do not have any records for them yet.</p> <p>Wildlife and countryside Act Schedule 1 protected birds known to be breeding, and so have additional protection, in Putley - Barn Owl</p> <p>Habitats in Putley that have Local Habitat Plans in Herefordshire Biodiversity Action Plans are-  Lowland meadows and pasture  Ancient and species rich hedgerows  Lowland wood pasture, parkland and Veteran trees  Mixed deciduous woodland  Ponds  Quarries and lakes  Rivers and streams  Traditional orchards  Green spaces and corridors</p> <p>Species in Putley that have specific Species Action Plans in the county BAP are-</p> <ol style="list-style-type: none"> <li>Barn owl</li> <li>Bat</li> <li>Black poplar</li> <li>Brown hare</li> <li>Dormouse</li> <li>Hedgehog</li> <li>White admiral</li> <li>Curlew; Harvest mouse; white clawed crayfish; adder; and wood white have all been reported at some point in the past but no very recent records that I am aware of.' </li></ol>

Plans and Programmes	Type of document	Date	Overview	Key message, target/objective/indicator	SEA topic(s) <sup>1</sup>	Implications for the NDP and SEA
Building Biodiversity into the LDF	Evidence	2009	Provides the Council's Local Plan (Core Strategy) with evidence in respect of biodiversity and geodiversity, identifying both opportunities and constraints across Herefordshire.	This document provides useful information in respect of Hereford and the market towns only.	<ul style="list-style-type: none"> <li>• Air</li> <li>• Biodiversity</li> <li>• Climate factors</li> <li>• Cultural heritage and the landscape</li> <li>• Flora and fauna</li> <li>• Material assets</li> <li>• Population and human health</li> <li>• Soil</li> <li>• Water</li> </ul>	<p>There is a lack of information about rural areas which means it will be necessary to gather and assess existing biodiversity and geodiversity data, in order to ensure that <b>Putley Parish NDP</b> can overcome any existing constraints and capitalise on opportunities to enhance habitats and their networks.</p> <p><b>Putley have had additional studies carried out.</b></p>

Plans and Programmes	Type of document	Date	Overview	Key message, target/objective/indicator	SEA topic(s) <sup>1</sup>	Implications for the NDP and SEA
Herefordshire Green Infrastructure Strategy	Evidence	2010	Develops a framework of natural and culturally important features and functions so that planning for a sustainable future is at the heart of planning within Herefordshire.	Establishes policies and principles for the protection and enhancement of those features and functions that contributes to the environment of Herefordshire across a range of scales.	<ul style="list-style-type: none"> <li>• Air</li> <li>• Biodiversity</li> <li>• Climate factors</li> <li>• Cultural heritage and the landscape</li> <li>• Flora and fauna</li> <li>• Material assets</li> <li>• Population and human health</li> <li>• Soil</li> <li>• Water</li> </ul>	The study provides evidence that could be taken into account when preparing policies for the Putley Parish NDP.
Renewable Energy Study	Evidence	2010	Assesses the energy demand within Herefordshire and the ability for the county to accommodate renewable and low carbon energy technologies.	<p>The total energy demand excluding transport for Herefordshire, at that point in time, was calculated as being:</p> <ul style="list-style-type: none"> <li>• Electrical: 731 GWh/yr</li> <li>• Heat: 1,810 GWh/yr</li> <li>• Total: 2,541 GWh/yr</li> </ul> <p>There is scope for all types of renewable energy production.</p>	<ul style="list-style-type: none"> <li>• Air</li> <li>• Biodiversity</li> <li>• Climate factors</li> <li>• Cultural heritage and the landscape</li> <li>• Flora and fauna</li> <li>• Material assets</li> <li>• Population and human health</li> <li>• Soil</li> <li>• Water</li> </ul>	The study provides evidence that could be taken into account when preparing policies for the Putley Parish NDP.

Plans and Programmes	Type of document	Date	Overview	Key message, target/objective/indicator	SEA topic(s) <sup>1</sup>	Implications for the NDP and SEA
Herefordshire Playing Pitch Assessment	Evidence	2012	Produces a strategic framework, audit and assessment and needs analysis of outdoor sports pitches and facilities for Herefordshire. The document arises as a result of a recommendation in the Herefordshire and Worcestershire Sports Facilities Framework to develop local standards for playing fields and sports pitches throughout Herefordshire.	<p>The study updates components of the Herefordshire and Worcestershire Sports Facilities Framework 2010 such as updating population forecasts, setting local standards for synthetic turf pitches and grass playing fields within Herefordshire. It identifies any current gaps in provision, and looks forward to 2031 to assess what facilities are likely to be required by that date.</p> <p>In terms of Putley parish itself, the study reveals that there is:</p> <p>There is no playing pitch area with secured community access.</p> <p>However Putley does have a playground which is to be found within the environs of the two Housing Associations that provide the social housing in Putley. It contains one 'play structure', one netball post and one goal post.</p>	<ul style="list-style-type: none"> <li>• Biodiversity</li> <li>• Cultural heritage and the landscape</li> <li>• Flora and fauna</li> <li>• Material assets</li> <li>• Population and human health</li> </ul>	<p>The study provides evidence that could be taken into account when preparing policies for the Putley NDP.</p> <p>Additional local evidence may be required to identify if there is a need for any secured playing pitch facilities within the Group Parish.</p>

Plans and Programmes	Type of document	Date	Overview	Key message, target/objective/indicator	SEA topic(s) <sup>1</sup>	Implications for the NDP and SEA
Open Spaces Study	Evidence	2006	The 2006 space audit and assessment of need is a snap shot of the quality, quantity and distribution of open space across Herefordshire.	<p>The study reveals that within the Putley</p> <ul style="list-style-type: none"> <li>• Extensive under provision of parks and gardens and outdoor sport</li> <li>• Extensive over provision of natural and semi natural greenspace</li> </ul>	<ul style="list-style-type: none"> <li>• Biodiversity</li> <li>• Climate factors</li> <li>• Cultural heritage and the landscape</li> <li>• Flora and fauna</li> <li>• Material assets</li> <li>• Population and human health</li> </ul>	The open space audit and assessment of does not give a specific indication of open space shortfalls and surpluses in Putley



Plans and Programmes	Type of document	Date	Overview	Key message, target/objective/indicator	SEA topic(s) <sup>1</sup>	Implications for the NDP and SEA
Play Facilities Study	Evidence	2012	The Play Facilities Study 2012 updates the previous play facilities analysis under the Open Spaces Study 2006 and provides guidance and a framework for the development, delivery and continued sustainability of providing new and improved play facilities for children and young people in Herefordshire to 2031.	Putley has a population of under 500 with no formal play provision (as stated in Play Facilities Study 2012)	<ul style="list-style-type: none"> <li>• Biodiversity</li> <li>• Climate factors</li> <li>• Cultural heritage and the landscape</li> <li>• Flora and fauna</li> <li>• Material assets</li> <li>• Population and human health</li> </ul>	The study provides evidence that could be taken into account when preparing policies for the Putley Parish NDP.

Plans and Programmes	Type of document	Date	Overview	Key message, target/objective/indicator	SEA topic(s) <sup>1</sup>	Implications for the NDP and SEA
Strategic Flood Risk Assessment (SFRA) and Water Cycle Study	Evidence	2009	<p>The Strategic Flood Risk Assessment (SFRA) provides a summary of flood risk in Herefordshire to inform the location of future development.</p> <p>The Water Cycle Study examines how water resources and water supply infrastructure, wastewater treatment, water quality, sewerage and flood risk could constrain growth across Herefordshire.</p>	<p>Putley Parish does not lie within the hydrological catchment of the River Wye SAC.</p> <p>It does sit within the Leadon River Catchment within the Lower Leadon catchment.</p> <p>The SFRA study states that:</p> <p>It has a 35% - 40% standard run off by sub catchment. This is potentially highly unsuitable for infiltration source control.</p> <p>A moderately slow (Tp-time to peak) time at around 9-11 hours.</p>	<ul style="list-style-type: none"> <li>• Biodiversity</li> <li>• Climate factors</li> <li>• Material assets</li> <li>• Population and human health</li> <li>• Water</li> </ul>	<p>New development proposed through the Putley NDP should be assessed against the capacity of local infrastructure.</p> <p>Up-to-date flood risk information should be gathered from the Environment Agency, in order to ensure that any flood risks are considered when preparing the Putley NDP.</p>

**Appendix A2** – Baseline information for **Putley**

*N.B. This is based on countywide baseline information with some additions relevant to Putley (in red). Where no locally specific data is available for current status, trends and targets, only countywide data is reported. Any gaps in data may be filled following additional research.*

SA Objective <sup>1</sup>	SA Theme	Proposed indicator	Current status	Trends	Targets	Issues and constraints	Baseline (information) source
SEA Topic covered by objective: <i>Biodiversity, flora and fauna</i>							
13. Value, maintain, restore and expand county biodiversity.	Natural environment	Net change in condition of SSSIs across Herefordshire.	The 2011-2013 AMR does not contain updated conservation data.  2010/11: 27% of Herefordshire's SSSI land was in favourable  <b>Putley has:</b>  <b>1 SSSI –</b>  <b>Mains Wood (Unfavourable Declining)</b>  <b>2 neighbouring SSSI's-</b>  <b>Little Hill; (Unfavourable, No Change)</b> <b>Orchid Bank, Winslow Mill. (Favourable)</b>	2006: 22% 2007: 22% 2008: 22% 2010: 24 %  Proportion of SSSI land that was in unfavourable condition but recovering increased between 2010 and 2012 going from 41% to 65%.  Proportion in unfavourable and declining condition had also decreased from 4% to 1%.	% of SSSI land in favourable condition (Increase)  % of SSSI land in unfavourable condition but recovering (Increase)  % of SSSI land in unfavourable condition and declining (Decrease)	Herefordshire's SSSIs are in extremely poor condition relative to England as whole, where 96.1% of all SSSI land was in favourable condition in April 2014.  The proportion of SSSI in unfavourable condition but recovering is greater than England as a whole, where the figure currently stands at 58.6%.	Understanding Herefordshire: An integrated needs assessment (June 2013).  NE & DEFRA Website

<sup>1</sup> Derived from the Pre Submission Core Strategy Sustainability Appraisal Assessment (May 2014)

SA Objective <sup>1</sup>	SA Theme	Proposed indicator	Current status	Trends	Targets	Issues and constraints	Baseline (information) source
13. Value, maintain, restore and expand county biodiversity.	Natural environment	After use of mineral sites especially wildlife habitat creation	<i>There is no countywide or locally specific data available at present.</i>	-	Percentage of opportunities taken	Should be monitored through AMR following the adoption of the Core Strategy, in line with SA recommendations.	-
13. Value, maintain, restore and expand county biodiversity.	Natural environment	Phosphate levels within the River Wye SAC and adjoining tributaries that receive increased phosphates from proportional growth.	Countywide data is available, <b>but this indicator would not apply to Putley Parish Neighbourhood Area, as the parish falls outside the catchment area for the River Wye SAC.</b>	N/A	N/A	N/A	Nutrient Management Plan

SA Objective <sup>1</sup>	SA Theme	Proposed indicator	Current status	Trends	Targets	Issues and constraints	Baseline (information) source
13. Value, maintain, restore and expand county biodiversity.	Natural environment	Changes to protected habitats and impacts of species within the Herefordshire Local Biodiversity Action Plan.	<p>The 2011-2013 AMR does not contain updated conservation data.</p> <p>2010/11: 17 Habitat Action Plans and 14 Species Action Plans are currently in operation across Herefordshire.</p> <p><i>There is no locally specific data available at present.</i></p>	<p>There are no formal records of any unacceptable adverse impacts on habitats or protected species.</p> <p>Originally 156 Priority Species were identified for inclusion in Herefordshire's LBAP.</p> <p>Similarly Herefordshire's LBAP covered 23 habitats with Action Plans.</p>	<p>To protect and where possible enhance the habitats of protected species identified.</p> <p>No net losses.</p>	Herefordshire Biological Records Centre (HBRC) holds limited data on some individual sites.	Herefordshire Council AMR (2010/11)

SA Objective <sup>1</sup>	SA Theme	Proposed indicator	Current status	Trends	Targets	Issues and constraints	Baseline (information) source
13. Value, maintain, restore and expand county biodiversity.	Natural environment	Changes in the areas of designated nature conservation sites as a consequence of planning permission.	<p>Putley has:</p> <p><b>1 SSSI –</b></p> <p>Mains Wood (Unfavourable Declining)</p> <p><b>(Neighbouring SSSI – 2)</b></p> <p>Little Hill (Unfavourable)</p> <p>Orchid Bank (No change)</p> <p>Winslow Mill (Favourable)</p> <p><b>LWS: 2</b></p> <p>Putley Common and surrounding woodlands;</p> <p>Whitfield &amp; Slade Coppices.</p> <p>(Neighbouring LWS-7)</p> <p>There are no SACs, NNRs, SINC and LNRs within the parish.</p>	As of 2012, there had been no change in the areas of designated nature conservation sites as a consequence of the planning permissions granted.	To capitalise on opportunities to enhance the areas of value to nature conservation as much as possible.	Herefordshire Biological Records Centre (HBRC) holds limited data on some individual sites.	Herefordshire Council Initial Screening Report for the Neighbourhood Plan  Putley 24 Feb 2014

SA Objective <sup>1</sup>	SA Theme	Proposed indicator	Current status	Trends	Targets	Issues and constraints	Baseline (information) source
13. Value, maintain, restore and expand county biodiversity.	Natural environment	Proportion of local sites where positive conservation management has or is being implemented.	<p>The Putley Parish Area has and even mix of the following landscape types:</p> <ul style="list-style-type: none"> <li>• Wooded Hills and Farmlands</li> <li>• Principle settled farmlands</li> <li>• Principle Wooded Hills</li> </ul>	-	No specific targets identified.	Should be monitored through AMR following the adoption of the Core Strategy, in line with SA recommendations.	Herefordshire Landscape Character Assessment (2004 updated 2009)
SEA Topic covered by objectives: <i>Material assets</i>							
14. Use natural resources and energy more efficiently.	Resource consumption and climate change	Maintaining Herefordshire Council's County Site and Monuments Register.	<p>Countywide data would be too large to incorporate into this template.</p> <p>Whilst there is no qualitative, locally specific data available at present, there are numerous scheduled monuments in Putley Parish</p>	-	No specific targets identified, but need to ensure that the register is kept up to date.	Should be monitored through AMR following the adoption of the Core Strategy, in line with SA recommendations.	Herefordshire Environmental Records Register (search January 2017).

SA Objective <sup>1</sup>	SA Theme	Proposed indicator	Current status	Trends	Targets	Issues and constraints	Baseline (information) source
			according to the latest version of the register. There are 40 shown on HER database.				
14. Use natural resources and energy more efficiently.	Resource consumption and climate change	Monitoring changes to historic landscapes.	<p>Historic Landscape Character assessments have only been undertaken for Hereford City.</p> <p>Rapid townscape Assessments (2010) were only undertaken for Hereford, Ledbury and Ross.</p> <p><i>Urban Fringe Sensitivity Analysis (2010) only considers sites on the urban fringe of Hereford and the five market towns</i></p>	-	No specific targets identified.	Should be monitored through AMR following the adoption of the Core Strategy, in line with SA recommendations.	<p>Historic Landscape Character Assessment for Hereford.</p> <p>Rapid townscape Assessments (2010)</p> <p><i>Urban Fringe Sensitivity Analysis (2010)</i></p>



SA Objective <sup>1</sup>	SA Theme	Proposed indicator	Current status	Trends	Targets	Issues and constraints	Baseline (information) source
SEA Topic covered by objective: <i>Population, Biodiversity, Flora and Fauna</i>							
15. Value, protect, enhance and restore the landscape quality of Herefordshire, including its rural areas and open spaces.	Natural environment	Number of developments meeting and surpassing national design standards.	<i>There is no countywide or locally specific data available at present.</i>	-	No specific targets identified.	Should be monitored through AMR following the adoption of the Core Strategy, in line with SA recommendations.	-
15. Value, protect, enhance and restore the landscape quality of Herefordshire, including its rural areas and open spaces.	Natural environment	The need for, frequency and outcomes of planning enforcement investigations/ planning appeals concerning aspects of local loss of heritage assets and locally important buildings particularly within a conservation area.	Countywide data would be too large to incorporate into this template.  <b>There are no outstanding enforcement actions or appeals concerning local loss of heritage assets and locally important buildings within Putley Parish at present.</b>	<b>No historic records of any planning enforcement action or appeals concerning locally important buildings.</b>	To wherever possible improve upon or otherwise maintain current status.	Current status must be verified by Dvt Mgt and Enforcement Officers, but the NDP can help to avoid enforcement action and appeals during the plan period.	Council Dvt Mgt records <b>(searched January 2017)</b>

SA Objective <sup>1</sup>	SA Theme	Proposed indicator	Current status	Trends	Targets	Issues and constraints	Baseline (information) source
SEA Topic covered by objective: <i>Climatic Factors</i>							
16. Reduce Herefordshire's vulnerability to the impacts of climate change as well as its contribution to the problem.	Resource consumption and climate change.	Transport patronage by mode	<p>% of Herefordshire residents who travel to work by:</p> <p>Car: 70.1% Foot: 14.7% Bicycle: 4.3% Bus: 2% Train: 0.8% Motorbike: 0.8% Taxi: 0.3% Other: 7%</p> <p><i>There is no locally specific data available at present</i></p>	The number of people cycling or travelling by bus as the main form transport to get to work declined between 2001 and 2011 – across England and Wales there was little change in either. Walking or driving a car or van on the other hand increased.	To encourage the take up of lesser polluting modes of transport.	There are a lack of transport options for many rural communities and therefore high car ownership and dependency – the last decade has seen a 15 per cent increase in household car ownership, although this is not reflected in traffic flows of recent years with volumes in Hereford City and wider county having decreased. The proportion of people working from home increased over the decade from 15 per cent in 2001 to 17 per cent in 2011.	2011 Census

SA Objective <sup>1</sup>	SA Theme	Proposed indicator	Current status	Trends	Targets	Issues and constraints	Baseline (information) source
16. Reduce Herefordshire's vulnerability to the impacts of climate change as well as its contribution to the problem.	Resource consumption and climate change.	Number of decentralised energy schemes granted permission.	<i>There is no countywide or locally specific data available at present.</i>	-	To contribute towards the national target.	Should be monitored through AMR following the adoption of the Core Strategy, in line with SA recommendations.	-

SA Objective <sup>1</sup>	SA Theme	Proposed indicator	Current status	Trends	Targets	Issues and constraints	Baseline (information) source
16. Reduce Herefordshire's vulnerability to the impacts of climate change as well as its contribution to the problem.	Resource consumption and climate	Total CO2 emissions per capita	<p>Latest figure dates back to 2010: 1.61 million tonnes (mtCO<sup>2</sup>)</p> <p>There is no locally specific data available at present.</p>	<p>Between 2005 and 2010 Herefordshire's total and per capita carbon emission reduced by 7% and 8% respectively; while UK's total and per capita carbon emission reduced by 8% and 12% respectively within the same period. This trend hides an increase in emissions between 2009 and 2010 when total emissions in the county increased by 5% the same as across the UK (+5%).</p>	To reduce the overall carbon emissions.	CO <sup>2</sup> emissions produced are decreasing.	Understanding Herefordshire: An integrated needs assessment (June 2013).

SA Objective <sup>1</sup>	SA Theme	Proposed indicator	Current status	Trends	Targets	Issues and constraints	Baseline (information) source
SEA Topic covered by objective: <i>Water</i>							
17. Reduce the risk of flooding and the resulting detriment to public wellbeing, the economy and the environment.	Natural environment	Number of planning permissions granted contrary to the advice of the Environment Agency on flood defence grounds.	2010/11: None 2011/13: Not specified 2013/14: None <i>There is no locally specific data available at present.</i>	There have been no approvals contrary to EA advice since reporting began in 2004.	To have no applications permitted contrary to EA advice.	None identified.	Herefordshire Council AMR (2010/11)
SEA Topic covered by objective: <i>Water, air, soil, material assets</i>							
18. Minimise local and global pollution and protect or enhance environmental resources.	Natural environment	Agricultural land usage by quality. LA to monitor the number of hectares of the best and most versatile agricultural land (grades 3a and higher) lost to development.	<b>2011: Majority of land to the East within the neighbourhood area was listed Grades 2 (Very Good) and areas to the West 3 (Good to Moderate) and 4 (Poor).</b>	-	Measure the number of hectares of best and most versatile soil lost through development.	Should be monitored through AMR following the adoption of the Core Strategy, in line with SA recommendations.	West Midland ALC Map (Natural England 2011).

SA Objective <sup>1</sup>	SA Theme	Proposed indicator	Current status	Trends	Targets	Issues and constraints	Baseline (information) source
18. Minimise local and global pollution and protect or enhance environmental resources.	Natural environment	Percentage of river length assessed as good or very good chemical quality and ecological quality as required by the Water Framework Directive	Latest figures for the county as a whole dates back to 2005 when there was considered to be 84% assessed as good or very good. This represents a decrease in the % since 2002  <i>There is no locally specific data available at present.</i>	Figure steadily improved before going into decline:  Herefordshire 1999 85.9%, 2000 89.5%, 2001 92.2%, 2002 91.8%	To ensure that rivers meet their conservation objectives and do not fall below the required standard of quality.	None identified.	The State of Herefordshire (2007)  Water Framework Directive (2000)
SEA Topic covered by objective: <i>Soil</i>							
19. Ensure integrated, efficient and balanced land use.	Built environment	Percentage of all new development completed on previously developed land.	2010/11: 67% 2011-13: 57% 2013-14: 65%  <i>There is no locally specific data available at present.</i>	Completions on PDL had risen to 71% by 2005.	To increase the number of homes built on PDL in line with the provisions of national planning policy.	The number of brownfield completions has fallen slightly in recent years, though this is probably the offshoot of tough market conditions.	Herefordshire Council AMR (2010/11),(2011-2013) and (2013-2014)

SA Objective <sup>1</sup>	SA Theme	Proposed indicator	Current status	Trends	Targets	Issues and constraints	Baseline (information) source
19. Ensure integrated, efficient and balanced land use.	Built environment	Housing densities in urban and rural areas	<i>There is no countywide or locally specific data available at present.</i>	-	No specific targets identified.	Should be monitored through AMR following the adoption of the Core Strategy, in line with SA recommendations.	-
19. Ensure integrated, efficient and balanced land use.	Built environment	Level of development in urban areas compared to rural.	<i>There is no countywide or locally specific data available at present.</i>  This indicator would not be applicable to rural NDPs.	N/A	N/A	N/A	N/A
SEA Topic covered by objective: <i>Cultural heritage</i>							

SA Objective <sup>1</sup>	SA Theme	Proposed indicator	Current status	Trends	Targets	Issues and constraints	Baseline (information) source
20. Value, protect and enhance the character and built quality of settlements and neighbourhoods and the county's heritage assets, including conservation areas, historic environment and cultural heritage.	Built environment	Number and percentage of listed buildings and Scheduled Ancient Monuments on Buildings at Risk Register (Historic England).	<p>Up-to-date countywide information will be presented in the next AMR and which is due to be published in 2014. However, this data would be too large to incorporate into this template.</p> <p>There are numerous listed buildings within the parish and two SAMs.</p> <p>Roman villa east of The Rectory;</p> <p>Putley Churchyard Cross.</p> <p>None are currently recorded in the Buildings at Risk Register.</p>	There were 71 heritage assets in Herefordshire that were considered to be at high risk and included in the Heritage at Risk Register January 2017.	To wherever possible improve upon or otherwise maintain current status. (If heritage is at risk include-promote opportunities to achieve the removal of heritage assets from the at risk register.	None of Putley Parishes listed buildings or SAMs are considered to be at risk at present.	Buildings at Risk Register (Historic England; search January 2017)



SA Objective <sup>1</sup>	SA Theme	Proposed indicator	Current status	Trends	Targets	Issues and constraints	Baseline (information) source
20. Value, protect and enhance the character and built quality of settlements and neighbourhoods and the county's heritage assets, including conservation areas, historic environment and cultural heritage.	Built environment	The need for, frequency and outcomes of planning enforcement investigations/ planning appeals concerning aspects of local loss of heritage assets, locally important buildings within the parish and particularly within a conservation area.	Countywide data would be too large to incorporate into this template.  There are no outstanding enforcement actions or appeals concerning local loss of heritage assets locally important buildings particularly within conservation areas within Putley Parish.	No historic records of any planning enforcement action or appeals concerning locally important buildings within the Putley conservation area.	To wherever possible improve upon or otherwise maintain current status	Current status must be verified by Dvt Mgt and Enforcement Officers, but the NDP can help to avoid enforcement action and appeals during the plan period.	Council Dvt Mgt records (searched January 2017)

**Appendix A3 – Environmental issues identified from the Putley baseline**

These environmental issues are the same as most of those identified for the Herefordshire Core Strategy<sup>1</sup>

SEA Topic		Environmental issue	SA objectives
1	Air	High reliance upon the private car causing high levels of air pollution and in Hereford in particular	Objective 16
		Need to reduce carbon emissions by encouraging alternative modes of travel.	
2	Biodiversity	Habitats and species of national, regional and local importance are under pressure from the adaptation and diversification of farming and forestry employment.	Objectives 13 & 15
		Habitats and species of national, regional and local importance are under pressure from development	
		Minimise loss of biodiversity and expand opportunities for wildlife everywhere.	
3	Climatic factors	Reduce greenhouse gas emissions through planning, design and build.	Objective 16
4	Cultural heritage	Putley has two Scheduled Ancient Monuments and numerous listed buildings, all of which require ongoing protection and many in need of high levels of maintenance.	Objective 20
5	Flora and fauna	Conserve and enhance the character and quality of historic landscapes, including all types of natural flora and fauna.	Objective 15
6	Material assets	How the countryside can continue to be managed in an economically, socially and environmentally beneficial way in the face of continuing pressures on traditional farming.	Objectives 14 & 18
7	Population	Minimise energy waste through good designs, which help to reduce energy consumption and maximise efficiency.	Objective 15
		Need to avoid enforcement investigations/action concerning locally important buildings and those within conservation areas in particular.	
8	Soil	Promoting development of previously developed land and buildings as opposed to greenfield sites or agricultural land of the highest quality.	Objectives 18 & 19

<sup>1</sup> Derived from the Pre-submission Core Strategy Sustainability Appraisal Assessment (May 2014) and LDF General Scoping Report (June 2007)

---

9	Water	Issues relating to availability of resources, foul drainage, pollution, and abstraction in a county which supports water dependent biodiversity of international and national importance, given the predicted climate change consequences for water availability and demanding projections for new housing.	Objectives 17 & 18
		Steady decline in the chemical quality of rivers over the last 10 years.	

## Appendix A4: SEA Framework

### SEA Scoping Stage A, Task A4 - SEA Framework SEA Objectives, Indicators, Targets

Parish Council Name: Putley

Neighbourhood Development Plan Name: Putley Parish Neighbourhood Plan

Date completed: January 2017

SEA Topics	SA Objective	SEA Objective	Sub-objectives / Appraisal Questions (Will the option/proposal/site...)	Indicators	Targets
Nature Conservation (Biodiversity, flora and fauna)	Value, maintain, restore or expand county biodiversity.  Value, protect, enhance or restore the landscape quality of Herefordshire, including its rural areas and open spaces.	To maintain and enhance nature conservation (biodiversity, flora and fauna)	<ul style="list-style-type: none"> <li>Protect or enhance habitats of international, national, regional or local importance.</li> <li>Protect international, national, regional or locally important terrestrial or aquatic species.</li> <li>Maintain wildlife corridors and minimise fragmentation of ecological areas and green spaces.</li> <li>Manage access to sites in a sustainable way that protects or enhances their nature conservation value.</li> <li>Create new appropriate habitats.</li> <li>Value, enhance and protect natural environmental assets including AONB's, historic</li> </ul>	<p>Net change in condition of SSSIs across Herefordshire.</p> <p>After use of mineral sites especially wildlife habitat creation</p> <p>Changes to protected habitats and impacts of species within the Herefordshire Local Biodiversity Action Plan.</p>	<p>% of SSSI land in favourable condition (Increase)</p> <p>% of SSSI land in unfavourable condition but recovering (Increase)</p> <p>% of SSSI land in unfavourable condition and declining (Decrease)</p> <p>Percentage of opportunities taken</p> <p>To protect and where possible enhance the habitats of protected species identified.</p> <p>No net losses</p>

SEA Topics	SA Objective	SEA Objective	Sub-objectives / Appraisal Questions (Will the option/proposal/site...)	Indicators	Targets
			<p>landscapes, open spaces, parks and gardens and their settings</p> <ul style="list-style-type: none"> <li>• Encourage local stewardship of local environments, for example by promoting best practices in agricultural management</li> <li>• Ensure that environmental impacts caused by mineral operations and the transport of minerals are minimised.</li> <li>• Promote the use of rural areas and open space by all, encourage easy non-car based access, and accommodate the needs of disabled users.</li> </ul>		
Landscape	Not covered in SA	<p>To maintain and enhance the quality of landscapes and townscapes</p> <p>To improve quality of surroundings</p>	<ul style="list-style-type: none"> <li>• Protect and enhance the landscape everywhere and particularly in designated areas</li> <li>• Value and protect diversity and local distinctiveness</li> <li>• Improve landscape and ecological quality and character of the countryside</li> <li>• Improve the quantity and quality of publicly accessible open space</li> </ul>	<p>Changes in the areas of designated nature conservation sites as a consequence of planning permission.</p> <p>Proportion of local sites where positive conservation management has or is being implemented.</p> <p>Monitoring changes to historic landscapes.</p> <p>Area resulting in a loss of open space as a result of planning</p>	<p>To capitalise on opportunities to enhance the areas of value to nature conservation as much as possible.</p> <p>No specific targets identified.</p> <p>No specific targets identified.</p> <p>No specific targets identified</p>

SEA Topics	SA Objective	SEA Objective	Sub-objectives / Appraisal Questions (Will the option/proposal/site...)	Indicators	Targets
			<ul style="list-style-type: none"> <li>Improve satisfaction of people with their neighbourhoods as places to live</li> <li>Decrease litter and graffiti in towns and countryside</li> <li>Result in the loss of open space</li> </ul>	permission	
Heritage	Value, protect or enhance the character and built quality of settlements and neighbourhoods and the county's heritage assets, historic environment and cultural heritage.	To conserve and where appropriate enhance the historic environment, heritage assets and culture heritage	<ul style="list-style-type: none"> <li>Preserve, protect and enhance heritage assets including conservation areas, listed buildings, archaeological sites and other culturally important features in both urban and rural settings.</li> <li>Prevent development which is inappropriate in scale, form or design to its setting or to its function or local area.</li> <li>Encourage development that creates and sustains well-designed, high quality built environments that incorporate green space, encourage biodiversity and promote local distinctiveness and sense of place.</li> </ul>	<p>The need for, frequency and outcomes of planning enforcement investigations/ planning appeals concerning the aspects of local loss of locally important buildings within a conservation area.</p> <p>Number and percentage of listed buildings and Scheduled Ancient Monuments on Buildings at Risk Register (Historic England).</p> <p>Ensure that Herefordshire Council's Sites and Monuments Register is kept up to date.</p>	<p>To improve upon or otherwise maintain current status.</p> <p>To improve upon or otherwise maintain current status.</p> <p>No specific targets identified, but need to ensure that the register is kept up to date.</p>

SEA Topics	SA Objective	SEA Objective	Sub-objectives / Appraisal Questions (Will the option/proposal/site...)	Indicators	Targets
			<ul style="list-style-type: none"><li>• Encourage cleanliness and/or improve the general appearance of the area.</li></ul>		

SEA Topics	SA Objective	SEA Objective	Sub-objectives / Appraisal Questions (Will the option/proposal/site...)	Indicators	Targets
Air and Climate	<p>Minimise local and global pollution and protect or enhance environmental resources.</p> <p>Reduce Herefordshire's vulnerability to the impacts of climate change as well as its contribution to the problem.</p>	<p>To improve air quality</p> <p>To reduce the effect of traffic on the environment</p> <p>To reduce contributions to climate change</p> <p>To reduce vulnerability to climate change</p>	<ul style="list-style-type: none"> <li>Minimise water, air, soil, groundwater, noise and light pollution from current activities and the potential for such pollution.</li> <li>Protect or enhance the quality of watercourses.</li> <li>Provide opportunities to improve soil quality or reduce contaminated land.</li> <li>Reduce the county's contribution to climate change by reducing greenhouse gas emissions from transport, domestic, commercial and industrial sources.</li> <li>Increase the proportion of energy generated from renewable and low carbon sources including by micro-generation, Combined Heat and Power (CHP), district heating and in transportation.</li> </ul>	<p>Transport patronage by mode</p> <p>Number of decentralised energy schemes granted permission.</p> <p>Total CO2 emissions per capita</p>	<p>To increase the take up of alternative modes to the private car.</p> <p>To contribute towards the national target.</p> <p>To reduce the overall carbon emissions.</p>



SEA Topics	SA Objective	SEA Objective	Sub-objectives / Appraisal Questions (Will the option/proposal/site...)	Indicators	Targets
Water	<p>Reduce the risk of flooding and the resulting detriment to public well-being, the economy and the environment.</p> <p>Minimise local and global pollution and protect or enhance environmental resources.</p>	<p>To improve water quality</p> <p>To provide for sustainable sources of water supply</p> <p>To avoid, reduce and manage flood risk</p>	<ul style="list-style-type: none"> <li>Reduce flood risk both presently and taking into account climate change.</li> <li>Prevent inappropriate development of the floodplain, and include flood protection systems.</li> <li>Include sustainable urban drainage systems where appropriate.</li> <li>Minimise water, air, soil, groundwater, noise and light pollution from current activities and the potential for such pollution.</li> <li>Protect or enhance the quality of watercourses.</li> </ul>	<p>Number of planning permissions granted contrary to the advice of the Environment Agency on flood defence grounds.</p> <p>Percentage of river length assessed as good or very good chemical quality and ecological quality</p> <p>Phosphate levels within the River Wye SAC and adjoining tributaries that receive increased phosphates from proportional growth.</p>	<p>To have no applications permitted contrary to EA advice.</p> <p>To ensure that rivers meet their conservation objectives and do not fall below the required standard of quality as set out in the Water Framework Directive.</p> <p>To meet the targets set out in the Nutrient Management Plan (2014)</p>
Soil	<p>Minimise local and global pollution and protect or enhance environmental resources.</p> <p>Ensure integrated, efficient and</p>	<p>To conserve soil resources and quality</p> <p>Ensure integrated, efficient and balanced land use.</p>	<ul style="list-style-type: none"> <li>Minimise water, air, soil, groundwater, noise and light pollution from current activities and the potential for such pollution.</li> <li>Provide opportunities to improve soil quality or reduce contaminated land.</li> <li>Ensure new developments</li> </ul>	<p>Percentage of all new development completed on previously developed land.</p> <p>Amount of land identified as best and most versatile agricultural land lost to development.</p>	<p>To increase the number of homes built on PDL in line with the provisions of national planning policy.</p> <p>Measure the number of hectares of best and most versatile soil lost through development.</p>

SEA Topics	SA Objective	SEA Objective	Sub-objectives / Appraisal Questions (Will the option/proposal/site...)	Indicators	Targets
	balanced land use.		are in appropriate locations, optimising the use of previously developed land and buildings, primarily focussed on the urban areas and are accessible by walking, cycling or sustainable transport and/or will increase the share of these transport modes, thereby reducing the need to travel.		
Population and Human Health	Value, protect, enhance or restore the landscape quality of Herefordshire, including its rural areas and open spaces.	To improve health of the population  To reduce crime and nuisance	<ul style="list-style-type: none"> <li>Value, enhance and protect natural environmental assets including AONB's, historic landscapes, open spaces, parks and gardens and their settings.</li> <li>Encourage local stewardship of local environments, for example by promoting best practices in agricultural management.</li> <li>Ensure that environmental impacts caused by mineral operations and the transport of minerals are minimised.</li> <li>Promote the use of rural areas and open</li> </ul>	Number of developments meeting and surpassing national design	No specific targets identified.

SEA Topics	SA Objective	SEA Objective	Sub-objectives / Appraisal Questions (Will the option/proposal/site...)	Indicators	Targets
			space by all, encourage easy non-car based access, and accommodate the needs of disabled users.		
Material Assets	<p>Use natural resources and energy more efficiently.</p> <p>Minimise local and global pollution and protect or enhance environmental resources.</p>	To conserve natural and manmade resources	<ul style="list-style-type: none"> <li>• Maximise energy efficiency and minimise the consumption of non-renewable energy i.e. from fossil fuels.</li> <li>• Minimise the consumption of water, land, soil, minerals, aggregates and other raw materials by all? E.g. through integrated transport, sustainable resource-efficient design, local sourcing of food, goods, materials.</li> <li>• Encourage the re-use/enhancement (to high standards of sustainable resource-efficient design) of existing buildings and minimise the need for new build.</li> <li>• Encourage the use of clean technologies and water minimisation techniques.</li> </ul>	<p>The need for, frequency and outcomes of planning enforcement investigations/ planning appeals concerning the aspects of local loss of locally important buildings within a conservation area.</p> <p>Maintaining Herefordshire Council's County Site and Monuments Register.</p> <p>Monitoring changes to historic landscapes.</p> <p>Agricultural land usage by quality</p>	<p>Measure the number of hectares of best and most versatile soil lost through development. No specific targets identified.</p> <p>No specific targets identified, but need to ensure that the register is kept up to date.</p> <p>No specific targets identified.</p> <p>Measure the number of hectares of best and most versatile soil lost through development.</p>

---

**Initial Habitat Regulations Assessment and Strategic Environmental  
Assessment Screening Notification**

**The Neighbourhood Planning (General) (Amendment) Regulations  
2015 (Reg. 32)**

**Conservation of Habitats and Species Regulations 2010 (d)**

---

<b>Neighbourhood Area:</b>	Putley Neighbourhood Area
<b>Parish Council:</b>	Putley Parish Council
<b>Neighbourhood Area Designation Date:</b>	24 February 2016

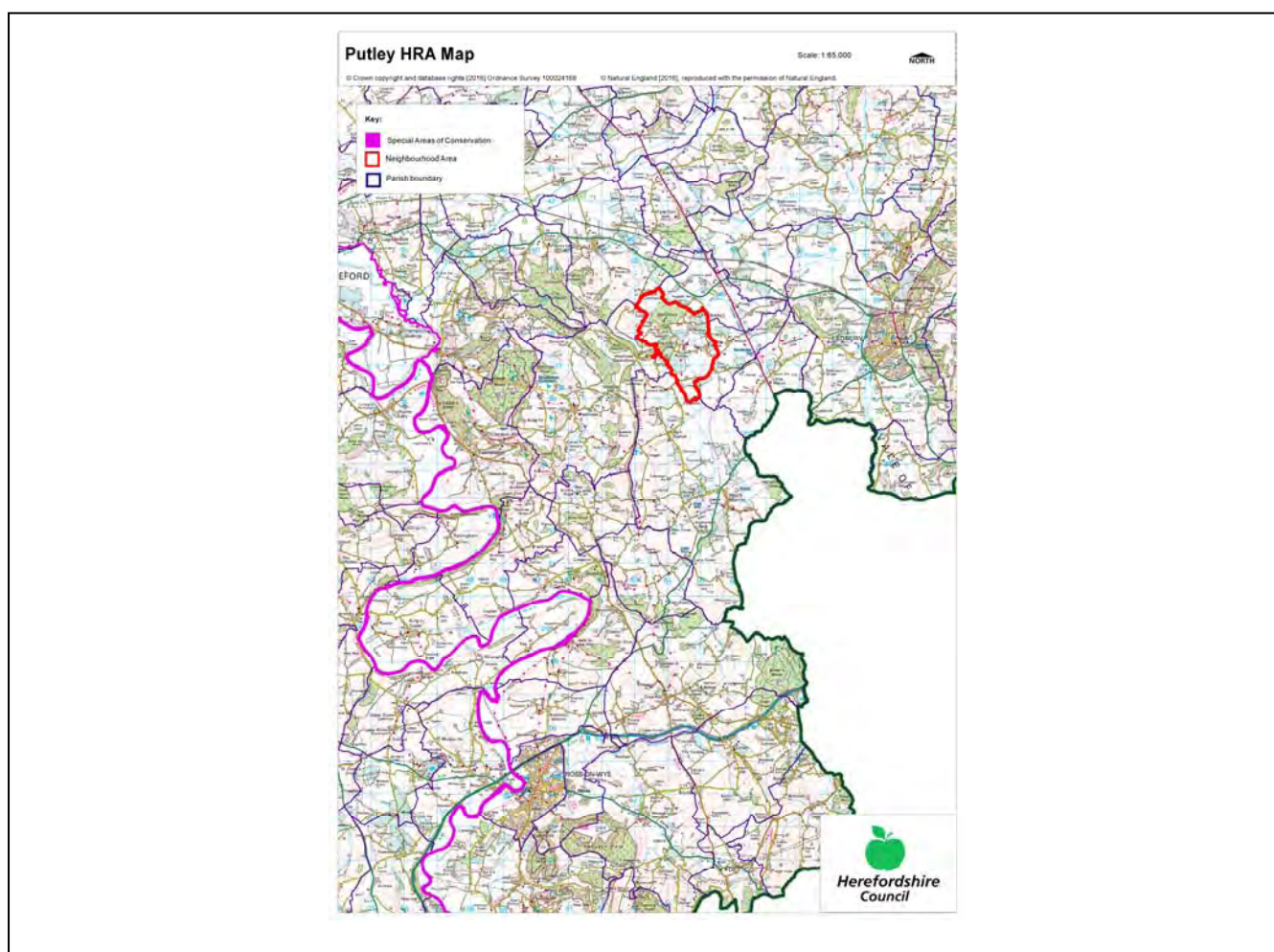
### **Introduction**

This Initial Habitat Regulations Assessment (HRA) and Strategic Environmental Assessment (SEA) Screening has been undertaken to assess whether any European sites exist within or in proximity to the Neighbourhood Area which could be affected by any future proposals or policies.

Through continual engagement the outcomes of any required assessments will help to ensure that proposed developments will not lead to Likely Significant Effects upon a European site or cause adverse impacts upon other environmental assets, such as the built historic or local natural environment.

## HRA Initial Screening

Map showing relationship of Neighbourhood Area with European Sites (not to scale)



### River Wye (including the River Lugg) Special Area of Conservation (SAC):

Does the Neighbourhood Area have the River Wye (including the River Lugg) in or next to its boundary?	N	The River Wye is 6.75km away from the Parish
Is the Neighbourhood Area in the hydrological catchment of the River Wye (including the River Lugg) SAC?	N	The Parish is not within the hydrological catchment of the River Wye (including the River Lugg) SAC.
If yes above, does the Neighbourhood Area have mains drainage to deal with foul sewage?	N/A	Not Applicable

### Downton Gorge SAC:

Is the Neighbourhood Area within 10km of Downton Gorge SAC?	N	Downton Gorge is 39.5km away from the Parish.
---	---	---

**River Clun SAC:**

Does the River Clun border the Neighbourhood Area	N	River Clun does not border the Parish.
---	---	--

**Wye Valley & Forest of Dean Bat Sites SAC:**

Is the Neighbourhood Area within 10km of any of the individual sites that make up the Wye Valley & Forest of Dean Bat Sites?	N	Wye Valley and Forest of Dean Bat Sites are 16km away from the Parish.
--	---	--

**Wye Valley Woodlands SAC:**

Is the Neighbourhood Area within 10km of any of the individual sites that make up the Wye Valley Woodlands Site?	N	Wye Valley Woodlands are 22.7km away from the Parish.
--	---	---

**HRA Conclusion:**

The assessment above highlights that European Sites will not need to be taken into account in the future Neighbourhood Development Plan for the Putley Neighbourhood Area and a Full HRA Screening will not be required.

**European Site**

*(List only those which are relevant from above)*

None

**Strategic Environmental Assessment Initial Screening for nature conservation landscape and heritage features**

The following environmental features are within or in general proximity to the Putley Neighbourhood Area and would need to be taken into account within a Strategic Environmental Assessment. In addition, the NDP will also need to consider the other SEA topics set out in Guidance Note 9a to ensure that the plan does not cause adverse impacts.

SEA features	Within Neighbourhood Area		Bordering Neighbourhood Area	
	Total number	Name(s)	Total number	Name(s)
Ancient Woodland	3	Mains Wood; Priggles Wood; Millpound Coppice.	12	Whitfield Coppice; Park Coppice; Green Hill Coppice; Beans Butts Wood; Nurdens Wood/Canwood Knoll; Busland & Jones Wood; Ashperton Park; Dormington Wood; Swillow Wood; Eastwood; Ast Wood; Haygrove Coppice.
Areas of Outstanding Natural Beauty (AONB)	0	-	0	-
Conservation Areas	1	Putley.	1	Aylton.
Flood Areas	None			
Geoparks	0	-	0	-
Listed Buildings	There are numerous listed buildings throughout the Parish.			
Mineral Reserves	1	Perton Quarry to Sheepcote Hill to Woolhope Cockshoot.	2	The Plantation to Devereux Park to Winslow Mill to Busland Wood to Sapness House; Green Hill Coppice to Hopper's Oak to Hoar Wood to Newbury Lodge, Yatton.

National Nature Reserve (NNR)	0	-	0	-
Nature Trails	1	Herefordshire Trail.	1	Three Choirs Way.
Regionally Important Geological Sites (RIGS)	0	-	0	-
Registered Parks and Gardens	0	-	0	-
Scheduled Ancient Monuments (SAM)	2	Roman villa east of The Rectory; Putley Churchyard Cross.	0	-
Sites of Importance in Nature Conservation (SINCs)	0	-	0	-
Special Areas of Conservation (SAC)	0	-	0	-
Special Wildlife Sites (SWS)	2	Putley Common and surrounding woodlands; Whitfield & Slade Coppices.	7	Patches Coppice; Ast Wood; Fields at Woolhope Cockshoot; Woodland near Seager Hill; Rushall Road Cutting; Eastwood; Ashperton Park.
Unregistered parks and gardens	1	Putley Court.	3	Mainstone Court; Devereux Park; Hall Court, Kynaston.
			<b>SSSI Status</b>	
Sites of Special Scientific Interest (SSSI)	1	Mains Wood.	Unfavourable Declining	2 Little Hill; Orchid Bank, Winslow Mill.
				<b>SSSI Status</b> Unfavourable No Change; Favourable



**Decision Notification:**

The initial screening highlights that the Neighbourhood Development Plan for the Putley Neighbourhood Area:

- a) Will require further environmental assessment for Strategic Environmental Assessment.

**Assessment date: 05/02/2016**

**Assessed by: James Latham**

## Appendix 1: European Sites

The table below provides the name of each European Site, which has been screened in for the purposes of neighbourhood planning in Herefordshire; includes their site features of integrity; and vulnerability data. This is based on the sites individual features of integrity and their vulnerabilities, which could include distance criteria. This has been used in identifying which parishes are likely to require a full HRA Screening of their future Neighbourhood Development Plan, to establish if their plan might have Likely Significant Effects on a European Site.

<b>Downton Gorge</b>
<b>Site Features:</b> <i>Tilio-Acerion</i> forests of slopes, screes and ravines
<b>Vulnerability data:</b> 10km for air quality associated with poultry units or other intensive agricultural practices.

<b>River Clun</b>
<b>Site Features:</b> Freshwater pearl mussel <i>Margaritifera margaritifera</i>
<b>Vulnerability data:</b> Water quality is important to maintain the site feature. Parishes either side of the River Clun will be affected.

<b>River Wye</b>
<b>Site Features:</b> Water courses of plain to montane levels with the <i>Ranunculion fluitantis</i> and <i>Callitricho-Batrachion</i> vegetation. Transition mires and quaking bogs. White-clawed (or Atlantic Stream) crayfish <i>Austropotamobius pallipes</i> . Sea lamprey <i>Petromyzon marinus</i> . Brook lamprey <i>Lampetra planeri</i> . River lamprey <i>Lampetra fluviatilis</i> . Twaite shad <i>Alosa fallax</i> . Atlantic salmon <i>Salmo salar</i> . Bullhead <i>Cottus gobio</i> . Otter <i>Lutra lutra</i> . Allis shad <i>Alosa alosa</i>
<b>Vulnerability data:</b> Proximity: Developments should not be within 100m of the designated bank. Some developments beyond 100m may also have impacts based on proximity and these issues should be addressed where possible when developing NDP policy and choosing site allocations. Water Quality: Within the whole catchment of the River Wye, which includes the River Lugg, mains drainage issues with regards to water quality are being resolved through the Core Strategy / Local Plan and development of a Nutrient Management Plan. Welsh Water should be consulted to ensure that the proposed growth will be within the limit of their consents. Otters: "An otter will occupy a 'home range', which on fresh waters usually includes a stretch of river as well as associated tributary streams, ditches, ponds, lakes and woodland. The size of a home range depends largely on the availability of food and shelter, and the presence of neighbouring otters. On rivers, a male's home range may be up to 40km or more of watercourse and associated areas; females have smaller ranges (roughly half the size) and favour quieter locations for breeding, such as tributary streams. Otters without an established home range are known as 'transients'. They are mostly juveniles looking for a territory of their own, or adults that have been pushed out of their territories. Transient otters may use an area for a short while, but they will move on if conditions are not suitable or if they are driven away by resident otters. Transients will have been important in extending the range of otters, but they are very difficult to identify from field signs. Within a home range an otter may use many resting sites. These include above-ground shelters, such as stands of scrub or areas of rank grass, and underground 'holts' – for example, cavities under tree roots and dry drainage pipes."

### Wye Valley and Forest of Dean Bat Sites

**Site Features:** Annex II species that are a primary reason for site selection: Lesser horseshoe bat *Rhinolophus hipposideros*. Greater horseshoe bat *Rhinolophus ferrumequinum*

**Vulnerability data:** Lesser Horseshoe bats are known to migrate between 5km and 10km between their summer and winter roosts. The Lesser Horseshoe Bat is vulnerable to disturbance; light pollution; and habitat loss. Check with the planning ecologist for other issues.

Greater Horseshoe bats are known to migrate between 20-30km between their summer and winter roosts.

NDPs closest to the European Site will need to consider:

Woodland habitat buffer.

Lesser Horseshoe Bat: Old buildings; woodland locations; sheltered valleys, extensive deciduous woods or dense scrub, close to roost sites. In areas of fragmented habitats, linear habitats such as hedgerows are important corridors. Vulnerable to loss or disturbance of both summer and winter roosts and removal of linear habitat.

Greater Horseshoe Bat: Large buildings, pasture, edge of mixed deciduous woodland and hedgerows. Mixed land-use especially south-facing slopes, favours beetles, moths and insects they feed on. During the winter they depend on caves, abandoned mines and other underground sites for undisturbed hibernation. A system/series of sites required. Vulnerable to loss of insect food supply, due to insecticide use, changing farming practices and loss of broad-leaved tree-cover and loss / disturbance of underground roosts sites.

### Wye Valley Woodlands

**Site Features:** Annex I habitats that are a primary reason for site selection: Beech forests *Asperulo-Fagetum*, *Tilio-Acerion* forests of slopes, screes and ravines, *Taxus baccata* woods of the British Isles. Annex II species present as a qualifying feature, but not a primary reason for site selection: Lesser horseshoe bat *Rhinolophus hipposideros*, 51-100 residents

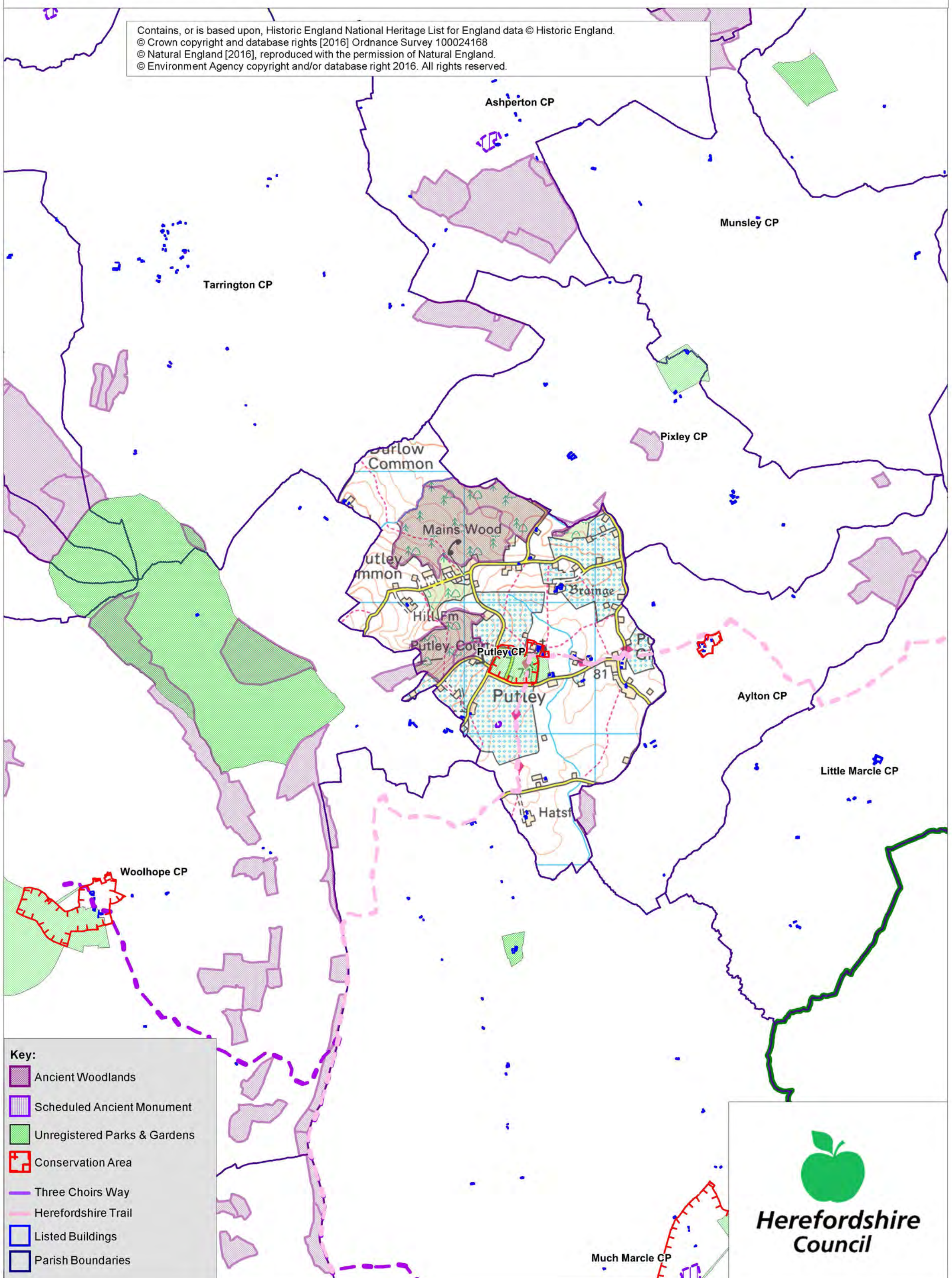
**Vulnerability data:** Lesser Horseshoe bats are known to migrate between 5km and 10km between their summer and winter roosts. The Lesser Horseshoe Bat is vulnerable to disturbance; light pollution; and habitat loss. Check with the planning ecologist for other issues. NDPs closest to the European Site will need to consider: Woodland habitat buffer. Lesser Horseshoe Bat: Old buildings; woodland locations; sheltered valleys, extensive deciduous woods or dense scrub, close to roost sites. In areas of fragmented habitats, linear habitats such as hedgerows are important corridors. Vulnerable to loss or disturbance of both summer and winter roosts and removal of linear habitat.

# Putley SEA Map 1

Scale: 1:25,000



Contains, or is based upon, Historic England National Heritage List for England data © Historic England.  
© Crown copyright and database rights [2016] Ordnance Survey 100024168  
© Natural England [2016], reproduced with the permission of Natural England.  
© Environment Agency copyright and/or database right 2016. All rights reserved.



**Key:**

- Ancient Woodlands
- Scheduled Ancient Monument
- Unregistered Parks & Gardens
- Conservation Area
- Three Choirs Way
- Herefordshire Trail
- Listed Buildings
- Parish Boundaries

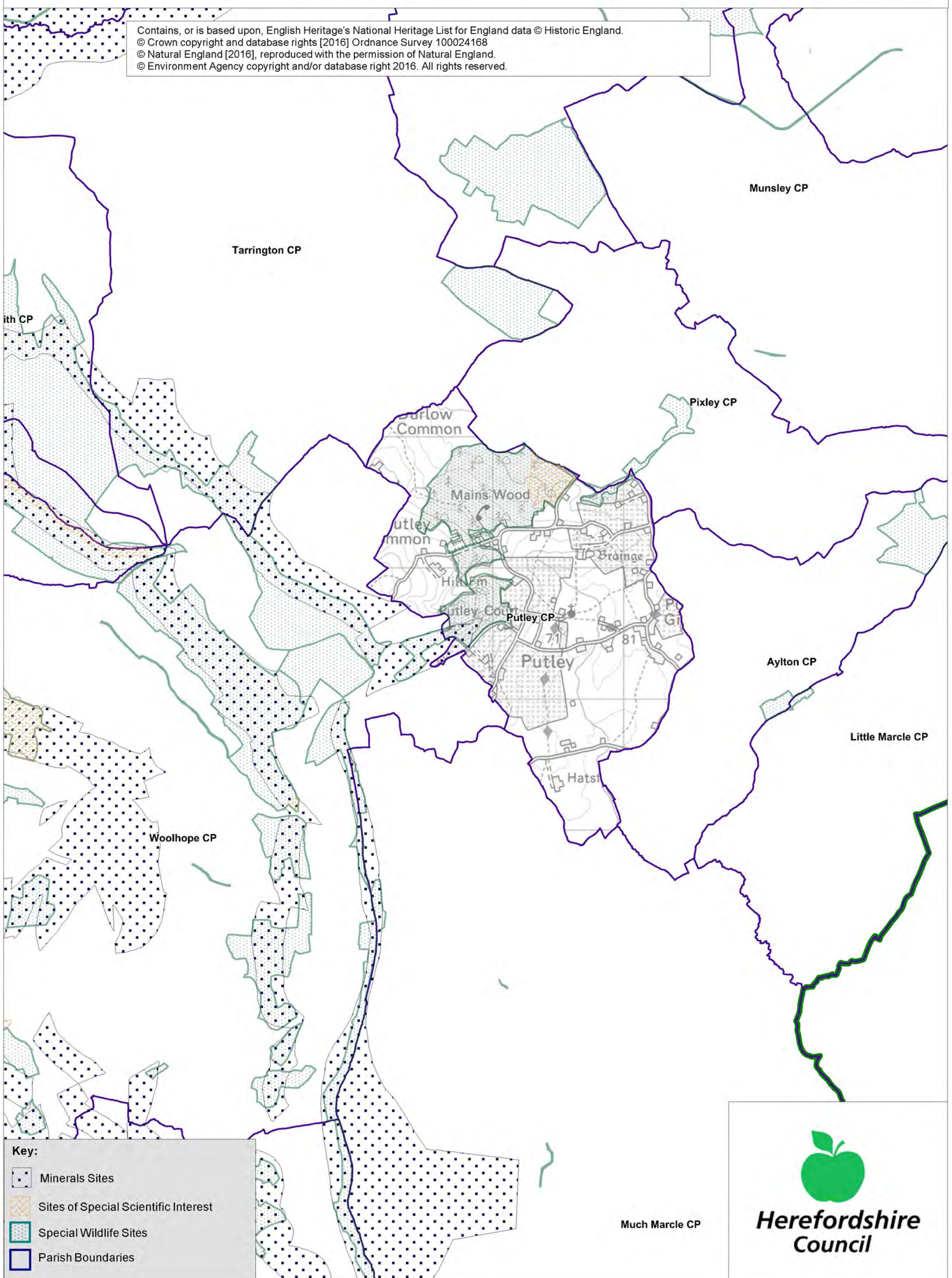
**Herefordshire Council**

# Putley SEA Map 2

Scale: 1:25,000



Contains, or is based upon, English Heritage's National Heritage List for England data © Historic England.  
© Crown copyright and database rights [2016] Ordnance Survey 100024168  
© Natural England [2016], reproduced with the permission of Natural England.  
© Environment Agency copyright and/or database right 2016. All rights reserved.



**Key:**

- Minerals Sites
- Sites of Special Scientific Interest
- Special Wildlife Sites
- Parish Boundaries

**Herefordshire Council**