

Belmont Rural Parish Council

# BELMONT RURAL

## NEIGHBOURHOOD DEVELOPMENT PLAN

2011 - 2031



## Foreword

The Neighbourhood Development Plan (NDP) for Belmont Rural contains policies to help guide decisions on planning applications. The NDP will be used by planning officers alongside the Herefordshire Local Plan Core Strategy and national planning policy (the NPPF). The plan period covers the period 2011 – 2031.

The Plan builds on the key planning related issues that were raised as part of the Parish Plan 2002/03. In 2012 a Neighbourhood Plan Steering Group was established and have had regular meetings to move forward with the plan. The Plan has been prepared following informal consultation on the vision, objectives and key themes. The Draft Neighbourhood Development Plan was published for 8 weeks' formal public consultation from February 9<sup>th</sup> – 23<sup>rd</sup> March 2015. The Submission Draft Plan was amended following careful consideration of all the responses received which has resulted in this final NDP.

The Plan has a Vision, Aims and Objectives and includes Policies under the following key themes:

- Open Space
- Protecting Home Farm
- Future Development for Belmont Golf Course
- Community Facilities
- Infill Housing
- Accessibility and Connectivity
- Supporting local businesses

Herefordshire Council are now publishing the plan for consultation. After this, the Neighbourhood Development Plan will then be examined by an Independent Examiner. The Examiner will then decide if the NDP should proceed to a local referendum.

Copies of the draft NDP can be viewed at:

<https://www.herefordshire.gov.uk/planning-and-building-control/neighbourhood-planning/neighbourhood-areas-and-plans>

The Neighbourhood team can be contacted at:

Neighbourhood Planning Team  
Herefordshire Council  
Planning Services  
Plough Lane  
Hereford  
HR4 0LE

Belmont Rural Parish Council gratefully acknowledges a grant awarded by the Supporting Communities in Neighbourhood Planning Programme. This is led by Locality in association with RTPI/Planning Aid England, CDF and partners, available through the My Community Rights Website

## Contents

|  | <b>Page</b> |
|--|-------------|
| 1. Introduction  | 5           |
| 2. Why are we preparing a Neighbourhood Development Plan?                      | 8           |
| 3. The Neighbourhood Development Plan Process                                  | 10          |
| 4. Planning policy, context and key issues for Belmont Rural                   | 12          |
| 5. Vision and Objectives of the Belmont Rural NDP                              | 14          |
| 6. Policies and Objectives of the Belmont Rural Neighbourhood Development Plan | 24          |
| 1. Open Spaces and Local Green Spaces  |             |
| 2. Protecting Home Farm and Land Adjacent to Ruckhall Lane                     |             |
| 3. Future Development for Belmont Golf Course                                  |             |
| 4. Community Facilities  |             |
| 5. Infill Housing  |             |
| 6. Accessibility and Connectivity  |             |
| 7. Supporting Local Businesses   |             |
| 7. Monitoring and Review   | 43          |
| 8. Appendix A  | 44          |

## Maps and Figures

|  | <b>Page</b> |
|--|-------------|
| Figure 1 – Neighbourhood Plan area                                 | 5           |
| Figure 2 – Preparing the Belmont Rural NDP                         | 10          |
| Figure 3 – Open Spaces in Belmont Rural                            | 15          |
| Figure 4 – Unregistered Parks and Gardens                          | 16          |
| Figure 5 – Belmont Golf Course Site                                | 18          |
| Figure 6 – Existing Community Facilities in Belmont Rural          | 20          |
| Figure 7 – Hereford Key Diagram                                    | 22          |
| Figure 8 – Local Green Spaces Justification                        | 28          |
| Figure 9 – Designated Local Green Spaces                           | 29          |
| Figure 10 – Home Farm / The Land Adjacent to Ruckhall Lane         | 31          |
| Figure 11 – Belmont Golf Course                                    | 34          |
| Figure 12 – Indicative route of Western Relief Road                | 34          |
| Figure 13 – Protected Community Services                           | 37          |
| Figure 14 – Extract from the Local Plan on the Western Relief Road | 41          |

## 1. Introduction

- 1.1 The Parish of Belmont Rural is located to the south of the City of Hereford with boundaries formed by Newton Brook to the South and East, Ruckhall Lane to the West and the River Wye to the North.
- 1.2 The boundary follows the south side of the River Wye (Special Area of Conservation and Site of Scientific Interest) and Belmont Abbey to the northern boundary and comprises an area of 991 hectares, see Figure 1.



**Figure 1 - The designated Belmont Rural Neighbourhood Plan area**

- 1.3 The Parish of Belmont Rural was established in April 2000, and from May 2015 became a Ward within its own right.
- 1.4 The parish is divided by the A465. There is a clear distinction from the urban to the rural. The last properties on Dorchester Way mark the end of the urban boundary as the open fields and parklands surrounding Home Farm and Belmont Parklands stretches out to the west.
- 1.5 Facilities include Belmont Community Centre (incorporating a small public library<sup>1</sup>) and Northolme Community Centre. Other local services and facilities include a doctor's surgery, a health centre and a pharmacy (all near the Belmont Community Centre) and on the A465 is a Tesco

<sup>1</sup> The long term future of the library is currently being considered by Herefordshire Council. Consultation on the budget of the Council has indicated that one option is that Belmont Library will no longer be supported by Herefordshire Council.



supermarket, the Three Counties Hotel and a McDonalds.

- 1.6 Belmont is an attractive Parish to live in, being only 2.5 miles from Hereford city whilst at the same time having excellent links with and in close proximity to the surrounding countryside, giving the parish its name Belmont Rural.
- 1.7 There are a total of 6 Listed Buildings within the area (see Appendix A, page 44). The listed buildings are concentrated to the western part of the parish and just beyond the parish boundary lies the grade II\* Abbey Church of St Michael and all Angels which dates back to 1854. The Church and Abbey is home to the Benedictine community.
- 1.8 The area directly to the north of the Church and Abbey, is an area of land around Home Farm which was heavily discussed as part of a planning inquiry made in 2013 for residential development on land at Home Farm. The Almshouse and Chapel are Grade II listed buildings, which lie on the most westerly boundary of the existing Belmont Rural residential area.
- 1.9 A large area of open parkland runs along Ruckhall Lane, which was designed by Humphry Repton. Whilst the parkland is not formally registered, it forms part of the 'Herefordshire Lowlands' national landscape character area (LCA) such historic parks form a key component of this LCA.
- 1.10 Belmont House II\* (dating from 1788 – 1790) is accessed from Ruckhall Lane and has associations with James Wyatt, an architect of national importance. The House has been modified over the years and most recently was used as a golf club house which has now closed.



**Picture 1 - Grade II\* Abbey Church of St Michael and all Angels**

- 1.11 Figure 1 clearly shows the parish has two distinctive parts; to the east the suburban housing developments either side of the A465 and to the west the tranquil parkland setting taking in a section of the former golf club, Belmont House and land associated with Home Farm.
- 1.12 A number of our neighbouring parishes are preparing Neighbourhood Development plans, as of September 2015:
- Breinton (to the north) submitted plan to Hereford Regulation 16
  - Callow & Haywood (to the south) at submission
  - Clehonger (to the west) have plans for developing a NDP

## **2. Why are we preparing a Neighbourhood Development Plan for Belmont Rural?**

- 2.1 Neighbourhood Development Plans are part of the statutory development planning system. Local authorities, such as Herefordshire Council, can produce development plans to promote, guide and control development of houses, businesses, open spaces and other uses of land. Parish councils now have the ability to do the same in the form of a neighbourhood plan.
- 2.2 Neighbourhood Development Plans, when complete, form part of the development plan for an area. They will be used to promote and guide what type of development goes where, and more importantly, will be used to help determine planning applications.
- 2.3 In 2012 a Neighbourhood Development Plan Steering Group was established and have had regular meetings to move forward with the NDP. Belmont Rural was one of the first parishes in Herefordshire to get formal designation in June 2013, following a 6-week consultation period on the area from May –June 2013.

### Belmont Rural Parish Plan<sup>2</sup>

- 2.4 Belmont Rural is an active parish that developed a Parish Plan in 2002/03. The Parish Plan has been the focus for the group, trying to deal with local issues and help achieve the objectives set within the plan. In Summer 2002, a 'Planning for Real' exercise was held to encourage local people to be involved and identify local issues and solutions. This was also complemented with a series of household questionnaires which were used to produce the plan.

---

<sup>2</sup>The Parish Plan still exists but is now out of date and work is underway to update it. The Neighbourhood Plan (NP) will not override the Parish Plan (PP), the NP focuses more on shaping the Parish through planning policies whereas the PP helps focus the parish on a wide range of issues which aren't just planning related.





**Picture 2 - Belmont Rural location marker**

- 2.5 Since 2002, there have been a series of updates to the Parish Plan and in 2011 a further questionnaire was produced and delivered to every household within the parish, primarily to obtain views on Abbey View Parks (part of which is now known as Jubilee Field<sup>3</sup>).

---

<sup>3</sup>Jubilee Field was named in honour of the Queen's Golden Jubilee celebrations.

### 3. The Neighbourhood Development Plan Process

- 3.1 The process for creating a neighbourhood plan are set out in the Town & Country Planning Act 1990, The Planning & Compulsory Purchase Act 2004, the Localism Act 2011, the Neighbourhood Planning Regulations 2012 and Directive 2001/42/EC on Strategic Environmental Assessment.
- 3.2 The process followed and key dates for preparing the Belmont Rural NDP is set out in detail in the table below.

(BRPC – Belmont Rural Parish Council HC – Herefordshire Council)

| Stage   | Event   | Consultation  | Outcome   |
|---|---|---|---|
| Stage 1<br>Designation  | October 2013<br>BRPC submitted an application to HC seeking formal designation of a NP area | HC consulted for 6 weeks  | Approval for the NP was given June 2014   |
| Stage 2   | August 2014<br>'Walkabout' of the NP area with the steering group                           |   |   |
| Stage 2<br>Plan Preparation   | September 2014  |   |   |
| Stage 3<br>Informal Consultation on the Issues, Vision, draft policies                        | November/December 2014  | BRP consult on the draft plan for 4 weeks: newsletter to be published Nov and Consultation event planned Dec. | Public consultation event 6 <sup>th</sup> 2014 December to the 5 <sup>th</sup> January 2015 |
| Reg 14 - Formal Consultation Draft NDP Feb 9 <sup>th</sup> 2015 – 23 <sup>rd</sup> March 2015 |   | Feb 9 <sup>th</sup> – 23 <sup>rd</sup> March 2015   | See consultation statement for response detail  |
| Stage 4<br>Revisions to the draft   | April – August 2015   |   |   |
| Stage 5<br>Regulation 16 - Submit to HCC  | October 2016  |   |   |
| Stage 6<br>HCC Public consultation 6 wks  |   |   |   |
| Stage 7<br>Examination  | January 2017  |   |   |
| Stage 8<br>*Referendum  | TBC   |   |   |

Figure 2 - Table showing the preparation of the Belmont Rural NDP

\*If the referendum vote is YES, then Herefordshire Council will 'make' the Belmont Rural NP part of the development plan for Herefordshire. The NP will then be used in the determination of planning applications.

Some of the dates may be subject to change.

## **4. Planning policy context & key issues for Belmont Rural**

### **Planning Policy Context**

- 4.1 The Belmont Rural NDP must take account of national planning policy. This is primarily contained in the National Planning Policy Framework (NPPF), March 2012. The Belmont Rural Neighbourhood Development Plan has taken full account of policy in the NPPF and has also been prepared by taking account of guidance contained in the National Planning Practice Guidance (NPPG).
- 4.2 The NDP must 'plan positively to promote local development' and must 'support the strategic development needs' set out in Herefordshire Council's (HC) Core Strategy adopted October 2015.

### **Strategic Environmental Assessment**

- 4.3 An initial Habitat Regulation Assessment and Strategic Environmental Assessment was carried out by Herefordshire Council in June 2013.
- 4.4 Herefordshire Council then produced a Strategic Environmental Assessment Scoping Report (October 2014). This was consulted upon for a period of 5 weeks. The aim of the consultation process is to involve and engage with statutory consultees and other relevant bodies on the scope of the appraisal. In particular, it seeks to:
- Ensure the SEA is both comprehensive and sufficiently robust to support the Neighbourhood Development Plan during the later stages of full public consultation;
  - Seek advice on the completeness of the plan review and baseline data and gain further information where appropriate;
  - Seek advice on the suitability of key sustainability issues;
  - Seek advice on the suitability of the sustainability objectives.
- 4.5 Comments on this Scoping Report were invited from the three consultation bodies (Natural England, Historic England and the Environment Agency) as required by the SEA regulations, together with the Natural Resources Wales.
- 4.6 A final Environmental Report has been carried out on the NDP, all documents are available on the Council's website.

### **Key Issues for Belmont Rural NDP**

- 4.7 The key issues to be addressed in the Belmont Rural NDP are detailed below. It is recognised some of the issues are achievable through mechanisms other than planning policy.

#### Open spaces and Parklands

- Whilst closely related to Hereford City, Belmont wants to retain its rural identity and connections with neighbouring parishes and be able to protect and enhance open spaces and parklands.

#### Transportation & Connectivity

- The impact of the Western Relief road has potential positives for the area.
- Safer routes to school needs to be developed in consultation with Herefordshire Council.
- Public Rights of Way are important within the parish and any possibilities to extend and enhance should be considered.

#### Housing and Development

- There are opportunities to look at small infill housing opportunities, the Golf Course could be identified as a potential housing site.

#### Community

- The area needs to access any available funding to keep existing community facilities going.
- There is limited emergency access especially to the north of the A465 which needs further consideration.
- A pub/restaurant in the area would be a huge benefit to the community.
- Medical services which includes a doctors' surgery are currently oversubscribed. The area needs to link into the Doctors Consortium and Wye Valley NHS Trust to find out any future plans they have for Belmont Rural.

## 5. Vision and Objectives of the Belmont Rural NDP

### 5.1 Belmont Rural's Vision for 2031:

'By 2031 Belmont Rural will have grown to take advantage of the Western Relief Road. Key green areas and open spaces will have been protected. Access to and from the area will have been improved allowing safe, easy access to quality services, open spaces and the wider countryside.'

5.2 To achieve this Vision the following objectives have been identified for the Belmont Rural NDP:

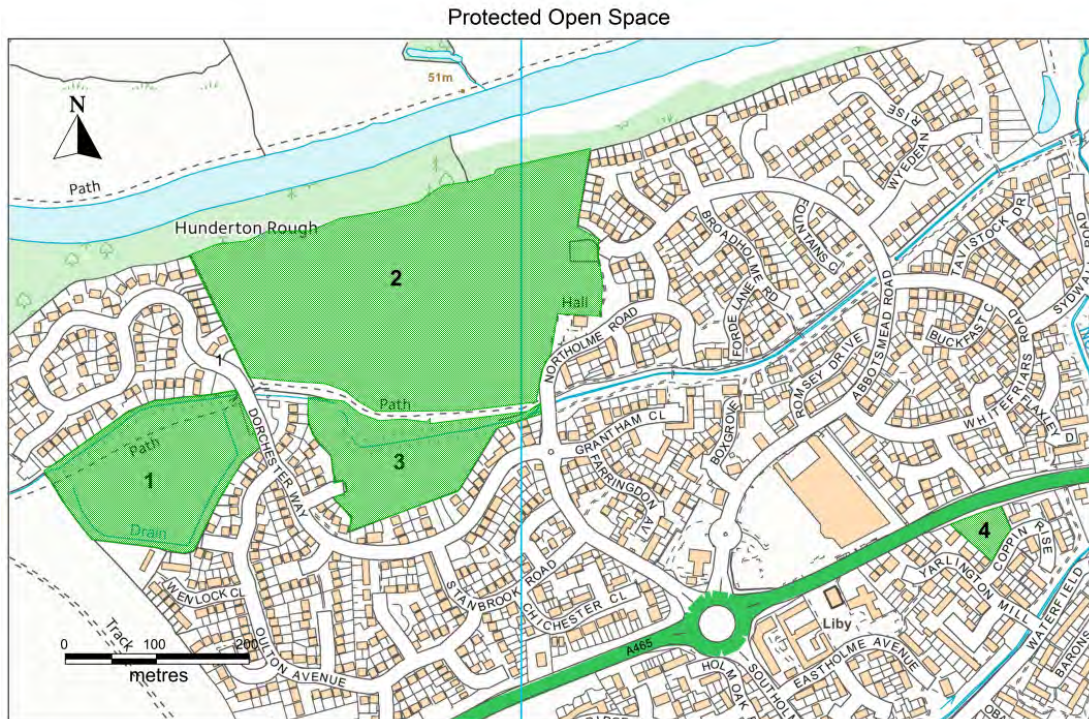
#### **Objective 1 – to protect and improve Open Spaces**



**Picture 3 - Abbey View Park**

5.3 Open spaces both formal and informal are valued by the residents of Belmont Rural Parish, which is supported in NPPF para 73-74.





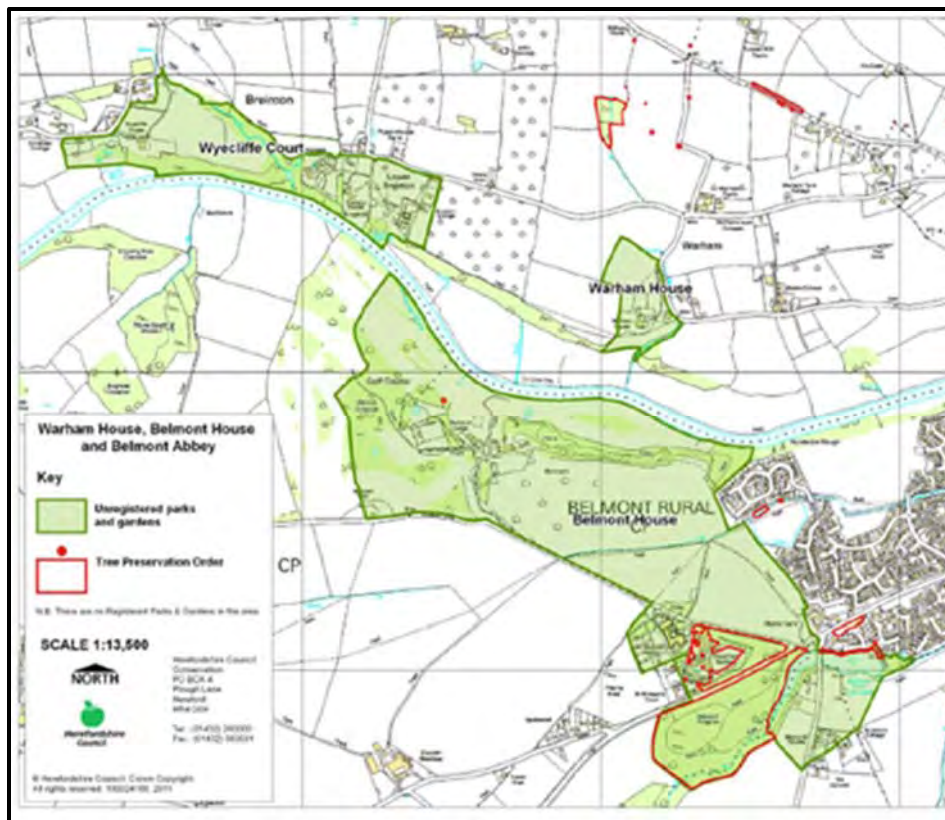
**Figure 3 - Open Spaces in Belmont Rural**

PSMA No: 0100054865

1. Abbey View West
2. Abbey View East
3. Jubilee Field
4. Coppin Rise

## Objective 2 – to protect ‘Home Farm’.

- 5.4 Home Farm is the key area of open land in the western half of the parish to the north east of Belmont Abbey. The land is within close proximity to the proposals for the Western Relief Road as detailed within Policy HD3 of the adopted Herefordshire Local Plan Core Strategy.
- 5.5 The site comprises of agricultural land which lies outside the urban settlement boundary, as previously defined in the Herefordshire Unitary Development Plan and is unregistered parkland. There is also evidence of below ground archaeological remains from Roman times. The area is also within the area of the Western Relief Road proposal.



**Figure 4 - Unregistered Parks and Gardens**

Extract taken from the Hereford UDP showing the extent of the unregistered parks and gardens within Belmont Rural parish and neighbouring Breinton



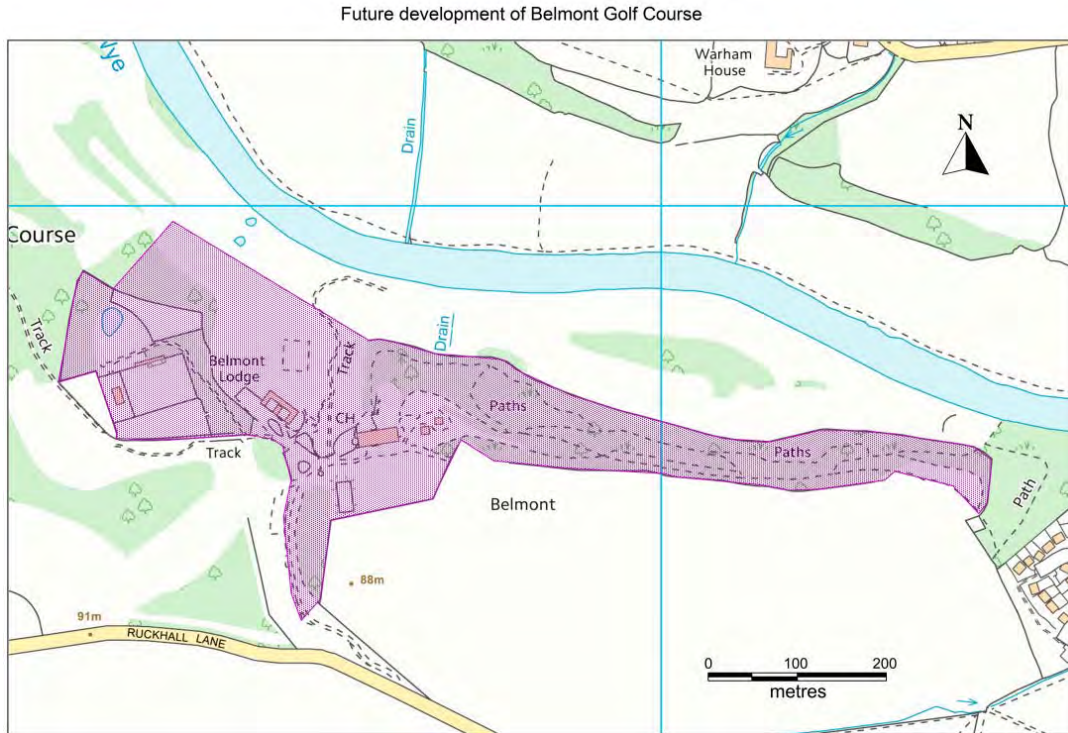
Picture 4 - Home Farm looking towards Dorchester Way with Hereford City beyond

**Objective 3 – to support long term development proposals for the former Belmont Golf Club**

- 5.6 Belmont Golf Club closed in March 2014. Belmont House which is grade II\* listed (listed building part of which was used as the Clubhouse) and Belmont Lodge (hotel) were subsequently decommissioned. The golf course has been leased for agricultural use for the medium term.
- 5.7 A private property exists just inside the north-western parish boundary adjacent to the course and Belmont Lodge. The wall surrounding the garden of this property and a stone in the grounds are listed. Future decisions on the route of any Western Relief Road could impact future development of this area of the parish. An indicative area of the potential road is illustrated on figure 12 (page 34).



# Belmont Rural Neighbourhood Development Plan



**Figure 5 - Belmont Golf Course Site**  
PSMA No: 0100054865



**Picture 5 - Belmont House**

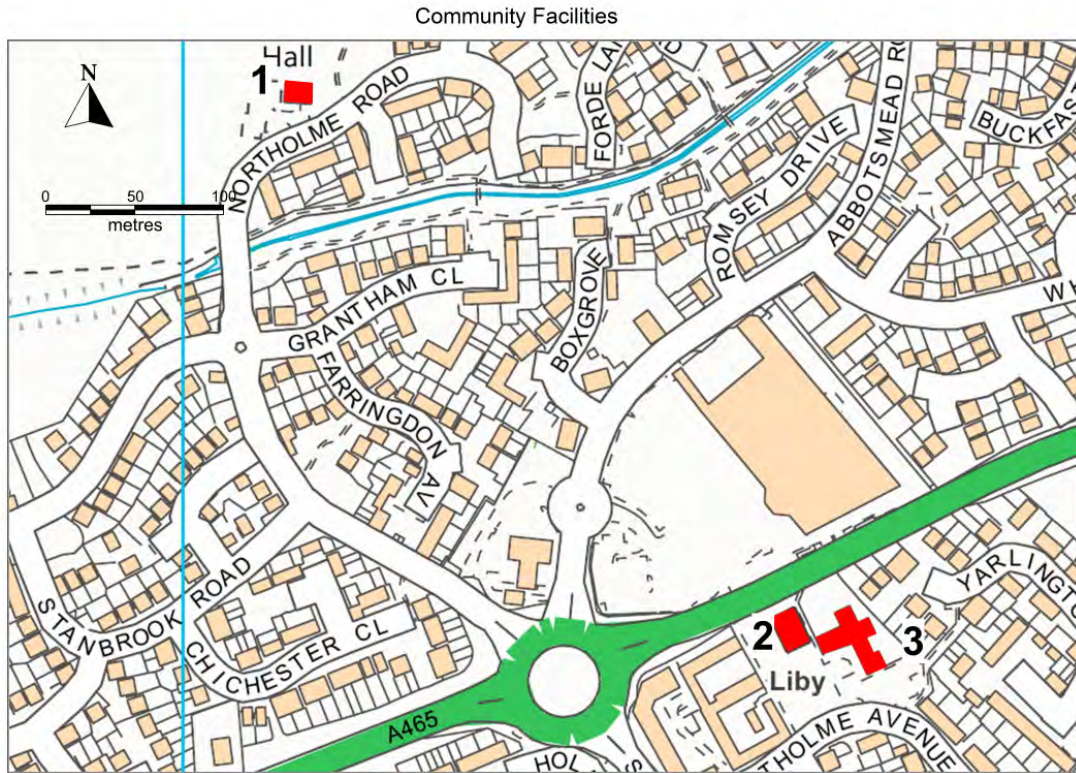
**Objective 4 – to improve and protect the quality and access of community facilities.**

- 5.8 The area needs to access any available funding to keep existing community facilities running (Figure 6). There are funding pots such as the Community Infrastructure Levy (CIL). The Parish Council will work with Herefordshire Council to know what best funding opportunities are available.
- 5.9 Whilst there is a Medical Centre within the area, there is no dentist. There is a need to link into the Doctors Consortium and Wye Valley NHS Trust to find out any future plans they have for the area.



**Picture 6 - Northholme Community Centre**





**Figure 6 - Existing Community Facilities in Belmont Rural**  
PSMA No: 0100054865

**Key:**

1. Northholme Community Centre
2. Belmont Community Centre including a public library
3. Belmont medical centre includes a doctor's surgery and pharmacy



**Objective 5 – to identify small, infill sites for new housing**

- 5.10 To help support housing growth in the wider area, small infill sites for new housing within Belmont Rural will be supported when they are of good design and do not have an adverse impact on residential amenity or the local environment.



**Picture 7 - View looking towards Hereford City from Ruckhall Lane**

## Objective 6 – to improve access to the area, taking advantage of the Western Relief Road

- 5.11 Transport and connectivity through the area is important for the future of Belmont Rural. The area is in an excellent position with good roads, footpaths and cycle ways for easy access to Hereford City whilst at the same time retaining its own identity and maintaining strong linkages to the surrounding rural area. It is key that the area takes advantage of future strategic improvements such as the Western Relief Road.
- 5.12 Smaller initiatives such as enhancement to footpaths and cycle ways are of equal importance. This can be achieved by working with Herefordshire Council and organisations such as Sustrans<sup>4</sup>.

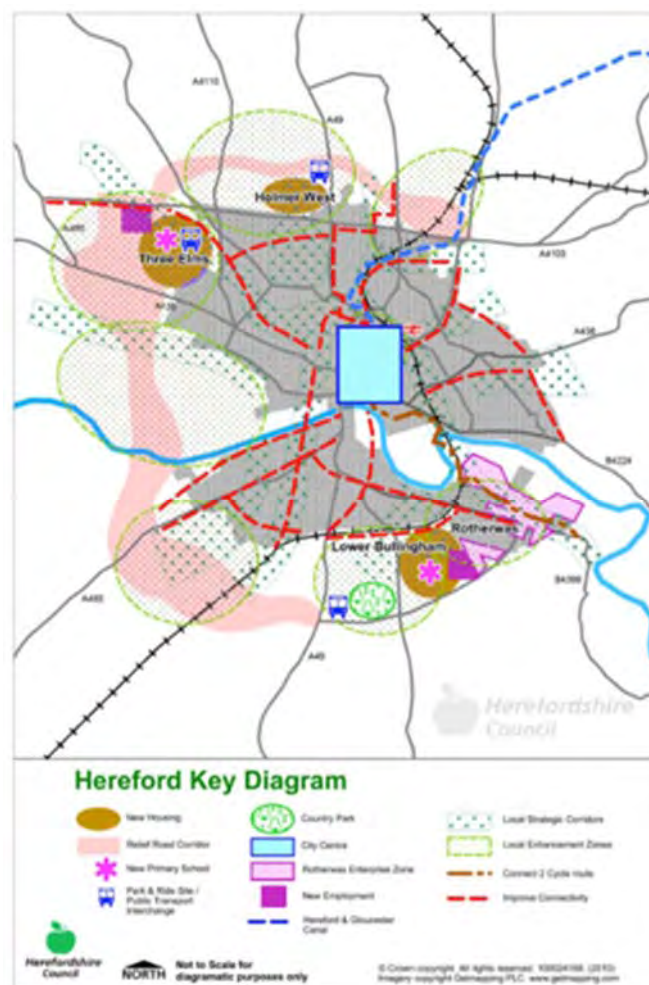


Figure 7 - Hereford Key Diagram

<sup>4</sup> <http://www.sustrans.org.uk>

**Objective 7 – to support local Small and Medium Businesses**

- 5.13 Tesco is clearly the biggest employer within the Parish, but the area has a number of small and medium sized businesses, along with many people who now work from home. Supporting existing local businesses and the creation of new local businesses within the parish is important for the long- term sustainability of the parish and encourages people to use local services. The Belmont Rural NDP will seek to support local business growth in appropriate locations.

# **Policies and Objectives of the Belmont Rural Neighbourhood Development Plan**

## Open Spaces and Local Green Spaces

### Policy 1: Open Space and Local Green Spaces

a). Any future planned development must include adequate additional public open space. This will be assessed on a site by site basis and in line with adopted policies within the Herefordshire Local Plan Core Strategy 2011 - 2031

b). Local Green Spaces

The following green spaces, also identified on Figure 9 will be protected as designated Local Green Space. Developments for other uses will only be supported when it is accordance with national planning policy for local green spaces

1. Abbey View West
2. Abbey View East
3. Jubilee Field
4. Coppin Rise

c). Other Open Spaces within the Parish identified below will also be protected. Any proposals which would result in the loss of these open spaces will be determined in line with Core Strategy Policy OS3.

|                                       |                      |
|---------------------------------------|----------------------|
| Glastonbury Close                     | Wyedean Rise x 3     |
| Deerhurst Drive x 1                   | Fountains Close      |
| Between Forde Lane and Northolme Road | Sydwall Road         |
| Benjamin Park off Northolme Road      | Grantham Close       |
| Wheatridge Road                       | Northolme Play Areas |
| Stanbrook Road                        | Dorchester Way x 2   |
| End of Canterbury Close               | Rosedale Drive       |
| Blackthorne Close                     |                      |

The enhancement of these sites and links to other potential new sites will be encouraged.

d). Where opportunities exist linkages to 'cross parish' green spaces will be promoted to provide defined areas for public access.

e). Any development specifically for sports open space within the Parish must reflect the recommendations set out in Herefordshire's Playing Pitch Assessment 2012



Picture 8 - Play area to the rear of Northholme Community Centre

The policy supports the following Neighbourhood Plan objective:

**Objective 1 - to protect and improve Open Space**

**Planning Policy Linkages**

Adopted Herefordshire Local Plan – Core Strategy 2011-2031

- Policy OS2 – Meeting open space, sports and recreation needs
- Policy OS3 – Loss of open space, sports or recreation facilities
- Policy LD3 – Green infrastructure



## Background/Justification

Belmont Rural has a range of green and open spaces, which the community considers to be a huge asset. These green and open spaces play an important role in the wider Green Infrastructure network.

The NPPF allows communities to protect significant local green space. Paragraphs 76-77 are as follows:

*76. Local communities through local and neighbourhood plans should be able to identify for special protection green areas of particular importance to them. By designating land as Local Green Space local communities will be able to rule out new development other than in very special circumstances. Identifying land as Local Green Space should therefore be consistent with the local planning of sustainable development and complement investment in sufficient homes, jobs and other essential services. Local Green Spaces should only be designated when a plan is prepared or reviewed, and be capable of enduring beyond the end of the plan period.*

*77. The Local Green Space designation will not be appropriate for most green areas or open space. The designation should only be used:*

- *where the green space is in reasonably close proximity to the community it serves;*
- *where the green area is demonstrably special to a local community and holds a particular local significance, for example because of its beauty, historic significance, recreational value (including as a playing field), tranquillity or richness of its wildlife; and*
- *where the green area concerned is local in character and is not an extensive tract of land.*

The Parish Council supports the identification of several green spaces within Belmont Rural for protection as Local Green Spaces.

| Name of site   | Distance from local community  | Local significance   |
|--|--|--|
| 1. Abbey View West   | Close to Home Farm   | <p>Informal footpaths have been provided around the perimeter by the Parish Council, which also ensures the local residents with any form of disability can enjoy this public open space as the footpaths provide a safe and level access.</p>   |
| 2. Abbey View East incorporating Northholme Community Centre | <p>Running west of Northholme Community Centre and open space adjacent to Northholme Community Centre, off Northholme Road</p> | <p>Informal footpaths have been provided around the perimeter by the Parish Council, which also ensures that the local residents with any form of disability can enjoy this public open space as the footpaths provide a safe and level access.</p> <p>This has proven to be popular with Wheelchair users, cyclists / walkers and anyone else who enjoy outdoor activities.</p> <p>The area has been equipped with a much used Infants and Junior play park for use by the local community. The open space is mainly used by younger members of the community for various sporting activities which encourages physical activities.</p> <p>This is also used to hold the Belmont Summer/Fun day which is open to the local community.</p> |
| 3. Jubilee Field   | <p>Central to the community close to Northholme Community Centre</p>   | <p>An area of bio diversity with clear informal walked grassed footways.</p> <p>This area is part of the Local Communities aspiration to have a managed informal public open space where all walks of life can come and enjoy the wildflower meadow and natural beauty.</p> <p>The Parish has developed a local management plan for this purpose.</p>  |
| 4. Coppin Rise   | <p>South of Belmont Rd, within close proximity to Belmont Community Centre</p>   | <p>Area designated as public open space with the provision of a children's play area for the whole local community to enjoy.</p> <p>This also aids and encourages physical activity for the younger generation.</p>  |

**Figure 8 - Local Green Spaces Justification**

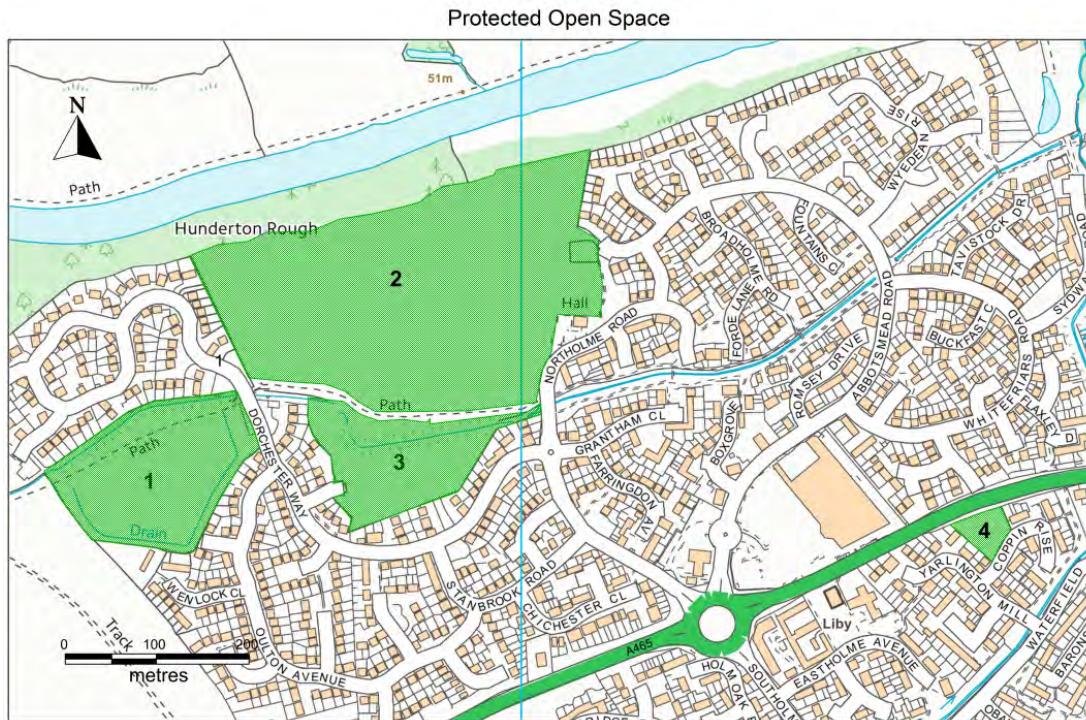


Figure 9 - Designated Local Green Spaces

PSMA No: 0100054865

### Management Plan

It is the intention that a management plan for the local green spaces will be developed and monitored. This will be carried out by the Parish Council in liaison with Herefordshire Council.

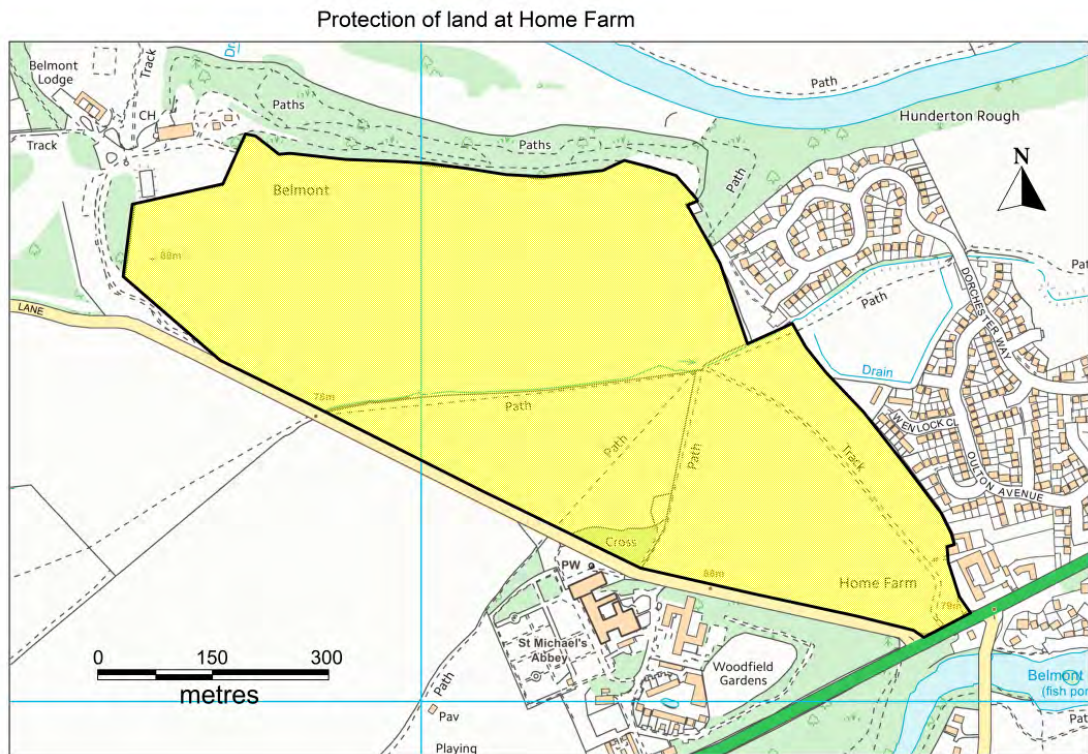
## Protecting Home Farm and the Land Adjacent to Ruckhall Lane

### **Policy 2: Protecting Home Farm and the Land Adjacent to Ruckhall Lane**

- a) Any development on land at Home Farm and land adjacent to Ruckhall Lane as identified on Figure 10 must have regard to the character and appearance of the area and conserve or enhance the character or appearance of heritage assets
- b) Opportunities to enhance the ecological networks and habitats including hedgerows will be promoted and support is given for a walking and cycling link between Abbey View West and Belmont Abbey
- c) Any proposals must have regard to policies SS4 and HD3 of the adopted Hereford Local Plan Core Strategy and any other strategic policy or proposal concerning the proposed Hereford Relief Road and it is not intended that this policy will prejudice the implementation of the Hereford Relief Road

This area has been recognised as an important ecological site together with a collection of key heritage assets; Belmont Abbey, Home Farm Stables, Belmont House former Golf Club site, The Almshouses and Chapel. It is important that the site is protected so that there is no harm to the character and appearance of the area.





**Figure 10 - Home Farm / The Land Adjacent to Ruckhall Lane**  
PSMA No: 0100054865



**Picture 9 - View of Home Farm taken from Ruckhall Lane**

The policy supports the following Neighbourhood Plan objective:

**Objective 2 - to protect Home Farm and the Land Adjacent to Ruckhall Lane.**

**Planning Policy Linkages**

Adopted Herefordshire Local Plan – Core Strategy 2011-2031

LD1 – Landscape and townscape  
LD2 – Biodiversity and geodiveristy  
LD4 – Historic environment and heritage assets  
HD3 – Hereford Movement  
SS4 – Movement and Transportation

**Background/Justification**

Home Farm and the surrounding farmland which includes several listed buildings, creates a unique landscape setting which is not only important to Belmont Rural, but to the wider area.

The parkland is designated as an ‘unregistered park’, and there are no other historic parklands of this scale or quality on the city boundary of Hereford.

This area has been recognised as having an important ecological value, notably mature and veteran trees, established hedgerow habitats and evidence of below ground archaeological remains from Roman Times. There is also a collection of key heritage assets; Belmont Abbey, Home Farm Stables, Belmont House former Golf Club site, The Almshouses and Chapel. It is important that the site is protected so that there is no harm to the character and appearance of the area.

Working with Herefordshire Council and the landowner, a parkland management plan shall be put in place in order to safeguard the future sustainability of the site.

Policy links should be made with policy 1 and policy 6 of this plan.



## Future development for Belmont Golf Course

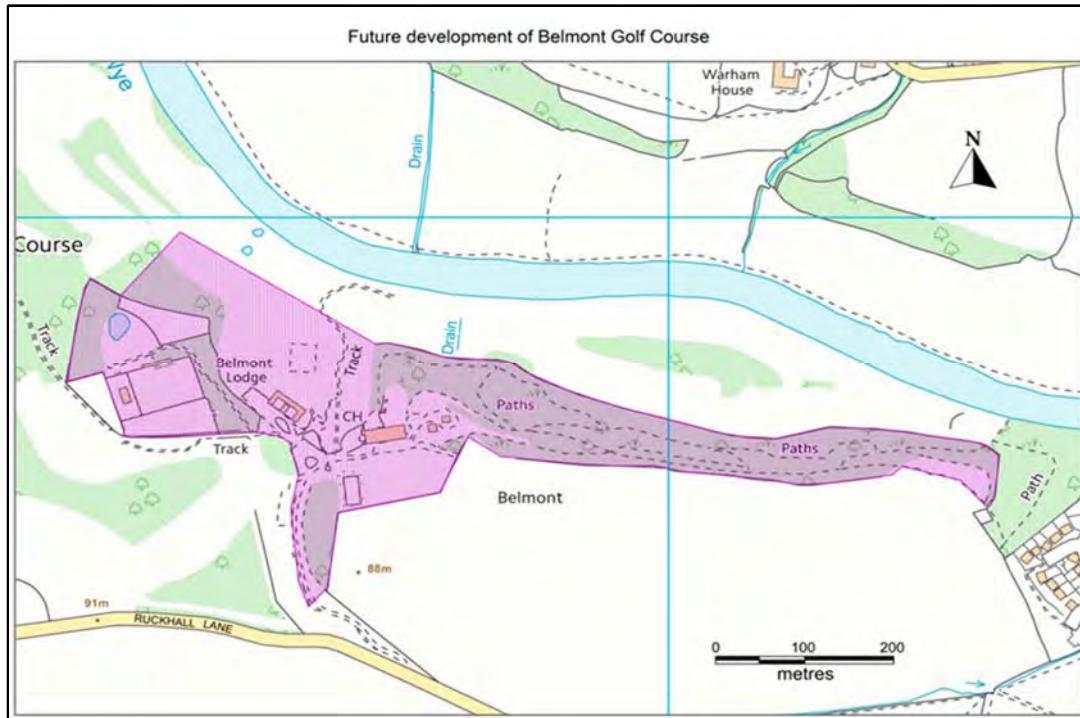
### Policy 3: Belmont Golf Course

Future development of the former Belmont Golf Course site (see Figure 11) will be supported if proposals secure the future of Belmont House and other heritage assets. Existing buildings should, wherever desirable and viable to do so, be reused and converted. Enabling development will be considered favourable if appropriate in location and scale and if it respects the setting of the site.

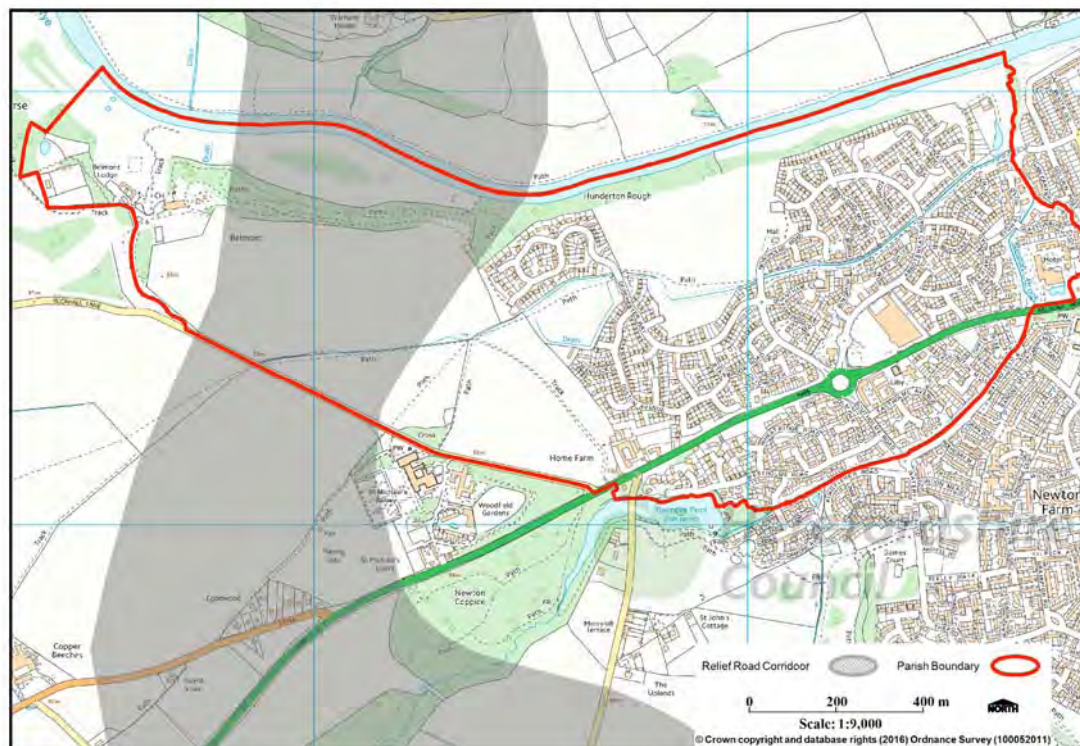
A range of uses including housing, B1 employment and leisure uses will be supported in principle provided the following criteria can be met:

- a. Proposals should be easily connected to the wider Belmont Rural area both by foot, cycle and road with improved supporting infrastructure;
- b. All new development must demonstrate good quality design by responding to, and integrating with, local surroundings, landscape context, and the existing built environment;
- c. Proposals should utilise the site's existing heritage assets and respect the character and setting of these assets;
- d. As the site is located within close proximity to the Special Area of Conservation (SAC) River Wye, any future proposals for the site should respect this exceptional position and work with statutory bodies to ensure there is no detrimental impacts to the River Wye's vegetation, habitats and other environmental assets;
- e. Any future proposals must have regard to policies SS4 and HD3 of the adopted Hereford Local Plan detailing policy on the proposed Hereford Relief Road;
- f. Future development must liaise with statutory consultees regarding potential flood risk; and
- g. Development can only proceed where any likely significant effect on the River Wye SAC can be avoided or mitigated.

# Belmont Rural Neighbourhood Development Plan



**Figure 11 – Belmont Golf Course Site**  
PSMA No: 0100054865



**Figure 11 - Indicative route of the Western Relief Road in relation to Belmont Rural**  
[https://www.herefordshire.gov.uk/media/5656700/Draft%20Study\\_of\\_Options\\_Aug\\_2010.pdf](https://www.herefordshire.gov.uk/media/5656700/Draft%20Study_of_Options_Aug_2010.pdf)



Picture 10 - View into the former golf club

The policy supports the following Neighbourhood Plan objective:

**Objective 3 - to support long-term development proposals for the former Belmont Golf Club**

**Planning Policy Linkages**

Adopted Herefordshire Local Plan – Core Strategy 2011-2031

- LD1 – Landscape and townscape
- LD4 – Historic environment and heritage assets
- HD5 – Western urban extension (Three Elms)
- SS4 – Movement and Transportation

**Background/Justification**

The former Golf Club and associated land provides a huge opportunity for development within the parish. The site is to the western edge of the parish, which is accessed by road from Ruckhall Lane.

The site is a key heritage asset within Belmont Rural, and it's re-use would enhance and preserve the asset. Enabling a viable use to the buildings is important to the long term future of the site and wider social, cultural, economic and environmental benefits.

## Community Facilities

### Policy 4: Community Facilities

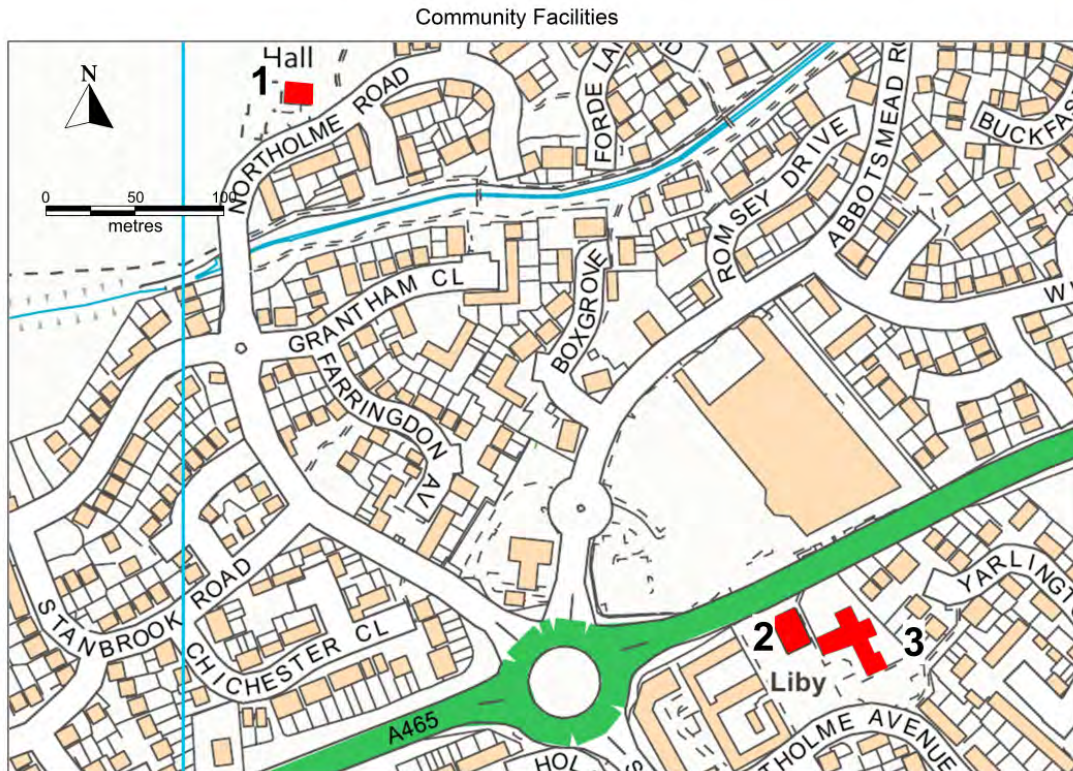
The community facilities identified on Figure 13 will be protected:

1. Northolme Community Centre
2. Belmont Community Centre and public library
3. Belmont Medical Centre with doctor's surgery and pharmacy

There will be a presumption in favour of the re-use of such facilities for community, social or recreation uses. Development of these community assets for non-community use will only be permitted when:

- a). An alternative site or building is provided of equal or greater community value than the facility to be replaced; and
- b). The asset to be replaced has been unused for a significant period of at least 12 months, marketed to find another user, and is not subject to the community right to bid process
- c). Development can only proceed where any likely significant effect on the River Wye SAC can be avoided or mitigated.





**Figure 12 - Protected Community Facilities**  
PSMA No: 0100054865



**Picture 11 - Belmont Community Centre**

The above policy supports the following Neighbourhood Plan objective:

**Objective 4 - to improve the quality of, and access to, community facilities.**

### **Planning Policy Linkages**

Adopted Herefordshire Local Plan – Core Strategy 2011-2031

Policy SS1 – Presumption in favour of sustainable development

Policy SC1 – Social and community facilities

### **Background/Justification**

Belmont Rural has limited community assets, and the long term future of some of these existing assets are at risk. It is therefore important to protect these assets, as any loss would have a detrimental impact on the local community and would put pressure on people to travel further afield to access services.

## Infill Housing

The policy below supports the following Neighbourhood Plan objective:

### Objective 5 - Small, infill sites for new housing

#### Policy 5: Infill Housing

Applications for residential developments on infill and redevelopment sites within Belmont will be supported subject to proposals being well designed and meeting all relevant requirements set out in other policies in this plan and the Core Strategy, and where such development:

- a). Fills a restricted gap in the continuity of existing frontage buildings or on other sites within the built-up area of the parish
- b). Will not have a harmful impact of the privacy or other living conditions of the occupiers of nearby properties or is inconsistent with the character and appearance of the locality
- c). A mix of property type, size, or tenure should be provided on appropriate sites
- d). Applications for annexes to an existing dwelling, should be conditioned appropriately through the formal planning application process to ensure that units aren't sold off separately to avoid creating problems with parking issues.
- e). Development can only proceed where any likely significant effect on the River Wye SAC can be avoided or mitigated.
- f). All new dwellings will have useable garden space and provide appropriate parking provision within the site curtilage

#### Planning Policy Linkages

Adopted Herefordshire Local Plan – Core Strategy 2011-2031

SS2 – Delivering new homes

H1 – Affordable housing, thresholds and targets

#### Background/Justification

Belmont Rural has contributed to the provision of new housing over the last 15-25 years with the development of modern housing estates on both sides of the A465. The parish also sits on the edge of the urban boundary of Hereford which sits tightly around the ward boundary, leaving little opportunities to extend beyond the existing built form.

The Neighbourhood Development Plan recognises that new housing is important, and the policy above supports housing on appropriate sites within Belmont Rural.



## Accessibility and Connectivity

### Policy 6: Accessibility & Connectivity

Walking and cycling will be encouraged by the enhancement of existing routes (the National Cycle Route 46 and Great Western Way Link) through Belmont Rural.

New development should take every available opportunity to provide new and enhanced safe footpaths and cycleways



Picture 12 - Footpath/cycleway

The above policy supports the following Neighbourhood Plan objective:

### **Objective 6 - to improve access to the area, taking advantage of the Western Relief Road**

#### **Planning Policy Linkages**

Adopted Herefordshire Local Plan – Core Strategy 2011-2031

- MT1 – Traffic Management, highway safety and promoting active travel
- SS4 – Movement and transportation
- E4 – Tourism
- HD3 – Hereford Movement

#### **Background/Justification**

The Parish is located in an excellent position with a range of transport modes; road, foot and cycle access to Hereford City. The parish has its own identity and strong linkages to the surrounding rural areas. The National Cycle Route (46) runs through Belmont Rural as well as the 'Great Western Way Link' and smaller local routes.

The Western Relief Road will aim to reduce the volume of traffic from the city centre and enable the delivery of walking, cycling and bus improvements on the existing highway network.

Further assessments will be undertaken as part of the Hereford Area Plan<sup>5</sup> and subsequent planning applications.



Figure 13 - taken from page 6 of the Herefordshire Council LTP 2013/14 - 2015/16

<sup>5</sup> In accordance with the Hereford Local Development Scheme, submission is due Summer 2016

## Supporting Local Businesses

### **Policy 7: Supporting small and medium businesses in Belmont Rural**

Existing small/medium businesses will be supported within the neighbourhood plan area and where opportunities exist small scale expansion will be supported, providing the following criteria are met:

- a. There is a satisfactory means of access and adequate parking provided on site;
- b. There will not be an unacceptable harm to the amenity of any neighbouring properties;
- c. All new development must demonstrate good quality design. This means responding to and integrating with local surroundings and landscape context as well as the existing built environment;
- d. Development can only proceed where any likely significant effect on the River Wye SAC can be avoided or mitigated.

The above policy supports the following Neighbourhood Plan objective:

### **Objective 7 – to support local businesses**

#### **Planning Policy Linkages**

Adopted Herefordshire Local Plan – Core Strategy

- SS1 – Presumption in favour of sustainable development
- E1 – Employment provision
- E3 – Homeworking

#### **Background/Justification**

Belmont Rural recognises the value of existing local businesses and the contribution they bring to the area for job creation and also for service users.

## **7 Monitoring and review**

- 7.1** To ensure our Plan is kept up-to-date we will review the document annually. Where it is found that policies are not working, or are no longer relevant this may necessitate a review of the Plan.

## Appendix A

The information in the appendix is correct at the time of writing the plan. Up to date information should be sought from the local planning authority, the Parish Council or other relevant organisation such as Historic England.

There are 6 Listed Buildings in Belmont Rural. These are:

| Name   | Listing |
|--|---------|
| Stables about 20 yards NNE of Home Farmhouse                                 | II      |
| Stone and plaque about 200 yards WNW of Belmont House                        | II      |
| Almshouses and Chapel at NGR 485383  | II      |
| Belmont House  | II*     |
| Barwood House  | II      |
| Walled gardens c 220 metres WNW of Belmont House                             | II*     |
| Abbey Church of St Michael and all Angels (lies outside the Parish boundary) | II*     |
|  |         |

# Belmont Rural Parish Council

