

Environmental Report



Burghill Neighbourhood Area

December 2015

Burghill Parish Environmental Report

Contents

Non-technical summary

- 1.0 Introduction
- 2.0 Methodology
- 3.0 The SEA Framework
- 4.0 Appraisal of Objectives
- 5.0 Appraisal of Options
- 6.0 Appraisal of Policies
- 7.0 Implementation and monitoring
- 8.0 Next steps

Appendix 1: Initial SEA Screening Report

Appendix 2: SEA Scoping Report incorporating Tasks A1, A2, A3 and A4

Appendix 3: Consultation responses from Natural England and English Heritage

Appendix 4: SEA Stage B incorporating Tasks B1, B2, B3 and B4

Appendix 5: Options Considered

Appendix 6: Environmental Report checklist

Non-technical summary

Strategic Environmental Assessment (SEA) is an important part of the evidence base which underpins Neighbourhood Development Plans (NDP), as it is a systematic decision support process, aiming to ensure that environmental assets, including those whose importance transcends local, regional and national interests, are considered effectively in plan making.

The Burghill Parish has undertaken to prepare an NDP and this process has been subject to environmental appraisal pursuant to the SEA Directive. The centre of the Parish lies approximately 4 miles to the north west of Hereford City and to the north of the A4103 which is on an east west alignment of the former Roman Road, the defining northern city limit. Neighbouring Parishes include Credenhill and Brinsop and Wormsely to the West, Stretton Sugwas to the South West, Canon Pyon to the north, Wellington to the north east, Moreton on Lugg and Pipe and Lyde to the east and Holmer and Shelwick to the south east.

The Draft Burghill NDP includes 11 objectives and it is intended that these objectives will be delivered by 14 criteria based planning policies; there are 7 site allocations across the parish proposed.

The environmental appraisal of the Burghill NDP has been undertaken in line with the Environmental Assessment of Plan and Programmes Regulations 2004. Stage A of the SEA process involved Scoping and Stage B provided a review and analysis of the NDP. Stage C involved preparing an Environmental Report and Stage D comprises a formal consultation on both this and the Draft Plan itself.

Habitat Regulations Assessment (HRA) screening has been carried out as the Parish falls within the catchment for the River Wye, which is a European site (Special Area of Conservation). The HRA assesses the potential effects of the NDP on the River Wye SAC.

On the whole, it is considered that the Burghill NDP is in general conformity with both national planning policy contained in the National Planning Policy Framework and strategic policies set within the Herefordshire Local Plan (Core Strategy). Nor does it propose any growth that would be over and above that prescribed by strategic policies. Therefore no changes to the NDP are recommended as a result of the SEA.

Once made (adopted) by Herefordshire Council, the effects of the policies within the Burghill NDP will be monitored annually via the Council's Annual Monitoring Report (AMR).

1.0 Introduction

- 1.1 This report forms the draft Strategic Environmental Assessment (SEA) of the Burghill Parish Neighbourhood Development Plan (NDP).
- 1.2 The Burghill Parish NDP proposes 7 site allocations, Burghill and Tillington are settlements identified within Table 4.14 of the Core Strategy which are identified for proportional levels of growth in Policy RA1 of the Herefordshire Local Plan (Core Strategy). The NDP will also provide general policies for guiding future development across the parish as a whole.

Purpose of the SEA

- 1.3 SEA is a requirement of EC Directive 2001/42/EC (the SEA Directive) which requires the assessment of the effects of certain plans and programmes on the environment to ensure that the proposals in that plan or programme contribute to the achievement of sustainable development.
- 1.4 The Directive was transposed into domestic legislation through the Environmental Assessment of Plans and Programmes Regulations 2004 and which applies to plans with significant environmental effects.
- 1.5. A screening opinion was carried out on the Burghill Parish NDP and it concluded that due to the range of environmental designations in and around the parish, there may be significant environmental effects and consequently an SEA would be required.

Burghill Parish Neighbourhood Plan Context

- 1.6 The centre of the Parish lies approximately 4 miles to the north west of Hereford City and to the north of the A4103 which is on an east west alignment of the former Roman Road, the defining northern city limit. Neighbouring Parishes include Credenhill and Brinsop and Wormsely to the West, Stretton Sugwas to the South West, Canon Pyon to the north, Wellington to the north east, Moreton on Lugg and Pipe and Lyde to the east and Holmer and Shelwick to the south east.
- 1.7 The neighbourhood area boasts many natural features, not least 3 Special Wildlife Sites and 1 Sites of Importance to Nature Conservation and a Conservation area. There are numerous built heritage assets, too, including listed buildings, 4 Scheduled Ancient Monuments and non-designated assets.
- 1.8 The vision for Burghill Parish in 2031 is:

‘Our vision for the Parish of Burghill is that it should be a pleasant place for people of all ages to live with amenities that allow it to be a thriving community and with a separate identity from the city of Hereford.’

- 1.9 The 11 NDP objectives are as follows:
- Objective 1 - To try to ensure there is a mix of housing for local people to rent or buy, so that both first-time buyers and the elderly can remain a part of the community.
 - Objective 2 - To establish criteria for new housing such as the size of developments, sustainability, and building materials in keeping with the local environment and in accordance with the Burghill Parish Design Standards.
 - Objective 3 - To preserve and where possible enhance the natural environment around us.
 - Objective 4 - To promote and support our local primary school
 - Objective 5 - To support local assets such as the shop, pub and village hall for the present and future benefit of the community.
 - Objective 6 – To preserve and where possible enhance leisure facilities such as the playground and sports grounds.
 - Objective 7 - To maintain for the parish a separate identity from the city.

- Objective 8 - To try to establish safe walking, cycling and driving routes through the parish.
- Objective 9 - To encourage small businesses in the parish, and promote tourism
- Objective 10 - To promote better internet provision.
- Objective 11 - To try to provide better public transport and lessen reliance on car usage.

Context of Neighbourhood Plans

- 1.10 NDPs are a relatively new type of planning document that form a key part of the Government's localism agenda. They enable local communities to develop plans that reflect local aspirations, in accordance with strategic policies.
- 1.11 The Burghill Parish NDP must therefore conform to national planning policy set within the NPPF and strategic level local policy including the Herefordshire Local Plan (Core Strategy).
- 1.12 The Herefordshire Local Plan (Core Strategy) was adopted on the 16th October 2015.
- 1.13 Paragraph 216 of the NPPF and Planning Practice Guidance set out the weight that may be given to relevant policies in emerging plans, including NDPs, and indicated that weight may be given to relevant policies in emerging NDPs according to:
- The stage of preparation of the emerging plan (the more advanced the preparation, the greater the weight that may be given);
 - The extent to which there are unresolved objections to relevant policies (the less significant the unresolved objections, the greater the weight that may be given); and
 - The degree of consistency of the relevant policies in the emerging plan to the policies in this Framework (the closer the policies in the emerging plan to the policies in the Framework, the greater the weight that may be given).
- 1.14 This part of the NPPF is reinforced by Planning Practice Guidance published in March 2014, which is clear that an emerging NDP may be a material planning consideration once it has reached submission/local authorities publication stage (Regulation 16). This is reinforced by recent ministerial statements and case law (West Sussex), all of which have demonstrated that an emerging NDP may be a material consideration at the Regulation 16 stage¹.
- 1.15 Table 4.14 of the Local Plan (Core Strategy) lists Burghill and Tillington among the settlements which it considers to be sustainable locations for growth of 18%, in line with the provisions of Policy RA2.
- 1.16 Once made (adopted) by Herefordshire Council, the Burghill Parish NDP will have a role in guiding future development proposals within the Parish, by setting out policies against which planning applications will be determined.

Structure of SEA

- 1.17 The structure of the document is as follows:
- Section 2 – Explains the SEA methodology and summarises the comments received in respect of the SEA Scoping Report
 - Section 3 - Introduces the Burghill Parish NDP objectives and the SEA framework
 - Section 4 - Appraises the objectives contained within the Neighbourhood Plan against the SEA framework

¹ For the avoidance of doubt, this NDP is currently at the Draft Plan Stage (Regulation 14) and cannot, therefore, be given weight in reaching decisions on planning applications

- Section 5 - Appraises the options considered within the Neighbourhood Plan against the SEA framework
- Section 6 – Appraises the policies contained within the Neighbourhood Plan against the SEA framework
- Section 7 – Discusses the implementation and monitoring of the Neighbourhood Plan
- Section 8 - Concludes the SEA report by outlining next steps

2.0 Methodology

2.1 The SEA process comprised several stages and which are summarised, in some detail, below.

2.2 Stage A involved 4 tasks and culminated in a Scoping Report:

- *Task A1:* Identified and reviewed relevant policies, plans and programmes and environmental protection objectives from European, National and Local sources.
- *Task A2:* Collected baseline information to provide a picture of past, present and likely future conditions within the area. This helped to establish indicators which will be used to monitor the effects and performance of the Burghill Parish NDP.
- *Task A3:* Focused on the environmental issues identified from the baseline, highlighting key issues and problems within the neighbourhood area.
- *Task A4:* Used the information gathered from Tasks A1-A3 to develop a set of SEA objectives, sometimes referred to as the 'sustainability framework'.
- *Task A5:* Collated the results of Tasks A1-A4 within a Scoping Report, a document which was subject to a statutory 5 week consultation.

2.3 Stage B involved 4 tasks and assessed the effects of the NDP.

- *Task B1:* Tested NDP Objectives against the SEA Objectives
- *Task B2:* Developed and refined the NDP options and policies
- *Task B3/B4:* Predicted and evaluated the significant effects of the NDP

2.4 Stage C involved preparing an Environmental Report. This report presents information compiled during Stage B of the SEA process and constitutes the Draft Environmental Appraisal of the NDP. It accompanies the Draft Plan during its formal Regulation 14 consultation with people who live, work and carry out businesses in the neighbourhood area, as well as statutory bodies listed in the Neighbourhood Planning (General) Regulations 2012.

2.5 Producing an Environmental Report was therefore a legal requirement and the submission of this report to Herefordshire Council forms Stage D of the SEA process.

Scoping Report Consultation

2.6 With regard to the SEA scoping assessments, documents A1 to A4 were completed by a Herefordshire Council Planning Officer and sent to the Parish Council for comment, in readiness for a 5 week consultation with statutory bodies, pursuant to the Environmental Assessment of Plans and Programmes Regulations 2004.

- 2.7 After the document was approved by the Parish Council, the Burghill Parish SEA Scoping Report was available to four² statutory bodies for consultation from 28 July to 1 September 2014.

Consultation outcomes from Statutory Consultees

- 2.8 The consultation resulted in 2 responses, both of which are attached at Appendix 3.
- 2.9 Both responses were collated and incorporated within this document where relevant.

Natural England: Approved of the list of Plans, policies and Programmes detailed. Also recommend that additional baseline data be sourced in respect of SSSIs, wildlife habitats, landscape character and the quality of agricultural land.

Response: Further baseline data has been incorporated at A2.

English Heritage: Had no substantial comments to make.

Environment Agency: No comments received

Natural Resources Wales: No comments received

Response: N/A

3.0 The SEA Framework

- 3.1 As mentioned previously, Stage A of the SEA identifies and reviews relevant policies, plans and programmes and environmental protection objectives from European, National and Local sources (refer to Table A1 in Appendix 2 for details of those documents that were reviewed in completing Stage A of SEA on the Burghill Parish NDP).
- 3.2 The requirement to undertake this 'context review' is contained in Annexes 1(a) and (e) of the SEA Directive which states that an Environmental Report should include:

"...an outline of the contents, main objectives of the plan or programme and relationship with other relevant plans and programmes" and

"...the environmental protection objectives, established at international, Community or Member State level, which are relevant to the plan or programme and the way those objectives and any environmental considerations have been taken into account during its preparation"

Policy context

- 3.3 The Burghill Parish NDP will deliver the Local Plan (Core Strategy) at parish level by adding locally specific detail to strategic policies. As a consequence, the Scoping Report for the NDP was based on the context review Herefordshire Council undertook for its Local Plan (Core Strategy).
- 3.4 The results of this assessment (context review) provide the source of the local baseline data and have been incorporated into the SEA framework. It should be noted that:
- No list of policies, plans and programmes can ever be exhaustive and that Herefordshire Council has selected those considered to be of particular relevance to the planning system;
 - New or revised plans and policies can emerge during the SEA process

² Statutory consultation bodies: Natural England; English Heritage; Environment Agency Natural Resources Wales

3.5 The following strategies and plans have been reviewed and, where appropriate, incorporated within the SA Framework objectives:

- *The EC Conservation of Habitats and Species Regulations (2010)* - These regulations transpose the Habitats Directive in England, Wales and to a limited extent Scotland by ensuring that activities are carried out in accordance with the Habitats Directive, which is to protect biodiversity through the conservation of natural habitats and species of wild flora and fauna.
- *The EC Water Framework Directive (2000)* - Commits all EU member states to achieve good qualitative and quantitative status of all water courses by 2015
- *The Wildlife and Countryside Act (1981)* - The major legal instrument for wildlife protection in Britain, although other significant acts have been passed since. It has numerous parts and supplementary lists and schedules many of which have been amended since publication.
- *Biodiversity 2020: A strategy for England's wildlife and ecosystem services (2011)* - Forms part of the UK's Post-2010 Biodiversity Framework by setting out England's contribution towards the UK's commitments under the United Nations Convention of Biological Diversity.
- *The Countryside and Right of Way Act (2000)* - Creates a statutory right of access on foot to certain types of open land, to modernise the public rights of way system, to strengthen nature conservation legislation, and to facilitate better management of AONBs
- *The Natural Environment and Rural Communities Act (2006)* - Designed to help achieve a rich and diverse natural environment and thriving rural communities through modernised and simplified arrangements for delivering Government policy.
- *Revised EU Sustainable Development strategy (2009)* - Sets out a single strategy on how the EU will more effectively meet its long-standing commitment to meet the challenges of sustainable development.
- *National Planning Policy Framework (NPPF) (2012)* - Consolidates the suite of PPG/PPS into one succinct planning policy document.
- *Planning Practice Guidance (2013)* - Sets out the vision, objectives and policies for the Herefordshire Local Plan (Core Strategy), which will guide development across the county up to 2031.
- *Herefordshire Local Transport Plan 3 (LTP) 2013-2015* - Sets out the Council's strategy for supporting economic growth, social inclusion and reducing the environmental impacts of transport, as well as the program of investment for the period April 2013 to April 2015.
- *Understanding Herefordshire Report (2014)* - Important to understand the place such as the local economy natural and built environment in which people live, learn and work as part of understanding their quality of life. Enable development for economy and housing to required levels and growth should be supported by sustainable transport measures.
- *Malvern Hills AONB Management Plan 2009-2014 (2009)* - Identifies the issues and challenges facing the special features of the area and contains 24 guiding principles and 46 strategic objectives which will help address them.

- *Wye Valley AONB management Plan 2009-2014 (2009)* - The Management Plan is the prime document which sets out the vision for the area and the priorities for its management.
- *Herefordshire Economic Development Strategy 2011-2016* - Aims to increase the economic wealth of Herefordshire by setting out proposals and to support business growth up to 2016.
- *Herefordshire Employment Land Study (2012)* - Includes employment land assessments for the plan period 2011-2031. The study includes Quantitative and Qualitative assessments of employment land, assessment of market demand and need, as well as providing forecasts and recommendations for future employment need over the plan period.
- *Herefordshire Strategic Housing Land Availability Assessment (SHLAA) (2009)* - The SHLAA aims to justify site allocations in plans by:
 - Identifying sites which are capable of delivering housing development
 - Assessing sites for their housing potential; and
 - Predicting when a site could be developed for housing.
- *Herefordshire Local Housing Market Assessment (LHMA) (2013)* - Builds on an earlier Strategic Housing Market Assessment (SHMA) developed for Herefordshire and Shropshire. Its purpose is to inform the Local Plan's policies regarding housing need and demand (for market and affordable housing) within each of the 7 Housing Market Areas (HMAs) in Herefordshire between 2011 and 2031.
- *Herefordshire Local Housing Requirements Study (2012)* - Technical assessment of the housing market and potential future local housing requirements which supports planning policy regarding the amount of growth, housing tenure and housing type needed within Herefordshire up to 2031.
- *Herefordshire Rural Housing Background Report (2013)* - Provides the justification for the proportional housing growth targets outlined in the Core Strategy
- *Herefordshire Draft Gypsies and Travellers Assessment (2013)* - Assesses the accommodation needs of Gypsies and Travellers across Herefordshire.
- *Herefordshire Local Biodiversity Action Plan (2007)* - Focuses conservation efforts on the areas within Herefordshire that will result in the greatest benefit for ecological networks, habitats and species.
- *Building Biodiversity into the LDF (2009)* - Provides the Council's Local Plan (Core Strategy) with evidence in respect of biodiversity and geodiversity, identifying both opportunities and constraints across Herefordshire.
- *Herefordshire Green Infrastructure Strategy (2010)* - Develops a framework of natural and culturally important features and functions so that planning for a sustainable future is at the heart of planning within Herefordshire.
- *Renewable Energy Study (2010)* - Assesses the energy demand within Herefordshire and the ability for the county to accommodate renewable and low carbon energy technologies.
- *Herefordshire Playing Pitch Assessment (2012)* - Produces a strategic framework, audit and assessment and needs analysis of outdoor sports pitches and facilities for Herefordshire. The document arises as a result of a

recommendation in the Herefordshire and Worcestershire Sports Facilities Framework to develop local standards for playing fields and sports pitches throughout Herefordshire.

- *Open Spaces Study (2006)* - The 2006 space audit and assessment of need is a snap shot of the quality, quantity and distribution of open space across Herefordshire.
- *Play Facilities Study (2012)* - The Play Facilities Study 2012 updates the previous play facilities analysis under the Open Spaces Study 2006 and provides guidance and a framework for the development, delivery and continued sustainability of providing new and improved play facilities for children and young people in Herefordshire to 2031.
- *Strategic Flood Risk Assessment (SFRA) and Water Cycle Study (2009)* - The Strategic Flood Risk Assessment (SFRA) provides a summary of flood risk in Herefordshire to inform the location of future development. The Water Cycle Study examines how water resources and water supply infrastructure, wastewater treatment, water quality, sewerage and flood risk could constrain growth across Herefordshire.

- 3.6 Appendix 1 of the Burghill Parish NDP Scoping Report provides additional detail on the Plans, Policies and Programmes mentioned above and identifies the implications for the SEA and NDP.

SEA Objectives and baseline characteristics

- 3.7 The SEA objectives that were used at Stages A and B of the process are listed in the following table.

| SEA Objective | |
|---------------|--|
| 1 | To maintain or enhance nature conservation (biodiversity, flora and fauna) |
| 2 | To maintain or enhance the quality of landscapes and townscapes |
| 3 | To improve the quality of surroundings |
| 4 | To conserve or where appropriate enhance the historic environment and culture heritage |
| 5 | To improve air quality |
| 6 | To reduce the effect of traffic on the environment |
| 7 | To reduce contributions to climate change |
| 8 | To reduce vulnerability to climate change |
| 9 | To improve water quality |
| 10 | To provide for sustainable sources of water supply |
| 11 | To avoid, reduce and manage flood risk |
| 12 | To conserve soil resources and quality |
| 13 | To minimise the production of waste |
| 14 | To improve the health of the population |
| 15 | To reduce crime and nuisance |
| 16 | To conserve natural and manmade resources |

- 3.8 The SEA objectives detailed above conform to the SEA Directive, and are derived from the Sustainability Appraisal undertaken for the Herefordshire Local Plan Core Strategy 2011-2031.

- 3.9 Baseline information gathered during Stage A of the SEA process provided details of the current environmental characteristics of the neighbourhood area and the status of its natural assets and features (refer to Appendix 2). This information was analysed as part of Task B2 of SEA, which looked at the extent to which the emerging NDP policies will help or obstruct these characteristics.
- 3.10 Following the completion of Task B2 of SEA it was apparent that the largest environmental issue within the Group Parish has an impact on the County as a whole is water quality; the River Wye, though currently meeting all its conservation objectives, will require effective management, in order to ensure that the quality of water does not deteriorate to the point that nutrient targets are missed further downstream.
- 3.11 The NDP does propose 7 sites to be allocated for development and also contains criteria-based policies, which help to mitigate against any adverse impact coming from the housing sites, in addition the sites are of small scale and in conformity with the requirements of policy RA1 of the Core Strategy. On this basis, the delivery of the NDP should not exacerbate existing problems regarding water quality or have an unacceptable adverse impact.
- 3.12 Baseline characteristics within the SEA detail the current environmental status of environmental characteristics in the neighbourhood plan area from different sources. The source of Baseline Information used in Table A2 in Appendix 2, and analysed in Table B2 can be found in Appendix 4 Baseline characteristics in relation to the Burghill Parish NDP SEA objectives are listed below.

| SEA Objective | Baseline Data / Characteristic | Future Baseline trends |
|--|---|--|
| To maintain and enhance nature conservation (biodiversity, flora and fauna) | The 2011-2013 AMR does not contain updated conservation data. 2010/11: 27% of Herefordshire's SSSI land was in favourable condition. There are no SSSIs within the Parish. 2010/11: 17 Habitat Action Plans and 14 Species Action Plans are currently in operation across Herefordshire. Burghill has: 3 SWS and 1 SINC. There are no NNRs within the parish. | % of SSSI land in favourable condition (Increase) % of SSSI land in unfavourable condition but recovering (Increase) % of SSSI land in unfavourable condition and declining (Decrease) To capitalise on opportunities to enhance the areas of value to nature conservation as much as possible. |
| To maintain and enhance the quality of landscapes and townscapes | There are no outstanding enforcement actions or appeals concerning locally important buildings within Burghill at present. | To wherever possible improve upon or otherwise maintain current status. |
| To improve quality of surroundings | In terms of Burghill and Tillington the study does not detail any particular play area, but there has been 3.67 hectares of playing pitch area and 2.6 (71%) hectares of playing pitch area with secured community access identified. | No specific targets identified |

| | | |
|--|---|---|
| To conserve and where appropriate enhance the historic environment and cultural heritage | Whilst there is no qualitative, locally specific data available at present, There are numerous listed buildings within the parish and 4 SAMs, none of which are currently recorded in the Buildings at Risk Register | To wherever possible improve upon or otherwise maintain current status. |
| To improve air quality | Between 2005 and 2010 Herefordshire's total and per capita carbon emission reduced by 7% and 8% respectively; while UK's total and per capita carbon emission reduced by 8% and 12% respectively within the same period. This suggests that air quality is improving. | To reduce the overall carbon emissions. |
| To reduce the effect of traffic on the environment | % of Herefordshire residents who travel to work by: Car: 70.1%, Foot: 14.7%, Bicycle: 4.3%, Bus: 2%, Train: 0.8%, Motorbike: 0.8%, Taxi: 0.3%, Other: 7%. | To encourage the take up of lesser polluting modes of transport. |
| To reduce contributions to climate change | Herefordshire latest figure of CO ₂ emissions per capita-dates back to 2010: 1.61 million tonnes (mtCO ₂) | To reduce the overall carbon emissions. |
| To reduce vulnerability to climate change | Reduce the risk of flooding-There have been no approvals contrary to EA advice since reporting began in 2004. The 2011-2013 AMR does not contain updated conservation data. | To have no applications permitted contrary to EA advice. |
| To improve water quality | Percentage of river length assessed as good or very good chemical quality and ecological quality as required by the Water Framework Directive. Latest figure dates back to 2005: 84% | To ensure that rivers meet their conservation objectives and do not fall below the required standard of quality. |
| To provide for sustainable sources of water supply | Burghill parish falls into the Herefordshire Conjunctive Use Water Resource Zones (WRZs), one of 6 zones covering Herefordshire. 39% of demand is from non-household use. | No specific targets identified |
| To avoid, reduce and manage flood risk | Number of planning permissions granted contrary to the advice of the Environment Agency on flood defence grounds. The 2011-2013 AMR does not contain updated conservation data. | To have no applications permitted contrary to EA advice. |
| To conserve soil resources and quality | With the exception of Tillington Common, the majority of land within the neighbourhood area was listed Grade 1 (Excellent) for its agricultural quality. Percentage of all new development completed on previously developed land. 2010/11: 67% 2011-13: 57%. | Measure the number of hectares of best and most versatile soil lost through development To increase the number of homes built on PDL in line with the provisions of national planning policy |
| To minimise the production of waste | No baseline data available | No specific targets identified. |
| To improve health of the population | No baseline data available | No specific targets identified. |

| | | |
|---|---|---|
| To reduce crime and nuisance | No baseline data available | No specific targets identified. |
| To conserve natural and manmade resources | There are numerous listed buildings within the parish and 4 SAMs. There are no outstanding enforcement actions or appeals concerning locally important buildings within Burghill parish at present. 3.The Parish Area has the following landscape types: Principle settled farmlands | To wherever possible improve upon or otherwise maintain current status. |

3.13 There are three objectives for which there is no local baseline data available and therefore this provides a limitation on the baseline data and whether the NDP policies are able to move towards or away from this data, this also means that there are no future trends to link the SEA objective too.

4.0 Assessing the NDP Objectives

4.1 The following are objectives listed in the NDP that aim to realise the vision for Burghill Parish in 2031:

- Objective 1 - To try to ensure there is a mix of housing for local people to rent or buy, so that both first-time buyers and the elderly can remain a part of the community.
- Objective 2 - To establish criteria for new housing such as the size of developments, sustainability, and building materials in keeping with the local environment and in accordance with the Burghill Parish Design Standards.
- Objective 3 - To preserve and where possible enhance the natural environment around us.
- Objective 4 - To promote and support our local primary school
- Objective 5 - To support local assets such as the shop, pub and village hall for the present and future benefit of the community.
- Objective 6 – To preserve and where possible enhance leisure facilities such as the playground and sports grounds.
- Objective 7 - To maintain for the parish a separate identity from the city.
- Objective 8 - To try to establish safe walking, cycling and driving routes through the parish.
- Objective 9 - To encourage small businesses in the parish, and promote tourism
- Objective 10 - To promote better internet provision.
- Objective 11 - To try to provide better public transport and lessen reliance on car usage.

4.2 The table below tests these NDP objectives against the SEA objectives, providing a summary of the results of Task B1 of SEA. The full results are available at Appendix 4 of this report.

4.3 The majority of those NDP objectives which have a relationship with the SEA framework are positively compatible with it or have a neutral effect.

4.4 Task B1 of the SEA identified the following potential conflicts between the NDP objectives and the SEA framework:

- NDP Objective 1, 2 and 3 has unknown effects with SEA Objectives 6 to 12

4.5 The potential conflicts listed above can be largely attributed to the possible rise in vehicular movements in remote locations due to increased housing however policy safeguards can help to alleviate these issues.

| Key: | |
|------|------------------------------------|
| + | Compatible |
| - | Possible conflict |
| 0 | Neutral |
| X | No relationship between objectives |
| ? | Unclear, more information needed |

| NDP Objectives | SEA Objectives | | | | | | | | | | | | | | | |
|----------------|----------------|---|---|---|---|---|---|---|---|----|----|----|----|----|----|----|
| | 1 | 2 | 3 | 4 | 5 | 6 | 7 | 8 | 9 | 10 | 11 | 12 | 13 | 14 | 15 | 16 |
| Objective 1 | 0 | + | + | + | 0 | ? | ? | ? | ? | ? | ? | ? | + | X | X | + |
| Objective 2 | + | + | + | + | X | ? | ? | ? | ? | ? | ? | ? | X | X | X | ? |
| Objective 3 | + | + | + | + | X | ? | ? | ? | ? | ? | ? | ? | X | X | X | ? |
| Objective 4 | + | + | + | + | + | ? | ? | ? | X | X | ? | + | + | + | + | + |
| Objective 5 | X | X | + | + | X | X | X | X | X | X | ? | X | ? | + | + | + |
| Objective 6 | + | + | ? | ? | X | ? | ? | X | X | X | ? | ? | X | + | + | + |
| Objective 7 | + | + | + | + | X | X | X | X | X | X | X | ? | ? | + | + | + |
| Objective 8 | + | + | + | + | + | + | + | X | X | X | X | + | + | + | + | + |
| Objective 9 | ? | X | X | + | X | ? | ? | ? | X | X | ? | ? | ? | X | X | ? |

5.0 Assessing the NDP Options

- 5.1 All options that were considered by Burghill Parish during the development of their Plan have been assessed as part of the SEA, the summary matrix of the assessment can be found in Table B2 options these tables are in Appendix 4.
- 5.2 A 'do nothing' option was also considered by the Parish, i.e. not undertaking a Neighbourhood Development Plan, however this was disregarded at an early stage by the Parish Council as it was highlighted within the Parish Plan that the majority of the community would support the work undertaken for a Neighbourhood Plan.
- 5.3 The Burghill Parish options all had a generally positive or unknown impact upon the Baseline data and SEA objectives, in particular Options 2, 3 and 4 would have the least impact upon the environment and move towards the SEA objectives. The Option 5 would be more unknown due to relying on criteria policies only due to loss of certainty of location for settlement boundaries and housing allocations.
- 5.4 Overall all of the options had mainly a positive effect on the SEA objectives and baseline, if the policies that are developed incorporated the elements of the options that are ensuring mitigation of new development and additional details are provided for the location and design of any proposed site then the assessment of the policies should result in a positive result. As these options were generally moving towards the SEA objectives any further alternatives would probably be moving away and therefore no further options are required to be assessed.

| NDP Options | SEA Objectives | | | | | | | | | | | | | | | |
|-------------|----------------|----|----|----|---|---|---|---|---|----|----|----|----|----|----|----|
| | 1 | 2 | 3 | 4 | 5 | 6 | 7 | 8 | 9 | 10 | 11 | 12 | 13 | 14 | 15 | 16 |
| Option 1 | X | X | X | X | X | X | X | X | X | X | X | X | X | X | X | X |
| Option 2 | + | + | + | + | + | + | + | + | + | + | + | + | X | X | X | + |
| Option 3 | ++ | ++ | ++ | ++ | + | + | + | + | + | + | ++ | + | X | X | X | ++ |

| NDP Options | SEA Objectives | | | | | | | | | | | | | | | |
|-------------|----------------|---|---|---|---|---|---|---|---|----|----|----|----|----|----|----|
| | 1 | 2 | 3 | 4 | 5 | 6 | 7 | 8 | 9 | 10 | 11 | 12 | 13 | 14 | 15 | 16 |
| Option 4 | + | + | + | + | + | + | + | + | ? | X | X | + | X | + | + | + |
| Option 5 | + | + | + | + | ? | ? | ? | X | X | X | ? | ? | X | X | X | ? |

6.0 Appraisal of the policies

- 6.1 A key part of developing a plan such as the Burghill Parish NDP is developing a range of options and testing these, so that a preferred way forward can be selected.
- 6.2 The Draft Burghill NDP identifies a number of key themes or issues which are considered significant to the Parish. The following emerging set of draft policies can be appraised for the purposes of Stage B of the SEA:
- Policy B1 – scale and type of new housing
 - Policy B2 – Supporting existing small scale local employment
 - Policy B3 – Supporting new small scale local employment
 - Policy B4 – rural enterprise and farm diversification
 - Policy B5 – Supporting development of communications infrastructure
 - Policy B6 - Education
 - Policy B7 – Traffic management and transport improvements
 - Policy B8 – Design of development in Burghill Parish
 - Policy B9 – Protecting and where possible enhancing local landscape character
 - Policy B10 – Protection of local green spaces
 - Policy B11 – Protection and where possible enhancement of local community facilities
 - Policy B12 – Community facilities and community infrastructure levy
 - Policy B13 – Flood Risk, water management and surface water run off
 - Policy B14 – Development of renewable energy facilities in Burghill parish

Stage B of SEA

- 6.3 In the context of Task B1 of SEA, the previous section of this report identified that many of the NDP objectives are compatible with the SEA framework, while others had either a neutral impact, no relationship with the SEA objectives or if needed; further information such as location of development. Additional policy safeguards within the NDP and Local Plan (Core Strategy) would help mitigate any possible conflicts.
- 6.4 With regard to Task B2 of SEA, the NDP policies were measured against both the SEA framework and the baseline characteristics identified during Stage A of the process; here, there was no baseline data available in respect of SEA Objectives 3 and 9. Full details of this appraisal are attached at Appendix 4.
- 6.5 The policies largely score as positive or neutral against the SEA objectives and will not, therefore, have an adverse impact on the baseline characteristics or immediate environmental impacts. This is because they are criteria based policies which only consider schemes on their own merits, as and when planning applications are submitted to the local planning authority.

- 6.6 There are some unknown factors, particularly where the location of specific piece of development (i.e tourist facilities or business units) is not yet known.

| NDP Policy | SEA Objectives | | | | | | | | | | | | | | | |
|------------|----------------|----|----|----|---|---|---|---|---|----|----|----|----|----|----|----|
| | 1 | 2 | 3 | 4 | 5 | 6 | 7 | 8 | 9 | 10 | 11 | 12 | 13 | 14 | 15 | 16 |
| Policy B1 | ++ | ++ | + | ++ | + | + | + | + | + | 0 | + | + | X | X | X | + |
| Policy B2 | + | + | + | + | + | + | + | 0 | X | X | + | + | + | 0 | + | + |
| Policy B3 | + | + | + | + | + | + | + | 0 | X | X | + | + | + | 0 | + | + |
| Policy B4 | + | + | + | + | ? | ? | + | 0 | X | X | + | + | + | 0 | X | + |
| Policy B5 | X | 0 | + | X | + | + | 0 | 0 | X | X | X | + | 0 | 0 | 0 | + |
| Policy B6 | + | + | + | + | ? | ? | + | 0 | X | X | + | + | + | X | X | + |
| Policy B7 | + | + | + | + | + | + | + | + | X | X | X | ? | X | + | X | + |
| Policy B8 | ++ | ++ | ++ | ++ | X | ? | + | + | + | 0 | + | + | + | X | X | + |
| Policy B9 | ++ | ++ | ++ | + | + | 0 | + | + | 0 | + | + | + | X | + | X | ++ |
| Policy B10 | ++ | + | + | + | X | X | X | + | 0 | X | + | + | X | + | X | ++ |
| Policy B11 | + | + | + | + | + | + | + | X | X | X | + | X | X | + | + | + |
| Policy B12 | + | + | + | + | X | X | X | X | X | X | X | X | X | X | X | + |
| Policy B13 | + | + | + | + | X | X | + | + | + | X | ++ | + | X | X | X | + |
| Policy B14 | + | + | + | + | X | + | + | + | X | X | + | X | + | X | X | + |

- 6.7 The results of Task B3, as shown at Appendix 4, demonstrate that the cumulative impact of the NDP policies over the course of the plan period is generally positive. Although some policies may have an uncertain impact during the first 5 years of the plan period, there is no reason why they cannot have a positive effect in the medium to long-term due to policy safeguards included in the Local Plan (Core Strategy); these safeguards should avoid or mitigate against unacceptable adverse impacts.
- 6.8 Task B4 of SEA brings together the results of earlier tasks and thus identifies the cumulative impact of the entire of the NDP. This task, which is also attached at Appendix 4, reveals that the objectives and policies contained in the Burghill Parish NDP are in general conformity with the Local Plan (Core Strategy), which means that the cumulative effect of the plan will contribute to the achievement of the SEA objectives.
- 6.9 None of the NDP policies are considered to be in direct conflict with or propose greater levels of growth and development than strategic policies contained in the Local Plan (Core Strategy), which themselves have undergone a full Sustainability Appraisal.

7.0 Implementation and monitoring

- 7.1 Herefordshire Council as the Local Planning Authority should make arrangements to monitor the significant effects of implementing a neighbourhood plan.
- 7.2 Indeed, Regulation 17 of the Environmental Assessment of Plans and Programmes Regulations 2004 requires the Local Planning Authority to monitor the significant environmental effects of the implementation of any NDP that was subject to SEA, in order to identify unforeseen adverse effects at an early stage and to enable appropriate remedial actions.
- 7.3 Accordingly, Herefordshire Council will monitor outcomes from the NDP policies and the results of these will be reported in the Council's Annual Monitoring Report (AMR).
- 7.4 The AMR runs from 1 April to 31 March each year and the topics covered therein include the following:

- Housing delivery;
- Previously developed land
- Housing completions
- Affordable housing conditions
- Employment land delivery.

8.0 Next steps

- 8.1 This report will be subject to a formal public consultation of 6 weeks duration alongside the Draft Burghill Parish NDP.
- 8.2 Responses on the Draft NDP will be reviewed and the plan amended where appropriate.
- 8.3 Any changes made to the NDP as a consequence of the Regulation 14 consultation with those who live, work or carry out business in the neighbourhood area, as well as statutory consultation bodies, will trigger a review of the SEA, unless they do not materially affect the outcomes of Stage B of the SEA process.

Appendix 1

**Initial Habitat Regulations Assessment and Strategic Environmental
Assessment Screening Notification**

The Neighbourhood Planning (General) Regulation 2012 (Reg. 32)

Conservation of Habitats and Species Regulations 2010 (d)

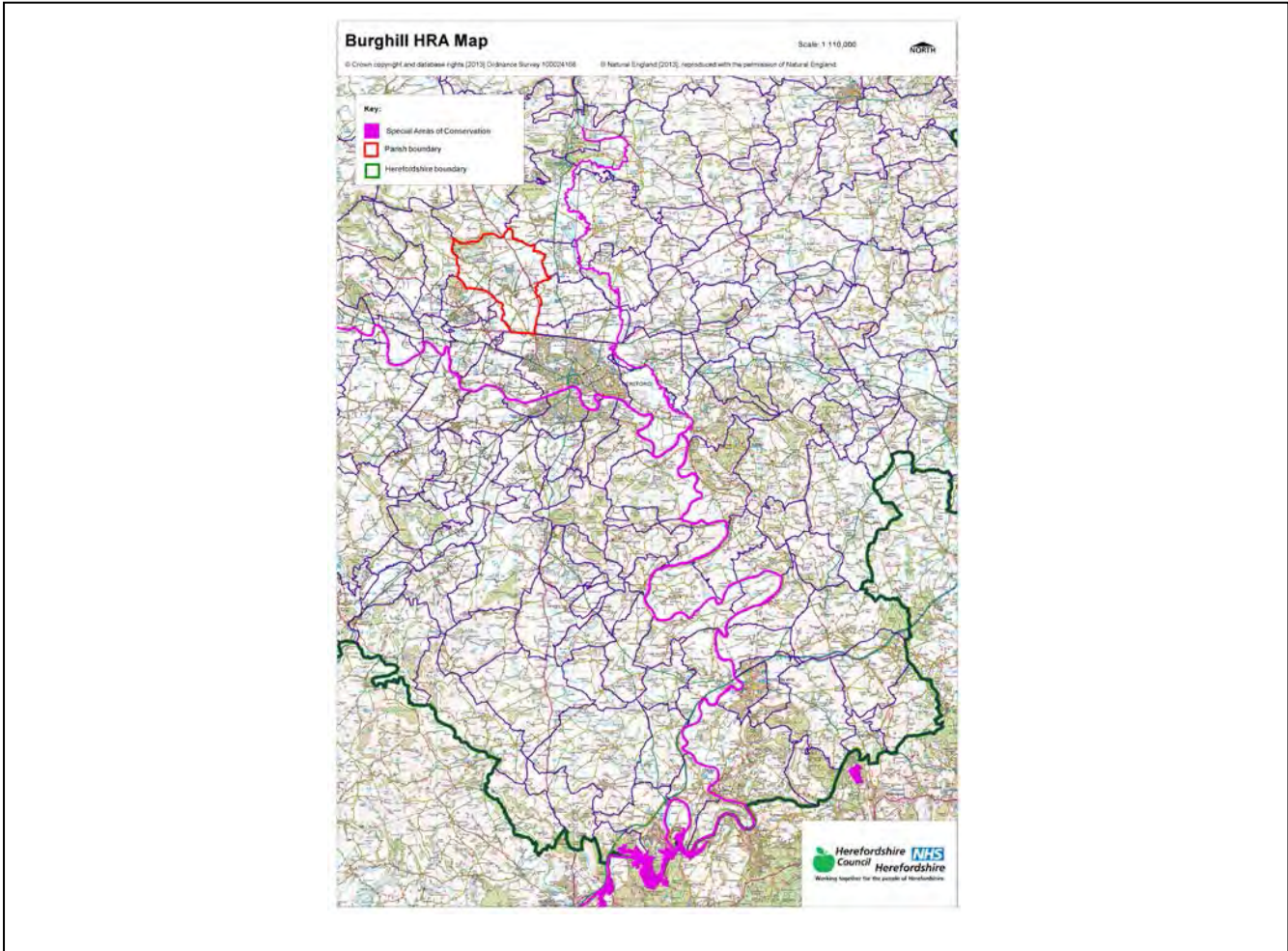
| | |
|---|---------------------------------|
| Neighbourhood Area: | Burghill Neighbourhood Area |
| Parish Council: | Burghill Parish Council |
| Neighbourhood Area Designation Date: | 11 th September 2013 |

Introduction

This Initial Habitat Regulations Assessment (HRA) and Strategic Environmental Assessment (SEA) Screening has been undertaken to assess whether any European Sites exist within or in proximity to the Neighbourhood Area which could be affected by any future proposals or policies.

Through continual engagement the outcomes of any required assessments will help to ensure that proposed developments will not lead to Likely Significant Effects upon a European Site or cause adverse impacts upon other environmental assets, such as the built historic or local natural environment.

**HRA Initial Screening: Map showing relationship of Neighbourhood Area with European Sites
(not to scale)**



Initial HRA Screening

River Wye (including the River Lugg) SAC:

| | | |
|--|---|---|
| Does the Neighbourhood Area have the River Wye (including the River Lugg) in or next to its boundary? | N | The River Wye is 2.96km away from the Parish and the River Lugg is 1.7km away from the Parish |
| Is the Neighbourhood Area in the hydrological catchment of the River Wye (including the River Lugg) SAC? | Y | The Parish is within the hydrological catchment of the River Wye |
| If yes above, does the Neighbourhood Area have mains drainage to deal with foul sewage? | Y | The Parish has mains drainage within Hereford |

Downton Gorge SAC:

| | | |
|---|---|--|
| Is the Neighbourhood Area within 10km of Downton Gorge SAC? | N | Downton Gorge is 25.6km away from the Parish |
|---|---|--|

River Clun SAC:

| | | |
|--|---|---------------------------------------|
| Does the Neighbourhood Area include: Border Group Parish Council or Leintwardine Group Parish Council? | N | River Clun does not border the Parish |
|--|---|---------------------------------------|

Usk Bat Sites SAC:

| | | |
|--|---|---|
| Is the Neighbourhood Area within 10km of the SAC boundary? | N | Usk Bat Sites are 39km away from the Parish |
|--|---|---|

Wye Valley & Forest of Dean Bat Sites SAC:

| | | |
|--|---|--|
| Is the Neighbourhood Area within 10km of any of the individual sites that make up the Wye Valley & Forest of Dean Bat Sites? | N | The Parish is 27.6km away from Wye Valley and Forest of Dean Bat Sites |
|--|---|--|

Wye Valley Woodlands SAC:

| | | |
|--|---|--|
| Is the Neighbourhood Area within 10km of any of the individual sites that make up the Wye Valley Woodlands Site? | N | The Parish is 28.87km away from the Wye Valley Woodlands |
|--|---|--|

HRA Conclusion:

The assessment above highlights that the following European Sites will need to be taken into account in the future Neighbourhood Development Plan for the Burghill Neighbourhood Area and a Full HRA Screening will be required.

European Site

(List only those which are relevant from above)

River Wye (including the River Lugg) SAC

Strategic Environmental Assessment Initial Screening for nature conservation landscape and heritage features

The following environmental features are within or in general proximity to the Burghill Neighbourhood Area and would need to be taken into account within a Strategic Environmental Assessment. In addition, the NDP will also need to consider the other SEA topics set out in Guidance Note 9a to ensure that the plan does not cause adverse impacts.

| SEA features | Total | Explanation | SEA required |
|---|---------------------------|---|---------------------|
| Air Quality Management Areas | 0 | There are no AQMAs within the Parish | N |
| Ancient Woodland | 2 | Badnage Wood; Credenhill Park Wood (border) | Y |
| Areas of Archaeological Interest | 0 | There are no AAls within the Parish | N |
| Areas of Outstanding Natural Beauty | 0 | There are no AONBs within the Parish | N |
| Conservation Areas | 1 | Burghill village is a Conservation Area | Y |
| European Sites | 0 | There are no SACs within the Parish | N |
| Flood Areas | | Flood Zones 2 and 3 flow from Brookhouse Farm in the east of the parish to Haven. There are also Flood Zones along the south west borders of the Parish | Y |
| Listed Buildings | Numerous | There are numerous Listed Buildings scattered throughout the Parish | Y |
| Local Sites (SWS/SINCs/RIGS) | 1 (RIGS) 1 (SINC) 3 (SWS) | RIGS: Upper Lyde Quarry (border) SINC: Yazor Brook (border) SWS: Pond near Tillington Court; Woodlands and Golf Course around Nupton Hill; Credenhill Park Wood and Sally Coppice (border) | Y |
| Long distance footpaths/trails (e.g. Herefordshire Trail) | 1 | Three Rivers Ride | Y |
| Mineral Reserves | 4 | Portway; West and south of Portway, east of Burghill down Canon Pyon Road; Cot Barn (border); South of Roman Road to A438 and area between Wye and A438 | Y |
| National Nature Reserve | 0 | There are no NNRs within the Parish | N |
| Registered & Unregistered parks and gardens | 6 Unregistered | The Hermitage; Tillington Court; Burghill Court; Burghill Hospital; Brinsop Court (border); Credenhill Court (border) | Y |
| Scheduled Ancient Monuments | 4 | Churchyard Cross in St Mary the Virgin Churchyard; Credenhill camp (border); Moated site 200 yds (180m) south of Brinsop Court (border); Medieval bridge 870m north east of Stretton Court Farm | Y |
| Sites of Special Scientific Interest | 0 | There are no SSSIs within the Parish | N |

Decision Notification:

The initial screening highlights that the Neighbourhood Development Plan for the Burghill Neighbourhood Area:

- a) Will require further environmental assessment for Habitat Regulations Assessment and Strategic Environmental Assessment.

Assessment date: 08/08/2013

Assessed by: James Latham

Appendix 1: European Sites

The table below provides the name of each European Site, which has been screened in for the purposes of neighbourhood planning in Herefordshire; includes their site features of integrity; and vulnerability data. This is based on the sites individual features of integrity and their vulnerabilities, which could include distance criteria. This has been used in identifying which parishes are likely to require a full HRA Screening of their future Neighbourhood Development Plan, to establish if their plan might have Likely Significant Effects on a European Site.

| |
|---|
| Downton Gorge |
| Site Features: <i>Tilio-Acerion</i> forests of slopes, screes and ravines |
| Vulnerability data: 10km for air quality associated with poultry units or other intensive agricultural practices. |
| River Clun |
| Site Features: Freshwater pearl mussel <i>Margaritifera margaritifera</i> |
| Vulnerability data: Water quality is important to maintain the site feature. Parishes either side of the River Clun will be affected. |
| River Wye |
| Site Features: Water courses of plain to montane levels with the <i>Ranunculion fluitantis</i> and <i>Callitricho-Batrachion</i> vegetation. Transition mires and quaking bogs. White-clawed (or Atlantic Stream) crayfish <i>Austropotamobius pallipes</i> . Sea lamprey <i>Petromyzon marinus</i> . Brook lamprey <i>Lampetra planeri</i> . River lamprey <i>Lampetra fluviatilis</i> . Twaite shad <i>Alosa fallax</i> . Atlantic salmon <i>Salmo salar</i> . Bullhead <i>Cottus gobio</i> . Otter <i>Lutra lutra</i> . Allis shad <i>Alosa alosa</i> |
| Vulnerability data: Proximity: Developments should not be within 100m of the designated bank. Some developments beyond 100m may also have impacts based on proximity and these issues should be addressed where possible when developing NDP policy and choosing site allocations. Water Quality: Within the whole catchment of the River Wye, which includes the River Lugg, mains drainage issues with regards to water quality are being resolved through the Core Strategy / Local Plan and development of a Nutrient Management Plan. Welsh Water should be consulted to ensure that the proposed growth will be within the limit of their consents. Otters: "An otter will occupy a 'home range', which on fresh waters usually includes a stretch of river as well as associated tributary streams, ditches, ponds, lakes and woodland. The size of a home range depends largely on the availability of food and shelter, and the presence of neighbouring otters. On rivers, a male's home range may be up to 40km or more of watercourse and associated areas; females have smaller ranges (roughly half the size) and favour quieter locations for breeding, such as tributary streams. Otters without an established home range are known as 'transients'. They are mostly juveniles looking for a territory of their own, or adults that have been pushed out of their territories. Transient otters may use an area for a short while, but they will move on if conditions are not suitable or if they are driven away by resident otters. Transients will have been important in extending the range of otters, but they are very difficult to identify from field signs. Within a home range an otter may use many resting sites. These include above-ground shelters, such as stands of scrub or areas of rank grass, and underground 'holts' – for example, cavities under tree roots and dry drainage pipes." (Source: EA website: http://www.environmentagency.gov.uk/static/documents/Business/Otters_the_facts.pdf accessed 09/04/2013) |

Usk Bat Site

Site Features: Annex I habitats present as a qualifying feature, but not a primary reason for site selection: European dry heaths, Degraded raised bogs still capable of natural regeneration, Blanket bogs, Calcareous rocky slopes with chasmophytic vegetation, Caves not open to the public, *Tilio-Acerion* forests of slopes, screes and ravines. Annex II species of primary reason for site selection: Lesser horseshoe bat *Rhinolophus hipposideros*, UK population 5%, although it is suggested this is an underestimate.

Vulnerability data: Lesser Horseshoe bats are known to migrate between 5km and 10km between their summer and winter roosts. The Lesser Horseshoe Bat is vulnerable to disturbance; light pollution; and habitat loss. Check with the planning ecologist for other issues.

Wye Valley and Forest of Dean Bat Sites

Site Features: Annex II species that are a primary reason for site selection: Lesser horseshoe bat *Rhinolophus hipposideros*. Greater horseshoe bat *Rhinolophus ferrumequinum*

Vulnerability data: Lesser Horseshoe bats are known to migrate between 5km and 10km between their summer and winter roosts. The Lesser Horseshoe Bat is vulnerable to disturbance; light pollution; and habitat loss. Check with the planning ecologist for other issues.

Greater Horseshoe bats are known to migrate between 20-30km between their summer and winter roosts.

NDPs closest to the European Site will need to consider:

Woodland habitat buffer.

Lesser Horseshoe Bat: Old buildings; woodland locations; sheltered valleys, extensive deciduous woods or dense scrub, close to roost sites. In areas of fragmented habitats, linear habitats such as hedgerows are important corridors. Vulnerable to loss or disturbance of both summer and winter roosts and removal of linear habitat.

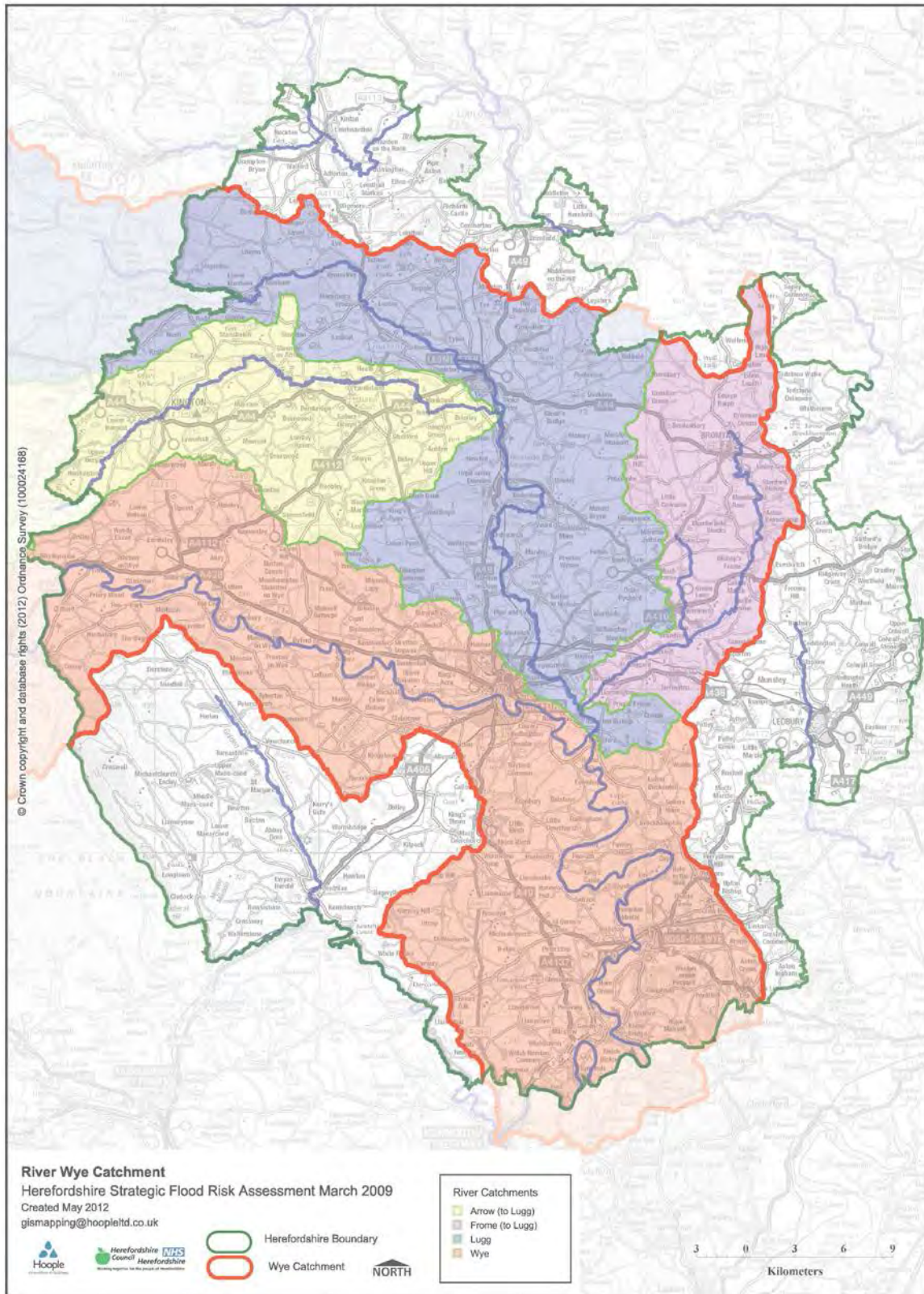
Greater Horseshoe Bat: Large buildings, pasture, edge of mixed deciduous woodland and hedgerows. Mixed land-use especially south-facing slopes, favours beetles, moths and insects they feed on. During the winter they depend on caves, abandoned mines and other underground sites for undisturbed hibernation. A system/series of sites required. Vulnerable to loss of insect food supply, due to insecticide use, changing farming practices and loss of broad-leaved tree-cover and loss / disturbance of underground roosts sites.

Wye Valley Woodlands

Site Features: Annex I habitats that are a primary reason for site selection: Beech forests *Asperulo-Fagetum*, *Tilio-Acerion* forests of slopes, screes and ravines, *Taxus baccata* woods of the British Isles. Annex II species present as a qualifying feature, but not a primary reason for site selection: Lesser horseshoe bat *Rhinolophus hipposideros*, 51-100 residents

Vulnerability data: Lesser Horseshoe bats are known to migrate between 5km and 10km between their summer and winter roosts. The Lesser Horseshoe Bat is vulnerable to disturbance; light pollution; and habitat loss. Check with the planning ecologist for other issues. NDPs closest to the European Site will need to consider: Woodland habitat buffer. Lesser Horseshoe Bat: Old buildings; woodland locations; sheltered valleys, extensive deciduous woods or dense scrub, close to roost sites. In areas of fragmented habitats, linear habitats such as hedgerows are important corridors. Vulnerable to loss or disturbance of both summer and winter roosts and removal of linear habitat.

Appendix 2: Wye Catchment Map

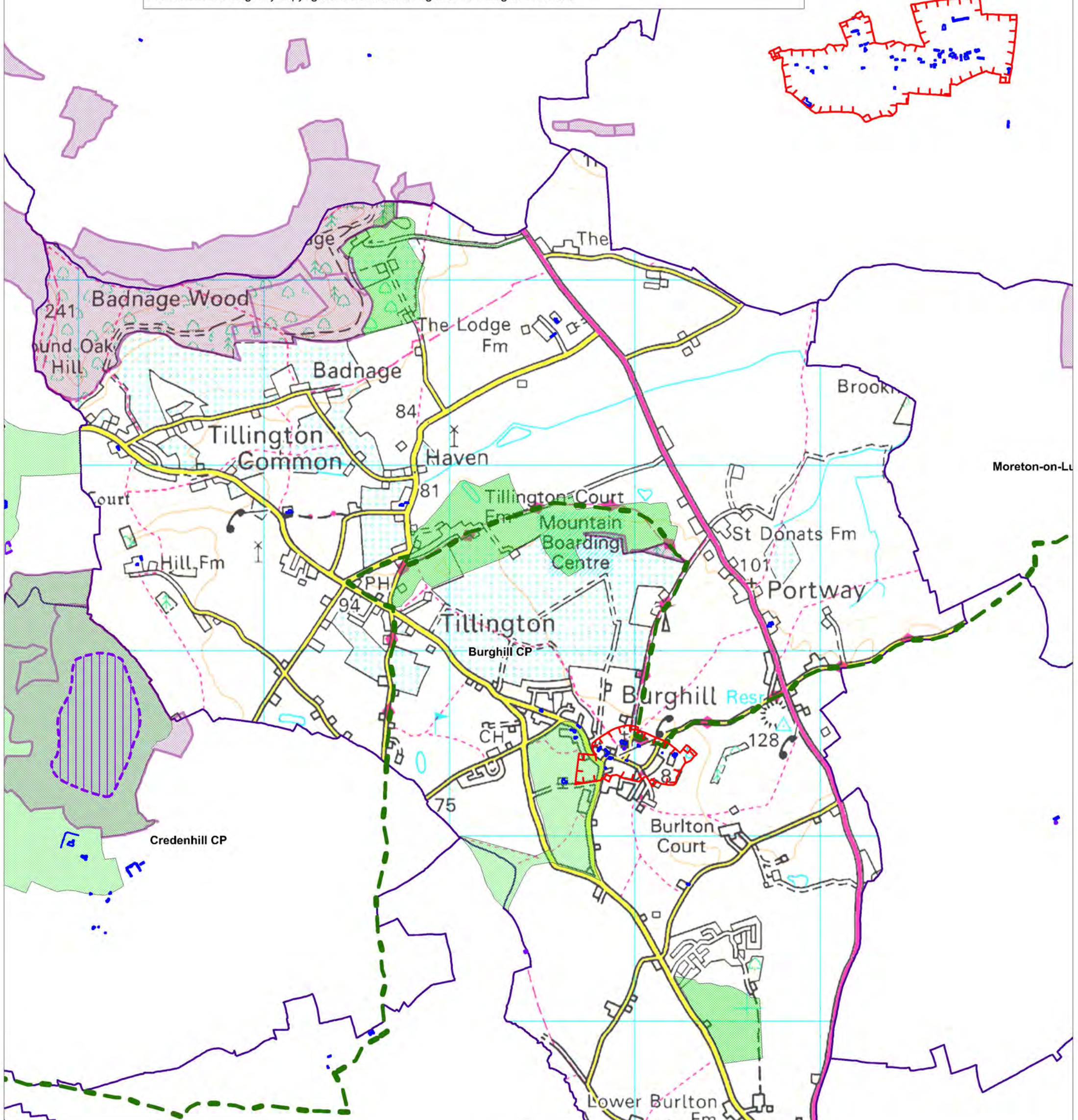


Burghill SEA Map 1

Scale: 1:20,000



Contains, or is based upon, English Heritage's National Heritage List for England data © English Heritage.
© Crown copyright and database rights [2013] Ordnance Survey 100024168
© Natural England [2013], reproduced with the permission of Natural England.
© Environment Agency copyright and/or database right 2013. All rights reserved.



Key:

- Ancient Woodlands
- Unregistered Parks and Gardens
- Three Rivers Ride
- Conservation Areas
- Scheduled Ancient Monuments
- Listed Buildings
- Parish Boundaries



**Herefordshire
Council**

Burghill SEA Map 2

Scale: 1:20,000



Contains, or is based upon, English Heritage's National Heritage List for England data © English Heritage.
© Crown copyright and database rights [2013] Ordnance Survey 100024168
© Natural England [2013], reproduced with the permission of Natural England.
© Environment Agency copyright and/or database right 2013. All rights reserved.



Key:

- Minerals Sites
- Special Wildlife Sites
- Regionally Important Geological Sites
- Flood Zone 2
- Flood Zone 3
- Parish Boundaries



Appendix 2

Strategic Environmental Assessment



Burghill Neighbourhood Area

Scoping Report

October 2014

Consultation on the Scoping Report

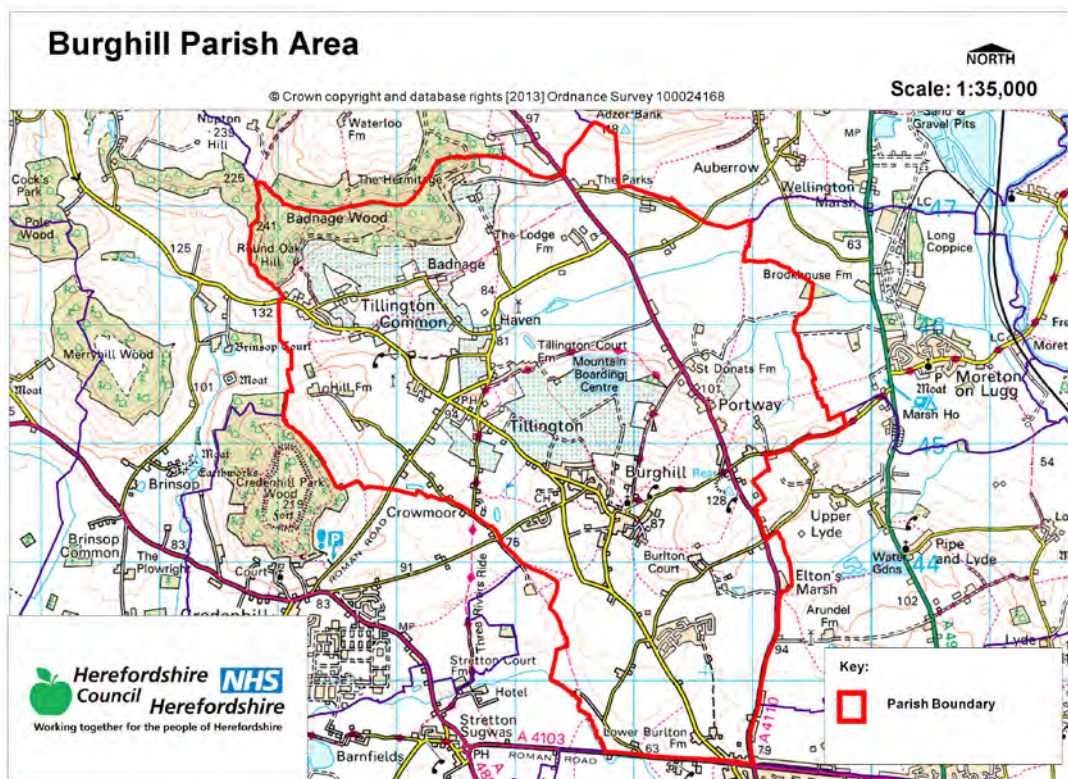
The aim of the consultation process is to involve and engage with statutory consultees and other relevant bodies on the scope of the appraisal. In particular, it seeks to:

- Ensure the SEA is both comprehensive and sufficiently robust to support the Neighbourhood Development Plan during the later stages of full public consultation;
- Seek advice on the completeness of the plan review and baseline data and gain further information where appropriate;
- Seek advice on the suitability of key sustainability issues;
- Seek advice on the suitability of the sustainability objectives.

Comments on this Scoping Report have been invited from the three consultation bodies as required by the SEA regulations, together with the Natural Resources Wales.

The three consultation bodies are as follows:

1. Natural England;
2. English Heritage;
3. Environment Agency.



| Plans and Programmes | Type of document | Date | Overview | Key message, target/objective/indicator | SEA topic(s) | Implications for the NDP and SEA |
|---|----------------------------|------|---|--|---|---|
| The EC Conservation of Habitats and Species Regulations | European Union Legislation | 2010 | These regulations transpose the Habitats Directive in England, Wales and to a limited extent Scotland by ensuring that activities are carried out in accordance with the Habitats Directive, which is to protect biodiversity through the conservation of natural habitats and species of wild flora and fauna. | The Regulations make it an offence (subject to exceptions) to deliberately capture, kill, disturb, or trade in the animals listed in Schedule 2, or pick, collect, cut, uproot, destroy, or trade in the plants listed in Schedule 4. However, these actions can be made lawful through the granting of licenses by the appropriate authorities. | <ul style="list-style-type: none"> Biodiversity Cultural heritage and the landscape | The Neighbourhood Plan should be compliant with all the relevant legislation and regulations. |
| The EC Water Framework Directive | European Union | 2000 | Commits all EU member states to achieve good qualitative and quantitative status of all water courses by 2015. | Aims for 'good status' for all ground and surface waters (rivers, lakes, transitional waters, and coastal waters) in the EU | <ul style="list-style-type: none"> Water | The Neighbourhood Plan should be compliant with all the relevant legislation and regulations. |

| Plans and Programmes | Type of document | Date | Overview | Key message, target/objective/indicator | SEA topic(s) | Implications for the NDP and SEA |
|---|----------------------|------|---|---|---|---|
| The Wildlife and Countryside Act (1981) | Domestic Legislation | 1981 | The major legal instrument for wildlife protection in Britain, although other significant acts have been passed since. It has numerous parts and supplementary lists and schedules many of which have been amended since publication. | The principle mechanism for the legislative protection of wildlife in Great Britain. | <ul style="list-style-type: none"> • Biodiversity • Cultural heritage and the landscape • Flora and fauna • Material assets • Soil | The Neighbourhood Plan should be compliant with all the relevant legislation and regulations. |
| The Countryside and Right of Way Act (2000) | Domestic Legislation | 2000 | Creates a statutory right of access on foot to certain types of open land, to modernise the public rights of way system, to strengthen nature conservation legislation, and to facilitate better management of AONBs. | <p>The Act provides for a new right of access on foot to areas of open land comprising: Mountain (land over 600 metres); Moorland; Heath; Downland; Registered common land.</p> <p>There are provisions to consider extending the right in the future to coastal land, but not woodland despite some early publicity suggesting this.</p> | <ul style="list-style-type: none"> • Biodiversity • Cultural heritage and the landscape • Flora and fauna • Material assets • Soil | The Neighbourhood Plan should be compliant with all the relevant legislation and regulations. |

| Plans and Programmes | Type of document | Date | Overview | Key message, target/objective/indicator | SEA topic(s) | Implications for the NDP and SEA |
|--|----------------------|------|---|--|---|---|
| The Natural Environment and Rural Communities Act (2006) | Domestic Legislation | 2006 | Designed to help achieve a rich and diverse natural environment and thriving rural communities through modernised and simplified arrangements for delivering Government policy. | Provides that any public body or statutory undertaker in England and Wales must have regard to the purpose of conservation of biological diversity in the exercise of their functions. | <ul style="list-style-type: none"> • Biodiversity • Cultural heritage and the landscape • Flora and fauna • Material assets • Soil | The Neighbourhood Plan should be compliant with all the relevant legislation and regulations. |
| Revised EU Sustainable Development strategy | EU Strategy. | 2009 | Sets out a single strategy on how the EU will better meet its long-standing commitment to meet the challenges of sustainable development. | Recognises the need to gradually change current unsustainable consumption and production patterns and move towards a better integrated approach to policy making. The Strategy sets overall objectives, targets and concrete actions for seven key priority challenges, predominantly environmental. | <ul style="list-style-type: none"> • Air • Biodiversity • Climatic factors • Cultural heritage • Flora and fauna • Material assets • Population • Soil • Water | The NDP should take account of the objectives of the strategy, making the aim of sustainable development an integral part of its proposals. |

| Plans and Programmes | Type of document | Date | Overview | Key message, target/objective/indicator | SEA topic(s) | Implications for the NDP and SEA |
|---|---------------------------|------|---|--|---|---|
| Biodiversity 2020: A strategy for England's wildlife and ecosystem services | National Strategy | 2011 | Forms part of the UK's Post-2010 Biodiversity Framework by setting out England's contribution towards the UK's commitments under the United Nations Convention of Biological Diversity. | Sets out to halt overall biodiversity loss, support healthy well-functioning ecosystems and establish coherent ecological networks, with more and better places for nature for the benefit of wildlife and people. | <ul style="list-style-type: none"> • Biodiversity | The NDP should take account of the provisions of the strategy, making the most of opportunities to enhance wildlife habitats or restore degraded ecosystems in the process. |
| National Planning Policy Framework (NPPF) | National Planning Policy. | 2012 | Consolidates the suite of PPG/PPS into one succinct planning policy document. | Aims to make the planning system less complex, more accessible and able to promote growth within the ethos of sustainable development. The presumption is in favour of sustainable development. | <ul style="list-style-type: none"> • Air • Biodiversity • Climatic factors • Cultural heritage • Flora and fauna • Material assets • Population • Soil • Water | The guidance contained within the section on Neighbourhood Planning should be borne in mind during the preparation of the NDP. |

| Plans and Programmes | Type of document | Date | Overview | Key message, target/objective/indicator | SEA topic(s) | Implications for the NDP and SEA |
|--|---------------------------------|------|---|---|---|---|
| Planning Practice Guidance | Government Guidance | 2014 | Provides guidance to local planning authorities and others on the operation of the planning system. | Offers up-to-date, electronic guidance on every aspect of planning from air quality and design to land stability and rural housing. | <ul style="list-style-type: none"> • Air • Biodiversity • Climatic factors • Cultural heritage • Flora and fauna • Material assets • Population • Soil • Water | The NDP must be pro-growth and facilitate the provision of sustainable development. |
| Herefordshire Pre Submission Core Strategy 2011-2031 | Development Plan Document (DPD) | 2014 | Sets out the vision, objectives and policies for the Herefordshire Local Plan (Core Strategy), which will guide development across the county up to 2031. | Outlines the emerging suite of countywide planning policies relating to housing, economic development and the environment, which the NDP will need to be in conformity with where relevant. | <ul style="list-style-type: none"> • Air • Biodiversity • Climatic factors • Cultural heritage • Flora and fauna • Material assets • Population • Soil • Water | <p>The NDP should take account of relevant policies set within the Core Strategy.</p> <p>Where necessary, the NDP should provide services, facilities and employment opportunities that are</p> |

| Plans and Programmes | Type of document | Date | Overview | Key message, target/objective/indicator | SEA topic(s) | Implications for the NDP and SEA |
|----------------------|------------------|------|----------|---|--------------|---|
| | | | | <p>The Pre Submission Core Strategy includes a range of objectives, five of which directly relate to rural areas:</p> <ul style="list-style-type: none"> • To meet the housing needs of all sections of the community • To improve access to services in rural areas • To strengthen the economic viability of the villages and their rural hinterlands • To achieve sustainable communities and protect the environment • To conserve, promote, utilise and enjoy our natural, built, historic and cultural assets for the fullest benefit of the whole community | | <p>accessible to both local and neighbouring communities.</p> <p>¹Approximately 45 dwellings will need to be delivered within Burghill and 20 dwellings within Tillington, though these targets are indicative and provide a starting point for work on the NDP.</p> |

¹ Figures do not include extant planning permissions from 2011 onwards.

| Plans and Programmes | Type of document | Date | Overview | Key message, target/objective/indicator | SEA topic(s) | Implications for the NDP and SEA |
|----------------------|------------------|------|----------|--|--------------|----------------------------------|
| | | | | <p>To achieve a thriving rural Herefordshire, the Core Strategy seeks to enhance the role the villages have traditionally played in as accessible, sustainable centres for their rural catchments.</p> <p>Seeks proportional growth of up to 18% in Burghill and Tillington (Hereford HMA) over the plan period, subject to EiP outcome.</p> | | |

| Plans and Programmes | Type of document | Date | Overview | Key message, target/objective/indicator | SEA topic(s) | Implications for the NDP and SEA |
|--|------------------|------|---|---|---|---|
| Herefordshire Local Transport Plan (LTP) 2013-2015 | Corporate | 2013 | Sets out the Council's strategy for supporting economic growth, social inclusion and reducing the environmental impacts of transport, as well as the program of investment for the period April 2013 to April 2015. | The document includes three key objectives, one of which seeks to maintain access for rural residents and people without access to a car. Intrinsic to this is the retention of a 'core network' of bus services which focus on journeys between Hereford and the market towns, along with main transport corridors close to larger rural settlements. To this end, the strategy aims to increase the number of bus users by 1.3% (4,700 journeys) by 2015. | <ul style="list-style-type: none"> • Air • Climatic factors • Population | The LTP does not explore current transport issues in the Burghill neighbourhood area. |

| Plans and Programmes | Type of document | Date | Overview | Key message, target/objective/indicator | SEA topic(s) | Implications for the NDP and SEA |
|---|------------------|------|---|---|--|----------------------------------|
| Herefordshire Economic Development Strategy 2011-2016 | Corporate | 2011 | Aims to increase the economic wealth of Herefordshire by setting out proposals and to support business growth up to 2016. | <p>The document outlines the path and direction to foster economic vitality within Herefordshire. Key objectives therefore include:</p> <ul style="list-style-type: none"> • Sustaining business survival and growth • Increasing wage levels, range and quality of jobs • Having a skilled population to meet future work needs • Developing the county's built infrastructure so enterprise can flourish. | <ul style="list-style-type: none"> • Cultural heritage • Material assets • Population | None of merit. |

| Plans and Programmes | Type of document | Date | Overview | Key message, target/objective/indicator | SEA topic(s) | Implications for the NDP and SEA |
|-------------------------------------|------------------|------|---|--|---|--|
| Herefordshire Employment Land Study | Evidence | 2012 | Includes employment land assessments for the plan period 2011-2031. The study includes Quantitative and Qualitative assessments of employment land, assessment of market demand and need, as well as providing forecasts and recommendations for future employment need over the plan period. | <p>This study covers existing employment sites in Hereford, the five market towns and their rural hinterlands.</p> <p>There are no employment land allocations within Burghill or Tillington at present and so the study does not identify sites which are worthy of continued protection from alternative uses. Nor does it make any recommendations in respect of employment need within the neighbourhood area.</p> | <ul style="list-style-type: none"> • Material assets • Population | None of merit; however it would be appropriate for the NDP to examine employment need locally and determine whether there is any scope for providing employment land and premises. |

| Plans and Programmes | Type of document | Date | Overview | Key message, target/objective/indicator | SEA topic(s) | Implications for the NDP and SEA |
|--|------------------|------|--|--|--|--|
| Herefordshire Strategic Housing Land Availability Assessment (SHLAA) | Evidence | 2009 | <p>The SHLAA aims to justify site allocations in plans by:</p> <ul style="list-style-type: none"> Identifying sites which are capable of delivering housing development Assessing sites for their housing potential; and Predicting when a site could be developed for housing. | <p>In terms of Burghill, previous SHLAA identifies that 112 additional dwellings could be provided on 6 sites in and around the existing settlement, however it is unlikely that this number would materialise due to significant constraints.</p> <p>Neither existing nor previous versions of SHLAA identify sites within or adjacent to Tillington.</p> <p>Both settlements are to feature in the SHLAA 2013 review, due to be published in 2014.</p> | <ul style="list-style-type: none"> Air Biodiversity Climatic factors Cultural heritage Flora and fauna Population Soil Water | <p>If site allocations are pursued then the Burghill NDP should be informed by a housing land assessment, undertaken in line with Guidance Note 21: Site assessment and allocation sites.</p> <p>.</p> |

| Plans and Programmes | Type of document | Date | Overview | Key message, target/objective/indicator | SEA topic(s) | Implications for the NDP and SEA |
|--|------------------|------|---|---|--|--|
| Herefordshire Local Housing Market Assessment (LHMA) | Evidence | 2013 | Builds on an earlier Strategic Housing Market Assessment (SHMA) developed for Herefordshire and Shropshire. Its purpose is to inform the Local Plan's policies regarding housing need and demand (for market and affordable housing) within each of the 7 Housing Market Areas (HMAs) in Herefordshire between 2011 and 2031. | <p>The LHMA uses 7 HMAs as the geography for presenting data. Burghill falls within the Hereford HMA. Here, the study reveals that:</p> <ul style="list-style-type: none"> • 58% of households are unable to afford market housing. • There is an annual requirement for 417 affordable dwellings between 2012 and 2017. • Higher proportion of the HMA population is of working age (62%) compared to the county average of (61%). • The proportion of the population above retirement age is slightly below average (19% compared to 22% across Herefordshire). | <ul style="list-style-type: none"> • Air • Biodiversity • Climatic factors • Cultural heritage • Flora and fauna • Population • Soil • Water | <p>The LHMA provides an indication of housing needs and affordability within the Hereford HMA.</p> <p>It provides evidence that could be used to inform policies or market and affordable housing requirements in the NDP.</p> |

| Plans and Programmes | Type of document | Date | Overview | Key message, target/objective/indicator | SEA topic(s) | Implications for the NDP and SEA |
|--|------------------|------|---|---|---|---|
| Herefordshire Local Housing Requirements Study | Evidence | 2012 | Technical assessment of the housing market and potential future local housing requirements which supports planning policy regarding the amount of growth, housing tenure and housing type needed within Herefordshire up to 2031. | <p>The delivery of 5,300 homes in the rural areas would:</p> <ul style="list-style-type: none"> • Support growth in the rural population by 6% • Increase the number of households by 14.5% <p>Forecasts also predict that growth in the population of the rural areas is likely to be primarily through an increase in those aged over 75.</p> <p>Moderate growth is expected in the 30-44 and 60-74 age brackets.</p> <p>The Local Housing Requirements Study therefore anticipates continuing improvements in life expectancy; significant growth is expected of those in their 80s, with the existing population in their 40s and 50s moving into retirement.</p> | <ul style="list-style-type: none"> • Air • Biodiversity • Climatic factors • Cultural heritage • Flora and fauna • Material assets • Population • Soil • Water | <p>This study provides an indication of housing requirements in the rural areas and the Hereford HMA.</p> <p>This evidence can be used to inform the content of the Burghill NDP.</p> |

| Plans and Programmes | Type of document | Date | Overview | Key message, target/objective/indicator | SEA topic(s) | Implications for the NDP and SEA |
|---|------------------|------|---|---|---|---|
| Herefordshire Rural Housing Background Report | Evidence | 2013 | Provides the background for the proportional housing growth targets outlined in the Core Strategy | The villages within the neighbourhood area are listed among the settlements which are considered to be sustainable locations for growth of up to 18%, in accordance with the EiP outcome. | <ul style="list-style-type: none"> • Air • Biodiversity • Climatic factors • Cultural heritage • Flora and fauna • Material assets • Population • Soil • Water | The Burghill NDP will need to be in general conformity with the provisions of Local Plan policies concerning the rural areas. |

| Plans and Programmes | Type of document | Date | Overview | Key message, target/objective/indicator | SEA topic(s) | Implications for the NDP and SEA |
|---|------------------|------|--|--|---|---|
| Herefordshire Draft Gypsies and Travellers Assessment | Evidence | 2013 | Assesses the accommodation needs of Gypsies and Travellers across Herefordshire. | <p>Key findings from the survey of Gypsy and Traveller households in 2012 found that:</p> <ul style="list-style-type: none"> • 31% of households surveyed have some sort of accommodation need • Of the 17 households with an accommodation need, 7 had a requirement for at least one additional pitch • 10 households had a requirement for bricks and mortar housing • There is an additional requirement for 7 pitches and 9 units of Registered Social Landlord accommodation within Herefordshire. | <ul style="list-style-type: none"> • Air • Biodiversity • Climatic factors • Cultural heritage • Flora and fauna • Material assets • Population • Soil • Water | The Burghill NDP should establish whether any of the need identified in this assessment falls within the neighbourhood area and seek appropriate pitches and provision. |

| Plans and Programmes | Type of document | Date | Overview | Key message, target/objective/indicator | SEA topic(s) | Implications for the NDP and SEA |
|--|------------------|------|---|--|---|--|
| Herefordshire Local Biodiversity Action Plan | Evidence | 2007 | Focuses conservation efforts on the areas within Herefordshire that will result in the greatest benefit for ecological networks, habitats and species. | Integrating biodiversity objectives with other environmental, social and economic needs can provide a sustainable living and working environment that benefits both people and nature. | <ul style="list-style-type: none"> Biodiversity | The Burghill NDP can help to achieve the priorities set within the LBAP. |
| Building Biodiversity into the LDF | Evidence | 2009 | Provides the Council's Local Plan (Core Strategy) with evidence in respect of biodiversity and geodiversity, identifying both opportunities and constraints across Herefordshire. | <p>The study is focused on those parts of the county which are most likely to be subject to development pressures. Therefore, although the study addresses biodiversity interests in and around the peripheries of the city of Hereford, the parish is not covered in great detail.</p> <p>The study does, however, identify a range of artificial and semi-natural habitats on tracts of land in southern parts of the parish, which are close to the boundary with the city of Hereford.</p> | <ul style="list-style-type: none"> Air Biodiversity Climatic factors Cultural heritage Flora and fauna Material assets Population Soil Water | There is a lack of information about rural areas which means it will be necessary to gather and assess existing biodiversity and geodiversity data, in order to ensure that the Burghill NDP can overcome any existing constraints and capitalise on opportunities to enhance habitats and their networks. |

| Plans and Programmes | Type of document | Date | Overview | Key message, target/objective/indicator | SEA topic(s) | Implications for the NDP and SEA |
|-----------------------------------|------------------|------|---|--|--|--|
| Urban Fringe Sensitivity Analysis | Evidence | 2010 | Technical Paper which supports the SHLAA by classifying the landscape sensitivity of the urban fringe on the edges of Hereford and the five market towns. | Provides documentary and photographic evidence of the condition of the neighbourhood's finest landscapes. Each of these landscapes are categorised into different groups, with some identified as being worthy of protection or enhancement. | <ul style="list-style-type: none"> • Cultural heritage • Flora and fauna | The study provides evidence that could be taken into account when preparing policies for the Burghill NDP. |

| Plans and Programmes | Type of document | Date | Overview | Key message, target/objective/indicator | SEA topic(s) | Implications for the NDP and SEA |
|---|------------------|------|---|---|---|--|
| Herefordshire Green Infrastructure Strategy | Evidence | 2010 | Develops a framework of natural and culturally important features and functions so that planning for a sustainable future is at the heart of planning within Herefordshire. | <p>Establishes policies and principles for the protection or enhancement of those features and functions that contributes to the environment of Herefordshire across a range of scales.</p> <p>The parish may be part of District Strategic Corridor 1 (DSC1: Hereford to Leominster), and there are areas of land between the A49 and A4110, the latter of which traverses part of the neighbourhood area, which have been identified in the study as being places that present opportunities for growth or enhancement (HerLEZ3: 115).</p> <p>In addition, the parish is within Hereford Fringe Zone 4 (HerFZ4), focussing on the predominant features of the landscape: Woodland and Orchards.</p> | <ul style="list-style-type: none"> • Air • Biodiversity • Climatic factors • Cultural heritage • Flora and fauna • Material assets • Population • Soil • Water | The study provides evidence that could be taken into account when preparing policies for the Burghill NDP. |

| Plans and Programmes | Type of document | Date | Overview | Key message, target/objective/indicator | SEA topic(s) | Implications for the NDP and SEA |
|------------------------|------------------|------|---|---|---|--|
| Renewable Energy Study | Evidence | 2010 | Assesses the energy demand within Herefordshire and the ability for the county to accommodate renewable and low carbon energy technologies. | <p>The total energy demand excluding transport for Herefordshire, at that point in time, was calculated as being:</p> <ul style="list-style-type: none"> • Electrical: 731 GWh/yr • Heat: 1,810 GWh/yr • Total: 2,541 GWh/yr <p>There is scope for all types of renewable energy production.</p> | <ul style="list-style-type: none"> • Air • Biodiversity • Climatic factors • Cultural heritage • Flora and fauna • Material assets • Population • Soil • Water | The study provides evidence that could be taken into account when preparing policies for the Burghill NDP. |

| Plans and Programmes | Type of document | Date | Overview | Key message, target/objective/indicator | SEA topic(s) | Implications for the NDP and SEA |
|--|------------------|------|--|---|---|--|
| Herefordshire Playing Pitch Assessment | Evidence | 2012 | Produces a strategic framework, audit and assessment and needs analysis of outdoor sports pitches and facilities for Herefordshire. The document arises as a result of a recommendation in the Herefordshire and Worcestershire Sports Facilities Framework to develop local standards for playing fields and sports pitches throughout Herefordshire. | <p>The study updates components of the Herefordshire and Worcestershire Sports Facilities Framework 2010 such as updating population forecasts, setting local standards for synthetic turf pitches and grass playing fields within Herefordshire. It identifies any current gaps in provision, and looks forward to 2031 to assess what facilities are likely to be required by that date.</p> <p>In terms of Burghill itself, the study reveals that there is:</p> <ul style="list-style-type: none"> • 3.67 hectares of playing pitch area • 2.6 (71%) hectares of playing pitch area with secured community access; these are Burghill Playing Fields and Tillington Cricket Ground. | <ul style="list-style-type: none"> • Biodiversity • Cultural heritage • Flora and fauna • Material assets • Population | The study provides evidence that could be taken into account when preparing policies the Burghill NDP. |

| Plans and Programmes | Type of document | Date | Overview | Key message, target/objective/indicator | SEA topic(s) | Implications for the NDP and SEA |
|----------------------|------------------|------|--|--|---|--|
| Open Spaces Study | Evidence | 2006 | The 2006 space audit and assessment of need is a snap shot of the quality, quantity and distribution of open space across Herefordshire. | <p>The study reveals that within the Central Herefordshire area, to which Burghill, Holmer and Lyde Ward is a part, there is:</p> <ul style="list-style-type: none"> • Extensive over provision of parks and gardens • Extensive over provision of natural and semi-natural green space • Under provision of amenity green space and outdoor sport • Average provision for children and young people. • Extensive under provision of outdoor sports facilities. <p>In terms of Burghill and Tillington, no specific sites are identified.</p> | <ul style="list-style-type: none"> • Biodiversity • Climatic factors • Cultural heritage • Flora and fauna • Material assets • Population | The open space audit and assessment does not give a specific indication of open space shortfalls and surpluses in the Burghill neighbourhood area. However, there may be a need to include a policy which encourages and facilitates the provision of outdoor recreational facilities. |

| Plans and Programmes | Type of document | Date | Overview | Key message, target/objective/indicator | SEA topic(s) | Implications for the NDP and SEA |
|-----------------------|------------------|------|--|--|---|----------------------------------|
| Play Facilities Study | Evidence | 2012 | The Play Facilities Study 2012 updates the previous play facilities analysis under the Open Spaces Study 2006 and provides guidance and a framework for the development, delivery and continued sustainability of providing new and improved play facilities for children and young people in Herefordshire to 2031. | In terms of Burghill and Tillington, no specific sites are identified. | <ul style="list-style-type: none"> • Biodiversity • Climatic factors • Cultural heritage • Flora and fauna • Material assets • Population | None of merit. |

| Plans and Programmes | Type of document | Date | Overview | Key message, target/objective/indicator | SEA topic(s) | Implications for the NDP and SEA |
|--|------------------|------|--|--|--|--|
| Strategic Flood Risk Assessment (SFRA) and Water Cycle Study | Evidence | 2009 | <p>The Strategic Flood Risk Assessment (SFRA) provides a summary of flood risk in Herefordshire to inform the location of future development.</p> <p>The Water Cycle Study (WCS) examines how water resources and water supply infrastructure, wastewater treatment, water quality, sewerage and flood risk could constrain growth across Herefordshire.</p> | <p>The neighbourhood area is situated in the River Wye catchment.</p> <p>Sub-catchments within this zone are one of the most rapid response flood warning systems in the SFRA area.</p> <p>Sub-catchments within this zone record a standard percentage run off of 35-40%, which is potentially highly unsuitable for infiltration source control.</p> <p>The area has a very slow flood response (Tp-time to peak) time at around 11 hours.</p> <p>The WCS identifies 30 sites in the River Wye catchment where current discharge consent licences cannot be shown to have no adverse effect.</p> | <ul style="list-style-type: none"> • Biodiversity • Climatic factors • Material assets • Population • Water | <p>New development proposed through the Burghill NDP should be assessed against the capacity of local infrastructure.</p> <p>Up-to-date flood risk information should be gathered from the Environment Agency, in order to ensure that any flood risks are considered when preparing the Burghill NDP.</p> |

Appendix A2 – Baseline information for Burghill

N.B. This is based on countywide baseline information with some additions relevant to Burghill (in red). Where no locally specific data is available for current status, trends and targets, only countywide data is reported. Any gaps in data may be filled following additional research.

| SA Objective ¹ | SA Theme | Proposed indicator | Current status | Trends | Targets | Issues and constraints | Baseline (information) source |
|--|---------------------|--|--|--------|------------------------------------|---|-------------------------------|
| SEA Topic covered by objective: <i>Biodiversity, flora and fauna</i> | | | | | | | |
| 13. Value, maintain, restore or expand county biodiversity. | Natural environment | Net change in condition of SSSIs across Herefordshire. | There are no SSSIs within the Neighbourhood Area | N/A | N/A | N/A | N/A |
| 13. Value, maintain, restore or expand county biodiversity. | Natural environment | After use of mineral sites especially wildlife habitat creation. | <i>There is no countywide or locally specific data available at present.</i> | - | Percentage of opportunities taken. | Should be monitored through AMR following the adoption of the Core Strategy, in line with SA recommendations. | - |

¹ Derived from the Pre Submission Core Strategy Sustainability Appraisal Assessment (May 2014)

| SA Objective ¹ | SA Theme | Proposed indicator | Current status | Trends | Targets | Issues and constraints | Baseline (information) source |
|---|---------------------|---|---|---|---|---|---------------------------------|
| 13. Value, maintain, restore or expand county biodiversity. | Natural environment | Phosphate levels within the River Wye SAC and adjoining tributaries that receive increased phosphates from proportional growth. | The existing status of the Wye SAC between the Hay and Lugg confluence is currently meeting its phosphate and conservation targets. | The River Wye SAC was subject to a review of consents in 2010, as a number of sections of the river were found to have greater phosphate levels than those identified in Natural England's favourable condition tables. | The roll out of the Nutrient Management Plan will determine future targets. | New development within the area could lead to the water quality failing the phosphate levels and conservation objectives. | Nutrient Management Plan (2014) |

| SA Objective ¹ | SA Theme | Proposed indicator | Current status | Trends | Targets | Issues and constraints | Baseline (information) source |
|---|---------------------|---|---|---|---|---|-------------------------------|
| 13. Value, maintain, restore or expand county biodiversity. | Natural environment | Changes to protected habitats and impacts of species within the Herefordshire Local Biodiversity Action Plan. | The 2011-2013 AMR does not contain updated conservation data. <i>There is no locally specific data available at present.</i> | 2010/11: 17 Habitat Action Plans and 14 Species Action Plans are currently in operation across Herefordshire. There are no formal records of any unacceptable adverse impacts on habitats or protected species. Originally 156 Priority Species were identified for inclusion in Herefordshire's LBAP. Similarly Herefordshire's LBAP covered 23 habitats with Action Plans. | To protect or enhance the habitats of species identified. Zero net loss of habitats. | Herefordshire Biological Records Centre (HBRC) holds limited data on some individual sites. | - |

This document is copyright of Herefordshire Council. Please contact the Neighbourhood Planning team if you wish to reuse it in whole or part.

| SA Objective ¹ | SA Theme | Proposed indicator | Current status | Trends | Targets | Issues and constraints | Baseline (information) source |
|---|---------------------|---|---|---|---|---|--|
| 13. Value, maintain, restore or expand county biodiversity. | Natural environment | Changes in the areas of designated nature conservation sites as a consequence of planning permission. | Burghill has: SWS: 3 ² SAC: 1 SINCs: 1 There are no SSSIs, NNRs, and LNRs within the parish. | As of 2012, there had been no change in the areas of designated nature conservation sites as a consequence of the planning permissions granted. | To capitalise on opportunities to protect or enhance areas of value to nature conservation. | Should be monitored through AMR following the adoption of the Core Strategy, in line with SA recommendations. | NDP SEA/HRA Screening Notification Report (July 2014) |
| 13. Value, maintain, restore or expand county biodiversity. | Natural environment | Proportion of local sites where positive conservation management has or is being implemented. | The neighbourhood area comprises the following types of landscape: • Principal settled farmlands. | - | No specific targets identified. | Should be monitored through AMR following the adoption of the Core Strategy, in line with SA recommendations. | Herefordshire Landscape Character Assessment (2004; updated 2009). |

² View SEA/HRA Screening Notification Report for further details.

| SA Objective ¹ | SA Theme | Proposed indicator | Current status | Trends | Targets | Issues and constraints | Baseline (information) source |
|---|---|---|---|--------|--|---|--|
| SEA Topic covered by objectives: <i>Material assets</i> | | | | | | | |
| 14. Use natural resources and energy more efficiently. | Resource consumption and climate change | Maintaining Herefordshire Council's County Site and Monuments Register. | Countywide data would be too large to incorporate into this template. Whilst there is no locally specific data available at present, there are numerous archaeological and historic sites in Burghill according to the latest version of the register. | - | No specific targets identified, but need to ensure that the register is kept up to date. | Should be monitored through AMR following the adoption of the Core Strategy, in line with SA recommendations. | Herefordshire Environmental Records Register (searched July 2014). |

| SA Objective ¹ | SA Theme | Proposed indicator | Current status | Trends | Targets | Issues and constraints | Baseline (information) source |
|---|---|--|---|--------|---------------------------------|---|---|
| 14. Use natural resources and energy more efficiently. | Resource consumption and climate change | Monitoring changes to historic landscapes. | <p><i>Rapid Townscape Assessments (2010) were only undertaken for Hereford, Ledbury and Ross.</i></p> <p>Condition of highly sensitive local landscapes is reported in the Urban Fringe Sensitivity Analysis.</p> | - | No specific targets identified. | Should be monitored through AMR following the adoption of the Core Strategy, in line with SA recommendations | Urban Fringe Sensitivity Analysis (2010). |
| SEA Topic covered by objective: <i>Population, Biodiversity, Flora and Fauna</i> | | | | | | | |
| 15. Value, protect, enhance or restore the landscape quality of Herefordshire, including its rural areas and open spaces. | Natural environment | Number of developments meeting and surpassing national design standards. | <i>There is no countywide or locally specific data available at present.</i> | - | No specific targets identified. | Should be monitored through AMR following the adoption of the Core Strategy, in line with SA recommendations. | - |

| SA Objective ¹ | SA Theme | Proposed indicator | Current status | Trends | Targets | Issues and constraints | Baseline (information) source |
|---|---------------------|---|---|---|--|--|--|
| 15. Value, protect, enhance or restore the landscape quality of Herefordshire, including its rural areas and open spaces. | Natural environment | The need for, frequency and outcomes of planning enforcement investigations/ planning appeals concerning the aspects of local loss of locally important buildings within a conservation area. | Countywide data would be too large to incorporate into this template. There are no outstanding enforcement actions or appeals concerning locally important buildings within Burghill village at present. | No historic records of any planning enforcement action or appeals concerning locally important buildings within Burghill village. | To maintain or enhance current status. | Current status must be verified by Dvt Mgt and Enforcement Officers. | Council Dvt Mgt records (searched July 2014) |

| SA Objective ¹ | SA Theme | Proposed indicator | Current status | Trends | Targets | Issues and constraints | Baseline (information) source |
|---|--|------------------------------|--|---|--|---|-------------------------------|
| SEA Topic covered by objective: <i>Climatic Factors</i> | | | | | | | |
| 16. Reduce Herefordshire's vulnerability to the impacts of climate change as well as its contribution to the problem. | Resource consumption and climate change. | Transport patronage by mode. | % of Herefordshire residents who travel to work by: Car: 70.1% Foot: 14.7% Bicycle: 4.3% Bus: 2% Train: 0.8% Motorbike: 0.8% Taxi: 0.3% Other: 7% <i>There is no locally specific data available at present</i> | The number of people cycling or travelling by bus as the main form transport to get to work declined between 2001 and 2011 – across England and Wales there was little change in either. Walking or driving a car or van on the other hand increased. | To encourage the take up of less polluting forms of transport. | There are a lack of transport options for many rural communities and therefore high car ownership and dependency – the last decade has seen a 15 per cent increase in household car ownership, although this is not reflected in traffic flows of recent years with volumes in Hereford City and wider county having decreased. The proportion of people working from home increased over the decade from 15 per cent in 2001 to 17 per cent in 2011. | 2011 Census |

| SA Objective ¹ | SA Theme | Proposed indicator | Current status | Trends | Targets | Issues and constraints | Baseline (information) source |
|---|--|--|--|--------|--|---|-------------------------------|
| 16. Reduce Herefordshire's vulnerability to the impacts of climate change as well as its contribution to the problem. | Resource consumption and climate change. | Number of decentralised energy schemes granted permission. | <i>There is no countywide or locally specific data available at present.</i> | - | To contribute towards the national target. | Should be monitored through AMR following the adoption of the Core Strategy, in line with SA recommendations. | - |

| SA Objective ¹ | SA Theme | Proposed indicator | Current status | Trends | Targets | Issues and constraints | Baseline (information) source |
|---|----------------------------------|--------------------------------|---|---|---|--|--|
| 16. Reduce Herefordshire's vulnerability to the impacts of climate change as well as its contribution to the problem. | Resource consumption and climate | Total CO2 emissions per capita | <p>Latest figure dates back to 2010: 1.61 million tonnes (mtCO₂)</p> <p><i>There is no locally specific data available at present.</i></p> | <p>Between 2005 and 2010 Herefordshire's total and per capita carbon emission reduced by 7% and 8% respectively; while UK's total and per capita carbon emission reduced by 8% and 12% respectively within the same period. This trend hides an increase in emissions between 2009 and 2010 when total emissions in the county increased by 5% the same as across the UK (+5%).</p> | To reduce the overall carbon emissions. | CO ₂ emissions produced are decreasing. | Understanding Herefordshire: An integrated needs assessment (June 2013). |

| SA Objective ¹ | SA Theme | Proposed indicator | Current status | Trends | Targets | Issues and constraints | Baseline (information) source |
|---|---------------------|---|--|--|--|---|--|
| SEA Topic covered by objective: <i>Water</i> | | | | | | | |
| 17. Reduce the risk of flooding and the resulting detriment to public wellbeing, the economy and the environment. | Natural environment | Number of planning permissions granted contrary to the advice of the Environment Agency on flood defence grounds. | The 2011-2013 AMR does not contain updated conservation data. <i>There is no locally specific data available at present.</i> | 2010/11: None There have been no approvals contrary to EA advice since reporting began in 2004. | To have no applications permitted contrary to EA advice. | Should be monitored through AMR following the adoption of the Core Strategy, in line with SA recommendations. | - |
| SEA Topic covered by objective: <i>Water, air, soil, material assets</i> | | | | | | | |
| 18. Minimise local and global pollution and protect or enhance environmental resources. | Natural environment | Agricultural land usage by quality | <i>There is no countywide data available at present.</i> 2011: With the exception of Tillington Common, the majority of land within the neighbourhood area was listed Grade 1 (Excellent) for its agricultural quality. | - | Measure the number of hectares of best and most versatile soil lost through development. | Should be monitored through AMR following the adoption of the Core Strategy, in line with SA recommendations. | West Midland ALC Map (Natural England 2011). |

| SA Objective ¹ | SA Theme | Proposed indicator | Current status | Trends | Targets | Issues and constraints | Baseline (information) source |
|---|---------------------|--|---|---|--|--|---|
| 18. Minimise local and global pollution and protect or enhance environmental resources. | Natural environment | Percentage of river length assessed as good or very good chemical quality and ecological quality as required by the Water Framework Directive. | Latest figure dates back to 2005: 84% <i>There is no locally specific data available at present.</i> | Figure steadily improved before going into decline: Herefordshire 1999 85.9%, 2000 89.5%, 2001 92.2%, 2002 91.8% | To ensure that rivers meet their conservation objectives and do not fall below the required standard of quality. | None identified. | The State of Herefordshire Report (2007). Water Framework Directive (2000) |
| SEA Topic covered by objective: <i>Soil</i> | | | | | | | |
| 19. Ensure integrated, efficient and balanced land use. | Built environment | Percentage of all new development completed on previously developed land. | 2011/13: 57% <i>There is no locally specific data available at present.</i> | 2010/11: 67% Completions on PDL had risen to 71% by 2005. | To increase the number of homes built on PDL in line with the provisions of national planning policy. | The number of brownfield completions has fallen slightly in recent years, though this is probably the offshoot of tough market conditions. | Herefordshire Council AMR (2011/13) |
| 19. Ensure integrated, efficient and balanced land use. | Built environment | Housing densities in urban and rural areas | <i>There is no countywide or locally specific data available at present.</i> | - | No specific targets identified. | Should be monitored through AMR following the adoption of the Core Strategy, in line with SA recommendations. | - |

| SA Objective ¹ | SA Theme | Proposed indicator | Current status | Trends | Targets | Issues and constraints | Baseline (information) source |
|--|-------------------|---|---|--|---|---|---|
| 19. Ensure integrated, efficient and balanced land use. | Built environment | Level of development in urban areas compared to rural. | <i>There is no countywide or locally specific data available at present.</i> | - | No specific targets identified. | Should be monitored through AMR following the adoption of the Core Strategy, in line with SA recommendations. | - |
| SEA Topic covered by objective: <i>Cultural heritage</i> | | | | | | | |
| 20. Value, protect or enhance the character and built quality of settlements and neighbourhoods and the county's historic environment and cultural heritage. | Built environment | Number and percentage of listed buildings and Scheduled Ancient Monuments on Buildings at Risk Register (English Heritage). | The 2011-2013 AMR does not contain updated conservation data. There are numerous listed buildings within the parish and 4 SAMs, none of which are currently recorded in the Buildings at Risk Register. | In 2011, there were 58 heritage assets in Herefordshire that were considered to be at high risk and included in the Heritage at Risk Register. | To maintain or enhance current status. | None of the incumbent listed buildings or SAMs are considered to be at risk at present. | Buildings at Risk Register (English Heritage; searched July 2014) |

| SA Objective ¹ | SA Theme | Proposed indicator | Current status | Trends | Targets | Issues and constraints | Baseline (information) source |
|---|-------------------|---|---|---|--|--|--|
| 20. Value, protect or enhance the character and built quality of settlements and neighbourhoods and the county's heritage assets, historic environment and cultural heritage. | Built environment | The need for, frequency and outcomes of planning enforcement investigations/ planning appeals concerning the aspects of local loss of heritage assets, locally important buildings across the Parish and particularly within a conservation area. | Countywide data would be too large to incorporate into this template. There are no outstanding enforcement actions or appeals concerning locally important buildings within Burghill village at present. | No historic records of any planning enforcement action or appeals concerning locally important buildings within Burghill village. | To maintain or enhance current status. | Current status must be verified by Dvt Mgt and Enforcement Officers. | Council Dvt Mgt records (searched July 2014) |

Appendix A3 – Environmental issues identified from the Burghill baseline

These environmental issues are the same as most of those identified for the Herefordshire Core Strategy¹

| SEA Topic | | Environmental issue | SA objectives |
|-----------|-------------------|---|--------------------|
| 1 | Air | High reliance upon the private car causing high levels of air pollution and in Hereford in particular | Objective 16 |
| | | Need to reduce carbon emissions by encouraging less polluting forms of transport. | |
| 2 | Biodiversity | Habitats and species of national, regional and local importance are under pressure from the adaptation and diversification of farming and forestry employment. | Objectives 13 &15 |
| | | Habitats and species of national, regional and local importance are under pressure from development | |
| | | Minimise loss of biodiversity and expand opportunities for wildlife everywhere. | |
| 3 | Climatic factors | Reduce greenhouse gas emissions through planning, design and build. | Objective 16 |
| 4 | Cultural heritage | Burghill has numerous Scheduled Ancient Monuments and listed buildings, all of which require ongoing protection and many in need of high levels of maintenance. | Objective 20 |
| 5 | Flora and fauna | Conserve or enhance the character and quality of historic landscapes, including all types of natural flora and fauna. | Objective 15 |
| 6 | Material assets | How the countryside can continue to be managed in an economically, socially and environmentally beneficial way in the face of continuing pressures on traditional farming. | Objectives 14 & 18 |
| 7 | Population | Minimise energy waste through good designs, which help to reduce energy consumption and maximise efficiency. | Objective 15 |
| | | Need to avoid enforcement investigations/action concerning locally important buildings and those within conservation areas in particular. | |
| 8 | Soil | Promoting development of previously developed land and buildings as opposed to greenfield sites or agricultural land of the highest quality. | Objectives 18 & 19 |
| 9 | Water | Issues relating to availability of resources, foul drainage, pollution, and abstraction in a county which supports water dependent biodiversity of international and national importance, given the predicted climate change consequences for water availability and demanding projections for new housing. | Objectives 17 & 18 |

¹ Derived from the Pre Submission Core Strategy Sustainability Appraisal Assessment (May 2014) and LDF General Scoping Report (June 2007)

| | | | |
|--|--|--|--|
| | | Steady decline in the chemical quality of rivers over the last 10 years. | |
|--|--|--|--|

Appendix A4 – SEA framework (objectives, indicators and targets)

| SEA Topic(s) | SEA Objective(s) | SA Objective(s) | Sub-objectives/Appraisal Questions | Indicators | Targets |
|-------------------------------|---|--|---|---|---|
| Air | <ul style="list-style-type: none"> To improve air quality. To reduce the effect of traffic on the environment | <ul style="list-style-type: none"> Minimise local and global pollution and protect or enhance environmental resources. | <ul style="list-style-type: none"> Minimise water, air, soil, groundwater, noise and light pollution from current activities and the potential for such pollution. Protect or enhance the quality of watercourses. Provide opportunities to improve soil quality or reduce contaminated land. | Transport patronage by mode. | To encourage the take up of less polluting forms of transport. |
| Biodiversity, Flora and fauna | <ul style="list-style-type: none"> To maintain or enhance nature conservation (biodiversity, flora and fauna) | <ul style="list-style-type: none"> Value, maintain, restore or expand county biodiversity. Value, protect, enhance or restore the landscape quality of Herefordshire, including its rural areas and open spaces. | <ul style="list-style-type: none"> Protect or enhance habitats of international, national, regional or local importance. Protect international, national, regional or locally important terrestrial or aquatic species. Maintain wildlife corridors and minimise fragmentation of ecological areas and green spaces. Manage access to sites in a sustainable way that protects or enhances their nature conservation value. | Net change in condition of SSSIs across Herefordshire. | N/A |
| | | | | After use of mineral sites especially wildlife habitat creation. | Percentage of opportunities taken. |
| | | | | Phosphate levels within the River Wye SAC and adjoining tributaries that receive increased phosphates from proportional growth. | The roll out of the Nutrient Management Plan will determine future targets. |

| SEA Topic(s) | SEA Objective(s) | SA Objective(s) | Sub-objectives/Appraisal Questions | Indicators | Targets |
|--------------|------------------|-----------------|--|--|---|
| | | | <ul style="list-style-type: none"> • Create new appropriate habitats. • Value, enhance and protect natural environmental assets including AONB's, historic landscapes, open spaces, parks and gardens and their settings • Encourage local stewardship of local environments, for example by promoting best practices in agricultural management. • Ensure that environmental impacts caused by mineral operations and the transport of minerals are minimised. • Promote the use of rural areas and open space by all, encourage easy non-car based access, and accommodate the needs of disabled users. | <p>Changes to protected habitats and impacts of species within the Herefordshire Local Biodiversity Action Plan.</p> <p>Changes in the areas of designated nature conservation sites as a consequence of planning permission.</p> <p>Proportion of local sites where positive conservation management has or is being implemented.</p> | <p>To protect or enhance the habitats and species identified.</p> <p>Zero net loss of habitats.</p> <p>To capitalise on opportunities to enhance the areas of value to nature conservation.</p> <p>The number of local sites under positive conservation management (Increase).</p> |

| SEA Topic(s) | SEA Objective(s) | SA Objective(s) | Sub-objectives/Appraisal Questions | Indicators | Targets |
|-------------------|--|---|---|---|--|
| Climatic factors | <ul style="list-style-type: none"> To reduce contributions to climate change To reduce vulnerability to climate change | <ul style="list-style-type: none"> Reduce Herefordshire's vulnerability to the impacts of climate change as well as its contribution to the problem. | <ul style="list-style-type: none"> Reduce the county's contribution to climate change by reducing greenhouse gas emissions from transport, domestic, commercial and industrial sources. Increase the proportion of energy generated from renewable and low carbon sources including by micro-generation, Combined Heat and Power (CHP), district heating and in transportation. | Number of decentralised energy schemes granted permission. | To contribute towards the national target. |
| | | | | Total CO2 emissions per capita. | To reduce the overall carbon emissions. |
| Cultural heritage | <ul style="list-style-type: none"> To conserve or enhance the historic environment, heritage assets and cultural heritage. | <ul style="list-style-type: none"> Value, protect or enhance the character and built quality of settlements and neighbourhoods and the county's heritage assets, historic environment and cultural heritage. | <ul style="list-style-type: none"> Preserve, protect or enhance Conservation Areas, Listed Buildings, archaeological remains, and other features and areas of historical heritage and cultural value e.g. locally listed buildings. | Number and percentage of listed buildings and Scheduled Ancient Monuments on Buildings at Risk Register (English Heritage). | To maintain or enhance current status in Burghill. |

| SEA Topic(s) | SEA Objective(s) | SA Objective(s) | Sub-objectives/Appraisal Questions | Indicators | Targets |
|------------------------------|--|---|---|---|--|
| | | | <ul style="list-style-type: none"> • Prevent development which is inappropriate in scale, form or design to its setting or to its function or local area. • Encourage development that creates and sustains well-designed, high quality built environments that incorporate green space, encourage biodiversity and promote local distinctiveness and sense of place. • Encourage cleanliness and/or improve the general appearance of the area. | The need for, frequency and outcomes of planning enforcement investigations/ planning appeals concerning the aspects of local loss of heritage assets, locally important buildings across the Parish and particularly within a conservation area. | To maintain or enhance current status in Burghill. |
| Material assets Landscape | <ul style="list-style-type: none"> • To conserve natural and man-made resources. • To improve the quality of surroundings • To maintain or enhance the quality of landscapes and townscapes | <ul style="list-style-type: none"> • Use natural resources and energy more efficiently. • Minimise local and global pollution and protect or enhance environmental resources. | <ul style="list-style-type: none"> • Maximise energy efficiency and minimise the consumption of non-renewable energy i.e. from fossil fuels. | Maintaining Herefordshire Council's County Site and Monuments Register. | No specific targets identified, but need to ensure that the register is kept up to date. |
| | | | | Monitoring changes to historic landscapes. | No specific targets identified. |

| SEA Topic(s) | SEA Objective(s) | SA Objective(s) | Sub-objectives/Appraisal Questions | Indicators | Targets |
|--------------|------------------|-----------------|---|------------------------------------|---|
| | | | <ul style="list-style-type: none"> • Minimise the consumption of water, land, soil, minerals, aggregates and other raw materials by all? E.g. through integrated transport, sustainable resource-efficient design, local sourcing of food, goods, materials. • Encourage the re-use/enhancement (to high standards of sustainable resource-efficient design) of existing buildings and minimise the need for new build. • Encourage the use of clean technologies and water minimisation techniques. | Agricultural land usage by quality | Measure the number of hectares of best or most versatile soil lost through development. |

| SEA Topic(s) | SEA Objective(s) | SA Objective(s) | Sub-objectives/Appraisal Questions | Indicators | Targets |
|--------------|---|---|---|---|--|
| Population | <ul style="list-style-type: none"> To improve the health and well-being of the population. | <ul style="list-style-type: none"> Value, protect, enhance or restore the landscape quality of Herefordshire, including its rural areas and open spaces. | <ul style="list-style-type: none"> Value, enhance and protect natural environmental assets including AONB's, historic landscapes, open spaces, parks and gardens and their settings. Encourage local stewardship of local environments, for example by promoting best practices in agricultural management. Ensure that environmental impacts caused by mineral operations and the transport of minerals are minimised. Promote the use of rural areas and open space by all, encourage easy non-car based access, and accommodate the needs of disabled users. | Number of developments meeting and surpassing national design | No specific targets identified. |
| | | | | The need for, frequency and outcomes of planning enforcement investigations/ planning appeals concerning the aspects of local loss of locally important buildings within a conservation area. | To maintain or enhance current status in Burghill. |

| SEA Topic(s) | SEA Objective(s) | SA Objective(s) | Sub-objectives/Appraisal Questions | Indicators | Targets |
|--------------|--|--|---|---|---|
| Soil | <ul style="list-style-type: none"> To conserve soil resources and quality | <ul style="list-style-type: none"> Minimise local and global pollution and protect or enhance environmental resources. Ensure integrated, efficient and balanced land use. | <ul style="list-style-type: none"> Minimise water, air, soil, groundwater, noise and light pollution from current activities and the potential for such pollution. Provide opportunities to improve soil quality or reduce contaminated land. Ensure new developments are in appropriate locations, optimising the use of previously developed land and buildings, primarily focussed on the urban areas and are accessible by walking, cycling or sustainable transport and/or will increase the share of these transport modes, thereby reducing the need to travel. | Percentage of all new development completed on previously developed land. | To increase the number of homes built on PDL in line with the provisions of national planning policy. |
| | | | | Housing densities in urban and rural areas | No specific targets identified |

| SEA Topic(s) | SEA Objective(s) | SA Objective(s) | Sub-objectives/Appraisal Questions | Indicators | Targets |
|--------------|--|---|---|---|---|
| Water | <ul style="list-style-type: none"> To improve water quality To provide for sustainable sources of water supply To reduce, avoid and manage flood risk | <ul style="list-style-type: none"> Reduce the risk of flooding and the resulting detriment to public well-being, the economy and the environment. Minimise local and global pollution and protect or enhance environmental resources. | <ul style="list-style-type: none"> Reduce flood risk both presently and taking into account climate change. Prevent inappropriate development of the floodplain, and include flood protection systems. Include sustainable urban drainage systems where appropriate. Minimise water, air, soil, groundwater, noise and light pollution from current activities and the potential for such pollution. Protect or enhance the quality of watercourses. | Number of planning permissions granted contrary to the advice of the Environment Agency on flood defence grounds. | To have no applications permitted contrary to EA advice. |
| | | | | Percentage of river length assessed as good or very good chemical quality and ecological quality. | To ensure that rivers meet their conservation objectives and do not fall below the required standard of quality, as set out in the Water Framework Directive. |

Appendix 3

Date: 04 September 2014
Our ref: 128293
Your ref: None



James Latham
Technical Support Officer
Neighbourhood Planning, Strategic Planning & Conservation teams
Herefordshire Council
neighbourhoodplanning@herefordshire.gov.uk

Customer Services
Hornbeam House
Crewe Business Park
Electra Way
Crewe
Cheshire
CW1 6GJ

T 0300 060 3900

BY EMAIL ONLY

Dear Mr Latham

Burghill Neighbourhood Plan Strategic Environmental Assessment Scoping and Habitat Regulations Assessment Screening

Thank you for your consultation on the above dated 01 August 2014 which was received by Natural England on the same date.

Natural England is a non-departmental public body. Our statutory purpose is to ensure that the natural environment is conserved, enhanced, and managed for the benefit of present and future generations, thereby contributing to sustainable development.

Natural England is a non-departmental public body. Our statutory purpose is to ensure that the natural environment is conserved, enhanced, and managed for the benefit of present and future generations, thereby contributing to sustainable development.

Where Neighbourhood Plans could have significant environmental effects, they may require a Strategic Environmental Assessment (SEA) under the Environment Assessment of Plans and Programmes Regulations 2004.

Further guidance on deciding whether the proposals are likely to have significant environmental effects and the requirements for consulting Natural England on SEA are set out in the National Planning Practice Guidance at:
<http://planningguidance.planningportal.gov.uk/blog/guidance/strategic-environmental-assessment-and-sustainability-appraisal/does-a-neighbourhood-plan-require-a-sustainability-appraisal/>

We welcome the production of this SEA Scoping report. The following comments are intended to further improve the SEA and its usefulness in assessing the Neighbourhood Plan.

Appendix A1 – Plans, policies and programmes

Natural England approves of the plans, policies and programmes listed.

Appendix A2 – Baseline information for Burghill

Biodiversity, flora and fauna

Against the proposed indicator “*Net change in condition of SSSIs across Herefordshire*”, under “*current status*” the table states that there is no data available. Natural England is able to provide up



to date information on the condition of SSSI's. Please contact us for this information as and when required.

Under the proposed indicator "*Changes to protected habitats and impacts of species within the Herefordshire Local Biodiversity Action Plan*", no baseline information source has been identified. Maps of priority habitats and species are available on *Magic*, Defra's GIS package for environmental assets (www.natureonthemap.naturalengland.org.uk).

Baseline information on the landscape and open spaces needs to be included under SA objective 15: "*Value, protect, enhance and restore the landscape quality of Herefordshire, including its rural areas and open spaces*". Reference could be made to the county Landscape Character Assessment and Landscape Characterisation studies including Historic Landscape Characterisation if this has been carried out.

Water, air, soil and material assets

This section (or suitable alternative) should include information on geodiversity. The baseline and assessment should make reference to geological conservation and the need to conserve, interpret and manage geological sites and features, both in the wider environment and in relation to designated features. The Herefordshire & Worcestershire Earth Heritage Trust may be of assistance.

We welcome the inclusion of information on Agricultural Land Classification data against the indicator "*Agricultural land usage by quality*", as per our previous recommendations in response to other neighbourhood plan SEA Scoping reports.

Soil

We note that the best and most versatile agricultural land has not been considered. We suggest including an indicator to monitor the hectares of the best and most versatile agricultural land lost to development.

Appendix A3 – Environmental issues identified from Burghill baseline

We welcome the recognition that development can be a pressure on biodiversity and the inclusion of landscape and soils as environmental issues, as per our previous recommendations in response to other neighbourhood plan SEA Scoping reports.

Appendix A4 – SEA Framework

We welcome the incorporation of some of the recommendations which we have previously made in response to other neighbourhood plan SEA Scoping Report consultations in the county.

Under the SEA topic "*Biodiversity, flora and fauna*" and the SEA objective "*Value, protect, enhance and restore the landscape quality of Herefordshire, including its rural areas and open spaces*", landscape quality and open spaces have not been covered in the indicators. Relevant indicators should be added, or will not be possible to monitor the impacts of the plan on the landscape and open space. Reference could be made to the county Landscape Character Assessment and Landscape Characterisation studies including Historic Landscape Characterisation if this has been carried out. Applications resulting in the loss of open space could be monitored.

We would also welcome the inclusion of an indicator/target around the impact/benefit to ecological networks (NPPF paragraph 109, 113 and 117). We note that no targets have been identified against the indicator "*After use of mineral sites especially wildlife habitat creation*"; we suggest that perhaps the percentage of opportunities taken could be monitored.

Under SEA topic “*material assets*”, there are no targets identified against the indicator “*monitoring changes to the historic landscape*”. We suggest that the LPA could monitor the number of applications permitted despite a significant impact on the landscape having been identified.

Habitats Regulations Assessment Screening

Where a Neighbourhood Plan could potentially lead to significant environmental effects it will be necessary to screen the Plan in relation to the Habitats and Species Regulations (2010), as amended (the ‘Habitats Regulations’). One of the basic conditions that will be tested at Examination is whether the making of the plan is compatible with European obligations and this includes requirements relating to the Habitats Directive.

In relation to the Habitats Regulations, a Neighbourhood Plan cannot progress if the likelihood of significant effects on any European Site, either alone (or in combination with other plans and projects) cannot be ruled out (see Schedule 2, The Neighbourhood Planning (General) Regulations 2012). Therefore measures may need to be incorporated into the Neighbourhood Plan to ensure that any likely significant effects are avoided in order to secure compliance with the Regulations. A screening exercise should be undertaken if there is any doubt about the possible effects of the Plan on European protected sites. This will be particularly important if a Neighbourhood Plan is to progress **before** a Local Plan has been adopted and/or the Neighbourhood Plan proposes development which has not been assessed and/or included in the Habitats Regulations Assessment for the Local Plan.

We note the recommendation that a full Habitat Regulations Assessment Screening is undertaken due to proximity to the River Wye Special Area of Conservation (SAC).

We would be happy to comment further should the need arise but if in the meantime you have any queries please do not hesitate to contact us.

For any queries relating to the specific advice in this letter only please contact Hayley Fleming on 0300 060 1594. For any new consultations, or to provide further information on this consultation please send your correspondences to consultations@naturalengland.org.uk.

We really value your feedback to help us improve the service we offer. We have attached a feedback form to this letter and welcome any comments you might have about our service.

Yours sincerely

Hayley Fleming
Lead adviser – Planning
South Mercia Area Team
(Gloucestershire, Herefordshire, Worcestershire, Warwickshire, Coventry and Solihull)



ENGLISH HERITAGE

WEST MIDLANDS REGION

Neighbourhood Planning Team
Herefordshire Council
Planning Services
PO Box 230
Blueschool House
Blueschool Street
Hereford
HR1 2ZB.

Our ref:
Your ref:

Telephone 0121 625 6887
Fax 0121 625 6820

01 September 2014

Dear Sir or Madam

CONSULTATION ON SEA SCOPING REPORTS FOR NEIGHBOURHOOD PLANS IN: (Burghill; Hope under Dinmore; Humber; Ford and Stoke Prior Group; Leominster).

Thank you for your e-mails and the invitation to comment on the SEA Scoping Reports for the Neighbourhood Plans listed above. We have no substantive objection to the contents of the documents. However, having considered the above Neighbourhood Plans please note that our comments and recommendations to you in relation to these remain substantively the same as those which we communicated to you in our letter of the 15th August 2014 in response to the first tranche of SEA Scoping Reports. We urge you to refer back to and consider these representations before finalizing the reports in relation to the above Neighbourhood Plans also.

I hope this is helpful.

Yours faithfully

Pete Boland
Historic Places Adviser
E-mail: peter.boland@english-heritage.org.uk

Appendix 4

| Objectives verses SEA Objectives (SMART and Compatibility Test) | | | | |
|---|------------------------------------|-----------------------------------|--|---|
| SEA Stage B1 | Key: | SMART criteria: | | |
| + =/++ | Compatible/ Very comp | S – Specific: | NDP objectives should specify what is intended to be done in detail and should not be open to a wide range of misinterpretations | The following matrix appraises the emerging Burghill NDP Objectives in terms of their SMART criteria and their compatibility with the SEA Objectives. These have been developed from Government guidance on SEA and from the local evidence base gathered for identifying the NDP issues. |
| - = | Possible conflict | M – Measurable: | It should be possible to monitor NDP objectives in a quantifiable way, by the use of indicators. Indicators should be measurable with limited resource implications. | |
| 0 = | Neutral | A – Attainable/achievable: | NDP objectives should be achievable and deliverable, related to the scale of growth proposed | |
| X = | No relationship between objectives | R – Realistic: | NDP objectives should relate to the overall vision of the plan. Likewise, chosen indicators should relate to objectives and their outcomes. | |
| ? = | Unclear, more information needed | T – Time-Bound: | Objectives should be specific to the NDP period or another specified time-frame. Objectives should be associated with a target and indicators should specify when the target should be achieved. | |

- SEA Objectives**
- 1- To maintain and enhance nature conservation (biodiversity, flora and fauna)
 - 2- To maintain and enhance the quality of landscapes and townscapes
 - 3- To improve quality of surroundings
 - 4- To conserve and where appropriate enhance the historic environment and culture heritage
 - 5- To improve air quality
 - 6- To reduce the effect of traffic on the environment
 - 7- To reduce contributions to climate change
 - 8- To reduce vulnerability to climate change
 - 9- To improve water quality
 - 10- To provide for sustainable sources of water supply
 - 11- To avoid, reduce and manage flood risk
 - 12- To conserve soil resources and quality
 - 13- To minimise the production of waste
 - 14- To improve health of the population
 - 15- To reduce crime and nuisance
 - 16- To conserve natural and manmade resources

| NDP objectives | SEA Objectives | | | | | | | | | | | | | | | | Conclusions | Recommendations | SMART Test of NDP objective | After SMART objectives |
|--|----------------|---|---|---|---|---|---|---|---|----|----|----|----|----|----|----|---|---|---|---|
| | 1 | 2 | 3 | 4 | 5 | 6 | 7 | 8 | 9 | 10 | 11 | 12 | 13 | 14 | 15 | 16 | | | | |
| Objective 1 – mix of housing | 0 | + | + | + | 0 | ? | ? | ? | ? | ? | ? | ? | + | X | X | + | Overall the objective to ensure that the delivering housing in Burghill are tailored to the needs and context of Burghill Village, this meets all the relevant SEA criteria. | Ensure proposed development has some sustainable design elements to reduce environmental impact of new development. | This objective meets all of the SMART criteria except specifying a time frame in which the objective will be achieved; a time frame will strengthen the objective. | Deliver a housing growth strategy tailored to the needs and context of Burghill Parish, within the plan period. |
| Objective 2 – establish criteria for new housing | + | + | + | + | X | ? | ? | ? | ? | ? | ? | ? | X | X | X | ? | This objective is generally compatible with the SEA objectives. Policy safeguards exist within both the Core Strategy and neighbourhood plan to mitigate any impacts upon the environment. | | This objective meets all of the SMART criteria. This objective is specific and measurable via the Authority Monitoring Report (AMR). It will be attainable, achievable and realistic. | |
| Objective 3 – preserve and enhance the natural environment | + | + | + | + | X | ? | ? | ? | ? | ? | ? | ? | X | X | X | ? | This objective is generally compatible with the SEA objectives. Policy safeguards exist within both the Core Strategy and neighbourhood plan to mitigate any impacts upon the environment. | | This objective meets all of the SMART criteria. This objective is specific and measurable via the Authority Monitoring Report (AMR). It will be attainable, achievable and realistic. | |
| Objective 4 – promote and support the local primary school | + | + | + | + | + | ? | ? | ? | X | X | ? | + | + | + | + | + | This objective is generally compatible with the SEA objectives. There may still be some effect on the traffic on the environment due to not knowing the catchment area of the school, although this will be reduced somewhat due to the school remaining local to the main village. | | This objective meets all of the SMART criteria. | |

| | | | | | | | | | | | | | | | | | | | | |
|---|---|---|---|---|---|---|---|---|---|---|---|---|---|---|---|---|--|--|---|--|
| Objective 5 – support local assets for future benefit for community | X | X | + | + | X | X | X | X | X | X | ? | X | ? | + | + | + | This objective does not have a direct relationship with many of the SEA objectives, but the objectives that there is a relationship are compatible | | This objective meets the SMART criteria | |
| Objective 6 – preserve and enhance leisure facilities | + | + | ? | ? | X | ? | ? | X | X | X | ? | ? | X | + | + | + | This objective is generally compatible depending upon location of any new sports facilities. | Ensure the location of any new sports facilities does not have an adverse effect on the environment, and ensure that policy safeguards exist. | This objective meets all of the SMART criteria. This objective is specific and measurable via the Authority Monitoring Report (AMR). It will be attainable, achievable and realistic. | |
| Objective 7 – maintain separate identity from the city | + | + | + | + | X | X | X | X | X | X | X | ? | ? | + | + | + | This objective is generally compatible with the SEA objectives however it does not provide a lot of information as to how this would happen throughout the plan period | Ensure the policy details where new development should be located as well as protection of green spaces to ensure the identity of the rural parish remains. | Until the policy is written it is difficult to know how this objective will be measured, as no true planning meaning within the objective. | |
| Objective 8 – establish safe walking, cycling and driving routes through the parish | + | + | + | + | + | + | + | X | X | X | X | + | + | + | + | + | This will provide a positive relationship with the SEA objectives due to increasing links around the parish without always the need for car use | Ensure any new development of paths/ cycleways are carefully designed to limit any impact, limit the need for too many new roads across the Parish. | This objective meets all of the SMART criteria. | |
| Objective 9 – encourage small businesses in the parish and promote tourism | ? | X | X | + | X | ? | ? | ? | X | X | ? | ? | ? | X | X | ? | Further details are required with regards to the type of business and location. | Many of these objectives could be positive if the business were kept local thereby reducing traffic, and had policy safeguards to ensure no adverse impact upon the environment. | This objective meets all of the SMART criteria. This objective is specific and measurable via the Authority Monitoring Report (AMR). It will be attainable, achievable and realistic. | |
| Objective 10 – promote better internet provision | X | X | X | ? | X | + | ? | ? | X | X | ? | ? | + | X | X | ? | This objective is fairly specific and therefore does not relate to all of the SEA objectives. | Ensure policy safeguards are in place to protect the environment from development of broadband | This objective meets the SMART criteria | |

| | | | | | | | | | | | | | | | | | | | | |
|--|---|---|---|---|---|---|---|---|---|---|---|---|---|---|---|---|---|--|--|--|
| <p>Objective 11 – provide better public transport and reduce car usage</p> | + | + | + | + | + | + | ? | x | x | x | x | x | + | + | + | + | <p>This objective is generally compatible as it seeks to reduce car use throughout the Parish</p> | | <p>This objective meets the SMART criteria</p> | |
|--|---|---|---|---|---|---|---|---|---|---|---|---|---|---|---|---|---|--|--|--|

| Objectives verses SEA Objectives (SMART and Compatibility Test) | | | | |
|---|------------------------------------|-----------------------------------|--|---|
| SEA Stage B1 | Key: | SMART criteria: | | |
| + =/++ | Compatible/very comp | S – Specific: | NDP objectives should specify what is intended to be done in detail and should not be open to a wide range of misinterpretations | The following matrix appraises the emerging Burghill NDP Objectives in terms of their SMART criteria and their compatibility with the SEA Objectives. These have been developed from Government guidance on SEA and from the local evidence base gathered for identifying the NDP issues. |
| - = | Possible conflict | M – Measurable: | It should be possible to monitor NDP objectives in a quantifiable way, by the use of indicators. Indicators should be measurable with limited resource implications. | |
| 0 = | Neutral | A – Attainable/achievable: | NDP objectives should be achievable and deliverable, related to the scale of growth proposed | |
| X = | No relationship between objectives | R – Realistic: | NDP objectives should relate to the overall vision of the plan. Likewise, chosen indicators should relate to objectives and their outcomes. | |
| ? = | Unclear, more information needed | T – Time-Bound: | Objectives should be specific to the NDP period or another specified time-frame. Objectives should be associated with a target and indicators should specify when the target should be achieved. | |

| SEA Objectives | Baseline carried over from Stage A |
|---|--|
| <p>1- To maintain and enhance nature conservation (biodiversity, flora and fauna)</p> <p>2- To maintain and enhance the quality of landscapes and townscapes</p> <p>3- To improve quality of surroundings</p> <p>4- To conserve and where appropriate enhance the historic environment and culture heritage</p> <p>5- To improve air quality</p> <p>6- To reduce the effect of traffic on the environment</p> <p>7- To reduce contributions to climate change</p> <p>8- To reduce vulnerability to climate change</p> <p>9- To improve water quality</p> <p>10- To provide for sustainable sources of water supply</p> <p>11- To avoid, reduce and manage flood risk</p> <p>12- To conserve soil resources and quality</p> <p>13- To minimise the production of waste</p> <p>14- To improve health of the population</p> <p>15- To reduce crime and nuisance</p> <p>16- To conserve natural and manmade resources</p> | <p>1-The 2011-2013 AMR does not contain updated conservation data.2010/11: 27% of Herefordshire's SSSI land was in favourable condition. There are no SSSIs within the Parish. 2010/11: 17 Habitat Action Plans and 14 Species Action Plans are currently in operation across Herefordshire. Burghill has: 3 SWS and 1 SINC. There are no NNRS within the parish.</p> <p>2-There are no outstanding enforcement actions or appeals concerning locally important buildings within Burghill at present.</p> <p>3-In terms of Burghill and Tillington the study does not detail any particular play area, but there has been 3.67 hectares of playing pitch area and 2.6 (71%) hectares of playing pitch area with secured community access identified.</p> <p>4-Whilst there is no qualitative, locally specific data available at present, There are numerous listed buildings within the parish and 4 SAMs, none of which are currently recorded in the Buildings at Risk Register.</p> <p>5-Between 2005 and 2010 Herefordshire's total and per capita carbon emission reduced by 7% and 8% respectively; while UK's total and per capita carbon emission reduced by 8% and 12% respectively within the same period. This suggests that air quality is improving.</p> <p>6-% of Herefordshire residents who travel to work by: Car: 70.1%, Foot: 14.7%;Bicycle: 4.3%,Bus: 2%, Train: 0.8%,Motorbike: 0.8%,Taxi: 0.3%,Other: 7%.</p> <p>7-Herefordshire latest figure of CO2 emissions per capita-dates back to 2010: 1.61 million tonnes (mtCO²)</p> <p>8-Reduce the risk of flooding-There have been no approvals contrary to EA advice since reporting began in 2004.The 2011-2013 AMR does not contain updated conservation data.</p> <p>9-Percentage of river length assessed as good or very good chemical quality and ecological quality as required by the Water Framework Directive. Latest figure dates back to 2005: 84%.</p> <p>10-Burghill parish falls into the Herefordshire Conjunctive Use Water Resource Zones (WRZs), one of 6 zones covering Herefordshire. 39% of demand is from non-household use.</p> <p>11-Number of planning permissions granted contrary to the advice of the Environment Agency on flood defence grounds. The 2011-2013 AMR does not contain updated conservation data.</p> <p>12-With the exception of Tillington Common, the majority of land within the neighbourhood area was listed Grade 1 (Excellent) for its agricultural quality. Percentage of all new development completed on previously developed land.2010/11: 67%2011-13: 57%.</p> <p>16-There are numerous listed buildings within the parish and 4 SAMs. There are no outstanding enforcement actions or appeals concerning locally important buildings within Burghill parish at present. 3.The Parish Area has the following landscape types: Principle settled farmlands</p> |

| NDP Policies | SEA objectives | | | | | | | | | | | | | | | | Summary in relation to baseline | Overall commentary and any initial cumulative effects/ Recommendations | Conformity with Core Strategy | |
|--|----------------|---|---|---|---|---|---|---|---|----|----|----|----|----|----|----|---|---|---|--|
| | 1 | 2 | 3 | 4 | 5 | 6 | 7 | 8 | 9 | 10 | 11 | 12 | 13 | 14 | 15 | 16 | | | | |
| Baseline | 1 | 2 | 3 | 4 | 5 | 6 | 7 | 8 | 9 | 10 | 11 | 12 | NA | NA | NA | 13 | | | | |
| Options | | | | | | | | | | | | | | | | | | | | |
| Option 1 Do nothing | X | X | X | X | X | X | X | X | X | X | X | X | | | | X | Do nothing option is essential not to produce a neighbourhood plan and rely on the criteria policies within the Core Strategy to guide further development. Specific policies and proposals for the parishes would not exist. | All developments would need to be in conformity with the Core Strategy. The Core Strategy has been subject to a Sustainability Appraisal and policies met the SEA objectives. | n/a | |
| Option 2 Set out settlement boundaries for main housing group | + | + | + | + | + | + | + | + | + | + | + | + | | | | + | The designation of a settlement boundary will give additional certainty and help define those areas considered as the built form and open countryside. This can aid the direction of further growth to maintain the quality of the landscape and surroundings. There is less certainty over the positive effects on the baseline as any growth with be adjudged by criteria based policy. | Any settlement boundary would need to be designated to ensure that sufficient capacity was included to permit the proportional growth requirements within Policy RA2 of the Core Strategy. Criteria would need to be included within the policy to safeguard against effects on any SEA objectives. | This option would meet the Core Strategy requirements in terms of the SEA. | |
| Option 3 Designate land for housing, employment and community use | + | + | + | + | + | + | + | + | + | + | + | + | | | | + | + | Allocation of sites for housing or other uses would give certainty to future development. Specific environmental issues could be investigated during the site search and be positively addressed within the policy wording. This option could have a positive effect on the baseline. | Pursuing this option would give greater certainty over future development within the area. If required mitigation criteria can be added to site allocations policies to ensure all SEA objectives are achieved. | This option would meet the Core Strategy requirements in terms of the SEA. |
| Option 4 Safeguarding / designation of land for recreation/ public open space or amenity purposes | + | + | + | + | + | + | + | + | ? | X | X | + | X | + | + | + | Safeguarding sites for recreation use provide certainty for the use of the land. | Policies need mitigation in place to ensure that additional development such as changing rooms, play facilities etc do not have an adverse impact. | This option would meet the Core Strategy requirements in terms of the SEA. | |
| Option 5 Criteria only policies | + | + | + | + | ? | ? | ? | X | X | X | ? | ? | X | X | X | ? | This option will provide some mitigation towards development through the NDP, however it won't provide as much certainty as to the location of development. | Policies will need to ensure policy safeguards and criteria to help guide development throughout the plan period. | This option would meet the Core Strategy requirements in terms of the SEA. | |
| Policies | | | | | | | | | | | | | | | | | | | | |
| Policy B1 – scale and type of new housing | + | + | + | + | + | + | + | + | + | 0 | + | + | X | X | X | + | Overall this policy has a positive effect on the baseline, and seeks to mitigate against the effects of housing development on the environment. | Overall this policy meets the SEA objectives and the requirements in the Core Strategy for housing proposals. | Overall this policy meets the Core Strategy requirements for the purposes of | |

| | | | | | | | | | | | | | | | | | | | |
|---|---|---|---|---|---|---|---|---|---|---|---|---|---|---|---|---|---|---|---|
| employment | | | | | | | | | | | | | | | | | on the local roads will help meet the baseline also. | | the purposes of the SEA. |
| Policy B4 – rural enterprise and farm diversification | + | + | + | + | ? | ? | + | 0 | X | X | + | + | + | 0 | X | + | Overall this policy has a positive effect on the baseline. Converting farm buildings for employment use will help the baseline, and reduce the need for new development. However it may increase the traffic travelling to the more rural location. | Overall this policy meets the SEA objectives and the requirements in the Core Strategy. | Overall this policy meets the Core Strategy requirements for the purposes of the SEA. |
| Policy B5 – Supporting development of communications infrastructure | X | 0 | + | X | + | + | 0 | 0 | X | X | X | + | 0 | 0 | 0 | + | Overall this policy has mainly a neutral impact on the baseline data. There are policy safeguards in place within the policy for the infrastructure that could come with broadband. | Overall this policy meets the SEA objectives and the requirements in the Core Strategy in supporting broadband infrastructure. | Overall this policy meets the Core Strategy requirements for the purposes of the SEA. |
| Policy B6 - Education | + | + | + | + | ? | ? | + | 0 | X | X | + | + | + | X | X | + | Overall this policy has a positive effect on the baseline. However it may increase the traffic travelling to the school if expanded, but counter to this more children from the local villages will be able to attend the school rather than travel further distances away. | Overall this policy meets the SEA objectives and the requirements in the Core Strategy. | Overall this policy meets the Core Strategy requirements for the purposes of the SEA. |
| Policy B7 – Traffic management and transport improvements | + | + | + | + | + | + | + | + | X | X | X | ? | X | + | X | + | Overall this policy has mainly a positive impact on the baseline data , due to the emphasis on reducing car use and encouraging alternative methods of travel, including cycling and public transport. | Overall this policy meets the SEA objectives and the requirements in the Core Strategy, particularly in relation to reducing car use and encouraging other methods of transport by providing footpaths and cycle storage. | This policy meets the Core Strategy requirements for the purposes of the SEA. |
| Policy B8 – Design of development in Burghill Parish | + | + | + | + | X | ? | + | + | + | 0 | + | + | + | X | X | + | Overall this policy has a positive effect on the baseline, and seeks to mitigate against the effects of housing development on the environment. | Overall this policy meets the SEA objectives and the requirements in the Core Strategy for housing proposals. | Overall this policy meets the Core Strategy requirements for the purposes of the SEA. |
| Policy B9 – Protecting and where possible enhancing local landscape character | + | + | + | + | + | 0 | + | + | 0 | + | + | + | X | + | X | + | Overall this policy has a positive effect on the baseline, retaining the character and setting of the landscape within the parish. | Overall this policy meets the SEA objectives and the requirements in the Core Strategy, and retaining the landscape character and setting of the area. | Overall this policy meets the Core Strategy requirements for the purposes of the SEA. |
| Policy B10 – Protection of local green spaces | + | + | + | + | X | X | X | + | 0 | X | + | + | X | + | X | + | Overall this policy has a positive effect on the baseline, retaining the character of the area and ensuring a valued green space is protected. | Overall this policy meets the SEA objectives and the requirements in the Core Strategy. | Overall this policy meets the Core Strategy requirements for the purposes of the SEA. |
| Policy B11 – Protection and where possible enhancement of local community | + | + | + | + | + | + | + | X | X | X | + | X | X | + | + | + | Overall this policy has a positive effect on the baseline, and seeks to mitigate against the effects of any new community development would have on the environment. | Overall this policy meets the SEA objectives and the requirements in the Core Strategy. | Overall this policy meets the Core Strategy requirements for the purposes of the SEA. |

| | | | | | | | | | | | | | | | | | | | | |
|--|---|---|---|---|---|---|---|---|---|---|---|---|---|---|---|---|--|--|---|--|
| facilities | | | | | | | | | | | | | | | | | | | | |
| Policy B12 – Community facilities and community infrastructure levy | + | + | + | + | X | X | X | X | X | X | X | X | X | X | X | X | + | This has a mainly positive impact upon the baseline, however a lot of the baseline does not directly relate to this policy. | Overall this policy meets the SEA objectives and the requirements in the Core Strategy. | This policy would meet the Core Strategy requirements in terms of the SEA. |
| Policy B13 – Flood Risk, water management and surface water run off | + | + | + | + | X | X | + | + | + | X | + | + | X | X | X | + | Overall this policy has a positive effect on the baseline, and seeks to mitigate against the effects of all development on the environment, particularly in relation to flood risk and flooding. | Overall this policy meets the SEA objectives and the requirements in the Core Strategy for safeguarding against flooding and flood risk. | Overall this policy meets the Core Strategy requirements for the purposes of the SEA. | |
| Policy B14 – Development of renewable energy facilities in Burghill parish | + | + | + | + | X | + | + | + | X | X | + | X | + | X | X | + | Overall this policy has a positive effect on the baseline, this policy will help to follow the trends and reach targets set in the baseline. The designation of an area for a solar farm appears to be located in a place where there will be little effect on the surrounding area but will provide many benefits. | Overall this policy meets the SEA objectives and the requirements in the Core Strategy. | Overall this policy meets the Core Strategy requirements for the purposes of the SEA. | |

B3: Predict and evaluate the effects of the policies and sites within the Neighbourhood Development Plan

Key:

| | | | | | | |
|-------------------------------|---------------------------|-----------------------------|------------------------|-----------|-------------|---------------------|
| ++ Move towards significantly | + Move towards Marginally | - - Move away significantly | - Move away marginally | 0 Neutral | ? Uncertain | N/A No relationship |
|-------------------------------|---------------------------|-----------------------------|------------------------|-----------|-------------|---------------------|

Policy B1 – Scale and type of new housing in Burghill and Tillington and lower Burlton

| SEA Objective | Assessment of effect (consider cumulative effects, significance of the effect and magnitude of the effect in terms of the three time periods) | | | Summary Explanation | Enhancement and mitigation opportunities |
|---|---|----------------------------|------------------------|---|--|
| | Short term (1 – 5 years) | Medium term (6 – 10 years) | Long term (11 years +) | | |
| To maintain and enhance nature conservation (biodiversity, flora and fauna) | + | ++ | ++ | This Policy would not lead to development itself but would direct where development would be located. This Policy is not over and above the Core Strategy in terms of SEA objectives. | |
| To maintain and enhance the quality of landscapes and | + | ++ | ++ | This Policy would not lead to development itself but would direct where development would be located. This Policy is not | |

B3: Predict and evaluate the effects of the policies and sites within the Neighbourhood Development Plan

| | | | | | |
|--|----|----|----|---|--|
| townscapes | | | | over and above the Core Strategy in terms of SEA objectives. | |
| To improve quality of surroundings | + | + | + | This Policy would not lead to development itself but would direct where development would be located. This Policy is not over and above the Core Strategy in terms of SEA objectives. | |
| To conserve and where appropriate enhance the historic environment and cultural heritage | ++ | ++ | ++ | This Policy would not lead to development itself but would direct where development would be located. This Policy is not over and above the Core Strategy in terms of SEA objectives. | |
| To improve air quality | + | + | + | This Policy would not lead to development itself but would direct where development would be located. This Policy is not over and above the Core Strategy in terms of SEA objectives. | |
| To reduce the effect of traffic on the | + | + | + | This Policy would not lead to development itself but would | |

B3: Predict and evaluate the effects of the policies and sites within the Neighbourhood Development Plan

| | | | | | |
|---|---|---|---|---|--|
| environment | | | | direct where development would be located. This Policy is not over and above the Core Strategy in terms of SEA objectives. | |
| To reduce contributions to climate change | + | + | + | This Policy would not lead to development itself but would direct where development would be located. This Policy is not over and above the Core Strategy in terms of SEA objectives. | |
| To reduce vulnerability to climate change | + | + | + | This Policy would not lead to development itself but would direct where development would be located. This Policy is not over and above the Core Strategy in terms of SEA objectives. | |
| To improve water quality | + | + | + | This Policy would not lead to development itself but would direct where development would be located. This Policy is not over and above the Core Strategy in terms of SEA objectives. | |

B3: Predict and evaluate the effects of the policies and sites within the Neighbourhood Development Plan

| | | | | | |
|--|---|---|---|---|--|
| To provide for sustainable sources of water supply | 0 | 0 | 0 | This Policy would not lead to development itself but would direct where development would be located. This Policy is not over and above the Core Strategy in terms of SEA objectives. | |
| To avoid, reduce and manage flood risk | + | + | + | This Policy would not lead to development itself but would direct where development would be located. This Policy is not over and above the Core Strategy in terms of SEA objectives. | |
| To conserve soil resources and quality | + | + | + | This Policy would not lead to development itself but would direct where development would be located. This Policy is not over and above the Core Strategy in terms of SEA objectives. | |
| To minimise the production of waste | x | x | x | n/a | |
| To improve health of the population | x | x | x | n/a | |

B3: Predict and evaluate the effects of the policies and sites within the Neighbourhood Development Plan

| | | | | | |
|--|--|---|---|---|--|
| To reduce crime and nuisance | x | x | x | n/a | |
| To conserve natural and manmade resources | + | + | + | This Policy would not lead to development itself but would direct where development would be located. This Policy is not over and above the Core Strategy in terms of SEA objectives. | |
| Overall commentary and any cumulative effects | This Policy does not go over and above the Core Strategy. This policy will direct where the development within the parish should go, it will not lead to development itself. | | | | |

Site 22 – Adjacent Bell Inn, Tillington

| SEA Objective | Assessment of effect (consider cumulative effects, significance of the effect and magnitude of the effect in terms of the three time periods) | | | Summary Explanation | Enhancement and mitigation opportunities |
|---------------|---|----------------------------|------------------------|---------------------|--|
| | Short term (1 – 5 years) | Medium term (6 – 10 years) | Long term (11 years +) | | |
| | | | | | |

B3: Predict and evaluate the effects of the policies and sites within the Neighbourhood Development Plan

| | | | | | |
|--|---|---|---|---|--|
| To maintain and enhance nature conservation (biodiversity, flora and fauna) | ? | + | + | This Policy is not over and above the Core Strategy in terms of SEA objectives. The mitigation methods coming through the policies in the NDP will help enhance the setting of the village. | |
| To maintain and enhance the quality of landscapes and townscapes | ? | + | + | This Policy is not over and above the Core Strategy in terms of SEA objectives. The mitigation methods coming through the policies in the NDP will help enhance the setting of the village. | |
| To improve quality of surroundings | ? | + | + | This Policy is not over and above the Core Strategy in terms of SEA objectives. The mitigation methods coming through the policies in the NDP will help enhance the setting of the village. | |
| To conserve and where appropriate enhance the historic environment and cultural heritage | ? | + | + | This Policy is not over and above the Core Strategy in terms of SEA objectives. The mitigation methods coming through the policies in the NDP | |

B3: Predict and evaluate the effects of the policies and sites within the Neighbourhood Development Plan

| | | | | | |
|--|---|---|---|---|---|
| | | | | will help enhance the setting of the village. | |
| To improve air quality | x | x | x | n/a | |
| To reduce the effect of traffic on the environment | ? | ? | + | This Policy is not over and above the Core Strategy in terms of SEA objectives. The mitigation methods coming through the policies in the NDP will help enhance the setting of the village. | |
| To reduce contributions to climate change | ? | ? | ? | This Policy is not over and above the Core Strategy in terms of SEA objectives. The mitigation methods coming through the policies in the NDP will help enhance the setting of the village. | Ensure renewable energy schemes are utilised where possible |
| To reduce vulnerability to climate change | x | x | x | n/a | |
| To improve water quality | x | x | x | n/a | |
| To provide for sustainable sources of water supply | x | x | x | n/a | |

B3: Predict and evaluate the effects of the policies and sites within the Neighbourhood Development Plan

| | | | | | |
|---|---|---|---|---|--|
| To avoid, reduce and manage flood risk | + | + | + | This Policy is not over and above the Core Strategy in terms of SEA objectives. The mitigation methods coming through the policies in the NDP will help enhance the setting of the village. | |
| To conserve soil resources and quality | ? | ? | ? | This Policy is not over and above the Core Strategy in terms of SEA objectives. The mitigation methods coming through the policies in the NDP will help enhance the setting of the village. | |
| To minimise the production of waste | x | x | x | n/a | |
| To improve health of the population | x | x | x | n/a | |
| To reduce crime and nuisance | x | x | x | n/a | |
| To conserve natural and manmade resources | + | + | + | This Policy is not over and above the Core Strategy in terms of SEA objectives. The mitigation methods coming through the policies in the NDP will help enhance the setting of | |

B3: Predict and evaluate the effects of the policies and sites within the Neighbourhood Development Plan

| | | | | | |
|--|---|--|--|--------------|--|
| | | | | the village. | |
| Overall commentary and any cumulative effects | This Policy is not over and above the Core Strategy in terms of SEA objectives. The mitigation methods coming through the policies in the NDP will help enhance the setting of the village. | | | | |

Site 2D – Tillington road, Lower Burlton

| SEA Objective | Assessment of effect (consider cumulative effects, significance of the effect and magnitude of the effect in terms of the three time periods) | | | Summary Explanation | Enhancement and mitigation opportunities |
|---|---|----------------------------|------------------------|---|--|
| | Short term (1 – 5 years) | Medium term (6 – 10 years) | Long term (11 years +) | | |
| To maintain and enhance nature conservation (biodiversity, flora and fauna) | + | + | + | This Policy is not over and above the Core Strategy in terms of SEA objectives. The mitigation methods coming through the policies in the NDP will help counteract the impacts. | |
| To maintain and enhance the quality of landscapes and | ? | + | + | This Policy is not over and above the Core Strategy in terms of SEA objectives. The | |

B3: Predict and evaluate the effects of the policies and sites within the Neighbourhood Development Plan

| | | | | | |
|--|---|---|---|---|--|
| townscapes | | | | mitigation methods coming through the policies in the NDP will help counteract the impacts. | |
| To improve quality of surroundings | + | + | + | This Policy is not over and above the Core Strategy in terms of SEA objectives. The mitigation methods coming through the policies in the NDP will help counteract the impacts. | |
| To conserve and where appropriate enhance the historic environment and cultural heritage | + | + | + | This Policy is not over and above the Core Strategy in terms of SEA objectives. The mitigation methods coming through the policies in the NDP will help counteract the impacts. | |
| To improve air quality | x | x | x | n/a | |
| To reduce the effect of traffic on the environment | ? | + | + | This Policy is not over and above the Core Strategy in terms of SEA objectives. The mitigation methods coming through the policies in the NDP will help counteract the impacts. | |
| To reduce contributions to climate change | ? | + | + | This Policy is not over and above the Core Strategy in terms of SEA objectives. The | |

B3: Predict and evaluate the effects of the policies and sites within the Neighbourhood Development Plan

| | | | | | |
|--|---|---|---|---|--|
| | | | | mitigation methods coming through the policies in the NDP will help counteract the impacts. | |
| To reduce vulnerability to climate change | x | x | x | n/a | |
| To improve water quality | x | x | x | n/a | |
| To provide for sustainable sources of water supply | x | x | x | n/a | |
| To avoid, reduce and manage flood risk | + | + | + | This Policy is not over and above the Core Strategy in terms of SEA objectives. The mitigation methods coming through the policies in the NDP will help counteract the impacts. | |
| To conserve soil resources and quality | ? | ? | + | This Policy is not over and above the Core Strategy in terms of SEA objectives. The mitigation methods coming through the policies in the NDP will help counteract the impacts. | |
| To minimise the production of waste | x | x | x | n/a | |

B3: Predict and evaluate the effects of the policies and sites within the Neighbourhood Development Plan

| | | | | | |
|--|---|---|---|---|--|
| To improve health of the population | x | x | x | n/a | |
| To reduce crime and nuisance | x | x | x | n/a | |
| To conserve natural and manmade resources | + | + | + | This Policy is not over and above the Core Strategy in terms of SEA objectives. The mitigation methods coming through the policies in the NDP will help counteract the impacts. | |
| Overall commentary and any cumulative effects | This Policy is not over and above the Core Strategy in terms of SEA objectives. The mitigation methods coming through the policies in the NDP will help counteract the impacts. | | | | |

Site 25 – Cherry Orchard, Tillington

| SEA Objective | Assessment of effect (consider cumulative effects, significance of the effect and magnitude of the effect in terms of the three time periods) | | | Summary Explanation | Enhancement and mitigation opportunities |
|---------------|---|----------------------|------------------------|---------------------|--|
| | Short term (1 – 5 years) | Medium term (6 – 10) | Long term (11 years +) | | |
| | | | | | |

B3: Predict and evaluate the effects of the policies and sites within the Neighbourhood Development Plan

| | | years) | | | |
|--|---|--------|---|---|--|
| To maintain and enhance nature conservation (biodiversity, flora and fauna) | + | + | + | This Policy is not over and above the Core Strategy in terms of SEA objectives. The mitigation methods coming through the policies in the NDP will help counteract the impacts. | |
| To maintain and enhance the quality of landscapes and townscapes | + | + | + | This Policy is not over and above the Core Strategy in terms of SEA objectives. The mitigation methods coming through the policies in the NDP will help counteract the impacts. | |
| To improve quality of surroundings | ? | + | + | This Policy is not over and above the Core Strategy in terms of SEA objectives. The mitigation methods coming through the policies in the NDP will help counteract the impacts. | |
| To conserve and where appropriate enhance the historic environment and cultural heritage | ? | + | + | This Policy is not over and above the Core Strategy in terms of SEA objectives. The mitigation methods coming through the policies in the NDP will help counteract the impacts. | |

B3: Predict and evaluate the effects of the policies and sites within the Neighbourhood Development Plan

| | | | | | |
|--|---|---|---|---|--|
| To improve air quality | x | x | x | n/a | |
| To reduce the effect of traffic on the environment | ? | + | + | This Policy is not over and above the Core Strategy in terms of SEA objectives. The mitigation methods coming through the policies in the NDP will help counteract the impacts. | |
| To reduce contributions to climate change | + | + | + | This Policy is not over and above the Core Strategy in terms of SEA objectives. The mitigation methods coming through the policies in the NDP will help counteract the impacts. | |
| To reduce vulnerability to climate change | x | x | x | n/a | |
| To improve water quality | x | x | x | n/a | |
| To provide for sustainable sources of water supply | x | x | x | n/a | |
| To avoid, reduce and manage flood risk | + | + | + | This Policy is not over and above the Core Strategy in terms of SEA objectives. The mitigation methods coming | |

B3: Predict and evaluate the effects of the policies and sites within the Neighbourhood Development Plan

| | | | | | |
|--|---|---|---|---|--|
| | | | | through the policies in the NDP will help counteract the impacts. | |
| To conserve soil resources and quality | ? | ? | + | This Policy is not over and above the Core Strategy in terms of SEA objectives. The mitigation methods coming through the policies in the NDP will help counteract the impacts. | |
| To minimise the production of waste | x | x | x | n/a | |
| To improve health of the population | x | x | x | n/a | |
| To reduce crime and nuisance | x | x | x | n/a | |
| To conserve natural and manmade resources | + | + | + | This Policy is not over and above the Core Strategy in terms of SEA objectives. The mitigation methods coming through the policies in the NDP will help counteract the impacts. | |
| Overall commentary and any cumulative effects | This Policy is not over and above the Core Strategy in terms of SEA objectives. The mitigation methods coming through the policies in the NDP will help counteract the impacts. | | | | |

B3: Predict and evaluate the effects of the policies and sites within the Neighbourhood Development Plan

Site 10 – Tillington Business Park

| SEA Objective | Assessment of effect (consider cumulative effects, significance of the effect and magnitude of the effect in terms of the three time periods) | | | Summary Explanation | Enhancement and mitigation opportunities |
|---|---|----------------------------|------------------------|---|--|
| | Short term (1 – 5 years) | Medium term (6 – 10 years) | Long term (11 years +) | | |
| To maintain and enhance nature conservation (biodiversity, flora and fauna) | + | + | + | This Policy is not over and above the Core Strategy in terms of SEA objectives. The mitigation methods coming through the policies in the NDP will help counteract the impacts. | |
| To maintain and enhance the quality of landscapes and townscapes | ? | + | + | This Policy is not over and above the Core Strategy in terms of SEA objectives. The mitigation methods coming through the policies in the NDP will help counteract the impacts. | |
| To improve quality of surroundings | ? | + | + | This Policy is not over and above the Core Strategy in terms of SEA objectives. The | |

B3: Predict and evaluate the effects of the policies and sites within the Neighbourhood Development Plan

| | | | | | |
|--|---|---|---|---|--|
| | | | | mitigation methods coming through the policies in the NDP will help counteract the impacts. | |
| To conserve and where appropriate enhance the historic environment and cultural heritage | + | + | + | This Policy is not over and above the Core Strategy in terms of SEA objectives. The mitigation methods coming through the policies in the NDP will help counteract the impacts. | |
| To improve air quality | x | x | x | n/a | |
| To reduce the effect of traffic on the environment | ? | + | + | This Policy is not over and above the Core Strategy in terms of SEA objectives. The mitigation methods coming through the policies in the NDP will help counteract the impacts. | |
| To reduce contributions to climate change | + | + | + | This Policy is not over and above the Core Strategy in terms of SEA objectives. The mitigation methods coming through the policies in the NDP will help counteract the impacts. | |
| To reduce vulnerability to climate change | x | x | x | n/a | |

B3: Predict and evaluate the effects of the policies and sites within the Neighbourhood Development Plan

| | | | | | |
|--|---|---|---|---|--|
| To improve water quality | x | x | x | n/a | |
| To provide for sustainable sources of water supply | x | x | x | n/a | |
| To avoid, reduce and manage flood risk | + | + | + | This Policy is not over and above the Core Strategy in terms of SEA objectives. The mitigation methods coming through the policies in the NDP will help counteract the impacts. | |
| To conserve soil resources and quality | ? | ? | + | This Policy is not over and above the Core Strategy in terms of SEA objectives. The mitigation methods coming through the policies in the NDP will help counteract the impacts. | |
| To minimise the production of waste | x | x | x | n/a | |
| To improve health of the population | x | x | x | n/a | |
| To reduce crime and nuisance | x | x | x | n/a | |
| To conserve natural | + | + | + | This Policy is not over and | |

B3: Predict and evaluate the effects of the policies and sites within the Neighbourhood Development Plan

| | | | | | |
|--|---|--|--|---|--|
| and manmade resources | | | | above the Core Strategy in terms of SEA objectives. The mitigation methods coming through the policies in the NDP will help counteract the impacts. | |
| Overall commentary and any cumulative effects | This Policy is not over and above the Core Strategy in terms of SEA objectives. The mitigation methods coming through the policies in the NDP will help counteract the impacts. | | | | |

Site 2B – Lower Burlton

| SEA Objective | Assessment of effect (consider cumulative effects, significance of the effect and magnitude of the effect in terms of the three time periods) | | | Summary Explanation | Enhancement and mitigation opportunities |
|----------------------|--|-----------------------------|-------------------------------|----------------------------|---|
| | Short term (1 – 5 years) | Medium term (6 – 10) | Long term (11 years +) | | |
| | | | | | |

B3: Predict and evaluate the effects of the policies and sites within the Neighbourhood Development Plan

| | | years) | | | |
|--|---|--------|---|---|--|
| To maintain and enhance nature conservation (biodiversity, flora and fauna) | + | + | + | This Policy is not over and above the Core Strategy in terms of SEA objectives. The mitigation methods coming through the policies in the NDP will help counteract the impacts. | |
| To maintain and enhance the quality of landscapes and townscapes | ? | + | + | This Policy is not over and above the Core Strategy in terms of SEA objectives. The mitigation methods coming through the policies in the NDP will help counteract the impacts. | |
| To improve quality of surroundings | ? | + | + | This Policy is not over and above the Core Strategy in terms of SEA objectives. The mitigation methods coming through the policies in the NDP will help counteract the impacts. | |
| To conserve and where appropriate enhance the historic environment and cultural heritage | + | + | + | This Policy is not over and above the Core Strategy in terms of SEA objectives. The mitigation methods coming through the policies in the NDP will help counteract the impacts. | |

B3: Predict and evaluate the effects of the policies and sites within the Neighbourhood Development Plan

| | | | | | |
|--|---|---|---|---|--|
| To improve air quality | x | x | x | n/a | |
| To reduce the effect of traffic on the environment | ? | + | + | This Policy is not over and above the Core Strategy in terms of SEA objectives. The mitigation methods coming through the policies in the NDP will help counteract the impacts. | |
| To reduce contributions to climate change | + | + | + | This Policy is not over and above the Core Strategy in terms of SEA objectives. The mitigation methods coming through the policies in the NDP will help counteract the impacts. | |
| To reduce vulnerability to climate change | x | x | x | n/a | |
| To improve water quality | x | x | x | n/a | |
| To provide for sustainable sources of water supply | x | x | x | n/a | |
| To avoid, reduce and manage flood risk | + | + | + | This Policy is not over and above the Core Strategy in terms of SEA objectives. The mitigation methods coming | |

B3: Predict and evaluate the effects of the policies and sites within the Neighbourhood Development Plan

| | | | | | |
|--|---|---|---|---|--|
| | | | | through the policies in the NDP will help counteract the impacts. | |
| To conserve soil resources and quality | ? | ? | + | This Policy is not over and above the Core Strategy in terms of SEA objectives. The mitigation methods coming through the policies in the NDP will help counteract the impacts. | |
| To minimise the production of waste | x | x | x | n/a | |
| To improve health of the population | x | x | x | n/a | |
| To reduce crime and nuisance | x | x | x | n/a | |
| To conserve natural and manmade resources | + | + | + | This Policy is not over and above the Core Strategy in terms of SEA objectives. The mitigation methods coming through the policies in the NDP will help counteract the impacts. | |
| Overall commentary and any cumulative effects | This Policy is not over and above the Core Strategy in terms of SEA objectives. The mitigation methods coming through the policies in the NDP will help counteract the impacts. | | | | |

B3: Predict and evaluate the effects of the policies and sites within the Neighbourhood Development Plan

Site White Roses, Lower Burlton

| SEA Objective | Assessment of effect (consider cumulative effects, significance of the effect and magnitude of the effect in terms of the three time periods) | | | Summary Explanation | Enhancement and mitigation opportunities |
|---|---|----------------------------|------------------------|---|--|
| | Short term (1 – 5 years) | Medium term (6 – 10 years) | Long term (11 years +) | | |
| To maintain and enhance nature conservation (biodiversity, flora and fauna) | + | + | + | This Policy is not over and above the Core Strategy in terms of SEA objectives. The mitigation methods coming through the policies in the NDP will help counteract the impacts. | |
| To maintain and enhance the quality of landscapes and townscapes | ? | + | + | This Policy is not over and above the Core Strategy in terms of SEA objectives. The mitigation methods coming through the policies in the NDP will help counteract the impacts. | |
| To improve quality of surroundings | ? | + | + | This Policy is not over and above the Core Strategy in terms of SEA objectives. The | |

B3: Predict and evaluate the effects of the policies and sites within the Neighbourhood Development Plan

| | | | | | |
|--|---|---|---|---|--|
| | | | | mitigation methods coming through the policies in the NDP will help counteract the impacts. | |
| To conserve and where appropriate enhance the historic environment and cultural heritage | + | + | + | This Policy is not over and above the Core Strategy in terms of SEA objectives. The mitigation methods coming through the policies in the NDP will help counteract the impacts. | |
| To improve air quality | x | x | x | n/a | |
| To reduce the effect of traffic on the environment | ? | + | + | This Policy is not over and above the Core Strategy in terms of SEA objectives. The mitigation methods coming through the policies in the NDP will help counteract the impacts. | |
| To reduce contributions to climate change | + | + | + | This Policy is not over and above the Core Strategy in terms of SEA objectives. The mitigation methods coming through the policies in the NDP will help counteract the impacts. | |
| To reduce vulnerability to climate change | x | x | x | n/a | |

B3: Predict and evaluate the effects of the policies and sites within the Neighbourhood Development Plan

| | | | | | |
|--|---|---|---|---|--|
| To improve water quality | x | x | x | n/a | |
| To provide for sustainable sources of water supply | x | x | x | n/a | |
| To avoid, reduce and manage flood risk | + | + | + | This Policy is not over and above the Core Strategy in terms of SEA objectives. The mitigation methods coming through the policies in the NDP will help counteract the impacts. | |
| To conserve soil resources and quality | ? | ? | + | This Policy is not over and above the Core Strategy in terms of SEA objectives. The mitigation methods coming through the policies in the NDP will help counteract the impacts. | |
| To minimise the production of waste | x | x | x | n/a | |
| To improve health of the population | x | x | x | n/a | |
| To reduce crime and nuisance | x | x | x | n/a | |
| To conserve natural | + | + | + | This Policy is not over and | |

B3: Predict and evaluate the effects of the policies and sites within the Neighbourhood Development Plan

| | | | | | |
|--|---|--|--|---|--|
| and manmade resources | | | | above the Core Strategy in terms of SEA objectives. The mitigation methods coming through the policies in the NDP will help counteract the impacts. | |
| Overall commentary and any cumulative effects | This Policy is not over and above the Core Strategy in terms of SEA objectives. The mitigation methods coming through the policies in the NDP will help counteract the impacts. | | | | |

Site 21 Near Redstone on corner, Burghill

| SEA Objective | Assessment of effect (consider cumulative effects, significance of the effect and magnitude of the effect in terms of the three time periods) | | | Summary Explanation | Enhancement and mitigation opportunities |
|---|---|----------------------------|------------------------|---|--|
| | Short term (1 – 5 years) | Medium term (6 – 10 years) | Long term (11 years +) | | |
| To maintain and enhance nature conservation (biodiversity, flora and fauna) | + | + | + | This Policy is not over and above the Core Strategy in terms of SEA objectives. The mitigation methods coming through the policies in the NDP | |

B3: Predict and evaluate the effects of the policies and sites within the Neighbourhood Development Plan

| | | | | | |
|--|---|---|---|---|--|
| | | | | will help counteract the impacts. | |
| To maintain and enhance the quality of landscapes and townscapes | ? | + | + | This Policy is not over and above the Core Strategy in terms of SEA objectives. The mitigation methods coming through the policies in the NDP will help counteract the impacts. | |
| To improve quality of surroundings | ? | + | + | This Policy is not over and above the Core Strategy in terms of SEA objectives. The mitigation methods coming through the policies in the NDP will help counteract the impacts. | |
| To conserve and where appropriate enhance the historic environment and cultural heritage | + | + | + | This Policy is not over and above the Core Strategy in terms of SEA objectives. The mitigation methods coming through the policies in the NDP will help counteract the impacts. | |
| To improve air quality | x | x | x | n/a | |

B3: Predict and evaluate the effects of the policies and sites within the Neighbourhood Development Plan

| | | | | | |
|--|---|---|---|---|--|
| To reduce the effect of traffic on the environment | ? | + | + | This Policy is not over and above the Core Strategy in terms of SEA objectives. The mitigation methods coming through the policies in the NDP will help counteract the impacts. | |
| To reduce contributions to climate change | + | + | + | This Policy is not over and above the Core Strategy in terms of SEA objectives. The mitigation methods coming through the policies in the NDP will help counteract the impacts. | |
| To reduce vulnerability to climate change | x | x | x | n/a | |
| To improve water quality | x | x | x | n/a | |
| To provide for sustainable sources of water supply | x | x | x | n/a | |
| To avoid, reduce and manage flood risk | + | + | + | This Policy is not over and above the Core Strategy in terms of SEA objectives. The mitigation methods coming through the policies in the NDP | |

B3: Predict and evaluate the effects of the policies and sites within the Neighbourhood Development Plan

| | | | | | |
|--|---|---|---|---|--|
| | | | | will help counteract the impacts. | |
| To conserve soil resources and quality | ? | ? | + | This Policy is not over and above the Core Strategy in terms of SEA objectives. The mitigation methods coming through the policies in the NDP will help counteract the impacts. | |
| To minimise the production of waste | x | x | x | n/a | |
| To improve health of the population | x | x | x | n/a | |
| To reduce crime and nuisance | x | x | x | n/a | |
| To conserve natural and manmade resources | + | + | + | This Policy is not over and above the Core Strategy in terms of SEA objectives. The mitigation methods coming through the policies in the NDP will help counteract the impacts. | |
| Overall commentary and any cumulative effects | This Policy is not over and above the Core Strategy in terms of SEA objectives. The mitigation methods coming through the policies in the NDP will help counteract the impacts. | | | | |

Policy B2 – Supporting existing small scale local employment

This document is copyright of Herefordshire Council, please contact the Neighbourhood Planning team if you wish to reuse it in whole or part.

B3: Predict and evaluate the effects of the policies and sites within the Neighbourhood Development Plan

| SEA Objective | Assessment of effect (consider cumulative effects, significance of the effect and magnitude of the effect in terms of the three time periods) | | | Summary Explanation | Enhancement and mitigation opportunities |
|---|---|----------------------------|------------------------|---|--|
| | Short term (1 – 5 years) | Medium term (6 – 10 years) | Long term (11 years +) | | |
| To maintain and enhance nature conservation (biodiversity, flora and fauna) | + | + | + | This policy does not go over and above the Core Strategy. It aims to encourage existing businesses to remain in the Parish. | |
| To maintain and enhance the quality of landscapes and townscapes | + | + | + | This policy does not go over and above the Core Strategy. It aims to encourage existing businesses to remain in the Parish. | |
| To improve quality of surroundings | + | + | + | This policy does not go over and above the Core Strategy. It aims to encourage existing businesses to remain in the Parish. | |
| To conserve and where appropriate enhance | + | + | + | This policy does not go over and above the Core Strategy. It aims to | |

B3: Predict and evaluate the effects of the policies and sites within the Neighbourhood Development Plan

| | | | | | |
|--|---|---|---|---|--|
| the historic environment and cultural heritage | | | | encourage existing businesses to remain in the Parish. | |
| To improve air quality | + | + | + | This policy does not go over and above the Core Strategy. It aims to encourage existing businesses to remain in the Parish. | |
| To reduce the effect of traffic on the environment | + | + | + | This policy does not go over and above the Core Strategy. It aims to encourage existing businesses to remain in the Parish. | |
| To reduce contributions to climate change | + | + | + | This policy does not go over and above the Core Strategy. It aims to encourage existing businesses to remain in the Parish. | |
| To reduce vulnerability to climate change | 0 | 0 | 0 | This policy does not go over and above the Core Strategy. It aims to encourage existing businesses to remain in the Parish. | |
| To improve water quality | x | x | x | n/a | |
| To provide for sustainable sources of | x | x | x | n/a | |

B3: Predict and evaluate the effects of the policies and sites within the Neighbourhood Development Plan

| | | | | | |
|--|---|---|---|---|--|
| water supply | | | | | |
| To avoid, reduce and manage flood risk | + | + | + | This policy does not go over and above the Core Strategy. It aims to encourage existing businesses to remain in the Parish. | |
| To conserve soil resources and quality | + | + | + | This policy does not go over and above the Core Strategy. It aims to encourage existing businesses to remain in the Parish. | |
| To minimise the production of waste | + | + | + | This policy does not go over and above the Core Strategy. It aims to encourage existing businesses to remain in the Parish. | |
| To improve health of the population | 0 | 0 | 0 | This policy does not go over and above the Core Strategy. It aims to encourage existing businesses to remain in the Parish. | |
| To reduce crime and nuisance | + | + | + | This policy does not go over and above the Core Strategy. It aims to encourage existing businesses to remain in the Parish. | |
| To conserve natural and manmade | + | + | + | This policy does not go over and above the Core Strategy. It aims to | |

B3: Predict and evaluate the effects of the policies and sites within the Neighbourhood Development Plan

| | | | | | |
|--|--|--|--|--|--|
| resources | | | | encourage existing businesses to remain in the Parish. | |
| Overall commentary and any cumulative effects | This policy does not go over and above the Core Strategy. Safeguards are in place to mitigate against the adverse impact of new development. | | | | |

Policy B3 – Supporting new small scale local employment

| SEA Objective | Assessment of effect (consider cumulative effects, significance of the effect and magnitude of the effect in terms of the three time periods) | | | Summary Explanation | Enhancement and mitigation opportunities |
|---|---|----------------------------|------------------------|--|--|
| | Short term (1 – 5 years) | Medium term (6 – 10 years) | Long term (11 years +) | | |
| To maintain and enhance nature conservation (biodiversity, flora and fauna) | + | + | + | This policy does not go over and above the Core Strategy. It aims to encourage new small scale businesses to come to the Parish. | |
| To maintain and enhance the quality of landscapes and | + | + | + | This policy does not go over and above the Core Strategy. It aims to | |

B3: Predict and evaluate the effects of the policies and sites within the Neighbourhood Development Plan

| | | | | | |
|--|---|---|---|---|--|
| townscapes | | | | encourage new small scale businesses to come to the Parish | |
| To improve quality of surroundings | + | + | + | This policy does not go over and above the Core Strategy. It aims to encourage new small scale businesses to come to the Parish | |
| To conserve and where appropriate enhance the historic environment and cultural heritage | + | + | + | This policy does not go over and above the Core Strategy. It aims to encourage new small scale businesses to come to the Parish | |
| To improve air quality | + | + | + | This policy does not go over and above the Core Strategy. It aims to encourage new small scale businesses to come to the Parish | |
| To reduce the effect of traffic on the environment | + | + | + | This policy does not go over and above the Core Strategy. It aims to encourage new small scale businesses to come to the Parish | |
| To reduce contributions to climate change | + | + | + | This policy does not go over and above the Core Strategy. It aims to encourage new small scale businesses to come to the Parish | |

B3: Predict and evaluate the effects of the policies and sites within the Neighbourhood Development Plan

| | | | | | |
|--|---|---|---|---|--|
| To reduce vulnerability to climate change | 0 | 0 | 0 | This policy does not go over and above the Core Strategy. It aims to encourage new small scale businesses to come to the Parish | |
| To improve water quality | x | x | x | n/a | |
| To provide for sustainable sources of water supply | x | x | x | n/a | |
| To avoid, reduce and manage flood risk | + | + | + | This policy does not go over and above the Core Strategy. It aims to encourage new small scale businesses to come to the Parish | |
| To conserve soil resources and quality | + | + | + | This policy does not go over and above the Core Strategy. It aims to encourage new small scale businesses to come to the Parish | |
| To minimise the production of waste | + | + | + | This policy does not go over and above the Core Strategy. It aims to encourage new small scale businesses to come to the Parish | |
| To improve health of the population | 0 | 0 | 0 | This policy does not go over and above the Core Strategy. It aims to | |

B3: Predict and evaluate the effects of the policies and sites within the Neighbourhood Development Plan

| | | | | | |
|--|---|---|---|---|--|
| | | | | encourage new small scale businesses to come to the Parish | |
| To reduce crime and nuisance | + | + | + | This policy does not go over and above the Core Strategy. It aims to encourage new small scale businesses to come to the Parish | |
| To conserve natural and manmade resources | + | + | + | This policy does not go over and above the Core Strategy. It aims to encourage new small scale businesses to come to the Parish | |
| Overall commentary and any cumulative effects | This policy does not go over and above the Core Strategy. It aims to encourage new small scale businesses to come to the Parish | | | | |

Policy B4 – Rural enterprise and farm diversification

| SEA Objective | Assessment of effect (consider cumulative effects, significance of the effect and magnitude of the effect in terms of the three time periods) | Summary Explanation | Enhancement and mitigation opportunities |
|----------------------|--|----------------------------|---|
| | | | |

B3: Predict and evaluate the effects of the policies and sites within the Neighbourhood Development Plan

| | Short term (1 – 5 years) | Medium term (6 – 10 years) | Long term (11 years +) | | |
|--|---------------------------------|-----------------------------------|-------------------------------|---|--|
| To maintain and enhance nature conservation (biodiversity, flora and fauna) | + | + | + | This policy does not go over and above the Core Strategy. | |
| To maintain and enhance the quality of landscapes and townscapes | + | + | + | This policy does not go over and above the Core Strategy. | |
| To improve quality of surroundings | + | + | + | This policy does not go over and above the Core Strategy. | |
| To conserve and where appropriate enhance the historic environment and cultural heritage | + | + | + | This policy does not go over and above the Core Strategy. | |
| To improve air quality | ? | ? | + | This policy does not go over and above the Core Strategy. | |
| To reduce the effect of | ? | ? | + | This policy does not go over and | |

B3: Predict and evaluate the effects of the policies and sites within the Neighbourhood Development Plan

| | | | | | |
|--|---|---|---|---|--|
| traffic on the environment | | | | above the Core Strategy. | |
| To reduce contributions to climate change | + | + | + | This policy does not go over and above the Core Strategy. | |
| To reduce vulnerability to climate change | 0 | 0 | 0 | This policy does not go over and above the Core Strategy. | |
| To improve water quality | x | x | x | n/a | |
| To provide for sustainable sources of water supply | x | x | x | n/a | |
| To avoid, reduce and manage flood risk | + | + | + | This policy does not go over and above the Core Strategy. | |
| To conserve soil resources and quality | + | + | + | This policy does not go over and above the Core Strategy. | |
| To minimise the production of waste | + | + | + | This policy does not go over and above the Core Strategy. | |
| To improve health of the population | 0 | 0 | 0 | This policy does not go over and above the Core Strategy. | |
| To reduce crime and nuisance | x | x | x | n/a | |

B3: Predict and evaluate the effects of the policies and sites within the Neighbourhood Development Plan

| | | | | | |
|--|---|---|---|---|--|
| To conserve natural and manmade resources | + | + | + | This policy does not go over and above the Core Strategy. | |
| Overall commentary and any cumulative effects | This policy does not go over and above the Core Strategy. This policy encourages the re-use of rural buildings for employment and therefore reduces the needs for new development in the rural areas. | | | | |

Policy B5 – Supporting development of communications infrastructure

| SEA Objective | Assessment of effect (consider cumulative effects, significance of the effect and magnitude of the effect in terms of the three time periods) | | | Summary Explanation | Enhancement and mitigation opportunities |
|---|---|----------------------------|------------------------|---|--|
| | Short term (1 – 5 years) | Medium term (6 – 10 years) | Long term (11 years +) | | |
| To maintain and enhance nature conservation (biodiversity, flora and fauna) | x | x | x | n/a | |
| To maintain and enhance the quality of | 0 | 0 | 0 | This Policy is not over and above the Core Strategy in terms of SEA | |

B3: Predict and evaluate the effects of the policies and sites within the Neighbourhood Development Plan

| | | | | | |
|--|---|---|---|---|--|
| landscapes and townscapes | | | | objectives. | |
| To improve quality of surroundings | + | + | + | This Policy is not over and above the Core Strategy in terms of SEA objectives. | |
| To conserve and where appropriate enhance the historic environment and cultural heritage | x | x | x | n/a | |
| To improve air quality | + | + | + | This Policy is not over and above the Core Strategy in terms of SEA objectives. | |
| To reduce the effect of traffic on the environment | + | + | + | This Policy is not over and above the Core Strategy in terms of SEA objectives. | |
| To reduce contributions to climate change | 0 | 0 | 0 | This Policy is not over and above the Core Strategy in terms of SEA objectives. | |
| To reduce vulnerability to climate change | 0 | 0 | 0 | This Policy is not over and above the Core Strategy in terms of SEA objectives. | |

B3: Predict and evaluate the effects of the policies and sites within the Neighbourhood Development Plan

| | | | | | |
|--|---|---|---|---|--|
| To improve water quality | x | x | x | n/a | |
| To provide for sustainable sources of water supply | x | x | x | n/a | |
| To avoid, reduce and manage flood risk | x | x | x | n/a | |
| To conserve soil resources and quality | + | + | + | This Policy is not over and above the Core Strategy in terms of SEA objectives. | |
| To minimise the production of waste | 0 | 0 | 0 | This Policy is not over and above the Core Strategy in terms of SEA objectives. | |
| To improve health of the population | 0 | 0 | 0 | This Policy is not over and above the Core Strategy in terms of SEA objectives. | |
| To reduce crime and nuisance | 0 | 0 | 0 | This Policy is not over and above the Core Strategy in terms of SEA objectives. | |
| To conserve natural and manmade resources | + | + | + | This Policy is not over and above the Core Strategy in terms of SEA objectives. | |

B3: Predict and evaluate the effects of the policies and sites within the Neighbourhood Development Plan

| | |
|--|---|
| Overall commentary and any cumulative effects | This Policy is not over and above the Core Strategy in terms of SEA objectives. |
|--|---|

Policy B6 - Education

| SEA Objective | Assessment of effect (consider cumulative effects, significance of the effect and magnitude of the effect in terms of the three time periods) | | | Summary Explanation | Enhancement and mitigation opportunities |
|---|---|----------------------------|------------------------|---|--|
| | Short term (1 – 5 years) | Medium term (6 – 10 years) | Long term (11 years +) | | |
| To maintain and enhance nature conservation (biodiversity, flora and fauna) | + | + | + | This Policy is not over and above the Core Strategy in terms of SEA objectives. | |
| To maintain and enhance the quality of landscapes and townscapes | + | + | + | This Policy is not over and above the Core Strategy in terms of SEA objectives. | |

B3: Predict and evaluate the effects of the policies and sites within the Neighbourhood Development Plan

| | | | | | |
|--|---|---|---|---|--|
| To improve quality of surroundings | + | + | + | This Policy is not over and above the Core Strategy in terms of SEA objectives. | |
| To conserve and where appropriate enhance the historic environment and cultural heritage | + | + | + | This Policy is not over and above the Core Strategy in terms of SEA objectives. | |
| To improve air quality | ? | ? | + | This Policy is not over and above the Core Strategy in terms of SEA objectives. | |
| To reduce the effect of traffic on the environment | ? | ? | + | This Policy is not over and above the Core Strategy in terms of SEA objectives. | |
| To reduce contributions to climate change | + | + | + | This Policy is not over and above the Core Strategy in terms of SEA objectives. | |
| To reduce vulnerability to climate change | 0 | 0 | 0 | This Policy is not over and above the Core Strategy in terms of SEA objectives. | |
| To improve water quality | x | x | x | n/a | |

B3: Predict and evaluate the effects of the policies and sites within the Neighbourhood Development Plan

| | | | | | |
|--|---|---|---|---|--|
| To provide for sustainable sources of water supply | x | x | x | n/a | |
| To avoid, reduce and manage flood risk | + | + | + | This Policy is not over and above the Core Strategy in terms of SEA objectives. | |
| To conserve soil resources and quality | + | + | + | This Policy is not over and above the Core Strategy in terms of SEA objectives. | |
| To minimise the production of waste | + | + | + | This Policy is not over and above the Core Strategy in terms of SEA objectives. | |
| To improve health of the population | x | x | x | n/a | |
| To reduce crime and nuisance | x | x | x | n/a | |
| To conserve natural and manmade resources | + | + | + | This Policy is not over and above the Core Strategy in terms of SEA objectives. | |
| Overall commentary and any cumulative effects | This Policy is not over and above the Core Strategy in terms of SEA objectives. | | | | |

B3: Predict and evaluate the effects of the policies and sites within the Neighbourhood Development Plan

Policy B7 – Traffic Management and transport improvements

| SEA Objective | Assessment of effect (consider cumulative effects, significance of the effect and magnitude of the effect in terms of the three time periods) | | | Summary Explanation | Enhancement and mitigation opportunities |
|---|---|----------------------------|------------------------|---|--|
| | Short term (1 – 5 years) | Medium term (6 – 10 years) | Long term (11 years +) | | |
| To maintain and enhance nature conservation (biodiversity, flora and fauna) | + | + | + | This Policy is not over and above the Core Strategy in terms of SEA objectives. | |
| To maintain and enhance the quality of landscapes and townscapes | + | + | + | This Policy is not over and above the Core Strategy in terms of SEA objectives. | |
| To improve quality of surroundings | + | + | + | This Policy is not over and above the Core Strategy in terms of SEA objectives. | |

B3: Predict and evaluate the effects of the policies and sites within the Neighbourhood Development Plan

| | | | | | |
|--|---|----|----|---|--|
| To conserve and where appropriate enhance the historic environment and cultural heritage | + | + | + | This Policy is not over and above the Core Strategy in terms of SEA objectives. | |
| To improve air quality | + | + | + | This Policy is not over and above the Core Strategy in terms of SEA objectives. | |
| To reduce the effect of traffic on the environment | + | ++ | ++ | This Policy is not over and above the Core Strategy in terms of SEA objectives. | |
| To reduce contributions to climate change | + | + | + | This Policy is not over and above the Core Strategy in terms of SEA objectives. | |
| To reduce vulnerability to climate change | + | + | + | This Policy is not over and above the Core Strategy in terms of SEA objectives. | |
| To improve water quality | x | x | x | n/a | |
| To provide for sustainable sources of water supply | x | x | x | n/a | |

B3: Predict and evaluate the effects of the policies and sites within the Neighbourhood Development Plan

| | | | | | |
|--|---|---|---|---|--|
| To avoid, reduce and manage flood risk | x | x | x | n/a | |
| To conserve soil resources and quality | ? | + | + | This Policy is not over and above the Core Strategy in terms of SEA objectives. | |
| To minimise the production of waste | x | x | x | n/a | |
| To improve health of the population | + | + | + | This Policy is not over and above the Core Strategy in terms of SEA objectives. | |
| To reduce crime and nuisance | x | x | x | n/a | |
| To conserve natural and manmade resources | + | + | + | This Policy is not over and above the Core Strategy in terms of SEA objectives. | |
| Overall commentary and any cumulative effects | This Policy is not over and above the Core Strategy in terms of SEA objectives. It will help to provide mitigation methods towards development and to help reduce the effect of traffic on the environment and air quality. | | | | |

PolicyB8 – Design of development in Burghill Parish

| SEA Objective | Assessment of effect (consider cumulative effects, significance of the | Summary Explanation | Enhancement and mitigation |
|----------------------|---|----------------------------|-----------------------------------|
|----------------------|---|----------------------------|-----------------------------------|

B3: Predict and evaluate the effects of the policies and sites within the Neighbourhood Development Plan

| | effect and magnitude of the effect in terms of the three time periods) | | | | opportunities |
|---|--|-----------------------------------|-------------------------------|---|----------------------|
| | Short term (1 – 5 years) | Medium term (6 – 10 years) | Long term (11 years +) | | |
| To maintain and enhance nature conservation (biodiversity, flora and fauna) | ++ | ++ | ++ | This Policy would not lead to development itself but contains design criteria and mitigation criteria for environmental protection. This Policy is not over and above the Core Strategy in terms of SEA objectives. | |
| To maintain and enhance the quality of landscapes and townscapes | ++ | ++ | ++ | This Policy would not lead to development itself but contains design criteria and mitigation criteria for environmental protection. This Policy is not over and above the Core Strategy in terms of SEA objectives. | |
| To improve quality of surroundings | ++ | ++ | ++ | This Policy would not lead to development itself but contains design criteria and mitigation criteria for environmental | |

B3: Predict and evaluate the effects of the policies and sites within the Neighbourhood Development Plan

| | | | | | |
|--|----|----|----|---|--|
| | | | | protection. This Policy is not over and above the Core Strategy in terms of SEA objectives. | |
| To conserve and where appropriate enhance the historic environment and cultural heritage | ++ | ++ | ++ | This Policy would not lead to development itself but contains design criteria and mitigation criteria for environmental protection. This Policy is not over and above the Core Strategy in terms of SEA objectives. | |
| To improve air quality | x | x | x | n/a | |
| To reduce the effect of traffic on the environment | ? | ? | + | This Policy would not lead to development itself but contains design criteria and mitigation criteria for environmental protection. This Policy is not over and above the Core Strategy in terms of SEA objectives. | |
| To reduce contributions to climate change | + | + | + | This Policy would not lead to development itself but contains design criteria and mitigation criteria for environmental protection. This Policy is not over and above the Core Strategy in | |

B3: Predict and evaluate the effects of the policies and sites within the Neighbourhood Development Plan

| | | | | | |
|--|---|---|---|---|--|
| | | | | terms of SEA objectives. | |
| To reduce vulnerability to climate change | + | + | + | This Policy would not lead to development itself but contains design criteria and mitigation criteria for environmental protection. This Policy is not over and above the Core Strategy in terms of SEA objectives. | |
| To improve water quality | + | + | + | This Policy would not lead to development itself but contains design criteria and mitigation criteria for environmental protection. This Policy is not over and above the Core Strategy in terms of SEA objectives. | |
| To provide for sustainable sources of water supply | 0 | 0 | 0 | This Policy would not lead to development itself but contains design criteria and mitigation criteria for environmental protection. This Policy is not over and above the Core Strategy in terms of SEA objectives. | |
| To avoid, reduce and manage flood risk | + | + | + | This Policy would not lead to development itself but contains | |

B3: Predict and evaluate the effects of the policies and sites within the Neighbourhood Development Plan

| | | | | | |
|--|---|---|---|---|--|
| | | | | design criteria and mitigation criteria for environmental protection. This Policy is not over and above the Core Strategy in terms of SEA objectives. | |
| To conserve soil resources and quality | + | + | + | This Policy would not lead to development itself but contains design criteria and mitigation criteria for environmental protection. This Policy is not over and above the Core Strategy in terms of SEA objectives. | |
| To minimise the production of waste | + | + | + | This Policy would not lead to development itself but contains design criteria and mitigation criteria for environmental protection. This Policy is not over and above the Core Strategy in terms of SEA objectives. | |
| To improve health of the population | x | x | x | n/a | |
| To reduce crime and nuisance | x | x | x | n/a | |

B3: Predict and evaluate the effects of the policies and sites within the Neighbourhood Development Plan

| | | | | | |
|--|---|---|---|---|--|
| To conserve natural and manmade resources | + | + | + | This Policy would not lead to development itself but contains design criteria and mitigation criteria for environmental protection. This Policy is not over and above the Core Strategy in terms of SEA objectives. | |
| Overall commentary and any cumulative effects | This Policy would not lead to development itself but contains design criteria and mitigation criteria for environmental protection. This Policy is not over and above the Core Strategy in terms of SEA objectives. | | | | |

Policy B9 – Protecting and where possible enhancing local landscape character

| SEA Objective | Assessment of effect (consider cumulative effects, significance of the effect and magnitude of the effect in terms of the three time periods) | | | Summary Explanation | Enhancement and mitigation opportunities |
|----------------------|--|-----------------------------|-------------------------------|----------------------------|---|
| | Short term (1 – 5 years) | Medium term (6 – 10) | Long term (11 years +) | | |
| | | | | | |

B3: Predict and evaluate the effects of the policies and sites within the Neighbourhood Development Plan

| | | years) | | | |
|--|----|--------|----|--|--|
| To maintain and enhance nature conservation (biodiversity, flora and fauna) | ++ | ++ | ++ | This policy would not lead to development itself but contains the design and landscape criteria. This Policy is not over and above the Core Strategy in terms of SEA objectives. | |
| To maintain and enhance the quality of landscapes and townscapes | ++ | ++ | ++ | This policy would not lead to development itself but contains the design and landscape criteria. This Policy is not over and above the Core Strategy in terms of SEA objectives. | |
| To improve quality of surroundings | ++ | ++ | ++ | This policy would not lead to development itself but contains the design and landscape criteria. This Policy is not over and above the Core Strategy in terms of SEA objectives. | |
| To conserve and where appropriate enhance the historic environment and cultural heritage | + | + | + | This policy would not lead to development itself but contains the design and landscape criteria. This Policy is not over and above the Core Strategy in terms of SEA | |

B3: Predict and evaluate the effects of the policies and sites within the Neighbourhood Development Plan

| | | | | | |
|--|---|---|---|--|--|
| | | | | objectives. | |
| To improve air quality | + | + | + | This policy would not lead to development itself but contains the design and landscape criteria. This Policy is not over and above the Core Strategy in terms of SEA objectives. | |
| To reduce the effect of traffic on the environment | 0 | 0 | 0 | This policy would not lead to development itself but contains the design and landscape criteria. This Policy is not over and above the Core Strategy in terms of SEA objectives. | |
| To reduce contributions to climate change | + | + | + | This policy would not lead to development itself but contains the design and landscape criteria. This Policy is not over and above the Core Strategy in terms of SEA objectives. | |
| To reduce vulnerability to climate change | + | + | + | This policy would not lead to development itself but contains the design and landscape criteria. This Policy is not over and above the Core Strategy in terms of SEA | |

B3: Predict and evaluate the effects of the policies and sites within the Neighbourhood Development Plan

| | | | | | |
|--|---|---|---|--|--|
| | | | | objectives. | |
| To improve water quality | 0 | 0 | 0 | This policy would not lead to development itself but contains the design and landscape criteria. This Policy is not over and above the Core Strategy in terms of SEA objectives. | |
| To provide for sustainable sources of water supply | + | + | + | This policy would not lead to development itself but contains the design and landscape criteria. This Policy is not over and above the Core Strategy in terms of SEA objectives. | |
| To avoid, reduce and manage flood risk | + | + | + | This policy would not lead to development itself but contains the design and landscape criteria. This Policy is not over and above the Core Strategy in terms of SEA objectives. | |
| To conserve soil resources and quality | + | + | + | This policy would not lead to development itself but contains the design and landscape criteria. This Policy is not over and above the Core Strategy in terms of SEA | |

B3: Predict and evaluate the effects of the policies and sites within the Neighbourhood Development Plan

| | | | | | |
|--|--|----|----|--|--|
| | | | | objectives. | |
| To minimise the production of waste | x | x | x | n/a | |
| To improve health of the population | + | + | + | This policy would not lead to development itself but contains the design and landscape criteria. This Policy is not over and above the Core Strategy in terms of SEA objectives. | |
| To reduce crime and nuisance | x | x | x | n/a | |
| To conserve natural and manmade resources | ++ | ++ | ++ | This policy would not lead to development itself but contains the design and landscape criteria. This Policy is not over and above the Core Strategy in terms of SEA objectives. | |
| Overall commentary and any cumulative effects | This policy would not lead to development itself but contains the design and landscape criteria. This Policy is not over and above the Core Strategy in terms of SEA objectives. | | | | |

Policy B10 – Protection of local green spaces

| SEA Objective | Assessment of effect (consider | Summary Explanation | Enhancement and |
|---------------|--------------------------------|---------------------|-----------------|
|---------------|--------------------------------|---------------------|-----------------|

B3: Predict and evaluate the effects of the policies and sites within the Neighbourhood Development Plan

| | cumulative effects, significance of the effect and magnitude of the effect in terms of the three time periods) | | | | mitigation opportunities |
|---|--|-----------------------------------|-------------------------------|---|---------------------------------|
| | Short term (1 – 5 years) | Medium term (6 – 10 years) | Long term (11 years +) | | |
| To maintain and enhance nature conservation (biodiversity, flora and fauna) | ++ | ++ | ++ | This Policy is not over and above the Core Strategy in terms of SEA objectives. | |
| To maintain and enhance the quality of landscapes and townscapes | + | + | + | This Policy is not over and above the Core Strategy in terms of SEA objectives. | |
| To improve quality of surroundings | + | + | + | This Policy is not over and above the Core Strategy in terms of SEA objectives. | |
| To conserve and where appropriate enhance the historic environment and | + | + | + | This Policy is not over and above the Core Strategy in terms of SEA objectives. | |

B3: Predict and evaluate the effects of the policies and sites within the Neighbourhood Development Plan

| | | | | | |
|--|---|---|---|---|--|
| cultural heritage | | | | | |
| To improve air quality | x | x | x | n/a | |
| To reduce the effect of traffic on the environment | x | x | x | n/a | |
| To reduce contributions to climate change | x | x | x | n/a | |
| To reduce vulnerability to climate change | + | + | + | This Policy is not over and above the Core Strategy in terms of SEA objectives. | |
| To improve water quality | 0 | 0 | 0 | This Policy is not over and above the Core Strategy in terms of SEA objectives. | |
| To provide for sustainable sources of water supply | x | x | x | n/a | |
| To avoid, reduce and manage flood risk | + | + | + | This Policy is not over and above the Core Strategy in terms of SEA objectives. | |
| To conserve soil resources and quality | + | + | + | This Policy is not over and above the Core Strategy in terms of SEA | |

B3: Predict and evaluate the effects of the policies and sites within the Neighbourhood Development Plan

| | | | | | |
|--|---|----|----|---|--|
| | | | | objectives. | |
| To minimise the production of waste | x | x | x | n/a | |
| To improve health of the population | + | + | + | This Policy is not over and above the Core Strategy in terms of SEA objectives. | |
| To reduce crime and nuisance | x | x | x | n/a | |
| To conserve natural and manmade resources | ++ | ++ | ++ | This Policy is not over and above the Core Strategy in terms of SEA objectives. | |
| Overall commentary and any cumulative effects | This Policy is not over and above the Core Strategy in terms of SEA objectives. | | | | |

Policy B11 – Protection and where possible enhancement of local community facilities

| SEA Objective | Assessment of effect (consider cumulative effects, significance of the effect and magnitude of the effect in terms of the three time periods) | | | Summary Explanation | Enhancement and mitigation opportunities |
|---------------|---|-------------|------------------------|---------------------|--|
| | Short term (1 – | Medium term | Long term (11 years +) | | |
| | | | | | |

B3: Predict and evaluate the effects of the policies and sites within the Neighbourhood Development Plan

| | 5 years) | (6 – 10 years) | | | |
|--|----------|----------------|---|---|--|
| To maintain and enhance nature conservation (biodiversity, flora and fauna) | + | + | + | This policy does not go over and above the Core Strategy. | |
| To maintain and enhance the quality of landscapes and townscapes | + | + | + | This policy does not go over and above the Core Strategy. | |
| To improve quality of surroundings | + | + | + | This policy does not go over and above the Core Strategy. | |
| To conserve and where appropriate enhance the historic environment and cultural heritage | + | + | + | This policy does not go over and above the Core Strategy. | |
| To improve air quality | + | + | + | This policy does not go over and above the Core Strategy. | |
| To reduce the effect of traffic on the environment | + | + | + | This policy does not go over and above the Core Strategy. | |

B3: Predict and evaluate the effects of the policies and sites within the Neighbourhood Development Plan

| | | | | | |
|--|---|---|---|---|--|
| To reduce contributions to climate change | + | + | + | This policy does not go over and above the Core Strategy. | |
| To reduce vulnerability to climate change | x | x | x | n/a | |
| To improve water quality | x | x | x | n/a | |
| To provide for sustainable sources of water supply | x | x | x | n/a | |
| To avoid, reduce and manage flood risk | + | + | + | This policy does not go over and above the Core Strategy. | |
| To conserve soil resources and quality | x | x | x | n/a | |
| To minimise the production of waste | x | x | x | n/a | |
| To improve health of the population | + | + | + | This policy does not go over and above the Core Strategy. | |
| To reduce crime and nuisance | + | + | + | This policy does not go over and above the Core Strategy. | |
| To conserve natural and manmade resources | + | + | + | This policy does not go over and above the Core Strategy. | |

B3: Predict and evaluate the effects of the policies and sites within the Neighbourhood Development Plan

| | |
|--|---|
| Overall commentary and any cumulative effects | This policy does not go over and above the Core Strategy. Policy safeguards exist within this policy, other policies in the NDP and Core Strategy to avoid and mitigate against significant harm. |
|--|---|

Policy B12 – Community facilities and Community Infrastructure Levy

| SEA Objective | Assessment of effect (consider cumulative effects, significance of the effect and magnitude of the effect in terms of the three time periods) | | | Summary Explanation | Enhancement and mitigation opportunities |
|---|--|-----------------------------------|-------------------------------|---|---|
| | Short term (1 – 5 years) | Medium term (6 – 10 years) | Long term (11 years +) | | |
| To maintain and enhance nature conservation (biodiversity, flora and fauna) | + | + | + | This policy does not go over and above the Core Strategy. | |
| To maintain and enhance the quality of landscapes and townscapes | + | + | + | This policy does not go over and above the Core Strategy. | |

B3: Predict and evaluate the effects of the policies and sites within the Neighbourhood Development Plan

| | | | | | |
|--|---|---|---|---|--|
| To improve quality of surroundings | + | + | + | This policy does not go over and above the Core Strategy. | |
| To conserve and where appropriate enhance the historic environment and cultural heritage | + | + | + | This policy does not go over and above the Core Strategy. | |
| To improve air quality | x | x | x | n/a | |
| To reduce the effect of traffic on the environment | x | x | x | n/a | |
| To reduce contributions to climate change | x | x | x | n/a | |
| To reduce vulnerability to climate change | x | x | x | n/a | |
| To improve water quality | x | x | x | n/a | |
| To provide for sustainable sources of water supply | x | x | x | n/a | |
| To avoid, reduce and manage flood risk | x | x | x | n/a | |

B3: Predict and evaluate the effects of the policies and sites within the Neighbourhood Development Plan

| | | | | | |
|--|---|---|---|---|--|
| To conserve soil resources and quality | x | x | x | n/a | |
| To minimise the production of waste | x | x | x | n/a | |
| To improve health of the population | x | x | x | n/a | |
| To reduce crime and nuisance | x | x | x | n/a | |
| To conserve natural and manmade resources | + | + | + | This policy does not go over and above the Core Strategy. | |
| Overall commentary and any cumulative effects | This policy does not go over and above the Core Strategy. | | | | |

Policy B13 – Flood risk, water management and surface water run-off

| SEA Objective | Assessment of effect (consider cumulative effects, significance of the effect and magnitude of the effect in terms of the three time periods) | | | Summary Explanation | Enhancement and mitigation opportunities |
|---------------|---|-------------|------------------------|---------------------|--|
| | Short term (1 – | Medium term | Long term (11 years +) | | |
| | | | | | |

B3: Predict and evaluate the effects of the policies and sites within the Neighbourhood Development Plan

| | 5 years) | (6 – 10 years) | | | |
|---|----------|----------------|---|---|--|
| To maintain and enhance nature conservation (biodiversity, flora and fauna) | + | + | + | This Policy would not lead to development itself but contains safeguards for flooding and flood risk. This Policy is not over and above the Core Strategy in terms of SEA objectives. | |
| To maintain and enhance the quality of landscapes and townscapes | + | + | + | This Policy would not lead to development itself but contains safeguards for flooding and flood risk. This Policy is not over and above the Core Strategy in terms of SEA objectives. | |
| To improve quality of surroundings | + | + | + | This Policy would not lead to development itself but contains safeguards for flooding and flood risk. This Policy is not over and above the Core Strategy in terms of SEA objectives. | |
| To conserve and where appropriate enhance the historic environment and | + | + | + | This Policy would not lead to development itself but contains safeguards for flooding and flood risk. This Policy is not over and | |

B3: Predict and evaluate the effects of the policies and sites within the Neighbourhood Development Plan

| | | | | | |
|--|---|---|---|---|--|
| cultural heritage | | | | above the Core Strategy in terms of SEA objectives. | |
| To improve air quality | x | x | x | n/a | |
| To reduce the effect of traffic on the environment | x | x | x | n/a | |
| To reduce contributions to climate change | + | + | + | This Policy would not lead to development itself but contains safeguards for flooding and flood risk. This Policy is not over and above the Core Strategy in terms of SEA objectives. | |
| To reduce vulnerability to climate change | + | + | + | This Policy would not lead to development itself but contains safeguards for flooding and flood risk. This Policy is not over and above the Core Strategy in terms of SEA objectives. | |
| To improve water quality | + | + | + | This Policy would not lead to development itself but contains safeguards for flooding and flood risk. This Policy is not over and above the Core Strategy in terms of | |

B3: Predict and evaluate the effects of the policies and sites within the Neighbourhood Development Plan

| | | | | | |
|--|----|----|----|---|--|
| | | | | SEA objectives. | |
| To provide for sustainable sources of water supply | x | x | x | n/a | |
| To avoid, reduce and manage flood risk | ++ | ++ | ++ | This Policy would not lead to development itself but contains safeguards for flooding and flood risk. This Policy is not over and above the Core Strategy in terms of SEA objectives. | |
| To conserve soil resources and quality | + | + | + | This Policy would not lead to development itself but contains safeguards for flooding and flood risk. This Policy is not over and above the Core Strategy in terms of SEA objectives. | |
| To minimise the production of waste | x | x | x | n/a | |
| To improve health of the population | x | x | x | n/a | |
| To reduce crime and nuisance | x | x | x | n/a | |
| To conserve natural and manmade | + | + | + | This Policy would not lead to development itself but contains | |

B3: Predict and evaluate the effects of the policies and sites within the Neighbourhood Development Plan

| | | | | | |
|--|---|--|--|---|--|
| resources | | | | safeguards for flooding and flood risk. This Policy is not over and above the Core Strategy in terms of SEA objectives. | |
| Overall commentary and any cumulative effects | This Policy would not lead to development itself but contains safeguards for flooding and flood risk. This Policy is not over and above the Core Strategy in terms of SEA objectives. | | | | |

Policy B14 – Development of renewable energy facilities in Burghill Parish

| SEA Objective | Assessment of effect (consider cumulative effects, significance of the effect and magnitude of the effect in terms of the three time periods) | | | Summary Explanation | Enhancement and mitigation opportunities |
|---|---|----------------------------|------------------------|---|--|
| | Short term (1 – 5 years) | Medium term (6 – 10 years) | Long term (11 years +) | | |
| To maintain and enhance nature conservation (biodiversity, flora and fauna) | + | + | + | This policy meets the SEA objectives. Policy safeguards exist to protect from any undue adverse impact from the developments. Long term the benefits will | |

B3: Predict and evaluate the effects of the policies and sites within the Neighbourhood Development Plan

| | | | | | |
|--|---|---|---|---|--|
| | | | | outweigh the initial development. | |
| To maintain and enhance the quality of landscapes and townscapes | + | + | + | This policy meets the SEA objectives. Policy safeguards exist to protect from any undue adverse impact from the developments. Long term the benefits will outweigh the initial development. | |
| To improve quality of surroundings | + | + | + | This policy meets the SEA objectives. Policy safeguards exist to protect from any undue adverse impact from the developments. Long term the benefits will outweigh the initial development. | |
| To conserve and where appropriate enhance the historic environment and cultural heritage | + | + | + | This policy meets the SEA objectives. Policy safeguards exist to protect from any undue adverse impact from the developments. Long term the benefits will outweigh the initial development. | |
| To improve air quality | x | x | x | n/a | |

B3: Predict and evaluate the effects of the policies and sites within the Neighbourhood Development Plan

| | | | | | |
|--|----|----|----|---|--|
| To reduce the effect of traffic on the environment | + | + | + | This policy meets the SEA objectives. Policy safeguards exist to protect from any undue adverse impact from the developments. Long term the benefits will outweigh the initial development. | |
| To reduce contributions to climate change | ++ | ++ | ++ | This policy meets the SEA objectives. Policy safeguards exist to protect from any undue adverse impact from the developments. Long term the benefits will outweigh the initial development. | |
| To reduce vulnerability to climate change | + | + | + | This policy meets the SEA objectives. Policy safeguards exist to protect from any undue adverse impact from the developments. Long term the benefits will outweigh the initial development. | |
| To improve water quality | x | x | x | n/a | |
| To provide for sustainable sources of water supply | x | x | x | n/a | |

B3: Predict and evaluate the effects of the policies and sites within the Neighbourhood Development Plan

| | | | | | |
|---|---|---|---|---|--|
| To avoid, reduce and manage flood risk | + | + | + | This policy meets the SEA objectives. Policy safeguards exist to protect from any undue adverse impact from the developments. Long term the benefits will outweigh the initial development. | |
| To conserve soil resources and quality | x | x | x | n/a | |
| To minimise the production of waste | + | + | + | This policy meets the SEA objectives. Policy safeguards exist to protect from any undue adverse impact from the developments. Long term the benefits will outweigh the initial development. | |
| To improve health of the population | x | x | x | n/a | |
| To reduce crime and nuisance | x | x | x | n/a | |
| To conserve natural and manmade resources | + | + | + | This policy meets the SEA objectives. Policy safeguards exist to protect from any undue adverse impact from the developments. Long term the benefits will | |

B3: Predict and evaluate the effects of the policies and sites within the Neighbourhood Development Plan

| | | | | | |
|--|---|--|--|-----------------------------------|--|
| | | | | outweigh the initial development. | |
| Overall commentary and any cumulative effects | This policy meets the SEA objectives. Policy safeguards exist to protect from any undue adverse impact from the developments. Long term the benefits will outweigh the initial development. | | | | |

Key:

| | | | | | | |
|--------------------------------------|----------------------------------|-----------------------------------|-------------------------------|------------------|--------------------|--------------------------|
| ++ Move towards significantly | + Move towards marginally | -- Move away Significantly | - Move away marginally | 0 Neutral | ? Uncertain | X No relationship |
|--------------------------------------|----------------------------------|-----------------------------------|-------------------------------|------------------|--------------------|--------------------------|

| SEA Objective / Policy | 1. To maintain and enhance nature conservation (biodiversity, flora and fauna) | 2. To maintain and enhance the quality of landscapes and townscapes | 3. To improve quality of surroundings | 4. To conserve and where appropriate enhance the historic environment and culture heritage | 5. To improve air quality | 6. To reduce the effect of traffic on the environment | 7. To reduce contributions to climate change | 8. To reduce vulnerability to climate change | 9. To improve water quality | 10. To provide for sustainable sources of water supply | 11. To avoid, reduce and manage flood risk | 12. To conserve soil resources and quality | 13. To minimise the production | 14. To improve health of the population | 15. To reduce crime and nuisance | 16. To conserve natural and manmade resources |
|---|--|---|---------------------------------------|--|---------------------------|---|--|--|-----------------------------|--|--|--|--------------------------------|---|----------------------------------|---|
| Objective 1 | 0 | + | + | + | 0 | ? | ? | ? | ? | ? | ? | ? | + | X | X | + |
| Objective 2 | + | + | + | + | X | ? | ? | ? | ? | ? | ? | ? | X | X | X | ? |
| Objective 3 | + | + | + | + | X | ? | ? | ? | ? | ? | ? | ? | X | X | X | ? |
| Objective 4 | + | + | + | + | + | ? | ? | ? | X | X | ? | + | + | + | + | + |
| Objective 5 | X | X | + | + | X | X | X | X | X | X | ? | X | ? | + | + | + |
| Objective 6 | + | + | ? | ? | X | ? | ? | X | X | X | ? | ? | X | + | + | + |
| Objective 7 | + | + | + | + | X | X | X | X | X | X | X | ? | ? | + | + | + |
| Objective 8 | + | + | + | + | + | + | + | X | X | X | X | + | + | + | + | + |
| Objective 9 | ? | X | X | + | X | ? | ? | ? | X | X | ? | ? | ? | X | X | ? |
| Objective 10 | X | X | X | ? | X | + | ? | ? | X | X | ? | ? | + | X | X | ? |
| Objective 11 | + | + | + | + | ++ | + | ? | X | X | X | X | X | + | + | + | + |
| Policy B1 | ++ | ++ | + | ++ | + | + | + | + | + | 0 | + | + | X | X | X | + |
| Site 22 – Frontage adjacent to the Bell | + | + | + | + | X | ? | ? | X | X | X | + | ? | X | X | X | + |
| Site 2D – Tillington Road Frontage, Lower Burlton | + | + | + | + | X | + | + | X | X | X | + | ? | X | X | X | + |

| | | | | | | | | | | | | | | | | |
|--|-------------------------------|-----------------------------|---------------------------|------------------------------|--------------------------|----------------------------------|-----------------------------|-----------------------|----------------------------|----------------------------|----------------------|-------------------------|----------------------------|----------------------------|----------------------------|----------------------------|
| Site 25 – Cherry Orchard, Tillington | + | + | + | + | X | ? | + | X | X | X | + | ? | X | X | X | + |
| Site 10 – Tillington business Park | + | + | + | + | X | ? | + | X | X | X | + | ? | X | X | X | + |
| Site 2B – Lower Burton, Near A4110 | + | + | + | + | X | + | + | X | X | X | + | ? | X | X | X | + |
| Within curtilage of White Roses, A41110 | + | + | + | + | X | + | + | X | X | X | + | ? | X | X | X | + |
| Site 21 – Near Redstone on the corner | + | + | + | + | X | + | + | X | X | X | + | ? | X | X | X | + |
| Policy B2 | + | + | + | + | + | + | + | 0 | X | X | + | + | + | 0 | + | + |
| Policy B3 | + | + | + | + | + | + | + | 0 | X | X | + | + | + | 0 | + | + |
| Policy B4 | + | + | + | + | ? | ? | + | 0 | X | X | + | + | + | 0 | X | + |
| Policy B5 | X | 0 | + | X | + | + | 0 | 0 | X | X | X | + | 0 | 0 | 0 | + |
| Policy B6 | + | + | + | + | ? | ? | + | 0 | X | X | + | + | + | X | X | + |
| Policy B7 | + | + | + | + | + | ++ | + | + | X | X | X | ? | X | + | X | + |
| Policy B8 | ++ | ++ | ++ | ++ | X | ? | + | + | + | 0 | + | + | + | X | X | + |
| Policy B9 | ++ | ++ | ++ | + | + | 0 | + | + | 0 | + | + | + | X | + | X | ++ |
| Policy B10 | ++ | + | + | + | X | X | X | + | 0 | X | + | + | X | + | X | ++ |
| Policy B11 | + | + | + | + | + | + | + | X | X | X | + | X | X | + | + | + |
| Policy B12 | + | + | + | + | X | X | X | X | X | X | X | X | X | X | X | + |
| Policy B13 | + | + | + | + | X | X | + | + | + | X | ++ | + | X | X | X | + |
| Policy B14 | + | + | + | + | X | + | ++ | + | X | X | + | X | + | X | X | + |
| Summary of effects of whole plan on each SEA | + | + | + | + | + | + | + | + | + | + | + | + | + | + | + | + |
| | On balance the plan aiming to | On balance the plan aims to | The plan aims improve the | The plan aims to protect and | The plan conforms to the | The Plan's Policies do encourage | Policies include provisions | Policies are included | Policies are in conformity | Policies are in conformity | Policies are include | Policies aim to conform | Policies are in conformity | Policies are in conformity | Policies are in conformity | Policies exist to conserve |

| | | | | | | | | | | | | | | | | |
|--|--|--|---|--|---------------------------|--|---|----------------------------------|---|---|---------------------------------|---|---|---|--|-----------------------------|
| Objective | conserve and enhance the natural environment | protect and enhance the environment around Burghill parish and the setting and character of the villages | quality of the surroundings and encourage additional facilities | enhance the environment around Burghill parish and the setting and character of the villages | aims of the Core Strategy | local small scale businesses, improvements to footpath / cycle path links and reduction in car use therefore there could be an improvement in air quality. | to reduce the contribution to climate change such as design and renewable energy. | to reduce the risks of flooding. | with the requirements of the Core Strategy. | with the requirements of the Core Strategy. | to reduce the risks of flooding | to the local policies within the Core Strategy. | with the requirements of the Core Strategy. | with the requirements of the Core Strategy, and include provisions to improve the health of the parish. | with the requirements of the Core Strategy | or reuse existing resources |
| Cumulative effects of whole plan (1 + 2 + 3...) | <i>Overall the Burghill Neighbourhood Plan will contribute to meeting the SEA objectives and having a positive impact on the baseline. Policies have been drafted in general conformity with the Core Strategy objectives and contain many policy safeguards to ensure that the effects on environmental assets can be avoided or mitigated against. None of the policies are over and above those already assessed for the Core Strategy.</i> | | | | | | | | | | | | | | | |
| Commentary for significant cumulative effects | <i>The Burghill neighbourhood plan is unlikely to have any significant cumulative effects on the SEA objectives.</i> | | | | | | | | | | | | | | | |

Appendix 5

Burghill Parish options

- Do NDP / No NDP
- Criteria based policies
- Settlement boundaries for the main housing group.
- The designation of land for housing, employment and community use.
- The safeguarding or designation of land for recreation, public open space or amenity purposes

Appendix 6

| Objectives and context | Where referenced in NDP/SEA |
|---|--|
| <ul style="list-style-type: none"> • The Neighbourhood Development Plan's purpose and objectives are made clear. • The Neighbourhood Area's environmental issues and constraints, including acknowledgement of those in the Local Plan (Core Strategy) SA, where relevant, and local environmental protection objectives, are considered in developing objectives and targets. • SEA objectives are clearly set out and linked to indicators and targets where appropriate. • Links with other locally related plans, programmes and policies are identified, explained and acknowledgement for those set out in the SA of the Local Plan (Core Strategy) is given, where relevant. • Conflicts that exist between SEA and Neighbourhood Development Plan objectives; and between SEA objectives and other local plan objectives are identified and described. | <ul style="list-style-type: none"> • Section 1 (paras 1.8 – 1.9). • Sections 2 and 3; and Tables A2 and A3 • Section 3 (para 3.7). • Section 3 (para 3.5). • Section 3 (paras 3.8 – 3.12) |
| Scoping | |
| <ul style="list-style-type: none"> • Statutory Consultees are consulted in appropriate ways and at appropriate times on the content and scope of the Environmental Report. • The assessment focuses on significant issues. • Technical, procedural and other difficulties encountered are discussed; assumptions and uncertainties are made explicit. | <ul style="list-style-type: none"> • Section 2 (paras 2.6 – 2.7) and Appendix 3 • Sections 2 and 4 • Sections 2 and 4 |

| Alternatives | |
|--|---|
| <ul style="list-style-type: none"> Realistic alternatives are considered for key issues, and the reasons for choosing them are documented. Alternatives include 'do minimum' and/or 'business as usual' scenarios wherever relevant. The environmental effects (both adverse and beneficial) of each alternative are identified and compared. Inconsistencies between the alternatives and other relevant local plans, programmes or policies are identified and explained. Reasons are given for selection or elimination of alternatives. | Section 5 (5.1 to 5.4) |
| Baseline information | |
| <ul style="list-style-type: none"> Relevant aspects of the current state of the local, neighbourhood area environment and their likely evolution without the Neighbourhood Development Plan are described. Acknowledgement to the information in the SA of the Local Plan (Core Strategy) is given, where relevant. Environmental characteristics of the local, neighbourhood area, likely to be significantly affected are described, including areas wider than the physical boundary of the designated neighbourhood area, where it is likely to be affected by the Neighbourhood Development Plan. Difficulties such as deficiencies in information or methods are explained. | <ul style="list-style-type: none"> Section 1 and 4. Initial screening report and Section 1. Section 2. |

| Prediction and evaluation of likely significant environmental effects | |
|---|--|
| <ul style="list-style-type: none"> • Effects identified include the types listed in the Directive (biodiversity, population, human health, fauna, flora, soil, water, air, climate factors, material assets, cultural heritage and landscape), as relevant; and other local likely environmental effects are also covered, as appropriate. • Both positive and negative effects are considered, and the duration of effects (short, medium or long-term) is addressed. • Likely secondary, cumulative (growing in quantity and strength) and synergistic (acting together) effects are identified, where practicable. • Inter-relationships between effects are considered, where practicable. • The prediction and evaluation of effects makes use of relevant accepted standards, regulations, and thresholds (i.e. data gathered for the evidence base). • Methods used to evaluate the effects are described. | <ul style="list-style-type: none"> • Tables A2, A3 and A4 (Appendix 2) • Tables B2 and B3 (Appendix 4) • Table B4 (Appendix 4) • Section 4 • Section 4 • Section 2 |
| Mitigation measures | |
| <ul style="list-style-type: none"> • Measures envisaged to prevent, reduce and offset any significant adverse effects of implementing the Neighbourhood Development Plan are indicated. • Issues to be taken into account when determining planning applications or other projects, for example funding bids, are identified. | <ul style="list-style-type: none"> • Section 6 (paras 6.3 to 6.6) • Section 4 |

| The Environmental Report | |
|--|--|
| <ul style="list-style-type: none"> • Is clear and concise in its layout and presentation. • Uses simple, clear language and avoids or explains technical terms. • Uses maps and other illustrations, where appropriate. • Explains the methodology used. • Explains who was consulted and what methods of consultation were used. • Identifies sources of information, including expert judgement and matters of opinion. • Contains a non-technical summary covering the overall approach to the SEA, the objectives of the Neighbourhood Development Plan, the main options considered, and any changes to the Neighbourhood Development Plan resulting from the SEA. | <ul style="list-style-type: none"> • N/A • N/A • N/A • Section 2 • Section 2 • Section 2 • Included at page 1 |
| Consultation | |
| <ul style="list-style-type: none"> • The SEA is consulted on as an integral part of the plan-making process of the Neighbourhood Development Plan. • Consultation Bodies and the public likely to be affected by, or having an interest in, the Neighbourhood Development Plan are consulted in ways and at times, which give them an early and effective opportunity within appropriate time frames to express their opinions on the draft Neighbourhood Development Plan and Environmental Report. | <ul style="list-style-type: none"> • Section 2 (paras 2.4 – 2.5) • Section 6 |

| Decision-making and information on the decision | |
|---|--|
| <ul style="list-style-type: none"> The environmental report and the opinions of those consulted are taken into account in finalising and adopting the Neighbourhood Development Plan. An explanation is given of how they have been taken into account. Reasons are given for choosing the Neighbourhood Development Plan as adopted, in the light of other reasonable alternatives considered. | <ul style="list-style-type: none"> Sections 2 and 6 Following draft consultation Following draft consultation |
| Monitoring measures | |
| <ul style="list-style-type: none"> Measures proposed for monitoring the Neighbourhood Development Plan are clear, practicable and linked to the indicators and objectives used in the SEA. Monitoring is used, where appropriate, during implementation of the Neighbourhood Development Plan to make good deficiencies in baseline information in the SEA. Acknowledgement that monitoring enables unforeseen adverse effects to be identified at an early stage. (These effects may include predictions which prove to be incorrect.) Proposals are made for action in response to significant adverse effects arising from the monitoring of the Neighbourhood Development Plan. | <ul style="list-style-type: none"> Section 5 Section 5 Section 5 Section 5 |