

Habitats Regulations Assessment



Cusop Neighbourhood Area

June 2016

Habitat Regulation Assessment Screening Cusop Neighbourhood Plan Regulation 14 Consultation – June 2016

Contents

1. Introduction
 - a. Figure 1: Cusop Neighbourhood Area
2. The requirement to undertake Habitats Regulations Assessment of neighbourhood development plans
3. Methodology
4. Results of the Cusop Initial Screening Report
 - a. Figure 2: Cusop Neighbourhood Area and European sites.
5. Description of the Cusop Neighbourhood Plan
6. Identification of other plans and policies which may have in-combination effects
7. Assessment of the likely significant effects of the Cusop Neighbourhood Plan
8. Timetable for adoption
9. Conclusions from the screening matrix

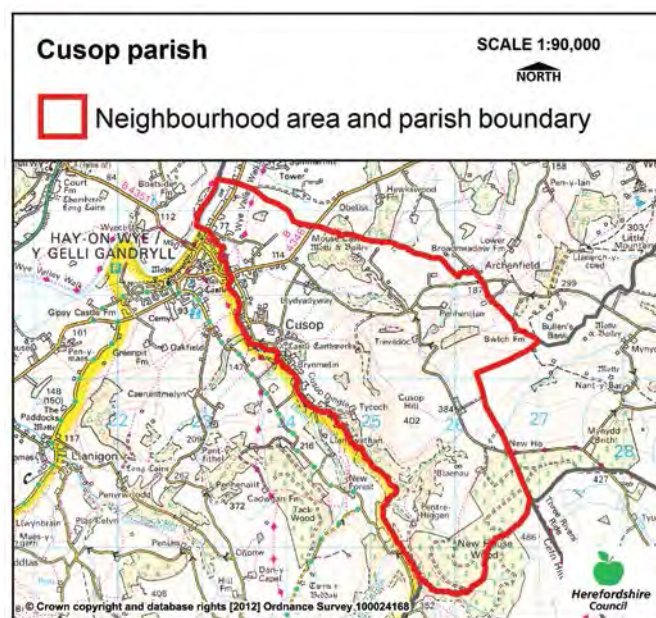
Appendix 1 Initial Screening Report (October 2014)

Appendix 2 Screening of initial options matrix

Appendix 3 Screening of emerging policy matrix

1 Introduction

- 1.1 This Screening Assessment relates to a Neighbourhood Development Plan (NDP) that is considered to be in general conformity with higher level strategic plans, such as the Herefordshire Local Plan (Core Strategy) and the National Planning Policy Framework. The screening stage involves assessing broadly whether the Draft Cusop Neighbourhood Plan is likely to have a significant effect on any European site(s).
- 1.2 Cusop Parish Council is producing a Neighbourhood Development Plan for whole administrative area of Cusop parish, in order to set out objectives and policies for the development of the parish up to 2031 (Draft plan June 2016 being assessed).
- 1.3 The NDP has two allocated sites and provides a number of general policies that clarify and provide more detail to the policies within the Herefordshire Core Strategy, therefore it requires a high level screening assessment to build upon the HRA Screening Assessment Report for the Herefordshire Core Strategy. This high level screening assessment should be read in combination with the Herefordshire Local Plan-Core Strategy Habitat Regulations Assessment Report and ensures that there will not be any significant impacts upon Natura 2000 sites.
- 1.4 The map below shows Cusop Neighbourhood Area and parish boundary.



2 The requirement to undertake Habitats Regulations Assessment of plans

- 2.1 The requirement to undertake HRA of development/neighbourhood plans was confirmed by the amendments to the "Habitats Regulations" published for England and Wales in July 2007 and updated in 2013. Therefore, when preparing its neighbourhood plan, Cusop Parish

Council is required by law to carry out an assessment known as “Habitats Regulations Assessment”. Reg 32 Schedule 2 Neighbourhood Planning Regulations.

2.2 Article 6(3) of the EU Habitats Directive provides that:

Any plan or project not directly connected with or necessary to the management of the [European] site but likely to have a significant effect thereon, either individually or in combination with other plans or projects, shall be subject to appropriate assessment of its implications for the site in view of the site's conservation objectives. In the light of the conclusions of the assessment of the implications for the site and subject to the provisions of paragraph 4, the competent national authorities shall agree to the plan or project only after having ascertained that it will not adversely affect the integrity of the site concerned and, if appropriate, after having obtained the opinion of the general public.

2.3 HRA is an impact-led assessment and refers to the assessment of the potential effects of a development plan on one or more European sites, including Special Protection Areas (SPAs) and Special Areas of Conservation (SACs):

- **SPAs** are classified under the European Council Directive ‘on the conservation of wild birds’ (79/409/EEC; ‘Birds Directive’) for the protection of **wild birds and their habitats** (including particularly rare and vulnerable species listed in Annex 1 of the Birds Directive, and migratory species).
- **SACs** are designated under the Habitats Directive and target **particular habitats** (Annex 1) and/or species (Annex II) identified as being of European importance.
- **Ramsar sites** support internationally important wetlands habitats

2.4 For ease of reference during HRA, general practice has been that these three designations are collectively referred to as either **Natura 2000** or **European sites**. This means that a Screening Assessment is carried out with regard to the Conservation Objectives of the European Sites and with reference to other plans or projects to identify if any significant effect is likely for any European Site.

3 Methodology

3.1 The Cusop Neighbourhood Plan is not directly connected with the management of any European sites, however it does include proposals for development which may affect European sites. Therefore, it is necessary under Regulation 102(1)(a) of the Habitats Regulations 2010 to undertake screening for likely significant effects on European sites.

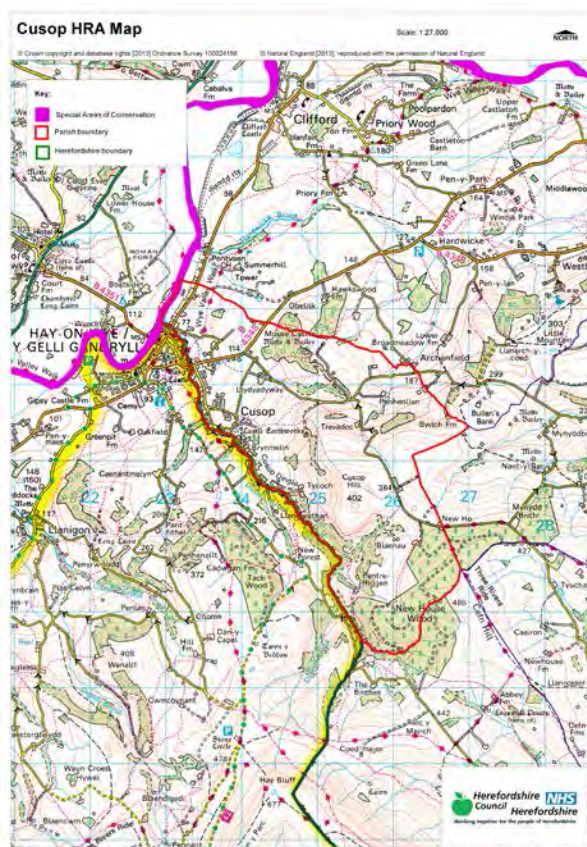
3.2 The HRA of neighbourhood plans is undertaken in stages and should conclude whether or not a proposal or policy in a neighbourhood plan would adversely affect the integrity of the site in question. This is judged in terms of the implications of the plan for a site’s ‘qualifying features’ (i.e. those Annex I habitats, Annex II species, and Annex I bird populations for which it has

been designated) and are measured with reference to the conservation objectives for those qualifying features as defined by Natural England.

- 3.3 The first process is to undertake an initial screening report to determine the need to undertake the requirement for a HRA, this initial screening identifies whether the Plan could impact upon any European site that could be within the Neighbourhood area or nearby.
- 3.4 If a European Site is within the Neighbourhood area or the Neighbourhood area could impact upon a European site then this will need to be taken into account and a full screening assessment will need to be undertaken.
- 3.5 The full screening stage consists of a description of the plan, identification of potential effects on European Sites, assessing the effects on European Sites (taking into account potential mitigation provided by other policies in the plan). For Neighbourhood Plans the outcome should demonstrate there are no likely effects upon the European sites. If any likely effects occur then there will need to be amendments to the Neighbourhood Plan made and be re-screened until all likely effects have been mitigated.

4 Results of the Initial Screening Report and options

- 4.1 The initial Screening report (October 2014) (Appendix 1) found that the River Wye SAC is located adjacent to the north western boundary of the Cusop Neighbourhood Area. However, some northern parts of the neighbourhood area are within the hydrological catchment of the River Wye, therefore a full screening assessment is required. Figure 2 below highlights the location of River Wye SAC in relation to the neighbourhood area.



- 4.2 European sites can be sensitive to changes in water quantity and quality. As outlined within the Habitat Regulation Assessment to the Herefordshire Local Plan (Core Strategy), the water supply in this area comes from Dwr Cymru Welsh Water (DCWW) and no likely significant effects on European sites as a result of changes in water quality are expected in relation to the proportional growth outlined with the Herefordshire Core Strategy. In relation to water quality, the preparation of the Nutrient Management Plan for the River Wye SAC should ensure that developments within the area can be accommodated within existing water discharge permits would not be likely to have a significant effect upon the River Wye SAC. Work is currently ongoing with DCWW to ensure that sufficient permitted headroom exists and or measure can be put in place in the Hay on Wye Sewerage treatment works (STW) to accommodate the specific growth highlighted within the Cusop Neighbourhood Plan.
- 4.3 For full details of the River Wye's attributes which contribute to and define their integrity and vulnerable data see Appendix 1 of the Cusop Neighbourhood Plan Initial Screening Report (Full report in Appendix 1 of this HRA report). This information made it possible to identify the features of each site which determine site integrity, as well as the specific sensitivities of each site, therefore enabling later analysis of how the potential impacts of the Cusop Neighbourhood Plan may affect site integrity.

- 4.4 Options for initial policy choices (See appendix 2) have been assessed to determine their environmental impact for each option that could impact the River Wye SAC. The alternative options were primarily concerning the delineation of the settlement boundary for the village of Cusop and potential location of further housing and employment land. The whole parish within the hydrological catchment of the River Wye with the Dulas Brook running through the parish. The HRA screening matrix of emerging Neighbourhood Development Plan can be found in appendix 3.

5 Description of the Cusop Neighbourhood Plan

- 5.1 The Draft Cusop Neighbourhood Plan (June 2016) presents detailed policies for development in the Neighbourhood Area, which is equivalent to the administrative parish boundary, up to 2031.

- 5.2 The neighbourhood plan sets out the objectives for the whole plan period. The objectives cover the following topics:

- Objective 1: to enable development while protecting the local environment by maintaining a clear visual and functional distinction between built-up areas and the countryside
- Objective 2: to enable sufficient new housing while maintaining or improving the balance of housing in terms of size, design and neighbour impact
- Objective 3: to enable the growth of the local economy whilst protecting and strengthening its distinctive character
- Objective 4: to protect the local environment by identifying local distinctive assets

- 5.3 The Neighbourhood Plan also sets out 14 policies which include 5 site specific policies and 9 criteria based policies on topics based on the objective headings above as follows:

- Policy 1: Settlement boundary
- Policy 2: Newport Street housing allocation
- Policy 3: New dwellings within the settlement boundary
- Policy 4: Size of dwelling
- Policy 5: Extension of dwellings
- Policy 6: New dwellings within the curtilage of existing dwellings
- Policy 7: Safeguarding of Newport Street employment land
- Policy 8: Extension of Newport Street employment land
- Policy 9: Employment generating proposals outside the settlement boundary
- Policy 10: Cusop Hill
- Policy 11: Black Lion Fields

- Policy 12: Dulas Brook
- Policy 13: Avoiding light pollution
- Policy 14: Design

5.4 The Cusop Neighbourhood Plan highlights the plan period until 2031 and this stage a formal review of the plan during the period is not proposed within the plan text.

5.5 A draft consultation is planned to be undertaken in line with Regulation 14 of the Neighbourhood Planning Regulations, any amendments or changes suggested as part of this assessment would need to be considered as part of the review of comments received to this consultation.

6 Identification of other plans and projects which may have 'in-combination' effects

6.1 Regulation 102 of the Habitats Regulations 2010 requires an appropriate assessment where a land use plan (not directly connected with or necessary to the management of the site) is likely to have a significant effect on a European site, either alone or in combination with other plans or projects. It should be noted however, that neighbourhood plans cannot be made if like significant effects occur.

6.2 There are a number of potentially relevant plans and projects which may result in in-combination effects with the Core Strategy across Herefordshire, these plans have been reviewed and can be found in Appendix 2 of the pre-submission publication of the Herefordshire Local Plan – Core Strategy Habitats Regulations Assessment (May 2014). It is seen that as the Cusop Neighbourhood Plan does not go over and beyond the requirements set out in the Core Strategy this review will also be substantial for the NDP. Adjacent neighbourhood plans of Dorstone and Vowchurch Group have reached draft plan stage, Clifford and Longtown are preparing plans. At this stage in their production, also collectively, these are no going over and beyond the requirements set out within the Core Strategy for their area. The combination effects of developments in emerging Powys Local Development Plan and Brecon Beacons National Park Local Development Plan within regards to development proposals within Hay on Wye have been assess as part of the Core Strategy HRA.

6.3 The HRA for the Core Strategy also identifies that both the Water Cycle Study for Herefordshire, which indicates the potential for planned water abstraction requirements combined with pressures on European Sites from the Core Strategy policies, and the work on the Nutrient Management Plan, to ensure the favourable conservation status of the SAC in respect of phosphate levels as soon as possible and at the latest by 2027, have both been considered as part of the in-combination assessment.

7 Assessment of the 'likely significant effects' of the Cusop NDP

- 7.1 As required under Regulation 102 of the Habitats Regulations 2010, a screening assessment has been undertaken to identify the 'likely significant effects' of the NDP. A screening matrix was prepared in order to identify whether any of the policies in the Plan would be likely to have a significant effect on the River Wye SAC.
- 7.2 The findings of the screening matrix can be found in the Screening Matrix in Appendix 3 of this report. Colour coding was used to record the likely impacts of the policies on the European site and its qualifying habitats and species as shown in the table 1 below.

Table1

Red	There are likely to be significant effects
Green	Significant effects are unlikely

- 7.3 The Screening matrix took the approach of screening each policy individually, which is consistent with current guidance documents. The results from the HRA report for the Pre-submission version of the Herefordshire Local Plan (Core Strategy), was also taken into consideration.
- 7.4 Mitigation of some of the identified potential effects could be achieved through implementation of the other policies within the NDP which require good practice measures. The Cusop Neighbourhood Plan will safeguard any proposal or development against detrimental impact on the environment within Policy 1, Policy 10, Policy 11 and Policy 12. Many policies refer to, but not repeat, the protection policy criteria within the Core Strategy. The Neighbourhood Plan recognises the importance of the hydrological catchment of the River Wye and the role the Dulas Brook has in ensuring water quality is maintained.

8 Conclusions from the Screening Matrix

- 8.1 None of the Cusop Neighbourhood Plan policies (June 2016) were concluded to be likely to have a significant likely effect on the River Wye SAC. This is based on assumptions and information contained within the Cusop Neighbourhood Plan, Herefordshire Core Strategy and the HRA for the Core Strategy all of the NDP policies were found to be unlikely to result in a significant likely effect on the River Wye SAC.
- 8.2 In many cases this is because the policies themselves would not result in development ie they relate instead to criteria for development. In several cases the policies also include measures to help support the natural environment including biodiversity.
- 8.3 With regards to the site allocations, neither are within 100m of the River Wye boundary, although they are within the hydrological catchment. The housing allocation site has existing

planning permission and currently subject to a reserve matters application. This site raised no objections from the Environment Agency or Welsh Water at application stage. At this stage, the possibility of there being likely significant effects cannot be discounted for the employment allocation. However the inclusion of additional policy wording relating to safeguarding of the River Wye will provide the required safeguarding measures.

- 8.3 Dwr Cymru Welsh Water (DCWW) has stated for the Core Strategy that there is sufficient existing permitted headroom in the Sewerage Treatment works serving the Cusop area to continue to treat the water from the amount of housing provided for in the Core Strategy policies. Continuing work is required with DCWW to ensure that sufficient headroom remains and a potential feasibility study may be required to assess any further upgrade requirements. In addition, the preparation of the Nutrient Management Plan for the River Wye SAC should ensure that development within Herefordshire which can be accommodated within existing water discharge permits would not be likely to have a significant effect upon the River Wye SAC.
- 9.5 It is unlikely that the Cusop Neighbourhood Plan will have any in-combination effects with any Plans from neighbouring parishes due to the level of growth proposed is of the same that is proposed for the Golden Valley Housing Market Area in the Herefordshire Core Strategy and all of the proposed housing will be of a small scale.
- 9.6 It is therefore concluded that the **Cusop Neighbourhood Plan will not have a likely significant effect on the River Wye SAC.**
- 9.7 Any further amendments to the policies (post June 2016) will be rescreened if required and an addendum to this report will be produced to accompany the submission plan.

Appendix 1

**Initial Habitat Regulations Assessment and Strategic Environmental
Assessment Screening Notification**

The Neighbourhood Planning (General) Regulation 2012 (Reg. 32)

Conservation of Habitats and Species Regulations 2010 (d)

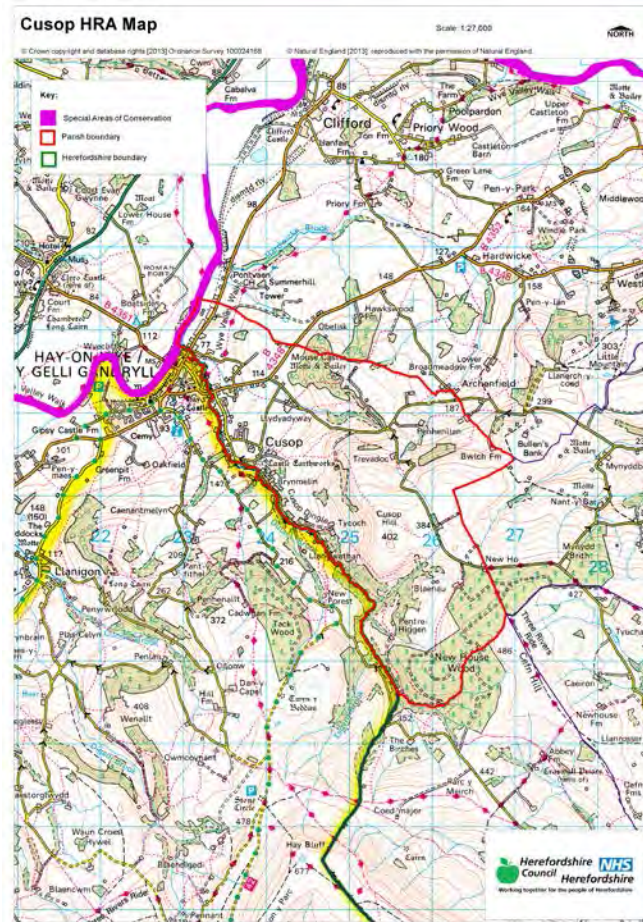
Neighbourhood Area:	Cusop Neighbourhood Area
Parish Council:	Cusop Parish Council
Neighbourhood Area Designation Date:	07/09/2012

Introduction

This Initial Habitat Regulations Assessment (HRA) and Strategic Environmental Assessment (SEA) Screening has been undertaken to assess whether any European sites exist within or in proximity to the neighbourhood area which could be affected by any future proposals or policies.

Through continual engagement the outcomes of any required assessments will help to ensure that proposed developments will not lead to Likely Significant Effects upon a European Site or cause adverse impacts upon other environmental assets, such as the built historic or local natural environment.

**HRA Initial Screening: Map showing relationship of Neighbourhood Area with European Sites
(not to scale)**



Initial HRA Screening

River Wye (including the River Lugg) SAC:

Does the Neighbourhood Area have the River Wye (including the River Lugg) in or next to its boundary?	Y	The River Wye runs along the northern boundary of the Parish and is partly within it.
Is the Neighbourhood Area in the hydrological catchment of the River Wye (including the River Lugg) SAC?	Y	Nearly all of the Parish is within the River Wye catchment area.
If yes above, does the Neighbourhood Area have mains drainage to deal with foul sewage?	N	Most dwellings within the Parish are connected to mains drainage which is connected to the Hay on Wye STW which discharges into the Wye

Downton Gorge SAC:

Is the Neighbourhood Area within 10km of Downton Gorge SAC?	N	Downton Gorge is 34.95km away from the Parish
---	---	---

River Clun SAC:

Does the Neighbourhood Area include: Border Group Parish Council or Leintwardine Group Parish Council?	N	River Clun does not border the Parish
--	---	---------------------------------------

Usk Bat Sites SAC:

Is the Neighbourhood Area within 10km of the SAC boundary?	N	Usk Bat Sites are 22.86km away from the Parish
--	---	--

Wye Valley & Forest of Dean Bat Sites SAC:

Is the Neighbourhood Area within 10km of any of the individual sites that make up the Wye Valley & Forest of Dean Bat Sites?	N	The Parish is 43.38km away from Wye Valley and Forest of dean Bat Sites
--	---	---

Wye Valley Woodlands SAC:

Is the Neighbourhood Area within 10km of any of the individual sites that make up the Wye Valley Woodlands Site?	N	The Parish is 35.97km away from the Wye Valley Woodlands
--	---	--

HRA Conclusion:

The assessment above highlights that the following European Sites will need to be taken into account in the future Neighbourhood Development Plan for the Cusop Neighbourhood Area and a Full HRA Screening will be required.

European Site

(List only those which are relevant from above)

River Wye (including the River Lugg) SAC

Strategic Environmental Assessment Initial Screening for nature conservation landscape and heritage features

The following environmental features are within or in general proximity to the Cusop Neighbourhood Area and would need to be taken into account within a Strategic Environmental Assessment. In addition, the NDP will also need to consider the other SEA topics set out in Guidance Note 9a to ensure that the plan does not cause adverse impacts.

SEA features	Total	Explanation	SEA required
Air Quality Management Areas	0	There are no AQMA's within the Parish	N
Ancient Woodland	6	Mousecastle Wood; Trevadoc Wood; Pentre Higgen Wood 2; Hawks Wood (border); 2 unlabelled at: east of brynmelin and by Cusop Dingle	Y
Areas of Archaeological Interest	0	There are no AAI's within the Parish	N
Areas of Outstanding Natural Beauty	0	There are no AONB's within the Parish	N
Conservation Areas	0	There are no Conservation Areas within the Parish	N
European Sites	1	The River Wye borders the Parish to the north	Y
Flood Areas		The very north of the Parish by the River Wye has Flood Zones 2 and 3 within it. There are also Flood zones along Dulas Brook on the western border	Y
Listed Buildings	Numerous	There are numerous listed buildings scattered throughout the Parish	Y
Local Nature Trails	2		Y
Local Sites (SWS/SINCS/RIGS)	5 (SWS)	River Wye, Mouse Castle, Hawks & Scudamore Woods, Pentre Higgen Wood, Cusop Hill and Dingle, Disused quarry on Cusop Hill, Cefn-Hill Common (border)	Y
Long distance footpaths/trails	2	Wye Valley Walk; Three Rivers Ride	Y
Mineral Reserves	0	There are no Minerals Reserves sites within the Parish	N
National Nature Reserve	0	There are no NNR's within the Parish	N
Registered & unregistered parks and gardens	1 Unregistered	The Moor, Clifford	Y
Scheduled Ancient Monuments	2	Mouse Motte & Bailey Castle, Cusop Castle ringwork	Y
Sites of Special Scientific Interest	1	River Wye (Unfavourable Recovering)	Y

Decision Notification:

The initial screening highlights that the Neighbourhood Development Plan for the Cusop Neighbourhood Area:

- a) Will require further environmental assessment for Habitat Regulations Assessment and Strategic Environmental Assessment.

Assessment date: 21/05/2013

Assessed by: James Latham

Appendix 1: European Sites

The table below provides the name of each European Site, which has been screened in for the purposes of neighbourhood planning in Herefordshire; includes their site features of integrity; and vulnerability data. This is based on the sites individual features of integrity and their vulnerabilities, which could include distance criteria. This has been used in identifying which parishes are likely to require a full HRA Screening of their future Neighbourhood Development Plan, to establish if their plan might have Likely Significant Effects on a European Site.

Downton Gorge
Site Features: <i>Tilio-Acerion</i> forests of slopes, screes and ravines
Vulnerability data: 10km for air quality associated with poultry units or other intensive agricultural practices.
River Clun
Site Features: Freshwater pearl mussel <i>Margaritifera margaritifera</i>
Vulnerability data: Water quality is important to maintain the site feature. Parishes either side of the River Clun will be affected.
River Wye
Site Features: Water courses of plain to montane levels with the <i>Ranunculion fluitantis</i> and <i>Callitricho-Batrachion</i> vegetation. Transition mires and quaking bogs. White-clawed (or Atlantic Stream) crayfish <i>Austropotamobius pallipes</i> . Sea lamprey <i>Petromyzon marinus</i> . Brook lamprey <i>Lampetra planeri</i> . River lamprey <i>Lampetra fluviatilis</i> . Twaite shad <i>Alosa fallax</i> . Atlantic salmon <i>Salmo salar</i> . Bullhead <i>Cottus gobio</i> . Otter <i>Lutra lutra</i> . Allis shad <i>Alosa alosa</i>
Vulnerability data: Proximity: Developments should not be within 100m of the designated bank. Some developments beyond 100m may also have impacts based on proximity and these issues should be addressed where possible when developing NDP policy and choosing site allocations. Water Quality: Within the whole catchment of the River Wye, which includes the River Lugg, mains drainage issues with regards to water quality are being resolved through the Core Strategy / Local Plan and development of a Nutrient Management Plan. Welsh Water should be consulted to ensure that the proposed growth will be within the limit of their consents. Otters: "An otter will occupy a 'home range', which on fresh waters usually includes a stretch of river as well as associated tributary streams, ditches, ponds, lakes and woodland. The size of a home range depends largely on the availability of food and shelter, and the presence of neighbouring otters. On rivers, a male's home range may be up to 40km or more of watercourse and associated areas; females have smaller ranges (roughly half the size) and favour quieter locations for breeding, such as tributary streams. Otters without an established home range are known as 'transients'. They are mostly juveniles looking for a territory of their own, or adults that have been pushed out of their territories. Transient otters may use an area for a short while, but they will move on if conditions are not suitable or if they are driven away by resident otters. Transients will have been important in extending the range of otters, but they are very difficult to identify from field signs. Within a home range an otter may use many resting sites. These include above-ground shelters, such as stands of scrub or areas of rank grass, and underground 'holts' – for example, cavities under tree roots and dry drainage pipes." (Source: EA website: http://www.environmentagency.gov.uk/static/documents/Business/Otters_the_facts.pdf accessed 09/04/2013)

Usk Bat Site

Site Features: Annex I habitats present as a qualifying feature, but not a primary reason for site selection: European dry heaths, Degraded raised bogs still capable of natural regeneration, Blanket bogs, Calcareous rocky slopes with chasmophytic vegetation, Caves not open to the public, *Tilio-Acerion* forests of slopes, screes and ravines. Annex II species of primary reason for site selection: Lesser horseshoe bat *Rhinolophus hipposideros*, UK population 5%, although it is suggested this is an underestimate.

Vulnerability data: Lesser Horseshoe bats are known to migrate between 5km and 10km between their summer and winter roosts. The Lesser Horseshoe Bat is vulnerable to disturbance; light pollution; and habitat loss. Check with the planning ecologist for other issues.

Wye Valley and Forest of Dean Bat Sites

Site Features: Annex II species that are a primary reason for site selection: Lesser horseshoe bat *Rhinolophus hipposideros*. Greater horseshoe bat *Rhinolophus ferrumequinum*

Vulnerability data: Lesser Horseshoe bats are known to migrate between 5km and 10km between their summer and winter roosts. The Lesser Horseshoe Bat is vulnerable to disturbance; light pollution; and habitat loss. Check with the planning ecologist for other issues.

Greater Horseshoe bats are known to migrate between 20-30km between their summer and winter roosts.

NDPs closest to the European Site will need to consider:
Woodland habitat buffer.

Lesser Horseshoe Bat: Old buildings; woodland locations; sheltered valleys, extensive deciduous woods or dense scrub, close to roost sites. In areas of fragmented habitats, linear habitats such as hedgerows are important corridors. Vulnerable to loss or disturbance of both summer and winter roosts and removal of linear habitat.

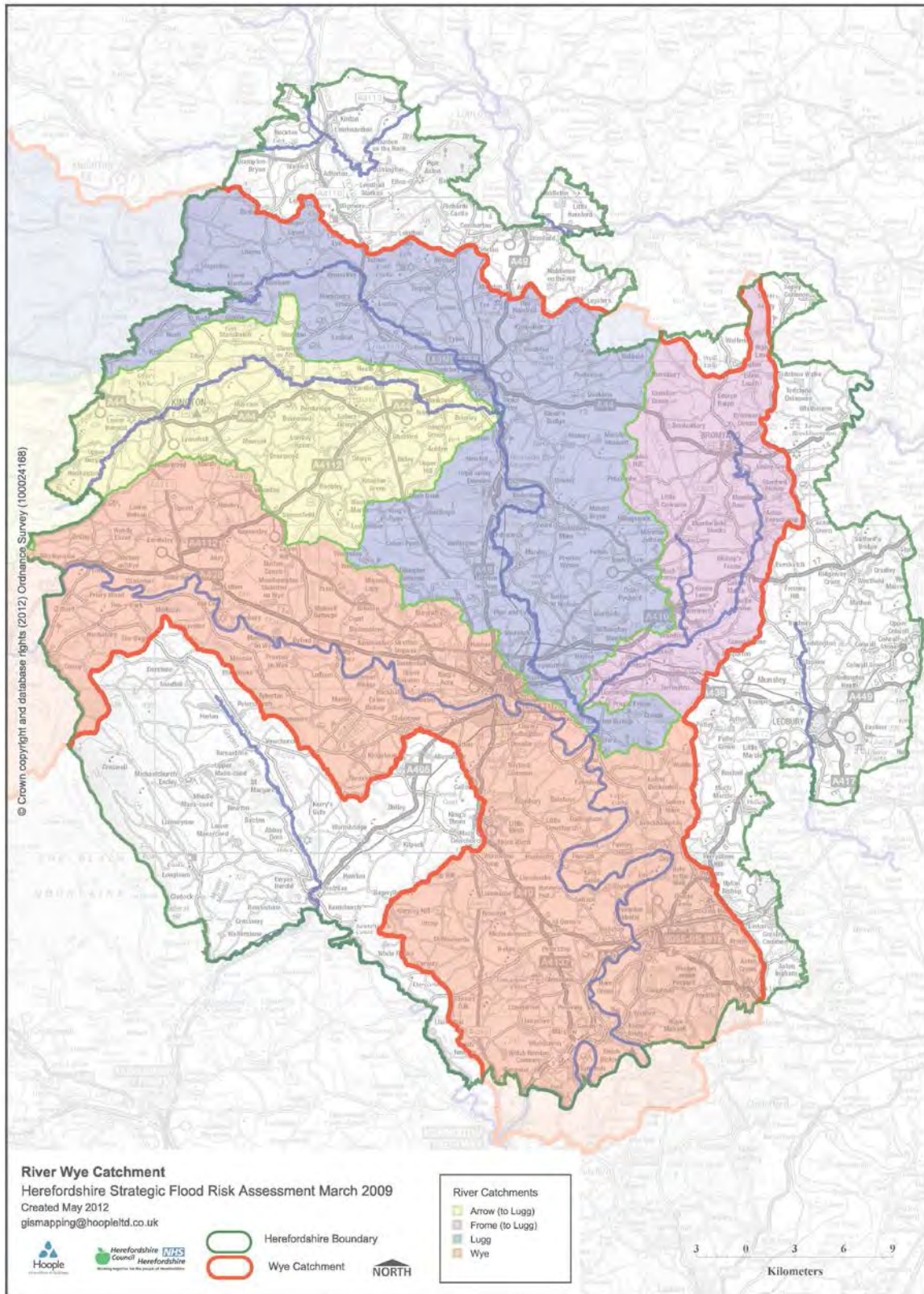
Greater Horseshoe Bat: Large buildings, pasture, edge of mixed deciduous woodland and hedgerows. Mixed land-use especially south-facing slopes, favours beetles, moths and insects they feed on. During the winter they depend on caves, abandoned mines and other underground sites for undisturbed hibernation. A system/series of sites required. Vulnerable to loss of insect food supply, due to insecticide use, changing farming practices and loss of broad-leaved tree-cover and loss / disturbance of underground roosts sites.

Wye Valley Woodlands

Site Features: Annex I habitats that are a primary reason for site selection: Beech forests *Asperulo-Fagetum*, *Tilio-Acerion* forests of slopes, screes and ravines, *Taxus baccata* woods of the British Isles. Annex II species present as a qualifying feature, but not a primary reason for site selection: Lesser horseshoe bat *Rhinolophus hipposideros*, 51-100 residents

Vulnerability data: Lesser Horseshoe bats are known to migrate between 5km and 10km between their summer and winter roosts. The Lesser Horseshoe Bat is vulnerable to disturbance; light pollution; and habitat loss. Check with the planning ecologist for other issues. NDPs closest to the European Site will need to consider: Woodland habitat buffer. Lesser Horseshoe Bat: Old buildings; woodland locations; sheltered valleys, extensive deciduous woods or dense scrub, close to roost sites. In areas of fragmented habitats, linear habitats such as hedgerows are important corridors. Vulnerable to loss or disturbance of both summer and winter roosts and removal of linear habitat.

Appendix 2: Wye Catchment Map



Appendix 2

Options Considered in preparation of Cusop NDP

- Option 1 Do nothing
- Option 2 Designate settlement boundary
- Option 3 No settlement boundary
- Option 4 Continue with previous housing allocation site
- Option 5 Allocate housing elsewhere
- Option 6 Employment land to south
- Option 7 Employment land to west
- Option 8 Employment land to north
- Option 9 Employment land to east
- Option 10 Additional local distinctive asset policy
- Option 11 Additional light and design policy

HRA Report – Cusop Neighbourhood Plan (June 2016) - HRA Screening of Emerging Neighbourhood Development Plan Options

Date option screening undertaken: **June 2016**

NDP options	HRA Screening of Emerging NDP options				
	Likely activities (operations) to result as a consequence of the option	Likely effect if option implemented. Could they have Likely Significant Effects (LSE) on European Sites?	European Sites potentially affected	Mitigation measures to be considered, as necessary, through redraft of option and to be considered as part of Appropriate Assessment	Could the policy have likely significant effects on European sites (taking mitigation into account?)
<i>Option 1</i> <i>Do nothing</i>	Development in line with core Strategy policies	n/a	n/a	n/a	No, development would be adjudged against the policies of the Core Strategy which has been subject to its own HRA
<i>Option 2</i> <i>Designate settlement boundary</i>	Small scale proportionate growth within a defined settlement boundary area	No significant effect	n/a	Measures are set out within the Core Strategy and the Nutrient Management Plan to provide policy safeguards	No, provided criteria is developed. Additional pressure on water abstraction and treatment has been confirmed by Welsh Water as having sufficient water resources to meet the increase in demand. The Nutrient Management Plan has concluded that measures can be implemented to allow the level of growth proposed without

This document is copyright of Herefordshire Council, please contact the Neighbourhood Planning team if you wish to reuse it in whole or part.

HRA Report – Cusop Neighbourhood Plan (June 2016) - HRA Screening of Emerging Neighbourhood Development Plan Options

					compromising the achievements of phosphate targets in the River Wye.
<i>Option 3</i> <i>No settlement boundary</i>	Small scale proportionate growth where the location would be determined by a criteria based policy	Uncertain as to the impact as this would be dependent on location of the development	River Wye SAC	Any criteria based policies would need to include reference to the need to take water quality issues of the River Wye into account. Measures are set out within the Core Strategy and the Nutrient Management Plan to provide policy safeguards.	No, provided criteria is developed. Additional pressure on water abstraction and treatment has been confirmed by Welsh Water as having sufficient water resources to meet the increase in demand. The Nutrient Management Plan has concluded that measures can be implemented to allow the level of growth proposed without compromising the achievements of phosphate targets in the River Wye.
<i>Option 4</i> <i>Continue with existing housing allocation</i>	Development for housing along Newport Street. Existing commitment	No significant effect	n/a	n/a	No, the site is an existing commitment. Specific issues would have been subject to the planning

This document is copyright of Herefordshire Council, please contact the Neighbourhood Planning team if you wish to reuse it in whole or part.

HRA Report – Cusop Neighbourhood Plan (June 2016) - HRA Screening of Emerging Neighbourhood Development Plan Options

					application
<p><i>Option 5</i></p> <p><i>Allocation housing elsewhere</i></p>	<p>Development of proportional growth on allocated sites</p> <p>Increased demand on water abstraction</p>	<p>Uncertain as to the impact as this would be dependent on location of the development</p>	<p>River Wye SAC</p>	<p>Any criteria based policies would need to include reference to the need to take water quality issues of the River Wye into account.</p> <p>Measures are set out within the Core Strategy and the Nutrient Management Plan to provide policy safeguards.</p>	<p>No, provided criteria is developed. Additional pressure on water abstraction and treatment has been confirmed by Welsh Water as having sufficient water resources to meet the increase in demand. The Nutrient Management Plan has concluded that measures can be implemented to allow the level of growth proposed without compromising the achievements of phosphate targets in the River Wye.</p>
<p><i>Option 6</i></p> <p><i>Employment land to the south</i></p>	<p>Allocation of land for employment uses</p> <p>Some increase in traffic</p> <p>Increase in water uses</p>	<p>No, investigation concluded that this option had already been developed</p>	<p>n/a</p>	<p>n/a</p>	<p>No, this area was considered not to be a viable alternative once investigated</p>
<p><i>Option 7</i></p> <p><i>Employment land to the</i></p>	<p>Allocation of land for employment uses</p>	<p>Uncertain as to the impact as this would be dependent on location of the development. Area is</p>	<p>River Wye SAC</p>	<p>Any site allocation policies would need to include reference to the need to take water</p>	<p>No, this area is considered to be vulnerable to flooding and therefore could</p>

This document is copyright of Herefordshire Council, please contact the Neighbourhood Planning team if you wish to reuse it in whole or part.

HRA Report – Cusop Neighbourhood Plan (June 2016) - HRA Screening of Emerging Neighbourhood Development Plan Options

<p><i>west</i></p>	<p>Some increase in traffic Increase in water uses</p>	<p>subject from flooding from the Dulas Brook which is part of the River Wye SAC catchment.</p>		<p>quality issues of the River Wye into account. Measures are set out within the Core Strategy and the Nutrient Management Plan to provide policy safeguards.</p>	<p>restrict potential land options. If land was available, criteria would need to be developed to safeguard the Dulas Brook and the River Wye. Additional pressure on water abstraction and treatment has been confirmed by Welsh Water as having sufficient water resources to meet the increase in demand. The Nutrient Management Plan has concluded that measures can be implemented to allow the level of growth proposed without compromising the achievements of phosphate targets in the River Wye.</p>
<p><i>Option 8</i> <i>Employment land to the north</i></p>	<p>Allocation of land for employment uses Some increase in traffic</p>	<p>Uncertain as to the impact as this would be dependent on location of the development. Some flooding in parts of the</p>	<p>River Wye SAC</p>	<p>Any site allocation policies would need to include reference to the need to take water quality issues of the</p>	<p>No, provided criteria is developed. Additional pressure on water abstraction and treatment has been confirmed by Welsh</p>

This document is copyright of Herefordshire Council, please contact the Neighbourhood Planning team if you wish to reuse it in whole or part.

HRA Report – Cusop Neighbourhood Plan (June 2016) - HRA Screening of Emerging Neighbourhood Development Plan Options

	Increase in water uses	north from the River Wye		River Wye into account. Measures are set out within the Core Strategy and the Nutrient Management Plan to provide policy safeguards.	Water as having sufficient water resources to meet the increase in demand. The Nutrient Management Plan has concluded that measures can be implemented to allow the level of growth proposed without compromising the achievements of phosphate targets in the River Wye.
<i>Option 9</i> <i>Employment land to the east</i>	Allocation of land for employment uses Some increase in traffic Increase in water uses	Uncertain as to the impact as this would be dependent on location of the development.	River Wye SAC	Any site allocation policies would need to include reference to the need to take water quality issues of the River Wye into account. Measures are set out within the Core Strategy and the Nutrient Management Plan to provide policy safeguards.	No, provided criteria is developed. Additional pressure on water abstraction and treatment has been confirmed by Welsh Water as having sufficient water resources to meet the increase in demand. The Nutrient Management Plan has concluded that measures can be implemented to allow the level of growth proposed without compromising the

This document is copyright of Herefordshire Council, please contact the Neighbourhood Planning team if you wish to reuse it in whole or part.

HRA Report – Cusop Neighbourhood Plan (June 2016) - HRA Screening of Emerging Neighbourhood Development Plan Options

					achievements of phosphate targets in the River Wye.
<i>Option 10</i> <i>Additional local distinctive asset policy</i>	Safeguarding the character of specific areas of the parish	This could have a positive effect on the SAC	River Wye SAC	n/a	No, safeguarding will have a positive effect.
<i>Option 11</i> <i>Additional light and design policy</i>	Reduction in use of lighting within the parish	n/a	n/a	n/a	No, although this will have a positive effect on many species, particularly those who are nocturnal.

Appendix 3

HRA Report – Cusop Neighbourhood Plan (June 2016) - HRA Screening of Emerging Neighbourhood Development Plan Objectives and Policies

Date undertaken: **June 2016**

Core Strategy HRA version: **Herefordshire Core Strategy (October 2015)**

NDP objectives, policies	HRA Screening of Emerging NDP objectives and policies				
	Likely activities (operations) to result as a consequence of the objective/option/policy	Likely effect if objective/option/policy implemented. Could they have Likely Significant Effects (LSE) on European Sites?	European Sites potentially affected	Mitigation measures to be considered, as necessary, through redraft of objective/option/policy.	Could the policy have any likely significant effects on European sites (taking mitigation into account)?
Objective 1	Promoting growth whilst protecting the environment	n/a	n/a	n/a	No, this objective would not lead to development itself rather it acknowledged the requirements of Core Strategy policy RA2
Objective 2		n/a	n/a	n/a	No, this objective would not lead to development itself
Objective 3		n/a	n/a	n/a	No, this objective would not lead to development itself
Objective 4		n/a	n/a	n/a	No, this objective would not lead to

This document is copyright of Herefordshire Council, please contact the Neighbourhood Planning team if you wish to reuse it in whole or part.

HRA Report – Cusop Neighbourhood Plan (June 2016) - HRA Screening of Emerging Neighbourhood Development Plan Objectives and Policies

					development itself
Policy 1 Settlement boundary	Small scale development within the settlement boundary	No significant effects	River Wye SAC	The implementation of policy SD3 and SD4 should help to avoid any adverse impacts in relation to the hydrological regimes of the River Wye SAC. Water quality is also addressed through the Nutrient Management Plan produced by Natural England and the Environment Agency.	No, this policy will allow for small scale development in line with policy RA2 of the Core Strategy. Safeguards exist with the Core Strategy and the Nutrient Management plan
Policy 2 Newport Street Housing Allocation	Development of site for a minimum of 25 homes Increased traffic, water use	No, this is already a commitment site within the village.	River Wye SAC	The implementation of policy SD3 and SD4 should help to avoid any adverse impacts in relation to the hydrological regimes of the River Wye SAC. Water quality is also addressed through the Nutrient Management Plan produced by Natural England and the Environment Agency.	No, this is an existing commitment site and in line with the proportional growth requirements indicated within the Core Strategy.

This document is copyright of Herefordshire Council, please contact the Neighbourhood Planning team if you wish to reuse it in whole or part.

HRA Report – Cusop Neighbourhood Plan (June 2016) - HRA Screening of Emerging Neighbourhood Development Plan Objectives and Policies

Policy 3 New dwellings within the settlement boundary	Criteria for new homes within the settlement boundary	No significant effects	River Wye SAC	The implementation of policy SD3 and SD4 should help to avoid any adverse impacts in relation to the hydrological regimes of the River Wye SAC. Water quality is also addressed through the Nutrient Management Plan produced by Natural England and the Environment Agency.	No, this policy will allow for small scale development in line with policy RA2 of the Core Strategy. Safeguards exist with the Core Strategy and the Nutrient Management plan
Policy 4 Size of dwelling	Size of dwellings	n/a	n/a	n/a	No, this will not lead to development itself but guides the size and type of dwellings to be provided
Policy 5 Extension of dwellings	Extensions to existing properties	n/a	n/a	n/a	No, although there may be a small rise in the use and disposal of water, policy safeguards existing within policy SD3 and SD4 of the Core Strategy and the Nutrient

This document is copyright of Herefordshire Council, please contact the Neighbourhood Planning team if you wish to reuse it in whole or part.

HRA Report – Cusop Neighbourhood Plan (June 2016) - HRA Screening of Emerging Neighbourhood Development Plan Objectives and Policies

					Management Plan.
<p>Policy 6</p> <p>New dwellings within the curtilage of existing dwellings</p>	Sub division of curtilage	No significant effects	River Wye SAC	The implementation of policy SD3 and SD4 should help to avoid any adverse impacts in relation to the hydrological regimes of the River Wye SAC. Water quality is also addressed through the Nutrient Management Plan produced by Natural England and the Environment Agency.	No, this policy will allow for small scale development in line with policy RA2 of the Core Strategy. Safeguards exist with the Core Strategy and the Nutrient Management plan
<p>Policy 7</p> <p>Safeguarding of Newport Street employment land</p>	Safeguarding employment	n/a	n/a	n/a	No, this policy is safeguarding existing employment land
<p>Policy 8</p> <p>Extension to Newport Street employment land</p>	<p>Allocation of employment land</p> <p>Increase traffic levels</p> <p>Potential increase in abstraction and water use</p>	This site is not within 100m of the River Wye SAC, it is close to the flood plain	River Wye SAC	The implementation of policy SD3 and SD4 should help to avoid any adverse impacts in relation to the hydrological regimes of the River Wye SAC. Water quality is also addressed through the Nutrient Management Plan produced by	No, policy safeguards within the Core Strategy will help mitigate any issues.

This document is copyright of Herefordshire Council, please contact the Neighbourhood Planning team if you wish to reuse it in whole or part.

HRA Report – Cusop Neighbourhood Plan (June 2016) - HRA Screening of Emerging Neighbourhood Development Plan Objectives and Policies

				Natural England and the Environment Agency.	
Policy 9 Employment generating proposals outside of the settlement boundary	Employment outside the settlement boundary	No likely significant effects	River Wye SAC	<p>Core Strategy policy LD2 will aim to help avoid any adverse impacts on the River Wye SAC.</p> <p>The implementation of policy SD3 and SD4 should help to avoid any adverse impacts in relation to the hydrological regimes of the River Wye SAC. Water quality is also addressed through the Nutrient Management Plan produced by Natural England and the Environment Agency.</p>	<p>No, this policy is seeking to support small scale rural employment in line with Policy RA6.</p> <p>Policy safeguards exist within the Core strategy policies that will help mitigate potential effects.</p>
Policy 10 Cusop Hill	Protection of Cusop Hill	n/a	n/a	n/a	No; this policy is seeking to protect the character and views of Cusop Hill
Policy 11 Black Lion Fields	Protection of Black Lion Fields	n/a	n/a	n/a	No, this policy is seeking to protect the character of land near the village hall

This document is copyright of Herefordshire Council, please contact the Neighbourhood Planning team if you wish to reuse it in whole or part.

HRA Report – Cusop Neighbourhood Plan (June 2016) - HRA Screening of Emerging Neighbourhood Development Plan Objectives and Policies

Policy 12 Dulas Brook	Protection of Cusop Dingle and Dulas Brook	n/a	n/a	n/a	No, this policy will have a positive effect on the SAC as the Dulas Brook is part of its catchment
Policy 13 Avoiding light pollution	Reduction in lighting	n/a	n/a	n/a	No, although this policy will have a positive effect on many species particularly those who are nocturnal
Policy 14 Design	Design criteria	n/a	n/a	n/a	No, this policy will not lead to development but does encourage sustainable, energy efficient design which could have a positive effect on the use and quality of water.