

Strategic Environmental Assessment



Leominster Neighbourhood Area

Scoping Report

October 2014

Consultation on the Scoping Report

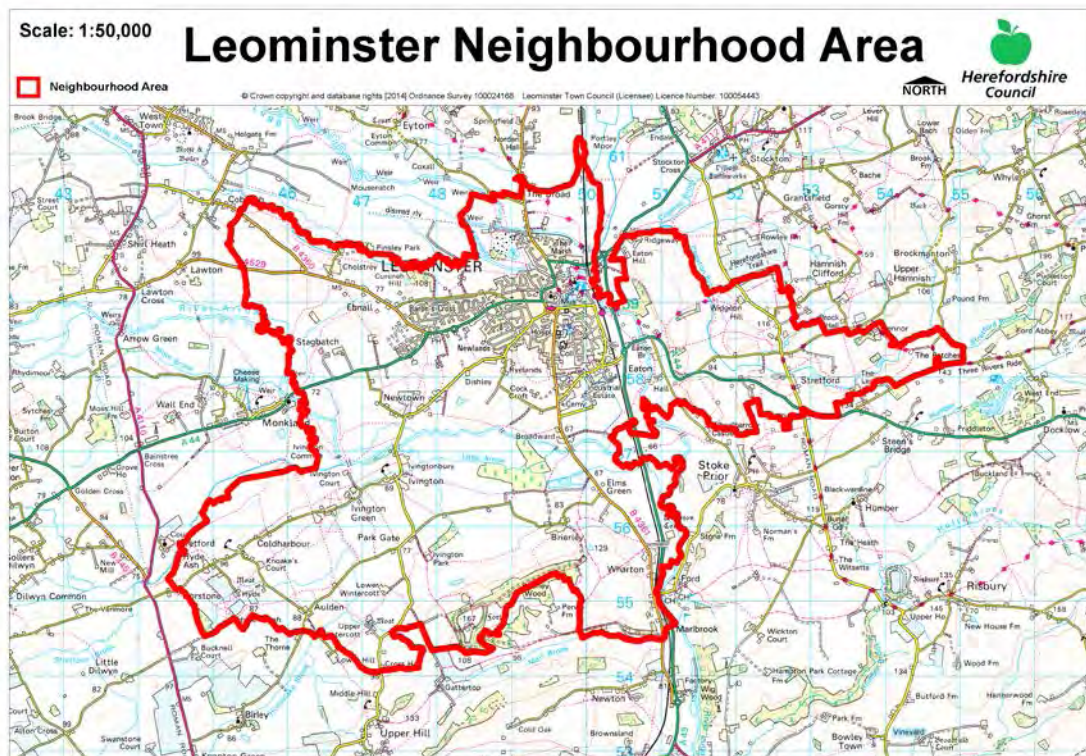
The aim of the consultation process is to involve and engage with statutory consultees and other relevant bodies on the scope of the appraisal. In particular, it seeks to:

- Ensure the SEA is both comprehensive and sufficiently robust to support the Neighbourhood Development Plan during the later stages of full public consultation;
- Seek advice on the completeness of the plan review and baseline data and gain further information where appropriate;
- Seek advice on the suitability of key sustainability issues;
- Seek advice on the suitability of the sustainability objectives.

Comments on this Scoping Report have been invited from the three consultation bodies as required by the SEA regulations, together with the Natural Resources Wales.

The three consultation bodies are as follows:

1. Natural England;
2. English Heritage;
3. Environment Agency.



Template A1: Identification and review of local Neighbourhood Area relevant plans, policies and programmes

Parish Council Name: Leominster Town Council

Neighbourhood Development Plan Name: Leominster Area Neighbourhood Plan

Date completed: July 2014

Plans and Programmes	Type of document	Date	Overview	Key message, target/objective/indicator	SEA topic(s) ¹	Implications for the NDP and SEA
Revised EU Sustainable Development strategy	European Union Strategy	2009	Sets out a single strategy on how the EU will more effectively meet its long-standing commitment to meet the challenges of sustainable development.	Recognises the need to gradually change current unsustainable consumption and production patterns and move towards a better integrated approach to policy making. The Strategy sets overall objectives, targets and concrete actions for seven key priority challenges, predominantly environmental: <ul style="list-style-type: none"> • Climate change and clean energy; • Sustainable transport • Sustainable production and consumption; • Public health threats; • Better management of natural 	<ul style="list-style-type: none"> • Air • Climate factors • Cultural heritage and the landscape • Population and human health 	The Neighbourhood Plans should take into account the objectives of the strategy. The aim of sustainable development should be implicit in its approach.

¹ Derived from the LDF General Scoping Report (June 2007)

This document is copyright of Herefordshire Council, please contact the Neighbourhood Planning team if you wish to reuse it in whole or part.

Plans and Programmes	Type of document	Date	Overview	Key message, target/objective/indicator	SEA topic(s) ¹	Implications for the NDP and SEA
				resources; <ul style="list-style-type: none"> • Social inclusion, demography and migration; • Fighting global poverty. 		
The EC Conservation of Habitats and Species Regulations	European Union Legislation	2010	These regulations transpose the Habitats Directive in England, Wales and to a limited extent Scotland by ensuring that activities are carried out in accordance with the Habitats Directive, which is to protect biodiversity through the conservation of natural habitats and species of wild flora and fauna.	The Regulations make it an offence (subject to exceptions) to deliberately capture, kill, disturb, or trade in the animals listed in Schedule 2, or pick, collect, cut, uproot, destroy, or trade in the plants listed in Schedule 4. However, these actions can be made lawful through the granting of licenses by the appropriate authorities.	<ul style="list-style-type: none"> • Biodiversity • Cultural heritage and the landscape 	The Neighbourhood Plan should be compliant with all the relevant legislation and regulations.
The EC Water Framework Directive	European Union	2000	Commits all EU member states to achieve good qualitative and quantitative status of all water courses by 2015	Aims for 'good status' for all ground and surface waters (rivers, lakes, transitional waters, and coastal waters) in the EU	<ul style="list-style-type: none"> • Water 	The Neighbourhood Plan should be compliant with all the relevant legislation and regulations.
The Wildlife	Domestic	1981	The major legal	The principle mechanism	<ul style="list-style-type: none"> • Biodiversity 	The Neighbourhood

This document is copyright of Herefordshire Council, please contact the Neighbourhood Planning team if you wish to reuse it in whole or part.

Plans and Programmes	Type of document	Date	Overview	Key message, target/objective/indicator	SEA topic(s) ¹	Implications for the NDP and SEA
and Countryside Act (1981)	Legislation		instrument for wildlife protection in Britain, although other significant acts have been passed since. It has numerous parts and supplementary lists and schedules many of which have been amended since publication.	for the legislative protection of wildlife in Great Britain.	<ul style="list-style-type: none"> • Cultural heritage and the landscape • Flora and fauna • Material assets • Soil 	Plan should be compliant with all the relevant legislation and regulations.
The Countryside and Right of Way Act (2000)	Domestic Legislation	2000	Creates a statutory right of access on foot to certain types of open land, to modernise the public rights of way system, to strengthen nature conservation legislation, and to facilitate better management of AONBs.	<p>The Act provides for a new right of access on foot to areas of open land comprising: Mountain (land over 600 metres); Moorland; Heath; Downland; Registered common land.</p> <p>There are provisions to consider extending the right in the future to coastal land, but not woodland despite some early publicity suggesting this.</p>	<ul style="list-style-type: none"> • Biodiversity • Cultural heritage and the landscape • Flora and fauna • Material assets • Soil 	The Neighbourhood Plan should be compliant with all the relevant legislation and regulations.
The Natural Environment and Rural Communities Act (2006)	Domestic Legislation	2006	Designed to help achieve a rich and diverse natural environment and thriving rural	Provides that any public body or statutory undertaker in England and Wales must have regard to the purpose of	<ul style="list-style-type: none"> • Biodiversity • Cultural heritage and the landscape 	The Neighbourhood Plan should be compliant with all the relevant legislation and regulations.

This document is copyright of Herefordshire Council, please contact the Neighbourhood Planning team if you wish to reuse it in whole or part.

Plans and Programmes	Type of document	Date	Overview	Key message, target/objective/indicator	SEA topic(s) ¹	Implications for the NDP and SEA
			communities through modernised and simplified arrangements for delivering Government policy.	conservation of biological diversity in the exercise of their functions.	<ul style="list-style-type: none"> • Flora and fauna • Material assets • Soil 	
Biodiversity 2020: A strategy for England's wildlife and ecosystem services	National Strategy	2011	Forms part of the UK's Post-2010 Biodiversity Framework by setting out England's contribution towards the UK's commitments under the United Nations Convention of Biological Diversity.	Sets out to halt overall biodiversity loss, support healthy well-functioning ecosystems and establish coherent ecological networks, with more and better places for nature for the benefit of wildlife and people.	<ul style="list-style-type: none"> • Biodiversity 	The NDP should take account of the provisions of the strategy, making the most of opportunities to enhance wildlife habitats or restore degraded ecosystems in the process.
National Planning Policy Framework (NPPF)	National planning policy.	2012	Consolidates the suite of PPG/PPS into one succinct planning policy document.		<ul style="list-style-type: none"> • Air • Biodiversity • Climate factors • Cultural heritage and the landscape • Flora and fauna • Material assets • Population and human health • Soil • Water 	The NDP should take into account the relevant policies set within the NPPF.
Planning	Government	2014	Provides		<ul style="list-style-type: none"> • Air 	The NDP should take

This document is copyright of Herefordshire Council, please contact the Neighbourhood Planning team if you wish to reuse it in whole or part.

Plans and Programmes	Type of document	Date	Overview	Key message, target/objective/indicator	SEA topic(s) ¹	Implications for the NDP and SEA
Practice Guidance	Guidance		guidance to local planning authorities and others on the operation of the planning system.		<ul style="list-style-type: none"> • Biodiversity • Climate factors • Cultural heritage and the landscape • Flora and fauna • Material assets • Population and human health • Soil • Water 	into account the planning guidance provided within these documents.
Herefordshire Core Strategy, Pre-submission document 2011-2031	Development Plan Document (DPD)	2013	Sets out the vision, objectives and policies for the Herefordshire Local Plan (Core Strategy), which will guide development across the county up to 2031.	<p>Outlines the emerging suite of countywide planning policies relating to housing, economic development and the environment, which the NDP will need to be in conformity with where relevant.</p> <p>The Core Strategy includes a range of objectives, the ones highlighted below relate to Leominster:</p> <ul style="list-style-type: none"> • To meet the housing needs of all sections of the community • To improve the health, well-being and quality of life of all residents • To strengthen the economic viability of the market towns • To strengthen the economic viability of the villages and their rural hinterlands • To achieve sustainable communities and protect the environment 	<ul style="list-style-type: none"> • Air • Biodiversity • Climate factors • Cultural heritage and the landscape • Flora and fauna • Material assets • Population and human health • Soil • Water 	<p>The NDP should take account of relevant policies set within in the Core Strategy.</p> <p>Where necessary, the NDP should provide services, facilities and employment opportunities that are accessible to both local and neighbouring communities.</p> <p>Approx 2.300 dwellings will need to be delivered over the Plan period within Leominster Town, 1,500 of these will be on the strategic site to the south-west of the town.</p>

This document is copyright of Herefordshire Council, please contact the Neighbourhood Planning team if you wish to reuse it in whole or part.

Plans and Programmes	Type of document	Date	Overview	Key message, target/objective/indicator	SEA topic(s) ¹	Implications for the NDP and SEA
				<ul style="list-style-type: none"> • To address the causes and impacts of climate change through new development • To conserve, promote, utilise and enjoy our natural, built, historic and cultural assets for the fullest benefit of the whole community <p>The Core Strategy seeks for Leominster to continue to fulfil a diverse range of important roles as a centre, and to continue to act as a service centre to its rural hinterland.</p> <p>A minimum of 2,300 new homes will be provided across Leominster in the Plan period, of these 1,500 dwellings will be provided on a strategic site to the south-west of the Town Centre.</p> <p>In addition, the Leominster Neighbourhood Area has three RA2 villages which seek to provide housing to meet the needs of people with local connections or affordable housing.</p>		<p>Leominster is within the Leominster HMA, in addition to the market town there are three villages – Ivington, Brierley and Wharton, which are identified under the RA2 policy and should take into consideration the criteria set within this policy.</p>

Plans and Programmes	Type of document	Date	Overview	Key message, target/objective/indicator	SEA topic(s) ¹	Implications for the NDP and SEA
Herefordshire Local Transport Plan 3 (LTP) 2013-2015	Corporate	2013	Sets out the Council's strategy for supporting economic growth, social inclusion and reducing the environmental impacts of transport, as well as the program of investment for the period April 2013 to April 2015.	The document includes three key objectives, one which seeks to maintain access for rural residents and people without access to a car. Intrinsic to this is the retention of a 'core network' of bus services which focus on journeys between Hereford and the market towns, along with main transport corridors close to larger rural settlements. To this end, the strategy aims to increase the number of bus users by 1.3% (4,700 journeys) by 2015.	<ul style="list-style-type: none"> • Air • Climate factors • Population and human health 	The LTP does not explore current transport issues in the Leominster neighbourhood area, but any new development proposed through the NDP should seek to reduce the environmental impacts of transport.
Malvern Hills AONB Management Plan 2009-2014	Corporate	2009	Identifies the issues and challenges facing the special features of the area and contains 24 guiding principles and 46 strategic objectives which will help address them.		<ul style="list-style-type: none"> • Air • Biodiversity • Climate factors • Cultural heritage and the landscape • Flora and fauna • Material assets • Population and human health • Soil • Water 	The Leominster neighbourhood Area is not within or adjacent to the Malvern Hills AONB.

This document is copyright of Herefordshire Council, please contact the Neighbourhood Planning team if you wish to reuse it in whole or part.

Plans and Programmes	Type of document	Date	Overview	Key message, target/objective/indicator	SEA topic(s) ¹	Implications for the NDP and SEA
Wye Valley AONB management Plan 2009-2014	Corporate	2009	The Management Plan is the prime document which sets out the vision for the area and the priorities for its management.		<ul style="list-style-type: none"> • Air • Biodiversity • Climate factors • Cultural heritage and the landscape • Flora and fauna • Material assets • Population and human health • Soil • Water 	The Leominster neighbourhood Area is not within or adjacent to the Wye Valley AONB.
Herefordshire Economic Development Strategy 2011-2016	Corporate	2011	Aims to increase the economic wealth of Herefordshire by setting out proposals and to support business growth up to 2016.	<p>The document outlines the path and direction to foster economic vitality within Herefordshire. Key objectives therefore include:</p> <ul style="list-style-type: none"> • Sustaining business survival and growth • Increasing wage levels, range and quality of jobs • Having a skilled population to meet future work needs • Developing the county's built infrastructure so enterprise can flourish. 	<ul style="list-style-type: none"> • Cultural heritage and the landscape • Material assets • Population and human health 	None of merit.

This document is copyright of Herefordshire Council, please contact the Neighbourhood Planning team if you wish to reuse it in whole or part.

Plans and Programmes	Type of document	Date	Overview	Key message, target/objective/indicator	SEA topic(s) ¹	Implications for the NDP and SEA
Herefordshire Employment Land Study	Evidence	2012	Includes employment land assessments for the plan period 2011-2031. The study includes Quantitative and Qualitative assessments of employment land, assessment of market demand and need, as well as providing forecasts and recommendations for future employment need over the plan period.	<p>This study covers existing employment sites in Hereford, the five market towns and their rural hinterlands.</p> <p>Land at Southern Avenue is approx. 33ha in size and is mainly occupied by B2 and B8 uses. In addition, there are just over 15 ha of employment land at Leominster Enterprise Park.</p> <p>There are a further 10ha identified as part of the Strategic site to the south west of the town.</p>	<ul style="list-style-type: none"> • Material assets • Population and human health 	The NDP will need to ensure that employment is continued to be encouraged within the Town.

Plans and Programmes	Type of document	Date	Overview	Key message, target/objective/indicator	SEA topic(s) ¹	Implications for the NDP and SEA
Herefordshire Strategic Housing Land Availability Assessment (SHLAA)	Evidence	2012	<p>The SHLAA aims to justify site allocations in plans by:</p> <ul style="list-style-type: none"> Identifying sites which are capable of delivering housing development Assessing sites for their housing potential; and Predicting when a site could be developed for housing. 	<p>In terms of Leominster Area the previous SHLAA identified a number of sites around the town, the majority of the least constrained sites were to the South-west due to flooding constraints to the north.</p>	<ul style="list-style-type: none"> Air Biodiversity Climate factors Cultural heritage and the landscape Flora and fauna Population and human health Soil Water 	<p>The SHLAA assesses the potential availability of land for housing in Leominster</p> <p>The Leominster NDP should be informed by the findings of the SHLAA and any subsequent updates of the SHLAA.</p>

Plans and Programmes	Type of document	Date	Overview	Key message, target/objective/indicator	SEA topic(s) ¹	Implications for the NDP and SEA
Herefordshire Local Housing Market Assessment (LHMA)	Evidence	2013	Builds on an earlier Strategic Housing Market Assessment (SHMA) developed for Herefordshire and Shropshire. Its purpose is to inform the Local Plan's policies regarding housing need and demand (for market and affordable housing) within each of the 7 Housing Market Areas (HMAs) in Herefordshire between 2011 and 2031.	<p>Leominster Neighbourhood area falls within the Leominster HMA. Here, the study reveals that:</p> <ul style="list-style-type: none"> • 57% of households are unable to afford market housing. • There is an annual requirement for 72 affordable dwellings between 2012 and 2017. <p>The study identifies that, in rural parts of the HMA, there is a need for:</p> <ul style="list-style-type: none"> • 1,725 market houses • 575 affordable houses. <p>The study highlights that within the Leominster HMA the overall estimated housing need by size 2011-2031 is as follows: 1 Bed - 6.5%, 2 bed - 23.9%, 3 bed – 49.1%, 4 bed – 20.5%</p>	<ul style="list-style-type: none"> • Air • Biodiversity • Climate factors • Cultural heritage and the landscape • Flora and fauna • Population and human health • Soil • Water 	<p>The LHMA provides an indication of housing needs and affordability within the Leominster HMA.</p> <p>It provides evidence that could be used to inform policies or market and affordable housing requirements in the NDP.</p>
Herefordshire	Evidence	2012	Technical	The delivery of 2,300	<ul style="list-style-type: none"> • Air 	This study provides an

This document is copyright of Herefordshire Council, please contact the Neighbourhood Planning team if you wish to reuse it in whole or part.

Plans and Programmes	Type of document	Date	Overview	Key message, target/objective/indicator	SEA topic(s) ¹	Implications for the NDP and SEA
Local Housing Requirements Study			assessment of the housing market and potential future local housing requirements which supports planning policy regarding the amount of growth, housing tenure and housing type needed within Herefordshire up to 2031.	<p>homes in the Leominster area would:</p> <ul style="list-style-type: none"> • Support growth in the rural population by 42.8% • Increase the number of households by 43.5% <p>Forecasts also predict that growth in the population of the Leominster area is likely to be primarily through an increase of family age groups.</p> <p>Moderate growth is expected in the 30-44 and 75+ age brackets.</p> <p>The Local Housing Requirements Study therefore anticipates continuing improvements in life expectancy; significant growth is expected of those in their 80s, with the existing population in their 40s and 50s moving into retirement. As a consequence, the Leominster Area will face an increasing urgency to provide more 3 bedroom homes, with less demand</p>	<ul style="list-style-type: none"> • Biodiversity • Climate factors • Cultural heritage and the landscape • Flora and fauna • Material assets • Population and human health • Soil • Water 	<p>indication of housing requirements in the Leominster HMA.</p> <p>This evidence can be used to inform the content of the Leominster NDP, which could include policies to facilitate the provision of the right types of homes in the right places.</p>

This document is copyright of Herefordshire Council, please contact the Neighbourhood Planning team if you wish to reuse it in whole or part.

Plans and Programmes	Type of document	Date	Overview	Key message, target/objective/indicator	SEA topic(s) ¹	Implications for the NDP and SEA
				for 1 bedroom dwellings.		
Herefordshire Rural Housing Background Report	Evidence	2013	Provides the justification for the proportional housing growth targets outlined in the Core Strategy	The villages of Brierley, Ivington and Wharton as RA2 settlements, which means that they are considered for affordable housing and to meet the needs of people with local connections.	<ul style="list-style-type: none"> • Air • Biodiversity • Climate factors • Cultural heritage and the landscape • Flora and fauna • Material assets • Population and human health • Soil • Water 	The Leominster Area NDP will need to be in conformity with the provisions of Policy RA2.

Plans and Programmes	Type of document	Date	Overview	Key message, target/objective/indicator	SEA topic(s) ¹	Implications for the NDP and SEA
Herefordshire Draft Gypsies and Travellers Assessment	Evidence	2013	Assesses the accommodation needs of Gypsies and Travellers across Herefordshire.	<p>Key findings from the survey of Gypsy and Traveller households in 2012 found that:</p> <ul style="list-style-type: none"> • 31% of households surveyed have some sort of accommodation need • Of the 17 households with an accommodation need, 7 had a requirement for at least one additional pitch • 10 households had a requirement for bricks and mortar housing • There is an additional requirement for 7 pitches and 9 units of Registered Social Landlord accommodation within Herefordshire. 	<ul style="list-style-type: none"> • Air • Biodiversity • Climate factors • Cultural heritage and the landscape • Flora and fauna • Material assets • Population and human health • Soil • Water 	The Leominster NDP must establish whether any of the need identified in this assessment falls within the neighbourhood area and make appropriate provisions for it.

Plans and Programmes	Type of document	Date	Overview	Key message, target/objective/indicator	SEA topic(s)¹	Implications for the NDP and SEA
Building Biodiversity into the LDF	Evidence	2009	Provides the Council's Local Plan (Core Strategy) with evidence in respect of biodiversity and geodiversity, identifying both opportunities and constraints across Herefordshire.	This document provides useful information in respect of a 1km buffer around the edge of Leominster, identifying priority habitats and species.	<ul style="list-style-type: none"> • Air • Biodiversity • Climate factors • Cultural heritage and the landscape • Flora and fauna • Material assets • Population and human health • Soil • Water 	The Leominster area NDP can utilise this information to provide opportunities to enhance habitats and their networks.
Herefordshire Local Biodiversity Action Plan	Evidence	2007	Focuses conservation efforts on the areas within Herefordshire that will result in the greatest benefit for ecological networks, habitats and species.	Integrating biodiversity objectives with other environmental, social and economic needs can provide a sustainable living and working environment that benefits both people and nature.	<ul style="list-style-type: none"> • Biodiversity 	The NDP can help to achieve the LBAP priorities.

This document is copyright of Herefordshire Council, please contact the Neighbourhood Planning team if you wish to reuse it in whole or part.

Plans and Programmes	Type of document	Date	Overview	Key message, target/objective/indicator	SEA topic(s) ¹	Implications for the NDP and SEA
Herefordshire Green Infrastructure Strategy	Evidence	2010	Develops a framework of natural and culturally important features and functions so that planning for a sustainable future is at the heart of planning within Herefordshire.	Establishes policies and principles for the protection and enhancement of those features and functions that contributes to the environment of Herefordshire across a range of scales.	<ul style="list-style-type: none"> • Air • Biodiversity • Climate factors • Cultural heritage and the landscape • Flora and fauna • Material assets • Population and human health • Soil • Water 	The study provides evidence that could be taken into account when preparing policies for the Leominster NDP.
Renewable Energy Study	Evidence	2010	Assesses the energy demand within Herefordshire and the ability for the county to accommodate renewable and low carbon energy technologies.	<p>The total energy demand excluding transport for Herefordshire, at that point in time, was calculated as being:</p> <ul style="list-style-type: none"> • Electrical: 731 GWh/yr • Heat: 1,810 GWh/yr • Total: 2,541 GWh/yr <p>There is scope for all types of renewable energy production.</p>	<ul style="list-style-type: none"> • Air • Biodiversity • Climate factors • Cultural heritage and the landscape • Flora and fauna • Material assets • Population and human health • Soil • Water 	The study provides evidence that could be taken into account when preparing policies for the Leominster NDP.

Plans and Programmes	Type of document	Date	Overview	Key message, target/objective/indicator	SEA topic(s) ¹	Implications for the NDP and SEA
Herefordshire Playing Pitch Assessment	Evidence	2012	Produces a strategic framework, audit and assessment and needs analysis of outdoor sports pitches and facilities for Herefordshire. The document arises as a result of a recommendation in the Herefordshire and Worcestershire Sports Facilities Framework to develop local standards for playing fields and sports pitches throughout Herefordshire.	<p>The study updates components of the Herefordshire and Worcestershire Sports Facilities Framework 2010 such as updating population forecasts, setting local standards for synthetic turf pitches and grass playing fields within Herefordshire. It identifies any current gaps in provision, and looks forward to 2031 to assess what facilities are likely to be required by that date.</p> <p>In terms of Leominster parish itself, the study reveals that there is:</p> <ul style="list-style-type: none"> • 27.3ha of playing pitch area • 85% of this is with secured community access 	<ul style="list-style-type: none"> • Biodiversity • Cultural heritage and the landscape • Flora and fauna • Material assets • Population and human health 	The study provides evidence that could be taken into account when preparing policies for the Leominster area NDP.

This document is copyright of Herefordshire Council, please contact the Neighbourhood Planning team if you wish to reuse it in whole or part.

Plans and Programmes	Type of document	Date	Overview	Key message, target/objective/indicator	SEA topic(s) ¹	Implications for the NDP and SEA
Open Spaces Study	Evidence	2006	The 2006 space audit and assessment of need is a snapshot of the quality, quantity and distribution of open space across Herefordshire.	<p>The study reveals that within the Leominster Area has:</p> <ul style="list-style-type: none"> • Extensive under provision of parks and gardens • Extensive over provision of natural and semi-natural green space • Under provision of amenity green space and average provision for outdoor sport • Average provision for children and young people. 	<ul style="list-style-type: none"> • Biodiversity • Climate factors • Cultural heritage and the landscape • Flora and fauna • Material assets • Population and human health 	<p>The open space audit and assessment provides an indication that any new open space could be provided at Leominster landfill site.</p> <p>The Leominster Area NDP should consider the provision levels of open space within their policies.</p>

Plans and Programmes	Type of document	Date	Overview	Key message, target/objective/indicator	SEA topic(s) ¹	Implications for the NDP and SEA
Play Facilities Study	Evidence	2012	The Play Facilities Study 2012 updates the previous play facilities analysis under the Open Spaces Study 2006 and provides guidance and a framework for the development, delivery and continued sustainability of providing new and improved play facilities for children and young people in Herefordshire to 2031.	In terms of Leominster Area itself: <ul style="list-style-type: none"> the study reveals that the play facility at the Grange may require some further investing the Sydonia play area needs to ensure there is a plan in place for all age groups The play area at ropewalk would benefit from a re-vamp Additional facilities could be provided at Ridgemoor rd 	<ul style="list-style-type: none"> Biodiversity Climate factors Cultural heritage and the landscape Flora and fauna Material assets Population and human health 	The study provides evidence that could be taken into account when preparing policies for the Leominster NDP.

Plans and Programmes	Type of document	Date	Overview	Key message, target/objective/indicator	SEA topic(s) ¹	Implications for the NDP and SEA
Strategic Flood Risk Assessment (SFRA) and Water Cycle Study	Evidence	2009	<p>The Strategic Flood Risk Assessment (SFRA) provides a summary of flood risk in Herefordshire to inform the location of future development.</p> <p>The Water Cycle Study examines how water resources and water supply infrastructure, wastewater treatment, water quality, sewerage and flood risk could constrain growth across Herefordshire.</p>	<p>Fluvial flooding from adjacent floodplains is prevalent for properties adjacent to River Lugg in Leominster.</p> <p>The River Lugg is currently designated as 'poor' ecological status.</p> <p>A surface water management is required for Leominster.</p> <p>The development to the south of the town may require river channel capacity reinforcement.</p>	<ul style="list-style-type: none"> • Biodiversity • Climate factors • Material assets • Population and human health • Water 	<p>New development proposed through the Leominster NDP should be assessed against the capacity of local infrastructure.</p> <p>Developers will need to provide a surface water management plan as part of any applications.</p>

Plans and Programmes	Type of document	Date	Overview	Key message, target/objective/indicator	SEA topic(s) ¹	Implications for the NDP and SEA
Leominster Parish Plan	Evidence / local document	2012	The Parish Plan identified a series of aims and actions across a number of topics. The Parish Plan was consulted on throughout with the local community and therefore identifies what the local community want/need and would require to help improve their Parish.	The following aims that were recommended to take forward into the NDP were: <ul style="list-style-type: none"> • To retain and promote the historical rural character of the town through future planning policy • To bring about significant improvement in local housing standards for all new development and ensure that future developments fulfil the housing needs of all the community • Provide additional community activity venues for families and young people • Improvements to the local health facilities that meet the needs of the community • Improve parking areas for the station 	<ul style="list-style-type: none"> • Population and human health • Material assets • Cultural heritage and the landscape • Climate factors • Biodiversity • Flora and fauna 	The NDP to take into account the aims and actions of the Parish plan to help implement into policies.

Plans and Programmes	Type of document	Date	Overview	Key message, target/objective/indicator	SEA topic(s) ¹	Implications for the NDP and SEA
Leominster Green Infrastructure Strategy	Evidence / implementation plan	2013	The strategy identifies the location and requirements for green infrastructure improvements across the Parish.	<p>Promote recognition of the town's environment as important to its economic health, the health and wellbeing of its residents, and as an integrated system supporting a range of community benefits.</p> <p>The approach be based upon linking ecology, art and heritage should be adopted as the basis for developing a landscape and green infrastructure strategy that would enhance and strengthen the character of Leominster and its surroundings.</p>	<ul style="list-style-type: none"> • Biodiversity • Fauna and flora • Cultural heritage and the landscape 	The NDP to utilise the information to identify green infrastructure schemes to include within the policies.

Appendix A2 – Baseline information for Leominster Area

N.B. This is based on countywide baseline information with some additions relevant to Leominster (in red). Where no locally specific data is available for current status, trends and targets, only countywide data is reported. Any gaps in data may be filled following additional research.

SA Objective ¹	SA Theme	Proposed indicator	Current status	Trends	Targets	Issues and constraints	Baseline (information) source
SEA Topic covered by objective: <i>Biodiversity, flora and fauna</i>							
13. Value, maintain, restore and expand county biodiversity.	Natural environment	Net change in condition of SSSIs across Herefordshire.	The 2011-2013 AMR does not contain updated conservation data. 2010/11: 27% of Herefordshire's SSSI land was in favourable condition. 30/07/14: River Lugg – unfavourable recovering condition	2006: 22% 2007: 22% 2008: 22% 2010: 24 % Proportion of SSSI land that was in unfavourable condition but recovering increased between 2010 and 2012 going from 41% to 65%. Proportion in unfavourable and declining condition had also decreased from 4% to 1%.	% of SSSI land in favourable condition (Increase) % of SSSI land in unfavourable condition but recovering (Increase) % of SSSI land in unfavourable condition and declining (Decrease)	Herefordshire's SSSIs are in extremely poor condition relative to England as whole, where 96.1% of all SSSI land was in favourable condition in April 2014. The proportion of SSSI in unfavourable condition but recovering is greater than England as a whole, where the figure currently stands at 58.6%.	Understanding Herefordshire: An integrated needs assessment (June 2013). DEFRA magic website (July 2014)

¹ Derived from the Pre Submission Core Strategy Sustainability Appraisal Assessment (May 2014)

SA Objective ¹	SA Theme	Proposed indicator	Current status	Trends	Targets	Issues and constraints	Baseline (information) source
13. Value, maintain, restore and expand county biodiversity.	Natural environment	After use of mineral sites especially wildlife habitat creation	<i>There is no countywide or locally specific data available at present.</i>	-	No specific targets identified.	Should be monitored through AMR following the adoption of the Core Strategy, in line with SA recommendations.	-
13. Value, maintain, restore and expand county biodiversity.	Natural environment	Phosphate levels within the River Wye SAC and adjoining tributaries that receive increased phosphates from proportional growth.	<p>The River Lugg runs through the Parish of Leominster.</p> <p>The River Lugg section of the SAC is currently exceeding the phosphate target.</p>	N/A	Successful completion of the Nutrient Management Plan and Action Plan will provide future targets	There is the potential that new development could have a small impact upon the phosphate levels further downstream in the River Lugg.	Nutrient Management Plan (2014)

SA Objective ¹	SA Theme	Proposed indicator	Current status	Trends	Targets	Issues and constraints	Baseline (information) source
13. Value, maintain, restore and expand county biodiversity.	Natural environment	Changes to protected habitats and impacts of species within the Herefordshire Local Biodiversity Action Plan.	<p>The 2011-2013 AMR does not contain updated conservation data.</p> <p>2010/11: 17 Habitat Action Plans and 14 Species Action Plans are currently in operation across Herefordshire.</p> <p><i>There is no locally specific data available at present.</i></p>	<p>There are no formal records of any unacceptable adverse impacts on habitats or protected species.</p> <p>Originally 156 Priority Species were identified for inclusion in Herefordshire's LBAP.</p> <p>Similarly Herefordshire's LBAP covered 23 habitats with Action Plans.</p>	No specific targets identified.	Herefordshire Biological Records Centre (HBRC) holds limited data on some individual sites.	Herefordshire Council AMR (2010/11)

SA Objective ¹	SA Theme	Proposed indicator	Current status	Trends	Targets	Issues and constraints	Baseline (information) source
13. Value, maintain, restore and expand county biodiversity.	Natural environment	Changes in the areas of designated nature conservation sites as a consequence of planning permission.	<p>Leominster Neighbourhood Area has:</p> <p>SSSI: 1, with 5 SSSIs on the border of the parish</p> <p>SWS: 21, 13 of which are just over the border of the area</p> <p>The R.Lugg runs through the parish into the R.Wye SAC</p> <p>There are no NNRs, SINC and LNRs within the parish.</p>	As of 2012, there had been no change in the areas of designated nature conservation sites as a consequence of the planning permissions granted.	To capitalise on opportunities to enhance the areas of value to nature conservation as much as possible.	Herefordshire Biological Records Centre (HBRC) holds limited data on some individual sites.	Herefordshire Council Initial Screening Report for the Neighbourhood Plan 2013

SA Objective ¹	SA Theme	Proposed indicator	Current status	Trends	Targets	Issues and constraints	Baseline (information) source
13. Value, maintain, restore and expand county biodiversity.	Natural environment	Proportion of local sites where positive conservation management has or is being implemented.	The Parish Area has the following landscape types: Principal settled farmlands; urban; settled farmlands on River Terrace; ancient border farmlands	-	No specific targets identified.	Should be monitored through AMR following the adoption of the Core Strategy, in line with SA recommendations.	Herefordshire Landscape Character Assessment (2004 updated 2009)
SEA Topic covered by objectives: <i>Material assets</i>							
14. Use natural resources and energy more efficiently.	Resource consumption and climate change	Maintaining Herefordshire Council's County Site and Monuments Register.	Countywide data would be too large to incorporate into this template. Whilst there is no qualitative, locally specific data available at present, there are numerous scheduled monuments in Leominster Neighbourhood Area according to the latest version of the register.	-	No specific targets identified, but need to ensure that the register is kept up to date.	Should be monitored through AMR following the adoption of the Core Strategy, in line with SA recommendations.	Herefordshire Environmental Records Register (search July 2014).

SA Objective ¹	SA Theme	Proposed indicator	Current status	Trends	Targets	Issues and constraints	Baseline (information) source
14. Use natural resources and energy more efficiently.	Resource consumption and climate change	Monitoring changes to historic landscapes.	<p><i>Historic Landscape Character assessment has only been undertaken for Hereford City.</i></p> <p><i>Rapid Townscape Assessments have only been undertaken for Hereford, Ledbury and Ross.</i></p>	-	No specific targets identified.	Should be monitored through AMR following the adoption of the Core Strategy, in line with SA recommendations.	<p>Historic Landscape Character Assessment for Hereford.</p> <p>Rapid townscape Assessments (2010)</p>
SEA Topic covered by objective: <i>Population, Biodiversity, Flora and Fauna</i>							
15. Value, protect, enhance and restore the landscape quality of Herefordshire, including its rural areas and open spaces.	Natural environment	Number of developments meeting and surpassing national design standards.	<i>There is no countywide or locally specific data available at present.</i>	-	No specific targets identified.	Should be monitored through AMR following the adoption of the Core Strategy, in line with SA recommendations.	-

SA Objective ¹	SA Theme	Proposed indicator	Current status	Trends	Targets	Issues and constraints	Baseline (information) source
15. Value, protect, enhance and restore the landscape quality of Herefordshire, including its rural areas and open spaces.	Natural environment	The need for, frequency and outcomes of planning enforcement investigations/ planning appeals concerning the aspects of local loss of heritage assets and locally important buildings particularly within a conservation area	Countywide data would be too large to incorporate into this template. There are no outstanding enforcement actions or appeals concerning local loss of heritage assets and locally important buildings within Leominster Neighbourhood area at present.	No historic records of any planning enforcement action or appeals concerning locally important buildings within the four conservation areas.	To wherever possible improve upon or otherwise maintain current status	Current status must be verified by Dvt Mgt and Enforcement Officers, but the NDP can help to avoid enforcement action and appeals during the plan period.	Council Dvt Mgt records (searched July 2014)
SEA Topic covered by objective: <i>Climatic Factors</i>							

SA Objective ¹	SA Theme	Proposed indicator	Current status	Trends	Targets	Issues and constraints	Baseline (information) source
16. Reduce Herefordshire's vulnerability to the impacts of climate change as well as its contribution to the problem.	Resource consumption and climate change.	Transport patronage by mode	<p>% of Herefordshire residents who travel to work by:</p> <p>Car: 70.1% Foot: 14.7% Bicycle: 4.3% Bus: 2% Train: 0.8% Motorbike: 0.8% Taxi: 0.3% Other: 7%</p> <p><i>There is no locally specific data available at present</i></p>	The number of people cycling or travelling by bus as the main form transport to get to work declined between 2001 and 2011 – across England and Wales there was little change in either. Walking or driving a car or van on the other hand increased.	To increase the take up of alternative modes to the private car.	There are a lack of transport options for many rural communities and therefore high car ownership and dependency – the last decade has seen a 15 per cent increase in household car ownership, although this is not reflected in traffic flows of recent years with volumes in Hereford City and wider county having decreased. The proportion of people working from home increased over the decade from 15 per cent in 2001 to 17 per cent in 2011.	2011 Census

SA Objective ¹	SA Theme	Proposed indicator	Current status	Trends	Targets	Issues and constraints	Baseline (information) source
16. Reduce Herefordshire's vulnerability to the impacts of climate change as well as its contribution to the problem.	Resource consumption and climate change.	Number of decentralised energy schemes granted permission.	<i>There is no countywide or locally specific data available at present.</i>	-	To contribute towards the national target.	Should be monitored through AMR following the adoption of the Core Strategy, in line with SA recommendations.	-

SA Objective ¹	SA Theme	Proposed indicator	Current status	Trends	Targets	Issues and constraints	Baseline (information) source
16. Reduce Herefordshire's vulnerability to the impacts of climate change as well as its contribution to the problem.	Resource consumption and climate	Total CO2 emissions per capita	Latest figure dates back to 2010: 1.61 million tonnes (mtCO ₂) <i>There is no locally specific data available at present.</i>	Between 2005 and 2010 Herefordshire's total and per capita carbon emission reduced by 7% and 8% respectively; while UK's total and per capita carbon emission reduced by 8% and 12% respectively within the same period. This trend hides an increase in emissions between 2009 and 2010 when total emissions in the county increased by 5% the same as across the UK (+5%).	To reduce the overall carbon emissions.	CO ₂ emissions produced are decreasing.	Understanding Herefordshire: An integrated needs assessment (June 2013).

SA Objective ¹	SA Theme	Proposed indicator	Current status	Trends	Targets	Issues and constraints	Baseline (information) source
SEA Topic covered by objective: <i>Water</i>							
17. Reduce the risk of flooding and the resulting detriment to public wellbeing, the economy and the environment.	Natural environment	Number of planning permissions granted contrary to the advice of the Environment Agency on flood defence grounds.	The 2011-2013 AMR does not contain updated conservation data. 2010/11: None <i>There is no locally specific data available at present.</i>	There have been no approvals contrary to EA advice since reporting began in 2004.	To have no applications permitted contrary to EA advice.	None identified.	Herefordshire Council AMR (2010/11)
SEA Topic covered by objective: <i>Water, air, soil, material assets</i>							
18. Minimise local and global pollution and protect or enhance environmental resources.	Natural environment	Agricultural land usage by quality. LA to monitor the number of hectares of the best and most versatile agricultural land (grades 3a and higher) lost to development.	To the south of Leominster Town Grade 1 and 2 classification. Grade 3 to the north and west and around Brierley. Grades 1 and 2 around Ivington.	-	Measure the number of hectares of best and most versatile soil lost through development.	Should be monitored through AMR following the adoption of the Core Strategy, in line with SA recommendations.	Agricultural Land classification Map (Magic website)

SA Objective ¹	SA Theme	Proposed indicator	Current status	Trends	Targets	Issues and constraints	Baseline (information) source
18. Minimise local and global pollution and protect or enhance environmental resources.	Natural environment	Percentage of river length assessed as good or very good chemical quality and ecological quality as required by the Water Framework Directive	Latest figure dates back to 2005: 84% <i>There is no locally specific data available at present.</i>	Figure steadily improved before going into decline: Herefordshire 1999 85.9%, 2000 89.5%, 2001 92.2%, 2002 91.8%	To ensure that rivers meet their conservation objectives and do not fall below the required standard of quality.	None identified.	The State of Herefordshire Report (2007) Water Framework Directive (2000)
SEA Topic covered by objective: <i>Soil</i>							
19. Ensure integrated, efficient and balanced land use.	Built environment	Percentage of all new development completed on previously developed land.	2010/11: 67% 2011-13: 57% <i>There is no locally specific data available at present.</i>	Completions on PDL had risen to 71% by 2005.	To increase the number of homes built on PDL in line with the provisions of national planning policy.	The number of brownfield completions has fallen slightly in recent years, though this is probably the offshoot of tough market conditions.	Herefordshire Council AMR (2010/11) and (2011-2013)
19. Ensure integrated, efficient and balanced land use.	Built environment	Housing densities in urban and rural areas	<i>There is no countywide or locally specific data available at present.</i>	-	No specific targets identified.	Should be monitored through AMR following the adoption of the Core Strategy, in line with SA recommendations.	-

SA Objective ¹	SA Theme	Proposed indicator	Current status	Trends	Targets	Issues and constraints	Baseline (information) source
19. Ensure integrated, efficient and balanced land use.	Built environment	Level of development in urban areas compared to rural.	<p><i>There is no countywide or locally specific data available at present.</i></p> <p>This indicator would not be applicable to rural NDPs.</p>	N/A	N/A	N/A	N/A
SEA Topic covered by objective: <i>Cultural heritage</i>							
20. Value, protect and enhance the character and built quality of settlements and neighbourhoods and the county's heritage assets, including conservation areas, historic environment and cultural heritage.	Built environment	Number and percentage of listed buildings and Scheduled Ancient Monuments on Buildings at Risk Register (English Heritage).	<p>Up-to-date countywide information will be presented in the next AMR and which is due to be published in 2014. However, this data would be too large to incorporate into this template.</p> <p>There are numerous listed buildings within the parish and four SAMs. None are currently recorded in the Buildings at Risk Register.</p>	There were 70 heritage assets in Herefordshire that were considered to be at high risk and included in the Heritage at Risk Register 2014.	To wherever possible improve upon or otherwise maintain current status	None of Leominster Area's listed buildings or SAMs are considered to be at risk at present.	Buildings at Risk Register (English Heritage; search July 2014)

SA Objective ¹	SA Theme	Proposed indicator	Current status	Trends	Targets	Issues and constraints	Baseline (information) source
20. Value, protect and enhance the character and built quality of settlements and neighbourhoods and the county's heritage assets, including conservation areas, historic environment and cultural heritage.	Built environment	The need for, frequency and outcomes of planning enforcement investigations/ planning appeals concerning aspects of local loss of heritage assets, locally important buildings within the parish and particularly within a conservation area.	Countywide data would be too large to incorporate into this template. There are no outstanding enforcement actions or appeals concerning the local loss of heritage assets locally important buildings particularly within a conservation area in Leominster at present.	No historic records of any planning enforcement action or appeals concerning locally important buildings within the four conservation areas.	To wherever possible improve upon or otherwise maintain current status	Current status must be verified by Dvt Mgt and Enforcement Officers, but the NDP can help to avoid enforcement action and appeals during the plan period.	Council Dvt Mgt records (searched July 2014)

Appendix A3 – Environmental issues identified from the Leominster Neighbourhood area baseline

These environmental issues are the same as most of those identified for the Herefordshire Core Strategy¹

SEA Topic		Environmental issue	SA objectives
1	Air	High reliance upon the private car causing high levels of air pollution and in Hereford in particular	Objective 16
		Need to reduce carbon emissions by encouraging alternative modes of travel.	
2	Biodiversity	Habitats and species of national, regional and local importance are under pressure from the adaptation and diversification of farming and forestry employment.	Objectives 13 &15
		Habitats and species of national, regional and local importance are under pressure from development	
		Minimise loss of biodiversity and expand opportunities for wildlife everywhere.	
3	Climatic factors	Reduce greenhouse gas emissions through planning, design and build.	Objective 16
4	Cultural heritage	Leominster Neighbourhood area has four Scheduled Ancient Monuments and listed buildings, all of which require ongoing protection and many in need of high levels of maintenance.	Objective 20
5	Flora and fauna	Conserve and enhance the character and quality of historic landscapes, including all types of natural flora and fauna.	Objective 15
6	Material assets	How the countryside can continue to be managed in an economically, socially and environmentally beneficial way in the face of continuing pressures on traditional farming.	Objectives 14 & 18
7	Population	Minimise energy waste through good designs, which help to reduce energy consumption and maximise efficiency.	Objective 15
		Need to avoid enforcement investigations/action concerning locally important buildings and those within conservation areas in particular.	
8	Soil	Promoting development of previously developed land and buildings as opposed to greenfield sites or agricultural land of the highest quality.	Objectives 18 & 19

¹ Derived from the Pre-submission Core Strategy Sustainability Appraisal Assessment (May 2014) and LDF General Scoping Report (June 2007)

9	Water	Issues relating to availability of resources, foul drainage, pollution, and abstraction in a county which supports water dependent biodiversity of international and national importance, given the predicted climate change consequences for water availability and demanding projections for new housing.	Objectives 17 & 18
		Steady decline in the chemical quality of rivers over the last 10 years.	

Template A4: SEA Framework

SEA Scoping Stage A, Task A4 - SEA Framework SEA Objectives, Indicators, Targets

Parish Council Name: Leominster

Neighbourhood Development Plan Name: Leominster Plan

Date completed: October 2014

SEA Topics	SA Objective	SEA Objective	Sub-objectives / Appraisal Questions (Will the option/proposal/site...)	Indicators	Targets
Nature Conservation (Biodiversity, flora and fauna)	Value, maintain, restore or expand county biodiversity. Value, protect, enhance or restore the landscape quality of Herefordshire, including its rural areas and open spaces.	To maintain and enhance nature conservation (biodiversity, flora and fauna)	<ul style="list-style-type: none"> Protect or enhance habitats of international, national, regional or local importance. Protect international, national, regional or locally important terrestrial or aquatic species. Maintain wildlife corridors and minimise fragmentation of ecological areas and green spaces. Manage access to sites in a sustainable way that protects or enhances their nature conservation value. Create new appropriate habitats. Value, enhance and protect natural environmental assets including AONB's, historic 	<p>Net change in condition of SSSIs across Herefordshire.</p> <p>After use of mineral sites especially wildlife habitat creation</p> <p>Changes to protected habitats and impacts of species within the Herefordshire Local Biodiversity Action Plan.</p>	<p>% of SSSI land in favourable condition (Increase) % of SSSI land in unfavourable condition but recovering (Increase) % of SSSI land in unfavourable condition and declining (Decrease)</p> <p>Percentage of opportunities taken</p> <p>To protect and where possible enhance the habitats of protected species identified. No net losses</p>

SEA Topics	SA Objective	SEA Objective	Sub-objectives / Appraisal Questions (Will the option/proposal/site...)	Indicators	Targets
			<p>landscapes, open spaces, parks and gardens and their settings</p> <ul style="list-style-type: none"> • Encourage local stewardship of local environments, for example by promoting best practices in agricultural management • Ensure that environmental impacts caused by mineral operations and the transport of minerals are minimised. • Promote the use of rural areas and open space by all, encourage easy non-car based access, and accommodate the needs of disabled users. 		
Landscape	Not covered in SA	<p>To maintain and enhance the quality of landscapes and townscapes</p> <p>To improve quality of surroundings</p>	<ul style="list-style-type: none"> • Protect and enhance the landscape everywhere and particularly in designated areas • Value and protect diversity and local distinctiveness • Improve landscape and ecological quality and character of the countryside • Improve the quantity and quality of publicly accessible open space • Improve satisfaction of people with their neighbourhoods as places to live 	<p>Changes in the areas of designated nature conservation sites as a consequence of planning permission.</p> <p>Proportion of local sites where positive conservation management has or is being implemented.</p> <p>Monitoring changes to historic landscapes.</p> <p>Area resulting in a loss of open space as a result of planning permission</p>	<p>To capitalise on opportunities to enhance the areas of value to nature conservation as much as possible.</p> <p>No specific targets identified.</p> <p>No specific targets identified.</p> <p>No specific targets identified</p>

SEA Topics	SA Objective	SEA Objective	Sub-objectives / Appraisal Questions (Will the option/proposal/site...)	Indicators	Targets
			<ul style="list-style-type: none"> Decrease litter and graffiti in towns and countryside Result in the loss of open space 		
Heritage	Value, protect or enhance the character and built quality of settlements and neighbourhoods and the county's heritage assets, historic environment and cultural heritage.	To conserve and where appropriate enhance the historic environment , heritage assets and culture heritage	<ul style="list-style-type: none"> Preserve, protect and enhance heritage assets including conservation areas, listed buildings, archaeological sites and other culturally important features in both urban and rural settings. Prevent development which is inappropriate in scale, form or design to its setting or to its function or local area. Encourage development that creates and sustains well-designed, high quality built environments that incorporate green space, encourage biodiversity and promote local distinctiveness and sense of place. Encourage cleanliness and/or improve the general appearance of the area. 	<p>The need for, frequency and outcomes of planning enforcement investigations/ planning appeals concerning the aspects of local loss of locally important buildings within a conservation area.</p> <p>Number and percentage of listed buildings and Scheduled Ancient Monuments on Buildings at Risk Register (English Heritage).</p> <p>Ensure that Herefordshire Council's Sites and Monuments Register is kept up to date.</p>	<p>To improve upon or otherwise maintain current status.</p> <p>To improve upon or otherwise maintain current status.</p> <p>No specific targets identified, but need to ensure that the register is kept up to date.</p>

SEA Topics	SA Objective	SEA Objective	Sub-objectives / Appraisal Questions (Will the option/proposal/site...)	Indicators	Targets
Air and Climate	<p>Minimise local and global pollution and protect or enhance environmental resources.</p> <p>Reduce Herefordshire's vulnerability to the impacts of climate change as well as its contribution to the problem.</p>	<p>To improve air quality</p> <p>To reduce the effect of traffic on the environment</p> <p>To reduce contributions to climate change</p> <p>To reduce vulnerability to climate change</p>	<ul style="list-style-type: none"> Minimise water, air, soil, groundwater, noise and light pollution from current activities and the potential for such pollution. Protect or enhance the quality of watercourses. Provide opportunities to improve soil quality or reduce contaminated land. Reduce the county's contribution to climate change by reducing greenhouse gas emissions from transport, domestic, commercial and industrial sources. Increase the proportion of energy generated from renewable and low carbon sources including by micro-generation, Combined Heat and Power (CHP), district heating and in transportation. 	<p>Transport patronage by mode</p> <p>Number of decentralised energy schemes granted permission.</p> <p>Total CO2 emissions per capita</p>	<p>To increase the take up of alternative modes to the private car.</p> <p>To contribute towards the national target.</p> <p>To reduce the overall carbon emissions.</p>
Water	Reduce the risk of flooding and the resulting detriment to public well-	<p>To improve water quality</p> <p>To provide for sustainable sources of water supply</p>	<ul style="list-style-type: none"> Reduce flood risk both presently and taking into account climate change. 	Number of planning permissions granted contrary to the advice of the Environment Agency on flood defence grounds.	To have no applications permitted contrary to EA advice.

SEA Topics	SA Objective	SEA Objective	Sub-objectives / Appraisal Questions (Will the option/proposal/site...)	Indicators	Targets
	<p>being, the economy and the environment.</p> <p>Minimise local and global pollution and protect or enhance environmental resources.</p>	To avoid, reduce and manage flood risk	<ul style="list-style-type: none"> • Prevent inappropriate development of the floodplain, and include flood protection systems. • Include sustainable urban drainage systems where appropriate. • Minimise water, air, soil, groundwater, noise and light pollution from current activities and the potential for such pollution. • Protect or enhance the quality of watercourses. 	<p>Percentage of river length assessed as good or very good chemical quality and ecological quality</p> <p>Phosphate levels within the River Wye SAC and adjoining tributaries that receive increased phosphates from proportional growth.</p>	<p>To ensure that rivers meet their conservation objectives and do not fall below the required standard of quality as set out in the Water Framework Directive.</p> <p>To meet the targets set out in the Nutrient Management Plan (2014)</p>
Soil	<p>Minimise local and global pollution and protect or enhance environmental resources.</p> <p>Ensure integrated, efficient and balanced land use.</p>	<p>To conserve soil resources and quality</p> <p>Ensure integrated, efficient and balanced land use.</p>	<ul style="list-style-type: none"> • Minimise water, air, soil, groundwater, noise and light pollution from current activities and the potential for such pollution. • Provide opportunities to improve soil quality or reduce contaminated land. • Ensure new developments are in appropriate locations, optimising the use of previously developed land and buildings, primarily focussed on the urban areas and are accessible by walking, cycling or sustainable transport and/or 	<p>Percentage of all new development completed on previously developed land.</p> <p>Amount of land identified as best and most versatile agricultural land lost to development.</p>	<p>To increase the number of homes built on PDL in line with the provisions of national planning policy.</p> <p>Measure the number of hectares of best and most versatile soil lost through development.</p>

SEA Topics	SA Objective	SEA Objective	Sub-objectives / Appraisal Questions (Will the option/proposal/site...)	Indicators	Targets
			will increase the share of these transport modes, thereby reducing the need to travel.		
Population and Human Health	Value, protect, enhance or restore the landscape quality of Herefordshire, including its rural areas and open spaces.	To improve health of the population To reduce crime and nuisance	<ul style="list-style-type: none"> Value, enhance and protect natural environmental assets including AONB's, historic landscapes, open spaces, parks and gardens and their settings. Encourage local stewardship of local environments, for example by promoting best practices in agricultural management. Ensure that environmental impacts caused by mineral operations and the transport of minerals are minimised. Promote the use of rural areas and open space by all, encourage easy non-car based access, and accommodate the needs of disabled users. 	Number of developments meeting and surpassing national design	No specific targets identified.
Material Assets	Use natural resources and energy more	To conserve natural and manmade resources	<ul style="list-style-type: none"> Maximise energy efficiency and minimise the consumption of non- 	The need for, frequency and outcomes of planning enforcement investigations/ planning appeals concerning the aspects of local loss	Measure the number of hectares of best and most versatile soil lost through development.

SEA Topics	SA Objective	SEA Objective	Sub-objectives / Appraisal Questions (Will the option/proposal/site...)	Indicators	Targets
	efficiently. Minimise local and global pollution and protect or enhance environmental resources.		<p>renewable energy i.e. from fossil fuels.</p> <ul style="list-style-type: none"> • Minimise the consumption of water, land, soil, minerals, aggregates and other raw materials by all? E.g. through integrated transport, sustainable resource-efficient design, local sourcing of food, goods, materials. • Encourage the re-use/enhancement (to high standards of sustainable resource-efficient design) of existing buildings and minimise the need for new build. • Encourage the use of clean technologies and water minimisation techniques. 	<p>of locally important buildings within a conservation area.</p> <p>Maintaining Herefordshire Council's County Site and Monuments Register.</p> <p>Monitoring changes to historic landscapes.</p> <p>Agricultural land usage by quality</p>	<p>No specific targets identified.</p> <p>No specific targets identified, but need to ensure that the register is kept up to date.</p> <p>No specific targets identified.</p> <p>Measure the number of hectares of best and most versatile soil lost through development.</p>

**Initial Habitat Regulations Assessment and Strategic Environmental
Assessment Screening Notification**

The Neighbourhood Planning (General) Regulation 2012 (Reg. 32)

Conservation of Habitats and Species Regulations 2010 (d)

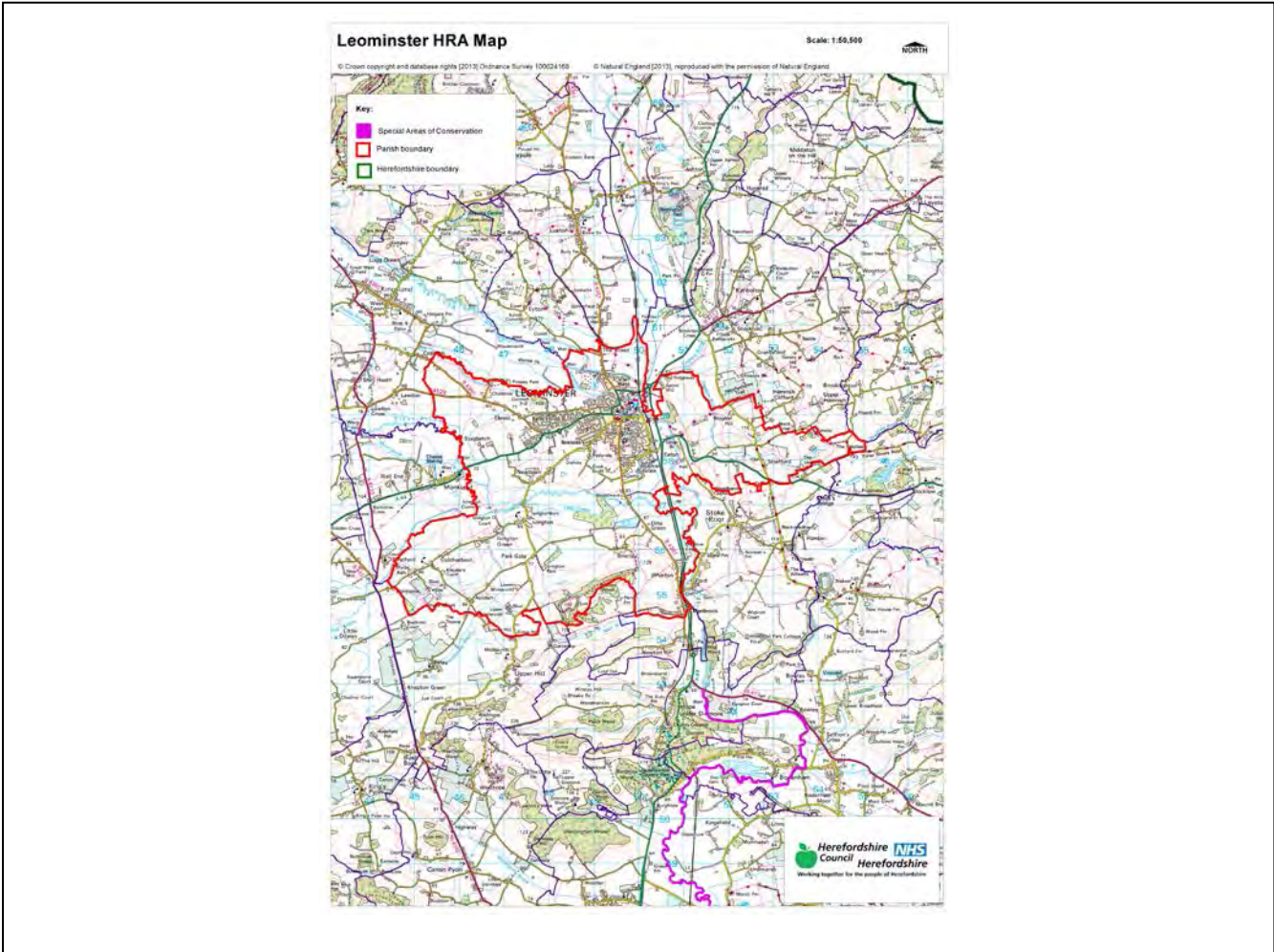
Neighbourhood Area:	Leominster
Parish Council:	Leominster Town Council
Neighbourhood Area Designation Date:	31 st July 2012

Introduction

This Initial Habitat Regulations Assessment (HRA) and Strategic Environmental Assessment (SEA) Screening has been undertaken to assess whether any European sites exist within or in proximity to the neighbourhood area which could be affected by any future proposals or policies.

Through continual engagement the outcomes of any required assessments will help to ensure that proposed developments will not lead to Likely Significant Effects upon a European Site or cause adverse impacts upon other environmental assets, such as the built historic or local natural environment.

**HRA Initial Screening: Map showing relationship of Neighbourhood Area with European Sites
(not to scale)**



Initial HRA Screening

River Wye (including the River Lugg) SAC:

Does the Neighbourhood Area have the River Wye (including the River Lugg) in or next to its boundary?	Y	The River Lugg (not part of the SAC) runs through the Parish
Is the Neighbourhood Area in the hydrological catchment of the River Wye (including the River Lugg) SAC?	Y	Leominster Parish is in both the Lugg and Arrow river catchments
If yes above, does the Neighbourhood Area have mains drainage to deal with foul sewage?	Y	Yes at Ivington and Leominster Worcester Road

Downton Gorge SAC:

Is the Neighbourhood Area within 10km of Downton Gorge SAC?	N	Downton Gorge is 12.7km away from the northern boundary of the Parish
-------------------------------------------------------------	---	-----------------------------------------------------------------------

River Clun SAC:

Does the Neighbourhood Area include: Border Group Parish Council or Leintwardine Group Parish Council?	N	River Clun does not border the Parish
--------------------------------------------------------------------------------------------------------	---	---------------------------------------

Usk Bat Sites SAC:

Is the Neighbourhood Area within 10km of the SAC boundary?	N	Usk Bat Sites are 46km away from the Parish
------------------------------------------------------------	---	---------------------------------------------

Wye Valley & Forest of Dean Bat Sites SAC:

Is the Neighbourhood Area within 10km of any of the individual sites that make up the Wye Valley & Forest of Dean Bat Sites?	N	Wye Valley & Forest of Dean Bat Sites are 37km away from the Parish
------------------------------------------------------------------------------------------------------------------------------	---	---------------------------------------------------------------------

Wye Valley Woodlands SAC:

Is the Neighbourhood Area within 10km of any of the individual sites that make up the Wye Valley Woodlands Site?	N	Wye Valley Woodlands are 41km away from the Parish
------------------------------------------------------------------------------------------------------------------	---	----------------------------------------------------

HRA Conclusion:

The assessment above highlights that the following European Sites will need to be taken into account in the future Neighbourhood Development Plan for the Leominster Neighbourhood Area and a Full HRA Screening will be required.

European Site

(List only those which are relevant from above)

River Wye (including the River Lugg) SAC

Strategic Environmental Assessment Initial Screening for nature conservation landscape and heritage features

The following environmental features are within or in general proximity to the Leominster Neighbourhood Area and would need to be taken into account within a Strategic Environmental Assessment. In addition, the NDP will also need to consider the other SEA topics set out in Guidance Note 9a to ensure that the plan does not cause adverse impacts.

SEA features	Total	Explanation	SEA required
Air Quality Management Areas	1	An area encompassing the junction between the A44 (Bargates) and B4361 (Dishley Street/Cursneh Road) in Leominster.	Y
Ancient Woodland	7	Marlbrook Woods; Ramshill Wood (border); Draycott Wood (border); Puddlestone Wood (border); Long Wood (border); Titterstone Plantation (border); Lower Miles Rough (border)	Y
Areas of Archaeological Interest	0	There are no AAI's in Leominster Parish	N
Areas of Outstanding Natural Beauty	0	There are no AONB's in Leominster Parish	N
Conservation Areas	4	Leominster Bridge Street; Leominster River Meadows; Leominster Bargates; Leominster	Y
European Sites	0	There are no SACs in the Parish	N
Flood Areas		Flood Zones 2 & 3 follow the Rivers Lugg and Arrow, as well as Cheaton Brook, Little Arrow and various other brooks and streams	Y
Listed Buildings	Numerous	There are numerous Listed Buildings throughout the Parish	Y
Local Sites (SWS/SINCs/RIGS)	21	Land at Eaton Hill; Land at Eaton; lands at Leasows; Pond near Bankfield House; River Lugg; River Arrow; Field near Stoke Prior (border); Land at Stoke Prior (border); marshland near Steens Bridge (border); Land near Stone Farm (border); Land at Stretford Bridge (border); Stretford Brook; Wig Wood, Lewis's Plantation & Kennel Gorse (border); Bach Camp (border); Fields east of Blackpole (border); Eyeton Common (border); Monkland Common (border); Field north of Harbour Farm (border); Pinsley Brook; Titterstone Plantation, Woodfield and Lime Kiln Copse (border); Lower Miles Rough (border)	Y
Long distance footpaths/trails (e.g. Herefordshire Trail)	2	Herefordshire Trail; Three Rivers Ride	Y
Mineral Reserves	13	West of Cholstrey mill to B4360 (border); Cholstrey, east and west of village (border); Ivington Bury to Ivington Court; Newlands to Highfield House off	Y

		Passa Lane; Worcester Road from Leominster; East of Leominster, Tick Bridge Lane, north of Stretford Brook; Sparrow Hill north of Steens Bridge; East of Stoke Prior, Blackwardine; Area around Wellington constrained by 200m zone and area north of Wellington outside 200m zone; East of Sollers Dilwyn – Tyrells Court to Stretford (border); Manor Farm, Monkland to Wall End (border); South east of Pudleston Court (border); North of Uphampton Farm-Fort (border)	
National Nature Reserve	0	No NNR's in Leominster Parish	N
Registered & unregistered parks and gardens	12 Unregistered	The Ryelands; Eaton Hill; Hennor House Upper Wintercott; Hamnish Clifford (border); Pudleston Court (border); Eyton Hall (border); Buckland (border); Eyton Old Hall (border); Pudleston Rectory (border); Hampton Court (border); Birley Court (border)	Y
Scheduled Ancient Monuments	9	Ivington Camp Multivallate Hillfort; Forbury Chapel; Leominster Priory; Three Moated Sites at The Hyde and Lower Hyde; Roman Settlement (border); Risbury Camp (border); Dovecote at Stockton Bury (border); Kingsland Castle (border); Bach Camp (border)	Y
Sites of Special Scientific Interest	6	River Lugg Meanders (Favourable) (border); River Lugg (Unfavourable Recovering); Hill Hole Dingle (Unfavourable Recovering) (border); The Bury Farm (Favourable) (border); Dinmore Hill Woods (Favourable (part) Unfavourable Recovering (part)) (border); Berrington Pool (Favourable) (border)	Y

Decision Notification:

The initial screening highlights that the Neighbourhood Development Plan for the Leominster Neighbourhood Area:

- a) Will require further environmental assessment for Habitat Regulations Assessment and Strategic Environmental Assessment.

Assessment date: 13/05/2013 re-screened 21/08/2013

Assessed by: James Latham

Appendix 1: European Sites

The table below provides the name of each European Site, which has been screened in for the purposes of neighbourhood planning in Herefordshire; includes their site features of integrity; and vulnerability data. This is based on the sites individual features of integrity and their vulnerabilities, which could include distance criteria. This has been used in identifying which parishes are likely to require a full HRA Screening of their future Neighbourhood Development Plan, to establish if their plan might have Likely Significant Effects on a European Site.

Downton Gorge
Site Features: <i>Tilio-Acerion</i> forests of slopes, screes and ravines
Vulnerability data: 10km for air quality associated with poultry units or other intensive agricultural practices.
River Clun
Site Features: Freshwater pearl mussel <i>Margaritifera margaritifera</i>
Vulnerability data: Water quality is important to maintain the site feature. Parishes either side of the River Clun will be affected.
River Wye
Site Features: Water courses of plain to montane levels with the <i>Ranunculion fluitantis</i> and <i>Callitricho-Batrachion</i> vegetation. Transition mires and quaking bogs. White-clawed (or Atlantic Stream) crayfish <i>Austropotamobius pallipes</i> . Sea lamprey <i>Petromyzon marinus</i> . Brook lamprey <i>Lampetra planeri</i> . River lamprey <i>Lampetra fluviatilis</i> . Twaite shad <i>Alosa fallax</i> . Atlantic salmon <i>Salmo salar</i> . Bullhead <i>Cottus gobio</i> . Otter <i>Lutra lutra</i> . Allis shad <i>Alosa alosa</i>
Vulnerability data: Proximity: Developments should not be within 100m of the designated bank. Some developments beyond 100m may also have impacts based on proximity and these issues should be addressed where possible when developing NDP policy and choosing site allocations. Water Quality: Within the whole catchment of the River Wye, which includes the River Lugg, mains drainage issues with regards to water quality are being resolved through the Core Strategy / Local Plan and development of a Nutrient Management Plan. Welsh Water should be consulted to ensure that the proposed growth will be within the limit of their consents. Otters: "An otter will occupy a 'home range', which on fresh waters usually includes a stretch of river as well as associated tributary streams, ditches, ponds, lakes and woodland. The size of a home range depends largely on the availability of food and shelter, and the presence of neighbouring otters. On rivers, a male's home range may be up to 40km or more of watercourse and associated areas; females have smaller ranges (roughly half the size) and favour quieter locations for breeding, such as tributary streams. Otters without an established home range are known as 'transients'. They are mostly juveniles looking for a territory of their own, or adults that have been pushed out of their territories. Transient otters may use an area for a short while, but they will move on if conditions are not suitable or if they are driven away by resident otters. Transients will have been important in extending the range of otters, but they are very difficult to identify from field signs. Within a home range an otter may use many resting sites. These include above-ground shelters, such as stands of scrub or areas of rank grass, and underground 'holts' – for example, cavities under tree roots and dry drainage pipes." (Source: EA website: http://www.environmentagency.gov.uk/static/documents/Business/Otters_the_facts.pdf accessed 09/04/2013)

Usk Bat Site

Site Features: Annex I habitats present as a qualifying feature, but not a primary reason for site selection: European dry heaths, Degraded raised bogs still capable of natural regeneration, Blanket bogs, Calcareous rocky slopes with chasmophytic vegetation, Caves not open to the public, *Tilio-Acerion* forests of slopes, screes and ravines. Annex II species of primary reason for site selection: Lesser horseshoe bat *Rhinolophus hipposideros*, UK population 5%, although it is suggested this is an underestimate.

Vulnerability data: Lesser Horseshoe bats are known to migrate between 5km and 10km between their summer and winter roosts. The Lesser Horseshoe Bat is vulnerable to disturbance; light pollution; and habitat loss. Check with the planning ecologist for other issues.

Wye Valley and Forest of Dean Bat Sites

Site Features: Annex II species that are a primary reason for site selection: Lesser horseshoe bat *Rhinolophus hipposideros*. Greater horseshoe bat *Rhinolophus ferrumequinum*

Vulnerability data: Lesser Horseshoe bats are known to migrate between 5km and 10km between their summer and winter roosts. The Lesser Horseshoe Bat is vulnerable to disturbance; light pollution; and habitat loss. Check with the planning ecologist for other issues.

Greater Horseshoe bats are known to migrate between 20-30km between their summer and winter roosts.

NDPs closest to the European Site will need to consider:
Woodland habitat buffer.

Lesser Horseshoe Bat: Old buildings; woodland locations; sheltered valleys, extensive deciduous woods or dense scrub, close to roost sites. In areas of fragmented habitats, linear habitats such as hedgerows are important corridors. Vulnerable to loss or disturbance of both summer and winter roosts and removal of linear habitat.

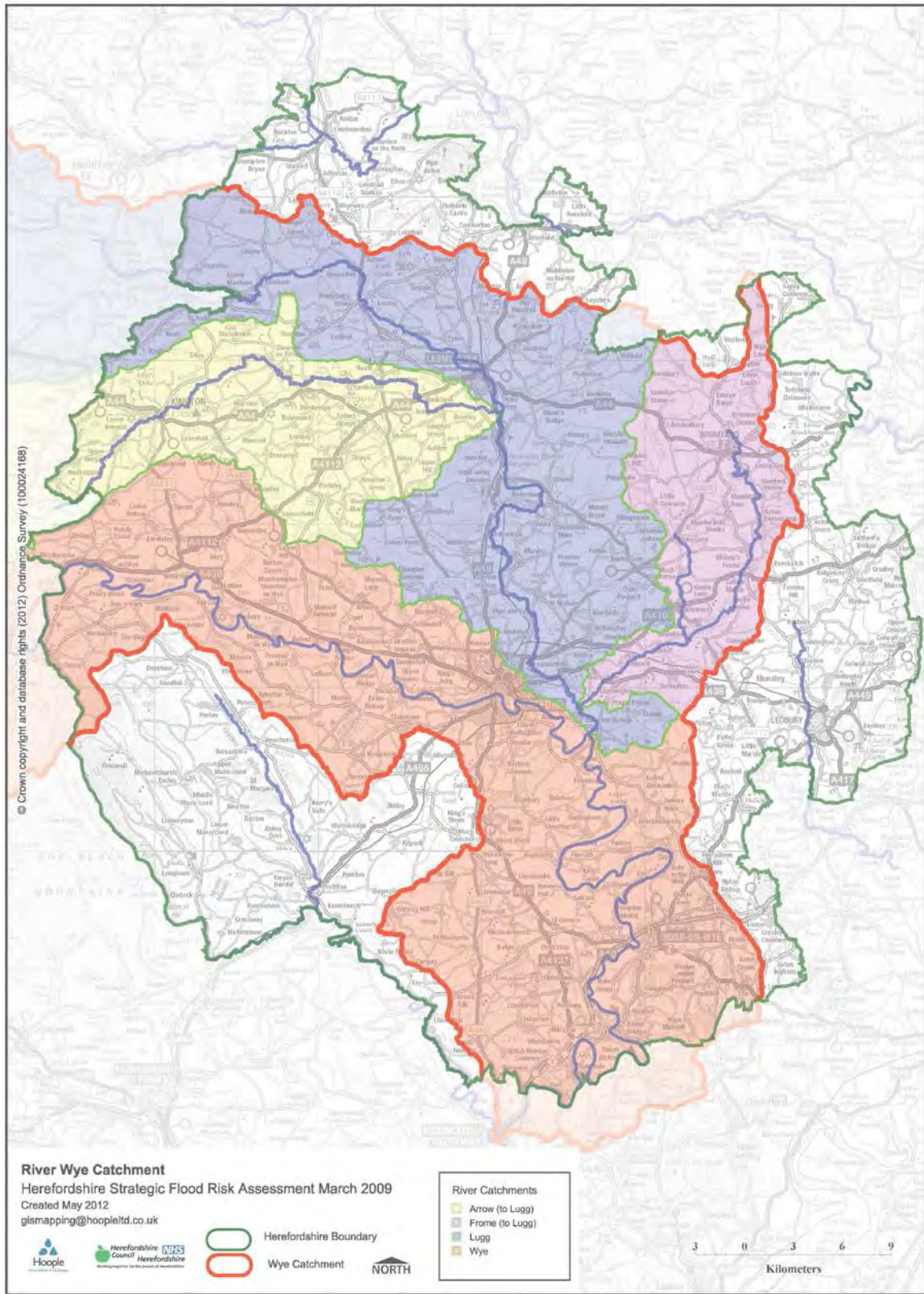
Greater Horseshoe Bat: Large buildings, pasture, edge of mixed deciduous woodland and hedgerows. Mixed land-use especially south-facing slopes, favours beetles, moths and insects they feed on. During the winter they depend on caves, abandoned mines and other underground sites for undisturbed hibernation. A system/series of sites required. Vulnerable to loss of insect food supply, due to insecticide use, changing farming practices and loss of broad-leaved tree-cover and loss / disturbance of underground roosts sites.

Wye Valley Woodlands

Site Features: Annex I habitats that are a primary reason for site selection: Beech forests *Asperulo-Fagetum*, *Tilio-Acerion* forests of slopes, screes and ravines, *Taxus baccata* woods of the British Isles. Annex II species present as a qualifying feature, but not a primary reason for site selection: Lesser horseshoe bat *Rhinolophus hipposideros*, 51-100 residents

Vulnerability data: Lesser Horseshoe bats are known to migrate between 5km and 10km between their summer and winter roosts. The Lesser Horseshoe Bat is vulnerable to disturbance; light pollution; and habitat loss. Check with the planning ecologist for other issues. NDPs closest to the European Site will need to consider: Woodland habitat buffer. Lesser Horseshoe Bat: Old buildings; woodland locations; sheltered valleys, extensive deciduous woods or dense scrub, close to roost sites. In areas of fragmented habitats, linear habitats such as hedgerows are important corridors. Vulnerable to loss or disturbance of both summer and winter roosts and removal of linear habitat.

Appendix 2: Wye Catchment Map

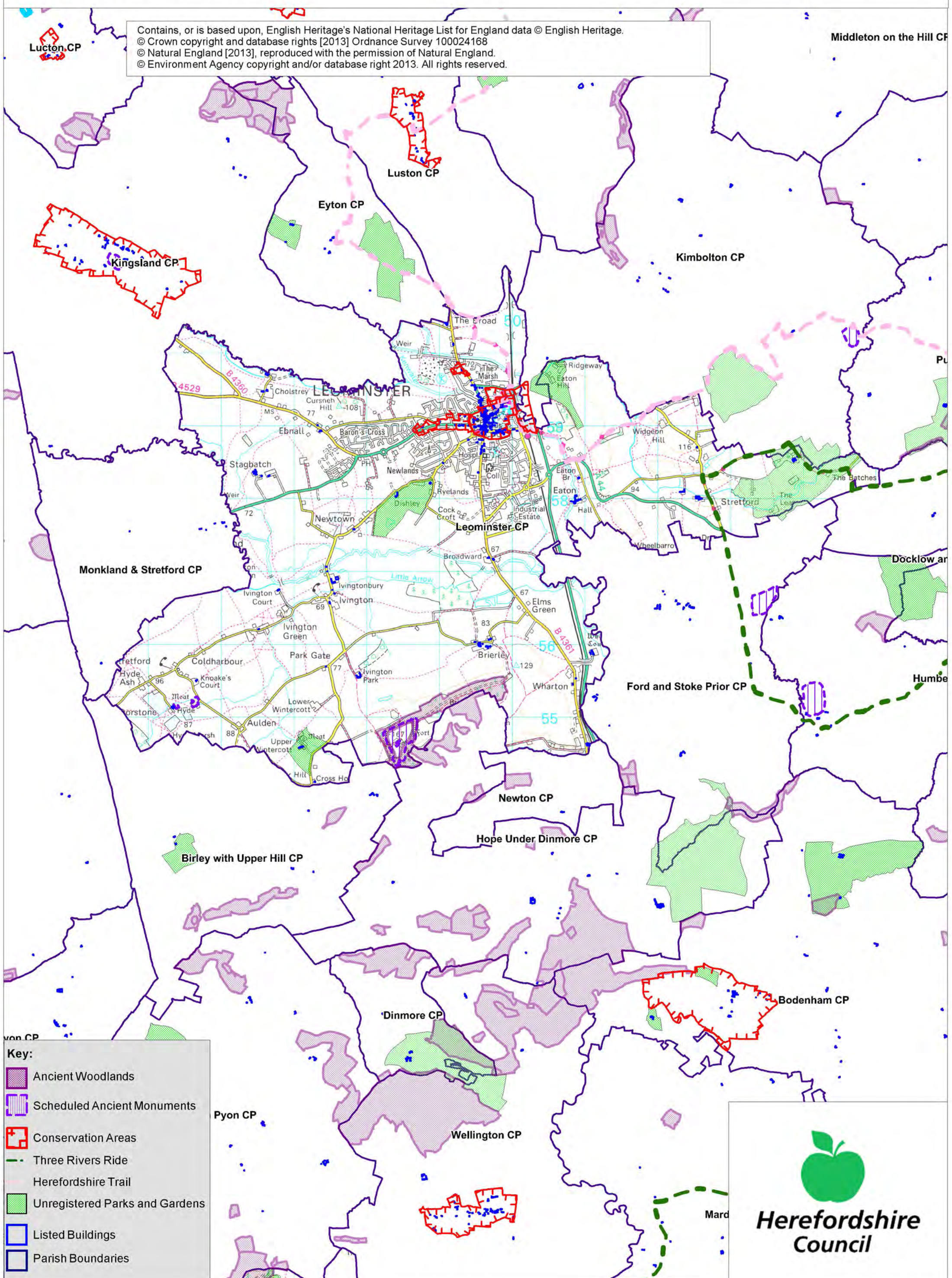


Leominster SEA Map 1

Scale: 1:45,000



Contains, or is based upon, English Heritage's National Heritage List for England data © English Heritage.
© Crown copyright and database rights [2013] Ordnance Survey 100024168
© Natural England [2013], reproduced with the permission of Natural England.
© Environment Agency copyright and/or database right 2013. All rights reserved.



Key:

- Ancient Woodlands
- Scheduled Ancient Monuments
- Conservation Areas
- Three Rivers Ride
- Herefordshire Trail
- Unregistered Parks and Gardens
- Listed Buildings
- Parish Boundaries

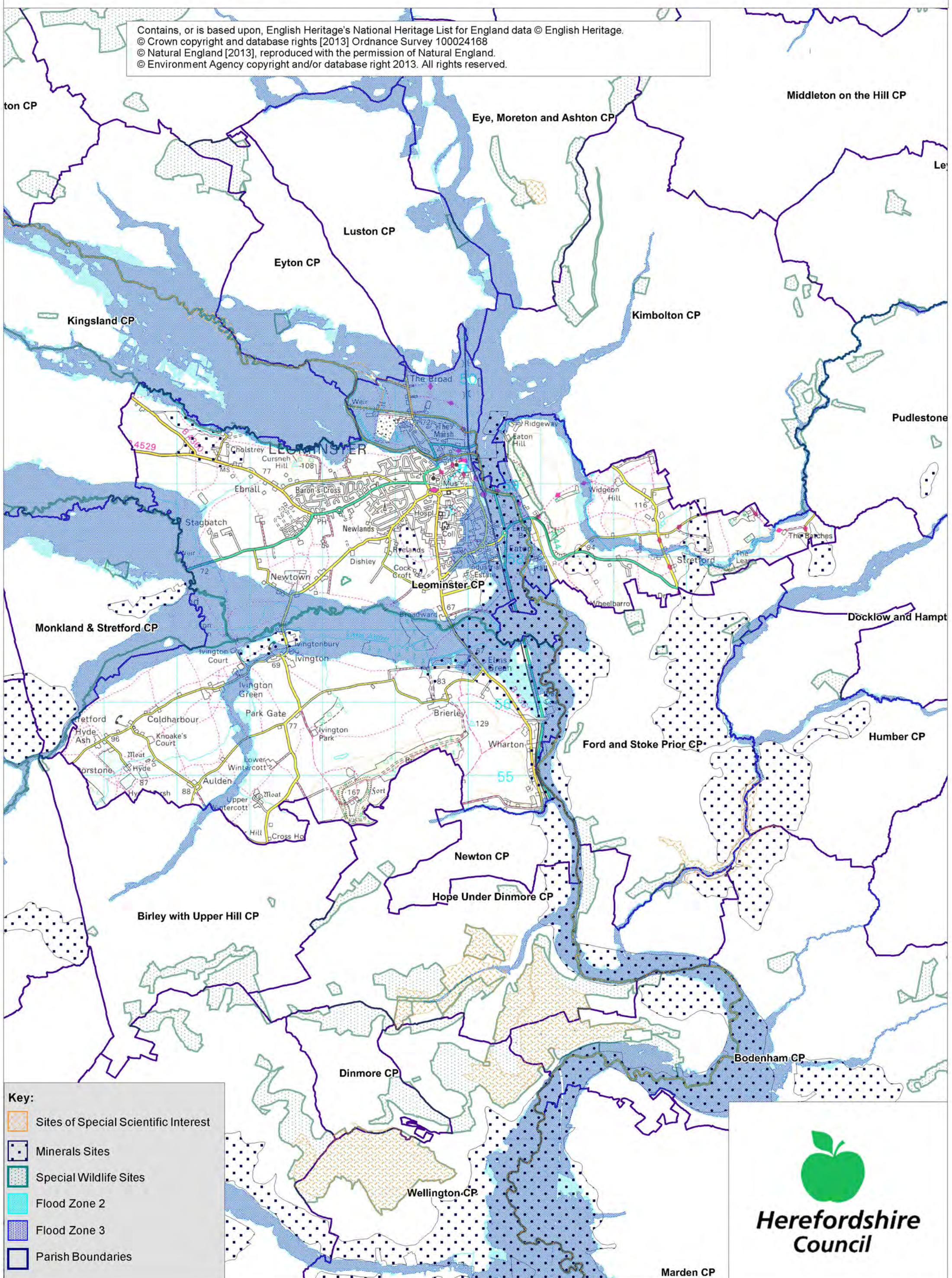


Leominster SEA Map 2

Scale: 1:45,000



Contains, or is based upon, English Heritage's National Heritage List for England data © English Heritage.
© Crown copyright and database rights [2013] Ordnance Survey 100024168
© Natural England [2013], reproduced with the permission of Natural England.
© Environment Agency copyright and/or database right 2013. All rights reserved.



Key:

- Sites of Special Scientific Interest
- Minerals Sites
- Special Wildlife Sites
- Flood Zone 2
- Flood Zone 3
- Parish Boundaries



**Herefordshire
Council**

Marden CP