

# Environmental Report



## Kingsland Neighbourhood Area

November 2014

## **Kingsland Environmental Report**

### **Contents**

Non-technical summary

- 1.0 Introduction
- 2.0 Methodology
- 3.0 The SEA Framework
- 4.0 Appraisal of objectives
- 5.0 Appraisal of options
- 6.0 Appraisal of policies
- 7.0 Monitoring and implementation
- 8.0 Next Steps

### **Appendices**

- 1 Initial SEA Screening Report
- 2 Stage A-Scoping Report incorporating tables A1, A2, A3 and A4
- 3 Consultation responses from Natural England and English Heritage
- 4 Stage B- tables B1, B2 options and policies, B3, B4
- 5 Options Considered June 2014
- 6 Environmental Report checklist

## **Kingsland Environmental Report**

### **Non-technical summary**

The main objective of the SEA is to ensure that the environment is protected and consider the environmental concerns into the run up of preparing neighbourhood plans. The River Lugg runs through the middle of the Parish and large areas of the parish is within flood zone 3 and 2 and therefore in parts are vulnerable to flooding from the river and the streams and land run off. The parish borders with the parishes of Leominster, Yarpole, Monkland and Stretford, Eardisland, Shobdon and Luston. Kingsland NDP has been written and produced by the Parish council, and have been assigned a planning support officer from Herefordshire Council.

Kingsland NDP covers five objectives covering sustainability, infrastructure, environment, housing, businesses and the economy. The NDP objectives and baseline comply with the SEA European directive; objectives have been thoroughly tested throughout Stage B of the SEA process. HRA screening has been carried out as Kingsland Parish falls within the River Wye (including the R.Lugg) SAC and Downton Gorge SAC. The HRA assesses the potential effects of a Neighbourhood Development Plans policies, objectives and options to the SAC.

Environmental scoping has been taken place in stage A, and stage B analyses and reviews the NDP. Stage C is the environmental report and stage D consists of consulting the statutory consultees with the environmental report and draft plan. These stages help to analyse and review the NDP's plans and policies, and to ensure that the alternatives have been considered for the NDP's policies to ensure the most appropriate policies have been selected. These stages are displayed in several tables and uses National and European polices guidance and reports as its evidence base. The results of this review have been used to inform the baseline data and have been incorporated into the SEA framework. Statutory consultees were consulted after the scoping has been carried out, and are consulted again at draft stage of the plan. Feedback after Stage A was received from Natural England and English Heritage regarding wording and soil and geodiversity issues. Stage B results show that the cumulative impact is generally positive impact meeting all of the SEA objectives. The majority of the policies will have a positive impact as the development objectives proposed are balanced with sustainable polices to minimise environmental impact.

In terms of mitigation, after estimating the environmental effects of an NDP, there are various ways to help avoid or reduce the possible negative effects are suggested to ensure that the management plan have limited detrimental environmental effects as possible. Regulation 17 of the Environmental Assessment of Plans and Programmes Regulations 2004 requires the Local Planning Authority to monitor the significant environmental effects of the implementation of the neighbourhood plan that was subject to a Strategic Environmental Assessment. Monitoring will be recorded by Herefordshire Council in order to monitor the significant environmental effects of the implementation of Kingsland neighbourhood plan. This is to identify unforeseen adverse effects at an early stage and to enable appropriate remedial actions. Results from this will be reported in Herefordshire Council's Annual Monitoring Report. The Kingsland Plan objectives and policies comply with the Local Plan and the NPPF and do not go over and above the Herefordshire Council Local Plan Core Strategy policies. Therefore do not need any further recommendations or changes in order to ensure no significant effect on protected sites.

## 1 Introduction

- 1.1 Kingsland Neighbourhood Plan area consists of the whole of Kingsland parish. The proposed plan is for the plan period of twenty years, 2011-2031 and has been drafted by the Kingsland Neighbourhood Plan Steering Group, a properly constituted sub-committee of Kingsland Parish Council, which includes Parish Council members and residents.
- 1.2 The Kingsland Plan does not allocate any sites for development, the Plan will, however, provide general policies for guiding future development across the parish as a whole. Herefordshire Council assigned a Neighbourhood Planning Support Officer to help guide and advise Kingsland parish through the Neighbourhood Planning process.
- 1.3 The main objective of a SEA is *“to provide for a high level of protection of the environment and to contribute to the integration of environmental considerations into the preparation and adoption of plans and programmes with a view to promoting sustainable development”*. The Environmental Assessment of Plans and Programmes Regulations (2004). The assessment is looking at the positive and negative environmental issues that your plan might have on your local environmental assets.
- 1.4 This Environmental report will meet all of the SEA Directive requirements. The structure of this report will be divided to explain the approach taken, process of assessment and outcomes met within the SEA process. Kingsland Plan policies and objectives should comply with the policies within Herefordshire Local Plan-Core Strategy 2011-2031.

### **Kingsland Parish Neighbourhood Plan Context**

- 1.5 Kingsland Group is situated in the Bircher Ward, about 4 miles north west of Leominster. There are two key villages within the Parish; Kingsland and Shirlheath.
- 1.6 The Group has many natural features, one of which is the River Lugg (River Wye SAC) running through the Parish and is part of the River Wye Special Area of Conservation and a Site of Special Scientific Interest. There is a conservation area around Kingsland village, 9 Special Wildlife sites across the group parish or on the border, two scheduled ancient monuments within the Parish or on the border, numerous listed buildings and 1 Site of Special Scientific Interest.
- 1.7 Kingsland Plan covers five objectives covering different themes within the plan. These are divided up into covering sustainability, infrastructure, environment, housing, businesses and the economy
- 1.8 The Kingsland Plan objectives are as follows:
- Objective one: Ensure that the visual effect of all development preserves and enhances the traditional character of the parish and protects our landscape and historic environment
  - Objective two: Ensure that all development is based upon sound environmental sustainability principles including energy sourcing and conservation, water and sewerage management, waste minimisation, wildlife conservation and habitat protection.
  - Objective three: Ensure all infrastructure including services, facilities and amenities are retained and developed in line with the current needs and future growth of the community.
  - Objective four: Provide sufficient housing to meet the future needs of the community, in terms of numbers and type, based upon robust evidence.
  - Objective five: Ensure that new and existing business and commerce, including tourism, beneficial to the economic health of the parish, can grow and is in scale with and sensitive to the rural character of the parish.

### **Context of Neighbourhood Plans**

- 1.9 Neighbourhood Plans are a relatively new type of planning document that form a key part of the Government's localism agenda. They enable local communities to develop plans that reflect local aspirations, in accordance with strategic policies.

This document is copyright of Herefordshire Council, please contact the Neighbourhood Planning team if you wish to reuse it in whole or part.

- 1.10 The Kingsland Neighbourhood Plan must therefore conform to national planning policy set within the NPPF and strategic level local policy including the Herefordshire Local Plan (Core Strategy).
- 1.11 The Herefordshire Local Plan (Core Strategy) was submitted to the Secretary of State of Independent Examination on 23 September 2014. On the basis of initial feedback from the appointed Inspector, the examination is likely to be held in February 2015.
- 1.12 The Saved Policies of the Herefordshire Unitary Development Plan (UDP) will be used as the basis for determining planning applications until such time the Local Plan (Core Strategy) is adopted by the Council, unless material considerations indicate otherwise.
- 1.13 Paragraph 2016 of the NPPF and Planning Practice Guidance set out the weight that may be given to relevant policies in emerging plans, including NDPs, and indicated that weight may be given to relevant policies in emerging NDPs according to:
- The stage of preparation of the emerging plan (the more advanced the preparation, the greater the weight that may be given);
  - The extent to which there are unresolved objections to relevant policies (the less significant the unresolved objections, the greater the weight that may be given); and
  - The degree of consistency of the relevant policies in the emerging plan to the policies in this Framework (the closer the policies in the emerging plan to the policies in the Framework, the greater the weight that may be given).
- 1.14 This part of the NPPF is reinforced by Planning Practice Guidance published in March 2014, which is clear that an emerging NDP may be a material planning consideration once it has reached submission/local authorities publication stage (Regulation 16). This is reinforced by recent ministerial statements and case law (West Sussex), all of which have demonstrated that an emerging NDP may be a material consideration at the Regulation 16 stage<sup>1</sup>.
- 1.15 Once made (adopted) by Herefordshire Council, the Kingsland Neighbourhood Plan will have a role in guiding future development proposals within the Parish, by setting out policies against which planning applications will be determined.

#### **Structure of SEA**

- 1.16 The structure of the document is as follows:
- Section 2 – Explains the SEA methodology and summarises the comments received in respect of the SEA Scoping Report
  - Section 3 - Introduces the Kingsland Neighbourhood Plan objectives and the SEA framework
  - Section 4 - Appraises the objectives contained within the Neighbourhood Plan against the SEA framework
  - Section 5 - Appraises the options considered within the Neighbourhood Plan against the SEA framework
  - Section 6 – Appraises the policies contained within the Neighbourhood Plan against the SEA framework
  - Section 7 – Discusses the implementation and monitoring of the Neighbourhood Plan
  - Section 8 - Concludes the SEA report by outlining next steps

---

<sup>1</sup> For the avoidance of doubt, this NDP is currently at the Draft Plan Stage (Regulation 14) and cannot, therefore, be given weight in reaching decisions on planning applications

## 2 **Methodology**

### **SEA Process and approach taken**

- 2.1 The SEA Process consisted of several stages. Stage A which is the scoping report, consisted of 4 tables. The Scoping Report sets out the SEA context and objectives, establish the local baseline information and decide on the environmental scope of the SEA. The tables are as follows:
- Task A1: Identifies and reviews relevant European, National and Local plan policies and programs in relation to SEA objectives that could impact upon the Neighbourhood Development Plan.
  - Task A2: is the collection of baseline information to provide a picture of past, present and likely future conditions within the area. Key sources of information include census data; population forecasts; commissioned studies and local public consultation. Through this stage indicators can be developed to monitor the effects and performance of the Kingsland Plan;
  - Task A3: focuses on the environmental issues identified from the baseline, analysing each SEA topic in relation to environmental issue and identifies how this is related to the SA objective.
  - Task A4: tests the SEA topics vs objectives in line with indicators and targets, development of a sustainability appraisal framework to assess the impacts of the emerging Plan's objectives, policies and proposals
- 2.2 Stage B addresses the significant impacts of the Neighbourhood Development Plan. This stage is carried out as the Plan is developed and refined it looks at the objectives, options, policies, sites and assesses their effects.
- The Table B1 assessment analyses the NDP objectives against the SEA objectives and tested against the SMART criteria.
  - Table B2 assesses the Draft NDP policies against the SEA objectives and identifies whether they are moving towards or away from the SEA objectives and the baseline.
  - B3 tests SEA objectives against the NDP policy but looks at the short, medium and long term effect that each NDP policy may have.
  - B4 Evaluates the NDP objective and policies against SEA and evaluates the overall cumulative effect.
- 2.3 Stage C, the Environmental Report. In accordance with Regulation 14 of the Neighbourhood Planning Regulations an Environmental Report is prepared to accompany your draft Neighbourhood Plan.
- 2.4 Stage D, consultation on the Environmental Report alongside the Draft Neighbourhood Plan. This will include consultation to Statutory Stakeholders such as Natural England, English Heritage, Environment Agency and Natural Resources Wales. Following the formal consultation some changes may need to be made to both the Draft Neighbourhood Plan and the Environmental Report.
- ### **Scoping Report Consultation**
- 2.5 In regards to consultation the SEA Scoping Stage A, Tables A1, A2, A3 and A4 were completed by a Herefordshire Council Planning Officer and sent back to the parish for consultation, any comments/amendments or additions from the Parish were made to the SEA. The Scoping Report was then sent to the statutory consultees for the required 5 week consultation period. The statutory consultees are Natural England, Environment Agency, English Heritage and Natural Resources Wales. Following the consultation any amendments or comments were added to the Stage A reports (see appendix 2 for the updated Scoping Report), prior to starting work on the Stage B.
- 2.6 The Environmental Report including all of the Scoping Report and Stage B tables will be consulted alongside the Draft NDP for the Statutory 6 weeks consultation, with members of the community and also Statutory Consultees.

### **Consultation Outcomes from statutory consultees**

- 2.7 The Statutory consultees that provided comments on the Scoping Report were from Natural England and English Heritage, there were no comments made from Environmental Agency and Natural Resources Wales.
- 2.8 Natural England commented on adding further plans, policies and programmes (please refer to appendix 3) to the A1 document. For the A2 section of the scoping report NE suggested to include NE internal information regarding priority habitats should be included within the baseline information in A2. NE stated that Soil and Geodiversity were not considered or covered in the A3 assessment and should be added to the baseline information. For the A4 assessment within particular objectives and topics Landscape character assessment and Water framework directive should be included within the baseline.
- 2.9 English Heritage comments resulted in minor amendments to wording for A2 and A4 regarding the phrase Heritage assets. All of these comments from English Heritage and Natural England were taken into account and added into each stage of the scoping report process.

## **3 SEA Framework**

### **Policy context**

- 3.1 The SEA Stage A uses a local, national and European policies guidance and reports as its evidence base. Please refer to Table A1 in appendix 2 to find plans, policies and programmes used as for the evidence base.

The requirement to undertake the 'context review' arises from the SEA Directive which states that the Environmental Report should include:

*“an outline of the contents, main objectives of the plan or programme and relationship with other relevant plans and programmes”*

*“the environmental protection objectives, established at international, Community or Member State level, which are relevant to the plan or programme and the way those objectives and any environmental considerations have been taken into account during its preparation”*

Annex 1(a) and (e)

- 3.2 Herefordshire Council carried out this context review for the Scoping Report supporting their Core Strategy and listed their results in the Appendix of that document. Kingsland Plan is a parish implementation of the Core Strategy and thus the scoping report uses the Herefordshire Council context review which is found in Stage A of the scoping report found in Appendix 1 of this report. The SEA Stage A uses a local, national and European policies guidance and reports as its evidence base.

The results of this review have been used to inform the baseline data and have been incorporated into the SEA framework. It should be noted that:

- no list of plans or policies can ever be exhaustive and that Herefordshire Council has selected those considered to be of particular relevance to the planning system;
- new or revised plans and policies emerge.

- 3.3 The following strategies and plans have been reviewed and, where appropriate, incorporated within the SA Framework objectives:

- *The EC Conservation of Habitats and Species Regulations (2010)* - These regulations transpose the Habitats Directive in England, Wales and to a limited extent Scotland by ensuring that activities are carried out in accordance with the Habitats Directive, which is to protect biodiversity through the conservation of natural habitats and species of wild flora and fauna.

This document is copyright of Herefordshire Council, please contact the Neighbourhood Planning team if you wish to reuse it in whole or part.

- *The EC Water Framework Directive (2000)* - Commits all EU member states to achieve good qualitative and quantitative status of all water courses by 2015
- *The Wildlife and Countryside Act (1981)* - The major legal instrument for wildlife protection in Britain, although other significant acts have been passed since. It has numerous parts and supplementary lists and schedules many of which have been amended since publication.
- *Biodiversity 2020: A strategy for England's wildlife and ecosystem services (2011)* - Forms part of the UK's Post-2010 Biodiversity Framework by setting out England's contribution towards the UK's commitments under the United Nations Convention of Biological Diversity.
- *The Countryside and Right of Way Act (2000)* - Creates a statutory right of access on foot to certain types of open land, to modernise the public rights of way system, to strengthen nature conservation legislation, and to facilitate better management of AONBs
- *The Natural Environment and Rural Communities Act (2006)* - Designed to help achieve a rich and diverse natural environment and thriving rural communities through modernised and simplified arrangements for delivering Government policy.
- *Revised EU Sustainable Development strategy (2009)* - Sets out a single strategy on how the EU will more effectively meet its long-standing commitment to meet the challenges of sustainable development.
- *National Planning Policy Framework (NPPF) (2012)* - Consolidates the suite of PPG/PPS into one succinct planning policy document.
- *Planning Practice Guidance (2013)* - Sets out the vision, objectives and policies for the Herefordshire Local Plan (Core Strategy), which will guide development across the county up to 2031.
- *Herefordshire Local Transport Plan 3 (LTP) 2013-2015* - Sets out the Council's strategy for supporting economic growth, social inclusion and reducing the environmental impacts of transport, as well as the program of investment for the period April 2013 to April 2015.
- *Understanding Herefordshire Report (2014)* - Important to understand the place such as the local economy natural and built environment in which people live, learn and work as part of understanding their quality of life. Enable development for economy and housing to required levels and growth should be supported by sustainable transport measures.
- *Malvern Hills AONB Management Plan 2009-2014 (2009)* - Identifies the issues and challenges facing the special features of the area and contains 24 guiding principles and 46 strategic objectives which will help address them.
- *Wye Valley AONB management Plan 2009-2014 (2009)* - The Management Plan is the prime document which sets out the vision for the area and the priorities for its management.
- *Herefordshire Economic Development Strategy 2011-2016* - Aims to increase the economic wealth of Herefordshire by setting out proposals and to support business growth up to 2016.



- *Herefordshire Employment Land Study (2012)* - Includes employment land assessments for the plan period 2011-2031. The study includes Quantitative and Qualitative assessments of employment land, assessment of market demand and need, as well as providing forecasts and recommendations for future employment need over the plan period.
- *Herefordshire Strategic Housing Land Availability Assessment (SHLAA) (2009)* - The SHLAA aims to justify site allocations in plans by:
  - Identifying sites which are capable of delivering housing development
  - Assessing sites for their housing potential; and
  - Predicting when a site could be developed for housing.
- *Herefordshire Local Housing Market Assessment (LHMA) (2013)* - Builds on an earlier Strategic Housing Market Assessment (SHMA) developed for Herefordshire and Shropshire. Its purpose is to inform the Local Plan's policies regarding housing need and demand (for market and affordable housing) within each of the 7 Housing Market Areas (HMAs) in Herefordshire between 2011 and 2031.
- *Herefordshire Local Housing Requirements Study (2012)* - Technical assessment of the housing market and potential future local housing requirements which supports planning policy regarding the amount of growth, housing tenure and housing type needed within Herefordshire up to 2031.
- *Herefordshire Rural Housing Background Report (2013)* - Provides the justification for the proportional housing growth targets outlined in the Core Strategy
- *Herefordshire Draft Gypsies and Travellers Assessment (2013)* - Assesses the accommodation needs of Gypsies and Travellers across Herefordshire.
- *Herefordshire Local Biodiversity Action Plan (2007)* - Focuses conservation efforts on the areas within Herefordshire that will result in the greatest benefit for ecological networks, habitats and species.
- *Building Biodiversity into the LDF (2009)* - Provides the Council's Local Plan (Core Strategy) with evidence in respect of biodiversity and geodiversity, identifying both opportunities and constraints across Herefordshire.
- *Herefordshire Green Infrastructure Strategy (2010)* - Develops a framework of natural and culturally important features and functions so that planning for a sustainable future is at the heart of planning within Herefordshire.
- *Renewable Energy Study (2010)* - Assesses the energy demand within Herefordshire and the ability for the county to accommodate renewable and low carbon energy technologies.
- *Herefordshire Playing Pitch Assessment (2012)* - Produces a strategic framework, audit and assessment and needs analysis of outdoor sports pitches and facilities for Herefordshire. The document arises as a result of a recommendation in the Herefordshire and Worcestershire Sports Facilities Framework to develop local standards for playing fields and sports pitches throughout Herefordshire.
- *Open Spaces Study (2006)* - The 2006 space audit and assessment of need is a snap shot of the quality, quantity and distribution of open space across Herefordshire.

- *Play Facilities Study (2012)* - The Play Facilities Study 2012 updates the previous play facilities analysis under the Open Spaces Study 2006 and provides guidance and a framework for the development, delivery and continued sustainability of providing new and improved play facilities for children and young people in Herefordshire to 2031.
- *Strategic Flood Risk Assessment (SFRA) and Water Cycle Study (2009)* - The Strategic Flood Risk Assessment (SFRA) provides a summary of flood risk in Herefordshire to inform the location of future development. The Water Cycle Study examines how water resources and water supply infrastructure, wastewater treatment, water quality, sewerage and flood risk could constrain growth across Herefordshire.
- *Kingsland Parish Plan 2013-2028* - Commissioned by Kingsland Parish Council, based on the views contributed by people living or working in the parish of Kingsland. Sets out the vision, objectives and policies for Kingsland Parish
- *Kingsland Conservation Designation document and map* - Original map and description of the reasoning and description of the Kingsland Conservation Area

3.4 Appendix 1 of the Kingsland Neighbourhood Plan Scoping Report provides additional detail on the Plans and Policies mentioned above and identifies the implications for the SEA and NDP.

### SEA Objectives and Baseline

3.5 SEA objectives which were used in each scoping Stage A and B were.

SEA Objective	
1	To maintain or enhance nature conservation (biodiversity, flora and fauna)
2	To maintain or enhance the quality of landscapes and townscapes
3	To improve the quality of surroundings
4	To conserve or where appropriate enhance the historic environment and culture heritage
5	To improve air quality
6	To reduce the effect of traffic on the environment
7	To reduce contributions to climate change
8	To reduce vulnerability to climate change
9	To improve water quality
10	To provide for sustainable sources of water supply
11	To avoid, reduce and manage flood risk
12	To conserve soil resources and quality
13	To minimise the production of waste
14	To improve the health of the population
15	To reduce crime and nuisance
16	To conserve natural and manmade resources

- 3.6 The SEA objectives detailed above are in line with the SEA European Directive, and have derived from the Herefordshire Local Plan Core Strategy 2011-2031 Sustainability Appraisal.
- 3.7 Baseline characteristics within the SEA detail the current environmental status of environmental characteristics in the neighbourhood plan area from different sources. The source of Baseline Information used in Table A2 in Appendix 2, and analysed in Table B2 can be found in Appendix 4 Baseline characteristics in relation to the Kingsland Plan SEA objectives are listed below.

<b>SEA Objective</b>	<b>Baseline Data / Characteristic</b>	<b>Future Baseline trends</b>
To maintain and enhance nature conservation (biodiversity, flora and fauna)	<p>The 2011-2013 AMR does not contain updated conservation data. 2010/11: 27% of Herefordshire's SSSI land was in favourable condition. 05/08/14 – status of the SSSIs are: River Lugg-Unfavourable recovering. River Lugg meanders – favourable.</p> <p>The 2011-2013 AMR does not contain updated conservation data. 2010/11: 17 Habitat Action Plans and 14 Species Action Plans are currently in operation across Herefordshire. There are no NNRs and SINCs within the parish and 9 SWS's. The Kingsland Neighbourhood Area, falls inside the River Wye (including Lugg) SAC. This area is classed as the River Lugg sub Catchment for the purposes of the Nutrient Management Plan. The River Lugg section of the SAC is currently exceeding phosphate targets.</p>	<p>% of SSSI land in favourable condition (Increase)</p> <p>% of SSSI land in unfavourable condition but recovering (Increase)</p> <p>% of SSSI land in unfavourable condition and declining (Decrease)</p> <p>To capitalise on opportunities to enhance the areas of value to nature conservation as much as possible.</p>
To maintain and enhance the quality of landscapes and townscapes	<p>There are no outstanding enforcement actions or appeals concerning local loss of heritage assets and locally important buildings within Kingsland at present.</p>	<p>To wherever possible improve upon or otherwise maintain current status.</p> <p>To protect and where possible, enhance the areas of traditional orchard within the group parish.</p>
To improve quality of surroundings	<p>In terms of Kingsland itself, the play facilities study recommends that Kingsland Millennium Green should consider using additional space to provide play for older children. In addition Kingsland Parish has 5.64 ha of playing pitch area, 5.38 hectares of playing pitch area have secured community access. 95% of the playing pitches have secured community access.</p>	<p>No specific targets identified</p>
To conserve and where appropriate enhance the historic environment and cultural heritage	<p>Whilst there is no qualitative, locally specific data available at present, there are two scheduled monuments in Kingsland, according to the latest version of the register. Kingsland Castle is on English Heritage Scheduled Monuments at risk register. This is due to the castles localised problems-extensive stock erosion. The church of St Michael's and All Angels is also on the buildings at risk list.</p>	<p>To improve the condition of Kingsland Castle, and promote opportunities to achieve the removal of heritage assets from the at risk register.</p>

To improve air quality	Between 2005 and 2010 Herefordshire's total and per capita carbon emission reduced by 7% and 8% respectively; while UK's total and per capita carbon emission reduced by 8% and 12% respectively within the same period. This suggests that air quality is improving.	To reduce the overall carbon emissions.
To reduce the effect of traffic on the environment	% of Herefordshire residents who travel to work by: Car: 70.1%, Foot: 14.7%, Bicycle: 4.3%, Bus: 2%, Train: 0.8%, Motorbike: 0.8%, Taxi: 0.3%, Other: 7%.	To encourage the take up of lesser polluting modes of transport.
To reduce contributions to climate change	Herefordshire latest figure of CO2 emissions per capita-dates back to 2010: 1.61 million tonnes (mtCO <sub>2</sub> )	To reduce the overall carbon emissions.
To reduce vulnerability to climate change	Reduce the risk of flooding-There have been no approvals contrary to EA advice since reporting began in 2004. The 2011-2013 AMR does not contain updated conservation data.	To have no applications permitted contrary to EA advice.
To improve water quality	Percentage of river length assessed as good or very good chemical quality and ecological quality as required by the Water Framework Directive. Latest figure dates back to 2005: 84% The River Lugg section of the SAC is currently exceeding phosphate targets.	To ensure that rivers meet their conservation objectives and do not fall below the required standard of quality.  New development within the area could lead to the water quality failing the phosphate levels and conservation objectives.
To provide for sustainable sources of water supply	Kingsland falls within the Middle Lugg catchment, and has one of the lowest areas at risk of hazard flooding in the county. The WCS states that Kingsland requires general upgrading for pollution and wastewater treatment. Potentially adding additional waste treatment infrastructure.	No specific targets identified
To avoid, reduce and manage flood risk	Number of planning permissions granted contrary to the advice of the Environment Agency on flood defence grounds. The 2011-2013 AMR does not contain updated conservation data.	To have no applications permitted contrary to EA advice.
To conserve soil resources and quality	The agricultural land classification around Kingsland is mainly Grades 2 and 3 (Very good to Moderate). There are patches of Grade 4 land (poor) within the centre of the parish. Percentage of all new development completed on previously developed land. 2010/11: 67% 2011-13: 57%.	Measure the number of hectares of best and most versatile soil lost through development  To increase the number of homes built on PDL in line with the provisions of national planning policy
To minimise the production of waste	No baseline data available	No specific targets identified.
To improve health of the population	No baseline data available	No specific targets identified.

To reduce crime and nuisance	No baseline data available	No specific targets identified.
To conserve natural and manmade resources	There are numerous listed buildings within the parish and two SAMs. There are no outstanding enforcement actions or appeals concerning local loss of heritage assets and locally important buildings within Kingsland at present. The Parish Area has the following landscape types: Principal settled farmlands on river terrace; principal settled farmlands; estate farmlands.	To improve the condition of Kingsland Castle, and promote opportunities to achieve the removal of heritage assets from the at risk register.

3.8 The largest Environmental issue within the Parish that impacts upon the County as a whole is the water quality of the River Wye, there is the possibility that if it is not properly managed then any additional impact upon the quality of the water upstream of the Lugg confluence could mean that it would fail the targets further downstream. The River Lugg flows through the Parish and towards the River Lugg confluence. However, the NDP policies will look to mitigate against this and also the proposals in the Plan are not over and above the Core Strategy and therefore should not have a significant impact.

3.9 There are three objectives for which there is no local baseline data available and therefore this provides a limitation on the baseline data and whether the NDP policies are able to move towards or away from this data, this also means that there are no future trends to link the SEA objective too.

#### 4 Appraisal of the Plans objectives

4.1 The list of the Plans' objectives are as follows:

- Objective one: Ensure that the visual effect of all development preserves and enhances the traditional character of the parish and protects our landscape and historic environment
- Objective two: Ensure that all development is based upon sound environmental sustainability principles including energy sourcing and conservation, water and sewerage management, waste minimisation, wildlife conservation and habitat protection.
- Objective three: Ensure all infrastructure including services, facilities and amenities are retained and developed in line with the current needs and future growth of the community.
- Objective four: Provide sufficient housing to meet the future needs of the community, in terms of numbers and type, based upon robust evidence.
- Objective five: Ensure that new and existing business and commerce, including tourism, beneficial to the economic health of the parish, can grow and is in scale with and sensitive to the rural character of the parish.

4.2 Overall within stage B1 the majority of the NDP objectives have met SEA objectives, and the rest had either a neutral compatibility with the different objectives or had no relationship with the SEA objective.

4.3 The table below tests these NDP objectives against the SEA objectives, providing a summary of the results of Task B1 of SEA. The full results are available at Appendix 4 of this report.

Objectives verses SEA Objectives (Compatibility Test)	
SEA Stage B1	Key:
+ =	Compatible
- =	Possible conflict

0 =	Neutral
X =	No relationship between objectives
? =	Unclear, more information needed

NDP objectives	SEA Objectives															
	1	2	3	4	5	6	7	8	9	10	11	12	13	14	15	16
<b>Objective 1</b> -Ensure that the visual effect of all development preserves and enhances the traditional character of the parish and protects or landscape and historic environment.	+	+	+	+	x	x	x	x	x	x	X	+	+	x	x	+
<b>Objective 2</b> -Ensure that all development is based upon sound environmental sustainability principles including energy sourcing and conservation, water and sewerage management, waste minimization, wildlife conservation and habitat protection.	+	+	+	x	+	x	+	+	+	+	X	+	+	+	x	+
<b>Objective 3</b> -Ensure all infrastructure including services, facilities and amenities are retained and developed in line with the current needs and future growth of the community.	+	+	+	x	+	x	x	x	x	x	X	+	+	+	+	+
<b>Objective 4</b> -Provide sufficient housing to the meet the future needs of the community, in terms of numbers and type, based upon robust evidence.	x	+	+	x	x	x	x	x	x	x	X	x	x	+	+	x
<b>Objective 5</b> -Ensure that new and existing business and commerce, including tourism, beneficial to the economic health of the parish, can grow and is in scale with and sensitive to the rural character of the parish.	0	+	+	0	+	?	+	+	+	+	X	+	+	+	+	0

## 5 Appraisal of NDP Options

5.1 All options that were considered by Kingsland Parish during the development of their Plan have been assessed as part of the SEA, the summary matrix of the assessment can be found below but the full assessment can be seen in Table B2 options in Appendix 4. A description of each of the Options can be found in Appendix 5.

NDP Option	SEA objectives															
	1	2	3	4	5	6	7	8	9	10	11	12	13	14	15	16

Baseline	1	2	3	4	5	6	7	8	9	10	11	12	NA	NA	NA	13
Kingsland Village Option 1	+	+	?	?	x	?	?	x	x	x	+	+	x	x	x	?
Kingsland Village Option 2	?	?	?	?	x	?	?	?	x	x	?	?	x	x	x	?
Kingsland Village Option 3	+	+	?	+	x	?	?	?	x	x	?	?	x	x	x	?
Kingsland Village Option 4	?	?	?	?	x	?	?	?	x	x	?	?	x	x	x	?
Shirlheath Option 1	+	?	?	+	x	?	?	?	?	x	?	-	-	x	x	?
Shirlheath Option 2	?	+	?	+	x	?	?	?	?	x	?	+	-	x	x	+

5.2 The options covered the topics that are likely to formulate the topics going forward in the Plan. These options were formulated from the Parish Plan but were also considered at public consultation events across the Parish in June 2014. The results of which will feed into the identification of the preferred options and ultimately the draft policies.

5.3 A 'do nothing' option was also considered by the Parish, i.e. not undertaking a Neighbourhood Development Plan, however this was disregarded at an early stage by the Parish Council as it was highlighted within the Parish Plan that the majority of the community would support the work undertaken for a Neighbourhood Plan.

5.4 The Kingsland village options all had a generally positive or unknown impact upon the Baseline data and SEA objectives, in particular Option 1 and Option 3 would have the least impact upon the environment and move towards the SEA objectives. The Option 2 would be more unknown due to not knowing the location of the new settlement boundary; therefore the policy and definition of a new settlement boundary will need to consider the SEA objectives. Option 4 is an unknown impact due to not knowing where the new development will be located. This option states small scale development but no further details are included to understand how a policy would impact upon the baseline.

5.5 The Shirlheath village options all had a generally positive effect but with some unknown factors. Option 2 is the most favoured due to the least impact upon the environment and therefore moving towards the SEA objectives, this is due to the development being limited to small projects in line with agreed criteria although the details of where these locations are and what the criteria is have yet to be decided.

5.10 Overall all of the options had mainly a positive effect on the SEA objectives and baseline, if the policies that are developed incorporated the elements of the options that are ensuring mitigation of new development and additional details are provided for the location and design of any proposed site then the assessment of the policies should result in a positive result. As these options were generally moving towards the SEA objectives any further alternatives would probably be moving away and therefore no further options are required to be assessed.

## 6 Appraisal of the NDP draft Policies

6.1 B2 measured SEA objectives against the baseline with the NDP policies. A summary matrix of this assessment is in the table below, the full assessment is within Table B2 in Appendix 4.

This document is copyright of Herefordshire Council, please contact the Neighbourhood Planning team if you wish to reuse it in whole or part.

The majority of the NDP policies have a positive effect as the policies are mainly criteria based which is requesting that potential development adhere to each of the criteria, therefore most development will be considered on a case by case basis. Some policies have a move significantly towards the SEA objective and baseline if they focussed on promoting sustainability and sustainable transport as this would be over the existing requirements for the village and therefore would help to move the Neighbourhood Area as a whole towards meeting the SEA objectives. There are also some uncertain effects from new development as this depends on the scheme itself and therefore the true impact of each development will be known on a case by case basis. However, the criteria within the policies will ensure that maximum mitigation is undertaken to ensure that the policies are moving towards the SEA objectives.

NDP Policies	SEA OBJECTIVES															
	1	2	3	4	5	6	7	8	9	10	11	12	13	14	15	16
<b>Baseline</b>	1	2	3	4	5	6	7	8	9	10	11	12	NA	NA	NA	13
<b>Policy KNP1</b> Promoting a sustainable community	+	+	+	+	x	+	+	+	x	+	+	x	+	+	+	+
<b>Policy KNP2</b> Development Strategy	0	+	+	0	?	?	0	0	x	x	x	0	x	+	+	0
<b>Policy KNP3</b> Sustainable Design	+	+	+	+	+	++	+	?	+	+	+	+	?	+	?	+
<b>Policy KNP4</b> Retaining the rural character of Kingsland	+	+	+	+	+	x	x	x	x	x	x	+	+	x	+	+
<b>Policy KNP5</b> Protecting Kingsland's Heritage Assets	+	+	+	++	x	x	x	x	x	x	x	?	x	x	0	+
<b>Policy KNP6</b> Retaining the character of the Conservation area and Kingsland village	+	+	+	+	x	x	x	x	x	x	x	+	+	x	+	+
<b>Policy KNP7</b> Addressing the flood risk	+	+	+	+	x	x	+	+	+	x	+	+	x	+	x	+
<b>Policy KNP8</b> Highway and Transport Infrastructure	x	+	+	x	+	+	+	+	x	x	x	x	x	+	+	x
<b>Policy KNP9</b> Kingsland	x	+	+	x	+	x	x	x	+	+	x	+	x	+	x	x



Sewage Treatment works																	
<b>Policy KNP10</b> Community renewable energy	+	+	+	0	+	0	+	+	0	x	x	0	+	+	x	0	
<b>Policy KNP 11</b> Infrastructure for Broadband	+	+	+	+	+	+	+	+	x	x	x	+	+	+	+	+	
<b>Policy KNP 12</b> Protection and enhancement of services and facilities for the community	0	+	+	0	0	0	x	x	x	x	x	x	0	+	+	0	
<b>Policy KNP13</b> Public open space and play areas	+	+	+	+	+	x	x	x	x	x	x	+	x	+	+	+	
<b>Policy KNP 14</b> New Homes in Kingsland	0	+	+	?	0	0	+	+	0	0	0	0	0	+	+	0	
<b>Policy KNP15</b> New homes in Shirleath	0	+	+	?	0	0	?	x	?	x	?	+	+	+	+	+	
<b>Policy KNP16</b> Supporting Local Business	0	+	+	+	0	0	x	x	x	x	x	0	+	+	+	+	
<b>Policy KNP17</b> Agriculture, Forestry and rural enterprises	+	+	+	?	?	+	+	?	+	x	?	+	?	x	+	+	

6.2 Within Table B3, the results show that the cumulative impact over the time scale is generally positive. Although the development policies indicate that in the short term there may be a neutral or unknown impact due to the development works that would be undergoing, but within the middle and long term the effects often turn positive due to the criteria in additional NDP policies that provide mitigation methods against the development. Therefore the majority of the policies will be balanced with sustainable policies to minimise environmental impact. There are uncertain effects from new development as it this depends on the scheme itself and is likely to understand a developments true impact on a case by case basis.

6.3 Within the B4 assessment which identified the cumulative effects of the Plan's policies it was highlighted that the policies contained in the Kingsland Plan are not over and above the Core Strategy, therefore the cumulative effect will not exceed that of the Core Strategy Policies which have also been subject to a full Sustainability Appraisal.

6.4 Environmental issues and problems in the Neighbourhood Area that could arise from the Kingsland Plan could include the loss of some good quality agricultural land as it is Grade 2 around the parish of Kingsland, although within the centre of the village there are some areas of poor quality agricultural land. There will be some additional production of waste during the development phases of the houses, and an increase in traffic however this will be mitigated

This document is copyright of Herefordshire Council, please contact the Neighbourhood Planning team if you wish to reuse it in whole or part.

against to a certain extent by other policies within the Plan including Policy KNP3 and KNP8. Although the River Lugg (River Wye SAC) runs through the Parish boundary of the Parish / Neighbourhood Area it is unlikely that there will be a significant impact upon its quality as the scale of housing within the villages will not exceed the indicative targets set out in policy RA2 of the Herefordshire Core Strategy.

- 6.5 Mitigation measures have been included within the SEA assessment. The mitigation areas is mostly within design and conservation polices this may help balance out development as well as the Policies to help protect and enhance the local character of the area and green infrastructure. These policies will also help conserve and enhance biodiversity within the parish. This should help to provide mitigation against the potential adverse impacts from new development.

### **Neighbourhood Plan Policies**

- *Policy KNP1 – Promoting Sustainable Development*
- *Policy KNP2 – Development Strategy*
- *Policy KNP3 – Sustainable Design*
- *Policy KNP4 – Retaining the rural character of Kingsland Parish*
- *Policy KNP5 – Protecting Kingsland’s Heritage Assets*
- *Policy KNP6 – Retaining the character of the Conservation Area and Kingsland village*
- *Policy KNP7 – Addressing flood risk*
- *Policy KNP8 – Highways and transport infrastructure*
- *Policy KNP9 – Kingsland Sewage treatment works*
- *Policy KNP10 – Community renewable energy*
- *Policy KNP11 – Infrastructure for broadband*
- *Policy KNP12 – Protection and enhancement of services and facilities for the community*
- *Policy KNP13 – Public open space and play areas*
- *Policy KNP14 – New homes in Kingsland*
- *Policy KNP15 – New homes in Shirlheath*
- *Policy KNP16 – Supporting local business*
- *Policy KNP17 – Agriculture, forestry and rural enterprises*

### **Summary of recommendations for the Neighbourhood Development Plan**

- 6.6 The Kingsland plan objectives and policies comply with the local plan and the NPPF, they do not go over and above the Herefordshire Council Local Plan Core Strategy policies and therefore do not need any further recommendations or changes in order to ensure no significant effect on protected sites.

## **7 Monitoring and implementation**

This document is copyright of Herefordshire Council, please contact the Neighbourhood Planning team if you wish to reuse it in whole or part.

- 7.1 Herefordshire Council as the Local Planning Authority should make arrangements to monitor the significant effects of implementing a neighbourhood plan. Regulation 17 of the Environmental Assessment of Plans and Programmes Regulations 2004 requires the Local Planning Authority to monitor the significant environmental effects of the implementation of the neighbourhood plan that was subject to a Strategic Environmental Assessment, to identify unforeseen adverse effects at an early stage and to enable appropriate remedial actions.
- 7.2 The monitoring results will be reported in Herefordshire Council's Monitoring Report. Herefordshire Council will monitor outcomes for the Neighbourhood Develop Plan and polices. The topics within the Monitoring report consist of the following topic-housing delivery, previous developed land, housing completions, affordable housing conditions and employment land delivery. The report runs from April 1<sup>st</sup>-March 31<sup>st</sup> each year.

## **8 Next Steps**

- 8.1 This draft Environmental Report will be published alongside the Kingsland Draft Neighbourhood Plan for the formal consultation period in order to meet the requirements of Regulation 14 of the Neighbourhood Planning Regulations 2012, for a period of 6 weeks. This consultation will be for all members of the community who live, work or have an interest in the Parish as well as Statutory Stakeholders and the relevant technical stakeholders.
- 8.2 Following this consultation the results and comments will be reviewed, this may require changes to both the Draft Neighbourhood Plan and Environmental Report prior to submitting the Final Plan to Herefordshire Council.

# Appendix 1

---

**Initial Habitat Regulations Assessment and Strategic Environmental  
Assessment Screening Notification**

**The Neighbourhood Planning (General) Regulation 2012 (Reg. 32)**

**Conservation of Habitats and Species Regulations 2010 (d)**

---

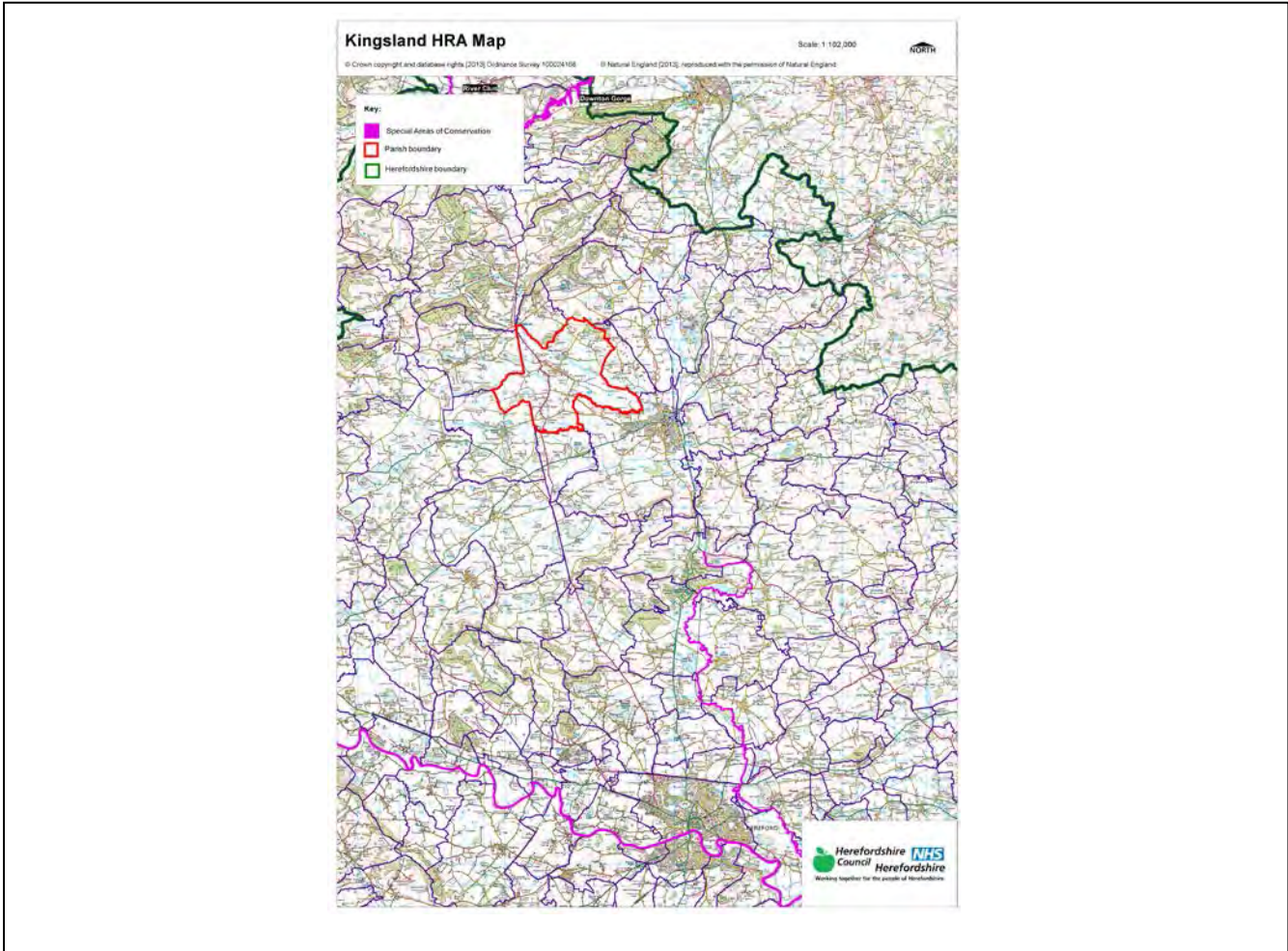
<b>Neighbourhood Area:</b>	Kingsland Neighbourhood Area
<b>Parish Council:</b>	Kingsland Parish Council
<b>Neighbourhood Area Designation Date:</b>	27/08/2013

### **Introduction**

This Initial Habitat Regulations Assessment (HRA) and Strategic Environmental Assessment (SEA) Screening has been undertaken to assess whether any European Sites exist within or in proximity to the Neighbourhood Area which could be affected by any future proposals or policies.

Through continual engagement the outcomes of any required assessments will help to ensure that proposed developments will not lead to Likely Significant Effects upon a European Site or cause adverse impacts upon other environmental assets, such as the built historic or local natural environment.

**HRA Initial Screening: Map showing relationship of Neighbourhood Area with European Sites  
(not to scale)**



**Initial HRA Screening**

**River Wye (including the River Lugg) SAC:**

Does the Neighbourhood Area have the River Wye (including the River Lugg) in or next to its boundary?	N	The River Wye and Lugg SAC is 7.5km away from the Parish
Is the Neighbourhood Area in the hydrological catchment of the River Wye (including the River Lugg) SAC?	Y	The Parish is within the River Lugg hydrological catchment area
If yes above, does the Neighbourhood Area have mains drainage to deal with foul sewage?	Y	There is mains drainage at Kingsland

**Downton Gorge SAC:**

Is the Neighbourhood Area within 10km of Downton Gorge SAC?	Y	Downton Gorge is 9.42km away from the Parish
---	---	--

**River Clun SAC:**

Does the Neighbourhood Area include: Border Group Parish Council or Leintwardine Group Parish Council?	N	River Clun does not border the Parish
--	---	---------------------------------------

**Usk Bat Sites SAC:**

Is the Neighbourhood Area within 10km of the SAC boundary?	N	Usk Bat Sites are 48.7km away from the Parish
--	---	---

**Wye Valley & Forest of Dean Bat Sites SAC:**

Is the Neighbourhood Area within 10km of any of the individual sites that make up the Wye Valley & Forest of Dean Bat Sites?	N	The Parish is 43.5km away from Wye Valley and Forest of Dean Bat Sites
--	---	--

**Wye Valley Woodlands SAC:**

Is the Neighbourhood Area within 10km of any of the individual sites that make up the Wye Valley Woodlands Site?	N	The Parish is 45.3km away from the Wye Valley Woodlands
--	---	---

**HRA Conclusion:**

The assessment above highlights that the following European Sites will need to be taken into account in the future Neighbourhood Development Plan for the Kingsland Neighbourhood Area and a Full HRA Screening will be required.

**European Site**

*(List only those which are relevant from above)*

River Wye (including the River Lugg) SAC

Downton Gorge SAC

**Strategic Environmental Assessment Initial Screening for nature conservation landscape and heritage features**

The following environmental features are within or in general proximity to the Kingsland Neighbourhood Area and would need to be taken into account within a Strategic Environmental Assessment. In addition, the NDP will also need to consider the other SEA topics set out in Guidance Note 9a to ensure that the plan does not cause adverse impacts.

<b>SEA features</b>	<b>Total</b>	<b>Explanation</b>	<b>SEA required</b>
Air Quality Management Areas	0	There are no AQMA's within the Parish	N
Ancient Woodland	8	Oaker Wood; Tylers Vallet (border); Tars Wood; Tars Coppice (border); Tank Wood; Chaff Wood (border); Church Wood (border); School Wood (border)	Y
Areas of Archaeological Interest	0	There are no AAIs within the Parish	N
Areas of Outstanding Natural Beauty	0	There are no AONBs within the Parish	N
Conservation Areas	1	There is a Conservation Area around Kingsland village	Y
European Sites	0	There are no SACs within the Parish	N
Flood Areas		There are Flood Zones 2 and 3 along the Rivers Lugg and Arrow as well as Pinsley Brook and tributaries off these 3 watercourses	Y
Listed Buildings	Numerous	There are numerous Listed Buildings throughout the Parish	Y
Local Sites (SWS/SINCS/RIGS)	9 SWS	River Arrow; Pinsley Brook; Field north of Harbour Farm; River Lugg; Tars Wood; Oaker Wood (2); Marsh Covert (border); Eyeton Common (border); Tylers Vallet (border)	Y
Long distance footpaths/trails	0	There are no long distance footpaths/trails within the Parish	N
Mineral Reserves	2	West of Cholstrey Mill to B4360 (border); Cholstrey, east and west of village (border)	Y
National Nature Reserve	0	There are no NNRs within the Parish	N
Registered & Unregistered parks and gardens	2 Unregistered	Eyton Old Hall (border); Eyton Hall (border)	Y
Scheduled Ancient Monuments	2	Kingsland Castle; Water Mills and quarry at Mortimer's Cross (border)	Y
Sites of Special Scientific Interest	1	River Lugg Meanders (Favourable); River Lugg (Unfavourable Recovering)	Y



**Decision Notification:**

The initial screening highlights that the Neighbourhood Development Plan for the Kingsland Neighbourhood Area:

- a) Will require further environmental assessment for Habitat Regulations Assessment and Strategic Environmental Assessment.

**Assessment date: 10/07/2013**

**Assessed by: James Latham**

## Appendix 1: European Sites

The table below provides the name of each European Site, which has been screened in for the purposes of neighbourhood planning in Herefordshire; includes their site features of integrity; and vulnerability data. This is based on the sites individual features of integrity and their vulnerabilities, which could include distance criteria. This has been used in identifying which parishes are likely to require a full HRA Screening of their future Neighbourhood Development Plan, to establish if their plan might have Likely Significant Effects on a European Site.

<b>Downton Gorge</b>
<b>Site Features:</b> <i>Tilio-Acerion</i> forests of slopes, screes and ravines
<b>Vulnerability data:</b> 10km for air quality associated with poultry units or other intensive agricultural practices.
<b>River Clun</b>
<b>Site Features:</b> Freshwater pearl mussel <i>Margaritifera margaritifera</i>
<b>Vulnerability data:</b> Water quality is important to maintain the site feature. Parishes either side of the River Clun will be affected.
<b>River Wye</b>
<b>Site Features:</b> Water courses of plain to montane levels with the <i>Ranunculion fluitantis</i> and <i>Callitricho-Batrachion</i> vegetation. Transition mires and quaking bogs. White-clawed (or Atlantic Stream) crayfish <i>Austropotamobius pallipes</i> . Sea lamprey <i>Petromyzon marinus</i> . Brook lamprey <i>Lampetra planeri</i> . River lamprey <i>Lampetra fluviatilis</i> . Twaite shad <i>Alosa fallax</i> . Atlantic salmon <i>Salmo salar</i> . Bullhead <i>Cottus gobio</i> . Otter <i>Lutra lutra</i> . Allis shad <i>Alosa alosa</i>
<b>Vulnerability data:</b> Proximity: Developments should not be within 100m of the designated bank. Some developments beyond 100m may also have impacts based on proximity and these issues should be addressed where possible when developing NDP policy and choosing site allocations. Water Quality: Within the whole catchment of the River Wye, which includes the River Lugg, mains drainage issues with regards to water quality are being resolved through the Core Strategy / Local Plan and development of a Nutrient Management Plan. Welsh Water should be consulted to ensure that the proposed growth will be within the limit of their consents. Otters: "An otter will occupy a 'home range', which on fresh waters usually includes a stretch of river as well as associated tributary streams, ditches, ponds, lakes and woodland. The size of a home range depends largely on the availability of food and shelter, and the presence of neighbouring otters. On rivers, a male's home range may be up to 40km or more of watercourse and associated areas; females have smaller ranges (roughly half the size) and favour quieter locations for breeding, such as tributary streams. Otters without an established home range are known as 'transients'. They are mostly juveniles looking for a territory of their own, or adults that have been pushed out of their territories. Transient otters may use an area for a short while, but they will move on if conditions are not suitable or if they are driven away by resident otters. Transients will have been important in extending the range of otters, but they are very difficult to identify from field signs. Within a home range an otter may use many resting sites. These include above-ground shelters, such as stands of scrub or areas of rank grass, and underground 'holts' – for example, cavities under tree roots and dry drainage pipes." (Source: EA website: <a href="http://www.environmentagency.gov.uk/static/documents/Business/Otters_the_facts.pdf">http://www.environmentagency.gov.uk/static/documents/Business/Otters_the_facts.pdf</a> accessed 09/04/2013)

### Usk Bat Site

**Site Features:** Annex I habitats present as a qualifying feature, but not a primary reason for site selection: European dry heaths, Degraded raised bogs still capable of natural regeneration, Blanket bogs, Calcareous rocky slopes with chasmophytic vegetation, Caves not open to the public, *Tilio-Acerion* forests of slopes, screes and ravines. Annex II species of primary reason for site selection: Lesser horseshoe bat *Rhinolophus hipposideros*, UK population 5%, although it is suggested this is an underestimate.

**Vulnerability data:** Lesser Horseshoe bats are known to migrate between 5km and 10km between their summer and winter roosts. The Lesser Horseshoe Bat is vulnerable to disturbance; light pollution; and habitat loss. Check with the planning ecologist for other issues.

### Wye Valley and Forest of Dean Bat Sites

**Site Features:** Annex II species that are a primary reason for site selection: Lesser horseshoe bat *Rhinolophus hipposideros*. Greater horseshoe bat *Rhinolophus ferrumequinum*

**Vulnerability data:** Lesser Horseshoe bats are known to migrate between 5km and 10km between their summer and winter roosts. The Lesser Horseshoe Bat is vulnerable to disturbance; light pollution; and habitat loss. Check with the planning ecologist for other issues.

Greater Horseshoe bats are known to migrate between 20-30km between their summer and winter roosts.

NDPs closest to the European Site will need to consider:

Woodland habitat buffer.

Lesser Horseshoe Bat: Old buildings; woodland locations; sheltered valleys, extensive deciduous woods or dense scrub, close to roost sites. In areas of fragmented habitats, linear habitats such as hedgerows are important corridors. Vulnerable to loss or disturbance of both summer and winter roosts and removal of linear habitat.

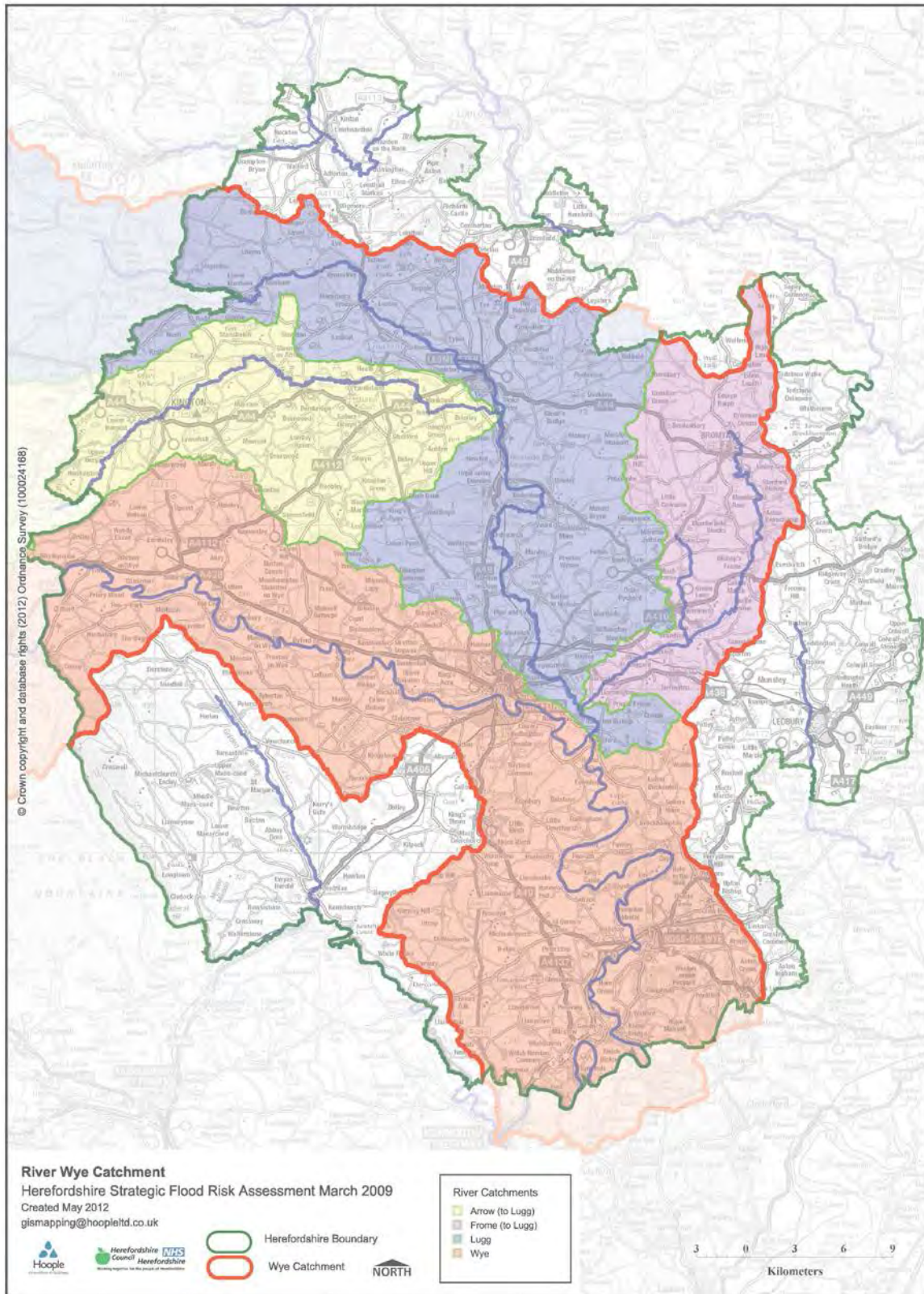
Greater Horseshoe Bat: Large buildings, pasture, edge of mixed deciduous woodland and hedgerows. Mixed land-use especially south-facing slopes, favours beetles, moths and insects they feed on. During the winter they depend on caves, abandoned mines and other underground sites for undisturbed hibernation. A system/series of sites required. Vulnerable to loss of insect food supply, due to insecticide use, changing farming practices and loss of broad-leaved tree-cover and loss / disturbance of underground roosts sites.

### Wye Valley Woodlands

**Site Features:** Annex I habitats that are a primary reason for site selection: Beech forests *Asperulo-Fagetum*, *Tilio-Acerion* forests of slopes, screes and ravines, *Taxus baccata* woods of the British Isles. Annex II species present as a qualifying feature, but not a primary reason for site selection: Lesser horseshoe bat *Rhinolophus hipposideros*, 51-100 residents

**Vulnerability data:** Lesser Horseshoe bats are known to migrate between 5km and 10km between their summer and winter roosts. The Lesser Horseshoe Bat is vulnerable to disturbance; light pollution; and habitat loss. Check with the planning ecologist for other issues. NDPs closest to the European Site will need to consider: Woodland habitat buffer. Lesser Horseshoe Bat: Old buildings; woodland locations; sheltered valleys, extensive deciduous woods or dense scrub, close to roost sites. In areas of fragmented habitats, linear habitats such as hedgerows are important corridors. Vulnerable to loss or disturbance of both summer and winter roosts and removal of linear habitat.

## Appendix 2: Wye Catchment Map

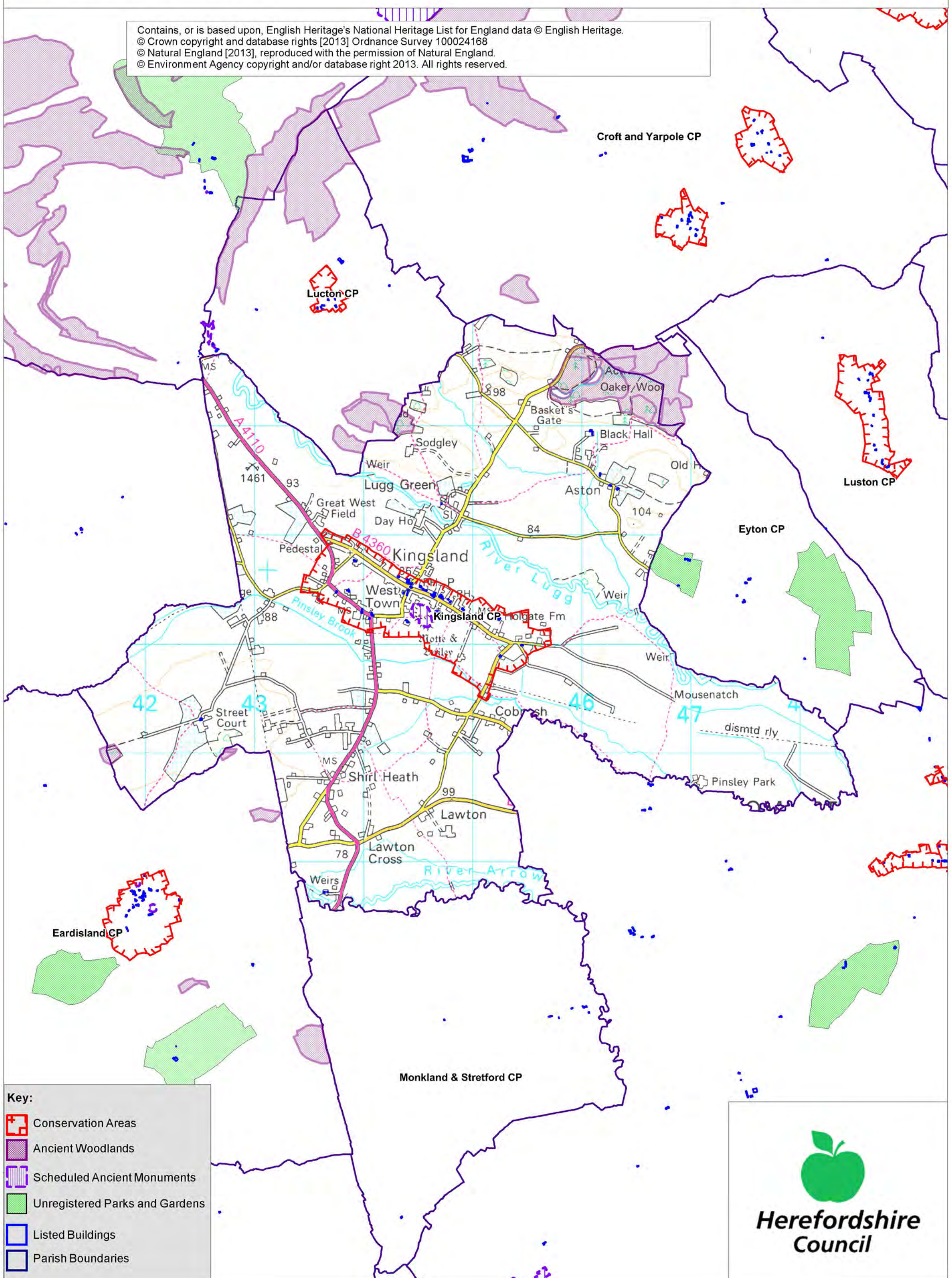


# Kingsland SEA Map 1

Scale: 1:30,000



Contains, or is based upon, English Heritage's National Heritage List for England data © English Heritage.  
© Crown copyright and database rights [2013] Ordnance Survey 100024168  
© Natural England [2013], reproduced with the permission of Natural England.  
© Environment Agency copyright and/or database right 2013. All rights reserved.



**Key:**

- Conservation Areas
- Ancient Woodlands
- Scheduled Ancient Monuments
- Unregistered Parks and Gardens
- Listed Buildings
- Parish Boundaries



**Herefordshire  
Council**

# Kingsland SEA Map 2

Scale: 1:30,000



Contains, or is based upon, English Heritage's National Heritage List for England data © English Heritage.  
© Crown copyright and database rights [2013] Ordnance Survey 100024168  
© Natural England [2013], reproduced with the permission of Natural England.  
© Environment Agency copyright and/or database right 2013. All rights reserved.



**Key:**

- Minerals Sites
- Sites of Special Scientific Interest
- Special Wildlife Sites
- Flood Zone 2
- Flood Zone 3
- Parish Boundaries

**Herefordshire Council**

# Appendix 2

# Strategic Environmental Assessment



## Kingsland Neighbourhood Area

Scoping Report

September 2014



## Consultation on the Scoping Report

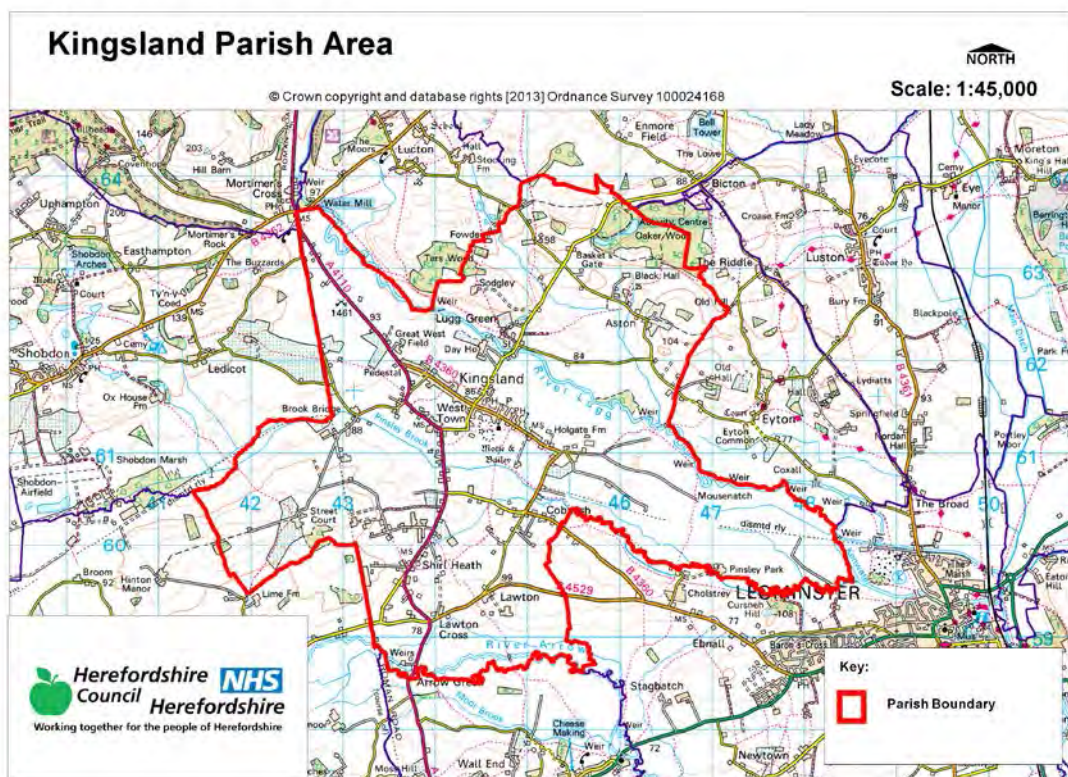
The aim of the consultation process is to involve and engage with statutory consultees and other relevant bodies on the scope of the appraisal. In particular, it seeks to:

- Ensure the SEA is both comprehensive and sufficiently robust to support the Neighbourhood Development Plan during the later stages of full public consultation;
- Seek advice on the completeness of the plan review and baseline data and gain further information where appropriate;
- Seek advice on the suitability of key sustainability issues;
- Seek advice on the suitability of the sustainability objectives.

Comments on this Scoping Report have been invited from the three consultation bodies as required by the SEA regulations, together with the Natural Resources Wales.

The three consultation bodies are as follows:

1. Natural England;
2. English Heritage;
3. Environment Agency.



## Template A1: Identification and review of local Neighbourhood Area relevant plans, policies and programmes

Parish Council Name: Kingsland

Neighbourhood Development Plan Name: Kingsland Plan

Date completed: June 2014

Plans and Programmes	Type of document	Date	Overview	Key message, target/objective/indicator	SEA topic(s) <sup>1</sup>	Implications for the NDP and SEA
The EC Conservation of Habitats and Species Regulations	European Union Legislation	2010	These regulations transpose the Habitats Directive in England, Wales and to a limited extent Scotland by ensuring that activities are carried out in accordance with the Habitats Directive, which is to protect biodiversity through the conservation of natural habitats and species of wild flora and fauna.	The Regulations make it an offence (subject to exceptions) to deliberately capture, kill, disturb, or trade in the animals listed in Schedule 2, or pick, collect, cut, uproot, destroy, or trade in the plants listed in Schedule 4. However, these actions can be made lawful through the granting of licenses by the appropriate authorities.	<ul style="list-style-type: none"> <li>Biodiversity</li> <li>Cultural heritage and the landscape</li> </ul>	The Neighbourhood Plan should be compliant with all the relevant legislation and regulations.
The EC Water Framework	European Union	2000	Commits all EU member states to achieve good	Aims for 'good status' for all ground and surface waters (rivers, lakes,	<ul style="list-style-type: none"> <li>Water</li> </ul>	The Neighbourhood Plan should be compliant with all the

<sup>1</sup> Derived from the LDF General Scoping Report (June 2007)

This document is copyright of Herefordshire Council, please contact the Neighbourhood Planning team if you wish to reuse it in whole or part.

Plans and Programmes	Type of document	Date	Overview	Key message, target/objective/indicator	SEA topic(s) <sup>1</sup>	Implications for the NDP and SEA
Directive			qualitative and quantitative status of all water courses by 2015	transitional waters, and coastal waters) in the EU		relevant legislation and regulations.
The Wildlife and Countryside Act (1981)	Domestic Legislation	1981	The major legal instrument for wildlife protection in Britain, although other significant acts have been passed since. It has numerous parts and supplementary lists and schedules many of which have been amended since publication.	The principle mechanism for the legislative protection of wildlife in Great Britain.	<ul style="list-style-type: none"> <li>• Biodiversity</li> <li>• Cultural heritage and the landscape</li> <li>• Flora and fauna</li> <li>• Material assets</li> <li>• Soil</li> </ul>	The Neighbourhood Plan should be compliant with all the relevant legislation and regulations.
The Countryside and Right of Way Act (2000)	Domestic Legislation	2000	Creates a statutory right of access on foot to certain types of open land, to modernise the public rights of way system, to strengthen nature conservation legislation, and to facilitate better management of AONBs.	<p>The Act provides for a new right of access on foot to areas of open land comprising: Mountain (land over 600 metres); Moorland; Heath; Downland; Registered common land.</p> <p>There are provisions to consider extending the right in the future to coastal land, but not woodland</p>	<ul style="list-style-type: none"> <li>• Biodiversity</li> <li>• Cultural heritage and the landscape</li> <li>• Flora and fauna</li> <li>• Material assets</li> <li>• Soil</li> </ul>	The Neighbourhood Plan should be compliant with all the relevant legislation and regulations.

This document is copyright of Herefordshire Council, please contact the Neighbourhood Planning team if you wish to reuse it in whole or part.

Plans and Programmes	Type of document	Date	Overview	Key message, target/objective/indicator	SEA topic(s) <sup>1</sup>	Implications for the NDP and SEA
				despite some early publicity suggesting this.		
The Natural Environment and Rural Communities Act (2006)	Domestic Legislation	2006	Designed to help achieve a rich and diverse natural environment and thriving rural communities through modernised and simplified arrangements for delivering Government policy.	Provides that any public body or statutory undertaker in England and Wales must have regard to the purpose of conservation of biological diversity in the exercise of their functions.	<ul style="list-style-type: none"> <li>• Biodiversity</li> <li>• Cultural heritage and the landscape</li> <li>• Flora and fauna</li> <li>• Material assets</li> <li>• Soil</li> </ul>	The Neighbourhood Plan should be compliant with all the relevant legislation and regulations.
Revised EU Sustainable Development strategy	European Union Strategy	2009	Sets out a single strategy on how the EU will more effectively meet its long-standing commitment to meet the challenges of sustainable development.	Recognises the need to gradually change current unsustainable consumption and production patterns and move towards a better integrated approach to policy making. The Strategy sets overall objectives, targets and concrete actions for seven key priority challenges, predominantly environmental: <ul style="list-style-type: none"> <li>• Climate change and clean energy;</li> <li>• Sustainable transport</li> </ul>	<ul style="list-style-type: none"> <li>• Air</li> <li>• Climate factors</li> <li>• Cultural heritage and the landscape</li> <li>• Population and human health</li> </ul>	The Neighbourhood Plans should take into account the objectives of the strategy. The aim of sustainable development should be implicit in its approach.

This document is copyright of Herefordshire Council, please contact the Neighbourhood Planning team if you wish to reuse it in whole or part.

Plans and Programmes	Type of document	Date	Overview	Key message, target/objective/indicator	SEA topic(s) <sup>1</sup>	Implications for the NDP and SEA
				<ul style="list-style-type: none"> <li>• Sustainable production and consumption;</li> <li>• Public health threats;</li> <li>• Better management of natural resources;</li> <li>• Social inclusion, demography and migration;</li> <li>• Fighting global poverty.</li> </ul>		
National Planning Policy Framework (NPPF)	National planning policy.	2012	Consolidates the suite of PPG/PPS into one succinct planning policy document.		<ul style="list-style-type: none"> <li>• Air</li> <li>• Biodiversity</li> <li>• Climate factors</li> <li>• Cultural heritage and the landscape</li> <li>• Flora and fauna</li> <li>• Material assets</li> <li>• Population and human health</li> <li>• Soil</li> <li>• Water</li> </ul>	The NDP should take into account the relevant policies set within the NPPF.
Planning Practice Guidance	Government Guidance	2014	Provides guidance to local planning authorities and others on the operation of the planning system.		<ul style="list-style-type: none"> <li>• Air</li> <li>• Biodiversity</li> <li>• Climate factors</li> <li>• Cultural heritage and the landscape</li> <li>• Flora and fauna</li> <li>• Material assets</li> <li>• Population and</li> </ul>	The NDP should take into account the planning guidance provided within these documents.

This document is copyright of Herefordshire Council, please contact the Neighbourhood Planning team if you wish to reuse it in whole or part.

Plans and Programmes	Type of document	Date	Overview	Key message, target/objective/indicator	SEA topic(s) <sup>1</sup>	Implications for the NDP and SEA
					human health <ul style="list-style-type: none"> <li>• Soil</li> <li>• Water</li> </ul>	
Herefordshire Core Strategy, Pre-submission document 2011-2031	Development Plan Document (DPD)	2013	<p>Sets out the vision, objectives and policies for the Herefordshire Local Plan (Core Strategy), which will guide development across the county up to 2031.</p>	<p>Outlines the emerging suite of countywide planning policies relating to housing, economic development and the environment, which the NDP will need to be in conformity with where relevant.</p> <p>The Core Strategy includes a range of objectives, five of which directly relate to rural areas:</p> <ul style="list-style-type: none"> <li>• To meet the housing needs of all sections of the community</li> <li>• To improve access to services in rural areas</li> <li>• To strengthen the economic viability of the villages and their rural hinterlands</li> <li>• To achieve sustainable communities and protect</li> </ul>	<ul style="list-style-type: none"> <li>• Air</li> <li>• Biodiversity</li> <li>• Climate factors</li> <li>• Cultural heritage and the landscape</li> <li>• Flora and fauna</li> <li>• Material assets</li> <li>• Population and human health</li> <li>• Soil</li> <li>• Water</li> </ul>	<p>The NDP should take account of relevant policies set within in the Core Strategy.</p> <p>Where necessary, the NDP should provide services, facilities and employment opportunities that are accessible to both local and neighbouring communities.</p> <p>Kingsland and Shirlheath are classified as RA1 settlements, therefore Kingsland's Neighbourhood Development Plan must take into consideration proportionate housing development.</p> <p>Approx 44 dwellings will need to be delivered within the village of Kingsland.</p> <p>Approx. 7 dwellings</p>

This document is copyright of Herefordshire Council, please contact the Neighbourhood Planning team if you wish to reuse it in whole or part.

Plans and Programmes	Type of document	Date	Overview	Key message, target/objective/indicator	SEA topic(s) <sup>1</sup>	Implications for the NDP and SEA
				<p>the environment</p> <ul style="list-style-type: none"> <li>• To conserve, promote, utilise and enjoy our natural, built, historic and cultural assets for the fullest benefit of the whole community.</li> <li>• To achieve a thriving rural Herefordshire, the Core Strategy seeks to enhance the role the villages have traditionally played in as accessible, sustainable centres for their rural catchments.</li> <li>• Seeks proportional growth of up to 14% in Kingsland (Leominster HMA) over the plan period.</li> </ul>		<p>should be provided for in Shirleath.</p> <p>Cobnash is classified as an RA2 settlement, and should adhere to the RA2 policy; accepting affordable housing needs only.</p>

Plans and Programmes	Type of document	Date	Overview	Key message, target/objective/indicator	SEA topic(s) <sup>1</sup>	Implications for the NDP and SEA
Herefordshire Local Transport Plan 3 (LTP) 2013-2015	Corporate	2013	Sets out the Council's strategy for supporting economic growth, social inclusion and reducing the environmental impacts of transport, as well as the program of investment for the period April 2013 to April 2015.	The document includes three key objectives, one which seeks to maintain access for rural residents and people without access to a car. Intrinsic to this is the retention of a 'core network' of bus services which focus on journeys between Hereford and the market towns, along with main transport corridors close to larger rural settlements. To this end, the strategy aims to increase the number of bus users by 1.3% (4,700 journeys) by 2015.	<ul style="list-style-type: none"> <li>• Air</li> <li>• Climate factors</li> <li>• Population and human health</li> </ul>	The LTP does not explore current transport issues in the Kingsland neighbourhood area, but any new development proposed through the NDP should seek to reduce the environmental impacts of transport.

This document is copyright of Herefordshire Council, please contact the Neighbourhood Planning team if you wish to reuse it in whole or part.



Plans and Programmes	Type of document	Date	Overview	Key message, target/objective/indicator	SEA topic(s) <sup>1</sup>	Implications for the NDP and SEA
Understanding Herefordshire Report	Built and natural environment	2014	<p>Important to understand the place such as the local economy natural and built environment in which people live, learn and work as part of understanding their quality of life</p> <p>Enable development for economy and housing to required levels.</p> <p>Growth should be supported by sustainable transport measures.</p>	An air quality management plan is in place to tackle this. Destination Hereford project is in place to give locals more sustainable transport options.	<p>Improve air quality.</p> <p>Have a more diverse range of transport options.</p>	None identified.
Malvern Hills AONB Management Plan 2009-2014	Corporate	2009	Identifies the issues and challenges facing the special features of the area and contains 24 guiding principles and 46 strategic objectives which will help address them.		<ul style="list-style-type: none"> <li>• Air</li> <li>• Biodiversity</li> <li>• Climate factors</li> <li>• Cultural heritage and the landscape</li> <li>• Flora and fauna</li> <li>• Material assets</li> <li>• Population and human health</li> <li>• Soil</li> <li>• Water</li> </ul>	The Kingsland Plan neighbourhood Area is not within or adjacent to the Malvern Hills AONB.

This document is copyright of Herefordshire Council, please contact the Neighbourhood Planning team if you wish to reuse it in whole or part.

<b>Plans and Programmes</b>	<b>Type of document</b>	<b>Date</b>	<b>Overview</b>	<b>Key message, target/objective/indicator</b>	<b>SEA topic(s)<sup>1</sup></b>	<b>Implications for the NDP and SEA</b>
Wye Valley AONB management Plan 2009-2014	Corporate	2009	The Management Plan is the prime document which sets out the vision for the area and the priorities for its management.		<ul style="list-style-type: none"> <li>• Air</li> <li>• Biodiversity</li> <li>• Climate factors</li> <li>• Cultural heritage and the landscape</li> <li>• Flora and fauna</li> <li>• Material assets</li> <li>• Population and human health</li> <li>• Soil</li> <li>• Water</li> </ul>	The Kingsland Plan neighbourhood Area is not within or adjacent to the Wye Valley AONB.

Plans and Programmes	Type of document	Date	Overview	Key message, target/objective/indicator	SEA topic(s) <sup>1</sup>	Implications for the NDP and SEA
Herefordshire Economic Development Strategy 2011-2016	Corporate	2011	Aims to increase the economic wealth of Herefordshire by setting out proposals and to support business growth up to 2016.	<p>The document outlines the path and direction to foster economic vitality within Herefordshire. Key objectives therefore include:</p> <ul style="list-style-type: none"> <li>• Sustaining business survival and growth</li> <li>• Increasing wage levels, range and quality of jobs</li> <li>• Having a skilled population to meet future work needs</li> <li>• Developing the county's built infrastructure so enterprise can flourish.</li> </ul>	<ul style="list-style-type: none"> <li>• Cultural heritage and the landscape</li> <li>• Material assets</li> <li>• Population and human health</li> </ul>	None of merit.

Plans and Programmes	Type of document	Date	Overview	Key message, target/objective/indicator	SEA topic(s) <sup>1</sup>	Implications for the NDP and SEA
Herefordshire Employment Land Study	Evidence	2012	Includes employment land assessments for the plan period 2011-2031. The study includes Quantitative and Qualitative assessments of employment land, assessment of market demand and need, as well as providing forecasts and recommendations for future employment need over the plan period.	<p>This study covers existing employment sites in Hereford, the five market towns and their rural hinterlands.</p> <p>There are no employment land allocations within Kingsland at present and so the study does not identify sites which are worthy of continued protection from alternative uses. Nor does it make any recommendations in respect of employment need within the neighbourhood area. Employment land has been allocated to Leominster, this may effect inhabitants of Kingsland in terms of employment.</p>	<ul style="list-style-type: none"> <li>• Material assets</li> <li>• Population and human health</li> </ul>	None of merit; however the NDP process may have to explore whether there is any employment need locally and if so whether there is any scope for providing employment land and premises.

Plans and Programmes	Type of document	Date	Overview	Key message, target/objective/indicator	SEA topic(s) <sup>1</sup>	Implications for the NDP and SEA
Herefordshire Strategic Housing Land Availability Assessment (SHLAA)	Evidence	2009	<p>The SHLAA aims to justify site allocations in plans by:</p> <ul style="list-style-type: none"> <li>Identifying sites which are capable of delivering housing development</li> <li>Assessing sites for their housing potential; and</li> <li>Predicting when a site could be developed for housing.</li> </ul>	<p>In terms of Kingsland, previous SHLAA identifies that:</p> <ul style="list-style-type: none"> <li>212 additional dwellings could be provided on 7 sites in and around the existing settlement.</li> </ul> <p>Of the 212 dwellings, 115 could be provided in 1-10 years, and 95 in 11-20 years.</p>	<ul style="list-style-type: none"> <li>Air</li> <li>Biodiversity</li> <li>Climate factors</li> <li>Cultural heritage and the landscape</li> <li>Flora and fauna</li> <li>Population and human health</li> <li>Soil</li> <li>Water</li> </ul>	<p>The SHLAA assesses the potential availability of land for housing in Kingsland.</p> <p>The Kingsland NDP should be informed by the findings of the SHLAA.</p>

Plans and Programmes	Type of document	Date	Overview	Key message, target/objective/indicator	SEA topic(s) <sup>1</sup>	Implications for the NDP and SEA
Herefordshire Local Housing Market Assessment (LHMA)	Evidence	2013	Builds on an earlier Strategic Housing Market Assessment (SHMA) developed for Herefordshire and Shropshire. Its purpose is to inform the Local Plan's policies regarding housing need and demand (for market and affordable housing) within each of the 7 Housing Market Areas (HMAs) in Herefordshire between 2011 and 2031.	<p>Kingsland fall within the Leominster HMA. Here, the study reveals that:</p> <ul style="list-style-type: none"> <li>• 55% of households are unable to afford market housing.</li> <li>• There is an annual requirement for 190 affordable dwellings between 2012 and 2030.</li> <li>• The study identifies that, between 2011-2031 in rural parts of Leominster HMA, there is a need for <ul style="list-style-type: none"> <li>• 548 Market houses</li> <li>• 183 Affordable houses</li> </ul> </li> </ul> <p>The study highlights that within the Leominster HMA the overall estimated housing need by size 2012-2017 is as follows: 1 Bed 77.1%, 2 bed: 21.6%, 3 bed:10.4%, 4 bed: 11.7%.</p>	<ul style="list-style-type: none"> <li>• Air</li> <li>• Biodiversity</li> <li>• Climate factors</li> <li>• Cultural heritage and the landscape</li> <li>• Flora and fauna</li> <li>• Population and human health</li> <li>• Soil</li> <li>• Water</li> </ul>	<p>The LHMA provides an indication of housing needs and affordability within the Leominster HMA.</p> <p>It provides evidence that could be used to inform policies or market and affordable housing requirements in the NDP.</p>

This document is copyright of Herefordshire Council, please contact the Neighbourhood Planning team if you wish to reuse it in whole or part.

Plans and Programmes	Type of document	Date	Overview	Key message, target/objective/indicator	SEA topic(s) <sup>1</sup>	Implications for the NDP and SEA
Herefordshire Local Housing Requirements Study	Evidence	2012	Technical assessment of the housing market and potential future local housing requirements which supports planning policy regarding the amount of growth, housing tenure and housing type needed within Herefordshire up to 2031.	<p>The delivery of 5,300 homes in the rural areas would:</p> <ul style="list-style-type: none"> <li>• Support growth in the rural population by 6%</li> <li>• Increase the number of households by 14.5%</li> </ul> <p>Forecasts also predict that growth in the population of the rural areas is likely to be primarily through an increase in those aged over 75.</p> <p>Moderate growth is expected in the 30-44 and 60-74 age brackets.</p> <p>The Local Housing Requirements Study therefore anticipates continuing improvements in life expectancy; significant growth is expected of those in their 80s, with the existing population in their 40s and 50s moving into retirement. As a consequence, the rural areas will face an increasing urgency to</p>	<ul style="list-style-type: none"> <li>• Air</li> <li>• Biodiversity</li> <li>• Climate factors</li> <li>• Cultural heritage and the landscape</li> <li>• Flora and fauna</li> <li>• Material assets</li> <li>• Population and human health</li> <li>• Soil</li> <li>• Water</li> </ul>	<p>This study provides an indication of housing requirements in the rural areas and the Leominster HMA.</p> <p>This evidence can be used to inform the content of the Kingsland NDP, which could include policies to facilitate the provision of the right types of homes in the right places.</p>

This document is copyright of Herefordshire Council, please contact the Neighbourhood Planning team if you wish to reuse it in whole or part.

Plans and Programmes	Type of document	Date	Overview	Key message, target/objective/indicator	SEA topic(s) <sup>1</sup>	Implications for the NDP and SEA
				provide more 3 bedroom homes, with more 1 and 2 bed homes required in the affordable sector.		
Herefordshire Rural Housing Background Report	Evidence	2013	Provides the justification for the proportional housing growth targets outlined in the Core Strategy	The villages of and Shirleath are listed as an RA1 settlement, which means they are considered a sustainable location for proportional growth of up to 14%.	<ul style="list-style-type: none"> <li>• Air</li> <li>• Biodiversity</li> <li>• Climate factors</li> <li>• Cultural heritage and the landscape</li> <li>• Flora and fauna</li> <li>• Material assets</li> <li>• Population and human health</li> <li>• Soil</li> <li>• Water</li> </ul>	The Kingsland NDP will need to be in conformity with the provisions of Policy RA1 and RA2.

This document is copyright of Herefordshire Council, please contact the Neighbourhood Planning team if you wish to reuse it in whole or part.



Plans and Programmes	Type of document	Date	Overview	Key message, target/objective/indicator	SEA topic(s) <sup>1</sup>	Implications for the NDP and SEA
Herefordshire Draft Gypsies and Travellers Assessment	Evidence	2013	Assesses the accommodation needs of Gypsies and Travellers across Herefordshire.	<p>Key findings from the survey of Gypsy and Traveller households in 2012 found that:</p> <ul style="list-style-type: none"> <li>• 31% of households surveyed have some sort of accommodation need</li> <li>• Of the 17 households with an accommodation need, 7 had a requirement for at least one additional pitch</li> <li>• 10 households had a requirement for bricks and mortar housing</li> <li>• There is an additional requirement for 7 pitches and 9 units of Registered Social Landlord accommodation within Herefordshire.</li> </ul>	<ul style="list-style-type: none"> <li>• Air</li> <li>• Biodiversity</li> <li>• Climate factors</li> <li>• Cultural heritage and the landscape</li> <li>• Flora and fauna</li> <li>• Material assets</li> <li>• Population and human health</li> <li>• Soil</li> <li>• Water</li> </ul>	The Kingsland NDP must establish whether any of the need identified in this assessment falls within the neighbourhood area and make appropriate provisions for it.

This document is copyright of Herefordshire Council, please contact the Neighbourhood Planning team if you wish to reuse it in whole or part.

Plans and Programmes	Type of document	Date	Overview	Key message, target/objective/indicator	SEA topic(s) <sup>1</sup>	Implications for the NDP and SEA
Herefordshire Local Biodiversity Action Plan	Evidence	2007	Focuses conservation efforts on the areas within Herefordshire that will result in the greatest benefit for ecological networks, habitats and species.	Integrating biodiversity objectives with other environmental, social and economic needs can provide a sustainable living and working environment that benefits both people and nature.	<ul style="list-style-type: none"> <li>• Biodiversity</li> </ul>	The NDP can help to achieve the LBAP priorities.
Building Biodiversity into the LDF	Evidence	2009	Provides the Council's Local Plan (Core Strategy) with evidence in respect of biodiversity and geodiversity, identifying both opportunities and constraints across Herefordshire.	This document provides useful information in respect of Hereford and the market towns only.	<ul style="list-style-type: none"> <li>• Air</li> <li>• Biodiversity</li> <li>• Climate factors</li> <li>• Cultural heritage and the landscape</li> <li>• Flora and fauna</li> <li>• Material assets</li> <li>• Population and human health</li> <li>• Soil</li> <li>• Water</li> </ul>	There is a lack of information about rural areas which means it will be necessary to gather and assess existing biodiversity and geodiversity data, in order to ensure that the Kingsland NDP can overcome any existing constraints and capitalise on opportunities to enhance habitats and their networks.

This document is copyright of Herefordshire Council, please contact the Neighbourhood Planning team if you wish to reuse it in whole or part.

Plans and Programmes	Type of document	Date	Overview	Key message, target/objective/indicator	SEA topic(s) <sup>1</sup>	Implications for the NDP and SEA
Herefordshire Green Infrastructure Strategy	Evidence	2010	Develops a framework of natural and culturally important features and functions so that planning for a sustainable future is at the heart of planning within Herefordshire.	Establishes policies and principles for the protection and enhancement of those features and functions that contributes to the environment of Herefordshire across a range of scales.	<ul style="list-style-type: none"> <li>• Air</li> <li>• Biodiversity</li> <li>• Climate factors</li> <li>• Cultural heritage and the landscape</li> <li>• Flora and fauna</li> <li>• Material assets</li> <li>• Population and human health</li> <li>• Soil</li> <li>• Water</li> </ul>	The study provides evidence that could be taken into account when preparing policies for the Kingsland NDP.
Renewable Energy Study	Evidence	2010	Assesses the energy demand within Herefordshire and the ability for the county to accommodate renewable and low carbon energy technologies.	<p>The total energy demand excluding transport for Herefordshire, at that point in time, was calculated as being:</p> <ul style="list-style-type: none"> <li>• Electrical: 731 GWh/yr</li> <li>• Heat: 1,810 GWh/yr</li> <li>• Total: 2,541 GWh/yr</li> </ul> <p>There is scope for all types of renewable energy production.</p>	<ul style="list-style-type: none"> <li>• Air</li> <li>• Biodiversity</li> <li>• Climate factors</li> <li>• Cultural heritage and the landscape</li> <li>• Flora and fauna</li> <li>• Material assets</li> <li>• Population and human health</li> <li>• Soil</li> <li>• Water</li> </ul>	The study provides evidence that could be taken into account when preparing policies for the Kingsland NDP.

Plans and Programmes	Type of document	Date	Overview	Key message, target/objective/indicator	SEA topic(s) <sup>1</sup>	Implications for the NDP and SEA
Herefordshire Playing Pitch Assessment	Evidence	2012	Produces a strategic framework, audit and assessment and needs analysis of outdoor sports pitches and facilities for Herefordshire. The document arises as a result of a recommendation in the Herefordshire and Worcestershire Sports Facilities Framework to develop local standards for playing fields and sports pitches throughout Herefordshire.	<p>The study updates components of the Herefordshire and Worcestershire Sports Facilities Framework 2010 such as updating population forecasts, setting local standards for synthetic turf pitches and grass playing fields within Herefordshire. It identifies any current gaps in provision, and looks forward to 2031 to assess what facilities are likely to be required by that date.</p> <p>In terms of Kingsland parish itself, the study reveals that there is:</p> <ul style="list-style-type: none"> <li>• 5.64 ha of playing pitch area.</li> <li>• 5.38 hectares of playing pitch area have secured community access. 95% of the playing pitches have secured community access.</li> </ul>	<ul style="list-style-type: none"> <li>• Biodiversity</li> <li>• Cultural heritage and the landscape</li> <li>• Flora and fauna</li> <li>• Material assets</li> <li>• Population and human health</li> </ul>	The study provides evidence that could be taken into account when preparing policies for the Kingsland NDP.

This document is copyright of Herefordshire Council, please contact the Neighbourhood Planning team if you wish to reuse it in whole or part.

Plans and Programmes	Type of document	Date	Overview	Key message, target/objective/indicator	SEA topic(s) <sup>1</sup>	Implications for the NDP and SEA
Open Spaces Study	Evidence	2006	The 2006 space audit and assessment of need is a snapshot of the quality, quantity and distribution of open space across Herefordshire.	<p>The study reveals that within the Leominster Area, to which Kingsland is situated, there is</p> <ul style="list-style-type: none"> <li>• Extensive under provision of parks and gardens and outdoor sport.</li> <li>• Extensive over provision of natural and semi natural Green space.</li> <li>• Under provision of amenity green space.</li> <li>• Average provision for children and young people.</li> </ul>	<ul style="list-style-type: none"> <li>• Biodiversity</li> <li>• Climate factors</li> <li>• Cultural heritage and the landscape</li> <li>• Flora and fauna</li> <li>• Material assets</li> <li>• Population and human health</li> </ul>	The open space audit and assessment of does not give a specific indication of open space shortfalls and surpluses in Kingsland Parish.

Plans and Programmes	Type of document	Date	Overview	Key message, target/objective/indicator	SEA topic(s) <sup>1</sup>	Implications for the NDP and SEA
Play Facilities Study	Evidence	2012	The Play Facilities Study 2012 updates the previous play facilities analysis under the Open Spaces Study 2006 and provides guidance and a framework for the development, delivery and continued sustainability of providing new and improved play facilities for children and young people in Herefordshire to 2031.	<p>In terms of Kingsland itself, Kingsland Primary School has a formal play area.</p> <p>The study recommends that Kingsland Millennium Green, should consider using additional space to provide play for older children. This suggestion is supported by the Parish Council and is listed as a medium priority.</p>	<ul style="list-style-type: none"> <li>• Biodiversity</li> <li>• Climate factors</li> <li>• Cultural heritage and the landscape</li> <li>• Flora and fauna</li> <li>• Material assets</li> <li>• Population and human health</li> </ul>	The study provides evidence that could be taken into account when preparing policies for the Kingsland NDP.

Plans and Programmes	Type of document	Date	Overview	Key message, target/objective/indicator	SEA topic(s) <sup>1</sup>	Implications for the NDP and SEA
Strategic Flood Risk Assessment (SFRA) and Water Cycle Study	Evidence	2009	<p>The Strategic Flood Risk Assessment (SFRA) provides a summary of flood risk in Herefordshire to inform the location of future development.</p> <p>The Water Cycle Study examines how water resources and water supply infrastructure, wastewater treatment, water quality, sewerage and flood risk could constrain growth across Herefordshire.</p>	<p>Kingsland falls within the Middle Lugg catchment, and has one of the lowest areas at risk of hazard flooding in the county.</p> <ul style="list-style-type: none"> <li>The Middle Lugg has a 20-25% standard run percentage run off by sub catchment. This is potentially moderately suitable for infiltration source control.</li> <li>The Middle Lugg has a slow flood response (Tp-time to peak) time at around 9-10 hours.</li> <li>The WCS states that Kingsland requires general upgrading for pollution and wastewater treatment. Potentially adding additional waste treatment infrastructure.</li> </ul>	<ul style="list-style-type: none"> <li>Biodiversity</li> <li>Climate factors</li> <li>Material assets</li> <li>Population and human health</li> <li>Water</li> </ul>	<p>New development proposed through the Kingsland NDP should be assessed against the capacity of local infrastructure.</p> <p>Up-to-date flood risk information should be gathered from the Environment Agency, in order to ensure that any flood risks are considered when preparing the Kingsland NDP.</p>

This document is copyright of Herefordshire Council, please contact the Neighbourhood Planning team if you wish to reuse it in whole or part.

Plans and Programmes	Type of document	Date	Overview	Key message, target/objective/indicator	SEA topic(s) <sup>1</sup>	Implications for the NDP and SEA
Kingsland Parish Plan 2013-2028	Evidence	2013	Commissioned by Kingsland Parish Council, based on the views contributed by people living or working in the parish of Kingsland. Sets out the vision, objectives and policies for Kingsland Parish.	Determined key findings and objectives for: Housing Infrastructure Roads, safety and parking Transport Environment and sustainability Services and facilities Healthier communities Business, enterprise and tourism Policing and crime	<ul style="list-style-type: none"> <li>• Biodiversity</li> <li>• Climate factors</li> <li>• Cultural heritage and the landscape</li> <li>• Flora and fauna</li> <li>• Material assets</li> <li>• Population and human health</li> </ul>	The NDP should take account of relevant objectives set within the Parish Plan which was adopted by the Parish Council in 2013
Kingsland Housing Needs Survey	Evidence / local	2014	Kingsland Parish Housing needs survey conducted by Herefordshire Council In 2013/14 to identify the possible requirements for affordable housing for local people in the community in the future	Determined key findings and objectives for: Housing for local people	<ul style="list-style-type: none"> <li>• Material assets</li> <li>• Population and human health</li> </ul>	The NDP should take account of relevant findings in housing policies within the Plan



<b>Plans and Programmes</b>	<b>Type of document</b>	<b>Date</b>	<b>Overview</b>	<b>Key message, target/objective/indicator</b>	<b>SEA topic(s)<sup>1</sup></b>	<b>Implications for the NDP and SEA</b>
Kingsland Conservation Designation document and map	Historic evidence	1984	Original map and description of the reasoning and description of the Kingsland Conservation Area	Determined key findings and objectives for: Housing Infrastructure Roads, safety and parking Environment and sustainability Landscape	<ul style="list-style-type: none"> <li>• Biodiversity</li> <li>• Climate factors</li> <li>• Cultural heritage and the landscape</li> <li>• Flora and fauna</li> <li>• Material assets</li> </ul>	The NDP should take account of relevant issues laid out as the basis for the Conservation Area

**Appendix A2 – Baseline information for Kingsland**

*N.B. This is based on countywide baseline information with some additions relevant to Kingsland (in red). Where no locally specific data is available for current status, trends and targets, only countywide data is reported. Any gaps in data may be filled following additional research.*

SA Objective <sup>1</sup>	SA Theme	Proposed indicator	Current status	Trends	Targets	Issues and constraints	Baseline (information) source
SEA Topic covered by objective: <i>Biodiversity, flora and fauna</i>							
13. Value, maintain, restore and expand county biodiversity.	Natural environment	Net change in condition of SSSIs across Herefordshire.	The 2011-2013 AMR does not contain updated conservation data.  2010/11: 27% of Herefordshire's SSSI land was in favourable condition.  <i>05/08/14 – River Lugg- Unfavourable recovering.  River Lugg meanders - favourable</i>	2006: 22% 2007: 22% 2008: 22% 2010: 24 %  Proportion of SSSI land that was in unfavourable condition but recovering increased between 2010 and 2012 going from 41% to 65%. Proportion in unfavourable and declining condition had also decreased from 4% to 1%.	% of SSSI land in favourable condition (Increase)  % of SSSI land in unfavourable condition but recovering (Increase)  % of SSSI land in unfavourable condition and declining (Decrease)	Herefordshire's SSSIs are in extremely poor condition relative to England as whole, where 96.1% of all SSSI land was in favourable condition in April 2014.  The proportion of SSSI in unfavourable condition but recovering is greater than England as a whole, where the figure currently stands at 58.6%.	Understanding Herefordshire: An integrated needs assessment (June 2013).  NE SSSI information on the Website (August 2014)

<sup>1</sup> Derived from the Pre Submission Core Strategy Sustainability Appraisal Assessment (May 2014)

SA Objective <sup>1</sup>	SA Theme	Proposed indicator	Current status	Trends	Targets	Issues and constraints	Baseline (information) source
13. Value, maintain, restore and expand county biodiversity.	Natural environment	After use of mineral sites especially wildlife habitat creation	<i>There is no countywide or locally specific data available at present.</i>	-	No specific targets identified.	Should be monitored through AMR following the adoption of the Core Strategy, in line with SA recommendations.	-
13. Value, maintain, restore and expand county biodiversity.	Natural environment	Phosphate levels within the River Wye SAC and adjoining tributaries that receive increased phosphates from proportional growth.	Countywide data is available,  <b>The Kingsland Neighbourhood Area, falls inside the River Wye (including Lugg) SAC. This area is classed as the River Lugg sub Catchment for the purposes of the Nutrient Management Plan.</b>  <b>The River Lugg section of the SAC is currently exceeding phosphate targets.</b>	The River Wye SAC was subject to a review of consents in 2010, as a number of sections of the river were found to have greater phosphate levels than those identified in Natural England's favourable condition tables.	The roll out of the Nutrient Management Plan will determine future targets.	New development within the area could lead to the water quality failing the phosphate levels and conservation objectives.	Nutrient Management Plan (2014)

SA Objective <sup>1</sup>	SA Theme	Proposed indicator	Current status	Trends	Targets	Issues and constraints	Baseline (information) source
13. Value, maintain, restore and expand county biodiversity.	Natural environment	Changes to protected habitats and impacts of species within the Herefordshire Local Biodiversity Action Plan.	<p>The 2011-2013 AMR does not contain updated conservation data.</p> <p>2010/11: 17 Habitat Action Plans and 14 Species Action Plans are currently in operation across Herefordshire.</p> <p><i>There is no locally specific data available at present.</i></p>	<p>There are no formal records of any unacceptable adverse impacts on habitats or protected species.</p> <p>Originally 156 Priority Species were identified for inclusion in Herefordshire's LBAP.</p> <p>Similarly Herefordshire's LBAP covered 23 habitats with Action Plans.</p>	No specific targets identified.	Herefordshire Biological Records Centre (HBRC) holds limited data on some individual sites.	Herefordshire Council AMR (2010/11)

SA Objective <sup>1</sup>	SA Theme	Proposed indicator	Current status	Trends	Targets	Issues and constraints	Baseline (information) source
13. Value, maintain, restore and expand county biodiversity.	Natural environment	Changes in the areas of designated nature conservation sites as a consequence of planning permission.	<p>Within the parish of Kingsland it has:</p> <p>SSSI: 1 SWS: 9</p> <p>Kingsland is within the catchment area of the River Wye SAC and the Downton Gorge SAC.</p> <p>NNRs-0 SINCs-0 LNRs-0</p>	As of 2012, there had been no change in the areas of designated nature conservation sites as a consequence of the planning permissions granted.	To capitalise on opportunities to enhance the areas of value to nature conservation as much as possible.	Herefordshire Biological Records Centre (HBRC) holds limited data on some Individual sites.	Herefordshire Council Initial Screening Report for the Neighbourhood Plan 2013

SA Objective <sup>1</sup>	SA Theme	Proposed indicator	Current status	Trends	Targets	Issues and constraints	Baseline (information) source
13. Value, maintain, restore and expand county biodiversity.	Natural environment	Proportion of local sites where positive conservation management has or is being implemented.	<i>There is no countywide or locally specific data available at present.</i>	-	No specific targets identified.	Should be monitored through AMR following the adoption of the Core Strategy, in line with SA recommendations.	-
SEA Topic covered by objectives: <i>Material assets</i>							
14. Use natural resources and energy more efficiently.	Resource consumption and climate change	Maintaining Herefordshire Council's County Site and Monuments Register.	Countywide data would be too large to incorporate into this template.  <i>Whilst there is no qualitative, locally specific data available at present, there are two scheduled</i>	-	No specific targets identified, but need to ensure that the register is kept up to date.	Should be monitored through AMR following the adoption of the Core Strategy, in line with SA recommendations.	Herefordshire Environmental Records Register (search June 2014).

SA Objective <sup>1</sup>	SA Theme	Proposed indicator	Current status	Trends	Targets	Issues and constraints	Baseline (information) source
			monuments in Kingsland according to the latest version of the register.				
14. Use natural resources and energy more efficiently.	Resource consumption and climate change	Monitoring changes to historic landscapes.	<i>There is no countywide or locally specific data available at present.</i>	-	No specific targets identified.	Should be monitored through AMR following the adoption of the Core Strategy, in line with SA recommendations.	-
SEA Topic covered by objective: <i>Population, Biodiversity, Flora and Fauna</i>							
15. Value, protect, enhance and restore the landscape quality of Herefordshire, including its rural areas and open spaces.	Natural environment	Number of developments meeting and surpassing national design standards.	<i>There is no countywide or locally specific data available at present.</i>	-	No specific targets identified.	Should be monitored through AMR following the adoption of the Core Strategy, in line with SA recommendations.	-

SA Objective <sup>1</sup>	SA Theme	Proposed indicator	Current status	Trends	Targets	Issues and constraints	Baseline (information) source
15. Value, protect, enhance and restore the landscape quality of Herefordshire, including its rural areas and open spaces.	Natural environment	The need for, frequency and outcomes of planning enforcement investigations/ planning appeals concerning the aspects of local loss of locally important buildings within a conservation area.	Countywide data would be too large to incorporate into this template.  <b>There are no outstanding enforcement actions or appeals concerning locally important buildings within Kingsland at present.</b>	No historic records of any planning enforcement action or appeals concerning locally important buildings within the one conservation area.	To maintain current status.	Current status must be verified by Dvt Mgt and Enforcement Officers, but the NDP can help to avoid enforcement action and appeals during the plan period.	Council Dvt Mgt records (searched June 2014)
SEA Topic covered by objective: <i>Climatic Factors</i>							



SA Objective <sup>1</sup>	SA Theme	Proposed indicator	Current status	Trends	Targets	Issues and constraints	Baseline (information) source
16. Reduce Herefordshire's vulnerability to the impacts of climate change as well as its contribution to the problem.	Resource consumption and climate change.	Transport patronage by mode	<p>% of Herefordshire residents who travel to work by:</p> <p>Car: 70.1%  Foot: 14.7%  Bicycle: 4.3%  Bus: 2%  Train: 0.8%  Motorbike: 0.8%  Taxi: 0.3%  Other: 7%</p> <p><i>There is no locally specific data available at present</i></p>	The number of people cycling or travelling by bus as the main form transport to get to work declined between 2001 and 2011 – across England and Wales there was little change in either. Walking or driving a car or van on the other hand increased.	To increase the take up of alternative modes to the private car.	There are a lack of transport options for many rural communities and therefore high car ownership and dependency – the last decade has seen a 15 per cent increase in household car ownership, although this is not reflected in traffic flows of recent years with volumes in Hereford City and wider county having decreased. The proportion of people working from home increased over the decade from 15 per cent in 2001 to 17 per cent in 2011.	2011 Census

SA Objective <sup>1</sup>	SA Theme	Proposed indicator	Current status	Trends	Targets	Issues and constraints	Baseline (information) source
16. Reduce Herefordshire's vulnerability to the impacts of climate change as well as its contribution to the problem.	Resource consumption and climate change.	Number of decentralised energy schemes granted permission.	<i>There is no countywide or locally specific data available at present.</i>	-	To contribute towards the national target.	Should be monitored through AMR following the adoption of the Core Strategy, in line with SA recommendations.	-

SA Objective <sup>1</sup>	SA Theme	Proposed indicator	Current status	Trends	Targets	Issues and constraints	Baseline (information) source
16. Reduce Herefordshire's vulnerability to the impacts of climate change as well as its contribution to the problem.	Resource consumption and climate	Total CO2 emissions per capita	<p>Latest figure dates back to 2010: 1.61 million tonnes (mtCO<sub>2</sub>)</p> <p><i>There is no locally specific data available at present.</i></p>	<p>Between 2005 and 2010 Herefordshire's total and per capita carbon emission reduced by 7% and 8% respectively; while UK's total and per capita carbon emission reduced by 8% and 12% respectively within the same period. This trend hides an increase in emissions between 2009 and 2010 when total emissions in the county increased by 5% the same as across the UK (+5%).</p>	To reduce the overall carbon emissions.	CO <sub>2</sub> emissions produced are decreasing.	Understanding Herefordshire: An integrated needs assessment (June 2013).

SA Objective <sup>1</sup>	SA Theme	Proposed indicator	Current status	Trends	Targets	Issues and constraints	Baseline (information) source
SEA Topic covered by objective: <i>Water</i>							
17. Reduce the risk of flooding and the resulting detriment to public wellbeing, the economy and the environment.	Natural environment	Number of planning permissions granted contrary to the advice of the Environment Agency on flood defence grounds.	The 2011-2013 AMR does not contain updated conservation data.  2010/11: None  <i>There is no locally specific data available at present.</i>	There have been no approvals contrary to EA advice since reporting began in 2004.	To have no applications permitted contrary to EA advice.	None identified.	Herefordshire Council AMR (2010/11)
SEA Topic covered by objective: <i>Water, air, soil, material assets</i>							
18. Minimise local and global pollution and protect or enhance environmental resources.	Natural environment	Agricultural land usage by quality LA to monitor the number of hectares of the best and most versatile agricultural land (grades 3a and higher) lost to development.	<b>The agricultural land classification around Kingsland is mainly Grades 2 and 3 (Very good to Moderate). There are patches of Grade 4 land (poor) within the centre of the parish.</b>	-	No specific targets identified.	Should be monitored through AMR following the adoption of the Core Strategy, in line with SA recommendations.	DEFRA 'Magic' website for land classification

SA Objective <sup>1</sup>	SA Theme	Proposed indicator	Current status	Trends	Targets	Issues and constraints	Baseline (information) source
18. Minimise local and global pollution and protect or enhance environmental resources.	Natural environment	Percentage of river length assessed as good or very good chemical quality and ecological quality as required by the Water Framework Directive	Latest figure dates back to 2005: 84%  <i>There is no locally specific data available at present.</i>	Figure steadily improved before going into decline:  Herefordshire 1999 85.9%, 2000 89.5%, 2001 92.2%, 2002 91.8%	To ensure that rivers meet their conservation objectives and do not fall below the required standard of quality.	None identified.	The State of Herefordshire Report (2007)  Water Framework Directive (2000)
SEA Topic covered by objective: <i>Soil</i>							
19. Ensure integrated, efficient and balanced land use.	Built environment	Percentage of all new development completed on previously developed land.	2010/11: 67% 2011-13: 57%  <i>There is no locally specific data available at present.</i>	Completions on PDL had risen to 71% by 2005.	To increase the number of homes built on PDL in line with the provisions of national planning policy.	The number of brownfield completions has fallen slightly in recent years, though this is probably the offshoot of tough market conditions.	Herefordshire Council AMR (2010/11) and (2011-2013)

SA Objective <sup>1</sup>	SA Theme	Proposed indicator	Current status	Trends	Targets	Issues and constraints	Baseline (information) source
19. Ensure integrated, efficient and balanced land use.	Built environment	Housing densities in urban and rural areas	<i>There is no countywide or locally specific data available at present.</i>	-	No specific targets identified.	Should be monitored through AMR following the adoption of the Core Strategy, in line with SA recommendations.	-
19. Ensure integrated, efficient and balanced land use.	Built environment	Level of development in urban areas compared to rural.	<i>There is no countywide or locally specific data available at present.</i>  This indicator would not be applicable to rural NDPs.	N/A	N/A	N/A	N/A
SEA Topic covered by objective: <i>Cultural heritage</i>							

SA Objective <sup>1</sup>	SA Theme	Proposed indicator	Current status	Trends	Targets	Issues and constraints	Baseline (information) source
20. Value, protect and enhance the character and built quality of settlements and neighbourhoods and the county's historic environment and cultural heritage.	Built environment	Number and percentage of listed buildings and Scheduled Ancient Monuments on Buildings at Risk Register (English Heritage).	Up-to-date countywide information will be presented in the next AMR and which is due to be published in 2014. However, this data would be too large to incorporate into this template.  There are numerous listed buildings within the parish and two SAMs. Kingsland Castle is currently recorded in the Buildings at Risk Register.	There were 70 heritage assets in Herefordshire that were considered to be at high risk and included in the Heritage at Risk Register 2014.	To improve the condition of Kingsland Castle.	Kingsland Castle is on English Heritage Scheduled Monuments at risk register. This is due to the castles localised problems-extensive stock erosion. The church of St Michael's and All Angels is also on the buildings at risk list.	Buildings at Risk Register (English Heritage; search June 2014)

SA Objective <sup>1</sup>	SA Theme	Proposed indicator	Current status	Trends	Targets	Issues and constraints	Baseline (information) source
20. Value, protect and enhance the character and built quality of settlements and neighbourhoods and the county's historic environment and cultural heritage.	Built environment	The need for, frequency and outcomes of planning enforcement investigations/ planning appeals concerning the aspects of local loss of locally important buildings within the conservation area.	Countywide data would be too large to incorporate into this template.  <b>There are no outstanding enforcement actions or appeals concerning locally important buildings within Kingsland at present.</b>	No historic records of any planning enforcement action or appeals concerning locally important buildings within the conservation area.	To maintain current status.	Current status must be verified by Dvt Mgt and Enforcement Officers, but the NDP can help to avoid enforcement action and appeals during the plan period.	Council Dvt Mgt records (searched June 2014)



**Appendix A3 – Environmental issues identified from Kingsland baseline**

These environmental issues are the same as most of those identified for the Herefordshire Core Strategy<sup>1</sup>

SEA Topic		Environmental issue	SA objectives
1	Air	High reliance upon the private car causing high levels of air pollution and in Hereford in particular	Objective 16
		Need to reduce carbon emissions by encouraging alternative modes of travel.	
2	Biodiversity	Habitats and species of national, regional and local importance are under pressure from the adaptation and diversification of farming and forestry employment.	Objectives 13 &15
		Habitats and species of national, regional and local importance are under pressure from development.	
		Minimise loss of biodiversity and expand opportunities for wildlife everywhere.	
3	Climatic factors	Reduce greenhouse gas emissions through planning, design and build.	Objective 16
4	Cultural heritage	Kingsland has numerous listed buildings and two Scheduled Ancient Monuments, all of which require ongoing protection and many in need of high levels of maintenance.	Objective 20
5	Flora and fauna	Conserve and enhance the character and quality of historic landscapes, including all types of natural flora and fauna.	Objective 15
6	Material assets	How the countryside can continue to be managed in an economically, socially and environmentally beneficial way in the face of continuing pressures on traditional farming.	Objectives 14 & 18
7	Population	Minimise energy waste through good designs, which help to reduce energy consumption and maximise efficiency.	Objective 15
		Need to avoid enforcement investigations/action concerning locally important buildings and those within conservation areas in particular.	
8	Soil	Promoting development of previously developed land and buildings as opposed to greenfield sites or agricultural land of the highest quality.	Objectives 18 & 19

<sup>1</sup> Derived from the Pre-submission Core Strategy Sustainability Appraisal Assessment (May 2014) and LDF General Scoping Report (June 2007)

9	Water	Issues relating to availability of resources, foul drainage, pollution, and abstraction in a county which supports water dependent biodiversity of international and national importance, given the predicted climate change consequences for water availability and demanding projections for new housing.	Objectives 17 & 18
		Steady decline in the chemical quality of rivers over the last 10 years.	

## Template A4: SEA Framework

### SEA Scoping Stage A, Task A4 - SEA Framework SEA Objectives, Indicators, Targets

**Parish Council Name: Kingsland**

**Neighbourhood Development Plan Name: Kingsland Plan**

**Date completed: June 2014**

<b>SEA Topics</b>	<b>SEA Objective</b> (These objectives are strategic overall SEA objectives, which you may need to refine, based on your local evidence, to make them locally relevant)	<b>Sub-objectives / Appraisal Questions (Will the option/proposal/site...)</b> (These sub-objectives are strategic overall SEA sub-objectives, which you may need to refine, based on your local evidence, to make them locally relevant)	<b>Indicators</b> (Insert indicators, based on evidence, to test and monitor whether your NDP proposals and policies are working. These should relate to the sub-objectives and be taken from Template A2)	<b>Targets</b> (Insert targets, based on evidence, to monitor whether the NDP proposals and policies are working. These should relate to the sub-objectives indicators and be taken from Template A2)
Nature Conservation (Biodiversity, flora and fauna)	To maintain and enhance nature conservation (biodiversity, flora and fauna)	<ul style="list-style-type: none"> <li>• Conserve and enhance natural / semi-natural habitats</li> <li>• Conserve and enhance species diversity</li> <li>• Avoid harm to protected species</li> <li>• Avoid damage to wildlife and geological sites designated for their conservation interest</li> <li>• Maintain and enhance woodland cover and management</li> <li>• Maintain biodiversity, avoiding irreversible losses</li> <li>• Restore the full range of characteristic habitats and species to viable levels</li> <li>• Reverse the long term decline in farmland birds</li> <li>• Ensure the sustainable management of key wildlife sites and the ecological processes on which they depend</li> <li>• Provide opportunities for people to come into contact with and appreciate wildlife and wild place</li> </ul>	<p>Net change in condition of SSSIs across Herefordshire.</p> <p>After use of mineral sites especially wildlife habitat creation</p> <p>Changes to protected habitats and impacts of species within the Herefordshire Local Biodiversity Action Plan.</p>	<p>% of SSSI land in favourable condition (Increase)</p> <p>% of SSSI land in unfavourable condition but recovering (Increase)</p> <p>% of SSSI land in unfavourable condition and declining (Decrease)</p> <p>No specific targets identified.</p> <p>No specific targets identified.</p>

<b>SEA Topics</b>	<b>SEA Objective</b> (These objectives are strategic overall SEA objectives, which you may need to refine, based on your local evidence, to make them locally relevant)	<b>Sub-objectives / Appraisal Questions (Will the option/proposal/site...)</b> (These sub-objectives are strategic overall SEA sub-objectives, which you may need to refine, based on your local evidence, to make them locally relevant)	<b>Indicators</b> (Insert indicators, based on evidence, to test and monitor whether your NDP proposals and policies are working. These should relate to the sub-objectives and be taken from Template A2)	<b>Targets</b> (Insert targets, based on evidence, to monitor whether the NDP proposals and policies are working. These should relate to the sub-objectives indicators and be taken from Template A2)
Landscape	<p>To maintain and enhance the quality of landscapes and townscapes</p> <p>To improve quality of surroundings</p>	<ul style="list-style-type: none"> <li>• Protect and enhance the landscape everywhere and particularly in designated areas</li> <li>• Value and protect diversity and local distinctiveness</li> <li>• Improve landscape and ecological quality and character of the countryside</li> <li>• Improve the quantity and quality of publicly accessible open space</li> <li>• Improve satisfaction of people with their neighbourhoods as places to live</li> <li>• Decrease litter and graffiti in towns and countryside</li> <li>• Result in the loss of open space</li> </ul>	<p>Changes in the areas of designated nature conservation sites as a consequence of planning permission.</p> <p>Proportion of local sites where positive conservation management has or is being implemented.</p> <p>Monitoring changes to historic landscapes.</p> <p>Area resulting in a loss of open space as a result of planning permission</p>	<p>To capitalise on opportunities to enhance the areas of value to nature conservation as much as possible.</p> <p>No specific targets identified.</p> <p>No specific targets identified.</p> <p>No specific targets identified</p>
Heritage	<p>To conserve and where appropriate enhance the historic environment and culture heritage</p>	<ul style="list-style-type: none"> <li>• Preserve historic buildings, archaeological sites and other culturally important features in both urban and rural settings</li> <li>• Create places, spaces and buildings that work well, wear well and look well</li> </ul>	<p>The need for, frequency and outcomes of planning enforcement investigations/ planning appeals concerning the aspects of local loss of locally important buildings within a conservation area.</p> <p>Number and percentage of listed buildings and Scheduled Ancient Monuments on Buildings at Risk Register (English Heritage).</p> <p>Maintaining Herefordshire Council's County Site and Monuments Register.</p>	<p>To maintain current status.</p> <p>To maintain current status</p> <p>No specific targets identified, but need to ensure that the register is kept up to date.</p>

<b>SEA Topics</b>	<b>SEA Objective</b> (These objectives are strategic overall SEA objectives, which you may need to refine, based on your local evidence, to make them locally relevant)	<b>Sub-objectives / Appraisal Questions (Will the option/proposal/site...)</b> (These sub-objectives are strategic overall SEA sub-objectives, which you may need to refine, based on your local evidence, to make them locally relevant)	<b>Indicators</b> ( <i>Insert indicators, based on evidence, to test and monitor whether your NDP proposals and policies are working. These should relate to the sub-objectives and be taken from Template A2</i> )	<b>Targets</b> ( <i>Insert targets, based on evidence, to monitor whether the NDP proposals and policies are working. These should relate to the sub-objectives indicators and be taken from Template A2</i> )
Air and Climate	<p>To improve air quality</p> <p>To reduce the effect of traffic on the environment</p> <p>To reduce contributions to climate change</p> <p>To reduce vulnerability to climate change</p>	<ul style="list-style-type: none"> <li>• Limit air pollution, including greenhouse gas emissions and ozone depleting substances</li> <li>• Improve air quality</li> <li>• Reduce the need to travel</li> <li>• Reduce traffic volumes and congestion</li> <li>• Reduce road traffic accidents</li> <li>• Reduce commuting and improve accessibility by public transport walking and cycling</li> <li>• Increase proportion of journeys using modes other than the car</li> <li>• Reduce the effects of heavy goods traffic (freight) on people and the environment</li> <li>• Reduce respiratory illnesses</li> <li>• Reduce energy consumption and improve energy efficiency</li> <li>• Increase proportion of energy needs being met from renewable sources</li> <li>• Reduce vulnerability to the effects of climate change e.g. flooding, disruption to travel by extreme weather</li> </ul>	<p>Transport patronage by mode</p> <p>Number of decentralised energy schemes granted permission.</p> <p>Total CO2 emissions per capita</p>	<p>To increase the take up of alternative modes to the private car.</p> <p>To contribute towards the national target.</p> <p>To reduce the overall carbon emissions.</p>

<b>SEA Topics</b>	<b>SEA Objective</b> (These objectives are strategic overall SEA objectives, which you may need to refine, based on your local evidence, to make them locally relevant)	<b>Sub-objectives / Appraisal Questions (Will the option/proposal/site...)</b> (These sub-objectives are strategic overall SEA sub-objectives, which you may need to refine, based on your local evidence, to make them locally relevant)	<b>Indicators</b> (Insert indicators, based on evidence, to test and monitor whether your NDP proposals and policies are working. These should relate to the sub-objectives and be taken from Template A2)	<b>Targets</b> (Insert targets, based on evidence, to monitor whether the NDP proposals and policies are working. These should relate to the sub-objectives indicators and be taken from Template A2)
Water	<p>To improve water quality</p> <p>To provide for sustainable sources of water supply</p> <p>To avoid, reduce and manage flood risk</p>	<ul style="list-style-type: none"> <li>• Improve the quality of inland water: rivers, lakes and ponds</li> <li>• Limit water pollution</li> <li>• Maintain water abstraction, run-off and recharge within carrying capacity (including future capacity)</li> <li>• Reduce water consumption and improve water efficiency</li> <li>• Minimise the risk of flooding from rivers and watercourses to people and property</li> <li>• Minimise risk of subsidence</li> <li>• Reduce risk of damage to property from storm events</li> </ul>	<p>Number of planning permissions granted contrary to the advice of the Environment Agency on flood defence grounds.</p> <p>Percentage of river length assessed as good or very good chemical quality and ecological quality</p> <p>Phosphate levels within the River Wye SAC and adjoining tributaries that receive increased phosphates from proportional growth.</p>	<p>To have no applications permitted contrary to EA advice.</p> <p>To ensure that rivers meet their conservation objectives and do not fall below the required standard of quality quality as set out in the Water Framework Directive.</p> <p>To meet the targets set out in the Nutrient Management Plan (2014)</p>
Soil	<p>To conserve soil resources and quality</p> <p>Ensure integrated, efficient and balanced land use.</p>	<ul style="list-style-type: none"> <li>• Reduce contamination, and safeguard soil quality and quantity</li> <li>• Minimise loss of greenfield land / maximise development on brownfield land</li> <li>• Reduce the amount of derelict and underused land</li> <li>• Minimise waste generation and increase re-use or recovery through recycling, composting or energy recovery</li> <li>• Maximise the amount of waste diverted from landfill through recovery and recycling</li> <li>• Reduce household waste going to landfill</li> <li>• Reduce hazardous waste</li> <li>• Reduce waste in the construction of developments</li> </ul>	<p>Percentage of all new development completed on previously developed land.</p> <p>Amount of land identified as best and most versatile agricultural land lost to development.</p>	<p>To increase the number of homes built on PDL in line with the provisions of national planning policy.</p> <p>No specific targets identified.</p>

<b>SEA Topics</b>	<b>SEA Objective</b> (These objectives are strategic overall SEA objectives, which you may need to refine, based on your local evidence, to make them locally relevant)	<b>Sub-objectives / Appraisal Questions (Will the option/proposal/site...)</b> (These sub-objectives are strategic overall SEA sub-objectives, which you may need to refine, based on your local evidence, to make them locally relevant)	<b>Indicators</b> ( <i>Insert indicators, based on evidence, to test and monitor whether your NDP proposals and policies are working. These should relate to the sub-objectives and be taken from Template A2</i> )	<b>Targets</b> ( <i>Insert targets, based on evidence, to monitor whether the NDP proposals and policies are working. These should relate to the sub-objectives indicators and be taken from Template A2</i> )
Population and Human Health	To improve health of the population  To reduce crime and nuisance	<ul style="list-style-type: none"> <li>• Create conditions to improve health and reduce health inequalities in those areas most affected</li> <li>• Promote healthy living and lifestyles</li> <li>• Reduce death rates</li> <li>• Protect and enhance human health</li> <li>• Reduce and prevent crime, reduce fear of crime</li> <li>• Decrease noise and vibration</li> <li>• Increase opportunities for indoor recreation and exercise</li> </ul>	Number of developments meeting and surpassing national design standards.	No specific targets identified.
Material Assets	To conserve natural and manmade resources	<ul style="list-style-type: none"> <li>• Protect built assets, property, infrastructure and services</li> <li>• Increase proportion of building materials from sustainable sources</li> <li>• Promote the development of a sustainable settlement pattern and physical infrastructure</li> <li>• Promote the efficient use of land and resources</li> <li>• Reduce consumption of materials and resources</li> </ul>	<p>Agricultural land usage by quality</p> <p>Housing densities in urban and rural areas</p> <p>Level of development in urban areas compared to rural.</p>	<p>No specific targets identified.</p> <p>No specific targets identified.</p> <p>N/A</p>

# Appendix 3





ENGLISH HERITAGE

WEST MIDLANDS REGION

Neighbourhood Planning Team  
Herefordshire Council  
Planning Services  
PO Box 230  
Blueschool House  
Blueschool Street  
Hereford  
HR1 2ZB.

Our ref:  
Your ref:

Telephone 0121 625 6887  
Fax 0121 625 6820

01 October 2014

Dear Sir or Madam

**CONSULTATION ON SEA SCOPING REPORTS FOR NEIGHBOURHOOD PLANS IN: Belmont Rural; Border Group; Bosbury & Catley; Cradley; Hampton Bishop; Hatfield & District Group; Kingsland: Kingstone and Thruxton Group; Pembridge.**

Thank you for your e-mails and the invitation to comment on the SEA Scoping Reports for the Neighbourhood Plans listed above. We have no substantive objection to the contents of the documents. However, having considered the above Neighbourhood Plans please note that overall our comments and recommendations to you in relation to these remain substantively the same as those which we communicated to you in our letter of the 15<sup>th</sup> August 2014 in response to the first tranche of SEA Scoping Reports. We urge you to refer back to and consider these representations before finalizing the reports in relation to the above Neighbourhood Plans also.

Specifically in relation to the fourth tranche of consultations we are pleased to note that some of the SEA's now appear to reflect aspects our earlier advice, perhaps particularly Belmont Rural, Hampton Bishop and Border Group.

However, Hatfield and District and Kingstone and Thruxton Group have proposed indicators for locally important buildings in conservation areas but in fact neither Parish has a conservation area so the indicator should more properly refer to locally important buildings "in the Parish". The Kingsland SEA identifies Kingslands Castle and St Michaels Church as BAR but only proposes to address the improvement of the condition of the Castle, which appears to be anomalous.

Both Kingsland and Pembridge and other of the SEA's appear to have anomalous references to SAM's, the Herefordshire SMR, monitoring changes to historic landscapes and historic landscape character assessments in relation to SA Objective 14 "Use natural resources and energy more effectively". Presumably this is unintentional and they would in fact be more relevant under SA Objectives 15 and 20?

I hope this is helpful.

Yours faithfully

A handwritten signature in black ink, appearing to read 'P. Boland', with a stylized flourish extending to the right.

Pete Boland  
Historic Places Adviser  
E-mail: [peter.boland@english-heritage.org.uk](mailto:peter.boland@english-heritage.org.uk)

Date: 13 October 2014  
Our ref: 131814 Kingsland NP SEA Scoping  
Your ref:



Neighbourhood Planning, Strategic Planning & Conservation teams  
Herefordshire Council  
Planning Services,  
Blueschool House,  
Blueschool Street  
Hereford,  
HR1 2ZB

Customer Services  
Hornbeam House  
Crewe Business Park  
Electra Way  
Crewe  
Cheshire  
CW1 6GJ

**By email only:** [neighbourhoodplanning@herefordshire.gov.uk](mailto:neighbourhoodplanning@herefordshire.gov.uk)

T 0300 060 3900

Dear Sir/Madam

## **Kingsland Neighbourhood Plan Strategic Environmental Assessment Scoping and Habitat Regulations Assessment Screening**

Thank you for your consultation on the above dated and received by Natural England on 08 September 2014.

Natural England is a non-departmental public body. Our statutory purpose is to ensure that the natural environment is conserved, enhanced, and managed for the benefit of present and future generations, thereby contributing to sustainable development.

Where Neighbourhood Plans could have significant environmental effects, they may require a Strategic Environmental Assessment (SEA) under the Environment Assessment of Plans and Programmes Regulations 2004.

Further guidance on deciding whether the proposals are likely to have significant environmental effects and the requirements for consulting Natural England on SEA are set out in the [National Planning Practice Guidance](#).

We welcome the production of this SEA Scoping report. The following comments are intended to further improve the SEA and its usefulness in assessing the Neighbourhood Plan.

### **Appendix A1 – Plans, policies and programmes**

Natural England approves of the plans, policies and programmes listed.

### **Appendix A2 – Baseline information**

#### ***Biodiversity, flora and fauna***

Under the proposed indicator “*Changes to protected habitats and impacts of species within the Herefordshire Local Biodiversity Action Plan*”, no baseline information source has been identified. Maps of priority habitats and species are available on *Magic*, Defra’s GIS package for environmental assets ([www.natureonthemap.naturalengland.org.uk](http://www.natureonthemap.naturalengland.org.uk)).

Baseline information on the landscape and open spaces needs to be included under SA objective 15: “*Value, protect, enhance and restore the landscape quality of Herefordshire, including its rural areas and open spaces*”. We welcome the reference to the Historic Landscape Characterisation for Hereford. Reference could also be made to the county Landscape Character Assessment.

### **Water, air, soil and material assets**

This section (or suitable alternative) should include information on geodiversity. The baseline and assessment should make reference to geological conservation and the need to conserve, interpret and manage geological sites and features, both in the wider environment and in relation to designated features. The Herefordshire & Worcestershire Earth Heritage Trust may be of assistance.

### **Soil**

We note that the best and most versatile agricultural land has not been considered. We suggest including an indicator to monitor the hectares of the best and most versatile agricultural land lost to development.

### **Appendix A3 – Environmental issues identified from the baseline**

Natural England welcomes the environmental issues identified.

### **Appendix A4 – SEA Framework**

Under the SEA topic “*Nature Conservation (Biodiversity, flora and fauna)*”, we would welcome the inclusion of an indicator/target around the impact/benefit to ecological networks (NPPF paragraph 109, 113 and 117). We note that no targets have been identified against the indicator “*After use of mineral sites especially wildlife habitat creation*”; we suggest that perhaps the percentage of opportunities taken could be monitored. Against “*Changes to protected habitats and impacts of species within the Herefordshire Local Biodiversity Action Plan*”, we suggest that as a minimum there should be no net losses. The NPPF sets out a requirement to move to net gains for nature (paragraph 9), drawing on the Natural Environment White Paper.

Under the SEA topic “*Landscape*” we suggest that reference could be made to the county Landscape Character Assessment and Landscape Characterisation studies including Historic Landscape Characterisation if this has been carried out. Applications resulting in the loss of open space could be monitored.

### **Habitats Regulations Assessment Screening**

Where a Neighbourhood Plan could potentially lead to significant environmental effects it will be necessary to screen the Plan in relation to the Habitats and Species Regulations (2010), as amended (the ‘Habitats Regulations’). One of the basic conditions that will be tested at Examination is whether the making of the plan is compatible with European obligations and this includes requirements relating to the Habitats Directive.

In relation to the Habitats Regulations, a Neighbourhood Plan cannot progress if the likelihood of significant effects on any European Site, either alone (or in combination with other plans and projects) cannot be ruled out (see Schedule 2, The Neighbourhood Planning (General) Regulations 2012). Therefore measures may need to be incorporated into the Neighbourhood Plan to ensure that any likely significant effects are avoided in order to secure compliance with the Regulations. A screening exercise should be undertaken if there is any doubt about the possible effects of the Plan on European protected sites. This will be particularly important if a Neighbourhood Plan is to progress before a Local Plan has been adopted and/or the Neighbourhood Plan proposes development which has not been assessed and/or included in the Habitats Regulations Assessment for the Local Plan.

We note the recommendation that a full Habitat Regulations Assessment Screening is undertaken due to proximity to the River Wye Special Area of Conservation (SAC).

We would be happy to comment further should the need arise but if in the meantime you have any queries please do not hesitate to contact us.

For any queries relating to the specific advice in this letter only please contact Jamie Melvin on 0300

060 2497. For any new consultations, or to provide further information on this consultation please send your correspondences to [consultations@naturalengland.org.uk](mailto:consultations@naturalengland.org.uk).

We really value your feedback to help us improve the service we offer. We have attached a feedback form to this letter and welcome any comments you might have about our service.

Yours faithfully,

Mr Jamie R Melvin  
Planning Adviser  
South Mercia Team

# Appendix 4

**Template B1: Kingsland NDP Objectives review against SEA objectives**

**Parish Council Name:** Kingsland

**Neighbourhood Development Plan Name:** Kingsland Neighbourhood Plan

**Date completed:** November 2014

Objectives verses SEA Objectives (SMART and Compatibility Test)				
<b>SEA Stage B1</b>	<b>Key:</b>	<b>SMART criteria:</b>		
+ =	Compatible	<b>S – Specific:</b>	NDP objectives should specify what is intended to be done in detail and should not be open to a wide range of misinterpretations	The following matrix appraises the emerging Kingsland NDP Objectives in terms of their SMART criteria and their compatibility with the SEA Objectives. These have been developed from Government guidance on SEA and from the local evidence base gathered for identifying the NDP issues.
- =	Possible conflict	<b>M – Measurable:</b>	It should be possible to monitor NDP objectives in a quantifiable way, by the use of indicators. Indicators should be measurable with limited resource implications.	
0 =	Neutral	<b>A – Attainable/achievable:</b>	NDP objectives should be achievable and deliverable, related to the scale of growth proposed	
X =	No relationship between objectives	<b>R – Realistic:</b>	NDP objectives should relate to the overall vision of the plan. Likewise, chosen indicators should relate to objectives and their outcomes.	
? =	Unclear, more information needed	<b>T – Time-Bound:</b>	Objectives should be specific to the NDP period or another specified time-frame. Objectives should be associated with a target and indicators should specify when the target should be achieved.	

**SEA Objectives**

- 1- To maintain and enhance nature conservation (biodiversity, flora and fauna)
- 2- To maintain and enhance the quality of landscapes and townscapes
- 3- To improve quality of surroundings
- 4- To conserve and where appropriate enhance the historic environment and culture heritage
- 5- To improve air quality
- 6- To reduce the effect of traffic on the environment
- 7- To reduce contributions to climate change
- 8- To reduce vulnerability to climate change
- 9- To improve water quality
- 10- To provide for sustainable sources of water supply
- 11- To avoid, reduce and manage flood risk
- 12- To conserve soil resources and quality
- 13- To minimise the production of waste
- 14- To improve health of the population
- 15- To reduce crime and nuisance
- 16- To conserve natural and manmade resources

NDP objectives	SEA Objectives																Conclusions	Recommendations	SMART Test of NDP objective	After SMART objectives
	1	2	3	4	5	6	7	8	9	10	11	12	13	14	15	16				
<b>Objective 1-</b> Ensure that the visual effect of all development preserves and enhances the traditional character of the parish and protects or landscape and historic environment.	+	+	+	+	X	X	X	X	X	X	X	+	+	X	X	+	Overall the objective to ensure that the visual effect of all development preserve and enhance the traditional character of the parish and protects landscape and historic environment meets all the relevant SEA criteria.	-	This objective meets all of the SMART criteria except specifying a time frame in which the objective will be achieved; a time frame will strengthen the objective.	Ensure that the visual effect of all development preserves and enhances the traditional character of the parish and protects or landscape and historic environment, within the plan period.
<b>Objective 2-</b> Ensure that all development is based upon sound environmental sustainability principles including energy sourcing and conservation, water and sewerage management, waste minimization, wildlife conservation and habitat protection.	+	+	+	X	+	X	+	+	+	+	X	+	+	+	X	+	Overall the objective to ensure that all development is based upon sound environmental sustainability principles including energy sourcing and conservation, water and sewerage management, waste minimization, wildlife conservation and habitat protection meets all the relevant SEA criteria.	-	This objective meets all of the SMART criteria except specifying a time frame in which the objective will be achieved; a time frame will strengthen the objective.	Ensure that all development is based upon sound environmental sustainability principles including energy sourcing and conservation, water and sewerage management, waste minimization, wildlife conservation and habitat protection, within the plan period.
<b>Objective 3-</b> Ensure all infrastructure including services, facilities and amenities are retained and developed in line with the current needs and future growth of the community.	+	+	+	X	+	X	X	X	X	X	X	+	+	+	+	+	Overall the objective to ensure all infrastructure including services, facilities and amenities are retained and developed in line with the current needs and future growth of the community, meets all the relevant SEA criteria.	-	This objective meets all of the SMART criteria except specifying a time frame in which the objective will be achieved; a time frame will strengthen the objective.	Ensure all infrastructure including services, facilities and amenities are retained and developed in line with the current needs and future growth of the community, within the plan period.



<b>Objective 4-</b> Provide sufficient housing to the meet the future needs of the community, in terms of numbers and type, based upon robust evidence.	<b>X</b>	<b>+</b>	<b>+</b>	<b>X</b>	<b>X</b>	<b>X</b>	<b>X</b>	<b>X</b>	<b>X</b>	<b>X</b>	<b>X</b>	<b>X</b>	<b>X</b>	<b>+</b>	<b>+</b>	<b>X</b>	Overall the objective to -provide sufficient housing to the meet the future needs of the community, in terms of numbers and type, based upon robust evidence, meets all the relevant SEA criteria.	-	This objective meets all of the SMART criteria except specifying a time frame in which the objective will be achieved; a time frame will strengthen the objective.	Provide sufficient housing to the meet the future needs of the community, in terms of numbers and type, based upon robust evidence, within the plan period.
<b>Objective 5-</b> Ensure that new and existing business and commerce, including tourism, beneficial to the economic health of the parish, can grow and is in scale with and sensitive to the rural character of the parish.	<b>0</b>	<b>+</b>	<b>+</b>	<b>0</b>	<b>+</b>	<b>?</b>	<b>+</b>	<b>+</b>	<b>+</b>	<b>+</b>	<b>X</b>	<b>+</b>	<b>+</b>	<b>+</b>	<b>+</b>	<b>0</b>	Overall the objective to ensure that new and existing business and commerce, including tourism, beneficial to the economic health of the parish, can grow and is in scale with and sensitive to the rural character of the parish meets all the relevant SEA criteria.	Additional economic development could potentially increase traffic and congestion. Ensure sustainable methods of transport are facilitated to meet travel needs.	This objective meets all of the SMART criteria except specifying a time frame in which the objective will be achieved; a time frame will strengthen the objective.	Ensure that new and existing business and commerce, including tourism, beneficial to the economic health of the parish, can grow and is in scale with and sensitive to the rural character of the parish, within the plan period.

**Template B2: Develop and Refinement of NDP policies –Kingsland NDP**

**Parish Council Name:** Kingsland parish.

**Neighbourhood Development Plan Name:** Kingsland Neighbourhood development Plan Public Consultation Draft

**Date completed:** November 2014

Objectives verses SEA Objectives (SMART and Compatibility Test)				
<b>SEA Stage B1</b>	<b>Key:</b>	<b>SMART criteria:</b>		
+ =/ ++	Compatible/ Very	<b>S – Specific:</b>	NDP objectives should specify what is intended to be done in detail and should not be open to a wide range of misinterpretations	The following matrix appraises the emerging Kingsland NDP Objectives in terms of their SMART criteria and their compatibility with the SEA Objectives. These have been developed from Government guidance on SEA and from the local evidence base gathered for identifying the NDP issues.
- =	Possible conflict	<b>M – Measurable:</b>	It should be possible to monitor NDP objectives in a quantifiable way, by the use of indicators. Indicators should be measurable with limited resource implications.	
0 =	Neutral	<b>A – Attainable/achievable:</b>	NDP objectives should be achievable and deliverable, related to the scale of growth proposed	
X =	No relationship between objectives	<b>R – Realistic:</b>	NDP objectives should relate to the overall vision of the plan. Likewise, chosen indicators should relate to objectives and their outcomes.	
? =	Unclear, more information needed	<b>T – Time-Bound:</b>	Objectives should be specific to the NDP period or another specified time-frame. Objectives should be associated with a target and indicators should specify when the target should be achieved.	
<b>SEA Objectives</b>		<b>Baseline carried over from Stage A</b>		
1- To maintain and enhance nature conservation (biodiversity, flora and fauna)		1-The 2011-2013 AMR does not contain updated conservation data.2010/11: 27% of Herefordshire's SSSI land was in favourable condition. 05/08/14 – status of the SSSIs are: River Lugg-Unfavourable recovering. River Lugg meanders – favourable.		
2- To maintain and enhance the quality of landscapes and townscapes		The 2011-2013 AMR does not contain updated conservation data. 2010/11: 17 Habitat Action Plans and 14 Species Action Plans are currently in operation across Herefordshire. There are no NNRs and SINC's within the parish and 9 SWS's. The Kingsland Neighbourhood Area, falls inside the River Wye (including Lugg) SAC. This area is classed as the River Lugg sub Catchment for the purposes of the Nutrient Management Plan. The River Lugg section of the SAC is currently exceeding phosphate targets.		
3- To improve quality of surroundings		2- There are no outstanding enforcement actions or appeals concerning local loss of heritage assets and locally important buildings within Kingsland at present.		
4- To conserve and where appropriate enhance the historic environment and culture heritage		3-In terms of Kingsland itself, the play facilities study recommends that Kingsland Millennium Green should consider using additional space to provide play for older children. This suggestion is supported by the Parish Council and is listed as a medium priority. In addition Kingsland Parish has 5.64 ha of playing pitch area, 5.38 hectares of playing pitch area have secured community access. 95% of the playing pitches have secured community access.		
5- To improve air quality		4-Whilst there is no qualitative, locally specific data available at present, there are two scheduled monuments in Kingsland, according to the latest version of the register. Kingsland Castle is on English Heritage Scheduled Monuments at risk register. This is due to the castles localised problems-extensive stock erosion. The church of St Michael's and All Angels is also on the buildings at risk list.		
6- To reduce the effect of traffic on the environment		5-Between 2005 and 2010 Herefordshire's total and per capita carbon emission reduced by 7% and 8% respectively; while UK's total and per capita carbon emission reduced by 8% and 12% respectively within the same period. This suggests that air quality is improving.		
7- To reduce contributions to climate change		6-% of Herefordshire residents who travel to work by: Car: 70.1%, Foot: 14.7%;Bicycle: 4.3%,Bus: 2%, Train: 0.8%,Motorbike: 0.8%,Taxi: 0.3%,Other: 7%.		
8- To reduce vulnerability to climate change		7-Herefordshire latest figure of C02 emissions per capita-dates back to 2010: 1.61 million tonnes (mtCO <sup>2</sup> )		
9- To improve water quality		8-Reduce the risk of flooding-There have been no approvals contrary to EA advice since reporting began in 2004.The 2011-2013 AMR does not contain updated conservation data.		
10- To provide for sustainable sources of water supply		9-Percentage of river length assessed as good or very good chemical quality and ecological quality as required by the Water Framework Directive. Latest figure dates back to 2005: 84%. The River Lugg section of the SAC is currently exceeding phosphate targets.		
11- To avoid, reduce and manage flood risk		10- Kingsland falls within the Middle Lugg catchment, and has one of the lowest areas at risk of hazard flooding in the county. The WCS states that Kingsland requires general upgrading for pollution and wastewater treatment. Potentially adding additional waste treatment infrastructure.		
12- To conserve soil resources and quality		11-Number of planning permissions granted contrary to the advice of the Environment Agency on flood defence grounds. The 2011-2013 AMR does not contain updated conservation data.		
13- To minimise the production of waste		12-The agricultural land classification around Kingsland is mainly Grades 2 and 3 (Very good to Moderate).There are patches of Grade 4 land (poor) within the centre of the parish. Percentage of all new development completed on previously developed land.2010/11: 67%2011-13: 57%.		
14- To improve health of the population		13 – No Baseline data		
15- To reduce crime and nuisance		14 – No Baseline data		
16- To conserve natural and manmade resources		15 – No Baseline data		
		16-There are numerous listed buildings within the parish and two SAMs. There are no outstanding enforcement actions or appeals concerning local loss of heritage assets and locally important buildings within Kingsland at present. The Parish Area has the following landscape types: Principal settled farmlands on river terrace; principal settled farmlands; estate farmlands.		

NDP Option	SEA objectives																Summary in relation to baseline	Overall commentary and any initial cumulative effects/ Recommendations	Conformity with Core Strategy
	1	2	3	4	5	6	7	8	9	10	11	12	13	14	15	16			
<b>Baseline</b>	1	2	3	4	5	6	7	8	9	10	11	12	NA	NA	NA	13			
<b>Kingsland Village Option 1</b>	+	+	?	?	X	?	?	X	X	X	+	+	X	X	X	?	Overall this option has both a positive and an unknown impact on the baseline data. The unknown is due to the extent of housing that would need to be included within the existing settlement boundary, could have an impact upon the quality of the surroundings.	Although the existing settlement boundary identifies the extent of the development and therefore offers protection of the landscape and surroundings, the additional development within the settlement boundary could alter the existing character due to intensification of development within the restricted area. Policies will need to ensure that sufficient development can occur in the boundary and that this additional does not have a negative impact upon the character of the area.	N/A
<b>Kingsland Village Option 2</b>	?	?	?	?	X	?	?	?	X	X	?	?	X	X	X	?	Overall this option has mainly an unknown impact due to not knowing the location of the new settlement boundary; therefore the policy and definition of a new settlement boundary will need to consider the SEA objectives.	This option has three different variants and therefore is difficult to assess in relation to the baseline, if the settlement boundary is redrawn using this option then the policy will need to ensure that the character and setting of the area as well as landscape quality is taken into account to minimise the effect on the baseline.	N/A
<b>Kingsland Village Option 3</b>	+	+	?	+	X	?	?	?	X	X	?	?	X	X	X	?	Overall this option has both a positive impact and unknown impact on the baseline data. This is due to not knowing the exact location of a new proposed boundary however, the re-drawing of the boundary would take into consideration the important open spaces, views and areas of important character of the village.	This option is ensuring the important open spaces, views and areas of important character will be protected although there is no map to display this therefore any policy will need to ensure that sufficient protection is offered to maintain the quality of the landscape and surroundings.	N/A
<b>Kingsland Village Option 4</b>	?	?	?	?	X	?	?	?	X	X	?	?	X	X	X	?	Overall this option has an unknown impact on the baseline data, this is due to the unknown factor of where the new development will be located. The option states small scale development but no further details are included to understand how a policy would impact upon the baseline.	Any criteria that is chosen if this option is taken forward would need to be robust to ensure that the Plan clearly identifies where development would and would not be suitable to ensure that the landscape and character of the village is protected.	N/A
<b>Shirlheath Option 1</b>	+	?	?	+	X	?	?	?	?	X	?	-	-	X	X	?	Overall this option has a mixed impact on the baseline data. This is due to not knowing the criteria and location of the proposed small scale development.	Any criteria that is chosen if this option is taken forward would need to be robust to ensure that the Plan clearly identifies where development would and would not be suitable to ensure that the landscape and character of the village is protected.	N/A
<b>Shirlheath Option 2</b>	?	+	?	+	X	?	?	?	?	X	?	+	-	X	X	+	Overall this option has mainly a positive impact on the baseline data, due to not knowing the location of the specific sites for the development.	This option has not identified any sites to come forward therefore it is difficult to assess against the baseline data, therefore any sites will need to ensure the least impact on the baseline data. However it does state that development will be limited to small projects in line with agreed criteria.	N/A

NDP Policies	SEA OBJECTIVES																Summary in relation to baseline	Overall commentary and any initial cumulative effects/ Recommendations	Conformity with Core Strategy
	1	2	3	4	5	6	7	8	9	10	11	12	13	14	15	16			
<b>Baseline</b>	1	2	3	4	5	6	7	8	9	10	11	12	NA	NA	NA	13			
<b>Policy KNP1</b> Promoting a sustainable community	+	+	+	+	X	+	+	+	X	+	+	X	+	+	+	+	Overall this policy has mainly a positive impact on the baseline data.	Overall this policy meets the relevant SEA baseline objectives.	This policy meets the Core Strategy requirements for the purposes of the SEA.
<b>Policy KNP2</b> Development Strategy	0	+	+	0	?	?	0	0	X	X	X	0	X	+	+	0	Overall this policy has mainly a positive impact on the baseline data. However new development could increase vehicle movement within Kingsland, resulting in air pollution.	Overall this policy meets the relevant SEA baseline objectives.	This policy meets the Core Strategy requirements for the purposes of the SEA.
<b>Policy KNP3</b> Sustainable Design	+	+	+	+	+	+	+	?	+	+	+	+	?	+	?	+	Overall this policy has mainly a positive impact on the baseline data, and will act as a mitigation policy for the NDP policies	Overall this policy meets the relevant SEA baseline objectives.	This policy meets the Core Strategy requirements for the purposes of the SEA
<b>Policy KNP4-</b> Retaining the rural character of Kingsland	+	+	+	+	+	X	X	X	X	X	X	+	+	X	+	+	Overall this policy has mainly a positive impact on the baseline data.	Overall this policy meets the relevant SEA baseline objectives.	This policy meets the Core Strategy requirements for the purposes of the SEA.
<b>Policy KNP5</b> – Protecting Kingsland's Heritage Assets	+	+	+	+	X	X	X	X	X	X	X	?	X	X	0	+	Overall this policy has mainly a positive impact on the baseline data.	Overall this policy meets the relevant SEA baseline objectives.	This policy meets the Core Strategy requirements for the purposes of the SEA.
<b>Policy KNP6-</b> Retaining the character of the Conservation area and Kingsland village	+	+	+	+	X	X	X	X	X	X	X	+	+	X	+	+	Overall this policy has mainly a positive impact on the baseline data.	Overall this policy meets the relevant SEA baseline objectives.	This policy meets the Core Strategy requirements for the purposes of the SEA.
<b>Policy KNP7-</b> Addressing the flood risk	+	+	+	+	X	X	+	+	+	X	+	+	X	+	X	+	Overall this policy has mainly a positive impact on the baseline data.	Overall this policy meets the relevant SEA baseline objectives.	This policy meets the Core Strategy requirements for the purposes of the SEA.
<b>Policy KNP8-</b> Highway and Transport Infrastructure	X	+	+	X	+	+	+	+	X	X	X	X	X	+	+	X	Overall this policy has mainly a positive impact on the baseline data.	Overall this policy meets the relevant SEA baseline objectives.	This policy meets the Core Strategy requirements for the purposes of the SEA.

<b>Policy KNP9</b> Kingsland Sewage Treatment works	<b>X</b>	<b>+</b>	<b>+</b>	<b>X</b>	<b>+</b>	<b>X</b>	<b>X</b>	<b>X</b>	<b>+</b>	<b>+</b>	<b>X</b>	<b>+</b>	<b>X</b>	<b>+</b>	<b>X</b>	<b>X</b>	Overall this policy has mainly a positive impact on the baseline data.	Overall this policy meets the relevant SEA baseline objectives.	This policy meets the Core Strategy requirements for the purposes of the SEA.
<b>Policy KNP10-</b> Community renewable energy	<b>+</b>	<b>+</b>	<b>+</b>	<b>0</b>	<b>+</b>	<b>0</b>	<b>+</b>	<b>+</b>	<b>0</b>	<b>X</b>	<b>X</b>	<b>0</b>	<b>+</b>	<b>+</b>	<b>X</b>	<b>0</b>	Overall this policy has mainly a positive impact on the baseline data.	Overall this policy meets the relevant SEA baseline objectives.	This policy meets the Core Strategy requirements for the purposes of the SEA.
<b>Policy KNP 11-</b> Infrastructure for Broadband	<b>+</b>	<b>+</b>	<b>+</b>	<b>+</b>	<b>+</b>	<b>+</b>	<b>+</b>	<b>+</b>	<b>X</b>	<b>X</b>	<b>X</b>	<b>+</b>	<b>+</b>	<b>+</b>	<b>+</b>	<b>+</b>	Overall this policy has mainly a positive impact on the baseline data.	Overall this policy meets the relevant SEA baseline objectives.	This policy meets the Core Strategy requirements for the purposes of the SEA.
<b>Policy KNP 12-</b> Protection and enhancement of services and facilities for the community	<b>0</b>	<b>+</b>	<b>+</b>	<b>0</b>	<b>0</b>	<b>0</b>	<b>X</b>	<b>X</b>	<b>X</b>	<b>X</b>	<b>X</b>	<b>X</b>	<b>0</b>	<b>+</b>	<b>+</b>	<b>0</b>	Overall this policy has mainly a positive impact on the baseline data.	Overall this policy meets the relevant SEA baseline objectives.	This policy meets the Core Strategy requirements for the purposes of the SEA.
<b>Policy KNP13</b> Public open space and play areas	<b>+</b>	<b>+</b>	<b>+</b>	<b>+</b>	<b>+</b>	<b>X</b>	<b>X</b>	<b>X</b>	<b>X</b>	<b>X</b>	<b>X</b>	<b>+</b>	<b>X</b>	<b>+</b>	<b>+</b>	<b>+</b>	Overall this policy has mainly a positive impact on the baseline data.	Overall this policy meets the relevant SEA baseline objectives.	This policy meets the Core Strategy requirements for the purposes of the SEA.
<b>Policy KNP 14-</b> New Homes in Kingsland	<b>0</b>	<b>+</b>	<b>+</b>	<b>?</b>	<b>0</b>	<b>0</b>	<b>+</b>	<b>+</b>	<b>0</b>	<b>0</b>	<b>0</b>	<b>0</b>	<b>0</b>	<b>+</b>	<b>+</b>	<b>0</b>	Overall this policy has mainly a positive and neutral impact on the baseline data.	Overall this policy meets the relevant SEA baseline objectives.	This policy meets the Core Strategy requirements for the purposes of the SEA.
<b>Policy KNP15</b> New homes in Shirlheath	<b>0</b>	<b>+</b>	<b>+</b>	<b>?</b>	<b>0</b>	<b>0</b>	<b>?</b>	<b>X</b>	<b>?</b>	<b>X</b>	<b>?</b>	<b>+</b>	<b>+</b>	<b>+</b>	<b>+</b>	<b>+</b>	Overall this policy has mainly a positive and neutral impact on the baseline data.	Overall this policy meets the relevant SEA baseline objectives.	This policy meets the Core Strategy requirements for the purposes of the SEA.
<b>Policy KNP16-</b> Supporting Local Business	<b>0</b>	<b>+</b>	<b>+</b>	<b>+</b>	<b>0</b>	<b>0</b>	<b>X</b>	<b>X</b>	<b>X</b>	<b>X</b>	<b>X</b>	<b>0</b>	<b>+</b>	<b>+</b>	<b>+</b>	<b>+</b>	Overall this policy has mainly a positive impact on the baseline data.	Overall this policy meets the relevant SEA baseline objectives.	This policy meets the Core Strategy requirements for the purposes of the SEA.
<b>Policy KNP17</b> Agriculture, Forestry and rural enterprises	<b>+</b>	<b>+</b>	<b>+</b>	<b>?</b>	<b>?</b>	<b>+</b>	<b>+</b>	<b>?</b>	<b>+</b>	<b>X</b>	<b>?</b>	<b>+</b>	<b>?</b>	<b>X</b>	<b>+</b>	<b>+</b>	Overall this policy has mainly a positive impact on the baseline	Overall this policy meets the relevant SEA baseline objectives	This policy meets the Core Strategy requirements for the purposes of the SEA.

## Template B3: Predict and evaluate the effects of the policies and sites within the Neighbourhood Development Plan

**Parish Council Name:** Kingsland Parish

**Neighbourhood Development Plan Name:** Kingsland Parish NDP Public Consultation Draft

**Date completed:** November 2014

**Key:**

++ Move towards significantly	+ Move towards Marginally	- - Move away significantly	- Move away marginally	0 Neutral	? Uncertain	N/A No relationship
-------------------------------	---------------------------	-----------------------------	------------------------	-----------	-------------	---------------------

*KNP1: Promoting a sustainable community*

SEA Objective	Assessment of effect (consider cumulative effects, significance of the effect and magnitude of the effect in terms of the three time periods)			Summary Explanation	Enhancement and mitigation opportunities
	Short term (1 – 5 years)	Medium term (6 – 10 years)	Long term (11 years +)		
To maintain and enhance nature conservation (biodiversity, flora and fauna)	+	+	+	This Policy is not over and above the Core Strategy	N/A

To maintain and enhance the quality of landscapes and townscapes	+	+	+	This Policy is not over and above the Core Strategy	N/A
To improve quality of surroundings	+	+	++	This Policy is not over and above the Core Strategy	N/A
To conserve and where appropriate enhance the historic environment and cultural heritage	+	+	++	This Policy is not over and above the Core Strategy	N/A
To improve air quality	N/A	N/A	N/A	N/A	N/A
To reduce the effect of traffic on the environment	+	+	+	This Policy is not over and above the Core Strategy	N/A
To reduce contributions to climate change	+	+	+	This Policy is not over and above the Core Strategy	N/A
To reduce vulnerability to climate change	+	+	+	This Policy is not over and above the Core Strategy	N/A
To improve water quality	N/A	N/A	N/A	N/A	N/A
To provide for sustainable sources of water supply	+	+	+	This Policy is not over and above the Core Strategy	N/A

This document is copyright of Herefordshire Council, please contact the Neighbourhood Planning team if you wish to reuse it in whole or part.

To avoid, reduce and manage flood risk	+	+	+	This Policy is not over and above the Core Strategy	N/A
To conserve soil resources and quality	N/A	N/A	N/A	N/A	N/A
To minimise the production of waste	+	+	+	This Policy is not over and above the Core Strategy	N/A
To improve health of the population	+	+	+	This Policy is not over and above the Core Strategy	N/A
To reduce crime and nuisance	+	+	+	This Policy is not over and above the Core Strategy	N/A
To conserve natural and manmade resources	+	+	+	This Policy is not over and above the Core Strategy	N/A
<b>Overall commentary and any cumulative effects</b>	Overall this Policy is not over and above the Core Strategy and the policy moves towards the relevant SEA objectives.				

*KNP2: Development Strategy*

<b>SEA Objective</b>	<b>Assessment of effect</b> (consider cumulative effects, significance of the effect and magnitude of the effect in terms of the three time periods)	<b>Summary Explanation</b>	<b>Enhancement and mitigation opportunities</b>
----------------------	--	----------------------------	---



	<b>Short term</b> (1 – 5 years)	<b>Medium term</b> (6 – 10 years)	<b>Long term</b> (11 years +)		
To maintain and enhance nature conservation (biodiversity, flora and fauna)	<b>0</b>	<b>0</b>	<b>0</b>	This Policy is not over and above the Core Strategy	N/A
To maintain and enhance the quality of landscapes and townscapes	<b>+</b>	<b>+</b>	<b>+</b>	This Policy is not over and above the Core Strategy	N/A
To improve quality of surroundings	<b>+</b>	<b>+</b>	<b>+</b>	This Policy is not over and above the Core Strategy	N/A
To conserve and where appropriate enhance the historic environment and cultural heritage	<b>0</b>	<b>0</b>	<b>0</b>	This Policy is not over and above the Core Strategy	N/A
To improve air quality	<b>N/A</b>	<b>N/A</b>	<b>N/A</b>	N/A	N/A
To reduce the effect of traffic on the environment	<b>?</b>	<b>?</b>	<b>?</b>	This Policy is not over and above the Core Strategy	N/A
To reduce contributions	<b>0</b>	<b>0</b>	<b>0</b>	This Policy is not over and	N/A

This document is copyright of Herefordshire Council, please contact the Neighbourhood Planning team if you wish to reuse it in whole or part.

to climate change				above the Core Strategy	
To reduce vulnerability to climate change	<b>0</b>	<b>0</b>	<b>0</b>	This Policy is not over and above the Core Strategy	N/A
To improve water quality	<b>N/A</b>	<b>N/A</b>	<b>N/A</b>	N/A	N/A
To provide for sustainable sources of water supply	<b>N/A</b>	<b>N/A</b>	<b>N/A</b>	N/A	N/A
To avoid, reduce and manage flood risk	<b>N/A</b>	<b>?</b>	<b>?</b>	This Policy is not over and above the Core Strategy	N/A
To conserve soil resources and quality	<b>+</b>	<b>?</b>	<b>?</b>	This Policy is not over and above the Core Strategy	N/A
To minimise the production of waste	<b>N/A</b>	<b>N/A</b>	<b>N/A</b>	N/A	N/A
To improve health of the population	<b>+</b>	<b>+</b>	<b>+</b>	This Policy is not over and above the Core Strategy	N/A
To reduce crime and nuisance	<b>+</b>	<b>+</b>	<b>+</b>	This Policy is not over and above the Core Strategy	N/A
To conserve natural and manmade resources	<b>+</b>	<b>+</b>	<b>+</b>	This Policy is not over and above the Core Strategy	N/A
<b>Overall commentary and any cumulative</b>	Overall this Policy is not over and above the Core Strategy and the policy moves towards the relevant SEA objectives.				

This document is copyright of Herefordshire Council, please contact the Neighbourhood Planning team if you wish to reuse it in whole or part.

<b>effects</b>	
----------------	--

*KNP3: Sustainable Design*

<b>SEA Objective</b>	<b>Assessment of effect</b> (consider cumulative effects, significance of the effect and magnitude of the effect in terms of the three time periods)			<b>Summary Explanation</b>	<b>Enhancement and mitigation opportunities</b>
	<b>Short term</b> (1 – 5 years)	<b>Medium term</b> (6 – 10 years)	<b>Long term</b> (11 years +)		
To maintain and enhance nature conservation (biodiversity, flora and fauna)	+	+	+	This Policy is not over and above the Core Strategy	N/A
To maintain and enhance the quality of landscapes and townscapes	+	+	+	This Policy is not over and above the Core Strategy	N/A
To improve quality of surroundings	+	+	+	This Policy is not over and above the Core Strategy	N/A
To conserve and where appropriate enhance the historic	+	+	+	This Policy is not over and above the Core Strategy	N/A

environment and cultural heritage					
To improve air quality	+	+	+	This Policy is not over and above the Core Strategy	N/A
To reduce the effect of traffic on the environment	+	++	++	This Policy is not over and above the Core Strategy	N/A
To reduce contributions to climate change	+	++	++	This Policy is not over and above the Core Strategy	N/A
To reduce vulnerability to climate change	?	+	+	This Policy is not over and above the Core Strategy	N/A
To improve water quality	+	+	+	This Policy is not over and above the Core Strategy	N/A
To provide for sustainable sources of water supply	+	+	+	This Policy is not over and above the Core Strategy	N/A
To avoid, reduce and manage flood risk	+	+	+	This Policy is not over and above the Core Strategy	N/A
To conserve soil resources and quality	+	+	+	This Policy is not over and above the Core Strategy	N/A
To minimise the production of waste	?	?	+	This Policy is not over and above the Core Strategy	Some waste will be produced during the development phases,

This document is copyright of Herefordshire Council, please contact the Neighbourhood Planning team if you wish to reuse it in whole or part.

					however this policy does state that a working method statement is required to minimise the waste.
To improve health of the population	+	+	++	This Policy is not over and above the Core Strategy	N/A
To reduce crime and nuisance	N/A	N/A	N/A	N/A	N/A
To conserve natural and manmade resources	+	+	+	This Policy is not over and above the Core Strategy	N/A
<b>Overall commentary and any cumulative effects</b>	Overall this Policy is not over and above the Core Strategy and the policy moves towards the relevant SEA objectives. This policy will be able to act as mitigation towards other policies in the Plan.				

*KNP4: Retaining the Rural Character of Kingsland Parish*

SEA Objective	Assessment of effect (consider cumulative effects, significance of the effect and magnitude of the effect in terms of the three time periods)			Summary Explanation	Enhancement and mitigation opportunities
	Short term (1 – 5)	Medium term	Long term (11 years +)		

	years)	(6 – 10 years)			
To maintain and enhance nature conservation (biodiversity, flora and fauna)	+	+	++	This Policy is not over and above the Core Strategy	N/A
To maintain and enhance the quality of landscapes and townscapes	+	+	++	This Policy is not over and above the Core Strategy	N/A
To improve quality of surroundings	+	+	+	This Policy is not over and above the Core Strategy	N/A
To conserve and where appropriate enhance the historic environment and cultural heritage	+	+	++	This Policy is not over and above the Core Strategy	N/A
To improve air quality	+	+	+	This Policy is not over and above the Core Strategy	N/A
To reduce the effect of traffic on the environment	N/A	N/A	N/A	N/A	N/A
To reduce contributions to climate change	N/A	N/A	N/A	N/A	N/A

This document is copyright of Herefordshire Council, please contact the Neighbourhood Planning team if you wish to reuse it in whole or part.

To reduce vulnerability to climate change	<b>N/A</b>	<b>N/A</b>	<b>N/A</b>	N/A	N/A
To improve water quality	<b>N/A</b>	<b>N/A</b>	<b>N/A</b>	N/A	N/A
To provide for sustainable sources of water supply	<b>N/A</b>	<b>N/A</b>	<b>N/A</b>	N/A	N/A
To avoid, reduce and manage flood risk	<b>N/A</b>	<b>N/A</b>	<b>N/A</b>	N/A	N/A
To conserve soil resources and quality	<b>+</b>	<b>+</b>	<b>+</b>	This Policy is not over and above the Core Strategy	N/A
To minimise the production of waste	<b>+</b>	<b>+</b>	<b>+</b>	This Policy is not over and above the Core Strategy	N/A
To improve health of the population	<b>N/A</b>	<b>N/A</b>	<b>N/A</b>	N/A	N/A
To reduce crime and nuisance	<b>+</b>	<b>+</b>	<b>+</b>	This Policy is not over and above the Core Strategy	N/A
To conserve natural and manmade resources	<b>+</b>	<b>+</b>	<b>+</b>	This Policy is not over and above the Core Strategy	N/A
<b>Overall commentary and any cumulative effects</b>	Overall this Policy is not over and above the Core Strategy and the policy moves towards the relevant SEA objectives. This policy will be able to act as mitigation towards other policies in the Plan.				

This document is copyright of Herefordshire Council, please contact the Neighbourhood Planning team if you wish to reuse it in whole or part.

*KNP5: Protecting Kingsland's Heritage Assets*

SEA Objective	Assessment of effect (consider cumulative effects, significance of the effect and magnitude of the effect in terms of the three time periods)			Summary Explanation	Enhancement and mitigation opportunities
	Short term (1 – 5 years)	Medium term (6 – 10 years)	Long term (11 years +)		
To maintain and enhance nature conservation (biodiversity, flora and fauna)	+	+	+	This Policy is not over and above the Core Strategy	N/A
To maintain and enhance the quality of landscapes and townscapes	+	+	+	This Policy is not over and above the Core Strategy	N/A
To improve quality of surroundings	+	+	+	This Policy is not over and above the Core Strategy	N/A
To conserve and where appropriate enhance the historic environment and	++	++	++	This Policy is not over and above the Core Strategy	N/A



cultural heritage					
To improve air quality	<b>N/A</b>	<b>N/A</b>	<b>N/A</b>	N/A	N/A
To reduce the effect of traffic on the environment	<b>N/A</b>	<b>N/A</b>	<b>N/A</b>	N/A	N/A
To reduce contributions to climate change	<b>N/A</b>	<b>N/A</b>	<b>N/A</b>	N/A	N/A
To reduce vulnerability to climate change	<b>N/A</b>	<b>N/A</b>	<b>N/A</b>	N/A	N/A
To improve water quality	<b>N/A</b>	<b>N/A</b>	<b>N/A</b>	N/A	N/A
To provide for sustainable sources of water supply	<b>N/A</b>	<b>N/A</b>	<b>N/A</b>	N/A	N/A
To avoid, reduce and manage flood risk	<b>N/A</b>	<b>N/A</b>	<b>N/A</b>	N/A	N/A
To conserve soil resources and quality	<b>?</b>	<b>?</b>	<b>?</b>	This Policy is not over and above the Core Strategy, however locations are currently unknown so impact is unknown	Advice from the archaeological department and also mitigation through other policies in this draft plan should be taken into

					consideration.
To minimise the production of waste	<b>N/A</b>	<b>N/A</b>	<b>N/A</b>	N/A	N/A
To improve health of the population	<b>N/A</b>	<b>N/A</b>	<b>N/A</b>	N/A	N/A
To reduce crime and nuisance	<b>0</b>	<b>0</b>	<b>0</b>	N/A	N/A
To conserve natural and manmade resources	<b>+</b>	<b>+</b>	<b>+</b>	This Policy is not over and above the Core Strategy	N/A
<b>Overall commentary and any cumulative effects</b>	Overall this Policy is not over and above the Core Strategy and where applicable the policy moves towards the relevant SEA objectives				

*KNP6: Retaining the character of the Conservation Area and Kingsland Village*

SEA Objective	Assessment of effect (consider cumulative effects, significance of the effect and magnitude of the effect in terms of the three time periods)			Summary Explanation	Enhancement and mitigation opportunities
	Short term (1 – 5 years)	Medium term (6 – 10 years)	Long term (11 years +)		

To maintain and enhance nature conservation (biodiversity, flora and fauna)	+	+	+	This Policy is not over and above the Core Strategy	N/A
To maintain and enhance the quality of landscapes and townscapes	+	++	++	This Policy is not over and above the Core Strategy	N/A
To improve quality of surroundings	+	+	+	This Policy is not over and above the Core Strategy	N/A
To conserve and where appropriate enhance the historic environment and cultural heritage	++	++	++	This Policy is not over and above the Core Strategy	N/A
To improve air quality	N/A	N/A	N/A	N/A	N/A
To reduce the effect of traffic on the environment	N/A	N/A	N/A	N/A	N/A
To reduce contributions to climate change	N/A	N/A	N/A	N/A	N/A
To reduce vulnerability to climate change	N/A	N/A	N/A	N/A	N/A

This document is copyright of Herefordshire Council, please contact the Neighbourhood Planning team if you wish to reuse it in whole or part.

To improve water quality	N/A	N/A	N/A	N/A	N/A
To provide for sustainable sources of water supply	N/A	N/A	N/A	N/A	N/A
To avoid, reduce and manage flood risk	N/A	N/A	N/A	N/A	N/A
To conserve soil resources and quality	+	+	+	This Policy is not over and above the Core Strategy	N/A
To minimise the production of waste	+	+	+	This Policy is not over and above the Core Strategy	N/A
To improve health of the population	N/A	N/A	N/A	N/A	N/A
To reduce crime and nuisance	+	+	+	This Policy is not over and above the Core Strategy	N/A
To conserve natural and manmade resources	+	+	+	This Policy is not over and above the Core Strategy	N/A
<b>Overall commentary and any cumulative effects</b>	Overall this Policy is not over and above the Core Strategy and the policy moves towards the relevant SEA objectives				

*KNP7: Addressing flood risk*

This document is copyright of Herefordshire Council, please contact the Neighbourhood Planning team if you wish to reuse it in whole or part.

SEA Objective	Assessment of effect (consider cumulative effects, significance of the effect and magnitude of the effect in terms of the three time periods)			Summary Explanation	Enhancement and mitigation opportunities
	Short term (1 – 5 years)	Medium term (6 – 10 years)	Long term (11 years +)		
To maintain and enhance nature conservation (biodiversity, flora and fauna)	+	+	+	This Policy is not over and above the Core Strategy	N/A
To maintain and enhance the quality of landscapes and townscapes	+	+	+	This Policy is not over and above the Core Strategy	N/A
To improve quality of surroundings	+	+	+	This Policy is not over and above the Core Strategy	N/A
To conserve and where appropriate enhance the historic environment and cultural heritage	+	+	+	This Policy is not over and above the Core Strategy	N/A
To improve air quality	N/A	N/A	N/A	N/A	N/A

This document is copyright of Herefordshire Council, please contact the Neighbourhood Planning team if you wish to reuse it in whole or part.

To reduce the effect of traffic on the environment	<b>N/A</b>	<b>N/A</b>	<b>N/A</b>	N/A	N/A
To reduce contributions to climate change	<b>+</b>	<b>+</b>	<b>+</b>	This Policy is not over and above the Core Strategy	N/A
To reduce vulnerability to climate change	<b>+</b>	<b>++</b>	<b>++</b>	This Policy is not over and above the Core Strategy	N/A
To improve water quality	<b>+</b>	<b>+</b>	<b>+</b>	This Policy is not over and above the Core Strategy	N/A
To provide for sustainable sources of water supply	<b>N/A</b>	<b>N/A</b>	<b>N/A</b>	N/A	N/A
To avoid, reduce and manage flood risk	<b>+</b>	<b>+</b>	<b>+</b>	This Policy is not over and above the Core Strategy	N/A
To conserve soil resources and quality	<b>+</b>	<b>+</b>	<b>+</b>	This Policy is not over and above the Core Strategy	N/A
To minimise the production of waste	<b>N/A</b>	<b>N/A</b>	<b>N/A</b>	N/A	N/A
To improve health of the population	<b>+</b>	<b>+</b>	<b>+</b>	This Policy is not over and above the Core Strategy	N/A
To reduce crime and nuisance	<b>N/A</b>	<b>N/A</b>	<b>N/A</b>	N/A	N/A

This document is copyright of Herefordshire Council, please contact the Neighbourhood Planning team if you wish to reuse it in whole or part.

To conserve natural and manmade resources	+	+	+	This Policy is not over and above the Core Strategy	N/A
<b>Overall commentary and any cumulative effects</b>	Overall this Policy is not over and above the Core Strategy and the policy moves towards the relevant SEA objectives				

*KNP8: Highways and Transport Infrastructure*

SEA Objective	Assessment of effect (consider cumulative effects, significance of the effect and magnitude of the effect in terms of the three time periods)			Summary Explanation	Enhancement and mitigation opportunities
	Short term (1 – 5 years)	Medium term (6 – 10 years)	Long term (11 years +)		
To maintain and enhance nature conservation (biodiversity, flora and fauna)	N/A	N/A	N/A	N/A	N/A
To maintain and enhance the quality of landscapes and townscapes	+	+	+	This Policy is not over and above the Core Strategy	N/A

To improve quality of surroundings	+	+	+	This Policy is not over and above the Core Strategy	N/A
To conserve and where appropriate enhance the historic environment and cultural heritage	N/A	N/A	N/A	N/A	N/A
To improve air quality	+	+	+	This Policy is not over and above the Core Strategy	N/A
To reduce the effect of traffic on the environment	+	++	++	This Policy is not over and above the Core Strategy	N/A
To reduce contributions to climate change	+	+	+	This Policy is not over and above the Core Strategy	N/A
To reduce vulnerability to climate change	+	+	+	This Policy is not over and above the Core Strategy	N/A
To improve water quality	N/A	N/A	N/A	N/A	N/A
To provide for sustainable sources of water supply	N/A	N/A	N/A	N/A	N/A
To avoid, reduce and manage flood risk	N/A	N/A	N/A	N/A	N/A

This document is copyright of Herefordshire Council, please contact the Neighbourhood Planning team if you wish to reuse it in whole or part.



To conserve soil resources and quality	N/A	N/A	N/A	N/A	N/A
To minimise the production of waste	N/A	N/A	N/A	N/A	N/A
To improve health of the population	+	+	+	This Policy is not over and above the Core Strategy	N/A
To reduce crime and nuisance	+	+	+	This Policy is not over and above the Core Strategy	N/A
To conserve natural and manmade resources	N/A	N/A	N/A	N/A	N/A
<b>Overall commentary and any cumulative effects</b>	Overall this Policy is not over and above the Core Strategy and the policy moves towards the relevant SEA objectives				

*KNP9: Kingsland Sewage Treatment works*

SEA Objective	Assessment of effect (consider cumulative effects, significance of the effect and magnitude of the effect in terms of the three time periods)			Summary Explanation	Enhancement and mitigation opportunities
	Short term (1 – 5 years)	Medium term (6 – 10 years)	Long term (11 years +)		

To maintain and enhance nature conservation (biodiversity, flora and fauna)	<b>N/A</b>	<b>N/A</b>	<b>N/A</b>	N/A	N/A
To maintain and enhance the quality of landscapes and townscapes	<b>+</b>	<b>+</b>	<b>+</b>	This Policy is not over and above the Core Strategy	N/A
To improve quality of surroundings	<b>+</b>	<b>+</b>	<b>+</b>	This Policy is not over and above the Core Strategy	N/A
To conserve and where appropriate enhance the historic environment and cultural heritage	<b>N/A</b>	<b>N/A</b>	<b>N/A</b>	N/A	N/A
To improve air quality	<b>+</b>	<b>+</b>	<b>+</b>	This Policy is not over and above the Core Strategy	N/A
To reduce the effect of traffic on the environment	<b>N/A</b>	<b>N/A</b>	<b>N/A</b>	N/A	N/A
To reduce contributions to climate change	<b>N/A</b>	<b>N/A</b>	<b>N/A</b>	N/A	N/A
To reduce vulnerability	<b>N/A</b>	<b>N/A</b>	<b>N/A</b>	N/A	N/A

This document is copyright of Herefordshire Council, please contact the Neighbourhood Planning team if you wish to reuse it in whole or part.

to climate change					
To improve water quality	+	+	+	This Policy is not over and above the Core Strategy	N/A
To provide for sustainable sources of water supply	+	+	+	This Policy is not over and above the Core Strategy	N/A
To avoid, reduce and manage flood risk	N/A	N/A	N/A	N/A	N/A
To conserve soil resources and quality	+	+	+	This Policy is not over and above the Core Strategy	N/A
To minimise the production of waste	N/A	N/A	N/A	N/A	N/A
To improve health of the population	+	+	+	This Policy is not over and above the Core Strategy	N/A
To reduce crime and nuisance	N/A	N/A	N/A	N/A	N/A
To conserve natural and manmade resources	N/A	N/A	N/A	N/A	N/A
<b>Overall commentary and any cumulative effects</b>	Overall this Policy is not over and above the Core Strategy and the policy moves towards the relevant SEA objectives				

KNP10: Community Renewable energy

SEA Objective	Assessment of effect (consider cumulative effects, significance of the effect and magnitude of the effect in terms of the three time periods)			Summary Explanation	Enhancement and mitigation opportunities
	Short term (1 – 5 years)	Medium term (6 – 10 years)	Long term (11 years +)		
To maintain and enhance nature conservation (biodiversity, flora and fauna)	+	+	+	This Policy is not over and above the Core Strategy	N/A
To maintain and enhance the quality of landscapes and townscapes	+	+	+	This Policy is not over and above the Core Strategy	N/A
To improve quality of surroundings	+	+	+	This Policy is not over and above the Core Strategy	N/A
To conserve and where appropriate enhance the historic environment and cultural heritage	0	0	0	This Policy is not over and above the Core Strategy	N/A

To improve air quality	+	+	+	This Policy is not over and above the Core Strategy	N/A
To reduce the effect of traffic on the environment	+	+	+	This Policy is not over and above the Core Strategy	N/A
To reduce contributions to climate change	++	++	++	This Policy is not over and above the Core Strategy	This policy will help to mitigate against other proposals in the Plan
To reduce vulnerability to climate change	++	++	++	This Policy is not over and above the Core Strategy	This policy will help to mitigate against other proposals in the Plan
To improve water quality	0	0	0	This Policy is not over and above the Core Strategy	N/A
To provide for sustainable sources of water supply	?	?	?	This Policy is not over and above the Core Strategy	The schemes aren't identified so difficult to identify impact.
To avoid, reduce and manage flood risk	+	+	+	This Policy is not over and above the Core Strategy	N/A
To conserve soil resources and quality	+	+	+	This Policy is not over and above the Core Strategy	N/A
To minimise the production of waste	?	?	?	This Policy is not over and above the Core Strategy	The schemes aren't identified so difficult to identify impact.

This document is copyright of Herefordshire Council, please contact the Neighbourhood Planning team if you wish to reuse it in whole or part.

To improve health of the population	+	+	+	This Policy is not over and above the Core Strategy	N/A
To reduce crime and nuisance	N/A	N/A	N/A	N/A	N/A
To conserve natural and manmade resources	+	+	+	This Policy is not over and above the Core Strategy	N/A
<b>Overall commentary and any cumulative effects</b>	Overall this Policy is not over and above the Core Strategy and the policy moves towards the relevant SEA objectives. In addition this policy will help to mitigate against other policies and proposals in the Plan to neutralise the overall impact.				

*KNP11: Infrastructure for Broadband*

SEA Objective	Assessment of effect (consider cumulative effects, significance of the effect and magnitude of the effect in terms of the three time periods)			Summary Explanation	Enhancement and mitigation opportunities
	Short term (1 – 5 years)	Medium term (6 – 10 years)	Long term (11 years +)		

To maintain and enhance nature conservation (biodiversity, flora and fauna)	0	0	0	This Policy is not over and above the Core Strategy	N/A
To maintain and enhance the quality of landscapes and townscapes	0	0	0	This Policy is not over and above the Core Strategy	N/A
To improve quality of surroundings	0	0	0	This Policy is not over and above the Core Strategy	N/A
To conserve and where appropriate enhance the historic environment and cultural heritage	0	0	0	This Policy is not over and above the Core Strategy	N/A
To improve air quality	N/A	N/A	N/A	N/A	N/A
To reduce the effect of traffic on the environment	N/A	N/A	N/A	N/A	N/A
To reduce contributions to climate change	+	+	+	This Policy is not over and above the Core Strategy	N/A
To reduce vulnerability to climate change	+	+	+	This Policy is not over and above the Core Strategy	N/A

This document is copyright of Herefordshire Council, please contact the Neighbourhood Planning team if you wish to reuse it in whole or part.

To improve water quality	N/A	N/A	N/A	N/A	N/A
To provide for sustainable sources of water supply	N/A	N/A	N/A	N/A	N/A
To avoid, reduce and manage flood risk	N/A	N/A	N/A	N/A	N/A
To conserve soil resources and quality	N/A	N/A	N/A	N/A	N/A
To minimise the production of waste	+	+	+	This Policy is not over and above the Core Strategy	N/A
To improve health of the population	+	+	+	This Policy is not over and above the Core Strategy	N/A
To reduce crime and nuisance	+	+	+	This Policy is not over and above the Core Strategy	N/A
To conserve natural and manmade resources	+	+	+	This Policy is not over and above the Core Strategy	N/A
<b>Overall commentary and any cumulative effects</b>	Overall this Policy is not over and above the Core Strategy and the policy moves towards the relevant SEA objectives.				

*KNP12: Protection and enhancement of services and facilities for the community*

This document is copyright of Herefordshire Council, please contact the Neighbourhood Planning team if you wish to reuse it in whole or part.



SEA Objective	Assessment of effect (consider cumulative effects, significance of the effect and magnitude of the effect in terms of the three time periods)			Summary Explanation	Enhancement and mitigation opportunities
	Short term (1 – 5 years)	Medium term (6 – 10 years)	Long term (11 years +)		
To maintain and enhance nature conservation (biodiversity, flora and fauna)	+	+	+	This Policy is not over and above the Core Strategy	N/A
To maintain and enhance the quality of landscapes and townscapes	+	+	+	This Policy is not over and above the Core Strategy	N/A
To improve quality of surroundings	+	+	+	This Policy is not over and above the Core Strategy	N/A
To conserve and where appropriate enhance the historic environment and cultural heritage	0	0	0	This Policy is not over and above the Core Strategy	N/A
To improve air quality	N/A	N/A	N/A	N/A	N/A

This document is copyright of Herefordshire Council, please contact the Neighbourhood Planning team if you wish to reuse it in whole or part.

To reduce the effect of traffic on the environment	+	+	+	This Policy is not over and above the Core Strategy	N/A
To reduce contributions to climate change	+	+	+	This Policy is not over and above the Core Strategy	
To reduce vulnerability to climate change	0	0	0	This Policy is not over and above the Core Strategy	
To improve water quality	N/A	N/A	N/A	N/A	N/A
To provide for sustainable sources of water supply	N/A	N/A	N/A	N/A	N/A
To avoid, reduce and manage flood risk	N/A	N/A	N/A	N/A	N/A
To conserve soil resources and quality	+	+	+	This Policy is not over and above the Core Strategy	N/A
To minimise the production of waste	+	+	+	This Policy is not over and above the Core Strategy	N/A
To improve health of the population	+	+	+	This Policy is not over and above the Core Strategy	N/A
To reduce crime and nuisance	+	+	+	This Policy is not over and above the Core Strategy	N/A

This document is copyright of Herefordshire Council, please contact the Neighbourhood Planning team if you wish to reuse it in whole or part.

To conserve natural and manmade resources	+	+	+	This Policy is not over and above the Core Strategy	N/A
<b>Overall commentary and any cumulative effects</b>	Overall this Policy is not over and above the Core Strategy and the policy moves towards the relevant SEA objectives.				

*KNP13: Public Open Space and Play areas*

SEA Objective	Assessment of effect (consider cumulative effects, significance of the effect and magnitude of the effect in terms of the three time periods)			Summary Explanation	Enhancement and mitigation opportunities
	Short term (1 – 5 years)	Medium term (6 – 10 years)	Long term (11 years +)		
To maintain and enhance nature conservation (biodiversity, flora and fauna)	+	+	+	This Policy is not over and above the Core Strategy	N/A
To maintain and enhance the quality of landscapes and townscapes	+	+	+	This Policy is not over and above the Core Strategy	N/A

To improve quality of surroundings	+	+	+	This Policy is not over and above the Core Strategy	N/A
To conserve and where appropriate enhance the historic environment and cultural heritage	+	+	+	This Policy is not over and above the Core Strategy	N/A
To improve air quality	+	+	+	This Policy is not over and above the Core Strategy	N/A
To reduce the effect of traffic on the environment	N/A	N/A	N/A	N/A	N/A
To reduce contributions to climate change	N/A	N/A	N/A	N/A	N/A
To reduce vulnerability to climate change	N/A	N/A	N/A	N/A	N/A
To improve water quality	N/A	N/A	N/A	N/A	N/A
To provide for sustainable sources of water supply	N/A	N/A	N/A	N/A	N/A
To avoid, reduce and manage flood risk	+	+	+	This Policy is not over and above the Core Strategy	N/A

This document is copyright of Herefordshire Council, please contact the Neighbourhood Planning team if you wish to reuse it in whole or part.

To conserve soil resources and quality	+	+	+	This Policy is not over and above the Core Strategy	N/A
To minimise the production of waste	N/A	N/A	N/A	N/A	N/A
To improve health of the population	+	+	+	This Policy is not over and above the Core Strategy	N/A
To reduce crime and nuisance	+	+	+	This Policy is not over and above the Core Strategy	N/A
To conserve natural and manmade resources	+	+	+	This Policy is not over and above the Core Strategy	N/A
<b>Overall commentary and any cumulative effects</b>	Overall this Policy is not over and above the Core Strategy and the policy moves towards the relevant SEA objectives.				

*KNP14: New Homes in Kingsland*

SEA Objective	Assessment of effect (consider cumulative effects, significance of the effect and magnitude of the effect in terms of the three time periods)			Summary Explanation	Enhancement and mitigation opportunities
	Short term (1 – 5 years)	Medium term (6 – 10 years)	Long term (11 years +)		

To maintain and enhance nature conservation (biodiversity, flora and fauna)	0	0	0	This Policy is not over and above the Core Strategy	N/A
To maintain and enhance the quality of landscapes and townscapes	+	+	+	This Policy is not over and above the Core Strategy	N/A
To improve quality of surroundings	?	?	?	This Policy is not over and above the Core Strategy	The location of the housing is still unknown, however other policies within the Plan and within this policy will help to mitigate against adverse impact.
To conserve and where appropriate enhance the historic environment and cultural heritage	+	+	+	This Policy is not over and above the Core Strategy	N/A
To improve air quality	0	0	0	This Policy is not over and above the Core Strategy	N/A
To reduce the effect of traffic on the environment	0	0	0	This Policy is not over and above the Core Strategy	N/A

This document is copyright of Herefordshire Council, please contact the Neighbourhood Planning team if you wish to reuse it in whole or part.

To reduce contributions to climate change	<b>0</b>	<b>0</b>	<b>0</b>	This Policy is not over and above the Core Strategy	N/A
To reduce vulnerability to climate change	<b>N/A</b>	<b>N/A</b>	<b>N/A</b>	N/A	N/A
To improve water quality	<b>0</b>	<b>0</b>	<b>0</b>	This Policy is not over and above the Core Strategy	N/A
To provide for sustainable sources of water supply	<b>N/A</b>	<b>N/A</b>	<b>N/A</b>	N/A	N/A
To avoid, reduce and manage flood risk	<b>+</b>	<b>+</b>	<b>+</b>	This Policy is not over and above the Core Strategy	N/A
To conserve soil resources and quality	<b>0</b>	<b>0</b>	<b>0</b>	This Policy is not over and above the Core Strategy	Mitigation through other policies in the Plan
To minimise the production of waste	<b>0</b>	<b>0</b>	<b>0</b>	This Policy is not over and above the Core Strategy	Mitigation through other policies in the Plan
To improve health of the population	<b>0</b>	<b>0</b>	<b>0</b>	This Policy is not over and above the Core Strategy	N/A
To reduce crime and nuisance	<b>+</b>	<b>+</b>	<b>+</b>	This Policy is not over and above the Core Strategy	N/A
To conserve natural and manmade	<b>0</b>	<b>0</b>	<b>0</b>	Mitigation through other policies in	N/A

This document is copyright of Herefordshire Council, please contact the Neighbourhood Planning team if you wish to reuse it in whole or part.

resources				the Plan	
<b>Overall commentary and any cumulative effects</b>	Overall this Policy is not over and above the Core Strategy and the policy moves towards the relevant SEA objectives.				

*KNP15: New homes in Shirtheath*

SEA Objective	Assessment of effect (consider cumulative effects, significance of the effect and magnitude of the effect in terms of the three time periods)			Summary Explanation	Enhancement and mitigation opportunities
	Short term (1 – 5 years)	Medium term (6 – 10 years)	Long term (11 years +)		
To maintain and enhance nature conservation (biodiversity, flora and fauna)	0	0	0	This Policy is not over and above the Core Strategy	N/A
To maintain and enhance the quality of landscapes and townscapes	+	+	+	This Policy is not over and above the Core Strategy	N/A
To improve quality of	?	?	?	This Policy is not over and above	The location of the housing is still unknown,



surroundings				the Core Strategy	however other policies within the Plan and within this policy will help to mitigate against adverse impact.
To conserve and where appropriate enhance the historic environment and cultural heritage	<b>+</b>	<b>+</b>	<b>+</b>	This Policy is not over and above the Core Strategy	N/A
To improve air quality	<b>0</b>	<b>0</b>	<b>0</b>	This Policy is not over and above the Core Strategy	N/A
To reduce the effect of traffic on the environment	<b>0</b>	<b>0</b>	<b>0</b>	This Policy is not over and above the Core Strategy	N/A
To reduce contributions to climate change	<b>0</b>	<b>0</b>	<b>0</b>	This Policy is not over and above the Core Strategy	N/A
To reduce vulnerability to climate change	<b>N/A</b>	<b>N/A</b>	<b>N/A</b>	N/A	N/A
To improve water quality	<b>0</b>	<b>0</b>	<b>0</b>	This Policy is not over and above the Core Strategy	N/A
To provide for sustainable sources of water supply	<b>N/A</b>	<b>N/A</b>	<b>N/A</b>	N/A	N/A

This document is copyright of Herefordshire Council, please contact the Neighbourhood Planning team if you wish to reuse it in whole or part.

To avoid, reduce and manage flood risk	+	+	+	This Policy is not over and above the Core Strategy	N/A
To conserve soil resources and quality	0	0	0	This Policy is not over and above the Core Strategy	Mitigation through other policies in the Plan
To minimise the production of waste	0	0	0	This Policy is not over and above the Core Strategy	Mitigation through other policies in the Plan
To improve health of the population	0	0	0	This Policy is not over and above the Core Strategy	N/A
To reduce crime and nuisance	+	+	+	This Policy is not over and above the Core Strategy	N/A
To conserve natural and manmade resources	0	0	0	Mitigation through other policies in the Plan	N/A
<b>Overall commentary and any cumulative effects</b>	Overall this Policy is not over and above the Core Strategy and the policy moves towards the relevant SEA objectives.				

KNP16: Supporting Local business

SEA Objective	Assessment of effect (consider cumulative effects, significance of the effect and magnitude of the effect in terms of the three time periods)			Summary Explanation	Enhancement and mitigation opportunities
	Short term (1 – 5 years)	Medium term (6 – 10 years)	Long term (11 years +)		
To maintain and enhance nature conservation (biodiversity, flora and fauna)	0	0	0	This Policy is not over and above the Core Strategy	N/A
To maintain and enhance the quality of landscapes and townscapes	+	+	+	This Policy is not over and above the Core Strategy	N/A
To improve quality of surroundings	+	+	+	This Policy is not over and above the Core Strategy	N/A
To conserve and where appropriate enhance the historic environment and cultural heritage	+	+	+	This Policy is not over and above the Core Strategy	N/A

To improve air quality	<b>0</b>	<b>0</b>	<b>0</b>	This Policy is not over and above the Core Strategy	N/A
To reduce the effect of traffic on the environment	<b>+</b>	<b>+</b>	<b>+</b>	This Policy is not over and above the Core Strategy	N/A
To reduce contributions to climate change	<b>N/A</b>	<b>N/A</b>	<b>N/A</b>	N/A	N/A
To reduce vulnerability to climate change	<b>N/A</b>	<b>N/A</b>	<b>N/A</b>	N/A	N/A
To improve water quality	<b>N/A</b>	<b>N/A</b>	<b>N/A</b>	N/A	N/A
To provide for sustainable sources of water supply	<b>N/A</b>	<b>N/A</b>	<b>N/A</b>	N/A	N/A
To avoid, reduce and manage flood risk	<b>+</b>	<b>+</b>	<b>+</b>	This Policy is not over and above the Core Strategy	N/A
To conserve soil resources and quality	<b>+</b>	<b>+</b>	<b>+</b>	This Policy is not over and above the Core Strategy	N/A
To minimise the production of waste	<b>0</b>	<b>0</b>	<b>0</b>	This Policy is not over and above the Core Strategy	Other policies in the Plan will help to mitigate against production of waste.

To improve health of the population	N/A	N/A	N/A	N/A	N/A
To reduce crime and nuisance	N/A	N/A	N/A	N/A	N/A
To conserve natural and manmade resources	+	+	+	This Policy is not over and above the Core Strategy	N/A
<b>Overall commentary and any cumulative effects</b>	Overall this Policy is not over and above the Core Strategy and the policy moves towards the relevant SEA objectives.				

*KNP17: Agriculture, Forestry and Rural Enterprises*

SEA Objective	Assessment of effect (consider cumulative effects, significance of the effect and magnitude of the effect in terms of the three time periods)			Summary Explanation	Enhancement and mitigation opportunities
	Short term (1 – 5 years)	Medium term (6 – 10 years)	Long term (11 years +)		
To maintain and enhance nature conservation (biodiversity, flora and	+	+	+	This Policy is not over and above the Core Strategy	N/A

fauna)					
To maintain and enhance the quality of landscapes and townscapes	+	+	+	This Policy is not over and above the Core Strategy	N/A
To improve quality of surroundings	+	+	+	This Policy is not over and above the Core Strategy	N/A
To conserve and where appropriate enhance the historic environment and cultural heritage	?	?	?	This Policy is not over and above the Core Strategy	The location of development is currently unknown so unsure of impact to this objective
To improve air quality	?	?	?	This Policy is not over and above the Core Strategy	N/A
To reduce the effect of traffic on the environment	+	+	+	This Policy is not over and above the Core Strategy	N/A
To reduce contributions to climate change	+	+	+	This Policy is not over and above the Core Strategy	N/A
To reduce vulnerability to climate change	?	?	?	This Policy is not over and above the Core Strategy	N/A
To improve water quality	+	+	+	This Policy is not over and above the Core Strategy	N/A

This document is copyright of Herefordshire Council, please contact the Neighbourhood Planning team if you wish to reuse it in whole or part.

To provide for sustainable sources of water supply	N/A	N/A	N/A	N/A	N/A
To avoid, reduce and manage flood risk	?	?	?	This Policy is not over and above the Core Strategy	N/A
To conserve soil resources and quality	+	+	+	This Policy is not over and above the Core Strategy	N/A
To minimise the production of waste	?	?	?	This Policy is not over and above the Core Strategy	N/A
To improve health of the population	N/A	N/A	N/A	N/A	N/A
To reduce crime and nuisance	+	+	+	This Policy is not over and above the Core Strategy	N/A
To conserve natural and manmade resources	+	+	+	This Policy is not over and above the Core Strategy	N/A
<b>Overall commentary and any cumulative effects</b>	Overall this Policy is not over and above the Core Strategy and the policy moves towards the relevant SEA objectives.				

## Template B4: Assessment of cumulative impacts of the Neighbourhood Development Plan

Parish Council Name: Kingsland

Neighbourhood Development Plan Name: Kingsland NDP

Date completed: November 2014

Key:

<b>++</b> Move towards significantly	<b>+</b> Move towards marginally	<b>--</b> Move away Significantly	<b>-</b> Move away marginally	<b>0</b> Neutral	<b>?</b> Uncertain	<b>X</b> No relationship
--------------------------------------	----------------------------------	-----------------------------------	-------------------------------	------------------	--------------------	--------------------------

<b>SEA Objective</b>  <b>Objective / Policy</b>	1. To maintain and enhance nature conservation (biodiversity, flora and fauna)	2. To maintain and enhance the quality of landscapes and townscapes	3. To improve quality of surroundings	4. To conserve and where appropriate enhance the historic environment and culture heritage	5. To improve air quality	6. To reduce the effect of traffic on the environment	7. To reduce contributions to climate change	8. To reduce vulnerability to climate change	9. To improve water quality	10. To provide for sustainable sources of water supply	11. To avoid, reduce and manage flood risk	12. To conserve soil resources and quality	13. To minimise the production	14. To improve health of the population	15. To reduce crime and nuisance	16. To conserve natural and manmade resources
<b>Objective 1-</b> Ensure that the visual effect of all development preserves and enhances the traditional character of the parish and protects or landscape and historic environment.	<b>+</b>	<b>+</b>	<b>+</b>	<b>+</b>	<b>X</b>	<b>X</b>	<b>X</b>	<b>X</b>	<b>X</b>	<b>X</b>	<b>X</b>	<b>+</b>	<b>+</b>	<b>X</b>	<b>X</b>	<b>+</b>
<b>Objective 2-</b> Ensure that all development is based upon sound environmental sustainability principles including energy sourcing and conservation, water and sewerage management,	<b>+</b>	<b>+</b>	<b>+</b>	<b>X</b>	<b>+</b>	<b>X</b>	<b>+</b>	<b>+</b>	<b>+</b>	<b>+</b>	<b>X</b>	<b>+</b>	<b>+</b>	<b>+</b>	<b>X</b>	<b>+</b>



waste minimization, wildlife conservation and habitat protection.																
<b>Objective 3-</b> Ensure all infrastructure including services, facilities and amenities are retained and developed in line with the current needs and future growth of the community.	<b>+</b>	<b>+</b>	<b>+</b>	<b>X</b>	<b>+</b>	<b>X</b>	<b>X</b>	<b>X</b>	<b>X</b>	<b>X</b>	<b>X</b>	<b>+</b>	<b>+</b>	<b>+</b>	<b>+</b>	<b>+</b>
<b>Objective 4-</b> Provide sufficient housing to the meet the future needs of the community, in terms of numbers and type, based upon robust evidence.	<b>X</b>	<b>+</b>	<b>+</b>	<b>X</b>	<b>X</b>	<b>X</b>	<b>X</b>	<b>X</b>	<b>X</b>	<b>X</b>	<b>X</b>	<b>X</b>	<b>X</b>	<b>+</b>	<b>+</b>	<b>X</b>
<b>Objective 5-</b> Ensure that new and existing business and commerce, including tourism, beneficial to the economic health of the parish, can grow and is in scale with and sensitive to the rural character of the parish.	<b>0</b>	<b>+</b>	<b>+</b>	<b>0</b>	<b>+</b>	<b>?</b>	<b>+</b>	<b>+</b>	<b>+</b>	<b>+</b>	<b>X</b>	<b>+</b>	<b>+</b>	<b>+</b>	<b>+</b>	<b>0</b>
<i>KNP1:</i> <i>Promoting a sustainable community</i>	<b>+</b>	<b>+</b>	<b>+</b>	<b>+</b>	<b>X</b>	<b>+</b>	<b>+</b>	<b>+</b>	<b>X</b>	<b>+</b>	<b>+</b>	<b>X</b>	<b>+</b>	<b>+</b>	<b>+</b>	<b>+</b>
<i>KNP2:</i> <i>Development Strategy</i>	<b>0</b>	<b>+</b>	<b>+</b>	<b>0</b>	<b>X</b>	<b>?</b>	<b>0</b>	<b>0</b>	<b>X</b>	<b>X</b>	<b>?</b>	<b>?</b>	<b>X</b>	<b>+</b>	<b>+</b>	<b>+</b>

<i>KNP3: Sustainable Design</i>	+	+	+	+	+	++	++	+	+	+	+	+	?	+	X	+
<i>KNP4: Retaining the Rural Character of Kingsland Parish</i>	+	+	+	+	+	X	X	X	X	X	X	+	+	X	+	+
<i>KNP5: Protecting Kingsland's Heritage Assets</i>	+	+	+	++	X	X	X	X	X	X	X	?	X	X	0	+
<i>KNP6: Retaining the character of the Conservation Area and Kingsland Village</i>	+	++	+	++	X	X	X	X	X	X	X	+	+	X	+	+
<i>KNP7: Addressing flood risk</i>	+	+	+	+	X	X	+	++	+	X	+	+	X	+	X	+
<i>KNP8: Highways and Transport Infrastructure</i>	X	+	+	X	+	++	+	+	X	X	X	X	X	+	+	X
<i>KNP9: Kingsland Sewage Treatment works</i>	X	+	+	X	+	X	X	X	+	+	X	+	X	+	X	X
<i>KNP10: Community Renewable energy</i>	+	+	+	0	+	+	++	++	0	?	+	+	?	+	X	+
<i>KNP11: Infrastructure for Broadband</i>	0	0	0	0	X	X	+	+	X	X	X	X	+	+	+	+
<i>KNP12: Protection and enhancement of services and facilities for the community</i>	+	+	+	0	X	+	+	0	X	X	X	+	+	+	+	+
<i>KNP13: Public Open Space and Play areas</i>	+	+	+	+	+	X	X	X	X	X	+	+	X	+	+	+
<i>KNP14: New Homes in Kingsland</i>	0	+	?	+	0	0	0	X	0	X	+	0	0	0	+	0

<i>KNP15: New homes in Shirlheath</i>	0	+	?	+	0	0	0	X	0	X	+	0	0	0	+	0
<i>KNP16: Supporting Local business</i>	0	+	+	+	0	+	X	X	X	X	+	+	0	X	X	+
<i>KNP17: Agriculture, Forestry and Rural Enterprises</i>	+	+	+	?	?	+	+	?	+	X	?	+	?	X	+	+
<b>Summary of effects of whole plan on each SEA Objective</b>	+ Overall the NDP does not go over and above the Core Strategy. Objectives and policy are mainly positive and moving towards the SEA Objective regarding enhancing and maintaining biodiversity, flora and fauna.	+ Overall the NDP does not go over and above the Core Strategy. Objectives and policy move towards the SEA Objective of maintaining landscapes and townscapes.	+ Overall the NDP does not go over and above the Core Strategy. Objectives and policy move towards the SEA Objective to improve quality of surroundings.	+ Overall the objectives and policy move towards the SEA Objective to conserve where appropriate and enhance the historic environment and cultural heritage.	+ Overall the NDP does not go over and above the Core Strategy. Objectives and policy move towards the SEA Objective to improve air quality.	+ Overall the NDP does not go over and above the Core Strategy. The objectives and policy move towards the SEA Objective to reduce the effect of traffic on the environment.	+ Overall the NDP does not go over and above the Core Strategy. The objectives and policy move towards the SEA Objective to reduce contributions to climate change.	+ Overall the NDP does not go over and above the Core Strategy. The objectives and policy move towards the SEA Objective to reduce vulnerability to climate change.	+ Overall the NDP does not go over and above the Core Strategy. Objectives and policy move towards the SEA Objective to improve water quality.	+ Overall the NDP does not go over and above the Core Strategy. The objectives and policy move towards the SEA Objective to provide for sustainable sources of water supply.	+ Overall the NDP does not go over and above the Core Strategy. The objectives and policy move towards the SEA Objective to avoid, reduce and Manama flood risk.	+ Overall the NDP does not go over and above the Core Strategy. The objectives and policy move towards the SEA Objective to conserve soil resources and quality.	+ Overall the NDP does not go over and above the Core Strategy. The objectives and policy move towards the SEA Objective to minimise the production of waste.	+ Overall the NDP does not go over and above the Core Strategy. The objectives and policy move towards the SEA Objective to improve the health of the population.	+ Overall the NDP does not go over and above the Core Strategy. The objectives and policy move towards the SEA Objective to reduce crime and nuisance.	+ Overall the NDP does not go over and above the Core Strategy. Overall the objectives and policy move towards the SEA Objective to conserve natural and manmade resources
<b>Cumulative effects of whole plan (1 + 2 + 3...)</b>	Overall, the objectives and the policies within the NDP do not go over and above the requirements within the Core Strategy and therefore the cumulative impact is generally positive or neutral. Many of the policies were so specific they have no relationship with certain SEA objectives.															
<b>Commentary for significant cumulative effects</b>	The Policies in the Plan provide a strong emphasis on sustainable development and renewable energy schemes to help improve the energy efficiency across the community. The policies also promote the maintenance and enhancement of the rural landscape and setting of the Parish. These various policies act as mitigation towards the development policies.															

# Appendix 5

# Neighbourhood Plan Land Use for Kingsland Parish

## Criteria for development

### All options to include the following criteria: (mainly from parish plan)

- Ensure that new build housing is designed to be sympathetically in keeping with the area.
- To ensure that there is a mix of size and tenure types in all new housing to cater for residents differing and changing needs.
- Use local craftsmen and local and natural materials where possible and practical.
- Maximize the use of renewable energy, energy saving and environmentally friendly design to keep the carbon footprint to a minimum.
- Ensure that parking, flooding, sewerage, pavement and traffic issues, resulting from any new build, are fully and satisfactorily considered before planning is agreed.
- Seek to maximize community benefit from development
- Ensure requirements for permeable ground surfacing are strictly adhered to, so that surface water can soak away adequately.
- Ensure sewerage management is fully compliant with environmental requirements and does not cause overload of the main systems
- Use brownfield sites and conversion of redundant buildings where possible before building on green field sites.
- Prevent such extensive infill that the streetscape appears suburban rather than rural.
- Seek to protect identified sites and objects such as trees, which have been chosen to enhance the rural village experience.
- Prevent undue and additional pollution from lighting to compromise our enjoyment of dark skies.
- Ensure the protection of Grade 1 and 2 agricultural land.
- Ensure any development includes green spaces and corridors to protect and enhance the rural character and biodiversity of the parish.

## **Development Planning options: (leading from the Parish Plan)**

### **Kingsland Village**

#### **Option 1.**

- Retain the current settlement boundary so that any development takes place within it and ensure all development meets the criteria specified in the Neighbourhood Plan.

#### **Option 2**

- Redraw the current settlement boundary by choosing one of the following:
  - a. Either widening the middle
  - b. Or extending at its edges
  - c. A mix of both

#### **Option 3**

- Redraw the settlement boundary to protect important open spaces, views and areas of important character.

#### **Option 4**

- Have no settlement boundary and limit development to small projects in line with the agreed criteria.

### **Shirlheath**

**Option 1** – To allow small scale development, that meets the agreed criteria and objectives set out in the Neighbourhood Plan for Kingsland Parish.

**Option 2** – To identify specific sites for small-scale development which must meet the agreed criteria and objectives set out in the Neighbourhood Plan for Kingsland Parish.

# Appendix 6

## Template C2: SEA Quality Assurance Checklist

Parish Council Name: Kingsland

Neighbourhood Development Plan Name: Kingsland Neighbourhood Plan

Date completed: 25/11/14

<b>Objectives and context</b>	<b>Where are the points covered in Neighbourhood Development Plan SEA (insert chapter, section, page references, as necessary)</b>
<ul style="list-style-type: none"> <li>• The Neighbourhood Development Plan’s purpose and objectives are made clear.</li> <li>• The Neighbourhood Area’s environmental issues and constraints, including acknowledgement of those in the Local Plan (Core Strategy) SA, where relevant, and local environmental protection objectives, are considered in developing objectives and targets.</li> <li>• SEA objectives are clearly set out and linked to indicators and targets where appropriate.</li> <li>• Links with other locally related plans, programmes and policies are identified, explained and acknowledgement for those set out in the SA of the Local Plan (Core Strategy) is given, where relevant.</li> <li>• Conflicts that exist between SEA objectives; between SEA and Neighbourhood Development Plan objectives; and between SEA objectives and other local plan objectives are identified and described.</li> </ul>	<p>Chapter 1.5 – 1.8</p> <p>Chapter 2 methodology, chapter 3 and tables A2 and A3</p> <p>Chapter 3 paragraph 3.5 and 3.7</p> <p>Chapter 3, paragraph 3.2</p> <p>Chapter 4</p>
<p><b>Scoping</b></p> <ul style="list-style-type: none"> <li>• Statutory Consultees are consulted in appropriate ways and at appropriate times on the content and scope of the Environmental Report.</li> <li>• The assessment focuses on significant issues.</li> <li>• Technical, procedural and other difficulties encountered are discussed; assumptions and uncertainties are made explicit.</li> <li>• Reasons are given for eliminating issues from further consideration.</li> </ul>	<p>Chapter 2, paragraphs 2.5-2.9</p> <p>Chapter 2 and chapter 5</p> <p>Chapter 2</p> <p>Chapter 2 and chapter 5</p>
<p><b>Alternatives</b></p>	



<ul style="list-style-type: none"> <li>• Realistic alternatives are considered for key issues, and the reasons for choosing them are documented.</li> <li>• Alternatives include 'do minimum' and/or 'business as usual' scenarios wherever relevant.</li> <li>• The environmental effects (both adverse and beneficial) of each alternative are identified and compared.</li> <li>• Inconsistencies between the alternatives and other relevant local plans, programmes or policies are identified and explained.</li> <li>• Reasons are given for selection or elimination of alternatives.</li> </ul>	<p>Chapter 5</p> <p>Paragraph 5.3</p> <p>Chapter 5</p> <p>Chapter 5</p> <p>Chapter 5</p>
<p><b>Baseline information</b></p> <ul style="list-style-type: none"> <li>• Relevant aspects of the current state of the local, neighbourhood area environment and their likely evolution without the Neighbourhood Development Plan are described. Acknowledgement to the information in the SA of the Local Plan (Core Strategy) is given, where relevant.</li> <li>• Environmental characteristics of the local, neighbourhood area, likely to be significantly affected are described, including areas wider than the physical boundary of the designated neighbourhood area, where it is likely to be affected by the Neighbourhood Development Plan.</li> <li>• Difficulties such as deficiencies in information or methods are explained.</li> </ul>	<p>Chapter 1, Chapter 3</p> <p>Initial screening report and Chapter 1</p> <p>Chapter 2</p>
<p><b>Prediction and evaluation of likely significant environmental effects</b></p> <ul style="list-style-type: none"> <li>• Effects identified include the types listed in the Directive (biodiversity, population, human health, fauna, flora, soil, water, air, climate factors, material assets, cultural heritage and landscape), as relevant; and other local likely environmental effects are also covered, as appropriate.</li> <li>• Both positive and negative effects are considered, and the duration of effects (short, medium or long-term) is addressed.</li> <li>• Likely secondary, cumulative (growing in quantity and strength) and synergistic (acting together) effects are identified, where practicable.</li> <li>• Inter-relationships between effects are considered, where practicable.</li> <li>• The prediction and evaluation of effects makes use of relevant accepted standards, regulations, and thresholds (i.e. data gathered for the evidence base).</li> </ul>	<p>Tables A2, A3 and A4</p> <p>Tables B2 and B3</p> <p>Tables B4</p> <p>Chapter 6</p> <p>Chapter 6</p>

<ul style="list-style-type: none"> <li>• Methods used to evaluate the effects are described.</li> </ul>	Chapter 2
<p><b>Mitigation measures</b></p> <ul style="list-style-type: none"> <li>• Measures envisaged to prevent, reduce and offset any significant adverse effects of implementing the Neighbourhood Development Plan are indicated.</li> <li>• Issues to be taken into account when determining planning applications or other projects, for example funding bids, are identified.</li> </ul>	<p>Chapter 6, paragraph 6.5</p> <p>Chapter 6</p>
<p><b>The Environmental Report</b></p> <ul style="list-style-type: none"> <li>• Is clear and concise in its layout and presentation.</li> <li>• Uses simple, clear language and avoids or explains technical terms.</li> <li>• Uses maps and other illustrations, where appropriate.</li> <li>• Explains the methodology used.</li> <li>• Explains who was consulted and what methods of consultation were used.</li> <li>• Identifies sources of information, including expert judgement and matters of opinion.</li> <li>• Contains a non-technical summary covering the overall approach to the SEA, the objectives of the Neighbourhood Development Plan, the main options considered, and any changes to the Neighbourhood Development Plan resulting from the SEA.</li> </ul>	<p>-</p> <p>-</p> <p>-</p> <p>Chapter 2</p> <p>Paragraph 2.5-2.9</p> <p>Paragraph 2.5-2.9</p> <p>Page 2 / Paragraph 1.8 / appendix 5 / Chapter 5</p>
<p><b>Consultation</b></p> <ul style="list-style-type: none"> <li>• The SEA is consulted on as an integral part of the plan-making process of the Neighbourhood Development Plan.</li> <li>• Consultation Bodies and the public likely to be affected by, or having an interest in, the Neighbourhood Development Plan are consulted in ways and at times, which give them an early and effective opportunity within appropriate time frames to express their opinions on the draft Neighbourhood Development Plan and Environmental Report.</li> </ul>	<p>Paragraph 2.5-2.9</p> <p>Chapter 8</p>
<p><b>Decision-making and information on the decision</b></p> <ul style="list-style-type: none"> <li>• The environmental report and the opinions of those consulted are taken into account in finalising and adopting the Neighbourhood Development Plan.</li> </ul>	Chapter 8

<ul style="list-style-type: none"> <li>• An explanation is given of how they have been taken into account.</li> <li>• Reasons are given for choosing the Neighbourhood Development Plan as adopted, in the light of other reasonable alternatives considered.</li> </ul>	<p>Following draft consultation</p> <p>Following draft consultation</p>
<p><b>Monitoring measures</b></p> <ul style="list-style-type: none"> <li>• Measures proposed for monitoring the Neighbourhood Development Plan are clear, practicable and linked to the indicators and objectives used in the SEA.</li> <li>• Monitoring is used, where appropriate, during implementation of the Neighbourhood Development Plan to make good deficiencies in baseline information in the SEA.</li> <li>• Acknowledgement that monitoring enables unforeseen adverse effects to be identified at an early stage. (These effects may include predictions which prove to be incorrect.) And that</li> <li>• Proposals are made for action in response to significant adverse effects arising from the monitoring of the Neighbourhood Development Plan.</li> </ul>	<p>Chapter 7</p> <p>Chapter 7</p> <p>Chapter 7</p> <p>Chapter 7</p>