

Strategic Environmental Assessment



Stretton Sugwas Neighbourhood Area

Scoping Report

October 2014

Consultation on the Scoping Report

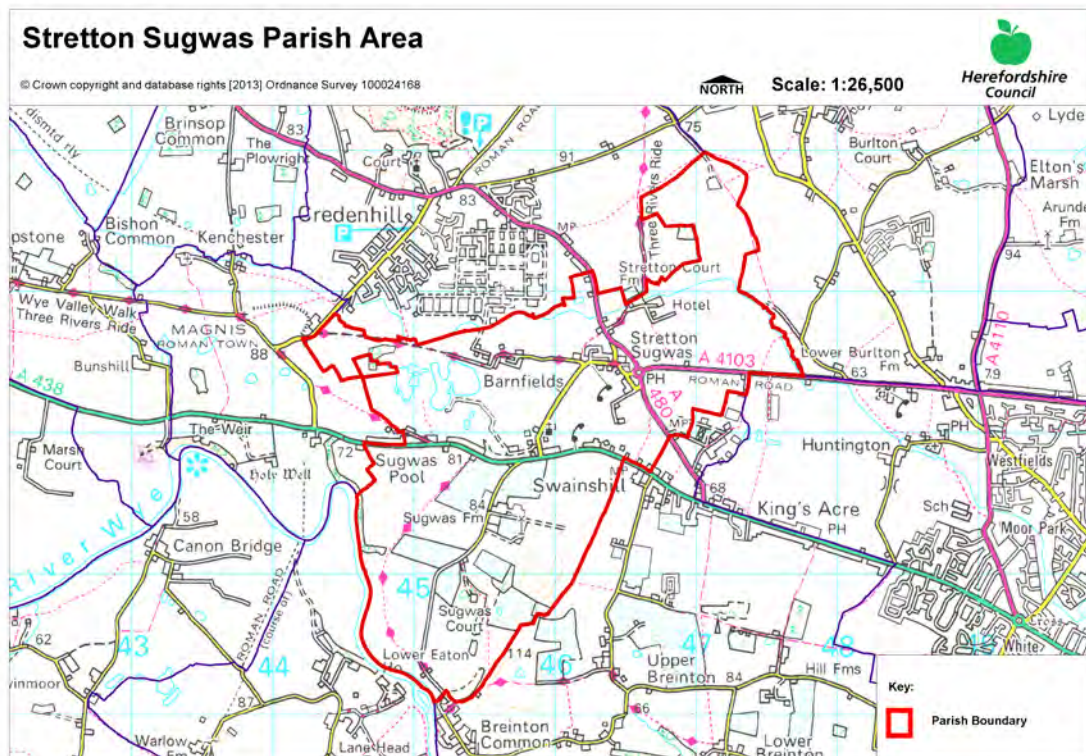
The aim of the consultation process is to involve and engage with statutory consultees and other relevant bodies on the scope of the appraisal. In particular, it seeks to:

- Ensure the SEA is both comprehensive and sufficiently robust to support the Neighbourhood Development Plan during the later stages of full public consultation;
- Seek advice on the completeness of the plan review and baseline data and gain further information where appropriate;
- Seek advice on the suitability of key sustainability issues;
- Seek advice on the suitability of the sustainability objectives.

Comments on this Scoping Report have been invited from the three consultation bodies as required by the SEA regulations, together with the Natural Resources Wales.

The three consultation bodies are as follows:

1. Natural England;
2. English Heritage;
3. Environment Agency.



Plans and Programmes	Type of document	Date	Overview	Key message, target/objective/indicator	SEA topic(s)	Implications for the NDP and SEA
The EC Conservation of Habitats and Species Regulations	European Union Legislation	2010	These regulations transpose the Habitats Directive in England, Wales and to a limited extent Scotland by ensuring that activities are carried out in accordance with the Habitats Directive, which is to protect biodiversity through the conservation of natural habitats and species of wild flora and fauna.	The Regulations make it an offence (subject to exceptions) to deliberately capture, kill, disturb, or trade in the animals listed in Schedule 2, or pick, collect, cut, uproot, destroy, or trade in the plants listed in Schedule 4. However, these actions can be made lawful through the granting of licenses by the appropriate authorities.	<ul style="list-style-type: none"> Biodiversity Cultural heritage and the landscape 	The Neighbourhood Plan should be compliant with all the relevant legislation and regulations.
The EC Water Framework Directive	European Union	2000	Commits all EU member states to achieve good qualitative and quantitative status of all water courses by 2015.	Aims for 'good status' for all ground and surface waters (rivers, lakes, transitional waters, and coastal waters) in the EU	<ul style="list-style-type: none"> Water 	The Neighbourhood Plan should be compliant with all the relevant legislation and regulations.

Plans and Programmes	Type of document	Date	Overview	Key message, target/objective/indicator	SEA topic(s)	Implications for the NDP and SEA
The Wildlife and Countryside Act (1981)	Domestic Legislation	1981	The major legal instrument for wildlife protection in Britain, although other significant acts have been passed since. It has numerous parts and supplementary lists and schedules many of which have been amended since publication.	The principle mechanism for the legislative protection of wildlife in Great Britain.	<ul style="list-style-type: none"> • Biodiversity • Cultural heritage and the landscape • Flora and fauna • Material assets • Soil 	The Neighbourhood Plan should be compliant with all the relevant legislation and regulations.
The Countryside and Right of Way Act (2000)	Domestic Legislation	2000	Creates a statutory right of access on foot to certain types of open land, to modernise the public rights of way system, to strengthen nature conservation legislation, and to facilitate better management of AONBs.	<p>The Act provides for a new right of access on foot to areas of open land comprising: Mountain (land over 600 metres); Moorland; Heath; Downland; Registered common land.</p> <p>There are provisions to consider extending the right in the future to coastal land, but not woodland despite some early publicity suggesting this.</p>	<ul style="list-style-type: none"> • Biodiversity • Cultural heritage and the landscape • Flora and fauna • Material assets • Soil 	The Neighbourhood Plan should be compliant with all the relevant legislation and regulations.

Plans and Programmes	Type of document	Date	Overview	Key message, target/objective/indicator	SEA topic(s)	Implications for the NDP and SEA
The Natural Environment and Rural Communities Act (2006)	Domestic Legislation	2006	Designed to help achieve a rich and diverse natural environment and thriving rural communities through modernised and simplified arrangements for delivering Government policy.	Provides that any public body or statutory undertaker in England and Wales must have regard to the purpose of conservation of biological diversity in the exercise of their functions.	<ul style="list-style-type: none"> • Biodiversity • Cultural heritage and the landscape • Flora and fauna • Material assets • Soil 	The Neighbourhood Plan should be compliant with all the relevant legislation and regulations.
Revised EU Sustainable Development strategy	EU Strategy.	2009	Sets out a single strategy on how the EU will better meet its long-standing commitment to meet the challenges of sustainable development.	Recognises the need to gradually change current unsustainable consumption and production patterns and move towards a better integrated approach to policy making. The Strategy sets overall objectives, targets and concrete actions for seven key priority challenges, predominantly environmental.	<ul style="list-style-type: none"> • Air • Biodiversity • Climatic factors • Cultural heritage • Flora and fauna • Material assets • Population • Soil • Water 	The NDP should take account of the objectives of the strategy, making the aim of sustainable development an integral part of its proposals.

Plans and Programmes	Type of document	Date	Overview	Key message, target/objective/indicator	SEA topic(s)	Implications for the NDP and SEA
Biodiversity 2020: A strategy for England's wildlife and ecosystem services	National Strategy	2011	Forms part of the UK's Post-2010 Biodiversity Framework by setting out England's contribution towards the UK's commitments under the United Nations Convention of Biological Diversity.	Sets out to halt overall biodiversity loss, support healthy well-functioning ecosystems and establish coherent ecological networks, with more and better places for nature for the benefit of wildlife and people.	<ul style="list-style-type: none"> • Biodiversity 	The NDP should take account of the provisions of the strategy, making the most of opportunities to enhance wildlife habitats or restore degraded ecosystems in the process.
National Planning Policy Framework (NPPF)	National Planning Policy.	2012	Consolidates the suite of PPG/PPS into one succinct planning policy document.	Aims to make the planning system less complex, more accessible and able to promote growth within the ethos of sustainable development. The presumption is in favour of sustainable development.	<ul style="list-style-type: none"> • Air • Biodiversity • Climatic factors • Cultural heritage • Flora and fauna • Material assets • Population • Soil • Water 	The guidance contained within the section on Neighbourhood Planning should be borne in mind during the preparation of the NDP.

Plans and Programmes	Type of document	Date	Overview	Key message, target/objective/indicator	SEA topic(s)	Implications for the NDP and SEA
Planning Practice Guidance	Government Guidance	2014	Provides guidance to local planning authorities and others on the operation of the planning system.	Offers up-to-date, electronic guidance on every aspect of planning from air quality and design to land stability and rural housing.	<ul style="list-style-type: none"> • Air • Biodiversity • Climatic factors • Cultural heritage • Flora and fauna • Material assets • Population • Soil • Water 	The NDP must be pro-growth and facilitate the provision and development of sustainable development.
Herefordshire Pre Submission Core Strategy 2011-2031	Development Plan Document (DPD)	2013	Sets out the vision, objectives and policies for the Herefordshire Local Plan (Core Strategy), which will guide development across the county up to 2031.	Outlines the emerging suite of countywide planning policies relating to housing, economic development and the environment, which the NDP will need to be in conformity with where relevant.	<ul style="list-style-type: none"> • Air • Biodiversity • Climatic factors • Cultural heritage • Flora and fauna • Material assets • Population • Soil • Water 	<p>The NDP should take account of relevant policies set within the Core Strategy.</p> <p>Where necessary, the NDP should provide services, facilities and employment opportunities that are accessible to</p>

Plans and Programmes	Type of document	Date	Overview	Key message, target/objective/indicator	SEA topic(s)	Implications for the NDP and SEA
				<p>The Pre Submission Core Strategy includes a range of objectives, five of which directly relate to rural areas:</p> <ul style="list-style-type: none"> • To meet the housing needs of all sections of the community • To improve access to services in rural areas • To strengthen the economic viability of the villages and their rural hinterlands • To achieve sustainable communities and protect the environment • To conserve, promote, utilise and enjoy our natural, built, historic and cultural assets for the fullest benefit of the whole community 		<p>both local and neighbouring communities.</p> <p>Potential corridors for the Western Relief Road will have to be borne in mind whilst drawing up proposals.</p> <p>Approximately¹ 14 dwellings will have to be delivered within Stretton Sugwas and 23 within Swainshill, though these targets are indicative and provide a starting point for work on the NDP.</p>

¹ Figures do not include extant planning permissions from 2011 onwards.

Plans and Programmes	Type of document	Date	Overview	Key message, target/objective/indicator	SEA topic(s)	Implications for the NDP and SEA
				<p>To achieve a thriving rural Herefordshire, the Core Strategy seeks to enhance the role the villages have traditionally played in as accessible, sustainable centres for their rural catchments.</p> <p>Seeks proportional growth of up to 18% in Stretton Sugwas and Swainshill (Hereford HMA) over the plan period, subject to EiP outcome.</p>		

Plans and Programmes	Type of document	Date	Overview	Key message, target/objective/indicator	SEA topic(s)	Implications for the NDP and SEA
Herefordshire Local Transport Plan (LTP) 2013-2015	Corporate	2013	Sets out the Council's strategy for supporting economic growth, social inclusion and reducing the environmental impacts of transport, as well as the program of investment for the period April 2013 to April 2015.	The document includes three key objectives, one of which seeks to maintain access for rural residents and people without access to a car. Intrinsic to this is the retention of a 'core network' of bus services which focus on journeys between Hereford and the market towns, along with main transport corridors close to larger rural settlements. To this end, the strategy aims to increase the number of bus users by 1.3% (4,700 journeys) by 2015.	<ul style="list-style-type: none"> • Air • Climatic factors • Population 	The LTP does not explore current transport issues in the Stretton Sugwas neighbourhood area.

Plans and Programmes	Type of document	Date	Overview	Key message, target/objective/indicator	SEA topic(s)	Implications for the NDP and SEA
Herefordshire Economic Development Strategy 2011-2016	Corporate	2011	Aims to increase the economic wealth of Herefordshire by setting out proposals and to support business growth up to 2016.	<p>The document outlines the path and direction to foster economic vitality within Herefordshire. Key objectives therefore include:</p> <ul style="list-style-type: none"> • Sustaining business survival and growth • Increasing wage levels, range and quality of jobs • Having a skilled population to meet future work needs • Developing the county's built infrastructure so enterprise can flourish. 	<ul style="list-style-type: none"> • Cultural heritage • Material assets • Population 	None of merit.

Plans and Programmes	Type of document	Date	Overview	Key message, target/objective/indicator	SEA topic(s)	Implications for the NDP and SEA
Herefordshire Employment Land Study	Evidence	2012	Includes employment land assessments for the plan period 2011-2031. The study includes Quantitative and Qualitative assessments of employment land, assessment of market demand and need, as well as providing forecasts and recommendations for future employment need over the plan period.	<p>This study covers existing employment sites in Hereford, the five market towns and their rural hinterlands.</p> <p>There are no employment land allocations within Stretton Sugwas or Swainshill at present and so the study does not identify sites which are worthy of continued protection from alternative uses. Nor does it make any recommendations in respect of employment need within the neighbourhood area.</p>	<ul style="list-style-type: none"> • Material assets • Population 	None of merit; however the NDP process may have to examine employment need locally and if so whether there is any scope for providing employment land and premises.

Plans and Programmes	Type of document	Date	Overview	Key message, target/objective/indicator	SEA topic(s)	Implications for the NDP and SEA
Herefordshire Strategic Housing Land Availability Assessment (SHLAA)	Evidence	2009	<p>The SHLAA aims to justify site allocations in plans by:</p> <ul style="list-style-type: none"> Identifying sites which are capable of delivering housing development Assessing sites for their housing potential; and Predicting when a site could be developed for housing. 	<p>In terms of Stretton Sugwas, previous SHLAA identifies that:</p> <ul style="list-style-type: none"> 110 additional dwellings could be provided on 3 sites in and around the existing settlement, however it is unlikely that this number would materialise due to significant constraints. <p>Of the 110 dwellings, all could be provided in 1-10 years.</p> <p>Swainshill is to feature in the SHLAA 2013 review, due to be published in 2014.</p>	<ul style="list-style-type: none"> Air Biodiversity Climatic factors Cultural heritage Flora and fauna Population Soil Water 	<p>The SHLAA assesses the potential availability of land for housing in Stretton Sugwas and Swainshill.</p> <p>If site allocations are pursued then the Stretton Sugwas NDP should be informed either by SHLAA or a housing land assessment, undertaken in line with Guidance Note 21: Site assessment and allocation sites.</p>

Plans and Programmes	Type of document	Date	Overview	Key message, target/objective/indicator	SEA topic(s)	Implications for the NDP and SEA
Herefordshire Local Housing Market Assessment (LHMA)	Evidence	2013	Builds on an earlier Strategic Housing Market Assessment (SHMA) developed for Herefordshire and Shropshire. Its purpose is to inform the Local Plan's policies regarding housing need and demand (for market and affordable housing) within each of the 7 Housing Market Areas (HMAs) in Herefordshire between 2011 and 2031.	<p>The LHMA uses 7 HMAs as the geography for presenting data. Stretton Sugwas falls within the Hereford HMA. Here, the study reveals that:</p> <ul style="list-style-type: none"> • Levels of owner occupation are higher on the western side of the city • 58% of households are unable to afford market housing. • There is an annual requirement for 417 affordable dwellings between 2012 and 2017. • Higher proportion of the HMA population is of working age (62%) compared to the county average of (61%). • The proportion of the population above retirement age is slightly below average (19% compared to 22% across Herefordshire) 	<ul style="list-style-type: none"> • Air • Biodiversity • Climatic factors • Cultural heritage • Flora and fauna • Population • Soil • Water 	<p>The LHMA provides an indication of housing needs and affordability within the Hereford HMA.</p> <p>It provides evidence that could be used to inform policies or market and affordable housing requirements in the NDP.</p>

Plans and Programmes	Type of document	Date	Overview	Key message, target/objective/indicator	SEA topic(s)	Implications for the NDP and SEA
Herefordshire Local Housing Requirements Study	Evidence	2012	Technical assessment of the housing market and potential future local housing requirements which supports planning policy regarding the amount of growth, housing tenure and housing type needed within Herefordshire up to 2031.	<p>The delivery of 5,300 homes in the rural areas would:</p> <ul style="list-style-type: none"> • Support growth in the rural population by 6% • Increase the number of households by 14.5% <p>Forecasts also predict that growth in the population of the rural areas is likely to be primarily through an increase in those aged over 75.</p> <p>Moderate growth is expected in the 30-44 and 60-74 age brackets.</p> <p>The Local Housing Requirements Study therefore anticipates continuing improvements in life expectancy; significant growth is expected of those in their 80s, with the existing population in their 40s and 50s moving into retirement.</p>	<ul style="list-style-type: none"> • Air • Biodiversity • Climatic factors • Cultural heritage • Flora and fauna • Material assets • Population • Soil • Water 	<p>This study provides an indication of housing requirements in the rural areas and the Hereford HMA.</p> <p>This evidence can be used to inform the content of the Stretton Sugwas NDP.</p>

Plans and Programmes	Type of document	Date	Overview	Key message, target/objective/indicator	SEA topic(s)	Implications for the NDP and SEA
Herefordshire Rural Housing Background Report	Evidence	2013	Provides the justification for the proportional housing growth targets outlined in the Core Strategy	The villages within the neighbourhood area are listed among the settlements which are considered to be sustainable locations for growth of up to 18%, in accordance with the EiP outcome.	<ul style="list-style-type: none"> • Air • Biodiversity • Climatic factors • Cultural heritage • Flora and fauna • Material assets • Population • Soil • Water 	The Stretton Sugwas NDP will need to be in conformity with the provisions of provisions of Local Plan policies concerning the rural areas.

Plans and Programmes	Type of document	Date	Overview	Key message, target/objective/indicator	SEA topic(s)	Implications for the NDP and SEA
Herefordshire Draft Gypsies and Travellers Assessment	Evidence	2013	Assesses the accommodation needs of Gypsies and Travellers across Herefordshire.	<p>Key findings from the survey of Gypsy and Traveller households in 2012 found that:</p> <ul style="list-style-type: none"> • 31% of households surveyed have some sort of accommodation need • Of the 17 households with an accommodation need, 7 had a requirement for at least one additional pitch • 10 households had a requirement for bricks and mortar housing • There is an additional requirement for 7 pitches and 9 units of Registered Social Landlord accommodation within Herefordshire. 	<ul style="list-style-type: none"> • Air • Biodiversity • Climatic factors • Cultural heritage • Flora and fauna • Material assets • Population • Soil • Water 	The Stretton Sugwas NDP should establish whether any of the need identified in this assessment falls within the neighbourhood area and seek appropriate pitches and provision.

Plans and Programmes	Type of document	Date	Overview	Key message, target/objective/indicator	SEA topic(s)	Implications for the NDP and SEA
Herefordshire Local Biodiversity Action Plan	Evidence	2007	Focuses conservation efforts on the areas within Herefordshire that will result in the greatest benefit for ecological networks, habitats and species.	Integrating biodiversity objectives with other environmental, social and economic needs can provide a sustainable living and working environment that benefits both people and nature.	<ul style="list-style-type: none"> Biodiversity 	The Stretton Sugwas NDP can help to achieve the priorities set within the LBAP.

Plans and Programmes	Type of document	Date	Overview	Key message, target/objective/indicator	SEA topic(s)	Implications for the NDP and SEA
Building Biodiversity into the LDF	Evidence	2009	Provides the Council's Local Plan (Core Strategy) with evidence in respect of biodiversity and geodiversity, identifying both opportunities and constraints across Herefordshire.	<p>Identifies a range of semi-natural habitats and sites which are subject to local designations for their importance to nature conservation.</p> <p>No specific mentioned of any settlement within the neighbourhood area, though small-scale, unimproved and semi-improved grasslands (including those associated with orchards) are a particular feature of the areas to the west of Hereford. These grasslands should be retained and appropriate long-term management strategies secured.</p>	<ul style="list-style-type: none"> • Air • Biodiversity • Climatic factors • Cultural heritage • Flora and fauna • Material assets • Population • Soil • Water 	There will be a need to conserve certain sites and explore opportunities to use the NDP as the catalyst for habitat enhancement and creation.

Plans and Programmes	Type of document	Date	Overview	Key message, target/objective/indicator	SEA topic(s)	Implications for the NDP and SEA
Urban Fringe Sensitivity Analysis	Evidence	2010	Technical Paper which supports the SHLAA by classifying the landscape sensitivity of the urban fringe on the edges of Hereford and the five market towns.	Provides documentary and photographic evidence of the condition of the neighbourhood's finest landscapes. Each of these landscapes are categorised into different groups, with some identified as being worthy of protection or enhancement.	<ul style="list-style-type: none"> • Cultural heritage • Flora and fauna 	The study provides evidence that could be taken into account when preparing policies for the Stretton Sugwas NDP.

Plans and Programmes	Type of document	Date	Overview	Key message, target/objective/indicator	SEA topic(s)	Implications for the NDP and SEA
Herefordshire Green Infrastructure Strategy	Evidence	2010	Develops a framework of natural and culturally important features and functions so that planning for a sustainable future is at the heart of planning within Herefordshire.	<p>Establishes policies and principles for the protection and enhancement of those features and functions that contributes to the environment of Herefordshire across a range of scales.</p> <p>The parish is part of District Strategic Corridors 7 (DSC7: Hereford to Hay on Wye), a well-connected network of habitats along the River Wye embankment.</p> <p>Also within HerLSC1, the Hereford Strategic Corridor which includes several important ecological sites; and HerLEZ1, the Local Enhancement Zone extending from Hereford Cemetery along Breinton Track, having a high visual sensitivity, but fragmented natural and historical assets and features.</p>	<ul style="list-style-type: none"> • Air • Biodiversity • Climatic factors • Cultural heritage • Flora and fauna • Material assets • Population • Soil • Water 	The study provides evidence that could be taken into account when preparing policies for the Stretton Sugwas NDP.

Plans and Programmes	Type of document	Date	Overview	Key message, target/objective/indicator	SEA topic(s)	Implications for the NDP and SEA
Renewable Energy Study	Evidence	2010	Assesses the energy demand within Herefordshire and the ability for the county to accommodate renewable and low carbon energy technologies.	<p>The total energy demand excluding transport for Herefordshire, at that point in time, was calculated as being:</p> <ul style="list-style-type: none"> • Electrical: 731 GWh/yr • Heat: 1,810 GWh/yr • Total: 2,541 GWh/yr <p>There is scope for all types of renewable energy production.</p>	<ul style="list-style-type: none"> • Air • Biodiversity • Climatic factors • Cultural heritage • Flora and fauna • Material assets • Population • Soil • Water 	The study provides evidence that could be taken into account when preparing policies for the Stretton Sugwas NDP.

Plans and Programmes	Type of document	Date	Overview	Key message, target/objective/indicator	SEA topic(s)	Implications for the NDP and SEA
Herefordshire Playing Pitch Assessment	Evidence	2012	Produces a strategic framework, audit and assessment and needs analysis of outdoor sports pitches and facilities for Herefordshire. The document arises as a result of a recommendation in the Herefordshire and Worcestershire Sports Facilities Framework to develop local standards for playing fields and sports pitches throughout Herefordshire.	<p>The study updates components of the Herefordshire and Worcestershire Sports Facilities Framework 2010 such as updating population forecasts, setting local standards for synthetic turf pitches and grass playing fields within Herefordshire. It identifies any current gaps in provision, and looks forward to 2031 to assess what facilities are likely to be required by that date.</p> <p>In terms of Stretton Sugwas itself, the study reveals that there is:</p> <ul style="list-style-type: none"> 0.77 ha of playing pitch area at the Primary School, but this is not accessible to the community. 	<ul style="list-style-type: none"> Biodiversity Cultural heritage Flora and fauna Material assets Population 	<p>The study provides evidence that could be taken into account when preparing policies for the Stretton Sugwas NDP.</p> <p>Playing pitch data for Swainshill is currently absent and will need to be examined.</p>

Plans and Programmes	Type of document	Date	Overview	Key message, target/objective/indicator	SEA topic(s)	Implications for the NDP and SEA
Open Spaces Study	Evidence	2006	The 2006 space audit and assessment of need is a snapshot of the quality, quantity and distribution of open space across Herefordshire.	<p>The study reveals that within Central Herefordshire, to which Credenhill Ward is a part, there is:</p> <ul style="list-style-type: none"> • Extensive over provision of parks and gardens • Extensive over provision of natural and semi-natural green space • Under provision of amenity green space and outdoor sport • Average provision for children and young people. • Extensive under provision of outdoor sports facilities. <p>In terms of Stretton Sugwas and Swainshill, no specific sites are identified.</p>	<ul style="list-style-type: none"> • Biodiversity • Climatic factors • Cultural heritage • Flora and fauna • Material assets • Population 	The open space audit and assessment does not give a specific indication of open space shortfalls and surpluses in the neighbourhood area. However, there may be a need to include a policy which encourages and facilitates the provision of outdoor recreational facilities.

Plans and Programmes	Type of document	Date	Overview	Key message, target/objective/indicator	SEA topic(s)	Implications for the NDP and SEA
Play Facilities Study	Evidence	2012	The Play Facilities Study 2012 updates the previous play facilities analysis under the Open Spaces Study 2006 and provides guidance and a framework for the development, delivery and continued sustainability of providing new and improved play facilities for children and young people in Herefordshire to 2031.	No specific sites are identified within the neighbourhood area.	<ul style="list-style-type: none"> • Biodiversity • Climatic factors • Cultural heritage • Flora and fauna • Material assets • Population 	None of merit.

Plans and Programmes	Type of document	Date	Overview	Key message, target/objective/indicator	SEA topic(s)	Implications for the NDP and SEA
Strategic Flood Risk Assessment (SFRA) and Water Cycle Study	Evidence	2009	<p>The Strategic Flood Risk Assessment (SFRA) provides a summary of flood risk in Herefordshire to inform the location of future development.</p> <p>The Water Cycle Study (WCS) examines how water resources and water supply infrastructure, wastewater treatment, water quality, sewerage and flood risk could constrain growth across Herefordshire.</p>	<p>The neighbourhood area is situated in the River Wye catchment.</p> <p>Sub-catchments within this zone are one of the most rapid response flood warning systems in the SFRA area.</p> <p>Sub-catchments within this zone record a standard percentage run off of 35-40%, which is potentially highly unsuitable for infiltration source control.</p> <p>The area has a very slow flood response (Tp-time to peak) time at around 11 hours.</p> <p>The WCS identifies 30 sites in the River Wye catchment where current discharge consent licences cannot be shown to have no adverse effect.</p>	<ul style="list-style-type: none"> • Biodiversity • Climatic factors • Material assets • Population • Water 	<p>New development proposed through the Stretton Sugwas NDP should be assessed against the capacity of local infrastructure.</p> <p>Up-to-date flood risk information should be gathered from the Environment Agency, in order to ensure that any flood risks are considered when preparing the Stretton Sugwas NDP.</p>

Appendix A2 – Baseline information for Stretton Sugwas

N.B. This is based on countywide baseline information with some additions relevant to Stretton Sugwas (in red). Where no locally specific data is available for current status, trends and targets, only countywide data is reported. Any gaps in data may be filled following additional research.

SA Objective ¹	SA Theme	Proposed indicator	Current status	Trends	Targets	Issues and constraints	Baseline (information) source
SEA Topic covered by objective: <i>Biodiversity, flora and fauna</i>							
13. Value, maintain, restore or expand county biodiversity.	Natural environment	Net change in condition of SSSIs across Herefordshire.	Current status of local SSSIs: <ul style="list-style-type: none"> • River Wye (Unfavourable recovering); • Bishon Meadow (border) (Favourable) 	Percentage of SSSI land in favourable condition. 2006: 22% 2007: 22% 2008: 22% 2010: 24% 2011: 27% Proportion of SSSI land that was in unfavourable condition but recovering increased between 2010 and 2012 going from 41% to 65%.	% of SSSI land in favourable condition (Increase) % of SSSI land in unfavourable condition but recovering (Increase) % of SSSI land in unfavourable condition and declining (Decrease)	Herefordshire's SSSIs are in extremely poor condition relative to England as whole, where 96.1% of all SSSI land was in favourable condition in April 2014. The proportion of SSSI in unfavourable condition but recovering is greater than England as a whole, where the figure currently stands at 58.6%.	NE & DEFRA Website (accessed July 2014)

¹ Derived from the Pre Submission Core Strategy Sustainability Appraisal Assessment (May 2014)

SA Objective ¹	SA Theme	Proposed indicator	Current status	Trends	Targets	Issues and constraints	Baseline (information) source
				Proportion in unfavourable and declining condition had also decreased from 4% to 1%.		Should be monitored through AMR following the adoption of the Core Strategy, in line with SA recommendations.	
13. Value, maintain, restore or expand county biodiversity.	Natural environment	After use of mineral sites especially wildlife habitat creation.	<i>There is no countywide or locally specific data available at present.</i>	-	Percentage of opportunities taken.	Should be monitored through AMR following the adoption of the Core Strategy, in line with SA recommendations.	-

SA Objective ¹	SA Theme	Proposed indicator	Current status	Trends	Targets	Issues and constraints	Baseline (information) source
13. Value, maintain, restore or expand county biodiversity.	Natural environment	Phosphate levels within the River Wye SAC and adjoining tributaries that receive increased phosphates from proportional growth.	The existing status of the Wye SAC between the Hay and Lugg confluence is currently meeting its phosphate and conservation targets.	The River Wye SAC was subject to a review of consents in 2010, as a number of sections of the river were found to have greater phosphate levels than those identified in Natural England's favourable condition tables.	The roll out of the Nutrient Management Plan will determine future targets.	New development within the area could lead to the water quality failing the phosphate levels and conservation objectives.	Nutrient Management Plan (2014)

SA Objective ¹	SA Theme	Proposed indicator	Current status	Trends	Targets	Issues and constraints	Baseline (information) source
13. Value, maintain, restore or expand county biodiversity.	Natural environment	Changes to protected habitats and impacts of species within the Herefordshire Local Biodiversity Action Plan.	<i>There is no countywide or locally specific data available at present.</i>	<p>2010/11: 17 Habitat Action Plans and 14 Species Action Plans were in operation across Herefordshire.</p> <p>There are no formal records of any unacceptable adverse impacts on habitats or protected species.</p> <p>Originally 156 Priority Species were identified for inclusion in Herefordshire's LBAP.</p> <p>Similarly Herefordshire's LBAP covered 23 habitats with Action Plans.</p>	<p>To protect or enhance the habitats of species identified.</p> <p>Zero net loss of habitats.</p>	Should be monitored through AMR following the adoption of the Core Strategy, in line with SA recommendations.	-

SA Objective ¹	SA Theme	Proposed indicator	Current status	Trends	Targets	Issues and constraints	Baseline (information) source
13. Value, maintain, restore or expand county biodiversity.	Natural environment	Changes in the areas of designated nature conservation sites as a consequence of planning permission.	<p>Stretton Sugwas has:</p> <p>SSSI: 2 SWS: 11 SINCs: 2</p> <p>The River Wye SAC runs through the parish.</p>	As of 2012, there had been no change in the areas of designated nature conservation sites as a consequence of the planning permissions granted.	To capitalise on opportunities to enhance the areas of value to nature conservation as much as possible.	Should be monitored through AMR following the adoption of the Core Strategy, in line with SA recommendations.	NDP SEA/HRA Screening Notification Report (November 2013)
13. Value, maintain, restore or expand county biodiversity.	Natural environment	Proportion of local sites where positive conservation management has or is being implemented.	<p>The neighbourhood area comprises the following types of landscapes:</p> <ul style="list-style-type: none"> • Principal settled farmlands. • Principal wooded hills • Riverside meadows 	-	No specific targets identified.	Should be monitored through AMR following the adoption of the Core Strategy, in line with SA recommendations.	Herefordshire Landscape Character Assessment (2004; updated 2009).

SA Objective ¹	SA Theme	Proposed indicator	Current status	Trends	Targets	Issues and constraints	Baseline (information) source
SEA Topic covered by objectives: <i>Material assets</i>							
14. Use natural resources and energy more efficiently.	Resource consumption and climate change	Maintaining Herefordshire Council's County Site and Monuments Register.	Countywide data would be too large to incorporate into this template. Whilst there is no locally specific data available at present, there are numerous archaeological and historic sites within the neighbourhood area according to the latest version of the register.	-	No specific targets identified, but need to ensure that the register is kept up to date.	Should be monitored through AMR following the adoption of the Core Strategy, in line with SA recommendations.	Herefordshire Environmental Records Register (search April 2014).
14. Use natural resources and energy more efficiently.	Resource consumption and climate change	Monitoring changes to historic landscapes.	<i>Rapid Townscape Assessments (2010) were only undertaken for Hereford, Ledbury and Ross.</i> Condition of highly sensitive local landscapes is reported in the Urban Fringe Sensitivity Analysis.	-	No specific targets identified.	Should be monitored through AMR following the adoption of the Core Strategy, in line with SA recommendations.	Urban Fringe Sensitivity Analysis (2010).

SA Objective ¹	SA Theme	Proposed indicator	Current status	Trends	Targets	Issues and constraints	Baseline (information) source
SEA Topic covered by objective: <i>Population, Biodiversity, Flora and Fauna</i>							
15. Value, protect, enhance and restore the landscape quality of Herefordshire, including its rural areas and open spaces.	Natural environment	Number of developments meeting and surpassing national design standards.	<i>There is no countywide or locally specific data available at present.</i>	-	No specific targets identified.	Should be monitored through AMR following the adoption of the Core Strategy, in line with SA recommendations.	-

SA Objective ¹	SA Theme	Proposed indicator	Current status	Trends	Targets	Issues and constraints	Baseline (information) source
15. Value, protect, enhance and restore the landscape quality of Herefordshire, including its rural areas and open spaces.	Natural environment	The need for, frequency and outcomes of planning enforcement investigations/ planning appeals concerning the aspects of local loss of locally important buildings within a conservation area.	Countywide data would be too large to incorporate into this template. There are no outstanding enforcement actions or appeals concerning locally important buildings within Huntingdon and Broomy Hill at present.	No historic records of any planning enforcement action or appeals concerning locally important buildings within the two conservation areas.	To maintain or enhance current status.	Current status must be verified by Dvt Mgt and Enforcement Officers.	Council Dvt Mgt records (searched April 2014)

SA Objective ¹	SA Theme	Proposed indicator	Current status	Trends	Targets	Issues and constraints	Baseline (information) source
SEA Topic covered by objective: <i>Climatic Factors</i>							
16. Reduce Herefordshire's vulnerability to the impacts of climate change as well as its contribution to the problem.	Resource consumption and climate change.	Transport patronage by mode.	% of Herefordshire residents who travel to work by: Car: 70.1% Foot: 14.7% Bicycle: 4.3% Bus: 2% Train: 0.8% Motorbike: 0.8% Taxi: 0.3% Other: 7% <i>There is no locally specific data available at present</i>	The number of people cycling or travelling by bus as the main form transport to get to work declined between 2001 and 2011 – across England and Wales there was little change in either. Walking or driving a car or van on the other hand increased.	To increase the take up of less polluting forms of transport.	There are a lack of transport options for many rural communities and therefore high car ownership and dependency – the last decade has seen a 15 per cent increase in household car ownership, although this is not reflected in traffic flows of recent years with volumes in Hereford City and wider county having decreased. The proportion of people working from home increased over the decade from 15 per cent in 2001 to 17 per cent in 2011.	2011 Census

SA Objective ¹	SA Theme	Proposed indicator	Current status	Trends	Targets	Issues and constraints	Baseline (information) source
16. Reduce Herefordshire's vulnerability to the impacts of climate change as well as its contribution to the problem.	Resource consumption and climate change.	Number of decentralised energy schemes granted permission.	<i>There is no countywide or locally specific data available at present.</i>	-	To contribute towards the national target.	Should be monitored through AMR following the adoption of the Core Strategy, in line with SA recommendations.	-

SA Objective ¹	SA Theme	Proposed indicator	Current status	Trends	Targets	Issues and constraints	Baseline (information) source
16. Reduce Herefordshire's vulnerability to the impacts of climate change as well as its contribution to the problem.	Resource consumption and climate	Total CO2 emissions per capita	<p>Latest figure dates back to 2010: 1.61 million tonnes (mtCO₂)</p> <p><i>There is no locally specific data available at present.</i></p>	<p>Between 2005 and 2010 Herefordshire's total and per capita carbon emission reduced by 7% and 8% respectively; while UK's total and per capita carbon emission reduced by 8% and 12% respectively within the same period. This trend hides an increase in emissions between 2009 and 2010 when total emissions in the county increased by 5% the same as across the UK (+5%).</p>	To reduce the overall carbon emissions.	CO ₂ emissions produced are decreasing.	Understanding Herefordshire: An integrated needs assessment (June 2013).

SA Objective ¹	SA Theme	Proposed indicator	Current status	Trends	Targets	Issues and constraints	Baseline (information) source
SEA Topic covered by objective: <i>Water</i>							
17. Reduce the risk of flooding and the resulting detriment to public wellbeing, the economy and the environment.	Natural environment	Number of planning permissions granted contrary to the advice of the Environment Agency on flood defence grounds.	<i>There is no countywide or locally specific data available at present.</i>	2010/11: None There have been no approvals contrary to EA advice since reporting began in 2004.	To have no applications permitted contrary to EA advice.	Should be monitored through AMR following the adoption of the Core Strategy, in line with SA recommendations.	-
SEA Topic covered by objective: <i>Water, air, soil, material assets</i>							
18. Minimise local and global pollution and protect or enhance environmental resources.	Natural environment	Agricultural land usage by quality	<i>There is no countywide data available at present.</i> 2011: Large tracts of land in and around Stretton and Swainshill were listed Grades 1 and 2 for their agricultural quality.	-	Measure the number of hectares of best and most versatile soil lost through development.	Should be monitored through AMR following the adoption of the Core Strategy, in line with SA recommendations.	West Midland ALC Map (Natural England 2011).

SA Objective ¹	SA Theme	Proposed indicator	Current status	Trends	Targets	Issues and constraints	Baseline (information) source
18. Minimise local and global pollution and protect or enhance environmental resources.	Natural environment	Percentage of river length assessed as good or very good chemical quality and ecological quality as required by the Water Framework Directive.	Latest figure dates back to 2005: 84% <i>There is no locally specific data available at present.</i>	Figure steadily improved before going into decline: Herefordshire 1999 85.9%, 2000 89.5%, 2001 92.2%, 2002 91.8%	To ensure that rivers meet their conservation objectives and do not fall below the required standard of quality.	None identified.	The State of Herefordshire Report (2007) Water Framework Directive (2000)
SEA Topic covered by objective: <i>Soil</i>							
19. Ensure integrated, efficient and balanced land use.	Built environment	Percentage of all new development completed on previously developed land.	2011/13: 57% <i>There is no locally specific data available at present.</i>	2010/11: 67% Completions on PDL had risen to 71% by 2005.	To increase the number of homes built on PDL in line with the provisions of national planning policy.	The number of brownfield completions has fallen dramatically in recent years, though this is probably the offshoot of tough market conditions.	Herefordshire Council AMR (2011/13)
19. Ensure integrated, efficient and balanced land use.	Built environment	Housing densities in urban and rural areas	<i>There is no countywide or locally specific data available at present.</i>	-	No specific targets identified.	Should be monitored through AMR following the adoption of the Core Strategy, in line with SA recommendations.	-

SA Objective ¹	SA Theme	Proposed indicator	Current status	Trends	Targets	Issues and constraints	Baseline (information) source
19. Ensure integrated, efficient and balanced land use.	Built environment	Level of development in urban areas compared to rural.	<i>There is no countywide or locally specific data available at present.</i>	-	No specific targets identified.	Should be monitored through AMR following the adoption of the Core Strategy, in line with SA recommendations.	-
SEA Topic covered by objective: <i>Cultural heritage</i>							
20. Value, protect or enhance the character and built quality of settlements and neighbourhoods and the county's heritage assets, historic environment and cultural heritage.	Built environment	Number and percentage of listed buildings and Scheduled Ancient Monuments on Buildings at Risk Register (English Heritage).	The 2011-2013 AMR does not contain updated conservation data. There are numerous listed buildings within the parish and 6 SAMs. None are currently recorded in the Buildings at Risk Register.	In 2011, there were 58 heritage assets in Herefordshire that were considered to be at high risk and included in the Heritage at Risk Register.	To maintain or enhance current status.	None of the local listed buildings or SAMs are considered to be at risk at present.	Buildings at Risk Register (English Heritage; searched April 2014)

SA Objective ¹	SA Theme	Proposed indicator	Current status	Trends	Targets	Issues and constraints	Baseline (information) source
20. Value, protect or enhance the character and built quality of settlements and neighbourhoods and the county's heritage assets, historic environment and cultural heritage.	Built environment	The need for, frequency and outcomes of planning enforcement investigations/ planning appeals concerning the aspects of local loss of heritage assets, locally important buildings across the Parish and particularly within a conservation area.	Countywide data would be too large to incorporate into this template. There are no outstanding enforcement actions or appeals concerning locally important buildings within Huntingdon and Broomy Hill at present.	No historic records of any planning enforcement action or appeals concerning locally important buildings within the two conservation areas.	To maintain or enhance current status.	Current status must be verified by Dvt Mgt and Enforcement Officers.	Council Dvt Mgt records (searched April 2014)

Appendix A3 – Environmental issues identified from the Stretton Sugwas baseline

These environmental issues are the same as most of those identified for the Herefordshire Core Strategy¹

SEA Topic		Environmental issue	SA objectives
1	Air	High reliance upon the private car causing high levels of air pollution and in Hereford in particular	Objective 16
		Need to reduce carbon emissions by encouraging less polluting forms of transport.	
2	Biodiversity	Habitats and species of national, regional and local importance are under pressure from the adaptation and diversification of farming and forestry employment.	Objectives 13 & 15
		Minimise loss of biodiversity and expand opportunities for wildlife everywhere.	
3	Climatic factors	Significant areas of the county are at risk of flooding.	Objective 16
		Reduce greenhouse gas emissions through planning, design and build.	
4	Cultural heritage	Stretton Sugwas has numerous Scheduled Ancient Monuments and listed buildings, all of which require ongoing protection and many in need of high levels of maintenance.	Objective 20
5	Flora and fauna	Conserve and enhance the character and quality of historic landscapes, including all types of natural flora and fauna.	Objective 15
6	Material assets	How the countryside can continue to be managed in an economically, socially and environmentally beneficial way in the face of continuing pressures on traditional farming.	Objectives 14 & 18
7	Population	Minimise energy waste through good designs, which help to reduce energy consumption and maximise efficiency.	Objective 15
		Need to avoid enforcement investigations/action concerning locally important buildings and those within conservation areas in particular.	
8	Soil	Promoting development of previously developed land and buildings as opposed to greenfield sites or agricultural land of the highest quality.	Objectives 18 & 19

¹ Derived from the Pre Submission Core Strategy Sustainability Appraisal Assessment (May 2014) and LDF General Scoping Report (June 2007)

9	Water	Issues relating to availability of resources, foul drainage, pollution, and abstraction in a county which supports water dependent biodiversity of international and national importance, given the predicted climate change consequences for water availability and demanding projections for new housing.	Objectives 17 & 18
		Steady decline in the chemical quality of rivers over the last 10 years.	

Appendix A4 – SEA framework (objectives, indicators and targets)

SEA Topic(s)	SEA Objective(s)	SA Objective(s)	Sub-objectives/Appraisal Questions	Indicators	Targets
Air	<ul style="list-style-type: none"> To improve air quality. To reduce the effect of traffic on the environment 	<ul style="list-style-type: none"> Minimise local and global pollution and protect or enhance environmental resources. 	<ul style="list-style-type: none"> Minimise water, air, soil, groundwater, noise and light pollution from current activities and the potential for such pollution. Protect or enhance the quality of watercourses. Provide opportunities to improve soil quality or reduce contaminated land. 	Transport patronage by mode.	To increase the take up of less polluting forms of transport.
Biodiversity, Flora and fauna	<ul style="list-style-type: none"> To maintain or enhance nature conservation (biodiversity, flora and fauna) 	<ul style="list-style-type: none"> Value, maintain, restore and expand county biodiversity. Value, protect, enhance or restore the landscape quality of Herefordshire, including its rural areas and open spaces. 	<ul style="list-style-type: none"> Protect or enhance habitats of international, national, regional or local importance. Protect international, national, regional or locally important terrestrial or aquatic species. Maintain wildlife corridors and minimise fragmentation of ecological areas and green spaces. Manage access to sites in a sustainable way that protects or enhances their nature conservation value. 	Net change in condition of SSSIs across Herefordshire.	<ul style="list-style-type: none"> % of SSSI land in favourable condition (Increase) % of SSSI land in unfavourable condition but recovering (Increase) % of SSSI land in unfavourable condition and declining (Decrease)
				After use of mineral sites especially wildlife habitat creation.	Percentage of opportunities taken.

SEA Topic(s)	SEA Objective(s)	SA Objective(s)	Sub-objectives/Appraisal Questions	Indicators	Targets
			<ul style="list-style-type: none"> • Create new appropriate habitats. • Value, enhance and protect natural environmental assets including AONB's, historic landscapes, open spaces, parks and gardens and their settings • Encourage local stewardship of local environments, for example by promoting best practices in agricultural management. • Ensure that environmental impacts caused by mineral operations and the transport of minerals are minimised. • Promote the use of rural areas and open space by all, encourage easy non-car based access, and accommodate the needs of disabled users. 	<p>Phosphate levels within the River Wye SAC and adjoining tributaries that receive increased phosphates from proportional growth.</p>	<p>The roll out of the Nutrient Management Plan will determine future targets</p>
				<p>Changes to protected habitats and impacts of species within the Herefordshire Local Biodiversity Action Plan.</p>	<p>To protect or enhance the habitats of species identified.</p> <p>Zero net loss of habitats.</p>
				<p>Changes in the areas of designated nature conservation sites as a consequence of planning permission.</p>	<p>To capitalise on opportunities to enhance the areas of value to nature conservation.</p>
				<p>Proportion of local sites where positive conservation management has or is being implemented.</p>	<p>The number of local sites under positive conservation management (Increase).</p>

SEA Topic(s)	SEA Objective(s)	SA Objective(s)	Sub-objectives/Appraisal Questions	Indicators	Targets
Climatic factors	<ul style="list-style-type: none"> To reduce contributions to climate change To reduce vulnerability to climate change 	<ul style="list-style-type: none"> Reduce Herefordshire's vulnerability to the impacts of climate change as well as its contribution to the problem. 	<ul style="list-style-type: none"> Reduce the county's contribution to climate change by reducing greenhouse gas emissions from transport, domestic, commercial and industrial sources. Increase the proportion of energy generated from renewable and low carbon sources including by micro-generation, Combined Heat and Power (CHP), district heating and in transportation. 	Number of decentralised energy schemes granted permission.	To contribute towards the national target.
				Total CO2 emissions per capita.	To reduce the overall carbon emissions.

SEA Topic(s)	SEA Objective(s)	SA Objective(s)	Sub-objectives/Appraisal Questions	Indicators	Targets
Cultural heritage	<ul style="list-style-type: none"> To conserve or enhance the historic environment, heritage assets and cultural heritage. 	<ul style="list-style-type: none"> Value, protect or enhance the character and built quality of settlements and neighbourhoods and the county's heritage assets, historic environment and cultural heritage. 	<ul style="list-style-type: none"> Preserve, protect or enhance Conservation Areas, Listed Buildings, archaeological remains, and other features and areas of historical heritage and cultural value e.g. locally listed buildings. Prevent development which is inappropriate in scale, form or design to its setting or to its function or local area. Encourage development that creates and sustains well-designed, high quality built environments that incorporate green space, encourage biodiversity and promote local distinctiveness and sense of place. Encourage cleanliness and/or improve the general appearance of the area. 	Number and percentage of listed buildings and Scheduled Ancient Monuments on Buildings at Risk Register (English Heritage).	To maintain or enhance current status in Stretton Sugwas.
				The need for, frequency and outcomes of planning enforcement investigations/planning appeals concerning the aspects of local loss of locally important buildings across the Parish and particularly within a conservation area.	To maintain or enhance current status in Stretton Sugwas.

SEA Topic(s)	SEA Objective(s)	SA Objective(s)	Sub-objectives/Appraisal Questions	Indicators	Targets
Material assets Landscape	<ul style="list-style-type: none"> To conserve natural and man-made resources. To improve the quality of surroundings To maintain or enhance the quality of landscapes and townscapes 	<ul style="list-style-type: none"> Use natural resources and energy more efficiently. Minimise local and global pollution and protect or enhance environmental resources. 	<ul style="list-style-type: none"> Maximise energy efficiency and minimise the consumption of non-renewable energy i.e. from fossil fuels. Minimise the consumption of water, land, soil, minerals, aggregates and other raw materials by all? E.g. through integrated transport, sustainable resource-efficient design, local sourcing of food, goods, materials. Encourage the re-use/enhancement (to high standards of sustainable resource-efficient design) of existing buildings and minimise the need for new build. Encourage the use of clean technologies and water minimisation techniques. 	Maintaining Herefordshire Council's County Site and Monuments Register.	No specific targets identified, but need to ensure that the register is kept up to date.
				Monitoring changes to historic landscapes.	No specific targets identified.
				Agricultural land usage by quality	Measure the number of hectares of best and most versatile soil lost through development.

SEA Topic(s)	SEA Objective(s)	SA Objective(s)	Sub-objectives/Appraisal Questions	Indicators	Targets
Population	<ul style="list-style-type: none"> To improve the health and well-being of the population. 	<ul style="list-style-type: none"> Value, protect, enhance or restore the landscape quality of Herefordshire, including its rural areas and open spaces. 	<ul style="list-style-type: none"> Value, enhance and protect natural environmental assets including AONB's, historic landscapes, open spaces, parks and gardens and their settings. Encourage local stewardship of local environments, for example by promoting best practices in agricultural management. Ensure that environmental impacts caused by mineral operations and the transport of minerals are minimised. Promote the use of rural areas and open space by all, encourage easy non-car based access, and accommodate the needs of disabled users. 	Number of developments meeting and surpassing national design	No specific targets identified.
				The need for, frequency and outcomes of planning enforcement investigations/ planning appeals concerning the aspects of local loss of locally important buildings across the parish and particularly within a conservation area.	To maintain or enhance current status in Stretton Sugwas.

SEA Topic(s)	SEA Objective(s)	SA Objective(s)	Sub-objectives/Appraisal Questions	Indicators	Targets
Soil	<ul style="list-style-type: none"> To conserve soil resources and quality 	<ul style="list-style-type: none"> Minimise local and global pollution and protect or enhance environmental resources. Ensure integrated, efficient and balanced land use. 	<ul style="list-style-type: none"> Minimise water, air, soil, groundwater, noise and light pollution from current activities and the potential for such pollution. Provide opportunities to improve soil quality or reduce contaminated land. Ensure new developments are in appropriate locations, optimising the use of previously developed land and buildings, primarily focussed on the urban areas and are accessible by walking, cycling or sustainable transport and/or will increase the share of these transport modes, thereby reducing the need to travel. 	Percentage of all new development completed on previously developed land.	To increase the number of homes built on PDL in line with the provisions of national planning policy.
				Housing densities in urban and rural areas.	No specific targets identified.

SEA Topic(s)	SEA Objective(s)	SA Objective(s)	Sub-objectives/Appraisal Questions	Indicators	Targets
Water	<ul style="list-style-type: none"> To improve water quality To provide for sustainable sources of water supply To reduce, avoid and manage flood risk 	<ul style="list-style-type: none"> Reduce the risk of flooding and the resulting detriment to public well-being, the economy and the environment. Minimise local and global pollution and protect or enhance environmental resources. 	<ul style="list-style-type: none"> Reduce flood risk both presently and taking into account climate change. Prevent inappropriate development of the floodplain, and include flood protection systems. Include sustainable urban drainage systems where appropriate. Minimise water, air, soil, groundwater, noise and light pollution from current activities and the potential for such pollution. Protect or enhance the quality of watercourses. 	Number of planning permissions granted contrary to the advice of the Environment Agency on flood defence grounds.	To have no applications permitted contrary to EA advice.
				Percentage of river length assessed as good or very good chemical quality and ecological quality.	To ensure that rivers meet their conservation objectives and do not fall below the required standard of quality, as set out in the Water Framework Directive.

Initial Habitat Regulations Assessment and Strategic Environmental Assessment Screening Notification

The Neighbourhood Planning (General) Regulation 2012 (Reg. 32) Conservation of Habitats and Species Regulations 2010 (d)

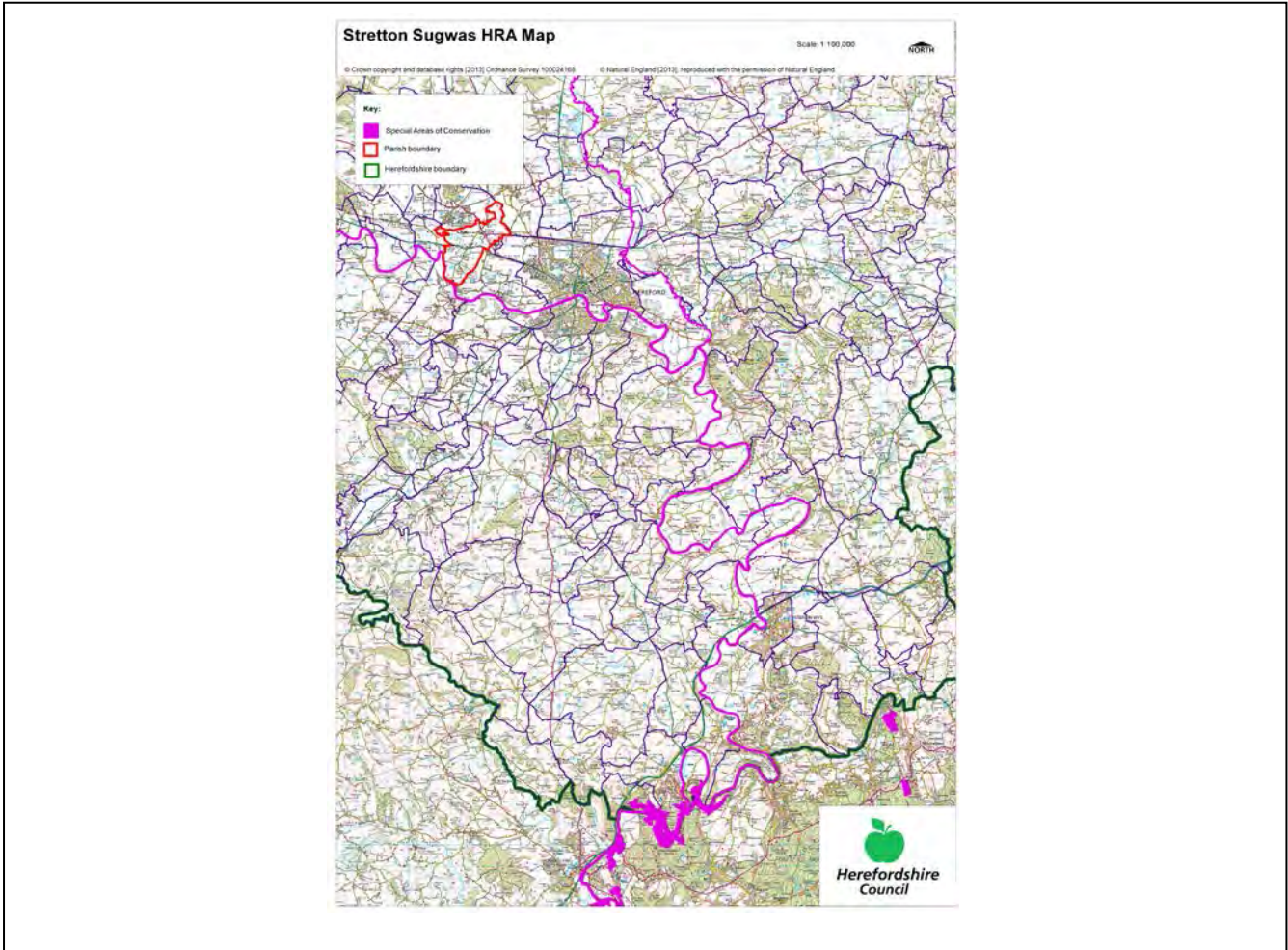
Neighbourhood Area:	Stretton Sugwas Neighbourhood Area
Parish Council:	Stretton Sugwas Parish Council
Neighbourhood Area Designation Date:	25/11/13

Introduction

This Initial Habitat Regulations Assessment (HRA) and Strategic Environmental Assessment (SEA) Screening has been undertaken to assess whether any European Sites exist within or in proximity to the Neighbourhood Area which could be affected by any future proposals or policies.

Through continual engagement the outcomes of any required assessments will help to ensure that proposed developments will not lead to Likely Significant Effects upon a European Site or cause adverse impacts upon other environmental assets, such as the built historic or local natural environment.

**HRA Initial Screening: Map showing relationship of Neighbourhood Area with European Sites
(not to scale)**



Initial HRA Screening

River Wye (including the River Lugg) SAC:

Does the Neighbourhood Area have the River Wye (including the River Lugg) in or next to its boundary?	Y	The River Wye SAC borders the Parish in the south
Is the Neighbourhood Area in the hydrological catchment of the River Wye (including the River Lugg) SAC?	Y	The Parish is within the hydrological catchment of the River Wye
If yes above, does the Neighbourhood Area have mains drainage to deal with foul sewage?	Y	There is mains drainage in Hereford

Downton Gorge SAC:

Is the Neighbourhood Area within 10km of Downton Gorge SAC?	N	Downton Gorge is 29.2km away from the Parish
---	---	--

River Clun SAC:

Does the Neighbourhood Area include: Border Group Parish Council or Leintwardine Group Parish Council?	N	River Clun does not border the Parish
--	---	---------------------------------------

Usk Bat Sites SAC:

Is the Neighbourhood Area within 10km of the SAC boundary?	N	Usk Bat Sites are 34.5km away from the Parish
--	---	---

Wye Valley & Forest of Dean Bat Sites SAC:

Is the Neighbourhood Area within 10km of any of the individual sites that make up the Wye Valley & Forest of Dean Bat Sites?	N	The Parish is 28.2km away from Wye Valley and Forest of Dean Bat Sites
--	---	--

Wye Valley Woodlands SAC:

Is the Neighbourhood Area within 10km of any of the individual sites that make up the Wye Valley Woodlands Site?	N	The Parish is 27.6km away from the Wye Valley Woodlands
--	---	---

HRA Conclusion:

The assessment above highlights that the following European Sites will need to be taken into account in the future Neighbourhood Development Plan for the Stretton Sugwas Neighbourhood Area and a Full HRA Screening will be required.

European Site

(List only those which are relevant from above)

River Wye (including the River Lugg) SAC

Strategic Environmental Assessment Initial Screening for nature conservation landscape and heritage features

The following environmental features are within or in general proximity to the Stretton Sugwas Neighbourhood Area and would need to be taken into account within a Strategic Environmental Assessment. In addition, the NDP will also need to consider the other SEA topics set out in Guidance Note 9a to ensure that the plan does not cause adverse impacts.

SEA features	Total	Explanation	SEA required
Air Quality Management Areas	0	There are no AQMAs within the Parish	N
Ancient Woodland	2	Credenhill Park Wood (border); 1 x unlabelled piece of land along A438	Y
Areas of Archaeological Interest	0	There are no AAls within the Parish	N
Areas of Outstanding Natural Beauty	0	There are no AONBs within the Parish	N
Conservation Areas	2	Huntington (border); Burghill (border)	Y
European Sites	1	River Wye	Y
Flood Areas		Flood Zones 2 and 3 flow through the north and south of the Parish	Y
Listed Buildings	Numerous	There are numerous Listed Buildings throughout the parish	Y
Local Sites (SWS/SINCs/RIGS)	2 (SINCs) 11 (SWS)	SINC: Yazor Brook (border); Railway Line near Green Farm (border) SWS: Two pools at Stretton Sugwas Gravel Workings; Pond near Stretton House; River Wye; Pool near Magna Castra House (border); First pond near Bunshill (border); Credenhill Park Woods and Sally Coppice (border); Pond at Huntington Court (border); Kings Acre Reserve (border); Field near Eaton camp (border); Warlow Pool (border); Pond near Longmoor Cottage (border)	Y
Long distance footpaths/trails	2	Three Rivers Ride; Wye Valley Walk	Y
Mineral Reserves	7	South of Roman Road to A438 and area between Wye and A438; North west of Credenhill (border); Kings Acre, Linden House (border); South of Canon Bridge (border); Kings Acre, Caravan Park (border); Cot Barn (border); West and south of Portway, east of Burghill down Canon Pyon Road (border)	Y
National Nature Reserve	0	There are no NNRs within the Parish	N
Registered & Unregistered parks and gardens	9 Unregistered	Sugwas Court; Burghill Court; Lower Eaton (border); New Weir (border); Canon Bridge House (border); Burghill Hospital (border); Huntington Court, Hereford (border); Wycliffe Court (border); Credenhill Court (border)	Y
Scheduled Ancient Monuments	6	Medieval Bridge 870m north east of Stretton Court Farm; Churchyard cross at St Mary the Virgins Churchyard (border); Site of Romano-British town of	Y

		Magna (border); New Weir Roman Site (border); Credenhill Camp (border); Eaton camp (border)	
Sites of Special Scientific Interest	2	River Wye (Unfavourable Recovering); Bishon Meadow (Favourable) (border)	Y

Decision Notification:

The initial screening highlights that the Neighbourhood Development Plan for the Stretton Sugwas Neighbourhood Area:

- a) Will require further environmental assessment for Habitat Regulations Assessment and Strategic Environmental Assessment.

Assessment date: 21/10/2013

Assessed by: James Latham

Appendix 1: European Sites

The table below provides the name of each European Site, which has been screened in for the purposes of neighbourhood planning in Herefordshire; includes their site features of integrity; and vulnerability data. This is based on the sites individual features of integrity and their vulnerabilities, which could include distance criteria. This has been used in identifying which parishes are likely to require a full HRA Screening of their future Neighbourhood Development Plan, to establish if their plan might have Likely Significant Effects on a European Site.

Downton Gorge
Site Features: <i>Tilio-Acerion</i> forests of slopes, screes and ravines
Vulnerability data: 10km for air quality associated with poultry units or other intensive agricultural practices.
River Clun
Site Features: Freshwater pearl mussel <i>Margaritifera margaritifera</i>
Vulnerability data: Water quality is important to maintain the site feature. Parishes either side of the River Clun will be affected.
River Wye
Site Features: Water courses of plain to montane levels with the <i>Ranunculion fluitantis</i> and <i>Callitricho-Batrachion</i> vegetation. Transition mires and quaking bogs. White-clawed (or Atlantic Stream) crayfish <i>Austropotamobius pallipes</i> . Sea lamprey <i>Petromyzon marinus</i> . Brook lamprey <i>Lampetra planeri</i> . River lamprey <i>Lampetra fluviatilis</i> . Twaite shad <i>Alosa fallax</i> . Atlantic salmon <i>Salmo salar</i> . Bullhead <i>Cottus gobio</i> . Otter <i>Lutra lutra</i> . Allis shad <i>Alosa alosa</i>
Vulnerability data: Proximity: Developments should not be within 100m of the designated bank. Some developments beyond 100m may also have impacts based on proximity and these issues should be addressed where possible when developing NDP policy and choosing site allocations. Water Quality: Within the whole catchment of the River Wye, which includes the River Lugg, mains drainage issues with regards to water quality are being resolved through the Core Strategy / Local Plan and development of a Nutrient Management Plan. Welsh Water should be consulted to ensure that the proposed growth will be within the limit of their consents. Otters: "An otter will occupy a 'home range', which on fresh waters usually includes a stretch of river as well as associated tributary streams, ditches, ponds, lakes and woodland. The size of a home range depends largely on the availability of food and shelter, and the presence of neighbouring otters. On rivers, a male's home range may be up to 40km or more of watercourse and associated areas; females have smaller ranges (roughly half the size) and favour quieter locations for breeding, such as tributary streams. Otters without an established home range are known as 'transients'. They are mostly juveniles looking for a territory of their own, or adults that have been pushed out of their territories. Transient otters may use an area for a short while, but they will move on if conditions are not suitable or if they are driven away by resident otters. Transients will have been important in extending the range of otters, but they are very difficult to identify from field signs. Within a home range an otter may use many resting sites. These include above-ground shelters, such as stands of scrub or areas of rank grass, and underground 'holts' – for example, cavities under tree roots and dry drainage pipes." (Source: EA website: http://www.environmentagency.gov.uk/static/documents/Business/Otters_the_facts.pdf accessed 09/04/2013)

Usk Bat Site

Site Features: Annex I habitats present as a qualifying feature, but not a primary reason for site selection: European dry heaths, Degraded raised bogs still capable of natural regeneration, Blanket bogs, Calcareous rocky slopes with chasmophytic vegetation, Caves not open to the public, *Tilio-Acerion* forests of slopes, screes and ravines. Annex II species of primary reason for site selection: Lesser horseshoe bat *Rhinolophus hipposideros*, UK population 5%, although it is suggested this is an underestimate.

Vulnerability data: Lesser Horseshoe bats are known to migrate between 5km and 10km between their summer and winter roosts. The Lesser Horseshoe Bat is vulnerable to disturbance; light pollution; and habitat loss. Check with the planning ecologist for other issues.

Wye Valley and Forest of Dean Bat Sites

Site Features: Annex II species that are a primary reason for site selection: Lesser horseshoe bat *Rhinolophus hipposideros*. Greater horseshoe bat *Rhinolophus ferrumequinum*

Vulnerability data: Lesser Horseshoe bats are known to migrate between 5km and 10km between their summer and winter roosts. The Lesser Horseshoe Bat is vulnerable to disturbance; light pollution; and habitat loss. Check with the planning ecologist for other issues.

Greater Horseshoe bats are known to migrate between 20-30km between their summer and winter roosts.

NDPs closest to the European Site will need to consider:

Woodland habitat buffer.

Lesser Horseshoe Bat: Old buildings; woodland locations; sheltered valleys, extensive deciduous woods or dense scrub, close to roost sites. In areas of fragmented habitats, linear habitats such as hedgerows are important corridors. Vulnerable to loss or disturbance of both summer and winter roosts and removal of linear habitat.

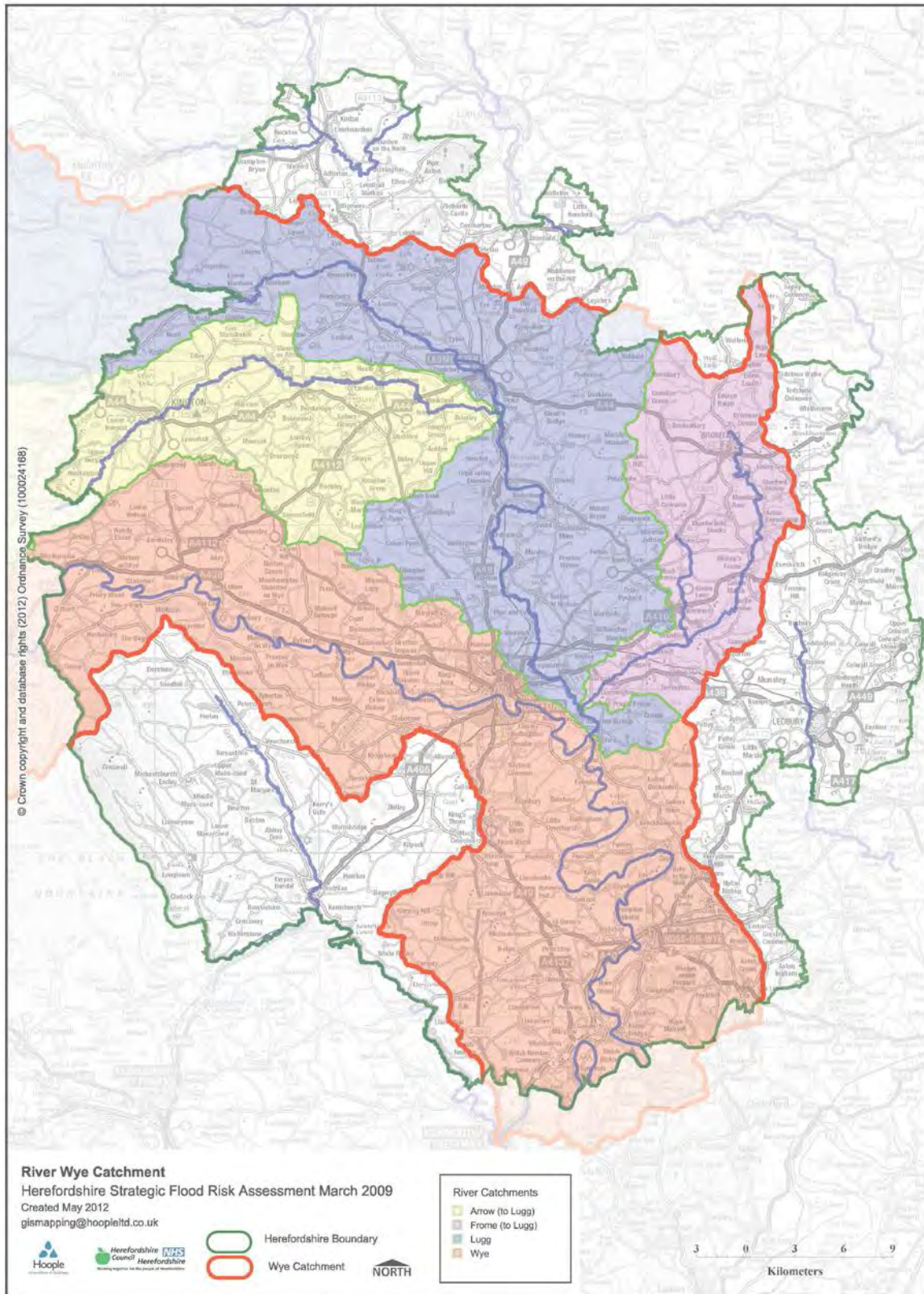
Greater Horseshoe Bat: Large buildings, pasture, edge of mixed deciduous woodland and hedgerows. Mixed land-use especially south-facing slopes, favours beetles, moths and insects they feed on. During the winter they depend on caves, abandoned mines and other underground sites for undisturbed hibernation. A system/series of sites required. Vulnerable to loss of insect food supply, due to insecticide use, changing farming practices and loss of broad-leaved tree-cover and loss / disturbance of underground roosts sites.

Wye Valley Woodlands

Site Features: Annex I habitats that are a primary reason for site selection: Beech forests *Asperulo-Fagetum*, *Tilio-Acerion* forests of slopes, screes and ravines, *Taxus baccata* woods of the British Isles. Annex II species present as a qualifying feature, but not a primary reason for site selection: Lesser horseshoe bat *Rhinolophus hipposideros*, 51-100 residents

Vulnerability data: Lesser Horseshoe bats are known to migrate between 5km and 10km between their summer and winter roosts. The Lesser Horseshoe Bat is vulnerable to disturbance; light pollution; and habitat loss. Check with the planning ecologist for other issues. NDPs closest to the European Site will need to consider: Woodland habitat buffer. Lesser Horseshoe Bat: Old buildings; woodland locations; sheltered valleys, extensive deciduous woods or dense scrub, close to roost sites. In areas of fragmented habitats, linear habitats such as hedgerows are important corridors. Vulnerable to loss or disturbance of both summer and winter roosts and removal of linear habitat.

Appendix 2: Wye Catchment Map

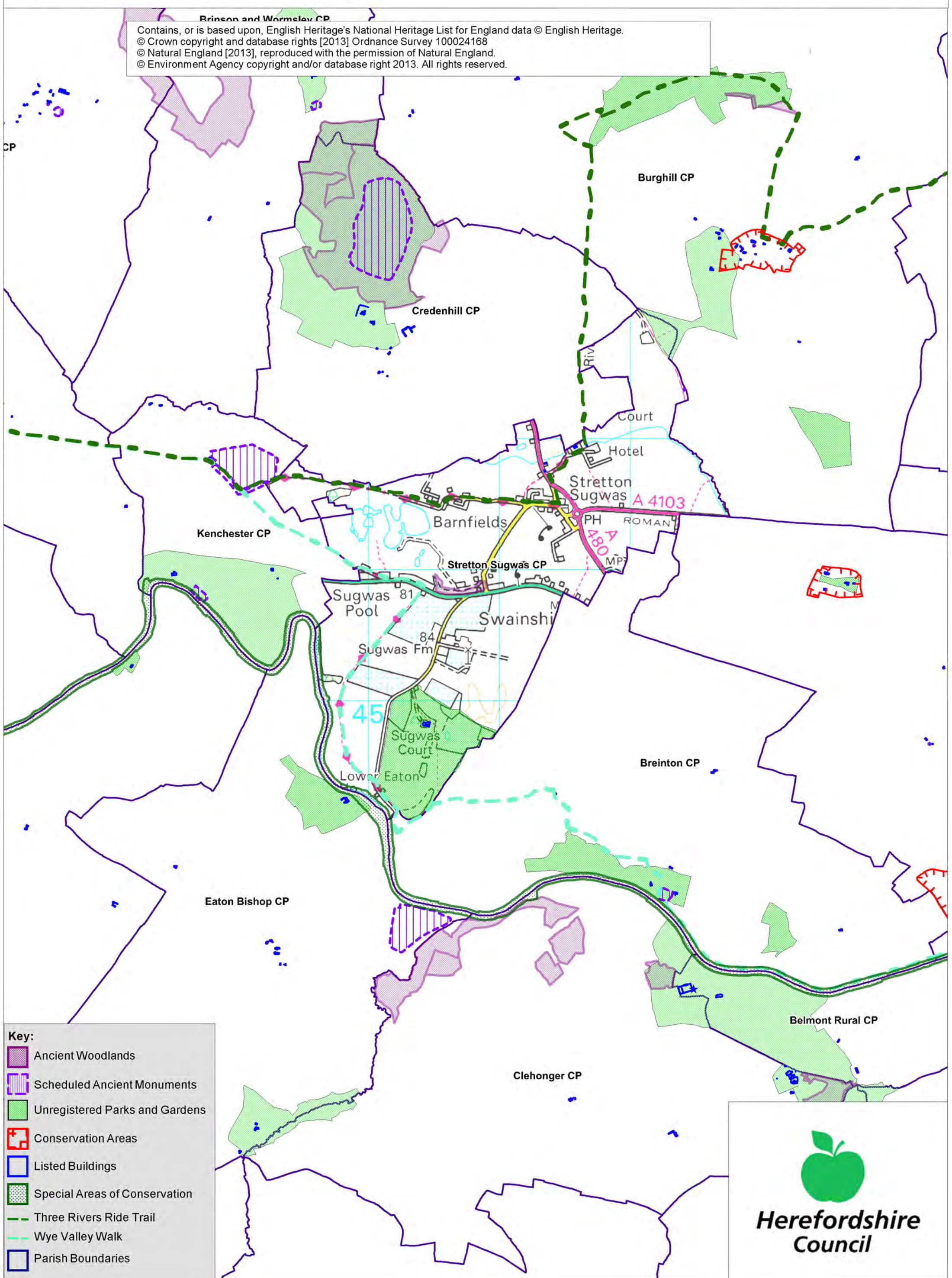


Stretton Sugwas SEA Map 1







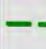

Scale: 1:25,000



Contains, or is based upon, English Heritage's National Heritage List for England data © English Heritage.
 © Crown copyright and database rights [2013] Ordnance Survey 100024168
 © Natural England [2013], reproduced with the permission of Natural England.
 © Environment Agency copyright and/or database right 2013. All rights reserved.



Key:

-  Ancient Woodlands
-  Scheduled Ancient Monuments
-  Unregistered Parks and Gardens
-  Conservation Areas
-  Listed Buildings
-  Special Areas of Conservation
-  Three Rivers Ride Trail
-  Wye Valley Walk
-  Parish Boundaries



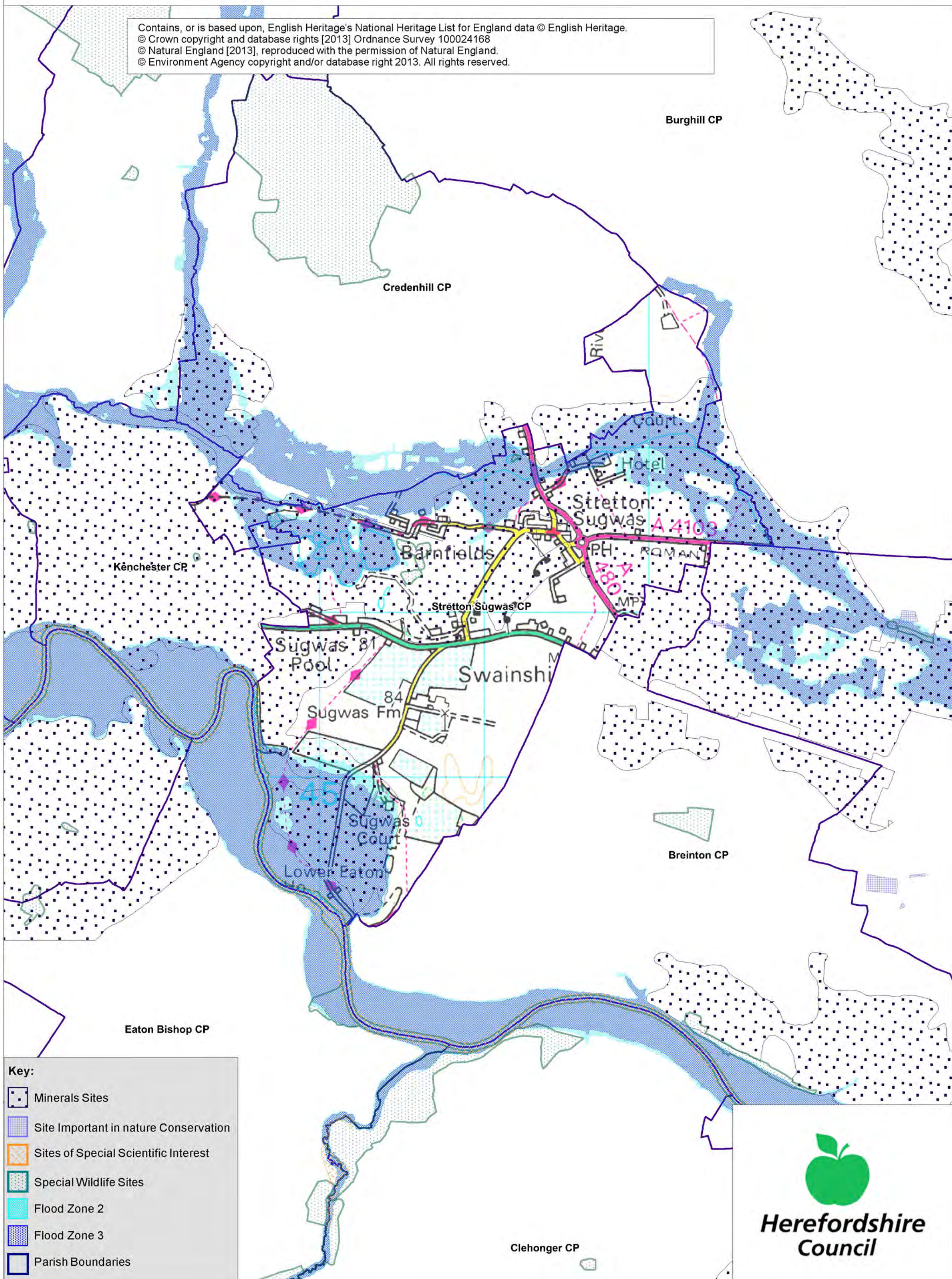
**Herefordshire
Council**

Stretton Sugwas SEA Map 2

Scale: 1:20,000



Contains, or is based upon, English Heritage's National Heritage List for England data © English Heritage.
© Crown copyright and database rights [2013] Ordnance Survey 100024168
© Natural England [2013], reproduced with the permission of Natural England.
© Environment Agency copyright and/or database right 2013. All rights reserved.



Key:

- Minerals Sites
- Site Important in nature Conservation
- Sites of Special Scientific Interest
- Special Wildlife Sites
- Flood Zone 2
- Flood Zone 3
- Parish Boundaries

