

Habitats Regulations Assessment

Report for:

Peterstow Neighbourhood Area

November 2017



Peterstow HRA

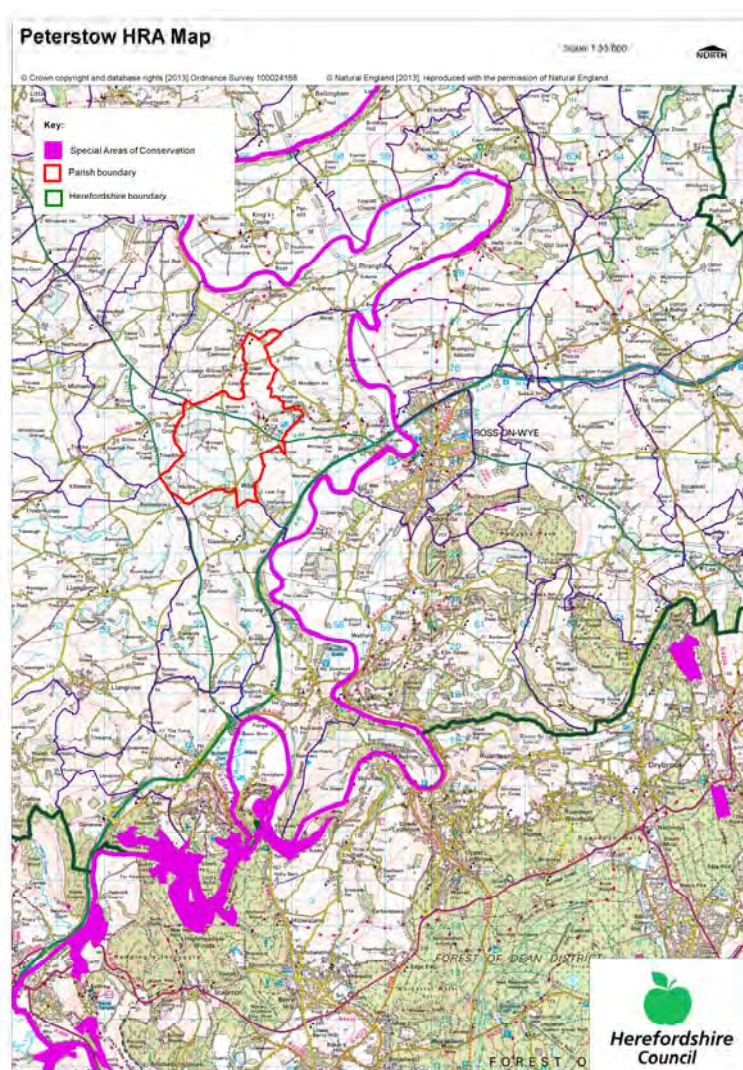
HRA Screening Assessment

Contents

- 1 Introduction**
Map of the Neighbourhood Area with European sites shown
 - 2 The requirement to undertake Habitats Regulations Assessment of Neighbourhood Plans**
 - 3 Methodology**
 - 4 Results of the Initial Screening Report and options**
 - 5 Description of the Peterstow Neighbourhood Plan**
 - 6 Identification of other plans and projects which may have 'in-combination' effects**
 - 7 Assessment of the 'likely significant effects' of the Peterstow Plan NDP**
Table 1 - Colour coding key for Matrix
 - 8 Conclusions from the Screening Matrix**
-
- Appendix 1** – List of options assessed
- Appendix 2** – Options assessment matrix
- Appendix 3** – Full Screening Matrix
- Appendix 4** – Initial Screening Report (2013)

1 Introduction

- 1.1 This Screening Assessment relates to a Neighbourhood Development Plan that is considered to be in general conformity with higher level strategic plans, such as the Herefordshire Core Strategy and the National planning Policy Framework. The screening stage involves assessing broadly whether the Draft Neighbourhood Plan is likely to have a significant effect on any European site(s).
- 1.2 Peterstow Parish Council is producing a Neighbourhood Development Plan for Peterstow Parish, in order to set out the vision, objectives and policies for the development of the Parish up to 2031. This HRA reviews the Draft Peterstow Plan November 2017.
- 1.3 The NDP is a mix of criteria based policies and has allocated 3 sites within the designated settlement boundary of Peterstow. It provides general policies that clarify and provide detail to the policies within the Herefordshire Core Strategy therefore it requires a high level screening assessment to build upon the HRA Screening Assessment Report for the Herefordshire Core Strategy. This high level screening assessment should be read in combination with the Herefordshire publication of the Local Plan-Core Strategy Habitat Regulations Assessment Report (October 2013) and ensures that there will not be any significant impacts upon Natura 2000 sites.
- 1.4 The map below shows Peterstow Neighbourhood Area with the European Site highlighted.



2 The requirement to undertake Habitats Regulations Assessment of neighbourhood plans

- 2.1 The requirement to undertake HRA of development plans was confirmed by the amendments to the “Habitats Regulations” published for England and Wales in July 2007 and updated in 2013. Therefore, when preparing its NDP, Peterstow Parish Council is required by law to carry out an assessment known as “Habitats Regulations Assessment”. It is also a requirement in Regulation 32 schedule 2 of the Neighbourhood Planning Regulations 2012.
- 2.2 Article 6(3) of the EU Habitats Directive provides that:
Any plan or project not directly connected with or necessary to the management of the [European] site but likely to have a significant effect thereon, either individually or in combination with other plans or projects, shall be subject to appropriate assessment of its implications for the site in view of the site's conservation objectives. In the light of the conclusions of the assessment of the implications for the site and subject to the provisions of paragraph 4, the competent national authorities shall agree to the plan or project only after having ascertained that it will not adversely affect the integrity of the site concerned and, if appropriate, after having obtained the opinion of the general public.
- 2.3 HRA is an impact-led assessment and refers to the assessment of the potential effects of a neighbourhood plan on one or more European sites, including Special Protection Areas (SPAs) and Special Areas of Conservation (SACs):
- **SPAs** are classified under the European Council Directive ‘on the conservation of wild birds’ (79/409/EEC; ‘Birds Directive’) for the protection of **wild birds and their habitats** (including particularly rare and vulnerable species listed in Annex 1 of the Birds Directive, and migratory species).
 - **SACs** are designated under the Habitats Directive and target **particular habitats** (Annex 1) and/or species (Annex II) identified as being of European importance.
- 2.4 For ease of reference during HRA, general practice has been that these three designations are collectively referred to as either **Natura 2000** or **European sites**. This means that a Screening Assessment is carried out with regard to the Conservation Objectives of the European Sites and with reference to other plans or projects to identify if any significant effect is likely for any European Site.

3 Methodology

- 3.1 As the Peterstow Plan is not directly connected with the management of any European sites, and includes proposals for development which may affect European sites, it is necessary under Regulation 102(1)(a) of the Habitats Regulations 2010 to undertake screening for likely significant effects on European sites.
- 3.2 The HRA of neighbourhood plans is undertaken in stages and should conclude whether or not a proposal or policy in a neighbourhood plan would adversely affect the integrity of the site in question. This is judged in terms of the implications of the plan for a site’s ‘qualifying features’ (i.e. those Annex I habitats, Annex II species, and Annex I bird populations for which it has been designated) and are measured with reference to the conservation objectives for those qualifying features as defined by Natural England.
- 3.3 The first process is to undertake an initial screening report to determine the need to undertake the requirement for a HRA, this initial screening identifies whether the Plan could impact upon any European site that could be within the Neighbourhood Area or nearby.

- 3.4 If a European Site is within the Neighbourhood Area or the Neighbourhood Area could impact upon a European site then this will need to be taken into account and a full screening assessment will need to be undertaken.
- 3.5 The full screening stage consists of a description of the plan, identification of potential effects on European Sites, assessing the effects on European Sites (taking into account potential mitigation provided by other policies in the plan). For Neighbourhood Plans the outcome should demonstrate there are no likely effects upon the European sites. If any likely effects occur then there will need to be amendments to the NDP made and be re-screened until all likely effects have been mitigated.

4 Results of the Initial Screening Report and options

- 4.1 The initial Screening report (October 2013) found that the Peterstow Parish is 1 km from the River Wye. Therefore Peterstow NDP area falls within the 10km hydrological catchment area of the River Wye (including the Lugg) SAC. The SAC is located east of the Neighbourhood Area and therefore a full screening assessment is required. The area also falls within the Wye Valley and Forest of Dean Bat sites and is 9.5km away. The parish also falls within 8.8km away from Wye Valley Woodlands.
- 4.2 For full details of the Wye Valley Woodlands, Wye Valley Forest of Dean Bat sites and the River Wye (including the Lugg) SAC attributes which contribute to and define their integrity and vulnerable data see Appendix 1 of the Peterstow Plan Initial Screening Report. The Initial Screening Report, October 2013, can be found in Appendix 4 of this HRA report. This information made it possible to identify the features of each site which determine site integrity, as well as the specific sensitivities of each site, therefore enabling later analysis of how the potential impacts of the Peterstow Plan Neighbourhood Plan may affect site integrity.
- 4.3 The initial options for the NDP were assessed to determine their environmental impact that could affect the Wye Valley Woodlands, Wye Valley Forest of Dean Bat sites and the River Wye (including the Lugg) SACs. Overall the majority of the options proposing any growth appear to depend on location and scale in relation to environmental impact. There are 20 site options, 18 policies and 6 objectives which have been screened to assess the impact on the three identified SACs However the site options listed are all on a small scale and located away from the SACs and are unlikely to have a significant impact on the SACs.
- 4.4 As the Peterstow Plan progresses from options onto their NDP policies, the Plan will need to identify ways in which the least effect on the ye Valley Woodlands, Wye Valley Forest of Dean Bat sites and the River Wye (including the Lugg) SACs could be achieved, alongside taking forward the preferred options from the consultation from the community. If a majority of these options are taken forward either as standalone policies or in combination with other policies then the mitigation from these options will help to counter balance the effect of all new development within the Parish. A list of the options and site options assessed can be found in Appendix 1, and the Assessment matrix for the options can be found Appendix 2.

5 Description of the Peterstow Plan Neighbourhood Plan

- 5.1 The Draft Peterstow Plan presents detailed policies for development in the Neighbourhood Area, which is equivalent to the parish boundary, up to 2031. The first part of the Plan introduces the Plan and its preparation and discusses the background to each of the villages.

- 5.2 The NDP then details the vision for the Group Parish over the Plan period and six objectives of how this will be achieved. The six objectives cover the following topics:

Local Environment
New Housing
Infrastructure and roads
Community Facilities
Energy
Economic Development and Employment

- 5.3 The NDP also sets out 18 policies on various topics based on the objective headings above and also for the village, these include:

- **Policy PTS1:** Promoting Sustainable Development
- **Policy PTS2:** Conserving the landscape and scenic beauty of the parish
- **Policy PTS3:** Enhancement of the natural environment
- **Policy PTS4:** Protecting Heritage assets
- **Policy PTS5:** Development within Peterstow Conservation Area
- **Policy PTS6:** Foul and Storm Drainage
- **Policy PTS7:** Protection of Peterstow Common as Local green Space
- **Policy PTS8:** Design and Appearance
- **Policy PTS9:** Sustainable Design
- **Policy PTS10:** Traffic Measures within the Parish
- **Policy PTS11:** Highway Design Requirements
- **Policy PTS12:** Housing Development in Peterstow Village
- **Policy PTS13:** Housing Sites in Peterstow Village
- **Policy PTS14:** Protection and enhancement of community facilities and services
- **Policy PTS15:** Contributions to Community Facilities
- **Policy PTS16:** Small and Home based businesses
- **Policy PTS17:** Polytunnel Proposals
- **Policy PTS18:** Renewable and Low Carbon Energy

- 5.4 The NDP proposes that the following sites be allocated for housing, in order to facilitate the proportional growth envisaged by Policy RA2 of the Local Plan (Core Strategy):

Site 1- land amounting to approximately 0.25ha at Peterstow Shop; 4 dwellings.

Site 2- land amounting to approximately 0.2ha at Highgrove, High town; 4 dwellings.

Site 3- land amounting to approximately 0.25ha at Old High Town. 5 dwellings.

Total capacity of 13 dwellings.

6 Identification of other plans and projects which may have ‘in-combination’ effects

- 6.1 Regulation 102 of the Habitats Regulations 2010 requires an appropriate assessment where a land use plan (not directly connected with or necessary to the management of the site) is likely to have a significant effect on a European site, either alone or in combination with other plans or projects. In addition, in accordance with the Neighbourhood Planning Regulation 2012 a NDP cannot have a significant effect on any European Site whether alone or in combination with another Plan.

- 6.2 There are a number of potentially relevant plans and projects which may result in in-combination effects with the Core Strategy across Herefordshire, these plans have been reviewed and can be found in Appendix 2 of the pre-submission publication of the Herefordshire Local Plan – Core Strategy Habitats Regulations Assessment (May 2014). It is seen that as this NDP does not go over and beyond the requirements set out in the Core Strategy this review will also be substantial for the NDP.
- 6.3 The HRA for the Core Strategy also identifies that both the Water Cycle Study for Herefordshire, which indicates the potential for planned water abstraction requirements combined with pressures on European Sites from the Core Strategy policies, and the work on the Nutrient Management Plan, to ensure the favourable conservation status of the SAC in respect of phosphate levels as soon as possible and at the latest by 2027, have both been considered as part of the in-combination assessment.

7 Assessment of the ‘likely significant effects’ of the Peterstow Plan NDP

- 7.1 As required under Regulation 102 of the Habitats Regulations 2010, a screening assessment has been undertaken to identify the ‘likely significant effects’ of the NDP. A screening matrix was prepared in order to identify whether any of the policies in the Plan would be likely to have a significant effect on the River Wye SAC.
- 7.2 The findings of the screening matrix can be found in the Screening Matrix in Appendix 3 of this report. Colour coding was used to record the likely impacts of the policies on the European site and its qualifying habitats and species as shown in the table 1 below.

Red	There are likely to be significant effects
Green	Significant effects are unlikely

- 7.3 The Screening matrix took the approach of screening each policy individually, which is consistent with current guidance documents. The results from the HRA report for the submission version of the Herefordshire Core Strategy were also taking into consideration.
- 7.4 Mitigation of some of the identified potential effects could be achieved through implementation of the other policies within the NDP which require good practice measures during and after construction phases, such as more efficient use of water, reduction in waste and encouragement of recycling.

8 Conclusions from the Screening Matrix

- 8.1 None of the Draft Peterstow Plan (November 2017) policies and sites were concluded to be likely to have a significant effect on the Wye Valley Woodlands SAC, Wye Valley Forest of Dean Bat sites SAC and the River Wye (including the Lugg) SAC. Based on assumptions and information contained within the Peterstow Plan, Herefordshire Core Strategy and the submission version of the HRA for the Core Strategy all of the NDP policies were found to be unlikely to result in significant effects on the River Wye (including Lugg) SAC.
- 8.2 In many cases this is because the policy itself would not result in development, i.e, it related instead to criteria for development. In a number of cases the policies also included measures to help support the natural environment, including biodiversity and therefore no significant effect conclusion could be reached. In addition, these policies have the potential to mitigate some of the possible adverse effects arising from other policies.

-
- 8.3 The plan allocates settlement boundaries and 3 sites for development; within the settlements of Peterstow. Within the settlement area there appears to be enough capacity within the two identified settlements to meet the target housing growth. Three of the allocated sites and the settlement boundary are recommended to be developed due to the small scale of the sites and location within the settlement of Peterstow. This will leave three sites with a potential to provide up to 13 dwellings, this meet proportionate growth figures.
- 8.4 The three sites for development of up to 13 dwellings, along with development from 5 commitments, 6 completions and windfall to meet the housing target of 27 from 2011 to 2031. Commitments and completions from April 2011-October 2016 are currently 11 dwellings, leaving a residual figure of 16 to find within the parish of Peterstow.
- 8.5 It is unlikely that the Peterstow Plan will have any in-combination effects with any Plans from neighbouring parish councils as the level of growth proposed is the same as that proposed for the Housing Market Area in the Herefordshire Core Strategy and all of the proposed housing sites will be of a small scale.
- 8.6 **It is therefore concluded that the Peterstow Plan will not have a likely significant effect on the River Wye (including Lugg) SAC.**
- 8.7 Any further amendments to policies (post November 2017) will be rescreened if required and an addendum to this report will be produced.

Appendix 1

PETERSTOW OPTIONS

Option 1- To do nothing
Option 2- To do a criteria based policy.
Option 3 - To allocate sites in the plan.
Option 4- Criteria policy and settlement boundary.
Option 5- Criteria policy/settlement boundary/allocate sites.
Option 6 – accommodating the level of housing growth required to meet Herefordshire Local Plan Core Strategy through small sites available within Peterstow village and at Winter's Cross;
Option 7 – accommodating the level of housing growth required to meet Herefordshire Local Plan Core Strategy through small sites available only within Peterstow village;
Option 8 – accommodating the level of housing growth required to meet Herefordshire Local Plan Core Strategy through development of a large site at Peterstow village;
Option 9 – accommodating the level of housing growth required to meet Herefordshire Local Plan Core Strategy through development of several medium sized sites at Peterstow village;
Option 10- exceeding the level of growth required by Herefordshire Local Plan Core Strategy through a development involving a combination of a large site and some small and medium sites.

Site Options

Site option 1 West of Wellsbrook Lane
Site option 2 South and adjacent to Hightown Cottage (31,000sq ft – 0.3 hectares)
Site option 3A Between Pippins and Stowehill (0.4 hectare)
Site option 3B North of Harlyn (0.1 hectare)
Site option 4A Kyrle Meadow (0.5 Acre)
Site option 4B Kyrle Meadow (2 acres)
Site option 5 Between Everstone Cottage and Westwinds, Winter's Cross (appx 1 acre)
Site option 6 Adj.Hightown House (0.25 acre)
Site option 7 End of New Road (0.5 acre)
Site option 8A Garden on Stonecrop (40 x 20 m)
Site option 8B Garden on Stonecrop (40 x 20 m)
Site option 9 Adj. Westwinds (0.1 hectare)
Site option 10 Garden at Highgrove (0.5 acre)
Site option 11 Land at SO561248 (c4 hectares)
Site option 12A Opposite Hightown Green (Small plot)
Site option 12B Land off drive at Hightown Green (Plot for 4/5 houses)
Site option 12C Land off drive to Hightown Green (Extension to 12B submitted through SHLAA)
Site option 13A Little Peterstow Orchards (0.5 acre)
Site option 13B Little Peterstow Orchards (0.25 acre)
Site option 14 Land at Peterstow Shop

Appendix 2

Table 1: HRA Screening of Emerging Neighbourhood Development Plan Objectives, Options and Policies

Parish Council Name: **Peterstow**

NDP Title: **Peterstow Neighbourhood Plan**

Date undertaken: **October 2017**

NDP objectives, Site options policies	HRA Screening of Emerging NDP objectives, options and policies				
	Likely activities (operations) to result as a consequence of the objective/option/policy	Likely effect if option implemented. Could they have Likely Significant Effects (LSE) on European Sites? (Yes/No, with reasons)	European Sites potentially affected	Mitigation measures to be considered, as necessary, through redraft of objective/option/policy and to be considered as part of Appropriate Assessment	If recommendations are implemented, would it be possible that it would result in no LSE? (Yes/No with reasons)
Option 1- to do nothing	No NDP to determine planning applications.	Criteria policies within the Core Strategy would guide further development. Specific policies and proposals for the parish would not exist.	River Wye (including the Lugg SAC). Wye Valley and Forest of Dean Bat Sites SAC. Wye Valley Woodlands SAC	N/A	N/A
Option 2- To do a criteria based policy.	Small scale proportionate growth where the location would be determined by a criteria based policy.	Uncertain as to the impact on the European sites as dependant on the location of the development.	River Wye (including the Lugg SAC). Wye Valley and Forest of Dean Bat Sites SAC.	Criteria based housing policy would require to include reference to mitigation measures to avoid any non-disturbance effects on the River Wye via its	No, development in line with the Local Plan (Core Strategy) and the policy safeguards which exist within the Core Strategy should avoid

This document is copyright of Herefordshire Council, please contact the Neighbourhood Planning team if you wish to reuse it in whole or part.

			Wye Valley Woodlands SAC	catchment. Policy would need to take account of the proportional growth requirements of the Core Strategy and potential headroom capacity at the local STW.	or mitigate any likely significant effects. Policy criteria should be included within the NDP which reflects this. Further assessments will be undertaken at draft policy stage.
Option 3 - To allocate sites in the plan.	Allocation of sites for housing or other uses would give certainty to future development. Specific environmental issues could be investigated during the site search and be positively addressed within the policy wording.	Pursuing this option would give greater certainty over future development within the area particularly within the River Wye catchment. If required mitigation criteria can be added to site allocations policies to ensure no likely significant effect would occur	River Wye (including the Lugg SAC). Wye Valley and Forest of Dean Bat Sites SAC. Wye Valley Woodlands SAC	Developments should not be within 100m of the designated bank. Some developments beyond 100m may also have impacts based on proximity and these issues should be addressed where possible when developing NDP policy and choosing site allocations.	No; policy criteria can be added to any allocation policy to mitigate. The majority of the village, where likely proportionate growth would be located is outside of the catchment area for the River Wye.
Option 4 - Criteria policy and settlement boundary.	The designation of a settlement boundary will give additional certainty and help define those areas considered as the built form and open countryside. This can aid	Any settlement boundary would need to be designated to ensure that sufficient capacity was included to permit the proportional growth requirements within Policy	River Wye (including the Lugg SAC). Wye Valley and Forest of Dean Bat Sites SAC. Wye Valley Woodlands	Developments should not be within 100m of the designated bank. Some developments beyond 100m may also have impacts based on proximity and these issues should be addressed where	No; policy criteria can be added to any settlement boundary criteria policy to mitigate. The majority of the village, where likely settlement boundary would be drawn is outside of the

This document is copyright of Herefordshire Council, please contact the Neighbourhood Planning team if you wish to reuse it in whole or part.

	the direction of further growth to maintain the quality of the landscape and surroundings. There is less certainty as any growth will be adjudged by criteria based policy.	RA2 of the Core Strategy. Criteria would need to be included within the policy to safeguard against any likely effects. However the majority of the village is outside of the catchment for the River Wye	SAC	possible when developing NDP policy and choosing site allocations.	catchment area for the River Wye.
Option 5 -Criteria policy/settlement boundary/allocate sites.	Allocation of sites for housing or other uses would give certainty to future development. Specific environmental issues could be investigated during the site search and be positively addressed within the policy wording. The designation of a settlement boundary will give additional certainty and help define those areas considered as the built form and open countryside	Pursuing this option would give greater certainty over future development within the area particularly within the River Wye catchment. If required mitigation criteria can be added to site allocations policies. However the majority of the village where proportional growth and the settlement boundary are likely to be located are outside of the River Wye catchment area.	River Wye (including the Lugg SAC). Wye Valley and Forest of Dean Bat Sites SAC. Wye Valley Woodlands SAC	Developments should not be within 100m of the designated bank. Some developments beyond 100m may also have impacts based on proximity and these issues should be addressed where possible when developing NDP policy and choosing site allocations.	No; policy criteria can be added to any allocation policy to mitigate. The majority of the village, where likely proportionate growth and settlement boundary would be located is outside of the catchment area for the River Wye.
Option 6 – accommodating the level of housing growth required to meet Herefordshire Local	Houses developed on sites in Peterstow village and within the hamlet of Winter's Cross.	Pursuing this option would give greater certainty over future development within the area particularly within the	River Wye (including the Lugg SAC). Wye Valley and Forest	Criteria based housing policy would require to include reference to mitigation measures to avoid any non-disturbance effects on	Uncertain. It is uncertain if development in both Peterstow in Winters Cross could have an impact on the SACs.

This document is copyright of Herefordshire Council, please contact the Neighbourhood Planning team if you wish to reuse it in whole or part.

<p>Plan Core Strategy through small sites available within Peterstow village and at Winter's Cross;</p>	<p>Demand in water supply.</p> <p>Increase in vehicular traffic.</p> <p>Allocation of sites would give added certainty to housing delivery.</p> <p>Non physical disturbance noise and light pollution</p>	<p>River Wye catchment. However development in Winter's Cross conflicts with RA3 of the Core Strategy and major development is not supported by policy RA3 of the Core Staretyg.</p>	<p>of Dean Bat Sites SAC.</p> <p>Wye Valley Woodlands SAC</p>	<p>the River Wye via its catchment.</p> <p>Policy would need to take account of the proportional growth requirements of the Core Strategy and potential headroom capacity at the local STW.</p>	<p>However this is dependent on the scale and location of each site.</p>
<p>Option 7 – accommodating the level of housing growth required to meet Herefordshire Local Plan Core Strategy through small sites available only within Peterstow village;</p>	<p>Houses developed on small scale sites in Peterstow village.</p> <p>Demand in water supply.</p> <p>Increase in vehicular traffic.</p> <p>Allocation of sites would give added certainty to housing delivery.</p> <p>Non physical disturbance noise and light pollution.</p>	<p>Pursuing this option would give greater certainty over future development within the area particularly within the River Wye catchment. If required mitigation criteria can be added to site allocations policies. However the majority of the village where proportional growth and the settlement boundary are likely to be located are outside of the River Wye catchment area.</p>	<p>River Wye (including the Lugg SAC).</p> <p>Wye Valley and Forest of Dean Bat Sites SAC.</p> <p>Wye Valley Woodlands SAC</p>	<p>Policy would need to take account of the proportional growth requirements of the Core Strategy and potential headroom capacity at the local STW.</p> <p>Developments should not be within 100m of the designated bank. Some developments beyond 100m may also have impacts based on proximity and these issues should be addressed where possible when developing NDP policy and choosing site allocations.</p>	<p>No; policy criteria can be added to any allocation policy to mitigate. The majority of the village, where likely proportionate growth and settlement boundary would be located is outside of the catchment area for the River Wye.</p>

This document is copyright of Herefordshire Council, please contact the Neighbourhood Planning team if you wish to reuse it in whole or part.

<p>Option 8 – accommodating the level of housing growth required to meet Herefordshire Local Plan Core Strategy through development of a large site at Peterstow village;</p>	<p>Houses developed on a large scale site in Peterstow village.</p> <p>Demand in water supply.</p> <p>Increase in vehicular traffic.</p> <p>Allocation of sites would give added certainty to housing delivery.</p> <p>Non physical disturbance noise and light pollution.</p>	<p>Pursuing this option would give greater certainty over future development within the area particularly within the River Wye catchment. If required mitigation criteria can be added to site allocations policies. However the majority of the village where proportional growth and the settlement boundary are likely to be located are outside of the River Wye catchment area.</p>	<p>River Wye (including the Lugg SAC).</p> <p>Wye Valley and Forest of Dean Bat Sites SAC.</p> <p>Wye Valley Woodlands SAC</p>	<p>Developments should not be within 100m of the designated bank. Some developments beyond 100m may also have impacts based on proximity and these issues should be addressed where possible when developing NDP policy and choosing site allocations.</p> <p>Policy would need to take account of the proportional growth requirements of the Core Strategy and potential headroom capacity at the local STW.</p>	<p>No; policy criteria can be added to any allocation policy to mitigate. The majority of the village, where likely proportionate growth and settlement boundary would be located is outside of the catchment area for the River Wye.</p>
<p>Option 9 – accommodating the level of housing growth required to meet Herefordshire Local Plan Core Strategy through development of several medium sized sites at Peterstow village</p>	<p>Houses developed on medium scale sites in Peterstow village.</p> <p>Demand in water supply.</p> <p>Increase in vehicular traffic.</p> <p>Allocation of sites would give added certainty to housing delivery.</p>	<p>Pursuing this option would give greater certainty over future development within the area particularly within the River Wye catchment. If required mitigation criteria can be added to site allocations policies. However the majority of the village where proportional growth and</p>	<p>River Wye (including the Lugg SAC).</p> <p>Wye Valley and Forest of Dean Bat Sites SAC.</p> <p>Wye Valley Woodlands SAC</p>	<p>Developments should not be within 100m of the designated bank. Some developments beyond 100m may also have impacts based on proximity and these issues should be addressed where possible when developing NDP policy and choosing site allocations.</p>	<p>No; policy criteria can be added to any allocation policy to mitigate. The majority of the village, where likely proportionate growth and settlement boundary would be located is outside of the catchment area for the River Wye.</p>

This document is copyright of Herefordshire Council, please contact the Neighbourhood Planning team if you wish to reuse it in whole or part.

	Non physical disturbance noise and light pollution.	the settlement boundary are likely to be located are outside of the River Wye catchment area.		Policy would need to take account of the proportional growth requirements of the Core Strategy and potential headroom capacity at the local STW.	
Option 10- exceeding the level of growth required by Herefordshire Local Plan Core Strategy through a development involving a combination of a large site and some small and medium sites.	<p>Houses developed on a mixed sized sites Peterstow village.</p> <p>Demand in water supply.</p> <p>Increase in vehicular traffic.</p> <p>Allocation of sites would give added certainty to housing delivery.</p> <p>Non physical disturbance noise and light pollution.</p>	Pursuing this option would give greater certainty over future development within the area particularly within the River Wye catchment. However it depends on the location and how development exceeds the proportionate growth.	<p>River Wye (including the Lugg SAC).</p> <p>Wye Valley and Forest of Dean Bat Sites SAC.</p> <p>Wye Valley Woodlands SAC</p>	Developments should not be within 100m of the designated bank. Some developments beyond 100m may also have impacts based on proximity and these issues should be addressed where possible when developing NDP policy and choosing site allocations.	Uncertain. It is uncertain if development in both Peterstow in Winters Cross could have an impact on the SACs. However this is dependent on the scale and location of each site

This document is copyright of Herefordshire Council, please contact the Neighbourhood Planning team if you wish to reuse it in whole or part.

Site Options					
<p>Site option 1 West of Wellsbrook Lane</p>	<p>Increase in water usage, abstraction and sewage treatment</p> <p>Loss of greenfield land</p> <p>Increase in traffic and parking demands</p> <p>New housing for dwellings located on the edge of settlement.</p> <p>Demand in broadband and communication services.</p> <p>Light pollution</p> <p>Increase in non-physical disturbances during construction</p>	<p>Uncertain: the location and scale of development is quite large if the whole site was developed. It may give rise to likely significant effects, and that development may result in the loss of foraging space in the form of an open agricultural field. However further details of development proposed need to be known to determine its true effect.</p>	<p>River Wye (including the Lugg SAC).</p> <p>Wye Valley and Forest of Dean Bat Sites SAC.</p> <p>Wye Valley Woodlands SAC</p>	<p>There are sufficient safeguards within other policies to avoid any adverse impacts, and the inclusion of additional policy wording in the NDP. This site identified falls within an area which identified as an area for proportionate growth.</p>	<p>Uncertain. The scale and extent of development on this site may to have a significant impact on the SACs</p> <p>However all of site is not recommended to be developed, as it is of a large scale and will impact the resources for growth in accordance Core Strategy policies RA1 and RA2.</p>
<p>Site option 2 South and adjacent to Hightown Cottage (31,000sq ft – 0.3 hectares)</p>	<p>Increase in water usage, abstraction and sewage treatment</p> <p>Development of dwellings</p> <p>Loss of greenfield land</p> <p>Small increase in traffic and parking demands</p>	<p>Due to the scale and proximity of the location to the SAC site it is unlikely that there will be significant effects on the European Site.</p>	<p>River Wye (including the Lugg SAC).</p> <p>Wye Valley and Forest of Dean Bat Sites SAC.</p> <p>Wye Valley Woodlands SAC</p>	<p>There are sufficient safeguards within other policies to avoid any adverse impacts, and the inclusion of additional policy wording in the NDP. This site identified falls within an area which is not identified as an area for proportionate growth.</p>	<p>No. The scale and extent of development on this site is unlikely to have a significant impact on the SAC in accordance Core Strategy policies RA1 and RA2.</p>

This document is copyright of Herefordshire Council, please contact the Neighbourhood Planning team if you wish to reuse it in whole or part.

	<p>New housing</p> <p>Demand in broadband and communication services.</p> <p>Light pollution</p> <p>Increase in non-physical disturbances during construction</p>				
<p>Site option 3A Between Pippins and Stowe Hill (0.4 hectare)</p>	<p>Increase in water usage, abstraction and sewage treatment</p> <p>New housing for on greenfield land</p> <p>Demand in broadband and communication services.</p> <p>Small increase in traffic and parking demands</p> <p>Light pollution</p> <p>Increase in non-physical disturbances during construction</p>	<p>Due to the scale and proximity of the location to the SAC site it is unlikely that there will be significant effects on the European Site.</p>	<p>River Wye (including the Lugg SAC).</p> <p>Wye Valley and Forest of Dean Bat Sites SAC.</p> <p>Wye Valley Woodlands SAC</p>	<p>There are sufficient safeguards within other policies to avoid any adverse impacts, and the inclusion of additional policy wording in the NDP. This site identified falls within an area which is not identified as an area for proportionate growth.</p>	<p>No. The scale and extent of development on this site is unlikely to have a significant impact on the SACs. Impact towards the SACs can be further determined in further detail on a case by case basis at planning application stage.</p>
<p>Site option 3B North of Harlyn (0.1 hectare)</p>	<p>Increase in water usage, abstraction and sewage treatment</p> <p>New housing</p>	<p>Due to the scale and proximity of the location to the SAC site it is unlikely that there will be significant effects on the</p>	<p>River Wye (including the Lugg SAC).</p> <p>Wye Valley and Forest</p>	<p>There are sufficient safeguards within other policies to avoid any adverse impacts, and the inclusion of additional</p>	<p>No. The scale and extent of development on this site is unlikely to have a significant impact on the SACs.</p>

This document is copyright of Herefordshire Council, please contact the Neighbourhood Planning team if you wish to reuse it in whole or part.

	<p>Demand in broadband and communication services.</p> <p>Small increase in traffic and parking demands</p> <p>Light pollution</p>	European Site.	<p>of Dean Bat Sites SAC.</p> <p>Wye Valley Woodlands SAC</p>	<p>policy wording in the NDP. This site identified falls within an area which is not identified as an area for proportionate growth.</p>	<p>Impact towards the SACs can be further determined in further detail on a case by case basis at planning application stage.</p>
Site option 4A Kyrle Meadow (0.5 Acre)	<p>Increase in water usage, abstraction and sewage treatment</p> <p>New housing on greenfield land</p> <p>Demand in broadband and communication services.</p> <p>Small increase in traffic and parking demands</p> <p>Light pollution</p> <p>Loss of greenfield land</p> <p>Increase in non-physical disturbances during construction</p>	<p>No: the scale of development proposed would not give rise to likely significant effects, but note that development may result in the loss of foraging space in the form of an open agricultural field in Peterstow.</p>	<p>River Wye (including the Lugg SAC).</p> <p>Wye Valley and Forest of Dean Bat Sites SAC.</p> <p>Wye Valley Woodlands SAC</p>	<p>There are sufficient safeguards within other policies to avoid any adverse impacts, and the inclusion of additional policy wording in the NDP. This site identified falls within an area which is identified as an area for proportionate growth.</p>	<p>No. The scale and extent of development on this site is unlikely to have a significant impact on the SACs. Impact towards the SACs can be further determined in further detail on a case by case basis at planning application stage.</p>
Site option 4B Kyrle Meadow (2 acres)	<p>Increase in water usage, abstraction and sewage treatment</p>	<p>No: the scale of development proposed would not give rise to likely significant effects, but note</p>	<p>River Wye (including the Lugg SAC).</p> <p>Wye Valley and Forest</p>	<p>There are sufficient safeguards within other policies to avoid any adverse impacts, and the inclusion of additional</p>	<p>No. The scale and extent of development on this site is unlikely to have a significant impact on the SACs.</p>

This document is copyright of Herefordshire Council, please contact the Neighbourhood Planning team if you wish to reuse it in whole or part.

	<p>Housing developed</p> <p>Small increase in traffic and parking demands</p> <p>New housing on greenfield land</p> <p>Demand in broadband and communication services.</p> <p>Light pollution</p> <p>Loss of greenfield land</p> <p>Increase in non-physical disturbances during construction</p>	<p>that development may result in the loss of foraging space in the form of an open agricultural field in Peterstow.</p>	<p>of Dean Bat Sites SAC.</p> <p>Wye Valley Woodlands SAC</p>	<p>policy wording in the NDP. This site identified falls within an area which is identified as an area for proportionate growth.</p>	<p>Impact towards the SACs can be further determined in further detail on a case by case basis at planning application stage.</p>
<p>Site option 5 Between Everstone Cottage and Westwinds, Winter's Cross (appx 1 acre)</p>	<p>Increase in water usage, abstraction and sewage treatment</p> <p>Small increase in traffic and parking demands</p> <p>New housing created</p> <p>Demand in broadband and communication services.</p> <p>Light pollution</p> <p>Loss of greenfield land</p> <p>Increase in non-physical</p>	<p>Due to the scale and proximity of the location to the SAC site it is unlikely that there will be significant effects on the European Site.</p>	<p>River Wye (including the Lugg SAC).</p> <p>Wye Valley and Forest of Dean Bat Sites SAC.</p> <p>Wye Valley Woodlands SAC</p>	<p>There are sufficient safeguards within other policies to avoid any adverse impacts, and the inclusion of additional policy wording in the NDP. This site identified falls within an area which is not identified as an area for proportionate growth.</p>	<p>No. The scale and extent of development on this site is unlikely to have a significant impact on the SAC. However this site is not recommended to be developed, as it is not identified as a sustainable location for growth in accordance Core Strategy policies RA1 and RA2.</p>

This document is copyright of Herefordshire Council, please contact the Neighbourhood Planning team if you wish to reuse it in whole or part.

	disturbances during construction				
Site option 6 Adj.Hightown House (0.25 acre)	<p>Increase in water usage, abstraction and sewage treatment</p> <p>Housing developed</p> <p>Small increase in traffic and parking demands</p> <p>Demand in broadband and communication services.</p> <p>Light pollution</p> <p>Increase in non-physical disturbances during construction</p>	No: the smallscale of development proposed would not give rise to likely significant effects. Site is located in the build settlement of Peterstow.	<p>River Wye (including the Lugg SAC).</p> <p>Wye Valley and Forest of Dean Bat Sites SAC.</p> <p>Wye Valley Woodlands SAC</p>	There are sufficient safeguards within other policies to avoid any adverse impacts, and the inclusion of additional policy wording in the NDP. This site identified falls within an area which is identified as an area for proportionate growth.	No. The scale and extent of development on this site is unlikely to have a significant impact on the SACs. Impact towards the SACs can be further determined in further detail on a case by case basis at planning application stage.
Site option 7 End of New Road (0.5 acre)	<p>Increase in water usage, abstraction and sewage treatment</p> <p>Housing developed</p> <p>Small increase in traffic and parking demands</p> <p>Demand in broadband and communication services.</p> <p>Light pollution</p> <p>Increase in non-physical</p>	No: the smallscale of development proposed would not give rise to likely significant effects. Site is located near the build settlement of Peterstow.	<p>River Wye (including the Lugg SAC).</p> <p>Wye Valley and Forest of Dean Bat Sites SAC.</p> <p>Wye Valley Woodlands SAC</p>	There are sufficient safeguards within other policies to avoid any adverse impacts, and the inclusion of additional policy wording in the NDP. This site identified falls within an area which is identified as an area for proportionate growth.	No. The scale and extent of development on this site is unlikely to have a significant impact on the SACs. Impact towards the SACs can be further determined in further detail on a case by case basis at planning application stage.

This document is copyright of Herefordshire Council, please contact the Neighbourhood Planning team if you wish to reuse it in whole or part.

	disturbances during construction				
Site option 8A Garden on Stonecrop (40 x 20 m)	<p>Increase in water usage, abstraction and sewage treatment</p> <p>Housing developed</p> <p>Small increase in traffic and parking demands</p> <p>Demand in broadband and communication services.</p> <p>Light pollution</p> <p>Increase in non-physical disturbances during construction</p>	No: the smallscale of development proposed would not give rise to likely significant effects. Site is located in the build settlement of Peterstow.	<p>River Wye (including the Lugg SAC).</p> <p>Wye Valley and Forest of Dean Bat Sites SAC.</p> <p>Wye Valley Woodlands SAC</p>	There are sufficient safeguards within other policies to avoid any adverse impacts, and the inclusion of additional policy wording in the NDP. This site identified falls within an area which is identified as an area for proportionate growth.	No. The scale and extent of development on this site is unlikely to have a significant impact on the SACs. Impact towards the SACs can be further determined in further detail on a case by case basis at planning application stage.
Site option 8B Garden on Stonecrop (40 x 20 m)	<p>Increase in water usage, abstraction and sewage treatment</p> <p>Housing developed</p> <p>Small increase in traffic and parking demands</p> <p>Demand in broadband and communication services.</p> <p>Light pollution</p> <p>Increase in non-physical</p>	No: the smallscale of development proposed would not give rise to likely significant effects. Site is located in the build settlement of Peterstow.	<p>River Wye (including the Lugg SAC).</p> <p>Wye Valley and Forest of Dean Bat Sites SAC.</p> <p>Wye Valley Woodlands SAC</p>	There are sufficient safeguards within other policies to avoid any adverse impacts, and the inclusion of additional policy wording in the NDP. This site identified falls within an area which is identified as an area for proportionate growth.	No. The scale and extent of development on this site is unlikely to have a significant impact on the SACs. Impact towards the SACs can be further determined in further detail on a case by case basis at planning application stage.

This document is copyright of Herefordshire Council, please contact the Neighbourhood Planning team if you wish to reuse it in whole or part.

	disturbances during construction				
Site option 9 Adj. Westwinds (0.1 hectare)	<p>Increase in water usage, abstraction and sewage treatment</p> <p>Small increase in traffic and parking demands</p> <p>New housing created</p> <p>Demand in broadband and communication services.</p> <p>Light pollution</p> <p>Loss of greenfield land</p> <p>Increase in non-physical disturbances during construction</p>	<p>Due to the scale and proximity of the location to the SAC site it is unlikely that there will be significant effects on the European Site.</p>	<p>River Wye (including the Lugg SAC).</p> <p>Wye Valley and Forest of Dean Bat Sites SAC.</p> <p>Wye Valley Woodlands SAC</p>	<p>There are sufficient safeguards within other policies to avoid any adverse impacts, and the inclusion of additional policy wording in the NDP. This site identified falls within an area which is not identified as an area for proportionate growth.</p>	<p>No. The scale and extent of development on this site is unlikely to have a significant impact on the SAC However this site is not recommended to be developed, as it is not identified as a sustainable location for growth in accordance Core Strategy policies RA1 and RA2.</p> <p>Impact towards the SACs can be further determined in further detail on a case by case basis at planning application stage.</p>
Site option 10 Garden at Highgrove (0.5 acre)	<p>Increase in water usage, abstraction and sewage treatment</p> <p>Small increase in traffic and parking demands</p> <p>New housing created</p> <p>Demand in broadband and communication</p>	<p>Due to the scale and proximity of the location to the SAC site it is unlikely that there will be significant effects on the European Site.</p>	<p>River Wye (including the Lugg SAC).</p> <p>Wye Valley and Forest of Dean Bat Sites SAC.</p> <p>Wye Valley Woodlands SAC</p>	<p>There are sufficient safeguards within other policies to avoid any adverse impacts, and the inclusion of additional policy wording in the NDP. This site identified falls within an area which is identified as an area for proportionate growth.</p>	<p>No. The scale and extent of development on this site is unlikely to have a significant impact on the SAC However this site is not recommended to be developed, as it is not identified as a sustainable location for growth in</p>

This document is copyright of Herefordshire Council, please contact the Neighbourhood Planning team if you wish to reuse it in whole or part.

	<p>services.</p> <p>Light pollution</p> <p>Loss of greenfield land</p> <p>Increase in non-physical disturbances during construction</p>				<p>accordance Core Strategy policies RA1 and RA2.</p> <p>Impact towards the SACs can be further determined in further detail on a case by case basis at planning application stage.</p>
<p>Site option 11 Land at SO561248 (c4 hectares)</p>	<p>Increase in water usage, abstraction and sewage treatment</p> <p>Loss of greenfield land</p> <p>Increase in traffic and parking demands</p> <p>New housing for dwellings located on the edge of settlement.</p> <p>Demand in broadband and communication services.</p> <p>Light pollution</p> <p>Increase in non-physical disturbances during construction</p>	<p>Uncertain: the location and scale of development is quite large if the whole site was developed. It may give rise to likely significant effects, and that development may result in the loss of foraging space in the form of an open agricultural field. However further details of development proposed need to be known to determine its true effect.</p>	<p>River Wye (including the Lugg SAC).</p> <p>Wye Valley and Forest of Dean Bat Sites SAC.</p> <p>Wye Valley Woodlands SAC</p>	<p>There are sufficient safeguards within other policies to avoid any adverse impacts, and the inclusion of additional policy wording in the NDP. This site identified falls within an area which identified as an area for proportionate growth.</p>	<p>Uncertain. The scale and extent of development on this site may to have a significant impact on the SACs</p>

This document is copyright of Herefordshire Council, please contact the Neighbourhood Planning team if you wish to reuse it in whole or part.

<p>Site option 12A Opposite Hightown Green (Small plot)</p>	<p>Increase in water usage, abstraction and sewage treatment</p> <p>Small increase in traffic and parking demands</p> <p>New housing created</p> <p>Demand in broadband and communication services.</p> <p>Light pollution</p> <p>Increase in non-physical disturbances during construction</p>	<p>Due to the scale and proximity of the location to the SAC site it is unlikely that there will be significant effects on the European Site.</p>	<p>River Wye (including the Lugg SAC).</p> <p>Wye Valley and Forest of Dean Bat Sites SAC.</p> <p>Wye Valley Woodlands SAC</p>	<p>There are sufficient safeguards within other policies to avoid any adverse impacts, and the inclusion of additional policy wording in the NDP. This site identified falls within an area which is identified as an area for proportionate growth.</p>	<p>No. The scale and extent of development on this site is unlikely to have a significant impact on the SAC However this site is not recommended to be developed, as it is not identified as a sustainable location for growth in accordance Core Strategy policies RA1 and RA2.</p> <p>Impact towards the SACs can be further determined in further detail on a case by case basis at planning application stage.</p>
<p>Site option 12B Land off drive at Hightown Green (Plot for 4/5 houses)</p>	<p>Increase in water usage, abstraction and sewage treatment</p> <p>Small increase in traffic and parking demands</p> <p>New housing created</p> <p>Demand in broadband and communication services.</p>	<p>Due to the scale and proximity of the location to the SAC site it is unlikely that there will be significant effects on the European Site.</p>	<p>River Wye (including the Lugg SAC).</p> <p>Wye Valley and Forest of Dean Bat Sites SAC.</p> <p>Wye Valley Woodlands SAC</p>	<p>There are sufficient safeguards within other policies to avoid any adverse impacts, and the inclusion of additional policy wording in the NDP. This site identified falls within an area which is identified as an area for proportionate growth.</p>	<p>No. The scale and extent of development on this site is unlikely to have a significant impact on the SAC However this site is not recommended to be developed, as it is not identified as a sustainable location for growth in accordance Core Strategy policies RA1</p>

This document is copyright of Herefordshire Council, please contact the Neighbourhood Planning team if you wish to reuse it in whole or part.

	<p>Light pollution</p> <p>Increase in non-physical disturbances during construction</p>				<p>and RA2.</p> <p>Impact towards the SACs can be further determined in further detail on a case by case basis at planning application stage.</p>
<p>Site option 12C Land off drive to Hightown Green (Extension to 12B submitted through SHLAA)</p>	<p>Increase in water usage, abstraction and sewage treatment</p> <p>Small increase in traffic and parking demands</p> <p>New housing created</p> <p>Demand in broadband and communication services.</p> <p>Light pollution</p> <p>Increase in non-physical disturbances during construction</p>	<p>Due to the scale and proximity of the location to the SAC site it is unlikely that there will be significant effects on the European Site.</p>	<p>River Wye (including the Lugg SAC).</p> <p>Wye Valley and Forest of Dean Bat Sites SAC.</p> <p>Wye Valley Woodlands SAC</p>	<p>There are sufficient safeguards within other policies to avoid any adverse impacts, and the inclusion of additional policy wording in the NDP. This site identified falls within an area which is identified as an area for proportionate growth.</p>	<p>No. The scale and extent of development on this site is unlikely to have a significant impact on the SAC. However this site is not recommended to be developed, as it is not identified as a sustainable location for growth in accordance Core Strategy policies RA1 and RA2.</p> <p>Impact towards the SACs can be further determined in further detail on a case by case basis at planning application stage.</p>
<p>Site option 13A Little Peterstow Orchards</p>	<p>Increase in water usage, abstraction and sewage treatment</p>	<p>Due to the scale and proximity of the location to the SAC site it is unlikely</p>	<p>River Wye (including the Lugg SAC).</p>	<p>There are sufficient safeguards within other policies to avoid any adverse impacts, and the</p>	<p>No. The scale and extent of development on this site is unlikely to have a significant</p>

This document is copyright of Herefordshire Council, please contact the Neighbourhood Planning team if you wish to reuse it in whole or part.

<p>(0.5 acre)</p>	<p>Small increase in traffic and parking demands</p> <p>New housing created</p> <p>Demand in broadband and communication services.</p> <p>Light pollution</p> <p>Loss of greenfield land</p> <p>Increase in non-physical disturbances during construction</p>	<p>that there will be significant effects on the European Site.</p>	<p>Wye Valley and Forest of Dean Bat Sites SAC.</p> <p>Wye Valley Woodlands SAC</p>	<p>inclusion of additional policy wording in the NDP. This site identified falls within an area which is not identified as an area for proportionate growth.</p>	<p>impact on the SAC However this site is not recommended to be developed, as it is not identified as a sustainable location for growth in accordance Core Strategy policies RA1 and RA2.</p>
<p>Site option 13B Little Peterstow Orchards (0.25 acre)</p>	<p>Increase in water usage, abstraction and sewage treatment</p> <p>Small increase in traffic and parking demands</p> <p>New housing created</p> <p>Demand in broadband and communication services.</p> <p>Light pollution</p> <p>Loss of greenfield land</p> <p>Increase in non-physical disturbances during construction</p>	<p>Due to the scale and proximity of the location to the SAC site it is unlikely that there will be significant effects on the European Site.</p>	<p>River Wye (including the Lugg SAC).</p> <p>Wye Valley and Forest of Dean Bat Sites SAC.</p> <p>Wye Valley Woodlands SAC</p>	<p>There are sufficient safeguards within other policies to avoid any adverse impacts, and the inclusion of additional policy wording in the NDP. This site identified falls within an area which is not identified as an area for proportionate growth.</p>	<p>No. The scale and extent of development on this site is unlikely to have a significant impact on the SAC However this site is not recommended to be developed, as it is not identified as a sustainable location for growth in accordance Core Strategy policies RA1 and RA2.</p>

This document is copyright of Herefordshire Council, please contact the Neighbourhood Planning team if you wish to reuse it in whole or part.

<p>Site option 14 Land at Peterstow Shop</p>	<p>Increase in water usage, abstraction and sewage treatment</p> <p>Small increase in traffic and parking demands</p> <p>New housing on land at peterstow shop</p> <p>Demand in broadband and communication services.</p> <p>Light pollution</p> <p>Increase in non-physical disturbances during construction</p>	<p>Due to the scale and proximity of the location to the SAC site it is unlikely that there will be significant effects on the European Site.</p>	<p>River Wye (including the Lugg SAC).</p> <p>Wye Valley and Forest of Dean Bat Sites SAC.</p> <p>Wye Valley Woodlands SAC</p>	<p>There are sufficient safeguards within other policies to avoid any adverse impacts, and the inclusion of additional policy wording in the NDP.</p>	<p>No. The scale and extent of development on this site is unlikely to have a significant impact on the SAC.</p>
---	---	---	--	---	--

Appendix 3

Appendix 3

Table 1: HRA Screening of Emerging Neighbourhood Development Plan Objectives and Policies

Parish Council Name: **Peterstow Parish Council**

NDP Title: **Peterstow Draft Plan reg 14**

Date undertaken: **November 2017**

Core Strategy HRA version: **Adopted Core Strategy 2011-2031**

NDP objectives, policies	HRA Screening of Emerging NDP objectives, options and policies				
	Likely activities (operations) to result as a consequence of the objective/option/policy	Likely effect if objective/option/policy implemented. Could they have Likely Significant Effects (LSE) on European Sites? (Yes/No, with reasons)	European Sites potentially affected	Mitigation measures to be considered, as necessary, through redraft of objective/policy and to be considered as part of Appropriate Assessment	Could the policy have likely significant effects on European sites (taking mitigation into account?)
1. Local Environment	Protect And enhance the existing natural environment, landscape and views. Sustainable development encouraged.	This objective itself is likely to mitigate the impact caused from development.	River Wye (including the Lugg SAC). Wye Valley and Forest of Dean Bat Sites SAC. Wye Valley Woodlands	The objective will help safeguard against unsuitable development in Peterstow.	No, this objective will not directly lead to development. Instead it aims to encourage suitable designed developments to be in keeping with the vernacular of Peterstow.

This document is copyright of Herefordshire Council, please contact the Neighbourhood Planning team if you wish to reuse it in whole or part.

			SAC		
2. New Housing	<p>Objectives will encourage small scale housing proposals within Peterstow to fit in keeping with the existing landscape character.</p> <p>Objective to support the delivery of proportionate growth in line with the Local Plan (Core Strategy) Policy RA1/RA2.</p>	<p>This is dependent on where location, scale and nature of the sites. This can be determined further at site allocation stage.</p>	<p>River Wye (including the Lugg SAC).</p> <p>Wye Valley and Forest of Dean Bat Sites SAC.</p> <p>Wye Valley Woodlands SAC</p>	<p>Policy criteria will need to include proximity of the River Wye, Wye Valley and Forest of Dean Bat Sites. Mitigation measures are likely to be included within the policies of the plan.</p>	<p>No. This will not have an impact on the River Wye sac, Wye Valley Woodlands and Wye Valley and Forest of Dean bat sites SACs. This objective seeks to encourage appropriate small scale housing scheme to be in keeping with the existing settlements.</p>
3. Infrastructure and Roads	<p>Promotion of safer roads.</p> <p>Improvements to public transport.</p> <p>Increase of sustainable transport usage.</p>	<p>None identified.</p>	<p>River Wye (including the Lugg SAC).</p> <p>Wye Valley and Forest of Dean Bat Sites SAC.</p> <p>Wye Valley Woodlands SAC</p>	<p>None identified.</p>	<p>No. This will not have an impact on the River Wye sac, Wye Valley Woodlands and Wye Valley and Forest of Dean bat sites SACs. This objective promotes safer and more sustainable travel through new development.</p>
4. Community Facilities	<p>Safeguard existing community faculties</p> <p>Enhance existing facilities</p>	<p>Protection of community assets including the village hall.</p>	<p>River Wye (including the Lugg SAC).</p> <p>Wye Valley and Forest of Dean Bat Sites SAC.</p>	<p>None. This objective is a mitigation measure in itself.</p>	<p>No. This will not have an impact on the River Wye sac, Wye Valley Woodlands and Wye Valley and Forest of Dean bat sites SACs. This objective seeks to safeguard public open space and protect the village hall for the</p>

This document is copyright of Herefordshire Council, please contact the Neighbourhood Planning team if you wish to reuse it in whole or part.

			Wye Valley Woodlands SAC		community.
5. Energy	Renewable energy schemes promoted within Peterstow. Small scale hydro scheme promoted.	Possible vehicular movements and demand for water abstraction and treatment.	River Wye (including the Lugg SAC). Wye Valley and Forest of Dean Bat Sites SAC. Wye Valley Woodlands SAC	Promotion of sustainable construction methods should be encouraged.	No. No. This will not have an impact on the River Wye sac, Wye Valley Woodlands and Wye Valley and Forest of Dean bat sites SACs. This objective seeks to support renewable energy schemes that are in keeping with the landscape and ecosystems.
6.Economic Development and Employment	Local jobs growth. Encourage local people to work closer to their work. Plan attracts employment opportunities in the rural area. Encouragement of small scale business development .Job creation	This is dependent on where location, scale and nature of the sites. This can be determined further at site allocation stage.	River Wye (including the Lugg SAC). Wye Valley and Forest of Dean Bat Sites SAC. Wye Valley Woodlands SAC	Objective and policies within the NDP and Core Strategy will help mitigate impact caused from employment growth. Promotion of sustainable construction methods should be encouraged.	No. No. This will not have an impact on the River Wye sac, Wye Valley Woodlands and Wye Valley and Forest of Dean bat sites SACs. This objective strives to improve and sustain existing employment areas within Peterstow Parish.

This document is copyright of Herefordshire Council, please contact the Neighbourhood Planning team if you wish to reuse it in whole or part.

Policies Appendix 3					
<p>Policy PTS1: Promoting Sustainable Development</p>	<p>New housing allocated in selected sites</p> <p>Increase in water consumption.</p> <p>Non-physical disturbance during construction phase.</p> <p>Physical damage of disturbance on a localised scale.</p>	<p>Small scale housing development.</p> <p>Housing, infrastructure development Possible increase in recreation activities, vehicular movements and demand for water abstraction and treatment.</p> <p>Physical damage of disturbance on a localised scale.</p> <p>Non-physical disturbance such as noise.</p>	<p>River Wye (including the Lugg SAC).</p> <p>Wye Valley and Forest of Dean Bat Sites SAC.</p> <p>Wye Valley Woodlands SAC</p>	<p>Good practice construction techniques include noise suppression measures; hours of operation may help to mitigate potential adverse effects during construction.</p> <p>Measures within Core Strategy policy SD1 should help to mitigate potential impacts relating to non-physical disturbances.</p>	<p>No. This policy will not have an impact on the River Wye sac, Wye Valley Woodlands and Wye Valley and Forest of Dean bat sites SACs.</p> <p>The scale and extent of development is unlikely to be significant, as the development is contained in a sustainable approach. Allocations help give greater certainty.</p>
<p>Policy PTS2: Conserving the landscape and scenic beauty of the parish</p>	<p>Safeguard existing landscape against inappropriate development.</p> <p>Encouragement of sustainable development which preserves and protects the landscape, environment and habitats.</p>	<p>Physical damage of disturbance on a localised scale.</p> <p>Non-physical disturbance such as noise.</p> <p>Uncertain as to the impacts upon the River Wye SAC dependent on the location of any development.</p> <p>Potential increase in visitor numbers to the parish could have an effect on the River Wye Employment and</p>	<p>River Wye (including the Lugg SAC).</p> <p>Wye Valley and Forest of Dean Bat Sites SAC.</p> <p>Wye Valley Woodlands SAC</p>	<p>None. This policy acts as a mitigation measure to ensure developments to be fitting for its context and ensures protection to the exiting landscape.</p>	<p>No. This policy will not have an impact on the River Wye sac, Wye Valley Woodlands and Wye Valley and Forest of Dean bat sites SACs. This policy ensures existing landscape is protected against inappropriate development.</p> <p>There are sufficient policy safeguards within the NDP and Core Strategy to help avoid or mitigate any likely significant effects on the River Wye SAC.</p>

This document is copyright of Herefordshire Council, please contact the Neighbourhood Planning team if you wish to reuse it in whole or part.

		<p>infrastructure development.</p> <p>Possible vehicular movements and demand for water abstraction and treatment.</p>			
<p>Policy PTS3: Enhancement of the natural environment</p>	<p>Protection and enhancement of the natural environment.</p> <p>Encouragement of sustainable development which preserves and protects the landscape, environment and habitats.</p> <p>Physical damage or disturbance on a localised scale.</p> <p>Non-physical disturbance such as noise.</p> <p>Possible vehicular movements and demand for water abstraction and treatment.</p>	<p>This policy itself is likely to mitigate the impact caused from development.</p>	<p>River Wye (including the Lugg SAC).</p> <p>Wye Valley and Forest of Dean Bat Sites SAC.</p> <p>Wye Valley Woodlands SAC</p>	<p>None. This policy acts as a mitigation measure to ensure environmental protection and enhancement in Peterstow.</p>	<p>No. This policy will not have an impact on the River Wye sac, Wye Valley Woodlands and Wye Valley and Forest of Dean bat sites SACs. This policy ensures existing landscape is protected against inappropriate development.</p> <p>There are sufficient policy safeguards within the NDP and Core Strategy to help avoid or mitigate any likely significant effects on the Wye Valley, River Wye SAC and Forest of Dean bat sites SAC.</p>
<p>Policy PTS4: Protecting Heritage assets</p>	<p>Sustainable re use of agricultural buildings.</p> <p>Sustainable development encouraged within the identified settlements.</p> <p>Minimal increase demand for water abstraction and</p>	<p>This policy itself is likely to mitigate the impact caused from development.</p>	<p>River Wye (including the Lugg SAC).</p> <p>Wye Valley and Forest of Dean Bat Sites</p>	<p>Good practice construction techniques include noise suppression measures; hours of operation may help to mitigate potential adverse effects during construction.</p> <p>Measures within Core Strategy policy SD1</p>	<p>No. This policy will not have an impact on the River Wye sac, Wye Valley Woodlands and Wye Valley and Forest of Dean bat sites SACs.</p> <p>The scale and extent of conversion of agricultural building is likely to be</p>

This document is copyright of Herefordshire Council, please contact the Neighbourhood Planning team if you wish to reuse it in whole or part.

	sewage treatment Sustainable housing growth		SAC. Wye Valley Woodlands SAC	should help to mitigate potential impacts relating to non-physical disturbances.	minimal, therefore is unlikely to have a significant impact on the SACs. There are sufficient policy safeguards within the Core Strategy and Peterstow NDP to safeguard and where necessary mitigate detrimental impact caused from development towards the SACs.
Policy PTS5: Development within Peterstow Conservation Area	Safeguard historic assets of Peterstow Protect conservation area	Possible vehicular movements and demand for water abstraction and treatment. Physical damage of disturbance on a localised scale. Mitigation criteria within this policy will help alleviate impact from development.	River Wye (including the Lugg SAC). Wye Valley and Forest of Dean Bat Sites SAC. Wye Valley Woodlands SAC	Good practice construction techniques include noise suppression measures; hours of operation may help to mitigate potential adverse effects during construction. Measures within Core Strategy policy SD1 should help to mitigate potential impacts relating to non-physical disturbances.	No. This policy will not have an impact on the River Wye sac, Wye Valley Woodlands and Wye Valley and Forest of Dean bat sites SACs. this policy safeguards against inappropriate development in order to preserve the historic character of Peterstow.
Policy PTS6: Foul and Storm Drainage	Strive to reduce impact of flooding within Peterstow. New development designed to appropriately reduce flood risk. Sustainable design promoted. Infrastructure development	This policy will help to safeguard against flooding from foul and storm drainage.	River Wye (including the Lugg SAC). Wye Valley and Forest of Dean Bat Sites SAC. Wye Valley	None. This policy acts as a mitigation measures to ensure new developments avoid and alleviate flooding impacts in Peterstow.	No. This policy will not have an impact on the River Wye sac, Wye Valley Woodlands and Wye Valley and Forest of Dean bat sites SACs. This policy ensures new development in Peterstow is safeguarded against flooding. Also that the infrastructure will have

This document is copyright of Herefordshire Council, please contact the Neighbourhood Planning team if you wish to reuse it in whole or part.

	phased in line with infrastructure works within the plan period.		Woodlands SAC		<p>enough capacity for any planned development.</p> <p>There are sufficient policy safeguards within the NDP and Core Strategy to help avoid or mitigate any likely significant effects on the Wye Valley and Forest of Dean bat sites SACs.</p>
Policy PTS7: Protection of Peterstow Common as Local green Space	<p>Protection of identified green space.</p> <p>Increase in recreational activities</p>	This policy safeguards important greenspace within Peterstow.	<p>River Wye (including the Lugg SAC).</p> <p>Wye Valley and Forest of Dean Bat Sites SAC.</p> <p>Wye Valley Woodlands SAC</p>	None. This policy acts as a mitigation measure to safeguard identified greenspace.	<p>No. This policy will not have an impact on the River Wye sac, Wye Valley Woodlands and Wye Valley and Forest of Dean bat sites SACs. This policy will not directly lead to development. Instead it protects identified greenspace for the community of Peterstow parish to utilise.</p>
Policy PTS8: Design and Appearance	<p>Design criteria for development to adhere to.</p> <p>The built character is protected along with landscape character.</p>	This policy itself is likely to mitigate the impact caused from development by ensuring design is suited to surrounding.	<p>River Wye (including the Lugg SAC).</p> <p>Wye Valley and Forest of Dean Bat Sites SAC.</p> <p>Wye Valley Woodlands SAC</p>	The objective will help safeguard against unsuitable development in Peterstow.	<p>No. This policy will not have an impact on the River Wye sac, Wye Valley Woodlands and Wye Valley and Forest of Dean bat sites SACs. No this policy will not directly lead to development. Instead it, aims to encourage suitable designed developments to be in keeping with the vernacular of Peterstow.</p>

This document is copyright of Herefordshire Council, please contact the Neighbourhood Planning team if you wish to reuse it in whole or part.

<p>Policy PTS9: Sustainable Design</p>	<p>Promotion of sustainable design. Sustainable development encouraged.</p> <p>The built character is protected along with landscape character.</p>	<p>This policy itself is likely to mitigate the impact caused from development by ensuring design is suited to surrounding.</p>	<p>River Wye (including the Lugg SAC).</p> <p>Wye Valley and Forest of Dean Bat Sites SAC.</p> <p>Wye Valley Woodlands SAC</p>	<p>Good practice construction techniques include noise suppression measures; hours of operation may help to mitigate potential adverse effects during construction.</p> <p>Measures within Core Strategy policy SD1 should help to mitigate potential impacts relating to non-physical disturbances.</p>	<p>No. This policy will not have an impact on the River Wye sac, Wye Valley Woodlands and Wye Valley and Forest of Dean bat sites SACs.</p>
<p>Policy PTS10: Traffic Measures within the Parish</p>	<p>Promotion of safer roads.</p> <p>Improved sustainable modes of transport such as cycling, walking, and public transport links.</p> <p>Increase in walking and cycling.</p> <p>Decrease in traffic accidents.</p> <p>Development of transport infrastructure</p> <p>Traffic Calming measures</p> <p>Improvement of road safety</p>	<p>The River Wye does not flow through the parish but the neighbourhood area falls within the catchment area.</p> <p>Any effects of additional transport will be mitigated with providing additional highway and transport measures.</p>	<p>River Wye (including the Lugg SAC).</p> <p>Wye Valley and Forest of Dean Bat Sites SAC.</p> <p>Wye Valley Woodlands SAC</p>	<p>None. This policy acts as a mitigation measure to ensure new development will alleviate traffic speeds and promote sustainable and public transport means.</p>	<p>No. This policy will not have an impact on the River Wye sac, Wye Valley Woodlands and Wye Valley and Forest of Dean bat sites SACs. This policy would only lead to some small scale sustainable transport links and predominately within areas outside of the hydrological catchment of the River Wye. Additional policy safeguards exist within the Core Strategy to mitigate any potential likely significant effects.</p>
<p>Policy PTS11: Highway Design Requirements</p>	<p>Sets out criteria for highway design.</p> <p>Sustainable development encouraged.</p>	<p>This policy itself is likely to mitigate the impact caused from development.</p>	<p>River Wye (including the Lugg SAC).</p> <p>Wye Valley and Forest of</p>	<p>None. This policy acts as a mitigation measure to ensure new development will promote road safety.</p>	<p>No. This policy will not have an impact on the River Wye sac, Wye Valley Woodlands and Wye Valley and Forest of Dean bat sites SACs.</p>

This document is copyright of Herefordshire Council, please contact the Neighbourhood Planning team if you wish to reuse it in whole or part.

			Dean Bat Sites SAC. Wye Valley Woodlands SAC		
Policy PTS12: Housing Development in Peterstow Village	New housing development within the designation settlement boundaries of Peterstow . Increase in vehicle traffic. Increased demand for water abstraction and sewage treatment.	Depending on type, location of infrastructure. Physical damage of disturbance. Non-physical disturbance such as noise.	River Wye (including the Lugg SAC). Wye Valley and Forest of Dean Bat Sites SAC. Wye Valley Woodlands SAC	Good practice construction techniques include noise suppression measures; hours of operation may help to mitigate potential adverse effects during construction. Measures within Core Strategy policy SD1 should help to mitigate potential impacts relating to non-physical disturbances. Additional criteria could be added to strengthen the avoidance of locations which could have an adverse impact on the Wye Valley and Forest of Dean Bat Sites SAC. The Lesser Horseshoe Bat is known to travel 5-10km between summer and winter roosts, and is vulnerable to disturbance; light pollution; and habitat loss. Development proposals will need to consider woodland habitat buffers and measures to minimise light pollution.	No. This policy will not have an impact on the River Wye sac, Wye Valley Woodlands and Wye Valley and Forest of Dean bat sites SACs. The scale and extent of such development is unlikely to be significant, as the development is contained in a sustainable approach in accordance with policies SS1 and RA2 of the Core Strategy.

This document is copyright of Herefordshire Council, please contact the Neighbourhood Planning team if you wish to reuse it in whole or part.

<p>Policy PTS13: Housing Sites in Peterstow Village</p>	<p>Housing sites identified.</p> <p>Promotion of achieving housing target.</p> <p>Increased vehicle traffic</p> <p>Increased demand for water abstraction and sewage treatment</p> <p>Sustainable housing growth</p>	<p>Small scale housing development.</p> <p>Housing, infrastructure development</p> <p>Possible increase in recreation activities, vehicular movements and demand for water abstraction and treatment.</p> <p>Physical damage of disturbance on a localised scale.</p> <p>Non-physical disturbance such as noise.</p>	<p>River Wye (including the Lugg SAC).</p> <p>Wye Valley and Forest of Dean Bat Sites SAC.</p> <p>Wye Valley Woodlands SAC</p>	<p>Good practice construction techniques include noise suppression measures; hours of operation may help to mitigate potential adverse effects during construction.</p> <p>Measures within Core Strategy policy SD1 should help to mitigate potential impacts relating to non-physical disturbances.</p> <p>Additional criteria could be added to strengthen the avoidance of locations which could have an adverse impact on the Wye Valley and Forest of Dean Bat Sites SAC. The Lesser Horseshoe Bat is known to travel 5-10km between summer and winter roosts, and is vulnerable to disturbance; light pollution; and habitat loss. Development proposals will need to consider woodland habitat buffers and measures to minimise light pollution.</p>	<p>No. This policy will not have an impact on the River Wye sac, Wye Valley Woodlands and Wye Valley and Forest of Dean bat sites SACs. this policy would allow for small to medium scale housing schemes and supports the Core Strategy Policy RA1 and RA2. Further assessment of the sites considered can be tested at planning application stage when further details are known.</p> <p>There are additional policy criteria in place in both the Core Strategy and the Peterstow Neighbourhood Plan to avoid or mitigate any likely significant effects towards the SACs.</p>
--	--	--	--	---	---

<p>Policy PTS14: Protection and enhancement of community facilities and services</p>	<p>Community energy schemes promoted</p> <p>Renewable energy schemes developed.</p> <p>Construction traffic.</p>	<p>Unlikely that there will have a significant effect on the European Site.</p> <p>Depending on type, location of infrastructure.</p> <p>Physical damage of disturbance.</p> <p>Non-physical disturbance such as noise.</p>	<p>River Wye (including the Lugg SAC).</p> <p>Wye Valley and Forest of Dean Bat Sites SAC.</p> <p>Wye Valley Woodlands SAC</p>	<p>Measures included within policy SD2 of the Core Strategy should help to mitigate potential impacts relating to non-physical disturbances.</p> <p>Good practice construction techniques include noise suppression measures; hours of operation may help to mitigate potential adverse effects during construction.</p>	<p>No. This policy will not have an impact on the River Wye sac, Wye Valley Woodlands and Wye Valley and Forest of Dean bat sites SACs.</p> <p>This policy may result in varied renewable energy schemes. Depending on scale, nature and location of the development it may have a possibility of having a detrimental effect on the River Wye SACs. There are sufficient policy safeguards within the NDP and Core Strategy to help avoid or mitigate any likely significant effects on the SACs.</p>
<p>Policy PTS15: Contributions to Community Facilities</p>	<p>Support and upkeep of existing local community facilities.</p> <p>Promote new development of community facilities.</p> <p>Increase in vehicular movements.</p> <p>Increase in nonphysical disturbance.</p>	<p>New community facilities.</p> <p>Possible vehicular movements and demand for water abstraction and treatment.</p> <p>Physical damage of disturbance on a localised scale.</p> <p>Non-physical disturbance such as noise.</p>	<p>River Wye (including the Lugg SAC).</p> <p>Wye Valley and Forest of Dean Bat Sites SAC.</p> <p>Wye Valley Woodlands SAC</p>	<p>Measures are included in both the Core Strategy and the Peterstow Neighbourhood Plan to help relieved any increased pressure on the River Wye.</p> <p>The implementation of the Nutrient Management Plan will specifically address issues relating to water quality in the River Wye.</p>	<p>No. This policy will not have an impact on the River Wye sac, Wye Valley Woodlands and Wye Valley and Forest of Dean bat sites SACs.</p> <p>Although this policy could result in the development of new community facilities or the loss of existing provision to new uses, which depending on location could have potential effect on the River Wye SAC. However, sufficient policy safeguards are in place within the Local Plan (Core Strategy) and with the inclusion of</p>

This document is copyright of Herefordshire Council, please contact the Neighbourhood Planning team if you wish to reuse it in whole or part.

					additional wording in the Peterstow NDP policy to avoid or mitigate any likely significant effects on the River Wye.
Policy PTS16: Small and Home based businesses	<p>Encourage of small domestic based employment facilities.</p> <p>Promotion of business development</p> <p>Job creation in local area</p> <p>Small reduction in vehicular usage.</p>	<p>Employment growth and infrastructure development</p> <p>Physical damage of disturbance on a localised scale.</p> <p>Non-physical disturbance such as noise.</p> <p>Uncertain as to the impacts upon the River Wye SAC dependent on the location of any development.</p> <p>Potential increase in visitor numbers to the parish could have an effect on the River Wye Employment and infrastructure development.</p> <p>Possible vehicular movements and demand for water abstraction and treatment.</p>	<p>River Wye (including the Lugg SAC).</p> <p>Wye Valley and Forest of Dean Bat Sites SAC.</p> <p>Wye Valley Woodlands SAC</p>	<p>The implementation of Core Strategy policies SD3 and SD4 should also help to avoid any adverse impacts in relation to the hydrological regimes at the River Wye.</p> <p>The implementation of the Nutrient Management Plan will specifically address issues relating to water quality in the River Wye.</p> <p>The Core Strategy policy LD2 will aim to help avoid any adverse impacts on the River Wye for new employment or businesses uses.</p> <p>Measures within Core Strategy policy SD1 should help to mitigate potential impacts relating to non-physical disturbances.</p>	<p>No. This policy will not have an impact on the River Wye sac, Wye Valley Woodlands and Wye Valley and Forest of Dean bat sites SACs.</p> <p>The scale and extent of potential employment development is unlikely to have a significant impact on the SAC. There are sufficient policy safeguards within the NDP and Core Strategy to help avoid or mitigate any likely significant effects on the River Wye SAC.</p> <p>Mitigation measures are covered in policy LD2 and LD3 of the Core Strategy and policies within the Peterstow NDP.</p>

This document is copyright of Herefordshire Council, please contact the Neighbourhood Planning team if you wish to reuse it in whole or part.

<p>Policy PTS17: Polytunnel Proposals</p>	<p>Appropriate poly tunnel development</p> <p>Rural business development</p> <p>Noise, odour and smell minimised.</p> <p>Unobtrusive lighting on new schemes.</p>	<p>Unlikely that there will have a significant effect on the European Site. This policy itself is likely to mitigate the impact caused from development.</p>	<p>River Wye (including the Lugg SAC).</p> <p>Wye Valley and Forest of Dean Bat Sites SAC.</p> <p>Wye Valley Woodlands SAC</p>	<p>None. This policy acts as a mitigation measure to ensure large agricultural development is fitting for its context and ensures protection to the exiting landscape.</p>	<p>No. This policy will not have an impact on the River Wye sac, Wye Valley Woodlands and Wye Valley and Forest of Dean bat sites SACs.</p> <p>It is unlikely that the scale of proposed rural business development is unlikely to have a significant impact on the baseline data.</p>
<p>Policy PTS18: Renewable and Low Carbon Energy</p>	<p>Community energy schemes promoted</p> <p>Reduction on carbon based energy usage in the long term</p>	<p>Unlikely that there will have a significant effect on the European Sites.</p>	<p>River Wye (including the Lugg SAC).</p> <p>Wye Valley and Forest of Dean Bat Sites SAC.</p> <p>Wye Valley Woodlands SAC</p>	<p>Measures included within policy SD2 of the Core Strategy should help to mitigate potential impacts relating to non-physical disturbances.</p> <p>Good practice construction techniques include noise suppression measures; hours of operation may help to mitigate potential adverse effects during construction.</p>	<p>No. This policy will not have an impact on the River Wye sac, Wye Valley Woodlands and Wye Valley and Forest of Dean bat sites SACs.</p> <p>This policy ensures suitable community energy project will have minimal environmental impact. Therefore is unlikely to impact on the SACs.</p>

Appendix 4

Initial Habitat Regulations Assessment and Strategic Environmental Assessment Screening Notification

The Neighbourhood Planning (General) Regulation 2012 (Reg. 32)

Conservation of Habitats and Species Regulations 2010 (d)

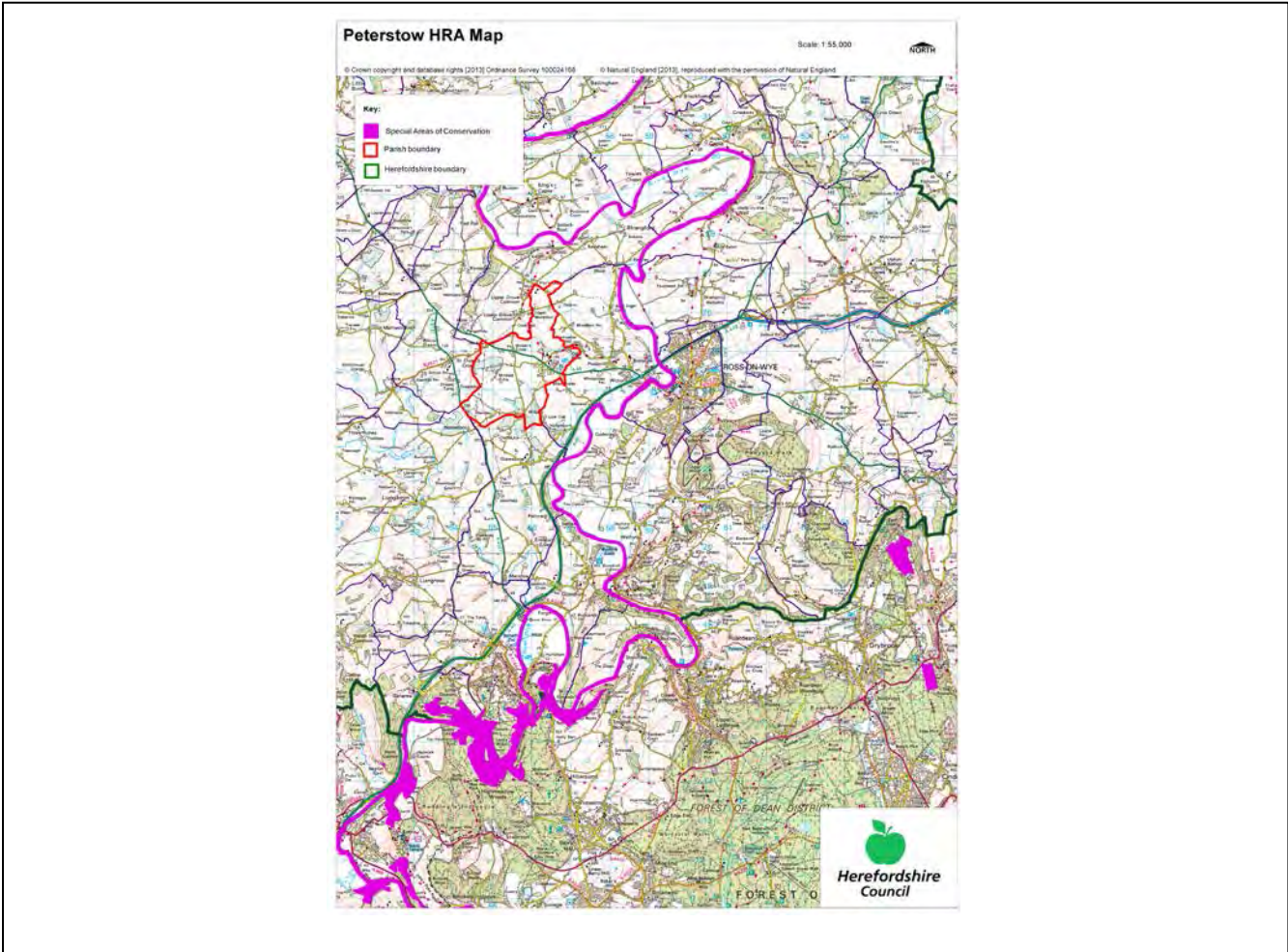
Neighbourhood Area:	Peterstow Neighbourhood Area
Parish Council:	Peterstow Parish Council
Neighbourhood Area Designation Date:	22/11/13

Introduction

This Initial Habitat Regulations Assessment (HRA) and Strategic Environmental Assessment (SEA) Screening has been undertaken to assess whether any European Sites exist within or in proximity to the Neighbourhood Area which could be affected by any future proposals or policies.

Through continual engagement the outcomes of any required assessments will help to ensure that proposed developments will not lead to Likely Significant Effects upon a European Site or cause adverse impacts upon other environmental assets, such as the built historic or local natural environment.

**HRA Initial Screening: Map showing relationship of Neighbourhood Area with European Sites
(not to scale)**



Initial HRA Screening

River Wye (including the River Lugg) SAC:

Does the Neighbourhood Area have the River Wye (including the River Lugg) in or next to its boundary?	N	The River Wye SAC is 1km away from the Parish
Is the Neighbourhood Area in the hydrological catchment of the River Wye (including the River Lugg) SAC?	Y	The Parish is within the hydrological catchment of the River Wye
If yes above, does the Neighbourhood Area have mains drainage to deal with foul sewage?	N	There is no mains drainage in Peterstow

Downton Gorge SAC:

Is the Neighbourhood Area within 10km of Downton Gorge SAC?	N	Downton Gorge is 48.1km away from the Parish
---	---	--

River Clun SAC:

Does the Neighbourhood Area include: Border Group Parish Council or Leintwardine Group Parish Council?	N	River Clun does not border the Parish
--	---	---------------------------------------

Usk Bat Sites SAC:

Is the Neighbourhood Area within 10km of the SAC boundary?	N	Usk Bat Sites are 36.3km away from the Parish
--	---	---

Wye Valley & Forest of Dean Bat Sites SAC:

Is the Neighbourhood Area within 10km of any of the individual sites that make up the Wye Valley & Forest of Dean Bat Sites?	Y	The Parish is 9.5km away from Wye Valley and Forest of Dean Bat Sites
--	---	---

Wye Valley Woodlands SAC:

Is the Neighbourhood Area within 10km of any of the individual sites that make up the Wye Valley Woodlands Site?	Y	The Parish is 8.8km away from the Wye Valley Woodlands
--	---	--

HRA Conclusion:

The assessment above highlights that the following European Sites will need to be taken into account in the future Neighbourhood Development Plan for the Peterstow Neighbourhood Area and a Full HRA Screening will be required.

European Site

(List only those which are relevant from above)

River Wye (including the River Lugg) SAC

Wye Valley & Forest of Dean Bat Sites SAC

Wye Valley Woodlands SAC

Strategic Environmental Assessment Initial Screening for nature conservation landscape and heritage features

The following environmental features are within or in general proximity to the Peterstow Neighbourhood Area and would need to be taken into account within a Strategic Environmental Assessment. In addition, the NDP will also need to consider the other SEA topics set out in Guidance Note 9a to ensure that the plan does not cause adverse impacts.

SEA features	Total	Explanation	SEA required
Air Quality Management Areas	0	There are no AQMAs within the Parish	N
Ancient Woodland	4	Lower Heath Wood (border); Pengethley Grove (border); Riggs Wood (border); Tuft Wood (border)	Y
Areas of Archaeological Interest	0	There are no AAls within the Parish	N
Areas of Outstanding Natural Beauty	1	Wye Valley AONB follows the A49 to Winters Cross crossroads then goes south following the road to Wilson	Y
Conservation Areas	1	Peterstow village	Y
European Sites	0	There are no SACs within the Parish	N
Flood Areas		There is a small area by the Cider Farm to the north of Peterstow village	Y
Listed Buildings	Numerous	There are numerous Listed Buildings throughout the Parish	Y
Local Sites (SWS/SINCS/RIGS)	11 (SWS)	Field near Wellsbrook Farm; Wilson Farm Ponds; Upper & Lower Heath Farms (border); Pengethley Grove (border); Riggs Wood (border); Castlemeadow Wood (border); Wells Brook; Marsh near Bridstow (border); Marsh near Bridstow Church (border); River Wye (border); The Moors (border)	Y
Long distance footpaths/trails	1	Herefordshire Trail	Y
Mineral Reserves	0	There are no Mineral Reserves sites within the Parish	N
National Nature Reserve	0	There are no NNRs within the Parish	N
Registered & Unregistered parks and gardens	4 Unregistered	Moraston House (border); Caradoc Court (border); Pengethley Park (border); Ashe Ingen Court (border)	Y
Scheduled Ancient Monuments	0	There are no SAMs within the Parish	N
Sites of Special Scientific Interest	1	River Wye (Unfavourable Recovering) (border)	Y

Decision Notification:

The initial screening highlights that the Neighbourhood Development Plan for the Peterstow Neighbourhood Area:

- a) Will require further environmental assessment for Habitat Regulations Assessment and Strategic Environmental Assessment.

Assessment date: 18/10/2013

Assessed by: James Latham

Appendix 1: European Sites

The table below provides the name of each European Site, which has been screened in for the purposes of neighbourhood planning in Herefordshire; includes their site features of integrity; and vulnerability data. This is based on the sites individual features of integrity and their vulnerabilities, which could include distance criteria. This has been used in identifying which parishes are likely to require a full HRA Screening of their future Neighbourhood Development Plan, to establish if their plan might have Likely Significant Effects on a European Site.

Downton Gorge
Site Features: <i>Tilio-Acerion</i> forests of slopes, screes and ravines
Vulnerability data: 10km for air quality associated with poultry units or other intensive agricultural practices.
River Clun
Site Features: Freshwater pearl mussel <i>Margaritifera margaritifera</i>
Vulnerability data: Water quality is important to maintain the site feature. Parishes either side of the River Clun will be affected.
River Wye
Site Features: Water courses of plain to montane levels with the <i>Ranunculion fluitantis</i> and <i>Callitricho-Batrachion</i> vegetation. Transition mires and quaking bogs. White-clawed (or Atlantic Stream) crayfish <i>Austropotamobius pallipes</i> . Sea lamprey <i>Petromyzon marinus</i> . Brook lamprey <i>Lampetra planeri</i> . River lamprey <i>Lampetra fluviatilis</i> . Twaite shad <i>Alosa fallax</i> . Atlantic salmon <i>Salmo salar</i> . Bullhead <i>Cottus gobio</i> . Otter <i>Lutra lutra</i> . Allis shad <i>Alosa alosa</i>
Vulnerability data: Proximity: Developments should not be within 100m of the designated bank. Some developments beyond 100m may also have impacts based on proximity and these issues should be addressed where possible when developing NDP policy and choosing site allocations. Water Quality: Within the whole catchment of the River Wye, which includes the River Lugg, mains drainage issues with regards to water quality are being resolved through the Core Strategy / Local Plan and development of a Nutrient Management Plan. Welsh Water should be consulted to ensure that the proposed growth will be within the limit of their consents. Otters: "An otter will occupy a 'home range', which on fresh waters usually includes a stretch of river as well as associated tributary streams, ditches, ponds, lakes and woodland. The size of a home range depends largely on the availability of food and shelter, and the presence of neighbouring otters. On rivers, a male's home range may be up to 40km or more of watercourse and associated areas; females have smaller ranges (roughly half the size) and favour quieter locations for breeding, such as tributary streams. Otters without an established home range are known as 'transients'. They are mostly juveniles looking for a territory of their own, or adults that have been pushed out of their territories. Transient otters may use an area for a short while, but they will move on if conditions are not suitable or if they are driven away by resident otters. Transients will have been important in extending the range of otters, but they are very difficult to identify from field signs. Within a home range an otter may use many resting sites. These include above-ground shelters, such as stands of scrub or areas of rank grass, and underground 'holts' – for example, cavities under tree roots and dry drainage pipes." (Source: EA website: http://www.environmentagency.gov.uk/static/documents/Business/Otters_the_facts.pdf accessed 09/04/2013)

Usk Bat Site

Site Features: Annex I habitats present as a qualifying feature, but not a primary reason for site selection: European dry heaths, Degraded raised bogs still capable of natural regeneration, Blanket bogs, Calcareous rocky slopes with chasmophytic vegetation, Caves not open to the public, *Tilio-Acerion* forests of slopes, screes and ravines. Annex II species of primary reason for site selection: Lesser horseshoe bat *Rhinolophus hipposideros*, UK population 5%, although it is suggested this is an underestimate.

Vulnerability data: Lesser Horseshoe bats are known to migrate between 5km and 10km between their summer and winter roosts. The Lesser Horseshoe Bat is vulnerable to disturbance; light pollution; and habitat loss. Check with the planning ecologist for other issues.

Wye Valley and Forest of Dean Bat Sites

Site Features: Annex II species that are a primary reason for site selection: Lesser horseshoe bat *Rhinolophus hipposideros*. Greater horseshoe bat *Rhinolophus ferrumequinum*

Vulnerability data: Lesser Horseshoe bats are known to migrate between 5km and 10km between their summer and winter roosts. The Lesser Horseshoe Bat is vulnerable to disturbance; light pollution; and habitat loss. Check with the planning ecologist for other issues.

Greater Horseshoe bats are known to migrate between 20-30km between their summer and winter roosts.

NDPs closest to the European Site will need to consider:

Woodland habitat buffer.

Lesser Horseshoe Bat: Old buildings; woodland locations; sheltered valleys, extensive deciduous woods or dense scrub, close to roost sites. In areas of fragmented habitats, linear habitats such as hedgerows are important corridors. Vulnerable to loss or disturbance of both summer and winter roosts and removal of linear habitat.

Greater Horseshoe Bat: Large buildings, pasture, edge of mixed deciduous woodland and hedgerows. Mixed land-use especially south-facing slopes, favours beetles, moths and insects they feed on. During the winter they depend on caves, abandoned mines and other underground sites for undisturbed hibernation. A system/series of sites required. Vulnerable to loss of insect food supply, due to insecticide use, changing farming practices and loss of broad-leaved tree-cover and loss / disturbance of underground roosts sites.

Wye Valley Woodlands

Site Features: Annex I habitats that are a primary reason for site selection: Beech forests *Asperulo-Fagetum*, *Tilio-Acerion* forests of slopes, screes and ravines, *Taxus baccata* woods of the British Isles. Annex II species present as a qualifying feature, but not a primary reason for site selection: Lesser horseshoe bat *Rhinolophus hipposideros*, 51-100 residents

Vulnerability data: Lesser Horseshoe bats are known to migrate between 5km and 10km between their summer and winter roosts. The Lesser Horseshoe Bat is vulnerable to disturbance; light pollution; and habitat loss. Check with the planning ecologist for other issues. NDPs closest to the European Site will need to consider: Woodland habitat buffer. Lesser Horseshoe Bat: Old buildings; woodland locations; sheltered valleys, extensive deciduous woods or dense scrub, close to roost sites. In areas of fragmented habitats, linear habitats such as hedgerows are important corridors. Vulnerable to loss or disturbance of both summer and winter roosts and removal of linear habitat.

Appendix 2: Wye Catchment Map

