

# Habitats Regulations Assessment

Report for:

**Aymestrey Neighbourhood Area**

**February 2018**



# Aymestrey HRA

## HRA Screening Assessment

### Contents

**1 Introduction**

Map of the Neighbourhood Area with European sites shown

**2 The requirement to undertake Habitats Regulations Assessment of Neighbourhood Plans**

**3 Methodology**

**4 Results of the Initial Screening Report and options**

**5 Description of the Aymestrey Neighbourhood Plan**

**6 Identification of other plans and projects which may have ‘in-combination’ effects**

**7 Assessment of the ‘likely significant effects’ of the Aymestrey NDP**

Table 1 - Colour coding key for Matrix

**8 Conclusions from the Screening Matrix**

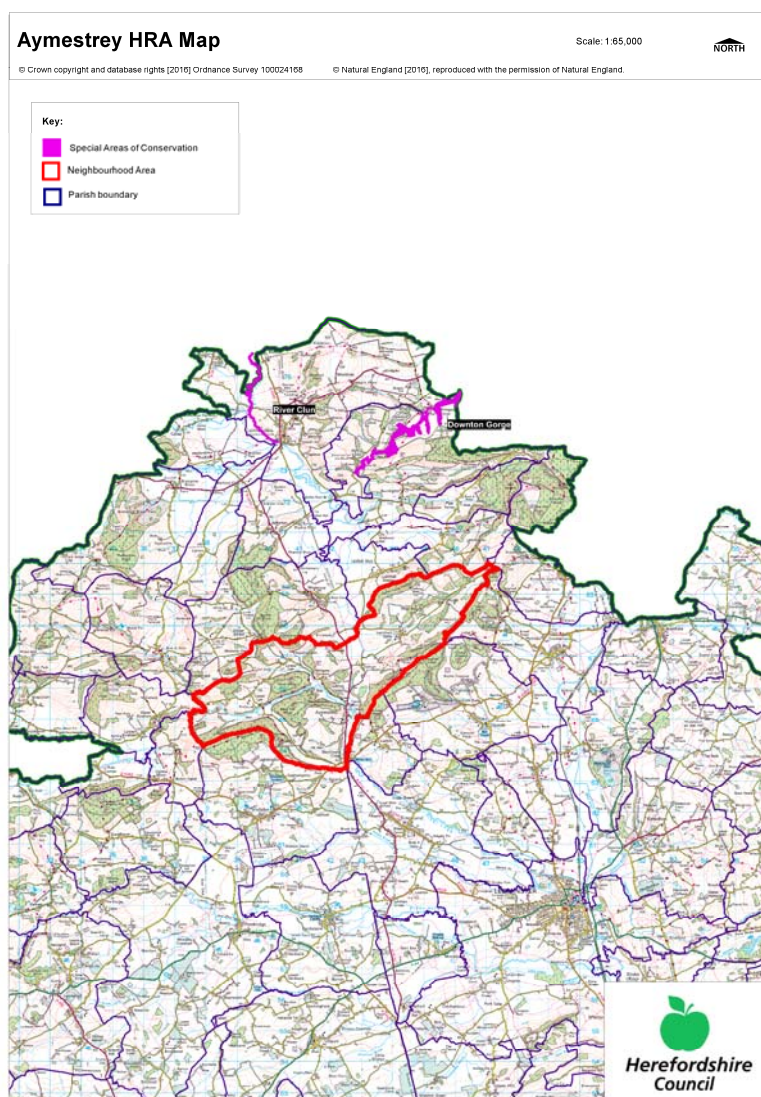
**Appendix 1** – List of options assessed

**Appendix 2** – Options Assessment and Full Screening matrix

**Appendix 3** – Initial Screening Report (January 2016)

## 1 Introduction

- 1.1 This Screening Assessment relates to a Neighbourhood Development Plan that is considered to be in general conformity with higher level strategic plans, such as the Herefordshire Core Strategy and the National planning Policy Framework. The screening stage involves assessing broadly whether the Draft Neighbourhood Plan is likely to have a significant effect on any European site(s).
- 1.2 Aymestrey Parish Council is producing a Neighbourhood Development Plan for Aymestrey Parish, in order to set out the vision, objectives and policies for the development of the Parish up to 2031. This HRA reviews the Draft Aymestrey Neighbourhood Plan February 2018.
- 1.3 The NDP has 23 criteria based policies which includes the allocation of 1 site within the policies. It provides general policies that clarify and provide detail to the policies within the Herefordshire Core Strategy therefore it requires a high level screening assessment to build upon the HRA Screening Assessment Report for the Herefordshire Core Strategy. This high level screening assessment should be read in combination with the Herefordshire Pre-submission publication of the Local Plan-Core Strategy Habitat Regulations Assessment Report (April 2014) and ensures that there will not be any significant impacts upon Natura 2000 sites.
- 1.4 The map below shows Aymestrey Neighbourhood Area with the European Site highlighted.



## 2 The requirement to undertake Habitats Regulations Assessment of neighbourhood plans

- 2.1 The requirement to undertake HRA of development plans was confirmed by the amendments to the "Habitats Regulations" published for England and Wales in July 2007 and updated in 2013. Therefore, when preparing its NDP, Aymestrey Parish Council is required by law to carry out an assessment known as "Habitats Regulations Assessment". It is also a requirement in Regulation 32 schedule 2 of the Neighbourhood Planning Regulations 2012.
- 2.2 Article 6(3) of the EU Habitats Directive provides that:  
*Any plan or project not directly connected with or necessary to the management of the [European] site but likely to have a significant effect thereon, either individually or in combination with other plans or projects, shall be subject to appropriate assessment of its implications for the site in view of the site's conservation objectives. In the light of the conclusions of the assessment of the implications for the site and subject to the provisions of paragraph 4, the competent national authorities shall agree to the plan or project only after having ascertained that it will not adversely affect the integrity of the site concerned and, if appropriate, after having obtained the opinion of the general public.*
- 2.3 HRA is an impact-led assessment and refers to the assessment of the potential effects of a neighbourhood plan on one or more European sites, including Special Protection Areas (SPAs) and Special Areas of Conservation (SACs):
- **SPAs** are classified under the European Council Directive 'on the conservation of wild birds' (79/409/EEC; 'Birds Directive') for the protection of **wild birds and their habitats** (including particularly rare and vulnerable species listed in Annex 1 of the Birds Directive, and migratory species).
  - **SACs** are designated under the Habitats Directive and target **particular habitats** (Annex 1) and/or species (Annex II) identified as being of European importance.
- 2.4 For ease of reference during HRA, general practice has been that these three designations are collectively referred to as either **Natura 2000** or **European sites**. This means that a Screening Assessment is carried out with regard to the Conservation Objectives of the European Sites and with reference to other plans or projects to identify if any significant effect is likely for any European Site.

## 3 Methodology

- 3.1 As the Aymestrey NDP is not directly connected with the management of any European sites, and includes proposals for development which may affect European sites, it is necessary under Regulation 102(1)(a) of the Habitats Regulations 2010 to undertake screening for likely significant effects on European sites.
- 3.2 The HRA of neighbourhood plans is undertaken in stages and should conclude whether or not a proposal or policy in a neighbourhood plan would adversely affect the integrity of the site in question. This is judged in terms of the implications of the plan for a site's 'qualifying features' (i.e. those Annex I habitats, Annex II species, and Annex I bird populations for which it has been designated) and are measured with reference to the conservation objectives for those qualifying features as defined by Natural England.
- 3.3 The first process is to undertake an initial screening report to determine the need to undertake the requirement for a HRA, this initial screening identifies whether the Plan could impact upon any European site that could be within the Neighbourhood Area or nearby.
- 3.4 If a European Site is within the Neighbourhood Area or the Neighbourhood Area could impact upon a European site then this will need to be taken into account and a full screening assessment will need to be undertaken.

- 3.5 The full screening stage consists of a description of the plan, identification of potential effects on European Sites, assessing the effects on European Sites (taking into account potential mitigation provided by other policies in the plan). For Neighbourhood Plans the outcome should demonstrate there are no likely effects upon the European sites. If any likely effects occur then there will need to be amendments to the NDP made and be re-screened until all likely effects have been mitigated.

#### **4 Results of the Initial Screening Report and options**

- 4.1 The initial Screening report (January 2016) found that the Neighbourhood Area is in the hydrological catchment of the River Wye (including the River Lugg) SAC and that the Parish is within the River Lugg catchment area and the Downton Gorge Sac. Therefore a full screening assessment is required.
- 4.2 For full details of the River Lugg and River Wye SAC attributes which contribute to and define their integrity and vulnerable data see Appendix 1 of the Aymestrey Initial Screening Report. The Initial Screening Report, January 2016, can be found in Appendix 3 of this HRA report. This information made it possible to identify the features of each site which determine site integrity, as well as the specific sensitivities of each site, therefore enabling later analysis of how the potential impacts of the Aymestrey Neighbourhood Plan may affect site integrity.
- 4.3 The initial options for the NDP were assessed to determine their environmental impact that could affect the River Wye SAC or the Downton Gorge SAC. Of the 4 options put forward the no NDP option was not considered viable for the Parish. The remaining options all proposed growth however they would all be within the proportional growth targets of the Core strategy and are therefore unlikely to have a significant impact on either SAC.
- 4.4 As Aymestrey progresses from options onto their NDP policies, the Plan will need to identify ways in which the least effect on the River Wye SAC and Downton Gorge SAC could be achieved, alongside taking forward the preferred option from the consultation from the community. A list of the options assessed can be found in Appendix 1, and the Assessment matrix for the options can be found Appendix 2.

#### **5 Description of the Aymestrey Neighbourhood Development Plan**

- 5.1 The Draft Aymestrey NDP presents detailed policies for development in the Neighbourhood Area, which is equivalent to the group parish boundary, up to 2031. The first part of the Plan introduces the Plan and its preparation and discusses the background of the village.
- 5.2 The NDP then details the vision for the Group Parish over the Plan period and 13 objectives of how this will be achieved. The objectives are as follow:
1. To protect and manage the high-quality landscape, green space, biodiversity and geology of the Parish and the settings of its settlements.
  2. To pay special regard to the River Lugg Site of Special Scientific Interest and its associated watercourses and habitats, both for its ecological interest and for the management of flooding within the Parish and downstream.
  3. To protect and manage the historic assets and their settings within the Parish, whether of national or local importance, the level of protection being in accordance with the importance of the asset.
  4. To conserve and enhance the area's distinctive historic environment, cultural heritage and nationally important geological sites, demonstrating how the inter-action of natural and historic factors has influenced the distinctive character of its landscape and settlement patterns, and use as a framework for sustainable development and habitat restoration and to maintain and promote the enjoyment of its high levels of tranquillity and landscape.

5. To contribute towards energy conservation and renewable energy.
6. To promote business activity that is appropriate to the Parish, including working from home.
7. To promote sustainable housing through controlled growth within defined settlement boundaries and on allocated sites, seeking small scale developments that achieve high design standards.
8. To foster social and economic wellbeing.
9. To respond to the demands for improved telecommunications
10. To retain and where appropriate improve existing public transport services
11. To enhance access to the countryside
12. To address community concerns about the volume and speed of traffic on the major roads and its impact and to improve safety (and perception of safety) for pedestrians and highway users.
13. To prevent development in areas at risk of flooding, improve land drainage, and avoid pollution, especially from waste water.

5.3 The NDP also sets out 23 policies on various topics based on the objective headings above and also for the villages, these include:

Policy AYS1: Promoting Sustainable Development

Policy AYS2: Development Strategy

Policy AYEnv1 - Landscape

Policy AYEnv2 – Biodiversity and Geodiversity

Policy AYEnv3: Protecting Heritage Assets

Policy AYEnv4: Sustainable Construction

Policy AYEnv5: Addressing Climate Change

Policy AYEnv6: Waste Water Treatment

Policy AYEnv7: Protection of Local Green Space

Policy AYEnv7a: Protection of Views and Vistas

Policy AYEnv8: Protection from Flood Risk

Policy AYMT1: Traffic Measures within the Parish

Policy AYT2: Highway Design Requirements

Policy AYJE1: Re-use of Employment Land at Mortimer Cross

Policy AYJE2: Business, Farming and Employment

Policy AYJE3: Tourism Development

Policy AYJE4: Working from Home

Policy AYH1: Housing on Land at Mortimer Cross (**SITE**)

Policy AYH2: Settlement Boundaries

Policy AYH3: Housing Development within Settlement Boundaries

Policy AYH4: Exceptional Sites for Affordable Housing.

Policy AYH5: Conversion of Rural Buildings to Residential Use

Policy AYH6: Affordable and Intermediate Homes

## **6 Identification of other plans and projects which may have ‘in-combination’ effects**



- 6.1 Regulation 102 of the Habitats Regulations 2010 requires an appropriate assessment where a land use plan (not directly connected with or necessary to the management of the site) is likely to have a significant effect on a European site, either alone or in combination with other plans or projects. In addition, in accordance with the Neighbourhood Planning Regulation 2012 a NDP cannot have a significant effect on any European Site whether alone or in combination with another Plan.
- 6.2 There are a number of potentially relevant plans and projects which may result in in-combination effects with the Core Strategy across Herefordshire, these plans have been reviewed and can be found in Appendix 2 of the pre-submission publication of the Herefordshire Local Plan – Core Strategy Habitats Regulations Assessment (May 2014). It is seen that as this NDP does not go over and beyond the requirements set out in the Core Strategy this review will also be substantial for the NDP.
- 6.3 The HRA for the Core Strategy also identifies that both the Water Cycle Study for Herefordshire, which indicates the potential for planned water abstraction requirements combined with pressures on European Sites from the Core Strategy policies, and the work on the Nutrient Management Plan, to ensure the favourable conservation status of the SAC in respect of phosphate levels as soon as possible and at the latest by 2027, have both been considered as part of the in-combination assessment.

## 7 Assessment of the 'likely significant effects' of the Aymestrey NDP

- 7.1 As required under Regulation 102 of the Habitats Regulations 2010, a screening assessment has been undertaken to identify the 'likely significant effects' of the NDP. A screening matrix was prepared in order to identify whether any of the policies in the Plan would be likely to have a significant effect on the River Wye SAC or Downton Gorge SAC.
- 7.2 The findings of the screening matrix can be found in the Screening Matrix in Appendix 2 of this report. Colour coding was used to record the likely impacts of the policies on the European site and its qualifying habitats and species as shown in the table 1 below.

Red	There are likely to be significant effects
Green	Significant effects are unlikely

- 7.3 The Screening matrix took the approach of screening each policy individually, which is consistent with current guidance documents. The results from the HRA report for the pre-submission version of the Herefordshire Core Strategy was also taking into consideration.
- 7.4 Mitigation of some of the identified potential effects could be achieved through implementation of the other policies within the NDP which require good practice measures during and after construction phases, such as more efficient use of water, reduction in waste and encouragement of recycling. The provision and encouragement of use of more sustainable transport measures when improving the transport infrastructure, will also help to reduce car traffic around the parish and surrounding areas.

## 8 Conclusions from the Screening Matrix

- 8.1 None of the Draft Aymestrey Neighbourhood Plan (February 2018) policies were concluded to be likely to have a significant effect on the River Wye SAC. Based on assumptions and information contained within the Aymestrey Parish Plan, Herefordshire Core Strategy and the Pre-submission version / proposed modifications addendum of the HRA for the Core Strategy all of the NDP policies were found to be unlikely to result in significant effects on the River Wye SAC and Downton Gorge SAC.

- 
- 8.2 In many cases this is because the policy itself would not result in development, i.e., it related instead to criteria for development. In a number of cases the policies also included measures to help support the natural environment, including biodiversity and therefore no significant effect conclusion could be reached. In addition, these policies have the potential to mitigate some of the possible adverse effects arising from other policies.
- 8.3 The plan is mainly criteria based, however does allocate one site.
- 8.4 Dwr Cymru Welsh Water (DCWW) has stated for the Core Strategy that there is sufficient existing permitted headroom in the Sewerage Treatment works serving the Almeley area to continue to treat the water from the amount of housing provided for in the Core Strategy policies. In addition, the preparation of the Nutrient Management Plan for the River Wye SAC should ensure that development within Herefordshire which can be accommodated within existing water discharge permits would not be likely to have a significant effect upon the River Wye SAC.
- 8.5 It is unlikely that the Aymestrey Plan will have any in-combination effects with any Plans from neighbouring parish councils as the level of growth proposed is the same as that proposed for the Housing Market Area in the Herefordshire Core Strategy and all of the proposed housing sites will be of a small scale and in line with the proportional growth specified in the Core Strategy.
- 8.6 It is therefore concluded that the Aymestrey Parish Plan will not have a likely significant effect on the River Wye SAC or the Downton Gorge SAC and Parish Councillors will welcome the conclusion as to no likely significant effect.
- 8.7 Any further amendments to policies (post February 2018) will be rescreened if required and an addendum to this report will be produced.



# Appendix 1

**Option 1 - Not to prepare a NDP:** this would mean that housing development within then parish would be developer led until such a time as Herefordshire Council adopts its Rural Areas Development Plan Document (DPD).

**Option 2 – To allocate sufficient land to meet the required level of housing growth but not to define settlement boundaries, relying on settlement policies only:** this approach would rely upon the ability to meet community and environmental objectives satisfactorily without defining a boundary within which most new housing development would be restricted.

**Option 3 – To allocate sufficient land to meet the required level of housing growth and defining settlement boundaries within which most new housing development would be restricted:** this approach, promoted through Herefordshire Local Plan Core Strategy, would define the extend of the built-up area of each settlement and any proposed extensions to it where housing development might take place.

**Option4 – A mixture of allocating sufficient land to meet the required level of housing growth but with some settlements having settlement boundaries defined while others rely upon policies only:** This is an option where each settlement would be assessed to determine whether either option 2 or option 3 might be most appropriate.

# Appendix 2

**Table 1: HRA Screening of Emerging Neighbourhood Development Plan Objectives, Options and Policies**

Parish Council Name: Aymestrey

NDP Title: Aymestrey NDP

Date undertaken: February 2018

NDP objectives, options policies	HRA Screening of Emerging NDP objectives, options and policies				
	Likely activities (operations) to result as a consequence of the objective/option/policy	Likely effect if objective/option/policy implemented. Could they have Likely Significant Effects (LSE) on European Sites? (Yes/No, with reasons)  <i>(If no, progress on to next objective/option/policy. If yes, progress on to next set of columns in row)</i>	European Sites potentially affected  (Refer to Initial Screening)	Mitigation measures to be considered, as necessary, through redraft of objective/option/policy and to be considered as part of Appropriate Assessment	Could the policy have likely significant effects on European sites (taking mitigation into account?)
<b>OBJECTIVES</b>		<i>The significance of the effect is key when assessing the effects.</i>			
<b>Objective 1</b>	Protection and management of the high-quality landscape, green space, biodiversity and geology of the Parish and the settings of its	This objective would give certainty over the future conservation and preservation of the character and history of the parish, it would not lead directly to	River Wye (including River Lugg) SAC  Downton Gorge SAC	N/A	No; policy criteria can be added to any allocation site as an outcome to this objective to mitigate the impact.

This document is copyright of Herefordshire Council, please contact the Neighbourhood Planning team if you wish to reuse it in whole or part.

	<p>settlements.</p> <p>Maintaining the rural character of the parish and its hamlets would ensure that the landscape character, views and features of the parish would be preserved and open spaces. Specific environmental issues could be investigated during the site search and be positively addressed within the policy wording.</p>	<p>development but and there would be no significant effect on the River Wye catchment.</p> <p>If required mitigation criteria can be added to site allocations policies to ensure no likely significant effect would occur.</p>			
<b>Objective 2</b>	<p>To pay special regard to the River Lugg Site of Special Scientific Interest and its associated watercourses and habitats, both for its ecological interest and for the management of flooding within the Parish and downstream.</p> <p>Specific environmental issues could be investigated during the site search and be positively addressed within the policy wording.</p>	<p>This objective would give certainty over the future conservation and preservation of the SSSI and SAC, it would not lead directly to development and there would be no significant effect on the River Wye catchment.</p> <p>If required mitigation criteria can be added to site allocations policies to ensure no likely significant effect would occur.</p>	<p>River Wye (including River Lugg) SAC</p> <p>Downton Gorge SAC</p>	N/A	<p>No; policy criteria can be added to any allocation site as an outcome to this objective to mitigate the impact.</p>

This document is copyright of Herefordshire Council, please contact the Neighbourhood Planning team if you wish to reuse it in whole or part.

<p><b>Objective 3</b></p>	<p>To protect and manage the historic assets and their settings within the Parish, whether of national or local importance, the level of protection being in accordance with the importance of the asset.</p> <p>Specific environmental issues could be investigated during the site search and be positively addressed within the policy wording.</p>	<p>This objective would give certainty over the future conservation and preservation of the character and history of the parish, it would not lead directly to development but and there would be no significant effect on the River Wye catchment.</p> <p>If required mitigation criteria can be added to site allocations policies to ensure no likely significant effect would occur.</p>	<p>River Wye (including River Lugg) SAC</p> <p>Downton Gorge SAC</p>	<p>N/A</p>	<p>No; policy criteria can be added to any allocation site as an outcome to this objective to mitigate the impact.</p>
<p><b>Objective 4</b></p>	<p>To conserve and enhance the area's distinctive historic environment, cultural heritage and nationally important geological sites, demonstrating how the interaction of natural and historic factors has influenced the distinctive character of its landscape and settlement patterns, and use as a framework for sustainable development and habitat restoration and to maintain and</p>	<p>This objective would give certainty over the future conservation and preservation of the character and history of the parish, it would not lead directly to development but and there would be no significant effect on the River Wye catchment.</p> <p>If required mitigation criteria can be added to site allocations policies to ensure no likely</p>	<p>River Wye (including River Lugg) SAC</p> <p>Downton Gorge SAC</p>	<p>N/A</p>	<p>No; policy criteria can be added to any allocation site as an outcome to this objective to mitigate the impact.</p>

This document is copyright of Herefordshire Council, please contact the Neighbourhood Planning team if you wish to reuse it in whole or part.



	<p>promote the enjoyment of its high levels of tranquillity and landscape.</p> <p>Specific environmental issues could be investigated during the site search and be positively addressed within the policy wording.</p>	<p>significant effect would occur.</p>			
<b>Objective 5</b>	<p>To contribute towards energy conservation and renewable energy.</p> <p>Specific environmental issues could be investigated during the site search and be positively addressed within the policy wording</p>	<p>This objective would give certainty over the future of environmental impacts on the parish in the future. It would not lead directly to development and there would be no significant effect on the River Wye catchment.</p> <p>If required mitigation criteria can be added to site allocations policies to ensure no likely significant effect would occur.</p>	<p>River Wye (including River Lugg) SAC</p> <p>Downton Gorge SAC</p>	N/A	<p>No; policy criteria can be added to any allocation site as an outcome to this objective to mitigate the impact.</p>
<b>Objective 6</b>	<p>To promote business activity that is appropriate to the Parish, including working from home.</p> <p>Specific environmental</p>	<p>This objective would give certainty over the future appropriate business activity in the parish in the future. It would not lead directly to development and there would be no</p>	<p>River Wye (including River Lugg) SAC</p> <p>Downton Gorge SAC</p>	N/A	<p>No; policy criteria can be added to any allocation site as an outcome to this objective to mitigate the impact.</p>

This document is copyright of Herefordshire Council, please contact the Neighbourhood Planning team if you wish to reuse it in whole or part.

	issues could be investigated during the site search and be positively addressed within the policy wording	<p>significant effect on the River Wye catchment.</p> <p>If required mitigation criteria can be added to site allocations policies to ensure no likely significant effect would occur.</p>			
<b>Objective 7</b>	To promote sustainable housing through controlled growth within defined settlement boundaries and on allocated sites, seeking small scale developments that achieve high design standards.	<p>This objective would give certainty over development in the parish in the future. The objective itself would not lead directly to development but would help to manage and regulate development. There would be no significant effect on the River Wye catchment.</p> <p>If required mitigation criteria can be added to site allocations policies to ensure no likely significant effect would occur.</p>	<p>River Wye (including River Lugg) SAC</p> <p>Downton Gorge SAC</p>	N/A	No; policy criteria can be added to any allocation site as an outcome to this objective to mitigate the impact.
<b>Objective 8</b>	To foster social and economic wellbeing.	<p>This objective would help to guide and enhance wellbeing but would not lead directly to development.</p> <p>There would be no</p>	<p>River Wye (including River Lugg) SAC</p> <p>Downton Gorge SAC</p>	N/A	No; policy criteria can be added to any allocation site as an outcome to this objective to mitigate the impact.

This document is copyright of Herefordshire Council, please contact the Neighbourhood Planning team if you wish to reuse it in whole or part.

		<p>significant effect on the River Wye catchment.</p> <p>If required mitigation criteria can be added to site allocations policies to ensure no likely significant effect would occur.</p>			
<b>Objective 9</b>	To respond to the demands for improved telecommunications.	<p>This objective would help to guide and enhance wellbeing but would not lead directly to development.</p> <p>There would be no significant effect on the River Wye catchment.</p> <p>If required mitigation criteria can be added to site allocations policies to ensure no likely significant effect would occur.</p>	<p>River Wye (including River Lugg) SAC</p> <p>Downton Gorge SAC</p>	N/A	No; policy criteria can be added to any allocation site as an outcome to this objective to mitigate the impact.
<b>Objective 10</b>	To retain existing public transport services.	<p>This objective would help to retain transport services and would not necessarily lead directly to development but could help to enhance existing access to public transport.</p> <p>There would be no significant effect on the</p>	<p>River Wye (including River Lugg) SAC</p> <p>Downton Gorge SAC</p>	N/A	No; policy criteria can be added to any allocation site as an outcome to this objective to mitigate the impact.

This document is copyright of Herefordshire Council, please contact the Neighbourhood Planning team if you wish to reuse it in whole or part.

		<p>River Wye catchment.</p> <p>If required mitigation criteria can be added to site allocations policies to ensure no likely significant effect would occur.</p>			
<b>Objective 11</b>	To enhance access to the countryside.	<p>This objective would help to enhance access to the countryside, it would not necessarily lead directly to development but could help to enhance existing access to public transport.</p> <p>There would be no significant effect on the River Wye catchment.</p> <p>If required mitigation criteria can be added to site allocations policies to ensure no likely significant effect would occur.</p>	<p>River Wye (including River Lugg) SAC</p> <p>Downton Gorge SAC</p>	N/A	No; policy criteria can be added to any allocation site as an outcome to this objective to mitigate the impact.
<b>Objective 12</b>	To address community concerns about the volume and speed of traffic on the major roads and its impact and to improve safety (and perception of safety) for pedestrians and highway users.	<p>This objective would help address issues regarding traffic in the parish, it would not necessarily lead directly to development but could help to improve safety in the parish.</p>	<p>River Wye (including River Lugg) SAC</p> <p>Downton Gorge SAC</p>	N/A	No; policy criteria can be added to any allocation site as an outcome to this objective to mitigate the impact.

This document is copyright of Herefordshire Council, please contact the Neighbourhood Planning team if you wish to reuse it in whole or part.

		<p>There would be no significant effect on the River Wye catchment.</p> <p>If required mitigation criteria can be added to site allocations policies to ensure no likely significant effect would occur.</p>			
<b>Objective 13</b>	To prevent development in areas at risk of flooding, improve land drainage, and avoid pollution, especially from waste water.	<p>This objective would help to address the impact of development in the parish and ensure that it does not impact on the environment. It would not necessarily lead directly to development but would help to guide the location of any development that may take place.</p> <p>There would be no significant effect on the River Wye catchment.</p> <p>If required mitigation criteria can be added to site allocations policies to ensure no likely significant effect would occur.</p>	<p>River Wye (including River Lugg) SAC</p> <p>Downton Gorge SAC</p>	N/A	No; policy criteria can be added to any allocation site as an outcome to this objective to mitigate the impact.
<b>OPTIONS</b>					

This document is copyright of Herefordshire Council, please contact the Neighbourhood Planning team if you wish to reuse it in whole or part.

Option 1	<p>Not producing a neighbourhood plan would result in any future growth decisions within the parish being made based on the strategic policies within the Core Strategy.</p> <p>Proportional housing and employment growth would be in accordance with the Core Strategy.</p>	<p>Core Strategy HRA has examined the likely significant effects of the Core Strategy rural policies in May 2014 and April 2015 and concluded that there are no LSE but acknowledges the role of neighbourhood plans to provide additional certainty.</p>	<p>River Wye (including River Lugg) SAC</p> <p>Downton Gorge SAC</p>	N/A	N/A
Option 2	<p>To allocate sufficient land to meet the required level of housing growth but not to define settlement boundaries, relying on settlement policies only:</p>	<p>Pursuing this option would give certainty over future development within the area particularly within the River Wye catchment but would work towards mitigating impact on the SAC.</p>	<p>River Wye (including River Lugg) SAC</p> <p>Downton Gorge SAC</p>	N/A	<p>No; policy criteria can be added to any allocation of sites policy to mitigate.</p>
Option 3	<p>To allocate sufficient land to meet the required level of housing growth and defining settlement boundaries within which most new housing development would be restricted.</p> <p>Defining settlement boundaries for</p>	<p>Pursuing this option would give greater certainty over future development within the area and within designated settlement boundaries, particularly within the River Wye catchment. If required mitigation criteria can be</p>	<p>River Wye (including River Lugg) SAC</p> <p>Downton Gorge SAC</p>	N/A	<p>No; policy criteria can be added to any allocation policy to mitigate.</p>

This document is copyright of Herefordshire Council, please contact the Neighbourhood Planning team if you wish to reuse it in whole or part.



	<p>settlements within Aymestrey will give additional certainty and help define those areas considered as the built form and open countryside. Specific environmental issues could be investigated during the site search and be positively addressed within the policy wording.</p>	<p>added to site allocations policies.</p>			
Option 4	<p>A mixture of allocating sufficient land to meet the required level of housing growth but with some settlements having settlement boundaries defined while others rely upon policies only:</p> <p>The settlement boundary will give additional certainty and help define those areas considered as the built form and open countryside. Specific environmental issues could be investigated during the site search and be positively addressed</p>	<p>Pursuing this option would give certainty over future development within the area particularly within the River Wye catchment. If required mitigation criteria can be added to site allocations policies</p>	<p>River Wye (including River Lugg) SAC</p> <p>Downton Gorge SAC</p>	N/A	<p>No; policy criteria can be added to any allocation policy to mitigate.</p>

This document is copyright of Herefordshire Council, please contact the Neighbourhood Planning team if you wish to reuse it in whole or part.

	within the policy wording.				
<b>POLICIES</b>					
Policy AYS1	Promoting sustainable development.	N/A	River Wye (including River Lugg) SAC  Downton Gorge SAC	N/A	No: this policy seeks to include of renewable energy design within any residential schemes but does not directly lead to development itself.
Policy AYS2	Development Strategy guiding development and compliance with Core Strategy Policies.	This policy will not directly lead to development but will guide any future development.  Any development could have a possible increase in vehicular movements and demand for water abstraction and treatment.  Uncertain as to the impact on the River Wye SAC as dependant on the location of the development of all development.	River Wye (including River Lugg) SAC  Downton Gorge SAC	Specific environmental issues could be investigated during the site search and be positively addressed within the policy wording. Policies LD2, SD1, SD3 and SD4 of the Local Plan (Core Strategy)	No, development in line with the Local Plan (Core Strategy) policy RA2 and the policy safeguards which exist within the Core Strategy should avoid or mitigate any likely significant effects.
Policy AYEnv1	Maintaining and protecting the landscape and its features and development should contribute positively to the existing high quality landscape.	N/A	River Wye (including River Lugg) SAC	N/A	No: this policy seeks to maintain and protect the landscape and its features but does not directly lead to development itself.

This document is copyright of Herefordshire Council, please contact the Neighbourhood Planning team if you wish to reuse it in whole or part.

Policy AYEnv2	Biodiversity and Geodiversity, with any new development looking to maintain and reinforce the ecological network and enhance biodiversity.	N/A	River Wye (including River Lugg) SAC Downton Gorge SAC	N/A	No: this policy seeks to address conservation and enhancement of the environment but does not directly lead to development itself.
Policy AYEnv3	Protecting Heritage Assets	N/A	River Wye (including River Lugg) SAC Downton Gorge SAC	N/A	No: this policy seeks to protect heritage assets and their settings within the parish but will not directly lead to development itself.
Policy AYEnv4	Sustainable Construction, creating safe, sustainable, well integrated environments for the community.	This policy will not directly lead to development but will guide development and ensure that sustainable construction methods are taken and that development takes into account aspects of the parish.  Any development could have a possible increase in vehicular movements and demand for water abstraction and treatment.  Uncertain as to the impact on the River Wye SAC as dependant on the location	River Wye (including River Lugg) SAC Downton Gorge SAC	Specific environmental issues could be investigated during the site search and be positively addressed within the policy wording. Policies LD2, SD1, SD3 and SD4 of the Local Plan (Core Strategy)	No, development in line with the Local Plan (Core Strategy) policy RA2 and the policy safeguards which exist within the Core Strategy should avoid or mitigate any likely significant effects.

This document is copyright of Herefordshire Council, please contact the Neighbourhood Planning team if you wish to reuse it in whole or part.

		of any development that the policy will mitigate.			
Policy AYEnv5:	Addressing Climate Change	N/A	River Wye (including River Lugg) SAC  Downton Gorge SAC	N/A	No, there will be no direct development as a result of this policy but guidance as to the sustainable elements of design of any future development and will be in line with the Local Plan (Core Strategy) policy RA2 and the policy safeguards which exist within the Core Strategy should avoid or mitigate any likely significant effects.
Policy AYEnv6:	Waste Water Treatment	New development in the parish will have an impact on the watercourse and in turn the River Wye SAC. Development will seek to use package sewage treatment works. All drainage proposals should be accompanied by information to demonstrate that there will be no likely significant effect on the water quality and ecological integrity of the River Wye.	River Wye (including River Lugg) SAC  Downton Gorge SAC	Policies LD2, SD1, SD3 and SD4 of the Local Plan (Core Strategy) and FW1 within the NDP will aim to help avoid any adverse impacts on the River Wye from any new employment or business uses.  Specific environmental issues could be investigated at development stage but be positively	No; policy criteria addresses the issue directly and additional safeguards can be added to any allocation policy to mitigate further.  Development in line with the Local Plan (Core Strategy) policy RA2 and the policy safeguards which exist within

This document is copyright of Herefordshire Council, please contact the Neighbourhood Planning team if you wish to reuse it in whole or part.

		Uncertain as to the impact on the River Wye SAC as dependant on specific location of the development, size and type of diversification.		<p>addressed within the policy wording.</p> <p>Policy would need to take account of the proportional growth requirements of the Core Strategy and potential headroom capacity at the local STW and the impact this will have on flooding in the development areas and SAC.</p> <p>Improved water efficiency measures, metering and addressing leakages in the supply may help to mitigate any additional pressures on the water supply as a result of new development.</p>	the Core Strategy should avoid or mitigate any likely significant effects.
Policy AYEnv7:	Protection of Local Green Space	N/A	River Wye (including River Lugg) SAC Downton Gorge SAC	N/A	No: this policy seeks to protect greenspaces in the parish but does not directly lead to development itself.

This document is copyright of Herefordshire Council, please contact the Neighbourhood Planning team if you wish to reuse it in whole or part.

Policy AYEnv7a:	Protection of Views and Vistas	N/A	River Wye (including River Lugg) SAC Downton Gorge SAC	N/A	No: this policy seeks to protect greenspaces in the parish but does not directly lead to development itself.
Policy AYEnv8	Protection from Flood Risk	Development needs to be tested before it commences.  Housing, infrastructure development  Possible loss of surface drainage capacity  Uncertain as to the impact on the River Wye SAC as dependant on the location and specifics of the development.	River Wye (including River Lugg) SAC Downton Gorge SAC	Specific environmental issues could be investigated at development stage but be positively addressed within the policy wording.  Policy would need to take account of the proportional growth requirements of the Core Strategy and potential headroom capacity at the local STW and the impact this will have on flooding in the development areas and SAC.	No, development in line with the Local Plan (Core Strategy) policy RA2 and the policy safeguards which exist within the Core Strategy should avoid or mitigate any likely significant effects.
Policy AYMT1	Traffic Measures within the Parish	N/A	River Wye (including River Lugg) SAC Downton Gorge SAC	N/A	No, development in line with the Local Plan (Core Strategy) policy RA2 and the policy safeguards which exist within the

This document is copyright of Herefordshire Council, please contact the Neighbourhood Planning team if you wish to reuse it in whole or part.



					Core Strategy should avoid or mitigate any likely significant effects.
Policy AYT2:	Highway Design Requirements	Any development could have a possible increase in vehicular movements.	River Wye (including River Lugg) SAC Downton Gorge SAC	N/A	No, this policy will not directly lead to development but will help to protect the landscape and features through any development.
Policy AYJE1:	Re-use of Employment Land at Mortimer Cross	New development of infrastructure and or environmental impacts as a result of increased employment activity.  Possible increase in vehicular movements, business activity and demand for water abstraction and treatment.  Uncertain as to the impact on the River Wye SAC as dependant on specific location of the development, size and type.	River Wye (including River Lugg) SAC Downton Gorge SAC	Policies LD2, SD1, SD3 and SD4 of the Local Plan (Core Strategy) and FW1 within the NDP will aim to help avoid any adverse impacts on the River Wye from any new employment or business uses.  Improved water efficiency measures, metering and addressing leakages in the supply may help to mitigate any additional pressures on the water supply as a result of new development.	Mitigation to the policy will be required to ensure that the outcomes and aims of the policy are clear and structured and that it addresses the correct aspects of land use issues and environmental issues.

This document is copyright of Herefordshire Council, please contact the Neighbourhood Planning team if you wish to reuse it in whole or part.

Policy AYJE2:	Business, Farming and Employment	<p>New development of infrastructure and or environmental impacts as a result of increased agricultural activity.</p> <p>Possible increase in vehicular movements, business activity and demand for water abstraction and treatment.</p> <p>Uncertain as to the impact on the River Wye SAC as dependant on specific location of the development, size and type.</p>	<p>River Wye (including River Lugg) SAC</p> <p>Downton Gorge SAC</p>	<p>This policy potentially should help to reduce the impact of intensive farming on the parish.</p> <p>Policies LD2, SD1, SD3 and SD4 of the Local Plan (Core Strategy) and FW1 within the NDP will aim to help avoid any adverse impacts on the River Wye from any new employment or business uses.</p> <p>Improved water efficiency measures, metering and addressing leakages in the supply may help to mitigate any additional pressures on the water supply as a result of new development.</p>	<p>Mitigation to the policy will be required to ensure that the outcomes and aims of the policy are clear and structured and that it addresses the correct aspects of land use issues and environmental issues.</p>
Policy AYJE3:	Tourism Development	<p>New development or diversification through tourism related activities would lead to some infrastructure and or environmental impacts as a result of increased activity.</p>	<p>River Wye (including River Lugg) SAC</p> <p>Downton Gorge SAC</p>	N/A	<p>No; policy criteria can be added to any allocation policy to mitigate.</p>

This document is copyright of Herefordshire Council, please contact the Neighbourhood Planning team if you wish to reuse it in whole or part.

		<p>Possible increase in vehicular movements, business activity and demand for water abstraction and treatment.</p> <p>Uncertain as to the impact on the River Wye SAC as dependant on specific location of the development, size and type of diversification.</p>			
Policy AYJE4:	Working from Home	<p>New development or diversification through encouraging working from home, would lead to some infrastructure and or environmental impacts as a result of increased activity in the parish.</p> <p>Possible increase in vehicular movements, business activity and demand for water abstraction and treatment.</p> <p>Uncertain as to the impact on the River Wye SAC as dependant on specific location of the development, size and type of diversification.</p>	<p>River Wye (including River Lugg) SAC</p> <p>Downton Gorge SAC</p>	N/A	No; policy criteria can be added to any allocation policy to mitigate.

This document is copyright of Herefordshire Council, please contact the Neighbourhood Planning team if you wish to reuse it in whole or part.

Policy AYH2:	Settlement Boundaries	<p>This policy will not directly lead to development but will guide any future development.</p> <p>Any development could have a possible increase in vehicular movements and demand for water abstraction and treatment.</p> <p>Uncertain as to the impact on the River Wye SAC as dependant on the location of the development of all development.</p>	<p>River Wye (including River Lugg) SAC</p> <p>Downton Gorge SAC</p>	<p>Specific environmental issues could be investigated during the site search and be positively addressed within the policy wording. Policies LD2, SD1, SD3 and SD4 of the Local Plan (Core Strategy)</p>	<p>No, development in line with the Local Plan (Core Strategy) policy RA2 and the policy safeguards which exist within the Core Strategy should avoid or mitigate any likely significant effects.</p>
Policy AYH3:	Housing Development within Settlement Boundaries	<p>This policy will not directly lead to development but will guide any future development.</p> <p>Any development could have a possible increase in vehicular movements and demand for water abstraction and treatment.</p> <p>Uncertain as to the impact on the River Wye SAC as dependant on the location of the development of all development.</p>	<p>River Wye (including River Lugg) SAC</p> <p>Downton Gorge SAC</p>	<p>Specific environmental issues could be investigated during the site search and be positively addressed within the policy wording. Policies LD2, SD1, SD3 and SD4 of the Local Plan (Core Strategy)</p> <p>Policy would need to take account of the proportional growth requirements of the Core Strategy and potential headroom capacity at the local STW</p>	<p>No, development in line with the Local Plan (Core Strategy) policy RA2 and the policy safeguards which exist within the Core Strategy should avoid or mitigate any likely significant effects.</p>

This document is copyright of Herefordshire Council, please contact the Neighbourhood Planning team if you wish to reuse it in whole or part.

Policy AYH4:	Exceptional Sites for Affordable Housing.	<p>New development of infrastructure and or environmental impacts of as a result of direct development in the parish.</p> <p>Possible increase in vehicular movements, business activity and demand for water abstraction and treatment.</p> <p>Uncertain as to the impact on the River Wye SAC as dependant on specific location of the development, size and type.</p>	<p>River Wye (including River Lugg) SAC</p> <p>Downton Gorge SAC</p>	<p>Specific environmental issues could be investigated during further site investigation and be positively addressed within the policy wording.</p> <p>Policy would need to take account of the proportional growth requirements of the Core Strategy and potential headroom capacity at the local STW</p>	<p>No, development in line with the Local Plan (Core Strategy) policy RA2 and the policy safeguards which exist within the Core Strategy should avoid or mitigate any likely significant effects.</p> <p>Policy criteria should be included within the NDP which reflects this. Further assessments will be undertaken at site allocation stage.</p>
Policy AYH5:	Conversion of Rural Buildings to Residential Use	<p>Conversion of rural buildings could have environmental impacts as a result of direct development in the parish.</p> <p>Possible increase in vehicular movements,</p>	<p>River Wye (including River Lugg) SAC</p> <p>Downton Gorge SAC</p>	<p>Specific environmental issues could be investigated during further site investigation and be positively addressed within the policy wording.</p> <p>Policy would need to take account of the</p>	<p>No, development in line with the Local Plan (Core Strategy) policy RA2 and the policy safeguards which exist within the Core Strategy should avoid or mitigate any likely significant</p>

This document is copyright of Herefordshire Council, please contact the Neighbourhood Planning team if you wish to reuse it in whole or part.

		<p>business activity and demand for water abstraction and treatment.</p> <p>Uncertain as to the impact on the River Wye SAC as dependant on specific location of the development, size and type.</p>		<p>proportional growth requirements of the Core Strategy and potential headroom capacity at the local STW</p>	<p>effects.</p> <p>Policy criteria should be included within the NDP which reflects this. Further assessments will be undertaken at site allocation stage.</p>
AYH6:	Affordable and Intermediate Homes	<p>New development of infrastructure and or environmental impacts of as a result of direct development in the parish.</p> <p>Possible increase in vehicular movements, business activity and demand for water abstraction and treatment.</p> <p>Uncertain as to the impact on the River Wye SAC as dependant on specific location of the development, size and type.</p>	<p>River Wye (including River Lugg) SAC</p> <p>Downton Gorge SAC</p>	<p>Specific environmental issues could be investigated during further site investigation and be positively addressed within the policy wording.</p> <p>Policy would need to take account of the proportional growth requirements of the Core Strategy and potential headroom capacity at the local STW</p>	<p>No, development in line with the Local Plan (Core Strategy) policy RA2 and the policy safeguards which exist within the Core Strategy should avoid or mitigate any likely significant effects.</p> <p>Policy criteria should be included within the NDP which reflects this. Further assessments will be undertaken at site allocation stage.</p>

Table 1a: HRA Screening of Neighbourhood Development Plan Proposed Site Allocations

Parish Council Name: Aymestrey

NDP Title: Aymestrey Parish NDP

Date undertaken: February 2018

Proposed Site Allocations	Characteristics of development, such as size  <i>(Use the SEA Criteria in Appendix 2 point 1 of the internal user guide)</i>	Location of proposed site allocation  <i>(Use the SEA Criteria in Appendix 2 point 2 of the internal user guide)</i>	HRA Screening of NDP Proposed Site Allocations			
			European Sites potentially affected  <i>(Refer to Initial Screening)</i>	Likely effect if proposed site allocation is developed. Could the site result in LSE on European Sites?	Mitigation measures to be considered to avoid any impacts	If recommendations are implemented, would it be possible that it would result in no likely significant effect?  <i>(Yes/No with reasons)</i>
Policy AYH1:	Land amounting to around 0.5 ha of land at Mortimers Cross for a maximum of 12 dwellings.  The construction new houses will involve use of timber, aggregates, metals and plastics.  There would also be increased demand	Housing on Land at Mortimers Cross	River Wye (including River Lugg) SAC	No: the scale of development proposed would not give rise to likely significant effects	There are sufficient safeguards within the Almeley NDP policy to avoid any adverse impacts.  This site has been identified in direct response to the proportional growth target within Core Strategy policy and its development, either in isolation or	No: The Local Plan (Core Strategy) confirms that the will not exceed the proportional growth target for the settlement, and the effects of this will not have a significant effect on the SAC.

This document is copyright of Herefordshire Council, please contact the Neighbourhood Planning team if you wish to reuse it in whole or part.

	<p>for water abstraction and sewage treatment.</p> <p>Pollution and nuisances: mainly from increased traffic, a potential exists from sewage arising.</p> <p>Housing will lead to increase in noise and light pollution than exists at present;</p>				<p>in tandem with the other proposed site allocations, would not exceed the Local Plan's requirements.</p>	
--	---	--	--	--	--	--



# Appendix 3

---

**Initial Habitat Regulations Assessment and Strategic Environmental  
Assessment Screening Notification**

**The Neighbourhood Planning (General) (Amendment) Regulations  
2015 (Reg. 32)**

**Conservation of Habitats and Species Regulations 2010 (d)**

---

<b>Neighbourhood Area:</b>	Aymestrey Neighbourhood Area
<b>Parish Council:</b>	Aymestrey Parish Council
<b>Neighbourhood Area Designation Date:</b>	07/01/2016

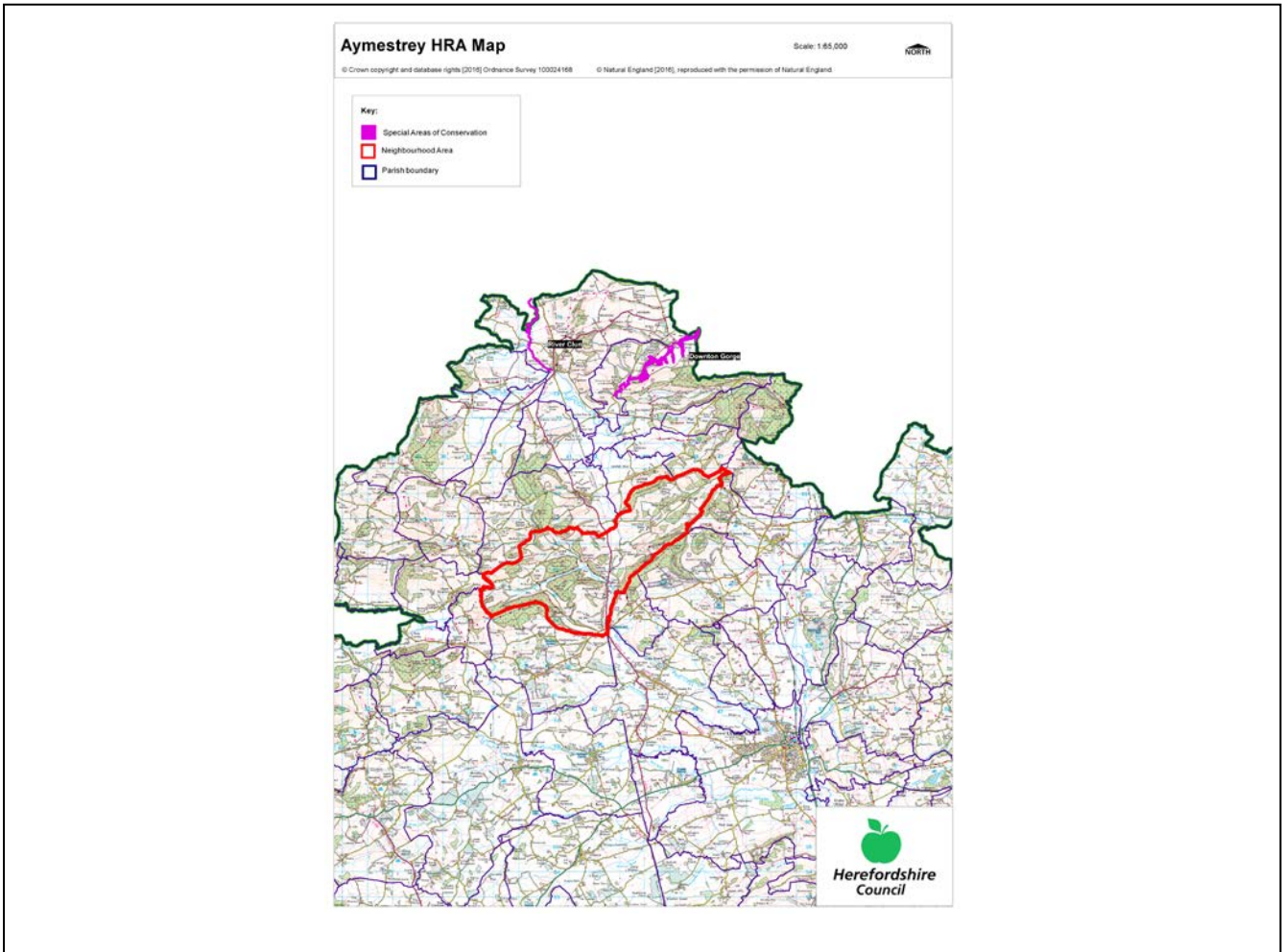
### **Introduction**

This Initial Habitat Regulations Assessment (HRA) and Strategic Environmental Assessment (SEA) Screening has been undertaken to assess whether any European sites exist within or in proximity to the Neighbourhood Area which could be affected by any future proposals or policies.

Through continual engagement the outcomes of any required assessments will help to ensure that proposed developments will not lead to Likely Significant Effects upon a European site or cause adverse impacts upon other environmental assets, such as the built historic or local natural environment.

## HRA Initial Screening

Map showing relationship of Neighbourhood Area with European Sites (not to scale)



### River Wye (including the River Lugg) Special Area of Conservation (SAC):

Does the Neighbourhood Area have the River Wye (including the River Lugg) in or next to its boundary?	Y	The River Lugg (not part of the SAC) runs through the Parish
Is the Neighbourhood Area in the hydrological catchment of the River Wye (including the River Lugg) SAC?	Y	The Group Parish is within the hydrological catchment of the River Lugg.
If yes above, does the Neighbourhood Area have mains drainage to deal with foul sewage?	N	There is no mains drainage at Aymestrey

### Downton Gorge SAC:

Is the Neighbourhood Area within 10km of Downton Gorge SAC?	Y	Downton Gorge is 3.85km away from the Parish.
---	---	---

**River Clun SAC:**

Does the River Clun border the Neighbourhood Area	N	River Clun does not border the Parish.
---	---	--

**Wye Valley & Forest of Dean Bat Sites SAC:**

Is the Neighbourhood Area within 10km of any of the individual sites that make up the Wye Valley & Forest of Dean Bat Sites?	N	Wye Valley and Forest of Dean Bat Sites are 49km away from the Parish.
--	---	--

**Wye Valley Woodlands SAC:**

Is the Neighbourhood Area within 10km of any of the individual sites that make up the Wye Valley Woodlands Site?	N	Wye Valley Woodlands are 48.6km away from the Parish.
--	---	---

**HRA Conclusion:**

The assessment above highlights that European Sites will need to be taken into account in the future Neighbourhood Development Plan for the Aymestrey Neighbourhood Area and a Full HRA Screening will be required.

**European Site**

*(List only those which are relevant from above)*

River Wye (including the River Lugg) SAC  
Downton Gorge SAC

**Strategic Environmental Assessment Initial Screening for nature conservation landscape and heritage features**

The following environmental features are within or in general proximity to the Aymestrey Neighbourhood Area and would need to be taken into account within a Strategic Environmental Assessment. In addition, the NDP will also need to consider the other SEA topics set out in Guidance Note 9a to ensure that the plan does not cause adverse impacts.

SEA features	Within Neighbourhood Area		Bordering Neighbourhood Area	
	Total number	Name(s)	Total number	Name(s)
Ancient Woodland	16	Barnett Wood; Woodhampton Wood; Paysure Wood; Gatley Long Coppice; Unnamed at Dionscourt Hill; Fishpool Valley; School Wood; Chaff Wood; Church Wood; Pyon Wood; Garden House Wood; Sned Wood; Weir Rough; Grindell Wood; Prichards Hill Wood; Unnamed north of Upper Lye.	13	Park Wood; Stocking Wood 1; Stocking Wood 2; Oldcastle Wood 2; Silver Will; Petchfield Copse; Burrel Wood; Hall Wood; Brush Wood; Goggin Copse and Green Wood; Bircher Coppice; Tars Wood; Tars Coppice.
Areas of Outstanding Natural Beauty (AONB)	0	-	0	-
Conservation Areas	0	-	6	Wigmore; Lingen; Lucton; Yarpole; Bircher; Orleton.
Flood Areas	Flood Zones 2 and 3 follow the River Lugg and tributaries of this.			

Geoparks	0	-	0	-
Listed Buildings	There are numerous Listed Buildings throughout the Parish.			
Mineral Reserves	5	Upper Lye to Wigmore to Leinthall Starkses to Leintwardine; Woodhampton to Lower Lye to north of Sned Wood, Aymestrey; West of Aymestrey; Mortimers Cross to Croft; Leinthall Earls to Richards Castle.	2	West of Bircher Common; Yarpole to Orleton.
National Nature Reserve (NNR)	0	-	0	-
Nature Trails	1	Mortimer Trail.	1	Herefordshire Trail.
Regionally Important Geological Sites (RIGS)	2	Aymestrey Main Quarry; Shobdon Drumlins.	3	Wigmore Castle; Goggin Road Station; Deer Park Road Station.
Registered Parks and Gardens	2	Gatley Park; Croft Castle.	1	Shobdon.
Scheduled Ancient Monuments (SAM)	5	Bowl barrow east of Yatton Marsh Farm; Croft Ambrey (camp); Pyon Wood camp, a small multivallate hillfort 700m WSW of Yatton; Churchyard cross in St John the Baptist and ST Alkmunds Churchyard; Castle mound in Camp Wood.	9	Shobdon Arches; Shobdon Castle Mound; Round barrow 250m south of Shobdon Church; Limebrook Priory; Lingen Castle; Wigmore Castle; Aston Tump; Richards Castle: a motte and bailey with an enclosed settlement; Dovecote at Court House.
Sites of Importance in Nature Conservation (SINCs)	0	-	0	-
Special Areas of Conservation (SAC)	0	-	0	-
Special Wildlife Sites (SWS)	16	River Lugg;	23	Land at Killhorse Lane 1

		Woodlands along River Lugg; Land at Wheelbarrow Castle; Fields, woodland and verges at Limebrook; Land at Lyepole Bridge; Land near Haven Farm; Woodhampton and Barnett Woods; Ballsgate Common; Pyon Wood; Garden House Wood; Mere Hill Wood Track Sections; Pecketts Yeld Wood; Three ponds at Aymestrey; Woodlands and Commons centred on Croft Ambrey; Oaker Wood; Limekiln Coppice and Barn Coppice.		Land at Killhorse Lane 2 Richards Castle mound and churchyard; Land near Sunnyside; Land at Rycroft; Land at Patrick's Hill; Tars Wood; Tylers Vallet; Shobdon Pools; Byton and Combe Moors; Woodlands on Coles Hill; Land at Limebrook; Land at Deerfold (2); Land at Lower Woodbatch; Land near Lower Woodbatch; Land at Chapel Farm; Wigmore Rolls; Green Hill Common; Land at Leinthall Starkes; Petchfield Copse and woodland to the north; Land at Elton; Kingacre and Hall Woods and Aston Copse; Land at Combe Moors.		
Unregistered parks and gardens	1	Yatton Court.	3	Kinsham Court; Elton Hall; Haye Park.		
			<b>SSSI Status</b>		<b>SSSI Status</b>	
Sites of Special Scientific Interest (SSSI)	2	Rockhall Quarry; River Lugg.	Favourable; Unfavourable Recovering.	3	Fishpool Valley; Elton Lane Cutting; Byton and Coombe Moors.	Favourable; Favourable; Unfavourable Recovering Unfavourable No Change.

**Decision Notification:**

The initial screening highlights that the Neighbourhood Development Plan for the Aymestrey Neighbourhood Area:

- a) Will require further environmental assessment for Habitat Regulations Assessment and Strategic Environmental Assessment.

**Assessment date: 08/01/2016**

**Assessed by: James Latham**



## Appendix 1: European Sites

The table below provides the name of each European Site, which has been screened in for the purposes of neighbourhood planning in Herefordshire; includes their site features of integrity; and vulnerability data. This is based on the sites individual features of integrity and their vulnerabilities, which could include distance criteria. This has been used in identifying which parishes are likely to require a full HRA Screening of their future Neighbourhood Development Plan, to establish if their plan might have Likely Significant Effects on a European Site.

<b>Downton Gorge</b>
<b>Site Features:</b> <i>Tilio-Acerion</i> forests of slopes, screes and ravines
<b>Vulnerability data:</b> 10km for air quality associated with poultry units or other intensive agricultural practices.

<b>River Clun</b>
<b>Site Features:</b> Freshwater pearl mussel <i>Margaritifera margaritifera</i>
<b>Vulnerability data:</b> Water quality is important to maintain the site feature. Parishes either side of the River Clun will be affected.

<b>River Wye</b>
<b>Site Features:</b> Water courses of plain to montane levels with the <i>Ranunculion fluitantis</i> and <i>Callitricho-Batrachion</i> vegetation. Transition mires and quaking bogs. White-clawed (or Atlantic Stream) crayfish <i>Austropotamobius pallipes</i> . Sea lamprey <i>Petromyzon marinus</i> . Brook lamprey <i>Lampetra planeri</i> . River lamprey <i>Lampetra fluviatilis</i> . Twaite shad <i>Alosa fallax</i> . Atlantic salmon <i>Salmo salar</i> . Bullhead <i>Cottus gobio</i> . Otter <i>Lutra lutra</i> . Allis shad <i>Alosa alosa</i>
<b>Vulnerability data:</b> Proximity: Developments should not be within 100m of the designated bank. Some developments beyond 100m may also have impacts based on proximity and these issues should be addressed where possible when developing NDP policy and choosing site allocations. Water Quality: Within the whole catchment of the River Wye, which includes the River Lugg, mains drainage issues with regards to water quality are being resolved through the Core Strategy / Local Plan and development of a Nutrient Management Plan. Welsh Water should be consulted to ensure that the proposed growth will be within the limit of their consents. Otters: "An otter will occupy a 'home range', which on fresh waters usually includes a stretch of river as well as associated tributary streams, ditches, ponds, lakes and woodland. The size of a home range depends largely on the availability of food and shelter, and the presence of neighbouring otters. On rivers, a male's home range may be up to 40km or more of watercourse and associated areas; females have smaller ranges (roughly half the size) and favour quieter locations for breeding, such as tributary streams. Otters without an established home range are known as 'transients'. They are mostly juveniles looking for a territory of their own, or adults that have been pushed out of their territories. Transient otters may use an area for a short while, but they will move on if conditions are not suitable or if they are driven away by resident otters. Transients will have been important in extending the range of otters, but they are very difficult to identify from field signs. Within a home range an otter may use many resting sites. These include above-ground shelters, such as stands of scrub or areas of rank grass, and underground 'holts' – for example, cavities under tree roots and dry drainage pipes."

### Wye Valley and Forest of Dean Bat Sites

**Site Features:** Annex II species that are a primary reason for site selection: Lesser horseshoe bat *Rhinolophus hipposideros*. Greater horseshoe bat *Rhinolophus ferrumequinum*

**Vulnerability data:** Lesser Horseshoe bats are known to migrate between 5km and 10km between their summer and winter roosts. The Lesser Horseshoe Bat is vulnerable to disturbance; light pollution; and habitat loss. Check with the planning ecologist for other issues.

Greater Horseshoe bats are known to migrate between 20-30km between their summer and winter roosts.

NDPs closest to the European Site will need to consider:  
Woodland habitat buffer.

Lesser Horseshoe Bat: Old buildings; woodland locations; sheltered valleys, extensive deciduous woods or dense scrub, close to roost sites. In areas of fragmented habitats, linear habitats such as hedgerows are important corridors. Vulnerable to loss or disturbance of both summer and winter roosts and removal of linear habitat.

Greater Horseshoe Bat: Large buildings, pasture, edge of mixed deciduous woodland and hedgerows. Mixed land-use especially south-facing slopes, favours beetles, moths and insects they feed on. During the winter they depend on caves, abandoned mines and other underground sites for undisturbed hibernation. A system/series of sites required. Vulnerable to loss of insect food supply, due to insecticide use, changing farming practices and loss of broad-leaved tree-cover and loss / disturbance of underground roosts sites.

### Wye Valley Woodlands

**Site Features:** Annex I habitats that are a primary reason for site selection: Beech forests *Asperulo-Fagetum*, *Tilio-Acerion* forests of slopes, screes and ravines, *Taxus baccata* woods of the British Isles. Annex II species present as a qualifying feature, but not a primary reason for site selection: Lesser horseshoe bat *Rhinolophus hipposideros*, 51-100 residents

**Vulnerability data:** Lesser Horseshoe bats are known to migrate between 5km and 10km between their summer and winter roosts. The Lesser Horseshoe Bat is vulnerable to disturbance; light pollution; and habitat loss. Check with the planning ecologist for other issues. NDPs closest to the European Site will need to consider: Woodland habitat buffer. Lesser Horseshoe Bat: Old buildings; woodland locations; sheltered valleys, extensive deciduous woods or dense scrub, close to roost sites. In areas of fragmented habitats, linear habitats such as hedgerows are important corridors. Vulnerable to loss or disturbance of both summer and winter roosts and removal of linear habitat.