

Strategic Environmental Assessment

Scoping Report for:

Walford Neighbourhood Area

April 2018



Consultation on the Scoping Report

The aim of the consultation process is to involve and engage with statutory consultees and other relevant bodies on the scope of the appraisal. In particular, it seeks to:

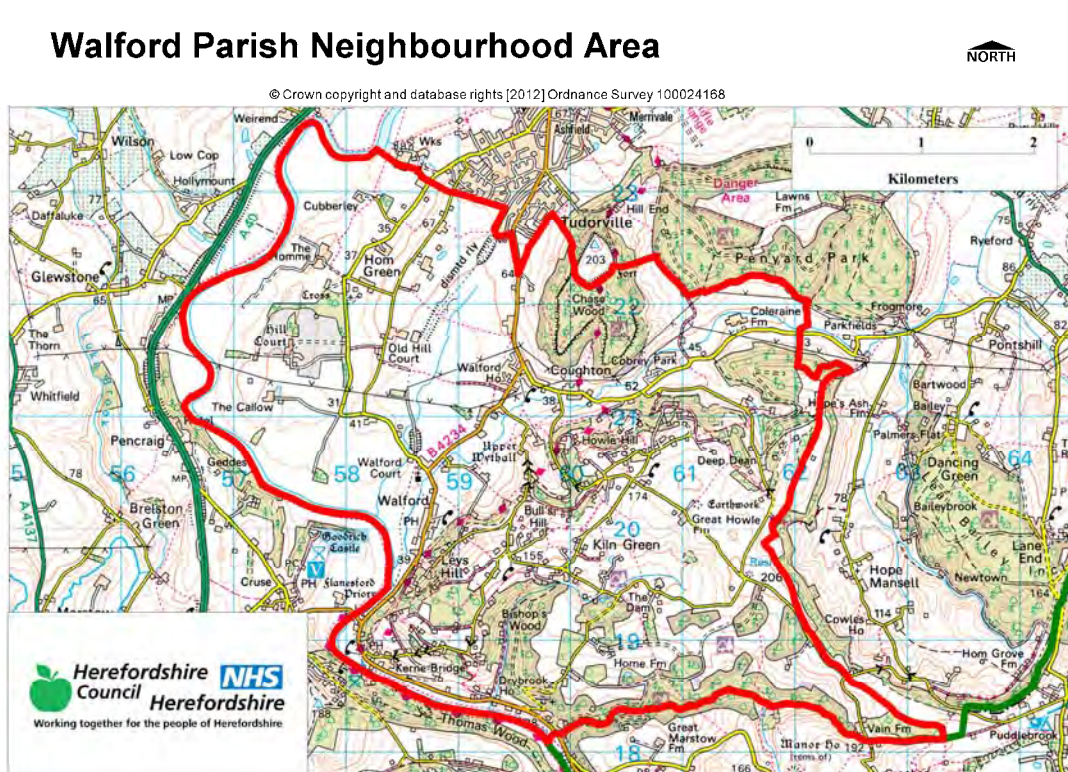
- Ensure the SEA is both comprehensive and sufficiently robust to support the Neighbourhood Development Plan during the later stages of full public consultation;
- Seek advice on the completeness of the plan review and baseline data and gain further information where appropriate;
- Seek advice on the suitability of key sustainability issues;
- Seek advice on the suitability of the sustainability objectives.

Comments on this Scoping Report have been invited from the three consultation bodies as required by the SEA regulations, together with Natural Resources Wales.

The three consultation bodies are as follows:

1. Natural England;
2. Historic England;
3. Environment Agency.

Walford Parish Neighbourhood Area



Template A1: Identification and review of local Neighbourhood Area relevant plans, policies and programmes**Parish Council Name:** Walford.**Neighbourhood Development Plan Name:** Walford Neighbourhood Plan**Date completed:** March 2018

Plans and Programmes	Type of document	Date	Overview	Key message, target/objective/indicator	SEA topic(s) ¹	Implications for the NDP and SEA
The EC Conservation of Habitats and Species Regulations	European Union Legislation	2010	These regulations transpose the Habitats Directive in England, Wales and to a limited extent Scotland by ensuring that activities are carried out in accordance with the Habitats Directive, which is to protect biodiversity through the conservation of natural habitats and species of wild flora and fauna.	The Regulations make it an offence (subject to exceptions) to deliberately capture, kill, disturb, or trade in the animals listed in Schedule 2, or pick, collect, cut, uproot, destroy, or trade in the plants listed in Schedule 4. However, these actions can be made lawful through the granting of licenses by the appropriate authorities.	<ul style="list-style-type: none"> Biodiversity Cultural heritage and the landscape 	The Neighbourhood Plan should be compliant with all the relevant legislation and regulations.
The EC Water Framework Directive	European Union	2000	Commits all EU member states to achieve good qualitative and quantitative status of all water courses by 2015	Aims for 'good status' for all ground and surface waters (rivers, lakes, transitional waters, and coastal waters) in the EU	<ul style="list-style-type: none"> Water 	The Neighbourhood Plan should be compliant with all the relevant legislation and regulations.
The Wildlife and	Domestic	1981	The major legal	The principle mechanism for	<ul style="list-style-type: none"> Biodiversity 	The Neighbourhood Plan

¹ Derived from the LDF General Scoping Report (June 2007)

This document is copyright of Herefordshire Council, please contact the Neighbourhood Planning team if you wish to reuse it in whole or part.

Plans and Programmes	Type of document	Date	Overview	Key message, target/objective/indicator	SEA topic(s) ¹	Implications for the NDP and SEA
Countryside Act (1981)	Legislation		instrument for wildlife protection in Britain, although other significant acts have been passed since. It has numerous parts and supplementary lists and schedules many of which have been amended since publication.	the legislative protection of wildlife in Great Britain.	<ul style="list-style-type: none"> • Cultural heritage and the landscape • Flora and fauna • Material assets • Soil 	should be compliant with all the relevant legislation and regulations.
The Countryside and Right of Way Act (2000)	Domestic Legislation	2000	Creates a statutory right of access on foot to certain types of open land, to modernise the public rights of way system, to strengthen nature conservation legislation, and to facilitate better management of AONBs.	<p>The Act provides for a new right of access on foot to areas of open land comprising: Mountain (land over 600 metres); Moorland; Heath; Downland; Registered common land.</p> <p>There are provisions to consider extending the right in the future to coastal land, but not woodland despite some early publicity suggesting this.</p>	<ul style="list-style-type: none"> • Biodiversity • Cultural heritage and the landscape • Flora and fauna • Material assets • Soil 	The Neighbourhood Plan should be compliant with all the relevant legislation and regulations.
The Natural Environment and Rural Communities Act (2006)	Domestic Legislation	2006	Designed to help achieve a rich and diverse natural environment and thriving rural communities through modernised and simplified arrangements for	Provides that any public body or statutory undertaker in England and Wales must have regard to the purpose of conservation of biological diversity in the exercise of their functions.	<ul style="list-style-type: none"> • Biodiversity • Cultural heritage and the landscape • Flora and fauna • Material assets • Soil 	The Neighbourhood Plan should be compliant with all the relevant legislation and regulations.

Plans and Programmes	Type of document	Date	Overview	Key message, target/objective/indicator	SEA topic(s) ¹	Implications for the NDP and SEA
			delivering Government policy.			
Revised EU Sustainable Development strategy	European Union Strategy	2009	Sets out a single strategy on how the EU will more effectively meet its long-standing commitment to meet the challenges of sustainable development.	Recognises the need to gradually change current unsustainable consumption and production patterns and move towards a better integrated approach to policy making. The Strategy sets overall objectives, targets and concrete actions for seven key priority challenges, predominantly environmental: <ul style="list-style-type: none"> • Climate change and clean energy; • Sustainable transport • Sustainable production and consumption; • Public health threats; • Better management of natural resources; • Social inclusion, demography and migration; • Fighting global poverty. 	<ul style="list-style-type: none"> • Air • Climate factors • Cultural heritage and the landscape • Population and human health 	The Neighbourhood Plan should take into account the objectives of the strategy. The aim of sustainable development should be implicit in its approach.

Plans and Programmes	Type of document	Date	Overview	Key message, target/objective/indicator	SEA topic(s) ¹	Implications for the NDP and SEA
Biodiversity 2020: A strategy for England's wildlife and ecosystem services	National Strategy	2011	Forms part of the UK's Post-2010 Biodiversity Framework by setting out England's contribution towards the UK's commitments under the United Nations Convention of Biological Diversity.	Sets out to halt overall biodiversity loss, support healthy well-functioning ecosystems and establish coherent ecological networks, with more and better places for nature for the benefit of wildlife and people.	<ul style="list-style-type: none"> • Biodiversity 	The NDP should take account of the provisions of the strategy, making the most of opportunities to enhance wildlife habitats or restore degraded ecosystems in the process.
National Planning Policy Framework (NPPF)	National planning policy.	2012	Consolidates the suite of PPG/PPS into one succinct planning policy document.		<ul style="list-style-type: none"> • Air • Biodiversity • Climate factors • Cultural heritage and the landscape • Flora and fauna • Material assets • Population and human health • Soil • Water 	The NDP should take into account the relevant policies set within the NPPF.
Planning Practice Guidance	Government Guidance	2014	Provides guidance to local planning authorities and others on the operation of the planning system.		<ul style="list-style-type: none"> • Air • Biodiversity • Climate factors • Cultural heritage and the landscape • Flora and fauna • Material assets • Population and human health • Soil • Water 	The NDP should take into account the planning guidance provided within these documents.

Plans and Programmes	Type of document	Date	Overview	Key message, target/objective/indicator	SEA topic(s) ¹	Implications for the NDP and SEA
Herefordshire Core Strategy, (adopted) 2011-2031	Development Plan Document (DPD)	2015	Sets out the vision, objectives and policies for the Herefordshire Local Plan (Core Strategy), which will guide development across the county up to 2031.	<p>Outlines the emerging suite of countywide planning policies relating to housing, economic development and the environment, which the NDP will need to be in conformity with where relevant.</p> <p>The Core Strategy includes a range of objectives, five of which directly relate to rural areas:</p> <ul style="list-style-type: none"> • To meet the housing needs of all sections of the community • To improve access to services in rural areas • To strengthen the economic viability of the villages and their rural hinterlands • To achieve sustainable communities and protect the environment • To conserve, promote, utilise and enjoy our natural, built, historic and cultural assets for the fullest benefit of the whole community. 	<ul style="list-style-type: none"> • Air • Biodiversity • Climate factors • Cultural heritage and the landscape • Flora and fauna • Material assets • Population and human health • Soil • Water 	<p>The NDP should take account of relevant policies set within in the Core Strategy.</p> <p>Where necessary, the NDP should provide services, facilities and employment opportunities that are accessible to both local and neighbouring communities.</p> <p>Walford is within the Ross on Wye HMA. This settlement of Walford (Coughton) is allocated as a 4.14 settlement, Bishopswood and Howle Hill as 4.15 settlements, meaning they are identified for proportionate growth.</p> <p>The housing target for Walford within the plan period is 91 units. There have been 3 completion and 22 commitments from 2011 to April 2017, leaving a remaining balance of 66 dwellings to allocate.</p>

Plans and Programmes	Type of document	Date	Overview	Key message, target/objective/indicator	SEA topic(s) ¹	Implications for the NDP and SEA
				<p>To achieve a thriving rural Herefordshire, the Core Strategy seeks to enhance the role the villages have traditionally played in as accessible, sustainable centres for their rural catchments.</p> <p>Walford is within the Ross on Wye Housing Market Area (HMA). The target for proportionate growth across identified areas is 14%.</p>		
Herefordshire Local Transport Plan 2016-2031	Corporate	2016	<p>The Local Transport Plan outlines the significant role that transport will play to enable the delivery of the Core Strategy proposals. This sets out the Council's strategy for supporting economic growth, social inclusion and reducing the environmental impacts of transport, as well as the program of investment for the period 2016 to 2031.</p>	<p>The Transport Plan aims to increase highway capacity for new development sites as improve efficiency of existing transport network.</p> <p>The document includes five key objectives, one which plans to enable economic growth connecting new roads with developments. Intrinsic to this is to provide a good quality transport network. The other objectives aim to promote healthy lifestyles with pollution reduction and active travel schemes. Improvements will be made to make journeys easier and safer, ensuring access to services for living in</p>	<ul style="list-style-type: none"> • Air • Climate factors • Population and human health 	<p>The LTP does not explore current transport issues in the Walford neighbourhood area, but any new development proposed through the NDP should seek to reduce the environmental impacts of transport.</p>

This document is copyright of Herefordshire Council, please contact the Neighbourhood Planning team if you wish to reuse it in whole or part.

Plans and Programmes	Type of document	Date	Overview	Key message, target/objective/indicator	SEA topic(s) ¹	Implications for the NDP and SEA
				rural areas maximising accessibility.		
Understanding Herefordshire Report	Built and natural environment	2016	<p>Important to understand the place such as the local economy natural and built environment in which people live, learn and work as part of understanding their quality of life</p> <p>Promotion of healthy lifestyle choices.</p> <p>Enable development for economy and housing to required levels.</p> <p>Growth should be supported by sustainable transport measures.</p>	<p>An air quality management plan is in place to tackle this. Destination Hereford project is in place to give locals more sustainable transport options.</p> <p>Sustainable transport measures will also help to promote active lifestyles within Herefordshire.</p>	<p>Improve air quality.</p> <p>Have a more diverse range of transport options.</p>	None identified.

Plans and Programmes	Type of document	Date	Overview	Key message, target/objective/indicator	SEA topic(s) ¹	Implications for the NDP and SEA
Malvern Hills AONB Management Plan 2014-2019	Corporate	2015	The Management Plan is the prime document which sets out the vision and objectives for the Malvern Hills AONB area and the priorities for its management.	Identifies the issues and challenges facing the special features of the area and contains 21 guiding principles and 14 strategic objectives and 76 policies which will help address them.	<ul style="list-style-type: none"> • Air • Biodiversity • Climate factors • Cultural heritage and the landscape • Flora and fauna • Material assets • Population and human health • Soil • Water 	The Walford neighbourhood area is not within or adjacent to the Malvern Hills AONB.
Wye Valley AONB management Plan 2015-2020	Corporate	2015	The Management Plan is the prime document which sets out the vision for the Wye Valley AONB area and the priorities for its management.	Sets out a range of objectives which seek to reconcile the competing interests of the environment, the ecology and the social and economic well-being of the AONB.	<ul style="list-style-type: none"> • Air • Biodiversity • Climate factors • Cultural heritage and the landscape • Flora and fauna • Material assets • Population and human health • Soil • Water 	Most of the central and all of the western half of the Walford Neighbourhood Plan Area lies within the Wye Valley AONB so will need to take into consideration the AONB management Plan.
Herefordshire Economic Development Strategy 2011-2016	Corporate	2011	Aims to increase the economic wealth of Herefordshire by setting out proposals and to support business growth up to 2016.	The document outlines the path and direction to foster economic vitality within Herefordshire. Key objectives therefore include: <ul style="list-style-type: none"> • Sustaining business survival and growth • Increasing wage levels, 	<ul style="list-style-type: none"> • Cultural heritage and the landscape • Material assets • Population and human health 	None of merit.

Plans and Programmes	Type of document	Date	Overview	Key message, target/objective/indicator	SEA topic(s) ¹	Implications for the NDP and SEA
				<p>range and quality of jobs</p> <ul style="list-style-type: none"> • Having a skilled population to meet future work needs • Developing the county's built infrastructure so enterprise can flourish. 		
Herefordshire Employment Land Study	Evidence	2012	Includes employment land assessments for the plan period 2011-2031. The study includes Quantitative and Qualitative assessments of employment land, assessment of market demand and need, as well as providing forecasts and recommendations for future employment need over the plan period.	<p>This study covers existing employment sites in Hereford, the five market towns and their rural hinterlands.</p> <p>There are no employment land allocations within Walford at present and so the study does not identify sites which are worthy of continued protection from alternative uses. Nor does it make any recommendations in respect of employment need within the neighbourhood area.</p>	<ul style="list-style-type: none"> • Material assets • Population and human health 	None of merit; however the NDP process may have to explore whether there is any employment need locally and if so whether there is any scope for providing employment land and premises.

Plans and Programmes	Type of document	Date	Overview	Key message, target/objective/indicator	SEA topic(s) ¹	Implications for the NDP and SEA
Herefordshire Housing Land Availability Assessment (SHLAA)	Evidence	2015	<p>The HELAA aims to justify site allocations in plans by:</p> <ul style="list-style-type: none"> Identifying sites which are capable of delivering housing development Assessing sites for their housing potential; and Predicting when a site could be developed for housing. 	<p>Walford (Coughton) was one of the 48 main settlements surveyed in the original 2012 SHLAA. The 2015 SHLAA also identified a number of sites in Walford.</p> <p>2012 O/Wal/002 Land north of Coughton Place 1.29 O/Wal/003 Land east of Coughton Place 4.80 O/Wal/004 Land adjacent to Four Seasons 0.79 O/Wal/005 Land adjacent to the Lawns 2.65 O/Wal/006 Land adjacent to Fowbridge Garden 0.88 O/Wal/007 Land adjacent to Cedar Grove, 2.53 O/Wal/008 Land adjacent to Lower Wythall 6.77</p> <p>2015 HLAA/355/001 Land opposite the Old Vicarage 1.60</p>	<ul style="list-style-type: none"> Air Biodiversity Climate factors Cultural heritage and the landscape Flora and fauna Population and human health Soil Water 	<p>The parish of Walford has had a SHLAA assessment undertaken; an updated local site assessment exercise could be undertaken for this parish if site allocations are likely to be proposed.</p>

Plans and Programmes	Type of document	Date	Overview	Key message, target/objective/indicator	SEA topic(s) ¹	Implications for the NDP and SEA
Herefordshire Local Housing Market Assessment (LHMA)	Evidence	2013	Builds on an earlier Strategic Housing Market Assessment (SHMA) developed for Herefordshire and Shropshire. Its purpose is to inform the Local Plan's policies regarding housing need and demand (for market and affordable housing) within each of the 7 Housing Market Areas (HMAs) in Herefordshire between 2011 and 2031.	<p>Walford falls within Ross on Wye HMA. Here, the study reveals that:</p> <ul style="list-style-type: none"> 55% of households are unable to afford market housing. There is an annual requirement for 58 affordable dwellings between 2012 and 2017. <p>The study identifies that, in rural parts of the Ross on Wye HMA between 2011-2031, there is a need for:</p> <ul style="list-style-type: none"> 690 market houses 490 affordable houses. <p>The study highlights that within the Ross on Wye HMA the overall estimated housing need by size 2012-2017 is as follows: 1 Bed - 54.4%, 2 bed – 18.4%, 3 bed – 28.2%</p>	<ul style="list-style-type: none"> Air Biodiversity Climate factors Cultural heritage and the landscape Flora and fauna Population and human health Soil Water 	<p>The LHMA provides an indication of housing needs and affordability within the Ross on Wye HMA.</p> <p>It provides evidence that could be used to inform policies or market and affordable housing requirements in the Walford NDP.</p>

Plans and Programmes	Type of document	Date	Overview	Key message, target/objective/indicator	SEA topic(s) ¹	Implications for the NDP and SEA
Herefordshire Local Housing Requirements Study 2012 (updated in 2014)	Evidence	2014	Technical assessment of the housing market and potential future local housing requirements which supports planning policy regarding the amount of growth, housing tenure and housing type needed within Herefordshire up to 2031.	<p>The delivery of 5,300 homes in the rural areas would:</p> <ul style="list-style-type: none"> • Support growth in the rural population by 6% • Increase the number of households by 14.5% <p>Forecasts also predict that growth in the population of the rural areas is likely to be primarily through an increase in those aged over 75.</p> <p>Moderate growth is expected in the 30-44 and 60-74 age brackets.</p> <p>The Local Housing Requirements Study therefore anticipates continuing improvements in life expectancy; significant growth is expected of those in their 80s, with the existing population in their 40s and 50s moving into retirement. As a consequence, the rural areas will face an increasing urgency to provide more 3 bedroom homes, with more 1 and 2 bed homes required in the affordable sector.</p>	<ul style="list-style-type: none"> • Air • Biodiversity • Climate factors • Cultural heritage and the landscape • Flora and fauna • Material assets • Population and human health • Soil • Water 	<p>This study provides an indication of housing requirements in the rural areas and the Ross on Wye HMA.</p> <p>This evidence can be used to inform the content of the Walford NDP, which could include policies to facilitate the provision of the right types of homes in the right places</p>

Plans and Programmes	Type of document	Date	Overview	Key message, target/objective/indicator	SEA topic(s) ¹	Implications for the NDP and SEA
Herefordshire Rural Housing Background Report	Evidence	2013	Provides the justification for the proportional housing growth targets outlined in the Core Strategy	Walford is a 4.14, Bishopswood and Howle Hill are 4.15 settlements, which combined are expected to provide proportional growth of 14%.	<ul style="list-style-type: none"> • Air • Biodiversity • Climate factors • Cultural heritage and the landscape • Flora and fauna • Material assets • Population and human health • Soil • Water 	The Walford NDP will need to be in conformity with the provisions of Core Strategy Policy RA1 and RA2.
Herefordshire Draft Gypsies and Travellers Assessment	Evidence	2016	Assesses the accommodation needs of Gypsies and Travellers across Herefordshire.	<p>Key findings from the survey of Gypsy and Traveller households in 2012 found that:</p> <ul style="list-style-type: none"> • 31% of households surveyed have some sort of accommodation need • Of the 17 households with an accommodation need, 7 had a requirement for at least one additional pitch • 10 households had a requirement for bricks and mortar housing • There is an additional requirement for 7 pitches and 9 units of Registered Social Landlord accommodation within Herefordshire. 	<ul style="list-style-type: none"> • Air • Biodiversity • Climate factors • Cultural heritage and the landscape • Flora and fauna • Material assets • Population and human health • Soil • Water 	The Walford NDP must establish whether any of the need identified in this assessment falls within the neighbourhood area and make appropriate provisions for it.

Plans and Programmes	Type of document	Date	Overview	Key message, target/objective/indicator	SEA topic(s) ¹	Implications for the NDP and SEA
Herefordshire Local Biodiversity Action Plan	Evidence	2007	Focuses conservation efforts on the areas within Herefordshire that will result in the greatest benefit for ecological networks, habitats and species.	Integrating biodiversity objectives with other environmental, social and economic needs can provide a sustainable living and working environment that benefits both people and nature.	<ul style="list-style-type: none"> Biodiversity 	The NDP can help to achieve the LBAP priorities.
Building Biodiversity into the LDF	Evidence	2009	Provides the Council's Local Plan (Core Strategy) with evidence in respect of biodiversity and geodiversity, identifying both opportunities and constraints across Herefordshire.	This document provides useful information in respect of Hereford and the market towns only.	<ul style="list-style-type: none"> Air Biodiversity Climate factors Cultural heritage and the landscape Flora and fauna Material assets Population and human health Soil Water 	There is a lack of information about rural areas which means it will be necessary to gather and assess existing biodiversity and geodiversity data, in order to ensure that the Walford NDP can overcome any existing constraints and capitalise on opportunities to enhance habitats and their networks.

Plans and Programmes	Type of document	Date	Overview	Key message, target/objective/indicator	SEA topic(s) ¹	Implications for the NDP and SEA
Herefordshire Green Infrastructure Strategy	Evidence	2010	Develops a framework of natural and culturally important features and functions so that planning for a sustainable future is at the heart of planning within Herefordshire.	Establishes policies and principles for the protection and enhancement of those features and functions that contributes to the environment of Herefordshire across a range of scales.	<ul style="list-style-type: none"> • Air • Biodiversity • Climate factors • Cultural heritage and the landscape • Flora and fauna • Material assets • Population and human health • Soil • Water 	The study provides evidence that could be taken into account when preparing policies for the Walford NDP .
Renewable Energy Study	Evidence	2010	Assesses the energy demand within Herefordshire and the ability for the county to accommodate renewable and low carbon energy technologies.	<p>The total energy demand excluding transport for Herefordshire, at that point in time, was calculated as being:</p> <ul style="list-style-type: none"> • Electrical: 731 GWh/yr • Heat: 1,810 GWh/yr • Total: 2,541 GWh/yr <p>There is scope for all types of renewable energy production.</p>	<ul style="list-style-type: none"> • Air • Biodiversity • Climate factors • Cultural heritage and the landscape • Flora and fauna • Material assets • Population and human health • Soil • Water 	The study provides evidence that could be taken into account when preparing policies for the Walford NDP .

Plans and Programmes	Type of document	Date	Overview	Key message, target/objective/indicator	SEA topic(s) ¹	Implications for the NDP and SEA
Herefordshire Playing Pitch Assessment	Evidence	2012	Produces a strategic framework, audit and assessment and needs analysis of outdoor sports pitches and facilities for Herefordshire. The document arises as a result of a recommendation in the Herefordshire and Worcestershire Sports Facilities Framework to develop local standards for playing fields and sports pitches throughout Herefordshire.	<p>The study updates components of the Herefordshire and Worcestershire Sports Facilities Framework 2010 such as updating population forecasts, setting local standards for synthetic turf pitches and grass playing fields within Herefordshire. It identifies any current gaps in provision, and looks forward to 2031 to assess what facilities are likely to be required by that date.</p> <p>In terms of Walford parish itself, the study reveals that there is:</p> <ul style="list-style-type: none"> • 2.7ha of playing pitch area (at the Primary School) <p>There are no hectares of playing pitch area with secured community access, however there is informal use of the facilities which have been rated as having a quality of 62% with no changing accommodation.</p>	<ul style="list-style-type: none"> • Biodiversity • Cultural heritage and the landscape • Flora and fauna • Material assets • Population and human health 	<p>The study provides evidence that could be taken into account when preparing policies for the Walford NDP.</p> <p>Additional local evidence may be required to identify if there is a need for any secured playing pitch facilities within the Parish.</p>

Plans and Programmes	Type of document	Date	Overview	Key message, target/objective/indicator	SEA topic(s) ¹	Implications for the NDP and SEA
Open Spaces Study	Evidence	2006	The 2006 space audit and assessment of need is a snap shot of the quality, quantity and distribution of open space across Herefordshire.	<p>Key findings that Ross on Wye area there is an:</p> <ul style="list-style-type: none"> • Extensive under provision of parks, amenity green space, outdoor sport and gardens. • Extensive over provision for natural and semi natural green space. • And an average provision for facilities for children and young people. <p>Open space for the Walford Neighbourhood area is not specifically referred to but falls within the Ross on Wye area.</p>	<ul style="list-style-type: none"> • Biodiversity • Climate factors • Cultural heritage and the landscape • Flora and fauna • Material assets • Population and human health 	The open space audit and assessment of does not give a specific indication of open space shortfalls and surpluses in Walford .

Plans and Programmes	Type of document	Date	Overview	Key message, target/objective/indicator	SEA topic(s) ¹	Implications for the NDP and SEA
Play Facilities Study	Evidence	2012	The Play Facilities Study 2012 updates the previous play facilities analysis under the Open Spaces Study 2006 and provides guidance and a framework for the development, delivery and continued sustainability of providing new and improved play facilities for children and young people in Herefordshire to 2031.	<p>In terms of Walford itself, the study reveals that there is no formal play provision in the village itself, although a new facility is proposed subject to availability and funding.</p> <p>Since the 2012 assessment a new play facility has been completed and is suitable for younger children.</p>	<ul style="list-style-type: none"> • Biodiversity • Climate factors • Cultural heritage and the landscape • Flora and fauna • Material assets • Population and human health 	The study provides evidence that could be taken into account when preparing policies for the Walford NDP .
Strategic Flood Risk Assessment (SFRA) and Water Cycle Study	Evidence	2009	<p>The Strategic Flood Risk Assessment (SFRA) provides a summary of flood risk in Herefordshire to inform the location of future development.</p> <p>The Water Cycle Study examines how water resources and water supply infrastructure,</p>	<p>Walford is classified as an area at highest risk of fluvial flooding in the Lower Wye catchment. Therefore requires a holistic integrated approach to flood risk management.</p> <p>Walford sits within the Ross on Wye Water Resource Zone (WRZ).</p> <p>The Lower Wye Catchment is part of a large linear ecosystem which acts as an</p>	<ul style="list-style-type: none"> • Biodiversity • Climate factors • Material assets • Population and human health • Water 	<p>New development proposed through the Walford NDP should be assessed against the capacity of local infrastructure.</p> <p>Up-to-date flood risk information should be gathered from the Environment Agency, in order to ensure that any flood risks are considered when preparing the Walford NDP.</p>

Plans and Programmes	Type of document	Date	Overview	Key message, target/objective/indicator	SEA topic(s) ¹	Implications for the NDP and SEA
			wastewater treatment, water quality, sewerage and flood risk could constrain growth across Herefordshire.	<p>important wildlife corridor, an essential migration route and breeding area for many nationally and internationally important species.</p> <p>SPR 10 – 20% - Potentially highly suitable for infiltration source control</p> <p>UH Tp 6 – 7 hours = Moderately rapid response catchment.</p> <p>The Lower Wye has a 14.9 standard percentage run off.</p> <p>The Lower Wye is identified as a nutrient sensitive water body under the urban waste water treatment directive.</p>		

Appendix A2 – Baseline information for Walford.

N.B. This is based on countywide baseline information with some additions relevant to Walford (in red). Where no locally specific data is available for current status, trends and targets, only countywide data is reported. Any gaps in data may be filled following additional research.

SA Objective ¹	SA Theme	Proposed indicator	Current status	Trends	Targets	Issues and constraints	Baseline (information) source
SEA Topic covered by objective: <i>Biodiversity, flora and fauna</i>							
13. Value, maintain, restore and expand county biodiversity.	Natural environment	Net change in condition of SSSIs across Herefordshire.	<p>The 2011-2013 AMR does not contain updated conservation data.</p> <p>2010/11: 27% of Herefordshire's SSSI land was in favourable condition.</p> <p>Within Walford there are 2 SSSIs. River Wye (Unfavourable Recovering)(Border); Coughton Wood & Marsh (Unfavourable Recovering)</p>	<p>2006: 22% 2007: 22% 2008: 22% 2010: 24 %</p> <p>Proportion of SSSI land that was in unfavourable condition but recovering increased between 2010 and 2012 going from 41% to 65%.</p> <p>Proportion in unfavourable and declining condition had also decreased</p>	<p>% of SSSI land in favourable condition (Increase)</p> <p>% of SSSI land in unfavourable condition but recovering (Increase)</p> <p>% of SSSI land in unfavourable condition and declining (Decrease)</p>	<p>Herefordshire's SSSIs are in extremely poor condition relative to England as whole, where 96.1% of all SSSI land was in favourable condition in April 2014.</p> <p>The proportion of SSSI in unfavourable condition but recovering is greater than England as a whole, where the figure currently stands at 58.6%.</p>	<p>Understanding Herefordshire: An integrated needs assessment</p> <p>NE & DEFRA Website</p>

¹ Derived from the Pre Submission Core Strategy Sustainability Appraisal Assessment (May 2014)

SA Objective ¹	SA Theme	Proposed indicator	Current status	Trends	Targets	Issues and constraints	Baseline (information) source
				from 4% to 1%.			
13. Value, maintain, restore and expand county biodiversity.	Natural environment	After use of mineral sites especially wildlife habitat creation	<i>There is no countywide or locally specific data available at present.</i>	-	Percentage of opportunities taken.	Should be monitored through AMR following the adoption of the Core Strategy, in line with SA recommendations.	-
13. Value, maintain, restore and expand county biodiversity.	Natural environment	Phosphate levels within the River Wye SAC and adjoining tributaries that receive increased phosphates from proportional growth.	Walford NDP falls within the River Wye SAC. The parish is within the River Wye catchment area.	N/A	N/A	N/A	Nutrient Management Plan

SA Objective ¹	SA Theme	Proposed indicator	Current status	Trends	Targets	Issues and constraints	Baseline (information) source
13. Value, maintain, restore and expand county biodiversity.	Natural environment	Changes to protected habitats and impacts of species within the Herefordshire Local Biodiversity Action Plan.	<p>The 2013 - 2014 AMR does not contain updated conservation data.</p> <p><i>There is no locally specific data available at present.</i></p>	<p>2010/11: 17 Habitat Action Plans and 14 Species Action Plans are currently in operation across Herefordshire.</p> <p>There are no formal records of any unacceptable adverse impacts on habitats or protected species.</p> <p>Originally 156 Priority Species were identified for inclusion in Herefordshire's LBAP.</p> <p>Similarly Herefordshire's LBAP covered 23 habitats with Action Plans.</p>	<p>To protect and where possible enhance the habitats of protected species identified.</p> <p>No net losses.</p>	Herefordshire Biological Records Centre (HBRC) holds limited data on some individual sites.	Herefordshire Council AMR (2013/14)

This document is copyright of Herefordshire Council. Please contact the Neighbourhood Planning team if you wish to reuse it in whole or part.

SA Objective ¹	SA Theme	Proposed indicator	Current status	Trends	Targets	Issues and constraints	Baseline (information) source
13. Value, maintain, restore and expand county biodiversity.	Natural environment	Changes in the areas of designated nature conservation sites as a consequence of planning permission.	<p>Walford NDP area has:</p> <p>SSSI: 2 SAC: 3 SWS: 10</p> <p>There are no, NNRs and LNRs within the parish.</p>	As of 2012, there had been no change in the areas of designated nature conservation sites as a consequence of the planning permissions granted.	<p>To protect and where possible enhance the habitats of protected species identified.</p> <p>No net losses.</p>	Herefordshire Biological Records Centre (HBRC) holds limited data on some individual sites.	<p>Herefordshire Council Initial Screening Report for the Neighbourhood Plan</p> <p>Walford March 2018</p>
13. Value, maintain, restore and expand county biodiversity.	Natural environment	Proportion of local sites where positive conservation management has or is being implemented.	<p>The Parish Area has the following landscape types:</p> <p>Principal settled farmlands; Principal Wooded Hills; Wooded Hills and Farmlands; Riverside meadows; Forest Smallholdings and Dwellings,</p>	-	No specific targets identified.	Should be monitored through AMR following the adoption of the Core Strategy, in line with SA recommendations.	Herefordshire Landscape Character Assessment (2004 updated 2009)

SA Objective ¹	SA Theme	Proposed indicator	Current status	Trends	Targets	Issues and constraints	Baseline (information) source
SEA Topic covered by objectives: <i>Material assets</i>							
14. Use natural resources and energy more efficiently.	Resource consumption and climate change	Maintaining Herefordshire Council's County Site and Monuments Register.	Countywide data would be too large to incorporate into Whilst there is no qualitative, locally specific data available at present, there are 256 scheduled monuments in Walford according to the latest version of the register.	-	No specific targets identified, but need to ensure that the register is kept up to date.	Should be monitored through AMR following the adoption of the Core Strategy, in line with SA recommendations.	Herefordshire Environmental Records Register (search March 2018)
14. Use natural resources and energy more efficiently.	Resource consumption and climate change	Monitoring changes to historic landscapes.	Historic Landscape Character assessments have only been undertaken for Hereford City. Rapid townscape Assessments (2010) were only undertaken for Hereford, Ledbury and Ross.	-	No specific targets identified.	Should be monitored through AMR following the adoption of the Core Strategy, in line with SA recommendations.	Historic Landscape Character Assessment for Hereford. Rapid townscape Assessments (2010)
SEA Topic covered by objective: <i>Population, Biodiversity, Flora and Fauna</i>							

SA Objective ¹	SA Theme	Proposed indicator	Current status	Trends	Targets	Issues and constraints	Baseline (information) source
15. Value, protect, enhance and restore the landscape quality of Herefordshire, including its rural areas and open spaces.	Natural environment	Number of developments meeting and surpassing national design standards.	<i>There is no countywide or locally specific data available at present.</i>	-	No specific targets identified.	Should be monitored through AMR following the adoption of the Core Strategy, in line with SA recommendations.	-
15. Value, protect, enhance and restore the landscape quality of Herefordshire, including its rural areas and open spaces.	Natural environment	The need for, frequency and outcomes of planning enforcement investigations/ planning appeals concerning aspects of local loss of heritage assets and locally important buildings. There is no conservation area within Walford.	Countywide data would be too large to incorporate into this template. There are no outstanding enforcement actions or appeals concerning local loss of heritage assets and locally important buildings within Walford at present.	No historic records of any planning enforcement action or appeals concerning locally important buildings .There is no conservation area within Walford.	To wherever possible improve upon or otherwise maintain current status.	Current status must be verified by Dvt Mgt and Enforcement Officers, but the NDP can help to avoid enforcement action and appeals during the plan period.	Council Dvt Mgt records (searched March 2018)

SA Objective ¹	SA Theme	Proposed indicator	Current status	Trends	Targets	Issues and constraints	Baseline (information) source
SEA Topic covered by objective: <i>Climatic Factors</i>							
16. Reduce Herefordshire's vulnerability to the impacts of climate change as well as its contribution to the problem.	Resource consumption and climate change.	Transport patronage by mode	<p>% of Herefordshire residents who travel to work by:</p> <p>Car: 70.1% Foot: 14.7% Bicycle: 4.3% Bus: 2% Train: 0.8% Motorbike: 0.8% Taxi: 0.3% Other: 7%</p> <p><i>There is no locally specific data available at present</i></p>	The number of people cycling or travelling by bus as the main form transport to get to work declined between 2001 and 2011 – across England and Wales there was little change in either. Walking or driving a car or van on the other hand increased.	To encourage the take up of lesser polluting modes of transport.	There are a lack of transport options for many rural communities and therefore high car ownership and dependency – the last decade has seen a 15 per cent increase in household car ownership, although this is not reflected in traffic flows of recent years with volumes in Hereford City and wider county having decreased. The proportion of people working from home increased over the decade from 15 per cent in 2001 to 17 per cent in 2011.	2011 Census

SA Objective ¹	SA Theme	Proposed indicator	Current status	Trends	Targets	Issues and constraints	Baseline (information) source
16. Reduce Herefordshire's vulnerability to the impacts of climate change as well as its contribution to the problem.	Resource consumption and climate change.	Number of decentralised energy schemes granted permission.	<i>There is no countywide or locally specific data available at present.</i>	-	To contribute towards the national target.	Should be monitored through AMR following the adoption of the Core Strategy, in line with SA recommendations.	-
16. Reduce Herefordshire's vulnerability to the impacts of climate change as well as its contribution to the problem.	Resource consumption and climate	Total CO2 emissions per capita	<p>Latest figure dates back to 2010: 1.61 million tonnes (mtCO²)</p> <p>Domestic emissions accounted for 35 per cent (438,237 tonnes) of Herefordshire's carbon footprint.</p> <p>There is no locally specific data available at present.</p>	Between 2005 and 2010 Herefordshire's total and per capita carbon emission reduced by 7% and 8% respectively; while UK's total and per capita carbon emission reduced by 8% and 12% respectively within the same period. This trend hides an increase in emissions between 2009 and 2010 when	To reduce the overall carbon emissions.	CO ² emissions produced are decreasing.	<p>Understanding Herefordshire: An integrated needs assessment (June 2013).</p> <p>Understanding Herefordshire: Joint Strategic Needs Assessment (July 2015).</p>

SA Objective ¹	SA Theme	Proposed indicator	Current status	Trends	Targets	Issues and constraints	Baseline (information) source
				total emissions in the county increased by 5% the same as across the UK (+5%).			
SEA Topic covered by objective: <i>Water</i>							
17. Reduce the risk of flooding and the resulting detriment to public wellbeing, the economy and the environment.	Natural environment	Number of planning permissions granted contrary to the advice of the Environment Agency on flood defence grounds.	2010/11: None 2011/13: Not specified 2013/14: None <i>There is no locally specific data available at present.</i>	There have been no approvals contrary to EA advice since reporting began in 2004.	To have no applications permitted contrary to EA advice.	None identified.	Herefordshire Council AMR (2010/11)
SEA Topic covered by objective: <i>Water, air, soil, material assets</i>							
18. Minimise local and global pollution and protect or enhance environmental resources.	Natural environment	Agricultural land usage by quality . LA to monitor the number of hectares of the best and most versatile	The agricultural land classification around Walford is mainly Grade 3 and 4 (Good to poor) with a significant amount of Grade 1 & 2 (Excellent to V	-	Measure the number of hectares of best and most versatile soil lost through development.	Should be monitored through AMR following the adoption of the Core Strategy, in line with SA recommendations.	DEFRA 'Magic' website for land classification

SA Objective ¹	SA Theme	Proposed indicator	Current status	Trends	Targets	Issues and constraints	Baseline (information) source
		agricultural land (grades 3a and higher) lost to development.	Good). There is also a small patch of Very Poor (Grade 5) land near Coughton.				
18. Minimise local and global pollution and protect or enhance environmental resources.	Natural environment	Percentage of river length assessed as good or very good chemical quality and ecological quality as required by the Water Framework Directive	Latest figure dates back to 2005: 84% <i>There is no locally specific data available at present.</i>	Figure steadily improved before going into decline: Herefordshire 1999 85.9%, 2000 89.5%, 2001 92.2%, 2002 91.8%	To ensure that rivers meet their conservation objectives and do not fall below the required standard of quality.	None identified.	The State of Herefordshire (2007) Water Framework Directive (2000)
SEA Topic covered by objective: <i>Soil</i>							
19. Ensure integrated, efficient and balanced land use.	Built environment	Percentage of all new development completed on previously developed land.	2010/11: 67% 2011-13: 57% 2013-14: 65% <i>There is no locally</i>	Completions on PDL had risen to 71% by 2005.	To increase the number of homes built on PDL in line with the provisions of national	The number of brownfield completions has fallen slightly in recent years, though this is probably the	Herefordshire Council AMR (2010/11), (2011-2013) and (2013-2014)

SA Objective ¹	SA Theme	Proposed indicator	Current status	Trends	Targets	Issues and constraints	Baseline (information) source
			<i>specific data available at present.</i>		planning policy.	offshoot of tough market conditions.	
19. Ensure integrated, efficient and balanced land use.	Built environment	Housing densities in urban and rural areas	<i>There is no countywide or locally specific data available at present.</i>	-	No specific targets identified.	Should be monitored through AMR following the adoption of the Core Strategy, in line with SA recommendations.	-
19. Ensure integrated, efficient and balanced land use.	Built environment	Level of development in urban areas compared to rural.	<i>There is no countywide or locally specific data available at present.</i> This indicator would not be applicable to rural NDPs.	N/A	N/A	N/A	N/A
SEA Topic covered by objective: <i>Cultural heritage</i>							
20. Value, protect and enhance the character and built quality of settlements and neighbourhoods and the county's	Built environment	Number and percentage of listed buildings and Scheduled Ancient Monuments on Buildings at Risk	Up-to-date countywide information will be presented in the next AMR and which is due to be published in 2014. However, this data would be too large	There were 71 heritage assets in Herefordshire that were considered to be at high risk and included in the Heritage at Risk Register	To wherever possible improve upon or otherwise maintain current status.	None of Walford's listed buildings or SAMs are considered to be at risk at present.	Buildings at Risk Register (Historic England; search March 2018)

SA Objective ¹	SA Theme	Proposed indicator	Current status	Trends	Targets	Issues and constraints	Baseline (information) source
heritage assets, including conservation areas, historic environment and cultural heritage.		Register (Historic England).	to incorporate into this template. There are numerous listed buildings within the parish and two SAMs. None are currently recorded in the Buildings at Risk Register	January 2017.			
20. Value, protect and enhance the character and built quality of settlements and neighbourhoods and the county's heritage assets, including conservation areas, historic environment and cultural heritage.	Built environment	The need for, frequency and outcomes of planning enforcement investigations/ planning appeals concerning aspects of local loss of heritage assets, locally important buildings within the parish and particularly within a conservation area.	Countywide data would be too large to incorporate into this template. There are no outstanding enforcement actions or appeals concerning local loss of heritage assets locally important buildings within Walford.	No historic records of any planning enforcement action or appeals concerning locally important buildings. There is no conservation area within Walford	To wherever possible improve upon or otherwise maintain current status	Current status must be verified by Dvt Mgt and Enforcement Officers, but the NDP can help to avoid enforcement action and appeals during the plan period.	Council Dvt Mgt records (searched March 2018)

Appendix A3 – Environmental issues identified from the Walford NDP baseline

These environmental issues are the same as most of those identified for the Herefordshire Core Strategy¹

SEA Topic		Environmental issue	SA objectives
1	Air	High reliance upon the private car causing high levels of air pollution and in Hereford in particular	Objective 16
		Need to reduce carbon emissions by encouraging alternative modes of travel.	
2	Biodiversity	Habitats and species of national, regional and local importance are under pressure from the adaptation and diversification of farming and forestry employment.	Objectives 13 & 15
		Habitats and species of national, regional and local importance are under pressure from development	
		Minimise loss of biodiversity and expand opportunities for wildlife everywhere.	
3	Climatic factors	Continuing need to reduce greenhouse gas emissions through planning, design and build.	Objective 16
4	Cultural heritage	Walford Parish has numerous listed buildings and two Scheduled Ancient Monuments, all of which require ongoing protection and many in need of high levels of maintenance.	Objective 20
5	Flora and fauna	Conserve and enhance the character and quality of historic landscapes, including all types of natural flora and fauna.	Objective 15
6	Material assets	How the countryside can continue to be managed in an economically, socially and environmentally beneficial way in the face of continuing pressures on traditional farming.	Objectives 14 & 18
7	Population	Minimise energy waste through good designs, which help to reduce energy consumption and maximise efficiency.	Objective 15
		Need to avoid enforcement investigations/action concerning locally important buildings and those within conservation areas in particular.	
8	Soil	Promoting development of previously developed land and buildings as opposed to greenfield sites or agricultural land of the highest quality.	Objectives 18 & 19

¹ Derived from the Pre-submission Core Strategy Sustainability Appraisal Assessment (May 2014) and LDF General Scoping Report (June 2007)

9	Water	Issues relating to availability of resources, foul drainage, pollution, and abstraction in a county which supports water dependent biodiversity of international and national importance, given the predicted climate change consequences for water availability and demanding projections for new housing.	Objectives 17 & 18
		Steady decline in the chemical quality of rivers over the last 10 years.	

Appendix A4: SEA Framework

SEA Scoping Stage A, Task A4 - SEA Framework SEA Objectives, Indicators, Targets

Parish Council Name: Walford

Neighbourhood Development Plan Name: Walford Neighbourhood Plan

Date completed: March 2018

SEA Topics	SA Objective	SEA Objective	Sub-objectives / Appraisal Questions (Will the option/proposal/site...)	Indicators	Targets
Nature Conservation (Biodiversity, flora and fauna)	Value, maintain, restore or expand county biodiversity. Value, protect, enhance or restore the landscape quality of Herefordshire, including its rural areas and open spaces.	To maintain and enhance nature conservation (biodiversity, flora and fauna)	<ul style="list-style-type: none"> • Protect or enhance habitats of international, national, regional or local importance. • Protect international, national, regional or locally important terrestrial or aquatic species. • Maintain wildlife corridors and minimise fragmentation of ecological areas and green spaces. • Manage access to sites in a sustainable way that protects or enhances their nature conservation value. • Create new appropriate habitats. • Value, enhance and protect natural environmental assets including AONB's, 	<p>Net change in condition of SSSIs across Herefordshire.</p> <p>After use of mineral sites especially wildlife habitat creation</p> <p>Changes to protected habitats and impacts of species within the Herefordshire Local Biodiversity Action Plan.</p>	<p>% of SSSI land in favourable condition (Increase) % of SSSI land in unfavourable condition but recovering (Increase) % of SSSI land in unfavourable condition and declining (Decrease)</p> <p>Percentage of opportunities taken</p> <p>To protect and where possible enhance the habitats of protected species identified. No net losses</p>

SEA Topics	SA Objective	SEA Objective	Sub-objectives / Appraisal Questions (Will the option/proposal/site...)	Indicators	Targets
			<p>historic landscapes, open spaces, parks and gardens and their settings</p> <ul style="list-style-type: none"> • Encourage local stewardship of local environments, for example by promoting best practices in agricultural management • Ensure that environmental impacts caused by mineral operations and the transport of minerals are minimised. • Promote the use of rural areas and open space by all, encourage easy non-car based access, and accommodate the needs of disabled users. 		
Landscape	Not covered in SA	<p>To maintain and enhance the quality of landscapes and townscapes</p> <p>To improve quality of surroundings</p>	<ul style="list-style-type: none"> • Protect and enhance the landscape everywhere and particularly in designated areas • Value and protect diversity and local distinctiveness 	<p>Changes in the areas of designated nature conservation sites as a consequence of planning permission.</p> <p>Proportion of local sites where positive conservation management has or is being implemented.</p>	<p>To capitalise on opportunities to enhance the areas of value to nature conservation as much as possible.</p> <p>No specific targets identified.</p>

SEA Topics	SA Objective	SEA Objective	Sub-objectives / Appraisal Questions (Will the option/proposal/site...)	Indicators	Targets
			<ul style="list-style-type: none"> • Improve landscape and ecological quality and character of the countryside • Improve the quantity and quality of publicly accessible open space • Improve satisfaction of people with their neighbourhoods as places to live • Decrease litter and graffiti in towns and countryside • Result in the loss of open space 	<p>Monitoring changes to historic landscapes.</p> <p>Area resulting in a loss of open space as a result of planning permission</p>	<p>No specific targets identified.</p> <p>No specific targets identified</p>
Heritage	Value, protect or enhance the character and built quality of settlements and neighbourhoods and the county's heritage assets, historic environment and cultural heritage.	To conserve and where appropriate enhance the historic environment, heritage assets and culture heritage	<ul style="list-style-type: none"> • Preserve, protect and enhance heritage assets including conservation areas, listed buildings, archaeological sites and other culturally important features in both urban and rural settings. • Prevent development which is inappropriate in scale, form or design to its setting or to its 	<p>The need for, frequency and outcomes of, planning enforcement investigations/planning appeals concerning aspects of loss of locally important buildings within a conservation area.</p> <p>Number and percentage of listed buildings and Scheduled Ancient Monuments on Buildings at Risk Register (English Heritage).</p> <p>Ensure that Herefordshire Council's Sites and Monuments Register is kept up to date.</p>	<p>To improve upon or otherwise maintain current status.</p> <p>To improve upon or otherwise maintain current status.</p> <p>No specific targets identified, but need to ensure that the register is kept up to date.</p>

SEA Topics	SA Objective	SEA Objective	Sub-objectives / Appraisal Questions (Will the option/proposal/site...)	Indicators	Targets
			<p>function or local area.</p> <ul style="list-style-type: none"> • Encourage development that creates and sustains well-designed, high quality built environments that incorporate green space, encourage biodiversity and promote local distinctiveness and sense of place. • Encourage cleanliness and/or improve the general appearance of the area. 		

SEA Topics	SA Objective	SEA Objective	Sub-objectives / Appraisal Questions (Will the option/proposal/site...)	Indicators	Targets
Air and Climate	<p>Minimise local and global pollution and protect or enhance environmental resources.</p> <p>Reduce Herefordshire's vulnerability to the impacts of climate change as well as its contribution to the problem.</p>	<p>To improve air quality</p> <p>To reduce the effect of traffic on the environment</p> <p>To reduce contributions to climate change</p> <p>To reduce vulnerability to climate change</p>	<ul style="list-style-type: none"> Minimise water, air, soil, groundwater, noise and light pollution from current activities and the potential for such pollution. Protect or enhance the quality of watercourses. Provide opportunities to improve soil quality or reduce contaminated land. Reduce the county's contribution to climate change by reducing greenhouse gas emissions from transport, domestic, commercial and industrial sources. Increase the proportion of energy generated from renewable and low carbon sources including by micro-generation, Combined Heat and Power (CHP), district heating and in transportation. 	<p>Transport patronage by mode</p> <p>Number of decentralised energy schemes granted permission.</p> <p>Total CO2 emissions per capita</p>	<p>To increase the take up of alternative modes to the private car.</p> <p>To contribute towards the national target.</p> <p>To reduce the overall carbon emissions.</p>

SEA Topics	SA Objective	SEA Objective	Sub-objectives / Appraisal Questions (Will the option/proposal/site...)	Indicators	Targets
Water	<p>Reduce the risk of flooding and the resulting detriment to public well-being, the economy and the environment.</p> <p>Minimise local and global pollution and protect or enhance environmental resources.</p>	<p>To improve water quality</p> <p>To provide for sustainable sources of water supply</p> <p>To avoid, reduce and manage flood risk</p>	<ul style="list-style-type: none"> Reduce flood risk both presently and taking into account climate change. Prevent inappropriate development of the floodplain, and include flood protection systems. Include sustainable urban drainage systems where appropriate. Minimise water, air, soil, groundwater, noise and light pollution from current activities and the potential for such pollution. Protect or enhance the quality of watercourses. 	<p>Number of planning permissions granted contrary to the advice of the Environment Agency on flood defence grounds.</p> <p>Percentage of river length assessed as good or very good chemical quality and ecological quality</p> <p>Phosphate levels within the River Wye SAC and adjoining tributaries that receive increased phosphates from proportional growth.</p>	<p>To have no applications permitted contrary to EA advice.</p> <p>To ensure that rivers meet their conservation objectives and do not fall below the required standard of quality as set out in the Water Framework Directive.</p> <p>To meet the targets set out in the Nutrient Management Plan (2014)</p>
Soil	<p>Minimise local and global pollution and protect or enhance environmental resources.</p> <p>Ensure integrated, efficient and</p>	<p>To conserve soil resources and quality</p> <p>Ensure integrated, efficient and balanced land use.</p>	<ul style="list-style-type: none"> Minimise water, air, soil, groundwater, noise and light pollution from current activities and the potential for such pollution. Provide opportunities to improve soil quality or reduce contaminated land. Ensure new developments 	<p>Percentage of all new development completed on previously developed land.</p> <p>Amount of land identified as best and most versatile agricultural land lost to development.</p>	<p>To increase the number of homes built on PDL in line with the provisions of national planning policy.</p> <p>Measure the number of hectares of best and most versatile soil lost through development.</p>

SEA Topics	SA Objective	SEA Objective	Sub-objectives / Appraisal Questions (Will the option/proposal/site...)	Indicators	Targets
	balanced land use.		are in appropriate locations, optimising the use of previously developed land and buildings, primarily focussed on the urban areas and are accessible by walking, cycling or sustainable transport and/or will increase the share of these transport modes, thereby reducing the need to travel.		
Population and Human Health	Value, protect, enhance or restore the landscape quality of Herefordshire, including its rural areas and open spaces.	To improve health of the population To reduce crime and nuisance	<ul style="list-style-type: none"> Value, enhance and protect natural environmental assets including AONB's, historic landscapes, open spaces, parks and gardens and their settings. Encourage local stewardship of local environments, for example by promoting best practices in agricultural management. Ensure that environmental impacts caused by mineral operations and the transport of minerals are minimised. Promote the use of 	Number of developments meeting and surpassing national design	No specific targets identified.

SEA Topics	SA Objective	SEA Objective	Sub-objectives / Appraisal Questions (Will the option/proposal/site...)	Indicators	Targets
			rural areas and open space by all, encourage easy non-car based access, and accommodate the needs of disabled users.		
Material Assets	<p>Use natural resources and energy more efficiently.</p> <p>Minimise local and global pollution and protect or enhance environmental resources.</p>	To conserve natural and manmade resources	<ul style="list-style-type: none"> • Maximise energy efficiency and minimise the consumption of non-renewable energy i.e. from fossil fuels. • Minimise the consumption of water, land, soil, minerals, aggregates and other raw materials by all? E.g. through integrated transport, sustainable resource-efficient design, local sourcing of food, goods, materials. • Encourage the re-use/enhancement (to high standards of sustainable resource-efficient design) of existing buildings and minimise the need for new build. • Encourage the use of clean technologies and water minimisation techniques. 	<p>The need for, frequency and outcomes of planning enforcement investigations/ planning appeals concerning the aspects of local loss of locally important buildings within a conservation area.</p> <p>Maintaining Herefordshire Council's County Site and Monuments Register.</p> <p>Monitoring changes to historic landscapes.</p> <p>Agricultural land usage by quality</p>	<p>Measure the number of hectares of best and most versatile soil lost through development.</p> <p>No specific targets identified.</p> <p>No specific targets identified, but need to ensure that the register is kept up to date.</p> <p>No specific targets identified.</p> <p>Measure the number of hectares of best and most versatile soil lost through development.</p>

**Initial Habitat Regulations Assessment and Strategic Environmental
Assessment Screening Notification**

The Neighbourhood Planning (General) Regulation 2012 (Reg. 32)

Conservation of Habitats and Species Regulations 2010 (d)

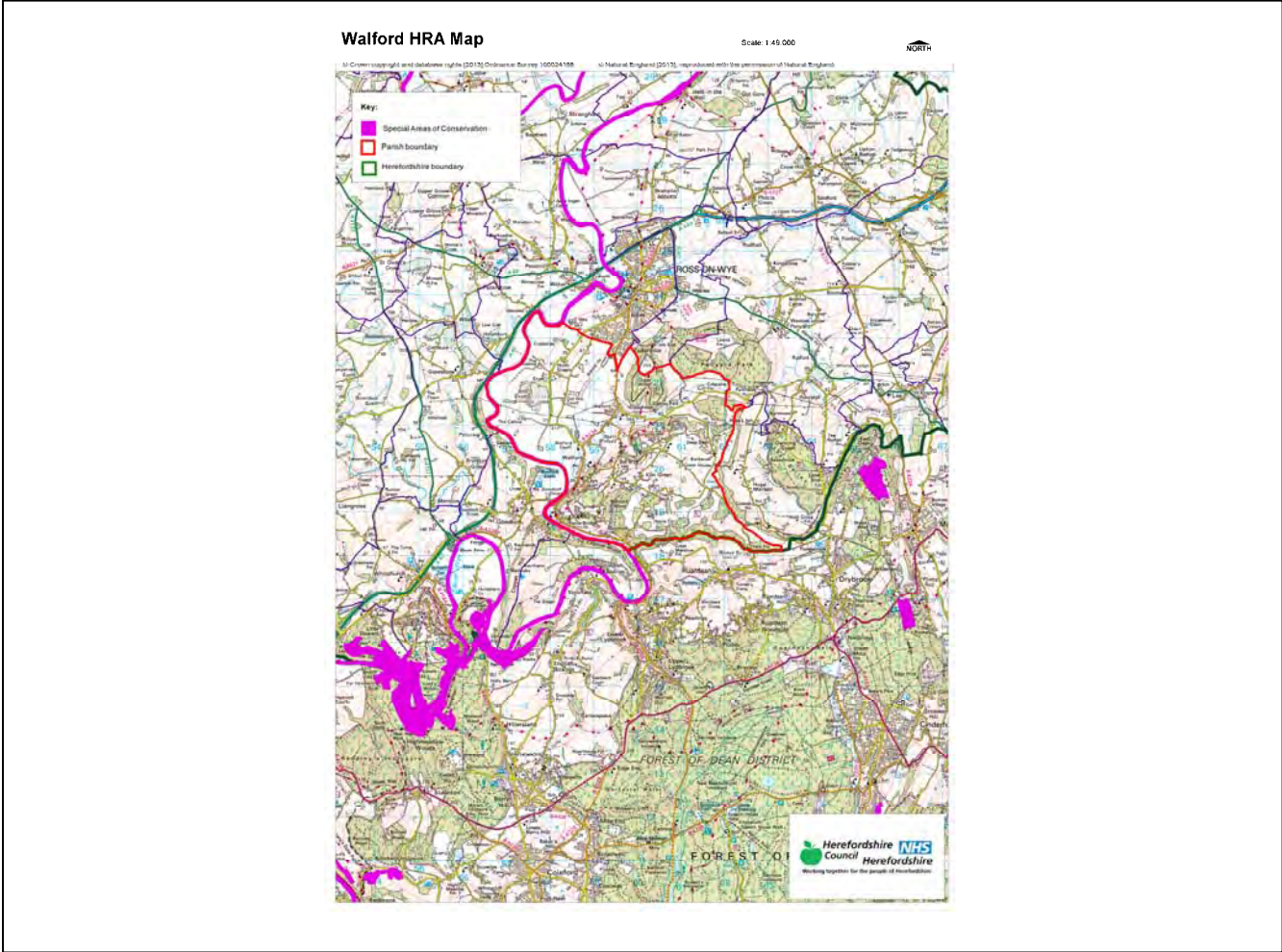
Neighbourhood Area:	Walford Neighbourhood Area
Parish Council:	Walford Parish Council
Neighbourhood Area Designation Date:	14/11/2012

Introduction

This Initial Habitat Regulations Assessment (HRA) and Strategic Environmental Assessment (SEA) Screening has been undertaken to assess whether any European sites exist within or in proximity to the neighbourhood area which could be affected by any future proposals or policies.

Through continual engagement the outcomes of any required assessments will help to ensure that proposed developments will not lead to Likely Significant Effects upon a European Site or cause adverse impacts upon other environmental assets, such as the built historic or local natural environment.

**HRA Initial Screening: Map showing relationship of Neighbourhood Area with European Sites
(not to scale)**



Initial HRA Screening

River Wye (including the River Lugg) SAC:

Does the Neighbourhood Area have the River Wye (including the River Lugg) in or next to its boundary?	Y	The River Wye borders the Parish to the west.
Is the Neighbourhood Area in the hydrological catchment of the River Wye (including the River Lugg) SAC?	Y	The Parish is within the River Wye catchment area.
If yes above, does the Neighbourhood Area have mains drainage to deal with foul sewage?	Y	There is mains drainage within Howle Hill

Downton Gorge SAC:

Is the Neighbourhood Area within 10km of Downton Gorge SAC?	N	Downton Gorge is 51.67km away from the Parish
---	---	---

River Clun SAC:

Does the Neighbourhood Area include: Border Group Parish Council or Leintwardine Group Parish Council?	N	River Clun does not border the Parish
--	---	---------------------------------------

Usk Bat Sites SAC:

Is the Neighbourhood Area within 10km of the SAC boundary?	N	Usk Bat Sites are 38.1km away from the Parish
--	---	---

Wye Valley & Forest of Dean Bat Sites SAC:

Is the Neighbourhood Area within 10km of any of the individual sites that make up the Wye Valley & Forest of Dean Bat Sites?	Y	The Parish is 3.24km away from Wye Valley and Forest of dean Bat Sites
--	---	--

Wye Valley Woodlands SAC:

Is the Neighbourhood Area within 10km of any of the individual sites that make up the Wye Valley Woodlands Site?	Y	The Parish is 7.04km away from the Wye Valley Woodlands
--	---	---

HRA Conclusion:

The assessment above highlights that the following European Sites will need to be taken into account in the future Neighbourhood Development Plan for the Walford Neighbourhood Area and a Full HRA Screening will be required.

European Site

(List only those which are relevant from above)

River Wye (including the River Lugg) SAC

Wye Valley and Forest of Dean Bat Sites SAC

Wye Valley Woodlands SAC

Strategic Environmental Assessment Initial Screening for nature conservation landscape and heritage features

The following environmental features are within or in general proximity to the Walford Neighbourhood Area and would need to be taken into account within a Strategic Environmental Assessment. In addition, the NDP will also need to consider the other SEA topics set out in Guidance Note 9a to ensure that the plan does not cause adverse impacts.

SEA features	Total	Explanation	SEA required
Air Quality Management Areas	0	There are no AQMA's within the Parish	N
Ancient Woodland	15	Chase Wood; Penyard Park; Howle Hill Wood; Hengrove and Warmhill Woods; Deep Dean; Mark's Well Wood; Purlieu Wood; Lodge Grove; Beech Tree Wood; Ferry Bank – Mayers Grove; Dam Wood; Wet Wood; Sixteen Acre Wood; Thomas Wood (border); Unlabelled site at Vain Farm	Y
Areas of Archaeological Interest	0	There are no AAI's within the Parish	N
Areas of Outstanding Natural Beauty	1	The west of the Parish is in the Wye Valley AONB	Y
Conservation Areas	0	There are no Conservation Areas within the Parish	N
European Sites	1	The River Wye	Y
Flood Areas		Flood Zones 2 and 3 follow the River Wye and also go east at Walford towards Coughton and out of the parish in the north east.	Y
Listed Buildings	Numerous	There are numerous Listed Buildings scattered around the Parish	Y
Local Sites (SWS/SINCs/RIGS)	10	Disused railway line – Ross to Kerne Bridge; Chase & Merrivale Woods; Coughton Wood & Marsh; Howle Hill & Marks Well; Woodlands nr Hope Mansell; Dam Wood and Copse; Coal Hill & 16 Acre Wood; Field nr Kiln Green; Field nr Forest Green; Woodlands east of Kerne Bridge; River Wye	Y
Long distance footpaths/trails (e.g. Herefordshire Trail)	4	Wye Valley Walk; Ross Round (border); Ross Buggy Route (border); Herefordshire Trail (border)	Y
Mineral Reserves	2	1 in the East and 1 in the West of the Parish	Y
National Nature Reserve	0	There are no NNRs within the Parish	N
Registered & unregistered parks and gardens	1 Registered 8 Unregistered	Registered: Hill Court. Unregistered: Lincoln Hill House; John Kyrles Walk (border); Penyard Park (border); Cobrey Park; Upper Wythall; Bishopswood; Hazelhurst; Goodrich Court (border)	Y
Scheduled Ancient Monuments	2	Camp in Chase Wood (border); Great Howle Camp	Y

Sites of Special Scientific Interest	2	River Wye (Unfavourable Recovering); Coughton Wood & Marsh (Unfavourable Recovering)	Y
--------------------------------------	---	---	---

Decision Notification:

The initial screening highlights that the Neighbourhood Development Plan for the Walford Neighbourhood Area:

- a) Will require further environmental assessment for Habitat Regulations Assessment and Strategic Environmental Assessment.

Assessment date: 21/05/2013

Assessed by: James Latham

Appendix 1: European Sites

The table below provides the name of each European Site, which has been screened in for the purposes of neighbourhood planning in Herefordshire; includes their site features of integrity; and vulnerability data. This is based on the sites individual features of integrity and their vulnerabilities, which could include distance criteria. This has been used in identifying which parishes are likely to require a full HRA Screening of their future Neighbourhood Development Plan, to establish if their plan might have Likely Significant Effects on a European Site.

Downton Gorge
Site Features: <i>Tilio-Acerion</i> forests of slopes, screes and ravines
Vulnerability data: 10km for air quality associated with poultry units or other intensive agricultural practices.

River Clun
Site Features: Freshwater pearl mussel <i>Margaritifera margaritifera</i>
Vulnerability data: Water quality is important to maintain the site feature. Parishes either side of the River Clun will be affected.

River Wye
Site Features: Water courses of plain to montane levels with the <i>Ranunculion fluitantis</i> and <i>Callitricho-Batrachion</i> vegetation. Transition mires and quaking bogs. White-clawed (or Atlantic Stream) crayfish <i>Austropotamobius pallipes</i> . Sea lamprey <i>Petromyzon marinus</i> . Brook lamprey <i>Lampetra planeri</i> . River lamprey <i>Lampetra fluviatilis</i> . Twaite shad <i>Alosa fallax</i> . Atlantic salmon <i>Salmo salar</i> . Bullhead <i>Cottus gobio</i> . Otter <i>Lutra lutra</i> . Allis shad <i>Alosa alosa</i>
Vulnerability data: Proximity: Developments should not be within 100m of the designated bank. Some developments beyond 100m may also have impacts based on proximity and these issues should be addressed where possible when developing NDP policy and choosing site allocations. Water Quality: Within the whole catchment of the River Wye, which includes the River Lugg, mains drainage issues with regards to water quality are being resolved through the Core Strategy / Local Plan and development of a Nutrient Management Plan. Welsh Water should be consulted to ensure that the proposed growth will be within the limit of their consents. Otters: "An otter will occupy a 'home range', which on fresh waters usually includes a stretch of river as well as associated tributary streams, ditches, ponds, lakes and woodland. The size of a home range depends largely on the availability of food and shelter, and the presence of neighbouring otters. On rivers, a male's home range may be up to 40km or more of watercourse and associated areas; females have smaller ranges (roughly half the size) and favour quieter locations for breeding, such as tributary streams. Otters without an established home range are known as 'transients'. They are mostly juveniles looking for a territory of their own, or adults that have been pushed out of their territories. Transient otters may use an area for a short while, but they will move on if conditions are not suitable or if they are driven away by resident otters. Transients will have been important in extending the range of otters, but they are very difficult to identify from field signs. Within a home range an otter may use many resting sites. These include above-ground shelters, such as stands of scrub or areas of rank grass, and underground 'holts' – for example, cavities under tree roots and dry drainage pipes." (Source: EA website: http://www.environmentagency.gov.uk/static/documents/Business/Otters_the_facts.pdf accessed 09/04/2013)

Usk Bat Site

Site Features: Annex I habitats present as a qualifying feature, but not a primary reason for site selection: European dry heaths, Degraded raised bogs still capable of natural regeneration, Blanket bogs, Calcareous rocky slopes with chasmophytic vegetation, Caves not open to the public, *Tilio-Acerion* forests of slopes, screes and ravines. Annex II species of primary reason for site selection: Lesser horseshoe bat *Rhinolophus hipposideros*, UK population 5%, although it is suggested this is an underestimate.

Vulnerability data: Lesser Horseshoe bats are known to migrate between 5km and 10km between their summer and winter roosts. The Lesser Horseshoe Bat is vulnerable to disturbance; light pollution; and habitat loss. Check with the planning ecologist for other issues.

Wye Valley and Forest of Dean Bat Sites

Site Features: Annex II species that are a primary reason for site selection: Lesser horseshoe bat *Rhinolophus hipposideros*. Greater horseshoe bat *Rhinolophus ferrumequinum*

Vulnerability data: Lesser Horseshoe bats are known to migrate between 5km and 10km between their summer and winter roosts. The Lesser Horseshoe Bat is vulnerable to disturbance; light pollution; and habitat loss. Check with the planning ecologist for other issues.

Greater Horseshoe bats are known to migrate between 20-30km between their summer and winter roosts.

NDPs closest to the European Site will need to consider:
Woodland habitat buffer.

Lesser Horseshoe Bat: Old buildings; woodland locations; sheltered valleys, extensive deciduous woods or dense scrub, close to roost sites. In areas of fragmented habitats, linear habitats such as hedgerows are important corridors. Vulnerable to loss or disturbance of both summer and winter roosts and removal of linear habitat.

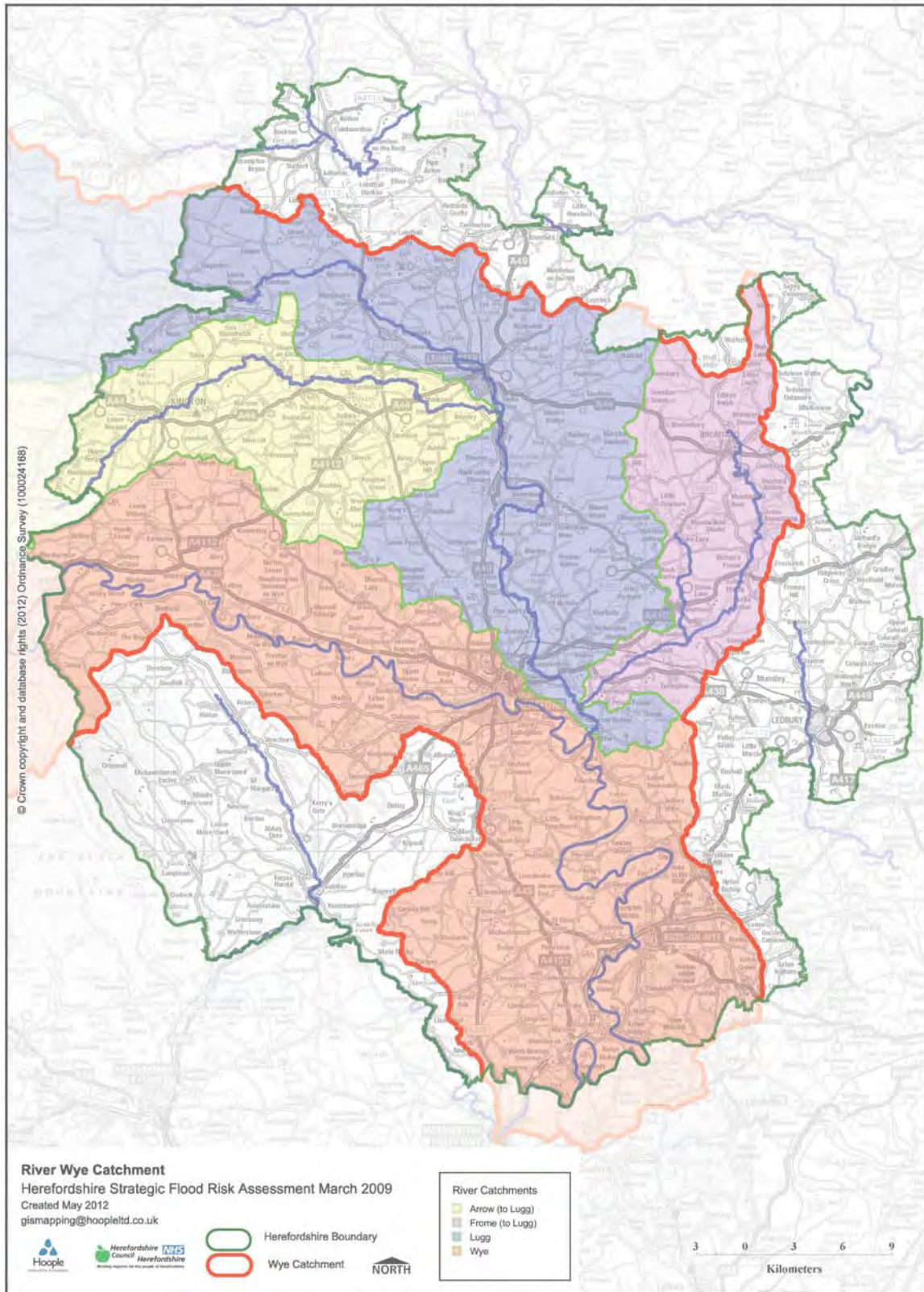
Greater Horseshoe Bat: Large buildings, pasture, edge of mixed deciduous woodland and hedgerows. Mixed land-use especially south-facing slopes, favours beetles, moths and insects they feed on. During the winter they depend on caves, abandoned mines and other underground sites for undisturbed hibernation. A system/series of sites required. Vulnerable to loss of insect food supply, due to insecticide use, changing farming practices and loss of broad-leaved tree-cover and loss / disturbance of underground roosts sites.

Wye Valley Woodlands

Site Features: Annex I habitats that are a primary reason for site selection: Beech forests *Asperulo-Fagetum*, *Tilio-Acerion* forests of slopes, screes and ravines, *Taxus baccata* woods of the British Isles. Annex II species present as a qualifying feature, but not a primary reason for site selection: Lesser horseshoe bat *Rhinolophus hipposideros*, 51-100 residents

Vulnerability data: Lesser Horseshoe bats are known to migrate between 5km and 10km between their summer and winter roosts. The Lesser Horseshoe Bat is vulnerable to disturbance; light pollution; and habitat loss. Check with the planning ecologist for other issues. NDPs closest to the European Site will need to consider: Woodland habitat buffer. Lesser Horseshoe Bat: Old buildings; woodland locations; sheltered valleys, extensive deciduous woods or dense scrub, close to roost sites. In areas of fragmented habitats, linear habitats such as hedgerows are important corridors. Vulnerable to loss or disturbance of both summer and winter roosts and removal of linear habitat.

Appendix 2: Wye Catchment Map

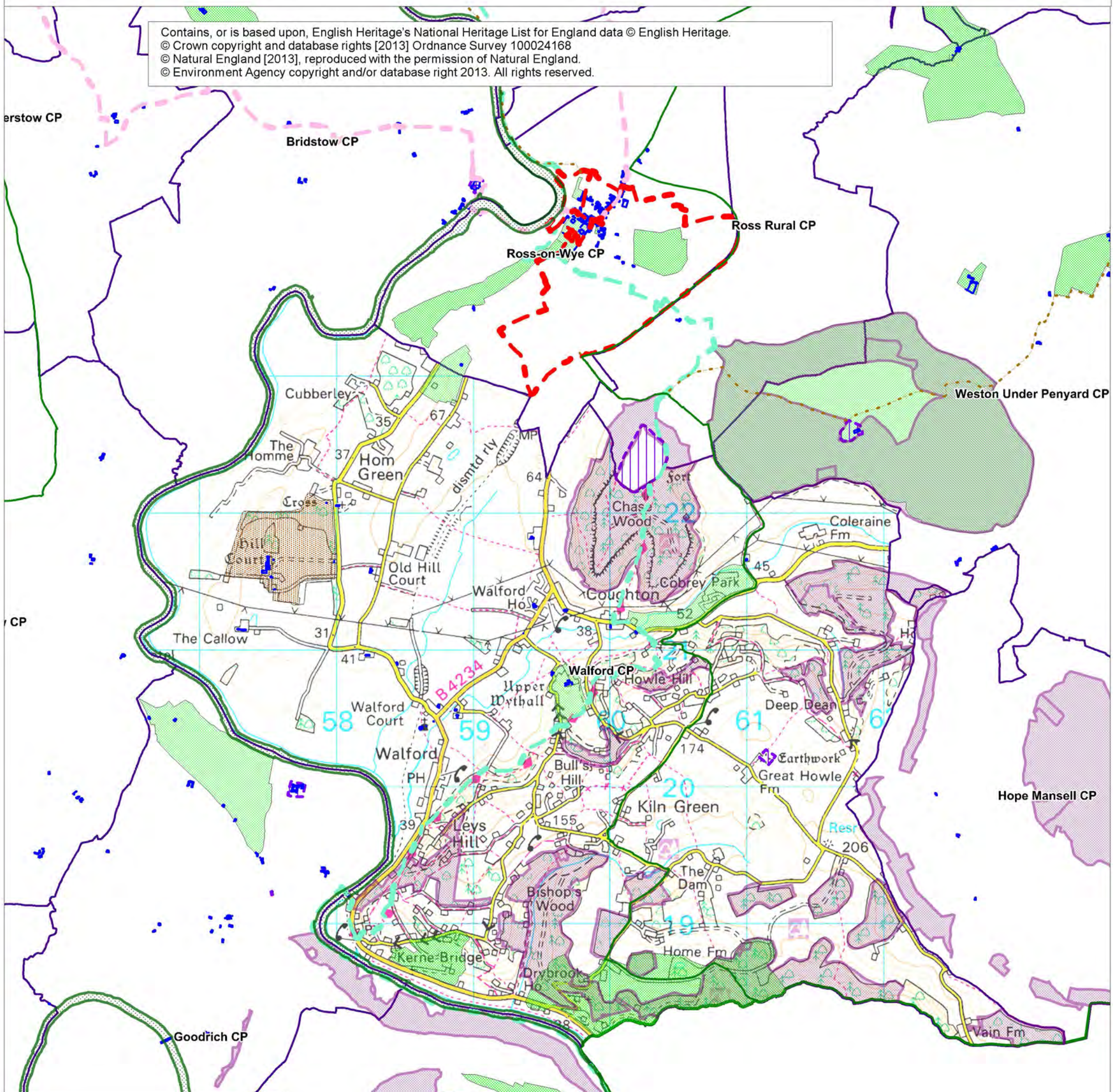


Walford SEA Map 1

Scale: 1:28,000



Contains, or is based upon, English Heritage's National Heritage List for England data © English Heritage.
© Crown copyright and database rights [2013] Ordnance Survey 100024168
© Natural England [2013], reproduced with the permission of Natural England.
© Environment Agency copyright and/or database right 2013. All rights reserved.



Key:

- Ancient Woodlands
- Scheduled Ancient Monuments
- Special Areas of Conservation
- Registered Parks & Gardens
- Unregistered Parks and Gardens
- Ross Round
- Ross Buggy Route
- Herefordshire Trail
- Wye Valley Walk
- Areas of Outstanding Natural Beauty
- Listed Buildings
- Parish Boundaries



Walford SEA Map 2

Scale: 1:28,000



Contains, or is based upon, English Heritage's National Heritage List for England data © English Heritage.
© Crown copyright and database rights [2013] Ordnance Survey 100024168
© Natural England [2013], reproduced with the permission of Natural England.
© Environment Agency copyright and/or database right 2013. All rights reserved.



Key:

- Minerals Sites
- Sites of Special Scientific Interest
- Special Wildlife Sites
- Flood Zone 2
- Flood Zone 3
- Parish Boundaries

Herefordshire Council