

# Environmental Report

Report for:

How Caple Sollers Hope and Yatton Group Neighbourhood Area

December 2018



# How Caple Sollers Hope and Yatton Group Parish Environmental Report

## Contents

Non-technical summary

- 1.0 Introduction
- 2.0 Methodology
- 3.0 The SEA Framework
- 4.0 Appraisal of Objectives
- 5.0 Appraisal of Options
- 6.0 Appraisal of Policies
- 7.0 Implementation and monitoring
- 8.0 Next steps

Appendix 1: Initial SEA Screening Report

Appendix 2: SEA Scoping Report incorporating Tasks A1, A2, A3 and A4

Appendix 3: Consultation responses from Natural England and English Heritage

Appendix 3a: Reg 14 responses to draft Environmental Report Consultation

Appendix 4: SEA Stage B incorporating Tasks B1, B2, B3 and B4

Appendix 5: Options Considered

Appendix 6: Feedback of Draft Environmental Report consultation (D1)

Appendix 7: Screening of amended policies (D3) post reg 14

Appendix 8: Modifications following examination

Appendix 9: SEA Stage (D3) assessment of modified policies following examination

Appendix 10: Environmental Report checklist

---

## Non-technical summary

Strategic Environmental Assessment (SEA) is an important part of the evidence base which underpins Neighbourhood Development Plans (NDP), as it is a systematic decision support process, aiming to ensure that environmental assets, including those whose importance transcends local, regional and national interests, are considered effectively in plan making.

The How Caple Sollers Hope and Yatton Group Parish has undertaken to prepare an NDP and this process has been subject to environmental appraisal pursuant to the SEA Directive. The Parish comprises the Parishes of How Caple Sollers Hope and Yatton. This group are located within around 10 miles south east of Hereford.

The Draft How Caple Sollers Hope and Yatton group NDP includes 6 objectives and it is intended that these objectives will be delivered by 5 criteria based planning policies; no site allocations are proposed here.

The environmental appraisal of the How Caple Sollers Hope and Yatton Group NDP has been undertaken in line with the Environmental Assessment of Plan and Programmes Regulations 2004. Stage A of the SEA process involved Scoping and Stage B provided a review and analysis of the NDP. Stage C involved preparing an Environmental Report and Stage D comprises a formal consultation on both this and the Draft Plan itself.

Following examination, all five of the policies within the NDP have been amended, ENV1, HSG1 and ECON1 these have been rescreened in D3 as they have been significantly restructured and reworded in order to be in better conformity with the strategic policies making these policies easier to implement. Policies CF1 and INF1 have been amended are minor wording changes and considered not necessary to rescreen. The conclusion set out in the Draft Environment Report is still valid. That is, the How Caple Sollers Hope and Yatton Group NDP is in general conformity with both national planning policy contained in the National Planning Policy Framework and strategic policies set within the Herefordshire Local Plan (Core Strategy). Therefore, no further changes are recommended as a result of this SEA (stage D).

Habitat Regulations Assessment (HRA) screening has been carried out as the Group Parish falls within the catchment for the River Wye (including River Lugg) this runs along the southern borders of the borders of How Caple Parish, and Wye Valley bat sites both of which are European sites (Special Area of Conservation) this is 9.4 km away from the parish so is within the 10km zone. The HRA assesses the potential effects of the NDP on the River Wye SAC and Wye Valley bat sites SAC.

On the whole, it is considered that the How Caple Sollers Hope and Yatton group NDP is in general conformity with both national planning policy contained in the National Planning Policy Framework and strategic policies set within the Herefordshire Local Plan (Core Strategy). Nor does it propose any growth that would be over and above that prescribed by strategic policies.

Once made (adopted) by Herefordshire Council, the effects of the policies within the How Caple Sollers Hope and Yatton group NDP will be monitored annually via the Council's Annual Monitoring Report (AMR).

## 1.0 Introduction

- 1.1 This report forms the draft Strategic Environmental Assessment (SEA) of the How Caple Sollers Hope and Yatton group Neighbourhood Development Plan (NDP).
- 1.2 The How Caple Sollers Hope and Yatton group NDP does not propose any site allocations or settlement boundaries. How Caple Sollers Hope and Yatton village is not identified as a targeted rural village for proportionate housing growth, as is not within table 4.14 or 4.15 which in Policy RA1 of the Herefordshire Local Plan (Core Strategy). The NDP will, however, provide general policies for guiding future development across the parish as a whole.

### Purpose of the SEA

- 1.3 SEA is a requirement of EC Directive 2001/42/EC (the SEA Directive) which requires the assessment of the effects of certain plans and programmes on the environment to ensure that the proposals in that plan or programme contribute to the achievement of sustainable development.
- 1.4 The Directive was transposed into domestic legislation through the Environmental Assessment of Plans and Programmes Regulations 2004 and which applies to plans with significant environmental effects.
- 1.5. A screening opinion was carried out on the How Caple Sollers Hope and Yatton group NDP and it concluded that due to the range of environmental designations in and around the parish, there may be significant environmental effects and consequently an SEA would be required.

### Parish Neighbourhood Plan Context

- 1.6 How Caple Sollers Hope and Yatton Group Parish comprises the Parishes of How Caple Sollers Hope and Yatton. The Group Parish lies approximately 10 kms to the south east of Hereford.
- 1.7 The group parish is rural in nature and has an overall population of 326 (census 2011). How Caple being the largest in population and in size. There are 165 households within the group parish. How Caple is astride the B4224 while Yatton is almost entirely west of the A449 with the exception of five households which lie east of the A449. The B4224 just clips the boundary of Sollershope but essentially this parish has no A or B class roads within it.
- 1.8 The neighbourhood area boasts many natural features, not least 10 Special Wildlife Sites and 10 Ancient Woodland sites. There are numerous built heritage assets, too, including listed buildings, Scheduled Monuments and non-designated assets.
- 1.9 The vision for How Caple Sollers Hope and Yatton group in 2031 is as follows:
- 'We will enjoy a thriving and prosperous community supported by a resilient economy, serving the needs of residents of all ages. This will be achieved through the sustainable use of resources whilst maintaining the unique character and heritage of these three parishes.'*
- 1.10 *The 6 NDP objectives are as follows:*
- Provide efficient communication and other related services (HOB1)
  - Support productive and efficient farming and small business development in order to create employment opportunities for residents of all age groups (HOB2)
  - Support growth of tourism in such a way as to provide economic benefit without adversely impacting the landscape or environment (HOB3)

- Permit a sustainable number of new houses in order to support economic growth associated with farming and/or small rural business, in accordance with Core Strategy policies RA3 and RA4 (HOB4)
- Maintain the unique character and heritage of the three parishes by careful management of development and protection of both the natural and built environments (HOB5)
- By careful planning, ensure any increase in traffic flow does not add to congestion and/or cause damage to the environment. (HOB6)

### **Context of Neighbourhood Plans**

- 1.11 NDPs are a relatively new type of planning document that form a key part of the Government's localism agenda. They enable local communities to develop plans that reflect local aspirations, in accordance with strategic policies.
- 1.12 The How Caple Sollers Hope and Yatton group NDP must therefore conform to national planning policy set within the NPPF and strategic level local policy including the Herefordshire Local Plan (Core Strategy).
- 1.13 The Herefordshire Local Plan (Core Strategy) was adopted on the 16<sup>th</sup> October 2015.
- 1.14 Paragraph 48 of the NPPF and Planning Practice Guidance set out the weight that may be given to relevant policies in emerging plans, including NDPs, and indicated that weight may be given to relevant policies in emerging NDPs according to:
- The stage of preparation of the emerging plan (the more advanced the preparation, the greater the weight that may be given);
  - The extent to which there are unresolved objections to relevant policies (the less significant the unresolved objections, the greater the weight that may be given); and
  - The degree of consistency of the relevant policies in the emerging plan to the policies in this Framework (the closer the policies in the emerging plan to the policies in the Framework, the greater the weight that may be given).
- 1.15 This part of the NPPF is reinforced by Planning Practice Guidance published in March 2014, which is clear that an emerging NDP may be a material planning consideration once it has reached submission/local authorities publication stage (Regulation 16). This is reinforced by recent ministerial statements and case law (West Sussex), all of which have demonstrated that an emerging NDP may be a material consideration at the Regulation 16 stage<sup>1</sup>.
- 1.16 How Caple Sollers Hope and Yatton are not identified settlements for sustainable locations for growth. Therefore growth within the parish will be limited and fall under RA3 policy of the Core Strategy.
- 1.17 Once made (adopted) by Herefordshire Council, the How Caple Sollers Hope and Yatton group NDP will have a role in guiding future development proposals within the Parish, by setting out policies against which planning applications will be determined.

### **Structure of SEA**

- 1.19 The structure of the document is as follows:
- Section 2 – Explains the SEA methodology and summarises the comments received in respect of the SEA Scoping Report

<sup>1</sup> For the avoidance of doubt, this NDP is currently at the Draft Plan Stage (Regulation 14) and cannot, therefore, be given weight in reaching decisions on planning applications

- 
- Section 3 - Introduces the How Caple Sollers Hope and Yatton group Neighbourhood Plan objectives and the SEA framework
  - Section 4 - Appraises the objectives contained within the Neighbourhood Plan against the SEA framework
  - Section 5 - Appraises the options considered within the Neighbourhood Plan against the SEA framework
  - Section 6 – Appraises the policies contained within the Neighbourhood Plan against the SEA framework
  - Section 7 – Discusses the implementation and monitoring of the Neighbourhood Plan
  - Section 8 - Concludes the SEA report by outlining next steps

## 2.0 Methodology

2.1 The SEA process comprised several stages and which are summarised, in some detail, below.

2.2 Stage A involved 4 tasks and culminated in a Scoping Report:

- *Task A1:* Identified and reviewed relevant policies, plans and programmes and environmental protection objectives from European, National and Local sources.
- *Task A2:* Collected baseline information to provide a picture of past, present and likely future conditions within the area. This helped to establish indicators which will be used to monitor the effects and performance of the How Caple Sollers Hope and Yatton group NDP.
- *Task A3:* Focused on the environmental issues identified from the baseline, highlighting key issues and problems within the neighbourhood area.
- *Task A4:* Used the information gathered from Tasks A1-A3 to develop a set of SEA objectives, sometimes referred to as the 'sustainability framework'.
- *Task A5:* Collated the results of Tasks A1-A4 within a Scoping Report, a document which was subject to a statutory 5 week consultation.

2.3 Stage B involved 4 tasks and assessed the effects of the NDP.

- *Task B1:* Tested NDP Objectives against the SEA Objectives
- *Task B2:* Developed and refined the NDP options and policies
- *Task B3/B4:* Predicted and evaluated the significant effects of the NDP

2.4 Stage C involved preparing an Environmental Report. This report presents information compiled during Stage B of the SEA process and constitutes the Draft Environmental Appraisal of the NDP. It accompanies the Draft Plan during its formal Regulation 14 consultation with people who live, work and carry out businesses in the neighbourhood area, as well as statutory bodies listed in the Neighbourhood Planning (General) Regulations 2012.

2.5 Producing an Environmental Report was therefore a legal requirement and the submission of this report to Herefordshire Council forms Stage D of the SEA process.

## Scoping Report Consultation

- 2.6 With regard to the SEA scoping assessments, documents A1 to A4 were completed by a Herefordshire Council Planning Officer and sent to the Parish Council for comment, in readiness for a 5 week consultation with statutory bodies, pursuant to the Environmental Assessment of Plans and Programmes Regulations 2004.
- 2.7 After the document was approved by the Parish Council, the How Caple Sollers Hope and Yatton group SEA Scoping Report was available to four<sup>2</sup> statutory bodies for consultation from 23 March to 29 April 2016.

## Consultation outcomes from Statutory Consultees

- 2.8 The consultation resulted in 3 responses, both of which are attached at Appendix 3.
- 2.9 All of the responses were collated and incorporated within this document where relevant.

**Natural England:** Welcomes plans and programmes listed in the assessment, and advises magic map to be included within the assessments along with geodiversity information. Relevant baseline information needs to be included in this section and reference made to the Wye Valley AONB Management Plan 2015-2020. Natural England would welcome an indicator and appropriate targets around maintaining the natural beauty of protected landscapes. These comments have been taken on board and added to the SEA stage A assessments.

**English Heritage:** Have no substantive objection to the contents of the documents.

**Environment Agency:** Have no substantive objection to the contents of the documents.

**Natural Resources Wales:** No comments received

## 3.0 The SEA Framework

- 3.1 As mentioned previously, Stage A of the SEA identifies and reviews relevant policies, plans and programmes and environmental protection objectives from European, National and Local sources (refer to Table A1 in Appendix 2 for details of those documents that were reviewed in completing Stage A of SEA on the How Caple Sollers Hope and Yatton group NDP).
- 3.2 The requirement to undertake this 'context review' is contained in Annexes 1(a) and (e) of the SEA Directive which states that an Environmental Report should include:

*"...an outline of the contents, main objectives of the plan or programme and relationship with other relevant plans and programmes" and*

*"...the environmental protection objectives, established at international, Community or Member State level, which are relevant to the plan or programme and the way those objectives and any environmental considerations have been taken into account during its preparation"*

## Policy context

- 3.3 The How Caple Sollers Hope and Yatton group NDP will deliver the Local Plan (Core Strategy) at parish level by adding locally specific detail to strategic policies. As a consequence, the Scoping Report for the NDP was based on the context review Herefordshire Council undertook for its Local Plan (Core Strategy).

<sup>2</sup> Statutory consultation bodies: Natural England; English Heritage; Environment Agency Natural Resources Wales

- 3.4 The results of this assessment (context review) provide the source of the local baseline data and have been incorporated into the SEA framework. It should be noted that:
- No list of policies, plans and programmes can ever be exhaustive and that Herefordshire Council has selected those considered to be of particular relevance to the planning system;
  - New or revised plans and policies can emerge during the SEA process
- 3.5 The following strategies and plans have been reviewed and, where appropriate, incorporated within the SA Framework objectives:
- *The EC Conservation of Habitats and Species Regulations (2010)* - These regulations transpose the Habitats Directive in England, Wales and to a limited extent Scotland by ensuring that activities are carried out in accordance with the Habitats Directive, which is to protect biodiversity through the conservation of natural habitats and species of wild flora and fauna.
  - *The EC Water Framework Directive (2000)* - Commits all EU member states to achieve good qualitative and quantitative status of all water courses by 2015
  - *The Wildlife and Countryside Act (1981)* - The major legal instrument for wildlife protection in Britain, although other significant acts have been passed since. It has numerous parts and supplementary lists and schedules many of which have been amended since publication.
  - *Biodiversity 2020: A strategy for England's wildlife and ecosystem services (2011)* - Forms part of the UK's Post-2010 Biodiversity Framework by setting out England's contribution towards the UK's commitments under the United Nations Convention of Biological Diversity.
  - *The Countryside and Right of Way Act (2000)* - Creates a statutory right of access on foot to certain types of open land, to modernise the public rights of way system, to strengthen nature conservation legislation, and to facilitate better management of AONBs
    - *The Natural Environment and Rural Communities Act (2006)* - Designed to help achieve a rich and diverse natural environment and thriving rural communities through modernised and simplified arrangements for delivering Government policy.
    - *Revised EU Sustainable Development strategy (2009)* - Sets out a single strategy on how the EU will more effectively meet its long-standing commitment to meet the challenges of sustainable development.
    - *National Planning Policy Framework (NPPF) (2012)* - Consolidates the suite of PPG/PPS into one succinct planning policy document.
    - *Planning Practice Guidance (2013)* - Sets out the vision, objectives and policies for the Herefordshire Local Plan (Core Strategy), which will guide development across the county up to 2031.
    - *Herefordshire Local Transport Plan 3 (LTP) 2013-2015* - Sets out the Council's strategy for supporting economic growth, social inclusion and reducing the environmental impacts of transport, as well as the program of investment for the period April 2013 to April 2015.



- 
- *Understanding Herefordshire Report (2014)* - Important to understand the place such as the local economy natural and built environment in which people live, learn and work as part of understanding their quality of life. Enable development for economy and housing to required levels and growth should be supported by sustainable transport measures.
  - *Malvern Hills AONB Management Plan 2009-2014 (2009)* - Identifies the issues and challenges facing the special features of the area and contains 24 guiding principles and 46 strategic objectives which will help address them.
  - *Wye Valley AONB management Plan 2009-2014 (2009)* - The Management Plan is the prime document which sets out the vision for the area and the priorities for its management.
  - *Herefordshire Economic Development Strategy 2011-2016* - Aims to increase the economic wealth of Herefordshire by setting out proposals and to support business growth up to 2016.
  - *Herefordshire Employment Land Study (2012)* - Includes employment land assessments for the plan period 2011-2031. The study includes Quantitative and Qualitative assessments of employment land, assessment of market demand and need, as well as providing forecasts and recommendations for future employment need over the plan period.
  - *Herefordshire Strategic Housing Land Availability Assessment (SHLAA) (2009)* - The SHLAA aims to justify site allocations in plans by:
    - Identifying sites which are capable of delivering housing development
    - Assessing sites for their housing potential; and
    - Predicting when a site could be developed for housing.
  - *Herefordshire Local Housing Market Assessment (LHMA) (2013)* - Builds on an earlier Strategic Housing Market Assessment (SHMA) developed for Herefordshire and Shropshire. Its purpose is to inform the Local Plan's policies regarding housing need and demand (for market and affordable housing) within each of the 7 Housing Market Areas (HMAs) in Herefordshire between 2011 and 2031.
  - *Herefordshire Local Housing Requirements Study (2012)* - Technical assessment of the housing market and potential future local housing requirements which supports planning policy regarding the amount of growth, housing tenure and housing type needed within Herefordshire up to 2031.
  - *Herefordshire Rural Housing Background Report (2013)* - Provides the justification for the proportional housing growth targets outlined in the Core Strategy
  - *Herefordshire Draft Gypsies and Travellers Assessment (2013)* - Assesses the accommodation needs of Gypsies and Travellers across Herefordshire.
  - *Herefordshire Local Biodiversity Action Plan (2007)* - Focuses conservation efforts on the areas within Herefordshire that will result in the greatest benefit for ecological networks, habitats and species.
  - *Building Biodiversity into the LDF (2009)* - Provides the Council's Local Plan (Core Strategy) with evidence in respect of biodiversity and geodiversity, identifying both opportunities and constraints across Herefordshire.

- *Herefordshire Green Infrastructure Strategy (2010)* - Develops a framework of natural and culturally important features and functions so that planning for a sustainable future is at the heart of planning within Herefordshire.
- *Renewable Energy Study (2010)* - Assesses the energy demand within Herefordshire and the ability for the county to accommodate renewable and low carbon energy technologies.
- *Herefordshire Playing Pitch Assessment (2012)* - Produces a strategic framework, audit and assessment and needs analysis of outdoor sports pitches and facilities for Herefordshire. The document arises as a result of a recommendation in the Herefordshire and Worcestershire Sports Facilities Framework to develop local standards for playing fields and sports pitches throughout Herefordshire.
- *Open Spaces Study (2006)* - The 2006 space audit and assessment of need is a snap shot of the quality, quantity and distribution of open space across Herefordshire.
- *Play Facilities Study (2012)* - The Play Facilities Study 2012 updates the previous play facilities analysis under the Open Spaces Study 2006 and provides guidance and a framework for the development, delivery and continued sustainability of providing new and improved play facilities for children and young people in Herefordshire to 2031.
- *Strategic Flood Risk Assessment (SFRA) and Water Cycle Study (2009)* - The Strategic Flood Risk Assessment (SFRA) provides a summary of flood risk in Herefordshire to inform the location of future development. The Water Cycle Study examines how water resources and water supply infrastructure, wastewater treatment, water quality, sewerage and flood risk could constrain growth across Herefordshire.

- 3.6 Appendix 1 of the How Caple Sollers Hope and Yatton group NDP Scoping Report provides additional detail on the Plans, Policies and Programmes mentioned above and identifies the implications for the SEA and NDP.

### SEA Objectives and baseline characteristics

- 3.7 The SEA objectives that were used at Stages A and B of the process are listed in the following table.

SEA Objective	
1	To maintain or enhance nature conservation (biodiversity, flora and fauna)
2	To maintain or enhance the quality of landscapes and townscapes
3	To improve the quality of surroundings
4	To conserve or where appropriate enhance the historic environment and culture heritage
5	To improve air quality
6	To reduce the effect of traffic on the environment
7	To reduce contributions to climate change
8	To reduce vulnerability to climate change
9	To improve water quality
10	To provide for sustainable sources of water supply
11	To avoid, reduce and manage flood risk
12	To conserve soil resources and quality

13	To minimise the production of waste
14	To improve the health of the population
15	To reduce crime and nuisance
16	To conserve natural and manmade resources

- 3.8 The SEA objectives detailed above conform to the SEA Directive, and are derived from the Sustainability Appraisal undertaken for the Herefordshire Local Plan Core Strategy 2011-2031.
- 3.9 Baseline information gathered during Stage A of the SEA process provided details of the current environmental characteristics of the neighbourhood area and the status of its natural assets and features (refer to Appendix 2). This information was analysed as part of Task B2 of SEA, which looked at the extent to which the emerging NDP policies will help or obstruct these characteristics.
- 3.10 Following the completion of Task B2 of SEA it was apparent that the largest environmental issue within the Group Parish has an impact on the County as a whole is water quality; the River Wye (including the River Lugg), though currently meeting all its conservation objectives, will require effective management, in order to ensure that the quality of water does not deteriorate to the point that nutrient targets are missed further downstream.
- 3.11 The NDP does not propose settlement boundaries or allocate sites for development, therefore contains only criteria-based policies. On this basis, the delivery of the NDP should not exacerbate existing problems regarding water quality or have an unacceptable adverse impact.
- 3.12 Baseline characteristics within the SEA detail the current environmental status of environmental characteristics in the neighbourhood plan area from different sources. The source of Baseline Information used in Table A2 in Appendix 2, and analysed in Table B2 can be found in Appendix 4 Baseline characteristics in relation to the How Caple Sollers Hope and Yatton group NDP SEA objectives are listed in appendix 4.
- 3.13 There are three objectives for which there is no local baseline data available and therefore this provides a limitation on the baseline data and whether the NDP policies are able to move towards or away from this data, this also means that there are no future trends to link the SEA objective too.

#### 4.0 Assessing the NDP Objectives

- 4.1 The following are objectives listed in the NDP that aim to realise the vision for How Caple Sollers Hope and Yatton group in 2031:
- HOB1-Provide efficient communication and other related services
  - HOB2-Support productive and efficient farming and small business development in order to create employment opportunities for residents of all age groups.
  - HOB3-Support growth of tourism in such a way as to provide economic benefit without adversely impacting the landscape or environment.
  - HOB4-Maintain the unique character and heritage of the three parishes by careful management of development and protection of both the natural and built environments.
  - HOB5-Maintain the unique character and heritage of the three parishes by careful management of development and protection of both the natural and built environments.
  - HOB6-By careful planning, ensure any increase in traffic flow does not add to congestion and/or cause damage to the environment.
- 4.2 The table below tests these NDP objectives against the SEA objectives, providing a summary of the results of Task B1 of SEA. The full results are available at Appendix 4 of this report.

- 4.3 The majority of those NDP objectives which have a relationship with the SEA framework are positively compatible with it or have a neutral effect.
- 4.4 Task B1 of the SEA have not identified any potential conflicts between the NDP objectives and the SEA framework. This is due to mitigation measures within the Neighbourhood Plan and the Core Strategy which will help alleviate impact from minor developments. All of the five objectives are criteria based and does not directly allocate sites or settlement boundaries.

Key:	
+	Compatible
-	Possible conflict
0	Neutral
X	No relationship between objectives
?	Unclear, more information needed

NDP Options	SEA Objectives															
	1	2	3	4	5	6	7	8	9	10	11	12	13	14	15	16
Objective 1	+	+	+	X	+	+	+	+	+	+	+	+	+	+	+	+
Objective 2	+	+	+	X	+	+	0	0	0	0	0	0	0	+	+	+
Objective 3:	+	+	+	+	+	+	0	0	0	0	0	0	0	+	+	+
Objective 4	+	+	+	++	+	0	0	0	0	0	0	0	0	+	+	+
Objective 5	++	+	+	++	+	+	+	+	+	+	+	+	+	+	+	++
Objective 6	+	+	+	+	+	+	+	+	+	+	+	+	+	+	+	+

## 5.0 Assessing the NDP Options

- 5.1 All options that were considered by How Caple Sollers Hope and Yatton Group Parish during the development of their Plan have been assessed as part of the SEA, the summary matrix of the assessment can be found in Table B2 options these tables are in Appendix 4.
- 5.2 The options covered the topics that are likely to formulate the topics going forward in the Plan. These options were formulated from the Parish Plan but were also considered at public consultation events across the Parish in 2015. The results of which will feed into the identification of the preferred options and ultimately the draft policies.
- 5.3 A 'do nothing' option 1, was also considered by the Parish, i.e. not undertaking a Neighbourhood Development Plan, however this was disregarded at an early stage by the Parish Council as it was highlighted within the Parish Plan that the majority of the community would support the work undertaken for a Neighbourhood Plan.
- 5.4 The How Caple Sollers Hope and Yatton Group two options all had a generally positive or unknown impact upon the Baseline data and SEA objectives. As no settlements within How Caple Sollers Hope and Yatton is identified as a settlement for proportionate growth. Options were not required regarding sit selection or settlement boundaries, as growth is restricted to 'limited' in accordance with policy RA3 of the Herefordshire Core Strategy.

- 5.5 Option 2 to proceed with a criteria based plan is the most favoured this is due to the development being limited to very small projects in line with agreed Core Strategy criteria. Reuse of redundant farm building and development through farming diversification. The criteria is known, but the details of where these locations are have yet to be decided. This will be determined and assessed further at planning application stage.

NDP Options	SEA Objectives															
	1	2	3	4	5	6	7	8	9	10	11	12	13	14	15	16
Option 1	x	x	x	x	x	x	x	x	x	x	x	x	x	x	x	x
Option 2	+	+	+	+	+	+	+	+	+	+	+	+	+	+	+	+

## 6.0 Appraisal of the policies

- 6.1 A key part of developing a plan such as the How Caple Sollers Hope and Yatton Group is developing a range of options and testing these, so that a preferred way forward can be selected.
- 6.2 Although the Draft NDP identifies a number of key themes or issues which are considered significant to the Group Parish, there is no evidence that alternative approaches were considered prior to an informal consultation that took place in respect of an emerging draft plan during the 2016-2017. Therefore only the following, emerging set of draft policies can be appraised for the purposes of Stage B of the SEA:

- **Policy ENV1-Environment**
- **Policy HSG1-Housing**
- **Policy ECON1-Economy**
- **Policy CF1-Community facilities**
- **Policy INF1-Infrastructure**

### Stage B of SEA

- 6.3 In the context of Task B1 of SEA, the previous section of this report identified that many of the NDP objectives are compatible with the SEA framework, while others had either a neutral impact, no relationship with the SEA objectives or if needed; further information such as location of development. Additional policy safeguards within the NDP and Local Plan (Core Strategy) would help mitigate any possible conflicts.
- 6.4 With regard to Task B2 of SEA, the NDP policies were measured against both the SEA framework and the baseline characteristics identified during Stage A of the process; here, there was no baseline data available in respect of SEA Objectives 3 and 9. Full details of this appraisal are attached at Appendix 4.
- 6.5 The policies largely score as positive or neutral against the SEA objectives and will not, therefore, have an adverse impact on the baseline characteristics or immediate environmental impacts. This is because they are criteria based policies which only consider schemes on their own merits, as and when planning applications are submitted to the local planning authority.
- 6.6 There are some unknown factors, particularly where the location of specific piece of development (i.e tourist facilities or business units) is not yet known.

NDP Options	SEA Objectives															
	1	2	3	4	5	6	7	8	9	10	11	12	13	14	15	16
Policy 1	+	+	+	0	+	0	+	+	+	+	+	+	+	+	+	+
Policy 2	0	+	+	+	+	0	+	+	x	x	x	+	+	+	+	0
Policy 3:	0	+	+	X	+	0	+	+	x	x	x	+	+	+	+	0
Policy 4	0	+	+	X	+	0	x	x	x	x	x	+	+	+	+	0
Policy 5	0	+	+	X	+	0	0	0	0	0	0	0	+	+	+	0

- 6.7 The results of Task B3, as shown at Appendix 4, demonstrate that the cumulative impact of the NDP policies over the course of the plan period is generally positive. Although some policies may have a neutral or uncertain impact during the first 5 years of the plan period, there is no reason why they cannot have a positive effect in the medium to long-term due to policy safeguards included in the Local Plan (Core Strategy); these safeguards should avoid or mitigate against unacceptable adverse impacts.
- 6.8 Task B4 of SEA brings together the results of earlier tasks and thus identifies the cumulative impact of the entire of the NDP. This task, which is also attached at Appendix 4, reveals that the objectives and policies contained in the How Caple Sollers Hope and Yatton NDP are by and large in general conformity with the Local Plan (Core Strategy), which means that the cumulative effect of the plan will contribute to the achievement of the SEA objectives.
- 6.9 None of the NDP policies are considered to be in direct conflict with or propose greater levels of growth and development than strategic policies contained in the Local Plan (Core Strategy), which themselves have undergone a full Sustainability Appraisal.

#### Regulation 14 Consultation

- 6.10 Following the Draft plan consultation (Regulation 14) The How Caple Sollers Hope and Yatton NDP steering group amending criteria in a majority of the policies in response to the comments received at regulation 14 consultation. The amendments were mainly minor wording changes to ensure consistency with the Framework and to provide more clarity for decision makers. Two policies CF1 and ENV1 were re-assessed as the criteria altered the policies. Overall these changes help move the policies closer towards the SEA baseline and likely to ensure suitable development in the NDP plan period.
- 6.11 It has been concluded that the rescreening made will not have a significant adverse impact on the SEA objectives and therefore the conclusions of the SEA remain the same as with the Draft Plan, no significant effect is likely from the implementation of the How Caple Sollers Hope and Yatton NDP policies.
- 6.12 The full results of the re-assessed policies can be found in Appendix 8 of this Environmental Report.

#### Regulation 16 Consultation and modifications post examination

- 6.13 Following the draft plan consultation at regulation 14 and the Submission NDP consultation (Reg16), the plan has now been subject to an independent examination during September-November 2018 by Ms Ann Skipper. She has reported that the NDP has met the Basic Conditions subject to a number of minor modifications to the policies. These recommendations can be found in Appendix 8. The suggested modifications to the plan were mainly minor wording changes to ensure consistency with the Framework and to provide more clarity for decision makers. Amendments were made to ENV1, HSG1 and ECON1 which were rescreened and can be found in appendix 10. The clarification to these policies helps to move

these policies closer to the SEA baseline and easier to implement at planning application stage.

- 6.14 The modifications have been accepted by Herefordshire Council and have been made to the plan. A reassessment of the policies with their modifications has been undertaken, the results of which are contained within Appendix 8. There were some minor wording changes throughout the text and polices, these were minimal it was not necessary rescreen policies.
- 6.15 It has been concluded that the modifications made will not have a significant adverse impact on the SEA objectives and therefore the conclusions of the SEA remain the same as previously reported.

## **7.0 Implementation and monitoring**

- 7.1 Herefordshire Council as the Local Planning Authority should make arrangements to monitor the significant effects of implementing a neighbourhood plan.
- 7.2 Indeed, Regulation 17 of the Environmental Assessment of Plans and Programmes Regulations 2004 requires the Local Planning Authority to monitor the significant environmental effects of the implementation of any NDP that was subject to SEA, in order to identify unforeseen adverse effects at an early stage and to enable appropriate remedial actions.
- 7.3 Accordingly, Herefordshire Council will monitor outcomes from the NDP policies and the results of these will be reported in the Council's Annual Monitoring Report (AMR).
- 7.4 The AMR runs from 1 April to 31 March each year and the topics covered therein include the following:
- Housing delivery;
  - Previously developed land
  - Housing completions
  - Affordable housing conditions
  - Employment land delivery.
  -

## **8.0 Next steps**

- 8.1 This report will accompany the post examination version of the How Caple Sollers Hope and Yatton. The plan will move to referendum and subject to a successful outcome, final adoption in How Caple Sollers Hope and Yatton Group 2018.
- 8.2 Any changes made to the NDP as a result of a future review will trigger the need to undertake a further SEA.

# Appendix 1



---

**Initial Habitat Regulations Assessment and Strategic Environmental  
Assessment Screening Notification**

**The Neighbourhood Planning (General) Regulation 2012 (Reg. 32)**

**Conservation of Habitats and Species Regulations 2010 (d)**

---

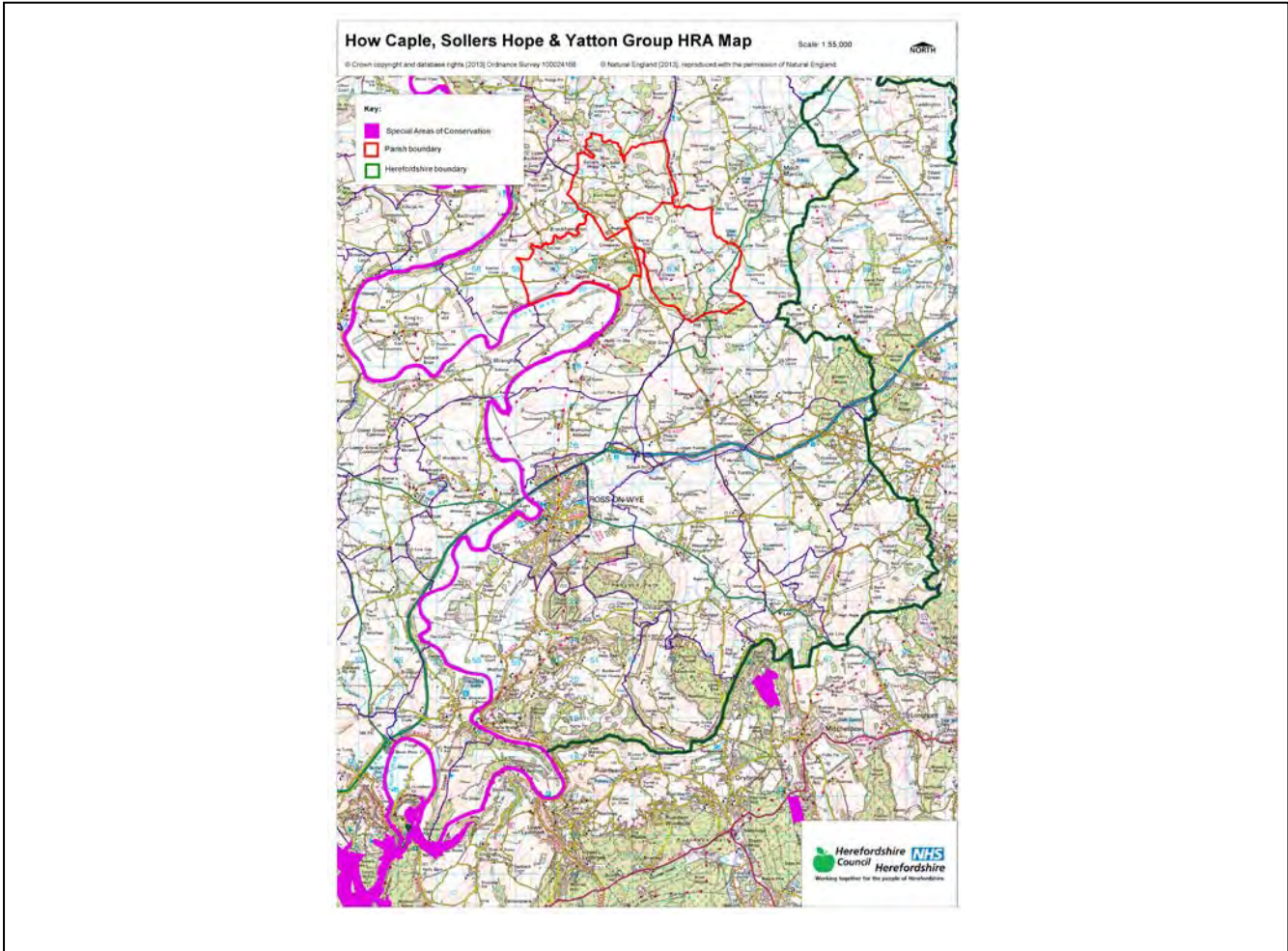
<b>Neighbourhood Area:</b>	How Caple, Sollers Hope & Yatton Group Neighbourhood Area
<b>Parish Council:</b>	How Caple, Sollers Hope & Yatton Group Parish Council
<b>Neighbourhood Area Designation Date:</b>	04/10/2013

### **Introduction**

This Initial Habitat Regulations Assessment (HRA) and Strategic Environmental Assessment (SEA) Screening has been undertaken to assess whether any European Sites exist within or in proximity to the Neighbourhood Area which could be affected by any future proposals or policies.

Through continual engagement the outcomes of any required assessments will help to ensure that proposed developments will not lead to Likely Significant Effects upon a European Site or cause adverse impacts upon other environmental assets, such as the built historic or local natural environment.

**HRA Initial Screening: Map showing relationship of Neighbourhood Area with European Sites  
(not to scale)**



**Initial HRA Screening**

**River Wye (including the River Lugg) SAC:**

Does the Neighbourhood Area have the River Wye (including the River Lugg) in or next to its boundary?	Y	The River Wye runs along the southern borders of How Caple Parish
Is the Neighbourhood Area in the hydrological catchment of the River Wye (including the River Lugg) SAC?	Y	The Group Parish is within the hydrological catchment of the River Wye
If yes above, does the Neighbourhood Area have mains drainage to deal with foul sewage?	Y	There is mains drainage at Crossway How Caple

**Downton Gorge SAC:**

Is the Neighbourhood Area within 10km of Downton Gorge SAC?	N	Downton Gorge is 43km away from the Group Parish
---	---	--

**River Clun SAC:**

Does the Neighbourhood Area include: Border Group Parish Council or Leintwardine Group Parish Council?	N	River Clun does not border the Group Parish
--	---	---

**Usk Bat Sites SAC:**

Is the Neighbourhood Area within 10km of the SAC boundary?	N	Usk Bat Sites are 41.1km away from the Parish
--	---	---

**Wye Valley & Forest of Dean Bat Sites SAC:**

Is the Neighbourhood Area within 10km of any of the individual sites that make up the Wye Valley & Forest of Dean Bat Sites?	Y	The Group Parish are 9.4km away from Wye Valley and Forest of Dean Bat Sites
--	---	--

**Wye Valley Woodlands SAC:**

Is the Neighbourhood Area within 10km of any of the individual sites that make up the Wye Valley Woodlands Site?	N	The Group Parish is 15.7km away from the Wye Valley Woodlands
--	---	---

**HRA Conclusion:**

The assessment above highlights that the following European Sites will need to be taken into account in the future Neighbourhood Development Plan for the How Caple, Sollers Hope & Yatton Group Neighbourhood Area and a Full HRA Screening will be required.

**European Site**

*(List only those which are relevant from above)*

River Wye (including the River Lugg) SAC

Wye Valley & Forest of Dean Bat Sites SAC

**Strategic Environmental Assessment Initial Screening for nature conservation landscape and heritage features**

The following environmental features are within or in general proximity to the How Caple, Sollers Hope & Yatton Group Neighbourhood Area and would need to be taken into account within a Strategic Environmental Assessment. In addition, the NDP will also need to consider the other SEA topics set out in Guidance Note 9a to ensure that the plan does not cause adverse impacts.

<b>SEA features</b>	<b>Total</b>	<b>Explanation</b>	<b>SEA required</b>
Air Quality Management Areas	0	There are no AQMA's within the Group Parish	N
Ancient Woodland	10	Wigleys Wood; Lyndor Wood; Lyndalls and Wittlebury Wood; Long Wood; The Grove; Round Wood; Rock Cottage Wood; Yatton Wood; Coldborough Park; 1 unlabelled site along the eastern boundary of Sollers Hope Parish	Y
Areas of Archaeological Interest	0	There are no AAls within the Parish	N
Areas of Outstanding Natural Beauty	1	The western side of both Sollers Hope and Yatton Parishes and the whole of How Caple Parish are within the Wye Valley AONB	Y
Conservation Areas	0	There are no Conservation Areas within the Group Parish	N
European Sites	1	River Wye	Y
Flood Areas		Flood Zones 2 and 3 run south of How Caple Parish along the River Wye. Also from north to south in Sollers Hope Parish along a brook which flows into the River Wye. There are also Flood Zones in Yatton entering the parish from the east and running until Welsh Court and continuing north towards Dean's Place	Y
Listed Buildings	Numerous	There are numerous Listed Buildings throughout the Group Parish	Y
Local Sites (SWS/SINCS/RIGS)	10 (SWS)	Woodland along Marcle Hill & Ridge Hill; Sutton Hill Wood (border); Lyndalls & Wittlebury Woods; Birch & Rattle Hill Woods; Yatton Wood; Coldborough Park; Lindor & How Caple Woods, west of The Stocking; Bayton Grove; River Wye; Tack Wood (border)	Y
Long distance footpaths/trails	3	Herefordshire Trail; Wye Valley Walk; Three Choirs Way	Y
Mineral Reserves	7	Dean's Place to Newhouse Farm, Yatton; Green Hill Coppice to Hoppers Oak to Hoar Wood to Newbury Lodge, Yatton; Sollers Hope to Wittlebury Farm to Foxalls; Siege Wood to Round Wood, Sollers Hope; Paget's Wood, Fownhope to Lower Buckenhill to Sollers Hope; Underhill, south of River Wye and How Caple, opposite Fawley Chapel (border);	Y

		The Plantation to Devereux Park to Winslow Mill to Busland Wood to Sapness House (border)	
National Nature Reserve	0	There are no NNRs within the Group Parish	N
Registered & Unregistered parks and gardens	1 registered 4 Unregistered	Registered: Homme House (border) Unregistered: How Caple Court; Perrystone Court (border); Eaton Tregoz (border); Brockhampton, by Ross (border)	Y
Scheduled Ancient Monuments	3	Churchyard cross in St Michaels Churchyard; Chapel at Chapel Farm; Dyke on south side of Yatton Wood (border)	Y
Sites of Special Scientific Interest	2	Birch Wood (Favourable); River Wye (Unfavourable Recovering)	Y

**Decision Notification:**

The initial screening highlights that the Neighbourhood Development Plan for the How Caple, Sollers Hope & Yatton Group Neighbourhood Area:

- a) Will require further environmental assessment for Habitat Regulations Assessment and Strategic Environmental Assessment.

**Assessment date: 15/08/2013**

**Assessed by: James Latham**

## Appendix 1: European Sites

The table below provides the name of each European Site, which has been screened in for the purposes of neighbourhood planning in Herefordshire; includes their site features of integrity; and vulnerability data. This is based on the sites individual features of integrity and their vulnerabilities, which could include distance criteria. This has been used in identifying which parishes are likely to require a full HRA Screening of their future Neighbourhood Development Plan, to establish if their plan might have Likely Significant Effects on a European Site.

<b>Downton Gorge</b>
<b>Site Features:</b> <i>Tilio-Acerion</i> forests of slopes, screes and ravines
<b>Vulnerability data:</b> 10km for air quality associated with poultry units or other intensive agricultural practices.
<b>River Clun</b>
<b>Site Features:</b> Freshwater pearl mussel <i>Margaritifera margaritifera</i>
<b>Vulnerability data:</b> Water quality is important to maintain the site feature. Parishes either side of the River Clun will be affected.
<b>River Wye</b>
<b>Site Features:</b> Water courses of plain to montane levels with the <i>Ranunculion fluitantis</i> and <i>Callitricho-Batrachion</i> vegetation. Transition mires and quaking bogs. White-clawed (or Atlantic Stream) crayfish <i>Austropotamobius pallipes</i> . Sea lamprey <i>Petromyzon marinus</i> . Brook lamprey <i>Lampetra planeri</i> . River lamprey <i>Lampetra fluviatilis</i> . Twaite shad <i>Alosa fallax</i> . Atlantic salmon <i>Salmo salar</i> . Bullhead <i>Cottus gobio</i> . Otter <i>Lutra lutra</i> . Allis shad <i>Alosa alosa</i>
<b>Vulnerability data:</b> Proximity: Developments should not be within 100m of the designated bank. Some developments beyond 100m may also have impacts based on proximity and these issues should be addressed where possible when developing NDP policy and choosing site allocations. Water Quality: Within the whole catchment of the River Wye, which includes the River Lugg, mains drainage issues with regards to water quality are being resolved through the Core Strategy / Local Plan and development of a Nutrient Management Plan. Welsh Water should be consulted to ensure that the proposed growth will be within the limit of their consents. Otters: "An otter will occupy a 'home range', which on fresh waters usually includes a stretch of river as well as associated tributary streams, ditches, ponds, lakes and woodland. The size of a home range depends largely on the availability of food and shelter, and the presence of neighbouring otters. On rivers, a male's home range may be up to 40km or more of watercourse and associated areas; females have smaller ranges (roughly half the size) and favour quieter locations for breeding, such as tributary streams. Otters without an established home range are known as 'transients'. They are mostly juveniles looking for a territory of their own, or adults that have been pushed out of their territories. Transient otters may use an area for a short while, but they will move on if conditions are not suitable or if they are driven away by resident otters. Transients will have been important in extending the range of otters, but they are very difficult to identify from field signs. Within a home range an otter may use many resting sites. These include above-ground shelters, such as stands of scrub or areas of rank grass, and underground 'holts' – for example, cavities under tree roots and dry drainage pipes." (Source: EA website: <a href="http://www.environmentagency.gov.uk/static/documents/Business/Otters_the_facts.pdf">http://www.environmentagency.gov.uk/static/documents/Business/Otters_the_facts.pdf</a> accessed 09/04/2013)

### Usk Bat Site

**Site Features:** Annex I habitats present as a qualifying feature, but not a primary reason for site selection: European dry heaths, Degraded raised bogs still capable of natural regeneration, Blanket bogs, Calcareous rocky slopes with chasmophytic vegetation, Caves not open to the public, *Tilio-Acerion* forests of slopes, screes and ravines. Annex II species of primary reason for site selection: Lesser horseshoe bat *Rhinolophus hipposideros*, UK population 5%, although it is suggested this is an underestimate.

**Vulnerability data:** Lesser Horseshoe bats are known to migrate between 5km and 10km between their summer and winter roosts. The Lesser Horseshoe Bat is vulnerable to disturbance; light pollution; and habitat loss. Check with the planning ecologist for other issues.

### Wye Valley and Forest of Dean Bat Sites

**Site Features:** Annex II species that are a primary reason for site selection: Lesser horseshoe bat *Rhinolophus hipposideros*. Greater horseshoe bat *Rhinolophus ferrumequinum*

**Vulnerability data:** Lesser Horseshoe bats are known to migrate between 5km and 10km between their summer and winter roosts. The Lesser Horseshoe Bat is vulnerable to disturbance; light pollution; and habitat loss. Check with the planning ecologist for other issues.

Greater Horseshoe bats are known to migrate between 20-30km between their summer and winter roosts.

NDPs closest to the European Site will need to consider:  
Woodland habitat buffer.

Lesser Horseshoe Bat: Old buildings; woodland locations; sheltered valleys, extensive deciduous woods or dense scrub, close to roost sites. In areas of fragmented habitats, linear habitats such as hedgerows are important corridors. Vulnerable to loss or disturbance of both summer and winter roosts and removal of linear habitat.

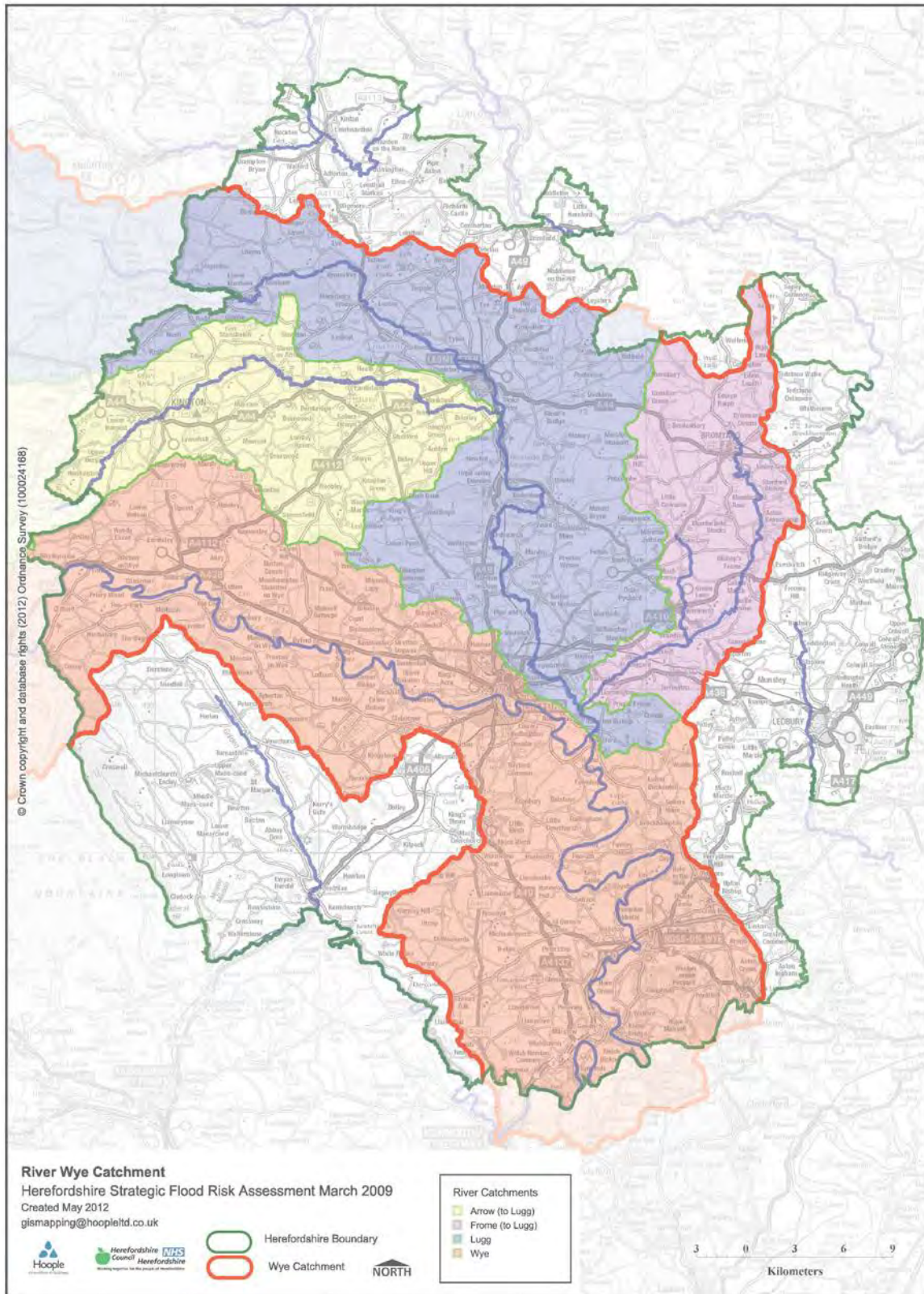
Greater Horseshoe Bat: Large buildings, pasture, edge of mixed deciduous woodland and hedgerows. Mixed land-use especially south-facing slopes, favours beetles, moths and insects they feed on. During the winter they depend on caves, abandoned mines and other underground sites for undisturbed hibernation. A system/series of sites required. Vulnerable to loss of insect food supply, due to insecticide use, changing farming practices and loss of broad-leaved tree-cover and loss / disturbance of underground roosts sites.

### Wye Valley Woodlands

**Site Features:** Annex I habitats that are a primary reason for site selection: Beech forests *Asperulo-Fagetum*, *Tilio-Acerion* forests of slopes, screes and ravines, *Taxus baccata* woods of the British Isles. Annex II species present as a qualifying feature, but not a primary reason for site selection: Lesser horseshoe bat *Rhinolophus hipposideros*, 51-100 residents

**Vulnerability data:** Lesser Horseshoe bats are known to migrate between 5km and 10km between their summer and winter roosts. The Lesser Horseshoe Bat is vulnerable to disturbance; light pollution; and habitat loss. Check with the planning ecologist for other issues. NDPs closest to the European Site will need to consider: Woodland habitat buffer. Lesser Horseshoe Bat: Old buildings; woodland locations; sheltered valleys, extensive deciduous woods or dense scrub, close to roost sites. In areas of fragmented habitats, linear habitats such as hedgerows are important corridors. Vulnerable to loss or disturbance of both summer and winter roosts and removal of linear habitat.

## Appendix 2: Wye Catchment Map



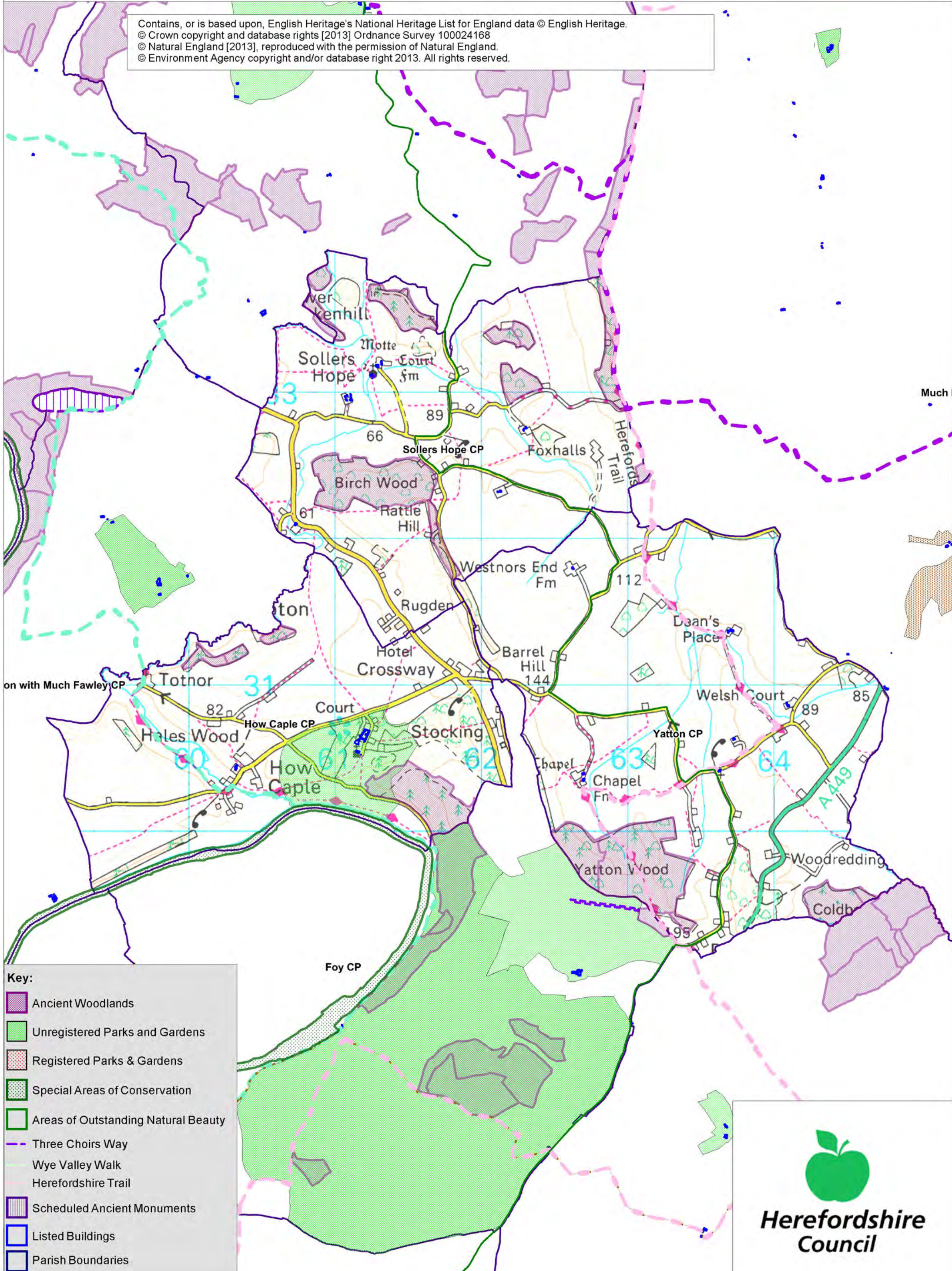


# How Caple, Sollers Hope & Yatton Group SEA Map 1

Scale: 1:22,500



Contains, or is based upon, English Heritage's National Heritage List for England data © English Heritage.  
 © Crown copyright and database rights [2013] Ordnance Survey 100024168  
 © Natural England [2013], reproduced with the permission of Natural England.  
 © Environment Agency copyright and/or database right 2013. All rights reserved.



**Key:**

- Ancient Woodlands
- Unregistered Parks and Gardens
- Registered Parks & Gardens
- Special Areas of Conservation
- Areas of Outstanding Natural Beauty
- Three Choirs Way
- Wye Valley Walk
- Herefordshire Trail
- Scheduled Ancient Monuments
- Listed Buildings
- Parish Boundaries



**Herefordshire Council**

# How Caple Sollers Hope Yatton Group SEA Map 2

Scale: 1:22,500



Contains, or is based upon, English Heritage's National Heritage List for England data © English Heritage.  
© Crown copyright and database rights [2013] Ordnance Survey 100024168  
© Natural England [2013], reproduced with the permission of Natural England.  
© Environment Agency copyright and/or database right 2013. All rights reserved.



**Key:**

- Minerals Sites
- Sites of Special Scientific Interest
- Special Wildlife Sites
- Flood Zone 2
- Flood Zone 3
- Parish Boundaries



# Appendix 2

# Strategic Environmental Assessment



## How Caple, Sollars Hope & Yatton Neighbourhood Area

**Scoping Report**

March 2016

## Consultation on the Scoping Report

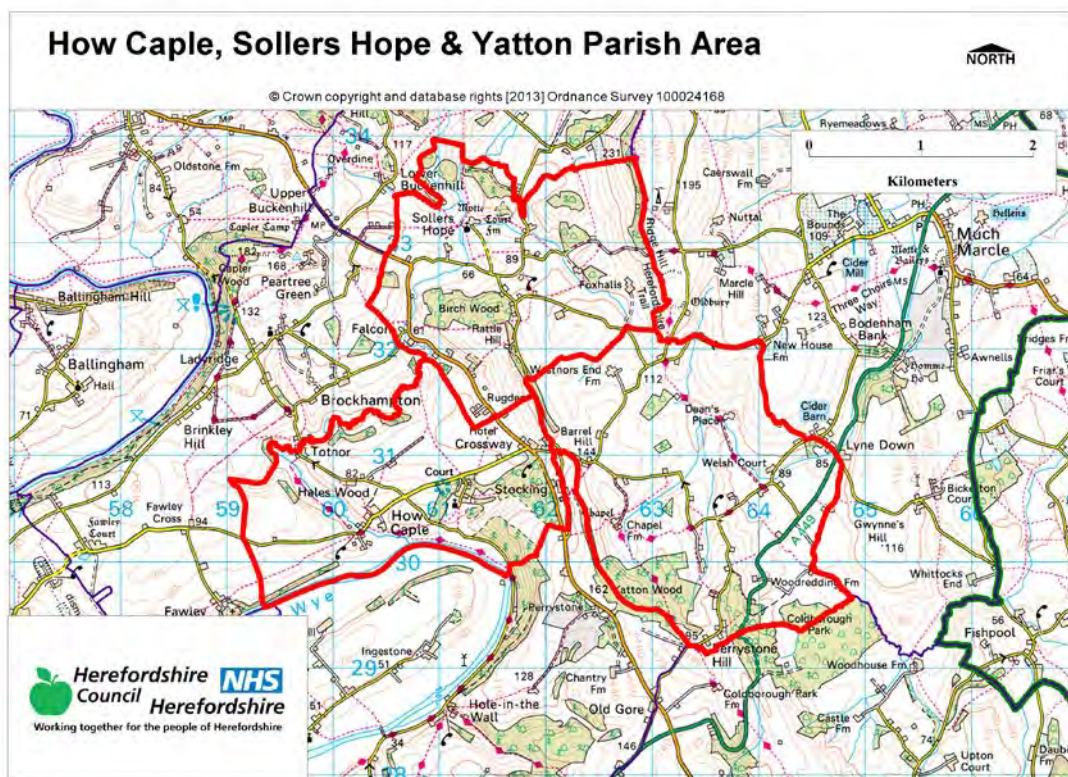
The aim of the consultation process is to involve and engage with statutory consultees and other relevant bodies on the scope of the appraisal. In particular, it seeks to:

- Ensure the SEA is both comprehensive and sufficiently robust to support the Neighbourhood Development Plan during the later stages of full public consultation;
- Seek advice on the completeness of the plan review and baseline data and gain further information where appropriate;
- Seek advice on the suitability of key sustainability issues;
- Seek advice on the suitability of the sustainability objectives.

Comments on this Scoping Report have been invited from the three consultation bodies as required by the SEA regulations, together with the Natural Resources Wales.

The three consultation bodies are as follows:

1. Natural England;
2. Historic England;
3. Environment Agency.



## Template A1: Identification and review of local Neighbourhood Area relevant plans, policies and programmes

Parish Council Name: How Caple, Sollers Hope and Yatton

Neighbourhood Development Plan Name: How Caple, Sollers Hope and Yatton Group Plan

Date completed: January 2016

Plans and Programmes	Type of document	Date	Overview	Key message, target/objective/indicator	SEA topic(s) <sup>1</sup>	Implications for the NDP and SEA
The EC Conservation of Habitats and Species Regulations	European Union Legislation	2010	These regulations transpose the Habitats Directive in England, Wales and to a limited extent Scotland by ensuring that activities are carried out in accordance with the Habitats Directive, which is to protect biodiversity through the conservation of natural habitats and species of wild flora and fauna.	The Regulations make it an offence (subject to exceptions) to deliberately capture, kill, disturb, or trade in the animals listed in Schedule 2, or pick, collect, cut, uproot, destroy, or trade in the plants listed in Schedule 4. However, these actions can be made lawful through the granting of licenses by the appropriate authorities.	<ul style="list-style-type: none"> <li>Biodiversity</li> <li>Cultural heritage and the landscape</li> </ul>	The Neighbourhood Plan should be compliant with all the relevant legislation and regulations.

<sup>1</sup> Derived from the LDF General Scoping Report (June 2007)

This document is copyright of Herefordshire Council, please contact the Neighbourhood Planning team if you wish to reuse it in whole or part.

Plans and Programmes	Type of document	Date	Overview	Key message, target/objective/indicator	SEA topic(s) <sup>1</sup>	Implications for the NDP and SEA
The EC Water Framework Directive	European Union	2000	Commits all EU member states to achieve good qualitative and quantitative status of all water courses by 2015	Aims for 'good status' for all ground and surface waters (rivers, lakes, transitional waters, and coastal waters) in the EU	<ul style="list-style-type: none"> <li>• Water</li> </ul>	The Neighbourhood Plan should be compliant with all the relevant legislation and regulations.
The Wildlife and Countryside Act (1981)	Domestic Legislation	1981	The major legal instrument for wildlife protection in Britain, although other significant acts have been passed since. It has numerous parts and supplementary lists and schedules many of which have been amended since publication.	The principle mechanism for the legislative protection of wildlife in Great Britain.	<ul style="list-style-type: none"> <li>• Biodiversity</li> <li>• Cultural heritage and the landscape</li> <li>• Flora and fauna</li> <li>• Material assets</li> <li>• Soil</li> </ul>	The Neighbourhood Plan should be compliant with all the relevant legislation and regulations.

Plans and Programmes	Type of document	Date	Overview	Key message, target/objective/indicator	SEA topic(s) <sup>1</sup>	Implications for the NDP and SEA
The Countryside and Right of Way Act (2000)	Domestic Legislation	2000	Creates a statutory right of access on foot to certain types of open land, to modernise the public rights of way system, to strengthen nature conservation legislation, and to facilitate better management of AONBs.	The Act provides for a new right of access on foot to areas of open land comprising: Mountain (land over 600 metres); Moorland; Heath; Downland; Registered common land.  There are provisions to consider extending the right in the future to coastal land, but not woodland despite some early publicity suggesting this.	<ul style="list-style-type: none"> <li>• Biodiversity</li> <li>• Cultural heritage and the landscape</li> <li>• Flora and fauna</li> <li>• Material assets</li> <li>• Soil</li> </ul>	The Neighbourhood Plan should be compliant with all the relevant legislation and regulations.
Biodiversity 2020: A strategy for England's wildlife and ecosystem services	National Strategy	2011	Forms part of the UK's Post-2010 Biodiversity Framework by setting out England's contribution towards the UK's commitments under the United Nations Convention of Biological Diversity.	Sets out to halt overall biodiversity loss, support healthy well-functioning ecosystems and establish coherent ecological networks, with more and better places for nature for the benefit of wildlife and people.	<ul style="list-style-type: none"> <li>• Biodiversity</li> </ul>	The NDP should take account of the provisions of the strategy, making the most of opportunities to enhance wildlife habitats or restore degraded ecosystems in the process.
The Natural Environment and Rural	Domestic Legislation	2006	Designed to help achieve a rich and diverse	Provides that any public body or statutory undertaker in England and	<ul style="list-style-type: none"> <li>• Biodiversity</li> <li>• Cultural heritage and the</li> </ul>	The Neighbourhood Plan should be compliant with all the

This document is copyright of Herefordshire Council, please contact the Neighbourhood Planning team if you wish to reuse it in whole or part.



Plans and Programmes	Type of document	Date	Overview	Key message, target/objective/indicator	SEA topic(s) <sup>1</sup>	Implications for the NDP and SEA
Communities Act (2006)			natural environment and thriving rural communities through modernised and simplified arrangements for delivering Government policy.	Wales must have regard to the purpose of conservation of biological diversity in the exercise of their functions.	landscape <ul style="list-style-type: none"> <li>• Flora and fauna</li> <li>• Material assets</li> <li>• Soil</li> </ul>	relevant legislation and regulations.

Plans and Programmes	Type of document	Date	Overview	Key message, target/objective/indicator	SEA topic(s) <sup>1</sup>	Implications for the NDP and SEA
Revised EU Sustainable Development strategy	European Union Strategy	2009	Sets out a single strategy on how the EU will more effectively meet its long-standing commitment to meet the challenges of sustainable development.	Recognises the need to gradually change current unsustainable consumption and production patterns and move towards a better integrated approach to policy making. The Strategy sets overall objectives, targets and concrete actions for seven key priority challenges, predominantly environmental: <ul style="list-style-type: none"> <li>• Climate change and clean energy;</li> <li>• Sustainable transport</li> <li>• Sustainable production and consumption;</li> <li>• Public health threats;</li> <li>• Better management of natural resources;</li> <li>• Social inclusion, demography and migration;</li> <li>• Fighting global poverty.</li> </ul>	<ul style="list-style-type: none"> <li>• Air</li> <li>• Climate factors</li> <li>• Cultural heritage and the landscape</li> <li>• Population and human health</li> </ul>	The Neighbourhood Plan should take into account the objectives of the strategy. The aim of sustainable development should be implicit in its approach.
National Planning Policy Framework (NPPF)	National planning policy.	2012	Consolidates the suite of PPG/PPS into one succinct planning policy document.		<ul style="list-style-type: none"> <li>• Air</li> <li>• Biodiversity</li> <li>• Climate factors</li> <li>• Cultural heritage and the landscape</li> <li>• Flora and fauna</li> <li>• Material assets</li> </ul>	The NDP should take into account the relevant policies set within the NPPF.

This document is copyright of Herefordshire Council, please contact the Neighbourhood Planning team if you wish to reuse it in whole or part.

Plans and Programmes	Type of document	Date	Overview	Key message, target/objective/indicator	SEA topic(s) <sup>1</sup>	Implications for the NDP and SEA
					<ul style="list-style-type: none"> <li>• Population and human health</li> <li>• Soil</li> <li>• Water</li> </ul>	
Planning Practice Guidance	Government Guidance	2014	Provides guidance to local planning authorities and others on the operation of the planning system.		<ul style="list-style-type: none"> <li>• Air</li> <li>• Biodiversity</li> <li>• Climate factors</li> <li>• Cultural heritage and the landscape</li> <li>• Flora and fauna</li> <li>• Material assets</li> <li>• Population and human health</li> <li>• Soil</li> <li>• Water</li> </ul>	The NDP should take into account the planning guidance provided within these documents.
Adopted Herefordshire Core Strategy, 2011-2031  (Adopted October 2015)	Development Plan Document (DPD)	2015	Sets out the vision, objectives and policies for the Herefordshire Local Plan (Core Strategy), which will guide development across the county up to 2031.	<p>Outlines the suite of countywide planning policies relating to housing, economic development and the environment, which the NDP will need to be in conformity with where relevant.</p> <p>The Core Strategy includes a range of objectives, five of which directly relate to rural areas:</p> <ul style="list-style-type: none"> <li>• To meet the housing needs of all sections of</li> </ul>	<ul style="list-style-type: none"> <li>• Air</li> <li>• Biodiversity</li> <li>• Climate factors</li> <li>• Cultural heritage and the landscape</li> <li>• Flora and fauna</li> <li>• Material assets</li> <li>• Population and human health</li> <li>• Soil</li> <li>• Water</li> </ul>	<p>The NDP should take account of relevant policies set within in the Core Strategy.</p> <p>Where necessary, the NDP should provide services, facilities and employment opportunities that are accessible to both local and neighbouring communities.</p>

This document is copyright of Herefordshire Council, please contact the Neighbourhood Planning team if you wish to reuse it in whole or part.

Plans and Programmes	Type of document	Date	Overview	Key message, target/objective/indicator	SEA topic(s) <sup>1</sup>	Implications for the NDP and SEA
				<p>the community</p> <ul style="list-style-type: none"> <li>• To improve access to services in rural areas</li> <li>• To strengthen the economic viability of the villages and their rural hinterlands</li> <li>• To achieve sustainable communities and protect the environment</li> <li>• To conserve, promote, utilise and enjoy our natural, built, historic and cultural assets for the fullest benefit of the whole community</li> </ul> <p>To achieve a thriving rural Herefordshire, the Core Strategy seeks to enhance the role the villages have traditionally played in as accessible, sustainable centres for their rural catchments.</p>		There are no 4.20 or 4.21 villages within How Caple, Sollers Hope and Yatton parish. Policies within the NDP need to be in conformity with RA3 and RA4 policy.
Herefordshire Local Transport Plan 3 (LTP) 2013-2015	Corporate	2013	Sets out the Council's strategy for supporting economic growth, social inclusion and reducing the	The document includes three key objectives, one which seeks to maintain access for rural residents and people without access to a car. Intrinsic to this is the retention of a 'core network' of bus services	<ul style="list-style-type: none"> <li>• Air</li> <li>• Climate factors</li> <li>• Population and human health</li> </ul>	The LTP does not explore current transport issues in the How Caple, Sollers Hope and Yatton Plan neighbourhood area, but any new development proposed

This document is copyright of Herefordshire Council, please contact the Neighbourhood Planning team if you wish to reuse it in whole or part.

Plans and Programmes	Type of document	Date	Overview	Key message, target/objective/indicator	SEA topic(s) <sup>1</sup>	Implications for the NDP and SEA
			environmental impacts of transport, as well as the program of investment for the period April 2013 to April 2015.	which focus on journeys between Hereford and the market towns, along with main transport corridors close to larger rural settlements. To this end, the strategy aims to increase the number of bus users by 1.3% (4,700 journeys) by 2015.		through the NDP should seek to reduce the environmental impacts of transport.
Understanding Herefordshire Report	Built and natural environment	2014	<p>Important to understand the place such as the local economy natural and built environment in which people live, learn and work as part of understanding their quality of life</p> <p>Enable development for economy and housing to required levels.</p> <p>Growth should be supported by sustainable</p>	An air quality management plan is in place to tackle this. Destination Hereford project is in place to give locals more sustainable transport options.	<p>Improve air quality.</p> <p>Have a more diverse range of transport options.</p>	None identified.

This document is copyright of Herefordshire Council, please contact the Neighbourhood Planning team if you wish to reuse it in whole or part.

Plans and Programmes	Type of document	Date	Overview	Key message, target/objective/indicator	SEA topic(s) <sup>1</sup>	Implications for the NDP and SEA
			transport measures.			
Malvern Hills AONB Management Plan 2014-2019	Corporate	2014	Identifies the issues and challenges facing the special features of the area and contains 24 guiding principles and 46 strategic objectives which will help address them.		<ul style="list-style-type: none"> <li>• Air</li> <li>• Biodiversity</li> <li>• Climate factors</li> <li>• Cultural heritage and the landscape</li> <li>• Flora and fauna</li> <li>• Material assets</li> <li>• Population and human health</li> <li>• Soil</li> <li>• Water</li> </ul>	How Caple, Sollers Hope and Yatton Group Plan neighbourhood Area is not within or adjacent to the Malvern Hills AONB.
Wye Valley AONB management Plan 2015-2020	Corporate	2015	The Management Plan is the prime document which sets out the vision for the area and the priorities for its management.	<p>To conserve and enhance the natural beauty of the area.</p> <p>The Plan has strategic objectives are linked to various themes: Landscape; biodiversity; geodiversity; historic environment; farming; woodlands, trees and forestry; development and transport.</p>	<ul style="list-style-type: none"> <li>• Air</li> <li>• Biodiversity</li> <li>• Climate factors</li> <li>• Cultural heritage and the landscape</li> <li>• Flora and fauna</li> <li>• Material assets</li> <li>• Population and human health</li> <li>• Soil</li> <li>• Water</li> </ul>	<p>The western side of both Sollers Hope and Yatton Parishes and the whole of How Caple Parish are within the Wye Valley AONB.</p> <p>Therefore the NDP will need to take into account the Wye Valley AONB management plan priorities.</p>
Herefordshire Economic Development	Corporate	2011	Aims to increase the economic wealth of	The document outlines the path and direction to foster economic vitality within	<ul style="list-style-type: none"> <li>• Cultural heritage and the landscape</li> </ul>	None of merit.

This document is copyright of Herefordshire Council, please contact the Neighbourhood Planning team if you wish to reuse it in whole or part.

Plans and Programmes	Type of document	Date	Overview	Key message, target/objective/indicator	SEA topic(s) <sup>1</sup>	Implications for the NDP and SEA
Strategy 2011-2016			Herefordshire by setting out proposals and to support business growth up to 2016.	Herefordshire. Key objectives therefore include: <ul style="list-style-type: none"> <li>• Sustaining business survival and growth</li> <li>• Increasing wage levels, range and quality of jobs</li> <li>• Having a skilled population to meet future work needs</li> <li>• Developing the county's built infrastructure so enterprise can flourish.</li> </ul>	<ul style="list-style-type: none"> <li>• Material assets</li> <li>• Population and human health</li> </ul>	
Herefordshire Employment Land Study	Evidence	2012	Includes employment land assessments for the plan period 2011-2031. The study includes Quantitative and Qualitative assessments of employment land, assessment of market demand and need, as well as providing	<p>This study covers existing employment sites in Hereford, the five market towns and their rural hinterlands.</p> <p>There are no employment land allocations within How Caple, Sollers Hope and Yatton at present and so the study does not identify sites which are worthy of continued protection from alternative uses. Nor does it make any recommendations in</p>	<ul style="list-style-type: none"> <li>• Material assets</li> <li>• Population and human health</li> </ul>	None of merit; however the NDP process may have to explore whether there is any employment need locally and if so whether there is any scope for providing employment land and premises.

This document is copyright of Herefordshire Council, please contact the Neighbourhood Planning team if you wish to reuse it in whole or part.

Plans and Programmes	Type of document	Date	Overview	Key message, target/objective/indicator	SEA topic(s) <sup>1</sup>	Implications for the NDP and SEA
			forecasts and recommendations for future employment need over the plan period.	respect of employment need within the neighbourhood area.		
Herefordshire Strategic Housing Land Availability Assessment (SHLAA)	Evidence	2009	<p>The SHLAA aims to justify site allocations in plans by:</p> <ul style="list-style-type: none"> <li>• Identifying sites which are capable of delivering housing development</li> <li>• Assessing sites for their housing potential; and</li> <li>• Predicting when a site could be developed for housing.</li> </ul>	In terms of How Caple, Sollers Hope and Yatton there was no SHLAA undertaken.	<ul style="list-style-type: none"> <li>• Air</li> <li>• Biodiversity</li> <li>• Climate factors</li> <li>• Cultural heritage and the landscape</li> <li>• Flora and fauna</li> <li>• Population and human health</li> <li>• Soil</li> <li>• Water</li> </ul>	The village of How Caple, Sollers Hope and Yatton did not have a SHLAA assessment undertaken; therefore a local site assessment exercise should be undertaken for these villages if any site allocations are likely, but as none of the villages are within 4.20 and 4.21 it is unlikely that they will require development of that scale.



Plans and Programmes	Type of document	Date	Overview	Key message, target/objective/indicator	SEA topic(s) <sup>1</sup>	Implications for the NDP and SEA
Herefordshire Local Housing Market Assessment (LHMA)	Evidence	2013	Builds on an earlier Strategic Housing Market Assessment (SHMA) developed for Herefordshire and Shropshire. Its purpose is to inform the Local Plan's policies regarding housing need and demand (for market and affordable housing) within each of the 7 Housing Market Areas (HMAs) in Herefordshire between 2011 and 2031.	<p>How Caple, Sollers Hope and Yatton falls within the Ross-on-Wye HMA. Here, the study reveals that:</p> <ul style="list-style-type: none"> <li>• 55% of households are unable to afford market housing.</li> <li>• There is an annual requirement for 58 affordable dwellings between 2012 and 2017.</li> </ul> <p>The study identifies that, in Ross-on-Wye HMA, there is a need for:</p> <ul style="list-style-type: none"> <li>• 690 market houses</li> <li>• 490 affordable houses.</li> </ul> <p>The study highlights that within the Ross-on-Wye HMA the overall estimated housing need by size 2012-2017 is as follows: 1 Bed - 54.4%, 2 bed – 18.4%, 3 bed – 28.2%</p>	<ul style="list-style-type: none"> <li>• Air</li> <li>• Biodiversity</li> <li>• Climate factors</li> <li>• Cultural heritage and the landscape</li> <li>• Flora and fauna</li> <li>• Population and human health</li> <li>• Soil</li> <li>• Water</li> </ul>	It provides evidence that could be used to inform policies or market and affordable housing requirements in the NDP.

This document is copyright of Herefordshire Council, please contact the Neighbourhood Planning team if you wish to reuse it in whole or part.

Plans and Programmes	Type of document	Date	Overview	Key message, target/objective/indicator	SEA topic(s) <sup>1</sup>	Implications for the NDP and SEA
Herefordshire Local Housing Requirements Study	Evidence	2012	Technical assessment of the housing market and potential future local housing requirements which supports planning policy regarding the amount of growth, housing tenure and housing type needed within Herefordshire up to 2031.	<p>The delivery of 5,300 homes in the rural areas would:</p> <ul style="list-style-type: none"> <li>• Support growth in the rural population by 6%</li> <li>• Increase the number of households by 14.5%</li> </ul> <p>Forecasts also predict that growth in the population of the rural areas is likely to be primarily through an increase in those aged over 75.</p> <p>Moderate growth is expected in the 30-44 and 60-74 age brackets.</p> <p>The Local Housing Requirements Study therefore anticipates continuing improvements in life expectancy; significant growth is expected of those in their 80s, with the existing population in their 40s and 50s moving into retirement. As a consequence, the rural areas will face an increasing urgency to</p>	<ul style="list-style-type: none"> <li>• Air</li> <li>• Biodiversity</li> <li>• Climate factors</li> <li>• Cultural heritage and the landscape</li> <li>• Flora and fauna</li> <li>• Material assets</li> <li>• Population and human health</li> <li>• Soil</li> <li>• Water</li> </ul>	<p>This study provides an indication of housing requirements in the rural areas and the Ross on Wye HMA.</p> <p>This evidence can be used to inform the content of the How Caple, Sollers Hope and Yatton group NDP, which could include policies to facilitate the provision of the right types of homes in the right places.</p>

This document is copyright of Herefordshire Council, please contact the Neighbourhood Planning team if you wish to reuse it in whole or part.

Plans and Programmes	Type of document	Date	Overview	Key message, target/objective/indicator	SEA topic(s) <sup>1</sup>	Implications for the NDP and SEA
				provide more 3 bedroom homes, with more 1 and 2 bed homes required in the affordable sector.		
Herefordshire Rural Housing Background Report	Evidence	2013	Provides the justification for the proportional housing growth targets outlined in the Core Strategy	The group settlements of How Caple, Sollers Hope and Yatton have no 4.20 and 4.21 have been identified.	<ul style="list-style-type: none"> <li>• Air</li> <li>• Biodiversity</li> <li>• Climate factors</li> <li>• Cultural heritage and the landscape</li> <li>• Flora and fauna</li> <li>• Material assets</li> <li>• Population and human health</li> <li>• Soil</li> <li>• Water</li> </ul>	The How Caple, Sollers Hope and Yatton NDP will need to be in conformity with the provisions of Policy RA3 and RA4. These policies outline criteria for rural dwellings and agricultural and forestry dwellings.
Herefordshire Draft Gypsies and Travellers Assessment	Evidence	2013	Assesses the accommodation needs of Gypsies and Travellers across Herefordshire.	<p>Key findings from the survey of Gypsy and Traveller households in 2012 found that:</p> <ul style="list-style-type: none"> <li>• 31% of households surveyed have some sort of accommodation need</li> <li>• Of the 17 households with an accommodation need, 7 had a requirement for at least one additional pitch</li> </ul>	<ul style="list-style-type: none"> <li>• Air</li> <li>• Biodiversity</li> <li>• Climate factors</li> <li>• Cultural heritage and the landscape</li> <li>• Flora and fauna</li> <li>• Material assets</li> <li>• Population and human health</li> <li>• Soil</li> <li>• Water</li> </ul>	The How Caple, Sollers Hope and Yatton NDP must establish whether any of the need identified in this assessment falls within the neighbourhood area and make appropriate provisions for it.

This document is copyright of Herefordshire Council, please contact the Neighbourhood Planning team if you wish to reuse it in whole or part.

Plans and Programmes	Type of document	Date	Overview	Key message, target/objective/indicator	SEA topic(s) <sup>1</sup>	Implications for the NDP and SEA
				<ul style="list-style-type: none"> <li>• 10 households had a requirement for bricks and mortar housing</li> <li>• There is an additional requirement for 7 pitches and 9 units of Registered Social Landlord accommodation within Herefordshire.</li> </ul>		
Herefordshire Local Biodiversity Action Plan	Evidence	2007	Focuses conservation efforts on the areas within Herefordshire that will result in the greatest benefit for ecological networks, habitats and species.	Integrating biodiversity objectives with other environmental, social and economic needs can provide a sustainable living and working environment that benefits both people and nature.	<ul style="list-style-type: none"> <li>• Biodiversity</li> </ul>	The NDP can help to achieve the LBAP priorities.
Building Biodiversity into the LDF	Evidence	2009	Provides the Council's Local Plan (Core Strategy) with evidence in respect of biodiversity and geodiversity, identifying both opportunities and constraints	This document provides useful information in respect of Hereford and the market towns only.	<ul style="list-style-type: none"> <li>• Air</li> <li>• Biodiversity</li> <li>• Climate factors</li> <li>• Cultural heritage and the landscape</li> <li>• Flora and fauna</li> <li>• Material assets</li> <li>• Population and human health</li> </ul>	There is a lack of information about rural areas which means it will be necessary to gather and assess existing biodiversity and geodiversity data, in order to ensure that the How Caple, Sollers Hope and Yatton NDP can overcome any

This document is copyright of Herefordshire Council, please contact the Neighbourhood Planning team if you wish to reuse it in whole or part.

Plans and Programmes	Type of document	Date	Overview	Key message, target/objective/indicator	SEA topic(s) <sup>1</sup>	Implications for the NDP and SEA
			across Herefordshire.		<ul style="list-style-type: none"> <li>• Soil</li> <li>• Water</li> </ul>	existing constraints and capitalise on opportunities to enhance habitats and their networks.
Herefordshire Green Infrastructure Strategy	Evidence	2010	Develops a framework of natural and culturally important features and functions so that planning for a sustainable future is at the heart of planning within Herefordshire.	Establishes policies and principles for the protection and enhancement of those features and functions that contributes to the environment of Herefordshire across a range of scales.	<ul style="list-style-type: none"> <li>• Air</li> <li>• Biodiversity</li> <li>• Climate factors</li> <li>• Cultural heritage and the landscape</li> <li>• Flora and fauna</li> <li>• Material assets</li> <li>• Population and human health</li> <li>• Soil</li> <li>• Water</li> </ul>	The study provides evidence that could be taken into account when preparing policies for the How Caple, Sollers Hope and Yatton NDP.
Renewable Energy Study	Evidence	2010	Assesses the energy demand within Herefordshire and the ability for the county to accommodate renewable and low carbon energy technologies.	<p>The total energy demand excluding transport for Herefordshire, at that point in time, was calculated as being:</p> <ul style="list-style-type: none"> <li>• Electrical: 731 GWh/yr</li> <li>• Heat: 1,810 GWh/yr</li> <li>• Total: 2,541 GWh/yr</li> </ul> <p>There is scope for all types of renewable energy production.</p>	<ul style="list-style-type: none"> <li>• Air</li> <li>• Biodiversity</li> <li>• Climate factors</li> <li>• Cultural heritage and the landscape</li> <li>• Flora and fauna</li> <li>• Material assets</li> <li>• Population and human health</li> <li>• Soil</li> <li>• Water</li> </ul>	The study provides evidence that could be taken into account when preparing policies for the How Caple, Sollers Hope and Yatton NDP.

This document is copyright of Herefordshire Council, please contact the Neighbourhood Planning team if you wish to reuse it in whole or part.

Plans and Programmes	Type of document	Date	Overview	Key message, target/objective/indicator	SEA topic(s) <sup>1</sup>	Implications for the NDP and SEA
Herefordshire Playing Pitch Assessment	Evidence	2012	Produces a strategic framework, audit and assessment and needs analysis of outdoor sports pitches and facilities for Herefordshire. The document arises as a result of a recommendation in the Herefordshire and Worcestershire Sports Facilities Framework to develop local standards for playing fields and sports pitches throughout Herefordshire.	<p>The study updates components of the Herefordshire and Worcestershire Sports Facilities Framework 2010 such as updating population forecasts, setting local standards for synthetic turf pitches and grass playing fields within Herefordshire. It identifies any current gaps in provision, and looks forward to 2031 to assess what facilities are likely to be required by that date.</p> <p>There are no playing pitches identified within How Caple, Sollers Hope and Yatton parishes.</p>	<ul style="list-style-type: none"> <li>• Biodiversity</li> <li>• Cultural heritage and the landscape</li> <li>• Flora and fauna</li> <li>• Material assets</li> <li>• Population and human health</li> </ul>	None of merit.

This document is copyright of Herefordshire Council, please contact the Neighbourhood Planning team if you wish to reuse it in whole or part.

Plans and Programmes	Type of document	Date	Overview	Key message, target/objective/indicator	SEA topic(s) <sup>1</sup>	Implications for the NDP and SEA
Open Spaces Study	Evidence	2006	The 2006 space audit and assessment of need is a snapshot of the quality, quantity and distribution of open space across Herefordshire.	<p>The study reveals that within the Ross-on-Wye Area.</p> <ul style="list-style-type: none"> <li>• Extensive under provision of parks and gardens</li> <li>• Extensive over provision of natural and semi-natural green space</li> <li>• Under provision of amenity green space and average provision for outdoor sport</li> <li>• Average provision for children and young people.</li> </ul> <p>How Caple, Sollers Hope and Yatton group parish is not specifically referred to.</p>	<ul style="list-style-type: none"> <li>• Biodiversity</li> <li>• Climate factors</li> <li>• Cultural heritage and the landscape</li> <li>• Flora and fauna</li> <li>• Material assets</li> <li>• Population and human health</li> </ul>	The open space audit and assessment of does not give a specific indication of open space shortfalls and surpluses in How Caple, Sollers Hope and Yatton.
Play Facilities Study	Evidence	2012	The Play Facilities Study 2012 updates the previous play facilities analysis under the Open Spaces Study 2006 and provides	<p>The study reveals that Sollers Hope and Yatton has a population under 500 with no formal play area. It falls within the Much Marcle school catchment area, therefore uses Much Marcle's play facilities. How Caple was not</p>	<ul style="list-style-type: none"> <li>• Biodiversity</li> <li>• Climate factors</li> <li>• Cultural heritage and the landscape</li> <li>• Flora and fauna</li> <li>• Material assets</li> <li>• Population and human health</li> </ul>	The study provides evidence that could be taken into account when preparing policies for the How Caple, Sollers Hope and Yatton NDP.

This document is copyright of Herefordshire Council, please contact the Neighbourhood Planning team if you wish to reuse it in whole or part.

Plans and Programmes	Type of document	Date	Overview	Key message, target/objective/indicator	SEA topic(s) <sup>1</sup>	Implications for the NDP and SEA
			guidance and a framework for the development, delivery and continued sustainability of providing new and improved play facilities for children and young people in Herefordshire to 2031.	referred to.		
Strategic Flood Risk Assessment (SFRA) and Water Cycle Study	Evidence	2009	<p>The Strategic Flood Risk Assessment (SFRA) provides a summary of flood risk in Herefordshire to inform the location of future development.</p> <p>The Water Cycle Study examines how water resources and water supply infrastructure, wastewater</p>	<p>How Caple, Sollers Hope and Yatton falls within the Sollers Brook river sub catchment.</p> <p>Sollers Brook has a 25-30% standard run percentage run off by sub catchment. This makes it potentially neutral for infiltration source control (site specific).</p> <p>Sollers Brook had a moderately rapid response at 5-7 hours in terms of fluvial flooding. Short response times make an</p>	<ul style="list-style-type: none"> <li>• Biodiversity</li> <li>• Climate factors</li> <li>• Material assets</li> <li>• Population and human health</li> <li>• Water</li> </ul>	<p>New development proposed through the How Caple, Sollers Hope and Yatton NDP should be assessed against the capacity of local infrastructure.</p> <p>Up-to-date flood risk information should be gathered from the Environment Agency, in order to ensure that any flood risks are considered when preparing the How Caple, Sollers Hope and Yatton NDP.</p>

This document is copyright of Herefordshire Council, please contact the Neighbourhood Planning team if you wish to reuse it in whole or part.



Plans and Programmes	Type of document	Date	Overview	Key message, target/objective/indicator	SEA topic(s) <sup>1</sup>	Implications for the NDP and SEA
			treatment, water quality, sewerage and flood risk could constrain growth across Herefordshire.	area more susceptible to flash flooding.		

**Appendix A2** – Baseline information for How Caple, Sollers Hope and Yatton

*N.B. This is based on countywide baseline information with some additions relevant to How Caple, Sollers Hope and Yatton Group (in red). Where no locally specific data is available for current status, trends and targets, only countywide data is reported. Any gaps in data may be filled following additional research.*

SA Objective <sup>1</sup>	SA Theme	Proposed indicator	Current status	Trends	Targets	Issues and constraints	Baseline (information) source
SEA Topic covered by objective: <i>Biodiversity, flora and fauna</i>							
13. Value, maintain, restore and expand county biodiversity.	Natural environment	Net change in condition of SSSIs across Herefordshire.	The 2011-2013 AMR does not contain updated conservation data.  2010/11: 27% of Herefordshire's SSSI land was in favourable condition.  <i>How Caple, Sollers Hope and Yatton has 2 SSSI's. Birch Wood status is Favourable; River Wye-Status is Unfavourable Recovering.</i>	2006: 22% 2007: 22% 2008: 22% 2010: 24 %  Proportion of SSSI land that was in unfavourable condition but recovering increased between 2010 and 2012 going from 41% to 65%. Proportion in unfavourable and declining condition had also decreased	% of SSSI land in favourable condition (Increase)  % of SSSI land in unfavourable condition but recovering (Increase)  % of SSSI land in unfavourable condition and declining (Decrease)	Herefordshire's SSSIs are in extremely poor condition relative to England as whole, where 96.1% of all SSSI land was in favourable condition in April 2014.  The proportion of SSSI in unfavourable condition but recovering is greater than England as a whole, where the figure currently stands at 58.6%.	Understanding Herefordshire: An integrated needs assessment (June 2013).  NE & DEFRA Website January 2016

<sup>1</sup> Derived from the Pre Submission Core Strategy Sustainability Appraisal Assessment (May 2014) Adoption Statement (October 2015)

SA Objective <sup>1</sup>	SA Theme	Proposed indicator	Current status	Trends	Targets	Issues and constraints	Baseline (information) source
				from 4% to 1%.			
13. Value, maintain, restore and expand county biodiversity.	Natural environment	After use of mineral sites especially wildlife habitat creation	<i>There is no countywide or locally specific data available at present.</i>	-	Percentage of opportunities taken	Should be monitored through AMR following the adoption of the Core Strategy, in line with SA recommendations.	-
13. Value, maintain, restore and expand county biodiversity.	Natural environment	Phosphate levels within the River Wye SAC and adjoining tributaries that receive increased phosphates from proportional growth.	<i>The parish falls inside the catchment area for the River Wye (including the Lugg) SAC and is within Sollers Brook river sub catchment. The River Wye downstream of the confluence with the River Lugg is currently meeting the phosphate target (0.05 mg/l phosphate).</i>	The River Wye SAC was subject to a review of consents in 2010, as a number of sections of the river were found to have greater phosphate levels than those identified in Natural England's favourable condition tables.	The roll out of the Nutrient Management Plan will determine future targets.	New development within the area could lead to the water quality failing the phosphate levels and conservation objectives.	Nutrient Management Plan 2014

SA Objective <sup>1</sup>	SA Theme	Proposed indicator	Current status	Trends	Targets	Issues and constraints	Baseline (information) source
13. Value, maintain, restore and expand county biodiversity.	Natural environment	Changes to protected habitats and impacts of species within the Herefordshire Local Biodiversity Action Plan.	<p>The 2011-2013 AMR does not contain updated conservation data.</p> <p>2010/11: 17 Habitat Action Plans and 14 Species Action Plans are currently in operation across Herefordshire.</p> <p><i>There is no locally specific data available at present.</i></p>	<p>There are no formal records of any unacceptable adverse impacts on habitats or protected species.</p> <p>Originally 156 Priority Species were identified for inclusion in Herefordshire's LBAP.</p> <p>Similarly Herefordshire's LBAP covered 23 habitats with Action Plans.</p>	<p>To protect and where possible enhance the habitats of protected species identified.</p> <p>No net losses.</p>	<p>Herefordshire Biological Records Centre (HBRC) holds limited data on some Individual sites.</p>	<p>Herefordshire Council AMR (2013/14)</p>

SA Objective <sup>1</sup>	SA Theme	Proposed indicator	Current status	Trends	Targets	Issues and constraints	Baseline (information) source
13. Value, maintain, restore and expand county biodiversity.	Natural environment	Changes in the areas of designated nature conservation sites as a consequence of planning permission.	How Caple, Sollers Hope and Yatton Group has:  SSSI: 2 SWS: 10 SAC:1  There are no NNRs, SINCs and LNRs within the parish.	As of 2012, there had been no change in the areas of designated nature conservation sites as a consequence of the planning permissions granted.	To capitalise on opportunities to enhance the areas of value to nature conservation as much as possible.	Herefordshire Biological Records Centre (HBRC) holds limited data on some individual sites.	Herefordshire Council Initial Screening Report for the Neighbourhood Plan 2013
13. Value, maintain, restore and expand county biodiversity.	Natural environment	Proportion of local sites where positive conservation management has or is being implemented.	The Parish Area has the following landscape types:  Settled farmlands on river terrace; principle settled farmlands; wooded estate lands	-	No specific targets identified.	Should be monitored through AMR following the adoption of the Core Strategy, in line with SA recommendations.	Herefordshire Landscape Character Assessment (2004 updated 2009)
SEA Topic covered by objectives: <i>Material assets</i>							
14. Use natural resources and energy more efficiently.	Resource consumption and climate change	Maintaining Herefordshire Council's County Site and Monuments Register.	Countywide data would be too large to incorporate into this template.  Whilst there is no qualitative, locally specific data	-	No specific targets identified, but need to ensure that the register is kept up to date.	Should be monitored through AMR following the adoption of the Core Strategy, in line with SA recommendations.	Herefordshire Environmental Records Register (search August 2014).

SA Objective <sup>1</sup>	SA Theme	Proposed indicator	Current status	Trends	Targets	Issues and constraints	Baseline (information) source
			available at present, there are numerous scheduled monuments in Whitbourne according to the latest version of the register.				
14. Use natural resources and energy more efficiently.	Resource consumption and climate change	Monitoring changes to historic landscapes.	Historic Landscape Character assessments have only been undertaken for Hereford City.  Rapid townscape Assessments (2010) were only undertaken for Hereford, Ledbury and Ross.	-	No specific targets identified.	Should be monitored through AMR following the adoption of the Core Strategy, in line with SA recommendations.	Historic Landscape Character Assessment for Hereford.  Rapid townscape Assessments (2010)
SEA Topic covered by objective: <i>Population, Biodiversity, Flora and Fauna</i>							

SA Objective <sup>1</sup>	SA Theme	Proposed indicator	Current status	Trends	Targets	Issues and constraints	Baseline (information) source
15. Value, protect, enhance and restore the landscape quality of Herefordshire, including its rural areas and open spaces.	Natural environment	Number of developments meeting and surpassing national design standards.	<i>There is no countywide or locally specific data available at present.</i>	-	No specific targets identified.	Should be monitored through AMR following the adoption of the Core Strategy, in line with SA recommendations.	-
15. Value, protect, enhance and restore the landscape quality of Herefordshire, including its rural areas and open spaces.	Natural environment	The need for, frequency and outcomes of planning enforcement investigations/ planning appeals concerning aspects of local loss of heritage assets and locally important buildings particularly within a conservation area.	Countywide data would be too large to incorporate into this template.  There are no outstanding enforcement actions or appeals concerning local loss of heritage assets and locally important buildings within How Caple, Sollers Hope and Yatton at present.	No historic records of any planning enforcement action or appeals concerning locally important buildings. There is no conservation area within How Caple, Sollers Hope or Yatton.	To wherever possible improve upon or otherwise maintain current status.	Current status must be verified by Dvt Mgt and Enforcement Officers, but the NDP can help to avoid enforcement action and appeals during the plan period.	Council Dvt Mgt records (searched January 2016 )
SEA Topic covered by objective: <i>Climatic Factors</i>							

SA Objective <sup>1</sup>	SA Theme	Proposed indicator	Current status	Trends	Targets	Issues and constraints	Baseline (information) source
16. Reduce Herefordshire's vulnerability to the impacts of climate change as well as its contribution to the problem.	Resource consumption and climate change.	Transport patronage by mode	<p>% of Herefordshire residents who travel to work by:</p> <p>Car: 70.1%  Foot: 14.7%  Bicycle: 4.3%  Bus: 2%  Train: 0.8%  Motorbike: 0.8%  Taxi: 0.3%  Other: 7%</p> <p><i>There is no locally specific data available at present</i></p>	The number of people cycling or travelling by bus as the main form transport to get to work declined between 2001 and 2011 – across England and Wales there was little change in either. Walking or driving a car or van on the other hand increased.	To encourage the take up of lesser polluting modes of transport.	There are a lack of transport options for many rural communities and therefore high car ownership and dependency – the last decade has seen a 15 per cent increase in household car ownership, although this is not reflected in traffic flows of recent years with volumes in Hereford City and wider county having decreased. The proportion of people working from home increased over the decade from 15 per cent in 2001 to 17 per cent in 2011.	2011 Census



SA Objective <sup>1</sup>	SA Theme	Proposed indicator	Current status	Trends	Targets	Issues and constraints	Baseline (information) source
16. Reduce Herefordshire's vulnerability to the impacts of climate change as well as its contribution to the problem.	Resource consumption and climate change.	Number of decentralised energy schemes granted permission.	<i>There is no countywide or locally specific data available at present.</i>	-	To contribute towards the national target.	Should be monitored through AMR following the adoption of the Core Strategy, in line with SA recommendations.	-

SA Objective <sup>1</sup>	SA Theme	Proposed indicator	Current status	Trends	Targets	Issues and constraints	Baseline (information) source
16. Reduce Herefordshire's vulnerability to the impacts of climate change as well as its contribution to the problem.	Resource consumption and climate	Total CO2 emissions per capita	Latest figure dates back to 2010: 1.61 million tonnes (mtCO <sub>2</sub> )  <i>There is no locally specific data available at present.</i>	Between 2005 and 2010 Herefordshire's total and per capita carbon emission reduced by 7% and 8% respectively; while UK's total and per capita carbon emission reduced by 8% and 12% respectively within the same period. This trend hides an increase in emissions between 2009 and 2010 when total emissions in the county increased by 5% the same as across the UK (+5%).	To reduce the overall carbon emissions.	CO <sub>2</sub> emissions produced are decreasing.	Understanding Herefordshire: An integrated needs assessment (August 2013).

SA Objective <sup>1</sup>	SA Theme	Proposed indicator	Current status	Trends	Targets	Issues and constraints	Baseline (information) source
SEA Topic covered by objective: <i>Water</i>							
17. Reduce the risk of flooding and the resulting detriment to public wellbeing, the economy and the environment.	Natural environment	Number of planning permissions granted contrary to the advice of the Environment Agency on flood defence grounds.	The 2011-2013 AMR does not contain updated conservation data.  2010/11: None  <i>There is no locally specific data available at present.</i>	There have been no approvals contrary to EA advice since reporting began in 2004.	To have no applications permitted contrary to EA advice.	None identified.	Herefordshire Council AMR (2013/14)
SEA Topic covered by objective: <i>Water, air, soil, material assets</i>							
18. Minimise local and global pollution and protect or enhance environmental resources.	Natural environment	Agricultural land usage by quality. <b>LA to monitor the number of hectares of the best and most versatile agricultural land (grades 3a and higher) lost to development.</b>	<i>How Caple, Sollers Hope and Yatton has Grade 2 and 3 land (very good to moderate), throughout the group parish.</i>	-	Measure the number of hectares of best and most versatile soil lost through development.	Should be monitored through AMR following the adoption of the Core Strategy, in line with SA recommendations.	DEFRA 'Magic' website for land classification

SA Objective <sup>1</sup>	SA Theme	Proposed indicator	Current status	Trends	Targets	Issues and constraints	Baseline (information) source
18. Minimise local and global pollution and protect or enhance environmental resources.	Natural environment	Percentage of river length assessed as good or very good chemical quality and ecological quality as required by the Water Framework Directive	Latest figure dates back to 2005: 84%  <i>There is no locally specific data available at present.</i>	Figure steadily improved before going into decline:  Herefordshire 1999 85.9%, 2000 89.5%, 2001 92.2%, 2002 91.8%	To ensure that rivers meet their conservation objectives and do not fall below the required standard of quality.	None identified.	The State of Herefordshire (2007)  Water Framework Directive (2000)
SEA Topic covered by objective: <i>Soil</i>							
19. Ensure integrated, efficient and balanced land use.	Built environment	Percentage of all new development completed on previously developed land.	2010/11: 67%  2011-13: 57%  <i>There is no locally specific data available at present.</i>	Completions on PDL had risen to 71% by 2005.	To increase the number of homes built on PDL in line with the provisions of national planning policy.	The number of brownfield completions has fallen slightly in recent years, though this is probably the offshoot of tough market conditions.	Herefordshire Council AMR (2010/11) and (2011-2013)

SA Objective <sup>1</sup>	SA Theme	Proposed indicator	Current status	Trends	Targets	Issues and constraints	Baseline (information) source
19. Ensure integrated, efficient and balanced land use.	Built environment	Housing densities in urban and rural areas	<i>There is no countywide or locally specific data available at present.</i>	-	No specific targets identified.	Should be monitored through AMR following the adoption of the Core Strategy, in line with SA recommendations.	-
19. Ensure integrated, efficient and balanced land use.	Built environment	Level of development in urban areas compared to rural.	<i>There is no countywide or locally specific data available at present.</i>  This indicator would not be applicable to rural NDPs.	N/A	N/A	N/A	N/A
SEA Topic covered by objective: <i>Cultural heritage</i>							

SA Objective <sup>1</sup>	SA Theme	Proposed indicator	Current status	Trends	Targets	Issues and constraints	Baseline (information) source
20. Value, protect and enhance the character and built quality of settlements and neighbourhoods and the county's heritage assets, including conservation areas, historic environment and cultural heritage.	Built environment	Number and percentage of listed buildings and Scheduled Ancient Monuments on Buildings at Risk Register (English Heritage).	Up-to-date countywide information will be presented in the next AMR and which is due to be published in 2014. However, this data would be too large to incorporate into this template.  There are numerous listed buildings within the parish and three SAMs. Church of St Andrews and St May is on the buildings at risk register.	There were 70 heritage assets in Herefordshire that were considered to be at high risk and included in the Heritage at Risk Register 2014.	To wherever possible improve upon or otherwise maintain current status.	Church of St Andrews and St May is on the buildings at risk register. Improve status of Church and remove off of Historic England at risk register.	Buildings at Risk Register (Historic England , At risk register, searched January 2016)

SA Objective <sup>1</sup>	SA Theme	Proposed indicator	Current status	Trends	Targets	Issues and constraints	Baseline (information) source
20. Value, protect and enhance the character and built quality of settlements and neighbourhoods and the county's heritage assets, including conservation areas, historic environment and cultural heritage.	Built environment	The need for, frequency and outcomes of planning enforcement investigations/ planning appeals concerning the aspects of local loss of heritage assets, locally important buildings within the parish and particularly within a conservation area.	Countywide data would be too large to incorporate into this template.  There are no outstanding enforcement actions or appeals concerning local loss of heritage assets locally important buildings. There is no conservation area within How Caple Sollers Hope and Yatton group parish.	No historic records of any planning enforcement action or appeals concerning locally important buildings . There is no conservation area within How Caple Sollers Hope and Yatton group parish	To wherever possible improve upon or otherwise maintain current status.	Current status must be verified by Dvt Mgt and Enforcement Officers, but the NDP can help to avoid enforcement action and appeals during the plan period.	Council Dvt Mgt records (searched January 2016)

**Appendix A3 – Environmental issues identified from the How Caple, Sollers Hope and Yatton Group baseline**

These environmental issues are the same as most of those identified for the Herefordshire Core Strategy<sup>1</sup>

SEA Topic		Environmental issues How Caple, Sollers Hope and Yatton	SA objectives
1	Air	High reliance upon the private car causing high levels of air pollution and in Hereford in particular	Objective 16
		Need to reduce carbon emissions by encouraging alternative modes of travel.	
2	Biodiversity	Habitats and species of national, regional and local importance are under pressure from the adaptation and diversification of farming and forestry employment.	Objectives 13 &15
		Habitats and species of national, regional and local importance are under pressure from development	
		Minimise loss of biodiversity and expand opportunities for wildlife everywhere.	
3	Climatic factors	Reduce greenhouse gas emissions through planning, design and build.	Objective 16
4	Cultural heritage	How Caple, Sollers Hope and Yatton Group have three Scheduled Ancient Monuments and numerous listed buildings, all of which require ongoing protection and many in need of high levels of maintenance. There are no Conservation areas within the parish.	Objective 20
5	Flora and fauna	Conserve and enhance the character and quality of historic landscapes, including all types of natural flora and fauna.	Objective 15
6	Material assets	How the countryside can continue to be managed in an economically, socially and environmentally beneficial way in the face of continuing pressures on traditional farming.	Objectives 14 & 18
7	Population	Minimise energy waste through good designs, which help to reduce energy consumption and maximise efficiency.	Objective 15
		Need to avoid enforcement investigations/action concerning locally important buildings and those within conservation areas in particular.	
8	Soil	Promoting development of previously developed land and buildings as opposed to greenfield sites or agricultural land of the highest quality.	Objectives 18 & 19

<sup>1</sup> Derived from the Pre-submission Core Strategy Sustainability Appraisal Assessment (May 2014) adoption statement (Oct 15)and LDF General Scoping Report (June 2007)



9	Water	Issues relating to availability of resources, foul drainage, pollution, and abstraction in a county which supports water dependent biodiversity of international and national importance, given the predicted climate change consequences for water availability and demanding projections for new housing.	Objectives 17 & 18
		Steady decline in the chemical quality of rivers over the last 10 years.	

## Template A4: SEA Framework

### SEA Scoping Stage A, Task A4 - SEA Framework SEA Objectives, Indicators, Targets

**Parish Council Name: How Caple, Sollers Hope and Yatton Group Group**

**Neighbourhood Development Plan Name: How Caple, Sollers Hope and Yatton Group Plan**

**Date completed: January 2016**

SEA Topics	SA Objective	SEA Objective	Sub-objectives / Appraisal Questions (Will the option/proposal/site...)	Indicators	Targets
Nature Conservation (Biodiversity, flora and fauna)	Value, maintain, restore or expand county biodiversity.  Value, protect, enhance or restore the landscape quality of Herefordshire, including its rural areas and open spaces.	To maintain and enhance nature conservation (biodiversity, flora and fauna)	<ul style="list-style-type: none"> <li>Protect or enhance habitats of international, national, regional or local importance.</li> <li>Protect international, national, regional or locally important terrestrial or aquatic species.</li> <li>Maintain wildlife corridors and minimise fragmentation of ecological areas and green spaces.</li> <li>Manage access to sites in a sustainable way that protects or enhances their nature conservation value.</li> <li>Create new appropriate habitats.</li> <li>Value, enhance and protect natural environmental assets including AONB's, historic landscapes, open spaces, parks and gardens and their</li> </ul>	<p>Net change in condition of SSSIs across Herefordshire.</p> <p>After use of mineral sites especially wildlife habitat creation</p> <p>Changes to protected habitats and impacts of species within the Herefordshire Local Biodiversity Action Plan.</p>	<p>% of SSSI land in favourable condition (Increase)</p> <p>% of SSSI land in unfavourable condition but recovering (Increase)</p> <p>% of SSSI land in unfavourable condition and declining (Decrease)</p> <p>Percentage of opportunities taken</p> <p>To protect and where possible enhance the habitats of protected species identified. No net losses</p>

SEA Topics	SA Objective	SEA Objective	Sub-objectives / Appraisal Questions (Will the option/proposal/site...)	Indicators	Targets
			<p>settings</p> <ul style="list-style-type: none"> <li>• Encourage local stewardship of local environments, for example by promoting best practices in agricultural management</li> <li>• Ensure that environmental impacts caused by mineral operations and the transport of minerals are minimised.</li> <li>• Promote the use of rural areas and open space by all, encourage easy non-car based access, and accommodate the needs of disabled users.</li> </ul>		
Landscape	Not covered in SA	<p>To maintain and enhance the quality of landscapes and townscapes</p> <p>To improve quality of surroundings</p>	<ul style="list-style-type: none"> <li>• Protect and enhance the landscape everywhere and particularly in designated areas</li> <li>• Value and protect diversity and local distinctiveness</li> <li>• Improve landscape and ecological quality and character of the countryside</li> <li>• Improve the quantity and quality of publicly accessible open space</li> <li>• Improve satisfaction of people with their neighbourhoods as places to live</li> </ul>	<p>Changes in the areas of designated nature conservation sites as a consequence of planning permission.</p> <p>Proportion of local sites where positive conservation management has or is being implemented.</p> <p>Monitoring changes to historic landscapes.</p> <p>Area resulting in a loss of open space as a result of planning permission</p>	<p>To capitalise on opportunities to enhance the areas of value to nature conservation as much as possible.</p> <p>No specific targets identified.</p> <p>No specific targets identified.</p> <p>No specific targets identified</p>

SEA Topics	SA Objective	SEA Objective	Sub-objectives / Appraisal Questions (Will the option/proposal/site...)	Indicators	Targets
			<ul style="list-style-type: none"> <li>Decrease litter and graffiti in towns and countryside</li> <li>Result in the loss of open space</li> </ul>		
Heritage	Value, protect or enhance the character and built quality of settlements and neighbourhoods and the county's heritage assets, historic environment and cultural heritage.	To conserve and where appropriate enhance the historic environment, heritage assets and culture heritage	<ul style="list-style-type: none"> <li>Preserve, protect and enhance heritage assets including conservation areas, listed buildings, archaeological sites and other culturally important features in both urban and rural settings.</li> <li>Prevent development which is inappropriate in scale, form or design to its setting or to its function or local area.</li> <li>Encourage development that creates and sustains well-designed, high quality built environments that incorporate green space, encourage biodiversity and promote local distinctiveness and sense of place.</li> <li>Encourage cleanliness and/or improve the general appearance of the area.</li> </ul>	<p>The need for, frequency and outcomes of planning enforcement investigations/ planning appeals concerning the aspects of local loss of locally important buildings within a conservation area.</p> <p>Number and percentage of listed buildings and Scheduled Ancient Monuments on Buildings at Risk Register (English Heritage).</p> <p>Ensure that Herefordshire Council's Sites and Monuments Register is kept up to date.</p>	<p>To improve upon or otherwise maintain current status.</p> <p>To improve upon or otherwise maintain current status.</p> <p>No specific targets identified, but need to ensure that the register is kept up to date.</p>

SEA Topics	SA Objective	SEA Objective	Sub-objectives / Appraisal Questions (Will the option/proposal/site...)	Indicators	Targets
Air and Climate	<p>Minimise local and global pollution and protect or enhance environmental resources.</p> <p>Reduce Herefordshire's vulnerability to the impacts of climate change as well as its contribution to the problem.</p>	<p>To improve air quality</p> <p>To reduce the effect of traffic on the environment</p> <p>To reduce contributions to climate change</p> <p>To reduce vulnerability to climate change</p>	<ul style="list-style-type: none"> <li>Minimise water, air, soil, groundwater, noise and light pollution from current activities and the potential for such pollution.</li> <li>Protect or enhance the quality of watercourses.</li> <li>Provide opportunities to improve soil quality or reduce contaminated land.</li> <li>Reduce the county's contribution to climate change by reducing greenhouse gas emissions from transport, domestic, commercial and industrial sources.</li> <li>Increase the proportion of energy generated from renewable and low carbon sources including by micro-generation, Combined Heat and Power (CHP), district heating and in transportation.</li> </ul>	<p>Transport patronage by mode</p> <p>Number of decentralised energy schemes granted permission.</p> <p>Total CO2 emissions per capita</p>	<p>To increase the take up of alternative modes to the private car.</p> <p>To contribute towards the national target.</p> <p>To reduce the overall carbon emissions.</p>

SEA Topics	SA Objective	SEA Objective	Sub-objectives / Appraisal Questions (Will the option/proposal/site...)	Indicators	Targets
Water	<p>Reduce the risk of flooding and the resulting detriment to public well-being, the economy and the environment.</p> <p>Minimise local and global pollution and protect or enhance environmental resources.</p>	<p>To improve water quality</p> <p>To provide for sustainable sources of water supply</p> <p>To avoid, reduce and manage flood risk</p>	<ul style="list-style-type: none"> <li>• Reduce flood risk both presently and taking into account climate change.</li> <li>• Prevent inappropriate development of the floodplain, and include flood protection systems.</li> <li>• Include sustainable urban drainage systems where appropriate.</li> <li>• Minimise water, air, soil, groundwater, noise and light pollution from current activities and the potential for such pollution.</li> <li>• Protect or enhance the quality of watercourses.</li> </ul>	<p>Number of planning permissions granted contrary to the advice of the Environment Agency on flood defence grounds.</p> <p>Percentage of river length assessed as good or very good chemical quality and ecological quality</p> <p>Phosphate levels within the River Wye SAC and adjoining tributaries that receive increased phosphates from proportional growth.</p>	<p>To have no applications permitted contrary to EA advice.</p> <p>To ensure that rivers meet their conservation objectives and do not fall below the required standard of quality as set out in the Water Framework Directive.</p> <p>To meet the targets set out in the Nutrient Management Plan (2014)</p>
Soil	<p>Minimise local and global pollution and protect or enhance environmental resources.</p>	<p>To conserve soil resources and quality</p> <p>Ensure integrated, efficient and balanced land use.</p>	<ul style="list-style-type: none"> <li>• Minimise water, air, soil, groundwater, noise and light pollution from current activities and the potential for such pollution.</li> <li>• Provide opportunities to improve soil quality or reduce contaminated land.</li> </ul>	<p>Percentage of all new development completed on previously developed land.</p> <p>Amount of land identified as best and most versatile agricultural land lost to development.</p>	<p>To increase the number of homes built on PDL in line with the provisions of national planning policy.</p> <p>Measure the number of hectares of best and most versatile soil lost through development.</p>

This document is copyright of Herefordshire Council, please contact the Neighbourhood Planning team if you wish to reuse it in whole or part.

SEA Topics	SA Objective	SEA Objective	Sub-objectives / Appraisal Questions (Will the option/proposal/site...)	Indicators	Targets
	Ensure integrated, efficient and balanced land use.		<ul style="list-style-type: none"> <li>Ensure new developments are in appropriate locations, optimising the use of previously developed land and buildings, primarily focussed on the urban areas and are accessible by walking, cycling or sustainable transport and/or will increase the share of these transport modes, thereby reducing the need to travel.</li> </ul>		
Population and Human Health	Value, protect, enhance or restore the landscape quality of Herefordshire, including its rural areas and open spaces.	<p>To improve health of the population</p> <p>To reduce crime and nuisance</p>	<ul style="list-style-type: none"> <li>Value, enhance and protect natural environmental assets including AONB's, historic landscapes, open spaces, parks and gardens and their settings.</li> <li>Encourage local stewardship of local environments, for example by promoting best practices in agricultural management.</li> <li>Ensure that environmental impacts caused by mineral operations and the transport of minerals are minimised.</li> <li>Promote the use of</li> </ul>	Number of developments meeting and surpassing national design	No specific targets identified.

SEA Topics	SA Objective	SEA Objective	Sub-objectives / Appraisal Questions (Will the option/proposal/site...)	Indicators	Targets
			rural areas and open space by all, encourage easy non-car based access, and accommodate the needs of disabled users.		
Material Assets	<p>Use natural resources and energy more efficiently.</p> <p>Minimise local and global pollution and protect or enhance environmental resources.</p>	To conserve natural and manmade resources	<ul style="list-style-type: none"> <li>• Maximise energy efficiency and minimise the consumption of non-renewable energy i.e. from fossil fuels.</li> <li>• Minimise the consumption of water, land, soil, minerals, aggregates and other raw materials by all? E.g. through integrated transport, sustainable resource-efficient design, local sourcing of food, goods, materials.</li> <li>• Encourage the re-use/enhancement (to high standards of sustainable resource-efficient design) of existing buildings and minimise the need for new build.</li> <li>• Encourage the use of clean technologies and water minimisation techniques.</li> </ul>	<p>The need for, frequency and outcomes of planning enforcement investigations/ planning appeals concerning the aspects of local loss of locally important buildings within a conservation area.</p> <p>Maintaining Herefordshire Council's County Site and Monuments Register.</p> <p>Monitoring changes to historic landscapes.</p> <p>Agricultural land usage by quality</p>	<p>Measure the number of hectares of best and most versatile soil lost through development. No specific targets identified.</p> <p>No specific targets identified, but need to ensure that the register is kept up to date.</p> <p>No specific targets identified.</p> <p>Measure the number of hectares of best and most versatile soil lost through development.</p>



# Appendix 3

## Latham, James

---

**From:** Irwin, Graeme <graeme.irwin@environment-agency.gov.uk>  
**Sent:** 03 May 2016 11:03  
**To:** Neighbourhood Planning Team  
**Subject:** RE: Consultation of Neighbourhood Development Plans SEA Scoping report

Good morning James.

I would have no bespoke comments to offer on these SEA Scoping requests. I would request that our guidance note/pro forma is provided to these Parishes to enable them to cover matters within our remit.

Regards.

Graeme Irwin

**Senior Planning Officer - Sustainable Places**  
Shropshire, Herefordshire, Worcestershire and Gloucestershire  
Environment Agency  
Direct Dial: 02030 251624  
Direct email: [graeme.irwin@environment-agency.gov.uk](mailto:graeme.irwin@environment-agency.gov.uk)

IMPORTANT: Updated Flood Risk Climate Change allowances for Planning Matters are at... [www.gov.uk/guidance/flood-risk-assessments-climate-change-allowances](http://www.gov.uk/guidance/flood-risk-assessments-climate-change-allowances)



**The climate is changing. Are you?**

A support service led by the Environment Agency  
[www.gov.uk/government/policies/adapting-to-climate-change](http://www.gov.uk/government/policies/adapting-to-climate-change)

---

**From:** Neighbourhood Planning Team [mailto:neighbourhoodplanning@herefordshire.gov.uk]  
**Sent:** 23 March 2016 10:08  
**Subject:** Consultation of Neighbourhood Development Plans SEA Scoping report

Dear Sir/Madam

With the introduction of the Localism Act 2011 and of the Neighbourhood Planning Regulations in 2012, Parishes within Herefordshire are undertaking the process of preparing Neighbourhood Development Plans (NDP) for their Parish.

In accordance with national and European legislation, a Strategic Environmental Assessment (SEA) initial screening report was undertaken to determine the requirement to undertake the SEA/HRA for that Parish. A SEA Scoping Report will be prepared for each of the Neighbourhood Plans in development across Herefordshire.

Herefordshire Council has undertaken a Scoping Report for the following Parishes preparing an NDP:

Ashperton: <https://www.herefordshire.gov.uk/planning-and-building-control/neighbourhood-planning/neighbourhood-areas-and-plans/ashperton>

How Caple, Sollars Hope & Yatton: <https://www.herefordshire.gov.uk/planning-and-building-control/neighbourhood-planning/neighbourhood-areas-and-plans/how-caple-sollars-hope-and-yatton-group>

Kimbolton: <https://www.herefordshire.gov.uk/planning-and-building-control/neighbourhood-planning/neighbourhood-areas-and-plans/kimbolton>

Date: 26 April 2016  
Our ref: 181964  
Your ref: None



James Latham  
Technical Support Officer  
Neighbourhood Planning, Strategic Planning & Conservation teams  
Herefordshire Council

Customer Services  
Hornbeam House  
Crewe Business Park  
Electra Way  
Crewe  
Cheshire  
CW1 6GJ

T 0300 060 3900

**BY EMAIL ONLY**

[neighbourhoodplanning@herefordshire.gov.uk](mailto:neighbourhoodplanning@herefordshire.gov.uk)

Dear Mr Latham

**Neighbourhood Plan Strategic Environmental Assessment Scoping and Habitat Regulations Assessment Screening for:**

Ashperton;  
How Caple, Sollars Hope & Yatton;  
Kimbolton;  
Peterstow.

Thank you for your consultation on the above dated 23 March 2016 which was received by Natural England on 23 March 2016.

Natural England is a non-departmental public body. Our statutory purpose is to ensure that the natural environment is conserved, enhanced, and managed for the benefit of present and future generations, thereby contributing to sustainable development.

We welcome the incorporation of some of the recommendations which we have previously made in response to other neighbourhood plan SEA Scoping Report consultations in the county. The following comments are intended to further improve the SEA and its usefulness in assessing the Neighbourhood Plan.

**Appendix A1 – Plans, policies and programmes**

All

Natural England welcomes the plans, policies and programmes listed.

**Appendix A2 – Baseline information for Peterstow**

***Biodiversity, flora and fauna***

All

Under the proposed indicator “*Changes to protected habitats and impacts of species within the Herefordshire Local Biodiversity Action Plan*”, we advise that *Magic*, Defra’s GIS package for environmental assets which contains maps of priority habitats and species ([www.natureonthemap.naturalengland.org.uk](http://www.natureonthemap.naturalengland.org.uk)) would be a useful information source for the baseline.

Ashperton

Under the proposed indicator “*Phosphate levels within the River Wye SAC and adjoining tributaries that receive increased phosphates from proportional growth*” it should be noted that Ashperton falls



within the catchment of the river Frome which flows into the river Lugg and subsequently the river Wye. The issues and constraints should include the potential for new development to lead to a reduction in water quality and failure to meet the conservation objectives.

#### Kimbolton

Under the proposed indicator “*Phosphate levels within the River Wye SAC and adjoining tributaries that receive increased phosphates from proportional growth*” the issues and constraints should include the potential for new development to lead to a reduction in water quality and failure to meet the River Wye SAC conservation objectives.

### **Water, air, soil and material assets**

#### All

This section (or suitable alternative) should include information on geodiversity (see NPPF paragraphs 113 & 117). The baseline and assessment should make reference to geological conservation and the need to conserve, interpret and manage geological sites and features, both in the wider environment and in relation to designated features. The Herefordshire & Worcestershire Earth Heritage Trust may be of assistance.

Under the proposed indicator “*Percentage of river length assessed as good or very good chemical quality as required by the Water Framework Directive*” no issues and constraints have been identified. We suggest including “*New development in the area could lead to a decrease in river chemical and ecological quality*”.

### **Material Assets**

#### How Caple, Sollers Hope and Yatton

#### Peterstow

These neighbourhood plan areas are partly within the Wye Valley AONB. Relevant baseline information needs to be included in this section and reference made to the Wye Valley AONB Management Plan 2015-2020. Natural England would welcome an indicator and appropriate targets around maintaining the natural beauty of protected landscapes.

### **Appendix A3 – Environmental issues identified from Peterstow baseline**

#### All

Natural England welcomes the environmental issues identified.

### **Appendix A4 – SEA Framework**

Under the SEA topic “*Nature Conservation (Biodiversity, flora and fauna)*”, we would welcome the inclusion of an indicator/target around the impact/benefit to ecological networks (NPPF paragraph 109, 113 and 117). We suggest you could monitor the number of applications that maintain and improve ecological networks and those that cause fragmentation in the ecological network.

Under SEA topic “*material assets*”, there are no targets identified against the indicator “*monitoring changes to the historic landscape*”. We suggest that the LPA could monitor the number of applications permitted despite a significant impact on the landscape having been identified.

### **Habitats Regulations Assessment Screening**

#### Ashperton

#### Kimbolton

We note and agree that a full HRA screening is required due to the proximity to the River Wye SAC.

How Caple, Sollers Hope and Yatton

We note and agree that a full HRA screening is required due to the proximity to the River Wye SAC and the Wye Valley & Forest of Dean Bat Sites SAC.

Peterstow

We note and agree that a full HRA screening is required due to the proximity to the River Wye SAC, the Wye Valley and Forest of Dean Bat Sites SAC and the Wye Valley Woodlands SAC.

We would be happy to comment further should the need arise but if in the meantime you have any queries please do not hesitate to contact us.

For any queries relating to the specific advice in this letter only please contact Tom Reynolds on 020 802 61050. For any new consultations, or to provide further information on this consultation please send your correspondences to [consultations@naturalengland.org.uk](mailto:consultations@naturalengland.org.uk).

We really value your feedback to help us improve the service we offer. We have attached a feedback form to this letter and welcome any comments you might have about our service.

Yours sincerely

Tom Reynolds  
Planning Adviser  
South Mercia Team

# Appendix 4

Objectives verses SEA Objectives (SMART and Compatibility Test)				
<b>SEA Stage B1</b>	<b>Key:</b>	<b>SMART criteria:</b>		
+ =/++	Compatible/ Very comp	<b>S – Specific:</b>	NDP objectives should specify what is intended to be done in detail and should not be open to a wide range of misinterpretations	The following matrix appraises the emerging How Caple Sollers Hope and Yatton NDP Objectives in terms of their SMART criteria and their compatibility with the SEA Objectives. These have been developed from Government guidance on SEA and from the local evidence base gathered for identifying the NDP issues.
- =	Possible conflict	<b>M – Measurable:</b>	It should be possible to monitor NDP objectives in a quantifiable way, by the use of indicators. Indicators should be measurable with limited resource implications.	
0 =	Neutral	<b>A – Attainable/achievable:</b>	NDP objectives should be achievable and deliverable, related to the scale of growth proposed	
X =	No relationship between objectives	<b>R – Realistic:</b>	NDP objectives should relate to the overall vision of the plan. Likewise, chosen indicators should relate to objectives and their outcomes.	
? =	Unclear, more information needed	<b>T – Time-Bound:</b>	Objectives should be specific to the NDP period or another specified time-frame. Objectives should be associated with a target and indicators should specify when the target should be achieved.	

- SEA Objectives**
- 1- To maintain and enhance nature conservation (biodiversity, flora and fauna)
  - 2- To maintain and enhance the quality of landscapes and townscapes
  - 3- To improve quality of surroundings
  - 4- To conserve and where appropriate enhance the historic environment and culture heritage
  - 5- To improve air quality
  - 6- To reduce the effect of traffic on the environment
  - 7- To reduce contributions to climate change
  - 8- To reduce vulnerability to climate change
  - 9- To improve water quality
  - 10- To provide for sustainable sources of water supply
  - 11- To avoid, reduce and manage flood risk
  - 12- To conserve soil resources and quality
  - 13- To minimise the production of waste
  - 14- To improve health of the population
  - 15- To reduce crime and nuisance
  - 16- To conserve natural and manmade resources

NDP objectives	SEA Objectives																Conclusions	Recommendations	SMART Test of NDP objective	After SMART objectives
	1	2	3	4	5	6	7	8	9	10	11	12	13	14	15	16				
HOB1-Provide efficient communication and other related services	+	+	+	X	+	+	+	+	+	+	+	+	+	+	+	+	Overall the objective to ensure that the promoting efficient communication services to the needs and context of HCSHY, this meets all the relevant SEA criteria.	Ensure proposed development has some sustainable design elements to reduce environmental impact of new development.	Overall this objective is specific, measurable, attainable and realistic. The time indicator is not specified this can be added in a sentence before the objectives, stating the time period when it needs to be achieved in.	Time period can be specified in the introduction to the plan.
HOB2-Support productive and efficient farming and small business development in order to create employment opportunities for residents of all age groups.	+	+	+	X	+	+	0	0	0	0	0	0	0	0	+	+	Overall the objective will support productive and efficient farming and small business development in order to create employment opportunities for all residents in HCSHY, this meets all the relevant SEA criteria.	Ensure proposed development has some sustainable design elements to reduce environmental impact of new development.	Overall this objective is specific, measurable, attainable and realistic. The time indicator is not specified this can be added in a sentence before the objectives, stating the time period when it needs to be achieved in.	Time period can be specified in the introduction to the plan.
HOB3-Support growth of tourism in such a way as to provide economic benefit without adversely impacting the landscape or environment.	+	+	+	+	+	+	0	0	0	0	0	0	0	+	+	+	Overall the objective supports growth of tourism in HCSHY, with a caveat of not damaging the environment and landscape this meets all the relevant SEA criteria.	Ensure proposed development has some sustainable design elements to reduce environmental impact of new development.	Overall this objective is specific, measurable, attainable and realistic. The time indicator is not specified this can be added in a sentence before the objectives, stating the time period when it needs to be achieved in.	Time period can be specified in the introduction to the plan.
HOB4-Maintain the unique character and heritage of the three parishes by careful management of development and protection of both the natural and built environments.	+	+	+	+	+	0	0	0	0	0	0	0	0	+	+	+	Overall the objective strives to maintain the unique character of HCSHY, by safeguarding heritage and protection of the natural and built environment this meets all the relevant SEA criteria.	None	Overall this objective is specific, measurable, attainable and realistic. The time indicator is not specified this can be added in a sentence before the objectives, stating the time period when it needs to be achieved in.	Time period can be specified in the introduction to the plan.



<p><b>HOB5-Maintain the unique character and heritage of the three parishes by careful management of development and protection of both the natural and built environments.</b></p>	+	+	+	+	+	+	+	+	+	+	+	+	+	+	+	+	<p>Overall the objective to maintain and safeguard character and heritage of HCSHY, this meets all the relevant SEA criteria.</p>	<p>None.</p>	<p>Overall this objective is specific, measurable, attainable and realistic. The time indicator is not specified this can be added in a sentence before the objectives, stating the time period when it needs to be achieved in.</p>	<p>Time period can be specified in the introduction to the plan.</p>
<p><b>HOB6-By careful planning, ensure any increase in traffic flow does not add to congestion and/or cause damage to the environment.</b></p>	+	+	+	+	+	+	+	+	+	+	+	+	+	+	+	+	<p>Overall the objective to ensure that traffic flow by new development does not have a negative impact on HCSHY, this meets all the relevant SEA criteria.</p>	<p>Ensure proposed development has some sustainable design elements to reduce environmental impact of new development.</p>	<p>Overall this objective is specific, measurable, attainable and realistic. The time indicator is not specified this can be added in a sentence before the objectives, stating the time period when it needs to be achieved in.</p>	<p>Time period can be specified in the introduction to the plan.</p>

Objectives verses SEA Objectives (SMART and Compatibility Test)			
SEA Stage B1	Key:	SMART criteria:	
+ =/++	Compatible/very comp	<b>S – Specific:</b>	NDP objectives should specify what is intended to be done in detail and should not be open to a wide range of misinterpretations
- =	Possible conflict	<b>M – Measurable:</b>	It should be possible to monitor NDP objectives in a quantifiable way, by the use of indicators. Indicators should be measurable with limited resource implications.
0 =	Neutral	<b>A – Attainable/achievable:</b>	NDP objectives should be achievable and deliverable, related to the scale of growth proposed
X =	No relationship between objectives	<b>R – Realistic:</b>	NDP objectives should relate to the overall vision of the plan. Likewise, chosen indicators should relate to objectives and their outcomes.
? =	Unclear, more information needed	<b>T – Time-Bound:</b>	Objectives should be specific to the NDP period or another specified time-frame. Objectives should be associated with a target and indicators should specify when the target should be achieved.

The following matrix appraises the emerging How Caple, Sollers Hope and Yatton NDP Objectives in terms of their SMART criteria and their compatibility with the SEA Objectives. These have been developed from Government guidance on SEA and from the local evidence base gathered for identifying the NDP issues.

SEA Objectives	Baseline carried over from Stage A
<ul style="list-style-type: none"> <li>1- To maintain and enhance nature conservation (biodiversity, flora and fauna)</li> <li>2- To maintain and enhance the quality of landscapes and townscapes</li> <li>3- To improve quality of surroundings</li> <li>4- To conserve and where appropriate enhance the historic environment and culture heritage</li> <li>5- To improve air quality</li> <li>6- To reduce the effect of traffic on the environment</li> <li>7- To reduce contributions to climate change</li> <li>8- To reduce vulnerability to climate change</li> <li>9- To improve water quality</li> <li>10- To provide for sustainable sources of water supply</li> <li>11- To avoid, reduce and manage flood risk</li> <li>12- To conserve soil resources and quality</li> <li>13- To minimise the production of waste</li> <li>14- To improve health of the population</li> <li>15- To reduce crime and nuisance</li> <li>16- To conserve natural and manmade resources</li> </ul>	<p>1-The 2011-2013 AMR does not contain updated conservation data.2010/11: 27% of Herefordshire’s SSSI land was in favourable condition. The parish falls inside the catchment area for the River Wye (including the Lugg) SAC and is within Sollers Brook river sub catchment. The River Wye downstream of the confluence with the River Lugg is currently meeting the phosphate target (0.05 mg/l phosphate).The 2011-2013 AMR does not contain updated conservation data. 2010/11: 17 Habitat Action Plans and 14 Species Action Plans are currently in operation across Herefordshire. How Caple, Sollers Hope and Yatton has 2 SSSI’s. Birch Wood status is Favourable; River Wye-Status is Unfavourable Recovering. There are no NNRs, SINCs and LNRs within the parish.</p> <p>2-There are no outstanding enforcement actions or appeals concerning locally important buildings within How Caple Sollers Hope and Yatton at present. How Caple Sollers Hope and Yatton des not have a conservation area.</p> <p>3-In terms of How Caple Sollers Hope and Yatton itself, The study reveals that How Caple, Sollers Hope and Yatton has a population under 500 with no formal play area. It falls within the Much Marcle school catchment area, therefore uses Much Marcle’s play facilities. How Caple was not referred to.</p> <p>4-Whilst there is no qualitative, locally specific data available at present, there is one scheduled monument in How Caple Sollers Hope and Yatton, with a further three SAMs on the border of the Parish, according to the latest version of the register. Church of St Andrews and St May is on the buildings at risk register. Improve status of Church and remove off of Historic England at risk register.</p> <p>5-Between 2005 and 2010 Herefordshire’s total and per capita carbon emission reduced by 7% and 8% respectively; while UK’s total and per capita carbon emission reduced by 8% and 12% respectively within the same period. This suggests that air quality is improving.</p> <p>6-% of Herefordshire residents who travel to work by: Car: 70.1%, Foot: 14.7;,Bicycle: 4.3%,Bus: 2%, Train: 0.8%,Motorbike: 0.8%,Taxi: 0.3%,Other: 7%.</p> <p>7-Herefordshire latest figure of CO2 emissions per capita-dates back to 2010: 1.61 million tonnes (mtCO<sup>2</sup>)</p> <p>8-Reduce the risk of flooding-There have been no approvals contrary to EA advice since reporting began in 2004.The 2011-2013 AMR does not contain updated conservation data.</p> <p>9-Percentage of river length assessed as good or very good chemical quality and ecological quality as required by the Water Framework Directive. Latest figure dates back to 2005: 84%.</p> <p>10- How Caple Sollers Hope and Yatton falls into the Herefordshire Conjunctive Use Water Resource Zones (WRZs), one of 6 zones covering Herefordshire. 39% of demand is from non-household use.</p> <p>11-Number of planning permissions granted contrary to the advice of the Environment Agency on flood defence grounds. The 2011-2013 AMR does not contain updated conservation data.</p> <p>12-Around the village of How Caple Sollers Hope and Yatton the soil classification is Grades 2 and 3. The parish has the following landscape types settled farmlands on river terrace; principle settled farmlands; wooded estate lands.</p> <p>13-There are numerous listed buildings within the parish and three SAMs. St Andrews Church and St May is currently recorded in the Buildings at Risk Register, as generally satisfactory but with localised problems. There are no outstanding enforcement actions or appeals concerning locally important buildings within How Caple Sollers Hope and Yatton parish at present.</p>

NDP Policies	SEA objectives																Summary in relation to baseline	Overall commentary and any initial cumulative effects/ Recommendations	Conformity with Core Strategy
	1	2	3	4	5	6	7	8	9	10	11	12	13	14	15	16			
Baseline	1	2	3	4	5	6	7	8	9	10	11	12	13	14	15	13			
Policy ENV1	+	+	+	0	+	0	+	+	+	+	+	+	+	+	+	+	Overall the Environment policy has mainly a positive impact on the baseline data. This policy strives to protect the natural environment ensuring the natural character is retained.	Overall this policy meets the SEA baseline. This environment policy will help mitigate impact caused from small scale development and help to preserve woodlands and existing hedgerows.	This policy meets the Core Strategy requirements for the purposes of the SEA.
Policy HSG1	0	+	+	+	+	0	+	+	X	X	X	+	+	+	+	0	Overall this policy has mainly a positive impact on the baseline data. Housing development will be limited to re-use of redundant agricultural buildings and houses required for agricultural diversification, keeping in line with the Core Strategy.	Overall this policy meets the SEA baseline. Environmental safeguard and mitigation measures are available in policies within the Core Strategy SS1, LD2, and SD3 and SD4 along with policy ENV1 of the HCSHY NDP.	This policy meets the Core Strategy requirements for the purposes of the SEA.
Policy ECON1	0	+	+	X	+	0	+	+	X	X	X	+	+	+	+	0	Overall this policy has mainly a positive impact on the baseline data. This policy promotes sustainable economic development within How Caple Sollers Hope and Yatton.	Overall this policy meets the SEA baseline data. Environmental safeguard and mitigation measures are available in policies within the Core Strategy SS1, LD2, and SD3 and SD4 along with policy ENV1 of the HCSHY NDP.	This policy meets the Core Strategy requirements for the purposes of the SEA.
Policy CF1	0	+	+	X	+	0	X	X	X	X	X	+	+	+	+	0	Overall this policy has mainly a positive impact on the baseline data. This policy strives to safeguard community facilities and supports facilities/projects that will enhance the community.	Overall this policy meets the SEA baseline data. Environmental safeguard and mitigation measures are available in policies within the Core Strategy SS1, LD2, and SD3 and SD4 along with policy ENV1 of the HCSHY NDP.	This policy meets the Core Strategy requirements for the purposes of the SEA.
Policy INF1	0	+	+	X	+	0	0	0	0	0	0	0	+	+	+	0	Overall this policy has mainly a positive/neutral impact on the baseline data. This policy strives to improve and support infrastructure development (especially communications infrastructure) within How Caple Sollers Hope and Yatton.	Overall this policy meets the SEA baseline. Environmental safeguard and mitigation measures are available in policies within the Core Strategy SS1, LD2, and SD3 and SD4 along with policy ENV1 of the HCSHY NDP.	This policy meets the Core Strategy requirements for the purposes of the SEA.

**Options**

<p><b>Option 1-</b> Do nothing</p>	<p><b>X</b></p>	<p><b>X</b></p>	<p><b>X</b></p>	<p><b>X</b></p>	<p><b>X</b></p>	<p><b>X</b></p>	<p><b>X</b></p>	<p><b>X</b></p>	<p><b>X</b></p>	<p><b>X</b></p>	<p><b>X</b></p>	<p><b>X</b></p>	<p><b>X</b></p>	<p><b>X</b></p>	<p><b>X</b></p>	<p>Do nothing option is essential not to produce a neighbourhood plan and rely on the criteria policies within the Core Strategy to guide further development. Specific policies and proposals for the parishes would not exist.</p>	<p>All developments would need to be in conformity with the Core Strategy. The Core Strategy has been subject to a Sustainability Appraisal and policies met the SEA objectives.</p>	<p>N/A</p>
<p><b>Option 2-</b> No allocation of sites stick to criteria based policy</p>	<p><b>+</b></p>	<p><b>+</b></p>	<p><b>+</b></p>	<p><b>+</b></p>	<p><b>+</b></p>	<p><b>+</b></p>	<p><b>+</b></p>	<p><b>+</b></p>	<p><b>+</b></p>	<p><b>+</b></p>	<p><b>+</b></p>	<p><b>+</b></p>	<p><b>+</b></p>	<p><b>+</b></p>	<p><b>+</b></p>	<p>Criteria based policy does not give the same level of certainty as the other options as it will be more reactionary than proactive in terms of growth proposals. However provide criteria is added to the policy to safeguard or mitigate against any harm, the option will have a positive effect on the baseline.</p>	<p>Criteria would need to be included within the policy to safeguard against effects on any SEA objectives. Further determination of environmental impact can be assessed at planning application stage. As no settlement in How, Caple, Sollers Hope and Yatton has been identified in the Core Strategy as a settlement for proportionate growth, development would be limited.</p>	<p>This option would meet the Core Strategy requirements in terms of the SEA</p>

## B3: Predict and evaluate the effects of the policies and sites within the Neighbourhood Development Plan

**Key:**

++ Move significantly	+ Move towards Marginally	- - Move away significantly	- Move away marginally	0 Neutral	? Uncertain	N/A No relationship
-----------------------	---------------------------	-----------------------------	------------------------	-----------	-------------	---------------------

towards  
Policy ENV1

SEA Objective	Assessment of effect (consider cumulative effects, significance of the effect and magnitude of the effect in terms of the three time periods)			Summary Explanation	Enhancement and mitigation opportunities
	Short term (1 – 5 years)	Medium term (6 – 10 years)	Long term (11 years +)		
To maintain and enhance nature conservation (biodiversity, flora and fauna)	+	+	++	This Policy is not over and above the Core Strategy and will have a positive impact towards the baseline data.	The policy itself mitigates environmental issues caused from new development in the short, medium and long term.
To maintain and enhance the quality of landscapes and townscapes	+	+	++	This Policy is not over and above the Core Strategy and will have a positive impact towards the baseline data.	The policy itself mitigates environmental issues caused from new development in the short, medium and long term.
To improve quality of surroundings	+	+	+	This Policy is not over and above the Core Strategy and will have a positive impact towards the baseline	The policy itself mitigates environmental issues caused from new development in

## B3: Predict and evaluate the effects of the policies and sites within the Neighbourhood Development Plan

				data.	the short, medium and long term.
To conserve and where appropriate enhance the historic environment and cultural heritage	0	0	0	This Policy is not over and above the Core Strategy and will have a positive impact towards the baseline data.	The policy itself mitigates environmental issues caused from new development in the short, medium and long term.
To improve air quality	+	+	+	This Policy is not over and above the Core Strategy and will have a positive impact towards the baseline data.	The policy itself mitigates environmental issues caused from new development in the short, medium and long term.
To reduce the effect of traffic on the environment	0	0	0	This Policy is not over and above the Core Strategy and will have a positive impact towards the baseline data.	The policy itself mitigates environmental issues caused from new development in the short, medium and long term.
To reduce contributions to climate change	+	+	+	This Policy is not over and above the Core Strategy and will have a positive impact towards the baseline data.	The policy itself mitigates environmental issues caused from new development in the short, medium and long term.
To reduce vulnerability to climate change	+	+	+	This Policy is not over and above the Core Strategy and will have a positive impact towards the baseline data.	The policy itself mitigates environmental issues caused from new development in the short, medium and long term.
To improve water quality	+	+	+	This Policy is not over and above the Core Strategy and will have a positive impact towards the baseline	The policy itself mitigates environmental issues caused from new development in the short, medium and long term.

## B3: Predict and evaluate the effects of the policies and sites within the Neighbourhood Development Plan

				data.	
To provide for sustainable sources of water supply	+	+	+	This Policy is not over and above the Core Strategy and will have a positive impact towards the baseline data.	The policy itself mitigates environmental issues caused from new development in the short, medium and long term.
To avoid, reduce and manage flood risk	+	+	+	This Policy is not over and above the Core Strategy and will have a positive impact towards the baseline data.	The policy itself mitigates environmental issues caused from new development in the short, medium and long term.
To conserve soil resources and quality	+	+	+	This Policy is not over and above the Core Strategy and will have a positive impact towards the baseline data.	The policy itself mitigates environmental issues caused from new development in the short, medium and long term.
To minimise the production of waste	+	+	+	This Policy is not over and above the Core Strategy and will have a positive impact towards the baseline data.	The policy itself mitigates environmental issues caused from new development in the short, medium and long term.
To improve health of the population	+	+	+	This Policy is not over and above the Core Strategy and will have a positive impact towards the baseline data.	The policy itself mitigates environmental issues caused from new development in the short, medium and long term.
To reduce crime and nuisance	+	+	+	This Policy is not over and above the Core Strategy and will have a positive impact towards the baseline data.	The policy itself mitigates environmental issues caused from new development in the short, medium and long term.

B3: Predict and evaluate the effects of the policies and sites within the Neighbourhood Development Plan

To conserve natural and manmade resources	<b>+</b>	<b>+</b>	<b>++</b>	This Policy is not over and above the Core Strategy and will have a positive impact towards the baseline data.	The policy itself mitigates environmental issues caused from new development in the short, medium and long term.
<b>Overall commentary and any cumulative effects</b>	Overall this Environmental policy is not over and above the Core Strategy. No cumulative effects have been identified for this policy. This policy will help mitigate potential impact caused from development in the short, medium and long term for How Caple, Sollers Hope and Yatton.				

**Policy HSG1**

<b>SEA Objective</b>	<b>Assessment of effect</b> (consider cumulative effects, significance of the effect and magnitude of the effect in terms of the three time periods)			<b>Summary Explanation</b>	<b>Enhancement and mitigation opportunities</b>
	<b>Short term</b> (1 – 5 years)	<b>Medium term</b> (6 – 10 years)	<b>Long term</b> (11 years +)		
To maintain and enhance nature conservation (biodiversity, flora and fauna)	<b>0</b>	<b>0</b>	<b>0</b>	This housing policy is not over and above the Core Strategy and will have a positive impact towards the baseline data.	Mitigation measures are covered within the Core Strategy and NDP. This will help mitigate any potential detrimental impacts from development over the short, medium and long term within the plan period.
To maintain and enhance the quality of landscapes and	<b>+</b>	<b>+</b>	<b>+</b>	This housing policy is not over and above the Core Strategy and will have a positive impact towards the	Mitigation measures are covered within the Core Strategy and NDP. This will help mitigate any potential detrimental impacts



## B3: Predict and evaluate the effects of the policies and sites within the Neighbourhood Development Plan

townscapes				baseline data.	from development over the short, medium and long term within the plan period.
To improve quality of surroundings	+	+	+	This housing policy is not over and above the Core Strategy and will have a positive impact towards the baseline data.	Mitigation measures are covered within the Core Strategy and NDP. This will help mitigate any potential detrimental impacts from development over the short, medium and long term within the plan period.
To conserve and where appropriate enhance the historic environment and cultural heritage	0	+	+	This housing policy is not over and above the Core Strategy and will have a positive impact towards the baseline data.	Mitigation measures are covered within the Core Strategy and NDP. This will help mitigate any potential detrimental impacts from development over the short, medium and long term within the plan period.
To improve air quality	0	+	+	This housing policy is not over and above the Core Strategy and will have a positive impact towards the baseline data.	Mitigation measures are covered within the Core Strategy and NDP. This will help mitigate any potential detrimental impacts from development over the short, medium and long term within the plan period.
To reduce the effect of traffic on the environment	0	0	0	This housing policy is not over and above the Core Strategy and will have a positive impact towards the baseline data.	Mitigation measures are covered within the Core Strategy and NDP. This will help mitigate any potential detrimental impacts from development over the short, medium and long term within the plan period.
To reduce contributions to climate change	+	+	+	This housing policy is not over and above the Core Strategy and will have a positive impact towards the baseline data.	Mitigation measures are covered within the Core Strategy and NDP. This will help mitigate any potential detrimental impacts from development over the short, medium and long term within the plan period.

## B3: Predict and evaluate the effects of the policies and sites within the Neighbourhood Development Plan

To reduce vulnerability to climate change	+	+	+	This housing policy is not over and above the Core Strategy and will have a positive impact towards the baseline data.	Mitigation measures are covered within the Core Strategy and NDP. This will help mitigate any potential detrimental impacts from development over the short, medium and long term within the plan period.
To improve water quality	X	X	X	N/A	-
To provide for sustainable sources of water supply	X	X	X	N/A	-
To avoid, reduce and manage flood risk	X	X	X	N/A	-
To conserve soil resources and quality	+	+	+	This housing policy is not over and above the Core Strategy and will have a positive impact towards the baseline data.	Mitigation measures are covered within the Core Strategy and NDP. This will help mitigate any potential detrimental impacts from development over the short, medium and long term within the plan period.
To minimise the production of waste	+	+	+	This housing policy is not over and above the Core Strategy and will have a positive impact towards the baseline data.	Mitigation measures are covered within the Core Strategy and NDP. This will help mitigate any potential detrimental impacts from development over the short, medium and long term within the plan period.
To improve health of the population	+	+	+	This housing policy is not over and above the Core Strategy and will have a positive impact towards the baseline data.	Mitigation measures are covered within the Core Strategy and NDP. This will help mitigate any potential detrimental impacts from development over the short, medium

B3: Predict and evaluate the effects of the policies and sites within the Neighbourhood Development Plan

					and long term within the plan period.
To reduce crime and nuisance	<b>+</b>	<b>+</b>	<b>+</b>	This housing policy is not over and above the Core Strategy and will have a positive impact towards the baseline data.	Mitigation measures are covered within the Core Strategy and NDP. This will help mitigate any potential detrimental impacts from development over the short, medium and long term within the plan period.
To conserve natural and manmade resources	<b>0</b>	<b>0</b>	<b>0</b>	This housing policy is not over and above the Core Strategy and will have a positive impact towards the baseline data.	Mitigation measures are covered within the Core Strategy and NDP. This will help mitigate any potential detrimental impacts from development over the short, medium and long term within the plan period.
<b>Overall commentary and any cumulative effects</b>	Overall this housing policy is not over and above the Core Strategy. This policy could specify how new development plans to manage water supply and how it plans to react to tackle vulnerability to climate change and flood risk. No cumulative effect has been identified for this policy. Environmental effects can be mitigated with core strategy and ndp environmental protection policies.				

**Policy ECON1**

<b>SEA Objective</b>	<b>Assessment of effect</b> (consider cumulative effects, significance of the effect and magnitude of the effect in terms of the three time periods)			<b>Summary Explanation</b>	<b>Enhancement and mitigation opportunities</b>
	<b>Short term</b> (1 – 5 years)	<b>Medium term</b> (6 – 10 years)	<b>Long term</b> (11 years +)		

## B3: Predict and evaluate the effects of the policies and sites within the Neighbourhood Development Plan

To maintain and enhance nature conservation (biodiversity, flora and fauna)	0	0	0	The principles of this policy are compatible with Core Strategy policy E1, E2 and E4 and RA5. Policy safeguards exist which will help avoid or mitigate against impacts on the natural environment.	Mitigation measures are covered within the Core Strategy and NDP. This will help mitigate any potential detrimental impacts from development over the short, medium and long term within the plan period.
To maintain and enhance the quality of landscapes and townscapes	0	+	+	The principles of this policy are compatible with Core Strategy policy E1, E2 and E4 and RA5. Policy safeguards exist which will help avoid or mitigate against impacts on the natural environment.	Mitigation measures are covered within the Core Strategy and NDP. This will help mitigate any potential detrimental impacts from development over the short, medium and long term within the plan period.
To improve quality of surroundings	+	+	+	The principles of this policy are compatible with Core Strategy policy E1, E2 and E4 and RA5. Policy safeguards exist which will help avoid or mitigate against impacts on the natural environment.	Mitigation measures are covered within the Core Strategy and NDP. This will help mitigate any potential detrimental impacts from development over the short, medium and long term within the plan period.
To conserve and where appropriate enhance the historic environment and cultural heritage	X	X	X	N/A	-
To improve air quality	+	+	+	The principles of this policy are compatible with Core Strategy policy E1, E2 and E4 and RA5. Policy safeguards exist which will help avoid or mitigate against	Mitigation measures are covered within the Core Strategy and NDP. This will help mitigate any potential detrimental impacts from development over the short, medium and long term within the plan period.

## B3: Predict and evaluate the effects of the policies and sites within the Neighbourhood Development Plan

				impacts on the natural environment.	
To reduce the effect of traffic on the environment	<b>0</b>	<b>0</b>	<b>0</b>	The principles of this policy are compatible with Core Strategy policy E1, E2 and E4 and RA5. Policy safeguards exist which will help avoid or mitigate against impacts on the natural environment.	Mitigation measures are covered within the Core Strategy and NDP. This will help mitigate any potential detrimental impacts from development over the short, medium and long term within the plan period.
To reduce contributions to climate change	<b>+</b>	<b>+</b>	<b>+</b>	The principles of this policy are compatible with Core Strategy policy E1, E2 and E4 and RA5. Policy safeguards exist which will help avoid or mitigate against impacts on the natural environment.	Mitigation measures are covered within the Core Strategy and NDP. This will help mitigate any potential detrimental impacts from development over the short, medium and long term within the plan period.
To reduce vulnerability to climate change	<b>+</b>	<b>+</b>	<b>+</b>	The principles of this policy are compatible with Core Strategy policy E1, E2 and E4 and RA5. Policy safeguards exist which will help avoid or mitigate against impacts on the natural environment.	Mitigation measures are covered within the Core Strategy and NDP. This will help mitigate any potential detrimental impacts from development over the short, medium and long term within the plan period.
To improve water quality	<b>X</b>	<b>X</b>	<b>X</b>	N/A	-
To provide for sustainable sources of water supply	<b>X</b>	<b>X</b>	<b>X</b>	N/A	-
To avoid, reduce and manage flood risk	<b>X</b>	<b>X</b>	<b>X</b>	N/A	-

## B3: Predict and evaluate the effects of the policies and sites within the Neighbourhood Development Plan

To conserve soil resources and quality	<b>0</b>	<b>+</b>	<b>+</b>	The principles of this policy are compatible with Core Strategy policy E1, E2 and E4 and RA5. Policy safeguards exist which will help avoid or mitigate against impacts on the natural environment.	Mitigation measures are covered within the Core Strategy and NDP. This will help mitigate any potential detrimental impacts from development over the short, medium and long term within the plan period.
To minimise the production of waste	<b>+</b>	<b>+</b>	<b>+</b>	The principles of this policy are compatible with Core Strategy policy E1, E2 and E4 and RA5. Policy safeguards exist which will help avoid or mitigate against impacts on the natural environment.	Mitigation measures are covered within the Core Strategy and NDP. This will help mitigate any potential detrimental impacts from development over the short, medium and long term within the plan period.
To improve health of the population	<b>+</b>	<b>+</b>	<b>+</b>	The principles of this policy are compatible with Core Strategy policy E1, E2 and E4 and RA5. Policy safeguards exist which will help avoid or mitigate against impacts on the natural environment.	Mitigation measures are covered within the Core Strategy and NDP. This will help mitigate any potential detrimental impacts from development over the short, medium and long term within the plan period.
To reduce crime and nuisance	<b>+</b>	<b>+</b>	<b>+</b>	The principles of this policy are compatible with Core Strategy policy E1, E2 and E4 and RA5. Policy safeguards exist which will help avoid or mitigate against impacts on the natural environment.	Mitigation measures are covered within the Core Strategy and NDP. This will help mitigate any potential detrimental impacts from development over the short, medium and long term within the plan period.
To conserve natural and manmade resources	<b>0</b>	<b>0</b>	<b>0</b>	The principles of this policy are compatible with Core Strategy policy E1, E2 and E4 and RA5. Policy safeguards exist which will help avoid or mitigate against	Mitigation measures are covered within the Core Strategy and NDP. This will help mitigate any potential detrimental impacts from development over the short, medium and long term within the plan period.

B3: Predict and evaluate the effects of the policies and sites within the Neighbourhood Development Plan

				impacts on the natural environment.	
<b>Overall commentary and any cumulative effects</b>	Overall this Economic policy is not over and above the Core Strategy and the policy moves towards the relevant SEA objectives. No cumulative effects have been identified for this policy. However Environmental effects can be mitigated with core strategy and ndp environmental protection policies.				

**Policy CF1**

<b>SEA Objective</b>	<b>Assessment of effect</b> (consider cumulative effects, significance of the effect and magnitude of the effect in terms of the three time periods)			<b>Summary Explanation</b>	<b>Enhancement and mitigation opportunities</b>
	<b>Short term</b> (1 – 5 years)	<b>Medium term</b> (6 – 10 years)	<b>Long term</b> (11 years +)		
To maintain and enhance nature conservation (biodiversity, flora and fauna)	<b>0</b>	<b>0</b>	<b>0</b>	This community facilities policy is not over and above the Core Strategy and will have a positive impact towards the baseline data.	Mitigation measures are covered within the Core Strategy and NDP. This will help mitigate any potential detrimental impacts from development over the short, medium and long term within the plan period.
To maintain and enhance the quality of landscapes and townscapes	<b>+</b>	<b>+</b>	<b>++</b>	This community facilities policy is not over and above the Core Strategy and will have a positive impact towards the baseline data.	Mitigation measures are covered within the Core Strategy and NDP. This will help mitigate any potential detrimental impacts from development over the short, medium and long term within the plan period.

## B3: Predict and evaluate the effects of the policies and sites within the Neighbourhood Development Plan

To improve quality of surroundings	<b>+</b>	<b>+</b>	<b>+</b>	This community facilities policy is not over and above the Core Strategy and will have a positive impact towards the baseline data.	Mitigation measures are covered within the Core Strategy and NDP. This will help mitigate any potential detrimental impacts from development over the short, medium and long term within the plan period.
To conserve and where appropriate enhance the historic environment and cultural heritage	<b>X</b>	<b>X</b>	<b>X</b>	N/A	
To improve air quality	<b>+</b>	<b>+</b>	<b>+</b>	This community facilities policy is not over and above the Core Strategy and will have a positive impact towards the baseline data.	Mitigation measures are covered within the Core Strategy and NDP. This will help mitigate any potential detrimental impacts from development over the short, medium and long term within the plan period.
To reduce the effect of traffic on the environment	<b>0</b>	<b>0</b>	<b>0</b>	This community facilities policy is not over and above the Core Strategy and will have a positive impact towards the baseline data.	Mitigation measures are covered within the Core Strategy and NDP. This will help mitigate any potential detrimental impacts from development over the short, medium and long term within the plan period.
To reduce contributions to climate change	<b>X</b>	<b>X</b>	<b>X</b>	N/A	-
To reduce vulnerability to climate change	<b>X</b>	<b>X</b>	<b>X</b>	N/A	-
To improve water quality	<b>X</b>	<b>X</b>	<b>X</b>	N/A	-



## B3: Predict and evaluate the effects of the policies and sites within the Neighbourhood Development Plan

To provide for sustainable sources of water supply	<b>X</b>	<b>X</b>	<b>X</b>	N/A	-
To avoid, reduce and manage flood risk	<b>X</b>	<b>X</b>	<b>X</b>	N/A	-
To conserve soil resources and quality	<b>+</b>	<b>+</b>	<b>+</b>	This community facilities policy is not over and above the Core Strategy and will have a positive impact towards the baseline data.	Mitigation measures are covered within the Core Strategy and NDP. This will help mitigate any potential detrimental impacts from development over the short, medium and long term within the plan period.
To minimise the production of waste	<b>+</b>	<b>+</b>	<b>+</b>	This community facilities policy is not over and above the Core Strategy and will have a positive impact towards the baseline data.	Mitigation measures are covered within the Core Strategy and NDP. This will help mitigate any potential detrimental impacts from development over the short, medium and long term within the plan period.
To improve health of the population	<b>+</b>	<b>+</b>	<b>+</b>	This community facilities policy is not over and above the Core Strategy and will have a positive impact towards the baseline data.	Mitigation measures are covered within the Core Strategy and NDP. This will help mitigate any potential detrimental impacts from development over the short, medium and long term within the plan period.
To reduce crime and nuisance	<b>+</b>	<b>+</b>	<b>+</b>	This community facilities policy is not over and above the Core Strategy and will have a positive impact towards the baseline data.	Mitigation measures are covered within the Core Strategy and NDP. This will help mitigate any potential detrimental impacts from development over the short, medium and long term within the plan period.
To conserve natural and manmade	<b>0</b>	<b>0</b>	<b>0</b>	This Policy This community facilities policy is not over and	Mitigation measures are covered within the Core Strategy and NDP. This will help

B3: Predict and evaluate the effects of the policies and sites within the Neighbourhood Development Plan

resources				above the Core Strategy and will have a positive impact towards the baseline data.	mitigate any potential detrimental impacts from development over the short, medium and long term within the plan period.
<b>Overall commentary and any cumulative effects</b>	Overall this Community Facilities policy is not over and above the Core Strategy and the policy moves towards the relevant SEA objectives. No cumulative effects have been identified for this policy. However Environmental effects can be mitigated with core strategy and ndp environmental protection policies.				

**Policy INF1**

SEA Objective	Assessment of effect (consider cumulative effects, significance of the effect and magnitude of the effect in terms of the three time periods)			Summary Explanation	Enhancement and mitigation opportunities
	Short term (1 – 5 years)	Medium term (6 – 10 years)	Long term (11 years +)		
To maintain and enhance nature conservation (biodiversity, flora and fauna)	0	0	0	This infrastructure policy is not over and above the Core Strategy and will have a positive impact towards the baseline data.	Mitigation measures are covered within the Core Strategy and NDP. This will help mitigate any potential detrimental impacts from development over the short, medium and long term within the plan period.
To maintain and enhance the quality of landscapes and	+	+	+	This infrastructure policy is not over and above the Core Strategy and will have a positive impact towards the baseline data.	Mitigation measures are covered within the Core Strategy and NDP. This will help mitigate any potential detrimental impacts from development over the short, medium

## B3: Predict and evaluate the effects of the policies and sites within the Neighbourhood Development Plan

townscapes					and long term within the plan period.
To improve quality of surroundings	+	+	+	This infrastructure policy is not over and above the Core Strategy and will have a positive impact towards the baseline data..	Mitigation measures are covered within the Core Strategy and NDP. This will help mitigate any potential detrimental impacts from development over the short, medium and long term within the plan period.
To conserve and where appropriate enhance the historic environment and cultural heritage	X	X	X	N/A	-
To improve air quality	+	+	+	This infrastructure policy is not over and above the Core Strategy and will have a positive impact towards the baseline data.	Mitigation measures are covered within the Core Strategy and NDP. This will help mitigate any potential detrimental impacts from development over the short, medium and long term within the plan period.
To reduce the effect of traffic on the environment	0	0	+	This infrastructure policy is not over and above the Core Strategy and will have a positive impact towards the baseline data.	Mitigation measures are covered within the Core Strategy and NDP. This will help mitigate any potential detrimental impacts from development over the short, medium and long term within the plan period.
To reduce contributions to climate change	0	0	+	This infrastructure policy is not over and above the Core Strategy and will have a positive impact towards the baseline data.	Mitigation measures are covered within the Core Strategy and NDP. This will help mitigate any potential detrimental impacts from development over the short, medium and long term within the plan period.

## B3: Predict and evaluate the effects of the policies and sites within the Neighbourhood Development Plan

To reduce vulnerability to climate change	0	0	0	This infrastructure policy is not over and above the Core Strategy and will have a positive impact towards the baseline data.	Mitigation measures are covered within the Core Strategy and NDP. This will help mitigate any potential detrimental impacts from development over the short, medium and long term within the plan period.
To improve water quality	0	0	+	This infrastructure policy is not over and above the Core Strategy and will have a positive impact towards the baseline data.	Mitigation measures are covered within the Core Strategy and NDP. This will help mitigate any potential detrimental impacts from development over the short, medium and long term within the plan period.
To provide for sustainable sources of water supply	0	0	+	This infrastructure policy is not over and above the Core Strategy and will have a positive impact towards the baseline data.	Mitigation measures are covered within the Core Strategy and NDP. This will help mitigate any potential detrimental impacts from development over the short, medium and long term within the plan period.
To avoid, reduce and manage flood risk	0	0	+	This infrastructure policy is not over and above the Core Strategy and will have a positive impact towards the baseline data.	Mitigation measures are covered within the Core Strategy and NDP. This will help mitigate any potential detrimental impacts from development over the short, medium and long term within the plan period.
To conserve soil resources and quality	0	0	+	This infrastructure policy is not over and above the Core Strategy and will have a positive impact towards the baseline data.	Mitigation measures are covered within the Core Strategy and NDP. This will help mitigate any potential detrimental impacts from development over the short, medium and long term within the plan period.
To minimise the production of waste	+	+	+	This infrastructure policy is not over and above the Core Strategy and will have a positive impact towards	Mitigation measures are covered within the Core Strategy and NDP. This will help mitigate any potential detrimental impacts from development over the short, medium

B3: Predict and evaluate the effects of the policies and sites within the Neighbourhood Development Plan

				the baseline data.	and long term within the plan period.
To improve health of the population	+	+	+	This infrastructure policy is not over and above the Core Strategy and will have a positive impact towards the baseline data.	Mitigation measures are covered within the Core Strategy and NDP. This will help mitigate any potential detrimental impacts from development over the short, medium and long term within the plan period.
To reduce crime and nuisance	+	+	+	This infrastructure policy is not over and above the Core Strategy and will have a positive impact towards the baseline data.	Mitigation measures are covered within the Core Strategy and NDP. This will help mitigate any potential detrimental impacts from development over the short, medium and long term within the plan period.
To conserve natural and manmade resources	0	0	0	This infrastructure policy is not over and above the Core Strategy and will have a positive impact towards the baseline data.	Mitigation measures are covered within the Core Strategy and NDP. This will help mitigate any potential detrimental impacts from development over the short, medium and long term within the plan period.
<b>Overall commentary and any cumulative effects</b>	Overall this Infrastructure policy is not over and above the Core Strategy and the policy moves towards the relevant SEA objectives. No cumulative effects have been identified for this policy. However Environmental effects can be mitigated with core strategy and ndp environmental protection policies.				

**Key:**

++ Move significantly towards	+ Move towards marginally	-- Move away Significantly	- Move away marginally	0 Neutral	? Uncertain	X No relationship
-------------------------------	---------------------------	----------------------------	------------------------	-----------	-------------	-------------------

SEA Objective / Policy	1. To maintain and enhance nature conservation (biodiversity, flora and fauna)	2. To maintain and enhance the quality of landscapes and townscapes	3. To improve quality of surroundings	4. To conserve and where appropriate enhance the historic environment and culture heritage	5. To improve air quality	6. To reduce the effect of traffic on the environment	7. To reduce contributions to climate change	8. To reduce vulnerability to climate change	9. To improve water quality	10. To provide for sustainable sources of water supply	11. To avoid, reduce and manage flood risk	12. To conserve soil resources and quality	13. To minimise the production	14. To improve health of the population	15. To reduce crime and nuisance	16. To conserve natural and manmade resources
HOB1	+	+	+	X	+	+	+	+	+	+	+	+	+	+	+	+
HOB2	+	+	+	X	+	+	0	0	0	0	0	0	0	+	+	+
HOB3	+	+	+	+	+	+	0	0	0	0	0	0	0	+	+	+
HOB4	+	+	+	++	+	0	0	0	0	0	0	0	0	+	+	+
HOB5	++	+	+	++	+	+	+	+	+	+	+	+	+	+	+	++
HOB6	+	+	+	+	+	++	+	+	+	+	+	+	+	+	+	+
ENV1	+	+	+	0	+	0	+	+	+	+	+	+	+	+	+	+
HSG1	0	+	+	+	+	0	+	+	X	X	X	+	+	+	+	0
ECON1	0	+	+	X	+	0	+	+	X	X	X	+	+	+	+	0
CF1	0	+	+	X	+	0	X	X	X	X	X	+	+	+	+	0
INF1	0	+	+	X	+	0	0	0	0	0	0	0	+	+	+	0
Summary of effects of whole plan on each SEA Objective	+	+	+	+	+	+	+	+	+	+	+	+	+	+	+	+
Cumulative effects of whole plan (1 + 2 + 3...)	Overall the policies and the options for the How Caple Sollers Hope and Yatton NDP have a positive impact towards the SEA baseline data. All of the policies and objectives meet the Core Strategy requirements for the purposes of the SEA. Policies and objectives strive to preserve and maintain natural and built historic environment as well as ensuring small scale appropriate development is developed this may help mitigate the effect of development.															

<b>Commentary for significant cumulative effects</b>	Overall this has had a positive effect on the SEA baseline data. Further detail such as location, scale and size of development, therefore are likely to be determined at planning application/ proposal stage. No significant cumulative effects have been identified.
--	---

# Appendix 5



## How Caple Sollers Hope and Yatton Options

1. Do nothing
2. No allocation of sites stick to criteria based policy

# Appendix 6

## **Template D1: SEA Consultation Feedback**

This consultation feedback is **only** for comments received on the SEA of your Neighbourhood Development Plan

**Parish Council Name:** How Caple Sollers Hope and Yatton group PC

**Neighbourhood Development Plan Name:** How Caple Sollers Hope and Yatton Neighbourhood Plan

**Consultation date:** 31 July to 24 September 2017

**Consultation title:** Regulation 14

No comments have been received from consultees regarding the SEA.

# Appendix 7

**D3: Predict and evaluate the effects of the amended Neighbourhood Development Plan policies following Reg 16**

**Parish Council Name:** How Caple Sollers Hope and Yatton group PC

**Date completed:** December 2017

**Key:**

++ Move towards significantly	+ Move towards Marginally	- - Move away significantly	- Move away marginally	0 Neutral	? Uncertain	N/A No relationship
-------------------------------	---------------------------	-----------------------------	------------------------	-----------	-------------	---------------------

PolicyCF1

SEA Objective	Assessment of effect (consider cumulative effects, significance of the effect and magnitude of the effect in terms of the three time periods)			Summary Explanation	Enhancement and mitigation opportunities
	Short term (1 – 5 years)	Medium term (6 – 10 years)	Long term (10 years +)		
To maintain and enhance nature conservation (biodiversity, flora and fauna)	+	+	+	This community facilities policy is not over and above the Core Strategy and will have a positive impact towards the baseline data. Changes to this policy highlight support given for small farm shops and trading outlets and add further safeguards moving the policy closer to the baseline data.	Mitigation measures are covered within the Core Strategy and NDP. This will help mitigate any potential detrimental impacts from development over the short, medium and long term within the plan period.
To maintain and enhance the quality of landscapes and townscapes	+	+	++	This community facilities policy is not over and above the Core Strategy and will have a positive impact towards the baseline data. Changes to this policy highlight support given for small farm shops and trading outlets and add further safeguards moving the policy closer to the baseline data.	Mitigation measures are covered within the Core Strategy and NDP. This will help mitigate any potential detrimental impacts from development over the short, medium and long term within the plan period.

To improve quality of surroundings	+	+	+	This community facilities policy is not over and above the Core Strategy and will have a positive impact towards the baseline data. Changes to this policy highlight support given for small farm shops and trading outlets and add further safeguards moving the policy closer to the baseline data.	Mitigation measures are covered within the Core Strategy and NDP. This will help mitigate any potential detrimental impacts from development over the short, medium and long term within the plan period.
To conserve and where appropriate enhance the historic environment and culture heritage	x	x	x	N/A	
To improve air quality	+	+	+	This community facilities policy is not over and above the Core Strategy and will have a positive impact towards the baseline data. Changes to this policy highlight support given for small farm shops and trading outlets and add further safeguards moving the policy closer to the baseline data.	Mitigation measures are covered within the Core Strategy and NDP. This will help mitigate any potential detrimental impacts from development over the short, medium and long term within the plan period.
To reduce the effect of traffic on the environment	0	0	0	This community facilities policy is not over and above the Core Strategy and will have a positive impact towards the baseline data.	Mitigation measures are covered within the Core Strategy and NDP. This will help mitigate any potential detrimental impacts from development over the short, medium and long term within the plan period.
To reduce contributions to climate change	x	x	x	N/A	-
To reduce vulnerability to climate change	x	x	x	N/A	-

To improve water quality	x	x	x	N/A	-
To provide for sustainable sources of water supply	x	x	x	N/A	-
To avoid, reduce and manage flood risk	x	x	x	N/A	-
To conserve soil resources and quality	+	+	+	This community facilities policy is not over and above the Core Strategy and will have a positive impact towards the baseline data. Changes to this policy highlight support given for small farm shops and trading outlets and add further safeguards moving the policy closer to the baseline data.	Mitigation measures are covered within the Core Strategy and NDP. This will help mitigate any potential detrimental impacts from development over the short, medium and long term within the plan period.
To minimise the production	+	+	+	This community facilities policy is not over and above the Core Strategy and will have a positive impact towards the baseline data. Changes to this policy highlight support given for small farm shops and trading outlets and add further safeguards moving the policy closer to the baseline data.	Mitigation measures are covered within the Core Strategy and NDP. This will help mitigate any potential detrimental impacts from development over the short, medium and long term within the plan period.
To improve health of the population	+	+	+	This community facilities policy is not over and above the Core Strategy and will have a positive impact towards the baseline data.	Mitigation measures are covered within the Core Strategy and NDP. This will help mitigate any potential detrimental impacts from development over the short, medium and long term within the plan period.
To reduce crime and nuisance	+	+	+	This community facilities policy is not over and above the Core Strategy and will have	Mitigation measures are covered within the Core Strategy and NDP. This will help mitigate any

This document is copyright of Herefordshire Council, please contact the Neighbourhood Planning team if you wish to reuse it in whole or part.

				a positive impact towards the baseline data.	potential detrimental impacts from development over the short, medium and long term within the plan period.
To conserve natural and manmade resources	0	0	0	This Policy This community facilities policy is not over and above the Core Strategy and will have a positive impact towards the baseline data.	Mitigation measures are covered within the Core Strategy and NDP. This will help mitigate any potential detrimental impacts from development over the short, medium and long term within the plan period.
<b>Overall commentary and any cumulative effects</b>	Overall this Community Facilities policy is not over and above the Core Strategy and the policy moves towards the relevant SEA objectives. No cumulative effects have been identified for this policy. However Environmental effects can be mitigated with core strategy and ndp environmental protection policies. Changes to this policy post regulation 16 highlight support given for small farm shops and trading outlets and add further safeguards moving the policy closer to the baseline data.				

#### Policy EV1

SEA Objective	Assessment of effect (consider cumulative effects, significance of the effect and magnitude of the effect in terms of the three time periods)			Summary Explanation	Enhancement and mitigation opportunities
	Short term (1 – 5 years)	Medium term (6 – 10 years)	Long term (11 years +)		



To maintain and enhance nature conservation (biodiversity, flora and fauna)	+	+	++	This Policy is not over and above the Core Strategy and will have a positive impact towards the baseline data. Changes this policy add further safeguarding criteria to protect the natural and built environment from redevelopment and alterations of farmsteads and agricultural buildings.	The policy itself mitigates environmental issues caused from new development in the short, medium and long term.
To maintain and enhance the quality of landscapes and townscapes	+	+	++	This Policy is not over and above the Core Strategy and will have a positive impact towards the baseline data.	The policy itself mitigates environmental issues caused from new development in the short, medium and long term.
To improve quality of surroundings	+	+	++	This Policy is not over and above the Core Strategy and will have a positive impact towards the baseline data. Changes this policy add further safeguarding criteria to protect the natural and built environment from redevelopment and alterations of farmsteads and agricultural buildings.	The policy itself mitigates environmental issues caused from new development in the short, medium and long term.
To conserve and where appropriate enhance the historic environment and cultural heritage	+	+	++	Changes this policy add further safeguarding criteria to protect the natural and built environment from redevelopment and alterations of farmsteads and agricultural buildings.	The policy itself mitigates environmental issues caused from new development in the short, medium and long term.
To improve air quality	+	+	+	This Policy is not over and above the Core Strategy and will have a positive impact towards the baseline data.	The policy itself mitigates environmental issues caused from new development in the short, medium and long term.

To reduce the effect of traffic on the environment	0	0	0	This Policy is not over and above the Core Strategy and will have a positive impact towards the baseline data.	The policy itself mitigates environmental issues caused from new development in the short, medium and long term.
To reduce contributions to climate change	+	+	+	This Policy is not over and above the Core Strategy and will have a positive impact towards the baseline data.	The policy itself mitigates environmental issues caused from new development in the short, medium and long term.
To reduce vulnerability to climate change	+	+	+	This Policy is not over and above the Core Strategy and will have a positive impact towards the baseline data.	The policy itself mitigates environmental issues caused from new development in the short, medium and long term.
To improve water quality	+	+	+	This Policy is not over and above the Core Strategy and will have a positive impact towards the baseline data.	The policy itself mitigates environmental issues caused from new development in the short, medium and long term.
To provide for sustainable sources of water supply	+	+	+	This Policy is not over and above the Core Strategy and will have a positive impact towards the baseline data.	The policy itself mitigates environmental issues caused from new development in the short, medium and long term.
To avoid, reduce and manage flood risk	+	+	+	This Policy is not over and above the Core Strategy and will have a positive impact towards the baseline data.	The policy itself mitigates environmental issues caused from new development in the short, medium and long term.
To conserve soil resources and quality	+	+	+	This Policy is not over and above the Core Strategy and will have a positive impact towards the baseline data.	The policy itself mitigates environmental issues caused from new development in the short, medium and long term.

To minimise the production of waste	+	+	+	This Policy is not over and above the Core Strategy and will have a positive impact towards the baseline data.	The policy itself mitigates environmental issues caused from new development in the short, medium and long term.
To improve health of the population	+	+	+	This Policy is not over and above the Core Strategy and will have a positive impact towards the baseline data.	The policy itself mitigates environmental issues caused from new development in the short, medium and long term.
To reduce crime and nuisance	+	+	+	This Policy is not over and above the Core Strategy and will have a positive impact towards the baseline data.	The policy itself mitigates environmental issues caused from new development in the short, medium and long term.
To conserve natural and manmade resources	+	+	++	This Policy is not over and above the Core Strategy and will have a positive impact towards the baseline data.	The policy itself mitigates environmental issues caused from new development in the short, medium and long term.
<b>Overall commentary and any cumulative effects</b>	Overall this Environmental policy is not over and above the Core Strategy. No cumulative effects have been identified for this policy. This policy will help mitigate potential impact caused from development in the short, medium and long term for How Caple, Sollers Hope and Yatton. Changes this policy post regulation 16 add further safeguarding criteria to protect the natural and built environment from redevelopment and alterations of farmsteads and agricultural buildings.				

# Appendix 8

Policy	Modification recommended	Justification
<p>Policy ENV1</p>	<p>Delete "Ref: NPPF sections 109, 111, 113 Hereford Council Core Strategy (in particular appx 8)" from the policy [the reference to the NDP objectives can be retained]                      Reword the policy to read:  <i>"All development must protect or safeguard the character and natural amenities of the three parishes whilst ensuring the parishes thrive through support for sustainable development. Proposals within the Wye Valley Area of Outstanding Natural Beauty must conserve its landscape and scenic beauty in line with national policy and the Core Strategy. Proposals will be assessed against all of the following criteria:</i></p> <p><i>i) Woodlands and hedgerows will be protected and new planting using native species will be encouraged in appropriate locations;</i>  <i>ii) All new development must protect or enhance the natural features of the area including views and view corridors, river meadows, orchards as well as footpaths and comply with Core Strategy Policies LD1 and LD2;</i>  <i>iii) The reuse of redundant rural buildings, farm expansion and tourism development will be encouraged in appropriate locations;</i>  <i>iv) Heritage assets will be protected in a manner appropriate to their significance and enhanced wherever possible. Appropriate and increased accessibility to those heritage assets listed on pages [x] of the Plan will be particularly encouraged;</i>  <i>v) For changes of use development, careful consideration will be given to the impacts on noise, smell, pollution, traffic generation and impact on rural roads and visual appearance. Development will not be permitted where such impacts singly or cumulatively result in any harm;</i>  <i>vi) Individual development of renewable energy sources for private use will be encouraged. The provision of community-led energy generation, including bio-digesters, will be sympathetically considered as will some limited commercial development of water power and ground heat capture for community benefit where these accord with Core Strategy Policy SD2;</i>  <i>vii) Installation of large scale photo-voltaic arrays or large installations of wind turbines or fracking will be supported only if they have an acceptable individual or cumulative impact on the landscape and visual appearance of the area and biodiversity and, where applicable, the Wye Valley Area of Outstanding Natural Beauty;</i>  <i>viii) Redevelopment, alteration or extension of historic farmstead and agricultural buildings within the Parishes must be sensitive to their distinctive character, materials and form and</i>  <i>ix) The promoters of new housing development should ensure that the living conditions of future occupiers will not be adversely affected by pre-existing agricultural or commercial activities."</i></p> <p>Ensure that the heritage assets referred to in [new] criterion iv) are referenced fully and clearly on the relevant pages of the Plan and should only include the Village Church of St Andrew and St Mary, How Caple, How Caple Court and Gardens, Village Church of St Michael, Sollershope and the Village Church of All Saints, Yatton.</p> <p>Move the community action sections that appear after Environment Policy ENV-1, Economy Policy ECON-1 and Infrastructure Policy INF-1 to appear after the supporting information sections on each of these policies.</p>	<p>Interests of accuracy and clarity.</p> <p>Conformity to the NPPF and Core Strategy</p>

How Caple Sollers Hope and Yatton Table of Examiner’s Modifications

<p>Policy HSG1</p>	<p>Add new sentences/paragraph [as preferred] after the sentence that begins  <i>“The first four criteria...” on page 18 of the Plan that reads: “It is however recognised that in order to meet the basic conditions, this Plan needs to be in general conformity with the strategic policies of the Core Strategy. Proposals for rural exception housing, houses of innovative design and provision for the needs of gypsies or travellers are satisfactorily addressed by policies in the Core Strategy.”</i></p> <p>Reword the policy to read:  <i>“How Caple, Sollershope and Yatton neighbourhood plan area is classified as open countryside where new housing is restricted to avoid unsustainable patterns of development in the rural areas. The following criteria guide new housing development:</i></p> <p><i>i) Homes which meet an agricultural or forestry need or other farm diversification or rural enterprise need will be supported in line with Core Strategy Policies RA3 and RA4;</i>  <i>ii) Proposals for the reuse of genuinely redundant or disused rural buildings including barns and the replacement of existing dwellings will be supported provided they are of a similar size and scale and have an acceptable impact on the area’s character and appearance;</i>  <i>iii) Where new homes are provided, preference will be given to local people and those with local connections, to dwellings suitable as starter homes or for older people or for smaller homes of up to three bedrooms;</i>  <i>iv) New homes should ensure that sufficient garden area and parking spaces are provided;</i>  <i>v) The use of traditional building materials e.g. stone, brick and slate will be encouraged;</i>  <i>vi) Development must ensure that it does not adversely affect the living conditions of the occupiers of nearby properties</i>  <i>vii) Development must protect or enhance the character and appearance of How Caple, Sollershope and Yatton. Particular regard will be given to conserving the landscape and scenic beauty of the Wye Valley Area of Outstanding Natural Beauty.”</i></p>	<p>Interests of accuracy and clarity.</p> <p>Conformity to the NPPF and Core Strategy</p>
<p>Policy ECON1</p>	<p>Delete criterion ECON-1A in its entirety  Reword criterion 1B to read: <i>“The change of use of redundant or disused rural buildings for small business uses will generally be supported in line with Core Strategy Policy RA5;</i>  Reword criterion 1C to read: <i>“The development of serviced workshops, work units attached to dwellings and small stand-alone businesses (e.g. information technology) are particularly encouraged and will generally be supported where they meet the criteria outlined in Core Strategy Policy RA5;</i>  Reword criterion 1D to read: <i>“Tourism related development will be supported where it benefits the local economy and safeguards the natural and built environment of the parishes. Particular regard will be given to conserving the landscape and scenic beauty of the Wye Valley Area of Outstanding Natural Beauty.”</i></p> <p>Remove the brackets from the paragraph that begins <i>“(The main economic contributor within...” on page 23 of the Plan</i></p>	<p>Interests of accuracy and clarity</p> <p>Conformity to the NPPF and Core Strategy</p>

How Caple Sollers Hope and Yatton Table of Examiner's Modifications

Policy CF1	<p>Move criteria CF-1A and CF-1C to a new Community Action section to be located after the supporting information for this policy</p> <p>Move supporting text for CF-1A on page 26 and CF-1C on page 27 to the new Community Action section alongside the criteria</p> <p>Reword [existing] criterion CF-1B to read: <i>“Proposals for farm shops or other small trading outlets will be encouraged where they accord with the relevant policies of the development plan.”</i></p>	<p>Interests of accuracy and clarity</p> <p>Conformity to the NPPF and Core Strategy</p>
Policy INF1	<p>Move criteria INF-1A and INF-1B to the Community Action section [which is to be relocated after the supporting information for this policy]</p> <p>Move the paragraph on page 28 of the Plan which begins: “We will maintain pressure...” to the Community Action section as it relates to criterion INF-1B</p> <p>Move the header to and the paragraph on page 28 of the Plan which begins: “There are several “dead” spots...” and its two accompanying paragraphs on page 29 to the Community Action section as it relates to criterion INF-1A</p> <p>Move the header to and the paragraph on page 29 of the Plan which begins: “This question in the survey (Q39)...” and its six accompanying paragraphs on page 30 to the Community Action section</p> <p>Change [existing] criterion INF-1C to read: “Proposals for the establishment of cycle paths <i>and footpaths</i> in appropriate locations will be considered subject to their relationship to existing footways and other cycle ways.”</p>	<p>Interests of accuracy and clarity</p> <p>Conformity to the NPPF and Core Strategy</p>
Annex	<p>Add a sentence that reads: <i>“Users of the Plan are advised to seek the most up to date information available from the relevant agencies and organisations.”</i> to Annexes 6 and 14</p>	<p>Interests of accuracy and clarity</p>

# Appendix 9



**D3: Predict and evaluate the effects of the amended Neighbourhood Development Plan policies following Examination**

**Parish Council Name:** How Caple Sollers Hope and Yatton group PC

**Date completed:** December 2018

**Key:**

++ Move towards significantly	+ Move towards Marginally	- - Move away significantly	- Move away marginally	0 Neutral	? Uncertain	N/A No relationship
-------------------------------	---------------------------	-----------------------------	------------------------	-----------	-------------	---------------------

**Policy ENV1**

SEA Objective	Assessment of effect (consider cumulative effects, significance of the effect and magnitude of the effect in terms of the three time periods)			Summary Explanation	Enhancement and mitigation opportunities
	Short term (1 – 5 years)	Medium term (6 – 10 years)	Long term (11 years +)		
To maintain and enhance nature conservation (biodiversity, flora and fauna)	+	+	++	This Policy is not over and above the Core Strategy and will have a positive impact towards the baseline data. Changes this policy post examination clarify and add more precision by rewording this policy.	The policy itself mitigates environmental issues caused from new development in the short, medium and long term.
To maintain and enhance the quality of landscapes and townscapes	+	+	++	This Policy is not over and above the Core Strategy and will have a positive impact towards the baseline data. Changes post examination clarify and ensure this policy is in better conformity with strategic policies.	The policy itself mitigates environmental issues caused from new development in the short, medium and long term.

To improve quality of surroundings	+	+	++	This Policy is not over and above the Core Strategy and will have a positive impact towards the baseline data. Changes post examination clarify and ensure this policy is in better conformity with strategic policies.	The policy itself mitigates environmental issues caused from new development in the short, medium and long term.
To conserve and where appropriate enhance the historic environment and cultural heritage	+	+	++	Changes this policy add further safeguarding criteria to protect the natural and built environment from redevelopment and alterations of farmsteads and agricultural buildings. Changes post examination clarify and ensure this policy is in better conformity with strategic policies.	The policy itself mitigates environmental issues caused from new development in the short, medium and long term.
To improve air quality	+	+	+	This Policy is not over and above the Core Strategy and will have a positive impact towards the baseline data. Changes post examination clarify and ensure this policy is in better conformity with strategic policies.	The policy itself mitigates environmental issues caused from new development in the short, medium and long term.
To reduce the effect of traffic on the environment	0	0	+	This Policy is not over and above the Core Strategy and will have a positive impact towards the baseline data. Changes post examination clarify and ensure this policy is in better conformity with strategic policies.	The policy itself mitigates environmental issues caused from new development in the short, medium and long term.
To reduce contributions to	+	+	+	This Policy is not over and above the	The policy itself mitigates environmental

climate change				Core Strategy and will have a positive impact towards the baseline data. Changes post examination clarify and ensure this policy is in better conformity with strategic policies.	issues caused from new development in the short, medium and long term.
To reduce vulnerability to climate change	+	+	+	This Policy is not over and above the Core Strategy and will have a positive impact towards the baseline data. Changes post examination clarify and ensure this policy is in better conformity with strategic policies.	The policy itself mitigates environmental issues caused from new development in the short, medium and long term.
To improve water quality	+	+	+	This Policy is not over and above the Core Strategy and will have a positive impact towards the baseline data. Changes post examination clarify and ensure this policy is in better conformity with strategic policies.	The policy itself mitigates environmental issues caused from new development in the short, medium and long term.
To provide for sustainable sources of water supply	+	+	+	This Policy is not over and above the Core Strategy and will have a positive impact towards the baseline data. Changes post examination clarify and ensure this policy is in better conformity with strategic policies.	The policy itself mitigates environmental issues caused from new development in the short, medium and long term.
To avoid, reduce and manage flood risk	+	+	+	This Policy is not over and above the Core Strategy and will have a positive impact towards the baseline	The policy itself mitigates environmental issues caused from new development in the short, medium and long term.

This document is copyright of Herefordshire Council, please contact the Neighbourhood Planning team if you wish to reuse it in whole or part.

				data. Changes post examination clarify and ensure this policy is in better conformity with strategic policies.	
To conserve soil resources and quality	+	+	+	This Policy is not over and above the Core Strategy and will have a positive impact towards the baseline data. Changes post examination clarify and ensure this policy is in better conformity with strategic policies.	The policy itself mitigates environmental issues caused from new development in the short, medium and long term.
To minimise the production of waste	+	+	+	This Policy is not over and above the Core Strategy and will have a positive impact towards the baseline data. Changes post examination clarify and ensure this policy is in better conformity with strategic policies.	The policy itself mitigates environmental issues caused from new development in the short, medium and long term.
To improve health of the population	+	+	+	This Policy is not over and above the Core Strategy and will have a positive impact towards the baseline data. Changes post examination clarify and ensure this policy is in better conformity with strategic policies.	The policy itself mitigates environmental issues caused from new development in the short, medium and long term.
To reduce crime and nuisance	+	+	+	This Policy is not over and above the Core Strategy and will have a positive impact towards the baseline data. Changes post examination clarify and ensure this policy is in	The policy itself mitigates environmental issues caused from new development in the short, medium and long term.

				better conformity with strategic policies.	
To conserve natural and manmade resources	+	+	++	This Policy is not over and above the Core Strategy and will have a positive impact towards the baseline data. Changes post examination clarify and ensure this policy is in better conformity with strategic policies.	The policy itself mitigates environmental issues caused from new development in the short, medium and long term.
<b>Overall commentary and any cumulative effects</b>	Overall this Environmental policy is not over and above the Core Strategy. No cumulative effects have been identified for this policy. This policy will help mitigate potential impact caused from development in the short, medium and long term for How Caple, Sollers Hope and Yatton. Changes this policy post examination clarify and ensure this policy is in better conformity with strategic policies of the NPPF and Core Strategy. This policy has been reworded so it is easier to implement as a policy.				

### Policy HSG1

SEA Objective	Assessment of effect (consider cumulative effects, significance of the effect and magnitude of the effect in terms of the three time periods)			Summary Explanation	Enhancement and mitigation opportunities
	Short term (1 – 5 years)	Medium term (6 – 10 years)	Long term (11 years +)		

To maintain and enhance nature conservation (biodiversity, flora and fauna)	0	0	+	Changes post examination clarify. Removing repetition and ensure this policy is in better conformity with strategic policies. This housing policy is not over and above the Core Strategy and will has now more of a positive and neutral impact towards the baseline data.	Mitigation measures are covered within the Core Strategy and NDP. This will help mitigate any potential detrimental impacts from development over the short, medium and long term within the plan period.
To maintain and enhance the quality of landscapes and townscapes	+	+	+	This housing policy is not over and above the Core Strategy and will have a positive impact towards the baseline data. Changes post examination clarify. Removing repetition and ensure this policy is in better conformity with strategic policies.	Mitigation measures are covered within the Core Strategy and NDP. This will help mitigate any potential detrimental impacts from development over the short, medium and long term within the plan period.
To improve quality of surroundings	+	+	+	This housing policy is not over and above the Core Strategy and will have a positive impact towards the baseline data. Changes post examination clarify. Removing repetition and ensure this policy is in better conformity with strategic policies.	Mitigation measures are covered within the Core Strategy and NDP. This will help mitigate any potential detrimental impacts from development over the short, medium and long term within the plan period.
To conserve and where appropriate enhance the historic environment and cultural heritage	0	+	+	This housing policy is not over and above the Core Strategy and will have a positive impact towards the baseline data. Changes post examination clarify. Removing repetition and ensure this policy is in better conformity with strategic	Mitigation measures are covered within the Core Strategy and NDP. This will help mitigate any potential detrimental impacts from development over the short, medium and long term within the plan period.

				policies.	
To improve air quality	0	+	+	This housing policy is not over and above the Core Strategy and will have a positive impact towards the baseline data. Changes post examination clarify. Removing repetition and ensure this policy is in better conformity with strategic policies.	Mitigation measures are covered within the Core Strategy and NDP. This will help mitigate any potential detrimental impacts from development over the short, medium and long term within the plan period.
To reduce the effect of traffic on the environment	0	0	0	This housing policy is not over and above the Core Strategy and will have a positive impact towards the baseline data. Changes post examination clarify. Removing repetition and ensure this policy is in better conformity with strategic policies.	Mitigation measures are covered within the Core Strategy and NDP. This will help mitigate any potential detrimental impacts from development over the short, medium and long term within the plan period.
To reduce contributions to climate change	+	+	+	This housing policy is not over and above the Core Strategy and will have a positive impact towards the baseline data. Changes post examination clarify. Removing repetition and ensure this policy is in better conformity with strategic policies.	Mitigation measures are covered within the Core Strategy and NDP. This will help mitigate any potential detrimental impacts from development over the short, medium and long term within the plan period.
To reduce vulnerability to climate change	+	+	+	This housing policy is not over and above the Core Strategy and will have a positive impact towards the baseline data. Changes post examination clarify. Removing	Mitigation measures are covered within the Core Strategy and NDP. This will help mitigate any potential detrimental impacts from development over the short, medium and long term within the plan period.

				repetition and ensure this policy is in better conformity with strategic policies.	
To improve water quality	x	x	x	N/A	-
To provide for sustainable sources of water supply	x	x	x	N/A	-
To avoid, reduce and manage flood risk	x	x	x	N/A	-
To conserve soil resources and quality	+	+	+	This housing policy is not over and above the Core Strategy and will have a positive impact towards the baseline data. Changes post examination clarify. Removing repetition and ensure this policy is in better conformity with strategic policies.	Mitigation measures are covered within the Core Strategy and NDP. This will help mitigate any potential detrimental impacts from development over the short, medium and long term within the plan period.
To minimise the production of waste	+	+	+	This housing policy is not over and above the Core Strategy and will have a positive impact towards the baseline data. Changes post examination clarify. Removing repetition and ensure this policy is in better conformity with strategic policies.	Mitigation measures are covered within the Core Strategy and NDP. This will help mitigate any potential detrimental impacts from development over the short, medium and long term within the plan period.
To improve health of the population	+	+	+	This housing policy is not over and above the Core Strategy and will have a positive impact towards the baseline data. Changes post examination clarify. Removing	Mitigation measures are covered within the Core Strategy and NDP. This will help mitigate any potential detrimental impacts from development over the short, medium



				repetition and ensure this policy is in better conformity with strategic policies.	and long term within the plan period.
To reduce crime and nuisance	+	+	+	This housing policy is not over and above the Core Strategy and will have a positive impact towards the baseline data. Changes post examination clarify. Removing repetition and ensure this policy is in better conformity with strategic policies.	Mitigation measures are covered within the Core Strategy and NDP. This will help mitigate any potential detrimental impacts from development over the short, medium and long term within the plan period.
To conserve natural and manmade resources	0	0	+	This housing policy is not over and above the Core Strategy and will have a positive/ neutral impact towards the baseline data. Changes post examination clarify. Removing repetition and ensure this policy is in better conformity with strategic policies.	Mitigation measures are covered within the Core Strategy and NDP. This will help mitigate any potential detrimental impacts from development over the short, medium and long term within the plan period.
<b>Overall commentary and any cumulative effects</b>	Overall this housing policy is not over and above the Core Strategy. This policy could specify how new development plans to manage water supply and how it plans to react to tackle vulnerability to climate change and flood risk. No cumulative effect has been identified for this policy. Environmental effects can be mitigated with core strategy and ndp environmental protection policies. Changes post examination clarify and remove repetition. This ensures that the policy is in better conformity with strategic policies.				

### Policy ECON1

SEA Objective	Assessment of effect (consider cumulative effects, significance of the effect and magnitude of the effect in terms of the three time periods)	Summary Explanation	Enhancement and mitigation opportunities
---------------	---	---------------------	--

	<b>Short term</b> (1 – 5 years)	<b>Medium term</b> (6 – 10 years)	<b>Long term</b> (11 years +)		
To maintain and enhance nature conservation (biodiversity, flora and fauna)	0	0	+	The principles of this policy are compatible with Core Strategy policy E1, E2 and E4 and RA5. Policy safeguards exist which will help avoid or mitigate against impacts on the natural environment. Changes post examination clarify and ensure this policy is in better conformity with strategic policies.	Mitigation measures are covered within the Core Strategy and NDP. This will help mitigate any potential detrimental impacts from development over the short, medium and long term within the plan period.
To maintain and enhance the quality of landscapes and townscapes	0	+	+	The principles of this policy are compatible with Core Strategy policy E1, E2 and E4 and RA5. Policy safeguards exist which will help avoid or mitigate against impacts on the natural environment. Changes post examination clarify and ensure this policy is in better conformity with strategic policies	Mitigation measures are covered within the Core Strategy and NDP. This will help mitigate any potential detrimental impacts from development over the short, medium and long term within the plan period.
To improve quality of surroundings	+	+	+	The principles of this policy are compatible with Core Strategy policy E1, E2 and E4 and RA5. Policy safeguards exist which will help avoid or mitigate against impacts on the natural environment. Changes post examination clarify and ensure this policy is in better conformity with strategic policies.	Mitigation measures are covered within the Core Strategy and NDP. This will help mitigate any potential detrimental impacts from development over the short, medium and long term within the plan period.

To conserve and where appropriate enhance the historic environment and cultural heritage	x	x	x	N/A	-
To improve air quality	+	+	+	The principles of this policy are compatible with Core Strategy policy E1, E2 and E4 and RA5. Policy safeguards exist which will help avoid or mitigate against impacts on the natural environment. Changes post examination clarify and ensure this policy is in better conformity with strategic policies	Mitigation measures are covered within the Core Strategy and NDP. This will help mitigate any potential detrimental impacts from development over the short, medium and long term within the plan period.
To reduce the effect of traffic on the environment	0	0	0	The principles of this policy are compatible with Core Strategy policy E1, E2 and E4 and RA5. Policy safeguards exist which will help avoid or mitigate against impacts on the natural environment. Changes post examination clarify and ensure this policy is in better conformity with strategic policies	Mitigation measures are covered within the Core Strategy and NDP. This will help mitigate any potential detrimental impacts from development over the short, medium and long term within the plan period.
To reduce contributions to climate change	+	+	+	The principles of this policy are compatible with Core Strategy policy E1, E2 and E4 and RA5. Policy safeguards exist which will help avoid or mitigate against impacts on the natural environment. Changes post examination clarify and ensure this policy is in better	Mitigation measures are covered within the Core Strategy and NDP. This will help mitigate any potential detrimental impacts from development over the short, medium and long term within the plan period.

				conformity with strategic policies	
To reduce vulnerability to climate change	+	+	+	The principles of this policy are compatible with Core Strategy policy E1, E2 and E4 and RA5. Policy safeguards exist which will help avoid or mitigate against impacts on the natural environment. Changes post examination clarify and ensure this policy is in better conformity with strategic policies	Mitigation measures are covered within the Core Strategy and NDP. This will help mitigate any potential detrimental impacts from development over the short, medium and long term within the plan period.
To improve water quality	x	x	x	N/A	-
To provide for sustainable sources of water supply	x	x	x	N/A	-
To avoid, reduce and manage flood risk	x	x	x	N/A	-
To conserve soil resources and quality	0	+	+	The principles of this policy are compatible with Core Strategy policy E1, E2 and E4 and RA5. Policy safeguards exist which will help avoid or mitigate against impacts on the natural environment. Changes post examination clarify and ensure this policy is in better conformity with strategic policies	Mitigation measures are covered within the Core Strategy and NDP. This will help mitigate any potential detrimental impacts from development over the short, medium and long term within the plan period.
To minimise the production of waste	+	+	+	The principles of this policy are compatible with Core Strategy policy E1, E2 and E4 and RA5. Policy safeguards exist which will help avoid or mitigate against	Mitigation measures are covered within the Core Strategy and NDP. This will help mitigate any potential detrimental impacts from development over the short, medium

				impacts on the natural environment. Changes post examination clarify and ensure this policy is in better conformity with strategic policies	and long term within the plan period.
To improve health of the population	+	+	+	The principles of this policy are compatible with Core Strategy policy E1, E2 and E4 and RA5. Policy safeguards exist which will help avoid or mitigate against impacts on the natural environment. Changes post examination clarify and ensure this policy is in better conformity with strategic policies	Mitigation measures are covered within the Core Strategy and NDP. This will help mitigate any potential detrimental impacts from development over the short, medium and long term within the plan period.
To reduce crime and nuisance	+	+	+	The principles of this policy are compatible with Core Strategy policy E1, E2 and E4 and RA5. Policy safeguards exist which will help avoid or mitigate against impacts on the natural environment. Changes post examination clarify and ensure this policy is in better conformity with strategic policies	Mitigation measures are covered within the Core Strategy and NDP. This will help mitigate any potential detrimental impacts from development over the short, medium and long term within the plan period.
To conserve natural and manmade resources	0	0	+	The principles of this policy are compatible with Core Strategy policy E1, E2 and E4 and RA5. Policy safeguards exist which will help avoid or mitigate against impacts on the natural environment. Changes post examination clarify and ensure this policy is in better	Mitigation measures are covered within the Core Strategy and NDP. This will help mitigate any potential detrimental impacts from development over the short, medium and long term within the plan period.

				conformity with strategic policies	
<b>Overall commentary and any cumulative effects</b>	Overall this Economic policy is not over and above the Core Strategy and the policy moves towards the relevant SEA objectives. No cumulative effects have been identified for this policy. However Environmental effects can be mitigated with core strategy and ndp environmental protection policies. Changes post examination clarify and ensure this policy is in better conformity with strategic policies of the NPPF and Core Strategy, this helps moves this policy closer to the sea baseline objectives.				

# Appendix 10

## Template C2: SEA Quality Assurance Checklist

**Parish Council Name:** How Caple, Sollers Hope and Yatton Group Parish

**Neighbourhood Development Plan Name:** How Caple, Sollers Hope and Yatton Neighbourhood Plan

**Date completed:** December 2018

<b>Objectives and context</b>	<b>Where are the points covered in Neighbourhood Development Plan SEA (insert chapter, section, page references, as necessary)</b>
<ul style="list-style-type: none"> <li>• The Neighbourhood Development Plan's purpose and objectives are made clear.</li> <li>• The Neighbourhood Area's environmental issues and constraints, including acknowledgement of those in the Local Plan (Core Strategy) SA, where relevant, and local environmental protection objectives, are considered in developing objectives and targets.</li> <li>• SEA objectives are clearly set out and linked to indicators and targets where appropriate.</li> <li>• Links with other locally related plans, programmes and policies are identified, explained and acknowledgement for those set out in the SA of the Local Plan (Core Strategy) is given, where relevant.</li> <li>• Conflicts that exist between SEA objectives; between SEA and Neighbourhood Development Plan objectives; and between SEA objectives and other local plan objectives are identified and described.</li> </ul>	<p>Chapter 1. 1-1.4,1.9.</p> <p>Chapter 2 Methodology, Chapter 3 and tables A2 and A3</p> <p>Chapter 3 paragraph 3.5-3.11</p> <p>Chapter 3, paragraph 3.1</p> <p>Chapter 3</p>
<p><b>Scoping</b></p> <ul style="list-style-type: none"> <li>• Statutory Consultees are consulted in appropriate ways and at appropriate times on the content and scope of the Environmental Report.</li> <li>• The assessment focuses on significant issues.</li> <li>• Technical, procedural and other</li> </ul>	<p>Chapter 2, paragraphs 2.8-2.9</p> <p>Chapter 2 and chapter 4</p> <p>Chapter 2</p>



<p>difficulties encountered are discussed; assumptions and uncertainties are made explicit.</p> <ul style="list-style-type: none"> <li>• Reasons are given for eliminating issues from further consideration.</li> </ul>	<p>Chapter 2 and Chapter 4</p>
<p><b>Alternatives</b></p> <ul style="list-style-type: none"> <li>• Realistic alternatives are considered for key issues, and the reasons for choosing them are documented.</li> <li>• Alternatives include 'do minimum' and/or 'business as usual' scenarios wherever relevant.</li> <li>• The environmental effects (both adverse and beneficial) of each alternative are identified and compared.</li> <li>• Inconsistencies between the alternatives and other relevant local plans, programmes or policies are identified and explained.</li> <li>• Reasons are given for selection or elimination of alternatives.</li> </ul>	<p>Chapter 5</p> <p>Paragraph 5.4</p> <p>Chapter 5</p> <p>Chapter 5</p> <p>Chapter 5</p>
<p><b>Baseline information</b></p> <ul style="list-style-type: none"> <li>• Relevant aspects of the current state of the local, neighbourhood area environment and their likely evolution without the Neighbourhood Development Plan are described. Acknowledgement to the information in the SA of the Local Plan (Core Strategy) is given, where relevant.</li> <li>• Environmental characteristics of the local, neighbourhood area, likely to be significantly affected are described, including areas wider than the physical boundary of the designated neighbourhood area, where it is likely to be affected by the Neighbourhood Development Plan.</li> <li>• Difficulties such as deficiencies in information or methods are explained.</li> </ul>	<p>Chapter 1, Chapter 5</p> <p>Initial screening report and Chapter 1</p> <p>Chapter 2</p>

<p><b>Prediction and evaluation of likely significant environmental effects</b></p> <ul style="list-style-type: none"> <li>• Effects identified include the types listed in the Directive (biodiversity, population, human health, fauna, flora, soil, water, air, climate factors, material assets, cultural heritage and landscape), as relevant; and other local likely environmental effects are also covered, as appropriate.</li> <li>• Both positive and negative effects are considered, and the duration of effects (short, medium or long-term) is addressed.</li> <li>• Likely secondary, cumulative (growing in quantity and strength) and synergistic (acting together) effects are identified, where practicable.</li> <li>• Inter-relationships between effects are considered, where practicable.</li> <li>• The prediction and evaluation of effects makes use of relevant accepted standards, regulations, and thresholds (i.e. data gathered for the evidence base).</li> <li>• Methods used to evaluate the effects are described.</li> </ul>	<p>Tables A2, A3 and A4</p> <p>Tables B2 and B3</p> <p>Tables B4</p> <p>Chapter 6</p> <p>Chapter 6</p> <p>Chapter 2</p>
<p><b>Mitigation measures</b></p> <ul style="list-style-type: none"> <li>• Measures envisaged to prevent, reduce and offset any significant adverse effects of implementing the Neighbourhood Development Plan are indicated.</li> <li>• Issues to be taken into account when determining planning applications or other projects, for example funding bids, are identified.</li> </ul>	<p>Chapter 6</p> <p>Chapter 6</p>
<p><b>The Environmental Report</b></p> <ul style="list-style-type: none"> <li>• Is clear and concise in its layout and presentation.</li> <li>• Uses simple, clear language and avoids or explains technical terms.</li> <li>• Uses maps and other illustrations,</li> </ul>	<p>-</p> <p>-</p> <p>-</p>

<p>where appropriate.</p> <ul style="list-style-type: none"> <li>• Explains the methodology used.</li> <li>• Explains who was consulted and what methods of consultation were used.</li> <li>• Identifies sources of information, including expert judgement and matters of opinion.</li> <li>• Contains a non-technical summary covering the overall approach to the SEA, the objectives of the Neighbourhood Development Plan, the main options considered, and any changes to the Neighbourhood Development Plan resulting from the SEA.</li> </ul>	<p>Chapter 2</p> <p>Paragraph 2.8-2.9</p> <p>Paragraph 2.8-2.9</p> <p>Page 2 / Appendix 5 / Chapter 4/ Chapter 5 / Chapter 6</p>
<p><b>Consultation</b></p> <ul style="list-style-type: none"> <li>• The SEA is consulted on as an integral part of the plan-making process of the Neighbourhood Development Plan.</li> <li>• Consultation Bodies and the public likely to be affected by, or having an interest in, the Neighbourhood Development Plan are consulted in ways and at times, which give them an early and effective opportunity within appropriate time frames to express their opinions on the draft Neighbourhood Development Plan and Environmental Report.</li> </ul>	<p>Paragraph 2.8-2.9</p> <p>Chapter 8</p>
<p><b>Decision-making and information on the decision</b></p> <ul style="list-style-type: none"> <li>• The environmental report and the opinions of those consulted are taken into account in finalising and adopting the Neighbourhood Development Plan.</li> <li>• An explanation is given of how they have been taken into account.</li> <li>• Reasons are given for choosing the Neighbourhood Development Plan as adopted, in the light of other reasonable alternatives considered.</li> </ul>	<p>Chapter 8</p> <p>Chapter 6</p> <p>Chapter 6</p>

<p><b>Monitoring measures</b></p> <ul style="list-style-type: none"> <li>• Measures proposed for monitoring the Neighbourhood Development Plan are clear, practicable and linked to the indicators and objectives used in the SEA.</li> <li>• Monitoring is used, where appropriate, during implementation of the Neighbourhood Development Plan to make good deficiencies in baseline information in the SEA.</li> <li>• Acknowledgement that monitoring enables unforeseen adverse effects to be identified at an early stage. (These effects may include predictions which prove to be incorrect.) And that</li> <li>• Proposals are made for action in response to significant adverse effects arising from the monitoring of the Neighbourhood Development Plan.</li> </ul>	<p>Chapter 7</p> <p>Chapter 7</p> <p>Chapter 7</p> <p>Chapter 7</p>
--	---