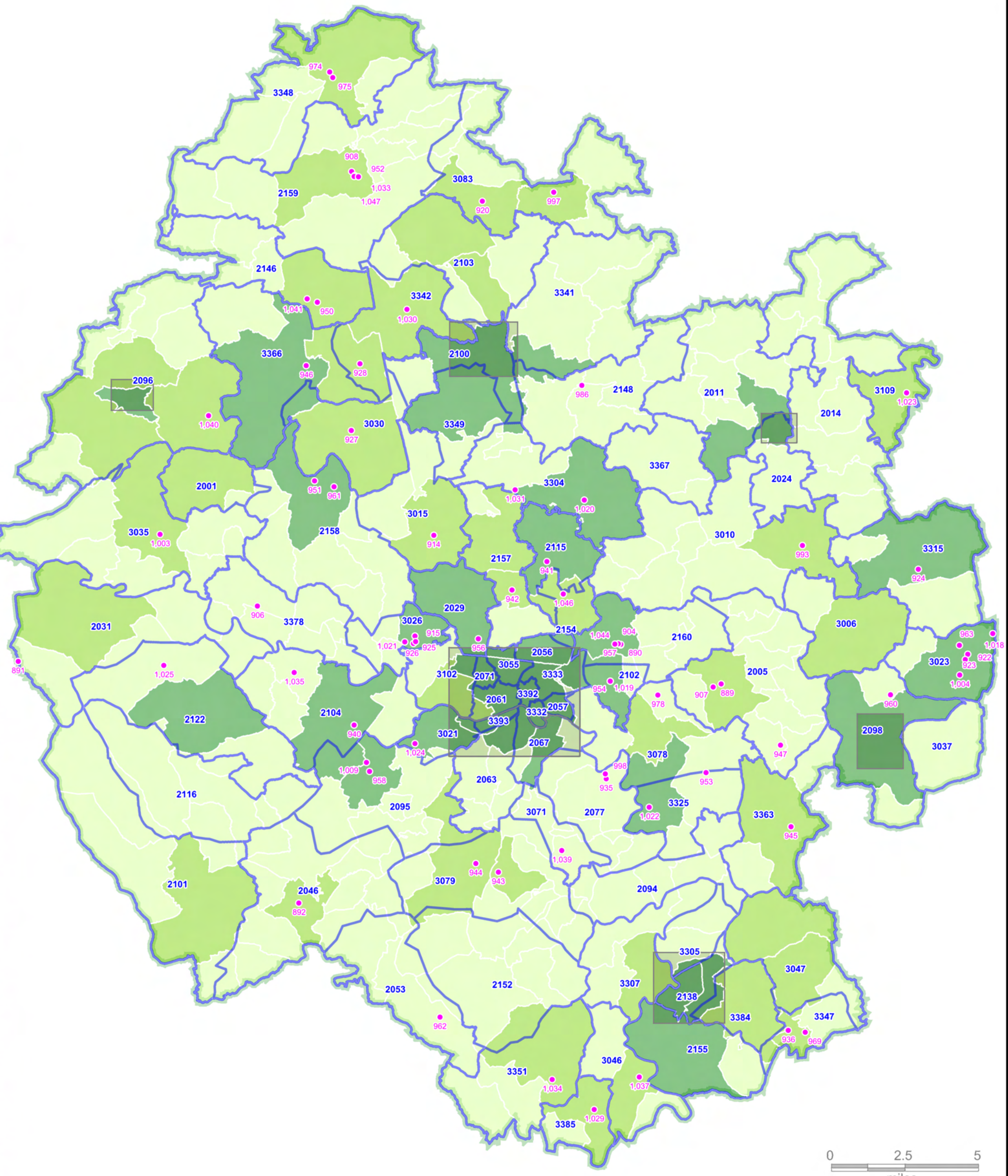


## **Appendix 4: Provision and Density Maps 1d Rural Areas**

**Map 1d: Herefordshire Play Area Parish Population Density and Primary School Catchment Area**

© Crown copyright and database rights (2012) Ordnance Survey (100024168) Source Super Output Area Boundaries. Crown Copyright 2012. Crown Copyright material is reproduced with the permission of the Controller of HMSO



## Herefordshire Rural Play Areas

against Parish Population and Primary School Catchment Areas



Updated January 2012

**Herefordshire Parishes**  
by Population

- Greater than 1,000
- Between 500 and 1,000
- Less than 500

**Primary School Catchment Area**  
with DCSF Number



**Urban Area**  
(Play Areas not shown)



**Play Area**  
and Unique ID



Working together for the people of Herefordshire innovation in business

Hoople Ltd, ICT Services, Thorn Office Centre  
Holme Lacy Road, Rotherwas, Hereford HR2 6JT

Population Data sourced from LSOA Mid 2010 estimates and LLPG data (assuming 2.144154 people per dwelling)