

hendeca

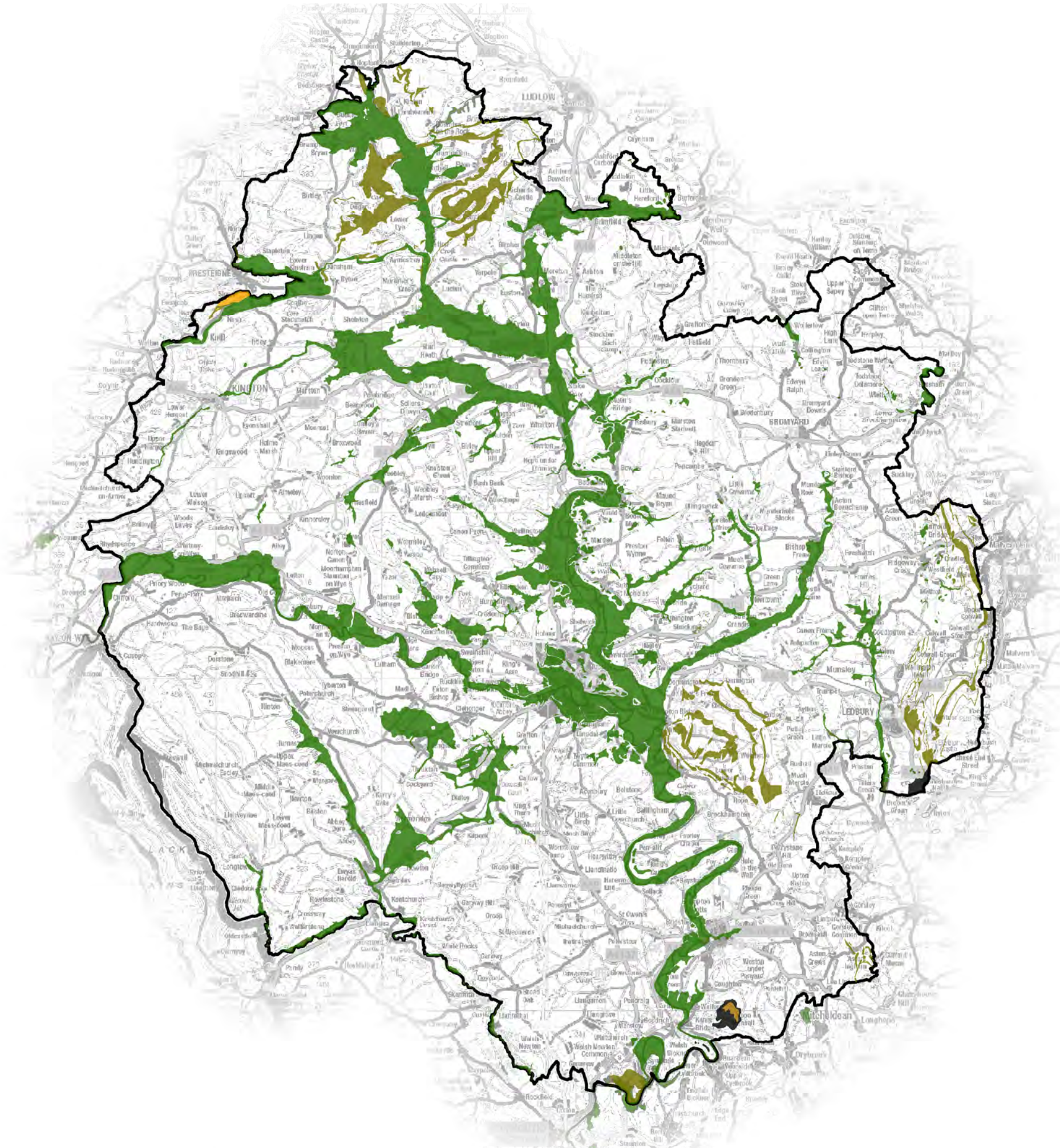
Spatial Context and Sites Report

Annex C

HEREFORDSHIRE MINERALS AND WASTE LOCAL PLAN
DRAFT PLAN

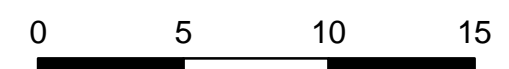
Herefordshire Minerals and Waste Local Plan

Figure C.1
Mineral resources in Herefordshire



Mineral Reserves

- Brick clay
- Coal
- Limestone (including dolomite)
- Sandstone: Pre-Cambrian, Ordovician, Silurian Greywacke
- Superficial sand/gravel



Kilometres

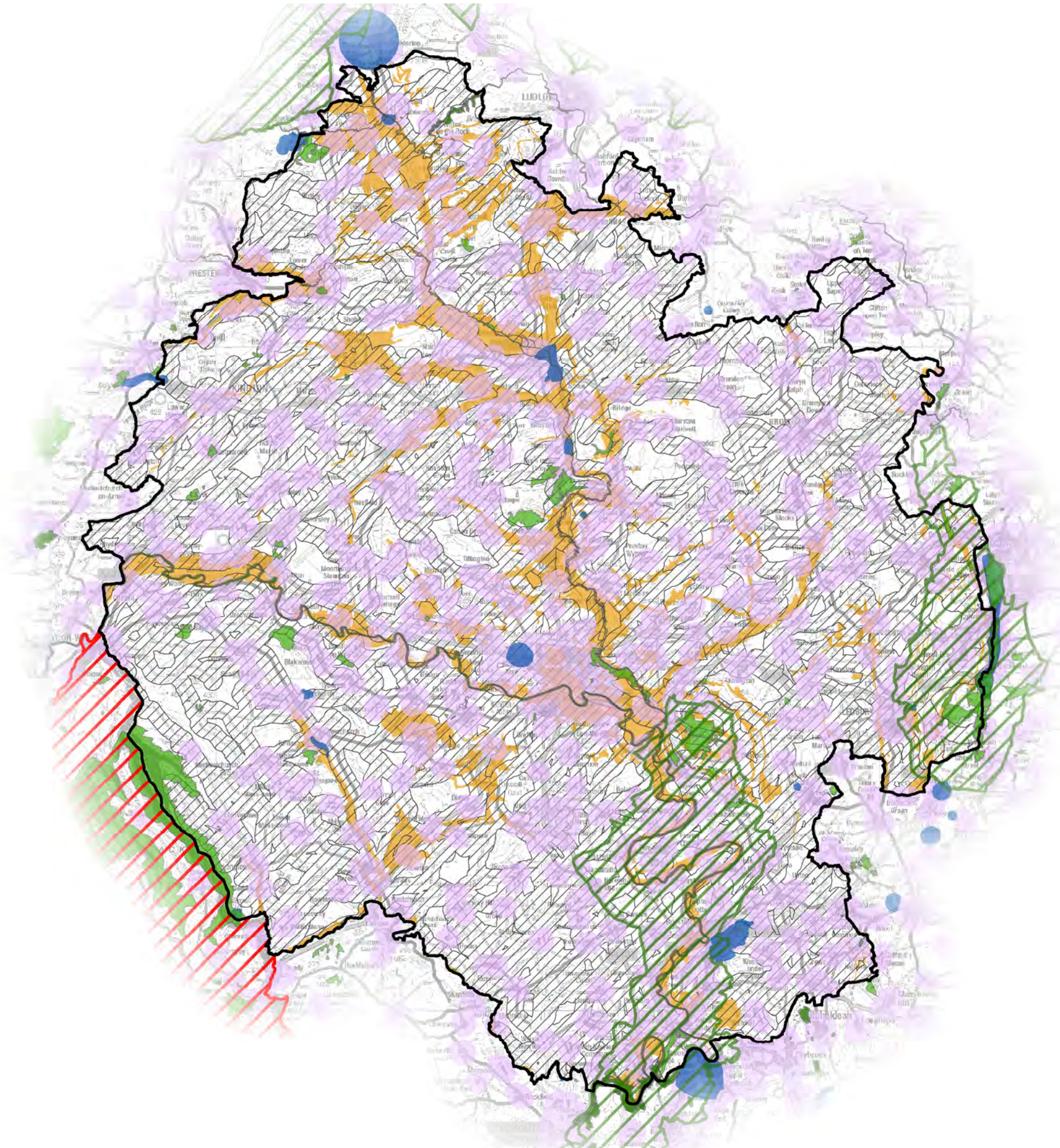
SCALE
1:260,000 @ A3

DATE
23/03/2018

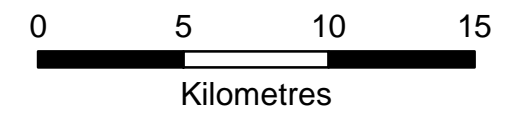
hendeca

Herefordshire Minerals and Waste Local Plan

Figure C.2
Constraints data applied to mineral resource



-  Mineral Reserves (BGS Geology)
-  Brecon Beacons National Park
-  AONB
-  Natura2000 Sites
-  UK Ecological Designations
-  Source Protection Zones
-  Built Up Areas 500m Buffer
-  Road Access



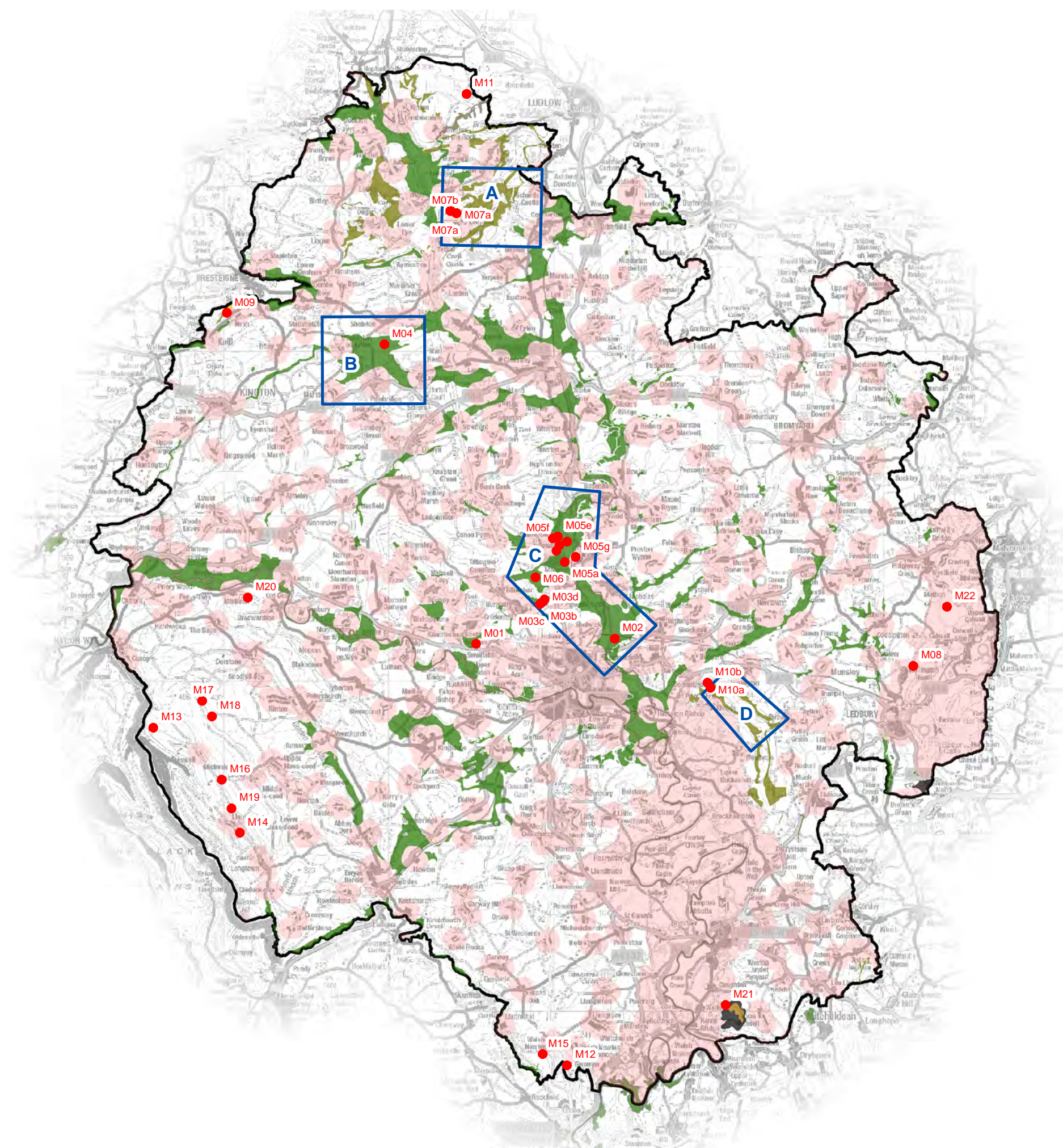
SCALE
1:260,000 @ A3

DATE
08/02/2018

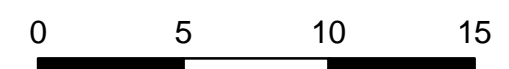
hendeca

Herefordshire Minerals and Waste Local Plan

Figure C.3
Preferred Areas of Search, with identified sites



- Identified Sites
- ▭ Preferred Areas of Search
- Mineral Reserves**
- Brick clay
- Coal
- Limestone (including dolomite)
- Sandstone: Pre-Cambrian, Ordovician, Silurian Greywacke
- Superficial sand/gravel
- Constrained Areas



Kilometres

SCALE
1:260,000 @ A3

DATE
23/03/2018