

## **Section 3 Playing Pitch Strategy for each area including summary of key findings and recommendations**

**Bromyard Area**

**Herefordshire Playing Pitch Assessment**

**On Behalf of Herefordshire Council  
October 2012**

**Ruth Jackson MA MRTPI  
Principal Leisure and Countryside Recreation Officer  
Herefordshire Council**

## Contents

1. Area Profile
2. Supply: Quantitative Assessment
3. Qualitative Assessment
4. Demand: Research and Consultation
5. Adequacy of Current Provision: The Playing Pitch Methodology
6. Predicting the Future
7. Developing Local Standards
8. Recommendations and Future Actions for Bromyard Area

## **Bromyard Area: Supply and Demand**

### **1. Area Profile**

#### **1.1 Planning Background**

- 1.1.1 Herefordshire Council commissioned GL Hearn to prepare a Local Housing Requirement Study (October 2011) to inform the development of the Local Development Framework Core Strategy. This includes demographic projections for population, households and dwellings, taking account of past demographic trends and forecast economic performance. The plan period covers 2011 – 31 and the analysis sets out the projections for population and housing growth for the county across seven sub Housing Market Areas (HMAs) including Hereford. A full list of all sub HMAs can be found in the Strategic Overview.

#### **1.2 Population**

- 1.2.1 Bromyard Area has an estimated population (2010 mid-year estimates) of 11,800 residents (6.5 % of the county's population). It includes the following wards: Bringsty, Bromyard and Hampton Court For analytical purposes, it has been divided into the two sub-areas of Bromyard town and Bromyard rural.
- 1.2.2 Bromyard Town has a relatively low proportion of children and also has relatively high proportions of young working age adults and older people - particularly those aged 75+.
- 1.2.3 Bromyard rural has a relatively large proportion of older working age people (45 to 64). *Herefordshire Council Research Team*

#### **1.3 Market Segmentation**

- 1.3.1 Sport England's Market segmentation identified that the following "types" are the most dominant market segments in the Bromyard Area:

##### **Bromyard Town:**

- Philip 46 – 55, Comfortable mid-life males: Most active type within this peer group participating in a number of activities including team sports, racquet games and technical sports
- Roger and Joy 56 – 65, Early retired couple: slightly less active than average enjoying keep fit and swimming, bowls, golf and angling
- Elsie and Arnold 66+ Retirement home singles: much less active than others in their group: activities include walking, swimming and bowls

### **Bromyard Rural:**

- Tim 26 – 35, Settling down males: very active enjoying high intensity activity; enjoys technical sports as well as team games and individual activity
- Philip 46 – 55, Comfortable mid-life males: Most active type within this peer group participating in a number of activities including team sports, racquet games and technical sports
- Roger and Joy 66+ Early retired couple: slightly less active than average enjoying keep fit and swimming, bowls, golf and angling
- Ralph and Phylis 66+ Comfortable retired couple: generally less active than the average adult population, but their activity levels are higher than others in their age range: activities include swimming, the gym, bowls and golf.

*Sport England and Experian Ltd. 2010, Measure: Sport Market Segmentation*

## **2. Supply: Quantitative Assessment**

- 2.0 This section considers the quantitative assessments of the grass playing pitch provision for football, cricket and rugby. Provision for Hockey is also considered and the use of Artificial Turf Pitches or grass pitches in the area. It also provides details of bowls and tennis.

### **2.1 Current Provision**

- 2.1.1 There are a total of 25 grass pitches for football, cricket and rugby pitches in the area.

This figure includes all known public, private, school and other pitches whether they are in secured public use or not.

- 2.1.2 The full schedule and location of pitches can be seen in the Maps of the County showing both areas and pitch type attached in Appendix 1

- 2.1.3 The existing pitches comprise of the following:

- 4 x Cricket
- 8 x senior Football
- 7 x junior Football
- 2 x mini Football
- 3 x senior Rugby

In addition there is:

- 1 x bowling green,
- 3 tennis courts

- 1 x golf course

There is also a “no longer in use”

- Cricket pitch at Upper Sapey
- Tennis courts at Whitbourne

2.1.4 Of these 24 pitches, 15 (63 %) are senior full size pitches. Total 16 + population using the 2010 estimated population census (rounded figures) in the Bromyard Area is 10,100. This equates to circa one pitch for every 673 adults (16+) in the study area. This ratio pitches to adults compares favourably compared to many other areas including England as a whole.

**Table 1: Pitch Ratios**

Local Authority	Ratio (Pitches: adults)
Kennett District Council	1:365
St Albans City and District Council	1:540
Chichester District Council	1:599
South Somerset District Council	1:608
<b>Bromyard Area</b>	<b>1:673</b>
Halton Borough Council	1:677
Staffordshire Moorlands District Council	1:761
Lichfield District Council	1:766
North Lincolnshire Council	1:773
North Wiltshire District Council	1:804
Derwentside District Council	1:815
Kirklees Metropolitan Borough Council	1:867
South Ribble Borough Council	1:891
Swindon	1:926
Adur District Council	1:947
Rochdale Metropolitan Borough Council	1:968
England	1:989
Ipswich Borough Council	1:992
Northamptonshire County	1:1,015
St Helens	1:1,050
Portsmouth City Council	1:1,100
Tamworth Borough Council	1:1,221
Sandwell MBC	1:1,327
Wolverhampton City Council	1:1,537

*Data used from PMP consultants studies.*

## 2.2 Accessibility

2.2.1 In line with “Towards a Level Playing Field: a manual for the production of a Playing Pitch Strategy” (Sport England 2003) the definition used for “community pitches” is those with “secured community use”. In practise this definition embraces:

**Table 2: Community Use Categories**

CATEGORY	DEFINITION	SUPPLEMENTARY INFORMATION
A (i)	<b>Secured Community Pitches</b>	Pitches in local authority or other public ownership or management
A (ii)		Pitches in the voluntary, private or commercial sector which are open to members of the public
A (iii)		Pitches at education sites which are available for use by the public through formal community use arrangements*
B	<b>Used by Community, but not secured</b>	Pitches not included in the above, that are nevertheless available for community use e.g. school/college pitches without formal use agreements
C	<b>Not open for Community use</b>	Pitches at establishments which are not, as a matter of policy or practice, available for hire by the public

- Where there is a charge it must be reasonable and affordable for the majority of the local community.
- Pitches in secured community use are pitches that are available for community use by community teams and whose future is secured for the coming seasons by one of the following:
  - A formal community use agreement
  - A leasing/management arrangement between the school and LEA requiring the pitches to be available to community teams
  - A policy of community use minuted by the school or LEA including tariff of charges
  - Minutes of the board of school governors allowing use of pitches by community teams
  - Written commitment from the school to the current community team using the pitches.

2.2.2 Of the 24 pitches identified, 12 are secured for use by the community (A(i) A(ii) A(iii)). Whilst there are a number of non community use sites, including school sites which are used “informally” by the community, including the Queen Elizabeth High School, which is used by Bromyard Cricket Club currently as their second ground, as these sites are not seen as secured by Sport England,

they have not been included in the demand modelling exercise reported later in this document.

- 2.2.3 It should also be noted that the impending “Academy Status” the majority of senior schools across Herefordshire are now seeking will make an impact on the future pitch resources which will be available for community use. As this area is an “unknown quantity” and will no longer be under Local Authority control, the assumption has been made to exclude school sites which are not currently offering community use from the demand modelling exercise. Those schools which do currently offer community use have been included but are identified as a future “risk”.
- 2.2.4 Also to note is the impact single pitch junior school sites are likely to have on current and future demand. Their role is seen by Sport England as limited and although Herefordshire has large numbers of junior schools, given the school curricula and capacity the pitches have it is unlikely that they could sustain additional community use on a regular basis. Whilst a number offer community use on an “informal basis” particularly at Bredenbury, they along with those offering no community use, have not been included in the demand modelling exercise reported later in this document. Those schools which do currently offer community use have been included but are identified as a future “risk”.
- 2.2.5 Whitbourne Primary School, use Whitbourne Playing Fields and this could be a reason why there is no use of the site by clubs currently. Therefore, whilst it is included in the demand modelling its future use by clubs is questionable.
- 2.2.6 Conversely some junior schools may benefit from additional community use, particularly if they are at risk of closure. This is identified as a recommendation for future consideration and exploration with property services.
- 2.2.7 Information on existing community use agreements on school sites has not been fully collated previously and it has been identified as a recommendation for future consideration with property services.
- 2.2.8 Table 3 below highlights the use of each site in the area.

**Table 3: Community/non community use pitches in Bromyard Area**

CATEGORY	DEFINITION	SUPPLEMENTARY INFORMATION
A (ii)	Secured Community Pitches	PP205 Bromyard Football Ground <ul style="list-style-type: none"> <li>• 3 x senior football</li> </ul> PP250 Bromyard Sports Foundation <ul style="list-style-type: none"> <li>• 2 x senior rugby</li> <li>• 1 x bowling</li> <li>• 1 x tennis</li> </ul> PP122 Bromyard Cricket Ground <ul style="list-style-type: none"> <li>• 1 x cricket</li> </ul> PP204 Bringsty Common Football Ground <ul style="list-style-type: none"> <li>• 1 x senior football (currently not used by clubs)</li> </ul> PP141 Bringsty Sports Ground <ul style="list-style-type: none"> <li>• 1 x cricket (currently not used by clubs)</li> </ul> PP230 Gaines Tennis Courts <ul style="list-style-type: none"> <li>• 2 x tennis (no longer in use)</li> </ul> PP185 Pencombe Sports Ground <ul style="list-style-type: none"> <li>• 1 x senior football</li> <li>• 1 x cricket</li> </ul> PP178 Whitbourne Playing Fields <ul style="list-style-type: none"> <li>• 1 x senior football</li> <li>• 1 x junior football</li> </ul> PP195 Stoke Prior football ground <ul style="list-style-type: none"> <li>• 1 x senior football</li> </ul>
B	Used by Community, but not secured	PP9 Bredenbury Primary School <ul style="list-style-type: none"> <li>• 1 x junior football</li> </ul> PP71 Queen Elizabeth High School <ul style="list-style-type: none"> <li>• 2 x senior football</li> <li>• 1 x senior rugby</li> <li>• 1 x cricket</li> </ul> PP97 Whitbourne Primary School <ul style="list-style-type: none"> <li>• 1 x junior football</li> </ul>
C	Not open for Community use	PP13 Brockhampton Primary School <ul style="list-style-type: none"> <li>• 1 x junior football</li> </ul> PP20 Burley Gate Primary School <ul style="list-style-type: none"> <li>• 1 x junior football</li> </ul> PP69 Pencombe Primary School <ul style="list-style-type: none"> <li>• 1 x junior football</li> </ul> St Peters Primary School <ul style="list-style-type: none"> <li>• 2 x mini football</li> </ul> PP65 Stoke Prior Junior School <ul style="list-style-type: none"> <li>• 1 x junior football</li> </ul>



## **2.3 Location**

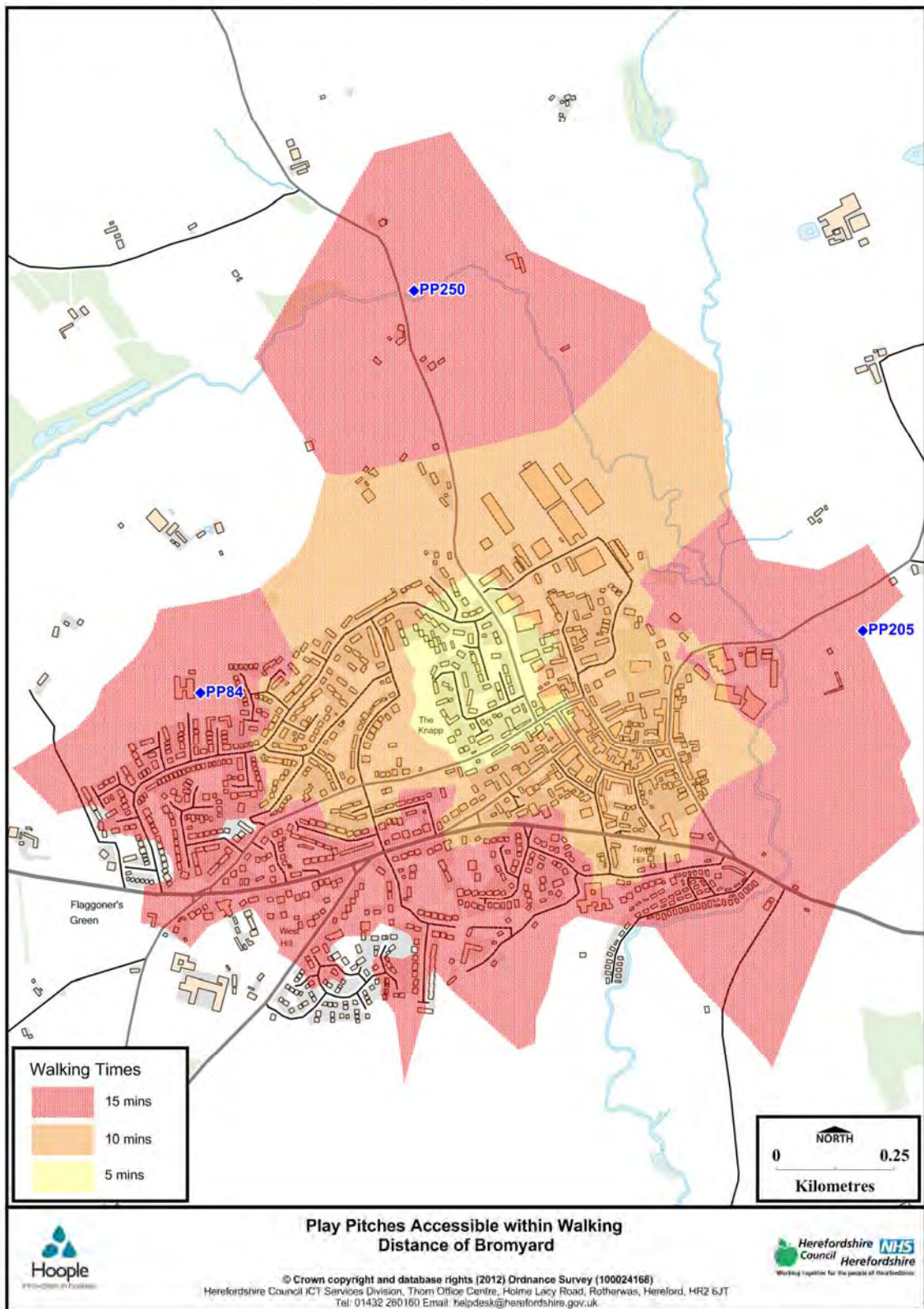
- 2.3.1 Sport England’s Facilities Planning Model supports a “hierarchical” approach for the development of sports facilities recognising that larger centres of population can sustain facilities which can provide facilities for a wider hinterland of rural parishes either at a district, local or neighbourhood level or as in the case of Hereford City a sub regional and county level. For Herefordshire it looks like this:
- Tier 1 Sub regional/ Countywide (50K population: Hereford City)
  - Tier 2 District (10K population: Market Towns)
  - Tier 3 Local (3k population: Market Towns)
  - Tier 4 Neighbourhood (Significant Settlements)
- 2.3.2 In the case of Bromyard Area, in a predominantly rural area where resources are limited, access to local facilities is often dependant on the main population centres providing them. Bromyard is considered Tier 3 Local.
- 2.3.3 Therefore whilst across the area, there is a reasonable spread of pitches, as you would expect the main centres of population, provides the most facilities. In Bromyard Area most of the pitches are located in Bromyard Town or the main villages where the facilities are more multi-functional offering a range of sports and facilities acting as a local “hub”. For example, Bromyard Sports Foundation (rugby, bowling, tennis), Pencombe Sports Ground, (football and cricket).
- 2.3.4 As part of the Local Development Framework, Planning has identified new housing growth areas across the county using a sustainable framework based the city of Hereford, the Market Towns, Rural Service Centres and Rural Service Hubs as areas most likely and capable of sustaining future growth. Those settlements identified for growth are set out in the table below as it is likely the areas of housing and population growth will provide opportunities for future investment in sports pitches to meet future supply and demand requirements. It is important to note that where, for example, a parish has no facilities, such as Stoke Lacy, and no evidence to suggest they are required in the future, any opportunities arising from new housing should be considered outside of the Parish based on this hierarchical approach and within the thresholds set out below.

**Table 4: Location / Distribution of Pitches/hierarchy**

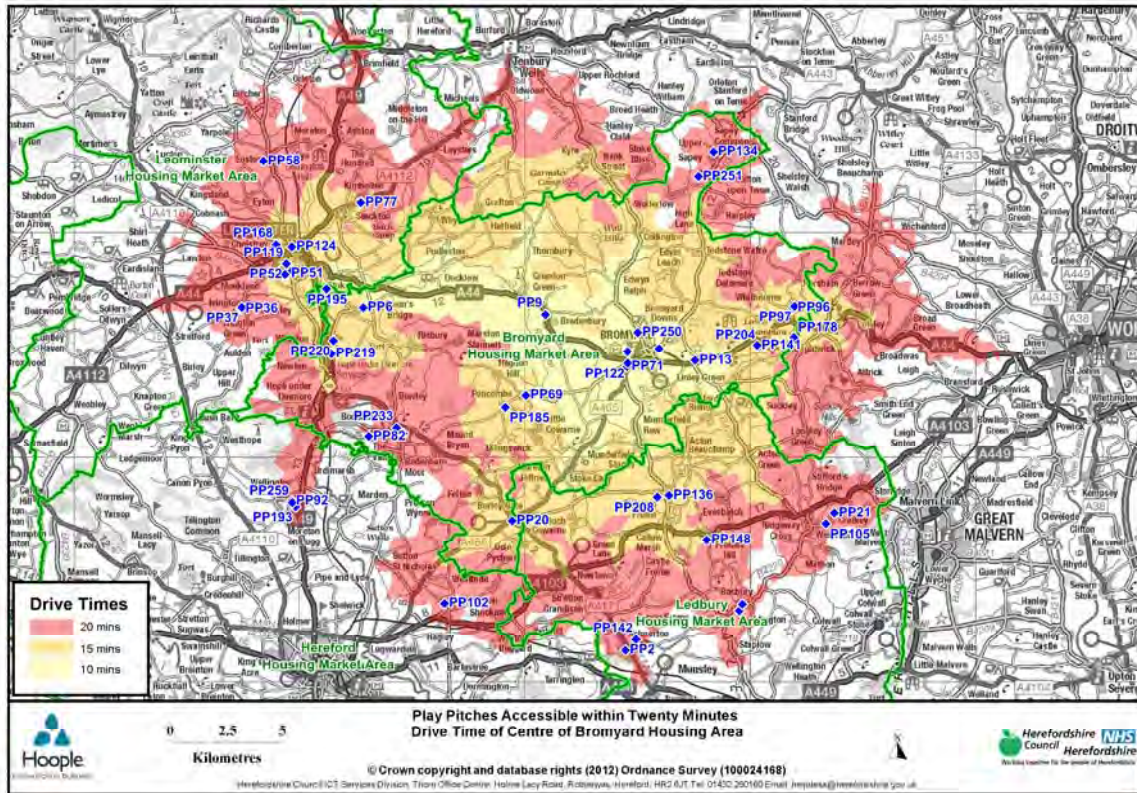
Sub-Area/Parish	Total Playing Pitch area (hectares)	Total Playing Pitch area with secured community access (hectares)	% of Playing Pitch area with secured community access (hectares)
<b>Market Town</b>			
<b>Bromyard &amp; Winslow</b>	12.07ha Queen Elizabeth High School St Peters Primary School Bromyard cricket Ground Bromyard Sports Foundation	5.56ha Bromyard cricket Ground Bromyard Sports Foundation	46%
<b>Rural Service Centres</b>			
<b>Rural Service Hubs</b>			
<b>Stoke Lacy</b>	0	0	0
<b>Parishes</b>			
<b>Bredenbury Group</b>	0.98 ha Bredenbury Primary School	0 ha	0%
<b>Brockhampton Group</b>	4.96 ha Brockhampton Primary school Bromyard Football Ground	4.45 ha Bromyard Football Ground	90%
<b>North Bromyard Group</b>	0	0	0
<b>Ocle Pychard Group</b>	1.47 ha Burley Gate Primary School	0ha	0%
<b>Thornbury Group</b>	0	0	0
<b>Pencombe Group</b>	2.12ha Pencombe Primary School Pencombe Sports Ground	1.6ha Pencombe Sports Ground	75%
<b>Avenbury</b>	0	0	0
<b>Hampton Charles</b>	0	0	0
<b>Whitbourne</b>	4.74ha Whitbourne Primary School Bringsty Common Football ground Bringsty Sports Ground Whitbourne Playing Fields	3.99ha Bringsty Common Football ground Bringsty Sports Ground Whitbourne Playing Fields	84%
<b>Hatfield &amp; District</b>	0	0	0
<b>Hope under Dinmore Group</b>	0	0	0
<b>Humber, Stoke Prior and Ford Group</b>	1.9ha Stoke Prior Primary School Stoke Prior Football Ground	1.36 ha Stoke Prior Football Ground	72%
<b>Bodenham</b>	1.17 ha St Michaels Primary	0 ha	0%

## **2.4 Thresholds**

- 2.4.1 In an area of both urban and rural mix it is important to see if the population is within a reasonable threshold distance to access facilities. It is recognised that rural areas are often marginalised having less access to a range of facilities but it would also be unreasonable to expect the same ease of access that those living in urban areas afford. Therefore a slightly different methodology has been considered for rural and urban areas, which meets with Sport England's recommendations. In this way it can be shown if there are any obvious gaps in provision which may require addressing.
- 2.4.2 The modelling exercise for "urban areas" including Bromyard is based on walking and access times recommended by Sport England of "15 minutes walking at 3 mph
- 2.4.3 The modelling exercise for "rural areas" is based on driving and access times recommended by Sport England of a 20 minute drive time on A and B roads.
- 2.4.4 All access times are taken from a central point in Bromyard Town
- 2.4.5 Map 2a below shows the 15 minute walk modelling exercise.
- 2.4.6 Map 2b below shows the 20 minute drive time modelling exercise. This identifies that all facilities can be accessed with 10mins, 15mins or 20mins from any where within the area , including some in surrounding areas and those in neighbouring authorities namely Malvern Hills, with the exception of some very small pockets which do not have A or B roads. There is no supporting evidence to suggest these areas require facilities.



Map 2a: shows the “Playing Pitches accessible within a 15 minute walk time of the centre of Bromyard”



Map 2b: shows “Playing Pitches accessible within a 20 minute drive time of centre of Bromyard”

## 2.5 Ownership

- 2.5.1 The table below illustrates the ownership of all pitches.
- 2.5.2 The largest providers are in the voluntary/private sector in respect of community use although there are a number of school sites, all of which have no formal community access. This indicates that supply is not reliant on schools offering community use apart from the Queen Elizabeth High school for cricket. The implications for cricket and the aspirations the club has for development in the town are dealt with later on in this report.
- 2.5.3 There is no formal community use at school sites in the Bromyard area which would suggest that there are no issues around school curricula use apart from Whitbourne Primary School, who use the parish playing fields which may have an impact on club use. Schools have been consulted via the Schools Sports Partnerships, but further work is recommended if schools are to play a more prominent part in community use in the future, around the school curricula use.

**Table 5: Ownership**

Ownership	No. of senior football pitches	No. of junior football pitches	No. of mini football pitches	No. of cricket pitches	No. of senior rugby pitches	No. of junior rugby pitches	No. of senior and junior hockey	No. of Tennis courts
Herefordshire Council (HALO) community use	0	0	0	0	0	0	0	0
School community use	0	0	0	0	0	0	0	0
School non community use	2	6	2	1	1	0	0	0
Private schools	0	0	0	0	0	0	0	0
Parish/Town Council community use	2	1	0	1	0	0	0	0
Private/voluntary community use	4	0	0	2	2	0	0	3
<b>Total community</b>	<b>6</b>	<b>1</b>	<b>0</b>	<b>3</b>	<b>2</b>	<b>0</b>	<b>0</b>	<b>3</b>
<b>Total non community</b>	<b>2</b>	<b>6</b>	<b>2</b>	<b>1</b>	<b>1</b>	<b>0</b>	<b>0</b>	<b>0</b>

0 pitches: Local Authority (HALO)

12 pitches: School

8 pitches: Voluntary/private

4 pitches: Parish Council

**Total 24: 12 in community use**

*\*note: Tennis courts are not included in the totals above*

## 3 Qualitative Assessment:

### 3.1 Pitches and Site Facilities

- 3.1.0 Perceived quality of pitches and ancillary facilities is almost as important as actual quality as the perceptions of users or potential users can easily change patterns of use.
- 3.1.1 This considers the quality of all the grass playing pitch provision for football, cricket and rugby in the study area. It also includes some detail for bowls and tennis where appropriate.
- 3.1.2 All community facilities listed in Appendix 2 have been visited during Sept and October 2010 by the same assessor from Parks and Countryside. All school sites have been visited in the same period by the same assessors from Property Services to ensure consistency. School changing rooms were not surveyed.
- 3.1.3 The non technical assessment proforma matrix provided as part of Sport England's "Towards a Level Playing Field Guidance" has been used and sites banded accordingly a copy of which is provided in Appendix 3. Scores for each of the playing pitches and changing accommodation are recorded on the table in Appendix 2.

### 3.2 Site Changing Facilities: Community use only

- 3.2.1 The site assessment matrix rates the overall facilities (changing rooms, parking etc) and the pitches themselves. The percentage scores for the overall sites are broken down as follows:
- Over 90% - excellent
  - 60%-89% - good
  - 40% - 59% - average
  - 30% - 39% - poor
  - Less than 30% - very poor
- 3.2.2 The overall results of those assessed for the quality of facilities show that all community use sites have access to changing accommodation although quality and accessibility varies across the sites:
- **2 x changing accommodation rated excellent:** Bromyard Football Ground and Bromyard Cricket Club.
  - **4 x changing accommodation rated good:** Bromyard Sports Foundation (Rugby, tennis, bowls), Gaines Tennis
  - **3 x changing accommodation rated very poor:** Bringsty Sports Ground: Cricket, Bringsty Football Ground, Pencombe Sports Ground

- **1 x changing accommodation:** is at the village hall on a different site: Whitbourne Playing Fields use Whitbourne Village Hall
  - **1 x not surveyed:** Stoke Prior Football Pitches
- 3.2.3 The Facilities used by the clubs for competitive sports matches have all been rated as either excellent or good. Of the clubs who responded they rated these facilities as acceptable. Of the poorest facilities Pencombe Football Club and Pencombe Cricket Club actively use Pencombe sports ground: poor toilets, poor shower, poor parking, poor security and high levels of vandalism are all issues. The other two facilities are currently not used for competitive club matches or home venues and their quality could be a reason for this. However, there is no evidence to suggest that there is any “latent” demand in these areas.
- 3.2.4 This would indicate that improving changing facilities and car parking in these areas should be a future priority for investment. It is important to note that any requirement for investment for on-site facilities would be dependent on the current usage or status of the sites; therefore Pencombe Sports Ground is seen as the highest priority for the “Rural” part of the Bromyard Area.
- 3.2.5 Club responses have indicated that changing accommodation and showers at Stoke Prior are good.
- 3.2.6 Survey required for Stoke Prior football pitches changing accommodation and Bodenham Tennis Courts.

### **3.3 Pitch quality: Community use only**

- 3.3.1 The percentage scores for pitches are broken down as follows:
- Over 90% - excellent
  - 64%-90% - good
  - 55% - 64% - average
  - 30% - 54 % - below average
  - Less than 30% - poor
- 3.3.2 The overall results for the quality of facilities show that quality also varies across the sites (not including Gaines and Bodenham Tennis courts):
- **4 x pitches are rated excellent:** Bromyard Football Club, Bromyard Cricket Club, Pencombe Sports Ground (football and cricket)
  - **4 x pitches are rated good:** Bromyard Sports foundation (rugby, bowling)
  - **2 x pitches are rated below average:** Bringsty Common Football ground and Bringsty Sports Ground (cricket)
  - **2 x not surveyed:** Whitbourne Playing Fields, Stoke Prior Football pitches  
Stoke Prior Football pitch (for the purposes of the Sport England modelling exercise this has been rated average)



3.3.3 The pitches used by the clubs for competitive sports matches and home venues have all been rated as either excellent or good. In these instances where clubs have responded they have also rated these pitches as good. Those rated below average are currently not used for competitive sport by clubs. As with investment in changing facilities, it is important to note that any requirement for investment to improve the quality of these pitches would be dependent on the current usage or status of the sites, and as there is no evidence to suggest that there is any “latent” demand in these areas, they are not seen as a high priority.

3.3.4 Club response from Stoke Prior indicates that their pitch is good.

## 4 Demand: Research and Consultation

This section considers the number of clubs and teams, user perceptions and evidence taken from Governing Bodies Sports Strategies of development priorities and anecdotal evidence from Local Sports Development Officers for the Herefordshire area of any issues around the development of the game. It also considers any opportunities or threats to existing facilities that are currently known.

### 4.1 Bromyard Area Clubs and Teams

4.1.1 The table below outlines the number of clubs and teams for football, cricket and rugby in the study area: A full list of clubs and teams can be found in Appendix 4. Appendix 5 provides an updated list as of November 2012 of football clubs as provided by Herefordshire Football Association. In summary there are:

**Table 6: Number of clubs and teams in Bromyard Area**

Sport	No. of clubs	No. adult teams	No. junior teams (u11s/12s) (u13s+)	No. mini teams (u8s/9s/10s)
Football	5	4 (m)	Total: 6 (m) U11s/12s: 2 U13s +:4	4 (mixed)
Cricket	3	5	3	1
Rugby	1	3	4	6
Hockey	0	0	0	0
Bowling	2	34 m 9 f	0	0
Tennis	2			
<b>Total</b>	<b>13</b>	<b>14</b> 34 m 9 f	<b>12</b>	<b>8</b>

Excluding Bowling and Tennis, there are 9 clubs and 34 teams playing in the study

- 55%, over half are football. Of the 14 football teams 71% are juniors. This is reflective of national trends, which indicate that participation in mini and junior football is growing.
- 33% are cricket. Of the 13 teams 44% are juniors.
- 12% are Rugby. Of the 18 teams 77% are juniors

#### **4.2 Team equivalents: School Curricula Use**

4.2.1 Sport England has produced the following calculation of team equivalents for both school use and training:

**Table 7: Sport England Team Equivalents**

Type of Player	Length of match/session	Area of play/size of pitch	Team equivalent
PE Lesson: 11 – 16 yr olds football/rugby	Assume 2 hours	1 junior football/ rugby pitch	1 junior football/ rugby team
PE Lesson 7 – 11 yr olds	Assume 2 hours	1 junior football / rugby pitch	1 mni-soccer/1mini rugby team
Football / rugby training – adults	Up to 2 hours	1 adult football/rugby pitch	1 adult football/ rugby team
Junior cricket training	Up to 2 hours	1 cricket pitch	1 junior team
Break-time activity	Up to 1 hour	1 junior or adult pitch	1 junior football team

4.2.2 Only those schools where clubs are known to play (either with a formal or informal agreement) are included as team equivalent. Informal agreements are shown in blue below and followed up in Table 11: Cricket surpluses and deficiencies as a scenario 2:

**Table 8: School Team Equivalents**

Senior School	Community Use	Pitch	School Use Equivalent
Queen Elizabeth High School	Informal: Used by Bromyard Cricket Club as their second ground.	1 x cricket	School use: 5 x 2 hours per week equivalent 5 junior cricket teams

4.2.3 The following schools in the Bromyard Area are or are in the process of converting to Academy Status: Queen Elizabeth High School: Converted, which means that future use of this facility for community use is uncertain.

### **4.3 Team equivalents: Club Training**

4.3.1 **Football:** Herefordshire Football Association identified that the number of hours training undertaken by teams is on average as follows:

- **Senior teams:** train between 1 – 3 hours per week depending on club. Elite teams average 3 hours per week but most teams will average between 1 and 2 hours per week, therefore in doing the calculation an average has been assumed as follows:
- **Junior/ mini teams:** train for approx 1 hour per week (mini teams approx 30 mins each). In the winter months this is mainly indoors but in the spring (when the clocks change) this is mainly outside.

**Total:** Based on the total number of teams in the Bromyard Area, the total team equivalents is **6.5 adult teams** as shown below:

**Table 9: Football Team Equivalents**

<b>No of Adult Teams</b>	<b>Adult Team equivalent</b>
Approx 1 teams train 3 x week (10%)	= 1.5 adult teams
Approx 1 teams train 2 x week (30%)	= 1 adult teams
Approx 2 teams train 1 x week (60%)	= 1 adult teams
<b>Total</b>	<b>3.5 adult teams</b>
<b>No of Junior Games</b>	<b>Adult Team equivalent</b>
6 games/ 2 played per 1 x adult pitch / 4 teams per pitch	1.5 adult teams
4 mini games/ 4 games played per 1 adult pitch / 8 teams per pitch/30 minutes each	1 adult teams
<b>Total</b>	<b>2.5 adult teams</b>

4.3.2 Outside training in the winter months is an issue and many clubs use indoor facilities or floodlit ATPs in other parts of the county. Owning portable floodlights is an issue for many clubs due to cost and planning issues. The Herefordshire Football Association has highlighted this as a real problem experienced by a number of clubs across the county as a whole and something future funding opportunities could address.

4.3.3 **Cricket:** Herefordshire Cricket Board identified that the number of hours training undertaken by teams is on average as follows:

- **Senior teams:** train 1 hour per week
- **Junior teams:** train for approx 1 hour per week
- **Mini teams:** train for approx 30 mins per week

- **Total:** Based on the total number of teams in the Bromyard Area, the total team equivalents is **8.30 hours training equivalent to 4 junior teams and 0.25 mini teams** as shown below:

**Table 10: Cricket Team Equivalents**

No of Adult/ Junior / Mini Teams	Junior Team equivalent
5 x senior at 1 hour per week	= 2.5 junior teams
3 x junior teams at 1 hour per week	= 1.5 junior teams
1 x mini teams at 30 mins per week	= 0.25 mini team
<b>Total</b>	<b>4 junior teams 0.25 mini team</b>

- 4.3.4 **Rugby:** Using data from the Hereford and Worcester Rugby Playing Pitch Strategy and based on the total number of teams for the Bromyard Area the total is as follows:

- **Total: 6 team equivalents** as shown below:

**Table 11: Rugby Team Equivalents**

Club	Adult Team equivalent
Bromyard Rugby Club	6 adult teams per week
<b>Total</b>	<b>6 adult teams</b>

- 4.3.5 Out door training can take place at the Bromyard Rugby Club as 2 x rugby pitches have floodlights.

#### **4.4 Local issues for the development of the sport**

- 4.4.1 Individual sports development plans and local knowledge will help identify key areas for the growth of the game and in particular where support is needed to increase participation. This information will help identify priority areas where future investment in pitches and facilities could support these aspirations.

- 4.4.2 **Football:** The FA have tracked team data over a number of years through football participation reports, the trend for Hereford shows significant growth from 2009/10 onwards with growth then beginning to plateau.

Season	Adult male 11v11	Adult female 11v11	Youth Male	Youth female	Mini Soccer - mixed	Total
<b>2009-10</b>	99	7	97	2	57	<b>262</b>
<b>2010-11</b>	108	4	126	21	63	<b>322</b>
<b>2011-12</b>	96	4	125	23	62	<b>310</b>

- 4.4.3 The Herefordshire FA has a strategy in place to Grow and Retain all areas of the game from 2012-2015 with a particular focus on adult 11v11 football and is therefore exploring ways to help support existing Clubs/Teams identify new opportunities to develop additional teams. For this to happen, it will require appropriate facilities for training and match play to allow the game to flourish.
- 4.4.4 The FA has an accreditation system known as The FA charter standard award which has 3 echelons. The highest FA award being that of the community award. The FA has set a target nationally to have 75% of all youth football being played in a Charter standard club. 80.95% of youth football in Hereford is played in a Charter Standard Club.
- 4.4.5 As part of this figure, within the Bromyard Area, Bromyard FC are a Chartered Standard Club with the potential to become a community club.
- 4.4.6 Key priorities for the Herefordshire FA from 2012-2015 are focused around 6 Key Areas;
- Growth and Retention\*
  - Raising Standards
  - Better Players
  - Workforce Development
  - Running the Game
  - Facilities\*

The main priorities under these headings are as follows.

\*Growth and Retention:

- Sustain current affiliated mini soccer teams (mixed) during season 2012-2013 and support Clubs to develop further mini soccer teams during season 2013/2014 and 2014/2015.
- Clubs and Leagues need to be mindful of the FA Youth Development Review and the new formats of Football that will bring in changes to facility provision especially at U7 and U8 who will play 5v5 football from season 2013-2014 and 2014-2015 respectively.
- Develop new and sustain existing Youth Male Teams from U11 – U18 with a vision of 130 teams by season 2014-2015. At U11 and U12 age groups, the format of the game will be 9v9 football on  $\frac{3}{4}$  pitches with U13's upwards progressing to 11v11.
- Develop new and sustain existing Youth Female Teams from U11 – U18 with a vision of 25\*\* teams by season 2014-2015. At U11, Girls currently play 7v7 and at U13 they play 9v9, considerations around U15 playing 9v9

or 11v11 need to be considered linked to player registrations and participation in this area of the County. (\*\*there are currently 25 Youth Female Teams affiliated – therefore the priority will be to retain teams within this area and develop growth where there is potential to do so).

- Adult Male Football is a key priority and therefore particular emphasis will be around sustaining and growing the Adult Male 11v11 Game – links with the U18 League are critical to the sustainability of Male 11v11 Teams in Adult Football.
- Adult Female Football is also a priority and therefore sustaining and growing the Adult Female 11v11 is key to ensuring there is a structured player pathway from U9 – Adult. Priority work with leagues to develop a player pathway from Junior to Adult is important work to be done. There are currently 4 Adult Female Teams with a target of 5 by 2014-2015. Flexibility in playing formats is critical to sustainability of the Adult Female Game within Herefordshire.

4.4.7 Youth Development Review Implications: By the 2012/13 season it is forecast that 9v9 will already be a more popular format for young players across the country than the 11v11 version of the game. These formats are based upon all the academic research, evidence about child development and player development that has been gathered throughout the extensive consultation process. The Herefordshire Junior League and Herefordshire Girls League already provide 9v9 for U11 and U12 (HJFL) and U13 (HGFL) and have worked with the LA to ensure pitches are marked according to required usage.

4.4.8 One of the short-term challenges the Herefordshire FA face along with Leagues and Clubs is ensuring we have facilities that meet the pitch and goal requirements and to support this The FA have specific resources to support Clubs, Leagues and Local Authorities to ensure the pitches are set out according to usage.

4.4.9 The FA are introducing mandatory changes to the game from 2013/14 which will see a number of new formats of the game in the youngest age ranges. Introduction of 5v5 football at U7 and U8 from season 2013-2014 suggests that there will be an increased demand in the number of 5v5 pitches as well as 9v9 pitches as this format becomes mandatory to leagues from Under 11. The impact of these changes should be monitored closely as demand levels are likely to change significantly.

4.4.10 **Cricket:** The Herefordshire Cricket Board (HCB) has identified within its Facilities Development Plan 2009 -2013, that the county has 45 cricket clubs affiliated to the HCB. 11 are designated Focus clubs of which Bromyard Cricket Club is one.

- 4.4.11 The Herefordshire Cricket Board recognises that there is a good spread of Focus Clubs across the county in terms of travelling distances and population centres. As such clubs are organised into 4 cricket development districts to enable the development of school club links and a progression route for the sport. They are: Central; East; North & West and South & West. Bromyard Area mostly falls in East district.
- 4.4.12 The focus clubs have detailed development plans and are progressively working with a cluster of schools within the population centres resulting in Herefordshire having seen progressive growth in the number of participants at school club, district and county level over the past 6 years. There is also currently a strong take up of the game at a junior level, male and female.
- 4.4.13 The HCB also undertook an assessment of local facilities and this found that most club houses and pavilions are considered good or adequate but on a club by club basis attention is being paid to ensure that all changing rooms meet modern standards. This is particularly important for women and girls cricket to develop and for Focus clubs. Only a few clubs rate their square and outfield and practice facilities as good. Very few 2<sup>nd</sup> grounds currently meet quality standards and individual clubs may require an upgrade and improvements to their facilities.
- 4.4.14 In respect of existing facilities at the time of writing this report the Local Planning Authority and the Governing Bodies know of the following opportunities and threats to the provision of cricket facilities in the Bromyard Area.
- 4.4.15 It is understood that current provision in Bromyard is at risk. The first pitch at Bromyard Cricket Ground is considered too small to allow the club to develop particularly as it has a number of junior sides. Its' second pitch at the Queen Elizabeth High School may also be under threat if Academy status is sought. There may be an opportunity to redevelop the existing site for housing but this would require relocation of the cricket pitch and this is currently being explored through the local development framework and the Strategic Housing Land Availability Assessment. The loss of the site for housing would provide the investment required to develop an alternative facility but one of the issues is finding an appropriate site. The development of bigger and better facilities is considered a high priority for the both the club and the HCB.
- 4.4.16 **Rugby:** The Rugby Football Union (RFU) through the North Midlands Strategy 2008 -2011, acknowledge that the range of facilities will be driven by the activities that take place and therefore if a club seeks investment to increase or improve their facilities then the level of activity must take account of any "under capacity". The North Midland strategy identifies three Model Venues that should be viewed as benchmarks against which clubs can identify their level of provision and need. Each one has a different range of activity and the

requisite facilities and are not in any priority order, but designed as a framework. Bromyard Rugby Club is a Model 2 Venue site. This means it is an established club with a wide programme of adult and junior rugby potentially for both male and females.

4.4.17 In respect of existing facilities at the time of writing this report the Local Planning Authority and the Governing Bodies know of the following opportunities and threats to the provision of rugby facilities in the Bromyard Area.

4.4.18 The RFU have identified Bromyard Rugby Club as a high priority within the North Midlands RFU and West Midlands Facility Strategies for additional pitches. Following the club's rapid growth at mini and youth level the RFU recently invested in match floodlights for the club's two existing pitches. This investment is underpinned by the clubs development plan which identifies further growth over the coming years. With the increased usage that the floodlit pitches has created has led to the demand outstripping supply. The club requires additional pitches as the existing pitches are becoming overused and unsustainable to meet the clubs existing programme. A number of opportunities are currently being explored through the planning system which could provide future investment opportunities on a new site or expand the existing site. This is considered a high priority for the both the club and the RFU.

#### **4.5 User perception: Club Responses**

4.5.1 The key issues raised by the clubs in response to the questionnaire, in terms of participation, facilities used, issues and development opportunities are summarised below. The response rates for each sport to the questionnaire are also included.

4.5.2 **Football:** Returned Questionnaire from Football Clubs:

- 1 Clubs (25%)
  - 1 team (9%)



**Table 12: Football Club responses**

<b>Club</b>	<b>Stoke Prior Football club</b>
Match Day Venues	Play on a private ground at Stoke Prior on Saturday pm. Match Day Venues: Wicton Lane, Stoke Prior– Private – Saturday pm and Tuesday evening.
cancellations	Very few of their games were cancelled last season. 15 games played last season – 2 cancelled due to pitch condition
Training on main pitch	Outdoor Training and indoor training – sometimes use Bridge Street
Pitch rating overall	Good
Changing	Good at village hall
Showers	Good
Parking	Good
Value for money	Good
Future plans	Club has just relocated
Where do majority of players reside?	Leominster

4.5.3 **Cricket:** returned Questionnaire from Cricket Clubs:

- 2 Clubs (100%)
  - 9 teams – (100%)
  -

**Table 13: Cricket Club responses**

<b>Club</b>	<b>Pencombe Cricket Club</b>
Match Day Venues	Pencombe Playing Fields Leased from a private individual – Sat 1.30 – 5 pm, Wed 6 – 8 pm, Sunday 1- 8
cancellations	6 were cancelled last season due to weather conditions.
Training on main pitch	1 hour per week on main pitch
Pitch rating overall	Good / acceptable
Changing	Acceptable
Showers	Poor
Parking	Good
Future plans	None
Where do majority of players reside?	Pencombe
<b>Club</b>	<b>Bromyard Cricket Club</b>
Match Day Venues	Flaggoners Green Saturday (April – Sept) 12 – 8 p, Sundays 10 – 7 pm, Tuesdays 6.30 – 8.30pm, Wednesday 6.30 – 8.30 pm, Queen Elizabeth High School, Saturdays 12 – 8 pm
Cancellations	45+ games are played on the main pitch each season and

	none were cancelled last season due to weather conditions.
Training	Outdoor training at Flaggoners Green and indoor at The Bromyard Centre. The main pitch is used for training for 4 hours per week.
Pitch rating overall	Good/acceptable
Changing	Acceptable
Showers	Acceptable
Parking	Poor
Value for money	Good
Future plans	Increasing membership, expanding range of facilities: Existing facilities are not appropriate for clubs needs. 2 options: refurbish existing or relocate to different premises which is the preferred option.
Where do majority of players reside?	Bromyard

#### 4.5.4 **Rugby:** returned Questionnaire from Rugby Clubs:

- 1 Club (100%)

**Table 14: Rugby Club responses**

<b>Club</b>	<b>Bromyard Rugby Club</b>
Match Day Venues	Bromyard Sports Foundation: Saturday pm and Sunday am
Cancellations	60 games are played on the main pitch each season and 4 were cancelled last season due to weather conditions.
Training	Outdoor training as above Tues 7 – 9pm and Thurs 7 – 9 pm
Pitch rating overall	Good/acceptable
Changing	Acceptable
Showers	Poor
Parking	Good
Value for money	Acceptable
Future plans	include increasing membership, refurbishing existing facilities, additional pitch
Where do majority of players reside?	Bromyard

## 4.6 User perception: Pitch Owner Responses

**Table 15: Pitch Owner responses**

Owner	Whitbourne Parish Council
Venue	Whitbourne Playing Fields
Users	Mainly used by the school in term time – changing at the school
Facility ratings overall	Average

## 5. Adequacy of Current Provision: The Playing Pitch Methodology

5.1.0 The remainder of this section draws on the findings of the supply and demand analysis to identify key issues and a future delivery strategy for Herefordshire and Bromyard Area in particular.

The Playing Pitch Methodology comprises 8 stages:

- Stage 1: Identifying Teams / Team equivalents
- Stage 2: Calculating home games per week
- Stage 3: Assessing total home games per week
- Stage 4: Establishing temporal demand for games.
- Stage 5: Defining Pitches used / required on each day
- Stage 6: Establishing Pitches Available.
- Stage 7: Assessing the findings
- Stage 8: Identifying policy options and solutions

5.1.1 Stages 1 – 6 involve numerical calculations, whilst stage 7 and 8 develop issues and solutions. The methodology is employed to analyse the adequacy of current provision and to assess possible future situations, in order that latent and future demand (identified through Team Generation Rates) and the problems with quality, use and capacity of existing pitches can be taken into account. The increase in population is considered by modelling a future year scenario – in this case 2031. Potential changes to pitch stock over that time are also taken into account.

5.1.2 It is implicit to the methodology that each sport is dealt with individually with a specific set of calculation for each because, despite some superficial similarities, they exhibit very different patterns of play. Bowling and Tennis are not included in these calculations.

5.1.3 We have however, used the Playing Pitch Model assumptions regarding the number of home games per week played by each sport. This is further broken down to deal with junior and senior play which is taken from the

league fixtures. The analysis requires a breakdown of junior and senior pitches, however, no differentiation has been made between junior and senior cricket as they play on pitches of similar dimensions.

5.1.4 The Playing Pitch Model is a “peak day” model, therefore, we have determined on which day teams /leagues wish to play their fixtures, as well as the peak time (am or pm). The methodology also considers the ability of pitches to sustain play on the peak day at the peak time.

## 5.2 Playing Pitch Capacity

5.2.1 “Towards a Level Playing Field” indicates that it is appropriate to take account of the carrying capacity (i.e. the number of games that pitches are adequately able to sustain per week) when calculating the playing pitch methodology.

5.2.2 There is no formula for calculating the carrying capacity of pitches as it is dependent on a number of factors such as weather, conditions, public access, quality of players etc. This information is best gathered through local knowledge, user surveys etc.

5.2.3 In calculating the carrying capacity of a pitch, the following should be considered:

- What proportion of the games are cancelled on the pitch due to poor pitch condition
- Is the condition of the pitch declining over the season
- What is the maintenance regime for the pitch at present?
- Could the capacity of the pitch be improved by enhanced maintenance?
- To what extent are pitches required to accommodate training activity?

5.2.4 As the response rate from both clubs and pitch owners is fairly low we haven’t been able to consider the above in a meaningful way. The standard Playing Pitch Model assumes that pitches are able to take 2 games per week. However, this depends on its quality. Therefore, based on other studies and the non technical assessment undertaken for each pitch an informed judgement has been made to classify them using the following categories:

**Table 16 : Quality ratings categories**

Quality Rating	Carrying Capacity	Multiplication Factor
Excellent/Good	2 matches per week	1.0
Average	1.5 matches per week /	0.75
Below Average	1 match per week	0.5
Poor	0.5 match per week/	0.25

- 5.2.5 If a pitch is of an excellent/ good quality it may be able to take two games per week, hence a higher weighting, however, on the other hand, if the pitch is only able to accommodate 1 match per week, it is equivalent to half a pitch.
- 5.2.6 Increasing the quality of a pitch will therefore increase the capacity of the pitch and reduce the overall number of facilities required. Qualitative improvements are therefore likely to be as important as the provision of additional pitches.
- 5.2.7 Other considerations to be taken into account include things such as carrying capacity which varies between sports and age groups: For example: The condition of a football pitch is more likely to deteriorate quicker when in use than a cricket pitch due to both the nature of the sport and the time of year these sports are played; one cricket pitch normally supports a number of cricket strips/wickets, but uses the same outfield which can be used alternatively across a cricket season, therefore for these reasons a cricket pitch is more likely to hold three matches or more per week, than football. Lower levels of wear and tear are generated by younger players and the short duration of matches, mini football pitches are considered able to sustain three or four games per week, without detriment to them.
- 5.2.8 Synthetic hockey pitches are not affected by the conditions discussed above as wear and tear of this pitches does not occur to the same degree as grass. These pitches have therefore been considered able to take four games on the peak day, although this is dependent on flexible programming of matches to ensure this is feasible.
- 5.2.9 Table 17 below show the number of pitches available when taking the multiplication factor into consideration.

**Table 17: Quality Ratings**

Quality Rating Carrying Capacity	Football	Multiplication Factor – pitches available	Total pitches available per week.
Excellent/Good 2 matches per week	community use 5 x senior 1 x junior non community use 4 x junior	community use 5 1 non community use 4	community use 5.5 x senior 1 x junior  non community use 1.5 x senior 5.5 x junior 1.5 x mini
Average 1.5 matches per week	non community use 2 x senior 2 x junior 2 x mini	non community use 1.5 1.5 1.5	
Below Average / poor 1/0.5 match per week	community use 1 x senior	community use 0.5	

<b>Quality Rating Carrying Capacity</b>	<b>Rugby</b>	<b>Multiplication Factor – pitches available</b>	<b>Total pitches available per week.</b>
<b>Excellent/Good 2 matches per week</b>	community use 2 x senior	community use 2	community use 2 x senior  non community use 0.75 x senior
<b>Average 1.5 matches per week</b>	non community use 1 x senior	non community use 0.75	
<b>Quality Rating Carrying Capacity</b>	<b>Cricket</b>	<b>Multiplication Factor – pitches available</b>	<b>Total pitches available per week.</b>
<b>Excellent/Good 2 matches per week</b>	community use 2 x senior	community use 2	community use 2.5 x senior non community use 0.75x senior
<b>Average 1.5 matches per week</b>	non community use 1 x senior	non community use 0.75	
<b>Below Average 1 match per week</b>	community use 1 x senior	community use 0.5	

### **5.3 Playing Pitch Model Calculations**

- 5.3.1 The tables below show the calculations undertaken to determine the surplus/deficit of football, cricket and rugby pitches in the study area.
- 5.3.2 As per the Playing Pitch Model Guidance it is assumed that all football and rugby teams play a home match every fortnight. However, for cricket teams it is assumed that many teams play home matches more than every fortnight (i.e. mid-week matches etc) hence the figure of 0.7.
- 5.3.3 Data has been determined by a combination of questionnaire responses, telephone interviews, discussions with the HFA, ECB and RFU and web based information on league fixtures. Figures are approximate and it is acknowledged that these could change.
- 5.3.4 Only community use sites have been included and the multiplication factor for the pitches as described above used.

**Table 18: Football Surpluses / Deficiencies Scenario 1/ Scenario 2 including school sites with “informal” community use.**

<b>Bromyard Area: Football Provision: Surpluses / Deficiencies</b>						
<b>Stage 1: Identifying Team Equivalents</b>						
Adult/u18 floodlit Teams	4					
Training adult equivalents	6	3.5 adult/1.5 junior/1 mini				
Junior Teams (u11s/12s) (U13's +)	6	6 juniors (u11's /12's – 2) (u13's + 4)				
Mini Teams (u8's/9's/10s)	4					
<b>Total</b>	<b>20</b>					
<b>Stage 2: Home Games per Team per Week</b>						
(based on the principal of one home game per week, one week away = 0.5 )						
<b>Stage 3: Total Home Games per Week</b>						
Adult	(4 x 0.5)		2			
Training adult equivalents	(6 x 1)		6			
Junior (u11s/12s) (U13's +)	(2 x 0.5) (4 x 0.5)		1 – u11's / u12's 2 – u13's + (mainly play on senior pitches)			
Mini (u8's/9's/10s)	(4 x 1)		4			
<b>Stage 4: Temporal Demand for Games</b>						
	Sat am	Sat pm	Sun am	Sun pm	U18 floodlit weekday	Weekday schools/ Weekday training
Adult	0%	67%	16%	0%	16%	
Training adult equivalents	0%	0%	0%	0%	0%	100%
Junior (u13's +) Teams	0%	0%	50%	50%	0%	0%
Junior (u11's,u12's Mini (u8's,9's,10s) Teams	75%	0%	25%	0%	0%	0%
<b>Stage 5: Pitches required to meet Peak Demand</b>						
	Sat am	Sat pm	Sun am	Sun pm	(weekday)	Weekday schools/ Weekday training
Adult	0	1	0.5	0	0.5	0
Training adult equivalents	0	0	0	0	0	6
Junior (u13's +) Teams	0	0	1	1	0	0
Junior (u11's,u12's Mini (u8's,9's,10s) Teams	3 x 7 v 7 0.5 x 9 v 9	0	1 x 7 v 7 0.5 x 9 v 9	0	0	0
<b>Stage 6: Community Pitches available to meet Peak Demand</b>						
To assess the adequacy of current provision weightings have been added to reflect the capacity/availability of existing pitches.						
	LA owned/LEA owned	PC owned	Privately/voluntary owned	Total		
Adult	0	2	3.5	5.5		
Junior	0	1	0	1		
Mini	0	0	0	0		

Stage 7: Surplus / deficiency of pitches			
	Total pitches	Peak demand	Surpluses/deficiencies
Adult	5.5	1	+ 4.5 surplus
Training adult equivalents	3.5 senior 1.5 junior 1 mini	6	-1.5 deficiency (assuming all play on the same night and during daylight hours)
Junior (u13's +) Teams	5.5	1	+4 surplus
Junior (u11's,u12's Mini (u8's,9's,10s) Teams	1 junior	3 x 7 v 7 0.5 x 9 v 9	-2 x 7 v 7 -0.5 9 v 9
Peak time for adult/junior/mini Sunday am	5.5 senior 1 junior	2.5	If u8s,9s,10s use senior pitches + 4 surplus.
Usage per week for games and training.	7.5 games ( 5 games use adult pitches and 2.5 the junior pitch plus 8. 5 training sessions  ( senior pitches used approx 2.3 times per week) Majority of pitches are of high quality being able to sustain 2+ games per week.		

Table 19: Cricket Surpluses / Deficiencies Scenario 1/ Scenario 2 including school sites with “informal” community use.

Bromyard Area: Cricket Provision: Surpluses / Deficiencies						
Stage 1: Identifying Team Equivalents						
Adult Teams	5					
Adult Training	2.5					
Junior Teams	3					
Junior Teams	8 ( 3 x junior/ 5 x school equivalents)					
Junior / mini Training	1.75					
Mini Teams	1					
Total	13.25					
Total	18.25					
Stage 2: Home Games per Team per Week						
(based on the principal of one home game per week, one week away = 0.7 )						
Stage 3: Total Home Games per Week						
Adult	(5 x 0.7)	3.5				
Adult Training	(2.5 x 1)	2.5				
Junior/mini	(3 x 0.7)	2.1				
Junior / School	(3 x 0.7) (5 x 1)	2.1 5 (school equivalents)				
Junior / mini Training	(1 x 1.75)	1.75				
Mini	(1 x 1)	1	Note: some minis only play monthly			
Stage 4: Temporal Demand for Games						
	Sat am	Sat pm	Sun am	Sun pm	Tuesday pm	Weekday schools/ Weekday training
Adult	0%	85%	0%	15%	0%	0%
Adult Training	0%	0%	0%	0%	0%	100% (Wednesday)
Junior /mini	0%	0%	50%	25%	25%	
Junior / mini / School			22%	11%	11%	55%
Junior / mini Training	0%	0%	0%	0%	0%	100% (Thursday)
Stage 5: Pitches required to meet Peak Demand						
	Sat am	Sat pm	Sun am	Sun pm	Tuesday pm	Weekday schools/ Weekday training
Adult	0	3	0	0.5	0	0



Adult Training	0	0	0	0	0	2.5
Junior /mini	0	0	2	1	1.1	0
Junior/ mini / School	0	0	2	1	1	5(school)
Junior / mini Training	0	0	0	0	0	1.75
<b>Stage 6: Community Pitches available to meet Peak Demand</b>						
To assess the adequacy of current provision weightings have been added to reflect the capacity/availability of existing pitches.						
	LA owned/LEA owned	PC owned	Privately/voluntary owned	Total		
Adult/Junior		1	1.5	2.5		
Adult/Junior	0.75	1	1.5	3.25		
<b>Stage 7: surplus / deficiency of pitches</b>						
	Total pitches	Peak demand	Surpluses/deficiencies			
Adult	2.5	3	<b>-0.5 deficiency</b>			
Adult Training	2.5	2.5	+2 surplus			
Junior / mini	2.5	2	0.5 surplus			
Junior / School	3.25	2 (juniors) 5 (school)	+1.25 surplus -1.75 deficiency – but school will use 2 pitches at school 2.5 x per week.			
Junior/mini/ Training	2.5	1.75	+0.75 surplus			
Peak time for adult/junior/mini Sun pm – juniors use senior pitches	2.5	2.5	0			
Usage per week for games and training.	7.5 x (over 3 x per week for each pitch. Summer use sports are able to accommodate more games per week due to less wear and tear, and all pitches bar 1					

Table 20: Rugby Surpluses / Deficiencies Scenario 1 only

<b>Bromyard Area : Rugby Union Provision: Surpluses / Deficiencies</b>					
<b>Stage 1: Identifying Team Equivalents</b>					
Adult Teams	3				
Junior Teams	4				
Mini Teams	6 (equivalent 3.5 adults)				
Weekly Team Equivalents (training)	6				
Total	22				
<b>Stage 2: Home Games per Team per Week</b>					
(based on the principal of one home game per week, one week away = 0.5 )					
<b>Stage 3: Total Home Games per Week</b>					
Adult / 18/19 yr old	(3 x 0.5)		1.5		
Junior	(4 x 0.5)		2		
Mini	(3.5 x 0.5)		1.75		
Weekly Team Equivalents (training)	(6 x 1)		6		
<b>Stage 4: Temporal Demand for Games</b>					
	Sat am	Sat pm	Sun am	Sun pm	Weekday schools/ Weekday training
Adult / 18/19 yr olds	0%	100%	0%	0%	0%
Junior/Mini	0%	47%	53%	0%	
Week Team equivalent (training)	0%	0%	0%	0%	100%

Stage 5: Pitches required to meet Peak Demand					
	Sat am	Sat pm	Sun am	Sun pm	Weekday schools/ Weekday training
Adult / 18/19 yr olds	0	1.5	0	0	0
Junior/Mini	0	1.75	2	0	0
Week Team equivalent (training)	0	0	0	0	6
Stage 6: Community Pitches available to meet Peak Demand					
To assess the adequacy of current provision weightings have been added to reflect the capacity/availability of existing pitches.					
	LA owned/LEA owned	PC owned	Privately/voluntary owned	Total	
Adult/Junior	0	0	2	2	
Stage 7: Surpluses / deficiencies of pitches					
	Total pitches	Peak demand	Surpluses/deficiencies		
Adult	2	1.5	+0.5 pitches		
Adult/Junior	2	3.25	-1.25 pitches		
Junior/Mini	2	2	0		
Week Team equivalent (training)	2	6	-4 if all training on same day		
Usage per week for games and training – juniors use same pitches as adults	5.25 (2.6 x per week plus training.)				

- 5.3.5 **General Issues:** These results are based on the assumption that teams wish to play on pitches which meet the National Governing Body recommendations for their age category.
- 5.3.6 The modelling provides an output which identifies deficiencies or surpluses of pitches and for football in particular it can often show a surplus of adult pitches and a deficiency of junior. Looked in isolation these figures can be misleading and non-reflective of local circumstances. Local knowledge and consultation helps to reflect the reality as far as possible. The investment strategy will pick this up further and help to develop the thinking about specific sites and targeted usage patterns.
- 5.3.7 **Football Pitches:** Herefordshire Junior Football League is responsible for league matches for all junior and mini teams across the county.
- Junior u13's teams and older play on senior pitches.
  - Junior u11's and u12's teams where they can play on dedicated junior 9 v 9 pitches.
  - Mini u8's, 9's and 10's teams where they can play on mini 5 v 5 pitches. Given the lack of dedicated junior and mini pitches across the county and only a small number of clubs have their own grounds, many mini and junior teams do have to play on senior size pitches. For example 4 mini teams can use 1 senior pitch, therefore where there are no dedicated pitches available, 4 mini teams could play on one pitch.

Location of mini pitches is also important as the younger teams are often led and set up by parents. Although not essential, having access to toilets and a changing room is important as often parents will bring younger siblings along to watch and on wet days being able to change children out of wet clothes is helpful.

#### 5.3.8 **Cricket Pitches:**

- Junior cricket teams play on senior pitches.

#### 5.3.9 **Rugby Pitches:**

- All u13's rugby teams and up, play on a 15 a side rugby and use a full size pitch.
- Mini teams, u7's and 8's play principally on half 1 adult team with 10 players at 20 minutes per game. ,
- U9/10's with 13 players at 30 minutes per game and u11's/12's with 17 players at 40 minutes per game.

#### 5.3.10 **Sport England Modelling: Football:**

The overall assessment indicates that the main issues are that there are not enough dedicated pitches for juniors and minis and outdoor training facilities, especially floodlit pitches are in short in the Bromyard Area. Bringsty common Sports Ground which includes a football pitch is not currently used by local clubs. However, even taking this ground out of the equation there is an adequate supply of pitches to meet current needs.

#### 5.3.11 **Key Findings: Scenario 1 only**

- **Adult Teams Games:** Peak time for adult team games is Saturday pm. There is a surplus of adult football pitches to meet demand on peak days.
- **Adult Team Equivalent:** (Training): Peak time for training is weekdays. There is a deficiency to meet demand and although these can be programmed for different days of the week, this assumes all pitches can be used to avoid over use. Opportunities for outside training in the winter months are limited due to the availability of pitches with floodlights. Increased use of portable floodlights could reduce this issue. .
- **Junior u13's and Older Junior Teams:** Peak time for junior team games is Sunday am and pm. As this age group use senior pitches there is a surplus of pitches to meet demand
- **Junior u11's, 12,s, Mini u8's,9's10'sTeams:** Peak time for junior team games is Saturday am. With only 1 junior pitch and no dedicated 7 v 7 or 9 v 9 pitches, there a deficiency to meet demand. There are no school equivalents
- **Overall Peak Demand:** Peak time for adults and older juniors is Sunday am: There is a surplus in the number of senior pitches to meet demand
- **Usage per Week:** To accommodate all games and training per week, including adult, junior and mini pitches will be used over 2 x per week which could impact on their quality (assuming training takes place outside in the

winter months). Currently most pitches are rated well which assumes they can sustain more use per week.

- **Training:** There are significant deficiencies in outdoor training facilities to accommodate training sessions.

#### 5.3.12 **Sport England Modelling: Cricket:**

The overall assessment indicates that although there is a slight surplus of pitches to meet senior and junior games there is a deficiency to meet demand on peak days when both seniors and juniors play. Bringsty common Sports Ground has a cricket pitch is not currently used by local clubs; if it is taken out of the equation there would not be adequate facilities to meet demand which is currently met by the Queen Elizabeth High School. This pitch is currently used by Bromyard Cricket Club as a second pitch, who has both adult and junior sections, but is not formally secured for community use. The School has recently become Academy Status; therefore the future use of it is not certain. Although its inclusion in the equation ensures that there is an adequate supply of pitches for community use, it does get additional wear and tear from school use.

#### 5.3.13 **: Key Findings: Scenario 1/ Scenario 2**

- **Adult Teams:** Peak time for adults is Saturday pm. There is a deficiency of cricket pitches to meet demand on peak days.
- **Adult Team Equivalent:** Training: Peak Time Weekday Wednesday: There is a surplus of cricket pitches to meet demand on peak days assuming all training occurs on the same day.
- **Junior and Mini Teams:** Peak for juniors and minis is Sunday am. There is a surplus of cricket pitches to meet demand on peak days.
- **Junior School equivalent (scenario 2):** Peak time is weekdays – all use takes place at the school
- **Junior / Mini Equivalent:** Training: Peak Time Weekday Wednesday. There is a surplus of cricket pitches to meet demand.
- **Adult, Junior and Mini Teams:** Peak time for adults, juniors and minis is Saturday pm. Given Juniors play on adult pitches there is a deficiency of cricket pitches to meet demand on peak days.
- **Usage per week:** It is acknowledged that summer sports pitches can accommodate a greater number of games per week; however, pitches are considered to be well used increasing wear and tear at over 3 x times per week to accommodate all games and training.

5.3.14 **Sport England Modelling Rugby:** The overall assessment indicates a surplus of pitches to meet demand but issues for training in the Bromyard Area.

#### 5.3.15 **Key Findings from: Scenario 1 (only)**

- **Adult Teams / 18 /19 year old Teams:** Peak time for adults is Saturday am. There is a surplus of senior pitches to meet demand on peak days

- **Junior/mini teams:** Peak demand for junior/mini teams is Sunday am. There are enough pitches to meet demand on peak days: juniors and minis play on senior pitches and this has been taken into account.
- **Adult Teams/Junior Teams:** Peak time for both to play is Saturday am. There is a deficiency of pitches to meet demand.
- **Training Team Equivalents:** Peak time is weekdays. There is a deficiency of pitches to meet peak demand if all training on the same day.
- **Usage per week:** To accommodate all games per week, including adult, junior and mini the pitches are used over 2 x per week.

## 6. Predicting the Future

### 6.1 Team Generation Rates

- 6.1.1 Team Generation Rates (TGRs) indicate how many people in a specified age group are required to generate one team. TGRs are derived by dividing the appropriate population age and for the relevant sport (e.g. for adult football it is the 16 – 45 age group) by the number of teams playing that sport. Calculation TGRs enables fair comparison to be made between different areas where similar studies have been undertaken. They also enable the projection of likely future participation.
- 6.1.2 TGRs can be calculated for each of the individual disciplines, such as adult men’s football, adult women’s football etc. Once these TGRs have been calculated, they can be brought together to form one TGR for each sport.
- 6.1.3 The TGRs for each sport in the study area are shown in the Tables below and are compared to the national average based on Sport England’s database of Team Generation Rates.

**Table 21: Football Team Generation Rates**

Age Group	Bromyard Area TGR	National Average
Senior Male	1:253	1:314
Senior Female	0	1:10,593
Junior Male	1:95	1:71
Junior Female	0	1:818
Mini soccer	1:108	1:141

- 6.1.4 Where the number of people required across each age group to generate senior, junior and mini male teams is similar to the national average meaning that participation is average in these areas but does indicate that the sport is developing well across all age groups apart from female football which is nil. Development in these areas may have a significant impact on pitch requirements.

**Table 22: Cricket Team Generation Rates**

Age Group	Bromyard Area TGR	National Average
Senior Male	1:511	1:1,333
Senior Female	0	1:72,518
Junior Male	1:117	1:1,481
Junior Female	0	1:15,926

- 6.1.5 This table indicates that the number of senior and junior males needed to generate a team is significantly below the national average meaning that participation is over the national average suggesting development of the sport and its popularity for males senior and junior in this area is good with a highly active local population which perhaps reflects the “sparsity” of population particularly in the more rural parts of this area. However, participation in female cricket is nil.

**Table 23: Rugby Team Generation Rates**

Age Group	Bromyard Area TGR	National Average
Senior Male	1:561	1:10,315
Senior Female	0	1:43,770
Mini Male	1:97	1:1,864
Junior Male	1:85	
Junior Female	0	1:19,529

- 6.1.6 As with cricket, this table indicates that the number of senior and junior males needed to generate a team is significantly below the national average meaning that participation is over the national average suggesting development of the sport and its popularity for males senior and junior in this area is good with a highly active local population which perhaps reflects the “sparsity” of population particularly in the more rural parts of this area. However, participation in female rugby is nil.

- 6.1.7 Hockey Team Generation Rates: There are no hockey teams in this area and no suggestion from the governing body that there is any latent demand.

## **6.2 Future Proofing: Herefordshire Population Forecasting Projections for 2031**

- 6.2.1 By applying the Team Generation Rates to population projections, it is possible to project the theoretical number of teams that would be generated over the Local Development Framework period (2011 – 31) and gain an understanding of the adequacy of current pitch provision to meet future demand, assuming the supply and capacity of pitches does not alter in the interim.
- 6.2.2 The Sport England methodology requires detailed future population totals to be used. Population projections for the period 2011 - 2031 are taken from

the study undertaken by G L Hearn, 2012, to determine local housing requirements. Herefordshire Council commissioned G L Hearn to undertake a detailed analysis which set out population projections and household growth for the county and seven sub-markets taking account of the level and distribution of proposed housing in the Revised Core Strategy preferred Options (October 2011) and the plan period 2011 – 31.

- 6.2.3 The seven sub-markets include: Bromyard, Golden Valley, Hereford, Kington, Leominster, Ledbury and Ross. These areas act as the service hubs for their rural hinterlands.
- 6.2.4 The population growth is anticipated to take place mostly in the urban areas along with the strategic housing sites and it is anticipated that there will be a marked decline in rural populations over the next 20 years up to 2031 (GL Hearn Housing study figures 2012).
- 6.2.5 Development of new and existing sustainable facilities is therefore best placed in the urban areas where the biggest population growth is going to be. Whilst facilities are needed in the rural areas and some will require investment, Sport England advocate a 20 minute drive time to facilities and Bromyard Town is well placed to serve its rural hinterlands.

### **6.3 Bromyard Area Population – 2011 – 2031**

- 6.3.1 The structure of a population and future changes may impact on the demand for a certain pitch or sports. Changing demographics usually happen gradually over a period of time but it is important for pitch providers to be aware of these changes to be prepared and able to respond.
- 6.3.2 The estimated and forecast populations of Herefordshire sub-market housing areas, 2010 and 2031 for the Bromyard Area are shown below for the 6 – 55 year age group (Sport England’s active population). They are based on ONS indicative 2010 mid year estimates and mid-2012 small area population estimates.

**Table 24: Forecast Populations**

Sex	Age	Bromyard 2010	Bromyard Rural 2010	Bromyard 2031	Bromyard Rural 2031	Bromyard change 2010 - 2031	Bromyard Rural Change 2010 - 2031
All persons	6 -55	3394	3122	3576	2627	182	-495

- 6.3.3 Using Sport England selected age-sex groups it is predicted that in the majority of selected age-groups in Bromyard the population will increase whereas there is a predicted decline in the majority of age groups in

Bromyard Rural. This is indicative of where the majority of new housing is proposed.

- 6.3.4 To allow for increase participation in all sports, a “growth factor” of 1% per annum has been used on the basis of 15 years to cover the Core Strategy plan period up to 2031.
- 6.3.5 The table below uses Sport England Modelling and shows the likely implications of all these future changes based on the population increase and sports growth of 1% per annum over 15 years as described above.

**Table 25: Future playing pitch requirements**

<b>Bromyard Area</b>	
<b>Mini/ Junior Football: (U8’s, 9’s, 10’s minis and U10,s, u11,s juniors):</b>	
Mini 6.6% of total estimated population Junior Boys 2.9% of total estimated population	
Mini: 15 year plan period total sports growth factor 15% ( 1% per annum) added into future proofing: 4.4 total (+0.4 increase) Junior: 15 year plan period total sports growth factor 15% ( 1% per annum) added into future proofing: 2.8 total (+0.8increase)	
<b>Mini 7 v 7 Junior 9 v 9</b>	Peak time: sat am. 3.3 x 7 v 7 pitches required: - 3.3 x 7 v 7 <b>deficiency</b> Peak time: sat am: 1 x 9 v 9 pitches required: 0 surplus/deficiency
<b>Senior Football (13 – 45) :</b>	
Senior men 31% total estimated population	
15 year plan period total sports growth factor 15% (1% per annum) added into future proofing: new teams created total 8.8 teams (0.8 increase).	
<b>Adult Teams u13+</b>	Peak time: sun am : 1.7 pitches required: +3.8 surplus
<b>Senior / Junior Cricket:</b>	
Junior boys 7.2% of total estimated population Senior men 39.% of total estimated population	
Mini/ + 1/5Junior: 15 year plan period total sports growth factor 15% ( 1% per annum) added into future proofing: 4.3 total (+ 0.3 increase) Senior: 15 year plan period total sports growth factor 15% (1% per annum) added into future proofing: new teams created total 5.5 teams (+0.5 increase).	
<b>Adult</b>	Peak Time Saturday pm: 3.3 pitches required: - 0.8 <b>deficiency</b>
<b>Junior</b>	Peak Time Sunday am: 1.5 pitches required: + 1 surplus
<b>Senior / Junior/ mini Rugby Union</b>	
Mini 8.9% of total estimated population Junior boys 5.2% of total estimated population Junior Girls 2% of total estimated population	



Senior men 25.8% of total estimated population Senior women 25.2% of total estimated population	
Mini: no projected figures Junior: 15 year plan period total sports growth factor 15% ( 1% per annum) added into future proofing: 6 total (+ increase) Senior: 15 year plan period total sports growth factor 15% (1% per annum) added into future proofing: new teams created total 2 teams (-1 decrease).	
<b>Adult Teams Adult/junior Teams</b>	Peak Time Saturday pm: 1 pitches required Peak Time Saturday pm: 2.5 pitches required (this doesn't include mini teams) <b>-0.5 deficiency</b>
<b>Junior/mini Teams</b>	Peak Time Sunday am: 1.6 pitches required

6.3.6 The Playing Pitch Model also suggests that a 10% “strategic” reserve is built in for future needs. This in effect creates slightly more pitches than required (10%) to allow for pitches to be rested and thereby improving quality. Accounting for this, future pitch requirements are as follows:

**Table 26: Future Playing Pitch Requirements if 10% strategic reserve included.**

Pitches	Bromyard Area + 10% Strategic Reserve	Surplus/ <b>Deficiency</b>
Mini 7 v 7	3.6 x 7 v 7 pitches required	<b>-3.3 x 7 v 7 deficiency</b>
Junior 9 v 9	1.1 x 9 v 9 pitches required	<b>-0.1 x 9 v 9 deficiency</b>
U13 - Adult Football	1.9 pitches required	+3.6 surplus
Adult Cricket	3.6 pitches required	<b>- 1.1 deficiency</b>
Junior Cricket	1.7 pitches required	+0.8 surplus
Adult/Junior peak times Rugby	2.75 pitches required	<b>- 0.75 deficiency</b>

## 7 Developing Local Standards

The National Planning Policy Framework: Promoting Healthy Communities asks for Planning Policies to be based on robust and up-to-date assessments of needs for open space, sports and recreation facilities and opportunities for new provision. Information gained from the assessment should be used to determine what open space, sports and recreational provision is required for the local area. The provision requirements for outdoor sports pitches for the Bromyard Area are set out below.

## **7.1 Quantity Standards**

- 7.1.1 There are no national standards or benchmarking.
- 7.1.2 Current Provision is set out in policy RST4 of the Unitary Development Plan for Herefordshire and uses the National Playing Field Association standards of 2.6 ha of open space per 1000 population of which 1.6 ha is for outdoor sport.
- 7.1.3 Current Provision: based on the existing population in Bromyard Area and the total ha of existing community sites, equates to 1.43 ha per 1000 population.
- 7.1.4 New recommendation: Taking account of the 10% increase in strategic reserve this equates to **1.58 ha per 1000** population for the Bromyard area.

## **7.2 Quality Standards**

- 7.2.1 Facility standards should reflect the quality aspects deemed most important by the users – i.e.
- Level even surfaces to play on
  - Good length of grass
  - Clean/litter and dog fouling free
  - Good provision of changing rooms
- 7.2.2 Pitches should be measured against the quality criteria as set out in Towards a Level Playing Field. All sites have been assessed using the proforma provided by Sport England.
- 7.2.3 New recommendation: The minimum baseline scores targeted should be:
- 60% for the site and ancillary facilities (the % score required to be categorised as good)
  - 65% for the pitch (the score required to be categorised as good)

These should reflect minimum standard of provision.

- 7.2.4 Standards should also reflect and be responsive to national governing body standards for each sport and in particular standards and issues for Herefordshire which are identified in current and emerging documents, for example:
- Herefordshire Cricket Board Facility Strategy 2009 -2013
  - North Midland RFU County Facility Plan 2008 -2011
- 7.2.5 Separate standards for Synthetic Turf Pitches for use by different sports, for example, football and hockey should be considered against demand.

### **7.3 Access /Thresholds**

- 7.3.1 Access to all playing pitches, bowling greens and tennis courts should be within the following access times:
- In urban areas including Bromyard Town they should all be accessed within a walking distance of most potential and casual users. This is recommended to be 15 minute walk time to facilities
  - However, it is not sustainable to apply the same standards in the rural parts of the Bromyard area and have pitches within walking thresholds therefore a driving threshold of a 20 minute drive time to facilities is recommended.
- 7.3.2 These standards should be used to support requirements arising from new housing developments and included in the revised Supplementary Planning Document for open spaces.

## **8 Recommendations and Future Actions for Bromyard Area**

### **8.1 Community Access on School Sites**

- Further work to identify where existing community use agreements are in place at Schools across the area and in particular the Queen Elizabeth High School in light of impending Academy status: Property Services, Herefordshire Council
- Further work to identify where junior schools in the area would benefit from community access: Property Services, Herefordshire Council

### **8.2 Quality**

- The quality of pitches impacts not only on the quality of play, but also on the potential capacity of a pitch and hence numerical surpluses and deficiencies.
- Improvements should be particularly targeted at those areas required to meet Sport England's minimum standards including drainage, changing accommodation and levelling, for example. The minimum baseline scores targeted should be:
  - 60% for the site and ancillary facilities
  - 65% for the pitch

### 8.3 Site Specifics

- **Pencombe Sports Ground** requires improved changing facilities: High level of current usage therefore consider as a High Priority for future investment.
- **Bromyard Rugby Club** requires improvements to changing facilities to improve the showers: The club has other priorities therefore, consider as a Low/Medium priority for future investment.
- **Bringsty Sports Ground requires** improved pitch and changing facilities: Low level of current usage therefore consider as Low Priority for future investment
- **Bringsty Football Ground:** requires improved pitch and changing facilities: Low level of current usage therefore consider as Low Priority for future investment

### 8.4 Risks/Opportunities

- **Bromyard Cricket Club:** the first pitch is considered to small with poor parking to enable the club to develop further and as a focus club it is a priority for the Herefordshire ECB to support its growth opportunities. The second pitch at the QE High School may not be available in the future. Therefore:
  - The club require investment to enable expansion of existing facilities or relocation to new site. Consider as a Priority for future investment and future options:
    - Secure community use at Queen Elizabeth College for future use.
    - Identify sites/opportunities for relocation through the Local Development Framework, via proposed housing sites either on site or from securing planning gain.
- **Bromyard Rugby Club:** The club require additional pitches to meet both existing and future needs and this is seen as a high priority by the RFU for the North Midlands. Therefore:
  - The club require investment to enable expansion of existing facilities or relocation to new site. Consider as a Priority for future investment and consider future options:
  - Identify sites/opportunities for additional pitch through the Local Development Framework, via proposed housing sites either on site or from securing planning gain
- **Football:** In general there are not enough junior and mini pitches, although the game can be played on senior pitches. 7 v 7 and 9 v 9 pitches are required by the FA. There are not enough training facilities. Therefore consider as a Priority for future investment and consider:

- Future investment by clubs in reconfiguring pitches to meet the FA standards required.
  - Future investment to enable pitches to be used for training purposes.
  - The Football Foundation and England Hockey are undertaking work to look at training provision across the authority area and in particular the need for 3G pitches which can double up as match surfaces for football. This work references demand based upon team numbers and proposes solutions.
- **Other:** Consider improvements to existing facilities if they fall below the minimum standards as required in this document and by Sport England as priorities for future investment
  - Consideration to be made, where there is an existing and predicted surplus of provision of one type of sport to redevelop the pitch to meet the needs of other sports including both those identified within this assessment and those which aren't, including minority sports and those sports which encourage a greater take up of females and juniors particularly where the team generation rates have highlighted a gap and clubs have identified future plans to include growth in these areas.
  - This would be dependent on:
    - individual sports development plans identifying a need and providing a business case,
    - the priorities identified in the development plans of the Council's Sports Development Team, The County Sports Partnership and Herefordshire Sport.

### **8.5 Generic**

- Where possible in the town a "hub" approach is recommended where pitches for an area are concentrated on fewer sites with a greater number of pitches on each site. This is with a view to providing a higher standard of facilities on fewer sites.
- The second tier of the hierarchy comprises of smaller satellite sites, located strategically in the larger settlements to serve communities across the area. A better use of limited resources will arise from investment and management in more sustainable sites.
- Improvements to pitch quality and ancillary provision should be made with the principles of the hierarchy in mind. In particular, improvements should be targeted in areas of deficiency.
- The proportion of pitches meeting the desired quality standard should be monitored annually.

- Where a considered business case has been put together by the community consideration should be give to community asset transfer
- Continue to support voluntary, private and community sector where appropriate
- Where issues of poor value for money have been sited and these are on Council owned property, consider a review of the Halo pricing policy?

## **8.6 Implications for Planning Policy**

- All pitches should specifically be afforded protection within the Local Development Framework through a policy in the Core Strategy. Protection policies should link with policies for other types of open space. This policy should only permit development on playing fields when Sport England exception criteria can be met
- New pitches may be required in some areas and should be facilitated through planning policy
- Where planning obligations are sought these should be used to contribute to the enhancement of existing facilities and to help provide increased community access as well as to provide new facilities where these are required.
- The Council should update the existing SPD on open space contributions to include specific standards set as part of the Playing Pitch Strategy as described for each area.
- Set new local standards based on recommendations in this strategy:
- **Quantity Standard:** New recommendation: **1.58 ha per 1000** population for the Bromyard Area.
- **Access Standard:** New recommendation:
  - Bromyard Town – a 15 minute walk time to facilities
  - Bromyard Rural – a 20 minute drive time to facilities
- These standards should be used to support requirements arising from new housing developments.

# Herefordshire Playing Pitch Assessment

## Appendix 1: Sports Pitches within Herefordshire

**Cricket**

**Football**

**Rugby**

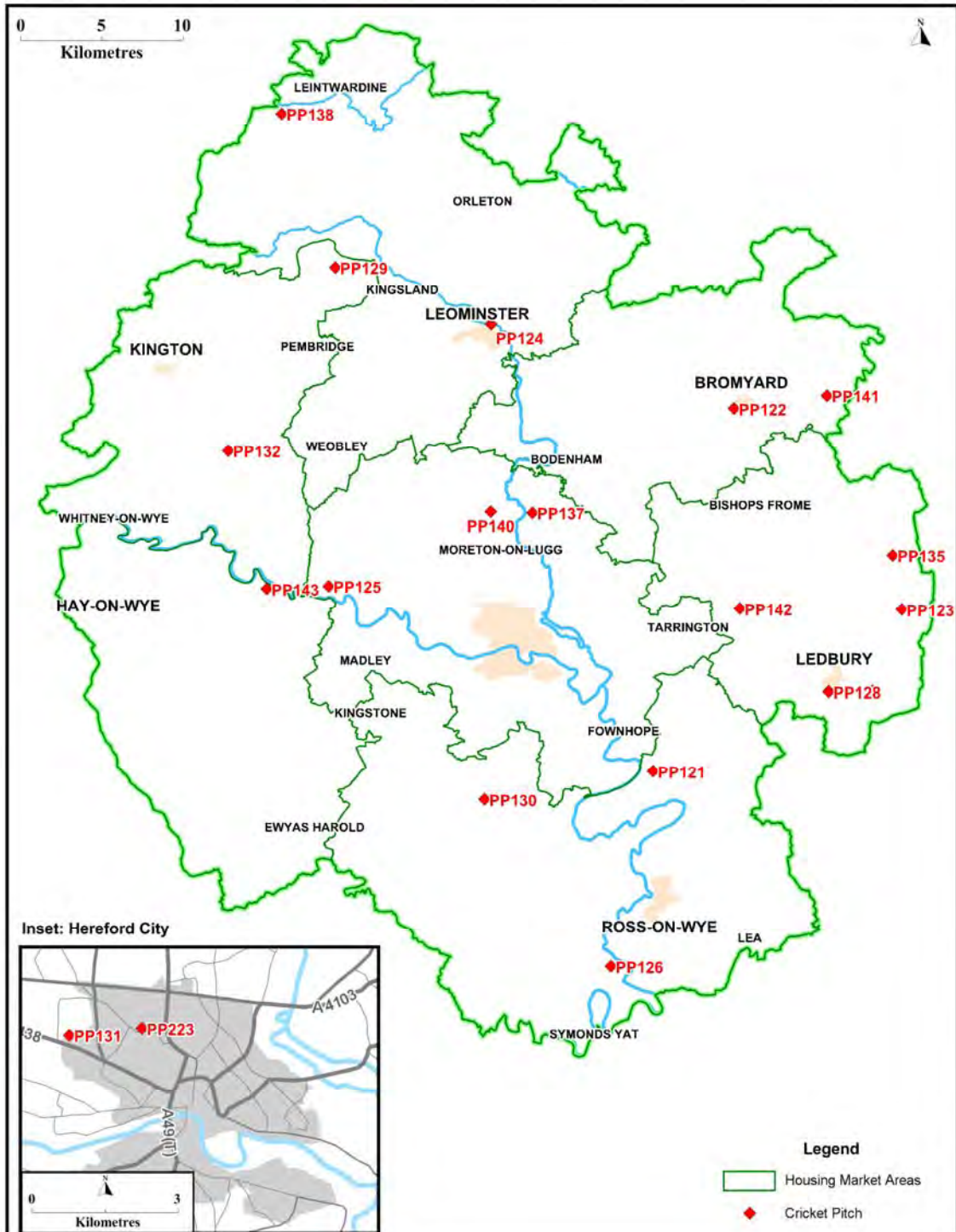
**Bowling**

**Tennis**

**School**

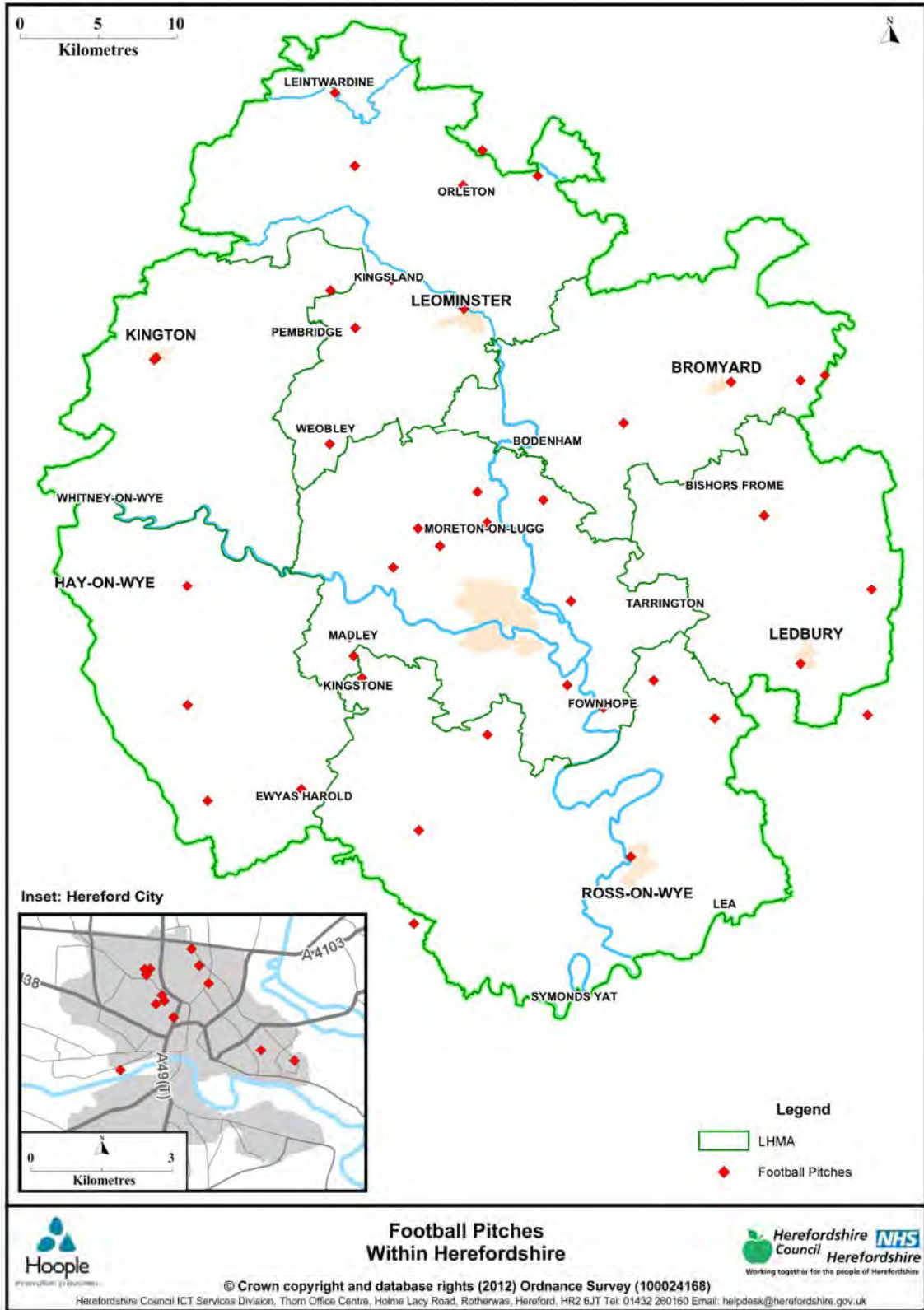
**Hockey**

# Herefordshire Playing Pitch Assessment

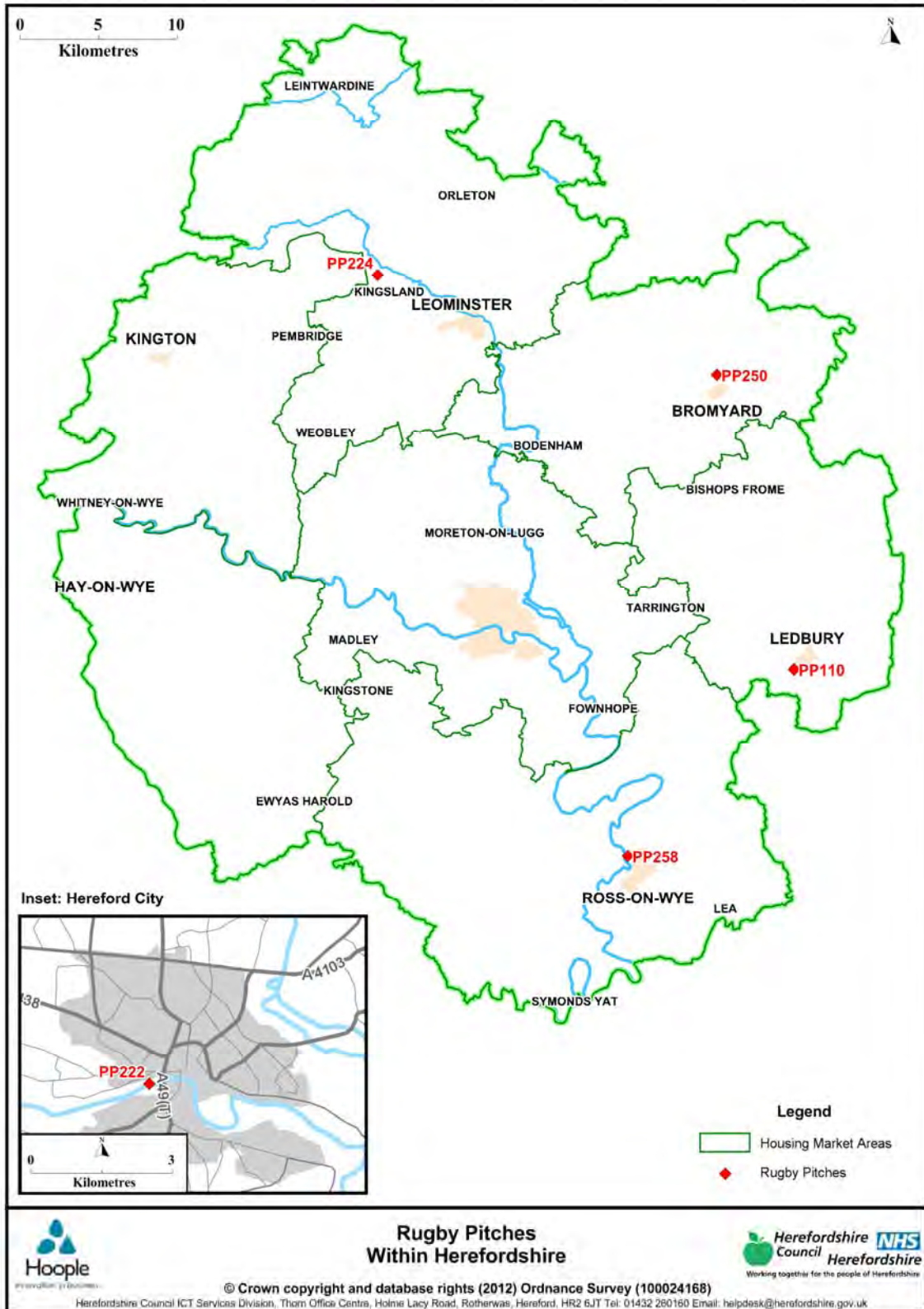




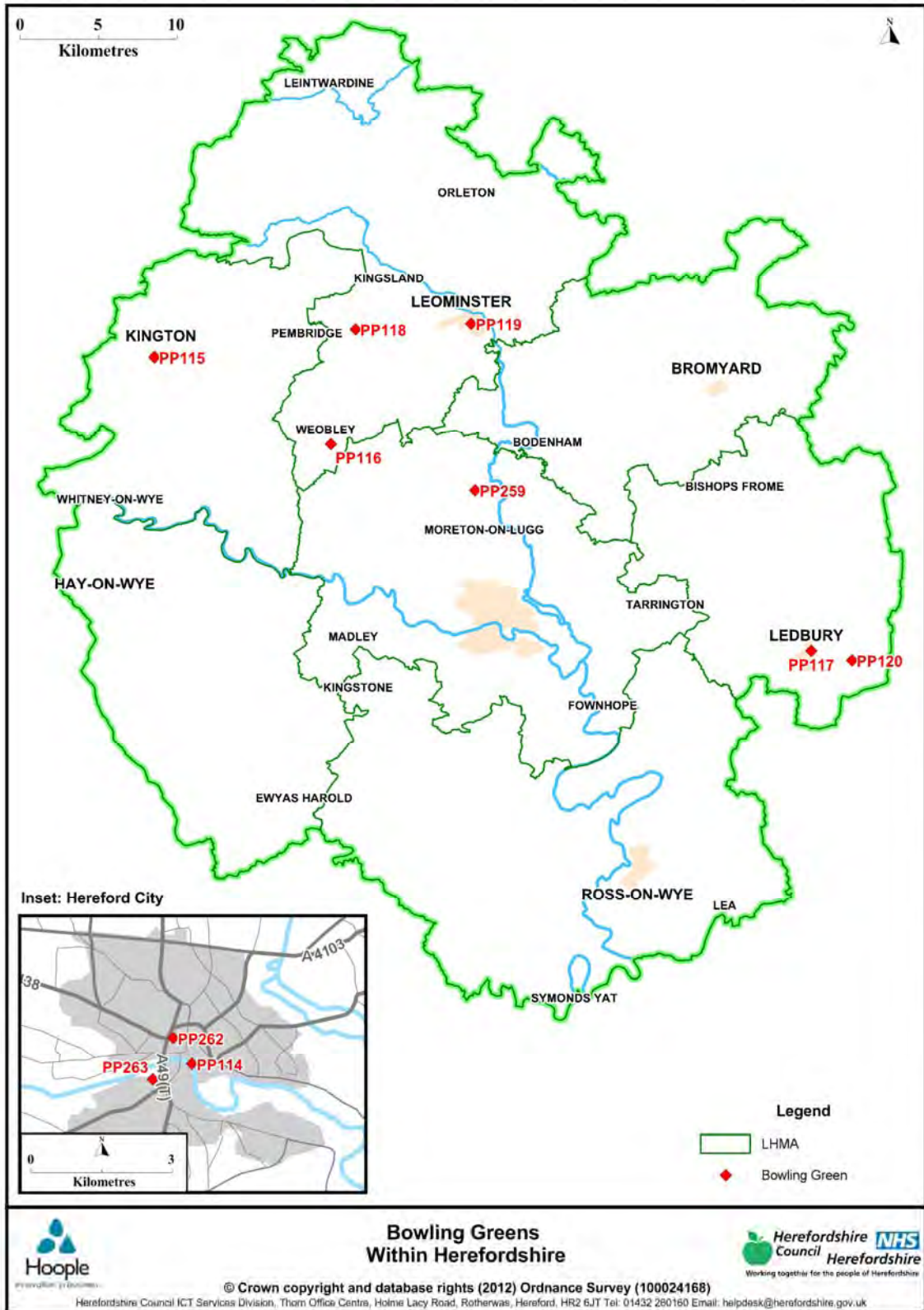
# Herefordshire Playing Pitch Assessment



# Herefordshire Playing Pitch Assessment



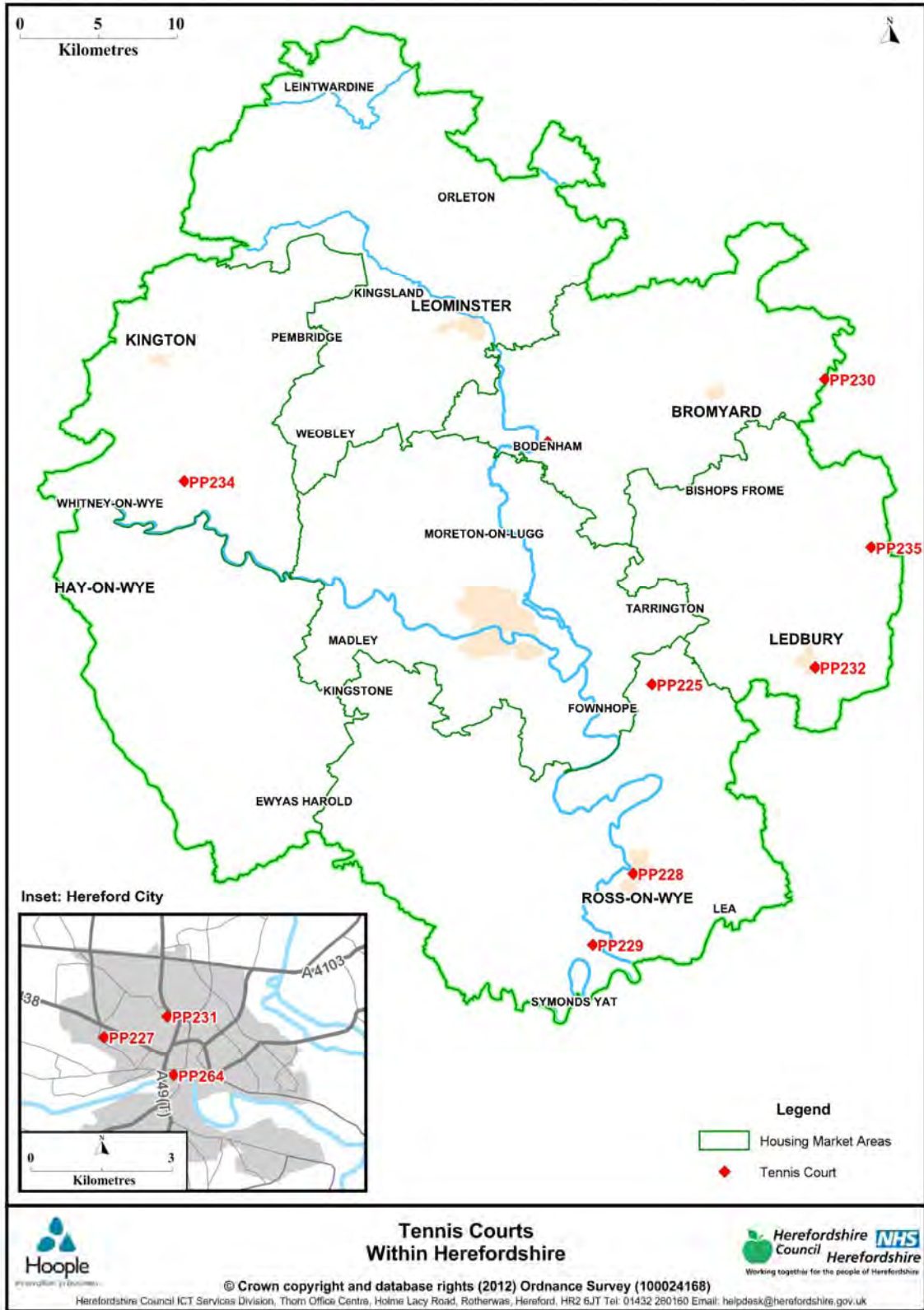
# Herefordshire Playing Pitch Assessment



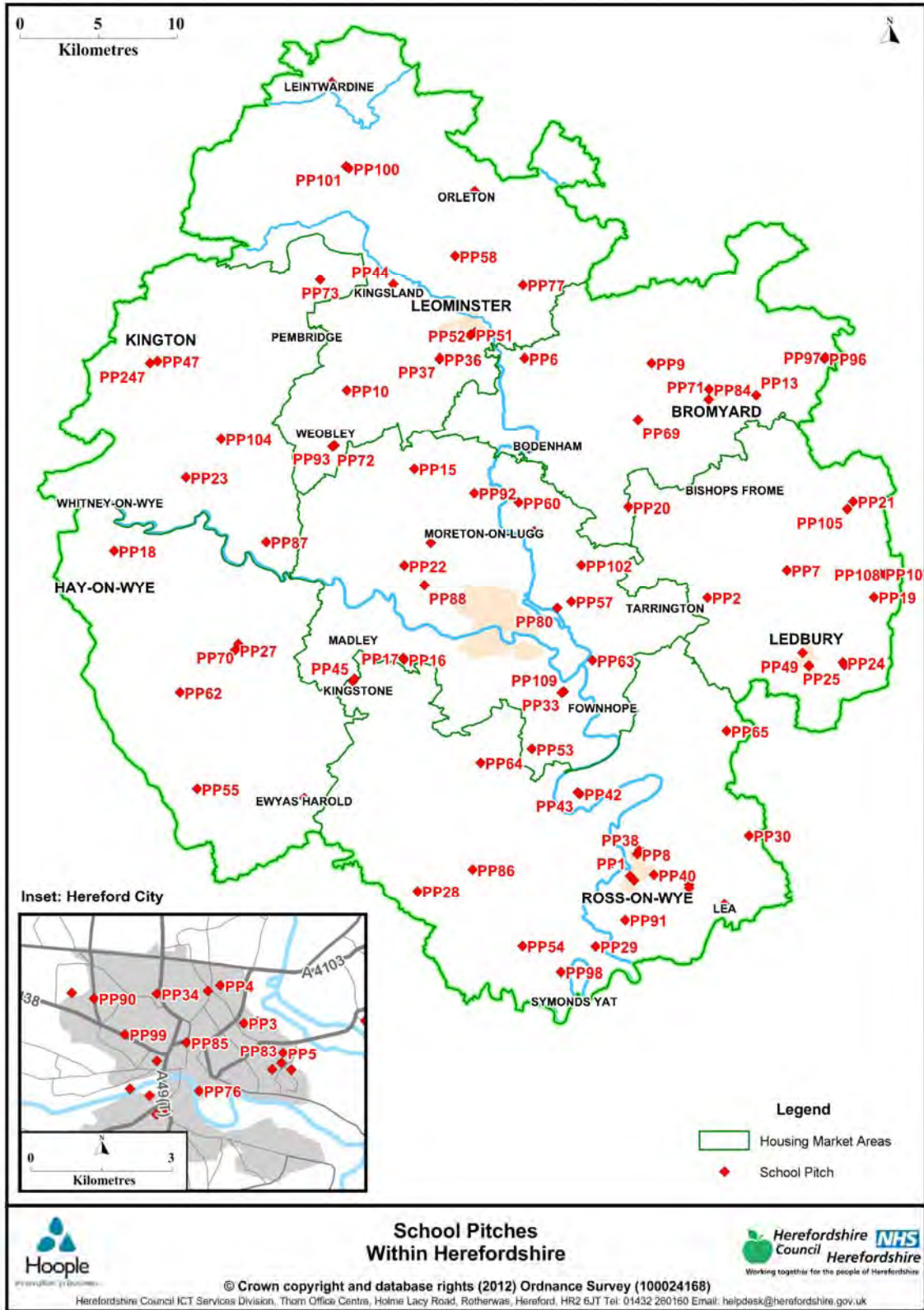
## Bowling Greens Within Herefordshire



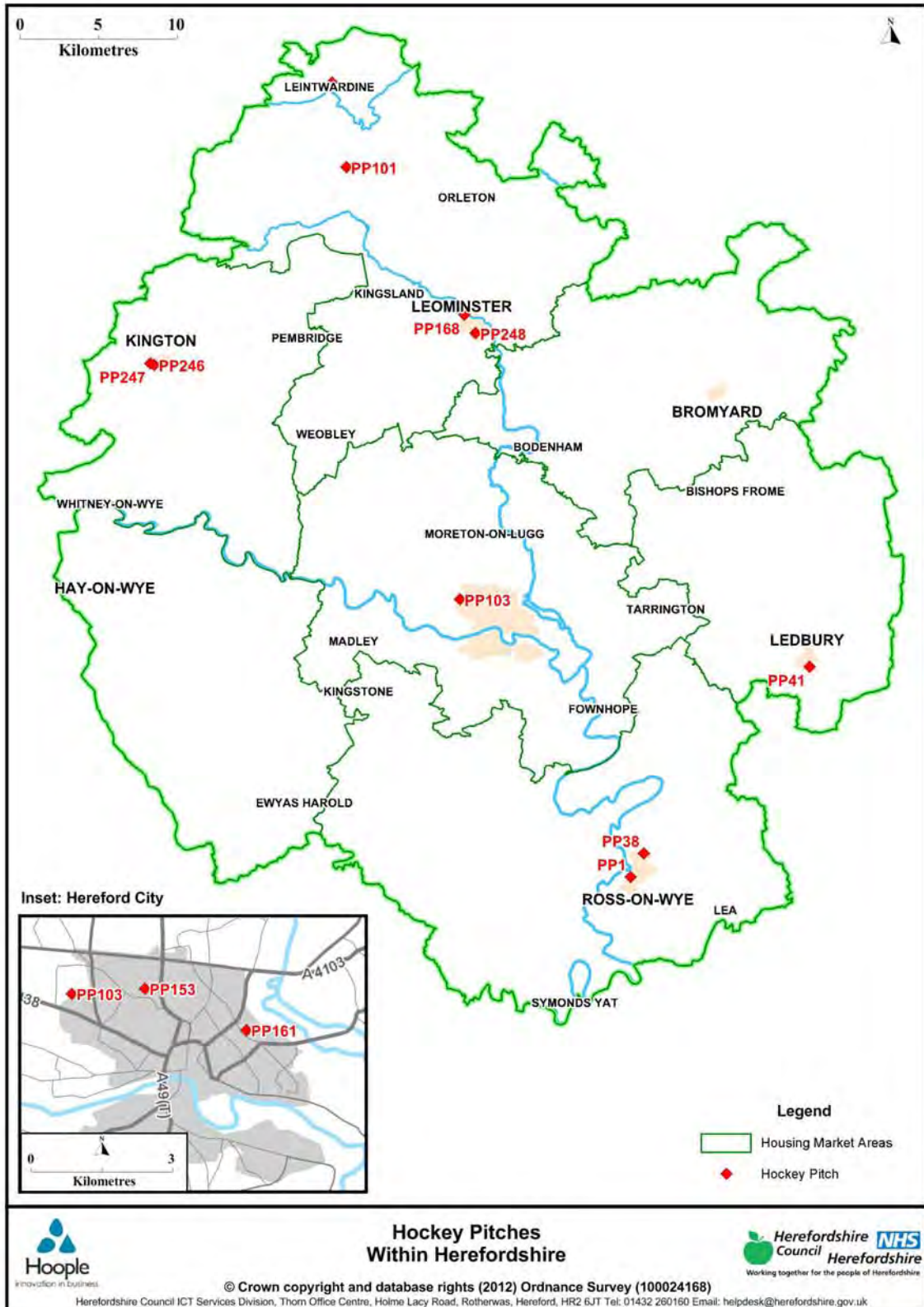
# Herefordshire Playing Pitch Assessment



# Herefordshire Playing Pitch Assessment



# Herefordshire Playing Pitch Assessment



BROMYARD AREA		Sport	Site ref	Name	Pitches	Size Ha	community use	ownership	Quality Rating % & category	
WARD	PARISH								Changing Accomodation	Pitch
Bringsty	<b>Bredenbury and District Group</b>	School	PP9	Bredenbury Primary School	1 x junior	9895	informal	school	no	66%
	<b>Brockhampton Group</b> (Brockhampton, Linton, Norton)	School	PP13	Brockhampton Primary School	1 x junior	5127.59	no	school	no	71%
		Football	PP205	Bromyard Football Ground	3 x senior	44541.29	yes	private	93% excellent	90% Excellent
	<b>Thornbury Group</b> (Collington, Edwin Ralph, Thornbury)									
	<b>Whitbourne</b>	School	PP97	Whitbourne Primary School	1 x junior	7486.53	informal	school	no	55%
		No longer in use	PP178	Whitbourne Playing Fields						
		Football	PP204	Bringsty Common Football Ground	??	8144.88	yes			
		Football Cricket	PP141	Bringsty Sports Ground	1 x senior football	9762.81	yes	private	yes 10%	52%
	1 x cricket				52%					
Tennis	PP230	Gaines Tennis Courts	2 x tennis	1922.21				yes 90%		

BROMYARD AREA		Sport	Site ref	Name	Pitches	Size Ha	community use	ownership	Quality Rating % & category		
WARD	PARISH								Changing Accomodation	Pitch	
Bromyard	North Bromyard Group (Edwin Loach, Saltmarsh, Tedstone Delemere, Tedstone Wafre, Upper Sapey, Wolferlow)	No longer in use	PP134	Sapey Cricket Ground							
		Golf	PP251	Upper Sapey Golf Course							
	Ocle Pychard Group (Felton, Ocle Pychard, Ullingswick)	School	PP20	Burley Gate Primary School	1 x junior	14695.78	no	school	no	55%	
	Pencombe Group (Little Cowarne, Pencombe, Grendon Warren)	School	PP69	Pencombe Primary School	1 x junior	5146.27	no	school	no	66%	
		Football Cricket	PP185	Pencombe Sports Ground	1 x senior football 1 x cricket	16006.17	yes	Parish Council	2 teams 22%	90%	
	Avenbury										
	Bromyard and Winslow	School	PP71	Queen Elizabeth High School	2 x senior football	50897.13	informal	school	NO	55%	
					1 x rugby					58%	
					1 x cricket					summer pitch	
		School	PP84	St Peters	2 x mini	14200.66	no	school	No	64%	
		Cricket	PP122	Bromyard Cricket Ground	1 x cricket	10440.41	yes	private	2 teams 93%	90%	
		Rugby Bowling Tennis	PP250	Bromyard Sports Foundation	2 x senior rugby	45205.55	yes	private	4 teams 85%	89%	
	1 x bowling				68%						
	1 x tennis				2 teams 85%						
Stoke Lacy											
Hampton Court	Hampton Charles Paish, Hatfield & Newhampton										
	Hope-under-Dinmore Parish										
	Humber Parish										
	School	PP65	Stoke Prior Primary School	1 x junior football	5405	informal	School	No	69%		
	Stoke Prior and Ford and Newton Parish										
Bodenham											





Herefordshire Football, Cricket, Rugby, Hockey, Bowling, Tennis Clubs, Teams and Venues						
Bromyard Area		Questionnaire returned	Sport	Club/League/standard/times of play	Teams	Venue /Expanare Ref
WARD	PARISH					
Bringsty	Bredenbury and District Group Brockhampton Group (Brockhampton, Linton, Norton)					
			Football	<b>Bromyard Colts Football Club</b>	1 team	PP205 Bromuyard Football Ground, Delahay Meadow
			Adult & U18 male	Hfds Sunday League Div 1 10.30 am	1	
				Training		No set night or venue
			Football	<b>Bromyard Town Football Club</b>	3 teams	
			Adult & U18 male	West Mid Region League	1	PP205 Bromuyard Football Ground, Delahay Meadow
				Hfds Sat Premier League 2.30 pm (reserves)	1	
				U18 Floodlit League	1	
				Training		No set night or venue
			Football	<b>Bromyard Town Youth Football Club</b>	6 teams	
			U16 & below male	U10 - HGTA Saturday am 10.45	1	PP205 Bromuyard Football Ground, Delahay Meadow
				U11 - HGTA Saturday am 12.00	1	
				U11 - Stirling Saturday am 12.00 (colts)	1	
				U12 - Stirling Sunday am 10.30	1	as above
				U13 - HGTA Sunday am 10.30	1	as above
	U14 - HGTA Sunday pm 2.00	1		as above		
		Training		No set night or venue		
	Thornbury Group (Collington, Edwin Ralph, Thornbury)					
	Whitbourne					

**Herefordshire Football, Cricket, Rugby, Hockey, Bowling, Tennis Clubs, Teams and Venues**

Bromyard Area		Questionnaire returned	Sport	Club/League/standard/times of play	Teams	Venue /Expanare Ref
WARD	PARISH					
Bromyard	<b>North Bromyard Group</b> (Edwin Loach, Saltmarsh, Tedstone Delemere, Tedstone Wafre, Upper Sapey, Wolferlow)					
	<b>Ocle Pychard Group</b> (Felton, Ocle Pychard, Ullingswick)					
	<b>Pencombe Group</b> (Little Cowarne, Pencombe, Grendon Warren)	<b>Returned</b>	<b>Football</b> Adult & U18 male	<b>Pencombe Football Club</b>		
				Hfds Saturday League Div3: 2.30 pm	1 team	PP185 Pencombe Sports Ground
				Training	1	No set night or venue
		<b>Returned</b>	<b>Cricket</b> Adult male	<b>Pencombe Cricket Club</b>	1 team	PP185 Pencombe Sports Ground
		Sunday League pm		1		
		Training Wednesday				
<b>Avenbury</b>						
Bromyard and Winslow	<b>Returned</b>	<b>Cricket</b> Adult Male	<b>Bromyard Cricket Club</b>	4 teams	PP122 Bromyard Cricket Ground (Main ground)Flaggoners Green PP71 QE High School (2nd Ground)	
			Worcs Saturday League pm	3		
			Worcs Sunday League pm	1		
			Hfds Indoor League	1 team		
			Training: Wednesday			
	<b>Returned</b>	<b>Cricket</b> Junior boys	<b>Bromyard Cricket Club</b>	4 teams		
			U9 Hfds Junior League: Sunday am	1	PP122 Bromyard Cricket Ground (Main	
			U11 Hfds Junior League: Sunday am	1	ground)Flaggoners Green	
U13 Hfds Junior League: Tuesday pm			1	PP71 QE High School (2nd		
U15 Hfds Junior League: Sunday pm			1	Ground)		
		Training Thursday				

**Herefordshire Football, Cricket, Rugby, Hockey, Bowling, Tennis Clubs, Teams and Venues**

Bromyard Area		Questionnaire returned	Sport	Club/League/standard/times of play	Teams	Venue /Expanare Ref	
WARD	PARISH						
Bromyard	Bromyard and Winslow	Returned	Rugby	<b>Bromyard Rugby Club</b>	3 teams	PP250 Bromyard Sports Foundation as above as above	
			Senior males	Saturday 3pm Adults	3		
				Saturday 3pm 18 - 19 year olds	0		
				Training Tues/Thurs 7.15 - 8 pm			
		Returned	Rugby	<b>Bromyard Rugby Club</b>	4 teams	PP250 Bromyard Sports Foundation as above	
			Junior boys	U13 - U16 Sunday time varies	4		
				Training Wed 6.15 - 8 pm and Sunday 10.30	6 teams		
		Returned	Rugby	<b>Bromyard Rugby Club</b>		PP250 Bromyard Sports Foundation as above	
			Minors	U7 - U12 Sunday 10.30 am	6		
				Training			
			Bowling	<b>Bromyard Bowling Club</b>	12 male		PP250 Bromyard Sports Foundation
				Private sports trust mixed	9 female		
Tennis	<b>Bromyard Tennis Club</b>		PP250 Bromyard Sports Foundation				
	Stoke Lacy						
Hampton Court	Hampton Charles Paish, Hatfield & Newhampton						
	Hope-under-Dinmore Parish						
	Humber Parish						
	Stoke Prior and Ford and Newton Parish	Returned	Football	<b>Stoke Prior FC</b>	1 team	PP195 Stoke Prior Football Ground No set night or venue	
			Adult & U18 male	Hfds Saturday League Div 1: pm Training	1		
Bodenham		Bowling	<b>Bodenham Bowling Club</b>	22 male	?? Bodenham Bowling Green/ No Clubhouse		
		Tennis	<b>Bodenham Tennis Club</b>			P233 Bodenham Tennis courts	

**Protection of Playing Fields Audit Report**

Team County Name	Club Name	Club ID	Team Name	Team ID	Ground Name	Ground Address 1	Ground Address 2	Ground Town	Ground County	Ground Post Code	Ground Northing	Ground Easting	Local Authority	Day Plays On
Herefordshire FA	Addison Allstars F.C.	223579	First	11286966	Hereford Leisure Centre	Holmer		Hereford	Herefordshire		241550	350550	ounty of Herefordshi	Sunday
Herefordshire FA	Allstars F.C.	44331	First	10922785	Ledbury Rugby Club	Ross Road Playing Fields	Ross Road	Ledbury	Herefordshire		236089	368885	ounty of Herefordshi	Sunday
Herefordshire FA	Athletico Toros F.C.	227530	Cavaliers	11424816	Hereford Leisure Centre	Holmer		Hereford	Herefordshire		241550	350550	ounty of Herefordshi	Sunday
Herefordshire FA	Athletico Toros F.C.	227530	First	11352577	The Abbey Park	Belmont Abbey		Hereford		hr2 9sh	237799	347902	ounty of Herefordshi	Sunday
Herefordshire FA	Athletico Ledbury F.C.	147620	First	11019522	Ledbury Town	New Street		Ledbury	Herefordshire	HR8 2AE	237867	370912	ounty of Herefordshi	Sunday
Herefordshire FA	Barrels F.C.	110081	First	11089070	Gorsty Lane	Gorsty Lane		Hereford	Herefordshire	HR1 1UN	239428	353322	ounty of Herefordshi	Sunday
Herefordshire FA	Bartestree F.C.	44088	First	10922546	Bartestree And Lugwardine Playing Fields	Bartestree		Hereford	Herefordshire	HR1 4BU	241236	355949	ounty of Herefordshi	Saturday
Herefordshire FA	Bartestree F.C.	44088	Reserves	11050057	Bartestree And Lugwardine Playing Fields	Bartestree		Hereford	Herefordshire	HR1 4BU	241236	355949	ounty of Herefordshi	Saturday
Herefordshire FA	Bartestree F.C.	44088	U10	11410335	Bartestree And Lugwardine Playing Fields	Bartestree		Hereford	Herefordshire	HR1 4BU	241236	355949	ounty of Herefordshi	Saturday
Herefordshire FA	Bartestree F.C.	44088	U12	11410329	Bartestree And Lugwardine Playing Fields	Bartestree		Hereford	Herefordshire	HR1 4BU	241236	355949	ounty of Herefordshi	Saturday
Herefordshire FA	Bartestree F.C.	44088	U12 Juniors	11410326	Bartestree And Lugwardine Playing Fields	Bartestree		Hereford	Herefordshire	HR1 4BU	241236	355949	ounty of Herefordshi	Saturday
Herefordshire FA	Bartestree F.C.	44088	u13 Girls	11410332	Bartestree And Lugwardine Playing Fields	Bartestree		Hereford	Herefordshire	HR1 4BU	241236	355949	ounty of Herefordshi	Sunday
Herefordshire FA	Bartestree F.C.	44088	U13 Juniors	11410330	Bartestree And Lugwardine Playing Fields	Bartestree		Hereford	Herefordshire	HR1 4BU	241236	355949	ounty of Herefordshi	Sunday
Herefordshire FA	Bartestree F.C.	44088	U15 Girls	11410336	Bartestree And Lugwardine Playing Fields	Bartestree		Hereford	Herefordshire	HR1 4BU	241236	355949	ounty of Herefordshi	Sunday
Herefordshire FA	Bartestree F.C.	44088	U16	11410327	Bartestree And Lugwardine Playing Fields	Bartestree		Hereford	Herefordshire	HR1 4BU	241236	355949	ounty of Herefordshi	Sunday
Herefordshire FA	Bartestree F.C.	44088	U18	11444330	Bartestree And Lugwardine Playing Fields	Bartestree		Hereford	Herefordshire	HR1 4BU	241236	355949	ounty of Herefordshi	Wednesday
Herefordshire FA	Bartestree F.C.	44088	U9	11410333	Bartestree And Lugwardine Playing Fields	Bartestree		Hereford	Herefordshire	HR1 4BU	241236	355949	ounty of Herefordshi	Saturday
Herefordshire FA	Bell F.C.	44315	First	10922770	Briarwood Stadium	Bridge Street		Leominster	Herefordshire	HR6 8EA	259813	349280	ounty of Herefordshi	Sunday
Herefordshire FA	Belmont F.C.	43898	U15	11434367	Newton Farm	Marcle Walk	Newton Farm	Hereford	Herefordshire	HR2 7RQ	239397	350880	ounty of Herefordshi	Sunday
Herefordshire FA	Bromyard Colts F.C.	140691	First	10948917	Stourport Road		Stourport Road	Bromyard	Herefordshire	HR7 4SR	253343	362520	ounty of Herefordshi	Sunday
Herefordshire FA	Bromyard F.C.	44253	First	11411818	Stourport Road		Stourport Road	Bromyard	Herefordshire	HR7 4SR	253343	362520	ounty of Herefordshi	Saturday
Herefordshire FA	Bromyard F.C.	44253	U10	11411803	Stourport Road		Stourport Road	Bromyard	Herefordshire	HR7 4SR	253343	362520	ounty of Herefordshi	Saturday
Herefordshire FA	Bromyard F.C.	44253	U10 Colts	11370201	Stourport Road		Stourport Road	Bromyard	Herefordshire	HR7 4SR	253343	362520	ounty of Herefordshi	Saturday
Herefordshire FA	Bromyard F.C.	44253	U11	11455323	Stourport Road		Stourport Road	Bromyard	Herefordshire	HR7 4SR	253343	362520	ounty of Herefordshi	
Herefordshire FA	Bromyard F.C.	44253	U12	11370185	Stourport Road		Stourport Road	Bromyard	Herefordshire	HR7 4SR	253343	362520	ounty of Herefordshi	Sunday
Herefordshire FA	Bromyard F.C.	44253	U13	11370178	Stourport Road		Stourport Road	Bromyard	Herefordshire	HR7 4SR	253343	362520	ounty of Herefordshi	Sunday
Herefordshire FA	Bromyard F.C.	44253	U14	11411805	Stourport Road		Stourport Road	Bromyard	Herefordshire	HR7 4SR	253343	362520	ounty of Herefordshi	Sunday
Herefordshire FA	Bromyard F.C.	44253	U16	11411816	Stourport Road		Stourport Road	Bromyard	Herefordshire	HR7 4SR	253343	362520	ounty of Herefordshi	Sunday
Herefordshire FA	Bromyard F.C.	44253	U8	11370211	Stourport Road		Stourport Road	Bromyard	Herefordshire	HR7 4SR	253343	362520	ounty of Herefordshi	Saturday
Herefordshire FA	Bromyard F.C.	44253	U9	11370208	Stourport Road		Stourport Road	Bromyard	Herefordshire	HR7 4SR	253343	362520	ounty of Herefordshi	Saturday
Herefordshire FA	Bromyard Town F.C.	43852	First	10922310	Delahay Meadow	Stourport Road		Bromyard	Herefordshire	HR7 4NT	255019	366079	ounty of Herefordshi	Saturday
Herefordshire FA	Bromyard Town F.C.	43852	U18	11063205	Stourport Road		Stourport Road	Bromyard	Herefordshire	HR7 4SR	253343	362520	ounty of Herefordshi	Monday
Herefordshire FA	Burghill F.C.	43854	First	10922312	Burghill Playing Field	Redstone	Burghill	Hereford	Herefordshire	HR7 4HR	244500	347500	ounty of Herefordshi	Saturday
Herefordshire FA	Burghill Rangers F.C.	223628	First	11288230	Burghill FC	The Coppice	Burghill	Hereford	Herefordshire	hr4 8lq	245936	346671	ounty of Herefordshi	Sunday
Herefordshire FA	Casuals F.C.	43951	First	10922409	Bishops Frome Sports Ground	Bishops Frome		Bishops Frome	Worcestershire	WR6 5DB	248374	365961	ounty of Herefordshi	Sunday
Herefordshire FA	Civil Service F.C.	43855	First	10922313	Gorsty Lane	Gorsty Lane		Hereford	Herefordshire	HR1 1UN	239428	353322	ounty of Herefordshi	Saturday
Herefordshire FA	Colwall St James F.C.	43914	First	10922372	Colwall Football pitch	Walwyn Road	Colwall	Colwall	Worcestershire	WR13	214816	374980	ounty of Herefordshi	Sunday
Herefordshire FA	Cradley Sports Club F.C.	146525	U10	11411332	Bishops Frome Sports Ground	Bishops Frome		Bishops Frome	Worcestershire	WR6 5DB	248374	365961	ounty of Herefordshi	Saturday
Herefordshire FA	Cradley Sports Club F.C.	146525	U16	11411330	Cradley C E Primary School	Cradley		Cradley	Herefordshire	WR13 5LL	247100	373433	ounty of Herefordshi	Sunday
Herefordshire FA	Cradley Sports Club F.C.	146525	U8	11387272	Cradley C E Primary School	Cradley		Cradley	Herefordshire	WR13 5LL	247100	373433	ounty of Herefordshi	Saturday
Herefordshire FA	Cradley Sports Club F.C.	146525	U9	11387273	Cradley C E Primary School	Cradley		Cradley	Herefordshire	WR13 5LL	247100	373433	ounty of Herefordshi	Saturday
Herefordshire FA	Credenhill Juniors F.C.	44070	Credenhill Toros	11404530	Roman Park, Credenhill	Station Road	Credenhill	Hereford	Herefordshire		0	0	ounty of Herefordshi	Saturday
Herefordshire FA	Credenhill Juniors F.C.	44070	U10	11404529	Roman Park, Credenhill	Station Road	Credenhill	Hereford	Herefordshire		243516	345064	ounty of Herefordshi	Saturday
Herefordshire FA	Credenhill Juniors F.C.	44070	U12	11417095	St Mary's CofE Primary School	Credenhill		Hereford	Herefordshire	HR4 7DW	243460	345054	ounty of Herefordshi	Sunday
Herefordshire FA	Dore Valley F.C.	141633	First	10962127	Seven Site		Kingstone	Hereford	Herefordshire	HR2 9EW	236008	342703	ounty of Herefordshi	Saturday
Herefordshire FA	Eardisley Werewolves F.C.	226774	U12	11405704	Spear Marsh Common			Almeley	Herefordshire	HR3 6LH	251556	333479	ounty of Herefordshi	Sunday
Herefordshire FA	Eardisley Werewolves F.C.	226774	U8	11405700	Spear Marsh Common			Almeley	Herefordshire	HR3 6LH	251556	333479	ounty of Herefordshi	Saturday
Herefordshire FA	Ewyas Harold F.C.	43860	First	10922318	Ewyas Harold Recreation Ground	Ewyas Harold		Hereford	Herefordshire	HR2 0EY	228716	338793	ounty of Herefordshi	Saturday
Herefordshire FA	Ewyas Harold F.C.	43860	Reserves	11052402	Recreation Ground	Ewyas Harold		Hereford	Herefordshire		239800	350600	ounty of Herefordshi	Saturday
Herefordshire FA	Ewyas Harold F.C.	43860	U15	11426013	Ewyas Harold Recreation Ground	Ewyas Harold		Hereford	Herefordshire	HR2 0EY	228716	338793	ounty of Herefordshi	Sunday
Herefordshire FA	Fownhope F.C.	43861	First	10922319	Fownhope Recreation Field	Capler Lane	Fawnhope	Hereford	Herefordshire	HR1 4PJ	233838	358240	ounty of Herefordshi	Saturday
Herefordshire FA	Fownhope F.C.	43861	Reserves	11050015	Fownhope Recreation Field	Capler Lane	Fawnhope	Hereford	Herefordshire	HR1 4PJ	233838	358240	ounty of Herefordshi	Saturday
Herefordshire FA	Fownhope F.C.	43861	U18	11425775	Fownhope Recreation Field	Capler Lane	Fawnhope	Hereford	Herefordshire	HR1 4PJ	233838	358240	ounty of Herefordshi	Wednesday
Herefordshire FA	Fownhope F.C.	43861	U9	11425773	Fownhope Recreation Field	Capler Lane	Fawnhope	Hereford	Herefordshire	HR1 4PJ	233838	358240	ounty of Herefordshi	Sunday
Herefordshire FA	Fownhope Junior Dynamos Youth F.C.	44101	U10 Lightning	11435093	Victoria Park	Victoria Park		Hereford	Herefordshire		244650	346350	ounty of Herefordshi	Saturday
Herefordshire FA	Fownhope Junior Dynamos Youth F.C.	44101	U10 Thunder	11435100	Fownhope Recreation Field	Capler Lane	Fawnhope	Hereford	Herefordshire	HR1 4PJ	233838	358240	ounty of Herefordshi	Saturday
Herefordshire FA	Fownhope Junior Dynamos Youth F.C.	44101	U14	11435070	Fownhope Recreation Field	Capler Lane	Fawnhope	Hereford	Herefordshire	HR1 4PJ	233838	358240	ounty of Herefordshi	Sunday

Herefordshire FA	Golden Valley Juniors F.C.	44133	U11	11432718	Seven Site	Seve Site	Kingstone	Hereford	Herefordshire		0	0	ounty of Herefordshi	Saturday
Herefordshire FA	Golden Valley Juniors F.C.	44133	U12	11455351	Seven Site	Seve Site	Kingstone	Hereford	Herefordshire		0	0	ounty of Herefordshi	Sunday
Herefordshire FA	Golden Valley Juniors F.C.	44133	U13	11432713	Seven Site	Seve Site	Kingstone	Hereford	Herefordshire		0	0	ounty of Herefordshi	Saturday
Herefordshire FA	Golden Valley Juniors F.C.	44133	U14	11432709	Seven Site	Seve Site	Kingstone	Hereford	Herefordshire		0	0	ounty of Herefordshi	Sunday
Herefordshire FA	Golden Valley Juniors F.C.	44133	U16	11432722	Seven Site	Seve Site	Kingstone	Hereford	Herefordshire		0	0	ounty of Herefordshi	Sunday
Herefordshire FA	Goldvale F.C.	219669	First	11232935	King George V Playing Fields	St Martins		Hereford		HR2 7RQ	239397	350880	ounty of Herefordshi	Sunday
Herefordshire FA	Gorsley Village F.C.	214301	Skills	11461531	Gorsley Goffs Primary School	Gorsley		Ross-on-Wye	Herefordshire	HR9 7SE	226012	367213	ounty of Herefordshi	Saturday
Herefordshire FA	Gorsley Village F.C.	214301	U11	11422841	Gorsley Goffs Primary School	Gorsley		Ross-on-Wye	Herefordshire	HR9 7SE	226012	367213	ounty of Herefordshi	Sunday
Herefordshire FA	Gorsley Village F.C.	214301	U13	11461528	Gorsley Goffs Primary School	Gorsley		Ross-on-Wye	Herefordshire	HR9 7SE	226012	367213	ounty of Herefordshi	Saturday
Herefordshire FA	Greyhound City Sports Youth F.C.	110034	U14	11442218	Hereford City Sports Club	Grandstand Road		Hereford	Herefordshire		241250	350150	ounty of Herefordshi	Saturday
Herefordshire FA	HCT F.C.	231070	First	11414080	Wellington Playing Field	Wellington		Hereford	Herefordshire	HR4 8AZ	248214	349611	ounty of Herefordshi	Monday
Herefordshire FA	Heart of Oak FC	146518	First	11001961	Hereford Leisure Centre	Holmer Road		Hereford	Herefordshire	HR4 9UD	241505	350554	ounty of Herefordshi	Sunday
Herefordshire FA	Hearts F.C.	223570	First	11286445	Hereford Leisure Centre	Holmer Road		Hereford	Herefordshire	HR4 9UD	241505	350554	ounty of Herefordshi	Sunday
Herefordshire FA	Hereford City FC	219066	First	11221089	Gorsty Lane	Gorsty Lane		Hereford	Herefordshire	HR1 1UN	239428	353322	ounty of Herefordshi	Saturday
Herefordshire FA	Hereford City Sports F.C.	215491	U8	11260980	Hereford City Sports Club	Grandstand Road		Hereford	Herefordshire		241250	350150	ounty of Herefordshi	Saturday
Herefordshire FA	Hereford City Sports F.C.	215491	u9	11362777	Hereford City Sports Club	Grandstand Road		Hereford	Herefordshire		241250	350150	ounty of Herefordshi	Saturday
Herefordshire FA	Hereford Girls FC	209323	U13	11436929	Gorsty Lane	Gorsty Lane		Hereford	Herefordshire	HR1 1UN	239428	353322	ounty of Herefordshi	Sunday
Herefordshire FA	Hereford Girls FC	209323	U15	11436923	Gorsty Lane	Gorsty Lane		Hereford	Herefordshire	HR1 1UN	239428	353322	ounty of Herefordshi	Sunday
Herefordshire FA	Hereford Lads Club F.C.	43909	First	10922367	Hereford Leisure Centre	Holmer Road		Hereford	Herefordshire	HR4 9UD	241505	350554	ounty of Herefordshi	Saturday
Herefordshire FA	Hereford Lads Club F.C.	43909	Reserves	11125212	Widemarsh Common	Holmer Road		Hereford	Herefordshire	HR4 9UD	241505	350554	ounty of Herefordshi	Saturday
Herefordshire FA	Hereford Lads Club Youth F.C.	44225	U10 Colts	11434094	HFA County Ground	Widemarsh common		Hereford	Herefordshire	HR4 9NA	240893	350611	ounty of Herefordshi	Saturday
Herefordshire FA	Hereford Lads Club Youth F.C.	44225	U10 terriers	11434098	HFA County Ground	Widemarsh common		Hereford	Herefordshire	HR4 9NA	240893	350611	ounty of Herefordshi	Saturday
Herefordshire FA	Hereford Lads Club Youth F.C.	44225	U10 Warriors	11434101	HFA County Ground	Widemarsh common		Hereford	Herefordshire	HR4 9NA	240893	350611	ounty of Herefordshi	Saturday
Herefordshire FA	Hereford Lads Club Youth F.C.	44225	U11 Bells	11434137	HFA County Ground	Widemarsh common		Hereford	Herefordshire	HR4 9NA	240893	350611	ounty of Herefordshi	Sunday
Herefordshire FA	Hereford Lads Club Youth F.C.	44225	U11 Tigers	11441766	HFA County Ground	Widemarsh common		Hereford	Herefordshire	HR4 9NA	240893	350611	ounty of Herefordshi	Sunday
Herefordshire FA	Hereford Lads Club Youth F.C.	44225	U11 Vixens	11434141	HFA County Ground	Widemarsh common		Hereford	Herefordshire	HR4 9NA	240893	350611	ounty of Herefordshi	Sunday
Herefordshire FA	Hereford Lads Club Youth F.C.	44225	U12 Bulls	11434115	King George V Playing Fields	St Martins		Hereford	Herefordshire	HR2 7RQ	239397	350880	ounty of Herefordshi	Sunday
Herefordshire FA	Hereford Lads Club Youth F.C.	44225	U13	11434118	HFA County Ground	Widemarsh common		Hereford	Herefordshire	HR4 9NA	240893	350611	ounty of Herefordshi	Sunday
Herefordshire FA	Hereford Lads Club Youth F.C.	44225	U13 Vixens	11434146	HFA County Ground	Widemarsh common		Hereford	Herefordshire	HR4 9NA	240893	350611	ounty of Herefordshi	Sunday
Herefordshire FA	Hereford Lads Club Youth F.C.	44225	U14	11434122	HFA County Ground	Widemarsh common		Hereford	Herefordshire	HR4 9NA	240893	350611	ounty of Herefordshi	Sunday
Herefordshire FA	Hereford Lads Club Youth F.C.	44225	U17 Tigers	11434153	HFA County Ground	Widemarsh common		Hereford	Herefordshire	HR4 9NA	240893	350611	ounty of Herefordshi	Sunday
Herefordshire FA	Hereford Lads Club Youth F.C.	44225	U18	11434124	Hereford Leisure Centre	Holmer Road		Hereford	Herefordshire	HR4 9UD	241505	350554	ounty of Herefordshi	Thursday
Herefordshire FA	Hereford Lads Club Youth F.C.	44225	U8 Gullers	11434078	HFA County Ground	Widemarsh common		Hereford	Herefordshire	HR4 9NA	240893	350611	ounty of Herefordshi	Saturday
Herefordshire FA	Hereford Lads Club Youth F.C.	44225	U8 Merlins	11434083	HFA County Ground	Widemarsh common		Hereford	Herefordshire	HR4 9NA	240893	350611	ounty of Herefordshi	Saturday
Herefordshire FA	Hereford Lads Club Youth F.C.	44225	U8 scorpions	11434079	HFA County Ground	Widemarsh common		Hereford	Herefordshire	HR4 9NA	240893	350611	ounty of Herefordshi	Saturday
Herefordshire FA	Hereford Lads Club Youth F.C.	44225	U9 Cheetas	11434086	HFA County Ground	Widemarsh common		Hereford	Herefordshire	HR4 9NA	240893	350611	ounty of Herefordshi	Saturday
Herefordshire FA	Hereford Lads Club Youth F.C.	44225	U9 Pumas	11434134	HFA County Ground	Widemarsh common		Hereford	Herefordshire	HR4 9NA	240893	350611	ounty of Herefordshi	Sunday
Herefordshire FA	Hereford Lads Club Youth F.C.	44225	U9 Rangers	11434090	HFA County Ground	Widemarsh common		Hereford	Herefordshire	HR4 9NA	240893	350611	ounty of Herefordshi	Saturday
Herefordshire FA	Hereford Lads Club Youth F.C.	44225	U9 Tigers	11434128	HFA County Ground	Widemarsh common		Hereford	Herefordshire	HR4 9NA	240893	350611	ounty of Herefordshi	Sunday
Herefordshire FA	Hereford Pegasus Ladies F.C.	43996	Ladies First	10922454	Pegasus FC	Old School Lane		Hereford	Herefordshire	HR1 1EX	241794	351269	ounty of Herefordshi	Sunday
Herefordshire FA	Hereford Pegasus Ladies F.C.	43996	Reserves	11367536	Pegasus FC	Old School Lane		Hereford	Herefordshire	HR1 1EX	241794	351269	ounty of Herefordshi	Sunday
Herefordshire FA	Hereford Redstars F.C.	232729	U8	11450140	Hereford Sixth Form College	Folly Lane		Hereford	Herefordshire	HR1 1LU	240699	352212	ounty of Herefordshi	Saturday
Herefordshire FA	Herefordshire Mind FC	210484	Open Aged	11327100	Hereford Leisure Centre	Holmer		Hereford	Herefordshire		241550	350550	ounty of Herefordshi	Sunday
Herefordshire FA	Herefordshire Mind FC	210484	Open Aged2	11327101	Hereford Leisure Centre	Holmer		Hereford	Herefordshire		241550	350550	ounty of Herefordshi	Sunday
Herefordshire FA	Hereford United FC	43954	Adult disability	11344776	Hereford United FC	Edgar Street Athletic Ground	Edgar Street	HEREFORD	Herefordshire	HR4 9JU	240460	350930	ounty of Herefordshi	Saturday
Herefordshire FA	Hereford United FC	43954	Disability	11392146	Hereford United FC	Edgar Street Athletic Ground	Edgar Street	HEREFORD	Herefordshire	HR4 9JU	240460	350930	ounty of Herefordshi	Saturday
Herefordshire FA	Hereford United FC	43954	First	10922412	Hereford United FC	Edgar Street Athletic Ground	Edgar Street	HEREFORD	Herefordshire	HR4 9JU	240460	350930	ounty of Herefordshi	Saturday
Herefordshire FA	Hereford United FC	43954	U10	11344771	Hereford United FC	Edgar Street Athletic Ground	Edgar Street	HEREFORD	Herefordshire	HR4 9JU	240460	350930	ounty of Herefordshi	Saturday
Herefordshire FA	Hereford United FC	43954	U11	11344767	Hereford United FC	Edgar Street Athletic Ground	Edgar Street	HEREFORD	Herefordshire	HR4 9JU	240460	350930	ounty of Herefordshi	Saturday
Herefordshire FA	Hereford United FC	43954	U13	11404815	Hereford United FC	Edgar Street Athletic Ground	Edgar Street	HEREFORD	Herefordshire	HR4 9JU	240460	350930	ounty of Herefordshi	Saturday
Herefordshire FA	Hereford United FC	43954	U14	11344718	Hereford United FC	Edgar Street Athletic Ground	Edgar Street	HEREFORD	Herefordshire	HR4 9JU	240460	350930	ounty of Herefordshi	Saturday
Herefordshire FA	Hereford United FC	43954	U16	11344715	Hereford United FC	Edgar Street Athletic Ground	Edgar Street	HEREFORD	Herefordshire	HR4 9JU	240460	350930	ounty of Herefordshi	Saturday
Herefordshire FA	Hereford United FC	43954	U18	11049834	Hereford United FC	Edgar Street Athletic Ground	Edgar Street	HEREFORD	Herefordshire	HR4 9JU	240460	350930	ounty of Herefordshi	Wednesday
Herefordshire FA	Hereford United FC	43954	U9	11344774	Hereford United FC	Edgar Street Athletic Ground	Edgar Street	HEREFORD	Herefordshire	HR4 9JU	240460	350930	ounty of Herefordshi	Saturday
Herefordshire FA	HFA County Team F.C.	44160	U16	11253103	Delahay Meadow	Stourport Road		Bromyard	Herefordshire	HR7 4NT	255019	366079	ounty of Herefordshi	Sunday
Herefordshire FA	HFA County Team F.C.	44160	U18	10907848	Pegasus FC	Old School Lane		Hereford	Herefordshire	HR1 1EX	241794	351269	ounty of Herefordshi	Sunday
Herefordshire FA	HFA Girls PDC F.C.	226752	U11	11394131	Haywood High School	Stanberrow Road		Grafton	Herefordshire	HR2 7NG	237991	350132	ounty of Herefordshi	Friday
Herefordshire FA	HFA Girls PDC F.C.	226752	U13	11394132	Haywood High School	Stanberrow Road		Grafton	Herefordshire	HR2 7NG	237991	350132	ounty of Herefordshi	Friday
Herefordshire FA	HFA Girls PDC F.C.	226752	U15	11394133	Haywood High School	Stanberrow Road		Grafton	Herefordshire	HR2 7NG	237991	350132	ounty of Herefordshi	Friday
Herefordshire FA	HFA Girls PDC F.C.	226752	U17	11394130	Haywood High School	Stanberrow Road		Grafton	Herefordshire	HR2 7NG	237991	350132	ounty of Herefordshi	Friday

Herefordshire FA	HFA Girls PDC F.C.	226752	U9	11450173	Haywood High School	Stanberrow Road		Grafton	Herefordshire	HR2 7NG	237991	350132	ounty of Herefordshi	Friday	
Herefordshire FA	Hinton F.C.	43866	First	10922324	Broomy Hill	Football Pitch	Broomy Hill	Hereford	Herefordshire		0	0	ounty of Herefordshi	Saturday	
Herefordshire FA	Hinton F.C.	43866	Reserves	11123512	Broomy Hill	Football Pitch	Broomy Hill	Hereford	Herefordshire		0	0	ounty of Herefordshi	Saturday	
Herefordshire FA	Hinton U18 F.C.	140779	U18	11123533	Broomy Hill	Football Pitch	Broomy Hill	Hereford	Herefordshire		0	0	ounty of Herefordshi	Wednesday	
Herefordshire FA	Hinton Youth F.C.	140778	U12	11420399	Broomy Hill	Football Pitch	Broomy Hill	Hereford	Herefordshire		239500	349500	ounty of Herefordshi	Saturday	
Herefordshire FA	Hinton Youth F.C.	140778	U13	11453475	Broomy Hill	Football Pitch	Broomy Hill	Hereford	Herefordshire		239500	349500	ounty of Herefordshi	Saturday	
Herefordshire FA	Hinton Youth F.C.	140778	U13 colts	11420396	Broomy Hill	Football Pitch	Broomy Hill	Hereford	Herefordshire		239500	349500	ounty of Herefordshi	Saturday	
Herefordshire FA	Hinton Youth F.C.	140778	U14	11342395	Broomy Hill	Football Pitch	Broomy Hill	Hereford	Herefordshire		239500	349500	ounty of Herefordshi	Sunday	
Herefordshire FA	Hinton Youth F.C.	140778	U14 Colts	11420395	Broomy Hill	Football Pitch	Broomy Hill	Hereford	Herefordshire		239500	349500	ounty of Herefordshi	Sunday	
Herefordshire FA	Hinton Youth F.C.	140778	U15	11455329	Broomy Hill	Football Pitch	Broomy Hill	Hereford	Herefordshire		239500	349500	ounty of Herefordshi	Saturday	
Herefordshire FA	Hinton Youth F.C.	140778	U16	11420392	Broomy Hill	Football Pitch	Broomy Hill	Hereford	Herefordshire		239500	349500	ounty of Herefordshi	Sunday	
Herefordshire FA	Holme Lacy F.C.	43867	First	10922325	Holme Lacy Playing Field	Holme Lacy		Hereford	Herefordshire	HR2	235621	355573	ounty of Herefordshi	Saturday	
Herefordshire FA	Holme Lacy F.C.	43867	Reserves	11050047	Holme Lacy Playing Field	Holme Lacy		Hereford	Herefordshire	HR2	235621	355573	ounty of Herefordshi	Saturday	
Herefordshire FA	Holmer Athletic F.C.	44255	First	10922710	Widemarsh Common	Widemarsh Common		Hereford	Herefordshire	hr4 9na	240893	350611	ounty of Herefordshi	Sunday	
Herefordshire FA	Hop Pole F.C.	227134	First	11341662	Bridge Street			Leominster		HR6 8EA	259813	349280	ounty of Herefordshi	Sunday	
Herefordshire FA	HWX United F.C.	44318	First	10922773	King George V Playing Fields	St Martins		Hereford		HR2 7RQ	239397	350880	ounty of Herefordshi	Sunday	
Herefordshire FA	Kimbolton Junior FC	146149	U10	11338577	Earl Mortimer Sports College	Leominster		Leominster	Herefordshire	HR6 8JJ	258443	349673	ounty of Herefordshi	Saturday	
Herefordshire FA	Kingspan F.C.	227321	First	11346030	Shobdon Airfield	Shobdon		Leominster	Hereford	Herefordshire	HR6 9NT	261844	339690	ounty of Herefordshi	Sunday
Herefordshire FA	Kingstone Harriers F.C.	219500	First	11229519	Kingstone High School	Kingstone		Hereford	Herefordshire	HR2 9HJ	236102	342009	ounty of Herefordshi	Saturday	
Herefordshire FA	Kingstone Rovers F.C.	43900	First	10922358	Seven Site		Kingstone	Hereford	Herefordshire	HR2 9EW	236008	342703	ounty of Herefordshi	Saturday	
Herefordshire FA	Kington Town F.C.	43894	First	10922352	Kington Town FC	Mill Street		Kington	Herefordshire	HR5 3AL	256540	329467	ounty of Herefordshi	Saturday	
Herefordshire FA	Kington Town F.C.	43894	Reserves	11054334	Kington Town FC	Mill Street		Kington	Herefordshire	HR5 3AL	256540	329467	ounty of Herefordshi	Saturday	
Herefordshire FA	Kington Town Youth F.C.	44107	U10	11410651	Kington Town FC	Mill Street		Kington	Herefordshire	HR5 3AL	256540	329467	ounty of Herefordshi	Saturday	
Herefordshire FA	Kington Town Youth F.C.	44107	U12	11410645	Kington Town FC	Mill Street		Kington	Herefordshire	HR5 3AL	256540	329467	ounty of Herefordshi	Saturday	
Herefordshire FA	Kington Town Youth F.C.	44107	U13	11410653	Kington Town FC	Mill Street		Kington	Herefordshire	HR5 3AL	256540	329467	ounty of Herefordshi	Sunday	
Herefordshire FA	Kington Town Youth F.C.	44107	U15	11410648	Kington Town FC	Mill Street		Kington	Herefordshire	HR5 3AL	256540	329467	ounty of Herefordshi	Sunday	
Herefordshire FA	Kington Town Youth F.C.	44107	U16	11410646	Kington Town FC	Mill Street		Kington	Herefordshire	HR5 3AL	256540	329467	ounty of Herefordshi	Sunday	
Herefordshire FA	Kington Town Youth F.C.	44107	U8	11410655	Kington Town FC	Mill Street		Kington	Herefordshire	HR5 3AL	256540	329467	ounty of Herefordshi	Saturday	
Herefordshire FA	Lads Club (SUNDAY) F.C.	43908	First	11411141	Hereford Leisure Centre	Holmer		Hereford	Herefordshire		241550	350550	ounty of Herefordshi	Sunday	
Herefordshire FA	La Mano De Dios 86 F.C.	209753	First	11138971	Ledbury Town	New Street		Ledbury	Herefordshire	HR8 2AE	237867	370912	ounty of Herefordshi	Sunday	
Herefordshire FA	LC Galaxy FC	226612	u9	11455330	Hereford Leisure Centre	Holmer		Hereford	Herefordshire		241550	350550	ounty of Herefordshi	Saturday	
Herefordshire FA	Ledbury Swifts FC	146214	U10	11440172	Ledbury Rugby Club	Ross Road Playing Fields	Ross Road	Ledbury	Herefordshire		0	0	ounty of Herefordshi	Saturday	
Herefordshire FA	Ledbury Swifts FC	146214	U11	11440176	Ledbury Rugby Club	Ross Road Playing Fields	Ross Road	Ledbury	Herefordshire		0	0	ounty of Herefordshi	Saturday	
Herefordshire FA	Ledbury Swifts FC	146214	U11	11440194	Ledbury Rugby Club	Ross Road Playing Fields	Ross Road	Ledbury	Herefordshire		0	0	ounty of Herefordshi	Sunday	
Herefordshire FA	Ledbury Swifts FC	146214	U12 Rovers	11440179	Ledbury Rugby Club	Ross Road Playing Fields	Ross Road	Ledbury	Herefordshire		0	0	ounty of Herefordshi	Sunday	
Herefordshire FA	Ledbury Swifts FC	146214	U12 United	11440180	Ledbury Rugby Club	Ross Road Playing Fields	Ross Road	Ledbury	Herefordshire		0	0	ounty of Herefordshi	Sunday	
Herefordshire FA	Ledbury Swifts FC	146214	U13	11440196	Ledbury Rugby Club	Ross Road Playing Fields	Ross Road	Ledbury	Herefordshire		0	0	ounty of Herefordshi	Sunday	
Herefordshire FA	Ledbury Swifts FC	146214	U13 Athletic	11440183	Ledbury Rugby Club	Ross Road Playing Fields	Ross Road	Ledbury	Herefordshire		0	0	ounty of Herefordshi	Sunday	
Herefordshire FA	Ledbury Swifts FC	146214	U14 Rovers	11440184	Ledbury Rugby Club	Ross Road Playing Fields	Ross Road	Ledbury	Herefordshire		0	0	ounty of Herefordshi	Sunday	
Herefordshire FA	Ledbury Swifts FC	146214	U15 Rovers	11440189	Ledbury Rugby Club	Ross Road Playing Fields	Ross Road	Ledbury	Herefordshire		0	0	ounty of Herefordshi	Sunday	
Herefordshire FA	Ledbury Swifts FC	146214	U15 Wanderes	11440187	Ledbury Rugby Club	Ross Road Playing Fields	Ross Road	Ledbury	Herefordshire		0	0	ounty of Herefordshi	Sunday	
Herefordshire FA	Ledbury Swifts FC	146214	U16 Athletic	11440191	Ledbury Rugby Club	Ross Road Playing Fields	Ross Road	Ledbury	Herefordshire		0	0	ounty of Herefordshi	Sunday	
Herefordshire FA	Ledbury Swifts FC	146214	U17	11440201	Ledbury Rugby Club	Ross Road Playing Fields	Ross Road	Ledbury	Herefordshire		0	0	ounty of Herefordshi	Sunday	
Herefordshire FA	Ledbury Swifts FC	146214	U8	11440152	Ledbury Rugby Club	Ross Road Playing Fields	Ross Road	Ledbury	Herefordshire		0	0	ounty of Herefordshi	Saturday	
Herefordshire FA	Ledbury Swifts FC	146214	U9 athletic	11440165	Ledbury Rugby Club	Ross Road Playing Fields	Ross Road	Ledbury	Herefordshire		0	0	ounty of Herefordshi	Saturday	
Herefordshire FA	Ledbury Swifts FC	146214	U9 United	11440155	Ledbury Rugby Club	Ross Road Playing Fields	Ross Road	Ledbury	Herefordshire		0	0	ounty of Herefordshi	Saturday	
Herefordshire FA	Ledbury Town F.C.	43870	1st	11230105	Ledbury Town	New Street		Ledbury	Herefordshire	HR8 2AE	237867	370912	ounty of Herefordshi	Saturday	
Herefordshire FA	Ledbury Town F.C.	43870	Reserves	11064677	Ledbury Town	New Street		Ledbury	Herefordshire	HR8 2AE	237867	370912	ounty of Herefordshi	Saturday	
Herefordshire FA	Ledbury Town F.C.	43870	U18	11430894	Ledbury Town	New Street		Ledbury	Herefordshire	HR8 2AE	237867	370912	ounty of Herefordshi	Thursday	
Herefordshire FA	Ledbury Town F.C.	43870	Veterans	11457626	Ledbury Town	New Street		Ledbury	Herefordshire	HR8 2AE	237867	370912	ounty of Herefordshi	Sunday	
Herefordshire FA	Ledbury Town F.C.	43870	Women's	11369281	Ledbury Town	New Street		Ledbury	Herefordshire	HR8 2AE	237867	370912	ounty of Herefordshi	Sunday	
Herefordshire FA	Leintwardine Colts F.C.	43871	First	10922329	Leintwardine FC	Paytoe Lane		Leintwardine	Herefordshire	SY7	272600	341000	ounty of Herefordshi	Saturday	
Herefordshire FA	Leintwardine School Sports Club F.C.	140832	U11	11303653	Leintwardine Primary School	Leintwardine		Hereford	Herefordshire	SY7 0LB	274064	340411	ounty of Herefordshi	Saturday	
Herefordshire FA	Leominster Minors F.C.	146568	U10	11412659	Briarwood Stadium	Bridge Street		Leominster	Herefordshire	HR6 8EA	259813	349280	ounty of Herefordshi	Saturday	
Herefordshire FA	Leominster Minors F.C.	146568	U11	11412636	Briarwood Stadium	Bridge Street		Leominster	Herefordshire	HR6 8EA	259813	349280	ounty of Herefordshi	Saturday	
Herefordshire FA	Leominster Minors F.C.	146568	U11 Girls	11412652	Briarwood Stadium	Bridge Street		Leominster	Herefordshire	HR6 8EA	259813	349280	ounty of Herefordshi	Sunday	
Herefordshire FA	Leominster Minors F.C.	146568	U13	11412632	Briarwood Stadium	Bridge Street		Leominster	Herefordshire	HR6 8EA	259813	349280	ounty of Herefordshi	Sunday	
Herefordshire FA	Leominster Minors F.C.	146568	u13 Colts	11412657	Briarwood Stadium	Bridge Street		Leominster	Herefordshire	HR6 8EA	259813	349280	ounty of Herefordshi	Sunday	
Herefordshire FA	Leominster Minors F.C.	146568	U13 girls	11412654	Briarwood Stadium	Bridge Street		Leominster	Herefordshire	HR6 8EA	259813	349280	ounty of Herefordshi	Sunday	
Herefordshire FA	Leominster Minors F.C.	146568	U14	11412629	Briarwood Stadium	Bridge Street		Leominster	Herefordshire	HR6 8EA	259813	349280	ounty of Herefordshi	Saturday	

Herefordshire FA	Leominster Minors F.C.	146568	U14 Colts	11412637	Briarwood Stadium	Bridge Street		Leominster	Herefordshire	HR6 8EA	259813	349280	ounty of Herefordshi	Sunday
Herefordshire FA	Leominster Minors F.C.	146568	U15	11412628	Briarwood Stadium	Bridge Street		Leominster	Herefordshire	HR6 8EA	259813	349280	ounty of Herefordshi	Sunday
Herefordshire FA	Leominster Minors F.C.	146568	U15 Girls	11412626	Briarwood Stadium	Bridge Street		Leominster	Herefordshire	HR6 8EA	259813	349280	ounty of Herefordshi	Sunday
Herefordshire FA	Leominster Minors F.C.	146568	U16	11412640	Briarwood Stadium	Bridge Street		Leominster	Herefordshire	HR6 8EA	259813	349280	ounty of Herefordshi	Sunday
Herefordshire FA	Leominster Minors F.C.	146568	U18	11003167	Briarwood Stadium	Bridge Street		Leominster	Herefordshire	HR6 8EA	259813	349280	ounty of Herefordshi	Tuesday
Herefordshire FA	Leominster Minors F.C.	146568	U8	11412663	Briarwood Stadium	Bridge Street		Leominster	Herefordshire	HR6 8EA	259813	349280	ounty of Herefordshi	Saturday
Herefordshire FA	Leominster Minors F.C.	146568	U9	11412653	Briarwood Stadium	Bridge Street		Leominster	Herefordshire	HR6 8EA	259813	349280	ounty of Herefordshi	Saturday
Herefordshire FA	Leominster Town F.C.	43872	Colts	11309014	Briarwood Stadium	Bridge Street		Leominster	Herefordshire	HR6 8EA	259813	349280	ounty of Herefordshi	Saturday
Herefordshire FA	Leominster Town F.C.	43872	First	10922330	Briarwood Stadium	Bridge Street		Leominster	Herefordshire	HR6 8EA	259813	349280	ounty of Herefordshi	Saturday
Herefordshire FA	Lichfield Vaults F.C.	227419	First	11348581	The Common	Widemarsh Common		Hereford	Herefordshire	hr4 9na	240893	350611	ounty of Herefordshi	Sunday
Herefordshire FA	Llandrindod Wells U18 F.C.	44320	First	10972636	Broadway	Lant Avenue		Llandrindod Wells	Herefordshire	LD1 5HT	261176	306321	ounty of Herefordshi	Wednesday
Herefordshire FA	Mercia Athletic F.C.	224183	Colts	11437955	Playing Fields	Marden		Hereford	Herefordshire	hr1 3dw	247452	352132	ounty of Herefordshi	Saturday
Herefordshire FA	Mercia Athletic F.C.	224183	First	11299559	Playing Fields	Marden		Hereford	Herefordshire	hr1 3dw	247452	352132	ounty of Herefordshi	Saturday
Herefordshire FA	Misfits F.C.	217148	First	11201566	Roman Park	Credehill		Hereford	Herefordshire	hr4	243640	345560	ounty of Herefordshi	Sunday
Herefordshire FA	Nexus FC	230922	Nexus	11410608	King George V Playing Fields	St Martins		Hereford		HR2 7RQ	239397	350880	ounty of Herefordshi	Sunday
Herefordshire FA	Norfolk Athletic F.C.	227576	First	11353789	Newton Farm	Marcle Walk	Newton Farm	Hereford	Herefordshire	HR2 7RQ	239397	350880	ounty of Herefordshi	Sunday
Herefordshire FA	Orleton Colts F.C.	213811	First	11163596	Brimfield and Little Hereford Sports Club	Aynall Lane		Brimfields	Herefordshire	SY8 4BG	267709	354031	ounty of Herefordshi	Saturday
Herefordshire FA	Orleton Colts F.C.	213811	Reserves	11291165	Brimfield and Little Hereford Sports Club	Aynall Lane		Brimfields	Herefordshire	SY8 4BG	267709	354031	ounty of Herefordshi	Saturday
Herefordshire FA	Orleton (Sunday) F.C.	111562	First	11096401	Brimfield and Little Hereford Sports Club	Aynall Lane		Brimfields	Herefordshire	SY8 4BG	267709	354031	ounty of Herefordshi	Sunday
Herefordshire FA	Orleton Youth F.C.	44158	U11	11428341	Orleton Recreation Ground	Orleton		Orleton	Herefordshire	SY8 4HL	267333	349517	ounty of Herefordshi	Saturday
Herefordshire FA	Orleton Youth F.C.	44158	U12	11428337	Orleton Recreation Ground	Orleton		Orleton	Herefordshire	SY8 4HL	267333	349517	ounty of Herefordshi	Saturday
Herefordshire FA	Orleton Youth F.C.	44158	U13	11428335	Orleton Recreation Ground	Orleton		Orleton	Herefordshire	SY8 4HL	267333	349517	ounty of Herefordshi	Sunday
Herefordshire FA	Orleton Youth F.C.	44158	U16	11428374	Orleton Recreation Ground	Orleton		Orleton	Herefordshire	SY8 4HL	267333	349517	ounty of Herefordshi	Sunday
Herefordshire FA	Orleton Youth F.C.	44158	U8	11428367	Orleton Recreation Ground	Orleton		Orleton	Herefordshire	SY8 4HL	267333	349517	ounty of Herefordshi	Saturday
Herefordshire FA	Orleton Youth F.C.	44158	U9	11428346	Orleton Recreation Ground	Orleton		Orleton	Herefordshire	SY8 4HL	267333	349517	ounty of Herefordshi	Saturday
Herefordshire FA	Pegasus F.C.	44082	First	10922540	Marden Playing Fields	Marden		Hereford	Herefordshire	241702	351350	351350	ounty of Herefordshi	Saturday
Herefordshire FA	Pegasus Juniors F.C.	43876	First	10922334	Old School Lane	Old School Lane		Hereford	Herefordshire	HR1 1EX	241794	351269	ounty of Herefordshi	Saturday
Herefordshire FA	Pegasus Youth F.C.	44276	Floodlit	11418401	Pegasus FC	Old School Lane		Hereford	Herefordshire	HR1 1EX	241794	351269	ounty of Herefordshi	Thursday
Herefordshire FA	Pegasus Youth F.C.	44276	U10 Juniors	11418596	Pegasus FC	Old School Lane		Hereford	Herefordshire	hr1 1ex	241794	351269	ounty of Herefordshi	Saturday
Herefordshire FA	Pegasus Youth F.C.	44276	U11	11431385	Pegasus FC	Old School Lane		Hereford	Herefordshire	HR1 1EX	241794	351269	ounty of Herefordshi	Sunday
Herefordshire FA	Pegasus Youth F.C.	44276	U11 Colts	11418593	Pegasus FC	Old School Lane		Hereford	Herefordshire	hr1 1ex	241794	351269	ounty of Herefordshi	Saturday
Herefordshire FA	Pegasus Youth F.C.	44276	U11 Jets	11418594	Pegasus FC	Old School Lane		Hereford	Herefordshire	hr1 1ex	241794	351269	ounty of Herefordshi	Saturday
Herefordshire FA	Pegasus Youth F.C.	44276	U11 Juniors	11418592	Marden Playing Fields	Marden		Hereford	Herefordshire		241702	351350	ounty of Herefordshi	Saturday
Herefordshire FA	Pegasus Youth F.C.	44276	U12 Juniors	#MULTIVALUE	Pegasus FC	Old School Lane		Hereford	Herefordshire	hr1 1ex	241794	351269	ounty of Herefordshi	Saturday
Herefordshire FA	Pegasus Youth F.C.	44276	U13	11431394	Pegasus FC	Old School Lane		Hereford	Herefordshire	HR1 1EX	241794	351269	ounty of Herefordshi	Sunday
Herefordshire FA	Pegasus Youth F.C.	44276	U13 Colts	11418445	Pegasus FC	Old School Lane		Hereford	Herefordshire	hr1 1ex	241794	351269	ounty of Herefordshi	Sunday
Herefordshire FA	Pegasus Youth F.C.	44276	U14 Colts	11455333	Pegasus FC	Old School Lane		Hereford	Herefordshire	HR1 1EX	241794	351269	ounty of Herefordshi	Sunday
Herefordshire FA	Pegasus Youth F.C.	44276	U14 Juniors	11359495	Pegasus FC	Old School Lane		Hereford	Herefordshire	hr1 1ex	241794	351269	ounty of Herefordshi	Sunday
Herefordshire FA	Pegasus Youth F.C.	44276	U15	11431399	Pegasus FC	Old School Lane		Hereford	Herefordshire	HR1 1EX	241794	351269	ounty of Herefordshi	Sunday
Herefordshire FA	Pegasus Youth F.C.	44276	U15 Juniors	11418428	Burghill Playing Field	Redstone	Burghill	Hereford	Herefordshire	HR7 4HR	244500	347500	ounty of Herefordshi	Sunday
Herefordshire FA	Pegasus Youth F.C.	44276	U16 Pumas	11418396	Burghill Playing Field	Redstone	Burghill	Hereford	Herefordshire	HR7 4HR	244500	347500	ounty of Herefordshi	Sunday
Herefordshire FA	Pegasus Youth F.C.	44276	U18	11291454	Pegasus FC	Old School Lane		Hereford	Herefordshire	hr1 1ex	241794	351269	ounty of Herefordshi	Saturday
Herefordshire FA	Pegasus Youth F.C.	44276	u9 Juniors	11418595	Pegasus FC	Old School Lane		Hereford	Herefordshire	hr1 1ex	241794	351269	ounty of Herefordshi	Saturday
Herefordshire FA	Pencombe F.C.	43877	First	10922335	Gabbage Sports Ground	Pencombe		Hereford	Herefordshire	HR7 4RN	252744	359804	ounty of Herefordshi	Saturday
Herefordshire FA	Phoenix F.C.	44260	Disabled	11261845	Hereford Leisure Centre	Holmer		Hereford	Herefordshire		241550	350550	ounty of Herefordshi	Sunday
Herefordshire FA	Phoenix F.C.	44260	Disabled Res	11261846	Hereford Leisure Centre	Holmer		Hereford	Herefordshire		241550	350550	ounty of Herefordshi	Sunday
Herefordshire FA	Phoenix F.C.	44260	U13	11404543	Gorsty Lane	Gorsty Lane		Hereford	Herefordshire	HR1 1UN	239428	353322	ounty of Herefordshi	Sunday
Herefordshire FA	Phoenix F.C.	44260	U8	11404550	Broadlands Primary School	Prospect Walk	Tupstey,	Hereford	Herefordshire	HR1 1NZ	240738	352606	ounty of Herefordshi	Saturday
Herefordshire FA	Phoenix Sunday F.C.	213821	First	11163812	Hereford Leisure Centre	Holmer		Hereford	Herefordshire		241550	350550	ounty of Herefordshi	Sunday
Herefordshire FA	Plough F.C.	226966	First	11337226	King George V Playing Fields	St Martins		Hereford	Herefordshire	HR2 7RQ	239397	350880	ounty of Herefordshi	Sunday
Herefordshire FA	Real Toros F.C.	213993	First	11167137	The Abbey Park	Belmont Abbey		Hereford	Herefordshire	hr2 9sh	237799	347902	ounty of Herefordshi	Sunday
Herefordshire FA	Relentless F.C.	219591	First	11231612	Hereford Leisure Centre	Holmer Road		Hereford		hr4 9na	240893	350611	ounty of Herefordshi	Saturday
Herefordshire FA	Roebuck Inn FC	146519	First	11001976	Brimfield and Little Hereford Sports Club	Aynall Lane		Brimfields	Herefordshire	SY8 4BG	267709	354031	ounty of Herefordshi	Sunday
Herefordshire FA	Rose & Crown F.C.	43946	First	10922404	King George Playing Fields			Hereford	Herefordshire		226879	346299	ounty of Herefordshi	Sunday
Herefordshire FA	Rosey Athletic F.C.	227303	First	11345682	King George V Playing Fields	St Martins		Hereford		HR2 7RQ	239397	350880	ounty of Herefordshi	Sunday
Herefordshire FA	Ross Junior Adult Saturday F.C.	233298	First	11456240	Ross-on-Wye Sports Centre	Wilton Rd	Ross-on-Wye	Ross-on-Wye	Herefordshire		223907	359174	ounty of Herefordshi	Saturday
Herefordshire FA	Ross Junior Adult Saturday F.C.	233298	Reserves	11456242	Ross-on-Wye Sports Centre	Wilton Rd	Ross-on-Wye	Ross-on-Wye	Herefordshire		223907	359174	ounty of Herefordshi	Saturday
Herefordshire FA	Ross Juniors Adults F.C.	223673	First	11289292	Ross-on-Wye Sports Centre	Wilton Rd	Ross-on-Wye	Ross-on-Wye	Herefordshire		223907	359174	ounty of Herefordshi	Sunday
Herefordshire FA	Ross Juniors Adults F.C.	223673	Saturday	11413370	Ross-on-Wye Sports Centre	Wilton Rd	Ross-on-Wye	Ross-on-Wye	Herefordshire		223907	359174	ounty of Herefordshi	Saturday
Herefordshire FA	Ross Juniors Adults F.C.	223673	Saturday Res	11413371	Ross-on-Wye Sports Centre	Wilton Rd	Ross-on-Wye	Ross-on-Wye	Herefordshire		223907	359174	ounty of Herefordshi	Saturday



