

Section 3 Playing Pitch Strategy for each Area including summary of key findings and recommendations

Kington Area

Herefordshire Playing Pitch Assessment

**On Behalf of Herefordshire Council
October 2012**

**Ruth Jackson MA MRTPI
Principal Leisure and Countryside Recreation Officer
Herefordshire Council**

Contents

1. Area Profile
2. Supply: Quantitative Assessment
3. Qualitative Assessment:
4. Demand: Research and Consultation
5. Adequacy of Current Provision: The Playing Pitch Methodology
6. Predicting the Future
7. Developing Local Standards
8. Recommendations and Future Actions for Kington Area

Kington Area Supply and Demand

1. Area Profile

1.1 Planning Background

- 1.1.1 Herefordshire Council commissioned GL Hearn to prepare a Local Housing Requirement Study (October 2011) to inform the development of the Local Development Framework Core Strategy. This includes demographic projections for population, households and dwellings, taking account of past demographic trends and forecast economic performance. The plan period covers 2011 – 31 and the analysis sets out the projections for population and housing growth for the county across seven sub Housing Market Areas. (HMAs) including Hereford. A full list of all sub HMAs can be found in the Strategic Overview.

1.2 Population

- 1.2.1 Kington area has an estimated population (2010 mid-year estimates) of 9,500 residents (6.5 % of the county's population) and includes the following wards: Castle, Kington Town, Pembridge and Lyonshall & Titley.

For analytical purposes, it has been divided into the two sub-localities of Kington town and Kington rural.

- 1.2.2 **Kington Town** is the smallest of Herefordshire's market towns and has the highest proportion of people aged 65 and over out of all areas in the county. Parts of it have a younger age profile than the surrounding area of 'Kington'. The proportion of working age people falls within the lowest 5% in Herefordshire.
- 1.2.3 **Kington Rural** has a notably old age profile, with a high proportion of people aged 65 and over and a relatively low proportion of children. Parts of it have the largest proportions of over 65s (falling within the top 25% in Herefordshire). Parts of it have the lowest proportions of children, falling within the lowest 5% in the county. *Herefordshire Council Research Team*

1.3 Market Segmentation

- 1.3.1 Sport England's Market segmentation identified that the following "types" are the most dominant market segments in the Kington Area:

Kington Town:

- Philip 46 – 55, Comfortable mid-life males: Most active type within this peer group participating in a number of activities including team sports, racquet games and technical sports
- Elsie and Arnold 66+ Retirement home singles: much less active than others in their group: activities include walking, swimming and bowls

Kington Rural

- Philip 46 – 55, Comfortable mid-life males: Most active type within this peer group participating in a number of activities including team sports, racquet games and technical sports
- Ralph and Phylis 66+ Comfortable retired couple: generally less active than the average adult population, but their activity levels are higher than others in their age range: activities include swimming, the gym, bowls and golf.

Sport England and Experian Ltd. 2010, Measure: Sport Market Segmentation

2. Supply: Quantitative Assessment

- 2.0 This section considers the quantitative assessments of the grass playing pitch provision for football, cricket and rugby. Provision for Hockey is also considered and the use of Synthetic Turf Pitches or grass pitches in the area. It also provides details of bowls and tennis.

2.1 Current Provision

- 2.1.1 There are a total of **16** grass pitches for football, cricket, rugby and hockey pitches in the area.

This figure includes all known public, private, school and other pitches whether they are in secured public use or not.

- 2.1.2 The full schedule and location of pitches can be seen in the
- Maps of the County showing both areas and pitch type attached in Appendix 1

- 2.1.3 The existing pitches comprise of the following:

- 4 x Cricket
- 6 x senior Football
- 4 x junior Football
- 2 x senior Hockey

In addition there are

- 8 x tennis courts,
- 1 x bowling greens

2.1.4 Of these 16 pitches, 12 (75 %) are senior full size pitches. Total 16 + population using the 2010 estimated population census (rounded figures in the Kington Area is 8,100. This equates to circa one pitch for every 675 adults (16+) in the study area. This ratio pitches to adults compares favourably to many other areas including England as a whole.

Table 1: Pitch Ratios

Local Authority	Ratio (Pitches: adults)
Kennett District Council	1:365
St Albans City and District Council	1:540
Chichester District Council	1:599
South Somerset District Council	1:608
Kington Area	1:675
Halton Borough Council	1:677
Staffordshire Moorlands District Council	1:761
Lichfield District Council	1:766
North Lincolnshire Council	1:773
North Wiltshire District Council	1:804
Derwentside District Council	1:815
Kirklees Metropolitan Borough Council	1:867
South Ribble Borough Council	1:891
Swindon	1:926
Adur District Council	1:947
Rochdale Metropolitan Borough Council	1:968
England	1:989
Ipswich Borough Council	1:992
Northamptonshire County	1:1,015
St Helens	1:1,050
Portsmouth City Council	1:1,100
Tamworth Borough Council	1:1,221
Sandwell MBC	1:1,327
Wolverhampton City Council	1:1,537

Data used from PMP Consultant's studies.

2.2 Accessibility

2.2.1 In line with “Towards a Level Playing Field: a manual for the production of a Playing Pitch Strategy” (Sport England 2003) the definition used for “community pitches” is those with “secured community use”. In practise this definition embraces:

Table 2: Community Use Categories

CATEGORY	DEFINITION	SUPPLEMENTARY INFORMATION
A (i)	Secured Community Pitches	Pitches in local authority or other public ownership or management
A (ii)		Pitches in the voluntary, private or commercial sector which are open to members of the public
A (iii)		Pitches at education sites which are available for use by the public through formal community use arrangements*
B	Used by Community, but not secured	Pitches not included in the above, that are nevertheless available for community use e.g. school/college pitches without formal use agreements
C	Not open for Community use	Pitches at establishments which are not, as a matter of policy or practice, available for hire by the public

- Where there is a charge it must be reasonable and affordable for the majority of the local community.
- Pitches in secured community use are pitches that are available for community use by community teams and whose future is secured for the coming seasons by one of the following:
 - A formal community use agreement
 - A leasing/management arrangement between the school and LEA requiring the pitches to be available to community teams
 - A policy of community use minuted by the school or LEA including tariff of charges
 - Minutes of the board of school governors allowing use of pitches by community teams
 - Written commitment from the school to the current community team using the pitches.

2.2.2 Of the 16 pitches identified, 9 are secured for use by the community. (A(i) A(ii) A(iii)). Whilst there are a number of non community use sites, including school sites which are used “informally” by the community, as these sites are not seen as secured by Sport England, they have not been included in the demand modelling exercise reported later in this document.

- 2.2.3 It should also be noted that the impending “Academy Status” the majority of senior schools across Herefordshire are now seeking will make an impact on the future pitch resources which will be available for community use. As this area is an “unknown quantity” and will no longer be under Local Authority control, the assumption has been made to exclude school sites which are not currently offering community use from the demand modelling exercise.
- 2.2.4 It is understood that Kington High School has two formal agreements, one with Kington Cricket Club who use their cricket pitch as a second ground and one with Kington Tennis club who use their outdoor facilities. The rest of the outdoor pitches are available for community use. This is identified as a future “risk”.
- 2.2.5 Also to note is the impact single pitch junior school sites are likely to have on current and future demand. Their role is seen by Sport England as limited and although Herefordshire has large numbers of junior schools, given the school curricula and capacity the pitches have it is unlikely that they could sustain additional community use on a regular basis.
- 2.2.6 There are no schools in the Kington Area either offering formal or informal community use on their pitches.
- 2.2.7 Conversely some junior schools may benefit from additional community use, particularly if they are at risk of closure. This is identified as a recommendation for future consideration and exploration with property services.
- 2.2.8 Information on existing community use agreements on school sites has not been fully collated previously and it has been identified as a recommendation for future consideration with property services.
- 2.2.9 Table 3 below highlights the use of each site in the area.

Table 3: Community/non community use pitches in Kington Area

CATEGORY	DEFINITION	SUPPLEMENTARY INFORMATION
A (i)	Secured Community Pitches	PP132 Spearmarsh Common <ul style="list-style-type: none"> • 1 x cricket PP246 Kington Recreation Ground <ul style="list-style-type: none"> • 2 x senior football • 1 x cricket • 1 x hockey
A (ii)		PP158 Kington Town Football Ground <ul style="list-style-type: none"> • 1 x senior football PP197 Shobdon Football Ground

		<ul style="list-style-type: none"> • 1 x senior football PP129 Shobdon Cricket Ground 1 x cricket
A (iii)		PP247 Lady Hawkins High School <ul style="list-style-type: none"> • 1 x cricket • 4 x tennis courts
B	Used by Community, but not secured	
C	Not open for Community use	PP23 Eardisley Primary School <ul style="list-style-type: none"> • 1 x junior football PP104 Almeley Primary School <ul style="list-style-type: none"> • 1 x junior football PP247 Lady Hawkins High School <ul style="list-style-type: none"> • 2 x senior Football • 1 x senior hockey PP68 Pembridge Primary School <ul style="list-style-type: none"> • 1 x junior football PP73 Shobdon Primary School <ul style="list-style-type: none"> • 1 x junior football

2.3 Location

- 2.3.1 Sport England’s Facilities Planning Model supports a “hierarchical” approach for the development of sports facilities recognising that larger centres of population can sustain facilities which can provide facilities for a wider hinterland of rural parishes either at a district, local or neighbourhood level or as in the case of Hereford City a sub regional and county level. For Herefordshire it looks like this:
- Tier 1 Sub regional/ Countywide (50K population: Hereford City)
 - Tier 2 District (10K population: Market Towns)
 - Tier 3 Local (3k population: Market Towns)
 - Tier 4 Neighbourhood (Significant Settlements)
- 2.3.2 In the case of Kington Area, in a predominantly rural area where resources are limited, access to local facilities is often dependant on the main population centres providing them. Kington is considered Tier 3 Local.
- 2.3.3 Therefore whilst across the area, the majority of rural parishes don’t have access to pitches and as you would expect the main centres of population, provides the most facilities. In Kington Area most of the pitches are located in KingtonTown or the main villages where the facilities are more multi-functional offering a range of sports and facilities acting as a local “hub”. For example, Kington has provision for football, cricket and bowling.
- 2.3.4 As part of the Local Development Framework, Planning has identified new housing growth areas across the county using a sustainable framework based on market towns, service centres and service hubs as areas most likely and capable of sustaining future growth. Those settlements indentified for growth are set out in the table below as it

is likely the areas of housing and population growth will provide opportunities for future investment in sports pitches to meet future supply and demand requirements. It is important to note that where, for example, a parish has no facilities, such as Eardisley and Pembridge, and no evidence to suggest they are required in the future, any opportunities arising from new housing should be considered outside of the Parish based on this hierarchical approach and within the thresholds set out below.

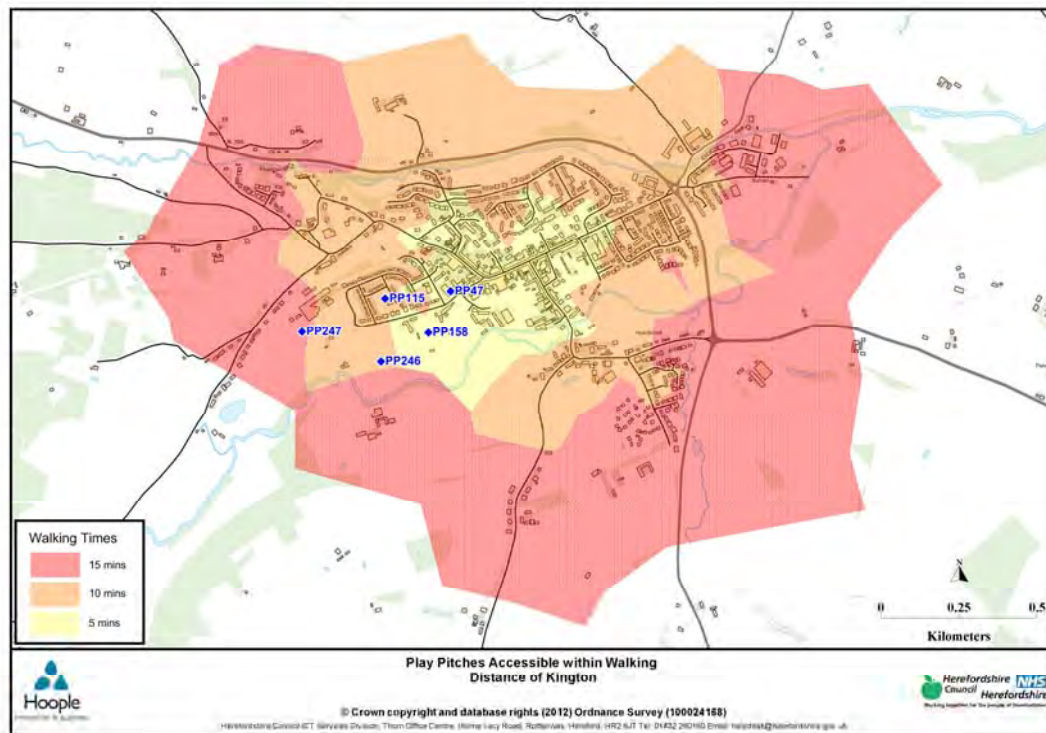
Table 4: Location / Distribution of Pitches/hierarchy

Sub-Area/Parish	Total Playing Pitch area (hectares)	Total Playing Pitch area with secured community access (hectares)	% of Playing Pitch area with secured community access (hectares)
Market Town			
Kington	6.5 ha Lady Hawkins HS Kington Town Football Ground Kington Recreation ground	6ha Kington Town Football Ground Kington recreation ground Lady Hawkins HS Cricket	92%
Rural Service Hubs			
Almeley	1.7ha Almeley Primary School Spearmarsh Common	1.4ha Spearmarsh Common	82%
Rural Service Centres			
Eardisley Group	0.58ha Eardisley Primary School	0ha	0%
Pembridge	1ha Pembridge Primary School	0ha	0%
Shobdon	3.61ha Shobdon Primary School Shobdon Football Ground Shobdon Cricket Ground	2.7 ha Shobdon Football Ground Shobdon Cricket Ground	75%
Parishes			
Kington Rural & Lr Harpton Group	0	0	0
Titley and District Group	0	0	0
Brilley	0	0	0
Huntington	0	0	0
Lyonshall	0	0	0
Kindersley and District Group	0	0	0
Staunton on Wye Group	0	0	0

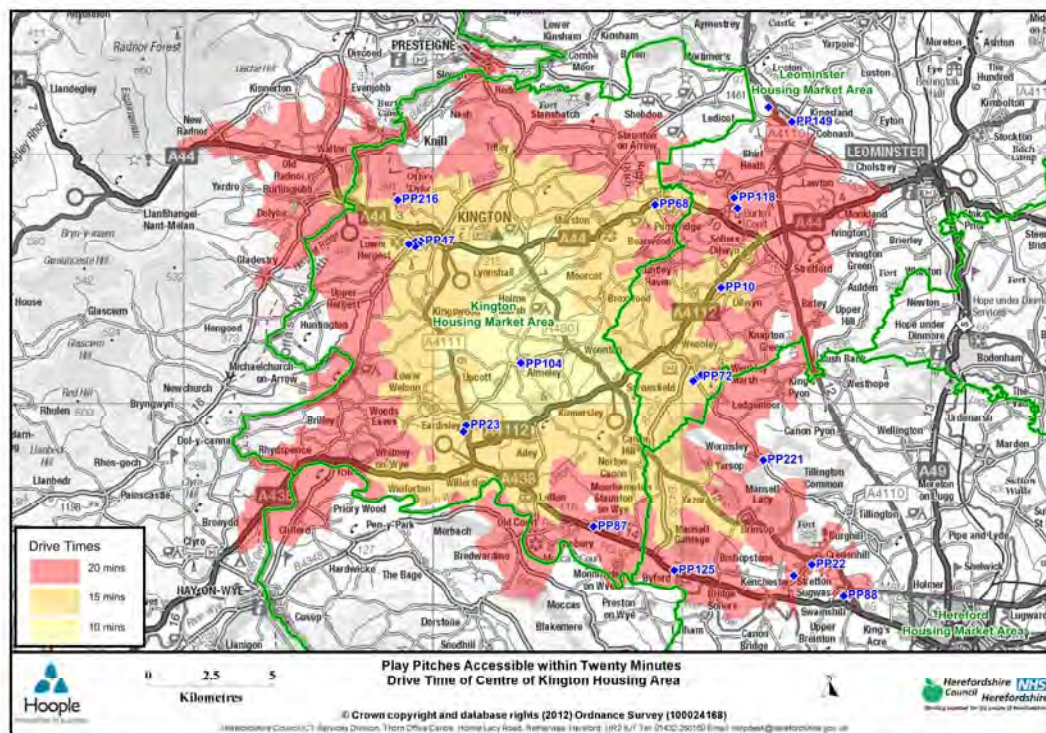
2.4 Thresholds

- 2.4.1 In an area of both urban and rural mix it is important to see if the population is within a reasonable threshold distance to access facilities. It is recognised that rural areas are often marginalised having less access to a range of facilities but it would also be unreasonable to expect the same ease of access that those living in urban areas afford. Therefore a slightly different methodology has been considered for rural and urban areas, which meets with Sport England's recommendations. In this way it can be shown if there are any obvious gaps in provision which may require addressing.
- 2.4.2 The modelling exercise for "urban areas" including Kington is based on walking and access times recommended by Sport England of "15 minutes walking at 3 mph
- 2.4.3 The modelling exercise for "rural areas" is based on driving and access times recommended by Sport England of a 20 minute drive time on A and B roads.
- 2.4.4 All access times are taken from a central point in Kington Town.
- 2.4.5 Map 2a below shows the 15 minute walk modelling exercise
- 2.4.6 Map 2b below shows the 20 minute drive time modelling exercise. This identifies that all facilities can be accessed with 10mins, 15mins or 20mins from anywhere within the area, including some in surrounding localities with the exception of some very small pockets which do not have A or B roads. There is no supporting evidence to suggest these areas require facilities or have difficulties accessing nearby facilities.

Map 2a: shows walking thresholds in Kington Town



Map 2b: shows “Playing Pitches accessible within a 20 minute drive time of Centre of Kington”



2.5 Ownership

- 2.5.1 The table below illustrates the ownership of all pitches.
- 2.5.2 The largest providers are the Parish Councils and Voluntary/Private sector in respect of community use although there are a number of school sites, all of which have no formal community access.
- 2.5.3 Kington Cricket club lease their ground from Kington Town Council and have a formal agreement with the school to use the school ground as their second ground. Kington Tennis Club lease the tennis courts from the school.
- 2.5.4 There is no other formal community use at school sites in the Kington Area. Schools have been consulted via the Schools Sports Partnerships, but further work is recommended if schools are to play a more prominent part in community use in the future, around the school curricula use.

Table 5 Ownership

Ownership	No. of senior football pitches	No. of junior football pitches	No. of mini football pitches	No. of cricket pitches	No. of senior rugby pitches	No. of junior rugby pitches	No of senior and junior hockey	No of Tennis courts
Herefordshire Council (HALO) community use	0	0	0	0	0	0	0	0
School community use	2	0	0	2	0	0	1	4
School non community use	2	4	0	0	0	0	1	2
Private schools	0	0	0	0	0	0	0	0
Parish/Town Council community use	0	0	0	1	0	0	0	2
Private/vol. community use	2	0	0	1	0	0	0	0
Total community	4	0	0	4	0	0	1	6
Total non community	2	4	0	0	0	0	1	2

0 pitches:	Local Authority (HALO)
12 pitches:	School
0 pitches:	private school
3 pitches:	Voluntary/private
1 pitches:	Parish Council
Total 16:	9 in community use

**note: Tennis courts are not included in the totals above*

3 Qualitative Assessment

3.1 Pitches and Site Facilities

- 3.1.0 Perceived quality of pitches and ancillary facilities is almost as important as actual quality as the perceptions of users or potential users can easily change patterns of use.
- 3.1.1 This considers the quality of all the grass playing pitch provision for football, cricket and rugby in the study area. It also includes some detail for bowls and tennis where appropriate.
- 3.1.2 All community facilities listed in Appendix 2 have been visited during Sept and October 2010 by the same assessor from Parks and Countryside. All school sites have been visited in the same period by the same assessors from Property Services to ensure consistency. School changing rooms were not surveyed.
- 3.1.3 The non technical assessment proforma matrix provided as part of Sport England's "Towards a Level Playing Field Guidance" has been used and sites banded accordingly a copy of which is provided in Appendix 3. Scores for each of the playing pitches and changing accommodation are recorded on the table in Appendix 2.

3.2 Site Changing Facilities: Community use only

- 3.2.1 The site assessment matrix rates the overall facilities (changing rooms, parking etc) and the pitches themselves. The percentage scores for the overall sites are broken down as follows:
 - Over 90% - excellent
 - 60%-90% - good
 - 40% - 59% - average
 - 30% - 39% - poor
 - Less than 30% - very poor

3.2.2 The overall results for the quality of facilities show that all community use sites have changing accommodation and quality has been rated excellent or good across the sites:

- **2 x changing accommodation is excellent:** Eardisley Tennis Courts, Kington Recreation Ground (football)
- **4 x changing accommodation is good:** Spearmarsh Common, Cricket Ground, Kington Town Football Ground, Kington Bowling Green, Shobdon Cricket Club
- **1 x changing accommodation is average:** Shobdon Football ground

3.2.3 All facilities are actively used by clubs for competitive matches. Not all the facilities used by the clubs for competitive sports matches have been rated as either excellent or good. 1 facility at Shobdon Football Ground has been rated as average. Of the clubs who responded Shobdon Football Club agreed with their average rating. This is below the Sport England recommendation of 60% and would suggest that any future investment opportunities should be a priority for these areas.

3.3.4 Almeley Cricket Club who use Spearmarsh Common have rated the changing facilities as poor and Kington Town Football club have highlighted a need to improve their changing facilities and have rated them as poor, and as the club wishes to develop and attract new members this is seen as an issue.

3.2.5 It should therefore be noted that any future improvements for on-site facilities will be dependent on the current usage or status of a site

3.3 Pitch quality: Community use only

3.3.1 The percentage scores for pitches are broken down as follows:

- Over 90% - excellent
- 64%-89% - good
- 55% - 63% - average
- 30% - 54 % - below average
- Less than 30% - poor

3.3.2 The overall results for the quality of facilities show that quality also varies across the sites (not including Eardisley Tennis Courts)

- **2 x excellent pitches:** Kington Town Football Ground, Kington Bowling Green
 - **4 x pitches are rated good:** Spearmarsh Common Cricket Ground, Kington Recreation Ground (Cricket), Shobdon Cricket Ground Shobdon Football Ground
 - **2 x pitches are rated below average:** Kington Recreation Ground (Football),
- 3.3.3 All the pitches are used by the clubs for competitive sports matches and home venues. The majority have all been rated as either excellent or good. In these instances where clubs have responded they have also rated these pitches as good or acceptable. Of the clubs who responded Shobdon Football Club agreed with their average rating apart from parking which they rate as acceptable.
- 3.3.4 Shobdon Football Club and Shobdon Cricket Club both have recently secured s.106 monies to help improve their pitches including ongoing maintenance, so it is encouraging to see that their facilities have been rated good and above the minimum standard.
- 3.3.5 Kington Recreation Ground is rated below average, although Kington Town Council has rated it good. It is, however, well used by the local hockey, football and cricket club as well as a general recreation ground for Kington town, being an important “hub” site for the Town. The disparity in ratings and its high usage, would suggest this site needs good management and maintenance to sustain its current levels of usage and it should be a priority for any future investment opportunities where appropriate.
- 3.3.6 It should be noted that any requirement for investment to improve the quality of these pitches would be dependent on the current usage or status of the sites.
- 3.3.7 Kington Bowling Green has a quality rating of good for changing accommodation and excellent for the Bowling Green
- 3.3.8 Eardisley Tennis courts have a quality rating of excellent for changing accommodation although the club would disagree with this rating and have indicated it is poor.

4 Demand: Research and Consultation

This section considers the number of clubs and teams, user perceptions and evidence taken from Governing Bodies Sports Strategies of development priorities and anecdotal evidence from Local Sports Development Officers for the Herefordshire area of any issues around the development of the game. It also considers any opportunities or threats to existing facilities that are currently known.

4.1 Kington Area Clubs and Teams

4.1.1 The table below outlines the number of clubs and teams for football, cricket and hockey in the study area (Please note there are no rugby clubs): A full list of clubs and teams can be found in Appendix 4. In summary there are:

Table 6: Number of clubs and teams in Kington Area

Sport	No. of clubs	No. adult teams	No. junior teams (u11s/12s) (u13s+)	No. mini teams (u8s/9s/10s)
Football	4	4 m	8 (all m) U11s/12s: 4 U13s +:4	5 (mixed)
Cricket	4	10m	3m	0
Hockey	1	1f	0	0
Bowling	1	28m 15 f	0	0
Tennis	2	0	0	0
Total	12	15	11	5

Excluding Bowling and Tennis, there are 9 clubs and 31 teams playing in the study

- 44%, under half are football. Of the 17 football teams 76% are juniors/minis. This is reflective of national trends, which indicate that participation in mini and junior football is growing.
- 44 %, under half are cricket. Of the 13 teams 30% are juniors.
- 12 % are hockey. 0% is juniors.

4.2 Team equivalents: School Curricula Use

4.2.1 Sport England has produced the following calculation of team equivalents for both school use and training:

Table 7: Sport England Team Equivalents

Type of Player	Length of match/session	Area of play/size of pitch	Team equivalent
PE Lesson: 11 – 16 yr olds football/rugby	Assume 2 hours	1 junior football/ rugby pitch	1 junior football/ rugby team
PE Lesson 7 – 11 yr olds	Assume 2 hours	1 junior football / rugby pitch	1 mni-soccer/1mini rugby team
Football / rugby training – adults	Up to 2 hours	1 adult football/rugby pitch	1 adult football/ rugby team
Junior cricket training	Up to 2 hours	1 cricket pitch	1 junior team
Break-time activity	Up to 1 hour	1 junior or adult pitch	1 junior football team

4.2.2 Only those schools where clubs are known to play (either with a formal or informal agreement) are included as team equivalent. There are no schools with informal agreements.

Table 8: School Team Equivalents

Senior School	Community Use	Pitch	School Use Equivalent
Lady Hawkins High School	Kington Girls Football Club	2 x senior football	School use : 5 x 2 hours per week team equivalent 5 junior football teams
Formal Agreement in place for use of pitches by local clubs but depends on quantity and weather conditions!	Kington Cricket Club	1 x cricket	School use: 5 x 2 hours per week equivalent 5 junior cricket teams
	Kington Ladies Hockey Club	1 x hockey	School use: 5 x 2 hours per week equivalent 5 junior hockey teams

4.2.3 The following schools in the Kington Area are or are in the process of converting to Academy Status: Lady Hawkins High School: Converted, which means that future use of this facility for community use is uncertain.

4.3 Team equivalents: Club Training

4.3.1 **Football:** Herefordshire Football Association identified that the number of hours training undertaken by teams is on average as follows:

- **Senior teams:** train between 1 – 3 hours per week depending on club. Elite teams average 3 hours per week but most teams will average between 1 and 2 hours per week, therefore in doing the calculation an average has been assumed as follows:

- **Junior/ mini teams:** train for approx 1 hour per week (mini teams approx 30 mins each). In the winter months this is mainly indoors but in the spring (when the clocks change) this is mainly outside.

Total: Based on the total number of teams in the Kington Area, the total team equivalents are 5.5adult teams as shown below:

Table 9: Football Team Equivalents

No of Adult Teams	Adult Team equivalent
Approx 1 team trains 2 x week (33%)	= 1 adult teams
Approx 1 teams train 2 x week (33%)	= 1 adult teams
Total	2 adult teams
No of Junior Games	Adult Team equivalent
9 games/ 2 played per 1 x adult pitch / 4 teams per pitch	2.5 adult teams
5 mini games/ 4 games played per 1 adult pitch / 8 teams per pitch/30 minutes each	0.75 adult teams
Total	3.25 adult teams

4.3.2 Kington football club are able to train outside in the winter months train at Kington Football Ground as these are the only floodlit facilities in the area but bad weather will reduce this option.

4.3.3 Portable floodlights are an option for the other clubs but cost and planning can be an issue. The Herefordshire Football Association has highlighted this as a real problem experienced by a number of clubs across the county as a whole and something future funding opportunities could address.

4.3.4 **Cricket:** Herefordshire Cricket Board identified that the number of hours training undertaken by teams is on average as follows:

- **Senior teams:** train 1 hour per week
- **Junior teams:** train for approx 1 hour per week
- **Mini teams:** train for approx 30 mins per week

- **Total:** Based on the total number of teams in the Kington Area, the total team equivalents is **6.30 hours training equivalent to 6.5 junior teams** as shown below:

Table 10: Cricket Team Equivalents

No of Adult/ Junior / Mini Teams	Junior Team equivalent
10 x senior at 1 hour per week	= 5 junior teams
3 x junior teams at 1 hour per week	= 1.5 junior teams
Total	6.5 junior teams

4.4 Local issues for the development of the sport

- 4.4.1 Individual sports development plans and local knowledge will help identify key areas for the growth of the game and in particular where support is needed to increase participation. This information will help identify priority areas where future investment in pitches and facilities could support these aspirations.
- 4.4.2 **Football:** The FA have tracked team data over a number of years through football participation reports, the trend for Hereford shows significant growth from 2009/10 onwards with growth then beginning to plateau.

Season	Adult male 11v11	Adult female 11v11	Youth Male	Youth female	Mini Soccer - mixed	Total
2009-10	99	7	97	2	57	262
2010-11	108	4	126	21	63	322
2011-12	96	4	125	23	62	310
2012-13	109	4	122	29	68	332

- 4.4.3 The Herefordshire FA has a strategy in place to Grow and Retain all areas of the game from 2012-2015 with a particular focus on adult 11v11 football and is therefore exploring ways to help support existing Clubs/Teams identify new opportunities to develop additional teams . For this to happen, it will require appropriate facilities for training and match play to allow the game to flourish.
- 4.4.4 The FA has an accreditation system known as The FA charter standard award which has 3 echelons. The highest FA award being that of the community award. The FA has set a target nationally to have 75% of all youth football being played in a Charter standard club. 80.95% of youth football in Hereford is played in a Charter Standard Club.
- 4.4.5 As part of this figure, within the Kington Area, Kington Town Youth are a Chartered Standard Club with the potential to become a community club.
- 4.4.6 Key priorities for the Herefordshire FA from 2012-2015 are focused around 6 Key Areas;
- Growth and Retention*
 - Raising Standards
 - Better Players
 - Workforce Development
 - Running the Game

- Facilities*

The main priorities under these headings are as follows.

*Growth and Retention:

- Sustain current affiliated mini soccer teams (mixed) during season 2012-2013 and support Clubs to develop further mini soccer teams during season 2013/2014 and 2014/2015.
- Clubs and Leagues need to be mindful of the FA Youth Development Review and the new formats of Football that will bring in changes to facility provision especially at U7 and U8 who will play 5v5 football from season 2013-2014 and 2014-2015 respectively.
- Develop new and sustain existing Youth Male Teams from U11 – U18 with a vision of 130 teams by season 2014-2015. At U11 and U12 age groups, the format of the game will be 9v9 football on ¾ pitches with U13's upwards progressing to 11v11.
- Develop new and sustain existing Youth Female Teams from U11 – U18 with a vision of 25** teams by season 2014-2015. At U11, Girls currently play 7v7 and at U13 they play 9v9, considerations around U15 playing 9v9 or 11v11 need to be considered linked to player registrations and participation in this area of the County. (**there are currently 25 Youth Female Teams affiliated – therefore the priority will be to retain teams within this area and develop growth where there is potential to do so).
- Adult Male Football is a key priority and therefore particular emphasis will be around sustaining and growing the Adult Male 11v11 Game – links with the U18 League are critical to the sustainability of Male 11v11 Teams in Adult Football.
- Adult Female Football is also a priority and therefore sustaining and growing the Adult Female 11v11 is key to ensuring there is a structured player pathway from U9 – Adult. Priority work with leagues to develop a player pathway from Junior to Adult is important work to be done. There are currently 4 Adult Female Teams with a target of 5 by 2014-2015. Flexibility in playing formats is critical to sustainability of the Adult Female Game within Herefordshire.

4.4.7 Youth Development Review Implications: By the 2012/13 season it is forecast that 9v9 will already be a more popular format for young players across the country than the 11v11 version of the game. These formats are based upon all the academic research, evidence about child development and player development that has been gathered

throughout the extensive consultation process. The Herefordshire Junior League and Herefordshire Girls League already provide 9v9 for U11 and U12 (HJFL) and U13 (HGFL) and have worked with the LA to ensure pitches are marked according to required usage.

- 4.4.8 One of the short-term challenges the Herefordshire FA face along with Leagues and Clubs is ensuring we have facilities that meet the pitch and goal requirements and to support this The FA have specific resources to support Clubs, Leagues and Local Authorities to ensure the pitches are set out according to usage.
- 4.4.9 The FA are introducing mandatory changes to the game from 2013/14 which will see a number of new formats of the game in the youngest age ranges. Introduction of 5v5 football at U7 and U8 from season 2013-2014 suggests that there will be an increased demand in the number of 5v5 pitches as well as 9v9 pitches as this format becomes mandatory to leagues from Under 11. The impact of these changes should be monitored closely as demand levels are likely to change significantly.
- 4.4.10 **Cricket:** The Herefordshire Cricket Board (HCB) has identified within its Facilities Development Plan 2009 -2013, that the county has 45 cricket clubs affiliated to the Herefordshire Cricket Board. 11 are designated Focus clubs of which Kington Cricket club is one as well working towards clubmark.
- 4.4.11 The Herefordshire Cricket Board recognises that there is a good spread of Focus Clubs across the county in terms of travelling distances and population centres. As such clubs are organised into 4 cricket development districts to enable the development of school club links and a progression route for the sport. They are: Central; East; North & West and South & West. The Kington Area mostly falls in North & West district.
- 4.4.13 The focus clubs have detailed development plans and are progressively working with a cluster of schools within the population centres resulting in Herefordshire having seen progressive growth in the number of participants at school club, district and county level over the past 6 years. There is also currently a strong take up of the game at a junior level, male and female.
- 4.4.14 The HCB also undertook an assessment of local facilities and this found that most club houses and pavilions are considered good or adequate but on a club by club basis attention is being paid to ensure that all changing rooms meet modern standards. This is particularly important as women and girls cricket develops and for Focus clubs. Only a few clubs rate their square and outfield and practice facilities

as good. Very few 2nd grounds currently meet quality standards and individual clubs may require an upgrade and improvements to their facilities. This is particularly important for women and girls cricket development and for Focus clubs.

Kington Cricket Club is on short term lease (21 years from 2007) and provides good opportunities for women and girls cricket to develop

4.4.15 In respect of existing facilities at the time of writing this report the Local Planning Authority and the Governing Bodies do not know of any opportunities or threats to the provision of cricket facilities in the Kington Area.

4.4.16 **Hockey:** The International Hockey Federation (IFH) under whose guidance all governing bodies have to operate, have stipulated that 3G, or long pile turf pitches, must be certified as being appropriate for hockey. The maximum permitted will be 35-40mm and provided this is met the pitch can be used for local and regional league competition. There are, however, severe restrictions on use of these pitches outside of that category. However, a pitch with 40mm length pile has to pass the IFH testing parameters and if it does not, then the existing insurance cover may well be invalidated which means that hockey could not be played.

4.4.17 Currently Kington Ladies Hockey club play on the only grass pitches in the County available for community use at Kington Recreation ground and outside the county in Wales as they play in the South Wales League on Saturdays and a local league on Sundays. They also make use of the ATPs in Hereford & Leominster

4.4.18 In respect of existing facilities at the time of writing this report the Local Planning Authority and the Governing Bodies do not know of any opportunities or threats to the provision of hockey facilities in the Kington Area.

4.5 User perception: Club Responses

4.5.1 The key issues raised by the clubs in response to the questionnaire, in terms of participation, facilities used, issues and development opportunities are summarised below. The response rates for each sport to the questionnaire are also included.

4.5.2 **Football:** Returned Questionnaire from Football Clubs

- 3 Clubs (100%)

Table 11: Football Club responses

Club	Kington Girls Football Club
Match Day Venues	Kington Recreation Ground – Hired – Sunday
Cancellations	
Training on main pitch	Outdoor Training Venues: Kington Recreation Ground – Hired–Thursday 6 – 7pm Indoor Training Venue: Lady Hawkins Community Leisure Centre Sports Hall – Hired - Thursday 6 – 7.30 pm
Pitch rating overall	Not filled in
Changing	Not filled in
Showers	Not filled in
Parking	Not filled in
Value for money	Not filled in
Future plans	Increase membership and relocation to different premises
Where do majority of players reside?	Kington
Club	Kington Town Football Club
Match Day Venues	Mill Street, Kington - owned – Saturday 2– 5 pm, Sunday 10 – 1, midweek 7 – 10 pm
cancellations	40 games played last season – 4 cancelled due to pitch condition
Training on main pitch	Indoor Training as Lady Hawkins Community Leisure Centre sports hall – hired – winter time evenings once per week.
Pitch rating overall	Pitch is rated as good overall but evenness, grass cover and length of grass as acceptable
Changing	poor
Showers	good
Parking	good
Value for money	good
Future plans	Increase membership, expand the range of facilities, refurbish existing facilities, including additional pitches.
Where do majority of players reside?	Kington
Club	Shobdon Football Club
Match Day Venues	Match Day Venues: Shobdon Airfield– Leased – Saturday and Sunday when required.
Cancellations	20 games played last season –26 cancelled due to pitch condition
Training	Train 2 hours per week on main pitch

Pitch rating overall	Pitch is rated as good overall
Changing	Acceptable
Showers	Acceptable
Parking	Acceptable
Value for money	Good
Future plans	Future plans include expanding the range of facilities provided and refurbishing the existing facilities.
Where do majority of players reside?	The majority of players reside in Leominster

4.5.3 **Cricket:** Returned Questionnaire from Cricket Clubs:

- 1 Club (50%)
 - 3 Teams – (27%)

Table 12: Cricket Club responses

Club	Almeley Cricket Club
Match Day Venues	Spearmarsh Common , Saturday and Sunday 1.30 – 8,
cancellations	25 games are played on the main pitch each season but 4 cancelled last season due to weather conditions. The main pitch is used for training for 2 hours per week
Training on main pitch	
Pitch rating overall	Acceptable/good – some dog fouling.
Changing	Poor
Showers	Acceptable
Parking	Acceptable
Value for money	Acceptable
Future plans	relocation to different premises
Where do majority of players reside?	various

4.5.4 **Tennis:** Returned Questionnaire from Cricket Clubs:

- 1 Club (100%)

Table 13: Tennis Club responses

Club	Eardisley Tennis Club
Match Day Venues	Eardisley Tennis courts (2 x external floodlit courts) 7 days a week any time except after 10pm in winter.
cancellations	
Training on main pitch	As above

Pitch rating overall	good
Changing	acceptable
Showers	poor
Parking	good
Value for money	good
Future plans	Increase membership
Where do majority of players reside?	catchment area of up to 15 miles

4.6 User perception: Pitch Owner Responses

Table 14: Pitch Owner responses

Owner	Kington Town Council
Venue	Kington Recreation ground
Users	Used by Kington Cricket Club, summer months, Kington Ladies Hockey winter months, Kington Girls FC and Kington Juniors FC winter months.
Facility ratings overall	Good

5 Adequacy of Current Provision: The Playing Pitch Methodology

5.1.0 The remainder of this section draws on the findings of the supply and demand analysis to identify key issues and a future delivery strategy for Herefordshire and Kington Area in particular

The Playing Pitch Methodology comprises 8 stages:

- Stage 1: Identifying Teams / Team equivalents
- Stage 2: Calculating home games per week
- Stage 3: Assessing total home games per week
- Stage 4: Establishing temporal demand for games.
- Stage 5: Defining Pitches used / required on each day
- Stage 6: Establishing Pitches Available.
- Stage 7: Assessing the findings
- Stage 8: Identifying policy options and solutions

5.1.1 Stages 1 – 6 involve numerical calculations, whilst stage 7 and 8 develop issues and solutions. The methodology is employed to analyse the adequacy of current provision and to assess possible future situations, in order that latent and future demand (identified through Team Generation Rates) and the problems with quality, use and capacity of existing pitches can be taken into account. The increase in population is considered by modelling a future year scenario – on this case 2031. Potential changes to pitch stock over that time are also taken into account.

- 5.1.2 It is implicit to the methodology that each sport is dealt with individually with a specific set of calculation for each because, despite some superficial similarities, they exhibit very different patterns of play. Bowling and Tennis are not included in these calculations.
- 5.1.3 We have however, used the Playing Pitch Model assumptions regarding the number of home games per week played by each sport. This is further broken down to deal with junior and senior play which is taken from the league fixtures. The analysis requires a breakdown of junior and senior pitches, however, no differentiation has been made between junior and senior cricket as they play on pitches of similar dimensions.
- 5.1.4 The Playing Pitch Model is a “peak day” model, therefore, we have determined on which day teams /leagues wish to play their fixtures, as well as the peak time (am or pm). The methodology also considers the ability of pitches to sustain play on the peak day at the peak time.

5.2 Playing Pitch Capacity

- 5.2.1 “Towards a Level Playing Field” indicates that it is appropriate to take account of the carrying capacity (i.e. the number of games that pitches are adequately able to sustain per week) when calculating the playing pitch methodology.
- 5.2.2 There is no formula for calculating the carrying capacity of pitches as it is dependent on a number of factors such as weather, conditions, public access, quality of players etc. This information is best gathered through local knowledge, user surveys etc.
- 5.2.3 In calculating the carrying capacity of a pitch, the following should be considered:
- What proportion of the games are cancelled on the pitch due to poor pitch condition
 - Is the condition of the pitch declining over the season
 - What is the maintenance regime for the pitch at present?
 - Could the capacity of the pitch be improved by enhanced maintenance?
 - To what extent are pitches required to accommodate training activity?
- 5.2.4 As the response rate from both clubs and pitch owners is fairly low we haven’t been able to consider the above in a meaningful way. The standard Playing Pitch Model assumes that pitches are able to take 2 games per week. However, this depends on its quality. Therefore, based on other studies and the non technical assessment undertaken

for each pitch an informed judgement has been made to classify them using the following categories:

Table 15: Quality ratings categories

Quality Rating	Carrying Capacity	Multiplication Factor
Excellent/Good	2 matches per week	1.0
Average	1.5 matches per week /	0.75
Below Average	1 match per week	0.5
Poor	0.5 match per week/	0.25

- 5.2.5 If a pitch is of an excellent/ good quality it may be able to take two games per week, hence a higher weighting, however, on the other hand, if the pitch is only able to accommodate 1 match per week, it is equivalent to half a pitch.
- 5.2.6 Increasing the quality of a pitch will therefore increase the capacity of the pitch and reduce the overall number of facilities required. Qualitative improvements are therefore likely to be as important as the provision of additional pitches.
- 5.2.7 Other considerations to be taken into account include things such as carrying capacity which varies between sports and age groups: For example:
The condition of a football pitch is more likely to deteriorate quicker when in use than a cricket pitch due to both the nature of the sport and the time of year these sports are played; one cricket pitch normally supports a number of cricket strips/wickets, but uses the same outfield which can be used alternatively across a cricket season, therefore for these reasons a cricket pitch is more likely to hold three matches or more per week, than football. Lower levels of wear and tear are generated by younger players and the short duration of matches, mini football pitches are considered able to sustain three or four games per week, without detriment to them.
- 5.2.8 Synthetic hockey pitches are not affected by the conditions discussed above as wear and tear of this pitches does not occur to the same degree as grass. These pitches have therefore been considered able to take four games on the peak day, although this is dependent on flexible programming of matches to ensure this is feasible.
- 5.2.9 Table 16 shows the number of pitches available when taking the multiplication factor into consideration.

Table 16: Quality Ratings

Quality Rating Carrying Capacity	Football	Multiplication Factor – pitches available	Total pitches available per week.
Excellent/Good 2 matches per week	community use 2 x senior non community use 2 x senior 1 x junior	community use 2 non community use 2 1	community use 3 x senior non community use 2 x senior 3.25 x junior
Average 1.5 matches per week	non community use 3 x junior	non community use 2.25	
Below Average / poor 1/0.5 match per week	community use 2 x senior	community use 1	
Quality Rating Carrying Capacity	Cricket	Multiplication Factor – pitches available	Total pitches available per week.
Excellent/Good 2 matches per week	community use 4 x senior	community use 4	community use 4 x senior
Quality Rating Carrying Capacity	Hockey	Multiplication Factor – pitches available	Total pitches available per week.
Excellent/Good 2 matches per week	community use 1 x senior non community use 1 x senior	community use 1 non community use 1	community use 1 x senior non community use 1 x senior

5.3 Playing Pitch Model Calculations

- 5.3.1 The table below shows the calculations undertaken to determine the surplus/deficit of football, cricket and rugby pitches in the study area.
- 5.3.2 As per the PPM guidance, it is assumed that all football and rugby teams play a home match every fortnight. However, for cricket teams it is assumed that many teams play home matches more than every fortnight (i.e. mid-week matches etc) hence the figure of 0.7.
- 5.3.3 Data has been determined by a combination of questionnaire responses, telephone interviews, discussions with the HFA and HCB and web based information on league fixtures. Figures are approximate and it is acknowledged that these could change.

5.3.4 Only community use sites have been included and the multiplication factor for the pitches as described above used.

Table 17: Football Surpluses / Deficiencies

Kington Area: Football Provision: Surpluses / Deficiencies					
Stage 1: Identifying Team Equivalents					
Adult Teams	4				
Training adult equivalents	5.25	2 adult/2.5junior/0.75 mini			
Junior Teams (u11s/12s) (U13's +)	13	8 junior (u11's /12's – 4) (u13's + 4) / 5 school equivalents			
Mini Teams (u8's/9's/10s)	5				
Total	27.25				
Stage 2: Home Games per Team per Week					
(based on the principal of one home game per week, one week away = 0.5)					
Stage 3: Total Home Games per Week					
Adult	(4 x 0.5)	2			
Training adult equivalents	(5.25 x 1)	5.25			
Junior (u11s/12s) (U13's +)	(4 x 0.5) (4 x 0.5)	2 – u11's / u12's 2– u13's + (mainly play on senior pitches)			
School Equivalents	(5 x 1)	5			
Mini (u8's/9's/10s)	(5 x 1)	5			
Stage 4: Temporal Demand for Games					
	Sat am	Sat pm	Sun am	Sun pm	Weekday schools/ Weekday training
Adult	0%	100%	0%	0%	
Training adult equivalents	0%	0%	0%	0%	100%
Junior (u13's +) Teams	0%	0%	34%	66%	0%
School Equivalents	0%	0%	0%	0%	100%
Junior (u11's,u12's Mini (u8's,9's,10s) Teams	75%	0%	25%	0%	
Stage 5: Pitches required to meet Peak Demand					
	Sat am	Sat pm	Sun am	Sun pm	Weekday schools/ Weekday training
Adult	0	2	0	0	0
Training adult equivalents	0	0	0	0	5.25
Junior (u13's +) Teams	0	0	0.5	1.5	0
School Equivalents					5
Junior (u11's,u12's Mini (u8's,9's,10s) Teams	1.5 x 9 v 9 3.75 x 7 v 7	0	0.5 x 9 v 9 1.25 x 7 v 7	0	0

Stage 6: Community Pitches available to meet Peak Demand				
To assess the adequacy of current provision weightings have been added to reflect the capacity/availability of existing pitches.				
	LA owned/LEA owned	PC owned	Privately/voluntary owned	Total
Adult	1	0	2	3
Junior	0	0	0	0
Mini	0	0	0	0
Stage 7: Surplus / deficiency of pitches				
	Total pitches	Peak demand	Surpluses/deficiencies	
Adult	3	2	+1 surplus	
Training adult equivalents	3	5.25	-2.25 deficiency if outdoor pitches used on the same day	
Junior (u13's +) Teams	3	1.5	+1.5 surplus	
School Equivalents		5	School use senior pitches at Lady Hawkins	
Junior (u11's,u12's) Mini (u8's,9's,10s) Teams	0	1.5 x 9 v 9 3.75 x 7 v 7	-1.5 x 9 v 9 deficiency -3.75 x 7 v 7 deficiency	
Peak time for adult/junior/mini -	There is no issue with adults and juniors playing on the same day and the older juniors who do play on the same day as the younger juniors play on senior pitches.			
Usage per week for games and training.	Senior pitches used for adult, older juniors and training are used on average 8.5 times per week for games. For 3 pitches this approximately 2.3 times each per week. This does not include training and it is acknowledged that not all training takes place on these pitches which reduces wear and tear. The schools also use their pitches on average 5 x times per week which places a number of junior/mini pitches under additional stress.			

Table 18: Cricket Surpluses / Deficiencies

Kington Area: Cricket Provision: Surpluses / Deficiencies						
Stage 1: Identifying Team Equivalents						
Adult Teams	10					
Adult Training	3					
Junior Teams	8 (3 x junior/ 5 x school equivalents)					
Junior Training	1.5 junior					
Total	22.5					
Stage 2: Home Games per Team per Week						
(based on the principal of one home game per week, one week away = 0.7)						
Stage 3: Total Home Games per Week						
Adult	(10 x 0.7)	7				
Adult Training	(3 x 1)	3				
Junior	(3 x 0.7) (5 x 1)	2.1 5				
Junior Training	(1.5 x 1)	1.5				
Stage 4: Temporal Demand for Games						
	Sat am	Sat pm	Sun am	Sun pm	Tuesday pm	Weekday schools/ Weekday training
Adult	0%	60%	0%	40%	0%	0%
Adult Training	0%	0%	0%	0%	0%	100% (Wednesday)
Junior /School	0%	0%	12%	12%	12%	64% (school)
Junior Training	0%	0%	0%	0%	0%	100% (Thursday)

Stage 5: Pitches required to meet Peak Demand						
	Sat am	Sat pm	Sun am	Sun pm	Tuesday pm	Weekday schools/ Weekday training
Adult	0	4.2	0	2.8	0	0
Adult Training	0	0	0	0	0	3
Junior / School	0	0	0.7	0.7	0.7	5 (school)
Junior Training	0	0	0	0	0	1.5
Stage 6: Community Pitches available to meet Peak Demand						
To assess the adequacy of current provision weightings have been added to reflect the capacity/availability of existing pitches.						
	LA owned/LEA owned	PC owned	Privately/voluntary owned	Total		
Adult/Junior	2	1	1	4		
Stage 7: surplus / deficiency of pitches						
	Total pitches	Peak demand	Surpluses/deficiencies			
Adult	4	4.2	- 0.2 deficiency			
Adult Training	4	3	+1 surplus			
Junior School	4	0.7 5 (school)	+ 3.3 surplus Not all games will be played on the same day, school have use of 2 pitches.			
Junior Training	4	1.5	+3.25 surplus			
Peak time for adult/junior/mini Sun t pm – juniors use senior pitches	4	3.5	+ 0.5 surplus			
Usage per week for games and training.	Juniors use senior pitches, 2 pitches at Lady Hawkins/ Recreation Ground get most use at peak times					

Table 19: Hockey Surpluses / Deficiencies

Kington Area Hockey Provision: Surpluses / Deficiencies					
Stage 1: Identifying Team Equivalents					
Adult Teams	1				
Training adult equivalents	1				
Junior Teams	5 school equivalents				
Total	2				
Stage 2: Home Games per Team per Week					
(based on the principal of one home game per week, one week away = 0.5)					
Stage 3: Total Home Games per Week					
Adult	(1x 0.5)				1
Training adult equivalents	(1 x 1)				1
Junior	(5 x 1)				5
Stage 4: Temporal Demand for Games					
	Sat am	Sat pm	Sun am	Sun pm	Weekday schools/ Weekday training
Adult	100%	0%	0%	0%	
Training adult equivalents					100%
Junior school equivalents					100% (school)

Stage 5: Pitches required to meet Peak Demand					
	Sat am	Sat pm	Sun am	Sun pm	Weekday schools/ Weekday training
Adult	0.5	0	0	0	0
Training adult equivalents	0	0	0	0	1
Junior School Equivalents					5 – all use school pitch
Stage 6: Community Pitches available to meet Peak Demand					
To assess the adequacy of current provision weightings have been added to reflect the capacity/availability of existing pitches.					
	LA owned/LEA owned	PC owned	Privately/voluntary owned	Total	
Adult	1 (grass)	0	0	1	
Stage 7: Surplus / deficiency of pitches					
	Total pitches	Peak demand	Surpluses/deficiencies		
Adult	1	0.5	+0.5 surplus		
Training adult equivalents	1	1	0		
Junior	1	5	All use school pitch		
Usage	6.5 x per week – high usage.				

5.3.5 **General Issues:** These results are based on the assumption that teams wish to play on pitches which meet the National Governing Body recommendations for their age category. The modelling provides an output which identifies deficiencies or surpluses of pitches and for football in particular it can often show a surplus of adult pitches and a deficiency of junior. Looked in isolation these figures can be misleading and non-reflective of local circumstances. Local knowledge and consultation helps to reflect the reality as far as possible. The investment strategy will pick this up further and help to develop the thinking about specific sites and targeted usage patterns.

5.3.6 **Football Pitches:** Herefordshire Junior Football League is responsible for league matches for all junior and mini teams across the county.

- Junior u13's teams and older play on senior pitches.
- Junior u11's and u12's teams where they can play on dedicated junior 9 v 9 pitches.
- Mini u8's, 9's and 10's teams where they can play on mini 5 v 5 pitches. Given the lack of dedicated junior and mini pitches across the county and only a small number of clubs have their own grounds, many mini and junior teams do have to play on senior size pitches. For example 4 mini teams can use 1 senior pitch, therefore where there are no dedicated pitches available, 4 mini teams could play on one pitch.

Location of mini pitches is also important as the younger teams are often led and set up by parents. Although not essential, having access to toilets and a changing room is important as often

parents will bring younger siblings along to watch and on wet days being able to change children out of wet clothes is helpful.

5.3.7 **Cricket Pitches:**

- Junior cricket teams play on senior pitches.

5.3.8 **Rugby Pitches:**

- All u13's rugby teams and up, play on a 15 a side rugby and use a full size pitch.
- Mini teams, u7's and 8's play principally on half 1 adult team with 10 players at 20 minutes per game. ,
- U9/10's with 13 players at 30 minutes per game and u11's/12's with 17 players at 40 minutes per game.

5.3.9 **Sport England Modelling: Football:**

The overall assessment indicates a shortage of dedicated mini and junior pitches in the Kington Area. Provision of dedicated pitches is particularly important given Kington Town Football club are keen to develop opportunities for all ages of the community including juniors and the Football Foundation now require dedicated 9 v 9 pitches. There is also a shortage of outdoor training pitches.

5.3.10 **Key Findings:**

- **Adult Teams Games:** Peak time for adult team games is Saturday pm. There is a surplus of adult football pitches to meet demand on peak days.
- **Adult Team Equivalent:** (Training): Peak time for training is weekdays. There is a deficiency to meet demand and although these can be programmed for different days of the week, this assumes all pitches can be used to avoid over use. Opportunities for outside training in the winter months are limited due to the availability of pitches with floodlights. Increased use of portable floodlights could reduce this issue.
- **Junior u13's and Older Junior Teams:** Peak time for junior team games is Sunday pm. As they use senior pitches there is a surplus to meet demand.
- **Junior u11's, 12,s, Mini u8's,9's,10's Teams:** Peak time for junior / mini team games is Saturday am. There are no dedicated junior or mini pitches and therefore s a deficiency of pitches to meet demand. All school games are played at Lady Hawkins on school pitches. As a consequence minis often play on available senior pitches as is the case of Kington Town Youth Football Club who use pitches at Kington Town and there are enough pitches to meet demand assuming 4 x teams per pitch. This does increase the weekly usage of senior pitches.
- **Overall Peak Demand:** Adults and juniors don't play on the same day. Juniors and minis play on the same day at Kington Town

Football Club on senior pitches There are enough pitches to meet demand but no dedicated pitches.

- **Usage per Week:** To accommodate all games per week, including adult, junior and mini the grass pitches are used over 4 x per week there are enough pitches which is above normal wear and tear thresholds. The main pressure is at Kington Town Football Club where all of the junior games are played and outside training takes place, which is added to as the 2 school/community use pitches on the recreation ground are identified as being of below average and therefore can only sustain 1 game per week between them.
- **Training:** There are significant deficiencies in outdoor training facilities to accommodate training sessions, however indoor facilities are used and training will be programmed for different days of the week for use of the floodlit pitch at Kington Town.

5.3.11 Sport England Modelling: Cricket:

- The overall assessment indicates a shortage of pitches to meet demand on peak days for adults in the Kington Area

5.3.12 Key Findings:

- **Adult Teams:** Peak time for adults is Saturday pm. There is a slight deficiency of cricket pitches to meet demand on peak days.
- **Adult Team Equivalents:** Training: Peak Time Weekday Wednesday: There is a surplus of cricket pitches to meet demand on peak days assuming all training occurs on the same day.
- **Junior Teams:** Peak for juniors is Sunday am, Sunday pm and Tuesday pm. There is a surplus of cricket pitches to meet demand on peak days.
- **Junior School equivalents:** Peak time is weekdays – all use takes place at Lady Hawkins school which has the use of two pitches
- **Junior Equivalents:** Training: Peak Time Weekday Wednesday. There is a surplus of cricket pitches to meet demand.
- **Adult, Junior and Mini Teams:** Peak time for adults, juniors and minis is Sunday pm. Given Juniors play on adult pitches there is a still a surplus of cricket pitches to meet demand on peak days.
- **Usage per week:** It is acknowledged that summer sports pitches can accommodate a greater number of games per week, however, pitches are considered to be well used increasing wear and tear at approximately 4 times per week to accommodate all games and training.

5.3.13 Sport England Modelling: Hockey:

There is a surplus of pitches to meet demand on peak days in the Kington Area.

5.3.14 Key Findings

- **Adult Teams:** Peak time for adults is Saturday pm. There is a surplus of grass pitches to meet demand on peak days.
- **Usage per week:** Usage per week for a grass pitch will be high given school use and training adding to wear and tear.

6. Predicting the Future

6.1 Team Generation Rates

- 6.1.1 Team Generation Rates (TGRs) indicate how many people in a specified age group are required to generate one team. TGRs are derived by dividing the appropriate population age and for the relevant sport (e.g. for adult football it is the 16 – 45 age group) by the number of teams playing that sport. Calculation TGRs enables fair comparison to be made between different areas where similar studies have been undertaken. They also enable the projection of likely future participation.
- 6.1.2 TGRs can be calculated for each of the individual disciplines, such as adult men’s football, adult women’s football etc. Once these TGRs have been calculated, they can be brought together to form one TGR for each sport.
- 6.1.3 The TGRs for each sport in the study area are shown in the Tables below and are compared to the national average based on Sport England’s database of Team Generation Rates.

Table 20: Football Team Generation Rates

Age Group	Kington Area TGR	National Average
Senior Male	1:204	1:314
Senior Female	0	1:10,593
Junior Male	1:38	1:71
Junior Female	0	1:818
Mini soccer	1:64	1:141

- 6.1.4 This table indicates that the number of people required to generate all genders and age groups of teams is higher than the national average especially for mini soccer suggesting average to good participation rates which indicate that the sport is developing well across all age groups although participation in female is nil.

Table 21: Cricket Team Generation Rates

Age Group	Kington Area TGR	National Average
-----------	------------------	------------------

Senior Male	1:206	1:1,333
Senior Female	0	1:72,518
Junior Male	1:118	1:1,481
Junior Female	0	1:15,926

6.1.5 This table indicates that the number of senior and junior males needed to generate a team is significantly below the national average meaning that participation is over the national average suggesting development of the sport and its popularity in these groups in this area is good with a highly active local population which perhaps reflects the “sparsity” of population particularly in the more rural parts of this area. However, participation in female cricket is nil.

Table 22: Hockey Team Generation Rates

Age Group	Kington Area TGR	National Average
Senior Male	0	1:7,595
Senior Female	1:1347	1:10,292
Junior Male	0	1:4,239
Junior Female	0	1:5,115

6.1.6 This table indicates that the number of senior females needed to generate a team is significantly below the national average meaning that participation is over the national average and although this suggests that female hockey is developing well, it is non existent in the other age/gender groups.

6.1.7 Rugby Team Generation Rates: There are no rugby teams in this area and no suggestion from the governing body that there is any latent demand.

6.2 Future Proofing: Herefordshire Population Forecasting Projections for 2011 - 2031

6.2.1 By applying the Team Generation Rates to population projections, it is possible to project the theoretical number of teams that would be generated over the Local Development Framework period (2011 – 31) and gain an understanding of the adequacy of current pitch provision to meet future demand, assuming the supply and capacity of pitches does not alter in the interim.

6.2.2 The Sport England methodology requires detailed future population totals to be used. Population projections for the period 2011 - 2031 are taken from the study undertaken by G L Hearn, 2012, to determine local housing requirements. Herefordshire Council commissioned G L Hearn to undertake a detailed analysis which set out population projections and household growth for the county and seven sub-markets taking account of the level and distribution of

proposed housing in the Revised Core Strategy preferred Options (October 2011) and the plan period 2011 – 31.

- 6.2.3 The seven sub-markets include: Bromyard, Golden Valley, Hereford, Kington, Leominster, Ledbury and Ross. These areas act as the service hubs for their rural hinterlands.
- 6.2.4 The population growth is anticipated to take place mostly in the urban areas along with the strategic housing sites and it is anticipated that there will be a marked decline in rural populations over the next 20 years up to 2031 (GL Hearn Housing study figures 2012).
- 6.2.5 Development of new and existing sustainable facilities is therefore best placed in the urban areas where the biggest population growth is going to be. Whilst facilities are needed in the rural areas and some will require investment, Sport England advocate a 20 minute drive time to facilities and Kington Town is well placed to serve its rural hinterlands.

6.3 Kington Area Population – 2011 – 2031

- 6.3.1 The structure of a population and future changes may impact on the demand for a certain pitch or sports. Changing demographics usually happen gradually over a period of time but it is important for pitch providers to be aware of these changes to be prepared and able to respond.
- 6.3.2 The estimated and forecast populations of Herefordshire sub-market housing areas, 2010 and 2031 for the Kington Area are shown below for the 6 – 55 year age group (Sport England’s active population) . They are based on ONS indicative 2010 mid year estimates and mid-2012 small area population estimates.

Table 23: Forecast Populations

Sex	Age	Kington 2010	Kington Rural 2010	Kington 2031	Kington Rural 2031	Kington change 2010 - 2031	Kington Rural Change 2010 - 2031
All persons	6 - 55	1825	3369	1859	2885	34	-484

- 6.3.3 Using Sport England selected age-sex groups it is predicted that in the majority of selected age-groups in Kington the population will increase, whereas there is a predicted decline in the majority of age groups in Kington Rural. This is indicative of where the majority of new housing is proposed.

- 6.3.4 To allow for increase participation in all sports, a “growth factor” of 1% per annum has been used on the basis of 15 years to cover the Core Strategy plan period up to 2031.
- 6.3.5 The table below use Sport England modelling and show the likely implications of all these future changes based on the population increase and sports growth of 1% per annum over 15 years as described above.

Table 24: Future playing pitch requirements

Kington Area			
Mini/ Junior Football: (U8’s, 9’s, 10’s minis and U10,s, u11,s juniors):			
Mini 7.8% of total estimated population Junior Boys 3.6% of total estimated population			
Mini: 15 year plan period total sports growth factor 15% (1% per annum) added into future proofing: 6.9 total (+1.9 increase) Junior: 15 year plan period total sports growth factor 15% (1% per annum) added into future proofing: 5.7 total (+1.7increase)			
Mini 7 v 7	Peak time: sat am. 5.1 pitches required: - 5.1 x 7 v 7 deficiency		
Junior 9 v 9	Peak time: sat am: 2.1 pitches required: - 2.1 x 9 v 9 deficiency		
Senior Football (13 – 45) :			
Senior men 39.4% total estimated population			
15 year plan period total sports growth factor 15% (1% per annum) added into future proofing: new teams created total 11.6 teams (+3.6 increase).			
Adult Teams u13+	Peak time: sat pm: 2.9 pitches required: +0.1 surplus		
Mini Football: U8’s, 9’s, 10’s minis and U10,s, u11,s juniors			
7.1 % of total estimated population – new teams created total 3.7 (- 0.3 decrease)			
15 year plan period total sports growth factor 15% (1% per annum) added into future proofing: total 4.2 teams			
Junior (u11’s,u12’s Mini (u8’s,9’s,10s) Teams	2.1 x mini 2.1 x junior	Peak Time Saturday am: 2.1 pitches required pitches required	-2.1 deficiency mini / junior pitches
Senior / Junior Football (U13’s+):			
66.1 % of total estimated population – new teams created total 6.4 (+0.4 increase)			
15 year plan period total sports growth factor 15% (1% per annum) added into future proofing: total 7.4 teams			

Adult Teams	3.7	Peak Time Saturday pm: 1.3 x pitch required	+ 1.7 surplus senior pitches
Junior (u13's +)	3.7 (5 school equivalents)	Peak Time Sunday pm : 1.2 pitches required and weekdays (school): 5 pitches required	+ 1.8 surplus senior pitches Schools use school pitches
Senior / Junior Cricket:			
90.9% of total estimated population – new teams created total 11.9 (+0.4 increase)			
15 year plan period total sports growth factor 15% (1% per annum) added into future proofing: total 13.7 (0.4 decrease in senior teams and 1.1 increase in juniors / minis) (excluding schools equivalents)			
Adult Teams	9.6	Peak Time Saturday pm: 4 pitches required	+0 surplus pitches
Junior/mini Teams	4.1	Peak Time Sunday am/pm/Tuesday evening: 0.7 pitches required and weekdays school use: 5 school pitches required.	+3.3 surplus pitches. Schools play on school pitches
Senior /Hockey:			
64.1% of total estimated population – new teams created total 0.9 -0.1 decrease)			
15 year plan period total sports growth factor 15% (1% per annum) added into future proofing: total 1.1 (
Adult Teams	1.1	Peak Time Saturday am: 0.5 pitches required	+0.5 surplus pitches

6.3.6 The Playing Pitch Model also suggests that a 10% “strategic” reserve is built in for future needs. This in effect creates slightly more pitches than required (10%) to allow for pitches to be rested and thereby improving quality. Accounting for this, future pitch requirements are as follows:

Table 25: Future Playing Pitch Requirements if 10% strategic reserve included.

Pitches	Kington Area + 10% Strategic Reserve	Surplus/Deficiency
Mini 7 v 7	5.6 x 7 v 7 required	-5.6 x 7 v 7 deficiency
Junior 9 v 9	2.3 x 9 v 9 required	-2.3 x 9 v 9 deficiency
U 13 - Adult Football	3.2 pitches required	-0.2 pitches deficiency
Adult Cricket	4.4 pitches required	-0.4 deficiency
Junior Cricket +	0.8 pitches required	+ 3.2 surplus adult pitches

7 Developing Local Standards

The National Planning Policy Framework: Promoting Healthy Communities asks for Planning Policies to be based on robust and up-to-date assessments of needs for open space, sports and recreation facilities and opportunities for new provision. Information gained from the assessment should be used to determine what open space, sports and recreational provision is required for the local area. The provision requirements for outdoor sports pitches for the Kington Area are set out below.

7.1 Quantity Standards

- 7.1.1 There are no national standards or benchmarking.
- 7.1.2 Current Provision is set out in policy RST4 of the Unitary Development Plan for Herefordshire and uses the National Playing Field Association standards of 2.6 ha of open space per 1000 population of which 1.6 ha is for outdoor sport.
- 7.1.3 The consultation exercise did not flag up any issues of latent demand
- 7.1.4 Current Provision: based on the existing population in Kington Area and the total ha of existing community sites equates to 1.1 ha per 1000 population.
- 7.1.5 New recommendation: Taking account of the 10% increase in strategic reserve this equates to **1.2 ha per 1000** population for the Kington Area.

7.2 Quality Standards

- 7.2.1 Facility standards should reflect the quality aspects deemed most important by the users – i.e.
 - Level even surfaces to play on
 - Good length of grass
 - Clean/litter and dog fouling free
 - Good provision of changing rooms
- 7.2.2 Pitches should be measured against the quality criteria as set out in Towards a Level Playing Field. All sites have been assessed using the proforma provided by Sport England.
- 7.2.3 New recommendation: The minimum baseline scores targeted should be:
 - 60% for the site and ancillary facilities (the % score required to be categorised as good)

- 65% for the pitch (the score required to be categorised as good)

These should reflect minimum standard of provision

7.2.4 Standards should also reflect and be responsive to national governing body standards for each sport and in particular standards and issues for Herefordshire which are identified in current and emerging documents, for example:

- Herefordshire Cricket Board Facility Strategy 2009 -2013
- North Midland Rugby Football Union County Facility Plan 2008 -2011
- Separate standards for Synthetic Turf Pitches for use by different sports, for example, football and hockey should be considered against demand

7.3 Access /Thresholds

7.3.1 Access to all playing pitches, bowling greens and tennis courts should be within the following access times:

- In urban areas including Kington Town they should all be accessed within a walking distance of most potential and casual users. This is recommended to be 15 minute walk time to facilities
- However, it is not sustainable to apply the same standards in the rural parts of the Kington area and have pitches within walking thresholds therefore a driving threshold of a 20 minute drive time to facilities is recommended.

7.3.2 These standards should be used to support requirements arising from new housing developments and included in the revised Supplementary Planning Document (SPD) for open spaces.

8 Recommendations and Future Actions for Kington Area

8.1 Community Access on School Sites

- Further work to identify where existing community use agreements are in place at Schools across the area and in particular the Kington High School in light of impending Academy status: Property Services, Herefordshire Council
- Further work to identify where junior schools in the area would benefit from community access: Property Services, Herefordshire Council

8.2 Quality

- The quality of pitches impacts not only on the quality of play, but also on the potential capacity of a pitch. This is particularly apparent in Kington Area as there are 4 senior pitches but due to poor quality at Kington recreation ground the equivalent of only 3. This will have an impact on future requirements.
- Improvements should be particularly targeted at those areas required to meet Sport England's minimum standards including drainage, changing accommodation and levelling, for example. The minimum baseline scores targeted should be:
 - 60% for the site and ancillary facilities
 - 65% for the pitch
-

8.3 Site Specifics

- **Almeley Cricket Club** who use Spearmarsh Common have rated the changing facilities as poor although the assessment rated it as good. HCB have indicated that any facility not meeting minimum standards should be improved.
 - If the HCB support the club consider this as a priority for future investment
- **Kington Town Football club** has highlighted a need to improve their changing facilities and have rated them as poor, and as the club wishes to develop and attract new members this is seen as an issue.
 - The assessment rated them as good but consider them as a priority for future investment
- **Kington Recreation Ground** is rated below average, although Kington Town Council has rated it good. It is, however, well used by the local hockey, football and cricket club as well as a general recreation ground for Kington town and an important "hub" site for the Town. The disparity in ratings and its high usage, would suggest this site needs good management and maintenance to sustain its current levels of usage.
 - Consider as a priority for any future investment opportunities.
- **Eardisley Tennis Club** have a quality rating of excellent for changing accommodation although the club would disagree with this rating and have indicated it is poor.
 - Consider for future investment on the understanding that any future improvements for on-site facilities will be dependent on the current usage or status of a site and the club would need to demonstrate this.

- **Other:** Consider improvements to existing facilities and pitches if they fall below the minimum standards as required in this document and by Sport England as priorities for future investment

8.4 Risks

- Football:** In general there are not enough dedicated junior and mini pitches although the game can be played on senior pitches to meet both current and predicted needs. 9 v 9 pitches are also required by the FA. Training is also an issue. Therefore recommend:
- Future investment by clubs in reconfiguring pitches to meet the FA standards required: Consider as a Priority for future investment
 - Temporary lighting is often difficult to put up and take down. The cost in doing both in terms of finances and volunteers, especially in the winter does not really make this a sensible option for those involved. Kington pitch is being overplayed – a sensible solution considering the proximity of the school and sustainability of the sites should be considered e.g. 5v5 or 7v7 AGP
 - The Football Foundation and England Hockey are undertaking work to look at training provision across the authority area and in particular the need for 3G pitches which can double up as match surfaces for football. This work references demand based upon team numbers and proposes solutions.
- Cricket:** There will be a future “deficiency” of cricket pitches to meet current and predicted requirements for the game. Therefore consider as a priority:
- Secure future community use of Kington High School
 - Identify sites/opportunities for additional pitch through the Local Development Framework, via proposed housing sites either on site or from securing planning gain
- Tennis:** Kington Tennis Club use Kington High School Tennis Courts: Consider as a priority:
- Secure future community use of Kington High School
- Other:** Consideration to be made, where there is an existing and predicted surplus of provision of one type of sport to redevelop the pitch to meet the needs of other sports including both those identified within this assessment and those which aren’t, including minority sports and those sports which encourage a greater take up of females and juniors particularly where the team generation rates have highlighted a gap and clubs have identified future plans to include growth in these areas. This would be dependent on:
- Individual sports development plans identifying a need and providing a business case,

- The priorities identified in the development plans of the Council's Sports Development Team, The County Sports Partnership and Herefordshire Sport.

8.5 Generic

- A hierarchical approach to facility development is recommended. This includes those parishes identified as Service Centres or Service Hubs, located strategically to serve communities across the area. Investment in these areas will provide a better use of limited resources and the development of more sustainable sites.
- Improvements to pitch quality and ancillary provision should be made with the principles of the hierarchy in mind. In particular, improvements should be targeted in areas of deficiency.
- The proportion of pitches meeting the desired quality standard should be monitored annually.
- In light of limited Local Authority resources and in the interests of maintaining quality pitches, where a considered business case has been put together by the community consideration should be given to community asset transfer
- Continue to support voluntary, private and community sector where appropriate
- Where issues of poor value for money have been sited and these are on Council owned property, consider a review of the Halo pricing policy?

8.6 Implications for Planning Policy

- All pitches should specifically be afforded protection within the Local Development Framework through a policy in the Core Strategy. Protection policies should link with policies for other types of open space. This policy should only permit development on playing fields when Sport England exception criteria can be met.
- New pitches may be required in some areas and should be facilitated through planning policy
- Where planning obligations are sought these should be used to contribute to the enhancement of existing facilities and to help provide increased community access as well as to provide new facilities where these are required.

- The Council should update the existing SPD on open space contributions to include specific standards set as part of the Playing Pitch Strategy as described for each area.
- Set new local standards based on recommendations in this strategy:
- **Quantity Standard:** New recommendation: **1.2 ha per 1000 population** for the Kington Area.
- **Access Standard:** New recommendation:
 - Kington Town – a 15 minute walk time to facilities
 - Kington Rural – a 20 minute drive time to facilities.These standards should be used to support requirements arising from new housing.

Herefordshire Playing Pitch Assessment

Appendix 1: Sports Pitches within Herefordshire

Cricket

Football

Rugby

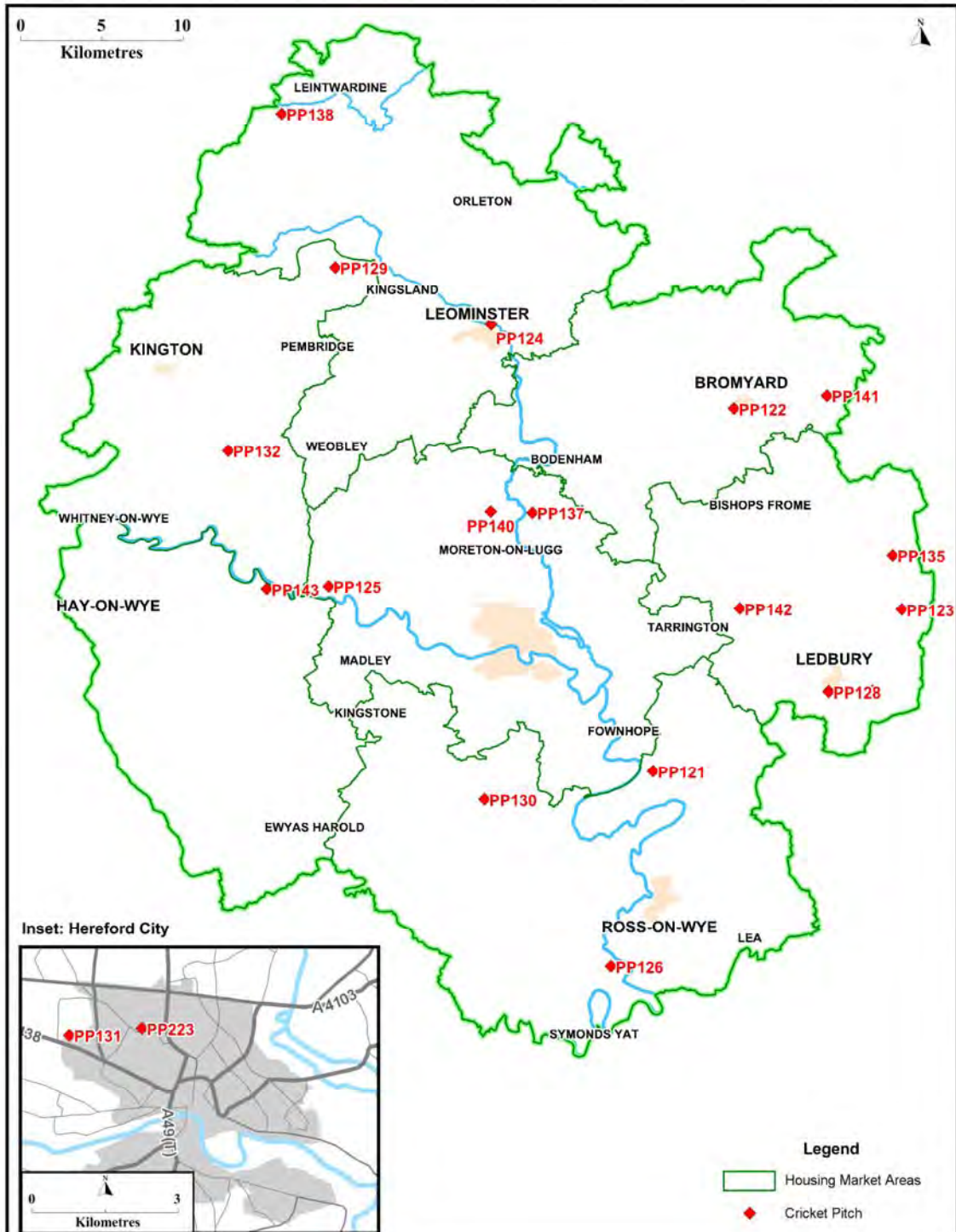
Bowling

Tennis

School

Hockey

Herefordshire Playing Pitch Assessment

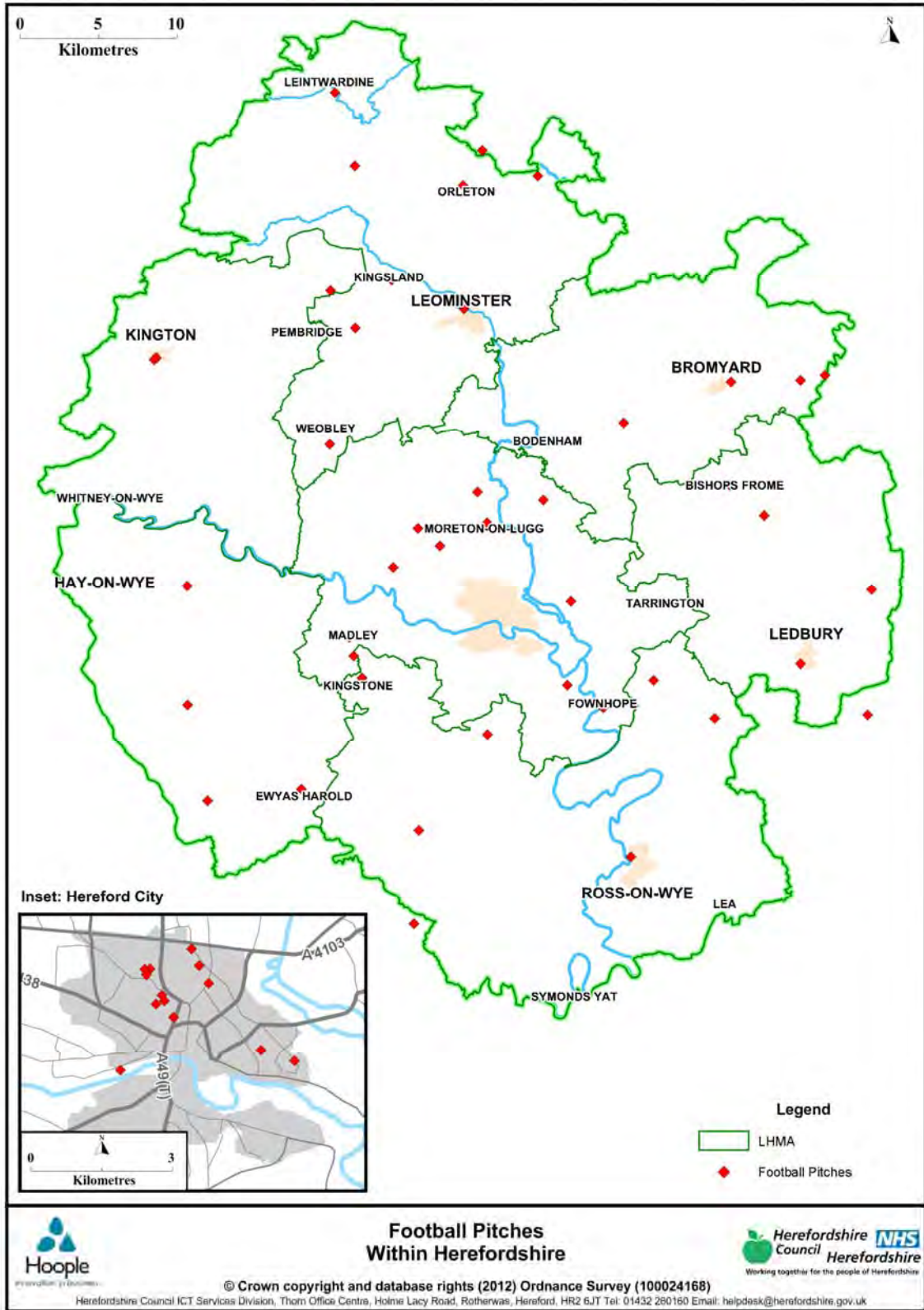


Cricket Pitches Within Herefordshire

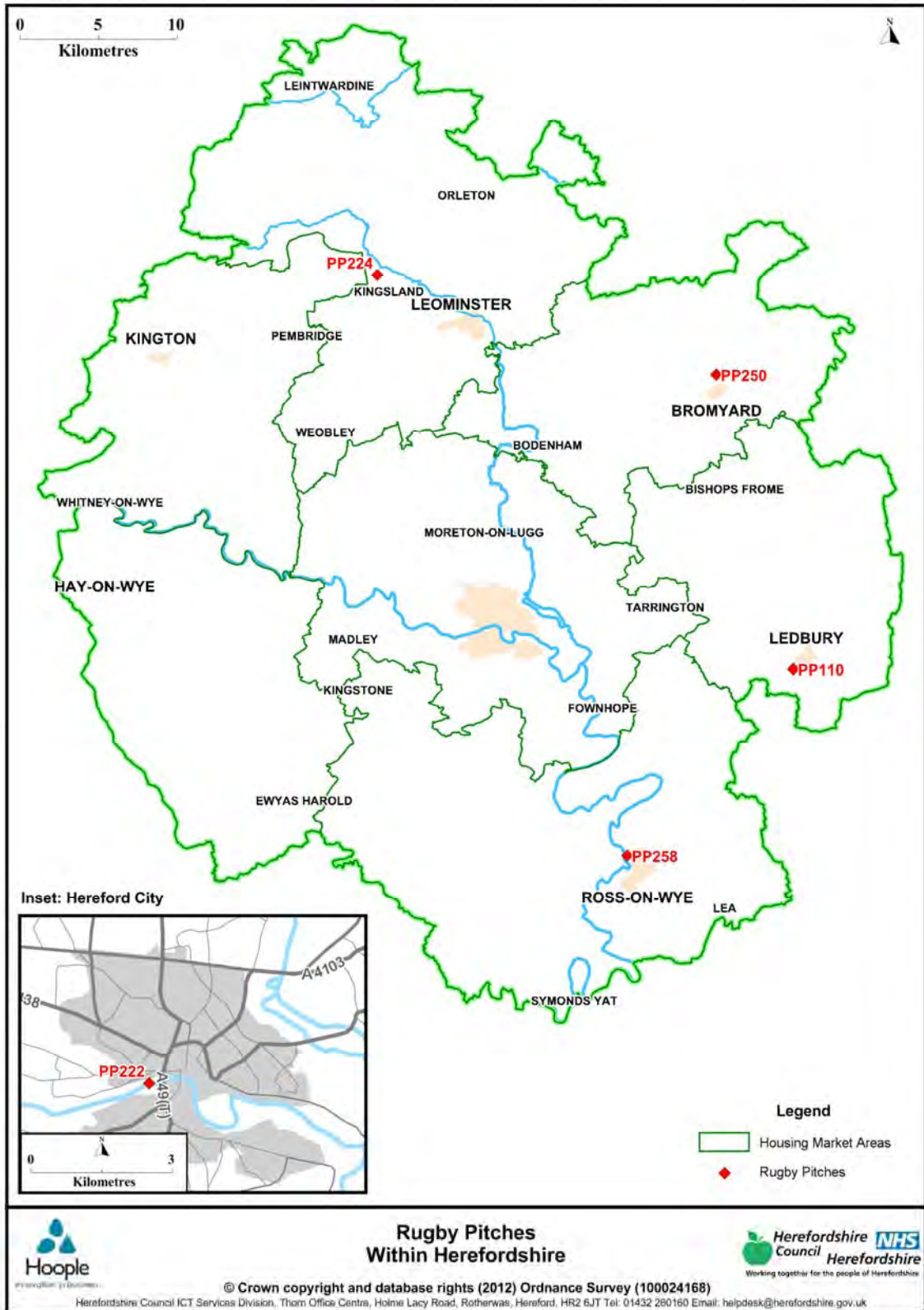


© Crown copyright and database rights (2012) Ordnance Survey (100024168)
 Herefordshire Council ICT Services Division, Thorn Office Centre, Holme Lacy Road, Rotherwas, Hereford, HR2 6JT Tel: 01432 280160 Email: helpdesk@herefordshire.gov.uk

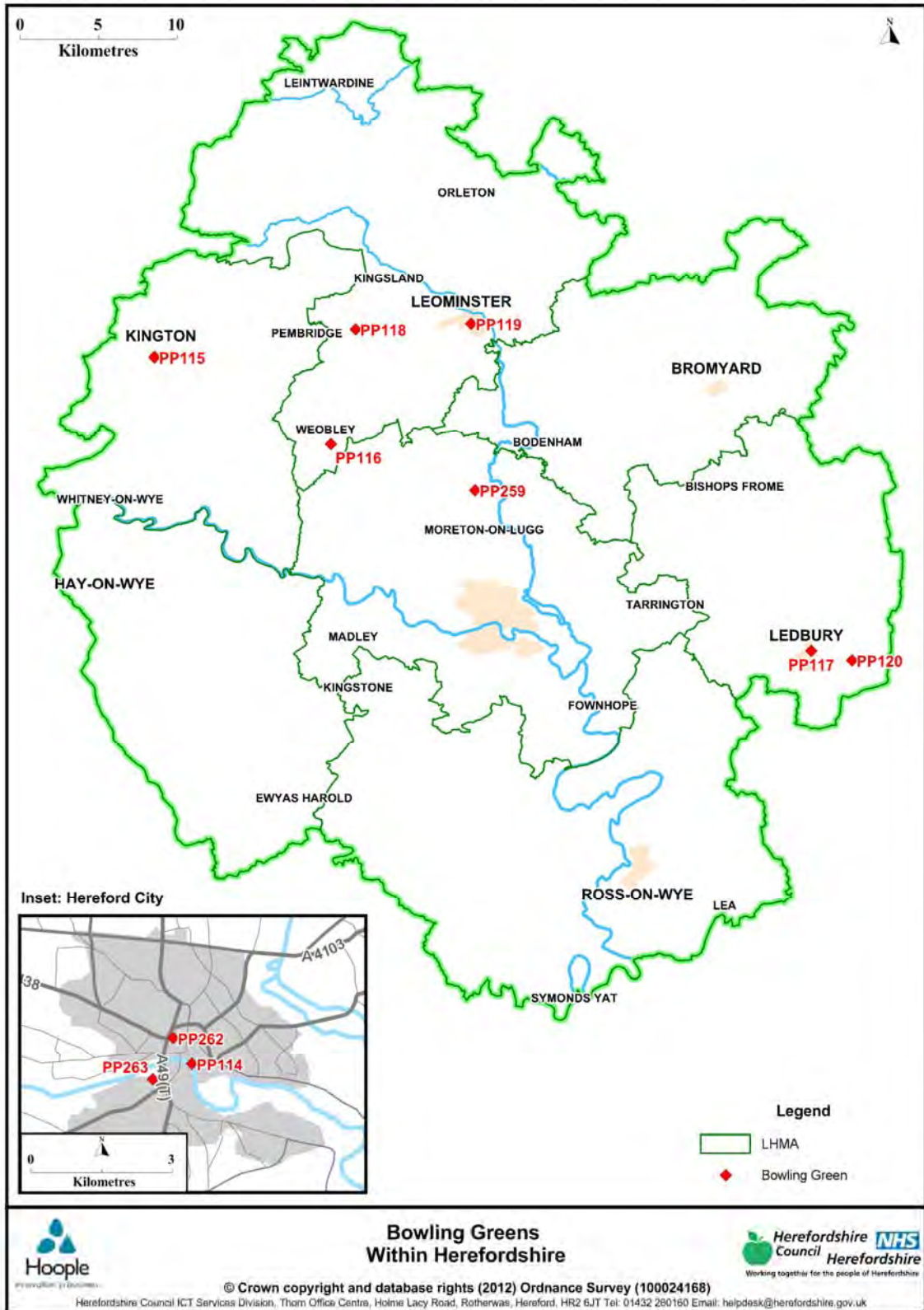
Herefordshire Playing Pitch Assessment



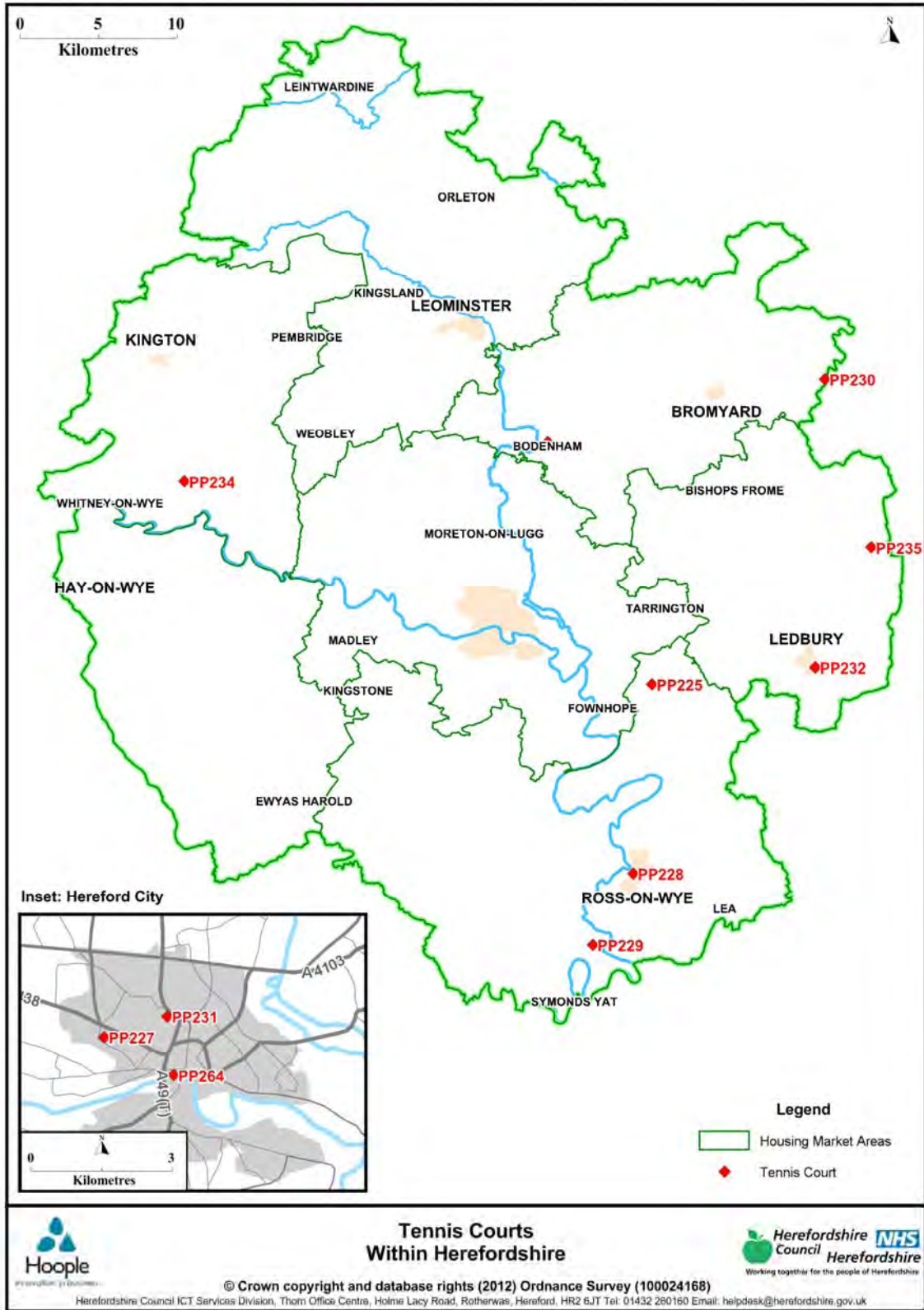
Herefordshire Playing Pitch Assessment



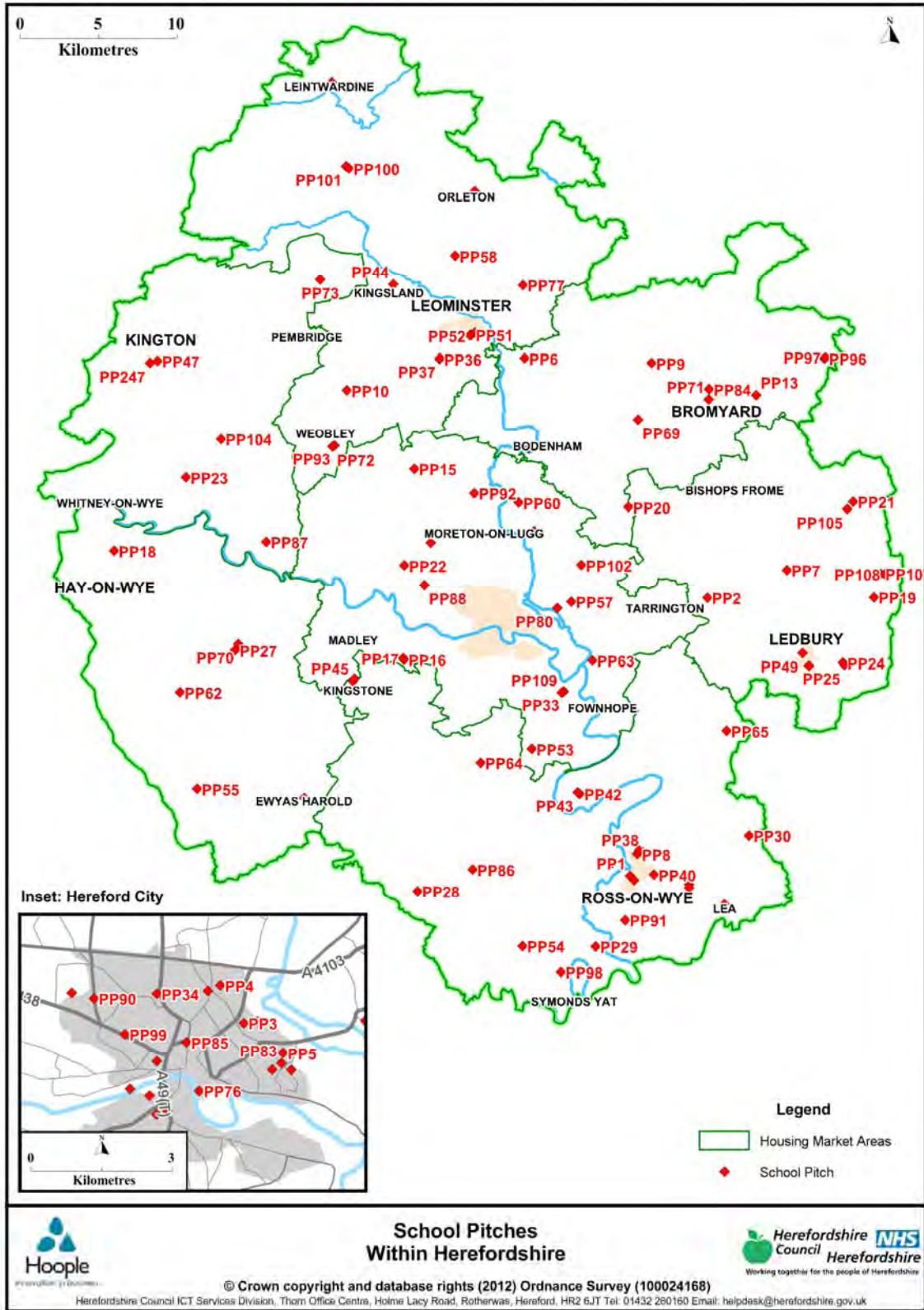
Herefordshire Playing Pitch Assessment



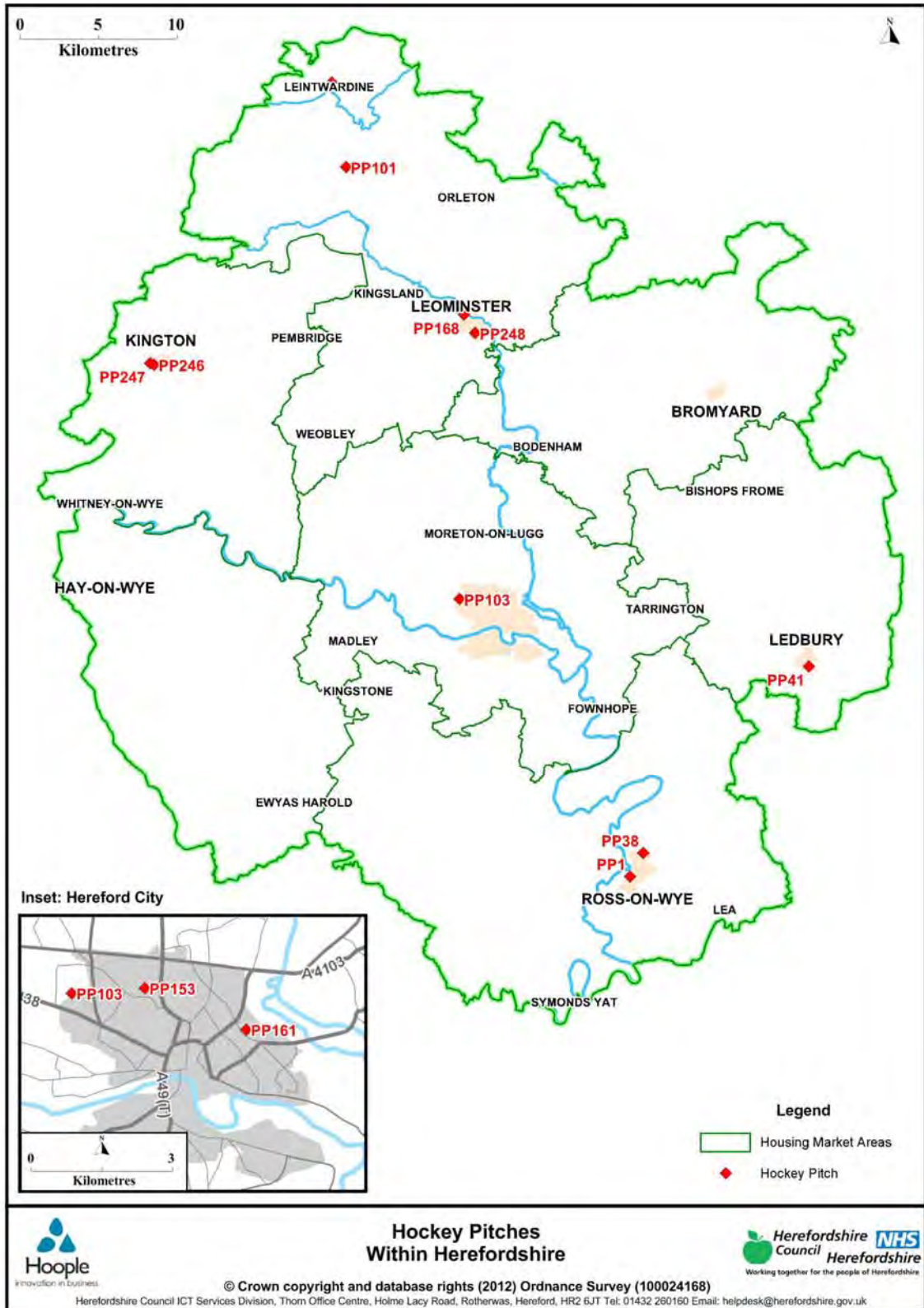
Herefordshire Playing Pitch Assessment



Herefordshire Playing Pitch Assessment



Herefordshire Playing Pitch Assessment



Hockey Pitches Within Herefordshire



KINGTON AREA		Sport	Site ref	Name	Pitches	Size Ha	community use	ownership	Quatlity Rating % & category	
WARD	PARISH								Changing Accomodation	Pitch
Castle	Kinnersley Group (Kinnersley, Letton, Norton Canon Sarnesfield)									
	Eardisley Group (Eardisley, Whitney-on-Wye, Willersley & Winforton)	School	PP23	Eardisley Primary School	1 x junior football	5785.83	no	School	no	65%
		Tennis	PP234	Eardisley Tennis Courts	2 x tennis courts	1116.13	yes	?	2 teams100%	
	Almeley	School	PP104	Amleley Primary School	1 x junior football	3045.52	no	School	no	56%
		Cricket	PP132	Spearmarsh Common	1 x cricket	13913.43	yes	PC	2 teams 85%	82%
	Brilley									
	Huntington									
Staunton on Wye District Group (Staunton-on-We, Brobury with Monnigton-on-Wye)	School	PP87	Staunton on Wye Primary School	no pitch						

KINGTON AREA		Sport	Site ref	Name	Pitches	Size Ha	community use	ownership	Quatlity Rating % & category	
WARD	PARISH								Changing Accomodation	Pitch
Kington Town	Kington Rural and Lower Harpton Group									
	Kington	School	PP47	Kington Primary School	0 pitches					
		School	PP247	Lady Hawkins High School	2 x senior football	4176.83	No	School	2 teams 95% football	71%
					1 x cricket					76%
					1 x hockey tennis					73%
		Football, Cricket	PP246	Kington Recreation Ground	2 x senior football	53704.58	Yes	School	2 teams 93%	53%
					1 x cricket					Cricket
		Football	PP158	Kington Town Football Ground	1 x senior football	7014.16	yes	private	2 teams 63%	92%
Bowling	PP115	Kington Bowling Green	1 x bowling green	1995.46	yes	private	2 teams 98%	90%		
Golf	PP216	Kington Golf Course								

KINGTON AREA		Sport	Site ref	Name	Pitches	Size Ha	community use	ownership	Quatlity Rating % & category		
WARD	PARISH								Changing Accomodation	Pitch	
Pembrige, Lyonshall & Titley	Titley and District Group (Little Brampton, Titley, Staunton-on-Arrow, Knill, Rodd, Nash)										
	Lyonshall										
	Pembrige	School	PP68	Pembrige Primary School	1 x junior football	10128.28	no	School	no		60%
	Shobdon	School	PP73	Shobdon Primary School	1 x junior football	9248.27	no	school	no		61%
		Football	PP197	Shobdon Football Ground	1 x senior football	15207.35	yes	private	2 teams 56%		85%
		Cricket	PP129	Shobdon Cricket Ground	1 x cricket	11658.89	yes	private	2 teams 90%		82%

Herefordshire Football, Cricket, Rugby, Hockey, Bowling, Tennis Clubs, Teams and Venues						
Kington Area		Questionnaire returned	Sport	Club/League/standard/times of play	Teams	Venue /Expanare Ref
WARD	PARISH					
Castle	Kinnersley Group (Kinnersley, Letton, Norton Canon Sarnesfield)					
	Eardisley Group (Eardisley, Whitney-on-Wye, Willersley & Winforton)	Returned	Tennis	Eardisly Tennis Club		PP234 Eardisley tennis courts
	Almeley	Returned	Cricket Adult Male	Almeley Cricket Club	3 teams	PP132 Spearmarsh Common
				Marches Saturday League pm	2	
				Marches Sunday League:pm	1	
				(Hfds Indoor League)	1 team	
Training Wed						
Brilley						
Huntington						
Staunton on Wye District Group (Staunton-on-We, Brobury with Monnigton-on-Wye)						

Herefordshire Football, Cricket, Rugby, Hockey, Bowling, Tennis Clubs, Teams and Venues

Kington Area		Questionnaire returned	Sport	Club/League/standard/times of play	Teams	Venue /Expanare Ref	
WARD	PARISH						
Kington Town	Kington Rural & Lr Harpton Group						
	Kington	Returned	Football	Kington Girls Football Club	2 teams	PP246/7Lady Hawkings High School, Park View Kington	
			U16 & below female	Girls U10's League: Sunday 10.00 am	1		
				Girls U12s League: Sunday 11.00 am	1		
			Returned	Football	Kington Town Football Club	2 teams	PP158 Kinton Town Football Ground, Mill Street
				Adult & U18 male	Hfds Saturday Premir League 2.00 pm (1sts)	1	
					Hfds Saturday League Div 2: 2.00 pm (reserves)	1	
					Training		No set night or venue
				Football	Kington Town Youth Football Club	5 teams	
				U16 & below male	U10 - Stirling Saturday am 10.45	1	PP158 Kinton Town Football Ground, Mill Street
					U11 - HGTA Saturday am 12.00	1	
					U13 - HGTA Sunday am 10.30	1	as above
					U14 - HGTA Sunday pm 2.00	1	as above
					U16 - HGTA Sunday pm 2.00	1	as above
					Training		No set night or venue
			Returned	Cricket	Kington Cricket Club	5 teams	PP246/7Lady Hawkings High School, Park View Kington
				Adult Male	Saturday League: pm	3	
					Sunday League: pm	2	
					Hfds Indoor League	1 team	
					Training Wednesday		
		Returned	Cricket	Kington Cricket Club	3 teams	PP246/7Lady Hawkings High School, Park View Kington	
			Junior boys	Hfds U11's Sunday am	1		
				Hfds U13's Tuesday pm	1		
				Hfds U15's Sunday pm	1		
			Junior Girls				
				Training Monday			

Herefordshire Football, Cricket, Rugby, Hockey, Bowling, Tennis Clubs, Teams and Venues

Kington Area		Questionnaire returned	Sport	Club/League/standard/times of play	Teams	Venue /Expanare Ref
WARD	PARISH					
Kington Town	Kington		Hockey	Kington Ladies Hockey Club	1 team	PP246/7Lady Hawkings High School, Park View Kington
			Adult female	Adult seniors time / day / training	1	
			Bowling	Kington Bowling Club	28 male	PP115 Kington Bowling Green, Park Road
				Private/Mixed	15 female	
			Tennis	Kington Tennis Club		PP246/7Lady Hawkings High School, Park View Kington
Pembridge, Lyonshall & Titley	Titley and District Group (Little Brampton, Titley, Staunton-on-Arrow, Knill, Rodd, Nash)					
	Lyonshall					
	Pembridge					
	Shobdon	Returned	Football	Shobdon Football Club	1 team	PP197 Shobdon Football Ground, Shobdon Air Field
Adult & U18 male			Hfds Saturday League Div 1: 2.30 pm Training	1		
Cricket			Shobdon Cricket Club	2 teams	PP129 Shobldon Cricket Ground, The Hayes, Shobdon	
Adult male			Saturday League:pm Sunday League:pm	1 1		
			Training Wednesday			

Protection of Playing Fields Audit Report

Team County Name	Club Name	Club ID	Team Name	Team ID	Ground Name	Ground Address 1	Ground Address 2	Ground Town	Ground County	Ground Post Code	Ground Northing	Ground Easting	Local Authority	Day Plays On
Herefordshire FA	Addison Allstars F.C.	223579	First	11286966	Hereford Leisure Centre	Holmer		Hereford	Herefordshire		241550	350550	ounty of Herefordshi	Sunday
Herefordshire FA	Allstars F.C.	44331	First	10922785	Ledbury Rugby Club	Ross Road Playing Fields	Ross Road	Ledbury	Herefordshire		236089	368885	ounty of Herefordshi	Sunday
Herefordshire FA	Athletico Toros F.C.	227530	Cavaliers	11424816	Hereford Leisure Centre	Holmer		Hereford	Herefordshire		241550	350550	ounty of Herefordshi	Sunday
Herefordshire FA	Athletico Toros F.C.	227530	First	11352577	The Abbey Park	Belmont Abbey		Hereford		hr2 9sh	237799	347902	ounty of Herefordshi	Sunday
Herefordshire FA	Athletico Ledbury F.C.	147620	First	11019522	Ledbury Town	New Street		Ledbury	Herefordshire	HR8 2AE	237867	370912	ounty of Herefordshi	Sunday
Herefordshire FA	Barrels F.C.	110081	First	11089070	Gorsty Lane	Gorsty Lane		Hereford	Herefordshire	HR1 1UN	239428	353322	ounty of Herefordshi	Sunday
Herefordshire FA	Bartestree F.C.	44088	First	10922546	Bartestree And Lugwardine Playing Fields	Bartestree		Hereford	Herefordshire	HR1 4BU	241236	355949	ounty of Herefordshi	Saturday
Herefordshire FA	Bartestree F.C.	44088	Reserves	11050057	Bartestree And Lugwardine Playing Fields	Bartestree		Hereford	Herefordshire	HR1 4BU	241236	355949	ounty of Herefordshi	Saturday
Herefordshire FA	Bartestree F.C.	44088	U10	11410335	Bartestree And Lugwardine Playing Fields	Bartestree		Hereford	Herefordshire	HR1 4BU	241236	355949	ounty of Herefordshi	Saturday
Herefordshire FA	Bartestree F.C.	44088	U12	11410329	Bartestree And Lugwardine Playing Fields	Bartestree		Hereford	Herefordshire	HR1 4BU	241236	355949	ounty of Herefordshi	Saturday
Herefordshire FA	Bartestree F.C.	44088	U12 Juniors	11410326	Bartestree And Lugwardine Playing Fields	Bartestree		Hereford	Herefordshire	HR1 4BU	241236	355949	ounty of Herefordshi	Saturday
Herefordshire FA	Bartestree F.C.	44088	u13 Girls	11410332	Bartestree And Lugwardine Playing Fields	Bartestree		Hereford	Herefordshire	HR1 4BU	241236	355949	ounty of Herefordshi	Sunday
Herefordshire FA	Bartestree F.C.	44088	U13 Juniors	11410330	Bartestree And Lugwardine Playing Fields	Bartestree		Hereford	Herefordshire	HR1 4BU	241236	355949	ounty of Herefordshi	Sunday
Herefordshire FA	Bartestree F.C.	44088	U15 Girls	11410336	Bartestree And Lugwardine Playing Fields	Bartestree		Hereford	Herefordshire	HR1 4BU	241236	355949	ounty of Herefordshi	Sunday
Herefordshire FA	Bartestree F.C.	44088	U16	11410327	Bartestree And Lugwardine Playing Fields	Bartestree		Hereford	Herefordshire	HR1 4BU	241236	355949	ounty of Herefordshi	Sunday
Herefordshire FA	Bartestree F.C.	44088	U18	11444330	Bartestree And Lugwardine Playing Fields	Bartestree		Hereford	Herefordshire	HR1 4BU	241236	355949	ounty of Herefordshi	Wednesday
Herefordshire FA	Bartestree F.C.	44088	U9	11410333	Bartestree And Lugwardine Playing Fields	Bartestree		Hereford	Herefordshire	HR1 4BU	241236	355949	ounty of Herefordshi	Saturday
Herefordshire FA	Bell F.C.	44315	First	10922770	Briarwood Stadium	Bridge Street		Leominster	Herefordshire	HR6 8EA	259813	349280	ounty of Herefordshi	Sunday
Herefordshire FA	Belmont F.C.	43898	U15	11434367	Newton Farm	Marcle Walk	Newton Farm	Hereford	Herefordshire	HR2 7RQ	239397	350880	ounty of Herefordshi	Sunday
Herefordshire FA	Bromyard Colts F.C.	140691	First	10948917	Stourport Road		Stourport Road	Bromyard	Herefordshire	HR7 4SR	253343	362520	ounty of Herefordshi	Sunday
Herefordshire FA	Bromyard F.C.	44253	First	11411818	Stourport Road		Stourport Road	Bromyard	Herefordshire	HR7 4SR	253343	362520	ounty of Herefordshi	Saturday
Herefordshire FA	Bromyard F.C.	44253	U10	11411803	Stourport Road		Stourport Road	Bromyard	Herefordshire	HR7 4SR	253343	362520	ounty of Herefordshi	Saturday
Herefordshire FA	Bromyard F.C.	44253	U10 Colts	11370201	Stourport Road		Stourport Road	Bromyard	Herefordshire	HR7 4SR	253343	362520	ounty of Herefordshi	Saturday
Herefordshire FA	Bromyard F.C.	44253	U11	11455323	Stourport Road		Stourport Road	Bromyard	Herefordshire	HR7 4SR	253343	362520	ounty of Herefordshi	
Herefordshire FA	Bromyard F.C.	44253	U12	11370185	Stourport Road		Stourport Road	Bromyard	Herefordshire	HR7 4SR	253343	362520	ounty of Herefordshi	Sunday
Herefordshire FA	Bromyard F.C.	44253	U13	11370178	Stourport Road		Stourport Road	Bromyard	Herefordshire	HR7 4SR	253343	362520	ounty of Herefordshi	Sunday
Herefordshire FA	Bromyard F.C.	44253	U14	11411805	Stourport Road		Stourport Road	Bromyard	Herefordshire	HR7 4SR	253343	362520	ounty of Herefordshi	Sunday
Herefordshire FA	Bromyard F.C.	44253	U16	11411816	Stourport Road		Stourport Road	Bromyard	Herefordshire	HR7 4SR	253343	362520	ounty of Herefordshi	Sunday
Herefordshire FA	Bromyard F.C.	44253	U8	11370211	Stourport Road		Stourport Road	Bromyard	Herefordshire	HR7 4SR	253343	362520	ounty of Herefordshi	Saturday
Herefordshire FA	Bromyard F.C.	44253	U9	11370208	Stourport Road		Stourport Road	Bromyard	Herefordshire	HR7 4SR	253343	362520	ounty of Herefordshi	Saturday
Herefordshire FA	Bromyard Town F.C.	43852	First	10922310	Delahay Meadow	Stourport Road		Bromyard	Herefordshire	HR7 4NT	255019	366079	ounty of Herefordshi	Saturday
Herefordshire FA	Bromyard Town F.C.	43852	U18	11063205	Stourport Road		Stourport Road	Bromyard	Herefordshire	HR7 4SR	253343	362520	ounty of Herefordshi	Monday
Herefordshire FA	Burghill F.C.	43854	First	10922312	Burghill Playing Field	Redstone	Burghill	Hereford	Herefordshire	HR7 4HR	244500	347500	ounty of Herefordshi	Saturday
Herefordshire FA	Burghill Rangers F.C.	223628	First	11288230	Burghill FC	The Coppice	Burghill	Hereford	Herefordshire	hr4 8lq	245936	346671	ounty of Herefordshi	Sunday
Herefordshire FA	Casuals F.C.	43951	First	10922409	Bishops Frome Sports Ground	Bishops Frome		Bishops Frome	Worcestershire	WR6 5DB	248374	365961	ounty of Herefordshi	Sunday
Herefordshire FA	Civil Service F.C.	43855	First	10922313	Gorsty Lane	Gorsty Lane		Hereford	Herefordshire	HR1 1UN	239428	353322	ounty of Herefordshi	Saturday
Herefordshire FA	Colwall St James F.C.	43914	First	10922372	Colwall Football pitch	Walwyn Road	Colwall	Colwall	Worcestershire	WR13	214816	374980	ounty of Herefordshi	Sunday
Herefordshire FA	Cradley Sports Club F.C.	146525	U10	11411332	Bishops Frome Sports Ground	Bishops Frome		Bishops Frome	Worcestershire	WR6 5DB	248374	365961	ounty of Herefordshi	Saturday
Herefordshire FA	Cradley Sports Club F.C.	146525	U16	11411330	Cradley C E Primary School	Cradley		Cradley	Herefordshire	WR13 5LL	247100	373433	ounty of Herefordshi	Sunday
Herefordshire FA	Cradley Sports Club F.C.	146525	U8	11387272	Cradley C E Primary School	Cradley		Cradley	Herefordshire	WR13 5LL	247100	373433	ounty of Herefordshi	Saturday
Herefordshire FA	Cradley Sports Club F.C.	146525	U9	11387273	Cradley C E Primary School	Cradley		Cradley	Herefordshire	WR13 5LL	247100	373433	ounty of Herefordshi	Saturday
Herefordshire FA	Credenhill Juniors F.C.	44070	Credenhill Toros	11404530	Roman Park, Credenhill	Station Road	Credenhill	Hereford	Herefordshire		0	0	ounty of Herefordshi	Saturday
Herefordshire FA	Credenhill Juniors F.C.	44070	U10	11404529	Roman Park, Credenhill	Station Road	Credenhill	Hereford	Herefordshire		243516	345064	ounty of Herefordshi	Saturday
Herefordshire FA	Credenhill Juniors F.C.	44070	U12	11417095	St Mary's CofE Primary School	Credenhill		Hereford	Herefordshire	HR4 7DW	243460	345054	ounty of Herefordshi	Sunday
Herefordshire FA	Dore Valley F.C.	141633	First	10962127	Seven Site		Kingstone	Hereford	Herefordshire	HR2 9EW	236008	342703	ounty of Herefordshi	Saturday
Herefordshire FA	Eardisley Werewolves F.C.	226774	U12	11405704	Spear Marsh Common			Almeley	Herefordshire	HR3 6LH	251556	333479	ounty of Herefordshi	Sunday
Herefordshire FA	Eardisley Werewolves F.C.	226774	U8	11405700	Spear Marsh Common			Almeley	Herefordshire	HR3 6LH	251556	333479	ounty of Herefordshi	Saturday
Herefordshire FA	Ewyas Harold F.C.	43860	First	10922318	Ewyas Harold Recreation Ground	Ewyas Harold		Hereford	Herefordshire	HR2 0EY	228716	338793	ounty of Herefordshi	Saturday
Herefordshire FA	Ewyas Harold F.C.	43860	Reserves	11052402	Recreation Ground	Ewyas Harold		Hereford	Herefordshire		239800	350600	ounty of Herefordshi	Saturday
Herefordshire FA	Ewyas Harold F.C.	43860	U15	11426013	Ewyas Harold Recreation Ground	Ewyas Harold		Hereford	Herefordshire	HR2 0EY	228716	338793	ounty of Herefordshi	Sunday
Herefordshire FA	Fownhope F.C.	43861	First	10922319	Fownhope Recreation Field	Capler Lane	Fawnhope	Hereford	Herefordshire	HR1 4PJ	233838	358240	ounty of Herefordshi	Saturday
Herefordshire FA	Fownhope F.C.	43861	Reserves	11050015	Fownhope Recreation Field	Capler Lane	Fawnhope	Hereford	Herefordshire	HR1 4PJ	233838	358240	ounty of Herefordshi	Saturday
Herefordshire FA	Fownhope F.C.	43861	U18	11425775	Fownhope Recreation Field	Capler Lane	Fawnhope	Hereford	Herefordshire	HR1 4PJ	233838	358240	ounty of Herefordshi	Wednesday
Herefordshire FA	Fownhope F.C.	43861	U9	11425773	Fownhope Recreation Field	Capler Lane	Fawnhope	Hereford	Herefordshire	HR1 4PJ	233838	358240	ounty of Herefordshi	Sunday
Herefordshire FA	Fownhope Junior Dynamos Youth F.C.	44101	U10 Lightning	11435093	Victoria Park	Victoria Park		Hereford	Herefordshire		244650	346350	ounty of Herefordshi	Saturday
Herefordshire FA	Fownhope Junior Dynamos Youth F.C.	44101	U10 Thunder	11435100	Fownhope Recreation Field	Capler Lane	Fawnhope	Hereford	Herefordshire	HR1 4PJ	233838	358240	ounty of Herefordshi	Saturday
Herefordshire FA	Fownhope Junior Dynamos Youth F.C.	44101	U14	11435070	Fownhope Recreation Field	Capler Lane	Fawnhope	Hereford	Herefordshire	HR1 4PJ	233838	358240	ounty of Herefordshi	Sunday

Herefordshire FA	Golden Valley Juniors F.C.	44133	U11	11432718	Seven Site	Seve Site	Kingstone	Hereford	Herefordshire		0	0	ounty of Herefordshi	Saturday
Herefordshire FA	Golden Valley Juniors F.C.	44133	U12	11455351	Seven Site	Seve Site	Kingstone	Hereford	Herefordshire		0	0	ounty of Herefordshi	Sunday
Herefordshire FA	Golden Valley Juniors F.C.	44133	U13	11432713	Seven Site	Seve Site	Kingstone	Hereford	Herefordshire		0	0	ounty of Herefordshi	Saturday
Herefordshire FA	Golden Valley Juniors F.C.	44133	U14	11432709	Seven Site	Seve Site	Kingstone	Hereford	Herefordshire		0	0	ounty of Herefordshi	Sunday
Herefordshire FA	Golden Valley Juniors F.C.	44133	U16	11432722	Seven Site	Seve Site	Kingstone	Hereford	Herefordshire		0	0	ounty of Herefordshi	Sunday
Herefordshire FA	Goldvale F.C.	219669	First	11232935	King George V Playing Fields	St Martins		Hereford		HR2 7RQ	239397	350880	ounty of Herefordshi	Sunday
Herefordshire FA	Gorsley Village F.C.	214301	Skills	11461531	Gorsley Goffs Primary School	Gorsley		Ross-on-Wye	Herefordshire	HR9 7SE	226012	367213	ounty of Herefordshi	Saturday
Herefordshire FA	Gorsley Village F.C.	214301	U11	11422841	Gorsley Goffs Primary School	Gorsley		Ross-on-Wye	Herefordshire	HR9 7SE	226012	367213	ounty of Herefordshi	Sunday
Herefordshire FA	Gorsley Village F.C.	214301	U13	11461528	Gorsley Goffs Primary School	Gorsley		Ross-on-Wye	Herefordshire	HR9 7SE	226012	367213	ounty of Herefordshi	Saturday
Herefordshire FA	Greyhound City Sports Youth F.C.	110034	U14	11442218	Hereford City Sports Club	Grandstand Road		Hereford	Herefordshire		241250	350150	ounty of Herefordshi	Saturday
Herefordshire FA	HCT F.C.	231070	First	11414080	Wellington Playing Field	Wellington		Hereford	Herefordshire	HR4 8AZ	248214	349611	ounty of Herefordshi	Monday
Herefordshire FA	Heart of Oak FC	146518	First	11001961	Hereford Leisure Centre	Holmer Road		Hereford	Herefordshire	HR4 9UD	241505	350554	ounty of Herefordshi	Sunday
Herefordshire FA	Hearts F.C.	223570	First	11286445	Hereford Leisure Centre	Holmer Road		Hereford	Herefordshire	HR4 9UD	241505	350554	ounty of Herefordshi	Sunday
Herefordshire FA	Hereford City FC	219066	First	11221089	Gorsty Lane	Gorsty Lane		Hereford	Herefordshire	HR1 1UN	239428	353322	ounty of Herefordshi	Saturday
Herefordshire FA	Hereford City Sports F.C.	215491	U8	11260980	Hereford City Sports Club	Grandstand Road		Hereford	Herefordshire		241250	350150	ounty of Herefordshi	Saturday
Herefordshire FA	Hereford City Sports F.C.	215491	u9	11362777	Hereford City Sports Club	Grandstand Road		Hereford	Herefordshire		241250	350150	ounty of Herefordshi	Saturday
Herefordshire FA	Hereford Girls FC	209323	U13	11436929	Gorsty Lane	Gorsty Lane		Hereford	Herefordshire	HR1 1UN	239428	353322	ounty of Herefordshi	Sunday
Herefordshire FA	Hereford Girls FC	209323	U15	11436923	Gorsty Lane	Gorsty Lane		Hereford	Herefordshire	HR1 1UN	239428	353322	ounty of Herefordshi	Sunday
Herefordshire FA	Hereford Lads Club F.C.	43909	First	10922367	Hereford Leisure Centre	Holmer Road		Hereford	Herefordshire	HR4 9UD	241505	350554	ounty of Herefordshi	Saturday
Herefordshire FA	Hereford Lads Club F.C.	43909	Reserves	11125212	Widemarsh Common	Holmer Road		Hereford	Herefordshire	HR4 9UD	241505	350554	ounty of Herefordshi	Saturday
Herefordshire FA	Hereford Lads Club Youth F.C.	44225	U10 Colts	11434094	HFA County Ground	Widemarsh common		Hereford	Herefordshire	HR4 9NA	240893	350611	ounty of Herefordshi	Saturday
Herefordshire FA	Hereford Lads Club Youth F.C.	44225	U10 terriers	11434098	HFA County Ground	Widemarsh common		Hereford	Herefordshire	HR4 9NA	240893	350611	ounty of Herefordshi	Saturday
Herefordshire FA	Hereford Lads Club Youth F.C.	44225	U10 Warriors	11434101	HFA County Ground	Widemarsh common		Hereford	Herefordshire	HR4 9NA	240893	350611	ounty of Herefordshi	Saturday
Herefordshire FA	Hereford Lads Club Youth F.C.	44225	U11 Bells	11434137	HFA County Ground	Widemarsh common		Hereford	Herefordshire	HR4 9NA	240893	350611	ounty of Herefordshi	Sunday
Herefordshire FA	Hereford Lads Club Youth F.C.	44225	U11 Tigers	11441766	HFA County Ground	Widemarsh common		Hereford	Herefordshire	HR4 9NA	240893	350611	ounty of Herefordshi	Sunday
Herefordshire FA	Hereford Lads Club Youth F.C.	44225	U11 Vixens	11434141	HFA County Ground	Widemarsh common		Hereford	Herefordshire	HR4 9NA	240893	350611	ounty of Herefordshi	Sunday
Herefordshire FA	Hereford Lads Club Youth F.C.	44225	U12 Bulls	11434115	King George V Playing Fields	St Martins		Hereford	Herefordshire	HR2 7RQ	239397	350880	ounty of Herefordshi	Sunday
Herefordshire FA	Hereford Lads Club Youth F.C.	44225	U13	11434118	HFA County Ground	Widemarsh common		Hereford	Herefordshire	HR4 9NA	240893	350611	ounty of Herefordshi	Sunday
Herefordshire FA	Hereford Lads Club Youth F.C.	44225	U13 Vixens	11434146	HFA County Ground	Widemarsh common		Hereford	Herefordshire	HR4 9NA	240893	350611	ounty of Herefordshi	Sunday
Herefordshire FA	Hereford Lads Club Youth F.C.	44225	U14	11434122	HFA County Ground	Widemarsh common		Hereford	Herefordshire	HR4 9NA	240893	350611	ounty of Herefordshi	Sunday
Herefordshire FA	Hereford Lads Club Youth F.C.	44225	U17 Tigers	11434153	HFA County Ground	Widemarsh common		Hereford	Herefordshire	HR4 9NA	240893	350611	ounty of Herefordshi	Sunday
Herefordshire FA	Hereford Lads Club Youth F.C.	44225	U18	11434124	Hereford Leisure Centre	Holmer Road		Hereford	Herefordshire	HR4 9UD	241505	350554	ounty of Herefordshi	Thursday
Herefordshire FA	Hereford Lads Club Youth F.C.	44225	U8 Gullers	11434078	HFA County Ground	Widemarsh common		Hereford	Herefordshire	HR4 9NA	240893	350611	ounty of Herefordshi	Saturday
Herefordshire FA	Hereford Lads Club Youth F.C.	44225	U8 Merlins	11434083	HFA County Ground	Widemarsh common		Hereford	Herefordshire	HR4 9NA	240893	350611	ounty of Herefordshi	Saturday
Herefordshire FA	Hereford Lads Club Youth F.C.	44225	U8 scorpions	11434079	HFA County Ground	Widemarsh common		Hereford	Herefordshire	HR4 9NA	240893	350611	ounty of Herefordshi	Saturday
Herefordshire FA	Hereford Lads Club Youth F.C.	44225	U9 Cheetas	11434086	HFA County Ground	Widemarsh common		Hereford	Herefordshire	HR4 9NA	240893	350611	ounty of Herefordshi	Saturday
Herefordshire FA	Hereford Lads Club Youth F.C.	44225	U9 Pumas	11434134	HFA County Ground	Widemarsh common		Hereford	Herefordshire	HR4 9NA	240893	350611	ounty of Herefordshi	Sunday
Herefordshire FA	Hereford Lads Club Youth F.C.	44225	U9 Rangers	11434090	HFA County Ground	Widemarsh common		Hereford	Herefordshire	HR4 9NA	240893	350611	ounty of Herefordshi	Saturday
Herefordshire FA	Hereford Lads Club Youth F.C.	44225	U9 Tigers	11434128	HFA County Ground	Widemarsh common		Hereford	Herefordshire	HR4 9NA	240893	350611	ounty of Herefordshi	Sunday
Herefordshire FA	Hereford Pegasus Ladies F.C.	43996	Ladies First	10922454	Pegasus FC	Old School Lane		Hereford	Herefordshire	HR1 1EX	241794	351269	ounty of Herefordshi	Sunday
Herefordshire FA	Hereford Pegasus Ladies F.C.	43996	Reserves	11367536	Pegasus FC	Old School Lane		Hereford	Herefordshire	HR1 1EX	241794	351269	ounty of Herefordshi	Sunday
Herefordshire FA	Hereford Redstars F.C.	232729	U8	11450140	Hereford Sixth Form College	Folly Lane		Hereford	Herefordshire	HR1 1LU	240699	352212	ounty of Herefordshi	Saturday
Herefordshire FA	Herefordshire Mind FC	210484	Open Aged	11327100	Hereford Leisure Centre	Holmer		Hereford	Herefordshire		241550	350550	ounty of Herefordshi	Sunday
Herefordshire FA	Herefordshire Mind FC	210484	Open Aged2	11327101	Hereford Leisure Centre	Holmer		Hereford	Herefordshire		241550	350550	ounty of Herefordshi	Sunday
Herefordshire FA	Hereford United FC	43954	Adult disability	11344776	Hereford United FC	Edgar Street Athletic Ground	Edgar Street	HEREFORD	Herefordshire	HR4 9JU	240460	350930	ounty of Herefordshi	Saturday
Herefordshire FA	Hereford United FC	43954	Disability	11392146	Hereford United FC	Edgar Street Athletic Ground	Edgar Street	HEREFORD	Herefordshire	HR4 9JU	240460	350930	ounty of Herefordshi	Saturday
Herefordshire FA	Hereford United FC	43954	First	10922412	Hereford United FC	Edgar Street Athletic Ground	Edgar Street	HEREFORD	Herefordshire	HR4 9JU	240460	350930	ounty of Herefordshi	Saturday
Herefordshire FA	Hereford United FC	43954	U10	11344771	Hereford United FC	Edgar Street Athletic Ground	Edgar Street	HEREFORD	Herefordshire	HR4 9JU	240460	350930	ounty of Herefordshi	Saturday
Herefordshire FA	Hereford United FC	43954	U11	11344767	Hereford United FC	Edgar Street Athletic Ground	Edgar Street	HEREFORD	Herefordshire	HR4 9JU	240460	350930	ounty of Herefordshi	Saturday
Herefordshire FA	Hereford United FC	43954	U13	11404815	Hereford United FC	Edgar Street Athletic Ground	Edgar Street	HEREFORD	Herefordshire	HR4 9JU	240460	350930	ounty of Herefordshi	Saturday
Herefordshire FA	Hereford United FC	43954	U14	11344718	Hereford United FC	Edgar Street Athletic Ground	Edgar Street	HEREFORD	Herefordshire	HR4 9JU	240460	350930	ounty of Herefordshi	Saturday
Herefordshire FA	Hereford United FC	43954	U16	11344715	Hereford United FC	Edgar Street Athletic Ground	Edgar Street	HEREFORD	Herefordshire	HR4 9JU	240460	350930	ounty of Herefordshi	Saturday
Herefordshire FA	Hereford United FC	43954	U18	11049834	Hereford United FC	Edgar Street Athletic Ground	Edgar Street	HEREFORD	Herefordshire	HR4 9JU	240460	350930	ounty of Herefordshi	Wednesday
Herefordshire FA	Hereford United FC	43954	U9	11344774	Hereford United FC	Edgar Street Athletic Ground	Edgar Street	HEREFORD	Herefordshire	HR4 9JU	240460	350930	ounty of Herefordshi	Saturday
Herefordshire FA	HFA County Team F.C.	44160	U16	11253103	Delahay Meadow	Stourport Road		Bromyard	Herefordshire	HR7 4NT	255019	366079	ounty of Herefordshi	Sunday
Herefordshire FA	HFA County Team F.C.	44160	U18	10907848	Pegasus FC	Old School Lane		Hereford	Herefordshire	HR1 1EX	241794	351269	ounty of Herefordshi	Sunday
Herefordshire FA	HFA Girls PDC F.C.	226752	U11	11394131	Haywood High School	Stanberrow Road		Grafton	Herefordshire	HR2 7NG	237991	350132	ounty of Herefordshi	Friday
Herefordshire FA	HFA Girls PDC F.C.	226752	U13	11394132	Haywood High School	Stanberrow Road		Grafton	Herefordshire	HR2 7NG	237991	350132	ounty of Herefordshi	Friday
Herefordshire FA	HFA Girls PDC F.C.	226752	U15	11394133	Haywood High School	Stanberrow Road		Grafton	Herefordshire	HR2 7NG	237991	350132	ounty of Herefordshi	Friday
Herefordshire FA	HFA Girls PDC F.C.	226752	U17	11394130	Haywood High School	Stanberrow Road		Grafton	Herefordshire	HR2 7NG	237991	350132	ounty of Herefordshi	Friday

Herefordshire FA	HFA Girls PDC F.C.	226752	U9	11450173	Haywood High School	Stanberrow Road		Grafton	Herefordshire	HR2 7NG	237991	350132	ounty of Herefordshi	Friday	
Herefordshire FA	Hinton F.C.	43866	First	10922324	Broomy Hill	Football Pitch	Broomy Hill	Hereford	Herefordshire		0	0	ounty of Herefordshi	Saturday	
Herefordshire FA	Hinton F.C.	43866	Reserves	11123512	Broomy Hill	Football Pitch	Broomy Hill	Hereford	Herefordshire		0	0	ounty of Herefordshi	Saturday	
Herefordshire FA	Hinton U18 F.C.	140779	U18	11123533	Broomy Hill	Football Pitch	Broomy Hill	Hereford	Herefordshire		0	0	ounty of Herefordshi	Wednesday	
Herefordshire FA	Hinton Youth F.C.	140778	U12	11420399	Broomy Hill	Football Pitch	Broomy Hill	Hereford	Herefordshire		239500	349500	ounty of Herefordshi	Saturday	
Herefordshire FA	Hinton Youth F.C.	140778	U13	11453475	Broomy Hill	Football Pitch	Broomy Hill	Hereford	Herefordshire		239500	349500	ounty of Herefordshi	Saturday	
Herefordshire FA	Hinton Youth F.C.	140778	U13 colts	11420396	Broomy Hill	Football Pitch	Broomy Hill	Hereford	Herefordshire		239500	349500	ounty of Herefordshi	Saturday	
Herefordshire FA	Hinton Youth F.C.	140778	U14	11342395	Broomy Hill	Football Pitch	Broomy Hill	Hereford	Herefordshire		239500	349500	ounty of Herefordshi	Sunday	
Herefordshire FA	Hinton Youth F.C.	140778	U14 Colts	11420395	Broomy Hill	Football Pitch	Broomy Hill	Hereford	Herefordshire		239500	349500	ounty of Herefordshi	Sunday	
Herefordshire FA	Hinton Youth F.C.	140778	U15	11455329	Broomy Hill	Football Pitch	Broomy Hill	Hereford	Herefordshire		239500	349500	ounty of Herefordshi	Saturday	
Herefordshire FA	Hinton Youth F.C.	140778	U16	11420392	Broomy Hill	Football Pitch	Broomy Hill	Hereford	Herefordshire		239500	349500	ounty of Herefordshi	Sunday	
Herefordshire FA	Holme Lacy F.C.	43867	First	10922325	Holme Lacy Playing Field	Holme Lacy		Hereford	Herefordshire	HR2	235621	355573	ounty of Herefordshi	Saturday	
Herefordshire FA	Holme Lacy F.C.	43867	Reserves	11050047	Holme Lacy Playing Field	Holme Lacy		Hereford	Herefordshire	HR2	235621	355573	ounty of Herefordshi	Saturday	
Herefordshire FA	Holmer Athletic F.C.	44255	First	10922710	Widemarsh Common	Widemarsh Common		Hereford	Herefordshire	hr4 9na	240893	350611	ounty of Herefordshi	Sunday	
Herefordshire FA	Hop Pole F.C.	227134	First	11341662	Bridge Street			Leominster		HR6 8EA	259813	349280	ounty of Herefordshi	Sunday	
Herefordshire FA	HWX United F.C.	44318	First	10922773	King George V Playing Fields		St Martins			HR2 7RQ	239397	350880	ounty of Herefordshi	Sunday	
Herefordshire FA	Kimbolton Junior FC	146149	U10	11338577	Earl Mortimer Sports College		Leominster	Leominster	Herefordshire	HR6 8JJ	258443	349673	ounty of Herefordshi	Saturday	
Herefordshire FA	Kingspan F.C.	227321	First	11346030	Shobdon Airfield	Shobdon		Leominster	Hereford	Herefordshire	HR6 9NT	261844	339690	ounty of Herefordshi	Sunday
Herefordshire FA	Kingstone Harriers F.C.	219500	First	11229519	Kingstone High School	Kingstone			Hereford	Herefordshire	HR2 9HJ	236102	342009	ounty of Herefordshi	Saturday
Herefordshire FA	Kingstone Rovers F.C.	43900	First	10922358	Seven Site		Kingstone		Hereford	Herefordshire	HR2 9EW	236008	342703	ounty of Herefordshi	Saturday
Herefordshire FA	Kington Town F.C.	43894	First	10922352	Kington Town FC	Mill Street		Kington	Herefordshire	HR5 3AL	256540	329467	ounty of Herefordshi	Saturday	
Herefordshire FA	Kington Town F.C.	43894	Reserves	11054334	Kington Town FC	Mill Street		Kington	Herefordshire	HR5 3AL	256540	329467	ounty of Herefordshi	Saturday	
Herefordshire FA	Kington Town Youth F.C.	44107	U10	11410651	Kington Town FC	Mill Street		Kington	Herefordshire	HR5 3AL	256540	329467	ounty of Herefordshi	Saturday	
Herefordshire FA	Kington Town Youth F.C.	44107	U12	11410645	Kington Town FC	Mill Street		Kington	Herefordshire	HR5 3AL	256540	329467	ounty of Herefordshi	Saturday	
Herefordshire FA	Kington Town Youth F.C.	44107	U13	11410653	Kington Town FC	Mill Street		Kington	Herefordshire	HR5 3AL	256540	329467	ounty of Herefordshi	Sunday	
Herefordshire FA	Kington Town Youth F.C.	44107	U15	11410648	Kington Town FC	Mill Street		Kington	Herefordshire	HR5 3AL	256540	329467	ounty of Herefordshi	Sunday	
Herefordshire FA	Kington Town Youth F.C.	44107	U16	11410646	Kington Town FC	Mill Street		Kington	Herefordshire	HR5 3AL	256540	329467	ounty of Herefordshi	Sunday	
Herefordshire FA	Kington Town Youth F.C.	44107	U8	11410655	Kington Town FC	Mill Street		Kington	Herefordshire	HR5 3AL	256540	329467	ounty of Herefordshi	Saturday	
Herefordshire FA	Lads Club (SUNDAY) F.C.	43908	First	11411141	Hereford Leisure Centre	Holmer		Hereford	Herefordshire		241550	350550	ounty of Herefordshi	Sunday	
Herefordshire FA	La Mano De Dios 86 F.C.	209753	First	11138971	Ledbury Town	New Street		Ledbury	Herefordshire	HR8 2AE	237867	370912	ounty of Herefordshi	Sunday	
Herefordshire FA	LC Galaxy FC	226612	u9	11455330	Hereford Leisure Centre	Holmer		Hereford	Herefordshire		241550	350550	ounty of Herefordshi	Saturday	
Herefordshire FA	Ledbury Swifts FC	146214	U10	11440172	Ledbury Rugby Club	Ross Road Playing Fields	Ross Road	Ledbury	Herefordshire		0	0	ounty of Herefordshi	Saturday	
Herefordshire FA	Ledbury Swifts FC	146214	U11	11440176	Ledbury Rugby Club	Ross Road Playing Fields	Ross Road	Ledbury	Herefordshire		0	0	ounty of Herefordshi	Saturday	
Herefordshire FA	Ledbury Swifts FC	146214	U11	11440194	Ledbury Rugby Club	Ross Road Playing Fields	Ross Road	Ledbury	Herefordshire		0	0	ounty of Herefordshi	Sunday	
Herefordshire FA	Ledbury Swifts FC	146214	U12 Rovers	11440179	Ledbury Rugby Club	Ross Road Playing Fields	Ross Road	Ledbury	Herefordshire		0	0	ounty of Herefordshi	Sunday	
Herefordshire FA	Ledbury Swifts FC	146214	U12 United	11440180	Ledbury Rugby Club	Ross Road Playing Fields	Ross Road	Ledbury	Herefordshire		0	0	ounty of Herefordshi	Sunday	
Herefordshire FA	Ledbury Swifts FC	146214	U13	11440196	Ledbury Rugby Club	Ross Road Playing Fields	Ross Road	Ledbury	Herefordshire		0	0	ounty of Herefordshi	Sunday	
Herefordshire FA	Ledbury Swifts FC	146214	U13 Athletic	11440183	Ledbury Rugby Club	Ross Road Playing Fields	Ross Road	Ledbury	Herefordshire		0	0	ounty of Herefordshi	Sunday	
Herefordshire FA	Ledbury Swifts FC	146214	U14 Rovers	11440184	Ledbury Rugby Club	Ross Road Playing Fields	Ross Road	Ledbury	Herefordshire		0	0	ounty of Herefordshi	Sunday	
Herefordshire FA	Ledbury Swifts FC	146214	U15 Rovers	11440189	Ledbury Rugby Club	Ross Road Playing Fields	Ross Road	Ledbury	Herefordshire		0	0	ounty of Herefordshi	Sunday	
Herefordshire FA	Ledbury Swifts FC	146214	U15 Wanderes	11440187	Ledbury Rugby Club	Ross Road Playing Fields	Ross Road	Ledbury	Herefordshire		0	0	ounty of Herefordshi	Sunday	
Herefordshire FA	Ledbury Swifts FC	146214	U16 Athletic	11440191	Ledbury Rugby Club	Ross Road Playing Fields	Ross Road	Ledbury	Herefordshire		0	0	ounty of Herefordshi	Sunday	
Herefordshire FA	Ledbury Swifts FC	146214	U17	11440201	Ledbury Rugby Club	Ross Road Playing Fields	Ross Road	Ledbury	Herefordshire		0	0	ounty of Herefordshi	Sunday	
Herefordshire FA	Ledbury Swifts FC	146214	U8	11440152	Ledbury Rugby Club	Ross Road Playing Fields	Ross Road	Ledbury	Herefordshire		0	0	ounty of Herefordshi	Saturday	
Herefordshire FA	Ledbury Swifts FC	146214	U9 athletic	11440165	Ledbury Rugby Club	Ross Road Playing Fields	Ross Road	Ledbury	Herefordshire		0	0	ounty of Herefordshi	Saturday	
Herefordshire FA	Ledbury Swifts FC	146214	U9 United	11440155	Ledbury Rugby Club	Ross Road Playing Fields	Ross Road	Ledbury	Herefordshire		0	0	ounty of Herefordshi	Saturday	
Herefordshire FA	Ledbury Town F.C.	43870	1st	11230105	Ledbury Town	New Street		Ledbury	Herefordshire	HR8 2AE	237867	370912	ounty of Herefordshi	Saturday	
Herefordshire FA	Ledbury Town F.C.	43870	Reserves	11064677	Ledbury Town	New Street		Ledbury	Herefordshire	HR8 2AE	237867	370912	ounty of Herefordshi	Saturday	
Herefordshire FA	Ledbury Town F.C.	43870	U18	11430894	Ledbury Town	New Street		Ledbury	Herefordshire	HR8 2AE	237867	370912	ounty of Herefordshi	Thursday	
Herefordshire FA	Ledbury Town F.C.	43870	Veterans	11457626	Ledbury Town	New Street		Ledbury	Herefordshire	HR8 2AE	237867	370912	ounty of Herefordshi	Sunday	
Herefordshire FA	Ledbury Town F.C.	43870	Women's	11369281	Ledbury Town	New Street		Ledbury	Herefordshire	HR8 2AE	237867	370912	ounty of Herefordshi	Sunday	
Herefordshire FA	Leintwardine Colts F.C.	43871	First	10922329	Leintwardine FC	Paytoe Lane		Leintwardine	Herefordshire	SY7	272600	341000	ounty of Herefordshi	Saturday	
Herefordshire FA	Leintwardine School Sports Club F.C.	140832	U11	11303653	Leintwardine Primary School	Leintwardine		Hereford	Herefordshire	SY7 0LB	274064	340411	ounty of Herefordshi	Saturday	
Herefordshire FA	Leominster Minors F.C.	146568	U10	11412659	Briarwood Stadium	Bridge Street		Leominster	Herefordshire	HR6 8EA	259813	349280	ounty of Herefordshi	Saturday	
Herefordshire FA	Leominster Minors F.C.	146568	U11	11412636	Briarwood Stadium	Bridge Street		Leominster	Herefordshire	HR6 8EA	259813	349280	ounty of Herefordshi	Saturday	
Herefordshire FA	Leominster Minors F.C.	146568	U11 Girls	11412652	Briarwood Stadium	Bridge Street		Leominster	Herefordshire	HR6 8EA	259813	349280	ounty of Herefordshi	Sunday	
Herefordshire FA	Leominster Minors F.C.	146568	U13	11412632	Briarwood Stadium	Bridge Street		Leominster	Herefordshire	HR6 8EA	259813	349280	ounty of Herefordshi	Sunday	
Herefordshire FA	Leominster Minors F.C.	146568	u13 Colts	11412657	Briarwood Stadium	Bridge Street		Leominster	Herefordshire	HR6 8EA	259813	349280	ounty of Herefordshi	Sunday	
Herefordshire FA	Leominster Minors F.C.	146568	U13 girls	11412654	Briarwood Stadium	Bridge Street		Leominster	Herefordshire	HR6 8EA	259813	349280	ounty of Herefordshi	Sunday	
Herefordshire FA	Leominster Minors F.C.	146568	U14	11412629	Briarwood Stadium	Bridge Street		Leominster	Herefordshire	HR6 8EA	259813	349280	ounty of Herefordshi	Saturday	

Herefordshire FA	Leominster Minors F.C.	146568	U14 Colts	11412637	Briarwood Stadium	Bridge Street		Leominster	Herefordshire	HR6 8EA	259813	349280	ounty of Herefordshi	Sunday
Herefordshire FA	Leominster Minors F.C.	146568	U15	11412628	Briarwood Stadium	Bridge Street		Leominster	Herefordshire	HR6 8EA	259813	349280	ounty of Herefordshi	Sunday
Herefordshire FA	Leominster Minors F.C.	146568	U15 Girls	11412626	Briarwood Stadium	Bridge Street		Leominster	Herefordshire	HR6 8EA	259813	349280	ounty of Herefordshi	Sunday
Herefordshire FA	Leominster Minors F.C.	146568	U16	11412640	Briarwood Stadium	Bridge Street		Leominster	Herefordshire	HR6 8EA	259813	349280	ounty of Herefordshi	Sunday
Herefordshire FA	Leominster Minors F.C.	146568	U18	11003167	Briarwood Stadium	Bridge Street		Leominster	Herefordshire	HR6 8EA	259813	349280	ounty of Herefordshi	Tuesday
Herefordshire FA	Leominster Minors F.C.	146568	U8	11412663	Briarwood Stadium	Bridge Street		Leominster	Herefordshire	HR6 8EA	259813	349280	ounty of Herefordshi	Saturday
Herefordshire FA	Leominster Minors F.C.	146568	U9	11412653	Briarwood Stadium	Bridge Street		Leominster	Herefordshire	HR6 8EA	259813	349280	ounty of Herefordshi	Saturday
Herefordshire FA	Leominster Town F.C.	43872	Colts	11309014	Briarwood Stadium	Bridge Street		Leominster	Herefordshire	HR6 8EA	259813	349280	ounty of Herefordshi	Saturday
Herefordshire FA	Leominster Town F.C.	43872	First	10922330	Briarwood Stadium	Bridge Street		Leominster	Herefordshire	HR6 8EA	259813	349280	ounty of Herefordshi	Saturday
Herefordshire FA	Lichfield Vaults F.C.	227419	First	11348581	The Common	Widemarsh Common		Hereford	Herefordshire	hr4 9na	240893	350611	ounty of Herefordshi	Sunday
Herefordshire FA	Llandrindod Wells U18 F.C.	44320	First	10972636	Broadway	Lant Avenue		Llandrindod Wells	Herefordshire	LD1 5HT	261176	306321	ounty of Herefordshi	Wednesday
Herefordshire FA	Mercia Athletic F.C.	224183	Colts	11437955	Playing Fields	Marden		Hereford	Herefordshire	hr1 3dw	247452	352132	ounty of Herefordshi	Saturday
Herefordshire FA	Mercia Athletic F.C.	224183	First	11299559	Playing Fields	Marden		Hereford	Herefordshire	hr1 3dw	247452	352132	ounty of Herefordshi	Saturday
Herefordshire FA	Misfits F.C.	217148	First	11201566	Roman Park	Credenhill		Hereford	Herefordshire	hr4	243640	345560	ounty of Herefordshi	Sunday
Herefordshire FA	Nexus FC	230922	Nexus	11410608	King George V Playing Fields	St Martins		Hereford		HR2 7RQ	239397	350880	ounty of Herefordshi	Sunday
Herefordshire FA	Norfolk Athletic F.C.	227576	First	11353789	Newton Farm	Marcle Walk	Newton Farm	Hereford	Herefordshire	HR2 7RQ	239397	350880	ounty of Herefordshi	Sunday
Herefordshire FA	Orleton Colts F.C.	213811	First	11163596	Brimfield and Little Hereford Sports Club	Aynall Lane		Brimfields	Herefordshire	SY8 4BG	267709	354031	ounty of Herefordshi	Saturday
Herefordshire FA	Orleton Colts F.C.	213811	Reserves	11291165	Brimfield and Little Hereford Sports Club	Aynall Lane		Brimfields	Herefordshire	SY8 4BG	267709	354031	ounty of Herefordshi	Saturday
Herefordshire FA	Orleton (Sunday) F.C.	111562	First	11096401	Brimfield and Little Hereford Sports Club	Aynall Lane		Brimfields	Herefordshire	SY8 4BG	267709	354031	ounty of Herefordshi	Sunday
Herefordshire FA	Orleton Youth F.C.	44158	U11	11428341	Orleton Recreation Ground	Orleton		Orleton	Herefordshire	SY8 4HL	267333	349517	ounty of Herefordshi	Saturday
Herefordshire FA	Orleton Youth F.C.	44158	U12	11428337	Orleton Recreation Ground	Orleton		Orleton	Herefordshire	SY8 4HL	267333	349517	ounty of Herefordshi	Saturday
Herefordshire FA	Orleton Youth F.C.	44158	U13	11428335	Orleton Recreation Ground	Orleton		Orleton	Herefordshire	SY8 4HL	267333	349517	ounty of Herefordshi	Sunday
Herefordshire FA	Orleton Youth F.C.	44158	U16	11428374	Orleton Recreation Ground	Orleton		Orleton	Herefordshire	SY8 4HL	267333	349517	ounty of Herefordshi	Sunday
Herefordshire FA	Orleton Youth F.C.	44158	U8	11428367	Orleton Recreation Ground	Orleton		Orleton	Herefordshire	SY8 4HL	267333	349517	ounty of Herefordshi	Saturday
Herefordshire FA	Orleton Youth F.C.	44158	U9	11428346	Orleton Recreation Ground	Orleton		Orleton	Herefordshire	SY8 4HL	267333	349517	ounty of Herefordshi	Saturday
Herefordshire FA	Pegasus F.C.	44082	First	10922540	Marden Playing Fields	Marden		Hereford	Herefordshire	241702	351350	351350	ounty of Herefordshi	Saturday
Herefordshire FA	Pegasus Juniors F.C.	43876	First	10922334	Old School Lane	Old School Lane		Hereford	Herefordshire	HR1 1EX	241794	351269	ounty of Herefordshi	Saturday
Herefordshire FA	Pegasus Youth F.C.	44276	Floodlit	11418401	Pegasus FC	Old School Lane		Hereford	Herefordshire	HR1 1EX	241794	351269	ounty of Herefordshi	Thursday
Herefordshire FA	Pegasus Youth F.C.	44276	U10 Juniors	11418596	Pegasus FC	Old School Lane		Hereford	Herefordshire	hr1 1ex	241794	351269	ounty of Herefordshi	Saturday
Herefordshire FA	Pegasus Youth F.C.	44276	U11	11431385	Pegasus FC	Old School Lane		Hereford	Herefordshire	HR1 1EX	241794	351269	ounty of Herefordshi	Sunday
Herefordshire FA	Pegasus Youth F.C.	44276	U11 Colts	11418593	Pegasus FC	Old School Lane		Hereford	Herefordshire	hr1 1ex	241794	351269	ounty of Herefordshi	Saturday
Herefordshire FA	Pegasus Youth F.C.	44276	U11 Jets	11418594	Pegasus FC	Old School Lane		Hereford	Herefordshire	hr1 1ex	241794	351269	ounty of Herefordshi	Saturday
Herefordshire FA	Pegasus Youth F.C.	44276	U11 Juniors	11418592	Marden Playing Fields	Marden		Hereford	Herefordshire		241702	351350	ounty of Herefordshi	Saturday
Herefordshire FA	Pegasus Youth F.C.	44276	U12 Juniors	#MULTIVALUE	Pegasus FC	Old School Lane		Hereford	Herefordshire	hr1 1ex	241794	351269	ounty of Herefordshi	Saturday
Herefordshire FA	Pegasus Youth F.C.	44276	U13	11431394	Pegasus FC	Old School Lane		Hereford	Herefordshire	HR1 1EX	241794	351269	ounty of Herefordshi	Sunday
Herefordshire FA	Pegasus Youth F.C.	44276	U13 Colts	11418445	Pegasus FC	Old School Lane		Hereford	Herefordshire	hr1 1ex	241794	351269	ounty of Herefordshi	Sunday
Herefordshire FA	Pegasus Youth F.C.	44276	U14 Colts	11455333	Pegasus FC	Old School Lane		Hereford	Herefordshire	HR1 1EX	241794	351269	ounty of Herefordshi	Sunday
Herefordshire FA	Pegasus Youth F.C.	44276	U14 Juniors	11359495	Pegasus FC	Old School Lane		Hereford	Herefordshire	hr1 1ex	241794	351269	ounty of Herefordshi	Sunday
Herefordshire FA	Pegasus Youth F.C.	44276	U15	11431399	Pegasus FC	Old School Lane		Hereford	Herefordshire	HR1 1EX	241794	351269	ounty of Herefordshi	Sunday
Herefordshire FA	Pegasus Youth F.C.	44276	U15 Juniors	11418428	Burghill Playing Field	Redstone	Burghill	Hereford	Herefordshire	HR7 4HR	244500	347500	ounty of Herefordshi	Sunday
Herefordshire FA	Pegasus Youth F.C.	44276	U16 Pumas	11418396	Burghill Playing Field	Redstone	Burghill	Hereford	Herefordshire	HR7 4HR	244500	347500	ounty of Herefordshi	Sunday
Herefordshire FA	Pegasus Youth F.C.	44276	U18	11291454	Pegasus FC	Old School Lane		Hereford	Herefordshire	hr1 1ex	241794	351269	ounty of Herefordshi	Saturday
Herefordshire FA	Pegasus Youth F.C.	44276	u9 Juniors	11418595	Pegasus FC	Old School Lane		Hereford	Herefordshire	hr1 1ex	241794	351269	ounty of Herefordshi	Saturday
Herefordshire FA	Pencombe F.C.	43877	First	10922335	Gabbage Sports Ground	Pencombe		Hereford	Herefordshire	HR7 4RN	252744	359804	ounty of Herefordshi	Saturday
Herefordshire FA	Phoenix F.C.	44260	Disabled	11261845	Hereford Leisure Centre	Holmer		Hereford	Herefordshire		241550	350550	ounty of Herefordshi	Sunday
Herefordshire FA	Phoenix F.C.	44260	Disabled Res	11261846	Hereford Leisure Centre	Holmer		Hereford	Herefordshire		241550	350550	ounty of Herefordshi	Sunday
Herefordshire FA	Phoenix F.C.	44260	U13	11404543	Gorsty Lane	Gorsty Lane		Hereford	Herefordshire	HR1 1UN	239428	353322	ounty of Herefordshi	Sunday
Herefordshire FA	Phoenix F.C.	44260	U8	11404550	Broadlands Primary School	Prospect Walk	Tupstey,	Hereford	Herefordshire	HR1 1NZ	240738	352606	ounty of Herefordshi	Saturday
Herefordshire FA	Phoenix Sunday F.C.	213821	First	11163812	Hereford Leisure Centre	Holmer		Hereford	Herefordshire		241550	350550	ounty of Herefordshi	Sunday
Herefordshire FA	Plough F.C.	226966	First	11337226	King George V Playing Fields	St Martins		Hereford	Herefordshire	HR2 7RQ	239397	350880	ounty of Herefordshi	Sunday
Herefordshire FA	Real Toros F.C.	213993	First	11167137	The Abbey Park	Belmont Abbey		Hereford	Herefordshire	hr2 9sh	237799	347902	ounty of Herefordshi	Sunday
Herefordshire FA	Relentless F.C.	219591	First	11231612	Hereford Leisure Centre	Holmer Road		Hereford		hr4 9na	240893	350611	ounty of Herefordshi	Saturday
Herefordshire FA	Roebuck Inn FC	146519	First	11001976	Brimfield and Little Hereford Sports Club	Aynall Lane		Brimfields	Herefordshire	SY8 4BG	267709	354031	ounty of Herefordshi	Sunday
Herefordshire FA	Rose & Crown F.C.	43946	First	10922404	King George Playing Fields			Hereford	Herefordshire		226879	346299	ounty of Herefordshi	Sunday
Herefordshire FA	Rosey Athletic F.C.	227303	First	11345682	King George V Playing Fields	St Martins		Hereford		HR2 7RQ	239397	350880	ounty of Herefordshi	Sunday
Herefordshire FA	Ross Junior Adult Saturday F.C.	233298	First	11456240	Ross-on-Wye Sports Centre	Wilton Rd	Ross-on-Wye	Ross-on-Wye	Herefordshire		223907	359174	ounty of Herefordshi	Saturday
Herefordshire FA	Ross Junior Adult Saturday F.C.	233298	Reserves	11456242	Ross-on-Wye Sports Centre	Wilton Rd	Ross-on-Wye	Ross-on-Wye	Herefordshire		223907	359174	ounty of Herefordshi	Saturday
Herefordshire FA	Ross Juniors Adults F.C.	223673	First	11289292	Ross-on-Wye Sports Centre	Wilton Rd	Ross-on-Wye	Ross-on-Wye	Herefordshire		223907	359174	ounty of Herefordshi	Sunday
Herefordshire FA	Ross Juniors Adults F.C.	223673	Saturday	11413370	Ross-on-Wye Sports Centre	Wilton Rd	Ross-on-Wye	Ross-on-Wye	Herefordshire		223907	359174	ounty of Herefordshi	Saturday
Herefordshire FA	Ross Juniors Adults F.C.	223673	Saturday Res	11413371	Ross-on-Wye Sports Centre	Wilton Rd	Ross-on-Wye	Ross-on-Wye	Herefordshire		223907	359174	ounty of Herefordshi	Saturday

