

Section 3 Playing Pitch Strategy for each area including summary of key findings and recommendations

Ledbury Area

Herefordshire Playing Pitch Assessment

**On Behalf of Herefordshire Council
October 2012**

**Ruth Jackson MA MRTPI
Principal Leisure and Countryside Recreation Officer
Herefordshire Council**

Contents

1. Area Profile
2. Supply: Quantitative Assessment
3. Qualitative Assessment:
4. Demand: Research and Consultation
5. Adequacy of Current Provision: The Playing Pitch Methodology
6. Predicting the Future
7. Developing Local Standards
8. Recommendations and Future Actions for Ledbury Area

Ledbury Area Supply and Demand

1. Area Profile

1.1 Planning Background

- 1.1.1 Herefordshire Council commissioned GL Hearn to prepare a Local Housing Requirement Study (October 2011) to inform the development of the Local Development Framework Core Strategy. This includes demographic projections for population, households and dwellings, taking account of past demographic trends and forecast economic performance. The plan period covers 2011 – 31 and the analysis sets out the projections for population and housing growth for the county across seven sub Housing Market Areas. (HMAs) including Hereford. A full list of all sub HMAs can be found in the Strategic Overview.

1.2 Population

- 1.2.1 Ledbury Area has an estimated population (2010 mid-year estimates) of 19,300 residents (10.5 % of the county's population). It includes the following wards: Frome, Hope End, Ledbury. For analytical purposes, it has been divided into the two sub-area of Ledbury town and Ledbury rural.
- 1.2.2 Ledbury Town has a relatively high proportion of older people aged 65 and over particularly in the south of the built-up central area which has a notably older age profile than the county as a whole. Furthermore, the proportions of children in this area fall within the lowest 25% in the county. However, the New Mills' area of the town has a very high proportion of children. Overall, it has a relatively low proportion of working age people, particularly those in the 45-64 year old bracket.
- 1.2.3 Ledbury Rural has a fairly typical age profile for Herefordshire. There is, however, a relatively low proportion of young working age adults. Parts of it have very low proportions of working age people.
Herefordshire Council Research Team

1.3 Market Segmentation

- 1.3.1 Sport England's Market segmentation identified that the following "types" are the most dominant market segments in the Ledbury Area:

Ledbury Town:

- Roger and Joy 56 – 65, Early retired couple: slightly less active than average enjoying keep fit and swimming, bowls, golf and angling.
- Elsie and Arnold 66+ Retirement home singles: much less active than others in their group: activities include walking, swimming and bowls.

Ledbury Rural:

- Tim 26 – 35, Settling down males: very active enjoying high intensity activity; enjoys technical sports as well as team games and individual activity
- Ralph and Phylis 66+ Comfortable retired couple: generally less active than the average adult population, but their activity levels are higher than others in their age range: activities include swimming, the gym, bowls and golf.

Sport England and Experian Ltd. 2010, Measure: Sport Market Segmentation

2. Supply: Quantitative Assessment

- 2.0 This section considers the quantitative assessments of the grass playing pitch provision for football, cricket and rugby. Provision for Hockey is also considered and the use of Artificial Turf Pitches or grass pitches in the area. It also provides details of bowls and tennis.

2.1 Current Provision

- 2.1.1 There are a total of **39** grass/artificial turf pitches for football, cricket, rugby and hockey pitches in the area.

This figure includes all known public, private, school and other pitches whether they are in secured public use or not.

- 2.1.2 The full schedule and location of pitches can be seen in the
- Maps of the County showing both areas and pitch type attached in Appendix 1

- 2.1.3 The existing pitches comprise of the following:
- 11 x Cricket
 - 1 x junior cricket

- 9 x senior Football (+ 1 no longer in use)
- 7 x junior Football
- 2 x mini Football
- 7 x senior Rugby
- 1 x junior Rugby
- 1 x Artificial Turf Pitches (sand)- Hockey

In addition there are:

- 6 tennis courts community use (plus 5 non community use)
- 2 bowling greens

There is also a “no longer in use”

- Football pitch at Bosbury

2.1.4 Of these 39 pitches, 28 (72 %) are senior full size pitches. Total 16 + population using the 2001 population census in the Ledbury Area is **16,100**. This equates to circa one pitch for every 575 adults (16+) in the study area. This ratio pitches to adults compares favourably compared to many other areas including England as a whole.

Table 1: Pitch Ratios

Local Authority	Ratio (Pitches: adults)
Kennett District Council	1:365
St Albans City and District Council	1:540
Ledbury Area	1:575
Chichester District Council	1:599
South Somerset District Council	1:608
Halton Borough Council	1:677
Staffordshire Moorlands District Council	1:761
Lichfield District Council	1:766
North Lincolnshire Council	1:773
North Wiltshire District Council	1:804
Derwentside District Council	1:815
Kirklees Metropolitan Borough Council	1:867
South Ribble Borough Council	1:891
Swindon	1:926
Adur District Council	1:947
Rochdale Metropolitan Borough Council	1:968
England	1:989
Ipswich Borough Council	1:992

Northamptonshire County	1:1,015
St Helens	1:1,050
Portsmouth City Council	1:1,100
Tamworth Borough Council	1:1,221
Sandwell MBC	1:1,327
Wolverhampton City Council	1:1,537

Data used from PMP consultants studies.

2.2 Accessibility

- 2.2.1 In line with “Towards a Level Playing Field: a manual for the production of a Playing Pitch Strategy” (Sport England 2003) the definition used for “community pitches” is those with “secured community use”. In practise this definition embraces:

Table 2: Community Use Categories

CATEGORY	DEFINITION	SUPPLEMENTARY INFORMATION
A (i)	Secured Community Pitches	Pitches in local authority or other public ownership or management
A (ii)		Pitches in the voluntary, private or commercial sector which are open to members of the public
A (iii)		Pitches at education sites which are available for use by the public through formal community use arrangements*
B	Used by Community, but not secured	Pitches not included in the above, that are nevertheless available for community use e.g. school/college pitches without formal use agreements
C	Not open for Community use	Pitches at establishments which are not, as a matter of policy or practice, available for hire by the public

- Where there is a charge it must be reasonable and affordable for the majority of the local community.
- Pitches in secured community use are pitches that are available for community use by community teams and whose future is secured for the coming seasons by one of the following:
 - A formal community use agreement
 - A leasing/management arrangement between the school and LEA requiring the pitches to be available to community teams
 - A policy of community use minuted by the school or LEA including tariff of charges

- Minutes of the board of school governors allowing use of pitches by community teams
- Written commitment from the school to the current community team using the pitches.

- 2.2.2 Of the 39 pitches identified, 24 are secured for use by the community. A(i) A(ii) A(iii)). Whilst there are a number of non community use sites, including school sites which are used “informally” by the community, as these sites are not seen as secured by Sport England, they have not been included in the demand modelling exercise reported later in this document.
- 2.2.3 It should also be noted that the impending “Academy Status” the majority of senior schools across Herefordshire are now seeking will make an impact on the future pitch resources which will be available for community use. As this area is an “unknown quantity” and will no longer be under Local Authority control, the assumption has been made to exclude school sites which are not currently offering community use from the demand modelling exercise.
- 2.2.4 One notable exception is the use of John Masefield High School playing fields by Ledbury Rugby Club, which is leased currently from Herefordshire Council. The school do make use of this facility but only during the winter months, from April and during the summer months little use is required. In respect of Academy status, the land is to continue under the control of Herefordshire Council and not the school, to ensure the future security for the club.
- 2.2.5 Also to note is the impact single pitch junior school sites are likely to have on current and future demand. Their role is seen by Sport England as limited and although Herefordshire has large numbers of junior schools, given the school curricula and capacity the pitches have it is unlikely that they could sustain additional community use on a regular basis.
- 2.2.6 There are 2 primary schools in the Ledbury Area offering formal community use on their pitches at Ledbury Primary School and Bosbury Primary School. Bosbury Primary School is used by Bosbury Cricket Club but it is not clear if there is a formal community use agreement or not and this is identified as a future risk.
- 2.2.7 Conversely some junior schools may benefit from additional community use, particularly if they are at risk of closure. This is identified as a recommendation for future consideration and exploration with property services.

2.2.8 Information on existing community use agreements on school sites has not been fully collated previously and it has been identified as a recommendation for future consideration with property services.

2.2.9 Table 3 below highlights the use of each site in the area.

Table 3: Community/non community use pitches in Ledbury Area

CATEGORY	DEFINITION	SUPPLEMENTARY INFORMATION
A (i)	Secured Community Pitches	PP142 Canon Frome Cricket Ground <ul style="list-style-type: none"> • 1 x cricket PP173 Colwall Playing Fields <ul style="list-style-type: none"> • 1 x senior football PP123 Colwall Cricket Ground <ul style="list-style-type: none"> • 2 x cricket
A (ii)		P133 Eastnor Cricket Ground <ul style="list-style-type: none"> • 2 x cricket PP107/108 The Downs School <ul style="list-style-type: none"> • 1 x cricket PP159 Ledbury Town Football Ground <ul style="list-style-type: none"> • 1 x senior football PP110 Ledbury Rugby and Football Ground <ul style="list-style-type: none"> • 3 x senior football • 2 x mini football • 4 x rugby • 1 x cricket PP128 Ledbury Cricket Ground <ul style="list-style-type: none"> • 1 x cricket PP135 West Malvern Cricket Ground <ul style="list-style-type: none"> • 1 x cricket PP7 Bosbury Primary School <ul style="list-style-type: none"> • 1 x junior cricket PP208 Frome Valley Sports Pitches <ul style="list-style-type: none"> • 2 x senior football • 1 x cricket
A (iii)		PP41 John Masefield High School <ul style="list-style-type: none"> • 1 x Artificial Turf Pitch (sand)
B	Used by Community, but not secured	PP110 Ledbury Rugby and Football Ground <ul style="list-style-type: none"> • 2 x rugby PP21 Cradley Primary School <ul style="list-style-type: none"> • 1 x junior football
C	Not open for Community use	PP7 Bosbury Primary School <ul style="list-style-type: none"> • 1 x junior football PP49 Ledbury Primary School <ul style="list-style-type: none"> • 2 x junior football PP107/108 The Downs School <ul style="list-style-type: none"> • 1 x senior football • 1 x rugby PP24 Eastnor Primary School <ul style="list-style-type: none"> • 1 x junior football PP2 Ashperton Primary School <ul style="list-style-type: none"> • 1 x junior football PP19 Colwall Primary School <ul style="list-style-type: none"> • 1 x junior football PP41 John Masefield High School <ul style="list-style-type: none"> • 1 x senior football • 1 x junior rugby

2.3 Location

- 2.3.1 Sport England’s Facilities Planning Model supports a “hierarchical” approach for the development of sports facilities recognising that larger centres of population can sustain facilities which can provide facilities for a wider hinterland of rural parishes either at a district, local or neighbourhood level or as in the case of Hereford City a sub regional and county level. For Herefordshire it looks like this:
- Tier 1 Sub regional/ Countywide (50K population: Hereford City)
 - Tier 2 District (10K population: Market Towns)
 - Tier 3 Local (3k population: Market Towns)
 - Tier 4 Neighbourhood (Significant Settlements)
 -
- 2.3.2 In the case of Ledbury Area which is a predominantly rural area where resources are limited, access to local facilities is often dependant on the main population centres providing them. Ledbury is considered Tier 2 District.
- 2.3.3 Therefore whilst across the area, there is a reasonable spread of facilities within the larger rural parishes, the majority of facilities are located in the main centres of population, including Ledbury and Colwall, which is the only Service Hub in the area. These facilities are more multi-functional offering a range of sports and facilities acting as a local “hub”. For example, football, cricket and rugby are well catered for and Ledbury Rugby Club also offers opportunities for the local rifle and running clubs.
- 2.3.4 As part of the Local Development Framework, Planning has identified new housing growth areas across the county using a sustainable framework based on market towns, service hubs and service centres as areas most likely and capable of sustaining future growth. Those settlements identified for growth are set out in the table below as it is likely the areas of housing and population growth will provide opportunities for future investment in sports pitches to meet future supply and demand requirements. It is important to note that where, for example, a parish has no facilities, such as Tarrington and Wellington Heath, and no evidence to suggest they are required in the future, any opportunities arising from new housing should be considered outside of the Parish based on this hierarchical approach and within the thresholds set out below.

Table 4: Location / Distribution of Pitches/hierarchy

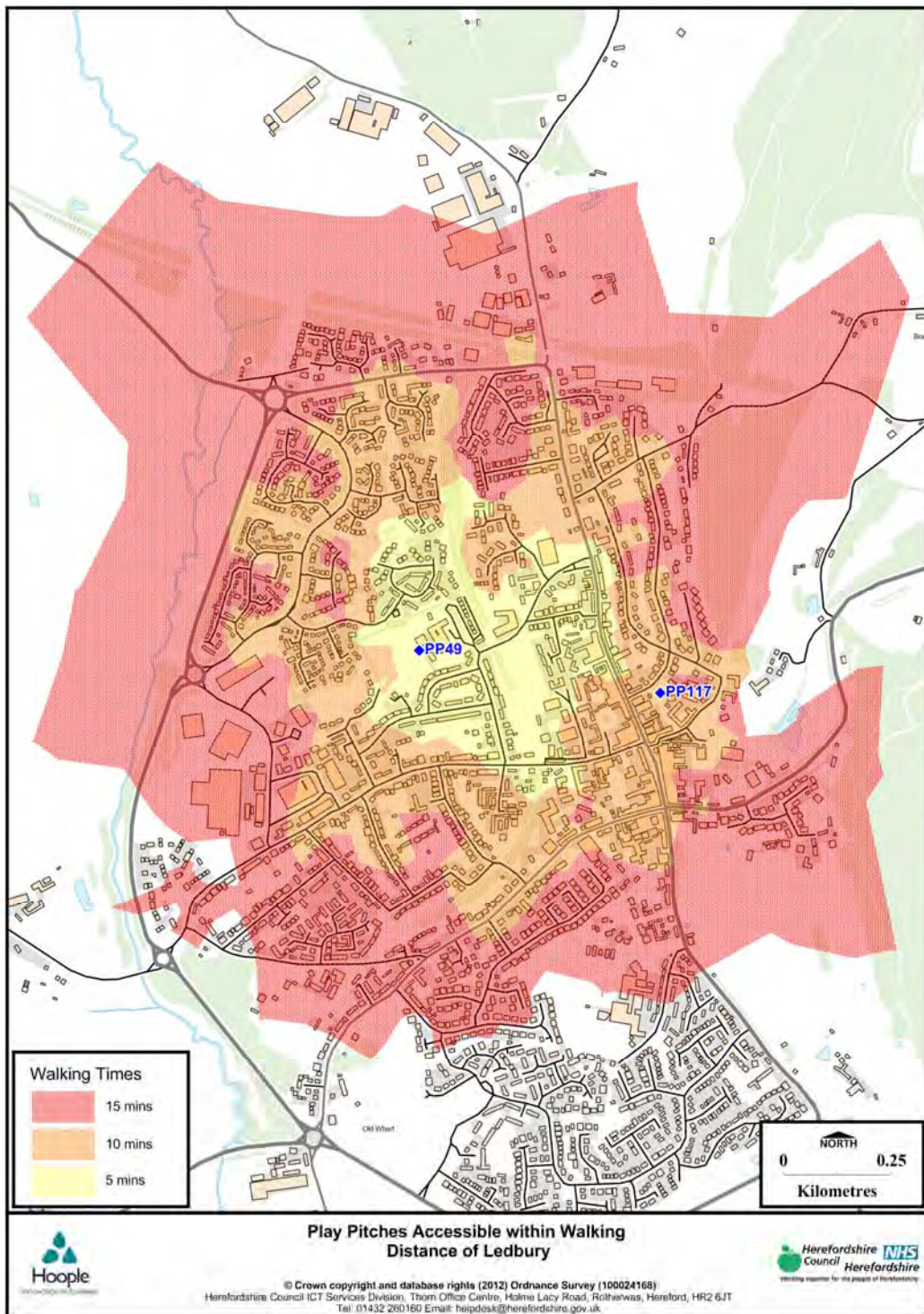
Sub-Area/Parish	Total Playing Pitch area (hectares)	Total Playing Pitch area with secured community access (hectares)	% of Playing Pitch area with secured community access (hectares)
Market Town			
Ledbury	22ha John Masefield HS Ledbury Primary School Ledbury Town Football ground Ledbury Rugby & Football Ground	13.1ha Ledbury Town Football ground Ledbury Rugby & Football Ground Ledbury Primary School John Masefield High School ATP	59%
Rural Service Centres			
Colwall	8ha Colwall Primary school The Downs School Colwall Playing Fields Colwall Cricket Ground	6.2ha The Downs School Colwall Playing Fields Colwall Cricket Ground	77%
Rural Service Hubs			
Bishops Frome	0.8ha Frome Valley Sports Pitches	0.8ha Frome Valley Sports Pitches	100%
Parishes			
Acton Beauchamp Group	0	0	0
Bosbury & Coddington	1.5 ha Bosbury Primary School	1.5 ha Bosbury Primary School	100% but cricket only
Eastnor & Donnington	3.54ha Eastnor Primary School Eastnor Cricket Ground	3ha Eastnor Cricket Ground	85%
Much Cowarne Group	0	0	0
Pixley & District	0	0	0
Stretton Grandison Group	1 ha Canon Frome Cricket Ground	1 ha Canon Frome Cricket Ground	100%
Ashperton	0.73ha Ashperton Primary School	0h	0%

Cradley	2ha Cradley Primary School	0ha	0%
Mathon	1.29ha West Malvern Cricket Ground	1.29ha West Malvern Cricket Ground	100%
Putley	0	0	0
Wellington Heath	0	0	0
Yarkhill	0	0	0
Stanford Bishop	0	0	0

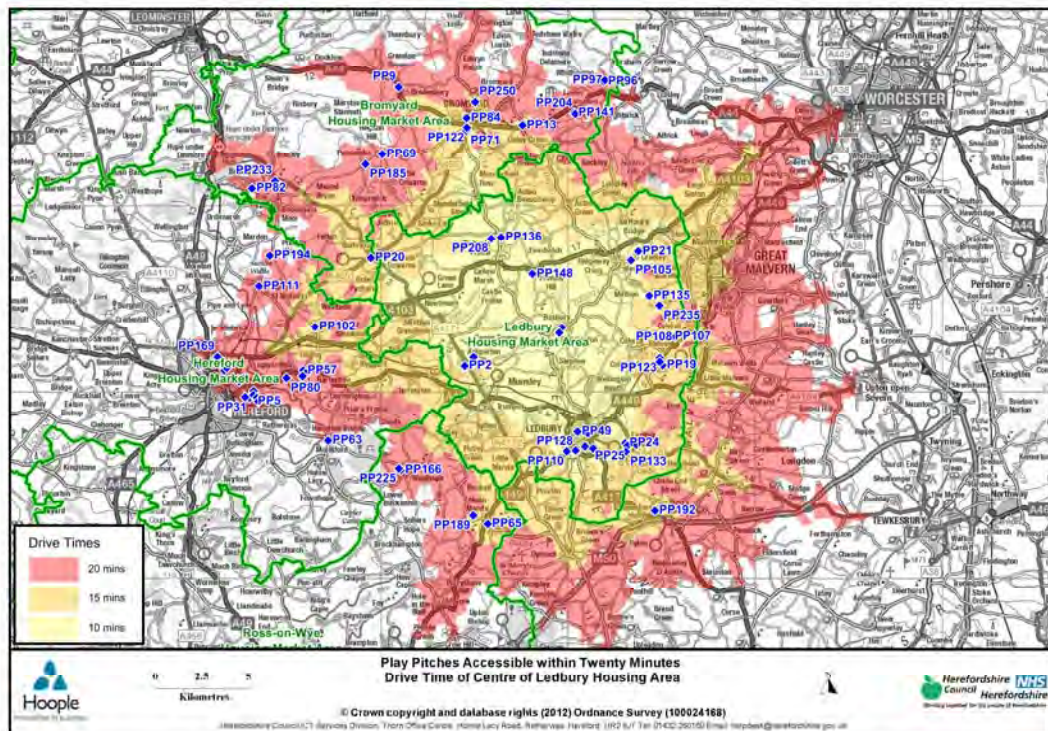
2.4 Thresholds

- 2.4.1 In an area of both urban and rural mix it is important to see if the population is within a reasonable threshold distance to access facilities. It is recognised that rural areas are often marginalised having less access to a range of facilities but it would also be unreasonable to expect the same ease of access that those living in urban areas afford. Therefore a slightly different methodology has been considered for rural and urban areas, which meets with Sport England’s recommendations. In this way it can be shown if there are any obvious gaps in provision which may require addressing.
- 2.4.2 The modelling exercise for “urban areas” including Ledbury Town is based on walking and access times recommended by Sport England of “15 minutes walking at 3 mph.
- 2.4.3 The modelling exercise for “rural areas” is based on driving and access times recommended by Sport England of a 20 minute drive time on A and B roads.
- 2.4.4 All access times are taken from a central point in Ledbury Town.
- 2.4.5 Map 2a below shows the 15 minute walk modelling exercise
- 2.4.6 Map 2b below shows the 20 minute drive time modelling exercise. This identifies that all facilities can be accessed with 10mins, 15mins or 20mins from anywhere within the area, including some in surrounding localities with the exception of some very small pockets which do not have A or B roads. There is no supporting evidence to suggest these areas require facilities or have difficulties accessing nearby facilities.

Map 2a: shows walking thresholds Ledbury Town



Map 2b: shows “Playing Pitches accessible within a 20 minute drive time of Centre of Ledbury”.



2.5 Ownership

- 2.5.1 The table below illustrates the ownership of all pitches.
- 2.5.2 The largest providers are the Parish Councils and Voluntary/Private sector in respect of community use although there are a number of school sites, 2 of which have formal community access, including Bosbury Primary School who lease land to to Bosbury Cricket Club and land is leased to the Rugby Club from John Masefield High School. This, however, indicates that supply is not reliant on schools offering community use which would suggest that there are no issues around school curricula use.
- 2.5.3 The Downs School Colwall, which is a private school, has potential for community use as a result from a recent planning permission.
- 2.5.4 Schools have been consulted via the Schools Sports Partnerships, but further work is recommended if schools are to play a more prominent part in community use in the future, around the school curricula use.

Table 5 Ownership

Ownership	No. of senior football pitches	No. of junior football pitches	No. of mini football pitches	No. of cricket pitches	No. of senior rugby pitches	No. of junior rugby pitches	No of senior and junior hockey	No of Tennis courts	No of Bowling
Herefordshire Council (HALO) community use	0	0	0	0	0	0	0	0	0
School community use	0	0	0	1 junior	0	0	0	0	0
School non community use	1	7		1		1	1 ATP (sand)		0
Private schools	1 non CU	0	0	1 CU	1 non cu	0	0	0	0
Parish/Town Council community use	1	0	0	2	0	0	0	0	0
Private/voluntary community use	6 + 1 part use at Ledbury Town FC	0	2	7	4	0	0	6	0
Private/voluntary but not secured	0	0	0	0	2	0	0	0	0
Total community	7	0	2	10 + 1 junior	4	0	0	6	2
Total non community	2	7	0	1	3	1	1	6	2

13 pitches:	School
3 pitches:	private school
21+ 1 pitches:	Voluntary/private
3 pitches:	Parish Council
Total 39:	23+ 1 in community use

**note: Tennis courts and Bowling are not included in the totals above and hockey is played outside the county in Malvern*

3 Qualitative Assessment

3.1 Pitches and Site Facilities

- 3.1.0 Perceived quality of pitches and ancillary facilities is almost as important as actual quality as the perceptions of users or potential users can easily change patterns of use.
- 3.1.1 This considers the quality of all the grass playing pitch provision for football, cricket and rugby in the study area. It also includes some detail for bowls and tennis where appropriate.
- 3.1.2 All community facilities listed in Appendix 2 have been visited during Sept and October 2010 by the same assessor from Parks and Countryside. All school sites have been visited in the same period by the same assessors from Property Services to ensure consistency. School changing rooms were not surveyed.
- 3.1.3 The non technical assessment proforma matrix provided as part of Sport England's "Towards a Level Playing Field Guidance" has been used and sites banded accordingly a copy of which is provided in Appendix 3. Scores for each of the playing pitches and changing accommodation are recorded on the table in Appendix 2.

3.2 Site Changing Facilities: Community use only

- 3.2.1 The site assessment matrix rates the overall facilities (changing rooms, parking etc) and the pitches themselves. The percentage scores for the overall sites are broken down as follows:
 - Over 90% - excellent
 - 60%-90% - good
 - 40% - 59% - average
 - 30% - 39% - poor
 - Less than 30% - very poor
- 3.2.2 The overall results for the quality of facilities show that 2 community use sites have no changing accommodation and of

those that do quality and accessibility is excellent/good across the other sites:

- **10 x changing accommodation is excellent:** Eastnor Cricket Ground, Eastnor Bowling Green, Colwall Cricket Ground, Ledbury Town Football Ground, Ledbury Rugby Club, Ledbury Bowling Green, Ledbury Tennis Courts, Mathon Tennis Courts, Canon Frome Cricket Ground and Frome Valley Sports Pitches
- **1 x changing is good:** Ledbury Cricket Ground
- **2 x no changing:** Colwall Playing Fields, Football.
- **Not assessed:** West Malvern Cricket Ground

3.2.3 All facilities are actively used by clubs for competitive matches. There are no poor facilities and all of those with facilities are rated above 60% which meets Sport England's minimum standard. However, Ledbury Cricket Club in response to the questionnaire has rated its facilities as poor including changing and showers and Ledbury Bowling Club has rated its changing facilities as poor and a priority for future investment.

3.2.4 Colwall Playing Fields has no changing and as it is used for club matches by Colwall St James Football Team regularly this is an issue.

3.2.5 Therefore, it should be noted that any future improvements for on-site facilities will be dependent on the current usage or status of a site.

3.3 Pitch quality: Community use only

3.3.1 The percentage scores for the overall sites are broken down as follows:

- Over 90% - excellent
- 64 %-90% - good
- 55% - 64% - average
- 30% - 54% - below average
- Less than 30% - poor

3.3.2 The overall results for the quality of facilities show quality has been rated excellent or good across the sites:

- **6 x excellent pitches:** Eastnor Cricket Ground, Eastnor Bowling Green, Canon Frome Cricket Ground, Colwall Cricket Ground
- **18 x good pitches:** Bosbury Primary School (Cricket), Ledbury Town Football Ground, Ledbury Cricket Ground,

Ledbury Rugby Club and Frome Valley Sports Pitches (football and cricket)

- **3 x average:** Colwall Playing Fields (Football), Ledbury Primary School (junior football x 2)
- **1 x not assessed:** West Malvern Cricket Ground

3.3.3 There are no poor pitches. However 2 sites (Ledbury Primary School and Colwall Playing fields) are rated average and fall below the 65% which meets Sport England’s minimum standard.

3.3.4 Colwall Playing Fields are used for club matches by Colwall St James Football Team regularly and the quality of the pitch is an issue.

3.3.5 It is important to note that any requirement for on-site facilities is dependent on the current usage or status of a site.

4 Demand: Research and Consultation

4.0 This section considers the number of clubs and teams, user perceptions and evidence taken from Governing Bodies Sports Strategies of development priorities and anecdotal evidence from Local Sports Development Officers for the Herefordshire area of any issues around the development of the game. It also considers any opportunities or threats to existing facilities that are currently known.

4.1 Ledbury Area Clubs and Teams

4.1.1 The table below outlines the number of clubs and teams for football, cricket and rugby in the study area: A full list of clubs and teams can be found in Appendix 4. Appendix 5 provides an updated list as of November 2012 of football clubs as provided by Herefordshire Football Association. In summary there are:

Table 6: Number of clubs and teams in the Ledbury Area

Sport	No. of clubs	No. adult teams	No. junior teams (u11s/12s) (u13s+)	No. mini teams (u8s/9s/10s)
Football	10	6 (5m) (1f)	Total:13 (m) U11s/12s: 4 (3m, 1 f) U13s +:9 (7m, 2 f)	7 (mixed)
Cricket	8	19(18m) (1f)	10(m)	3(m)
Rugby	1	4 (m)	9(m)	3(m)
Hockey	1	1(1f)	0	0
Bowling	2	83	0	0

		members		
Tennis	1	-	-	-
Total	23	34	29	10

Excluding Bowling and Tennis, of the 20 clubs playing in the study area:

- 50% half are football of which 76% are junior teams. This is reflective of national trends, which indicate that participation in mini and junior football is growing.
- 40 % are cricket. Of the 32 teams 41% are juniors/mini
- 5% are rugby. Of the 16 teams 75% are juniors/mini
- 5% are hockey. All adult teams

4.2 Team equivalents: School Curricula Use

4.2.1 Sport England has produced the following calculation of team equivalents for both school use and training:

Table 7: Sport England Team Equivalents

Type of Player	Length of match/session	Area of play/size of pitch	Team equivalent
PE Lesson: 11 – 16 yr olds football/rugby	Assume 2 hours	1 junior football/ rugby pitch	1 junior football/ rugby team
PE Lesson 7 – 11 yr olds	Assume 2 hours	1 junior football / rugby pitch	1 mini-soccer/1mini rugby team
Football / rugby training – adults	Up to 2 hours	1 adult football/rugby pitch	1 adult football/ rugby team
Junior cricket training	Up to 2 hours	1 cricket pitch	1 junior team
Break-time activity	Up to 1 hour	1 junior or adult pitch	1 junior football team

4.2.2 Only those schools where clubs are known to play (either with a formal or informal agreement) are included as team equivalent. Informal agreements are shown in blue below and followed up in Table 19: Football: surpluses and deficiencies as a scenario 2:

Table 8: School Team Equivalents

Senior School	Community Use	Pitch	School Use Equivalent
The Downs School (Private)	Yes: Used by Chasers Cricket Club	1 x Cricket	5 x 2 hours per week equivalent 5 junior cricket teams
John Masefield High School	Yes: Used by Colwall's Women's Hockey Club	1 x ATP	5 x 2 hours per week equivalent 5 junior hockey teams
Junior School	Community Use	Pitch	School Use Equivalent
Bosbury Primary School	Yes: Used by Bosbury Cricket Club	The Oval Cricket	5 x 2 hours per week equivalent 5 junior cricket

			teams
Cradley Primary School	No: Used by Cradley Sports Club (Football) Juniors	1 x junior football	5 x 2 hours per week equivalent 5 junior football teams

4.2.3 The following schools in the Ledbury Area are or are in the process of converting to Academy Status: John Masefield High School: Converted, which means that future use of this facility for community use is uncertain.

4.3 Team equivalents: Club Training

4.3.1 **Football:** Herefordshire Football Association identified that the number of hours training undertaken by teams is on average as follows:

- **Senior teams:** train between 1 – 3 hours per week depending on club. Elite teams average 3 hours per week but most teams will average between 1 and 2 hours per week, therefore in doing the calculation an average has been assumed as follows:
- **Junior/ mini teams:** train for approx 1 hour per week (mini teams approx 30 mins each). In the winter months this is mainly indoors but in the spring (when the clocks change) this is mainly outside.

Total: Based on the total number of teams in the Ledbury Area, the total team equivalents is **7 adult teams** as shown below:

Table 9: Football Team Equivalents

No of Adult Teams	Adult Team equivalent
Approx 1 teams train 3 x week (10%)	= 1.5 adult teams
Approx 2 teams train 2 x week (30%)	= 1 adult teams
Approx 3 teams train 1 x week (60%)	= 1.5 adult teams
Total	4 adult teams
No of Junior Games	Adult Team equivalent
13 games/ 2 played per 1 x adult pitch / 4 teams per pitch	3 adult teams
7 mini games/ 4 games played per 1 adult pitch / 8 teams per pitch/30 minutes each	0.25 adult teams
Total	3.25 adult teams

4.3.2 Apart from Ledbury Town Football Club which does have floodlights, outside training in the winter months is an issue and many clubs use indoor facilities or floodlit ATPs in other parts of the county. Owning portable floodlights is an issue for many clubs due to cost and planning issues. The Herefordshire Football Association has

highlighted this as a real problem experienced by a number of clubs across the county as a whole and something future funding opportunities could address.

- 4.3.3 **Cricket:** Herefordshire Cricket Board identified that the number of hours training undertaken by teams is on average as follows:
- **Senior teams:** train 1 hour per week
 - **Junior teams:** train for approx 1 hour per week
 - **Mini teams:** train for approx 30 mins per week
- **Total:** Based on the total number of teams in the Ledbury Area, the total team equivalents is **30.30 hours training equivalent to 14.5 junior teams and 0.75 mini teams** as shown below:

Table 10: Cricket Team Equivalents

No of Adult/ Junior / Mini Teams	Junior Team equivalent
19 x senior at 1 hour per week	= 9.5 junior teams
10 x junior teams at 1 hour per week	= 5 junior teams
3 x mini teams at 30 mins per week	= 0.75 mini team
Total	14.5 junior teams 0.75 mini team

- 4.3.4 **Rugby:** Using data from the Hereford and Worcester Rugby Playing Pitch Strategy and based on the total number of teams for the Ledbury Area the total is as follows:
- **Total: 6 team equivalents** as shown below:

Table 11: Rugby Team Equivalents

Club	Adult Team equivalent
Ledbury Rugby Club	6 adult teams per week
Total	6 adult teams

- 4.3.5 Out door training can take place at the Ledbury Rugby Club as 2 x rugby pitches have floodlights.

4.4 Local issues for the development of the sport

- 4.4.1 Individual sports development plans and local knowledge will help identify key areas for the growth of the game and in particular where support is needed to increase participation. This information will help identify priority areas where future investment in pitches and facilities could support these aspirations.
- 4.4.2 **Football:** The FA have tracked team data over a number of years

through football participation reports, the trend for Hereford shows significant growth from 2009/10 onwards with growth then beginning to plateau.

Season	Adult male 11v11	Adult female 11v11	Youth Male	Youth female	Mini Soccer - mixed	Total
2009-10	99	7	97	2	57	262
2010-11	108	4	126	21	63	322
2011-12	96	4	125	23	62	310
2012-13	109	4	122	29	68	332

4.4.3 The Herefordshire FA has a strategy in place to Grow and Retain all areas of the game from 2012-2015 with a particular focus on adult 11v11 football and is therefore exploring ways to help support existing Clubs/Teams identify new opportunities to develop additional teams . For this to happen, it will require appropriate facilities for training and match play to allow the game to flourish.

4.4.4 The FA has an accreditation system known as The FA charter standard award which has 3 echelons. The highest FA award being that of the community award. The FA has set a target nationally to have 75% of all youth football being played in a Charter standard club. 80.95% of youth football in Hereford is played in a Charter Standard Club.

4.4.5 As part of this figure, within the Ledbury Area, Ledbury Swifts are a Chartered Standard Club with the potential to become a community club.

4.4.6 Key priorities for the Herefordshire FA from 2012-2015 are focused around 6 Key Areas;

- Growth and Retention*
- Raising Standards
- Better Players
- Workforce Development
- Running the Game
- Facilities*

The main priorities under these headings are as follows.

*Growth and Retention:

- Sustain current affiliated mini soccer teams (mixed) during season 2012-2013 and support Clubs to develop further mini soccer teams during season 2013/2014 and 2014/2015.

- Clubs and Leagues need to be mindful of the FA Youth Development Review and the new formats of Football that will bring in changes to facility provision especially at U7 and U8 who will play 5v5 football from season 2013-2014 and 2014-2015 respectively.
- Develop new and sustain existing Youth Male Teams from U11 – U18 with a vision of 130 teams by season 2014-2015. At U11 and U12 age groups, the format of the game will be 9v9 football on $\frac{3}{4}$ pitches with U13's upwards progressing to 11v11.
- Develop new and sustain existing Youth Female Teams from U11 – U18 with a vision of 25** teams by season 2014-2015. At U11, Girls currently play 7v7 and at U13 they play 9v9, considerations around U15 playing 9v9 or 11v11 need to be considered linked to player registrations and participation in this area of the County. (**there are currently 25 Youth Female Teams affiliated – therefore the priority will be to retain teams within this area and develop growth where there is potential to do so).
- Adult Male Football is a key priority and therefore particular emphasis will be around sustaining and growing the Adult Male 11v11 Game – links with the U18 League are critical to the sustainability of Male 11v11 Teams in Adult Football.
- Adult Female Football is also a priority and therefore sustaining and growing the Adult Female 11v11 is key to ensuring there is a structured player pathway from U9 – Adult. Priority work with leagues to develop a player pathway from Junior to Adult is important work to be done. There are currently 4 Adult Female Teams with a target of 5 by 2014-2015. Flexibility in playing formats is critical to sustainability of the Adult Female Game within Herefordshire.

4.4.7 Youth Development Review Implications: By the 2012/13 season it is forecast that 9v9 will already be a more popular format for young players across the country than the 11v11 version of the game. These formats are based upon all the academic research, evidence about child development and player development that has been gathered throughout the extensive consultation process. The Herefordshire Junior League and Herefordshire Girls League already provide 9v9 for U11 and U12 (HJFL) and U13 (HGFL) and have worked with the LA to ensure pitches are marked according to required usage.

4.4.8 One of the short-term challenges the Herefordshire FA face along

with Leagues and Clubs is ensuring we have facilities that meet the pitch and goal requirements and to support this The FA have specific resources to support Clubs, Leagues and Local Authorities to ensure the pitches are set out according to usage.

- 4.4.9 The FA are introducing mandatory changes to the game from 2013/14 which will see a number of new formats of the game in the youngest age ranges. Introduction of 5v5 football at U7 and U8 from season 2013-2014 suggests that there will be an increased demand in the number of 5v5 pitches as well as 9v9 pitches as this format becomes mandatory to leagues from Under 11. The impact of these changes should be monitored closely as demand levels are likely to change significantly.
- 4.4.10 **Cricket:** The Herefordshire Cricket Board (HCB) has identified within its' Facilities Development Plan 2009 – 2013, that the county has 45 cricket clubs affiliated to the HCB. 11 are designated Focus clubs of which Eastnor Cricket Club, Colwall Cricket Club and Canon Frome Cricket Club are all Club marked and Canon Frome Cricket Club is an Affiliated Club with a Junior Section (ACwJS) that is working towards Focus Club status.
- 4.4.11 The Herefordshire Cricket Board recognises that there is a good spread of Focus Clubs across the county in terms of travelling distances and population centres. As such clubs are organised into 4 cricket development districts to enable the development of school club links and a progression route for the sport. They are: Central; East; North & West and South & West. The Ledbury Area mostly falls in East district.
- 4.4.12 The focus clubs have detailed development plans and are progressively working with a cluster of schools within the population centres resulting in Herefordshire having seen progressive growth in the number of participants at school club, district and county level over the past 6 years. There is also currently a strong take up of the game at a junior level, male and female.
- 4.4.13 The HCB also undertook an assessment of local facilities and this found that most club houses and pavilions are considered good or adequate but on a club by club basis attention is being paid to ensure that all changing rooms meet modern standards. This is particularly important for women and girls cricket to develop and for Focus clubs. Only a few clubs rate their square and outfield and practice facilities as good. Very few 2nd grounds currently meet quality standards and individual clubs may require an upgrade and

improvements to their facilities. This is particularly important as women and girls cricket develops and for Focus clubs.

- 4.4.14 Eastnor Cricket Club is on short term lease from Eastnor Castle and a key issue for them is to extend their lease to 25 years as this would enable them to access external grants. Colwall Cricket Club provide good opportunities for women and girls cricket to develop
- 4.4.15 **Hockey:** The International Hockey Federation (IFH) under whose guidance all governing bodies have to operate, have stipulated that 3G, or long pile turf pitches, must be certified as being appropriate for hockey. The maximum permitted will be 35-40mm and provided this is met the pitch can be used for local and regional league competition. There are, however, severe restrictions on use of these pitches outside of that category. However, a pitch with 40mm length pile has to pass the IFH testing parameters and if it does not, then the existing insurance cover may well be invalidated which means that hockey could not be played.
- 4.4.16 Currently Colwall Ladies Hockey club play outside the county at St James College, Malvern and as such hasn't been included in this assessment.
- 4.4.17 **Rugby:** The RFU acknowledge that the range of facilities will be driven by the activities that take place and therefore if a club seeks investment to increase or improve their facilities then the level of activity must take account of any "under capacity". The North Midland strategy identifies three Model Venues that should be viewed as benchmarks against which clubs can identify their level of provision and need. Each one has a different range of activity and the requisite facilities and are not in any priority order, but designed as a framework. Ledbury Rugby Club is a Model 2 Venue site. This means it is an established club with a wide programme of adult and junior rugby potentially for both male and females. Two of the pitches are on land which is subject to a short term local arrangement, providing little security and much concern for future use and any desired expansion of participation levels. Without these pitches the club would not be able to sustain its present level of usage and demand would outstrip supply.

4.5 User perception: Club Responses

- 4.5.1 The key issues raised by the clubs in response to the questionnaire, in terms of participation, facilities used, issues and development opportunities are summarised below. The response rates for each sport to the questionnaire are also included.

4.5.2 Football: Returned Questionnaire from Football Clubs

- 2 Clubs (20 %)
 - 16 teams – (59%)

Table 12: Football Club responses

Club	Ledbury Town Football Club (updated 2012)
Match Day Venues	Match Day Venues: Ledbury Town Football Ground, New Street – Leased – Property Solutions Ltd – Saturday 3 – 5, Wed 7 – 10
cancellations	60 games played last season – 4 cancelled 2010/11 due to pitch condition. 6 cancelled 2011/12
Training on main pitch	Occasionally in the summer, in the winter train on astro @ John Masefield School, Lebury
Pitch rating overall	Very good
Changing	Acceptable
Showers	Acceptable
Parking	Acceptable
Value for money	but good value for money and free from litter and dog fouling
Future plans	Future plans include increasing number of members, expanding the range of facilities and refurbishment of existing facilities. A Training Pitch
Where do majority of players reside?	Ledbury
Club	Ledbury Swifts FC
Match Day Venues	Match Day Venues: Ledbury Rugby Ground – Hired from Ledbury Rugby Club – Sat 9.45 – 1.15, Sunday 10.30 – 2.00pm Ledbury Town Football Ground – Hired from Ledbury Town Football Club – Sunday 10.30 – 4pm Not all home matches are not played at preferred location which is Ledbury Town Football Ground
cancellations	171 games played last season – 40 rescheduled due to pitch condition (included in the total)
Training on main pitch	Outdoor Training: Ledbury Rugby Ground– Hired from Ledbury Rugby Club - Sumer Tues/Wed/Thurs 5.30 – 9 John Masefield School – Astro Turf – hired from HALO – Winter Tues/Weds/Thurs 5.30 – 8.30 Indoor Training – John Masefield School hall – hired from HALO – but difficult to get a slot due to high use.
Pitch rating overall	Main pitch is rated as acceptable/poor overall, dog fouling, litter acceptable
Changing	Good
Showers	Good

Parking	poor
Value for money	poor
Future plans	
Where do majority of players reside?	Ledbury

4.5.3 Cricket: Returned Questionnaire from Cricket Clubs:

- 4 Clubs (57%)
 - 24 teams – (77%)

Table 13: Cricket Club responses

Club	Canon Frome Cricket Club
Match Day Venues	Match Day venues: Canon Frome Cricket Ground (Walsopthorne, Ashperton) – leased Sunday 10 – 7 Mon 6 – 8 , Tues 6 – 8, Wed 6 – 8, Thurs 6 – 8, Fri – 6 -8, Sat 12 – 8
cancellations	Games are played on the main pitch each season but 10 cancelled last season due to weather conditions.
Training on main pitch	The main pitch is used for training for 6hours per week.
Pitch rating overall	Acceptable
Changing	Acceptable
Showers	Acceptable
Parking	Acceptable
Value for money	Acceptable
Future plans	Future plans include increasing membership, expanding the range of facilities and refurbishing existing facilities.
Where do majority of players reside?	Ledbury
Club	Eastnor Cricket Club
Match Day Venues	Match Day venues: Eastnor Cricket Ground, Clenchers Mill Lane – leased/hired Eastnor Castle Estate - Sat and Sunday mainly times variable
cancellations	50+ games are played on the main pitch each season not sure how many cancelled across all teams last season due to weather conditions.
Training on main pitch	Train as above normally Thursdays 6 – 8.30 but can vary T2 – 3 hours per week.
Pitch rating overall	Good
Changing	Acceptable
Showers	Acceptable
Parking	Good
Value for money	Good

Future plans	Future plans include increasing membership, expanding the range of facilities provided and refurbishing existing facilities.
Where do majority of players reside?	Ledbury, Malvern, Worcester

Club	Colwall Cricket Club
Match Day Venues	Match Day venues: Colwall Cricket Ground, Stowe Lane – leased Lloyds Estate - all days April - September
cancellations	100 games are played on the main pitch each season with 0 cancelled last season due to weather conditions.
Training on main pitch	The main pitch is used for training for 10 hours per week Indoor train at The Downs School Sports Hall – hired from the school in the winter months.
Pitch rating overall	Good/Acceptable Dog Fouling and litter an issue
Changing	Good
Showers	Good
Parking	Good
Value for money	Good
Future plans	Future plans include increasing membership, expanding the range of facilities provided and refurbishing existing facilities
Where do majority of players reside?	Ledbury, Malvern and Local villages

Club	Ledbury Cricket Club
Match Day Venues	Match Day venues: Ledbury Cricket Ground, New Street – leased Enterprise Inns - Sat 1 – 8 pm. Tues 6 – 9 pm
cancellations	30 – 35 games are played on the main pitch each season with 2 cancelled last season due to weather conditions.
Training on main pitch	The main pitch is used for training for 2.30 hours per week, indoor train at The Downs School Sports Hall – hired from the school – Spring 3 – 5 pm.
Pitch rating overall	Acceptable/poor. Dog fouling and litter an issue
Changing	Poor
Showers	Poor
Parking	Poor
Value for money	Good
Future plans	Future plans include increasing membership, expanding the range of facilities provided and

	relocation to different premises Additional comments: “we at Ledbury Cricket Club are in a permanent state of limbo. We have a growing membership but owing to our lease position cannot attract funding to develop our facilities further, neither can we risk a substantial outlay of club funds to invest in our ground when the threat of development of the site hangs over us. We as a club see re-development of our ground and re-location to a new facility as the best way of safeguarding the club and raising standards of what we can provide”.
Where do majority of players reside?	Ledbury

- 4.5.4 Bowling: Returned Questionnaire from Bowling Clubs:
- 1 Clubs (50%)

Table 14: Bowling Club responses

Club	Ledbury Bowling Club
Match Day Venues	Ledbury Bowling Green which is owned by the club – play 10 -10, 7 days a week April - September
Cancellations	75 matches are played each season and only 1 was cancelled. Training takes place in groups or as individuals on own green
Training on main pitch	
Pitch rating overall	Good/Acceptable
Changing Showers	Poor
Parking	Poor
Value for money	Good
Future plans	Future plans include expanding the range of facilities and refurbishment of the existing facilities.
Where do majority of players reside?	Ledbury

- 4.5.5 Tennis: Returned Questionnaire from Tennis Clubs:
- 1 Club (100%)

Table 15: Tennis Club responses

Club	Ledbury Tennis Club
Match Day Venues	Ledbury Tennis Club leased from the Biddulph Estate. Everyday up till 10pm
cancellations	
Training on main pitch	
Pitch rating overall	
Changing	
Showers	
Parking	
Value for money	
Future plans	The club would like to increase membership, expand the range of facilities and refurbish the existing facilities.
Where do majority of players reside?	Ledbury and surrounding villages

4.5.6 Pitch Owner Responses

Table 16: Pitch Owner responses

Owner	Ledbury Town Council
Venue	Ledbury Recreation Ground: Informal Senior football (as such not included in the assessment)
Users	Free for public use. No booked team matches
Facility ratings overall	No facilities
Owner	Colwall Parish Council
Venue	Colwall Playing Fields (Football)
Users	
Facility ratings overall	Good but not floodlit and parking is on street but unlimited

4.5.7 Although there were no responses from Ledbury Rugby Club at this stage, subsequently they provided very detailed information after the draft consultation stage.

5 Adequacy of Current Provision: The Playing Pitch Methodology

5.1.0 The remainder of this section draws on the findings of the supply and demand analysis to identify key issues and a future delivery strategy for Herefordshire and Ledbury Area in particular

The Playing Pitch Methodology comprises 8 stages:

- Stage 1: Identifying Teams / Team equivalents
- Stage 2: Calculating home games per week
- Stage 3: Assessing total home games per week
- Stage 4: Establishing temporal demand for games.
- Stage 5: Defining Pitches used / required on each day
- Stage 6: Establishing Pitches Available.
- Stage 7: Assessing the findings
- Stage 8: Identifying policy options and solutions

- 5.1.1 Stages 1 – 6 involve numerical calculations, whilst stage 7 and 8 develop issues and solutions. The methodology is employed to analyse the adequacy of current provision and to assess possible future situations, in order that latent and future demand (identified through Team Generation Rates) and the problems with quality, use and capacity of existing pitches can be taken into account. The increase in population is considered by modelling a future year scenario – on this case 2026. Potential changes to pitch stock over that time are also taken into account.
- 5.1.2 It is implicit to the methodology that each sport is dealt with individually with a specific set of calculation for each because, despite some superficial similarities, they exhibit very different patterns of play. Bowling and Tennis are not included in these calculations.
- 5.1.3 We have however, used the Playing Pitch Model assumptions regarding the number of home games per week played by each sport. This is further broken down to deal with junior and senior play which is taken from the league fixtures. The analysis requires a breakdown of junior and senior pitches, however, no differentiation has been made between junior and senior cricket as they play on pitches of similar dimensions.
- 5.1.4 The Playing Pitch Model is a “peak day” model, therefore, we have determined on which day teams /leagues wish to play their fixtures, as well as the peak time (am or pm). The methodology also considers the ability of pitches to sustain play on the peak day at the peak time.

5.2 Playing Pitch Capacity

- 5.2.1 “Towards a Level Playing Field” indicates that it is appropriate to take account of the carrying capacity (i.e. the number of games that pitches are adequately able to sustain per week) when calculating the playing pitch methodology.

- 5.2.2 There is no formula for calculating the carrying capacity of pitches as it is dependent on a number of factors such as weather, conditions, public access, quality of players etc. This information is best gathered through local knowledge, user surveys etc.
- 5.2.3 In calculating the carrying capacity of a pitch, the following should be considered:
- What proportion of the games are cancelled on the pitch due to poor pitch condition
 - Is the condition of the pitch declining over the season?
 - What is the maintenance regime for the pitch at present?
 - Could the capacity of the pitch be improved by enhanced maintenance?
 - To what extent are pitches required to accommodate training activity?
- 5.2.4 As the response rate from both clubs and pitch owners is fairly low we haven't been able to consider the above in a meaningful way. The standard Playing Pitch Model assumes that pitches are able to take 2 games per week. However, this depends on its quality. Therefore, based on other studies and the non technical assessment undertaken for each pitch an informed judgement has been made to classify them using the following categories:

Table 17: Quality Ratings Categories

Quality Rating	Carrying Capacity	Multiplication Factor
Excellent/Good	2 matches per week	1.0
Average	1.5 matches per week /	0.75
Below Average	1 match per week	0.5
Poor	0.5 match per week/	0.25

- 5.2.5 If a pitch is of an excellent/ good quality it may be able to take two games per week, hence a higher weighting, however, on the other hand, if the pitch is only able to accommodate 1 match per week, it is equivalent to half a pitch.
- 5.2.6 Increasing the quality of a pitch will therefore increase the capacity of the pitch and reduce the overall number of facilities required. Qualitative improvements are therefore likely to be as important as the provision of additional pitches.
- 5.2.7 Other considerations to be taken into account include things such as carrying capacity which varies between sports and age groups: For example:

The condition of a football pitch is more likely to deteriorate quicker when in use than a cricket pitch due to both the nature of the sport and the time of year these sports are played; one cricket pitch normally supports a number of cricket strips/wickets, but uses the same outfield which can be used alternatively across a cricket season, therefore for these reasons a cricket pitch is more likely to hold three matches or more per week, than football. Lower levels of wear and tear are generated by younger players and the short duration of matches, mini football pitches are considered able to sustain three or four games per week, without detriment to them.

5.2.8 Synthetic hockey pitches are not affected by the conditions discussed above as wear and tear of this pitches does not occur to the same degree as grass. These pitches have therefore been considered able to take four games on the peak day, although this is dependent on flexible programming of matches to ensure this is feasible.

5.2.9 Table 18 shows the number of pitches available when taking the multiplication factor into consideration.

Table 18: Quality Ratings

Quality Rating Carrying Capacity	Football	Multiplication Factor – pitches available	Total pitches available per week.
Excellent/Good 2 matches per week	community use 6 x senior 1x junior 2 x mini non community use 1 x senior	community use 6 1 2 non community use 1	community use 6.75 x senior 1 x junior 2 x mini non community use: 1.75 x senior 4.5 x junior 0 x mini
Average 1.5 matches per week	community use 1 x senior non community use 1 x senior 6 x junior	community use 0.75 non community use 0.75 4.5	
Quality Rating Carrying Capacity	Rugby	Multiplication Factor – pitches available	Total pitches available per week.
Excellent/Good 2 matches per week	community use 4x senior non community use 2 x senior	community use 4 non community use 2	community use 4 x senior 0 x junior non community use

	1 x junior	1	2.75 x senior 1 x junior
Average 1.5 matches per week	non community use 1 x senior	non community use 0.75	
Quality Rating Carrying Capacity	Cricket	Multiplication Factor – pitches available	Total pitches available per week.
Excellent/Good 2 matches per week	community use 7 x senior 1 x junior	community use 7 1	community use 8.5 x senior 1 x junior
Average 1.5 matches per week	community use 2 x senior	community use 1.5	

Note: there are no grass hockey pitches

5.3 Playing Pitch Model Calculations

- 5.3.1 The table below shows the calculations undertaken to determine the surplus/deficit of football, cricket and rugby pitches in the study area.
- 5.3.2 As per the Playing Pitch Model guidance, it is assumed that all football and rugby teams play a home match every fortnight. However, for cricket teams it is assumed that many teams play home matches more than every fortnight (i.e. mid-week matches etc) hence the figure of 0.7.
- 5.3.3 Data has been determined by a combination of questionnaire responses, telephone interviews, discussions with the HFA, ECB and RFU and web based information on league fixtures. Figures are approximate and it is acknowledged that these could change.
- 5.3.4 Only community use sites have been included and the multiplication factor for the pitches as described above used.

Table 19 : Football Surpluses / Deficiencies

Scenario 1: Ledbury Area- Secured community use pitches only shown in community use columns

Scenario 2: Ledbury Area – Includes pitches on school sites where clubs are known to play but with no formal community use agreement, shown in community use columns including:

- Cradley Primary School, used by Cradley Sports Club

Ledbury Area: Football Provision: Surpluses / Deficiencies						
Stage 1: Identifying Team Equivalents						
Adult Teams / u 18 floodlit	6					
Training adult/junior/mini equivalents	7.25					
Junior Teams (u11s/12s) (U13's +)	13	11 juniors (u11's /12's – 4) (u13's + 9)				
School Equivalents	5					
Mini Teams (u8's/9's/10s)	7					
Total	33.25					
	38.25					
Stage 2: Home Games per Team per Week						
(based on the principal of one home game per week, one week away = 0.5)						
Stage 3: Total Home Games per Week						
Adult	(6 x 0.5)	3				
Training adult/junior/mini equivalents	(7.25 x 1)	7.25				
Junior Teams (u11s/12s) (U13's +)	(4 x 0.5) (9 x 0.5)	2 – u11's / u12's 4.5 – u13's + (mainly play on senior pitches)				
School equivalents	(5 x 1)	5				
Mini Teams (u8's/9's/10s)	(7 x 1)	7				
Stage 4: Temporal Demand for Games						
	Sat am	Sat pm	Sun am	Sun pm	Weekday schools	Weekday/ Training
Adult	17%	17%	66%	0%	0%	0%
Training (adult equivalent)	0%	0%	0%	0%	0%	100%
Junior (u13's +) Teams	0%	0%	11%	67%	0%	22%
School equivalents juniors	0%	0%	0%	0%	100%	0%
Junior (u11's,u12's) Mini (u8's,9's,10s) Teams	75%	0%	25%	0%	0%	0%
Stage 5: Pitches required to meet Peak Demand						
	Sat am	Sat pm	Sun am	Sun pm	Weekday schools	Weekday/ Training
Adult	0.5	0.5	2	0	0	0
Training (adult equivalent)	0	0	0	0	0	7.5
Junior (u13's +) Teams	0	0	0.5	3	0	1
School equivalents juniors	0	0	0	0	5 per week	0

Junior (u11's,u12's Mini (u8's,9's,10s) Teams	1.5 x 9 v 9 5.25 x 7 v 7	0	0.5 x 9 v 9 1.75 x 7 v 7	0	0	0
Stage 6: Community Pitches available to meet Peak Demand						
To assess the adequacy of current provision weightings have been added to reflect the capacity/availability of existing pitches.						
	LA owned	PC owned	Privately/voluntary owned	Total		
Adult	0	0.75	6 + 1 part used Ledbury Town Football club	6.75		
Junior	0	0	2	2 3		
Mini	0	0	0	0		
Stage 7: Surpluses / deficiencies of pitches						
	Total pitches	Peak demand	Surplus/deficiencies			
Adult / u 18 floodlit	6.75	2 games (peak times is Sun am when both adult and older juniors use pitches)	+4.75surplus			
Training (adult equivalent)	6.75	7.5	- 0.5 deficiency			
Junior (u13's +) Teams	6.75	3 games	+3.75 surplus			
Junior/school equivalents	1 (Cradley school)	5 school use	School use school pitch			
Junior (u11's,u12's Mini (u8's,9's,10s) T	2 junior 3 junior	1.5 x 9 v 9 5.25 x 7 v 7	- 1.5 x 9 v 9 - 3.25 /2.25 x 7 v 7			
Usage per week for adult/junior games and training total 18: Each pitch used 2.6 x plus per week						
Usage per week for games and training.	Senior pitches are used up to 7.5 x per week by adults and older juniors. With 6.75 pitches available this is approx. 1.1 times per week. Junior pitches are use 7.5 times per week by minis and younger juniors and with only 2 pitches this is over 3.5 times per week. Including Cradley junior school pitch improves the rate for club use as Cradley Sports Club use it but this pitch is also used by the school.					

Table 20: Cricket Surpluses / Deficiencies

Ledbury Area: Cricket Provision / Surpluses/Deficiencies	
Stage 1: Identifying Team Equivalents	
Adult Teams	19
Adult training	9.5
Training junior/mini equivalents	5 junior / 0.75 mini
Junior Teams	10
School equivalents	10 junior
mini Teams	3
Total	57.25
Stage 2: Home Games per Team per Week	
(based on the principal of one home game per week, one week away = 0.5)	
Stage 3: Total Home Games per Week	
Adult	(19 x 0.7) 13.3
Adult training	(9.5 x 1) 9.5

Training junior/mini equivalents	(5 x 1) (0.75 X 1)	15.5 0.75				
Junior	(10 x 0.7)	8.4	Note some minis only play monthly			
Mini	(3 x 1)	3				
School equivalents	(10 x 1)	10				
Stage 4: Temporal Demand for Games						
	Sat am	Sat pm	Sun am	Sun pm	Tues pm	Weekday schools/ Weekday training
Adult	0%	79%	0%	21%	0%	
Training Adult equivalents	0%	0%	0%	0%	0%	100% (Wed)
Training junior/mini equivalents	0%	0%	0%	0%	0%	80% (Wed) 10% (Mon) 10% (Tues)
Junior / mini	0%	0%	38%	38%	24%	
School equivalent	0%	0%	0%	0%	0%	100%
Stage 5: Pitches required to meet Peak Demand						
	Sat am	Sat pm	Sun am	Sun pm	Tues pm	Weekday Schools/ Weekday training
Adult	0	10.5	0	2.8	0	
Training Adult equivalents	0	0	0	0	0	9.5
Training junior/mini equivalents	0	0	0	0	0	4.5 (Wed) 0.5 (Mon) 0.5 (Tues)
Junior / mini	0	0	3.5	3.5	2.1	
School equivalent (John Masefield)	0	0	0	0	0	10 x per week
Stage 6: Community Pitches available to meet Peak Demand						
To assess the adequacy of current provision weightings have been added to reflect the capacity/availability of existing pitches.						
	LA owned	PC owned	Privately/voluntary owned	Total		
Adult	0	3	5.5	8.5		
Junior	1	0	1	1		
Stage 7: Surpluses / deficiencies of pitches						
	Total pitches	Peak demand	Surplus/deficiencies			
Adult	8.5	10.5 games 9.5 training	- 2 deficiency - 1 deficiency			
Junior	8.5 plus 1 x junior	3.5 games 4.5 training	+ 5 + 1 junior surplus + 4 surplus			
Peak demand adult/junior and mini Sunday pm	8.5	6.3	+ 2.2 surplus			
Usage per week for games and training total 46.7: Each pitch over used – 5 x plus per week						

Table 21: Rugby Surpluses / Deficiencies

Ledbury Area: Rugby Union Provision: Surpluses /Deficiencies	
Stage 1: Identifying Team Equivalents	
Adult Teams	4
18 – 19 yr old	0(equiv adults)

Teams					
Junior Teams	9 (equiv 9 adults)	Junior and minis equivalent to 10.5 senior teams			
Mini Teams	3 (equiv 1.5 adults)				
Training equivalents	6 adult teams				
Total	21				
Stage 2: Home Games per Team per Week					
(based on the principal of one home game per week, one week away = 0.5)					
Stage 3: Total Home Games per Week					
Adult	(4 x 0.5)	2			
Junior	(9 x 0.5)	4.5			
Mini	(1.5 x 0.5 per 2 teams)	0.75			
Training equivalents	(6 x 1)	6			
Stage 4: Temporal Demand for Games					
	Sat am	Sat pm	Sun am	Sun pm	Training weeknights
Adult	0%	100%	0%	0%	0%
Junior/mini	0%	25%	50%	25%	0%
Training	0%	0%	0%	0%	100%
Note: time of juniors can vary on a Sunday					
Stage 5: Pitches required to meet Peak Demand					
	Sat am	Sat pm	Sun am	Sun pm	Training weeknights
Adult	0	2	0	0	0
Junior /mini	0	1.3	2.6	1.3	0
Training	0	0	0	0	6
Stage 6: Community Pitches available to meet Peak Demand					
To assess the adequacy of current provision weightings have been added to reflect the capacity/availability of existing pitches.					
	LA owned	PC owned/LEA owned	Privately/ Voluntary owned	Total	
Adult	0	0	4	4	
Junior	0	0	0	0	
Total	0	0	0	4	
Stage 7: Surpluses / deficiencies of pitches					
	Total pitches	Peak demand	Surplus/deficiencies		
Adult +	4	2	+2 surplus pitches		
Junior / mini	4 (use adult pitches)	2.6	+1.4 surplus pitches		
Adult/junior/mini peak demand Saturday pm	4	3.3	+0.7		
Training	2 (floodlit)	6 if training on same day	- 4 deficiency		
Usage per week for games and training total 13.2. Each pitch over used – 3.3 x plus per week					

Table 22: Hockey Surpluses / Deficiencies

Ledbury Area Hockey Provision: Surpluses / Deficiencies	
Stage 1: Identifying Team Equivalents	
Adult Teams	1

Training adult equivalents	1				
Junior Teams	5 school equivalents				
Total	2				
Stage 2: Home Games per Team per Week					
(based on the principal of one home game per week, one week away = 0.5)					
Stage 3: Total Home Games per Week					
Adult	(1 x 0.5)	0.5			
Training adult equivalents	(1 x 1)	0			
Junior school equivalents	(5 x 1)	5			
Stage 4: Temporal Demand for Games					
	Sat am	Sat pm	Sun am	Sun pm	Weekday schools/ Weekday training
Adult	100%	0%	0%	0%	
Training adult equivalents					100%
Junior school equivalents					100% (school)
Stage 5: Pitches required to meet Peak Demand					
	Sat am	Sat pm	Sun am	Sun pm	Weekday schools/ Weekday training
Adult	0.5	0	0	0	0
Training adult equivalents	0	0	0	0	1
Junior School Equivalents					5 – all use school pitch
Stage 6: Community Pitches available to meet Peak Demand					
To assess the adequacy of current provision weightings have been added to reflect the capacity/availability of existing pitches.					
	LA owned/LEA owned	PC owned	Privately/voluntary owned	Total	
Adult	1 John Masefield High School ATP And ATP in Malvern	0	0	2	
Stage 7: Surplus / deficiency of pitches					
	Total pitches	Peak demand	Surpluses/deficiencies		
Adult	2	0.5	+1.5 surplus		
Training adult equivalents	2	1	-+ 1 surplus		
Junior school equivalents.		5	All use school pitch at John Masefield High School, Ledbury		
Usage	John Masefield High school is used by the school and by Colwall Hockey Club who also use facilities in Malvern. The 2 x APTs can sustain 6.5 games per week				

5.3.5 **General Issues:** These results are based on the assumption that teams wish to play on pitches which meet the National Governing Body recommendations for their age category. The modelling provides an output which identifies deficiencies or surpluses of pitches and for football in particular it can often show a surplus of adult pitches and a deficiency of junior. Looked in isolation these figures can be misleading and non-reflective of local circumstances. Local

knowledge and consultation helps to reflect the reality as far as possible. The investment strategy will pick this up further and help to develop the thinking about specific sites and targeted usage patterns.

- 5.3.6 **Football Pitches:** Herefordshire Junior Football League is responsible for league matches for all junior and mini teams across the county.
- Junior u13's teams and older play on senior pitches.
 - Junior u11's and u12's teams where they can play on dedicated junior 9 v 9 pitches.
 - Mini u8's, 9's and 10's teams where they can play on mini 5 v 5 pitches. Given the lack of dedicated junior and mini pitches across the county and only a small number of clubs have their own grounds, many mini and junior teams do have to play on senior size pitches. For example 4 mini teams can use 1 senior pitch, therefore where there are no dedicated pitches available, 4 mini teams could play on one pitch.

Location of mini pitches is also important as the younger teams are often led and set up by parents. Although not essential, having access to toilets and a changing room is important as often parents will bring younger siblings along to watch and on wet days being able to change children out of wet clothes is helpful.

- 5.3.7 **Cricket Pitches:**
- Junior cricket teams play on senior pitches.

- 5.3.8 **Rugby Pitches:**
- All u13's rugby teams and up, play on a 15 a side rugby and use a full size pitch.
 - Mini teams, u7's and 8's play principally on half 1 adult team with 10 players at 20 minutes per game. ,
 - U9/10's with 13 players at 30 minutes per game and u11's/12's with 17 players at 40 minutes per game.

- 5.3.9 **Sport England Modelling: Football:**
The overall assessment indicates a shortage of dedicated mini and junior pitches in the Ledbury Area. Provision of dedicated pitches is particularly important given the Football Foundation's requirement to now provide 9 v 9 pitches.

- 5.3.10 **Key Findings: Scenario 1/ Scenario 2**
- **Adult Teams Games:** Peak time for adult team games is Saturday am. There is a surplus of adult football pitches to meet demand on peak days.
 - **Adult Team Equivalent: (Training):** Peak time for training is weekdays. There is a slight deficiency to meet demand and

although these can be programmed for different days of the week, this assumes all pitches can be used to avoid over use. Opportunities for outside training in the winter months are limited due to the availability of pitches with floodlights. Increased use of portable floodlights could reduce this issue.

- **Junior u13's and Older Junior Teams:** Peak time for junior team games is Sunday pm. These teams use senior pitches and there is a surplus of adult pitches to meet demand.
- Although there are 2 dedicated junior/mini pitches, there is still a deficiency to meet demand and as a consequence juniors will have play on available senior pitches. This does increase the weekly usage of senior pitches.
- **Junior u11's, 12,s, Mini u8's, 9's and 10'sTeams:** Peak time for junior/ mini team games is Saturday am. There are no dedicated 9 v 9 pitches and therefore a deficiency. There are 2x junior pitches but no dedicated 7 v7 mini pitches and therefore a deficiency of dedicated pitches to meet demand on peak days⁷⁴
- **School Equivalents:** are accommodated on the school pitch but will increase wear and tear and although the local sports club use this facility it would be unsustainable for it to be used to meet the wider deficiency as described above. If the school consider the pitches to be "overused" the school curriculum requirements will be the priority.
- **Overall Peak Demand:** Peak time for adults and older juniors is Sunday am. There is a surplus of senior pitches to meet demand.
- **Usage per Week:** Existing pitches are not overused.
- **Training:** There are significant deficiencies in outdoor training facilities to accommodate training sessions.

5.3.11 **Sport England Modelling: Cricket: Scenario 1 only.**

The overall assessment indicates a shortage of pitches to meet demand on peak days for adults in the Ledbury Area

5.3.12 **Key Findings:**

- **Adult Teams:** Peak time for adults is Saturday pm. There is a deficiency of cricket pitches to meet demand on peak days.
- **Adult Team Equivalents: Training:** Peak Time Weekday
Wednesday: There is a deficiency of cricket pitches to meet demand on peak days assuming all training occurs on the same day.
- **Junior and Mini Teams:** Peak for juniors and minis is Sunday am and Sunday pm. There is a surplus of cricket pitches to meet demand on peak days.
- **Junior / Mini Equivalents:** Training: Peak Time Weekday
Wednesday. There is a surplus of cricket pitches to meet demand.

- **Adult, Junior and Mini Teams:** Peak time for adults, juniors and minis is Sunday pm. There is a surplus of cricket pitches to meet demand on peak days.
- **Usage per week:** It is acknowledged that summer sports pitches can accommodate a greater number of games per week, however, pitches are considered to be well used increasing wear and tear at approximately 5 times per week to accommodate all games and training.

5.3.13 **Sport England Modelling: Rugby: Scenario 1 only.**

There are adequate pitches to meet demand but security of tenure on some of the pitches is an issue as well as flooding.

5.3.14 **Key Findings:**

- **Adult Teams / 18 /19 year old Teams:** Peak time for adults is Saturday pm. There is a surplus of senior pitches to meet demand on peak days
- **Junior/mini teams:** Peak demand for junior/mini teams is Sunday am. There is a surplus of pitches to meet demand on peak days: juniors and minis play on senior pitches and this has been taken into account.
- **Training Team Equivalent:** Peak time is weekdays. There is a deficiency of pitches to meet peak demand if teams train on the same day.
- **Usage per week:** To accommodate all games and training per week, including adult, junior and mini, excluding the impact flooding has, the existing pitches are used more than twice a week which will impact long term on quality. Reducing the impact of flooding and securing tenure for the 2 pitches will help to reduce this impact.

5.3.15 **Sport England Modelling: Hockey: Scenario 1 only.** There are adequate pitches to meet demand but this also includes travelling outside the county.

5.3.16 **Key Findings:**

- **Adult Teams:** Peak time for adults is Saturday am. There is a surplus of ATP's to meet demand on peak days but some games/training are played outside the area in Malvern and the ATP at John Masefield is also used by the school increasing wear and tear.
- **Usage per week:** Usage per week will be high for both ATPs

5.3.17 **Local Issues for Ledbury**

The methodology used by Sport England in assessing current and future needs does not always take account of individual and local

needs and should be considered in conjunction with local knowledge and issues.

- 5.3.18 **Ledbury and District Sports Federation:** The Federation is to develop a “blueprint” for sport and recreation for the area. This will address current issues relating to supply and demand through a joined up approach and in particular help shape the future sporting requirements in the town. It will help to maximise the opportunities arising from the development in Ledbury over the next 20 years as set out in the Core Strategy and Local Development Framework.
- 5.3.19 In particular, the draft “blueprint” recognises existing pressures on facilities for football, cricket and rugby in the town and identifies the issues each sport is facing in order to develop their local clubs over the next 5 years as follows:
- 5.3.20 **Football – Key Issues:** Within the town there are two principal clubs and a number of Sunday league football clubs based both within the town and the surrounding area. The two main town facilities are at Ledbury Town Football Ground, The Full Pitcher and Ledbury Rugby Football Club, Ross Road Playing Fields.
- **Ledbury Town Football Club:** is the tenant of the ground at the Full Pitcher under a lease until 2026. During the season, the main pitch is heavily used by not only the club, who has 7 adult teams, for games and training, but the Ledbury Swifts, John Masefield High School, the Sunday League teams and the Herefordshire Football Association (for county games) all wishing to use the facility, many of which are turned down because of pitch overuse.
 - **Latent Demand:** The club has raised issues over latent demand and problems with expansion. They are keen to develop and during the last 12 months (2011/12) created a Ladies division. But pressures to develop good links with the Ledbury Swifts and host a number of u16’s games for them in order to both acclimatise the players to playing in a small stadium and to encourage them to join their u18 squad the following season, has left their u18 team heavily oversubscribed for their facility. The club are also keen to develop both Sunday sides and an u17 team to play in the local leagues, but emphasises that only with the availability of more pitches could these demands be met. This is further compounded by the use of their second pitch rented from the cricket club (but without changing facilities) which is only

available outside the cricket season so is unavailable from April to September.

- **The Ledbury Swifts:** use the pitches at the Ross Road Rugby club site which are leased on an annual basis.
 - **Facility Issues:** overbooking at Ross Road, means that Swifts have to use the Ledbury Town Football pitches.
 - Car parking is shared with the Ledbury Rugby club and on Sunday mornings. On mornings when junior football matches clash with junior rugby matches the parking on site is inadequate to cater for the volume of people.
 - Quality of the available pitches is reduced due to problems with moles and rabbits causing damage.
 - Winter training facilities are hired from HALO at Ledbury Leisure centre from October – March as the available Ross Road pitches do not have flood lighting.
 - One of the club's biggest frustrations comes from the lack of control from having to hire facilities for both training and competitive matches, which means it is tied on what it is permitted to do.
 - Given the number of junior teams they have, ideally they would their own site which could provide a range of junior pitches from 11 v 11s down to 5 v 5s.

5.3.21 **Rugby – Key Issues: Ledbury Rugby Football Club:** Within the town there is one principal club, the Ledbury Rugby Football Club which is situated on the Ross Road Playing Fields which are leased from Herefordshire Council. The Rugby Club manage the facilities.

- **Club Requirements:** The total playing area is approximately 18 acres of which 12 acres are devoted to rugby. The club require 18 acres of playing area currently and this is made up from land rented adjacent to the site from a local farmer. However, this is only a temporary arrangement and taken into account in the Sport England modelling.
- **Other use:** The remaining 6 acres accommodate senior and junior football and a cricket square. The cricket pitch is hired out by the Rugby Club to any potential users including other clubs in the town (The Strollers) and the John Masefield High School as an additional facility when the school requires it.

John Masefield High School although not a strong Rugby school, play on the pitches for one term (Autumn).

There is weekly use from October on by one of the County age group squads (last year u/14's).

The facilities and site are used by a number of different activities including the archery and rifle clubs but the extensive use of this site by the football club mean that the archery and rifle clubs are finding it difficult to expand.

5.3.22 **Long Term Security, Latent Demand and Future Deficits:** The future of the club is dependent on securing all pitches long term. In their 5 year plans (Ledbury Rugby Football Club: An analysis of current and future facilities 2011) in estimating the clubs requirements for the 2016/17 season they have identified a deficit of 6 acres within the next 5 years to meet the demands particularly from a rapidly expanding junior section.

- **Flooding:** 7 acres of the site are subject to flooding which makes some pitches unavailable for between 2 and 3 weeks each year. The impact of flooding is difficult to quantify in Sport England's supply and demand modelling but it does impact on the overall supply and quality of pitches and facilities to meet demand. It can lead to over use of some pitches in bad weather and impact on the overall availability of pitches at these times and as a consequence pitches can become overused and out of condition. Even though the summer months allow them to be rested and the club regularly rotate them the high quality standards required are often not met so pitches are taken out of operation regularly.

Rotation/resting of pitches is increasingly becoming a critical issue for the club particularly for the 3 floodlit pitches (not because of flooding alone) but also due to the demands of midweek training on top of weekend matches, coupled with flooding, it is making it difficult for them to last for the whole season.

The impact of flooding in the clubhouse is most noticeable on Sundays when both rugby and football and played at the venue.

Consultation with the club undertaken during the process of preparing this assessment.

5.3.23 **Cricket – Key Issues: Ledbury Cricket Club:** Ledbury Cricket Club rent a 6 acre field behind the Full Pitcher, New Street, Ledbury on a short term lease. Some of the ground is sub-let to Ledbury Town Football Club off season.

5.3.24 **Latent Demand:** The club has an aspiration to grow to meet the

needs of local cricketers playing at the local level rather than to gain promotion higher up the leagues.

Short term plans are to re-start a junior section despite limited facilities are underway, but formal practice facilities such as nets have suffered from theft and deterioration. Current facilities are less than ideal to accommodate junior teams. Existing changing provision is out of date and requires replacing but without security of tenure this is difficult.

Long term plans for another pitch would be necessary for the club to have a 3rd Saturday team and share the load on the main square. An additional pitch would also enable the club to run a number of junior teams of the same age level increasing participation and reducing wear and tear on the first pitch

- 5.3.25 **Lease:** They are finding it difficult to attract and retain better players. A longer lease or freehold would enable the club to develop and become more attractive to players outside of the area. The short term lease means their future is uncertain.

6. Predicting the Future

6.2 Future Proofing: Herefordshire Population Forecasting Projections for 2011 - 2031

- 6.2.1 By applying the Team Generation Rates to population projections, it is possible to project the theoretical number of teams that would be generated over the Local Development Framework period (2011 – 31) and gain an understanding of the adequacy of current pitch provision to meet future demand, assuming the supply and capacity of pitches does not alter in the interim.
- 6.2.2 The Sport England methodology requires detailed future population totals to be used. Population projections for the period 2011 - 2031 are taken from the study undertaken by G L Hearn, 2012, to determine local housing requirements. Herefordshire Council commissioned G L Hearn to undertake a detailed analysis which set out population projections and household growth for the county and seven sub-markets taking account of the level and distribution of proposed housing in the Revised Core Strategy preferred Options (October 2011) and the plan period 2011 – 31.
- 6.2.3 The seven sub-markets include: Bromyard, Golden Valley, Hereford, Kington, Leominster, Ledbury and Ross. These areas act as the service hubs for their rural hinterlands.

- 6.2.4 The population growth is anticipated to take place mostly in the urban areas along with the strategic housing sites and it is anticipated that there will be a marked decline in rural populations over the next 20 years up to 2031 (GL Hearn Housing study figures 2012).
- 6.2.5 Development of new and existing sustainable facilities is therefore best placed in the urban areas where the biggest population growth is going to be. Whilst facilities are needed in the rural areas and some will require investment, Sport England advocate a 20 minute drive time to facilities and Ledbury Town is well placed to serve its rural hinterlands.

6.1 Team Generation Rates

- 6.1.1 Team Generation Rates (TGRs) indicate how many people in a specified age group are required to generate one team. TGRs are derived by dividing the appropriate population age and for the relevant sport (e.g. for adult football it is the 16 – 45 age group) by the number of teams playing that sport. Calculation TGRs enables fair comparison to be made between different areas where similar studies have been undertaken. They also enable the projection of likely future participation.
- 6.1.2 TGRs can be calculated for each of the individual disciplines, such as adult men’s football, adult women’s football etc. Once these TGRs have been calculated, they can be brought together to form one TGR for each sport.
- 6.1.3 The TGRs for each sport in the study area are shown in the Tables below and are compared to the national average based on Sport England’s database of Team Generation Rates.

Table 23: Football Team Generation Rates

Age Group	Ledbury Area TGR	National Average
Senior Male	1:274	1:314
Senior Female	1:1097	1:10,593
Junior Male	1:129	1:71
Junior Female	1:328	1:818
Mini soccer	1:113	1:141

- 6.1.4 Where the number of people required across each age group to generate senior, junior and mini male teams is similar to the national average meaning that participation is average in these areas but does

indicate that the sport is developing well across all age groups. Junior male is below the national average.

Table 24: Cricket Team Generation Rates

Age Group	Ledbury Area TGR	National Average
Senior Male	1:511	1:1,333
Senior Female	1:4175	1:72,518
Junior Male	1:224	1:1,481
Junior Female	0	1:15,926

6.1.5 This table indicates that the number of senior and junior males and senior females needed to generate a team is significantly below the national average meaning that participation is over the national average suggesting development of the sport and its popularity for males senior and junior in this area is good with a highly active local population which perhaps reflects the “sparsity” of population particularly in the more rural parts of this area. However, participation in junior female cricket is nil.

Table 25: Rugby Team Generation Rates

Age Group	Ledbury Area TGR	National Average
Senior Male	1:679	1:10,315
Senior Female	0	1:43,770
Mini Male	1:97	1:1,864
Junior Male	1:48	
Junior Female	0	1:19,529

6.1.6 As with cricket, this table indicates that the number of senior and junior males needed to generate a team is significantly below the national average meaning that participation is over the national average suggesting development of the sport and its popularity for males senior and junior in this area is good with a highly active local population which perhaps reflects the “sparsity” of population particularly in the more rural parts of this area. However, participation in female rugby is nil.

Table 26: Hockey Team Generation Rates

Age Group	Ledbury Area TGR	National Average
Senior Male	0	1:7,595
Senior Female	1:2972	1:10,292
Junior Male	0	1:4,239
Junior Female	0	1:5,115

- 6.1.7 This table indicates that the number of senior females needed to generate a team is significantly below the national average meaning that participation is over the national average suggesting development of the sport and its popularity for females in this area is good with a highly active local population which perhaps reflects the “sparsity” of population particularly in the more rural parts of this area. However, participation in male and junior hockey is nil.

6.2 Future Proofing: Herefordshire Population Forecasting Projections for 2011 - 2031

- 6.2.1 By applying the Team Generation Rates to population projections, it is possible to project the theoretical number of teams that would be generated over the Local Development Framework period (2011 – 31) and gain an understanding of the adequacy of current pitch provision to meet future demand, assuming the supply and capacity of pitches does not alter in the interim.
- 6.2.2 The Sport England methodology requires detailed future population totals to be used. Population projections for the period 2011 - 2031 are taken from the study undertaken by G L Hearn, 2012, to determine local housing requirements. Herefordshire Council commissioned G L Hearn to undertake a detailed analysis which set out population projections and household growth for the county and seven sub-markets taking account of the level and distribution of proposed housing in the Revised Core Strategy preferred Options (October 2011) and the plan period 2011 – 31.
- 6.2.3 The seven sub-markets include: Bromyard, Golden Valley, Hereford, Kington, Leominster, Ledbury and Ross. These areas act as the service hubs for their rural hinterlands.
- 6.2.4 The population growth is anticipated to take place mostly in the urban areas along with the strategic housing sites and it is anticipated that there will be a marked decline in rural populations over the next 20 years up to 2031 (GL Hearn Housing study figures 2012).
- 6.2.5 Development of new and existing sustainable facilities is therefore best placed in the urban areas where the biggest population growth is going to be. Whilst facilities are needed in the rural areas and some will require investment, Sport England advocate a 20 minute drive time to facilities and Ledbury Town is well placed to serve its rural hinterlands.

6.3 Ledbury Area Population – 2011 – 2031

- 6.3.1 The structure of a population and future changes may impact on the demand for a certain pitch or sports. Changing demographics usually happen gradually over a period of time but it is important for pitch providers to be aware of these changes to be prepared and able to respond.
- 6.3.2 The estimated and forecast populations of Herefordshire sub-market housing areas, 2010 and 2031 for the Ledbury Area are shown below for the 6 – 55 year age group (Sport England’s active population) . They are based on ONS indicative 2010 mid year estimates and mid-2012 small area population estimates.

Table 27: Forecast Populations

Sex	Age	Ledbury 2010	Ledbury Rural 2010	Ledbury 2031	Ledbury Rural 2031	Ledbury change 2010 - 2031	Ledbury Rural Change 2010 - 2031
All persons	6 - 55	5671	5120	5931	4227	260	-893

- 6.3.3 Using Sport England selected age-sex groups it is predicted that in the majority of selected age-groups in Ledbury the population will increase whereas there is a predicted decline in the majority of age groups in Ledbury Rural. This is indicative of where the majority of new housing is proposed.
- 6.3.4 To allow for increase participation in all sports, a “growth factor” of 1% per annum has been used on the basis of 15 years to cover the Core Strategy plan period up to 2031.
- 6.3.5 The table below using Sport England Modelling shows the likely implications of all these future changes based on the population increase and sports growth of 1% per annum over 15 years as described above.

Table 28: Future playing pitch requirements

Ledbury Area
Mini/ Junior Football: (U8’s, 9’s, 10’s minis and U10,s, u11,s juniors):
Mini 7.3 % of total estimated population
Junior Boys 3.6 % of total estimated population
Junior Girls 3.0% of the total estimated population
Mini: 15 year plan period total sports growth factor 15% (1% per annum)

added into future proofing: 7.7 total (+0.7 increase) Junior: 15 year plan period total sports growth factor 15% (1% per annum) added into future proofing: 5.1 total (+1.1increase)			
Mini 7 v 7	Peak time: sat am. 5.8 pitches required: - 3.8 x 7 v 7 deficiency		
Junior 9 v 9	Peak time: sat am 1.9 pitches required: -1.9 x 9 v 9 deficiency		
Senior Football (13 – 45) :			
Senior men 30.5% total estimated population Senior females 30.5% total estimated population			
15 year plan period total sports growth factor 15% (1% per annum) added into future proofing: new teams created total 16.8 teams (+1.8 increase).			
Adult Teams u13+	Peak time: sun pm: 3.4 pitches required:+ 3.35 senior pitches surplus		
Senior / Junior Cricket:			
90.5% of total estimated population – new teams created total 30.1 (–1.9 reduction)			
15 year plan period total sports growth factor 15% (1% per annum) added into future proofing: total 34.6			
Adult Teams	20.4	Peak Time: Saturday pm: 11.3 pitches required	- 2.8 deficiency in pitches
Junior/mini Teams	14.2	Peak Times: Sunday am and Sunday pm 3.8 pitches required	+4.7 and 1 junior surplus pitches
Senior / Junior/ mini Rugby Union			
57.6% % of total estimated population (excluding minis) – new teams created total 12.2(-0.8 excluding minis)			
15 year plan period total sports growth factor 15% (1% per annum) added into future proofing: total 14.1 teams			
Adult Teams	4	Peak Time Saturday pm: 2.5 pitches required	+1.5 surplus pitches
Junior/mini Teams	13.6 (includes 4.6 minis/ 9 juniors)	Peak Time Sunday am: 3.4 pitches required	+0.6 surplus pitches
Senior Hockey			
65.4% % of total estimated population – new teams created total 0.9			
15 year plan period total sports growth factor 15% (1% per annum) added into future proofing: total 1.1 teams			
Adult Teams	1.1	Peak Time Saturday am: 0.5 pitches required	+1.5 surplus pitches

6.3.6 The Playing Pitch Model also suggests that a 10% “strategic” reserve is built in for future needs. This in effect creates slightly more pitches than required (10%) to allow for pitches to be rested and thereby improving quality. Accounting for this, future pitch requirements are as follows:

Table 29: Future Playing Pitch Requirements if 10% strategic reserve included.

Pitches	Ledbury Area + 10% Strategic Reserve	Surplus/Deficiency
Mini 7 v7	6.4 x 7 v 7 pitches	-4.4 x 7 v 7 deficiency
Junior 9 v9	2.1 x 9 v 9 pitches	-2.1 x 9 v 9 deficiency
U13 - Adult Football	3.75 pitches required	+3 surplus adult pitches
Adult Cricket + 10% Strategic reserve	12.4 pitches required	-4 deficiency adult pitches
Junior Cricket + 10% Strategic reserve	4.2 pitches required	+4.3 surplus adult pitches surplus and 1 junior pitch
Adult Rugby + 10% Strategic reserve	2.75 pitches required	+1.25 surplus adult pitches
Junior / Mini Rugby + 10% Strategic reserve	3.75 pitches required	+0.25 surplus adult pitches

7 Developing Local Standards

- 7.0 The National Planning Policy Framework: Promoting Healthy Communities asks for Planning Policies to be based on robust and up-to-date assessments of needs for open space, sports and recreation facilities and opportunities for new provision. Information gained from the assessment should be used to determine what open space, sports and recreational provision is required for the local area. The provision requirements for outdoor sports pitches for the Ledbury Area are set out below.

7.1 Quantity Standards

- 7.1.1 There are no national standards or benchmarking.
- 7.1.2 Current Provision is set out in policy RST4 of the Unitary Development Plan for Herefordshire and uses the National Playing Field Association standards of 2.6 ha of open space per 1000 population of which 1.6 ha is for outdoor sport.
- 7.1.3 The consultation exercise did not flag up any issues of latent demand.
- 7.1.4 Current Provision: based on the existing population in Ledbury Area and the total ha of existing community sites equate to 1.4 ha per 1000 population.

- 7.1.5 New recommendation: Taking account of the 10% increase in strategic reserve this equates to **1.5 ha per 1000** population for the Ledbury Area.

7.2 Quality Standards

- 7.2.1 Facility standards should reflect the quality aspects deemed most important by the users – i.e.
- Level even surfaces to play on
 - Good length of grass
 - Clean/litter and dog fouling free
 - Good provision of changing rooms
- 7.2.2 Pitches should be measured against the quality criteria as set out in Towards a Level Playing Field. All sites have been assessed using the proforma provided by Sport England.
- 7.2.3 New recommendation: The minimum baseline scores targeted should be:
- 60% for the site and ancillary facilities (the % score required to be categorised as good)
 - 65% for the pitch (the score required to be categorised as good)

These should reflect minimum standard of provision

- 7.2.4 Standards should also reflect and be responsive to national governing body standards for each sport and in particular standards and issues for Herefordshire which are identified in current and emerging documents, for example:
- Herefordshire Cricket Board Facility Strategy 2009 -2013
 - North Midland RFU County Facility Plan 2008 -2011
 - Separate standards for ATPs for use by different sports, for example, football and hockey should be considered against demand

7.3 Access /Thresholds

- 7.3.1 Access to all playing pitches, bowling greens and tennis courts should be within the following access times:
- In urban areas including Ledbury Town they should all be accessed within a walking distance of most potential and casual users. This is recommended to be 15 minute walk time to facilities
 - However, it is not sustainable to apply the same standards in the rural parts of the Ledbury Area and have pitches within

walking thresholds therefore a driving threshold of a 20 minute drive time to facilities is recommended.

- 7.3.2 These standards should be used to support requirements arising from new housing developments and as such should be used to inform planning policy and included in the relevant sections in the Supplementary Planning Document on Planning Obligations.

8 Recommendations and Future Actions for Ledbury Area

8.1 Community Access on School Sites

- Further work to identify where existing community use agreements are in place at Schools across the area and in particular ensure the future use for Ledbury Rugby pitches is not threatened by the impending Academy status of John Masefield High School and secure the future community use at Bosbury Primary School for the cricket club: Property Services, Herefordshire Council
- Further work to identify where junior schools in the Area would benefit from community access: Property Services, Herefordshire Council

8.2 Quality

- The quality of pitches impacts not only on the quality of play, but also on the potential capacity of a pitch and hence numerical surpluses and deficiencies.
- Improvements should be particularly targeted at those areas required to meet Sport England's minimum standards including drainage, changing accommodation and levelling, for example. The minimum baseline scores targeted should be:
 - 60% for the site and ancillary facilities
 - 65% for the pitch

8.3 Site Specifics

Cricket:

Ledbury Cricket Club: Issues for Ledbury Cricket Club are described fully in 5.3.23

Bosbury Cricket Club play at Bosbury Primary School the future community use of the facility is an unknown.

Bowling:

Ledbury Bowling Club has rated its changing facilities as poor although the assessment rated them as excellent. This is a big discrepancy and any priority for future investment will be dependent on usage.

Football:

Colwall Playing Fields have no changing and a pitch rating below the recommended standard of 65%. It is used by local clubs and as a home venue. Dependant of usage it is a priority for future investment.

Ledbury Town Football Club: Issues for Ledbury Town Football Club are described fully in 5.3.20

Ledbury Swifts Football Club: Issues for Ledbury Swifts Football Club are described fully in 5.3.20

Rugby:

Ledbury Rugby Football Club: Issues for Ledbury Rugby Football Club are described fully in 5.3.21

8.4 Risks/Opportunities:

Football:

- In general there are not enough junior and mini pitches, although the game can be played on senior pitches. 9 v 9 pitches are required by the FA.
- There will be an undersupply of pitches to meet junior and mini football demands in the future which will increase the existing pressure at Ledbury Rugby Ground which already experiences difficulties at peak times.
- Ledbury Town Football club are finding it difficult to expand due to the lease arrangement and nature of their facility, coupled with the use of the second pitch by the cricket club.
- Ledbury Swifts find it difficult to share the use of Ross Road Rugby club site on peak days with the rugby club when the volume of people far exceed the capability of the parking facilities. Given the number of junior teams ideally they would like a site with dedicated pitches.

- More facilities are required in this area as the number of teams remain stagnant due to facility implications.
- Major issues appears to be parking and the fact some facilities are being shared with other sports, especially Rugby.
- Dire need for improved training provision including sand dressed ATP identified for refurbishment to 3G by EHA and FA
- Therefore consider the future options as priorities:
 - Future investment by clubs in reconfiguring pitches to meet the FA standards required:
 - Invest in improvements to existing facilities in Ledbury but space is limited
 - Identify sites/opportunities for additional pitches through the Local Development Framework, via proposed housing sites either on site or from securing planning gain
 - The Football Foundation and England Hockey are undertaking work to look at training provision across the authority area and in particular the need for 3G pitches which can double up as match surfaces for football. This work references demand based upon team numbers and proposes solutions.

Cricket

- There will be a deficiency in the number of pitches required to meet the anticipated growth and this will be further compounded if Bosbury Primary School is not secured for future community use. The Ledbury Cricket club has aspirations to grow but current facilities are not ideal to support junior teams with out of date changing facilities. Short term lease of the existing site means their future is uncertain and expansion plans are difficult to achieve.
- Therefore consider the future options as priorities:
 - Invest in improvements to existing facilities in Ledbury and provide a second ground but limited space.
 - Identify sites/opportunities for additional pitches through the Local Development Framework, via proposed housing sites either on site or from securing planning gain

Rugby:

- The club will require further land for pitches to meet their projected targets in the future. Long term security of existing pitches is the main issue but coupled with flooding which leads to problems making the pitches last a whole season means that the club will

require an additional 6 acres of land long term. This requires either land purchase and conversion or other sports moving off the site to vacate existing pitches.

Other:

- Consideration to be made, where there is an existing and predicted surplus of provision of one type of sport to redevelop the pitch to meet the needs of other sports including both those identified within this assessment and those which aren't, including minority sports and those sports which encourage a greater take up of females and juniors particularly where the team generation rates have highlighted a gap and clubs have identified future plans to include growth in these areas. This would be dependent on:
 - individual sports development plans identifying a need and providing a business case,
 - The priorities identified in the development plans of the Council's Sports Development Team, The County Sports Partnership and Herefordshire Sport.

8.5 Generic

- A hierarchical approach to facility development is recommended. This includes those parishes identified as Service Centres or Service Hubs, located strategically to serve communities across the area. Investment in these areas will provide a better use of limited resources and the development of more sustainable sites.
- Improvements to pitch quality and ancillary provision should be made with the principles of the hierarchy in mind. In particular, improvements should be targeted in areas of deficiency.
- The proportion of pitches meeting the desired quality standard should be monitored annually.
- In light of limited Local Authority resources and in the interests of maintaining quality pitches, where a considered business case has been put together by the community consideration should be given to community asset transfer.
- Continue to support voluntary, private and community sector where appropriate.
- Where issues of poor value for money have been sited and these are on Council owned property, consider a review of the Halo pricing policy?

8.6 Implications for Planning Policy

- All pitches should specifically be afforded protection within the Local Development Framework through a policy in the Core Strategy. Protection policies should link with policies for other types of open space. This policy should only permit development on playing fields when Sport England exception criteria can be met.
- New pitches may be required in some areas and should be facilitated through planning policy.
- Where planning obligations are sought these should be used to contribute to the enhancement of existing facilities and to help provide increased community access as well as to provide new facilities where these are required.
- The Council should update the existing SPD on open space contributions to include specific standards set as part of the Playing Pitch Strategy as described for each area.
- Set new local standards based on recommendations in this strategy:
- **Quantity Standard:** New recommendation: **1.5 ha per 1000 population** for the Ledbury Area.
- **Access Standard:** New recommendation:
 - Ledbury Town – a 15 minute walk time to facilities
 - Ledbury Rural – a 20 minute drive time to facilities

These standards should be used to support requirements arising from new housing developments.

Herefordshire Playing Pitch Assessment

Appendix 1: Sports Pitches within Herefordshire

Cricket

Football

Rugby

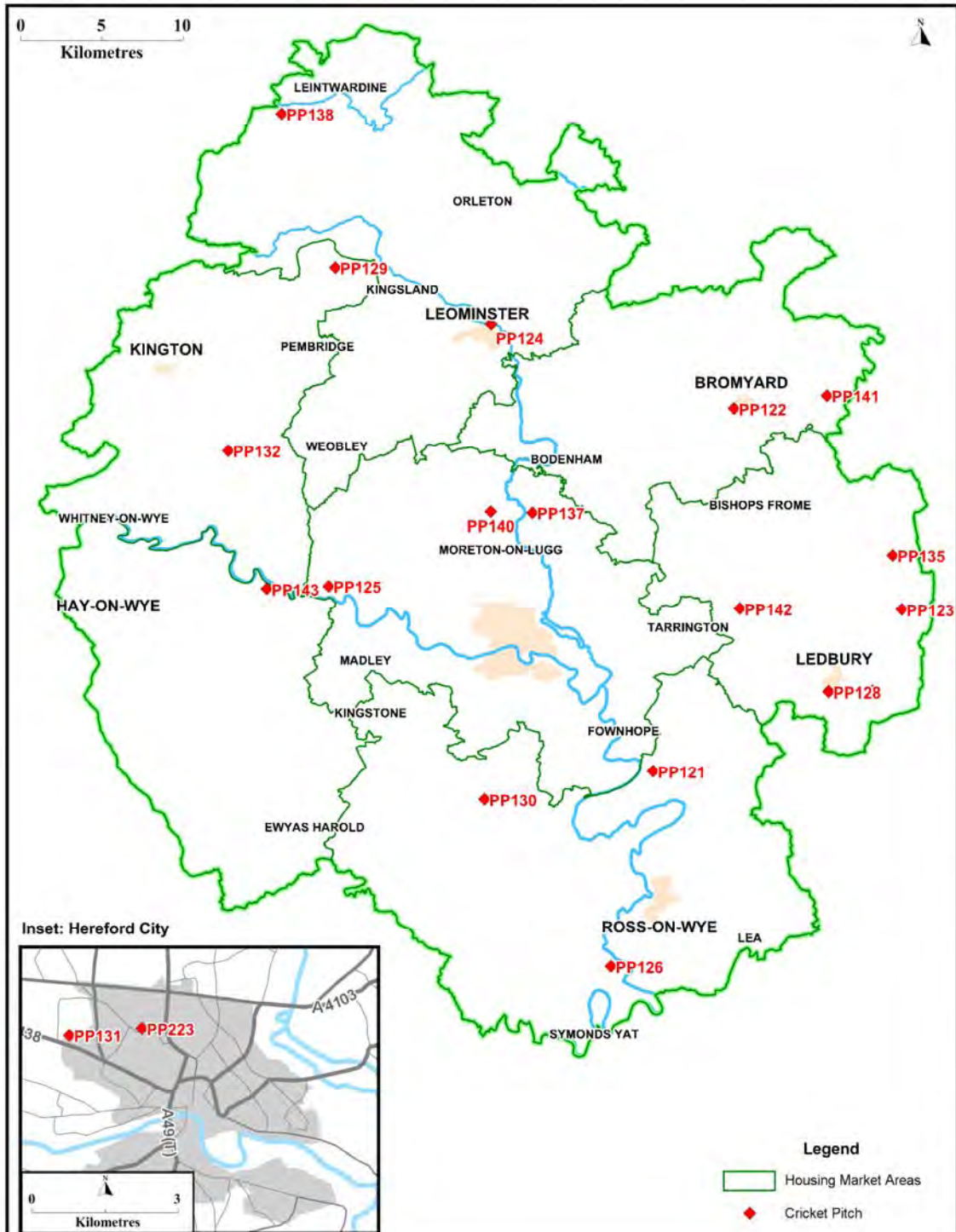
Bowling

Tennis

School

Hockey

Herefordshire Playing Pitch Assessment

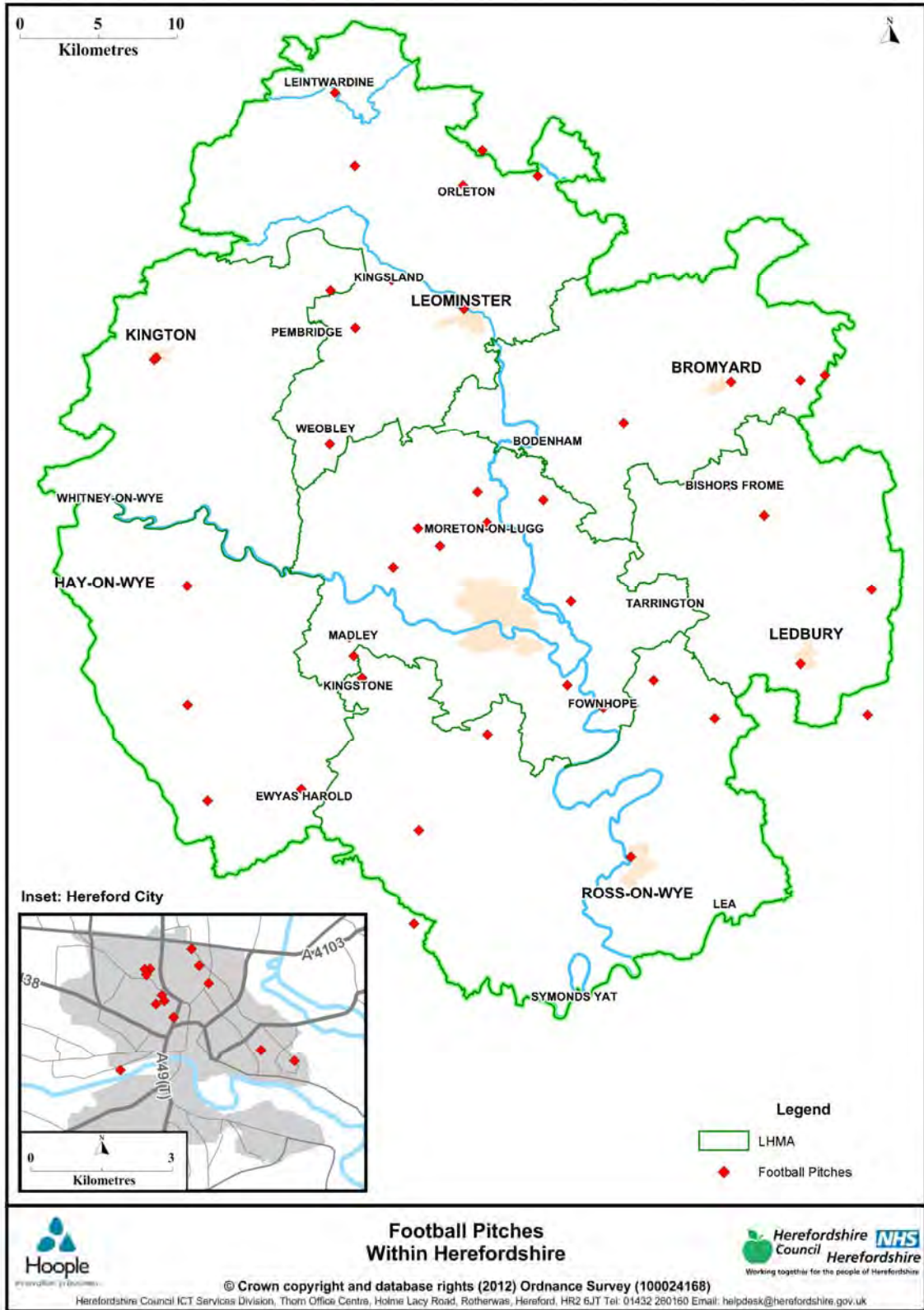


Cricket Pitches Within Herefordshire

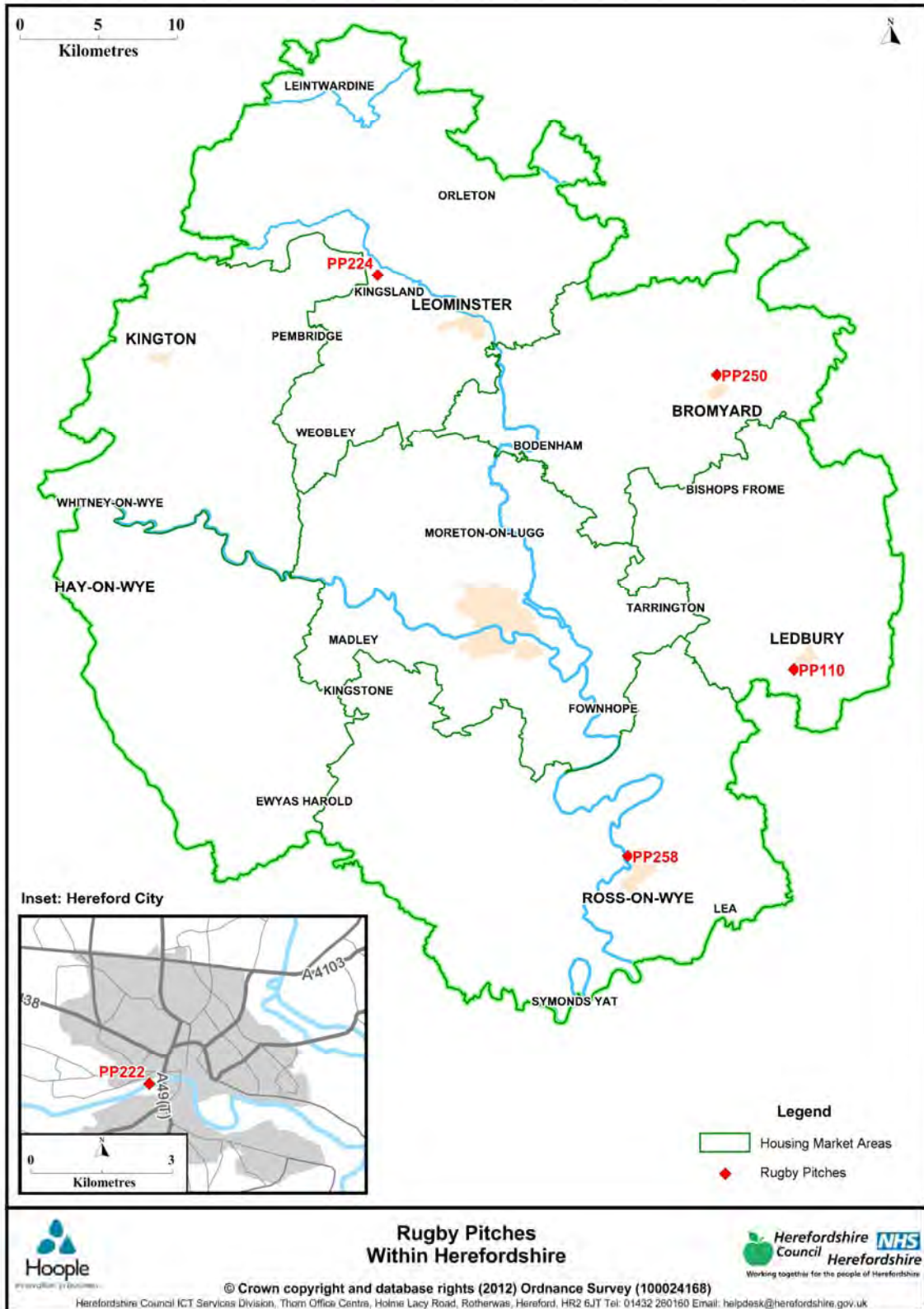


© Crown copyright and database rights (2012) Ordnance Survey (100024168)
 Herefordshire Council ICT Services Division, Thorn Office Centre, Holme Lacy Road, Rotherwas, Hereford, HR2 6JT Tel: 01432 280160 Email: helpdesk@herefordshire.gov.uk

Herefordshire Playing Pitch Assessment



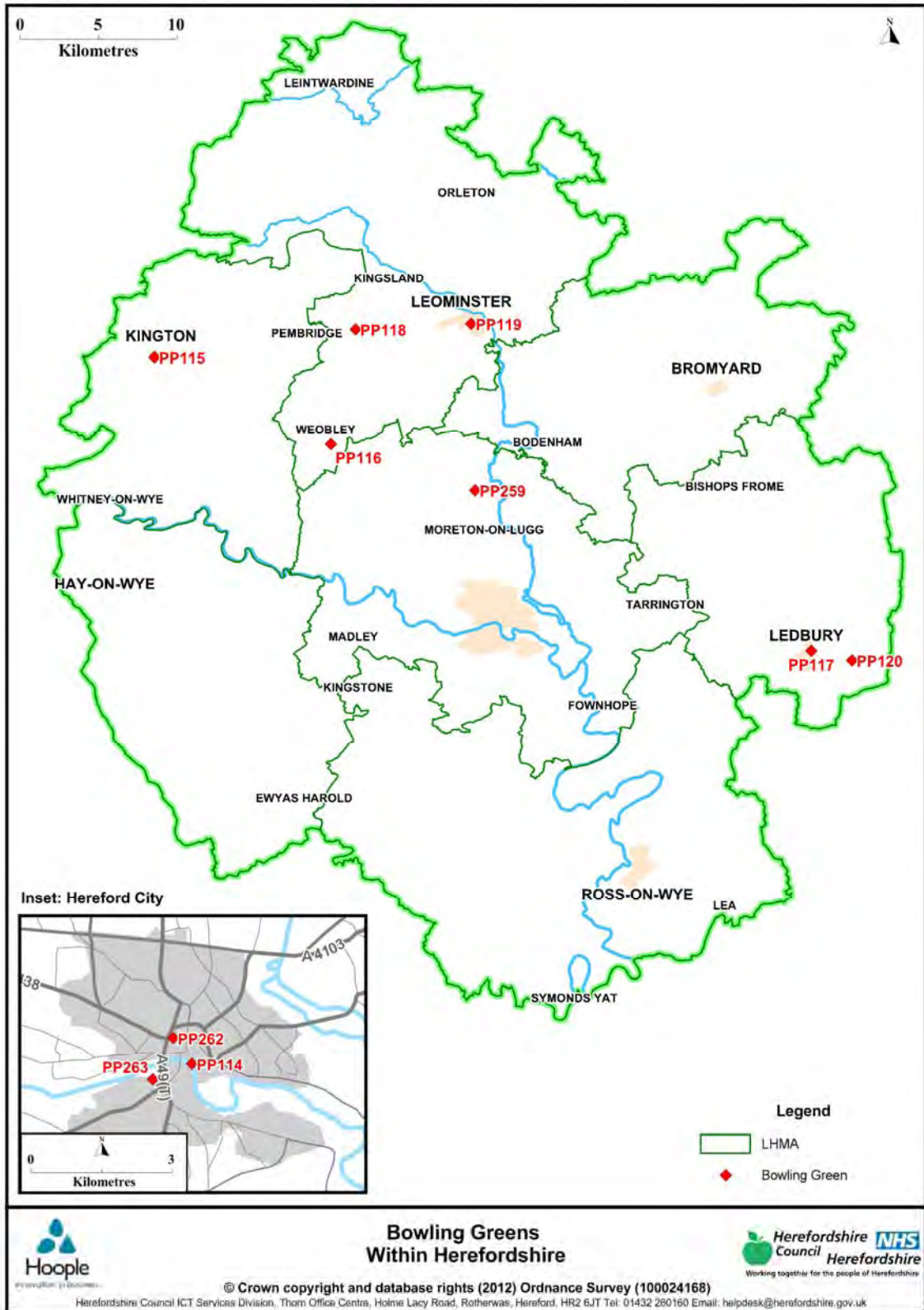
Herefordshire Playing Pitch Assessment



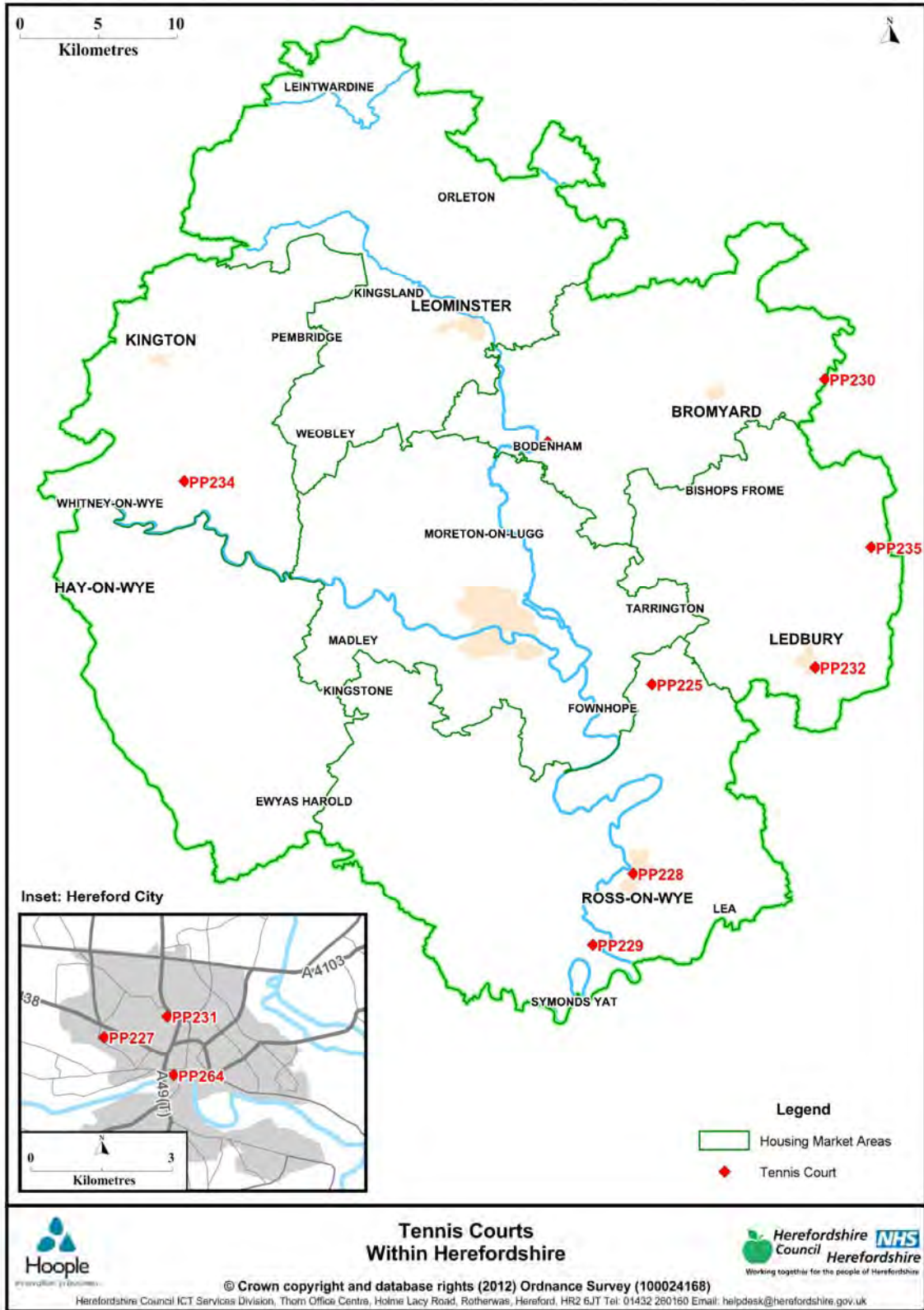
Rugby Pitches Within Herefordshire



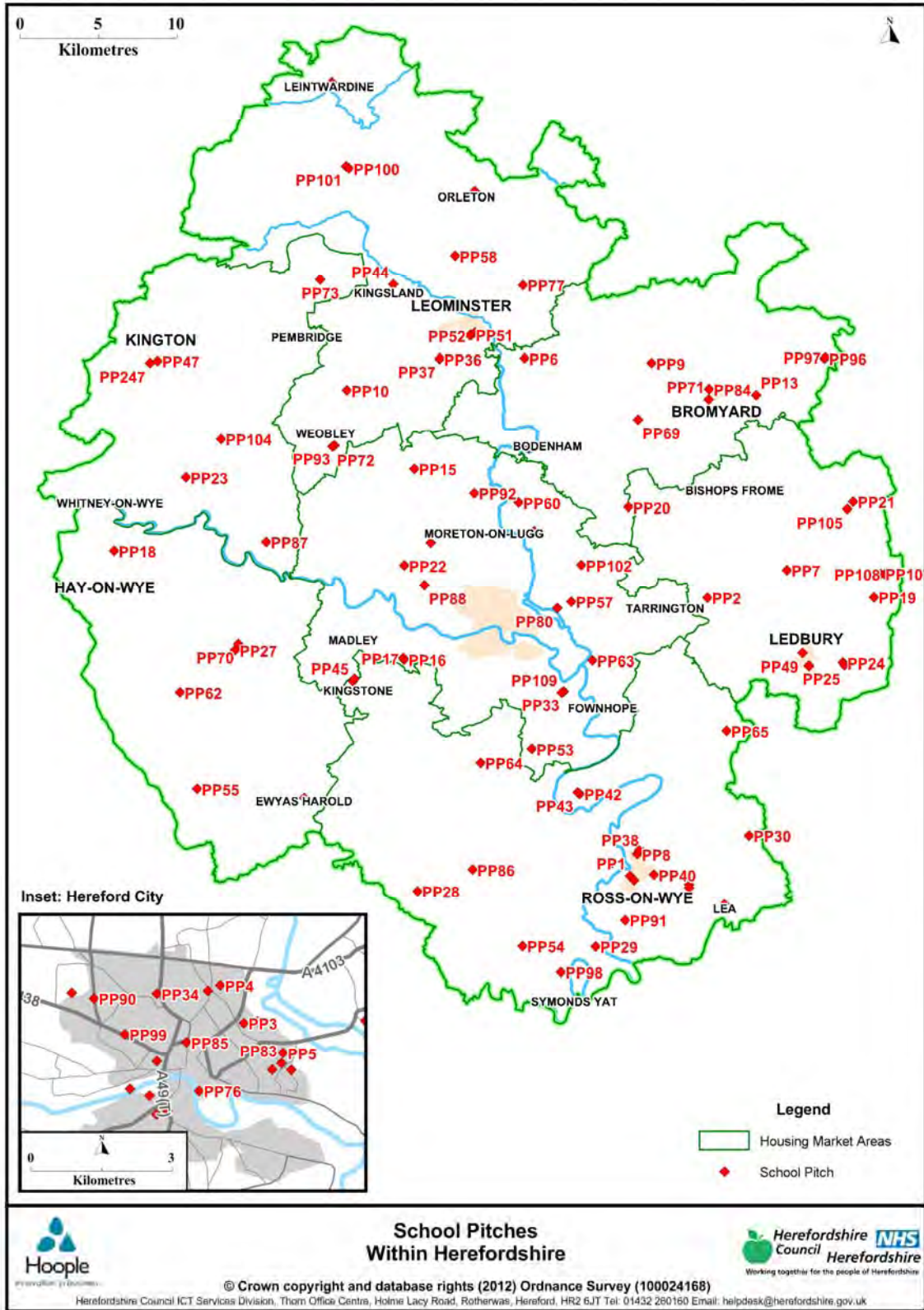
Herefordshire Playing Pitch Assessment



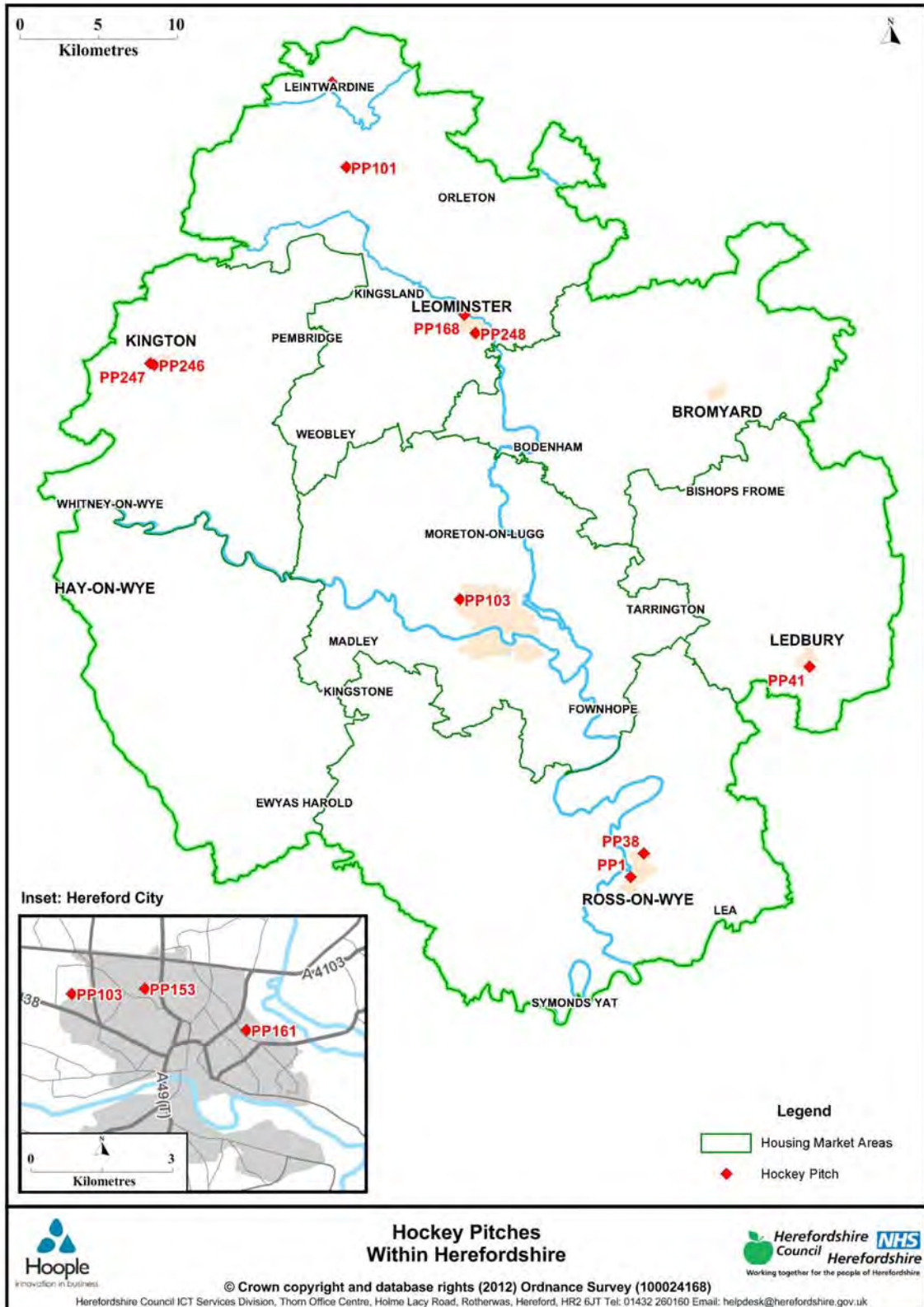
Herefordshire Playing Pitch Assessment



Herefordshire Playing Pitch Assessment



Herefordshire Playing Pitch Assessment



LEDBURY AREA		Sport	Site ref	Name	Pitches	Size Ha	community use	ownership	Quality Rating % & category	
WARD	PARISH								Changing Accomodation	Pitch
Ledbury	Eastnor and Donnington	School	PP24	Eastnor Primary School	1 x junior football	4510.71	no	School	no	58%
		Cricket	PP133	Eastnor Cricket Ground	2 x cricket	30866.84	yes	private	2 teams 83%	90%
		Bowling	PP120	Eastnor Bowling Green	1 x bowling green	2670.54	yes	private	2 teams 93%	81%
	Ledbury	School	PP41	John Masefield High School	1 x senior football	61792.55	no	School	no	66%
					1 x rugby					66%
					1 x ATP sand					
		School	PP49	Ledbury Primary School	2 x junior football	29211.86	yes	School	no	58%, 56%
		Football	PP159	Ledbury Town Football Ground	1 x senior football	13938.66	yes	private	2 teams 100%	89%
		Football Rugby Cricket	PP110	Ledbury Rugby and Football Club	3 x senior football	85848	yes	School leased to club	10 teams 85%	66% - 87%
					2 x mini football					
					6 x rugby					66% - 87%
					1 x cricket					87%
		Cricket	PP128	Ledbury Cricket Ground	1 x cricket	29756.57	yes	private	2 teams 61%	69%
Bowling	PP117	Ledbury Bowling Green	1 x bowling green	1640.09	yes	private	2 teams 88%	81%		
Tennis	PP232	Ledbury Tennis Courts	3 x tennis courts	1531.31	yes	private	2 teams 90%			

Herefordshire Football, Cricket, Rugby, Hockey, Bowling, Tennis Clubs, Teams and Venues							
Ledbury Area		Questionnaire returned	Sport	Club/League/standard/times of play	Teams	Venue /Expanare Ref	
WARD	PARISH						
Frome	Pixley and District (Aylton, Little Marcle, Munsley, Pixley)						
	Stretton Grandison Group (Canon Frome, Castle Frome, Eggleton, Stretton Grandison)						
	Ashperton	Returned	Cricket	Canon Frome Cricket Club (Affiliated)	2 teams	PP142, Canon Frome Cricket Ground Main Ground	
				Adult male	Saturday League pm		2
				Hfds Indoor League	1 team		
					Training: Wednesday		as above + indoor facility
		Returned	Cricket	Canon Frome Cricket Club (Affiliated)	3 teams	PP142, Canon Frome Cricket Ground Main Ground	
				Junior boys	U9 Hfds Junior League: Sunday am monthly		1
					U13's Junior League: Tuesday pm		1
	U15's Junior League: Sunday pm				1		as above + indoor facility
				Training: Friday			
	Putley						
	Yarkhill						
Acton Beauchamp Group							
Much Cowarne Group (Much Cowarne and Moreton Jefferies)							
Bishop's Frome		Football	Frome Tigers	1 team	PP208 Frome Valley Sports Pitches		
			Adult & U18 male	Hfds Sunday League Div 1 10.30 am		1	
				Training			No set night or venue
Stanford Bishop							
Hope End	Bosbury and Coddington		Cricket	Bosbury Cricket Club	2 Teams	PP7 Main Ground: The Oval, Bosbury Primary School (formal community use agreement)	
			Adult male	Marches Saturday League pm			
				Training: Wednesday			

Herefordshire Football, Cricket, Rugby, Hockey, Bowling, Tennis Clubs, Teams and Venues						
Ledbury Area		Questionnaire returned	Sport	Club/League/standard/times of play	Teams	Venue /Expanare Ref
WARD	PARISH					
Hope End	Colwall		Football	Colwall St Jame's Football Club	1 team	PP173 Colwall Playing Fields
		Adult & U18 male		Worcester Sunday League Training	1	No set night or venue
			Cricket	Chasers Cricket Club (general club)	1 team	
		Adult Male		Sunday League: pm	1	PP107/PP108 Downs School, Colwall
				Training: Wednesday		as above + indoor facility
		Returned	Cricket	Colwall Cricket Club (Focus Club/ Club Mark)	4 teams	PP123 Colwall Cricket Ground, Ghost Meadow, Colwall
		Adult Male		Saturday League:pm	3	
				Sunday League:pm	1	
				Hfds Indoor League	1 team	
				Training: Wednesday		as above + indoor facility
		Returned	Cricket	Colwall Cricket Club (Focus Club/ Club Mark)	5 teams	PP123 Colwall Cricket Ground, Ghost Meadow, Colwall
		Junior boys		U9's Junior League Sunday am	1	
			U11's Junior League: Sunday am	1		
			U13's Junior League: Tuesday pm	1		
			U15's Junior League: Sunday pm	1		
			U16's Junior League: Sunday pm	1		
	Junior Girls					
			Training: U13, U15, U16 Wednesday & U9, U11Friday pm		as above + indoor facility	
	Returned	Cricket	Colwall Cricket Club (Focus Club/ Club Mark)	1 team	PP123 Colwall Cricket Ground, Ghost Meadow, Colwall	
	Adult female		Womens League? Training	1 team		
	Hockey	Colwall Women's Hockey Club	1 team		PP41 John Masefield High School, Ledbury, ATP and St James College, Malvern	
	Adult female		Adult seniors time / day / training			
	Cradley		Football	Cradley Sports Club Charterd Standard	1 team	PP21 Cradley Primary School
U16 & below male				U16's Sunday League:pm Training	1	No set night or venue
	Mathon					
	Wellington Heath					

Herefordshire Football, Cricket, Rugby, Hockey, Bowling, Tennis Clubs, Teams and Venues							
Ledbury Area		Questionnaire returned	Sport	Club/League/standard/times of play	Teams	Venue /Expanare Ref	
WARD	PARISH						
Ledbury	Eastnor and Donnington	Returned	Cricket	Eastnor Cricket Club (Focus Club/Club Mark)	4 teams	PP133 Eastnor Cricket Ground, Mill Street, Eastnor	
			Adult Male	Saturday League:pm	3		
				Sunday League:pm	1		
				Training: Wednesday		as above	
		Returned	Cricket	Eastnor Cricket Club (Focus Club/Club Mark)	4 teams	PP133 Eastnor Cricket Ground, Mill Street, Eastnor	
			Junior boys	U9's Junior League Sunday am monthly	1		
				U11's Junior League: Sunday am	1		
				U13's Junior League: Tuesday pm	1		
				U15's Junior League: Sunday pm	1		
			Training: Wednesday		as above		
	Returned	Eastnor	Eastnor Bowling Club	25 males	PP120 Easnor Bowling Green, Eastnor Park		
			Private/ Mixed	15 female			
	Ledbury	Returned	Football	Ledbury Swifts Football Club Chartered Standard	11 teams	PP110 Ledbury Rugby & Football Club, Ross Road Mini pitches	
			U16 & below male	U9 - HGTA Saturday am 9.45	1		
				U10 - HGTA Saturday am 10.45 (Rovers)	1		
				U10 - Stirling Saturday am 10.45 (united)	1	as above	
				U11 - Stirling Saturday am 12.00 (Athletic)	1	as above	
				U12 - HGTA Sunday am 10.30(Rovers&wanderers)	2	as above	
				U13 - HGTA Sunday am 10.30 (Wanderers)	1	as above	
				U14 - HGTA Sunday pm 2.00 (Athletic)	1	as above	
			U15 - HGTA Sunday pm 2.00 (united)	1	as above		
			U15 - HGTA Sunday pm 2.00 (Woodpeckers)	1	as above		
			U16 - HGTA Sunday pm 2.00 (Swifts)	1	PP159 Ledbury Town Football Ground, New Street		
			Training		No set night or venue		

Herefordshire Football, Cricket, Rugby, Hockey, Bowling, Tennis Clubs, Teams and Venues							
Ledbury Area		Questionnaire returned	Sport	Club/League/standard/times of play	Teams	Venue /Expanare Ref	
WARD	PARISH						
Ledbury	Ledbury	Returned	Football	Ledbury Town Football Club	2 teams	PP159 Ledbury Town Football Ground, New Street	
			U16 & below male	U10 - HGTA Saturday am 10.45	1		
				U12 - HGTA Sunday am 10.30	1		
				Training			No set night or venue
			Football	Ledbury Misfits Football Club	1 team	PP110 Ledbury Rugby & Football Club, Ross Road	
			Adult & U18 male	Hfds Sunday League Div 2 South: am	1		
				Training		No set night or venue	
			Football	Athletic Ledbury Football Club	1 team	Ledbury Town Football Ground, New Street	
			Adult & U18 male	Hfds Sunday League Div 1: am	1		
				Training		No set night or venue	
			Football	La Mano Di Dios 86 Football Club	1 team	PP159 Ledbury Town Football Ground, New Street	
			Adult & U18 male	Hfds Sunday League Premier: am	1		
				Training		No set night or venue	
			Football	Ledbury Colts Football Club	1 team	PP159 Ledbury Town Football Ground, New Street	
			Adult & U18 male	HFL Div 2	1		
				Training		No set night or venue	
			Football	Ledbury Town Football Club	3 teams	PP159 Ledbury Town Football Ground, New Street	
			Adult & U18 male	Hfds Saturday League Premier: am (1sts)	1		
				Hfds Saturday League Div 2 2.30pm (3rds)	1		
				HFL Div 1	1		
				Training		No set night or venue	
	Football	Severn All Stars	1 team	PP110 Ledbury Rugby & Football Club, Ross Road			
	Adult & U18 male	Hfs Sunday Premire League 10.30 am	1				
		Training		No set night or venue			
	Cricket	Ledbury Cricket Club (general club)	2 teams	PP128 Ledbury Cricket Ground, Full Pitcher Oval, Ledbury			
	Adult Male	Saturday League:pm	2				
		Training: Wednesday		as above			
	Cricket	Strollers Cricket Club (general club)	3 teams	PP110 Ledbury Rugby & Football Club, Ross Road			
	Adult Male	Saturday League:pm	2				
		Sunday League pm	1				
		Training: Wednesday		as above			

Herefordshire Football, Cricket, Rugby, Hockey, Bowling, Tennis Clubs, Teams and Venues												
Ledbury Area		Questionnaire returned	Sport	Club/League/standard/times of play	Teams	Venue /Expanare Ref						
WARD	PARISH											
Ledbury	Ledbury		Rugby	Ledbury Rugby Club (Model 2 Venue	4 teams							
			seniors	Knights XV Saturday 3 pm	98 no							
			males	2nd XV Saturday 3 pm	players							
				Knights XV Saturday 3 pm	216 no							
				Colts U17 Saturday 3 pm	adult							
				Colts U18 Saturday 3 pm								
				Colts U19 Saturday 3 pm								
				Training Tues/Thurs 7.15 - 8 pm								
					Rugby	Ledbury Rugby Club (Model 2 Venue	6 teams					
					Junior boys	Youth U13's Sunday (time varies)	151no					
						Youth U14's Sunday (time varies)	players					
						Youth U15's Sunday (time varies)						
						Youth U16's Sunday (time varies)						
						RMS Colts Sunday (time varies)						
									Rugby	Ledbury Rugby Club (Model 2 Venue	6 teams	
									Minors	U6's Sunday 10.30	223 no	
										U7's Sunday 10.30	players	
										U8's Sunday 10.30		
										U9's Sunday 10.30		
										U10's Sunday 10.30		
			U11's Sunday 10.30									
			U12's Sunday 10.30									
				Returned	Bowling	Ledbury Bowling Club	36 male	PP117 Bank Crescent Bowling Green, Ledbury				
						Private	7 female					
		Returned	Tennis	Ledbury Tennis Club		PP232 Ledbury Tennis Courts						

Protection of Playing Fields Audit Report

Team County Name	Club Name	Club ID	Team Name	Team ID	Ground Name	Ground Address 1	Ground Address 2	Ground Town	Ground County	Ground Post Code	Ground Northing	Ground Easting	Local Authority	Day Plays On
Herefordshire FA	Addison Allstars F.C.	223579	First	11286966	Hereford Leisure Centre	Holmer		Hereford	Herefordshire		241550	350550	ounty of Herefordshi	Sunday
Herefordshire FA	Allstars F.C.	44331	First	10922785	Ledbury Rugby Club	Ross Road Playing Fields	Ross Road	Ledbury	Herefordshire		236089	368885	ounty of Herefordshi	Sunday
Herefordshire FA	Athletico Toros F.C.	227530	Cavaliers	11424816	Hereford Leisure Centre	Holmer		Hereford	Herefordshire		241550	350550	ounty of Herefordshi	Sunday
Herefordshire FA	Athletico Toros F.C.	227530	First	11352577	The Abbey Park	Belmont Abbey		Hereford		hr2 9sh	237799	347902	ounty of Herefordshi	Sunday
Herefordshire FA	Athletico Ledbury F.C.	147620	First	11019522	Ledbury Town	New Street		Ledbury	Herefordshire	HR8 2AE	237867	370912	ounty of Herefordshi	Sunday
Herefordshire FA	Barrels F.C.	110081	First	11089070	Gorsty Lane	Gorsty Lane		Hereford	Herefordshire	HR1 1UN	239428	353322	ounty of Herefordshi	Sunday
Herefordshire FA	Bartestree F.C.	44088	First	10922546	Bartestree And Lugwardine Playing Fields	Bartestree		Hereford	Herefordshire	HR1 4BU	241236	355949	ounty of Herefordshi	Saturday
Herefordshire FA	Bartestree F.C.	44088	Reserves	11050057	Bartestree And Lugwardine Playing Fields	Bartestree		Hereford	Herefordshire	HR1 4BU	241236	355949	ounty of Herefordshi	Saturday
Herefordshire FA	Bartestree F.C.	44088	U10	11410335	Bartestree And Lugwardine Playing Fields	Bartestree		Hereford	Herefordshire	HR1 4BU	241236	355949	ounty of Herefordshi	Saturday
Herefordshire FA	Bartestree F.C.	44088	U12	11410329	Bartestree And Lugwardine Playing Fields	Bartestree		Hereford	Herefordshire	HR1 4BU	241236	355949	ounty of Herefordshi	Saturday
Herefordshire FA	Bartestree F.C.	44088	U12 Juniors	11410326	Bartestree And Lugwardine Playing Fields	Bartestree		Hereford	Herefordshire	HR1 4BU	241236	355949	ounty of Herefordshi	Saturday
Herefordshire FA	Bartestree F.C.	44088	u13 Girls	11410332	Bartestree And Lugwardine Playing Fields	Bartestree		Hereford	Herefordshire	HR1 4BU	241236	355949	ounty of Herefordshi	Sunday
Herefordshire FA	Bartestree F.C.	44088	U13 Juniors	11410330	Bartestree And Lugwardine Playing Fields	Bartestree		Hereford	Herefordshire	HR1 4BU	241236	355949	ounty of Herefordshi	Sunday
Herefordshire FA	Bartestree F.C.	44088	U15 Girls	11410336	Bartestree And Lugwardine Playing Fields	Bartestree		Hereford	Herefordshire	HR1 4BU	241236	355949	ounty of Herefordshi	Sunday
Herefordshire FA	Bartestree F.C.	44088	U16	11410327	Bartestree And Lugwardine Playing Fields	Bartestree		Hereford	Herefordshire	HR1 4BU	241236	355949	ounty of Herefordshi	Sunday
Herefordshire FA	Bartestree F.C.	44088	U18	11444330	Bartestree And Lugwardine Playing Fields	Bartestree		Hereford	Herefordshire	HR1 4BU	241236	355949	ounty of Herefordshi	Wednesday
Herefordshire FA	Bartestree F.C.	44088	U9	11410333	Bartestree And Lugwardine Playing Fields	Bartestree		Hereford	Herefordshire	HR1 4BU	241236	355949	ounty of Herefordshi	Saturday
Herefordshire FA	Bell F.C.	44315	First	10922770	Briarwood Stadium	Bridge Street		Leominster	Herefordshire	HR6 8EA	259813	349280	ounty of Herefordshi	Sunday
Herefordshire FA	Belmont F.C.	43898	U15	11434367	Newton Farm	Marcle Walk	Newton Farm	Hereford	Herefordshire	HR2 7RQ	239397	350880	ounty of Herefordshi	Sunday
Herefordshire FA	Bromyard Colts F.C.	140691	First	10948917	Stourport Road		Stourport Road	Bromyard	Herefordshire	HR7 4SR	253343	362520	ounty of Herefordshi	Sunday
Herefordshire FA	Bromyard F.C.	44253	First	11411818	Stourport Road		Stourport Road	Bromyard	Herefordshire	HR7 4SR	253343	362520	ounty of Herefordshi	Saturday
Herefordshire FA	Bromyard F.C.	44253	U10	11411803	Stourport Road		Stourport Road	Bromyard	Herefordshire	HR7 4SR	253343	362520	ounty of Herefordshi	Saturday
Herefordshire FA	Bromyard F.C.	44253	U10 Colts	11370201	Stourport Road		Stourport Road	Bromyard	Herefordshire	HR7 4SR	253343	362520	ounty of Herefordshi	Saturday
Herefordshire FA	Bromyard F.C.	44253	U11	11455323	Stourport Road		Stourport Road	Bromyard	Herefordshire	HR7 4SR	253343	362520	ounty of Herefordshi	
Herefordshire FA	Bromyard F.C.	44253	U12	11370185	Stourport Road		Stourport Road	Bromyard	Herefordshire	HR7 4SR	253343	362520	ounty of Herefordshi	Sunday
Herefordshire FA	Bromyard F.C.	44253	U13	11370178	Stourport Road		Stourport Road	Bromyard	Herefordshire	HR7 4SR	253343	362520	ounty of Herefordshi	Sunday
Herefordshire FA	Bromyard F.C.	44253	U14	11411805	Stourport Road		Stourport Road	Bromyard	Herefordshire	HR7 4SR	253343	362520	ounty of Herefordshi	Sunday
Herefordshire FA	Bromyard F.C.	44253	U16	11411816	Stourport Road		Stourport Road	Bromyard	Herefordshire	HR7 4SR	253343	362520	ounty of Herefordshi	Sunday
Herefordshire FA	Bromyard F.C.	44253	U8	11370211	Stourport Road		Stourport Road	Bromyard	Herefordshire	HR7 4SR	253343	362520	ounty of Herefordshi	Saturday
Herefordshire FA	Bromyard F.C.	44253	U9	11370208	Stourport Road		Stourport Road	Bromyard	Herefordshire	HR7 4SR	253343	362520	ounty of Herefordshi	Saturday
Herefordshire FA	Bromyard Town F.C.	43852	First	10922310	Delahay Meadow	Stourport Road		Bromyard	Herefordshire	HR7 4NT	255019	366079	ounty of Herefordshi	Saturday
Herefordshire FA	Bromyard Town F.C.	43852	U18	11063205	Stourport Road		Stourport Road	Bromyard	Herefordshire	HR7 4SR	253343	362520	ounty of Herefordshi	Monday
Herefordshire FA	Burghill F.C.	43854	First	10922312	Burghill Playing Field	Redstone	Burghill	Hereford	Herefordshire	HR7 4HR	244500	347500	ounty of Herefordshi	Saturday
Herefordshire FA	Burghill Rangers F.C.	223628	First	11288230	Burghill FC	The Coppice	Burghill	Hereford	Herefordshire	hr4 8lq	245936	346671	ounty of Herefordshi	Sunday
Herefordshire FA	Casuals F.C.	43951	First	10922409	Bishops Frome Sports Ground	Bishops Frome		Bishops Frome	Worcestershire	WR6 5DB	248374	365961	ounty of Herefordshi	Sunday
Herefordshire FA	Civil Service F.C.	43855	First	10922313	Gorsty Lane	Gorsty Lane		Hereford	Herefordshire	HR1 1UN	239428	353322	ounty of Herefordshi	Saturday
Herefordshire FA	Colwall St James F.C.	43914	First	10922372	Colwall Football pitch	Walwyn Road	Colwall	Colwall	Worcestershire	WR13	214816	374980	ounty of Herefordshi	Sunday
Herefordshire FA	Cradley Sports Club F.C.	146525	U10	11411332	Bishops Frome Sports Ground	Bishops Frome		Bishops Frome	Worcestershire	WR6 5DB	248374	365961	ounty of Herefordshi	Saturday
Herefordshire FA	Cradley Sports Club F.C.	146525	U16	11411330	Cradley C E Primary School	Cradley		Cradley	Herefordshire	WR13 5LL	247100	373433	ounty of Herefordshi	Sunday
Herefordshire FA	Cradley Sports Club F.C.	146525	U8	11387272	Cradley C E Primary School	Cradley		Cradley	Herefordshire	WR13 5LL	247100	373433	ounty of Herefordshi	Saturday
Herefordshire FA	Cradley Sports Club F.C.	146525	U9	11387273	Cradley C E Primary School	Cradley		Cradley	Herefordshire	WR13 5LL	247100	373433	ounty of Herefordshi	Saturday
Herefordshire FA	Credenhill Juniors F.C.	44070	Credenhill Toros	11404530	Roman Park, Credenhill	Station Road	Credenhill	Hereford	Herefordshire		0	0	ounty of Herefordshi	Saturday
Herefordshire FA	Credenhill Juniors F.C.	44070	U10	11404529	Roman Park, Credenhill	Station Road	Credenhill	Hereford	Herefordshire		243516	345064	ounty of Herefordshi	Saturday
Herefordshire FA	Credenhill Juniors F.C.	44070	U12	11417095	St Mary's CofE Primary School	Credenhill		Hereford	Herefordshire	HR4 7DW	243460	345054	ounty of Herefordshi	Sunday
Herefordshire FA	Dore Valley F.C.	141633	First	10962127	Seven Site		Kingstone	Hereford	Herefordshire	HR2 9EW	236008	342703	ounty of Herefordshi	Saturday
Herefordshire FA	Eardisley Werewolves F.C.	226774	U12	11405704	Spear Marsh Common			Almeley	Herefordshire	HR3 6LH	251556	333479	ounty of Herefordshi	Sunday
Herefordshire FA	Eardisley Werewolves F.C.	226774	U8	11405700	Spear Marsh Common			Almeley	Herefordshire	HR3 6LH	251556	333479	ounty of Herefordshi	Saturday
Herefordshire FA	Ewyas Harold F.C.	43860	First	10922318	Ewyas Harold Recreation Ground	Ewyas Harold		Hereford	Herefordshire	HR2 0EY	228716	338793	ounty of Herefordshi	Saturday
Herefordshire FA	Ewyas Harold F.C.	43860	Reserves	11052402	Recreation Ground	Ewyas Harold		Hereford	Herefordshire		239800	350600	ounty of Herefordshi	Saturday
Herefordshire FA	Ewyas Harold F.C.	43860	U15	11426013	Ewyas Harold Recreation Ground	Ewyas Harold		Hereford	Herefordshire	HR2 0EY	228716	338793	ounty of Herefordshi	Sunday
Herefordshire FA	Fownhope F.C.	43861	First	10922319	Fownhope Recreation Field	Capler Lane	Fawnhope	Hereford	Herefordshire	HR1 4PJ	233838	358240	ounty of Herefordshi	Saturday
Herefordshire FA	Fownhope F.C.	43861	Reserves	11050015	Fownhope Recreation Field	Capler Lane	Fawnhope	Hereford	Herefordshire	HR1 4PJ	233838	358240	ounty of Herefordshi	Saturday
Herefordshire FA	Fownhope F.C.	43861	U18	11425775	Fownhope Recreation Field	Capler Lane	Fawnhope	Hereford	Herefordshire	HR1 4PJ	233838	358240	ounty of Herefordshi	Wednesday
Herefordshire FA	Fownhope F.C.	43861	U9	11425773	Fownhope Recreation Field	Capler Lane	Fawnhope	Hereford	Herefordshire	HR1 4PJ	233838	358240	ounty of Herefordshi	Sunday
Herefordshire FA	Fownhope Junior Dynamos Youth F.C.	44101	U10 Lightning	11435093	Victoria Park	Victoria Park		Hereford	Herefordshire		244650	346350	ounty of Herefordshi	Saturday
Herefordshire FA	Fownhope Junior Dynamos Youth F.C.	44101	U10 Thunder	11435100	Fownhope Recreation Field	Capler Lane	Fawnhope	Hereford	Herefordshire	HR1 4PJ	233838	358240	ounty of Herefordshi	Saturday
Herefordshire FA	Fownhope Junior Dynamos Youth F.C.	44101	U14	11435070	Fownhope Recreation Field	Capler Lane	Fawnhope	Hereford	Herefordshire	HR1 4PJ	233838	358240	ounty of Herefordshi	Sunday

Herefordshire FA	Golden Valley Juniors F.C.	44133	U11	11432718	Seven Site	Seve Site	Kingstone	Hereford	Herefordshire		0	0	ounty of Herefordshi	Saturday
Herefordshire FA	Golden Valley Juniors F.C.	44133	U12	11455351	Seven Site	Seve Site	Kingstone	Hereford	Herefordshire		0	0	ounty of Herefordshi	Sunday
Herefordshire FA	Golden Valley Juniors F.C.	44133	U13	11432713	Seven Site	Seve Site	Kingstone	Hereford	Herefordshire		0	0	ounty of Herefordshi	Saturday
Herefordshire FA	Golden Valley Juniors F.C.	44133	U14	11432709	Seven Site	Seve Site	Kingstone	Hereford	Herefordshire		0	0	ounty of Herefordshi	Sunday
Herefordshire FA	Golden Valley Juniors F.C.	44133	U16	11432722	Seven Site	Seve Site	Kingstone	Hereford	Herefordshire		0	0	ounty of Herefordshi	Sunday
Herefordshire FA	Goldvale F.C.	219669	First	11232935	King George V Playing Fields	St Martins		Hereford		HR2 7RQ	239397	350880	ounty of Herefordshi	Sunday
Herefordshire FA	Gorsley Village F.C.	214301	Skills	11461531	Gorsley Goffs Primary School	Gorsley		Ross-on-Wye	Herefordshire	HR9 7SE	226012	367213	ounty of Herefordshi	Saturday
Herefordshire FA	Gorsley Village F.C.	214301	U11	11422841	Gorsley Goffs Primary School	Gorsley		Ross-on-Wye	Herefordshire	HR9 7SE	226012	367213	ounty of Herefordshi	Sunday
Herefordshire FA	Gorsley Village F.C.	214301	U13	11461528	Gorsley Goffs Primary School	Gorsley		Ross-on-Wye	Herefordshire	HR9 7SE	226012	367213	ounty of Herefordshi	Saturday
Herefordshire FA	Greyhound City Sports Youth F.C.	110034	U14	11442218	Hereford City Sports Club	Grandstand Road		Hereford	Herefordshire		241250	350150	ounty of Herefordshi	Saturday
Herefordshire FA	HCT F.C.	231070	First	11414080	Wellington Playing Field	Wellington		Hereford	Herefordshire	HR4 8AZ	248214	349611	ounty of Herefordshi	Monday
Herefordshire FA	Heart of Oak FC	146518	First	11001961	Hereford Leisure Centre	Holmer Road		Hereford	Herefordshire	HR4 9UD	241505	350554	ounty of Herefordshi	Sunday
Herefordshire FA	Hearts F.C.	223570	First	11286445	Hereford Leisure Centre	Holmer Road		Hereford	Herefordshire	HR4 9UD	241505	350554	ounty of Herefordshi	Sunday
Herefordshire FA	Hereford City FC	219066	First	11221089	Gorsty Lane	Gorsty Lane		Hereford	Herefordshire	HR1 1UN	239428	353322	ounty of Herefordshi	Saturday
Herefordshire FA	Hereford City Sports F.C.	215491	U8	11260980	Hereford City Sports Club	Grandstand Road		Hereford	Herefordshire		241250	350150	ounty of Herefordshi	Saturday
Herefordshire FA	Hereford City Sports F.C.	215491	u9	11362777	Hereford City Sports Club	Grandstand Road		Hereford	Herefordshire		241250	350150	ounty of Herefordshi	Saturday
Herefordshire FA	Hereford Girls FC	209323	U13	11436929	Gorsty Lane	Gorsty Lane		Hereford	Herefordshire	HR1 1UN	239428	353322	ounty of Herefordshi	Sunday
Herefordshire FA	Hereford Girls FC	209323	U15	11436923	Gorsty Lane	Gorsty Lane		Hereford	Herefordshire	HR1 1UN	239428	353322	ounty of Herefordshi	Sunday
Herefordshire FA	Hereford Lads Club F.C.	43909	First	10922367	Hereford Leisure Centre	Holmer Road		Hereford	Herefordshire	HR4 9UD	241505	350554	ounty of Herefordshi	Saturday
Herefordshire FA	Hereford Lads Club F.C.	43909	Reserves	11125212	Widemarsh Common	Holmer Road		Hereford	Herefordshire	HR4 9UD	241505	350554	ounty of Herefordshi	Saturday
Herefordshire FA	Hereford Lads Club Youth F.C.	44225	U10 Colts	11434094	HFA County Ground	Widemarsh common		Hereford	Herefordshire	HR4 9NA	240893	350611	ounty of Herefordshi	Saturday
Herefordshire FA	Hereford Lads Club Youth F.C.	44225	U10 terriers	11434098	HFA County Ground	Widemarsh common		Hereford	Herefordshire	HR4 9NA	240893	350611	ounty of Herefordshi	Saturday
Herefordshire FA	Hereford Lads Club Youth F.C.	44225	U10 Warriors	11434101	HFA County Ground	Widemarsh common		Hereford	Herefordshire	HR4 9NA	240893	350611	ounty of Herefordshi	Saturday
Herefordshire FA	Hereford Lads Club Youth F.C.	44225	U11 Bells	11434137	HFA County Ground	Widemarsh common		Hereford	Herefordshire	HR4 9NA	240893	350611	ounty of Herefordshi	Sunday
Herefordshire FA	Hereford Lads Club Youth F.C.	44225	U11 Tigers	11441766	HFA County Ground	Widemarsh common		Hereford	Herefordshire	HR4 9NA	240893	350611	ounty of Herefordshi	Sunday
Herefordshire FA	Hereford Lads Club Youth F.C.	44225	U11 Vixens	11434141	HFA County Ground	Widemarsh common		Hereford	Herefordshire	HR4 9NA	240893	350611	ounty of Herefordshi	Sunday
Herefordshire FA	Hereford Lads Club Youth F.C.	44225	U12 Bulls	11434115	King George V Playing Fields	St Martins		Hereford	Herefordshire	HR2 7RQ	239397	350880	ounty of Herefordshi	Sunday
Herefordshire FA	Hereford Lads Club Youth F.C.	44225	U13	11434118	HFA County Ground	Widemarsh common		Hereford	Herefordshire	HR4 9NA	240893	350611	ounty of Herefordshi	Sunday
Herefordshire FA	Hereford Lads Club Youth F.C.	44225	U13 Vixens	11434146	HFA County Ground	Widemarsh common		Hereford	Herefordshire	HR4 9NA	240893	350611	ounty of Herefordshi	Sunday
Herefordshire FA	Hereford Lads Club Youth F.C.	44225	U14	11434122	HFA County Ground	Widemarsh common		Hereford	Herefordshire	HR4 9NA	240893	350611	ounty of Herefordshi	Sunday
Herefordshire FA	Hereford Lads Club Youth F.C.	44225	U17 Tigers	11434153	HFA County Ground	Widemarsh common		Hereford	Herefordshire	HR4 9NA	240893	350611	ounty of Herefordshi	Sunday
Herefordshire FA	Hereford Lads Club Youth F.C.	44225	U18	11434124	Hereford Leisure Centre	Holmer Road		Hereford	Herefordshire	HR4 9UD	241505	350554	ounty of Herefordshi	Thursday
Herefordshire FA	Hereford Lads Club Youth F.C.	44225	U8 Gullers	11434078	HFA County Ground	Widemarsh common		Hereford	Herefordshire	HR4 9NA	240893	350611	ounty of Herefordshi	Saturday
Herefordshire FA	Hereford Lads Club Youth F.C.	44225	U8 Merlins	11434083	HFA County Ground	Widemarsh common		Hereford	Herefordshire	HR4 9NA	240893	350611	ounty of Herefordshi	Saturday
Herefordshire FA	Hereford Lads Club Youth F.C.	44225	U8 scorpions	11434079	HFA County Ground	Widemarsh common		Hereford	Herefordshire	HR4 9NA	240893	350611	ounty of Herefordshi	Saturday
Herefordshire FA	Hereford Lads Club Youth F.C.	44225	U9 Cheetas	11434086	HFA County Ground	Widemarsh common		Hereford	Herefordshire	HR4 9NA	240893	350611	ounty of Herefordshi	Saturday
Herefordshire FA	Hereford Lads Club Youth F.C.	44225	U9 Pumas	11434134	HFA County Ground	Widemarsh common		Hereford	Herefordshire	HR4 9NA	240893	350611	ounty of Herefordshi	Sunday
Herefordshire FA	Hereford Lads Club Youth F.C.	44225	U9 Rangers	11434090	HFA County Ground	Widemarsh common		Hereford	Herefordshire	HR4 9NA	240893	350611	ounty of Herefordshi	Saturday
Herefordshire FA	Hereford Lads Club Youth F.C.	44225	U9 Tigers	11434128	HFA County Ground	Widemarsh common		Hereford	Herefordshire	HR4 9NA	240893	350611	ounty of Herefordshi	Sunday
Herefordshire FA	Hereford Pegasus Ladies F.C.	43996	Ladies First	10922454	Pegasus FC	Old School Lane		Hereford	Herefordshire	HR1 1EX	241794	351269	ounty of Herefordshi	Sunday
Herefordshire FA	Hereford Pegasus Ladies F.C.	43996	Reserves	11367536	Pegasus FC	Old School Lane		Hereford	Herefordshire	HR1 1EX	241794	351269	ounty of Herefordshi	Sunday
Herefordshire FA	Hereford Redstars F.C.	232729	U8	11450140	Hereford Sixth Form College	Folly Lane		Hereford	Herefordshire	HR1 1LU	240699	352212	ounty of Herefordshi	Saturday
Herefordshire FA	Herefordshire Mind FC	210484	Open Aged	11327100	Hereford Leisure Centre	Holmer		Hereford	Herefordshire		241550	350550	ounty of Herefordshi	Sunday
Herefordshire FA	Herefordshire Mind FC	210484	Open Aged2	11327101	Hereford Leisure Centre	Holmer		Hereford	Herefordshire		241550	350550	ounty of Herefordshi	Sunday
Herefordshire FA	Hereford United FC	43954	Adult disability	11344776	Hereford United FC	Edgar Street Athletic Ground	Edgar Street	HEREFORD	Herefordshire	HR4 9JU	240460	350930	ounty of Herefordshi	Saturday
Herefordshire FA	Hereford United FC	43954	Disability	11392146	Hereford United FC	Edgar Street Athletic Ground	Edgar Street	HEREFORD	Herefordshire	HR4 9JU	240460	350930	ounty of Herefordshi	Saturday
Herefordshire FA	Hereford United FC	43954	First	10922412	Hereford United FC	Edgar Street Athletic Ground	Edgar Street	HEREFORD	Herefordshire	HR4 9JU	240460	350930	ounty of Herefordshi	Saturday
Herefordshire FA	Hereford United FC	43954	U10	11344771	Hereford United FC	Edgar Street Athletic Ground	Edgar Street	HEREFORD	Herefordshire	HR4 9JU	240460	350930	ounty of Herefordshi	Saturday
Herefordshire FA	Hereford United FC	43954	U11	11344767	Hereford United FC	Edgar Street Athletic Ground	Edgar Street	HEREFORD	Herefordshire	HR4 9JU	240460	350930	ounty of Herefordshi	Saturday
Herefordshire FA	Hereford United FC	43954	U13	11404815	Hereford United FC	Edgar Street Athletic Ground	Edgar Street	HEREFORD	Herefordshire	HR4 9JU	240460	350930	ounty of Herefordshi	Saturday
Herefordshire FA	Hereford United FC	43954	U14	11344718	Hereford United FC	Edgar Street Athletic Ground	Edgar Street	HEREFORD	Herefordshire	HR4 9JU	240460	350930	ounty of Herefordshi	Saturday
Herefordshire FA	Hereford United FC	43954	U16	11344715	Hereford United FC	Edgar Street Athletic Ground	Edgar Street	HEREFORD	Herefordshire	HR4 9JU	240460	350930	ounty of Herefordshi	Saturday
Herefordshire FA	Hereford United FC	43954	U18	11049834	Hereford United FC	Edgar Street Athletic Ground	Edgar Street	HEREFORD	Herefordshire	HR4 9JU	240460	350930	ounty of Herefordshi	Wednesday
Herefordshire FA	Hereford United FC	43954	U9	11344774	Hereford United FC	Edgar Street Athletic Ground	Edgar Street	HEREFORD	Herefordshire	HR4 9JU	240460	350930	ounty of Herefordshi	Saturday
Herefordshire FA	HFA County Team F.C.	44160	U16	11253103	Delahay Meadow	Stourport Road		Bromyard	Herefordshire	HR7 4NT	255019	366079	ounty of Herefordshi	Sunday
Herefordshire FA	HFA County Team F.C.	44160	U18	10907848	Pegasus FC	Old School Lane		Hereford	Herefordshire	HR1 1EX	241794	351269	ounty of Herefordshi	Sunday
Herefordshire FA	HFA Girls PDC F.C.	226752	U11	11394131	Haywood High School	Stanberrow Road		Grafton	Herefordshire	HR2 7NG	237991	350132	ounty of Herefordshi	Friday
Herefordshire FA	HFA Girls PDC F.C.	226752	U13	11394132	Haywood High School	Stanberrow Road		Grafton	Herefordshire	HR2 7NG	237991	350132	ounty of Herefordshi	Friday
Herefordshire FA	HFA Girls PDC F.C.	226752	U15	11394133	Haywood High School	Stanberrow Road		Grafton	Herefordshire	HR2 7NG	237991	350132	ounty of Herefordshi	Friday
Herefordshire FA	HFA Girls PDC F.C.	226752	U17	11394130	Haywood High School	Stanberrow Road		Grafton	Herefordshire	HR2 7NG	237991	350132	ounty of Herefordshi	Friday

Herefordshire FA	HFA Girls PDC F.C.	226752	U9	11450173	Haywood High School	Stanberrow Road		Grafton	Herefordshire	HR2 7NG	237991	350132	ounty of Herefordshi	Friday	
Herefordshire FA	Hinton F.C.	43866	First	10922324	Broomy Hill	Football Pitch	Broomy Hill	Hereford	Herefordshire		0	0	ounty of Herefordshi	Saturday	
Herefordshire FA	Hinton F.C.	43866	Reserves	11123512	Broomy Hill	Football Pitch	Broomy Hill	Hereford	Herefordshire		0	0	ounty of Herefordshi	Saturday	
Herefordshire FA	Hinton U18 F.C.	140779	U18	11123533	Broomy Hill	Football Pitch	Broomy Hill	Hereford	Herefordshire		0	0	ounty of Herefordshi	Wednesday	
Herefordshire FA	Hinton Youth F.C.	140778	U12	11420399	Broomy Hill	Football Pitch	Broomy Hill	Hereford	Herefordshire		239500	349500	ounty of Herefordshi	Saturday	
Herefordshire FA	Hinton Youth F.C.	140778	U13	11453475	Broomy Hill	Football Pitch	Broomy Hill	Hereford	Herefordshire		239500	349500	ounty of Herefordshi	Saturday	
Herefordshire FA	Hinton Youth F.C.	140778	U13 colts	11420396	Broomy Hill	Football Pitch	Broomy Hill	Hereford	Herefordshire		239500	349500	ounty of Herefordshi	Saturday	
Herefordshire FA	Hinton Youth F.C.	140778	U14	11342395	Broomy Hill	Football Pitch	Broomy Hill	Hereford	Herefordshire		239500	349500	ounty of Herefordshi	Sunday	
Herefordshire FA	Hinton Youth F.C.	140778	U14 Colts	11420395	Broomy Hill	Football Pitch	Broomy Hill	Hereford	Herefordshire		239500	349500	ounty of Herefordshi	Sunday	
Herefordshire FA	Hinton Youth F.C.	140778	U15	11455329	Broomy Hill	Football Pitch	Broomy Hill	Hereford	Herefordshire		239500	349500	ounty of Herefordshi	Saturday	
Herefordshire FA	Hinton Youth F.C.	140778	U16	11420392	Broomy Hill	Football Pitch	Broomy Hill	Hereford	Herefordshire		239500	349500	ounty of Herefordshi	Sunday	
Herefordshire FA	Holme Lacy F.C.	43867	First	10922325	Holme Lacy Playing Field	Holme Lacy		Hereford	Herefordshire	HR2	235621	355573	ounty of Herefordshi	Saturday	
Herefordshire FA	Holme Lacy F.C.	43867	Reserves	11050047	Holme Lacy Playing Field	Holme Lacy		Hereford	Herefordshire	HR2	235621	355573	ounty of Herefordshi	Saturday	
Herefordshire FA	Holmer Athletic F.C.	44255	First	10922710	Widemarsh Common	Widemarsh Common		Hereford	Herefordshire	hr4 9na	240893	350611	ounty of Herefordshi	Sunday	
Herefordshire FA	Hop Pole F.C.	227134	First	11341662	Bridge Street			Leominster		HR6 8EA	259813	349280	ounty of Herefordshi	Sunday	
Herefordshire FA	HWX United F.C.	44318	First	10922773	King George V Playing Fields		St Martins			HR2 7RQ	239397	350880	ounty of Herefordshi	Sunday	
Herefordshire FA	Kimbolton Junior FC	146149	U10	11338577	Earl Mortimer Sports College		Leominster	Leominster	Herefordshire	HR6 8JJ	258443	349673	ounty of Herefordshi	Saturday	
Herefordshire FA	Kingspan F.C.	227321	First	11346030	Shobdon Airfield	Shobdon		Leominster	Hereford	Herefordshire	HR6 9NT	261844	339690	ounty of Herefordshi	Sunday
Herefordshire FA	Kingstone Harriers F.C.	219500	First	11229519	Kingstone High School	Kingstone			Hereford	Herefordshire	HR2 9HJ	236102	342009	ounty of Herefordshi	Saturday
Herefordshire FA	Kingstone Rovers F.C.	43900	First	10922358	Seven Site		Kingstone		Hereford	Herefordshire	HR2 9EW	236008	342703	ounty of Herefordshi	Saturday
Herefordshire FA	Kington Town F.C.	43894	First	10922352	Kington Town FC	Mill Street		Kington	Herefordshire	HR5 3AL	256540	329467	ounty of Herefordshi	Saturday	
Herefordshire FA	Kington Town F.C.	43894	Reserves	11054334	Kington Town FC	Mill Street		Kington	Herefordshire	HR5 3AL	256540	329467	ounty of Herefordshi	Saturday	
Herefordshire FA	Kington Town Youth F.C.	44107	U10	11410651	Kington Town FC	Mill Street		Kington	Herefordshire	HR5 3AL	256540	329467	ounty of Herefordshi	Saturday	
Herefordshire FA	Kington Town Youth F.C.	44107	U12	11410645	Kington Town FC	Mill Street		Kington	Herefordshire	HR5 3AL	256540	329467	ounty of Herefordshi	Saturday	
Herefordshire FA	Kington Town Youth F.C.	44107	U13	11410653	Kington Town FC	Mill Street		Kington	Herefordshire	HR5 3AL	256540	329467	ounty of Herefordshi	Sunday	
Herefordshire FA	Kington Town Youth F.C.	44107	U15	11410648	Kington Town FC	Mill Street		Kington	Herefordshire	HR5 3AL	256540	329467	ounty of Herefordshi	Sunday	
Herefordshire FA	Kington Town Youth F.C.	44107	U16	11410646	Kington Town FC	Mill Street		Kington	Herefordshire	HR5 3AL	256540	329467	ounty of Herefordshi	Sunday	
Herefordshire FA	Kington Town Youth F.C.	44107	U8	11410655	Kington Town FC	Mill Street		Kington	Herefordshire	HR5 3AL	256540	329467	ounty of Herefordshi	Saturday	
Herefordshire FA	Lads Club (SUNDAY) F.C.	43908	First	11411141	Hereford Leisure Centre	Holmer		Hereford	Herefordshire		241550	350550	ounty of Herefordshi	Sunday	
Herefordshire FA	La Mano De Dios 86 F.C.	209753	First	11138971	Ledbury Town	New Street		Ledbury	Herefordshire	HR8 2AE	237867	370912	ounty of Herefordshi	Sunday	
Herefordshire FA	LC Galaxy FC	226612	u9	11455330	Hereford Leisure Centre	Holmer		Hereford	Herefordshire		241550	350550	ounty of Herefordshi	Saturday	
Herefordshire FA	Ledbury Swifts FC	146214	U10	11440172	Ledbury Rugby Club	Ross Road Playing Fields	Ross Road	Ledbury	Herefordshire		0	0	ounty of Herefordshi	Saturday	
Herefordshire FA	Ledbury Swifts FC	146214	U11	11440176	Ledbury Rugby Club	Ross Road Playing Fields	Ross Road	Ledbury	Herefordshire		0	0	ounty of Herefordshi	Saturday	
Herefordshire FA	Ledbury Swifts FC	146214	U11	11440194	Ledbury Rugby Club	Ross Road Playing Fields	Ross Road	Ledbury	Herefordshire		0	0	ounty of Herefordshi	Sunday	
Herefordshire FA	Ledbury Swifts FC	146214	U12 Rovers	11440179	Ledbury Rugby Club	Ross Road Playing Fields	Ross Road	Ledbury	Herefordshire		0	0	ounty of Herefordshi	Sunday	
Herefordshire FA	Ledbury Swifts FC	146214	U12 United	11440180	Ledbury Rugby Club	Ross Road Playing Fields	Ross Road	Ledbury	Herefordshire		0	0	ounty of Herefordshi	Sunday	
Herefordshire FA	Ledbury Swifts FC	146214	U13	11440196	Ledbury Rugby Club	Ross Road Playing Fields	Ross Road	Ledbury	Herefordshire		0	0	ounty of Herefordshi	Sunday	
Herefordshire FA	Ledbury Swifts FC	146214	U13 Athletic	11440183	Ledbury Rugby Club	Ross Road Playing Fields	Ross Road	Ledbury	Herefordshire		0	0	ounty of Herefordshi	Sunday	
Herefordshire FA	Ledbury Swifts FC	146214	U14 Rovers	11440184	Ledbury Rugby Club	Ross Road Playing Fields	Ross Road	Ledbury	Herefordshire		0	0	ounty of Herefordshi	Sunday	
Herefordshire FA	Ledbury Swifts FC	146214	U15 Rovers	11440189	Ledbury Rugby Club	Ross Road Playing Fields	Ross Road	Ledbury	Herefordshire		0	0	ounty of Herefordshi	Sunday	
Herefordshire FA	Ledbury Swifts FC	146214	U15 Wanderes	11440187	Ledbury Rugby Club	Ross Road Playing Fields	Ross Road	Ledbury	Herefordshire		0	0	ounty of Herefordshi	Sunday	
Herefordshire FA	Ledbury Swifts FC	146214	U16 Athletic	11440191	Ledbury Rugby Club	Ross Road Playing Fields	Ross Road	Ledbury	Herefordshire		0	0	ounty of Herefordshi	Sunday	
Herefordshire FA	Ledbury Swifts FC	146214	U17	11440201	Ledbury Rugby Club	Ross Road Playing Fields	Ross Road	Ledbury	Herefordshire		0	0	ounty of Herefordshi	Sunday	
Herefordshire FA	Ledbury Swifts FC	146214	U8	11440152	Ledbury Rugby Club	Ross Road Playing Fields	Ross Road	Ledbury	Herefordshire		0	0	ounty of Herefordshi	Saturday	
Herefordshire FA	Ledbury Swifts FC	146214	U9 athletic	11440165	Ledbury Rugby Club	Ross Road Playing Fields	Ross Road	Ledbury	Herefordshire		0	0	ounty of Herefordshi	Saturday	
Herefordshire FA	Ledbury Swifts FC	146214	U9 United	11440155	Ledbury Rugby Club	Ross Road Playing Fields	Ross Road	Ledbury	Herefordshire		0	0	ounty of Herefordshi	Saturday	
Herefordshire FA	Ledbury Town F.C.	43870	1st	11230105	Ledbury Town	New Street		Ledbury	Herefordshire	HR8 2AE	237867	370912	ounty of Herefordshi	Saturday	
Herefordshire FA	Ledbury Town F.C.	43870	Reserves	11064677	Ledbury Town	New Street		Ledbury	Herefordshire	HR8 2AE	237867	370912	ounty of Herefordshi	Saturday	
Herefordshire FA	Ledbury Town F.C.	43870	U18	11430894	Ledbury Town	New Street		Ledbury	Herefordshire	HR8 2AE	237867	370912	ounty of Herefordshi	Thursday	
Herefordshire FA	Ledbury Town F.C.	43870	Veterans	11457626	Ledbury Town	New Street		Ledbury	Herefordshire	HR8 2AE	237867	370912	ounty of Herefordshi	Sunday	
Herefordshire FA	Ledbury Town F.C.	43870	Women's	11369281	Ledbury Town	New Street		Ledbury	Herefordshire	HR8 2AE	237867	370912	ounty of Herefordshi	Sunday	
Herefordshire FA	Leintwardine Colts F.C.	43871	First	10922329	Leintwardine FC	Paytoe Lane		Leintwardine	Herefordshire	SY7	272600	341000	ounty of Herefordshi	Saturday	
Herefordshire FA	Leintwardine School Sports Club F.C.	140832	U11	11303653	Leintwardine Primary School	Leintwardine		Hereford	Herefordshire	SY7 0LB	274064	340411	ounty of Herefordshi	Saturday	
Herefordshire FA	Leominster Minors F.C.	146568	U10	11412659	Briarwood Stadium	Bridge Street		Leominster	Herefordshire	HR6 8EA	259813	349280	ounty of Herefordshi	Saturday	
Herefordshire FA	Leominster Minors F.C.	146568	U11	11412636	Briarwood Stadium	Bridge Street		Leominster	Herefordshire	HR6 8EA	259813	349280	ounty of Herefordshi	Saturday	
Herefordshire FA	Leominster Minors F.C.	146568	U11 Girls	11412652	Briarwood Stadium	Bridge Street		Leominster	Herefordshire	HR6 8EA	259813	349280	ounty of Herefordshi	Sunday	
Herefordshire FA	Leominster Minors F.C.	146568	U13	11412632	Briarwood Stadium	Bridge Street		Leominster	Herefordshire	HR6 8EA	259813	349280	ounty of Herefordshi	Sunday	
Herefordshire FA	Leominster Minors F.C.	146568	u13 Colts	11412657	Briarwood Stadium	Bridge Street		Leominster	Herefordshire	HR6 8EA	259813	349280	ounty of Herefordshi	Sunday	
Herefordshire FA	Leominster Minors F.C.	146568	U13 girls	11412654	Briarwood Stadium	Bridge Street		Leominster	Herefordshire	HR6 8EA	259813	349280	ounty of Herefordshi	Sunday	
Herefordshire FA	Leominster Minors F.C.	146568	U14	11412629	Briarwood Stadium	Bridge Street		Leominster	Herefordshire	HR6 8EA	259813	349280	ounty of Herefordshi	Saturday	

Herefordshire FA	Leominster Minors F.C.	146568	U14 Colts	11412637	Briarwood Stadium	Bridge Street		Leominster	Herefordshire	HR6 8EA	259813	349280	ounty of Herefordshi	Sunday
Herefordshire FA	Leominster Minors F.C.	146568	U15	11412628	Briarwood Stadium	Bridge Street		Leominster	Herefordshire	HR6 8EA	259813	349280	ounty of Herefordshi	Sunday
Herefordshire FA	Leominster Minors F.C.	146568	U15 Girls	11412626	Briarwood Stadium	Bridge Street		Leominster	Herefordshire	HR6 8EA	259813	349280	ounty of Herefordshi	Sunday
Herefordshire FA	Leominster Minors F.C.	146568	U16	11412640	Briarwood Stadium	Bridge Street		Leominster	Herefordshire	HR6 8EA	259813	349280	ounty of Herefordshi	Sunday
Herefordshire FA	Leominster Minors F.C.	146568	U18	11003167	Briarwood Stadium	Bridge Street		Leominster	Herefordshire	HR6 8EA	259813	349280	ounty of Herefordshi	Tuesday
Herefordshire FA	Leominster Minors F.C.	146568	U8	11412663	Briarwood Stadium	Bridge Street		Leominster	Herefordshire	HR6 8EA	259813	349280	ounty of Herefordshi	Saturday
Herefordshire FA	Leominster Minors F.C.	146568	U9	11412653	Briarwood Stadium	Bridge Street		Leominster	Herefordshire	HR6 8EA	259813	349280	ounty of Herefordshi	Saturday
Herefordshire FA	Leominster Town F.C.	43872	Colts	11309014	Briarwood Stadium	Bridge Street		Leominster	Herefordshire	HR6 8EA	259813	349280	ounty of Herefordshi	Saturday
Herefordshire FA	Leominster Town F.C.	43872	First	10922330	Briarwood Stadium	Bridge Street		Leominster	Herefordshire	HR6 8EA	259813	349280	ounty of Herefordshi	Saturday
Herefordshire FA	Lichfield Vaults F.C.	227419	First	11348581	The Common	Widemarsh Common		Hereford	Herefordshire	hr4 9na	240893	350611	ounty of Herefordshi	Sunday
Herefordshire FA	Llandrindod Wells U18 F.C.	44320	First	10972636	Broadway	Lant Avenue		Llandrindod Wells	Herefordshire	LD1 5HT	261176	306321	ounty of Herefordshi	Wednesday
Herefordshire FA	Mercia Athletic F.C.	224183	Colts	11437955	Playing Fields	Marden		Hereford	Herefordshire	hr1 3dw	247452	352132	ounty of Herefordshi	Saturday
Herefordshire FA	Mercia Athletic F.C.	224183	First	11299559	Playing Fields	Marden		Hereford	Herefordshire	hr1 3dw	247452	352132	ounty of Herefordshi	Saturday
Herefordshire FA	Misfits F.C.	217148	First	11201566	Roman Park	Credehill		Hereford	Herefordshire	hr4	243640	345560	ounty of Herefordshi	Sunday
Herefordshire FA	Nexus FC	230922	Nexus	11410608	King George V Playing Fields	St Martins		Hereford		HR2 7RQ	239397	350880	ounty of Herefordshi	Sunday
Herefordshire FA	Norfolk Athletic F.C.	227576	First	11353789	Newton Farm	Marcle Walk	Newton Farm	Hereford	Herefordshire	HR2 7RQ	239397	350880	ounty of Herefordshi	Sunday
Herefordshire FA	Orleton Colts F.C.	213811	First	11163596	Brimfield and Little Hereford Sports Club	Aynall Lane		Brimfields	Herefordshire	SY8 4BG	267709	354031	ounty of Herefordshi	Saturday
Herefordshire FA	Orleton Colts F.C.	213811	Reserves	11291165	Brimfield and Little Hereford Sports Club	Aynall Lane		Brimfields	Herefordshire	SY8 4BG	267709	354031	ounty of Herefordshi	Saturday
Herefordshire FA	Orleton (Sunday) F.C.	111562	First	11096401	Brimfield and Little Hereford Sports Club	Aynall Lane		Brimfields	Herefordshire	SY8 4BG	267709	354031	ounty of Herefordshi	Sunday
Herefordshire FA	Orleton Youth F.C.	44158	U11	11428341	Orleton Recreation Ground	Orleton		Orleton	Herefordshire	SY8 4HL	267333	349517	ounty of Herefordshi	Saturday
Herefordshire FA	Orleton Youth F.C.	44158	U12	11428337	Orleton Recreation Ground	Orleton		Orleton	Herefordshire	SY8 4HL	267333	349517	ounty of Herefordshi	Saturday
Herefordshire FA	Orleton Youth F.C.	44158	U13	11428335	Orleton Recreation Ground	Orleton		Orleton	Herefordshire	SY8 4HL	267333	349517	ounty of Herefordshi	Sunday
Herefordshire FA	Orleton Youth F.C.	44158	U16	11428374	Orleton Recreation Ground	Orleton		Orleton	Herefordshire	SY8 4HL	267333	349517	ounty of Herefordshi	Sunday
Herefordshire FA	Orleton Youth F.C.	44158	U8	11428367	Orleton Recreation Ground	Orleton		Orleton	Herefordshire	SY8 4HL	267333	349517	ounty of Herefordshi	Saturday
Herefordshire FA	Orleton Youth F.C.	44158	U9	11428346	Orleton Recreation Ground	Orleton		Orleton	Herefordshire	SY8 4HL	267333	349517	ounty of Herefordshi	Saturday
Herefordshire FA	Pegasus F.C.	44082	First	10922540	Marden Playing Fields	Marden		Hereford	Herefordshire	241702	351350	351350	ounty of Herefordshi	Saturday
Herefordshire FA	Pegasus Juniors F.C.	43876	First	10922334	Old School Lane	Old School Lane		Hereford	Herefordshire	HR1 1EX	241794	351269	ounty of Herefordshi	Saturday
Herefordshire FA	Pegasus Youth F.C.	44276	Floodlit	11418401	Pegasus FC	Old School Lane		Hereford	Herefordshire	HR1 1EX	241794	351269	ounty of Herefordshi	Thursday
Herefordshire FA	Pegasus Youth F.C.	44276	U10 Juniors	11418596	Pegasus FC	Old School Lane		Hereford	Herefordshire	hr1 1ex	241794	351269	ounty of Herefordshi	Saturday
Herefordshire FA	Pegasus Youth F.C.	44276	U11	11431385	Pegasus FC	Old School Lane		Hereford	Herefordshire	HR1 1EX	241794	351269	ounty of Herefordshi	Sunday
Herefordshire FA	Pegasus Youth F.C.	44276	U11 Colts	11418593	Pegasus FC	Old School Lane		Hereford	Herefordshire	hr1 1ex	241794	351269	ounty of Herefordshi	Saturday
Herefordshire FA	Pegasus Youth F.C.	44276	U11 Jets	11418594	Pegasus FC	Old School Lane		Hereford	Herefordshire	hr1 1ex	241794	351269	ounty of Herefordshi	Saturday
Herefordshire FA	Pegasus Youth F.C.	44276	U11 Juniors	11418592	Marden Playing Fields	Marden		Hereford	Herefordshire		241702	351350	ounty of Herefordshi	Saturday
Herefordshire FA	Pegasus Youth F.C.	44276	U12 Juniors	#MULTIVALUE	Pegasus FC	Old School Lane		Hereford	Herefordshire	hr1 1ex	241794	351269	ounty of Herefordshi	Saturday
Herefordshire FA	Pegasus Youth F.C.	44276	U13	11431394	Pegasus FC	Old School Lane		Hereford	Herefordshire	HR1 1EX	241794	351269	ounty of Herefordshi	Sunday
Herefordshire FA	Pegasus Youth F.C.	44276	U13 Colts	11418445	Pegasus FC	Old School Lane		Hereford	Herefordshire	hr1 1ex	241794	351269	ounty of Herefordshi	Sunday
Herefordshire FA	Pegasus Youth F.C.	44276	U14 Colts	11455333	Pegasus FC	Old School Lane		Hereford	Herefordshire	HR1 1EX	241794	351269	ounty of Herefordshi	Sunday
Herefordshire FA	Pegasus Youth F.C.	44276	U14 Juniors	11359495	Pegasus FC	Old School Lane		Hereford	Herefordshire	hr1 1ex	241794	351269	ounty of Herefordshi	Sunday
Herefordshire FA	Pegasus Youth F.C.	44276	U15	11431399	Pegasus FC	Old School Lane		Hereford	Herefordshire	HR1 1EX	241794	351269	ounty of Herefordshi	Sunday
Herefordshire FA	Pegasus Youth F.C.	44276	U15 Juniors	11418428	Burghill Playing Field	Redstone	Burghill	Hereford	Herefordshire	HR7 4HR	244500	347500	ounty of Herefordshi	Sunday
Herefordshire FA	Pegasus Youth F.C.	44276	U16 Pumas	11418396	Burghill Playing Field	Redstone	Burghill	Hereford	Herefordshire	HR7 4HR	244500	347500	ounty of Herefordshi	Sunday
Herefordshire FA	Pegasus Youth F.C.	44276	U18	11291454	Pegasus FC	Old School Lane		Hereford	Herefordshire	hr1 1ex	241794	351269	ounty of Herefordshi	Saturday
Herefordshire FA	Pegasus Youth F.C.	44276	u9 Juniors	11418595	Pegasus FC	Old School Lane		Hereford	Herefordshire	hr1 1ex	241794	351269	ounty of Herefordshi	Saturday
Herefordshire FA	Pencombe F.C.	43877	First	10922335	Gabbage Sports Ground	Pencombe		Hereford	Herefordshire	HR7 4RN	252744	359804	ounty of Herefordshi	Saturday
Herefordshire FA	Phoenix F.C.	44260	Disabled	11261845	Hereford Leisure Centre	Holmer		Hereford	Herefordshire		241550	350550	ounty of Herefordshi	Sunday
Herefordshire FA	Phoenix F.C.	44260	Disabled Res	11261846	Hereford Leisure Centre	Holmer		Hereford	Herefordshire		241550	350550	ounty of Herefordshi	Sunday
Herefordshire FA	Phoenix F.C.	44260	U13	11404543	Gorsty Lane	Gorsty Lane		Hereford	Herefordshire	HR1 1UN	239428	353322	ounty of Herefordshi	Sunday
Herefordshire FA	Phoenix F.C.	44260	U8	11404550	Broadlands Primary School	Prospect Walk	Tupstey,	Hereford	Herefordshire	HR1 1NZ	240738	352606	ounty of Herefordshi	Saturday
Herefordshire FA	Phoenix Sunday F.C.	213821	First	11163812	Hereford Leisure Centre	Holmer		Hereford	Herefordshire		241550	350550	ounty of Herefordshi	Sunday
Herefordshire FA	Plough F.C.	226966	First	11337226	King George V Playing Fields	St Martins		Hereford	Herefordshire	HR2 7RQ	239397	350880	ounty of Herefordshi	Sunday
Herefordshire FA	Real Toros F.C.	213993	First	11167137	The Abbey Park	Belmont Abbey		Hereford	Herefordshire	hr2 9sh	237799	347902	ounty of Herefordshi	Sunday
Herefordshire FA	Relentless F.C.	219591	First	11231612	Hereford Leisure Centre	Holmer Road		Hereford		hr4 9na	240893	350611	ounty of Herefordshi	Saturday
Herefordshire FA	Roebuck Inn FC	146519	First	11001976	Brimfield and Little Hereford Sports Club	Aynall Lane		Brimfields	Herefordshire	SY8 4BG	267709	354031	ounty of Herefordshi	Sunday
Herefordshire FA	Rose & Crown F.C.	43946	First	10922404	King George Playing Fields			Hereford	Herefordshire		226879	346299	ounty of Herefordshi	Sunday
Herefordshire FA	Rosey Athletic F.C.	227303	First	11345682	King George V Playing Fields	St Martins		Hereford		HR2 7RQ	239397	350880	ounty of Herefordshi	Sunday
Herefordshire FA	Ross Junior Adult Saturday F.C.	233298	First	11456240	Ross-on-Wye Sports Centre	Wilton Rd	Ross-on-Wye	Ross-on-Wye	Herefordshire		223907	359174	ounty of Herefordshi	Saturday
Herefordshire FA	Ross Junior Adult Saturday F.C.	233298	Reserves	11456242	Ross-on-Wye Sports Centre	Wilton Rd	Ross-on-Wye	Ross-on-Wye	Herefordshire		223907	359174	ounty of Herefordshi	Saturday
Herefordshire FA	Ross Juniors Adults F.C.	223673	First	11289292	Ross-on-Wye Sports Centre	Wilton Rd	Ross-on-Wye	Ross-on-Wye	Herefordshire		223907	359174	ounty of Herefordshi	Sunday
Herefordshire FA	Ross Juniors Adults F.C.	223673	Saturday	11413370	Ross-on-Wye Sports Centre	Wilton Rd	Ross-on-Wye	Ross-on-Wye	Herefordshire		223907	359174	ounty of Herefordshi	Saturday
Herefordshire FA	Ross Juniors Adults F.C.	223673	Saturday Res	11413371	Ross-on-Wye Sports Centre	Wilton Rd	Ross-on-Wye	Ross-on-Wye	Herefordshire		223907	359174	ounty of Herefordshi	Saturday

