

**HCA30.1 Racecourse - Grandstand Road Park**

-  Character Area
-  Tree Preservation Order
-  Conservation Area
-  Listed Building
-  Area of Local Interest
-  Hereford Area of Archaeological Importance
-  Scheduled Monument
-  Conservation Area
-  Area of Local Interest
-  Green Space/Allotment Gardens
-  Development/Enhancement Potential

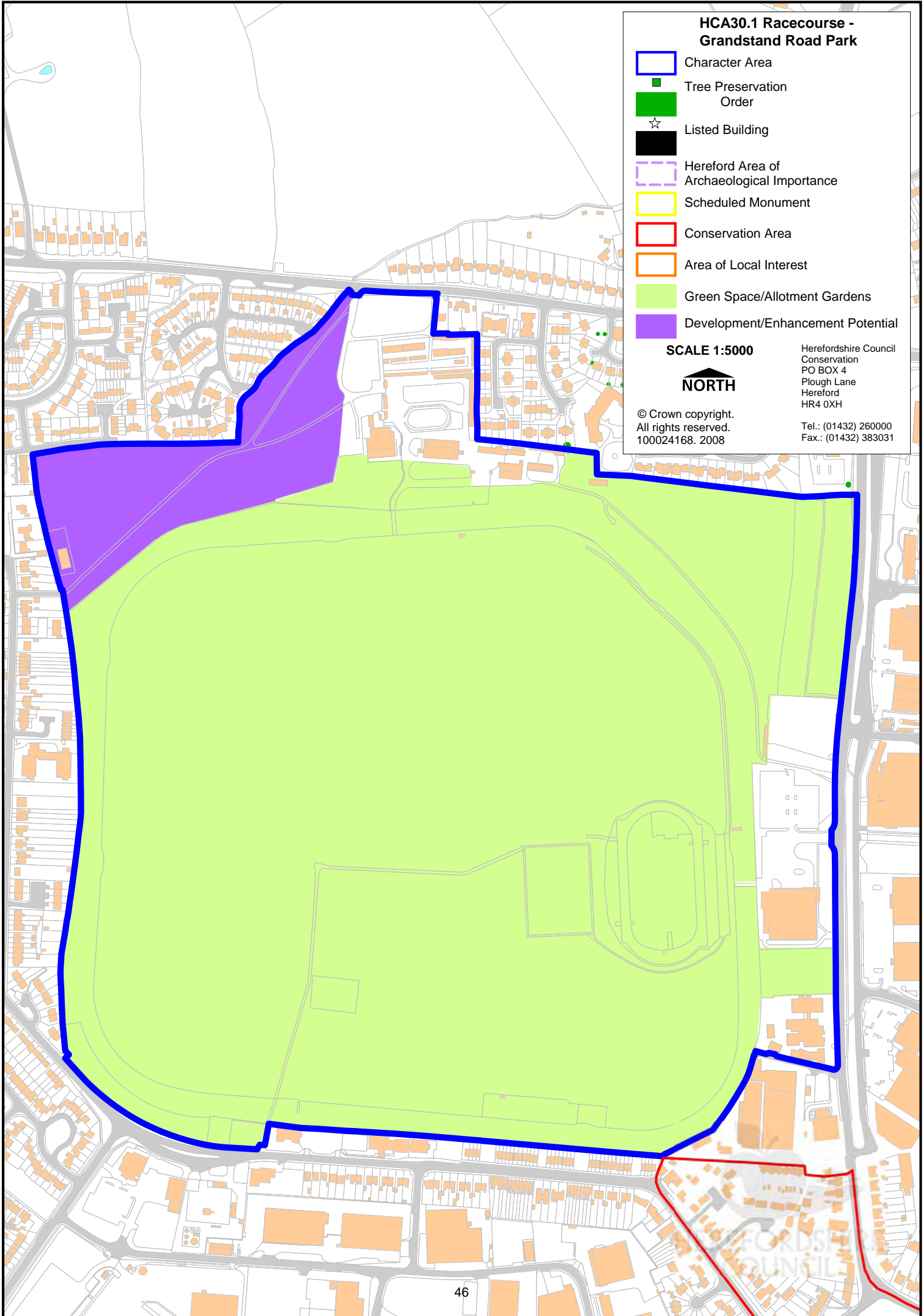
SCALE 1:5000



Herefordshire Council  
Conservation  
PO BOX 4  
Plough Lane  
Hereford  
HR4 0XH

© Crown copyright.  
All rights reserved.  
100024168. 2008

Tel.: (01432) 260000  
Fax.: (01432) 383031



### HCA30.2 Widemarsh Common

-  Character Area
-  Tree Preservation Order
-  Listed Building
-  Hereford Area of Archaeological Importance
-  Scheduled Monument
-  Conservation Area
-  Area of Local Interest
-  Green Space/Allotment Gardens
-  Development/Enhancement Potential

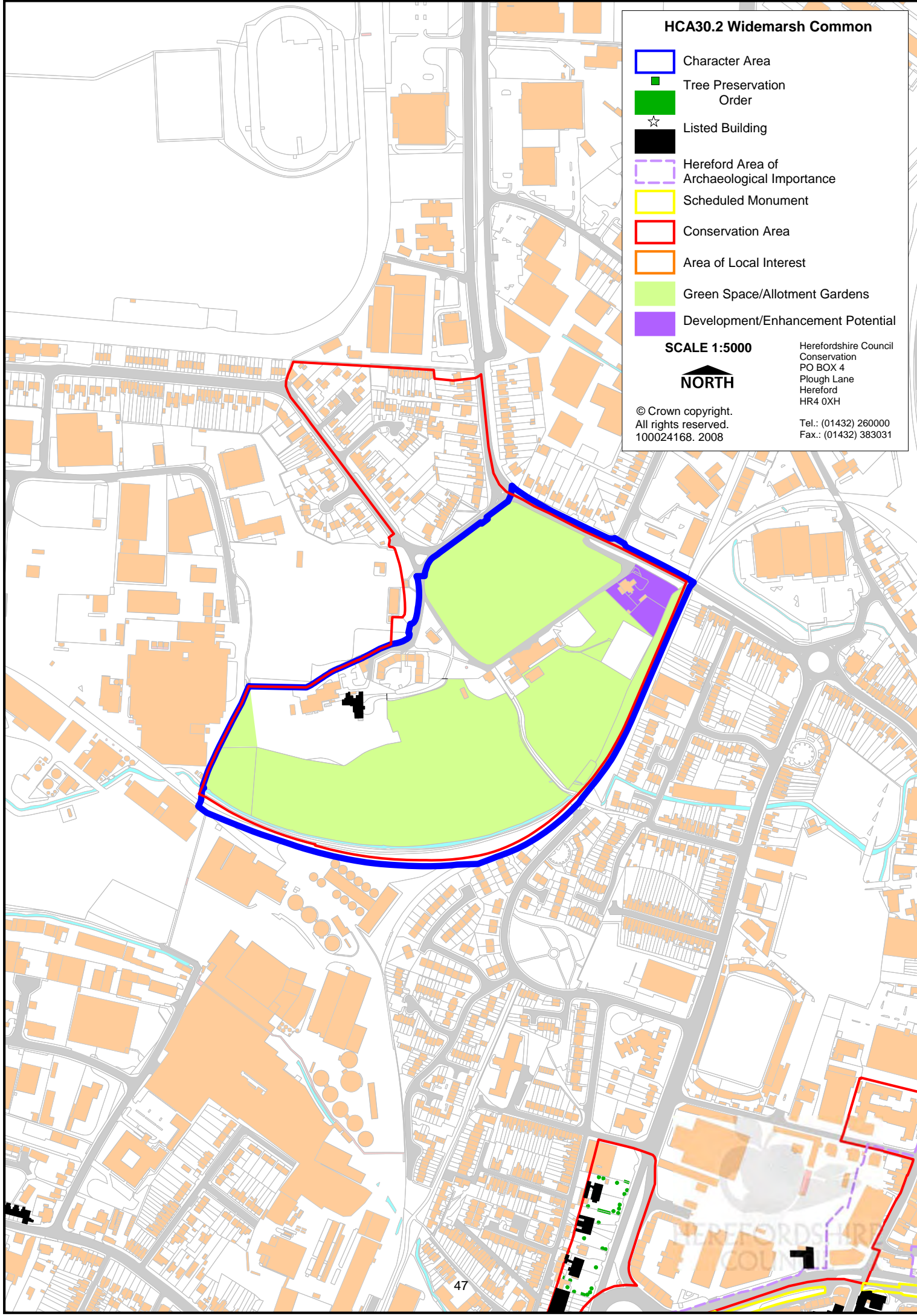
SCALE 1:5000



© Crown copyright.  
All rights reserved.  
100024168. 2008

Herefordshire Council  
Conservation  
PO BOX 4  
Plough Lane  
Hereford  
HR4 0XH

Tel.: (01432) 260000  
Fax.: (01432) 383031



### HCA30.3 Wyaside Playing Fields

-  Character Area
-  Tree Preservation Order
-  Listed Building
-  Listed Building
-  Hereford Area of Archaeological Importance
-  Scheduled Monument
-  Conservation Area
-  Area of Local Interest
-  Green Space/Allotment Gardens
-  Development/Enhancement Potential

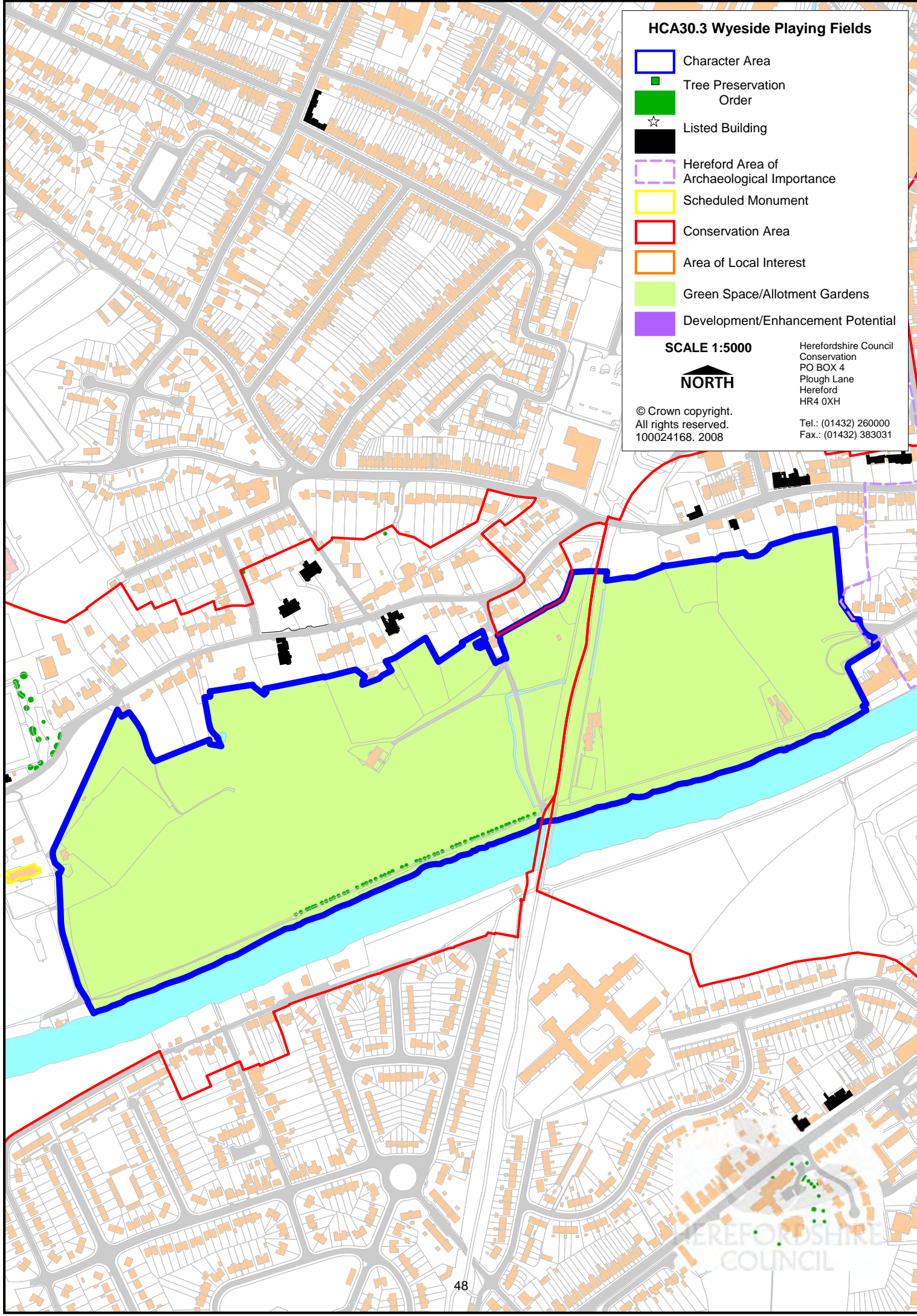
SCALE 1:5000



Herefordshire Council  
Conservation  
PO BOX 4  
Plough Lane  
Hereford  
HR4 0XH

© Crown copyright.  
All rights reserved.  
100024168. 2008

Tel.: (01432) 260000  
Fax.: (01432) 383031



# HCA30.4 Bishops Meadow - King George V Playing Fields

-  Character Area
-  Tree Preservation Order
-  Listed Building
-  Hereford Area of Archaeological Importance
-  Scheduled Monument
-  Conservation Area
-  Area of Local Interest
-  Green Space/Allotment Gardens
-  Development/Enhancement Potential

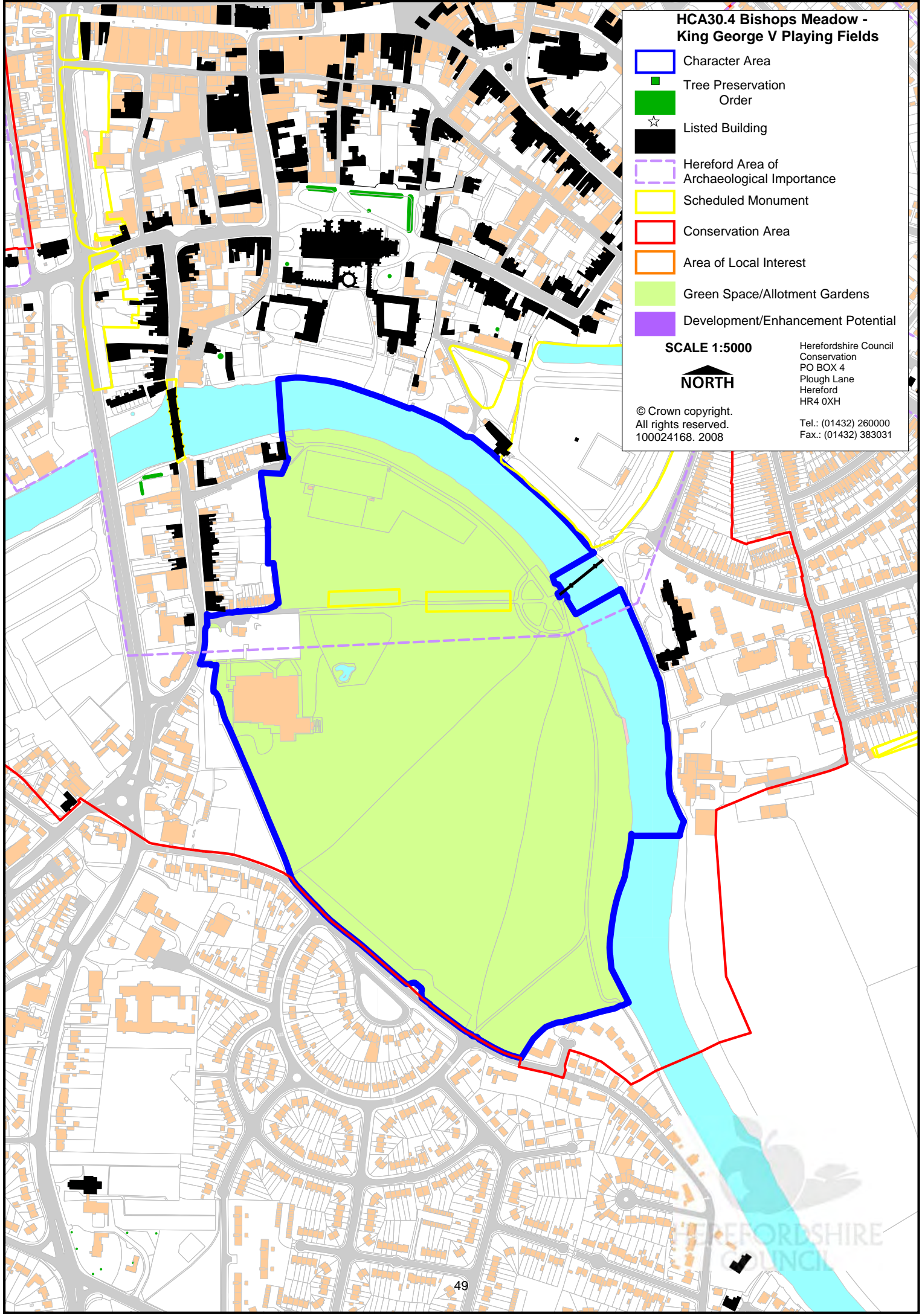
SCALE 1:5000



© Crown copyright.  
All rights reserved.  
100024168. 2008

Herefordshire Council  
Conservation  
PO BOX 4  
Plough Lane  
Hereford  
HR4 0XH

Tel.: (01432) 260000  
Fax.: (01432) 383031



### HCA30.5 Tupsley Quarry

-  Character Area
-  Tree Preservation Order
-  Listed Building
-  Listed Building
-  Hereford Area of Archaeological Importance
-  Scheduled Monument
-  Conservation Area
-  Area of Local Interest
-  Green Space/Allotment Gardens
-  Development/Enhancement Potential

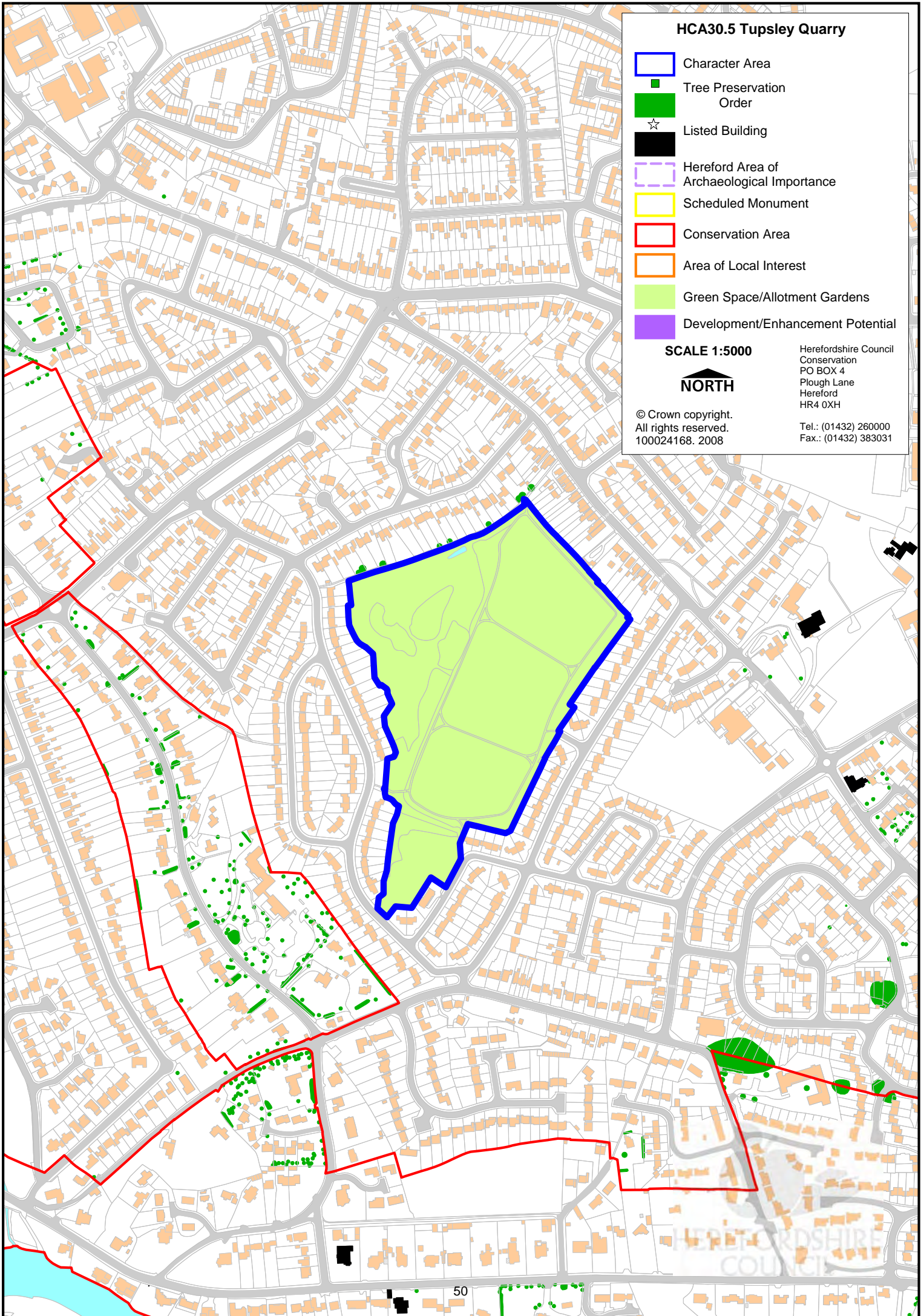
SCALE 1:5000



Herefordshire Council  
Conservation  
PO BOX 4  
Plough Lane  
Hereford  
HR4 0XH

© Crown copyright.  
All rights reserved.  
100024168. 2008

Tel.: (01432) 260000  
Fax.: (01432) 383031



# HCA30.6 Aylestone Park

-  Character Area
-  Tree Preservation Order
-  Listed Building
-  Hereford Area of Archaeological Importance
-  Scheduled Monument
-  Conservation Area
-  Area of Local Interest
-  Green Space/Allotment Gardens
-  Development/Enhancement Potential

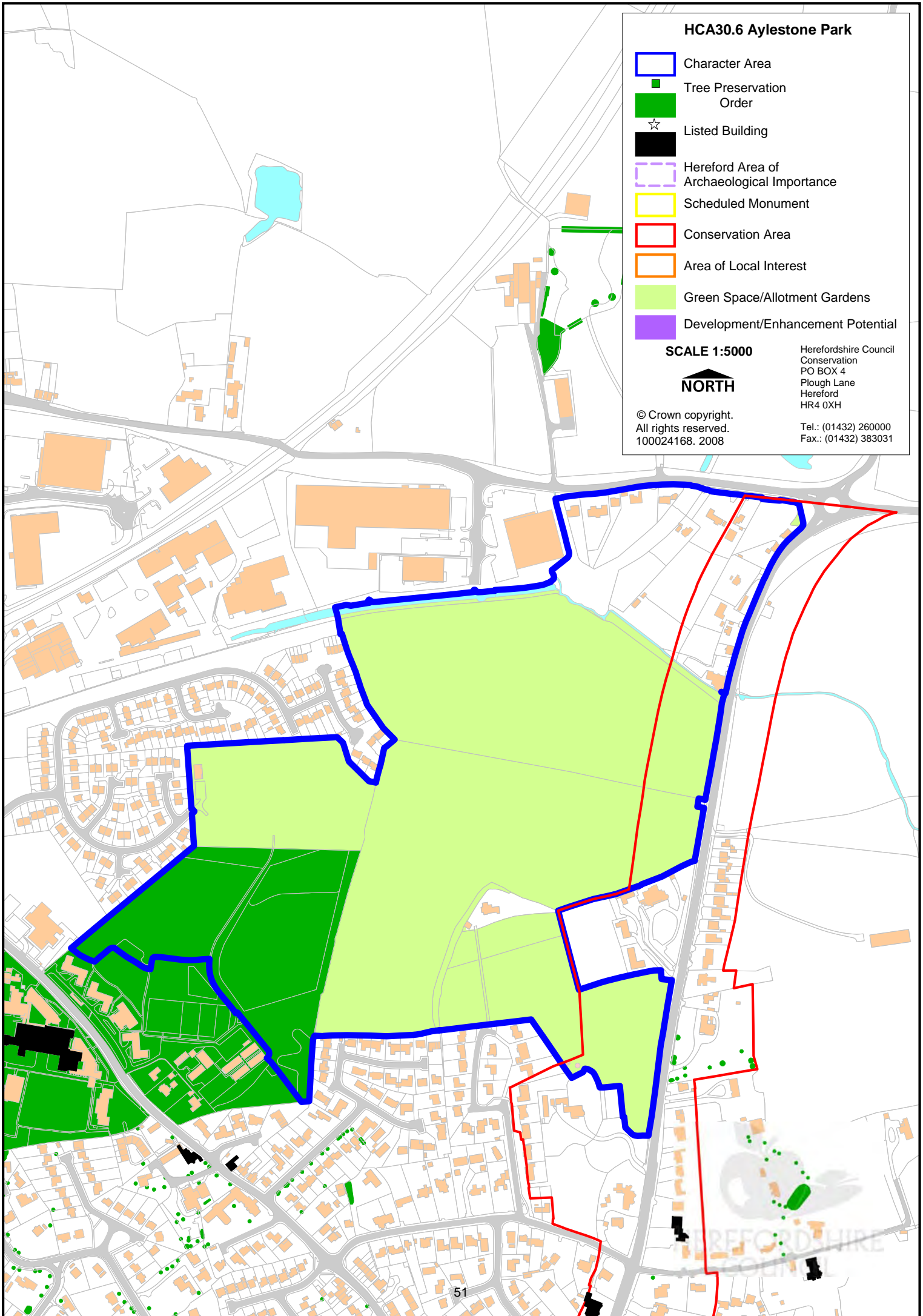
SCALE 1:5000



© Crown copyright.  
All rights reserved.  
100024168. 2008

Herefordshire Council  
Conservation  
PO BOX 4  
Plough Lane  
Hereford  
HR4 0XH

Tel.: (01432) 260000  
Fax.: (01432) 383031



**This page is deliberately left blank**

## **APPENDIX IV**

### **List of Hereford Settlement Plans**

Plan1 Settlement Area

Plan 2 Historic Assets

Plan 3 Archaeological Sites

Plan 3a Archaeological Sites (central area)

Plan 4 Character Areas

Plan 4a Character Area Groupings

Plan 5 Development/Enhancement Potential

Plan 5a Development/Enhancement Potential (central area)




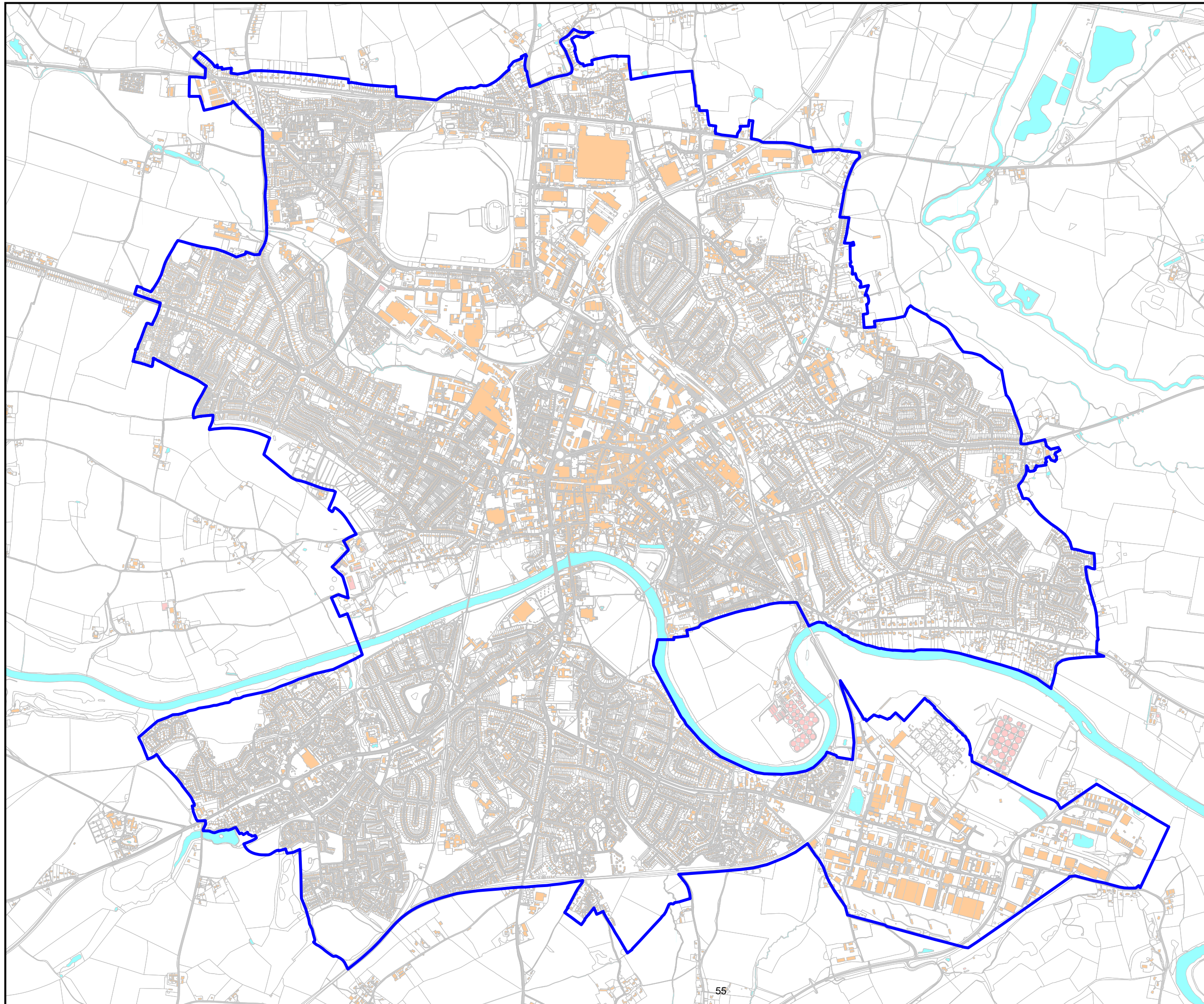
**This page is deliberately left blank**

# Hereford Rapid Townscape Assessment

## Plan 1 : Settlement Area

### Legend

 Urban Settlement Boundary



**Herefordshire  
Council**

**SCALE 1:20000** Herefordshire Council  
Conservation  
PO BOX 4  
Plough Lane  
Hereford  
HR4 0XH



Tel.: (01432) 260000  
Fax.: (01432) 383031

© This map is reproduced from Ordnance Survey material on behalf of the Controller of Her Majesty's Stationary Office © Crown copyright. Unauthorised reproduction infringes Crown copyright and may lead to prosecution or civil proceedings. 100024168. 2010

**This page has deliberately been left blank**