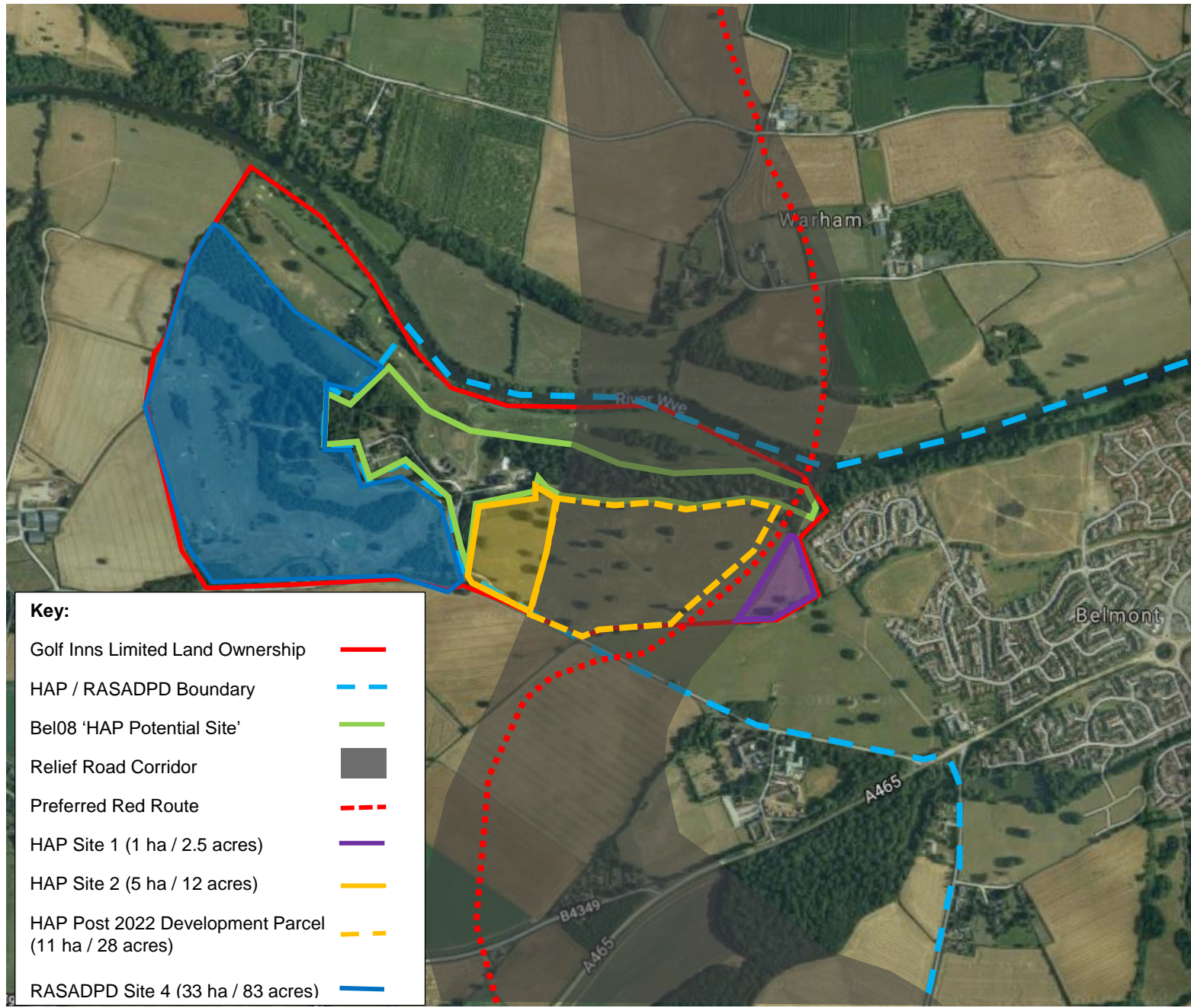


Revised Potential Development Parcels Plan

Former Belmont Golf Course – February 2019



Key:

Golf Inns Limited Land Ownership	
HAP / RASADPD Boundary	
Bel08 'HAP Potential Site'	
Relief Road Corridor	
Preferred Red Route	
HAP Site 1 (1 ha / 2.5 acres)	
HAP Site 2 (5 ha / 12 acres)	
HAP Post 2022 Development Parcel (11 ha / 28 acres)	
RASADPD Site 4 (33 ha / 83 acres)	