

# **APPENDIX 9**

## **Sports Facilities Calculator**

# APPENDIX 9

## Bromsgrove-Redditch SUE

### Sports Facility Calculator

#### Step 1

Select local authority

**User Profile 1**

Region Not Specified

#### Step 2

Enter population

**7,200**

#### Step 3

Cost Variations

**Select county**

**Hereford & Worces**

#### Step 4

Adjust Demand

**15%**

**15%**

**15%**

Facility Requirements

**Pools**

98.52 sq.m.  
1.85 Lanes  
0.46 Pools

**Halls**

2.66 Courts  
0.67 Halls

**Indoor Bowls**

0.20 Rinks  
0.03 Centres

**Synthetic Turf Pitches**

0.31 Pitches

**Cost**

**£1,018,071**

**£1,737,745**

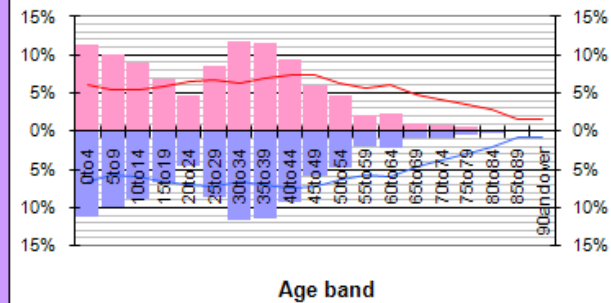
**£47,999**

**£216,446 3G**  
**£174,650 Sand**

#### Disclaimer

Sport England has made all reasonable endeavours to ensure the accuracy of the material contained in this calculator. The Calculator has been produced in good faith and Sport England does not accept any liability that may come from the use of it. The use of the Calculator is entirely at the users own risk and Sport England do not accept any liable caused from its use.

#### Age profile of selected district



# APPENDIX 9

WWM-GA South (Norton)

## Sports Facility Calculator

### Step 1

Select local authority

**User Profile 2**

Region Not Specified

### Step 2

Enter population

**6,480**

### Step 3

Cost Variations

**Select county**

**Hereford & Worces**

### Step 4

Adjust Demand

**15%**

**15%**

**15%**

Facility Requirements

**Pools**

88.64 sq.m.  
1.67 Lanes  
0.42 Pools

**Halls**

2.39 Courts  
0.60 Halls

**Indoor Bowls**

0.18 Rinks  
0.03 Centres

**Synthetic Turf Pitches**

0.28 Pitches

**Cost**

**£916,050**

**£1,563,362**

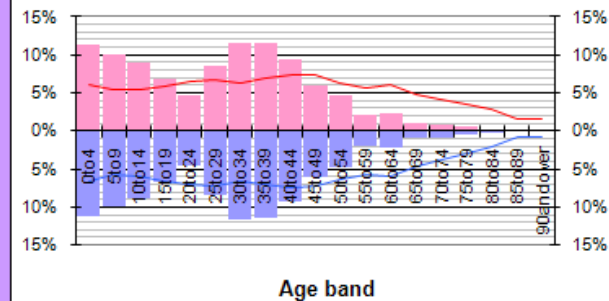
**£43,325**

**£194,671 3G**  
**£157,079 Sand**

### Disclaimer

Sport England has made all reasonable endeavours to ensure the accuracy of the material contained in this calculator. The Calculator has been produced in good faith and Sport England does not accept any liability that may come from the use of it. The use of the Calculator is entirely at the users own risk and Sport England do not accept any liable caused from its use.

### Age profile of selected district



# APPENDIX 9

WWM-GA West

## Sports Facility Calculator

### Step 1

Select local authority

**User Profile 1**

Region Not Specified

### Step 2

Enter population

**8,400**

### Step 3

Cost Variations

**Select county**

**Hereford & Worces**

### Step 4

Adjust Demand

**15%**

**15%**

**15%**

Facility Requirements

**Pools**

114.94 sq.m.  
2.16 Lanes  
0.54 Pools

**Halls**

3.10 Courts  
0.78 Halls

**Indoor Bowls**

0.23 Rinks  
0.04 Centres

**Synthetic Turf Pitches**

0.37 Pitches

**Cost**

**£1,187,774**

**£2,027,012**

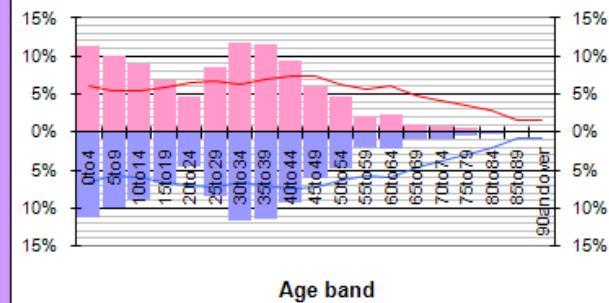
**£55,933**

**£252,379 3G**  
**£203,644 Sand**

### Disclaimer

Sport England has made all reasonable endeavours to ensure the accuracy of the material contained in this calculator. The Calculator has been produced in good faith and Sport England does not accept any liability that may come from the use of it. The use of the Calculator is entirely at the users own risk and Sport England do not accept any liable caused from its use.

**Age profile of selected district**



# APPENDIX 9

## Hereford Growth

### Sports Facility Calculator

**Step 1**  
Select local authority  
**User Profile 2**

**Step 2**  
Enter population  
15,480

**Step 3**  
Cost Variations  
Select county: Hereford & Worces

Region Not Specified

**Step 4**

Adjust Demand: 15%

15%

15%

Facility Requirements	Pools	Halls	Indoor Bowls	Synthetic Turf Pitches
Size	211.81 sq.m. 3.99 Lanes 1.00 Pools	5.72 Courts 1.43 Halls	0.42 Rinks 0.07 Centres	0.68 Pitches
Cost	<b>£2,188,880</b>	<b>£3,735,350</b>	<b>£103,125</b>	<b>£465,176 3G</b> <b>£375,349 Sand</b>

**Age profile of selected district**

Age Band	Percentage
0 to 4	10%
5 to 9	8%
10 to 14	7%
15 to 19	6%
20 to 24	5%
25 to 29	6%
30 to 34	10%
35 to 39	10%
40 to 44	8%
45 to 49	6%
50 to 54	5%
55 to 59	4%
60 to 64	3%
65 to 69	2%
70 to 74	1%
75 to 79	1%
80 to 84	1%
85 to 89	1%
90 and over	1%

**Disclaimer**

Sport England has made all reasonable endeavours to ensure the accuracy of the material contained in this calculator. The Calculator has been produced in good faith and Sport England does not accept any liability that may come from the use of it. The use of the Calculator is entirely at the users own risk and Sport England do not accept any liable caused from its use.