

Environmental Report

Report for:

Clehonger Neighbourhood Area

June 2019



Cleghonger Neighbourhood Development Plan Environmental Report

Contents

Non-technical summary

- 1.0 Introduction
- 2.0 Methodology
- 3.0 The SEA Framework
- 4.0 Appraisal of Objectives
- 5.0 Appraisal of Options
- 6.0 Appraisal of Policies
- 7.0 Implementation and monitoring
- 8.0 Next steps

Appendix 1: Initial SEA Screening Report

Appendix 2: SEA Scoping Report incorporating Tasks A1, A2, A3 and A4

Appendix 3: SEA Scoping Report Consultation Responses -Natural England and English Heritage

Appendix 4: SEA Stage B incorporating Tasks B1, B2, B3 and B4

Appendix 5: Options Considered

Appendix 6: Environmental Report checklist

Non-technical summary

Strategic Environmental Assessment (SEA) is an important part of the evidence base which underpins Neighbourhood Development Plans (NDP), as it is a systematic decision support process, aiming to ensure that environmental assets, including those whose importance transcends local, regional and national interests, are considered effectively in plan making.

Clehonger has undertaken to prepare an NDP and this process has been subject to environmental appraisal pursuant to the SEA Directive.

The Parish of Clehonger area lies to the south-west of Hereford with the River Wye to the north. Nearby villages are Madley, Kingstone and Allensmore. The Area is principally accessed by the B4349 which runs from the A465 in the east through the village of Clehonger enroute to Kingstone and thence the Golden Valley to the west. The B4352 runs from Clehonger to Madley, and then to Hay-on-Wye. Ruckhall Lane serves the north of the Area, connecting Belmont Abbey to Ruckhall; Church Road runs from Ruckhall Lane to the B4349.

The Clehonger Draft NDP includes 5 main objectives and it is intended that these objectives will be delivered by 11 criteria based planning policies.

The environmental appraisal of the Clehonger NDP has been undertaken in line with the Environmental Assessment of Plan and Programmes Regulations 2004. Stage A of the SEA process involved Scoping and Stage B provided a review and analysis of the NDP. Stage C involved preparing an Environmental Report and Stage D comprises a formal consultation on both this and the draft plan itself.

Habitat Regulations Assessment (HRA) screening has been carried out as the Parish falls within the catchment for the River Wye (including River Lugg). The HRA assesses the potential effects of the NDP on the River Wye (including River Lugg) SAC.

On the whole, it is considered that the Clehonger NDP is in general conformity with both national planning policy contained in the National Planning Policy Framework and strategic policies set within the Herefordshire Local Plan (Core Strategy). Parish Councillors will welcome the conclusion as to general conformity. It also does not propose any growth that would be over and above that prescribed by strategic policies.

Taking into consideration the cumulative effects of policies, options and sites, the plan will have an overall positive impact on environmental assets. The plan is in general conformity with the Core Strategy overall and all of the policies and objectives meet the Core Strategy requirements for the purposes of the SEA. Other issues with a current uncertain outcome have the opportunity to be mitigated by further detail in policies or at planning stage.

Overall the plan is positive and would have a positive impact upon the SEA baseline data. Key recommendations would be to ensure that the environmental mitigation impacts are clear and robust, this may require some enhancement of existing policies in regard to air quality and water resources. However the plan as a whole is robust and meets key targets, any unknown factors would require further detail such as location, scale and size of development, therefore are likely to be determined at planning application/ proposal stage. No significant cumulative effects have been identified.

Once made (adopted) by Herefordshire Council, the effects of the policies within the Clehonger NDP will be monitored annually via the Council's Annual Monitoring Report (AMR).

1.0 Introduction

- 1.1 This report forms the draft Strategic Environmental Assessment (SEA) of the Clehonger Draft Neighbourhood Development Plan (NDP).
- 1.2 The Clehonger Draft NDP will provide general policies for guiding future development across the parish.

Purpose of the SEA

- 1.3 SEA is a requirement of EC Directive 2001/42/EC (the SEA Directive) which requires the assessment of the effects of certain plans and programmes on the environment to ensure that the proposals in that plan or programme contribute to the achievement of sustainable development.
- 1.4 The Directive was transposed into domestic legislation through the Environmental Assessment of Plans and Programmes Regulations 2004 and which applies to plans with significant environmental effects.
- 1.5 A screening opinion was carried out on the Clehonger Draft NDP and it concluded that due to the range of environmental designations in and around the parish, there may be significant environmental effects and consequently an SEA would be required.

Parish Neighbourhood Plan Context

- 1.6 The Parish of Clehonger area lies to the south-west of Hereford with the River Wye to the north. Nearby villages are Madley, Kingstone and Allensmore. The Area is principally accessed by the B4349 which runs from the A465 in the east through the village of Clehonger enroute to Kingstone and thence the Golden Valley to the west. The B4352 runs from Clehonger to Madley, and then to Hay-on-Wye. Ruckhall Lane serves the north of the Area, connecting Belmont Abbey to Ruckhall; Church Road runs from Ruckhall Lane to the B4349.
- 1.7 The Parish includes numerous Listed Buildings and no Scheduled Ancient Monuments. The Parish area consists of 4 Local Wildlife Sites, 4 ancient woodlands, 1 Mineral Reserve, 2 sites of Special Scientific Interest, 2 unregistered park and gardens. There are no conservation areas in the parish.
- 1.8 The Draft Clehonger NDP includes 5 main objectives, which are designed to deliver the overarching vision on the ground, and it is intended that these objectives will be supported by 11 criteria based planning policies. Alternative options were considered prior to reaching a decision over the format of the draft plan.
- 1.9 The vision for Clehonger in 2031 is as follows:

In 2031, Clehonger will be a caring community where a high quality of life is underpinned by essential infrastructure, public safety, recreational opportunities, good quality development and a healthy natural environment that promotes the wellbeing of residents and the protection of wildlife.

The 5 NDP objectives are as follows:

Objective 1: Housing

• To meet housing requirements by demonstrating delivery to meet the strategic requirements, defining the planned extent of Clehonger village, and requiring a mix of size and type of properties to meet community needs.

Objective 2: Environment

• To protect and enhance the local environment by ensuring that new development and road infrastructure is located and designed to respect its immediate context, the character of the landscape, wildlife and biodiversity and heritage assets.

Objective 3: Local economy

- To support the local economy by enabling development which is in scale and in keeping with the rural character of the Neighbourhood Area and appropriate to its location and setting.

Objective 4: Social and community infrastructure

- To protect, retain and improve infrastructure including community facilities, open space and land used for recreation.

Objective 5: Community Actions

- To identify those matters which fall outside the formal development and land-use scope of the Neighbourhood Development Plan, such as traffic and transport, as Community Actions for further consideration and action by Clehonger Council.

Context of Neighbourhood Plans

- 1.10 NDPs are a relatively new type of planning document that form a key part of the Government's localism agenda. They enable local communities to develop plans that reflect local aspirations, in accordance with strategic policies.
- 1.11 The Clehonger NDP must therefore conform to national planning policy set within the NPPF and strategic level local policy including the Herefordshire Local Plan (Core Strategy).
- 1.12 The Herefordshire Local Plan (Core Strategy) was adopted on the 16th October 2015.
- 1.13 Paragraph 48 of the NPPF and Planning Practice Guidance set out the weight that may be given to relevant policies in emerging plans, including NDPs, and indicated that weight may be given to relevant policies in emerging NDPs according to:
- The stage of preparation of the emerging plan (the more advanced the preparation, the greater the weight that may be given);
 - The extent to which there are unresolved objections to relevant policies (the less significant the unresolved objections, the greater the weight that may be given); and
 - The degree of consistency of the relevant policies in the emerging plan to the policies in this Framework (the closer the policies in the emerging plan to the policies in the Framework, the greater the weight that may be given).
- 1.14 This part of the NPPF is reinforced by Planning Practice Guidance published in March 2014, which is clear that an emerging NDP may be a material planning consideration once it has reached submission/local authorities publication stage (Regulation 16). This is reinforced by recent ministerial statements and case law (West Sussex), all of which have demonstrated that an emerging NDP may be a material consideration at the Regulation 16 stage¹.
- 1.15 The Local Plan (Core Strategy) lists Clehonger as 4.14 settlements, as such it considers them to be a sustainable location for growth, with a 18% proportional growth target as part of the Hereford HMA.
- 1.16 Once made (adopted) by Herefordshire Council, the Clehonger NDP will have a role in guiding future development proposals within the Parish, by setting out policies against which planning applications will be determined.

Structure of SEA

- 1.17 The structure of the document is as follows:

¹ For the avoidance of doubt, this NDP is currently at the Draft Plan Stage (Regulation 14) and cannot, therefore, be given weight in reaching decisions on planning applications

- Section 2 – Explains the SEA methodology and summarises the comments received in respect of the SEA Scoping Report
- Section 3 - Introduces the Clehonger Neighbourhood Plan objectives and the SEA framework
- Section 4 - Appraises the objectives contained within the Neighbourhood Plan against the SEA framework
- Section 5 - Appraises the options considered within the Neighbourhood Plan against the SEA framework
- Section 6 – Appraises the policies contained within the Neighbourhood Plan against the SEA framework
- Section 7 – Discusses the implementation and monitoring of the Neighbourhood Plan
- Section 8 - Concludes the SEA report by outlining next steps

2.0 Methodology

- 2.1 The SEA process comprised several stages and which are summarised, in some detail, below.
- 2.2 Stage A involved 4 tasks and culminated in a Scoping Report:
- *Task A1:* Identified and reviewed relevant policies, plans and programmes and environmental protection objectives from European, National and Local sources.
 - *Task A2:* Collected baseline information to provide a picture of past, present and likely future conditions within the area. This helped to establish indicators which will be used to monitor the effects and performance of the Clehonger NDP.
 - *Task A3:* Focused on the environmental issues identified from the baseline, highlighting key issues and problems within the neighbourhood area.
 - *Task A4:* Used the information gathered from Tasks A1-A3 to develop a set of SEA objectives, sometimes referred to as the 'sustainability framework'.
 - *Task A5:* Collated the results of Tasks A1-A4 within a Scoping Report, a document which was subject to a statutory 5 week consultation.
- 2.3 Stage B involved 4 tasks and assessed the effects of the NDP.
- *Task B1:* Tested NDP Objectives against the SEA Objectives
 - *Task B2:* Developed and refined the NDP options and policies
 - *Task B3/B4:* Predicted and evaluated the significant effects of the NDP
- 2.4 Stage C involved preparing an Environmental Report. This report presents information compiled during Stage B of the SEA process and constitutes the Draft Environmental Appraisal of the NDP. It accompanies the Draft Plan during its formal Regulation 14 consultation with people who live, work and carry out businesses in the neighbourhood area, as well as statutory bodies listed in the Neighbourhood Planning (General) Regulations 2012.
- 2.5 Producing an Environmental Report was therefore a legal requirement and the submission of this report to Herefordshire Council forms Stage D of the SEA process.

Scoping Report Consultation

- 2.6 With regard to the SEA scoping assessments, documents A1 to A4 were completed by a Herefordshire Council Planning Officer and sent to the Parish Council for comment, in readiness for a 5 week consultation with statutory bodies, pursuant to the Environmental Assessment of Plans and Programmes Regulations 2004.
- 2.7 After the document was approved by the Parish Council, the Clehonger SEA Scoping Report was available to four² statutory bodies for consultation from 18 June 2015 to 27 July 2015.

Consultation outcomes from Statutory Consultees

- 2.8 The consultation resulted in two responses, see Appendix 3.
- 2.9 The responses were collated and incorporated within this document where relevant.

Natural England: Comment received, no significant comments

Historic England: Comment received, no significant comments

Environment Agency: Comment received, no significant comments

Natural Resources Wales: No comments received

3.0 The SEA Framework

- 3.1 As mentioned previously, Stage A of the SEA identifies and reviews relevant policies, plans and programmes and environmental protection objectives from European, National and Local sources (refer to Table A1 in Appendix 2 for details of those documents that were reviewed in completing Stage A of SEA on the Clehonger NDP).
- 3.2 The requirement to undertake this 'context review' is contained in Annexes 1(a) and (e) of the SEA Directive which states that an Environmental Report should include:

"...an outline of the contents, main objectives of the plan or programme and relationship with other relevant plans and programmes" and

"...the environmental protection objectives, established at international, Community or Member State level, which are relevant to the plan or programme and the way those objectives and any environmental considerations have been taken into account during its preparation"

Policy context

- 3.3 The Clehonger NDP will deliver the Local Plan (Core Strategy) at parish level by adding locally specific detail to strategic policies. As a consequence, the Scoping Report for the NDP was based on the context review Herefordshire Council undertook for its Local Plan (Core Strategy).
- 3.4 The results of this assessment (context review) provide the source of the local baseline data and have been incorporated into the SEA framework. It should be noted that:
- No list of policies, plans and programmes can ever be exhaustive and that Herefordshire Council has selected those considered to be of particular relevance to the planning system;
 - New or revised plans and policies can emerge during the SEA process

² Statutory consultation bodies: Natural England; English Heritage; Environment Agency Natural Resources Wales

3.5 The following strategies and plans have been reviewed and, where appropriate, incorporated within the SA Framework objectives:

- *The EC Conservation of Habitats and Species Regulations (2010)* - These regulations transpose the Habitats Directive in England, Wales and to a limited extent Scotland by ensuring that activities are carried out in accordance with the Habitats Directive, which is to protect biodiversity through the conservation of natural habitats and species of wild flora and fauna.
- *The EC Water Framework Directive (2000)* - Commits all EU member states to achieve good qualitative and quantitative status of all water courses by 2015
- *The Wildlife and Countryside Act (1981)* - The major legal instrument for wildlife protection in Britain, although other significant acts have been passed since. It has numerous parts and supplementary lists and schedules many of which have been amended since publication.
- *Biodiversity 2020: A strategy for England's wildlife and ecosystem services (2011)* - Forms part of the UK's Post-2010 Biodiversity Framework by setting out England's contribution towards the UK's commitments under the United Nations Convention of Biological Diversity.
- *The Countryside and Right of Way Act (2000)* - Creates a statutory right of access on foot to certain types of open land, to modernise the public rights of way system, to strengthen nature conservation legislation, and to facilitate better management of AONBs
- *The Natural Environment and Rural Communities Act (2006)* - Designed to help achieve a rich and diverse natural environment and thriving rural communities through modernised and simplified arrangements for delivering Government policy.
- *Revised EU Sustainable Development strategy (2009)* - Sets out a single strategy on how the EU will more effectively meet its long-standing commitment to meet the challenges of sustainable development.
- *National Planning Policy Framework (NPPF) (2018 and 2019)* - Consolidates the suite of PPG/PPS into one succinct planning policy document.
- *Planning Practice Guidance (2013)* - Sets out the vision, objectives and policies for the Herefordshire Local Plan (Core Strategy), which will guide development across the county up to 2031.
- *Herefordshire Local Transport Plan 3 (LTP) 2013-2015* - Sets out the Council's strategy for supporting economic growth, social inclusion and reducing the environmental impacts of transport, as well as the program of investment for the period April 2013 to April 2015.
- *Understanding Herefordshire Report (2014)* - Important to understand the place such as the local economy natural and built environment in which people live, learn and work as part of understanding their quality of life. Enable development for economy and housing to required levels and growth should be supported by sustainable transport measures.
- *Malvern Hills AONB Management Plan 2009-2014 (2009)* - Identifies the issues and challenges facing the special features of the area and contains 24 guiding principles and 46 strategic objectives which will help address them.

- *Wye Valley AONB management Plan 2009-2014 (2009)* - The Management Plan is the prime document which sets out the vision for the area and the priorities for its management.
- *Herefordshire Economic Development Strategy 2011-2016* - Aims to increase the economic wealth of Herefordshire by setting out proposals and to support business growth up to 2016.
- *Herefordshire Employment Land Study (2012)* - Includes employment land assessments for the plan period 2011-2031. The study includes Quantitative and Qualitative assessments of employment land, assessment of market demand and need, as well as providing forecasts and recommendations for future employment need over the plan period.
- *Herefordshire Strategic Housing Land Availability Assessment (SHLAA) (2009)* - The SHLAA aims to justify site allocations in plans by:
 - Identifying sites which are capable of delivering housing development
 - Assessing sites for their housing potential; and
 - Predicting when a site could be developed for housing.
- *Herefordshire Local Housing Market Assessment (LHMA) (2013)* - Builds on an earlier Strategic Housing Market Assessment (SHMA) developed for Herefordshire and Shropshire. Its purpose is to inform the Local Plan's policies regarding housing need and demand (for market and affordable housing) within each of the 7 Housing Market Areas (HMAs) in Herefordshire between 2011 and 2031.
- *Herefordshire Local Housing Requirements Study (2012)* - Technical assessment of the housing market and potential future local housing requirements which supports planning policy regarding the amount of growth, housing tenure and housing type needed within Herefordshire up to 2031.
- *Herefordshire Rural Housing Background Report (2013)* - Provides the justification for the proportional housing growth targets outlined in the Core Strategy
- *Herefordshire Draft Gypsies and Travellers Assessment (2013)* - Assesses the accommodation needs of Gypsies and Travellers across Herefordshire.
- *Herefordshire Local Biodiversity Action Plan (2007)* - Focuses conservation efforts on the areas within Herefordshire that will result in the greatest benefit for ecological networks, habitats and species.
- *Building Biodiversity into the LDF (2009)* - Provides the Council's Local Plan (Core Strategy) with evidence in respect of biodiversity and geodiversity, identifying both opportunities and constraints across Herefordshire.
- *Herefordshire Green Infrastructure Strategy (2010)* - Develops a framework of natural and culturally important features and functions so that planning for a sustainable future is at the heart of planning within Herefordshire.
- *Renewable Energy Study (2010)* - Assesses the energy demand within Herefordshire and the ability for the county to accommodate renewable and low carbon energy technologies.
- *Herefordshire Playing Pitch Assessment (2012)* - Produces a strategic framework, audit and assessment and needs analysis of outdoor sports pitches and facilities for Herefordshire. The document arises as a result of a

recommendation in the Herefordshire and Worcestershire Sports Facilities Framework to develop local standards for playing fields and sports pitches throughout Herefordshire.

- *Open Spaces Study (2006)* - The 2006 space audit and assessment of need is a snap shot of the quality, quantity and distribution of open space across Herefordshire.
- *Play Facilities Study (2012)* - The Play Facilities Study 2012 updates the previous play facilities analysis under the Open Spaces Study 2006 and provides guidance and a framework for the development, delivery and continued sustainability of providing new and improved play facilities for children and young people in Herefordshire to 2031.
- *Strategic Flood Risk Assessment (SFRA) and Water Cycle Study (2009)* - The Strategic Flood Risk Assessment (SFRA) provides a summary of flood risk in Herefordshire to inform the location of future development. The Water Cycle Study examines how water resources and water supply infrastructure, wastewater treatment, water quality, sewerage and flood risk could constrain growth across Herefordshire.

- 3.6 Appendix 1 of the Clehonger NDP Scoping Report provides additional detail on the Plans, Policies and Programmes mentioned above and identifies the implications for the SEA and NDP.

SEA Objectives and baseline characteristics

- 3.7 The SEA objectives that were used at Stages A and B of the process are listed in the following table.

SEA Objective	
1	To maintain or enhance nature conservation (biodiversity, flora and fauna)
2	To maintain or enhance the quality of landscapes and townscapes
3	To improve the quality of surroundings
4	To conserve or where appropriate enhance the historic environment and culture heritage
5	To improve air quality
6	To reduce the effect of traffic on the environment
7	To reduce contributions to climate change
8	To reduce vulnerability to climate change
9	To improve water quality
10	To provide for sustainable sources of water supply
11	To avoid, reduce and manage flood risk
12	To conserve soil resources and quality
13	To minimise the production of waste
14	To improve the health of the population
15	To reduce crime and nuisance
16	To conserve natural and manmade resources

- 3.8 The SEA objectives detailed above conform to the SEA Directive, and are derived from the Sustainability Appraisal undertaken for the Herefordshire Local Plan Core Strategy 2011-2031.

- 3.9 Baseline information gathered during Stage A of the SEA process provided details of the current environmental characteristics of the neighbourhood area and the status of its natural assets and features (refer to Appendix 2). This information was analysed as part of Task B2 of SEA, which looked at the extent to which the emerging NDP policies will help or obstruct these characteristics.
- 3.10 Following the completion of Task B2 of SEA there were no major issues identified against environmental impacts.
- 3.11 The NDP contains 11 criteria-based policies.
- 3.12 Baseline characteristics within the SEA detail the current environmental status of environmental characteristics in the neighbourhood plan area from different sources. The source of Baseline Information used in Table A2 in Appendix 2, and analysed in Table B2 can be found in Appendix 4.
- 3.13 There are 5 objectives for which there is no local baseline data available and therefore this provides a limitation on the baseline data and whether the NDP policies are able to move towards or away from this data, this also means that there are no future trends to link the SEA objective too.

4.0 Assessing the NDP Objectives

- 4.1 The following are objectives listed in the NDP that aim to realise the vision for Clehonger in 2031:

Objective 1: Housing

- To meet housing requirements by demonstrating delivery to meet the strategic requirements, defining the planned extent of Clehonger village, and requiring a mix of size and type of properties to meet community needs.

Objective 2: Environment

- To protect and enhance the local environment by ensuring that new development and road infrastructure is located and designed to respect its immediate context, the character of the landscape, wildlife and biodiversity and heritage assets.

Objective 3: Local economy

- To support the local economy by enabling development which is in scale and in keeping with the rural character of the Neighbourhood Area and appropriate to its location and setting.

Objective 4: Social and community infrastructure

- To protect, retain and improve infrastructure including community facilities, open space and land used for recreation.

Objective 5: Community Actions

- To identify those matters which fall outside the formal development and land-use scope of the Neighbourhood Development Plan, such as traffic and transport, as Community Actions for further consideration and action by Clehonger Council.

- 4.2 The table below tests these NDP objectives against the SEA objectives, providing a summary of the results of Task B1 of SEA. The full results are available at Appendix 4 of this report.
- 4.3 The majority of those NDP objectives which have a relationship with the SEA framework are positively compatible with it or have an unknown effect, requiring more detail at planning application stage or in policy detail.
- 4.4 The NDP objectives had a mainly positive or neutral impact on some of the key SEA Objectives relating to some environment impacts and traffic management. This is because at this stage given the lack of detail over the exact details of an development that may come to

fruition as a result of the implementation of these objectives; however, it is accepted that further development of the planning policies that relate to these objectives would move them towards a compatible outcome.

- 4.5 Task B1 of the SEA did not identify any major potential conflicts between the NDP objectives and the SEA framework.

Key:	
+ /++	Compatible
-	Possible conflict
0	Neutral
X	No relationship between objectives
?	Unclear, more information needed

NDP Objectives	SEA Objectives															
	1	2	3	4	5	6	7	8	9	10	11	12	13	14	15	16
Objective 1 – Housing	+	+	+	+	+	0	0	0	0	+	+	X	X	X	X	+
Objective 2 – The Environment	++	++	++	++	+	0	+	+	+	++	X	++	X	X	X	++
Objective 3 – Local Economy	+	+	+	+	+	0	0	0	X	X	X	0	0	0	0	+
Objective 4 – Community Facilities and Infrastructure	+	+	+	+	+	0	+	+	+	0	X	0	X	+	0	+
Objective 5 – Community Actions	+	+	+	+	+	+	+	+	+	X	X	X	X	+	+	+

5 Assessing the NDP Options

5.1 All options that were considered by Clehonger during the development of their Plan have been assessed as part of the SEA, the summary matrix of the assessment can be found in Table B2 options these tables are in Appendix 4.

5.2 The options covered were are followed;

Option 1: not to prepare a Neighbourhood Development Plan, relying instead on the Core Strategy and the Rural Areas Sites Allocations DPD
Option 2: use a criteria-based Plan only
Option 3: allocate sites to address the minimum housing requirement
Option 4: define settlement boundary for Clehonger without allocating sites
Option 5: define settlement boundary for Clehonger and allocate sites

5.3 The choice of preferred option was Option 4. This option was accepted because the consultation process demonstrated that this option should be adopted.

- 5.4 A 'do nothing' option (option 1) as considered by the Parish, i.e. not undertaking a Neighbourhood Development Plan, however this was discounted after due consideration at an early stage by the Parish Council.
- 5.5 The option which emerged as the most achievable and had support from both the LPA officers and the local community was Option 4 above; Accommodating the level of housing growth required through settlement boundaries without allocating sites.
- 5.6 These options were formulated from the responses to residents' surveys and community consultation. The results of which will feed into the identification of the preferred options and ultimately the draft policies.
- 5.7 Options 2, 3 and 5 were rejected because the consultation process demonstrated that this option should be in line with being in conformity with the Core Strategy/Local.
- 5.8 Overall the relevant options had a mostly positive or neutral effect on the SEA objectives and baseline, if the policies that are developed incorporated the elements of the chosen option, ensuring mitigation of new development and additional details are provided for the location and design of any proposed further development, then the assessment of the policies should result in a positive result. As these options were generally moving towards the SEA objectives any further alternatives would probably be moving away and therefore no further options are required to be assessed. Option 1, to do nothing was not deemed to be relevant against the baseline as it was not directly contributing to any locally specific environmental issues.

NDP Options	SEA Objectives															
	1	2	3	4	5	6	7	8	9	10	11	12	13	14	15	16
Option 1	x	x	x	x	x	x	x	x	x	x	x	x				x
Option 2	+	+	+	+	0	?	?	?	?	?	?	?				+
Option 3	+	+	+	+	0	?	?	?	?	?	?	0				+
Option 4	+	+	+	+	+	?	?	?	?	?	?	0				+
Option 5	+	+	+	+	0	?	?	?	?	?	?	0				+

6.0 Appraisal of the policies

- 6.1 A key part of developing a plan such as the Clehonger NDP is developing a range of options and testing these, so that a preferred way forward can be selected.
- 6.2 The following, emerging set of draft policies can be appraised for the purposes of Stage B of the SEA:

Policy C1 – Sustainable Development

Policy C2 – Settlement Boundary

Policy C3 – Housing Mix

Policy C4 – Natural Environment

Policy C5 – Historic Environment

Policy C6 – Design

Policy C7 – Business and Tourism

Policy C8 – Agricultural Development

Policy C9 – Community Facilities

Policy C10 – Clehonger Playing Field

Policy C11 – Hereford Bypass

Stage B of SEA

- 6.3 In the context of Task B1 of SEA, the previous section of this report identified that many of the NDP objectives are compatible with the SEA framework, while others had either a neutral impact, no relationship with the SEA objectives or if needed; further information such as location of development. Additional policy safeguards within the NDP and Local Plan (Core Strategy) would help mitigate any possible conflicts.
- 6.4 With regard to Task B2 of SEA, the NDP policies were measured against both the SEA framework and the baseline characteristics identified during Stage A of the process. Full details of this appraisal are attached at Appendix 4.
- 6.5 The policies largely score as positive or neutral or are not relevant against the SEA objectives and will not, therefore, have an adverse impact on the baseline characteristics or immediate environmental impacts. This is because they are mainly criteria based policies which only consider schemes on their own merits, as and when planning applications are submitted to the local planning authority.
- 6.6 Impact on water quality, water supply and flood risk can be fully assessed further when more details are known, such as location, scale and type of development. This could be determined on an individual basis at planning application stage. Mitigation measures have been included within the Core Strategy and criteria policies within the NDP.

NDP Policies	SEA objectives															
	1	2	3	4	5	6	7	8	9	10	11	12	13	14	15	16
Baseline	1	2	3	4	5	6	7	8	9	10	11	12	X	X	X	16
Policy C1 – Sustainable Development	++	++	++	++	+	++	+	+	0	0	x	0				+
Policy C2 – Settlement Boundary	+	++	++	++	0	?	0	x	x	x	x	x				+
Policy C3 – Housing Mix	0	+	+	+	x	?	0	x	x	x	x	x				+
Policy C4 – Natural Environment	++	+	++	+	+	x	0	0	+	+	+	+				++
Policy C5 – Historic Environment	+	++	+	++	x	?	x	x	x	x	x	x				+
Policy C6 – Design	++	++	+	+	+	++	+	+	0	0	0	+				+
Policy C7 – Business and Tourism	+	+	+	+	0	x	x	x	x	x	x	+				+
Policy C8 – Agricultural Development	+	++	++	++	x	++	0	0	+	+	++	++				++
Policy C9 – Community Facilities	+	+	+	+	x	+	x	x	x	x	x	x				+
Policy C10 – Clehonger Playing Field	++	++	++	++	+	+	+	0	x	x	x	+				++
Policy C11 – Hereford Bypass	++	++	++	++	x	?	x	x	x	x	x	x				+

- 6.7 The results of Task B3, as shown at Appendix 4, demonstrate that the cumulative impact of the NDP policies over the course of the plan period is generally positive. Although some

policies may have a neutral impact during the first 5 years of the plan period, there is no reason why they cannot have a positive effect in the medium to long-term due to policy safeguards included in the Local Plan (Core Strategy); these safeguards should avoid or mitigate against unacceptable adverse impacts.

- 6.8 Task B4 of SEA brings together the results of earlier tasks and thus identifies the cumulative impact of the entire of the NDP. This task, which is also attached at Appendix 4, reveals that the objectives and policies contained in the Clehonger NDP are by and large in general conformity with the Local Plan (Core Strategy), which means that the cumulative effect of the plan will contribute to the achievement of the SEA objectives.
- 6.9 None of the NDP policies are considered to be in direct conflict with or propose greater levels of growth and development than strategic policies contained in the Local Plan (Core Strategy), which themselves have undergone a full Sustainability Appraisal.

7.0 Implementation and monitoring

- 7.1 Herefordshire Council as the Local Planning Authority should make arrangements to monitor the significant effects of implementing a neighbourhood plan.
- 7.2 Indeed, Regulation 17 of the Environmental Assessment of Plans and Programmes Regulations 2004 requires the Local Planning Authority to monitor the significant environmental effects of the implementation of any NDP that was subject to SEA, in order to identify unforeseen adverse effects at an early stage and to enable appropriate remedial actions.
- 7.3 Accordingly, Herefordshire Council will monitor outcomes from the NDP policies and the results of these will be reported in the Council's Annual Monitoring Report (AMR).
- 7.4 The AMR runs from 1 April to 31 March each year and the topics covered therein include the following:
- Housing delivery;
 - Previously developed land
 - Housing completions
 - Affordable housing conditions
 - Employment land delivery.

8.0 Next steps

- 8.1 This report will be subject to a formal public consultation of 6 weeks duration alongside the Draft Clehonger NDP.
- 8.2 Responses on the Draft NDP will be reviewed and the plan amended where appropriate.
- 8.3 Any changes made to the NDP as a consequence of the Regulation 14 consultation with those who live, work or carry out business in the neighbourhood area, as well as statutory consultation bodies, will trigger a review of the SEA, unless they do not materially affect the outcomes of Stage B of the SEA process.

Appendix 1

**Initial Habitat Regulations Assessment and Strategic Environmental
Assessment Screening Notification**

The Neighbourhood Planning (General) Regulation 2012 (Reg. 32)

Conservation of Habitats and Species Regulations 2010 (d)

Neighbourhood Area:	Clehonger Neighbourhood Area
Parish Council:	Clehonger Parish Council
Neighbourhood Area Designation Date:	21/11/2014

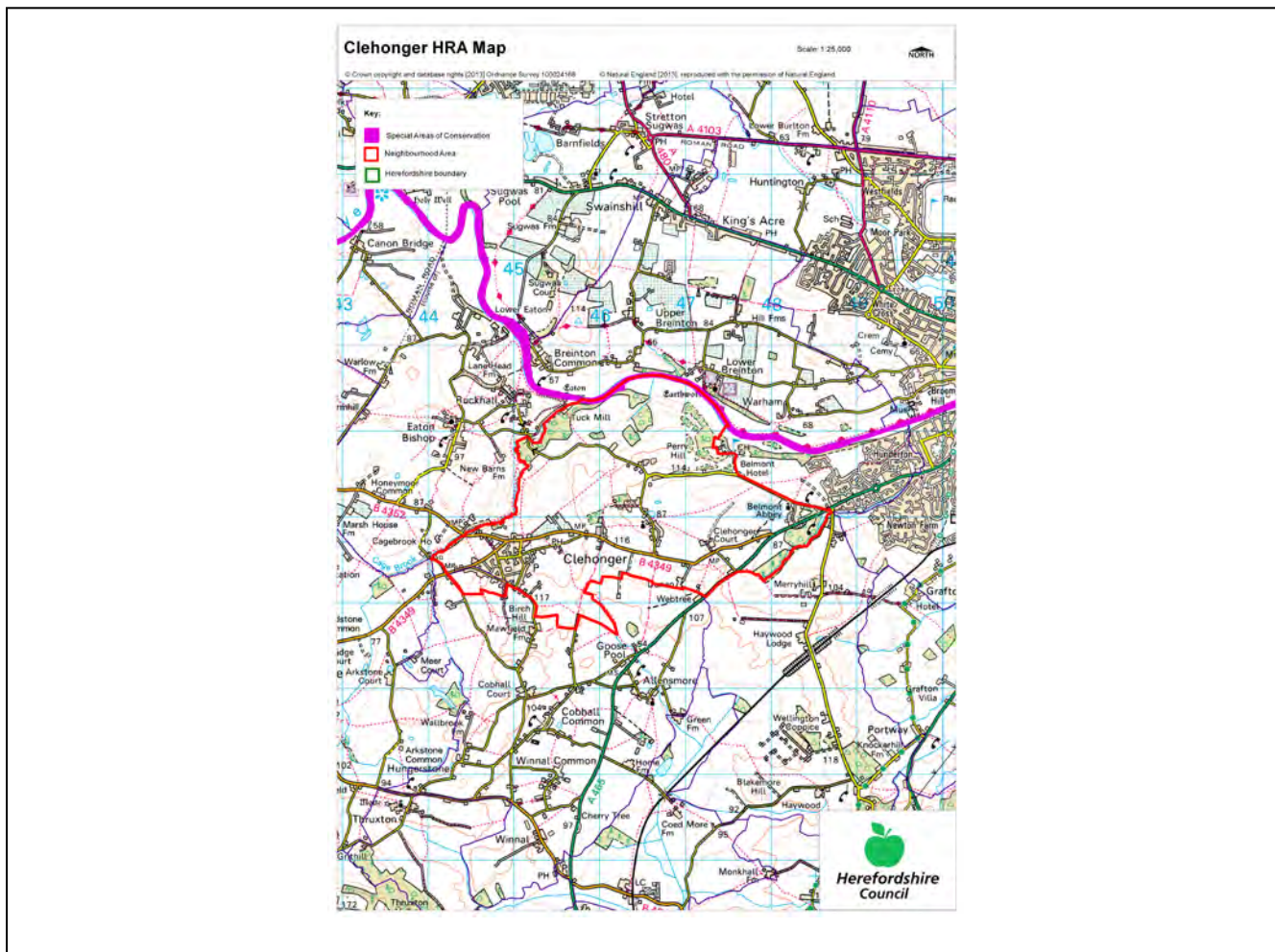
Introduction

This Initial Habitat Regulations Assessment (HRA) and Strategic Environmental Assessment (SEA) Screening has been undertaken to assess whether any European sites exist within or in proximity to the Neighbourhood Area which could be affected by any future proposals or policies.

Through continual engagement the outcomes of any required assessments will help to ensure that proposed developments will not lead to Likely Significant Effects upon a European site or cause adverse impacts upon other environmental assets, such as the built historic or local natural environment.

HRA Initial Screening

Map showing relationship of Neighbourhood Area with European Sites (not to scale)



River Wye (including the River Lugg) Special Area of Conservation (SAC):

Does the Neighbourhood Area have the River Wye (including the River Lugg) in or next to its boundary?	Y	The River Wye/Lugg SAC borders the Parish to the north.
Is the Neighbourhood Area in the hydrological catchment of the River Wye (including the River Lugg) SAC?	Y	The Parish is within the hydrological catchment of the River Wye.
If yes above, does the Neighbourhood Area have mains drainage to deal with foul sewage?	Y	There is mains drainage in Clethonger

Downton Gorge SAC:

Is the Neighbourhood Area within 10km of Downton Gorge SAC?	N	Downton Gorge is 33.6km away from the Parish
---	---	--

River Clun SAC:

Does the River Clun border the Neighbourhood Area	N	River Clun does not border the parish
---	---	---------------------------------------

Wye Valley & Forest of Dean Bat Sites SAC:

Is the Neighbourhood Area within 10km of any of the individual sites that make up the Wye Valley & Forest of Dean Bat Sites?	N	Wye Valley and Forest of Dean Bat Sites are 24.3km away from the Parish.
--	---	--

Wye Valley Woodlands SAC:

Is the Neighbourhood Area within 10km of any of the individual sites that make up the Wye Valley Woodlands Site?	N	Wye Valley Woodlands are 22.7km away from the Parish.
--	---	---

HRA Conclusion:

The assessment above highlights that the following European Sites will need to be taken into account in the future Neighbourhood Development Plan for the Clehonger Neighbourhood Area and a Full HRA Screening will be required.

European Site

(List only those which are relevant from above)

River Wye (including the River Lugg) SAC

Strategic Environmental Assessment Initial Screening for nature conservation landscape and heritage features

The following environmental features are within or in general proximity to the Clehonger Neighbourhood Area and would need to be taken into account within a Strategic Environmental Assessment. In addition, the NDP will also need to consider the other SEA topics set out in Guidance Note 9a to ensure that the plan does not cause adverse impacts.

SEA features	Within Neighbourhood Area		Bordering Neighbourhood Area	
	Total number	Name(s)	Total number	Name(s)
Ancient Woodland	4	Ruckhall Wood; Priors Shell Wood; Old Hill Coppice; Newton Coppice.	3	Wall Brook Wood; Veddoes Copse; Knockerhill Wood.
Areas of Outstanding Natural Beauty (AONB)	0	-	0	-
Conservation Areas	0	-	0	-
Flood Areas	Flood Zones 2 & 3 follow the River Wye and Cage Brook.			
Geoparks	0	-	0	-
Listed Buildings	There are numerous Listed Buildings throughout the Neighbourhood Area.			
Mineral Reserves	1	Hunderton Rough to Clehonger to Allensmore.	6	Courtlands Farm; Cobhall Farm; Cobhall Common; Whitehouse Kennels; Small area NW of Green Farm; Between Lower Breinton Farm & Court Farm.
National Nature Reserve (NNR)	0	-	0	-
Nature Trails	0	-	2	Wye Valley Walk; Violette Szabo.
Regionally Important Geological Sites (RIGS)	0	-	0	-

Registered Parks and Gardens	0	-	0	-		
Scheduled Ancient Monuments (SAM)	0	-	2	Eaton Camp; Moated site SW of the Church.		
Sites of Importance in Nature Conservation (SINCs)	0	-	0	-		
Special Areas of Conservation (SAC)	1	River Wye.	0	-		
Special Wildlife Sites (SWS)	4	River Wye; Cage Brook Valley & Woodlands; Clehonger Village Pond; Hayleasow Wood, Newton Coppice & Spring Grove.	7	Breinton Wood; Belmont Wood & Hunderton Rough; Field near Eaton Camp; Eaton Bishop Church; Littlemarsh Common; Honeymoon Common; Pond at Allensmore Court.		
Unregistered parks and gardens	2	Cagebrook House; Belmont House.	3	Wyeclyffe Court; Warham House; Allensmore Court.		
			SSSI Status		SSSI Status	
Sites of Special Scientific Interest (SSSI)	2	River Wye; Cage Brook Valley.	Unfavourable Recovering; Favourable (part) Unfavourable No Change (part) Unfavourable Declining (part).	1	Littlemarsh Common.	Unfavourable Declining.

Decision Notification:

The initial screening highlights that the Neighbourhood Development Plan for the Clehonger Neighbourhood Area:

- a) Will require further environmental assessment for Habitat Regulations Assessment and Strategic Environmental Assessment.

Assessment date: 06/10/2014

Assessed by: James Latham

Appendix 1: European Sites

The table below provides the name of each European Site, which has been screened in for the purposes of neighbourhood planning in Herefordshire; includes their site features of integrity; and vulnerability data. This is based on the sites individual features of integrity and their vulnerabilities, which could include distance criteria. This has been used in identifying which parishes are likely to require a full HRA Screening of their future Neighbourhood Development Plan, to establish if their plan might have Likely Significant Effects on a European Site.

Downton Gorge
Site Features: <i>Tilio-Acerion</i> forests of slopes, screes and ravines
Vulnerability data: 10km for air quality associated with poultry units or other intensive agricultural practices.

River Clun
Site Features: Freshwater pearl mussel <i>Margaritifera margaritifera</i>
Vulnerability data: Water quality is important to maintain the site feature. Parishes either side of the River Clun will be affected.

River Wye
Site Features: Water courses of plain to montane levels with the <i>Ranunculion fluitantis</i> and <i>Callitricho-Batrachion</i> vegetation. Transition mires and quaking bogs. White-clawed (or Atlantic Stream) crayfish <i>Austropotamobius pallipes</i> . Sea lamprey <i>Petromyzon marinus</i> . Brook lamprey <i>Lampetra planeri</i> . River lamprey <i>Lampetra fluviatilis</i> . Twaite shad <i>Alosa fallax</i> . Atlantic salmon <i>Salmo salar</i> . Bullhead <i>Cottus gobio</i> . Otter <i>Lutra lutra</i> . Allis shad <i>Alosa alosa</i>
Vulnerability data: Proximity: Developments should not be within 100m of the designated bank. Some developments beyond 100m may also have impacts based on proximity and these issues should be addressed where possible when developing NDP policy and choosing site allocations. Water Quality: Within the whole catchment of the River Wye, which includes the River Lugg, mains drainage issues with regards to water quality are being resolved through the Core Strategy / Local Plan and development of a Nutrient Management Plan. Welsh Water should be consulted to ensure that the proposed growth will be within the limit of their consents. Otters: "An otter will occupy a 'home range', which on fresh waters usually includes a stretch of river as well as associated tributary streams, ditches, ponds, lakes and woodland. The size of a home range depends largely on the availability of food and shelter, and the presence of neighbouring otters. On rivers, a male's home range may be up to 40km or more of watercourse and associated areas; females have smaller ranges (roughly half the size) and favour quieter locations for breeding, such as tributary streams. Otters without an established home range are known as 'transients'. They are mostly juveniles looking for a territory of their own, or adults that have been pushed out of their territories. Transient otters may use an area for a short while, but they will move on if conditions are not suitable or if they are driven away by resident otters. Transients will have been important in extending the range of otters, but they are very difficult to identify from field signs. Within a home range an otter may use many resting sites. These include above-ground shelters, such as stands of scrub or areas of rank grass, and underground 'holts' – for example, cavities under tree roots and dry drainage pipes."

Wye Valley and Forest of Dean Bat Sites

Site Features: Annex II species that are a primary reason for site selection: Lesser horseshoe bat *Rhinolophus hipposideros*. Greater horseshoe bat *Rhinolophus ferrumequinum*

Vulnerability data: Lesser Horseshoe bats are known to migrate between 5km and 10km between their summer and winter roosts. The Lesser Horseshoe Bat is vulnerable to disturbance; light pollution; and habitat loss. Check with the planning ecologist for other issues.

Greater Horseshoe bats are known to migrate between 20-30km between their summer and winter roosts.

NDPs closest to the European Site will need to consider:

Woodland habitat buffer.

Lesser Horseshoe Bat: Old buildings; woodland locations; sheltered valleys, extensive deciduous woods or dense scrub, close to roost sites. In areas of fragmented habitats, linear habitats such as hedgerows are important corridors. Vulnerable to loss or disturbance of both summer and winter roosts and removal of linear habitat.

Greater Horseshoe Bat: Large buildings, pasture, edge of mixed deciduous woodland and hedgerows. Mixed land-use especially south-facing slopes, favours beetles, moths and insects they feed on. During the winter they depend on caves, abandoned mines and other underground sites for undisturbed hibernation. A system/series of sites required. Vulnerable to loss of insect food supply, due to insecticide use, changing farming practices and loss of broad-leaved tree-cover and loss / disturbance of underground roosts sites.

Wye Valley Woodlands

Site Features: Annex I habitats that are a primary reason for site selection: Beech forests *Asperulo-Fagetum*, *Tilio-Acerion* forests of slopes, screes and ravines, *Taxus baccata* woods of the British Isles. Annex II species present as a qualifying feature, but not a primary reason for site selection: Lesser horseshoe bat *Rhinolophus hipposideros*, 51-100 residents

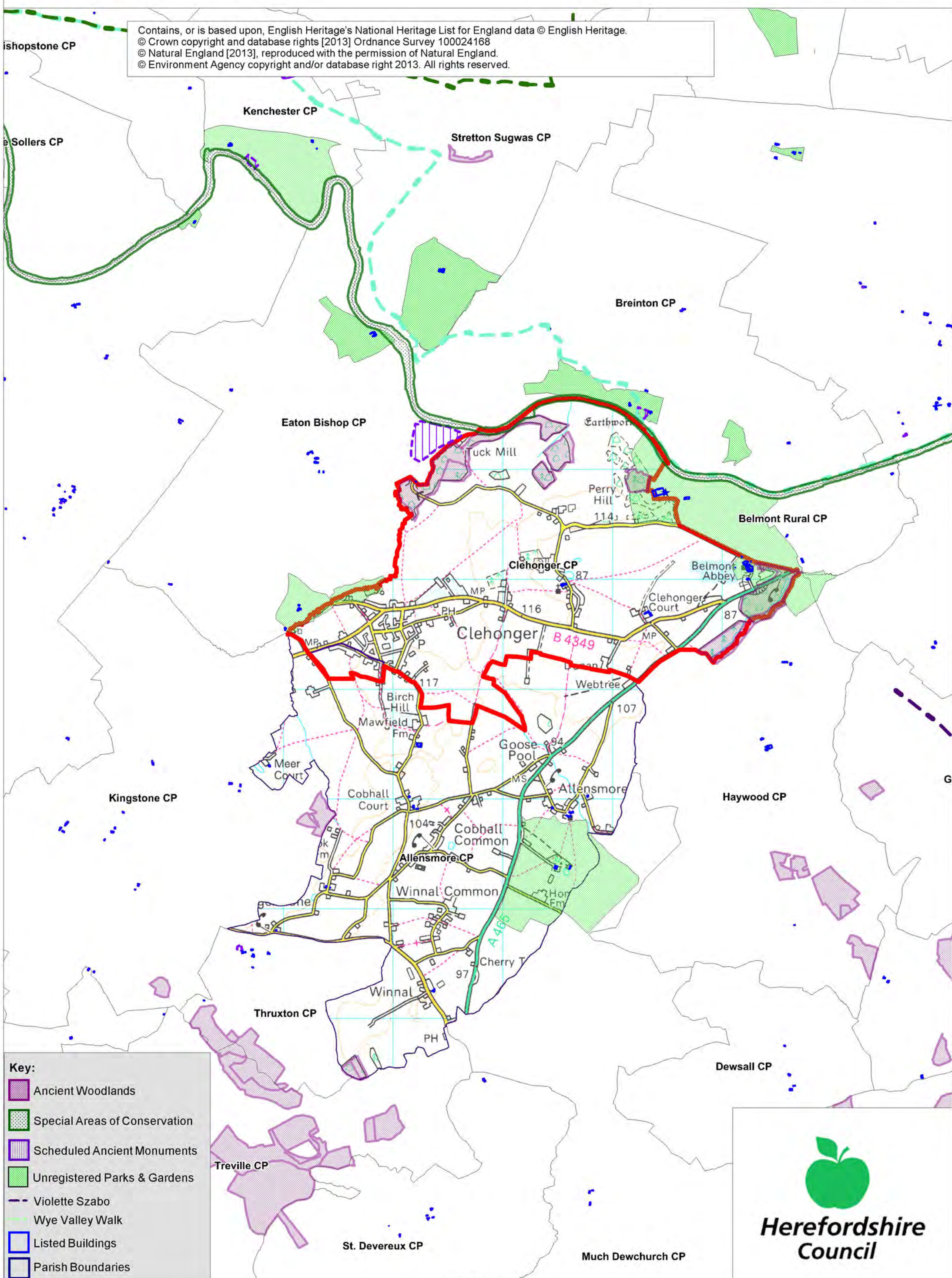
Vulnerability data: Lesser Horseshoe bats are known to migrate between 5km and 10km between their summer and winter roosts. The Lesser Horseshoe Bat is vulnerable to disturbance; light pollution; and habitat loss. Check with the planning ecologist for other issues. NDPs closest to the European Site will need to consider: Woodland habitat buffer. Lesser Horseshoe Bat: Old buildings; woodland locations; sheltered valleys, extensive deciduous woods or dense scrub, close to roost sites. In areas of fragmented habitats, linear habitats such as hedgerows are important corridors. Vulnerable to loss or disturbance of both summer and winter roosts and removal of linear habitat.

Clehonger SEA Map 1

Scale: 1:30,000



Contains, or is based upon, English Heritage's National Heritage List for England data © English Heritage.
© Crown copyright and database rights [2013] Ordnance Survey 100024168
© Natural England [2013], reproduced with the permission of Natural England.
© Environment Agency copyright and/or database right 2013. All rights reserved.



Key:

- Ancient Woodlands
- Special Areas of Conservation
- Scheduled Ancient Monuments
- Unregistered Parks & Gardens
- Violette Szabo
- Wye Valley Walk
- Listed Buildings
- Parish Boundaries

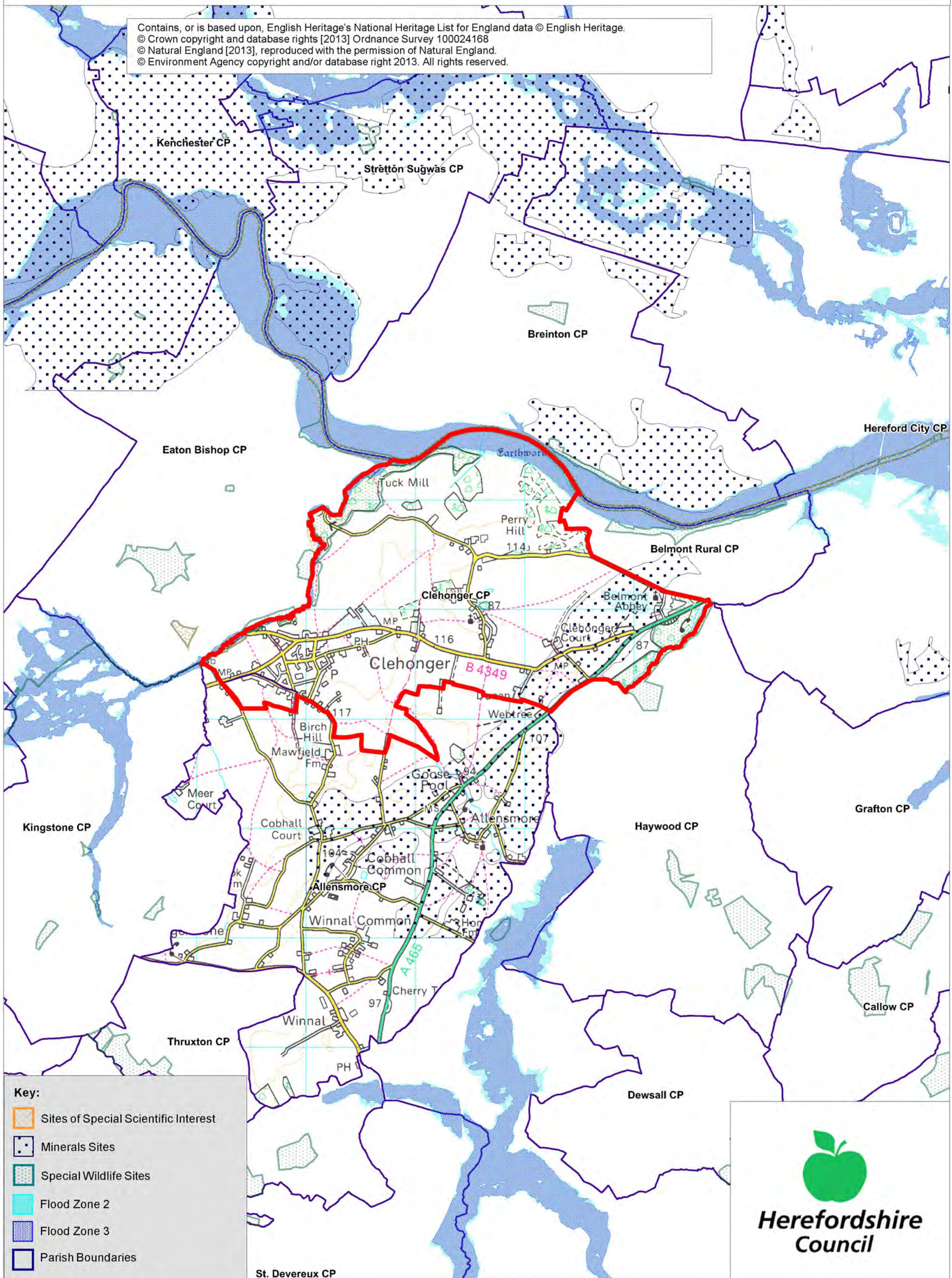
**Herefordshire
Council**

Clehonger SEA Map 2

Scale: 1:30,000



Contains, or is based upon, English Heritage's National Heritage List for England data © English Heritage.
© Crown copyright and database rights [2013] Ordnance Survey 100024168
© Natural England [2013], reproduced with the permission of Natural England.
© Environment Agency copyright and/or database right 2013. All rights reserved.



Key:

- Sites of Special Scientific Interest
- Minerals Sites
- Special Wildlife Sites
- Flood Zone 2
- Flood Zone 3
- Parish Boundaries



**Herefordshire
Council**

Appendix 2

Strategic Environmental Assessment



Clehonger Neighbourhood Area

Scoping Report

June 2015

Consultation on the Scoping Report

The aim of the consultation process is to involve and engage with statutory consultees and other relevant bodies on the scope of the appraisal. In particular, it seeks to:

- Ensure the SEA is both comprehensive and sufficiently robust to support the Neighbourhood Development Plan during the later stages of full public consultation;
- Seek advice on the completeness of the plan review and baseline data and gain further information where appropriate;
- Seek advice on the suitability of key sustainability issues;
- Seek advice on the suitability of the sustainability objectives.

Comments on this Scoping Report have been invited from the three consultation bodies as required by the SEA regulations, together with the Natural Resources Wales.

The three consultation bodies are as follows:

1. Natural England;
2. Historic England;
3. Environment Agency.



Template A1: Identification and review of local Neighbourhood Area relevant plans, policies and programmes

Parish Council Name: Clehonger

Neighbourhood Development Plan Name: Clehonger Neighbourhood Plan

Date completed: March 2015

Plans and Programmes	Type of document	Date	Overview	Key message, target/objective/indicator	SEA topic(s)¹	Implications for the NDP and SEA
The EC Conservation of Habitats and Species Regulations	European Union Legislation	2010	These regulations transpose the Habitats Directive in England, Wales and to a limited extent Scotland by ensuring that activities are carried out in accordance with the Habitats Directive, which is to protect biodiversity through the conservation of natural habitats and species of wild flora and fauna.	The Regulations make it an offence (subject to exceptions) to deliberately capture, kill, disturb, or trade in the animals listed in Schedule 2, or pick, collect, cut, uproot, destroy, or trade in the plants listed in Schedule 4. However, these actions can be made lawful through the granting of licenses by the appropriate authorities.	<ul style="list-style-type: none"> • Biodiversity • Cultural heritage and the landscape 	The Neighbourhood Plan should be compliant with all the relevant legislation and regulations.

¹ Derived from the LDF General Scoping Report (June 2007)

Plans and Programmes	Type of document	Date	Overview	Key message, target/objective/indicator	SEA topic(s) ¹	Implications for the NDP and SEA
The EC Water Framework Directive	European Union	2000	Commits all EU member states to achieve good qualitative and quantitative status of all water courses by 2015	Aims for 'good status' for all ground and surface waters (rivers, lakes, transitional waters, and coastal waters) in the EU	<ul style="list-style-type: none"> • Water 	The Neighbourhood Plan should be compliant with all the relevant legislation and regulations.
The Wildlife and Countryside Act (1981)	Domestic Legislation	1981	The major legal instrument for wildlife protection in Britain, although other significant acts have been passed since. It has numerous parts and supplementary lists and schedules many of which have been amended since publication.	The principle mechanism for the legislative protection of wildlife in Great Britain.	<ul style="list-style-type: none"> • Biodiversity • Cultural heritage and the landscape • Flora and fauna • Material assets • Soil 	The Neighbourhood Plan should be compliant with all the relevant legislation and regulations.

Plans and Programmes	Type of document	Date	Overview	Key message, target/objective/indicator	SEA topic(s) ¹	Implications for the NDP and SEA
The Countryside and Right of Way Act (2000)	Domestic Legislation	2000	Creates a statutory right of access on foot to certain types of open land, to modernise the public rights of way system, to strengthen nature conservation legislation, and to facilitate better management of AONBs.	<p>The Act provides for a new right of access on foot to areas of open land comprising: Mountain (land over 600 metres); Moorland; Heath; Downland; Registered common land.</p> <p>There are provisions to consider extending the right in the future to coastal land, but not woodland despite some early publicity suggesting this.</p>	<ul style="list-style-type: none"> • Biodiversity • Cultural heritage and the landscape • Flora and fauna • Material assets • Soil 	The Neighbourhood Plan should be compliant with all the relevant legislation and regulations.
The Natural Environment and Rural Communities Act (2006)	Domestic Legislation	2006	Designed to help achieve a rich and diverse natural environment and thriving rural communities through modernised and simplified arrangements for delivering Government policy.	Provides that any public body or statutory undertaker in England and Wales must have regard to the purpose of conservation of biological diversity in the exercise of their functions.	<ul style="list-style-type: none"> • Biodiversity • Cultural heritage and the landscape • Flora and fauna • Material assets • Soil 	The Neighbourhood Plan should be compliant with all the relevant legislation and regulations.

Plans and Programmes	Type of document	Date	Overview	Key message, target/objective/indicator	SEA topic(s) ¹	Implications for the NDP and SEA
Revised EU Sustainable Development strategy	European Union Strategy	2009	Sets out a single strategy on how the EU will more effectively meet its long-standing commitment to meet the challenges of sustainable development.	Recognises the need to gradually change current unsustainable consumption and production patterns and move towards a better integrated approach to policy making. The Strategy sets overall objectives, targets and concrete actions for seven key priority challenges, predominantly environmental: <ul style="list-style-type: none"> • Climate change and clean energy; • Sustainable transport • Sustainable production and consumption; • Public health threats; • Better management of natural resources; • Social inclusion, demography and migration; • Fighting global poverty. 	<ul style="list-style-type: none"> • Air • Climate factors • Cultural heritage and the landscape • Population and human health 	The Neighbourhood Plan should take into account the objectives of the strategy. The aim of sustainable development should be implicit in its approach.

Plans and Programmes	Type of document	Date	Overview	Key message, target/objective/indicator	SEA topic(s) ¹	Implications for the NDP and SEA
Biodiversity 2020: A strategy for England's wildlife and ecosystem services	National Strategy	2011	Forms part of the UK's Post-2010 Biodiversity Framework by setting out England's contribution towards the UK's commitments under the United Nations Convention of Biological Diversity.	Sets out to halt overall biodiversity loss, support healthy well-functioning ecosystems and establish coherent ecological networks, with more and better places for nature for the benefit of wildlife and people.	<ul style="list-style-type: none"> • Biodiversity 	The NDP should take account of the provisions of the strategy, making the most of opportunities to enhance wildlife habitats or restore degraded ecosystems in the process.
National Planning Policy Framework (NPPF)	National planning policy.	2012	Consolidates the suite of PPG/PPS into one succinct planning policy document.		<ul style="list-style-type: none"> • Air • Biodiversity • Climate factors • Cultural heritage and the landscape • Flora and fauna • Material assets • Population and human health • Soil • Water 	The NDP should take into account the relevant policies set within the NPPF.
Planning Practice Guidance	Government Guidance	2014	Provides guidance to local planning authorities and others on the		<ul style="list-style-type: none"> • Air • Biodiversity • Climate factors 	The NDP should take into account the planning guidance provided within these

Plans and Programmes	Type of document	Date	Overview	Key message, target/objective/indicator	SEA topic(s) ¹	Implications for the NDP and SEA
			operation of the planning system.		<ul style="list-style-type: none"> • Cultural heritage and the landscape • Flora and fauna • Material assets • Population and human health • Soil • Water 	documents.
Herefordshire Core Strategy, Pre-submission document 2011-2031	Development Plan Document (DPD)	2013	Sets out the vision, objectives and policies for the Herefordshire Local Plan (Core Strategy), which will guide development across the county up to 2031.	<p>Outlines the emerging suite of countywide planning policies relating to housing, economic development and the environment, which the NDP will need to be in conformity with where relevant.</p> <p>The Core Strategy includes a range of objectives, five of which directly relate to rural areas:</p> <ul style="list-style-type: none"> • To meet the housing 	<ul style="list-style-type: none"> • Air • Biodiversity • Climate factors • Cultural heritage and the landscape • Flora and fauna • Material assets • Population and human health • Soil • Water 	<p>The NDP should take account of relevant policies set within in the Core Strategy.</p> <p>Where necessary, the NDP should provide services, facilities and employment opportunities that are accessible to both local and neighbouring communities.</p>

Plans and Programmes	Type of document	Date	Overview	Key message, target/objective/indicator	SEA topic(s) ¹	Implications for the NDP and SEA
				<p>needs of all sections of the community</p> <ul style="list-style-type: none"> • To improve access to services in rural areas • To strengthen the economic viability of the villages and their rural hinterlands • To achieve sustainable communities and protect the environment • To conserve, promote, utilise and enjoy our natural, built, historic and cultural assets for the fullest benefit of the whole community. <p>To achieve a thriving rural Herefordshire, the Core Strategy seeks to enhance the role the villages have traditionally played in as accessible, sustainable centres for their rural catchments.</p>		<p>Clehonger is identified as being suitable for proportional growth.</p>

Plans and Programmes	Type of document	Date	Overview	Key message, target/objective/indicator	SEA topic(s) ¹	Implications for the NDP and SEA
				Seeks proportional growth of 18% in Cleghonger (Hereford HMA) over the plan period.		
Herefordshire Local Transport Plan 3 (LTP) 2013-2015	Corporate	2013	Sets out the Council's strategy for supporting economic growth, social inclusion and reducing the environmental impacts of transport, as well as the program of investment for the period April 2013 to April 2015.	The document includes three key objectives, one which seeks to maintain access for rural residents and people without access to a car. Intrinsic to this is the retention of a 'core network' of bus services which focus on journeys between Hereford and the market towns, along with main transport corridors close to larger rural settlements. To this end, the strategy aims to increase the number of bus users by 1.3% (4,700 journeys) by 2015.	<ul style="list-style-type: none"> • Air • Climate factors • Population and human health 	The LTP does not explore current transport issues in the Cleghonger Neighbourhood Area, but any new development proposed through the NDP should seek to reduce the environmental impacts of transport.

Plans and Programmes	Type of document	Date	Overview	Key message, target/objective/indicator	SEA topic(s) ¹	Implications for the NDP and SEA
Understanding Herefordshire Report	Built and natural environment	2014	<p>Important to understand the place such as the local economy, natural and built environment in which people live, learn and work as part of understanding their quality of life</p> <p>Enable development for economy and housing to required levels.</p> <p>Growth should be supported by sustainable transport measures.</p>	An air quality management plan is in place to tackle this. Destination Hereford project is in place to give locals more sustainable transport options.	<p>Improve air quality.</p> <p>Have a more diverse range of transport options.</p>	None identified.

Plans and Programmes	Type of document	Date	Overview	Key message, target/objective/indicator	SEA topic(s) ¹	Implications for the NDP and SEA
Malvern Hills AONB Management Plan 2009-2014	Corporate	2009	Identifies the issues and challenges facing the special features of the area and contains 24 guiding principles and 46 strategic objectives which will help address them.	N/A	<ul style="list-style-type: none"> • Air • Biodiversity • Climate factors • Cultural heritage and the landscape • Flora and fauna • Material assets • Population and human health • Soil • Water 	The Clehonger Neighbourhood Plan area is not within or adjacent to the Malvern Hills AONB.
Wye Valley AONB management Plan 2009-2014	Corporate	2009	The Management Plan is the prime document which sets out the vision for the area and the priorities for its management.	N/A	<ul style="list-style-type: none"> • Air • Biodiversity • Climate factors • Cultural heritage and the landscape • Flora and fauna • Material assets • Population and human health • Soil • Water 	The Clehonger Neighbourhood Plan area is not within or adjacent to the Wye Valley AONB.

Plans and Programmes	Type of document	Date	Overview	Key message, target/objective/indicator	SEA topic(s) ¹	Implications for the NDP and SEA
Herefordshire Economic Development Strategy 2011-2016	Corporate	2011	Aims to increase the economic wealth of Herefordshire by setting out proposals and to support business growth up to 2016.	<p>The document outlines the path and direction to foster economic vitality within Herefordshire. Key objectives therefore include:</p> <ul style="list-style-type: none"> • Sustaining business survival and growth • Increasing wage levels, range and quality of jobs • Having a skilled population to meet future work needs • Developing the county's built infrastructure so enterprise can flourish. 	<ul style="list-style-type: none"> • Cultural heritage and the landscape • Material assets • Population and human health 	None of merit.

Plans and Programmes	Type of document	Date	Overview	Key message, target/objective/indicator	SEA topic(s) ¹	Implications for the NDP and SEA
Herefordshire Employment Land Study	Evidence	2012	Includes employment land assessments for the plan period 2011-2031. The study includes Quantitative and Qualitative assessments of employment land, assessment of market demand and need, as well as providing forecasts and recommendations for future employment need over the plan period.	<p>This study covers existing employment sites in Hereford, the five market towns and their rural hinterlands.</p> <p>There are no employment land allocations within Clelonger at present and so the study does not identify sites which are worthy of continued protection from alternative uses. Nor does it make any recommendations in respect of employment need within the neighbourhood area.</p>	<ul style="list-style-type: none"> • Material assets • Population and human health 	None of merit; however the NDP process may have to explore whether there is any employment need locally and if so whether there is any scope for providing employment land and premises.

Plans and Programmes	Type of document	Date	Overview	Key message, target/objective/indicator	SEA topic(s) ¹	Implications for the NDP and SEA
Herefordshire Strategic Housing Land Availability Assessment (SHLAA)	Evidence	2009	<p>The SHLAA aims to justify site allocations in plans by:</p> <ul style="list-style-type: none"> Identifying sites which are capable of delivering housing development Assessing sites for their housing potential; and Predicting when a site could be developed for housing. 	<p>In terms of Clehonger previous SHLAA identifies that:</p> <ul style="list-style-type: none"> Clehonger NDP area is within the Hereford HMA and is allocated under the RA1 policy and should take into consideration the criteria set within this policy. There needs to be proportional housing growth of 18% in the Clehonger area. 	<ul style="list-style-type: none"> Air Biodiversity Climate factors Cultural heritage and the landscape Flora and fauna Population and human health Soil Water 	<p>The SHLAA assesses the potential availability of land for housing in Clehonger.</p> <p>The Clehonger NDP should be informed by the findings of the SHLAA.</p>

Plans and Programmes	Type of document	Date	Overview	Key message, target/objective/indicator	SEA topic(s) ¹	Implications for the NDP and SEA
Herefordshire Local Housing Market Assessment (LHMA)	Evidence	2013	Builds on an earlier Strategic Housing Market Assessment (SHMA) developed for Herefordshire and Shropshire. Its purpose is to inform the Local Plan's policies regarding housing need and demand (for market and affordable housing) within each of the 7 Housing Market Areas (HMAs) in Herefordshire between 2011 and 2031.	<p>Clelonger falls within the Hereford HMA. Here, the study reveals that:</p> <ul style="list-style-type: none"> • 58% of households are unable to afford market housing. • There is an annual requirement for 417 affordable dwellings between 2012 and 2017. <p>The study identifies that, in rural parts of the HMA, there is a need for:</p> <ul style="list-style-type: none"> • 1215 market houses • 654 affordable houses. <p>The study highlights that within the Hereford HMA the overall estimated housing need by size 2012-2017 is as follows:</p> <ul style="list-style-type: none"> 1 bed - 57.3% 2 bed – 18.6% 3 bed – 18.5% 4 bed – 5.7% 	<ul style="list-style-type: none"> • Air • Biodiversity • Climate factors • Cultural heritage and the landscape • Flora and fauna • Population and human health • Soil • Water 	<p>The LHMA provides an indication of housing needs and affordability within the Hereford HMA.</p> <p>It provides evidence that could be used to inform policies or market and affordable housing requirements in the NDP.</p>

Plans and Programmes	Type of document	Date	Overview	Key message, target/objective/indicator	SEA topic(s) ¹	Implications for the NDP and SEA
Herefordshire Local Housing Requirements Study	Evidence	2012	Technical assessment of the housing market and potential future local housing requirements which supports planning policy regarding the amount of growth, housing tenure and housing type needed within Herefordshire up to 2031.	<p>The delivery of 5,300 homes in the rural areas would:</p> <ul style="list-style-type: none"> • Support growth in the rural population by 6% • Increase the number of households by 14.5% <p>Forecasts also predict that growth in the population of the rural areas is likely to be primarily through an increase in those aged over 75.</p> <p>Moderate growth is expected in the 30-44 and 60-74 age brackets.</p> <p>The Local Housing Requirements Study therefore anticipates continuing improvements in life expectancy; significant growth is expected of those in their 80s, with the existing population in their 40s and 50s moving into retirement.</p>	<ul style="list-style-type: none"> • Air • Biodiversity • Climate factors • Cultural heritage and the landscape • Flora and fauna • Material assets • Population and human health • Soil • Water 	<p>This study provides an indication of housing requirements in the rural areas and the Hereford HMA.</p> <p>This evidence can be used to inform the content of the Clehonger NDP, which could include policies to facilitate the provision of the right types of homes in the right places.</p>

Plans and Programmes	Type of document	Date	Overview	Key message, target/objective/indicator	SEA topic(s) ¹	Implications for the NDP and SEA
				As a consequence, the rural areas will face an increasing urgency to provide more 3 bedroom homes, with more 1 and 2 bed homes required in the affordable sector.		
Herefordshire Rural Housing Background Report	Evidence	2013	Provides the justification for the proportional housing growth targets outlined in the Core Strategy	The village of Clehonger is classified as an RA1 settlement, which means it is considered a sustainable location for proportional growth of up to 18%.	<ul style="list-style-type: none"> • Air • Biodiversity • Climate factors • Cultural heritage and the landscape • Flora and fauna • Material assets • Population and human health • Soil • Water 	The Clehonger NDP will need to be in conformity with the provisions of Policy RA1.

Plans and Programmes	Type of document	Date	Overview	Key message, target/objective/indicator	SEA topic(s) ¹	Implications for the NDP and SEA
Herefordshire Draft Gypsies and Travellers Assessment	Evidence	2013	Assesses the accommodation needs of Gypsies and Travellers across Herefordshire.	<p>Key findings from the survey of Gypsy and Traveller households in 2012 found that:</p> <ul style="list-style-type: none"> • 31% of households surveyed have some sort of accommodation need • Of the 17 households with an accommodation need, 7 had a requirement for at least one additional pitch • 10 households had a requirement for bricks and mortar housing • There is an additional requirement for 7 pitches and 9 units of Registered Social Landlord accommodation within Herefordshire. 	<ul style="list-style-type: none"> • Air • Biodiversity • Climate factors • Cultural heritage and the landscape • Flora and fauna • Material assets • Population and human health • Soil • Water 	The Clehonger NDP must establish whether any of the need identified in this assessment falls within the neighbourhood area and make appropriate provisions for it.

Plans and Programmes	Type of document	Date	Overview	Key message, target/objective/indicator	SEA topic(s) ¹	Implications for the NDP and SEA
Herefordshire Local Biodiversity Action Plan	Evidence	2007	Focuses conservation efforts on the areas within Herefordshire that will result in the greatest benefit for ecological networks, habitats and species.	Integrating biodiversity objectives with other environmental, social and economic needs can provide a sustainable living and working environment that benefits both people and nature.	<ul style="list-style-type: none"> Biodiversity 	The NDP can help to achieve the LBAP priorities.
Building Biodiversity into the LDF	Evidence	2009	Provides the Council's Local Plan (Core Strategy) with evidence in respect of biodiversity and geodiversity, identifying both opportunities and constraints across Herefordshire.	This document provides useful information in respect of Hereford and the market towns only.	<ul style="list-style-type: none"> Air Biodiversity Climate factors Cultural heritage and the landscape Flora and fauna Material assets Population and human health Soil Water 	There is a lack of information about rural areas which means it will be necessary to gather and assess existing biodiversity and geodiversity data, in order to ensure that the Clehonger NDP can overcome any existing constraints and capitalise on opportunities to enhance habitats and their networks.

Plans and Programmes	Type of document	Date	Overview	Key message, target/objective/indicator	SEA topic(s) ¹	Implications for the NDP and SEA
Herefordshire Green Infrastructure Strategy	Evidence	2010	Develops a framework of natural and culturally important features and functions so that planning for a sustainable future is at the heart of planning within Herefordshire.	Establishes policies and principles for the protection and enhancement of those features and functions that contributes to the environment of Herefordshire across a range of scales.	<ul style="list-style-type: none"> • Air • Biodiversity • Climate factors • Cultural heritage and the landscape • Flora and fauna • Material assets • Population and human health • Soil • Water 	The study provides evidence that could be taken into account when preparing policies for the Cleghonger NDP.
Renewable Energy Study	Evidence	2010	Assesses the energy demand within Herefordshire and the ability for the county to accommodate renewable and low carbon energy technologies.	<p>The total energy demand excluding transport for Herefordshire, at that point in time, was calculated as being:</p> <ul style="list-style-type: none"> • Electrical: 731 GWh/yr • Heat: 1,810 GWh/yr • Total: 2,541 GWh/yr <p>There is scope for all types of renewable energy production.</p>	<ul style="list-style-type: none"> • Air • Biodiversity • Climate factors • Cultural heritage and the landscape • Flora and fauna • Material assets • Population and human health • Soil • Water 	The study provides evidence that could be taken into account when preparing policies for the Cleghonger NDP.

Plans and Programmes	Type of document	Date	Overview	Key message, target/objective/indicator	SEA topic(s) ¹	Implications for the NDP and SEA
Herefordshire Playing Pitch Assessment	Evidence	2012	Produces a strategic framework, audit and assessment and needs analysis of outdoor sports pitches and facilities for Herefordshire. The document arises as a result of a recommendation in the Herefordshire and Worcestershire Sports Facilities Framework to develop local standards for playing fields and sports pitches throughout Herefordshire.	<p>The study updates components of the Herefordshire and Worcestershire Sports Facilities Framework 2010 such as updating population forecasts, setting local standards for synthetic turf pitches and grass playing fields within Herefordshire. It identifies any current gaps in provision, and looks forward to 2031 to assess what facilities are likely to be required by that date.</p> <p>In terms of Clehonger parish itself, the study reveals that there is:</p> <ul style="list-style-type: none"> • 0.70ha of playing pitch area (at the Primary School) <p>There are no hectares of playing pitch area with secured community access.</p>	<ul style="list-style-type: none"> • Biodiversity • Cultural heritage and the landscape • Flora and fauna • Material assets • Population and human health 	<p>The study provides evidence that could be taken into account when preparing policies for the Clehonger NDP.</p> <p>Additional local evidence may be required to identify if there is a need for any secured playing pitch facilities within the Group Parish.</p>

Plans and Programmes	Type of document	Date	Overview	Key message, target/objective/indicator	SEA topic(s) ¹	Implications for the NDP and SEA
Open Spaces Study	Evidence	2006	The 2006 space audit and assessment of need is a snap shot of the quality, quantity and distribution of open space across Herefordshire.	<p>The study reveals that within the Cleghonger parish</p> <ul style="list-style-type: none"> • Extensive under provision of parks and gardens and outdoor sport • Extensive over provision of natural and semi-natural green space • Under provision of amenity green space and • Average provision for children and young people. 	<ul style="list-style-type: none"> • Biodiversity • Climate factors • Cultural heritage and the landscape • Flora and fauna • Material assets • Population and human health 	The open space audit and assessment of does not give a specific indication of open space shortfalls and surpluses in Cleghonger

Plans and Programmes	Type of document	Date	Overview	Key message, target/objective/indicator	SEA topic(s) ¹	Implications for the NDP and SEA
Play Facilities Study	Evidence	2012	The Play Facilities Study 2012 updates the previous play facilities analysis under the Open Spaces Study 2006 and provides guidance and a framework for the development, delivery and continued sustainability of providing new and improved play facilities for children and young people in Herefordshire to 2031.	In terms of Cleghonger itself, the study reveals that the play area needs to be replaced or refurbished as a neighbourhood facility and has been given a high priority.	<ul style="list-style-type: none"> • Biodiversity • Climate factors • Cultural heritage and the landscape • Flora and fauna • Material assets • Population and human health 	The study provides evidence that could be taken into account when preparing policies for the Cleghonger NDP.

Plans and Programmes	Type of document	Date	Overview	Key message, target/objective/indicator	SEA topic(s) ¹	Implications for the NDP and SEA
Strategic Flood Risk Assessment (SFRA) and Water Cycle Study	Evidence	2009	<p>The Strategic Flood Risk Assessment (SFRA) provides a summary of flood risk in Herefordshire to inform the location of future development.</p> <p>The Water Cycle Study examines how water resources and water supply infrastructure, wastewater treatment, water quality, sewerage and flood risk could constrain growth across Herefordshire.</p>	<p>Cleghonger lies within the Lower Middle Wye and Cage Brook catchment areas and are classified as having the 20th and 38th highest risk ranking, respectively for fluvial flooding at 1%AEP.</p> <p>Cleghonger is within the Hereford CU Water Resource Zone (WRZ).</p> <ul style="list-style-type: none"> Both the 'Annual Average' and 'Critical Period' scenarios are in surplus throughout the planning period for the WRZ. <p>The overall Water Directive Framework status of the River Wye in the Cleghonger area is 'Good'. However the Cage Brook status is 'Poor'.</p>	<ul style="list-style-type: none"> Biodiversity Climate factors Material assets Population and human health Water 	<p>New development proposed through the Cleghonger NDP should be assessed against the capacity of local infrastructure.</p> <p>Up-to-date flood risk information should be gathered from the Environment Agency, in order to ensure that any flood risks are considered when preparing the Cleghonger NDP.</p>

Appendix A2 – Baseline information for Clelonger

N.B. This is based on countywide baseline information with some additions relevant to Clelonger (in red). Where no locally specific data is available for current status, trends and targets, only countywide data is reported. Any gaps in data may be filled following additional research.

SA Objective ¹	SA Theme	Proposed indicator	Current status	Trends	Targets	Issues and constraints	Baseline (information) source
SEA Topic covered by objective: <i>Biodiversity, flora and fauna</i>							
13. Value, maintain, restore and expand county biodiversity.	Natural environment	Net change in condition of SSSIs across Herefordshire.	<p>The 2011-2013 AMR does not contain updated conservation data.</p> <p>2010/11: 27% of Herefordshire's SSSI land was in favourable condition.</p> <p><i>Within Clelonger there are 2 SSSIs; River Wye (Unfavourable Recovering) and Cage Brook Valley (Favourable (part), Unfavourable No Change (part), Unfavourable Declining (part)).</i></p> <p><i>Nearby there is 1</i></p>	<p>2006: 22%</p> <p>2007: 22%</p> <p>2008: 22%</p> <p>2010: 24 %</p> <p>Proportion of SSSI land that was in unfavourable condition but recovering increased between 2010 and 2012 going from 41% to 65%.</p> <p>Proportion in unfavourable and declining condition had also decreased from 4% to 1%.</p>	<p>% of SSSI land in favourable condition (Increase)</p> <p>% of SSSI land in unfavourable condition but recovering (Increase)</p> <p>% of SSSI land in unfavourable condition and declining (Decrease)</p>	<p>Herefordshire's SSSIs are in extremely poor condition relative to England as whole, where 96.1% of all SSSI land was in favourable condition in April 2014.</p> <p>The proportion of SSSI in unfavourable condition but recovering is greater than England as a whole, where the figure currently stands at 58.6%.</p>	<p>Understanding Herefordshire: An integrated needs assessment (June 2013).</p> <p>NE & DEFRA Website July 2014</p>

¹ Derived from the Pre Submission Core Strategy Sustainability Appraisal Assessment (May 2014)

SA Objective ¹	SA Theme	Proposed indicator	Current status	Trends	Targets	Issues and constraints	Baseline (information) source
			SSSI; Littlemarsh Common (Unfavourable Declining)				
13. Value, maintain, restore and expand county biodiversity.	Natural environment	After use of mineral sites especially wildlife habitat creation	<i>There is no countywide or locally specific data available at present.</i>	-	Percentage of opportunities taken	Should be monitored through AMR following the adoption of the Core Strategy, in line with SA recommendations.	-
13. Value, maintain, restore and expand county biodiversity.	Natural environment	Phosphate levels within the River Wye SAC and adjoining tributaries that receive increased phosphates from proportional growth.	Countywide data is available, Phosphate levels within the Wye between Hay and the Lugg confluence is currently meeting the phosphate target and therefore fulfilling the conservation objectives, however it is nearing the target so there is a risk to future compliance.	N/A	N/A	N/A	Nutrient Management Plan

SA Objective ¹	SA Theme	Proposed indicator	Current status	Trends	Targets	Issues and constraints	Baseline (information) source
13. Value, maintain, restore and expand county biodiversity.	Natural environment	Changes to protected habitats and impacts of species within the Herefordshire Local Biodiversity Action Plan.	<p>The 2011-2013 AMR does not contain updated conservation data.</p> <p>2010/11: 17 Habitat Action Plans and 14 Species Action Plans are currently in operation across Herefordshire.</p> <p><i>There is no locally specific data available at present.</i></p>	<p>There are no formal records of any unacceptable adverse impacts on habitats or protected species.</p> <p>Originally 156 Priority Species were identified for inclusion in Herefordshire's LBAP.</p> <p>Similarly Herefordshire's LBAP covered 23 habitats with Action Plans.</p>	<p>To protect and where possible enhance the habitats of protected species identified.</p> <p>No net losses.</p>	<p>Herefordshire Biological Records Centre (HBRC) holds limited data on some individual sites.</p>	<p>Herefordshire Council AMR (2010/11)</p>

SA Objective ¹	SA Theme	Proposed indicator	Current status	Trends	Targets	Issues and constraints	Baseline (information) source
13. Value, maintain, restore and expand county biodiversity.	Natural environment	Changes in the areas of designated nature conservation sites as a consequence of planning permission.	Clehonger has: SSSI: 3 SWS: 4 There is 1 SAC, no NNRs, SINC or LNRs within the parish.	As of 2012, there had been no change in the areas of designated nature conservation sites as a consequence of the planning permissions granted.	To capitalise on opportunities to enhance the areas of value to nature conservation as much as possible.	Herefordshire Biological Records Centre (HBRC) holds limited data on some individual sites.	Herefordshire Council Initial Screening Report for the Neighbourhood Plan 2013

SA Objective ¹	SA Theme	Proposed indicator	Current status	Trends	Targets	Issues and constraints	Baseline (information) source
13. Value, maintain, restore and expand county biodiversity.	Natural environment	Proportion of local sites where positive conservation management has or is being implemented.	The Parish Area has the following landscape types: Predominantly Wooded Estatelands; with Principal settled farmlands in the south and the west; Riverside meadows occupy the land alongside the river;	-	No specific targets identified.	Should be monitored through AMR following the adoption of the Core Strategy, in line with SA recommendations.	Herefordshire Landscape Character Assessment (2004 updated 2009)
SEA Topic covered by objectives: <i>Material assets</i>							
14. Use natural resources and energy more efficiently.	Resource consumption and climate change	Maintaining Herefordshire Council's County Site and Monuments Register.	Countywide data would be too large to incorporate into this template. Whilst there is no qualitative, locally specific data available at	-	No specific targets identified, but need to ensure that the register is kept up to date.	Should be monitored through AMR following the adoption of the Core Strategy, in line with SA recommendations.	Herefordshire Environmental Records Register (search June 2014).

SA Objective ¹	SA Theme	Proposed indicator	Current status	Trends	Targets	Issues and constraints	Baseline (information) source
			present, there are a number of listed buildings within the NDP area and 2 scheduled monuments near to the parish; Eaton Camp and the moated site SW of the Church according to the latest version of the register.				
14. Use natural resources and energy more efficiently.	Resource consumption and climate change	Monitoring changes to historic landscapes.	Historic Landscape Character assessments have only been undertaken for Hereford City. Rapid townscape Assessments (2010) were only undertaken for Hereford, Ledbury and Ross.	-	No specific targets identified.	Should be monitored through AMR following the adoption of the Core Strategy, in line with SA recommendations.	Historic Landscape Character Assessment for Hereford. Rapid townscape Assessments (2010)
SEA Topic covered by objective: <i>Population, Biodiversity, Flora and Fauna</i>							

SA Objective ¹	SA Theme	Proposed indicator	Current status	Trends	Targets	Issues and constraints	Baseline (information) source
15. Value, protect, enhance and restore the landscape quality of Herefordshire, including its rural areas and open spaces.	Natural environment	Number of developments meeting and surpassing national design standards.	<i>There is no countywide or locally specific data available at present.</i>	-	No specific targets identified.	Should be monitored through AMR following the adoption of the Core Strategy, in line with SA recommendations.	-
15. Value, protect, enhance and restore the landscape quality of Herefordshire, including its rural areas and open spaces.	Natural environment	The need for, frequency and outcomes of planning enforcement investigations/ planning appeals concerning aspects of local loss of heritage assets and locally important buildings particularly within a conservation area.	Countywide data would be too large to incorporate into this template. There are no outstanding enforcement actions or appeals concerning local loss of heritage assets and locally important buildings within Cleghonger at present.	No historic records of any planning enforcement action or appeals concerning locally important buildings and there is no conservation area present in the parish.	To wherever possible improve upon or otherwise maintain current status.	Current status must be verified by Dvt Mgt and Enforcement Officers, but the NDP can help to avoid enforcement action and appeals during the plan period.	Council Dvt Mgt records (searched March 2015)
SEA Topic covered by objective: <i>Climatic Factors</i>							

SA Objective ¹	SA Theme	Proposed indicator	Current status	Trends	Targets	Issues and constraints	Baseline (information) source
16. Reduce Herefordshire's vulnerability to the impacts of climate change as well as its contribution to the problem.	Resource consumption and climate change.	Transport patronage by mode	<p>% of Herefordshire residents who travel to work by:</p> <p>Car: 70.1% Foot: 14.7% Bicycle: 4.3% Bus: 2% Train: 0.8% Motorbike: 0.8% Taxi: 0.3% Other: 7%</p> <p><i>There is no locally specific data available at present</i></p>	The number of people cycling or travelling by bus as the main form transport to get to work declined between 2001 and 2011 – across England and Wales there was little change in either. Walking or driving a car or van on the other hand increased.	To encourage the take up of lesser polluting modes of transport.	There are a lack of transport options for many rural communities and therefore high car ownership and dependency – the last decade has seen a 15 per cent increase in household car ownership, although this is not reflected in traffic flows of recent years with volumes in Hereford City and wider county having decreased. The proportion of people working from home increased over the decade from 15 per cent in 2001 to 17 per cent in 2011.	2011 Census

SA Objective ¹	SA Theme	Proposed indicator	Current status	Trends	Targets	Issues and constraints	Baseline (information) source
16. Reduce Herefordshire's vulnerability to the impacts of climate change as well as its contribution to the problem.	Resource consumption and climate change.	Number of decentralised energy schemes granted permission.	<i>There is no countywide or locally specific data available at present.</i>	-	To contribute towards the national target.	Should be monitored through AMR following the adoption of the Core Strategy, in line with SA recommendations.	-

SA Objective ¹	SA Theme	Proposed indicator	Current status	Trends	Targets	Issues and constraints	Baseline (information) source
16. Reduce Herefordshire's vulnerability to the impacts of climate change as well as its contribution to the problem.	Resource consumption and climate	Total CO2 emissions per capita	<p>Latest figure dates back to 2010: 1.61 million tonnes (mtCO₂)</p> <p>There is no locally specific data available at present.</p>	<p>Between 2005 and 2010 Herefordshire's total and per capita carbon emission reduced by 7% and 8% respectively; while UK's total and per capita carbon emission reduced by 8% and 12% respectively within the same period. This trend hides an increase in emissions between 2009 and 2010 when total emissions in the county increased by 5% the same as across the UK (+5%).</p>	To reduce the overall carbon emissions.	CO ₂ emissions produced are decreasing.	Understanding Herefordshire: An integrated needs assessment (June 2013).

SA Objective ¹	SA Theme	Proposed indicator	Current status	Trends	Targets	Issues and constraints	Baseline (information) source
SEA Topic covered by objective: <i>Water</i>							
17. Reduce the risk of flooding and the resulting detriment to public wellbeing, the economy and the environment.	Natural environment	Number of planning permissions granted contrary to the advice of the Environment Agency on flood defence grounds.	2010/11: None 2011/13: Not specified 2013/14: None <i>There is no locally specific data available at present.</i>	There have been no approvals contrary to EA advice since reporting began in 2004.	To have no applications permitted contrary to EA advice.	None identified.	Herefordshire Council AMR (2010/11)
SEA Topic covered by objective: <i>Water, air, soil, material assets</i>							
18. Minimise local and global pollution and protect or enhance environmental resources.	Natural environment	Agricultural land usage by quality . LA to monitor the number of hectares of the best and most versatile agricultural land (grades 3a and higher) lost to development.	The agricultural land classification around Clehonger is mainly Grade 2 (Very Good) with a small area of Grade 1 (Excellent) near the east of the parish, with grade 3 (Good to Moderate) mainly in the west. There is also a strip of Poor (grade 4) land by the river.	-	Measure the number of hectares of best and most versatile soil lost through development.	Should be monitored through AMR following the adoption of the Core Strategy, in line with SA recommendations.	DEFRA 'Magic' website for land classification 2015

SA Objective ¹	SA Theme	Proposed indicator	Current status	Trends	Targets	Issues and constraints	Baseline (information) source
18. Minimise local and global pollution and protect or enhance environmental resources.	Natural environment	Percentage of river length assessed as good or very good chemical quality and ecological quality as required by the Water Framework Directive	Latest figures for the county as a whole dates back to 2005 when there was considered to be 84% assessed as good or very good. This represents a decrease in the % since 2002 <i>There is no locally specific data available at present.</i>	Figure steadily improved before going into decline: Herefordshire 1999 85.9%, 2000 89.5%, 2001 92.2%, 2002 91.8%	To ensure that rivers meet their conservation objectives and do not fall below the required standard of quality.	None identified.	The State of Herefordshire (2007) Water Framework Directive (2000)
SEA Topic covered by objective: <i>Soil</i>							
19. Ensure integrated, efficient and balanced land use.	Built environment	Percentage of all new development completed on previously developed land.	2010/11: 67% 2011-13: 57% 2013-14: 65% <i>There is no locally specific data available at present.</i>	Completions on PDL had risen to 71% by 2005.	To increase the number of homes built on PDL in line with the provisions of national planning policy.	The number of brownfield completions has fallen slightly in recent years, though this is probably the offshoot of tough market conditions.	Herefordshire Council AMR (2010/11),(2011-2013) and (2013-2014)

SA Objective ¹	SA Theme	Proposed indicator	Current status	Trends	Targets	Issues and constraints	Baseline (information) source
19. Ensure integrated, efficient and balanced land use.	Built environment	Housing densities in urban and rural areas	<i>There is no countywide or locally specific data available at present.</i>	-	No specific targets identified.	Should be monitored through AMR following the adoption of the Core Strategy, in line with SA recommendations.	-
19. Ensure integrated, efficient and balanced land use.	Built environment	Level of development in urban areas compared to rural.	<i>There is no countywide or locally specific data available at present.</i> This indicator would not be applicable to rural NDPs.	N/A	N/A	N/A	N/A
SEA Topic covered by objective: <i>Cultural heritage</i>							

SA Objective ¹	SA Theme	Proposed indicator	Current status	Trends	Targets	Issues and constraints	Baseline (information) source
20. Value, protect and enhance the character and built quality of settlements and neighbourhoods and the county's heritage assets, including conservation areas, historic environment and cultural heritage.	Built environment	Number and percentage of listed buildings and Scheduled Ancient Monuments on Buildings at Risk Register (English Heritage).	<p>Up-to-date countywide information will be presented in the next AMR and which is due to be published in 2014. However, this data would be too large to incorporate into this template.</p> <p>There are a number of listed buildings within the parish and two SAMs.</p> <p>1 Listed Building, Belmont House, is listed on the Heritage at Risk Register.</p>	There were 79 heritage assets in Herefordshire that were considered to be at high risk and included in the Heritage at Risk Register 2014.	<p>To wherever possible improve upon or otherwise maintain current status of listed buildings and scheduled monuments.</p> <p>Promote opportunities to achieve the removal of heritage assets from the at risk register.</p>	One of Cleghongers listed buildings is considered to be at risk at present.	Buildings at Risk Register (English Heritage; search March 2015)

SA Objective ¹	SA Theme	Proposed indicator	Current status	Trends	Targets	Issues and constraints	Baseline (information) source
20. Value, protect and enhance the character and built quality of settlements and neighbourhoods and the county's heritage assets, including conservation areas, historic environment and cultural heritage.	Built environment	The need for, frequency and outcomes of planning enforcement investigations/ planning appeals concerning aspects of local loss of heritage assets, locally important buildings within the parish and particularly within a conservation area.	Countywide data would be too large to incorporate into this template. There are no outstanding enforcement actions or appeals concerning local loss of heritage assets or locally important buildings. There is no conservation area in the Clehonger NDP area.	No historic records of any planning enforcement action or appeals concerning locally important buildings within the two conservation areas.	To wherever possible improve upon or otherwise maintain current status	Current status must be verified by Dvt Mgt and Enforcement Officers, but the NDP can help to avoid enforcement action and appeals during the plan period.	Council Dvt Mgt records (searched March 2015)

Appendix A3 – Environmental issues identified from the Clehonger Group baseline

These environmental issues are the same as most of those identified for the Herefordshire Core Strategy¹

SEA Topic		Environmental issue	SA objectives
1	Air	High reliance upon the private car causing high levels of air pollution and in Hereford in particular	Objective 16
		Need to reduce carbon emissions by encouraging alternative modes of travel.	
2	Biodiversity	Habitats and species of national, regional and local importance are under pressure from the adaptation and diversification of farming and forestry employment.	Objectives 13 &15
		Habitats and species of national, regional and local importance are under pressure from development	
		Minimise loss of biodiversity and expand opportunities for wildlife everywhere.	
3	Climatic factors	Reduce greenhouse gas emissions through planning, design and build.	Objective 16
4	Cultural heritage	Clehonger NDP area has numerous Scheduled Ancient Monuments and listed buildings, all of which require ongoing protection and in some cases high levels of maintenance.	Objective 20
5	Flora and fauna	Conserve and enhance the character and quality of historic landscapes, including all types of natural flora and fauna.	Objective 15
6	Material assets	How the countryside can continue to be managed in an economically, socially and environmentally beneficial way in the face of continuing pressures on traditional farming.	Objectives 14 & 18
7	Population	Minimise energy waste through good designs, which help to reduce energy consumption and maximise efficiency.	Objective 15
		Need to avoid enforcement investigations/action concerning locally important buildings and those within conservation areas in particular.	
8	Soil	Promoting development of previously developed land and buildings as opposed to greenfield sites or agricultural land of the highest quality.	Objectives 18 & 19

¹ Derived from the Pre-submission Core Strategy Sustainability Appraisal Assessment (May 2014) and LDF General Scoping Report (June 2007)

9	Water	Issues relating to availability of resources, foul drainage, pollution, and abstraction in a county which supports water dependent biodiversity of international and national importance, given the predicted climate change consequences for water availability and demanding projections for new housing.	Objectives 17 & 18
		Steady decline in the chemical quality of rivers over the last 10 years.	

Appendix A4: SEA Framework

SEA Scoping Stage A, Task A4 - SEA Framework SEA Objectives, Indicators, Targets

Parish Council Name: Clehonger

Neighbourhood Development Plan Name: Clehonger Neighbourhood Plan

Date completed: March 2015

SEA Topics	SA Objective	SEA Objective	Sub-objectives / Appraisal Questions (Will the option/proposal/site...)	Indicators	Targets
Nature Conservation (Biodiversity, flora and fauna)	Value, maintain, restore or expand county biodiversity. Value, protect, enhance or restore the landscape quality of Herefordshire, including its rural areas and open spaces.	To maintain and enhance nature conservation (biodiversity, flora and fauna)	<ul style="list-style-type: none"> Protect or enhance habitats of international, national, regional or local importance. Protect international, national, regional or locally important terrestrial or aquatic species. Maintain wildlife corridors and minimise fragmentation of ecological areas and green spaces. Manage access to sites in a sustainable way that protects or enhances their nature conservation value. Create new appropriate habitats. Value, enhance and protect natural 	<p>Net change in condition of SSSIs across Herefordshire.</p> <p>After use of mineral sites especially wildlife habitat creation</p> <p>Changes to protected habitats and impacts of species within the Herefordshire Local Biodiversity Action Plan.</p>	<p>% of SSSI land in favourable condition (Increase) % of SSSI land in unfavourable condition but recovering (Increase) % of SSSI land in unfavourable condition and declining (Decrease)</p> <p>Percentage of opportunities taken</p> <p>To protect and where possible enhance the habitats of protected species identified. No net losses</p>

SEA Topics	SA Objective	SEA Objective	Sub-objectives / Appraisal Questions (Will the option/proposal/site...)	Indicators	Targets
			<p>environmental assets including AONB's, historic landscapes, open spaces, parks and gardens and their settings</p> <ul style="list-style-type: none"> • Encourage local stewardship of local environments, for example by promoting best practices in agricultural management • Ensure that environmental impacts caused by mineral operations and the transport of minerals are minimised. • Promote the use of rural areas and open space by all, encourage easy non-car based access, and accommodate the needs of disabled users. 		
Landscape	Not covered in SA	<p>To maintain and enhance the quality of landscapes and townscapes</p> <p>To improve quality of surroundings</p>	<ul style="list-style-type: none"> • Protect and enhance the landscape everywhere and particularly in designated areas • Value and protect diversity and local 	<p>Changes in the areas of designated nature conservation sites as a consequence of planning permission.</p> <p>Proportion of local sites where positive conservation management has or is being</p>	<p>To capitalise on opportunities to enhance the areas of value to nature conservation as much as possible.</p> <p>No specific targets identified.</p>

SEA Topics	SA Objective	SEA Objective	Sub-objectives / Appraisal Questions (Will the option/proposal/site...)	Indicators	Targets
			<p>distinctiveness</p> <ul style="list-style-type: none"> • Improve landscape and ecological quality and character of the countryside • Improve the quantity and quality of publicly accessible open space • Improve satisfaction of people with their neighbourhoods as places to live • Decrease litter and graffiti in towns and countryside • Result in the loss of open space 	<p>implemented.</p> <p>Monitoring changes to historic landscapes.</p> <p>Area resulting in a loss of open space as a result of planning permission</p>	<p>No specific targets identified.</p> <p>No specific targets identified</p>
Heritage	Value, protect or enhance the character and built quality of settlements and neighbourhoods and the county's heritage assets, historic environment and cultural heritage.	To conserve and where appropriate enhance the historic environment, heritage assets and culture heritage	<ul style="list-style-type: none"> • Preserve, protect and enhance heritage assets including conservation areas, listed buildings, archaeological sites and other culturally important features in both urban and rural settings. • Prevent development which is inappropriate 	<p>The need for, frequency and outcomes of planning enforcement investigations/ planning appeals concerning the aspects of local loss of locally important buildings within a conservation area.</p> <p>Number and percentage of listed buildings and Scheduled Ancient Monuments on Buildings at Risk Register (English Heritage).</p> <p>Ensure that Herefordshire Council's</p>	<p>To improve upon or otherwise maintain current status.</p> <p>To improve upon or otherwise maintain current status.</p> <p>No specific targets identified,</p>

SEA Topics	SA Objective	SEA Objective	Sub-objectives / Appraisal Questions (Will the option/proposal/site...)	Indicators	Targets
			<p>in scale, form or design to its setting or to its function or local area.</p> <ul style="list-style-type: none"> • Encourage development that creates and sustains well-designed, high quality built environments that incorporate green space, encourage biodiversity and promote local distinctiveness and sense of place. • Encourage cleanliness and/or improve the general appearance of the area. 	Sites and Monuments Register is kept up to date.	but need to ensure that the register is kept up to date.

SEA Topics	SA Objective	SEA Objective	Sub-objectives / Appraisal Questions (Will the option/proposal/site...)	Indicators	Targets
Air and Climate	<p>Minimise local and global pollution and protect or enhance environmental resources.</p> <p>Reduce Herefordshire's vulnerability to the impacts of climate change as well as its contribution to the problem.</p>	<p>To improve air quality</p> <p>To reduce the effect of traffic on the environment</p> <p>To reduce contributions to climate change</p> <p>To reduce vulnerability to climate change</p>	<ul style="list-style-type: none"> Minimise water, air, soil, groundwater, noise and light pollution from current activities and the potential for such pollution. Protect or enhance the quality of watercourses. Provide opportunities to improve soil quality or reduce contaminated land. Reduce the county's contribution to climate change by reducing greenhouse gas emissions from transport, domestic, commercial and industrial sources. Increase the proportion of energy generated from renewable and low carbon sources including by micro-generation, Combined Heat and Power (CHP), district heating and in transportation. 	<p>Transport patronage by mode</p> <p>Number of decentralised energy schemes granted permission.</p> <p>Total CO2 emissions per capita</p>	<p>To increase the take up of alternative modes to the private car.</p> <p>To contribute towards the national target.</p> <p>To reduce the overall carbon emissions.</p>

SEA Topics	SA Objective	SEA Objective	Sub-objectives / Appraisal Questions (Will the option/proposal/site...)	Indicators	Targets
Water	<p>Reduce the risk of flooding and the resulting detriment to public well-being, the economy and the environment.</p> <p>Minimise local and global pollution and protect or enhance environmental resources.</p>	<p>To improve water quality</p> <p>To provide for sustainable sources of water supply</p> <p>To avoid, reduce and manage flood risk</p>	<ul style="list-style-type: none"> • Reduce flood risk both presently and taking into account climate change. • Prevent inappropriate development of the floodplain, and include flood protection systems. • Include sustainable urban drainage systems where appropriate. • Minimise water, air, soil, groundwater, noise and light pollution from current activities and the potential for such pollution. • Protect or enhance the quality of watercourses. 	<p>Number of planning permissions granted contrary to the advice of the Environment Agency on flood defence grounds.</p> <p>Percentage of river length assessed as good or very good chemical quality and ecological quality</p> <p>Phosphate levels within the River Wye SAC and adjoining tributaries that receive increased phosphates from proportional growth.</p>	<p>To have no applications permitted contrary to EA advice.</p> <p>To ensure that rivers meet their conservation objectives and do not fall below the required standard of quality as set out in the Water Framework Directive.</p> <p>To meet the targets set out in the Nutrient Management Plan (2014)</p>
Soil	<p>Minimise local and global pollution and protect or enhance environmental resources.</p> <p>Ensure integrated, efficient and</p>	<p>To conserve soil resources and quality</p> <p>Ensure integrated, efficient and balanced land use.</p>	<ul style="list-style-type: none"> • Minimise water, air, soil, groundwater, noise and light pollution from current activities and the potential for such pollution. • Provide opportunities to improve soil quality or reduce contaminated land. • Ensure new developments 	<p>Percentage of all new development completed on previously developed land.</p> <p>Amount of land identified as best and most versatile agricultural land lost to development.</p>	<p>To increase the number of homes built on PDL in line with the provisions of national planning policy.</p> <p>Measure the number of hectares of best and most versatile soil lost through development.</p>

SEA Topics	SA Objective	SEA Objective	Sub-objectives / Appraisal Questions (Will the option/proposal/site...)	Indicators	Targets
	balanced land use.		are in appropriate locations, optimising the use of previously developed land and buildings, primarily focussed on the urban areas and are accessible by walking, cycling or sustainable transport and/or will increase the share of these transport modes, thereby reducing the need to travel.		
Population and Human Health	Value, protect, enhance or restore the landscape quality of Herefordshire, including its rural areas and open spaces.	To improve health of the population To reduce crime and nuisance	<ul style="list-style-type: none"> Value, enhance and protect natural environmental assets including AONB's, historic landscapes, open spaces, parks and gardens and their settings. Encourage local stewardship of local environments, for example by promoting best practices in agricultural management. Ensure that environmental impacts caused by mineral operations and the transport of minerals are minimised. Promote the use of 	Number of developments meeting and surpassing national design	No specific targets identified.

SEA Topics	SA Objective	SEA Objective	Sub-objectives / Appraisal Questions (Will the option/proposal/site...)	Indicators	Targets
			rural areas and open space by all, encourage easy non-car based access, and accommodate the needs of disabled users.		
Material Assets	<p>Use natural resources and energy more efficiently.</p> <p>Minimise local and global pollution and protect or enhance environmental resources.</p>	To conserve natural and manmade resources	<ul style="list-style-type: none"> • Maximise energy efficiency and minimise the consumption of non-renewable energy i.e. from fossil fuels. • Minimise the consumption of water, land, soil, minerals, aggregates and other raw materials by all? E.g. through integrated transport, sustainable resource-efficient design, local sourcing of food, goods, materials. • Encourage the re-use/enhancement (to high standards of sustainable resource-efficient design) of existing buildings and minimise the need for new build. • Encourage the use of clean technologies and water minimisation techniques. 	<p>The need for, frequency and outcomes of planning enforcement investigations/ planning appeals concerning the aspects of local loss of locally important buildings within a conservation area.</p> <p>Maintaining Herefordshire Council's County Site and Monuments Register.</p> <p>Monitoring changes to historic landscapes.</p> <p>Agricultural land usage by quality</p>	<p>Measure the number of hectares of best and most versatile soil lost through development.</p> <p>No specific targets identified.</p> <p>No specific targets identified, but need to ensure that the register is kept up to date.</p> <p>No specific targets identified.</p> <p>Measure the number of hectares of best and most versatile soil lost through development.</p>

Appendix 3

Neighbourhood Planning Team

From: Irwin, Graeme <graeme.irwin@environment-agency.gov.uk>
Sent: 29 June 2015 09:59
To: Neighbourhood Planning Team
Cc: Banks, Samantha
Subject: RE: Consultation of Neighbourhood Development Plans SEA Scoping report
Attachments: neighbourhood plan pro forma.pdf; neighbourhood plan waste water treatment spreadsheet.pdf

Good morning James.

Due to the number of separate Scoping reports I am unable to provide comments on each one individually. Therefore the attached EA Pro-Forma, and associated spreadsheet, lists what I would expect to see addressed in any forthcoming Neighbourhood Plan. The attached should be provided to the parishes to assist them moving forward.

I will comment, in detail, on the subsequent Regulation 14 and Regulation 16 plans when they are submitted.

Feel free to contact me to discuss further if necessary.

Regards.

Graeme Irwin

Senior Planning Officer - Sustainable Places

Shropshire, Herefordshire, Worcestershire and Gloucestershire
Environment Agency
Direct Dial: 01743 283579
Direct email: graeme.irwin@environment-agency.gov.uk

From: Neighbourhood Planning Team [<mailto:neighbourhoodplanning@herefordshire.gov.uk>]
Sent: 18 June 2015 13:54
Subject: Consultation of Neighbourhood Development Plans SEA Scoping report

Dear Sir/Madam

Herefordshire Council are working towards adopting their Local Plan. As part of this and with the introduction of the Localism Act 2011 and of the Neighbourhood Planning Regulations in 2012, Parishes within Herefordshire are undertaking the process of preparing Neighbourhood Development Plans (NDP) for their Parish.

In accordance with national and European legislation, a Strategic Environmental Assessment (SEA) initial screening report was undertaken to determine the requirement to undertake the SEA/HRA for that Parish. A SEA Scoping Report will be prepared for each of the Neighbourhood Plans in development across Herefordshire.

Herefordshire Council has undertaken a Scoping Report for the following Parishes preparing an NDP:

Bridstow;
Clehonger;
Credenhill;
Dormington & Mordiford Group;

Holme Lacy;
Leintwardine Group;
Little Dewchurch;
Llanwarne & District Group;
Moreton on Lugg;
Tarrington;
Yarpole Group.

You are invited to comment on these documents by **23rd July 2015**.

The documents can be found at the following link: <https://www.herefordshire.gov.uk/planning-and-building-control/neighbourhood-planning/submitted-neighbourhood-areas> underneath their respective Neighbourhood Area links.

If you have any questions regarding the contents of the documents, please do not hesitate to contact the Neighbourhood Planning team.

Regards

James Latham
Technical Support Officer

Neighbourhood Planning, Strategic Planning & Conservation teams
Herefordshire Council
Planning Services
PO Box 230
Blueschool House
Blueschool Street
Hereford
HR1 2ZB
Tel: 01432 383617
Courier code : H31

Email: jlatham@herefordshire.gov.uk
neighbourhoodplanning@herefordshire.gov.uk (for Neighbourhood Planning enquiries)
ldf@herefordshire.gov.uk (for Strategic Planning enquiries)

Web: www.herefordshire.gov.uk/neighbourhoodplanning (Neighbourhood Planning)
www.herefordshire.gov.uk/local-plan (Strategic Planning)
www.herefordshire.gov.uk/conservation (Conservation)

Any opinion expressed in this e-mail or any attached files are those of the individual and not necessarily those of Herefordshire Council.

This e-mail and any attached files are confidential and intended solely for the use of the addressee. This communication may contain material protected by law from being passed on. If you are not the intended recipient and have received this e-mail in error, you are advised that any use, dissemination, forwarding, printing or copying of this e-mail is strictly prohibited. If you have received this e-mail in error please contact the sender immediately and destroy all copies of it.

This message has been scanned and no issues discovered.
Click [here](#) to report this email as spam

Information in this message may be confidential and may be legally privileged. If you have received this message by mistake, please notify the sender immediately, delete it and do not copy it to anyone else.

We have checked this email and its attachments for viruses. But you should still check any attachment before opening it.

We may have to make this message and any reply to it public if asked to under the Freedom of Information Act, Data Protection Act or for litigation. Email messages and

To assist the Environment Agency in providing the most focused and accurate consultation responses through the Neighbourhood Planning process we have produced the attached **pro-forma** for you to complete and return to the Neighbourhood Planning team at Herefordshire Council.

Together with Natural England, English Heritage and the Forestry Commission we have published joint advice on Neighbourhood Planning which sets out sources of environmental information and ideas on incorporating the environment into plans. This is available at: http://webarchive.nationalarchives.gov.uk/20140328084622/http://cdn.environment-agency.gov.uk/LIT_6524_7da381.pdf

The below detail takes you through the issues we would consider in reviewing your Plan. We aim to reduce flood risk, whilst protecting and enhancing the water environment, land and Biodiversity. We recommend completing this to check whether we are likely to have any concerns with your Neighbourhood Plan at later stages.

Flood Risk

Your Neighbourhood Plan should conform to national and local policies on flood risk. National Planning Policy Framework (NPPF) – Paragraph 100 states that 'Inappropriate development in areas of flooding should be avoided by directing development away from areas at highest risk, but where development is necessary, making it safe without increasing flood risk elsewhere'.

In reference to the emerging Herefordshire Council Strategy it is important that your Plan is in accordance with Policy SD3 – Sustainable Water Management and the associated text. https://beta.herefordshire.gov.uk/media/7848349/pre-submission_publication.pdf

If your Neighbourhood Plan is proposing sites for development you should check whether any of the proposed allocations are at risk of fluvial flooding based on our Flood Map. For example are there any areas of Flood Zone 3 or 2 (High and Medium Risk). In line with National Planning Policy and, specifically, the Sequential Test, we would expect all built development to be located within Flood Zone 1, the low risk Zone.

Our Flood Map can be accessed via the following link:

<http://watermaps.environment-agency.gov.uk/wiyby/wiyby.aspx?topic=floodmap#x=357683&y=355134&scale=2>

In addition to the above you should also check with the Council's Neighbourhood Planning team with regards to **other sources of flooding** as detailed in their Strategic Flood Risk Assessment (SFRA). Herefordshire Council, as the Lead Local Flood Authority (LLFA), now has responsibility for local flood risk management and may hold flooding information that is not identified on our Flood Map.

Specifically, some watercourses have not been modelled on our Flood Maps (Our Flood Maps primarily show flooding from Main Rivers, not ordinary watercourses, or un-modelled rivers, with a catchment of less than 3km²). Herefordshire Council intend to undertake additional assessment of ordinary watercourses, or relevant unmodelled rivers, to ensure that the impact from these sources is understood and can be factored into your Neighbourhood Plan submissions.

Where an unmodelled watercourse is present, or adjacent to a site, then it may be prudent to incorporate a buffer zone in consideration of flood risk not shown on the Flood Map. Where

flooding could be extensive modelling may be necessary to confirm that the site is developable, that there will be no impact on third parties and assess any opportunities for enhancement.

As stated above, some assessment is necessary in your Plan, to inform the deliverability of sites. Additionally all sites with flood risk issues, especially those with ordinary watercourses or unmodeled rivers within/adjacent or near to sites, are likely to need detailed modelling at the planning application stage to verify the design flood extents, developable areas and that the development will be safe.

Flood Defences - Areas of your Parish, or proposed sites, may be afforded protection by a flood defence/alleviation scheme. Where this is the case your Plan should acknowledge this and identify the level of protection provided. It should be noted that flood defences are intended to protect existing properties and are not to facilitate new development in areas that would otherwise be impacted by flooding. Any assessment of development behind flood defences should consider the impacts of a breach or overtopping. Where it is determined that new development should be behind a flood defence financial contributions may be sought to maintain or improve the structure.

Waste Water Infrastructure

The Environment Agency has offered advice to Herefordshire Council, as part of their Core Strategy, to help ensure that their strategic housing growth can be accommodated in consideration of waste water infrastructure. Information on the County's treatment works and their ability to accommodate housing growth can be found in the **attached spreadsheet**.

Given that local growth areas have been deferred to the local level waste water infrastructure is also of importance in your Neighbourhood Plan. Where housing is proposed you should use the **pro-forma** to identify the receiving treatment works and whether the housing and/or any employment growth can be accommodated without impacted the received treatment works. You should look at **physical** capacity issues (e.g. network pipes) and **environmental** capacity (quality of treated effluent) issues.

Where there is an identified constraint (amber or red) you will need to demonstrate that there is a solution (it may be already programmed, or could be a possible future infrastructure upgrade) to help improve the capacity issue and enable the development to go ahead. This will require consultation with the Utility Company and we have developed a set of general questions to assist this process. The outcome of this may inform a 'phasing' policy within your plan where appropriate. It may also be necessary to produce an 'Infrastructure Delivery Plan' to set out any key milestones for waste water infrastructure upgrades and improvements. The evidence you produce should give a reasonable degree of certainty to all parties, helping demonstrate development is deliverable, and importantly ensure that your plan is 'sound'.

Note: Government Guidance states that sufficient detail should be provided to give clarity to all parties on when infrastructure upgrades will be provided, looking at the needs and costs (what and how much). The NPPG refers to "ensuring viability and deliverability – pursuing sustainable development requires careful attention to viability and costs in plan making and decision making". Plans should be "deliverable".

Nutrient Management Plan (NMP): The River Wye and River Lugg are areas of special importance for nature conservation, with both rivers being designated as Sites of Specific Scientific Interest (SSSIs). The lower stretches of the River Lugg, along with the River Wye, are also a part of the River Wye Special Area of Conservation (SAC). Parts of the River Wye and Lugg are currently not meeting the required phosphate reduction targets for water quality and this could be further impacted by future growth within the catchment.

In consideration of the above we have produced a Nutrient Management Plan (NMP) to identify areas of the Catchment where the receiving treatment works are vulnerable to housing growth. Potential impacts appear to relate to long term growth and Welsh Water are currently undertaking Asset Management Plan (AMP) trials to investigate methods of ensuring their treatment works

can accommodate housing growth in the long term. Where development is likely to pose water quality impact upon the SAC we would expect to see confirmation that there are appropriate measures in place to help accommodate sustainable growth.

Water Management and Groundwater Protection:

In February 2011, the Government signalled its belief that more locally focussed decision making and action should sit at the heart of improvements to the water environment. This is widely known as the catchment-based approach and has been adopted to deliver requirements under the Water Framework Directive. It seeks to:

- deliver positive and sustained outcomes for the water environment by promoting a better understanding of the environment at a local level; and
- to encourage local collaboration and more transparent decision-making when both planning and delivering activities to improve the water environment.

Neighbourhood Plans provide an opportunity to deliver multi-functional benefits through linking development with enhancements to the environment.

Herefordshire County, and the Wye Catchment, falls within the **Severn River Basin Management Plan** area and the document highlights key issues and actions for the Wye that should be of use in developing your Neighbourhood Plan.

https://www.gov.uk/government/uploads/system/uploads/attachment_data/file/291442/gemi0910b_ssk-e-e.pdf

<http://www.catchmentbasedapproach.org/severn/wye>

<http://www.wyeuskfoundation.org/projects/whip2.php>

Source Protection Zone: Some areas of your Parish, and specific potential site allocations, may be located within Source Protection Zone (SPZ) 1, which indicates a sensitive hydrogeological setting. You should consider this constraint within your plan and when allocating sites. Specifically your plan should consider the relevance of the designation and the potential implication on development, with reference to our Groundwater Protection: principles and Practice (GP3) policy:

https://www.gov.uk/government/uploads/system/uploads/attachment_data/file/297347/LIT_7660_9a3742.pdf

Development and surface water drainage will need to be carefully located and designed to avoid pollution risks to controlled waters and address potential environmental impact associated with low flows. For example SuDS on the sites may need to provide multiple levels of treatment. To address the quantitative issues with the waterbodies, SuDS should be designed so to maximise recharge to the aquifer and support water levels in the receiving brooks.

For further information or advice please contact us on shwgplanning@environment-agency.gov.uk

Neighbourhood Plan Environment Agency Pro-Forma for Parish Councils

Parish or housing Site Allocation	Flood Zone (3/2/1)*	Unmodelled river or ordinary watercourse in or adjacent to site	Other sources of flooding	Flood Defence	Source Protection Zone 1	NMP	Environmental Capacity at Treatment Works (Red, Amber or Green)
Example	2	Y	SW	N	N	Y	Amber
		Y/N		Y/N	Y/N	Y/N	
		Y/N		Y/N	Y/N	Y/N	
		Y/N		Y/N	Y/N	Y/N	
		Y/N		Y/N	Y/N	Y/N	
		Y/N		Y/N	Y/N	Y/N	
		Y/N		Y/N	Y/N	Y/N	
		Y/N		Y/N	Y/N	Y/N	
		Y/N		Y/N	Y/N	Y/N	
		Y/N		Y/N	Y/N	Y/N	

***Note to above:** Flood Zone 3 is the high risk zone and is defined for mapping purposes by the Environment Agency's Flood Zone Map. Flood Zone 3 refers to land where the indicative annual probability of flooding is 1 in 100 years or less from river sources (i.e. it has a 1% or greater chance of flooding in any given year). Flood Zone 2 is land where the indicative annual probability of flooding is between 1 in 100 and 1 in 1000 years. Flood Zone 1 is the low risk Zone with a flood risk in excess of 1 in 1000 years.

When considering 'other sources of flooding' you should refer to the SFRA and contact Herefordshire Council's Neighbourhood Planning team to ascertain whether the Parish, or specific allocated site, is impacted by surface water, groundwater, or sewer flooding etc. The team may also have historic flooding information to help inform your plan.

Waste water Infrastructure Questions: What is the waste water capacity issue? The attached spreadsheet should help you to identify whether your Parish has capacity problems at its receiving treatment works. We would recommend discussions with the Utility Company to ascertain how you can progress with your Plan without impact on the works. To assist in these discussions we would recommend the following:

- What solutions are programmed within Asset Management Plans (AMP)? When will these solutions be delivered? Are there any options for accelerating these schemes via developer contributions?
- In the absence of an improvement schemes what could alternative solutions be (type and location of) for short/medium/long term growth. Are these solutions cost prohibitive?
- Are there any short term options to facilitate growth? Some options to consider could be SUDS retrofitting or removing surface water from sewer systems.
- Utility companies could be asked about what WFD work they already have programmed in to their AMP Schemes for Phosphate stripping or other sanitarities (e.g. ammonia/Biological Oxygen Demand).
- With reference to the NMP, and Phosphate specific issues, are there any stringent measures factored in to ensure no environmental deterioration? What improvement scheme is, or could be, in place to bring forward development?

Herefordshire Council Neighbourhood Plan – Environment Agency Consultation Waste Water Information.

Location	Sewage Treatment Works	Receiving Waterbody	NMP	Environmental Conclusions and Options	Concerns raised by Welsh Water
Rural Treatment Works					
Bromyard	Bodenham	Lugg			
Hereford	Clehonger	Cage Bk (Wye to Lugg)			Yes
Kington	Eardisley	Wye (Wye to Lugg)		Growth can potentially be accepted within current flow limit. Recommend liaison with water company before any development	
Hereford	Fownhope	Wye (DS Lugg)			

Herefordshire Council Neighbourhood Plan – Environment Agency Consultation Waste Water Information.

Ross On Wye	Goodrich	Wye (DS Lugg)		Growth can potentially be accepted within current flow limit. Recommend liaison with water company before any development	Yes
Leominster	Kingsland	Pinsley Bk (Lugg)	Yes	Growth would require new permit. No current capacity. Current investigation ongoing into options for site. Recommend liaison with water company before any development. Need to assess situation in future to confirm when if / when headroom may be available.	
Ross (Kingstone) & Hereford (Madeley)	Kingstone and Madeley	Coldstone Bk (Wye to Lugg)			
Golden Valley	Longtown	Olchon Bk (Monnow)			

Herefordshire Council Neighbourhood Plan – Environment Agency Consultation Waste Water Information.

Leominster	Luston and Yarpole	Ridgemoor Bk (Lugg)	Yes	Growth would require new permit. No current capacity. Current investigation ongoing into options for site. Recommend liasion with water company before any development. Need to assess situation in future to confirm when if / when headroom may be available.	Yes
Kington	Lyonshall	Curl Bk (Arrow)	Yes	Growth would require new permit. No current capacity. Current investigation ongoing into options for site. Recommend liasion with water company before any development. Need to assess situation in future to confirm when if / when headroom may be available.	
Hereford	Moreton On Lugg	Lugg	Yes	Growth can potentially be accepted within current flow limit. Recommend liasion with water company before any development	Yes
Ross	Much Dewchurch	Worm Bk (Monnow)		Growth can potentially be accepted within current flow limit. Recommend liasion with water company before any development	

Herefordshire Council Neighbourhood Plan – Environment Agency Consultation Waste Water Information.

Kington	Pembridge	Arrow	Yes	Growth can potentially be accepted within current flow limit. Recommend liasion with water company before any development	
Golden Valley	Peterchurch	Dore (Monnow)			Yes
Golden Valley & Ross	Pontrillas	Dulas (Monnow)		Growth can potentially be accepted within current flow limit. Recommend liasion with water company before any development	Yes
Kington	Shobdon	Pinsley Bk (Lugg)	Yes	Growth can potentially be accepted within current flow limit. Recommend liasion with water company before any development	

Herefordshire Council Neighbourhood Plan – Environment Agency Consultation Waste Water Information.

Hereford	Tarrington	Tarrington Bk (Frome)			
Leominster	Weobley	Newbridge Bk (Arrow)	Yes		
Ledbury	Bosbury	Leadon		Growth would require new permit. No current capacity. Current investigation ongoing into options for site. Recommend liasion with water company before any development. Need to assess situation in future to confirm when if / when headroom may be available.	Severn Trent Water
Ledbury	Colwall	Cradley Brook		Growth can potentially be accepted within current flow limit. Recommend liasion with water company before any development	Severn Trent Water

Herefordshire Council Neighbourhood Plan – Environment Agency Consultation Waste Water Information.

Ledbury	Cradley	Cradley Brook		Growth can potentially be accepted within current flow limit. Recommend liasion with water company before any development	Severn Trent Water
Leominster	Leintwardine	River Teme			Severn Trent Water
Bromyard	Whitbourne	River Teme			Severn Trent Water
Leominster	Wigmore	River Teme			Severn Trent Water

Herefordshire Council Neighbourhood Plan – Environment Agency Consultation Waste Water Information.

Small Rural Treatment Works					
Ledbury	Bishops Frome			Growth can potentially be accepted within current flow limit. Recommend liasion with water company before any development	
Hereford	Canon Pyon			Can potentially accept with current limit. Worst case constant load indicates limits achievable but no current ammonia.	
Leominster	Dilwyn			Growth can potentially be accepted within current flow limit. Recommend liasion with water company before any development	
Bromyard	Edwyn Ralph			Growth impact negligible as small catchment. Worst case constant load indicates limits achievable	

Herefordshire Council Neighbourhood Plan – Environment Agency Consultation Waste Water Information.

Ledbury	Fromes Hill			Growth can potentially be accepted within current flow limit. Recommend liasion with water company before any development	Severn Trent Water
Hereford	Holme Lacy			Growth can potentially be accepted within current flow limit. Recommend liasion with water company before any development	
Leominster	Ivington			Growth impact negliable as small catchment. Worse case constant load indicates limits achievable	
Hereford	Little Dewchurch			Growth can potentially be accepted within current flow limit. Recommend liasion with water company before any development	
Golden Valley	Moccas			Growth negliable as small catchment. Can potentially accept with current limits.	
Bromyard	Ocle Pychard			Growth negliable as small catchment. Can potentially accept with current limits.	

Herefordshire Council Neighbourhood Plan – Environment Agency Consultation Waste Water Information.

<p>Ledbury</p>	<p>Putley Green</p>			<p>Growth negligible as small catchment. Can potentially accept with current limits.</p>	<p>Severn Trent Water</p>
<p>Kington</p>	<p>Titley</p>			<p>Growth can potentially be accepted within current flow limit. Recommend liaison with water company before any development</p>	
<p>Bromyard</p>	<p>Stokes Lacy</p>			<p>Growth impact negligible as small catchment. Worst case constant load indicates limits achievable</p>	



Historic England

Neighbourhood Planning Team
Herefordshire Council
Planning Services
PO Box 230
Blueschool House
Blueschool Street
Hereford
HR1 2ZB.

Our ref: 1441
Your ref:

Telephone
0121
6256887

09 July 2015

Dear Sir or Madam

**CONSULTATION ON SEA SCOPING REPORTS FOR NEIGHBOURHOOD PLANS IN:
Bridstow; Clehonger; Credenhill; Dormington; Holme Lacy; Leintwardine; Little
Dewchurch; Llanwarne; Moreton on Lugg; Tarrington; Yarpole.**

Thank you for your e-mail and the invitation to comment on the SEA Scoping Reports for the Neighbourhood Plans listed above. As we have previously commented we note the SEA Frameworks sections of the SEA's submitted are generally commendable in their approach of including references to historic landscape and townscape quality, the maintenance of the Herefordshire SMR and conservation and wherever possible enhancement of locally significant heritage assets. We also particularly commend the treatment of "Heritage at Risk" and the commitment to put measures in place to assist in the removal of heritage assets from the register, also the commitment to encourage the retention and re-use of existing buildings.

However, having considered the above Neighbourhood Plans whilst we have no substantive objection to the contents of the documents please note that many of our comments and recommendations to you in relation to earlier tranches of SEA Scoping Reports remain relevant. We urge you to refer back to and consider these representations before finalizing the reports in relation to the above Neighbourhood Plans.

Specifically in relation to the eighth tranche of consultations we note that all of the SEA Scoping Reports appear to have anomalous references to SAM's, the Herefordshire SMR, monitoring changes to historic landscapes and historic landscape character assessments



Historic England, 8th Floor, The Axis, 10 Holliday Street, Birmingham B1 1TG
Telephone 0121 625 6870 HistoricEngland.org.uk

Please note that Historic England operates an access to information policy.
Correspondence or information which you send us may therefore become publicly available.



in relation to SA Objective 14 "Use natural resources and energy more effectively". Presumably this is unintentional? Is there some confusion as between the Herefordshire Sites and Monuments Register and the Herefordshire Environmental Records Register? Would these elements in fact be more relevant under SA Objectives 15 and 20?

It may be that we are suffering from some misapprehension as to the most appropriate structure for the documents. Nevertheless, we would strongly suggest that you hold detailed discussions in this respect and specifically address the issues raised with your own Council historic environment specialists in order that these matters can be properly clarified. To these ends you will note that I am copying the relevant officers into the e-mail that accompanies this letter.

I hope this is helpful.

Yours faithfully



Pete Boland
Historic Places Adviser
E-mail: peter.boland@HistoricEngland.org.uk



Date: 23 July 2015
Our ref: 157220
Your ref: Neighbourhood Area SEA Scoping



Mr J. Latham
Technical Support Officer
Neighbourhood Planning, Strategic Planning & Conservation teams
Herefordshire Council
Planning Services,
Blueschool House,
Blueschool Street
Hereford,
HR1 2ZB

Customer Services
Hornbeam House
Crewe Business Park
Electra Way
Crewe
Cheshire
CW1 6GJ

T 0300 060 3900

BY EMAIL ONLY

Dear Mr Latham

Neighbourhood Plan Strategic Environmental Assessment Scoping and Habitat Regulations Assessment Screening for:

Bridstow;
Clehonger;
Credenhill;
Dormington & Mordiford Group;
Holme Lacy;
Leintwardine Group;
Little Dewchurch;
Llanwarne & District Group;
Moreton on Lugg;
Tarrington;
Yarpole Group.

Thank you for your consultation on the above dated and received by Natural England on 18 June 2015.

Natural England is a non-departmental public body. Our statutory purpose is to ensure that the natural environment is conserved, enhanced, and managed for the benefit of present and future generations, thereby contributing to sustainable development.

We welcome the production of this SEA Scoping report. With respect to the natural environment Natural England wishes to make the following comments which are intended to further improve the SEA and its usefulness in assessing the Neighbourhood Plan.

Appendix A1 – Plans, policies and programmes

In addition to the plans, policies and programmes listed, we suggest that the following are relevant and should be added:

All

- [Natural Environment White Paper](#)



All that refer to:

Malvern Hills AONB Management Plan 2009- 2014, we advise referring to the more up to date [Malvern Hills AONB Management Plan 2014 to 2018](#).

Wye Valley AONB Management Plan 2009-2014, we advise also referring to [Draft Wye Valley Management Plan 2014 -19](#).

Appendix A2 – Baseline information

Biodiversity, flora and fauna

All

Under objective-13. proposed indicators “Net changes in condition of SSSIs across Herefordshire” and “Changes in the areas of designated nature conservation sites as a consequence of planning permission”, it needs to be clearer in these sections whether the SSSIs you refer to are within or near to the neighbourhood plan area. Furthermore, reference to any relevant European protected sites for example the River Wye SAC should be included, where applicable.

Leintwardine Group

Under objective-13, the following SSSIs and SACs have not been included and are within the boundaries of the plan area: River Clun SAC/SSSI, Downtown Gorge SAC Burrington Farm Stream Section SSSI. Additionally you state that there are 3 SSSIs within the Leintwardine Group this is incorrect.

Clehonger

Credenhill

Holme Lacy

Leintwardine Group

Moreton on Lugg

Under objective-13. proposed indicators “Phosphate levels within the River Wye SAC and adjoining tributaries that received increased phosphates from proportional growth”, this needs to be expanded to give more detail and explain the local situation. Also Trends, targets and issues and constraints columns need to be completed, refer to Bridstow SEA Scoping.

Water, air, soil and material assets

All

This section (or suitable alternative) should include information on geodiversity. The baseline and assessment should make reference to geological conservation and the need to conserve, interpret and manage geological sites and features, both in the wider environment and in relation to designated features. The Herefordshire & Worcestershire Earth Heritage Trust may be of assistance.

Material Assets

Little Dewchurch

Llanwarne and District Group

These development plan areas are partly within the Wye Valley AONB and therefore this should be included within this section and landscape should be clearly included in Appendix A3 and Appendix 4.

Appendix A4 – SEA Framework

All

Under SEA topic “material assets”, there are no targets identified against the indicator “monitoring changes to the historic landscape”. We suggest that the LPA could utilise Historic Landscape Characterisation studies and monitor the number of applications permitted despite a significant

impact on the landscape having been identified.

Habitats Regulations Assessment Screening

We would remind you of one of the basic conditions that a draft neighbourhood plan or Order must meet, as set out in the Neighbourhood Planning Regulations 2012, which states that 'The making of the neighbourhood development plan is not likely to have a significant effect on a European site'.

Clehonger

Credenhill

Dormington & Mordiford Group

Holme Lacy

Little Dewchurch

Moreton on Lugg

Tarrington

We welcome this initial assessment and agree that a full screening exercise will be required to assess the impacts on the River Wye (including the River Lugg) Special Area of Conservation (SAC).

LLanwarne and District Group

We welcome this initial assessment and agree that a full screening exercise will be required to assess the impacts on the River Wye SAC and Wye Valleys Woodlands SAC

Bridstow

We welcome this initial assessment and agree that a full screening exercise will be required to assess the impacts on the River Wye (including the River Lugg) SAC, Wye Valley & Forest of Dean Bat Sites SAC and Wye Valleys Woodlands SAC.

Yarpole Group

We welcome this initial assessment and agree that a full screening exercise will be required to assess the impacts on the River Wye (including the River Lugg) Special Area of Conservation (SAC) and Downton Gorge SAC.

Leintwardine Group

We welcome this initial assessment and agree that a full screening exercise will be required to assess the impacts on the River Clun Special Area of Conservation (SAC) and Downton Gorge SAC.

We would be happy to comment further should the need arise but if in the meantime you have any queries please do not hesitate to contact us.

For any queries relating to the specific advice in this letter only please contact Gillian Driver on 0300 060 4335. For any new consultations, or to provide further information on this consultation please send your correspondences to consultations@naturalengland.org.uk.

We really value your feedback to help us improve the service we offer. We have attached a feedback form to this letter and welcome any comments you might have about our service.

Yours sincerely

Gillian Driver

Miss Gillian Driver
Planning Adviser
South Mercia Team

Appendix 4

Objectives verses SEA Objectives (SMART and Compatibility Test)			
SEA Stage B1	Key:	SMART criteria:	
+ =/++	Compatible/ Very comp	S – Specific:	NDP objectives should specify what is intended to be done in detail and should not be open to a wide range of misinterpretations
- =	Possible conflict	M – Measurable:	It should be possible to monitor NDP objectives in a quantifiable way, by the use of indicators. Indicators should be measurable with limited resource implications.
0 =	Neutral	A – Attainable/achievable:	NDP objectives should be achievable and deliverable, related to the scale of growth proposed
X =	No relationship between objectives	R – Realistic:	NDP objectives should relate to the overall vision of the plan. Likewise, chosen indicators should relate to objectives and their outcomes.
? =	Unclear, more information needed	T – Time-Bound:	Objectives should be specific to the NDP period or another specified time-frame. Objectives should be associated with a target and indicators should specify when the target should be achieved.

The following matrix appraises the emerging Clehonger NDP Objectives in terms of their SMART criteria and their compatibility with the SEA Objectives. These have been developed from Government guidance on SEA and from the local evidence base gathered for identifying the NDP issues.

- SEA Objectives**
- 1- To maintain and enhance nature conservation (biodiversity, flora and fauna)
 - 2- To maintain and enhance the quality of landscapes and townscapes
 - 3- To improve quality of surroundings
 - 4- To conserve and where appropriate enhance the historic environment and culture heritage
 - 5- To improve air quality
 - 6- To reduce the effect of traffic on the environment
 - 7- To reduce contributions to climate change
 - 8- To reduce vulnerability to climate change
 - 9- To improve water quality
 - 10- To provide for sustainable sources of water supply
 - 11- To avoid, reduce and manage flood risk
 - 12- To conserve soil resources and quality
 - 13- To minimise the production of waste
 - 14- To improve health of the population
 - 15- To reduce crime and nuisance
 - 16- To conserve natural and manmade resources

NDP objectives	SEA Objectives																Conclusions	Recommendations	SMART Test of NDP objective	After SMART objectives
	1	2	3	4	5	6	7	8	9	10	11	12	13	14	15	16				
Objective 1 – Housing	+	+	+	+	+	0	0	0	0	+	+	X	X	X	X	+	Overall this objective has a positive outcome over the SEA objectives where relevant and a neutral outcome across some other key environmental aspects as details are not known at this stage.	Ensure that detail of the aims and of the objective are thoroughly explained in any emerging policy and that further details are given at each stage. There will be an increase in traffic as a result of new development however this can be mitigated through policies in the plan.	This objective is achievable and deliverable. It could be monitored against policy sustainability and infrastructure criteria and is in line with the overall vision for the plan and it is considered that this objective meets the SMART criteria.	No changes recommended.
Objective 2 – The Environment	+	+	+	+	+	0	+	+	+	+	X	+	X	X	X	+	Overall this objective has a positive outcome over the SEA objectives where relevant and directly addresses the issue of conservation of the parish, water and energy conservation.	Ensure that detail of the aims and of the objective are thoroughly explained in any emerging policy and that further details are given at each stage.	This objective is achievable and deliverable. It could be monitored against policy sustainability criteria and is in line with the overall vision for the plan and it is considered that this objective meets the SMART criteria.	No changes recommended.
Objective 3 – Local Economy	+	+	+	+	+	0	0	0	X	X	X	0	0	0	0	+	Overall this objective has a positive outcome over the SEA objectives where relevant and a neutral outcome across some other key environmental aspects of development in the local economy as details are not known at this stage.	Ensure that detail of the aims and of the objective are thoroughly explained in any emerging policy and that further details are given at each stage. There will be an increase in traffic as a result of new development however this can be mitigated through policies in the plan.	This objective is achievable and deliverable. It could be monitored against policy sustainability and infrastructure criteria and is in line with the overall vision for the plan and it is considered that this objective meets the SMART criteria.	No changes recommended.
Objective 4 – Community Facilities and Infrastructure	+	+	+	+	+	0	+	+	+	0	X	0	X	+	0	+	Overall this objective has a positive outcome over the SEA objectives where relevant and a neutral outcome across the other key environmental aspects in regard to community facilities.	Ensure that detail of the aims and of the objective are thoroughly explained in any emerging policy and that further details are given at each stage.	This objective is achievable and deliverable. It could be monitored against policy criteria relating to conservation of the historical environment and is in line with the overall vision for the plan and it is considered that this objective meets the SMART criteria.	No changes recommended
Objective 5 – Community Actions	+	+	+	+	+	+	+	+	+	X	X	X	X	+	+	+	Overall this objective has a positive outcome over the SEA objectives where relevant and a neutral outcome across the other key environmental aspects in regard to community	Ensure that detail of the aims and of the objective are thoroughly explained in any emerging policy and that further details are given at each stage.	This objective is achievable and deliverable. It could be monitored against policy criteria relating to conservation of the historical environment and is in line with the overall vision for the plan and it is considered that this objective meets the	No changes recommended

																facilities.			SMART criteria.	
--	--	--	--	--	--	--	--	--	--	--	--	--	--	--	--	-------------	--	--	-----------------	--

Objectives verses SEA Objectives (SMART and Compatibility Test)				
SEA Stage B1	Key:	SMART criteria:		
+ =/++	Compatible/very comp	S – Specific:	NDP objectives should specify what is intended to be done in detail and should not be open to a wide range of misinterpretations	The following matrix appraises the emerging Cleghonger NDP Objectives in terms of their SMART criteria and their compatibility with the SEA Objectives. These have been developed from Government guidance on SEA and from the local evidence base gathered for identifying the NDP issues.
- =	Possible conflict	M – Measurable:	It should be possible to monitor NDP objectives in a quantifiable way, by the use of indicators. Indicators should be measurable with limited resource implications.	
0 =	Neutral	A – Attainable/achievable:	NDP objectives should be achievable and deliverable, related to the scale of growth proposed	
X =	No relationship between objectives	R – Realistic:	NDP objectives should relate to the overall vision of the plan. Likewise, chosen indicators should relate to objectives and their outcomes.	
? =	Unclear, more information needed	T – Time-Bound:	Objectives should be specific to the NDP period or another specified time-frame. Objectives should be associated with a target and indicators should specify when the target should be achieved.	

SEA Objectives	Baseline carried over from Stage A
<p>1- To maintain and enhance nature conservation (biodiversity, flora and fauna)</p> <p>2- To maintain and enhance the quality of landscapes and townscapes</p> <p>3- To improve quality of surroundings</p> <p>4- To conserve and where appropriate enhance the historic environment and culture heritage</p> <p>5- To improve air quality</p> <p>6- To reduce the effect of traffic on the environment</p> <p>7- To reduce contributions to climate change</p> <p>8- To reduce vulnerability to climate change</p> <p>9- To improve water quality</p> <p>10- To provide for sustainable sources of water supply</p> <p>11- To avoid, reduce and manage flood risk</p> <p>12- To conserve soil resources and quality</p> <p>13- To minimise the production of waste</p> <p>14- To improve health of the population</p> <p>15- To reduce crime and nuisance</p> <p>16- To conserve natural and manmade resources</p>	<p>1-The 2011-2013 AMR does not contain updated conservation data.2010/11: 27% of Herefordshire’s SSSI land was in favourable condition.– August 2014 status of the SSSIs are: River Wye – unfavourable recovering. Moseley Common (Unfavourable but recovering). The existing status of the Wye SAC between Hay and the Lugg confluence is currently meeting its phosphate target and is meeting the conservation targets. The 2011-2013 AMR does not contain updated conservation data. 2010/11: 17 Habitat Action Plans and 14 Species Action Plans are currently in operation across Herefordshire. Cleghonger Parish has: 2 SSSI, 4 LWS, 4 Ancient Woodlands, 1 Mineral reserve and 2 Unregistered Park and Gardens. Cleghonger Parish falls inside the hydrological catchment area for the River Wye SAC. There are no NNRs or SINCs within the parish.</p> <p>2-There are no outstanding enforcement actions or appeals concerning locally important buildings within Cleghonger Parish at present.</p> <p>3- In terms of Cleghonger parish itself, the study reveals In terms of Cleghonger parish itself, the study reveals that there is: 0.70ha of playing pitch area (at the Primary School). There are no hectares of playing pitch area with secured community access.</p> <p>4-Whilst there is no qualitative, locally specific data available at present, Cleghonger has 0 Scheduled Ancient Monuments but numerous listed buildings, all of which require ongoing maintenance.</p> <p>5-Between 2005 and 2010 Herefordshire’s total and per capita carbon emission reduced by 7% and 8% respectively; while UK’s total and per capita carbon emission reduced by 8% and 12% respectively within the same period. This suggests that air quality is improving.</p> <p>6-% of Herefordshire residents who travel to work by: Car: 70.1%, Foot: 14.7: Bicycle: 4.3%,Bus: 2%, Train: 0.8%,Motorbike: 0.8%,Taxi: 0.3%,Other: 7%.</p> <p>7-Herefordshire latest figure of C02 emissions per capita-dates back to 2010: 1.61 million tonnes (mtCO²)</p> <p>8-Reduce the risk of flooding-There have been no approvals contrary to EA advice since reporting began in 2004.The 2011-2013 AMR does not contain updated conservation data.</p> <p>9-Percentage of river length assessed as good or very good chemical quality and ecological quality as required by the Water Framework Directive. Latest figure dates back to 2005: 84%.</p> <p>10-The parish falls into the Herefordshire Conjunctive Use Water Resource Zones (WRZs), one of 6 zones covering Herefordshire. 39% of demand is from non-household use.</p> <p>11-Number of planning permissions granted contrary to the advice of the Environment Agency on flood defence grounds. The 2011-2013 AMR does not contain updated conservation data.</p> <p>12- Majority of land within the agricultural land classification around Cleghonger is predominantly Grades 2 (very good) with a small area of Grade 1 (excellent) near the east of the parish, with grade 3 (good to moderate) mainly in the west. There is also a strip of grade 4 (poor) of land by the river. Percentage of all new development completed on previously developed land.2010/11: 67%2011-13: 57%.</p> <p>16- There are numerous listed buildings within the parish but no SAMs. The neighbourhood area comprises the following types of landscapes: Principal settled farmlands in the south and the west, Riverside Meadows occupy the land alongside the river.</p>

NDP Options and Policies	SEA objectives																Summary in relation to baseline	Overall commentary and any initial cumulative effects/ Recommendations	Conformity with Core Strategy
	1	2	3	4	5	6	7	8	9	10	11	12	13	14	15	16			
Baseline	1	2	3	4	5	6	7	8	9	10	11	12	X	X	X	16			
Options																			
Option 1	X	X	X	X	X	X	X	X	X	X	X	X				X	N/A	N/A	N/A
Option 2	+	+	+	+	0	?	?	?	?	?	?	?				+	Overall this option has mainly a positive impact on the baseline data and successfully addresses all SEA and baseline objectives where relevant. Unknown or neutral factors will be addressed by emerging policies developed from this option. Using a criteria based strategy would give certainty to some impacts but some remain unknown at this level.	Overall this policy meets the SEA baseline as it will help to guide development and although some of the environmental baseline statistics can be addressed through supporting policies.	This option meets the Core Strategy requirements for the purposes of the SEA and line with Core Strategy policies.
Option 3	+	+	+	+	0	?	?	?	?	?	?	0				+	Overall this option has mainly a positive impact on the baseline data and successfully addresses all SEA and baseline objectives where relevant. Unknown or neutral factors will be addressed by emerging policies developed from this option. Allocations of sites would help to give certainty over impacts.	Overall this policy meets the SEA baseline as it will help to guide development and although some of the environmental baseline statistics can be addressed through supporting policies.	This option meets the Core Strategy requirements for the purposes of the SEA and line with Core Strategy policies.
Option 4	+	+	+	+	+	?	?	?	?	?	?	0				+	Overall this option has mainly a positive impact on the baseline data and successfully addresses all SEA and baseline objectives where relevant. Unknown or neutral factors will be addressed by emerging policies developed from this option. This option does not allocate any sites however it will give certainty to the plan as there is currently a large amount of development in the parish.	Overall this policy meets the SEA baseline as it will help to guide development but not allocate sites and although some of the environmental baseline statistics can be addressed through supporting policies.	This option meets the Core Strategy requirements for the purposes of the SEA and line with Core Strategy policies.
Option 5	+	+	+	+	0	?	?	?	?	?	?	0				+	Overall this option has mainly a positive impact on the baseline data and successfully addresses all SEA and baseline objectives where relevant. Unknown or neutral factors will be addressed by emerging policies developed from this option. Allocations of sites would help to give certainty over impacts.	Overall this policy meets the SEA baseline as it will help to guide development and although some of the environmental baseline statistics can be addressed through supporting policies.	This option meets the Core Strategy requirements for the purposes of the SEA and line with Core Strategy policies.
Policies																			

Policy C1 – Sustainable Development	+	+	+	+	+	+	+	+	0	0	X	0					+	Overall this policy has mainly a positive impact on the baseline data and successfully addresses all SEA and baseline objectives where relevant. The policy directly encourages sustainable development and proposals which contribute to sustainable development in the parish.	Overall this policy meets the SEA baseline as it will help to guide development and although some of the environmental baseline statistics can be addressed through supporting policies.	This policy meets the Core Strategy requirements for the purposes of the SEA.	
Policy C2 – Settlement Boundary	+	+	+	+	0	?	0	X	X	X	X	X					+	Overall this policy has mainly a positive impact on the baseline data and successfully addresses all SEA and baseline objectives where relevant. The policy directly encourages development within the settlement boundary.	Overall this policy meets the SEA baseline as it will help to guide development and although some of the environmental baseline statistics can be addressed through supporting policies.	This policy meets the Core Strategy requirements for the purposes of the SEA.	
Policy C3 – Housing Mix	0	+	+	+	X	?	0	X	X	X	X	X					+	Overall this policy has mainly a positive impact on the baseline data and successfully addresses all SEA and baseline objectives where relevant regarding the housing mix.	Overall this policy meets the SEA baseline as it will help to guide development and although some of the environmental baseline statistics can be addressed through supporting policies.	This policy meets the Core Strategy requirements for the purposes of the SEA.	
Policy C4 – Natural Environment	+	+	+	+	+	X	0	0	+	+	+	+					+	+	Overall this policy has mainly a positive impact on the baseline data and successfully addresses all SEA and baseline objectives where relevant.	Overall this policy meets the SEA baseline as it will help to guide development and although some of the environmental baseline statistics can be addressed through supporting policies.	This policy meets the Core Strategy requirements for the purposes of the SEA.
Policy C5 – Historic Environment	+	+	+	+	X	?	X	X	X	X	X	X					+	Overall this policy has mainly a positive impact on the baseline data and successfully addresses all SEA and baseline objectives where relevant.	Overall this policy meets the SEA baseline as it will help to guide development and although some of the environmental baseline statistics can be addressed through supporting policies.	This policy meets the Core Strategy requirements for the purposes of the SEA.	
Policy C6 – Design	+	+	+	+	+	+	+	+	0	0	0	+					+	Overall this policy has mainly a positive impact on the baseline data and successfully addresses all SEA and baseline objectives where relevant.	Overall this policy meets the SEA baseline as it will help to guide development and although some of the neutral outcomes regarding the environmental baseline statistics can be addressed through supporting policies.	This policy meets the Core Strategy requirements for the purposes of the SEA.	
Policy C7 – Business and Tourism	+	+	+	+	0	X	X	X	X	X	X	+					+	Overall this policy has mainly a positive impact on the baseline data and successfully addresses all SEA and baseline objectives where relevant. There are some elements of uncertainty regarding traffic, as tourism will create a level of increase in traffic to the area, and similarly with business	Overall this policy meets the SEA baseline as it will help to guide development and although some of the neutral and uncertain outcomes regarding the environmental baseline statistics can be addressed through supporting policies.	This policy meets the Core Strategy requirements for the purposes of the SEA.	
Policy C8 – Agricultural Development	+	+	+	+	X	+	0	0	+	+	+	+					+	+	Overall this policy has mainly a positive impact on the baseline data and successfully addresses all SEA and baseline objectives where relevant.	Overall this policy meets the SEA baseline as it will help to guide development and although some of the neutral outcomes regarding the environmental baseline statistics can be addressed through supporting policies.	This policy meets the Core Strategy requirements for the purposes of the SEA.

Policy C9 – Community Facilities	+	+	+	+	X	+	X	X	X	X	X	X				+	Overall this policy has mainly a positive impact on the baseline data and successfully addresses all SEA and baseline objectives where relevant.	Overall this policy meets the SEA baseline as it will help to guide development and although some of the environmental baseline statistics can be addressed through supporting policies.	This policy meets the Core Strategy requirements for the purposes of the SEA.
Policy C10 – Clehonger Playing Field	+	+	+	+	+	+	+	0	X	X	X	+				+	Overall this policy has mainly a positive impact on the baseline data and successfully addresses all SEA and baseline objectives where relevant.	Overall this policy meets the SEA baseline as it will help to guide development and although some of the environmental baseline statistics can be addressed through supporting policies.	This policy meets the Core Strategy requirements for the purposes of the SEA.
Policy C11 – Hereford Bypass	+	+	+	+	X	+	X	X	X	X	X	X				+	Overall this policy has mainly a positive impact on the baseline data and successfully addresses all SEA and baseline objectives where relevant.	Overall this policy meets the SEA baseline as it will help to guide development and although some of the environmental baseline statistics can be addressed through supporting policies.	This policy meets the Core Strategy requirements for the purposes of the SEA.

B3: Predict and evaluate the effects of the policies and sites within the Neighbourhood Development Plan

Key:

++ Move towards significantly	+ Move towards Marginally	- - Move away significantly	- Move away marginally	0 Neutral	? Uncertain	N/A No relationship
--------------------------------------	----------------------------------	------------------------------------	-------------------------------	------------------	--------------------	----------------------------

Policy C1 – Sustainable Development

SEA Objective	Assessment of effect (consider cumulative effects, significance of the effect and magnitude of the effect in terms of the three time periods)			Summary Explanation	Enhancement and mitigation opportunities
	Short term (1 – 5 years)	Medium term (6 – 10 years)	Long term (11 years +)		
To maintain and enhance nature conservation (biodiversity, flora and fauna)	++	++	++	This Policy is not over and above the Core Strategy in terms of SEA objectives and would work towards ensuring that measures of sustainable development are included in new development to protect and enhance the local landscape.	N/A
To maintain and enhance the quality of landscapes and	++	++	++	This Policy is not over and above the Core Strategy in terms of SEA objectives and would work towards ensuring that measures are included in new development to	N/A

B3: Predict and evaluate the effects of the policies and sites within the Neighbourhood Development Plan

townscapes				protect and enhance the local landscape.	
To improve quality of surroundings	+	+	++	This Policy is not over and above the Core Strategy in terms of SEA objectives and would work towards ensuring that measures are included in new development to improve the quality of surroundings.	N/A
To conserve and where appropriate enhance the historic environment and cultural heritage	+	++	++	This Policy is not over and above the Core Strategy in terms of SEA objectives and see to enhance surroundings with sustainable development in line with the proportional growth within the Core Strategy. Policy safeguards are included within the policy to ensure historic and cultural heritage features are taken into consideration.	N/A
To improve air quality	+	+	+	This Policy is not over and above the Core Strategy in terms of SEA objectives and would only see to enhance surroundings with sustainable development in line with the proportional growth within the Core Strategy. This could have a positive effect on air quality if implemented correctly over time.	N/A

B3: Predict and evaluate the effects of the policies and sites within the Neighbourhood Development Plan

To reduce the effect of traffic on the environment	++	++	++	This Policy is not over and above the Core Strategy in terms of SEA objectives and would only see to enhance surroundings with sustainable development in line with the proportional growth within the Core Strategy. With development there will be some margin increase in traffic however this would be balanced by the implementation of sustainable development and measures to mitigate against impacts.	N/A
To reduce contributions to climate change	+	+	+	This Policy is not over and above the Core Strategy in terms of SEA objectives and would only see to enhance surroundings with sustainable development in line with the proportional growth within the Core Strategy.	N/A
To reduce vulnerability to climate change	+	+	+	This Policy is not over and above the Core Strategy in terms of SEA objectives and would only see to enhance surroundings with sustainable development in line with the proportional growth within the Core Strategy but the outcome on actively reducing contributions is neutral.	N/A

B3: Predict and evaluate the effects of the policies and sites within the Neighbourhood Development Plan

To improve water quality	0	0	0	This Policy is not over and above the Core Strategy in terms of SEA objectives and could see to enhance surroundings through sustainable development in line with the proportional growth within the Core Strategy.	N/A
To provide for sustainable sources of water supply	0	0	0	This Policy is not over and above the Core Strategy in terms of SEA objectives and could see to enhance surroundings through sustainable development in line with the proportional growth within the Core Strategy.	N/A
To avoid, reduce and manage flood risk	X	X	X	N/A	N/A
To conserve soil resources and quality	0	0	0	This Policy is not over and above the Core Strategy in terms of SEA objectives and could see to enhance surroundings through sustainable development in line with the proportional growth within the Core Strategy.	N/A
To minimise the production of waste					
To improve health of the population					

B3: Predict and evaluate the effects of the policies and sites within the Neighbourhood Development Plan

To reduce crime and nuisance					
To conserve natural and manmade resources	+	+	+	This Policy is not over and above the Core Strategy in terms of SEA objectives and would only see to enhance surroundings with sustainable development in line with policy RA2 and proportional growth within the Core Strategy.	N/A
Overall commentary and any cumulative effects	This policy complements Core Strategy policies and would see any development to work to enhance surroundings with sustainable development measures, mainly through the protections and enhancement of the local landscape. Policy safeguards exist to ensure that environmental considerations are taking into account.				

B3: Predict and evaluate the effects of the policies and sites within the Neighbourhood Development Plan

Policy C2 – Settlement Boundary

SEA Objective	Assessment of effect (consider cumulative effects, significance of the effect and magnitude of the effect in terms of the three time periods)			Summary Explanation	Enhancement and mitigation opportunities
	Short term (1 – 5 years)	Medium term (6 – 10 years)	Long term (11 years +)		
To maintain and enhance nature conservation (biodiversity, flora and fauna)	+	+	++	This Policy is not over and above the Core Strategy in terms of SEA objectives and would work towards ensuring that measures of sustainable development are included in new development to protect and enhance the local landscape.	N/A
To maintain and enhance the quality of landscapes and townscapes	++	++	++	This Policy is not over and above the Core Strategy in terms of SEA objectives and would work towards ensuring that measures are included in new development to protect and enhance the local landscape.	N/A

B3: Predict and evaluate the effects of the policies and sites within the Neighbourhood Development Plan

To improve quality of surroundings	+	+	++	This Policy is not over and above the Core Strategy in terms of SEA objectives and would work towards ensuring that measures are included in new development to improve the quality of surroundings.	N/A
To conserve and where appropriate enhance the historic environment and cultural heritage	+	++	++	This Policy is not over and above the Core Strategy in terms of SEA objectives and see to enhance surroundings with sustainable development in line with the proportional growth within the Core Strategy. Policy safeguards are included within the policy to ensure historic and cultural heritage features are taken into consideration.	N/A
To improve air quality	+	+	+	This Policy is not over and above the Core Strategy in terms of SEA objectives and would only see to enhance surroundings with sustainable development in line with the proportional growth within the Core Strategy. This could have a positive effect on air quality if implemented correctly over time.	N/A
To reduce the effect of traffic on the environment	0	0	+	This Policy is not over and above the Core Strategy in terms of SEA objectives and would only see to enhance surroundings with	N/A

B3: Predict and evaluate the effects of the policies and sites within the Neighbourhood Development Plan

				sustainable development in line with the proportional growth within the Core Strategy. With development there will be some margin increase in traffic however this would be balanced by the implementation of sustainable development and measures to mitigate against impacts.	
To reduce contributions to climate change	0	0	0	This Policy is not over and above the Core Strategy in terms of SEA objectives and could see to enhance surroundings through sustainable development in line with the proportional growth within the Core Strategy.	N/A
To reduce vulnerability to climate change	X	X	X	N/A	N/A
To improve water quality	X	X	X	N/A	N/A
To provide for sustainable sources of water supply	X	X	X	N/A	N/A
To avoid, reduce and manage flood risk	X	X	X	N/A	N/A

B3: Predict and evaluate the effects of the policies and sites within the Neighbourhood Development Plan

To conserve soil resources and quality	X	X	X	N/A	N/A
To minimise the production of waste					
To improve health of the population					
To reduce crime and nuisance					
To conserve natural and manmade resources	+	+	+	This Policy is not over and above the Core Strategy in terms of SEA objectives and would only see to enhance surroundings with sustainable development in line with policy RA2 and proportional growth within the Core Strategy.	N/A
Overall commentary and any cumulative effects	This policy complements Core Strategy policies and would see any development within a Settlement Boundary and work to enhance surroundings with sustainable development measures, mainly through the protections and enhancement of the local landscape. Policy safeguards exist to ensure that environmental considerations are taken into account.				

B3: Predict and evaluate the effects of the policies and sites within the Neighbourhood Development Plan

Policy C3 – Housing Mix

SEA Objective	Assessment of effect (consider cumulative effects, significance of the effect and magnitude of the effect in terms of the three time periods)			Summary Explanation	Enhancement and mitigation opportunities
	Short term (1 – 5 years)	Medium term (6 – 10 years)	Long term (11 years +)		
To maintain and enhance nature conservation (biodiversity, flora and fauna)	0	0	0	This Policy is not over and above the Core Strategy in terms of SEA objectives and would work towards ensuring that measures of sustainable development are included in new development to protect and enhance the local landscape however at this stage the impact is neutral.	N/A
To maintain and enhance the quality of landscapes and townscapes	+	+	+	This Policy is not over and above the Core Strategy in terms of SEA objectives and would work towards ensuring that measures are included in new development to protect and enhance the local landscape.	N/A

B3: Predict and evaluate the effects of the policies and sites within the Neighbourhood Development Plan

To improve quality of surroundings	+	+	+	This Policy is not over and above the Core Strategy in terms of SEA objectives and would work towards ensuring that measures are included in new development to improve the quality of surroundings.	N/A
To conserve and where appropriate enhance the historic environment and cultural heritage	+	+	+	This Policy is not over and above the Core Strategy in terms of SEA objectives and see to enhance surroundings with sustainable development in line with the proportional growth within the Core Strategy. Policy safeguards are included within the policy to ensure historic and cultural heritage features are taken into consideration.	N/A
To improve air quality	X	X	X	N/A	N/A
To reduce the effect of traffic on the environment	0	0	+	This Policy is not over and above the Core Strategy in terms of SEA objectives and would only see to enhance surroundings with sustainable development in line with the proportional growth within the Core Strategy. With development there will be some margin increase in traffic however this would be balanced by the implementation of sustainable	N/A

B3: Predict and evaluate the effects of the policies and sites within the Neighbourhood Development Plan

				development and measures to mitigate against impacts.	
To reduce contributions to climate change	0	0	0	This Policy is not over and above the Core Strategy in terms of SEA objectives and could see to enhance surroundings through sustainable development in line with the proportional growth within the Core Strategy.	N/A
To reduce vulnerability to climate change	X	X	X	N/A	N/A
To improve water quality	X	X	X	N/A	N/A
To provide for sustainable sources of water supply	X	X	X	N/A	N/A
To avoid, reduce and manage flood risk	X	X	X	N/A	N/A
To conserve soil resources and quality	X	X	X	N/A	N/A
To minimise the production of waste					
To improve health of the population					

B3: Predict and evaluate the effects of the policies and sites within the Neighbourhood Development Plan

To reduce crime and nuisance					
To conserve natural and manmade resources	+	+	+	This Policy is not over and above the Core Strategy in terms of SEA objectives and would only see to enhance surroundings with sustainable development in line with policy RA2 and proportional growth within the Core Strategy.	N/A
Overall commentary and any cumulative effects	This policy complements Core Strategy policies and would see any development delivering a range of dwellings that are of type and size that positively contribute to meet the housing needs in the area and work to enhance surroundings with sustainable development measures, mainly through the protections and enhancement of the local landscape. Policy safeguards exist to ensure that environmental considerations are taken into account.				

Policy C4 – Natural Environment

SEA Objective	Assessment of effect (consider cumulative effects, significance of the effect and magnitude of the effect in terms of the three time periods)			Summary Explanation	Enhancement and mitigation opportunities
	Short term (1 – 5 years)	Medium term (6 – 10 years)	Long term (11 years +)		

B3: Predict and evaluate the effects of the policies and sites within the Neighbourhood Development Plan

To maintain and enhance nature conservation (biodiversity, flora and fauna)	++	++	++	This Policy is not over and above the Core Strategy in terms of SEA objectives and would work towards ensuring that measures of sustainable development are included in new development to protect and enhance the local landscape however at this stage the impact is positive.	N/A
To maintain and enhance the quality of landscapes and townscapes	+	+	+	This Policy is not over and above the Core Strategy in terms of SEA objectives and would work towards ensuring that measures are included in new development to protect and enhance the local landscape.	N/A
To improve quality of surroundings	+	+	+	This Policy is not over and above the Core Strategy in terms of SEA objectives and would work towards ensuring that measures are included in new development to improve the quality of surroundings.	N/A
To conserve and where appropriate enhance the historic environment and cultural heritage	+	+	+	This Policy is not over and above the Core Strategy in terms of SEA objectives and see to enhance surroundings with sustainable development in line with the proportional growth within the Core Strategy. Policy safeguards are included within the policy to ensure	N/A

B3: Predict and evaluate the effects of the policies and sites within the Neighbourhood Development Plan

				historic and cultural heritage features are taken into consideration.	
To improve air quality	0	0	+	This Policy is not over and above the Core Strategy in terms of SEA objectives and see to enhance surroundings with sustainable development in line with the proportional growth within the Core Strategy. Policy safeguards are included within the policy to ensure air quality is taken into consideration.	N/A
To reduce the effect of traffic on the environment	0	0	+	This Policy is not over and above the Core Strategy in terms of SEA objectives and would only see to enhance surroundings with sustainable development in line with the proportional growth within the Core Strategy. With development there will be some margin increase in traffic however this would be balanced by the implementation of sustainable development and measures to mitigate against impacts.	N/A
To reduce contributions to climate change	+	+	+	This Policy is not over and above the Core Strategy in terms of SEA objectives and could see to enhance surroundings through	N/A

B3: Predict and evaluate the effects of the policies and sites within the Neighbourhood Development Plan

				sustainable development in line with the proportional growth within the Core Strategy.	
To reduce vulnerability to climate change	+	+	+	This Policy is not over and above the Core Strategy in terms of SEA objectives and could see to enhance surroundings through sustainable development in line with the proportional growth within the Core Strategy.	N/A
To improve water quality	+	+	+	This Policy is not over and above the Core Strategy in terms of SEA objectives and could see to enhance surroundings through sustainable development in line with the proportional growth within the Core Strategy.	N/A
To provide for sustainable sources of water supply	+	+	+	This Policy is not over and above the Core Strategy in terms of SEA objectives and could see to enhance surroundings through sustainable development in line with the proportional growth within the Core Strategy.	N/A
To avoid, reduce and manage flood risk	+	+	+	This Policy is not over and above the Core Strategy in terms of SEA objectives and could see to enhance surroundings through sustainable development in line	N/A

B3: Predict and evaluate the effects of the policies and sites within the Neighbourhood Development Plan

				with the proportional growth within the Core Strategy.	
To conserve soil resources and quality	+	+	+	This Policy is not over and above the Core Strategy in terms of SEA objectives and could see to enhance surroundings through sustainable development in line with the proportional growth within the Core Strategy.	N/A
To minimise the production of waste					
To improve health of the population					
To reduce crime and nuisance					
To conserve natural and manmade resources	+	++	++	This Policy is not over and above the Core Strategy in terms of SEA objectives and would only see to enhance surroundings with sustainable development in line with policy RA2 and proportional growth within the Core Strategy.	N/A
Overall commentary and any cumulative effects	This policy complements Core Strategy policies and would see any development within the area protectin, conserving and enhancing the natural environment. Policy safeguards exist to ensure that environmental considerations are taken into account.				

B3: Predict and evaluate the effects of the policies and sites within the Neighbourhood Development Plan

Policy C5 – Historic Environment

SEA Objective	Assessment of effect (consider cumulative effects, significance of the effect and magnitude of the effect in terms of the three time periods)			Summary Explanation	Enhancement and mitigation opportunities
	Short term (1 – 5 years)	Medium term (6 – 10 years)	Long term (11 years +)		
To maintain and enhance nature conservation (biodiversity, flora and fauna)	+	+	+	This Policy is not over and above the Core Strategy in terms of SEA objectives and would work towards ensuring that measures of sustainable development are included in new development to protect and enhance the local landscape however at this stage the impact is positive.	N/A
To maintain and enhance the quality of landscapes and townscapes	+	+	+	This Policy is not over and above the Core Strategy in terms of SEA objectives and would work towards ensuring that measures are included in new development to protect and enhance the local landscape.	N/A

B3: Predict and evaluate the effects of the policies and sites within the Neighbourhood Development Plan

To improve quality of surroundings	+	+	+	This Policy is not over and above the Core Strategy in terms of SEA objectives and would work towards ensuring that measures are included in new development to improve the quality of surroundings.	N/A
To conserve and where appropriate enhance the historic environment and cultural heritage	++	++	++	This Policy is not over and above the Core Strategy in terms of SEA objectives and see to enhance surroundings with sustainable development in line with the proportional growth within the Core Strategy. Policy safeguards are included within the policy to ensure historic and cultural heritage features are taken into consideration.	N/A
To improve air quality	X	X	X	N/A	N/A
To reduce the effect of traffic on the environment	0	0	0	This Policy is not over and above the Core Strategy in terms of SEA objectives and would only see to enhance surroundings.	N/A
To reduce contributions to climate change	X	X	X	N/A	N/A
To reduce vulnerability to climate change	X	X	X	N/A	N/A

B3: Predict and evaluate the effects of the policies and sites within the Neighbourhood Development Plan

To improve water quality	X	X	X	N/A	N/A
To provide for sustainable sources of water supply	X	X	X	N/A	N/A
To avoid, reduce and manage flood risk	X	X	X	N/A	N/A
To conserve soil resources and quality	X	X	X	N/A	N/A
To minimise the production of waste					
To improve health of the population					
To reduce crime and nuisance					
To conserve natural and manmade resources	+	+	+	This Policy is not over and above the Core Strategy in terms of SEA objectives and would only see to enhance surroundings with sustainable development in line with policy RA2 and proportional growth within the Core Strategy.	N/A

B3: Predict and evaluate the effects of the policies and sites within the Neighbourhood Development Plan

Overall commentary and any cumulative effects	This policy complements Core Strategy policies and would see any development within the area protecting, conserving and enhancing the historic environment. Policy safeguards exist to ensure that environmental considerations are taken into account.
--	---

Policy C6 – Design

SEA Objective	Assessment of effect (consider cumulative effects, significance of the effect and magnitude of the effect in terms of the three time periods)			Summary Explanation	Enhancement and mitigation opportunities
	Short term (1 – 5 years)	Medium term (6 – 10 years)	Long term (11 years +)		
To maintain and enhance nature conservation (biodiversity, flora and fauna)	++	++	++	This Policy is not over and above the Core Strategy in terms of SEA objectives and would work towards ensuring that elements of design are included in new development to protect and enhance nature conservation.	N/A
To maintain and enhance the quality of landscapes and	++	++	++	This Policy is not over and above the Core Strategy in terms of SEA objectives and would work towards ensuring that measures are	N/A

B3: Predict and evaluate the effects of the policies and sites within the Neighbourhood Development Plan

townscapes				included in new development to protect and enhance the local landscape.	
To improve quality of surroundings	+	+	+	This Policy is not over and above the Core Strategy in terms of SEA objectives and would work towards ensuring that measures are included in new development to improve the quality of surroundings.	N/A
To conserve and where appropriate enhance the historic environment and cultural heritage	+	+	+	This Policy is not over and above the Core Strategy in terms of SEA objectives and see to enhance surroundings through design in line with the proportional growth within the Core Strategy. Further policy safeguards are included to ensure historic and cultural heritage features are taken into consideration.	N/A
To improve air quality	+	+	+	This Policy is not over and above the Core Strategy in terms of SEA objectives and see to enhance surroundings with sustainable development in line with the proportional growth within the Core Strategy. Policy safeguards are included within the policy to ensure air quality is taken into consideration.	N/A

B3: Predict and evaluate the effects of the policies and sites within the Neighbourhood Development Plan

To reduce the effect of traffic on the environment	++	++	++	This Policy is not over and above the Core Strategy in terms of SEA objectives and would only see to enhance surroundings with sustainable development in line with the proportional growth within the Core Strategy. With development there will be some margin increase in traffic however this would be balanced by the implementation of sustainable development and measures to mitigate against impacts.	N/A
To reduce contributions to climate change	+	+	+	This Policy is not over and above the Core Strategy in terms of SEA objectives and could see to enhance surroundings through sustainable development in line with the proportional growth within the Core Strategy.	N/A
To reduce vulnerability to climate change	+	+	+	This Policy is not over and above the Core Strategy in terms of SEA objectives and could see to enhance surroundings through sustainable development in line with the proportional growth within the Core Strategy.	N/A
To improve water quality	0	0	0	This Policy is not over and above the Core Strategy in terms of SEA objectives with a neutral impact at	N/A

B3: Predict and evaluate the effects of the policies and sites within the Neighbourhood Development Plan

				this stage, however could see to enhance surroundings through sustainable development in line with the proportional growth within the Core Strategy.	
To provide for sustainable sources of water supply	0	0	0	This Policy is not over and above the Core Strategy in terms of SEA objectives with a neutral impact at this stage, however could see to enhance surroundings through sustainable development in line with the proportional growth within the Core Strategy.	N/A
To avoid, reduce and manage flood risk	0	0	0	This Policy is not over and above the Core Strategy in terms of SEA objectives with a neutral impact at this stage, however could see to enhance surroundings through sustainable development in line with the proportional growth within the Core Strategy.	N/A
To conserve soil resources and quality	+	+	+	This Policy is not over and above the Core Strategy in terms of SEA objectives and could see to enhance surroundings through sustainable development in line with the proportional growth within the Core Strategy.	N/A

B3: Predict and evaluate the effects of the policies and sites within the Neighbourhood Development Plan

To minimise the production of waste					
To improve health of the population					
To reduce crime and nuisance					
To conserve natural and manmade resources	+	+	+	This Policy is not over and above the Core Strategy in terms of SEA objectives and would only see to enhance surroundings with sustainable development in line with policy RA2 and proportional growth within the Core Strategy.	N/A
Overall commentary and any cumulative effects	This policy complements Core Strategy policies and would see any development proposals working to maintain and enhance the local distinctiveness of Clehonger and achieve a high quality of design within the area. Policy safeguards exist to ensure that environmental considerations are taken into account.				

Policy C7 – Business and Tourism

SEA Objective	Assessment of effect (consider cumulative effects, significance of the effect and magnitude of the effect in terms of the three time periods)	Summary Explanation	Enhancement and mitigation opportunities

B3: Predict and evaluate the effects of the policies and sites within the Neighbourhood Development Plan

	Short term (1 – 5 years)	Medium term (6 – 10 years)	Long term (11 years +)		
To maintain and enhance nature conservation (biodiversity, flora and fauna)	+	+	+	This Policy is not over and above the Core Strategy in terms of SEA objectives and would work towards ensuring that measures of sustainable development are included in new development to protect and enhance the local landscape.	N/A
To maintain and enhance the quality of landscapes and townscapes	+	+	+	This Policy is not over and above the Core Strategy in terms of SEA objectives and would work towards ensuring that measures are included in new development to protect and enhance the local landscape.	N/A
To improve quality of surroundings	+	+	+	This Policy is not over and above the Core Strategy in terms of SEA objectives and would work towards ensuring that measures are included in new development to improve the quality of surroundings.	N/A
To conserve and where appropriate enhance the historic	+	+	+	This Policy is not over and above the Core Strategy in terms of SEA objectives and see to enhance	N/A

B3: Predict and evaluate the effects of the policies and sites within the Neighbourhood Development Plan

environment and cultural heritage				surroundings with sustainable development in line with the proportional growth within the Core Strategy. Policy safeguards are included within the policy to ensure historic and cultural heritage features are taken into consideration.	
To improve air quality	0	0	+	This Policy is not over and above the Core Strategy in terms of SEA objectives and would only see to enhance surroundings with sustainable development in line with the proportional growth within the Core Strategy. This would currently have a neutral effect on air quality if implemented correctly over time.	N/A
To reduce the effect of traffic on the environment	?	?	?	This Policy is not over and above the Core Strategy in terms of SEA objectives and would only see to enhance surroundings with sustainable development in line with the proportional growth within the Core Strategy. With development there will be some margin increase in traffic however this would be balanced by the implementation of sustainable development and measures to	N/A

B3: Predict and evaluate the effects of the policies and sites within the Neighbourhood Development Plan

				mitigate against impacts.	
To reduce contributions to climate change	X	X	X	N/A	N/A
To reduce vulnerability to climate change	X	X	X	N/A	N/A
To improve water quality	X	X	X	N/A	N/A
To provide for sustainable sources of water supply	X	X	X	N/A	N/A
To avoid, reduce and manage flood risk	X	X	X	N/A	N/A
To conserve soil resources and quality	+	+	+	This Policy is not over and above the Core Strategy in terms of SEA objectives and could see to enhance surroundings through sustainable development in line with the proportional growth within the Core Strategy.	N/A
To minimise the production of waste					
To improve health of the population					

B3: Predict and evaluate the effects of the policies and sites within the Neighbourhood Development Plan

To reduce crime and nuisance					
To conserve natural and manmade resources	+	+	+	This Policy is not over and above the Core Strategy in terms of SEA objectives and would only see to enhance surroundings with sustainable development in line with policy RA2 and proportional growth within the Core Strategy.	N/A
Overall commentary and any cumulative effects	This policy complements Core Strategy policies and would see any development of business and tourism within the area and work to enhance surroundings with sustainable development measures. Policy safeguards exist to ensure that environmental considerations are taken into account.				

Policy C8 – Agricultural Development

SEA Objective	Assessment of effect (consider cumulative effects, significance of the effect and magnitude of the effect in terms of the three time periods)			Summary Explanation	Enhancement and mitigation opportunities
	Short term (1 – 5 years)	Medium term (6 – 10 years)	Long term (11 years +)		

B3: Predict and evaluate the effects of the policies and sites within the Neighbourhood Development Plan

To maintain and enhance nature conservation (biodiversity, flora and fauna)	+	+	+	This Policy is not over and above the Core Strategy in terms of SEA objectives and would work towards ensuring that proposals for agricultural development protect and enhance nature conservation.	N/A
To maintain and enhance the quality of landscapes and townscapes	++	++	++	This Policy is not over and above the Core Strategy in terms of SEA objectives and would work towards ensuring that measures are included in new agricultural development to protect and enhance the local landscape.	N/A
To improve quality of surroundings	++	++	++	This Policy is not over and above the Core Strategy in terms of SEA objectives and would work towards ensuring that measures are included in new agricultural development to improve the quality of surroundings.	N/A
To conserve and where appropriate enhance the historic environment and cultural heritage	++	++	++	This Policy is not over and above the Core Strategy in terms of SEA objectives and see to enhance surroundings and especially the natural and historic landscapes through design in line with the proportional growth within the Core Strategy. Further policy safeguards are included to ensure historic and cultural heritage features are taken	N/A

B3: Predict and evaluate the effects of the policies and sites within the Neighbourhood Development Plan

				into consideration.	
To improve air quality	X	X	X	N/A	N/A
To reduce the effect of traffic on the environment	++	++	++	This Policy is not over and above the Core Strategy in terms of SEA objectives and would only see to enhance surroundings with sustainable development in line with the proportional growth within the Core Strategy. With agricultural development there will be some margin increase in traffic however this would be balanced by the implementation of sustainable development and measures to mitigate against impacts.	N/A
To reduce contributions to climate change	0	0	+	This Policy is not over and above the Core Strategy in terms of SEA objectives and could see to enhance surroundings over the longer term through sustainable development in line with the proportional growth within the Core Strategy.	N/A
To reduce vulnerability to climate change	0	0	+	This Policy is not over and above the Core Strategy in terms of SEA objectives and could see to enhance surroundings over the longer term through sustainable	N/A

B3: Predict and evaluate the effects of the policies and sites within the Neighbourhood Development Plan

				development in line with the proportional growth within the Core Strategy.	
To improve water quality	+	+	+	This Policy is not over and above the Core Strategy in terms of SEA objectives with a neutral impact at this stage, however could see to enhance surroundings through sustainable development in line with the proportional growth within the Core Strategy.	N/A
To provide for sustainable sources of water supply	+	+	+	This Policy is not over and above the Core Strategy in terms of SEA objectives with a neutral impact at this stage, however could see to enhance surroundings through sustainable development in line with the proportional growth within the Core Strategy.	N/A
To avoid, reduce and manage flood risk	+	++	++	This Policy is not over and above the Core Strategy in terms of SEA objectives with a neutral impact at this stage, however could see to enhance surroundings through sustainable development in line with the proportional growth within the Core Strategy.	N/A
To conserve soil	++	++	++	This Policy is not over and above the Core Strategy in terms of SEA	N/A

B3: Predict and evaluate the effects of the policies and sites within the Neighbourhood Development Plan

resources and quality				objectives and could see to enhance surroundings through sustainable development in line with the proportional growth within the Core Strategy.	
To minimise the production of waste					
To improve health of the population					
To reduce crime and nuisance					
To conserve natural and manmade resources	+	+	+	This Policy is not over and above the Core Strategy in terms of SEA objectives and would only see to enhance surroundings with sustainable development in line with policy RA2 and proportional growth within the Core Strategy.	N/A
Overall commentary and any cumulative effects	This policy complements Core Strategy policies and would see any development proposals relating to agricultural development working to maintain and enhance the local distinctiveness of Clehonger as well as making efforts to address and minimise cumulative effects through environmental impacts. Policy safeguards exist to ensure that environmental considerations are taken into account.				

Policy C9 – Community Facilities

B3: Predict and evaluate the effects of the policies and sites within the Neighbourhood Development Plan

SEA Objective	Assessment of effect (consider cumulative effects, significance of the effect and magnitude of the effect in terms of the three time periods)			Summary Explanation	Enhancement and mitigation opportunities
	Short term (1 – 5 years)	Medium term (6 – 10 years)	Long term (11 years +)		
To maintain and enhance nature conservation (biodiversity, flora and fauna)	+	+	+	This Policy is not over and above the Core Strategy in terms of SEA objectives and development proposals for community facilities would work towards ensuring that proposals for agricultural development protect and enhance nature conservation.	N/A
To maintain and enhance the quality of landscapes and townscapes	+	+	+	This Policy is not over and above the Core Strategy in terms of SEA objectives and would work towards ensuring that measures are included in new development of community facilities to protect and enhance the local landscape.	N/A
To improve quality of surroundings	+	+	+	This Policy is not over and above the Core Strategy in terms of SEA objectives and would work towards ensuring that measures are included in new development to	N/A

B3: Predict and evaluate the effects of the policies and sites within the Neighbourhood Development Plan

				improve the quality of surroundings.	
To conserve and where appropriate enhance the historic environment and cultural heritage	+	+	+	This Policy is not over and above the Core Strategy in terms of SEA objectives and see to enhance surroundings and especially the natural and historic landscapes through design in line with the proportional growth within the Core Strategy. Further policy safeguards are included to ensure historic and cultural heritage features are taken into consideration.	N/A
To improve air quality	X	X	X	N/A	N/A
To reduce the effect of traffic on the environment	+	+	+	This Policy is not over and above the Core Strategy in terms of SEA objectives and would only see to enhance surroundings with sustainable development in line with the proportional growth within the Core Strategy. The viability of community facilities would reduce the need to travel within the community.	N/A
To reduce contributions to climate change	X	X	X	N/A	N/A
To reduce vulnerability	X	X	X	N/A	N/A

B3: Predict and evaluate the effects of the policies and sites within the Neighbourhood Development Plan

to climate change					
To improve water quality	X	X	X	N/A	N/A
To provide for sustainable sources of water supply	X	X	X	N/A	N/A
To avoid, reduce and manage flood risk	X	X	X	N/A	N/A
To conserve soil resources and quality	X	X	X	N/A	N/A
To minimise the production of waste					
To improve health of the population					
To reduce crime and nuisance					
To conserve natural and manmade resources	+	+	+	This Policy is not over and above the Core Strategy in terms of SEA objectives and would only see to enhance surroundings with sustainable development of community facilities in line with the Core Strategy.	N/A

B3: Predict and evaluate the effects of the policies and sites within the Neighbourhood Development Plan

Overall commentary and any cumulative effects	This policy complements Core Strategy policies and would see any development proposals relating to community facilities working to maintain and enhance the local distinctiveness of Clehonger as well as making efforts to address and minimise cumulative effects through environmental impacts. Policy safeguards exist to ensure that environmental considerations are taken into account.
--	--

Policy C10 – Clehonger Playing Field

SEA Objective	Assessment of effect (consider cumulative effects, significance of the effect and magnitude of the effect in terms of the three time periods)			Summary Explanation	Enhancement and mitigation opportunities
	Short term (1 – 5 years)	Medium term (6 – 10 years)	Long term (11 years +)		

B3: Predict and evaluate the effects of the policies and sites within the Neighbourhood Development Plan

To maintain and enhance nature conservation (biodiversity, flora and fauna)	++	++	++	This Policy is not over and above the Core Strategy in terms of SEA objectives and would work towards ensuring that proposals do not result in the loss of any protect and enhance nature conservation related to the playing field.	N/A
To maintain and enhance the quality of landscapes and townscapes	++	++	++	This Policy is not over and above the Core Strategy in terms of SEA objectives and would work towards ensuring that measures are included to protect and enhance the local landscape.	N/A
To improve quality of surroundings	++	++	++	This Policy is not over and above the Core Strategy in terms of SEA objectives and would work towards ensuring that measures are included to improve and protect the quality of surroundings.	N/A
To conserve and where appropriate enhance the historic environment and cultural heritage	++	++	++	This Policy is not over and above the Core Strategy in terms of SEA objectives and see to enhance surroundings and especially the natural and historic landscapes by protecting the open spaces and recreational space.	N/A
To improve air quality	+	+	+	This Policy is not over and above the Core Strategy in terms of SEA objectives and would only see to	N/A

B3: Predict and evaluate the effects of the policies and sites within the Neighbourhood Development Plan

				enhance surroundings with sustainable development in line with the proportional growth within the Core Strategy. This would currently have a neutral effect on air quality if implemented correctly over time.	
To reduce the effect of traffic on the environment	+	+	+	This Policy is not over and above the Core Strategy in terms of SEA objectives and would only see to enhance surroundings.	N/A
To reduce contributions to climate change	+	+	+	This Policy is not over and above the Core Strategy in terms of SEA objectives and could see to enhance surroundings.	N/A
To reduce vulnerability to climate change	0	0	0	This Policy is not over and above the Core Strategy in terms of SEA objectives and could see to enhance surroundings.	N/A
To improve water quality	X	X	X	N/A	N/A
To provide for sustainable sources of water supply	X	X	X	N/A	N/A
To avoid, reduce and manage flood risk	X	X	X	N/A	N/A

B3: Predict and evaluate the effects of the policies and sites within the Neighbourhood Development Plan

To conserve soil resources and quality	+	+	+	This Policy is not over and above the Core Strategy in terms of SEA objectives and could see to enhance surroundings through protection of the playing fields.	N/A
To minimise the production of waste					
To improve health of the population					
To reduce crime and nuisance					
To conserve natural and manmade resources	+	+	+	This Policy is not over and above the Core Strategy in terms of SEA objectives and would only see to enhance surroundings.	N/A
Overall commentary and any cumulative effects	This policy complements Core Strategy policies and looks to protect and avoid the loss of open space in the parish. Policy safeguards exist to ensure that environmental considerations are taken into account.				

Policy C11 – Hereford Bypass

SEA Objective	Assessment of effect (consider cumulative effects, significance of the effect and magnitude of the effect in	Summary Explanation	Enhancement and mitigation
----------------------	---	----------------------------	-----------------------------------

B3: Predict and evaluate the effects of the policies and sites within the Neighbourhood Development Plan

	terms of the three time periods)				opportunities
	Short term (1 – 5 years)	Medium term (6 – 10 years)	Long term (11 years +)		
To maintain and enhance nature conservation (biodiversity, flora and fauna)	++	++	++	This Policy is not over and above the Core Strategy in terms of SEA objectives and would work towards ensuring that proposals do not result in the loss of any protect and enhance nature conservation related to the Bypass.	N/A
To maintain and enhance the quality of landscapes and townscapes	++	++	++	This Policy is not over and above the Core Strategy in terms of SEA objectives and would work towards ensuring that measures are included to protect and enhance the local landscape.	N/A
To improve quality of surroundings	++	++	++	This Policy is not over and above the Core Strategy in terms of SEA objectives and would work towards ensuring that measures are included to improve and protect the quality of surroundings.	N/A
To conserve and where appropriate enhance the historic	++	++	++	This Policy is not over and above the Core Strategy in terms of SEA objectives and see to enhance	N/A

B3: Predict and evaluate the effects of the policies and sites within the Neighbourhood Development Plan

environment and cultural heritage				surroundings and especially the natural and historic landscapes by protecting the open spaces and recreational space.	
To improve air quality	X	X	X	N/A	N/A
To reduce the effect of traffic on the environment	++	++	++	This Policy is not over and above the Core Strategy in terms of SEA objectives and would only see to enhance surroundings to mitigate impacts for proposals for the Hereford Bypass.	N/A
To reduce contributions to climate change	X	X	X	N/A	N/A
To reduce vulnerability to climate change	X	X	X	N/A	N/A
To improve water quality	X	X	X	N/A	N/A
To provide for sustainable sources of water supply	X	X	X	N/A	N/A
To avoid, reduce and manage flood risk	X	X	X	N/A	N/A

B3: Predict and evaluate the effects of the policies and sites within the Neighbourhood Development Plan

To conserve soil resources and quality	+	+	+	This Policy is not over and above the Core Strategy in terms of SEA objectives and could see to enhance surroundings through.	N/A
To minimise the production of waste					
To improve health of the population					
To reduce crime and nuisance					
To conserve natural and manmade resources	+	+	+	This Policy is not over and above the Core Strategy in terms of SEA objectives and would only see to enhance surroundings.	N/A
Overall commentary and any cumulative effects	This policy complements Core Strategy policies and looks to protect and avoid the loss of open space, protection of heritage assets and water management relating to proposals for the Hereford Bypass. Policy safeguards exist to ensure that environmental considerations are taken into account.				

Key:

++ Move towards significantly	+ Move towards marginally	-- Move away Significantly	- Move away marginally	0 Neutral	? Uncertain	X No relationship
--------------------------------------	----------------------------------	-----------------------------------	-------------------------------	------------------	--------------------	--------------------------

SEA Objective / Objective / Policy	1. To maintain and enhance nature conservation (biodiversity, flora and fauna)	2. To maintain and enhance the quality of landscapes and townscapes	3. To improve quality of surroundings	4. To conserve and where appropriate enhance the historic environment and culture heritage	5. To improve air quality	6. To reduce the effect of traffic on the environment	7. To reduce contributions to climate change	8. To reduce vulnerability to climate change	9. To improve water quality	10. To provide for sustainable sources of water supply	11. To avoid, reduce and manage flood risk	12. To conserve soil resources and quality	13. To minimise the production of waste	14. To improve health of the population	15. To reduce crime and nuisance	16. To conserve natural and manmade resources
Objective 1 – Housing	+	+	+	+	+	0	0	0	0	+	+	X	X	X	X	+
Objective 2 – The Environment	+++	+++	+++	+++	+	0	+	+	+	+++	X	+++	X	X	X	+++
Objective 3 – Local Economy	+	+	+	+	+	0	0	0	X	X	X	0	0	0	0	+
Objective 4 – Community Facilities and Infrastructure	+	+	+	+	+	0	+	+	+	0	X	0	X	+	0	+
Objective 5 – Community Actions	+	+	+	+	+	+	+	+	+	X	X	X	X	+	+	+
Policy C1 – Sustainable Development	+++	+++	+++	+++	+	+++	+	+	0	0	X	0				+
Policy C2 – Settlement Boundary	+	+++	+++	+++	0	?	0	X	X	X	X	X				+
Policy C3 – Housing Mix	0	+	+	+	X	?	0	X	X	X	X	X				+
Policy C4 – Natural Environment	+++	+	+++	+	+	X	0	0	+	+	+	+				+++

Policy C5 – Historic Environment	+	++	+	++	X	?	X	X	X	X	X	X				+
Policy C6 – Design	++	++	+	+	+	++	+	+	0	0	0	+				+
Policy C7 – Business and Tourism	+	+	+	+	0	X	X	X	X	X	X	+				+
Policy C8 – Agricultural Development	+	++	++	++	X	++	0	0	+	+	++	++				++
Policy C9 – Community Facilities	+	+	+	+	X	+	X	X	X	X	X	X				+
Policy C10 – Clehonger Playing Field	++	++	++	++	+	+	+	0	X	X	X	+				++
Policy C11 – Hereford Bypass	++	++	++	++	X	++	X	X	X	X	X	X				+
	++	++	++	++	+	+	0	0	0	0	+	+				+
Cumulative effects of whole plan (1 + 2 + 3...)	Taking into consideration the cumulative effects of policies and options, the plan will have an overall positive impact on environmental assets. The plan is in general conformity with the Core Strategy overall and all of the policies and objectives meet the Core Strategy requirements for the purposes of the SEA. Other issues with a currently neutral outcome have the opportunity to be mitigated by further detail in policies or at planning stage.															
Commentary for significant cumulative effects	Overall the plan is positive and would have a positive impact upon the SEA baseline data. Key recommendations would be to ensure that the environmental mitigation impacts are clear and robust, this may require some enhancement of existing policies in regard to air quality and water resources. However the plan as a whole is robust and meets key targets. No significant negative cumulative effects have been identified.															

Appendix 5

Appendix 5 – Clehonger (Reg 14)
Options Considered
May 2019

Option 1: not to prepare a Neighbourhood Development Plan, relying instead on the Core Strategy and the Rural Areas Sites Allocations DPD
Option 2: use a criteria-based Plan only
Option 3: allocate sites to address the minimum housing requirement
Option 4: define settlement boundary for Clehonger without allocating sites
Option 5: define settlement boundary for Clehonger and allocate sites

Appendix 6

Template C2: SEA Quality Assurance Checklist

Parish Council Name: Clehonger Parish

Neighbourhood Development Plan Name: Clehonger Parish Neighbourhood Plan

Date completed: May 2019

Objectives and context	Where are the points covered in Neighbourhood Development Plan SEA (insert chapter, section, page references, as necessary)
<ul style="list-style-type: none"> • The Neighbourhood Development Plan's purpose and objectives are made clear. • The Neighbourhood Area's environmental issues and constraints, including acknowledgement of those in the Local Plan (Core Strategy) SA, where relevant, and local environmental protection objectives, are considered in developing objectives and targets. • SEA objectives are clearly set out and linked to indicators and targets where appropriate. • Links with other locally related plans, programmes and policies are identified, explained and acknowledgement for those set out in the SA of the Local Plan (Core Strategy) is given, where relevant. • Conflicts that exist between SEA objectives; between SEA and Neighbourhood Development Plan objectives; and between SEA objectives and other local plan objectives are identified and described. 	<p>Chapter 1.6 – 1.10</p> <p>Chapter 2 methodology, chapter 3 and tables A2 and A3</p> <p>Chapter 3 paragraph 3.5 and 3.7</p> <p>Chapter 3, paragraph 3.1</p> <p>Chapter 3</p>
<p>Scoping</p> <ul style="list-style-type: none"> • Statutory Consultees are consulted in appropriate ways and at appropriate times on the content and scope of the Environmental Report. • The assessment focuses on significant issues. • Technical, procedural and other 	<p>Chapter 2, paragraphs 2.6-2.9</p> <p>Chapter 2 and chapter 4</p>

<p>difficulties encountered are discussed; assumptions and uncertainties are made explicit.</p> <ul style="list-style-type: none"> • Reasons are given for eliminating issues from further consideration. 	<p>Chapter 2</p> <p>Chapter 2, chapter 4 and chapter 5</p>
<p>Alternatives</p> <ul style="list-style-type: none"> • Realistic alternatives are considered for key issues, and the reasons for choosing them are documented. • Alternatives include 'do minimum' and/or 'business as usual' scenarios wherever relevant. • The environmental effects (both adverse and beneficial) of each alternative are identified and compared. • Inconsistencies between the alternatives and other relevant local plans, programmes or policies are identified and explained. • Reasons are given for selection or elimination of alternatives. 	<p>Chapter 4 and chapter 5</p> <p>Paragraph 5.4</p> <p>Chapter 5</p> <p>Chapter 5</p> <p>Chapter 5</p>
<p>Baseline information</p> <ul style="list-style-type: none"> • Relevant aspects of the current state of the local, neighbourhood area environment and their likely evolution without the Neighbourhood Development Plan are described. Acknowledgement to the information in the SA of the Local Plan (Core Strategy) is given, where relevant. • Environmental characteristics of the local, neighbourhood area, likely to be significantly affected are described, including areas wider than the physical boundary of the designated neighbourhood area, where it is likely to be affected by the Neighbourhood Development Plan. • Difficulties such as deficiencies in information or methods are explained. 	<p>Chapter 1, Chapter 3</p> <p>Initial screening report and Chapter 1</p> <p>Chapter 2</p>

<p>Prediction and evaluation of likely significant environmental effects</p> <ul style="list-style-type: none"> • Effects identified include the types listed in the Directive (biodiversity, population, human health, fauna, flora, soil, water, air, climate factors, material assets, cultural heritage and landscape), as relevant; and other local likely environmental effects are also covered, as appropriate. • Both positive and negative effects are considered, and the duration of effects (short, medium or long-term) is addressed. • Likely secondary, cumulative (growing in quantity and strength) and synergistic (acting together) effects are identified, where practicable. • Inter-relationships between effects are considered, where practicable. • The prediction and evaluation of effects makes use of relevant accepted standards, regulations, and thresholds (i.e. data gathered for the evidence base). • Methods used to evaluate the effects are described. 	<p>Tables A2, A3 and A4</p> <p>Tables B2 and B3</p> <p>Table B4</p> <p>Chapter 5, chapter 6</p> <p>Chapter 5, chapter 6</p> <p>Chapter 2</p>
<p>Mitigation measures</p> <ul style="list-style-type: none"> • Measures envisaged to prevent, reduce and offset any significant adverse effects of implementing the Neighbourhood Development Plan are indicated. • Issues to be taken into account when determining planning applications or other projects, for example funding bids, are identified. 	<p>Chapter 6, paragraph 6.6 – 6.9</p> <p>Chapter 6</p>
<p>The Environmental Report</p> <ul style="list-style-type: none"> • Is clear and concise in its layout and presentation. • Uses simple, clear language and avoids or explains technical terms. • Uses maps and other illustrations, 	<p>-</p> <p>-</p> <p>-</p>

<p>where appropriate.</p> <ul style="list-style-type: none"> • Explains the methodology used. • Explains who was consulted and what methods of consultation were used. • Identifies sources of information, including expert judgement and matters of opinion. • Contains a non-technical summary covering the overall approach to the SEA, the objectives of the Neighbourhood Development Plan, the main options considered, and any changes to the Neighbourhood Development Plan resulting from the SEA. 	<p>Chapter 2</p> <p>Paragraph 2.6-2.9</p> <p>Paragraph 2.8-2.9</p> <p>Page 1 / Paragraph 1.8 / Chapter 6</p>
<p>Consultation</p> <ul style="list-style-type: none"> • The SEA is consulted on as an integral part of the plan-making process of the Neighbourhood Development Plan. • Consultation Bodies and the public likely to be affected by, or having an interest in, the Neighbourhood Development Plan are consulted in ways and at times, which give them an early and effective opportunity within appropriate time frames to express their opinions on the draft Neighbourhood Development Plan and Environmental Report. 	<p>Paragraph 2.6-2.9</p> <p>Chapter 8</p>
<p>Decision-making and information on the decision</p> <ul style="list-style-type: none"> • The environmental report and the opinions of those consulted are taken into account in finalising and adopting the Neighbourhood Development Plan. • An explanation is given of how they have been taken into account. • Reasons are given for choosing the Neighbourhood Development Plan as adopted, in the light of other reasonable alternatives considered. 	<p>Chapter 8</p> <p>Following draft consultation</p> <p>Following draft consultation</p>

<p>Monitoring measures</p> <ul style="list-style-type: none"> • Measures proposed for monitoring the Neighbourhood Development Plan are clear, practicable and linked to the indicators and objectives used in the SEA. • Monitoring is used, where appropriate, during implementation of the Neighbourhood Development Plan to make good deficiencies in baseline information in the SEA. • Acknowledgement that monitoring enables unforeseen adverse effects to be identified at an early stage. (These effects may include predictions which prove to be incorrect.) And that • Proposals are made for action in response to significant adverse effects arising from the monitoring of the Neighbourhood Development Plan. 	<p>Chapter 7</p> <p>Chapter 7</p> <p>Chapter 7</p> <p>Chapter 7</p>
--	---