

# Strategic Environmental Assessment

Scoping Report for:

Ledbury Neighbourhood Area

November 2020



## Consultation on the Scoping Report

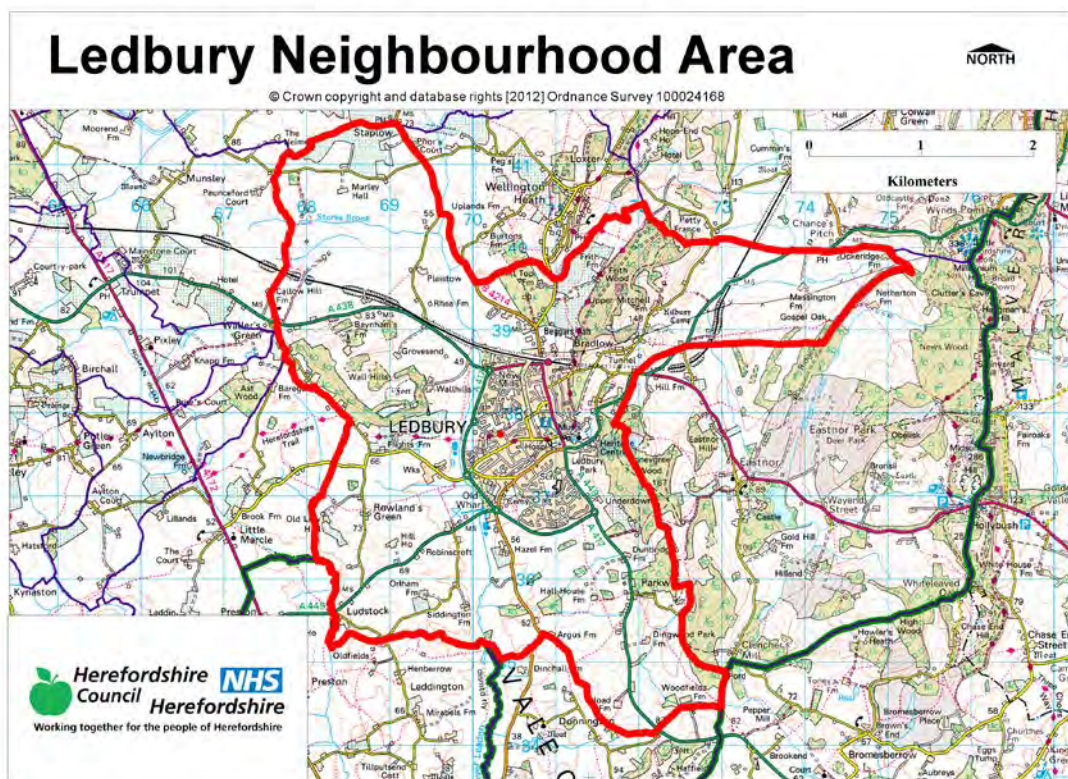
The aim of the consultation process is to involve and engage with statutory consultees and other relevant bodies on the scope of the appraisal. In particular, it seeks to:

- Ensure the SEA is both comprehensive and sufficiently robust to support the Neighbourhood Development Plan during the later stages of full public consultation;
- Seek advice on the completeness of the plan review and baseline data and gain further information where appropriate;
- Seek advice on the suitability of key sustainability issues;
- Seek advice on the suitability of the sustainability objectives.

Comments on this Scoping Report have been invited from the three consultation bodies as required by the SEA regulations, together with Natural Resources Wales.

The three consultation bodies are as follows:

1. Natural England;
2. Historic England;
3. Environment Agency.



Plans and Programmes	Type of document	Date	Overview	Key message, target/objective/indicator	SEA topic(s)	Implications for the NDP and SEA
The EC Conservation of Habitats and Species Regulations	European Union Legislation	2010	These regulations transpose the Habitats Directive in England, Wales and to a limited extent Scotland by ensuring that activities are carried out in accordance with the Habitats Directive, which is to protect biodiversity through the conservation of natural habitats and species of wild flora and fauna.	The Regulations make it an offence (subject to exceptions) to deliberately capture, kill, disturb, or trade in the animals listed in Schedule 2, or pick, collect, cut, uproot, destroy, or trade in the plants listed in Schedule 4. However, these actions can be made lawful through the granting of licenses by the appropriate authorities.	<ul style="list-style-type: none"> <li>Biodiversity</li> <li>Cultural heritage and the landscape</li> </ul>	The Ledbury NDP should be compliant with all the relevant legislation and regulations.

Plans and Programmes	Type of document	Date	Overview	Key message, target/objective/indicator	SEA topic(s)	Implications for the NDP and SEA
The EC Water Framework Directive	European Union	2000	Commits all EU member states to achieve good qualitative and quantitative status of all water courses by 2015.	Aims for 'good status' for all ground and surface waters (rivers, lakes, transitional waters, and coastal waters) in the EU.	<ul style="list-style-type: none"> <li>• Water</li> </ul>	The Ledbury NDP should be compliant with all the relevant legislation and regulations.
The Wildlife and Countryside Act (1981)	Domestic Legislation	1981	The major legal instrument for wildlife protection in Britain, although other significant acts have been passed since. It has numerous parts and supplementary lists and schedules many of which have been amended since publication.	The principle mechanism for the legislative protection of wildlife in Great Britain.	<ul style="list-style-type: none"> <li>• Biodiversity</li> <li>• Cultural heritage and the landscape</li> <li>• Flora and fauna</li> <li>• Material assets</li> <li>• Soil</li> </ul>	The Ledbury NDP should be compliant with all the relevant legislation and regulations.

Plans and Programmes	Type of document	Date	Overview	Key message, target/objective/indicator	SEA topic(s)	Implications for the NDP and SEA
The Countryside and Right of Way Act (2000)	Domestic Legislation	2000	Creates a statutory right of access on foot to certain types of open land, to modernise the public rights of way system, to strengthen nature conservation legislation, and to facilitate better management of AONBs.	<p>The Act provides for a new right of access on foot to areas of open land comprising: Mountain (land over 600 metres); Moorland; Heath; Downland; Registered common land.</p> <p>There are provisions to consider extending the right in the future to coastal land, but not woodland despite some early publicity suggesting this.</p>	<ul style="list-style-type: none"> <li>• Biodiversity</li> <li>• Cultural heritage and the landscape</li> <li>• Flora and fauna</li> <li>• Material assets</li> <li>• Soil</li> </ul>	The Ledbury NDP should be compliant with all the relevant legislation and regulations.
The Natural Environment and Rural Communities Act (2006)	Domestic Legislation	2006	Designed to help achieve a rich and diverse natural environment and thriving rural communities through modernised and simplified	Provides that any public body or statutory undertaker in England and Wales must have regard to the purpose of conservation of biological diversity in the exercise of their functions.	<ul style="list-style-type: none"> <li>• Biodiversity</li> <li>• Cultural heritage and the landscape</li> <li>• Flora and fauna</li> <li>• Material assets</li> <li>• Soil</li> </ul>	The Ledbury NDP should be compliant with all the relevant legislation and regulations.

Plans and Programmes	Type of document	Date	Overview	Key message, target/objective/indicator	SEA topic(s)	Implications for the NDP and SEA
			arrangements for delivering Government policy.			
Revised EU Sustainable Development strategy	EU Strategy.	2009	Sets out a single strategy on how the EU will better meet its long-standing commitment to meet the challenges of sustainable development.	Recognises the need to gradually change current unsustainable consumption and production patterns and move towards a better integrated approach to policy making. The Strategy sets overall objectives, targets and concrete actions for seven key priority challenges, predominantly environmental.	<ul style="list-style-type: none"> <li>• Air</li> <li>• Biodiversity</li> <li>• Climatic factors</li> <li>• Cultural heritage</li> <li>• Flora and fauna</li> <li>• Material assets</li> <li>• Population</li> <li>• Soil</li> <li>• Water</li> </ul>	The Ledbury NDP should take account of the objectives of the strategy, making the aim of sustainable development an integral part of its proposals.



Plans and Programmes	Type of document	Date	Overview	Key message, target/objective/indicator	SEA topic(s)	Implications for the NDP and SEA
Biodiversity 2020: A strategy for England's wildlife and ecosystem services	National Strategy	2011	Forms part of the UK's Post-2010 Biodiversity Framework by setting out England's contribution towards the UK's commitments under the United Nations Convention of Biological Diversity.	Sets out to halt overall biodiversity loss, support healthy well-functioning ecosystems and establish coherent ecological networks, with more and better places for nature for the benefit of wildlife and people.	<ul style="list-style-type: none"> <li>• Biodiversity</li> </ul>	The Ledbury NDP should take account of the provisions of the strategy, making the most of opportunities to enhance wildlife habitats or restore degraded ecosystems in the process.
National Planning Policy Framework (NPPF)	National Planning Policy.	2018	Consolidates the suite of PPG/PPS into one succinct planning policy document.	Aims to make the planning system less complex, more accessible and able to promote growth within the ethos of sustainable development. The presumption is in favour of sustainable development.	<ul style="list-style-type: none"> <li>• Air</li> <li>• Biodiversity</li> <li>• Climatic factors</li> <li>• Cultural heritage</li> <li>• Flora and fauna</li> <li>• Material assets</li> <li>• Population</li> <li>• Soil</li> <li>• Water</li> </ul>	The guidance contained within the section on Neighbourhood Planning should be borne in mind during the preparation of the Ledbury NDP.

Plans and Programmes	Type of document	Date	Overview	Key message, target/objective/indicator	SEA topic(s)	Implications for the NDP and SEA
Planning Practice Guidance	Government Guidance	2019	Provides guidance to local planning authorities and others on the operation of the planning system.	Offers up-to-date, electronic guidance on every aspect of planning from air quality and design to land stability and rural housing.	<ul style="list-style-type: none"> <li>• Air</li> <li>• Biodiversity</li> <li>• Climatic factors</li> <li>• Cultural heritage</li> <li>• Flora and fauna</li> <li>• Material assets</li> <li>• Population</li> <li>• Soil</li> <li>• Water</li> </ul>	The Ledbury NDP must be pro-growth and facilitate the provision and development of sustainable development.
Herefordshire Adopted Core Strategy 2011-2031	Development Plan Document (DPD)	2015	Sets out the vision, objectives and policies for the Herefordshire Local Plan (Core Strategy), which will guide development across the county up to 2031.	<p>Outlines the emerging suite of countywide planning policies relating to housing, economic development and the environment, which the NDP will need to be in conformity with where relevant.</p> <p>The Submission Core Strategy includes a range of objectives, five of which directly relate to rural areas:</p>	<ul style="list-style-type: none"> <li>• Air</li> <li>• Biodiversity</li> <li>• Climatic factors</li> <li>• Cultural heritage</li> <li>• Flora and fauna</li> <li>• Material assets</li> <li>• Population</li> <li>• Soil</li> <li>• Water</li> </ul>	<p>The Ledbury NDP should take account of relevant policies set within the Core Strategy.</p> <p>Where necessary, the Ledbury NDP should provide services, facilities and employment opportunities that are accessible to both local and neighbouring</p>



Plans and Programmes	Type of document	Date	Overview	Key message, target/objective/indicator	SEA topic(s)	Implications for the NDP and SEA
				<ul style="list-style-type: none"> <li>• To meet the housing needs of all sections of the community</li> <li>• To improve access to services in rural areas</li> <li>• To strengthen the economic viability of the villages and their rural hinterlands.</li> <li>• To achieve sustainable communities and protect the environment</li> <li>• To conserve, promote, utilise and enjoy our natural, built, historic and cultural assets for the fullest benefit of the whole community</li> </ul> <p>To achieve a thriving rural Herefordshire, the Core Strategy seeks to enhance the role the villages have traditionally played in as accessible, sustainable centres for their rural</p>		<p>communities. A strategic site has been identified, LB2 strategic development site comprises the provision of 625 new homes, 3ha of employment land and 210-place primary school.</p> <p>Following an outline application 171532 for 625, a hearing for Ledbury has taken place in September 2020.</p> <p>The NDP will need to recognised these commitments and in line with NPPF potentially consider the allocation of a housing site.</p> <p>Rural areas in the Ledbury HMA has a</p>

<b>Plans and Programmes</b>	<b>Type of document</b>	<b>Date</b>	<b>Overview</b>	<b>Key message, target/objective/indicator</b>	<b>SEA topic(s)</b>	<b>Implications for the NDP and SEA</b>
				catchments.  Seeks proportional growth of up to 14% in Ledbury (Ledbury HMA) over the plan period.		14% indicative housing growth target, 565 houses in the rural areas in the Ledbury HMA.

Plans and Programmes	Type of document	Date	Overview	Key message, target/objective/indicator	SEA topic(s)	Implications for the NDP and SEA
Herefordshire Local Transport Plan (LTP) 2016-2031	Corporate	2016	Sets out the Council's strategy for supporting economic growth, social inclusion and reducing the environmental impacts of transport, as well as the program of investment for the period 2016 to 2031.	<p>The Transport Plan aims to increase highway capacity for new development sites as improve efficiency of existing transport network.</p> <p>The document includes five key objectives, one which plans to enable economic growth connecting new roads with developments. Intrinsic to this is to provide a good quality transport network. The other objectives aim to promote healthy lifestyles with pollution reduction and active travel schemes. Improvements will be made to make journeys easier and safer, ensuring access to services for living in rural areas maximising accessibility.</p>	<ul style="list-style-type: none"> <li>• Air</li> <li>• Climatic factors</li> <li>• Population</li> </ul>	<p>The LTP highlights rail access improvements for Ledbury. Detailed assessments will be carried out to identify opportunities to improve access to and by rail, public realm improvements in Ledbury town centre, parking issues and bus services.</p> <p>Ledbury neighbourhood area but any new development proposed through the NDP should seek to reduce the environmental impacts of transport.</p>

Plans and Programmes	Type of document	Date	Overview	Key message, target/objective/indicator	SEA topic(s)	Implications for the NDP and SEA
Herefordshire Economic Development Strategy 2011-2016	Corporate	2011	Aims to increase the economic wealth of Herefordshire by setting out proposals and to support business growth up to 2016.	<p>The document outlines the path and direction to foster economic vitality within Herefordshire. Key objectives therefore include:</p> <ul style="list-style-type: none"> <li>• Sustaining business survival and growth</li> <li>• Increasing wage levels, range and quality of jobs</li> <li>• Having a skilled population to meet future work needs</li> <li>• Developing the county's built infrastructure so enterprise can flourish.</li> </ul>	<ul style="list-style-type: none"> <li>• Cultural heritage</li> <li>• Material assets</li> <li>• Population</li> </ul>	None of merit.

Plans and Programmes	Type of document	Date	Overview	Key message, target/objective/indicator	SEA topic(s)	Implications for the NDP and SEA
Herefordshire Employment Land Study	Evidence	2012	Includes employment land assessments for the plan period 2011-2031. The study includes Quantitative and Qualitative assessments of employment land, assessment of market demand and need, as well as providing forecasts and recommendations for future employment need over the plan period.	<p>This study covers existing employment sites in Hereford, the five market towns and their rural hinterlands.</p> <p>The main strategic employment location for Ledbury is: 12 hectares of employment land have been identified – Land between Little Marcle Road and Ross Road.</p> <p>In the Ledbury area employment space areas are 15.79% is office space, 9.35% is sales, 20.38% is warehousing, 51.53% is industrial and 2.94% is other. (Table 7.1b)</p>	<ul style="list-style-type: none"> <li>• Material assets</li> <li>• Population</li> </ul>	<p>The demand for employment land and premises up to 2031 should be achieved through this policy L02 of the Core Strategy.</p> <p>However, the Ledbury NDP can support the delivery of employment land at through the inclusion of a detailed, site specific policy, which sets out the criteria against which future planning applications will be decided.</p> <p>The evidence base recommends that the Ledbury NDP protect the employment sites alongside from alternative uses.</p>

Plans and Programmes	Type of document	Date	Overview	Key message, target/objective/indicator	SEA topic(s)	Implications for the NDP and SEA
Understanding Herefordshire Report	Built and natural environment	2016	<p>Important to understand the place such as the local economy natural and built environment in which people live, learn and work as part of understanding their quality of life</p> <p>Promotion of healthy lifestyle choices.</p> <p>Enable development for economy and housing to required levels.</p> <p>Growth should be supported by sustainable transport measures.</p>	<p>An air quality management plan is in place to tackle this. Destination Hereford project is in place to give locals more sustainable transport options.</p> <p>Sustainable transport measures will also help to promote active lifestyles within Herefordshire.</p>	<p>Improve air quality.</p> <p>Have a more diverse range of transport options.</p>	None of merit.

This document is copyright of Herefordshire Council. Please contact the Neighbourhood Planning team if you wish to reuse it in whole or part.

Plans and Programmes	Type of document	Date	Overview	Key message, target/objective/indicator	SEA topic(s)	Implications for the NDP and SEA
Herefordshire Local Housing Market Assessment (LHMA)	Evidence	2013	Builds on an earlier Strategic Housing Market Assessment (SHMA) developed for Herefordshire and Shropshire. Its purpose is to inform the Local Plan's policies regarding housing need and demand (for market and affordable housing) within each of the 7 Housing Market Areas (HMAs) in Herefordshire between 2011 and 2031.	<p>The LHMA uses 7 HMAs as the geography for presenting data. Ledbury town falls within the Ledbury HMA.</p> <p>Here, the study reveals that:</p> <ul style="list-style-type: none"> <li>• The Ledbury HMA contains 8,544 properties<sup>42</sup> representing 10% of total properties in Herefordshire.</li> <li>• The proportion of people working at home in 2001 in this HMA was only slightly higher than in 10.9 Herefordshire as a whole (16.3% of the working population as compared to 15.2%) and more travelled 10km or more to get to work (39.3% as compared to 26.9%)<sup>43</sup>.</li> <li>• There is an annual requirement for 40 affordable dwellings in the Ledbury HMA.</li> </ul>	<ul style="list-style-type: none"> <li>• Air</li> <li>• Biodiversity</li> <li>• Climatic factors</li> <li>• Cultural heritage</li> <li>• Flora and fauna</li> <li>• Population</li> <li>• Soil</li> <li>• Water</li> </ul>	<p>The LHMA provides an indication of housing needs and affordability within the Ledbury HMA.</p> <p>It provides evidence that could be used to inform policies or market and affordable housing requirements in the NDP.</p>
<p>This document is copyright of Herefordshire Council. Please contact the Neighbourhood Planning team if you wish to reuse it in whole or part.</p>						



Plans and Programmes	Type of document	Date	Overview	Key message, target/objective/indicator	SEA topic(s)	Implications for the NDP and SEA
Herefordshire Local Housing Requirements Study	Evidence	2012	Technical assessment of the housing market and potential future local housing requirements which supports planning policy regarding the amount of growth, housing tenure and housing type needed within Herefordshire up to 2031.	<p>The delivery of 5,300 homes in the rural areas would:</p> <ul style="list-style-type: none"> <li>• Support growth in the rural population by 6%</li> <li>• Increase the number of households by 14.5%</li> </ul> <p>Forecasts also predict that growth in the population of the rural areas is likely to be primarily through an increase in those aged over 75.</p> <p>Moderate growth is expected in the 30-44 and 60-74 age brackets.</p> <p>The Local Housing Requirements Study therefore anticipates continuing improvements in life expectancy; significant growth is expected of those in their 80s, with the existing</p>	<ul style="list-style-type: none"> <li>• Air</li> <li>• Biodiversity</li> <li>• Climatic factors</li> <li>• Cultural heritage</li> <li>• Flora and fauna</li> <li>• Material assets</li> <li>• Population</li> <li>• Soil</li> <li>• Water</li> </ul>	<p>This study provides an indication of housing requirements in the rural areas and the Ledbury HMA.</p> <p>This evidence can be used to inform the content of the Ledbury NDP.</p>

Plans and Programmes	Type of document	Date	Overview	Key message, target/objective/indicator	SEA topic(s)	Implications for the NDP and SEA
				population in their 40s and 50s moving into retirement.		
Herefordshire Rural Housing Background Report	Evidence	2013	Provides the background for the proportional housing growth targets outlined in the Core Strategy	<p>Ledbury rural HMA, should provide 14% proportionate growth in the villages.</p> <p>There are no rural villages within the designated neighbourhood area.</p>	<ul style="list-style-type: none"> <li>• Air</li> <li>• Biodiversity</li> <li>• Climatic factors</li> <li>• Cultural heritage</li> <li>• Flora and fauna</li> <li>• Material assets</li> <li>• Population</li> <li>• Soil</li> <li>• Water</li> </ul>	None of merit.

Plans and Programmes	Type of document	Date	Overview	Key message, target/objective/indicator	SEA topic(s)	Implications for the NDP and SEA
Herefordshire Housing Land Availability Assessment (SHLAA)	Evidence	2012	<p>The HELAA aims to justify site allocations in plans by:</p> <ul style="list-style-type: none"> <li>Identifying sites which are capable of delivering housing development</li> <li>Assessing sites for their housing potential; and</li> <li>Predicting when a site could be developed for housing.</li> </ul>	<p>In terms of Ledbury the SHLAA identifies that:</p> <ul style="list-style-type: none"> <li>There needs to be proportional housing growth of 14% in the Ledbury area.</li> <li>Appendix 10 lists all developable sites in Ledbury. Overall 884 had low constraints and 1790 site have significant constraints.</li> </ul>	<ul style="list-style-type: none"> <li>Air</li> <li>Biodiversity</li> <li>Climate factors</li> <li>Cultural heritage and the landscape</li> <li>Flora and fauna</li> <li>Population and human health</li> <li>Soil</li> <li>Water</li> </ul>	<p>The SHLAA assesses the potential availability of land for housing.</p> <p>The Ledbury NDP should be informed by the findings of the SHLAA.</p>

Plans and Programmes	Type of document	Date	Overview	Key message, target/objective/indicator	SEA topic(s)	Implications for the NDP and SEA
Herefordshire Gypsies and Travellers Assessment	Evidence	2013	Assesses the accommodation needs of Gypsies and Travellers across Herefordshire.	<p>Key findings from the survey of Gypsy and Traveller households in 2012 found that:</p> <ul style="list-style-type: none"> <li>• 31% of households surveyed have some sort of accommodation need</li> <li>• Of the 17 households with an accommodation need, 7 had a requirement for at least one additional pitch</li> <li>• 10 households had a requirement for bricks and mortar housing</li> <li>• There is an additional requirement for 7 pitches and 9 units of Registered Social Landlord accommodation within Herefordshire.</li> </ul>	<ul style="list-style-type: none"> <li>• Air</li> <li>• Biodiversity</li> <li>• Climatic factors</li> <li>• Cultural heritage</li> <li>• Flora and fauna</li> <li>• Material assets</li> <li>• Population</li> <li>• Soil</li> <li>• Water</li> </ul>	The Ledbury NDP should establish whether any of the need identified in this assessment falls within the neighbourhood area and seek appropriate pitches and provision.

Plans and Programmes	Type of document	Date	Overview	Key message, target/objective/indicator	SEA topic(s)	Implications for the NDP and SEA
Herefordshire Traveller's sites DPD	Evidence	2019	Assesses the accommodation needs of Gypsies and Travellers across Herefordshire.	Key findings from the DPD. In Herefordshire there are a number of small privately owned traveller sites and larger sites that are managed by Herefordshire Council. The private sites varying size with small sites of 1-5 pitches typically being occupied by a single, extended family. In total there are 133 authorised pitches across the county. In addition to this there are 10 Travelling Show people plots in Ross on Wye. No sites have been allocated in the Ledbury neighbourhood area.	<ul style="list-style-type: none"> <li>• Air</li> <li>• Biodiversity</li> <li>• Climate factors</li> <li>• Cultural heritage and the landscape</li> <li>• Flora and fauna</li> <li>• Material assets</li> <li>• Population and human health</li> <li>• Soil</li> <li>• Water</li> </ul>	The Ledbury NDP must establish whether any of the need identified in this assessment falls within the neighbourhood area and make appropriate provisions for it.

Plans and Programmes	Type of document	Date	Overview	Key message, target/objective/indicator	SEA topic(s)	Implications for the NDP and SEA
Building Biodiversity into the LDF	Evidence	2009	Provides the Council's Local Plan (Core Strategy) with evidence in respect of biodiversity and geodiversity, identifying both opportunities and constraints across Herefordshire.	<p>The study addresses biodiversity interests in and around the peripheries of the Ledbury town.</p> <p>3 SSSIs are found east of Ledbury. Ledbury Cutting status is unfavourable, declining. Upper Hall Farm and Quarry favourable. Ridgeway wood is favourable.</p> <p>1 Geopark, Malvern Hills.</p> <p>3 Local geological sites- Knapp Lane quarry, Ledbury tunnel quarry and Coneygree wood.</p> <p>There are 10 LWS found in the Ledbury area. Woodlands on Wall Hills; Ledbury Cutting; Frith Wood, Bradlow Knoll &amp; Dog Hill; Ridgeway Wood; Stitch Wood &amp; adjoining pasture; Upper Hall Farm Quarry &amp; grassland; Upper Hall grounds and lake; Coneygree &amp; Mayhill Woods; Woodland north of Wall Hills; Clenchers Mill Wood &amp; Little Woolpits.</p>	<ul style="list-style-type: none"> <li>• Air</li> <li>• Biodiversity</li> <li>• Climatic factors</li> <li>• Cultural heritage</li> <li>• Flora and fauna</li> <li>• Material assets</li> <li>• Population</li> <li>• Soil</li> <li>• Water</li> </ul>	The Ledbury NDP can overcome any existing constraints and capitalise on opportunities to enhance habitats and their networks.
<p>This document is copyright of Herefordshire Council. Please contact the Neighbourhood Planning team if you wish to reuse it in whole or part.</p> <p style="text-align: right;">Page 19 of 28</p>						

Plans and Programmes	Type of document	Date	Overview	Key message, target/objective/indicator	SEA topic(s)	Implications for the NDP and SEA
Urban Fringe Sensitivity Analysis	Evidence	2010	Technical Paper which supports the SHLAA by classifying the landscape sensitivity of the urban fringe on the edges of Hereford and the five market towns.	<p>The document provides useful information in respect of Ledbury market town. Land to the east of Ledbury falls into the Malvern Hills AONB.</p> <p>The historic core of the town is situated in an elevated position with sloping wooded hills on its eastern edge. The topographical position, Ledbury is visually constrained, north is restricted by the viaduct and embankment, the east restricted by landform, the south by hills and west by woodland.</p> <p>Conservation features in the core of Ledbury Town with notable listed buildings, this extends westwards to encompass Ledbury Park and Upper Hall historic parks.</p>	<ul style="list-style-type: none"> <li>• Cultural heritage</li> <li>• Flora and fauna</li> </ul>	The study provides evidence that could be taken into account when preparing policies for the Ledbury NDP.

This document is copyright of Herefordshire Council. Please contact the Neighbourhood Planning team if you wish to reuse it in whole or part.



<b>Plans and Programmes</b>	<b>Type of document</b>	<b>Date</b>	<b>Overview</b>	<b>Key message, target/objective/indicator</b>	<b>SEA topic(s)</b>	<b>Implications for the NDP and SEA</b>
Herefordshire Green Infrastructure Strategy	Evidence	2010	Develops a framework of natural and culturally important features and functions so that planning for a sustainable future is at the heart of planning within Herefordshire.	Establishes policies and principles for the protection and enhancement of those features and functions that contributes to the environment of Herefordshire across a range of scales.	<ul style="list-style-type: none"> <li>• Air</li> <li>• Biodiversity</li> <li>• Climatic factors</li> <li>• Cultural heritage</li> <li>• Flora and fauna</li> <li>• Material assets</li> <li>• Population</li> <li>• Soil</li> <li>• Water</li> </ul>	The study provides evidence that could be taken into account when preparing policies for the Ledbury NDP.

Plans and Programmes	Type of document	Date	Overview	Key message, target/objective/indicator	SEA topic(s)	Implications for the NDP and SEA
Renewable Energy Study	Evidence	2010	Assesses the energy demand within Herefordshire and the ability for the county to accommodate renewable and low carbon energy technologies.	<p>The total energy demand excluding transport for Herefordshire, at that point in time, was calculated as being:</p> <ul style="list-style-type: none"> <li>• Electrical: 731 GWh/yr</li> <li>• Heat: 1,810 GWh/yr</li> <li>• Total: 2,541 GWh/yr</li> </ul> <p>There is scope for all types of renewable energy production.</p>	<ul style="list-style-type: none"> <li>• Air</li> <li>• Biodiversity</li> <li>• Climatic factors</li> <li>• Cultural heritage</li> <li>• Flora and fauna</li> <li>• Material assets</li> <li>• Population</li> <li>• Soil</li> <li>• Water</li> </ul>	The study provides evidence that could be taken into account when preparing policies for the Ledbury NDP.

Plans and Programmes	Type of document	Date	Overview	Key message, target/objective/indicator	SEA topic(s)	Implications for the NDP and SEA
Herefordshire Playing Pitch Assessment	Evidence	2012	Produces a strategic framework, audit and assessment and needs analysis of outdoor sports pitches and facilities for Herefordshire. The document arises as a result of a recommendation in the Herefordshire and Worcestershire Sports Facilities Framework to develop local standards for playing fields and sports pitches throughout Herefordshire.	<p>The study updates components of the Herefordshire and Worcestershire Sports Facilities Framework 2010 such as updating population forecasts, setting local standards for synthetic turf pitches and grass playing fields within Herefordshire. It identifies any current gaps in provision, and looks forward to 2031 to assess what facilities are likely to be required by that date.</p> <p>In terms of Ledbury market town, the study reveals that there are:</p> <ul style="list-style-type: none"> <li>• 22ha of playing pitch area.</li> <li>• 13.1ha of has secured community access.</li> </ul>	<ul style="list-style-type: none"> <li>• Biodiversity</li> <li>• Cultural heritage</li> <li>• Flora and fauna</li> <li>• Material assets</li> <li>• Population</li> </ul>	<p>22ha include-John Masefield HS, Ledbury PS, Ledbury Town football ground, Ledbury Rugby and football ground.</p> <p>The study provides evidence that could be taken into account when preparing policies the Ledbury NDP.</p>

This document is copyright of Herefordshire Council. Please contact the Neighbourhood Planning team if you wish to reuse it in whole or part.

Plans and Programmes	Type of document	Date	Overview	Key message, target/objective/indicator	SEA topic(s)	Implications for the NDP and SEA
Open Spaces Study	Evidence	2006	The 2006 space audit and assessment of need is a snapshot of the quality, quantity and distribution of open space across Herefordshire.	<p>The study reveals that within Ledbury area, to which Ledbury is a part, there is:</p> <ul style="list-style-type: none"> <li>• Extensive under provision of parks and gardens and outdoor sport</li> <li>• Extensive over provision of natural and semi natural greenspace</li> <li>• Ledbury area has a provision of 1.13 ha of parks and gardens per 1000 population</li> </ul>	<ul style="list-style-type: none"> <li>• Biodiversity</li> <li>• Climatic factors</li> <li>• Cultural heritage</li> <li>• Flora and fauna</li> <li>• Material assets</li> <li>• Population</li> </ul>	<p>The open space audit and assessment does not give a specific indication Ledbury has a good provision of natural and semi natural greenspace, but an under provision for parks, garden and outdoor sports spaces.</p> <p>It may help to include a policy which encourages and facilitates the provision of outdoor recreational facilities.</p>

Plans and Programmes	Type of document	Date	Overview	Key message, target/objective/indicator	SEA topic(s)	Implications for the NDP and SEA
Play Facilities Study	Evidence	2012	The Play Facilities Study 2012 updates the previous play facilities analysis under the Open Spaces Study 2006 and provides guidance and a framework for the development, delivery and continued sustainability of providing new and improved play facilities for children and young people in Herefordshire to 2031.	<p>In terms of Ledbury area.</p> <ul style="list-style-type: none"> <li>• 8 play areas has been identified in the rural areas of Ledbury.</li> <li>• 9 play facilities have been identified in Ledbury town.</li> <li>• 0.5 are owned by a housing association, 1 Town Council, and 7.5 Herefordshire Council.</li> </ul>	<ul style="list-style-type: none"> <li>• Biodiversity</li> <li>• Climatic factors</li> <li>• Cultural heritage</li> <li>• Flora and fauna</li> <li>• Material assets</li> <li>• Population</li> </ul>	It may help to include a policy which encourages and facilitates the provision of play facilities within the neighbourhood area.

Plans and Programmes	Type of document	Date	Overview	Key message, target/objective/indicator	SEA topic(s)	Implications for the NDP and SEA
Strategic Flood Risk Assessment (SFRA)	Evidence	2019	The Strategic Flood Risk Assessment (SFRA) provides a summary of flood risk in Herefordshire to inform the location of future development.	<p>The River Leadon, designated as a main river, flows in a southerly direction to the west of Ledbury. Flood zones 2 and 3 fall west of the A417, west of Ledbury town.</p> <p>A strategic assessment of flood risk at each of the main strategic development sites was undertaken in February 2015 and included the following sites. Site LB2, land north of the viaduct in Ledbury. This concluded there are opportunities to reduce surface water run off through SUD provision and controlling runoff from proposed strategic development site.</p>	<ul style="list-style-type: none"> <li>• Biodiversity</li> <li>• Climatic factors</li> <li>• Material assets</li> <li>• Population</li> <li>• Water</li> </ul>	<p>New development proposed through the Ledbury NDP should be assessed against the capacity of local infrastructure.</p> <p>Up-to-date flood risk information should be gathered from the Environment Agency, in order to ensure that any flood risks are considered when preparing the Ledbury NDP.</p>
This document is copyright of Herefordshire Council. Please contact the Neighbourhood Planning team if you wish to reuse it in whole or part.						

Plans and Programmes	Type of document	Date	Overview	Key message, target/objective/indicator	SEA topic(s)	Implications for the NDP and SEA
Water Cycle Study	Evidence	2009	The Water Cycle Study (WCS) examines how water resources and water supply infrastructure, wastewater treatment, water quality, sewerage and flood risk could constrain growth across Herefordshire	Ledbury STW discharges into the River Leadon. The WCS identifies the River Leadon is designated sensitive waters, and is susceptible to eutrophication under the urban wastewater treatment directive. Tertiary standards of treatment therefore apply to all STWs serving populations greater than 10,000. The River Leadon is currently classed as 'Poor' ecological status. It also is likely to receive a significant increase in housing pressure that without mitigation will exacerbate the situation. However there are ongoing actions for Seven treatment plants provide phosphate removal under UWWTD. EA implementing programme of measures under Severn RBMP.	<ul style="list-style-type: none"> <li>• Biodiversity</li> <li>• Climatic factors</li> <li>• Material assets</li> <li>• Population</li> <li>• Water</li> </ul>	<p>Water quality is an issue in both the upper and lower River Leadon sub catchments currently have poor ecological status.</p> <p>Mitigation measures should be considered whilst drafting emerging policy. Examples of mitigation strategies are: Promotion of SUDs, reduction of water demand and sewerage disposal and improved adaptive land management to reduce levels of orthophosphate from horticultural and farmed land.</p>
This document is copyright of Herefordshire Council. Please contact the Neighbourhood Planning team if you wish to reuse it in whole or part.						





**Appendix A2 – Baseline information for Ledbury**

*N.B. This is based on countywide baseline information with some additions relevant to Ledbury (in red). Where no locally specific data is available for current status, trends and targets, only countywide data is reported. Any gaps in data may be filled following additional research.*

SA Objective <sup>1</sup>	SA Theme	Proposed indicator	Current status	Trends	Targets	Issues and constraints	Baseline (information) source
SEA Topic covered by objective: <i>Biodiversity, flora and fauna</i>							
13. Value, maintain, restore or expand county biodiversity.	Natural environment	Net change in condition of SSSIs across Herefordshire.	<p>Condition of SSSIs within Ledbury:</p> <p>Ridgeway Wood (Favourable); Ledbury Cutting (Unfavourable Declining); Farm Quarry and grassland (Favourable)</p>	<p>Percentage of SSSI land in favourable condition.</p> <p>2006: 22% 2007: 22% 2008: 22% 2010: 24% 2011: 27%</p> <p>Proportion of SSSI land that was in unfavourable condition but recovering</p>	<p>% of SSSI land in favourable condition (Increase)</p> <p>% of SSSI land in unfavourable condition but recovering (Increase)</p> <p>% of SSSI land in</p>	<p>Herefordshire's SSSIs are in extremely poor condition relative to England as whole, where 96.1% of all SSSI land was in favourable condition in April 2014.</p> <p>The proportion of SSSI in unfavourable condition but</p>	NE & Defra website (search October 2020).

<sup>1</sup> Derived from the Pre Submission Core Strategy Sustainability Appraisal Assessment (May 2014)

SA Objective <sup>1</sup>	SA Theme	Proposed indicator	Current status	Trends	Targets	Issues and constraints	Baseline (information) source
				<p>increased between 2010 and 2012 going from 41% to 65%.</p> <p>Proportion in unfavourable and declining condition had also decreased from 4% to 1%.</p>	unfavourable condition and declining (Decrease)	recovering is greater than England as a whole, where the figure currently stands at 58.6%.	
13. Value, maintain, restore or expand county biodiversity	Natural environment	After use of mineral sites especially wildlife habitat creation.	<i>There is no countywide or locally specific data available at present.</i>	-	Percentage of opportunities taken.	Should be monitored through AMR following the adoption of the Core Strategy, in line with SA recommendations.	-

SA Objective <sup>1</sup>	SA Theme	Proposed indicator	Current status	Trends	Targets	Issues and constraints	Baseline (information) source
13. Value, maintain, restore or expand county biodiversity	Natural environment	Phosphate levels within the River Wye SAC and adjoining tributaries that receive increased phosphates from proportional growth.	Countywide data is available, but this indicator would not apply to this Neighbourhood Area, as the parish falls outside the catchment area for the River Wye SAC.	N/A	N/A	The River Wye is not within or bordering Ledbury Neighbourhood Area. The Neighbourhood area is not within the hydrological catchment of the River Wye Lugg or River Wye hydrological catchment area.	Nutrient Management Plan

SA Objective <sup>1</sup>	SA Theme	Proposed indicator	Current status	Trends	Targets	Issues and constraints	Baseline (information) source
13. Value, maintain, restore and expand county biodiversity	Natural environment	Changes to protected habitats and impacts of species within the Herefordshire Local Biodiversity Action Plan.	<p>The 2011-2013 AMR does not contain updated conservation data.</p> <p>2010/11: 17 Habitat Action Plans and 14 Species Action Plans are currently in operation across Herefordshire.</p> <p><i>There is no locally specific data available at present.</i></p>	<p>There are no formal records of any unacceptable adverse impacts on habitats or protected species.</p> <p>Originally 156 Priority Species were identified for inclusion in Herefordshire's LBAP.</p> <p>Similarly Herefordshire's LBAP covered 23 habitats with Action Plans.</p>	<p>To protect and where possible enhance the habitats of protected species identified.</p> <p>No net losses.</p>	Herefordshire Biological Records Centre (HBRC) holds limited data on some individual sites.	Herefordshire Council AMR (2018/19)

SA Objective <sup>1</sup>	SA Theme	Proposed indicator	Current status	Trends	Targets	Issues and constraints	Baseline (information) source
13. Value, maintain, restore or expand county biodiversity.	Natural environment	Changes in the areas of designated nature conservation sites as a consequence of planning permission.	<p>Ledbury has:  <b>SAM: 1</b>  <b>SAC: 0</b>  <b>SSSI: 3</b>  <b>LWS: 10</b></p> <p><b>Ancient Woodland: 13</b></p> <p><b>AONB:1 Malvern Hills</b></p> <p><b>Geopark: 1 Malvern Hills Geopark.</b></p> <p><b>Local Geological Sites: 3</b></p> <p><b>Mineral Reserves: 11</b>                      There are no SINC, NNRs, and LNRs within the parish.</p> <p><b>4 Unregistered parks and gardens. 1 Registered parks and gardens.</b></p>	As of 2012, there had been no change in the areas of designated nature conservation sites as a consequence of the planning permissions granted.	To capitalise on opportunities to protect or enhance the areas of value to nature conservation.	Should be monitored through AMR following the adoption of the Core Strategy, in line with SA recommendations.	NDP SEA/HRA Screening Notification Report (14/05/2013)
<p style="text-align: center;">This document is copyright of Herefordshire Council. Please contact the Neighbourhood Planning team if you wish to reuse it in whole or part.</p> <p style="text-align: right;">Page 5 of 17</p>							

SA Objective <sup>1</sup>	SA Theme	Proposed indicator	Current status	Trends	Targets	Issues and constraints	Baseline (information) source
13. Value, maintain, restore or expand county biodiversity.	Natural environment	Proportion of local sites where positive conservation management has or is being implemented.	<p>The Ledbury neighbourhood area comprises the following types of landscape:</p> <ul style="list-style-type: none"> <li>Principal wooded hills to the east.</li> <li>Principal timbered farmlands to the west.</li> </ul>	-	No specific targets identified.	Should be monitored through AMR following the adoption of the Core Strategy, in line with SA recommendations.	Herefordshire Landscape Character Assessment (2004; updated 2009).
SEA Topic covered by objectives: <i>Material assets</i>							
14. Use natural resources and energy more efficiently.	Resource consumption and climate change	Maintaining Herefordshire Council's County Site and Monuments Register.	<p>Countywide data would be too large to incorporate into this template.</p> <p>Whilst there is no locally specific data</p>	-	No specific targets identified, but need to ensure that the register is kept up to	Should be monitored through AMR following the adoption of the Core Strategy, in line with SA recommendation	Herefordshire Environmental Records Register (searched October 2020).



SA Objective <sup>1</sup>	SA Theme	Proposed indicator	Current status	Trends	Targets	Issues and constraints	Baseline (information) source
			available at present, there are numerous archaeological and historic sites in Ledbury according to the latest version of the register.		date.	s.	
14. Use natural resources and energy more efficiently.	Resource consumption and climate change	Monitoring changes to historic landscapes.	<i>Rapid Townscape Assessments (2010) were undertaken for Ledbury.</i>  <i>Urban Fringe Sensitivity Analysis (2010) considers sites in Ledbury.</i>	-	No specific targets identified.	Should be monitored through AMR following the adoption of the Core Strategy, in line with SA recommendation s	Rapid Townscape Assessments (2010) Ledbury  Urban Fringe Sensitivity Analysis (2010)
SEA Topic covered by objective: <i>Population, Biodiversity, Flora and Fauna</i>							

SA Objective <sup>1</sup>	SA Theme	Proposed indicator	Current status	Trends	Targets	Issues and constraints	Baseline (information) source
15. Value, protect, enhance or restore the landscape quality of Herefordshire, including its rural areas and open spaces.	Natural environment	Number of developments meeting and surpassing national design standards.	<i>There is no countywide or locally specific data available at present.</i>	-	No specific targets identified.	Should be monitored through AMR following the adoption of the Core Strategy, in line with SA recommendations.	-
15. Value, protect, enhance or restore the landscape quality of Herefordshire, including its rural areas and open spaces.	Natural environment	The need for, frequency and outcomes of planning enforcement investigations/ planning appeals concerning the aspects of local loss of locally important buildings within a conservation area.	Countywide data would be too large to incorporate into this template.	No records of any current planning enforcement action or appeals concerning locally important buildings within the Ledbury conservation area.	To wherever possible improve upon or otherwise maintain current status.	Current status must be verified by Dvt Mgt and Enforcement Officers, but the NDP can help to avoid enforcement action and appeals during the plan period.	Council Dvt Mgt records (searched October 2020)

SA Objective <sup>1</sup>	SA Theme	Proposed indicator	Current status	Trends	Targets	Issues and constraints	Baseline (information) source
SEA Topic covered by objective: <i>Climatic Factors</i>							

SA Objective <sup>1</sup>	SA Theme	Proposed indicator	Current status	Trends	Targets	Issues and constraints	Baseline (information) source
16. Reduce Herefordshire's vulnerability to the impacts of climate change as well as its contribution to the problem.	Resource consumption and climate change.	Transport patronage by mode.	% of Herefordshire residents who travel to work by: Car: 70.1% Foot: 14.7% Bicycle: 4.3% Bus: 2% Train: 0.8% Motorbike: 0.8% Taxi: 0.3% Other: 7%  <i>There is no locally specific data available at present</i>	The number of people cycling or travelling by bus as the main form transport to get to work declined between 2001 and 2011 – across England and Wales there was little change in either. Walking or driving a car or van on the other hand increased.	To encourage the take up of Less polluting forms of transport.	There are a lack of transport options for many rural communities and therefore high car ownership and dependency – the last decade has seen a 15 per cent increase in household car ownership, although this is not reflected in traffic flows of recent years with volumes in Hereford City and wider county having decreased. The proportion of people working from home increased over the decade from 15 per cent in 2001 to 17 per cent in 2011.	2011 Census
<p>This document is copyright of Herefordshire Council. Please contact the Neighbourhood Planning team if you wish to reuse it in whole or part.</p>							Page 10 of 17

SA Objective <sup>1</sup>	SA Theme	Proposed indicator	Current status	Trends	Targets	Issues and constraints	Baseline (information) source
16. Reduce Herefordshire's vulnerability to the impacts of climate change as well as its contribution to the problem.	Resource consumption and climate change.	Number of decentralised energy schemes granted permission.	<i>There is no countywide or locally specific data available at present.</i>	-	To contribute towards the national target.	Should be monitored through AMR following the adoption of the Core Strategy, in line with SA recommendations.	-

SA Objective <sup>1</sup>	SA Theme	Proposed indicator	Current status	Trends	Targets	Issues and constraints	Baseline (information) source
16. Reduce Herefordshire's vulnerability to the impacts of climate change as well as its contribution to the problem.	Resource consumption and climate	Total CO2 emissions per capita	<p>Latest figure dates back to 2010: 1.61 million tonnes (mtCO<sub>2</sub>)</p> <p><i>There is no locally specific data available at present.</i></p>	<p>Between 2005 and 2010 Herefordshire's total and per capita carbon emission reduced by 7% and 8% respectively; while UK's total and per capita carbon emission reduced by 8% and 12% respectively within the same period. This trend hides an increase in emissions between 2009 and 2010 when total emissions in the county increased by 5% the same as across the UK (+5%).</p>	To reduce the overall carbon emissions.	CO <sub>2</sub> emissions produced are decreasing.	Understanding Herefordshire: An integrated needs assessment (June 2013).
<p>This document is copyright of Herefordshire Council. Please contact the Neighbourhood Planning team if you wish to reuse it in whole or part.</p> <p style="text-align: right;">Page 12 of 17</p>							

SA Objective <sup>1</sup>	SA Theme	Proposed indicator	Current status	Trends	Targets	Issues and constraints	Baseline (information) source
SEA Topic covered by objective: <i>Water</i>							
17. Reduce the risk of flooding and the resulting detriment to public wellbeing, the economy and the environment.	Natural environment	Number of planning permissions granted contrary to the advice of the Environment Agency on flood defence grounds.	The 2011-2013 AMR does not contain updated conservation data.  <i>There is no locally specific data available at present.</i>	2010/11: None  There have been no approvals contrary to EA advice since reporting began in 2004.	To have no applications permitted contrary to EA advice.	Should be monitored through AMR following the adoption of the Core Strategy, in line with SA recommendations.	Herefordshire Council AMR (2018/19)
SEA Topic covered by objective: <i>Water, air, soil, material assets</i>							
18. Minimise local and global pollution and protect or enhance environmental resources.	Natural environment	Agricultural land usage by quality	<i>There is no countywide data available at present.</i>  2011: The majority of land outside Ledbury town is was listed Grade 2 (Good) and	-	Measure the number of hectares of best and most versatile soil lost through developm	Should be monitored through AMR following the adoption of the Core Strategy, in line with SA recommendations.	West Midland ALC Map (Natural England 2011).

SA Objective <sup>1</sup>	SA Theme	Proposed indicator	Current status	Trends	Targets	Issues and constraints	Baseline (information) source
			Grade 3 (Good to Moderate) for its agricultural quality. The town centre is classified as land in predominantly urban use.		ent.		
18. Minimise local and global pollution and protect or enhance environmental resources.	Natural environment	Percentage of river length assessed as good or very good chemical quality and ecological quality as required by the Water Framework Directive	Latest figure dates back to 2005: 84%  <i>There is no locally specific data available at present.</i>	Figure steadily improved before going into decline:  Herefordshire 1999 85.9%, 2000 89.5%, 2001 92.2%, 2002 91.8%	To ensure that rivers meet their conservation objectives and do not fall below the required standard of quality.	The River Wye is not within or bordering Ledbury Neighbourhood Area	The State of Herefordshire Report (2007)  Water Framework Directive (2000)
SEA Topic covered by objective: <i>Soil</i>							



SA Objective <sup>1</sup>	SA Theme	Proposed indicator	Current status	Trends	Targets	Issues and constraints	Baseline (information) source
19. Ensure integrated, efficient and balanced land use.	Built environment	Percentage of all new development completed on previously developed land.	2010/11: 67% 2011-13: 57% <i>There is no locally specific data available at present.</i>	2010/11: 67%  Completions on PDL had risen to 71% by 2005.	To increase the number of homes built on PDL in line with the provisions of national planning policy.	The number of brownfield completions has fallen slightly in recent years, though this is probably the offshoot of tough market conditions.	Herefordshire Council AMR (2018/19)
19. Ensure integrated, efficient and balanced land use.	Built environment	Housing densities in urban and rural areas	<i>There is no countywide or locally specific data available at present.</i>	-	No specific targets identified.	Should be monitored through AMR following the adoption of the Core Strategy, in line with SA recommendations.	-

SA Objective <sup>1</sup>	SA Theme	Proposed indicator	Current status	Trends	Targets	Issues and constraints	Baseline (information) source
19. Ensure integrated, efficient and balanced land use.	Built environment	Level of development in urban areas compared to rural.	<i>There is no countywide or locally specific data available at present.</i>	-	No specific targets identified.	Should be monitored through AMR following the adoption of the Core Strategy, in line with SA recommendations.	-
SEA Topic covered by objective: <i>Cultural heritage</i>							
20. Value, protect or enhance the character and built quality of settlements and neighbourhoods and the county's historic environment and cultural heritage.	Built environment	Number and percentage of listed buildings and Scheduled Ancient Monuments on Buildings at Risk Register (English Heritage).	The 2011-2013 AMR does not contain updated conservation data.  <b>Ledbury has 1 SAM.</b>  <b>There are no listed buildings of SAMs listed as at risk in Ledbury.</b>	In October 2020, there were 61 heritage assets in Herefordshire that were considered to be at high risk and included in the Heritage at Risk Register.	<b>To maintain or enhance current status.</b>	<b>None of the incumbent listed buildings or SAMs are considered to be at risk at present.</b>	Buildings at Risk Register (English Heritage; searched October 2020)

SA Objective <sup>1</sup>	SA Theme	Proposed indicator	Current status	Trends	Targets	Issues and constraints	Baseline (information) source
20. Value, protect or enhance the character and built quality of settlements and neighbourhoods and the county's heritage assets, historic environment and cultural heritage.	Built environment	The need for, frequency and outcomes of planning enforcement investigations/ planning appeals concerning the aspects of local loss of heritage assets, locally important buildings across the Parish and particularly within a conservation area.	<p>Ledbury has one conservation area, located in Ledbury town.</p> <p>There is an ongoing appeal concerning, Land north of viaduct adjoining Orchard Business Park Ledbury. Application 171532.</p>	No historic records of any planning enforcement action or appeals concerning locally important buildings within the Ledbury conservation area.	To wherever possible improve upon or otherwise maintain current status	Current status must be verified by Development Management and Enforcement Officers, but the NDP can help to avoid enforcement action and appeals during the plan period.	Council Development Management records (searched October 2020)

**Appendix A3 – Environmental issues identified from the Ledbury baseline**

These environmental issues are the same as most of those identified for the Herefordshire Core Strategy<sup>1</sup>

SEA Topic		Environmental issue	SA objectives
1	Air	High reliance upon the private car causing high levels of air pollution and in Hereford in particular	Objective 16
		Need to reduce carbon emissions by encouraging less polluting forms of transport.	
2	Biodiversity	Habitats and species of national, regional and local importance are under pressure from the adaptation and diversification of farming and forestry employment.	Objectives 13 &15
		Habitats and species of national, regional and local importance are under pressure from development	
		Minimise loss of biodiversity and expand opportunities for wildlife everywhere.	
3	Climatic factors	Reduce greenhouse gas emissions through planning, design and build.	Objective 16
4	Cultural heritage	Ledbury has 1 conservation area, 1 Scheduled Ancient Monument, Walls Hill Camp and numerous Listed Buildings, all of which require ongoing protection and many in need of high levels of maintenance.	Objective 20
5	Flora and fauna	Conserve and enhance the character and quality of historic landscapes, including all types of natural flora and fauna.	Objective 15
6	Material assets	How the countryside can continue to be managed in an economically, socially and environmentally beneficial way in the face of continuing pressures on traditional farming.	Objectives 14 & 18
7	Population	Minimise energy waste through good designs, which help to reduce energy consumption and maximise efficiency.	Objective 15
		Need to avoid enforcement investigations/action concerning locally important buildings and those within Ledbury conservation areas in particular.	
8	Soil	Promoting development of previously developed land and buildings as opposed to greenfield sites or agricultural land of the highest quality.	Objectives 18 & 19
9	Water	Issues relating to availability of resources, foul drainage, pollution, and abstraction in a county which supports water dependent biodiversity of international and national importance, given the predicted climate change consequences for water availability and demanding projections for new housing.	Objectives 17 & 18
		Steady decline in the chemical quality of rivers over the last 10 years.	

<sup>1</sup> Derived from the Pre Submission Core Strategy Sustainability Appraisal Assessment (May 2014) and LDF General Scoping Report (June 2007)



---

**Appendix A4 – SEA framework (objectives, indicators and targets)**

SEA Topic(s)	SEA Objective(s)	SA Objective(s)	Sub-objectives/Appraisal Questions	Indicators	Targets
Air	<ul style="list-style-type: none"> <li>To improve air quality.</li> <li>To reduce the effect of traffic on the environment</li> </ul>	<ul style="list-style-type: none"> <li>Minimise local and global pollution and protect or enhance environmental resources.</li> </ul>	<ul style="list-style-type: none"> <li>Minimise water, air, soil, groundwater, noise and light pollution from current activities and the potential for such pollution.</li> <li>Protect and enhance the quality of watercourses.</li> <li>Provide opportunities to improve soil quality or reduce contaminated land.</li> </ul>	Transport patronage by mode.	To encourage the take up of less polluting forms of transport.
Biodiversity, Flora and fauna	<ul style="list-style-type: none"> <li>To maintain or enhance nature conservation (biodiversity, flora and fauna)</li> </ul>	<ul style="list-style-type: none"> <li>Value, maintain, restore or expand county biodiversity.</li> <li>Value, protect, enhance or restore the landscape quality of Herefordshire, including its rural areas and open spaces.</li> </ul>	<ul style="list-style-type: none"> <li>Protect or enhance habitats of international, national, regional or local importance.</li> <li>Protect international, national, regional or locally important terrestrial or aquatic species.</li> <li>Maintain wildlife corridors and minimise fragmentation of ecological areas and green spaces.</li> <li>Manage access to sites in a sustainable way that protects or enhances their nature conservation value.</li> </ul>	Net change in condition of SSSIs across Herefordshire.	<ul style="list-style-type: none"> <li>% of SSSI land in favourable condition (Increase)</li> <li>% of SSSI land in unfavourable condition but recovering (Increase)</li> <li>% of SSSI land in unfavourable condition and declining (Decrease)</li> </ul>
				After use of mineral sites especially wildlife habitat creation.	Percentage of opportunities taken.

SEA Topic(s)	SEA Objective(s)	SA Objective(s)	Sub-objectives/Appraisal Questions	Indicators	Targets
			<ul style="list-style-type: none"> <li>• Create new appropriate habitats.</li> <li>• Value, enhance and protect natural environmental assets including AONB's, historic landscapes, open spaces, parks and gardens and their settings</li> <li>• Encourage local stewardship of local environments, for example by promoting best practices in agricultural management.</li> <li>• Ensure that environmental impacts caused by mineral operations and the transport of minerals are minimised.</li> <li>• Promote the use of rural areas and open space by all, encourage easy non-car based access, and accommodate the needs of disabled users.</li> </ul>	<p>Phosphate levels within the River Wye SAC and adjoining tributaries that receive increased phosphates from proportional growth.</p> <p>Changes to protected habitats and impacts of species within the Herefordshire Local Biodiversity Action Plan.</p> <p>Changes in the areas of designated nature conservation sites as a consequence of planning permission.</p> <p>Proportion of local sites where positive conservation management has or is being implemented.</p>	<p>N/A</p> <p>To protect or enhance the habitats of species identified. Zero net loss of habitats.</p> <p>To capitalise on opportunities to enhance the areas of value to nature conservation.</p> <p>The number of local sites under positive conservation management (Increase).</p>

SEA Topic(s)	SEA Objective(s)	SA Objective(s)	Sub-objectives/Appraisal Questions	Indicators	Targets
Climatic factors	<ul style="list-style-type: none"> <li>To reduce contributions to climate change</li> <li>To reduce vulnerability to climate change</li> </ul>	<ul style="list-style-type: none"> <li>Reduce Herefordshire's vulnerability to the impacts of climate change as well as its contribution to the problem.</li> </ul>	<ul style="list-style-type: none"> <li>Reduce the county's contribution to climate change by reducing greenhouse gas emissions from transport, domestic, commercial and industrial sources.</li> <li>Increase the proportion of energy generated from renewable and low carbon sources including by micro-generation, Combined Heat and Power (CHP), district heating and in transportation.</li> </ul>	Number of decentralised energy schemes granted permission.	To contribute towards the national target.
				Total CO2 emissions per capita.	To reduce the overall carbon emissions.



SEA Topic(s)	SEA Objective(s)	SA Objective(s)	Sub-objectives/Appraisal Questions	Indicators	Targets
Cultural heritage	<ul style="list-style-type: none"> <li>To conserve or enhance the historic environment, heritage assets and cultural heritage.</li> </ul>	<ul style="list-style-type: none"> <li>Value, protect or enhance the character and built quality of settlements and neighbourhoods and the county's heritage assets, historic environment and cultural heritage.</li> </ul>	<ul style="list-style-type: none"> <li>Preserve, protect and enhance Ledbury Conservation Areas, Listed Buildings, archaeological remains, and other features and areas of historical heritage and cultural value e.g. locally listed buildings.</li> <li>Prevent development which is inappropriate in scale, form or design to its setting or to its function or local area.</li> <li>Encourage development that creates and sustains well-designed, high quality built environments that incorporate green space, encourage biodiversity and promote local distinctiveness and sense of place.</li> <li>Encourage cleanliness and/or improve the general appearance of the area.</li> </ul>	Number and percentage of listed buildings and Scheduled Ancient Monuments on Buildings at Risk Register (English Heritage).	To maintain or enhance current status in Ledbury.
				The need for, frequency and outcomes of planning enforcement investigations/ planning appeals concerning the aspects of local loss of heritage assets, locally important buildings across the Parish and particularly within a conservation area.	N/A

SEA Topic(s)	SEA Objective(s)	SA Objective(s)	Sub-objectives/Appraisal Questions	Indicators	Targets
Material assets Landscape	<ul style="list-style-type: none"> <li>To conserve natural and man-made resources.</li> <li>To improve the quality of surroundings</li> <li>To maintain or enhance the quality of landscapes and townscapes</li> </ul>	<ul style="list-style-type: none"> <li>Use natural resources and energy more efficiently.</li> <li>Minimise local and global pollution and protect or enhance environmental resources.</li> </ul>	<ul style="list-style-type: none"> <li>Maximise energy efficiency and minimise the consumption of non-renewable energy i.e. from fossil fuels.</li> <li>Minimise the consumption of water, land, soil, minerals, aggregates and other raw materials by all? E.g. through integrated transport, sustainable resource-efficient design, local sourcing of food, goods, materials.</li> <li>Encourage the re-use/enhancement (to high standards of sustainable resource-efficient design) of existing buildings and minimise the need for new build.</li> <li>Encourage the use of clean technologies and water minimisation techniques.</li> </ul>	Maintaining Herefordshire Council's County Site and Monuments Register.	No specific targets identified, but need to ensure that the register is kept up to date.
				Monitoring changes to historic landscapes.	No specific targets identified.
				Agricultural land usage by quality	Measure the number of hectares of best and most versatile soil lost through development.

SEA Topic(s)	SEA Objective(s)	SA Objective(s)	Sub-objectives/Appraisal Questions	Indicators	Targets
Population	<ul style="list-style-type: none"> <li>To improve the health and well-being of the population.</li> </ul>	<ul style="list-style-type: none"> <li>Value, protect, enhance or restore the landscape quality of Herefordshire, including its rural areas and open spaces.</li> </ul>	<ul style="list-style-type: none"> <li>Value, enhance and protect natural environmental assets including AONB's, historic landscapes, open spaces, parks and gardens and their settings.</li> <li>Encourage local stewardship of local environments, for example by promoting best practices in agricultural management.</li> <li>Ensure that environmental impacts caused by mineral operations and the transport of minerals are minimised.</li> <li>Promote the use of rural areas and open space by all, encourage easy non-car based access, and accommodate the needs of disabled users.</li> </ul>	Number of developments meeting and surpassing national design	No specific targets identified.
				The need for, frequency and outcomes of planning enforcement investigations/ planning appeals concerning the aspects of local loss of locally important buildings within a conservation area.	N/A

SEA Topic(s)	SEA Objective(s)	SA Objective(s)	Sub-objectives/Appraisal Questions	Indicators	Targets
Soil	<ul style="list-style-type: none"> <li>To conserve soil resources and quality</li> </ul>	<ul style="list-style-type: none"> <li>Minimise local and global pollution and protect or enhance environmental resources.</li> <li>Ensure integrated, efficient and balanced land use.</li> </ul>	<ul style="list-style-type: none"> <li>Minimise water, air, soil, groundwater, noise and light pollution from current activities and the potential for such pollution.</li> <li>Provide opportunities to improve soil quality or reduce contaminated land.</li> <li>Ensure new developments are in appropriate locations, optimising the use of previously developed land and buildings, primarily focussed on the urban areas and are accessible by walking, cycling or sustainable transport and/or will increase the share of these transport modes, thereby reducing the need to travel.</li> </ul>	Percentage of all new development completed on previously developed land.	To increase the number of homes built on PDL in line with the provisions of national planning policy.
				Housing densities in urban and rural areas.	No specific targets identified.

SEA Topic(s)	SEA Objective(s)	SA Objective(s)	Sub-objectives/Appraisal Questions	Indicators	Targets
Water	<ul style="list-style-type: none"> <li>To improve water quality</li> <li>To provide for sustainable sources of water supply</li> <li>To reduce, avoid and manage flood risk</li> </ul>	<ul style="list-style-type: none"> <li>Reduce the risk of flooding and the resulting detriment to public well-being, the economy and the environment.</li> <li>Minimise local and global pollution and protect or enhance environmental resources.</li> </ul>	<ul style="list-style-type: none"> <li>Reduce flood risk both presently and taking into account climate change.</li> <li>Prevent inappropriate development of the floodplain, and include flood protection systems.</li> <li>Include sustainable urban drainage systems where appropriate.</li> <li>Minimise water, air, soil, groundwater, noise and light pollution from current activities and the potential for such pollution.</li> <li>Protect and enhance the quality of watercourses.</li> </ul>	Number of planning permissions granted contrary to the advice of the Environment Agency on flood defence grounds.	To have no applications permitted contrary to EA advice.
				Percentage of river length assessed as good or very good chemical quality and ecological quality.	To ensure that rivers meet their conservation objectives and do not fall below the required standard of quality, as set out in the Water Framework Directive.

# Appendix 1

---

## Initial Habitat Regulations Assessment and Strategic Environmental Assessment Screening Notification

### The Neighbourhood Planning (General) (Amendment) Regulations 2015 (Reg. 32)

### Conservation of Habitats and Species Regulations 2010 (d)

---

<b>Neighbourhood Area:</b>	Ledbury Neighbourhood Area
<b>Parish Council:</b>	Ledbury Town Council
<b>Neighbourhood Area Designation Date:</b>	16 November 2012

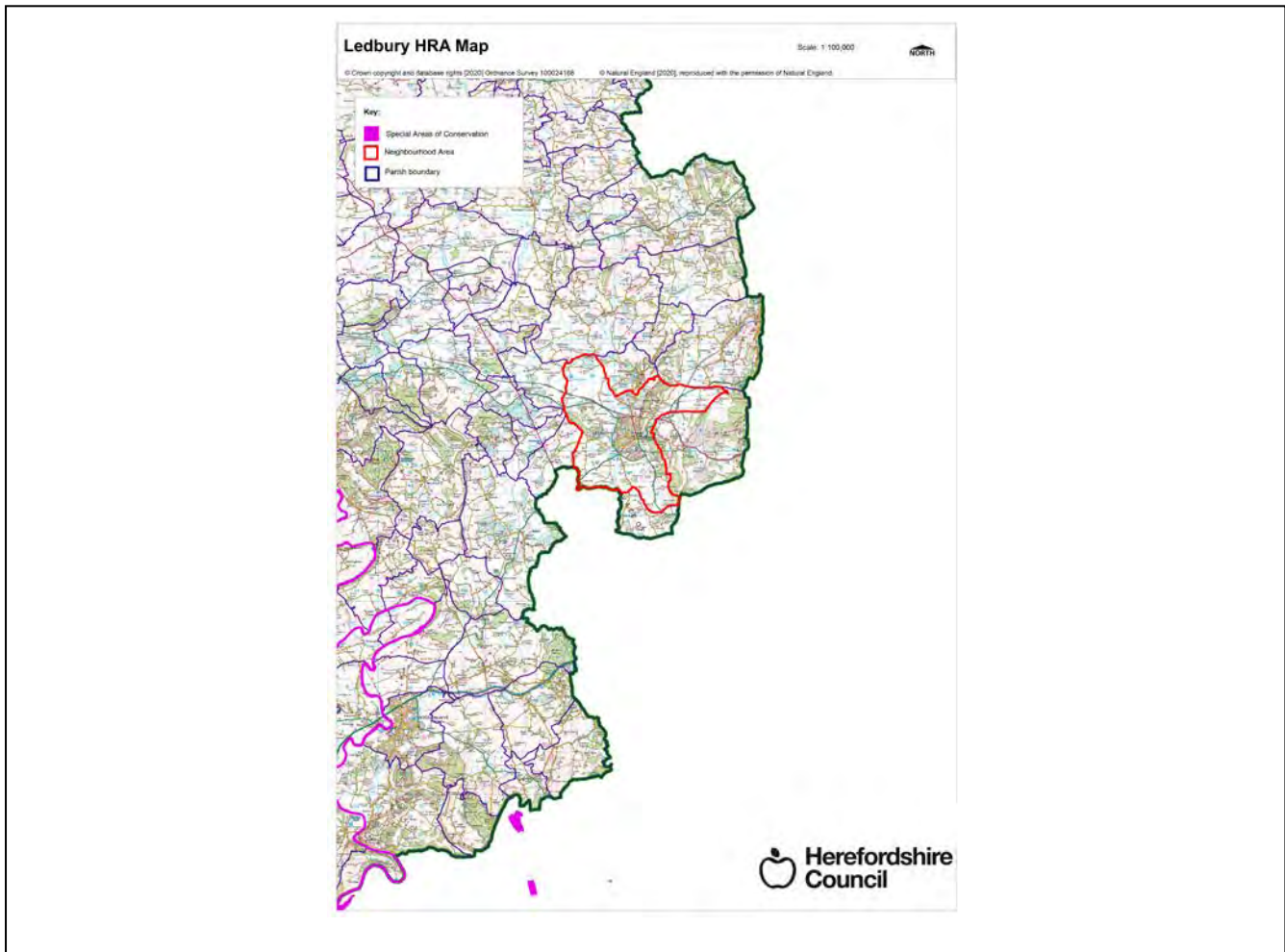
#### Introduction

This Initial Habitat Regulations Assessment (HRA) and Strategic Environmental Assessment (SEA) Screening has been undertaken to assess whether any European sites exist within or in proximity to the Neighbourhood Area which could be affected by any future proposals or policies.

Through continual engagement the outcomes of any required assessments will help to ensure that proposed developments will not lead to Likely Significant Effects upon a European site or cause adverse impacts upon other environmental assets, such as the built historic or local natural environment.

# HRA Initial Screening

Map showing relationship of Neighbourhood Area with European Sites (not to scale)



## River Wye (including the River Lugg) Special Area of Conservation (SAC):

Does the Neighbourhood Area have the River Wye (including the River Lugg) in or next to its boundary?	N	The River Wye is not within or bordering Ledbury neighbourhood area.
Is the Neighbourhood Area in the hydrological catchment of the River Wye SAC?	N	The neighbourhood area is not within the hydrological catchment of the River Wye.
Is the Neighbourhood Area in the River Lugg hydrological catchment area?	N	The neighbourhood area is not within the River Lugg hydrological catchment area.
If yes above, does the Neighbourhood Area have mains drainage to deal with foul sewage?	N/A	Not Applicable.



**Downton Gorge SAC:**

Is the Neighbourhood Area within 10km of Downton Gorge SAC?	N	Downton Gorge is 40.4km away from the neighbourhood area.
---	---	---

**River Clun SAC:**

Does the River Clun border the Neighbourhood Area	N	The River Clun SAC does not border the neighbourhood area.
---	---	--

**Wye Valley & Forest of Dean Bat Sites SAC:**

Is the Neighbourhood Area within 10km of any of the individual sites that make up the Wye Valley & Forest of Dean Bat Sites?	N	Wye Valley and Forest of Dean Bat Sites are 15.1km away from the neighbourhood area.
--	---	--

**Wye Valley Woodlands SAC:**

Is the Neighbourhood Area within 10km of any of the individual sites that make up the Wye Valley Woodlands Site?	N	Wye Valley Woodlands are 24km away from the neighbourhood area.
--	---	---

**HRA Conclusion:**

The assessment above highlights that European Sites will not need to be taken into account in the future Neighbourhood Development Plan for the Ledbury Neighbourhood Area and a Full HRA Screening will not be required.

**European Site**

*(List only those which are relevant)*

## Strategic Environmental Assessment Initial Screening for nature conservation landscape and heritage features

The following environmental features are within or in general proximity to the Ledbury Neighbourhood Area and would need to be taken into account within a Strategic Environmental Assessment. In addition, the NDP will also need to consider the other SEA topics set out in Guidance Note 9a to ensure that the plan does not cause adverse impacts.

SEA features	Within Neighbourhood Area		Bordering Neighbourhood Area	
	Total number	Name(s)	Total number	Name(s)
<b>Ancient Woodland</b>	13	Knoll Coppice; Redhill & Mallins Wood; Quarry Coppice (part) & Wall Hills Coppice (part); Grovesend Wood; Baymans Wood; Coppice; Frith Wood; Sling Coppice; Hatfield Coppice; Dog Hill Wood; Coney Green & May Hill Woods; Hospital Wood; Clenchers Mill Wood.	20	Glebe Coppice; Ast Wood; Hay Grove Coppice; Rough Pasture Ash; Pauncewood; Coppice; Canon Heath Wood; Loxter Wood; France Grove; Broomy Hill Coppice; Lavengers Coppice; Sparrow Hill Wood; Wynds Point Wood; Birchams Wood; Great Hayclose Coppice; Little Hayclose Coppice; Reddings Coppice; Brand Oak Coppice; Ridge Hill Coppice; Ash Coppice.
<b>Areas of Outstanding Natural Beauty</b>	1	Malvern Hills.	0	-

SEA features	Within Neighbourhood Area		Bordering Neighbourhood Area	
	Total number	Name(s)	Total number	Name(s)
<b>Conservation Areas</b>	1	Ledbury.	1	Eastnor.
<b>Flood Areas</b>	Flood Zones 2 and 3 running north to south via River Leaddon to the West of Ledbury Town.			
<b>Geoparks</b>	1	Malvern Hills	0	-
<b>Listed Buildings</b>	There are numerous listed buildings throughout the neighbourhood area.			
<b>Local Geological Sites</b>	3	Knapp Lane Quarry; Ledbury Tunnel Quarry; Coneygree Wood Site 1.	2	Haysebrook Cottages, Colwall; Loxter Ashbed Quarry.
<b>Local Wildlife Sites</b>	10	Woodlands on Wall Hills; Ledbury Cutting; Frith Wood, Bradlow Knoll & Dog Hill; Ridgeway Wood; Stitch Wood & adjoining pasture; Upper Hall Farm Quarry & grassland; Upper Hall grounds and lake; Coneygree & Mayhill Woods; Woodland north of Wall Hills; Clenchers Mill Wood & Little Woolpits.	10	Ast Wood; Longworth Meadow; Field near canal at Swinmore; Pool at Hope End Estate; Roadside verges above Chances Pitch on A449; Malvern Hills & adjoining sites; Eastnor Park, Birchen Wood & Castle Coppice; Eastnor Lake; Eastnor Hill Wood; Quarry near Dead Woman's Thorn Hill Wood.

SEA features	Within Neighbourhood Area		Bordering Neighbourhood Area	
	Total number	Name(s)	Total number	Name(s)
<b>Mineral Reserves</b>	11	East of Wellington Heath to The Frith, Ledbury; Frith Wood, east of Wellington Heath; Petty France Farm to Bradlow; North of Bradlow, north west of Kilbury Camp; North of Bradlow, Bradlow Coppice; Evedine to Baxhill coppice, Colwall Stone; Ridgeway south of Ockeridge Farm to Eastnor; East of Ledbury Quarry Plantation /Worcester Walk, Coppice to Mayhill Wood to The Holts; South east of Ledbury to Gloucester Road Bullen House, south to Hospital Wood; South east of Ledbury, Hospital Wood; South east of Ledbury, Gloucester Road, north of Dingwood Park Farm.	10	Jabeys Cottage, Coddington to Hope End Farm, Loxter; Holly Bank Coppice to Petty France, Coddington; Broadwood House, Colwall Stone to News Wood south of Herefordshire Beacon; Hollybush, north of Herefordshire Beacon; North east of Ledbury, East of Lower Mitchell Cottage and adj. railway line; North east of Ledbury, White House Farm; East of Ledbury, The Gables to Eastnor Hill; East of Ledbury & west of Eastnor, Squirrel Wood Hill; East of Ledbury, north of Eastnor, Wintercombe; South west of Eastnor, Holts Coppice to Clenchers Mill Wood.
<b>National Nature Reserve</b>	0	-	0	-
<b>Nature Trails</b>	2	Herefordshire Trail; Geopark Way.	0	-
<b>Registered Parks and Gardens</b>	1	Eastnor Castle.	1	Hope End.

SEA features	Within Neighbourhood Area		Bordering Neighbourhood Area			
	Total number	Name(s)	Total number	Name(s)		
<b>Scheduled Ancient Monuments</b>	1	Wall Hills Camp.	4	Herefordshire Beacon Camp; Midsummer Hill Camp; Bronsil Castle; Dovecote at Barton Court.		
<b>Sites of Importance in Nature Conservation</b>	0	-	0	-		
<b>Special Areas of Conservation</b>	0	-	0	-		
<b>Unregistered parks and gardens</b>	4	Upper Hall; Ledbury Park; Underdown; Dingewood Park.	4	Hatfield; Donnington Hall; Priors Court; Barton Court.		
		<b>SSSI Status</b>		<b>SSSI Status</b>		
<b>Sites of Special Scientific Interest (SSSI)</b>	3	Ledbury Cutting;  Upper Hall Farm Quarry & grasslands; Ridgeway Wood.	Unfavourable, Declining; Favourable;  Favourable.	3	The Malvern Hills;   Eastnor Park; Mayhill Wood.	Favourable (part), Unfavourable, Recovering (part) Favourable; Favourable.

**Decision Notification:**

The initial screening highlights that the Neighbourhood Development Plan for the Ledbury Neighbourhood Area will require further environmental assessment for Habitats Regulations Assessment and Strategic Environmental Assessment.

**Assessment date: 3 November 2020**

**Assessed by: James Latham**

## Appendix 1: European Sites

The table below provides the name of each European Site, which has been screened in for the purposes of neighbourhood planning in Herefordshire. This is based on the sites individual features of integrity and their vulnerabilities, which could include distance criteria. This has been used in identifying which parishes are likely to require a full HRA Screening of their future Neighbourhood Development Plan, to establish if their plan might have Likely Significant Effects on a European Site.

<b>Downton Gorge</b>
<b>Site Features:</b> <i>Tilio-Acerion</i> forests of slopes, screes and ravines
<b>Vulnerability data:</b> 10km for air quality associated with poultry units or other intensive agricultural practices.
<b>River Clun</b>
<b>Site Features:</b> Freshwater pearl mussel <i>Margaritifera margaritifera</i>
<b>Vulnerability data:</b> Water quality is important to maintain the site feature. Parishes either side of the River Clun will be affected.
<b>River Wye</b>
<b>Site Features:</b> Water courses of plain to montane levels with the <i>Ranunculion fluitantis</i> and <i>Callitricho-Batrachion</i> vegetation. Transition mires and quaking bogs. White-clawed (or Atlantic Stream) crayfish <i>Austropotamobius pallipes</i> . Sea lamprey <i>Petromyzon marinus</i> . Brook lamprey <i>Lampetra planeri</i> . River lamprey <i>Lampetra fluviatilis</i> . Twaite shad <i>Alosa fallax</i> . Atlantic salmon <i>Salmo salar</i> . Bullhead <i>Cottus gobio</i> . Otter <i>Lutra lutra</i> . Allis shad <i>Alosa alosa</i>
<b>Vulnerability data:</b> Proximity: Developments should not be within 100m of the designated bank. Some developments beyond 100m may also have impacts based on proximity and these issues should be addressed where possible when developing NDP policy and choosing site allocations. Water Quality: Within the whole catchment of the River Wye, which includes the River Lugg, mains drainage issues with regards to water quality are being resolved through the Core Strategy / Local Plan and development of a Nutrient Management Plan. Welsh Water should be consulted to ensure that the proposed growth will be within the limit of their consents. Otters: “An otter will occupy a ‘home range’, which on fresh waters usually includes a stretch of river as well as associated tributary streams, ditches, ponds, lakes and woodland. The size of a home range depends largely on the availability of food and shelter, and the presence of neighbouring otters. On rivers, a male’s home range may be up to 40km or more of watercourse and associated areas; females have smaller ranges (roughly half the size) and favour quieter locations for breeding, such as tributary streams. Otters without an established home range are known as ‘transients’. They are mostly juveniles looking for a territory of their own, or adults that have been pushed out of their territories. Transient otters may use an area for a short while, but they will move on if conditions are not suitable or if they are driven away by resident otters. Transients will have been important in extending the range of otters, but they are very difficult to

identify from field signs.

Within a home range an otter may use many resting sites. These include above-ground shelters, such as stands of scrub or areas of rank grass, and underground 'holts' – for example, cavities under tree roots and dry drainage pipes.”

### Wye Valley and Forest of Dean Bat Sites

**Site Features:** Annex II species that are a primary reason for site selection: Lesser horseshoe bat *Rhinolophus hipposideros*. Greater horseshoe bat *Rhinolophus ferrumequinum*

**Vulnerability data:** Lesser Horseshoe bats are known to migrate between 5km and 10km between their summer and winter roosts. The Lesser Horseshoe Bat is vulnerable to disturbance; light pollution; and habitat loss. Check with the planning ecologist for other issues.

Greater Horseshoe bats are known to migrate between 20-30km between their summer and winter roosts.

NDPs closest to the European Site will need to consider:  
Woodland habitat buffer.

Lesser Horseshoe Bat: Old buildings; woodland locations; sheltered valleys, extensive deciduous woods or dense scrub, close to roost sites. In areas of fragmented habitats, linear habitats such as hedgerows are important corridors. Vulnerable to loss or disturbance of both summer and winter roosts and removal of linear habitat.

Greater Horseshoe Bat: Large buildings, pasture, edge of mixed deciduous woodland and hedgerows. Mixed land-use especially south-facing slopes, favours beetles, moths and insects they feed on. During the winter they depend on caves, abandoned mines and other underground sites for undisturbed hibernation. A system/series of sites required. Vulnerable to loss of insect food supply, due to insecticide use, changing farming practices and loss of broad-leaved tree-cover and loss / disturbance of underground roosts sites.

### Wye Valley Woodlands

**Site Features:** Annex I habitats that are a primary reason for site selection: Beech forests *Asperulo-Fagetum*, *Tilio-Acerion* forests of slopes, screes and ravines, *Taxus baccata* woods of the British Isles. Annex II species present as a qualifying feature, but not a primary reason for site selection: Lesser horseshoe bat *Rhinolophus hipposideros*, 51-100 residents

**Vulnerability data:** Lesser Horseshoe bats are known to migrate between 5km and 10km between their summer and winter roosts. The Lesser Horseshoe Bat is vulnerable to disturbance; light pollution; and habitat loss. Check with the planning ecologist for other issues. NDPs closest to the European Site will need to consider: Woodland habitat buffer. Lesser Horseshoe Bat: Old buildings; woodland locations; sheltered valleys, extensive deciduous woods or dense scrub, close to roost sites. In areas of fragmented habitats, linear habitats such as hedgerows are important corridors. Vulnerable to loss or disturbance of both summer and winter roosts and removal of linear habitat.



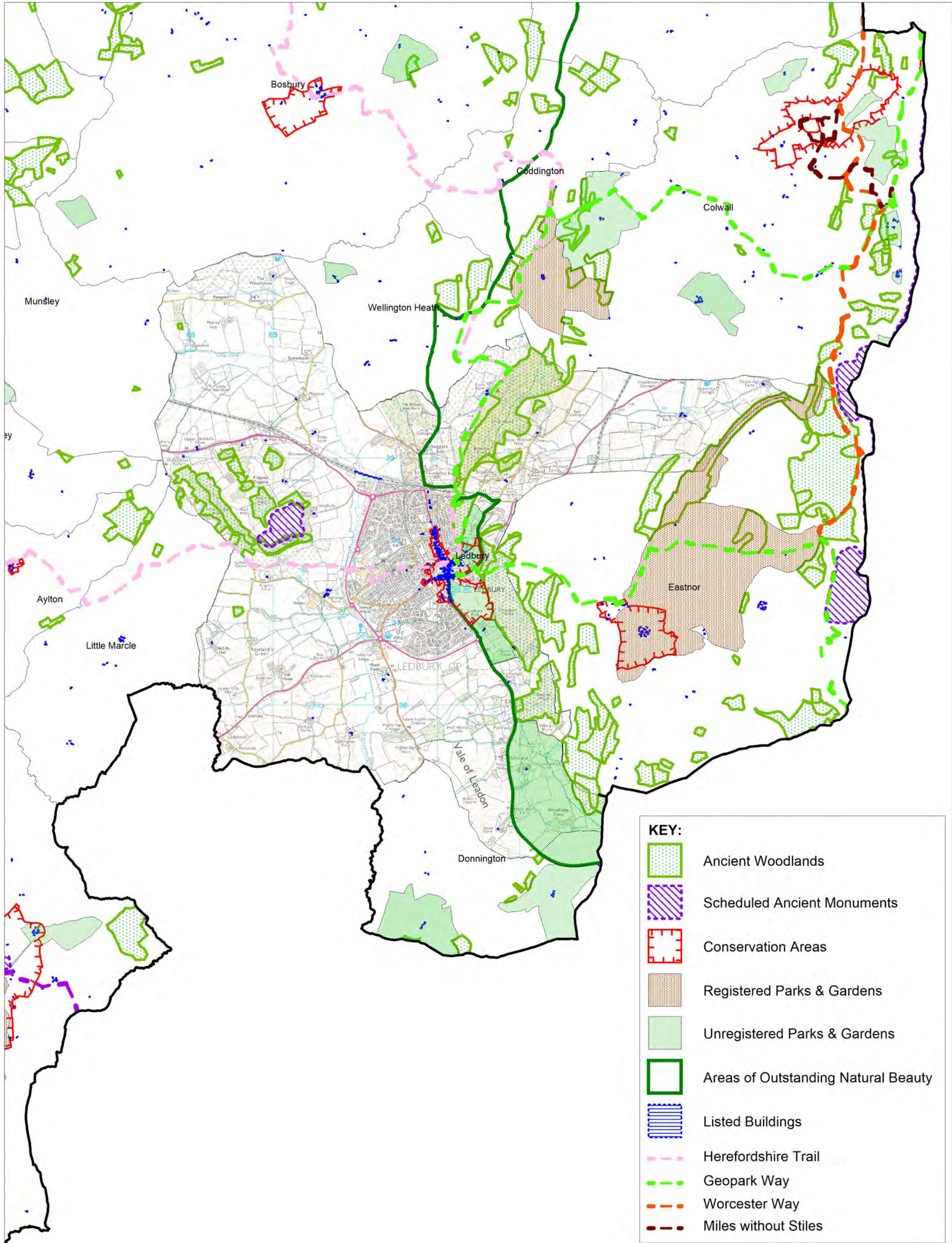


# Ledbury SEA Map 1



SCALE: 1:40,000

© Crown copyright and database rights [2020] Ordnance Survey 100024168



**KEY:**

	Ancient Woodlands
	Scheduled Ancient Monuments
	Conservation Areas
	Registered Parks & Gardens
	Unregistered Parks & Gardens
	Areas of Outstanding Natural Beauty
	Listed Buildings
	Herefordshire Trail
	Geopark Way
	Worcester Way
	Miles without Stiles



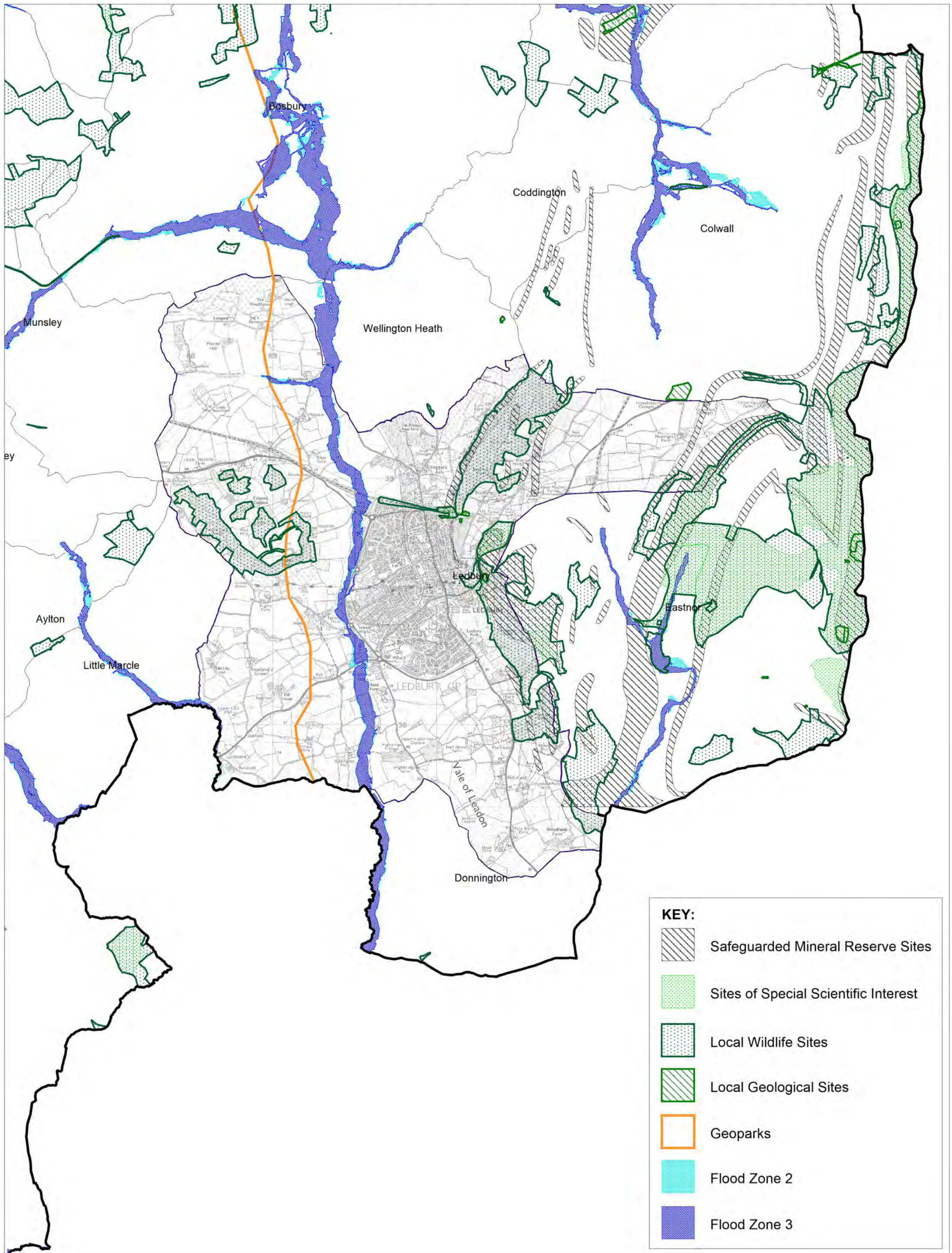


# Ledbury SEA Map 2


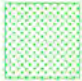







SCALE: 1:40,000

© Crown copyright and database rights [2020] Ordnance Survey 100024168



**KEY:**

-  Safeguarded Mineral Reserve Sites
-  Sites of Special Scientific Interest
-  Local Wildlife Sites
-  Local Geological Sites
-  Geoparks
-  Flood Zone 2
-  Flood Zone 3