

Habitats Regulations Assessment

Report for:

Bridstow Neighbourhood Area

January 2021



Bridstow Neighbourhood Plan HRA

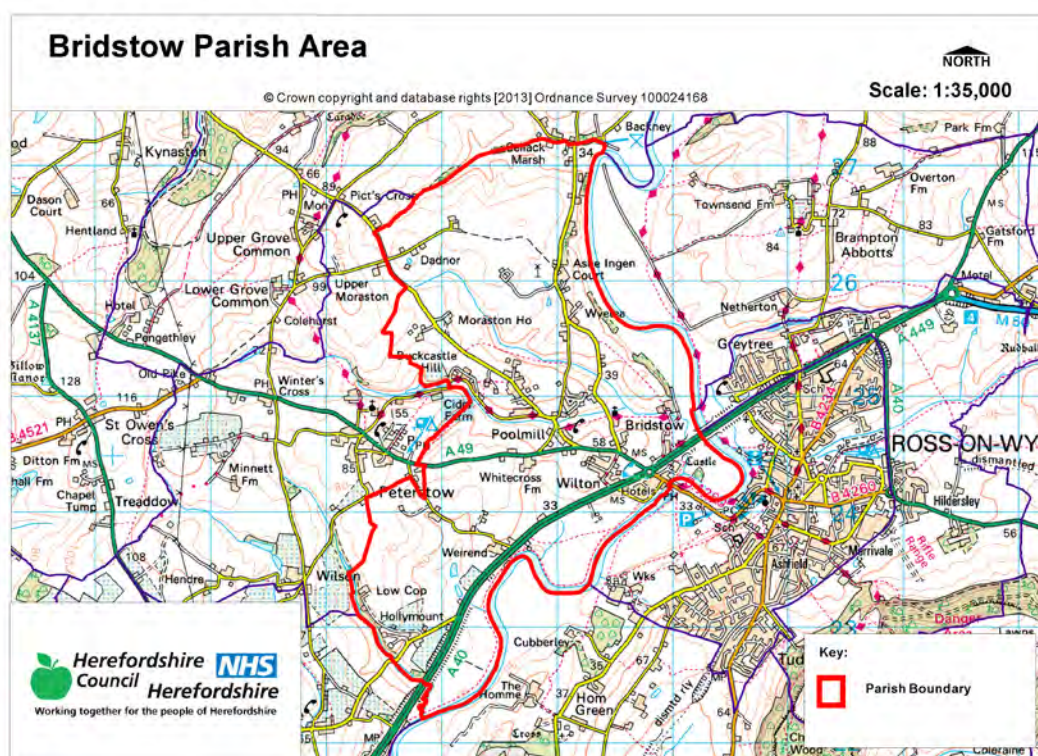
HRA Screening Assessment

Contents

- 1 Introduction**
Map of the Neighbourhood Area with European sites shown
- 2 The requirement to undertake Habitats Regulations Assessment of Neighbourhood Plans – Legislative background**
- 3 Methodology - HRA Stages**
- 4 Results of the Initial Scoping Report and qualifying features of European sites**
- 5 Description of the Bridstow Neighbourhood Plan NDP policies**
- 6 Assessment of the ‘likely significant effects’ of the Bridstow NDP policies**
Table 1 – Colour coding key for Matrix
- 7 Conclusions from the Screening Matrix and if any ‘likely significant effects’**
- 8 Identification of other plans and projects which may have ‘in-combination’ effects**
- 9 Conclusion**
- 10 Next steps**
Appendix 1 – Initial Screening Report (August 2013)
Appendix 2 – List of options assessed
Appendix 3 – Full Screening matrix of final policies and sites
Appendix 4 - Consultation responses to Reg 14
Appendix 5 - Post reg 14 rescreening matrix of policies

1 Introduction

- 1.1 This Screening Assessment relates to a Neighbourhood Development Plan that is considered to be in general conformity with higher level strategic plans, such as the Herefordshire Core Strategy and the National Planning Policy Framework. The screening stage involves assessing broadly whether the final Neighbourhood Plan is likely to have a significant effect on any European site(s).
- 1.2 Bridstow Parish Council have produced a Neighbourhood Development Plan for Bridstow Parish, in order to set out the vision, objectives and policies for the development of the Parish up to 2031. This HRA reviews the submission Bridstow Plan (January 2021).
- 1.3 The NDP allocates sites, contains criteria based policies and designates settlement boundaries within the settlement of Bridstow, Wilton, Claytons and Buckcastle Hill. It provides general criteria policies that clarify and given more detail to those within the Herefordshire Core Strategy.
- 1.4 This requires a high level screening assessment to build upon the HRA Screening Assessment Report for the Core Strategy. It should be read in combination with the Core Strategy Habitat Regulations Assessment Report and ensures that there will not be any significant impacts upon Natura 2000 sites.
- 1.5 The map below shows Bridstow Neighbourhood Area to which this assessment related.



2 The requirement to undertake Habitats Regulations Assessment of neighbourhood plans

- 2.1 The requirement to undertake HRA of development plans was confirmed by the amendments to the “Habitats Regulations” published for England and Wales in July 2007 and updated in 2013. Therefore, when preparing its NDP, Bridstow Parish Council is required by law to carry out an assessment known as “Habitats Regulations Assessment”. It is also a requirement in Regulation 32 schedule 2 of the Neighbourhood Planning Regulations 2012.
- 2.2 Article 6(3) of the EU Habitats Directive provides that:
Any plan or project not directly connected with or necessary to the management of the [European] site but likely to have a significant effect thereon, either individually or in combination with other plans or projects, shall be subject to appropriate assessment of its implications for the site in view of the site's conservation objectives. In the light of the conclusions of the assessment of the implications for the site and subject to the provisions of paragraph 4, the competent national authorities shall agree to the plan or project only after having ascertained that it will not adversely affect the integrity of the site concerned and, if appropriate, after having obtained the opinion of the general public.
- 2.3 HRA is an impact-led assessment and refers to the assessment of the potential effects of a neighbourhood plan on one or more European sites, including Special Protection Areas (SPAs) and Special Areas of Conservation (SACs):
- **SPAs** are classified under the European Council Directive ‘on the conservation of wild birds’ (79/409/EEC; ‘Birds Directive’) for the protection of **wild birds and their habitats** (including particularly rare and vulnerable species listed in Annex 1 of the Birds Directive, and migratory species).
 - **SACs** are designated under the Habitats Directive and target **particular habitats** (Annex 1) and/or species (Annex II) identified as being of European importance.
- 2.4 For ease of reference during HRA, general practice has been that these three designations are collectively referred to as either **Natura 2000** or **European sites**. This means that a Screening Assessment is carried out with regard to the Conservation Objectives of the European Sites and with reference to other plans or projects to identify if any significant effect is likely for any European Site.
- 2.5 Herefordshire Council is aware of the recent judgement (People over Wind, Peter Sweetman vs Coillte). The Court of Justice of the European Union (CJEU) ruled that Article 6(3) of the Habitats Directive must be interpreted as meaning that mitigation measures should be assessed within the framework of an appropriate assessment and that it is not permissible to take account of measures intended to avoid or reduce the harmful effects of the plan on a European site at the screening stage. The initial screening undertaken in August 2013 and concluded that a full HRA would be required. Mitigation was not taken into account at this stage.

- 2.6 The purpose of this HRA report is to detail the findings of the screening and reviewed in Terms of the implications of the *Sweetman* of the submission NDP.

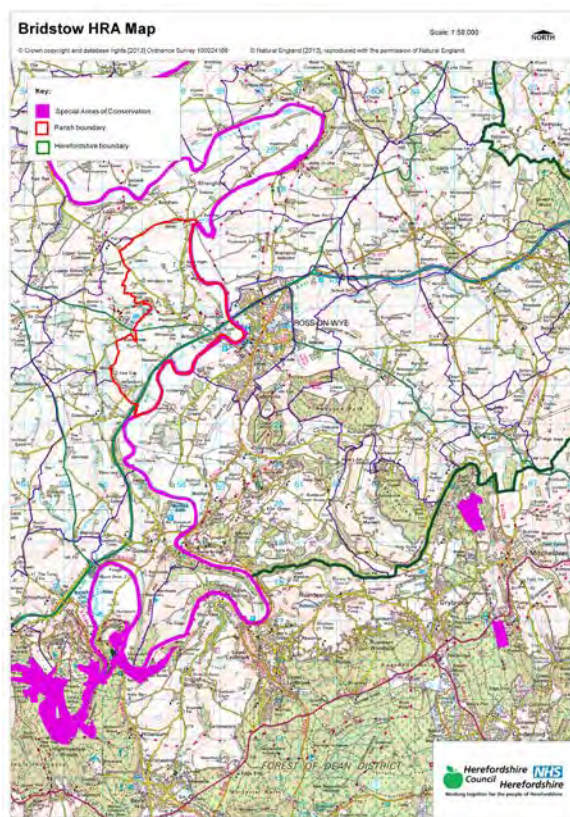
3 Methodology

- 3.1 Although the Bridstow NDP is not in direct management of any European sites, it does includes proposals for development which may affect European sites. Therefore, it is necessary under Regulation 102(1)(a) of the Habitats Regulations 2010 to undertake screening for likely significant effects on European sites.
- 3.2 The HRA of neighbourhood plans is undertaken in stages and should conclude whether or not a proposal or policy in a neighbourhood plan would adversely affect the integrity of the site in question. This is judged in terms of the implications of the plan for a site's 'qualifying features' (i.e. those Annex I habitats, Annex II species, and Annex I bird populations for which it has been designated) and are measured with reference to the conservation objectives for those qualifying features as defined by Natural England.
- 3.3 The first process is to undertake an initial screening report to determine the need to undertake the requirement for a HRA, this initial screening identifies whether the Plan could impact upon any European site that could be within the Neighbourhood Area or nearby.
- 3.4 If a European Site is within the Neighbourhood Area or the Neighbourhood Area could impact upon a European site then this will need to be taken into account and a full screening assessment will need to be undertaken.
- 3.5 The full screening stage consists of a description of the plan, identification of potential effects on European Sites, assessing the effects on European Sites. For Neighbourhood Plans the outcome should demonstrate there are no likely effects upon the European sites. If any likely effects occur then there will need to be amendments to the NDP made and be re-screened until all likely effects have been addressed.

4 Results of the Initial Screening Report and qualifying features of the European Sites

- 4.1 The initial Screening report (August 2016) found that the River Wye runs along the eastern border of the parish (including the River Lugg) SAC is located inside the parish and the parish falls within the hydrological catchment of the River Wye. Figure 2 below highlights the location of River Wye SAC, away from the parish in relation to the neighbourhood area. Wye Valley Woodlands is 8.5km away from the parish and Wye Valley and Forest of Dean Bat Sites SAC is 7.1km from the parish.
- 4.2 There is also a duty under the Water Framework Directive to ensure that proposals for growth do not adversely affect the river water quality and this included the associated watercourses flowing into the rivers.

Figure 2 below highlights the location of the River Wye (including River Lugg) SAC, Wye Valley Woodlands and Wye Valley and Forest of Dean Bat sites SAC in relation to the neighbourhood area.



Site integrity of the River Wye (including the River Lugg) SAC

- 4.3 The issues associated with maintaining the sites integrity include water levels and flow, water quality, eutrophication (nitrogen enrichment), sedimentation, disturbance and species maintenance.
- 4.4 The River Wye SAC can be sensitive to changes in water quantity and quality. As outlined within the Habitat Regulation Assessment to the Herefordshire Core Strategy, the water supply in this area comes from Dwr Cymru Welsh Water (DCWW) and no likely significant effects on European sites as a result of changes in water quality are expected in relation to the proportional growth outlined with the Herefordshire Core Strategy. There is capacity at Lower Cleeve waste water treatment works within in the neighbourhood area. It is expected for new development will need to adhere to the provisions of Policy SD4 of the Core Strategy.
- 4.5 In relation to water quality, Policy SD4 of the Herefordshire Core Strategy indicates that any development should not undermine the achievement of water quality targets within the county's rivers. This should ensure that developments within the area can be accommodated within existing water discharge permits would not be likely to have a significant effect upon the River Wye SAC. This position is confirmed within the HRA of the Core Strategy in April 2015.

- 4.6 The addition of the Nutrient Management Plan for the River Wye SAC will support this policy. DCWW states there is limited capacity at Goodrich waste water treatment works within in the neighbourhood area. Therefore new development will need to adhere to the provisions of Policy SD4 of the Core Strategy.

Site integrity of the Wye Valley and Forest of Dean Bat Sites SAC and Wye Valley Woodlands SAC

- 4.7 The Greater Horseshoe Bat and Lesser Horseshoe bat feature within the Wye Valley and Forest of Dean Bat Sites. The Greater Horseshoe Bat are known to migrate between 20-30km between their summer and winter roosts whereas the Lesser Horseshoe migrate 5km and 10km between their summer and winter roosts. The Lesser Horseshoe Bat is vulnerable to disturbance, noise and vibration, light pollution and habitat lost.
- 4.8 NDPs sites within 10 km of the Wye Valley and Forest of Dean Bat Sites will need to consider development impact to these species and their habitats. NDPs closest to the Wye Valley Woodlands will need to consider: Woodland habitat buffer. Lesser Horseshoe Bat: Old buildings; woodland locations; sheltered valleys, extensive deciduous woods or dense scrub, close to roost sites. In areas of fragmented habitats, linear habitats such as hedgerows are important corridors. Vulnerable to loss or disturbance of both summer and winter roosts and removal of linear habitat.
- 4.8 The issues associated with maintaining the sites integrity include impact of development result in changes in landscape and townscape. As outlined within the Habitat Regulation Assessment to the Herefordshire Core Strategy, impact on European sites is dependent on scale and proximity to the European sites.
- 4.9 In relation to impact on biodiversity and important species, Policy LD2 of the Herefordshire Core Strategy indicates that any development should conserve, restore and enhance biodiversity and geodiversity assets of Herefordshire. Development within close proximity to internationally and local designated sites will need to incorporate sympathetic design components to enhance their nature conservation interests.
- 4.7 For full details of the three SAC attributes which contribute to and define their integrity and vulnerable data see Appendix 1 of the Ross on Wye Initial Screening Report. The Initial Screening Report, August 2013, can be found in Appendix 1 of this HRA report.
- 4.8 This information made it possible to identify the features of each site which determine site integrity, as well as the specific sensitivities of each site, therefore enabling later analysis of how the potential impacts of the Bridstow Neighbourhood Plan may affect site integrity.
- 4.9 The initial screening assessment indicated that a full screening assessment is required to assessment the likelihood of significant effects on the River Wye (including the River Lugg) SAC, Wye Valley and Forest of Dean Bat sites SAC and the Wye Valley Woodlands SAC of the policies within the Bridstow NDP.

5 Description of the Bridstow Neighbourhood Development Plan

5.1 The draft Bridstow NDP presents detailed policies for development in the Neighbourhood Area, which is equivalent to the group parish boundary, up to 2031. The Plan begins by introducing its preparation and highlighting its issues.

5.2 The NDP then details the vision for the Group Parish over the Plan period; "Our community will be a place where people can enjoy living and working in a rural setting. The predominantly quiet, small scale nature of our parish will be preserved whilst accommodating the growth and development needed to meet the needs of the community and promote a sustainable and thriving community life."

There are six objectives of how this will be achieved. The objectives cover the following topics:

- Local environment
- New housing.
- Infrastructure and roads
- Community facilities
- Energy
- Economic development and Employment

5.3 The initial options for the NDP (refer to appendix 2) were assessed to determine their environmental impact that could affect the River Wye SAC. Of the five general options put forward the 'no NDP / do nothing' option was not considered viable for the Parish.

- Do nothing
- **Option 1** – seeking one or two relatively large sites that might accommodate the Core Strategy target for the Parish;
- **Option 2** – identifying a number of smaller sites that would be in keeping with the scale of development within Wilton and the 3 main settlements in Bridstow;
- **Option 3** – locating development where this might contribute towards creating a village core for Bridstow.

All of which indicated towards growth however all the options would be seeking to provide proportional growth in line with the Core strategy and are therefore unlikely to have a significant impact on the three SACs.

5.4 As Bridstow Neighbourhood Plan progressed from options to draft NDP policies, the Plan needed to identify ways in which the Bridstow effect on the three SACs, could be achieved, alongside taking forward the preferred option from the consultation from the community. The site options can be found below.

Site Options

5.5 Bridstow considered 18 site options in order to demonstrate potential to deliver proportionate growth within Bridstow. Option 1, 2 and 6 is the preferred option as it provides the most certainty for future development. This option allocates sites and a settlement boundaries, as well as using a criteria based policy to define areas for development. This option has an overall positive/ neutral impact on the baseline

objectives and help set out criteria for potential development, allocate sites within the settlement boundary in Bridstow and definition of a settlement boundary.

Site 1: Bk6 Land adjacent to Salsdon Cottage. 1 dwelling.
Site 2: Bk2 Land at Oaklands (Small site). 5 dwellings.
Site 3: Bt7 Land at Whitecross. 3 dwellings. SELECTED
Site 4: Bk2a/b Land at Oaklands.
Site 5: Bt4 Land at the Old Vicarage. 5 dwellings. SELECTED
Site 6: W2 Land opposite Wilton Cottages*. 9 dwellings. SELECTED
Site 7: Bk1 Land at Foxdale (3 dwellings). SELECTED
Site 8: Bk4b Land at Cotterell's Farm (Small site) (8 dwellings). SELECTED
Site 9: Bt2a/b Land at Bridruthen* (8 dwellings) SELECTED
Site 10: Bt3b Land west of Wilton Roundabout* (25 dwellings)
Site 11: Bt6b Land at Tanglewood (Small site)* (5 dwellings)
Site 12: Bk7 Land adjacent to 6 Oaklands Cottages* (5 dwellings) SELECTED
Site 13: C1 Land at Ash Ridge, Claytons* (9 dwellings)
Site 14: W1b/c Land off Wilton Lane, Wilton (Small site)* (9 dwellings)
Site 15: Bt3c Land west of Wilton Roundabout (Small site)*
Site 16: Bt6a Land at Tanglewood* (20 dwellings)
Site 17: Bk4a Land at Cotterell's Farm* (32 dwellings)
Site 18: W1a Land off Wilton Lane, Wilton* (16 dwellings)

- 5.6 The 18 site options above sites 3,5,6,7,8,9 and 12 were selected. All of these sites had no significant effect on the SACs, this is mostly down to the scale, location nature of the sites proposed as well as the majority of the sites were in or around the identified settlement boundary, deeming the locations a place of sustainable growth. Of the 18 sites, sites 10, 16, 17 was deemed of having a potential significant impact, due to scale, size and location of the proposed scheme. However as these are options that have not been selected, they do not require an appropriate assessment.
- 5.7 Majority of the site options were screened and were considered unlikely to have a significant effect on the SACs. The main concerns of development is noise pollution and air pollution impact as the A49 runs through Bridstow and the A40 runs alongside Wilton. This constraint effects nearly all of potential development in Bridstow, however there are enough safeguards in the core strategy and design and placement of potential schemes can address this.
- 5.8 Seven sites that have finally been selected 1,2,6. The selected sites have been screened in appendix 3. None have been found to have a significant effect on the SACs. This is due to locations and size of the potential development that is close to the defined settlement of Bridstow.

Policies

- 5.9 The NDP also sets out 24 policies on various topics based on the objective headings above and also for group parish, these include:
- Draft Policy BR1 Promoting Sustainable Development
 - Draft Policy BR2 Development Strategy

- Draft Policy BR3 Major Development within the Wye Valley AONB
- Draft Policy BR4 Conserving the Landscape and Scenic Beauty within the Wye Valley AONB
- Draft Policy BR5 Protecting Heritage Assets
- Draft Policy BR6 Enhancement of the Natural Environment
- Draft Policy BR7 Protection from Flood Risk
- Draft Policy BR8 Sewerage Infrastructure
- Draft Policy BR9 Sustainable Design
- Draft Policy BR10 Housing Design and Appearance
- Draft Policy BR11 Traffic Measures within the Parish
- Draft Policy BR12 Highway Design Requirements
- Draft Policy BR13 Housing Development in Wilton
- ~~Draft Policy BR14 Housing Site in Wilton Deleted post reg 14 consultation~~
- Draft Policy BR14 Housing Development in Bridstow
- Draft Policy BR15 Housing Sites in Bridstow Village
- Draft Policy BR16 Housing Development within Buckcastle Hill Area of Special Character
- Draft Policy BR17 Agricultural Diversification, Tourism and other Employment Enterprises
- Draft Policy BR18 Renewable and Low Carbon Energy
- Draft Policy BR19 Polytunnel Proposals
- Draft Policy BR20 Protection and Enhancement of Community Facilities
- Draft Policy BR21 Protection of Local Green Space and Areas of Open Space
- Draft Policy BR22 Contributions to Community Services, Youth Provision and Recreation Facilities
- Draft Policy BR23 High Speed Broadband and Telecommunications

Screening of modifications to NDP (Reg16)

- 5.10 The Submission NDP (January 2021) incorporates additional policy criteria or wording to add clarity and emphasis throughout the document as well as removal of two site allocations, the land at Whitecross Farm is now a commitment site as two dwellings have been granted planning permission. One policy BR14 Housing site in Wilton had been deleted, following advice from Highways England and the high level of noise and traffic pollution on this site. Several policies have been rescreened in light of the changes. These policies have added more criteria to clarify type of development and had added criteria to ensure environmental protections.
- 5.11 Policies Policy BR10, BR11, BR12 and BR15 has been rescreened along with all of the policies in appendix 6. Two objectives have been rescreened due to the added criteria. Modifications made to several other policies of the plan are considered to be minor and would not have a significant effect on the results previously assessed. These were points of clarity and minor word changes.
- 5.12 The revised NDP policies are therefore unlikely to result in significant effects on the European site. Conservation status of the SAC in respect of phosphate levels as soon as possible and at the latest by 2027, have both been considered as part of the in-combination assessment.

6.0 Assessments undertaken to date of the submission Bridstow NDP policies

- 6.1 Regulation 102 of the Habitats Regulations 2010 requires that a Screening Assessment be undertaken, in order to identify the 'likely significant effects' of an NDP. Accordingly, a screening matrix was prepared and this determined the extent to which any of the policies within the Bridstow NDP would be likely to have a significant effect on the River Wye SAC, Wye Valleys Woodlands SAC and Wye Valley and Forest of Dean bat sites. This has been repeated at each statutory stage of the NDP consultation process.
- 6.2 In light of the *Sweetman* case all policies have been reviewed to ensure compliance with the ruling. The finding can be found in appendix 3.
- 6.3 The findings of the screening matrix can be found in the appendix. Colour coding was used to record the likely impacts of the policies on the European site and its qualifying habitats and species as shown in the table 1 below.

Red	There are likely to be significant effects
Green	Significant effects are unlikely

- 6.4 Following the recent *Sweetman* judgement, it is not permissible to take account of measure intended to avoid or reduce the harmful effects of the plan on the River Wye SAC, Wye Valley Woodlands SAC, Forest of Dean Bat site SAC at this final screening stage. Any likely significant effects would require an Appropriate Assessment to be required.

7 Conclusions from the Screening Matrix

- 7.1 None of the draft Bridstow Neighbourhood Plan (January 2021) policies were concluded to be likely to have a significant effect on the River Wye SAC, Wye Valley and Forest of Dean Bat Sites and Wye Valley Woodlands SAC.
- 7.2 This is partly down to scale and extent of plan also the Bridstow Plan small scale site allocations. For the policies contained in the plan there is sufficient policy criteria in Core Strategy policies LD2, SD3 and SD4 to ensure that development can only occur if these criteria are met.
- 7.3 Commitments and completions from April 2011-April 2018 are currently 10 dwellings, leaving a residual figure of 47 to find within the parish of Bridstow. The plan allocates settlement boundaries for development within Bridstow, Claytons, Buckcastle Hill and Wilton. There are 7 site allocations to provide up to 41 dwellings. Allocated sites for development in Bridstow and Wilton village to provide a minimum of 32 dwellings and two sites allocations are allocated in Buckcastle Hill to accommodate up to 8 dwellings. Expected windfall to meet the housing target from 2011 to 2031 is around 12 dwellings, 9 within the identified settlement boundaries and 3 within the rural areas.

- 7.4 The allocated sites for development in Bridstow, Wilton and Buckcastle Hill are not directly on the river banks or adjacent to a watercourse that feeds into the River, and due to the scale of the sites for homes and businesses being of that is alignment with the scale of growth that is required by the Herefordshire Core Strategy, these would not have an appreciable effect on the River Wye SAC, i.e. that they were not likely to be significant.
- 7.5 There is currently capacity at Lower Cleeve waste water treatment works, and is within the neighbourhood area. It is expected for new development will need to adhere to the provisions of Policy SD4 of the Core Strategy. In Water Cycle Study addendum it states that the Growth can potentially be accepted within permit flow limit. It is recommended that liaison with the Water Company is needed before significant growth takes place.
- 7.6 In addition, the Nutrient Management Plan for the River Wye SAC should ensure that development within Herefordshire which can be accommodated within existing water discharge permits would not be likely to have a significant effect upon the River Wye SAC.
- 7.7 No mitigation measures have been included within the screening of the policies of the NDP. Policies of the Core Strategy and the NDP will form part of the development plans. A key requirement of the Core Strategy is to meet the Water Framework Directive.
- 7.8 Policy SD4 of the Core Strategy of the NDP indicate that development would not be permitted if wastewater treatment and water quality cannot be assured.
- 7.9 Policy LD2 of the Core Strategy indicates that any development should conserve, restore and enhance biodiversity and geodiversity assets of Herefordshire. Development within close proximity to internationally and local designated sites will need to incorporate sympathetic design components to enhance their nature conservation interests. Bridstow NDP allocates sites, however the location and scale of the sites have been screened and seen to have an unlikely significant effect on the Wye Valley and Forest of Dean SAC along with the Wye Valley Woodlands SAC. Therefore an AA is not required as the plan is criteria based consisting of mostly protective policies it is determined unlikely to have a significant impact on the SACs. The sites likely impact on the SACs can be determined further at planning application stage when further details of the proposed housing schemes are known.
- 7.10 This review and rescreening in addition to the revisions to the policies from the examination, have been found to be unlikely to result in significant effects on the River Wye SAC. ***It is therefore concluded that the Bridstow Neighbourhood Plan will not have a likely significant effect on the River Wye SAC, Wye Valley Woodland SAC and Wye Valley and Forest of Dean Bat site SACs.***

8 Identification of other plans and projects which may have 'in-combination' effects

- 8.1 There are a number of potentially relevant plans and projects which may result in in-combination effects with the Core Strategy across Herefordshire, these plans have been reviewed and can be found in Appendix 2 of the publication of the

Herefordshire Local Plan Core Strategy Habitats Regulations Assessment (Oct 2015).

- 8.2 It is seen that as this NDP does not go over and beyond the requirements set out in the Core Strategy.
- 8.3 Adjacent neighbourhood plans include Peterstow (made), Walford, Bramoton Abbots and Foy, Ross on Wye and are in the process of producing a neighbourhood plan. These plans have not gone over and beyond the requirements set out within the Core Strategy for their area. Sellack and Marstow are not doing a NDP.
- 8.4 The HRA for the Core Strategy also identifies that both the Water Cycle Study for Herefordshire, which indicates the potential for planned water abstraction requirements combined with pressures on European Sites from the Core Strategy policies, and the work on the Nutrient Management Plan, to ensure the favourable conservation status of the SAC in respect of phosphate levels as soon as possible and at the latest by 2027, have both been considered as part of the in-combination assessment.
- 8.5 It is unlikely that the Bridstow Neighbourhood Plan will have any in-combination effects with any plans from neighbouring parish councils as the level of growth proposed is the same as that proposed for the Ross on Wye Housing Market Area in the Herefordshire Core Strategy.

9.0 Conclusion

- 9.1 With reference to sections 5 to 9 above, the modifications to the NDP are not considered to affect the findings of the previous HRA report in a positive way as in many cases policies have been strengthened by adding protective criteria to avoid negative impacts on the SAC's and environmental assets. The review in light of the *Sweetman* case is also not considered to affect the previous findings.
- 9.2 Therefore the earlier conclusions that the **Bridstow NDP will not have a likely significant effect on the River Wye SAC, Wye Valley Woodlands and Wye Valley and forest of Dean Bat sites SAC** has been strengthened.

10.0 Next steps

- 10.1 This Report will be published alongside the draft Bridstow NDP. This will be subject to a consultation with the statutory bodies during the six week Regulation 16 consultation. After this consultation, the plan will be sent off to examination.

Appendix 1

Initial Habitat Regulations Assessment and Strategic Environmental Assessment Screening Notification

The Neighbourhood Planning (General) Regulation 2012 (Reg. 32)

Conservation of Habitats and Species Regulations 2010 (d)

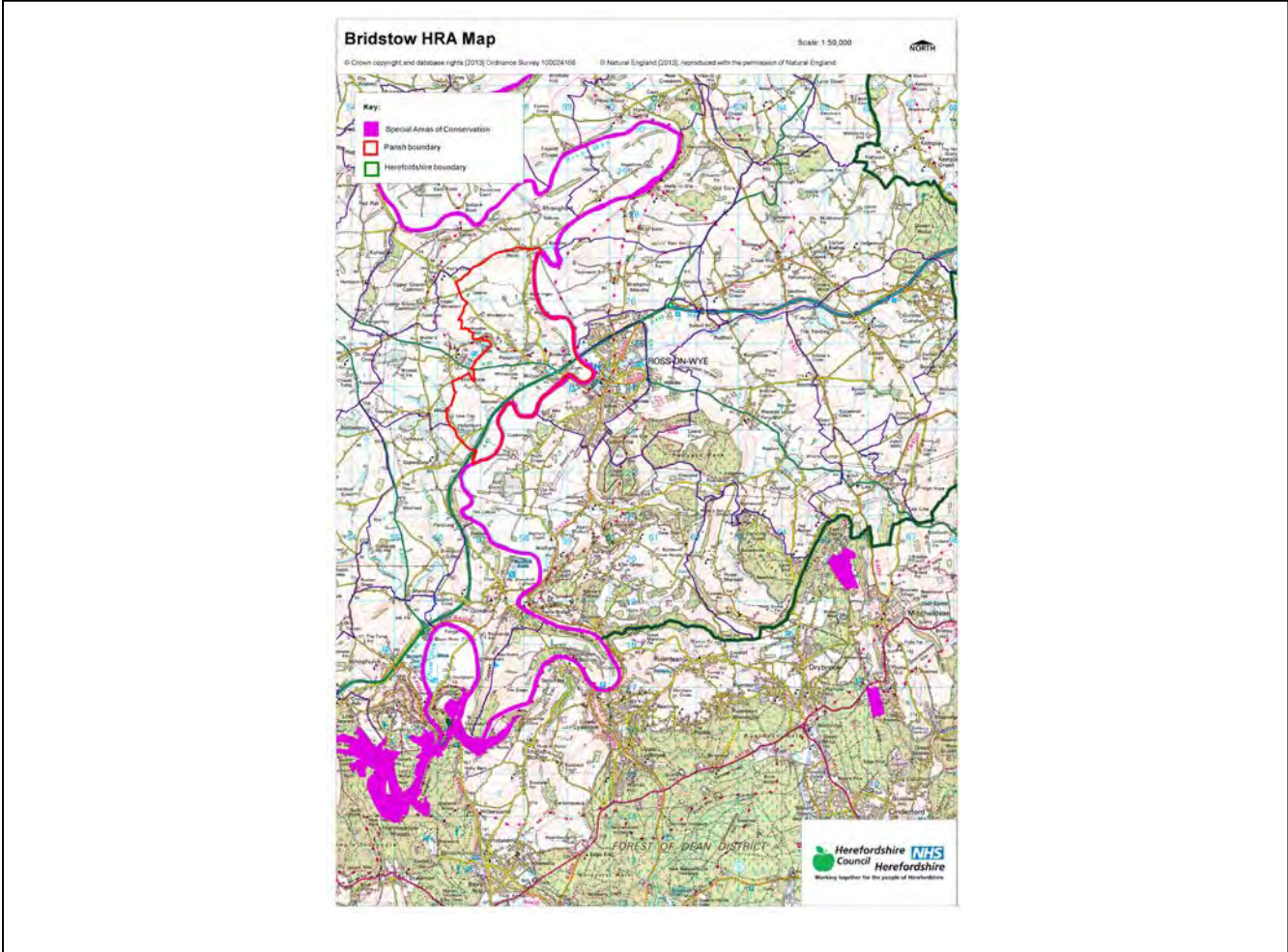
Neighbourhood Area:	Bridstow Neighbourhood Area
Parish Council:	Bridstow Parish Council
Neighbourhood Area Designation Date:	23 rd September 2013

Introduction

This Initial Habitat Regulations Assessment (HRA) and Strategic Environmental Assessment (SEA) Screening has been undertaken to assess whether any European Sites exist within or in proximity to the Neighbourhood Area which could be affected by any future proposals or policies.

Through continual engagement the outcomes of any required assessments will help to ensure that proposed developments will not lead to Likely Significant Effects upon a European Site or cause adverse impacts upon other environmental assets, such as the built historic or local natural environment.

**HRA Initial Screening: Map showing relationship of Neighbourhood Area with European Sites
(not to scale)**



Initial HRA Screening

River Wye (including the River Lugg) SAC:

Does the Neighbourhood Area have the River Wye (including the River Lugg) in or next to its boundary?	Y	The River Wye runs along the eastern border of the Parish
Is the Neighbourhood Area in the hydrological catchment of the River Wye (including the River Lugg) SAC?	Y	The Parish is within the hydrological catchment of the River Wye
If yes above, does the Neighbourhood Area have mains drainage to deal with foul sewage?	N	There is no mains drainage within the Parish

Downton Gorge SAC:

Is the Neighbourhood Area within 10km of Downton Gorge SAC?	N	Downton Gorge is 48.1km away from the Parish
-------------------------------------------------------------	---	----------------------------------------------

River Clun SAC:

Does the Neighbourhood Area include: Border Group Parish Council or Leintwardine Group Parish Council?	N	River Clun does not border the Parish
--------------------------------------------------------------------------------------------------------	---	---------------------------------------

Usk Bat Sites SAC:

Is the Neighbourhood Area within 10km of the SAC boundary?	N	Usk Bat Sites are 38.3km away from the Parish
------------------------------------------------------------	---	-----------------------------------------------

Wye Valley & Forest of Dean Bat Sites SAC:

Is the Neighbourhood Area within 10km of any of the individual sites that make up the Wye Valley & Forest of Dean Bat Sites?	Y	The Parish is 7.1km away from Wye Valley and Forest of Dean Bat Sites
------------------------------------------------------------------------------------------------------------------------------	---	-----------------------------------------------------------------------

Wye Valley Woodlands SAC:

Is the Neighbourhood Area within 10km of any of the individual sites that make up the Wye Valley Woodlands Site?	Y	The Parish is 8.5km away from the Wye Valley Woodlands
------------------------------------------------------------------------------------------------------------------	---	--------------------------------------------------------

HRA Conclusion:

The assessment above highlights that the following European Sites will need to be taken into account in the future Neighbourhood Development Plan for the Bridstow Neighbourhood Area and a Full HRA Screening will be required.

European Site

(List only those which are relevant from above)

River Wye (including the River Lugg) SAC

Wye Valley & Forest of Dean Bat Sites SAC

Wye Valley Woodlands SAC

Strategic Environmental Assessment Initial Screening for nature conservation landscape and heritage features

The following environmental features are within or in general proximity to the Bridstow Neighbourhood Area and would need to be taken into account within a Strategic Environmental Assessment. In addition, the NDP will also need to consider the other SEA topics set out in Guidance Note 9a to ensure that the plan does not cause adverse impacts.

SEA features	Total	Explanation	SEA required
Air Quality Management Areas	0	There are no AQMA's within the Parish	N
Ancient Woodland	0	There are no Ancient Woodlands within the Parish	N
Areas of Archaeological Interest	0	There are no AAls within the parish	N
Areas of Outstanding Natural Beauty	1	Wye Valley AONB	Y
Conservation Areas	2	Ross on Wye Conservation Area is in the south east of the Parish; Peterstow village (border)	Y
European Sites	1	The River Wye borders the eastern edge of the Parish	Y
Flood Areas		Flood Zones 2 and 3 run along the River Wye on the eastern borders of the Parish, and through a brook/stream from east to west, running north of Bridstow, through Poolmill and exiting the Parish by Buckcastle Hill	Y
Listed Buildings	Numerous	There are numerous Listed Buildings throughout the Parish	Y
Local Sites (SWS/SINCS/RIGS)	5 (SWS)	Fields near Wellsbrook Farm (border); Wells Brook; Marsh near Bridstow Church; Marsh near Bridstow; River Wye	Y
Long distance footpaths/trails (e.g. Herefordshire Trail)	1	Herefordshire Trail	Y
Mineral Reserves	7	Blackfields (border); 3 x sites in and around Bridstow village; North of Ross/Blackfields x 2 (border); 1 x unlabelled site by The Homme (border)	Y
National Nature Reserve	0	There are no NNRs within the Parish	N
Registered & Unregistered parks and gardens	7 Unregistered	Moraston House; Ashe Ingen Court; The Prospect (border); Merton House (border); John Kyrles Garden (border); John Kyrles Walk (border); Caradoc Court (border)	Y
Scheduled Ancient Monuments	3	Wilton Castle; Wilton Bridge (border); Churchyard Cross at St Bridget's Churchyard	Y
Sites of Special Scientific Interest	2	River Wye (Unfavourable Recovering); Wilton Bluff (Favourable) (border)	Y

Decision Notification:

The initial screening highlights that the Neighbourhood Development Plan for the Bridstow Neighbourhood Area:

- a) Will require further environmental assessment for Habitat Regulations Assessment and Strategic Environmental Assessment.

Assessment date: 12/08/2013

Assessed by: James Latham

Appendix 1: European Sites

The table below provides the name of each European Site, which has been screened in for the purposes of neighbourhood planning in Herefordshire; includes their site features of integrity; and vulnerability data. This is based on the sites individual features of integrity and their vulnerabilities, which could include distance criteria. This has been used in identifying which parishes are likely to require a full HRA Screening of their future Neighbourhood Development Plan, to establish if their plan might have Likely Significant Effects on a European Site.

Downton Gorge
Site Features: <i>Tilio-Acerion</i> forests of slopes, screes and ravines
Vulnerability data: 10km for air quality associated with poultry units or other intensive agricultural practices.
River Clun
Site Features: Freshwater pearl mussel <i>Margaritifera margaritifera</i>
Vulnerability data: Water quality is important to maintain the site feature. Parishes either side of the River Clun will be affected.
River Wye
Site Features: Water courses of plain to montane levels with the <i>Ranunculion fluitantis</i> and <i>Callitricho-Batrachion</i> vegetation. Transition mires and quaking bogs. White-clawed (or Atlantic Stream) crayfish <i>Austropotamobius pallipes</i> . Sea lamprey <i>Petromyzon marinus</i> . Brook lamprey <i>Lampetra planeri</i> . River lamprey <i>Lampetra fluviatilis</i> . Twaite shad <i>Alosa fallax</i> . Atlantic salmon <i>Salmo salar</i> . Bullhead <i>Cottus gobio</i> . Otter <i>Lutra lutra</i> . Allis shad <i>Alosa alosa</i>
Vulnerability data: Proximity: Developments should not be within 100m of the designated bank. Some developments beyond 100m may also have impacts based on proximity and these issues should be addressed where possible when developing NDP policy and choosing site allocations. Water Quality: Within the whole catchment of the River Wye, which includes the River Lugg, mains drainage issues with regards to water quality are being resolved through the Core Strategy / Local Plan and development of a Nutrient Management Plan. Welsh Water should be consulted to ensure that the proposed growth will be within the limit of their consents. Otters: "An otter will occupy a 'home range', which on fresh waters usually includes a stretch of river as well as associated tributary streams, ditches, ponds, lakes and woodland. The size of a home range depends largely on the availability of food and shelter, and the presence of neighbouring otters. On rivers, a male's home range may be up to 40km or more of watercourse and associated areas; females have smaller ranges (roughly half the size) and favour quieter locations for breeding, such as tributary streams. Otters without an established home range are known as 'transients'. They are mostly juveniles looking for a territory of their own, or adults that have been pushed out of their territories. Transient otters may use an area for a short while, but they will move on if conditions are not suitable or if they are driven away by resident otters. Transients will have been important in extending the range of otters, but they are very difficult to identify from field signs. Within a home range an otter may use many resting sites. These include above-ground shelters, such as stands of scrub or areas of rank grass, and underground 'holts' – for example, cavities under tree roots and dry drainage pipes." (Source: EA website: http://www.environmentagency.gov.uk/static/documents/Business/Otters_the_facts.pdf accessed 09/04/2013)

Usk Bat Site

Site Features: Annex I habitats present as a qualifying feature, but not a primary reason for site selection: European dry heaths, Degraded raised bogs still capable of natural regeneration, Blanket bogs, Calcareous rocky slopes with chasmophytic vegetation, Caves not open to the public, *Tilio-Acerion* forests of slopes, screes and ravines. Annex II species of primary reason for site selection: Lesser horseshoe bat *Rhinolophus hipposideros*, UK population 5%, although it is suggested this is an underestimate.

Vulnerability data: Lesser Horseshoe bats are known to migrate between 5km and 10km between their summer and winter roosts. The Lesser Horseshoe Bat is vulnerable to disturbance; light pollution; and habitat loss. Check with the planning ecologist for other issues.

Wye Valley and Forest of Dean Bat Sites

Site Features: Annex II species that are a primary reason for site selection: Lesser horseshoe bat *Rhinolophus hipposideros*. Greater horseshoe bat *Rhinolophus ferrumequinum*

Vulnerability data: Lesser Horseshoe bats are known to migrate between 5km and 10km between their summer and winter roosts. The Lesser Horseshoe Bat is vulnerable to disturbance; light pollution; and habitat loss. Check with the planning ecologist for other issues.

Greater Horseshoe bats are known to migrate between 20-30km between their summer and winter roosts.

NDPs closest to the European Site will need to consider:

Woodland habitat buffer.

Lesser Horseshoe Bat: Old buildings; woodland locations; sheltered valleys, extensive deciduous woods or dense scrub, close to roost sites. In areas of fragmented habitats, linear habitats such as hedgerows are important corridors. Vulnerable to loss or disturbance of both summer and winter roosts and removal of linear habitat.

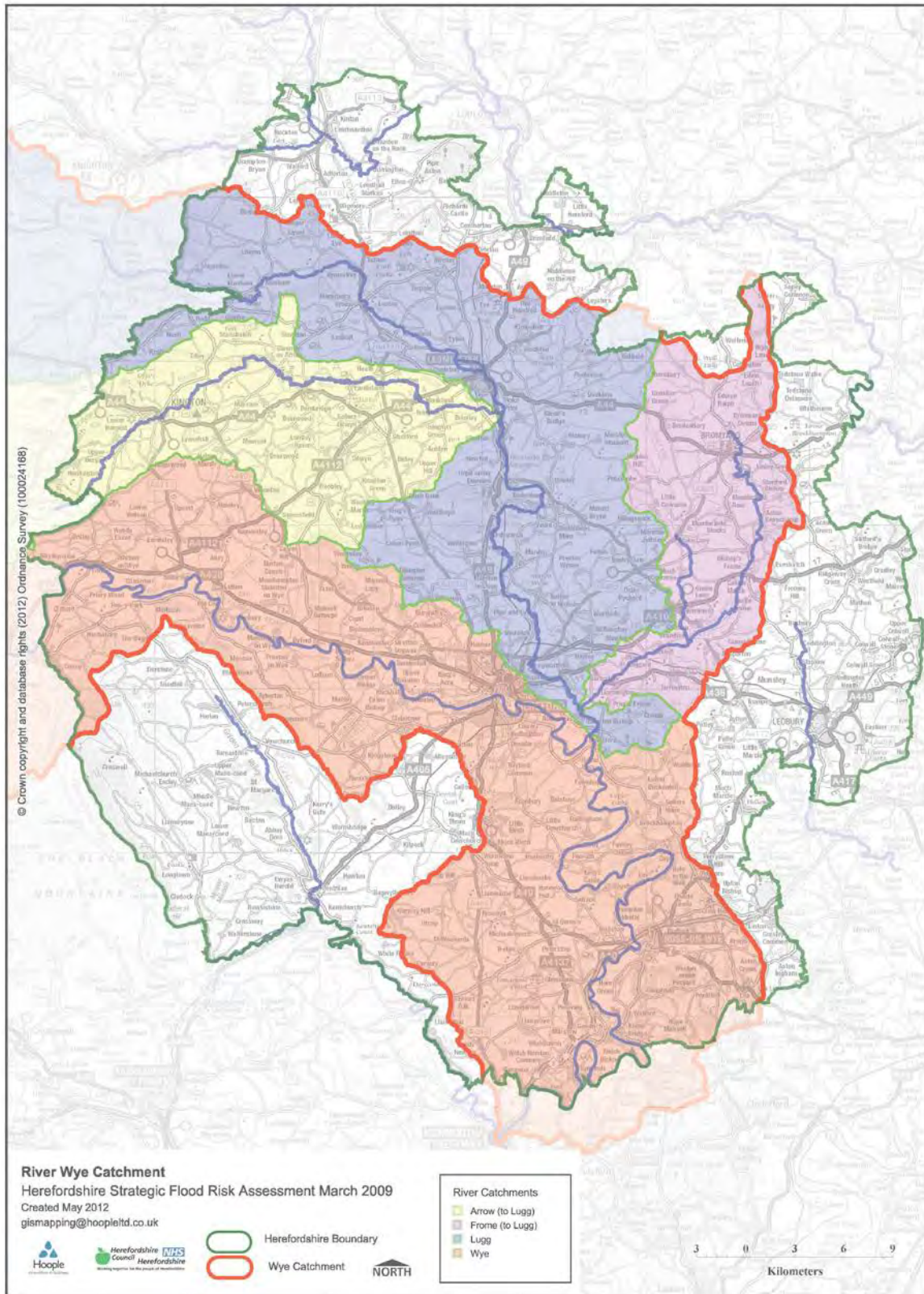
Greater Horseshoe Bat: Large buildings, pasture, edge of mixed deciduous woodland and hedgerows. Mixed land-use especially south-facing slopes, favours beetles, moths and insects they feed on. During the winter they depend on caves, abandoned mines and other underground sites for undisturbed hibernation. A system/series of sites required. Vulnerable to loss of insect food supply, due to insecticide use, changing farming practices and loss of broad-leaved tree-cover and loss / disturbance of underground roosts sites.

Wye Valley Woodlands

Site Features: Annex I habitats that are a primary reason for site selection: Beech forests *Asperulo-Fagetum*, *Tilio-Acerion* forests of slopes, screes and ravines, *Taxus baccata* woods of the British Isles. Annex II species present as a qualifying feature, but not a primary reason for site selection: Lesser horseshoe bat *Rhinolophus hipposideros*, 51-100 residents

Vulnerability data: Lesser Horseshoe bats are known to migrate between 5km and 10km between their summer and winter roosts. The Lesser Horseshoe Bat is vulnerable to disturbance; light pollution; and habitat loss. Check with the planning ecologist for other issues. NDPs closest to the European Site will need to consider: Woodland habitat buffer. Lesser Horseshoe Bat: Old buildings; woodland locations; sheltered valleys, extensive deciduous woods or dense scrub, close to roost sites. In areas of fragmented habitats, linear habitats such as hedgerows are important corridors. Vulnerable to loss or disturbance of both summer and winter roosts and removal of linear habitat.

Appendix 2: Wye Catchment Map



Appendix 2

Bridstow Group Options

Do nothing

Housing development options

Option 1 – seeking one or two relatively large sites that might accommodate the Core Strategy target for the Parish;

Option 2 – identifying a number of smaller sites that would be in keeping with the scale of development within Wilton and the 3 main settlements in Bridstow;

Option 3 – locating development where this might contribute towards creating a village core for Bridstow.

Site Options

Site 1: Bk6 Land adjacent to Salsdon Cottage. 1 dwelling.

Site 2: Bk2c Land at Oaklands (Small site). 5 dwelling.

Site 3: Bt7 Land at Whitecross. 3 dwelling.

Site 4: Bk2a/b Land at Oaklands.

Site 5: Bt4 Land at the Old Vicarage. 5 dwellings.

Site 6: W2 Land opposite Wilton Cottages*. 9 dwellings.

Site 7: Bk1 Land at Foxdale (3 dwellings).

Site 8: Bk4b Land at Cotterell's Farm (Small site) (8 dwellings).

Site 9: Bt2a/b Land at Bridruthen* (8 dwellings)

Site 10: Bt3b Land west of Wilton Roundabout* (25 dwellings)

Site 11: Bt6b Land at Tanglewood (Small site)* (5 dwellings)

Site 12: Bk7 Land adjacent to 6 Oaklands Cottages* (1 dwelling)

Site 13: C1 Land at Ash Ridge, Claytons* (9 dwellings)

Site 14: W1b/c Land off Wilton Lane, Wilton (Small site)* (9 dwellings)

Site 15: Bt3c Land west of Wilton Roundabout (Small site)*

Site 16: Bt6a Land at Tanglewood* (20 dwellings)

Site 17: Bk4a Land at Cotterell's Farm* (32 dwellings)

Site 18: W1a Land off Wilton Lane, Wilton* (16 dwellings)

Appendix 3

Table 1: HRA Screening of Emerging Neighbourhood Development Plan Options

Parish Council Name: Bridstow

NDP Title: Neighbourhood Development Plan

Date undertaken: July 2019

NDP objectives and policies	Mitigation measures to be considered, as necessary, through redraft of objective/option/policy and to be considered as part of Appropriate Assessment				
	Likely activities (operations) to result as a consequence of the objective/option/policy	Likely effect if option implemented. Could they have Likely Significant Effects (LSE) on European Sites?	European Sites potentially affected	Would it be possible that it would result in any LSE?	Requirement for an Appropriate Assessment
Do nothing	No NDP to determine planning applications.	Criteria policies within the Core Strategy would guide further development. Specific policies and proposals for the parish would not exist.	River Wye (including the Lugg) SAC Wye Valley and Forest of Dean Bat Sites SAC Wye Valley Woodlands SAC	The measures set out in the Core Strategy policies and also the NDP policies should help to avoid adverse impacts upon the European site.	No.
Option 1 – seeking one or two relatively large sites that might accommodate the Core Strategy target for the Parish;	This would lead to planned development to meet the growth requirements of the Core Strategy. Increase in water usage, abstraction and sewage treatment Increase in traffic and parking demands Demand in broadband and	Unlikely that there will be any significant effects on the European Site. All developments are requirements are required to meet criteria of Policy LD2 to protect biodiversity and wildlife, and SD4 which seeks to ensure water quality of the SAC is not detrimentally effected.	River Wye (including the Lugg) SAC Wye Valley and Forest of Dean Bat Sites SAC Wye Valley Woodlands SAC	No, water quality is not an issue in this part of the River Wye SAC and Policy LD2 of the Core Strategy seeks to ensure that all development will only be permitted if there is no significant effect to the biodiversity of any SAC.	No.

This document is copyright of Herefordshire Council, please contact the Neighbourhood Planning team if you wish to reuse it in whole or part.

	<p>communication services.</p> <p>Light pollution</p> <p>Increase in non-physical disturbances during construction</p>				
<p>Option 2 – identifying a number of smaller sites that would be in keeping with the scale of development within Wilton and the 3 main settlements in Bridstow;</p>	<p>Increase in water usage, abstraction and sewage treatment</p> <p>Increase in traffic and parking demands</p> <p>Demand in broadband and communication services.</p> <p>Light pollution</p> <p>Increase in non-physical disturbances during construction</p>	<p>Unlikely that there will be any significant effects on the European Site. All developments are requirements are required to meet criteria of Policy LD2 to protect biodiversity and wildlife, and SD4 which seeks to ensure water quality of the SAC is not detrimentally effected.</p>	<p>River Wye (including the Lugg) SAC</p> <p>Wye Valley and Forest of Dean Bat Sites SAC</p> <p>Wye Valley Woodlands SAC</p>	<p>No, water quality is not an issue in this part of the River Wye SAC and Policy LD2 of the Core Strategy seeks to ensure that all development will only be permitted if there is no significant effect to the biodiversity of any SAC.</p>	<p>No.</p>
<p>Option 3 – locating development where this might contribute towards creating a village core for Bridstow.</p>	<p>Increase in water usage, abstraction and sewage treatment</p> <p>Increase in traffic and parking demands</p> <p>Demand in broadband and communication services.</p> <p>Light pollution</p> <p>Increase in non-physical disturbances during construction</p>	<p>Unlikely that there will be any significant effects on the European Site. All developments are requirements are required to meet criteria of Policy LD2 to protect biodiversity and wildlife, and SD4 which seeks to ensure water quality of the SAC is not detrimentally effected.</p>	<p>River Wye (including the Lugg) SAC</p> <p>Wye Valley and Forest of Dean Bat Sites SAC</p> <p>Wye Valley Woodlands SAC</p>	<p>No, water quality is not an issue in this part of the River Wye SAC and Policy LD2 of the Core Strategy seeks to ensure that all development will only be permitted if there is no significant effect to the biodiversity of any SAC.</p>	<p>No.</p>

This document is copyright of Herefordshire Council, please contact the Neighbourhood Planning team if you wish to reuse it in whole or part.

<p>Site 1: Bk6 Land adjacent to Salsdon Cottage. 1 dwelling.</p>	<p>Small scale housing development of 1-2 dwellings.</p> <p>Increase in water usage, abstraction and sewage treatment</p> <p>Demand in broadband and communication services.</p> <p>Light pollution</p> <p>Increase in non-physical disturbances during construction</p>	<p>This site seeks to manage and retain the existing hedgerows that screen the site, and support tree planting near site to minimise impact on AONB from development. Retention of hedgerows will assist on providing potential foraging areas for bats.</p> <p>Unlikely that there will be any significant effects on the European Site. All developments are required to meet the criteria of Policy LD2 to protect biodiversity and wildlife to ensure that there is no detrimental effect.</p>	<p>River Wye (including the Lugg) SAC</p> <p>Wye Valley and Forest of Dean Bat Sites SAC</p> <p>Wye Valley Woodlands SAC</p>	<p>No, water quality is not an issue in this part of the River Wye SAC and Policy LD2 of the Core Strategy seeks to ensure that all development will only be permitted if there is no significant effect to the biodiversity of any SAC.</p>	<p>No.</p>
<p>Site 2: Bk2c Land at Oaklands (Small site). 5 dwelling.</p>	<p>Potential housing development up to (25 dwellings on all sites Bk2a, Bk2b and Bk2c.) Likely to be 5 dwellings on site Bk2c.</p> <p>Increase in water usage, abstraction and sewage treatment.</p> <p>Increase in traffic and parking demands</p> <p>Demand in broadband and</p>	<p>There are a number of trees surrounding the site that intend to be retained. This should help retain limited biodiversity which exists on the site.</p> <p>Unlikely that there will be any significant effects on the European Site. All developments are required to meet the criteria of</p>	<p>River Wye (including the Lugg) SAC</p> <p>Wye Valley and Forest of Dean Bat Sites SAC</p> <p>Wye Valley Woodlands SAC</p>	<p>No, water quality is not an issue in this part of the River Wye SAC and Policy LD2 of the Core Strategy seeks to ensure that all development will only be permitted if there is no significant effect to the biodiversity of any SAC.</p>	<p>No.</p>

This document is copyright of Herefordshire Council, please contact the Neighbourhood Planning team if you wish to reuse it in whole or part.

	<p>communication services.</p> <p>Light pollution</p> <p>Increase in non-physical disturbances during construction</p>	<p>Policy LD2 to protect biodiversity and wildlife to ensure that there is no detrimental effect.</p>			
<p>Site 3: Bt7 Land at Whitecross. 3 dwellings.</p>	<p>Small scale housing development up to 3 dwellings.</p> <p>Increase in water usage, abstraction and sewage treatment</p> <p>Increase in traffic and parking demands</p> <p>Demand in broadband and communication services.</p> <p>Light pollution</p> <p>Increase in non-physical disturbances during construction</p>	<p>This site falls in the previously defined settlement boundary of Bridstow.</p> <p>Unlikely that there will be any significant effects on the European Site. All developments are required to meet the criteria of Policy LD2 to protect biodiversity and wildlife to ensure that there is no detrimental effect.</p>	<p>River Wye (including the Lugg) SAC</p> <p>Wye Valley and Forest of Dean Bat Sites SAC</p> <p>Wye Valley Woodlands SAC</p>	<p>No, water quality is not an issue in this part of the River Wye SAC and Policy LD2 of the Core Strategy seeks to ensure that all development will only be permitted if there is no significant effect to the biodiversity of any SAC.</p>	<p>No.</p>
<p>Site 4: Bk2a/b Land at Oaklands.</p>	<p>Potential housing development up to (25 dwellings on sites Bk2a, Bk2b and Bk2c.) Likely to be 5 dwellings on sites Bk2a/b.</p> <p>Increase in water usage, abstraction and sewage treatment</p> <p>Increase in traffic and</p>	<p>There are a number of trees surrounding the site that intend to be retained. This should help retain limited biodiversity which exists on the site.</p> <p>Unlikely that there will be any significant effects on the European Site. All</p>	<p>River Wye (including the Lugg) SAC</p> <p>Wye Valley and Forest of Dean Bat Sites SAC</p> <p>Wye Valley Woodlands SAC</p>	<p>No, water quality is not an issue in this part of the River Wye SAC and Policy LD2 of the Core Strategy seeks to ensure that all development will only be permitted if there is no significant effect to the biodiversity of any SAC.</p>	<p>No.</p>

This document is copyright of Herefordshire Council, please contact the Neighbourhood Planning team if you wish to reuse it in whole or part.

	<p>parking demands</p> <p>Demand in broadband and communication services.</p> <p>Light pollution</p> <p>Increase in non-physical disturbances during construction</p>	<p>developments are required to meet the criteria of Policy LD2 to protect biodiversity and wildlife to ensure that there is no detrimental effect.</p>			
<p>Site 5: Bt4 Land at the Old Vicarage. 5 dwellings.</p>	<p>Small scale housing development up to 5 dwellings.</p> <p>Increase in water usage, abstraction and sewage treatment</p> <p>Increase in traffic and parking demands</p> <p>Demand in broadband and communication services.</p> <p>Light pollution</p> <p>Increase in non-physical disturbances during construction</p>	<p>The Site is currently used as a garden curtilage of the Old Vicarage, this is a listed building and also a cross nearby is a scheduled ancient monument. This site is in the setting of Wilton Castle and Ross on Wye Conservation area. Screening on views could be provided by enhancing the existing hedgerow on the eastern edge of the Old Vicarage. Helping to provide potential foraging areas for bats.</p> <p>Unlikely that there will be any significant effects on the European Site. All developments are required to meet the criteria of Policy LD2 to protect biodiversity and wildlife to ensure that there is no</p>	<p>River Wye (including the Lugg) SAC</p> <p>Wye Valley and Forest of Dean Bat Sites SAC</p> <p>Wye Valley Woodlands SAC</p>	<p>No, water quality is not an issue in this part of the River Wye SAC and Policy LD2 of the Core Strategy seeks to ensure that all development will only be permitted if there is no significant effect to the biodiversity of any SAC.</p>	<p>No.</p>

This document is copyright of Herefordshire Council, please contact the Neighbourhood Planning team if you wish to reuse it in whole or part.

		detrimental effect.			
Site 6: W2 Land opposite Wilton Cottages*. 9 dwellings.	<p>Small scale development up to 8-9 dwellings. This includes a conversion of a redundant barn.</p> <p>Increase in water usage, abstraction and sewage treatment</p> <p>Increase in traffic and parking demands</p> <p>Demand in broadband and communication services.</p> <p>Light pollution</p> <p>Increase in non-physical disturbances during construction</p> <p>Noise pollution of site</p>	<p>This site is located nearby the dual carriageway A40 and contains numerous trees among the periphery of the site. Redundant barns may have roosting bats and a bat survey will be required to determine potential impact on these.</p> <p>Unlikely that there will be any significant effects on the European Site. All developments are required to meet the criteria of Policy LD2 to protect biodiversity and wildlife to ensure that there is no detrimental effect.</p>	<p>River Wye (including the Lugg) SAC</p> <p>Wye Valley and Forest of Dean Bat Sites SAC</p> <p>Wye Valley Woodlands SAC</p>	<p>No, water quality is not an issue in this part of the River Wye SAC and Policy LD2 of the Core Strategy seeks to ensure that all development will only be permitted if there is no significant effect to the biodiversity of any SAC.</p>	No.
Site 7: Bk1 Land at Foxdale (3 dwellings).	<p>Small scale housing development for around 3 dwellings.</p> <p>Increase in water usage, abstraction and sewage treatment</p> <p>Increase in traffic and parking demands</p> <p>Demand in broadband and communication services.</p>	<p>This site has low biodiversity value, and is expected some of the site to remain open, which could be beneficial for local biodiversity and bat foraging opportunities.</p> <p>Unlikely that there will be any significant effects on the European Site. All developments are required to meet the criteria of</p>	<p>River Wye (including the Lugg) SAC</p> <p>Wye Valley and Forest of Dean Bat Sites SAC</p> <p>Wye Valley Woodlands SAC</p>	<p>No, water quality is not an issue in this part of the River Wye SAC and Policy LD2 of the Core Strategy seeks to ensure that all development will only be permitted if there is no significant effect to the biodiversity of any SAC.</p>	No.

This document is copyright of Herefordshire Council, please contact the Neighbourhood Planning team if you wish to reuse it in whole or part.

	<p>Light pollution</p> <p>Increase in non-physical disturbances during construction</p>	<p>Policy LD2 to protect biodiversity and wildlife to ensure that there is no detrimental effect.</p>			
<p>Site 8: Bk4b Land at Cotterell's Farm (Small site) (8 dwellings).</p>	<p>Housing development up to 8 dwellings, over a 0.65 hectare site.</p> <p>Increase in water usage, abstraction and sewage treatment</p> <p>Increase in traffic and parking demands</p> <p>Demand in broadband and communication services.</p> <p>Light pollution</p> <p>Increase in non-physical disturbances during construction</p>	<p>Criteria contained within the NDP ensures the design and layout of new development have no adverse effect on neighbouring amenity and wider agricultural setting.</p> <p>Unlikely that there will be any significant effects on the European Site. All developments are required to meet the criteria of Policy LD2 to protect biodiversity and wildlife to ensure that there is no detrimental effect.</p>	<p>River Wye (including the Lugg) SAC</p> <p>Wye Valley and Forest of Dean Bat Sites SAC</p> <p>Wye Valley Woodlands SAC</p>	<p>No, water quality is not an issue in this part of the River Wye SAC and Policy LD2 of the Core Strategy seeks to ensure that all development will only be permitted if there is no significant effect to the biodiversity of any SAC.</p>	<p>No.</p>
<p>Site 9: Bt2a/b Land at Bridruthen* (8 dwellings)</p>	<p>Housing development site up to 8 dwellings. Site 2a/b</p> <p>Increase in water usage, abstraction and sewage treatment</p> <p>Increase in traffic and parking demands</p> <p>Demand in broadband and communication services.</p>	<p>This site does not have any notable biodiversity value and does not open into the countryside to a significant degree.</p> <p>Unlikely that there will be any significant effects on the European Site. All developments are required to meet the criteria of</p>	<p>River Wye (including the Lugg) SAC</p> <p>Wye Valley and Forest of Dean Bat Sites SAC</p> <p>Wye Valley Woodlands SAC</p>	<p>No, water quality is not an issue in this part of the River Wye SAC and Policy LD2 of the Core Strategy seeks to ensure that all development will only be permitted if there is no significant effect to the biodiversity of any SAC.</p>	<p>No.</p>

This document is copyright of Herefordshire Council, please contact the Neighbourhood Planning team if you wish to reuse it in whole or part.

	<p>Light pollution</p> <p>Increase in non-physical disturbances during construction</p>	<p>Policy LD2 to protect biodiversity and wildlife to ensure that there is no detrimental effect.</p>			
<p>Site 10: Bt3b Land west of Wilton Roundabout* (25 dwellings)</p>	<p>Housing development up to 25 dwellings. Bt3b is over 1.7 hectares.</p> <p>Increase in water usage, abstraction and sewage treatment.</p> <p>Increase in traffic and parking demands.</p> <p>Demand in broadband and communication services.</p> <p>Light pollution.</p> <p>Increase in non-physical disturbances during construction.</p>	<p>Development of the sites will result in a loss of hedgerows, which will a detrimental impact on the local diversity and natural landscape.</p> <p>Unlikely that there will be any significant effects on the European Site. All developments are required to meet the criteria of Policy LD2 to protect biodiversity and wildlife to ensure that there is no detrimental effect.</p>	<p>River Wye (including the Lugg) SAC</p> <p>Wye Valley and Forest of Dean Bat Sites SAC</p> <p>Wye Valley Woodlands SAC</p>	<p>No, water quality is not an issue in this part of the River Wye SAC and Policy LD2 of the Core Strategy seeks to ensure that all development will only be permitted if there is no significant effect to the biodiversity of any SAC.</p> <p>Size and location of site may have adverse impact on the AONB and natural landscape.</p>	<p>No. This option hasn't been put forward therefore does not require an Appropriate Assessment.</p>
<p>Site 11: Bt6b Land at Tanglewood (Small site)* (5 dwellings)</p>	<p>Housing development up to 5 dwellings.</p> <p>Increase in water usage, abstraction and sewage treatment</p> <p>Increase in traffic and parking demands</p> <p>Demand in broadband and communication services.</p>	<p>Development of the site will result in a loss of hedgerows, which will a detrimental impact on the local diversity and natural landscape. This has potential adverse effect on views.</p> <p>Unlikely that there will be any significant effects on the European Site. All developments are required</p>	<p>River Wye (including the Lugg) SAC</p> <p>Wye Valley and Forest of Dean Bat Sites SAC</p> <p>Wye Valley Woodlands SAC</p>	<p>No, water quality is not an issue in this part of the River Wye SAC and Policy LD2 of the Core Strategy seeks to ensure that all development will only be permitted if there is no significant effect to the biodiversity of any SAC.</p>	<p>No. This option hasn't been put forward therefore does not require an Appropriate Assessment.</p>

This document is copyright of Herefordshire Council, please contact the Neighbourhood Planning team if you wish to reuse it in whole or part.

	<p>Light pollution</p> <p>Increase in non-physical disturbances during construction</p>	<p>to meet the criteria of Policy LD2 to protect biodiversity and wildlife to ensure that there is no detrimental effect.</p>			
<p>Site 12: Bk7 Land adjacent to 6 Oaklands Cottages* (1 dwelling)</p>	<p>Small scale housing development up to 1 dwelling.</p> <p>Increase in water usage, abstraction and sewage treatment</p> <p>Increase in traffic and parking demands</p> <p>Demand in broadband and communication services.</p> <p>Light pollution</p> <p>Increase in non-physical disturbances during construction.</p>	<p>This location of the site may have an adverse effect on neighbouring properties due to access. Impact on the natural landscape effects the character of the natural form of the AONB.</p> <p>Unlikely that there will be any significant effects on the European Site. All developments are required to meet the criteria of Policy LD2 to protect biodiversity and wildlife to ensure that there is no detrimental effect.</p>	<p>River Wye (including the Lugg) SAC</p> <p>Wye Valley and Forest of Dean Bat Sites SAC</p> <p>Wye Valley Woodlands SAC</p>	<p>No, water quality is not an issue in this part of the River Wye SAC and Policy LD2 of the Core Strategy seeks to ensure that all development will only be permitted if there is no significant effect to the biodiversity of any SAC.</p>	<p>No. This option hasn't been put forward therefore does not require an Appropriate Assessment.</p>
<p>Site 13: C1 Land at Ash Ridge, Claytons* (9 dwellings)</p>	<p>Housing development up to 9 dwellings.</p> <p>Increase in water usage, abstraction and sewage treatment</p> <p>Increase in traffic and parking demands</p> <p>Demand in broadband and communication services.</p>	<p>Minor impact on residential amenity of Ash Ridge through traffic passing. The scale and location of the development is still likely to have an impact on the AONB.</p> <p>Unlikely that there will be any significant effects on the European Site. All developments are required</p>	<p>River Wye (including the Lugg) SAC</p> <p>Wye Valley and Forest of Dean Bat Sites SAC</p> <p>Wye Valley Woodlands SAC</p>	<p>The measures set out in the Core Strategy policies and also the NDP policies should help to avoid adverse impacts upon the European site.</p>	<p>No. This option hasn't been put forward therefore does not require an Appropriate Assessment.</p>

This document is copyright of Herefordshire Council, please contact the Neighbourhood Planning team if you wish to reuse it in whole or part.

	<p>Light pollution</p> <p>Increase in non-physical disturbances during construction</p>	<p>to meet the criteria of Policy LD2 to protect biodiversity and wildlife to ensure that there is no detrimental effect.</p>			
<p>Site 14: W1b/c Land off Wilton Lane, Wilton (Small site)* (9 dwellings)</p>	<p>Housing development up to 9 dwellings.</p> <p>Increase in water usage, abstraction and sewage treatment</p> <p>Increase in traffic and parking demands</p> <p>Demand in broadband and communication services.</p> <p>Light pollution</p> <p>Increase in non-physical disturbances during construction</p>	<p>This site location is close to the A40 and would contribute to poor quality residential amenity for noise and air pollution. Development on site b/c will have an impact on the natural landscape AONB setting.</p> <p>Unlikely that there will be any significant effects on the European Site. All developments are required to meet the criteria of Policy LD2 to protect biodiversity and wildlife to ensure that there is no detrimental effect.</p>	<p>River Wye (including the Lugg) SAC</p> <p>Wye Valley and Forest of Dean Bat Sites SAC</p> <p>Wye Valley Woodlands SAC</p>	<p>No, water quality is not an issue in this part of the River Wye SAC and Policy LD2 of the Core Strategy seeks to ensure that all development will only be permitted if there is no significant effect to the biodiversity of any SAC.</p>	<p>No. This option hasn't been put forward therefore does not require an Appropriate Assessment.</p>
<p>Site 15: Bt3c Land west of Wilton Roundabout (Small site)*</p>	<p>Increase in water usage, abstraction and sewage treatment</p> <p>Increase in traffic and parking demands</p> <p>Demand in broadband and communication services.</p>	<p>Development of the sites will result in a loss of hedgerows, which will a detrimental impact on the local diversity and natural landscape.</p> <p>Unlikely that there will be any significant effects on</p>	<p>River Wye (including the Lugg) SAC</p> <p>Wye Valley and Forest of Dean Bat Sites SAC</p> <p>Wye Valley Woodlands SAC</p>	<p>No, water quality is not an issue in this part of the River Wye SAC and Policy LD2 of the Core Strategy seeks to ensure that all development will only be permitted if there is</p>	<p>No.</p>

This document is copyright of Herefordshire Council, please contact the Neighbourhood Planning team if you wish to reuse it in whole or part.

	<p>Light pollution</p> <p>Increase in non-physical disturbances during construction</p>	<p>the European Site. All developments are required to meet the criteria of Policy LD2 to protect biodiversity and wildlife to ensure that there is no detrimental effect.</p>		<p>no significant effect to the biodiversity of any SAC.</p>	
<p>Site 16: Bt6a Land at Tanglewood* (20 dwellings)</p>	<p>Housing development up to 20 dwellings.</p> <p>Increase in water usage, abstraction and sewage treatment</p> <p>Increase in traffic and parking demands</p> <p>Demand in broadband and communication services.</p> <p>Light pollution</p> <p>Increase in non-physical disturbances during construction</p>	<p>Development of the site will result in a loss of hedgerows, which will a detrimental impact on the local diversity and natural landscape. This has potential adverse effect on views.</p> <p>Scale and location of site has potential impact on landscape requirements of the aonb. The large scale is likely cause disruption to extensive views and effect the nationally important landscape</p>	<p>River Wye (including the Lugg) SAC</p> <p>Wye Valley and Forest of Dean Bat Sites SAC</p> <p>Wye Valley Woodlands SAC</p>	<p>No, water quality is not an issue in this part of the River Wye SAC and Policy LD2 of the Core Strategy seeks to ensure that all development will only be permitted if there is no significant effect to the biodiversity of any SAC.</p>	<p>No. This option hasn't been put forward therefore does not require an Appropriate Assessment.</p>
<p>Site 17: Bk4a Land at Cotterell's Farm* (32 dwellings)</p>	<p>Housing development up to 32 dwellings.</p> <p>Increase in water usage, abstraction and sewage treatment</p> <p>Increase in traffic and parking demands</p> <p>Demand in broadband and</p>	<p>This site seeks development on a large site of 2.4 ha. This site has potential impact on landscape requirements of the aonb. The large scale is likely cause disruption to extensive views and effect the nationally important</p>	<p>River Wye (including the Lugg) SAC</p> <p>Wye Valley and Forest of Dean Bat Sites SAC</p> <p>Wye Valley Woodlands SAC</p>	<p>No, water quality is not an issue in this part of the River Wye SAC and Policy LD2 of the Core Strategy seeks to ensure that all development will only be permitted if there is no significant effect to</p>	<p>No. This option hasn't been put forward therefore does not require an Appropriate Assessment.</p>

This document is copyright of Herefordshire Council, please contact the Neighbourhood Planning team if you wish to reuse it in whole or part.

	<p>communication services.</p> <p>Light pollution</p> <p>Increase in non-physical disturbances during construction</p>	<p>landscape.</p> <p>Unlikely that there will be any significant effects on the European Site. All developments are required to meet the criteria of Policy LD2 to protect biodiversity and wildlife to ensure that there is no detrimental effect.</p>		<p>the biodiversity of any SAC.</p>	
<p>Site 18: W1a Land off Wilton Lane, Wilton* (16 dwellings)</p>	<p>Housing development up to 16 dwellings over a 1.5 ha site.</p> <p>Increase in water usage, abstraction and sewage treatment</p> <p>Increase in traffic and parking demands</p> <p>Demand in broadband and communication services.</p> <p>Light pollution</p> <p>Increase in non-physical disturbances during construction</p>	<p>This site location is close to the A40 and would contribute to poor quality residential amenity for noise and air pollution. Development on site b/c will have an impact on the natural landscape AONB setting.</p> <p>Unlikely that there will be any significant effects on the European Site. All developments are required to meet the criteria of Policy LD2 to protect biodiversity and wildlife to ensure that there is no detrimental effect.</p>	<p>River Wye (including the Lugg) SAC</p> <p>Wye Valley and Forest of Dean Bat Sites SAC</p> <p>Wye Valley Woodlands SAC</p>	<p>No, water quality is not an issue in this part of the River Wye SAC and Policy LD2 of the Core Strategy seeks to ensure that all development will only be permitted if there is no significant effect to the biodiversity of any SAC.</p>	<p>No. This option hasn't been put forward therefore does not require an Appropriate Assessment.</p>

HRA Screening of Significant Changes (Objectives, Options and Policies)

Parish Council Name: Bridstow

NDP Title: Bridstow Neighbourhood Plan

Date undertaken: July 2019

NDP objectives, options and policies significantly changed following Draft Plan Consultation	HRA Screening of significant changes (objectives, options and policies) following Draft Plan Consultation				
	Likely activities (operations) to result as a consequence of the objective/option/policy	Likely effect if option implemented. Could they have Likely Significant Effects (LSE) on European Sites?	European Sites potentially affected	Would it be possible that it would result in any LSE?	Requirement for an Appropriate Assessment
OB1 To preserve, and where possible, enhance the rural character and features of the Parish, including its tranquillity.	Preserve rural character Noise reduction Protection of aonb Improved wildlife conditions Natural landscape improvement	Unlikely that there will be any significant effects on the European Site.	River Wye (including the Lugg SAC) Wye Valley and Forest of Dean Bat Sites SAC Wye Valley Woodlands SAC	No	Not required. This objective strives to preserve and enhance the natural character of Bridstow. This objective does not require an AA as it is protective of natural assets and is unlikely to have any environmental impacts.
OB2 To address the highway safety concerns of residents	Promotion of highway safety and speed reduction Reduction of traffic in the village Increase in sustainable modes of transportation Safer access routes created	Unlikely that there will be any significant effects on the European Site.	River Wye (including the Lugg SAC) Wye Valley and Forest of Dean Bat Sites SAC Wye Valley Woodlands SAC	No	Not required. This objective is a protective measure to address highway safety and traffic concerns.

This document is copyright of Herefordshire Council, please contact the Neighbourhood Planning team if you wish to reuse it in whole or part.

<p>OB3 To ensure the network for walking and cycling is effective, increasing accessibility through these means where possible.</p>	<p>Promotion of safer footpaths and pedestrian links between the settlements</p> <p>Creation of footpaths and cycleways</p>	<p>Unlikely that there will be any significant effects on the European Site.</p>	<p>River Wye (including the Lugg SAC)</p> <p>Wye Valley and Forest of Dean Bat Sites SAC</p> <p>Wye Valley Woodlands SAC</p>	<p>No</p>	<p>Not required. This objective is unlikely to have a significant impact on the SAC. As this policy promotes safer routes for pedestrians and cyclists.</p>
<p>OB4 To accommodate new housing sensitively within and adjacent to the Parish's settlements, ensuring the types and sizes of dwellings meet local needs in particular.</p>	<p>New housing developed</p>	<p>Unlikely that there will be any significant effects on the European Site.</p>	<p>River Wye (including the Lugg SAC)</p> <p>Wye Valley and Forest of Dean Bat Sites SAC</p> <p>Wye Valley Woodlands SAC</p>	<p>No</p>	<p>Not required.</p>
<p>OB5 To support local businesses where these reflect the nature and scale of the Parish, in particular farm diversification, tourism and working from home</p>	<p>Local businesses retained and enhanced</p>	<p>Unlikely that there will be any significant effects on the European Site.</p>	<p>River Wye (including the Lugg SAC)</p> <p>Wye Valley and Forest of Dean Bat Sites SAC</p> <p>Wye Valley Woodlands SAC</p>	<p>No</p>	<p>Not required.</p>
<p>OB6 To strengthen community identity and cohesion, and its health and well-being</p>	<p>Community activities grown.</p>	<p>Unlikely that there will be any significant effects on the European Site.</p>	<p>River Wye (including the Lugg SAC)</p> <p>Wye Valley and Forest of Dean Bat Sites SAC</p> <p>Wye Valley Woodlands SAC</p>	<p>No</p>	<p>Not required.</p>

This document is copyright of Herefordshire Council, please contact the Neighbourhood Planning team if you wish to reuse it in whole or part.

Policies					
BR1: Promoting Sustainable Development	New housing allocated in selected sites Increase in water consumption. Non-physical disturbance during construction phase. Physical damage of disturbance on a localised scale.	Unlikely that there will be any significant effects on the European Site. All developments are required to meet the criteria of Policy LD2 to protect biodiversity and wildlife, and SD4 which seeks to ensure water quality of the SAC is not detrimentally effected.	River Wye (including the Lugg SAC) Wye Valley and Forest of Dean Bat Sites SAC Wye Valley Woodlands SAC	No	Not required. The scale and extent of potential housing development is unlikely to have a significant impact on the SAC. Implementation of Core Strategy policy SD4, LD2, SD1 to grant planning permission will ensure water quality issues are addressed. Impact on the Wye Valley Woodlands and Wye Valley and Forest of Dean Bat sites SAC can be further assessed, when further details are known regarding new housing development. This will be assessed on a case by case basis.
BR2: Development Strategy	New housing development within the designation settlement boundaries of Bridstow. Increase in vehicle traffic. Increased demand for water abstraction and sewage treatment.	Depending on type, location of infrastructure. Physical damage of disturbance. Non-physical disturbance such as noise.	River Wye (including the Lugg SAC) Wye Valley and Forest of Dean Bat Sites SAC Wye Valley Woodlands SAC	No	Not required. The scale and extent of potential housing development is unlikely to have a significant impact on the SAC. Implementation of Core Strategy policy SD4, LD2, SD1 to grant planning permission will ensure water quality issues are addressed. Impact on the Wye Valley Woodlands and Wye Valley and Forest of Dean Bat sites SAC can be further assessed, when further details are known regarding new housing development. This will be assessed on a case by case basis.

This document is copyright of Herefordshire Council, please contact the Neighbourhood Planning team if you wish to reuse it in whole or part.

BR3: Major Development within the Wye Valley AONB	<p>Safeguard natural beauty of aonb through criteria.</p> <p>Cultural heritage and wildlife conserved and enhanced.</p> <p>More opportunities for recreation activities.</p> <p>Sustainable development.</p>	<p>Unlikely that there will be any significant effects on the European Site. All developments are required to meet the criteria of Policy LD2 to protect biodiversity and wildlife, and SD4 which seeks to ensure water quality of the SAC is not detrimentally effected.</p>	<p>River Wye (including the Lugg SAC)</p> <p>Wye Valley and Forest of Dean Bat Sites SAC</p> <p>Wye Valley Woodlands SAC</p>	<p>No</p>	<p>Not required. This policy sets out criteria to ensue major development within the Wye Valley AONB does not have an adverse impact on the wildlife and natural landscape. Impact on the Wye Valley Woodlands and Wye Valley and Forest of Dean Bat sites SAC can be further assessed, when further details are known regarding new housing development. This will be assessed on a case by case basis.</p>
BR4: Conserving the landscape and scenic beauty within the Wye Valley AONB	<p>Safeguard existing landscape against inappropriate development. Encouragement of sustainable development which preserves and protects the landscape, environment and habitats.</p>	<p>Unlikely that there will be any significant effects on the European Site. All developments are required to meet the criteria of Policy LD2 to protect biodiversity and wildlife, and SD4 which seeks to ensure water quality of the SAC is not detrimentally effected.</p>	<p>River Wye (including the Lugg SAC)</p> <p>Wye Valley and Forest of Dean Bat Sites SAC</p> <p>Wye Valley Woodlands SAC</p>	<p>No</p>	<p>Not required. This policy strives to protect and enhance the natural landscape and natural environment, this could potentially have a positive impact on the SAC sites. Implementation of Core Strategy policy SD4, LD2, SD1 to grant planning permission will ensure water quality issues are addressed.</p>
BR5: Protecting Heritage Assets	<p>Sustainable re use of agricultural buildings. Sustainable development encouraged within the identified settlements. Minimal increase demand for water abstraction and sewage treatment Sustainable housing growth</p>	<p>Unlikely that there will be any significant effects on the European Site. All developments are required to meet the criteria of Policy LD2 to protect biodiversity and wildlife, and SD4 which seeks to ensure water quality of the SAC is not detrimentally effected.</p>	<p>River Wye (including the Lugg SAC)</p> <p>Wye Valley and Forest of Dean Bat Sites SAC</p> <p>Wye Valley Woodlands SAC</p>	<p>No</p>	<p>Not required. This policy strives to protect and enhance the historic built environment, this could potentially have a positive impact on the SAC sites. Implementation of Core Strategy policy SD4, LD2, SD1 to grant planning permission will ensure water quality issues are addressed.</p>

This document is copyright of Herefordshire Council, please contact the Neighbourhood Planning team if you wish to reuse it in whole or part.

BR6: Enhancement of the Natural Environment	Protection and enhancement of the natural environment. Encouragement of sustainable development which preserves and protects the landscape, environment and habitats.	None identified	River Wye (including the Lugg SAC) Wye Valley and Forest of Dean Bat Sites SAC Wye Valley Woodlands SAC	No	Not required. This policy strives to protect and enhance the natural environment, this could potentially have a positive impact on the SAC sites. Implementation of Core Strategy policy SD4, LD2, SD1 to grant planning permission will ensure water quality issues are addressed.
BR7: Protection from Flood Risk	Strive to reduce impact of flooding within Bridstow. New development designed to appropriately reduce flood risk. Sustainable design promoted. Infrastructure development phased in line with infrastructure works within the plan period. Support for SUDs to be used in new development.	Unlikely that there will be any significant effects on the European Site. All developments are required to meet the criteria of Policy LD2 to protect biodiversity and wildlife, and SD4 which seeks to ensure water quality of the SAC is not detrimentally effected	River Wye (including the Lugg SAC) Wye Valley and Forest of Dean Bat Sites SAC Wye Valley Woodlands SAC	No	Not required. This policy will not lead to development instead it provides criteria for development for drainage and flood management in the parish. The implementation of Core Strategy policy SD4, LD2, SD1 to grant planning permission will ensure water quality issues are addressed.
BR8: Sewerage Infrastructure	Utilisation of existing sewage infrastructure Support developer contributions for infrastructure improvement.	Unlikely that there will be any significant effects on the European Site. All developments are required to meet the criteria of Policy LD2 to protect biodiversity and wildlife, and SD4 which seeks to ensure water quality of the SAC is not detrimentally	River Wye (including the Lugg SAC) Wye Valley and Forest of Dean Bat Sites SAC Wye Valley Woodlands SAC	No	Not required. This policy will not lead to development instead it provides criteria for new development to adhere to in regards to sewerage.

This document is copyright of Herefordshire Council, please contact the Neighbourhood Planning team if you wish to reuse it in whole or part.

		effected			
BR9: Sustainable Design	Promotion of sustainable design. Sustainable development encouraged. The built character is protected along with landscape character.	None identified.	River Wye (including the Lugg SAC) Wye Valley and Forest of Dean Bat Sites SAC Wye Valley Woodlands SAC	No	Not required. This policy will not lead to development instead it provides sustainable design criteria for developments to adhere to.
BR10: Housing Design and Appearance	Design criteria for development to adhere to. The built character is protected along with landscape character.	None identified	River Wye (including the Lugg SAC) Wye Valley and Forest of Dean Bat Sites SAC Wye Valley Woodlands SAC	No	Not required. This policy will not lead to development instead it provides criteria for development for design and appearance of development in the parish.
BR11: Traffic Measures within the Parish	Promotion of safer roads. Improved sustainable modes of transport such as cycling, walking, and public transport links. Increase in walking and cycling. Decrease in traffic accidents. Development of transport Infrastructure. Traffic Calming Measures. Improvement of road Safety.	Unlikely that there will be any significant effects on the European Site. All developments are required to meet the criteria of Policy LD2 to protect biodiversity and wildlife, and SD4 which seeks to ensure water quality of the SAC is not detrimentally effected.	River Wye (including the Lugg SAC) Wye Valley and Forest of Dean Bat Sites SAC Wye Valley Woodlands SAC	No	Not required. This policy will not lead to development instead it provides traffic alleviation measures for developments to adhere to.
BR12: Highway Design	Sets out criteria for highway design.	Unlikely that there will be any significant effects on	River Wye (including the Lugg SAC)	No	Not required. This policy will not lead to development

This document is copyright of Herefordshire Council, please contact the Neighbourhood Planning team if you wish to reuse it in whole or part.

Requirements	Sustainable development encouraged.	the European Site. All developments are required to meet the criteria of Policy LD2 to protect biodiversity and wildlife, and SD4 which seeks to ensure water quality of the SAC is not detrimentally effected.	Wye Valley and Forest of Dean Bat Sites SAC Wye Valley Woodlands SAC		instead it provides highway design requirements for developments to adhere to. Implementation of Core Strategy policy SD4, LD2, SD1 to grant planning permission will ensure water quality issues are addressed.
BR13: Housing Development in Wilton	New housing development within the designation settlement boundaries of Wilton. Increase in vehicle traffic. Increased demand for water abstraction and sewage treatment.	Depending on type, location of infrastructure. Physical damage of disturbance. Non-physical disturbance such as noise.	River Wye (including the Lugg SAC) Wye Valley and Forest of Dean Bat Sites SAC Wye Valley Woodlands SAC	No	Not required. The scale and extent of potential housing development is unlikely to have a significant impact on the SAC. Implementation of Core Strategy policy SD4, LD2, SD1 to grant planning permission will ensure water quality issues are addressed. Impact on the Wye Valley Woodlands and Wye Valley and Forest of Dean Bat sites SAC can be further assessed, when further details are known regarding new housing development. This will be assessed on a case by case basis.
BR14: Housing Sites in Wilton	Housing sites identified. Promotion of achieving housing target. Increased vehicle traffic Increased demand for water abstraction and sewage treatment Sustainable housing growth	Small scale housing development. Housing, infrastructure development Possible increase in recreation activities, vehicular movements and demand for water abstraction and treatment.	River Wye (including the Lugg SAC) Wye Valley and Forest of Dean Bat Sites SAC Wye Valley Woodlands SAC	No	Not required. The scale and location of potential housing development is unlikely to have a significant impact on the SAC. Implementation of Core Strategy policy SD4, LD2, SD1 to grant planning permission will ensure water quality issues are addressed.

This document is copyright of Herefordshire Council, please contact the Neighbourhood Planning team if you wish to reuse it in whole or part.

		Physical damage of disturbance on a localised scale. Non-physical disturbance such as noise.			Impact on the Wye Valley Woodlands and Wye Valley and Forest of Dean Bat sites SAC can be further assessed, when further details are known regarding new housing development. This will be assessed on a case by case basis.
BR15: Housing Development in Bridstow	New housing development within the designation settlement boundaries of Bridstow. Increase in vehicle traffic. Increased demand for water abstraction and sewage treatment.	Depending on type, location of infrastructure. Physical damage of disturbance. Non-physical disturbance such as noise.	River Wye (including the Lugg SAC) Wye Valley and Forest of Dean Bat Sites SAC Wye Valley Woodlands SAC	No	Not required. The scale and extent of potential housing development is unlikely to have a significant impact on the SAC. Implementation of Core Strategy policy SD4, LD2, SD1 to grant planning permission will ensure water quality issues are addressed. Impact on the Wye Valley Woodlands and Wye Valley and Forest of Dean Bat sites SAC can be further assessed, when further details are known regarding new housing development. This will be assessed on a case by case basis.
BR16: Housing Sites in Bridstow Village	Housing sites identified. Promotion of achieving housing target. Increased vehicle traffic Increased demand for water abstraction and sewage treatment Sustainable housing growth	Small scale housing development. Housing, infrastructure development Possible increase in recreation activities, vehicular movements and demand for water abstraction and treatment. Physical damage of	River Wye (including the Lugg SAC) Wye Valley and Forest of Dean Bat Sites SAC Wye Valley Woodlands SAC	No	Not required. The scale and location of potential housing development is unlikely to have a significant impact on the SAC. Implementation of Core Strategy policy SD4, LD2, SD1 to grant planning permission will ensure water quality issues are addressed. Impact on the Wye Valley

This document is copyright of Herefordshire Council, please contact the Neighbourhood Planning team if you wish to reuse it in whole or part.

		disturbance on a localised scale. Non-physical disturbance such as noise.			Woodlands and Wye Valley and Forest of Dean Bat sites SAC can be further assessed, when further details are known regarding new housing development. This will be assessed on a case by case basis.
BR17: Housing development within Buckcastle Hill Area of special character	New housing development within the designation settlement boundaries of Buckcastle Hill. Increase in vehicle traffic. Increased demand for water abstraction and sewage treatment.	Depending on type, location of infrastructure. Physical damage of disturbance. Non-physical disturbance such as noise.	River Wye (including the Lugg SAC) Wye Valley and Forest of Dean Bat Sites SAC Wye Valley Woodlands SAC	No	Not required. The scale and extent of potential housing development is unlikely to have a significant impact on the SAC. Implementation of Core Strategy policy SD4, LD2, SD1 to grant planning permission will ensure water quality issues are addressed. Impact on the Wye Valley Woodlands and Wye Valley and Forest of Dean Bat sites SAC can be further assessed, when further details are known regarding new housing development. This will be assessed on a case by case basis.
BR18: Agricultural Diversification, Tourism and other Employment Enterprises	Increased demand for water abstraction and sewage treatment. Increase in vehicular usage and traffic Increase in nonphysical disturbance. Increase in business Potential job creation	Small scale business development and potential employment growth. Physical damage of disturbance on a localised scale. Non-physical disturbance such as noise. Uncertain as to the impacts upon the River Wye SAC	River Wye (including the Lugg) SAC Wye Valley and Forest of Dean Bat Sites SAC Wye Valley Woodlands SAC	No	Not required. The scale and extent of agricultural diversification is unlikely to have a significant impact on the SAC. There are sufficient policy safeguards within the NDP and Core Strategy to help to ensure there are no likely significant effects on the Wye Valley and Forest of Dean bat sites SAC, Wye Valley and Forest of Dean SAC. However this can be further assessed at planning application stage, when more details such as location and

This document is copyright of Herefordshire Council, please contact the Neighbourhood Planning team if you wish to reuse it in whole or part.

		dependent on the location of any development.			materials are known.
BR19: Renewable and Low Carbon Energy	Community energy schemes promoted. Reduction on carbon based energy usage in the long term.	Unlikely that there will be any significant effects on the European Site. All developments are required to meet the criteria of Policy LD2 to protect biodiversity and wildlife, and SD4 which seeks to ensure water quality of the SAC is not detrimentally effected.	River Wye (including the Lugg SAC) Wye Valley and Forest of Dean Bat Sites SAC Wye Valley Woodlands SAC	No	Not required. Policy criteria exist within the Core Strategy SD4 required to be met for the development to receive planning permission. The scale, location and extent of potential renewable energy development is unlikely to have a significant impact on the SAC. Further assessment on the River Wye (including River Lugg), Wye and Valley and Forest of Dean Bat sites SAC and Wye Valley Woodlands SAC can be completed at planning application stage.
BR20: Poly tunnel Proposals	Appropriate poly tunnel development. Rural business development. Noise, odour and smell minimised. Unobtrusive lighting on new schemes.	Unlikely that there will be any significant effects on the European Site. All developments are required to meet the criteria of Policy LD2 to protect biodiversity and wildlife, and SD4 which seeks to ensure water quality of the SAC is not detrimentally effected.	River Wye (including the Lugg SAC) Wye Valley and Forest of Dean Bat Sites SAC Wye Valley Woodlands SAC	No	Not required. Policy criteria exist within the Core Strategy SD4 required to be met for the development to receive planning permission. The scale, location and extent of potential renewable energy development is unlikely to have a significant impact on the SAC. This policy is likely to have a beneficial effect on environment of sensitive polytunnels development
BR21: Protection and Enhancement of Community facilities	Community areas safeguarded and enhanced. Renewable energy schemes developed. Construction traffic.	Unlikely that there will be any significant effects on the European Site. All developments are required to meet the	River Wye (including the Lugg SAC) Wye Valley and Forest of Dean Bat	No	No, although this policy could result in the re development of new community facilities or the loss of existing provision to

This document is copyright of Herefordshire Council, please contact the Neighbourhood Planning team if you wish to reuse it in whole or part.

	Continued use of community services. Recreational activities.	criteria of Policy LD2 to protect biodiversity and wildlife, and SD4 which seeks to ensure water quality of the SAC is not detrimentally effected.	Sites SAC Wye Valley Woodlands SAC		new uses, which depending on location could have potential effect on the Wye Valley and Forest of Dean Bat sites. However, sufficient policy safeguards are in place within the Local Plan (Core Strategy) and with the inclusion of additional wording in the NDP policy ensure there are no significant effects on the River Wye.
BR22: Protection of Local Green Space and Areas of Open Space	Protection of identified green space and open space. Continuation of use of recreational activities.	None identified	River Wye (including the Lugg) SAC Wye Valley and Forest of Dean Bat Sites SAC Wye Valley Woodlands SAC	No	Not required. This policy strives to retain Bridstow Common as a designated green space, this could potentially have a positive impact on the SAC sites. Implementation of Core Strategy policy SD4, LD2, SD1 to grant planning permission will ensure water quality issues are addressed.
BR23: Contributions to Community Services, Youth Provision and Recreation facilities	Support and upkeep of existing local community facilities. Promote new development of community facilities. Increase in vehicular movements. Increase in nonphysical disturbance.	None identified.	River Wye (including the Lugg) SAC Wye Valley and Forest of Dean Bat Sites SAC Wye Valley Woodlands SAC	No	Not required. This policy will not lead to development, instead it stipulates criteria for contributions from new development towards community facilities. The implementation of Core Strategy policy SD4, LD2, SD1 to grant planning permission will ensure water quality issues are addressed.

This document is copyright of Herefordshire Council, please contact the Neighbourhood Planning team if you wish to reuse it in whole or part.

<p>BR24: High Speed Broadband and Telecommunications</p>	<p>Broadband strengthen and improved</p> <p>Increase in local businesses and productivity</p> <p>Increase in working from home</p> <p>Greater connectivity to the county, country and globe.</p> <p>Small decrease in vehicular usage</p>	<p>Unlikely that there will be any significant effects on the European Site. All developments are required to meet the criteria of Policy LD2 to protect biodiversity and wildlife, and SD4 which seeks to ensure water quality of the SAC is not detrimentally effected.</p>	<p>River Wye (including the Lugg) SAC</p> <p>Wye Valley and Forest of Dean Bat Sites SAC</p> <p>Wye Valley Woodlands SAC</p>	<p>No</p>	<p>Not required. This policy will not lead to development instead it provides broadband and telecommunication criteria, for new development to adhere to.</p>
-----------------------------------------------------------------	-------------------------------------------------------------------------------------------------------------------------------------------------------------------------------------------------------------------------------------------	-------------------------------------------------------------------------------------------------------------------------------------------------------------------------------------------------------------------------------------------------------------------------------	-------------------------------------------------------------------------------------------------------------------------------	-----------	---------------------------------------------------------------------------------------------------------------------------------------------------------------

Appendix 4

Summary of consultation responses to Bridstow Reg 14 HRA

Consultation date: 31 October to 16 December 2019

Consultation title: Bridstow Neighbourhood Plan Regulation 16

N.B. This consultation feedback is only for comments received on the HRA of the draft Neighbourhood Development Plan

Consultee and any comments received:

- Natural England – No comments received specific to HRA
- Historic England – No comments received specific to HRA
- Environment Agency – No comments received specific to HRA
- Natural Resources Wales – No comments received specific to HRA

Responses to comments:

- Comments received are noted, there are no comments to make on the responses received.

Appendix 5

HRA Screening of Significant Changes (Objectives, Options and Policies)

Parish Council Name: Bridstow

NDP Title: Bridstow Neighbourhood Plan (R16 Submission version)

Date undertaken: January 2021

NDP objectives, options and policies significantly changed following Draft Plan Consultation	HRA Screening of significant changes (objectives, options and policies) following Draft Plan Consultation				
	Likely activities (operations) to result as a consequence of the objective/option/policy	Likely effect if option implemented. Could they have Likely Significant Effects (LSE) on European Sites?	European Sites potentially affected	Would it be possible that it would result in any LSE?	Requirement for an Appropriate Assessment
<p>OB3 To ensure the network for walking and cycling is effective, increasing accessibility through these means where possible.</p>	<p>Promotion of safer footpaths and pedestrian links between the settlements</p> <p>Creation of footpaths and cycleways</p>	<p>Unlikely that there will be any significant effects on the European Site.</p>	<p>River Wye (including the Lugg SAC)</p> <p>Wye Valley and Forest of Dean Bat Sites SAC</p> <p>Wye Valley Woodlands SAC</p>	<p>No</p>	<p>Not required. This objective is unlikely to have a significant impact on the SAC. As this policy promotes safer routes for pedestrians and cyclists. Changes to this policy post regulation 14 have added further criteria</p>
<p>OB4 To accommodate new housing sensitively within and adjacent to the Parish's settlements, ensuring the types and sizes of dwellings meet local needs in particular.</p>	<p>New housing developed</p>	<p>Unlikely that there will be any significant effects on the European Site.</p>	<p>River Wye (including the Lugg SAC)</p> <p>Wye Valley and Forest of Dean Bat Sites SAC</p> <p>Wye Valley Woodlands SAC</p>	<p>No</p>	<p>Not required. Changes to this policy post regulation 14 have added further criteria</p>

This document is copyright of Herefordshire Council, please contact the Neighbourhood Planning team if you wish to reuse it in whole or part.

Policies					
BR10: Housing Design and Appearance	Design criteria for development to adhere to. The built character is protected along with landscape character.	None identified	River Wye (including the Lugg SAC) Wye Valley and Forest of Dean Bat Sites SAC Wye Valley Woodlands SAC	No	Not required. This policy will not lead to development instead it provides criteria for development for design and appearance of development in the parish. Changes to this policy post regulation 14 have added further criteria to ensure local amenity is protected from commercial or industrial activity.
BR11: Traffic Measures within the Parish	Promotion of safer roads. Improved sustainable modes of transport such as cycling, walking, and public transport links. Increase in walking and cycling. Decrease in traffic accidents. Development of transport Infrastructure. Traffic Calming Measures. Improvement of road Safety.	Unlikely that there will be any significant effects on the European Site. All developments are required to meet the criteria of Policy LD2 to protect biodiversity and wildlife, and SD4 which seeks to ensure water quality of the SAC is not detrimentally effected.	River Wye (including the Lugg SAC) Wye Valley and Forest of Dean Bat Sites SAC Wye Valley Woodlands SAC	No	Not required. This policy will not lead to development instead it provides traffic alleviation measures for developments to adhere to. Changes to this policy post regulation 14 have added further detail about the importance of road safety in development.
BR12: Highway Design Requirements	Sets out criteria for highway design. Sustainable development encouraged.	Unlikely that there will be any significant effects on the European Site. All developments are required to meet the criteria of Policy LD2 to protect biodiversity and wildlife, and SD4 which seeks to ensure water quality of the SAC is not detrimentally effected.	River Wye (including the Lugg SAC) Wye Valley and Forest of Dean Bat Sites SAC Wye Valley Woodlands SAC	No	Not required. Changes to this policy post regulation 14 have added further criteria to support sustainable transport, this sets out further support for transport impact assessments. This policy will not lead to development instead it provides highway design requirements for developments to adhere to. Implementation of Core Strategy policy SD4, LD2, SD1 to grant planning

This document is copyright of Herefordshire Council, please contact the Neighbourhood Planning team if you wish to reuse it in whole or part.

					permission will ensure water quality issues are addressed.
BR15:	Housing sites identified. Promotion of achieving housing target. Increased vehicle traffic Increased demand for water abstraction and sewage treatment Sustainable housing growth	Small scale housing development. Housing, infrastructure development Possible increase in recreation activities, vehicular movements and demand for water abstraction and treatment. Physical damage of disturbance on a localised scale. Non-physical disturbance such as noise.	River Wye (including the Lugg SAC) Wye Valley and Forest of Dean Bat Sites SAC Wye Valley Woodlands SAC	No	Changes to this policy post regulation 14, have removed the housing site due to likely noise and environmental pollution, of being located to a major road. No. It is still not required. The scale and location of potential housing development is unlikely to have a significant impact on the SAC. Implementation of Core Strategy policy SD4, LD2, SD1 to grant planning permission will ensure water quality issues are addressed. Impact on the Wye Valley Woodlands and Wye Valley and Forest of Dean Bat sites SAC can be further assessed, when further details are known regarding new housing development. This will be assessed on a case by case basis.