

Habitats Regulations Assessment

Report for:

Dinedor Neighbourhood Area

March 2021



Dinedor Neighbourhood Plan HRA

HRA Screening Assessment

Contents

- 1 **Introduction**
Map of the Neighbourhood Area with European sites shown
- 2 **The requirement to undertake Habitats Regulations Assessment of Neighbourhood Plans – Legislative background**
- 3 **Methodology - HRA Stages**
- 4 **Results of the Initial Scoping Report and qualifying features of European sites**
- 5 **Description of the Dinedor Neighbourhood Plan**
- 6 **Assessment of the ‘likely significant effects’ of the NDP policies**
Table 1 - Colour coding key for Matrix
- 7 **Conclusions from the Screening Matrix and if any ‘likely significant effects’**
- 8 **Identification of other plans and projects which may have ‘in-combination’ effects**
- 9 **Conclusion**
- 10 **Next steps**

Appendix 1 – Initial Screening Report (August 2013)

Appendix 2 – List of options assessed

Appendix 3 – Options Assessment and Full Screening matrix

Appendix 4 – Consultation Response on Reg 14 HRA report

Appendix 5 – Matrix of amended policies post Reg 14

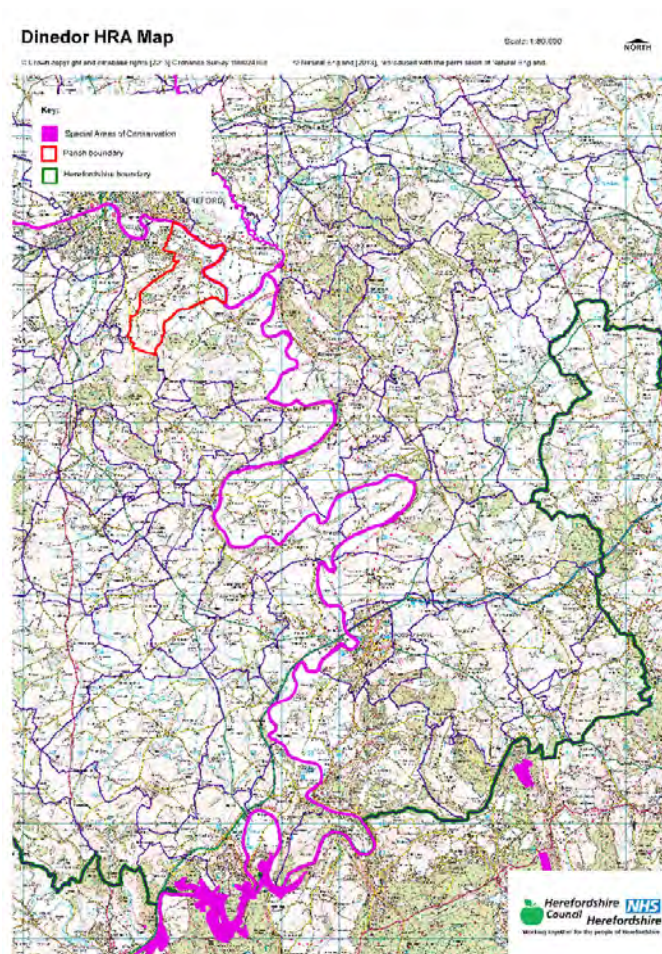
Appendix 6 – Consultation Response on Reg 16 HRA report

Appendix 7 – Modifications following examination

Appendix 8 – Matrix of post examination policies

1 Introduction

- 1.1 This Screening Assessment relates to a Neighbourhood Development Plan that is considered to be in general conformity with higher level strategic plans, such as the Herefordshire Core Strategy and the National Planning Policy Framework. The screening stage involves assessing broadly whether the final Neighbourhood Plan is likely to have a significant effect on any European site(s).
- 1.2 Dinedor Parish Council has produced a Neighbourhood Development Plan for Dinedor, in order to set out the vision, objectives and policies for the development of the area up to 2031. This HRA reviews the post examination Dinedor Plan (March 2021).
- 1.3 The NDP does not allocate site, but has designated a settlement boundary to meet the growth requirements of the strategic policies. It provides general criteria policies that clarify and given more detail to those within the Herefordshire Core Strategy. This requires a high level screening assessment to build upon the HRA Screening Assessment Report for the Core Strategy. It should be read in combination with the Core Strategy Habitat Regulations Assessment Report and ensures that there will not be any significant impacts upon Natura 2000 sites.
- 1.4 The map below shows Dinedor Neighbourhood Area to with the European Sites highlighted.



This document is copyright of Herefordshire Council.

Please contact the Neighbourhood Planning team if you wish to reuse it in whole or part

2 The requirement to undertake Habitats Regulations Assessment of neighbourhood plans

- 2.1 The requirement to undertake HRA of development plans was confirmed by the amendments to the “Habitats Regulations” published for England and Wales in July 2007 and updated in 2013. Therefore, when preparing its NDP, Dinedor Parish Council is required by law to carry out an assessment known as “Habitats Regulations Assessment”. It is also a requirement in Regulation 32 schedule 2 of the Neighbourhood Planning Regulations 2012.
- 2.2 Article 6(3) of the EU Habitats Directive provides that:
Any plan or project not directly connected with or necessary to the management of the [European] site but likely to have a significant effect thereon, either individually or in combination with other plans or projects, shall be subject to appropriate assessment of its implications for the site in view of the site's conservation objectives. In the light of the conclusions of the assessment of the implications for the site and subject to the provisions of paragraph 4, the competent national authorities shall agree to the plan or project only after having ascertained that it will not adversely affect the integrity of the site concerned and, if appropriate, after having obtained the opinion of the general public.
- 2.3 HRA is an impact-led assessment and refers to the assessment of the potential effects of a neighbourhood plan on one or more European sites, including Special Protection Areas (SPAs) and Special Areas of Conservation (SACs):
- **SPAs** are classified under the European Council Directive ‘on the conservation of wild birds’ (79/409/EEC; ‘Birds Directive’) for the protection of **wild birds and their habitats** (including particularly rare and vulnerable species listed in Annex 1 of the Birds Directive, and migratory species).
 - **SACs** are designated under the Habitats Directive and target **particular habitats** (Annex 1) and/or species (Annex II) identified as being of European importance.
- 2.4 For ease of reference during HRA, general practice has been that these three designations are collectively referred to as either **Natura 2000** or **European sites**. This means that a Screening Assessment is carried out with regard to the Conservation Objectives of the European Sites and with reference to other plans or projects to identify if any significant effect is likely for any European Site.
- 2.5 Herefordshire Council is aware of the recent judgement (People over Wind, Peter Sweetman vs Coillte). The Court of Justice of the European Union (CJEU) ruled that Article 6(3) of the Habitats Directive must be interpreted as meaning that mitigation measures should be assessed within the framework of an appropriate assessment and that it is not permissible to take account of measures intended to avoid or reduce the harmful effects of the plan on a European site at the screening stage. The initial screening undertaken in August 2013 and concluded that a full HRA would be required. Mitigation was not taken into account at this stage.

- 2.6 The Co-operation Mobilisation (The Dutch case) ruling will also have an impact on Herefordshire in the areas within the catchment of the River Lugg. This will be covered in section 4.
- 2.7 The purpose of this HRA report is to detail the findings of the screening of the proposed minor changes to policies following the revisions after the Reg14 consultations. It will also take into account the implications of Sweetman and the Dutch Case on the NDP.

3 Methodology

- 3.1 Although the Dinedor NDP is not directly regarding the management of any European sites, it does include proposals for development which may affect European sites. Therefore, it is necessary under Regulation 102(1)(a) of the Habitats Regulations 2010 to undertake screening for likely significant effects on European sites.
- 3.2 The HRA of neighbourhood plans is undertaken in stages and should conclude whether or not a proposal or policy in a neighbourhood plan would adversely affect the integrity of the site in question. This is judged in terms of the implications of the plan for a site's 'qualifying features' (i.e. those Annex I habitats, Annex II species, and Annex I bird populations for which it has been designated) and are measured with reference to the conservation objectives for those qualifying features as defined by Natural England.
- 3.3 The first process is to undertake an initial screening report to determine the need to undertake the requirement for a HRA, this initial screening identifies whether the Plan could impact upon any European site that could be within the Neighbourhood Area or nearby.
- 3.4 If a European Site is within the Neighbourhood Area or the Neighbourhood Area could impact upon a European site then this will need to be taken into account and a full screening assessment will need to be undertaken.
- 3.5 The full screening stage consists of a description of the plan, identification of potential effects on European Sites, assessing the effects on European Sites. For Neighbourhood Plans the outcome should demonstrate there are no likely effects upon the European sites. If any likely effects occur then there will need to be amendments to the NDP made and be re-screened until all likely effects have been addressed.

4 Results of the Initial Screening Report and qualifying features of the European Sites

- 4.1 The initial Screening report (**August 2013**) found that the Neighbourhood Area is in the hydrological catchment of the River Wye (including the River Lugg) SAC. Therefore a full screening assessment is required.
- 4.2 There is also a duty under the Water Framework Directive to ensure that proposals for growth do not adversely affect the river water quality and this included the associated watercourses flowing into the rivers.

Site integrity of the River Wye (including the River Lugg) SAC

- 4.3 The issues associated with maintaining the sites integrity include water levels and flow, water quality, eutrophication (nitrogen enrichment), sedimentation, disturbance and species maintenance.
- 4.4 The River Wye SAC can be sensitive to changes in water quantity and quality. As outlined within the Habitat Regulation Assessment to the Herefordshire Core Strategy, the water supply in this area comes from Dwr Cymru Welsh Water (DCWW) and no likely significant effects on European sites as a result of changes in water quality are expected in relation to the proportional growth outlined with the Herefordshire Core Strategy.
- 4.5 Sections of the River Wye SAC where the water quality targets are already exceeding are subject to measure to reduce nutrients in line with the targets. In light of the interpretation of the Dutch Case where a European Site is falling its water quality objectives and is classified as unfavourable condition, there is limited scope for the approval of additional damaging effects and measures that can't be relied or are uncertain.
- 4.6 In relation to water quality, Policy SD4 of the Herefordshire Core Strategy indicates that any development should not undermine the achievement of water quality targets within the county's rivers. This should ensure that developments within the area can be accommodated within existing water discharge permits would not be likely to have a significant effect upon the River Wye SAC. This position is confirmed within the HRA of the Core Strategy in April 2015.
- 4.7 Dwr Cymru Welsh Water (DCWW) has stated for the Core Strategy that there is sufficient existing permitted headroom in the Sewerage Treatment Works serving the Dinedor area, which is covered by the Eign STW, to continue to treat the water from the amount of housing provided for in the Core Strategy policies. In addition, the preparation of the Nutrient Management Plan for the River Wye SAC should ensure that development within Herefordshire which can be accommodated within existing water discharge permits would not be likely to have a significant effect upon the River Wye SAC. Although the parish is located within the hydrological catchment of the River Wye SAC, the level of phosphate is not an issue which is causing concern within Dinedor and NMP actions are unlikely to be required.
- 4.8 For full details of the two relevant SAC attributes which contribute to and define their integrity and vulnerable data see Appendix 1 of the Dinedor Initial Screening Report. The Initial Screening Report, August 2013, can be found in Appendix 1 of this HRA report.
- 4.9 This information made it possible to identify the features of each site which determine site integrity, as well as the specific sensitivities of each site, therefore enabling later analysis of how the potential impacts of the Dinedor Neighbourhood Plan may affect site integrity.
- 4.10 The initial screening assessment indicated that a full screening assessment is required to assessment the likelihood of significant effects on the River Wye (including the River Lugg) SAC, of the policies within the Dinedor NDP.
- 4.11 As the Dinedor NDP progresses from options onto their NDP policies, the Plan will need to identify ways in which the least effect on the River Wye SAC could be achieved, alongside taking forward the preferred options from the consultation from the community. If a

majority of these options are taken forward either as standalone policies or in combination with other policies then the mitigation from these options will help to counter balance the effect of all new development within the Parish. A list of the options and site options assessed can be found in Appendix 1, and the Assessment matrix for the options can be found Appendix 2.

5 Description of the Dinedor Neighbourhood Development Plan

- 5.1 The final Dinedor NDP presents detailed policies for development in the Neighbourhood Area, which is equivalent to the group parish boundary, up to 2031. The Plan begins by introducing its preparation and highlighting its issues.
- 5.2 The NDP then details the vision for the parish over the Plan period together with a number of primary objectives to realise that visions:
- OB1-To help meet local housing needs up to 2031
 - OB2-To ensure all new development is of good quality design
 - OB3-Travelling in and around Dinedor
 - OB4-To promote the development and diversification of rural businesses
 - OB5-Protecting and enhancing the rural environment and landscape
 - OB6-To protect local heritage assets and support heritage investigations
 - OB7-To protect local green spaces
 - OB8-To protect community facilities
 - OB9- Promoting local residents' enjoyment of the parish
- 5.3 The initial options for the NDP (refer to appendix 2) were assessed to determine their environmental impact that could affect the River Wye SAC. Of the eight options put forward the 'no NDP / do nothing' option was not considered viable for the parish. All of which indicated towards growth however all the options would be seeking to provide proportional growth in line with the Core strategy and are therefore unlikely to have a significant impact on the SAC.
- **Option1** - To do nothing
 - **Option 2**-Criteria based policy
 - **Option 3**- Allocate sites
 - **Option 4**- Criteria policy and settlement boundary - final option.
 - **Option 5**- Criteria policy/settlement boundary/allocate sites.
 - **Option 6**- Use a nucleated settlement boundary
 - **Option 7**-Extend settlement boundary to the north east
 - **Option 8**-Cluster form settlement including Dinedor Cross

- 5.4 As Dinedor Neighbourhood Plan progressed from options to draft NDP policies, the Plan needed to identify ways in which the least effect on the two European sites could be achieved, alongside taking forward the preferred option from the consultation from the community.
- 5.5 The NDP also sets out 10 general policies on various topics based on the objective headings above, these include:
- **A-NEW HOUSING DEVELOPMENT IN DINEDOR VILLAGE**
 - **B-RURAL EXCEPTION HOUSING**
 - **C-HIGH QUALITY DESIGN**
 - **D- THE MANAGEMENT OF TRAFFIC AROUND DINEDOR**
 - **E-SUPPORT GROWTH OF SMALL SCALE RURAL BUSINESSES**
 - **F-TO PROTECT AND ENHANCE THE RURAL ENVIRONMENT AND LANDSCAPE**
 - **G-PROTECTING LOCAL HERITAGE ASSETS**
 - **H-PROTECTING LOCAL GREEN SPACES**
 - **I-COMMUNITY FACILITIES**
 - **J-LOCAL RESIDENTS ENJOYMENT OF THE PARISH**

6.0 Assessments undertaken to date of the emerging Dinedor NDP policies

- 6.1 Regulation 102 of the Habitats Regulations 2010 requires that a Screening Assessment be undertaken, in order to identify the 'likely significant effects' of an NDP. Accordingly, a screening matrix was prepared and this determined the extent to which any of the policies within the Dinedor NDP would be likely to have a significant effect on the River Wye SAC, In light of the *Sweetman* case all policies have been reviewed to ensure compliance with the ruling. The finding can be found in appendix 3.
- 6.3 The findings of the screening matrix can be found in the appendix. Positive or negative outcomes were used to record the outcome of likely impacts of the policies on the European site and its qualifying habitats and species as shown in the table 1 below.

Key of outcomes of HRA screening assessment	
Negative	There are likely to be significant effects
Positive	Significant effects are unlikely

- 6.4 Following the recent *Sweetman* judgement, it is not permissible to take account of measure intended to avoid or reduce the harmful effects of the plan on the River Wye SAC and Wye Valley Woodlands SAC, at this final screening stage. Any likely significant effects would require an Appropriate Assessment to be required.

Screening of the draft plan (Reg14)

- 6.5 None of the final Dinedor Neighbourhood Plan policies were concluded to be likely to have a significant effect on the River Wye SAC.
- 6.6 Policy LD2 of the Core Strategy indicates that any development should conserve, restore and enhance biodiversity and geodiversity assets of Herefordshire. Development within close proximity to internationally and local designated sites will need to incorporate sympathetic design components to enhance their nature conservation interests.
- 6.7 Dinedor NDP does not allocate sites, the settlement boundary and criteria based policies within the NDP have been screened within the policy and seen to have an unlikely significant effect on the SAC.
- 6.8 In addition, as any development will require to meet the criteria of Policy LD2, legal opinion has indicated that an AA is not required. The sites likely impact on the SACs can be determined further at planning application stage when further details of the proposed housing schemes are known.
- 6.9 Dwr Cymru Welsh Water (DCWW) have indicated that there is headroom to accommodate growth within the Core Strategy. Although located adjacent to the River Wye SAC, the level of phosphate is not an issue which is causing concern within Dinedor and NMP actions are unlikely to be required.
- 6.10 In addition, the review of the Nutrient Management Plan for the River Wye SAC should ensure that development within Herefordshire which can be accommodated within existing water discharge permits would not be likely to have a significant effect upon the River Wye SAC.
- 6.11 No mitigation measures have been included within the screening of the policies of the NDP. Policies of the Core Strategy and the NDP will form part of the development plans. A key requirement of the Core Strategy is to meet the Water Framework Directive.
- 6.12 This review has concluded that the policies are unlikely to result in significant effects on the River Wye SAC and the Wye Valley woodland SAC ***It is therefore concluded that the Dinedor Plan will not have a likely significant effect on the aforementioned European Site.***

7 Screening of modifications to the NDP (Reg16)

- 7.1 The submission Dinedor NDP has been revised following the Reg14 consultation. No additional objectives have been added or amended. One policy has been deleted policy H. Two policies have been amended. These changes have been minor in nature and do not affect the stance of the policies. However, these two changes have added new criteria or removed areas of text and therefore these changes have been reassessed.

7.2 The following policies have been reassessed:

- Policy A
- Policy D

7.3 No mitigation measures have been included within the screening of the policies of the NDP. Policies of the Core strategy and the NDP will form part of the development plan. A key requirement of the Core Strategy is to meet the Water Framework Directive.

7.4 Legal opinion following the Sweetman case has indicated that in areas where there is adequate sewerage treatment works capacity and where Policy SD4 would apply to developments, then no likely significant effect could be concluded with regards to the NDP and there is no requirement for NDPs to include additional mitigation.

7.5 This review and rescreening have been found to be unlikely to result in significant effects on the River Wye SAC. It is therefore concluded that the modifications made have not resulted in any policy changes that would mean that the **Dinedor NDP would not have a likely significant effect on the aforementioned three European Sites.**

Post examination modified Dinedor NDP

7.6 The plan was independently examined during winter 2021 and as a result some minor modifications that did not change the meaning or context of the policy were made:

- Policy A
- Policy C
- Policy D
- Policy E
- Policy F
- Policy G
- Policy H
- Policy J

7.7 None of the policies and objectives which received more substantial changes during the examination and therefore did not require rescreening.

7.9 This review have still found to be unlikely to result in significant effects on the River Wye SAC. It is therefore concluded that the modifications made have not resulted in any policy changes that would mean that the **Dinedor NDP would not have a likely significant effect on the aforementioned three European Sites.**

8 Identification of other plans and projects which may have 'in-combination' effects

8.1 There are a number of potentially relevant plans and projects which may result in in-combination effects with the Core Strategy across Herefordshire, these plans have been reviewed and can be found in Appendix 2 of the publication of the Herefordshire Local Plan Core Strategy Habitats Regulations Assessment (Oct 2015).

- 8.2 It is seen that as this NDP does not go over and beyond the requirements set out in the Core Strategy.
- 8.3 Adjacent neighbourhood plans include Little Birch and Aconbury, Lower Bullingham and Hampton Bishop have been made. Holme Lacy has not produced a Neighbourhood Plan and Hereford City is likely to do their own area plan . These plans have not gone over and beyond the requirements set out within the Core Strategy for their area.
- 8.4 The HRA for the Core Strategy also identifies that both the Water Cycle Study for Herefordshire, which indicates the potential for planned water abstraction requirements combined with pressures on European Sites from the Core Strategy policies, and the review work on the Nutrient Management Plan, have both been considered as part of the in-combination assessment.
- 8.5 It is unlikely that the Dinedor Plan will have any in-combination effects with any plans from neighbouring parish councils as the level of growth proposed is the same as that proposed for the Hereford Housing Market Area in the Herefordshire Core Strategy.

9.0 Conclusion

- 9.1 With reference to sections 6 to 9 above, the NDP **will not have a likely significant effect on the River Wye SAC.**

10.0 Next steps

- 10.1 This report will accompany the post examination version of the Dinedor NDP. The plan will move to referendum and, subject to a successful outcome, final adoption.

Appendix 1

Initial Habitat Regulations Assessment and Strategic Environmental Assessment Screening Notification

The Neighbourhood Planning (General) Regulation 2012 (Reg. 32)

Conservation of Habitats and Species Regulations 2010 (d)

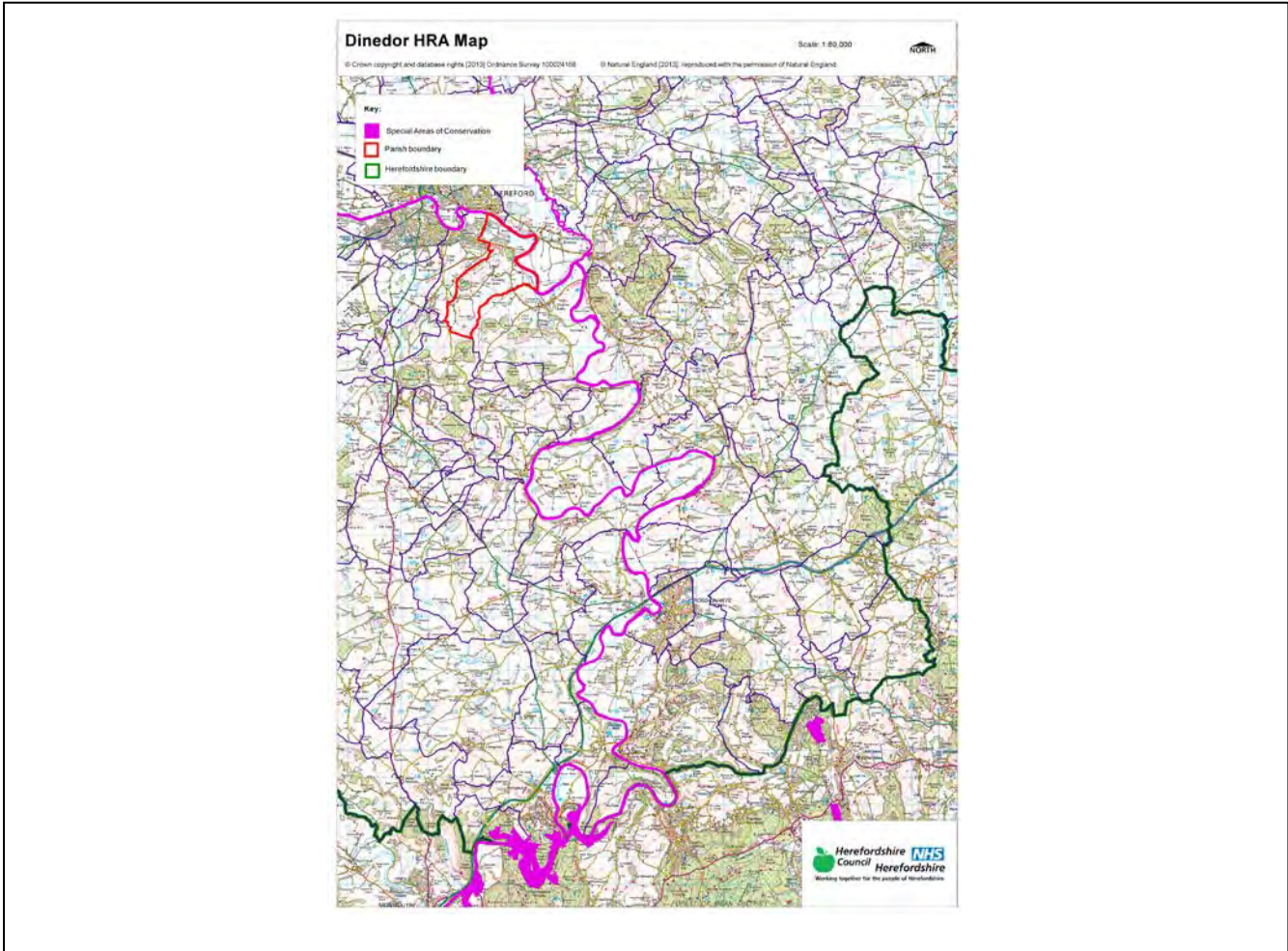
Neighbourhood Area:	Dinedor Neighbourhood Area
Parish Council:	Dinedor Parish Council
Neighbourhood Area Designation Date:	04/10/2013

Introduction

This Initial Habitat Regulations Assessment (HRA) and Strategic Environmental Assessment (SEA) Screening has been undertaken to assess whether any European Sites exist within or in proximity to the Neighbourhood Area which could be affected by any future proposals or policies.

Through continual engagement the outcomes of any required assessments will help to ensure that proposed developments will not lead to Likely Significant Effects upon a European Site or cause adverse impacts upon other environmental assets, such as the built historic or local natural environment.

**HRA Initial Screening: Map showing relationship of Neighbourhood Area with European Sites
(not to scale)**



Initial HRA Screening

River Wye (including the River Lugg) SAC:

Does the Neighbourhood Area have the River Wye (including the River Lugg) in or next to its boundary?	Y	The River Wye runs along the north and north west borders of the Parish
Is the Neighbourhood Area in the hydrological catchment of the River Wye (including the River Lugg) SAC?	Y	The Parish is within the hydrological catchment of the River Wye
If yes above, does the Neighbourhood Area have mains drainage to deal with foul sewage?	Y	The northern part of the Parish is served by Herefords mains drainage system

Downton Gorge SAC:

Is the Neighbourhood Area within 10km of Downton Gorge SAC?	N	Downton Gorge is 35.5km away from the Parish
---	---	--

River Clun SAC:

Does the Neighbourhood Area include: Border Group Parish Council or Leintwardine Group Parish Council?	N	River Clun does not border the Parish
--	---	---------------------------------------

Usk Bat Sites SAC:

Is the Neighbourhood Area within 10km of the SAC boundary?	N	Usk Bat Sites are 36.6km away from the Parish
--	---	---

Wye Valley & Forest of Dean Bat Sites SAC:

Is the Neighbourhood Area within 10km of any of the individual sites that make up the Wye Valley & Forest of Dean Bat Sites?	N	The Group Parish are 19.3km away from Wye Valley and Forest of Dean Bat Sites
--	---	---

Wye Valley Woodlands SAC:

Is the Neighbourhood Area within 10km of any of the individual sites that make up the Wye Valley Woodlands Site?	N	The Group Parish is 20.4km away from the Wye Valley Woodlands
--	---	---

HRA Conclusion:

The assessment above highlights that the following European Sites will need to be taken into account in the future Neighbourhood Development Plan for the Dinedor Neighbourhood Area and a Full HRA Screening will be required.

European Site

(List only those which are relevant from above)

River Wye (including the River Lugg) SAC

Strategic Environmental Assessment Initial Screening for nature conservation landscape and heritage features

The following environmental features are within or in general proximity to the Dinedor Neighbourhood Area and would need to be taken into account within a Strategic Environmental Assessment. In addition, the NDP will also need to consider the other SEA topics set out in Guidance Note 9a to ensure that the plan does not cause adverse impacts.

SEA features	Total	Explanation	SEA required
Air Quality Management Areas	0	There are no AQMA's within the Parish	N
Ancient Woodland	3	Rotherwas Park Wood; Widows Wood (border); Nether Wood (border)	Y
Areas of Archaeological Interest	0	There are no AAls within the Parish	N
Areas of Outstanding Natural Beauty	0	There are no AONBs within the Parish	N
Conservation Areas	2	Hampton Bishop (border); Hampton Park (border)	Y
European Sites	1	River Wye	Y
Flood Areas		There are Flood Zones in the north of the Parish following the River Wye, and flowing down the western borders of the Parish	Y
Listed Buildings	Numerous	There are numerous listed buildings scattered throughout the Parish	Y
Local Sites (SWS/SINCs/RIGS)	3 (SWS)	Pool at Rotherwas; Rotherwas Park Wood; River Wye	Y
Long distance footpaths/trails	1	Wye Valley Walk (border)	Y
Mineral Reserves	2	Barry's Cross; West of Holme Lacy (border)	Y
National Nature Reserve	0	There are no NNRs within the Parish	N
Registered & Unregistered parks and gardens	1 Unregistered	Rotherwas Park	Y
Scheduled Ancient Monuments	4	Dinedor Camp; Site of Medieval Village; Site of Rotherwas House, earthwork remains of formal gardens and Rotherwas Chapel; Lower Bullingham deserted medieval village	Y
Sites of Special Scientific Interest	1	River Wye (Unfavourable Recovering)	Y

Decision Notification:

The initial screening highlights that the Neighbourhood Development Plan for the Dinedor Neighbourhood Area:

- a) Will require further environmental assessment for Habitat Regulations Assessment and Strategic Environmental Assessment.

Assessment date: 15/08/2013

Assessed by: James Latham

Appendix 1: European Sites

The table below provides the name of each European Site, which has been screened in for the purposes of neighbourhood planning in Herefordshire; includes their site features of integrity; and vulnerability data. This is based on the sites individual features of integrity and their vulnerabilities, which could include distance criteria. This has been used in identifying which parishes are likely to require a full HRA Screening of their future Neighbourhood Development Plan, to establish if their plan might have Likely Significant Effects on a European Site.

Downton Gorge
Site Features: <i>Tilio-Acerion</i> forests of slopes, screes and ravines
Vulnerability data: 10km for air quality associated with poultry units or other intensive agricultural practices.
River Clun
Site Features: Freshwater pearl mussel <i>Margaritifera margaritifera</i>
Vulnerability data: Water quality is important to maintain the site feature. Parishes either side of the River Clun will be affected.
River Wye
Site Features: Water courses of plain to montane levels with the <i>Ranunculion fluitantis</i> and <i>Callitricho-Batrachion</i> vegetation. Transition mires and quaking bogs. White-clawed (or Atlantic Stream) crayfish <i>Austropotamobius pallipes</i> . Sea lamprey <i>Petromyzon marinus</i> . Brook lamprey <i>Lampetra planeri</i> . River lamprey <i>Lampetra fluviatilis</i> . Twaite shad <i>Alosa fallax</i> . Atlantic salmon <i>Salmo salar</i> . Bullhead <i>Cottus gobio</i> . Otter <i>Lutra lutra</i> . Allis shad <i>Alosa alosa</i>
Vulnerability data: Proximity: Developments should not be within 100m of the designated bank. Some developments beyond 100m may also have impacts based on proximity and these issues should be addressed where possible when developing NDP policy and choosing site allocations. Water Quality: Within the whole catchment of the River Wye, which includes the River Lugg, mains drainage issues with regards to water quality are being resolved through the Core Strategy / Local Plan and development of a Nutrient Management Plan. Welsh Water should be consulted to ensure that the proposed growth will be within the limit of their consents. Otters: "An otter will occupy a 'home range', which on fresh waters usually includes a stretch of river as well as associated tributary streams, ditches, ponds, lakes and woodland. The size of a home range depends largely on the availability of food and shelter, and the presence of neighbouring otters. On rivers, a male's home range may be up to 40km or more of watercourse and associated areas; females have smaller ranges (roughly half the size) and favour quieter locations for breeding, such as tributary streams. Otters without an established home range are known as 'transients'. They are mostly juveniles looking for a territory of their own, or adults that have been pushed out of their territories. Transient otters may use an area for a short while, but they will move on if conditions are not suitable or if they are driven away by resident otters. Transients will have been important in extending the range of otters, but they are very difficult to identify from field signs. Within a home range an otter may use many resting sites. These include above-ground shelters, such as stands of scrub or areas of rank grass, and underground 'holts' – for example, cavities under tree roots and dry drainage pipes." (Source: EA website: http://www.environmentagency.gov.uk/static/documents/Business/Otters_the_facts.pdf accessed 09/04/2013)

Usk Bat Site

Site Features: Annex I habitats present as a qualifying feature, but not a primary reason for site selection: European dry heaths, Degraded raised bogs still capable of natural regeneration, Blanket bogs, Calcareous rocky slopes with chasmophytic vegetation, Caves not open to the public, *Tilio-Acerion* forests of slopes, screes and ravines. Annex II species of primary reason for site selection: Lesser horseshoe bat *Rhinolophus hipposideros*, UK population 5%, although it is suggested this is an underestimate.

Vulnerability data: Lesser Horseshoe bats are known to migrate between 5km and 10km between their summer and winter roosts. The Lesser Horseshoe Bat is vulnerable to disturbance; light pollution; and habitat loss. Check with the planning ecologist for other issues.

Wye Valley and Forest of Dean Bat Sites

Site Features: Annex II species that are a primary reason for site selection: Lesser horseshoe bat *Rhinolophus hipposideros*. Greater horseshoe bat *Rhinolophus ferrumequinum*

Vulnerability data: Lesser Horseshoe bats are known to migrate between 5km and 10km between their summer and winter roosts. The Lesser Horseshoe Bat is vulnerable to disturbance; light pollution; and habitat loss. Check with the planning ecologist for other issues.

Greater Horseshoe bats are known to migrate between 20-30km between their summer and winter roosts.

NDPs closest to the European Site will need to consider:

Woodland habitat buffer.

Lesser Horseshoe Bat: Old buildings; woodland locations; sheltered valleys, extensive deciduous woods or dense scrub, close to roost sites. In areas of fragmented habitats, linear habitats such as hedgerows are important corridors. Vulnerable to loss or disturbance of both summer and winter roosts and removal of linear habitat.

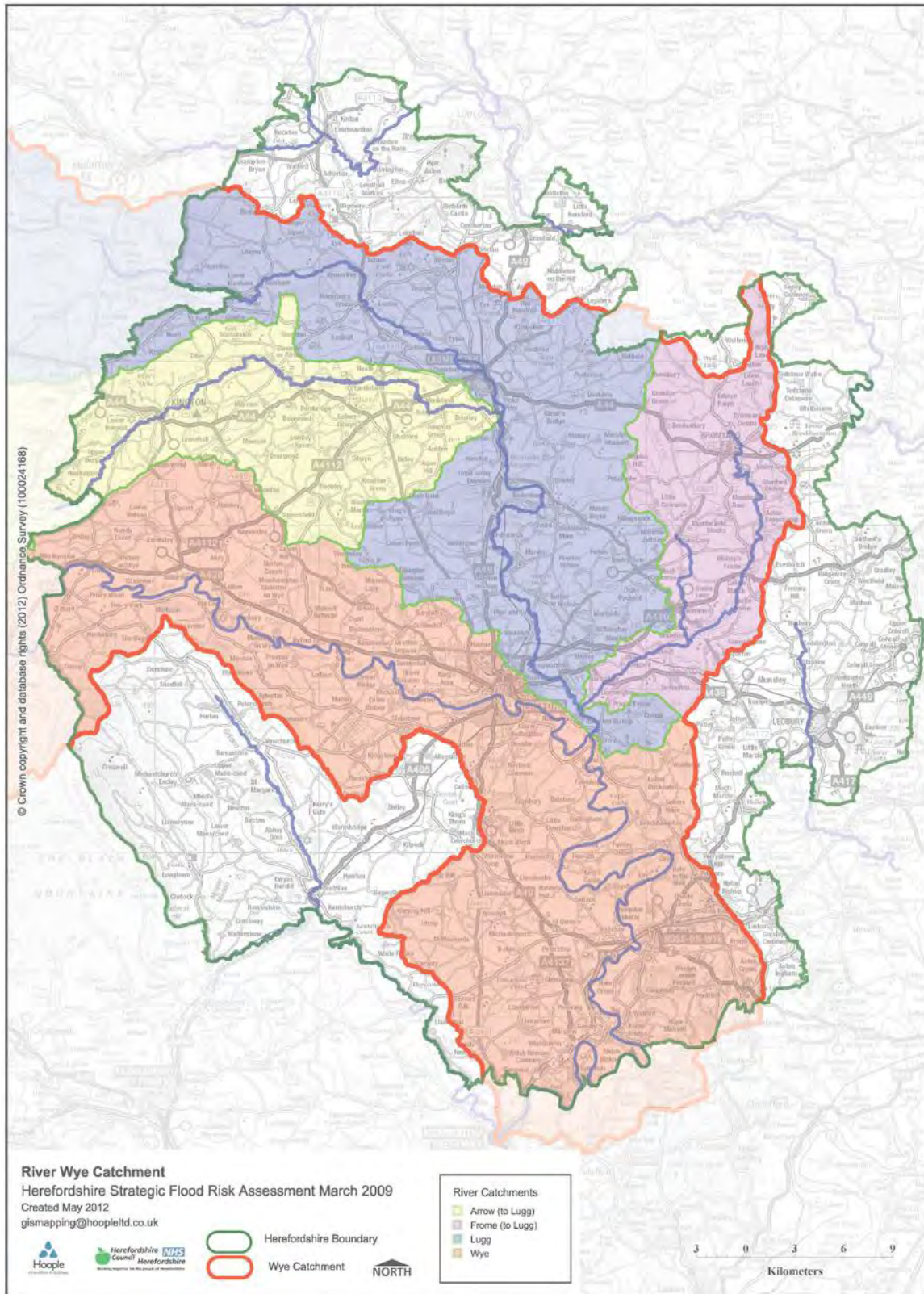
Greater Horseshoe Bat: Large buildings, pasture, edge of mixed deciduous woodland and hedgerows. Mixed land-use especially south-facing slopes, favours beetles, moths and insects they feed on. During the winter they depend on caves, abandoned mines and other underground sites for undisturbed hibernation. A system/series of sites required. Vulnerable to loss of insect food supply, due to insecticide use, changing farming practices and loss of broad-leaved tree-cover and loss / disturbance of underground roosts sites.

Wye Valley Woodlands

Site Features: Annex I habitats that are a primary reason for site selection: Beech forests *Asperulo-Fagetum*, *Tilio-Acerion* forests of slopes, screes and ravines, *Taxus baccata* woods of the British Isles. Annex II species present as a qualifying feature, but not a primary reason for site selection: Lesser horseshoe bat *Rhinolophus hipposideros*, 51-100 residents

Vulnerability data: Lesser Horseshoe bats are known to migrate between 5km and 10km between their summer and winter roosts. The Lesser Horseshoe Bat is vulnerable to disturbance; light pollution; and habitat loss. Check with the planning ecologist for other issues. NDPs closest to the European Site will need to consider: Woodland habitat buffer. Lesser Horseshoe Bat: Old buildings; woodland locations; sheltered valleys, extensive deciduous woods or dense scrub, close to roost sites. In areas of fragmented habitats, linear habitats such as hedgerows are important corridors. Vulnerable to loss or disturbance of both summer and winter roosts and removal of linear habitat.

Appendix 2: Wye Catchment Map



Appendix 2

Dinedor NDP Options

Option1 - To do nothing
Option 2 -Criteria based policy
Option 3 - Allocate sites
Option 4 - Criteria policy and settlement boundary - final option.
Option 5 - Criteria policy/settlement boundary/allocate sites.
Option 6 - Use a nucleated settlement boundary
Option 7 -Extend settlement boundary to the north east
Option 8 - <i>Cluster form settlement including Dinedor Cross</i>

Appendix 3

Table 1: HRA Screening of Emerging Neighbourhood Development Plan Options Parish Council Name: Dinedor Parish Council

NDP Title: Dinedor Neighbourhood Development Plan (Reg14 Consultation Draft)

Date undertaken: August 2017

NDP options	HRA Screening of Emerging NDP options				
	Likely activities (operations) to result as a consequence of the option	Likely effect if option implemented. Could they have Likely Significant Effects (LSE) on European Sites?	European Sites potentially affected	Mitigation measures to be considered, as necessary, through redraft of option and to be considered as part of Appropriate Assessment	Could the policy have likely significant effects on European sites (taking mitigation into account?)
Option 1 Do nothing / Rely on Core Strategy policies	No NDP to determine planning applications.	Criteria policies within the Core Strategy would guide further development. Specific policies and proposals for the parish would not exist.	N/A	N/A	N/A
Option 2 Criteria based policy	Small scale proportionate growth where the location would be determined by a criteria based policy.	Uncertain as to the impact on the European sites as dependant on the location of the development.	River Wye (including the River Lugg) SAC	Criteria based housing policy would require to include reference to mitigation measures to avoid any non-disturbance effects on the River Wye via its catchment. Policy would need to take account of the proportional growth requirements of the Core Strategy and potential	No, development in line with the Local Plan (Core Strategy) and the policy safeguards which exist within the Core Strategy should avoid or mitigate any likely significant effects. Policy criteria should be included within the NDP which reflects this. Further

This document is copyright of Herefordshire Council, please contact the Neighbourhood Planning team if you wish to reuse it in whole or part.

				headroom capacity at the local STW.	assessments will be undertaken at draft policy stage.
Option 3 Allocate sites for housing	Small scale proportionate growth on specific sites identified on a proposals map.	Greater degree of certainty over the impact of future development on the European sites, as the location of housing would be pre-determined and not left to market forces.	River Wye (including the River Lugg) SAC	Specific environmental issues could be investigated during the site search and be positively addressed within the policy wording. Policy would need to take account of the proportional growth requirements of the Core Strategy and potential headroom capacity at the local STW.	No, development in line with the Local Plan (Core Strategy) and the policy safeguards which exist within the Core Strategy should avoid or mitigate any likely significant effects. Policy criteria should be included within the NDP which reflects this. Further assessments will be undertaken at draft policy stage.
Option 4 Manage future housing using a settlement boundary and criteria policy.	Small scale proportionate growth within a defined settlement boundary area.	Uncertain as to the impact on the European sites as dependant on the location of the development.	River Wye (including the River Lugg) SAC	Additional criteria would be required when formulating the accompanying settlement boundary policy to ensure that no likely significant effects could occur. Policy would need to take account of the proportional growth requirements of the Core	No, development in line with the Local Plan (Core Strategy) and the policy safeguards which exist within the Core Strategy should avoid or mitigate any likely significant effects. Policy criteria should be included within the NDP which reflects

This document is copyright of Herefordshire Council, please contact the Neighbourhood Planning team if you wish to reuse it in whole or part.

				Strategy and potential headroom capacity at the local STW.	this. Further assessments will be undertaken at draft policy stage.
<p>Option 5</p> <p>Manage future housing using a settlement boundary and criteria policy and allocate sites.</p>	<p>Small scale proportionate growth within a defined settlement boundary area.</p>	<p>Uncertain as to the impact on the European sites as dependant on the location of the development.</p>	<p>River Wye (including the River Lugg) SAC</p>	<p>Additional criteria would be required when formulating the accompanying settlement boundary policy to ensure that no likely significant effects could occur.</p> <p>Policy would need to take account of the proportional growth requirements of the Core Strategy and potential headroom capacity at the local STW.</p>	<p>No, development in line with the Local Plan (Core Strategy) and the policy safeguards which exist within the Core Strategy should avoid or mitigate any likely significant effects.</p> <p>Policy criteria should be included within the NDP which reflects this. Further assessments will be undertaken at draft policy stage.</p>
<p>Option 6</p> <p>Use a nucleated settlement boundary</p>	<p>New housing will be developed in settlement boundary in a central form. Increase demand in transportation. Increase demand in water abstraction and waste production. New houses developed.</p>	<p>Any settlement boundary would need to be designated to ensure that sufficient capacity was included to permit the proportional growth requirements within Policy RA2 of the Core Strategy. Unlikely that there will be any significant effects on the European Site.</p>	<p>River Wye (including the River Lugg) SAC</p>	<p>Additional criteria would be required when formulating the accompanying settlement boundary policy to ensure that no likely significant effects could occur.</p> <p>Policy would need to take account of the proportional growth requirements of the Core Strategy and potential</p>	<p>No, this option acknowledges sustainable scale growth within defined settlement boundaries in line with Core Strategy policy. Safeguard policies exist within the plan.</p>

This document is copyright of Herefordshire Council, please contact the Neighbourhood Planning team if you wish to reuse it in whole or part.

				headroom capacity at the local STW.	
<p>Option 7</p> <p>Extend settlement boundary to the north east</p>	<p>New housing will be developed in settlement boundary to the north east. Increase demand in transportation. Increase demand in water abstraction and waste production. New houses developed.</p>	<p>Any settlement boundary would need to be designated to ensure that sufficient capacity was included to permit the proportional growth requirements within Policy RA2 of the Core Strategy. Unlikely that there will be any significant effects on the European Site.</p>	<p>River Wye (including the River Lugg) SAC</p>	<p>Additional criteria would be required when formulating the accompanying settlement boundary policy to ensure that no likely significant effects could occur.</p> <p>Policy would need to take account of the proportional growth requirements of the Core Strategy and potential headroom capacity at the local STW.</p>	<p>No, this option acknowledges sustainable scale growth within defined settlement boundaries in line with Core Strategy policy. Safeguard policies exist within the plan. This will extend the boundary to cater for development to the north east of Dinedor settlement.</p>
<p>Option 8</p> <p>Cluster form settlement including Dinedor Cross</p>	<p>New housing will be developed in settlement boundary in a cluster form. Increase demand in transportation. Increase demand in water abstraction and waste production. New houses developed.</p>	<p>Any settlement boundary would need to be designated to ensure that sufficient capacity was included to permit the proportional growth requirements within Policy RA2 of the Core Strategy. Unlikely that there will be any significant effects on the European Site.</p> <p>Having a dispersed settlement boundary may have an impact on the</p>	<p>River Wye (including the River Lugg) SAC</p>	<p>Additional criteria would be required when formulating the accompanying settlement boundary policy to ensure that no likely significant effects could occur.</p> <p>Policy would need to take account of the proportional growth requirements of the Core Strategy and potential headroom capacity at the local STW.</p>	<p>Uncertain, although this option acknowledges sustainable scale growth within defined settlement boundaries in line with Core Strategy policy. Dispersing development in clusters is likely to be unsustainable and have an impact on the River Wye SAC .</p>

This document is copyright of Herefordshire Council, please contact the Neighbourhood Planning team if you wish to reuse it in whole or part.

		SAC and have an environmental impact on several areas within Dinedor.			
--	--	---	--	--	--

Table 1: HRA Screening of Emerging Neighbourhood Development Plan Objectives

Parish Council Name: Dinedor Parish Council

NDP Title: Dinedor Neighbourhood Development Plan (Reg14 Consultation Draft)

Date undertaken: August 2017

NDP objectives	HRA Screening of Emerging NDP options				
	Likely activities (operations) to result as a consequence of the option	Likely effect if option implemented. Could they have Likely Significant Effects (LSE) on European Sites?	European Sites potentially affected	Mitigation measures to be considered, as necessary, through redraft of option and to be considered as part of Appropriate Assessment	Could the policy have likely significant effects on European sites (taking mitigation into account?)
Objective 1 - To help meet local housing needs up to 2031	<p>Small scale housing development</p> <p>Increase in vehicle traffic.</p> <p>Increased demand for water abstraction and sewage treatment.</p>	<p>The River Wye runs along the north and north west borders of the Parish. The majority of the small scale housing growth will be located in Dinedor village in the centre of the parish.</p> <p>Uncertain as to the impacts upon the River Wye SAC dependent on the specific location of development, however the policy would result in small scale growth.</p>	River Wye (including the Lugg SAC).	<p>Measures set out within the Core Strategy policies should help to avoid adverse impacts upon the European site.</p> <p>Improved water efficiency measures, metering and addressing leakages in supply may help to mitigate any additional pressure placed on the water supply as a result of new developments.</p>	No: this objective will allow for the small scale sustainable growth of Dinedor village in line with Core Strategy policy RA1/RA2. Additional policy criteria are in place in both the Core Strategy and the Dinedor Neighbourhood Plan to avoid or mitigate any likely significant effects.

This document is copyright of Herefordshire Council, please contact the Neighbourhood Planning team if you wish to reuse it in whole or part.

Objective 2 - To ensure all new development is of good quality design	The protection of the village character, wildlife, and established trees alongside the installation of signage and prevention of disruption of the visual impact of the landscape of the parish.	None identified.	River Wye (including the Lugg SAC).	None identified.	No: this objective will not lead to new development rather it aims to ensure that all development proposed will be of a high quality and well designed.
Objective 3 – Travelling in and around Dinedor	Promote safe and sustainable measures of transport. Supports building of cycleway infrastructure and an eastern crossing over the River Wye.	Unlikely that there will have a significant effect on the European Site.	River Wye (including the Lugg SAC).	None identified.	No; this objective would only lead to some small scale sustainable transport links and addresses traffic and transport issues associated with development.
Objective 4 – To promote the development and diversification of rural businesses	Promotion of business development Promotion of farm diversification More residents home working. Increase of live/work units in Dinedor.	The River Wye runs along the north and north west borders of the Parish. The majority of the small scale housing growth will be located in Dinedor village in the centre of the parish. Uncertain as to the impacts upon the River Wye SAC dependent on the location of development, however the policy would result in	River Wye (including the Lugg SAC).	Measures are included in both the Core Strategy and the Dinedor Neighbourhood Plan to help relieved any increased pressure on the River Wye for development and rural diversification purposes. The implementation of the Nutrient Management Plan will specifically address issues relating to water quality in the River	No: this objective reiterates the criteria within the Core Strategy policies RA3, RA4 and RA5. Any resulting development will be very small scale. Additional Core Strategy and Dinedor Neighbourhood Plan policies will avoid any likely significant effects.

This document is copyright of Herefordshire Council, please contact the Neighbourhood Planning team if you wish to reuse it in whole or part.

		very small scale growth.		Wye.	
Objective 5 – Protecting and enhancing the rural environment and landscape	Protection of biodiversity Safeguard local landscape character	Unlikely that there will have a significant effect on the European Site. This objective aims to safeguard the natural environment.	River Wye (including the Lugg SAC).	None identified.	No: this objective in itself would not result in new development rather it relates to the safeguarding and enhancement of existing rural environment and landscape.
Objective 6 - To protect local heritage assets and support heritage investigations	Safeguard historic assets of Dinedor. Support heritage investigations.	Unlikely that there will have a significant effect on the European Site. This objective aims to safeguard the built environment.	River Wye (including the Lugg SAC).	None identified.	No this objective safeguards against inappropriate development in order to preserve the historic Character of Dinedor.
Objective 7 – To protect local green spaces	Safeguard local green spaces Increase recreation activities	Unlikely that there will have a significant effect on the European Site.	River Wye (including the Lugg SAC).	None identified.	No this objective safeguards against inappropriate development on local greenspace in Dinedor.
Objective 8 – To protect community facilities	Protect community facilities St Andrews Church Village Hall Preserve local character	Unlikely that there will have a significant effect on the European Site. This objective aims to safeguard the built environment.	River Wye (including the Lugg SAC).	None identified.	No, although this objective could result in the development of new community facilities or the loss of existing provision to new uses, which depending on location could have potential effect on the

This document is copyright of Herefordshire Council, please contact the Neighbourhood Planning team if you wish to reuse it in whole or part.

					River Wye, sufficient policy safeguards are in place within both the Local Plan (Core Strategy) and NDP policy to avoid or mitigate any likely significant effects on the River Wye.
Objective 9 – Promoting local residents' enjoyment of the parish	Preserve rural characteristics and environmental quality of Dinedor.	None identified.	River Wye (including the Lugg SAC).	This policy acts as a mitigation measure itself, to ensure the rural character of the parish is not diminished.	No this objective safeguards against inappropriate development in Dinedor which impact's on the character and environmental quality of the parish. This is not a land use policy which will lead to development.
Policies					
A-NEW HOUSING DEVELOPMENT IN DINEDOR VILLAGE	Small scale housing development Increase in vehicle traffic. Increased demand for water abstraction and sewage treatment.	The River Wye runs along the north and north west borders of the Parish. The majority of the small scale housing growth will be located in Dinedor village in the centre of	River Wye (including the Lugg SAC).	Criteria within the policy should take place within the settlement boundary. Measures set out within the Core Strategy policies should help to avoid adverse impacts	No: this policy will allow for the small scale sustainable growth of Dinedor village in line with Core Strategy policy RA1/RA2. Additional policy criteria are in place in both the Core Strategy and

This document is copyright of Herefordshire Council, please contact the Neighbourhood Planning team if you wish to reuse it in whole or part.

		<p>the parish.</p> <p>Uncertain as to the impacts upon the River Wye SAC dependent on the specific location of development, however the policy would result in small scale growth.</p> <p>Housing, employment and infrastructure development. Possible increase in recreation activities, vehicular movements and demand for water abstraction and treatment.</p>		<p>upon the European site.</p> <p>Improved water efficiency measures, metering and addressing leakages in supply may help to mitigate any additional pressure placed on the water supply as a result of new developments.</p> <p>The implementation of the Core Strategy policies SD3 and SD4 should help to avoid adverse impacts in relation to hydrological regimes at the River Wye. Water quality in the River Wye SAC is also specifically addressed through the Nutrient Management Plan produced by Natural England and the Environment Agency.</p>	<p>the Dinedor Neighbourhood Plan to avoid or mitigate any likely significant effects.</p>
B-RURAL EXCEPTION HOUSING	Policy to support the delivery of affordable housing in line with Core Strategy policy H2.	<p>Some small scale housing development.</p> <p>Housing, infrastructure development</p>	River Wye (including the River Lugg) SAC	Measures set out within the Core Strategy policies should help to avoid adverse impacts	No: this policy would allow for small affordable housing schemes and supports the Core

This document is copyright of Herefordshire Council, please contact the Neighbourhood Planning team if you wish to reuse it in whole or part.

		<p>Possible increase in recreation activities, vehicular movements and demand for water abstraction and treatment.</p> <p>Uncertain as to the impacts upon the River Wye SAC dependent on the location of development, however the policy would result in small scale growth.</p>		<p>upon the European site.</p> <p>Improved water efficiency measures, metering and addressing leakages in supply may help to mitigate any additional pressure placed on the water supply as a result of new developments.</p> <p>The implementation of the Core Strategy policies SD3 and SD4 should help to avoid adverse impacts in relation to hydrological regimes at the River Wye. Water quality in the River Wye SAC is also specifically addressed through the Nutrient Management Plan produced by Natural England and the Environment Agency.</p>	<p>Strategy Policy H2. These would be in areas not normally released for housing.</p> <p>However there are additional policy criteria in place in both the Core Strategy and the Dinedor Neighbourhood Plan to avoid or mitigate any likely significant effects.</p>
C-HIGH QUALITY DESIGN	Promote high quality design within Dinedor.	Unlikely that there will have a significant effect on the European Site.	River Wye (including the Lugg SAC).	This policy helps to safeguard high quality design in line with policy LD1, and help mitigate adverse effects caused from development.	No, this policy will not lead to development; rather it sets out design criteria for development to adhere to.

This document is copyright of Herefordshire Council, please contact the Neighbourhood Planning team if you wish to reuse it in whole or part.

<p>D – THE MANAGEMENT OF TRAFFIC AROUND DINEDOR</p>	<p>Promote safe and sustainable measures of transport.</p> <p>Supports building of cycleway infrastructure and an eastern crossing over the River Wye.</p>	<p>Uncertain as to the impacts upon the River Wye SAC dependent on the specific location of improved links, however the policy would result in small scale sustainable transport links.</p> <p>Possible increase in recreation activities and vehicular movements associated with car parking.</p>	<p>River Wye (including the Lugg SAC).</p>	<p>The implementation of the Core Strategy policies SD3 and SD4 should help to avoid adverse impacts in relation to hydrological regimes at the River Wye. Water quality in the River Wye SAC is also specifically addressed through the Nutrient Management Plan produced by Natural England and the Environment Agency.</p>	<p>No; this policy would only lead to some small scale sustainable transport links. Additional policy safeguards exist within the Core Strategy to mitigate any potential likely significant effects.</p>
<p>E-SUPPORT GROWTH OF SMALL SCALE RURAL BUSINESSES</p>	<p>Promotion of business development</p> <p>Promotion of farm diversification</p>	<p>Uncertain as to the impacts upon the River Wye SAC dependent on the location of any development.</p>	<p>River Wye (including the Lugg SAC).</p>	<p>None identified.</p>	<p>No. It is unlikely that the scale of proposed development will have an impact on the River Wye SAC.</p>
<p>F-TO PROTECT AND ENHANCE THE RURAL ENVIRONMENT AND LANDSCAPE</p>	<p>Protection of biodiversity</p> <p>Safeguard local landscape character</p>	<p>Unlikely that there will have a significant effect on the European Site.</p>	<p>River Wye (including the Lugg SAC).</p>	<p>This policy helps to safeguard greenspace in line with policy LD2, and help mitigate adverse effects caused from development.</p>	<p>No: Scale and extent of such development is unlikely to be significant. This objective is likely to have a beneficial effect on environment and biodiversity of Dinedor.</p>
<p>G-PROTECTING LOCAL HERITAGE</p>	<p>Safeguard historic assets of Dinedor.</p> <p>Local heritage assets</p>	<p>Unlikely that there will have a significant effect</p>	<p>River Wye (including the Lugg SAC).</p>	<p>This policy helps Dinedor maintain historic character and</p>	<p>No this policy safeguards against inappropriate</p>

This document is copyright of Herefordshire Council, please contact the Neighbourhood Planning team if you wish to reuse it in whole or part.

ASSETS	protected.	on the European Site.	SAC).	helps safeguard against inappropriate development.	development in order to preserve the historic character of Dinedor.
H- TO ENCOURAGE AND SUPPORT INVESTIGATIONS INTO LOCAL HERITAGE ASSETS	Support heritage investigations. Local heritage assets protected.	Unlikely that there will have a significant effect on the European Site.	River Wye (including the Lugg SAC).	This policy helps Dinedor maintain historic character and helps safeguard against inappropriate development.	No this policy safeguards against inappropriate development in order to preserve the historic character of Dinedor.
I-PROTECTING LOCAL GREEN SPACES	Protection of green space Designation of green space	No likely significant effect on the River Wye SAC	River Wye (including the Lugg SAC).	None identified.	No. This policy will not lead to development but will ensure local green spaces are protected. This policy could help to provide mitigation against the potential of other NDP policies, potentially conserving and enhancing local biodiversity.
J-COMMUNITY FACILITIES	Protect community facilities Community using facilities	Unlikely that there will have a significant effect on the European Site.	River Wye (including the Lugg SAC).	None identified.	No, although this policy could result in the development of new community facilities or the loss of existing provision to new uses, which depending on location could have potential effect on the River Wye, sufficient policy

This document is copyright of Herefordshire Council, please contact the Neighbourhood Planning team if you wish to reuse it in whole or part.

					safeguards are in place within both the Local Plan (Core Strategy) and NDP policy to avoid or mitigate any likely significant effects on the River Wye.
K-LOCAL RESIDENTS ENJOYMENT OF THE PARISH	Preserve rural characteristics and environmental quality of Dinedor.	None identified.	River Wye (including the Lugg SAC).	This policy acts as a mitigation measure itself, to ensure the rural character of the parish is not diminished.	No this policy safeguards against inappropriate development in Dinedor which impact's on the character and environmental quality of the parish.

Appendix 4

HRA Consultation Feedback

This consultation feedback is **only** for comments received on the HRA of your Neighbourhood Development Plan

Parish Council Name: Ashperton Parish Council

Neighbourhood Development Plan Name: Ashperton Neighbourhood Plan

Details of consultation: Regulation 14

Consultation date: 31 October to 12 December 2017

Consultation title: Regulation 14

No comments regarding the HRA have been received at regulation 14 consultation.

Appendix 5

Table 1: HRA Screening of Emerging Neighbourhood Development Plan Objectives

Parish Council Name: Dinedor Parish Council

NDP Title: Dinedor Neighbourhood Development Plan (Reg16 Consultation Draft)

Date undertaken: June 2020

NDP objectives	HRA Screening of Emerging NDP options				
	Likely activities (operations) to result as a consequence of the objective/option/policy	Likely effect if option implemented. Could they have Likely Significant Effects (LSE) on European Sites?	European Sites potentially affected	Would it be possible that it would result in any LSE?	Requirement for an Appropriate Assessment
Objective 1 - To help meet local housing needs up to 2031	Small scale housing development Increase in vehicle traffic. Increased demand for water abstraction and sewage treatment.	The River Wye runs along the north and north west borders of the Parish. The majority of the small scale housing growth will be located in Dinedor village in the centre of the parish.	River Wye (including the Lugg SAC).	No	Not required.: this objective will allow for the small scale sustainable growth of Dinedor village in line with Core Strategy policy RA1/RA2. Additional policy criteria are in place in both the Core Strategy and the Dinedor Neighbourhood Plan to avoid any likely significant effects.
Objective 2 - To ensure all new development is of good quality design	The protection of the village character, wildlife, and established trees alongside the installation of signage and prevention of disruption of the visual impact of the landscape of the parish.	None identified.	River Wye (including the Lugg SAC).	No	Not required.: this objective will not lead to new development rather it aims to ensure that all development proposed will be of a high quality and well designed.

This document is copyright of Herefordshire Council, please contact the Neighbourhood Planning team if you wish to reuse it in whole or part.

Objective 3 – Travelling in and around Dinedor	Promote safe and sustainable measures of transport. Supports building of cycleway infrastructure and an eastern crossing over the River Wye.	Unlikely that there will have a significant effect on the European Site.	River Wye (including the Lugg SAC).	No	Not required. This objective would only lead to some small scale sustainable transport links and addresses traffic and transport issues associated with development.
Objective 4 – To promote the development and diversification of rural businesses	Promotion of business development Promotion of farm diversification More residents home working. Increase of live/work units in Dinedor.	The River Wye runs along the north and north west borders of the Parish. The majority of the small scale housing growth will be located in Dinedor village in the centre of the parish.	River Wye (including the Lugg SAC).	No	Not required. This objective reiterates the criteria within the Core Strategy policies RA3, RA4 and RA5. Any resulting development will be very small scale. Additional Core Strategy and Dinedor Neighbourhood Plan policies will avoid any likely significant effects.
Objective 5 – Protecting and enhancing the rural environment and landscape	Protection of biodiversity Safeguard local landscape character	Unlikely that there will have a significant effect on the European Site. This objective aims to safeguard the natural environment.	River Wye (including the Lugg SAC).	No	Not required, this objective in itself would not result in new development rather it relates to the safeguarding and enhancement of existing rural environment and landscape.
Objective 6 - To protect local heritage assets and support heritage investigations	Safeguard historic assets of Dinedor. Support heritage investigations.	Unlikely that there will have a significant effect on the European Site. This objective aims to safeguard the built environment.	River Wye (including the Lugg SAC).	No	Not required. this objective safeguards against inappropriate development in order to preserve the historic Character of Dinedor.
Objective 7 – To protect local green	Safeguard local green spaces	Unlikely that there will have a significant effect	River Wye (including the Lugg	No	Not required. this objective safeguards against

This document is copyright of Herefordshire Council, please contact the Neighbourhood Planning team if you wish to reuse it in whole or part.

spaces	Increase recreation activities	on the European Site.	SAC).		inappropriate development on local greenspace in Dinedor.
Objective 8 – To protect community facilities	Protect community facilities St Andrews Church Village Hall Preserve local character	Unlikely that there will have a significant effect on the European Site. This objective aims to safeguard the built environment.	River Wye (including the Lugg SAC).	No	Not required., although this objective could result in the development of new community facilities or the loss of existing provision to new uses, which depending on location could have potential effect on the River Wye, sufficient policy safeguards are in place within both the Local Plan (Core Strategy) and NDP policy to avoid any likely significant effects on the River Wye.
Objective 9 – Promoting local residents' enjoyment of the parish	Preserve rural characteristics and environmental quality of Dinedor.	None identified.	River Wye (including the Lugg SAC).	No	Not required. This objective safeguards against inappropriate development in Dinedor which impact's on the character and environmental quality of the parish. This is not a land use policy which will lead to development.
Policies					
A-NEW HOUSING DEVELOPMENT IN DINEDOR VILLAGE	Small scale housing development Increase in vehicle traffic. Increased demand for water abstraction and sewage treatment.	The River Wye runs along the north and north west borders of the Parish. The majority of the small scale housing growth will be located in Dinedor	River Wye (including the Lugg SAC).	No	Not required. The scale and extent of such development is unlikely to be significant, as the development is contained in a sustainable approach. Allocations help give greater certainty. Implementation of Core Strategy

This document is copyright of Herefordshire Council, please contact the Neighbourhood Planning team if you wish to reuse it in whole or part.

		<p>village in the centre of the parish.</p> <p>Uncertain as to the impacts upon the River Wye SAC dependent on the specific location of development, however the policy would result in small scale growth.</p> <p>Housing, employment and infrastructure development. Possible increase in recreation activities, vehicular movements and demand for water abstraction and treatment.</p>			<p>policy SD4, LD2, SD1 to grant planning permission will ensure water quality issues are addressed.</p> <p>Changes to this policy post regulation 14 to help clarify the settlement boundary. This is unlikely to have an impact on the River Wye SAC.</p>
B-RURAL EXCEPTION HOUSING	Policy to support the delivery of affordable housing in line with Core Strategy policy H2.	<p>Some small scale housing development.</p> <p>Housing, infrastructure development Possible increase in recreation activities, vehicular movements and demand for water abstraction and treatment. Uncertain as to the impacts upon the River Wye SAC dependent on the location of</p>	River Wye (including the River Lugg) SAC	No	<p>Not required. The scale and extent of conversion of agricultural building is likely to be minimal, therefore is unlikely to have a significant impact on the SAC.</p> <p>Implementation of Core Strategy policy SD4, LD2, SD1 to grant planning permission will ensure water quality issues are addressed.</p>

This document is copyright of Herefordshire Council, please contact the Neighbourhood Planning team if you wish to reuse it in whole or part.

		development, however the policy would result in small scale growth.			
C-HIGH QUALITY DESIGN	Promote high quality design within Dinedor.	Unlikely that there will have a significant effect on the European Site.	River Wye (including the Lugg SAC).	No	Not required. This policy will not lead to new development; but rather it will ensure that any new development is in keeping with the surrounding design and context of Dinedor.
D – THE MANAGEMENT OF TRAFFIC AROUND DINEDOR	Promote safe and sustainable measures of transport. Supports building of cycleway infrastructure and an eastern crossing over the River Wye.	Uncertain as to the impacts upon the River Wye SAC dependent on the specific location of improved links, however the policy would result in small scale sustainable transport links. Possible increase in recreation activities and vehicular movements associated with car parking.	River Wye (including the Lugg SAC).	No	Not required. This policy would only lead to some small scale sustainable transport links. Implementation of Core Strategy policy SD4, LD2, SD1 to grant planning permission will ensure water quality issues are addressed. Changes to this policy post regulation 14 to help clarify the policy. This is unlikely to have an impact on the River Wye SAC.
E-SUPPORT GROWTH OF SMALL SCALE RURAL BUSINESSES	Promotion of business development Promotion of farm diversification	Uncertain as to the impacts upon the River Wye SAC dependent on the location of any development.	River Wye (including the Lugg SAC).	No	Not required. The scale and extent of potential employment development is unlikely to have a significant impact on the SAC. Implementation of Core Strategy policy SD4, LD2, SD1 to grant planning permission will ensure water quality issues are

This document is copyright of Herefordshire Council, please contact the Neighbourhood Planning team if you wish to reuse it in whole or part.

					addressed.
F-TO PROTECT AND ENHANCE THE RURAL ENVIRONMENT AND LANDSCAPE	Protection of biodiversity Safeguard local landscape character	Unlikely that there will have a significant effect on the European Site.	River Wye (including the Lugg SAC).	No	Not required. Scale and extent of such development is unlikely to be significant. This objective is likely to have a beneficial effect on environment and biodiversity of Dinedor. Implementation of Core Strategy policy SD4, LD2, SD1 to grant planning permission will ensure water quality issues are addressed.
G-PROTECTING LOCAL HERITAGE ASSETS	Safeguard historic assets of Dinedor. Local heritage assets protected.	Unlikely that there will have a significant effect on the European Site.	River Wye (including the Lugg SAC).	No	Not required. No this policy safeguards against inappropriate development in order to preserve the historic character of Dinedor.
H- TO ENCOURAGE AND SUPPORT INVESTIGATIONS INTO LOCAL HERITAGE ASSETS	Support heritage investigations. Local heritage assets protected.	Unlikely that there will have a significant effect on the European Site.	River Wye (including the Lugg SAC).	No	Not required. This policy safeguards against inappropriate development in order to preserve the historic character of Dinedor.
I-PROTECTING LOCAL GREEN SPACES	Protection of green space Designation of green space	No likely significant effect on the River Wye SAC	River Wye (including the Lugg SAC).	No	Not required. This policy will not lead to development but will ensure local green spaces are protected.

This document is copyright of Herefordshire Council, please contact the Neighbourhood Planning team if you wish to reuse it in whole or part.

J-COMMUNITY FACILITIES	Protect community facilities Community using facilities	Unlikely that there will have a significant effect on the European Site.	River Wye (including the Lugg SAC).	No	Not required. This policy could result in the development of new community facilities or the loss of existing provision to new uses, which depending on location could have potential effect on the River Wye, sufficient policy safeguards are in place within both the Local Plan (Core Strategy)
K-LOCAL RESIDENTS ENJOYMENT OF THE PARISH	Preserve rural characteristics and environmental quality of Dinedor.	None identified.	River Wye (including the Lugg SAC).	No	Not required. This policy safeguards against inappropriate development in Dinedor which impact's on the character and environmental quality of the parish.

Appendix 6

Summary of consultation responses to Dinedor Reg 16 HRA

Consultation date: 10 August to 5 October 2020

Consultation title: Dinedor Neighbourhood Plan Regulation 16

N.B. This consultation feedback is only for comments received on the HRA of the draft Neighbourhood Development Plan

Consultee and any comments received:

- Natural England – No comments received specific to HRA
- Historic England – No comments received specific to HRA
- Environment Agency – No comments received specific to HRA
- Natural Resources Wales – No comments received specific to HRA

Responses to comments:

- Natural England – No comments to make
- Historic England – No comments to make
- Environment Agency – No comments to make
- Natural Resources Wales – No comments to make

Appendix 7

Appendix 9: Modifications following Dinedor NDP examination (February 2021)

Policy	Modification recommended	Justification
Throughout the plan	Modification 1: All policies in the Plan to be clearly defined within a box or other clearly distinguishing feature, and to be set out on one page wherever possible. Section 7 to be replaced with an Appendix listing the Parish Council Supporting Actions listed after paragraph 5.6 in the submission version of the Plan.	For clarity and accuracy.
Policy A	Modification 2: Policy A to be amended as follows: <i>POLICY A -NEW HOUSING DEVELOPMENT WITHIN THE SETTLEMENT BOUNDARY OF IN DINEDOR VILLAGE</i> <i>Small scale proposals (up to 2 dwellings) for new market and affordable housing will be supported within the village settlement of Dinedor and a settlement boundary is defined for the village as shown on</i> (see <i>Figure 6a, Policies Map.</i> providing that it is proportionate to the existing number and form of housing in the immediate area of the village. <i>Such proposals will be assessed against the following criteria and will be required to:</i> they: <i>a. relate well to the existing built-up area of the village;</i> <i>b. meet, or exceed, the highest possible sustainable design and construction standards prevailing at the time;</i> <i>c. do not have an unacceptable adverse impact on residential amenity of existing and future occupiers, heritage assets and local infrastructure; and d. do not erode the existing character and setting of the village area. ; and</i> The concluding text of Policy A from this point to be deleted. Figure 6a to show only the settlement boundary and protected community facilities (modification 6 refers), and the settlement boundary to be amended as shown below to incorporate recent planning permissions and a coherent boundary definition in line with the criteria and guidance from the LPA. (The example settlement boundary can be found in the examiner's report).	To comply with the Core Strategy Local Plan and NPPF in the interest of accuracy and clarity.
Policy C	Modification 3: The current alphabetic identification from a) to d) in the first set of criteria in Policy C to be replaced with the numbers 1) through to 4) identifying each of them.	To confirm with NPPF and to ensure policy is clear.
Policy D	Modification 4: The last sentence of Policy D criteria b) to read: <i>... . Development proposals leading to loss or breaks in this network of routes will not be supported, unless an acceptable adequate or better replacement is provided.</i> Figure 3 to be amended so that only rights of	For clarity and in accordance with NPPF.

Policy	Modification recommended	Justification
	way improvements within the parish are shown and the indication of improvements and additions desired are properly distinguished from the existing public rights of way network shown in Figure 3 by the addition of a key detailing added detail.	
Policy E	<p>Modification 5: Policy E to be amended as follows: <i>Proposals for the development of small-scale business enterprises suitable to a rural area will be encouraged when they comply with other policies in the development plan and do not significantly adversely affect the rural character, environment and landscape of Dinedor or existing residential amenities. They may include but not exclusively the following development proposals: and are for the following:</i></p> <ul style="list-style-type: none"> a. for the conversion or reuse of an existing building; b. homeworking proposals; c. live/work units; d. diversification of an existing rural business; e. the proposal is in accordance with Policy C in terms of its design. 	For clarity and in accordance with NPPF. Minor grammatical alterations are recommended for clarity.
Policy F	<p>Modification 6: Policy F to be amended as follows: <i>Development proposals should protect or and enhance the rural environment and landscape of the area. Proposals should:</i></p> <ul style="list-style-type: none"> a. have a be designed in terms of scale, form and siting so as to that retain rural character; b. <i>protect and enhance or protect the landscape setting of Dinedor village;</i> c. <i>conserve or and enhance biodiversity and heritage assets;</i> d. <i>protect and or enhance the natural and scenic beauty of Dinedor;</i> e. <i>incorporate, where necessary, landscaping schemes and future on-going management arrangements to ensure the proposal integrates into the surrounding landscape and rural environment;</i> f. <i>in suitable locations, maintain and extend woodland and hedgerows by using native species; and</i> g. should <i>not have an adverse impact on the environmental quality of the parish's rivers, streams and brooks.</i> 	To avoid ambiguity and to ensure policy is clear and in accordance with NPPF. Minor grammatical alterations are recommended for clarity.
Policy G	<p>Modification 5: Policy G to be amended as follows: <i>Development proposals should conserve or and enhance the local heritage assets, including those listed below, ...</i></p> <p>Proposals for new development should consult the Historic</p>	For clarity and for the policy to reflect NPPF para 16d.

Policy	Modification recommended	Justification
	<p>Environment Record. Where there is an indication or potential that there may be assets of heritage or archaeological interest appropriate suitable-desk-based and site investigations should be carried out. Site investigations must follow the appropriate professional practices so that there is no detriment to the rural environment.</p>	
Policy H	<p>Modification 6: Policy H to be amended as follows: Dinedor Camp is designated as a The Local Green Space as shown identified below and on the Dinedor Policies Map figure (Figures 6a and 6b. below will be protected. Development of thisese space will only be supported in very special circumstances.</p> <ul style="list-style-type: none"> • the Village Green • Dinedor Camp 	To ensure this policy complies with the policies in the NPPF, para 100.
Policy J	<p>Modification 7: Policy J to be amended as follows: POLICY J – TRANQUILLITY LOCAL RESIDENTS' ENJOYMENT OF THE PARISH <i>All new development proposals should respect Dinedor's rural environment and tranquillity. Proposals should include suitable measures to mitigate any impact on residential amenity and proposals that are considered to have an significant adverse impact on residential amenity will not be supported. To preserve the area's rural environmental quality and relative tranquillity, proposals will only be supported where they retain or enhance that environmental quality and retain the parish's tranquillity.</i></p>	For clarity and to better reflect NPPF and NPPG.

Appendix 8

HRA Screening of Neighbourhood Development Plan Policies and Objectives (Post Examination)

Parish: Dinedor Parish

Date undertaken: March 2021

The plan post examination have had minor changes to the policies, no re screening of the policies post examination are required.