

Environmental Report

Report for:

Dinedor Neighbourhood Area

March 2021



Dinedor Neighbourhood Plan

Environmental Report

Contents

Non-technical summary

- 1.0 Introduction
- 2.0 Methodology
- 3.0 The SEA Framework
- 4.0 Appraisal of Objectives
- 5.0 Appraisal of Options
- 6.0 Appraisal of Policies
- 7.0 Implementation and monitoring
- 8.0 Next steps

Appendix 1: Initial SEA Screening Report

Appendix 2: SEA Scoping Report incorporating Tasks A1, A2, A3 and A4

Appendix 3: Consultation responses from Natural England and English Heritage

Appendix 4: SEA Stage B incorporating Tasks B1, B2, B3 and B4

Appendix 5: Options considered

Appendix 6: SEA D1 post regulation 14 consultation

Appendix 7: SEA D3 post regulation 14 consultation

Appendix 8: Examiner's modifications

Appendix 9: SEA D1 post regulation 16 consultation

Appendix 10: SEA D2/ D3 post regulation 16 consultation

Appendix 11: Environmental Report checklist

Non-technical summary

Strategic Environmental Assessment (SEA) is an important part of the evidence base which underpins Neighbourhood Development Plans (NDP), as it is a systematic decision support process, aiming to ensure that environmental assets, including those whose importance transcends local, regional and national interests, are considered effectively in plan making.

Dinedor Parish has undertaken to prepare an NDP and this process has been subject to environmental appraisal pursuant to the SEA Directive. Dinedor Parish is a rural parish 2.5 miles south of Hereford. There is no post office or shop within the parish, facilities include a village hall and church.

The Draft Dinedor NDP includes 9 main objectives and it is intended that these objectives will be delivered by 10 criteria based planning policies; no site allocations are proposed here. The plan does propose a settlement boundary for Dinedor and is highlighted within the plan.

The environmental appraisal of the Dinedor NDP has been undertaken in line with the Environmental Assessment of Plan and Programmes Regulations 2004. Stage A of the SEA process involved Scoping and Stage B provided a review and analysis of the NDP. Stage C involved preparing an Environmental Report and Stage D comprises a formal consultation on both this and the Draft Plan itself.

Following examination many of the policies required minor changes with wording changes. No policies were substantially changes within the NDP, therefore no rescreening is required post examination. Therefore the conclusion set out in the Draft Environment Report is still valid. That is, the Dinedor NDP is in general conformity with both national planning policy contained in the National Planning Policy Framework and strategic policies set within the Herefordshire Local Plan (Core Strategy). Therefore, no further changes are recommended as a result of this post examination SEA (stage D).

Habitat Regulations Assessment (HRA) screening has been carried out on the Parish and have shown it falls within the catchment for the River Wye (including River Lugg). The River Wye runs along the north and north west borders of the parish and falls within the hydrological catchment. The northern part of the Parish is served by Hereford's drainage system. The HRA assesses the potential effects of the NDP on the River Wye SAC, which is a European site (Special Area of Conservation).

On the whole, it is considered that the Dinedor NDP is in general conformity with both national planning policy contained in the National Planning Policy Framework and strategic policies set within the Herefordshire Local Plan (Core Strategy). Nor does it propose any growth that would be over and above that prescribed by strategic policies. Habitat Regulations Assessment (HRA) screening has been carried out as the Parish falls within the catchment for the River Wye (including River Lugg), and is within the Wye Valley Woodlands SAC both of which are European sites (Special Area of Conservation). The HRA assesses the potential effects of the NDP on the River Wye SAC and Wye Valley Woodlands SAC.

On the whole, it is considered that the Dinedor group NDP is in general conformity with both national planning policy contained in the National Planning Policy Framework and strategic policies set within the Herefordshire Local Plan (Core Strategy). Nor does it propose any growth that would be over and above that prescribed by strategic policies. Once made (adopted) by Herefordshire Council, the effects of the policies within the Dinedor NDP will be monitored annually via the Council's Annual Monitoring Report (AMR).

1.0 Introduction

- 1.1 This report forms the draft Strategic Environmental Assessment (SEA) of the Dinedor group Neighbourhood Development Plan (NDP).
- 1.2 The Dinedor NDP does not propose any site allocations, although Dinedor village is identified within table 4.15 which is targeted for proportional levels of growth in Policy RA1 of the Herefordshire Local Plan (Core Strategy). The NDP will, however, provide general criteria based policies for guiding future development across the parish as a whole as there are no specifically allocated sites.

Purpose of the SEA

- 1.3 SEA is a requirement of EC Directive 2001/42/EC (the SEA Directive) which requires the assessment of the effects of certain plans and programmes on the environment to ensure that the proposals in that plan or programme contribute to the achievement of sustainable development.
- 1.4 The Directive was transposed into domestic legislation through the Environmental Assessment of Plans and Programmes Regulations 2004 which applies to plans with significant environmental effects.
- 1.5. The main objective of a SEA is *“to provide for a high level of protection of the environment and to contribute to the integration of environmental considerations into the preparation and adoption of plans and programmes with a view to promoting sustainable development”*. The Environmental Assessment of Plans and Programmes Regulations (2004). The assessment is looking at the positive and negative environmental issues that your plan might have on your local environmental assets.
- 1.6 A screening opinion was carried out on the Dinedor NDP and it concluded that due to the range of environmental designations in and around the parish, there may be significant environmental effects and consequently an SEA and HRA would be required.

Dinedor Neighbourhood Plan Context

- 1.7 Dinedor Parish is a rural parish 2.5 miles south of Hereford with a population of over 300 people this is concentrated mostly in the settlements of Dinedor. Housing in the parish is divided into three main areas, in the east, along the B4399 and around Dinedor Court. The north western boundary of Dinedor lies Rotherwas Industrial Estate, where an enterprise zone is being developed. The majority of Rotherwas Industrial Estate is located within the parish of Lower Bullingham but a section of it is in Dinedor parish, i.e. the Chapel Lane and Cold Nose Road areas of Rotherwas and the Enterprise Zone.
- 1.8 The landscape is dominated by an Iron Age fort Dinedor Camp this is located on Dinedor Hill. Dinedor Camp is in an elevated position around 182 metres above sea level, this provides a natural and historic backdrop to the wider area including Hereford City.
- 1.9 There is no school, public house or shop in Dinedor village. The facilities within the parish includes the village hall, and parish church these are located in the main settlement of Dinedor. Outside Dinedor there are a number of historic farmsteads scattered across traditional rural landscape of pasture and arable fields. There is no public transport into the

village centre or to Dinedor Cross. There are infrequent bus services along the Hereford – Rotherwas-Holme Lacy Road, B4399, and very limited services on the Hereford-Hoarwithy Road

The vision for Dinedor by 2031 is as follows:

'Our vision for Dinedor is –To maintain its rural nature and to promote the health, well-being and sense of community of its residents.

To support this, all development in the parish should go forward in such manner as to minimise the effect on the parish's current character and environment.'

1.10 The 9 NDP objectives are as follows:

OB1-To help meet local housing needs up to 2031

OB2-To ensure all new development is of good quality design

OB3-Travelling in and around Dinedor

OB4-To promote the development and diversification of rural businesses

OB5-Protecting and enhancing the rural environment and landscape

OB6-To protect local heritage assets and support heritage investigations

OB7-To protect local green spaces

OB8-To protect community facilities

OB9- Promoting local residents' enjoyment of the parish

Context of Neighbourhood Plans

1.11 NDPs are a planning document that form a key part of the Government's localism agenda. They enable local communities to develop plans that reflect local aspirations, in accordance with strategic policies.

1.12 The Dinedor NDP must therefore conform to national planning policy set within the NPPF and strategic level local policy including the Herefordshire Local Plan (Core Strategy).

1.13 The Herefordshire Local Plan (Core Strategy) was adopted on 16 October 2015.

1.14 Paragraph 46 of the NPPF and Planning Practice Guidance set out the weight that may be given to relevant policies in emerging plans, including NDPs, and indicated that weight may be given to relevant policies in emerging NDPs according to:

- The stage of preparation of the emerging plan (the more advanced the preparation, the greater the weight that may be given);
- The extent to which there are unresolved objections to relevant policies (the less significant the unresolved objections, the greater the weight that may be given); and

- The degree of consistency of the relevant policies in the emerging plan to the policies in this Framework (the closer the policies in the emerging plan to the policies in the Framework, the greater the weight that may be given).
- 1.15 This part of the NPPF is reinforced by Planning Practice Guidance published in March 2014, which is clear that an emerging NDP may be a material planning consideration once it has reached submission/local authorities publication stage (Regulation 16). This is reinforced by recent ministerial statements and case law (West Sussex), all of which have demonstrated that an emerging NDP may be a material consideration at the Regulation 16 stage¹.
- 1.16 Table 4.15 of the Local Plan (Core Strategy) lists Dinedor among the settlements which it considers to be sustainable locations for growth, albeit smaller market homes which meet the needs of people with local connections or affordable housing in line with the provisions of Policy RA2. It is listed within the Hereford HMA which proposes 18% growth.
- 1.17 Once made (adopted) by Herefordshire Council, the Dinedor NDP will have a role in guiding future development proposals within the Parish, by setting out setting out policies against which planning applications will be determined.

Structure of SEA

- 1.18 The structure of the document is as follows:
- Section 2 – Explains the SEA methodology and summarises the comments received in respect of the SEA Scoping Report
 - Section 3 - Introduces the Neighbourhood Plan objectives and the SEA framework
 - Section 4 - Appraises the objectives contained within the Neighbourhood Plan against the SEA framework
 - Section 5 - Appraises the options considered within the Neighbourhood Plan against the SEA framework
 - Section 6 – Appraises the policies contained within the Neighbourhood Plan against the SEA framework
 - Section 7 – Discusses the implementation and monitoring of the Neighbourhood Plan
 - Section 8 - Concludes the SEA report by outlining next steps

2.0 Methodology

- 2.1 The SEA process comprised several stages which are summarised, in some detail, below.
- 2.2 Stage A involved 4 tasks and culminated in a Scoping Report:
- *Task A1:* Identified and reviewed relevant policies, plans and programmes and environmental protection objectives from European, National and Local sources.
 - *Task A2:* Collected baseline information to provide a picture of past, present and likely future conditions within the area. This helped to establish indicators which will be used to monitor the effects and performance of the NDP.

¹ For the avoidance of doubt, this NDP is currently at the Draft Plan Stage (Regulation 14) and cannot, therefore, be given weight in reaching decisions on planning applications

- *Task A3:* Focused on the environmental issues identified from the baseline, highlighting key issues and problems within the neighbourhood area.
- *Task A4:* Used the information gathered from Tasks A1- A3 to develop a set of SEA objectives, sometimes referred to as the 'sustainability framework'.
- *Task A5:* Collated the results of Tasks A1-A4 within a Scoping Report, a document which was subject to a statutory 5 week consultation.

2.3 Stage B involved 4 tasks and assessed the effects of the NDP.

- *Task B1:* Tested NDP Objectives against the SEA Objectives
- *Task B2:* Developed and refined the NDP policies and reasonable alternatives
- *Task B3 / B4:* Predicted and evaluated the significant effects of the NDP

2.4 Stage C involved preparing an Environmental Report. This report presents information compiled during Stage B of the SEA process and constitutes the Draft Environmental Appraisal of the NDP. It accompanies the Draft Plan during its formal Regulation 14 consultation with people who live, work and carry out businesses in the neighbourhood area, as well as statutory bodies listed in the Neighbourhood Planning (General) Regulations 2012.

2.5 Producing an Environmental Report was therefore a legal requirement and the submission of this report to Herefordshire Council forms Stage D of the SEA process.

Scoping Report Consultation

2.6 With regard to the SEA scoping assessments, documents A1 to A4 were completed by a Herefordshire Council Planning Officer and sent to the Parish Council for comment, in readiness for a 5 week consultation with statutory bodies, pursuant to the Environmental Assessment of Plans and Programmes Regulations 2004.

2.7 After the document was approved by the Parish Council, the Dinedor SEA Scoping Report was available to four² statutory bodies for consultation from 3 October to 7 November 2014.

Consultation outcomes from Statutory Consultees

2.8 The consultation resulted in 2 responses, both of which are attached at Appendix 3.

2.9 Both responses were collated and incorporated within this document where relevant:

Natural England: Recommends that additional baseline data should be added including Natural Environment White Paper, Biodiversity 2020 and Wye Valley AONB Management Plan 2009-2014.

² Statutory consultation bodies: Natural England; English Heritage; Environment Agency Natural Resources Wales

English Heritage: Have no substantive objection to the contents of the documents.

Environment Agency: No bespoke comments on the content of the SEA/HRA.

Natural Resources Wales: No comments received

3.0 The SEA Framework

- 3.1 As mentioned previously, Stage A of the SEA identifies and reviews relevant policies, plans and programmes and environmental protection objectives from European, National and Local sources (refer to Table A1 in Appendix 2 for details of those documents that were reviewed in completing Stage A of SEA on the Dinedor NDP).
- 3.2 The requirement to undertake this 'context review' is contained in Annexes 1(a) and (e) of the SEA Directive which states that an Environmental Report should include:

"...an outline of the contents, main objectives of the plan or programme and relationship with other relevant plans and programmes" and

"...the environmental protection objectives, established at international, Community or Member State level, which are relevant to the plan or programme and the way those objectives and any environmental considerations have been taken into account during its preparation"

Policy context

- 3.3 The Dinedor NDP will deliver the Local Plan (Core Strategy) at parish level by adding locally specific detail to strategic policies. As a consequence, the Scoping Report for the NDP was based on the context review Herefordshire Council undertook for its Local Plan (Core Strategy).
- 3.4 The results of this assessment (context review) provide the source of the local baseline data and have been incorporated into the SEA framework. It should be noted that:
- No list of policies, plans and programmes can ever be exhaustive and that Herefordshire Council has selected those considered to be of particular relevance to the planning system;
 - New or revised plans and policies can emerge during the SEA process
- 3.5 The strategies and plans have been reviewed and, where appropriate, incorporated within the SA Framework objectives. These can be seen in Appendix 1 of the Dinedor Plan Scoping Report together with the implications for the SEA and NDP highlighted.

SEA Objectives and baseline characteristics

- 3.6 The SEA objectives that were used at Stages A and B of the process are listed in the following table.

SEA Objective	
1	To maintain or enhance nature conservation (biodiversity, flora and fauna)
2	To maintain or enhance the quality of landscapes and townscapes
3	To improve the quality of surroundings
4	To conserve or where appropriate enhance the historic environment and culture heritage
5	To improve air quality
6	To reduce the effect of traffic on the environment
7	To reduce contributions to climate change
8	To reduce vulnerability to climate change
9	To improve water quality
10	To provide for sustainable sources of water supply
11	To avoid, reduce and manage flood risk
12	To conserve soil resources and quality
13	To minimise the production of waste
14	To improve the health of the population
15	To reduce crime and nuisance
16	To conserve natural and manmade resources

- 3.7 The SEA objectives detailed above conform to the SEA Directive, and are derived from the Sustainability Appraisal undertaken for the Herefordshire Local Plan Core Strategy 2011-2031.
- 3.8 Baseline information gathered during Stage A of the SEA process provided details of the current environmental characteristics of the neighbourhood area and the status of its natural assets and features (refer to Appendix 2). This information was analysed as part of Task B2 of SEA, which looked at the extent to which the emerging NDP policies will help or obstruct these characteristics.
- 3.9 Following the completion of Task B2 of SEA it was apparent that the largest environmental issue within the Group Parish has an impact on the County as a whole is water quality; the River Wye (including the River Lugg), this will require effective management, in order to ensure that the quality of water does not deteriorate to the point that nutrient targets are missed further downstream.
- 3.10 The NDP allocates a settlement boundary for Dinedor, but does not allocate any housing sites. The Core Strategy along with the NDP has safeguarding policies to ensure water quality is maintained in the light of new development. Water quality has been taken into consideration for all of the commitments sites. On this basis, the delivery of the NDP should not exacerbate existing problems regarding water quality or have an unacceptable adverse impact, as the identified housing has already been considered.
- 3.11 Baseline characteristics within the SEA detail the current environmental status of environmental characteristics in the neighbourhood plan area from different sources. The source of Baseline Information used in Table A2 in Appendix 2, and analysed in Table B2 can be found in Appendix 4 Baseline characteristics in relation to the Dinedor Plan SEA objectives are listed below.
- 3.12 There are three objectives for which there is no local baseline data available and therefore this provides a limitation on the baseline data and whether the NDP policies are able to move towards or away from this data, this also means that there are no future trends to link the SEA objective too.

4.0 Assessing the NDP Objectives / aims

- 4.1 The aims listed in the NDP seek to achieve the vision of the Dinedor NDP. There are a total of 9 objectives; these are listed in paragraph 1.11 above.
- 4.2 The table in appendix 4 tests these NDP aims against the SEA objectives, providing a summary of the results of Task B1 of SEA.
- 4.3 The majority of those NDP aims which have a relationship with the SEA framework are positively compatible with it or further clarification is required to fully assess the effects.
- 4.4 Task B1 of the SEA identifies that all eight NDP aims were compatible with the SEA framework. Task B1 also requires objectives to be SMART assessed. These too were seen as compatible.
- 4.5 Overall within Stage B1 the majority of the NDP aims have met SEA objectives, and the rest had no relationship with the SEA objective or needed further information such as location of development.

5.0 Assessing the NDP Neighbourhood Plan Options

- 5.1 The eight options that were considered during the development of the Dinedor Neighbourhood Plan were supplied by the Parish Council and have been assessed as part of the SEA. These options were predominately concerning the method of managing the proportional growth of Dinedor village, no options were supplied regarding the whole plan area. The summary matrix of the assessment can be found in Table B2 options these tables are in Appendix 4.
- 5.2 The options cover the issues that are likely to formulate the policy topics going forward in the Plan. The Parish Council held public consultation across the parish to inform residents about the plan and identify land based issues in the parish. The Parish Council issued a questionnaire and hosted public consultation events help to fed into the identification of the preferred options and ultimately the draft policies.
- 5.3 To not to pursue a Neighbourhood Plan was initially considered by the parish at the start of the neighbourhood planning process. However the Parish Council disregarded this at an early stage as it was highlighted within open day event and original consultation exercise that the majority of the community would support the work undertaken for a Neighbourhood Plan.
- 5.4 Option 2-5 have a positive impact of the baseline data as they all consider planning for proportionate growth using suitable planning techniques such as allocating sites Option 2 and 4, identifying settlement boundaries in option 3 and 4. Options 6 and 7 have an overall positive effect on the sea baseline and are in line with policy RA2 of the Core Strategy. Option 8 to have a cluster settlement boundary has an uncertain impact on the sea baseline, as clustered patterns of development are likely to be unsustainable.
- 5.6 Overall all of the eight criteria policy options had mainly a positive effect on the SEA objectives and baseline, if the policies that are developed incorporated the elements of the options that are ensuring mitigation of new development and additional details are provided for the location and design of any proposed site then the assessment of the policies should result in a positive result.

As these options were generally moving towards the SEA objectives any further alternatives would probably be moving away and therefore no further options are required to be assessed. The full screening assessment of the NDP options can be found in appendix 5.

6.0 Appraisal of the policies

- 6.1 A key part of developing a plan such as the Dinedor NDP is developing a range of options and testing these, so that a preferred way forward can be selected. The policies selected below have followed from the options process.
- 6.2 The following, emerging set of 11 draft policies can be appraised for the purposes of Stage B of the SEA:
- **A-NEW HOUSING DEVELOPMENT IN DINEDOR VILLAGE**
 - **B-RURAL EXCEPTION HOUSING**
 - **C-HIGH QUALITY DESIGN**
 - **D- THE MANAGEMENT OF TRAFFIC AROUND DINEDOR**
 - **E-SUPPORT GROWTH OF SMALL SCALE RURAL BUSINESSES**
 - **F-TO PROTECT AND ENHANCE THE RURAL ENVIRONMENT AND LANDSCAPE**
 - **G-PROTECTING LOCAL HERITAGE ASSETS**
 - **H-PROTECTING LOCAL GREEN SPACES**
 - **I-COMMUNITY FACILITIES**
 - **J-LOCAL RESIDENTS ENJOYMENT OF THE PARISH**

Stage B of SEA

- 6.3 In the context of Task B1 of SEA, the previous section of this report identified that many of the NDP objectives are compatible with the SEA framework, while others had either a neutral impact, no relationship with the SEA objectives or if needed; further information such as location of development. Additional policy safeguards within the NDP and Local Plan (Core Strategy) would help mitigate any possible conflicts.
- 6.4 With regard to Task B2 of SEA, the NDP policies were measured against both the SEA framework and the baseline characteristics identified during Stage A of the process; here, there was no baseline data available in respect of SEA Objectives 3 and 9. Full details of this appraisal are attached at Appendix 4.
- 6.5 The policies largely score as positive or neutral against the SEA objectives most of the policies included within the plan are mitigation and safeguarding measures particularly policies D,F,G,H,I,J and K. (H- has been deleted following reg 14 consultation.) All of these policies have a positive impact on the SEA baseline data and will not directly lead to development. Policies A, B and E will lead to development, but have provided criteria within the plan to mitigate any potential harmful effect caused from new development. In these policies there are a few uncertain outcomes but this is because development schemes will be consider on their own merits, as and when planning applications are submitted to the local planning authority.
- 6.6 There are some unknown factors, particularly where the location of specific piece of development (i.e tourist facilities / farm diversification areas) is not yet known.

- 6.7 The results of Task B3, as shown at Appendix 4, demonstrates that the cumulative impact of the NDP policies over the course of the plan period is generally positive. Although some policies may have a neutral or uncertain impact during the first 5 years of the plan period, there is no reason why they cannot have a positive effect in the medium to long-term due to policy safeguards included in the Local Plan (Core Strategy); these safeguards should avoid or mitigate against unacceptable adverse impacts.
- 6.8 Task B4 of SEA brings together the results of earlier tasks and identifies the cumulative impact of the entire of the NDP. This task, which is also attached at Appendix 4, reveals that the objectives and policies contained in the Dinedor NDP are by and large in general conformity with the Local Plan (Core Strategy), which means that the cumulative effect of the plan will contribute to the achievement of the SEA objectives.
- 6.9 None of the NDP policies are considered to be in direct conflict with or propose greater levels of growth and development than strategic policies contained in the Local Plan (Core Strategy), which themselves have undergone a full Sustainability Appraisal.

Stage D of the SEA (Reg16)

- 6.10 Following the Draft plan consultation (Regulation 14) The Dinedor NDP steering group amending criteria in a majority of the policies in response to the comments received at regulation 14 consultation. The amendments were mainly minor wording changes to ensure consistency with the Framework and to provide more clarity for decision makers. Minor amendments were made to several policies, these were not significantly changed, as most of these were changes for clarification and accuracy therefore were not needed to be rescreened. One policy has been deleted policy H- To encourage and support investigations into local heritage assets. Therefore two policies, A and D was rescreened as the settlement boundary was extended and other policy was reworded. Overall these changes help clarify the plan and help move the plan closer towards the SEA baseline and likely to ensure suitable development in the NDP plan period.
- 6.11 It has been concluded that the rescreening made will not have a significant adverse impact on the SEA objectives and therefore the conclusions of the SEA remain the same as with the Draft Plan, no significant effect is likely from the implementation of the Dinedor NDP policies.
- 6.12 Following rescreening, these amendments have not specifically changed the outcomes of the SEA. The full results of the re-assessed policies can be found in Appendix 8 of this Environmental Report.

Stage D of the SEA (Post Examination)

- 6.13 Following the draft plan consultation at Regulation 14 and the submission consultation at Regulation 16, the plan has now been subject to an independent examination during winter 2021 by Liz Beth MRTPI. She has reported that the NDP has met the Basic Conditions subject to a number of modifications to the policies. These can be found in Appendix 8.

- 6.14 The policies which have been subject to minor modifications during the examination are:
- Policy A
 - Policy C
 - Policy D
 - Policy E
 - Policy F
 - Policy G
 - Policy H
 - Policy J
- 6.15 No policies which received more substantial changes during the examination and therefore no policies required rescreening. No changes were made to policy B and I.
- 6.15 Wording changes were made to the objectives however these did not alter the outcome of the objective and do not require rescreening. Wording changes were also made following the deletion of some sections of policies A and policies E,F,G have been reworded, again these did not alter the meaning of the paragraphs and also did not require rescreening
- 6.16 It has been concluded that the modifications made will not have a significant adverse impact on the SEA objectives and therefore the conclusions of the SEA remain the same or have improved from the previous report.

7.0 Implementation and monitoring

- 7.1 Herefordshire Council as the Local Planning Authority should make arrangements to monitor the significant effects of implementing a neighbourhood plan.
- 7.2 Indeed, Regulation 17 of the Environmental Assessment of Plans and Programmes Regulations 2004 requires the Local Planning Authority to monitor the significant environmental effects of the implementation of any NDP that was subject to SEA, in order to identify unforeseen adverse effects at an early stage and to enable appropriate remedial actions.
- 7.3 Accordingly, Herefordshire Council will monitor outcomes from the NDP policies and the results of these will be reported in the Council's Annual Monitoring Report (AMR).
- 7.4 The AMR runs from 1 April to 31 March each year and the topics covered therein include the following:
- Housing delivery
 - Previously developed land
 - Housing completions
 - Affordable housing conditions
 - Employment land delivery

8.0 Next steps

- 8.1 This report will accompany the post examination version of the Dinedor NDP. The plan will move to referendum and, subject to a successful outcome, final adoption.

Appendix 1

**Initial Habitat Regulations Assessment and Strategic Environmental
Assessment Screening Notification**

The Neighbourhood Planning (General) Regulation 2012 (Reg. 32)

Conservation of Habitats and Species Regulations 2010 (d)

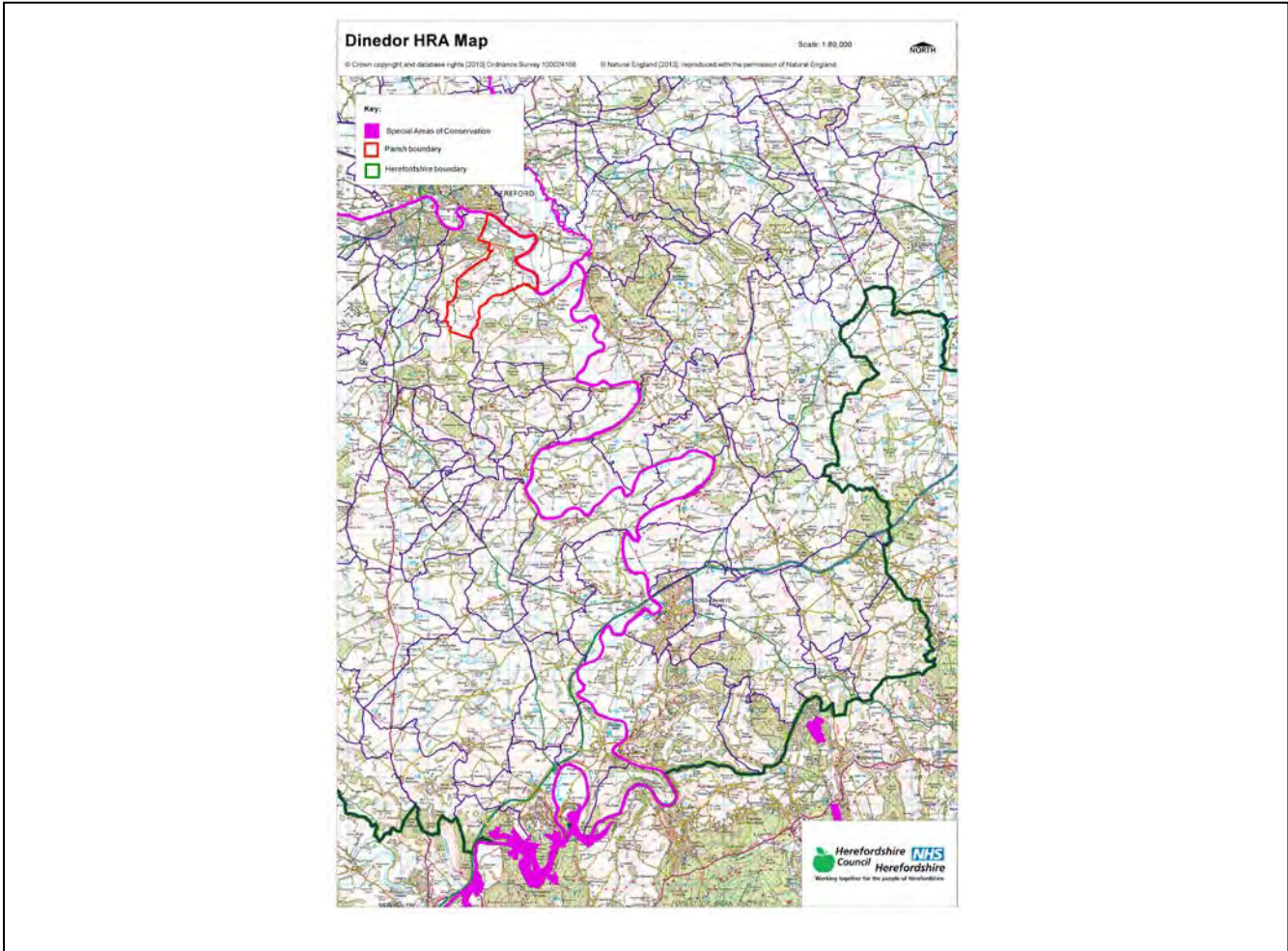
Neighbourhood Area:	Dinedor Neighbourhood Area
Parish Council:	Dinedor Parish Council
Neighbourhood Area Designation Date:	04/10/2013

Introduction

This Initial Habitat Regulations Assessment (HRA) and Strategic Environmental Assessment (SEA) Screening has been undertaken to assess whether any European Sites exist within or in proximity to the Neighbourhood Area which could be affected by any future proposals or policies.

Through continual engagement the outcomes of any required assessments will help to ensure that proposed developments will not lead to Likely Significant Effects upon a European Site or cause adverse impacts upon other environmental assets, such as the built historic or local natural environment.

**HRA Initial Screening: Map showing relationship of Neighbourhood Area with European Sites
(not to scale)**



Initial HRA Screening

River Wye (including the River Lugg) SAC:

Does the Neighbourhood Area have the River Wye (including the River Lugg) in or next to its boundary?	Y	The River Wye runs along the north and north west borders of the Parish
Is the Neighbourhood Area in the hydrological catchment of the River Wye (including the River Lugg) SAC?	Y	The Parish is within the hydrological catchment of the River Wye
If yes above, does the Neighbourhood Area have mains drainage to deal with foul sewage?	Y	The northern part of the Parish is served by Herefords mains drainage system

Downton Gorge SAC:

Is the Neighbourhood Area within 10km of Downton Gorge SAC?	N	Downton Gorge is 35.5km away from the Parish
---	---	--

River Clun SAC:

Does the Neighbourhood Area include: Border Group Parish Council or Leintwardine Group Parish Council?	N	River Clun does not border the Parish
--	---	---------------------------------------

Usk Bat Sites SAC:

Is the Neighbourhood Area within 10km of the SAC boundary?	N	Usk Bat Sites are 36.6km away from the Parish
--	---	---

Wye Valley & Forest of Dean Bat Sites SAC:

Is the Neighbourhood Area within 10km of any of the individual sites that make up the Wye Valley & Forest of Dean Bat Sites?	N	The Group Parish are 19.3km away from Wye Valley and Forest of Dean Bat Sites
--	---	---

Wye Valley Woodlands SAC:

Is the Neighbourhood Area within 10km of any of the individual sites that make up the Wye Valley Woodlands Site?	N	The Group Parish is 20.4km away from the Wye Valley Woodlands
--	---	---

HRA Conclusion:

The assessment above highlights that the following European Sites will need to be taken into account in the future Neighbourhood Development Plan for the Dinedor Neighbourhood Area and a Full HRA Screening will be required.

European Site

(List only those which are relevant from above)

River Wye (including the River Lugg) SAC

Strategic Environmental Assessment Initial Screening for nature conservation landscape and heritage features

The following environmental features are within or in general proximity to the Dinedor Neighbourhood Area and would need to be taken into account within a Strategic Environmental Assessment. In addition, the NDP will also need to consider the other SEA topics set out in Guidance Note 9a to ensure that the plan does not cause adverse impacts.

SEA features	Total	Explanation	SEA required
Air Quality Management Areas	0	There are no AQMA's within the Parish	N
Ancient Woodland	3	Rotherwas Park Wood; Widows Wood (border); Nether Wood (border)	Y
Areas of Archaeological Interest	0	There are no AAls within the Parish	N
Areas of Outstanding Natural Beauty	0	There are no AONBs within the Parish	N
Conservation Areas	2	Hampton Bishop (border); Hampton Park (border)	Y
European Sites	1	River Wye	Y
Flood Areas		There are Flood Zones in the north of the Parish following the River Wye, and flowing down the western borders of the Parish	Y
Listed Buildings	Numerous	There are numerous listed buildings scattered throughout the Parish	Y
Local Sites (SWS/SINCs/RIGS)	3 (SWS)	Pool at Rotherwas; Rotherwas Park Wood; River Wye	Y
Long distance footpaths/trails	1	Wye Valley Walk (border)	Y
Mineral Reserves	2	Barry's Cross; West of Holme Lacy (border)	Y
National Nature Reserve	0	There are no NNRs within the Parish	N
Registered & Unregistered parks and gardens	1 Unregistered	Rotherwas Park	Y
Scheduled Ancient Monuments	4	Dinedor Camp; Site of Medieval Village; Site of Rotherwas House, earthwork remains of formal gardens and Rotherwas Chapel; Lower Bullingham deserted medieval village	Y
Sites of Special Scientific Interest	1	River Wye (Unfavourable Recovering)	Y

Decision Notification:

The initial screening highlights that the Neighbourhood Development Plan for the Dinedor Neighbourhood Area:

- a) Will require further environmental assessment for Habitat Regulations Assessment and Strategic Environmental Assessment.

Assessment date: 15/08/2013

Assessed by: James Latham

Appendix 1: European Sites

The table below provides the name of each European Site, which has been screened in for the purposes of neighbourhood planning in Herefordshire; includes their site features of integrity; and vulnerability data. This is based on the sites individual features of integrity and their vulnerabilities, which could include distance criteria. This has been used in identifying which parishes are likely to require a full HRA Screening of their future Neighbourhood Development Plan, to establish if their plan might have Likely Significant Effects on a European Site.

Downton Gorge
Site Features: <i>Tilio-Acerion</i> forests of slopes, screes and ravines
Vulnerability data: 10km for air quality associated with poultry units or other intensive agricultural practices.
River Clun
Site Features: Freshwater pearl mussel <i>Margaritifera margaritifera</i>
Vulnerability data: Water quality is important to maintain the site feature. Parishes either side of the River Clun will be affected.
River Wye
Site Features: Water courses of plain to montane levels with the <i>Ranunculion fluitantis</i> and <i>Callitricho-Batrachion</i> vegetation. Transition mires and quaking bogs. White-clawed (or Atlantic Stream) crayfish <i>Austropotamobius pallipes</i> . Sea lamprey <i>Petromyzon marinus</i> . Brook lamprey <i>Lampetra planeri</i> . River lamprey <i>Lampetra fluviatilis</i> . Twaite shad <i>Alosa fallax</i> . Atlantic salmon <i>Salmo salar</i> . Bullhead <i>Cottus gobio</i> . Otter <i>Lutra lutra</i> . Allis shad <i>Alosa alosa</i>
Vulnerability data: Proximity: Developments should not be within 100m of the designated bank. Some developments beyond 100m may also have impacts based on proximity and these issues should be addressed where possible when developing NDP policy and choosing site allocations. Water Quality: Within the whole catchment of the River Wye, which includes the River Lugg, mains drainage issues with regards to water quality are being resolved through the Core Strategy / Local Plan and development of a Nutrient Management Plan. Welsh Water should be consulted to ensure that the proposed growth will be within the limit of their consents. Otters: "An otter will occupy a 'home range', which on fresh waters usually includes a stretch of river as well as associated tributary streams, ditches, ponds, lakes and woodland. The size of a home range depends largely on the availability of food and shelter, and the presence of neighbouring otters. On rivers, a male's home range may be up to 40km or more of watercourse and associated areas; females have smaller ranges (roughly half the size) and favour quieter locations for breeding, such as tributary streams. Otters without an established home range are known as 'transients'. They are mostly juveniles looking for a territory of their own, or adults that have been pushed out of their territories. Transient otters may use an area for a short while, but they will move on if conditions are not suitable or if they are driven away by resident otters. Transients will have been important in extending the range of otters, but they are very difficult to identify from field signs. Within a home range an otter may use many resting sites. These include above-ground shelters, such as stands of scrub or areas of rank grass, and underground 'holts' – for example, cavities under tree roots and dry drainage pipes." (Source: EA website: http://www.environmentagency.gov.uk/static/documents/Business/Otters_the_facts.pdf accessed 09/04/2013)

Usk Bat Site

Site Features: Annex I habitats present as a qualifying feature, but not a primary reason for site selection: European dry heaths, Degraded raised bogs still capable of natural regeneration, Blanket bogs, Calcareous rocky slopes with chasmophytic vegetation, Caves not open to the public, *Tilio-Acerion* forests of slopes, screes and ravines. Annex II species of primary reason for site selection: Lesser horseshoe bat *Rhinolophus hipposideros*, UK population 5%, although it is suggested this is an underestimate.

Vulnerability data: Lesser Horseshoe bats are known to migrate between 5km and 10km between their summer and winter roosts. The Lesser Horseshoe Bat is vulnerable to disturbance; light pollution; and habitat loss. Check with the planning ecologist for other issues.

Wye Valley and Forest of Dean Bat Sites

Site Features: Annex II species that are a primary reason for site selection: Lesser horseshoe bat *Rhinolophus hipposideros*. Greater horseshoe bat *Rhinolophus ferrumequinum*

Vulnerability data: Lesser Horseshoe bats are known to migrate between 5km and 10km between their summer and winter roosts. The Lesser Horseshoe Bat is vulnerable to disturbance; light pollution; and habitat loss. Check with the planning ecologist for other issues.

Greater Horseshoe bats are known to migrate between 20-30km between their summer and winter roosts.

NDPs closest to the European Site will need to consider:

Woodland habitat buffer.

Lesser Horseshoe Bat: Old buildings; woodland locations; sheltered valleys, extensive deciduous woods or dense scrub, close to roost sites. In areas of fragmented habitats, linear habitats such as hedgerows are important corridors. Vulnerable to loss or disturbance of both summer and winter roosts and removal of linear habitat.

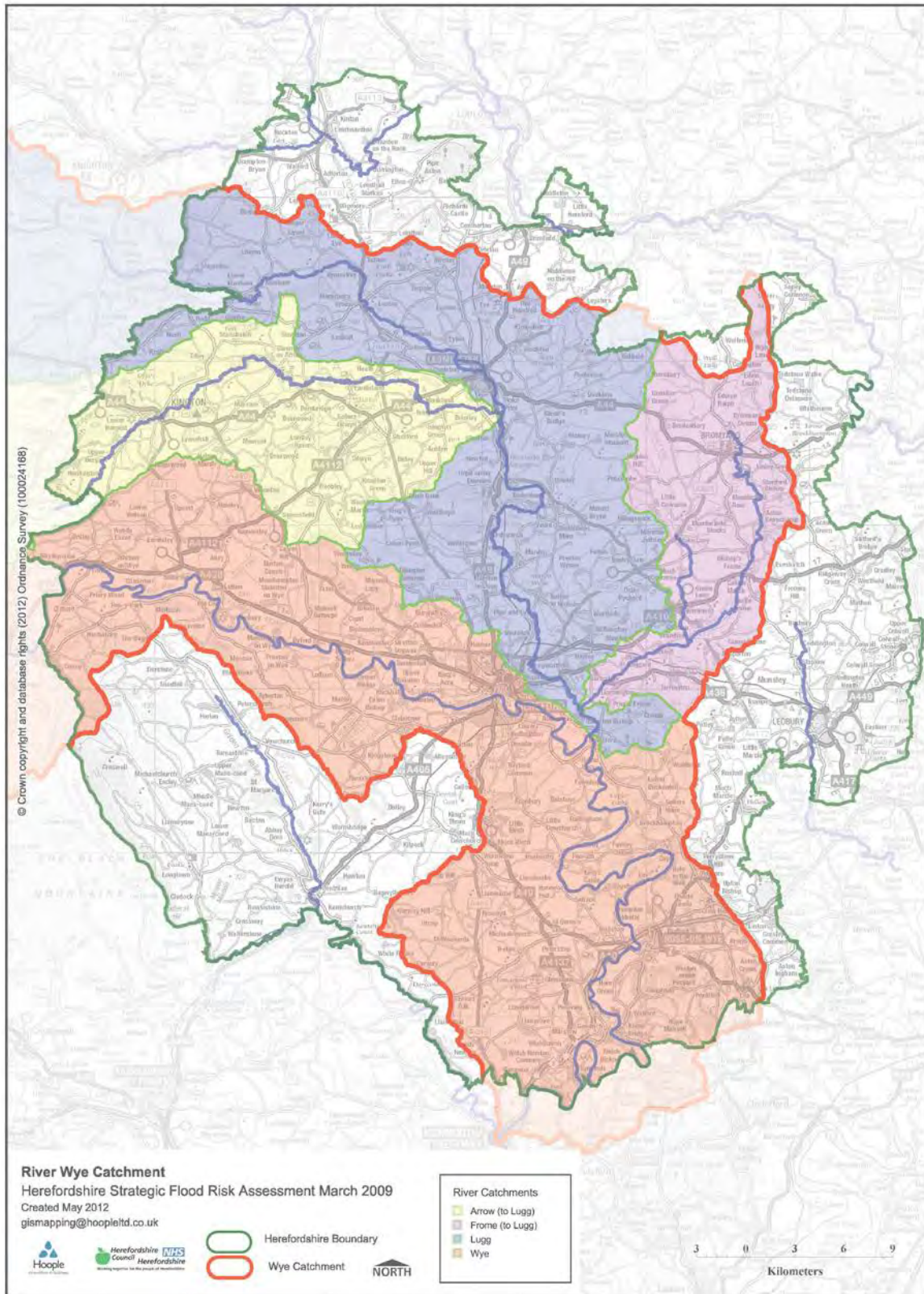
Greater Horseshoe Bat: Large buildings, pasture, edge of mixed deciduous woodland and hedgerows. Mixed land-use especially south-facing slopes, favours beetles, moths and insects they feed on. During the winter they depend on caves, abandoned mines and other underground sites for undisturbed hibernation. A system/series of sites required. Vulnerable to loss of insect food supply, due to insecticide use, changing farming practices and loss of broad-leaved tree-cover and loss / disturbance of underground roosts sites.

Wye Valley Woodlands

Site Features: Annex I habitats that are a primary reason for site selection: Beech forests *Asperulo-Fagetum*, *Tilio-Acerion* forests of slopes, screes and ravines, *Taxus baccata* woods of the British Isles. Annex II species present as a qualifying feature, but not a primary reason for site selection: Lesser horseshoe bat *Rhinolophus hipposideros*, 51-100 residents

Vulnerability data: Lesser Horseshoe bats are known to migrate between 5km and 10km between their summer and winter roosts. The Lesser Horseshoe Bat is vulnerable to disturbance; light pollution; and habitat loss. Check with the planning ecologist for other issues. NDPs closest to the European Site will need to consider: Woodland habitat buffer. Lesser Horseshoe Bat: Old buildings; woodland locations; sheltered valleys, extensive deciduous woods or dense scrub, close to roost sites. In areas of fragmented habitats, linear habitats such as hedgerows are important corridors. Vulnerable to loss or disturbance of both summer and winter roosts and removal of linear habitat.

Appendix 2: Wye Catchment Map

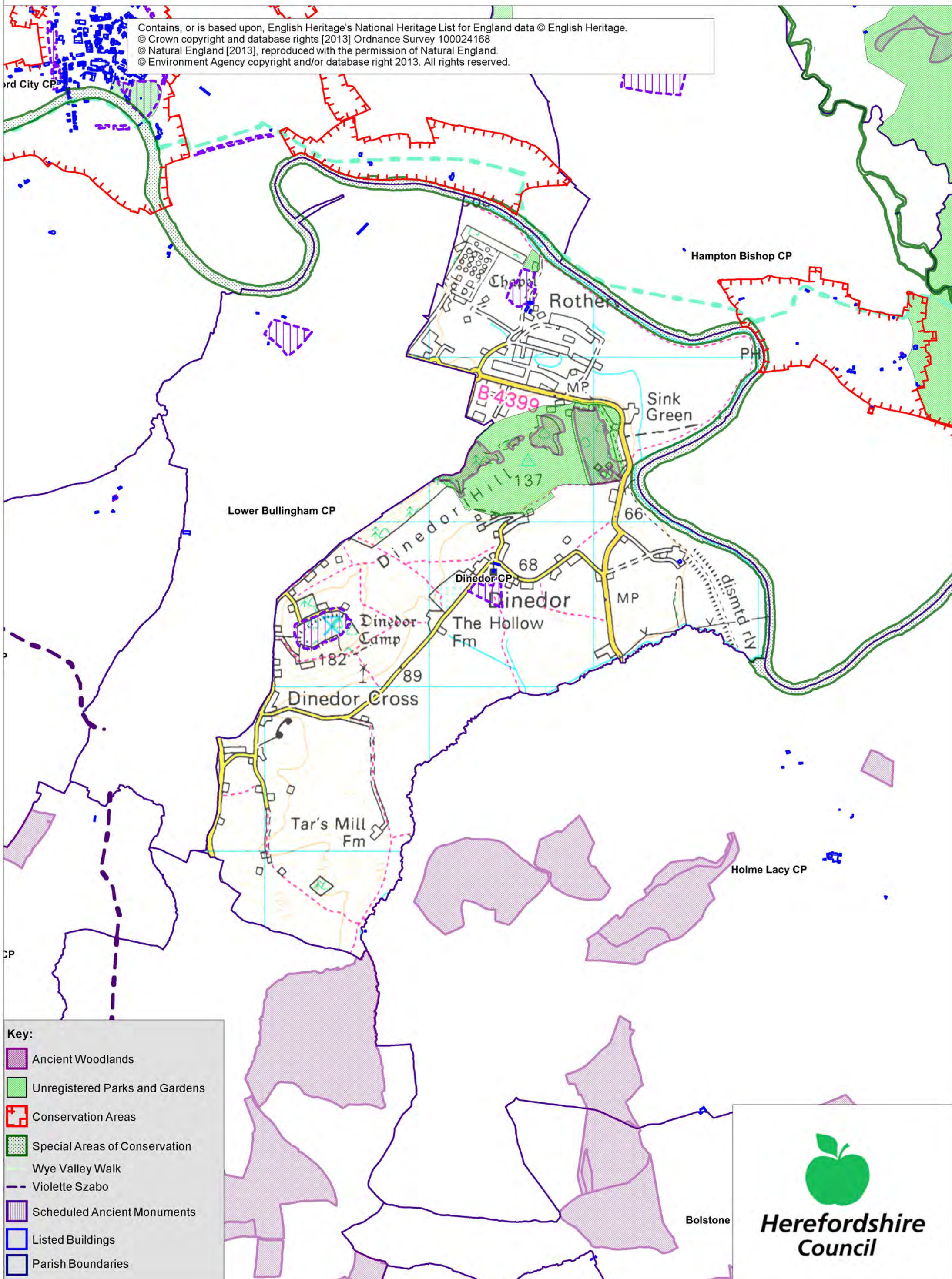


Dinedor SEA Map 1

Scale: 1:20,000



Contains, or is based upon, English Heritage's National Heritage List for England data © English Heritage.
© Crown copyright and database rights [2013] Ordnance Survey 100024168
© Natural England [2013], reproduced with the permission of Natural England.
© Environment Agency copyright and/or database right 2013. All rights reserved.



Key:

- Ancient Woodlands
- Unregistered Parks and Gardens
- Conservation Areas
- Special Areas of Conservation
- Wye Valley Walk
- Violette Szabo
- Scheduled Ancient Monuments
- Listed Buildings
- Parish Boundaries

Herefordshire Council

Bolstone

Dinedor SEA Map 2

Scale: 1:20,000



Contains, or is based upon, English Heritage's National Heritage List for England data © English Heritage.
© Crown copyright and database rights [2013] Ordnance Survey 100024168
© Natural England [2013], reproduced with the permission of Natural England.
© Environment Agency copyright and/or database right 2013. All rights reserved.



Key:

- Minerals Sites
- Sites of Special Scientific Interest
- Special Wildlife Sites
- Flood Zone 2
- Flood Zone 3
- Parish Boundaries

Herefordshire Council

Appendix 2

Strategic Environmental Assessment



Dinedor Neighbourhood Area

Scoping Report

October 2014

Consultation on the Scoping Report

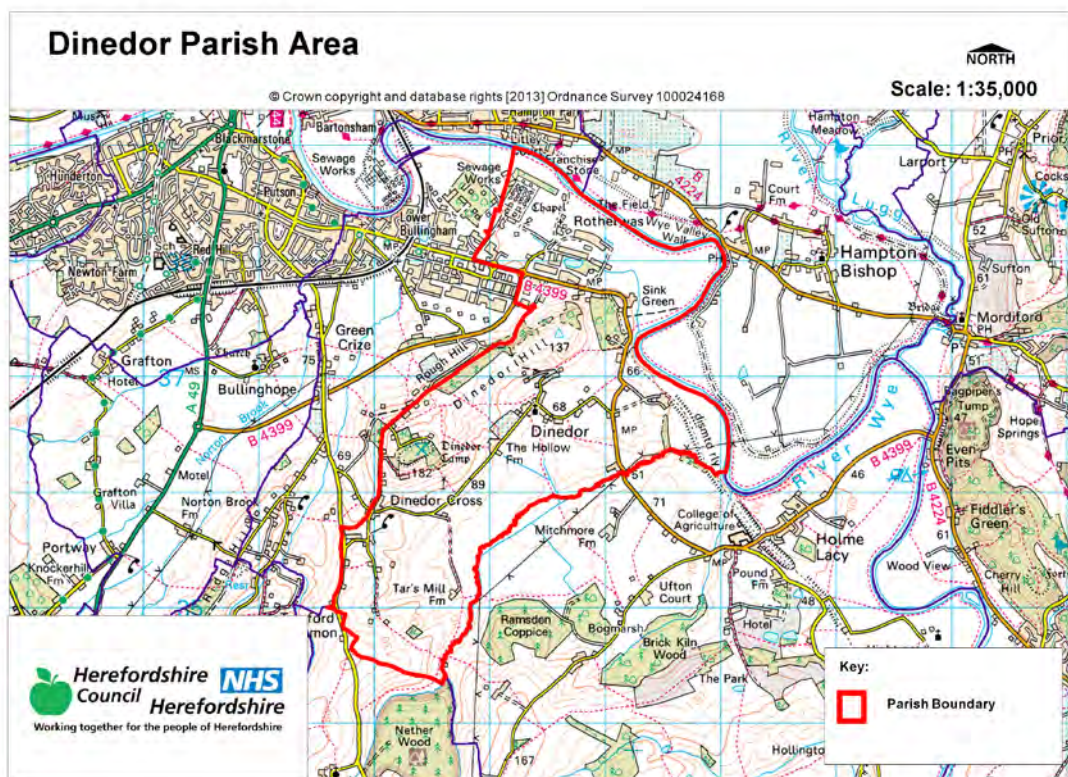
The aim of the consultation process is to involve and engage with statutory consultees and other relevant bodies on the scope of the appraisal. In particular, it seeks to:

- Ensure the SEA is both comprehensive and sufficiently robust to support the Neighbourhood Development Plan during the later stages of full public consultation;
- Seek advice on the completeness of the plan review and baseline data and gain further information where appropriate;
- Seek advice on the suitability of key sustainability issues;
- Seek advice on the suitability of the sustainability objectives.

Comments on this Scoping Report have been invited from the three consultation bodies as required by the SEA regulations, together with the Natural Resources Wales.

The three consultation bodies are as follows:

1. Natural England;
2. English Heritage;
3. Environment Agency.



Plans and Programmes	Type of document	Date	Overview	Key message, target/objective/indicator	SEA topic(s)	Implications for the NDP and SEA
The EC Conservation of Habitats and Species Regulations	European Union Legislation	2010	These regulations transpose the Habitats Directive in England, Wales and to a limited extent Scotland by ensuring that activities are carried out in accordance with the Habitats Directive, which is to protect biodiversity through the conservation of natural habitats and species of wild flora and fauna.	The Regulations make it an offence (subject to exceptions) to deliberately capture, kill, disturb, or trade in the animals listed in Schedule 2, or pick, collect, cut, uproot, destroy, or trade in the plants listed in Schedule 4. However, these actions can be made lawful through the granting of licenses by the appropriate authorities.	<ul style="list-style-type: none"> Biodiversity Cultural heritage and the landscape 	The NDP should be compliant with all the relevant legislation and regulations.
The EC Water Framework Directive	European Union	2000	Commits all EU member states to achieve good qualitative and quantitative status of all water courses by 2015.	Aims for 'good status' for all ground and surface waters (rivers, lakes, transitional waters, and coastal waters) in the EU.	<ul style="list-style-type: none"> Water 	The NDP should be compliant with all the relevant legislation and regulations.

Plans and Programmes	Type of document	Date	Overview	Key message, target/objective/indicator	SEA topic(s)	Implications for the NDP and SEA
The Wildlife and Countryside Act (1981)	Domestic Legislation	1981	The major legal instrument for wildlife protection in Britain, although other significant acts have been passed since. It has numerous parts and supplementary lists and schedules many of which have been amended since publication.	The principle mechanism for the legislative protection of wildlife in Great Britain.	<ul style="list-style-type: none"> • Biodiversity • Cultural heritage and the landscape • Flora and fauna • Material assets • Soil 	The NDP should be compliant with all the relevant legislation and regulations.
The Countryside and Right of Way Act (2000)	Domestic Legislation	2000	Creates a statutory right of access on foot to certain types of open land, to modernise the public rights of way system, to strengthen nature conservation legislation, and to facilitate better management of AONBs.	<p>The Act provides for a new right of access on foot to areas of open land comprising: Mountain (land over 600 metres); Moorland; Heath; Downland; Registered common land.</p> <p>There are provisions to consider extending the right in the future to coastal land, but not woodland despite some early publicity suggesting this.</p>	<ul style="list-style-type: none"> • Biodiversity • Cultural heritage and the landscape • Flora and fauna • Material assets • Soil 	The NDP should be compliant with all the relevant legislation and regulations.

Plans and Programmes	Type of document	Date	Overview	Key message, target/objective/indicator	SEA topic(s)	Implications for the NDP and SEA
The Natural Environment and Rural Communities Act (2006)	Domestic Legislation	2006	Designed to help achieve a rich and diverse natural environment and thriving rural communities through modernised and simplified arrangements for delivering Government policy.	Provides that any public body or statutory undertaker in England and Wales must have regard to the purpose of conservation of biological diversity in the exercise of their functions.	<ul style="list-style-type: none"> • Biodiversity • Cultural heritage and the landscape • Flora and fauna • Material assets • Soil 	The NDP should be compliant with all the relevant legislation and regulations.
Revised EU Sustainable Development strategy	EU Strategy.	2009	Sets out a single strategy on how the EU will better meet its long-standing commitment to meet the challenges of sustainable development.	Recognises the need to gradually change current unsustainable consumption and production patterns and move towards a better integrated approach to policy making. The Strategy sets overall objectives, targets and concrete actions for seven key priority challenges, predominantly environmental.	<ul style="list-style-type: none"> • Air • Biodiversity • Climatic factors • Cultural heritage • Flora and fauna • Material assets • Population • Soil • Water 	The NDP should take account of the objectives of the strategy, making the aim of sustainable development an integral part of its proposals.

Plans and Programmes	Type of document	Date	Overview	Key message, target/objective/indicator	SEA topic(s)	Implications for the NDP and SEA
National Planning Policy Framework (NPPF)	National Planning Policy.	2012	Consolidates the suite of PPG/PPS into one succinct planning policy document.	Aims to make the planning system less complex, more accessible and able to promote growth within the ethos of sustainable development. The presumption is in favour of sustainable development.	<ul style="list-style-type: none"> • Air • Biodiversity • Climatic factors • Cultural heritage • Flora and fauna • Material assets • Population • Soil • Water 	The guidance contained within the section on Neighbourhood Planning should be borne in mind during the preparation of the NDP.
Planning Practice Guidance	Government Guidance	2014	Provides guidance to local planning authorities and others on the operation of the planning system.	Offers up-to-date, electronic guidance on every aspect of planning from air quality and design to land stability and rural housing.	<ul style="list-style-type: none"> • Air • Biodiversity • Climatic factors • Cultural heritage • Flora and fauna • Material assets • Population • Soil • Water 	The NPD must be pro-growth and facilitate the provision and development of sustainable development.

Plans and Programmes	Type of document	Date	Overview	Key message, target/objective/indicator	SEA topic(s)	Implications for the NDP and SEA
Herefordshire Pre Submission Core Strategy 2011-2031	Development Plan Document (DPD)	2014	Sets out the vision, objectives and policies for the Herefordshire Local Plan (Core Strategy), which will guide development across the county up to 2031.	<p>Outlines the emerging suite of countywide planning policies relating to housing, economic development and the environment, which the NDP will need to be in conformity with where relevant.</p> <p>The Pre Submission Core Strategy includes a range of objectives, five of which directly relate to rural areas:</p> <ul style="list-style-type: none"> • To meet the housing needs of all sections of the community • To improve access to services in rural areas • To strengthen the economic viability of the villages and their rural hinterlands. • To achieve sustainable communities and protect the environment. 	<ul style="list-style-type: none"> • Air • Biodiversity • Climatic factors • Cultural heritage • Flora and fauna • Material assets • Population • Soil • Water 	<p>The NDP should take account of relevant policies set within the Core Strategy.</p> <p>Where necessary, the NDP should provide services, facilities and employment opportunities that are accessible to both local and neighbouring communities.</p>

Plans and Programmes	Type of document	Date	Overview	Key message, target/objective/indicator	SEA topic(s)	Implications for the NDP and SEA
				<ul style="list-style-type: none"> • To conserve, promote, utilise and enjoy our natural, built, historic and cultural assets for the fullest benefit of the whole community. <p>To achieve a thriving rural Herefordshire, the Core Strategy seeks to enhance the role the villages have traditionally played in as accessible, sustainable centres for their rural catchments.</p> <p>Seeks proportional levels of housing growth in Dinedor (Hereford HMA) and which will be focussed on providing smaller more affordably priced market homes for local people.</p>		

Plans and Programmes	Type of document	Date	Overview	Key message, target/objective/indicator	SEA topic(s)	Implications for the NDP and SEA
Herefordshire Local Transport Plan (LTP) 2013-2015	Corporate	2013	Sets out the Council's strategy for supporting economic growth, social inclusion and reducing the environmental impacts of transport, as well as the program of investment for the period April 2013 to April 2015.	The document includes three key objectives, one of which seeks to maintain access for rural residents and people without access to a car. Intrinsic to this is the retention of a 'core network' of bus services which focus on journeys between Hereford and the market towns, along with main transport corridors close to larger rural settlements. To this end, the strategy aims to increase the number of bus users by 1.3% (4,700 journeys) by 2015.	<ul style="list-style-type: none"> • Air • Climatic factors • Population 	The LTP does not explore current transport issues in the Dinedor neighbourhood area.

Plans and Programmes	Type of document	Date	Overview	Key message, target/objective/indicator	SEA topic(s)	Implications for the NDP and SEA
Herefordshire Economic Development Strategy 2011-2016	Corporate	2011	Aims to increase the economic wealth of Herefordshire by setting out proposals and to support business growth up to 2016.	<p>The document outlines the path and direction to foster economic vitality within Herefordshire. Key objectives therefore include:</p> <ul style="list-style-type: none"> • Sustaining business survival and growth • Increasing wage levels, range and quality of jobs • Having a skilled population to meet future work needs • Developing the county's built infrastructure so enterprise can flourish. 	<ul style="list-style-type: none"> • Cultural heritage • Material assets • Population 	None of merit.

Plans and Programmes	Type of document	Date	Overview	Key message, target/objective/indicator	SEA topic(s)	Implications for the NDP and SEA
Herefordshire Employment Land Study	Evidence	2012	Includes employment land assessments for the plan period 2011-2031. The study includes Quantitative and Qualitative assessments of employment land, assessment of market demand and need, as well as providing forecasts and recommendations for future employment need over the plan period.	<p>This study covers existing employment sites in Hereford, the five market towns and their rural hinterlands.</p> <p>There are no employment land allocations within Dinedor at present and so the study does not identify sites which are worthy of continued protection from alternative uses. Nor does it make any recommendations in respect of employment need within the neighbourhood area.</p>	<ul style="list-style-type: none"> • Material assets • Population 	None of merit; however it would be appropriate for the NDP to examine employment need locally and if so whether there is any scope for providing employment land and premises.

Plans and Programmes	Type of document	Date	Overview	Key message, target/objective/indicator	SEA topic(s)	Implications for the NDP and SEA
Herefordshire Strategic Housing Land Availability Assessment (SHLAA)	Evidence	2009	<p>The SHLAA aims to justify site allocations in plans by:</p> <ul style="list-style-type: none"> Identifying sites which are capable of delivering housing development Assessing sites for their housing potential; and Predicting when a site could be developed for housing. 	The SHLAA does not assess any sites within the neighbourhood area.	<ul style="list-style-type: none"> Air Biodiversity Climatic factors Cultural heritage Flora and fauna Population Soil Water 	If site allocations are pursued then the Dinedor NDP should be informed by some form of housing land assessment, undertaken in line with Guidance Note 21: Site assessment and allocation sites.

Plans and Programmes	Type of document	Date	Overview	Key message, target/objective/indicator	SEA topic(s)	Implications for the NDP and SEA
Herefordshire Local Housing Market Assessment (LHMA)	Evidence	2013	Builds on an earlier Strategic Housing Market Assessment (SHMA) developed for Herefordshire and Shropshire. Its purpose is to inform the Local Plan's policies regarding housing need and demand (for market and affordable housing) within each of the 7 Housing Market Areas (HMAs) in Herefordshire between 2011 and 2031.	<p>The LHMA uses 7 HMAs as the geography for presenting data. Dinedor falls within the Hereford HMA.</p> <p>Here, the study reveals that:</p> <ul style="list-style-type: none"> • 58% of households are unable to afford market housing. • There is an annual requirement for 417 affordable dwellings between 2012 and 2017. • Higher proportion of the HMA population is of working age (62%) compared to the county average of (61%). • The proportion of the population above retirement age is slightly below average (19% compared to 22% across Herefordshire). 	<ul style="list-style-type: none"> • Air • Biodiversity • Climatic factors • Cultural heritage • Flora and fauna • Population • Soil • Water 	<p>The LHMA provides an indication of housing needs and affordability within the Hereford HMA.</p> <p>It provides evidence that could be used to inform policies on market and affordable housing requirements in the NDP.</p>
<p>This document is copyright of Herefordshire Council. Please contact the Neighbourhood Planning team if you wish to reuse it in whole or part.</p>						

Plans and Programmes	Type of document	Date	Overview	Key message, target/objective/indicator	SEA topic(s)	Implications for the NDP and SEA
Herefordshire Local Housing Requirements Study	Evidence	2012	Technical assessment of the housing market and potential future local housing requirements which supports planning policy regarding the amount of growth, housing tenure and housing type needed within Herefordshire up to 2031.	<p>The delivery of 5,300 homes in the rural areas would:</p> <ul style="list-style-type: none"> • Support growth in the rural population by 6% • Increase the number of households by 14.5% <p>Forecasts also predict that growth in the population of the rural areas is likely to be primarily through an increase in those aged over 75.</p> <p>Moderate growth is expected in the 30-44 and 60-74 age brackets.</p> <p>The Local Housing Requirements Study therefore anticipates continuing improvements in life expectancy; significant growth is expected of those in their 80s, with the existing population in their 40s and 50s moving into retirement.</p>	<ul style="list-style-type: none"> • Air • Biodiversity • Climatic factors • Cultural heritage • Flora and fauna • Material assets • Population • Soil • Water 	<p>This study provides an indication of housing requirements in the rural areas and the Hereford HMA.</p> <p>This evidence can be used to inform the content of the Dinedor NDP.</p>

Plans and Programmes	Type of document	Date	Overview	Key message, target/objective/indicator	SEA topic(s)	Implications for the NDP and SEA
Herefordshire Rural Housing Background Report	Evidence	2013	Provides the background for the proportional housing growth targets outlined in the Core Strategy	Dinedor itself is not listed among the settlements which are considered to be sustainable locations for growth of up to 18%, in accordance with the EiP outcome. However, it would be appropriate for the NDP to examine housing need and requirements locally and make whatever provision is required.	<ul style="list-style-type: none"> • Air • Biodiversity • Climatic factors • Cultural heritage • Flora and fauna • Material assets • Population • Soil • Water 	The Dinedor NDP will need to be in general conformity with the provisions of Local Plan policies concerning the rural areas.

Plans and Programmes	Type of document	Date	Overview	Key message, target/objective/indicator	SEA topic(s)	Implications for the NDP and SEA
Herefordshire Draft Gypsies and Travellers Assessment	Evidence	2013	Assesses the accommodation needs of Gypsies and Travellers across Herefordshire.	<p>Key findings from the survey of Gypsy and Traveller households in 2012 found that:</p> <ul style="list-style-type: none"> • 31% of households surveyed have some sort of accommodation need • Of the 17 households with an accommodation need, 7 had a requirement for at least one additional pitch • 10 households had a requirement for bricks and mortar housing • There is an additional requirement for 7 pitches and 9 units of Registered Social Landlord accommodation within Herefordshire. 	<ul style="list-style-type: none"> • Air • Biodiversity • Climatic factors • Cultural heritage • Flora and fauna • Material assets • Population • Soil • Water 	The Dinedor NDP should establish whether any of the need identified in this assessment falls within the neighbourhood area and seek appropriate pitches and provision.

Plans and Programmes	Type of document	Date	Overview	Key message, target/objective/indicator	SEA topic(s)	Implications for the NDP and SEA
Herefordshire Local Biodiversity Action Plan	Evidence	2007	Focuses conservation efforts on the areas within Herefordshire that will result in the greatest benefit for ecological networks, habitats and species.	Integrating biodiversity objectives with other environmental, social and economic needs can provide a sustainable living and working environment that benefits both people and nature.	<ul style="list-style-type: none"> • Biodiversity 	The NDP can help to achieve the priorities set within the LBAP.
Building Biodiversity into the LDF	Evidence	2009	Provides the Council's Local Plan (Core Strategy) with evidence in respect of biodiversity and geodiversity, identifying both opportunities and constraints across Herefordshire.	The study is focused on those parts of the county which are most likely to be subject to development pressures. Therefore, although the study addresses biodiversity interests in and around the peripheries of the city of Hereford, the parish is not covered in great detail.	<ul style="list-style-type: none"> • Air • Biodiversity • Climatic factors • Cultural heritage • Flora and fauna • Material assets • Population • Soil • Water 	There is a lack of information about rural areas which means it will be necessary to gather and assess existing biodiversity and geodiversity data, in order to ensure that the Dinedor NDP can overcome any existing constraints and capitalise on opportunities to enhance habitats and their networks.

Plans and Programmes	Type of document	Date	Overview	Key message, target/objective/indicator	SEA topic(s)	Implications for the NDP and SEA
Herefordshire Green Infrastructure Strategy	Evidence	2010	Develops a framework of natural and culturally important features and functions so that planning for a sustainable future is at the heart of planning within Herefordshire.	Establishes policies and principles for the protection and enhancement of those features and functions that contributes to the environment of Herefordshire across a range of scales.	<ul style="list-style-type: none"> • Air • Biodiversity • Climatic factors • Cultural heritage • Flora and fauna • Material assets • Population • Soil • Water 	The study provides evidence that could be taken into account when preparing policies for the Dinedor NDP.
Renewable Energy Study	Evidence	2010	Assesses the energy demand within Herefordshire and the ability for the county to accommodate renewable and low carbon energy technologies.	<p>The total energy demand excluding transport for Herefordshire, at that point in time, was calculated as being:</p> <ul style="list-style-type: none"> • Electrical: 731 GWh/yr • Heat: 1,810 GWh/yr • Total: 2,541 GWh/yr <p>There is scope for all types of renewable energy production.</p>	<ul style="list-style-type: none"> • Air • Biodiversity • Climatic factors • Cultural heritage • Flora and fauna • Material assets • Population • Soil • Water 	The study provides evidence that could be taken into account when preparing policies for the Dinedor NDP.

Plans and Programmes	Type of document	Date	Overview	Key message, target/objective/indicator	SEA topic(s)	Implications for the NDP and SEA
Herefordshire Playing Pitch Assessment	Evidence	2012	Produces a strategic framework, audit and assessment and needs analysis of outdoor sports pitches and facilities for Herefordshire. The document arises as a result of a recommendation in the Herefordshire and Worcestershire Sports Facilities Framework to develop local standards for playing fields and sports pitches throughout Herefordshire.	<p>The study updates components of the Herefordshire and Worcestershire Sports Facilities Framework 2010 such as updating population forecasts, setting local standards for synthetic turf pitches and grass playing fields within Herefordshire. It identifies any current gaps in provision, and looks forward to 2031 to assess what facilities are likely to be required by that date.</p> <p>There are no pitches identified in Dinedor.</p>	<ul style="list-style-type: none"> • Biodiversity • Cultural heritage • Flora and fauna • Material assets • Population 	None of merit, but there may be local evidence of need for playing pitch provision.

Plans and Programmes	Type of document	Date	Overview	Key message, target/objective/indicator	SEA topic(s)	Implications for the NDP and SEA
Open Spaces Study	Evidence	2006	The 2006 space audit and assessment of need is a snap shot of the quality, quantity and distribution of open space across Herefordshire.	<p>The study reveals that within Hollington Ward, assessed as part of Ross-on-Wye and which includes Dinedor, there is:</p> <ul style="list-style-type: none"> • Extensive under provision of parks and gardens • Extensive over provision of natural and semi-natural green space • Extensive under provision of amenity green space and outdoor sport • Average provision for children and young people. • Extensive under provision of outdoor sports facilities. <p>In terms of Dinedor, no specific sites are identified.</p>	<ul style="list-style-type: none"> • Biodiversity • Climatic factors • Cultural heritage • Flora and fauna • Material assets • Population 	The open space audit and assessment does not give a specific indication of open space shortfalls and surpluses in the Dinedor neighbourhood area. However, there may be a need to include a policy which encourages and facilitates the provision of outdoor recreational facilities.

Plans and Programmes	Type of document	Date	Overview	Key message, target/objective/indicator	SEA topic(s)	Implications for the NDP and SEA
Play Facilities Study	Evidence	2012	The Play Facilities Study 2012 updates the previous play facilities analysis under the Open Spaces Study 2006 and provides guidance and a framework for the development, delivery and continued sustainability of providing new and improved play facilities for children and young people in Herefordshire to 2031.	In terms of Dinedor, no specific sites are identified.	<ul style="list-style-type: none"> • Biodiversity • Climatic factors • Cultural heritage • Flora and fauna • Material assets • Population 	None of merit.

Plans and Programmes	Type of document	Date	Overview	Key message, target/objective/indicator	SEA topic(s)	Implications for the NDP and SEA
Strategic Flood Risk Assessment (SFRA) and Water Cycle Study	Evidence	2009	<p>The Strategic Flood Risk Assessment (SFRA) provides a summary of flood risk in Herefordshire to inform the location of future development.</p> <p>The Water Cycle Study (WCS) examines how water resources and water supply infrastructure, wastewater treatment, water quality, sewerage and flood risk could constrain growth across Herefordshire.</p>	<p>The neighbourhood area is situated in the River Wye catchment and is not in a high risk flooding area.</p> <p>Sub-catchments within this zone are one of the most rapid response flood warning systems in the SFRA area.</p> <p>Sub-catchments within this zone record a standard percentage run off of 35-40%, which is potentially highly unsuitable for infiltration source control.</p> <p>The area has a very slow flood response (Tp-time to peak) time at around 11 hours.</p> <p>The WCS identifies 30 sites in the River Wye catchment where current discharge consent licences cannot be shown to have no adverse effect.</p>	<ul style="list-style-type: none"> • Biodiversity • Climatic factors • Material assets • Population • Water 	<p>New development proposed through the Dinedor NDP should be assessed against the capacity of local infrastructure.</p> <p>Up-to-date flood risk information should be gathered from the Environment Agency, in order to ensure that any flood risks are considered when preparing the Dinedor NDP.</p>

Appendix A2 – Baseline information for Dinedor

N.B. This is based on countywide baseline information with some additions relevant to Dinedor (in red). Where no locally specific data is available for current status, trends and targets, only countywide data is reported. Any gaps in data may be filled following additional research.

SA Objective ¹	SA Theme	Proposed indicator	Current status	Trends	Targets	Issues and constraints	Baseline (information) source
SEA Topic covered by objective: <i>Biodiversity, flora and fauna</i>							
13. Value, maintain, restore and expand county biodiversity.	Natural environment	Net change in condition of SSSIs across Herefordshire.	Condition of SSSIs within Dinedor: <ul style="list-style-type: none"> River Wye (Unfavourable but recovering) 	Percentage of SSSI land in favourable condition. 2006: 22% 2007: 22% 2008: 22% 2010: 24% 2011: 27% Proportion of SSSI land that was in unfavourable condition but recovering increased between 2010 and 2012 going from 41% to 65%.	% of SSSI land in favourable condition (Increase) % of SSSI land in unfavourable condition but recovering (Increase) % of SSSI land in unfavourable condition and declining (Decrease)	Herefordshire's SSSIs are in extremely poor condition relative to England as whole, where 96.1% of all SSSI land was in favourable condition in April 2014. The proportion of SSSI in unfavourable condition but recovering is greater than England as a whole, where the figure currently stands at 58.6%.	NE & Defra website (search July 2014).

¹ Derived from the Pre Submission Core Strategy Sustainability Appraisal Assessment (May 2014)

SA Objective ¹	SA Theme	Proposed indicator	Current status	Trends	Targets	Issues and constraints	Baseline (information) source
				Proportion in unfavourable and declining condition had also decreased from 4% to 1%.			
13. Value, maintain, restore or expand county biodiversity.	Natural environment	After use of mineral sites especially wildlife habitat creation.	<i>There is no countywide or locally specific data available at present.</i>	-	No specific targets identified.	Should be monitored through AMR following the adoption of the Core Strategy, in line with SA recommendations.	-

SA Objective ¹	SA Theme	Proposed indicator	Current status	Trends	Targets	Issues and constraints	Baseline (information) source
13. Value, maintain, restore or expand county biodiversity.	Natural environment	Phosphate levels within the River Wye SAC and adjoining tributaries that receive increased phosphates from proportional growth.	The existing status of the Wye SAC between the Hay and Lugg confluence is currently meeting its phosphate and conservation targets.	The River Wye SAC was subject to a review of consents in 2010, as a number of sections of the river were found to have greater phosphate levels than those identified in Natural England's favourable condition tables.	The roll out of the Nutrient Management Plan will determine future targets.	New development within the area could lead to the water quality failing the phosphate levels and conservation objectives.	Nutrient Management Plan (2014)

SA Objective ¹	SA Theme	Proposed indicator	Current status	Trends	Targets	Issues and constraints	Baseline (information) source
13. Value, maintain, restore or expand county biodiversity.	Natural environment	Changes to protected habitats and impacts of species within the Herefordshire Local Biodiversity Action Plan.	The 2011-2013 AMR does not contain updated conservation data. <i>There is no locally specific data available at present.</i>	2010/11: 17 Habitat Action Plans and 14 Species Action Plans are currently in operation across Herefordshire. There are no formal records of any unacceptable adverse impacts on habitats or protected species. Originally 156 Priority Species were identified for inclusion in Herefordshire's LBAP. Similarly Herefordshire's LBAP covered 23 habitats with Action Plans.	No specific targets identified.	Herefordshire Biological Records Centre (HBRC) holds limited data on some individual sites.	-

This document is copyright of Herefordshire Council. Please contact the Neighbourhood Planning team if you wish to reuse it in whole or part.

SA Objective ¹	SA Theme	Proposed indicator	Current status	Trends	Targets	Issues and constraints	Baseline (information) source
13. Value, maintain, restore or expand county biodiversity.	Natural environment	Changes in the areas of designated nature conservation sites as a consequence of planning permission.	Dinedor has: SAC: 1² SSSI: 1 SWS: 3 There are no SINCl, NNRs, and LNRs within the parish.	As of 2012, there had been no change in the areas of designated nature conservation sites as a consequence of the planning permissions granted.	To capitalise on opportunities to protect or enhance the areas of value to nature conservation.	Should be monitored through AMR following the adoption of the Core Strategy, in line with SA recommendations.	NDP SEA/HRA Screening Notification Report (October 2013)
13. Value, maintain, restore or expand county biodiversity.	Natural environment	Proportion of local sites where positive conservation management has or is being implemented.	<i>There is no countywide or locally specific data available at present.</i>	-	No specific targets identified.	Should be monitored through AMR following the adoption of the Core Strategy, in line with SA recommendations.	-

² View SEA/HRA Screening Notification Report for further details.

SA Objective ¹	SA Theme	Proposed indicator	Current status	Trends	Targets	Issues and constraints	Baseline (information) source
SEA Topic covered by objectives: <i>Material assets</i>							
14. Use natural resources and energy more efficiently.	Resource consumption and climate change	Maintaining Herefordshire Council's County Site and Monuments Register.	Countywide data would be too large to incorporate into this template. Whilst there is no locally specific data available at present, there are numerous scheduled monuments in Dinedor according to the latest version of the register.	-	No specific targets identified, but need to ensure that the register is kept up to date.	Should be monitored through AMR following the adoption of the Core Strategy, in line with SA recommendations.	Herefordshire Environmental Records Register (searched July 2014).

SA Objective ¹	SA Theme	Proposed indicator	Current status	Trends	Targets	Issues and constraints	Baseline (information) source
14. Use natural resources and energy more efficiently.	Resource consumption and climate change	Monitoring changes to historic landscapes.	<p>Historic Landscape Character assessments have only been undertaken for Hereford City.</p> <p>Rapid townscape Assessments (2010) were only undertaken for Hereford, Ledbury and Ross.</p> <p><i>There is no locally specific data available at present.</i></p>	-	No specific targets identified.	Should be monitored through AMR following the adoption of the Core Strategy, in line with SA recommendations	-

SA Objective ¹	SA Theme	Proposed indicator	Current status	Trends	Targets	Issues and constraints	Baseline (information) source
SEA Topic covered by objective: <i>Population, Biodiversity, Flora and Fauna</i>							
15. Value, protect, enhance or restore the landscape quality of Herefordshire, including its rural areas and open spaces.	Natural environment	Number of developments meeting and surpassing national design standards.	<i>There is no countywide or locally specific data available at present.</i>	-	No specific targets identified.	Should be monitored through AMR following the adoption of the Core Strategy, in line with SA recommendations.	-

SA Objective ¹	SA Theme	Proposed indicator	Current status	Trends	Targets	Issues and constraints	Baseline (information) source
15. Value, protect, enhance or restore the landscape quality of Herefordshire, including its rural areas and open spaces.	Natural environment	The need for, frequency and outcomes of planning enforcement investigations/ planning appeals concerning the aspects of local loss of locally important buildings within a conservation area.	There are no conservation areas within the neighbourhood area.	N/A	N/A	N/A	N/A

This document is copyright of Herefordshire Council. Please contact the Neighbourhood Planning team if you wish to reuse it in whole or part.

SA Objective ¹	SA Theme	Proposed indicator	Current status	Trends	Targets	Issues and constraints	Baseline (information) source
SEA Topic covered by objective: <i>Climatic Factors</i>							
16. Reduce Herefordshire's vulnerability to the impacts of climate change as well as its contribution to the problem.	Resource consumption and climate change.	Transport patronage by mode.	% of Herefordshire residents who travel to work by: Car: 70.1% Foot: 14.7% Bicycle: 4.3% Bus: 2% Train: 0.8% Motorbike: 0.8% Taxi: 0.3% Other: 7% <i>There is no locally specific data available at present</i>	The number of people cycling or travelling by bus as the main form transport to get to work declined between 2001 and 2011 – across England and Wales there was little change in either. Walking or driving a car or van on the other hand increased.	To encourage the take up of less polluting forms of transport.	There are a lack of transport options for many rural communities and therefore high car ownership and dependency – the last decade has seen a 15 per cent increase in household car ownership, although this is not reflected in traffic flows of recent years with volumes in Hereford City and wider county having decreased. The proportion of people working from home increased over the decade from 15 per cent in 2001 to 17 per cent in 2011.	2011 Census

SA Objective ¹	SA Theme	Proposed indicator	Current status	Trends	Targets	Issues and constraints	Baseline (information) source
16. Reduce Herefordshire's vulnerability to the impacts of climate change as well as its contribution to the problem.	Resource consumption and climate change.	Number of decentralised energy schemes granted permission.	<i>There is no countywide or locally specific data available at present.</i>	-	To contribute towards the national target.	Should be monitored through AMR following the adoption of the Core Strategy, in line with SA recommendations.	-

SA Objective ¹	SA Theme	Proposed indicator	Current status	Trends	Targets	Issues and constraints	Baseline (information) source
16. Reduce Herefordshire's vulnerability to the impacts of climate change as well as its contribution to the problem.	Resource consumption and climate	Total CO2 emissions per capita	Latest figure dates back to 2010: 1.61 million tonnes (mtCO ₂) <i>There is no locally specific data available at present.</i>	Between 2005 and 2010 Herefordshire's total and per capita carbon emission reduced by 7% and 8% respectively; while UK's total and per capita carbon emission reduced by 8% and 12% respectively within the same period. This trend hides an increase in emissions between 2009 and 2010 when total emissions in the county increased by 5% the same as across the UK (+5%).	To reduce the overall carbon emissions.	CO ₂ emissions produced are decreasing.	Understanding Herefordshire: An integrated needs assessment (June 2013).

SA Objective ¹	SA Theme	Proposed indicator	Current status	Trends	Targets	Issues and constraints	Baseline (information) source
SEA Topic covered by objective: <i>Water</i>							
17. Reduce the risk of flooding and the resulting detriment to public wellbeing, the economy and the environment.	Natural environment	Number of planning permissions granted contrary to the advice of the Environment Agency on flood defence grounds.	The 2011-2013 AMR does not contain updated conservation data. <i>There is no locally specific data available at present.</i>	2010/11: None There have been no approvals contrary to EA advice since reporting began in 2004.	To have no applications permitted contrary to EA advice.	Should be monitored through AMR following the adoption of the Core Strategy, in line with SA recommendations.	-
SEA Topic covered by objective: <i>Water, air, soil, material assets</i>							
18. Minimise local and global pollution and protect or enhance environmental resources.	Natural environment	Agricultural land usage by quality	<i>There is no countywide data available at present.</i> 2011: The majority of land within the neighbourhood area was listed Grade 2 (Good) or Grade 3 (Good to Moderate) for its agricultural quality.	-	No specific targets identified.	Should be monitored through AMR following the adoption of the Core Strategy, in line with SA recommendations.	West Midland ALC Map (Natural England 2011).

SA Objective ¹	SA Theme	Proposed indicator	Current status	Trends	Targets	Issues and constraints	Baseline (information) source
18. Minimise local and global pollution and protect or enhance environmental resources.	Natural environment	Percentage of river length assessed as good or very good chemical quality and ecological quality as required by the Water Framework Directive	Latest figure dates back to 2005: 84% <i>There is no locally specific data available at present.</i>	Figure steadily improved before going into decline: Herefordshire 1999 85.9%, 2000 89.5%, 2001 92.2%, 2002 91.8%	To ensure that rivers meet their conservation objectives and do not fall below the required standard of quality.	None identified.	The State of Herefordshire Report (2007) Water Framework Directive (2000)
SEA Topic covered by objective: <i>Soil</i>							
19. Ensure integrated, efficient and balanced land use.	Built environment	Percentage of all new development completed on previously developed land.	2011/13: 57% <i>There is no locally specific data available at present.</i>	2010/11: 67% Completions on PDL had risen to 71% by 2005.	To increase the number of homes built on PDL in line with the provisions of national planning policy.	The number of brownfield completions has fallen slightly in recent years, though this is probably the offshoot of tough market conditions.	Herefordshire Council AMR (2011/13)
19. Ensure integrated, efficient and balanced land use.	Built environment	Housing densities in urban and rural areas	<i>There is no countywide or locally specific data available at present.</i>	-	No specific targets identified.	Should be monitored through AMR following the adoption of the Core Strategy, in line with SA recommendations.	-

SA Objective ¹	SA Theme	Proposed indicator	Current status	Trends	Targets	Issues and constraints	Baseline (information) source
19. Ensure integrated, efficient and balanced land use.	Built environment	Level of development in urban areas compared to rural.	<i>There is no countywide or locally specific data available at present.</i>	-	No specific targets identified.	Should be monitored through AMR following the adoption of the Core Strategy, in line with SA recommendations.	-
SEA Topic covered by objective: <i>Cultural heritage</i>							
20. Value, protect or enhance the character and built quality of settlements and neighbourhoods and the county's heritage assets, historic environment and cultural heritage.	Built environment	Number and percentage of listed buildings and Scheduled Ancient Monuments on Buildings at Risk Register (English Heritage).	The 2011-2013 AMR does not contain updated conservation data. There are numerous listed buildings within the parish and 4 SAMs, none of which are currently recorded in the Buildings at Risk Register.	In 2011, there were 58 heritage assets in Herefordshire that were considered to be at high risk and included in the Heritage at Risk Register.	To maintain or enhance current status.	None of the incumbent listed buildings or SAMs are considered to be at risk at present.	Buildings at Risk Register (English Heritage; searched July 2014)

SA Objective ¹	SA Theme	Proposed indicator	Current status	Trends	Targets	Issues and constraints	Baseline (information) source
20. Value, protect or enhance the character and built quality of settlements and neighbourhoods and the county's heritage assets, historic environment and cultural heritage.	Built environment	The need for, frequency and outcomes of planning enforcement investigations/ planning appeals concerning the aspects of local loss of heritage assets, locally important buildings across the Parish and particularly within a conservation area.	There are no conservation areas within the neighbourhood area.	N/A	N/A	N/A	N/A

Appendix A3 – Environmental issues identified from the Dinedor baseline

These environmental issues are the same as most of those identified for the Herefordshire Core Strategy¹

SEA Topic		Environmental issue	SA objectives
1	Air	High reliance upon the private car causing high levels of air pollution and in Hereford in particular	Objective 16
		Need to reduce carbon emissions by encouraging less polluting forms of transport.	
2	Biodiversity	Habitats and species of national, regional and local importance are under pressure from the adaptation and diversification of farming and forestry employment.	Objectives 13 &15
		Habitats and species of national, regional and local importance are under pressure from development	
		Minimise loss of biodiversity and expand opportunities for wildlife everywhere.	
3	Climatic factors	Reduce greenhouse gas emissions through planning, design and build.	Objective 16
4	Cultural heritage	Dinedor has 4 Scheduled Ancient Monuments and numerous Listed Buildings, all of which require ongoing protection and many in need of high levels of maintenance.	Objective 20
5	Flora and fauna	Conserve and enhance the character and quality of historic landscapes, including all types of natural flora and fauna.	Objective 15
6	Material assets	How the countryside can continue to be managed in an economically, socially and environmentally beneficial way in the face of continuing pressures on traditional farming.	Objectives 14 & 18
7	Population	Minimise energy waste through good designs, which help to reduce energy consumption and maximise efficiency.	Objective 15
		Need to avoid enforcement investigations/action concerning locally important buildings and those within conservation areas in particular.	
8	Soil	Promoting development of previously developed land and buildings as opposed to greenfield sites or agricultural land of the highest quality.	Objectives 18 & 19
9	Water	Issues relating to availability of resources, foul drainage, pollution, and abstraction in a county which supports water dependent biodiversity of international and national importance, given the predicted climate change consequences for water availability and demanding projections for new housing.	Objectives 17 & 18

¹ Derived from the Pre Submission Core Strategy Sustainability Appraisal Assessment (May 2014) and LDF General Scoping Report (June 2007)

		Steady decline in the chemical quality of rivers over the last 10 years.	
--	--	--	--

Appendix A4 – SEA framework (objectives, indicators and targets)

SEA Topic(s)	SA Objective(s)	Sub-objectives/Appraisal Questions	Indicators	Targets
Air	<ul style="list-style-type: none"> Minimise local and global pollution and protect or enhance environmental resources. 	<ul style="list-style-type: none"> Minimise water, air, soil, groundwater, noise and light pollution from current activities and the potential for such pollution. Protect and enhance the quality of watercourses. Provide opportunities to improve soil quality or reduce contaminated land. 	Transport patronage by mode.	To encourage the take up of less polluting forms of transport.
Biodiversity, Flora and fauna	<ul style="list-style-type: none"> Value, maintain, restore or expand county biodiversity. Value, protect, enhance or restore the landscape quality of Herefordshire, including its rural areas and open spaces. 	<ul style="list-style-type: none"> Protect or enhance habitats of international, national, regional or local importance. Protect international, national, regional or locally important terrestrial or aquatic species. Maintain wildlife corridors and minimise fragmentation of ecological areas and green spaces. Manage access to sites in a sustainable way that protects or enhances their nature conservation value. 	Net change in condition of SSSIs across Herefordshire.	% of SSSI land in favourable condition (Increase) % of SSSI land in unfavourable condition but recovering (Increase) % of SSSI land in unfavourable condition and declining (Decrease)
			After use of mineral sites especially wildlife habitat creation.	No specific targets identified.

SEA Topic(s)	SA Objective(s)	Sub-objectives/Appraisal Questions	Indicators	Targets
		<ul style="list-style-type: none"> • Create new appropriate habitats. • Value, enhance and protect natural environmental assets including AONB's, historic landscapes, open spaces, parks and gardens and their settings • Encourage local stewardship of local environments, for example by promoting best practices in agricultural management. • Ensure that environmental impacts caused by mineral operations and the transport of minerals are minimised. • Promote the use of rural areas and open space by all, encourage easy non-car based access, and accommodate the needs of disabled users. 	Phosphate levels within the River Wye SAC and adjoining tributaries that receive increased phosphates from proportional growth.	The roll out of the Nutrient Management Plan will determine future targets.
			Changes to protected habitats and impacts of species within the Herefordshire Local Biodiversity Action Plan.	No specific targets identified.
			Changes in the areas of designated nature conservation sites as a consequence of planning permission.	To capitalise on opportunities to enhance the areas of value to nature conservation.
			Proportion of local sites where positive conservation management has or is being implemented.	The number of local sites under positive conservation management (Increase).

SEA Topic(s)	SA Objective(s)	Sub-objectives/Appraisal Questions	Indicators	Targets
Climatic factors	<ul style="list-style-type: none"> Reduce Herefordshire's vulnerability to the impacts of climate change as well as its contribution to the problem. 	<ul style="list-style-type: none"> Reduce the county's contribution to climate change by reducing greenhouse gas emissions from transport, domestic, commercial and industrial sources. Increase the proportion of energy generated from renewable and low carbon sources including by micro-generation, Combined Heat and Power (CHP), district heating and in transportation. 	Number of decentralised energy schemes granted permission.	To contribute towards the national target.
			Total CO2 emissions per capita.	To reduce the overall carbon emissions.
Cultural heritage	<ul style="list-style-type: none"> Value, protect or enhance the character and built quality of settlements and neighbourhoods and the county's heritage assets, historic environment and cultural heritage. 	<ul style="list-style-type: none"> Preserve, protect and enhance Conservation Areas, Listed Buildings, archaeological remains, and other features and areas of historical heritage and cultural value e.g. locally listed buildings. Prevent development which is inappropriate in scale, form or design to its setting or to its function or local area. Encourage development that creates and sustains well-designed, high quality built environments that incorporate green space, encourage biodiversity and promote local distinctiveness and sense of place. Encourage cleanliness and/or improve the general appearance of 	Number and percentage of listed buildings and Scheduled Ancient Monuments on Buildings at Risk Register (English Heritage).	To maintain or enhance current status in Dinedor.
			The need for, frequency and outcomes of planning enforcement investigations/ planning appeals concerning the aspects of local loss of heritage assets, locally important buildings across the Parish and particularly within a conservation area.	N/A

SEA Topic(s)	SA Objective(s)	Sub-objectives/Appraisal Questions	Indicators	Targets
		the area.		
Material assets	<ul style="list-style-type: none"> • Use natural resources and energy more efficiently. • Minimise local and global pollution and protect or enhance environmental resources. 	<ul style="list-style-type: none"> • Maximise energy efficiency and minimise the consumption of non-renewable energy i.e. from fossil fuels. 	Maintaining Herefordshire Council's County Site and Monuments Register.	No specific targets identified, but need to ensure that the register is kept up to date.
			Monitoring changes to historic landscapes.	No specific targets identified.

SEA Topic(s)	SA Objective(s)	Sub-objectives/Appraisal Questions	Indicators	Targets
		<ul style="list-style-type: none"> • Minimise the consumption of water, land, soil, minerals, aggregates and other raw materials by all? E.g. through integrated transport, sustainable resource-efficient design, local sourcing of food, goods, materials. • Encourage the re-use/enhancement (to high standards of sustainable resource-efficient design) of existing buildings and minimise the need for new build. • Encourage the use of clean technologies and water minimisation techniques. 	Agricultural land usage by quality	No specific targets identified.

SEA Topic(s)	SA Objective(s)	Sub-objectives/Appraisal Questions	Indicators	Targets
Population	<ul style="list-style-type: none"> Value, protect, enhance or restore the landscape quality of Herefordshire, including its rural areas and open spaces. 	<ul style="list-style-type: none"> Value, enhance and protect natural environmental assets including AONB's, historic landscapes, open spaces, parks and gardens and their settings. Encourage local stewardship of local environments, for example by promoting best practices in agricultural management. Ensure that environmental impacts caused by mineral operations and the transport of minerals are minimised. Promote the use of rural areas and open space by all, encourage easy non-car based access, and accommodate the needs of disabled users. 	Number of developments meeting and surpassing national design	No specific targets identified.
			The need for, frequency and outcomes of planning enforcement investigations/ planning appeals concerning the aspects of local loss of locally important buildings within a conservation area.	N/A

SEA Topic(s)	SA Objective(s)	Sub-objectives/Appraisal Questions	Indicators	Targets
Soil	<ul style="list-style-type: none"> Minimise local and global pollution and protect or enhance environmental resources. Ensure integrated, efficient and balanced land use. 	<ul style="list-style-type: none"> Minimise water, air, soil, groundwater, noise and light pollution from current activities and the potential for such pollution. Provide opportunities to improve soil quality or reduce contaminated land. Ensure new developments are in appropriate locations, optimising the use of previously developed land and buildings, primarily focussed on the urban areas and are accessible by walking, cycling or sustainable transport and/or will increase the share of these transport modes, thereby reducing the need to travel. 	Percentage of all new development completed on previously developed land.	To increase the number of homes built on PDL in line with the provisions of national planning policy.
			Housing densities in urban and rural areas.	No specific targets identified.

SEA Topic(s)	SA Objective(s)	Sub-objectives/Appraisal Questions	Indicators	Targets
Water	<ul style="list-style-type: none"> Reduce the risk of flooding and the resulting detriment to public well-being, the economy and the environment. Minimise local and global pollution and protect or enhance environmental resources. 	<ul style="list-style-type: none"> Reduce flood risk both presently and taking into account climate change. Prevent inappropriate development of the floodplain, and include flood protection systems. Include sustainable urban drainage systems where appropriate. Minimise water, air, soil, groundwater, noise and light pollution from current activities and the potential for such pollution. Protect and enhance the quality of watercourses. 	Number of planning permissions granted contrary to the advice of the Environment Agency on flood defence grounds.	To have no applications permitted contrary to EA advice.
			Percentage of river length assessed as good or very good chemical quality and ecological quality.	To ensure that rivers meet their conservation objectives and do not fall below the required standard of quality, as set out in the Water Framework Directive.

Appendix 3



ENGLISH HERITAGE

WEST MIDLANDS REGION

Neighbourhood Planning Team
Herefordshire Council
Planning Services
PO Box 230
Blueschool House
Blueschool Street
Hereford
HR1 2ZB.

Our ref:
Your ref:

Telephone 0121 625 6887
Fax 0121 625 6820

27 October 2014

Dear Sir or Madam

CONSULTATION ON SEA SCOPING REPORTS FOR NEIGHBOURHOOD PLANS IN: Abbeydore & Bacton, Ewyas Harold Group & Kentchurch; Bodenham; Colwall; Cusop; Dinedor; Llangarron; Lower Bullingham; Much Marcle; Ross on Wye and Ross Rural.

Thank you for your e-mails and the invitation to comment on the SEA Scoping Reports for the Neighbourhood Plans listed above. We have no substantive objection to the contents of the documents. However, having considered the above Neighbourhood Plans please note that overall our comments and recommendations to you in relation to these remain substantively the same as those which we communicated to you in our letter of the 15th August 2014 in response to the first tranche of SEA Scoping Reports. We urge you to refer back to and consider these representations before finalizing the reports in relation to the above Neighbourhood Plans also.

Specifically in relation to the fifth tranche of consultations we note that all of the SEA Scoping Reports appear to have anomalous references to SAM's, the Herefordshire SMR, monitoring changes to historic landscapes and historic landscape character assessments in relation to SA Objective 14 "Use natural resources and energy more effectively". Presumably this is unintentional? Is there some confusion as between the Herefordshire Sites and Monuments Register and the Herefordshire Environmental Records Register? Would these elements in fact be more relevant under SA Objectives 15 and 20?

I hope this is helpful.

Yours faithfully

Pete Boland
Historic Places Adviser
E-mail: peter.boland@english-heritage.org.uk

Date: 21 November 2014
Our ref: Various
Your ref: Neighbourhood Area SEA Scoping



Mr J. Latham
Technical Support Officer
Neighbourhood Planning, Strategic Planning & Conservation teams
Herefordshire Council
Planning Services,
Blueschool House,
Blueschool Street
Hereford,
HR1 2ZB

Customer Services
Hornbeam House
Crewe Business Park
Electra Way
Crewe
Cheshire
CW1 6GJ

T 0300 060 3900

BY EMAIL ONLY

Dear Mr Latham

Neighbourhood Plan Strategic Environmental Assessment Scoping and Habitat Regulations Assessment Screening for:

Abbeydore and Bacton, Ewyas Harold Group and Kentchurch (NE ref:133596)
Bodenham (NE Ref:133598)
Colwall (NE Ref: 133599)
Cusop (NE Ref: 133600)
Dinedor (NE Ref:133602)
Llangarron (NE Ref: 133603)
Lower Bullingham (NE Ref:133604)
Much Marcle (NE Ref:133605)
Ross on Wye & Ross Rural (NE Ref:133606)

Thank you for your consultation on the above dated and received by Natural England on 03 October 2014.

Natural England is a non-departmental public body. Our statutory purpose is to ensure that the natural environment is conserved, enhanced, and managed for the benefit of present and future generations, thereby contributing to sustainable development.

We welcome the production of this SEA Scoping report. With respect to the natural environment Natural England wishes to make the following comments which are intended to further improve the SEA and its usefulness in assessing the Neighbourhood Plan.

Appendix A1 – Plans, policies and programmes

In addition to the plans, policies and programmes listed, we suggest that the following are relevant and should be added:

All

- [Natural Environment White Paper](#)
- [Biodiversity 2020](#)

Bodenham

Colwall

Cusop

- The EC Conservation of Habitats and Species Regulations
- The EC Water Framework Directive
- The Wildlife and Countryside Act (1981)
- The Countryside and Right of Ways Act (2000)
- The Natural Environment and Rural Communities Act (2006)
- Understanding Herefordshire Report
- Herefordshire Local Biodiversity Action Plan

Dinedor

Lower Bullingham

Much Marcle

- Wye Valley AONB Management Plan 2009-2014

We also note the following:

Abbeydore and Bacton, Ewyas Harold Group and Kentchurch

Bodenham

Llangarron

- The date for Herefordshire Core Strategy, Presubmission document 2011-2031, is 2013. The presubmission document has been updated since.

Bodenham,

- In the key messages, target/ objective/indicator of Herefordshire Strategic Housing Land Availability Assessment (SHLAA) it needs to be clearer how many sites are affected rather than stating ??.

Appendix A2 – Baseline information

Biodiversity, flora and fauna

Abbeydore and Bacton, Ewyas Harold Group and Kentchurch

Under 13. Value, maintain, restore and expand county biodiversity- Net change in condition of SSSIs across Herefordshire, it states that Wormbridge Common SSSI and Chanstone Wood SSSI are within the Abbeydore and Bacton but they are not within these parish boundaries though they are within 1km of the Neighbourhood plan area.

Bodenham

Colwall

Cusop

Llangarron

Lower Bullingham

Ross on Wye and Ross Rural

Under the proposed indicator “*Changes to protected habitats and impacts of species within the Herefordshire Local Biodiversity Action Plan*”, we advise an additional baseline information source - Maps of priority habitats and species are available on *Magic*, Defra’s GIS package for environmental assets (www.natureonthemap.naturalengland.org.uk).

Lower Bullingham

Lower Marcle

Ross on Wye and Ross Rural

Baseline information on the proposed indicator Changes to Protected habitats and impacts of species within the Herefordshire Local Biodiversity Action Plan needs to be included and we advise you could refer to the Herefordshire Council AMR (2010/11).

All

Baseline information on the landscape and open spaces needs to be included under SA objective 15: *“Value, protect, enhance and restore the landscape quality of Herefordshire, including its rural areas and open spaces”*. We would welcome a reference to the Historic Landscape Characterisation for Hereford and also reference could also be made to the county Landscape Character Assessment.

Water, air, soil and material assets

All

This section (or suitable alternative) should include information on geodiversity. The baseline and assessment should make reference to geological conservation and the need to conserve, interpret and manage geological sites and features, both in the wider environment and in relation to designated features. The Herefordshire & Worcestershire Earth Heritage Trust may be of assistance.

Dinedor

Llangarron

Lower Bullingham

In topic “Water, air, soil, material assets”- 18. Minimise local and global pollution and protect or enhance environmental resources, a distinction should be made between soil Grade 3a and 3b. The best and most versatile land is defined as Grades 1, 2 and 3a by policy guidance (see Annex 2 of NPPF).

Soil

All

We note that the best and most versatile agricultural land has not been considered. We suggest including an indicator to monitor the hectares of the best and most versatile agricultural land lost to development.

To assist in understanding agricultural land quality within the plan area and to safeguard ‘best and most versatile’ agricultural land in line with paragraph 112 of the National Planning Policy Framework, strategic scale Agricultural Land Classification (ALC) Maps are available. Natural England also has an archive of more detailed ALC surveys for selected locations. Both these types of data can be supplied digitally free of charge by contacting Natural England. Some of this data is also available on the www.magic.gov.uk website. The planning authority should ensure that sufficient site specific ALC survey data is available to inform decision making.

Appendix A3 – Environmental issues identified from the baseline

All

Natural England welcomes the environmental issues identified.

Appendix A4 – SEA Framework

All

Under the SEA topic “ Nature Conservation” we would welcome the inclusion of an indicator/target around the impact/benefit to ecological networks (NPPF paragraph 109, 113 and 117). We note that no targets have been identified against the indicator *“After use of mineral sites especially wildlife*

habitat creation”; we suggest that perhaps the percentage of opportunities taken could be monitored.

Under SEA topic “*material assets*”, there are no targets identified against the indicator “*monitoring changes to the historic landscape*”. We suggest that the LPA could utilise Historic Landscape Characterisation studies and monitor the number of applications permitted despite a significant impact on the landscape having been identified.

Dinedor

Lower Bullingham

Ross on Wye and Ross Rural

Under the SEA topic “*Nature Conservation*” we would welcome the inclusion of sub objective “*value, enhance and protect natural environmental assets including AONB’s, historic landscapes, open spaces, parks and gardens and their settings*” but note that no indicators or targets have been identified.

Abbeydore & Bacton, Ewyas Harold Group & Kentchurch

Bodenham

Colwall

Cusop

Under the SEA topic “*Landscape*” reference could be made to the county Landscape Character Assessment and Landscape Characterisation studies including Historic Landscape Characterisation if this has been carried out.

Habitats Regulations Assessment Screening

We would remind you of one of the basic conditions that a draft neighbourhood plan or Order must meet, as set out in the Neighbourhood Planning Regulations 2012, which states that ‘The making of the neighbourhood development plan is not likely to have a significant effect on a European site’.

Abbeydore and Bacton, Ewyas Harold Group and Kentchurch

Colwall

We welcome this initial assessment and agree that a full Habitat Regulations Assessment Screening is not required.

Bodenham

Cusop

Dinedor

Lower Bullingham

We welcome this initial assessment and agree that a full screening exercise will be required to assess the impacts on the River Wye Special Area of Conservation (SAC).

Llangorran

We welcome this initial assessment and agree that a full screening exercise will be required to assess the impacts on the River Wye SAC and Wye Valleys Woodlands SAC

Much Marcle

We welcome this initial assessment and agree that a full screening exercise will be required to assess the impacts on the Wye Valley & Forest of Dean Bat Sites SAC).

Ross on Wye and Ross Rural

We welcome this initial assessment and agree that a full screening exercise will be required to assess the impacts on the River Wye SAC, Wye Valley & Forest of Dean Bat Sites SAC and Wye Valleys Woodlands SAC.

We would be happy to comment further should the need arise but if in the meantime you have any queries please do not hesitate to contact us.

For any queries relating to the specific advice in this letter only please contact Gillian Driver on 0300 060 4335. For any new consultations, or to provide further information on this consultation please send your correspondences to consultations@naturalengland.org.uk.

We really value your feedback to help us improve the service we offer. We have attached a feedback form to this letter and welcome any comments you might have about our service.

Yours sincerely

Gillian Driver

Miss Gillian Driver
Planning Adviser
South Mercia Team

Appendix 4

Objectives verses SEA Objectives (SMART and Compatibility Test)				
SEA Stage B1	Key:	SMART criteria:		
+ =/++	Compatible/ Very comp	S – Specific:	NDP objectives should specify what is intended to be done in detail and should not be open to a wide range of misinterpretations	The following matrix appraises the emerging Dinedor NDP Objectives in terms of their SMART criteria and their compatibility with the SEA Objectives. These have been developed from Government guidance on SEA and from the local evidence base gathered for identifying the NDP issues.
- =	Possible conflict	M – Measurable:	It should be possible to monitor NDP objectives in a quantifiable way, by the use of indicators. Indicators should be measurable with limited resource implications.	
0 =	Neutral	A – Attainable/achievable:	NDP objectives should be achievable and deliverable, related to the scale of growth proposed	
X =	No relationship between objectives	R – Realistic:	NDP objectives should relate to the overall vision of the plan. Likewise, chosen indicators should relate to objectives and their outcomes.	
? =	Unclear, more information needed	T – Time-Bound:	Objectives should be specific to the NDP period or another specified time-frame. Objectives should be associated with a target and indicators should specify when the target should be achieved.	

- SEA Objectives**
- 1- To maintain and enhance nature conservation (biodiversity, flora and fauna)
 - 2- To maintain and enhance the quality of landscapes and townscapes
 - 3- To improve quality of surroundings
 - 4- To conserve and where appropriate enhance the historic environment and culture heritage
 - 5- To improve air quality
 - 6- To reduce the effect of traffic on the environment
 - 7- To reduce contributions to climate change
 - 8- To reduce vulnerability to climate change
 - 9- To improve water quality
 - 10- To provide for sustainable sources of water supply
 - 11- To avoid, reduce and manage flood risk
 - 12- To conserve soil resources and quality
 - 13- To minimise the production of waste
 - 14- To improve health of the population
 - 15- To reduce crime and nuisance
 - 16- To conserve natural and manmade resources

	SEA Objectives																Conclusions	Recommendations	SMART Test of NDP objective	After SMART objectives
	1	2	3	4	5	6	7	8	9	10	11	12	13	14	15	16				
OB1- To help meet local housing needs up to 2031	?	?	?	?	?	?	?	?	?	?	?	?	?	?	?	?	This objective is generally uncertain with the SEA objectives. As it is not clear what the local housing needs are. And how it relates to the Core Strategy housing growth.	This objective could be more place specific and measurable, by adding in reference to proportionate growth.	Although this objective has indicated a timeframe. This objective needs to be more place specific and measurable in order to be realistic and attainable.	To ensure local housing needs are met in Dinedor up to 2031 to deliver proportional growth in line with the Core Strategy.
OB2- To ensure all new development is of good quality design	+	+	+	+	+	+	+	+	+	+	+	+	+	0	0	+	Overall the objective to ensure all new development is of good quality design has generally a positive effect towards the relevant baseline objectives.	Ensure proposed development considers environmental impact that development causes, ensure it is in line with the SEA Objectives.	This objective generally meets all of the SMART Objectives.	To ensure all new development in Dinedor is of good quality design.
OB3-Travelling in and around Dinedor	?	?	?	X	?	?	X	X	X	X	X	X	X	X	X	X	Overall the impact is uncertain as the objective is too vague.	Make objective more specific to travelling around Dinedor. This needs further explanation.	This objective is too generic and is not specific enough.	This objective needs to be more specific and will need to define in what it is trying to achieve.
OB4- To promote the development and diversification of rural businesses	0	+	+	0	0	0	+	+	+	+	+	+	+	+	+	0	Overall the objective to promote the development and diversification of rural businesses has generally a positive effect towards the relevant baseline objectives. Clarification of air pollution and traffic impact can be determined when details of proposed development emerge. These can be assessed at planning application stage.	Ensure proposed development considers environmental impact that development causes, ensure it is in line with the SEA Objectives.	This objective meets most of the SMART Objectives. A time frame in which the objective will be achieved is generally covered throughout the plan, but could be specified in this objective. This objective should be place specific by adding reference to Dinedor.	To promote the development and diversification of rural businesses within Dinedor.
OB5-Protecting and enhancing the rural environment and landscape	+	+	+	+	+	X	+	+	+	+	+	+	+	+	X	+	Overall the objective protecting and enhancing the rural environment and landscape has generally a positive effect towards the	None	This objective meets all of the SMART Objectives. A time frame in which the objective will be achieved is generally covered throughout the plan. Add in reference to Dinedor.	Protecting and enhancing the rural environment and landscape within Dinedor.

																	relevant baseline objectives.			
OB6-To protect local heritage assets and support heritage investigations	+	+	+	+	+	X	+	+	X	X	+	+	+	X	X	+	Overall the objective to protect local heritage assets and support heritage investigations has generally a positive effect towards the relevant baseline objectives.	None	This objective meets all of the SMART Objectives. A time frame in which the objective will be achieved is generally covered throughout the plan. This objective should be place specific by adding reference to Dinedor.	To protect Dinedor's local heritage assets and support heritage investigations
OB7- To protect local green spaces	+	+	+	X	+	X	+	+	X	X	+	+	+	X	X	+	Overall the objective to protect local greenspaces has generally a positive effect towards the relevant baseline objectives.	None	This objective meets all of the SMART Objectives. A time frame in which the objective will be achieved is generally covered throughout the plan. This objective should be place specific by adding reference to Dinedor.	To protect local green spaces within Dinedor.
OB8- To protect community facilities	+	+	+	X	X	X	+	+	X	X	X	+	+	+	+	+	Overall the objective to protect local communities has generally a positive effect towards the relevant baseline objectives.	None	This objective meets all of the SMART Objectives. A time frame in which the objective will be achieved is generally covered throughout the plan. This objective should be place specific by adding reference to Dinedor.	To protect Dinedor's community facilities
OB9- Promoting local residents' enjoyment of the parish	?	?	?	?	?	?	?	?	?	?	?	?	?	?	?	?	Overall the objective promoting local residents enjoyment of the parish is uncertain as the objective is too general to grasp its impact of the sea baseline.	This is quite a general objective, this need have more detail and be specific how this relates to land use policies.	This objective could be more specific and specify what it means by 'enjoyment of the parish'. Is it relating to natural and built environment?	This objective needs to be more specific and will need to define in what it is trying to achieve.

Objectives verses SEA Objectives (SMART and Compatibility Test)				
SEA Stage B1	Key:	SMART criteria:		
+ =/++	Compatible/very comp	S – Specific:	NDP objectives should specify what is intended to be done in detail and should not be open to a wide range of misinterpretations	The following matrix appraises the emerging Dinedor NDP Objectives in terms of their SMART criteria and their compatibility with the SEA Objectives. These have been developed from Government guidance on SEA and from the local evidence base gathered for identifying the NDP issues.
- =	Possible conflict	M – Measurable:	It should be possible to monitor NDP objectives in a quantifiable way, by the use of indicators. Indicators should be measurable with limited resource implications.	
0 =	Neutral	A – Attainable/achievable:	NDP objectives should be achievable and deliverable, related to the scale of growth proposed	
X =	No relationship between objectives	R – Realistic:	NDP objectives should relate to the overall vision of the plan. Likewise, chosen indicators should relate to objectives and their outcomes.	
? =	Unclear, more information needed	T – Time-Bound:	Objectives should be specific to the NDP period or another specified time-frame. Objectives should be associated with a target and indicators should specify when the target should be achieved.	

SEA Objectives	Baseline carried over from Stage A
1- To maintain and enhance nature conservation (biodiversity, flora and fauna)	1-The 2011-2013 AMR does not contain updated conservation data.2010/11: 27% of Herefordshire's SSSI land was in favourable condition. 09/14 – status of the SSSI is : River Wye (Unfavourable but recovering). The 2011-2013 AMR does not contain updated conservation data. 2010/11: 17 Habitat Action Plans and 14 Species Action Plans are currently in operation across Herefordshire. Dinedor Parish has: 1 SSSI, 3 SWS, 3 Ancient Woodland, 1 SAC. There are no NNRs and SINCs within the parish.
2- To maintain and enhance the quality of landscapes and townscapes	2-There are no outstanding enforcement actions or appeals concerning locally important buildings within Dinedor at present.
3- To improve quality of surroundings	3-In terms of Dinedor itself, the study reveals that there is no formal play provision in Dinedor.
4- To conserve and where appropriate enhance the historic environment and culture heritage	4-Whilst there is no qualitative, locally specific data available at present, there are four scheduled monument in Dinedor, according to the latest version of the register. There are two Conservation areas bordering the parish, Hampton Bishop (border); Hampton Park (border).
5- To improve air quality	5-Between 2005 and 2010 Herefordshire's total and per capita carbon emission reduced by 7% and 8% respectively; while UK's total and per capita carbon emission reduced by 8% and 12% respectively within the same period. This suggests that air quality is improving.
6- To reduce the effect of traffic on the environment	6-% of Herefordshire residents who travel to work by: Car: 70.1%, Foot: 14.7%;Bicycle: 4.3%,Bus: 2%, Train: 0.8%,Motorbike: 0.8%,Taxi: 0.3%,Other: 7%.
7- To reduce contributions to climate change	7-Herefordshire latest figure of CO2 emissions per capita-dates back to 2010: 1.61 million tonnes (mtCO ²)
8- To reduce vulnerability to climate change	8-Reduce the risk of flooding-There have been no approvals contrary to EA advice since reporting began in 2004.The 2011-2013 AMR does not contain updated conservation data.
9- To improve water quality	9-Percentage of river length assessed as good or very good chemical quality and ecological quality as required by the Water Framework Directive. Latest figure dates back to 2005: 84%.
10- To provide for sustainable sources of water supply	10- Dinedor parish falls into the Herefordshire Conjunctive Use Water Resource Zones (WRZs), one of 6 zones covering Herefordshire. 39% of demand is from non-household use.
11- To avoid, reduce and manage flood risk	11-Number of planning permissions granted contrary to the advice of the Environment Agency on flood defence grounds. The 2011-2013 AMR does not contain updated conservation data.
12- To conserve soil resources and quality	12- The majority of land within the neighbourhood area was listed Grade 2 (Good) or Grade 3 (Good to Moderate) for its agricultural quality.
13- To minimise the production of waste	13,14,15,16- There are numerous listed buildings within the parish and 4 SAMs, Dinedor Camp; Site of Medieval Village; Site of Rotherwas House, earthwork remains of formal gardens and Rotherwas Chapel; Lower Bullingham deserted medieval village none of which are currently recorded in the Buildings at Risk Register. The Parish Area has the following landscape types: Wooded estate lands Forest smallholdings and dwellings.
14- To improve health of the population	
15- To reduce crime and nuisance	
16- To conserve natural and manmade resources	

NDP Policies	SEA objectives																Summary in relation to baseline	Overall commentary and any initial cumulative effects/ Recommendations	Conformity with Core Strategy
	1	2	3	4	5	6	7	8	9	10	11	12	13	14	15	16			
Baseline	1	2	3	4	5	6	7	8	9	10	11	12	13	14	15	16			
Option1 - to do nothing	X	X	X	X	X	X	X	X	X	X	X	X	X	X	X	X	Do nothing option is essentially not to produce a neighbourhood plan and rely on the criteria policies within the Core Strategy to guide further development. Specific policies and proposals for the parishes would not exist.	All developments would need to be in conformity with the Core Strategy. The Core Strategy has been subject to a Sustainability Appraisal and policies met the SEA objectives.	N/A
Option 2- Criteria based policy	+	+	+	+	+	+	+	+	+	+	+	+	+	+	+	+	Criteria based policy does not give the same level of certainty as the other options as it will be more reactionary than proactive in terms of growth proposals. However, provided criteria is added to the policy to safeguard or mitigate against any harm, the option will have a positive effect on the baseline.	Criteria would need to be included within the policy to safeguard against effects on any SEA objectives.	This option would meet the Core Strategy requirements in terms of the SEA.
Option 3- Allocate sites	+	+	+	+	+	+	+	+	+	+	+	+	+	+	+	+	Allocation of sites for housing or other uses would give certainty to future development. Specific environmental issues could be investigated during the site search and be positively addressed within the policy wording.	Pursuing this option would give greater certainty over future development within the area particularly within Dinedor, where proportional growth is expected. If required mitigation criteria can be added to site allocations policies to ensure all SEA objectives are achieved.	This option would meet the Core Strategy requirements in terms of the SEA.
Option 4- Criteria policy and settlement boundary - final option.	+	+	+	+	+	+	+	+	+	+	+	+	+	+	+	+	The designation of a settlement boundary will give additional certainty and help define those areas considered as the built form and open countryside. This can aid the direction of further growth to maintain the quality of the landscape and surroundings. There is less certainty over the positive effects on the baseline as any growth with be adjudged by criteria based policy.	Any settlement boundary would need to be designated to ensure that sufficient capacity was included to permit any proportional growth requirements. Criteria would need to be included within the policy to safeguard against effects on any SEA objectives.	This option would meet the Core Strategy requirements in terms of the SEA.
Option 5- Criteria policy/settlement boundary/allocate sites.	+	+	+	+	+	+	+	+	+	+	+	+	+	+	+	+	Allocation of sites for housing or other uses would give certainty to future development. Specific environmental issues could be investigated during the site search and be positively addressed within the policy wording. The designation of a settlement boundary will give additional certainty and help define those areas considered as the built form and open countryside This option could have a positive effect on the baseline.	Pursuing this option would give greater certainty over future development within the area particularly within Dinedor, where proportional growth is expected. If required mitigation criteria can be added to site allocations policies to ensure all SEA objectives are achieved.	This option would meet the Core Strategy requirements in terms of the SEA.
Option 6- Use a nucleated settlement boundary	+	+	+	+	+	+	+	+	+	+	+	+	+	+	+	+	The designation of a settlement boundary will give additional certainty and help define those areas considered as the built form and open countryside. This can aid the direction of further growth to maintain the quality of the landscape and surroundings. There is less certainty over the positive effects on the baseline as any growth with be adjudged by criteria based policy.	Any settlement boundary would need to be designated to ensure that sufficient capacity was included to permit any proportional growth requirements. Criteria would need to be included within the policy to safeguard against effects on any SEA objectives.	This option would meet the Core Strategy requirements in terms of the SEA.

<p>Option 7- Extend settlement boundary to the north east</p>	+	+	+	+	+	+	+	+	+	+	+	+	+	+	+	<p>The designation of a settlement boundary will give additional certainty and help define those areas considered as the built form and open countryside. This can aid the direction of further growth to maintain the quality of the landscape and surroundings.</p>	<p>Any settlement boundary would need to be designated to ensure that sufficient capacity was included to permit any proportional growth requirements. Criteria would need to be included within the policy to safeguard against effects on any SEA objectives.</p>	<p>This option would meet the Core Strategy requirements in terms of the SEA.</p>
<p>Option 8- Cluster form settlement including Dinedor Cross</p>	?	?	?	?	?	?	?	?	?	?	?	?	?	?	?	<p>Having a cluster settlement pattern for development in Dinedor is likely to be unsustainable and overall has an uncertain impact on the SEA baseline.</p>	<p>A nucleated settlement would be preferable to the nature of the Dinedor settlement.</p>	<p>This option is unlikely to meet policy RA2 settlement.</p>

Objectives verses SEA Objectives (SMART and Compatibility Test)				
SEA Stage B1	Key:	SMART criteria:		
+ =/++	Compatible/very comp	S – Specific:	NDP objectives should specify what is intended to be done in detail and should not be open to a wide range of misinterpretations	The following matrix appraises the emerging Dinedor NDP Objectives in terms of their SMART criteria and their compatibility with the SEA Objectives. These have been developed from Government guidance on SEA and from the local evidence base gathered for identifying the NDP issues.
- =	Possible conflict	M – Measurable:	It should be possible to monitor NDP objectives in a quantifiable way, by the use of indicators. Indicators should be measurable with limited resource implications.	
0 =	Neutral	A – Attainable/achievable:	NDP objectives should be achievable and deliverable, related to the scale of growth proposed	
X =	No relationship between objectives	R – Realistic:	NDP objectives should relate to the overall vision of the plan. Likewise, chosen indicators should relate to objectives and their outcomes.	
? =	Unclear, more information needed	T – Time-Bound:	Objectives should be specific to the NDP period or another specified time-frame. Objectives should be associated with a target and indicators should specify when the target should be achieved.	

SEA Objectives	Baseline carried over from Stage A
1- To maintain and enhance nature conservation (biodiversity, flora and fauna)	1-The 2011-2013 AMR does not contain updated conservation data.2010/11: 27% of Herefordshire's SSSI land was in favourable condition. 09/14 – status of the SSSI is : River Wye (Unfavourable but recovering). The 2011-2013 AMR does not contain updated conservation data. 2010/11: 17 Habitat Action Plans and 14 Species Action Plans are currently in operation across Herefordshire. Dinedor Parish has: 1 SSSI, 3 SWS, 3 Ancient Woodland, 1 SAC. There are no NNRs and SINCs within the parish.
2- To maintain and enhance the quality of landscapes and townscapes	2-There are no outstanding enforcement actions or appeals concerning locally important buildings within Dinedor at present.
3- To improve quality of surroundings	3-In terms of Dinedor itself, the study reveals that there is no formal play provision in Dinedor.
4- To conserve and where appropriate enhance the historic environment and culture heritage	4-Whilst there is no qualitative, locally specific data available at present, there are four scheduled monument in Dinedor, according to the latest version of the register. There are two Conservation areas bordering the parish, Hampton Bishop (border); Hampton Park (border).
5- To improve air quality	5-Between 2005 and 2010 Herefordshire's total and per capita carbon emission reduced by 7% and 8% respectively; while UK's total and per capita carbon emission reduced by 8% and 12% respectively within the same period. This suggests that air quality is improving.
6- To reduce the effect of traffic on the environment	6-% of Herefordshire residents who travel to work by: Car: 70.1%, Foot: 14.7;,Bicycle: 4.3%,Bus: 2%, Train: 0.8%,Motorbike: 0.8%,Taxi: 0.3%,Other: 7%.
7- To reduce contributions to climate change	7-Herefordshire latest figure of CO2 emissions per capita-dates back to 2010: 1.61 million tonnes (mtCO ²)
8- To reduce vulnerability to climate change	8-Reduce the risk of flooding-There have been no approvals contrary to EA advice since reporting began in 2004.The 2011-2013 AMR does not contain updated conservation data.
9- To improve water quality	9-Percentage of river length assessed as good or very good chemical quality and ecological quality as required by the Water Framework Directive. Latest figure dates back to 2005: 84%.
10- To provide for sustainable sources of water supply	10- Dinedor parish falls into the Herefordshire Conjunctive Use Water Resource Zones (WRZs), one of 6 zones covering Herefordshire. 39% of demand is from non-household use.
11- To avoid, reduce and manage flood risk	11-Number of planning permissions granted contrary to the advice of the Environment Agency on flood defence grounds. The 2011-2013 AMR does not contain updated conservation data.
12- To conserve soil resources and quality	12- The majority of land within the neighbourhood area was listed Grade 2 (Good) or Grade 3 (Good to Moderate) for its agricultural quality.
13- To minimise the production of waste	13,14,15,16- There are numerous listed buildings within the parish and 4 SAMs, Dinedor Camp; Site of Medieval Village; Site of Rotherwas House, earthwork remains of formal gardens and Rotherwas Chapel; Lower Bullingham deserted medieval village none of which are currently recorded in the Buildings at Risk Register. The Parish Area has the following landscape types: Wooded estate lands Forest smallholdings and dwellings.
14- To improve health of the population	
15- To reduce crime and nuisance	
16- To conserve natural and manmade resources	

NDP Policies	SEA objectives																Summary in relation to baseline	Overall commentary and any initial cumulative effects/ Recommendations	Conformity with Core Strategy
	1	2	3	4	5	6	7	8	9	10	11	12	13	14	15	16			
Baseline	1	2	3	4	5	6	7	8	9	10	11	12	13	14	15	16			
A-NEW HOUSING DEVELOPMENT IN DINEDOR VILLAGE	+	+	+	+	?	?	0	0	0	0	0	?	+	+	+	+	Overall policy A- New housing development in Dinedor village has generally a positive impact on the baseline data. This policy will lead to some small scale development within the settlement boundaries designated. Further clarification of traffic and air quality impact can be determine at development stage, however impact is likely to be minimal due to potential scale of development.	Overall this policy meets the SEA baseline. Environmental safeguard and mitigation measures are available in policies within the Core Strategy SS1, LD2, and SD3 and SD4. Environmental protection can be found within the NDP polices C,E, F and G.	This policy is quite restrictive in terms of housing development. This could be more flexible in minimum plot sizes, not restricting sites to just 1 to 2. The settlement boundary for Dinedor is very tight how will the plan achieve residual housing target?
B-RURAL EXCEPTION HOUSING	+	+	+	+	0	0	0	0	0	0	0	0	+	+	+	+	Overall policy B- Rural exception housing in Dinedor village has a positive impact on the baseline data in line with policy RA3 of the Core Strategy.	Overall this policy meets the SEA objectives and the requirements in the Core Strategy in promoting sustainable development within the parish. Overall this policy meets the SEA baseline. Environmental safeguard and mitigation measures are available in policies within the Core Strategy SS1, LD2, and SD3 and SD4.	This policy does not meet the Core Strategy requirements for the purposes of the SEA.
C-HIGH QUALITY DESIGN	+	+	+	+	+	+	+	+	+	+	+	+	+	+	+	+	Overall policy C- High quality design in Dinedor village has a positive impact on the baseline data.	Overall this policy meets the SEA objectives and the requirements in the Core Strategy in promoting sustainable development within the parish. This policy will ensure new development is of a high quality and design that is in keeping with the existing townscape.	This policy does not meet the Core Strategy requirements for the purposes of the SEA.
D-THE MANAGEME NT OF TRAFFIC AROUND DINEDOR	+	+	+	X	+	+	0	0	0	0	0	0	+	+	+	+	Overall this policy has a positive impact on the sea baseline. This policy transport policy promotes sustainable transport infrastructure development.	This policy would not lead to development itself but contains criteria to promote sustainable transport development in line with policy MT1of the Core Strategy.	This policy does not meet the Core Strategy requirements for the purposes of the SEA.
E-SUPPORT GROWTH OF SMALL SCALE RURAL	+	+	+	+	?	?	0	0	0	0	0	?	+	+	+	+	Overall this policy has a positive impact on the sea baseline. However there are a few uncertain effects on air quality, traffic impact and flood risk can be determined at planning application stage on a case by	Overall this policy meets the SEA baseline. Environmental safeguard and mitigation measures are available in policies within the Core Strategy SS1, LD2, and SD3 and SD4.Environmental protection can be found within Dinedor NDP policies F, G and I.	This policy does not meet the Core Strategy requirements for the purposes of

BUSINESSES																	case basis.		the SEA.
F-TO PROTECT AND ENHANCE THE RURAL ENVIRONMENT AND LANDSCAPE	+	+	+	+	+	+	+	+	+	+	+	+	+	+	+	+	Overall this policy has a positive impact on the sea baseline. Criteria within the NDP, has been included which would aim to safeguard environmental character of the rural landscape.	Overall this policy meets the SEA objectives and the requirements in the Core Strategy in promoting sustainable development within the parish. This policy can help mitigate impact caused from development, adding further protection	This policy does not meet the Core Strategy requirements for the purposes of the SEA.
G- PROTECTING LOCAL HERITAGE ASSETS	+	+	+	+	+	+	+	+	+	+	+	+	+	+	+	+	Overall this policy has a positive impact on the sea baseline. Criteria within the NDP, has been included which would aim to safeguard local historic assets and keeping Dindore's historic character and quality.	This policy would not lead to development itself but contains criteria to safeguard historic landscape, specifically historic buildings within the NDP area. This policy can help mitigate impact caused from development, adding further protection to local heritage assets, building on Core Strategy policy LD4.	This policy does not meet the Core Strategy requirements for the purposes of the SEA.
H- TO ENCOURAGE AND SUPPORT INVESTIGATIONS INTO LOCAL HERITAGE ASSETS	+	+	+	+	X	X	X	X	X	X	+	+	+	X	X	+	Overall the policy meets all the relevant SEA criteria, and has mostly positive impact towards the baseline data. Criteria within the NDP, has been included which would aim to safeguard local heritage assets.	This policy would not lead to development itself but contains criteria to safeguard historic landscape, specifically Listed Buildings within the NDP area. This policy can help mitigate impact caused from development, adding further protection to local heritage assets, building on Core Strategy policy LD4.	This policy meets the Core Strategy requirements for the purposes of the SEA.
I- PROTECTING LOCAL GREEN SPACES	+	+	+	X	+	0	0	0	0	0	+	+	+	+	+	+	Overall this policy meets the SEA objectives and the requirements in the Core Strategy in protection of local green space and complies with LD1 and OS2 of the Core Strategy.	Overall this policy meets the SEA baseline. This policy would not lead to development itself but contains criteria to protect and promote Local Greenspaces within the parish. This policy can help to alleviate undesirable development within Dinedor.	This policy does not meet the Core Strategy requirements for the purposes of the SEA.
J- COMMUNITY FACILITIES	+	+	+	+	0	0	0	X	+	+	0	0	0	+	+	0	Overall the policy is positive as it will encourage the continuing use of existing facilities thus contributing to the village character and environment. It will also reduce the need to travel to other area for facilities reducing the impact of climate change.	Overall this policy meets the SEA baseline. This policy would not lead to development itself but contains criteria to safeguard existing community facilities within Dinedor.	This policy does not meet the Core Strategy requirements for the purposes of the SEA.
K-LOCAL RESIDENTS ENJOYMENT OF THE PARISH	+	+	+	X	X	X	X	X	X	X	X	X	X	+	+	X	Overall this policy has a positive impact on the baseline data. The policy intends to promote sustainable development to ensure residents enjoy and celebrate natural and built environment.	Overall this policy meets the SEA objectives and the requirements in the Core Strategy in promoting sustainable development within the parish.	N/A

B3: Predict and evaluate the effects of the policies and sites within the Neighbourhood Development Plan

Key:

++ Move towards significantly	+ Move towards Marginally	- - Move away significantly	- Move away marginally	0 Neutral	? Uncertain	N/A No relationship
-------------------------------	---------------------------	-----------------------------	------------------------	-----------	-------------	---------------------

Policy A

SEA Objective	Assessment of effect (consider cumulative effects, significance of the effect and magnitude of the effect in terms of the three time periods)			Summary Explanation	Enhancement and mitigation opportunities
	Short term (1 – 5 years)	Medium term (6 – 10 years)	Long term (11 years +)		
To maintain and enhance nature conservation (biodiversity, flora and fauna)	+	+	+	This Policy is not over and above the Core Strategy in terms of SEA objectives and would only lead to small scale development in line with the proportional growth within the Core Strategy.	None identified. Policy safeguards within the NDP and Core Strategy will help to alleviate impact caused from new development particularly policies LD1, LD2 and SD1.
To maintain and enhance the quality of landscapes and townscapes	+	+	+	This Policy is not over and above the Core Strategy in terms of SEA objectives and would only lead to small scale development in line with the proportional growth within the Core Strategy.	None identified. Policy safeguards within the NDP and Core Strategy will help to alleviate impact caused from new development particularly policies LD1, LD2 and SD1.

B3: Predict and evaluate the effects of the policies and sites within the Neighbourhood Development Plan

To improve quality of surroundings	+	+	+	This Policy is not over and above the Core Strategy in terms of SEA objectives and would only lead to small scale development in line with the proportional growth within the Core Strategy.	None identified. Policy safeguards within the NDP and Core Strategy will help to alleviate impact caused from new development particularly policies LD1, LD2 and SD1.
To conserve and where appropriate enhance the historic environment and cultural heritage	+	+	+	This Policy is not over and above the Core Strategy in terms of SEA objectives and would only lead to small scale development in line with the proportional growth within the Core Strategy.	None identified. Policy safeguards within the NDP and Core Strategy will help to alleviate impact caused from new development particularly policies LD1, LD2 and LD4.
To improve air quality	?	?	?	Further clarification of traffic and air quality impact can be determine at development stage, however impact is likely to be minimal due to potential scale of development.	Policy safeguards within the NDP and Core Strategy will help to alleviate impact caused from new development particularly policies SD1, LD1 and MT1.
To reduce the effect of traffic on the environment	?	?	?	Further clarification of traffic and air quality impact can be determine at development stage, however impact is likely to be minimal due to potential scale of development.	Policy safeguards within the NDP and Core Strategy will help to alleviate impact caused from new development particularly policies SD1, LD1 and MT1.
To reduce contributions to climate change	0	0	0	This Policy is not over and above the Core Strategy in terms of SEA objectives and would only lead to small scale development in line with the proportional growth within the	None identified. Policy safeguards within the NDP and Core Strategy will help to alleviate impact caused from new development particularly

B3: Predict and evaluate the effects of the policies and sites within the Neighbourhood Development Plan

				Core Strategy.	policies LD1, LD2 and SD1.
To reduce vulnerability to climate change	0	0	0	This Policy is not over and above the Core Strategy in terms of SEA objectives and would only lead to small scale development in line with the proportional growth within the Core Strategy.	None identified. Policy safeguards within the NDP and Core Strategy will help to alleviate impact caused from new development particularly policies LD1, LD2 and SD1.
To improve water quality	0	0	0	This Policy is not over and above the Core Strategy in terms of SEA objectives and would only lead to small scale development in line with the proportional growth within the Core Strategy.	None identified. Policy safeguards within the NDP and Core Strategy will help to alleviate impact caused from new development particularly policies LD1, LD2 and SD1.
To provide for sustainable sources of water supply	0	0	0	This Policy is not over and above the Core Strategy in terms of SEA objectives and would only lead to small scale development in line with the proportional growth within the Core Strategy.	None identified. Policy safeguards within the NDP and Core Strategy will help to alleviate impact caused from new development particularly policies LD1, LD2 and SD1.
To avoid, reduce and manage flood risk	0	0	0	This Policy is not over and above the Core Strategy in terms of SEA objectives and would only lead to small scale development in line with the proportional growth within the Core Strategy.	None identified. Policy safeguards within the NDP and Core Strategy will help to alleviate impact caused from new development particularly policies LD1, LD2 and SD1.

B3: Predict and evaluate the effects of the policies and sites within the Neighbourhood Development Plan

To conserve soil resources and quality	0	?	?	Impact on soil quality can be determined at a later stage. Due to the scale of development, it is unlikely to cause long term damage.	None identified. Policy safeguards within the NDP and Core Strategy will help to alleviate impact caused from new development particularly policies LD1, LD2 and SD1.
To minimise the production of waste	0	+	+	This Policy is not over and above the Core Strategy in terms of SEA objectives and would only lead to small scale development in line with the proportional growth within the Core Strategy.	None identified. Policy safeguards within the NDP and Core Strategy will help to alleviate impact caused from new development particularly policies LD1, LD2 and SD1.
To improve health of the population	+	+	+	This Policy is not over and above the Core Strategy in terms of SEA objectives and would only lead to small scale development in line with the proportional growth within the Core Strategy.	None identified. Policy safeguards within the NDP and Core Strategy will help to alleviate impact caused from new development particularly policies LD1, LD2 and SD1.
To reduce crime and nuisance	+	+	+	This Policy is not over and above the Core Strategy in terms of SEA objectives and would only lead to small scale development in line with the proportional growth within the Core Strategy.	None identified.
To conserve natural and manmade resources	+	+	+	This Policy is not over and above the Core Strategy in terms of SEA objectives and would only lead to small scale development in line with the proportional growth within the	None identified. Policy safeguards within the NDP and Core Strategy will help to alleviate impact caused from new development particularly

B3: Predict and evaluate the effects of the policies and sites within the Neighbourhood Development Plan

				Core Strategy.	policies LD1, LD2 and SD1.
Overall commentary and any cumulative effects	Overall this policy has a positive effect on the baseline objectives and is in conformity with the Core Strategy. Short, medium and long term will have a positive impact on the baseline as this policy promotes sustainable development in design and development. Impact on traffic and air quality can be further assessed at a later stage in the planning process.				

Policy B

SEA Objective	Assessment of effect (consider cumulative effects, significance of the effect and magnitude of the effect in terms of the three time periods)			Summary Explanation	Enhancement and mitigation opportunities
	Short term (1 – 5 years)	Medium term (6 – 10 years)	Long term (11 years +)		
To maintain and enhance nature conservation (biodiversity, flora and fauna)	+	+	+	This Policy is not over and above the Core Strategy in terms of SEA objectives and would only lead to limited development in line with the proportional growth within the Core Strategy. Policy safeguards are included within the policy to ensure nature conservation is taken into consideration.	Policy safeguards within the NDP and Core Strategy will help to alleviate impact caused from new development particularly policies LD1, LD2 and SD3.

B3: Predict and evaluate the effects of the policies and sites within the Neighbourhood Development Plan

To maintain and enhance the quality of landscapes and townscapes	+	+	+	This Policy is not over and above the Core Strategy in terms of SEA objectives and would only lead to limited development in line with the proportional growth within the Core Strategy. Policy safeguards are included within the policy to ensure nature conservation is taken into consideration.	None identified. Policy safeguards within the NDP and Core Strategy will help to alleviate impact caused from new development particularly policies LD1, LD2 and LD4.
To improve quality of surroundings	+	+	+	This Policy is not over and above the Core Strategy in terms of SEA objectives and would only lead to limited development in line with the proportional growth within the Core Strategy. Policy safeguards are included within the policy to ensure nature conservation is taken into consideration.	None identified. Policy safeguards within the NDP and Core Strategy will help to alleviate impact caused from new development particularly policies LD1, LD2 and LD4.
To conserve and where appropriate enhance the historic environment and cultural heritage	+	+	+	This Policy is not over and above the Core Strategy in terms of SEA objectives and would only lead to limited development in line with the proportional growth within the Core Strategy. Policy safeguards are included within the policy to ensure nature conservation is taken into consideration.	None identified. Policy safeguards within the NDP and Core Strategy will help to alleviate impact caused from new development particularly policies LD1, LD2 and LD4.

B3: Predict and evaluate the effects of the policies and sites within the Neighbourhood Development Plan

To improve air quality	0	0	0	This Policy is not over and above the Core Strategy in terms of SEA objectives and would only lead to limited development in line with the proportional growth within the Core Strategy. Policy safeguards are included within the policy to ensure nature conservation is taken into consideration.	None identified. Policy safeguards within the NDP and Core Strategy will help to alleviate impact caused from new development particularly policies LD1, LD2 and SD3.
To reduce the effect of traffic on the environment	0	0	0	This Policy is not over and above the Core Strategy in terms of SEA objectives and would only lead to limited development in line with the proportional growth within the Core Strategy. Policy safeguards are included within the policy to ensure nature conservation is taken into consideration.	None identified. Policy safeguards within the NDP and Core Strategy will help to alleviate impact caused from new development particularly policies LD1, LD2 and MT1.
To reduce contributions to climate change	0	0	0	This Policy is not over and above the Core Strategy in terms of SEA objectives and would only lead to limited development in line with the proportional growth within the Core Strategy. Policy safeguards are included within the policy to ensure nature conservation is taken into consideration.	None identified. Policy safeguards within the NDP and Core Strategy will help to alleviate impact caused from new development particularly policies LD1, LD2, SS6,SS7 and SD3.

B3: Predict and evaluate the effects of the policies and sites within the Neighbourhood Development Plan

To reduce vulnerability to climate change	0	0	0	This Policy is not over and above the Core Strategy in terms of SEA objectives and would only lead to limited development in line with the proportional growth within the Core Strategy. Policy safeguards are included within the policy to ensure nature conservation is taken into consideration.	None identified. Policy safeguards within the NDP and Core Strategy will help to alleviate impact caused from new development particularly policies LD1, LD2, SS6, SS7 and SD3.
To improve water quality	0	0	0	This Policy is not over and above the Core Strategy in terms of SEA objectives and would only lead to limited development in line with the proportional growth within the Core Strategy. Policy safeguards are included within the policy to ensure nature conservation is taken into consideration.	None identified. Policy safeguards within the NDP and Core Strategy will help to alleviate impact caused from new development particularly policies LD1, LD2, SD3 and SD4.
To provide for sustainable sources of water supply	0	0	0	This Policy is not over and above the Core Strategy in terms of SEA objectives and would only lead to limited development in line with the proportional growth within the Core Strategy. Policy safeguards are included within the policy to ensure nature conservation is taken into consideration.	None identified. Policy safeguards within the NDP and Core Strategy will help to alleviate impact caused from new development particularly policies LD1, LD2, SD3 and SD4.

B3: Predict and evaluate the effects of the policies and sites within the Neighbourhood Development Plan

To avoid, reduce and manage flood risk	0	0	0	This Policy is not over and above the Core Strategy in terms of SEA objectives and would only lead to limited development in line with the proportional growth within the Core Strategy. Policy safeguards are included within the policy to ensure nature conservation is taken into consideration.	None identified. Policy safeguards within the NDP and Core Strategy will help to alleviate impact caused from new development particularly policies LD1, LD2, SD3 and SD4.
To conserve soil resources and quality	0	0	0	This Policy is not over and above the Core Strategy in terms of SEA objectives and would only lead to limited development in line with the proportional growth within the Core Strategy. Policy safeguards are included within the policy to ensure nature conservation is taken into consideration.	None identified. Policy safeguards within the NDP and Core Strategy will help to alleviate impact caused from new development particularly policies LD1, LD2 and SD3.
To minimise the production of waste	+	+	+	This Policy is not over and above the Core Strategy in terms of SEA objectives and would only lead to limited development in line with the proportional growth within the Core Strategy. Policy safeguards are included within the policy to ensure nature conservation is taken into consideration.	None identified. Policy safeguards within the NDP and Core Strategy will help to alleviate impact caused from new development particularly policies LD1, LD2 and SD3.

B3: Predict and evaluate the effects of the policies and sites within the Neighbourhood Development Plan

To improve health of the population	+	+	+	This Policy is not over and above the Core Strategy in terms of SEA objectives and would only lead to limited development in line with the proportional growth within the Core Strategy. Policy safeguards are included within the policy to ensure nature conservation is taken into consideration.	None identified. Policy safeguards within the NDP and Core Strategy will help to alleviate impact caused from new development particularly policies LD1, LD2 and SD3.
To reduce crime and nuisance	+	+	+	This Policy is not over and above the Core Strategy in terms of SEA objectives and would only lead to limited development in line with the proportional growth within the Core Strategy. Policy safeguards are included within the policy to ensure nature conservation is taken into consideration.	None identified. Policy safeguards within the NDP and Core Strategy will help to alleviate impact caused from new development particularly policies LD1, LD2 and SD3.
To conserve natural and manmade resources	+	+	+	This Policy is not over and above the Core Strategy in terms of SEA objectives and would only lead to limited development in line with the proportional growth within the Core Strategy. Policy safeguards are included within the policy to ensure nature conservation is taken into consideration.	None identified. Policy safeguards within the NDP and Core Strategy will help to alleviate impact caused from new development particularly policies LD1, LD2 and SD3.

B3: Predict and evaluate the effects of the policies and sites within the Neighbourhood Development Plan

Overall commentary and any cumulative effects	Overall this policy has a positive effect on the baseline objectives and is in conformity with the Core Strategy. Mitigation measures have been included within the NDP and Core Strategy to ensure no detrimental effects towards the environment will be caused by rural development.
--	---

Policy C

SEA Objective	Assessment of effect (consider cumulative effects, significance of the effect and magnitude of the effect in terms of the three time periods)			Summary Explanation	Enhancement and mitigation opportunities
	Short term (1 – 5 years)	Medium term (6 – 10 years)	Long term (11 years +)		
To maintain and enhance nature conservation (biodiversity, flora and fauna)	+	+	+	This Policy is not over and above the Core Strategy in terms of SEA objectives and design out design criteria that development should adhere to.	The policy itself helps to safeguard the historic and natural environment, ensuring the design of new development is fitting in its context.
To maintain and enhance the quality of landscapes and townscapes	+	+	++	This Policy is not over and above the Core Strategy in terms of SEA objectives and would only lead to small scale development in line with the proportional growth within the Core Strategy.	The policy itself helps to safeguard the historic and natural environment, ensuring the design of new development is fitting in its context.

B3: Predict and evaluate the effects of the policies and sites within the Neighbourhood Development Plan

To improve quality of surroundings	+	+	++	This Policy is not over and above the Core Strategy in terms of SEA objectives and would only lead to small scale development in line with the proportional growth within the Core Strategy.	The policy itself helps to safeguard the historic and natural environment, ensuring the design of new development is fitting in its context.
To conserve and where appropriate enhance the historic environment and cultural heritage	+	+	+	This Policy is not over and above the Core Strategy in terms of SEA objectives and design out design criteria that development should adhere to.	The policy itself helps to safeguard the historic and natural environment, ensuring the design of new development is fitting in its context.
To improve air quality	+	+	+	This Policy is not over and above the Core Strategy in terms of SEA objectives and design out design criteria that development should adhere to.	The policy itself helps to safeguard the historic and natural environment, ensuring the design of new development is fitting in its context.
To reduce the effect of traffic on the environment	+	+	+	This Policy is not over and above the Core Strategy in terms of SEA objectives and design out design criteria that development should adhere to.	The policy itself helps to safeguard the historic and natural environment, ensuring the design of new development is fitting in its context.
To reduce contributions to climate change	+	+	+	This Policy is not over and above the Core Strategy in terms of SEA objectives and design out design criteria that development should adhere to.	The policy itself helps to safeguard the historic and natural environment, ensuring the design of new development is fitting in its context.

B3: Predict and evaluate the effects of the policies and sites within the Neighbourhood Development Plan

To reduce vulnerability to climate change	+	+	+	This Policy is not over and above the Core Strategy in terms of SEA objectives and design out design criteria that development should adhere to.	The policy itself helps to safeguard the historic and natural environment, ensuring the design of new development is fitting in its context.
To improve water quality	+	+	+	This Policy is not over and above the Core Strategy in terms of SEA objectives and design out design criteria that development should adhere to.	The policy itself helps to safeguard the historic and natural environment, ensuring the design of new development is fitting in its context.
To provide for sustainable sources of water supply	+	+	+	This Policy is not over and above the Core Strategy in terms of SEA objectives and design out design criteria that development should adhere to.	The policy itself helps to safeguard the historic and natural environment, ensuring the design of new development is fitting in its context.
To avoid, reduce and manage flood risk	+	+	+	This Policy is not over and above the Core Strategy in terms of SEA objectives and design out design criteria that development should adhere to.	The policy itself helps to safeguard the historic and natural environment, ensuring the design of new development is fitting in its context.
To conserve soil resources and quality	+	+	+	This Policy is not over and above the Core Strategy in terms of SEA objectives and design out design criteria that development should adhere to.	The policy itself helps to safeguard the historic and natural environment, ensuring the design of new development is fitting in its context.

B3: Predict and evaluate the effects of the policies and sites within the Neighbourhood Development Plan

To minimise the production of waste	+	+	+	This Policy is not over and above the Core Strategy in terms of SEA objectives and design out design criteria that development should adhere to.	The policy itself helps to safeguard the historic and natural environment, ensuring the design of new development is fitting in its context.
To improve health of the population	+	+	+	This Policy is not over and above the Core Strategy in terms of SEA objectives and would only lead to small scale development in line with the proportional growth within the Core Strategy.	The policy itself helps to safeguard the historic and natural environment, ensuring the design of new development is fitting in its context.
To reduce crime and nuisance	+	+	+	This Policy is not over and above the Core Strategy in terms of SEA objectives and would only lead to small scale development in line with the proportional growth within the Core Strategy.	The policy itself helps to safeguard the historic and natural environment, ensuring the design of new development is fitting in its context.
To conserve natural and manmade resources	+	+	+	This Policy is not over and above the Core Strategy in terms of SEA objectives and would only lead to small scale development in line with the proportional growth within the Core Strategy.	The policy itself helps to safeguard the historic and natural environment, ensuring the design of new development is fitting in its context.
Overall commentary and any cumulative effects	Overall this policy has a positive effect on the baseline objectives and is in conformity with the Core Strategy.				

B3: Predict and evaluate the effects of the policies and sites within the Neighbourhood Development Plan

Policy D

SEA Objective	Assessment of effect (consider cumulative effects, significance of the effect and magnitude of the effect in terms of the three time periods)			Summary Explanation	Enhancement and mitigation opportunities
	Short term (1 – 5 years)	Medium term (6 – 10 years)	Long term (11 years +)		
To maintain and enhance nature conservation (biodiversity, flora and fauna)	+	+	+	This policy management of traffic around Dinedor moves towards the baseline data.	Sustainable transport measures are promoted in this policy. This policy aims to reduce and alleviate traffic in Dinedor, which will overall help reduce air pollution on a limited scale.
To maintain and enhance the quality of landscapes and townscapes	+	+	+	This policy management of traffic around Dinedor moves towards the baseline data.	Sustainable transport measures are promoted in this policy. This policy aims to reduce and alleviate traffic in Dinedor, which will overall help reduce air pollution on a limited scale.
To improve quality of surroundings	+	+	+	This policy management of traffic around Dinedor moves towards the baseline data.	Sustainable transport measures are promoted in this policy. This policy aims to reduce and alleviate traffic in Dinedor, which will overall help reduce air pollution on a limited scale.

B3: Predict and evaluate the effects of the policies and sites within the Neighbourhood Development Plan

To conserve and where appropriate enhance the historic environment and cultural heritage	X	X	X	No relationship.	
To improve air quality	+	+	++	This policy management of traffic around Dinedor moves towards the baseline data.	Sustainable transport measures are promoted in this policy. This policy aims to reduce and alleviate traffic in Dinedor, which will overall help reduce air pollution on a limited scale.
To reduce the effect of traffic on the environment	+	+	++	This policy management of traffic around Dinedor moves towards the baseline data.	Sustainable transport measures are promoted in this policy. This policy aims to reduce and alleviate traffic in Dinedor, which will overall help reduce air pollution on a limited scale.
To reduce contributions to climate change	0	0	+	This policy management of traffic around Dinedor moves towards the baseline data.	Sustainable transport measures are promoted in this policy. This policy aims to reduce and alleviate traffic in Dinedor, which will overall help reduce air pollution on a limited scale.
To reduce vulnerability to climate change	0	0	+	This policy management of traffic around Dinedor moves towards the baseline data.	Sustainable transport measures are promoted in this policy. This policy aims to reduce and alleviate traffic in Dinedor, which will overall help reduce air pollution on a limited scale.

B3: Predict and evaluate the effects of the policies and sites within the Neighbourhood Development Plan

To improve water quality	0	0	0	This policy management of traffic around Dinedor moves towards the baseline data.	Sustainable transport measures are promoted in this policy. This policy aims to reduce and alleviate traffic in Dinedor, which will overall help reduce air pollution on a limited scale.
To provide for sustainable sources of water supply	0	0	0	This policy management of traffic around Dinedor moves towards the baseline data.	Sustainable transport measures are promoted in this policy. This policy aims to reduce and alleviate traffic in Dinedor, which will overall help reduce air pollution on a limited scale.
To avoid, reduce and manage flood risk	0	0	0	This policy management of traffic around Dinedor moves towards the baseline data.	Sustainable transport measures are promoted in this policy. This policy aims to reduce and alleviate traffic in Dinedor, which will overall help reduce air pollution on a limited scale.
To conserve soil resources and quality	0	0	0	This policy management of traffic around Dinedor moves towards the baseline data.	Sustainable transport measures are promoted in this policy. This policy aims to reduce and alleviate traffic in Dinedor, which will overall help reduce air pollution on a limited scale.
To minimise the production of waste	0	+	+	This policy management of traffic around Dinedor moves towards the baseline data.	Sustainable transport measures are promoted in this policy. This policy aims to reduce and alleviate traffic in Dinedor, which will overall help reduce air pollution on a limited scale.

B3: Predict and evaluate the effects of the policies and sites within the Neighbourhood Development Plan

To improve health of the population	+	+	+	This policy management of traffic around Dinedor moves towards the baseline data.	Sustainable transport measures are promoted in this policy. This policy aims to reduce and alleviate traffic in Dinedor, which will overall help reduce air pollution on a limited scale.
To reduce crime and nuisance	+	+	+	This policy management of traffic around Dinedor moves towards the baseline data.	Sustainable transport measures are promoted in this policy. This policy aims to reduce and alleviate traffic in Dinedor, which will overall help reduce air pollution on a limited scale.
To conserve natural and manmade resources	+	+	+	This policy management of traffic around Dinedor moves towards the baseline data.	Sustainable transport measures are promoted in this policy. This policy aims to reduce and alleviate traffic in Dinedor, which will overall help reduce air pollution on a limited scale.
Overall commentary and any cumulative effects	Overall this policy has a positive effect on the baseline objectives and is in conformity with the Core Strategy. Mitigation measures have been included within the NDP and Core Strategy to ensure no detrimental effects towards the environment will be caused by additional traffic.				

B3: Predict and evaluate the effects of the policies and sites within the Neighbourhood Development Plan

Policy E

SEA Objective	Assessment of effect (consider cumulative effects, significance of the effect and magnitude of the effect in terms of the three time periods)			Summary Explanation	Enhancement and mitigation opportunities
	Short term (1 – 5 years)	Medium term (6 – 10 years)	Long term (11 years +)		
To maintain and enhance nature conservation (biodiversity, flora and fauna)	0	+	+	This Policy is not over and above the Core Strategy in terms of SEA objectives and would only lead to small scale business development i.e farm diversification projects.	Mitigation measures within the Core Strategy NDP can help to safeguard adverse effect from small scale development.
To maintain and enhance the quality of landscapes and townscapes	+	+	+	This Policy is not over and above the Core Strategy in terms of SEA objectives and would only lead to small scale business development i.e farm diversification projects.	Mitigation measures within the Core Strategy NDP can help to safeguard adverse effect from small scale development.
To improve quality of surroundings	+	+	+	This Policy is not over and above the Core Strategy in terms of SEA objectives and would only lead to small scale business development i.e farm diversification projects.	Mitigation measures within the Core Strategy NDP can help to safeguard adverse effect from small scale development.

B3: Predict and evaluate the effects of the policies and sites within the Neighbourhood Development Plan

To conserve and where appropriate enhance the historic environment and cultural heritage	0	+	+	This Policy is not over and above the Core Strategy in terms of SEA objectives and would only lead to small scale business development i.e farm diversification projects.	Mitigation measures within the Core Strategy NDP can help to safeguard adverse effect from small scale development.
To improve air quality	?	?	?	Impact on air quality can be determined at a later stage on a case by case basis.	Mitigation measures within the Core Strategy NDP can help to safeguard adverse effect from small scale development.
To reduce the effect of traffic on the environment	?	?	?	Impact on traffic can be determined at a later stage on a case by case basis.	Mitigation measures within the Core Strategy NDP can help to safeguard adverse effect from small scale development.
To reduce contributions to climate change	0	0	0	This Policy is not over and above the Core Strategy in terms of SEA objectives and would only lead to small scale business development i.e farm diversification projects.	Mitigation measures within the Core Strategy NDP can help to safeguard adverse effect from small scale development.
To reduce vulnerability to climate change	0	0	0	This Policy is not over and above the Core Strategy in terms of SEA objectives and would only lead to small scale business development i.e farm diversification projects.	Mitigation measures within the Core Strategy NDP can help to safeguard adverse effect from small scale development.
To improve water quality	0	0	0	This Policy is not over and above the Core Strategy in terms of SEA objectives and would only lead to small scale business development	Mitigation measures within the Core Strategy NDP can help to safeguard adverse effect from small scale

B3: Predict and evaluate the effects of the policies and sites within the Neighbourhood Development Plan

				i.e farm diversification projects.	development.
To provide for sustainable sources of water supply	0	0	0	This Policy is not over and above the Core Strategy in terms of SEA objectives and would only lead to small scale business development i.e farm diversification projects.	Mitigation measures within the Core Strategy NDP can help to safeguard adverse effect from small scale development.
To avoid, reduce and manage flood risk	0	0	0	This Policy is not over and above the Core Strategy in terms of SEA objectives and would only lead to small scale business development i.e farm diversification projects.	Mitigation measures within the Core Strategy NDP can help to safeguard adverse effect from small scale development.
To conserve soil resources and quality	?	?	?	Impact on soil quality can be determined at a later stage on a case by case basis.	-
To minimise the production of waste	+	+	+	This Policy is not over and above the Core Strategy in terms of SEA objectives and would only lead to small scale business development i.e farm diversification projects.	Mitigation measures within the Core Strategy NDP can help to safeguard adverse effect from small scale development.
To improve health of the population	+	+	+	This Policy is not over and above the Core Strategy in terms of SEA objectives and would only lead to small scale business development i.e farm diversification projects.	Mitigation measures within the Core Strategy NDP can help to safeguard adverse effect from small scale development.

B3: Predict and evaluate the effects of the policies and sites within the Neighbourhood Development Plan

To reduce crime and nuisance	+	+	+	This Policy is not over and above the Core Strategy in terms of SEA objectives and would only lead to small scale business development i.e farm diversification projects.	Mitigation measures within the Core Strategy NDP can help to safeguard adverse effect from small scale development.
To conserve natural and manmade resources	+	+	+++	This Policy is not over and above the Core Strategy in terms of SEA objectives and would only lead to small scale business development i.e farm diversification projects.	Mitigation measures within the Core Strategy NDP can help to safeguard adverse effect from small scale development.
This policy compliments the Core Strategy and would only lead to very small scale rural businesses. Policy safeguarding exists to ensure that environmental considerations are taken into account.					

Policy F

SEA Objective	Assessment of effect (consider cumulative effects, significance of the effect and magnitude of the effect in terms of the three time periods)			Summary Explanation	Enhancement and mitigation opportunities
	Short term (1 – 5 years)	Medium term (6 – 10 years)	Long term (11 years +)		

B3: Predict and evaluate the effects of the policies and sites within the Neighbourhood Development Plan

To maintain and enhance nature conservation (biodiversity, flora and fauna)	++	++	++	The principles of this policy are compatible with Core Strategy policy LD1 and LD2. Policy safeguards exist which will help avoid or mitigate against impacts on the natural environment.	This policy will mitigate impact from development and safeguard the natural environment protecting environmental assets.
To maintain and enhance the quality of landscapes and townscapes	+	+	+	The principles of this policy are compatible with Core Strategy policy LD1 and LD2. Policy safeguards exist which will help avoid or mitigate against impacts on the natural environment.	This policy will mitigate impact from development and safeguard the natural environment protecting environmental assets.
To improve quality of surroundings	+	+	+	The principles of this policy are compatible with Core Strategy policy LD1 and LD2. Policy safeguards exist which will help avoid or mitigate against impacts on the natural environment.	This policy will mitigate impact from development and safeguard the natural environment protecting environmental assets.
To conserve and where appropriate enhance the historic environment and cultural heritage	+	+	+	The principles of this policy are compatible with Core Strategy policy LD1 and LD2. Policy safeguards exist which will help avoid or mitigate against impacts on the natural environment.	This policy will mitigate impact from development and safeguard the natural environment protecting environmental assets.
To improve air quality	+	+	+	The principles of this policy are compatible with Core Strategy policy LD1 and LD2. Policy safeguards exist which will help avoid or mitigate against impacts	This policy will mitigate impact from development and safeguard the natural environment protecting

B3: Predict and evaluate the effects of the policies and sites within the Neighbourhood Development Plan

				on the natural environment.	environmental assets.
To reduce the effect of traffic on the environment	+	+	+	The principles of this policy are compatible with Core Strategy policy LD1 and LD2. Policy safeguards exist which will help avoid or mitigate against impacts on the natural environment.	This policy will mitigate impact from development and safeguard the natural environment protecting environmental assets.
To reduce contributions to climate change	+	+	+	The principles of this policy are compatible with Core Strategy policy LD1 and LD2. Policy safeguards exist which will help avoid or mitigate against impacts on the natural environment.	This policy will mitigate impact from development and safeguard the natural environment protecting environmental assets.
To reduce vulnerability to climate change	+	+	+	The principles of this policy are compatible with Core Strategy policy LD1 and LD2. Policy safeguards exist which will help avoid or mitigate against impacts on the natural environment.	This policy will mitigate impact from development and safeguard the natural environment protecting environmental assets.
To improve water quality	+	+	+	The principles of this policy are compatible with Core Strategy policy LD1 and LD2. Policy safeguards exist which will help avoid or mitigate against impacts on the natural environment.	This policy will mitigate impact from development and safeguard the natural environment protecting environmental assets.

B3: Predict and evaluate the effects of the policies and sites within the Neighbourhood Development Plan

To provide for sustainable sources of water supply	+	+	+	The principles of this policy are compatible with Core Strategy policy LD1 and LD2. Policy safeguards exist which will help avoid or mitigate against impacts on the natural environment.	This policy will mitigate impact from development and safeguard the natural environment protecting environmental assets.
To avoid, reduce and manage flood risk	+	+	+	The principles of this policy are compatible with Core Strategy policy LD1 and LD2. Policy safeguards exist which will help avoid or mitigate against impacts on the natural environment.	This policy will mitigate impact from development and safeguard the natural environment protecting environmental assets.
To conserve soil resources and quality	+	+	++	The principles of this policy are compatible with Core Strategy policy LD1 and LD2. Policy safeguards exist which will help avoid or mitigate against impacts on the natural environment.	This policy will mitigate impact from development and safeguard the natural environment protecting environmental assets.
To minimise the production of waste	+	+	+	The principles of this policy are compatible with Core Strategy policy LD1 and LD2. Policy safeguards exist which will help avoid or mitigate against impacts on the natural environment.	This policy will mitigate impact from development and safeguard the natural environment protecting environmental assets.
To improve health of the population	+	+	+	The principles of this policy are compatible with Core Strategy policy LD1 and LD2. Policy safeguards exist which will help	This policy will mitigate impact from development and safeguard the natural environment protecting

B3: Predict and evaluate the effects of the policies and sites within the Neighbourhood Development Plan

				avoid or mitigate against impacts on the natural environment.	environmental assets.
To reduce crime and nuisance	+	+	+	The principles of this policy are compatible with Core Strategy policy LD1 and LD2. Policy safeguards exist which will help avoid or mitigate against impacts on the natural environment.	This policy will mitigate impact from development and safeguard the natural environment protecting environmental assets.
To conserve natural and manmade resources	+	++	++	The principles of this policy are compatible with Core Strategy policy LD1 and LD2. Policy safeguards exist which will help avoid or mitigate against impacts on the natural environment.	This policy will mitigate impact from development and safeguard the natural environment protecting environmental assets.
Overall commentary and any cumulative effects	Overall this Policy moves towards the SEA objectives and is not over and above the Core Strategy in terms of SEA objectives. This policy has an overall positive effect on the sea baseline in the short, medium and long term on the sea baseline. This policy will mitigate impact from development and safeguard the natural environment protecting environmental assets.				

Policy G

SEA Objective	Assessment of effect (consider cumulative effects, significance of the effect and magnitude of the effect in terms of the three time periods)			Summary Explanation	Enhancement and mitigation opportunities
	Short term (1 –	Medium term	Long term (11 years +)		

B3: Predict and evaluate the effects of the policies and sites within the Neighbourhood Development Plan

	5 years)	(6 – 10 years)			
To maintain and enhance nature conservation (biodiversity, flora and fauna)	+	+	+	The principles of this policy are compatible with Core Strategy policy LD1 and LD4. Policy safeguards exist which will help avoid or mitigate against impacts on the natural environment.	This policy will mitigate impact from development and safeguard the built environment protecting historic assets.
To maintain and enhance the quality of landscapes and townscapes	+	+	++	The principles of this policy are compatible with Core Strategy policy LD1 and LD4. Policy safeguards exist which will help avoid or mitigate against impacts on the natural environment.	This policy will mitigate impact from development and safeguard the built environment protecting historic assets.
To improve quality of surroundings	+	+	++	The principles of this policy are compatible with Core Strategy policy LD1 and LD4. Policy safeguards exist which will help avoid or mitigate against impacts on the natural environment.	This policy will mitigate impact from development and safeguard the built environment protecting historic assets.
To conserve and where appropriate enhance the historic environment and cultural heritage	+	++	++	The principles of this policy are compatible with Core Strategy policy LD1 and LD4. Policy safeguards exist which will help avoid or mitigate against impacts on the natural environment.	This policy will mitigate impact from development and safeguard the built environment protecting historic assets.

B3: Predict and evaluate the effects of the policies and sites within the Neighbourhood Development Plan

To improve air quality	+	+	+	The principles of this policy are compatible with Core Strategy policy LD1 and LD4. Policy safeguards exist which will help avoid or mitigate against impacts on the natural environment.	This policy will mitigate impact from development and safeguard the built environment protecting historic assets.
To reduce the effect of traffic on the environment	+	+	+	The principles of this policy are compatible with Core Strategy policy LD1 and LD4. Policy safeguards exist which will help avoid or mitigate against impacts on the natural environment.	This policy will mitigate impact from development and safeguard the built environment protecting historic assets.
To reduce contributions to climate change	+	+	+	The principles of this policy are compatible with Core Strategy policy LD1 and LD4. Policy safeguards exist which will help avoid or mitigate against impacts on the natural environment.	This policy will mitigate impact from development and safeguard the built environment protecting historic assets.
To reduce vulnerability to climate change	+	+	+	The principles of this policy are compatible with Core Strategy policy LD1 and LD4. Policy safeguards exist which will help avoid or mitigate against impacts on the natural environment.	This policy will mitigate impact from development and safeguard the built environment protecting historic assets.
To improve water quality	+	+	+	The principles of this policy are compatible with Core Strategy policy LD1 and LD4. Policy safeguards exist which will help	This policy will mitigate impact from development and safeguard the built environment protecting historic assets.

B3: Predict and evaluate the effects of the policies and sites within the Neighbourhood Development Plan

				avoid or mitigate against impacts on the natural environment.	
To provide for sustainable sources of water supply	+	+	+	The principles of this policy are compatible with Core Strategy policy LD1 and LD4. Policy safeguards exist which will help avoid or mitigate against impacts on the natural environment.	This policy will mitigate impact from development and safeguard the built environment protecting historic assets.
To avoid, reduce and manage flood risk	+	+	+	The principles of this policy are compatible with Core Strategy policy LD1 and LD4. Policy safeguards exist which will help avoid or mitigate against impacts on the natural environment.	This policy will mitigate impact from development and safeguard the built environment protecting historic assets.
To conserve soil resources and quality	+	+	+	The principles of this policy are compatible with Core Strategy policy LD1 and LD4. Policy safeguards exist which will help avoid or mitigate against impacts on the natural environment.	This policy will mitigate impact from development and safeguard the built environment protecting historic assets.
To minimise the production of waste	+	+	+	The principles of this policy are compatible with Core Strategy policy LD1 and LD4. Policy safeguards exist which will help avoid or mitigate against impacts on the natural environment.	This policy will mitigate impact from development and safeguard the built environment protecting historic assets.

B3: Predict and evaluate the effects of the policies and sites within the Neighbourhood Development Plan

To improve health of the population	+	+	+	The principles of this policy are compatible with Core Strategy policy LD1 and LD4. Policy safeguards exist which will help avoid or mitigate against impacts on the natural environment.	This policy will mitigate impact from development and safeguard the built environment protecting historic assets.
To reduce crime and nuisance	+	+	+	The principles of this policy are compatible with Core Strategy policy LD1 and LD4. Policy safeguards exist which will help avoid or mitigate against impacts on the natural environment.	This policy will mitigate impact from development and safeguard the built environment protecting historic assets.
To conserve natural and manmade resources	+	+	+	The principles of this policy are compatible with Core Strategy policy LD1 and LD4. Policy safeguards exist which will help avoid or mitigate against impacts on the natural environment.	This policy will mitigate impact from development and safeguard the built environment protecting historic assets.
Overall commentary and any cumulative effects	Overall this Policy moves towards the SEA objectives and is not over and above the Core Strategy in terms of SEA objectives. This policy acts as a mitigation measure to protect historic assets, which will help alleviate impact caused from new developments. This policy has an overall positive effect on the sea baseline in the short, medium and long term on the sea baseline. This policy will help to safeguard heritage assets within Dinedor.				

B3: Predict and evaluate the effects of the policies and sites within the Neighbourhood Development Plan

Policy H

SEA Objective	Assessment of effect (consider cumulative effects, significance of the effect and magnitude of the effect in terms of the three time periods)			Summary Explanation	Enhancement and mitigation opportunities
	Short term (1 – 5 years)	Medium term (6 – 10 years)	Long term (11 years +)		
To maintain and enhance nature conservation (biodiversity, flora and fauna)	+	+	+	The principles of this policy are compatible with Core Strategy policy LD1 and LD4. Policy safeguards exist which will help avoid or mitigate against impacts on the natural environment.	This policy will help mitigate impact from development and safeguard the built environment protecting historic assets.
To maintain and enhance the quality of landscapes and townscapes	+	+	++	The principles of this policy are compatible with Core Strategy policy LD1 and LD4. Policy safeguards exist which will help avoid or mitigate against impacts on the natural environment.	This policy will help mitigate impact from development and safeguard the built environment protecting historic assets.

B3: Predict and evaluate the effects of the policies and sites within the Neighbourhood Development Plan

To improve quality of surroundings	+	+	++	The principles of this policy are compatible with Core Strategy policy LD1 and LD4. Policy safeguards exist which will help avoid or mitigate against impacts on the natural environment.	This policy will help mitigate impact from development and safeguard the built environment protecting historic assets.
To conserve and where appropriate enhance the historic environment and cultural heritage	++	++	++	The principles of this policy are compatible with Core Strategy policy LD1 and LD4. Policy safeguards exist which will help avoid or mitigate against impacts on the natural environment.	This policy will help mitigate impact from development and safeguard the built environment protecting historic assets.
To improve air quality	X	X	X	No relationship.	
To reduce the effect of traffic on the environment	X	X	X	No relationship.	
To reduce contributions to climate change	X	X	X	No relationship.	
To reduce vulnerability to climate change	X	X	X	No relationship.	

B3: Predict and evaluate the effects of the policies and sites within the Neighbourhood Development Plan

To improve water quality	X	X	X	No relationship.	
To provide for sustainable sources of water supply	X	X	X	No relationship.	
To avoid, reduce and manage flood risk	+	+	+	The principles of this policy are compatible with Core Strategy policy LD1 and LD4. Policy safeguards exist which will help avoid or mitigate against impacts on the natural environment.	This policy will help mitigate impact from development and safeguard the built environment protecting historic assets.
To conserve soil resources and quality	+	+	+	The principles of this policy are compatible with Core Strategy policy LD1 and LD4. Policy safeguards exist which will help avoid or mitigate against impacts on the natural environment.	This policy will help mitigate impact from development and safeguard the built environment protecting historic assets.
To minimise the production of waste	+	+	+	The principles of this policy are compatible with Core Strategy policy LD1 and LD4. Policy safeguards exist which will help avoid or mitigate against impacts on the natural environment.	This policy will help mitigate impact from development and safeguard the built environment protecting historic assets.

B3: Predict and evaluate the effects of the policies and sites within the Neighbourhood Development Plan

To improve health of the population	X	X	X	No relationship.	
To reduce crime and nuisance	X	X	X	No relationship.	
To conserve natural and manmade resources	+	+	+	The principles of this policy are compatible with Core Strategy policy LD1 and LD4. Policy safeguards exist which will help avoid or mitigate against impacts on the natural environment.	This policy will help mitigate impact from development and safeguard the built environment protecting historic assets.
Overall commentary and any cumulative effects	Overall this Policy moves towards the SEA objectives and is not over and above the Core Strategy in terms of SEA objectives. This policy has an overall positive effect on the sea baseline in the short, medium and long term on the sea baseline. This policy will help to safeguard and support heritage assets within Dinedor.				

Policy 1

SEA Objective	Assessment of effect (consider cumulative effects, significance of the effect and magnitude of the effect in terms of the three time periods)			Summary Explanation	Enhancement and mitigation opportunities
	Short term (1 –	Medium	Long term		

B3: Predict and evaluate the effects of the policies and sites within the Neighbourhood Development Plan

	5 years)	term (6 – 10 years)	(11 years +)		
To maintain and enhance nature conservation (biodiversity, flora and fauna)	+	+	+	This Policy is not over and above the Core Strategy in terms of SEA objectives and moves towards the SEA baseline.	This policy safeguards the village green and Dinedor Camp from development.
To maintain and enhance the quality of landscapes and townscapes	+	+	+	This Policy is not over and above the Core Strategy in terms of SEA objectives and moves towards the SEA baseline.	This policy safeguards the village green and Dinedor Camp from development.
To improve quality of surroundings	+	+	++	This Policy is not over and above the Core Strategy in terms of SEA objectives and moves towards the SEA baseline.	This policy safeguards the village green and Dinedor Camp from development.
To conserve and where appropriate enhance the historic environment and cultural heritage	X	X	X	No relationship.	-
To improve air quality	+	+	+	This Policy is not over and above the Core Strategy in terms of SEA objectives and moves towards the	This policy safeguards the village green and Dinedor Camp from development.

B3: Predict and evaluate the effects of the policies and sites within the Neighbourhood Development Plan

				SEA baseline.	
To reduce the effect of traffic on the environment	0	0	0	This Policy is not over and above the Core Strategy in terms of SEA objectives and has a neutral impact on the SEA baseline.	This policy safeguards the village green and Dinedor Camp from development.
To reduce contributions to climate change	0	0	0	This Policy is not over and above the Core Strategy in terms of SEA objectives and has a neutral impact on the SEA baseline.	This policy safeguards the village green and Dinedor Camp from development.
To reduce vulnerability to climate change	0	0	0	This Policy is not over and above the Core Strategy in terms of SEA objectives and has a neutral impact on the SEA baseline.	This policy safeguards the village green and Dinedor Camp from development.
To improve water quality	0	0	0	This Policy is not over and above the Core Strategy in terms of SEA objectives and has a neutral impact on the SEA baseline.	This policy safeguards the village green and Dinedor Camp from development.
To provide for sustainable sources of water supply	0	0	0	This Policy is not over and above the Core Strategy in terms of SEA objectives and has a neutral impact on the SEA	This policy safeguards the village green and Dinedor Camp from development.

B3: Predict and evaluate the effects of the policies and sites within the Neighbourhood Development Plan

				baseline.	
To avoid, reduce and manage flood risk	+	+	+	This Policy is not over and above the Core Strategy in terms of SEA objectives and moves towards the SEA baseline.	This policy safeguards the village green and Dinedor Camp from development.
To conserve soil resources and quality	+	+	+++	This Policy is not over and above the Core Strategy in terms of SEA objectives and moves towards the SEA baseline.	This policy safeguards the village green and Dinedor Camp from development.
To minimise the production of waste	+	+	+	This Policy is not over and above the Core Strategy in terms of SEA objectives and moves towards the SEA baseline.	This policy safeguards the village green and Dinedor Camp from development.
To improve health of the population	+	+	+++	This Policy is not over and above the Core Strategy in terms of SEA objectives and moves towards the SEA baseline.	This policy safeguards the village green and Dinedor Camp from development.
To reduce crime and nuisance	+	+	+	This Policy is not over and above the Core Strategy in terms of SEA objectives and moves towards the SEA baseline.	This policy safeguards the village green and Dinedor Camp from development.
To conserve natural and manmade resources	+	+	+	This Policy is not over and above the Core Strategy in terms of SEA objectives and moves towards the SEA baseline.	This policy safeguards the village green and Dinedor Camp from development.

B3: Predict and evaluate the effects of the policies and sites within the Neighbourhood Development Plan

Overall commentary and any cumulative effects	Overall this Policy moves towards the SEA objectives and is not over and above the Core Strategy in terms of SEA objectives. The policy will help to safeguard community facilities in the short, medium and long term in Dinedor.				

Policy J

SEA Objective	Assessment of effect (consider cumulative effects, significance of the effect and magnitude of the effect in terms of the three time periods)			Summary Explanation	Enhancement and mitigation opportunities
	Short term (1 – 5 years)	Medium term (6 – 10 years)	Long term (11 years +)		
To maintain and enhance nature conservation (biodiversity, flora and fauna)	+	+	+	This Policy is not over and above the Core Strategy in terms of SEA objectives and moves towards the SEA baseline.	This policy safeguards the Village Hall and St Andrews Church.
To maintain and enhance the quality of landscapes and townscapes	+	+	+	This Policy is not over and above the Core Strategy in terms of SEA objectives and moves towards the SEA baseline.	This policy safeguards the Village Hall and St Andrews Church.

B3: Predict and evaluate the effects of the policies and sites within the Neighbourhood Development Plan

To improve quality of surroundings	+	+	+	This Policy is not over and above the Core Strategy in terms of SEA objectives and moves towards the SEA baseline.	This policy safeguards the Village Hall and St Andrews Church.
To conserve and where appropriate enhance the historic environment and cultural heritage	+	+	+	This Policy is not over and above the Core Strategy in terms of SEA objectives and moves towards the SEA baseline.	This policy safeguards the Village Hall and St Andrews Church.
To improve air quality	0	0	0	This Policy is not over and above the Core Strategy in terms of SEA objectives and moves towards the SEA baseline.	This policy safeguards the Village Hall and St Andrews Church.
To reduce the effect of traffic on the environment	0	0	0	This Policy is not over and above the Core Strategy in terms of SEA objectives and moves towards the SEA baseline.	This policy safeguards the Village Hall and St Andrews Church.
To reduce contributions to climate change	0	0	0	This Policy is not over and above the Core Strategy in terms of SEA objectives and moves towards the SEA baseline.	This policy safeguards the Village Hall and St Andrews Church.
To reduce vulnerability to climate change	X	X	X	No relationship.	

B3: Predict and evaluate the effects of the policies and sites within the Neighbourhood Development Plan

To improve water quality	+	+	+	This Policy is not over and above the Core Strategy in terms of SEA objectives and moves towards the SEA baseline.	This policy safeguards the Village Hall and St Andrews Church.
To provide for sustainable sources of water supply	+	+	+	This Policy is not over and above the Core Strategy in terms of SEA objectives and moves towards the SEA baseline.	This policy safeguards the Village Hall and St Andrews Church.
To avoid, reduce and manage flood risk	0	0	0	This Policy is not over and above the Core Strategy in terms of SEA objectives and moves towards the SEA baseline.	This policy safeguards the Village Hall and St Andrews Church.
To conserve soil resources and quality	0	0	+	This Policy is not over and above the Core Strategy in terms of SEA objectives and moves towards the SEA baseline.	This policy safeguards the Village Hall and St Andrews Church.
To minimise the production of waste	0	0	+	This Policy is not over and above the Core Strategy in terms of SEA objectives and moves towards the SEA baseline.	This policy safeguards the Village Hall and St Andrews Church.
To improve health of the population	+	+	+	This Policy is not over and above the Core Strategy in terms of SEA objectives and moves towards the SEA baseline.	This policy safeguards the Village Hall and St Andrews Church.

B3: Predict and evaluate the effects of the policies and sites within the Neighbourhood Development Plan

To reduce crime and nuisance	+	+	+	This Policy is not over and above the Core Strategy in terms of SEA objectives and moves towards the SEA baseline.	This policy safeguards the Village Hall and St Andrews Church.
To conserve natural and manmade resources	0	0	0	This Policy is not over and above the Core Strategy in terms of SEA objectives and moves towards the SEA baseline.	This policy safeguards the Village Hall and St Andrews Church.
Overall commentary and any cumulative effects	Overall this Policy moves towards the SEA objectives and is not over and above the Core Strategy in terms of SEA objectives. The policy will help to safeguard community facilities in the short, medium and long term.				

Policy K

SEA Objective	Assessment of effect (consider cumulative effects, significance of the effect and magnitude of the effect in terms of the three time periods)			Summary Explanation	Enhancement and mitigation opportunities
	Short term (1 – 5 years)	Medium term (6 – 10 years)	Long term (11 years +)		

B3: Predict and evaluate the effects of the policies and sites within the Neighbourhood Development Plan

To maintain and enhance nature conservation (biodiversity, flora and fauna)	+	+	++	Although this policy will not lead directly to development. It has a positive impact on the SEA baseline data. There is likely to have a positive short, medium and long term impact.	None identified.
To maintain and enhance the quality of landscapes and townscapes	+	+	++	Although this policy will not lead directly to development. It has a positive impact on the SEA baseline data. There is likely to have a positive short, medium and long term impact.	None identified.
To improve quality of surroundings	+	+	++	Although this policy will not lead directly to development. It has a positive impact on the SEA baseline data. There is likely to have a positive short, medium and long term impact.	None identified.
To conserve and where appropriate enhance the historic environment and cultural heritage	X	X	X	No relationship.	
To improve air quality	X	X	X	No relationship.	

B3: Predict and evaluate the effects of the policies and sites within the Neighbourhood Development Plan

To reduce the effect of traffic on the environment	X	X	X	No relationship.	
To reduce contributions to climate change	X	X	X	No relationship.	
To reduce vulnerability to climate change	X	X	X	No relationship.	
To improve water quality	X	X	X	No relationship.	
To provide for sustainable sources of water supply	X	X	X	No relationship.	
To avoid, reduce and manage flood risk	X	X	X	No relationship.	
To conserve soil resources and quality	X	X	X	No relationship.	
To minimise the production of waste	X	X	X	No relationship.	
To improve health of the population	X	X	X	No relationship.	

B3: Predict and evaluate the effects of the policies and sites within the Neighbourhood Development Plan

To reduce crime and nuisance	X	X	X	No relationship.	
To conserve natural and manmade resources	+	+	+	Although this policy will not lead directly to development. It has a positive impact on the SEA baseline data. There is likely to have a positive short, medium and long term impact.	None identified.
Overall commentary and any cumulative effects	Although this policy will not lead directly to development. It has a positive impact on the SEA baseline data in the short, medium and long term of the plan period.				

Key:

++ Move towards significantly	+ Move towards marginally	-- Move away Significantly	- Move away marginally	0 Neutral	? Uncertain	X No relationship
--------------------------------------	----------------------------------	-----------------------------------	-------------------------------	------------------	--------------------	--------------------------

SEA Objective / Objective / Policy	1. To maintain and enhance nature conservation (biodiversity, flora and fauna)	2. To maintain and enhance the quality of landscapes and townscapes	3. To improve quality of surroundings	4. To conserve and where appropriate enhance the historic environment and culture heritage	5. To improve air quality	6. To reduce the effect of traffic on the environment	7. To reduce contributions to climate change	8. To reduce vulnerability to climate change	9. To improve water quality	10. To provide for sustainable sources of water supply	11. To avoid, reduce and manage flood risk	12. To conserve soil resources and quality	13. To minimise the production	14. To improve health of the population	15. To reduce crime and nuisance	16. To conserve natural and manmade resources
OB1- To help meet local housing needs up to 2031	?	?	?	?	?	?	?	?	?	?	?	?	?	?	?	?
OB2- To ensure all new development is of good quality design	+	+	++	+	+	+	+	+	+	+	+	+	+	0	0	+
OB3- Travelling in and around Dinedor	?	?	?	X	?	?	X	X	X	X	X	X	X	X	X	X
OB4- To promote the development and diversification of rural businesses	0	+	+	0	0	0	+	+	+	+	+	+	+	+	+	0
OB5- Protecting and enhancing the rural environment and landscape	++	++	+	+	+	X	+	+	+	+	+	+	+	+	X	++
OB6- To protect local heritage assets and support heritage investigations	+	+	+	+	+	X	+	+	X	X	+	+	+	X	X	+
OB7- To protect local green spaces	+	+	+	X	+	X	+	+	X	X	+	+	+	X	X	+
OB8- To protect community facilities	+	+	+	X	X	X	+	+	X	X	X	+	+	+	+	+

OB9- Promoting local residents' enjoyment of the parish	?	?	?	?	?	?	?	?	?	?	?	?	?	?	?	?
A-NEW HOUSING DEVELOPMENT IN DINEDOR VILLAGE	+	+	+	+	?	?	0	0	0	0	0	?	+	+	+	+
B-RURAL EXCEPTION HOUSING	+	+	+	+	0	0	0	0	0	0	0	0	+	+	+	+
C-HIGH QUALITY DESIGN	+	+	+	+	+	+	+	+	+	+	+	+	+	+	+	+
D-THE MANAGEMENT OF TRAFFIC AROUND DINEDOR	+	+	+	X	+	+	0	0	0	0	0	0	+	+	+	+
E-SUPPORT GROWTH OF SMALL SCALE RURAL BUSINESSES	+	+	+	+	?	?	0	0	0	0	0	?	+	+	+	+
F-TO PROTECT AND ENHANCE THE RURAL ENVIRONMENT AND LANDSCAPE	++	+	+	+	+	+	+	+	+	+	+	+	+	+	+	++
G-PROTECTING LOCAL HERITAGE ASSETS	+	+	+	++	+	+	+	+	+	+	+	+	+	+	+	+
H- TO ENCOURAGE AND SUPPORT INVESTIGATIONS INTO LOCAL HERITAGE ASSETS	+	+	+	++	X	X	X	X	X	X	+	+	+	X	X	+
I-PROTECTING LOCAL GREEN SPACES	+	+	+	X	+	0	0	0	0	0	+	+	+	+	+	+

J-COMMUNITY FACILITIES	+	+	+	+	0	0	0	X	+	+	0	0	0	+	+	0
K-LOCAL RESIDENTS ENJOYMENT OF THE PARISH	+	+	+	X	X	X	X	X	X	X	X	X	X	+	+	X
Overall																
Summary of effects of whole plan on each SEA Objective	+	+	+	+	+	+	+	+	+	+	+	+	+	+	+	+
Cumulative effects of whole plan (1 + 2 + 3...)	Overall the Neighbourhood Plan policies and objectives have a positive impact towards the SEA baseline data. And are in general conformity with the Core Strategy Overall all of the policies and objectives meet the Core Strategy requirements for the purposes of the SEA. Policies and objectives strive to preserve and maintain natural and built historic environment that can help mitigate impact from the housing policies. This plan ensures appropriate sized development is developed this may help mitigate the effect of development. Some objectives need to be more specific in order to make a complete assessment in relation to the baseline objectives.															
Commentary for significant cumulative effects	Overall this has had a positive effect on the SEA baseline data. Overall the unknown areas require further detail such as location, scale and size of development, therefore are likely to be determined at planning application/ proposal stage. No significant cumulative effects have been identified.															

Appendix 5

Dinedor Options

Option1 - To do nothing
Option 2 -Criteria based policy
Option 3 - Allocate sites
Option 4 - Criteria policy and settlement boundary - final option.
Option 5 - Criteria policy/settlement boundary/allocate sites.
Option 6 - Use a nucleated settlement boundary
Option 7 - Extend settlement boundary to the north east
Option 8 - Cluster form settlement including Dinedor Cross

Appendix 6

Template D1: SEA Consultation Feedback

This consultation feedback is **only** for comments received on the SEA of your Neighbourhood Development Plan

Parish Council Name: Dinedor Parish Council

Neighbourhood Development Plan Name: Dinedor Neighbourhood Plan

Details of consultation: *Regulation 14*

Consultation date: 31 October to 12 December 2017

Consultation title: Regulation 14

No comments regarding the sea have been received at regulation 14.

Appendix 7

Template D3: Predict and evaluate the effects of the amended Neighbourhood Development Plan policies and sites

Parish Council Name: Dinedor

Neighbourhood Development Plan Name: Dinedor Neighbourhood Plan

Date completed: June 2020

Key:

++ Move towards significantly	+ Move towards Marginally	- - Move away significantly	- Move away marginally	0 Neutral	? Uncertain	N/A No relationship
--------------------------------------	----------------------------------	------------------------------------	-------------------------------	------------------	--------------------	----------------------------

Policy A

SEA Objective	Assessment of effect (consider cumulative effects, significance of the effect and magnitude of the effect in terms of the three time periods)			Summary Explanation	Enhancement and mitigation opportunities
	Short term (1 – 5 years)	Medium term (6 – 10 years)	Long term (11 years +)		
To maintain and enhance nature conservation (biodiversity, flora and fauna)	+	+	+	This Policy is not over and above the Core Strategy in terms of SEA objectives and would only lead to small scale development in line with the proportional growth within the Core Strategy. Changes to this policy post reg 14 consultation by extending the settlement boundary, still has a	None identified. Policy safeguards within the post 14 NDP and Core Strategy will help to alleviate impact caused from new development particularly policies LD1, LD2 and SD1.

				positive impact on the sea baseline data.	
To maintain and enhance the quality of landscapes and townscapes	+	+	+	This Policy is not over and above the Core Strategy in terms of SEA objectives and would only lead to small scale development in line with the proportional growth within the Core Strategy. Changes to this policy post reg 14 consultation by extending the settlement boundary, still has a positive impact on the sea baseline data.	None identified. Policy safeguards within the post 14 NDP and Core Strategy will help to alleviate impact caused from new development particularly policies LD1, LD2 and SD1.
To improve quality of surroundings	+	+	+	This Policy is not over and above the Core Strategy in terms of SEA objectives and would only lead to small scale development in line with the proportional growth within the Core Strategy. Changes to this policy post reg 14 consultation by extending the settlement boundary, still has a positive impact on the sea baseline data.	None identified. Policy safeguards within the post 14 NDP and Core Strategy will help to alleviate impact caused from new development particularly policies LD1, LD2 and SD1.
To conserve and where appropriate enhance the historic environment and cultural heritage	+	+	+	This Policy is not over and above the Core Strategy in terms of SEA objectives and would only lead to small scale development in line with the proportional growth within the Core Strategy. Changes to this policy post reg 14 consultation by extending the settlement boundary, still has a positive impact on the sea baseline data.	None identified. Policy safeguards within the post 14 NDP and Core Strategy will help to alleviate impact caused from new development particularly policies LD1, LD2 and LD4.

To improve air quality	0	0	0	Changes to this policy post reg 14 consultation by extending the settlement boundary, has a neutral impact on the sea baseline data.	Policy safeguards within the post 14 NDP and Core Strategy will help to alleviate impact caused from new development particularly policies SD1, LD1 and MT1.
To reduce the effect of traffic on the environment	0	0	0	Changes to this policy post reg 14 consultation by extending the settlement boundary, has a neutral impact on the sea baseline data.	Policy safeguards within the post 14 NDP and Core Strategy will help to alleviate impact caused from new development particularly policies SD1, LD1 and MT1.
To reduce contributions to climate change	0	0	0	This Policy is not over and above the Core Strategy in terms of SEA objectives and would only lead to small scale development in line with the proportional growth within the Core Strategy. Changes to this policy post reg 14 consultation by extending the settlement boundary, has a neutral impact on the sea baseline data.	None identified. Policy safeguards within the post 14 NDP and Core Strategy will help to alleviate impact caused from new development particularly policies LD1, LD2 and SD1.
To reduce vulnerability to climate change	0	0	0	This Policy is not over and above the Core Strategy in terms of SEA objectives and would only lead to small scale development in line with the proportional growth within the Core Strategy. Changes to this policy post reg 14 consultation by extending the settlement boundary, has a neutral impact on the sea baseline data.	None identified. Policy safeguards within the post 14 NDP and Core Strategy will help to alleviate impact caused from new development particularly policies LD1, LD2 and SD1.

To improve water quality	0	0	0	This Policy is not over and above the Core Strategy in terms of SEA objectives and would only lead to small scale development in line with the proportional growth within the Core Strategy. Changes to this policy post reg 14 consultation by extending the settlement boundary, has a neutral impact on the sea baseline data.	None identified. Policy safeguards within the post 14 NDP and Core Strategy will help to alleviate impact caused from new development particularly policies LD1, LD2 and SD1.
To provide for sustainable sources of water supply	0	0	0	This Policy is not over and above the Core Strategy in terms of SEA objectives and would only lead to small scale development in line with the proportional growth within the Core Strategy. Changes to this policy post reg 14 consultation by extending the settlement boundary, has a neutral impact on the sea baseline data.	None identified. Policy safeguards within the post 14 NDP and Core Strategy will help to alleviate impact caused from new development particularly policies LD1, LD2 and SD1.
To avoid, reduce and manage flood risk	0	0	0	This Policy is not over and above the Core Strategy in terms of SEA objectives and would only lead to small scale development in line with the proportional growth within the Core Strategy. Changes to this policy post reg 14 consultation by extending the settlement boundary, has a neutral impact on the sea baseline data.	None identified. Policy safeguards within the post 14 NDP and Core Strategy will help to alleviate impact caused from new development particularly policies LD1, LD2 and SD1.

To conserve soil resources and quality	0	0	0	Impact on soil quality can be determined at a later stage. Due to the scale of development, it is unlikely to cause long term damage. Changes to this policy post reg 14 consultation by extending the settlement boundary, has a neutral impact on the sea baseline data.	None identified. Policy safeguards within the post 14 NDP and Core Strategy will help to alleviate impact caused from new development particularly policies LD1, LD2 and SD1.
To minimise the production of waste	0	+	+	This Policy is not over and above the Core Strategy in terms of SEA objectives and would only lead to small scale development in line with the proportional growth within the Core Strategy. Changes to this policy post reg 14 consultation by extending the settlement boundary, still has a positive impact on the sea baseline data.	None identified. Policy safeguards within the post 14 NDP and Core Strategy will help to alleviate impact caused from new development particularly policies LD1, LD2 and SD1.
To improve health of the population	+	+	+	This Policy is not over and above the Core Strategy in terms of SEA objectives and would only lead to small scale development in line with the proportional growth within the Core Strategy. Changes to this policy post reg 14 consultation by extending the settlement boundary, still has a positive impact on the sea baseline data.	None identified. Policy safeguards within the post 14 NDP and Core Strategy will help to alleviate impact caused from new development particularly policies LD1, LD2 and SD1.
To reduce crime and nuisance	+	+	+	This Policy is not over and above the Core Strategy in terms of SEA objectives and would only lead to small scale development in line with	None identified.

				the proportional growth within the Core Strategy. Changes to this policy post reg 14 consultation by extending the settlement boundary, still has a positive impact on the sea baseline data.	
To conserve natural and manmade resources	+	+	+	This Policy is not over and above the Core Strategy in terms of SEA objectives and would only lead to small scale development in line with the proportional growth within the Core Strategy. Changes to this policy post reg 14 consultation by extending the settlement boundary, still has a positive impact on the sea baseline data.	None identified. Policy safeguards within the post 14 NDP and Core Strategy will help to alleviate impact caused from new development particularly policies LD1, LD2 and SD1.
Overall commentary and any cumulative effects	Overall this policy has a positive effect on the baseline objectives and is in conformity with the Core Strategy. Short, medium and long term will have a positive impact on the baseline as this policy promotes sustainable development in design and development. Impact on traffic and air quality can be further assessed at a later stage in the planning process. Changes to this policy post reg 14 consultation by extending the settlement boundary, still has a positive impact on the sea baseline data. Criteria contained within the policy helps promote sustainable development and has criteria to ensure to alleviate negative impacts to the local environment caused from new development.				

Policy D

SEA Objective	Assessment of effect (consider cumulative effects, significance of the effect and magnitude of the effect in terms of the three time periods)			Summary Explanation	Enhancement and mitigation opportunities
	Short	Medium	Long term		

	term (1 – 5 years)	term (6 – 10 years)	(11 years +)		
To maintain and enhance nature conservation (biodiversity, flora and fauna)	+	+	+	This policy management of traffic around Dinedor moves towards the baseline data. Changes to this policy post reg 14 has condensed the policy, the policy still strives to promote safe and efficient road networks. Therefore the impact on the sea baseline still has a positive impact on the sea baseline	Sustainable transport measures are promoted in this policy. This policy aims to reduce and alleviate traffic in Dinedor, which will overall help reduce air pollution on a limited scale.
To maintain and enhance the quality of landscapes and townscapes	+	+	+	This policy management of traffic around Dinedor moves towards the baseline data. Changes to this policy post reg 14 has condensed the policy, the policy still strives to promote safe and efficient road networks. Therefore the impact on the sea baseline still has a positive impact on the sea baseline	Sustainable transport measures are promoted in this policy. This policy aims to reduce and alleviate traffic in Dinedor, which will overall help reduce air pollution on a limited scale.
To improve quality of surroundings	+	+	+	This policy management of traffic around Dinedor moves towards the baseline data. Changes to this policy post reg 14 has condensed the policy, the policy still strives to promote	Sustainable transport measures are promoted in this policy. This policy aims to reduce and alleviate traffic in Dinedor, which will overall help reduce air pollution on a limited scale.

				safe and efficient road networks. Therefore the impact on the sea baseline still has a positive impact on the sea baseline	
To conserve and where appropriate enhance the historic environment and cultural heritage	X	X	X	No relationship.	
To improve air quality	+	+	++	This policy management of traffic around Dinedor moves towards the baseline data. Changes to this policy post reg 14 has condensed the policy, the policy still strives to promote safe and efficient road networks. Therefore the impact on the sea baseline still has a positive impact on the sea baseline.	Sustainable transport measures are promoted in this policy. This policy aims to reduce and alleviate traffic in Dinedor, which will overall help reduce air pollution on a limited scale.
To reduce the effect of traffic on the environment	+	+	++	This policy management of traffic around Dinedor moves towards the baseline data. Changes to this policy post reg 14 has condensed the policy, the policy still strives to promote safe and efficient road networks. Therefore the impact on the sea baseline still has a positive impact on the sea baseline.	Sustainable transport measures are promoted in this policy. This policy aims to reduce and alleviate traffic in Dinedor, which will overall help reduce air pollution on a limited scale.

To reduce contributions to climate change	0	0	+	This policy management of traffic around Dinedor moves towards the baseline data. Changes to this policy post reg 14 has condensed the policy, the policy still strives to promote safe and efficient road networks. Therefore the impact on the sea baseline still has a neutral impact on the sea baseline	Sustainable transport measures are promoted in this policy. This policy aims to reduce and alleviate traffic in Dinedor, which will overall help reduce air pollution on a limited scale.
To reduce vulnerability to climate change	0	0	+	This policy management of traffic around Dinedor moves towards the baseline data. Changes to this policy post reg 14 has condensed the policy, the policy still strives to promote safe and efficient road networks. Therefore the impact on the sea baseline still has a neutral impact on the sea baseline.	Sustainable transport measures are promoted in this policy. This policy aims to reduce and alleviate traffic in Dinedor, which will overall help reduce air pollution on a limited scale.
To improve water quality	0	0	0	This policy management of traffic around Dinedor moves towards the baseline data. Changes to this policy post reg 14 has condensed the policy, the policy still strives to promote safe and efficient road networks. Therefore the impact on the sea baseline still has a neutral	Sustainable transport measures are promoted in this policy. This policy aims to reduce and alleviate traffic in Dinedor, which will overall help reduce air pollution on a limited scale.

				impact on the sea baseline	
To provide for sustainable sources of water supply	0	0	0	This policy management of traffic around Dinedor moves towards the baseline data. Changes to this policy post reg 14 has condensed the policy, the policy still strives to promote safe and efficient road networks. Therefore the impact on the sea baseline still has a neutral impact on the sea baseline	Sustainable transport measures are promoted in this policy. This policy aims to reduce and alleviate traffic in Dinedor, which will overall help reduce air pollution on a limited scale.
To avoid, reduce and manage flood risk	0	0	0	This policy management of traffic around Dinedor moves towards the baseline data. Changes to this policy post reg 14 has condensed the policy, the policy still strives to promote safe and efficient road networks. Therefore the impact on the sea baseline still has a neutral impact on the sea baseline	Sustainable transport measures are promoted in this policy. This policy aims to reduce and alleviate traffic in Dinedor, which will overall help reduce air pollution on a limited scale.
To conserve soil resources and quality	0	0	0	This policy management of traffic around Dinedor moves towards the baseline data. Changes to this policy post reg 14 has condensed the policy, the policy still strives to promote safe and efficient road networks. Therefore the impact on the sea	Sustainable transport measures are promoted in this policy. This policy aims to reduce and alleviate traffic in Dinedor, which will overall help reduce air pollution on a limited scale.

				baseline still has a neutral impact on the sea baseline.	
To minimise the production of waste	0	+	+	This policy management of traffic around Dinedor moves towards the baseline data. Changes to this policy post reg 14 has condensed the policy, the policy still strives to promote safe and efficient road networks. Therefore the impact on the sea baseline still has a positive impact on the sea baseline.	Sustainable transport measures are promoted in this policy. This policy aims to reduce and alleviate traffic in Dinedor, which will overall help reduce air pollution on a limited scale.
To improve health of the population	+	+	+	This policy management of traffic around Dinedor moves towards the baseline data. Changes to this policy post reg 14 has condensed the policy, the policy still strives to promote safe and efficient road networks. Therefore the impact on the sea baseline still has a positive impact on the sea baseline.	Sustainable transport measures are promoted in this policy. This policy aims to reduce and alleviate traffic in Dinedor, which will overall help reduce air pollution on a limited scale.
To reduce crime and nuisance	+	+	+	This policy management of traffic around Dinedor moves towards the baseline data. Changes to this policy post reg 14 has condensed the policy, the policy still strives to promote safe and efficient road networks.	Sustainable transport measures are promoted in this policy. This policy aims to reduce and alleviate traffic in Dinedor, which will overall help reduce air pollution on a limited scale.

				Therefore the impact on the sea baseline still has a positive impact on the sea baseline.	
To conserve natural and manmade resources	+	+	+	This policy management of traffic around Dinedor moves towards the baseline data. Changes to this policy post reg 14 has condensed the policy, the policy still strives to promote safe and efficient road networks. Therefore the impact on the sea baseline still has a positive impact on the sea baseline.	Sustainable transport measures are promoted in this policy. This policy aims to reduce and alleviate traffic in Dinedor, which will overall help reduce air pollution on a limited scale.
Overall commentary and any cumulative effects	Overall this policy has a positive effect on the baseline objectives and is in conformity with the Core Strategy. Mitigation measures have been included within the NDP and Core Strategy to ensure no detrimental effects towards the environment will be caused by additional traffic. Changes to this policy post reg 14 has condensed the policy, the policy still strives to promote safe and efficient road networks. Therefore the impact on the sea baseline still has a positive impact on the sea baseline.				

Appendix 8

Appendix 9: Modifications following Dinedor NDP examination (February 2021)

Policy	Modification recommended	Justification
Throughout the plan	Modification 1: All policies in the Plan to be clearly defined within a box or other clearly distinguishing feature, and to be set out on one page wherever possible. Section 7 to be replaced with an Appendix listing the Parish Council Supporting Actions listed after paragraph 5.6 in the submission version of the Plan.	For clarity and accuracy.
Policy A	Modification 2: Policy A to be amended as follows: <i>POLICY A -NEW HOUSING DEVELOPMENT WITHIN THE SETTLEMENT BOUNDARY OF IN DINEDOR VILLAGE</i> <i>Small scale proposals (up to 2 dwellings) for new market and affordable housing will be supported within the village settlement of Dinedor and a settlement boundary is defined for the village as shown on</i> (see <i>Figure 6a, Policies Map.</i> providing that it is proportionate to the existing number and form of housing in the immediate area of the village. <i>Such proposals will be assessed against the following criteria and will be required to:</i> they: <i>a. relate well to the existing built-up area of the village;</i> <i>b. meet, or exceed, the highest possible sustainable design and construction standards prevailing at the time;</i> <i>c. do not have an unacceptable adverse impact on residential amenity of existing and future occupiers, heritage assets and local infrastructure; and d. do not erode the existing character and setting of the village area. ; and</i> The concluding text of Policy A from this point to be deleted. Figure 6a to show only the settlement boundary and protected community facilities (modification 6 refers), and the settlement boundary to be amended as shown below to incorporate recent planning permissions and a coherent boundary definition in line with the criteria and guidance from the LPA. (The example settlement boundary can be found in the examiner's report).	To comply with the Core Strategy Local Plan and NPPF in the interest of accuracy and clarity.
Policy C	Modification 3: The current alphabetic identification from a) to d) in the first set of criteria in Policy C to be replaced with the numbers 1) through to 4) identifying each of them.	To confirm with NPPF and to ensure policy is clear.
Policy D	Modification 4: The last sentence of Policy D criteria b) to read: <i>... . Development proposals leading to loss or breaks in this network of routes will not be supported, unless an acceptable adequate or better replacement is provided.</i> Figure 3 to be amended so that only rights of	For clarity and in accordance with NPPF.

Policy	Modification recommended	Justification
	way improvements within the parish are shown and the indication of improvements and additions desired are properly distinguished from the existing public rights of way network shown in Figure 3 by the addition of a key detailing added detail.	
Policy E	<p>Modification 5: Policy E to be amended as follows: <i>Proposals for the development of small-scale business enterprises suitable to a rural area will be encouraged when they comply with other policies in the development plan and do not significantly adversely affect the rural character, environment and landscape of Dinedor or existing residential amenities. They may include but not exclusively the following development proposals: and are for the following:</i></p> <ul style="list-style-type: none"> a. for the conversion or reuse of an existing building; b. homeworking proposals; c. live/work units; d. diversification of an existing rural business; e. the proposal is in accordance with Policy C in terms of its design. 	For clarity and in accordance with NPPF. Minor grammatical alterations are recommended for clarity.
Policy F	<p>Modification 6: Policy F to be amended as follows: <i>Development proposals should protect or and enhance the rural environment and landscape of the area. Proposals should:</i></p> <ul style="list-style-type: none"> a. have a be designed in terms of scale, form and siting so as to that retain rural character; b. <i>protect and enhance or protect the landscape setting of Dinedor village;</i> c. <i>conserve or and enhance biodiversity and heritage assets;</i> d. <i>protect and or enhance the natural and scenic beauty of Dinedor;</i> e. <i>incorporate, where necessary, landscaping schemes and future on-going management arrangements to ensure the proposal integrates into the surrounding landscape and rural environment;</i> f. <i>in suitable locations, maintain and extend woodland and hedgerows by using native species; and</i> g. should <i>not have an adverse impact on the environmental quality of the parish's rivers, streams and brooks.</i> 	To avoid ambiguity and to ensure policy is clear and in accordance with NPPF. Minor grammatical alterations are recommended for clarity.
Policy G	<p>Modification 5: Policy G to be amended as follows: <i>Development proposals should conserve or and enhance the local heritage assets, including those listed below, ...</i> Proposals for new development should consult the Historic</p>	For clarity and for the policy to reflect NPPF para 16d.

Policy	Modification recommended	Justification
	<p>Environment Record. Where there is an indication or potential that there may be assets of heritage or archaeological interest appropriate suitable-desk-based and site investigations should be carried out. Site investigations must follow the appropriate professional practices so that there is no detriment to the rural environment.</p>	
Policy H	<p>Modification 6: Policy H to be amended as follows: Dinedor Camp is designated as a The Local Green Space as shown identified below and on the Dinedor Policies Map figure (Figures 6a and 6b. below will be protected. Development of this these space will only be supported in very special circumstances.</p> <ul style="list-style-type: none"> • the Village Green • Dinedor Camp 	To ensure this policy complies with the policies in the NPPF, para 100.
Policy J	<p>Modification 7: Policy J to be amended as follows: POLICY J – TRANQUILLITY LOCAL RESIDENTS' ENJOYMENT OF THE PARISH <i>All new development proposals should respect Dinedor's rural environment and tranquillity. Proposals should include suitable measures to mitigate any impact on residential amenity and proposals that are considered to have an significant adverse impact on residential amenity will not be supported. To preserve the area's rural environmental quality and relative tranquillity, proposals will only be supported where they retain or enhance that environmental quality and retain the parish's tranquillity.</i></p>	For clarity and to better reflect NPPF and NPPG.

Appendix 9

Summary of consultation responses to Bridstow Reg 16 SEA

Consultation date: 10 August to 5 October 2020

Consultation title: Dinedor Neighbourhood Plan Regulation 16

N.B. This consultation feedback is only for comments received on the SEA of the draft Neighbourhood Development Plan

Consultee and any comments received:

- Natural England – No comments received specific to SEA
- Historic England – No comments received specific to SEA
- Environment Agency – No comments received specific to SEA
- Natural Resources Wales – No comments received specific to SEA

Responses to comments:

- Natural England – No comments to make
- Historic England – No comments to make
- Environment Agency – No comments to make
- Natural Resources Wales – No comments to make

Appendix 10

Objectives verses SEA Objectives (SMART and Compatibility Test)

The matrix in this document appraises the final Dinedor NDP policies in terms of their SMART criteria and their compatibility with the SEA objectives. These have been developed from Government guidance on SEA and from the local evidence base gathered for identifying the NDP issues.

Strategic Environmental Assessment (SEA) Assessment outcome key
Very compatible-Very positive effect
Compatible –Positive effect
Conflict- Negative effect
Neutral-Neutral effect
No relationship between objectives- No link
Uncertain- more information needed

SMART criteria:

S – Specific: NDP objectives should specify what is intended to be done in detail and should not be open to a wide range of misinterpretations

M – Measurable: It should be possible to monitor NDP objectives in a quantifiable way, by the use of indicators. Indicators should be measurable with limited resource implications.

A – Attainable/achievable: NDP objectives should be achievable and deliverable, related to the scale of growth proposed

R – Realistic: NDP objectives should relate to the overall vision of the plan. Likewise, chosen indicators should relate to objectives and their outcomes.

T – Time-Bound: Objectives should be specific to the NDP period or another specified time-frame. Objectives should be associated with a target and indicators should specify when the target should be achieved.

SEA Objectives:

1-To maintain and enhance nature conservation (biodiversity, flora and fauna)

2- To maintain and enhance the quality of landscapes and townscapes

3- To improve quality of surroundings

4- To conserve and where appropriate enhance the historic environment and culture heritage

5- To improve air quality

Appendix D2: Develop and Refinement of the examination modified NDP policies (Dinedor NDP) (March 2021)

6- To reduce the effect of traffic on the environment

7- To reduce contributions to climate change

8- To reduce vulnerability to climate change

9- To improve water quality

10- To provide for sustainable sources of water supply

11- To avoid, reduce and manage flood risk

12- To conserve soil resources and quality

13- To minimise the production of waste

14- To improve health of the population

15- To reduce crime and nuisance

16- To conserve natural and manmade resources

Assessment of Neighbourhood Plan Policies against the SEA Objectives and SEA Baseline

No objectives post examination have been amended, therefore do not require rescreening.

D3: Predict and evaluate the short to long term effects of the examination modified NDP policies (Dinedor NDP) (2021)

Assessment of the short, medium and long term effects of the NDP policies/sites on the SEA Objectives

The matrix in this document appraises the final Dinedor NDP policies in terms of their effect on the SEA objectives over the short, medium and long term. These have been developed from Government guidance on SEA and from the local evidence base gathered for identifying the NDP issues.

Strategic Environmental Assessment (SEA) Assessment outcome key
Very compatible-Very positive effect
Compatible –Positive effect
Conflict- Negative effect
Neutral-Neutral effect
No relationship between objectives- No link
Uncertain- more information needed

SEA Objectives:

- 1-To maintain and enhance nature conservation (biodiversity, flora and fauna)
- 2- To maintain and enhance the quality of landscapes and townscapes
- 3- To improve quality of surroundings
- 4- To conserve and where appropriate enhance the historic environment and culture heritage
- 5- To improve air quality
- 6- To reduce the effect of traffic on the environment
- 7- To reduce contributions to climate change
- 8- To reduce vulnerability to climate change
- 9- To improve water quality
- 10- To provide for sustainable sources of water supply
- 11- To avoid, reduce and manage flood risk

D3: Predict and evaluate the short to long term effects of the examination modified NDP policies (Dinedor NDP) (2021)

12- To conserve soil resources and quality

13- To minimise the production of waste

14- To improve health of the population

15- To reduce crime and nuisance

16- To conserve natural and manmade resources

Assessment of the effect of Neighbourhood Plan Policies on SEA Objectives.

The plan post examination have had minor changes to the policies, no re screening of the policies post examination are required.

Appendix 11

Objectives and context	Where are the points covered in Neighbourhood Development Plan SEA
<ul style="list-style-type: none"> • The Neighbourhood Development Plan's purpose and objectives are made clear. • The Neighbourhood Area's environmental issues and constraints, including acknowledgement of those in the Local Plan (Core Strategy) SA, where relevant, and local environmental protection objectives, are considered in developing objectives and targets. • SEA objectives are clearly set out and linked to indicators and targets where appropriate. • Links with other locally related plans, programmes and policies are identified, explained and acknowledgement for those set out in the SA of the Local Plan (Core Strategy) is given, where relevant. • Conflicts that exist between SEA objectives; between SEA and Neighbourhood Development Plan objectives; and between SEA objectives and other local plan objectives are identified and described. 	<p>Chapter 1.6 – 1.10</p> <p>Chapter 2 methodology, chapter 3 and tables A2 and A3</p> <p>Chapter 3 paragraph 3.5 and 3.7</p> <p>Chapter 3, paragraph 3.1</p> <p>Chapter 3</p>
<p>Scoping</p> <ul style="list-style-type: none"> • Statutory Consultees are consulted in appropriate ways and at appropriate times on the content and scope of the Environmental Report. • The assessment focuses on significant issues. • Technical, procedural and other difficulties encountered are discussed; assumptions and uncertainties are made explicit. 	<p>Chapter 2, paragraphs 2.6-2.9</p> <p>Chapter 2 and chapter 4</p> <p>Chapter 2</p>

<ul style="list-style-type: none"> • Reasons are given for eliminating issues from further consideration. 	Chapter 2, chapter 4 and chapter 5
<p>Alternatives</p> <ul style="list-style-type: none"> • Realistic alternatives are considered for key issues, and the reasons for choosing them are documented. • Alternatives include 'do minimum' and/or 'business as usual' scenarios wherever relevant. • The environmental effects (both adverse and beneficial) of each alternative are identified and compared. • Inconsistencies between the alternatives and other relevant local plans, programmes or policies are identified and explained. • Reasons are given for selection or elimination of alternatives. 	<p>Chapter 4 and chapter 5</p> <p>Paragraph 5.4</p> <p>Chapter 5</p> <p>Chapter 5</p> <p>Chapter 5</p>
<p>Baseline information</p> <ul style="list-style-type: none"> • Relevant aspects of the current state of the local, neighbourhood area environment and their likely evolution without the Neighbourhood Development Plan are described. Acknowledgement to the information in the SA of the Local Plan (Core Strategy) is given, where relevant. • Environmental characteristics of the local, neighbourhood area, likely to be significantly affected are described, including areas wider than the physical boundary of the designated neighbourhood area, where it is likely to be affected by the Neighbourhood Development Plan. • Difficulties such as deficiencies in information or methods are explained. 	<p>Chapter 1, Chapter 3</p> <p>Initial screening report and Chapter 1</p> <p>Chapter 2</p>
<p>Prediction and evaluation of likely significant environmental effects</p>	

<ul style="list-style-type: none"> • Effects identified include the types listed in the Directive (biodiversity, population, human health, fauna, flora, soil, water, air, climate factors, material assets, cultural heritage and landscape), as relevant; and other local likely environmental effects are also covered, as appropriate. • Both positive and negative effects are considered, and the duration of effects (short, medium or long-term) is addressed. • Likely secondary, cumulative (growing in quantity and strength) and synergistic (acting together) effects are identified, where practicable. • Inter-relationships between effects are considered, where practicable. • The prediction and evaluation of effects makes use of relevant accepted standards, regulations, and thresholds (i.e. data gathered for the evidence base). • Methods used to evaluate the effects are described. 	<p>Tables A2, A3 and A4</p> <p>Tables B2 and B3, Table D2 and D3</p> <p>Table B4</p> <p>Chapter 5, chapter 6</p> <p>Chapter 5, chapter 6</p> <p>Chapter 2</p>
<p>Mitigation measures</p> <ul style="list-style-type: none"> • Measures envisaged to prevent, reduce and offset any significant adverse effects of implementing the Neighbourhood Development Plan are indicated. • Issues to be taken into account when determining planning applications or other projects, for example funding bids, are identified. 	<p>Chapter 6, paragraph 6.6 – 6.9</p> <p>Chapter 6</p>
<p>The Environmental Report</p> <ul style="list-style-type: none"> • Is clear and concise in its layout and presentation. • Uses simple, clear language and avoids or explains technical terms. 	<p>-</p> <p>-</p> <p>-</p>

<ul style="list-style-type: none"> • Uses maps and other illustrations, where appropriate. • Explains the methodology used. • Explains who was consulted and what methods of consultation were used. • Identifies sources of information, including expert judgement and matters of opinion. • Contains a non-technical summary covering the overall approach to the SEA, the objectives of the Neighbourhood Development Plan, the main options considered, and any changes to the Neighbourhood Development Plan resulting from the SEA. 	<p>Chapter 2</p> <p>Paragraph 2.6-2.9</p> <p>Paragraph 2.8-2.9</p> <p>Page 1 / Paragraph 1.8 / Chapter 6</p>
<p>Consultation</p> <ul style="list-style-type: none"> • The SEA is consulted on as an integral part of the plan-making process of the Neighbourhood Development Plan. • Consultation Bodies and the public likely to be affected by, or having an interest in, the Neighbourhood Development Plan are consulted in ways and at times, which give them an early and effective opportunity within appropriate time frames to express their opinions on the draft Neighbourhood Development Plan and Environmental Report. 	<p>Paragraph 2.6-2.9</p> <p>Chapter 8</p>
<p>Decision-making and information on the decision</p> <ul style="list-style-type: none"> • The environmental report and the opinions of those consulted are taken into account in finalising and adopting the Neighbourhood Development Plan. • An explanation is given of how they have been taken into account. • Reasons are given for choosing the Neighbourhood Development Plan as adopted, in the light of other reasonable alternatives considered. 	<p>Chapter 8</p> <p>Chapter 8</p> <p>Following draft consultation</p>

<p>Monitoring measures</p> <ul style="list-style-type: none"> • Measures proposed for monitoring the Neighbourhood Development Plan are clear, practicable and linked to the indicators and objectives used in the SEA. • Monitoring is used, where appropriate, during implementation of the Neighbourhood Development Plan to make good deficiencies in baseline information in the SEA. • Acknowledgement that monitoring enables unforeseen adverse effects to be identified at an early stage. (These effects may include predictions which prove to be incorrect.) And that • Proposals are made for action in response to significant adverse effects arising from the monitoring of the Neighbourhood Development Plan. 	<p>Chapter 7</p> <p>Chapter 7</p> <p>Chapter 7</p> <p>Chapter 7</p>