

# A Heritage Impact Assessment for Shobdon Quarry Extension, Herefordshire



August 2021

Report prepared by L. Delaney & T. Hoverd  
Herefordshire Archaeology Report No. 393  
*On behalf of Herefordshire Council*

**Client** Herefordshire Council Planning Services  
Plough Lane, Hereford, HR4 0LE

**Prepared By** Liam Delaney  
Tim Hoverd

**Illustration By** Liam Delaney

**Edited By** Tim Hoverd

**Site Visit** 19<sup>th</sup> August 2021

**Report Issued** 24<sup>th</sup> September 2021

**Contact Information** Herefordshire Archaeology  
Herefordshire Archives & Record Centre,  
Fir Tree Lane, Rotherwas, Hereford,  
HR2 6LA  
01432 260130  
Liam.Delaney@herefordshire.gov.uk  
Tim.Hoverd@herefordshire.gov.uk  
htt.herefordshire.gov.uk

**Site NGR** SO 39791 60476

**Herefordshire Archaeological  
Report Number** HAR393

**HER Event Number** EHE80469

**Herefordshire Archaeology** is Herefordshire Council's county archaeology service. It advises upon the conservation of archaeological and historic sites and landscapes and carries out conservation and investigative field projects.

# Contents

Summary:.....	4
1. Introduction .....	5
2. Aims and Objectives.....	5
3. Policy and guidance .....	6
4. Heritage Impact Assessment Methodology.....	6
5. The Site Location & Description.....	7
6. Geology & Topography .....	9
7. Proposed Scheme .....	9
8. Historical and archaeological background.....	9
8.1 Designated Archaeological Sites .....	14
8.2 Known Undesignated Archaeological Sites .....	14
Prehistoric.....	14
Romano-British.....	14
Early medieval .....	15
Medieval .....	15
Post-medieval.....	15
Modern .....	15
9. Map regression .....	20
10. Landscape visualisation and setting .....	22
11. Site visit .....	23
12. Discussion.....	25
12.1 The archaeological landscape of the search area .....	25
12.2 The archaeological potential of the proposal area .....	26
12.3 The impact of previous development on potential archaeological remains .....	26
12.4 The impact of the proposal of designated heritage assets .....	27
12.5 The impact of the proposal on non-designated heritage assets .....	27
13. Conclusions .....	28
14. Bibliography .....	29
15. Gazetteer of Historic Environment Records .....	30

# Figures

Figure 1: Location Plan.....	8
Figure 2: HLC for the study area.....	12
Figure 3: Designated Heritage Assets .....	13
Figure 4: Undesignated Heritage Assets – Prehistoric.....	16
Figure 5: Undesignated Heritage Assets – Romano-British .....	17
Figure 6: Undesignated Heritage Assets – Medieval.....	18
Figure 7: Undesignated Heritage Assets - Post-Medieval.....	19
Figure 8: Tithe Map extract 1829. Site boundary is outlined in blue (© G. Gwatkin).....	20
Figure 9: First Edition Ordnance Survey Map (1886) © Ordnance Survey (100024168).....	21
Figure 10: Fifth Edition Ordnance Survey Map (1950) © Ordnance Survey (100024168) .....	21
Figure 11: Visualised in 3D, setting issues of the various heritage assets can be considered..	22
Figure 12: Visual impact to the heritage assets is minimalised by the low-lying topography..	22
Figure 13: The Quarry extension site is surrounded by thick vegetation and high fences, removing any direct visibility of the site itself, including to the north to the airfield. ....	23
Figure 14: The site itself would not be suitable for any surface investigation, like field walking, but may be suitable for geophysics to investigate if there are any remaining sub-surface features.....	24
Figure 15: The Torvale Industrial Estate blocks any inter-visibility between the site and the barrow cemetery to the west.....	24
Figure 16: The Barrow Cemetery is under thick agricultural crop, making the subtle earthworks almost invisible.....	25

## Summary:

Herefordshire Archaeology, Herefordshire Council's Archaeology Service, was requested to produce a Heritage Impact Assessment in relation to the proposed allocation of an extension area to Shobdon Quarry in the emerging Minerals and Waste Local Plan (MWLP).

The production of an HIA has been recommended by Historic England, who raised a soundness objection at the reg.19 consultation on the publication draft MWLP for the proposed extension. The objection was centred upon concerns over the proximity of a number of non-designated assets, particularly prehistoric subsurface archaeology. This document describes the known heritage assets within the locality (both designated and undesignated), explores the impact and setting concerns of these sites in relation to the proposed extension and discusses the potential for survival of archaeological features and artefacts within the proposed extension area.

The fluvial-glacial deposits in the site area have been demonstrated to contain artefacts that are linked to, and indication of, activity from the Neolithic, to the Mesolithic. With nearby Bronze Age concentrated on extensive activity to the west of the site area in the form of a barrow cemetery.

There is a high potential for the some of the gravels in the quarry will contain archaeological deposits, however, previous extensive quarrying and evidence from other evaluations do suggest that there is at least a good possibility that these have been already heavily impacted by modern activity.

Disclaimer: It should not be assumed that land referred to in this document is accessible to the public. Location plans are indicative only. National Grid References are accurate to approximately 5m. Measured dimensions are accurate to within 1m at a scale of 1:500, 0.1m at 1:50 and 0.02m at 1:20m

Figures contained within this report contain material from the Ordnance Survey. The grid in this material is the National Grid taken from the Ordnance Survey map with the permission of the Controller of Her Majesty's Stationery Office (OS Licence 100024168). This material has been reproduced to locate the site in its environs.

Copyright: This report is the copyright of Herefordshire Council.

# 1. Introduction

The report has been prepared and is intended to inform, contextualise and assess the significance and potential impact of the proposed extension of Shobdon Quarry, Shobdon, Herefordshire (SO 39791 60476) to the historic environment.

Herefordshire Archaeology (Herefordshire Council's Archaeology Service) were requested to produce the Heritage Impact Assessment (HIA) in order the heritage assets to properly be considered in the draft Minerals & Waste Local Plan (MWLP) and so that the recommendations can be taken forward prior to final site selection within the adoption process

Historic England, who raised an objection at the reg.19 consultation on the publication draft Minerals and Waste Local Plan, has recommended the production of this HIA. The objection raised concerns in relation to non-designated assets, noting that the area is rich in prehistoric subsurface archaeology.

## 2. Aims and Objectives

The primary aim of the heritage impact assessment is to provide a professional appraisal of the archaeological potential of the site and its setting. This follows the Government guidance in *NPPF* (2021) by presenting a synthetic account of the available archaeological and historical data and its significance

In accordance with *NPPF* (2021), the report presents a desk-based evaluation of existing information. It additionally follows the Chartered Institute for Archaeologists (CIfA) *Standard* definition of a desk-based assessment (CIfA 2012). In brief, it seeks to identify and assess the known and potential archaeological resource within a specified area ('the site'), collating existing written and graphic information and taking full account of the likely character, extent, quantity and worth of that resource in a local, regional and national context. It also aims to define and comment on the likely impact of the proposed development scheme on the surviving archaeological resource.

The Chartered Institute for Archaeologists *Standard* states that the purpose of a desk-based assessment is to inform appropriate responses as regards to archaeology as a material consideration and an assessment of the impact on the historical character of the area. It is intended to contribute to the formulation of an informed and appropriate mitigation strategy.

### 3. Policy and guidance

This document has been produced with reference to relevant legislation. The National Planning Policy Framework (2021) provides such guidance, with specific reference to the following policy points:

194. In determining applications, local planning authorities should require an applicant to describe the significance of any heritage assets affected, including any contribution made by their setting. The level of detail should be proportionate to the assets' importance and no more than is sufficient to understand the potential impact of the proposal on their significance. As a minimum the relevant historic environment record should have been consulted and the heritage assets assessed using appropriate expertise where necessary. Where a site on which development is proposed includes, or has the potential to include, heritage assets with archaeological interest, local planning authorities should require developers to submit an appropriate desk-based assessment and, where necessary, a field evaluation.

195. Local planning authorities should identify and assess the particular significance of any heritage asset that may be affected by a proposal (including by development affecting the setting of a heritage asset) taking account of the available evidence and any necessary expertise. They should take this into account when considering the impact of a proposal on a heritage asset, to avoid or minimise any conflict between the heritage asset's conservation and any aspect of the proposal.

The NPPF also makes provisions for the protecting significance designated and undesignated heritage assets (200 & 203), utilisation of the Historic Environment Records for the determination of impact (192) and stresses the desirability of the proposed development to make a positive contribution to the local character and distinctiveness (197).

In addition specific guidance documents that are considered relevant to this assessment have been consulted for the production of this report, these have been used to provide guidance and ensure quality in the advice being given.

### 4. Heritage Impact Assessment Methodology

The methodology for this report is an adaptation of the standards outlined in the Chartered Institute for Archaeologists' Standard Guidance paper (CIfA 2012) and the Historic England guidance documents 'Mineral Extraction and Archaeology' (2020) and 'The Historic Environment and Site Allocations in Local Plans' (2015). Advice on assessing significance of heritage has been adapted from Historic England 'Statements of Heritage Significance' (2019).

The work has involved the consultation of the available documentary evidence, Historic Environment Record data, and including records of previous archaeological events and historical maps based on a 1.5km search from the centre of the site. The Herefordshire Historic Environment Record, hold details of known archaeological and historical sites in the vicinity of the proposal site. Guidance on setting issues has been adapted from Historic England's guidance document 'The Setting of Heritage Assets' (2015) these have been explored utilising a 3D visualisation generated from lidar data (Environment Agency), this model has been supplemented with a site walkover.

In summary, the work has involved:

- Identifying the client's objectives and project specifications,
- Undertaking a Historic Environment Record search from Herefordshire for information on heritage assets and previous work,
- Assembling the cartographic and documentary sources available,
- Assembling the LiDAR data from the Environment Agency for the region and generating a 3D Digital Terrain Model,
- Undertaking a site walkover.

It should be stressed that Historic Environment Records rely strongly on the extent of current knowledge which is usually the product of previous work undertaken which for large parts of the study area has not been the case. For this reason, apparently blank zones should not be automatically regarded as being devoid of remains.

In the report, the factual historical, archaeological, cartographic, visualisations and observed data are provided first. This will be followed by an assessment of the data and then conclusions of the study.

## 5. The Site Location & Description

Shobdon Quarry is located at SO 39791 60476 (NGR), immediately to the south of Shobdon Airfield, and east of Torvale Industrial Estate, both of which are 1km south of the village of Shobdon in the Parish of Shobdon, northern Herefordshire, approximately 8km to the west of the market town of Leominster (Figure 1). The former gravel quarries, now ponds, occupy a low lying, south sloping plain which has traditionally been known as the Shobdon Marsh. Shobdon Quarry was formerly used for the extraction of gravels from the kettle moraine deposited on the withdrawal of the Late Devensian ice-sheet (Earth Heritage Trust 2021). The proposed extension would be reopening and extending the previous quarry extents and would encompass an area of 4.81ha (Herefordshire Council 2021: (a) 21).



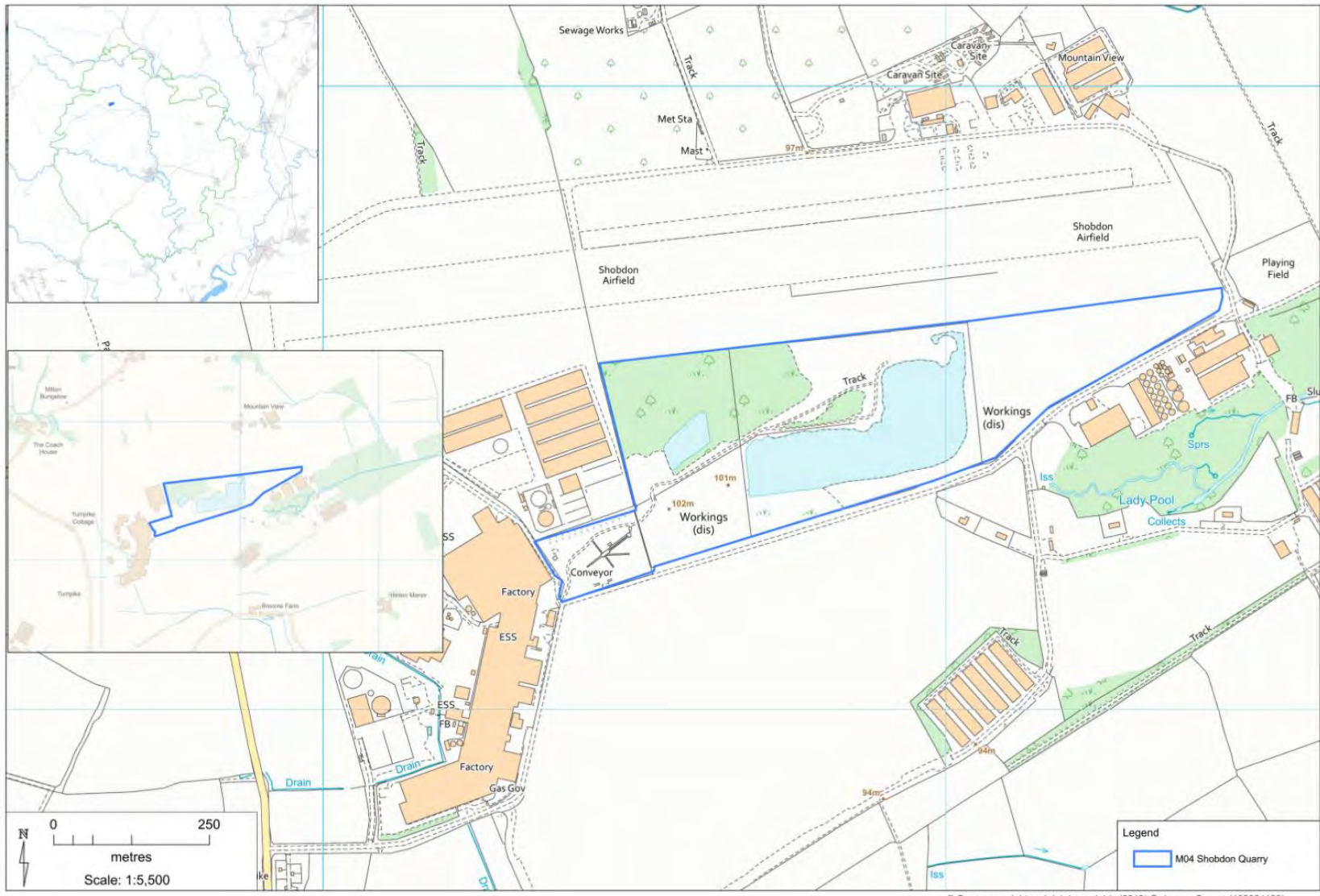


FIGURE 1: LOCATION PLAN

## 6. Geology & Topography

The plain that the quarry occupies is formed from the kettle moraine deposited on the withdrawal of the Late Devensian ice-sheet. These gravels contain locally derived Lower Old Red Sandstone pebbles with smaller proportions of Silurian siltstones, sandstones, shales and greywackes from Central Wales, in addition to vein quartz and possibly dolerite and gabbro. As the Wye glacier melted, it deposited blocks of ice against the line of hills stretching from Kington, past Shobdon to Orleton. These were then buried under the debris that was washed out of the glacier. When the ice blocks melted, the overlying sediment collapsed and the resulting hollow is known as a kettle hole. This kettle moraine is a glacial landform that has been created through the development of multiple kettle holes. Many of these kettle holes contain ponds, as the underlying clay-rich glacial deposits prevent water from draining effectively (Earth Heritage Trust 2021).

## 7. Proposed Scheme

Known mineral resources in Herefordshire are relatively limited in range, primarily consisting of aggregates for use in construction but also a small amount of building stone. Aggregates comprise, sand and gravel; crushed rock (limestone); and secondary or recycled materials gained from quarry and waste operations. Shobdon is one of three sand and gravel quarries in Herefordshire but it is currently the only inactive Quarry at the time of the MWLP.

Herefordshire looks to increase its level of self-sufficiency (not least to reduce the environmental burdens from transport) and to make a reasonable contribution to the Managed Aggregate Supply System. Total provision for sand and gravel over the plan period to 31 December 2041 will be 5 million tonnes. Additional provision shall be made through the five-year reviews, if necessary, to maintain a landbank of at least seven years for sand and gravel at 31 December 2041, based on an annual rate of provision to be determined through the review. The sand and gravel sites at Shobdon is a Local Geological Site designated for their glacial features. (Herefordshire Council 2021: (a) 21).

## 8. Historical and archaeological background

Shobdon is first mentioned in Domesday Book under the following entry:

*“Edith held it...4 hides which pay tax. In lordship 3 ploughs; 20 villagers, 20 smallholders. 1 riding man and a smith with 9 ploughs. 6 slaves; woodland, 1 league in both length and width. The value was £6; now £7.”*

The entry suggests a settlement of a relatively large size, (Pembrige was valued at £10 whilst Weobley was valued at 100s). The description include woodland and it is assumed that this represents the historic woodland that is located along the sides and gest of Shobdon Hill. 9DB 9,10).

It is suggested that the name 'Shobdon' derives from a personal name 'Sceobba' and 'Dun' meaning hill. It is spelled 'Scepedune' in Domesday Book equating to Sceobba's Hill. (Copplestone – Crow 1989: 180). The village of Shobdon lies approximately 1.5km to the north of the proposed site.

The area immediately surrounding the site contains a number of prehistoric features. Of these three are designated as Scheduled Ancient Monuments. SAM 1014895 represents the earthwork remains of a Bronze Age Round Barrow approximately 1.2km to the west of the site. SAM 1014112 represents the earthwork remains of a Bronze Age Round Barrow approximately 1.35km to the west of the site. SAM 1014103 represents the earthwork remains of a Bronze Age Round Barrow approximately 1.6km to the west of the site. In addition to the designated barrows, a number of ring ditches, linear ditches and other possible barrow sites have been documented indicating the presence of an extensive cemetery, (HSM 52008). The eastern extent of this cemetery is understood to be approximately 600m to the west of the proposed site. Evidence from aerial photographs has documented a number of additional ring ditches, linear features and small enclosures suggesting that the area to the west of the proposed site was, during the Bronze Age, a largely open landscape containing a wide spread group, or possibly groups, of funerary monuments within a marshy plain.

It would appear that during the later prehistoric period and into the Romano British period, the area around the proposed site was farmed. A number of small farmstead enclosures have been identified to the north f the site (HSM 4009) and to the south-east (HSM 15215) which is directly associated with a series of small fields (HSM 15217). Excavations over a rectangular enclosure (HSM 22863) were undertaken in 2003, as part of the Arrow Valley Project. Two 10m-long trenches were excavated across the northwest and southwest arms of the enclosure ditch. No archaeological features were detected in the interior of the enclosure within the limited excavation trenches. The ditch was over 1.2m deep and over 3m wide, and the fill indicated that there had once been an associated bank. Late Iron Age pottery was recovered from the ditch fill, including Malvernian ware and mudstone-tempered pottery that was likely to have been produced in the Martley area. Abraded Romano-British pottery was found in the upper fills of the ditch, including Severn Valley ware and Black Burnished ware. The results indicate that the enclosure was constructed sometime between 100 BC and AD 100, and was possibly abandoned by the mid-2nd Century AD. As the enclosure runs

underneath the Rowe Ditch, the results also provide strong evidence that the Rowe Ditch is probably a post-Roman monument. (White, 2003).

The earthwork monument known as Rowe Ditch (HSM 356, SAM 1005382) is located approximately 1.8m to the west of the proposed site. This comprises a linear bank, which appears to span much of the Arrow Valley running almost due north from the northern bank of the River Arrow for approximately 2km and continuing to the south of the River Arrow for over 1km. It clearly cuts through the barrow cemetery and overlies Romano-British field systems and an enclosure (see above), suggesting that this represents an Early Medieval cross valley dyke, which may have represented a physical boundary to a post-Roman land unit or estate.

During the medieval period there is evidence of water meadow creation in the valley base (indicated by a number of sluices and weirs along the course of the River Arrow together with large areas of water meadow ridging). On the gently sloping ground, just above the valley floor, areas of medieval ridge and furrow have been recorded (HSM 37587, HSM 37588), suggesting an intensive arable regime during this period.

The post-medieval period saw a continuation of the medieval agricultural pattern, with water meadows being kept up and some land drained in order to maximise productivity. A disused railway line runs approximately 0.5km to the south of the proposed site. Promoted by Lord Bateman of Shobdon Court, the Leominster and Kington Railway (HSM 21726), was incorporated on 10th July 1854. Piecemeal construction took place with the Leominster - Pembridge section opening to goods on 18th October 1855. The formal opening of the complete line to Kington was on 27th July 1857. The branch passenger service closed for two months during the 1951 fuel crisis, finally closing on 5th February 1955. A skeleton freight service continued until the complete closure of the line on 24th September 1964.

Shobdon Airfield (HSM 12531), was created during 1941 as the base for No.5 Glider Training School. It continued in operation after World War II as the home of Herefordshire Aero Club and is still operational today.

It is understood that the present quarry workings were begun in 1990 and that extraction had been halted by 2002.

The Historic Landscape Characterisation (HLC) data shows the immediate site's character has been determined by industrial urbanisation. Modern construction such as the airfield and the industrial site dictating the character of the landscape in the immediate region. (Figure 2).

FIGURE 2: HLC FOR THE STUDY AREA

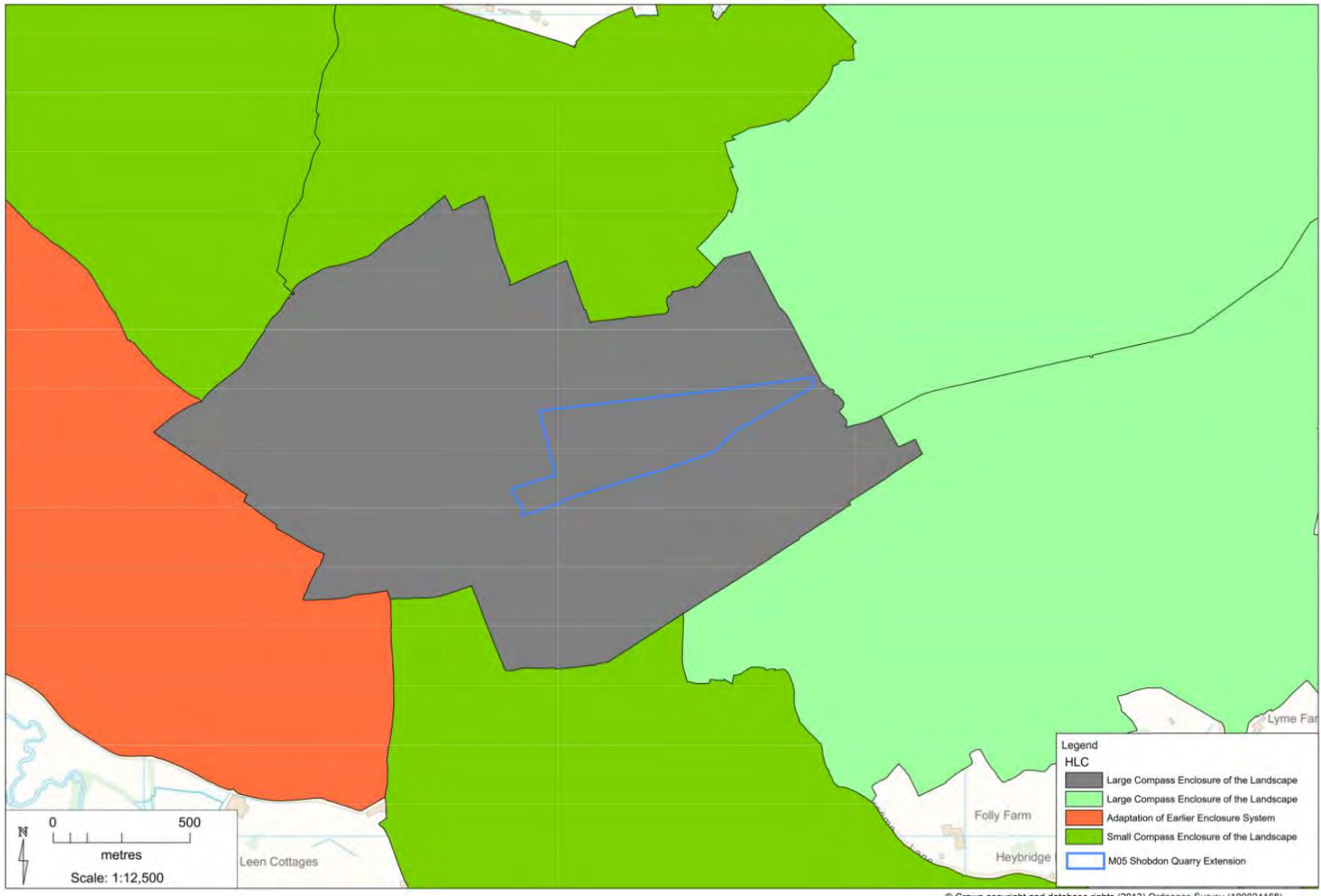
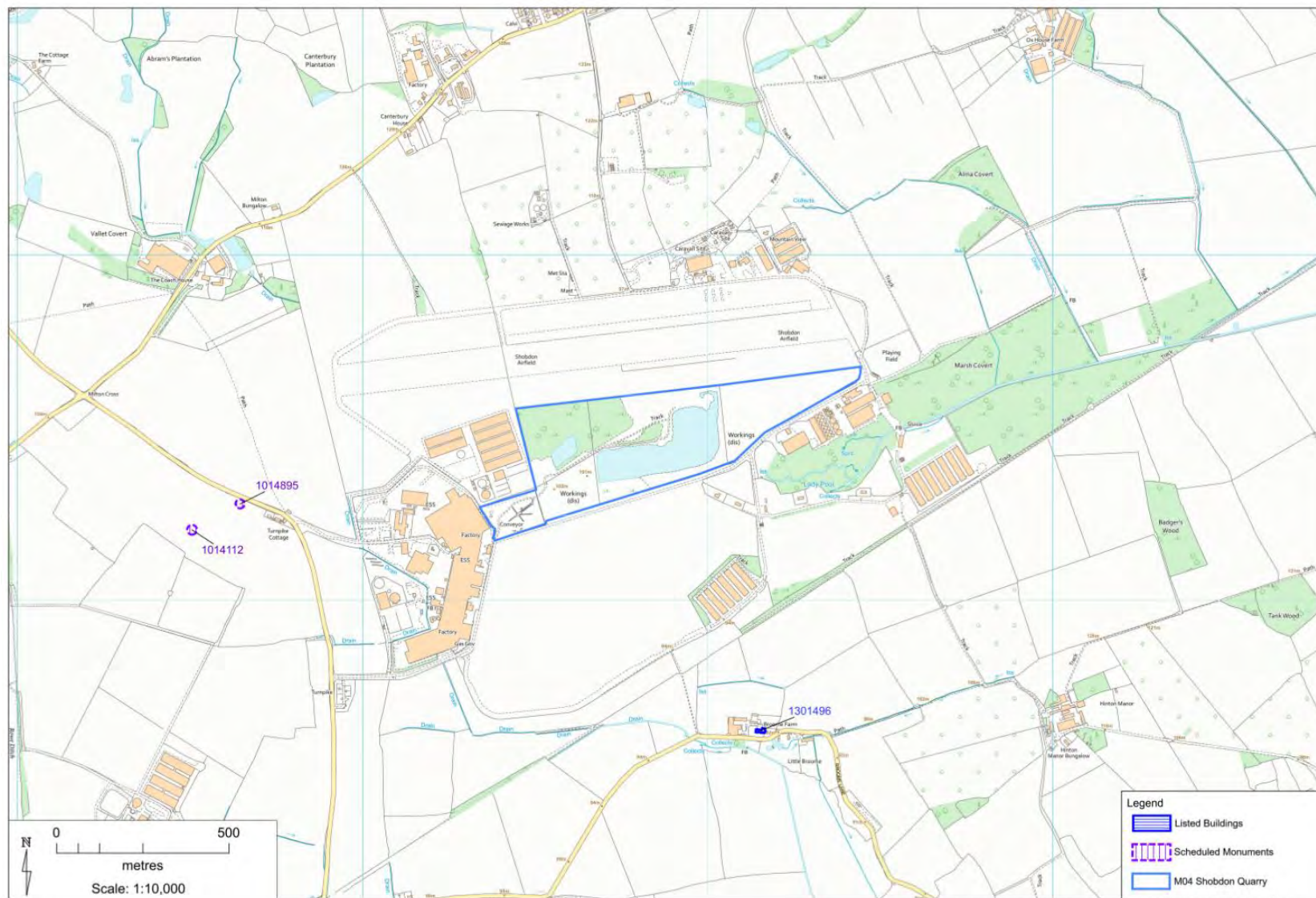


FIGURE 3:  
DESIGNATED  
HERITAGE  
ASSETS



© Crown copyright and database rights (2013) Ordnance Survey (100024168)

## 8.1 Designated Archaeological Sites

A 1.5km radius search was carried out around the proposed quarry extension. The designated features in the area are few in number and ranged in date from the Bronze Age to the Seventeenth century AD (Figure 3).

The principle concern and of most significance are two Scheduled Monuments within the study area, they are both around 600-800m west of the extensions site and are Bronze Age round barrows; Bowl barrow 490m south east of Milton Cross (1014112) and Bowl barrow 550m south east of Milton Cross (1014895).

There is only one Listed Building within the study area located 760m south-east of the extension area, it is a Grade II, 17<sup>th</sup> century property named Broome Farmhouse (1301496).

## 8.2 Known Undesignated Archaeological Sites

A 1.5km radius search was carried out around the proposed quarry extension. The recognised features in the area ranged in date from the Bronze Age to the modern period.

### *Prehistoric*

Evidence been recorded to suggest that in the site area itself there was intensive late Mesolithic to Neolithic activity, with the recording of a flint scatter (HSM 8513), recorded through fieldwalking. The flint scatter is suggestive that flint working was taking place at the site and consisted of two arrowheads, one arrowhead fragment, three scrapers. two blades, eight miscellaneous retouched fragments, five cores and sixty-two flakes.

The landscape to the west of the site is dominated by the presence of a round barrow cemetery (HSM 52008) which are visible as both earthwork mounds and subsurface features recorded from cropmarks (HSM 1028, 1029, 31116, 31836, 38504, 43984, 43985, 53517, 53440, 53441) two of which are Scheduled (1014112 & 1014895). This extensive Bronze Age activity has also resulted in the find of an axe (6234) in the same location.

There is evidence that this Bronze Age activity was not restrained to this area and evidence has been retrieved from cropmarks that suggests it extended to the location of the airfield north of the site with a cropmark complex that includes a ring ditch (HSM 53521) and small ring ditches (HSM 53520).

### *Romano-British*

South-west of the site area is an extensive cropmark complex, just north of the Leen (HSM 52120). The cropmarks mainly consist of rectilinear ditches and enclosures on a northwest-southeast aligned axis, the general orientation of which appears to survive more widely within the current landscape as reflected by the modern field boundaries. Small-scale excavation of some of these cropmark features has dated them to the Romano-British period, and the main

complex has been interpreted as a sizeable farmstead or broader settlement with associated field system. Findspot evidence for Romano-British occupation has also been found in this area (HSM 34881).

Further Romano-British occupation evidence is north of the site at Shobdon Airfield is the aforementioned cropmark complex (HSM 53521) that contains a D shaped enclosure which has been tentatively dated to the Romano-British period.

#### *Early medieval*

There is no evidence of any activity from this period within the search radius.

#### *Medieval*

There is a paucity of medieval activity in the study area, what has survived is suggestive of some features of a liminal rural economy. Shobdon village is relatively late in date and has apparently developed in a linear fashion along the main road following the southern boundary of Shobdon Park. It is believed that the medieval settlement was within the landscape park.

There is some survival of Ridge and Furrow (HSM 316) to the south of the study area at Broom Farm, which is also the location of a single Portable Antiquity findspot of an Ampulla dated 13<sup>th</sup> to 15<sup>th</sup> century (58627) and to the far north double lynchets are recorded (HSM 56439) at Old House Farm.

#### *Post-medieval*

The records in the HER that related to the post-medieval period describe a region that had an expanding rural economy dominated by a few historic farmsteads Broome Farm (HSM 46302) to the south, which also contains the Grade II, 17<sup>th</sup> century farmhouse (1301496), and Milton (HSM 31410) to the north-west. With these comes an increased amount of rural activity that has survived in the landscape as ridge and furrow (HSM 37586, 37587, 37587) and a lone PAS find of a 15-17<sup>th</sup> Buckle (HSM 49445). Just to the south of the site is the body of water of Ladypool (HSM 31420) associated with landscaping and water management of Manor Court.

#### *Modern*

The area vastly changed in the modern period due to industrialisation, this can be seen in the construction of both the RAF Shobdon Airfield (HSM 12531) in 1940, which expanded its operations in the 1960s. Also, the Leominster to Kington Railway (now dismantled) (HSM 21726) which construction started in 1854 until it was closed in 1964. Both these large-scale developments brought significant and long lasting change to the landscape.



FIGURE 4:  
UNDESIGNATED  
HERITAGE  
ASSETS –  
PREHISTORIC

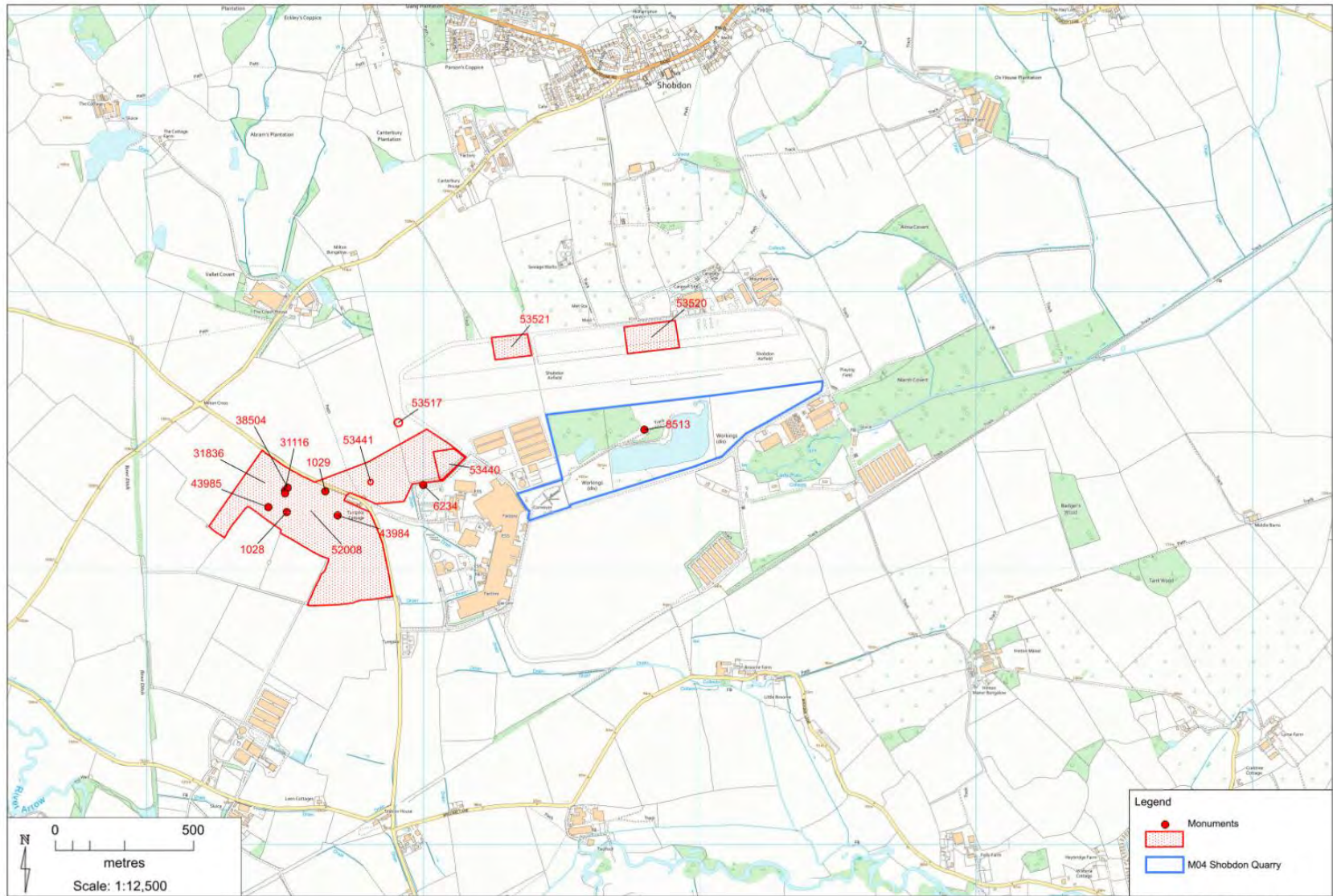


FIGURE 5:  
UNDESIGNATED  
HERITAGE  
ASSETS –  
ROMANO-  
BRITISH

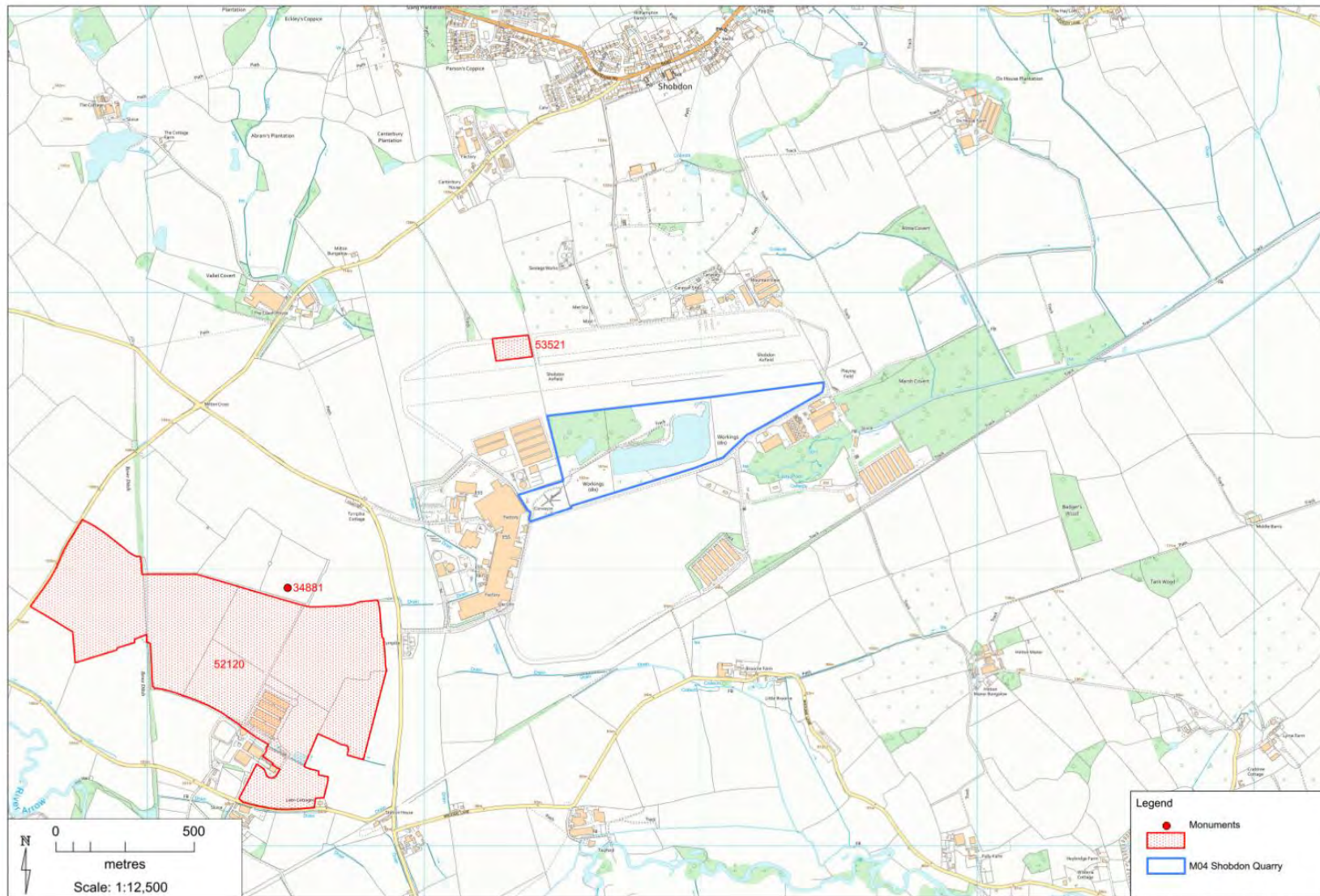
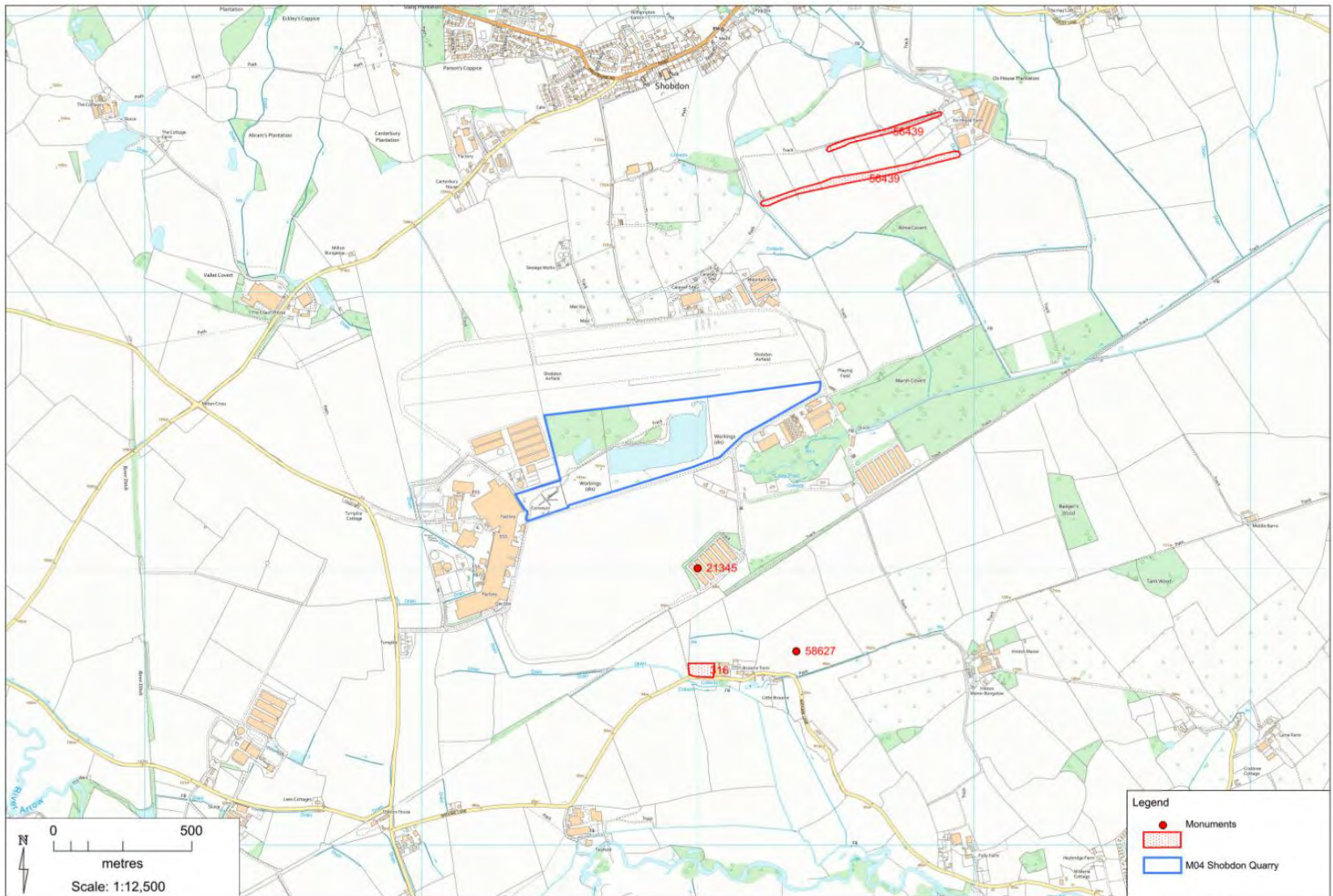
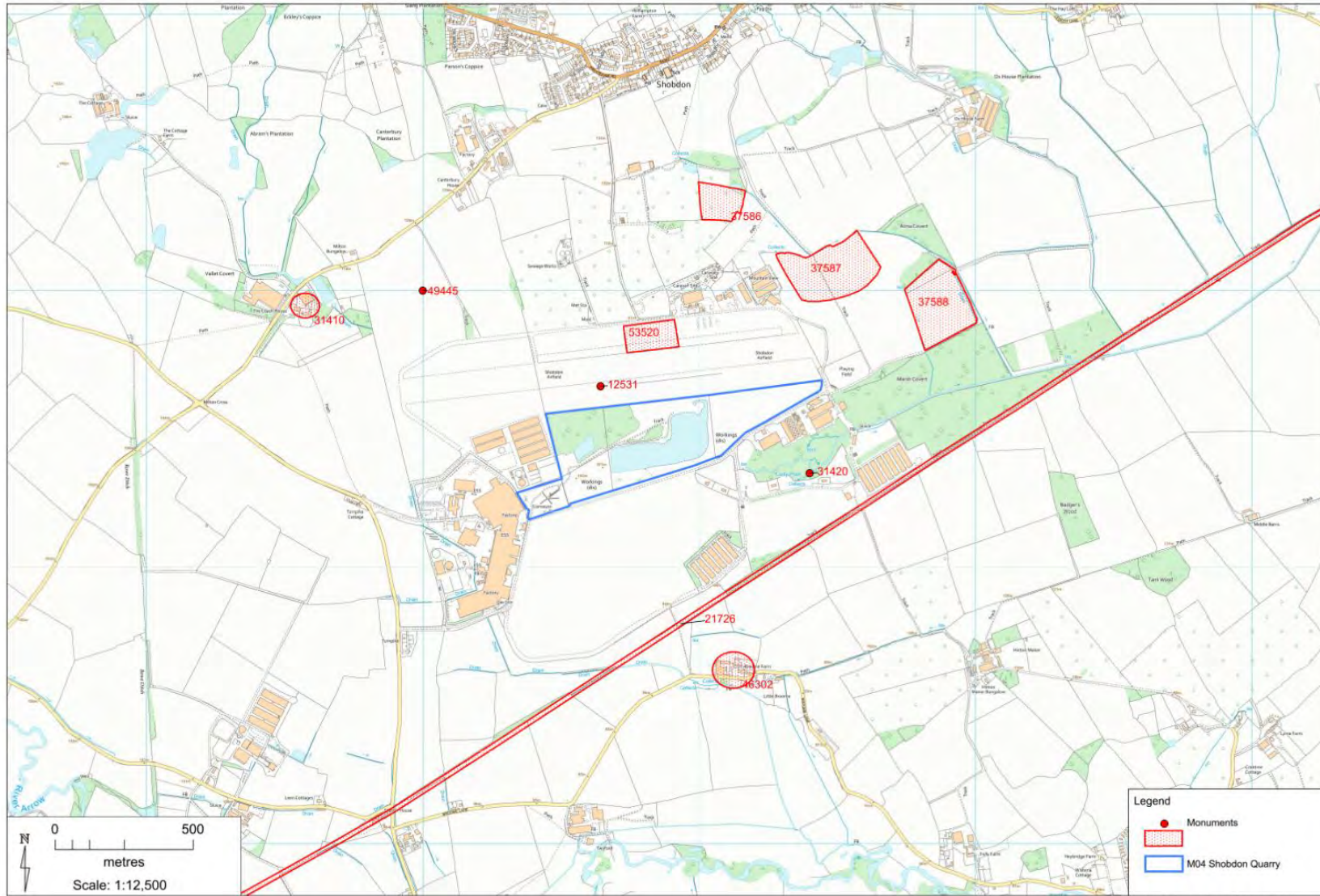


FIGURE 6:  
UNDESIGNATED  
HERITAGE  
ASSETS –  
MEDIEVAL



© Crown copyright and database rights (2013) Ordnance Survey (100024168)



© Crown copyright and database rights (2013) Ordnance Survey (100024168)

FIGURE 7:  
UNDESIGNATED  
HERITAGE ASSETS -  
POST-MEDIEVAL

## 9. Map regression

The earliest map extract available is the 1829 Tithe map, where the area of the site is recorded as a series of pasture field plots, the names not revealing any aspect of significant land use or heritage other than their possible owners. The names also suggest they may have been considered somewhat ephemeral plots of land; 'Brooms Corner', 'Morgan's Piece', 'Morgan's Rough', 'Bennetts', 'Tanner's Plock', 'Field above Tanner's Plock', 'Folley's', and 'Gosty Leasow'. These and none of the neighbouring plots suggest any quarry activity and the only notable feature is a trackway running from Shobdon on the eastern part of the site (Figure 8).



FIGURE 8: TITHE MAP EXTRACT 1829. SITE BOUNDARY IS OUTLINED IN BLUE (© G. GWATKIN)

The first edition Ordnance Survey map of 1886 shows the site as fields labelled 337, 338, 339, 340, 341 and 343, they are agricultural fields, with the trackway running down the eastern part of the site is more of a rural greenway (Figure 9). This does not significantly change until the fifth edition (1945-1952) where the Shobdon Airfield has been constructed to the north and west of the site area, and the construction of a Wood and Cement Works to the west has meant the area of the site has been managed as light woodland / scrub (Figure 10).

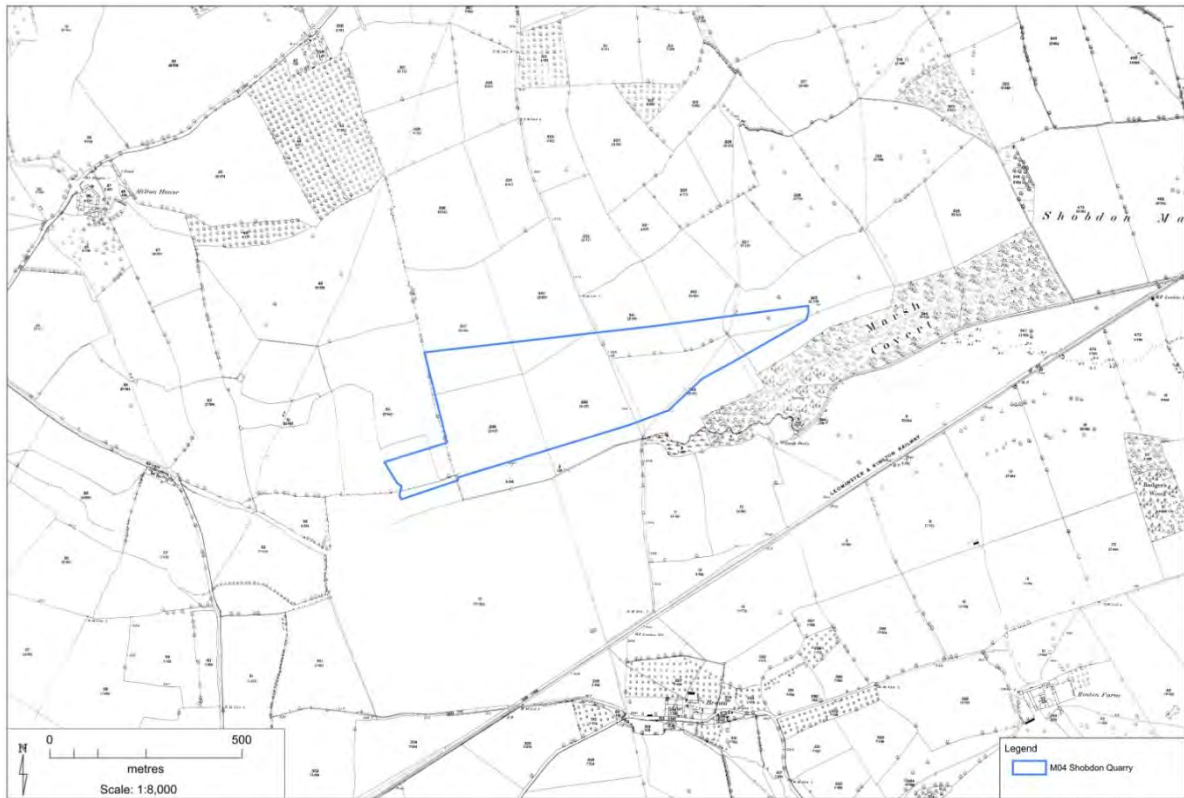


FIGURE 9: FIRST EDITION ORDNANCE SURVEY MAP (1886) © ORDNANCE SURVEY (100024168)

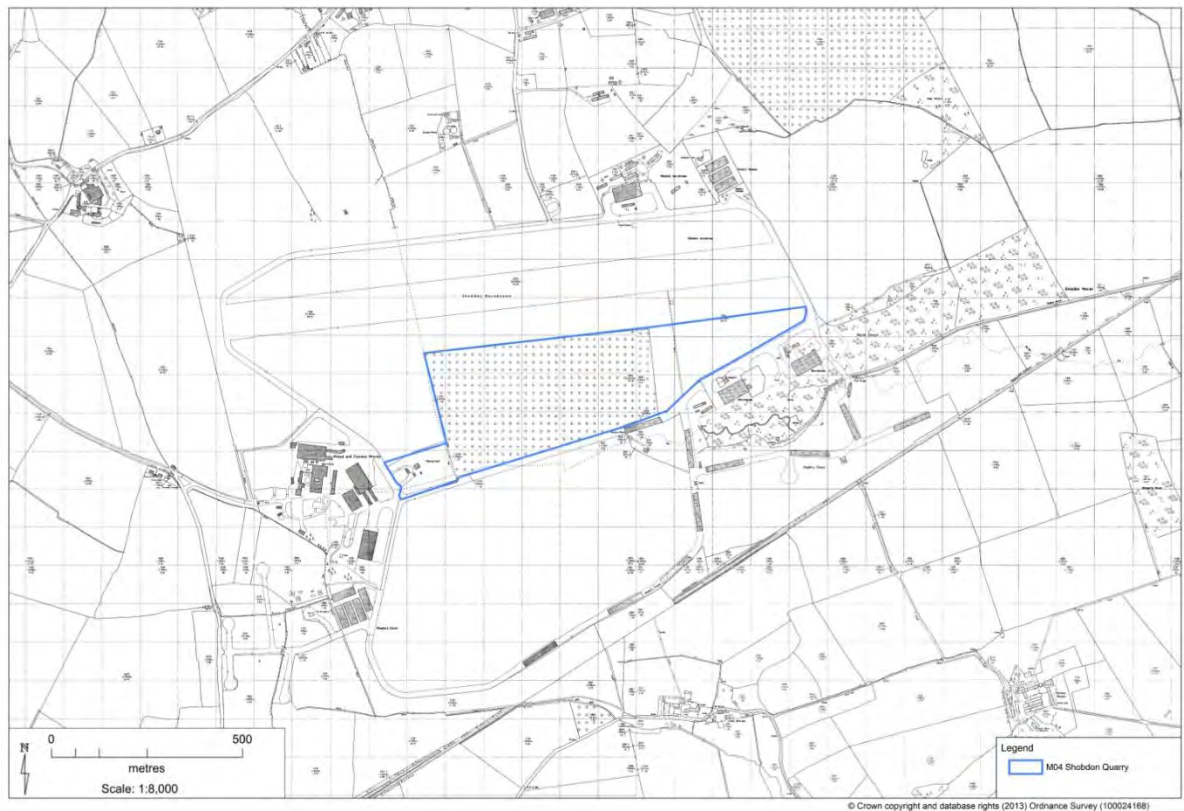


FIGURE 10: FIFTH EDITION ORDNANCE SURVEY MAP (1950) © ORDNANCE SURVEY (100024168)

## 10. Landscape visualisation and setting

Utilising lidar data (Environment Agency 2020) the area of the study area was generated in 3D (Figure 11 & Figure 12) so the setting of the various heritage assets could be considered against the landscape topography. The Quarry Extension site is located on a plot of land, which is exposed on all sides; it sits on very flat and low-lying landscape. Surrounding this site on roughly the same level are various heritage assets that have been previously identified.

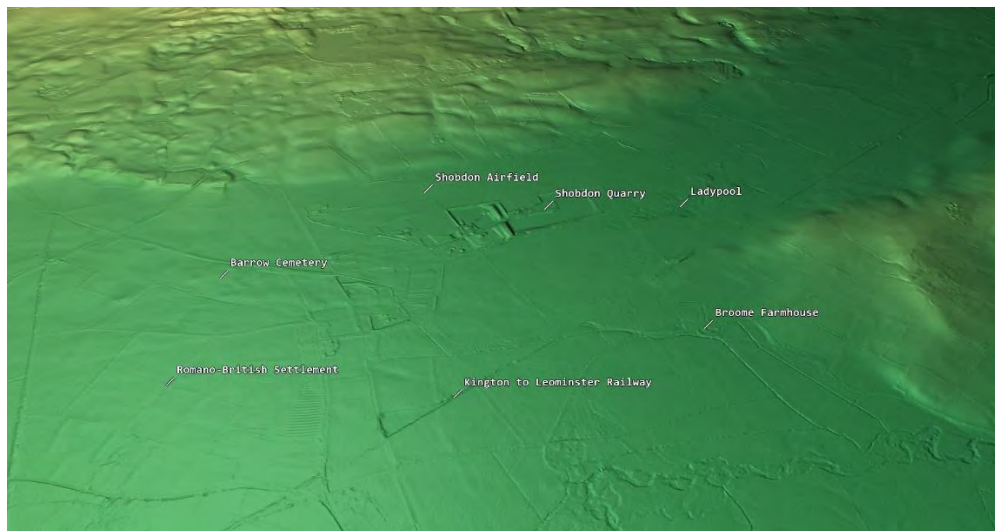


FIGURE 11: VISUALISED IN 3D, SETTING ISSUES OF THE VARIOUS HERITAGE ASSETS CAN BE CONSIDERED.

The most significant of these is the Barrow Cemetery containing two scheduled monuments, both to the west of the site; however, the low-lying nature of the landscape means that visual setting impact is greatly reduced, especially when factoring in vegetation and the built environment. Any future quarrying here should have minimal impact to the setting of surrounding designated and undesignated heritage assets.



FIGURE 12: VISUAL IMPACT TO THE HERITAGE ASSETS IS MINIMALISED BY THE LOW-LYING TOPOGRAPHY.

## 11. Site visit

The site visit was carried out on 19th August 2021 there was good visibility and it was a clear day. The main objective of the site visit was to confirm setting issues for the locality and check to see if there were any outlying issues not garnered from the heritage data.

Shobdon Quarry is located within a closed area that has high fences and thick vegetation (Figure 13), which reduces the visibility into the quarry site itself. The majority of the site, which has already been subject to quarrying, has been levelled and pathed which means any sort of surface finds would no longer be retrievable direct (Figure 14), and to the west, the large Torvale Industrial Estate blocks any visibility (Figure 15) from the quarry site to the Barrow Cemetery further to the west (Figure 16).



FIGURE 13: THE QUARRY EXTENSION SITE IS SURROUNDED BY THICK VEGETATION AND HIGH FENCES, REMOVING ANY DIRECT VISIBILITY OF THE SITE ITSELF, INCLUDING TO THE NORTH TO THE AIRFIELD.





FIGURE 14: THE SITE ITSELF WOULD NOT BE SUITABLE FOR ANY SURFACE INVESTIGATION, LIKE FIELD WALKING, BUT MAY BE SUITABLE FOR GEOPHYSICS TO INVESTIGATE IF THERE ARE ANY REMAINING SUB-SURFACE FEATURES.



FIGURE 15: THE TORVALE INDUSTRIAL ESTATE BLOCKS ANY INTER-VISIBILITY BETWEEN THE SITE AND THE BARROW CEMETERY TO THE WEST



FIGURE 16: THE BARROW CEMETERY IS UNDER THICK AGRICULTURAL CROP, MAKING THE SUBTLE EARTHWORKS ALMOST INVISIBLE

## 12. Discussion

### 12.1 The archaeological landscape of the search area

The available data from the search area indicate that the fluvial-glacial deposits of the site area have the potential to contain Neolithic and Mesolithic artefact remains, although these have not been linked to any features. Bronze Age activity is recorded in the study area to the west of the site with an extensive barrow cemetery.

Extensive Romano-British settlement features have been recorded to the south of this barrow cemetery, and forms an extensive complex of potential farmstead activity along the valley bottom.

During the Medieval period, the area is largely an agricultural liminal area, with some evidence of medieval agriculture and field systems over the entire area. Which formulise in the post-medieval period as two farmsteads come to dominate the area, Milton Farm and Broome Farm which areas of ridge and furrow dictate that it was an actively rich agricultural landscape.

However, industrialisation has had that largest impact on the character of the landscape. The first major establishment in the area was the Leominster to Kington Railway, which was then followed by the establishment of the Shobdon Airfield and construction of the Torvale Industrial Estate indicating a large change to the economy of the environment in the region. This activity then later leads to the opening of the Shobdon Gravel quarry in the current site area.

## 12.2 The archaeological potential of the proposal area

The assessment of the search area shows that the most significant part of the archaeological landscape has been formed by extensive activity through from the Neolithic to the Bronze Age. The proposal site was largely a liminal plot of land in the landscape until post-war industrialisation where the construction of the RAF airfield, the factory that becomes Torvale Industry Estate and gravel quarrying in the site area which all significantly adjusted the character of the landscape.

Due to the potential of the prehistoric archaeological landscape, an archaeological evaluation consisting of fieldwalking was undertaken on the site prior to gravel quarrying in Shobdon in 1989. This evaluation (EHE8513), undertaken by Herefordshire and Worcestershire County Council Archaeology Service was responsible for the identification of a number of worked flint and identified the site as a potential Neolithic site (Edwards 1989).

As a result of these findings, when development was being undertaken on the Torvale Industrial Estate at Milton Farm, bordering the quarry extension site area to the west, archaeological mitigation was undertaken prior to recent development. Border Archaeology undertook an evaluation in 2013 (EHE80223) and DW Archaeology in 2014 (EHE80057), both evaluations consisted of a series of trial trenches that cut through the fluvial-glacial deposits which had been seriously impacted by deep ploughing of those sequences. No archaeological deposits or finds were uncovered during either evaluations (Crooks 2013, Williams 2014). Border Archaeology also observed geo-environmental engineering pits being excavated on the western side of Torvale Industrial Estate (EHE80075); however, no archaeological deposits or features were observed (Children 2013).

## 12.3 The impact of previous development on potential archaeological remains

The previous evaluations on and adjacent to the site, mentioned in the previous section, show that the site had significant potential for Neolithic and Bronze Age features. However, the evaluations that have been undertaken have failed to find any subsurface archaeological deposits or features and both note that earlier ploughing of the site has impacted the survival of the archaeological significant fluvial-glacial deposits. It is highly likely that both the previous

quarrying at Shobdon and development from Torvale Industrial Estate has had significant impact to any potential archaeological remains.

## 12.4 The impact of the proposal of designated heritage assets

There are two scheduled monuments located within the wider region that both lie around 800m to the west of the site area. These bowl barrows are situated on the same topographical horizon as the site area, this means vegetation and the Torvale Industrial Estate restrict any direct visual impact and eliminate any potential setting impact.

Similarly, the only Listed Building in the search area, Broome Farmhouse, located 700m to the south is equally protected from any setting impact from vegetation and modern development.

As such, the proposed quarry extension should not impact any designated heritage assets.

## 12.5 The impact of the proposal on non-designated heritage assets

The proposed quarry extension has the potential to impact unknown non-designated heritage assets. The potential likelihood of unknown archaeological features being present are indicated by record of a Neolithic/Mesolithic flint scatter within the site area and nearby the Bronze Age bowl barrow cemetery.

However, previous evaluations adjacent to the site have failed to record any archaeological features of significant deposits; it is possible the Bronze Age barrow cemetery did not extend as far west as the quarry extension site. The largest impact in the site area is from the previous quarrying, which took place after the identification of the Neolithic/Mesolithic flint scatter; this could have been hugely impactful to any possible related archaeological features that survived in the fluvial-glacial deposits.

Based upon the information from the surrounding area, it would seem possible that archaeologically significant deposits may have been present within the proposed site area prior to the 1990's quarrying. That said, no crop marks were recorded from the site prior to this, which for an area where crop marks usually show well and being located adjacent to an airfield might suggest that any negative features on the site may have been small and shallow in nature. The flint scatters recovered in 1989 my support the notion that features containing these artefacts had already been truncated or completely destroyed by agricultural practices prior to any quarrying taking place. The recovery of flint scatters and the lack of any crop marks, together with the negative results from archaeological works immediately to the west of the proposed site, suggest that there is a low probability that features and in situ deposits have survived.

However, due to the nature of the proposed works and their scale, some form of mitigation (geophysical survey and/or evaluation) may be required as a planning condition to ensure there are no unknown archaeological features being damaged by any future quarrying. If archaeological features are found in the fluvial-glacial deposits then it may be required that extensive archaeological works are required prior to gravel extraction.

## 13. Conclusions

Herefordshire Archaeology were commissioned by Herefordshire Council to carry out a Heritage Impact Assessment for an extension to the gravel quarry at Shobdon. Located south of the Shobdon Airfield in north Herefordshire.

The proposal includes extraction of these gravel deposits, which covers 4.81ha (Herefordshire Council 2021: (a) 21).

The fluvial-glacial deposits in the site area have been demonstrated to contain artefacts that are linked to, and indication of, activity from the Neolithic, to the Mesolithic. With nearby, extensive, Bronze Age activity to the west of the site area in the form of a barrow cemetery.

There is good evidence for Iron Age / Romano-British farming within the wider area, however, this appears to have been concentrated to the north and west of the proposed site.

Previous archaeological fieldwork undertaken, both, on the proposed site prior to the 1990's quarrying, and on adjacent sites prior to the expansion of Torvale Industrial Estate has failed to record any survival of features of any period, or retrieve any further artefactual evidence from the fluvial-glacial deposits. With the evaluations noting that previous agricultural activity has greatly reduced the depth of survival outside of the quarry expansion site. It is likely the Bronze Age activity did not spread as far west as the Torvale Industrial Estate, or, the modern industrialisation has removed any evidence of its presence.

As the previous fieldwalking evaluation found evidence that the gravels in this area do have the potential to contain artefactual evidence. There is potential for the some of the gravels in the quarry will contain archaeological deposits, however, previous extensive quarrying and evidence from other evaluations do suggest that there is at least a good possibility that any surviving features or deposits have been heavily impacted by modern activity.

Whilst the possibility for the survival of intact negative features of any scale may appear to be low, the extent, size and placement of the quarry in the landscape means that prior to any further gravel extraction. It may therefore be deemed appropriate during any planning consultation, for the implementation of archaeological mitigation works in order to ensure that no surviving archaeological deposits or features are destroyed without record.

## 14. Bibliography

### Data sources:

The following sources of information were referred to:

- National Heritage List for England (held by Historic England)
- Herefordshire Historic Environment Record
- British Geological Survey (Website) <http://bgs.ac.uk>
- Historical Ordnance Survey Editions (1<sup>st</sup>-5<sup>th</sup>)
- Tithe Map for Shobdon 1829

### Published Sources:

Chartered Institute for Archaeologists. 2012. *Standards and Guidance for Archaeological Desk Based Assessments*. University of Reading, Reading

Children, G. 2013. *Archaeological Observation. Geo-Environmental Engineering Pits, Kingspan Insulation Lts, Shobdon Airfield, Pembridge, Herefordshire*. BA1223KISA

Communities and Local Government. 2012. *National Planning Policy Framework*. London

Copplestone-Crow, R. 1989. *Herefordshire Place Names*. British Archaeological Reports 214

Crooks, K. 2013, *Archaeological Evaluation*. Milton Farm, Pembridge, Leominster.

Edwards, R E, 1989, *Evaluation at Shobdon Airfield, Shobdon*. HWCC Archaeological Service HAR23.

Thorn, F. & Thorn, C. 1983. Domesday Herefordshire (17) in, Morris, J. (ed). *Domesday Book: A Survey of the Counties of England*. Phillimore: Chichester

Herefordshire Council. 2021. *Herefordshire Minerals & Waste Local Plan Publication Draft*. Hereford

Historic England. 2015. *The Setting of Heritage Assets (HEAG180/GOA3)*. Historic England, London.

Historic England. 2015. *The Historic Environment and Site Allocations in Local Plans (HEAG074)*. Historic England, London

Historic England. 2019. *Statements of Heritage Significance (HEAG279)*. Historic England, London

Historic England. 2020. *Mineral Extraction and Archaeology (HEAG278)*. Historic England, London

Williams, D, 2014, Environmental Impact Assessment. Archaeology chapter on Proposed Construction of Chicken Sheds, Shobdon Airfield, Herefordshire. DWA14/3

## 15. Gazetteer of Historic Environment Records



# Herefordshire Council

## HEREFORDSHIRE ARCHAEOLOGY

## HISTORIC ENVIRONMENT RECORD REPORT

Shobdon Quarry Extension

2<sup>nd</sup> August 2021

Herefordshire Archives and Records Centre,  
Fir Tree Lane, Rotherwas, Hereford, HR2 6LA  
[herenquiries@herefordshire.gov.uk](mailto:herenquiries@herefordshire.gov.uk)  
[htt.herefordshire.gov.uk](http://htt.herefordshire.gov.uk)  
01432 260130

Herefordshire Historic Environment Record (HER) is an integral part of Herefordshire Council's county archaeological service; Herefordshire Archaeology.

The HER is the most comprehensive index and primary information service for the historic environment within Herefordshire. It seeks to inform the management and conservation of the county's historic assets. It is managed in accordance with national standards of good practice and aims to continue its development as an accurate, comprehensive and actively maintained resource.



---

# **HISTORIC ENVIRONMENT RECORD REPORT**

## **Monuments and Historic Buildings**

# Herefordshire Council Monument List Report

22/07/2021

Number of records: 36

Ref	Site Name	Monument Types	Administration Areas/Description	NGR
<b>Find Spot</b>				
34881	Findspot of Romano-British pottery, The Leen, Pembridge	Findspot	PEMBRIDGE, HEREFORDSHIRE	SO 38 59 (point)
6234	Axe, near aerodrome, Shobdon	Findspot	SHOBDON, HEREFORDSHIRE	SO 39 60 (point)
8513	Flint scatter S of Shobdon Airfield, Shobdon	Flint Scatter	SHOBDON, HEREFORDSHIRE	SO 39 60 (point)
<b>Monument</b>				
37586	Ridge & furrow, approx 250m SSE of Mountain View	Ridge And Furrow	SHOBDON, HEREFORDSHIRE	Centred SO 4008 6132 (171m by 143m)
34828	Earthworks of circular depression, The Leen, Pembridge	Hollow	PEMBRIDGE, HEREFORDSHIRE	SO 3844 5990 (point)
43986	Pembridge CP, Milton Cross, field boundary	Field Boundary	PEMBRIDGE, HEREFORDSHIRE	SO 3871 6022 (point)
43985	Pembridge CP, Milton Cross, ring ditch	Ring Ditch	PEMBRIDGE, HEREFORDSHIRE	SO 3843 6022 (point)
43984	Pembridge CP, Milton Cross, curvilinear enclosure	Curvilinear Enclosure	PEMBRIDGE, HEREFORDSHIRE	SO 3868 6019 (point)
46302	Broome Farm (Broom)	Farm	EARDISLAND, HEREFORDSHIRE	Centred SO 40124 59627 (152m by 131m)
21726	Leominster to Kington (Dismantled) Railway	Railway	LYONSHALL, HEREFORDSHIRE, PEMBRIDGE, HEREFORDSHIRE, KINGSLAND, HEREFORDSHIRE, LEOMINSTER, HEREFORDSHIRE, EARDISLAND, HEREFORDSHIRE, SHOBDON, HEREFORDSHIRE	Centred SO 42241 59795 (15563m by 3264m)
37587	Ridge & furrow, east of Mountain View, Shobdon	Ridge And Furrow	SHOBDON, HEREFORDSHIRE	Centred SO 4046 6108 (379m by 258m)
21345	Aymestry Village	Settlement	AYMESTREY, HEREFORDSHIRE	SO 3 6 (point)
31836	Linear feature adjacent to barrow cemetery, Milton Cross	Linear Feature	STAUNTON ON ARROW, HEREFORDSHIRE	SO 3849 6026 (point)
38504	Barrow number 5, Milton Cross barrow cemetery	Round Barrow	STAUNTON ON ARROW, HEREFORDSHIRE	SO 38 60 (point)
31116	Barrow number 4, Milton Cross barrow cemetery	Round Barrow	STAUNTON ON ARROW, HEREFORDSHIRE	SO 38 60 (point)

Ref	Site Name	Monument Types	Administration Areas/Description	NGR
31420	Lady Pool	Pond	EARDISLAND, HEREFORDSHIRE, SHOBDON, HEREFORDSHIRE	SO 4039 6033 (point)
31410	Milton (Milton House), Pembridge	Farmstead, House	PEMBRIDGE, HEREFORDSHIRE	Centred SO 3857 6094 (104m by 89m)
4009	Enclosure, Shobdon Airfield	Subrectangular Enclosure	PEMBRIDGE, HEREFORDSHIRE	Centred SO 39 60 (119m by 97m)
37588	Ridge & furrow, south of Alma Covert, Shobdon Marsh	Ridge And Furrow	SHOBDON, HEREFORDSHIRE	Centred SO 4087 6094 (262m by 330m)
53517	Cropmark ring ditch 700m east of Milton Cross, Pembridge	Ring Ditch	PEMBRIDGE, HEREFORDSHIRE	Centred SO 3891 6052 (30m by 28m)
1029	Round Barrow, 550m SE of Milton Cross, Pembridge	Round Barrow	PEMBRIDGE, HEREFORDSHIRE	SO 38 60 (point)
1028	Round Barrow, 490m SE of Milton Cross, Pembridge	Round Barrow	PEMBRIDGE, HEREFORDSHIRE	SO 38 60 (point)
316	Ridge & Furrow, Broom Farm, Eardisland	Ridge And Furrow	EARDISLAND, HEREFORDSHIRE	Centred SO 4001 5963 (95m by 51m)
15215	Crop marks of rectangular enclosure, east of Rowe Ditch, Pembridge	Rectangular Enclosure	PEMBRIDGE, HEREFORDSHIRE	SO 38 59 (point)
56439	Double Lynchet, south-east of Ox House Farm, Shobdon	Lynchet	LITTLE COWARNE, HEREFORDSHIRE	Centred SO 4058 6148 (722m by 340m)
52008	Bronze Age Barrow Cemetery, South of Milton Cross, Pembridge	Barrow Cemetery	PEMBRIDGE, HEREFORDSHIRE	Centred SO 38 60 (930m by 639m)
53520	Cropmarks of small ring ditches or vegetation rings, Shobdon Airfield, Shobdon	Ring Ditch, Natural Feature	SHOBDON, HEREFORDSHIRE	Centred SO 3982 6083 (200m by 121m)
12531	Airfield (originally RAF Shobdon), Shobdon	Airfield, Training Base	SHOBDON, HEREFORDSHIRE	SO 3964 6065 (point)
53441	Cropmark ring ditch 670m south-east of Milton Cross, Pembridge	Ring Ditch	PEMBRIDGE, HEREFORDSHIRE	Centred SO 3880 6031 (19m by 18m)
53440	Cropmark of three ring ditches, 900m east-south-east of Milton Cross, Pembridge	Ring Ditch	PEMBRIDGE, HEREFORDSHIRE	Centred SO 3909 6037 (115m by 111m)
53439	Cropmark of linear feature Milton Cross, Pembridge	Linear Feature	PEMBRIDGE, HEREFORDSHIRE	Centred SO 3888 6039 (179m by 253m)
52120	Possible Roman Settlement, Immediately North of The Leen, Pembridge	Farmstead, Field System	PEMBRIDGE, HEREFORDSHIRE	Centred SO 38221 59655 (1287m by 1049m)
22846	Cropmarks, Twyford	Enclosure	PEMBRIDGE, HEREFORDSHIRE	SO 39 59 (point)
53521	Cropmarks of a ring ditch, an overlapping D shaped enclosure and a further linear feature, Shobdon Airfield, Shobdon	Ring Ditch, D Shaped Enclosure, Linear Feature	SHOBDON, HEREFORDSHIRE	Centred SO 3931 6080 (145m by 94m)

Ref	Site Name	Monument Types	Administration Areas/Description	NGR
<b>Portable Antiquities Scheme Find Spot</b>				
49445	Portable Antiquity, TARRINGTON	Findspot	TARRINGTON, HEREFORDSHIRE	Not displayed
58627	Portable Antiquities; Eardisland	Findspot	EARDISLAND, HEREFORDSHIRE	Not displayed

HER Number	Site Name	Record Type
1028	Round Barrow, 490m SE of Milton Cross, Pembridge	Monument

**Monument Types and Dates**

ROUND BARROW (Bronze Age - 2400 BC to 801 BC)

Evidence EARTHWORK

**Description and Sources****Description**

In 1967 the writer noticed a group of three low mounds in ploughed fields in the Arrow valley to the south of the Pembridge - Milton Cross road, just to the east of Rowe Ditch. Mound B [this mound] to the east of Mound A [see 1027] is 83' across and 5' in height. All three mounds have gently rounded profiles and their size, appearance and the fact that they lie in a straight line strongly suggest a group of round barrows. (1)

The barrow is in the middle of a line of three similar examples, extending WSW-ENE. A section of Rowe Ditch stretches north-south across the valley for c800m, passing 250m west of the most westerly of the group. The remains of this middle barrow include an earthen mound, circular in form, and c24m in diameter by c0.7m high. Material for the construction of this mound will have been obtained from a surrounding ditch which is now completely infilled. Before the advent of ploughing and the construction of the nearby drains and field boundaries, the three monuments would have formed a clearly visible alignment across the flat valley floor. This bowl barrow is a well-preserved example of this class of monument. The barrow mound will retain evidence for its method and phases of construction and for the burial or burials within. (2)

The monument was identified on the Heritage at Risk Register 2016. (4)

The monument was identified by Historic England on the Heritage at Risk Register 2020; described as generally unsatisfactory but with major localised problems, from arable ploughing and declining. (5)

**Sources**

- (1) Bibliographic reference: SHE6666. 1972. Transactions of the Woolhope Naturalists' Field Club 40. XL,315
- (2) Scheduling record: SHE12158. English Heritage Scheduling Section. 1996. Schedule entry. English Heritage.
- (3) Article in serial: SHE16067. Grinsell, L.V.. 1993. Herefordshire Barrows. Transactions of the Woolhope Naturalists' Field Club. XLVII 1993 Part III. 299-317.
- (4) Serial: SHE23935. Historic England. 2016. Heritage at Risk. West Midlands Register 2016..
- (5) Document: SHE24405. Historic England. 2020. Heritage at Risk: Midlands Register 2020.

**Associated resources**

HTT Web URL [#http://htt.herefordshire.gov.uk/her-search/monuments-search/search/monument?smr\\_no=1028#](http://htt.herefordshire.gov.uk/her-search/monuments-search/search/monument?smr_no=1028#)

Link to Herefordshire Through Time Web Database

**Location****National Grid Reference**

SO 385 602 (point) SO36SE Point

**Administrative Areas**

Civil Parish PEMBRIDGE, HEREFORDSHIRE

**Address/Historic Names - None recorded****Designations, Statuses and Scorings****Associated Designations**

Scheduled Monument - 27505	Bowl barrow 490m south east of Milton Cross	Active	DHE5955
SHINE	Earthworks and Cropmarks of Bronze Age Barrow Cemetery, 400m Southeast of Milton Cross, Pembridge	Active	DHE6556

**Other Statuses and Cross-References**

**HER Number** 1028

**Site Name** Round Barrow, 490m SE of Milton Cross, Pembridge

---

Sites & Monuments Record - 1028

Active

NAR Number - SO36SE12

Active

Heritage at Risk Register

Active

SHINE Candidate (Yes)

Active

**Ratings and Scorings - None recorded**

---

***Land Use***

**Associated Historic Landscape Character Records**

HHE60 Large Compass Enclosure of the Landscape - Estate (Type Code: F1.2)

**Other Land Classes - None recorded**

---

***Related Monuments***

52008 Bronze Age Barrow Cemetery, South of Milton Cross, Pembridge Hierarchical (Parent-Child)

---

***Finds - None recorded***

---

***Associated Events/Activities - None recorded***

---

***Associated Individuals/Organisations - None recorded***

---

HER Number 1029

Site Name Round Barrow, 550m SE of Milton Cross, Pembridge

HER Number	Site Name	Record Type
1029	Round Barrow, 550m SE of Milton Cross, Pembridge	Monument

### Monument Types and Dates

ROUND BARROW (Bronze Age - 2400 BC to 801 BC)

Evidence EARTHWORK

### Description and Sources

#### Description

In 1967 the writer noticed a group of three low mounds in ploughed fields in the Arrow valley to the south of the Pembridge - Milton Cross road, just to the east of Rowe Ditch. Mound C [this mound] is 79' in diameter and 2' high. All three mounds have gently rounded profiles and their size, appearance and the fact that they lie in a straight line strongly suggest a group of round barrows. (1)

The barrow is the most easterly in a line of three, extending WSW-ENE. A section of Rowe Ditch stretches north-south across the valley for c800m, passing 250m west of the most westerly of the barrows. This barrow sits at the eastern edge of a field, separated from the Pembridge road by a hedge. The remains include an earthen mound, c22m in diameter and 0.6m high. Material for the construction of the mound will have been obtained from a surrounding ditch which is now completely infilled. Before the advent of ploughing and the construction of nearby drain and field boundaries, the three barrows would have formed a clearly visible alignment across the flat valley floor. This bowl barrow is a well-preserved example of this class of monument. The barrow mound will retain evidence for its method of construction, which may include more than one phase, and for burials within it. (2)

The monument was identified on the Heritage at Risk Register 2016. (4)

The monument was identified by Historic England on the Heritage at Risk Register 2020; described as generally unsatisfactory but with major localised problems, from arable ploughing and declining. (5)

#### Sources

- (1) Bibliographic reference: SHE6671. Brown, A. 1972. Transactions of the Woolhope Naturalists' Field Club. XL,316
- (2) Scheduling record: SHE12158. English Heritage Scheduling Section. 1996. Schedule entry. English Heritage.
- (3) Article in serial: SHE16067. Grinsell, L.V.. 1993. Herefordshire Barrows. Transactions of the Woolhope Naturalists' Field Club. XLVII 1993 Part III. 299-317.
- (4) Serial: SHE23935. Historic England. 2016. Heritage at Risk. West Midlands Register 2016..
- (5) Document: SHE24405. Historic England. 2020. Heritage at Risk: Midlands Register 2020.

#### Associated resources

HTT Web URL [#http://htt.herefordshire.gov.uk/her-search/monuments-search/search/monument?smr\\_no=1029#](http://htt.herefordshire.gov.uk/her-search/monuments-search/search/monument?smr_no=1029#)

Link to Herefordshire Through Time Web Database

#### Location

##### National Grid Reference

SO 3864 6027 (point) SO36SE Point

##### Administrative Areas

Civil Parish PEMBRIDGE, HEREFORDSHIRE

##### Address/Historic Names - None recorded

#### Designations, Statuses and Scorings

##### Associated Designations

Scheduled Monument - 27506	Bowl barrow 550m south east of Milton Cross	Active	DHE6048
SHINE	Earthworks and Cropmarks of Bronze Age Barrow Cemetery, 400m Southeast of Milton Cross, Pembridge	Active	DHE6556

#### Other Statuses and Cross-References

**HER Number** 1029

**Site Name** Round Barrow, 550m SE of Milton Cross, Pembridge

---

Sites & Monuments Record - 1029

Active

Heritage at Risk Register

Active

SHINE Candidate (Yes)

Active

NAR Number - SO36SE12

Active

**Ratings and Scorings - None recorded**

---

***Land Use***

**Associated Historic Landscape Character Records**

HHE60 Large Compass Enclosure of the Landscape - Estate (Type Code: F1.2)

**Other Land Classes - None recorded**

---

***Related Monuments***

52008 Bronze Age Barrow Cemetery, South of Milton Cross, Pembridge Hierarchical (Parent-Child)

---

***Finds - None recorded***

---

***Associated Events/Activities - None recorded***

---

***Associated Individuals/Organisations - None recorded***

---



HER Number 12531

Site Name Airfield (originally RAF Shobdon), Shobdon

---

HER Number	Site Name	Record Type
12531	Airfield (originally RAF Shobdon), Shobdon	Monument

---

### **Monument Types and Dates**

TRAINING BASE (World War II - 1939 AD to 1945 AD)

AIRFIELD (World War II to 21st Century - 1939 AD to 2050 AD)

---

### **Description and Sources**

#### **Description**

Shobdon airfield fully described, and plan published. (1)

The site had been used for flying in support of Army manoeuvres since 1940 under the name Pembridge Landing Ground, and it was decided to develop it as a proper airfield. The new airfield opened in May 1942, with the aircraft dividing their time between Shobdon and Madley until at least the middle of 1944. The airfield was used for glider training. A runway three times wider than normal helped with this, as a glider/tug combination could be marshalled to one side while traffic landed on the other half. The Glider Training School was disbanded by the end of November 1945, when it became a detached site associated with a ground station at Hartlebury in Worcestershire. It had trained 1,335 glider pilots, 291 gliding instructors and 280 tug pilots. The site was then unused until the early 1960s when light aircraft began to operate from here. One of the wartime T2 hangars is still in use and a small control building has been put up. Many of the original huts remain in varying stages of decay and the old tower, a large 518/40 type, still stands derelict on the south-west boundary where the main site with its three 'T2's was once located. The centre of activity today is in what was known as the Heavy Tug Area on the NE side of the field. The Light Tug Area was in the SE corner with two more 'T2's and six Blister hangars on a loop dispersal. The provision of a cannon range and a Battle HQ makes one speculate that the airfield was intended for a more war-like purpose than glider training, but the only operational unit which ever used it was a brief detachment of 88 Squadron (Bostons), which was based at Shobdon in July 1943 for smoke-laying demonstrations. (2)

Border Archaeology was instructed by E & J Solutions Ltd to undertake Archaeological Observation of geo-environmental engineering test-pits which were opened on part of the Shobdon Airfield site adjacent to Kingspan Insulation prior to the installation of a proposed Anaerobic Digester.

All pits were excavated by machine to the required geo-environmental engineering depth. No structures or features relating to the airfield's use during the Second World War or to earlier periods were revealed, all pits being devoid of archaeological deposits. (3)

#### **Sources**

Data: SHE19029. Council for British Archaeology. 2002. The Defence of Britain Project Archive. GIS Database.

- (1) Document: SHE18909. Wilks, M. 1998. Defence of Britain Project record form and report: RAF Shobdon, Airfield.
- (2) Bibliographic reference: SHE12536. Smith, D J. 1990. Military airfields of Wales & the NW. Action Stations 3.
- (3) Unpublished Report: SHE23946. Children, G. 2013. Archaeological Observation. Geo-Environmental Engineering Pits, Kingspan Insulation Lts, Shobdon Airfield, Pembridge, Herefordshire.. Border Archaeology.

#### **Associated resources**

HTT Web URL [#http://htt.herefordshire.gov.uk/her-search/monuments-search/search/monument?smr\\_no=12531#](http://htt.herefordshire.gov.uk/her-search/monuments-search/search/monument?smr_no=12531#)

Link to Herefordshire Through Time Web Database

---

#### **Location**

##### **National Grid Reference**

SO 3964 6065 (point)

SO36SE

Point

##### **Administrative Areas**

Civil Parish

SHOBDON, HEREFORDSHIRE

##### **Address/Historic Names - None recorded**

---

#### **Designations, Statuses and Scorings**

##### **Associated Designations - None recorded**

#### **Other Statuses and Cross-References**

**HER Number** 12531

**Site Name** Airfield (originally RAF Shobdon), Shobdon

---

SHINE Candidate (Unlikely)

Active

Sites & Monuments Record - 12531

Active

**Ratings and Scorings - None recorded**

---

**Land Use**

**Associated Historic Landscape Character Records**

HHE763 Small Compass Enclosure of the Landscape - Reconfiguration of Former Common Arable Fields (Type Code: G2.3)

**Other Land Classes - None recorded**

---

**Related Monuments**

6917	Shobdon Court, Shobdon	Hierarchical (Parent-Child)
25243	Communal Site, RAF Shobdon, Shobdon	Hierarchical (Parent-Child)
27253	Sick Quarters, RAF Shobdon, Shobdon	Hierarchical (Parent-Child)
27255	Dispersed Site no 3, RAF Shobdon, Shobdon	Hierarchical (Parent-Child)
27386	Dispersed Site no 1, RAF Shobdon	Hierarchical (Parent-Child)
27387	Dispersed Site no 2, RAF Shobdon	Hierarchical (Parent-Child)
27458	Shobdon Court, RAF officers' sports club	Hierarchical (Parent-Child)

---

**Finds - None recorded**

---

**Associated Events/Activities**

EHE1000 Defence of Britain Project (Field Survey)

EHE80075 Archaeological Observation. Geo-Environmental Engineering Pits, Kingspan Insulation, Shobdon Airfield. 2013. (Archaeological Intervention)

---

**Associated Individuals/Organisations - None recorded**

---

**HER Number** 15215                      **Site Name** Crop marks of rectangular enclosure, east of Rowe Ditch, Pembridge

<b>HER Number</b>	<b>Site Name</b>	<b>Record Type</b>
15215	Crop marks of rectangular enclosure, east of Rowe Ditch, Pembridge	Monument

---

**Monument Types and Dates**

RECTANGULAR ENCLOSURE (Undated)

Evidence                      CROPMARK

---

**Description and Sources**

**Description**

Double ditches in field to W (15124) continue as N boundary of this field, other cropmarks in field are probably old field system. Irregular rectangular enclosure in SW corner of this field also. (1)

**Sources**

(1)      Aerial Photograph: SHE1125. 1971. 71.264.242-3. Ordnance Survey. Box 33

**Associated resources**

HTT Web URL                      #[http://htt.herefordshire.gov.uk/her-search/monuments-search/search/monument?smr\\_no=15215#](http://htt.herefordshire.gov.uk/her-search/monuments-search/search/monument?smr_no=15215#)

Link to Herefordshire Through Time Web Database

---

**Location**

**National Grid Reference**

SO 386 597 (point)    SO35NE                      Point

**Administrative Areas**

Civil Parish    PEMBRIDGE, HEREFORDSHIRE

**Address/Historic Names - None recorded**

---

**Designations, Statuses and Scorings**

**Associated Designations - None recorded**

**Other Statuses and Cross-References**

Sites & Monuments Record - 15215    Active

SHINE Candidate (No)    Active

**Ratings and Scorings - None recorded**

---

**Land Use**

**Associated Historic Landscape Character Records**

HHE64      Adaptation of Earlier Enclosure System - Co-Axial Enclosure - L2 Linking Type (Type Code: L2.4)

**Other Land Classes - None recorded**

---

**Related Monuments**

52120	Possible Roman Settlement, Immediately North of The Leen, Pembridge	Hierarchical (Parent-Child)
-------	---	-----------------------------

---

**Finds - None recorded**

---

**Associated Events/Activities - None recorded**

---

**Associated Individuals/Organisations - None recorded**

---

HER Number 21345

Site Name Aymestry Village

---

HER Number	Site Name	Record Type
21345	Aymestry Village	Monument

---

**Monument Types and Dates**

SETTLEMENT (Medieval - 1066 AD to 1539 AD)

Evidence DOCUMENTARY EVIDENCE

---

**Description and Sources**

**Description**

Queen Edith held it as one of the 16 members of Leominster. The manor contained 80 hides, 8 reeves, 8 beadles, 8 riding men, 238 villagers, 75 smallholders, 82 slaves, 8 mills, woodland. (1)

**Sources**

(1) Bibliographic reference: SHE30. Thorn, F & Thorn, C. 1983. Domesday Book: Herefordshire.

**Associated resources**

HTT Web URL [#http://htt.herefordshire.gov.uk/her-search/monuments-search/search/monument?smr\\_no=21345#](http://htt.herefordshire.gov.uk/her-search/monuments-search/search/monument?smr_no=21345#)

Link to Herefordshire Through Time Web Database

---

**Location**

**National Grid Reference**

SO 3 6 (point) SO36SE Point

**Administrative Areas**

Civil Parish AYMESTREY, HEREFORDSHIRE

**Address/Historic Names - None recorded**

---

**Designations, Statuses and Scorings**

**Associated Designations - None recorded**

**Other Statuses and Cross-References**

Sites & Monuments Record - 21345 Active

SHINE Candidate (Possible) Active

**Ratings and Scorings - None recorded**

---

**Land Use**

**Associated Historic Landscape Character Records**

HHE60 Large Compass Enclosure of the Landscape - Estate (Type Code: F1.2)

**Other Land Classes - None recorded**

---

**Related Monuments - None Recorded**

---

**Finds - None recorded**

---

**Associated Events/Activities - None recorded**

---

**Associated Individuals/Organisations - None recorded**

---

HER Number	Site Name	Record Type
21726	Leominster to Kington (Dismantled) Railway	Monument

### Monument Types and Dates

RAILWAY (19th Century to Late 20th Century - 1801 AD to 2000 AD)

### Description and Sources

#### Description

Leominster and Kington - Leominster & Kington Railway. Stations: Kington; Titley Junction; Marston; Pembridge; Kingsland; Leominster.

Promoted by Lord Bateman of Shobdon Court, the Leominster and Kington Railway was incorporated 10th July 1854. Piecemeal construction took place with the Leominster - Pembridge section opening to goods on 18th October 1855. The formal opening of the complete line to Kington was on 27th July 1857. The branch passenger service closed for two months during the 1951 fuel crisis, finally closing on 5th February 1955. A skeleton freight service continued until the complete closure of the line on 24th September 1964. (1)

The Leominster - Pembridge section opened in January 1856. The Pembridge - Marston Halt section opened on 27th July 1857. The Marston Halt - Kington section opened for goods trains on 27th July 1857, and for passenger trains on 20th August 1857. It was leased to contractors Brassey and Field for five years. The contractors, who had offices in Corn Square in Leominster, reported steadily increasing traffic in 1859. (2)

Until 1960 Leominster's Marsh, Bridge Street and Mill Street were regularly flooded by the Kenwater and Lugg; there were 22 floods in 19 years. In 1960, when Leominster was contemplating overspill population from Birmingham, the problem of flood control became much more urgent, and various schemes to alleviate the effects of the regular floods were put forward. Mr. S. R. Booth, an engineer at Cadbury's Marlbrook factory, suggested that the embankment of the dismantled Leominster - Kington branch railway line could provide a ready-made dyke round the north side of town. A scheme which included a new cut to take the Lugg north of the embankment was instigated in 1962. The success of the scheme was such that many people have now forgotten the catastrophic floods that afflicted the town. (3)

The route of disused railway running east from Titley Junction to Rowe Ditch, Pembridge. (4) (5) (6)

Route of disused railway, Leominster to Kingsland. (7) (8) (9)

#### Sources

- (1) Bibliographic reference: SHE14276. Smith, W H. 1998. Herefordshire Railways. Book published by Sutton Publishing Ltd. 96
- (2) Bibliographic reference: SHE14167. Christiansen, Rex. 1988. Severn Valley and Welsh Border. Forgotten Railways: Vol II. Pages 100, 179-80
- (3) Bibliographic reference: SHE11636. Reeves, Norman C. 1973. The Town in the Marches, A history of Leominster and its environs. Pages 194-95
- (4) Aerial Photograph: SHE20265. Musson, C R. 2003. 03-CN-0610. Herefordshire Aerial Archaeological Survey 2003. Oblique.
- (5) Aerial Photograph: SHE20365. Musson, C R. 2003. 03-CN-1028. Herefordshire Aerial Archaeological Survey 2003. Oblique.
- (6) Aerial Photograph: SHE20253. Musson, C R. 2003. 03-CN-0532. Herefordshire Aerial Archaeological Survey 2003. Oblique.
- (7) Aerial Photograph: SHE22151. Musson, C R. 2005. 05-CN-1417. Herefordshire Aerial Archaeological Survey 2005. Oblique.
- (8) Aerial Photograph: SHE22150. Musson, C R. 2005. 05-CN-1416. Herefordshire Aerial Archaeological Survey 2005. Oblique.
- (9) Aerial Photograph: SHE22149. Musson, C R. 2005. 05-CN-1415. Herefordshire Aerial Archaeological Survey 2005. Oblique.

#### Associated resources

HTT Web URL [#http://htt.herefordshire.gov.uk/her-search/monuments-search/search/monument?smr\\_no=21726#](http://htt.herefordshire.gov.uk/her-search/monuments-search/search/monument?smr_no=21726#)

Link to Herefordshire Through Time Web Database

#### Location

##### National Grid Reference

Centred SO 42241 59795 (15563m by 3264m) SO45NW Area

**Administrative Areas**

Civil Parish	EARDISLAND, HEREFORDSHIRE
Civil Parish	KINGSLAND, HEREFORDSHIRE
Civil Parish	LEOMINSTER, HEREFORDSHIRE
Civil Parish	LYONSHALL, HEREFORDSHIRE
Civil Parish	PEMBRIDGE, HEREFORDSHIRE
Civil Parish	SHOBDON, HEREFORDSHIRE

**Address/Historic Names - None recorded****Designations, Statuses and Scorings****Associated Designations**

Conservation Area - CON_AR_025	Kingsland	Active	DHE6268
Conservation Area - CON_AR_031	River Meadows, Leominster	Active	DHE6276

**Other Statuses and Cross-References**

SHINE Candidate (Possible)	Active
Sites & Monuments Record - 21726	Active

**Ratings and Scorings - None recorded****Land Use****Associated Historic Landscape Character Records**

HHE56	Enclosure of Common Arable Fields - Narrow Closes Continuously Distributed (Type Code: D1.1)
HHE60	Large Compass Enclosure of the Landscape - Estate (Type Code: F1.2)
HHE65	Large Compass Enclosure of the Landscape - Redefinition of Former Common Arable Fields/Meadow (Type Code: F2.2)
HHE80	Small Compass Enclosure of the Landscape - Regularly Planned (Type Code: G1.1)
HHE105	Large Compass Enclosure of the Landscape - Redefinition of Former Common Arable Fields/Meadow (Type Code: F2.2)
HHE120	Adaptation of Earlier Enclosure System - Early Meadow Enclosure - L2 Linking Type (Type Code: L2.2)
HHE121	Large Compass Enclosure of the Landscape - Redefinition of Former Common Arable Fields/Meadow (Type Code: F2.2)
HHE122	Recent Degradation through Boundary Loss - Boundary Loss with Straight Boundaries Present (Type Code: H1.1)
HHE164	Adaptation of Earlier Enclosure System - Co-Axial System/Formers Common Arable Fields (Type Code: L3.2)
HHE214	Adaptation of Earlier Enclosure System - Co-Axial System/Formers Common Arable Fields (Type Code: L3.2)
HHE218	Small Compass Enclosure of the Landscape - Reconfiguration of Early Meadow Enclosure/Drainage (Type Code: G2.7)
HHE233	Urbanisation - Urbanisation 2 (Type Code: Z2)
HHE662	Adaptation of Earlier Enclosure System - Former Common Arable Fields - L2 Linking Type (Type Code: L2.1)
HHE739	Small Compass Enclosure of the Landscape - Reconfiguration of Axial Field Systems (Type Code: G2.5)

HHE751 Enclosure of Common Arable Fields - Broad Closes Interspersed with Few Narrow Closes (Type Code: D2.3)

HHE752 Large Compass Enclosure of the Landscape - Estate (Type Code: F1.2)

**Other Land Classes - None recorded**

---

***Related Monuments***

30862	Kington station, Leominster & Kington Railway, Kington	Hierarchical (Parent-Child)
30863	Titley Junction station, Leominster & Kington Railway, Titley	Hierarchical (Parent-Child)
30864	Marston crossing and halt, Leominster & Kington Railway, Pembridge	Hierarchical (Parent-Child)
30865	Pembridge station, Leominster & Kington Railway, Pembridge	Hierarchical (Parent-Child)
30866	Kington Junction and crossing, Kington	Hierarchical (Parent-Child)
30831	Railways of Herefordshire, General Number	Functional Association (Peer-to-Peer)
30831	Railways of Herefordshire, General Number	Functional Association (Peer-to-Peer)

---

***Finds - None recorded***

---

***Associated Events/Activities***

EHE43737 Herefordshire Aerial Archaeological Survey, 2002-2006 (Remote Sensing Survey. Ref: SMR Event: 43737)

---

***Associated Individuals/Organisations - None recorded***

---

HER Number 22846

Site Name Cropmarks, Twyford

---

HER Number	Site Name	Record Type
22846	Cropmarks, Twyford	Monument

---

### **Monument Types and Dates**

ENCLOSURE (Undated)

Evidence CROPMARK

---

### **Description and Sources**

#### **Description**

Enclosure or old field boundaries. (1)

Visible as cropmarks, a number of boundaries criss-crossing within the field.

Chris Musson 2006 colour negative aerial photograph catalogue (2) (3) (4) (5) (6)

#### **Sources**

Aerial Photograph: SHE18287. Musson, C R. 12/07/2006. 06-CN-1215A. Herefordshire Aerial Archaeological Survey 2006. Oblique.

(1) Aerial Photograph: SHE6783. Musson, C R. 07/1994. 94-MB-0134. Clwyd and Powys Archaeology Trust.

(2) Aerial Photograph: SHE18283. Musson, C R. 12/07/2006. 06-CN-1211A. Herefordshire Aerial Archaeological Survey 2006. Oblique.

(3) Aerial Photograph: SHE18284. Musson, C R. 12/07/2006. 06-CN-1212A. Herefordshire Aerial Archaeological Survey 2006. Oblique.

(4) Aerial Photograph: SHE18285. Musson, C R. 12/07/2006. 06-CN-1213A. Herefordshire Aerial Archaeological Survey 2006. Oblique.

(5) Aerial Photograph: SHE18286. Musson, C R. 12/07/2006. 06-CN-1214A. Herefordshire Aerial Archaeological Survey 2006. Oblique.

#### **Associated resources**

HTT Web URL [#http://htt.herefordshire.gov.uk/her-search/monuments-search/search/monument?smr\\_no=22846#](http://htt.herefordshire.gov.uk/her-search/monuments-search/search/monument?smr_no=22846#)

Link to Herefordshire Through Time Web Database

---

### **Location**

#### **National Grid Reference**

SO 395 593 (point)

SO35NE

Point

#### **Administrative Areas**

Civil Parish

PEMBRIDGE, HEREFORDSHIRE

#### **Address/Historic Names - None recorded**

---

### **Designations, Statuses and Scorings**

#### **Associated Designations - None recorded**

#### **Other Statuses and Cross-References**

SHINE Candidate (No)

Active

Sites & Monuments Record - 22846

Active

#### **Ratings and Scorings - None recorded**

---

### **Land Use**

#### **Associated Historic Landscape Character Records**

HHE218 Small Compass Enclosure of the Landscape - Reconfiguration of Early Meadow Enclosure/Drainage (Type Code: G2.7)

#### **Other Land Classes - None recorded**

---



HER Number 22846

Site Name Cropmarks, Twyford

---

***Related Monuments - None Recorded***

---

***Finds - None recorded***

---

***Associated Events/Activities - None recorded***

---

***Associated Individuals/Organisations - None recorded***

---

HER Number 31116

Site Name Barrow number 4, Milton Cross barrow cemetery

---

HER Number	Site Name	Record Type
31116	Barrow number 4, Milton Cross barrow cemetery	Monument

---

**Monument Types and Dates**

ROUND BARROW (Bronze Age - 2400 BC to 801 BC)

Evidence EARTHWORK

---

**Description and Sources**

**Description**

Another earthwork barrow in addition to the three already recorded was noted in the field. Worked flints were noted on the surface of the barrow. (1) (2)

**Sources**

(2) Article in serial: SHE14585. Mould, C and S Watt. 2000. Reports, Herefordshire. West Midlands Archaeology 43, 2000.

**Associated resources**

HTT Web URL [#http://htt.herefordshire.gov.uk/her-search/monuments-search/search/monument?smr\\_no=31116#](http://htt.herefordshire.gov.uk/her-search/monuments-search/search/monument?smr_no=31116#)

Link to Herefordshire Through Time Web Database

---

**Location**

**National Grid Reference**

SO 3849 6028 (point) SO36SE Point

**Administrative Areas**

Civil Parish STAUNTON ON ARROW, HEREFORDSHIRE

**Address/Historic Names - None recorded**

---

**Designations, Statuses and Scorings**

**Associated Designations**

SHINE	Earthworks and Cropmarks of Bronze Age Barrow Cemetery, 400m Southeast of Milton Cross, Pembridge	Active	DHE6556
-------	---	--------	---------

**Other Statuses and Cross-References**

Sites & Monuments Record - 31116	Active
SHINE Candidate (Yes)	Active

**Ratings and Scorings - None recorded**

---

**Land Use**

**Associated Historic Landscape Character Records**

HHE60 Large Compass Enclosure of the Landscape - Estate (Type Code: F1.2)

**Other Land Classes - None recorded**

---

**Related Monuments**

52008	Bronze Age Barrow Cemetery, South of Milton Cross, Pembridge	Hierarchical (Parent-Child)
-------	--	-----------------------------

---

**Finds - None recorded**

---

**Associated Events/Activities - None recorded**

---

**Associated Individuals/Organisations - None recorded**

---

**HER Number** 31116

**Site Name** Barrow number 4, Milton Cross barrow cemetery

---

---

HER Number 31410

Site Name Milton (Milton House), Pembridge

---

HER Number	Site Name	Record Type
31410	Milton (Milton House), Pembridge	Monument

---

### **Monument Types and Dates**

FARMSTEAD (Post Medieval - 1540 AD to 1900 AD)

Evidence EXTANT BUILDING

HOUSE (Post Medieval - 1540 AD to 1900 AD)

Evidence DOCUMENTARY EVIDENCE

---

### **Description and Sources**

#### **Description**

2 artificial watercourses running S from Shobdon Park to pool alongside Milton House (Possible site of mill?) Large complex of house and large gardens and out buildings. Shown on 1st edition, and on tithe map, as central farm surrounded by lands. On tithe it is Milton estate, field number 334 is Park. (1)

Historic Farm recorded as part of the Herefordshire Historic Farmsteads Characterisation Project. Present on the Ordnance Survey First Edition, Pre-WW2 and Modern maps. (2) (3) (4) (5)

#### **Sources**

- (1) Cartographic material: SHE13991. Ordnance Survey. 1964. 1:10,000 or 10,560 1964 Ordnance Survey map. Ordnance Survey.
- (2) Cartographic material: SHE17616. Ordnance Survey. 1893. Ordnance Survey County Series Digital Historical Map Data 1:2500 - Epoch 1. Ordnance Survey/Landmark.
- (3) Cartographic material: SHE17619. Ordnance Survey. 1943. Ordnance Survey County Series Digital Historical Map Data 1:2500 - Epoch 4. Ordnance Survey/Landmark.
- (4) Cartographic material: SHE17620. Ordnance Survey. 2008 Onwards. Ordnance Survey Digital MasterMap Series.
- (5) Unpublished Report: SHE17621. Preece, N. 2008. Herefordshire Historic Farmsteads Characterisation Project (Stage 1). Herefordshire Archaeology.

#### **Associated resources**

HTT Web URL [#http://htt.herefordshire.gov.uk/her-search/monuments-search/search/monument?smr\\_no=31410#](http://htt.herefordshire.gov.uk/her-search/monuments-search/search/monument?smr_no=31410#)

Link to Herefordshire Through Time Web Database

---

#### **Location**

##### **National Grid Reference**

Centred SO 3857 6094 (104m by 89m) SO36SE Area

##### **Administrative Areas**

Civil Parish PEMBRIDGE, HEREFORDSHIRE

##### **Address/Historic Names - None recorded**

---

#### **Designations, Statuses and Scorings**

##### **Associated Designations - None recorded**

##### **Other Statuses and Cross-References**

Sites & Monuments Record - 31410 Active

SHINE Candidate (Possible) Active

##### **Ratings and Scorings - None recorded**

---

#### **Land Use**

##### **Associated Historic Landscape Character Records**

HHE60 Large Compass Enclosure of the Landscape - Estate (Type Code: F1.2)

---

**HER Number** 31410

**Site Name** Milton (Milton House), Pembridge

---

**Other Land Classes - None recorded**

---

***Related Monuments - None Recorded***

---

***Finds - None recorded***

---

***Associated Events/Activities***

EHE48661 Herefordshire Historic Farmsteads Characterisation Project: Stage 1 (Interpretation)

---

***Associated Individuals/Organisations - None recorded***

---

HER Number 31420

Site Name Lady Pool

---

HER Number	Site Name	Record Type
31420	Lady Pool	Monument

---

**Monument Types and Dates**

POND (Post Medieval - 1540 AD to 1900 AD)

Evidence DOCUMENTARY EVIDENCE

---

**Description and Sources**

**Description**

Lady Pool on edge of manor court. Source of the Pusley Brook. Shown on tithe the area is marshy, called Orrells Morgan's rough.

**Sources**

- (1) Cartographic material: SHE13991. Ordnance Survey. 1964. 1:10,000 or 10,560 1964 Ordnance Survey map. Ordnance Survey.

**Associated resources**

HTT Web URL [#http://htt.herefordshire.gov.uk/her-search/monuments-search/search/monument?smr\\_no=31420#](http://htt.herefordshire.gov.uk/her-search/monuments-search/search/monument?smr_no=31420#)

Link to Herefordshire Through Time Web Database

---

**Location**

**National Grid Reference**

SO 4039 6033 (point) SO46SW Point

**Administrative Areas**

Civil Parish EARDISLAND, HEREFORDSHIRE

Civil Parish SHOBDON, HEREFORDSHIRE

**Address/Historic Names - None recorded**

---

**Designations, Statuses and Scorings**

**Associated Designations - None recorded**

**Other Statuses and Cross-References**

SHINE Candidate (Possible) Active

Sites & Monuments Record - 31420 Active

**Ratings and Scorings - None recorded**

---

**Land Use**

**Associated Historic Landscape Character Records**

HHE60 Large Compass Enclosure of the Landscape - Estate (Type Code: F1.2)

**Other Land Classes - None recorded**

---

**Related Monuments - None Recorded**

---

**Finds - None recorded**

---

**Associated Events/Activities - None recorded**

---

**Associated Individuals/Organisations - None recorded**

---

HER Number 316

Site Name Ridge & Furrow, Broom Farm, Eardisland

---

HER Number	Site Name	Record Type
316	Ridge & Furrow, Broom Farm, Eardisland	Monument

---

**Monument Types and Dates**

RIDGE AND FURROW (Medieval - 1066 AD to 1539 AD)

Evidence EARTHWORK

---

**Description and Sources**

**Description**

Ridge and furrow visible in field immediately W of Broom (1)

**Sources**

(1) Verbal communication: SHE5922. Wilson, A M. 10/1976. SMR card.

**Associated resources**

HTT Web URL [#http://htt.herefordshire.gov.uk/her-search/monuments-search/search/monument?smr\\_no=316#](http://htt.herefordshire.gov.uk/her-search/monuments-search/search/monument?smr_no=316#)

Link to Herefordshire Through Time Web Database

---

**Location**

**National Grid Reference**

Centred SO 4001 5963 (95m by 51m) SO45NW Area

**Administrative Areas**

Civil Parish EARDISLAND, HEREFORDSHIRE

**Address/Historic Names - None recorded**

---

**Designations, Statuses and Scorings**

**Associated Designations**

SHINE	Post-Medieval Ridge & Furrow, Broom Farm, Eardisland	Active	DHE7460
-------	--	--------	---------

**Other Statuses and Cross-References**

Sites & Monuments Record - 316	Active
SHINE Candidate (Yes)	Active

**Ratings and Scorings - None recorded**

---

**Land Use**

**Associated Historic Landscape Character Records**

HHE752 Large Compass Enclosure of the Landscape - Estate (Type Code: F1.2)

**Other Land Classes - None recorded**

---

**Related Monuments - None Recorded**

---

**Finds - None recorded**

---

**Associated Events/Activities - None recorded**

---

**Associated Individuals/Organisations - None recorded**

---

HER Number 31836

Site Name Linear feature adjacent to barrow cemetery, Milton Cross

---

HER Number	Site Name	Record Type
31836	Linear feature adjacent to barrow cemetery, Milton Cross	Monument

---

### **Monument Types and Dates**

LINEAR FEATURE (Bronze Age - 2400 BC to 801 BC)

Evidence EARTHWORK

---

### **Description and Sources**

#### **Description**

To the south of the barrow cemetery a linear earthwork feature can be seen in the field. It appears to curve to the west suggesting that it is some sort of enclosure. (1) (2)

#### **Sources**

(2) Article in serial: SHE14585. Mould, C and S Watt. 2000. Reports, Herefordshire. West Midlands Archaeology 43, 2000.

#### **Associated resources**

HTT Web URL [#http://htt.herefordshire.gov.uk/her-search/monuments-search/search/monument?smr\\_no=31836#](http://htt.herefordshire.gov.uk/her-search/monuments-search/search/monument?smr_no=31836#)

Link to Herefordshire Through Time Web Database

---

### **Location**

#### **National Grid Reference**

SO 3849 6026 (point) SO36SE Point

#### **Administrative Areas**

Civil Parish STAUNTON ON ARROW, HEREFORDSHIRE

#### **Address/Historic Names - None recorded**

---

### **Designations, Statuses and Scorings**

#### **Associated Designations**

SHINE	Earthworks and Cropmarks of Bronze Age Barrow Cemetery, 400m Southeast of Milton Cross, Pembridge	Active	DHE6556
-------	---	--------	---------

#### **Other Statuses and Cross-References**

Sites & Monuments Record - 31836 Active

SHINE Candidate (Yes) Active

#### **Ratings and Scorings - None recorded**

---

### **Land Use**

#### **Associated Historic Landscape Character Records**

HHE60 Large Compass Enclosure of the Landscape - Estate (Type Code: F1.2)

#### **Other Land Classes - None recorded**

---

### **Related Monuments**

52008	Bronze Age Barrow Cemetery, South of Milton Cross, Pembridge	Hierarchical (Parent-Child)
-------	--	-----------------------------

---

#### **Finds - None recorded**

---

#### **Associated Events/Activities - None recorded**

---



**HER Number** 31836

**Site Name** Linear feature adjacent to barrow cemetery, Milton Cross

---

***Associated Individuals/Organisations - None recorded***

---

HER Number 34828

Site Name Earthworks of circular depression, The Leen, Pembridge

HER Number	Site Name	Record Type
34828	Earthworks of circular depression, The Leen, Pembridge	Monument

Archaeological features recorded during a whole farm survey as part of the Arrow Valley Archarology, Landscape Change and Conservation Project

### **Monument Types and Dates**

HOLLOW (Unknown date)

Evidence EARTHWORK

### **Description and Sources**

#### **Description**

Circular depression approximately 25m in diameter near entrance to the field. May be a natural depression or man-made feature (1)

#### **Sources**

Unpublished Report: SHE18716. White, P. 2003. The Leen, Pembridge: A Whole Farm Archaeological Survey. Herefordshire Archaeology.

### **Associated resources**

#### **Location**

#### **National Grid Reference**

SO 3844 5990 (point) SO35NE Point

#### **Administrative Areas**

Civil Parish PEMBRIDGE, HEREFORDSHIRE

#### **Address/Historic Names - None recorded**

### **Designations, Statuses and Scorings**

#### **Associated Designations - None recorded**

#### **Other Statuses and Cross-References**

Sites & Monuments Record - 34828 Active

#### **Ratings and Scorings - None recorded**

### **Land Use**

#### **Associated Historic Landscape Character Records**

HHE64 Adaptation of Earlier Enclosure System - Co-Axial Enclosure - L2 Linking Type (Type Code: L2.4)

#### **Other Land Classes - None recorded**

#### **Related Monuments - None Recorded**

#### **Finds - None recorded**

### **Associated Events/Activities**

EHE34821 Farm Archaeological Survey (Arrow Valley Project). The Leen, Pembridge. 2003 (Field Survey)

#### **Associated Individuals/Organisations - None recorded**

**HER Number** 34881

**Site Name** Findspot of Romano-British pottery, The Leen, Pembridge

---

<b>HER Number</b>	<b>Site Name</b>	<b>Record Type</b>
34881	Findspot of Romano-British pottery, The Leen, Pembridge	Find Spot

Archaeological features recorded during a whole farm survey as part of the Arrow Valley Archarology, Landscape Change and Conservation Project

---

***Monument Types and Dates***

FINDSPOT (Romano-British - 43 AD to 409 AD)

Evidence FIND

---

***Description and Sources***

**Description**

Scatter of Romano-British pottery observed by the owner in this field. (1)

**Sources**

(1) Unpublished Report: SHE18716. White, P. 2003. The Leen, Pembridge: A Whole Farm Archaeological Survey. Herefordshire Archaeology.

**Associated resources**

---

***Location***

**National Grid Reference**

SO 3850 5993 (point) SO35NE Point

**Administrative Areas**

Civil Parish PEMBRIDGE, HEREFORDSHIRE

**Address/Historic Names - None recorded**

---

***Designations, Statuses and Scorings***

**Associated Designations - None recorded**

**Other Statuses and Cross-References**

Sites & Monuments Record - 34881 Active

**Ratings and Scorings - None recorded**

---

***Land Use***

**Associated Historic Landscape Character Records**

HHE64 Adaptation of Earlier Enclosure System - Co-Axial Enclosure - L2 Linking Type (Type Code: L2.4)

**Other Land Classes - None recorded**

---

***Related Monuments - None Recorded***

---

***Finds - None recorded***

---

***Associated Events/Activities***

EHE34821 Farm Archaeological Survey (Arrow Valley Project). The Leen, Pembridge. 2003 (Field Survey)

---

***Associated Individuals/Organisations - None recorded***

---

HER Number 37586

Site Name Ridge & furrow, approx 250m SSE of Mountain View

---

HER Number	Site Name	Record Type
37586	Ridge & furrow, approx 250m SSE of Mountain View	Monument

---

**Monument Types and Dates**

RIDGE AND FURROW (Post Medieval - 1540 AD to 1900 AD)

Evidence CROPMARK

---

**Description and Sources**

**Description - None recorded**

**Sources**

(1) Cartographic material: SHE1313. 1979. Aerial photograph overlay maps at 1:10,000. Royal Commission on Historical Monuments.

**Associated resources**

HTT Web URL [#http://htt.herefordshire.gov.uk/her-search/monuments-search/search/monument?smr\\_no=37586#](http://htt.herefordshire.gov.uk/her-search/monuments-search/search/monument?smr_no=37586#)

Link to Herefordshire Through Time Web Database

---

**Location**

**National Grid Reference**

Centred SO 4008 6132 (171m by 143m) SO46SW Area

**Administrative Areas**

Civil Parish SHOBDON, HEREFORDSHIRE

**Address/Historic Names - None recorded**

---

**Designations, Statuses and Scorings**

**Associated Designations - None recorded**

**Other Statuses and Cross-References**

SHINE Candidate (No) Active

Sites & Monuments Record - 37586 Active

**Ratings and Scorings - None recorded**

---

**Land Use**

**Associated Historic Landscape Character Records**

HHE763 Small Compass Enclosure of the Landscape - Reconfiguration of Former Common Arable Fields (Type Code: G2.3)

**Other Land Classes - None recorded**

---

**Related Monuments - None Recorded**

---

**Finds - None recorded**

---

**Associated Events/Activities - None recorded**

---

**Associated Individuals/Organisations - None recorded**

---

HER Number 37587

Site Name Ridge & furrow, east of Mountain View, Shobdon

---

HER Number	Site Name	Record Type
37587	Ridge & furrow, east of Mountain View, Shobdon	Monument

---

**Monument Types and Dates**

RIDGE AND FURROW (Post Medieval - 1540 AD to 1900 AD)

Evidence CROPMARK

---

**Description and Sources**

**Description - None recorded**

**Sources**

(1) Cartographic material: SHE1313. 1979. Aerial photograph overlay maps at 1:10,000. Royal Commission on Historical Monuments.

**Associated resources**

HTT Web URL [#http://htt.herefordshire.gov.uk/her-search/monuments-search/search/monument?smr\\_no=37587#](http://htt.herefordshire.gov.uk/her-search/monuments-search/search/monument?smr_no=37587#)

Link to Herefordshire Through Time Web Database

---

**Location**

**National Grid Reference**

Centred SO 4046 6108 (379m by 258m) SO46SW Area

**Administrative Areas**

Civil Parish SHOBDON, HEREFORDSHIRE

**Address/Historic Names - None recorded**

---

**Designations, Statuses and Scorings**

**Associated Designations - None recorded**

**Other Statuses and Cross-References**

SHINE Candidate (No) Active

Sites & Monuments Record - 37587 Active

**Ratings and Scorings - None recorded**

---

**Land Use**

**Associated Historic Landscape Character Records**

HHE65 Large Compass Enclosure of the Landscape - Redefinition of Former Common Arable Fields/Meadow (Type Code: F2.2)

**Other Land Classes - None recorded**

---

**Related Monuments - None Recorded**

---

**Finds - None recorded**

---

**Associated Events/Activities - None recorded**

---

**Associated Individuals/Organisations - None recorded**

---

HER Number 37588

Site Name Ridge & furrow, south of Alma Covert, Shobdon Marsh

---

HER Number	Site Name	Record Type
37588	Ridge & furrow, south of Alma Covert, Shobdon Marsh	Monument

---

**Monument Types and Dates**

RIDGE AND FURROW (Post Medieval - 1540 AD to 1900 AD)

Evidence CROPMARK

---

**Description and Sources**

**Description - None recorded**

**Sources**

(1) Cartographic material: SHE1313. 1979. Aerial photograph overlay maps at 1:10,000. Royal Commission on Historical Monuments.

**Associated resources**

HTT Web URL [#http://htt.herefordshire.gov.uk/her-search/monuments-search/search/monument?smr\\_no=37588#](http://htt.herefordshire.gov.uk/her-search/monuments-search/search/monument?smr_no=37588#)

Link to Herefordshire Through Time Web Database

---

**Location**

**National Grid Reference**

Centred SO 4087 6094 (262m by 330m) SO46SW Area

**Administrative Areas**

Civil Parish SHOBDON, HEREFORDSHIRE

**Address/Historic Names - None recorded**

---

**Designations, Statuses and Scorings**

**Associated Designations - None recorded**

**Other Statuses and Cross-References**

SHINE Candidate (No) Active

Sites & Monuments Record - 37588 Active

**Ratings and Scorings - None recorded**

---

**Land Use**

**Associated Historic Landscape Character Records**

HHE65 Large Compass Enclosure of the Landscape - Redefinition of Former Common Arable Fields/Meadow (Type Code: F2.2)

**Other Land Classes - None recorded**

---

**Related Monuments - None Recorded**

---

**Finds - None recorded**

---

**Associated Events/Activities - None recorded**

---

**Associated Individuals/Organisations - None recorded**

---

HER Number 38504

Site Name Barrow number 5, Milton Cross barrow cemetery

---

HER Number	Site Name	Record Type
38504	Barrow number 5, Milton Cross barrow cemetery	Monument

---

**Monument Types and Dates**

ROUND BARROW (Bronze Age - 2400 BC to 801 BC)

Evidence EARTHWORK

---

**Description and Sources**

**Description**

Another earthwork barrow in addition to the three already recorded was noted in the field. Worked flints were noted on the surface of the barrow. (1)

**Sources**

(2) Article in serial: SHE14585. Mould, C and S Watt. 2000. Reports, Herefordshire. West Midlands Archaeology 43, 2000.

**Associated resources**

HTT Web URL [#http://htt.herefordshire.gov.uk/her-search/monuments-search/search/monument?smr\\_no=38504#](http://htt.herefordshire.gov.uk/her-search/monuments-search/search/monument?smr_no=38504#)

Link to Herefordshire Through Time Web Database

---

**Location**

**National Grid Reference**

SO 3850 6029 (point) SO36SE Point

**Administrative Areas**

Civil Parish STAUNTON ON ARROW, HEREFORDSHIRE

**Address/Historic Names - None recorded**

---

**Designations, Statuses and Scorings**

**Associated Designations**

SHINE	Earthworks and Cropmarks of Bronze Age Barrow Cemetery, 400m Southeast of Milton Cross, Pembridge	Active	DHE6556
-------	---	--------	---------

**Other Statuses and Cross-References**

Sites & Monuments Record - 38504	Active
SHINE Candidate (Yes)	Active

**Ratings and Scorings - None recorded**

---

**Land Use**

**Associated Historic Landscape Character Records**

HHE60 Large Compass Enclosure of the Landscape - Estate (Type Code: F1.2)

**Other Land Classes - None recorded**

---

**Related Monuments**

52008	Bronze Age Barrow Cemetery, South of Milton Cross, Pembridge	Hierarchical (Parent-Child)
-------	--	-----------------------------

---

**Finds - None recorded**

---

**Associated Events/Activities - None recorded**

---

**Associated Individuals/Organisations - None recorded**

---

**HER Number** 38504

**Site Name** Barrow number 5, Milton Cross barrow cemetery

---

---



HER Number 4009

Site Name Enclosure, Shobdon Airfield

---

HER Number	Site Name	Record Type
4009	Enclosure, Shobdon Airfield	Monument

---

**Monument Types and Dates**

SUBRECTANGULAR ENCLOSURE (Undated)

Evidence CROPMARK

---

**Description and Sources**

**Description**

Sub rectangular enclosure & linear feature. (1) (2)

A desk-based assessment and field evaluation was undertaken to the south of this feature in advance of proposed development in 2014. Seven trenches were excavated, which indicated that deep ploughing has occurred in the area. No archaeological deposits or finds were uncovered during the evaluation. (3) (4)

**Sources**

- (1) Aerial Photograph: SHE10450. Musson, C R. 1979. 79-53-05. Clwyd and Powys Archaeology Trust.
- (2) Aerial Photograph: SHE13635. Musson, C R. 24/07/1996. 96-MB-0296. Chris Musson AP collection. Oblique.
- (3) Unpublished Report: SHE19144. Williams, D. 2014. Environmental Impact Assessment. Archaeology chapter on Proposed Construction of Chicken Sheds, Shobdon Airfield, Herefordshire. DW Archaeology.
- (4) Unpublished Report: SHE19145. Williams, D. 2014. Milton Farm, Pembridge, Herefordshire. An Archaeological Field Evaluation. DW Archaeology.

**Associated resources**

HTT Web URL [#http://htt.herefordshire.gov.uk/her-search/monuments-search/search/monument?smr\\_no=4009#](http://htt.herefordshire.gov.uk/her-search/monuments-search/search/monument?smr_no=4009#)

Link to Herefordshire Through Time Web Database

---

**Location**

**National Grid Reference**

Centred SO 3927 6058 (119m by 97m) SO36SE Area

**Administrative Areas**

Civil Parish PEMBRIDGE, HEREFORDSHIRE

**Address/Historic Names - None recorded**

---

**Designations, Statuses and Scorings**

**Associated Designations**

SHINE	Cropmark of subrectangular enclosure, Shobdon Airfield, Shobdon	Active	DHE6580
-------	---	--------	---------

**Other Statuses and Cross-References**

SHINE Candidate (Yes)	Active
NAR Number - SO36SE24	Active
Sites & Monuments Record - 4009	Active

**Ratings and Scorings - None recorded**

---

**Land Use**

**Associated Historic Landscape Character Records**

HHE60 Large Compass Enclosure of the Landscape - Estate (Type Code: F1.2)

**Other Land Classes - None recorded**

---

**Related Monuments - None Recorded**

---

***Finds - None recorded***

---

***Associated Events/Activities***

EHE8513 Evaluation at Shobdon Airfield, Shobdon (Field Survey. Ref: SMR Event: 8513)  
EHE80057 Environmental Impact Assessment, Milton Farm, Pembridge, 2014 (Interpretation)  
EHE80058 Evaluation, Milton Farm, Pembridge, 2014 (Archaeological Intervention)

---

***Associated Individuals/Organisations - None recorded***

---

HER Number 43984

Site Name Pembridge CP, Milton Cross, curvilinear enclosure

---

HER Number	Site Name	Record Type
43984	Pembridge CP, Milton Cross, curvilinear enclosure	Monument

---

### **Monument Types and Dates**

CURVILINEAR ENCLOSURE (Prehistoric - 500000 BC to 42 AD)

Evidence CROPMARK

---

### **Description and Sources**

#### **Description**

Curvilinear enclosure enclosed by a single ditch and visible as a crop mark within an area of possible barrows. The enclosure is approximately 40 diameter.

Chris Musson 2006 colour negative aerial photograph catalogue (1) (2)

#### **Sources**

(1) Aerial Photograph: SHE18290. Musson, C R. 12/07/2006. 06-CN-1218A. Herefordshire Aerial Archaeological Survey 2006. Oblique.

#### **Associated resources**

HTT Web URL [#http://htt.herefordshire.gov.uk/her-search/monuments-search/search/monument?smr\\_no=43984#](http://htt.herefordshire.gov.uk/her-search/monuments-search/search/monument?smr_no=43984#)

Link to Herefordshire Through Time Web Database

---

#### **Location**

##### **National Grid Reference**

SO 3868 6019 (point) SO36SE Point

##### **Administrative Areas**

Civil Parish PEMBRIDGE, HEREFORDSHIRE

##### **Address/Historic Names - None recorded**

---

### **Designations, Statuses and Scorings**

#### **Associated Designations**

SHINE	Earthworks and Cropmarks of Bronze Age Barrow Cemetery, 400m Southeast of Milton Cross, Pembridge	Active	DHE6556
-------	---	--------	---------

#### **Other Statuses and Cross-References**

SHINE Candidate (Yes) Active

Sites & Monuments Record - 43984 Active

#### **Ratings and Scorings - None recorded**

---

### **Land Use**

#### **Associated Historic Landscape Character Records**

HHE60 Large Compass Enclosure of the Landscape - Estate (Type Code: F1.2)

#### **Other Land Classes - None recorded**

---

### **Related Monuments**

52008 Bronze Age Barrow Cemetery, South of Milton Cross, Pembridge Hierarchical (Parent-Child)

---

#### **Finds - None recorded**

---

#### **Associated Events/Activities - None recorded**

---

#### **Associated Individuals/Organisations - None recorded**

---

**HER Number** 43984

**Site Name** Pembridge CP, Milton Cross, curvilinear enclosure

---

---

HER Number 43985

Site Name Pembridge CP, Milton Cross, ring ditch

HER Number	Site Name	Record Type
43985	Pembridge CP, Milton Cross, ring ditch	Monument

### Monument Types and Dates

RING DITCH (Bronze Age - 2400 BC to 801 BC)

Evidence CROPMARK

### Description and Sources

#### Description

Ring ditch visible as a crop mark, possibly part of a barrow cemetery. (1) (2)  
Chris musson 2006 colour negative aerial photograph catalogue

#### Sources

(1) Aerial Photograph: SHE18290. Musson, C R. 12/07/2006. 06-CN-1218A. Herefordshire Aerial Archaeological Survey 2006. Oblique.

#### Associated resources

HTT Web URL [#http://htt.herefordshire.gov.uk/her-search/monuments-search/search/monument?smr\\_no=43985#](http://htt.herefordshire.gov.uk/her-search/monuments-search/search/monument?smr_no=43985#)  
Link to Herefordshire Through Time Web Database

### Location

#### National Grid Reference

SO 3843 6022 (point) SO36SE Point

#### Administrative Areas

Civil Parish PEMBRIDGE, HEREFORDSHIRE

#### Address/Historic Names - None recorded

### Designations, Statuses and Scorings

#### Associated Designations

SHINE	Earthworks and Cropmarks of Bronze Age Barrow Cemetery, 400m Southeast of Milton Cross, Pembridge	Active	DHE6556
-------	---	--------	---------

#### Other Statuses and Cross-References

SHINE Candidate (Yes)	Active
Sites & Monuments Record - 43985	Active

#### Ratings and Scorings - None recorded

### Land Use

#### Associated Historic Landscape Character Records

HHE60 Large Compass Enclosure of the Landscape - Estate (Type Code: F1.2)

#### Other Land Classes - None recorded

### Related Monuments

52008 Bronze Age Barrow Cemetery, South of Milton Cross, Pembridge Hierarchical (Parent-Child)

### Finds - None recorded

### Associated Events/Activities - None recorded

### Associated Individuals/Organisations - None recorded

**HER Number** 43985

**Site Name** Pembridge CP, Milton Cross, ring ditch

---

---

HER Number 43986

Site Name Pembridge CP, Milton Cross, field boundary

---

HER Number	Site Name	Record Type
43986	Pembridge CP, Milton Cross, field boundary	Monument

---

**Monument Types and Dates**

FIELD BOUNDARY (Undated)

Evidence CROPMARK

---

**Description and Sources**

**Description**

Field boundary visible as a crop mark to the southeast of Milton Cross. The boundary is aligned northeast-southwest. Chris Musson 2006 colour negative aerial photograph catalogue (1) (2)

**Sources**

(1) Aerial Photograph: SHE18290. Musson, C R. 12/07/2006. 06-CN-1218A. Herefordshire Aerial Archaeological Survey 2006. Oblique.

**Associated resources**

HTT Web URL [#http://htt.herefordshire.gov.uk/her-search/monuments-search/search/monument?smr\\_no=43986#](http://htt.herefordshire.gov.uk/her-search/monuments-search/search/monument?smr_no=43986#)

Link to Herefordshire Through Time Web Database

---

**Location**

**National Grid Reference**

SO 3871 6022 (point) SO36SE Point

**Administrative Areas**

Civil Parish PEMBRIDGE, HEREFORDSHIRE

**Address/Historic Names - None recorded**

---

**Designations, Statuses and Scorings**

**Associated Designations**

SHINE	Earthworks and Cropmarks of Bronze Age Barrow Cemetery, 400m Southeast of Milton Cross, Pembridge	Active	DHE6556
-------	---	--------	---------

**Other Statuses and Cross-References**

Sites & Monuments Record - 43986	Active
SHINE Candidate (Yes)	Active

**Ratings and Scorings - None recorded**

---

**Land Use**

**Associated Historic Landscape Character Records**

HHE60 Large Compass Enclosure of the Landscape - Estate (Type Code: F1.2)

**Other Land Classes - None recorded**

---

**Related Monuments**

52008	Bronze Age Barrow Cemetery, South of Milton Cross, Pembridge	Hierarchical (Parent-Child)
-------	--	-----------------------------

---

**Finds - None recorded**

---

**Associated Events/Activities - None recorded**

---

**Associated Individuals/Organisations - None recorded**

---

**HER Number** 43986

**Site Name** Pembridge CP, Milton Cross, field boundary

---

---



HER Number 46302

Site Name Broome Farm (Broom)

---

HER Number	Site Name	Record Type
46302	Broome Farm (Broom)	Monument

---

### **Monument Types and Dates**

FARM (Post Medieval - 1540 AD to 1900 AD)

Evidence DOCUMENTARY EVIDENCE

---

### **Description and Sources**

#### **Description**

Historic Farm recorded as part of the Herefordshire Historic Farmsteads Characterisation Project. Present on the Ordnance Survey First Edition, Pre-WW2 and Modern maps. (1) (2) (3) (4)

#### **Sources**

- (1) Cartographic material: SHE17616. Ordnance Survey. 1893. Ordnance Survey County Series Digital Historical Map Data 1:2500 - Epoch 1. Ordnance Survey/Landmark.
- (2) Cartographic material: SHE17619. Ordnance Survey. 1943. Ordnance Survey County Series Digital Historical Map Data 1:2500 - Epoch 4. Ordnance Survey/Landmark.
- (3) Cartographic material: SHE17620. Ordnance Survey. 2008 Onwards. Ordnance Survey Digital MasterMap Series.
- (4) Unpublished Report: SHE17621. Preece, N. 2008. Herefordshire Historic Farmsteads Characterisation Project (Stage 1). Herefordshire Archaeology.

#### **Associated resources**

HTT Web URL [#http://htt.herefordshire.gov.uk/her-search/monuments-search/search/monument?smr\\_no=46302#](http://htt.herefordshire.gov.uk/her-search/monuments-search/search/monument?smr_no=46302#)

Link to Herefordshire Through Time Web Database

---

### **Location**

#### **National Grid Reference**

Centred SO 40124 59627 (152m by 131m) SO45NW Area

#### **Administrative Areas**

Civil Parish EARDISLAND, HEREFORDSHIRE

#### **Address/Historic Names - None recorded**

---

### **Designations, Statuses and Scorings**

#### **Associated Designations**

Listed Building (II) - 149852	BROOME FARMHOUSE	Active	DHE497
-------------------------------	------------------	--------	--------

#### **Other Statuses and Cross-References**

SHINE Candidate (No)	Active
Sites & Monuments Record - 46302	Active

#### **Ratings and Scorings - None recorded**

---

### **Land Use**

#### **Associated Historic Landscape Character Records**

HHE218 Small Compass Enclosure of the Landscape - Reconfiguration of Early Meadow Enclosure/Drainage (Type Code: G2.7)

HHE752 Large Compass Enclosure of the Landscape - Estate (Type Code: F1.2)

#### **Other Land Classes - None recorded**

---

#### **Related Monuments - None Recorded**

---

**HER Number** 46302

**Site Name** Broome Farm (Broom)

---

***Finds - None recorded***

---

***Associated Events/Activities***

EHE48661 Herefordshire Historic Farmsteads Characterisation Project: Stage 1 (Interpretation)

---

***Associated Individuals/Organisations - None recorded***

---

HER Number 49445

Site Name Portable Antiquity, TARRINGTON

---

HER Number	Site Name	Record Type
49445	Portable Antiquity, TARRINGTON	Portable Antiquities Scheme Fi

---

**Monument Types and Dates**

FINDSPOT (16th Century to 17th Century - 1550 AD to 1650 AD)

Evidence FIND

**Description and Sources**

**Description**

Findspot of object(s) identified and recorded via the Portable Antiquities Scheme.

**Sources - None recorded**

**Associated resources**

HTT Web URL [#http://htt.herefordshire.gov.uk/her-search/monuments-search/search/monument?smr\\_no=49445#](http://htt.herefordshire.gov.uk/her-search/monuments-search/search/monument?smr_no=49445#)

Link to Herefordshire Through Time Web Database

**Location**

**National Grid Reference**

SO 39 60 (point) SO36SE Point

**Administrative Areas**

Civil Parish TARRINGTON, HEREFORDSHIRE

**Address/Historic Names**

Elmswood, Tarrington Comman, HR1 4HR

---

**Designations, Statuses and Scorings**

**Associated Designations - None recorded**

**Other Statuses and Cross-References**

SHINE Candidate (No) Active

Sites & Monuments Record - 49445 Active

**Ratings and Scorings - None recorded**

**Land Use**

**Associated Historic Landscape Character Records**

HHE60 Large Compass Enclosure of the Landscape - Estate (Type Code: F1.2)

**Other Land Classes - None recorded**

**Related Monuments - None Recorded**

**Associated Finds**

FHE2055 BUCKLE (1) (16th Century to 17th Century - 1550 AD to 1650 AD) COPPER ALLOY

**Associated Events/Activities - None recorded**

**Associated Individuals/Organisations - None recorded**

---

HER Number 52008

Site Name Bronze Age Barrow Cemetery, South of Milton Cross, Pembridge

HER Number	Site Name	Record Type
52008	Bronze Age Barrow Cemetery, South of Milton Cross, Pembridge	Monument

Group of Bronze Age Round Barrows, visible as earthwork mounds and cropmarks on aerial photos.

### Monument Types and Dates

BARROW CEMETERY (Bronze Age - 2400 BC to 801 BC)

Evidence	EARTHWORK
Evidence	CROPMARK

### Description and Sources

#### Description

Overall record for the Bronze Age Barrow Cemetery at Milton Cross - see related records for details of specific features. Five of the barrows survive as earthwork mounds, and one has been identified as a ring ditch cropmark on aerial photos. Other earthwork and cropmark features such as possible enclosures and linear features have also been identified within the area of the barrows. These may be related to the barrows, but it is not possible to be certain of this without further fieldwork. (1) (2) (3) (4)

#### Sources

- (1) Bibliographic reference: SHE6666. 1972. Transactions of the Woolhope Naturalists' Field Club 40.
- (2) Article in serial: SHE16067. Grinsell, L.V.. 1993. Herefordshire Barrows. Transactions of the Woolhope Naturalists' Field Club. XLVII 1993 Part III. 299-317.
- (3) Scheduling record: SHE12158. English Heritage Scheduling Section. 1996. Schedule entry. English Heritage.
- (4) Aerial Photograph: SHE18290. Musson, C R. 12/07/2006. 06-CN-1218A. Herefordshire Aerial Archaeological Survey 2006. Oblique.

#### Associated resources

HTT Web URL [#http://htt.herefordshire.gov.uk/her-search/monuments-search/search/monument?smr\\_no=52008#](http://htt.herefordshire.gov.uk/her-search/monuments-search/search/monument?smr_no=52008#)

Link to Herefordshire Through Time Web Database

### Location

#### National Grid Reference

Centred SO 38690 60182 (930m by 639m) SO36SE Area

#### Administrative Areas

Civil Parish PEMBRIDGE, HEREFORDSHIRE

#### Address/Historic Names - None recorded

### Designations, Statuses and Scorings

#### Associated Designations

Scheduled Monument - 27490	Bowl barrow 460m south of Milton Cross	Active	DHE6114
Scheduled Monument - 27505	Bowl barrow 490m south east of Milton Cross	Active	DHE5955
Scheduled Monument - 27506	Bowl barrow 550m south east of Milton Cross	Active	DHE6048
SHINE	Cropmark of three ring ditches, part of Milton Cross Bronze Age Barrow Cemetery, Milton Cross, Pembridge	Active	DHE7234
SHINE	Cropmark of ring ditches, part of Milton Cross Bronze Age Barrow Cemetery, Milton Cross, Pembridge	Active	DHE7236

#### Other Statuses and Cross-References

SHINE Candidate (Yes)	Active
Sites & Monuments Record - 52008	Active

HER Number 52008

Site Name Bronze Age Barrow Cemetery, South of Milton Cross,  
Pembridge

**Ratings and Scorings - None recorded**

---

**Land Use**

**Associated Historic Landscape Character Records**

HHE60 Large Compass Enclosure of the Landscape - Estate (Type Code: F1.2)

HHE64 Adaptation of Earlier Enclosure System - Co-Axial Enclosure - L2 Linking Type (Type Code: L2.4)

**Other Land Classes - None recorded**

---

**Related Monuments**

1027	Round Barrow, 460m S of Milton Cross, Pembridge	Hierarchical (Parent-Child)
1028	Round Barrow, 490m SE of Milton Cross, Pembridge	Hierarchical (Parent-Child)
1029	Round Barrow, 550m SE of Milton Cross, Pembridge	Hierarchical (Parent-Child)
31116	Barrow number 4, Milton Cross barrow cemetery	Hierarchical (Parent-Child)
38504	Barrow number 5, Milton Cross barrow cemetery	Hierarchical (Parent-Child)
31836	Linear feature adjacent to barrow cemetery, Milton Cross	Hierarchical (Parent-Child)
43984	Pembridge CP, Milton Cross, curvilinear enclosure	Hierarchical (Parent-Child)
43985	Pembridge CP, Milton Cross, ring ditch	Hierarchical (Parent-Child)
43986	Pembridge CP, Milton Cross, field boundary	Hierarchical (Parent-Child)
53440	Cropmark of three ring ditches, 900m east- south-east of Milton Cross, Pembridge	Hierarchical (Parent-Child)
53441	Cropmark ring ditch 670m south-east of Milton Cross, Pembridge	Hierarchical (Parent-Child)
53517	Cropmark ring ditch 700m east of Milton Cross, Pembridge	Hierarchical (Parent-Child)

---

**Finds - None recorded**

---

**Associated Events/Activities**

EHE43737 Herefordshire Aerial Archaeological Survey, 2002-2006 (Remote Sensing Survey. Ref: SMR  
Event: 43737)

---

**Associated Individuals/Organisations - None recorded**

---

**HER Number** 52120                      **Site Name** Possible Roman Settlement, Immediately North of The Leen, Pembridge

<b>HER Number</b>	<b>Site Name</b>	<b>Record Type</b>
52120	Possible Roman Settlement, Immediately North of The Leen, Pembridge	Monument

---

### **Monument Types and Dates**

FARMSTEAD? (Romano-British - 43 AD to 409 AD)

Evidence	CROPMARK
Evidence	EXCAVATED FEATURE

FIELD SYSTEM? (Romano-British - 43 AD to 409 AD)

Evidence	CROPMARK
Evidence	EXCAVATED FEATURE

---

### **Description and Sources**

#### **Description**

Extensive cropmark complex to the north of The Leen. The cropmarks mainly consist of rectilinear ditches and enclosures on a northwest-southeast aligned axis, the general orientation of which appears to survive more widely within the current landscape as reflected by the modern field boundaries. Small-scale excavation of some of these cropmarked features has dated them to the Romano-British period, and the main complex has been interpreted as a sizeable farmstead or broader settlement with associated field system. All the pottery from this site is later than that found at the enclosure excavated at Ox Pasture (SMR 22863 - also excavated during the Arrow Valley Project), which may indicate a settlement shift during the First Centuries AD. The excavation also indicated a period of rapid silt-deposition, possibly indicating that there may be a link between agricultural intensification and accelerated erosion in these fields. See related site and event records for more detail on specific components. (1)

#### **Sources**

- (1) Bibliographic reference: SHE15879. White, Paul. 2003. The Arrow Valley, Herefordshire. Archaeology, Landscape Change and Conservation. Herefordshire Studies in Archaeology. 2.

#### **Associated resources**

---

#### **Location**

##### **National Grid Reference**

Centred SO 38221 59655 (1287m by 1049m)                      SO35NE                      Area

##### **Administrative Areas**

Civil Parish                      PEMBRIDGE, HEREFORDSHIRE

##### **Address/Historic Names - None recorded**

---

#### **Designations, Statuses and Scorings**

##### **Associated Designations - None recorded**

##### **Other Statuses and Cross-References**

SHINE Candidate (No)	Active
Sites & Monuments Record - 52120	Active

##### **Ratings and Scorings - None recorded**

---

#### **Land Use**

##### **Associated Historic Landscape Character Records**

HHE60	Large Compass Enclosure of the Landscape - Estate (Type Code: F1.2)
HHE64	Adaptation of Earlier Enclosure System - Co-Axial Enclosure - L2 Linking Type (Type Code: L2.4)
HHE214	Adaptation of Earlier Enclosure System - Co-Axial System/Former Common Arable Fields (Type Code: L3.2)

##### **Other Land Classes - None recorded**

**HER Number** 52120

**Site Name** Possible Roman Settlement, Immediately North of The Leen, Pembridge

***Related Monuments***

10418	Ring ditch, W of Rowe Ditch, Pembridge	Hierarchical (Parent-Child)
10419	Enclosures, W of Rowe Ditch, Pembridge	Hierarchical (Parent-Child)
15213	Cropmarks of probable field system, east of Rowe Ditch, Pembridge	Hierarchical (Parent-Child)
15214	Crop marks of Roman Settlement Enclosures, North of The Leen, Pembridge	Hierarchical (Parent-Child)
15215	Crop marks of rectangular enclosure, east of Rowe Ditch, Pembridge	Hierarchical (Parent-Child)
15217	Romano-British Field System, East of Rowe Ditch, Pembridge	Hierarchical (Parent-Child)
15218	Cropmarks, N of Leen Farm, Pembridge	Hierarchical (Parent-Child)
25885	Cropmarks, Pembridge	Hierarchical (Parent-Child)

---

***Finds - None recorded***

---

***Associated Events/Activities***

EHE1944	Arrow Valley Archaeology, Landscape Change and Conservation Project (Field Survey)
EHE1952	Excavation at Middle Field, The Leen Farm, Pembridge, 2003 (Arrow Valley Project) (Archaeological Intervention)
EHE2004	Evaluation, Leen Farm, Pembridge, 2012 (Archaeological Intervention)
EHE2170	Watching Brief, The Leen, Pembridge, 2013 (Archaeological Intervention)

---

***Associated Individuals/Organisations - None recorded***

---

HER Number 53439

Site Name Cropmark of linear feature Milton Cross, Pembridge

---

HER Number	Site Name	Record Type
53439	Cropmark of linear feature Milton Cross, Pembridge	Monument

---

**Monument Types and Dates**

LINEAR FEATURE (Unknown date)

Evidence CROPMARK

---

**Description and Sources**

**Description**

Cropmark of a linear feature at Milton Cross. It bends slightly around a ring ditch which was obviously visible as an earthwork feature when the linear feature was created. (1) (2) (3) (4)

**Sources**

- (1) Aerial Photograph: SHE22034. Musson, C R. 2005. 05-CN-0920. Herefordshire Aerial Archaeological Survey 2005. Oblique.
- (2) Aerial Photograph: SHE22035. Musson, C R. 2005. 05-CN-0923. Herefordshire Aerial Archaeological Survey 2005. Oblique.
- (3) Aerial Photograph: SHE22037. Musson, C R. 2005. 05-CN-0924. Herefordshire Aerial Archaeological Survey 2005. Oblique.
- (4) Aerial Photograph: SHE22523. Musson, C R. 2005. 05-MB-2141/42. Herefordshire Aerial Archaeological Survey 2005. Oblique.

**Associated resources**

---

**Location**

**National Grid Reference**

Centred SO 3888 6039 (179m by 253m) SO36SE Area

**Administrative Areas**

Civil Parish PEMBRIDGE, HEREFORDSHIRE

**Address/Historic Names - None recorded**

---

**Designations, Statuses and Scorings**

**Associated Designations - None recorded**

**Other Statuses and Cross-References**

Sites & Monuments Record - 53439 Active

**Ratings and Scorings - None recorded**

---

**Land Use**

**Associated Historic Landscape Character Records - None recorded**

**Other Land Classes - None recorded**

---

**Related Monuments - None Recorded**

---

**Finds - None recorded**

---

**Associated Events/Activities**

EHE43737 Herefordshire Aerial Archaeological Survey, 2002-2006 (Remote Sensing Survey. Ref: SMR Event: 43737)

---

**Associated Individuals/Organisations - None recorded**

---



**HER Number** 53440 **Site Name** Cropmark of three ring ditches, 900m east-south-east of Milton Cross, Pembridge

HER Number	Site Name	Record Type
53440	Cropmark of three ring ditches, 900m east-south-east of Milton Cross, Pembridge	Monument

---

### **Monument Types and Dates**

RING DITCH (Bronze Age - 2400 BC to 801 BC)

Evidence CROPMARK

---

### **Description and Sources**

#### **Description**

Cropmark of three ring ditches, 900m east-south-east of Milton Cross. The three are closely spaced with two large outer rings and a smaller less clear one in between. These are clearly part of the more extensive Milton Cross Bronze Age barrow cemetery. (1) (2) (3) (4)

#### **Sources**

- (1) Aerial Photograph: SHE22036. Musson, C R. 2005. 05-CN-0921/22. Herefordshire Aerial Archaeological Survey 2005. Oblique.
- (2) Aerial Photograph: SHE22037. Musson, C R. 2005. 05-CN-0924. Herefordshire Aerial Archaeological Survey 2005. Oblique.
- (3) Aerial Photograph: SHE22528. Musson, C R. 2005. 05-MB-2149. Herefordshire Aerial Archaeological Survey 2005. Oblique.
- (4) Aerial Photograph: SHE22527. Musson, C R. 2005. 05-MB-2147/48. Herefordshire Aerial Archaeological Survey 2005. Oblique.

#### **Associated resources**

---

#### **Location**

##### **National Grid Reference**

Centred SO 3909 6037 (115m by 111m) SO36SE Area

##### **Administrative Areas**

Civil Parish PEMBRIDGE, HEREFORDSHIRE

##### **Address/Historic Names - None recorded**

---

### **Designations, Statuses and Scorings**

#### **Associated Designations**

SHINE	Cropmark of three ring ditches, part of Milton Cross Bronze Age Barrow Cemetery, Milton Cross, Pembridge	Active	DHE7234
-------	--	--------	---------

#### **Other Statuses and Cross-References**

SHINE Candidate (Yes)	Active
Sites & Monuments Record - 53440	Active

#### **Ratings and Scorings - None recorded**

---

#### **Land Use**

##### **Associated Historic Landscape Character Records - None recorded**

##### **Other Land Classes - None recorded**

---

#### **Related Monuments**

52008	Bronze Age Barrow Cemetery, South of Milton Cross, Pembridge	Hierarchical (Parent-Child)
-------	--	-----------------------------

---

#### **Finds - None recorded**

**HER Number** 53440

**Site Name** Cropmark of three ring ditches, 900m east-south-east of Milton Cross, Pembridge

***Associated Events/Activities***

EHE43737 Herefordshire Aerial Archaeological Survey, 2002-2006 (Remote Sensing Survey. Ref: SMR Event: 43737)

---

***Associated Individuals/Organisations - None recorded***

---

**HER Number** 53441

**Site Name** Cropmark ring ditch 670m south-east of Milton Cross, Pembridge

<b>HER Number</b>	<b>Site Name</b>	<b>Record Type</b>
53441	Cropmark ring ditch 670m south-east of Milton Cross, Pembridge	Monument

---

**Monument Types and Dates**

RING DITCH (Bronze Age - 2400 BC to 801 BC)

Evidence CROPMARK

---

**Description and Sources**

**Description**

Cropmark of a single ring ditch 670m south-east of Milton Cross. Part of the Milton Cross Bronze Age barrow cemetery. (1) (2) (3) (4)

**Sources**

- (1) Aerial Photograph: SHE22034. Musson, C R. 2005. 05-CN-0920. Herefordshire Aerial Archaeological Survey 2005. Oblique.
- (2) Aerial Photograph: SHE22035. Musson, C R. 2005. 05-CN-0923. Herefordshire Aerial Archaeological Survey 2005. Oblique.
- (3) Aerial Photograph: SHE22525. Musson, C R. 2005. 05-MB-2144/45. Herefordshire Aerial Archaeological Survey 2005. Oblique.
- (4) Aerial Photograph: SHE22569. Musson, C R. 2005. 05-MB-2455. Herefordshire Aerial Archaeological Survey 2005. Oblique.

**Associated resources**

---

**Location**

**National Grid Reference**

Centred SO 3880 6031 (19m by 18m) SO36SE Area

**Administrative Areas**

Civil Parish PEMBRIDGE, HEREFORDSHIRE

**Address/Historic Names - None recorded**

---

**Designations, Statuses and Scorings**

**Associated Designations**

SHINE	Cropmark of ring ditches, part of Milton Cross Bronze Age Barrow Cemetery, Milton Cross, Pembridge	Active	DHE7236
-------	--	--------	---------

**Other Statuses and Cross-References**

SHINE Candidate (Yes)	Active
Sites & Monuments Record - 53441	Active

**Ratings and Scorings - None recorded**

---

**Land Use**

**Associated Historic Landscape Character Records - None recorded**

**Other Land Classes - None recorded**

---

**Related Monuments**

52008	Bronze Age Barrow Cemetery, South of Milton Cross, Pembridge	Hierarchical (Parent-Child)
-------	--	-----------------------------

---

**Finds - None recorded**

---

**Associated Events/Activities**

**HER Number** 53441

**Site Name** Cropmark ring ditch 670m south-east of Milton Cross,  
Pembridge

EHE43737 Herefordshire Aerial Archaeological Survey, 2002-2006 (Remote Sensing Survey. Ref: SMR  
Event: 43737)

---

***Associated Individuals/Organisations - None recorded***

---

HER Number 53517

Site Name Cropmark ring ditch 700m east of Milton Cross, Pembridge

---

HER Number	Site Name	Record Type
53517	Cropmark ring ditch 700m east of Milton Cross, Pembridge	Monument

---

### **Monument Types and Dates**

RING DITCH (Bronze Age - 2400 BC to 801 BC)

Evidence CROPMARK

---

### **Description and Sources**

#### **Description**

Cropmark ring ditch, 700m east of Milton Cross, Pembridge. This is clearly part of the more extensive Milton Cross Bronze Age barrow cemetery. (1) (2) (3)

#### **Sources**

- (1) Aerial Photograph: SHE22759. Musson, C R. 2006. 06-CN-1224/25. Herefordshire Aerial Archaeological Survey 2006. Oblique.
- (2) Aerial Photograph: SHE22758. Musson, C R. 2006. 06-CN-1223. Herefordshire Aerial Archaeological Survey 2006. Oblique.
- (3) Aerial Photograph: SHE23339. Musson, C R. 2006. 06-MB-2456/57. Herefordshire Aerial Archaeological Survey 2006. Oblique.

#### **Associated resources**

---

#### **Location**

##### **National Grid Reference**

Centred SO 3891 6052 (30m by 28m) SO36SE Area

##### **Administrative Areas**

Civil Parish PEMBRIDGE, HEREFORDSHIRE

**Address/Historic Names - None recorded**

---

### **Designations, Statuses and Scorings**

#### **Associated Designations**

SHINE	Cropmark of ring ditches, part of Milton Cross Bronze Age Barrow Cemetery, Milton Cross, Pembridge	Active	DHE7235
-------	--	--------	---------

#### **Other Statuses and Cross-References**

SHINE Candidate (Yes)	Active
Sites & Monuments Record - 53517	Active

**Ratings and Scorings - None recorded**

---

#### **Land Use**

**Associated Historic Landscape Character Records - None recorded**

**Other Land Classes - None recorded**

---

#### **Related Monuments**

52008	Bronze Age Barrow Cemetery, South of Milton Cross, Pembridge	Hierarchical (Parent-Child)
-------	--	-----------------------------

---

**Finds - None recorded**

---

#### **Associated Events/Activities**

---

**HER Number** 53517

**Site Name** Cropmark ring ditch 700m east of Milton Cross, Pembridge

---

EHE43737 Herefordshire Aerial Archaeological Survey, 2002-2006 (Remote Sensing Survey. Ref: SMR  
Event: 43737)

---

***Associated Individuals/Organisations - None recorded***

---

**HER Number** 53520

**Site Name** Cropmarks of small ring ditches or vegetation rings,  
Shobdon Airfield, Shobdon

**HER Number**

**Site Name**

**Record Type**

53520

Cropmarks of small ring ditches or vegetation rings,  
Shobdon Airfield, Shobdon

Monument

---

***Monument Types and Dates***

RING DITCH? (Bronze Age - 2400 BC to 801 BC)

Evidence CROPMARK

NATURAL FEATURE? (Modern - 1901 AD to 2050 AD)

Evidence CROPMARK

---

***Description and Sources***

**Description**

Cropmarks of small ring ditches or vegetation rings, Shobdon Airfield, Shobdon. A number of circular features are visible in a small area it is unclear if these are archaeological or natural features or a mixture of the two. (1) (2)

**Sources**

- (1) Aerial Photograph: SHE22756. Musson, C R. 2006. 06-CN-1220/21. Herefordshire Aerial Archaeological Survey 2006. Oblique.
- (2) Aerial Photograph: SHE23337. Musson, C R. 2006. 06-MB-2353/54. Herefordshire Aerial Archaeological Survey 2006. Oblique.

**Associated resources**

---

***Location***

**National Grid Reference**

Centred SO 3982 6083 (200m by 121m) SO36SE Area

**Administrative Areas**

Civil Parish SHOBDON, HEREFORDSHIRE

**Address/Historic Names - None recorded**

---

***Designations, Statuses and Scorings***

**Associated Designations - None recorded**

**Other Statuses and Cross-References**

Sites & Monuments Record - 53520 Active

**Ratings and Scorings - None recorded**

---

***Land Use***

**Associated Historic Landscape Character Records - None recorded**

**Other Land Classes - None recorded**

---

***Related Monuments - None Recorded***

---

***Finds - None recorded***

---

***Associated Events/Activities***

EHE43737 Herefordshire Aerial Archaeological Survey, 2002-2006 (Remote Sensing Survey. Ref: SMR  
Event: 43737)

---

***Associated Individuals/Organisations - None recorded***

---

**HER Number** 53521

**Site Name** Cropmarks of a ring ditch, an overlapping D shaped enclosure and a further linear feature, Shobdon Airfield,

**HER Number**

**Site Name**

**Record Type**

53521

Cropmarks of a ring ditch, an overlapping D shaped enclosure and a further linear feature, Shobdon Airfield, Shobdon

Monument

---

***Monument Types and Dates***

LINEAR FEATURE (Unknown date)

Evidence CROPMARK

RING DITCH (Bronze Age - 2400 BC to 801 BC)

Evidence CROPMARK

D SHAPED ENCLOSURE (Early Iron Age to Romano-British - 800 BC to 409 AD)

Evidence CROPMARK

---

***Description and Sources***

**Description**

Cropmarks of a ring ditch, an overlapping D shaped enclosure and a further linear feature, Shobdon Airfield, Shobdon. (1) (2)

**Sources**

- (1) Aerial Photograph: SHE22757. Musson, C R. 2006. 06-CN-1222. Herefordshire Aerial Archaeological Survey 2006. Oblique.
- (2) Aerial Photograph: SHE23338. Musson, C R. 2006. 06-MB-2355. Herefordshire Aerial Archaeological Survey 2006. Oblique.

**Associated resources**

---

***Location***

**National Grid Reference**

Centred SO 3931 6080 (145m by 94m)

SO36SE

Area

**Administrative Areas**

Civil Parish

SHOBDON, HEREFORDSHIRE

**Address/Historic Names - None recorded**

---

***Designations, Statuses and Scorings***

**Associated Designations - None recorded**

**Other Statuses and Cross-References**

Sites & Monuments Record - 53521

Active

**Ratings and Scorings - None recorded**

---

***Land Use***

**Associated Historic Landscape Character Records - None recorded**

**Other Land Classes - None recorded**

---

***Related Monuments - None Recorded***

---

***Finds - None recorded***

---

***Associated Events/Activities***

EHE43737 Herefordshire Aerial Archaeological Survey, 2002-2006 (Remote Sensing Survey. Ref: SMR Event: 43737)

---

***Associated Individuals/Organisations - None recorded***



HER Number 56439

Site Name Double Lynchet, south-east of Ox House Farm, Shobdon

---

HER Number	Site Name	Record Type
56439	Double Lynchet, south-east of Ox House Farm, Shobdon	Monument

---

**Monument Types and Dates**

LYNCHET (Medieval - 1066 AD to 1539 AD)

Evidence EARTHWORK

---

**Description and Sources**

**Description**

Double Lynchet recorded from LiDAR. (1)

**Sources**

(1) Data: SHE23809. Environment Agency. EA LiDAR (2m resolution). WMS.

**Associated resources**

HTT Web URL [#https://htt.herefordshire.gov.uk/her-search/monuments-search/search/monument?smr\\_no=56439#](https://htt.herefordshire.gov.uk/her-search/monuments-search/search/monument?smr_no=56439#)

---

**Location**

**National Grid Reference**

Centred SO 4058 6148 (722m by 340m) SO46SW Dispersed

**Administrative Areas**

Civil Parish LITTLE COWARNE, HEREFORDSHIRE

**Address/Historic Names - None recorded**

---

**Designations, Statuses and Scorings**

**Associated Designations**

SHINE	Double Lynchets, south-east of Ox House Farm, Shobdon	Active	DHE7624
-------	---	--------	---------

**Other Statuses and Cross-References**

SHINE Candidate (Yes)	Active
Sites & Monuments Record - 56439	Active

**Ratings and Scorings - None recorded**

---

**Land Use**

**Associated Historic Landscape Character Records - None recorded**

**Other Land Classes - None recorded**

---

**Related Monuments - None Recorded**

---

**Finds - None recorded**

---

**Associated Events/Activities - None recorded**

---

**Associated Individuals/Organisations - None recorded**

---

HER Number 58627

Site Name Portable Antiquities; Eardisland

---

HER Number

Site Name

Record Type

58627

Portable Antiquities; Eardisland

Portable Antiquities Scheme Fi

---

**Monument Types and Dates**

FINDSPOT (13th Century to 15th Century - 1250 AD to 1500 AD)

Evidence

FIND

---

**Description and Sources**

**Description**

Portable Antiquities Scheme find provenance information:  
Methods of discovery: Metal detector

**Sources - None recorded**

---

**Location**

**National Grid Reference**

SO 40357 59701 (point)

SO45NW

Point

**Administrative Areas**

Civil Parish

EARDISLAND, HEREFORDSHIRE

**Address/Historic Names - None recorded**

---

**Designations, Statuses and Scorings**

**Associated Designations - None recorded**

**Other Statuses and Cross-References - None recorded**

**Ratings and Scorings - None recorded**

---

**Land Use**

**Associated Historic Landscape Character Records - None recorded**

**Other Land Classes - None recorded**

---

**Related Monuments - None Recorded**

---

**Associated Finds**

FHE7070 AMPULLA (1) (13th Century to 15th Century - 1250 AD to 1500 AD) LEAD ALLOY

---

**Associated Events/Activities - None recorded**

---

**Associated Individuals/Organisations - None recorded**

---

HER Number 6234

Site Name Axe, near aerodrome, Shobdon

---

HER Number	Site Name	Record Type
6234	Axe, near aerodrome, Shobdon	Find Spot

---

**Monument Types and Dates**

FINDSPOT (Neolithic - 4000 BC to 2401 BC)

Evidence FIND

---

**Description and Sources**

**Description**

Flint axe found near aerodrome on 6.1.1978 by Mr Weaver of Titley (1)

**Sources**

(1) Bibliographic reference: SHE16398. Anon. Woolhope, various articles,. Transactions of the Woolhope Naturalists' Field Club. 42,197

**Associated resources**

HTT Web URL [#http://htt.herefordshire.gov.uk/her-search/monuments-search/search/monument?smr\\_no=6234#](http://htt.herefordshire.gov.uk/her-search/monuments-search/search/monument?smr_no=6234#)

Link to Herefordshire Through Time Web Database

---

**Location**

**National Grid Reference**

SO 390 602 (point) SO36SE Point

**Administrative Areas**

Civil Parish SHOBDON, HEREFORDSHIRE

**Address/Historic Names - None recorded**

---

**Designations, Statuses and Scorings**

**Associated Designations - None recorded**

**Other Statuses and Cross-References**

SHINE Candidate (No) Active

NAR Number - SO36SE23 Active

Sites & Monuments Record - 6234 Active

**Ratings and Scorings - None recorded**

---

**Land Use**

**Associated Historic Landscape Character Records**

HHE60 Large Compass Enclosure of the Landscape - Estate (Type Code: F1.2)

**Other Land Classes - None recorded**

---

**Related Monuments - None Recorded**

---

**Associated Finds**

FHE87 AXE (TOOL) (Neolithic - 4000 BC to 2401 BC) FLINT

---

**Associated Events/Activities - None recorded**

---

**Associated Individuals/Organisations - None recorded**

---

HER Number 8513

Site Name Flint scatter S of Shobdon Airfield, Shobdon

---

HER Number	Site Name	Record Type
8513	Flint scatter S of Shobdon Airfield, Shobdon	Find Spot

---

**Monument Types and Dates**

FLINT SCATTER (Mesolithic - 10000 BC to 4001 BC)

Evidence FIND

---

**Description and Sources**

**Description**

Scatter of prehistoric worked flint consisting of 2 arrowheads, 1 arrowhead fragment, 3 scrapers. 2 blades, 8 miscellaneous retouched, 5 cores and 62 flakes. Most was found during fieldwalking. The presence of cores and flakes indicates that flintworking was taking place at the site. Suggested date is late mesolithic to early neolithic. (1)

**Sources**

(1) Unpublished Report: SHE8114. Edwards, R E. 1989. Evaluation at Shobdon Airfield, Shobdon. HWCC Archaeological Service.

**Associated resources**

HTT Web URL [#http://htt.herefordshire.gov.uk/her-search/monuments-search/search/monument?smr\\_no=8513#](http://htt.herefordshire.gov.uk/her-search/monuments-search/search/monument?smr_no=8513#)

Link to Herefordshire Through Time Web Database

---

**Location**

**National Grid Reference**

SO 397 605 (point) SO36SE Point

**Administrative Areas**

Civil Parish SHOBDON, HEREFORDSHIRE

**Address/Historic Names - None recorded**

---

**Designations, Statuses and Scorings**

**Associated Designations - None recorded**

**Other Statuses and Cross-References**

Sites & Monuments Record - 8513 Active

SHINE Candidate (No) Active

**Ratings and Scorings - None recorded**

---

**Land Use**

**Associated Historic Landscape Character Records**

HHE60 Large Compass Enclosure of the Landscape - Estate (Type Code: F1.2)

**Other Land Classes - None recorded**

---

**Related Monuments - None Recorded**

---

**Associated Finds**

FHE554 LITHIC IMPLEMENT (Mesolithic - 10000 BC to 4001 BC) FLINT

---

**Associated Events/Activities**

EHE8513 Evaluation at Shobdon Airfield, Shobdon (Field Survey. Ref: SMR Event: 8513)

---

**Associated Individuals/Organisations - None recorded**

---

---

# **HISTORIC ENVIRONMENT RECORD REPORT**

## **Events & Site Activities**

## Herefordshire Council Event/Activity List Report

22/07/2021

Number of records: 7

Event no.	Event Name	Event Type	Organisation	Dates	NGR
EHE10304	Farmstead and Landscape Statement. Herefordshire Lowlands. National Character Area 100	Heritage Assessment	Historic England	01/01/2020 - 30/06/2020	SO 4880 5204
EHE34821	Farm Archaeological Survey (Arrow Valley Project). The Leen, Pembridge. 2003	Field Survey	Herefordshire Archaeology	01/02/2003 - 30/04/2003, between	SO 3817 5935
EHE80057	Environmental Impact Assessment, Milton Farm, Pembridge, 2014	Interpretation	DW Archaeology	06/05/2014 - 09/05/2014, between	SO 3938 6042
EHE80058	Evaluation, Milton Farm, Pembridge, 2014	Archaeological Interventi	DW Archaeology	06/05/2014 - 09/05/2014, between	SO 39217 60464
EHE80075	Archaeological Observation. Geo-Environmental Engineering Pits, Kingspan Insulation, Shobdon Airfield. 2013.	Archaeological Interventi	Border Archaeology	26/03/2013 - 26/03/2013	SO 39092 60014
EHE80223	Archaeological Evaluation. Milton Farm, Pembridge, Leominster. 2013	Archaeological Interventi	Border Archaeology	14/10/2013 - 15/10/2013, between	SO 3936 6035
EHE8513	Evaluation at Shobdon Airfield, Shobdon	Field Survey	HWCC Archaeological Service	01/01/1989	SO 397 605

# Herefordshire Council Event/Activity Full Report

22/07/2021

Number of records: 7

---

Event ID	Event Name	Event Type
EHE10304	Farmstead and Landscape Statement. Herefordshire Lowlands. National Character Area 100	Heritage Assessment

**External Reference:**

**Dates:** 01/01/2020 - 30/06/2020

---

**Project Details:**

**Event/Activity Types - None recorded**

**Thesaurus Event Types**

HISTORIC AREA ASSESSMENT

**Event/Activity References - None recorded**

**Organisation:** Historic England

**Associated Individuals - None recorded**

**Associated Organisations - None recorded**

---

**Location**

**Grid Reference**

Centred SO 4880 5204 (51726m by 39485m) SO45SE Area

**Administrative Areas - None recorded**

**Address - None recorded**

---

**Description and Sources**

**Description**

The Farmstead and Landscape Statements are designed to identify the historic character of traditional farmsteads and their buildings in all parts of England, and how they relate to their surrounding landscapes.

This area is almost entirely within Herefordshire, with small areas to the north and east in Shropshire, Worcestershire and Gloucestershire. It is bounded by the North West Herefordshire Hills and the Black Mountains to the north and west, the Malverns and Bromyard plateau to the east and the Wye Valley to the south. Much of the area is fertile farmland with wide floodplains and undulating topography, with the hills of Dinmore and Wormsley rising above this. Of the Character Area, 4% is urban and 5% is woodland, whilst 1% lies within an Area of Outstanding Natural Beauty (AONB).

**Sources**

Unpublished Report: Lake, J. 2020. Herefordshire Lowlands: Western Mixed. Historic England.

---

**Associated Monuments**

11135	Preston Mill (Monument 11135)
11224	Corn Mill, Stauton on Arrow (Monument 11224)
12950	Leen Farm, Pembridge (Building 12950)
15052	Court of Noke, House and Gardens (Building 15052)
45605	The Mill (Bridge House) (Monument 45605)
45606	Lower House, Preston on Wye (Monument 45606)
45608	Bare Cottage, Preston on Wye (Monument 45608)
58357	Old Smithy, Staunton-on-Arrow (Monument 58357)
9110	Preston Court, Preston on Wye (Building 9110)
9111	Elm Cottage, Preston On Wye (Building 9111)
9113	Huntley Court, Preston on Wye (Building 9113)
9122	Church of St Peter, Staunton on Arrow (Building 9122)

**Event ID:** EHE10304

**Name:** Farmstead and Landscape Statement. Herefordshire Lowlands. National



**Event ID:** EHE34821      **Name:** Farm Archaeological Survey (Arrow Valley Project). The Leen, Pembridge.

<b>Event ID</b>	<b>Event Name</b>	<b>Event Type</b>
EHE34821	Farm Archaeological Survey (Arrow Valley Project). The Leen, Pembridge. 2003	Field Survey

**External Reference:**

**Dates:** 01/02/2003 - 30/04/2003, between

---

**Project Details:**

**Event/Activity Types**

Field Survey / Field Observation

**Thesaurus Event Types**

FIELD VISIT

**Event/Activity References**

OEU - Old Event UID EHE1926

OEV - Old SMR Event Number 34821

**Organisation:** Herefordshire Archaeology

**Associated Individuals - None recorded**

**Associated Organisations - None recorded**

---

**Location**

**Grid Reference**

Centred SO 3817 5935 (1472m by 2206m)      SO35NE      Dispersed

**Administrative Areas**

Civil Parish      PEMBRIDGE, HEREFORDSHIRE

**Address - None recorded**

---

**Description and Sources**

**Description**

An archaeological field survey was carried out on the holding of The Leen, Pembridge as part of the Arrow Valley Archaeology, Landscape Change and Conservation Project. (1) (2)

**Sources**

- (1) Unpublished Report: White, P. 2003. The Leen, Pembridge: A Whole Farm Archaeological Survey. Herefordshire Archaeology.
- (2) Bibliographic reference: White, Paul. 2003. The Arrow Valley, Herefordshire. Archaeology, Landscape Change and Conservation. Herefordshire Studies in Archaeology. 2.

---

**Associated Monuments**

- |       |   |
|-------|---|
| 34822 | Earthworks of two possible round barrows, The Leen, Pembridge (Monument 34822)          |
| 34823 | Earthwork of linear feature, The Leen, Pembridge (Monument 34823)                       |
| 34824 | Earthwork of relict field boundaries, The Leen, Pembridge (Monument 34824)              |
| 34825 | Earthwork of relict field boundaries, The Leen, Pembridge (Monument 34825)              |
| 34826 | Earthwork of possible building platform & ridging, The Leen, Pembridge (Monument 34826) |
| 34827 | Earthworks of possible relict field boundaries, The Leen, Pembridge (Monument 34827)    |
| 34828 | Earthworks of circular depression, The Leen, Pembridge (Monument 34828)                 |
| 34829 | Findspot of prehistoric flints, The Leen, Pembridge (Find Spot 34829)                   |
| 34830 | Findspot of Roman-British pottery, The Leen, Pembridge (Find Spot 34830)                |
| 34831 | Findspot of unidentified pottery, The Leen, Pembridge (Find Spot 34831)                 |
| 34832 | Soilmark of possible palaeochannel, The Leen, Pembridge (Monument 34832)                |
| 34833 | Findspot of flint scatter, The Leen, Pembridge (Find Spot 34833)                        |
| 34834 | Cricket Field, The Leen, Pembridge (Monument 34834)                                     |

**Event ID:** EHE34821      **Name:** Farm Archaeological Survey (Arrow Valley Project). The Leen, Pembridge.

- 34835      Stone scatter, The Leen, Pembridge (Find Spot 34835)
- 34836      Earthwork of hollow way, The Leen, Pembridge (Monument 34836)
- 34837      Stone sluice, The Leen, Pembridge (Monument 34837)
- 34838      Area of wooden stakes, The Leen, Pembridge (Monument 34838)
- 34881      Findspot of Romano-British pottery, The Leen, Pembridge (Find Spot 34881)
- 34882      Findspot of worked flint, The Leen, Pembridge (Find Spot 34882)
- 34883      Structure of stonework sluice, The Leen, Pembridge (Monument 34883)

**Event ID:** EHE80057      **Name:** Environmental Impact Assessment, Milton Farm, Pembridge, 2014

---

<b>Event ID</b>	<b>Event Name</b>	<b>Event Type</b>
EHE80057	Environmental Impact Assessment, Milton Farm, Pembridge, 2014	Interpretation

**External Reference:**

**Dates:** 06/05/2014 - 09/05/2014, between

---

**Project Details:**

**Event/Activity Types - None recorded**

**Thesaurus Event Types**

ENVIRONMENTAL IMPACT ASSESSMENT

**Event/Activity References - None recorded**

**Organisation:** DW Archaeology

**Associated Individuals - None recorded**

**Associated Organisations - None recorded**

---

**Location**

**Grid Reference**

SO 3938 6042 (point)      SO36SE      Point

**Administrative Areas**

Civil Parish      PEMBRIDGE, HEREFORDSHIRE

**Address - None recorded**

---

**Description and Sources**

**Description**

Assessment of the potential effects of the proposed development (construction of chicken sheds) at Milton Farm, Pembridge on heritage assets, both within the immediate development footprint and in the wider area. (1)

**Sources**

(1)      Unpublished Report: Williams, D. 2014. Environmental Impact Assessment. Archaeology chapter on Proposed Construction of Chicken Sheds, Shobdon Airfield, Herefordshire. DW Archaeology.

---

**Associated Monuments**

4009      Enclosure, Shobdon Airfield (Monument 4009)

**Event ID:** EHE80058      **Name:** Evaluation, Milton Farm, Pembridge, 2014

---

<b>Event ID</b>	<b>Event Name</b>	<b>Event Type</b>
EHE80058	Evaluation, Milton Farm, Pembridge, 2014	Archaeological Intervention

**External Reference:**

**Dates:** 06/05/2014 - 09/05/2014, between

---

**Project Details:**

**Event/Activity Types - None recorded**

**Thesaurus Event Types**

EVALUATION

**Event/Activity References - None recorded**

**Organisation:** DW Archaeology

**Associated Individuals - None recorded**

**Associated Organisations - None recorded**

---

**Location**

**Grid Reference**

Centred SO 39217 60464 (561m by 362m)      SO36SE      Area

**Administrative Areas**

Civil Parish      PEMBRIDGE, HEREFORDSHIRE

**Address - None recorded**

---

**Description and Sources**

**Description**

Archaeological field evaluation on the site of a proposed agricultural development between the west end of Shobdon Airfield and the Kingspan site on the Torvale Industrial Estate. Seven trenches were excavated down to the natural, pre-Holocene deposits in this area, which comprise fluvio-glacial sands and gravels. The presence of plough furrows that cut into the surface of the fluvio-glacial deposits indicates that deep ploughing has impacted upon the overlying (Holocene) sequences in this area into the modern period. No archaeological deposits or finds were uncovered during the evaluation. (1)

**Sources**

Unpublished Report: Williams, D. 2014. Milton Farm, Pembridge, Herefordshire. An Archaeological Field Evaluation. DW Archaeology. 1

---

**Associated Monuments**

4009      Enclosure, Shobdon Airfield (Monument 4009)

**Event ID:** EHE80075      **Name:** Archaeological Observation. Geo-Environmental Engineering Pits, Kingspan

<b>Event ID</b>	<b>Event Name</b>	<b>Event Type</b>
EHE80075	Archaeological Observation. Geo-Environmental Engineering Pits, Kingspan Insulation, Shobdon Airfield. 2013.	Archaeological Intervention

**External Reference:**

**Dates:** 26/03/2013 - 26/03/2013

---

**Project Details:**

**Event/Activity Types - None recorded**

**Thesaurus Event Types**

WATCHING BRIEF

**Event/Activity References - None recorded**

**Organisation:** Border Archaeology

**Associated Individuals - None recorded**

**Associated Organisations - None recorded**

---

**Location**

**Grid Reference**

Centred SO 39092 60014 (209m by 276m)      SO36SE      Area

**Administrative Areas**

Civil Parish      SHOBDON, HEREFORDSHIRE

**Address - None recorded**

---

**Description and Sources**

**Description**

Border Archaeology was instructed by E & J Solutions Ltd to undertake Archaeological Observation of geo-environmental engineering test-pits which were opened on part of the Shobdon Airfield site adjacent to Kingspan Insulation prior to the installation of a proposed Anaerobic Digester.

All pits were excavated by machine to the required geo-environmental engineering depth. No structures or features relating to the airfield's use during the Second World War or to earlier periods were revealed, all pits being devoid of archaeological deposits.

**Sources**

Unpublished Report: Children, G. 2013. Archaeological Observation. Geo-Environmental Engineering Pits, Kingspan Insulation Lts, Shobdon Airfield, Pembridge, Herefordshire.. Border Archaeology.

---

**Associated Monuments**

12531      Airfield (originally RAF Shobdon), Shobdon (Monument 12531)

**Event ID:** EHE80223      **Name:** Archaeological Evaluation. Milton Farm, Pembridge, Leominster. 2013

---

<b>Event ID</b>	<b>Event Name</b>	<b>Event Type</b>
EHE80223	Archaeological Evaluation. Milton Farm, Pembridge, Leominster. 2013	Archaeological Intervention

**External Reference:**

**Dates:** 14/10/2013 - 15/10/2013, between

---

**Project Details:**

**Event/Activity Types - None recorded**

**Thesaurus Event Types**

TRIAL TRENCH

**Event/Activity References - None recorded**

**Organisation:** Border Archaeology

**Associated Individuals - None recorded**

**Associated Organisations - None recorded**

---

**Location**

**Grid Reference**

Centred SO 3936 6035 (272m by 144m)      SO36SE      Area

**Administrative Areas**

Civil Parish      PEMBRIDGE, HEREFORDSHIRE

**Address - None recorded**

---

**Description and Sources**

**Description**

A programme of archaeological evaluation was undertaken by Border Archaeology at Milton Farm in Pembridge. The site is located immediately N of the Torvale Industrial Estate. During the course of the work five trenches were excavated to the natural gravel. No features of archaeological significance were revealed during the evaluation. It was apparent that the site had been intensively cultivated in the modern period with plough furrows visible in natural silting deposits.

**Sources**

Unpublished Report: Crooks, K. 10/2013. Archaeological Evaluation. Milton Farm, Pembridge, Leominster.. Border Archaeology.

---

**Associated Monuments - None recorded**

**Event ID:** EHE8513      **Name:** Evaluation at Shobdon Airfield, Shobdon

---

<b>Event ID</b>	<b>Event Name</b>	<b>Event Type</b>
EHE8513	Evaluation at Shobdon Airfield, Shobdon	Field Survey
<b>External Reference:</b>	SMR Event: 8513	
<b>Dates:</b>	01/01/1989	

---

***Project Details:***

**Event/Activity Types**

Field Survey / Fieldwalking Survey / Systematic Fieldwalking Survey

**Thesaurus Event Types**

SYSTEMATIC FIELDWALKING SURVEY

**Event/Activity References**

OEU - Old Event UID	EHE1328
OEV - Old SMR Event Number	8513

**Organisation:** HWCC Archaeological Service

**Associated Individuals**

Edwards, Rachel, - HWCC Archaeological Service

**Associated Organisations**

---

***Location***

**Grid Reference**

SO 397 605 (point)	SO36SE	Point
--------------------	--------	-------

**Administrative Areas**

Civil Parish                      SHOBDON, HEREFORDSHIRE

**Address - None recorded**

---

***Description and Sources***

**Description**

Scatter of prehistoric worked flint consisting of 2 arrowheads, 1 arrowhead fragment, 3 scrapers. 2 blades, 8 miscellaneous retouched, 5 cores and 62 flakes. Most was found during fieldwalking. The presence of cores and flakes indicates that flintworking was taking place at the site. Suggested date is late mesolithic to early neolithic.  
(1)

□

**Sources**

(1)      Unpublished Report: Edwards, R E. 1989. Evaluation at Shobdon Airfield, Shobdon. HWCC Archaeological Service.

---

***Associated Monuments***

4009	Enclosure, Shobdon Airfield (Monument 4009)
8513	Flint scatter S of Shobdon Airfield, Shobdon (Find Spot 8513)

---

# **HISTORIC ENVIRONMENT RECORD REPORT**

## **Listed Buildings**



# Herefordshire Council Designation Full Report

22/07/2021

---

**DesigUID:** DHE497      **Type:** Listed Building      **Status:** Active

**Legacy UID**      **List Entry No**      **Volume/Map/Item**  
149852      1301496      1563, 4, 70

**Name:** BROOME FARMHOUSE

**Grade:** II      **Date Assigned:** 10/11/1987      **Amended:**      **Revoked:**

## Legal Description

SO 45 NWEARDISLAND CP BROOME

4/70 Broome Farmhouse

- II

Farmhouse. C17, with some late C18 and mid-C20 alterations. Timber-frame entirely rough cast on coursed rubble plinth under a slate roof. H-plan, main range aligned east/west. Stack to west end of hall has four linked diamond plan shafts. Lateral stack on east wall is square plan with panelled sides. South front of two storeys, with one plus two plus one windows, a boxed 9-pane sash, a 3-light, a 2-light and a 3-light casement. Ground floor has a boxed glazing bar sash, a 4-light casement and two 3-light casements. Entrance to right of centre has a C20 porch. The C17 boarded door has an ovolo moulded frame and ornamental strap hinges. Interior has numerous exposed chamfered and stopped ceiling beams. Walls are probably four square panels high.

Listing NGR: SO4015059622

## Curatorial Notes

Type and date: C17 TIMBER FRAMED HOUSE. Date: from 1600 to 1699

Type and date: C17 FARMHOUSE. Date: from 1600 to 1699

Type and date: LATE C18 FARMHOUSE. Date: from 1767 to 1799

Type and date: MID C20 FARMHOUSE. Date: from 1933 to 1966

Main material: timber

Main material: roughcast

Main material: rubble

Covering material: slate

## Designating Organisation:

---

## Location

**Grid Reference:** Centred SO 40154 59622 (29m by 15m)

**Map sheet:** SO45NW      **Area (Ha):** 274.90

## Administrative Areas

Civil Parish      EARDISLAND, HEREFORDSHIRE

## Postal Addresses

Pembridge, Leominster, Herefordshire, HR6 9JY

## Listed Building Addresses

Statutory

BROOME FARMHOUSE

---

## Sources - None recorded

---

## Associated Monuments

46302      Monument: Broome Farm (Broom)

---

## Additional Information

**BldConArea:** NORTH AREA

BROOME

**List Parish:** EARDISLAND

**List District:** HEREFORDSHIRE

**List County:** HEREFORD AND WORCESTER

---

**DesigUID:** DHE497

**Name:** BROOME FARMHOUSE

---

**Group Value:**

**Upload Date:** 16/01/2009

---

---

# **HISTORIC ENVIRONMENT RECORD REPORT**

## **Scheduled Monuments**

## Herefordshire Council Designation List Report

22/07/2021

Number of records: 2

DesigUID	Name	Type	List Entry No	NGR
DHE5955	Bowl barrow 490m south east of Milton Cross	Scheduled Monument	1014112	Centred SO 3850 6020 (28m by 28m)
DHE6048	Bowl barrow 550m south east of Milton Cross	Scheduled Monument	1014895	Centred SO 3864 6027 (26m by 26m)

# Herefordshire Council Designation Full Report

22/07/2021

Number of records: 2

---

**DesigUID:** DHE5955      **Type:** Scheduled Monument      **Status:** Active

**Legacy UID**      **List Entry No**      **MVM Cross Ref**  
27505      1014112      SAM\_27505

**Name:** Bowl barrow 490m south east of Milton Cross

**Grade:**      **Date Assigned:** 22/03/1996      **Amended:**      **Revoked:**

## Legal Description

### Summary

Legacy Record - This information may be included in the List Entry Details.

### Reasons for Designation

Bowl barrows, the most numerous form of round barrow, are funerary monuments dating from the Late Neolithic period to the Late Bronze Age, with most examples belonging to the period 2400-1500 BC. They were constructed as earthen or rubble mounds, sometimes ditched, which covered single or multiple burials. They occur either in isolation or grouped as cemeteries and often acted as a focus for burials in later periods. Often superficially similar, although differing widely in size, they exhibit regional variations in form and a diversity of burial practices. There are over 10,000 surviving bowl barrows recorded nationally (many more have already been destroyed), occurring across most of lowland Britain. Often occupying prominent locations, they are a major historic element in the modern landscape and their considerable variation of form and longevity as a monument type provide important information on the diversity of beliefs and social organisations amongst early prehistoric communities. They are particularly representative of their period and a substantial proportion of surviving examples are considered worthy of protection.

The bowl barrow 490m south east of Milton Cross is a well preserved example of this class of monument. The barrow mound will retain evidence for its method and phases of construction and for the burial or burials within, enhancing our understanding of the technology, social organisation, and beliefs of its builders. The accumulated ditch fills will contain environmental evidence of activity at and around the barrow, during its initial construction and subsequent periods, including any reuse or refurbishment. The buried ground surface beneath the mound itself will similarly preserve environmental evidence for the prehistoric landscape in it was constructed. The close relationship of the monument with the two neighbouring barrows enhances interest in the individual monuments, and in the group as a focus of burial activity which may have continued over a prolonged period.

### History

Legacy Record - This information may be included in the List Entry Details.

### Details

The monument includes the earthwork and buried remains of a bowl barrow, situated on a level floodplain north of the River Arrow. The land was seasonally flooded and subsequently divided by a series of drains, many of which have now been filled in. The barrow is in the middle of a line of three similar examples, extending WSW-ENE. A section of Rowe Ditch stretches north-south across the valley for c.800m, passing 250m west of the most westerly of the group. The remains of this middle barrow include an earthen mound, circular in form, and c.24m in diameter by c.0.7m high. Material for the construction of this mound will have been obtained from a surrounding ditch which is now completely infilled. Before the advent of ploughing and the construction of the nearby drains and field boundaries, the three monuments would have formed a clearly visible alignment across the flat valley floor. The other two barrows are the subject of separate schedulings (SM27490, SM27506), as is the Rowe Ditch.

MAP EXTRACT The site of the monument is shown on the attached map extract. It includes a 2 metre boundary around the archaeological features, considered to be essential for the monument's support and preservation.

### Curatorial Notes

**Designating Organisation:** Department for Digital, Culture, Media and Sport (DCMS)

---

### Location

**Grid Reference:** Centred SO 3850 6020 (28m by 28m)

**Map sheet:** SO36SE      **Area (Ha):** 614.77

### Administrative Areas

Civil Parish      PEMBRIDGE, HEREFORDSHIRE

**Postal Addresses - None recorded**

**DesigUID:** DHE5955

**Name:** Bowl barrow 490m south east of Milton Cross

---

**Sources - None recorded**

---

**Associated Monuments**

1028 Monument: Round Barrow, 490m SE of Milton Cross, Pembridge  
52008 Monument: Bronze Age Barrow Cemetery, South of Milton Cross, Pembridge

---

**Additional Information**

---

**DesigUID:** DHE6048      **Type:** Scheduled Monument      **Status:** Active

<b>Legacy UID</b>	<b>List Entry No</b>	<b>MVM Cross Ref</b>
27506	1014895	SAM_27506

**Name:** Bowl barrow 550m south east of Milton Cross

**Grade:**      **Date Assigned:** 22/03/1996      **Amended:**      **Revoked:**

**Legal Description**

Summary

Legacy Record - This information may be included in the List Entry Details.

Reasons for Designation

Bowl barrows, the most numerous form of round barrow, are funerary monuments dating from the Late Neolithic period to the Late Bronze Age, with most examples belonging to the period 2400-1500 BC. They were constructed as earthen or rubble mounds, sometimes ditched, which covered single or multiple burials. They occur either in isolation or grouped as cemeteries and often acted as a focus for burials in later periods. Often superficially similar, although differing widely in size, they exhibit regional variations in form and a diversity of burial practices. There are over 10,000 surviving bowl barrows recorded nationally (many more have already been destroyed), occurring across most of lowland Britain. Often occupying prominent locations, they are a major historic element in the modern landscape and their considerable variation of form and longevity as a monument type provide important information on the diversity of beliefs and social organisations amongst early prehistoric communities. They are particularly representative of their period and a substantial proportion of surviving examples are considered worthy of protection.

The bowl barrow 550m south east of Milton Cross is a well preserved example of this class of monument. The barrow mound will retain evidence for its method of construction, which may include more than one phase, and for burials within it, enhancing our understanding of the technology, social organisation, and beliefs of its builders. The accumulated ditch fills will contain environmental evidence of activity at and around the barrow, both during and subsequent to its construction. The buried ground surface beneath the mound itself will similarly preserve environmental evidence for the prehistoric landscape in which it was constructed. The close relationship of the monument with the two neighbouring barrows enhances interest in the individual monuments, and in the group as a focus of burial activity which may have continued over a prolonged period.

History

Legacy Record - This information may be included in the List Entry Details.

Details

The monument includes the earthwork and buried remains of a bowl barrow, situated on a level floodplain north of the River Arrow. The land was once seasonally flooded and subsequently divided by a series of drains, many of which have now been filled in. The barrow is the most easterly in a line of three, extending WSW-ENE. A section of Rowe Ditch stretches north-south across the valley for c.800m, passing 250m west of the most westerly of the barrows. The barrow 550m south east of Milton Cross sits at the eastern edge of a field, separated from the Pembridge Road by a hedge. The remains include an earthen mound, c.22m in diameter and 0.6m high. Material for the construction of this mound will have been obtained from a surrounding ditch which is now completely infilled. Before the advent of ploughing and the construction of nearby drain and field boundaries, the three barrows would have formed a clearly visible alignment across the flat valley floor. The other barrows are the subject of separate schedulings (SM27490, SM27505), as is the Rowe Ditch.

MAP EXTRACT The site of the monument is shown on the attached map extract. It includes a 2 metre boundary around the archaeological features, considered to be essential for the monument's support and preservation.

**Curatorial Notes**

**Designating Organisation:** Department for Digital, Culture, Media and Sport (DCMS)

**DesigUID:** DHE6048

**Name:** Bowl barrow 550m south east of Milton Cross

---

**Location**

**Grid Reference:** Centred SO 3864 6027 (26m by 26m)

**Map sheet:** SO36SE                      **Area (Ha):** 529.86

**Administrative Areas**

Civil Parish                      PEMBRIDGE, HEREFORDSHIRE

**Postal Addresses - None recorded**

---

**Sources - None recorded**

---

**Associated Monuments**

1029                      Monument: Round Barrow, 550m SE of Milton Cross, Pembridge

52008                      Monument: Bronze Age Barrow Cemetery, South of Milton Cross, Pembridge

---

**Additional Information**

---

---

# **HISTORIC ENVIRONMENT RECORD REPORT**

## **Historic Landscape Characterisation Data**



# Herefordshire Council Character Area Analysis Report

22/07/2021

Number of records: 7

	Count	Total Area (Ha)
<b>Broad Type: Adaptation of Earlier Enclosure System</b>		
<b>Type:</b>		
Co-Axial Enclosure - L2 Linking Type	1	2975262
<b>Totals for Adaptation of Earlier Enclosure System</b>	<b>1</b>	<b>2975262</b>
<b>Broad Type: Large Compass Enclosure of the Landscape</b>		
<b>Type:</b>		
Estate	2	6013147
Redefinition of Former Common Arable Fields/Meadow	1	3755791
<b>Totals for Large Compass Enclosure of the Landscape</b>	<b>3</b>	<b>9768938</b>
<b>Broad Type: Small Compass Enclosure of the Landscape</b>		
<b>Type:</b>		
Reconfiguration of Early Meadow Enclosure/Drainage	1	6838000
Reconfiguration of Former Common Arable Fields	1	1588419
Reconfiguration of Intake/Enclosure of Woodland	1	2264844
<b>Totals for Small Compass Enclosure of the Landscape</b>	<b>3</b>	<b>10691263</b>

NB Only records where an HLC Type has been entered will be included in this report.

# Herefordshire Council HLC Full Report

22/07/2021

Number of records: 7

---

HLCUID	Name	HLC Code
HHE60		F1.2
Broad Type	HLC Type	Confidence
Large Compass Enclosure of the Landscape	Estate	

## Period

Previous Types - None recorded

## Full Description

ELEMENTS:  
Element L3,Element X2  
PATTERNS:  
Pattern A2,Pattern RE7  
CELL NO: 23

---

National Grid Reference	Area (Hectares)
Centred SO 39439 60472 (2807m by 1735m) SO36SE	2,663,138.63

## Attributes

Type	Value
HLC Stratum	Survey Planned
Linking Type	F1- Single Holdings
Boundary Type	80-100% Straight Boundaries
Modification	6

## Sources

Data: White, Paul. 2007. Herefordshire Historic Landscape Characterisation GIS Data 2007. GIS Database.

---

<b>HLCUID</b>	HHE64	<b>Name</b>
---------------	-------	-------------

---

<b>HLCUID</b>	<b>Name</b>	<b>HLC Code</b>
HHE64		L2.4

<b>Broad Type</b>	<b>HLC Type</b>	<b>Confidence</b>
Adaptation of Earlier Enclosure System	Co-Axial Enclosure - L2 Linking Type	

**Period**

---

**Previous Types - None recorded**

---

**Full Description**

ELEMENTS:  
Element A2,Element F4,Element F6,Element L3,Element X1,Element X2  
FEATURES:  
Feature f9  
PATTERNS:  
Pattern E2  
CELL NO: 23

---

<b>National Grid Reference</b>	<b>Area (Hectares)</b>	2,975,262.69
Centred SO 37754 60365 (2319m by 2542m)	SO36SE	

---

**Attributes**

<b>Type</b>	<b>Value</b>
HLC Stratum	Adaptive
Linking Type	L2- Boundary Redefinition and Insertion
Boundary Type	Even Mixture of Sinuous and Straight Boundaries
Modification	2

---

**Sources**

Data: White, Paul. 2007. Herefordshire Historic Landscape Characterisation GIS Data 2007. GIS Database.

---

---

<b>HLCUID</b>	HHE65	<b>Name</b>
---------------	-------	-------------

---

<b>HLCUID</b>	<b>Name</b>	<b>HLC Code</b>
HHE65		F2.2
<b>Broad Type</b>	<b>HLC Type</b>	<b>Confidence</b>
Large Compass Enclosure of the Landscape	Redefinition of Former Common Arable Fields/Meadow	
<b>Period</b>		

---

**Previous Types - None recorded**

---

**Full Description**

ELEMENTS:  
Element B1,Element D2,Element F2,Element F5,Element L3  
FEATURES:  
Feature f11  
PATTERNS:  
Pattern D3,Pattern E6  
CELL NO: 63

---

<b>National Grid Reference</b>	<b>Area (Hectares)</b>	3,755,791.29
Centred SO 41478 61580 (2918m by 2174m)	SO46SW	

---

**Attributes**

<b>Type</b>	<b>Value</b>
HLC Stratum	Survey Planned
Linking Type	F2- Multiple Holdings
Boundary Type	Even Mixture of Sinuous and Straight Boundaries
Modification	4

---

**Sources**

Data: White, Paul. 2007. Herefordshire Historic Landscape Characterisation GIS Data 2007. GIS Database.

---

---

<b>HLCUID</b>	HHE218	<b>Name</b>
---------------	--------	-------------

---

<b>HLCUID</b>	<b>Name</b>	<b>HLC Code</b>
HHE218		G2.7
<b>Broad Type</b>	<b>HLC Type</b>	<b>Confidence</b>
Small Compass Enclosure of the Landscape	Reconfiguration of Early Meadow Enclosure/Drainage	
<b>Period</b>		

---

**Previous Types - None recorded**

---

**Full Description**

ELEMENTS:  
Element B2,Element D1,Element F3  
PATTERNS:  
Pattern B2  
CELL NO: 10

---

<b>National Grid Reference</b>	<b>Area (Hectares)</b>	6,838,000.90
Centred SO 42216 58690 (6717m by 2451m)	SO45NW	

---

**Attributes**

<b>Type</b>	<b>Value</b>
HLC Stratum	Survey Planned
Linking Type	G2- Multiple Entity Planned Areas
Boundary Type	60-80% Straight Boundaries
Modification	5

---

**Sources**

Data: White, Paul. 2007. Herefordshire Historic Landscape Characterisation GIS Data 2007. GIS Database.

---

---

<b>HLCUID</b>	HHE752	<b>Name</b>
---------------	--------	-------------

---

<b>HLCUID</b>	<b>Name</b>	<b>HLC Code</b>
HHE752		F1.2

<b>Broad Type</b>	<b>HLC Type</b>	<b>Confidence</b>
Large Compass Enclosure of the Landscape	Estate	

**Period**

---

**Previous Types - None recorded**

---

**Full Description**

ELEMENTS:  
Element B1,Element F2,Element F4,Element X1  
FEATURES:  
Feature f2a  
PATTERNS:  
Pattern B4,Pattern E6,Pattern H1,Pattern I2,Pattern J3  
CELL NO: 63

---

<b>National Grid Reference</b>	<b>Area (Hectares)</b>	3,350,009.93
Centred SO 41489 60261 (3047m by 2270m)	SO46SW	

---

**Attributes**

<b>Type</b>	<b>Value</b>
HLC Stratum	Survey Planned
Linking Type	F1- Single Holdings
Boundary Type	60-80% Sinuous Boundaries
Modification	3

---

**Sources**

Data: White, Paul. 2007. Herefordshire Historic Landscape Characterisation GIS Data 2007. GIS Database.

---

---

<b>HLCUID</b>	HHE761	<b>Name</b>
---------------	--------	-------------

---

<b>HLCUID</b>	<b>Name</b>	<b>HLC Code</b>
HHE761		G2.4

<b>Broad Type</b>	<b>HLC Type</b>	<b>Confidence</b>
Small Compass Enclosure of the Landscape	Reconfiguration of Intake/Enclosure of Woodland	

**Period**

---

**Previous Types - None recorded**

---

**Full Description**

ELEMENTS:  
Element B1,Element D1,Element F3,Element F8,Element X3,Element W1  
FEATURES:  
Feature f2b  
PATTERNS:  
Pattern K2,Pattern K5  
CELL NO: 0

---

<b>National Grid Reference</b>	<b>Area (Hectares)</b>	2,264,844.92
Centred SO 38070 61741 (1904m by 2306m)	SO36SE	

---

**Attributes**

<b>Type</b>	<b>Value</b>
HLC Stratum	Survey Planned
Linking Type	G2- Multiple Entity Planned Areas
Boundary Type	Even Mixture of Sinuous and Straight Boundaries
Modification	Not Recorded

---

**Sources**

Data: White, Paul. 2007. Herefordshire Historic Landscape Characterisation GIS Data 2007. GIS Database.

---

---

<b>HLCUID</b>	HHE763	<b>Name</b>
---------------	--------	-------------

---

<b>HLCUID</b>	<b>Name</b>	<b>HLC Code</b>
HHE763		G2.3
<b>Broad Type</b>	<b>HLC Type</b>	<b>Confidence</b>
Small Compass Enclosure of the Landscape	Reconfiguration of Former Common Arable Fields	
<b>Period</b>		

---

**Previous Types - None recorded**

---

**Full Description**

ELEMENTS:  
Element B2,Element F2  
FEATURES:  
Feature f9  
PATTERNS:  
Pattern A1,Pattern H3  
CELL NO: 0

---

<b>National Grid Reference</b>	<b>Area (Hectares)</b>	1,588,419.96
Centred SO 39543 61515 (2115m by 1279m)	SO36SE	

---

**Attributes**

<b>Type</b>	<b>Value</b>
HLC Stratum	Survey Planned
Linking Type	G2- Multiple Entity Planned Areas
Boundary Type	80-100% Straight Boundaries
Modification	4

---

**Sources**

Data: White, Paul. 2007. Herefordshire Historic Landscape Characterisation GIS Data 2007. GIS Database.

---