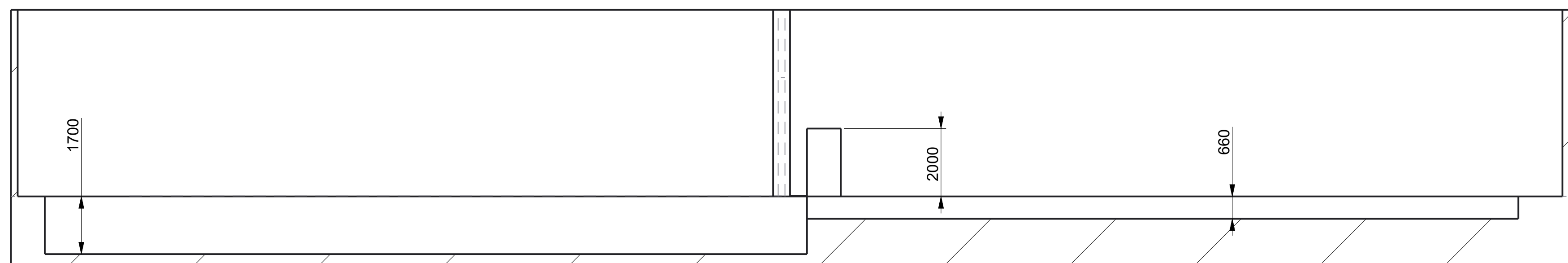
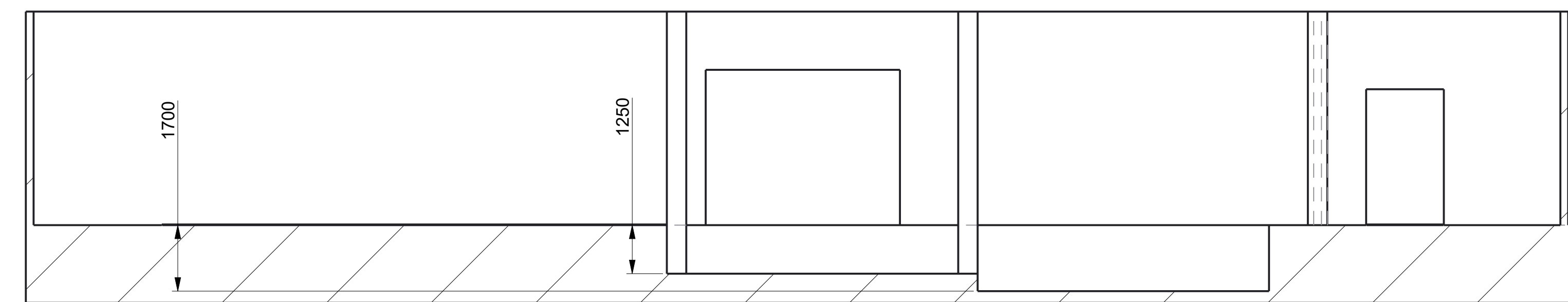
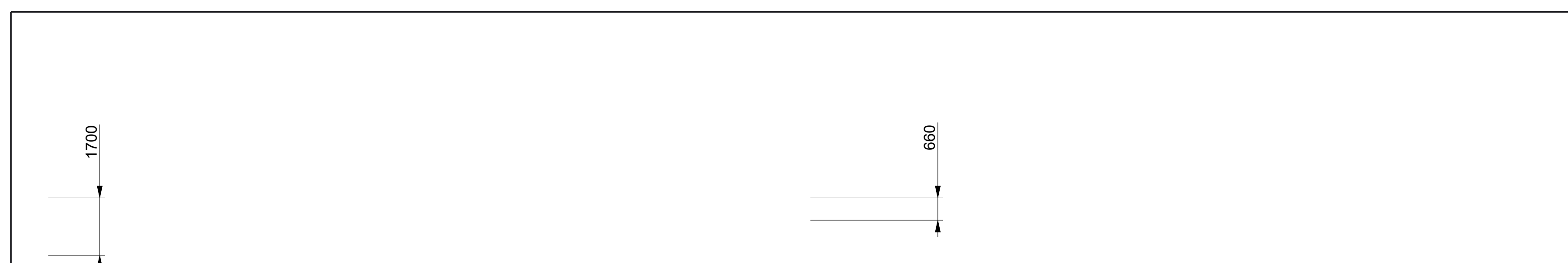


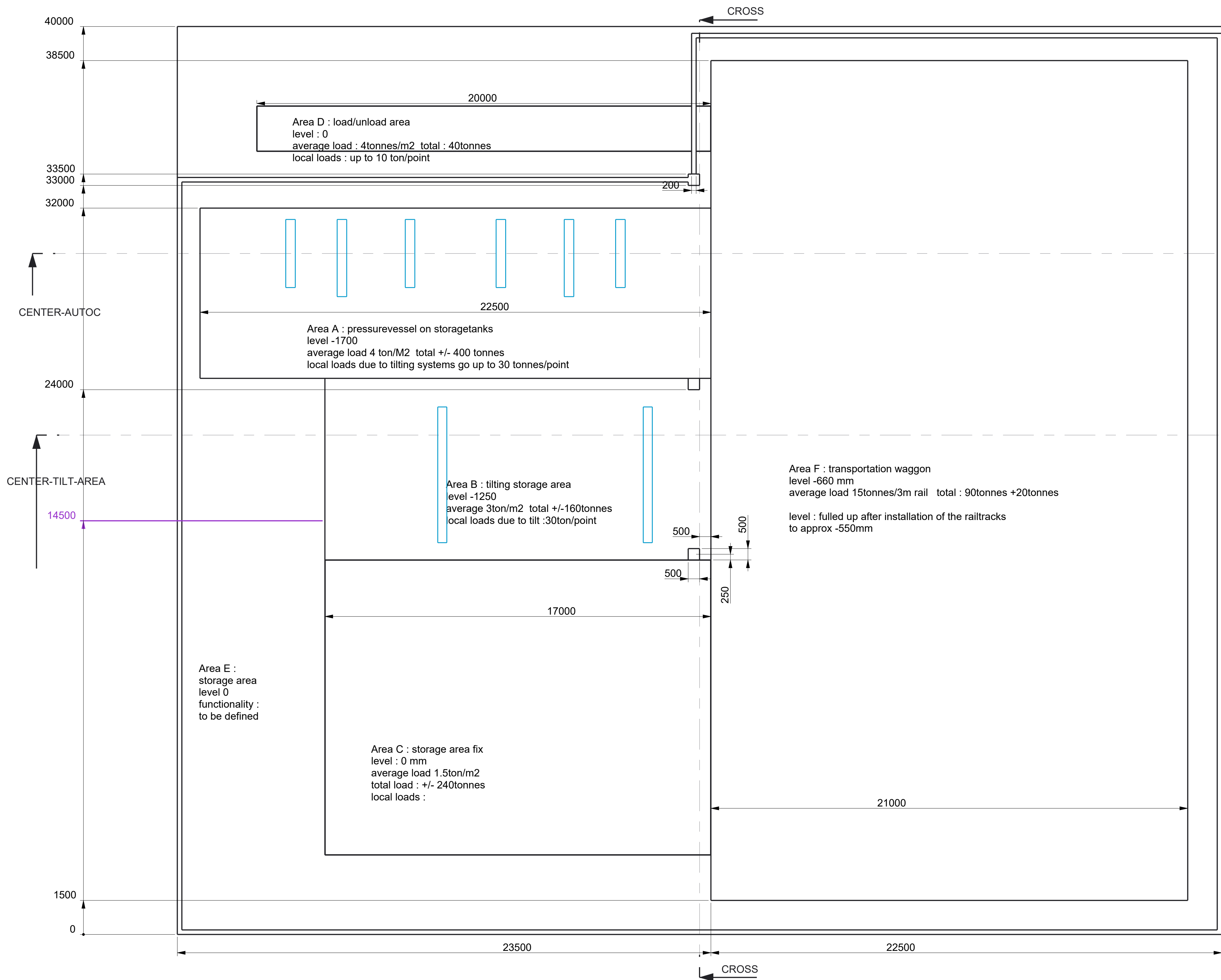
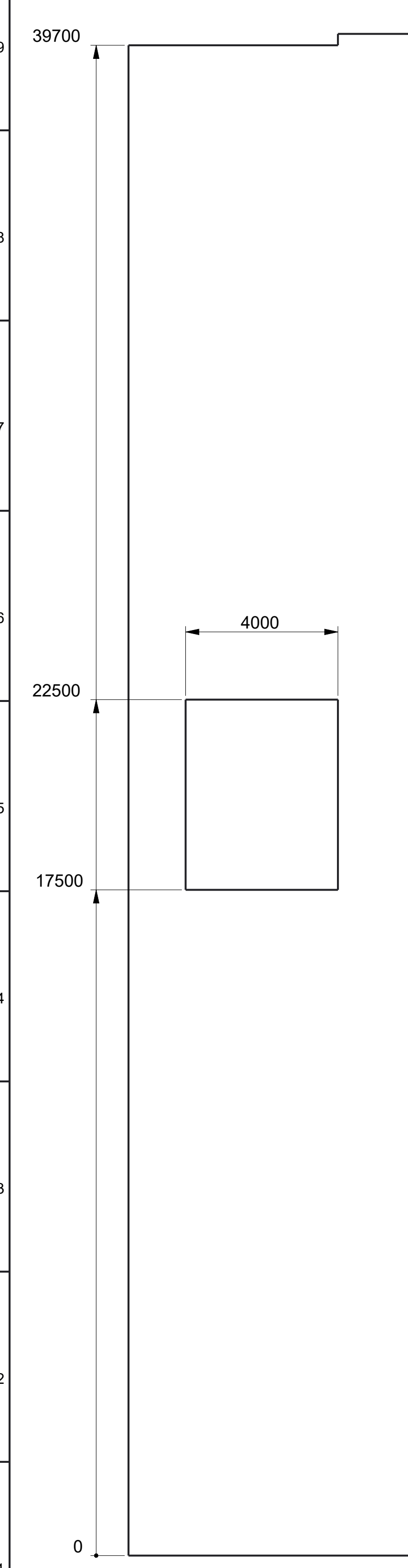
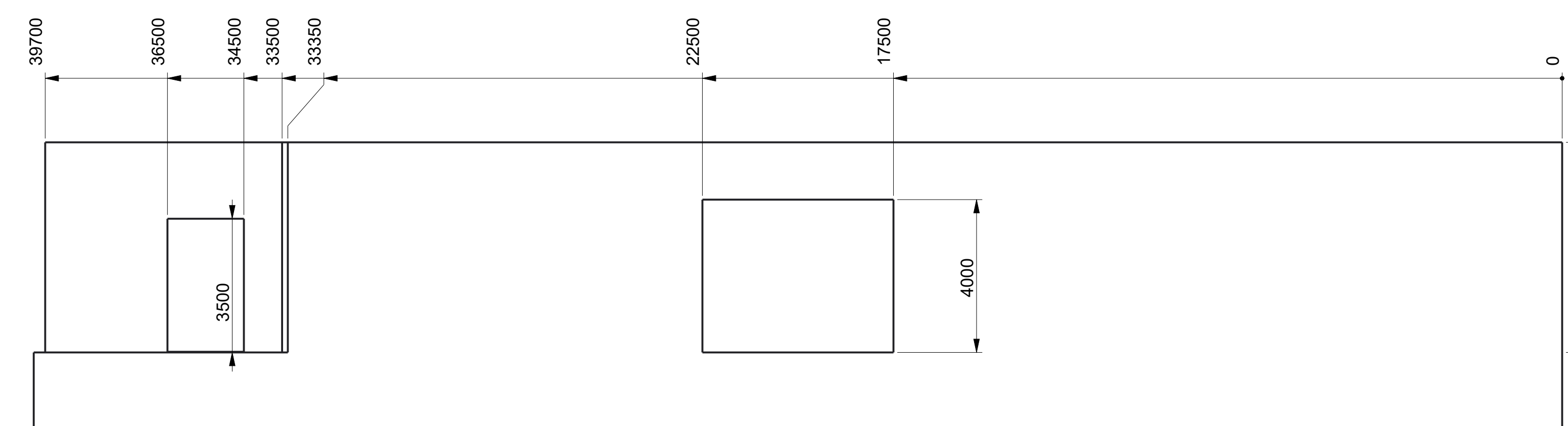
SECTION CENTER-TILT-AREA-CENTER-TILT-AREA



SECTION CENTER-AUTO-CENTER-AUTO-C



SECTION CROSS-CROSS



Area D : load/unload area  
level - 0  
average load : 4tonnes/m<sup>2</sup> total : 40tonnes  
local loads : up to 10 ton/point

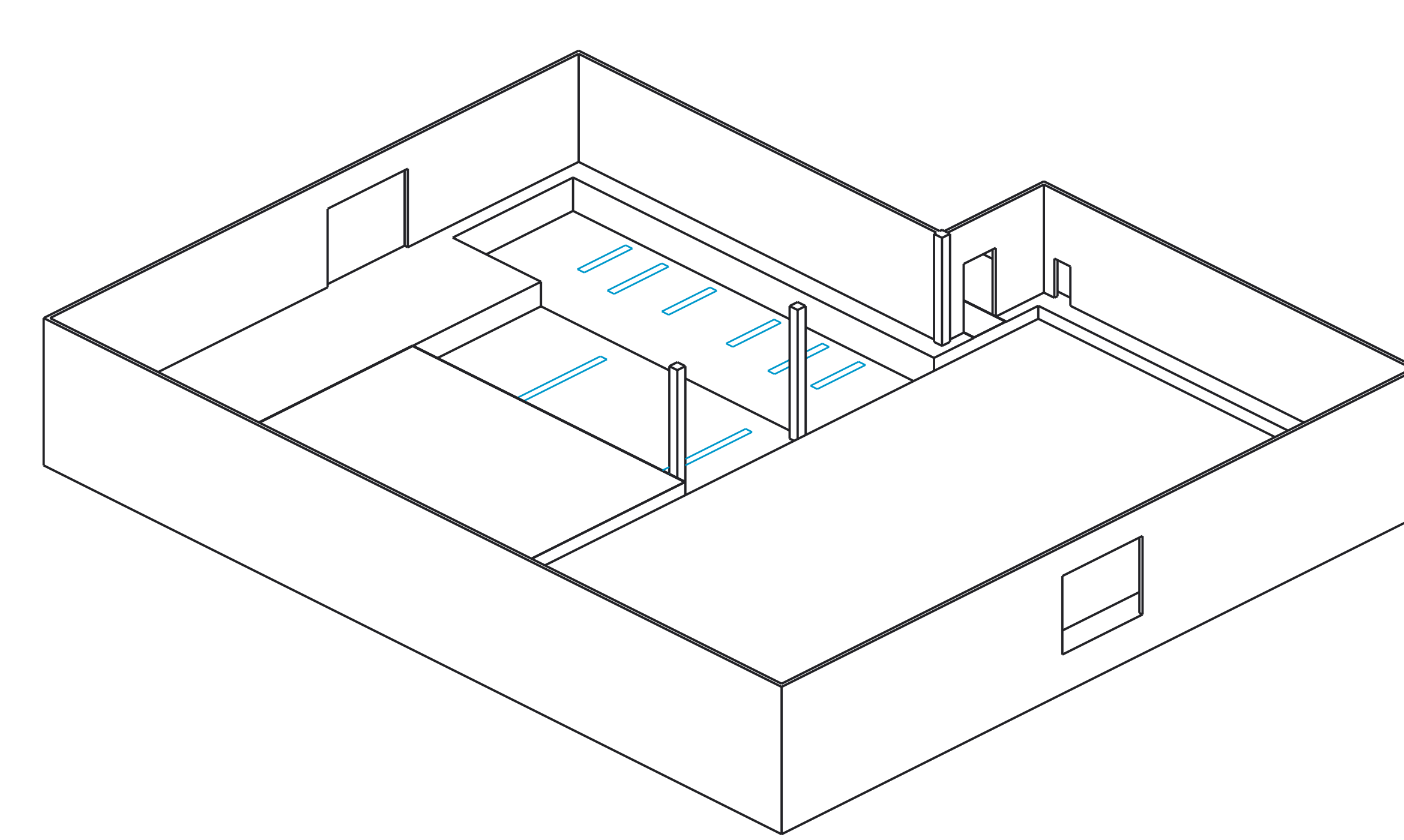
Area A : pressurevessel on storagetanks  
level -1700  
average load 4 ton/M2 total +/- 400 tonnes  
local loads due to tilting systems go up to 30 tonnes/point

Area B : tilting storage area  
level -1250  
average 3ton/m<sup>2</sup> total +/-160tonnes  
local loads due to tilt :30ton/point

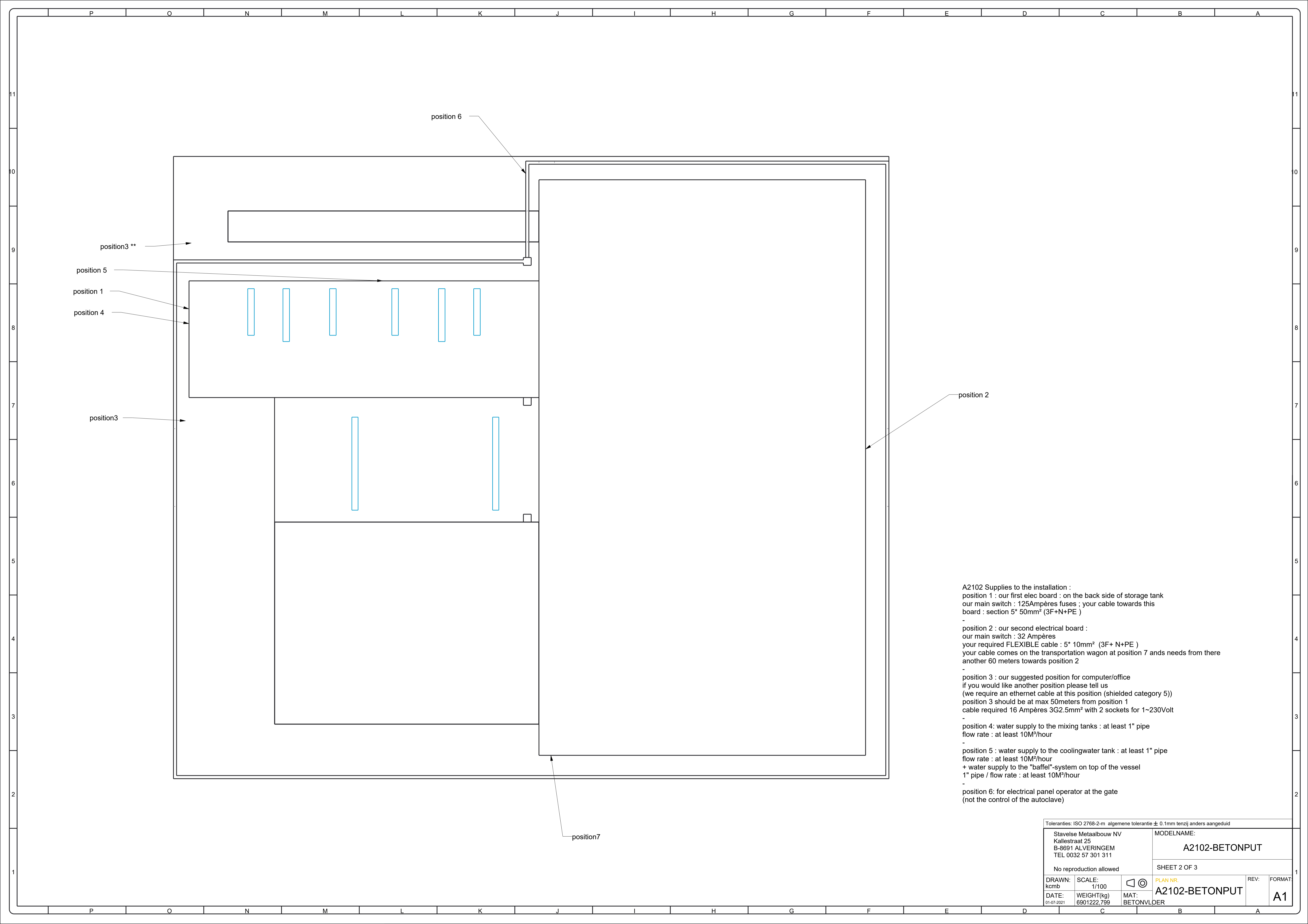
Area E :  
storage area  
level 0  
functionality :  
to be defined

Area C : storage area fix  
level : 0 mm  
average load 1.5ton/m<sup>2</sup>  
total load +/- 240tonnes  
local loads :

Area F : transportation waggon  
level -660 mm  
average load 15tonnes/3m rail total : 90tonnes +20tonnes  
level : filled up after installation of the railtracks  
to approx -550mm



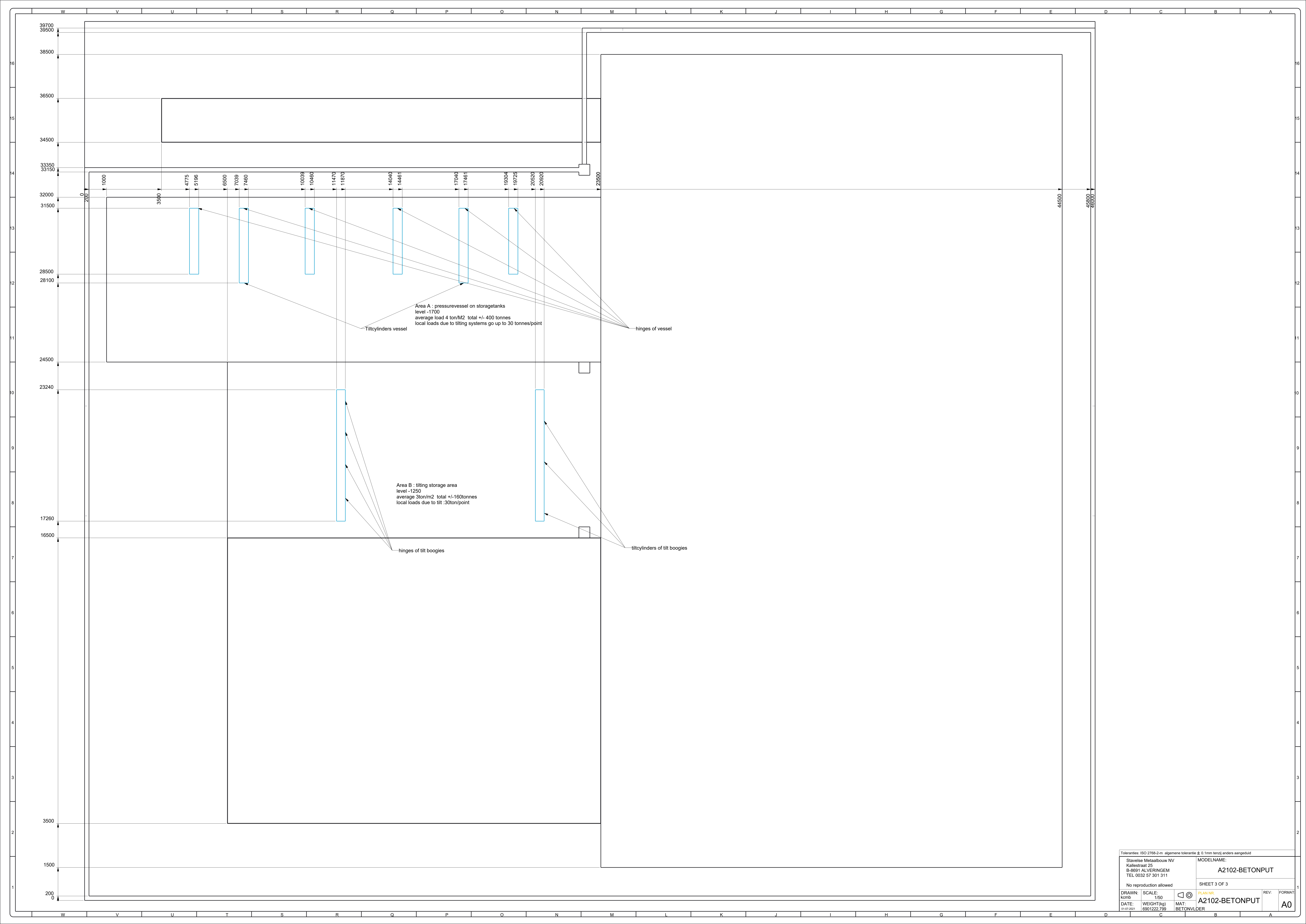
Toleranties: ISO 2768-2-m; algemene tolerantie ± 0.1mm tenzij anders aangegeven		MODELNAME:	
Stavelse Metaalbouw NV Kallestraat 25 B-8691 ALVERINGEM TEL 0032 57 301 311		A2102-BETONPUT	
No reproduction allowed		SHEET 1 OF 3	
DRAWN: kcm	SCALE: 1/100	PLAN NR A2102-BETONPUT	REV: FORMAT A0
DATE: 2022-09-01	WEIGHT (kg) 6961222.759	MAT: BETONVLDER	



A2102 Supplies to the installation :

- position 1 : our first elec board : on the back side of storage tank  
our main switch : 125Ampères fuses ; your cable towards this board : section 5\* 50mm<sup>2</sup> (3F+N+PE )
- position 2 : our second electrical board :  
our main switch : 32 Ampères  
your required FLEXIBLE cable : 5\* 10mm<sup>2</sup> (3F+ N+PE )  
your cable comes on the transportation wagon at position 7 and needs from there another 60 meters towards position 2
- position 3 : our suggested position for computer/office  
if you would like another position please tell us  
(we require an ethernet cable at this position (shielded category 5))  
position 3 should be at max 50meters from position 1  
cable required 16 Ampères 3G2.5mm<sup>2</sup> with 2 sockets for 1~230Volt
- position 4: water supply to the mixing tanks : at least 1" pipe  
flow rate : at least 10M<sup>3</sup>/hour
- position 5 : water supply to the coolingwater tank : at least 1" pipe  
flow rate : at least 10M<sup>3</sup>/hour  
+ water supply to the "baffel"-system on top of the vessel  
1" pipe / flow rate : at least 10M<sup>3</sup>/hour
- position 6: for electrical panel operator at the gate  
(not the control of the autoclave)

Toleranties: ISO 2768-2-m algemene tolerantie ± 0.1mm tenzij anders aangeduid			
Stavelse Metaalbouw NV Kallestraat 25 B-8691 ALVERINGEM TEL 0032 57 301 311		MODELNAME: <b>A2102-BETONPUT</b>	
No reproduction allowed		SHEET 2 OF 3	
DRAWN: kcmb	SCALE: 1/100	PLAN NR: <b>A2102-BETONPUT</b>	REV:
DATE: 01-07-2021	WEIGHT(kg): 6901222,799	MAT: BETONVLOER	FORMAT: <b>A1</b>



Area A : pressurevessel on storagetanks  
 level -1700  
 average load 4 ton/M2 total +/- 400 tonnes  
 local loads due to tilting systems go up to 30 tonnes/point

Area B : tilting storage area  
 level -1250  
 average 3ton/m2 total +/-160tonnes  
 local loads due to tilt :30ton/point

Tilcyinders vessel

hinges of vessel

hinges of tilt boogies

tilt cylinders of tilt boogies

Toleranties: ISO 2768-2-m algemene tolerantie ± 0.1mm tenzij anders aangegeven

Stavelise Metaalbouw NV Kallestraat 25 B-8691 ALVERINGEM TEL 0032 57 301 311	MODELNAME: <b>A2102-BETONPUT</b>
No reproduction allowed	SHEET 3 OF 3
DRAWN: krcmb DATE: 27/07/2021	SCALE: 1/50 WEIGHT (kg): 6901222.789 MAT: BETONVLDER
PLAN NR: <b>A2102-BETONPUT</b>	REV: FORMAT: <b>A0</b>