

National Model Design Code

Part 2 - Testing Programme Final Outputs

Documentation Index

September 2021



Part 2 – Testing Programme Final Outputs

Documentation index

Herefordshire Council Guidance Notes

What is a Design Code Guidance Note



This guidance note explains what a design code is, an explanation of the 10 characteristics of well-designed places and the coding process

Context – Cultural Heritage Guidance Note



This guidance note explains how to access historic environment and cultural heritage data held by Herefordshire Council Archaeology team.

Context Mapping Guidance Note



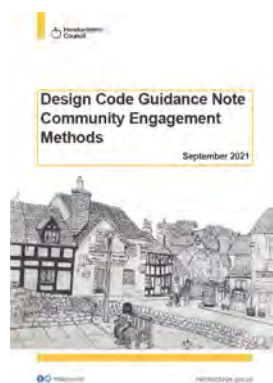
This guidance note explains the mapping information available via Herefordshire Council and Hoople GIS.

Context Landscape and settlement setting Guidance Note



This guidance note signposts users to available information to help define the historic character of their area, This includes Landscape Character areas and settings, historic landscape characterisation and different types of settlement patterns in Herefordshire.

Community Engagement techniques Guidance Note



This guidance note sets out different types of methods to engage the community in the design coding process.

Herefordshire Council Information and Worksheets

Built form and Identity Part A information guide



This information guide explains the design characteristics that helps to explain character, identity and built form of a place.

Built form and identity Part B worksheet



PART B: Village Character, Identity and Built Form Worksheet



Part B is a Worksheet Example to accompany Part A Village Character Information Guide. This worksheet should assist you in defining building design elements of your village that help to shape the identity and character of your village. This will help to define a sense of place and village distinction in your area could be like.

This worksheet sets out a template for parishes to use when assessing the village character, identity and built form of their area.

Movement Information Guide



PART A: Movement Information Guide



Part A is an information guide to accompany worksheet Part B. This should help to explain the right design characteristics that help to explain the movement in your area. This should assist you in defining the movement and travel within your village that will help to inform a sense of place and village distinction.

The Movement information guide explains the characteristics to help to explain movement and transport in your area and gives examples, this accompanies the Movement worksheet.

Movement Worksheet example



PART B: Movement Worksheet Example



Part B is a Worksheet Example to accompany Part A Movement Information Guide. This worksheet gives an indication of what a movement study of your village could be like.

This worksheet example accompanies the movement information guide; this shows an example of how to assess transport movement in your area.

Nature and Open Space Information Guide



This information guide explains the characteristics to help to explain nature and open space in your area and gives examples; this accompanies the nature and open space worksheet.

Nature and Open Space worksheet



This worksheet example accompanies Nature and Open Space information guide, this shows an example of how to review and assess open space and natural spaces in your area.

Herefordshire Council Design Pilot Support Documentation

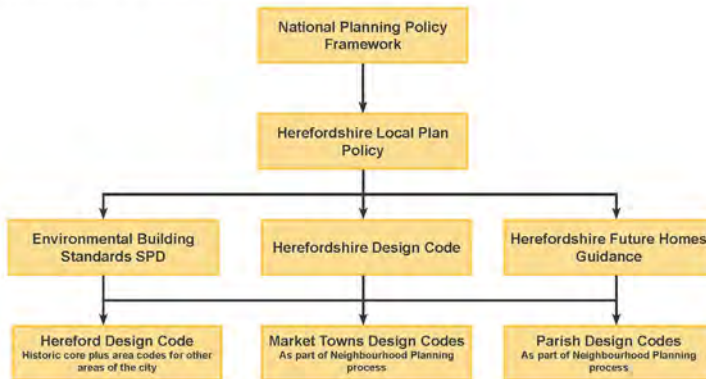
Pilot Case Study Consultation Statement-



This report summarises the consultation and engagement undertaken as part of that pilot and lessons learnt.

Herefordshire Design Coding Hierarchy

Design policy/code hierarchy in Herefordshire



This sets out the hierarchy for design coding in Herefordshire and lists the different documents that will focus on the various grain and scales of the Herefordshire code.

Characteristics hierarchy table



Herefordshire Design Coding hierarchy and coverage

Herefordshire are promoting a hierarchy of design code documentation to cover aspects of the National Model Design Code at different grains.

Some elements will be covered within countywide documents such as the Local Plan, Local Transport Plan, Herefordshire Design Code and/or Environmental Building Standard SPD and these would apply to developments across the county. More locally distinctive and specific elements will be covered within codes produced as a local area level such as Parish Design Code. These will supplement and add detail to the higher level Codes.

The table below gives an indication of the scope and coverage of the hierarchy proposed.

Scoping

Characteristic	Local Plan Policy / Local Transport Plan	Herefordshire Design Code	Market Towns and wider Hereford Design Code	Parish Design Code	Hereford Historic Code Design Guide	Environmental Buildings SPD	Site Specific Code
Movement							
Network of streets	✓	✓	✓	✓	✓		✓
Public transport	✓	✓	✓	✓	✓		✓
Street hierarchy	✓	✓	✓	✓	✓		✓
Walking/Cycling	✓	✓	✓	✓	✓	✓	✓
Junction and crossings	✓	✓	✓	✓	✓		✓
Provision elements	✓	✓	✓	✓	✓		✓
Car parking	✓	✓	✓	✓	✓	✓	✓
Cycle parking	✓	✓	✓	✓	✓	✓	✓
Service and Utilities	✓	✓	✓	✓	✓		✓

Page 1
Version number 1

This table sets out the different documents being developed to implement model design codes in Herefordshire and how the 10 characteristics of well-designed places could be included at different grains in different places

Service Level Agreement



Neighbourhood Planning
Design Coding
Service Level Agreement
September 2021



Microsoft

herefordshire.gov.uk

Sets out the level of service Herefordshire Council will provide to assist town and parish council in the local design coding process.

Draft Environmental Building Standards extract



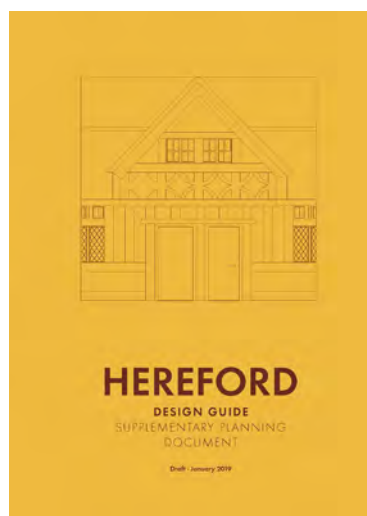
This sets out extracts from the EBS SPD, this document focuses on sustainable and low carbon building design, surrounding environment and use. This document will be used to inform the Herefordshire Countywide Design Code.

Herefordshire Future Homes extracts



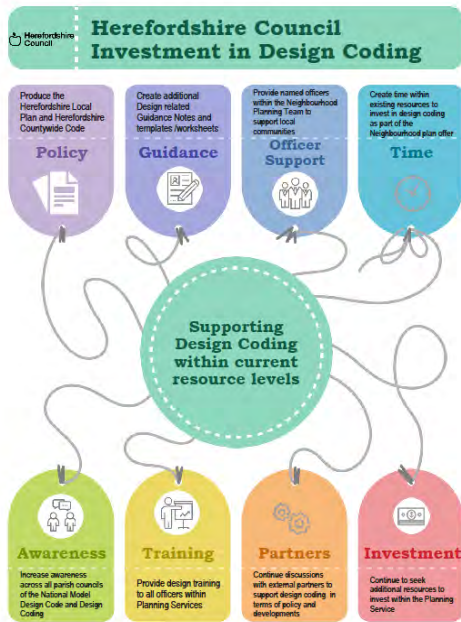
Extract from Herefordshire Future Homes, a guidance document produced to guide low carbon council built homes in Herefordshire. This document will be used to inform the Herefordshire Countywide Design Code.

Draft Hereford Design Code extracts



Hereford Design Guide sets out design guidance in Hereford City and its historic core. This is currently being reviews to in with the National Model Design Code.

Herefordshire Council Design Investment Plan



Sets out Herefordshire Council Planning Service’s investment plan for design coding in the future. This details how we will support design coding in Herefordshire during the next plan period 2021-2041.

List of potential future Guidance Notes

Herefordshire Council

Potential Future Documentation
Herefordshire Council Guidance Notes
Herefordshire Trees and Woodlands
Produced with the assistance of the Woodland Trust To highlight right tree right place, landscaping and green infrastructure, biodiversity, Transport Accessibility.
Produced with Transportation and Highways team To outline how to find information about accessibility public transport and links to revised parking standards Access for all
Produced with Adult Social Care team To address on aspects of personal accessibility and legibility of the built environment including sight and hearing impairments, physical restrictions and dementia
Design Coding in a Historic Environment
Aligning with Historic England Fundraise a Design Code
This would outline any funding and grants available to assist in the production of a Design Code locally Adoption Process - Guide to procedures
This would outline the Herefordshire Council governance and the regulatory process to adopt the Design Code
Herefordshire Council Information and Worksheets
Public Spaces Information Sheet
Public Spaces Worksheet
Active frontages and mix uses Information Sheet
Active frontages and mix uses Worksheet

List of potential future guidance notes to be developed to assist in the design coding process for parish and town councils. These will be beyond the pilot submission period.