

Environmental Report

Report for:

Walford Neighbourhood Area

May 2022



Contents

Non-technical summary

- 1.0 Introduction
- 2.0 Methodology
- 3.0 The SEA Framework
- 4.0 Appraisal of Objectives
- 5.0 Appraisal of Options
- 6.0 Appraisal of Policies
- 7.0 Implementation and monitoring
- 8.0 Next steps

Appendix 1: Initial SEA Screening Report (May 2013)

Appendix 2: SEA Scoping Report incorporating Tasks A1, A2, A3 and A4

Appendix 3: Consultation responses from the Scoping Report

Appendix 4: Site allocation Options considered

Appendix 5: SEA Stage B incorporating Tasks B1, B2a, B2b, B3 and B4

Appendix 6: Consultation Responses to Environmental Report Reg 14-Table D1

Appendix 7: SEA Stage D Reg Table D3

Appendix 8: Environmental Report checklist

Non-technical summary

Strategic Environmental Assessment (SEA) is an important part of the evidence base which underpins Neighbourhood Development Plans (NDP), as it is a systematic decision support process, aiming to ensure that environmental assets, including those whose importance transcends local, regional and national interests, are considered effectively in plan making.

Walford Parish Council have drafted their NDP and this process has been subject to environmental appraisal pursuant to the SEA Directive.

Walford is a parish in south-east Herefordshire, with a population of 1,514. The neighbourhood area of Walford lies south to the market town of Ross-on-Wye and to the west of Weston under Penyard and falls partly within the Wye Valley AONB. Walford contains the settlements of Walford (Coughton), Howle Hill and Bishopswood

The submission Walford NDP includes 5 objectives which are intended to address a number of issues highlighted and it is intended that these objectives will be delivered by 23 planning policies including site allocations and criteria based policies. A number of alternative site options have also been tested. Five site allocations have been proposed and they are expected to deliver 21 dwellings. Along with completed and committed dwellings and windfall allowance, it is expected to meet the housing requirement of 91.

The environmental appraisal of the Walford NDP has been undertaken in line with the Environmental Assessment of Plan and Programmes Regulations 2004. Stage A of the SEA process involved Scoping and Stage B provides a review and analysis of the NDP. Stage C involved preparing an Environmental Report. Stage D will comprise of a formal consultation on both this and the submission Plan itself.

Habitat Regulations Assessment (HRA) screening (May 2013) showed that a full HRA assessment was required. A separate report has been produced outlining this to accompany the submission Walford NDP.

On the whole, it is considered that the submission Walford NDP is in general conformity with both national planning policy contained in the National Planning Policy Framework and strategic policies set within the Herefordshire Local Plan (Core Strategy). The plan proposes a level of growth which reflects the proportionate growth that is prescribed by strategic policies. There are some revised wording changes suggested to strengthen or clarify some policies areas as a result of the SEA.

Once made (adopted) by Herefordshire Council, the effects of the policies within the Walford NDP will be monitored annually via the Council's Authority Monitoring Report (AMR).

1.0 Introduction

- 1.1 This report forms the draft Strategic Environmental Assessment (SEA) of the Walford Neighbourhood Plan.
- 1.2 The Walford NDP provides general policies for guiding future development across the parish as a whole. Settlement boundaries have been defined for Walford, Coughton and Bishopswood. These are supported by proposed site allocation to meet proportional levels of growth in Policy RA2 of the Herefordshire Local Plan (Core Strategy).

Purpose of the SEA

- 1.3 SEA is a requirement of EC Directive 2001/42/EC (the SEA Directive) which requires the assessment of the effects of certain plans and programmes on the environment to ensure that the proposals in that plan or programme contribute to the achievement of sustainable development.
- 1.4 The Directive was transposed into domestic legislation through the Environmental Assessment of Plans and Programmes Regulations 2004 which applies to plans with significant environmental effects.
- 1.5. The main objective of a SEA is *“to provide for a high level of protection of the environment and to contribute to the integration of environmental considerations into the preparation and adoption of plans and programmes with a view to promoting sustainable development”*. The Environmental Assessment of Plans and Programmes Regulations (2004). The assessment is looking at the positive and negative environmental issues that your plan might have on your local environmental assets.
- 1.5 A screening opinion was carried out on the Walford NDP and it concluded that due to the range of environmental designations in and around the parish, there may be significant environmental effects and consequently an SEA and HRA would be required.

Walford Neighbourhood Plan Context

- 1.6 Walford is a rural parish in south-east Herefordshire, immediately west of the market town of Ross-on-Wye. The neighbourhood area borders with Gloucestershire to the south, Goodrich and Welsh Bicknor, Marstow, Bridstow to the west and Ross Town and Ross Rural, Weston Under Penyard and Hope Mansell to the east.
- 1.7 The population of the parish was 1,514 in 2011. The Parish falls within Kerne Bridge ward and, together with Goodrich and Welsh Bicknor Parish, forms the Greater Walford sub area for which Census statistics are available. The population structure within this sub area in 2011 contained a higher proportion of people 65 years of age and over compared to the County as a whole.
- 1.8 Walford contains the settlements of Walford (Coughton), Howle Hill and Bishopswood. The parish contains a petrol station with shop and post office to its eastern edge. Facilities in the parish also include a primary school in the parish, 2 anglican churches and 2 public houses. The close proximity to Ross-on-Wye, Walford has easy access to a wider range of services including supermarkets, shops and a high school with a sixth form.

1.9 The neighbourhood area boasts many natural features. The River Wye borders the west of the Parish. Walford Parish is within the River Wye (SAC) hydrological catchment and is within 10 km Wye Valley and Forest of Dean Bat sites SAC and Wye Valley Woodlands SAC. The parish contains 15 ancient woodlands, 2 SSSI's, 10 local sites SWS/SINCs/RIGS, 1 AONB and 1 registered and 8 unregistered parks and gardens.

1.10 The overall vision contained within the submission neighbourhood plan is:

"By 2031 the unique landscape character and settlement pattern of Walford Parish will be enhanced through small scale, sustainable development that meets the needs and desires of our community today and for future generations"

1.12 The Walford NDP has 5 objectives which underpin this vision and in the NDP;

- Objective 1-Local Environment
- Objective 2-Community facilities
- Objective 3-New Housing
- Objective 4- Business and Economic development
- Objective 5-Infrastructure and roads

Context of Neighbourhood Plans

1.13 NDPs are a planning document that form a key part of the Government's localism agenda. They enable local communities to develop plans that reflect local aspirations, in accordance with strategic policies.

1.14 The Walford NDP must therefore conform to national planning policy set within the NPPF and strategic level local policy including the Herefordshire Local Plan (Core Strategy).

1.15 The Herefordshire Local Plan (Core Strategy) was adopted on 16 October 2015.

1.16 Paragraph 48 of the NPPF and Planning Practice Guidance set out the weight that may be given to relevant policies in emerging plans, including NDPs, and indicated that weight may be given to relevant policies in emerging NDPs according to:

- The stage of preparation of the emerging plan (the more advanced the preparation, the greater the weight that may be given);
- The extent to which there are unresolved objections to relevant policies (the less significant the unresolved objections, the greater the weight that may be given); and
- The degree of consistency of the relevant policies in the emerging plan to the policies in this Framework (the closer the policies in the emerging plan are to the policies in the Framework, the greater the weight that may be given).

1.17 Table 4.14 and 4.15 of the Local Plan (Core Strategy) lists Walford (Coughton), as a main settlement for proportionate housing growth which it considers to be sustainable locations for growth, which is the main focus of proportionate growth, and Bishopswood and Howle Hill other settlements where proportionate housing is appropriate, in line with the Policy RA2.

1.18 Once made (adopted) by Herefordshire Council the submission NDP will have a role in guiding future development proposals within the Parish, by setting out policies against which planning applications will be determined and will replace the current draft Walford NDP.

Structure of SEA

1.19 The structure of the document is as follows:

- Section 2 – Explains the SEA methodology and summarises the comments received in respect of the SEA Scoping Report
- Section 3 - Introduces the Neighbourhood Plan objectives and the SEA framework
- Section 4 - Appraises the objectives contained within the Neighbourhood Plan against the SEA framework
- Section 5 - Appraises the options considered within the Neighbourhood Plan against the SEA framework
- Section 6 – Appraises the policies contained within the Neighbourhood Plan against the SEA framework
- Section 7 – Discusses the implementation and monitoring of the Neighbourhood Plan
- Section 8 - Concludes the SEA report by outlining next steps

2.0 Methodology

2.1 The SEA process comprised several stages which are summarised, in some detail, below.

2.2 Stage A involved 4 tasks and culminated in a Scoping Report:

- *Task A1:* Identified and reviewed relevant policies, plans and programmes and environmental protection objectives from European, National and Local sources.
- *Task A2:* Collected baseline information to provide a picture of past, present and likely future conditions within the area. This helped to establish indicators which will be used to monitor the effects and performance of the NDP.
- *Task A3:* Focused on the environmental issues identified from the baseline, highlighting key issues and problems within the neighbourhood area.
- *Task A4:* Used the information gathered from Tasks A1- A3 to develop a set of SEA objectives, sometimes referred to as the 'sustainability framework'.
- *Task A5:* Collated the results of Tasks A1-A4 within a Scoping Report, a document which was subject to a statutory 5 week consultation.

2.3 Stage B involved 4 tasks and assessed the effects of the NDP.

- *Task B1:* Tested NDP Objectives against the SEA Objectives
- *Task B2:* Developed and refined the NDP policies and reasonable alternatives
- *Task B3 / B4:* Predicted and evaluated the significant effects of the NDP

- 2.4 Stage C involved preparing an Environmental Report. This report presents information compiled during Stage B of the SEA process and constitutes the Draft Environmental Appraisal of the submission NDP. It accompanies the submission Plan during its formal Regulation 16 consultation with people who live, work and carry out businesses in the neighbourhood area, as well as statutory bodies listed in the Neighbourhood Planning (General) Regulations 2012.
- 2.5 Producing an Environmental Report was therefore a legal requirement and the submission of this report to Herefordshire Council forms Stage D of the SEA process.

Scoping Report Consultation (Regulation 14 consultation)

- 2.6 With regard to the SEA scoping assessments, documents A1 to A4 were completed by a Herefordshire Council Planning Officer and sent to the Parish Council for comment, in readiness for a 5 week consultation with statutory bodies, pursuant to the Environmental Assessment of Plans and Programmes Regulations 2004.
- 2.7 After the document was approved by the Parish Council, the Walford SEA Scoping Report was available to four¹ statutory bodies for consultation from 4 January to 16 February 2022.

Consultation outcomes from Statutory Consultees

- 2.9 The consultation resulted in 2 responses, which are attached at Appendix 3.
- 2.10 This has been collated and incorporated within this document where relevant.

Natural England: Welcomes the SEA report and concurs with the conclusions of the report.

Historic England: No objection to the SEA reports. Agrees with SEA approach.

Environment Agency: No comments received
Response: N/A

Natural Resources Wales: No comments received
Response: N/A

3.0 The SEA Framework

- 3.1 As mentioned previously, Stage A of the SEA identifies and reviews relevant policies, plans and programmes and environmental protection objectives from European, National and Local sources (refer to Table A1 in Appendix 2 for details of those documents that were reviewed in completing Stage A of SEA on the Walford NDP).
- 3.2 The requirement to undertake this 'context review' is contained in Annexes 1(a) and (e) of the SEA Directive which states that an Environmental Report should include:

"...an outline of the contents, main objectives of the plan or programme and relationship with other relevant plans and programmes" and

¹ Statutory consultation bodies: Natural England; English Heritage; Environment Agency, Natural Resources Wales

“...the environmental protection objectives, established at international, Community or Member State level, which are relevant to the plan or programme and the way those objectives and any environmental considerations have been taken into account during its preparation”

Policy context

- 3.3 The draft Walford NDP will deliver the Local Plan (Core Strategy) at parish level by adding locally specific detail to strategic policies. As a consequence, the Scoping Report for the NDP was based on the context review Herefordshire Council undertook for its Local Plan (Core Strategy).
- 3.4 The results of this assessment (context review) provide the source of the local baseline data and have been incorporated into the SEA framework. It should be noted that no list of policies, plans and programmes can ever be exhaustive and that Herefordshire Council has selected those considered to be of particular relevance to the planning system. New or revised plans and policies can emerge during the SEA process.
- 3.5 The strategies and plans have been reviewed and, where appropriate, incorporated within the SA Framework objectives. These can be seen in Appendix 1 of the Walford Plan Scoping Report together with the implications for the SEA and NDP highlighted.

SEA Objectives and baseline characteristics

- 3.6 The SEA objectives that were used at Stages A and B of the process are listed in the following table.

SEA Objective	
1	To maintain or enhance nature conservation (biodiversity, flora and fauna)
2	To maintain or enhance the quality of landscapes and townscapes
3	To improve the quality of surroundings
4	To conserve or where appropriate enhance the historic environment and culture heritage
5	To improve air quality
6	To reduce the effect of traffic on the environment
7	To reduce contributions to climate change
8	To reduce vulnerability to climate change
9	To improve water quality
10	To provide for sustainable sources of water supply
11	To avoid, reduce and manage flood risk
12	To conserve soil resources and quality
13	To minimise the production of waste
14	To improve the health of the population
15	To reduce crime and nuisance
16	To conserve natural and manmade resources

- 3.7 The SEA objectives detailed above conform to the SEA Directive, and are derived from the Sustainability Appraisal undertaken for the Herefordshire Local Plan Core Strategy 2011- 2031.

- 3.8 Baseline information gathered during Stage A of the SEA process provided details of the current environmental characteristics of the neighbourhood area and the status of its natural assets and features (refer to Appendix 2). This information was analysed as part of Task B2 of SEA, which looked at the extent to which the submission NDP policies will help or obstruct these characteristics.
- 3.9 Following the completion of Task B2 of SEA it was apparent that the largest environmental issue within the Parish and which has an impact on the County as a whole, is water quality; the River Wye, though currently meeting all its conservation objectives, will require effective management, in order to ensure that the quality of water does not deteriorate to the point that nutrient targets are missed further downstream. The River Lugg hydrological catchment area is located several KMs in the north of the county and is not in close proximity to the parish. The Lugg is current not meeting its water quality targets and the Nutrient Management Plan is being revised to address this issue. This will be addressed further in the Habitat Regulation Assessment which is produced separate to this report.
- 3.10 Baseline characteristics within the SEA detail the current environmental status of environmental characteristics in the neighbourhood plan area from different sources. The source of Baseline Information used in Table A2 in Appendix 2, and analysed in Table B2 can be found in Appendix 4 Baseline characteristics in relation to the Walford Plan SEA objectives are listed below.
- 3.11 There are three objectives for which there is no local baseline data available and therefore this provides a limitation on the baseline data and whether the NDP policies are able to move towards or away from this data, this also means that there are no future trends to link the SEA objective too.

4.0 Assessing the NDP Objectives

- 4.1 The objectives listed in the NDP seek to achieve the vision of the Walford NDP. There are a total of 5 objectives; these are listed in paragraph 1.13 above.
- 4.2 The table in appendix 4 tests these draft NDP objectives against the SEA objectives, providing a summary of the results of Task B1 of SEA.
- 4.3 The majority of those NDP objectives which have a relationship with the SEA framework are positively compatible with it or further clarification is required to fully assess the effects.
- 4.4 Task B1 of the SEA identifies that the five NDP objectives were compatible with the SEA framework. Task B1 also requires objectives to be SMART assessed. These too were seen as compatible.
- 4.5 Overall within Stage B1 the majority of the NDP objective have met SEA objectives, and the rest had no relationship with the SEA objective or needed further information such as location of development.

5.0 Assessing the NDP Neighbourhood Plan Options

- 5.1 The reasonable alternative options on the plan development were considered. A Do nothing option was considered, and to rely on the criteria policies within the Core Strategy. To produce an NDP, was the preferred option, as it allows the local community to provide tailored policies, this also included a site allocation and settlement boundaries. The summary matrix of the assessment can be found in Table B2a options these tables are in Appendix 4.
- 5.2 A Call for Sites consultation was undertaken in February 2020, to ascertain the options for a site allocation within the reviewed NDP. Overall 34 sites were submitted for consideration as potential housing allocation. Following Initial assessment 3 site withdrew and 18 sites were found not to be in or adjacent to the existing settlements. 11 sites were left for further assessment and scrutiny in a stage 2 assessment.
- 5.3 In July 2020, a total of 11 sites were assessed by an independent reviewer in stage 2 site assessment. The review of the parish council determined that given the current proportional growth status within the parish it is estimated 16 dwellings will be achieved on the four site allocations and 18 through windfall.
- 5.4 The following sites have been assessed below.
- Land at Coughton Farm (1). (Site ref) SR6
 - Land at Coughton Farm (2) SR7
 - Walford Road SR11
 - Land at Rock Hill Farm SR14
 - New House Farm SR21
 - **Land at Watling Street SR24 (Allocation)**
 - **Land at Leys Hill SR26 (Allocation)**
 - Land near Kerne Bridge SR28
 - **Arthurs Dingle Leys Hill SR32 (Allocation)**
 - Arthurs Dingle Leys Hill SR33
 - **Lower Field of Orchard Heights SR34 (Allocation)**
- 5.5 Following the site assessment process, four sites below were deemed suitable for allocation. These are marked allocation in the text above.
- 5.6 The housing requirement for Walford for 2011-2031 is 91 dwellings. It is estimated that 96 dwellings will be developed in the plan period. Up to April 2021, 14 dwellings have been built and 39 have been granted planning permission. 9 dwellings have been granted planning permission since April 2021.
- 5.7 The alternatives sites were assessed, this has been done with the background that the parish has partially met some of its proportional growth target within the first part of the plan period. Therefore several site allocations of a small to medium scale are required to meet that need and growth requirements indicated within the Core Strategy Policy RA1 and RA2.
- 5.8 Community consultation on these was undertaken in April 2021 by the parish council and this has assisted in forming the site chosen for allocation within the plan.

5.9 The results of the SEA assessment, together with community consultation have assisted in the selection of the preferred option sites within the Walford NDP.

6.0 Appraisal of the policies

6.1 The following policies have been assessed;

Neighbourhood Plan Policy: Policy WALF1: Promoting Sustainable Development
Neighbourhood Plan Policy: Policy WALF2: Development Strategy
Neighbourhood Plan Policy: Policy WALF3: Major Development Within the Wye Valley AONB
Neighbourhood Plan Policy: Policy WALF4: Conserving the Landscape and Scenic Beauty of the Parish
Neighbourhood Plan Policy: Policy WALF5: Protecting Important Views within the Parish and the Settings of its Settlements
Neighbourhood Plan Policy: Policy WALF6: Enhancement of the Natural Environment
Neighbourhood Plan Policy: Policy WALF7: Protecting Heritage Assets
Neighbourhood Plan Policy: Policy WALF8: Wastewater Drainage
Neighbourhood Plan Policy: Policy WALF9: Protection from Flood Risk
Neighbourhood Plan Policy: Policy WALF10: Sustainable Design
Neighbourhood Plan Policy: Policy WALF11: Renewable and Low Carbon Energy Generation
Neighbourhood Plan Policy: Policy WALF12: Highway Design Requirements
Neighbourhood Plan Policy: Policy WALF13: Traffic Measures within the Parish
Neighbourhood Plan Policy: Policy WALF14: Protection and Enhancement of Community Facilities and Businesses serving the Local Community.
Neighbourhood Plan Policy: Policy WALF15: Contributions to Community Facilities.
Neighbourhood Plan Policy: Policy WALF16: High Speed Broadband and Telecommunications
Neighbourhood Plan Policy: Policy WALF17: Design and Appearance
Neighbourhood Plan Policy: Policy WALF18: Housing Development in Walford and Coughton
Neighbourhood Plan Policy: Policy WALF19: Housing Development in Bishopswood
Neighbourhood Plan Policy: Policy WALF20: Housing Development in Howle Hill
Neighbourhood Plan Policy: Policy WALF21: Proposed Housing Sites
Neighbourhood Plan Policy: Policy WALF22: Use of Rural Buildings for Business
Neighbourhood Plan Policy: Policy WALF23: Polytunnel Proposals

Stage B assessment of the draft policies

6.3 In the context of Task B1 of SEA, the previous section of this report identified that many of the NDP objectives are compatible with the SEA framework, while others had either a neutral impact, no relationship with the SEA objectives or needed further information such as location of development. Additional policy safeguards within the NDP and Local Plan (Core Strategy) would help mitigate any possible conflicts.

6.4 In regards to Task B2 of the SEA, the NDP policies were measured against both the SEA framework and the baseline characteristics identified during Stage A of the process; here, there was no baseline data available in respect of SEA Objectives 13,14 and 15. Some of the development policies had an uncertain effect on SEA objectives 9, 10,12, where further details are required such as location and detail of schemes. This can be clarified and assessed at planning application stage. Full details of this appraisal are attached at Appendix 4.

6.5 The policies largely score as positive against the SEA objectives and will not, therefore, have an adverse impact on the baseline characteristics or immediate environmental impacts. This can be largely attributed to the fact that many are criteria based policies which only consider schemes on their own merits, as and when planning applications are submitted to the local planning authority.

- 6.6 There are some unknown factors, such as design and layout details of scheme. The assessment of the site allocation have shown that that the criteria policies of the draft NDP and Core Strategy policy LD2 and SD4 will ensure that the key environmental issues within the parish are addressed.
- 6.7 The results of Task B3, as shown at Appendix 4, demonstrate that the cumulative impact over the time scale is generally positive. Although the development policies indicate that in the short term there may be a neutral or uncertain impact due to the development works that would be undergoing, but within the middle and long term the effects often turn positive due to the criteria in additional NDP policies that provide mitigation methods to alleviate the adverse impact caused from new development. Therefore the majority of the policies will be balanced with sustainable policies to minimise environmental impact.
- 6.8 Task B4 of SEA brings together the results of earlier tasks and thus identifies the cumulative impact of the entire of the NDP. This task, which is also attached at Appendix 6, reveals that the objectives and policies contained in the Walford NDP are by and large in general conformity with the Local Plan (Core Strategy), which means that the cumulative effect of the plan will contribute to the achievement of the SEA objectives.
- 6.9 None of the draft NDP policies are considered to be in direct conflict with or propose greater levels of growth and development than strategic policies contained in the Local Plan (Core Strategy), which themselves have undergone a full Sustainability Appraisal.

Stage D of the SEA

- 6.10 The submission Walford NDP has been reviewed following the draft consultation. A new Site has been added to the plan following the consultation. Several policies have had criteria added to them to provide further clarity. The remaining policies have had some minor word changes.
- 6.11 The following policies have been reassessed
- Policy WALF1: Promoting Sustainable Development
 - Neighbourhood Plan Policy: Policy WALF10: Sustainable Design
 - Neighbourhood Plan Policy: Policy WALF11: Renewable and Low Carbon Energy Generation
 - Neighbourhood Plan Policy: Policy WALF21: Proposed Housing Sites
 - Site Allocation: Land south of Cedar Grove, Coughton
- 6.12 None of the changes made to the above policies post-regulation 14 are considered to be in direct conflict with or propose greater levels of growth and development than strategic policies appraisal and are found to be in conformity with the Local Plan.

7.0 Implementation and monitoring

- 7.1 Herefordshire Council as the Local Planning Authority should make arrangements to monitor the significant effects of implementing a neighbourhood plan.
- 7.2 Indeed, Regulation 17 of the Environmental Assessment of Plans and Programmes Regulations 2004 requires the Local Planning Authority to monitor the significant environmental effects of the implementation of any NDP that was subject to SEA, in

order to identify unforeseen adverse effects at an early stage and to enable appropriate remedial actions.

7.3 Accordingly, Herefordshire Council will monitor outcomes from the NDP policies and the results of these will be reported in the Council's Authority Monitoring Report (AMR).

7.4 The AMR runs from 1 April to 31 March each year and the topics covered therein include the following:

- Housing delivery
- Previously developed land
- Housing completions
- Affordable housing conditions
- Employment land delivery

8.0 Next steps

8.1 This report will be subject to a formal public consultation of 6 weeks duration alongside the submission Walford NDP.

8.2 Any responses will form part of the examination of the NDP.

Appendix 1

**Initial Habitat Regulations Assessment and Strategic Environmental
Assessment Screening Notification**

The Neighbourhood Planning (General) Regulation 2012 (Reg. 32)

Conservation of Habitats and Species Regulations 2010 (d)

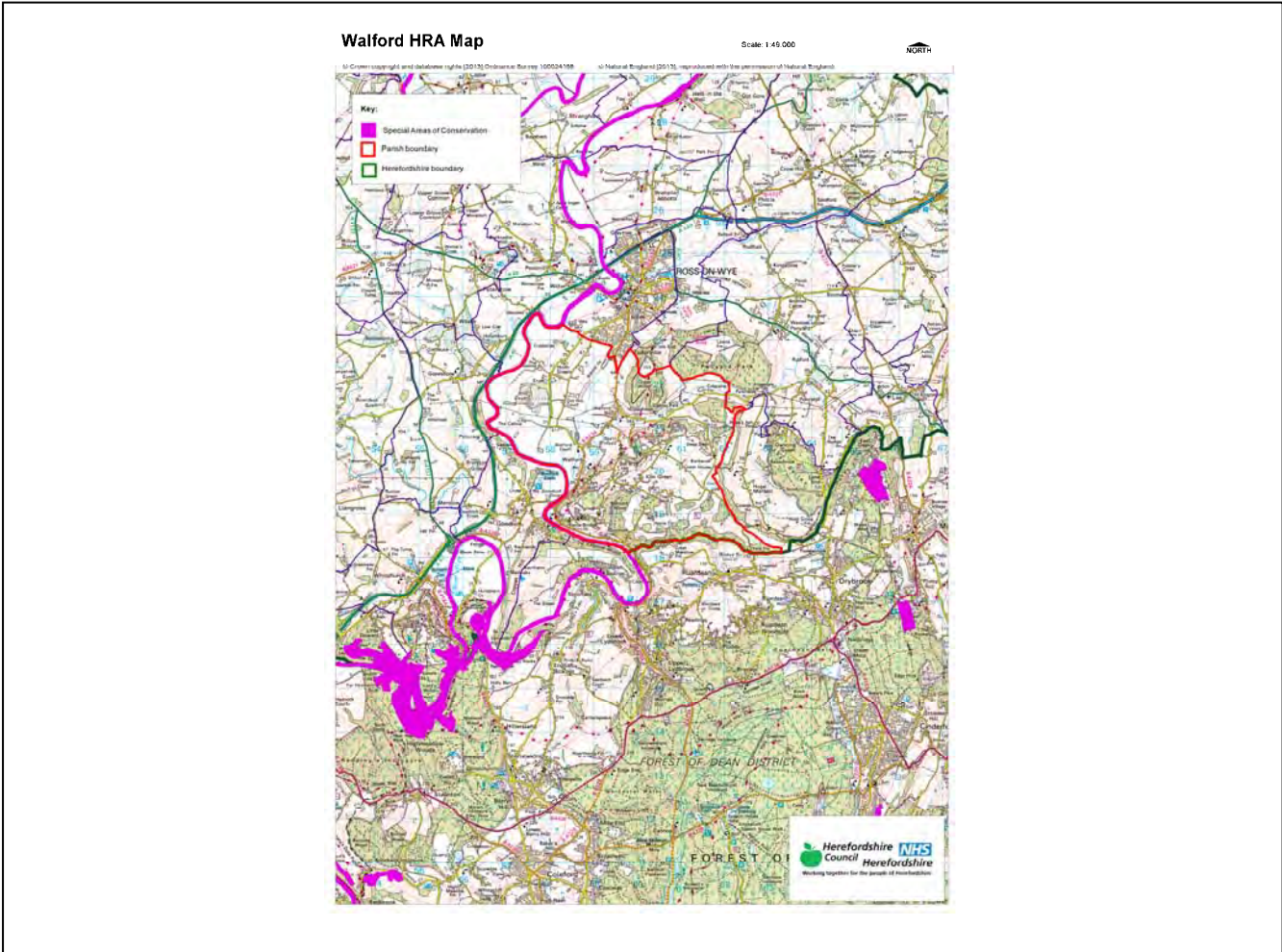
Neighbourhood Area:	Walford Neighbourhood Area
Parish Council:	Walford Parish Council
Neighbourhood Area Designation Date:	14/11/2012

Introduction

This Initial Habitat Regulations Assessment (HRA) and Strategic Environmental Assessment (SEA) Screening has been undertaken to assess whether any European sites exist within or in proximity to the neighbourhood area which could be affected by any future proposals or policies.

Through continual engagement the outcomes of any required assessments will help to ensure that proposed developments will not lead to Likely Significant Effects upon a European Site or cause adverse impacts upon other environmental assets, such as the built historic or local natural environment.

**HRA Initial Screening: Map showing relationship of Neighbourhood Area with European Sites
(not to scale)**



Initial HRA Screening

River Wye (including the River Lugg) SAC:

Does the Neighbourhood Area have the River Wye (including the River Lugg) in or next to its boundary?	Y	The River Wye borders the Parish to the west.
Is the Neighbourhood Area in the hydrological catchment of the River Wye (including the River Lugg) SAC?	Y	The Parish is within the River Wye catchment area.
If yes above, does the Neighbourhood Area have mains drainage to deal with foul sewage?	Y	There is mains drainage within Howle Hill

Downton Gorge SAC:

Is the Neighbourhood Area within 10km of Downton Gorge SAC?	N	Downton Gorge is 51.67km away from the Parish
---	---	---

River Clun SAC:

Does the Neighbourhood Area include: Border Group Parish Council or Leintwardine Group Parish Council?	N	River Clun does not border the Parish
--	---	---------------------------------------

Usk Bat Sites SAC:

Is the Neighbourhood Area within 10km of the SAC boundary?	N	Usk Bat Sites are 38.1km away from the Parish
--	---	---

Wye Valley & Forest of Dean Bat Sites SAC:

Is the Neighbourhood Area within 10km of any of the individual sites that make up the Wye Valley & Forest of Dean Bat Sites?	Y	The Parish is 3.24km away from Wye Valley and Forest of dean Bat Sites
--	---	--

Wye Valley Woodlands SAC:

Is the Neighbourhood Area within 10km of any of the individual sites that make up the Wye Valley Woodlands Site?	Y	The Parish is 7.04km away from the Wye Valley Woodlands
--	---	---

HRA Conclusion:

The assessment above highlights that the following European Sites will need to be taken into account in the future Neighbourhood Development Plan for the Walford Neighbourhood Area and a Full HRA Screening will be required.

European Site

(List only those which are relevant from above)

River Wye (including the River Lugg) SAC

Wye Valley and Forest of Dean Bat Sites SAC

Wye Valley Woodlands SAC

Strategic Environmental Assessment Initial Screening for nature conservation landscape and heritage features

The following environmental features are within or in general proximity to the Walford Neighbourhood Area and would need to be taken into account within a Strategic Environmental Assessment. In addition, the NDP will also need to consider the other SEA topics set out in Guidance Note 9a to ensure that the plan does not cause adverse impacts.

SEA features	Total	Explanation	SEA required
Air Quality Management Areas	0	There are no AQMA's within the Parish	N
Ancient Woodland	15	Chase Wood; Penyard Park; Howle Hill Wood; Hengrove and Warmhill Woods; Deep Dean; Mark's Well Wood; Purlieu Wood; Lodge Grove; Beech Tree Wood; Ferry Bank – Mayers Grove; Dam Wood; Wet Wood; Sixteen Acre Wood; Thomas Wood (border); Unlabelled site at Vain Farm	Y
Areas of Archaeological Interest	0	There are no AAI's within the Parish	N
Areas of Outstanding Natural Beauty	1	The west of the Parish is in the Wye Valley AONB	Y
Conservation Areas	0	There are no Conservation Areas within the Parish	N
European Sites	1	The River Wye	Y
Flood Areas		Flood Zones 2 and 3 follow the River Wye and also go east at Walford towards Coughton and out of the parish in the north east.	Y
Listed Buildings	Numerous	There are numerous Listed Buildings scattered around the Parish	Y
Local Sites (SWS/SINCs/RIGS)	10	Disused railway line – Ross to Kerne Bridge; Chase & Merrivale Woods; Coughton Wood & Marsh; Howle Hill & Marks Well; Woodlands nr Hope Mansell; Dam Wood and Copse; Coal Hill & 16 Acre Wood; Field nr Kiln Green; Field nr Forest Green; Woodlands east of Kerne Bridge; River Wye	Y
Long distance footpaths/trails (e.g. Herefordshire Trail)	4	Wye Valley Walk; Ross Round (border); Ross Buggy Route (border); Herefordshire Trail (border)	Y
Mineral Reserves	2	1 in the East and 1 in the West of the Parish	Y
National Nature Reserve	0	There are no NNRs within the Parish	N
Registered & unregistered parks and gardens	1 Registered 8 Unregistered	Registered: Hill Court. Unregistered: Lincoln Hill House; John Kyrles Walk (border); Penyard Park (border); Cobrey Park; Upper Wythall; Bishopswood; Hazelhurst; Goodrich Court (border)	Y
Scheduled Ancient Monuments	2	Camp in Chase Wood (border); Great Howle Camp	Y

Sites of Special Scientific Interest	2	River Wye (Unfavourable Recovering); Coughton Wood & Marsh (Unfavourable Recovering)	Y
--------------------------------------	---	--	---

Decision Notification:

The initial screening highlights that the Neighbourhood Development Plan for the Walford Neighbourhood Area:

- a) Will require further environmental assessment for Habitat Regulations Assessment and Strategic Environmental Assessment.

Assessment date: 21/05/2013

Assessed by: James Latham

Appendix 1: European Sites

The table below provides the name of each European Site, which has been screened in for the purposes of neighbourhood planning in Herefordshire; includes their site features of integrity; and vulnerability data. This is based on the sites individual features of integrity and their vulnerabilities, which could include distance criteria. This has been used in identifying which parishes are likely to require a full HRA Screening of their future Neighbourhood Development Plan, to establish if their plan might have Likely Significant Effects on a European Site.

Downton Gorge
Site Features: <i>Tilio-Acerion</i> forests of slopes, screes and ravines
Vulnerability data: 10km for air quality associated with poultry units or other intensive agricultural practices.
River Clun
Site Features: Freshwater pearl mussel <i>Margaritifera margaritifera</i>
Vulnerability data: Water quality is important to maintain the site feature. Parishes either side of the River Clun will be affected.
River Wye
Site Features: Water courses of plain to montane levels with the <i>Ranunculion fluitantis</i> and <i>Callitricho-Batrachion</i> vegetation. Transition mires and quaking bogs. White-clawed (or Atlantic Stream) crayfish <i>Austropotamobius pallipes</i> . Sea lamprey <i>Petromyzon marinus</i> . Brook lamprey <i>Lampetra planeri</i> . River lamprey <i>Lampetra fluviatilis</i> . Twaite shad <i>Alosa fallax</i> . Atlantic salmon <i>Salmo salar</i> . Bullhead <i>Cottus gobio</i> . Otter <i>Lutra lutra</i> . Allis shad <i>Alosa alosa</i>
Vulnerability data: Proximity: Developments should not be within 100m of the designated bank. Some developments beyond 100m may also have impacts based on proximity and these issues should be addressed where possible when developing NDP policy and choosing site allocations. Water Quality: Within the whole catchment of the River Wye, which includes the River Lugg, mains drainage issues with regards to water quality are being resolved through the Core Strategy / Local Plan and development of a Nutrient Management Plan. Welsh Water should be consulted to ensure that the proposed growth will be within the limit of their consents. Otters: "An otter will occupy a 'home range', which on fresh waters usually includes a stretch of river as well as associated tributary streams, ditches, ponds, lakes and woodland. The size of a home range depends largely on the availability of food and shelter, and the presence of neighbouring otters. On rivers, a male's home range may be up to 40km or more of watercourse and associated areas; females have smaller ranges (roughly half the size) and favour quieter locations for breeding, such as tributary streams. Otters without an established home range are known as 'transients'. They are mostly juveniles looking for a territory of their own, or adults that have been pushed out of their territories. Transient otters may use an area for a short while, but they will move on if conditions are not suitable or if they are driven away by resident otters. Transients will have been important in extending the range of otters, but they are very difficult to identify from field signs. Within a home range an otter may use many resting sites. These include above-ground shelters, such as stands of scrub or areas of rank grass, and underground 'holts' – for example, cavities under tree roots and dry drainage pipes." (Source: EA website: http://www.environmentagency.gov.uk/static/documents/Business/Otters_the_facts.pdf accessed 09/04/2013)

Usk Bat Site

Site Features: Annex I habitats present as a qualifying feature, but not a primary reason for site selection: European dry heaths, Degraded raised bogs still capable of natural regeneration, Blanket bogs, Calcareous rocky slopes with chasmophytic vegetation, Caves not open to the public, *Tilio-Acerion* forests of slopes, screes and ravines. Annex II species of primary reason for site selection: Lesser horseshoe bat *Rhinolophus hipposideros*, UK population 5%, although it is suggested this is an underestimate.

Vulnerability data: Lesser Horseshoe bats are known to migrate between 5km and 10km between their summer and winter roosts. The Lesser Horseshoe Bat is vulnerable to disturbance; light pollution; and habitat loss. Check with the planning ecologist for other issues.

Wye Valley and Forest of Dean Bat Sites

Site Features: Annex II species that are a primary reason for site selection: Lesser horseshoe bat *Rhinolophus hipposideros*. Greater horseshoe bat *Rhinolophus ferrumequinum*

Vulnerability data: Lesser Horseshoe bats are known to migrate between 5km and 10km between their summer and winter roosts. The Lesser Horseshoe Bat is vulnerable to disturbance; light pollution; and habitat loss. Check with the planning ecologist for other issues.

Greater Horseshoe bats are known to migrate between 20-30km between their summer and winter roosts.

NDPs closest to the European Site will need to consider:
Woodland habitat buffer.

Lesser Horseshoe Bat: Old buildings; woodland locations; sheltered valleys, extensive deciduous woods or dense scrub, close to roost sites. In areas of fragmented habitats, linear habitats such as hedgerows are important corridors. Vulnerable to loss or disturbance of both summer and winter roosts and removal of linear habitat.

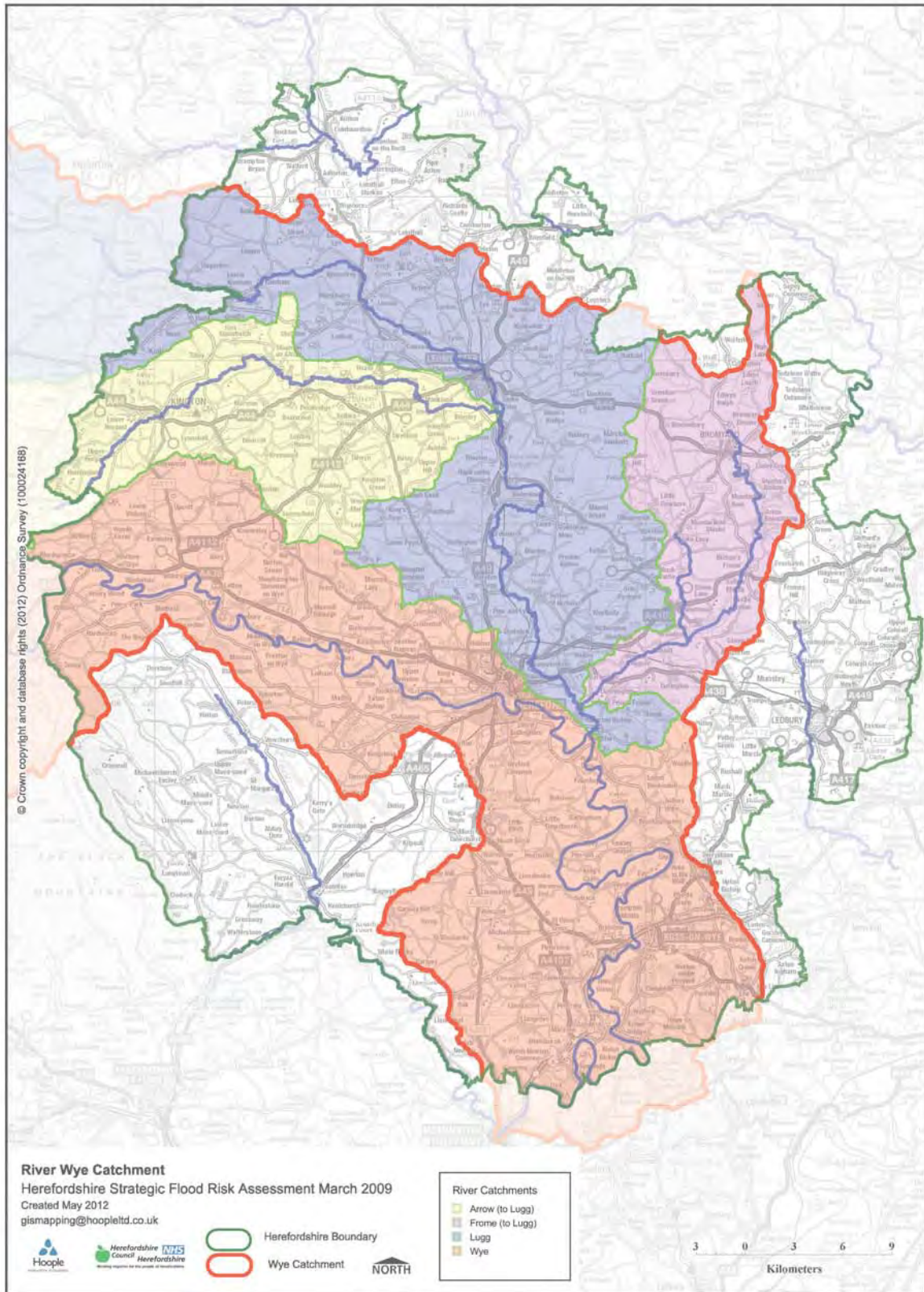
Greater Horseshoe Bat: Large buildings, pasture, edge of mixed deciduous woodland and hedgerows. Mixed land-use especially south-facing slopes, favours beetles, moths and insects they feed on. During the winter they depend on caves, abandoned mines and other underground sites for undisturbed hibernation. A system/series of sites required. Vulnerable to loss of insect food supply, due to insecticide use, changing farming practices and loss of broad-leaved tree-cover and loss / disturbance of underground roosts sites.

Wye Valley Woodlands

Site Features: Annex I habitats that are a primary reason for site selection: Beech forests *Asperulo-Fagetum*, *Tilio-Acerion* forests of slopes, screes and ravines, *Taxus baccata* woods of the British Isles. Annex II species present as a qualifying feature, but not a primary reason for site selection: Lesser horseshoe bat *Rhinolophus hipposideros*, 51-100 residents

Vulnerability data: Lesser Horseshoe bats are known to migrate between 5km and 10km between their summer and winter roosts. The Lesser Horseshoe Bat is vulnerable to disturbance; light pollution; and habitat loss. Check with the planning ecologist for other issues. NDPs closest to the European Site will need to consider: Woodland habitat buffer. Lesser Horseshoe Bat: Old buildings; woodland locations; sheltered valleys, extensive deciduous woods or dense scrub, close to roost sites. In areas of fragmented habitats, linear habitats such as hedgerows are important corridors. Vulnerable to loss or disturbance of both summer and winter roosts and removal of linear habitat.

Appendix 2: Wye Catchment Map

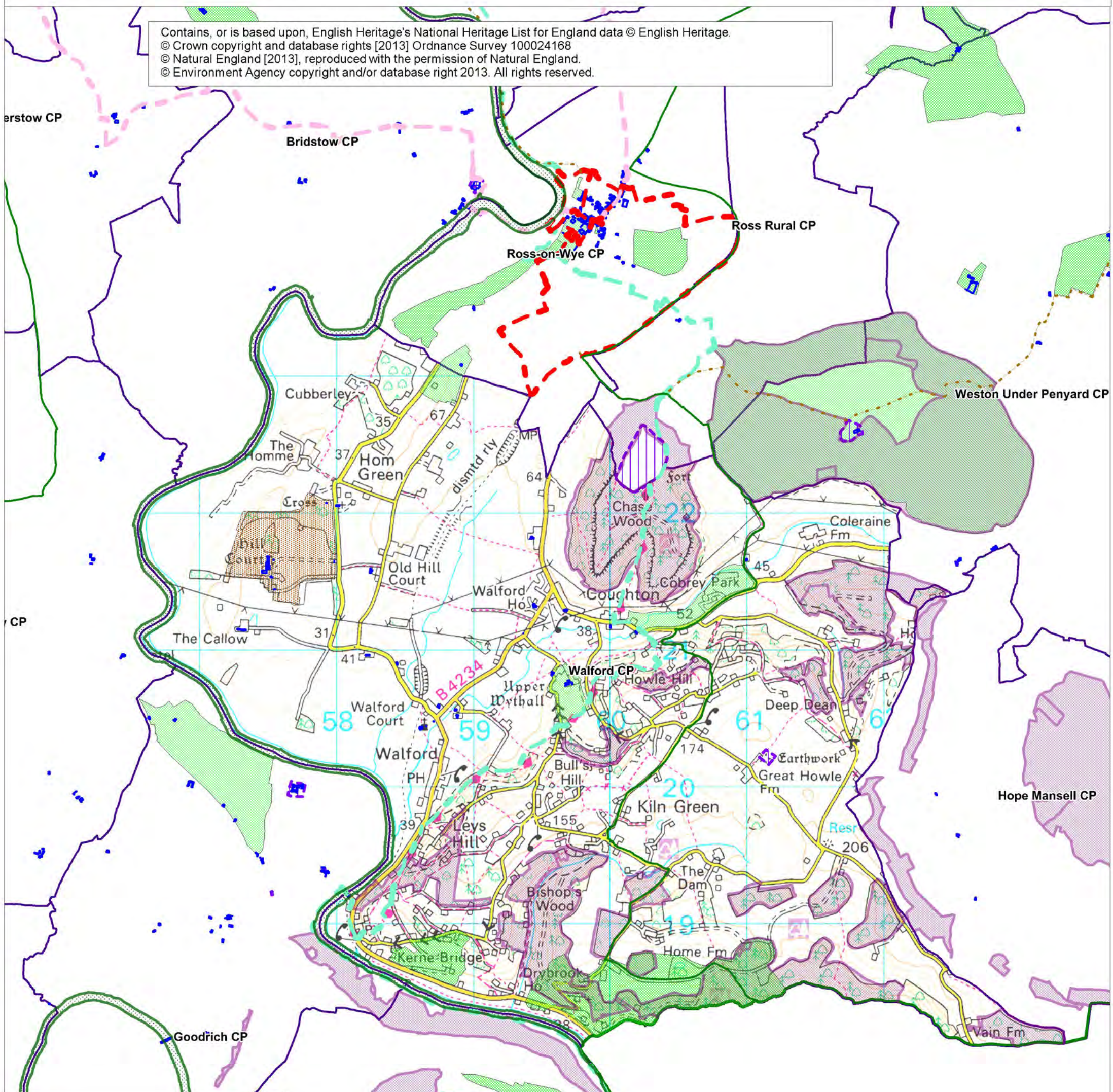


Walford SEA Map 1

Scale: 1:28,000



Contains, or is based upon, English Heritage's National Heritage List for England data © English Heritage.
 © Crown copyright and database rights [2013] Ordnance Survey 100024168
 © Natural England [2013], reproduced with the permission of Natural England.
 © Environment Agency copyright and/or database right 2013. All rights reserved.



Key:

- Ancient Woodlands
- Scheduled Ancient Monuments
- Special Areas of Conservation
- Registered Parks & Gardens
- Unregistered Parks and Gardens
- Ross Round
- Ross Buggy Route
- Herefordshire Trail
- Wye Valley Walk
- Areas of Outstanding Natural Beauty
- Listed Buildings
- Parish Boundaries

**Herefordshire
Council**

Walford SEA Map 2

Scale: 1:28,000



Contains, or is based upon, English Heritage's National Heritage List for England data © English Heritage.
© Crown copyright and database rights [2013] Ordnance Survey 100024168
© Natural England [2013], reproduced with the permission of Natural England.
© Environment Agency copyright and/or database right 2013. All rights reserved.



Key:

- Minerals Sites
- Sites of Special Scientific Interest
- Special Wildlife Sites
- Flood Zone 2
- Flood Zone 3
- Parish Boundaries

**Herefordshire
Council**

Appendix 2

Strategic Environmental Assessment

Scoping Report for:

Walford Neighbourhood Area

April 2018



Consultation on the Scoping Report

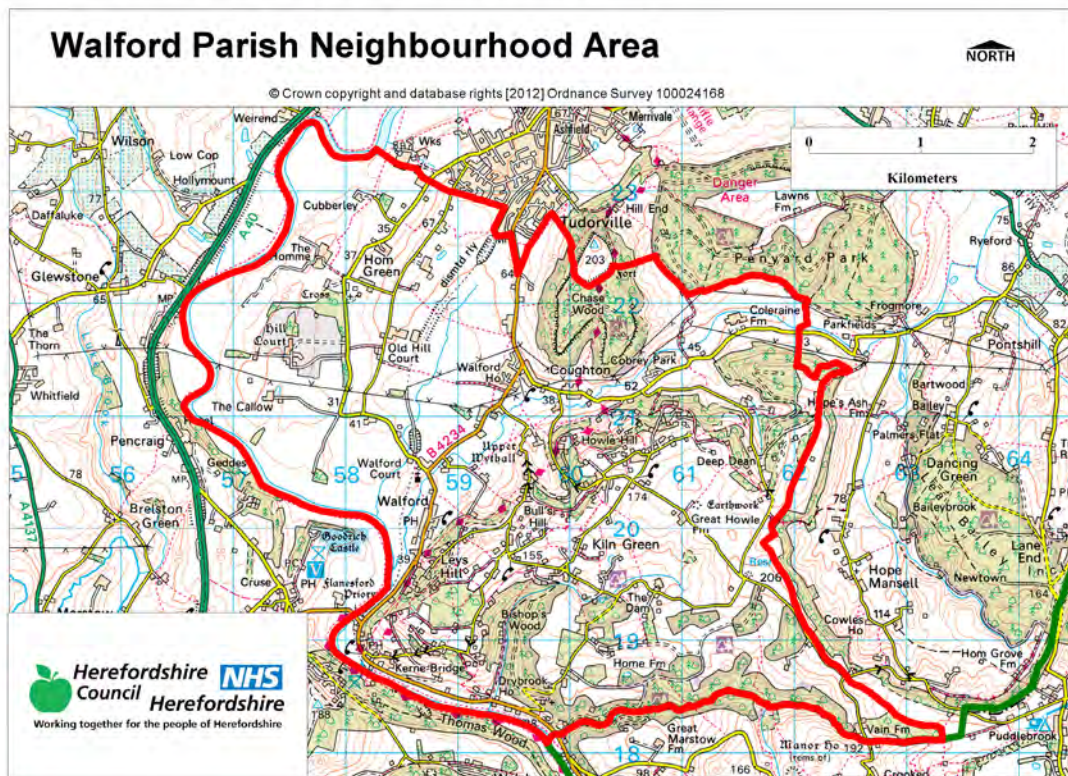
The aim of the consultation process is to involve and engage with statutory consultees and other relevant bodies on the scope of the appraisal. In particular, it seeks to:

- Ensure the SEA is both comprehensive and sufficiently robust to support the Neighbourhood Development Plan during the later stages of full public consultation;
- Seek advice on the completeness of the plan review and baseline data and gain further information where appropriate;
- Seek advice on the suitability of key sustainability issues;
- Seek advice on the suitability of the sustainability objectives.

Comments on this Scoping Report have been invited from the three consultation bodies as required by the SEA regulations, together with Natural Resources Wales.

The three consultation bodies are as follows:

1. Natural England;
2. Historic England;
3. Environment Agency.



Template A1: Identification and review of local Neighbourhood Area relevant plans, policies and programmes**Parish Council Name:** Walford.**Neighbourhood Development Plan Name:** Walford Neighbourhood Plan**Date completed:** March 2018

Plans and Programmes	Type of document	Date	Overview	Key message, target/objective/indicator	SEA topic(s)¹	Implications for the NDP and SEA
The EC Conservation of Habitats and Species Regulations	European Union Legislation	2010	These regulations transpose the Habitats Directive in England, Wales and to a limited extent Scotland by ensuring that activities are carried out in accordance with the Habitats Directive, which is to protect biodiversity through the conservation of natural habitats and species of wild flora and fauna.	The Regulations make it an offence (subject to exceptions) to deliberately capture, kill, disturb, or trade in the animals listed in Schedule 2, or pick, collect, cut, uproot, destroy, or trade in the plants listed in Schedule 4. However, these actions can be made lawful through the granting of licenses by the appropriate authorities.	<ul style="list-style-type: none"> • Biodiversity • Cultural heritage and the landscape 	The Neighbourhood Plan should be compliant with all the relevant legislation and regulations.

¹ Derived from the LDF General Scoping Report (June 2007)

This document is copyright of Herefordshire Council, please contact the Neighbourhood Planning team if you wish to reuse it in whole or part.

Plans and Programmes	Type of document	Date	Overview	Key message, target/objective/indicator	SEA topic(s) ¹	Implications for the NDP and SEA
The EC Water Framework Directive	European Union	2000	Commits all EU member states to achieve good qualitative and quantitative status of all water courses by 2015	Aims for 'good status' for all ground and surface waters (rivers, lakes, transitional waters, and coastal waters) in the EU	<ul style="list-style-type: none"> • Water 	The Neighbourhood Plan should be compliant with all the relevant legislation and regulations.
The Wildlife and Countryside Act (1981)	Domestic Legislation	1981	The major legal instrument for wildlife protection in Britain, although other significant acts have been passed since. It has numerous parts and supplementary lists and schedules many of which have been amended since publication.	The principle mechanism for the legislative protection of wildlife in Great Britain.	<ul style="list-style-type: none"> • Biodiversity • Cultural heritage and the landscape • Flora and fauna • Material assets • Soil 	The Neighbourhood Plan should be compliant with all the relevant legislation and regulations.

Plans and Programmes	Type of document	Date	Overview	Key message, target/objective/indicator	SEA topic(s) ¹	Implications for the NDP and SEA
The Countryside and Right of Way Act (2000)	Domestic Legislation	2000	Creates a statutory right of access on foot to certain types of open land, to modernise the public rights of way system, to strengthen nature conservation legislation, and to facilitate better management of AONBs.	<p>The Act provides for a new right of access on foot to areas of open land comprising: Mountain (land over 600 metres); Moorland; Heath; Downland; Registered common land.</p> <p>There are provisions to consider extending the right in the future to coastal land, but not woodland despite some early publicity suggesting this.</p>	<ul style="list-style-type: none"> • Biodiversity • Cultural heritage and the landscape • Flora and fauna • Material assets • Soil 	The Neighbourhood Plan should be compliant with all the relevant legislation and regulations.
The Natural Environment and Rural Communities Act (2006)	Domestic Legislation	2006	Designed to help achieve a rich and diverse natural environment and thriving rural communities through modernised and simplified arrangements for delivering Government policy.	Provides that any public body or statutory undertaker in England and Wales must have regard to the purpose of conservation of biological diversity in the exercise of their functions.	<ul style="list-style-type: none"> • Biodiversity • Cultural heritage and the landscape • Flora and fauna • Material assets • Soil 	The Neighbourhood Plan should be compliant with all the relevant legislation and regulations.

Plans and Programmes	Type of document	Date	Overview	Key message, target/objective/indicator	SEA topic(s) ¹	Implications for the NDP and SEA
Revised EU Sustainable Development strategy	European Union Strategy	2009	Sets out a single strategy on how the EU will more effectively meet its long-standing commitment to meet the challenges of sustainable development.	<p>Recognises the need to gradually change current unsustainable consumption and production patterns and move towards a better integrated approach to policy making. The Strategy sets overall objectives, targets and concrete actions for seven key priority challenges, predominantly environmental:</p> <ul style="list-style-type: none"> • Climate change and clean energy; • Sustainable transport • Sustainable production and consumption; • Public health threats; • Better management of natural resources; • Social inclusion, demography and migration; • Fighting global poverty. 	<ul style="list-style-type: none"> • Air • Climate factors • Cultural heritage and the landscape • Population and human health 	The Neighbourhood Plan should take into account the objectives of the strategy. The aim of sustainable development should be implicit in its approach.

Plans and Programmes	Type of document	Date	Overview	Key message, target/objective/indicator	SEA topic(s) ¹	Implications for the NDP and SEA
Biodiversity 2020: A strategy for England's wildlife and ecosystem services	National Strategy	2011	Forms part of the UK's Post-2010 Biodiversity Framework by setting out England's contribution towards the UK's commitments under the United Nations Convention of Biological Diversity.	Sets out to halt overall biodiversity loss, support healthy well-functioning ecosystems and establish coherent ecological networks, with more and better places for nature for the benefit of wildlife and people.	<ul style="list-style-type: none"> • Biodiversity 	The NDP should take account of the provisions of the strategy, making the most of opportunities to enhance wildlife habitats or restore degraded ecosystems in the process.
National Planning Policy Framework (NPPF)	National planning policy.	2012	Consolidates the suite of PPG/PPS into one succinct planning policy document.		<ul style="list-style-type: none"> • Air • Biodiversity • Climate factors • Cultural heritage and the landscape • Flora and fauna • Material assets • Population and human health • Soil • Water 	The NDP should take into account the relevant policies set within the NPPF.
Planning Practice Guidance	Government Guidance	2014	Provides guidance to local planning authorities and others on the operation of the planning system.		<ul style="list-style-type: none"> • Air • Biodiversity • Climate factors • Cultural heritage and the landscape • Flora and fauna • Material assets 	The NDP should take into account the planning guidance provided within these documents.

Plans and Programmes	Type of document	Date	Overview	Key message, target/objective/indicator	SEA topic(s) ¹	Implications for the NDP and SEA
					<ul style="list-style-type: none"> • Population and human health • Soil • Water 	
Herefordshire Core Strategy, (adopted) 2011-2031	Development Plan Document (DPD)	2015	Sets out the vision, objectives and policies for the Herefordshire Local Plan (Core Strategy), which will guide development across the county up to 2031.	<p>Outlines the emerging suite of countywide planning policies relating to housing, economic development and the environment, which the NDP will need to be in conformity with where relevant.</p> <p>The Core Strategy includes a range of objectives, five of which directly relate to rural areas:</p> <ul style="list-style-type: none"> • To meet the housing needs of all sections of the community • To improve access to services in rural areas • To strengthen the economic viability of the villages and their rural hinterlands 	<ul style="list-style-type: none"> • Air • Biodiversity • Climate factors • Cultural heritage and the landscape • Flora and fauna • Material assets • Population and human health • Soil • Water 	<p>The NDP should take account of relevant policies set within in the Core Strategy.</p> <p>Where necessary, the NDP should provide services, facilities and employment opportunities that are accessible to both local and neighbouring communities.</p> <p>Walford is within the Ross on Wye HMA. This settlement of Walford (Coughton) is allocated as a 4.14 settlement, Bishopswood and Howle Hill as 4.15 settlements, meaning they are identified for proportionate growth.</p>

Plans and Programmes	Type of document	Date	Overview	Key message, target/objective/indicator	SEA topic(s) ¹	Implications for the NDP and SEA
				<ul style="list-style-type: none"> To achieve sustainable communities and protect the environment To conserve, promote, utilise and enjoy our natural, built, historic and cultural assets for the fullest benefit of the whole community. <p>To achieve a thriving rural Herefordshire, the Core Strategy seeks to enhance the role the villages have traditionally played in as accessible, sustainable centres for their rural catchments.</p> <p>Walford is within the Ross on Wye Housing Market Area (HMA). The target for proportionate growth across identified areas is 14%.</p>		<p>The housing target for Walford within the plan period is 91 units. There have been 3 completions and 22 commitments from 2011 to April 2017, leaving a remaining balance of 66 dwellings to allocate.</p>
Herefordshire Local Transport Plan 2016-2031	Corporate	2016	The Local Transport Plan outlines the significant role that transport will play to enable the delivery	<p>The Transport Plan aims to increase highway capacity for new development sites as improve efficiency of existing transport network.</p> <p>The document includes</p>	<ul style="list-style-type: none"> Air Climate factors Population and human health 	The LTP does not explore current transport issues in the Walford neighbourhood area, but any new development proposed through the NDP should

Plans and Programmes	Type of document	Date	Overview	Key message, target/objective/indicator	SEA topic(s) ¹	Implications for the NDP and SEA
			of the Core Strategy proposals. This sets out the Council's strategy for supporting economic growth, social inclusion and reducing the environmental impacts of transport, as well as the program of investment for the period 2016 to 2031.	five key objectives, one which plans to enable economic growth connecting new roads with developments. Intrinsic to this is to provide a good quality transport network. The other objectives aim to promote healthy lifestyles with pollution reduction and active travel schemes. Improvements will be made to make journeys easier and safer, ensuring access to services for living in rural areas maximising accessibility.		seek to reduce the environmental impacts of transport.

Plans and Programmes	Type of document	Date	Overview	Key message, target/objective/indicator	SEA topic(s) ¹	Implications for the NDP and SEA
Understanding Herefordshire Report	Built and natural environment	2016	<p>Important to understand the place such as the local economy natural and built environment in which people live, learn and work as part of understanding their quality of life</p> <p>Promotion of healthy lifestyle choices.</p> <p>Enable development for economy and housing to required levels.</p> <p>Growth should be supported by sustainable transport measures.</p>	<p>An air quality management plan is in place to tackle this. Destination Hereford project is in place to give locals more sustainable transport options.</p> <p>Sustainable transport measures will also help to promote active lifestyles within Herefordshire.</p>	<p>Improve air quality.</p> <p>Have a more diverse range of transport options.</p>	None identified.

Plans and Programmes	Type of document	Date	Overview	Key message, target/objective/indicator	SEA topic(s) ¹	Implications for the NDP and SEA
Malvern Hills AONB Management Plan 2014-2019	Corporate	2015	The Management Plan is the prime document which sets out the vision and objectives for the Malvern Hills AONB area and the priorities for its management.	Identifies the issues and challenges facing the special features of the area and contains 21 guiding principles and 14 strategic objectives and 76 policies which will help address them.	<ul style="list-style-type: none"> • Air • Biodiversity • Climate factors • Cultural heritage and the landscape • Flora and fauna • Material assets • Population and human health • Soil • Water 	The Walford neighbourhood area is not within or adjacent to the Malvern Hills AONB.
Wye Valley AONB management Plan 2015-2020	Corporate	2015	The Management Plan is the prime document which sets out the vision for the Wye Valley AONB area and the priorities for its management.	Sets out a range of objectives which seek to reconcile the competing interests of the environment, the ecology and the social and economic well-being of the AONB.	<ul style="list-style-type: none"> • Air • Biodiversity • Climate factors • Cultural heritage and the landscape • Flora and fauna • Material assets • Population and human health • Soil • Water 	Most of the central and all of the western half of the Walford Neighbourhood Plan Area lies within the Wye Valley AONB so will need to take into consideration the AONB management Plan.
Herefordshire Economic Development Strategy 2011-2016	Corporate	2011	Aims to increase the economic wealth of Herefordshire by setting out	The document outlines the path and direction to foster economic vitality within Herefordshire. Key objectives therefore	<ul style="list-style-type: none"> • Cultural heritage and the landscape • Material assets • Population and 	None of merit.

This document is copyright of Herefordshire Council, please contact the Neighbourhood Planning team if you wish to reuse it in whole or part.

Plans and Programmes	Type of document	Date	Overview	Key message, target/objective/indicator	SEA topic(s) ¹	Implications for the NDP and SEA
			proposals and to support business growth up to 2016.	include: <ul style="list-style-type: none"> • Sustaining business survival and growth • Increasing wage levels, range and quality of jobs • Having a skilled population to meet future work needs • Developing the county's built infrastructure so enterprise can flourish. 	human health	
Herefordshire Employment Land Study	Evidence	2012	Includes employment land assessments for the plan period 2011-2031. The study includes Quantitative and Qualitative assessments of employment land, assessment of market demand and need, as well as providing forecasts and recommendations for future	This study covers existing employment sites in Hereford, the five market towns and their rural hinterlands. There are no employment land allocations within Walford at present and so the study does not identify sites which are worthy of continued protection from alternative uses. Nor does it make any recommendations in respect of employment need within the	<ul style="list-style-type: none"> • Material assets • Population and human health 	None of merit; however the NDP process may have to explore whether there is any employment need locally and if so whether there is any scope for providing employment land and premises.

Plans and Programmes	Type of document	Date	Overview	Key message, target/objective/indicator	SEA topic(s)¹	Implications for the NDP and SEA
			employment need over the plan period.	neighbourhood area.		

Plans and Programmes	Type of document	Date	Overview	Key message, target/objective/indicator	SEA topic(s) ¹	Implications for the NDP and SEA
Herefordshire Housing Land Availability Assessment (SHLAA)	Evidence	2015	<p>The HELAA aims to justify site allocations in plans by:</p> <ul style="list-style-type: none"> Identifying sites which are capable of delivering housing development Assessing sites for their housing potential; and Predicting when a site could be developed for housing. 	<p>Walford (Coughton) was one of the 48 main settlements surveyed in the original 2012 SHLAA. The 2015 SHLAA also identified a number of sites in Walford.</p> <p>2012 O/Wal/002 Land north of Coughton Place 1.29 O/Wal/003 Land east of Coughton Place 4.80 O/Wal/004 Land adjacent to Four Seasons 0.79 O/Wal/005 Land adjacent to the Lawns 2.65 O/Wal/006 Land adjacent to Fowbridge Garden 0.88 O/Wal/007 Land adjacent to Cedar Grove, 2.53 O/Wal/008 Land adjacent to Lower Wythall 6.77</p> <p>2015 HLAA/355/001 Land opposite the Old Vicarage 1.60</p>	<ul style="list-style-type: none"> Air Biodiversity Climate factors Cultural heritage and the landscape Flora and fauna Population and human health Soil Water 	<p>The parish of Walford has had a SHLAA assessment undertaken; an updated local site assessment exercise could be undertaken for this parish if site allocations are likely to be proposed.</p>

Plans and Programmes	Type of document	Date	Overview	Key message, target/objective/indicator	SEA topic(s) ¹	Implications for the NDP and SEA
Herefordshire Local Housing Market Assessment (LHMA)	Evidence	2013	Builds on an earlier Strategic Housing Market Assessment (SHMA) developed for Herefordshire and Shropshire. Its purpose is to inform the Local Plan's policies regarding housing need and demand (for market and affordable housing) within each of the 7 Housing Market Areas (HMAs) in Herefordshire between 2011 and 2031.	<p>Walford falls within Ross on Wye HMA. Here, the study reveals that:</p> <ul style="list-style-type: none"> • 55% of households are unable to afford market housing. • There is an annual requirement for 58 affordable dwellings between 2012 and 2017. <p>The study identifies that, in rural parts of the Ross on Wye HMA between 2011-2031, there is a need for:</p> <ul style="list-style-type: none"> • 690 market houses • 490 affordable houses. <p>The study highlights that within the Ross on Wye HMA the overall estimated housing need by size 2012-2017 is as follows: 1 Bed - 54.4%, 2 bed – 18.4%, 3 bed – 28.2%</p>	<ul style="list-style-type: none"> • Air • Biodiversity • Climate factors • Cultural heritage and the landscape • Flora and fauna • Population and human health • Soil • Water 	<p>The LHMA provides an indication of housing needs and affordability within the Ross on Wye HMA.</p> <p>It provides evidence that could be used to inform policies or market and affordable housing requirements in the Walford NDP.</p>

Plans and Programmes	Type of document	Date	Overview	Key message, target/objective/indicator	SEA topic(s) ¹	Implications for the NDP and SEA
Herefordshire Local Housing Requirements Study 2012 (updated in 2014)	Evidence	2014	Technical assessment of the housing market and potential future local housing requirements which supports planning policy regarding the amount of growth, housing tenure and housing type needed within Herefordshire up to 2031.	<p>The delivery of 5,300 homes in the rural areas would:</p> <ul style="list-style-type: none"> • Support growth in the rural population by 6% • Increase the number of households by 14.5% <p>Forecasts also predict that growth in the population of the rural areas is likely to be primarily through an increase in those aged over 75.</p> <p>Moderate growth is expected in the 30-44 and 60-74 age brackets.</p> <p>The Local Housing Requirements Study therefore anticipates continuing improvements in life expectancy; significant growth is expected of those in their 80s, with the existing population in their 40s and 50s moving into retirement. As a consequence, the rural areas will face an</p>	<ul style="list-style-type: none"> • Air • Biodiversity • Climate factors • Cultural heritage and the landscape • Flora and fauna • Material assets • Population and human health • Soil • Water 	<p>This study provides an indication of housing requirements in the rural areas and the Ross on Wye HMA.</p> <p>This evidence can be used to inform the content of the Walford NDP, which could include policies to facilitate the provision of the right types of homes in the right places</p>

Plans and Programmes	Type of document	Date	Overview	Key message, target/objective/indicator	SEA topic(s) ¹	Implications for the NDP and SEA
				increasing urgency to provide more 3 bedroom homes, with more 1 and 2 bed homes required in the affordable sector.		
Herefordshire Rural Housing Background Report	Evidence	2013	Provides the justification for the proportional housing growth targets outlined in the Core Strategy	Walford is a 4.14, Bishopswood and Howle Hill are 4.15 settlements, which combined are expected to provide proportional growth of 14%.	<ul style="list-style-type: none"> • Air • Biodiversity • Climate factors • Cultural heritage and the landscape • Flora and fauna • Material assets • Population and human health • Soil • Water 	The Walford NDP will need to be in conformity with the provisions of Core Strategy Policy RA1 and RA2.
Herefordshire Draft Gypsies and Travellers Assessment	Evidence	2016	Assesses the accommodation needs of Gypsies and Travellers across Herefordshire.	<p>Key findings from the survey of Gypsy and Traveller households in 2012 found that:</p> <ul style="list-style-type: none"> • 31% of households surveyed have some sort of accommodation need • Of the 17 households with an 	<ul style="list-style-type: none"> • Air • Biodiversity • Climate factors • Cultural heritage and the landscape • Flora and fauna • Material assets • Population and human health • Soil 	The Walford NDP must establish whether any of the need identified in this assessment falls within the neighbourhood area and make appropriate provisions for it.

Plans and Programmes	Type of document	Date	Overview	Key message, target/objective/indicator	SEA topic(s) ¹	Implications for the NDP and SEA
				<p>accommodation need, 7 had a requirement for at least one additional pitch</p> <ul style="list-style-type: none"> • 10 households had a requirement for bricks and mortar housing • There is an additional requirement for 7 pitches and 9 units of Registered Social Landlord accommodation within Herefordshire. 	<ul style="list-style-type: none"> • Water 	
Herefordshire Local Biodiversity Action Plan	Evidence	2007	Focuses conservation efforts on the areas within Herefordshire that will result in the greatest benefit for ecological networks, habitats and species.	Integrating biodiversity objectives with other environmental, social and economic needs can provide a sustainable living and working environment that benefits both people and nature.	<ul style="list-style-type: none"> • Biodiversity 	The NDP can help to achieve the LBAP priorities.

Plans and Programmes	Type of document	Date	Overview	Key message, target/objective/indicator	SEA topic(s) ¹	Implications for the NDP and SEA
Building Biodiversity into the LDF	Evidence	2009	Provides the Council's Local Plan (Core Strategy) with evidence in respect of biodiversity and geodiversity, identifying both opportunities and constraints across Herefordshire.	This document provides useful information in respect of Hereford and the market towns only.	<ul style="list-style-type: none"> • Air • Biodiversity • Climate factors • Cultural heritage and the landscape • Flora and fauna • Material assets • Population and human health • Soil • Water 	There is a lack of information about rural areas which means it will be necessary to gather and assess existing biodiversity and geodiversity data, in order to ensure that the Walford NDP can overcome any existing constraints and capitalise on opportunities to enhance habitats and their networks.
Herefordshire Green Infrastructure Strategy	Evidence	2010	Develops a framework of natural and culturally important features and functions so that planning for a sustainable future is at the heart of planning within Herefordshire.	Establishes policies and principles for the protection and enhancement of those features and functions that contributes to the environment of Herefordshire across a range of scales.	<ul style="list-style-type: none"> • Air • Biodiversity • Climate factors • Cultural heritage and the landscape • Flora and fauna • Material assets • Population and human health • Soil • Water 	The study provides evidence that could be taken into account when preparing policies for the Walford NDP .

Plans and Programmes	Type of document	Date	Overview	Key message, target/objective/indicator	SEA topic(s) ¹	Implications for the NDP and SEA
Renewable Energy Study	Evidence	2010	Assesses the energy demand within Herefordshire and the ability for the county to accommodate renewable and low carbon energy technologies.	<p>The total energy demand excluding transport for Herefordshire, at that point in time, was calculated as being:</p> <ul style="list-style-type: none"> • Electrical: 731 GWh/yr • Heat: 1,810 GWh/yr • Total: 2,541 GWh/yr <p>There is scope for all types of renewable energy production.</p>	<ul style="list-style-type: none"> • Air • Biodiversity • Climate factors • Cultural heritage and the landscape • Flora and fauna • Material assets • Population and human health • Soil • Water 	The study provides evidence that could be taken into account when preparing policies for the Walford NDP .

Plans and Programmes	Type of document	Date	Overview	Key message, target/objective/indicator	SEA topic(s) ¹	Implications for the NDP and SEA
Herefordshire Playing Pitch Assessment	Evidence	2012	Produces a strategic framework, audit and assessment and needs analysis of outdoor sports pitches and facilities for Herefordshire. The document arises as a result of a recommendation in the Herefordshire and Worcestershire Sports Facilities Framework to develop local standards for playing fields and sports pitches throughout Herefordshire.	<p>The study updates components of the Herefordshire and Worcestershire Sports Facilities Framework 2010 such as updating population forecasts, setting local standards for synthetic turf pitches and grass playing fields within Herefordshire. It identifies any current gaps in provision, and looks forward to 2031 to assess what facilities are likely to be required by that date.</p> <p>In terms of Walford parish itself, the study reveals that there is:</p> <ul style="list-style-type: none"> 2.7ha of playing pitch area (at the Primary School) <p>There are no hectares of playing pitch area with secured community access, however there is informal use of the facilities which have been rated as having a quality of 62% with no changing accommodation.</p>	<ul style="list-style-type: none"> Biodiversity Cultural heritage and the landscape Flora and fauna Material assets Population and human health 	<p>The study provides evidence that could be taken into account when preparing policies for the Walford NDP.</p> <p>Additional local evidence may be required to identify if there is a need for any secured playing pitch facilities within the Parish.</p>

Plans and Programmes	Type of document	Date	Overview	Key message, target/objective/indicator	SEA topic(s) ¹	Implications for the NDP and SEA
Open Spaces Study	Evidence	2006	The 2006 space audit and assessment of need is a snap shot of the quality, quantity and distribution of open space across Herefordshire.	<p>Key findings that Ross on Wye area there is an:</p> <ul style="list-style-type: none"> • Extensive under provision of parks, amenity green space, outdoor sport and gardens. • Extensive over provision for natural and semi natural green space. • And an average provision for facilities for children and young people. <p>Open space for the Walford Neighbourhood area is not specifically referred to but falls within the Ross on Wye area.</p>	<ul style="list-style-type: none"> • Biodiversity • Climate factors • Cultural heritage and the landscape • Flora and fauna • Material assets • Population and human health 	The open space audit and assessment of does not give a specific indication of open space shortfalls and surpluses in Walford .

Plans and Programmes	Type of document	Date	Overview	Key message, target/objective/indicator	SEA topic(s) ¹	Implications for the NDP and SEA
Play Facilities Study	Evidence	2012	The Play Facilities Study 2012 updates the previous play facilities analysis under the Open Spaces Study 2006 and provides guidance and a framework for the development, delivery and continued sustainability of providing new and improved play facilities for children and young people in Herefordshire to 2031.	<p>In terms of Walford itself, the study reveals that there is no formal play provision in the village itself, although a new facility is proposed subject to availability and funding.</p> <p>Since the 2012 assessment a new play facility has been completed and is suitable for younger children.</p>	<ul style="list-style-type: none"> • Biodiversity • Climate factors • Cultural heritage and the landscape • Flora and fauna • Material assets • Population and human health 	The study provides evidence that could be taken into account when preparing policies for the Walford NDP .
Strategic Flood Risk Assessment (SFRA) and Water Cycle Study	Evidence	2009	The Strategic Flood Risk Assessment (SFRA) provides a summary of flood risk in Herefordshire to inform the location of future	<p>Walford is classified as an area at highest risk of fluvial flooding in the Lower Wye catchment. Therefore requires a holistic integrated approach to flood risk management.</p> <p>Walford sits within the</p>	<ul style="list-style-type: none"> • Biodiversity • Climate factors • Material assets • Population and human health • Water 	<p>New development proposed through the Walford NDP should be assessed against the capacity of local infrastructure.</p> <p>Up-to-date flood risk information should be</p>

Plans and Programmes	Type of document	Date	Overview	Key message, target/objective/indicator	SEA topic(s) ¹	Implications for the NDP and SEA
			<p>development.</p> <p>The Water Cycle Study examines how water resources and water supply infrastructure, wastewater treatment, water quality, sewerage and flood risk could constrain growth across Herefordshire.</p>	<p>Ross on Wye Water Resource Zone (WRZ).</p> <p>The Lower Wye Catchment is part of a large linear ecosystem which acts as an important wildlife corridor, an essential migration route and breeding area for many nationally and internationally important species.</p> <p>SPR 10 – 20% - Potentially highly suitable for infiltration source control</p> <p>UH Tp 6 – 7 hours = Moderately rapid response catchment.</p> <p>The Lower Wye has a 14.9 standard percentage run off.</p> <p>The Lower Wye is identified as a nutrient sensitive water body under the urban waste water treatment directive.</p>		gathered from the Environment Agency, in order to ensure that any flood risks are considered when preparing the Walford NDP.

Appendix A2 – Baseline information for Walford.

N.B. This is based on countywide baseline information with some additions relevant to Walford (in red). Where no locally specific data is available for current status, trends and targets, only countywide data is reported. Any gaps in data may be filled following additional research.

SA Objective ¹	SA Theme	Proposed indicator	Current status	Trends	Targets	Issues and constraints	Baseline (information) source
SEA Topic covered by objective: <i>Biodiversity, flora and fauna</i>							
13. Value, maintain, restore and expand county biodiversity.	Natural environment	Net change in condition of SSSIs across Herefordshire.	The 2011-2013 AMR does not contain updated conservation data. 2010/11: 27% of Herefordshire's SSSI land was in favourable condition. Within Walford there are 2 SSSIs. River Wye (Unfavourable Recovering)(Border); Coughton Wood & Marsh	2006: 22% 2007: 22% 2008: 22% 2010: 24 % Proportion of SSSI land that was in unfavourable condition but recovering increased between 2010 and 2012 going from 41% to 65%. Proportion in unfavourable and declining	% of SSSI land in favourable condition (Increase) % of SSSI land in unfavourable condition but recovering (Increase) % of SSSI land in unfavourable condition and declining (Decrease)	Herefordshire's SSSIs are in extremely poor condition relative to England as whole, where 96.1% of all SSSI land was in favourable condition in April 2014. The proportion of SSSI in unfavourable condition but recovering is greater than England as a	Understanding Herefordshire: An integrated needs assessment NE & DEFRA Website

¹ Derived from the Pre Submission Core Strategy Sustainability Appraisal Assessment (May 2014)

SA Objective ¹	SA Theme	Proposed indicator	Current status	Trends	Targets	Issues and constraints	Baseline (information) source
			(Unfavourable Recovering)	condition had also decreased from 4% to 1%.		whole, where the figure currently stands at 58.6%.	
13. Value, maintain, restore and expand county biodiversity.	Natural environment	After use of mineral sites especially wildlife habitat creation	<i>There is no countywide or locally specific data available at present.</i>	-	Percentage of opportunities taken.	Should be monitored through AMR following the adoption of the Core Strategy, in line with SA recommendations	-
13. Value, maintain, restore and expand county biodiversity.	Natural environment	Phosphate levels within the River Wye SAC and adjoining tributaries that receive increased phosphates from proportional growth.	Walford NDP falls within the River Wye SAC. The parish is within the River Wye catchment area.	N/A	N/A	N/A	Nutrient Management Plan

SA Objective ¹	SA Theme	Proposed indicator	Current status	Trends	Targets	Issues and constraints	Baseline (information) source
13. Value, maintain, restore and expand county biodiversity.	Natural environment	Changes to protected habitats and impacts of species within the Herefordshire Local Biodiversity Action Plan.	<p>The 2013 - 2014 AMR does not contain updated conservation data.</p> <p><i>There is no locally specific data available at present.</i></p>	<p>2010/11: 17 Habitat Action Plans and 14 Species Action Plans are currently in operation across Herefordshire.</p> <p>There are no formal records of any unacceptable adverse impacts on habitats or protected species.</p> <p>Originally 156 Priority Species were identified for inclusion in Herefordshire's LBAP.</p> <p>Similarly Herefordshire's LBAP</p>	<p>To protect and where possible enhance the habitats of protected species identified.</p> <p>No net losses.</p>	Herefordshire Biological Records Centre (HBRC) holds limited data on some individual sites.	Herefordshire Council AMR (2013/14)
<p>This document is copyright of Herefordshire Council. Please contact the Neighbourhood Planning team if you wish to reuse it in whole or part.</p> <p style="text-align: right;">Page 3 of 15</p>							

SA Objective ¹	SA Theme	Proposed indicator	Current status	Trends	Targets	Issues and constraints	Baseline (information) source
13. Value, maintain, restore and expand county biodiversity.	Natural environment	Changes in the areas of designated nature conservation sites as a consequence of planning permission.	<p>Walford NDP area has:</p> <p>SSSI: 2 SAC: 3 SWS: 10</p> <p>There are no, NNRs and LNRs within the parish.</p>	As of 2012, there had been no change in the areas of designated nature conservation sites as a consequence of the planning permissions granted.	<p>To protect and where possible enhance the habitats of protected species identified.</p> <p>No net losses.</p>	Herefordshire Biological Records Centre (HBRC) holds limited data on some individual sites.	<p>Herefordshire Council Initial Screening Report for the Neighbourhood Plan</p> <p>Walford March 2018</p>
13. Value, maintain, restore and expand county biodiversity.	Natural environment	Proportion of local sites where positive conservation management has or is being implemented	<p>The Parish Area has the following landscape types:</p> <p>Principal settled farmlands; Principal Wooded Hills; Wooded Hills and Farmlands; Riverside meadows; Forest Smallholdings and Dwellings,</p>	-	No specific targets identified.	Should be monitored through AMR following the adoption of the Core Strategy, in line with SA recommendations	Herefordshire Landscape Character Assessment (2004 updated 2009)

SA Objective ¹	SA Theme	Proposed indicator	Current status	Trends	Targets	Issues and constraints	Baseline (information) source
SEA Topic covered by objectives: <i>Material assets</i>							
14. Use natural resources and energy more efficiently.	Resource consumption and climate change	Maintaining Herefordshire Council's County Site and Monuments Register.	Countywide data would be too large to incorporate into Whilst there is no qualitative, locally specific data available at present, there are 256 scheduled monuments in Walford according to the latest version of the register.	-	No specific targets identified, but need to ensure that the register is kept up to date.	Should be monitored through AMR following the adoption of the Core Strategy, in line with SA recommendations	Herefordshire Environmental Records Register (search March 2018)
14. Use natural resources and energy more efficiently.	Resource consumption and climate change	Monitoring changes to historic landscapes.	Historic Landscape Character assessments have only been undertaken for	-	No specific targets identified.	Should be monitored through AMR following the adoption of the Core Strategy, in line with SA	Historic Landscape Character Assessment for Hereford.

SA Objective ¹	SA Theme	Proposed indicator	Current status	Trends	Targets	Issues and constraints	Baseline (information) source
			Hereford City. Rapid townscape Assessments (2010) were only undertaken for Hereford, Ledbury and Ross.			recommendations	Rapid townscape Assessments (2010)
SEA Topic covered by objective: <i>Population, Biodiversity, Flora and Fauna</i>							
15. Value, protect, enhance and restore the landscape quality of Herefordshire, including its rural areas and open spaces.	Natural environment	Number of developments meeting and surpassing national design standards.	<i>There is no countywide or locally specific data available at present.</i>	-	No specific targets identified.	Should be monitored through AMR following the adoption of the Core Strategy, in line with SA recommendations.	-

SA Objective ¹	SA Theme	Proposed indicator	Current status	Trends	Targets	Issues and constraints	Baseline (information) source
15. Value, protect, enhance and restore the landscape quality of Herefordshire, including its rural areas and open spaces.	Natural environment	The need for, frequency and outcomes of planning enforcement investigations / planning appeals concerning aspects of local loss of heritage assets and locally important buildings. There is no conservation area within Walford.	Countywide data would be too large to incorporate into this template. There are no outstanding enforcement actions or appeals concerning local loss of heritage assets and locally important buildings within Walford at present.	No historic records of any planning enforcement action or appeals concerning locally important buildings .There is no conservation area within Walford.	To wherever possible improve upon or otherwise maintain current status.	Current status must be verified by Dvt Mgt and Enforcement Officers, but the NDP can help to avoid enforcement action and appeals during the plan period.	Council Dvt Mgt records (searched March 2018)
SEA Topic covered by objective: <i>Climatic Factors</i>							

SA Objective ¹	SA Theme	Proposed indicator	Current status	Trends	Targets	Issues and constraints	Baseline (information) source
16. Reduce Herefordshire's vulnerability to the impacts of climate change as well as its contribution to the problem.	Resource consumption and climate change.	Transport patronage by mode	<p>% of Herefordshire residents who travel to work by:</p> <p>Car: 70.1% Foot: 14.7% Bicycle: 4.3% Bus: 2% Train: 0.8% Motorbike: 0.8% Taxi: 0.3% Other: 7%</p> <p><i>There is no locally specific data available at present</i></p>	<p>The number of people cycling or travelling by bus as the main form transport to get to work declined between 2001 and 2011 – across England and Wales there was little change in either. Walking or driving a car or van on the other hand increased.</p>	To encourage the take up of lesser polluting modes of transport.	<p>There are a lack of transport options for many rural communities and therefore high car ownership and dependency – the last decade has seen a 15 per cent increase in household car ownership, although this is not reflected in traffic flows of recent years with volumes in Hereford City and wider county having decreased. The proportion of people working from home increased over the decade from 15 per cent in 2001 to 17 per cent in 2011.</p>	2011 Census

SA Objective ¹	SA Theme	Proposed indicator	Current status	Trends	Targets	Issues and constraints	Baseline (information) source
16. Reduce Herefordshire's vulnerability to the impacts of climate change as well as its contribution to the problem.	Resource consumption and climate change.	Number of decentralised energy schemes granted permission.	<i>There is no countywide or locally specific data available at present.</i>	-	To contribute towards the national target.	Should be monitored through AMR following the adoption of the Core Strategy, in line with SA recommendations.	-
16. Reduce Herefordshire's vulnerability to the impacts of climate change as well as its contribution to the problem.	Resource consumption and climate	Total CO2 emissions per capita	<p>Latest figure dates back to 2010: 1.61 million tonnes (mtCO²)</p> <p>Domestic emissions accounted for 35 per cent (438,237 tonnes) of Herefordshire's carbon footprint.</p> <p>There is no locally specific data available at present.</p>	Between 2005 and 2010 Herefordshire's total and per capita carbon emission reduced by 7% and 8% respectively; while UK's total and per capita carbon emission reduced by 8% and 12% respectively within the same period. This trend	To reduce the overall carbon emissions.	CO ² emissions produced are decreasing.	<p>Understanding Herefordshire: An integrated needs assessment (June 2013).</p> <p>Understanding Herefordshire: Joint Strategic Needs Assessment (July 2015).</p>

SA Objective ¹	SA Theme	Proposed indicator	Current status	Trends	Targets	Issues and constraints	Baseline (information) source
				hides an increase in emissions between 2009 and 2010 when total emissions in the county increased by 5% the same as across the UK (+5%).			
SEA Topic covered by objective: <i>Water</i>							
17. Reduce the risk of flooding and the resulting detriment to public wellbeing, the economy and the environment.	Natural environment	Number of planning permissions granted contrary to the advice of the Environment Agency on flood defence grounds.	2010/11: None 2011/13: Not specified 2013/14: None <i>There is no locally specific data available at present.</i>	There have been no approvals contrary to EA advice since reporting began in 2004.	To have no applications permitted contrary to EA advice.	None identified.	Herefordshire Council AMR (2010/11)

SA Objective ¹	SA Theme	Proposed indicator	Current status	Trends	Targets	Issues and constraints	Baseline (information) source
SEA Topic covered by objective: <i>Water, air, soil, material assets</i>							
18. Minimise local and global pollution and protect or enhance environmental resources.	Natural environment	Agricultural land usage by quality . LA to monitor the number of hectares of the best and most versatile agricultural land (grades 3a and higher) lost to development.	The agricultural land classification around Walford is mainly Grade 3 and 4 (Good to poor) with a significant amount of Grade 1 & 2 (Excellent to V Good). There is also a small patch of Very Poor (Grade 5) land near Coughton.	-	Measure the number of hectares of best and most versatile soil lost through development.	Should be monitored through AMR following the adoption of the Core Strategy, in line with SA recommendations	DEFRA 'Magic' website for land classification

SA Objective ¹	SA Theme	Proposed indicator	Current status	Trends	Targets	Issues and constraints	Baseline (information) source
18. Minimise local and global pollution and protect or enhance environmental resources.	Natural environment	Percentage of river length assessed as good or very good chemical quality and ecological quality as required by the Water Framework Directive	Latest figure dates back to 2005: 84% <i>There is no locally specific data available at present.</i>	Figure steadily improved before going into decline: Herefordshire 1999 85.9%, 2000 89.5%, 2001 92.2%, 2002 91.8%	To ensure that rivers meet their conservation objectives and do not fall below the required standard of quality.	None identified.	The State of Herefordshire (2007) Water Framework Directive (2000)
SEA Topic covered by objective: <i>Soil</i>							
19. Ensure integrated, efficient and balanced land use.	Built environment	Percentage of all new development completed on previously developed land.	2010/11: 67% 2011-13: 57% 2013-14: 65% <i>There is no locally specific data available at</i>	Completions on PDL had risen to 71% by 2005.	To increase the number of homes built on PDL in line with the provisions of national planning policy.	The number of brownfield completions has fallen slightly in recent years, though this is probably the offshoot of tough market conditions.	Herefordshire Council AMR (2010/11),(2011-2013) and (2013-2014)

SA Objective ¹	SA Theme	Proposed indicator	Current status	Trends	Targets	Issues and constraints	Baseline (information) source
			<i>present.</i>				
19. Ensure integrated, efficient and balanced land use.	Built environment	Housing densities in urban and rural areas	<i>There is no countywide or locally specific data available at present.</i>	-	No specific targets identified.	Should be monitored through AMR following the adoption of the Core Strategy, in line with SA recommendations	-
19. Ensure integrated, efficient and balanced land use.	Built environment	Level of development in urban areas compared to rural.	<i>There is no countywide or locally specific data available at present.</i> This indicator would not be applicable to rural NDPs.	N/A	N/A	N/A	N/A
SEA Topic covered by objective: <i>Cultural heritage</i>							
20. Value, protect and enhance the character and built quality of settlements and	Built environment	Number and percentage of listed buildings and Scheduled	Up-to-date countywide information will be presented in the next AMR and which is due to be	There were 71 heritage assets in Herefordshire that were considered to	To wherever possible improve upon or otherwise maintain current	None of Walford's listed buildings or SAMs are considered to be at risk at present.	Buildings at Risk Register (Historic England; search March 2018)

SA Objective ¹	SA Theme	Proposed indicator	Current status	Trends	Targets	Issues and constraints	Baseline (information) source
neighbourhoods and the county's heritage assets, including conservation areas, historic environment and cultural heritage.		Ancient Monuments on Buildings at Risk Register (Historic England).	published in 2014. However, this data would be too large to incorporate into this template. There are numerous listed buildings within the parish and two SAMs. None are currently recorded in the Buildings at Risk Register	be at high risk and included in the Heritage at Risk Register January 2017.	status.		

SA Objective ¹	SA Theme	Proposed indicator	Current status	Trends	Targets	Issues and constraints	Baseline (information) source
20. Value, protect and enhance the character and built quality of settlements and neighbourhoods and the county's heritage assets, including conservation areas, historic environment and cultural heritage.	Built environment	The need for, frequency and outcomes of planning enforcement investigations/ planning appeals concerning aspects of local loss of heritage assets, locally important buildings within the parish and particularly within a conservation area.	Countywide data would be too large to incorporate into this template. There are no outstanding enforcement actions or appeals concerning local loss of heritage assets locally important buildings within Walford.	No historic records of any planning enforcement action or appeals concerning locally important buildings. There is no conservation area within Walford	To wherever possible improve upon or otherwise maintain current status	Current status must be verified by Dvt Mgt and Enforcement Officers, but the NDP can help to avoid enforcement action and appeals during the plan period.	Council Dvt Mgt records (searched March 2018)

Appendix A3 – Environmental issues identified from the Walford NDP baseline

These environmental issues are the same as most of those identified for the Herefordshire Core Strategy¹

SEA Topic		Environmental issue	SA objectives
1	Air	High reliance upon the private car causing high levels of air pollution and in Hereford in particular	Objective 16
		Need to reduce carbon emissions by encouraging alternative modes of travel.	
2	Biodiversity	Habitats and species of national, regional and local importance are under pressure from the adaptation and diversification of farming and forestry employment.	Objectives 13 & 15
		Habitats and species of national, regional and local importance are under pressure from development	
		Minimise loss of biodiversity and expand opportunities for wildlife everywhere.	
3	Climatic factors	Continuing need to reduce greenhouse gas emissions through planning, design and build.	Objective 16
4	Cultural heritage	Walford Parish has numerous listed buildings and two Scheduled Ancient Monuments, all of which require ongoing protection and many in need of high levels of maintenance.	Objective 20
5	Flora and fauna	Conserve and enhance the character and quality of historic landscapes, including all types of natural flora and fauna.	Objective 15
6	Material assets	How the countryside can continue to be managed in an economically, socially and environmentally beneficial way in the face of continuing pressures on traditional farming.	Objectives 14 & 18
7	Population	Minimise energy waste through good designs, which help to reduce energy consumption and maximise efficiency.	Objective 15
		Need to avoid enforcement investigations/action concerning locally important buildings and those within conservation areas in particular.	
8	Soil	Promoting development of previously developed land and buildings as opposed to greenfield sites or agricultural land of the highest quality.	Objectives 18 & 19

¹ Derived from the Pre-submission Core Strategy Sustainability Appraisal Assessment (May 2014) and LDF General Scoping Report (June 2007)

9	Water	Issues relating to availability of resources, foul drainage, pollution, and abstraction in a county which supports water dependent biodiversity of international and national importance, given the predicted climate change consequences for water availability and demanding projections for new housing.	Objectives 17 & 18
		Steady decline in the chemical quality of rivers over the last 10 years.	

Appendix A4: SEA Framework

SEA Scoping Stage A, Task A4 - SEA Framework SEA Objectives, Indicators, Targets

Parish Council Name: Walford

Neighbourhood Development Plan Name: Walford Neighbourhood Plan

Date completed: March 2018

SEA Topics	SA Objective	SEA Objective	Sub-objectives / Appraisal Questions (Will the option/proposal/site...)	Indicators	Targets
Nature Conservation (Biodiversity, flora and fauna)	<p>Value, maintain, restore or expand county biodiversity.</p> <p>Value, protect, enhance or restore the landscape quality of Herefordshire, including its rural areas and open spaces.</p>	To maintain and enhance nature conservation (biodiversity, flora and fauna)	<ul style="list-style-type: none"> Protect or enhance habitats of international, national, regional or local importance. Protect international, national, regional or locally important terrestrial or aquatic species. Maintain wildlife corridors and minimise fragmentation of ecological areas and green spaces. Manage access to sites in a sustainable way that protects or enhances their nature conservation value. Create new 	<p>Net change in condition of SSSIs across Herefordshire.</p> <p>After use of mineral sites especially wildlife habitat creation</p> <p>Changes to protected habitats and impacts of species within the Herefordshire Local Biodiversity Action Plan.</p>	<p>% of SSSI land in favourable condition (Increase)</p> <p>% of SSSI land in unfavourable condition but recovering (Increase)</p> <p>% of SSSI land in unfavourable condition and declining (Decrease)</p> <p>Percentage of opportunities taken</p> <p>To protect and where possible enhance the habitats of protected species identified.</p> <p>No net losses</p>

SEA Topics	SA Objective	SEA Objective	Sub-objectives / Appraisal Questions (Will the option/proposal/site...)	Indicators	Targets
			<p>appropriate habitats.</p> <ul style="list-style-type: none"> • Value, enhance and protect natural environmental assets including AONB's, historic landscapes, open spaces, parks and gardens and their settings • Encourage local stewardship of local environments, for example by promoting best practices in agricultural management • Ensure that environmental impacts caused by mineral operations and the transport of minerals are minimised. • Promote the use of rural areas and open space by all, encourage easy non-car based access, and accommodate the needs of 		

SEA Topics	SA Objective	SEA Objective	Sub-objectives / Appraisal Questions (Will the option/proposal/site...)	Indicators	Targets
			disabled users.		
Landscape	Not covered in SA	To maintain and enhance the quality of landscapes and townscapes To improve quality of surroundings	<ul style="list-style-type: none"> Protect and enhance the landscape everywhere and particularly in designated areas Value and protect diversity and local distinctiveness Improve landscape and ecological quality and character of the countryside Improve the quantity and quality of publicly accessible open space Improve satisfaction of people with their neighbourhoods as places to live Decrease litter and graffiti in towns and countryside Result in the loss of open space 	<p>Changes in the areas of designated nature conservation sites as a consequence of planning permission.</p> <p>Proportion of local sites where positive conservation management has or is being implemented.</p> <p>Monitoring changes to historic landscapes.</p> <p>Area resulting in a loss of open space as a result of planning permission</p>	<p>To capitalise on opportunities to enhance the areas of value to nature conservation as much as possible.</p> <p>No specific targets identified.</p> <p>No specific targets identified.</p> <p>No specific targets identified</p>

SEA Topics	SA Objective	SEA Objective	Sub-objectives / Appraisal Questions (Will the option/proposal/site...)	Indicators	Targets
Heritage	Value, protect or enhance the character and built quality of settlements and neighbourhoods and the county's heritage assets, historic environment and cultural heritage.	To conserve and where appropriate enhance the historic environment, heritage assets and culture heritage	<ul style="list-style-type: none"> • Preserve, protect and enhance heritage assets including conservation areas, listed buildings, archaeological sites and other culturally important features in both urban and rural settings. • Prevent development which is inappropriate in scale, form or design to its setting or to its function or local area. • Encourage development that creates and sustains well-designed, high quality built environments that incorporate green space, encourage biodiversity and promote local distinctiveness and sense of place. 	<p>The need for, frequency and outcomes of, planning enforcement investigations/planning appeals concerning aspects of loss of locally important buildings within a conservation area.</p> <p>Number and percentage of listed buildings and Scheduled Ancient Monuments on Buildings at Risk Register (English Heritage).</p> <p>Ensure that Herefordshire Council's Sites and Monuments Register is kept up to date.</p>	<p>To improve upon or otherwise maintain current status.</p> <p>To improve upon or otherwise maintain current status.</p> <p>No specific targets identified, but need to ensure that the register is kept up to date.</p>

SEA Topics	SA Objective	SEA Objective	Sub-objectives / Appraisal Questions (Will the option/proposal/site...)	Indicators	Targets
			<ul style="list-style-type: none">• Encourage cleanliness and/or improve the general appearance of the area.		

SEA Topics	SA Objective	SEA Objective	Sub-objectives / Appraisal Questions (Will the option/proposal/site...)	Indicators	Targets
Air and Climate	<p>Minimise local and global pollution and protect or enhance environmental resources.</p> <p>Reduce Herefordshire's vulnerability to the impacts of climate change as well as its contribution to the problem.</p>	<p>To improve air quality</p> <p>To reduce the effect of traffic on the environment</p> <p>To reduce contributions to climate change</p> <p>To reduce vulnerability to climate change</p>	<ul style="list-style-type: none"> Minimise water, air, soil, groundwater, noise and light pollution from current activities and the potential for such pollution. Protect or enhance the quality of watercourses. Provide opportunities to improve soil quality or reduce contaminated land. Reduce the county's contribution to climate change by reducing greenhouse gas emissions from transport, domestic, commercial and industrial sources. Increase the proportion of energy generated from renewable and low carbon sources including by micro-generation, 	<p>Transport patronage by mode</p> <p>Number of decentralised energy schemes granted permission.</p> <p>Total CO2 emissions per capita</p>	<p>To increase the take up of alternative modes to the private car.</p> <p>To contribute towards the national target.</p> <p>To reduce the overall carbon emissions.</p>

SEA Topics	SA Objective	SEA Objective	Sub-objectives / Appraisal Questions (Will the option/proposal/site...)	Indicators	Targets
			Combined Heat and Power (CHP), district heating and in transportation.		

SEA Topics	SA Objective	SEA Objective	Sub-objectives / Appraisal Questions (Will the option/proposal/site...)	Indicators	Targets
Water	<p>Reduce the risk of flooding and the resulting detriment to public well-being, the economy and the environment.</p> <p>Minimise local and global pollution and protect or enhance environmental resources.</p>	<p>To improve water quality</p> <p>To provide for sustainable sources of water supply</p> <p>To avoid, reduce and manage flood risk</p>	<ul style="list-style-type: none"> • Reduce flood risk both presently and taking into account climate change. • Prevent inappropriate development of the floodplain, and include flood protection systems. • Include sustainable urban drainage systems where appropriate. • Minimise water, air, soil, groundwater, noise and light pollution from current activities and the potential for such pollution. • Protect or enhance the quality of watercourses. 	<p>Number of planning permissions granted contrary to the advice of the Environment Agency on flood defence grounds.</p> <p>Percentage of river length assessed as good or very good chemical quality and ecological quality</p> <p>Phosphate levels within the River Wye SAC and adjoining tributaries that receive increased phosphates from proportional growth.</p>	<p>To have no applications permitted contrary to EA advice.</p> <p>To ensure that rivers meet their conservation objectives and do not fall below the required standard of quality as set out in the Water Framework Directive.</p> <p>To meet the targets set out in the Nutrient Management Plan (2014)</p>

SEA Topics	SA Objective	SEA Objective	Sub-objectives / Appraisal Questions (Will the option/proposal/site...)	Indicators	Targets
Soil	<p>Minimise local and global pollution and protect or enhance environmental resources.</p> <p>Ensure integrated, efficient and balanced land use.</p>	<p>To conserve soil resources and quality</p> <p>Ensure integrated, efficient and balanced land use.</p>	<ul style="list-style-type: none"> Minimise water, air, soil, groundwater, noise and light pollution from current activities and the potential for such pollution. Provide opportunities to improve soil quality or reduce contaminated land. Ensure new developments are in appropriate locations, optimising the use of previously developed land and buildings, primarily focussed on the urban areas and are accessible by walking, cycling or sustainable transport and/or will increase the share of these transport modes, thereby reducing the need to travel. 	<p>Percentage of all new development completed on previously developed land.</p> <p>Amount of land identified as best and most versatile agricultural land lost to development.</p>	<p>To increase the number of homes built on PDL in line with the provisions of national planning policy.</p> <p>Measure the number of hectares of best and most versatile soil lost through development.</p>
Population and Human Health	Value, protect, enhance or restore the landscape quality of Herefordshire,	<p>To improve health of the population</p> <p>To reduce crime and nuisance</p>	<ul style="list-style-type: none"> Value, enhance and protect natural environmental assets including AONB's, historic landscapes, open 	Number of developments meeting and surpassing national design	No specific targets identified.

SEA Topics	SA Objective	SEA Objective	Sub-objectives / Appraisal Questions (Will the option/proposal/site...)	Indicators	Targets
	including its rural areas and open spaces.		<p>spaces, parks and gardens and their settings.</p> <ul style="list-style-type: none"> • Encourage local stewardship of local environments, for example by promoting best practices in agricultural management. • Ensure that environmental impacts caused by mineral operations and the transport of minerals are minimised. • Promote the use of rural areas and open space by all, encourage easy non-car based access, and accommodate the needs of disabled users. 		
Material Assets	Use natural resources and energy more efficiently.	To conserve natural and manmade resources	<ul style="list-style-type: none"> • Maximise energy efficiency and minimise the consumption of non-renewable energy i.e. from 	The need for, frequency and outcomes of planning enforcement investigations/ planning appeals concerning the aspects of local loss of locally	Measure the number of hectares of best and most versatile soil lost through development. No specific targets

SEA Topics	SA Objective	SEA Objective	Sub-objectives / Appraisal Questions (Will the option/proposal/site...)	Indicators	Targets
	Minimise local and global pollution and protect or enhance environmental resources.		<p>fossil fuels.</p> <ul style="list-style-type: none"> • Minimise the consumption of water, land, soil, minerals, aggregates and other raw materials by all? E.g. through integrated transport, sustainable resource-efficient design, local sourcing of food, goods, materials. • Encourage the re-use/enhancement (to high standards of sustainable resource-efficient design) of existing buildings and minimise the need for new build. • Encourage the use of clean technologies and water minimisation techniques. 	<p>important buildings within a conservation area.</p> <p>Maintaining Herefordshire Council's County Site and Monuments Register.</p> <p>Monitoring changes to historic landscapes.</p> <p>Agricultural land usage by quality</p>	<p>identified.</p> <p>No specific targets identified, but need to ensure that the register is kept up to date.</p> <p>No specific targets identified.</p> <p>Measure the number of hectares of best and most versatile soil lost through development.</p>

Appendix 3



Historic England

WEST MIDLANDS OFFICE

Mr James Latham
Herefordshire Council
Neighbourhood Planning & Strategic Planning
Planning Services, PO Box 230, Blueschool House
Blueschool Street
Hereford
HR1 2ZB

Direct Dial: 0121 625 6887

Our ref: PL00384642

22 May 2018

Dear Mr Latham

CONSULTATION ON SEA SCOPING REPORTS FOR BRADENBURY & DISTRICT GROUP AND WALFORD NEIGHBOURHOOD PLANS

Thank you for the invitation to comment on the SEA Scoping Reports for the Neighbourhood Plans listed above. We have no substantive objection to the contents of the documents.

The SEA Frameworks sections of the SEAs are generally commendable in their approach of including references to historic landscape and townscape quality, the maintenance of the Herefordshire SMR and conservation and wherever possible enhancement of locally significant heritage assets.

I hope this is helpful.

Yours sincerely,

Peter Boland
Historic Places Advisor
peter.boland@HistoricEngland.org.uk

cc:



THE AXIS 10 HOLLIDAY STREET BIRMINGHAM B1 1TF

Telephone 0121 625 6870
HistoricEngland.org.uk



Date: 22 May 2018
Our ref: 244954
Your ref: Walford Group NDP



James Latham
Herefordshire Council

Hornbeam House
Crewe Business Park
Electra Way
Crewe
Cheshire
CW1 6GJ

BY EMAIL ONLY

T 0300 060 3900

Dear Mr Latham,

Planning consultation: Walford Group Neighbourhood Plan – SEA Scoping and HRA screening.

Thank you for your consultation on the above dated 23/04/2018.

Natural England is a non-departmental public body. Our statutory purpose is to ensure that the natural environment is conserved, enhanced, and managed for the benefit of present and future generations, thereby contributing to sustainable development.

Strategic Environmental Assessment Screening

We welcome the production of the submitted SEA report. Natural England notes and concurs with the conclusions of the report.

Further guidance on deciding whether the proposals are likely to have significant environmental effects and the requirements for consulting Natural England on SEA are set out in the [National Planning Practice Guidance](#).

Habitats Regulations Assessment Screening

Natural England notes the screening process applied to this Neighbourhood plan.

We agree with the Council's conclusion that a full HRA screening will be required to determine impacts on the following site:

- River Wye SAC

We would be happy to comment further should the need arise but if in the meantime you have any queries please do not hesitate to contact us.

For any queries relating to the specific advice in this letter only please contact Tom Amos on 02080 260961. For any new consultations, or to provide further information on this consultation please send your correspondences to consultations@naturalengland.org.uk.

We really value your feedback to help us improve the service we offer. We have attached a feedback form to this letter and welcome any comments you might have about our service

Yours sincerely

Tom Amos
Planning for a Better Environment
West Midlands Team

Appendix 4

Site options considered within the Walford NDP

Do nothing

Option 1- To meet the required housing needs through the allocation of one large site. This would meet and exceed the minimum required level of proportional housing growth.

Option 2- To meet the required housing need through the allocation of medium and small sites. Again, depending upon the sites chosen, this option would meet or exceed the minimum required level of proportional housing growth.

Option 3- To utilise all the suitable and available small sites and a reasonable assessment for a windfall allowance based on recent trends.

Option 4- Not to include any housing land allocations but rely upon a policy to define how new dwellings will be accommodated. This might utilise specifically related policies for settlements in Walford Parish or, if not possible, rely upon Core Strategy policy RA2.

Site Options

Overall 34 sites were submitted for consideration as potential housing allocation. Following Initial assessment 3 site withdrew and 18 sites were found not to be in or adjacent to the existing settlements. 11 sites were left for further assessment and scrutiny in a stage 2 assessment .

1. Land at Coughton Farm (1). (Site ref) SR6
2. Land at Coughton Farm (2) SR7
3. Walford Road SR11
4. Land at Rock Hill Farm SR14
5. New House Farm SR21
6. Land at Watling Street SR24 (Allocation)
7. Land at Leys Hill SR26 (Allocation)
8. Land near Kerne Bridge SR28
9. Arthurs Dingle Leys Hill SR32 (Allocation)
10. Arthurs Dingle Leys Hill SR33
11. Lower Field of Orchard Heights SR34 (Allocation)

Appendix 5

Strategic Environmental Assessment (SEA) Scoping Stage B1:- Objectives assessed against SEA Objectives (SMART and Compatibility Test)

The following matrix appraises the emerging Walford NDP Objectives in terms of their SMART criteria and their compatibility with the SEA Objectives. These have been developed from Government guidance on SEA and from the local evidence base gathered for identifying the NDP issues.

SMART criteria:

S – Specific:

NDP objectives should specify what is intended to be done in detail and should not be open to a wide range of misinterpretations

M – Measurable:

It should be possible to monitor NDP objectives in a quantifiable way, by the use of indicators. Indicators should be measurable with limited resource implications.

A – Attainable/achievable:

NDP objectives should be achievable and deliverable, related to the scale of growth proposed

R – Realistic:

NDP objectives should relate to the overall vision of the plan. Likewise, chosen indicators should relate to objectives and their outcomes.

T – Time-Bound:

Objectives should be specific to the NDP period or another specified time-frame. Objectives should be associated with a target and indicators should specify when the target should be achieved.

Strategic Environmental Assessment (SEA) Stage B1-Assessment outcome

Very positive- Compatible with sea objective.

Positive- Compatible with sea objective.

Conflict- Negative effect/ conflict with sea objective.

Neutral-Neutral effect on sea objective.

No relationship between objectives- No link with sea objective.

Uncertain- Uncertain impact on sea objective, more information needed.

<p>SEA Objectives:</p> <p>1-To maintain and enhance nature conservation</p> <p>2- To maintain and enhance the quality of landscapes and townscapes</p> <p>3- To improve quality of surroundings</p> <p>4- To conserve and where appropriate enhance the historic environment</p> <p>5- To improve air quality</p>	<p>6- To reduce the effect of traffic on the environment</p> <p>7- To reduce contributions to climate change</p> <p>8- To reduce vulnerability to climate change</p> <p>9- To improve water quality</p> <p>10- To provide for sustainable sources of water supply</p> <p>11- To avoid, reduce and manage flood risk</p>	<p>12- To conserve soil resources and quality</p> <p>13- To minimise the production of waste</p> <p>14- To improve health of the population</p> <p>15- To reduce crime and nuisance</p> <p>16- To conserve natural and manmade resources</p>
--	---	--

Walford Neighbourhood Plan Local Environment Objective 1

SEA Objectives															
1	2	3	4	5	6	7	8	9	10	11	12	13	14	15	16
Very Positive	Very Positive	Positive	Positive	Positive	Positive	Positive	Positive	Positive	Positive	Positive	Positive				Very Positive

Conclusions- This objective is compatible with the relevant SEA objectives. This objective strives to safeguard and enhance the natural and built environment.

Recommendations- None

SMART Test of NDP Objective- This objective meets all of the SMART Objectives, this objective is specific and measurable.

After Smart Objective- No change.

Walford Neighbourhood Plan Community services and facilities Objective 2

SEA Objectives															
1	2	3	4	5	6	7	8	9	10	11	12	13	14	15	16
Neutral	Positive	Positive	Positive	Positive	Positive	Neutral	Neutral	Neutral	Neutral	Neutral	Positive				Neutral

Conclusions- The objective aims to enhance existing community facilities and promote new facilities that meet community needs. The objective is in line with the Core Strategy. Policy safeguards existing within both the Core Strategy and NDP to mitigate any impacts.

Recommendations- None

SMART Test of NDP Objective- This objective meets all of the SMART Objectives.

After Smart Objective- No change.

Walford Neighbourhood Plan New Housing Objective 3

SEA Objectives															
1	2	3	4	5	6	7	8	9	10	11	12	13	14	15	16
Neutral	Positive	Positive	Neutral	Neutral	Neutral	Neutral	Neutral	Neutral	Neutral	Neutral	Neutral				Neutral

Conclusions- This objective indicates that new housing development should take place in accordance with the Core Strategy policies. This objective aims for a variety of homes to meet the needs of the community that is in keeping with the scale and character of Walford parish and is of sustainable and a high quality design. Policy safeguards existing within both the Core Strategy and NDP to mitigate any impacts.

Recommendations- None

SMART Test of NDP Objective- This objective is specific and measurable via the Authority Monitoring Report (AMR). It will be attainable, achievable and realistic.

After Smart Objective- No change.

Walford Neighbourhood Plan Business and Economic development Objective 4

SEA Objectives															
1	2	3	4	5	6	7	8	9	10	11	12	13	14	15	16
Neutral	Positive	Positive	Positive	Positive	Positive	Positive	Neutral	Neutral	Neutral	Neutral	Neutral				Neutral

Conclusions- This objective is compatible with the majority of the relevant SEA objectives. This objective supports local businesses and farm diversification in the parish. Policy safeguards existing within both the Core Strategy and NDP to mitigate any impacts.

Recommendations- None

SMART Test of NDP Objective- This objective is specific and measurable via the AMR. It will be attainable, achievable and realistic

After Smart Objective- None

Walford Neighbourhood Plan Infrastructure and Roads Objective 5

SEA Objectives															
1	2	3	4	5	6	7	8	9	10	11	12	13	14	15	16
Positive	Positive	Positive	Positive	Positive	Positive	Positive	Positive	Positive	Positive	Positive	Positive				Positive

Conclusions- This objective is compatible with the majority of the relevant SEA objectives. This objective encourages improved infrastructure for sewerage, drainage, broadband, mobile phone coverage and low carbon energy schemes. Policy safeguards existing within both the Core Strategy and NDP to mitigate any impacts.

Recommendations- None

SMART Test of NDP Objective- This objective is specific and measurable via the AMR. It will be attainable, achievable and realistic

After Smart Objective- None

<p>The following matrix appraises the emerging modified Walford NDP Objectives in terms of their SMART criteria and their compatibility with the SEA Objectives. These have been developed from Government guidance on SEA and from the local evidence base gathered for identifying the NDP issues.</p>
<p>SMART criteria:</p>
<p>S – Specific: NDP objectives should specify what is intended to be done in detail and should not be open to a wide range of misinterpretations</p> <p>M – Measurable: It should be possible to monitor NDP objectives in a quantifiable way, by the use of indicators. Indicators should be measurable with limited resource implications.</p> <p>A – Attainable/achievable: NDP objectives should be achievable and deliverable, related to the scale of growth proposed</p> <p>R – Realistic: NDP objectives should relate to the overall vision of the plan. Likewise, chosen indicators should relate to objectives and their outcomes.</p> <p>T – Time-Bound: Objectives should be specific to the NDP period or another specified time-frame. Objectives should be associated with a target and indicators should specify when the target should be achieved.</p>

<p>SEA Stage B1: Assessment outcome</p>
<p>Very positive: Compatible with sea objective.</p>
<p>Positive: Compatible with sea objective.</p>
<p>Conflict: Negative effect/ conflict with sea objective.</p>
<p>Neutral: Neutral effect on sea objective.</p>
<p>No relationship between objectives: No link with sea objective.</p>
<p>Uncertain: Uncertain impact on sea objective, more information needed.</p>

<p>SEA Objectives:</p> <p>1-To maintain and enhance nature conservation (biodiversity, flora and fauna)</p> <p>2- To maintain and enhance the quality of landscapes and townscapes</p> <p>3- To improve quality of surroundings</p> <p>4- To conserve and where appropriate enhance the historic environment and culture heritage</p> <p>5- To improve air quality</p> <p>6- To reduce the effect of traffic on the environment</p>	<p>7- To reduce contributions to climate change</p> <p>8- To reduce vulnerability to climate change</p> <p>9- To improve water quality</p> <p>10- To provide for sustainable sources of water supply</p> <p>11- To avoid, reduce and manage flood risk</p> <p>12- To conserve soil resources and quality</p> <p>13- To minimise the production of waste</p> <p>14- To improve health of the population</p> <p>15- To reduce crime and nuisance</p>	<p>16- To conserve natural and manmade resources</p>
--	--	--

Neighbourhood Plan General Option: Do nothing approach

SEA Objectives															
1	2	3	4	5	6	7	8	9	10	11	12	13	14	15	16
No link	No link	No link	No link	No link	No link	No link	No link	No link	No link	No link	No link				No link

Do nothing option is essential not to produce a neighbourhood plan and rely on the criteria policies within the Core Strategy to guide further development. Specific policies and proposals for the parishes would not exist until a review of the Core Strategy was undertaken. All developments would need to be in conformity with the Core Strategy. The Core Strategy has been subject to a Sustainability Appraisal and policies met the SEA objectives.

Neighbourhood Plan General Option 1: To meet the required housing needs through the allocation of one large site. This would meet and exceed the minimum required level of proportional housing growth.

SEA Objectives															
1	2	3	4	5	6	7	8	9	10	11	12	13	14	15	16
uncertain	positive	positive	positive	positive	positive	positive	positive	positive	positive	positive	positive				uncertain

The allocation of housing on one large site would give certainty to the location of future growth. However excess growth may have a detrimental impact on the environment, however additional criteria can be added to the policy criteria to ensure that the proposal has a positive effect on the baseline. Any site would need to be assessed prior to allocation to ensure that it had a positive effect overall on the baseline. This option would meet the Core Strategy requirements in terms of the SEA.

Neighbourhood Plan General Option 2: To meet the required housing need through the allocation of medium and small sites. Again, depending upon the sites chosen, this option would meet or exceed the minimum required level of proportional housing growth.

SEA Objectives															
1	2	3	4	5	6	7	8	9	10	11	12	13	14	15	16
positive	positive	positive	positive	positive	positive	positive	positive	positive	positive	positive	positive				positive

The allocation of small and medium sites would give certainty to the location of future growth. Additional criteria can be added to the policy criteria to ensure that the proposal has a positive effect on the baseline. Any site would need to be assessed prior to allocation to ensure that it had a positive effect overall on the baseline. This option would meet the Core Strategy requirements in terms of the SEA

Neighbourhood Plan General Option 3: To utilise all the suitable and available small sites and a reasonable assessment for a windfall allowance based on recent trends.

SEA Objectives															
1	2	3	4	5	6	7	8	9	10	11	12	13	14	15	16
positive	positive	positive	positive	positive	positive	positive	positive	positive	positive	positive	positive				positive

The allocation of small sites would give certainty to the location of future growth. Additional criteria can be added to the policy criteria to ensure that the proposal has a positive effect on the baseline. Any site would need to be assessed prior to allocation to ensure that it had a positive effect overall on the baseline. This option would meet the Core Strategy requirements in terms of the SEA

Neighbourhood Plan General Option 4: Not to include any housing land allocations but rely upon a policy to define how new dwellings will be accommodated. This might utilise specifically related policies for settlements in Walford Parish or, if not possible, rely upon Core Strategy policy RA2.

SEA Objectives															
1	2	3	4	5	6	7	8	9	10	11	12	13	14	15	16
neutral	neutral	neutral	neutral	neutral	neutral	neutral	neutral	neutral	neutral	neutral	neutral				neutral

Criteria based policy does not give the same level of certainty as site allocations as it will be more reactionary than proactive in terms of growth proposals. However, provided criteria is added to the policy to safeguard or mitigate against any harm, the option will have a positive effect on the baseline. Criteria would need to be included within the policy to safeguard against effects on any SEA objectives. This option would meet the Core Strategy requirements in terms of the SEA.

SITE OPTIONS

Site Option 1: Land at Coughton Farm (1). (Site ref) SR6

SEA Objectives															
1	2	3	4	5	6	7	8	9	10	11	12	13	14	15	16
negative	negative	neutral	neutral	neutral	Uncertain	neutral	neutral	neutral	neutral	negative	neutral				negative

The site assessed covers 1.4 hectare is located south of Bulls Hills Lane adjacent to the village school. Development on the site would have an adverse impact on landscape character due to the sites configuration and scale this has a negative impact on SEA objectives. Part of the original site is in flood zone risk 2 and 3. The flood risk and landscape restricts the size of site that is developable, therefore deliverability could be an issue.

There are some concerns regarding the impact on the natural environment therefore option is not compatible with all of the sustainable objectives. This site option would not meet the Core Strategy requirements in terms of the SEA.

Site Option 2: Land at Coughton Farm (2) SR7

SEA Objectives															
1	2	3	4	5	6	7	8	9	10	11	12	13	14	15	16
negative	negative	negative	neutral	negative	negative	negative	negative	negative	negative	negative	negative				negative

The 6.3 hectare site is located to the south of Coughton situated on grade 2 agricultural land. The southwest corner of the site includes part of Coughton Marsh and Wood SSSI. A substantial portion of the central part of the site falls within zone 2 and 3 of the flood risk area and concern is raised regarding storm water run-off to other areas of the site.

There are some concerns regarding the impact on the natural environment, landscape character, flood risk and impact on the SSSI therefore option is not compatible with all of the sustainable objectives. This site option would not meet the Core Strategy requirements in terms of the SEA.

Site Option 3: Walford Road SR11

SEA Objectives															
1	2	3	4	5	6	7	8	9	10	11	12	13	14	15	16
Uncertain	negative	negative	negative	neutral	Uncertain	Uncertain	Uncertain	neutral	neutral	neutral	neutral				Uncertain

The 6.3hectare site is located in between the two clusters of the settlement of Walford. Development on the site would connect the two clusters and large scale development would impact the village character and settlement pattern and landscape character of Walford. The south west of the site sites onto the boundary of Coughton Wood and March SSSI, it is uncertain the impact it could have on the SSSI depending on the scheme, it may have positive mitigation measures to aid the recovery of the SSSI.

This option is not compatible with all of the sustainable objectives, as there are concerns on the impact on the natural environment SSSI and the settlement pattern and natural setting. Therefore this option would not meet the Core Strategy requirements in terms of the SEA.

Site Option 4: Land at Rock Hill Farm SR14

SEA Objectives															
1	2	3	4	5	6	7	8	9	10	11	12	13	14	15	16
negative	negative	negative	negative	negative	negative	negative	negative	neutral	neutral	neutral	neutral				negative

The full site is 6 hectare but a secondary submission reduced the site to 4ha. The site is a prominent and highly visible location on the edge of Ross on Wye and in the Wye Valley AONB. Therefore development on this site will have a detrimental impact on the natural and built form and character of Walford and Ross and Wye.

This option is not compatible with all of the sustainable objectives, as there are concerns on the impact on the natural and built environment, AONB especially its landscape setting. Therefore this option would not meet the Core Strategy requirements in terms of the SEA.

Site Option 5: New House Farm SR21

SEA Objectives															
1	2	3	4	5	6	7	8	9	10	11	12	13	14	15	16
uncertain	negative	negative	negative	negative	negative	negative	negative	neutral	neutral	neutral	neutral				uncertain

This 2.9 hectare site is located on the western edge of the two housing estates on the north western edge of Coughton. Large scale development on this site is likely to have adverse effects on settlement character and impact on the built form. Concern is also raised about having a suitable access, the lane serving the site not meet Herefordshire Council's highway design standards for residential developments.

This option is not compatible with all of the sustainable objectives, as there are concerns on access and the impact on the settlement character and landscape. Therefore this option would not meet the Core Strategy requirements in terms of the SEA.

Site Option 6: Land at Watling Street SR24 (Allocation)

SEA Objectives															
1	2	3	4	5	6	7	8	9	10	11	12	13	14	15	16
uncertain	uncertain	uncertain	neutral	neutral	uncertain	neutral	neutral	neutral	neutral	neutral	neutral				neutral

This 1.3 hectare site is located off of Watling Street on the southern edge of Ross on Wye. Development of the site would extend beyond the current urban edge of Ross-on-Wye and have some adverse effect on the town's setting and the landscape. Previous studies have highlighted as an area of landscape sensitivity, however there are opportunities to integrate the scheme with the playing pitch adjacent to the site which has already extended the edge of Ross on Wye. The site assessment indicated the site is tucked behind the Frome Valley and Former Railway line. Further detail of migration measures, scale and suitable design is required to determine the impact on natural environment and landscape character. This will help us to assess the impact on objectives 1 ,2 and 3 which can be reviewed at planning application stage.

This site option would meet the Core Strategy requirements in terms of the SEA.

Site Option 7: Land at Leys Hill SR26 (Allocation)

SEA Objectives															
1	2	3	4	5	6	7	8	9	10	11	12	13	14	15	16
uncertain	uncertain	uncertain	neutral	neutral	neutral	neutral	neutral	neutral	neutral	neutral	neutral				uncertain

This 0.45 hectare site is located to the north side of Leys Hill lane in Bishopswood. There are site specific environmental concerns about this site regarding the landscape character and elevation of the site. although it may be possible to provide sufficient mitigation through layout and landscaping. Due to the rural nature and low density of the site it is likely to suit very small scale development. This should be considered when designing and developing the scheme. Further detail of migration measures, scale and suitable design is required to determine the impact on natural environment and landscape character. This will help us to assess the impact on objectives 1 ,2 and 3 which can be reviewed at planning application stage.

This site option would meet the Core Strategy requirements in terms of the SEA.

Site Option 8: Land near Kerne Bridge SR28

SEA Objectives															
1	2	3	4	5	6	7	8	9	10	11	12	13	14	15	16
uncertain	uncertain	uncertain	neutral	neutral	uncertain	neutral	neutral	neutral	neutral	neutral	neutral				neutral

The site is 0.2 hectares and is to the rear of Beaufort house in Bishopswood. The small site is elevated set on the built edge of Bishopswood. There are site specific environmental concerns about this site regarding the impact on landscape character due to the elevation of the site. Access is a concern, and the works required to create access may have a detrimental impact on the natural environment. Although it may be possible to provide sufficient mitigation through layout and landscaping. Due to the rural nature and low density of the site it is likely to suit very small scale development of around 1 dwelling. This should be considered when designing and developing the scheme. Further detail of migration measures, scale and suitable design is required to determine the impact on natural environment and landscape character. This will help us to assess the impact on objectives 1 ,2 and 3 which can be reviewed at planning application stage.

This site option would meet the Core Strategy requirements in terms of the SEA.

Site Option 9: Arthurs Dingle Leys Hill SR32 (Allocation)

SEA Objectives															
1	2	3	4	5	6	7	8	9	10	11	12	13	14	15	16
uncertain	uncertain	uncertain	neutral	neutral	neutral	neutral	neutral	neutral	neutral	neutral	neutral				neutral

This 0.65 hectare site is adjacent to the B4234 on the southern edge of Bishopwood. This fits along the edge of the existing built form, having a limited impact on the AONB. Further detail of migration measures, scale and suitable design is required to determine the impact on natural environment and landscape character. This will help us to assess the impact on objectives 1, 2 and 3 which can be reviewed at planning application stage.

This site option would meet the Core Strategy requirements in terms of the SEA.

Site Option 10: Arthurs Dingle Leys Hill SR33

SEA Objectives															
1	2	3	4	5	6	7	8	9	10	11	12	13	14	15	16
negative	negative	negative	neutral	neutral	uncertain	neutral	neutral	neutral	neutral	neutral	neutral				negative

This small 0.17 ha site is located to the east of Leyton house on the southern area of Bishopwood. This small parcel of land is located in an isolated location would not fit within the natural form of the site or landscape character and have an impact on the AONB. There is concern that the access is unachievable on the site due to the engineering measures required and adverse environmental impact required to achieve access as well as the viability of works required to develop a very small site.

This option is not compatible with all of the sustainable objectives particularly the landscape and environmental objectives. This site option would not meet the Core Strategy requirements in terms of the SEA.

Site Option 11: Lower Field of Orchard Heights SR34 (Allocation)

SEA Objectives															
1	2	3	4	5	6	7	8	9	10	11	12	13	14	15	16
uncertain	uncertain	uncertain	neutral	neutral	uncertain	neutral	neutral	neutral	neutral	neutral	neutral				neutral

The small site is 0.8 hectares and is located at the Lower Field at Orchard Heights within the cluster of dwellings defined as Bishopwood. There are site specific environmental concerns about this site regarding the impact on landscape character due to the elevation of the site, part of the site is sloped. Highway Access is a concern access onto the B4234, further indication can be given by the highways team, Sites layout and design can be assessed at planning application stage. Due to the rural nature and relatively low density of the site it is likely to suit small scale development and should be considered when designing and developing the scheme. Further detail of migration measures, scale and suitable design is required to determine the impact on natural environment and landscape character. This will help us to assess the impact on objectives 1, 2 and 3 which can be reviewed at planning application stage.

This site option would meet the Core Strategy requirements in terms of the SEA.

Walford NDP - B2: Develop and Refinement of NDP Policies (December 2021)

<p>The following matrix appraises the emerging Walford NDP Objectives in terms of their SMART criteria and their compatibility with the SEA Objectives. These have been developed from Government guidance on SEA and from the local evidence base gathered for identifying the NDP issues.</p>
<p>SMART criteria:</p>
<p>S – Specific: NDP objectives should specify what is intended to be done in detail and should not be open to a wide range of misinterpretations</p> <p>M – Measurable: It should be possible to monitor NDP objectives in a quantifiable way, by the use of indicators. Indicators should be measurable with limited resource implications.</p> <p>A – Attainable/achievable: NDP objectives should be achievable and deliverable, related to the scale of growth proposed</p> <p>R – Realistic: NDP objectives should relate to the overall vision of the plan. Likewise, chosen indicators should relate to objectives and their outcomes.</p> <p>T – Time-Bound: Objectives should be specific to the NDP period or another specified time-frame. Objectives should be associated with a target and indicators should specify when the target should be achieved.</p>

Strategic Environmental Assessment (SEA) Stage B1: Assessment outcome
Very positive: Compatible with sea objective.
Positive: Compatible with sea objective.
Conflict: Negative effect/ conflict with sea objective.
Neutral: Neutral effect on sea objective.
No relationship between objectives: No link with sea objective.
Uncertain: Uncertain impact on sea objective, more information needed.

<p>SEA Objectives:</p> <p>1-To maintain and enhance nature conservation (biodiversity, flora and fauna)</p> <p>2- To maintain and enhance the quality of landscapes and townscapes</p> <p>3- To improve quality of surroundings</p> <p>4- To conserve and where appropriate enhance the historic environment and culture heritage</p> <p>5- To improve air quality</p> <p>6- To reduce the effect of traffic on the environment</p>	<p>7- To reduce contributions to climate change</p> <p>8- To reduce vulnerability to climate change</p> <p>9- To improve water quality</p> <p>10- To provide for sustainable sources of water supply</p> <p>11- To avoid, reduce and manage flood risk</p> <p>12- To conserve soil resources and quality</p> <p>13- To minimise the production of waste</p> <p>14- To improve health of the population</p> <p>15- To reduce crime and nuisance</p>	<p>16- To conserve natural and manmade resources</p>
--	--	--

Walford NDP - B2: Develop and Refinement of NDP Policies (December 2021)

Neighbourhood Plan Policy: Policy WALF1: Promoting Sustainable Development

SEA Objectives															
1	2	3	4	5	6	7	8	9	10	11	12	13	14	15	16
Positive	Positive	Positive	Positive	Neutral	Neutral	Neutral	Neutral	Positive	Positive	Positive	Positive				Positive

Summary in relation to baseline

Overall this policy is compatible with the Core Strategy and has mainly a positive and neutral impact on the baseline data.

Overall commentary and any initial cumulative effects/ Recommendations

This policy compliments Policy SD1 of the Core Strategy and would only lead to sustainable development and growth within the parish. Policy safeguarding exists to ensure that environmental considerations are taken into account.

Conformity with Core Strategy

This policy meets the Core Strategy requirements for the purposes of the SEA.

Neighbourhood Plan Policy: Policy WALF2: Development Strategy

SEA Objectives															
1	2	3	4	5	6	7	8	9	10	11	12	13	14	15	16
Positive	Positive	Positive	Positive	Neutral	Neutral	Neutral	Neutral	Positive	Positive	Positive	Positive				Positive

Summary in relation to baseline

This policy compliments Policy SD1 and RA1 of the Core Strategy and would only lead to growth which is proportionate to the size of the settlements of Walford, Coughton, Bishops Wood and Howle Hill. This policy safeguarding exists to ensure that environmental considerations are taken into account.

Overall commentary and any initial cumulative effects/ Recommendations

Overall this policy has mainly a positive and neutral impact on the baseline data. There are safeguarding policies exist within both the Core Strategy and NDP to provide adequate mitigation. The settlement boundaries identified lie outside the flood risk zone, therefore development within the settlement boundary is not at risk of fluvial flooding.

Conformity with Core Strategy

This policy meets the Core Strategy requirements for the purposes of the SEA.

Walford NDP - B2: Develop and Refinement of NDP Policies (December 2021)

Neighbourhood Plan Policy: Policy WALF3: Major Development Within the Wye Valley AONB

SEA Objectives															
1	2	3	4	5	6	7	8	9	10	11	12	13	14	15	16
Very positive	Very positive	Very positive	Positive	Positive	Neutral	Positive	Positive	Positive	Positive	Positive	Positive				Positive

Summary in relation to baseline

Overall, this policy has mainly a positive impact on the baseline data.

Overall commentary and any initial cumulative effects/ Recommendations

This policy is compatible with the relevant SEA objectives and will ensure development proposals will not harm the natural and built environment within the Wye Valley AONB. The policy is not over and above the Core Strategy and policy safeguards exist with the Core Strategy and the NDP to avoid and mitigate against significant harm.

Conformity with Core Strategy

This policy meets the Core Strategy requirements for the purposes of the SEA.

Neighbourhood Plan Policy: Policy WALF4: Conserving the Landscape and Scenic Beauty of the Parish

SEA Objectives															
1	2	3	4	5	6	7	8	9	10	11	12	13	14	15	16
Very positive	Very positive	Very positive	Positive	Positive	Neutral	Neutral	Neutral	Positive	Positive	Positive	Positive				Positive

Summary in relation to baseline

Overall this policy has mainly a positive impact on the baseline data.

Overall commentary and any initial cumulative effects/ Recommendations

Overall this policy meets the SEA baseline. This policy sets out criteria to landscape character in the parish and aonb are protected and enhanced where possible, this has a positive impact on the baseline data.

Conformity with Core Strategy

This policy meets the Core Strategy requirements for the purposes of the SEA.

Walford NDP - B2: Develop and Refinement of NDP Policies (December 2021)

Neighbourhood Plan Policy: Policy WALF5: Protecting Important Views within the Parish and the Settings of its Settlements

SEA Objectives															
1	2	3	4	5	6	7	8	9	10	11	12	13	14	15	16
Positive	Very positive	Very positive	Positive	Positive	Positive	Positive	Positive	Positive	Positive	Positive	Positive				Positive

Summary in relation to baseline

Overall, the policy is compatible and has a positive impact on the baseline data, as it will safeguard important views of key landscape and village features in the parish.

Overall commentary and any initial cumulative effects/ Recommendations

Overall the policy is compatible and has a positive impact on the baseline data. This policy sets out criteria for new development, to ensure it is in keeping with the built and natural environment whilst protecting important views and vistas.

Conformity with Core Strategy

This policy meets the Core Strategy requirements for the purposes of the SEA.

Neighbourhood Plan Policy: Policy WALF6: Enhancement of the Natural Environment

SEA Objectives															
1	2	3	4	5	6	7	8	9	10	11	12	13	14	15	16
Very positive	Very positive	Very positive	Positive	Positive	Positive	Positive	Positive	Positive	Positive	Positive	Positive				Very positive

Summary in relation to baseline

Overall this policy has mainly a positive impact on the baseline data.

Overall commentary and any initial cumulative effects/ Recommendations

Overall the policy is compatible and has a positive impact on the baseline data, This policy aim is to conserve and enhance the natural landscape, biodiversity and geodiversity of the Neighbourhood Area.

Conformity with Core Strategy

This policy meets the Core Strategy requirements for the purposes of the SEA.

Walford NDP - B2: Develop and Refinement of NDP Policies (December 2021)

Neighbourhood Plan Policy: Policy WALF7: Protecting Heritage Assets

SEA Objectives															
1	2	3	4	5	6	7	8	9	10	11	12	13	14	15	16
Positive	Very positive	Very positive	Very positive	No link	No link	No link	No link	No link	No link	No link	No link				Positive

Summary in relation to baseline

Overall this policy has mainly a positive impact on the baseline data. This policy sets out significant heritage assets that should be conserved, protected and where possible enhanced.

Overall commentary and any initial cumulative effects/ Recommendations

This policy conforms to the Local Plan (Core Strategy). Overall, the policy is compatible and has a positive impact on the baseline data, as it will safeguard important historic assets, such as listed buildings and SAMs in the neighbourhood area.

Conformity with Core Strategy

This policy meets the Core Strategy requirements for the purposes of the SEA.

Neighbourhood Plan Policy: Policy WALF8: Wastewater Drainage

SEA Objectives															
1	2	3	4	5	6	7	8	9	10	11	12	13	14	15	16
Positive	Positive	Positive	No link	Positive	No link	Positive	Positive	Very Positive	Very Positive	Positive	Positive				Positive

Summary in relation to baseline

Overall this policy has mainly a positive impact on the baseline data. This policy ensures there is sufficient sewer capacity to accommodate development. Also ensure development with private sewer works will not cause pollution to the River Wye SAC.

Overall commentary and any initial cumulative effects/ Recommendations

This policy conforms to the Local Plan (Core Strategy). Overall, the policy is compatible and has a positive impact on the baseline data, as it will ensure foul drainage can be accommodated without causing pollution to the River Wye SAC.

Conformity with Core Strategy

This policy meets the Core Strategy requirements for the purposes of the SEA.

Walford NDP - B2: Develop and Refinement of NDP Policies (December 2021)

Neighbourhood Plan Policy: Policy WALF9: Protection from Flood Risk

SEA Objectives															
1	2	3	4	5	6	7	8	9	10	11	12	13	14	15	16
Positive	Positive	Positive	Positive	Positive	No link	Positive	Positive	Positive	Positive	Very Positive	Positive				Positive

Summary in relation to baseline

Overall the policy meets all the relevant SEA criteria, and has mostly a positive impact towards the baseline data.

Overall commentary and any initial cumulative effects/ Recommendations

Overall this policy meets the SEA baseline. This policy ensure development is subject to the flood risk 'sequential' and exception testing within the NPPF taking into account water drainage. This policy also encourages SUDs and biodiversity enhancement where practicable.

Conformity with Core Strategy

This policy meets the Core Strategy requirements for the purposes of the SEA.

Neighbourhood Plan Policy: Policy WALF10: Sustainable Design

SEA Objectives															
1	2	3	4	5	6	7	8	9	10	11	12	13	14	15	16
Positive	Positive	Positive	Positive	Positive	Positive	Very Positive	Very Positive	Positive	Positive	Positive	Positive				Positive

Summary in relation to baseline

Overall this policy is compatible with the Core Strategy and has mainly a positive impact on the baseline data.

Overall commentary and any initial cumulative effects/ Recommendations Overall this policy meets the SEA baseline. This policy sets out criteria for high quality sustainable design to minimise carbon usage, energy use and waste of new developments. This policy also promotes sustainable travel and maximise natural site features to improve the sustainability of a scheme.

Conformity with Core Strategy

This policy meets the Core Strategy requirements for the purposes of the SEA.

Walford NDP - B2: Develop and Refinement of NDP Policies (December 2021)

Neighbourhood Plan Policy: Policy WALF11: Renewable and Low Carbon Energy Generation

SEA Objectives															
1	2	3	4	5	6	7	8	9	10	11	12	13	14	15	16
Positive	Positive	Positive	Positive	Positive	Neutral	Very Positive	Very Positive	Neutral	Neutral	Neutral	Positive				Positive

Summary in relation to baseline

Overall this policy is compatible with the Core Strategy and has mainly a positive impact on the baseline data.

Overall commentary and any initial cumulative effects/ Recommendations Overall this policy meets the SEA baseline. This policy sets out criteria for renewable and low carbon proposals in the neighbourhood area. Criteria contained in this policy ensures renewable energy schemes have minimal impact on the existing built and natural environment.

Conformity with Core Strategy

This policy meets the Core Strategy requirements for the purposes of the SEA.

Neighbourhood Plan Policy: Policy WALF12: Highway Design Requirements

SEA Objectives															
1	2	3	4	5	6	7	8	9	10	11	12	13	14	15	16
Neutral	Positive	Positive	No link	Neutral	Positive	Neutral	Neutral	Neutral	Neutral	Positive	Neutral				Neutral

Summary in relation to baseline

Overall this policy is compatible with the Core Strategy and has mainly a neutral impact on the baseline data.

Overall commentary and any initial cumulative effects/ Recommendations Overall this policy meets the SEA baseline. This policy sets out criteria for highway design requirement, ensuring. Highway safety for pedestrians, motorists and cyclists. The policy promotes active travel and ensures appropriate infrastructure and car parking is incorporated into each scheme.

Conformity with Core Strategy

This policy meets the Core Strategy requirements for the purposes of the SEA.

Walford NDP - B2: Develop and Refinement of NDP Policies (December 2021)

Neighbourhood Plan Policy: Policy WALF13: Traffic Measures within the Parish

SEA Objectives															
1	2	3	4	5	6	7	8	9	10	11	12	13	14	15	16
Neutral	Positive	Positive	No link	Neutral	Positive	Neutral	Neutral	Neutral	Neutral	Positive	Neutral				Neutral

Summary in relation to baseline

Overall this policy is compatible with the Core Strategy and has mainly a neutral impact on the baseline data.

Overall commentary and any initial cumulative effects/ Recommendations Overall this policy meets the SEA baseline. This policy sets out criteria to promote active travel in the parish.

Conformity with Core Strategy

This policy meets the Core Strategy requirements for the purposes of the SEA.

Neighbourhood Plan Policy: Policy WALF14: Protection and Enhancement of Community Facilities and Businesses serving the Local Community.

SEA Objectives															
1	2	3	4	5	6	7	8	9	10	11	12	13	14	15	16
Positive	Positive	Positive	Positive	Positive	Positive	Positive	Positive	Positive	Positive	Positive	Positive				Positive

Summary in relation to baseline

Overall this policy is compatible with the Core Strategy and has mainly a positive impact on the baseline data.

Overall commentary and any initial cumulative effects/ Recommendations Overall this policy meets the SEA baseline. This policy safeguards existing community facilities and businesses serving the local community. This policy also supports the enhancement of these facilities to ensure their feasibility.

Conformity with Core Strategy

This policy meets the Core Strategy requirements for the purposes of the SEA.

Walford NDP - B2: Develop and Refinement of NDP Policies (December 2021)

Neighbourhood Plan Policy: Policy WALF15: Contributions to Community Facilities.

SEA Objectives															
1	2	3	4	5	6	7	8	9	10	11	12	13	14	15	16
Positive	Positive	Positive	Positive	Positive	Positive	Positive	Positive	Positive	Positive	Positive	Positive				Positive

Summary in relation to baseline

Overall this policy is compatible with the Core Strategy and has mainly a positive impact on the baseline data.

Overall commentary and any initial cumulative effects/ Recommendations Overall this policy meets the SEA baseline. This policy states where appropriate new development should contribute towards necessary community infrastructure which supports the needs of the community.

Conformity with Core Strategy

This policy meets the Core Strategy requirements for the purposes of the SEA.

Neighbourhood Plan Policy: Policy WALF16: High Speed Broadband and Telecommunications

SEA Objectives															
1	2	3	4	5	6	7	8	9	10	11	12	13	14	15	16
Positive	Very Positive	Very Positive	Positive	Positive	Positive	Positive	Positive	Positive	Positive	Positive	Positive				Positive

Summary in relation to baseline

Overall this policy is compatible with the Core Strategy and has mainly a positive impact on the baseline data.

Overall commentary and any initial cumulative effects/ Recommendations Overall this policy meets the SEA baseline. This policy promotes high speed broadband and telecommunication infrastructure in the neighbourhood area, providing this will respect the scale, setting and nature of the site they are located.

Conformity with Core Strategy

This policy meets the Core Strategy requirements for the purposes of the SEA.

Walford NDP - B2: Develop and Refinement of NDP Policies (December 2021)

Neighbourhood Plan Policy: Policy WALF17: Design and Appearance

SEA Objectives															
1	2	3	4	5	6	7	8	9	10	11	12	13	14	15	16
Positive	Positive	Positive	Positive	Positive	Positive	Positive	Positive	Positive	Positive	Positive	Positive				Positive

Summary in relation to baseline

Overall this policy is compatible with the Core Strategy and has mainly a positive impact on the baseline data.

Overall commentary and any initial cumulative effects/ Recommendations Overall this policy meets the SEA baseline. This policy sets out design criteria for new dwellings, this will ensure new dwellings are in keeping with the natural and built environment.

Conformity with Core Strategy

This policy meets the Core Strategy requirements for the purposes of the SEA.

Neighbourhood Plan Policy: Policy WALF18: Housing Development in Walford and Coughton

SEA Objectives															
1	2	3	4	5	6	7	8	9	10	11	12	13	14	15	16
Neutral	Positive	Positive	Neutral	Neutral	Neutral	Neutral	Neutral	Uncertain	Uncertain	Neutral	Uncertain				Neutral

Summary in relation to baseline

Overall this policy is compatible with the Core Strategy and has mainly a mixed impact on the baseline data.

Overall commentary and any initial cumulative effects/ Recommendations Overall this policy meets the SEA baseline. This policy sets out criteria for development within the settlement boundaries of Walford and Coughton. Criteria has been added to ensure development will be sensitive to the natural and built environment. The location of each infill scheme is not known at this stage, therefore impact on objectives 9,10 and 12 are uncertain, details will be provided at planning application stage where this can be further assessed.

Conformity with Core Strategy

This policy meets the Core Strategy requirements for the purposes of the SEA.

Neighbourhood Plan Policy: Policy WALF19: Housing Development in Bishopswood

SEA Objectives															
1	2	3	4	5	6	7	8	9	10	11	12	13	14	15	16
Neutral	Positive	Positive	Neutral	Neutral	Neutral	Neutral	Neutral	Uncertain	Uncertain	Neutral	Uncertain				Neutral

Summary in relation to baseline

Overall this policy is compatible with the Core Strategy and has mainly a mixed impact on the baseline data.

Overall commentary and any initial cumulative effects/ Recommendations Overall this policy meets the SEA baseline. This policy sets out criteria for development within the settlement boundaries in Bishopswood. Criteria has been added to ensure development will be sensitive to the natural and built environment. The location of each infill scheme is not known at this stage, therefore impact on objectives 9,10 and 12 are uncertain. Details will be provided at planning application stage where this can be further assessed.

Walford NDP - B2: Develop and Refinement of NDP Policies (December 2021)

Conformity with Core Strategy

This policy meets the Core Strategy requirements for the purposes of the SEA.

Neighbourhood Plan Policy: Policy WALF20: Housing Development in Howle Hill

SEA Objectives															
1	2	3	4	5	6	7	8	9	10	11	12	13	14	15	16
Neutral	Positive	Positive	Neutral	Neutral	Neutral	Neutral	Neutral	Uncertain	Uncertain	Neutral	Uncertain				Neutral

Summary in relation to baseline

Overall this policy is compatible with the Core Strategy and has mainly a mixed impact on the baseline data.

Overall commentary and any initial cumulative effects/ Recommendations Overall this policy meets the SEA baseline. This policy sets out criteria for development within the settlement boundaries in Howle Hill. Criteria has been added to ensure development will be sensitive to the natural and built environment. The location of each infill scheme is not known at this stage, therefore impact on objectives 9,10 and 12 are uncertain, details will be provided at planning application stage where this can be further assessed.

Neighbourhood Plan Policy: Policy WALF21: Proposed Housing Sites

SEA Objectives															
1	2	3	4	5	6	7	8	9	10	11	12	13	14	15	16
Neutral	Positive	Positive	Neutral	Neutral	Neutral	Neutral	Neutral	Neutral	Neutral	Neutral	Neutral				Neutral

Summary in relation to baseline

Overall this policy is compatible with the Core Strategy and has mainly a neutral impact on the baseline data.

Overall commentary and any initial cumulative effects/ Recommendations Overall this policy meets the SEA baseline. This policy allocates four housing sites in Bishops wood and Ross on Wye urban fringe. This will accommodate up to 16 dwellings. Each site has been assessed fully in assessment B2a.

Conformity with Core Strategy

This policy meets the Core Strategy requirements for the purposes of the SEA.

Neighbourhood Plan Policy: Policy WALF22: Use of Rural Buildings for Business

SEA Objectives															
1	2	3	4	5	6	7	8	9	10	11	12	13	14	15	16
Neutral	Positive	Positive	Positive	Positive	Positive	Neutral	Neutral	Uncertain	Uncertain	Uncertain	Uncertain				Neutral

Summary in relation to baseline

Overall this policy is compatible with the Core Strategy and has mainly a positive impact on the baseline data.

Walford NDP - B2: Develop and Refinement of NDP Policies (December 2021)

Overall commentary and any initial cumulative effects/ Recommendations Overall this policy meets the SEA baseline. This policy sets out criteria for use of rural buildings for business and to ensure development will be in keeping with the built and natural environment.

The location of scheme is not known at this stage, therefore impact on objectives 9-12 are uncertain, details will be provided at planning application stage where this can be further assessed.

Conformity with Core Strategy

This policy meets the Core Strategy requirements for the purposes of the SEA.

Neighbourhood Plan Policy: Policy WALF23: Polytunnel Proposals

SEA Objectives															
1	2	3	4	5	6	7	8	9	10	11	12	13	14	15	16
Positive	Positive	Positive	Positive	Positive	Positive	Positive	Neutral	Uncertain	Uncertain	Uncertain	Uncertain				Positive

Summary in relation to baseline

Overall this policy is compatible with the Core Strategy and has mainly a positive impact on the baseline data.

Overall commentary and any initial cumulative effects/ Recommendations Overall this policy meets the SEA baseline. This policy sets out criteria for The location of the scheme is not known at this stage, therefore impact on objectives 9-12 are uncertain, details will be provided at planning application stage where this can be further assessed.

Conformity with Core Strategy

This policy meets the Core Strategy requirements for the purposes of the SEA.

B3 Key:

Strategic Environmental Assessment (SEA) Stage B1- Assessment outcome
Very compatible-Very positive effect
Compatible –Positive effect
Conflict- Negative effect
Neutral-Neutral effect
No relationship between objectives- No link
Uncertain- more information needed

Neighbourhood Plan Policy: Policy WALF1: Promoting Sustainable Development

SEA Objectives Assessment of effect (consider cumulative effects, significance of the effect and magnitude of the effect in terms of the three time periods)															
1	2	3	4	5	6	7	8	9	10	11	12	13	14	15	16
Short term (1 – 5 years)															
Positive	Positive	Positive	Positive	Neutral	Neutral	Neutral	Neutral	Positive	Positive	Positive	Positive				Positive

SEA Objectives Assessment of effect (consider cumulative effects, significance of the effect and magnitude of the effect in terms of the three time periods)															
1	2	3	4	5	6	7	8	9	10	11	12	13	14	15	16
Medium-term (5-10 years)															
Positive	Positive	Positive	Positive	Neutral	Neutral	Neutral	Neutral	Positive	Positive	Positive	Positive				Positive

SEA Objectives Assessment of effect (consider cumulative effects, significance of the effect and magnitude of the effect in terms of the three time periods)															
1	2	3	4	5	6	7	8	9	10	11	12	13	14	15	16
Long term (11 years +)															
Positive	Positive	Positive	Positive	Neutral	Neutral	Positive	Positive	Positive	Positive	Positive	Positive				Positive

Overall commentary and any initial cumulative effects/ Recommendations

Overall this policy is compatible with the Core Strategy and has mainly a positive and neutral impact on the baseline data, in a short, medium and long time frame.

This document is copyright of Herefordshire Council, please contact the Neighbourhood Planning team if you wish to reuse it in whole or part.

Overall commentary and any initial cumulative effects/ Recommendations

This policy compliments Policy SD1 of the Core Strategy and would only lead to sustainable development and growth within the parish. Policy safeguarding exists to ensure that environmental considerations are taken into account.

Conformity with Core Strategy

This policy meets the Core Strategy requirements for the purposes of the SEA.

Neighbourhood Plan Policy: Policy WALF2: Development Strategy

SEA Objectives Assessment of effect (consider cumulative effects, significance of the effect and magnitude of the effect in terms of the three time periods)															
1	2	3	4	5	6	7	8	9	10	11	12	13	14	15	16
Short term (1 – 5 years)															
Positive	Positive	Positive	Positive	Neutral	Neutral	Neutral	Neutral	Positive	Positive	Positive	Positive				Positive

SEA Objectives Assessment of effect (consider cumulative effects, significance of the effect and magnitude of the effect in terms of the three time periods)															
1	2	3	4	5	6	7	8	9	10	11	12	13	14	15	16
Medium-term (5-10 years)															
Positive	Positive	Positive	Positive	Neutral	Neutral	Neutral	Neutral	Positive	Positive	Positive	Positive				Positive

SEA Objectives Assessment of effect (consider cumulative effects, significance of the effect and magnitude of the effect in terms of the three time periods)															
1	2	3	4	5	6	7	8	9	10	11	12	13	14	15	16
Long term (11 years +)															
Positive	Positive	Positive	Positive	Neutral	Neutral	Positive	Positive	Positive	Positive	Positive	Positive				Positive

Overall commentary and any initial cumulative effects/ Recommendations

This policy compliments Policy SD1 and RA1 of the Core Strategy and would only lead to growth which is proportionate to the size of the settlements of Walford Coughton, Bishops Wood and Howle Hill. This policy safeguarding exists to ensure that environmental considerations are taken into account.

Overall commentary and any initial cumulative effects/ Recommendations

Overall this policy has mainly a positive on the baseline data in a short, medium and long time frame. There are safeguarding policies exist within both the Core Strategy and NDP to provide adequate mitigation. The settlement boundaries identified lie outside the flood risk zone, therefore development within the settlement boundary is not at risk of fluvial flooding.

Conformity with Core Strategy

This policy meets the Core Strategy requirements for the purposes of the SEA.

Neighbourhood Plan Policy: Policy WALF3: Major Development Within the Wye Valley AONB

SEA Objectives Assessment of effect (consider cumulative effects, significance of the effect and magnitude of the effect in terms of the three time periods)															
1	2	3	4	5	6	7	8	9	10	11	12	13	14	15	16
Short term (1 – 5 years)															
Positive	Positive	Positive	Positive	Positive	Neutral	Positive	Positive	Positive	Positive	Positive	Positive				Positive

SEA Objectives Assessment of effect (consider cumulative effects, significance of the effect and magnitude of the effect in terms of the three time periods)															
1	2	3	4	5	6	7	8	9	10	11	12	13	14	15	16
Medium-term (5-10 years)															
Very positive	Very positive	Very positive	Very positive	Positive	Neutral	Positive	Positive	Positive	Positive	Positive	Positive				Positive

SEA Objectives Assessment of effect (consider cumulative effects, significance of the effect and magnitude of the effect in terms of the three time periods)															
1	2	3	4	5	6	7	8	9	10	11	12	13	14	15	16
Long term (11 years +)															
Very positive	Very positive	Very positive	Very positive	Positive	Neutral	Positive	Positive	Positive	Positive	Positive	Positive				Positive

Overall commentary and any initial cumulative effects/ Recommendations

Overall this policy is compatible with the Core Strategy and has mainly a positive impact on the baseline data in a short, medium and long time frame.

Overall commentary and any initial cumulative effects/ Recommendations

This policy is compatible with the relevant SEA objectives and will ensure development proposals will not harm the natural and built environment within the Wye Valley AONB. The policy is not over and above the Core Strategy and policy safeguards exist with the Core Strategy and the NDP to avoid and mitigate against significant harm.

Conformity with Core Strategy

This policy meets the Core Strategy requirements for the purposes of the SEA.

Neighbourhood Plan Policy: Policy WALF4: Conserving the Landscape and Scenic Beauty of the Parish

SEA Objectives Assessment of effect (consider cumulative effects, significance of the effect and magnitude of the effect in terms of the three time periods)															
1	2	3	4	5	6	7	8	9	10	11	12	13	14	15	16
Short term (1 – 5 years)															
Very positive	Positive	Positive	Positive	Positive	Neutral	Neutral	Neutral	Positive	Positive	Positive	Positive				Positive

SEA Objectives Assessment of effect (consider cumulative effects, significance of the effect and magnitude of the effect in terms of the three time periods)															
1	2	3	4	5	6	7	8	9	10	11	12	13	14	15	16
Medium-term (5-10 years)															
Very positive	Very positive	Very positive	Positive	Positive	Neutral	Neutral	Neutral	Positive	Positive	Positive	Positive				Positive

SEA Objectives Assessment of effect (consider cumulative effects, significance of the effect and magnitude of the effect in terms of the three time periods)															
1	2	3	4	5	6	7	8	9	10	11	12	13	14	15	16
Long term (11 years +)															
Very positive	Very positive	Very positive	Positive	Positive	Neutral	Positive	Positive	Positive	Positive	Positive	Positive				Positive

Overall commentary and any initial cumulative effects/ Recommendations

Overall this policy is compatible with the Core Strategy and has mainly a positive impact on the baseline data in a short, medium and long time frame.

Overall commentary and any initial cumulative effects/ Recommendations

Overall this policy meets the SEA baseline. This policy sets out criteria to landscape character in the parish and aonb are protected and enhanced where possible, this has a positive impact on the baseline data.

Conformity with Core Strategy

This policy meets the Core Strategy requirements for the purposes of the SEA.

Neighbourhood Plan Policy: Policy WALF5: Protecting Important Views within the Parish and the Settings of its Settlements

SEA Objectives Assessment of effect (consider cumulative effects, significance of the effect and magnitude of the effect in terms of the three time periods)															
1	2	3	4	5	6	7	8	9	10	11	12	13	14	15	16
Short term (1 – 5 years)															
Positive	Very positive	Very positive	Positive	Positive	Positive	Positive	Positive	Positive	Positive	Positive	Positive				Positive

SEA Objectives Assessment of effect (consider cumulative effects, significance of the effect and magnitude of the effect in terms of the three time periods)															
1	2	3	4	5	6	7	8	9	10	11	12	13	14	15	16
Medium term (5-10 years)															
Very positive	Very positive	Very positive	Positive	Positive	Positive	Positive	Positive	Positive	Positive	Positive	Positive				Positive

SEA Objectives Assessment of effect (consider cumulative effects, significance of the effect and magnitude of the effect in terms of the three time periods)															
1	2	3	4	5	6	7	8	9	10	11	12	13	14	15	16
Long term (11 years +)															
Very positive	Very positive	Very positive	Positive	Positive	Positive	Positive	Positive	Positive	Positive	Positive	Positive				Positive

Overall commentary and any initial cumulative effects/ Recommendations

Overall, the policy is compatible and has a positive impact on the baseline data in a short, medium and long time frame, as it will safeguard important views of key landscape and village features in the parish.

Overall commentary and any initial cumulative effects/ Recommendations

Overall the policy is compatible and has a positive impact on the baseline data. This policy sets out criteria for new development, to ensure it is in keeping with the built and natural environment whilst protecting important views and vistas.

Conformity with Core Strategy

This policy meets the Core Strategy requirements for the purposes of the SEA.

Neighbourhood Plan Policy: Policy WALF6: Enhancement of the Natural Environment

SEA Objectives Assessment of effect (consider cumulative effects, significance of the effect and magnitude of the effect in terms of the three time periods)															
1	2	3	4	5	6	7	8	9	10	11	12	13	14	15	16
Short term (1 – 5 years)															
Very positive	Positive	Very positive	Positive	Positive	Positive	Positive	Positive	Positive	Positive	Positive	Positive				Very positive

SEA Objectives Assessment of effect (consider cumulative effects, significance of the effect and magnitude of the effect in terms of the three time periods)															
1	2	3	4	5	6	7	8	9	10	11	12	13	14	15	16
Medium-term (5-10 years)															
Very positive	Very positive	Very positive	Positive	Positive	Positive	Positive	Positive	Positive	Positive	Positive	Positive				Very positive

SEA Objectives Assessment of effect (consider cumulative effects, significance of the effect and magnitude of the effect in terms of the three time periods)															
1	2	3	4	5	6	7	8	9	10	11	12	13	14	15	16
Long term (11 years +)															
Very positive	Very positive	Very positive	Positive	Positive	Positive	Positive	Positive	Positive	Positive	Positive	Positive				Very positive

Overall commentary and any initial cumulative effects/ Recommendations

Overall this policy has mainly a positive impact on the baseline data in a short, medium and long time frame.

Overall commentary and any initial cumulative effects/ Recommendations

Overall the policy is compatible and has a positive impact on the baseline data, this policy's aim is to conserve and enhance the natural landscape, biodiversity and geodiversity of the Neighbourhood Area.

Conformity with Core Strategy

This policy meets the Core Strategy requirements for the purposes of the SEA.

Neighbourhood Plan Policy: Policy WALF7: Protecting Heritage Assets

SEA Objectives Assessment of effect (consider cumulative effects, significance of the effect and magnitude of the effect in terms of the three time periods)															
1	2	3	4	5	6	7	8	9	10	11	12	13	14	15	16

Short term (1 – 5 years)															
Positive	Positive	Very positive	Very positive	No link	No link	No link	No link	No link	No link	No link	No link				Positive

SEA Objectives Assessment of effect (consider cumulative effects, significance of the effect and magnitude of the effect in terms of the three time periods)															
1	2	3	4	5	6	7	8	9	10	11	12	13	14	15	16
Medium-term (5-10 years)															
Positive	Very positive	Very positive	Very positive	No link	No link	No link	No link	No link	No link	No link	No link				Positive

SEA Objectives Assessment of effect (consider cumulative effects, significance of the effect and magnitude of the effect in terms of the three time periods)															
1	2	3	4	5	6	7	8	9	10	11	12	13	14	15	16
Long term (11 years +)															
Positive	Very positive	Very positive	Very positive	No link	No link	No link	No link	No link	No link	No link	No link				Positive

Overall commentary and any initial cumulative effects/ Recommendations

Overall this policy has mainly a positive impact on the baseline data in a short, medium and long time frame. . This policy sets out significant heritage assets that should be conserved, protected and where possible enhanced.

Overall commentary and any initial cumulative effects/ Recommendations

This policy conforms to the Local Plan (Core Strategy). Overall, the policy is compatible and has a positive impact on the baseline data, as it will safeguard important historic assets, such as listed buildings and SAMs in the neighbourhood area.

Conformity with Core Strategy

This policy meets the Core Strategy requirements for the purposes of the SEA.

Neighbourhood Plan Policy: Policy WALF8: Wastewater Drainage

SEA Objectives Assessment of effect (consider cumulative effects, significance of the effect and magnitude of the effect in terms of the three time periods)															
1	2	3	4	5	6	7	8	9	10	11	12	13	14	15	16

Short term (1 – 5 years)															
Positive	Positive	Positive	No link	Positive	No link	Positive	Positive	Very Positive	Very Positive	Positive	Positive				Positive

SEA Objectives Assessment of effect (consider cumulative effects, significance of the effect and magnitude of the effect in terms of the three time periods)															
1	2	3	4	5	6	7	8	9	10	11	12	13	14	15	16
Medium term (5-10 years)															
Positive	Positive	Positive	No link	Positive	No link	Positive	Positive	Very Positive	Very Positive	Positive	Positive				Positive

SEA Objectives Assessment of effect (consider cumulative effects, significance of the effect and magnitude of the effect in terms of the three time periods)															
1	2	3	4	5	6	7	8	9	10	11	12	13	14	15	16
Long term (11 years +)															
Positive	Positive	Positive	No link	Positive	No link	Positive	Positive	Very Positive	Very Positive	Positive	Positive				Positive

Overall commentary and any initial cumulative effects/ Recommendations

Overall this policy has mainly a positive impact on the baseline data in a short, medium and long time frame. This policy ensures there is sufficient sewer capacity to accommodate development. Also ensure development with private sewer works will not cause pollution to the River Wye SAC.

Overall commentary and any initial cumulative effects/ Recommendations

This policy conforms to the Local Plan (Core Strategy). Overall, the policy is compatible and has a positive impact on the baseline data, as it will ensure foul drainage can be accommodated without causing pollution to the River Wye SAC.

Conformity with Core Strategy

This policy meets the Core Strategy requirements for the purposes of the SEA.

Neighbourhood Plan Policy: Policy WALF9: Protection from Flood Risk

SEA Objectives Assessment of effect (consider cumulative effects, significance of the effect and magnitude of the effect in terms of the three time periods)															
1	2	3	4	5	6	7	8	9	10	11	12	13	14	15	16
Short term (1 – 5 years)															

Positive	Positive	Positive	Positive	Positive	No link	Positive	Positive	Positive	Positive	Very Positive	Positive				Positive
----------	----------	----------	----------	----------	---------	----------	----------	----------	----------	---------------	----------	--	--	--	----------

SEA Objectives Assessment of effect (consider cumulative effects, significance of the effect and magnitude of the effect in terms of the three time periods)															
1	2	3	4	5	6	7	8	9	10	11	12	13	14	15	16
Medium term (5-10 years)															
Positive	Positive	Positive	Positive	Positive	No link	Positive	Positive	Positive	Positive	Very Positive	Positive				Positive

SEA Objectives Assessment of effect (consider cumulative effects, significance of the effect and magnitude of the effect in terms of the three time periods)															
1	2	3	4	5	6	7	8	9	10	11	12	13	14	15	16
Long term (11 years +)															
Positive	Positive	Positive	Positive	Positive	No link	Positive	Positive	Positive	Positive	Very Positive	Positive				Positive

Overall commentary and any initial cumulative effects/ Recommendations

Overall the policy meets all the relevant SEA criteria, and has mostly a positive impact towards the baseline data in the short, medium and long time frame

Overall commentary and any initial cumulative effects/ Recommendations

Overall this policy meets the SEA baseline. This policy ensure development is subject to the flood risk 'sequential' and exception testing within the NPPF taking into account water drainage. This policy also encourages SUDs and biodiversity enhancement where practicable.

Conformity with Core Strategy

This policy meets the Core Strategy requirements for the purposes of the SEA.

Neighbourhood Plan Policy: Policy WALF10: Sustainable Design

SEA Objectives Assessment of effect (consider cumulative effects, significance of the effect and magnitude of the effect in terms of the three time periods)															
1	2	3	4	5	6	7	8	9	10	11	12	13	14	15	16
Short term (1 – 5 years)															

Positive	Positive	Positive	Positive	Positive	Positive	Very Positive	Very Positive	Positive	Positive	Positive	Positive				Positive
----------	----------	----------	----------	----------	----------	---------------	---------------	----------	----------	----------	----------	--	--	--	----------

SEA Objectives Assessment of effect (consider cumulative effects, significance of the effect and magnitude of the effect in terms of the three time periods)															
1	2	3	4	5	6	7	8	9	10	11	12	13	14	15	16
Medium term (5-10 years)															
Positive	Positive	Positive	Positive	Positive	Positive	Very Positive	Very Positive	Positive	Positive	Positive	Positive				Positive

SEA Objectives Assessment of effect (consider cumulative effects, significance of the effect and magnitude of the effect in terms of the three time periods)															
1	2	3	4	5	6	7	8	9	10	11	12	13	14	15	16
Long term (11 years +)															
Positive	Very Positive	Very Positive	Positive	Positive	Positive	Very Positive	Very Positive	Positive	Positive	Positive	Positive				Positive

Overall commentary and any initial cumulative effects/ Recommendations

Overall this policy is compatible with the Core Strategy and has mainly a positive impact on the baseline data in short, medium and long time frame

Overall commentary and any initial cumulative effects/ Recommendations Overall this policy meets the SEA baseline. This policy sets out criteria for high quality sustainable design to minimise carbon usage, energy use and waste of new developments. This policy also promotes sustainable travel and maximise natural site features to improve the sustainability of a scheme.

Conformity with Core Strategy

This policy meets the Core Strategy requirements for the purposes of the SEA.

Neighbourhood Plan Policy: Policy WALF11: Renewable and Low Carbon Energy Generation

SEA Objectives Assessment of effect (consider cumulative effects, significance of the effect and magnitude of the effect in terms of the three time periods)															
1	2	3	4	5	6	7	8	9	10	11	12	13	14	15	16
Short term (1 – 5 years)															
Positive	Positive	Positive	Positive	Positive	Neutral	Positive	Positive	Neutral	Neutral	Neutral	Positive				Positive

SEA Objectives Assessment of effect (consider cumulative effects, significance of the effect and magnitude of the effect in terms of the three time periods)															
1	2	3	4	5	6	7	8	9	10	11	12	13	14	15	16
Medium term (5-10 years)															
Positive	Positive	Positive	Positive	Positive	Neutral	Very Positive	Very Positive	Neutral	Neutral	Neutral	Positive				Positive

SEA Objectives Assessment of effect (consider cumulative effects, significance of the effect and magnitude of the effect in terms of the three time periods)															
1	2	3	4	5	6	7	8	9	10	11	12	13	14	15	16
Long term (11 years +)															
Positive	Positive	Positive	Positive	Positive	Neutral	Very Positive	Very Positive	Neutral	Neutral	Neutral	Positive				Positive

Overall commentary and any initial cumulative effects/ Recommendations

Overall this policy is compatible with the Core Strategy and has mainly a positive impact on the baseline data in short, medium and long time frame

Overall commentary and any initial cumulative effects/ Recommendations Overall this policy meets the SEA baseline. This policy sets out criteria for renewable and low carbon proposals in the neighbourhood area. Criteria contained in this policy ensures renewable energy schemes have minimal impact on the existing built and natural environment.

Conformity with Core Strategy

This policy meets the Core Strategy requirements for the purposes of the SEA.

Neighbourhood Plan Policy: Policy WALF12: Highway Design Requirements

SEA Objectives Assessment of effect (consider cumulative effects, significance of the effect and magnitude of the effect in terms of the three time periods)															
1	2	3	4	5	6	7	8	9	10	11	12	13	14	15	16
Short term (1 – 5 years)															
Neutral	Positive	Positive	No link	Neutral	Positive	Neutral	Neutral	Neutral	Neutral	Positive	Neutral				Neutral

SEA Objectives Assessment of effect (consider cumulative effects, significance of the effect and magnitude of the effect in terms of the three time periods)															
1	2	3	4	5	6	7	8	9	10	11	12	13	14	15	16

Medium term (5-10 years)															
Neutral	Positive	Positive	No link	Neutral	Positive	Neutral	Neutral	Neutral	Neutral	Positive	Neutral				Neutral

SEA Objectives Assessment of effect (consider cumulative effects, significance of the effect and magnitude of the effect in terms of the three time periods)															
1	2	3	4	5	6	7	8	9	10	11	12	13	14	15	16
Long term (11 years +)															
Positive	Positive	Positive	No link	Positive	Positive	Neutral	Neutral	Neutral	Neutral	Positive	Neutral				Neutral

Overall commentary and any initial cumulative effects/ Recommendations

Overall this policy is compatible with the Core Strategy and has mainly a neutral impact on the baseline data in the short, medium and long time frame.

Overall commentary and any initial cumulative effects/ Recommendations Overall this policy meets the SEA baseline. This policy sets out criteria for highway design requirements, ensuring. Highway safety for pedestrians, motorists and cyclists. The policy promotes active travel and ensures appropriate infrastructure and car parking is incorporated into each scheme.

Conformity with Core Strategy

This policy meets the Core Strategy requirements for the purposes of the SEA.

Neighbourhood Plan Policy: Policy WALF13: Traffic Measures within the Parish

SEA Objectives Assessment of effect (consider cumulative effects, significance of the effect and magnitude of the effect in terms of the three time periods)															
1	2	3	4	5	6	7	8	9	10	11	12	13	14	15	16
Short term (1 – 5 years)															
Neutral	Positive	Positive	No link	Neutral	Positive	Neutral	Neutral	Neutral	Neutral	Neutral	Neutral				Neutral

SEA Objectives Assessment of effect (consider cumulative effects, significance of the effect and magnitude of the effect in terms of the three time periods)															
1	2	3	4	5	6	7	8	9	10	11	12	13	14	15	16
Medium term (5-10 years)															
Neutral	Positive	Positive	No link	Neutral	Positive	Neutral	Neutral	Neutral	Neutral	Positive	Neutral				Neutral

SEA Objectives Assessment of effect (consider cumulative effects, significance of the effect and magnitude of the effect in terms of the three time periods)															
---	--	--	--	--	--	--	--	--	--	--	--	--	--	--	--

1	2	3	4	5	6	7	8	9	10	11	12	13	14	15	16
Long term (11 years +)															
Neutral	Positive	Positive	No link	Neutral	Positive	Neutral	Neutral	Neutral	Neutral	Positive	Neutral				Neutral

Overall commentary and any initial cumulative effects/ Recommendations

Overall this policy is compatible with the Core Strategy and has mainly a neutral impact on the baseline data in the short, medium and long time frame.

Overall commentary and any initial cumulative effects/ Recommendations Overall this policy meets the SEA baseline. This policy sets out criteria to promote active travel in the parish.

Conformity with Core Strategy

This policy meets the Core Strategy requirements for the purposes of the SEA.

Neighbourhood Plan Policy: Policy WALF14: Protection and Enhancement of Community Facilities and Businesses serving the Local Community.

SEA Objectives Assessment of effect (consider cumulative effects, significance of the effect and magnitude of the effect in terms of the three time periods)															
1	2	3	4	5	6	7	8	9	10	11	12	13	14	15	16
Short term (1 – 5 years)															
Positive	Positive	Positive	Positive	Positive	Positive	Positive	Positive	Positive	Positive	Positive	Positive				Positive

SEA Objectives Assessment of effect (consider cumulative effects, significance of the effect and magnitude of the effect in terms of the three time periods)															
1	2	3	4	5	6	7	8	9	10	11	12	13	14	15	16
Medium term (5-10 years)															
Positive	Positive	Positive	Positive	Positive	Positive	Positive	Positive	Positive	Positive	Positive	Positive				Positive

SEA Objectives Assessment of effect (consider cumulative effects, significance of the effect and magnitude of the effect in terms of the three time periods)															
1	2	3	4	5	6	7	8	9	10	11	12	13	14	15	16
Long term (11 years +)															
Positive	Very positive	Very positive	Positive	Positive	Positive	Positive	Positive	Positive	Positive	Positive	Positive				Positive

Overall commentary and any initial cumulative effects/ Recommendations

Overall this policy is compatible with the Core Strategy and has mainly a positive impact on the baseline data in the short, medium and long time frame.

Overall commentary and any initial cumulative effects/ Recommendations Overall this policy meets the SEA baseline. This policy safeguards existing community facilities and businesses serving the local community. This policy also supports the enhancement of these facilities to ensure their feasibility.

Conformity with Core Strategy

This policy meets the Core Strategy requirements for the purposes of the SEA.

Neighbourhood Plan Policy: Policy WALF15: Contributions to Community Facilities.

SEA Objectives Assessment of effect (consider cumulative effects, significance of the effect and magnitude of the effect in terms of the three time periods)															
1	2	3	4	5	6	7	8	9	10	11	12	13	14	15	16
Short term (1 – 5 years)															
Positive	Positive	Positive	Positive	Positive	Positive	Positive	Positive	Positive	Positive	Positive	Positive				Positive

SEA Objectives Assessment of effect (consider cumulative effects, significance of the effect and magnitude of the effect in terms of the three time periods)															
1	2	3	4	5	6	7	8	9	10	11	12	13	14	15	16
Medium term (5-10 years)															
Positive	Positive	Positive	Positive	Positive	Positive	Positive	Positive	Positive	Positive	Positive	Positive				Positive

SEA Objectives Assessment of effect (consider cumulative effects, significance of the effect and magnitude of the effect in terms of the three time periods)															
1	2	3	4	5	6	7	8	9	10	11	12	13	14	15	16
Long term (11 years +)															
Positive	Positive	Positive	Positive	Positive	Positive	Positive	Positive	Positive	Positive	Positive	Positive				Positive

Overall commentary and any initial cumulative effects/ Recommendations

Overall this policy is compatible with the Core Strategy and has mainly a positive impact on the baseline data in the short, medium and long time frame.

Overall commentary and any initial cumulative effects/ Recommendations Overall this policy meets the SEA baseline. This policy states where appropriate new development should contribute towards necessary community infrastructure which supports the needs of the community.

Conformity with Core Strategy

This policy meets the Core Strategy requirements for the purposes of the SEA.

Neighbourhood Plan Policy: Policy WALF16: High Speed Broadband and Telecommunications

SEA Objectives Assessment of effect (consider cumulative effects, significance of the effect and magnitude of the effect in terms of the three time periods)															
1	2	3	4	5	6	7	8	9	10	11	12	13	14	15	16
Short term (1 – 5 years)															
Positive	Positive	Positive	Positive	Positive	Positive	Positive	Positive	Positive	Positive	Positive	Positive				Positive

SEA Objectives Assessment of effect (consider cumulative effects, significance of the effect and magnitude of the effect in terms of the three time periods)															
1	2	3	4	5	6	7	8	9	10	11	12	13	14	15	16
Medium term (5-10 years)															
Positive	Very Positive	Very Positive	Positive	Positive	Positive	Positive	Positive	Positive	Positive	Positive	Positive				Positive

SEA Objectives Assessment of effect (consider cumulative effects, significance of the effect and magnitude of the effect in terms of the three time periods)															
1	2	3	4	5	6	7	8	9	10	11	12	13	14	15	16
Long term (11 years +)															
Positive	Very Positive	Very Positive	Positive	Positive	Positive	Positive	Positive	Positive	Positive	Positive	Positive				Positive

Overall commentary and any initial cumulative effects/ Recommendations

Overall this policy is compatible with the Core Strategy and has mainly a positive impact on the baseline data in the short, medium and long time frame.

Overall commentary and any initial cumulative effects/ Recommendations Overall this policy meets the SEA baseline. This policy promotes high speed broadband and telecommunication infrastructure in the neighbourhood area, providing this will respect the scale, setting and nature of the site they are located.

Conformity with Core Strategy

This policy meets the Core Strategy requirements for the purposes of the SEA.

Neighbourhood Plan Policy: Policy WALF17: Design and Appearance

SEA Objectives Assessment of effect (consider cumulative effects, significance of the effect and magnitude of the effect in terms of the three time periods)															
1	2	3	4	5	6	7	8	9	10	11	12	13	14	15	16
Short term (1 – 5 years)															
Positive	Positive	Positive	Positive	Positive	Positive	Positive	Uncertain	Uncertain	Uncertain	Uncertain	Uncertain				Positive

SEA Objectives Assessment of effect (consider cumulative effects, significance of the effect and magnitude of the effect in terms of the three time periods)															
1	2	3	4	5	6	7	8	9	10	11	12	13	14	15	16
Medium-term (5-10 years)															
Positive	Positive	Positive	Positive	Positive	Positive	Positive	Uncertain	Uncertain	Uncertain	Uncertain	Uncertain				Positive

SEA Objectives Assessment of effect (consider cumulative effects, significance of the effect and magnitude of the effect in terms of the three time periods)															
1	2	3	4	5	6	7	8	9	10	11	12	13	14	15	16
Long term (11 years +)															
Positive	Very Positive	Very Positive	Positive	Positive	Positive	Positive	Uncertain	Uncertain	Uncertain	Uncertain	Uncertain				Positive

Overall commentary and any initial cumulative effects/ Recommendations

Overall this policy is compatible with the Core Strategy and has mainly a positive impact on the baseline data in the short, medium and long time frame.

Overall commentary and any initial cumulative effects/ Recommendations Overall this policy meets the SEA baseline. This policy sets out design criteria for new dwellings, this will ensure new dwellings are in keeping with the natural and built environment.

Conformity with Core Strategy

This policy meets the Core Strategy requirements for the purposes of the SEA.

Neighbourhood Plan Policy: Policy WALF18: Housing Development in Walford and Coughton

SEA Objectives Assessment of effect (consider cumulative effects, significance of the effect and magnitude of the effect in terms of the three time periods)															
1	2	3	4	5	6	7	8	9	10	11	12	13	14	15	16
Short term (1 – 5 years)															
Neutral	Positive	Positive	Neutral	Neutral	Neutral	Neutral	Neutral	Uncertain	Uncertain	Neutral	Uncertain				Neutral

SEA Objectives Assessment of effect (consider cumulative effects, significance of the effect and magnitude of the effect in terms of the three time periods)															
1	2	3	4	5	6	7	8	9	10	11	12	13	14	15	16
Medium term (5-10 years)															
Neutral	Positive	Positive	Neutral	Neutral	Neutral	Neutral	Neutral	Uncertain	Uncertain	Neutral	Uncertain				Neutral

SEA Objectives Assessment of effect (consider cumulative effects, significance of the effect and magnitude of the effect in terms of the three time periods)															
1	2	3	4	5	6	7	8	9	10	11	12	13	14	15	16
Long term (11 years +)															
Neutral	Positive	Positive	Neutral	Neutral	Neutral	Neutral	Neutral	Uncertain	Uncertain	Neutral	Uncertain				Neutral

Overall commentary and any initial cumulative effects/ Recommendations

Overall this policy is compatible with the Core Strategy and has mainly a neutral impact on the baseline data in the short, medium and long time frame.

Overall commentary and any initial cumulative effects/ Recommendations Overall this policy meets the SEA baseline. This policy sets out criteria for development within the settlement boundaries of Walford and Coughton. Criteria has been added to ensure development will be sensitive to the natural and built environment. The location of infill development is not known at this stage, therefore impact on objectives 9, 10 and 12 are uncertain,

Conformity with Core Strategy

This policy meets the Core Strategy requirements for the purposes of the SEA.

Neighbourhood Plan Policy: Policy WALF19: Housing Development in Bishopswood

SEA Objectives Assessment of effect (consider cumulative effects, significance of the effect and magnitude of the effect in terms of the three time periods)															
1	2	3	4	5	6	7	8	9	10	11	12	13	14	15	16
Short term (1 – 5 years)															
Neutral	Neutral	Neutral	Neutral	Neutral	Neutral	Neutral	Neutral	Uncertain	Uncertain	Neutral	Uncertain				Neutral

SEA Objectives Assessment of effect (consider cumulative effects, significance of the effect and magnitude of the effect in terms of the three time periods)															
1	2	3	4	5	6	7	8	9	10	11	12	13	14	15	16
Medium term (5-10 years)															
Neutral	Positive	Positive	Neutral	Neutral	Neutral	Neutral	Neutral	Uncertain	Uncertain	Neutral	Uncertain				Neutral

SEA Objectives Assessment of effect (consider cumulative effects, significance of the effect and magnitude of the effect in terms of the three time periods)															
1	2	3	4	5	6	7	8	9	10	11	12	13	14	15	16
Long term (11 years +)															
Neutral	Positive	Positive	Neutral	Neutral	Neutral	Neutral	Neutral	Uncertain	Uncertain	Neutral	Uncertain				Neutral

Overall commentary and any initial cumulative effects/ Recommendations

Overall this policy is compatible with the Core Strategy and has mainly a neutral impact on the baseline data in the short, medium and long time frame.

Overall commentary and any initial cumulative effects/ Recommendations Overall this policy meets the SEA baseline. This policy sets out criteria for development within the settlement boundaries in Bishopswood. Criteria has been added to ensure development will be sensitive to the natural and built environment. The location of infill development is not known at this stage, therefore impact on objectives 9, 10 and 12 are uncertain.

Conformity with Core Strategy

This policy meets the Core Strategy requirements for the purposes of the SEA.

Neighbourhood Plan Policy: Policy WALF20: Housing Development in Howle Hill

SEA Objectives Assessment of effect (consider cumulative effects, significance of the effect and magnitude of the effect in terms of the three time periods)															
1	2	3	4	5	6	7	8	9	10	11	12	13	14	15	16
Short term (1 – 5 years)															
Neutral	Positive	Positive	Neutral	Neutral	Neutral	Neutral	Neutral	Uncertain	Uncertain	Neutral	Uncertain				Neutral

SEA Objectives Assessment of effect (consider cumulative effects, significance of the effect and magnitude of the effect in terms of the three time periods)															
1	2	3	4	5	6	7	8	9	10	11	12	13	14	15	16
Medium term (5-10 years)															
Neutral	Positive	Positive	Neutral	Neutral	Neutral	Neutral	Neutral	Uncertain	Uncertain	Neutral	Uncertain				Neutral

SEA Objectives Assessment of effect (consider cumulative effects, significance of the effect and magnitude of the effect in terms of the three time periods)															
1	2	3	4	5	6	7	8	9	10	11	12	13	14	15	16
Long term (11 years +)															
Neutral	Positive	Positive	Neutral	Neutral	Neutral	Neutral	Neutral	Uncertain	Uncertain	Neutral	Uncertain				Neutral

Overall commentary and any initial cumulative effects/ Recommendations

Overall this policy is compatible with the Core Strategy and has mainly a neutral impact on the baseline data in the short, medium and long time frame.

Overall commentary and any initial cumulative effects/ Recommendations Overall this policy meets the SEA baseline. This policy sets out criteria for development within the settlement boundaries in Howle Hill. Criteria has been added to ensure development will be sensitive to the natural and built environment. The location of infill development is not known at this stage, therefore impact on objectives 9, 10 and 12 are uncertain.

Neighbourhood Plan Policy: Policy WALF21: Proposed Housing Sites

SEA Objectives Assessment of effect (consider cumulative effects, significance of the effect and magnitude of the effect in terms of the three time periods)															
1	2	3	4	5	6	7	8	9	10	11	12	13	14	15	16
Short term (1 – 5 years)															
Neutral	Positive	Positive	Neutral	Neutral	Neutral	Neutral	Neutral	Neutral	Neutral	Neutral	Neutral				Neutral

SEA Objectives Assessment of effect (consider cumulative effects, significance of the effect and magnitude of the effect in terms of the three time periods)															
1	2	3	4	5	6	7	8	9	10	11	12	13	14	15	16
Medium term (5-10 years)															
Neutral	Positive	Positive	Neutral	Neutral	Neutral	Neutral	Neutral	Neutral	Neutral	Neutral	Neutral				Neutral

SEA Objectives Assessment of effect (consider cumulative effects, significance of the effect and magnitude of the effect in terms of the three time periods)															
1	2	3	4	5	6	7	8	9	10	11	12	13	14	15	16
Long term (11 years +)															
Neutral	Positive	Positive	Neutral	Neutral	Neutral	Neutral	Neutral	Neutral	Neutral	Neutral	Neutral				Neutral

Overall commentary and any initial cumulative effects/ Recommendations

Overall this policy is compatible with the Core Strategy and has mainly a neutral impact on the baseline data on the baseline data in the short, medium and long time frame.

Overall commentary and any initial cumulative effects/ Recommendations Overall this policy meets the SEA baseline. This policy allocates four housing sites in Bishops wood and Ross on Wye urban fringe. This will accommodate up to 16 dwellings. Each site has been assessed fully in assessment B2a.

Conformity with Core Strategy

This policy meets the Core Strategy requirements for the purposes of the SEA.

Neighbourhood Plan Policy: Policy WALF22: Use of Rural Buildings for Business

SEA Objectives Assessment of effect (consider cumulative effects, significance of the effect and magnitude of the effect in terms of the three time periods)															
1	2	3	4	5	6	7	8	9	10	11	12	13	14	15	16
Short term (1 – 5 years)															
Neutral	Positive	Positive	Positive	Positive	Positive	Positive	Neutral	Uncertain	Uncertain	Uncertain	Uncertain				Neutral

SEA Objectives Assessment of effect (consider cumulative effects, significance of the effect and magnitude of the effect in terms of the three time periods)															
1	2	3	4	5	6	7	8	9	10	11	12	13	14	15	16
Medium term (5-10 years)															

Neutral	Positive	Positive	Positive	Positive	Positive	Positive	Neutral	Uncertain	Uncertain	Uncertain	Uncertain				Neutral
---------	----------	----------	----------	----------	----------	----------	---------	-----------	-----------	-----------	-----------	--	--	--	---------

SEA Objectives Assessment of effect (consider cumulative effects, significance of the effect and magnitude of the effect in terms of the three time periods)															
1	2	3	4	5	6	7	8	9	10	11	12	13	14	15	16
Long term (11 years +)															
Neutral	Positive	Positive	Positive	Positive	Positive	Positive	Positive	Uncertain	Uncertain	Uncertain	Uncertain				Neutral

Overall commentary and any initial cumulative effects/ Recommendations

Overall this policy is compatible with the Core Strategy and has mainly a positive impact on the baseline data on the baseline data in the short, medium and long time frame.

Overall commentary and any initial cumulative effects/ Recommendations Overall this policy meets the SEA baseline. This policy sets out criteria for use of rural buildings for business and to ensure development will be in keeping with the built and natural environment. The location of scheme is not known at this stage, therefore the impact on objectives 9-12 is uncertain, details will be provided at the planning application stage where this can be further assessed.

Conformity with Core Strategy

This policy meets the Core Strategy requirements for the purposes of the SEA.

Neighbourhood Plan Policy: Policy WALF23: Polytunnel Proposals

SEA Objectives Assessment of effect (consider cumulative effects, significance of the effect and magnitude of the effect in terms of the three time periods)															
1	2	3	4	5	6	7	8	9	10	11	12	13	14	15	16
Short term (1 – 5 years)															
Neutral	Positive	Positive	Positive	Positive	Positive	Positive	Uncertain	Uncertain	Uncertain	Uncertain	Uncertain				Neutral

SEA Objectives Assessment of effect (consider cumulative effects, significance of the effect and magnitude of the effect in terms of the three time periods)															
1	2	3	4	5	6	7	8	9	10	11	12	13	14	15	16
Medium term (5-10 years)															
Positive	Positive	Positive	Positive	Positive	Positive	Positive	Neutral	Uncertain	Uncertain	Uncertain	Uncertain				Positive

SEA Objectives Assessment of effect (consider cumulative effects, significance of the effect and magnitude of the effect in terms of the three time periods)															
1	2	3	4	5	6	7	8	9	10	11	12	13	14	15	16
Long term (11 years +)															
Positive	Positive	Positive	Positive	Positive	Positive	Positive	Neutral	Uncertain	Uncertain	Uncertain	Uncertain				Positive

Overall commentary and any initial cumulative effects/ Recommendations

Overall this policy is compatible with the Core Strategy and has mainly a positive impact on the baseline data in the short, medium and long time frame. The location of polytunnels is not known at this stage, therefore impact on objectives 9-12 are uncertain. This policy meets the Core Strategy requirements for the purposes of the SEA.

Overall commentary and any initial cumulative effects/ Recommendations Overall this policy meets the SEA baseline. This policy sets out criteria for polytunnels, with criteria to protect against unsuitable development and supports development that is sensitive to the built and natural environment. The location of scheme is not known at this stage, therefore the impact on objectives 9-12 are uncertain, details will be provided at planning application stage where this can be further assessed.

Conformity with Core Strategy

This policy meets the Core Strategy requirements for the purposes of the SEA.

Key:

++ Move towards significantly	+ Move towards marginally	-- Move away Significantly	- Move away marginally	0 Neutral	? Uncertain	X No relationship
----------------------------------	------------------------------	-------------------------------	---------------------------	--------------	----------------	----------------------

The following matrix appraises the emerging Walford NDP Objectives in terms of their SMART criteria and their compatibility with the SEA Objectives. These have been developed from Government guidance on SEA and from the local evidence base gathered for identifying the NDP issues.

SMART criteria:

S – Specific:

NDP objectives should specify what is intended to be done in detail and should not be open to a wide range of misinterpretations

M – Measurable:

It should be possible to monitor NDP objectives in a quantifiable way, by the use of indicators. Indicators should be measurable with limited resource implications.

A – Attainable/achievable:

NDP objectives should be achievable and deliverable, related to the scale of growth proposed

R – Realistic:

NDP objectives should relate to the overall vision of the plan. Likewise, chosen indicators should relate to objectives and their outcomes.

T – Time-Bound:

Objectives should be specific to the NDP period or another specified time-frame. Objectives should be associated with a target and indicators should specify when the target should be achieved.

Strategic Environmental Assessment (SEA) Stage B1-Assessment outcome

Very positive- Compatible with sea objective.

Positive- Compatible with sea objective.

Conflict- Negative effect/ conflict with sea objective.

Neutral-Neutral effect on sea objective.

No relationship between objectives- No link with sea objective.

Uncertain- Uncertain impact on sea objective, more information needed.

SEA Objectives:

- 1-To maintain and enhance nature conservation (biodiversity, flora and fauna)
- 2- To maintain and enhance the quality of landscapes and townscapes
- 3- To improve quality of surroundings
- 4- To conserve and where appropriate enhance the historic environment and culture
- 5- To improve air quality

- 6- To reduce the effect of traffic on the environment
- 7- To reduce contributions to climate change
- 8- To reduce vulnerability to climate change
- 9- To improve water quality
- 10- To provide sustainable sources of water supply
- 11- To avoid, reduce and manage flood risk

- 12- To conserve soil resources and quality
- 13- To minimise the production of waste
- 14- To improve health of the population
- 15- To reduce crime and nuisance
- 16- To conserve natural and manmade resources

Neighbourhood Plan Objectives and Policies

Neighbourhood Plan Objective: 1

SEA Objectives															
1	2	3	4	5	6	7	8	9	10	11	12	13	14	15	16
Very Positive	Very Positive	Positive	Positive	Positive	Positive	Positive	Positive	Positive	Positive	Positive	Positive				Very Positive

Neighbourhood Plan Objective: 2

SEA Objectives															
1	2	3	4	5	6	7	8	9	10	11	12	13	14	15	16
Neutral	Positive	Positive	Positive	Positive	Positive	Neutral	Neutral	Neutral	Neutral	Neutral	Positive				Neutral

Neighbourhood Plan Objective: 3

SEA Objectives															
1	2	3	4	5	6	7	8	9	10	11	12	13	14	15	16
Neutral	Positive	Positive	Neutral	Neutral	Neutral	Neutral	Neutral	Neutral	Neutral	Neutral	Neutral				Neutral

Neighbourhood Plan Objective: 4

SEA Objectives															
1	2	3	4	5	6	7	8	9	10	11	12	13	14	15	16
Neutral	Positive	Positive	Positive	Positive	Positive	Positive	Neutral	Neutral	Neutral	Neutral	Neutral				Neutral

Neighbourhood Plan Objective: 5

SEA Objectives															

1	2	3	4	5	6	7	8	9	10	11	12	13	14	15	16
Positive	Positive	Positive	Positive	Positive	Positive	Positive	Positive	Positive	Positive	Positive	Positive				Positive

Policies

Neighbourhood Plan Policy: Policy WALF1: Promoting Sustainable Development

SEA Objectives															
1	2	3	4	5	6	7	8	9	10	11	12	13	14	15	16
Positive	Positive	Positive	Positive	Neutral	Neutral	Neutral	Neutral	Positive	Positive	Positive	Positive				Positive

Neighbourhood Plan Policy: Policy WALF2: Development Strategy

SEA Objectives															
1	2	3	4	5	6	7	8	9	10	11	12	13	14	15	16
Positive	Positive	Positive	Positive	Neutral	Neutral	Neutral	Neutral	Positive	Positive	Positive	Positive				Positive

Neighbourhood Plan Policy: Policy WALF3: Major Development Within the Wye Valley AONB

SEA Objectives															
1	2	3	4	5	6	7	8	9	10	11	12	13	14	15	16
Very positive	Very positive	Very positive	Positive	Positive	Neutral	Positive	Positive	Positive	Positive	Positive	Positive				Positive

Neighbourhood Plan Policy: Policy WALF4: Conserving the Landscape and Scenic Beauty of the Parish

SEA Objectives															
1	2	3	4	5	6	7	8	9	10	11	12	13	14	15	16

Very positive	Very positive	Very positive	Positive	Positive	Neutral	Neutral	Neutral	Positive	Positive	Positive	Positive				Positive
---------------	---------------	---------------	----------	----------	---------	---------	---------	----------	----------	----------	----------	--	--	--	----------

Neighbourhood Plan Policy: Policy WALF5: Protecting Important Views within the Parish and the Settings of its Settlements

SEA Objectives															
1	2	3	4	5	6	7	8	9	10	11	12	13	14	15	16
Positive	Very positive	Very positive	Positive	Positive	Positive	Positive	Positive	Positive	Positive	Positive	Positive				Positive

Neighbourhood Plan Policy: Policy WALF6: Enhancement of the Natural Environment

SEA Objectives															
1	2	3	4	5	6	7	8	9	10	11	12	13	14	15	16
Very positive	Very positive	Very positive	Positive	Positive	Positive	Positive	Positive	Positive	Positive	Positive	Positive				Very positive

Neighbourhood Plan Policy: Policy WALF7: Protecting Heritage Assets

SEA Objectives															
1	2	3	4	5	6	7	8	9	10	11	12	13	14	15	16
Positive	Very positive	Very positive	Very positive	No link	No link	No link	No link	No link	No link	No link	No link				Positive

Neighbourhood Plan Policy: Policy WALF8: Wastewater Drainage

SEA Objectives															
1	2	3	4	5	6	7	8	9	10	11	12	13	14	15	16

Positive	Positive	Positive	No link	Positive	No link	Positive	Positive	Very Positive	Very Positive	Positive	Positive				Positive
----------	----------	----------	---------	----------	---------	----------	----------	---------------	---------------	----------	----------	--	--	--	----------

Neighbourhood Plan Policy: Policy WALF9: Protection from Flood Risk

SEA Objectives															
1	2	3	4	5	6	7	8	9	10	11	12	13	14	15	16
Positive	Positive	Positive	Positive	Positive	No link	Positive	Positive	Positive	Positive	Very Positive	Positive				Positive

Neighbourhood Plan Policy: Policy WALF10: Sustainable Design

SEA Objectives															
1	2	3	4	5	6	7	8	9	10	11	12	13	14	15	16
Positive	Positive	Positive	Positive	Positive	Positive	Very Positive	Very Positive	Positive	Positive	Positive	Positive				Positive

Neighbourhood Plan Policy: Policy WALF11: Renewable and Low Carbon Energy Generation

SEA Objectives															
1	2	3	4	5	6	7	8	9	10	11	12	13	14	15	16
Positive	Positive	Positive	Positive	Positive	Neutral	Very Positive	Very Positive	Neutral	Neutral	Neutral	Positive				Positive

Neighbourhood Plan Policy: Policy WALF12: Highway Design Requirements

SEA Objectives															
1	2	3	4	5	6	7	8	9	10	11	12	13	14	15	16
Neutral	Positive	Positive	No link	Neutral	Positive	Neutral	Neutral	Neutral	Neutral	Positive	Neutral				Neutral

Neighbourhood Plan Policy: Policy WALF13: Traffic Measures within the Parish

SEA Objectives															
1	2	3	4	5	6	7	8	9	10	11	12	13	14	15	16
Neutral	Positive	Positive	No link	Neutral	Positive	Neutral	Neutral	Neutral	Neutral	Positive	Neutral				Neutral

Neighbourhood Plan Policy: Policy WALF14: Protection and Enhancement of Community Facilities and Businesses serving the Local Community.

SEA Objectives															
1	2	3	4	5	6	7	8	9	10	11	12	13	14	15	16
Positive	Positive	Positive	Positive	Positive	Positive	Positive	Positive	Positive	Positive	Positive	Positive				Positive

Neighbourhood Plan Policy: Policy WALF15: Contributions to Community Facilities.

SEA Objectives															
1	2	3	4	5	6	7	8	9	10	11	12	13	14	15	16
Positive	Positive	Positive	Positive	Positive	Positive	Positive	Positive	Positive	Positive	Positive	Positive				Positive

Neighbourhood Plan Policy: Policy WALF16: High Speed Broadband and Telecommunications

SEA Objectives															
1	2	3	4	5	6	7	8	9	10	11	12	13	14	15	16
Positive	Very Positive	Very Positive	Positive	Positive	Positive	Positive	Positive	Positive	Positive	Positive	Positive				Positive

Neighbourhood Plan Policy: Policy WALF17: Design and Appearance

SEA Objectives															
1	2	3	4	5	6	7	8	9	10	11	12	13	14	15	16
Positive	Positive	Positive	Positive	Positive	Positive	Positive	Positive	Positive	Positive	Positive	Positive				Positive

Neighbourhood Plan Policy: Policy WALF18: Housing Development in Walford and Coughton

SEA Objectives															
1	2	3	4	5	6	7	8	9	10	11	12	13	14	15	16
Neutral	Positive	Positive	Neutral	Neutral	Neutral	Neutral	Neutral	Uncertain	Uncertain	Neutral	Uncertain				Neutral

Neighbourhood Plan Policy: Policy WALF19: Housing Development in Bishopswood

SEA Objectives															
1	2	3	4	5	6	7	8	9	10	11	12	13	14	15	16
Neutral	Positive	Positive	Neutral	Neutral	Neutral	Neutral	Neutral	Uncertain	Uncertain	Neutral	Uncertain				Neutral

Neighbourhood Plan Policy: Policy WALF20: Housing Development in Howle Hill

SEA Objectives															
1	2	3	4	5	6	7	8	9	10	11	12	13	14	15	16
Neutral	Positive	Positive	Neutral	Neutral	Neutral	Neutral	Neutral	Uncertain	Uncertain	Neutral	Uncertain				Neutral

Neighbourhood Plan Policy: Policy WALF21: Proposed Housing Sites

SEA Objectives															
1	2	3	4	5	6	7	8	9	10	11	12	13	14	15	16
Neutral	Positive	Positive	Neutral	Neutral	Neutral	Neutral	Neutral	Neutral	Neutral	Neutral	Neutral				Neutral

Neighbourhood Plan Policy: Policy WALF22: Use of Rural Buildings for Business

SEA Objectives															
1	2	3	4	5	6	7	8	9	10	11	12	13	14	15	16

Neutral	Positive	Positive	Positive	Positive	Positive	Neutral	Neutral	Uncertain	Uncertain	Uncertain	Uncertain				Neutral
---------	----------	----------	----------	----------	----------	---------	---------	-----------	-----------	-----------	-----------	--	--	--	---------

Neighbourhood Plan Policy: Policy WALF23: Polytunnel Proposals

SEA Objectives															
1	2	3	4	5	6	7	8	9	10	11	12	13	14	15	16
Positive	Positive	Positive	Positive	Positive	Positive	Positive	Neutral	Uncertain	Uncertain	Uncertain	Uncertain				Positive

Summary

Summary of effects of whole plan on each SEA Objective

Overall the Walford Neighbourhood Plan policies and objectives generally have a positive towards the SEA baseline data in the short, medium and long term, and is in general conformity with the Core Strategy. All of the policies and objectives meet the Core Strategy requirements for the purposes of the SEA.

Cumulative effects of whole plan (1 + 2 + 3...) Overall the Neighbourhood Plan policies and objectives have a positive impact towards the SEA baseline data. And are in general conformity with the Core Strategy Overall all of the policies and objectives meet the Core Strategy requirements for the purposes of the SEA. Policies and objectives strive to preserve and maintain natural and built historic environment that can help mitigate impact from the housing policies. This plan ensures appropriate sized development is developed this may help mitigate the effect of development and minimise impact on built and natural environment as well as protecting and enhancing AONB. The sites identified within the settlement boundaries lie outside the flood risk zone, therefore development within the settlement boundary is not at risk of fluvial flooding.

Commentary for significant cumulative effects Overall this has had a positive effect on the SEA baseline data. Overall the unknown areas require further detail such as location, scale and size of development, therefore are likely to be determined at planning application/ proposal stage. No significant cumulative effects have been identified.

Appendix 6

Template D1: SEA Consultation Feedback

This consultation feedback is **only** for comments received on the SEA of your Neighbourhood Development Plan

Parish Council Name: Walford

Neighbourhood Development Plan Name: Walford Neighbourhood Plan

Details of consultation: Online consultation

Consultation date: 4 January to 16 February 2022

Consultation title: Regulation 14

Response Date	Consultee	Summary of Comments	Response to Comments
12/5/22	Natural England	Natural England advises that we concur with the assessment conclusions, providing that all mitigation measures are appropriately secured in any planning permission given	Noted
14/5/22	Environment Agency	Raises no concerns from the Environmental Assessment at this time.	Noted

Appendix 7

Template D3: Predict and evaluate the effects of the amended Neighbourhood Development Plan policies and sites

Parish Council Name: Walford

Neighbourhood Development Plan Name: Walford NDP

Date completed: May 2022

Key:

++ Move towards significantly	+ Move towards Marginally	- - Move away significantly	- Move away marginally	0 Neutral	? Uncertain	N/A No relationship
-------------------------------	---------------------------	-----------------------------	------------------------	-----------	-------------	---------------------

Neighbourhood Plan Policy: Policy WALF1: Promoting Sustainable Development

SEA Objectives Assessment of effect (consider cumulative effects, significance of the effect and magnitude of the effect in terms of the three time periods)															
1	2	3	4	5	6	7	8	9	10	11	12	13	14	15	16
Positive	Positive	Positive	Positive	Neutral	Neutral	Neutral	Neutral	Positive	Positive	Positive	Positive				Positive

SEA Objectives Assessment of effect (consider cumulative effects, significance of the effect and magnitude of the effect in terms of the three time periods)															
1	2	3	4	5	6	7	8	9	10	11	12	13	14	15	16
Medium-term (5-10 years)															
Positive	Positive	Positive	Positive	Neutral	Neutral	Neutral	Neutral	Positive	Positive	Positive	Positive				Positive

SEA Objectives Assessment of effect (consider cumulative effects, significance of the effect and magnitude of the effect in terms of the three time periods)															
1	2	3	4	5	6	7	8	9	10	11	12	13	14	15	16
Long term (11 years +)															
Very positive	Positive	Positive	Positive	Neutral	Neutral	Positive	Positive	Positive	Positive	Positive	Positive				Positive

Overall commentary and any initial cumulative effects/ Recommendations

Overall this policy is compatible with the Core Strategy and has mainly a positive and neutral impact on the baseline data, in a short, medium and long time frame.

Overall commentary and any initial cumulative effects/ Recommendations

This policy complements Policy SD1 of the Core Strategy and would only lead to sustainable development and growth within the parish. Policy safeguarding exists to ensure that environmental considerations are taken into account. Changes post 14 have clarified the policy and added further criteria to ensure the most valuable and highest grade agricultural land is safeguarded from development.

This document is copyright of Herefordshire Council, please contact the Neighbourhood Planning team if you wish to reuse it in whole or part.

Conformity with Core Strategy

This policy meets the Core Strategy requirements for the purposes of the SEA.

Neighbourhood Plan Policy: Policy WALF10: Sustainable Design

SEA Objectives Assessment of effect (consider cumulative effects, significance of the effect and magnitude of the effect in terms of the three time periods)															
1	2	3	4	5	6	7	8	9	10	11	12	13	14	15	16
Short term (1 – 5 years)															
Positive	Positive	Positive	Positive	Positive	Positive	Very Positive	Very Positive	Positive	Positive	Positive	Positive				Positive

SEA Objectives Assessment of effect (consider cumulative effects, significance of the effect and magnitude of the effect in terms of the three time periods)															
1	2	3	4	5	6	7	8	9	10	11	12	13	14	15	16
Medium term (5-10 years)															
Positive	Positive	Positive	Positive	Positive	Positive	Very Positive	Very Positive	Positive	Positive	Positive	Positive				Positive

SEA Objectives Assessment of effect (consider cumulative effects, significance of the effect and magnitude of the effect in terms of the three time periods)															
1	2	3	4	5	6	7	8	9	10	11	12	13	14	15	16
Long term (11 years +)															
Positive	Very Positive	Very Positive	Positive	Positive	Positive	Very Positive	Very Positive	Positive	Positive	Positive	Positive				Positive

Overall commentary and any initial cumulative effects/ Recommendations

Overall this policy is compatible with the Core Strategy and has mainly a positive impact on the baseline data in short, medium and long time frame

Overall commentary and any initial cumulative effects/ Recommendations Overall this policy meets the SEA baseline. This policy sets out criteria for high-quality sustainable design to minimise carbon usage, energy use and waste of new developments. This policy also promotes sustainable travel and maximises natural site features to improve the sustainability of a scheme. Changes post-regulation 14 consultation have added criteria to ensure new development considers noise impact when locating development, as well as helping to reduce light pollution in new schemes.

Conformity with Core Strategy

This policy meets the Core Strategy requirements for the purposes of the SEA.

Neighbourhood Plan Policy: Policy WALF11: Renewable and Low Carbon Energy Generation

SEA Objectives Assessment of effect (consider cumulative effects, significance of the effect and magnitude of the effect in terms of the three time periods)															
1	2	3	4	5	6	7	8	9	10	11	12	13	14	15	16
Short term (1 – 5 years)															
Positive	Positive	Positive	Positive	Positive	Neutral	Positive	Positive	Neutral	Neutral	Neutral	Positive				Positive

SEA Objectives Assessment of effect (consider cumulative effects, significance of the effect and magnitude of the effect in terms of the three time periods)															
1	2	3	4	5	6	7	8	9	10	11	12	13	14	15	16
Medium term (5-10 years)															
Positive	Positive	Positive	Positive	Positive	Neutral	Very Positive	Very Positive	Neutral	Neutral	Neutral	Positive				Positive

SEA Objectives Assessment of effect (consider cumulative effects, significance of the effect and magnitude of the effect in terms of the three time periods)															
1	2	3	4	5	6	7	8	9	10	11	12	13	14	15	16
Long term (11 years +)															
Positive	Positive	Positive	Positive	Positive	Neutral	Very Positive	Very Positive	Neutral	Neutral	Neutral	Positive				Positive

Overall commentary and any initial cumulative effects/ Recommendations

Overall this policy is compatible with the Core Strategy and has mainly a positive impact on the baseline data in short, medium and long time frame

Overall commentary and any initial cumulative effects/ Recommendations Overall this policy meets the SEA baseline. This policy sets out criteria for renewable and low carbon proposals in the neighbourhood area. Criteria contained in this policy ensures renewable energy schemes have minimal impact on the existing built and natural environment. Criteria has been added post-regulation 14 consultation, to ensure there no loss in the best and most versatile agricultural land when considering new development.

Conformity with Core Strategy

This policy meets the Core Strategy requirements for the purposes of the SEA.

Neighbourhood Plan Policy: Policy WALF21: Proposed Housing Sites

SEA Objectives Assessment of effect (consider cumulative effects, significance of the effect and magnitude of the effect in terms of the three time periods)															
1	2	3	4	5	6	7	8	9	10	11	12	13	14	15	16
Short term (1 – 5 years)															
Neutral	Positive	Positive	Neutral	Neutral	Neutral	Neutral	Neutral	Neutral	Neutral	Neutral	Neutral				Neutral

SEA Objectives Assessment of effect (consider cumulative effects, significance of the effect and magnitude of the effect in terms of the three time periods)															
1	2	3	4	5	6	7	8	9	10	11	12	13	14	15	16
Medium term (5-10 years)															
Neutral	Positive	Positive	Neutral	Neutral	Neutral	Neutral	Neutral	Neutral	Neutral	Neutral	Neutral				Neutral

SEA Objectives Assessment of effect (consider cumulative effects, significance of the effect and magnitude of the effect in terms of the three time periods)															
1	2	3	4	5	6	7	8	9	10	11	12	13	14	15	16
Long term (11 years +)															
Neutral	Positive	Positive	Neutral	Neutral	Neutral	Neutral	Neutral	Neutral	Neutral	Neutral	Neutral				Neutral

Overall commentary and any initial cumulative effects/ Recommendations

Overall this policy is compatible with the Core Strategy and has mainly a neutral impact on the baseline data on the baseline data in the short, medium and long time frame.

Overall commentary and any initial cumulative effects/ Recommendations Overall this policy meets the SEA baseline. This policy allocates five housing sites in Bishops wood and Ross on Wye urban fringe. This will accommodate up to 21 dwellings. An additional site has been added since regulation 14 consultation, the amended site has been assessed individually in the table below.

Conformity with Core Strategy

This policy meets the Core Strategy requirements for the purposes of the SEA.

Site Allocation : Land south of Cedar Grove, Coughton

SEA Objectives															
1	2	3	4	5	6	7	8	9	10	11	12	13	14	15	16

uncertain	uncertain	uncertain	neutral	neutral	neutral	neutral	neutral	neutral	neutral	neutral	neutral				uncertain
-----------	-----------	-----------	---------	---------	---------	---------	---------	---------	---------	---------	---------	--	--	--	-----------

This 0.45 hectare site is located south of Ross on Wye for up to 5 dwellings. The site is located on the southwestern edge of Ross on Wye and appears to be in keeping with the built form. There are no site-specific environmental concerns about this site regarding the landscape character and elevation of the site. Although if required it may be possible to provide sufficient mitigation through layout and landscaping. Further detail of migration measures, scale and suitable design is required to determine the impact on natural environment and landscape character. This will help us to assess the impact on objectives 1 ,2 and 3 which can be reviewed at planning application stage.

This site option would meet the Core Strategy requirements in terms of the SEA

Appendix 8

Objectives and context	Where are the points covered in Neighbourhood Development Plan SEA
<ul style="list-style-type: none"> • The Neighbourhood Development Plan's purpose and objectives are made clear. • The Neighbourhood Area's environmental issues and constraints, including acknowledgement of those in the Local Plan (Core Strategy) SA, where relevant, and local environmental protection objectives, are considered in developing objectives and targets. • SEA objectives are clearly set out and linked to indicators and targets where appropriate. • Links with other locally related plans, programmes and policies are identified, explained and acknowledgement for those set out in the SA of the Local Plan (Core Strategy) is given, where relevant. • Conflicts that exist between SEA objectives; between SEA and Neighbourhood Development Plan objectives; and between SEA objectives and other local plan objectives are identified and described. 	<p>Chapter 1.6 – 1.10</p> <p>Chapter 2 methodology, chapter 3 and tables A2 and A3</p> <p>Chapter 3 paragraph 3.5 and 3.7</p> <p>Chapter 3, paragraph 3.1</p> <p>Chapter 3</p>
<p>Scoping</p> <ul style="list-style-type: none"> • Statutory Consultees are consulted in appropriate ways and at appropriate times on the content and scope of the Environmental Report. • The assessment focuses on significant issues. • Technical, procedural and other difficulties encountered are discussed; assumptions and uncertainties are made explicit. 	<p>Chapter 2, paragraphs 2.6-2.9</p> <p>Chapter 2 and chapter 4</p> <p>Chapter 2</p>

<ul style="list-style-type: none"> • Reasons are given for eliminating issues from further consideration. 	Chapter 2, chapter 4 and chapter 5
<p>Alternatives</p> <ul style="list-style-type: none"> • Realistic alternatives are considered for key issues, and the reasons for choosing them are documented. • Alternatives include 'do minimum' and/or 'business as usual' scenarios wherever relevant. • The environmental effects (both adverse and beneficial) of each alternative are identified and compared. • Inconsistencies between the alternatives and other relevant local plans, programmes or policies are identified and explained. • Reasons are given for selection or elimination of alternatives. 	<p>Chapter 4 and chapter 5</p> <p>Paragraph 5.4</p> <p>Chapter 5</p> <p>Chapter 5</p> <p>Chapter 5</p>
<p>Baseline information</p> <ul style="list-style-type: none"> • Relevant aspects of the current state of the local, neighbourhood area environment and their likely evolution without the Neighbourhood Development Plan are described. Acknowledgement to the information in the SA of the Local Plan (Core Strategy) is given, where relevant. • Environmental characteristics of the local, neighbourhood area, likely to be significantly affected are described, including areas wider than the physical boundary of the designated neighbourhood area, where it is likely to be affected by the Neighbourhood Development Plan. • Difficulties such as deficiencies in information or methods are explained. 	<p>Chapter 1, Chapter 3</p> <p>Initial screening report and Chapter 1</p> <p>Chapter 2</p>
<p>Prediction and evaluation of likely significant environmental effects</p>	

<ul style="list-style-type: none"> • Effects identified include the types listed in the Directive (biodiversity, population, human health, fauna, flora, soil, water, air, climate factors, material assets, cultural heritage and landscape), as relevant; and other local likely environmental effects are also covered, as appropriate. • Both positive and negative effects are considered, and the duration of effects (short, medium or long-term) is addressed. • Likely secondary, cumulative (growing in quantity and strength) and synergistic (acting together) effects are identified, where practicable. • Inter-relationships between effects are considered, where practicable. • The prediction and evaluation of effects makes use of relevant accepted standards, regulations, and thresholds (i.e. data gathered for the evidence base). • Methods used to evaluate the effects are described. 	<p>Tables A2, A3 and A4</p> <p>Tables B2 and B3</p> <p>Table B4</p> <p>Chapter 5, chapter 6</p> <p>Chapter 5, chapter 6</p> <p>Chapter 2</p>
<p>Mitigation measures</p> <ul style="list-style-type: none"> • Measures envisaged to prevent, reduce and offset any significant adverse effects of implementing the Neighbourhood Development Plan are indicated. • Issues to be taken into account when determining planning applications or other projects, for example funding bids, are identified. 	<p>Chapter 6, paragraph 6.6 – 6.9</p> <p>Chapter 6</p>
<p>The Environmental Report</p> <ul style="list-style-type: none"> • Is clear and concise in its layout and presentation. • Uses simple, clear language and avoids or explains technical terms. 	<p>-</p> <p>-</p> <p>-</p>

<ul style="list-style-type: none"> • Uses maps and other illustrations, where appropriate. • Explains the methodology used. • Explains who was consulted and what methods of consultation were used. • Identifies sources of information, including expert judgement and matters of opinion. • Contains a non-technical summary covering the overall approach to the SEA, the objectives of the Neighbourhood Development Plan, the main options considered, and any changes to the Neighbourhood Development Plan resulting from the SEA. 	<p>Chapter 2</p> <p>Paragraph 2.6-2.9</p> <p>Paragraph 2.8-2.9</p> <p>Page 1 / Paragraph 1.8 / Chapter 6</p>
<p>Consultation</p> <ul style="list-style-type: none"> • The SEA is consulted on as an integral part of the plan-making process of the Neighbourhood Development Plan. • Consultation Bodies and the public likely to be affected by, or having an interest in, the Neighbourhood Development Plan are consulted in ways and at times, which give them an early and effective opportunity within appropriate time frames to express their opinions on the draft Neighbourhood Development Plan and Environmental Report. 	<p>Paragraph 2.6-2.9</p> <p>Chapter 8</p>
<p>Decision-making and information on the decision</p> <ul style="list-style-type: none"> • The environmental report and the opinions of those consulted are taken into account in finalising and adopting the Neighbourhood Development Plan. • An explanation is given of how they have been taken into account. • Reasons are given for choosing the Neighbourhood Development Plan as adopted, in the light of other reasonable alternatives considered. 	<p>Chapter 8</p> <p>Following draft consultation</p> <p>Following draft consultation</p>

<p>Monitoring measures</p> <ul style="list-style-type: none"> • Measures proposed for monitoring the Neighbourhood Development Plan are clear, practicable and linked to the indicators and objectives used in the SEA. • Monitoring is used, where appropriate, during implementation of the Neighbourhood Development Plan to make good deficiencies in baseline information in the SEA. • Acknowledgement that monitoring enables unforeseen adverse effects to be identified at an early stage. (These effects may include predictions which prove to be incorrect.) And that • Proposals are made for action in response to significant adverse effects arising from the monitoring of the Neighbourhood Development Plan. 	<p>Chapter 7</p> <p>Chapter 7</p> <p>Chapter 7</p> <p>Chapter 7</p>