

Environmental Report

Report for:

Edwyn Ralph Neighbourhood Area

December 2022



Edwyn Ralph Neighbourhood Plan (December 2022)

Environmental Report Post Examination

Contents

Non-technical summary

- 1.0 Introduction
- 2.0 Methodology
- 3.0 The SEA Framework
- 4.0 Appraisal of Objectives
- 5.0 Appraisal of Options
- 6.0 Appraisal of Policies
- 7.0 Implementation and monitoring
- 8.0 Next steps

Appendix 1: Initial SEA Screening Report

Appendix 2: SEA Scoping Report incorporating Tasks A1, A2, A3 and A4

Appendix 3: Consultation responses to the Scoping Report

Appendix 4: SEA Stage B incorporating Tasks B1, B2, B3 and B4

Appendix 5: Options Considered

Appendix 6: Consultation responses to Environmental Report Reg14

Appendix 7: SEA Stage D Reg16 – Table D2 and D3

Appendix 8: Consultation responses to the Reg16 report

Appendix 9: Modifications following examination

Appendix 10: SEA Stage D – Table D2

Appendix 11: Environmental Report checklist

Non-technical summary

Strategic Environmental Assessment (SEA) is an important part of the evidence base which underpins Neighbourhood Development Plans (NDP), as it is a systematic decision support process, aiming to ensure that environmental assets, including those whose importance transcends local, regional and national interests, are considered effectively in plan making.

Thornbury Group Parish Council has undertaken to prepare an NDP and this process has been subject to environmental appraisal pursuant to the SEA Directive. The parish of Edwyn Ralph lies to the north west of Bromyard within the north east of Herefordshire.

The Parish area consists of 4 ancient woodland, 1 Local Wildlife Sites and 1 Ancient Monuments. There are no specific landscape designations in this area.

The submission Edwyn Ralph NDP includes 7 objectives and it is intended that these objectives will be supported by 18 criteria based planning policies including one housing site allocation. Alternative options were considered prior to reaching a decision over the format of the draft plan.

The Edwyn Ralph NDP has now been subject to an independent examination. Very minor modifications have been suggested to 3 policies to aid clarity. No further changes to the NDP are recommended as a result of this reassessment of the SEA. The NDP was concluded to be in general conformity with national planning policy and the strategic policies as set out within the adopted Herefordshire Core Strategy.

The environmental appraisal of the Edwyn Ralph NDP has been undertaken in line with the Environmental Assessment of Plan and Programmes Regulations 2004. Stage A of the SEA process involved Scoping and Stage B provided a review and analysis of the NDP. Stage C involved preparing an Environmental Report and Stage D comprises a formal consultation on both this submission and the Draft Plan itself.

Habitat Regulations Assessment (HRA) screening has been carried out and has determined that a full assessment is required. Natural England have concurred with this conclusion and a separate report have been produced.

On the whole, it is considered that the Edwyn Ralph NDP is in general conformity with both national planning policy contained in the National Planning Policy Framework and strategic policies set within the Herefordshire Local Plan (Core Strategy). The plan proposes a level of growth which reflects the proportional growth that is prescribed by strategic policy. There are no changes to the NDP are recommended as a result of the SEA.

Once made (adopted) by Herefordshire Council, the effects of the policies within the Edwyn Ralph NDP will be monitored annually via the Council's Authority Monitoring Report (AMR).

1.0 Introduction

- 1.1 This report forms the draft Strategic Environmental Assessment (SEA) of the Edwyn Ralph Neighbourhood Development Plan (NDP).
- 1.2 The Edwyn Ralph NDP proposes one housing site allocation. Edwyn Ralph is a settlement highlighted for proportional levels of growth in Policy RA2 of the Herefordshire Local Plan (Core Strategy) and the site allocation is seeking to meet this requirement. The NDP also provides general policies for guiding future development across the parish as a whole but not the wider group parish of Thornbury.

Purpose of the SEA

- 1.3 SEA is a requirement of EC Directive 2001/42/EC (the SEA Directive) which requires the assessment of the effects of certain plans and programmes on the environment to ensure that the proposals in that plan or programme contribute to the achievement of sustainable development.
- 1.4 The Directive was transposed into domestic legislation through the Environmental Assessment of Plans and Programmes Regulations 2004 and which applies to plans with significant environmental effects.
- 1.5. A screening opinion was carried out on the Edwyn Ralph NDP and it concluded that due to the range of environmental designations in and around the parish, there may be significant environmental effects and consequently an SEA would be required.

Edwyn Ralph Neighbourhood Plan Context

- 1.6 The parish of Edwyn Ralph is in the Thronbury Group of parishes and situated to the north east of Herefordshire and the north west of Bromyard. The parish itself covers an area of approximately 500 hectares.
- 1.7 The primary settlement of Edwyn Ralph is in the centre of the parish and consists of two parts: the medieval settlement and the main village. There are around 60 dwellings within the main village together with a village hall. The medieval settlements is to the south with a church and Norman castle.
- 1.8 The plan included a vision for 2031;

'In 2031, Edwyn Ralph will remain a rewarding place to live and work in, having grown only modestly whilst retaining it's uniquely tranquil rural character. The rich legacy of its historic buildings and monuments, natural habitats, trees and woodlands and expansive vistas from its elevated position will have been protected and enhances. Limited residential growth to provide for a range of needs will have taken place in a form which maintains the distinctive linear pattern of existing properties.

Road safety within the village will have been further improved as a result of traffic calming measure and the network of footpaths and bridleways protected and extended.

Our community will have a shared sense of pride and belonging, giving a sense of strong social cohesion to the main village and the wider rural parish beyond.'

Context of Neighbourhood Plans

- 1.9 NDPs are a relatively new type of planning document that form a key part of the Government's localism agenda. They enable local communities to develop plans that reflect local aspirations, in accordance with strategic policies.

- 1.10 The Edwyn Ralph NDP must therefore conform to national planning policy set within the NPPF and strategic level local policy including the Herefordshire Local Plan (Core Strategy).
- 1.11 The Herefordshire Local Plan (Core Strategy) was adopted on 16 October 2015.
- 1.12 Paragraph 48 of the NPPF and Planning Practice Guidance set out the weight that may be given to relevant policies in emerging plans, including NDPs, and indicated that weight may be given to relevant policies in emerging NDPs according to:
- The stage of preparation of the emerging plan (the more advanced the preparation, the greater the weight that may be given);
 - The extent to which there are unresolved objections to relevant policies (the less significant the unresolved objections, the greater the weight that may be given); and
 - The degree of consistency of the relevant policies in the emerging plan to the policies in this Framework (the closer the policies in the emerging plan to the policies in the Framework, the greater the weight that may be given).
- 1.13 Table 4.14 and 4.15 of the Local Plan (Core Strategy) lists Edwyn Ralph among the settlements which it considers to be sustainable locations for proportional growth in line with the provisions of Policy RA2. This policy is expected to facilitate the delivery of 5,300 homes across the areas outside Hereford and the Market Towns in accordance with Policy RA1 and it anticipates that NDPs will be the principle mechanism for delivering growth in the rural areas.
- 1.14 Once made (adopted) by Herefordshire Council, the Edwyn Ralph NDP will have a role in guiding future development proposals within the parish, by setting out policies against which planning applications will be determined.

Structure of SEA

- 1.15 The structure of the document is as follows:
- Section 2 – Explains the SEA methodology and summarises the comments received in respect of the SEA Scoping Report
 - Section 3 - Introduces the Edwyn Ralph NDP objectives and the SEA framework
 - Section 4 - Appraises the objectives set within the NDP against the SEA framework
 - Section 5 - Appraises the options set within the NDP against the SEA framework
 - Section 6 – Appraises the policies set within the NDP against the SEA framework
 - Section 7 – Discusses the implementation and monitoring of the NDP
 - Section 8 - Concludes the SEA report by outlining next steps

2.0 Methodology

- 2.1 The SEA process comprised several stages and which are summarised, in some detail, below.
- 2.2 Stage A involved 4 tasks and culminated in a Scoping Report:
- *Task A1:* Identified and reviewed relevant policies, plans and programmes and environmental protection objectives from European, National and Local sources.
 - *Task A2:* Collected baseline information to provide a picture of past, present and likely future conditions within the area. This helped to establish indicators which will be used to monitor the effects and performance of the NDP.

- *Task A3:* Focused on the environmental issues identified from the baseline, highlighting key issues and problems within the neighbourhood area.
- *Task A4:* Used the information gathered from Tasks A1-A3 to develop a set of SEA objectives, sometimes referred to as the 'sustainability framework'.
- *Task A5:* Collated the results of Tasks A1-A4 within a Scoping Report, a document which was subject to a statutory 5 week consultation.

2.3 Stage B involved 4 tasks and assessed the effects of the NDP.

- *Task B1:* Tested NDP Objectives against the SEA Objectives
- *Task B2:* Developed and refined the NDP options and policies.
- *Task B3/B4:* Predicted and evaluated the significant effects of the NDP

2.4 Stage C involved preparing an Environmental Report. This report presents information compiled during Stage B of the SEA process and constitutes the Draft Environmental Appraisal of the NDP. It accompanies the Draft Plan during its formal Regulation 14 consultation with people who live, work and carry out businesses in the neighbourhood area, as well as statutory bodies listed in the Neighbourhood Planning (General) Regulations 2012.

2.5 Producing an Environmental Report was therefore a legal requirement and the submission of this report to Herefordshire Council forms Stage D of the SEA process.

Scoping Report Consultation

2.6 With regard to the SEA scoping assessments, documents A1 to A4 were completed by a Herefordshire Council Planning Officer and sent to the Parish Council for comment, in readiness for a 5 week consultation with statutory bodies, pursuant to the Environmental Assessment of Plans and Programmes Regulations 2004.

2.7 After the document was approved by the Parish Council, Edwyn Ralph SEA Scoping Report was available to four statutory bodies for consultation from 10 March to 21 April 2020

Consultation outcomes from Statutory Consultees

2.8 The consultation resulted in 1 response, both of which are attached at Appendix 3.

2.9 The response were collated and incorporated within this document where relevant.

Natural England: No comments received

Historic England: no substantive comments to make. Commendable approach.

Environment Agency: No comments received

Natural Resources Wales: No comments received

3.0 The SEA Framework

3.1 As mentioned previously, Stage A of the SEA identifies and reviews relevant policies, plans and programmes and environmental protection objectives from European, National and Local sources (refer to Table A1 in Appendix 2 for details of those documents that were reviewed in completing Stage A of SEA on the Edwyn Ralph NDP).

3.2 The requirement to undertake this 'context review' is contained in Annexes 1(a) and (e) of the SEA Directive which states that an Environmental Report should include:

"...an outline of the contents, main objectives of the plan or programme and relationship with other relevant plans and programmes" and

"...the environmental protection objectives, established at international, Community or Member State level, which are relevant to the plan or programme and the way those objectives and any environmental considerations have been taken into account during its preparation"

Policy context

3.3 The Edwyn Ralph NDP will deliver the Local Plan (Core Strategy) at parish level by adding locally specific detail to strategic policies. As a consequence, the Scoping Report for the NDP was based on the context review Herefordshire Council undertook for its Local Plan (Core Strategy).

3.4 The results of this assessment (context review) provide the source of the local baseline data and have been incorporated into the SEA framework. It should be noted that:

- No list of policies, plans and programmes can ever be exhaustive and that Herefordshire Council has selected those considered to be of particular relevance to the planning system;
- New or revised plans and policies can emerge during the SEA process

3.5 Strategies and plans have been reviewed and where appropriate incorporated within the SA Framework Objectives. These can be seen in Appendix 1 of the Edwyn Ralph NDP Scoping Report together with the implications for the SEA and NDP highlighted.

SEA Objectives and baseline characteristics

3.6 The SEA objectives that were used at Stages A and B of the process are listed in the following table.

SEA Objective	
1	To maintain or enhance nature conservation (biodiversity, flora and fauna)
2	To maintain or enhance the quality of landscapes and townscapes
3	To improve the quality of surroundings
4	To conserve or where appropriate enhance the historic environment and culture heritage
5	To improve air quality
6	To reduce the effect of traffic on the environment
7	To reduce contributions to climate change
8	To reduce vulnerability to climate change
9	To improve water quality

10	To provide for sustainable sources of water supply
11	To avoid, reduce and manage flood risk
12	To conserve soil resources and quality
13	To minimise the production of waste
14	To improve the health of the population
15	To reduce crime and nuisance
16	To conserve natural and manmade resources

- 3.7 The SEA objectives detailed above conform to the SEA Directive, and are derived from the Sustainability Appraisal undertaken for the Herefordshire Local Plan (Core Strategy) 2011-2031.
- 3.8 Baseline information gathered during Stage A of the SEA process provided details of the current environmental characteristics of the neighbourhood area and the status of its natural assets and features (refer to Appendix 2). This information was analysed as part of Task B2 of SEA, which looked at the extent to which the emerging NDP policies will help or obstruct these characteristics.
- 3.9 Following the completion of Task B2 of SEA it was apparent that the largest environmental issue within the parish and has an impact on the county as a whole, is water quality. The River Lugg is current not meeting its water quality targets and the Nutrient Management Plan is being revised to address this issue. This will be addressed further in the Habitat Regulation Assessment which is produced separate to this report.
- 3.10 Baseline characteristics within the SEA detail the current environmental status of environmental characteristics in the neighbourhood area from different sources. The source of baseline information used in Table A2 in Appendix 2 and analysed in Table B2 can be found in Appendix 4.
- #### 4.0 Assessing the NDP Objectives
- 4.1 The following objectives, as set out in the NDP, aim to realise the vision for Edwyn Ralph parish in 2031;
- Objective 1 – to maintain and enhance the rural character of the villages and surrounding countryside, and ensure that important views, trees and woodlands, field and hedgerows and historic buildings are protected.
 - Objective 2 – to ensure that future housing development provides for modest growth of a scale and type to meet a range of needs, whilst fitting in sympathetically with existing properties and following the existing linear pattern of the main settlement.
 - Objective 3 – to sustain and enhance the range of business and commercial activity and services in the parish where this is compatible with the tranquil rural character. Especially those that support economic activity such as working from home and appropriate farm diversification.
 - Objective 4 – to promote safe roads and spaces for all road users including pedestrians, cyclist and horse riders; reduce traffic speeds through effective traffic calming measures
 - Objective 5 – maintaining all existing rights of way, footpaths and bridleways to enable the community to have as much access to and enjoyment of the beautiful countryside surrounding our village
 - Objective 6 - to provide for the needs of the community, by sustaining and /or enhancing where appropriate, improvements to existing community facilities including the local village hall and surrounding area and parish church and explore opportunities for new facilities such as a village shop

- Objective 7 – to ensure that the supply of utilities and telecommunications is sufficient to meet the needs of the community at a time when more home working is likely.

- 4.2 The table in Appendix 4 tests these NDP objectives against the SEA objectives, providing a summary of the results of Task B1 of SEA.
- 4.3 The majority of those NDP objectives, which have a relationship with the SEA framework, are positively compatible with it or have a neutral effect.
- 4.4 Table B1 of the SEA identifies that the 7 NDP objectives were compatible with the SEA framework. There are also required to be SMART assessed and this too was seen to be compatible.

5.0 Assessing the NDP Options

- 5.1 All reasonable alternative options that were considered by the NDP steering group during the development of their plan have been assessed as part of the SEA and the summary matrix of the assessment can be found in Table B2 at Appendix 4.
- 5.2 The options covered were as follows;

Option 1	Do nothing
Option 2	Produce a NDP
Option 3	Housing Delivery – Nucleated approach
Option 4	Housing Delivery – Dispersed approach
Option 5	Housing Delivery – Service and facility based approach

- 5.3 A 'do nothing' option was also considered, i.e. not undertaking an NDP, however this was disregarded at an early stage by the Parish Council as it was considered the majority of the community would support the work undertaken for an NDP.
- 5.4 A call for sites consultation was undertaken in Autumn 2020 to ascertain the site allocation options. A total of 5 sites were considered.
- 5.5 The following sites have been assessed;
- Site 1. East of The Hollings
 - Site 2 Land adjacent to Woodhouse Farm
 - Site 3 Top Paddock, The Manor
 - Site 4 East of B4214
 - Site 5 Oaklands

- 5.6 The residual housing requirement is a minimum of 17 dwellings.
- 5.7 Following the site assessment process, site three was deemed as suitable for allocation and this can also be reflected in the SEA assessment
- ## 6.0 Appraisal of the policies
- 6.1 A key part of developing a plan such as the Edwyn Ralph NDP is developing a range of options and testing these, so that a preferred way forward can be selected.
- 6.2 The plan has been organised with a set of general overarching policies for the whole neighbourhood area and these emerging set of draft policies have been appraised for the purposes of Stage B of the SEA:

- Policy ER1 Promoting a sustainable community
- Policy ER2 Development Strategy
- Policy ER3 Protecting and enhancing local character
- Policy ER4 Heritage Assets
- Policy ER5 The scale of new housing
- Policy ER6 Housing allocation
- Policy ER7 Housing in the countryside
- Policy ER8 Extensions to dwellings
- Policy ER9 Design of new dwellings
- Policy ER10 Ensuring an appropriate range of tenures, types and sizes of houses
- Policy ER11 Affordable housing
- Policy ER12 Business development
- Policy ER13 Protection of existing commercial business premises
- Policy ER14 Agricultural and forestry enterprises
- Policy ER15 Transport and connectivity
- Policy ER16 Enhanced services and facilities for the community
- Policy ER17 Protection of community facilities
- Policy ER18 Broadband and mobile telephone infrastructure

Stage B of SEA

- 6.3 In the context of Task B1 of SEA, the previous section of this report identified that many of the NDP objectives are compatible with the SEA framework, although policy safeguards within the NDP and Local Plan (Core Strategy) would help mitigate any possible conflicts.
- 6.4 With regard to Task B2 of SEA, the NDP policies were measured against both the SEA framework and the baseline characteristics identified during Stage A of the process; here, there was no baseline data available in respect of SEA Objectives 13, 14 and 15. Full details of this appraisal are attached at Appendix 4.
- 6.5 The policies largely score as positive against the SEA objectives and will not, therefore, have an adverse impact on the baseline characteristics or immediate environmental impacts. This is because they are criteria based policies which only consider schemes on their own merits, as and when planning applications are submitted to the local planning authority. Main of these criteria based policies contained safeguarding requirements to ensure the SEA objectives are taken into account.
- 6.6 The results of Task B3, as shown at Appendix 4, demonstrate that the cumulative impact of the NDP policies over the course of the plan period is generally positive.
- 6.7 Task B4 of SEA brings together the results of earlier tasks and thus identifies the cumulative impact of the entire of the NDP. This task, which is also attached at Appendix 4, reveals that the objectives and policies contained in the Edwyn Ralph NDP are by and large in general conformity with the Local Plan (Core Strategy), which means that the cumulative effect of the plan will contribute to the achievement of the SEA objectives.
- 6.8 None of the draft NDP policies are considered to be in direct conflict with or propose greater levels of growth and development than strategic policies contained in the Local Plan (Core Strategy), which themselves have undergone a full Sustainability Appraisal.

Stage D of SEA

- 6.9 The submission Edwyn Ralph NDP has been reviewed following Regulation 16 consultation. None of the objectives of the plan have been amended but in total there have been amendments to 9 policies. Of the policies modified, 5 have received very minor wording changes that do not alter the meaning of the policy (Policies ER11, ER13, ER14, ER15 and ER17), and 4 have received more substantial amendments, including the addition of criteria to policies (Policies ER2, ER3, ER7 and ER12) and have therefore been reassessed.
- 6.10 The assessment results have changed slightly, however there are only improvements noted and effect on the baseline has not changed or changed from uncertain or neutral to positive in most cases and vary very little in terms of the SEA from that undertaken upon the Reg 14 policies.

Stage D of SEA following the examination

- 6.11 Following the draft plan consultation at Regulation 14 and the submission consultation at Regulation 16, the plan has now been subject to an independent examination in November 2022 by Barbara Maksymiw. She reported that the NDP has met the Basic Conditions subject to a minor number of modifications to three policies. These can be seen in Appendix 9.
- 6.12 It has been concluded that the modifications made will not have a adverse impact on the SEA objectives and therefore the conclusions of the SEA remain the same from the previous report.

7.0 Implementation and monitoring

- 7.1 Herefordshire Council as the Local Planning Authority should make arrangements to monitor the significant effects of implementing a neighbourhood plan.
- 7.2 Indeed, Regulation 17 of the Environmental Assessment of Plans and Programmes Regulations 2004 requires the Local Planning Authority to monitor the significant environmental effects of the implementation of any NDP that was subject to SEA, in order to identify unforeseen adverse effects at an early stage and to enable appropriate remedial actions.
- 7.3 Accordingly, Herefordshire Council will monitor outcomes from the NDP policies and the results of these will be reported in the Council's Authority Monitoring Report (AMR).
- 7.4 The AMR runs from 1 April to 31 March each year and the topics covered therein include the following:
- Housing delivery;
 - Previously developed land
 - Housing completions
 - Affordable housing conditions
 - Employment land delivery.

8.0 Next steps

- 8.1 This report will accompany the post examination version of the Edwyn Ralph NDP. The plan will move to referendum and, subject to a successful outcome, final adoption.

Appendix 1

Initial Habitat Regulations Assessment and Strategic Environmental Assessment Screening Notification

The Neighbourhood Planning (General) (Amendment) Regulations 2015 (Reg. 32)

Conservation of Habitats and Species Regulations 2010 (d)

Neighbourhood Area:	Edwyn Ralph Neighbourhood Area
Parish Council:	Thornbury Group Parish Council
Neighbourhood Area Designation Date:	26 September 2019

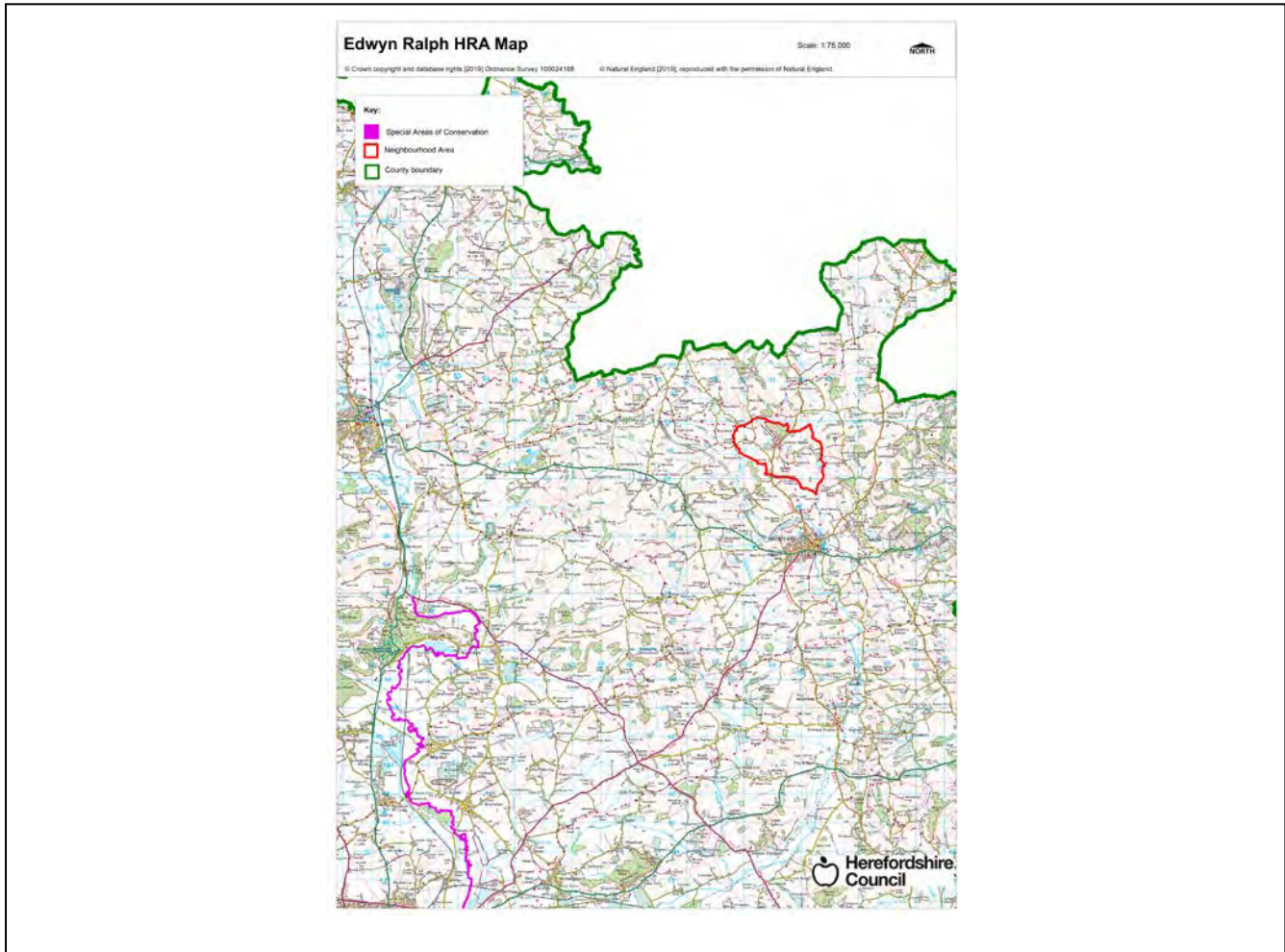
Introduction

This Initial Habitat Regulations Assessment (HRA) and Strategic Environmental Assessment (SEA) Screening has been undertaken to assess whether any European sites exist within or in proximity to the Neighbourhood Area which could be affected by any future proposals or policies.

Through continual engagement the outcomes of any required assessments will help to ensure that proposed developments will not lead to Likely Significant Effects upon a European site or cause adverse impacts upon other environmental assets, such as the built historic or local natural environment.

HRA Initial Screening

Map showing relationship of Neighbourhood Area with European Sites (not to scale)



River Wye (including the River Lugg) Special Area of Conservation (SAC):

Does the Neighbourhood Area have the River Wye (including the River Lugg) in or next to its boundary?	N	The River Wye (including the Lugg) SAC is 10.9km away from the neighbourhood area.
Is the Neighbourhood Area in the hydrological catchment of the River Wye SAC?	Y	The neighbourhood area within the River Frome (leading to the Lugg) catchment area.
Is the Neighbourhood Area in the River Lugg hydrological catchment area?	Y	The neighbourhood area is within the River Frome (leading to the Lugg) catchment area.
If yes above, does the Neighbourhood Area have mains drainage to deal with foul sewage?	Y	There is mains drainage at Edwyn Ralph

Downton Gorge SAC:

Is the Neighbourhood Area within 10km of Downton Gorge SAC?	N	Downtown Gorge SAC is 24.4km away from the neighbourhood area.
---	---	--

River Clun SAC:

Does the River Clun border the Neighbourhood Area	N	The River Clun SAC does not border the neighbourhood area.
---	---	--

Wye Valley & Forest of Dean Bat Sites SAC:

Is the Neighbourhood Area within 10km of any of the individual sites that make up the Wye Valley & Forest of Dean Bat Sites?	N	The Wye Valley and Forest of Dean Bat Sites SAC is 36.2km away from the neighbourhood area.
--	---	---

Wye Valley Woodlands SAC:

Is the Neighbourhood Area within 10km of any of the individual sites that make up the Wye Valley Woodlands Site?	N	The Wye Valley Woodlands SAC is 41.7km away from the neighbourhood area
--	---	---

HRA Conclusion:

The assessment above highlights that European Sites will need to be taken into account in the future Neighbourhood Development Plan for the Edwyn Ralph Neighbourhood Area and a Full HRA Screening will be required.

European Site

(List only those which are relevant)

River Wye (including the River Lugg) Special Area of Conservation (SAC)

Strategic Environmental Assessment Initial Screening for nature conservation landscape and heritage features

The following environmental features are within or in general proximity to the Edwyn Ralph Neighbourhood Area and would need to be taken into account within a Strategic Environmental Assessment. In addition, the NDP will also need to consider the other SEA topics set out in Guidance Note 9a to ensure that the plan does not cause adverse impacts.

SEA features	Within Neighbourhood Area		Bordering Neighbourhood Area	
	Total number	Name(s)	Total number	Name(s)
Ancient Woodland	4	4 x unnamed areas of woodland.	5	Cwm Wood; Rowden Coppice; Court Covert; 2 x unnamed areas of woodland.
Areas of Outstanding Natural Beauty (AONB)	0	-	0	-
Conservation Areas	0	-	0	-
Flood Areas	Flood Zones on the South-Eastern and Western boundaries.			
Geoparks	1	Malvern Hills Geopark.	0	-
Listed Buildings	There are numerous listed buildings within the Neighbourhood Area.			
Local Geological Sites (LGS)	0	-	0	-
Local Wildlife Sites (LWS)	1	Edwyn Wood.	5	Rowden Coppice; Kyre Brook and tributaries; Coldhunger Plantation; River Frome; Bromyard Downs and adjoining woodland.
Mineral Reserves	1	Northeast of Edwyn Ralph.	1	South of Felton Court to Field House Farm.
National Nature Reserve (NNR)	0	-	0	-
Nature Trails	3	Herefordshire Trail; Three Rivers Ride; Bromyard Walks.	0	-

Registered Parks and Gardens	0	-	0	-
Scheduled Ancient Monuments (SAM)	1	Motte & Bailey Castle.	3	Motte & Bailey Castle and St Marys Old Church; Wall Hills Camp; Castle Mound.
Sites of Importance in Nature Conservation (SINC)	0	-	0	-
Special Areas of Conservation (SAC)	0	-	0	-
Unregistered parks and gardens	0	-	1	Buckenhill.
			SSSI Status	
Sites of Special Scientific Interest (SSSI)	0	-	-	0
				SSSI Status

Decision Notification:

The initial screening highlights that the Neighbourhood Development Plan for the Edwyn Ralph Neighbourhood Area:

- a) Will require further environmental assessment for Habitats Regulations Assessment and Strategic Environmental Assessment.

Assessment date:

Assessed by: James Latham

Appendix 1: European Sites

The table below provides the name of each European Site, which has been screened in for the purposes of neighbourhood planning in Herefordshire. This is based on the sites individual features of integrity and their vulnerabilities, which could include distance criteria. This has been used in identifying which parishes are likely to require a full HRA Screening of their future Neighbourhood Development Plan, to establish if their plan might have Likely Significant Effects on a European Site.

Downton Gorge
Site Features: <i>Tilio-Acerion</i> forests of slopes, screes and ravines
Vulnerability data: 10km for air quality associated with poultry units or other intensive agricultural practices.
River Clun
Site Features: Freshwater pearl mussel <i>Margaritifera margaritifera</i>
Vulnerability data: Water quality is important to maintain the site feature. Parishes either side of the River Clun will be affected.
River Wye
Site Features: Water courses of plain to montane levels with the <i>Ranunculion fluitantis</i> and <i>Callitricho-Batrachion</i> vegetation. Transition mires and quaking bogs. White-clawed (or Atlantic Stream) crayfish <i>Austropotamobius pallipes</i> . Sea lamprey <i>Petromyzon marinus</i> . Brook lamprey <i>Lampetra planeri</i> . River lamprey <i>Lampetra fluviatilis</i> . Twaite shad <i>Alosa fallax</i> . Atlantic salmon <i>Salmo salar</i> . Bullhead <i>Cottus gobio</i> . Otter <i>Lutra lutra</i> . Allis shad <i>Alosa alosa</i>
Vulnerability data: Proximity: Developments should not be within 100m of the designated bank. Some developments beyond 100m may also have impacts based on proximity and these issues should be addressed where possible when developing NDP policy and choosing site allocations. Water Quality: Within the whole catchment of the River Wye, which includes the River Lugg, mains drainage issues with regards to water quality are being resolved through the Core Strategy / Local Plan and development of a Nutrient Management Plan. Welsh Water should be consulted to ensure that the proposed growth will be within the limit of their consents. Otters: "An otter will occupy a 'home range', which on fresh waters usually includes a stretch of river as well as associated tributary streams, ditches, ponds, lakes and woodland. The size of a home range depends largely on the availability of food and shelter, and the presence of neighbouring otters. On rivers, a male's home range may be up to 40km or more of watercourse and associated areas; females have smaller ranges (roughly half the size) and favour quieter locations for breeding, such as tributary streams. Otters without an established home range are known as 'transients'. They are mostly juveniles looking for a territory of their own, or adults that have been pushed out of their territories. Transient otters may use an area for a short while, but they will move on if conditions are not suitable or if they are driven away by resident otters. Transients will have been important in extending the range of otters, but they are very difficult to identify from field signs. Within a home range an otter may use many resting sites. These include above-ground shelters, such as stands of scrub or areas of rank grass, and underground 'holts' – for example, cavities under tree roots and dry drainage pipes."

Wye Valley and Forest of Dean Bat Sites

Site Features: Annex II species that are a primary reason for site selection: Lesser horseshoe bat *Rhinolophus hipposideros*. Greater horseshoe bat *Rhinolophus ferrumequinum*

Vulnerability data: Lesser Horseshoe bats are known to migrate between 5km and 10km between their summer and winter roosts. The Lesser Horseshoe Bat is vulnerable to disturbance; light pollution; and habitat loss. Check with the planning ecologist for other issues.

Greater Horseshoe bats are known to migrate between 20-30km between their summer and winter roosts.

NDPs closest to the European Site will need to consider:

Woodland habitat buffer.

Lesser Horseshoe Bat: Old buildings; woodland locations; sheltered valleys, extensive deciduous woods or dense scrub, close to roost sites. In areas of fragmented habitats, linear habitats such as hedgerows are important corridors. Vulnerable to loss or disturbance of both summer and winter roosts and removal of linear habitat.

Greater Horseshoe Bat: Large buildings, pasture, edge of mixed deciduous woodland and hedgerows. Mixed land-use especially south-facing slopes, favours beetles, moths and insects they feed on. During the winter they depend on caves, abandoned mines and other underground sites for undisturbed hibernation. A system/series of sites required. Vulnerable to loss of insect food supply, due to insecticide use, changing farming practices and loss of broad-leaved tree-cover and loss / disturbance of underground roosts sites.

Wye Valley Woodlands

Site Features: Annex I habitats that are a primary reason for site selection: Beech forests *Asperulo-Fagetum*, *Tilio-Acerion* forests of slopes, screes and ravines, *Taxus baccata* woods of the British Isles. Annex II species present as a qualifying feature, but not a primary reason for site selection: Lesser horseshoe bat *Rhinolophus hipposideros*, 51-100 residents

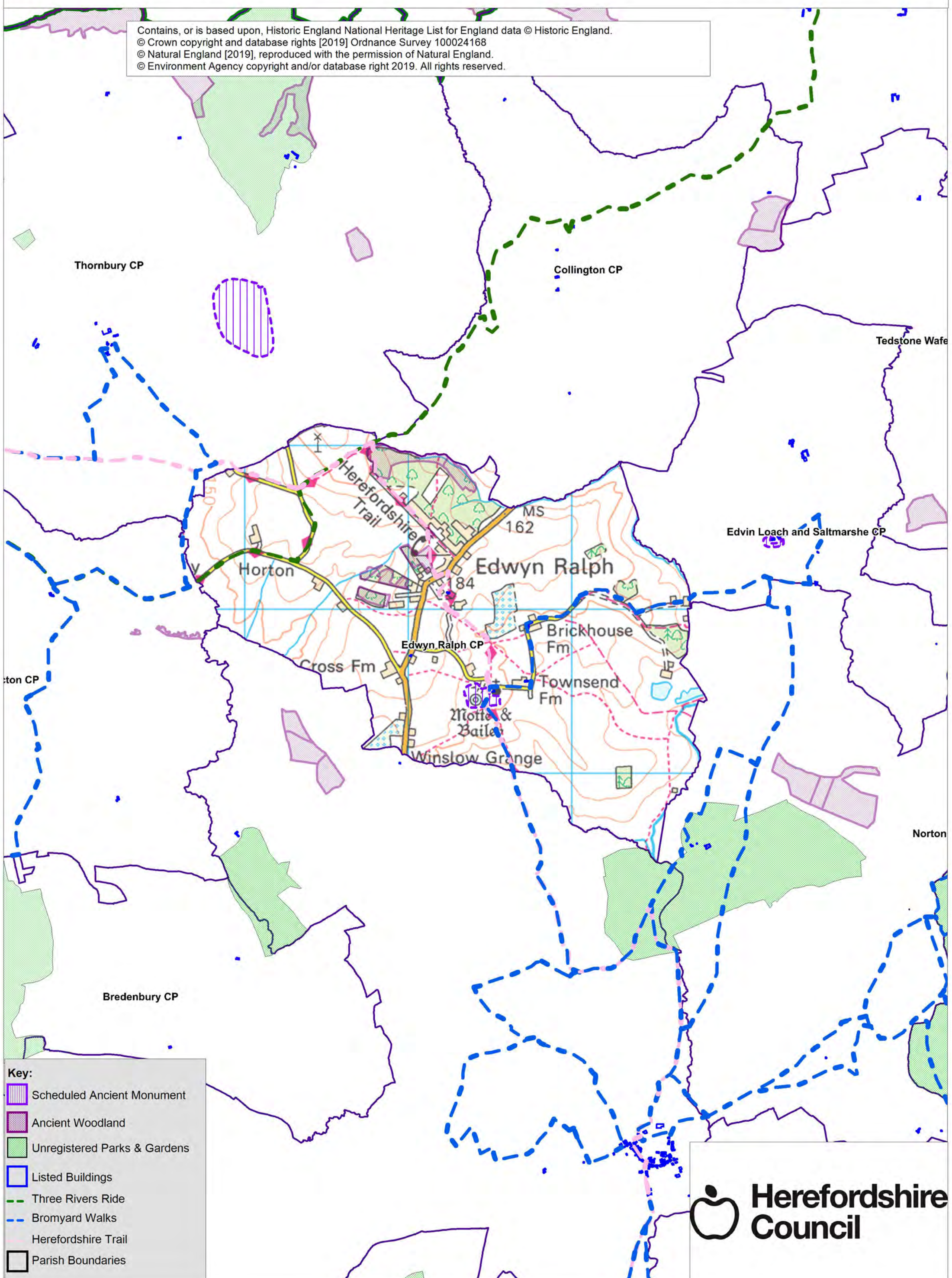
Vulnerability data: Lesser Horseshoe bats are known to migrate between 5km and 10km between their summer and winter roosts. The Lesser Horseshoe Bat is vulnerable to disturbance; light pollution; and habitat loss. Check with the planning ecologist for other issues. NDPs closest to the European Site will need to consider: Woodland habitat buffer. Lesser Horseshoe Bat: Old buildings; woodland locations; sheltered valleys, extensive deciduous woods or dense scrub, close to roost sites. In areas of fragmented habitats, linear habitats such as hedgerows are important corridors. Vulnerable to loss or disturbance of both summer and winter roosts and removal of linear habitat.

Edwyn Ralph SEA Map 1

Scale: 1:20,000



Contains, or is based upon, Historic England National Heritage List for England data © Historic England.
© Crown copyright and database rights [2019] Ordnance Survey 100024168
© Natural England [2019], reproduced with the permission of Natural England.
© Environment Agency copyright and/or database right 2019. All rights reserved.



Key:

- Scheduled Ancient Monument
- Ancient Woodland
- Unregistered Parks & Gardens
- Listed Buildings
- Three Rivers Ride
- Bromyard Walks
- Herefordshire Trail
- Parish Boundaries

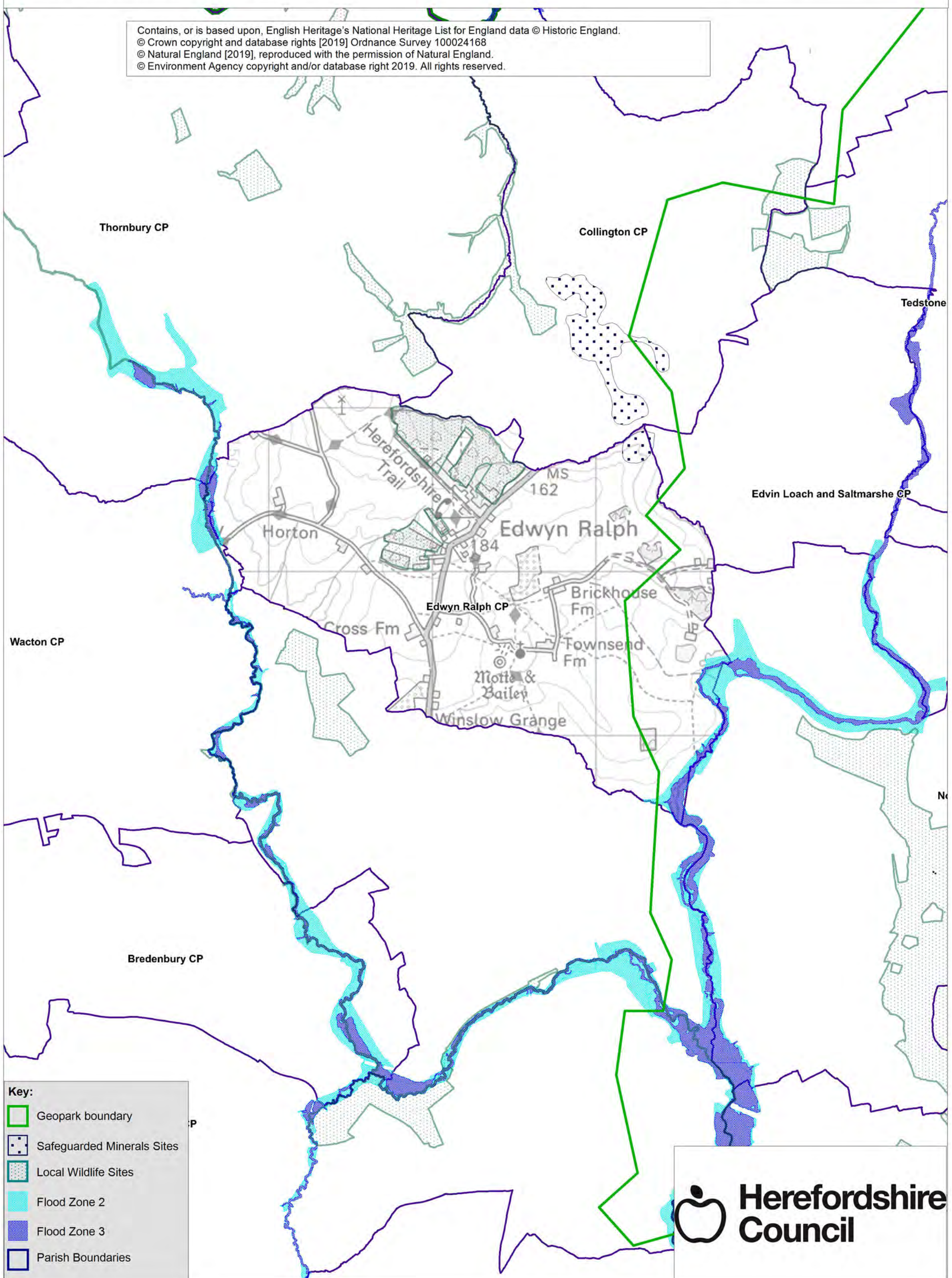


Edwyn Ralph SEA Map 2

Scale: 1:20,000



Contains, or is based upon, English Heritage's National Heritage List for England data © Historic England.
© Crown copyright and database rights [2019] Ordnance Survey 100024168
© Natural England [2019], reproduced with the permission of Natural England.
© Environment Agency copyright and/or database right 2019. All rights reserved.



Key:

- Geopark boundary
- Safeguarded Minerals Sites
- Local Wildlife Sites
- Flood Zone 2
- Flood Zone 3
- Parish Boundaries



Appendix 2

Strategic Environmental Assessment

Scoping Report for:

Edwyn Ralph Neighbourhood Area

March 2020



Consultation on the Scoping Report

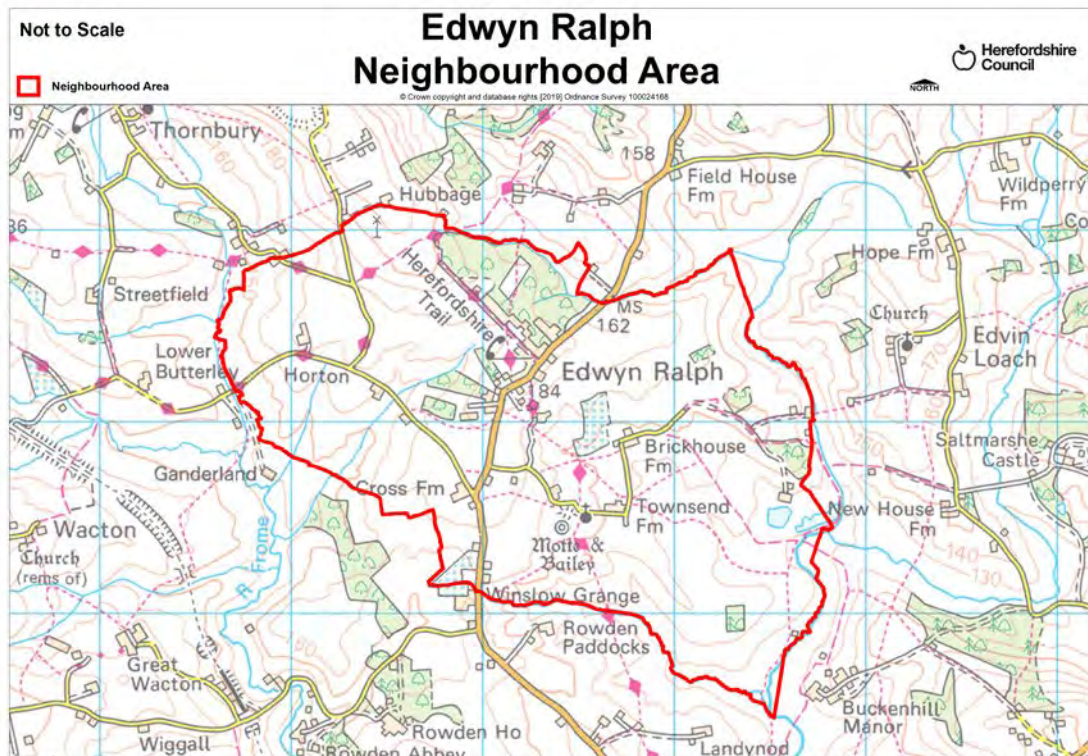
The aim of the consultation process is to involve and engage with statutory consultees and other relevant bodies on the scope of the appraisal. In particular, it seeks to:

- Ensure the SEA is both comprehensive and sufficiently robust to support the Neighbourhood Development Plan during the later stages of full public consultation;
- Seek advice on the completeness of the plan review and baseline data and gain further information where appropriate;
- Seek advice on the suitability of key sustainability issues;
- Seek advice on the suitability of the sustainability objectives.

Comments on this Scoping Report have been invited from the three consultation bodies as required by the SEA regulations, together with Natural Resources Wales.

The three consultation bodies are as follows:

1. Natural England;
2. Historic England;
3. Environment Agency.



Template A1: Identification and review of local Neighbourhood Area relevant plans, policies and programmes

Parish Council Name: Edwyn Ralph

Neighbourhood Development Plan Name: Edwyn Ralph Neighbourhood Development Plan

Date completed: January 2020

Plans and Programmes	Type of document	Date	Overview	Key message, target/objective/indicator	SEA topic(s) ¹	Implications for the NDP and SEA
The EC Conservation of Habitats and Species Regulations	European Union Legislation	2010	These regulations transpose the Habitats Directive in England, Wales and to a limited extent Scotland by ensuring that activities are carried out in accordance with the Habitats Directive, which is to protect biodiversity through the conservation of natural habitats and species of wild flora and fauna.	The Regulations make it an offence (subject to exceptions) to deliberately capture, kill, disturb, or trade in the animals listed in Schedule 2, or pick, collect, cut, uproot, destroy, or trade in the plants listed in Schedule 4. However, these actions can be made lawful through the granting of licenses by the appropriate authorities.	<ul style="list-style-type: none"> • Biodiversity • Cultural heritage and the landscape 	The Neighbourhood Plan should be compliant with all the relevant legislation and regulations.
The EC Water Framework Directive	European Union	2000	Commits all EU member states to achieve good qualitative and quantitative status of all water courses by 2015	Aims for 'good status' for all ground and surface waters (rivers, lakes, transitional waters, and coastal waters) in the EU	<ul style="list-style-type: none"> • Water 	The Neighbourhood Plan should be compliant with all the relevant legislation and regulations.
The Wildlife and Countryside Act (1981)	Domestic Legislation	1981	The major legal instrument for wildlife protection in Britain, although other significant acts have been passed since. It	The principle mechanism for the legislative protection of wildlife in Great Britain.	<ul style="list-style-type: none"> • Biodiversity • Cultural heritage and the landscape • Flora and fauna 	The Neighbourhood Plan should be compliant with all the relevant legislation and regulations.

¹ Derived from the LDF General Scoping Report (June 2007)

Plans and Programmes	Type of document	Date	Overview	Key message, target/objective/indicator	SEA topic(s) ¹	Implications for the NDP and SEA
			has numerous parts and supplementary lists and schedules many of which have been amended since publication.		<ul style="list-style-type: none"> • Material assets • Soil 	
The Countryside and Right of Way Act (2000)	Domestic Legislation	2000	Creates a statutory right of access on foot to certain types of open land, to modernise the public rights of way system, to strengthen nature conservation legislation, and to facilitate better management of AONBs.	<p>The Act provides for a new right of access on foot to areas of open land comprising: Mountain (land over 600 metres); Moorland; Heath; Downland; Registered common land.</p> <p>There are provisions to consider extending the right in the future to coastal land, but not woodland despite some early publicity suggesting this.</p>	<ul style="list-style-type: none"> • Biodiversity • Cultural heritage and the landscape • Flora and fauna • Material assets • Soil 	The Neighbourhood Plan should be compliant with all the relevant legislation and regulations.
The Natural Environment and Rural Communities Act (2006)	Domestic Legislation	2006	Designed to help achieve a rich and diverse natural environment and thriving rural communities through modernised and simplified arrangements for delivering	Provides that any public body or statutory undertaker in England and Wales must have regard to the purpose of conservation of biological diversity in the exercise of their functions.	<ul style="list-style-type: none"> • Biodiversity • Cultural heritage and the landscape • Flora and fauna • Material assets • Soil 	The Neighbourhood Plan should be compliant with all the relevant legislation and regulations.

Plans and Programmes	Type of document	Date	Overview	Key message, target/objective/indicator	SEA topic(s) ¹	Implications for the NDP and SEA
			Government policy.			
Revised EU Sustainable Development strategy	European Union Strategy	2009	Sets out a single strategy on how the EU will more effectively meet its long-standing commitment to meet the challenges of sustainable development.	Recognises the need to gradually change current unsustainable consumption and production patterns and move towards a better integrated approach to policy making. The Strategy sets overall objectives, targets and concrete actions for seven key priority challenges, predominantly environmental: <ul style="list-style-type: none"> • Climate change and clean energy; • Sustainable transport • Sustainable production and consumption; • Public health threats; • Better management of natural resources; • Social inclusion, demography and migration; • Fighting global poverty. 	<ul style="list-style-type: none"> • Air • Climate factors • Cultural heritage and the landscape • Population and human health 	The Neighbourhood Plan should take into account the objectives of the strategy. The aim of sustainable development should be implicit in its approach.

Plans and Programmes	Type of document	Date	Overview	Key message, target/objective/indicator	SEA topic(s) ¹	Implications for the NDP and SEA
Biodiversity 2020: A strategy for England's wildlife and ecosystem services	National Strategy	2011	Forms part of the UK's Post-2010 Biodiversity Framework by setting out England's contribution towards the UK's commitments under the United Nations Convention of Biological Diversity.	Sets out to halt overall biodiversity loss, support healthy well-functioning ecosystems and establish coherent ecological networks, with more and better places for nature for the benefit of wildlife and people.	<ul style="list-style-type: none"> • Biodiversity 	The NDP should take account of the provisions of the strategy, making the most of opportunities to enhance wildlife habitats or restore degraded ecosystems in the process.
National Planning Policy Framework (NPPF)	National planning policy.	2018	Consolidates the suite of PPG/PPS into one succinct planning policy document.		<ul style="list-style-type: none"> • Air • Biodiversity • Climate factors • Cultural heritage and the landscape • Flora and fauna • Material assets • Population and human health • Soil • Water 	The NDP should take into account the relevant policies set within the NPPF.
Planning Practice Guidance	Government Guidance	2019	Provides guidance to local planning authorities and others on the operation of the planning system.		<ul style="list-style-type: none"> • Air • Biodiversity • Climate factors • Cultural heritage and the landscape • Flora and fauna • Material assets 	The NDP should take into account the planning guidance provided within these documents.

Plans and Programmes	Type of document	Date	Overview	Key message, target/objective/indicator	SEA topic(s) ¹	Implications for the NDP and SEA
					<ul style="list-style-type: none"> • Population and human health • Soil • Water 	
Herefordshire Core Strategy, (adopted) 2011-2031	Development Plan Document (DPD)	2015	Sets out the vision, objectives and policies for the Herefordshire Local Plan (Core Strategy), which will guide development across the county up to 2031.	<p>Outlines the emerging suite of countywide planning policies relating to housing, economic development and the environment, which the NDP will need to be in conformity with where relevant.</p> <p>The Core Strategy includes a range of objectives, five of which directly relate to rural areas:</p> <ul style="list-style-type: none"> • To meet the housing needs of all sections of the community • To improve access to services in rural areas • To strengthen the economic viability of the villages and their rural hinterlands • To achieve sustainable communities and protect the environment 	<ul style="list-style-type: none"> • Air • Biodiversity • Climate factors • Cultural heritage and the landscape • Flora and fauna • Material assets • Population and human health • Soil • Water 	<p>The NDP should take account of relevant policies set within in the Core Strategy.</p> <p>Where necessary, the NDP should provide services, facilities and employment opportunities that are accessible to both local and neighbouring communities.</p> <p>Edwyn Ralph is listed in the Core Strategy table 4.14 and lies within the Bromyard HMA. This means the NDP should take into consideration the criteria set within Policy RA1 and RA2.</p> <p>The neighbourhood plan should allocate a minimum of 13 dwellings within Thornbury (Edwyn Ralph) within the plan period of</p>

Plans and Programmes	Type of document	Date	Overview	Key message, target/objective/indicator	SEA topic(s) ¹	Implications for the NDP and SEA
				<ul style="list-style-type: none"> To conserve, promote, utilise and enjoy our natural, built, historic and cultural assets for the fullest benefit of the whole community. <p>To achieve a thriving rural Herefordshire, the Core Strategy seeks to enhance the role the villages have traditionally played in as accessible, sustainable centres for their rural catchments.</p> <p>Edwyn Ralph is within the Bromyard Housing Market Area (HMA) and so the target for proportionate growth is 15% across the parish.</p>		<p>2011 to 2031. There are 2 remaining to allocate.</p>

Plans and Programmes	Type of document	Date	Overview	Key message, target/objective/indicator	SEA topic(s) ¹	Implications for the NDP and SEA
Herefordshire Local Transport Plan 2016-2031	Corporate	2016	The Local Transport Plan outlines the significant role that transport will play to enable the delivery of the Core Strategy proposals. This sets out the Council's strategy for supporting economic growth, social inclusion and reducing the environmental impacts of transport, as well as the program of investment for the period 2016 to 2031.	<p>The Transport Plan aims to increase highway capacity for new development sites as improve efficiency of existing transport network.</p> <p>The document includes five key objectives, one which plans to enable economic growth connecting new roads with developments. Intrinsic to this is to provide a good quality transport network. The other objectives aim to promote healthy lifestyles with pollution reduction and active travel schemes. Improvements will be made to make journeys easier and safer, ensuring access to services for living in rural areas maximising accessibility.</p>	<ul style="list-style-type: none"> • Air • Climate factors • Population and human health 	The LTP does not explore current transport issues in the Edwyn Ralph Neighbourhood Plan area, but any new development proposed through the NDP should seek to reduce the environmental impacts of transport.

Plans and Programmes	Type of document	Date	Overview	Key message, target/objective/indicator	SEA topic(s) ¹	Implications for the NDP and SEA
Understanding Herefordshire Report	Built and natural environment	2016	<p>Important to understand the place such as the local economy natural and built environment in which people live, learn and work as part of understanding their quality of life</p> <p>Promotion of healthy lifestyle choices.</p> <p>Enable development for economy and housing to required levels.</p> <p>Growth should be supported by sustainable transport measures.</p>	<p>An air quality management plan is in place to tackle this. Destination Hereford project is in place to give locals more sustainable transport options.</p> <p>Sustainable transport measures will also help to promote active lifestyles within Herefordshire.</p>	<p>Improve air quality.</p> <p>Have a more diverse range of transport options.</p>	None identified.

Plans and Programmes	Type of document	Date	Overview	Key message, target/objective/indicator	SEA topic(s) ¹	Implications for the NDP and SEA
Malvern Hills AONB Management Plan 2019-2024	Corporate	2019	The Management Plan is the prime document which sets out the vision and objectives for the Malvern Hills AONB area and the priorities for its management.	Identifies the issues and challenges facing the special features of the area and contains guiding principles and 14 strategic objectives and 68 policies which will help address them.	<ul style="list-style-type: none"> • Air • Biodiversity • Climate factors • Cultural heritage and the landscape • Flora and fauna • Material assets • Population and human health • Soil • Water 	The Edwyn Ralph Neighbourhood Plan Area is not within or adjacent to the Malvern Hills AONB.
Wye Valley AONB management Plan 2015-2020	Corporate	2015	The Management Plan is the prime document which sets out the vision for the Wye Valley AONB area and the priorities for its management.	Sets out a range of objectives which seek to reconcile the competing interests of the environment, the ecology and the social and economic well-being of the AONB.	<ul style="list-style-type: none"> • Air • Biodiversity • Climate factors • Cultural heritage and the landscape • Flora and fauna • Material assets • Population and human health • Soil • Water 	The Edwyn Ralph Neighbourhood Plan Area is not within the Wye Valley AONB.

Plans and Programmes	Type of document	Date	Overview	Key message, target/objective/indicator	SEA topic(s) ¹	Implications for the NDP and SEA
Herefordshire Economic Development Strategy 2011-2016	Corporate	2011	Aims to increase the economic wealth of Herefordshire by setting out proposals and to support business growth up to 2016.	<p>The document outlines the path and direction to foster economic vitality within Herefordshire. Key objectives therefore include:</p> <ul style="list-style-type: none"> • Sustaining business survival and growth • Increasing wage levels, range and quality of jobs • Having a skilled population to meet future work needs • Developing the county's built infrastructure so enterprise can flourish. 	<ul style="list-style-type: none"> • Cultural heritage and the landscape • Material assets • Population and human health 	None of merit.

Plans and Programmes	Type of document	Date	Overview	Key message, target/objective/indicator	SEA topic(s) ¹	Implications for the NDP and SEA
Herefordshire Employment Land Study	Evidence	2012	Includes employment land assessments for the plan period 2011-2031. The study includes Quantitative and Qualitative assessments of employment land, assessment of market demand and need, as well as providing forecasts and recommendations for future employment need over the plan period.	<p>This study covers existing employment sites in Hereford, the five market towns and their rural hinterlands.</p> <p>There are no employment land allocations within Edwyn Ralph at present and so the study does not identify sites which are worthy of continued protection from alternative uses. Nor does it make any recommendations in respect of employment need within the neighbourhood area.</p>	<ul style="list-style-type: none"> • Material assets • Population and human health 	None of merit; however the Edwyn Ralph NDP process may have to explore whether there is any employment need locally and if so whether there is any scope for providing employment land and premises.

Plans and Programmes	Type of document	Date	Overview	Key message, target/objective/indicator	SEA topic(s) ¹	Implications for the NDP and SEA
Herefordshire Housing Land Availability Assessment (SHLAA)	Evidence	2019	<p>The HELAA aims to justify site allocations in plans by:</p> <ul style="list-style-type: none"> Identifying sites which are capable of delivering housing development Assessing sites for their housing potential; and Predicting when a site could be developed for housing. 	<p>In terms of Edwyn Ralph the 2019 SHLAA identifies that:</p> <ul style="list-style-type: none"> 2 sites with low potential during the plan period. (HLAA/028/001, HLAA/049/001) There needs to be proportional housing growth of 15% in the Edwyn Ralph area. 	<ul style="list-style-type: none"> Air Biodiversity Climate factors Cultural heritage and the landscape Flora and fauna Population and human health Soil Water 	<p>The SHLAA assesses the potential availability of land for housing in As</p> <p>The Edwyn Ralph NDP should be informed by the findings of the SHLAA.</p>

Plans and Programmes	Type of document	Date	Overview	Key message, target/objective/indicator	SEA topic(s) ¹	Implications for the NDP and SEA
Herefordshire Local Housing Market Assessment (LHMA)	Evidence	2013	Builds on an earlier Strategic Housing Market Assessment (SHMA) developed for Herefordshire and Shropshire. Its purpose is to inform the Local Plan's policies regarding housing need and demand (for market and affordable housing) within each of the 7 Housing Market Areas (HMAs) in Herefordshire between 2011 and 2031	<p>The LHMA uses 7 HMAs as the geography for presenting data. Edwyn Ralph falls within the Bromyard HMA.</p> <p>Bromyard HMA. Here, the study reveals that:</p> <ul style="list-style-type: none"> • 57% of households are unable to afford market housing. • There is an annual requirement for 56 affordable dwellings between 2012 and 2017. <p>The study identifies that, in rural parts of the HMA, there is a need for:</p> <ul style="list-style-type: none"> • 403 market houses • 17 affordable houses. <p>The study highlights that within the Bromyard HMA the overall estimated housing need by size 2012-2017 is as follows: 1 Bed - 46%, 2 bed -30%, 3 bed – 8%, 4 bed – minus 16%</p>	<ul style="list-style-type: none"> • Air • Biodiversity • Climatic factors • Cultural heritage • Flora and fauna • Population • Soil • Water 	<p>The LHMA provides an indication of housing needs and affordability within the Bromyard HMA.</p> <p>It provides evidence that could be used to inform policies or market and affordable housing requirements in the NDP.</p>

Plans and Programmes	Type of document	Date	Overview	Key message, target/objective/indicator	SEA topic(s) ¹	Implications for the NDP and SEA
Herefordshire Local Housing Requirements Study	Evidence	2012 updated in 2014	Technical assessment of the housing market and potential future local housing requirements which supports planning policy regarding the amount of growth, housing tenure and housing type needed within Herefordshire up to 2031.	<p>The delivery of 5,300 homes in the rural areas would:</p> <ul style="list-style-type: none"> • Support growth in the rural population by 6% • Increase the number of households by 14.5% <p>Forecasts also predict that growth in the population of the rural areas is likely to be primarily through an increase in those aged over 75.</p> <p>Moderate growth is expected in the 30-44 and 60-74 age brackets.</p> <p>The Local Housing Requirements Study therefore anticipates continuing improvements in life expectancy; significant growth is expected of those in their 80s, with the existing population in their 40s and 50s moving into retirement.</p> <p>As a consequence, the rural areas will face an increasing urgency to provide more 3 bedroom homes, with more 1</p>	<ul style="list-style-type: none"> • Air • Biodiversity • Climate factors • Cultural heritage and the landscape • Flora and fauna • Material assets • Population and human health • Soil • Water 	<p>This study provides an indication of housing requirements in the rural areas and the Bromyard HMA.</p> <p>This evidence can be used to inform the content of the Edwyn Ralph NDP, which could include policies to facilitate the provision of the right types of homes in the right places.</p>

Plans and Programmes	Type of document	Date	Overview	Key message, target/objective/indicator	SEA topic(s) ¹	Implications for the NDP and SEA
				and 2 bed homes required in the affordable sector.		
Herefordshire Rural Housing Background Report	Evidence	2013	Provides the justification for the proportional housing growth targets outlined in the Core Strategy	The village of Edwyn Ralph is classified as a 4.14 settlement, which means it is considered a sustainable location for proportional growth of up to 15% across the parish.	<ul style="list-style-type: none"> • Air • Biodiversity • Climate factors • Cultural heritage and the landscape • Flora and fauna • Material assets • Population and human health • Soil • Water 	The Edwyn Ralph NDP will need to be in conformity with the provisions of Core Strategy Policy RA1 and RA2.

Plans and Programmes	Type of document	Date	Overview	Key message, target/objective/indicator	SEA topic(s) ¹	Implications for the NDP and SEA
Herefordshire Draft Gypsies and Travellers Assessment	Evidence	2013	Assesses the accommodation needs of Gypsies and Travellers across Herefordshire.	<p>Key findings from the survey of Gypsy and Traveller households in 2012 found that:</p> <ul style="list-style-type: none"> • 31% of households surveyed have some sort of accommodation need • Of the 17 households with an accommodation need, 7 had a requirement for at least one additional pitch • 10 households had a requirement for bricks and mortar housing • There is an additional requirement for 7 pitches and 9 units of Registered Social Landlord accommodation within Herefordshire. 	<ul style="list-style-type: none"> • Air • Biodiversity • Climate factors • Cultural heritage and the landscape • Flora and fauna • Material assets • Population and human health • Soil • Water 	<p>A countywide Gypsy and Traveller DPD is being prepared to address this issue. However, the Edwyn Ralph NDP could establish whether any of the need identified in this assessment falls within the neighbourhood area and make appropriate provisions for it if necessary.</p>

Plans and Programmes	Type of document	Date	Overview	Key message, target/objective/indicator	SEA topic(s) ¹	Implications for the NDP and SEA
Herefordshire Traveller's sites DPD	Evidence	2019	Assesses the accommodation needs of Gypsies and Travellers across Herefordshire.	Key findings from the dpd In Herefordshire there are a number of small privately owned traveller sites and larger sites that are managed by Herefordshire Council. The private sites varying size with small sites of 1-5 pitches typically being occupied by a single, extended family. In total there are 133 authorised pitches across the county.	<ul style="list-style-type: none"> • Air • Biodiversity • Climate factors • Cultural heritage and the landscape • Flora and fauna • Material assets • Population and human health • Soil • Water 	The Edwyn Ralph NDP must establish whether any of the need identified in this assessment falls within the neighbourhood area and make appropriate provisions for it.
Herefordshire Local Biodiversity Action Plan	Evidence	2007	Focuses conservation efforts on the areas within Herefordshire that will result in the greatest benefit for ecological networks, habitats and species.	Integrating biodiversity objectives with other environmental, social and economic needs can provide a sustainable living and working environment that benefits both people and nature.	<ul style="list-style-type: none"> • Biodiversity 	The NDP can help to achieve the LBAP priorities.

Plans and Programmes	Type of document	Date	Overview	Key message, target/objective/indicator	SEA topic(s) ¹	Implications for the NDP and SEA
Building Biodiversity into the LDF	Evidence	2009	Provides the Council's Local Plan (Core Strategy) with evidence in respect of biodiversity and geodiversity, identifying both opportunities and constraints across Herefordshire.	This document provides useful information in respect of Hereford and the market towns only.	<ul style="list-style-type: none"> • Air • Biodiversity • Climate factors • Cultural heritage and the landscape • Flora and fauna • Material assets • Population and human health • Soil • Water 	There is a lack of information about rural areas which means it will be necessary to gather and assess existing biodiversity and geodiversity data, in order to ensure that the Edwyn Ralph NDP can overcome any existing constraints and capitalise on opportunities to enhance habitats and their networks.
Herefordshire Green Infrastructure Strategy	Evidence	2010	Develops a framework of natural and culturally important features and functions so that planning for a sustainable future is at the heart of planning within Herefordshire.	Establishes policies and principles for the protection and enhancement of those features and functions that contributes to the environment of Herefordshire across a range of scales.	<ul style="list-style-type: none"> • Air • Biodiversity • Climate factors • Cultural heritage and the landscape • Flora and fauna • Material assets • Population and human health • Soil • Water 	The study provides evidence that could be taken into account when preparing policies for the Edwyn Ralph NDP.

Plans and Programmes	Type of document	Date	Overview	Key message, target/objective/indicator	SEA topic(s) ¹	Implications for the NDP and SEA
Renewable Energy Study	Evidence	2010	Assesses the energy demand within Herefordshire and the ability for the county to accommodate renewable and low carbon energy technologies.	<p>The total energy demand excluding transport for Herefordshire, at that point in time, was calculated as being:</p> <ul style="list-style-type: none"> • Electrical: 731 GWh/yr • Heat: 1,810 GWh/yr • Total: 2,541 GWh/yr <p>There is scope for all types of renewable energy production.</p>	<ul style="list-style-type: none"> • Air • Biodiversity • Climate factors • Cultural heritage and the landscape • Flora and fauna • Material assets • Population and human health • Soil • Water 	The study provides evidence that could be taken into account when preparing policies for the Edwyn Ralph NDP .

Plans and Programmes	Type of document	Date	Overview	Key message, target/objective/indicator	SEA topic(s) ¹	Implications for the NDP and SEA
Herefordshire Playing Pitch Assessment	Evidence	2012	Produces a strategic framework, audit and assessment and needs analysis of outdoor sports pitches and facilities for Herefordshire. The document arises as a result of a recommendation in the Herefordshire and Worcestershire Sports Facilities Framework to develop local standards for playing fields and sports pitches throughout Herefordshire.	<p>The study updates components of the Herefordshire and Worcestershire Sports Facilities Framework 2010 such as updating population forecasts, setting local standards for synthetic turf pitches and grass playing fields within Herefordshire. It identifies any current gaps in provision, and looks forward to 2031 to assess what facilities are likely to be required by that date.</p> <p>There are no playing pitches within Edwyn Ralph, Thornbury Group.</p>	<ul style="list-style-type: none"> • Biodiversity • Cultural heritage and the landscape • Flora and fauna • Material assets • Population and human health 	<p>The study provides evidence that could be taken into account when preparing policies for the Edwyn Ralph NDP.</p> <p>Additional local evidence may be required to identify if there is a need for any secured playing pitch facilities within the Parish.</p>

Plans and Programmes	Type of document	Date	Overview	Key message, target/objective/indicator	SEA topic(s) ¹	Implications for the NDP and SEA
Open Spaces Study	Evidence	2006	The 2006 space audit and assessment of need is a snap shot of the quality, quantity and distribution of open space across Herefordshire.	<p>The study reveals that within the Ross on Wye area there is:</p> <ul style="list-style-type: none"> • Extensive under provision of parks and gardens • Extensive over provision of natural and semi-natural green space • Extensive under provision of amenity green space and outdoor sport • Average provision for children and young people. 	<ul style="list-style-type: none"> • Biodiversity • Climate factors • Cultural heritage and the landscape • Flora and fauna • Material assets • Population and human health 	The open space audit and assessment of does not give a specific indication of open space shortfalls and surpluses in Edwyn Ralph .

Plans and Programmes	Type of document	Date	Overview	Key message, target/objective/indicator	SEA topic(s) ¹	Implications for the NDP and SEA
Play Facilities Study	Evidence	2006	The Play Facilities Study 2012 updates the previous play facilities analysis under the Open Spaces Study 2006 and provides guidance and a framework for the development, delivery and continued sustainability of providing new and improved play facilities for children and young people in Herefordshire to 2031.	Edwyn Ralph has a population of under 500 with no formal play provision.	<ul style="list-style-type: none"> • Biodiversity • Climate factors • Cultural heritage and the landscape • Flora and fauna • Material assets • Population and human health 	The study provides evidence that could be taken into account when preparing policies for the Edwyn Ralph NDP.

Plans and Programmes	Type of document	Date	Overview	Key message, target/objective/indicator	SEA topic(s) ¹	Implications for the NDP and SEA
Strategic Flood Risk Assessment (SFRA) and Water Cycle Study	Evidence	2019	<p>The Strategic Flood Risk Assessment (SFRA) provides a summary of flood risk in Herefordshire to inform the location of future development.</p> <p>The Water Cycle Study examines how water resources and water supply infrastructure, wastewater treatment, water quality, sewerage and flood risk could constrain growth across Herefordshire.</p>	<p>Edwyn Ralph is in the Hydrological catchment of the River Wye.</p> <p>The sub catchment is the River Frome.</p>	<ul style="list-style-type: none"> • Biodiversity • Climate factors • Material assets • Population and human health • Water 	<p>New development proposed through the Edwyn Ralph NDP should be assessed against the capacity of local infrastructure.</p> <p>Up-to-date flood risk information should be gathered from the Environment Agency, in order to ensure that any flood risks are considered when preparing Edwyn Ralph NDP.</p> <p>The neighbourhood area is within the River Frome (leading to the Lugg) catchment area.</p>

Appendix A2 – Baseline information for Edwyn Ralph

N.B. This is based on countywide baseline information with some additions relevant to Edwyn Ralph (in red). Where no locally specific data is available for current status, trends and targets, only countywide data is reported. Any gaps in data may be filled following additional research.

SA Objective ¹	SA Theme	Proposed indicator	Current status	Trends	Targets	Issues and constraints	Baseline (information) source
SEA Topic covered by objective: <i>Biodiversity, flora and fauna</i>							
13. Value, maintain, restore and expand county biodiversity.	Natural environment	Net change in condition of SSSIs across Herefordshire.	The 2011-2013 AMR does not contain updated conservation data. 2010/11: 27% of Herefordshire's SSSI land was in favourable condition. Within Edwyn Ralph there are 0 SSSI, 0 bordering.	2006: 22% 2007: 22% 2008: 22% 2010: 24 % Proportion of SSSI land that was in unfavourable condition but recovering increased between 2010 and 2012 going from 41% to 65%. Proportion in unfavourable and declining condition had also decreased from 4% to 1%.	% of SSSI land in favourable condition (Increase) % of SSSI land in unfavourable condition but recovering (Increase) % of SSSI land in unfavourable condition and declining (Decrease)	Herefordshire's SSSIs are in extremely poor condition relative to England as whole, where 96.1% of all SSSI land was in favourable condition in April 2014. The proportion of SSSI in unfavourable condition but recovering is greater than England as a whole, where the figure currently stands at 58.6%.	Understanding Herefordshire: An integrated needs assessment (June 2013). NE & DEFRA Website

¹ Derived from the Pre Submission Core Strategy Sustainability Appraisal Assessment (May 2014)

SA Objective ¹	SA Theme	Proposed indicator	Current status	Trends	Targets	Issues and constraints	Baseline (information) source
13. Value, maintain, restore and expand county biodiversity.	Natural environment	After use of mineral sites especially wildlife habitat creation	<i>There is no countywide or locally specific data available at present.</i>	-	Percentage of opportunities taken	Should be monitored through AMR following the adoption of the Core Strategy, in line with SA recommendations.	-
13. Value, maintain, restore and expand county biodiversity.	Natural environment	Phosphate levels within the River Wye SAC and adjoining tributaries that receive increased phosphates from proportional growth.	Countywide data is available, but this indicator does apply to this Neighbourhood Area, as the parish falls inside the catchment area for the River Wye SAC and Wye Valley and Forest of Dean Bat Sites sac.	N/A	N/A	N/A	Nutrient Management Plan

SA Objective ¹	SA Theme	Proposed indicator	Current status	Trends	Targets	Issues and constraints	Baseline (information) source
13. Value, maintain, restore and expand county biodiversity.	Natural environment	Changes to protected habitats and impacts of species within the Herefordshire Local Biodiversity Action Plan.	<p>The 2011-2013 AMR does not contain updated conservation data.</p> <p>2010/11: 17 Habitat Action Plans and 14 Species Action Plans are currently in operation across Herefordshire.</p> <p><i>There is no locally specific data available at present.</i></p>	<p>There are no formal records of any unacceptable adverse impacts on habitats or protected species.</p> <p>Originally 156 Priority Species were identified for inclusion in Herefordshire's LBAP.</p> <p>Similarly Herefordshire's LBAP covered 23 habitats with Action Plans.</p>	<p>To protect and where possible enhance the habitats of protected species identified.</p> <p>No net losses.</p>	<p>Herefordshire Biological Records Centre (HBRC) holds limited data on some individual sites.</p>	<p>Herefordshire Council AMR (2018/19)</p>

SA Objective ¹	SA Theme	Proposed indicator	Current status	Trends	Targets	Issues and constraints	Baseline (information) source
13. Value, maintain, restore and expand county biodiversity.	Natural environment	Changes in the areas of designated nature conservation sites as a consequence of planning permission.	<p>Edwyn Ralph has:</p> <p>SSSI: 0 (0)bordering LWS: 1 SACs: 1</p> <p>Ancient Woodland: 4</p> <p>Geopark: 1</p> <p>There are no NNRs, SINC's and LNRs within the parish.</p>	As of 2012, there had been no change in the areas of designated nature conservation sites as a consequence of the planning permissions granted.	To capitalise on opportunities to enhance the areas of value to nature conservation as much as possible.	Herefordshire Biological Records Centre (HBRC) holds limited data on some individual sites.	Herefordshire Council Initial Screening Report for the Neighbourhood Plan 2019
13. Value, maintain, restore and expand county biodiversity.	Natural environment	Proportion of local sites where positive conservation management has or is being implemented.	<p>The Parish Area has the following landscape type:</p> <p>Plateau Estate Farmlands</p>	-	No specific targets identified.	Should be monitored through AMR following the adoption of the Core Strategy, in line with SA recommendations.	Herefordshire Landscape Character Assessment (2004 updated 2009)

SA Objective ¹	SA Theme	Proposed indicator	Current status	Trends	Targets	Issues and constraints	Baseline (information) source
SEA Topic covered by objectives: <i>Material assets</i>							
14. Use natural resources and energy more efficiently.	Resource consumption and climate change	Maintaining Herefordshire Council's County Site and Monuments Register.	Countywide data would be too large to incorporate into this template. Whilst there is no qualitative, locally specific data available at present, there are 45 scheduled monuments in Edwyn Ralph according to the latest version of the register, and one SAM.	-	No specific targets identified, but need to ensure that the register is kept up to date.	Should be monitored through AMR following the adoption of the Core Strategy, in line with SA recommendations.	Herefordshire Environmental Records Register (search January 2020).

SA Objective ¹	SA Theme	Proposed indicator	Current status	Trends	Targets	Issues and constraints	Baseline (information) source
14. Use natural resources and energy more efficiently.	Resource consumption and climate change	Monitoring changes to historic landscapes.	Historic Landscape Character assessments have only been undertaken for Hereford City. Rapid townscape Assessments (2010) were only undertaken for Hereford, Ledbury and Ross.	-	No specific targets identified.	Should be monitored through AMR following the adoption of the Core Strategy, in line with SA recommendations.	Historic Landscape Character Assessment for Hereford. Rapid townscape Assessments (2010)
SEA Topic covered by objective: <i>Population, Biodiversity, Flora and Fauna</i>							
15. Value, protect, enhance and restore the landscape quality of Herefordshire, including its rural areas and open spaces.	Natural environment	Number of developments meeting and surpassing national design standards.	<i>There is no countywide or locally specific data available at present.</i>	-	No specific targets identified.	Should be monitored through AMR following the adoption of the Core Strategy, in line with SA recommendations.	-

SA Objective ¹	SA Theme	Proposed indicator	Current status	Trends	Targets	Issues and constraints	Baseline (information) source
15. Value, protect, enhance and restore the landscape quality of Herefordshire, including its rural areas and open spaces.	Natural environment	The need for, frequency and outcomes of planning enforcement investigations/ planning appeals concerning aspects of local loss of heritage assets and locally important buildings particularly within a conservation area.	Countywide data would be too large to incorporate into this template. There are no outstanding enforcement actions or appeals concerning local loss of heritage assets and locally important buildings within Edwyn Ralph at present.	No historic records of any planning enforcement action or appeals concerning locally important buildings. There are no conservation areas.	To wherever possible improve upon or otherwise maintain current status.	Current status must be verified by Dvt Mgt and Enforcement Officers, but the NDP can help to avoid enforcement action and appeals during the plan period.	Council Dvt Mgt records (searched January 2020)
SEA Topic covered by objective: <i>Climatic Factors</i>							

SA Objective ¹	SA Theme	Proposed indicator	Current status	Trends	Targets	Issues and constraints	Baseline (information) source
16. Reduce Herefordshire's vulnerability to the impacts of climate change as well as its contribution to the problem.	Resource consumption and climate change.	Transport patronage by mode	<p>% of Herefordshire residents who travel to work by:</p> <p>Car: 70.1% Foot: 14.7% Bicycle: 4.3% Bus: 2% Train: 0.8% Motorbike: 0.8% Taxi: 0.3% Other: 7%</p> <p><i>There is no locally specific data available at present</i></p>	The number of people cycling or travelling by bus as the main form transport to get to work declined between 2001 and 2011 – across England and Wales there was little change in either. Walking or driving a car or van on the other hand increased.	To encourage the take up of lesser polluting modes of transport.	There are a lack of transport options for many rural communities and therefore high car ownership and dependency – the last decade has seen a 15 per cent increase in household car ownership, although this is not reflected in traffic flows of recent years with volumes in Hereford City and wider county having decreased. The proportion of people working from home increased over the decade from 15 per cent in 2001 to 17 per cent in 2011.	2011 Census

SA Objective ¹	SA Theme	Proposed indicator	Current status	Trends	Targets	Issues and constraints	Baseline (information) source
16. Reduce Herefordshire's vulnerability to the impacts of climate change as well as its contribution to the problem.	Resource consumption and climate change.	Number of decentralised energy schemes granted permission.	<i>There is no countywide or locally specific data available at present.</i>	-	To contribute towards the national target.	Should be monitored through AMR following the adoption of the Core Strategy, in line with SA recommendations.	-

SA Objective ¹	SA Theme	Proposed indicator	Current status	Trends	Targets	Issues and constraints	Baseline (information) source
16. Reduce Herefordshire's vulnerability to the impacts of climate change as well as its contribution to the problem.	Resource consumption and climate	Total CO2 emissions per capita	<p>Latest figure dates back to 2010: 1.61 million tonnes (mtCO₂)</p> <p>There is no locally specific data available at present.</p>	<p>Between 2005 and 2010 Herefordshire's total and per capita carbon emission reduced by 7% and 8% respectively; while UK's total and per capita carbon emission reduced by 8% and 12% respectively within the same period. This trend hides an increase in emissions between 2009 and 2010 when total emissions in the county increased by 5% the same as across the UK (+5%).</p>	To reduce the overall carbon emissions.	CO ₂ emissions produced are decreasing.	Understanding Herefordshire: An integrated needs assessment (June 2013).

SA Objective ¹	SA Theme	Proposed indicator	Current status	Trends	Targets	Issues and constraints	Baseline (information) source
SEA Topic covered by objective: <i>Water</i>							
17. Reduce the risk of flooding and the resulting detriment to public wellbeing, the economy and the environment.	Natural environment	Number of planning permissions granted contrary to the advice of the Environment Agency on flood defence grounds.	2010/11: None 2011/13: Not specified 2013/14: None <i>There is no locally specific data available at present.</i>	There have been no approvals contrary to EA advice since reporting began in 2004.	To have no applications permitted contrary to EA advice.	None identified.	Herefordshire Council AMR (2010/11)
SEA Topic covered by objective: <i>Water, air, soil, material assets</i>							
18. Minimise local and global pollution and protect or enhance environmental resources.	Natural environment	Agricultural land usage by quality . LA to monitor the number of hectares of the best and most versatile agricultural land (grades 3a and higher) lost to development.	The agricultural land classification around Edwyn Ralph mainly Grade 3 and (Good to moderate).	-	Measure the number of hectares of best and most versatile soil lost through development.	Should be monitored through AMR following the adoption of the Core Strategy, in line with SA recommendations.	DEFRA 'Magic' website for land classification 2019

SA Objective ¹	SA Theme	Proposed indicator	Current status	Trends	Targets	Issues and constraints	Baseline (information) source
18. Minimise local and global pollution and protect or enhance environmental resources.	Natural environment	Percentage of river length assessed as good or very good chemical quality and ecological quality as required by the Water Framework Directive	Latest figures for the county as a whole dates back to 2005 when there was considered to be 84% assessed as good or very good. This represents a decrease in the % since 2002 <i>There is no locally specific data available at present.</i>	Figure steadily improved before going into decline: Herefordshire 1999 85.9%, 2000 89.5%, 2001 92.2%, 2002 91.8%	To ensure that rivers meet their conservation objectives and do not fall below the required standard of quality.	None identified.	The State of Herefordshire (2007) Water Framework Directive (2000)
SEA Topic covered by objective: <i>Soil</i>							
19. Ensure integrated, efficient and balanced land use.	Built environment	Percentage of all new development completed on previously developed land.	2010/11: 67% 2011-13: 57% 2013-14: 65% <i>There is no locally specific data available at present.</i>	Completions on PDL had risen to 71% by 2005.	To increase the number of homes built on PDL in line with the provisions of national planning policy.	The number of brownfield completions has fallen slightly in recent years, though this is probably the offshoot of tough market conditions.	Herefordshire Council AMR (2010/11),(2011-2013) and (2013-2014)

SA Objective ¹	SA Theme	Proposed indicator	Current status	Trends	Targets	Issues and constraints	Baseline (information) source
19. Ensure integrated, efficient and balanced land use.	Built environment	Housing densities in urban and rural areas	<i>There is no countywide or locally specific data available at present.</i>	-	No specific targets identified.	Should be monitored through AMR following the adoption of the Core Strategy, in line with SA recommendations.	-
19. Ensure integrated, efficient and balanced land use.	Built environment	Level of development in urban areas compared to rural.	<i>There is no countywide or locally specific data available at present.</i> This indicator would not be applicable to rural NDPs.	N/A	N/A	N/A	N/A
SEA Topic covered by objective: <i>Cultural heritage</i>							

SA Objective ¹	SA Theme	Proposed indicator	Current status	Trends	Targets	Issues and constraints	Baseline (information) source
20. Value, protect and enhance the character and built quality of settlements and neighbourhoods and the county's heritage assets, including conservation areas, historic environment and cultural heritage.	Built environment	Number and percentage of listed buildings and Scheduled Ancient Monuments on Buildings at Risk Register (English Heritage).	Up-to-date countywide information will be presented in the next AMR and which is due to be published in 2020. However, this data would be too large to incorporate into this template. There are numerous listed buildings within the parish and 1 SAM. None are currently recorded in the Buildings at Risk Register.	There were 79 heritage assets in Herefordshire that were considered to be at high risk and included in the Heritage at Risk Register 2019.	To wherever possible improve upon or otherwise maintain current status. (If heritage is at risk include-promote opportunities to achieve the removal of heritage assets from the at risk register.	None of Edwyn Ralphs listed buildings are considered to be at risk at present.	Buildings at Risk Register (English Heritage; search January 2020)

SA Objective ¹	SA Theme	Proposed indicator	Current status	Trends	Targets	Issues and constraints	Baseline (information) source
20. Value, protect and enhance the character and built quality of settlements and neighbourhoods and the county's heritage assets, including conservation areas, historic environment and cultural heritage.	Built environment	The need for, frequency and outcomes of planning enforcement investigations/ planning appeals concerning aspects of local loss of heritage assets, locally important buildings within the parish and particularly within a conservation area.	Countywide data would be too large to incorporate into this template. There are no outstanding enforcement actions or appeals concerning local loss of heritage assets locally important buildings. There is no conservation area in Edwyn Ralph	No historic records of any planning enforcement action or appeals concerning locally important buildings.	To wherever possible improve upon or otherwise maintain current status	Current status must be verified by Dvt Mgt and Enforcement Officers, but the NDP can help to avoid enforcement action and appeals during the plan period.	Council Dvt Mgt records (searched January 2020)

Appendix A3 – Environmental issues identified from the Edwyn Ralph baseline

These environmental issues are the same as most of those identified for the Herefordshire Core Strategy¹

SEA Topic		Environmental issue	SA objectives
1	Air	High reliance upon the private car causing high levels of air pollution and in Hereford in particular	Objective 16
		Need to reduce carbon emissions by encouraging alternative modes of travel.	
2	Biodiversity	Habitats and species of national, regional and local importance are under pressure from the adaptation and diversification of farming and forestry employment.	Objectives 13 &15
		Habitats and species of national, regional and local importance are under pressure from development	
		Minimise loss of biodiversity and expand opportunities for wildlife everywhere.	
3	Climatic factors	Reduce greenhouse gas emissions through planning, design and build.	Objective 16
4	Cultural heritage	Edwyn Ralph has numerous listed buildings and 1 Scheduled Ancient Monument all of which require ongoing protection and many in need of high levels of maintenance.	Objective 20
5	Flora and fauna	Conserve and enhance the character and quality of historic landscapes, including all types of natural flora and fauna.	Objective 15
6	Material assets	How the countryside can continue to be managed in an economically, socially and environmentally beneficial way in the face of continuing pressures on traditional farming.	Objectives 14 & 18
7	Population	Minimise energy waste through good designs, which help to reduce energy consumption and maximise efficiency.	Objective 15
		Need to avoid enforcement investigations/action concerning locally important buildings and those within conservation areas in particular.	
8	Soil	Promoting development of previously developed land and buildings as opposed to greenfield sites or agricultural land of the highest quality.	Objectives 18 & 19

¹ Derived from the Pre-submission Core Strategy Sustainability Appraisal Assessment (May 2014) and LDF General Scoping Report (June 2007)

9	Water	Issues relating to availability of resources, foul drainage, pollution, and abstraction in a county which supports water dependent biodiversity of international and national importance, given the predicted climate change consequences for water availability and demanding projections for new housing.	Objectives 17 & 18
		Steady decline in the chemical quality of rivers over the last 10 years.	

Appendix A4: SEA Framework

SEA Scoping Stage A, Task A4 - SEA Framework SEA Objectives, Indicators, Targets

Parish Council Name: Edwyn Ralph

Neighbourhood Development Plan Name: Edwyn Ralph Neighbourhood Plan

Date completed: January 2020

SEA Topics	SA Objective	SEA Objective	Sub-objectives / Appraisal Questions (Will the option/proposal/site...)	Indicators	Targets
Nature Conservation (Biodiversity, flora and fauna)	Value, maintain, restore or expand county biodiversity. Value, protect, enhance or restore the landscape quality of Herefordshire, including its rural areas and open spaces.	To maintain and enhance nature conservation (biodiversity, flora and fauna)	<ul style="list-style-type: none"> Protect or enhance habitats of international, national, regional or local importance. Protect international, national, regional or locally important terrestrial or aquatic species. Maintain wildlife corridors and minimise fragmentation of ecological areas and green spaces. Manage access to sites in a sustainable way that protects or enhances their nature conservation value. Create new appropriate habitats. Value, enhance and protect natural 	<p>Net change in condition of SSSIs across Herefordshire.</p> <p>After use of mineral sites especially wildlife habitat creation</p> <p>Changes to protected habitats and impacts of species within the Herefordshire Local Biodiversity Action Plan.</p>	<p>% of SSSI land in favourable condition (Increase) % of SSSI land in unfavourable condition but recovering (Increase) % of SSSI land in unfavourable condition and declining (Decrease)</p> <p>Percentage of opportunities taken</p> <p>To protect and where possible enhance the habitats of protected species identified. No net losses</p>

SEA Topics	SA Objective	SEA Objective	Sub-objectives / Appraisal Questions (Will the option/proposal/site...)	Indicators	Targets
			<p>environmental assets including AONB's, historic landscapes, open spaces, parks and gardens and their settings</p> <ul style="list-style-type: none"> • Encourage local stewardship of local environments, for example by promoting best practices in agricultural management • Ensure that environmental impacts caused by mineral operations and the transport of minerals are minimised. • Promote the use of rural areas and open space by all, encourage easy non-car based access, and accommodate the needs of disabled users. 		
Landscape	Not covered in SA	<p>To maintain and enhance the quality of landscapes and townscapes</p> <p>To improve quality of surroundings</p>	<ul style="list-style-type: none"> • Protect and enhance the landscape everywhere and particularly in designated areas • Value and protect diversity and local distinctiveness 	<p>Changes in the areas of designated nature conservation sites as a consequence of planning permission.</p> <p>Proportion of local sites where positive conservation management has or is being</p>	<p>To capitalise on opportunities to enhance the areas of value to nature conservation as much as possible.</p> <p>No specific targets identified.</p>

SEA Topics	SA Objective	SEA Objective	Sub-objectives / Appraisal Questions (Will the option/proposal/site...)	Indicators	Targets
			<ul style="list-style-type: none"> Improve landscape and ecological quality and character of the countryside Improve the quantity and quality of publicly accessible open space Improve satisfaction of people with their neighbourhoods as places to live Decrease litter and graffiti in towns and countryside Result in the loss of open space 	<p>implemented.</p> <p>Monitoring changes to historic landscapes.</p> <p>Area resulting in a loss of open space as a result of planning permission</p>	<p>No specific targets identified.</p> <p>No specific targets identified</p>
Heritage	Value, protect or enhance the character and built quality of settlements and neighbourhoods and the county's heritage assets, historic environment and cultural heritage.	To conserve and where appropriate enhance the historic environment , heritage assets and culture heritage	<ul style="list-style-type: none"> Preserve, protect and enhance heritage assets including conservation areas, listed buildings, archaeological sites and other culturally important features in both urban and rural settings. Prevent development which is inappropriate in scale, form or design to its setting or to its function or local area. Encourage development that creates and sustains well-designed, high quality built 	<p>The need for, frequency and outcomes of planning enforcement investigations/ planning appeals concerning the aspects of local loss of locally important buildings within a conservation area.</p> <p>Number and percentage of listed buildings and Scheduled Ancient Monuments on Buildings at Risk Register (English Heritage).</p> <p>Ensure that Herefordshire Council's Sites and Monuments Register is kept up to date.</p>	<p>To improve upon or otherwise maintain current status.</p> <p>To improve upon or otherwise maintain current status.</p> <p>No specific targets identified, but need to ensure that the register is kept up to date.</p>

SEA Topics	SA Objective	SEA Objective	Sub-objectives / Appraisal Questions (Will the option/proposal/site...)	Indicators	Targets
			<p>environments that incorporate green space, encourage biodiversity and promote local distinctiveness and sense of place.</p> <ul style="list-style-type: none"> • Encourage cleanliness and/or improve the general appearance of the area. 		

SEA Topics	SA Objective	SEA Objective	Sub-objectives / Appraisal Questions (Will the option/proposal/site...)	Indicators	Targets
Air and Climate	<p>Minimise local and global pollution and protect or enhance environmental resources.</p> <p>Reduce Herefordshire's vulnerability to the impacts of climate change as well as its contribution to the problem.</p>	<p>To improve air quality</p> <p>To reduce the effect of traffic on the environment</p> <p>To reduce contributions to climate change</p> <p>To reduce vulnerability to climate change</p>	<ul style="list-style-type: none"> Minimise water, air, soil, groundwater, noise and light pollution from current activities and the potential for such pollution. Protect or enhance the quality of watercourses. Provide opportunities to improve soil quality or reduce contaminated land. Reduce the county's contribution to climate change by reducing greenhouse gas emissions from transport, domestic, commercial and industrial sources. Increase the proportion of energy generated from renewable and low carbon sources including by micro-generation, Combined Heat and Power (CHP), district heating and in transportation. 	<p>Transport patronage by mode</p> <p>Number of decentralised energy schemes granted permission.</p> <p>Total CO2 emissions per capita</p>	<p>To increase the take up of alternative modes to the private car.</p> <p>To contribute towards the national target.</p> <p>To reduce the overall carbon emissions.</p>

SEA Topics	SA Objective	SEA Objective	Sub-objectives / Appraisal Questions (Will the option/proposal/site...)	Indicators	Targets
Water	<p>Reduce the risk of flooding and the resulting detriment to public well-being, the economy and the environment.</p> <p>Minimise local and global pollution and protect or enhance environmental resources.</p>	<p>To improve water quality</p> <p>To provide for sustainable sources of water supply</p> <p>To avoid, reduce and manage flood risk</p>	<ul style="list-style-type: none"> Reduce flood risk both presently and taking into account climate change. Prevent inappropriate development of the floodplain, and include flood protection systems. Include sustainable urban drainage systems where appropriate. Minimise water, air, soil, groundwater, noise and light pollution from current activities and the potential for such pollution. Protect or enhance the quality of watercourses. 	<p>Number of planning permissions granted contrary to the advice of the Environment Agency on flood defence grounds.</p> <p>Percentage of river length assessed as good or very good chemical quality and ecological quality</p> <p>Phosphate levels within the River Wye SAC and adjoining tributaries that receive increased phosphates from proportional growth.</p>	<p>To have no applications permitted contrary to EA advice.</p> <p>To ensure that rivers meet their conservation objectives and do not fall below the required standard of quality as set out in the Water Framework Directive.</p> <p>To meet the targets set out in the Nutrient Management Plan (2014)</p>
Soil	<p>Minimise local and global pollution and protect or enhance environmental resources.</p> <p>Ensure integrated, efficient and</p>	<p>To conserve soil resources and quality</p> <p>Ensure integrated, efficient and balanced land use.</p>	<ul style="list-style-type: none"> Minimise water, air, soil, groundwater, noise and light pollution from current activities and the potential for such pollution. Provide opportunities to improve soil quality or reduce contaminated land. Ensure new developments 	<p>Percentage of all new development completed on previously developed land.</p> <p>Amount of land identified as best and most versatile agricultural land lost to development.</p>	<p>To increase the number of homes built on PDL in line with the provisions of national planning policy.</p> <p>Measure the number of hectares of best and most versatile soil lost through development.</p>

SEA Topics	SA Objective	SEA Objective	Sub-objectives / Appraisal Questions (Will the option/proposal/site...)	Indicators	Targets
	balanced land use.		are in appropriate locations, optimising the use of previously developed land and buildings, primarily focussed on the urban areas and are accessible by walking, cycling or sustainable transport and/or will increase the share of these transport modes, thereby reducing the need to travel.		
Population and Human Health	Value, protect, enhance or restore the landscape quality of Herefordshire, including its rural areas and open spaces.	To improve health of the population To reduce crime and nuisance	<ul style="list-style-type: none"> Value, enhance and protect natural environmental assets including AONB's, historic landscapes, open spaces, parks and gardens and their settings. Encourage local stewardship of local environments, for example by promoting best practices in agricultural management. Ensure that environmental impacts caused by mineral operations and the transport of minerals are minimised. Promote the use of rural areas and open 	Number of developments meeting and surpassing national design	No specific targets identified.

SEA Topics	SA Objective	SEA Objective	Sub-objectives / Appraisal Questions (Will the option/proposal/site...)	Indicators	Targets
			space by all, encourage easy non-car based access, and accommodate the needs of disabled users.		
Material Assets	<p>Use natural resources and energy more efficiently.</p> <p>Minimise local and global pollution and protect or enhance environmental resources.</p>	To conserve natural and manmade resources	<ul style="list-style-type: none"> • Maximise energy efficiency and minimise the consumption of non-renewable energy i.e. from fossil fuels. • Minimise the consumption of water, land, soil, minerals, aggregates and other raw materials by all? E.g. through integrated transport, sustainable resource-efficient design, local sourcing of food, goods, materials. • Encourage the re-use/enhancement (to high standards of sustainable resource-efficient design) of existing buildings and minimise the need for new build. • Encourage the use of clean technologies and water minimisation techniques. 	<p>The need for, frequency and outcomes of planning enforcement investigations/ planning appeals concerning the aspects of local loss of locally important buildings within a conservation area.</p> <p>Maintaining Herefordshire Council's County Site and Monuments Register.</p> <p>Monitoring changes to historic landscapes.</p> <p>Agricultural land usage by quality</p>	<p>Measure the number of hectares of best and most versatile soil lost through development. No specific targets identified.</p> <p>No specific targets identified, but need to ensure that the register is kept up to date.</p> <p>No specific targets identified.</p> <p>Measure the number of hectares of best and most versatile soil lost through development.</p>

Appendix 3

Latham, James

From: Boland, Peter <Peter.Boland@HistoricEngland.org.uk>
Sent: 20 April 2020 11:20
To: Neighbourhood Planning Team
Cc: Dean, Adam
Subject: Herefordshire SEA Scoping Reports

CAUTION: This email originated from outside of the organisation. Do not click links or open attachments unless you recognise the sender and know the content is safe.

Hello James,

Please excuse the format due to my currently working from home and please see below the Historic England response to your scoping consultation of 10/03/2020.

CONSULTATION ON SEA SCOPING REPORTS FOR ASTON INGHAM; EDWYN RALPH; KINGTON AREA; STOKE LACY NEIGHBOURHOOD PLANS

Thank you for the invitation to comment on the SEA Scoping Reports for the Neighbourhood Plans listed above. We have no substantive objection to the contents of the documents.

The SEA Frameworks sections of the SEAs are generally commendable in their approach of including references to historic landscape and townscape quality, the maintenance of the Herefordshire SMR and conservation and wherever possible enhancement of locally significant heritage assets.

I hope this is helpful.

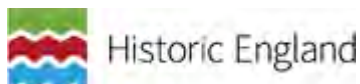
Yours sincerely,

Pete Boland.

Historic Places Adviser | West Midlands
Historic England | The Axis
10 Holliday Street | Birmingham B1 1TF

Tel: 0121 625 6887

www.HistoricEngland.org.uk | [@HistoricEngland](https://twitter.com/HistoricEngland)



Appendix 4

Strategic Environmental Assessment (SEA) Scoping Stage B1:- Objectives assessed against SEA Objectives (SMART and Compatibility Test)

The following matrix appraises the emerging Edwyn Ralph NDP Objectives in terms of their SMART criteria and their compatibility with the SEA Objectives. These have been developed from Government guidance on SEA and from the local evidence base gathered for identifying the NDP issues.

SMART criteria:

S – Specific:

NDP objectives should specify what is intended to be done in detail and should not be open to a wide range of misinterpretations

M – Measurable:

It should be possible to monitor NDP objectives in a quantifiable way, by the use of indicators. Indicators should be measurable with limited resource implications.

A – Attainable/achievable:

NDP objectives should be achievable and deliverable, related to the scale of growth proposed

R – Realistic:

NDP objectives should relate to the overall vision of the plan. Likewise, chosen indicators should relate to objectives and their outcomes.

T – Time-Bound:

Objectives should be specific to the NDP period or another specified time-frame. Objectives should be associated with a target and indicators should specify when the target should be achieved.

Strategic Environmental Assessment (SEA) Stage B1-Assessment outcome
Very positive- Compatible with sea objective.
Positive- Compatible with sea objective.
Conflict- Negative effect/ conflict with sea objective.
Neutral-Neutral effect on sea objective.
No relationship between objectives- No link with sea objective.
Uncertain- Uncertain impact on sea objective, more information needed.

SEA Objectives:	6- To reduce the effect of traffic on the environment	12- To conserve soil resources and quality
1-To maintain and enhance nature conservation	7- To reduce contributions to climate change	13- To minimise the production of waste
2- To maintain and enhance the quality of landscapes and townscapes	8- To reduce vulnerability to climate change	14- To improve health of the population
3- To improve quality of surroundings	9- To improve water quality	15- To reduce crime and nuisance
4- To conserve and where appropriate enhance the historic environment	10- To provide for sustainable sources of water supply	16- To conserve natural and manmade resources
5- To improve air quality	11- To avoid, reduce and manage flood risk	

Uncertain	Positive	Positive	Uncertain	Positive	Positive	Positive	Positive	Positive	Positive	Positive	Uncertain	Positive				Uncertain
-----------	----------	----------	-----------	----------	----------	----------	----------	----------	----------	----------	-----------	----------	--	--	--	-----------

Conclusions- This objective is compatible with the relevant SEA objectives. This objective strives to ensure that sustainable employment opportunities exist within the area. Some of the effects on the baseline will be uncertain at this stage, as the location of the development is unknown; however, there are sufficient policy safeguards within the Core Strategy and NDP to ensure these are addressed.

Recommendations- None

SMART Test of NDP Objective- This objective meets all of the SMART Objectives.

After Smart Objective- No change.

Objective 4: to promote safe roads and spaces for all road users including pedestrians, cyclists and horse riders; reduce traffic speeds through effective traffic calming measures

SEA Objectives															
1	2	3	4	5	6	7	8	9	10	11	12	13	14	15	16
Uncertain	Uncertain	Positive	Uncertain	Positive	Very positive	Positive	No relationship	No relationship	No relationship	Uncertain	Uncertain				Positive

Conclusions- This objective is compatible with the majority of the relevant SEA objectives. This objective supports safe use and sharing of road space for all users. Some of the effects on the baseline will be uncertain at this stage, as the location of the development is unknown, however, there are sufficient policy safeguards within the Core Strategy and NDP to ensure these are addressed.

Recommendations- None

SMART Test of NDP Objective- This objective is specific and measurable via the AMR. It will be attainable, achievable and realistic

After Smart Objective- None

Objective 5: Maintaining all existing rights of way. Footpaths and bridleways to enable the community to have as much access to and enjoyment of the beautiful countryside surrounding our villages

SEA Objectives															
1	2	3	4	5	6	7	8	9	10	11	12	13	14	15	16
Neutral	Positive	Positive	Positive	Positive	Positive	Positive	Positive	Positive	No relationship	No relationship	Positive				Positive

Conclusions- This objective is compatible with the majority of the relevant SEA objectives. The objective is seeking to give more access to the surrounding countryside and encourage cycling and walking.

Recommendations- None

SMART Test of NDP Objective- This objective is specific and measurable via the AMR. It will be attainable, achievable and realistic

After Smart Objective- None

Objective 6: To provide for the needs of the community by sustaining and/ or enhancing where appropriate, improvements to existing community facilities including the local village hall and surrounding area and parish church and explore opportunities for new facilities such as a village shop

SEA Objectives															
1	2	3	4	5	6	7	8	9	10	11	12	13	14	15	16
Uncertain	Very Positive	Very positive	Positive	Positive	Very positive	Positive	No relationship	No relationship	No relationship	Positive	Positive				Positive

Conclusions- This objective is compatible with the majority of the relevant SEA objectives. This objective is seeking to retain existing community facilities within the parish to reduce the need to travel and maintain a vibrant community.

Recommendations- None

SMART Test of NDP Objective- This objective is specific and measurable via the AMR. It will be attainable, achievable and realistic

After Smart Objective- None

Objective 7: to ensure that the supply of utilities and telecommunications is sufficient to meet the needs of the community at a time when more home working is likely

SEA Objectives															
1	2	3	4	5	6	7	8	9	10	11	12	13	14	15	16
Uncertain	Positive	Positive	Uncertain	Positive	Very positive	Very positive	Uncertain	No relationship	No relationship	No relationship	uncertain				Positive

Conclusions- This objective is compatible with the majority of the relevant SEA objectives. This objective is seeking to support more working from home and reduce the need to travel.

Recommendations- None

SMART Test of NDP Objective- This objective is specific and measurable via the AMR. It will be attainable, achievable and realistic

After Smart Objective- None

<p>The following matrix appraises the potential options in terms of their SMART criteria and their compatibility with the SEA Objectives. These have been developed from Government guidance on SEA and from the local evidence base gathered for identifying the NDP issues.</p>
<p>SMART criteria:</p>
<p>S – Specific: NDP objectives should specify what is intended to be done in detail and should not be open to a wide range of misinterpretations</p> <p>M – Measurable: It should be possible to monitor NDP objectives in a quantifiable way, by the use of indicators. Indicators should be measurable with limited resource implications.</p> <p>A – Attainable/achievable: NDP objectives should be achievable and deliverable, related to the scale of growth proposed</p> <p>R – Realistic: NDP objectives should relate to the overall vision of the plan. Likewise, chosen indicators should relate to objectives and their outcomes.</p> <p>T – Time-Bound: Objectives should be specific to the NDP period or another specified timeframe. Objectives should be associated with a target and indicators should specify when the target should be achieved.</p>

<p>SEA Stage B1: Assessment outcome</p>
<p>Very positive: Compatible with sea objective.</p>
<p>Positive: Compatible with sea objective.</p>
<p>Conflict: Negative effect/ conflict with sea objective.</p>
<p>Neutral: Neutral effect on sea objective.</p>
<p>No relationship between objectives: No link with sea objective.</p>
<p>Uncertain: Uncertain impact on sea objective, more information needed.</p>

<p>SEA Objectives:</p> <p>1-To maintain and enhance nature conservation (biodiversity, flora and fauna)</p> <p>2- To maintain and enhance the quality of landscapes and townscapes</p> <p>3- To improve quality of surroundings</p> <p>4- To conserve and where appropriate enhance the historic environment and culture heritage</p> <p>5- To improve air quality</p> <p>6- To reduce the effect of traffic on the environment</p>	<p>7- To reduce contributions to climate change</p> <p>8- To reduce vulnerability to climate change</p> <p>9- To improve water quality</p> <p>10- To provide for sustainable sources of water supply</p> <p>11- To avoid, reduce and manage flood risk</p> <p>12- To conserve soil resources and quality</p> <p>13- To minimise the production of waste</p> <p>14- To improve health of the population</p> <p>15- To reduce crime and nuisance</p>	<p>16- To conserve natural and manmade resources</p>
--	--	--

Neighbourhood Plan Option 1: Do nothing approach

SEA Objectives															
1	2	3	4	5	6	7	8	9	10	11	12	13	14	15	16
No link	No link	No link	No link	No link	No link	No link	No link	No link	No link	No link	No link				No link

Do nothing option is essential not to produce a neighbourhood plan and rely on the criteria policies within the Core Strategy to guide further development. Specific policies and proposals for the parishes would not exist until a review of the Core Strategy was undertaken. All developments would need to be in conformity with the Core Strategy. The Core Strategy has been subject to a Sustainability Appraisal and policies met the SEA objectives.

Neighbourhood Plan Option 2: Produce an NDP

SEA Objectives															
1	2	3	4	5	6	7	8	9	10	11	12	13	14	15	16
positive	positive	positive	positive	positive	positive	positive	positive	positive	positive	positive	positive				positive

This option allows the local community to provide local tailored policies to cover all aspects of planning. Policy could be included to ensure a positive safeguard to the baseline. This option would meet the Core Strategy requirements in terms of the SEA.

Neighbourhood Plan Option 3: No Settlement Boundary

SEA Objectives															
1	2	3	4	5	6	7	8	9	10	11	12	13	14	15	16
positive	positive	positive	positive	positive	positive	positive	positive	positive	positive	positive	positive				positive

No settlement boundary resulting in criteria based policy does not give the same level of certainty as the other options as it will be more reactionary than proactive in terms of growth proposals. However, provided criteria is added to the policy to safeguard or mitigate against any harm, the option will have a positive effect on the baseline. Criteria would need to be included within the policy to safeguard against effects on any SEA objectives. This option would meet the Core Strategy requirements in terms of the SEA.

Neighbourhood Plan Option 4: Site Allocation

SEA Objectives															
1	2	3	4	5	6	7	8	9	10	11	12	13	14	15	16
Very positive	Very positive	Very positive	Very positive	Very positive	positive	Very positive	Very positive	Very positive	positive	Very positive	positive				Very positive

The allocation of sites would give certainty to the location of future growth. Additional criteria can be added to the policy criteria to ensure that the proposal has a positive effect on the baseline. Any site would need to be assessed prior to allocation to ensure that it had a positive effect overall on the baseline. This option would meet the Core Strategy requirements in terms of the SEA

Neighbourhood Plan Option 5: Criteria Based Policy

SEA Objectives															
1	2	3	4	5	6	7	8	9	10	11	12	13	14	15	16
positive	positive	No link	positive	positive	positive	positive	positive	positive	positive	positive	positive				positive

Criteria based policy does not give the same level of certainty as site allocations as it will be more reactionary than proactive in terms of growth proposals. However, provided criteria is added to the policy to safeguard or mitigate against any harm, the option will have a positive effect on the baseline. Criteria would need to be included within the policy to safeguard against effects on any SEA objectives. This option would meet the Core Strategy requirements in terms of the SEA.

Neighbourhood Plan alternative site option 1: Site 1 – East of The Hollings

SEA Objectives															
1	2	3	4	5	6	7	8	9	10	11	12	13	14	15	16
Positive	Negative	Negative	Positive	Positive	Positive	Positive	Positive	uncertain	Positive	Positive	Neutral				Neutral

This 1.7 hectare site is current greenfield on the eastern side of the village. The site is adjacent to the built form of Edwyn Ralph village but is considered to be open and rural in character with long distance views to the west, south and south-west. There are no designations on or adjacent but the adjacent property has been identified as a heritage asset. Site has potential for up to 9 dwellings.

Neighbourhood Plan alternative site option 2: site 2 – Land adjacent to Woodlands Farm

SEA Objectives															
1	2	3	4	5	6	7	8	9	10	11	12	13	14	15	16
Negative	Negative	Negative	Negative	Positive	Positive	Positive	Positive	uncertain	Positive	Positive	Neutral				Negative

This 0.85 hectare site has the potential for 5 dwellings and an orchard. The site is situated to the rear of a row of detached properties and is adjacent to the current built form and has been subject to previous appeal. The previous appeal has highlighted concerns regarding character of the area and urban form in this location. There is a grade II listed building nearby to the south west. Therefore, this site option would have a negative effect on five of the baseline objectives.

Neighbourhood Plan alternative site option 3: Site 3 Top paddock, The Manor

SEA Objectives															
1	2	3	4	5	6	7	8	9	10	11	12	13	14	15	16
Positive	Positive	uncertain	uncertain	Positive	Positive	uncertain	positive	uncertain	Positive	Positive	Positive				uncertain

This 0.6 hectare sites has potential for 3 to 4 dwellings and is situated to the south of the village adjacent to the current built form. The site consists of two paddocks enclosed by planting but with some long distance views to the south. The site has access onto the B4214 and there is a grade II listed building in close proximity

Neighbourhood Plan alternative site option 4: East of B4214

SEA Objectives															
1	2	3	4	5	6	7	8	9	10	11	12	13	14	15	16
uncertain	Negative	Negative	uncertain	Positive	uncertain	uncertain	positive	uncertain	Positive	Positive	Neutral				uncertain

This 1 hectare site has the potential for 5 dwellings and is situated to the east of the B4214, the site is considered to be open with long distance views of the Bromyard Downs. It is not immediately adjacent to the current built form of the village. The site is considered to be visually prominent and could have a significant impact on the landscape and setting of the village.

Neighbourhood Plan Option 5: Site 5 Oaklands

SEA Objectives															
1	2	3	4	5	6	7	8	9	10	11	12	13	14	15	16
Positive	Positive	uncertain	Positive	Positive	uncertain	uncertain	positive	uncertain	Positive	Positive	Positive				uncertain

This is a 0.07 hectare sites suitable for 2 dwellings and forms the garden of an existing property in the east of the village and considered to be within the existing built form. This site is close to a SWS.

Edwyn Ralph NDP - B2: Develop and Refinement of NDP Policies (November 2021)

The following matrix appraises the emerging Edwyn Ralph NDP policies in terms of their SMART criteria and their compatibility with the SEA Objectives. These have been developed from Government guidance on SEA and from the local evidence base gathered for identifying the NDP issues.
SMART criteria:
<p>S – Specific: NDP objectives should specify what is intended to be done in detail and should not be open to a wide range of misinterpretations</p> <p>M – Measurable: It should be possible to monitor NDP objectives in a quantifiable way, by the use of indicators. Indicators should be measurable with limited resource implications.</p> <p>A – Attainable/achievable: NDP objectives should be achievable and deliverable, related to the scale of growth proposed</p> <p>R – Realistic: NDP objectives should relate to the overall vision of the plan. Likewise, chosen indicators should relate to objectives and their outcomes.</p> <p>T – Time-Bound: Objectives should be specific to the NDP period or another specified time-frame. Objectives should be associated with a target and indicators should specify when the target should be achieved.</p>

Strategic Environmental Assessment (SEA) Stage B1: Assessment outcome
Very positive: Compatible with sea objective.
Positive: Compatible with sea objective.
Conflict: Negative effect/ conflict with sea objective.
Neutral: Neutral effect on sea objective.
No relationship between objectives: No link with sea objective.
Uncertain: Uncertain impact on sea objective, more information needed.

<p>SEA Objectives:</p> <p>1-To maintain and enhance nature conservation (biodiversity, flora and fauna)</p> <p>2- To maintain and enhance the quality of landscapes and townscapes</p> <p>3- To improve quality of surroundings</p> <p>4- To conserve and where appropriate enhance the historic environment and culture heritage</p> <p>5- To improve air quality</p>	<p>6- To reduce the effect of traffic on the environment</p> <p>7- To reduce contributions to climate change</p> <p>8- To reduce vulnerability to climate change</p> <p>9- To improve water quality</p> <p>10- To provide for sustainable sources of water supply</p> <p>11- To avoid, reduce and manage flood risk</p> <p>12- To conserve soil resources and quality</p> <p>13- To minimise the production of waste</p>	<p>14- To improve health of the population</p> <p>15- To reduce crime and nuisance</p> <p>16- To conserve natural and manmade resources</p>
---	--	---

Neighbourhood Plan Policy: ER1 Promoting a sustainable community

SEA Objectives															
1	2	3	4	5	6	7	8	9	10	11	12	13	14	15	16
Very Positive	Very Positive	Very Positive	Very Positive	Very Positive	Very Positive	Very Positive	Very Positive	Positive	Positive	Very Positive	Very Positive				Very Positive

Summary in relation to baseline

Overall this policy is compatible with the Core Strategy and has mainly a very positive impact on the baseline data. The policy is seeking to promote positive measures to maintaining sustainable communities

Overall commentary and any initial cumulative effects/ Recommendations

Policy safeguarding exists to ensure that environmental considerations are taken into account.

Conformity with Core Strategy

This policy meets the Core Strategy requirements for the purposes of the SEA.

Neighbourhood Plan Policy: ER2 Development Strategy

SEA Objectives															
1	2	3	4	5	6	7	8	9	10	11	12	13	14	15	16
Uncertain	Positive	Positive	Uncertain	Positive	Positive	Positive	Positive	Positive	Positive	Positive	Positive				Positive

Summary in relation to baseline

The policy is seeking to meet the requirements of the Core Strategy Policy RA2 and direct proportional growth to the settlement of Edwyn Ralph. This has a positive effect on the baseline.

Overall commentary and any initial cumulative effects/ Recommendations

Policy safeguarding exists to ensure that environmental considerations are taken into account.

Conformity with Core Strategy

This policy meets the Core Strategy requirements for the purposes of the SEA.

Neighbourhood Plan Policy: ER3 Protecting and enhancing local character

SEA Objectives															
1	2	3	4	5	6	7	8	9	10	11	12	13	14	15	16
Very positive	Very positive	Very positive	Very positive	Very positive	Very positive	Very positive	Very positive	Very positive	Very positive	Very positive	Very positive				Very positive

Summary in relation to baseline

Overall, this policy has a very positive impact on all of the baseline objectives, its aim is to ensure that distinctive elements of the parishes are promoted and enhanced.

Overall commentary and any initial cumulative effects/ Recommendations

The policy compliments a number of policies within the Core Strategy and together with other specific policies within the Edwyn Ralph NDP provides a number of policy safeguards.

Conformity with Core Strategy

This policy meets the Core Strategy requirements for the purposes of the SEA.

Neighbourhood Plan Policy: ER4 Heritage Assets

SEA Objectives															
1	2	3	4	5	6	7	8	9	10	11	12	13	14	15	16
positive	Very positive	Very positive	Very positive	No link	No link	Positive	No link	No link	No link	No link	positive				Very positive

Summary in relation to baseline

The policy is seeking to protect and enhance heritage assets, therefore this has a positive effect on the baseline where relevant.

Overall commentary and any initial cumulative effects/ Recommendations

Overall this policy meets the SEA baseline and seek to complement the policies of the Core Strategy.

Conformity with Core Strategy

This policy meets the Core Strategy requirements for the purposes of the SEA.

Neighbourhood Plan Policy: ER5 The scale of new housing

SEA Objectives															
1	2	3	4	5	6	7	8	9	10	11	12	13	14	15	16
Uncertain	Positive	Positive	Positive	Positive	Positive	Positive	Positive	Positive	Positive	Positive	Positive				Positive

Summary in relation to baseline

Overall, this policy has mainly a positive impact on the baseline data. It is in conformity with the proportional growth requirements of the Core Strategy.

Overall commentary and any initial cumulative effects/ Recommendations

Overall, the policy is compatible and has a positive impact on the baseline data, as it will encourage sustainable development in the parish.

Conformity with Core Strategy

This policy meets the Core Strategy requirements for the purposes of the SEA.

Neighbourhood Plan Policy: ER6 Housing allocation

SEA Objectives															
1	2	3	4	5	6	7	8	9	10	11	12	13	14	15	16
Positive	Positive	uncertain	uncertain	Positive	Positive	uncertain	positive	uncertain	Positive	Positive	Positive				Positive

Summary in relation to baseline

Overall this policy has mainly a positive impact on the baseline data. The allocation has been tested against reasonable alternatives and has been reduced in size to take account of concerns raised during the site selection process. Significant policy safeguards exist within the Core Strategy and the NDP to ensure that those areas which are currently uncertain within the baseline are safeguarded.

Overall commentary and any initial cumulative effects/ Recommendations

Overall the policy is compatible and has a positive impact on the baseline data,

Conformity with Core Strategy

This policy meets the Core Strategy requirements for the purposes of the SEA.

Neighbourhood Plan Policy: ER7 Housing in the countryside

SEA Objectives															
1	2	3	4	5	6	7	8	9	10	11	12	13	14	15	16
Uncertain	Positive	Positive	Uncertain	Positive	Positive	Positive	Positive	Positive	Positive	Positive	Positive				Positive

Summary in relation to baseline

Overall this policy has mainly a positive impact on the baseline data. This policy is in line with Policy RA3 of the Core Strategy and limiting development in areas outside of the main settlement of Edwyn Ralph

Overall commentary and any initial cumulative effects/ Recommendations

This policy conforms to the Local Plan (Core Strategy). Overall, the policy is compatible and has a positive impact on the baseline data. Policies within the Core Strategy and the Edwyn Ralph NDP provide sufficient policy safeguards.

Conformity with Core Strategy

This policy meets the Core Strategy requirements for the purposes of the SEA.

Neighbourhood Plan Policy: ER8 Extensions to dwellings

SEA Objectives															
1	2	3	4	5	6	7	8	9	10	11	12	13	14	15	16
Positive	Positive	Positive	Positive	Positive	Positive	Positive	Positive	Positive	Positive	Positive	Positive				Positive

Summary in relation to baseline

Overall this policy has mainly a positive impact on the baseline data.

Overall commentary and any initial cumulative effects/ Recommendations

This policy conforms to the Local Plan (Core Strategy). Overall, the policy is compatible and has a positive impact on the baseline data, as is it seeking to protect the character of the area whilst enabling household growth or working from home requirements.

Conformity with Core Strategy

This policy meets the Core Strategy requirements for the purposes of the SEA.

Neighbourhood Plan Policy: ER9 Design of new dwellings

SEA Objectives															
1	2	3	4	5	6	7	8	9	10	11	12	13	14	15	16
Positive	Positive	Positive	Positive	Positive	Positive	Positive	Positive	Positive	Positive	Positive	Positive				Positive

Summary in relation to baseline

Overall the policy meets all the relevant SEA criteria, and is positive against the baseline, the policy will not lead to development but providing the design criteria for future developments.

Overall commentary and any initial cumulative effects/ Recommendations

Overall this policy meets the SEA baseline.

Conformity with Core Strategy

This policy meets the Core Strategy requirements for the purposes of the SEA.

Neighbourhood Plan Policy: ER10 Ensuring an appropriate range of tenures, types and sizes of houses

SEA Objectives															
1	2	3	4	5	6	7	8	9	10	11	12	13	14	15	16
No link	Positive	Positive	No link	No link	No link	No link	No link	No link	No link	No link	No link				No link

Summary in relation to baseline

Overall this policy is compatible with the Core Strategy and has positive impact on the baseline data where relevant. The policy will not lead to development but is seeking to ensure a range and mix of tenures within the settlement and this will have a positive effect onto the viability and character of the area.

Overall commentary and any initial cumulative effects/ Recommendations

Overall this policy meets the SEA baseline.

Conformity with Core Strategy

This policy meets the Core Strategy requirements for the purposes of the SEA.

Neighbourhood Plan Policy: ER11 Affordable housing

SEA Objectives															
1	2	3	4	5	6	7	8	9	10	11	12	13	14	15	16
No link	Positive	Positive	No link	No link	No link	No link	No link	No link	No link	No link	No link				No link

Summary in relation to baseline

Overall this policy is compatible with the Core Strategy and has a positive impact on the baseline data where relevant. The policy is seeking to support affordable housing which will assist the viability of the area.

Overall commentary and any initial cumulative effects/ Recommendations

Overall this policy meets the SEA baseline.

Conformity with Core Strategy

This policy meets the Core Strategy requirements for the purposes of the SEA.

Neighbourhood Plan Policy: ER12 Business Development

SEA Objectives															
1	2	3	4	5	6	7	8	9	10	11	12	13	14	15	16
Uncertain	Positive	Positive	uncertain	Neutral	Neutral	Positive	Positive	Positive	Positive	Positive	Positive				Positive

Summary in relation to baseline

Overall this policy is compatible with the Core Strategy and has mainly a positive impact on the baseline data. It is seeking to provide employment and business opportunities locally. This could reduce the need to travel of local people but also encourage some traveling into the parish in connection with tourism.

Overall commentary and any initial cumulative effects/ Recommendations

Overall this policy meets the SEA baseline. There are sufficient policy safeguards within the Core Strategy and the NDP itself to ensure environmental aspects of the baseline are maintained.

Conformity with Core Strategy

This policy meets the Core Strategy requirements for the purposes of the SEA.

Neighbourhood Plan Policy: ER13 Protection of existing commercial business premises

SEA Objectives															
1	2	3	4	5	6	7	8	9	10	11	12	13	14	15	16
Positive	Positive	Positive	Positive	Positive	Positive	Positive	Positive	Positive	Positive	Positive	Positive				Positive

Summary in relation to baseline

Overall this policy is compatible with the Core Strategy and has a positive impact on the baseline data. It is seeking to retain existing businesses and commercial opportunities within the parish.

Overall commentary and any initial cumulative effects/ Recommendations

Overall this policy meets the SEA baseline. There are sufficient policy safeguards within the Core Strategy and the NDP itself to ensure environmental aspects of the baseline are maintained

Conformity with Core Strategy

This policy meets the Core Strategy requirements for the purposes of the SEA.

Neighbourhood Plan Policy: ER14 Agricultural and forestry enterprises

SEA Objectives															
1	2	3	4	5	6	7	8	9	10	11	12	13	14	15	16
Positive	Positive	Positive	Positive	Positive	Positive	Positive	Positive	Positive	Positive	Positive	Positive				Positive

Summary in relation to baseline

Overall this policy is compatible with the Core Strategy and has mainly a positive impact on the baseline data. The policy recognises the rural nature of the parish and the activity which is likely to take place. There are a number of criteria within the policy addressing baseline objectives which will have a positive impact on the baseline itself

Overall commentary and any initial cumulative effects/ Recommendations

Overall this policy meets the SEA baseline.

Conformity with Core Strategy

This policy meets the Core Strategy requirements for the purposes of the SEA.

Neighbourhood Plan Policy: ER15 Transport and connectivity

SEA Objectives															
1	2	3	4	5	6	7	8	9	10	11	12	13	14	15	16
Positive	Positive	Positive	Uncertain	Positive	Very Positive	Positive	No link	No link	Positive	Positive	No link				Positive

Summary in relation to baseline

Overall this policy is compatible with the Core Strategy and has mainly a positive impact on the baseline data. It is seeking to provide a safer environment, reduce the impact of cars and private vehicle on the area. A reduction on lighting can have a positive effect on nocturnal species and the provision of cycle and footpaths can double as green corridors.

Overall commentary and any initial cumulative effects/ Recommendations Overall this policy meets the SEA baseline.

Conformity with Core Strategy

This policy meets the Core Strategy requirements for the purposes of the SEA.

Neighbourhood Plan Policy: ER16 Enhanced services and facilities for the community

SEA Objectives															
1	2	3	4	5	6	7	8	9	10	11	12	13	14	15	16
Positive	Positive	Very Positive	Positive	Positive	Very Positive	Positive	Positive	Positive	Positive	Positive	Positive				Positive

Summary in relation to baseline

Overall this policy is compatible with the Core Strategy and has a positive impact on the baseline data, encouraging local community facilities and reduce the need to travel

Overall commentary and any initial cumulative effects/ Recommendations Overall this policy meets the SEA baseline.

Conformity with Core Strategy

This policy meets the Core Strategy requirements for the purposes of the SEA.

Neighbourhood Plan Policy: ER17 Protection of community facilities

SEA Objectives															
1	2	3	4	5	6	7	8	9	10	11	12	13	14	15	16
Positive	Positive	Very Positive	Positive	Positive	Very Positive	Positive	Positive	Positive	Positive	Positive	Positive				Positive

Summary in relation to baseline

Overall this policy is compatible with the Core Strategy and has a positive impact on the baseline data. This is seeking to retain local community facilities which will maintain the vitality of the area and reduce the need to travel

Overall commentary and any initial cumulative effects/ Recommendations Overall this policy meets the SEA baseline.

Conformity with Core Strategy

This policy meets the Core Strategy requirements for the purposes of the SEA.

Neighbourhood Plan Policy: ER18 Broadband and mobile telephone infrastructure

SEA Objectives															
1	2	3	4	5	6	7	8	9	10	11	12	13	14	15	16
uncertain	Positive	Positive	Neutral	Positive	Very Positive	Positive	Positive	No link	No link	No link	No link				Positive

Summary in relation to baseline

Overall this policy is compatible with the Core Strategy and has mainly a positive impact on the baseline data. Enabling broadband and mobile network will improve the vitality of the parish and the ability of working from home which will reduce the need to travel.

Overall commentary and any initial cumulative effects/ Recommendations Overall this policy meets the SEA baseline.

Conformity with Core Strategy

This policy meets the Core Strategy requirements for the purposes of the SEA.

Neighbourhood Plan Policy: ER19 Renewable energy

SEA Objectives															
1	2	3	4	5	6	7	8	9	10	11	12	13	14	15	16
Positive	Positive	Positive	Neutral	Positive	Positive	Very Positive	Very Positive	Positive	Positive	uncertain	uncertain				Positive

Summary in relation to baseline

Overall this policy is compatible with the Core Strategy and has mainly a positive impact on the baseline data. The policy is seeking to ensure environmental sustainability and carbon reduction by supporting renewable energy. Criteria have been included within the policy regarding traffic and environmental impacts.

Overall commentary and any initial cumulative effects/ Recommendations Overall this policy meets the SEA baseline..

Conformity with Core Strategy

This policy meets the Core Strategy requirements for the purposes of the SEA.

Key:

Strategic Environmental Assessment (SEA) Stage B1- Assessment outcome
Very compatible-Very positive effect
Compatible –Positive effect
Conflict- Negative effect
Neutral-Neutral effect
No relationship between objectives- No link
Uncertain- more information needed

Neighbourhood Plan Policy: ER1 Promoting a sustainable community

SEA Objectives Assessment of effect (consider cumulative effects, significance of the effect and magnitude of the effect in terms of the three time periods)															
1	2	3	4	5	6	7	8	9	10	11	12	13	14	15	16
Short term (1 – 5 years)															
Very Positive	Very Positive	Very Positive	Very Positive	Very Positive	Very Positive	Very Positive	Very Positive	Positive	Positive	Very Positive	Very Positive				Very Positive

SEA Objectives Assessment of effect (consider cumulative effects, significance of the effect and magnitude of the effect in terms of the three time periods)															
1	2	3	4	5	6	7	8	9	10	11	12	13	14	15	16
Medium term (6ncertain – 10 years)															
Very Positive	Very Positive	Very Positive	Very Positive	Very Positive	Very Positive	Very Positive	Very Positive	Positive	Positive	Very Positive	Very Positive				Very Positive

SEA Objectives Assessment of effect (consider cumulative effects, significance of the effect and magnitude of the effect in terms of the three time periods)															
1	2	3	4	5	6	7	8	9	10	11	12	13	14	15	16
Long term (11 years +)															

Very Positive	Very Positive	Very Positive	Very Positive	Very Positive	Very Positive	Very Positive	Very Positive	Positive	Positive	Very Positive	Very Positive				Very Positive
---------------	---------------	---------------	---------------	---------------	---------------	---------------	---------------	----------	----------	---------------	---------------	--	--	--	---------------

Overall commentary and any initial cumulative effects/ Recommendations

Overall this policy is compatible with the Core Strategy and has mainly a very positive impact on the baseline data. The policy is seeking to promote positive measures to maintaining sustainable communities

Neighbourhood Plan Policy: ER2 Development Strategy

SEA Objectives Assessment of effect (consider cumulative effects, significance of the effect and magnitude of the effect in terms of the three time periods)															
1	2	3	4	5	6	7	8	9	10	11	12	13	14	15	16
Short term (1 – 5 years)															
Uncertain	Positive	Positive	Uncertain	Positive	Positive	Positive	Positive	Positive	Positive	Positive	Positive				Positive

SEA Objectives Assessment of effect (consider cumulative effects, significance of the effect and magnitude of the effect in terms of the three time periods)															
1	2	3	4	5	6	7	8	9	10	11	12	13	14	15	16
Medium term (6 – 10 years)															
Uncertain	Positive	Positive	Uncertain	Positive	Positive	Positive	Positive	Positive	Positive	Positive	Positive				Positive

SEA Objectives Assessment of effect (consider cumulative effects, significance of the effect and magnitude of the effect in terms of the three time periods)															
1	2	3	4	5	6	7	8	9	10	11	12	13	14	15	16
Long term (11 years +)															
Positive	Positive	Positive	Positive	Positive	Positive	Positive	Positive	Positive	Positive	Positive	Positive				Positive

Overall commentary and any initial cumulative effects/ Recommendations

The policy is seeking to meet the requirements of the Core Strategy Policy RA2 and direct proportional growth to the settlement of Edwyn Ralph. This has a positive effect on the baseline.

Neighbourhood Plan Policy: ER3 Protecting and enhancing local character

SEA Objectives Assessment of effect (consider cumulative effects, significance of the effect and magnitude of the effect in terms of the three time periods)															
1	2	3	4	5	6	7	8	9	10	11	12	13	14	15	16
Short term (1 – 5 years)															
Very positive	Very positive	Very positive	Very positive	Very positive	Very positive	Very positive	Very positive	Very positive	Very positive	Very positive	Very positive				Very positive

SEA Objectives Assessment of effect (consider cumulative effects, significance of the effect and magnitude of the effect in terms of the three time periods)															
1	2	3	4	5	6	7	8	9	10	11	12	13	14	15	16
Medium term (6 – 10 years)															
Very positive	Very positive	Very positive	Very positive	Very positive	Very positive	Very positive	Very positive	Very positive	Very positive	Very positive	Very positive				Very positive

SEA Objectives Assessment of effect (consider cumulative effects, significance of the effect and magnitude of the effect in terms of the three time periods)															
1	2	3	4	5	6	7	8	9	10	11	12	13	14	15	16
Long term (11 years +)															
Very positive	Very positive	Very positive	Very positive	Very positive	Very positive	Very positive	Very positive	Very positive	Very positive	Very positive	Very positive				Very positive

Overall commentary and any initial cumulative effects/ Recommendations

Overall, this policy has a very positive impact on all of the baseline objectives, its aim is to ensure that distinctive elements of the parishes are promoted and enhanced.

Neighbourhood Plan Policy: ER4 Heritage Assets

SEA Objectives Assessment of effect (consider cumulative effects, significance of the effect and magnitude of the effect in terms of the three time periods)															
1	2	3	4	5	6	7	8	9	10	11	12	13	14	15	16
Short term (1 – 5 years)															
positive	Very positive	Very positive	Very positive	No link	No link	Positive	No link	No link	No link	No link	positive				Very positive

SEA Objectives Assessment of effect (consider cumulative effects, significance of the effect and magnitude of the effect in terms of the three time periods)															
1	2	3	4	5	6	7	8	9	10	11	12	13	14	15	16
Medium term (6 – 10 years)															
positive	Very positive	Very positive	Very positive	No link	No link	Positive	No link	No link	No link	No link	positive				Very positive

SEA Objectives Assessment of effect (consider cumulative effects, significance of the effect and magnitude of the effect in terms of the three time periods)															
1	2	3	4	5	6	7	8	9	10	11	12	13	14	15	16
Long term (11 years +)															
positive	Very positive	Very positive	Very positive	No link	No link	Positive	No link	No link	No link	No link	positive				Very positive

Overall commentary and any initial cumulative effects/ Recommendations

The policy is seeking to protect and enhance heritage assets, therefore this has a positive effect on the baseline where relevant.

Neighbourhood Plan Policy: ER5 The scale of new housing

SEA Objectives Assessment of effect (consider cumulative effects, significance of the effect and magnitude of the effect in terms of the three time periods)															
1	2	3	4	5	6	7	8	9	10	11	12	13	14	15	16
Short term (1 – 5 years)															

Uncertain	Positive	Positive	Positive	Positive	Positive	Positive	Positive	Positive	Positive	Positive	Positive				Uncertain
-----------	----------	----------	----------	----------	----------	----------	----------	----------	----------	----------	----------	--	--	--	-----------

SEA Objectives Assessment of effect (consider cumulative effects, significance of the effect and magnitude of the effect in terms of the three time periods)															
1	2	3	4	5	6	7	8	9	10	11	12	13	14	15	16
Medium term (6 – 10 years)															
Positive	Positive	Positive	Positive	Positive	Positive	Positive	Positive	Positive	Positive	Positive	Positive				Uncertain

SEA Objectives Assessment of effect (consider cumulative effects, significance of the effect and magnitude of the effect in terms of the three time periods)															
1	2	3	4	5	6	7	8	9	10	11	12	13	14	15	16
Long term (11 years +)															
Positive	Positive	Positive	Positive	Positive	Positive	Positive	Positive	Positive	Positive	Positive	Positive				Uncertain

Overall commentary and any initial cumulative effects/ Recommendations

Overall, this policy has mainly a positive impact on the baseline data. It is in conformity with the proportional growth requirements of the Core Strategy.

Neighbourhood Plan Policy: ER6 Housing allocation

SEA Objectives Assessment of effect (consider cumulative effects, significance of the effect and magnitude of the effect in terms of the three time periods)															
1	2	3	4	5	6	7	8	9	10	11	12	13	14	15	16
Short term (1 – 5 years)															
Positive	Positive	uncertain	uncertain	Positive	Positive	uncertain	positive	uncertain	Positive	Positive	Positive				Positive

SEA Objectives Assessment of effect (consider cumulative effects, significance of the effect and magnitude of the effect in terms of the three time periods)															
1	2	3	4	5	6	7	8	9	10	11	12	13	14	15	16
Medium term (6 – 10 years)															
Positive	Positive	Positive	Positive	Positive	Positive	uncertain	positive	uncertain	Positive	Positive	Positive				Positive

SEA Objectives Assessment of effect (consider cumulative effects, significance of the effect and magnitude of the effect in terms of the three time periods)															
1	2	3	4	5	6	7	8	9	10	11	12	13	14	15	16
Long term (11 years +)															
Positive	Positive	Positive	Positive	Positive	Positive	Positive	positive	Positive	Positive	Positive	Positive				Positive

Overall commentary and any initial cumulative effects/ Recommendations

Overall this policy has mainly a positive impact on the baseline data. The allocation has been tested against reasonable alternatives and has been reduced in size to take account of concerns raised during the site selection process. Significant policy safeguards exist within the Core Strategy and the NDP to ensure that those areas which are currently uncertain within the baseline are safeguarded.

Neighbourhood Plan Policy: ER7 Housing in the countryside

SEA Objectives Assessment of effect (consider cumulative effects, significance of the effect and magnitude of the effect in terms of the three time periods)															
1	2	3	4	5	6	7	8	9	10	11	12	13	14	15	16
Short term (1 – 5 years)															
Uncertain	Positive	Positive	Uncertain	Positive	Positive	Positive	Positive	Positive	Positive	Positive	Positive				Positive

SEA Objectives Assessment of effect (consider cumulative effects, significance of the effect and magnitude of the effect in terms of the three time periods)															
1	2	3	4	5	6	7	8	9	10	11	12	13	14	15	16
Medium term (6 – 10 years)															
Positive	Positive	Positive	Positive	Positive	Positive	Positive	Positive	Positive	Positive	Positive	Positive				Positive

SEA Objectives Assessment of effect (consider cumulative effects, significance of the effect and magnitude of the effect in terms of the three time periods)															
1	2	3	4	5	6	7	8	9	10	11	12	13	14	15	16
Long term (11 years +)															
Positive	Positive	Positive	Positive	Positive	Positive	Positive	Positive	Positive	Positive	Positive	Positive				Positive

Overall commentary and any initial cumulative effects/ Recommendations

Overall this policy has mainly a positive impact on the baseline data. This policy is in line with Policy RA3 of the Core Strategy and limiting development in areas outside of the main settlement of Edwyn Ralph

Neighbourhood Plan Policy: ER8 Extensions to dwellings

SEA Objectives Assessment of effect (consider cumulative effects, significance of the effect and magnitude of the effect in terms of the three time periods)															
1	2	3	4	5	6	7	8	9	10	11	12	13	14	15	16
Short term (1 – 5 years)															
Positive	Positive	Positive	Positive	Positive	Positive	Positive	Positive	Positive	Positive	Positive	Positive				Positive

SEA Objectives Assessment of effect (consider cumulative effects, significance of the effect and magnitude of the effect in terms of the three time periods)															
1	2	3	4	5	6	7	8	9	10	11	12	13	14	15	16
Medium term (6 – 10 years)															
Positive	Positive	Positive	Positive	Positive	Positive	Positive	Positive	Positive	Positive	Positive	Positive				Positive

SEA Objectives Assessment of effect (consider cumulative effects, significance of the effect and magnitude of the effect in terms of the three time periods)															
1	2	3	4	5	6	7	8	9	10	11	12	13	14	15	16
Long term (11 years +)															
Positive	Positive	Positive	Positive	Positive	Positive	Positive	Positive	Positive	Positive	Positive	Positive				Positive

Overall commentary and any initial cumulative effects/ Recommendations

This policy conforms to the Local Plan (Core Strategy). Overall, the policy is compatible and has a positive impact on the baseline data, as is it seeking to protect the character of the area whilst enabling household growth or working from home requirements.

Neighbourhood Plan Policy: ER9 Design of new dwellings

SEA Objectives Assessment of effect (consider cumulative effects, significance of the effect and magnitude of the effect in terms of the three time periods)															
--	--	--	--	--	--	--	--	--	--	--	--	--	--	--	--

1	2	3	4	5	6	7	8	9	10	11	12	13	14	15	16
Short term (1 – 5 years)															
Positive	Positive	Positive	Positive	Positive	Positive	Positive	Positive	Positive	Positive	Positive	Positive				Positive

SEA Objectives Assessment of effect (consider cumulative effects, significance of the effect and magnitude of the effect in terms of the three time periods)															
1	2	3	4	5	6	7	8	9	10	11	12	13	14	15	16
Medium term (6 – 10 years)															
Positive	Positive	Positive	Positive	Positive	Positive	Positive	Positive	Positive	Positive	Positive	Positive				Positive

SEA Objectives Assessment of effect (consider cumulative effects, significance of the effect and magnitude of the effect in terms of the three time periods)															
1	2	3	4	5	6	7	8	9	10	11	12	13	14	15	16
Long term (11 years +)															
Positive	Positive	Positive	Positive	Positive	Positive	Positive	Positive	Positive	Positive	Positive	Positive				Positive

Overall commentary and any initial cumulative effects/ Recommendations

Overall the policy meets all the relevant SEA criteria, and is positive against the baseline, the policy will not lead to development but providing the design criteria for future developments

Neighbourhood Plan Policy: ER10 Ensuring an appropriate range of tenures, types and sizes of houses

SEA Objectives Assessment of effect (consider cumulative effects, significance of the effect and magnitude of the effect in terms of the three time periods)															
1	2	3	4	5	6	7	8	9	10	11	12	13	14	15	16
Short term (1 – 5 years)															
No link	Positive	Positive	No link	No link	No link	No link	No link	No link	No link	No link	No link				No link

SEA Objectives Assessment of effect (consider cumulative effects, significance of the effect and magnitude of the effect in terms of the three time periods)															
1	2	3	4	5	6	7	8	9	10	11	12	13	14	15	16
Medium term (6 – 10 years)															

No link	Positive	Positive	No link	No link	No link	No link	No link	No link	No link	No link	No link				No link
---------	----------	----------	---------	---------	---------	---------	---------	---------	---------	---------	---------	--	--	--	---------

SEA Objectives Assessment of effect (consider cumulative effects, significance of the effect and magnitude of the effect in terms of the three time periods)															
1	2	3	4	5	6	7	8	9	10	11	12	13	14	15	16
Long term (11 years +)															
No link	Positive	Positive	No link	No link	No link	No link	No link	No link	No link	No link	No link				No link

Overall commentary and any initial cumulative effects/ Recommendations

Overall this policy is compatible with the Core Strategy and has positive impact on the baseline data where relevant. The policy will not lead to development but is seeking to ensure a range and mix of tenures within the settlement and this will have a positive effect onto the viability and character of the area.

Neighbourhood Plan Policy: ER11 Affordable housing

SEA Objectives Assessment of effect (consider cumulative effects, significance of the effect and magnitude of the effect in terms of the three time periods)															
1	2	3	4	5	6	7	8	9	10	11	12	13	14	15	16
Short term (1 – 5 years)															
No link	Positive	Positive	No link	No link	No link	No link	No link	No link	No link	No link	No link				No link

SEA Objectives Assessment of effect (consider cumulative effects, significance of the effect and magnitude of the effect in terms of the three time periods)															
1	2	3	4	5	6	7	8	9	10	11	12	13	14	15	16
Medium term (6 – 10 years)															
No link	Positive	Positive	No link	No link	No link	No link	No link	No link	No link	No link	No link				No link

SEA Objectives Assessment of effect (consider cumulative effects, significance of the effect and magnitude of the effect in terms of the three time periods)															
1	2	3	4	5	6	7	8	9	10	11	12	13	14	15	16
Long term (11 years +)															
No link	Positive	Positive	No link	No link	No link	No link	No link	No link	No link	No link	No link				No link

Overall commentary and any initial cumulative effects/ Recommendations

Overall this policy is compatible with the Core Strategy and has a positive impact on the baseline data where relevent. The policy is seeking to support affordable housing which will assist the viability of the area.

Neighbourhood Plan Policy: ER12 Business Development

SEA Objectives Assessment of effect (consider cumulative effects, significance of the effect and magnitude of the effect in terms of the three time periods)															
1	2	3	4	5	6	7	8	9	10	11	12	13	14	15	16
Short term (1 – 5 years)															
Uncertain	Positive	Positive	uncertain	Neutral	Neutral	Positive	Positive	Positive	Positive	Positive	Positive				Positive

SEA Objectives Assessment of effect (consider cumulative effects, significance of the effect and magnitude of the effect in terms of the three time periods)															
1	2	3	4	5	6	7	8	9	10	11	12	13	14	15	16
Medium term (6 – 10 years)															
Positive	Positive	Positive	Positive	Neutral	Neutral	Positive	Positive	Positive	Positive	Positive	Positive				Positive

SEA Objectives Assessment of effect (consider cumulative effects, significance of the effect and magnitude of the effect in terms of the three time periods)															
1	2	3	4	5	6	7	8	9	10	11	12	13	14	15	16
Long term (11 years +)															
Positive	Positive	Positive	uncertain	Neutral	Neutral	Positive	Positive	Positive	Positive	Positive	Positive				Positive

Overall commentary and any initial cumulative effects/ Recommendations

Overall this policy is compatible with the Core Strategy and has mainly a positive impact on the baseline data. It is seeking to provide employment and business opportunities locally. This could reduce the need to travel of local people but also encourage some traveling into the parish in connection with tourism.

Neighbourhood Plan Policy: ER13 Protection of existing commercial business premises

SEA Objectives Assessment of effect (consider cumulative effects, significance of the effect and magnitude of the effect in terms of the three time periods)															
1	2	3	4	5	6	7	8	9	10	11	12	13	14	15	16

Short term (1 – 5 years)															
Positive	Positive	Positive	Positive	Positive	Positive	Positive	Positive	Positive	Positive	Positive	Positive				Positive

SEA Objectives Assessment of effect (consider cumulative effects, significance of the effect and magnitude of the effect in terms of the three time periods)															
1	2	3	4	5	6	7	8	9	10	11	12	13	14	15	16
Medium term (6 – 10 years)															
Positive	Positive	Positive	Positive	Positive	Positive	Positive	Positive	Positive	Positive	Positive	Positive				Positive

SEA Objectives Assessment of effect (consider cumulative effects, significance of the effect and magnitude of the effect in terms of the three time periods)															
1	2	3	4	5	6	7	8	9	10	11	12	13	14	15	16
Long term (11 years +)															
Positive	Positive	Positive	Positive	Positive	Positive	Positive	Positive	Positive	Positive	Positive	Positive				Positive

Overall commentary and any initial cumulative effects/ Recommendations

Overall this policy is compatible with the Core Strategy and has a positive impact on the baseline data. It is seeking to retain existing businesses and commercial opportunities within the parish.

Neighbourhood Plan Policy: ER14 Agricultural and forestry enterprises

SEA Objectives Assessment of effect (consider cumulative effects, significance of the effect and magnitude of the effect in terms of the three time periods)															
1	2	3	4	5	6	7	8	9	10	11	12	13	14	15	16
Short term (1 – 5 years)															
Positive	Positive	Positive	Positive	Positive	Positive	Positive	Positive	Positive	Positive	Positive	Positive				Positive

SEA Objectives Assessment of effect (consider cumulative effects, significance of the effect and magnitude of the effect in terms of the three time periods)															
1	2	3	4	5	6	7	8	9	10	11	12	13	14	15	16
Medium term (6 – 10 years)															

Positive	Positive	Positive	Positive	Positive	Positive	Positive	Positive	Positive	Positive	Positive	Positive				Positive
----------	----------	----------	----------	----------	----------	----------	----------	----------	----------	----------	----------	--	--	--	----------

SEA Objectives Assessment of effect (consider cumulative effects, significance of the effect and magnitude of the effect in terms of the three time periods)															
1	2	3	4	5	6	7	8	9	10	11	12	13	14	15	16
Long term (11 years +)															
Positive	Positive	Positive	Positive	Positive	Positive	Positive	Positive	Positive	Positive	Positive	Positive				Positive

Overall commentary and any initial cumulative effects/ Recommendations

Overall this policy is compatible with the Core Strategy and has mainly a positive impact on the baseline data. The policy recognises the rural nature of the parish and the activity which is likely to take place. There are a number of criteria within the policy addressing baseline objectives which will have a positive impact on the baseline itself

Neighbourhood Plan Policy: ER15 Transport and connectivity

SEA Objectives Assessment of effect (consider cumulative effects, significance of the effect and magnitude of the effect in terms of the three time periods)															
1	2	3	4	5	6	7	8	9	10	11	12	13	14	15	16
Short term (1 – 5 years)															
Positive	Positive	Positive	Uncertain	Positive	Very Positive	Positive	No link	No link	Positive	Positive	No link				Positive

SEA Objectives Assessment of effect (consider cumulative effects, significance of the effect and magnitude of the effect in terms of the three time periods)															
1	2	3	4	5	6	7	8	9	10	11	12	13	14	15	16
Medium term (6 – 10 years)															
Positive	Positive	Positive	Uncertain	Positive	Very Positive	Positive	No link	No link	Positive	Positive	No link				Positive

SEA Objectives Assessment of effect (consider cumulative effects, significance of the effect and magnitude of the effect in terms of the three time periods)															
1	2	3	4	5	6	7	8	9	10	11	12	13	14	15	16
Long term (11 years +)															

Positive	Positive	Positive	Uncertain	Positive	Very Positive	Positive	No link	No link	Positive	Positive	No link				Positive
----------	----------	----------	-----------	----------	---------------	----------	---------	---------	----------	----------	---------	--	--	--	----------

Overall commentary and any initial cumulative effects/ Recommendations

Overall this policy is compatible with the Core Strategy and has mainly a positive impact on the baseline data. It is seeking to provide a safer environment, reduce the impact of cars and private vehicle on the area. A reduction on lighting can have a positive effect on nocturnal species and the provision of cycle and footpaths can double as green corridors.

Neighbourhood Plan Policy: ER16 Enhanced services and facilities for the community

SEA Objectives Assessment of effect (consider cumulative effects, significance of the effect and magnitude of the effect in terms of the three time periods)															
1	2	3	4	5	6	7	8	9	10	11	12	13	14	15	16
Short term (1 – 5 years)															
Positive	Positive	Very Positive	Positive	Positive	Very Positive	Positive	Positive	Positive	Positive	Positive	Positive				Positive

SEA Objectives Assessment of effect (consider cumulative effects, significance of the effect and magnitude of the effect in terms of the three time periods)															
1	2	3	4	5	6	7	8	9	10	11	12	13	14	15	16
Medium term (6 – 10 years)															
Positive	Positive	Very Positive	Positive	Positive	Very Positive	Positive	Positive	Positive	Positive	Positive	Positive				Positive

SEA Objectives Assessment of effect (consider cumulative effects, significance of the effect and magnitude of the effect in terms of the three time periods)															
1	2	3	4	5	6	7	8	9	10	11	12	13	14	15	16
Long term (11 years +)															
Positive	Positive	Very Positive	Positive	Positive	Very Positive	Positive	Positive	Positive	Positive	Positive	Positive				Positive

Overall commentary and any initial cumulative effects/ Recommendations

Overall this policy is compatible with the Core Strategy and has a positive impact on the baseline data, encouraging local community facilities and reduce the need to travel

Neighbourhood Plan Policy: ER17 Protection of community facilities

SEA Objectives Assessment of effect (consider cumulative effects, significance of the effect and magnitude of the effect in terms of the three time periods)															
1	2	3	4	5	6	7	8	9	10	11	12	13	14	15	16
Short term (1 – 5 years)															
Positive	Positive	Very Positive	Positive	Positive	Very Positive	Positive	Positive	Positive	Positive	Positive	Positive				Positive

SEA Objectives Assessment of effect (consider cumulative effects, significance of the effect and magnitude of the effect in terms of the three time periods)															
1	2	3	4	5	6	7	8	9	10	11	12	13	14	15	16
Medium term (6 – 10 years)															
Positive	Positive	Very Positive	Positive	Positive	Very Positive	Positive	Positive	Positive	Positive	Positive	Positive				Positive

SEA Objectives Assessment of effect (consider cumulative effects, significance of the effect and magnitude of the effect in terms of the three time periods)															
1	2	3	4	5	6	7	8	9	10	11	12	13	14	15	16
Long term (11 years +)															
Positive	Positive	Very Positive	Positive	Positive	Very Positive	Positive	Positive	Positive	Positive	Positive	Positive				Positive

Overall commentary and any initial cumulative effects/ Recommendations

Overall this policy is compatible with the Core Strategy and has a positive impact on the baseline data. This is seeking to retain local community facilities which will maintain the vitality of the area and reduce the need to travel

Key:

++ Move towards significantly	+ Move towards marginally	-- Move away Significantly	- Move away marginally	0 Neutral	? Uncertain	X No relationship
----------------------------------	------------------------------	-------------------------------	---------------------------	--------------	----------------	----------------------

The following matrix appraises the emerging Edwyn Ralph NDP Objectives and policies in terms of their SMART criteria and their compatibility with the SEA Objectives. These have been developed from Government guidance on SEA and from the local evidence base gathered for identifying the NDP issues.

SMART criteria:

S – Specific:

NDP objectives should specify what is intended to be done in detail and should not be open to a wide range of misinterpretations

M – Measurable:

It should be possible to monitor NDP objectives in a quantifiable way, by the use of indicators. Indicators should be measurable with limited resource implications.

A – Attainable/achievable:

NDP objectives should be achievable and deliverable, related to the scale of growth proposed

R – Realistic:

NDP objectives should relate to the overall vision of the plan. Likewise, chosen indicators should relate to objectives and their outcomes.

T – Time-Bound:

Objectives should be specific to the NDP period or another specified time-frame. Objectives should be associated with a target and indicators should specify when the target should be achieved.

Strategic Environmental Assessment (SEA) Stage B1-Assessment outcome

Very positive- Compatible with sea objective.

Positive- Compatible with sea objective.

Conflict- Negative effect/ conflict with sea objective.

Neutral-Neutral effect on sea objective.

No relationship between objectives- No link with sea objective.

Uncertain- Uncertain impact on sea objective, more information needed.

<p>SEA Objectives:</p> <p>1-To maintain and enhance nature conservation (biodiversity, flora and fauna)</p> <p>2- To maintain and enhance the quality of landscapes and townscapes</p> <p>3- To improve quality of surroundings</p> <p>4- To conserve and where appropriate enhance the historic environment</p> <p>5- To improve air quality</p>	<p>6- To reduce the effect of traffic on the environment</p> <p>7- To reduce contributions to climate change</p> <p>8- To reduce vulnerability to climate change</p> <p>9- To improve water quality</p> <p>10- To provide sustainable sources of water supply</p> <p>11- To avoid, reduce and manage flood risk</p>	<p>12- To conserve soil resources and quality</p> <p>13- To minimise the production of waste</p> <p>14- To improve health of the population</p> <p>15- To reduce crime and nuisance</p> <p>16- To conserve natural and manmade resources</p>
--	---	--

Neighbourhood Plan Objectives and Policies

Neighbourhood Plan Objective: 1

SEA Objectives															
1	2	3	4	5	6	7	8	9	10	11	12	13	14	15	16
Very positive	Very positive	Very positive	Very positive	Positive	No relationship	Positive	Positive	Positive	Positive	Very positive	Very positive				Very positive

Neighbourhood Plan Objective: 2

SEA Objectives															
1	2	3	4	5	6	7	8	9	10	11	12	13	14	15	16
Uncertain	Positive	Positive	Uncertain	Positive	Positive	Positive	Positive	Positive	Positive	Uncertain	Positive				Uncertain

Neighbourhood Plan Objective: 3

SEA Objectives															
1	2	3	4	5	6	7	8	9	10	11	12	13	14	15	16
Uncertain	Positive	Positive	Uncertain	Positive	Positive	Positive	Positive	Positive	Positive	Uncertain	Positive				Uncertain

Neighbourhood Plan Objective: 4

SEA Objectives															
1	2	3	4	5	6	7	8	9	10	11	12	13	14	15	16
Uncertain	Uncertain	Positive	Uncertain	Positive	Very positive	Positive	No relationship	No relationship	No relationship	Uncertain	Uncertain				Positive

Neighbourhood Plan Objective: 5

SEA Objectives															
1	2	3	4	5	6	7	8	9	10	11	12	13	14	15	16
Neutral	Positive	Positive	Positive	Positive	Positive	Positive	Positive	Positive	No relationship	No relationship	Positive				Positive

Neighbourhood Plan Objective: 6

SEA Objectives															
1	2	3	4	5	6	7	8	9	10	11	12	13	14	15	16
Uncertain	Very Positive	Very positive	Positive	Positive	Very positive	Positive	No relationship	No relationship	No relationship	Positive	Positive				Positive

Neighbourhood Plan Objective: 7

SEA Objectives															
1	2	3	4	5	6	7	8	9	10	11	12	13	14	15	16
Uncertain	Positive	Positive	Uncertain	Positive	Very positive	Very positive	Uncertain	No relationship	No relationship	No relationship	uncertain				Positive

Policies

Neighbourhood Plan Policy: ER1 Promoting a sustainable community

SEA Objectives															
1	2	3	4	5	6	7	8	9	10	11	12	13	14	15	16
Very Positive	Very Positive	Very Positive	Very Positive	Very Positive	Very Positive	Very Positive	Very Positive	Positive	Positive	Very Positive	Very Positive				Very Positive

Summary in relation to baseline

Overall this policy is compatible with the Core Strategy and has mainly a very positive impact on the baseline data. The policy is seeking to promote positive measures to maintaining sustainable communities

Overall commentary and any initial cumulative effects/ Recommendations

Policy safeguarding exists to ensure that environmental considerations are taken into account.

Conformity with Core Strategy

This policy meets the Core Strategy requirements for the purposes of the SEA.

Neighbourhood Plan Policy: ER2 Development Strategy

SEA Objectives															
1	2	3	4	5	6	7	8	9	10	11	12	13	14	15	16
Uncertain	Positive	Positive	Uncertain	Positive	Positive	Positive	Positive	Positive	Positive	Positive	Positive				Positive

Summary in relation to baseline

The policy is seeking to meet the requirements of the Core Strategy Policy RA2 and direct proportional growth to the settlement of Edwyn Ralph. This has a positive effect on the baseline.

Overall commentary and any initial cumulative effects/ Recommendations

Policy safeguarding exists to ensure that environmental considerations are taken into account.

Conformity with Core Strategy

This policy meets the Core Strategy requirements for the purposes of the SEA.

Neighbourhood Plan Policy: ER3 Protecting and enhancing local character

SEA Objectives															
1	2	3	4	5	6	7	8	9	10	11	12	13	14	15	16
Very positive	Very positive	Very positive	Very positive	Very positive	Very positive	Very positive	Very positive	Very positive	Very positive	Very positive	Very positive				Very positive

Summary in relation to baseline

Overall, this policy has a very positive impact on all of the baseline objectives, its aim is to ensure that distinctive elements of the parishes are promoted and enhanced.

Overall commentary and any initial cumulative effects/ Recommendations

The policy compliments a number of policies within the Core Strategy and together with other specific policies within the Edwyn Ralph NDP provides a number of policy safeguards.

Conformity with Core Strategy

This policy meets the Core Strategy requirements for the purposes of the SEA.

Neighbourhood Plan Policy: ER4 Heritage Assets

SEA Objectives															
1	2	3	4	5	6	7	8	9	10	11	12	13	14	15	16
positive	Very positive	Very positive	Very positive	No link	No link	Positive	No link	No link	No link	No link	positive				Very positive

Summary in relation to baseline

The policy is seeking to protect and enhance heritage assets, therefore this has a positive effect on the baseline where relevant.

Overall commentary and any initial cumulative effects/ Recommendations

Overall this policy meets the SEA baseline and seek to complement the policies of the Core Strategy.

Conformity with Core Strategy

This policy meets the Core Strategy requirements for the purposes of the SEA.

Neighbourhood Plan Policy: ER5 The scale of new housing

SEA Objectives															
1	2	3	4	5	6	7	8	9	10	11	12	13	14	15	16
Uncertain	Positive	Positive	Positive	Positive	Positive	Positive	Positive	Positive	Positive	Positive	Positive				Positive

Summary in relation to baseline

Overall, this policy has mainly a positive impact on the baseline data. It is in conformity with the proportional growth requirements of the Core Strategy.

Overall commentary and any initial cumulative effects/ Recommendations

Overall, the policy is compatible and has a positive impact on the baseline data, as it will encourage sustainable development in the parish.

Conformity with Core Strategy

This policy meets the Core Strategy requirements for the purposes of the SEA.

Neighbourhood Plan Policy: ER6 Housing allocation

SEA Objectives															
1	2	3	4	5	6	7	8	9	10	11	12	13	14	15	16
Positive	Positive	uncertain	uncertain	Positive	Positive	uncertain	positive	uncertain	Positive	Positive	Positive				Positive

Summary in relation to baseline

Overall this policy has mainly a positive impact on the baseline data. The allocation has been tested against reasonable alternatives and has been reduced in size to take account of concerns raised during the site selection process. Significant policy safeguards exist within the Core Strategy and the NDP to ensure that those areas which are currently uncertain within the baseline are safeguarded.

Overall commentary and any initial cumulative effects/ Recommendations

Overall the policy is compatible and has a positive impact on the baseline data,

Conformity with Core Strategy

This policy meets the Core Strategy requirements for the purposes of the SEA.

Neighbourhood Plan Policy: ER7 Housing in the countryside

SEA Objectives															
1	2	3	4	5	6	7	8	9	10	11	12	13	14	15	16
Uncertain	Positive	Positive	Uncertain	Positive	Positive	Positive	Positive	Positive	Positive	Positive	Positive				Positive

Summary in relation to baseline

Overall this policy has mainly a positive impact on the baseline data. This policy is in line with Policy RA3 of the Core Strategy and limiting development in areas outside of the main settlement of Edwyn Ralph

Overall commentary and any initial cumulative effects/ Recommendations

This policy conforms to the Local Plan (Core Strategy). Overall, the policy is compatible and has a positive impact on the baseline data. Policies within the Core Strategy and the Edwyn Ralph NDP provide sufficient policy safeguards.

Conformity with Core Strategy

This policy meets the Core Strategy requirements for the purposes of the SEA.

Neighbourhood Plan Policy: ER8 Extensions to dwellings

SEA Objectives															
1	2	3	4	5	6	7	8	9	10	11	12	13	14	15	16
Positive	Positive	Positive	Positive	Positive	Positive	Positive	Positive	Positive	Positive	Positive	Positive				Positive

Summary in relation to baseline

Overall this policy has mainly a positive impact on the baseline data.

Overall commentary and any initial cumulative effects/ Recommendations

This policy conforms to the Local Plan (Core Strategy). Overall, the policy is compatible and has a positive impact on the baseline data, as is it seeking to protect the character of the area whilst enabling household growth or working from home requirements.

Conformity with Core Strategy

This policy meets the Core Strategy requirements for the purposes of the SEA.

Neighbourhood Plan Policy: ER9 Design of new dwellings

SEA Objectives															
1	2	3	4	5	6	7	8	9	10	11	12	13	14	15	16
Positive	Positive	Positive	Positive	Positive	Positive	Positive	Positive	Positive	Positive	Positive	Positive				Positive

Summary in relation to baseline

Overall the policy meets all the relevant SEA criteria, and is positive against the baseline, the policy will not lead to development but providing the design criteria for future developments.

Overall commentary and any initial cumulative effects/ Recommendations

Overall this policy meets the SEA baseline.

Conformity with Core Strategy

This policy meets the Core Strategy requirements for the purposes of the SEA.

Neighbourhood Plan Policy: ER10 Ensuring an appropriate range of tenures, types and sizes of houses

SEA Objectives															
1	2	3	4	5	6	7	8	9	10	11	12	13	14	15	16
No link	Positive	Positive	No link	No link	No link	No link	No link	No link	No link	No link	No link				No link

Summary in relation to baseline

Overall this policy is compatible with the Core Strategy and has positive impact on the baseline data where relevant. The policy will not lead to development but is seeking to ensure a range and mix of tenures within the settlement and this will have a positive effect onto the viability and character of the area.

Overall commentary and any initial cumulative effects/ Recommendations

Overall this policy meets the SEA baseline.

Conformity with Core Strategy

This policy meets the Core Strategy requirements for the purposes of the SEA.

Neighbourhood Plan Policy: ER11 Affordable housing

SEA Objectives															
1	2	3	4	5	6	7	8	9	10	11	12	13	14	15	16
No link	Positive	Positive	No link	No link	No link	No link	No link	No link	No link	No link	No link				No link

Neighbourhood Plan Policy: ER12 Business Development

SEA Objectives															
1	2	3	4	5	6	7	8	9	10	11	12	13	14	15	16
Uncertain	Positive	Positive	uncertain	Neutral	Neutral	Positive	Positive	Positive	Positive	Positive	Positive				Positive

Neighbourhood Plan Policy: ER13 Protection of existing commercial business premises

SEA Objectives															
1	2	3	4	5	6	7	8	9	10	11	12	13	14	15	16
Positive	Positive	Positive	Positive	Positive	Positive	Positive	Positive	Positive	Positive	Positive	Positive				Positive

Neighbourhood Plan Policy: ER14 Agricultural and forestry enterprises

SEA Objectives															
1	2	3	4	5	6	7	8	9	10	11	12	13	14	15	16
Positive	Positive	Positive	Positive	Positive	Positive	Positive	Positive	Positive	Positive	Positive	Positive				Positive

Neighbourhood Plan Policy: ER15 Transport and connectivity

SEA Objectives															
1	2	3	4	5	6	7	8	9	10	11	12	13	14	15	16
Positive	Positive	Positive	Uncertain	Positive	Very Positive	Positive	No link	No link	Positive	Positive	No link				Positive

Neighbourhood Plan Policy: ER16 Enhanced services and facilities for the community

SEA Objectives															
1	2	3	4	5	6	7	8	9	10	11	12	13	14	15	16
Positive	Positive	Very Positive	Positive	Positive	Very Positive	Positive	Positive	Positive	Positive	Positive	Positive				Positive

Neighbourhood Plan Policy: ER17 Protection of community facilities

SEA Objectives															
1	2	3	4	5	6	7	8	9	10	11	12	13	14	15	16
Positive	Positive	Very Positive	Positive	Positive	Very Positive	Positive	Positive	Positive	Positive	Positive	Positive				Positive

Neighbourhood Plan Policy: ER18 Broadband and mobile telephone infrastructure

SEA Objectives															
1	2	3	4	5	6	7	8	9	10	11	12	13	14	15	16
uncertain	Positive	Positive	Neutral	Positive	Very Positive	Positive	Positive	No link	No link	No link	No link				Positive

Neighbourhood Plan Policy: ER19 Renewable energy

SEA Objectives															
1	2	3	4	5	6	7	8	9	10	11	12	13	14	15	16
Positive	Positive	Positive	Neutral	Positive	Positive	Very Positive	Very Positive	Positive	Positive	uncertain	uncertain				Positive

Summary

Summary of effects of whole plan on each SEA Objective

Overall the Edwyn Ralph Neighbourhood Plan policies and objectives have a positive towards the SEA baseline data. They are in general conformity with the Core Strategy. All of the policies and objectives meet the Core Strategy requirements for the purposes of the SEA.

Cumulative effects of whole plan (1 + 2 + 3...) Overall the Neighbourhood Plan policies and objectives have a positive impact towards the SEA baseline data. And are in general conformity with the Core Strategy. Overall all of the policies and objectives meet the Core Strategy requirements for the purposes of the SEA. Policies and objectives strive to preserve and maintain natural and built historic environment that can help mitigate impact from the housing policies. This plan ensures appropriate sized development is developed this may help mitigate the effect of development. The site identified within the settlement boundary lie outside any flood risk zone or environmental designation.

Commentary for significant cumulative effects Overall this has had a positive effect on the SEA baseline data. Overall the unknown areas require further detail such as location, scale and size of development, therefore are likely to be determined at planning application/ proposal stage. No significant cumulative effects have been identified.

Appendix 5

Edywn Ralph NDP

Options considered

Option 1: do nothing.

Option 2: Produce an NDP

Option 3: Housing delivery – nucleated approach

Option 4: Housing delivery – dispersed approach

Option 5: Housing delivery – service and facility based approach

Site options considered

Five sites where considered in total. One is allocated in the NDP.

Site 1 East of the Hollings

Site 2 Land adjacent to Woodhouse Farm

Site 3 Top Paddock, The Manor

Site 4 East of B4214

Site 5 Oaklands

Appendix 6

Consultation date: 17 December 2021 to 12 February 2022

Consultation title: Edwyn Ralph Neighbourhood Development Plan (Reg14)

*N.B. This consultation feedback is **only** for comments received on the SEA Screening report*

Consultee	Summary of Comments	Response to Comments
Natural England	No comments received	
Heritage England	No comments received	
Environment Agency	No comments received	
Natural Resources Wales	No comments received	

Appendix 7

Objectives verses SEA Objectives (SMART and Compatibility Test)				
SEA Stage B1	Key:	SMART criteria:		
+ =/++	Compatible/very comp	S – Specific:	NDP objectives should specify what is intended to be done in detail and should not be open to a wide range of misinterpretations	
- =	Possible conflict	M – Measurable:	It should be possible to monitor NDP objectives in a quantifiable way, by the use of indicators. Indicators should be measurable with limited resource implications.	
0 =	Neutral	A – Attainable/achievable:	NDP objectives should be achievable and deliverable, related to the scale of growth proposed	
X =	No relationship between objectives	R – Realistic:	NDP objectives should relate to the overall vision of the plan. Likewise, chosen indicators should relate to objectives and their outcomes.	
? =	Uncertain, more information needed	T – Time-Bound:	Objectives should be specific to the NDP period or another specified time-frame. Objectives should be associated with a target and indicators should specify when the target should be achieved.	

The following matrix appraises the emerging Clifford NDP Objectives in terms of their SMART criteria and their compatibility with the SEA Objectives. These have been developed from Government guidance on SEA and from the local evidence base gathered for identifying the NDP issues.

NDP Policies	SEA objectives																Summary in relation to baseline	Overall commentary and any initial cumulative effects/ Recommendations	Conformity with Core Strategy
	1	2	3	4	5	6	7	8	9	10	11	12	13	14	15	16			
Baseline	1	2	3	4	5	6	7	8	9	10	11	12	13	14	15	16			
Policy ER 2 Development Strategy Minor wording changes and addition of new criterion (3)	+	+	+	+	+	+	+	+	+	+	+	+				+	The policy is seeking to meet the requirements of the Core Strategy Policy RA2 and direct proportional growth to the settlement of Edwyn Ralph. This has a positive effect on the baseline.	Policy safeguarding exists to ensure that environmental considerations are taken into account. The amendment to the policy increase certainly regarding development in the wider parish and therefore enhance the effect on the baseline.	This policy meets the Core Strategy requirements for the purposes of the SEA.
Policy ER 3 Protecting and Enhancing Local Character Addition of criteria (4)	++	++	++	++	++	++	++	++	++	++	++	++				++	This policy aims to ensure that distinctive elements of the parishes are promoted and enhanced and therefore has a very positive impact on all of the baseline objectives.	The policy compliments a number of policies within the Core Strategy and together with other specific policies within the Edwyn Ralph NDP provides a number of policy safeguards. The amendment to the policy has not changed the outcome, however ensures the policy addresses dark sky ideals.	This policy meets the Core Strategy requirements for the purposes of the SEA.
Policy: ER7 Housing in the countryside Addition of paragraph within policy to address agricultural	?	+	+	+	+	+	+	+	+	+	+	+				+	Overall this policy has mainly a positive impact on the baseline data. This policy is in line with Policy RA3 of the Core Strategy and limiting development in areas outside of the main settlement of Edwyn Ralph	This policy conforms to the Local Plan (Core Strategy). Overall, the policy is compatible and has a positive impact on the baseline data. Policies within the Core Strategy and the Edwyn Ralph NDP provide sufficient policy safeguards. The addition of the paragraph addressing the removal of agricultural occupancy conditions strengthens the cultural heritage of the parish	This policy meets the Core Strategy requirements for the purposes of the SEA.

occupancy conditions																			and has therefore improved the effect on the baseline.	
Policy ER12 Business Development Addition of two new criteria (5 & 6)	?	+	+	?	+	+	+	+	+	+	+	+					+	Overall this policy is compatible with the Core Strategy and has mainly a positive impact on the baseline data. It is seeking to provide employment and business opportunities locally. This could reduce the need to travel of local people but also encourage some traveling into the parish in connection with tourism	Overall this policy meets the SEA baseline. There are sufficient policy safeguards within the Core Strategy and the NDP itself to ensure environmental aspects of the baseline are maintained. The addition of the two criteria addressing sustainability measures and supporting sustainable travel has ensured that the effect on two areas of the baseline have changed from neutral to positive.	This policy meets the Core Strategy requirements for the purposes of the SEA.

D3: Predict and evaluate the effects of the amended policies within the Neighbourhood Development Plan

Key:

Strategic Environmental Assessment (SEA) Stage B1- Assessment outcome
Very compatible-Very positive effect
Compatible –Positive effect
Conflict- Negative effect
Neutral-Neutral effect
No relationship between objectives- No link
Uncertain- more information needed

D3: Predict and evaluate the effects of the amended policies within the Neighbourhood Development Plan

Neighbourhood Plan Policy: ER2 Development Strategy

SEA Objectives Assessment of effect (consider cumulative effects, significance of the effect and magnitude of the effect in terms of the three time periods)															
1	2	3	4	5	6	7	8	9	10	11	12	13	14	15	16
Short term (1 – 5 years)															
Positive	Positive	Positive	Positive	Positive	Positive	Positive	Positive	Positive	Positive	Positive	Positive				Positive

SEA Objectives Assessment of effect (consider cumulative effects, significance of the effect and magnitude of the effect in terms of the three time periods)															
1	2	3	4	5	6	7	8	9	10	11	12	13	14	15	16
Medium term (6 – 10 years)															
Positive	Positive	Positive	Positive	Positive	Positive	Positive	Positive	Positive	Positive	Positive	Positive				Positive

SEA Objectives Assessment of effect (consider cumulative effects, significance of the effect and magnitude of the effect in terms of the three time periods)															
1	2	3	4	5	6	7	8	9	10	11	12	13	14	15	16
Long term (11 years +)															
Positive	Positive	Positive	Positive	Positive	Positive	Positive	Positive	Positive	Positive	Positive	Positive				Positive

Overall commentary and any initial cumulative effects/ Recommendations

The policy is seeking to meet the requirements of the Core Strategy Policy RA2 and direct proportional growth to the settlement of Edwyn Ralph. This has a positive effect on the baseline.

The addition of additional criteria and rewording change the outcome of the cumulative effects from uncertain to positive across the short and medium term.

D3: Predict and evaluate the effects of the amended policies within the Neighbourhood Development Plan

Neighbourhood Plan Policy: ER3 Protecting and enhancing local character

SEA Objectives Assessment of effect (consider cumulative effects, significance of the effect and magnitude of the effect in terms of the three time periods)															
1	2	3	4	5	6	7	8	9	10	11	12	13	14	15	16
Short term (1 – 5 years)															
Very positive	Very positive	Very positive	Very positive	Very positive	Very positive	Very positive	Very positive	Very positive	Very positive	Very positive	Very positive				Very positive

SEA Objectives Assessment of effect (consider cumulative effects, significance of the effect and magnitude of the effect in terms of the three time periods)															
1	2	3	4	5	6	7	8	9	10	11	12	13	14	15	16
Medium term (6 – 10 years)															
Very positive	Very positive	Very positive	Very positive	Very positive	Very positive	Very positive	Very positive	Very positive	Very positive	Very positive	Very positive				Very positive

SEA Objectives Assessment of effect (consider cumulative effects, significance of the effect and magnitude of the effect in terms of the three time periods)															
1	2	3	4	5	6	7	8	9	10	11	12	13	14	15	16
Long term (11 years +)															
Very positive	Very positive	Very positive	Very positive	Very positive	Very positive	Very positive	Very positive	Very positive	Very positive	Very positive	Very positive				Very positive

Overall commentary and any initial cumulative effects/ Recommendations

Overall, this policy has a very positive impact on all of the baseline objectives, its aim is to ensure that distinctive elements of the parishes are promoted and enhanced.

The addition of additional criteria does not alter the outcome of the cumulative effects and they remain very positive over all time periods.

D3: Predict and evaluate the effects of the amended policies within the Neighbourhood Development Plan

Neighbourhood Plan Policy: ER7 Housing in the countryside

SEA Objectives Assessment of effect (consider cumulative effects, significance of the effect and magnitude of the effect in terms of the three time periods)															
1	2	3	4	5	6	7	8	9	10	11	12	13	14	15	16
Short term (1 – 5 years)															
Uncertain	Positive	Positive	Positive	Positive	Positive	Positive	Positive	Positive	Positive	Positive	Positive				Positive

SEA Objectives Assessment of effect (consider cumulative effects, significance of the effect and magnitude of the effect in terms of the three time periods)															
1	2	3	4	5	6	7	8	9	10	11	12	13	14	15	16
Medium term (6 – 10 years)															
Positive	Positive	Positive	Positive	Positive	Positive	Positive	Positive	Positive	Positive	Positive	Positive				Positive

SEA Objectives Assessment of effect (consider cumulative effects, significance of the effect and magnitude of the effect in terms of the three time periods)															
1	2	3	4	5	6	7	8	9	10	11	12	13	14	15	16
Long term (11 years +)															
Positive	Positive	Positive	Positive	Positive	Positive	Positive	Positive	Positive	Positive	Positive	Positive				Positive

Overall commentary and any initial cumulative effects/ Recommendations

Overall this policy has mainly a positive impact on the baseline data. This policy is in line with Policy RA3 of the Core Strategy and limiting development in areas outside of the main settlement of Edwyn Ralph.

The addition wording within the policy has changed the outcome of the cumulative effects slightly by creating more certainty in the short term.

D3: Predict and evaluate the effects of the amended policies within the Neighbourhood Development Plan

Neighbourhood Plan Policy: ER12 Business Development

SEA Objectives Assessment of effect (consider cumulative effects, significance of the effect and magnitude of the effect in terms of the three time periods)															
1	2	3	4	5	6	7	8	9	10	11	12	13	14	15	16
Short term (1 – 5 years)															
Uncertain	Positive	Positive	uncertain	Positive	Positive	Positive	Positive	Positive	Positive	Positive	Positive				Positive

SEA Objectives Assessment of effect (consider cumulative effects, significance of the effect and magnitude of the effect in terms of the three time periods)															
1	2	3	4	5	6	7	8	9	10	11	12	13	14	15	16
Medium term (6 – 10 years)															
Positive	Positive	Positive	Positive	Positive	Positive	Positive	Positive	Positive	Positive	Positive	Positive				Positive

SEA Objectives Assessment of effect (consider cumulative effects, significance of the effect and magnitude of the effect in terms of the three time periods)															
1	2	3	4	5	6	7	8	9	10	11	12	13	14	15	16
Long term (11 years +)															
Positive	Positive	Positive	uncertain	Positive	Positive	Positive	Positive	Positive	Positive	Positive	Positive				Positive

Overall commentary and any initial cumulative effects/ Recommendations

Overall this policy is compatible with the Core Strategy and has mainly a positive impact on the baseline data. It is seeking to provide employment and business opportunities locally. This could reduce the need to travel of local people but also encourage some traveling into the parish in connection with tourism.

The addition of the two criteria addressing sustainability measures and supporting sustainable travel has ensured that the impact on the cumulative effects over all time frames have changed from neutral to positive.

Appendix 8

Consultation date: 2 August to 13 September 2022 (Reg 16)

N.B. This consultation feedback is **only** for comments received on the SEA draft report

Consultee	Summary of Comments	Response to Comments
Natural England	With the inclusion of Policy ER3, agree plan will not have an adverse effect on the integrity of the River Wye SAC	
Heritage England	No specific comment to the AA	
Environment Agency	Welcome Policy ER3	An Appropriate Assessment will be undertaken for the Reg16 version of the NDP
Natural Resources Wales	No comments received	

Appendix 9

Modifications following the examination – Edwyn Ralph

Policy	Modification recommended	Justification
Modification 1	Change the title of Table 1 of the Basic Conditions Statement so that it relates to the Edwyn Ralph NDP	Correct typographical error
Modification 2 Policy ER1	Delete 'infrastructure limits' from clause 3 and replace with 'the capacity of existing infrastructure' Delete 'the effects' in clause 4 and replace with 'any adverse effects' in line 2	To strengthen the wording
Modification 3: Policy ER3	Add a suitable referenced version of Map 9 of the Neighbourhood Plan Characterisation Study to show the key views listed in clause 3 of Policy ER3 Amend clause 3 accordingly to include the map reference	For clarity
Modification 4 Policy ER3	In clause 6 after 'enhancement of' add 'local wildlife sites (shown on the Edwyn Ralph Parish Policies Map)'	To strengthen and add clarity
Modification 5 Policy ER3	Delete 'so' after 'it is shown' in the third line of clause 9	For clarity
Modification 6 Para 4.2.7	Add 'and' after 'listed buildings'	Correct typographical error
Modification 7 Policy ER9	Delete 'to be supported' at the start of Policy ER9	Correct typographical error
Modification 8 Policy ER15	Add 'will be provided' at the end of clause 1 Reword clause 3 to read 'Parking facilities should be constructed of permeable surfaces, to reduce surface water run-off and contribute to local flood reduction' Reword Clause 4 to read 'Additional street lighting within or beyond developments should only be provided where it is essential for public safety'	To add clarification
Modification 9 Policy ER17	Delete 'which are provide over the lifetime of the Neighbourhood Plan' from the first sentence	For clarity
Modification 10 Policy ER18	Delete a) and b) sub numbering from Policy ER18 and substitute 1 and 2	For consistency
Modification 11 Policy ER19	Delete the strikethrough text	Correct typographical error

Appendix 10

Edwyn Ralph NDP - D2: Modification of NDP Policies following examination (December 2022)

The following matrix appraises the post examination Edwyn Ralph NDP policies in terms of their SMART criteria and their compatibility with the SEA Objectives. These have been developed from Government guidance on SEA and from the local evidence base gathered for identifying the NDP issues.
SMART criteria:
<p>S – Specific: NDP objectives should specify what is intended to be done in detail and should not be open to a wide range of misinterpretations</p> <p>M – Measurable: It should be possible to monitor NDP objectives in a quantifiable way, by the use of indicators. Indicators should be measurable with limited resource implications.</p> <p>A – Attainable/achievable: NDP objectives should be achievable and deliverable, related to the scale of growth proposed</p> <p>R – Realistic: NDP objectives should relate to the overall vision of the plan. Likewise, chosen indicators should relate to objectives and their outcomes.</p> <p>T – Time-Bound: Objectives should be specific to the NDP period or another specified time-frame. Objectives should be associated with a target and indicators should specify when the target should be achieved.</p>

Strategic Environmental Assessment (SEA) Stage B1: Assessment outcome
Very positive: Compatible with sea objective.
Positive: Compatible with sea objective.
Conflict: Negative effect/ conflict with sea objective.
Neutral: Neutral effect on sea objective.
No relationship between objectives: No link with sea objective.
Uncertain: Uncertain impact on sea objective, more information needed.

<p>SEA Objectives:</p> <p>1-To maintain and enhance nature conservation (biodiversity, flora and fauna)</p> <p>2- To maintain and enhance the quality of landscapes and townscapes</p> <p>3- To improve quality of surroundings</p> <p>4- To conserve and where appropriate enhance the historic environment and culture heritage</p> <p>5- To improve air quality</p>	<p>6- To reduce the effect of traffic on the environment</p> <p>7- To reduce contributions to climate change</p> <p>8- To reduce vulnerability to climate change</p> <p>9- To improve water quality</p> <p>10- To provide for sustainable sources of water supply</p> <p>11- To avoid, reduce and manage flood risk</p> <p>12- To conserve soil resources and quality</p> <p>13- To minimise the production of waste</p>	<p>14- To improve health of the population</p> <p>15- To reduce crime and nuisance</p> <p>16- To conserve natural and manmade resources</p>
---	--	---

Neighbourhood Plan Policy: ER1 Promoting a sustainable community

SEA Objectives															
1	2	3	4	5	6	7	8	9	10	11	12	13	14	15	16
Very Positive	Very Positive	Very Positive	Very Positive	Very Positive	Very Positive	Very Positive	Very Positive	Positive	Positive	Very Positive	Very Positive				Very Positive

Summary in relation to baseline

Overall this policy is compatible with the Core Strategy and has mainly a very positive impact on the baseline data. The policy is seeking to promote positive measures to maintaining sustainable communities

Overall commentary and any initial cumulative effects/ Recommendations

Policy safeguarding exists to ensure that environmental considerations are taken into account.

Conformity with Core Strategy

This policy meets the Core Strategy requirements for the purposes of the SEA.

Neighbourhood Plan Policy: ER3 Protecting and enhancing local character

SEA Objectives															
1	2	3	4	5	6	7	8	9	10	11	12	13	14	15	16
Very positive	Very positive	Very positive	Very positive	Very positive	Very positive	Very positive	Very positive	Very positive	Very positive	Very positive	Very positive				Very positive

Summary in relation to baseline

Overall, this policy has a very positive impact on all of the baseline objectives, its aim is to ensure that distinctive elements of the parishes are promoted and enhanced.

Overall commentary and any initial cumulative effects/ Recommendations

The policy compliments a number of policies within the Core Strategy and together with other specific policies within the Edwyn Ralph NDP provides a number of policy safeguards.

Conformity with Core Strategy

This policy meets the Core Strategy requirements for the purposes of the SEA.

Neighbourhood Plan Policy: ER15 Transport and connectivity

SEA Objectives															
1	2	3	4	5	6	7	8	9	10	11	12	13	14	15	16
Positive	Positive	Positive	Uncertain	Positive	Very Positive	Positive	Positive	No link	Positive	Positive	No link				Positive

Summary in relation to baseline

Overall this policy is compatible with the Core Strategy and has mainly a positive impact on the baseline data. It is seeking to provide a safer environment, reduce the impact of cars and private vehicle on the area. A reduction on lighting can have a positive effect on nocturnal species and the provision of cycle and footpaths can double as green corridors.

Overall commentary and any initial cumulative effects/ Recommendations Overall this policy meets the SEA baseline.

Conformity with Core Strategy

This policy meets the Core Strategy requirements for the purposes of the SEA.

Appendix 11

Objectives and context	Where are the points covered in Neighbourhood Development Plan SEA
<ul style="list-style-type: none"> • The Neighbourhood Development Plan's purpose and objectives are made clear. • The Neighbourhood Area's environmental issues and constraints, including acknowledgement of those in the Local Plan (Core Strategy) SA, where relevant, and local environmental protection objectives, are considered in developing objectives and targets. • SEA objectives are clearly set out and linked to indicators and targets where appropriate. • Links with other locally related plans, programmes and policies are identified, explained and acknowledgement for those set out in the SA of the Local Plan (Core Strategy) is given, where relevant. • Conflicts that exist between SEA objectives; between SEA and Neighbourhood Development Plan objectives; and between SEA objectives and other local plan objectives are identified and described. 	<p>Chapter 1.6 – 1.10</p> <p>Chapter 2 methodology, chapter 3 and tables A2 and A3</p> <p>Chapter 3 paragraph 3.5 and 3.7</p> <p>Chapter 3, paragraph 3.1</p> <p>Chapter 3</p>
<p>Scoping</p> <ul style="list-style-type: none"> • Statutory Consultees are consulted in appropriate ways and at appropriate times on the content and scope of the Environmental Report. • The assessment focuses on significant issues. • Technical, procedural and other difficulties encountered are discussed; assumptions and uncertainties are made explicit. • Reasons are given for eliminating issues from further consideration. 	<p>Chapter 2, paragraphs 2.6-2.9</p> <p>Chapter 2 and chapter 4</p> <p>Chapter 2</p> <p>Chapter 2, chapter 4 and chapter 5</p>
<p>Alternatives</p> <ul style="list-style-type: none"> • Realistic alternatives are considered for key issues, and the reasons for choosing them are documented. • Alternatives include 'do minimum' and/or 'business as usual' scenarios wherever relevant. • The environmental effects (both adverse and beneficial) of each alternative are identified and compared. 	<p>Chapter 4 and chapter 5</p> <p>Paragraph 5.4</p> <p>Chapter 5</p>

<ul style="list-style-type: none"> • Inconsistencies between the alternatives and other relevant local plans, programmes or policies are identified and explained. • Reasons are given for selection or elimination of alternatives. 	<p>Chapter 5, chapter 3,</p> <p>Chapter 5</p>
<p>Baseline information</p> <ul style="list-style-type: none"> • Relevant aspects of the current state of the local, neighbourhood area environment and their likely evolution without the Neighbourhood Development Plan are described. Acknowledgement to the information in the SA of the Local Plan (Core Strategy) is given, where relevant. • Environmental characteristics of the local, neighbourhood area, likely to be significantly affected are described, including areas wider than the physical boundary of the designated neighbourhood area, where it is likely to be affected by the Neighbourhood Development Plan. • Difficulties such as deficiencies in information or methods are explained. 	<p>Chapter 1, Chapter 3</p> <p>Initial screening report and Chapter 1</p> <p>Chapter 2</p>
<p>Prediction and evaluation of likely significant environmental effects</p> <ul style="list-style-type: none"> • Effects identified include the types listed in the Directive (biodiversity, population, human health, fauna, flora, soil, water, air, climate factors, material assets, cultural heritage and landscape), as relevant; and other local likely environmental effects are also covered, as appropriate. • Both positive and negative effects are considered, and the duration of effects (short, medium or long-term) is addressed. • Likely secondary, cumulative (growing in quantity and strength) and synergistic (acting together) effects are identified, where practicable. • Inter-relationships between effects are considered, where practicable. • The prediction and evaluation of effects makes use of relevant accepted standards, regulations, and thresholds (i.e. data gathered for the evidence base). • Methods used to evaluate the effects are described. 	<p>Tables A2, A3 and A4</p> <p>Tables B2 and B3, Table D2 and D3</p> <p>Table B4</p> <p>Chapter 5, chapter 6</p> <p>Chapter 5, chapter 6</p> <p>Chapter 2</p>
<p>Mitigation measures</p>	

<ul style="list-style-type: none"> • Measures envisaged to prevent, reduce and offset any significant adverse effects of implementing the Neighbourhood Development Plan are indicated. • Issues to be taken into account when determining planning applications or other projects, for example funding bids, are identified. 	<p>Chapter 6, paragraph 6.6 – 6.9</p> <p>Chapter 6</p>
<p>The Environmental Report</p> <ul style="list-style-type: none"> • Is clear and concise in its layout and presentation. • Uses simple, clear language and avoids or explains technical terms. • Uses maps and other illustrations, where appropriate. • Explains the methodology used. • Explains who was consulted and what methods of consultation were used. • Identifies sources of information, including expert judgement and matters of opinion. • Contains a non-technical summary covering the overall approach to the SEA, the objectives of the Neighbourhood Development Plan, the main options considered, and any changes to the Neighbourhood Development Plan resulting from the SEA. 	<p>-</p> <p>-</p> <p>-</p> <p>Chapter 2</p> <p>Paragraph 2.6-2.9</p> <p>Paragraph 2.8-2.9</p> <p>Page 1 / Paragraph 1.8 / Chapter 6</p>
<p>Consultation</p> <ul style="list-style-type: none"> • The SEA is consulted on as an integral part of the plan-making process of the Neighbourhood Development Plan. • Consultation Bodies and the public likely to be affected by, or having an interest in, the Neighbourhood Development Plan are consulted in ways and at times, which give them an early and effective opportunity within appropriate time frames to express their opinions on the draft Neighbourhood Development Plan and Environmental Report. 	<p>Paragraph 2.6-2.9</p> <p>Chapter 8</p>
<p>Decision-making and information on the decision</p> <ul style="list-style-type: none"> • The environmental report and the opinions of those consulted are taken into account in finalising and adopting the Neighbourhood Development Plan. • An explanation is given of how they have been taken into account. 	<p>Chapter 8</p> <p>Following draft consultation</p>

<ul style="list-style-type: none"> • Reasons are given for choosing the Neighbourhood Development Plan as adopted, in the light of other reasonable alternatives considered. 	Following draft consultation
<p>Monitoring measures</p> <ul style="list-style-type: none"> • Measures proposed for monitoring the Neighbourhood Development Plan are clear, practicable and linked to the indicators and objectives used in the SEA. • Monitoring is used, where appropriate, during implementation of the Neighbourhood Development Plan to make good deficiencies in baseline information in the SEA. • Acknowledgement that monitoring enables unforeseen adverse effects to be identified at an early stage. (These effects may include predictions which prove to be incorrect.) And that • Proposals are made for action in response to significant adverse effects arising from the monitoring of the Neighbourhood Development Plan. 	<p>Chapter 7</p> <p>Chapter 7</p> <p>Chapter 7</p> <p>Chapter 7</p>