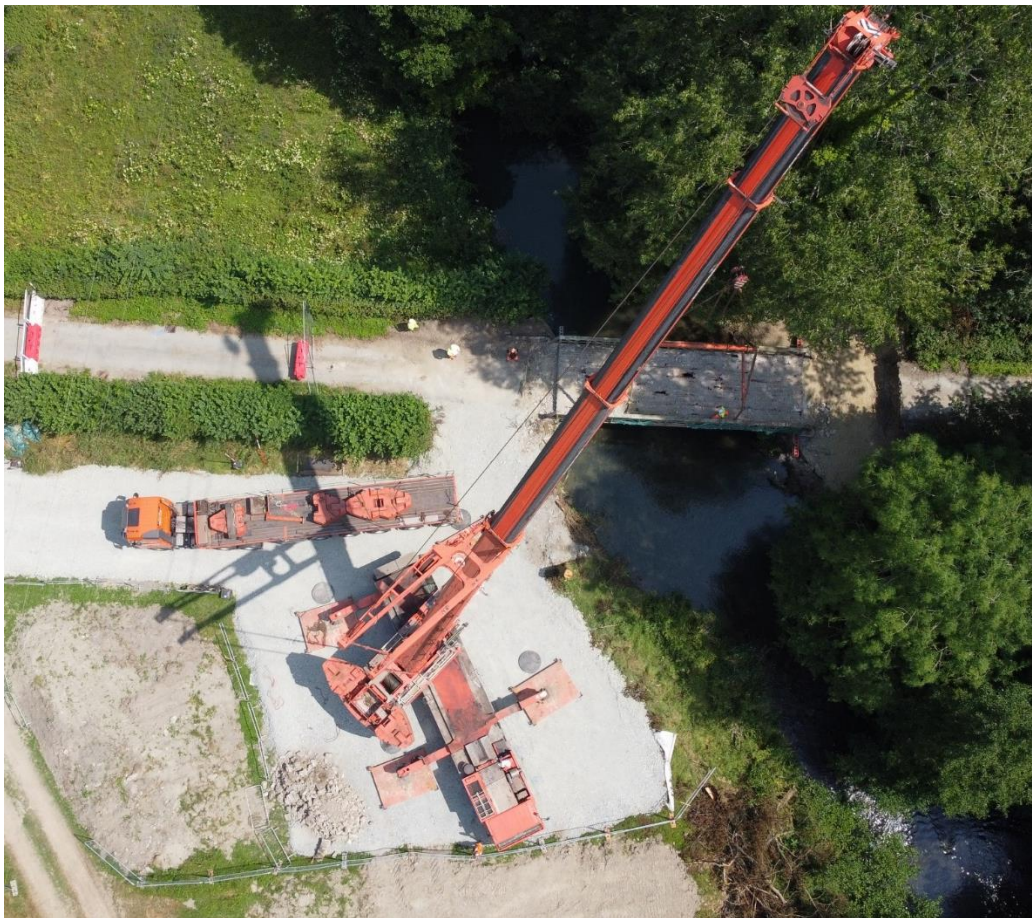


HEREFORDSHIRE PUBLIC REALM CONTRACT 2022/23

ANNEX 14 – STRUCTURES



SERVICE OVERVIEW

SERVICE SUMMARY

BBLP will manage HC's bridges and other structures and provide technical advice to support network management services such as adoptions of new assets, management of abnormal loads, regulating private highway structures, dealing with emergencies relating to highway structures, working in conjunction with other statutory asset owners (such as Utilities, Network Rail and Rail Residuary Board) and managing substandard structures.

Inspections of structures will be undertaken in accordance with National guidance. The service is required to react to incidents and defects that deteriorate rapidly during the annual plan period. Where this occurs, it is likely to impact on the planned works outlined in this document.

COMMISSIONED WORKS

The annex shall deliver all activities and works as set out in Schedule 4 – Service Information Annex 18 - Service Information Structures V1.4 unless deemed out of scope as detailed below

THE SERVICE

SERVICE DELIVERY

SERVICE	RESOURCES	DIRECT/SUB CONTRACT	DELIVERY
Capital Maintenance Works	Site Engineer + Construction/Project Management overseeing. Snr Engineer Input + Bridge Maintenance Gang + Specialist Sub-contractors	Direct/Sub-contract	Programmed
Capital Major Schemes & Design		Direct/Sub-contract	Programmed
Principal Inspections	Snr. Bridge Engineer + Structures Inspector (2no.) + Engineer + Specialist Sub-contractor Snr. Bridge Engineer + Structures Inspector (2no.)	Direct	Programmed
Structures Diving Inspections & Maintenance		Sub-contract	Programmed
Structures General Inspections		Direct	Programmed
Safety Barrier Inspections		Direct/Sub-contract	Programmed
Bridge Strike Support	Snr. Bridge Engineer + Structures Inspector (2no.)	Direct	Reactive
Planning / Adoption		Direct	Reactive
Development Control & Network Management		Direct	Reactive
Asset Inventory			

OUT OF SCOPE ACTIVITIES

The activities or works are out of scope:

Service/Activity Removed	Reason
Public Rights of Way (PROW) Inspection under 7.5m span	Removed from the contract
Public Rights of Way (PROW) Maintenance	Removed from the contract

APPENDICES

APPENDIX A: BBLP POLICY & PROCESSES TO BE USED IN THE DELIVERY OF THE ANNEX

Balfour Beatty Group Minimum Engineering Expectations
Balfour Beatty Group Minimum Commercial Expectations
Balfour Beatty Project Management Best Practice Guide
BBLP Design & Management Policies as detailed on Balfour Beatty BMS
Herefordshire Council Highways Maintenance Plan

APPENDIX B: PROGRAMME OF WORKS

A programme will be developed for each scheme as we progress through the relevant stages of scheme development. See attached document 2022-23 Annex 14 Inspections

APPENDIX C: BUDGET BREAKDOWN AS DETAILED ABOVE IN THE SERVICE DELIVERY TABLE

Refer to Budget Master

APPENDIX D – LIST OF NOMINATED SUBCONTRACTORS

WSP – Design Consultant
GW Marine – Structures diving inspections and maintenance
Schemes would be delivered by sub-contractor once they have been out to tender and awarded through the Balfour Beatty procurement tender system Jaggar