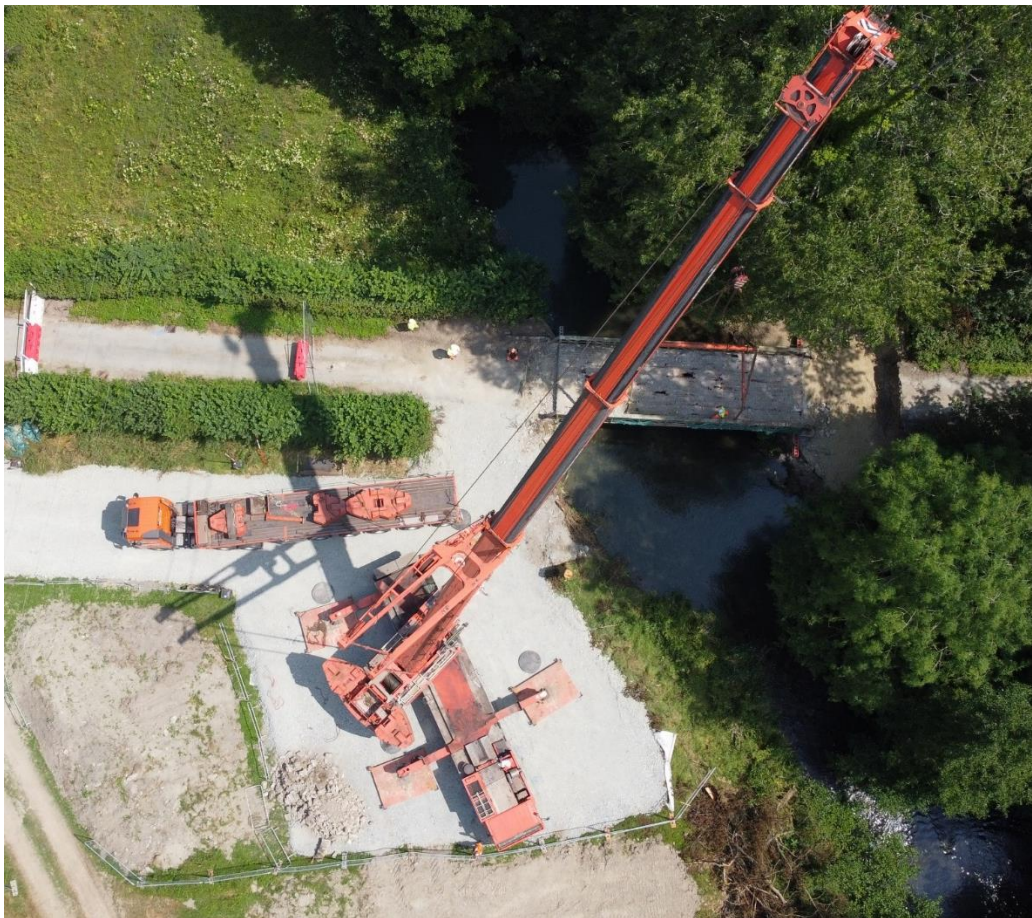

HEREFORDSHIRE PUBLIC REALM CONTRACT 2023/24

ANNEX 14 – STRUCTURES



ANNUAL PLAN FINAL APPROVAL

BBLP: Chris Allen 28.03.2023

HC:

SERVICE OVERVIEW

SERVICE SUMMARY

BBLP will manage HC's bridges and other structures and provide technical advice to support network management services such as adoptions of new assets, management of abnormal loads, regulating private highway structures, dealing with emergencies relating to highway structures, working in conjunction with other statutory asset owners (such as Utilities, Network Rail and Rail Residuary Board) and managing substandard structures.

Inspections of structures will be undertaken in accordance with National guidance. The service is required to react to incidents and defects that deteriorate rapidly during the annual plan period. Where this occurs, it is likely to impact on the planned works outlined in this document.

COMMISSIONED WORKS

The annex shall deliver all activities and works as set out in Schedule 4 – Service Information Annex 18 - Service Information Structures V1.4 unless deemed out of scope as detailed below

THE SERVICE

SERVICE DELIVERY

SERVICE	RESOURCES	DIRECT/SUB CONTRACT	DELIVERY	COST
Fee				£143,402.0
LMO				N/A
Capital Maintenance Works	Site Engineer + Construction/Project Management overseeing.	Direct/Sub-contract	Programmed	£283,500
Capital Major Schemes & Design	Snr Engineer Input + Bridge Maintenance Gang + Specialist Sub-contractors	Direct/Sub-contract	Programmed	£970,000
Principal Inspections	Snr. Bridge Engineer + Structures Inspector (2no.) + Engineer + Specialist Sub-contractor	Direct	Programmed	£180,000
Structures Diving Inspections & Maintenance	Snr. Bridge Engineer + Structures Inspector (2no.)	Sub-contract	Programmed	£25,000
Structures General Inspections		Direct	Programmed	£77,225.63

Safety Barrier Inspections		Direct/Sub-contract	Programmed	£5,500
Bridge Strike Support	Snr. Bridge Engineer + Structures Inspector (2no.)	Direct	Reactive	£50,000
Planning / Adoption		Direct	Reactive	Funding from Developers agreements with the Council. (links to Annex 4 and Annex 15 for certain schemes)
Development Control & Network Management		Direct	Reactive	£11,000
Asset Inventory	Asset Data Management, including the update of the Structures inventory records and the exchange of data & information with the asset leads (e.g. HC PROW team) are managed within the TAMP Annex 8.			

OUT OF SCOPE ACTIVITIES

The activities or works are out of scope:

Service/Activity Removed	Reason
Public Rights of Way (PROW) Inspection under 7.5m span	Removed from the contract
Public Rights of Way (PROW) Maintenance	Removed from the contract

APPENDICES

APPENDIX A: BBLP POLICY & PROCESSES TO BE USED IN THE DELIVERY OF THE ANNEX

Balfour Beatty Group Minimum Engineering Expectations – Copy provided as appendix to service overview

Balfour Beatty Group Minimum Commercial Expectations – Copy provided as appendix to service overview

Balfour Beatty Project Management Best Practice Guide – Copy provided as appendix to service overview

Herefordshire Council Highway Maintenance Plan [Highway asset management and maintenance – Herefordshire Council](#)

Herefordshire Council Highways Development Guidance: [Highway development – Herefordshire Council](#)

APPENDIX B: PROGRAMME OF WORKS

The Programme of Works included within each element are as follows:

Major Structures

Scheme	Type	Activity
Bredwardine	Movement monitoring survey	Survey
Saracens Head Walkway	Construction of cantilever walkway	Construction
Hampton Court Bridge	Design of stone parapet replacement scheme	Design
Mordiford Flood Arch 2 & 3	Flood Arch major repairs	Design & Construction
Parsons Pole Bridge Deck Replacement	Bridge deck replacement scheme	Construction
Southern Avenue Railway Bridge	Rail Possession for Inspection	Inspection
Stone Bridge	Strengthening Design	Design
Vowchurch	Rockarmour works	Construction

Minor Structures

Reference	Element	Activity
BB0109	Llangua Flood Arch	Construction
BB0109	Llangua Flood Arch	Construction
BF7910	Forest Wood	Construction
BB0261	Norton Edwin	Construction
BB0685	Clifford Culvert No.1	Construction
BB0503	Sheepcote	Construction

BB0181	Huntington Lane Culvert	Construction
BB1229	Michaelchurch Irish Bridge	Construction
BB0510	Cleeve	Construction
BB0611	Rudge Culvert	Construction
BB0111	Llangua (Moiety Monmouthshire)	Construction
BB0368	Packsaddle	Construction
BB0178	Yazor Road Culvert	Construction
BB0759	Kerne	Construction
BB0556	Lugg Mills Flood Arch No.5	Construction
BB0133	Vowchurch	Construction
BB0133	Vowchurch	Construction
BB0133	Vowchurch	Construction
BB0577	Gaulters	Construction
BB0176	Black Lion	Construction
BW7202N	Belmont, Hereford	Construction
BB0013	Sutton Marsh Culvert	Construction
BB0153	Long	Construction
BB0283	Banbury	Construction
BW7185	Dulas Brook, Ewyas Harold	Construction
BF7883	Plough Yazor #1	Construction
BF7944	Penrhowey Footbridge	Construction
BB0180	Clockmill	Construction
BB0085	Lugg Green	Construction
BB1224	Whitchurch Culvert No.4	Construction
BB0018	Laystone	Construction
BB0018	Laystone	Construction
BF7851	Victoria Footbridge	Construction
BB0426	Kinsham	Construction
BW7194	Rhydspence North	Construction
BB0606	Moorend	Construction
BB0718	Poswick	Construction
BB0628	Moorlands	Construction
BB0628	Moorlands	Construction
BF7931	Knill	Construction
BF0866	Longtown Ford Footbridge	Construction
BF0866	Longtown Ford Footbridge	Construction
BF0866	Longtown Ford Footbridge	Construction
BB0247	Combe Culvert	Construction
BB0685	Clifford Culvert No.1	Construction
BB0261	Norton Edwin	Construction
BB1314	Nook Flood Relief Culvert	Construction
BW7034	Welsh Newton	Construction
BB0503	Sheepcote	Construction

BB0354	Lyston	Construction
BW7034	Welsh Newton	Construction
BB0804	Rhea	Construction
BB0274	Massington Railway	Construction
BB1232	Paunton Mill	Construction
BB0691	Old Furnace	Construction
BB0923	Avenbury	Construction
BB0923	Avenbury	Construction
BB0302	Snodhill Culvert	Construction
BF7714	Bishops Frome BPF24	Construction
BB0204	Watts	Construction
BF7714	Bishops Frome BPF24	Construction
BP1074	Russian Cottage	Construction
BB0865	Longtown Ford	Construction
BB0865	Longtown Ford	Construction
BB1229	Michaelchurch Irish Bridge	Construction
BW7132	Ferry Inn, Ferry Lane	Construction
BB0108	Longtown	Construction
BB1229	Michaelchurch Irish Bridge	Construction
BB0108	Longtown	Construction
BB0108	Longtown	Construction

Inspections

Reference	Name	Structure Type	Inspection Type
BB0001	Mordiford	Bridge	Diving
BB0101	Bodenham Bridge	Bridge	Diving
BB0185	Bredwardine	Bridge	Diving
BB0389	Burrington	Bridge	Diving
BB0166	Commercial Road Culvert	Bridge	Diving
BB0390	Criftinford	Bridge	Diving
BB0161	Eardisland	Bridge	Diving
BB0202	Eardisley	Bridge	Diving
BB0056	Eaton	Bridge	Diving
BB0006	Fiveways Culvert	Bridge	Diving
BB0140	Grosmont	Bridge	Diving
BB0098	Hampton Court	Bridge	Diving
BB0424	Hampton Mill	Bridge	Diving
BB0624	Hoarwithy	Bridge	Diving
BB0513	Holme Lacy	Bridge	Diving
BB5068	Hunderton River Bridge	Bridge	Diving
BB0229	Hunton Bridge	Bridge	Diving
BB0623	Huntsham	Bridge	Diving
BB0759	Kerne	Bridge	Diving

BB0276	Kings Meadow Culvert	Bridge	Diving
BB0072	Little Hereford	Bridge	Diving
BB0476	Little Lugg	Bridge	Diving
BB0111	Llangua (Moiety Monmouthshire)	Bridge	Diving
BB0630	Longlands	Bridge	Diving
BB1187	Lower Kimbolton	Bridge	Diving
BB0012	Lugg Mills	Bridge	Diving
BB0010	Lugwardine Bridge	Bridge	Diving
BB1188	Mill (Bullocks Mill)	Bridge	Diving
BB0606	Moorend	Bridge	Diving
BB0135	Morehampton	Bridge	Diving
BB0017	Moreton-On-Lugg Bridge	Bridge	Diving
BB0306	New Mills	Bridge	Diving
BB0170	Old Wye Bridge	Bridge	Diving
BB0718	Poswick	Bridge	Diving
BB0930	Streffordbury	Bridge	Diving
BB0987	Trerece	Bridge	Diving
BF7851	Victoria Footbridge	Bridge	Diving
BB0015	Wergins	Bridge	Diving
BB0325	Wilton	Bridge	Diving
BB0117	Attwood Lane Culvert	Bridge	Diving
BB1163	Falcon Farm Culvert	Bridge	Diving
BB0245	Eardisley Culvert	Bridge	Diving
BF7874	Hampton Meadow	Bridge	Diving
BB0239	Noke Culvert No.5	Bridge	Diving
BB0396	Brandon Culvert	Bridge	Diving
BB0182	Widemarsh Brook Culvert	Bridge	Diving
BF7939	Saffrons Cross Footbridge	Bridge	Principal Inspection
BB0209	Mahollam	Bridge	Diving
BB0022	Marlbrook Railway	Bridge	Principal Inspection
BB0033	Back Brook	Bridge	General Inspection
BB0034	Arrow River	Bridge	General Inspection
BB0035	River Arrow Flood Culvert	Bridge	Principal Inspection
BB0056	Eaton	Bridge	Principal Inspection
BB0096	Marlbrook	Bridge	Principal Inspection
BB0093	Ivington	Bridge	Principal Inspection
BF7923	Highfield	Bridge	General Inspection
BB0840	Sodgley	Bridge	General Inspection
BB0239	Noke Culvert No.5	Bridge	Principal Inspection
BB0230	Titley Mill	Bridge	General Inspection
BB0376	Adforton (Div. Cul.)	Bridge	Principal Inspection
BB0401	Adleymoore Culvert	Bridge	Principal Inspection
BB0621	Lugg Mills Flood Arch No.11 (filled in)	Bridge	Principal Inspection
BB0632	Gritpit	Bridge	Principal Inspection

BB0826	Leinthall Moor	Bridge	General Inspection
BB0976	Lower Lye Culvert	Bridge	General Inspection
BB1231	Orchard Gardens	Bridge	Principal Inspection
BB1295	Southern Avenue Bridge	Bridge	Principal Inspection
BB2823	Birchley Farm	Bridge	Safety Inspection
BF5115	Railway Industrial FB, Bromyard	Bridge	Principal Inspection
BF7770	The Batches	Bridge	General Inspection
BF7772	Ivington Court	Bridge	General Inspection
BF7851	Victoria Footbridge	Bridge	Principal Inspection
BF7902	Twt No1	Bridge	Principal Inspection
BF7905	Field (New bridge to be updated)	Bridge	General Inspection
BF7912	Mowley	Bridge	General Inspection
BF7919	Ivington Common	Bridge	Principal Inspection
BF7920	Milking	Bridge	Principal Inspection
BF7921	Jay Farm	Bridge	Principal Inspection
BB1296	Newtown Road Canal	Bridge	Principal Inspection
BB0143	Eign Street Culvert (confined space)	Bridge	General Inspection
BB0050	Waterloo Mill Race	Bridge	General Inspection
BF7763	Norton (Bromyard)	Bridge	General Inspection
BB1332	City Link Road Culvert (Formerly known as Police Training Ground Culvert)	Bridge	General Inspection
BB0018	Laystone	Bridge	General Inspection
BB1094	Biddulph Arms No.2	Bridge	Safety Inspection
BB5068	Hunderton River Bridge	Bridge	Safety Inspection
BB0254	Wheatsheaf	Bridge	Principal Inspection
BB0473	Whitbourne Culvert	Bridge	General Inspection
BB0612	Whitbourne Ford	Bridge	General Inspection
BF7759	Whitehall Common	Bridge	General Inspection
BB0718	Poswick	Bridge	Principal Inspection
BB0720	Poswick Culvert	Bridge	Principal Inspection
BB0630	Longlands	Bridge	Principal Inspection
BF7765	Sapey Mill	Bridge	Principal Inspection
BB0256	Boillets	Bridge	Principal Inspection
BB0605	Butterley	Bridge	Principal Inspection
BB0939	Rowden Mill	Bridge	Principal Inspection
BB1103	Wicton	Bridge	Principal Inspection
BB0253	Instone	Bridge	Principal Inspection
BB0258	Stoney	Bridge	Principal Inspection
BB0261	Norton Edwin	Bridge	Principal Inspection
BF7758	Norton also Newhouse Farm	Bridge	Principal Inspection
BB0252	Broad	Bridge	Principal Inspection
BB0251	Petty	Bridge	Principal Inspection
BB0121	Bromyard Subway	Bridge	Principal Inspection
BF7761	Little Frome	Bridge	Principal Inspection

BF7665	Avenbury	Bridge	Principal Inspection
BB0923	Avenbury	Bridge	Principal Inspection
BB0924	Hyde Farm	Bridge	Principal Inspection
BB0925	Duffield Farm	Bridge	Principal Inspection
BB0423	Paunton	Bridge	General Inspection
BB1232	Paunton Mill	Bridge	Principal Inspection
BB0527	Keephill	Bridge	Principal Inspection
BB0260	Noakes	Bridge	Principal Inspection
BB0280	Wells Culvert	Bridge	Principal Inspection
BB0429	Hyde (Saddled)	Bridge	Principal Inspection
BB0428	Pencombe Mill Culvert	Bridge	Principal Inspection
BB0915	Little Cowarne	Bridge	Principal Inspection
BF7760	Little Cowarne	Bridge	Principal Inspection
BB0724	Steen's Culvert	Bridge	Principal Inspection
BB0057	Steens	Bridge	Principal Inspection
BB0444	Hatfield	Bridge	Principal Inspection
BF7520	Hatfield B/B	Bridge	General Inspection
BB0927	Pudleston	Bridge	General Inspection
BB0445	Hamnish	Bridge	Principal Inspection
BB0040	Brockmanton Culvert	Bridge	Principal Inspection
BB0514	Brockmanton	Bridge	Principal Inspection
BB0929	Brockhall	Bridge	Principal Inspection
BB0930	Streffordbury	Bridge	General Inspection
BB0446	Tick	Bridge	Principal Inspection
BB0054	Ridgemoor	Bridge	Principal Inspection
BB0095	Ford Bridge	Bridge	Principal Inspection
BB0483	Humber	Bridge	General Inspection
BB0058	Risbury	Bridge	General Inspection
BB0512	Lowbrook	Bridge	Principal Inspection
BB0970	Maidenhyde Farm	Bridge	General Inspection
BB0238	Cherrybrook Close Culvert	Bridge	Principal Inspection
BB0098	Hampton Court	Bridge	General Inspection
BB0424	Hampton Mill	Bridge	General Inspection
BB0892	Saffrons Cross Culvert	Bridge	Principal Inspection
BF7909	Kennels	Bridge	Principal Inspection
BB0103	Calderwell	Bridge	Principal Inspection
BB0893	Glebe Farm	Bridge	Principal Inspection
BB0100	Moor	Bridge	Principal Inspection
BB0652	Bodenham Culvert	Bridge	Principal Inspection
BB0102	Brockington	Bridge	Principal Inspection
BB0101	Bodenham Bridge	Bridge	Principal Inspection
BF7917	Bodenham	Bridge	Principal Inspection
BB0609	Broadward Flood Arch No.3	Bridge	Principal Inspection
BB0610	Brierley	Bridge	Principal Inspection

BB0608	Broadward Flood Arch No.2	Bridge	Principal Inspection
BB0060	Broadward Flood Arch	Bridge	Principal Inspection
BB0607	Broadward Flood Arch No.1	Bridge	General Inspection
BB0059	Broadward	Bridge	Principal Inspection
BB0565	Monkland Culvert	Bridge	Principal Inspection
BB0564	Stagbatch Culvert	Bridge	Principal Inspection
BB0090	Monkland	Bridge	Principal Inspection
BB0091	Owemer	Bridge	Principal Inspection
BB0485	Arrow Green Flood Arch	Bridge	General Inspection
BB0087	Arrow Green	Bridge	General Inspection
BB0088	Tollbar	Bridge	Principal Inspection
BB0089	Moorbrook	Bridge	Principal Inspection
BB0713	Moss Hill	Bridge	Principal Inspection
BB0016	Marsh Crossing	Bridge	Principal Inspection
BB0814	Newtown Culvert	Bridge	Principal Inspection
BB0235	Little Arrow	Bridge	Principal Inspection
BB0094	Honey Lake	Bridge	Principal Inspection
BB1055	Ivington Green	Bridge	General Inspection
BB0244	Ivington Court	Bridge	Principal Inspection
BB0478	Eardisland Mill	Bridge	General Inspection
BB0160	Brooch	Bridge	Principal Inspection
BB0208	Hergest	Bridge	General Inspection
BB0943	Haybridge	Bridge	General Inspection
BB0159	Tippets	Bridge	Principal Inspection
BB0692	Bidney	Bridge	General Inspection
BB0223	Dilwyn Underpass	Bridge	Principal Inspection
BB0155	Stretford	Bridge	Principal Inspection
BB0157	Venmore	Bridge	General Inspection
BB0153	Long	Bridge	Principal Inspection
BB0154	Knapton	Bridge	General Inspection
BB0163	Gadd	Bridge	Principal Inspection
BB0156	Full	Bridge	General Inspection
BB0531	Alton	Bridge	Principal Inspection
BB0162	Fields Place	Bridge	Principal Inspection
BB0158	Sollers Dilwyn	Bridge	Principal Inspection
BB0578	Kenwater	Bridge	Principal Inspection
BF7918	Priory (Kenwater)	Bridge	General Inspection
BB0591	New	Bridge	Principal Inspection
BB0061	Marsh	Bridge	Principal Inspection
BB0716	Cheese	Bridge	Principal Inspection
BB0081	Eyton	Bridge	Principal Inspection
BB0500	Aston Culvert	Bridge	General Inspection
BB0062	Luston	Bridge	Principal Inspection
BB0063	Eye	Bridge	Principal Inspection

BB0065	Ladymeadow	Bridge	Principal Inspection
BB0086	Waterlow	Bridge	Principal Inspection
BB0084	Brook End	Bridge	Principal Inspection
BB0083	Brook	Bridge	Principal Inspection
BB0082	Mortimers Cross	Bridge	General Inspection
BB0378	Allcocks	Bridge	General Inspection
BB0829	Leinthall Earles	Bridge	General Inspection
BB0373	Aymestrey bridge	Bridge	Principal Inspection
BB0668	Cobnash	Bridge	Principal Inspection
BB0371	Shobdon Culvert	Bridge	Principal Inspection
BB1016	Orleton Ford	Bridge	General Inspection
BB0066	Richards Castle	Bridge	Principal Inspection
BB0189	Yarpole Farm	Bridge	Principal Inspection
BB0837	Yarpole	Bridge	Principal Inspection
BB0276	Kings Meadow Culvert	Bridge	General Inspection
BB0277	Berry Lane Culvert	Bridge	Principal Inspection
BB0064	Eyeccote	Bridge	Principal Inspection
BB0596	Moreton (Saddled)	Bridge	Principal Inspection
BB0832	Comberton	Bridge	Principal Inspection
BB0390	Criftinford	Bridge	General Inspection
BB0700	Burrington Flood Arch	Bridge	General Inspection
BB0389	Burrington	Bridge	Principal Inspection
BB0827	The Willows	Bridge	Principal Inspection
BB0523	Criftinford Culvert	Bridge	Principal Inspection
BB0522	Watling Street Culvert	Bridge	General Inspection
BB0369	Leintwardine	Bridge	Principal Inspection
BB0403	Leintwardine Culvert	Bridge	General Inspection
BB0222	Pembridge	Bridge	General Inspection
BB0240	Leen Culvert	Bridge	Principal Inspection
BB0233	Noke Flood Arch	Bridge	Principal Inspection
BB0232	Noke	Bridge	Principal Inspection
BB0568	Noke Culvert No.2	Bridge	Principal Inspection
BB0231	Noke Culvert No.1	Bridge	Principal Inspection
BB0475	Holmcroft	Bridge	Principal Inspection
BB0236	Staunton Culvert	Bridge	Principal Inspection
BF7915	Gig	Bridge	Principal Inspection
BB0237	Staunton	Bridge	Principal Inspection
BB0412	Milton Culvert No.5	Bridge	Principal Inspection
BB0076	Pembridge Station	Bridge	General Inspection
BB0212	Headbrook Culvert	Bridge	Principal Inspection
BB0822	Luntley	Bridge	Principal Inspection
BB0146	Dairy House	Bridge	General Inspection
BB0860	Logaston	Bridge	General Inspection
BB0462	Almeley Culvert No.1	Bridge	General Inspection

BB0858	Almeley Station	Bridge	Principal Inspection
BB1080	Broxwood	Bridge	Principal Inspection
BB0821	Lower Green Culvert	Bridge	Principal Inspection
BB0820	Moor Court	Bridge	Principal Inspection
BB0221	Weston	Bridge	General Inspection
BB0220	Westonbury	Bridge	Principal Inspection
BB0819	Marston Culvert	Bridge	General Inspection
BB0229	Hunton Bridge	Bridge	General Inspection
BB0213	Curlbrook	Bridge	Principal Inspection
BB1114	Offa's Dyke	Bridge	Principal Inspection
BB0211	Headbrook (Saddled)	Bridge	General Inspection
BB0741	Cemetery	Bridge	Principal Inspection
BB0224	Bullocks Mill	Bridge	General Inspection
BB0225	Bullocks Mill Flood Arch	Bridge	General Inspection
BB1188	Mill (Bullocks Mill)	Bridge	General Inspection
BB0219	Rodd	Bridge	Principal Inspection
BB0532	Broadhurst	Bridge	General Inspection
BF7913	Nash	Bridge	General Inspection
BB0426	Kinsham	Bridge	Principal Inspection
BB0481	Kinsham Cross Culvert	Bridge	General Inspection
BB0511	Horseway Head	Bridge	General Inspection
BB0811	Lingen Castle	Bridge	General Inspection
BB0384	Birtley	Bridge	General Inspection
BB0393	Letton	Bridge	Principal Inspection
BB0385	Lingen	Bridge	General Inspection
BB0246	Combe	Bridge	General Inspection
BB0247	Combe Culvert	Bridge	General Inspection
BB0248	Hindwell Bridge	Bridge	General Inspection
BB0573	Ford Street Bridge	Bridge	Principal Inspection
BF7922	Limebrook	Bridge	Principal Inspection
BB0554	Limebrook	Bridge	General Inspection
BB0386	Lyepool	Bridge	General Inspection
BB0451	Oakley Mill	Bridge	General Inspection
BB0812	Ongar Street Culvert	Bridge	Principal Inspection
BB0377	Walford No.2	Bridge	Principal Inspection
BB0392	Lake	Bridge	General Inspection
BB0391	Buckton	Bridge	Principal Inspection
BB0533	Buckton Mill	Bridge	General Inspection
BB0388	Parsons Pole	Bridge	Principal Inspection
BB0397	Brandon	Bridge	Principal Inspection
BB0396	Brandon Culvert	Bridge	Principal Inspection
BB0693	Coxall	Bridge	General Inspection
BB0479	Red Lake	Bridge	Principal Inspection
BB0004	Lower Floodgates	Bridge	Principal Inspection

BB0210	Pentile	Bridge	General Inspection
BF7927	Broken Bank	Bridge	General Inspection
BF7928	Crooked Well	Bridge	Principal Inspection
BF7929	Back Brook Kington	Bridge	Principal Inspection
BB0214	Kington	Bridge	General Inspection
BB0215	Arrow Mill (Kington)	Bridge	General Inspection
BB0595	Hergest Flood Arch	Bridge	Principal Inspection
BB0594	Hergest Culvert	Bridge	General Inspection
BB0209	Mahollam	Bridge	General Inspection
BF7903	Mahollam Footbridge	Bridge	General Inspection
BF7933	Mahollam Farm	Bridge	General Inspection
BF7910	Forest Wood	Bridge	General Inspection
BF7908	Park Stile Mill	Bridge	Principal Inspection
BF7914	Burnt Hencoed	Bridge	General Inspection
BF7934	Knill Farm	Bridge	Principal Inspection
BF7931	Knill	Bridge	General Inspection
BF7935	Halls Mill No 2	Bridge	Principal Inspection
BB0852	Field Culvert	Bridge	Principal Inspection
BB0201	Bower	Bridge	Principal Inspection
BB0856	New House	Bridge	General Inspection
BB0206	Upcott	Bridge	Principal Inspection
BB0205	Gipsy Hall	Bridge	General Inspection
BB0217	Sunset	Bridge	Principal Inspection
BB0005	Waterloo	Bridge	Principal Inspection
BB0145	New	Bridge	Principal Inspection
BB0017	Moreton-On-Lugg Bridge	Bridge	Principal Inspection
BB1107	Marden Memorial	Bridge	General Inspection
BB0598	Station	Bridge	Principal Inspection
BB0597	Lower House	Bridge	General Inspection
BB0801	Ridgeway Canal	Bridge	Principal Inspection
BB0800	Fieldhouse Culvert	Bridge	Principal Inspection
BB0798	Marshfield Culvert	Bridge	Principal Inspection
BB0452	Sutton Marsh	Bridge	General Inspection
BB0013	Sutton Marsh Culvert	Bridge	Principal Inspection
BB0890	The Meadows	Bridge	Principal Inspection
BB0477	Preston Wynne	Bridge	General Inspection
BB0099	Cornett	Bridge	Principal Inspection
BB0271	Bullocks	Bridge	Principal Inspection
BB0662	Wergin's South Flood Arch No.6	Bridge	Principal Inspection
BB0015	Wergins	Bridge	Principal Inspection
BB0673	Wergin's Flood Arch No.5	Bridge	General Inspection
BB0672	Wergin's Flood Arch No.4	Bridge	General Inspection
BB0671	Wergin's Flood Arch No.3	Bridge	General Inspection
BB0670	Wergin's Flood Arch No.2	Bridge	General Inspection

BB0669	Wergin's Flood Arch No.1	Bridge	General Inspection
BB0014	Lea	Bridge	General Inspection
BB0804	Rhea	Bridge	General Inspection
BB0507	Stockbridge	Bridge	Principal Inspection
BB0574	Locks	Bridge	General Inspection
BB0521	Locks Canal	Bridge	General Inspection
BB0399	Jay	Bridge	Principal Inspection
BF7936	Clun	Bridge	Principal Inspection
BB0008	Bartestree	Bridge	Principal Inspection
BB0593	Convent	Bridge	Principal Inspection
BB0009	Bartestree Culvert	Bridge	General Inspection
BB0010	Lugwardine Bridge	Bridge	Principal Inspection
BB0011	Tupsley	Bridge	Principal Inspection
BB0486	Lugwardine Flats Flood Arch No.1	Bridge	Principal Inspection
BB0487	Lugwardine Flats Flood Arch No.2	Bridge	Principal Inspection
BB0488	Lugwardine Flats Flood Arch No.3	Bridge	Principal Inspection
BB0489	Lugwardine Flats Flood Arch No.4	Bridge	Principal Inspection
BB0490	Lugwardine Flats Flood Arch No.5	Bridge	Principal Inspection
BB0491	Lugwardine Flats Flood Arch No.6	Bridge	Principal Inspection
BB0492	Lugwardine Flood Arch	Bridge	Principal Inspection
BB0493	Lugwardine Flats Flood Arch No.7	Bridge	Principal Inspection
BB0494	Lugwardine Flats Flood Arch No.9	Bridge	Principal Inspection
BB0495	Lugwardine Flats Flood Arch No.10	Bridge	Principal Inspection
BB0496	Lugwardine Flats Flood Arch No.11	Bridge	Principal Inspection
BB0497	Lugwardine Flats Flood Arch No.12	Bridge	Principal Inspection
BB0413	Rowe Culvert	Bridge	General Inspection
BB1025	Miltons Cross Culvert No.6	Bridge	Principal Inspection
BF7907	Grove Farm	Bridge	Principal Inspection
BB1066	Stapleton Castle	Bridge	General Inspection
BB1150	Mortimers Cross Culvert	Bridge	Principal Inspection
BF7926	Shobdon Marsh	Bridge	Principal Inspection
BB0085	Lugg Green	Bridge	Principal Inspection
BB0548	Kingsland Mill	Bridge	Principal Inspection
BF7911	Mousenatch	Bridge	Principal Inspection
BB0824	The Kennels Culvert	Bridge	Principal Inspection
BP7901	Castle Downton	Bridge	Safety Inspection
BB0449	Englands Gate	Bridge	Principal Inspection
BB0031	Brockington Road	Bridge	Principal Inspection
BB0164	Stone	Bridge	Principal Inspection
BB1136	Wyson Culvert	Bridge	Principal Inspection
BB0078	Gosford	Bridge	Principal Inspection
BB0079	Brimfield	Bridge	General Inspection
BB0072	Little Hereford	Bridge	General Inspection
BF7916	Little Hereford	Bridge	Principal Inspection

BB0501	Westbrook	Bridge	Principal Inspection
BF7924	Westbrook	Bridge	Principal Inspection
BB0919	Upton	Bridge	Principal Inspection
BB1053	Wilden's Cotts	Bridge	General Inspection
BB0928	Rosedale	Bridge	General Inspection
BF7771	Cheaton Brook	Bridge	Principal Inspection
BB0542	Dunhampton	Bridge	Principal Inspection
BB0528	Whyle Mill	Bridge	Principal Inspection
BB0931	Norheaton	Bridge	General Inspection
BB0932	Stocktonbury	Bridge	Principal Inspection
BB0456	Stockton Ford	Bridge	General Inspection
BB0055	Stockton	Bridge	General Inspection
BB1187	Lower Kimbolton	Bridge	General Inspection
BB0457	Hawthorn	Bridge	Principal Inspection
BF7937	Main Ditch Kimbolton	Bridge	Principal Inspection
BB0476	Little Lugg	Bridge	Principal Inspection
BB0012	Lugg Mills	Bridge	Principal Inspection
BB0616	Lugg Mills Flood Arch No.1	Bridge	General Inspection
BB0617	Lugg Mills Flood Arch No.2	Bridge	General Inspection
BB0618	Lugg Mills Flood Arch No.3	Bridge	General Inspection
BB0555	Lugg Mills Flood Arch No.4	Bridge	General Inspection
BB0556	Lugg Mills Flood Arch No.5	Bridge	General Inspection
BB0557	Lugg Mills Flood Arch No.6	Bridge	General Inspection
BB0558	Lugg Mills Flood Arch No.7	Bridge	General Inspection
BB0619	Lugg Mills Flood Arch No.8	Bridge	General Inspection
BB0620	Lugg Mills Flood Arch No.9	Bridge	General Inspection
BB0559	Lugg Mills Flood Arch No.10	Bridge	General Inspection
BB0195	Old Canal Bridge	Bridge	General Inspection
BB0147	Swan Inn Culvert	Bridge	Principal Inspection
BF7871	Swan Inn	Bridge	General Inspection
BF7870	Walney Farm	Bridge	General Inspection
BB0166	Commercial Road Culvert	Bridge	Principal Inspection
BB0227	Canal Road Culvert	Bridge	General Inspection
BB0182	Widemarsh Brook Culvert	Bridge	Principal Inspection
BB0186	College Road Canal Bridge	Bridge	General Inspection
BF7868	College Rd Hfd	Bridge	Principal Inspection
BB0243	Millbrook Street	Bridge	General Inspection
BB0226	Plough Lane Culvert	Bridge	General Inspection
BB0817	Newtown	Bridge	General Inspection
BB0092	Crowmer	Bridge	Principal Inspection
BB0161	Eardisland	Bridge	Principal Inspection
BR5044	Berrington Railway	Bridge	Safety Inspection
BP 7925	Wheelbarrow Castle	Bridge	Safety Inspection
BP1254	Stoke Bridge	Bridge	Safety Inspection

BP1265	Cheaton Brook	Bridge	Safety Inspection
BP1268	Prospect Cottage	Bridge	Safety Inspection
BP1272	Church F/Br	Bridge	Safety Inspection
BP1273	Yatton Court Est	Bridge	Safety Inspection
BR1276	Fencote Abbey (Safety Inspection Only)	Bridge	Safety Inspection
BP1278	Pye Coppice	Bridge	Safety Inspection
BP1312	Swiss Cottage Culvert	Bridge	Safety Inspection
BP 5125	Merton Meadow Car Park	Bridge	Safety Inspection
BP5066	Whitney Toll	Bridge	Safety Inspection
BP7938	Eaton Hall	Bridge	Safety Inspection
BP7940	Wicton Farm Disused Railway	Bridge	Safety Inspection
BR3608	Shelwick Green Railway	Bridge	Safety Inspection
BR3614	Shelwick Railway	Bridge	Safety Inspection
BR5003	Shucknall Hill, Bridge House	Bridge	Safety Inspection
BR5017	Beggard Railway (culvert)	Bridge	Safety Inspection
BR3607	Yearsett Railway	Bridge	Safety Inspection
BR3613	Hope Under Dinmore Railway	Bridge	Safety Inspection
BR5039	Hunton Railway	Bridge	Safety Inspection
BB0228	Lower Harpton	Bridge	Safety Inspection
BB5051	Bromyard Station Railway (also BR5051)	Bridge	Principal Inspection
BB0387	Deerfold (or Darlings)	Bridge	Principal Inspection
BB1321	Lugwardine North Flood Arch No.2	Bridge	Principal Inspection
BB1320	Lugwardine North Flood Arch No.1	Bridge	Principal Inspection
BB0216	Floodgates	Bridge	Principal Inspection
BR5052	Bromyard	Bridge	Safety Inspection
BR5063	College Rd Railway	Bridge	Safety Inspection
BB0185	Bredwardine	Bridge	Principal Inspection
BB2713	Manor House	Bridge	Safety Inspection
BB2825	High Bridge	Bridge	Safety Inspection
BF7869	Old School Lane	Bridge	Principal Inspection
BB0168	Newmarket Street Subway (FILLED IN 2013)	Bridge	Safety Inspection
BB2037	Sapey, Gaines	Bridge	Principal Inspection
BB0339	Limebrook Irish Bridge	Bridge	Principal Inspection
BB0113	Eign Street Subway	Bridge	Principal Inspection
BB0204	Watts	Bridge	Principal Inspection
BB0249	Lugg	Bridge	Safety Inspection
BB2722	Batchelors	Bridge	Safety Inspection
BR3603	Oak (Railway)	Bridge	Safety Inspection
BP5081	Floodgates Railway Kington	Bridge	Safety Inspection
BR5076	Dinmore Station Railway	Bridge	Safety Inspection
BR5062	Bridge Inn Road Railway	Bridge	Safety Inspection
BR5061	Old School Lane Railway	Bridge	Safety Inspection
BR5060	Commercial Road Railway	Bridge	Safety Inspection
BR5054	Humber Brook	Bridge	Safety Inspection

BR5053	Burley Railway	Bridge	Safety Inspection
BR5050	Bredembury Railway	Bridge	Safety Inspection
BR5049	Fencote Railway	Bridge	Safety Inspection
BR5048	Docklow Railway	Bridge	Safety Inspection
BR5046	Wooferton Railway (not in Hereford)	Bridge	Safety Inspection
BR5045	Orleton Railway(Wooferton, Tunnel Lane)	Bridge	Safety Inspection
BR5043	Leominster Railway	Bridge	Safety Inspection
BR5041	Burcott Railway	Bridge	Safety Inspection
BR5040	Horseway Head Railway	Bridge	Safety Inspection
BR5080	Sunset Kington	Bridge	Safety Inspection
BR5001	Eau-Withington Railway	Bridge	Safety Inspection
BB2003	Cadmore	Bridge	Safety Inspection
BB2010	Collington (Moiety) Worcs Bridge	Bridge	Safety Inspection
BR5002	Withington Station Railway	Bridge	Safety Inspection
BB0434	Kinsham Culvert	Bridge	Safety Inspection
BB1020	Lugg Green Flood Arch No.1 (Filled in)	Bridge	Safety Inspection
BB1021	Lugg Green Flood Arch No.2 (filled in)	Bridge	Safety Inspection
BB0842	Lugg Green Culvert (filled in)	Bridge	Safety Inspection
BB0674	Wergin's Flood Arch No.7 (Filled in)	Bridge	Safety Inspection
BP7777	Sutton Rhea (BCI NOT Required, Occasional Inspection)	Bridge	Safety Inspection
BB0311	Stretton Grandison	Bridge	Safety Inspection
BF7664	Butterley Cottage	Bridge	Safety Inspection
BB0474	Eaton Culvert (Filled in)	Bridge	Safety Inspection
BR5070	Malvern Tunnel B	Bridge	Safety Inspection
BR3627	Burcott Road Railway	Bridge	Safety Inspection
BP1074	Russian Cottage	Bridge	Safety Inspection
BP1074	Russian Cottage	Bridge	Safety Inspection
BP1074	Russian Cottage	Bridge	Safety Inspection
BB0009	Bartestree Culvert	Bridge	Safety Inspection
BB0009	Bartestree Culvert	Bridge	Safety Inspection
BB0009	Bartestree Culvert	Bridge	Safety Inspection
BB0691	Old Furnace	Bridge	Safety Inspection
BB0691	Old Furnace	Bridge	Safety Inspection
BB0691	Old Furnace	Bridge	Safety Inspection
BB0186	College Road Canal Bridge	Bridge	Safety Inspection
BB0186	College Road Canal Bridge	Bridge	Safety Inspection
BB0529	Homend	Bridge	Safety Inspection
BB1094	Biddulph Arms No.2	Bridge	Safety Inspection
BB5068	Hunderton River Bridge	Bridge	Safety Inspection
BB0286	Canon Frome	Bridge	Safety Inspection

APPENDIX C: BUDGET BREAKDOWNS DETAILED ABOVE IN THE SERVICE DELIVERY TABLE

Site	Estimated Cost	Notes
Saracens Head walkway	£145,000	Construction of cantilever Walkway/cycleway
Hampton Court Bridge	£25,000	Design of stone parapet replacement scheme
Mordiford Bridge Flood Arch 2+3	£275,000	Construction works to new upstream parapet and spandrel walls.
Parsons Pole Bridge	£458,000	Bridge deck replacement scheme
Southern Avenue Railway Bridge	£20,000	Rail Possession for Inspection
Stone Bridge	£18,000	Strengthening Design
Bredwardine Bridge	£4,000	Movement monitoring survey
Vowchurch	£25,000	Rockarmour construction
Total	£970,000	

APPENDIX D – LIST OF NOMINATED SUBCONTRACTORS

WSP – Design Consultant

GW Marine – Structures diving inspections and maintenance

Schemes would be delivered by sub-contractor once they have been out too tender and awarded through the Balfour Beatty procurement tender system Jaggaer