

# Appendix C - Bridge Crossing Drawings

7 July 2023

# Contents

Page 1 - Highway alignment Option 3 structures general arrangement Sheet 01 of 03. Shows the overall plan and elevation, and the elevation of the viaduct.

Page 2 - Highway alignment Option 3 structures general arrangement Sheet 02 of 03. Shows the elevation of the viaduct and section A – a typical long section at abutment (west).

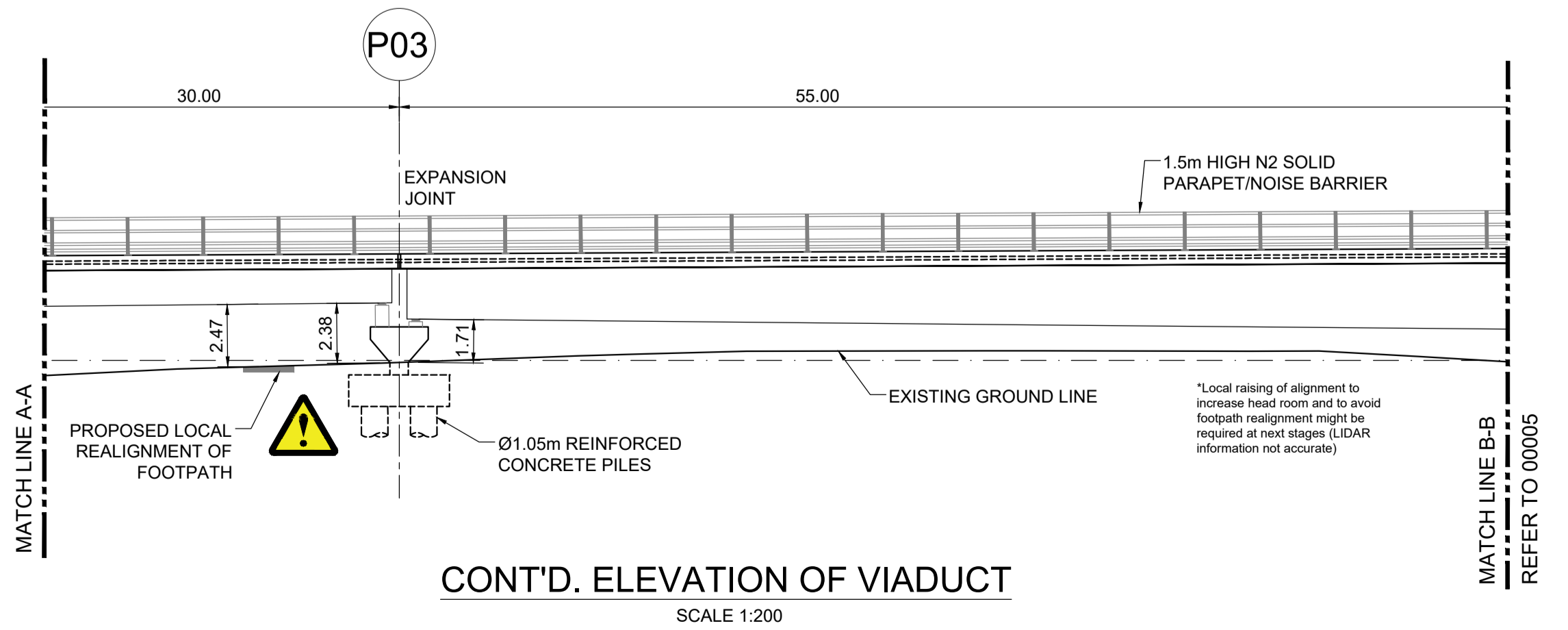
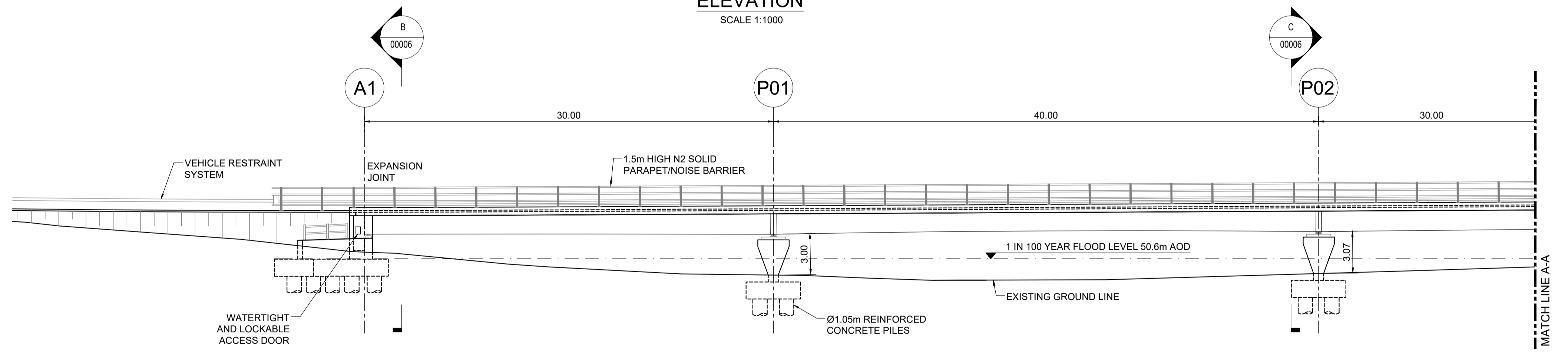
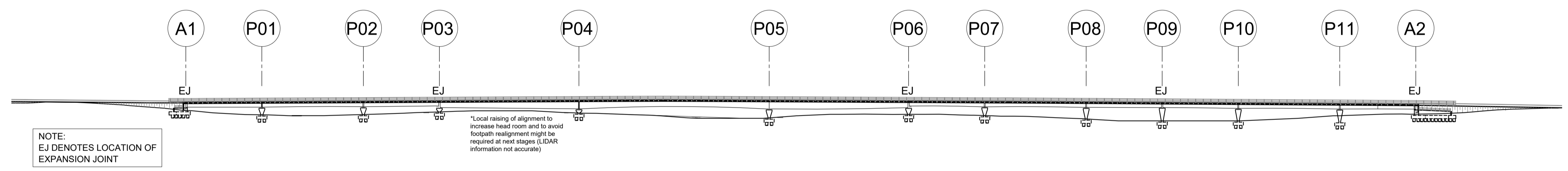
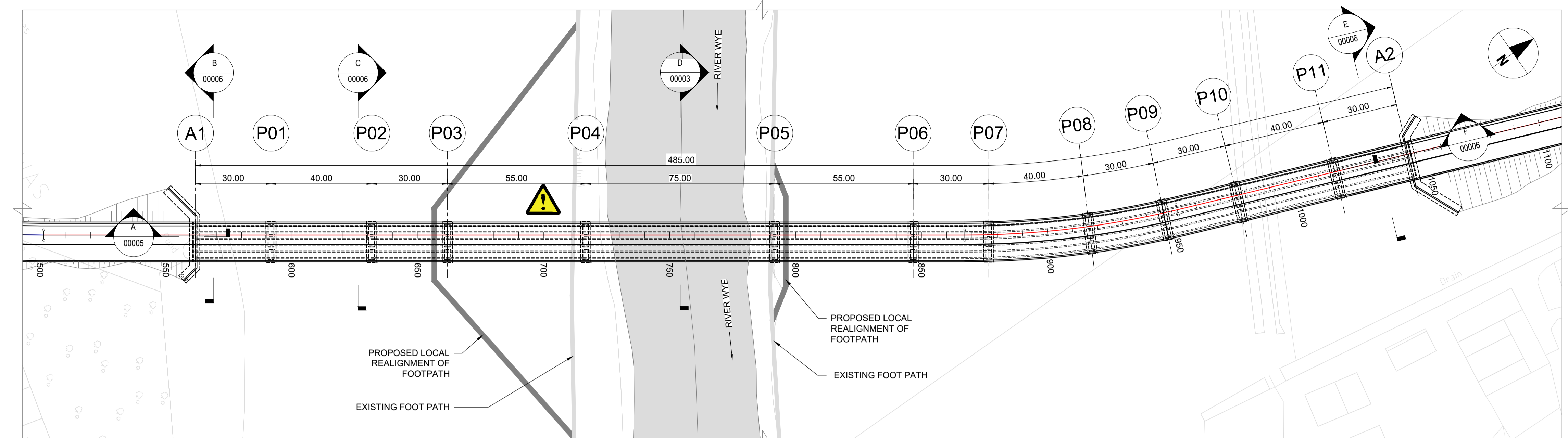
Page 3 - Highway alignment Option 3 structures general arrangement Sheet 03 of 03. Shows section B – abutment cross-section (west), section C – typical pier cross-section, section D – typical deck cross-section, section E – abutment cross-section (east), and section F – typical long section at abutment (east).

Page 4 - Highway alignment Option 1 structures general arrangement Sheet 01 of 03. Shows the overall plan and elevation, the elevation of the culvert, and the elevation of the viaduct.

Page 5 - Highway alignment Option 1 structures general arrangement Sheet 02 of 03. Shows the elevation of the viaduct, section A – a typical long section at abutment (west), and section B abutment cross section (west).

Page 6 - Highway alignment Option 1 structures general arrangement Sheet 03 of 03. Shows section C – typical pier cross-section, section D – typical deck cross-section, section E – abutment cross-section (east), and section F – typical long section at abutment (east).

If you are a user of assistive technology and would like this document in an alternative format please contact us at [editor@herefordshire.gov.uk](mailto:editor@herefordshire.gov.uk)



SAFETY, HEALTH & ENVIRONMENT (S.H.E) INFORMATION BOX

SAFETY AND HEALTH ISSUES  
 SPECIFIC RESIDUAL HAZARDS HAVE BEEN IDENTIFIED ON THE DRAWING WITH THE FOLLOWING SYMBOLS:

KEY: WORKING IN A FLOOD PLAIN

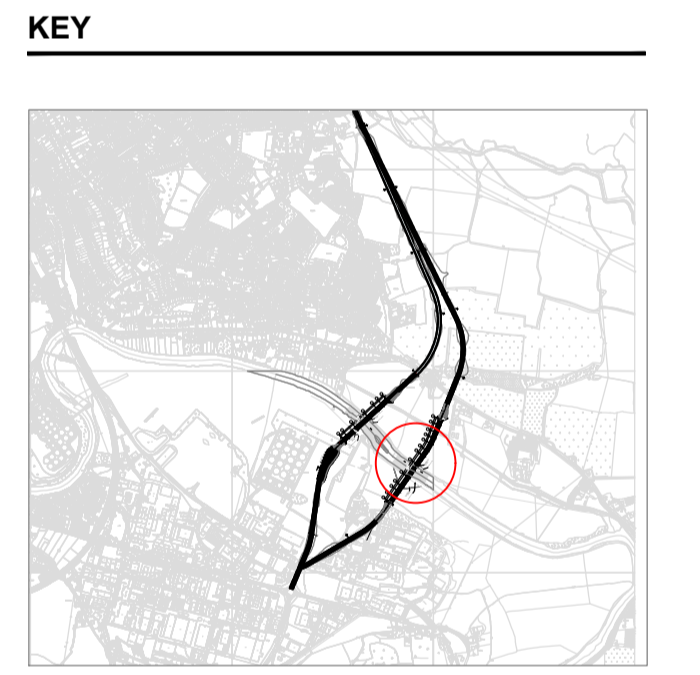


PROJECT  
**Hereford Eastern River Crossing**

CLIENT  
**Herefordshire Council**

CONSULTANT  
 AECOM  
 Royal Court  
 Colmore Circus Queensway  
 Birmingham  
 T: +44 (0) 1212621900  
 www.aecom.com

- NOTES
- ALL DIMENSIONS ARE IN METRES UNLESS OTHERWISE STATED.
  - DO NOT SCALE FROM THIS DRAWING.
  - LENGTHS OF BRIDGE AND VIADUCTS ARE APPROXIMATE AND REQUIRE FURTHER GEOMETRIC DESIGN TO BE UNDERTAKEN TO CONFIRM LENGTHS.
  - 1 IN 100 YEAR FLOOD LEVEL INCLUDES +70% CLIMATE CHANGE.
  - FOR FINISHED ROAD LEVELS AND CHAINAGES REFER TO THE HIGHWAYS SERIES DRAWINGS.



ISSUE/REVISION

I/R	DATE	DESCRIPTION
P01	07/07/2023	FOR COMMENT

ISSUE PURPOSE / SUITABILITY  
 INITIAL STATUS OR WIP

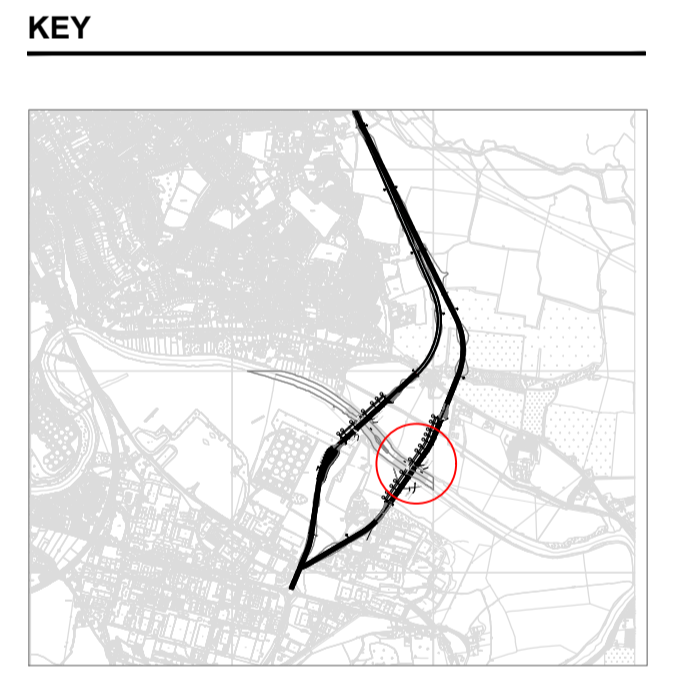
**NOT FOR CONSTRUCTION**

PROJECT NUMBER  
 60695983

SHEET TITLE  
 HIGHWAY ALIGNMENT OPTION 3  
 STRUCTURES GENERAL ARRANGEMENT  
 SHEET 01 OF 03

SHEET NUMBER  
 60695983-ACM-GEN-HC-DR-TR-00004

- NOTES**
- ALL DIMENSIONS ARE IN METRES UNLESS OTHERWISE STATED.
  - DO NOT SCALE FROM THIS DRAWING.
  - LENGTHS OF BRIDGE AND VIADUCTS ARE APPROXIMATE AND REQUIRE FURTHER GEOMETRIC DESIGN TO BE UNDERTAKEN TO CONFIRM LENGTHS.
  - 1 IN 100 YEAR FLOOD LEVEL INCLUDES +70% CLIMATE CHANGE.
  - FOR FINISHED ROAD LEVELS AND CHAINAGES REFER TO THE HIGHWAYS SERIES DRAWINGS.



**ISSUE/REVISION**

I/R	DATE	DESCRIPTION
P01	07/07/2023	FOR COMMENT

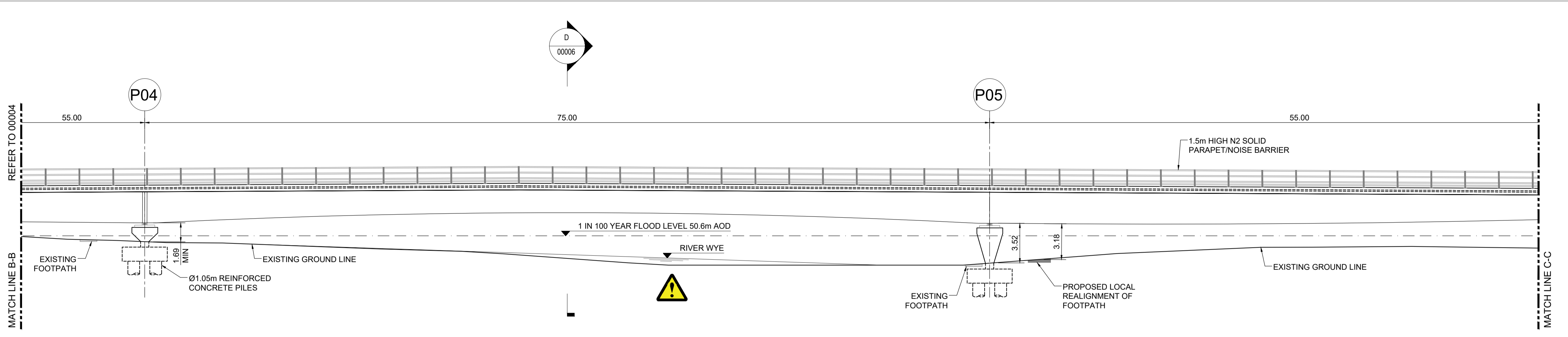
**ISSUE PURPOSE / SUITABILITY**  
 INITIAL STATUS OR WIP

**NOT FOR CONSTRUCTION**

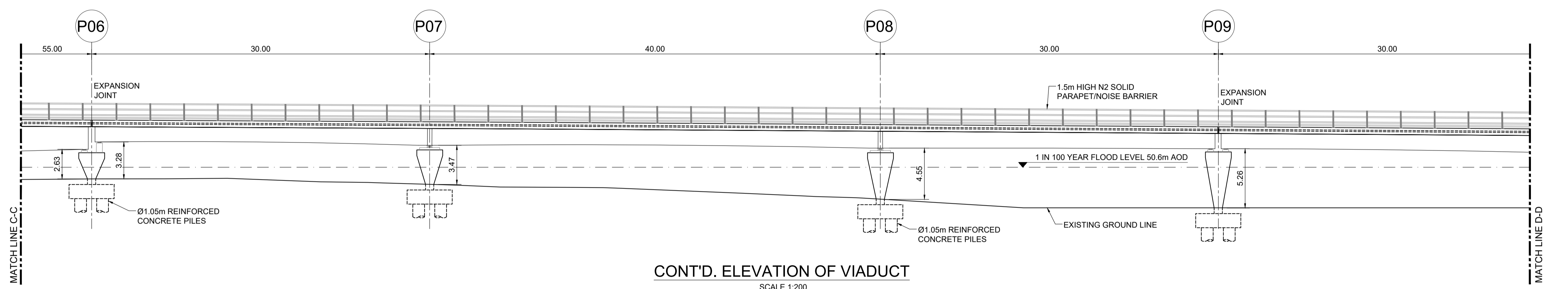
**PROJECT NUMBER**  
 60695983

**SHEET TITLE**  
 HIGHWAY ALIGNMENT OPTION 3  
 STRUCTURES GENERAL ARRANGEMENT  
 SHEET 02 OF 03

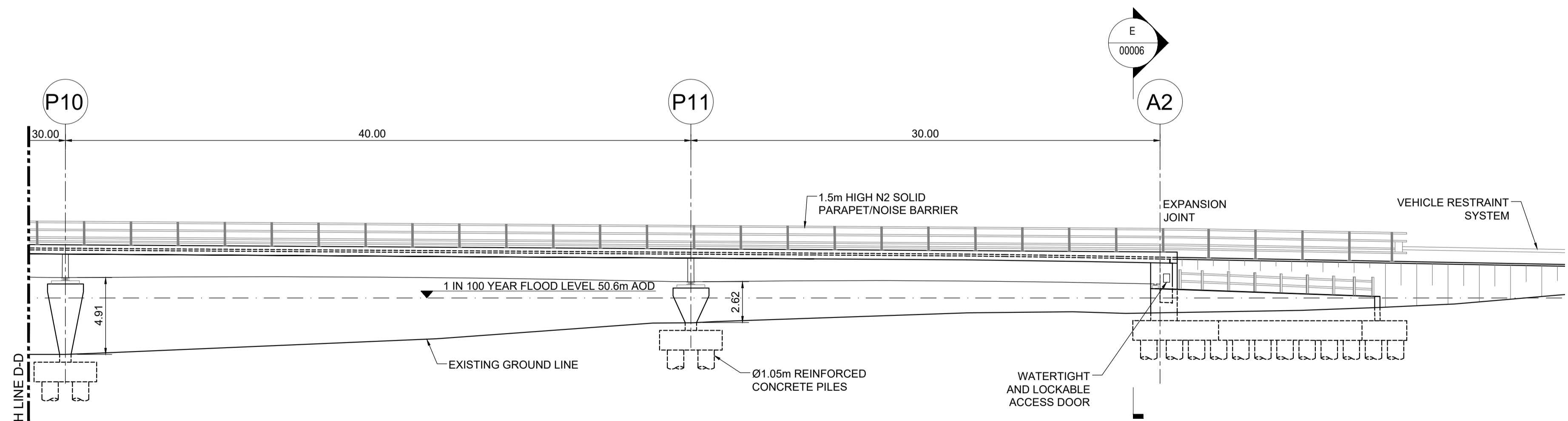
**SHEET NUMBER**  
 60695983-ACM-GEN-HC-DR-TR-00005



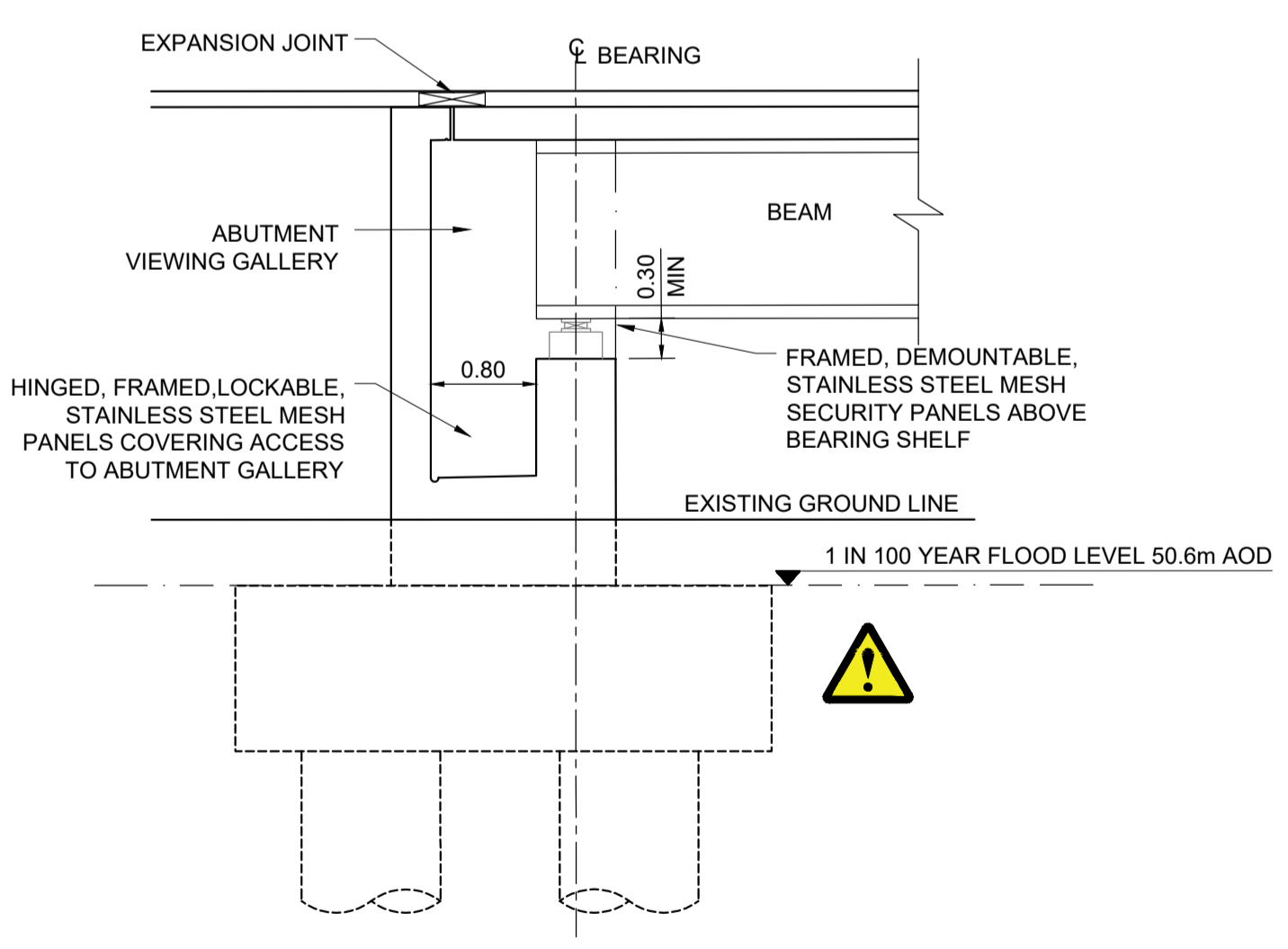
**CONT'D. ELEVATION OF VIADUCT**  
 SCALE 1:200



**CONT'D. ELEVATION OF VIADUCT**  
 SCALE 1:200



**CONT'D. ELEVATION OF VIADUCT**  
 SCALE 1:200



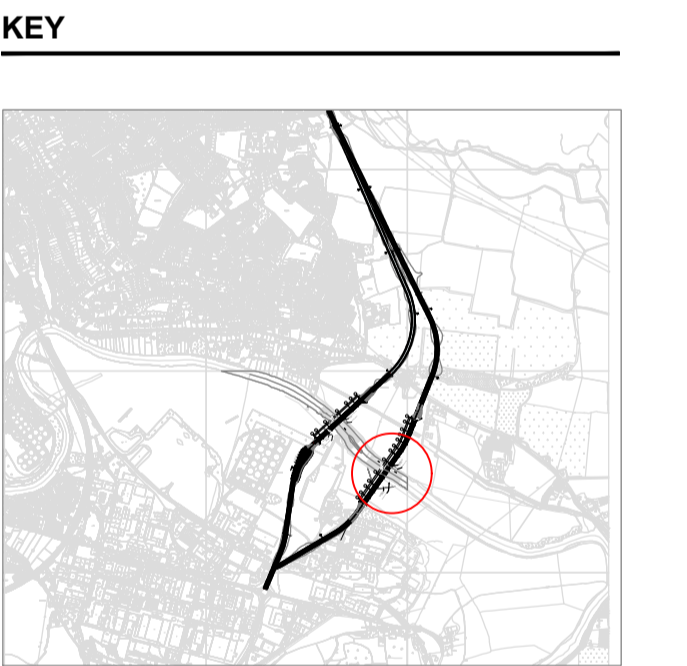
**SECTION-A**  
 SCALE 1:50

**SAFETY, HEALTH & ENVIRONMENT (S.H.E) INFORMATION BOX**

**SAFETY AND HEALTH ISSUES**  
 SPECIFIC RESIDUAL HAZARDS HAVE BEEN IDENTIFIED ON THE DRAWING WITH THE FOLLOWING SYMBOLS:

KEY	DETAILS
	WORKING IN A FLOOD PLAIN

- NOTES**
- ALL DIMENSIONS ARE IN METRES UNLESS OTHERWISE STATED.
  - DO NOT SCALE FROM THIS DRAWING.
  - LENGTHS OF BRIDGE AND VIADUCTS ARE APPROXIMATE AND REQUIRE FURTHER GEOMETRIC DESIGN TO BE UNDERTAKEN TO CONFIRM LENGTHS.
  - 1 IN 100 YEAR FLOOD LEVEL INCLUDES +70% CLIMATE CHANGE.
  - FOR FINISHED ROAD LEVELS AND CHAINAGES REFER TO THE HIGHWAYS SERIES DRAWINGS.



**ISSUE/REVISION**

NO.	DATE	DESCRIPTION
P01	07/07/2023	FOR COMMENT

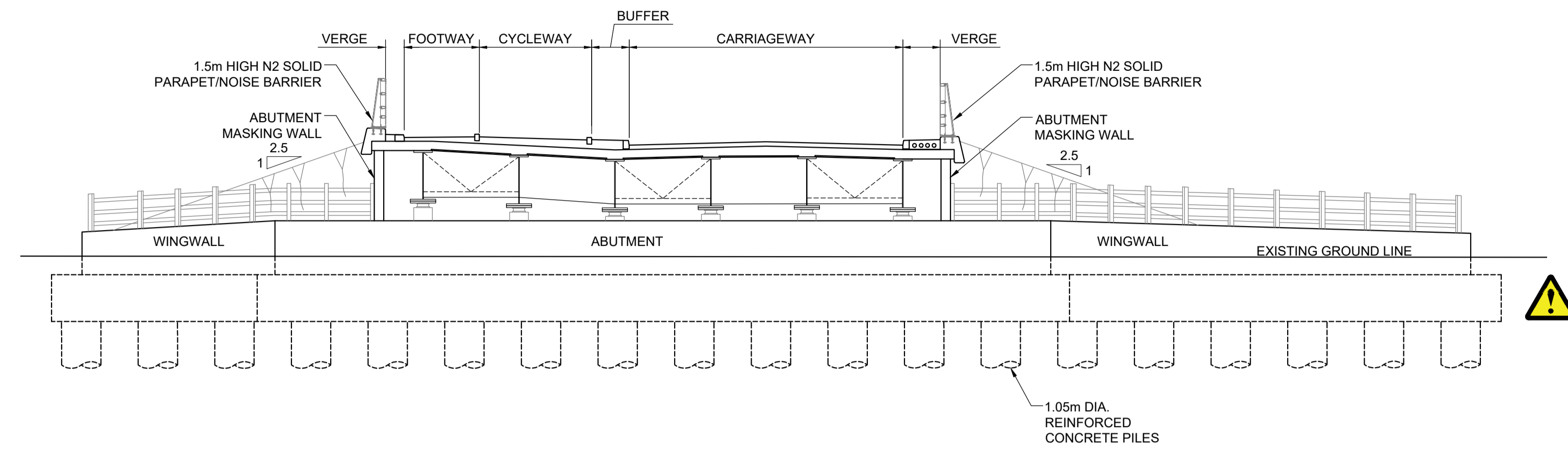
**ISSUE PURPOSE / SUITABILITY**  
INITIAL STATUS OR WIP

**NOT FOR CONSTRUCTION**

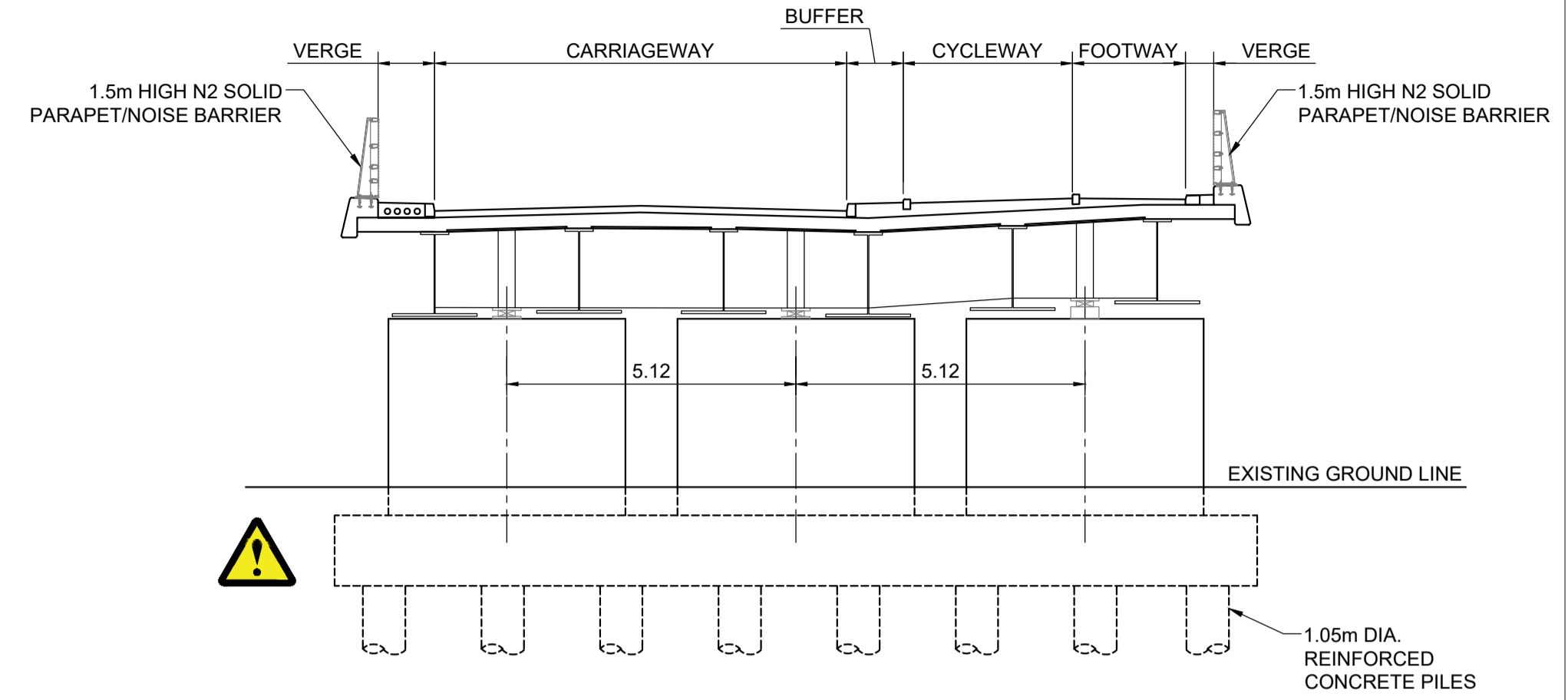
**PROJECT NUMBER**  
60695983

**SHEET TITLE**  
HIGHWAY ALIGNMENT OPTION 3  
STRUCTURES GENERAL ARRANGEMENT  
SHEET 03 OF 03

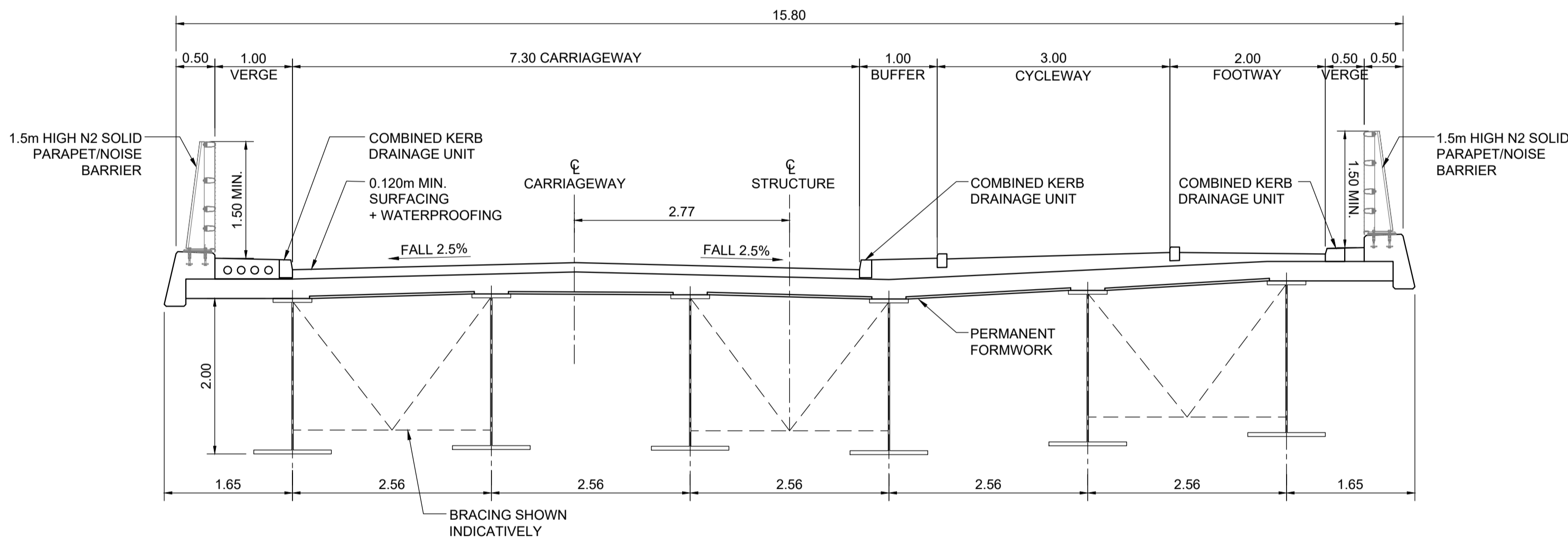
**SHEET NUMBER**  
60695983-ACM-GEN-HC-DR-TR-00006



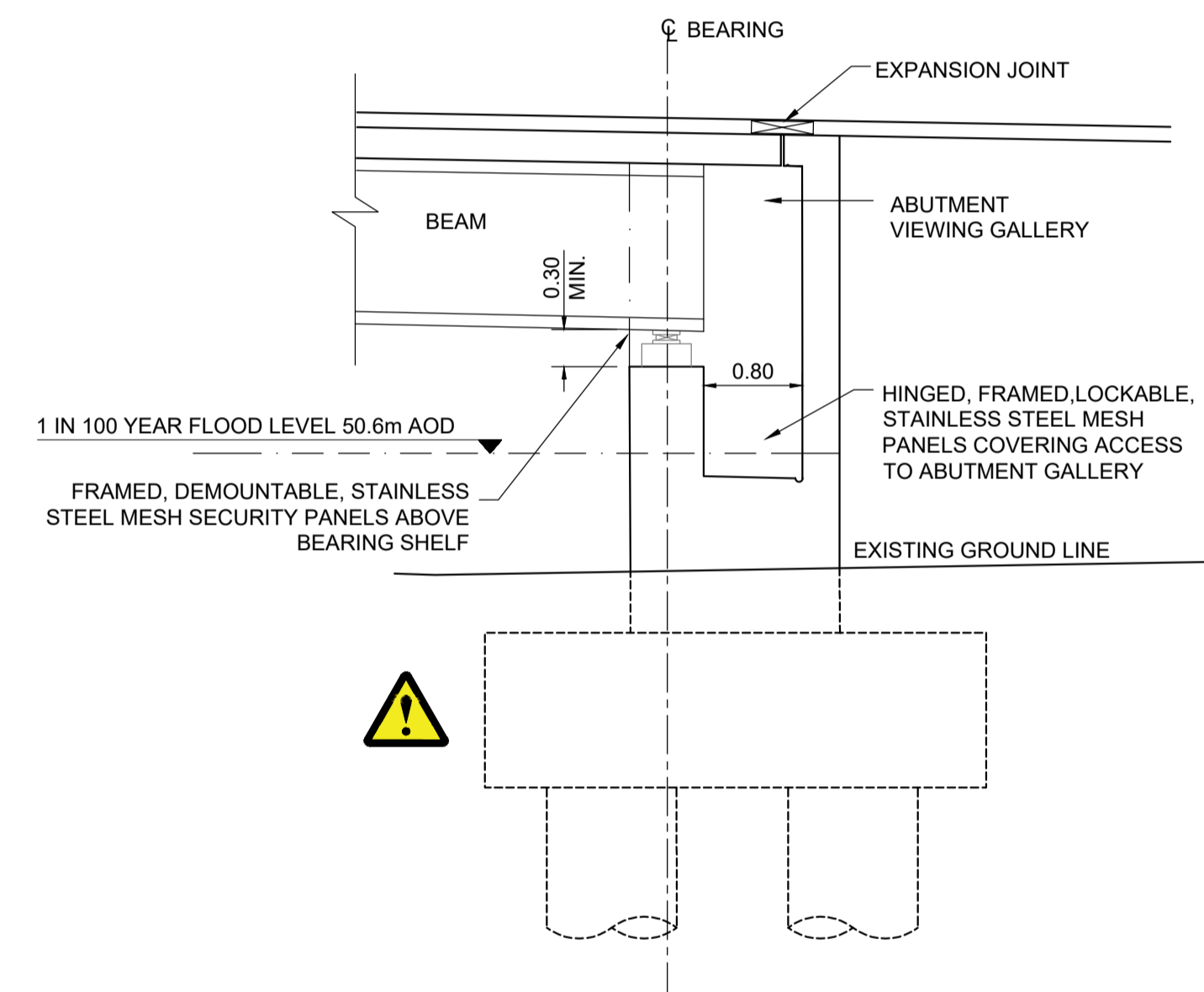
**SECTION-B**  
SCALE 1:100



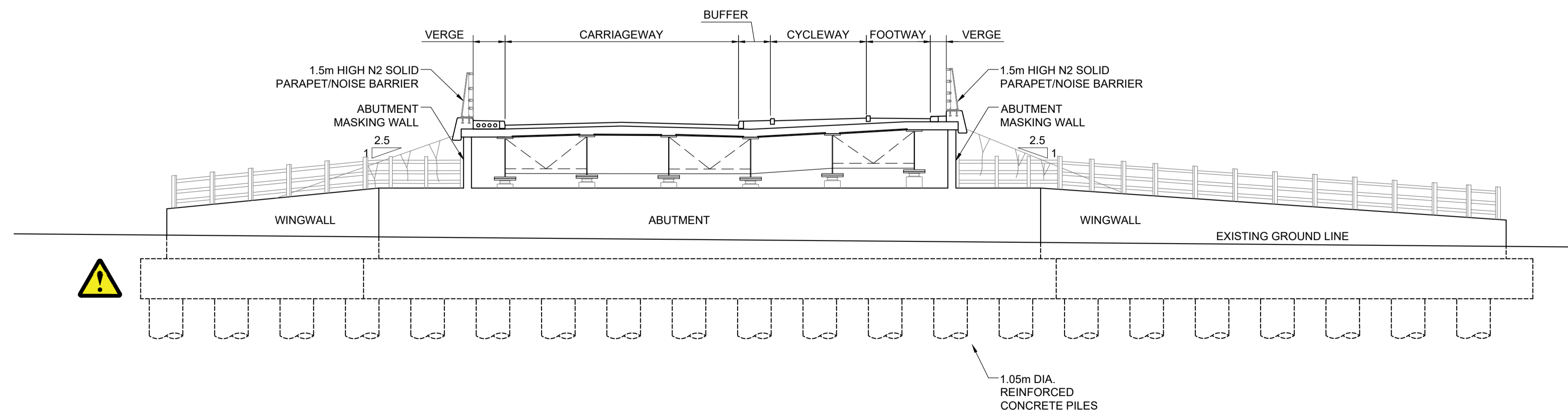
**SECTION-C**  
SCALE 1:100



**SECTION-D**  
SCALE 1:50



**SECTION-F**  
SCALE 1:50

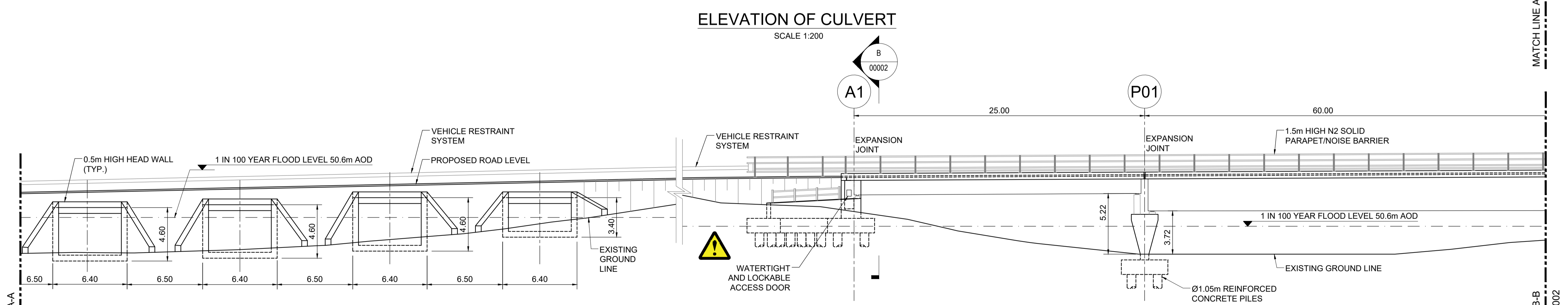
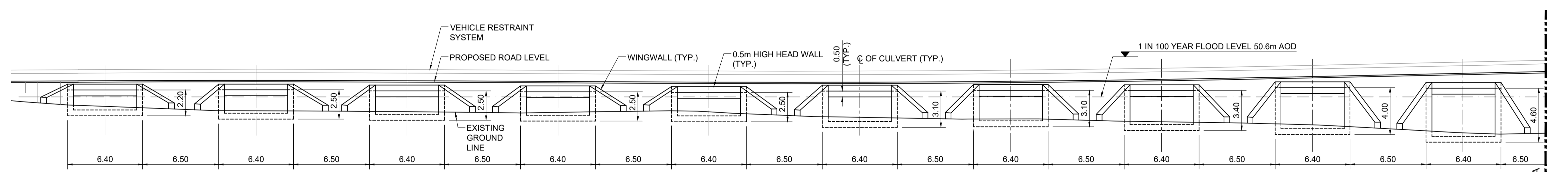
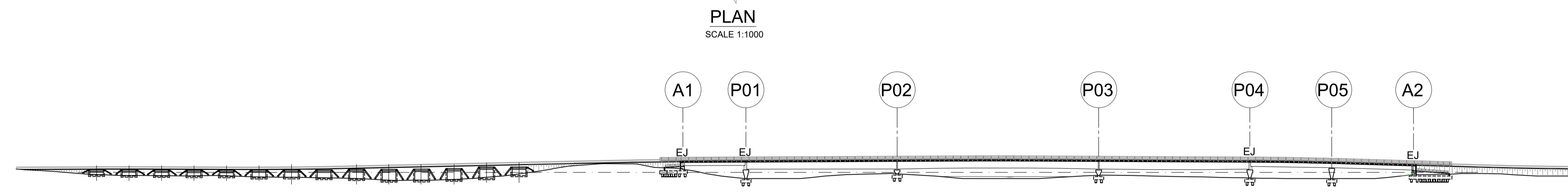
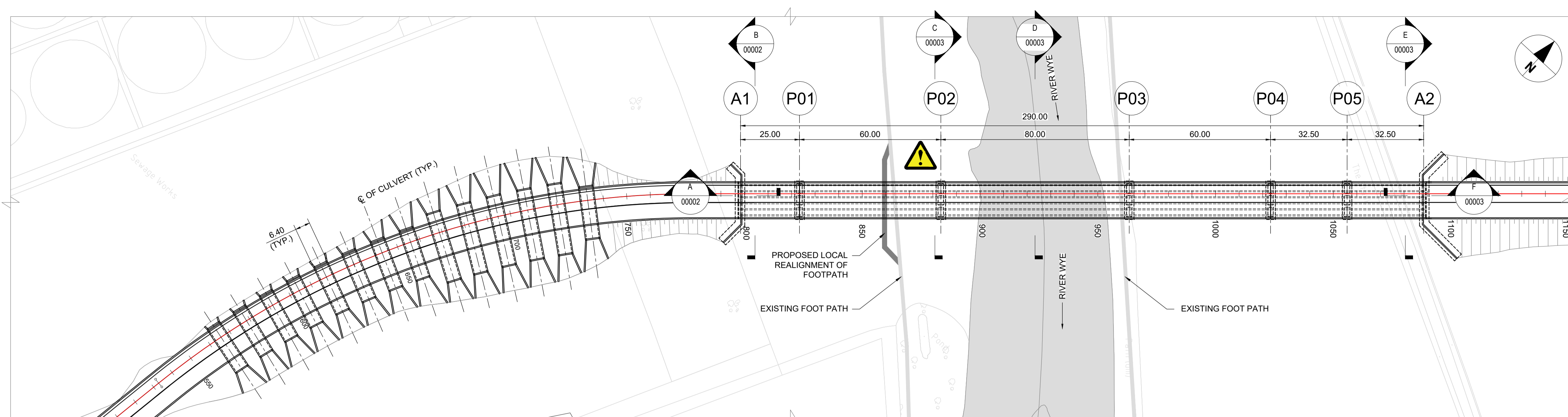


**SECTION-E**  
SCALE 1:100

SAFETY, HEALTH & ENVIRONMENT (S.H.E) INFORMATION BOX	
SAFETY AND HEALTH ISSUES SPECIFIC RESIDUAL HAZARDS HAVE BEEN IDENTIFIED ON THE DRAWING WITH THE FOLLOWING SYMBOLS:	
KEY	DETAILS
	WORKING IN A FLOOD PLAIN

ISO A1 594mm x 841mm  
 Drawn: GK  
 Approved: DA  
 Checked: AM  
 Designer: MK  
 Revision: P01

C:\Users\kai\OneDrive\Desktop\PROJECT\Hereford\WP\06072023\60695983-ACM-GEN-HC-DR-TR-00001 TO 00003



SAFETY, HEALTH & ENVIRONMENT (S.H.E) INFORMATION BOX

SAFETY AND HEALTH ISSUES  
 SPECIFIC RESIDUAL HAZARDS HAVE BEEN IDENTIFIED ON THE DRAWING WITH THE FOLLOWING SYMBOLS:

KEY: DETAILS

WORKING IN A FLOOD PLAIN

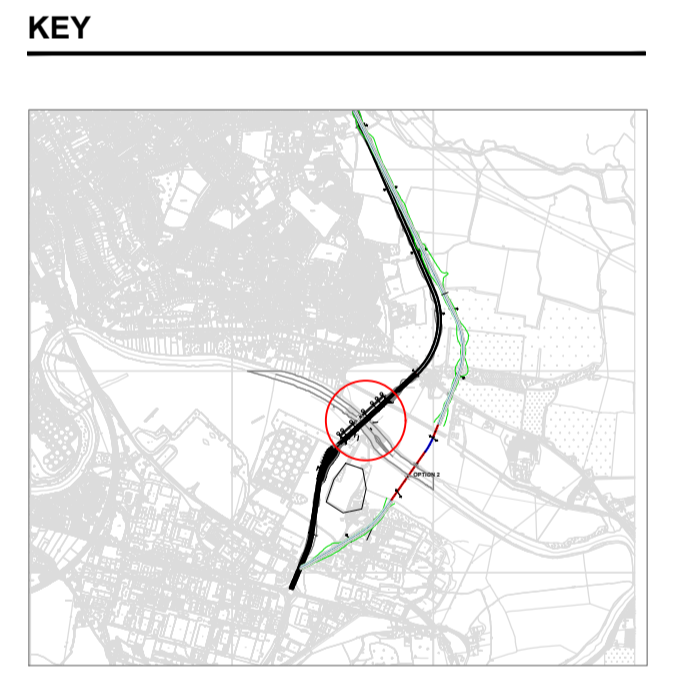


PROJECT  
**Hereford Eastern River Crossing**

CLIENT  
**Herefordshire Council**

CONSULTANT  
 AECOM  
 Royal Court  
 Colmore Circus Queensway  
 Birmingham  
 T: +44 (0) 1212621900  
 www.aecom.com

- NOTES
- ALL DIMENSIONS ARE IN METRES UNLESS OTHERWISE STATED.
  - DO NOT SCALE FROM THIS DRAWING.
  - LENGTHS OF BRIDGE AND VIADUCTS ARE APPROXIMATE AND REQUIRE FURTHER GEOMETRIC DESIGN TO BE UNDERTAKEN TO CONFIRM LENGTHS.
  - 1 IN 100 YEAR FLOOD LEVEL INCLUDES +70% CLIMATE CHANGE.
  - FOR FINISHED ROAD LEVELS AND CHAINAGES REFER TO THE HIGHWAYS SERIES DRAWINGS.



ISSUE/REVISION

NO	DATE	DESCRIPTION
P01	07/07/2023	FOR COMMENT
I/R		

ISSUE PURPOSE / SUITABILITY  
 INITIAL STATUS OR WIP

**NOT FOR CONSTRUCTION**

PROJECT NUMBER  
 60695983

SHEET TITLE  
 HIGHWAY ALIGNMENT OPTION 1  
 STRUCTURES GENERAL ARRANGEMENT  
 SHEET 01 OF 03

SHEET NUMBER  
 60695983-ACM-GEN-HC-DR-TR-00001

ISO A1 594mm x 841mm  
 Drawn: GK  
 Approved: DA  
 Checked: AM  
 Designer: MK  
 Project Management Initials: P01  
 Revision:  
 C:\Users\kai\OneDrive\Desktop\PROJECT\Hereford\WP\06072023\60695983-ACM-GEN-HC-DR-TR-00001 TO 00003

**CONSULTANT**

AECOM  
 Royal Court  
 Colmore Circus Queensway  
 Birmingham  
 T: +44 (0) 121 262 1900  
 www.aecom.com

**NOTES**

- ALL DIMENSIONS ARE IN METRES UNLESS OTHERWISE STATED.
- DO NOT SCALE FROM THIS DRAWING.
- LENGTHS OF BRIDGE AND VIADUCTS ARE APPROXIMATE AND REQUIRE FURTHER GEOMETRIC DESIGN TO BE UNDERTAKEN TO CONFIRM LENGTHS.
- 1 IN 100 YEAR FLOOD LEVEL INCLUDES +70% CLIMATE CHANGE.
- FOR FINISHED ROAD LEVELS AND CHAINAGES REFER TO THE HIGHWAYS SERIES DRAWINGS.

**KEY**



**ISSUE/REVISION**

I/R	DATE	DESCRIPTION
P01	07/07/2023	FOR COMMENT

**ISSUE PURPOSE / SUITABILITY**

INITIAL STATUS OR WIP

NOT FOR  
 CONSTRUCTION

**PROJECT NUMBER**

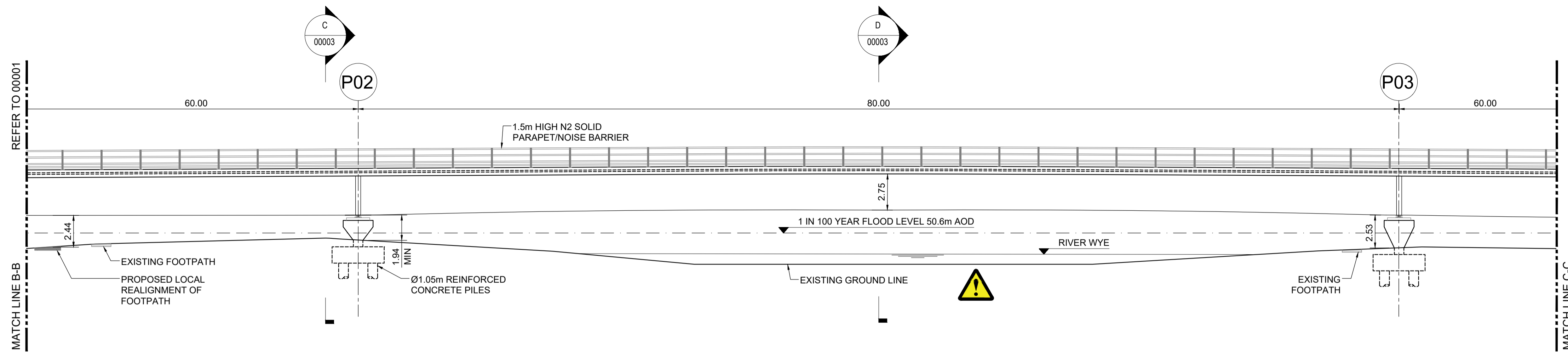
60695983

**SHEET TITLE**

HIGHWAY ALIGNMENT OPTION 1  
 STRUCTURES GENERAL ARRANGEMENT  
 SHEET 02 OF 03

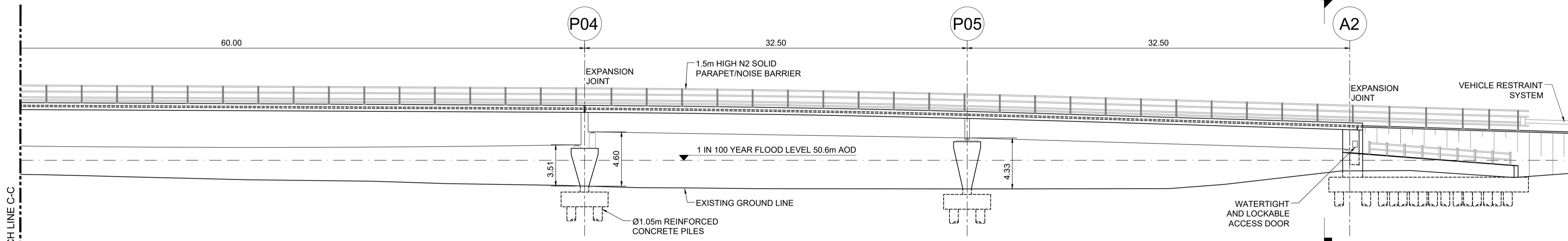
**SHEET NUMBER**

60695983-ACM-GEN-HC-DR-TR-00002



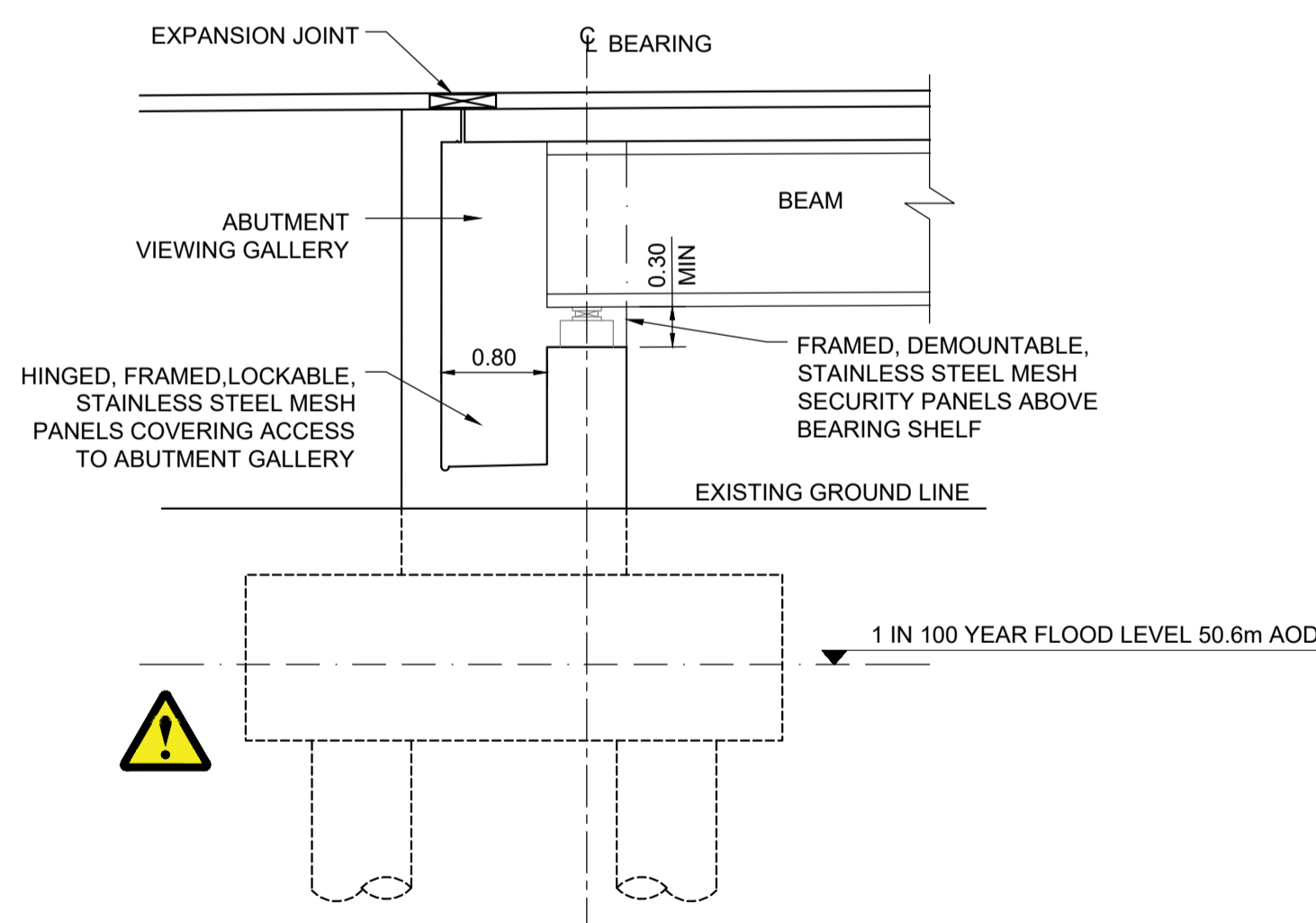
**CONT'D. ELEVATION OF VIADUCT**

SCALE 1:200



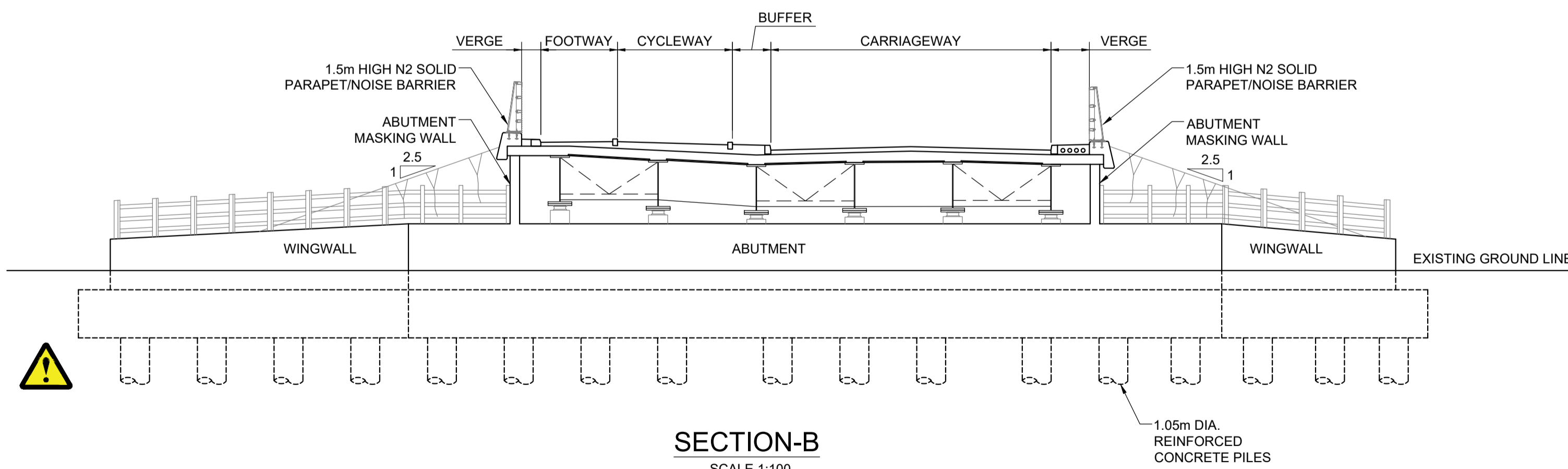
**CONT'D. ELEVATION OF VIADUCT**

SCALE 1:200



**SECTION-A**

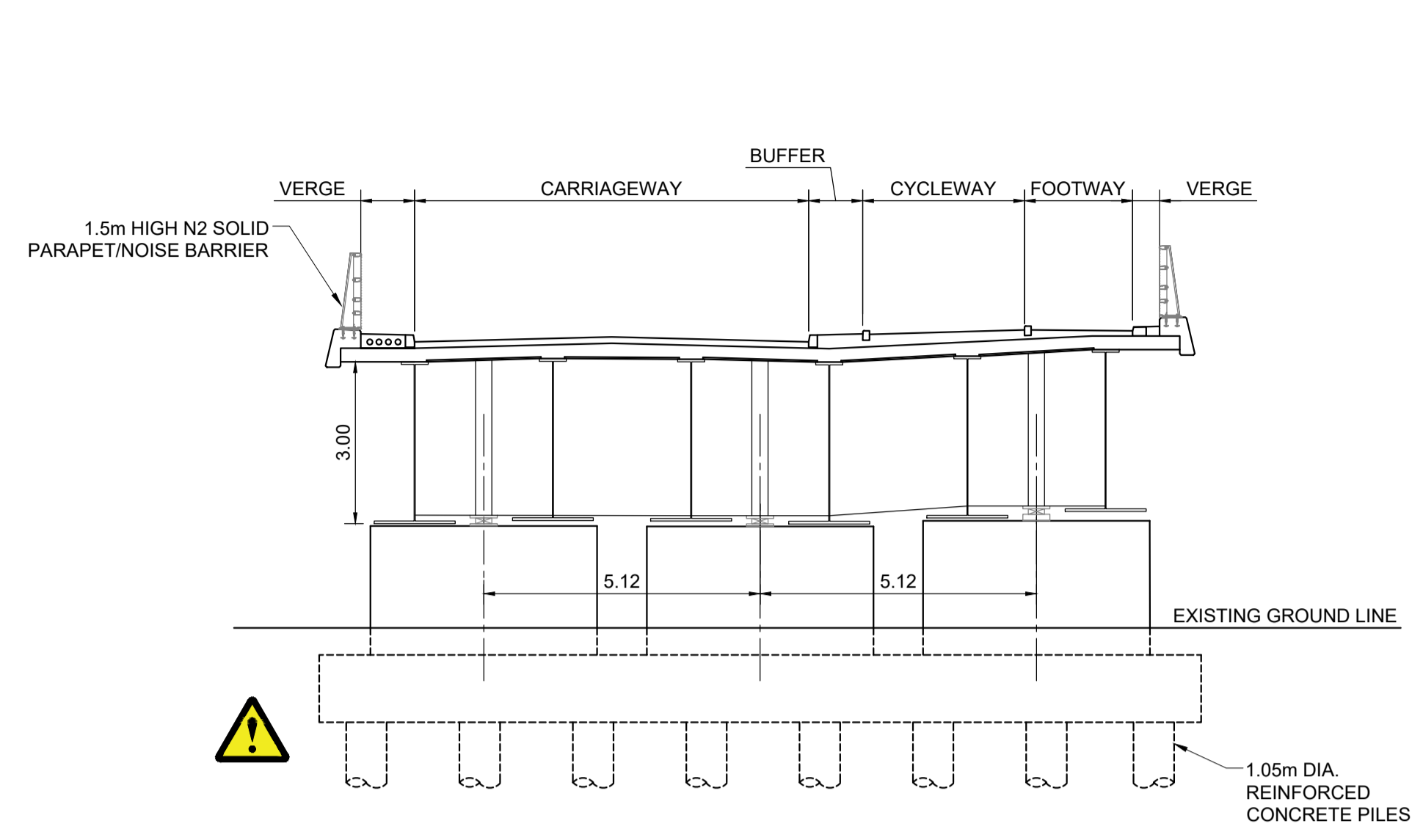
SCALE 1:50



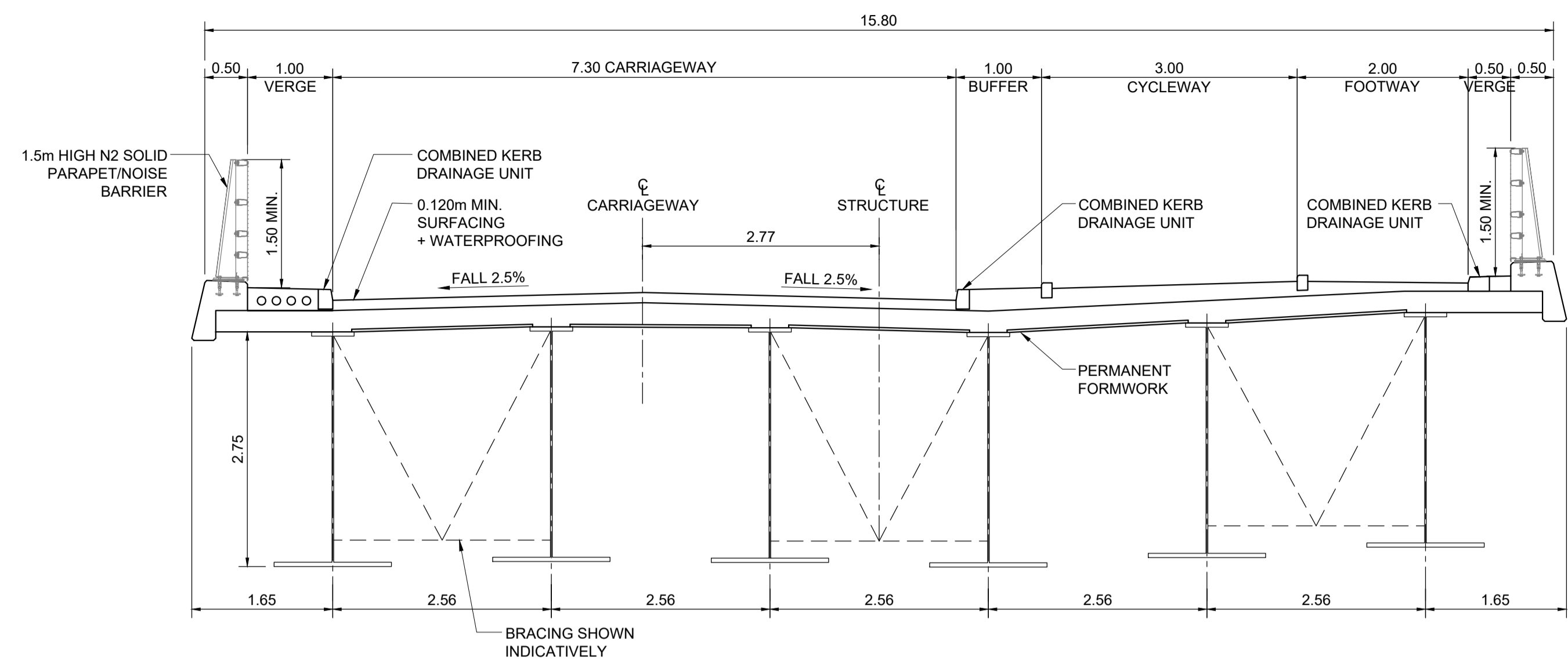
**SECTION-B**

SCALE 1:100

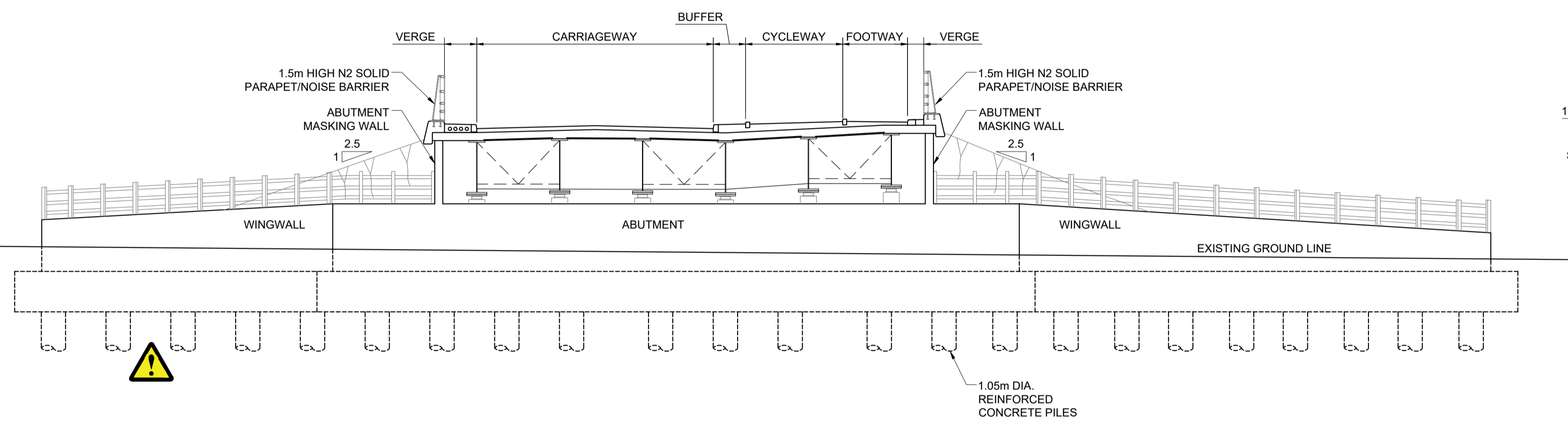
SAFETY, HEALTH & ENVIRONMENT (S.H.E) INFORMATION BOX	
SAFETY AND HEALTH ISSUES SPECIFIC RESIDUAL HAZARDS HAVE BEEN IDENTIFIED ON THE DRAWING WITH THE FOLLOWING SYMBOLS:	
KEY	DETAILS
	WORKING IN A FLOOD PLAIN



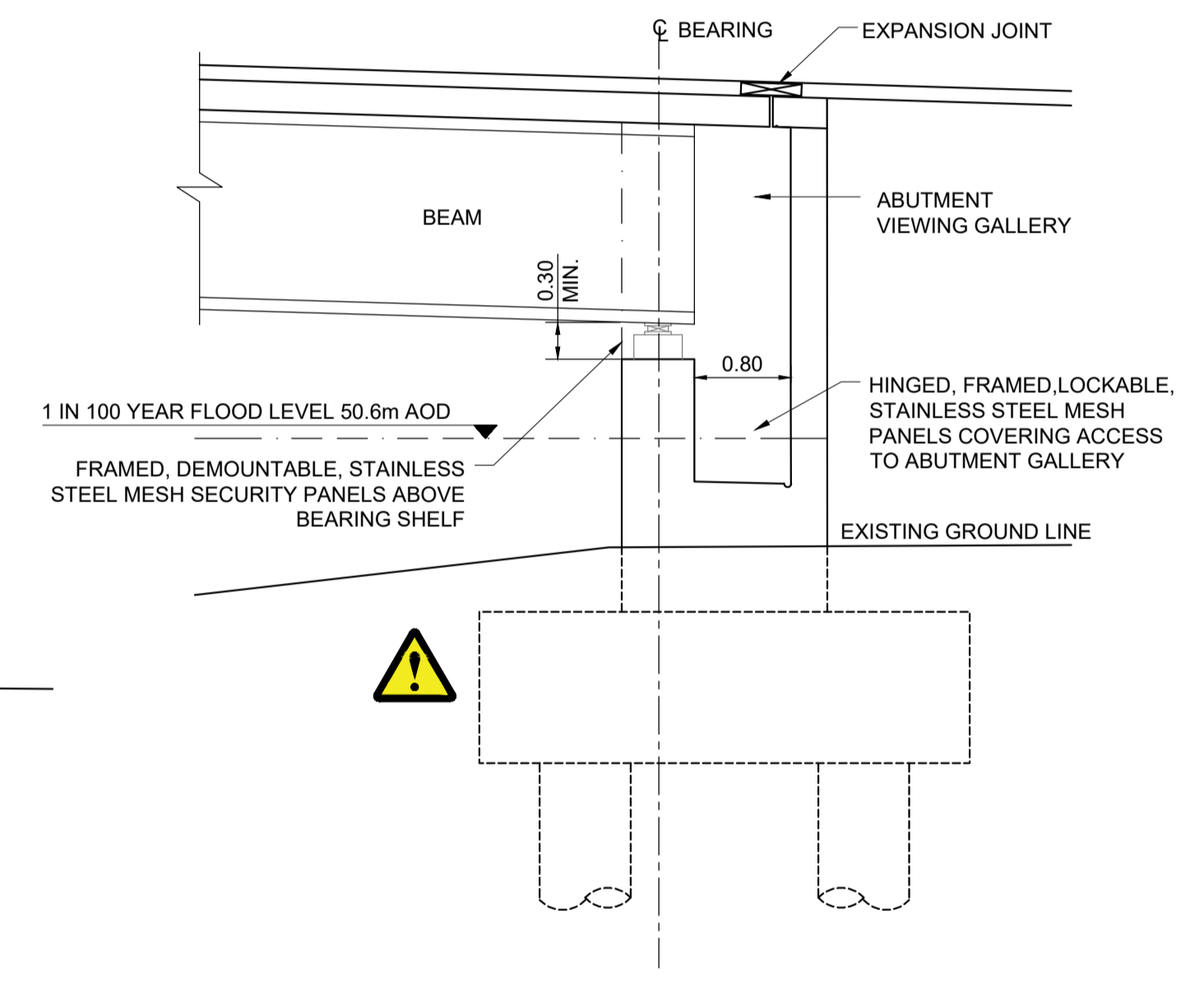
**SECTION-C**  
SCALE 1:100



**SECTION-D**  
SCALE 1:50

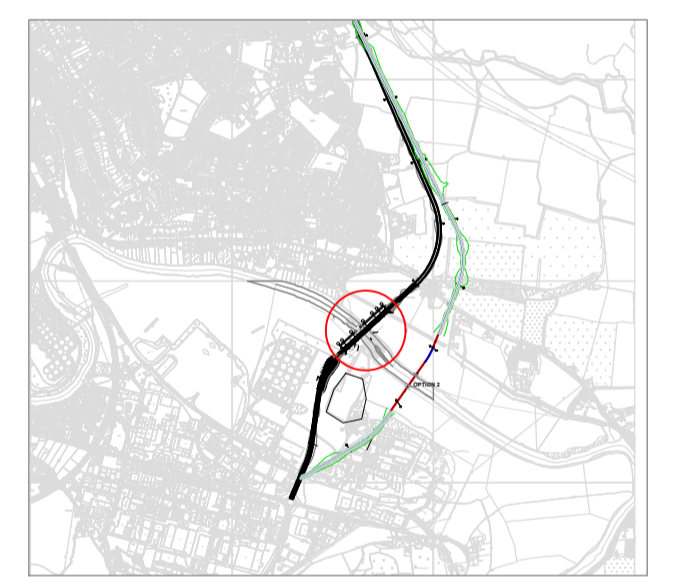


**SECTION-E**  
SCALE 1:100



**SECTION-F**  
SCALE 1:50

- ALL DIMENSIONS ARE IN METRES UNLESS OTHERWISE STATED.
- DO NOT SCALE FROM THIS DRAWING.
- LENGTHS OF BRIDGE AND VIADUCTS ARE APPROXIMATE AND REQUIRE FURTHER GEOMETRIC DESIGN TO BE UNDERTAKEN TO CONFIRM LENGTHS.
- 1 IN 100 YEAR FLOOD LEVEL INCLUDES +70% CLIMATE CHANGE.
- FOR FINISHED ROAD LEVELS AND CHAINAGES REFER TO THE HIGHWAYS SERIES DRAWINGS.



I/R	DATE	DESCRIPTION
P01	07/07/2023	FOR COMMENT

INITIAL STATUS OR WIP

**NOT FOR CONSTRUCTION**

60695983

HIGHWAY ALIGNMENT OPTION 1  
STRUCTURES GENERAL ARRANGEMENT  
SHEET 03 OF 03

60695983-ACM-GEN-HC-DR-TR-00003

SAFETY, HEALTH & ENVIRONMENT (S.H.E)  
INFORMATION BOX

SAFETY AND HEALTH ISSUES  
SPECIFIC RESIDUAL HAZARDS HAVE BEEN IDENTIFIED ON THE DRAWING WITH THE FOLLOWING SYMBOLS:

KEY	DETAILS
	WORKING IN A FLOOD PLAIN



