



Herefordshire Minerals and Waste Local Plan

Annex A



Annex A

Figure 3 Minerals Sites

Figure 4 Waste Facilities

Figure 6 Key Diagram

Figure 7 Minerals Safeguarding Areas including Rail Heads

The contents of this document are all designed to be printed at A3.

Herefordshire Minerals and Waste Local Plan

Figure 3
Minerals Sites

ID	Name	Mineral	Status	Postcode
1	Stretton Sugwas Quarry (Hereford Quarry)	Sand and gravel	Closed	HR4 7QD
2	Lugg Bridge Quarry	Sand and gravel	Closed	HR1 3LZ
3	Upper Lyde Quarry	Sand and gravel	Active	HR4 8AF
4	Shobdon Quarry	Sand and gravel	Inactive	HR6 9LA
5	Wellington Quarry	Sand and gravel	Active	HR4 8BY
6	St Donat's Quarry	Sand and gravel	Restored	HR4 8NQ
7	Leinthall Quarry	Limestone	Active	HR6 9TR
8	Loxter Ashbed Quarry	Limestone	Restored	HR8 1NU
9	Nash Scar Quarry	Limestone	Mothballed	LD8 2LE
10	Perton Quarry	Limestone	Active	HR1 4ED
11	Brakes Farm Delve	Sandstone	Abandoned	SY8 2LF
12	Callow Delve	Sandstone	Active	NP25 5RL
13	Black Hill Delve (formerly Coed Major Delve)	Sandstone	Active	HR2 0PX
14	High House Delve	Sandstone	Closed	HR2 0ND
15	Hunters Post Delve	Sandstone	Closed	NP25 5RW
16	Llandraw Delve	Sandstone	Active	HR2 0PW
17	Pennsylvania Delves	Sandstone	Active	HR2 0PU
18	Sunnybank Delve	Sandstone	Active	HR2 0LA
19	Tyubach Delve	Sandstone	Closed	HR2 0PJ
20	Westonhill Wood Delves	Sandstone	Active	HR3 6DE
21	Howle Hill Quarry	Coal	Restored	HR9 5SH

Legend

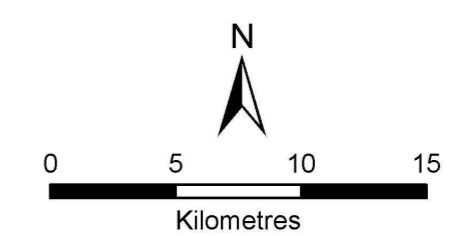
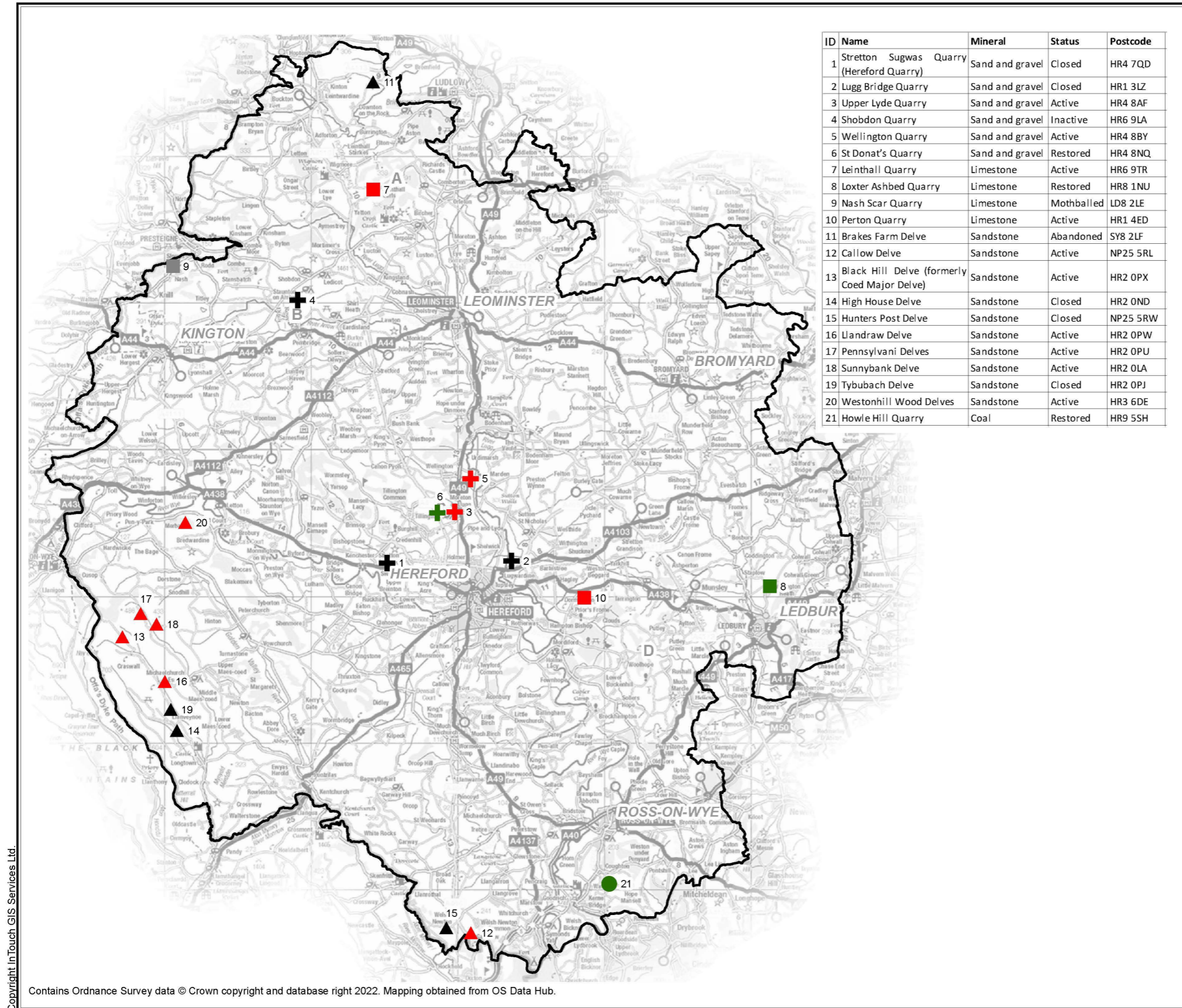
Minerals Facilities

- Coal
- Limestone
- + Sand and gravel
- ▲ Sandstone

Status

- Active
- Restored
- Uncertain
- Inactive/Closed

Herefordshire County Boundary



SCALE 1:250,000 @ A3 DATE 28/10/2022



Copyright inTouch GIS Services Ltd.

Contains Ordnance Survey data © Crown copyright and database right 2022. Mapping obtained from OS Data Hub.

Herefordshire Minerals and Waste Local Plan

**Figure 4
Waste Facilities**

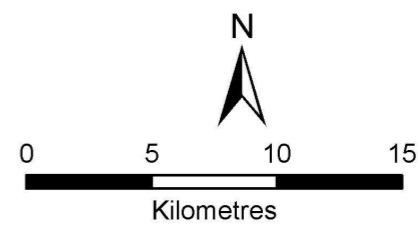
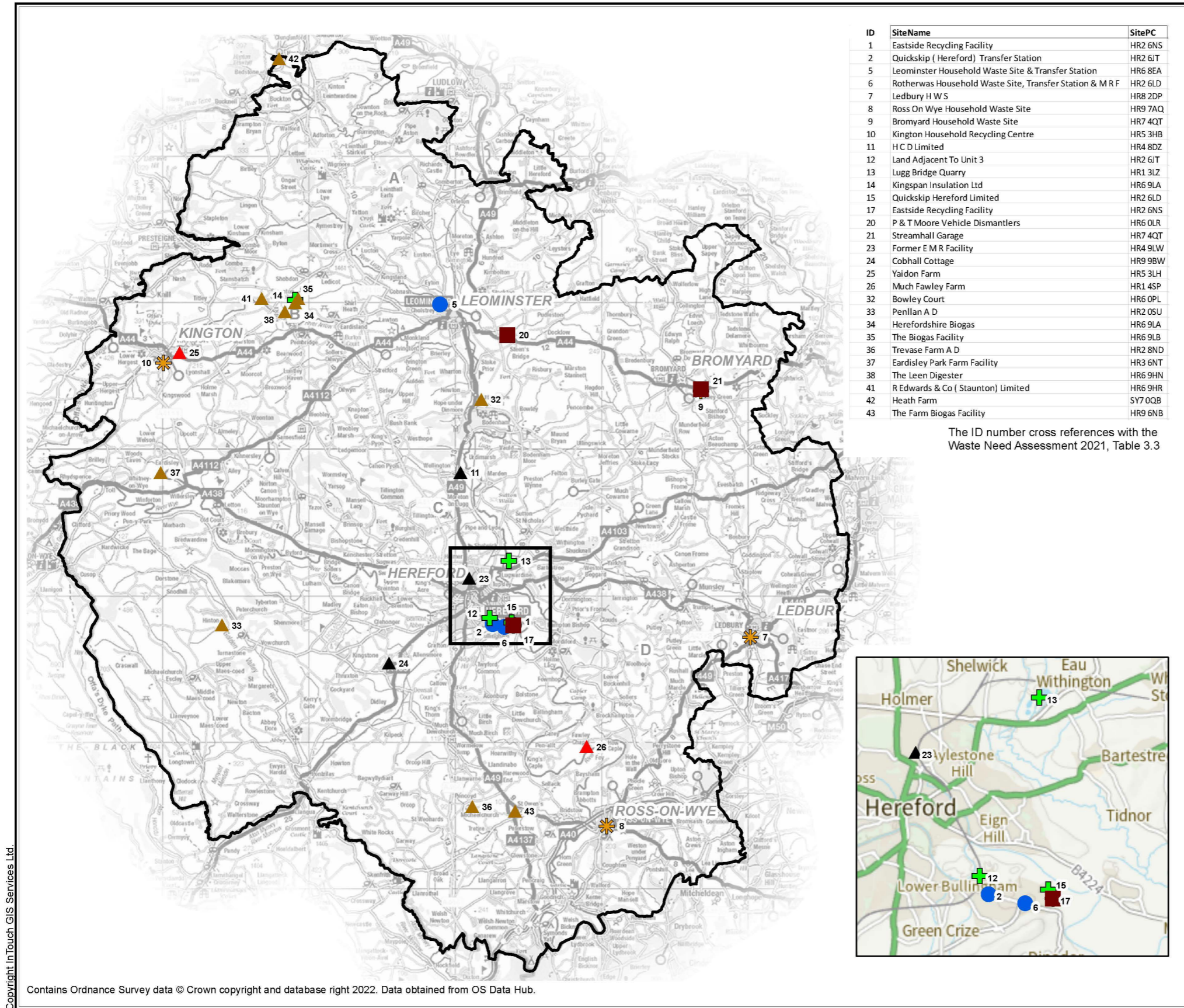
Legend

Waste Facility Type

-  Anaerobic Digestion (Farm Waste)
-  Biological Treatment
-  CA Site
-  Non-Haz Waste Transfer / Treatment
-  Physical Treatment
-  Haz Waste Transfer
-  Car Breaker
-  Material Recycling Facility
-  Herefordshire County Boundary

ID	SiteName	SitePC
1	Eastside Recycling Facility	HR2 GNS
2	Quickskip (Hereford) Transfer Station	HR2 6JT
5	Leominster Household Waste Site & Transfer Station	HR6 8EA
6	Rotherwas Household Waste Site, Transfer Station & M R F	HR2 6LD
7	Ledbury H W S	HR8 2DP
8	Ross On Wye Household Waste Site	HR9 7AQ
9	Bromyard Household Waste Site	HR7 4QT
10	Kington Household Recycling Centre	HR5 3HB
11	H C D Limited	HR4 8DZ
12	Land Adjacent To Unit 3	HR2 6JT
13	Lugg Bridge Quarry	HR1 3LZ
14	Kingspan Insulation Ltd	HR6 9LA
15	Quickskip Hereford Limited	HR2 6LD
17	Eastside Recycling Facility	HR2 GNS
20	P & T Moore Vehicle Dismantlers	HR6 0LR
21	Streamhall Garage	HR7 4QT
23	Former E M R Facility	HR4 9LW
24	Cobhall Cottage	HR9 9BW
25	Yaidon Farm	HR5 3LH
26	Much Fawley Farm	HR1 4SP
32	Bowley Court	HR6 0PL
33	Penllan A D	HR2 0SU
34	Herefordshire Biogas	HR6 9LA
35	The Biogas Facility	HR6 9LB
36	Trevasse Farm A D	HR2 8ND
37	Eardisley Park Farm Facility	HR3 6NT
38	The Leen Digester	HR6 9HN
41	R Edwards & Co (Staunton) Limited	HR6 9HR
42	Heath Farm	SY7 0QB
43	The Farm Biogas Facility	HR9 6NB

The ID number cross references with the Waste Need Assessment 2021, Table 3.3

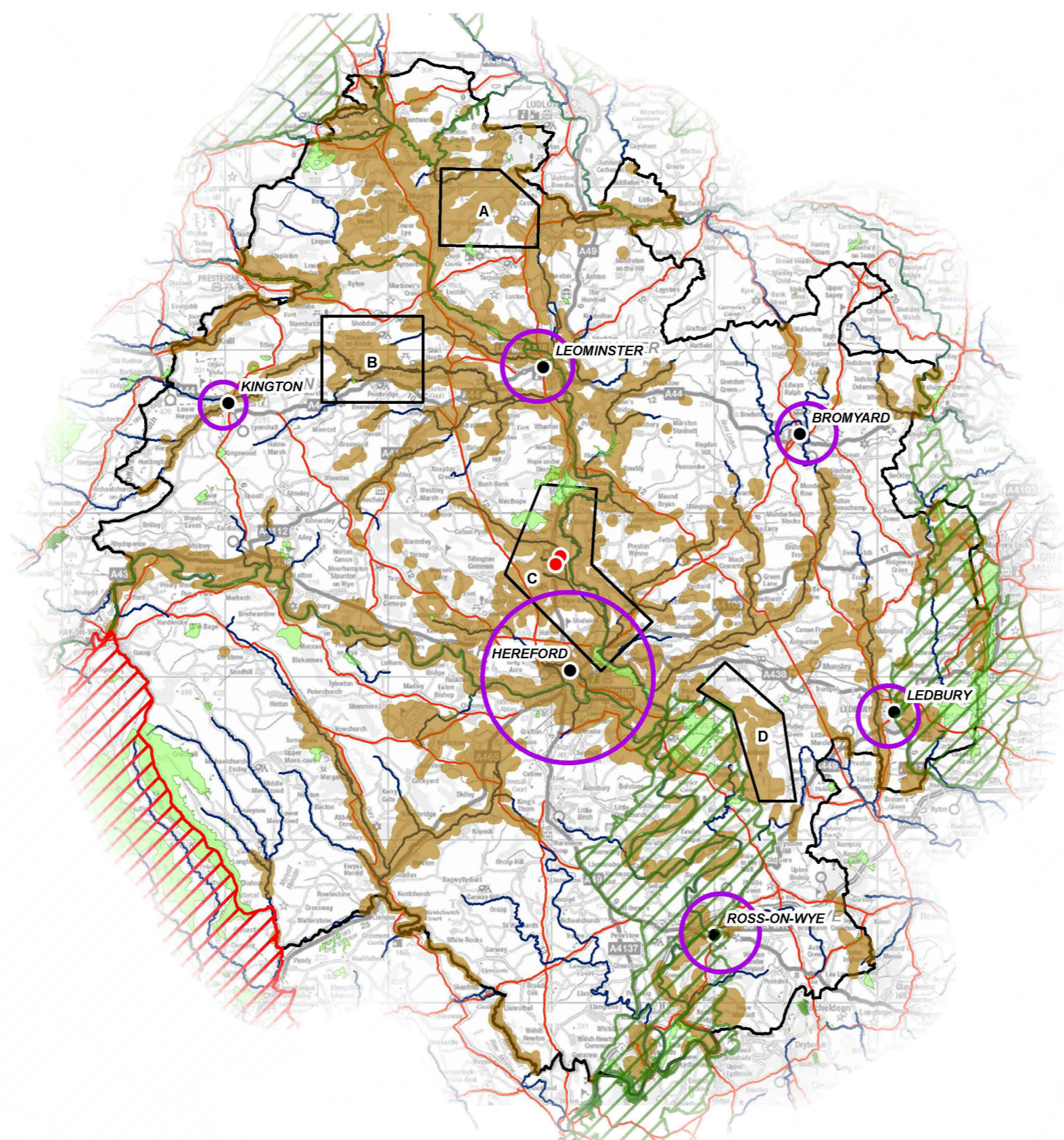


SCALE 1:250,000 @ A3 DATE 01/12/2022

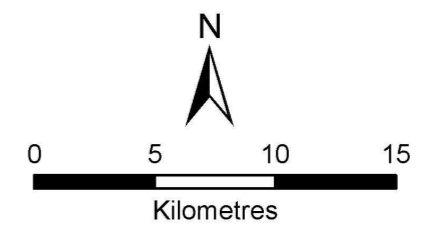
hendeca

Herefordshire Minerals and Waste Local Plan

**Figure 6
Key Diagram**



- Minerals Safeguarding Areas (policy M2)
- Preferred Areas (policy M3,2 and M4,2)
- Hereford and the market towns (policy W1)
- Brecon Beacons National Park
- AONB
- National Network Sites
- UK Ecological Designations
- Rail Heads
- Major Rivers
- Major Roads



SCALE 1:260,000 @ A3 DATE 28/11/2022

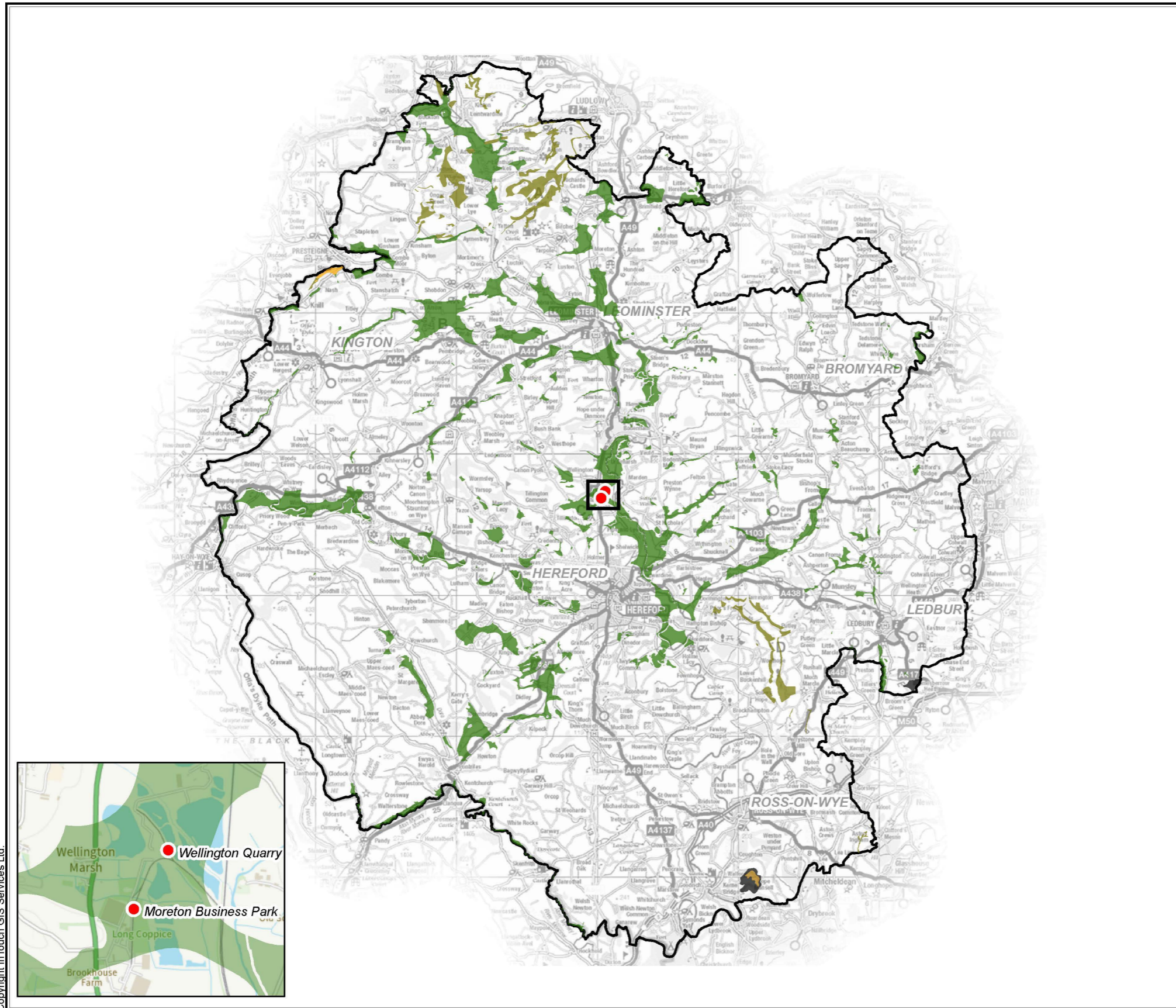
hendeca

Herefordshire Minerals and Waste Local Plan

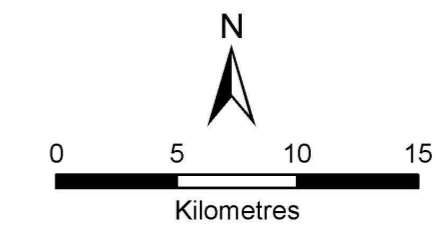
**Figure 7
Minerals Safeguarding Areas
including Rail Heads**

Mineral Resources

-  Brick Clay
-  Coal
-  Limestone (including dolomite)
-  Sandstone: Pre-Cambrian, Ordovician, Silurian Greywacke
-  Superficial Sand/Gravel
-  Rail Heads



Copyright inTouch GIS Services Ltd.



SCALE 1:260,000 @ A3 DATE 27/10/2022

hendeca