

HEREFORDSHIRE PUBLIC REALM CONTRACT 2024/25

ANNEX 10 – NETWORK REHABILITATION AND MAINTENANCE



ANNUAL PLAN FINAL APPROVAL

BBLP: Dale Watson

HC: Bruce Evans

SERVICE OVERVIEW

SERVICE SUMMARY

Network rehabilitation and maintenance includes routine and reactive network rehabilitation and maintenance services such as emergency incidence response and highway maintenance. This includes

repairs to carriageways, footways and routine maintenance to kerbs and road signs. Reactive (make safe) repairs will be made to safety fences, pedestrian fencing and barriers.

COMMISSIONED WORKS

The annex shall deliver all activities and works as set out in Schedule 4 – Service Information Annex 14 - Service Information Network Rehabilitation Maintenance V1.2 unless deemed out of scope as detailed below

“Annex 14 Original Service Outcomes:

As set out in the Highways Maintenance plan, the *Provider* is to:

- Maintain and improve the condition and safety of carriageways appropriate to hierarchy and usage.
- Maintain and improve the condition and safety of footways/cycleways appropriate to Hierarchy and usage.
- Maintain safety fencing, parapet fencing, handrails, visibility fencing and other barriers in a safe condition to protect the safety of the highway user.
- Keep all signs legible and visible as far as possible at all times in relation to road use and traffic speeds
- *Maintain and improve the drainage network so water is removed from the surface of highways as quickly as possible to maintain safety and minimise flooding. - Delivered under Annex 7”*

THE SERVICE

HIGH LEVEL SERVICE DELIVERY

SERVICE	RESOURCES	DIRECT/SUB CONTRACT	DELIVERY
Supervision & commercial	Operations Managers, Public Realm Supervisors and Operational Support	Direct	Effective supervision and management
Multitask	2 x Work Gangs	Direct and Sub-contract	Delivery of Cat 1 & 2 Re-active defects on the Network
Hotbox Teams	4 x Work Gangs	Direct and Sub-contract	Delivery of Cat 1 & 2 Re-active carriageway repairs

Traffic Signage Maintenance	Utilisation of Multitask Works Gangs	Direct and Sub-contract	Delivery of Cat 1 and 2 Re-active repairs or replacement of safety critical highway signage
Metalled PROW	Utilisation of existing Hotbox and Multitask teams	Direct and Sub-contract	Delivery of re-active repairs to those Metalled PROW routes which are identified by HC in the agreed schedule (surface wearing course only).
Spray Injection Repairs (Seasonal)	2 x Work Gangs	Direct and Sub-contract	Delivery of spray injection carriageway Re-active and program repairs
OOH Response	1 x OOH Supervisor, 2 x Work Gangs North and South	Direct and Sub-contract	Provision of emergency response and severe weather teams to Re-active defects outside core hours
Minor maintenance	1 x Work Gang	Direct and Sub-contract	Delivery of Minor work across the county to follow up on make-safe repairs by re-active gangs

IN AND OUT OF SCOPE ACTIVITIES

The activities or works are out of scope:

Service	Reason
Emergency response (incidents affecting Public Realm)	<p>Commissioned Service Scope</p> <ul style="list-style-type: none"> • Response to weather emergencies, river flooding & flooding from inadequate drainage • Road traffic accidents • Subsistence / heave affecting the network • Offensive graffiti • Traffic Management / Road Closure response due to structural collapse that has an immediate effect on the public realm network • Make safe response to any impact or indirect incident on the public realm that poses a safety risk to the public or network • Fuel and chemical spillages • Green Claims – (See Appendix A) <p>OUT OF SCOPE</p> <ul style="list-style-type: none"> • Structural collapse not affecting Public Realm network

<p>CAT 1 Response</p>	<p>Commissioned Service Scope</p> <ul style="list-style-type: none"> • Carriageway Repairs • Footway Repairs • Emergency Minor Maintenance Repairs to street furniture or attendance to make safe • Attendance for repair or make safe to any safety issues affecting the public realm <p>OUT OF SCOPE</p> <ul style="list-style-type: none"> • Replacement of Street Furniture were deemed out of scope for minor maintenance repair. (Delivered through Annex 3)
<p>Traffic Signage</p>	<p>Commissioned Service Scope</p> <ul style="list-style-type: none"> • Maintenance, Repair or Replacement as identified in the HMP as the following: <ul style="list-style-type: none"> ○ Traffic Signage identified as a safety issue or potential safety issue following a risk-based assessment in line with the HMP ○ Separation of potential traffic conflicts ○ Risks identified from route delineation in darkness or bad weather ○ Accident Cluster Sites <p>OUT OF SCOPE</p> <ul style="list-style-type: none"> • Any traffic sign not defined as a safety issue or potential safety issue following a risk-based assessment in line with HMP • Name Plates- (See Cat 2c Process in appendices) • Bus stop Flags
<p>Potholes (Carriageway and Footway repairs)</p>	<p>Commissioned Service Scope</p> <ul style="list-style-type: none"> • Repairs requiring intervention as set out in the HMP, following inspection • Find and fix • Spray Injection programme • Repairs to protect the network from significant further deterioration where it's evident intervention will prolong the assets usage as identified by the Senior Highway Engineer • Make Safe Repair to Cats Eye defects <p>OUT OF SCOPE</p> <ul style="list-style-type: none"> • Anything not defined as a safety issue or potential safety issue following risk-based assessment in line with HMP • Replacement of Cats eyes on the network (Delivered through Annex 3)

<p>Metalled PROW Repairs</p>	<p>Commissioned Service Scope</p> <ul style="list-style-type: none"> Reactive repairs only to surface repairs of Metalled PROWs as identified in the defined list provided by HC. <p>OUT OF SCOPE</p> <ul style="list-style-type: none"> Anything not defined as a safety issue or potential safety issue following risk-based assessment in line with HMP. Any BOAT, PROW or Metalled PROW not in the defined list provided and identified by HC. <p>BBLP are awaiting the defined list of known Metalled PROW’s across the network. An indicative budget has been identified to support the reactive maintenance of metalled PROW routes as defects are identified.</p>
<p>Safety barrier repairs</p>	<p>Commissioned Service Scope</p> <ul style="list-style-type: none"> Minor maintenance and make safe repairs to safety barriers <p>OUT OF SCOPE</p> <ul style="list-style-type: none"> Safety Barrier replacement (Delivered through Annex 3)
<p>Street Furniture Maintenance</p>	<p>Commissioned Service Scope</p> <ul style="list-style-type: none"> Replacement or repair of existing Verge Markers Replacement or repair of existing Roadside Visibility Bollards Make safe repairs to Vis fencing and Pedestrian Barriers Make safe or Minor Maintenance repairs to Highway Asset Street Furniture Make safe or Minor Maintenance repair to Bus Stops that pose a safety risk to either public or network <p>OUT OF SCOPE</p> <ul style="list-style-type: none"> Bus Stop Replacement Bus Stop Cleaning
<p>Edge of Carriageway</p>	<p>Commissioned Service Scope</p> <ul style="list-style-type: none"> Repairs requiring intervention as set out in the HMP, following inspection <p>OUT OF SCOPE</p> <ul style="list-style-type: none"> Any repair not defined as a safety issue or potential safety issue following risk-based assessment in line with HMP

<p>Cattle Grids</p>	<p>Commissioned Service Scope</p> <ul style="list-style-type: none"> • Minor maintenance and make safe repairs to Cattle Grids <p>OUT OF SCOPE</p> <ul style="list-style-type: none"> • Cattle Grid Replacement (Delivered through Annex 3)
<p>Traffic Mirror Sites</p>	<p>Commissioned Service Scope</p> <ul style="list-style-type: none"> • Maintenance of HC owned authorised traffic mirror sites <p>OUT OF SCOPE</p> <ul style="list-style-type: none"> • Maintenance of any traffic mirror not owned or authorised by HC
<p>Footway Scraping / Siding out</p>	<p>Commissioned Service Scope</p> <ul style="list-style-type: none"> • Footways requiring intervention as set out in the HMP, following inspection <p>OUT OF SCOPE</p> <ul style="list-style-type: none"> • Any works not defined as a safety issue or potential safety issue following a risk-based assessment in line with the HMP
<p>Minor Works</p>	<p>Commissioned Service Scope</p> <ul style="list-style-type: none"> • Drainage Repairs – As identified in program of works • Fencing / Guard Railing – As identified in program of works • Signage Repair / Replacement – As identified in program of works • Street Furniture Repair / Replacement - – As identified in program of works • Kerbs / Slabs / Pavers – As identified in program of works <p>OUT OF SCOPE</p> <ul style="list-style-type: none"> • Major works outside of commissioned scope above – Appropriate scheme should be raised through Annex 3 to be forward programmed accordingly

RISK INTERVENTION

As stated in the risk register, there may be times during seasonal peaks when it is not possible to keep up with the levels in which defects are raised and completed. During these periods there may be a

requirement to increase resource by utilising our supply chain or change/reduce the specification to works in order to retain and ensure a safe network.

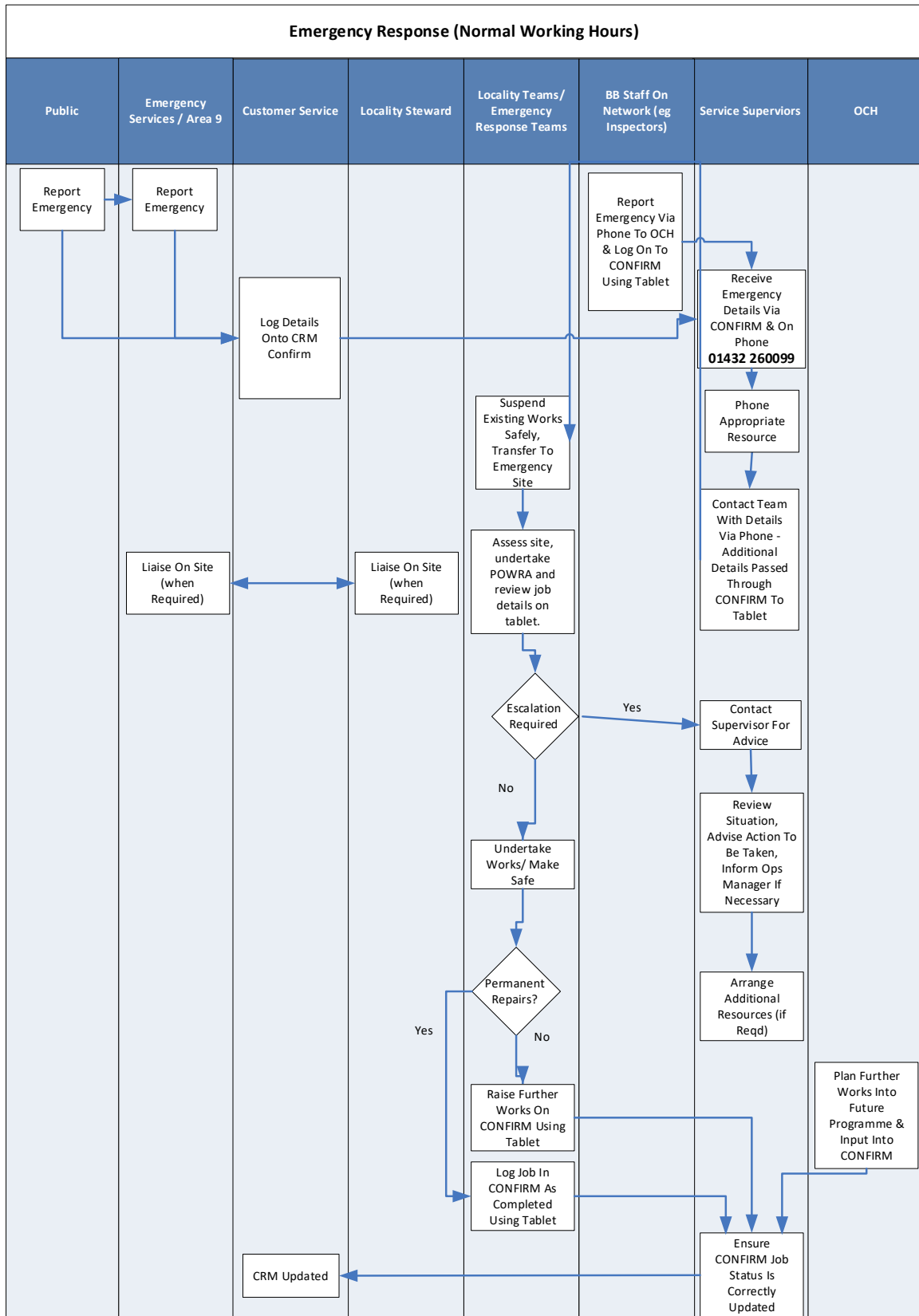
The current level for intervention will be set and reviewed annually. Prior to any intervention action taken, BBLP will ensure early warnings are raised to Herefordshire Council.

The current intervention level sits at 1600 outstanding Carriageway Defects across the county for a sustained 7-day period.

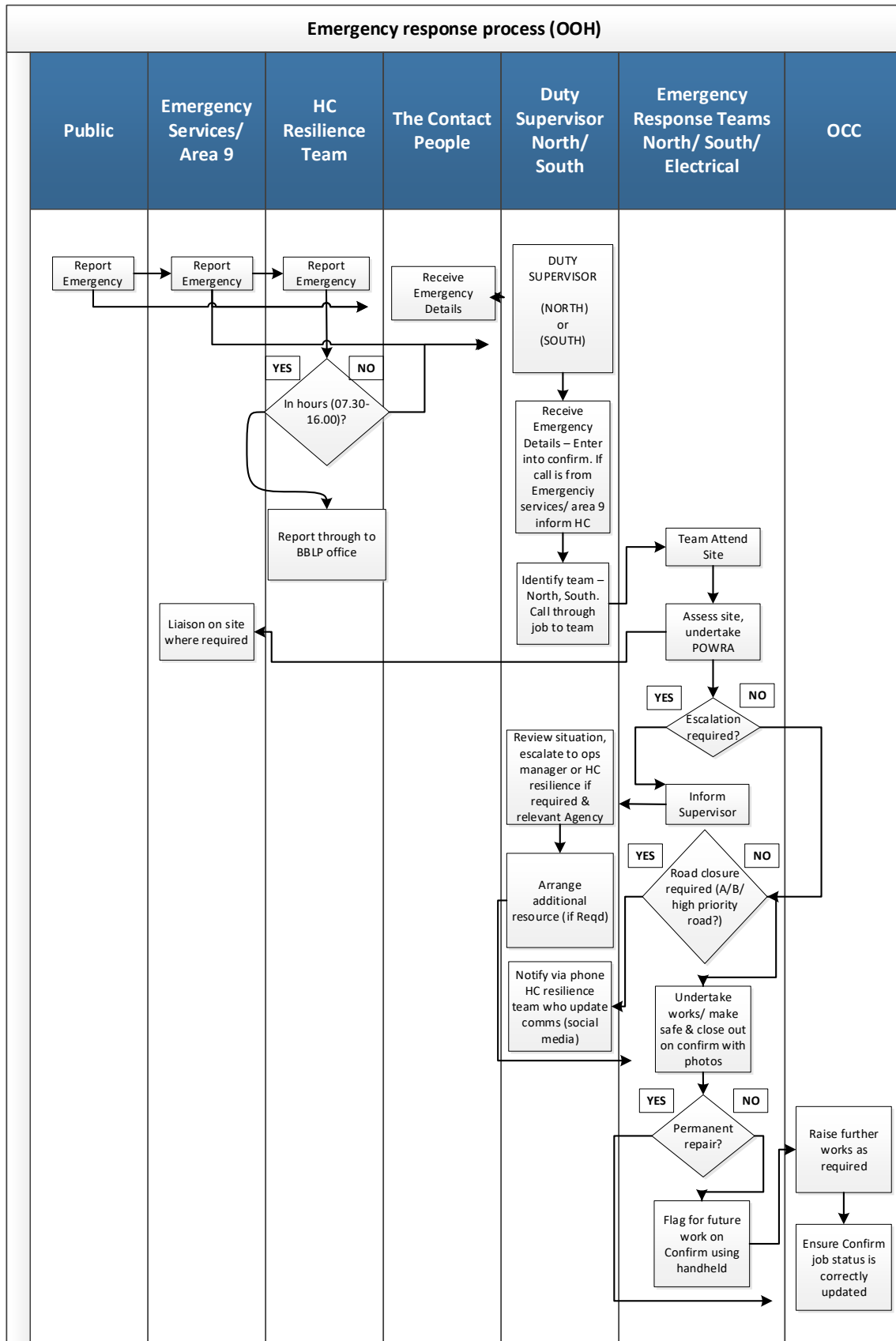
APPENDICES

APPENDIX A: BBLP POLICY & PROCESSES TO BE USED IN THE DELIVERY OF THE ANNEX

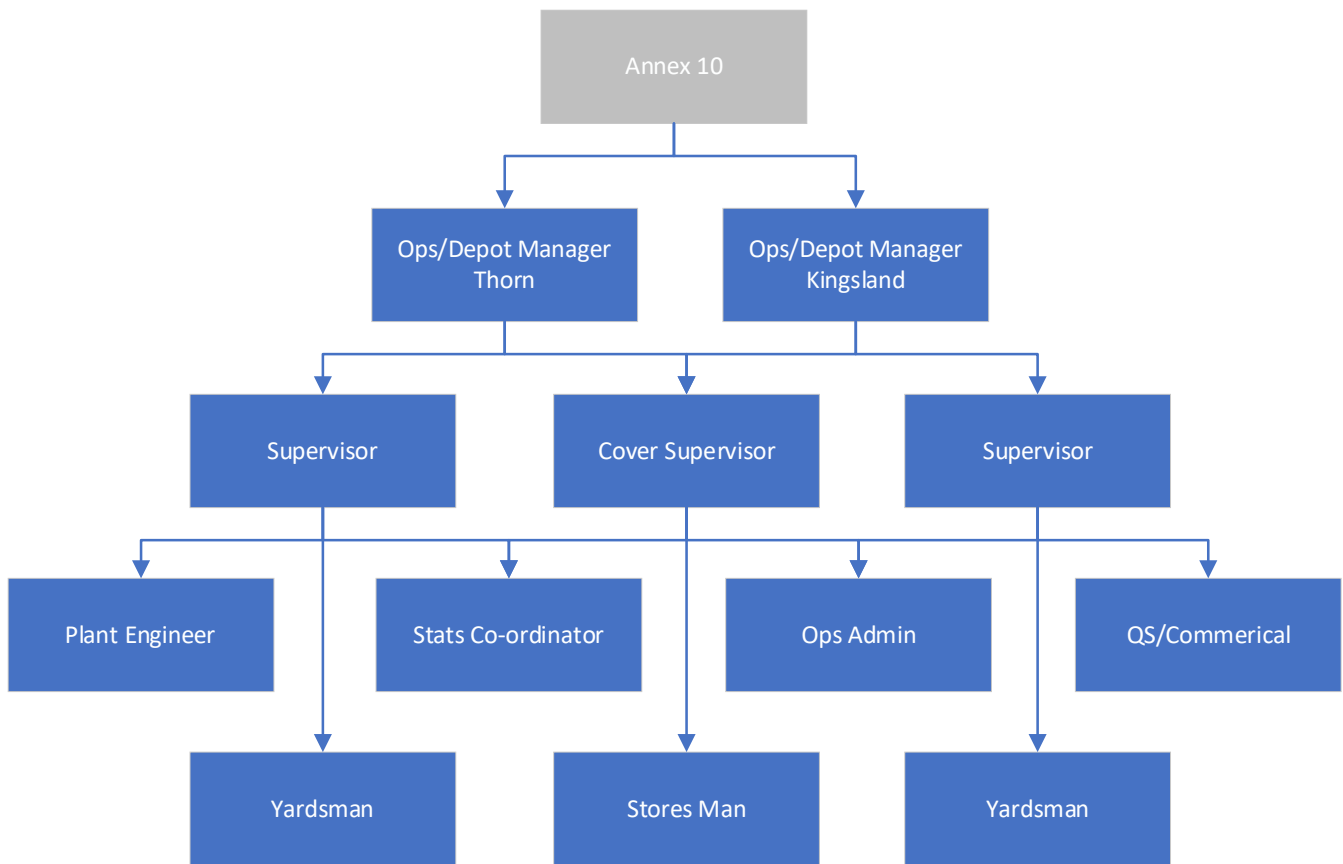
Incident Response (NORMAL-HOURS SERVICE)



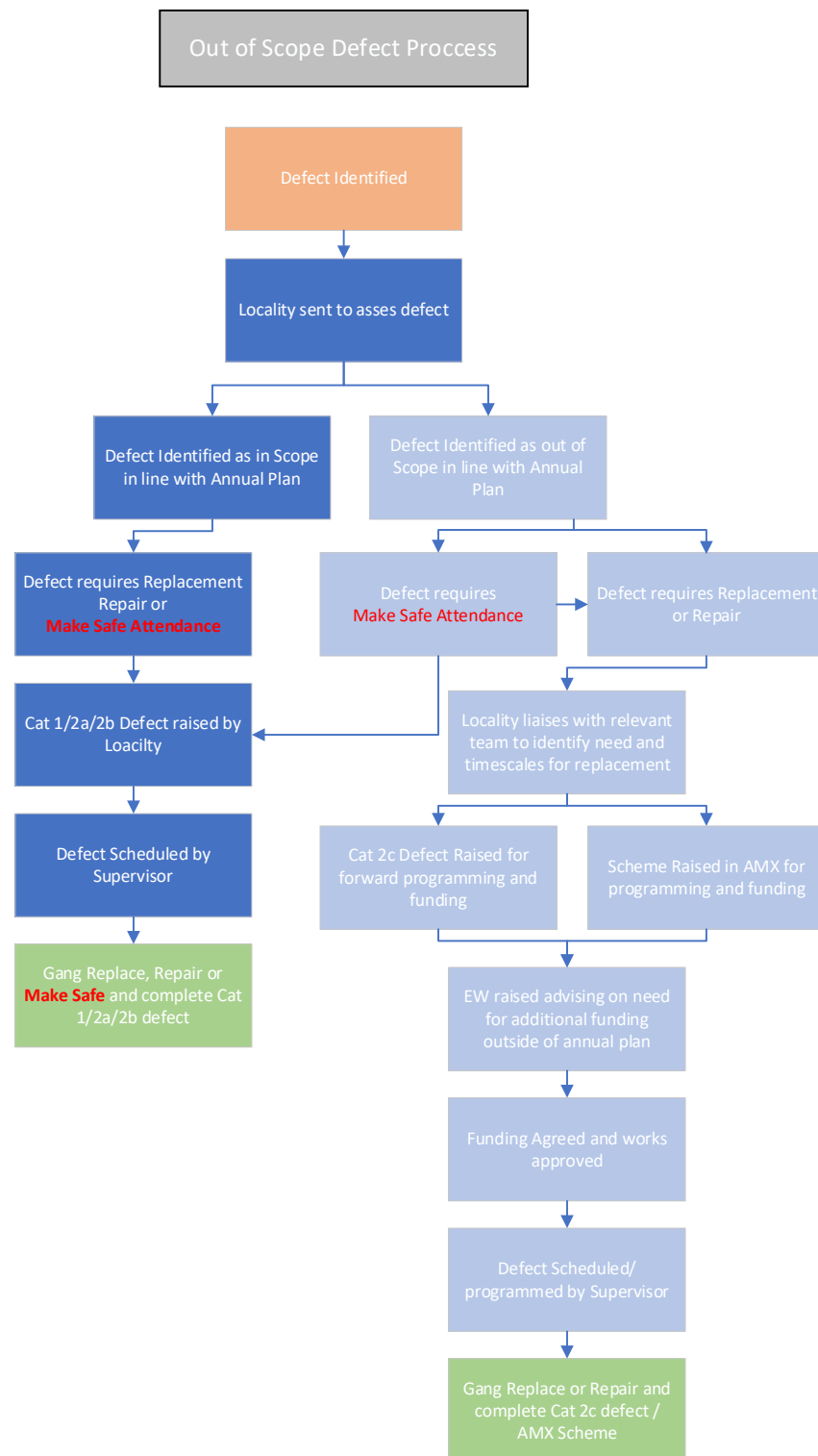
Incident Response (OUT OF HOURS SERVICE)



Organogram



Out of Scope – Cat 2c/AMX Process



Velocity Proposed Programme of works - Created from Vaisala SPI road review that takes place on an annual basis utilising the road condition points system.

All other areas are Reactive.

APPENDIX C: BUDGET BREAKDOWN

For a detailed breakdown refer to Budget Master

Defect Maintenance (Cat 1) A Roads	£7,237.47
Defect Maintenance (Cat 1) B & Other Roads	£41,012.32
Defect Maintenance (Cat 2a) A Roads	£54,371.16
Defect Maintenance (Cat 2a) B & Other Roads	£308,103.25
Defect Maintenance (Cat 2b) A Roads	£672,062.13
Defect Maintenance (Cat 2b) B & Other Roads	£2,271,800.29
Spray Injection	£432,097.49
Minor works team	£250,000.00
PROW Maintenance	£-
OOH Response	£240,002.03
TOTAL	4,036,684.12

APPENDIX D: LIST OF NOMINATED SUBCONTRACTORS

Name of Subcontractor	Service Provided
INSIDEOUT	Labour Workforce
VELOCITY	Spray Injection Carriageway Repairs
AMBERON	Traffic Management
TARMAC TM	Traffic Management
METROROD	Drainage Services