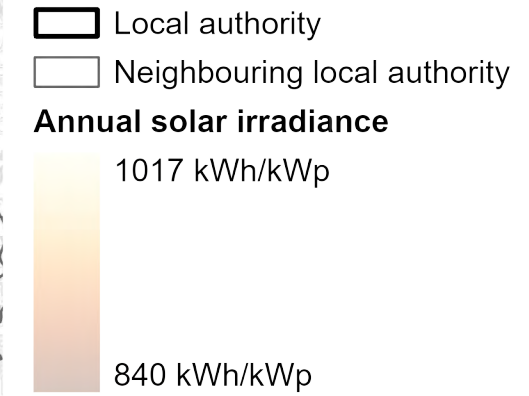
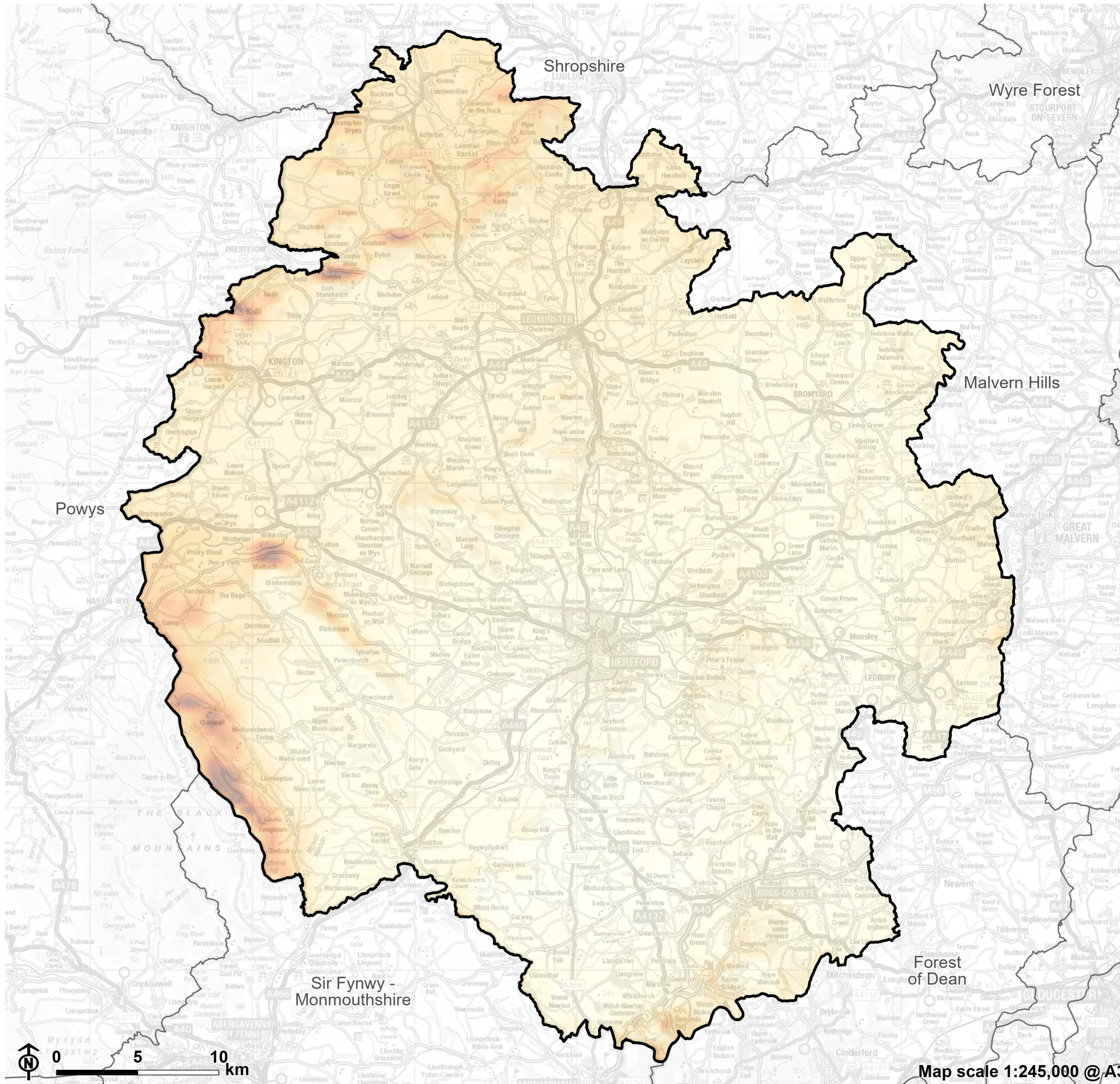


Appendix C

Ground-Mounted Solar PV Maps

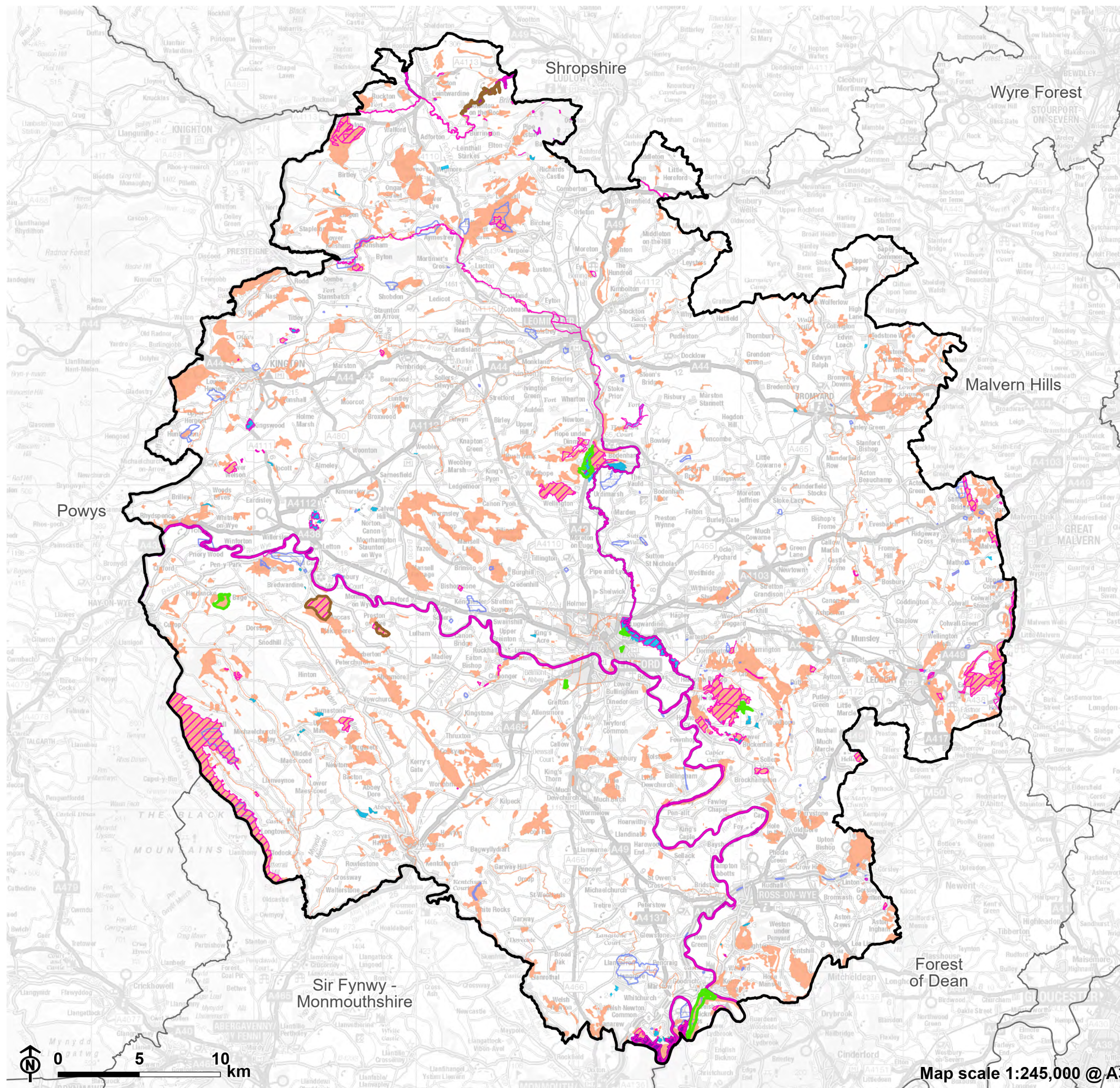
Figure C.1: Annual solar irradiance



Notes:
Global Solar Atlas 2.0 is a free, web-based application, developed and operated by the company Solargis s.r.o. on behalf of the World Bank Group, utilizing Solargis data, with funding provided by the Energy Sector Management Assistance Program (ESMAP). For additional information: <https://globalsolaratlas.info>. Please refer to this map in conjunction with the assessment assumptions detailed in Appendix A.

Map scale 1:245,000 @ A3

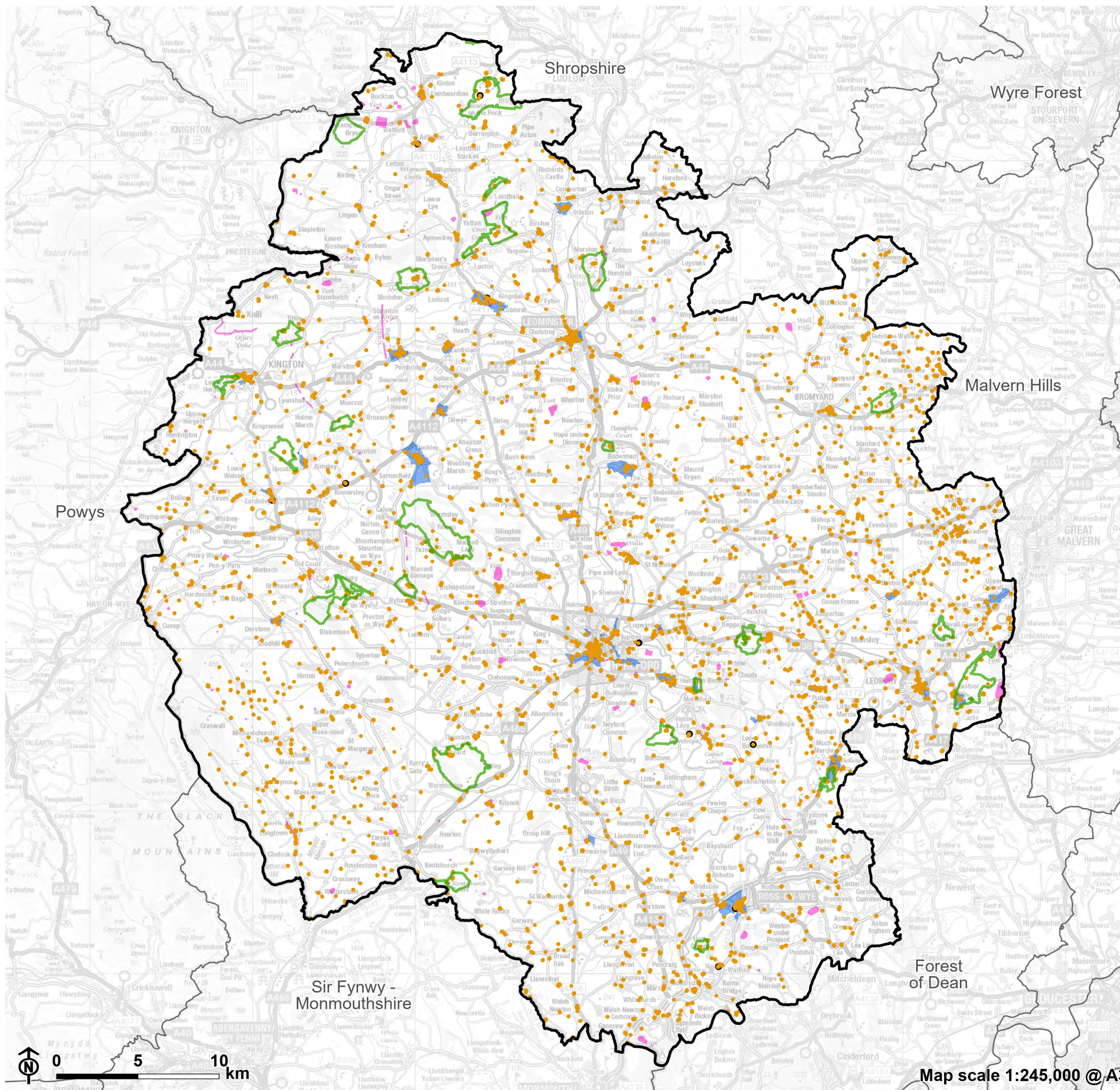
Figure C.2: Ground mounted solar constraints - Natural heritage constraints



- Local authority
- Neighbouring local authority
- Local Nature Reserve
- National Nature Reserve
- Site of Special Scientific Interest
- Special Area of Conservation
- Wildlife Trust Reserve
- Local Wildlife Site
- Local Geological Site

Notes:
Please refer to this map in conjunction with the assessment assumptions detailed in Appendix A.

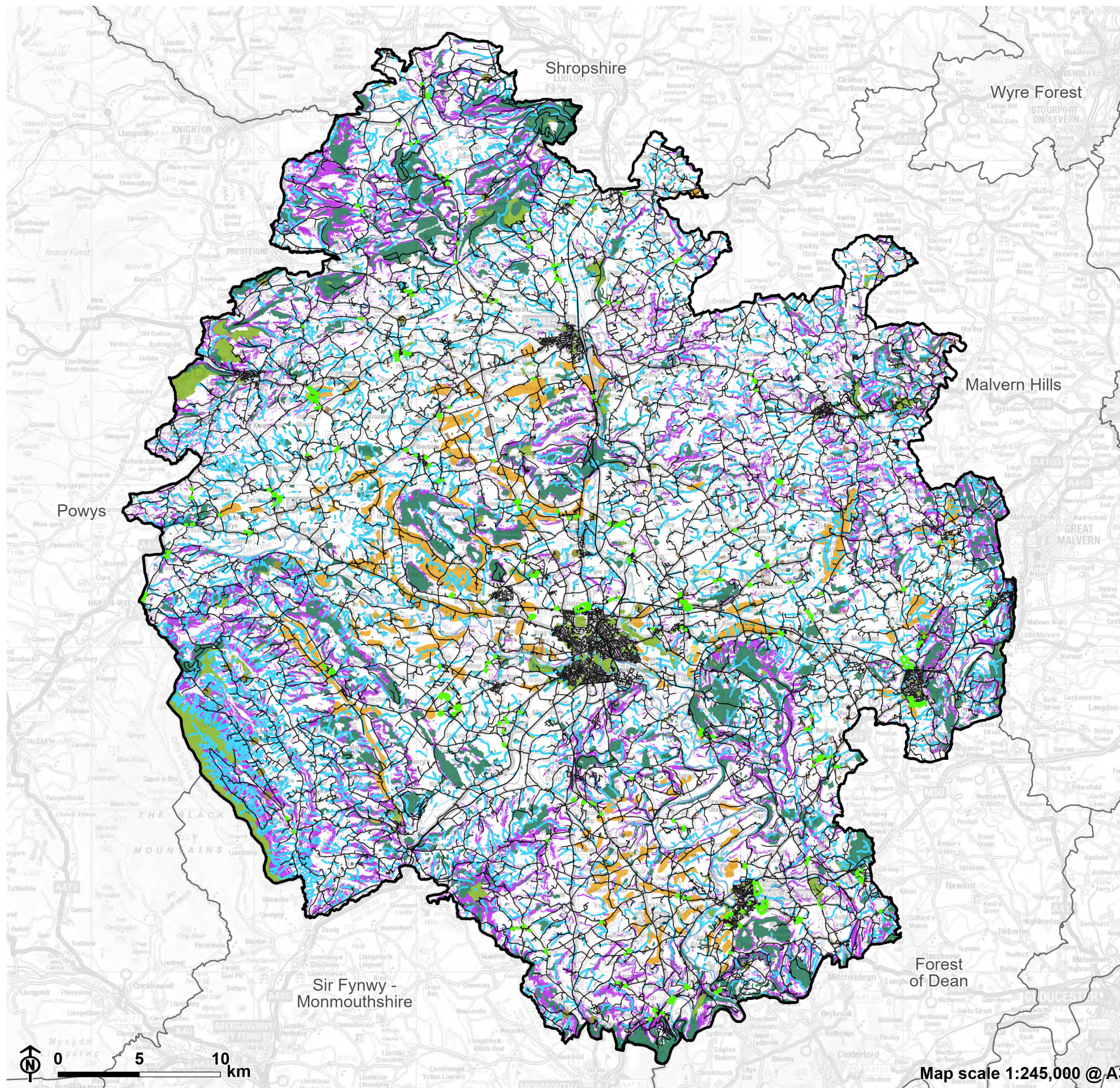
Figure C.3: Ground mounted solar constraints - Cultural heritage constraints



- Local authority
- Neighbouring local authority
- Registered Parks and Gardens
- Locally listed building
- Listed building
- Conservation area
- Scheduled monument

Notes:
Please refer to this map in conjunction with the assessment assumptions detailed in Appendix A.

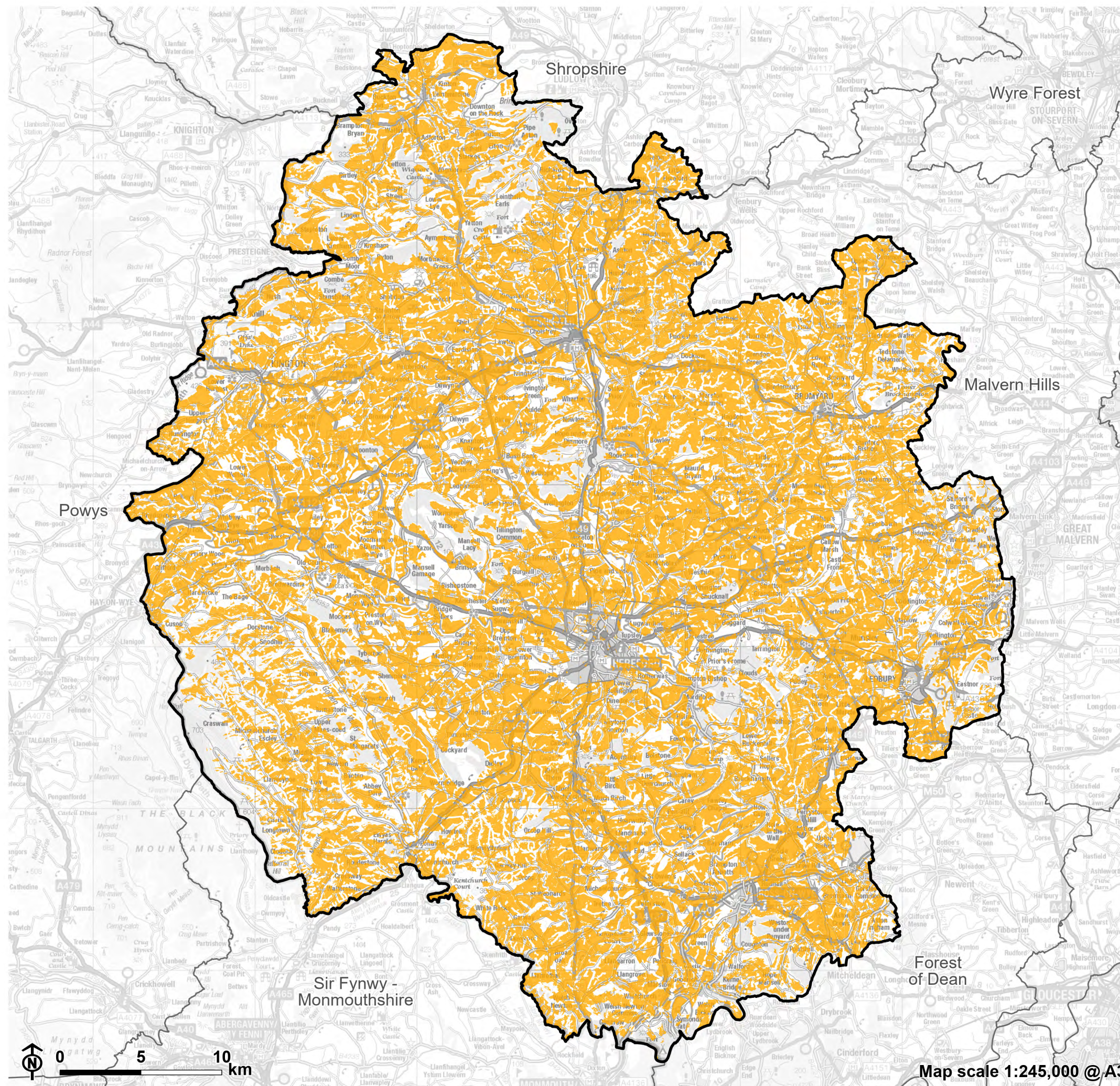
Figure C.4: Ground mounted solar constraints - Physical, land use and infrastructure



- Local authority
- Neighbouring local authority
- Mineral site
- Roads and Railways
- Orchards
- Building
- Designated open spaces
- Existing renewable development
- Grade 1 agricultural land
- Slope above 15° or slope above 7° and north-east to north-west aspect
- Watercourses and water bodies
- Woodland
- Housing, employment and committed sites

Notes:
This map displays the boundaries of features considered as constraints within this assessment. This does not display the constraint buffers applied to these features. Please refer to this map in conjunction with the assessment assumptions detailed in Appendix A.

**Figure C.5: Opportunities and constraints:
Ground mounted solar development**



- Local authority
- Neighbouring local authority
- Area with potential for ground mounted solar development
- Constrained area for ground mounted solar development

Notes:
Please refer to this map in conjunction with the assessment assumptions detailed in Appendix A.