

# Bromyard School Capital Investment

Briefing and Discussion 14<sup>th</sup> July 2015.

# Meeting overview

- Purpose of meeting

- Recap on work and thinking to date
- Discuss what the data might be telling us. (data still being verified )
- Examine what the future demand for school places is likely to be and where.
- Give ideas about how we can shape the strategy, get agreement and to a position where significant investment is made.

- The Agenda

1. The story so far
2. Some county level findings
3. Local issues
4. Consultation and initial thoughts

# Where are we in the process....



- The schools estate is made up of 100 Assets including:-
  - 78 Primary school
  - 15 Secondary schools
  - 1 all through school
  - 4 Special school
  - 1 PRU ( two sites)

Asset category / Type	VA	VC	Academy	Federation all through	Community	Trust	Free
Primary Schools	20	12	16	1	27	1	1
Secondary Schools	2		9		3		1
Special			2		2		
PRU					1 (two sites)		
All through School			1				

# Across Herefordshire - 1

- 88% of primary pupils attend a good or outstanding school ( *82% national and 80% across the west midlands* )
- 83% of secondary pupils attend a good or outstanding school ( *70% national and 71% west midlands* )



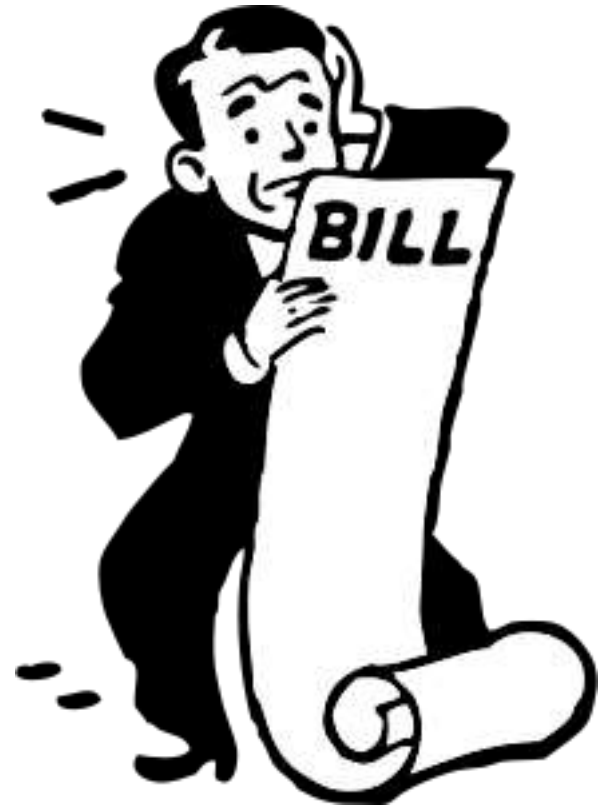
# Across Herefordshire - 2

- 1500 or 12% primary surplus places.
- 1100 or 11% secondary surplus places
- The spare places are not always where parents want them.
- On average 50% of children are not going to their nearest or catchment school.



# Across Herefordshire - 3

- The known LA maintenance bill is circa £8.5m
- Bill to make schools compliant circa £30m



# Previous funding sources seem to have dried up



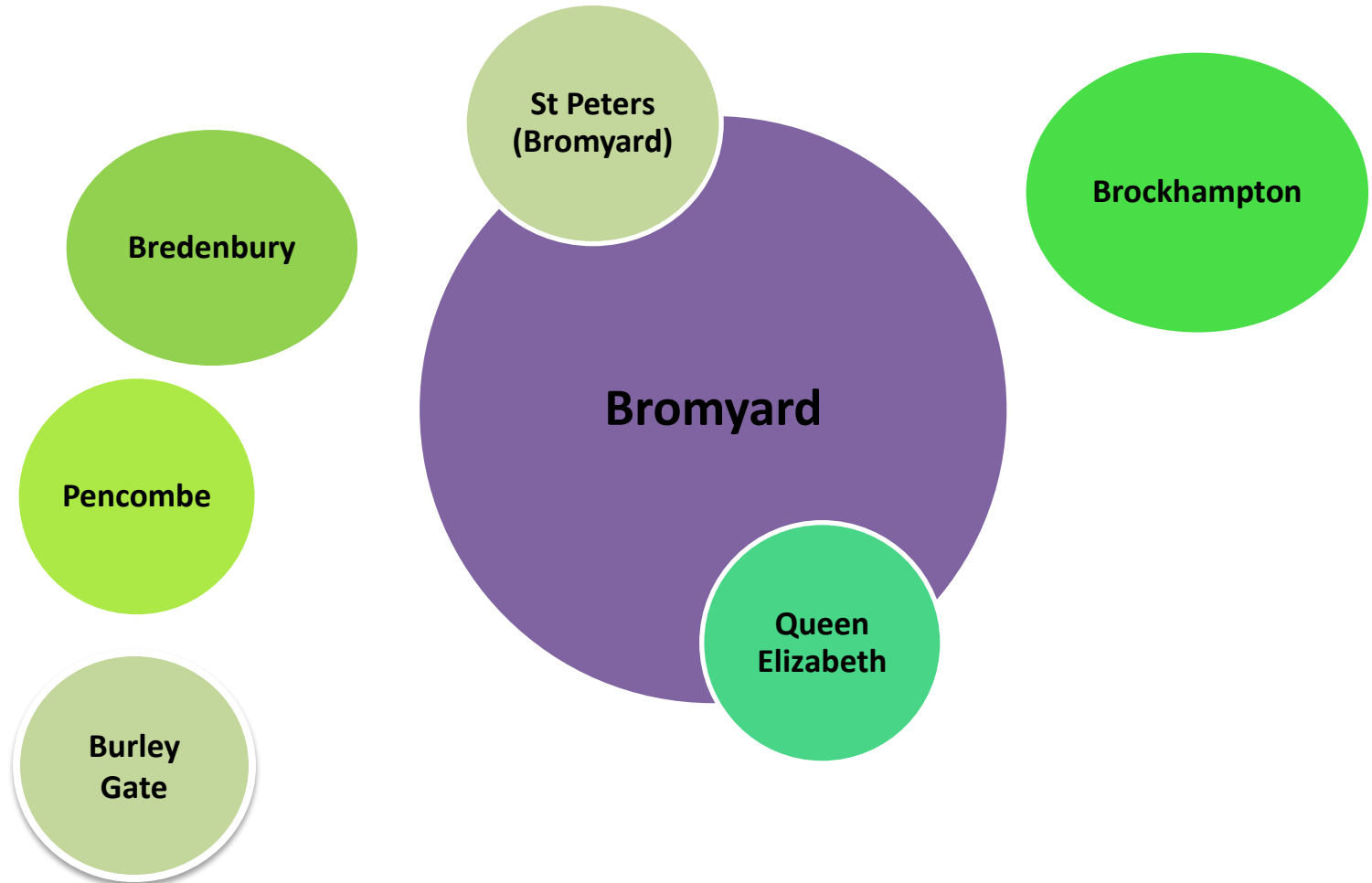


But .....



# Schools serving Bromyard

Schools that draw 10%+ of their roll from defined Bromyard region



# Future growth - county level

- 16,000 new homes across Herefordshire by 2031
- The expected average yield
  - Primary school ratio 0.17
  - Secondary school ratio 0.13
  - Special school places 1.2% of pupil population



Area
Hereford
Leominster
Ross
Ledbury
Bromyard
Kington
Rural

Proposed Housing Total
5830
2235
842
822
564
282
5137

Forecast Primary Children
1014
389
146
143
98
48
894

Forecast Secondary children
773
296
112
109
75
37
681

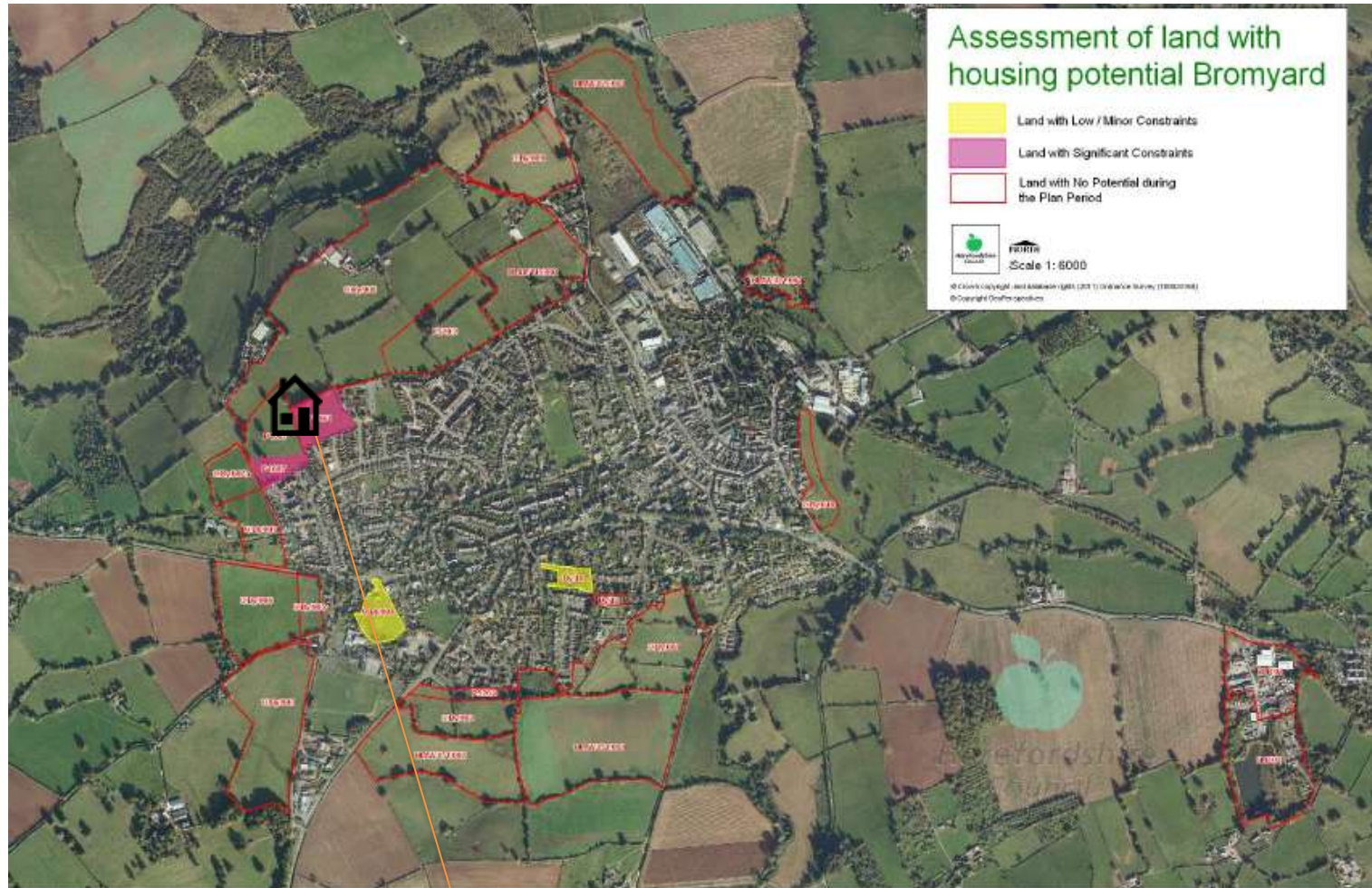


# Future growth – Bromyard

- *Bromyard 564 plus new homes by 2031*
  - *98 primary places*
  - *75 secondary places*
  - *3 special school places*



# Proposed housing development for Bromyard

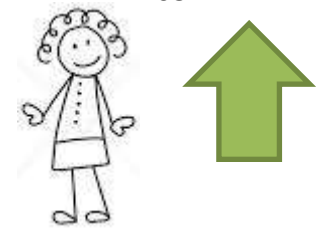


## Assessment of land with housing potential Bromyard

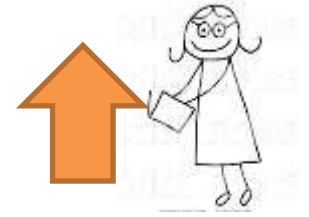
- Land with Low / Minor Constraints
  - Land with Significant Constraints
  - Land with No Potential during the Plan Period
-   Scale 1:6000
- © Crown Copyright and Database Right (2015) Ordnance Survey (100021968)  
© Copyright Ferris studios



564 proposed for the Hereford area by 2031



Total Primary School children set to increase by around 98 children by 2031



Total Secondary School children set to increase by around 75 children by 2031

Hardwick Bank  
250 New homes

44 new homes as existing commitments

# Bromyard – Headlines

- 5 Primary schools serve the Bromyard area 1 secondary
- £500k maintenance for 4 LA maintained schools over the next 5 years including backlog
- Average 70% building compliance.
- 5 out of 6 schools are located on recommended or larger sites than the standard criteria noted within BB103.
- Based upon current PAN we have provision for 623 primary pupils.
- Based upon current PAN we have provision for 400 Secondary pupils.
- 4 Schools have achieved a good rating , 2 require improvement.

School	School Capacity	Number on Roll Aut 2014	NOR Spr 2014	NOR Spr 2013	NOR Spr 2012	NOR Spr 2011
Bredenbury Primary School	70	60	53	56	66	76
Brockhampton Primary Academy	182	142	140	139	127	122
Burley Gate CE Primary School	105	106	94	93	93	85
Pencombe CE Primary School	56	53	53	57	60	52
St Peter's Primary School	210	190	189	183	193	189
<b>Total</b>	<b>623</b>	<b>551</b>	<b>529</b>	<b>528</b>	<b>539</b>	<b>524</b>
Queen Elizabeth Humanities College	400	310	321	321	288	308
<b>Total</b>	<b>400</b>	<b>310</b>	<b>321</b>	<b>321</b>	<b>288</b>	<b>308</b>

School	Published admission number	2014 first preference applications	2014 % first preference applications	2013 % first preference applications	2012 % first preference applications	2011 % first preference applications
Bredenbury Primary School	10	9	90%	10%	50%	100%
Brockhampton Primary Academy	26	14	54%	65%	103%	61%
Burley Gate CE Primary School	15	14	93%	87%	93%	73%
Pencombe CE Primary School	8	4	50%	88%	137%	87%
St Peter's Primary School	30	35	117%	67%	73%	90%
Queen Elizabeth Humanities College	80	52	65%	66%	83%	70%



School	Number of children for whom this school is the nearest	Number of children for whom it is the nearest who are actually attending the school	Percentage of NOR for whom it is nearest school	NOR Aut 2014
Bredenbury Primary School	30	20	33%	60
Brockhampton Primary Academy	51	39	27%	142
Burley Gate CE Primary School	92	47	44%	106
Pencombe CE Primary School	28	27	48%	56
St Peter's Primary School	327	179	94%	190
Queen Elizabeth Humanities College	356	248	80%	310

School	Maintenance cost exceeds 30% of asset	PAN for compliance comparison	Overall Gross site compliance	Overall building compliance
Bredenbury Primary School	School Holds Data	10	Over	Under
Brockhampton Primary Academy	School Holds Data	30	Under	Under
Burley Gate CE Primary School	Under	15	Over	Under
Pencombe CE Primary School	Under	10	Over	Under
St Peter's Primary School	School Holds Data	30	Over	TBC
Queen Elizabeth Humanities College	School Holds Data	-	Over	Over

# Next steps

- Development of ideas
- Acceptance of the principles
- Options
- A report setting out a strategy November 2015