

Leominster School Capital Investment

Briefing and Discussion 22nd June
2015.

Meeting overview

- Purpose of meeting

- Discuss what the data might be telling us. (data still being verified)
- Examine what the future demand for school places is likely to be and where.
- Give ideas about how we can shape the strategy, get agreement and to a position where significant investment is made.

- The Agenda

1. The story so far
2. Some county level findings
3. Local issues
4. Consultation and initial thoughts

Where are we in the process....



- The schools estate is made up of 100 Assets including:-
 - 78 Primary school
 - 15 Secondary schools
 - 1 all through school
 - 4 Special school
 - 1 PRU (two sites)

Asset category / Type	VA	VC	Academy	Federation all through	Community	Trust	Free
Primary Schools	20	12	16	1	27	1	1
Secondary Schools	2		9		3		1
Special			2		2		
PRU					1 (two sites)		
All through School			1				

Across Herefordshire - 1

- 88% of primary pupils attend a good or outstanding school (*82% national and 80% across the west midlands*)
- 83% of secondary pupils attend a good or outstanding school (*70% national and 71% west midlands*)



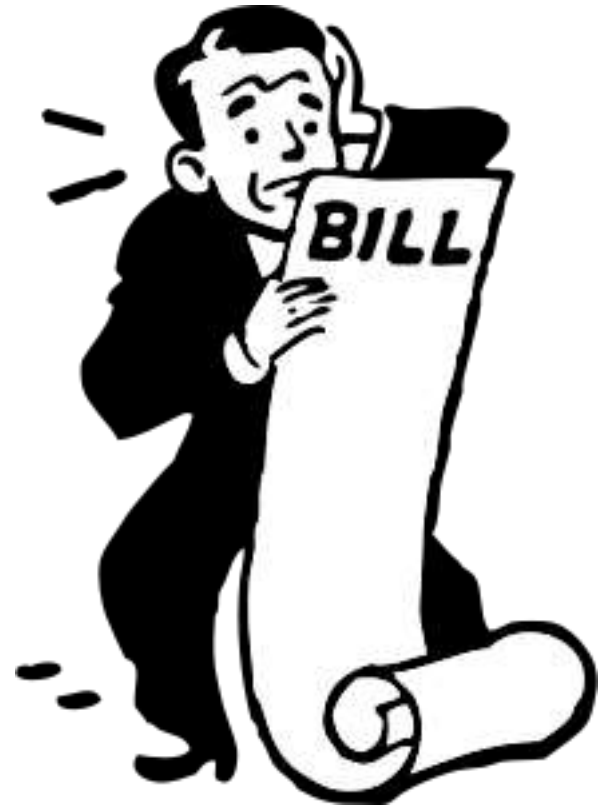
Across Herefordshire - 2

- 1500 or 12% primary surplus places.
- 1100 or 11% secondary surplus places
- The spare places are not always where parents want them.
- On average 50% of children are not going to their nearest or catchment school.



Across Herefordshire - 3

- The known LA maintenance bill is circa £8.5m
- Bill to make schools compliant circa £30m



Previous funding sources seem to have dried up



But



Schools serving –Leominster

Luston

St James
(Kimbolton)

Kingsland

Leominster

Leominster
Primary
School

Earl
Mortimer
Secondary
School

Stoke Prior

Ivington

Future growth - county level

- 16,000 new homes across Herefordshire by 2031
- The expected average yield
 - Primary school ratio 0.17
 - Secondary school ratio 0.13
 - Special school places 1.2% of pupil population



Area
Hereford
Leominster
Ross
Ledbury
Bromyard
Kington
Rural

Proposed Housing Total
5830
2235
842
822
564
282
5137

Forecast Primary Children
1014
389
146
143
98
98
894

Forecast Secondary children
773
296
112
109
75
37
681



Future growth - Leominster

- *Leominster 2200 plus new homes by 2031*
 - *390 primary places*
 - *296 secondary places*
 - *8 special school places*



Proposed housing development for schools serving Leominster

Luston

48 New Homes
8 Primary School Places
6 Secondary School places



St James (Kimbolton)

No allocation of New Homes

Kingsland

212 New Homes
36 Primary School Places
28 Secondary School places



Leominster

2200 New Homes
390 Primary School Places
296 Secondary School places



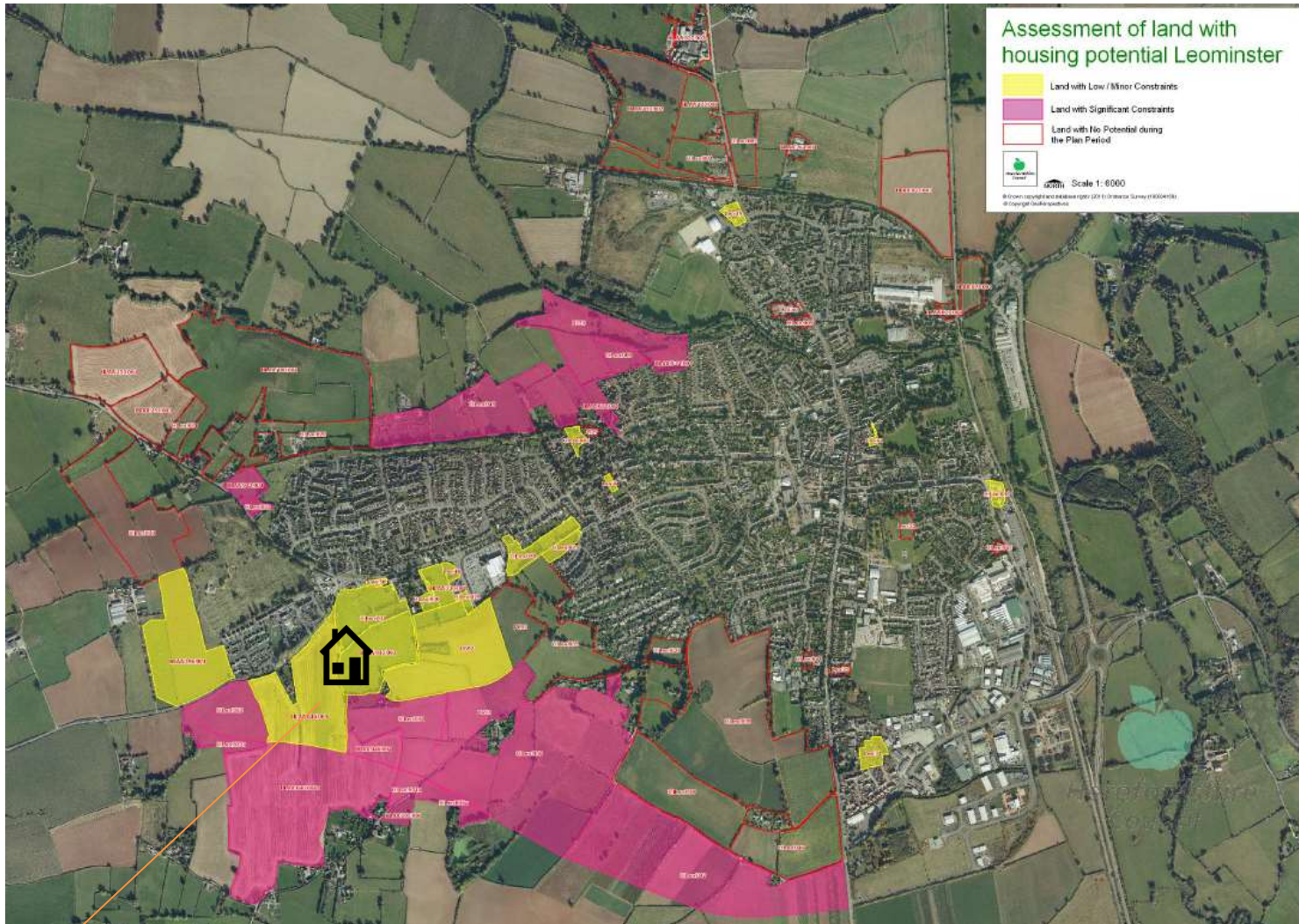
Stoke Prior

No allocation of New Homes

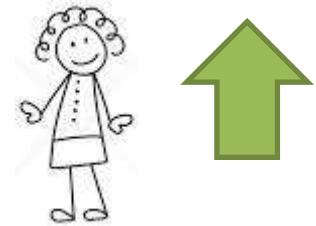
Ivington

No allocation of New Homes

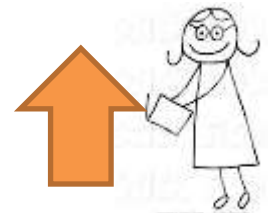




2200 proposed for
the Leominster area
by 2031



Total Primary School
children set to
increase by around
390 children by
2031



Total Secondary
School children set to
increase by around
300 children by 2031

Leominster southern
expansion 1500 new homes

465 new homes as existing
commitments

270 new homes allowance
remaining

Leominster – Headlines

- 6 Primary schools serve the Leominster area (6% of the school estate) & 1 secondary (1% of the school estate)
- £351k maintenance for 5 LA maintained schools over the next 5 years including backlog (Note excludes Leominster Primary)
- Average 82% building compliance.
- 4 out of 6 primary schools located on recommended or larger sites than the standard criteria noted within BB103.
- Based upon current PAN we have provision for 1197 pupils.
- 1 School has achieved outstanding ofsted rating, 4 Schools have achieved a good ofsted rating with Leominster primary yet to be undertaken.

School	School Capacity	Number on Roll NOR 2015	NOR 2014	NOR 2013	NOR 2012	NOR 2011
Ivington CE Primary School	105	103	101	91	87	96
Kingsland CE Primary School	140	154	151	145	147	139
Leominster Primary School	630	597	574	571	572	559
Luston Primary School	140	81	90	88	99	96
St James' CE Primary School	105	71	74	83	90	92
Stoke Prior Primary School	77	88	81	82	84	88
TOTAL for Primary	1197	1094	1071	1060	1079	1070
Earl Mortimer College (and Sixth Form Centre)	800	557	576	604	649	644
TOTAL for Secondary	800	557	576	604	649	644

School	Published admission number	2014 first preference Applications	2014	2013	2012	2011
Ivington CE Primary School	15	13	87%	73%	113%	120%
Kingsland CE Primary School	20	18	90%	165%	110%	125%
Leominster Primary School	90	n/a	n/a	n/a	n/a	n/a
Luston Primary School	20	8	40%	35%	45%	55%
St James' CE Primary School	15	12	80%	53%	86%	86%
Stoke Prior Primary School	11	12	109%	136%	118%	90%
Earl Mortimer College (and Sixth Form Centre)	140	96	69%	65%	73%	91%

School	Number of children for whom this school is the nearest	Number of children for whom it is the nearest who are actually attending the school	Percentage of NOR for whom it is nearest school	NOR 2015
Ivington CE Primary School	52	15	15%	103
Kingsland CE Primary School	60	40	26%	154
Leominster Primary School	887	555	93%	597
Luston Primary School	57	22	27%	81
St James' CE Primary School	34	23	32%	71
Stoke Prior Primary School	59	27	31%	88
Earl Mortimer College (and Sixth Form Centre)	821	540	97%	557

School	Maintenance cost exceeds 30% of asset	PAN for compliance comparison	Overall Gross site compliance	Overall building compliance
Ivington CE Primary School	yes (asset value questioned)	15	under	under
Kingsland CE Primary School	no	20	under	under
Leominster Primary School	Not available	90	over	over
Luston Primary School	no	20	over	under
St James' CE Primary School	no	15	to standard	under
Stoke Prior Primary School	no	10	over	under
Earl Mortimer College (and Sixth Form Centre)	Not available	N/A	over	over

Next steps

- Development of ideas
- Acceptance of the principles
- Options
- A report setting out a strategy November 2015