

Theresa



To: Hereford and Worcester County Council

STATEMENT PURSUANT TO SECTION 31(6) HIGHWAYS ACT 1980

On the 6th day of AUGUST 1997 I wish to deposit with Hereford and Worcester County Council, being the appropriate Council, a statement accompanied by a plan delineating my property by red edging which shows routes dedicated as public rights of way as per the Definitive Map key. No other ways have been dedicated as highways over the property.

Signed



CONWAY SECRETARY

on behalf of

The Council with Common Trust

Reg. Office Hereford,

Goodrich

Ross-on-Wye

HEREFORDSHIRE

HR 9 67F

COPPETT HILL COMMON TRUST LTD

Registered Office:

Charlton
Goodrich
Ross-on-Wye
HR9 6JF

phone/fax
01600 890 457

06/08/97

Registration of Rights of Way pursuant to Section 31(6) Highways Act 1980

The attached plan details rights of way within the area of land owned by the Coppett Hill Common Trust.

In explanation of the colours used:

Public Highways are marked as a solid black line.

The sole registered footpaths are:

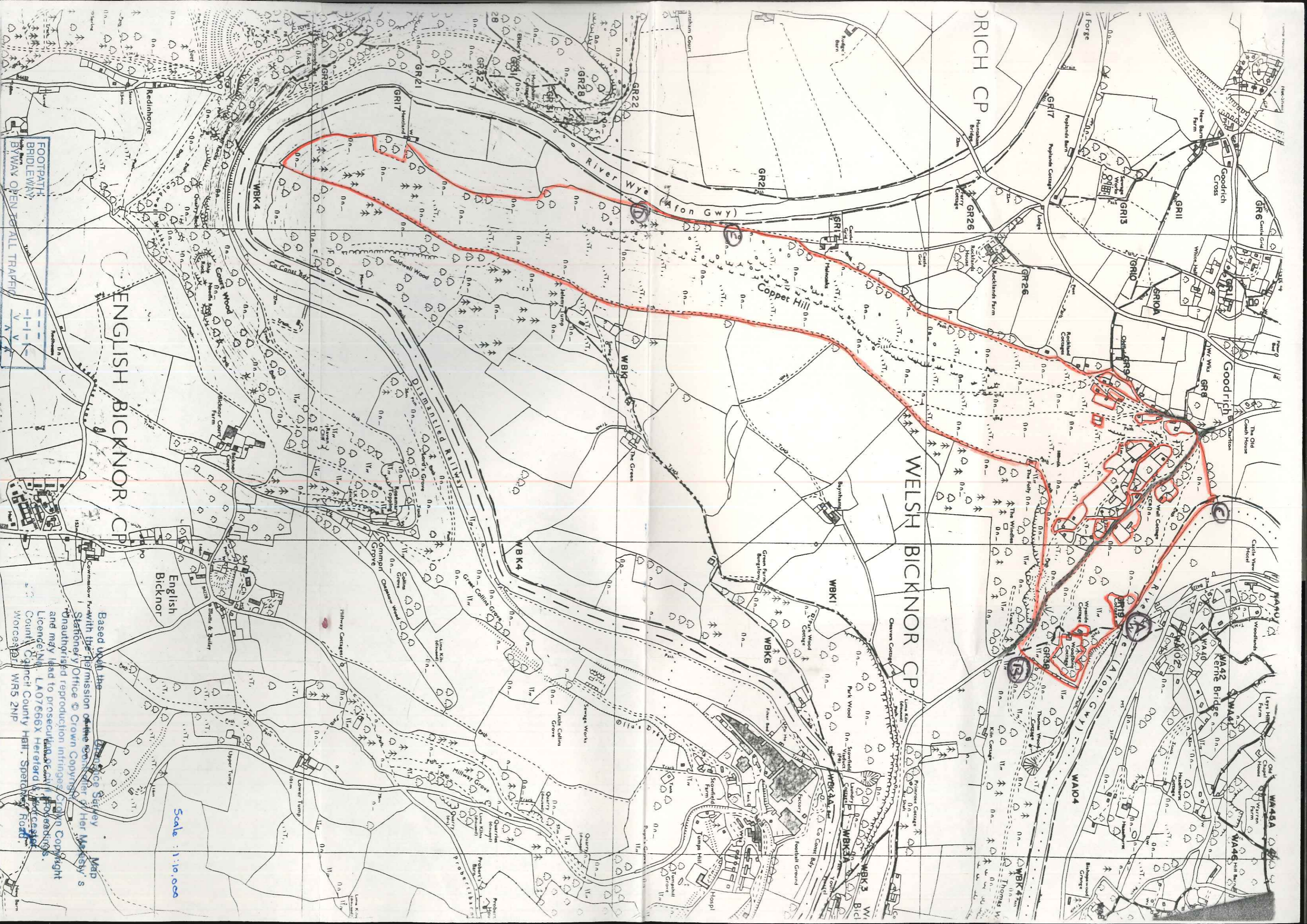
- 1 Between the points marked A and B and marked by a broken black line
- 2 Between the points marked A and C and marked by a broken black line
- 3 Between the points marked D and E and marked by a broken black line

On behalf of the Coppett Hill Common Trust


Company Secretary

Directors:
D B Verity R V Thomas J L Thomas R L C Harbord (Parish Council appointed Director)
R Graves (County Council appointed Director) Secretary: L Lowe

Registered in England No 1913510



DRICH CP

ENGLISH BICKNOR CP

WELSH BICKNOR CP

FOOTPATH
BRIDLEWAY
BYWAY OPEN TO ALL TRAFFIC

Based upon the Ordnance Survey Map with the permission of the Stationery Office © Crown Copyright. Unauthorised reproduction infringes Crown Copyright and may lead to prosecution. Licence No. LA07666X Hereford and Worcester Council County Hill, Spetchley Road, Worcester

Scale 1:10,000

River Wye (Afon Gwy)

Copper Hill

English Bicknor

W442 Kerne Bridge
W443
W444
W445
W446
W447
W448
W449
W450
W451
W452
W453
W454
W455
W456
W457
W458
W459
W460