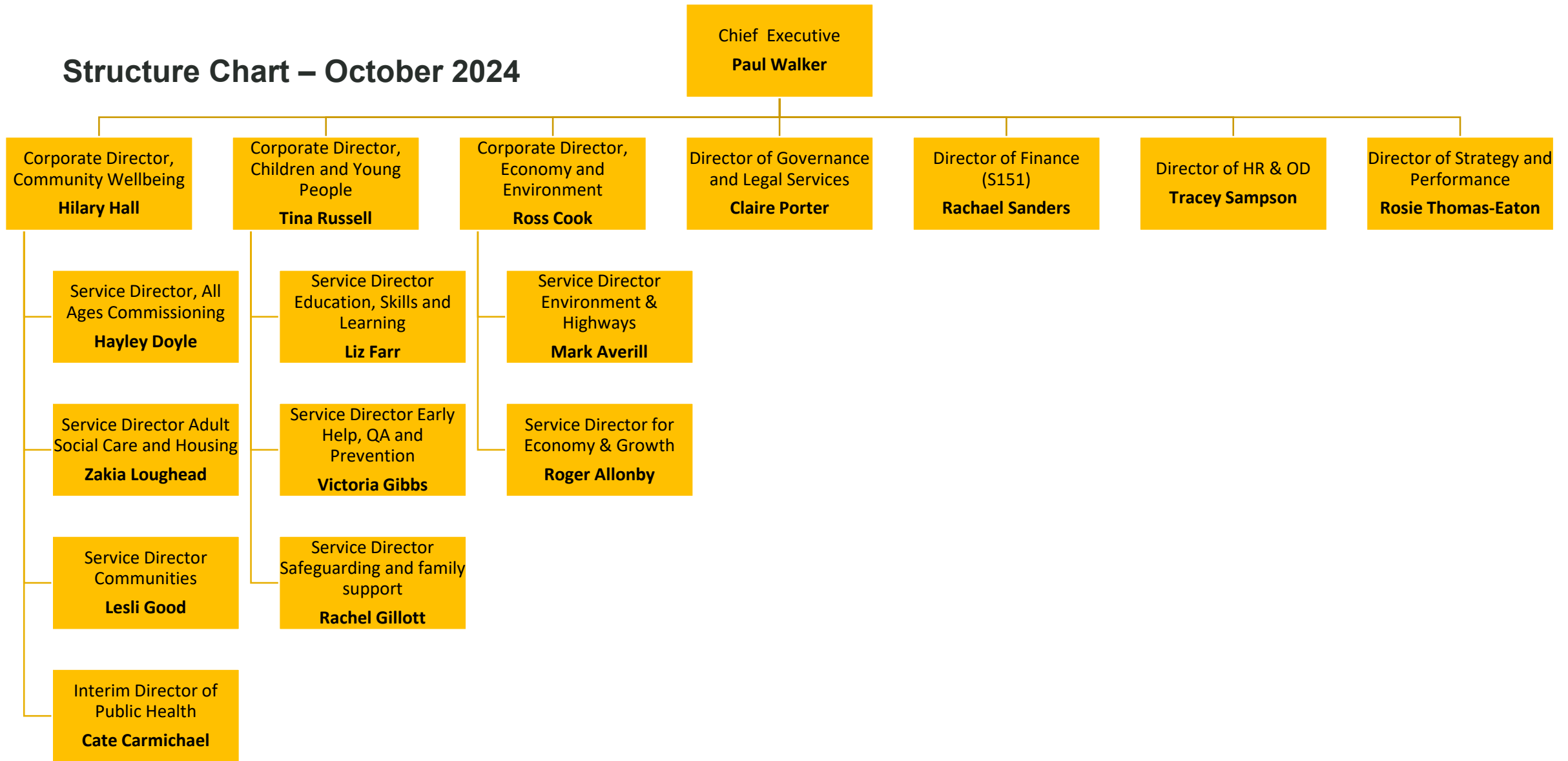


Structure Chart – October 2024



Contact details

Name	Position	Directorate	Email	Phone Number
Paul Walker	Chief Executive	Corporate Services	Paul.walker@Herefordshire.gov.uk	01432 260045
Hillary Hall	Corporate Director	Community Wellbeing	Hilary.hall@Herefordshire.gov.uk	01432 260476
Hayley Doyle	Service Director, All Ages Commissioning	Community Wellbeing	Hayley.Doyle@Herefordshire.gov.uk	01432 260832
Zakia Loughhead	Service Director, Adult Social Care and Housing	Community Wellbeing	Zakie.Loughhead@herefordshire.gov.uk	01432 260476
Lesli Good	Service Director, Communities	Community Wellbeing	Leslie.good@herefordshire.gov.uk	01432 260965
Cate Carmichael	Interim Director of Public Health	Community Wellbeing	Cate.Carmichael@Herefordshire.gov.uk	01432 383584
Tina Russell	Interim Corporate Director, Children & Young People	Children & Young People	Tina.Russell@herefordshire.gov.uk	01432 260039
Liz Farr	Service Director, Education, Skills & Learning	Children & Young People	Liz.farr@Herefordshire.gov.uk	01432 260160
Victoria Gibbs	Service Director, Early Help, QA and Prevention	Children & Young People	Victoria.gibbs@Herefordshire.gov.uk	01432 383887
Rachel Gillott	Service Director Safeguarding and family support	Children & Young People	Rachel.gillott@Herefordshire.gov.uk	01432 260573
Ross Cook	Corporate Director, Economy & Environment	Economy & Environment	Ross.cook@Herefordshire.gov.uk	01432 260695
Mark Averill	Service Director Environment & Highways	Economy & Environment	Mark.averill@Herefordshire.gov.uk	01432 260944
Roger Allonby	Service Director for Economy	Economy & Environment	Roger.allonby@Herefordshire.gov.uk	01432 260330
Claire Porter	Director of Governance & Legal Services	Corporate Services	Claire.porter2@Herefordshire.gov.uk	01432 260657
Rachael Sanders	Director of Finance (s151)	Corporate Services	Rachael.sanders@herefordshire.gov.uk	01432 383775
Tracey Sampson	Director of HR & OD	Corporate Services	Tracey.Sampson@Herefordshire.gov.uk	01432 383715
Rosie Thomas-Easton	Director of Strategy & Performance	Corporate Services	Rosie.Thomas-Easton@herefordshire.gov.uk	01432 260045