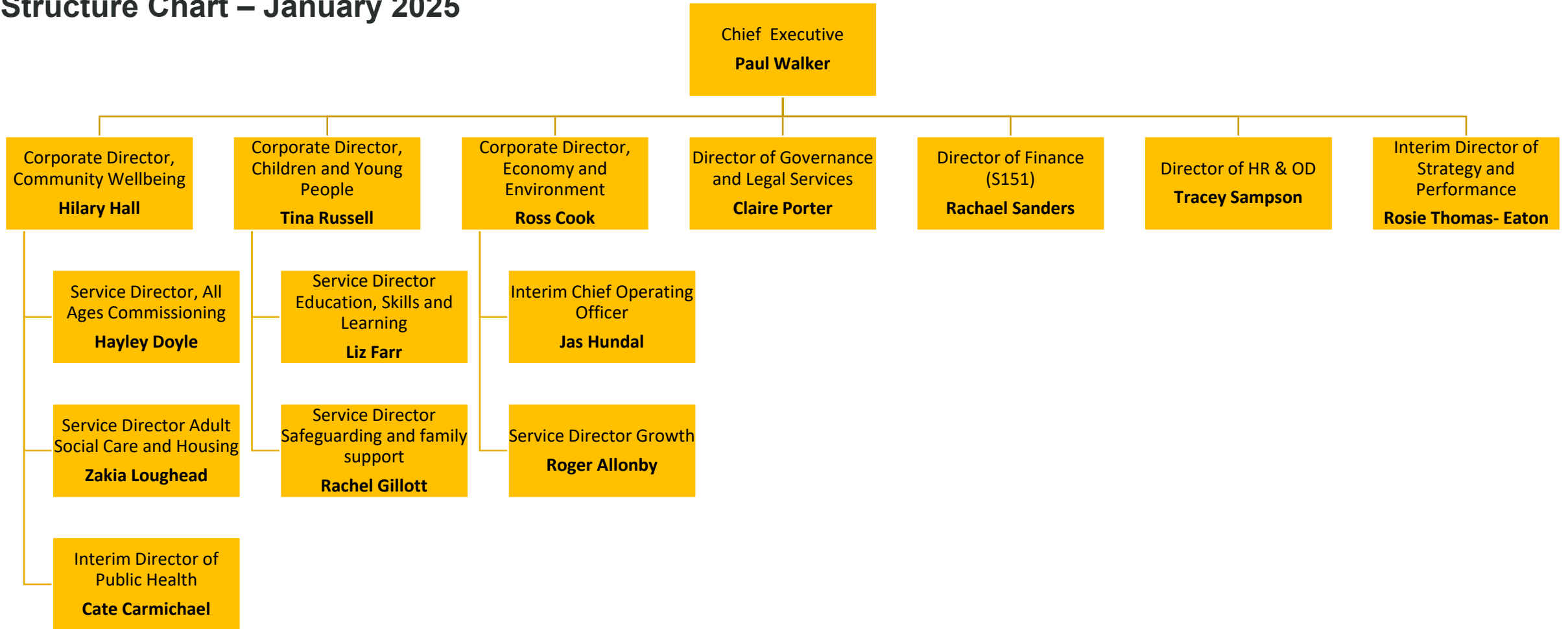


Structure Chart – January 2025



Contact details

Name	Position	Directorate	Email	Phone Number
Paul Walker	Chief Executive	Corporate Services	Paul.walker@Herefordshire.gov.uk	01432 260045
Hillary Hall	Corporate Director	Community Wellbeing	Hilary.hall@Herefordshire.gov.uk	01432 260476
Hayley Doyle	Service Director, All Ages Commissioning	Community Wellbeing	Hayley.Doyle@Herefordshire.gov.uk	01432 260832
Zakia Loughead	Service Director, Adult Social Care and Housing	Community Wellbeing	Zakia.Loughead@herefordshire.gov.uk	01432 260713
Cate Carmichael	Interim Director of Public Health	Community Wellbeing	Cate.Carmichael@Herefordshire.gov.uk	01432 383584
Tina Russell	Interim Corporate Director, Children & Young People	Children & Young People	Tine.Russell@herefordshire.gov.uk	01432 260039
Liz Farr	Service Director, Education, Skills & Learning	Children & Young People	Liz.farr@Herefordshire.gov.uk	01432 260160
Rachel Gillott	Service Director Safeguarding and family support	Children & Young People	Rachel.gillott@Herefordshire.gov.uk	01432 260573
Ross Cook	Corporate Director, Economy & Environment	Economy & Environment	Ross.cook@Herefordshire.gov.uk	01432 260695
Jas Hundal	Interim Chief Operating Officer	Economy & Environment	Jas.Hundall@Herefordshire.gov.uk	
Roger Allonby	Service Director, Growth	Economy & Environment	Roger.allonby@Herefordshire.gov.uk	01432 260330
Claire Porter	Director of Governance & Legal Services	Corporate Services	Claire.porter2@Herefordshire.gov.uk	01432 260657
Rachael Sanders	Director of Finance (s151)	Corporate Services	Rachael.sanders@herefordshire.gov.uk	01432 383775
Tracey Sampson	Director of HR & OD	Corporate Services	Tracey.Sampson@Herefordshire.gov.uk	01432 383715
Rosie Thomas-Eaton	Interim Director of Strategy & Performance	Corporate Services	Rosie.Thomas-eaton@herefordshire.gov.uk	