

Environmental Report



Brimfield & Little Hereford Group Neighbourhood Area

March 2016

Contents

Non-technical summary

1.0	Introduction	2
2.0	Methodology	5
3.0	The SEA Framework	7
4.0	Appraisal of Objectives	11
5.0	Appraisal of Options	13
6.0	Appraisal of Policies	14
7.0	Implementation and monitoring	15

Appendix 1: Initial SEA Screening Report

Appendix 2: SEA Scoping Report incorporating Tasks A1, A2, A3 and A4

Appendix 3: Responses to Scoping Report consultation

Appendix 3a: Responses to Draft Environmental Report consultation

Appendix 4: SEA Stage B incorporating Tasks B1, B2, B3 and B4

Appendix 5: Environmental Report checklist

Appendix 6: Feedback on Draft Environmental Report consultation

Appendix 7: Screening of amended policies

Appendix 8: Table of Examiner's recommended modifications

Appendix 9: Task D3 – Assessment following examination modifications

Non-technical summary

Strategic Environmental Assessment (SEA) is an important part of the evidence base which underpins Neighbourhood Development Plans (NDP), as it is a systematic decision support process, aiming to ensure that environmental assets, including those whose importance transcends local, regional and national interests, are considered effectively in plan making.

The Brimfield and Little Hereford Parishes have undertaken to prepare an NDP and this process has been subject to environmental appraisal pursuant to the SEA Directive. The Brimfield and Little Hereford Neighbourhood Area is on the north east boundary of Herefordshire, where the nearest towns are Ludlow in Shropshire to the north and Leominster in Herefordshire to the south. Brimfield extends over 749 Hectares and Little Hereford covers 1432 Hectares.

The Brimfield and Little Hereford NDP includes 6 objectives and it is intended that these objectives will be delivered by 19 criteria based planning policies and an associated site allocation. A range of alternative approaches were considered prior to drafting the plan, as evidenced by the Consultation Statement that accompanies the Submission NDP.

The environmental appraisal of the Brimfield and Little Hereford NDP has been undertaken in line with the Environmental Assessment of Plan and Programmes Regulations 2004. Stage A of the SEA process involved Scoping and Stage B provided a review and analysis of the NDP. Stage C involved preparing a Draft Environmental Report and Stage D comprised a formal consultation on both this and the Draft Plan itself.

The NDP was then refined by the NDP steering group to reflect:

- Feedback from consultation on the Draft Plan and Draft Environmental and Habitat Regulations Assessment (HRA) Reports

The great majority of these refinements relate to the composition of certain sentences and phrases, minor points of accuracy in relation to technical information and references to evidence base studies and other documentation. Policy BLH3 was restructured and broken down into two separate policies, and Policy BLH2 has been screened again, in order to determine the extent to which Stage B of the SEA process has been affected by changes to this policy. However, this assessment found that the outcomes of Stage B of the SEA process were largely unaffected.

The Draft NDP has been through a successful Examination with minor modifications recommended by the Examiner, these modifications have been accepted by Herefordshire Council and have now also been assessed as part of the SEA, the modifications do not change the overall conclusion of the SEA.

On that basis, the conclusion set out in the Draft Environmental Report remains valid. That is, the Brimfield and Little Hereford NDP is in general conformity with both national planning policy contained in the National Planning Policy Framework and strategic policies set within the Herefordshire Local Plan (Core Strategy), including the proposed Main Modifications. Therefore no changes to the NDP are recommended as a result of the SEA.

HRA screening has been carried out as the Neighbourhood Area is in close proximity of Downton Gorge, which is a European site (Special Area of Conservation). The HRA assesses the potential effects of the NDP on the Downton Gorge SAC.

Once made (adopted) by Herefordshire Council, the effects of the policies within the Brimfield and Little Hereford NDP will be monitored annually via the Council's Authority Monitoring Report (AMR).

1.0 Introduction

- 1.1 This report forms the Strategic Environmental Assessment (SEA) of the Brimfield and Little Hereford Neighbourhood Development Plan (NDP).
- 1.2 The Brimfield and Little Hereford NDP allocates one site in Brimfield for housing and provides general policies for guiding future development across the parishes of Brimfield and Little Hereford as a whole.

Purpose of the SEA

- 1.3 SEA is a requirement of EC Directive 2001/42/EC (the SEA Directive) which requires the assessment of the effects of certain plans and programmes on the environment to ensure that the proposals in that plan or programme contribute to the achievement of sustainable development.
- 1.4 The Directive was transposed into domestic legislation through the Environmental Assessment of Plans and Programmes Regulations 2004 and which applies to plans with significant environmental effects.
- 1.5. A screening opinion was carried out on the Brimfield and Little Hereford NDP and it concluded that due to the range of environmental designations in and around the parish, there may be significant environmental effects and consequently an SEA would be required.

About Brimfield and Little Hereford

- 1.6 Brimfield and Little Hereford is on the north east boundary of Herefordshire, where the nearest towns are Ludlow in Shropshire to the north and Leominster in Herefordshire to the south. Brimfield extends over 749 Hectares and Little Hereford covers 1432 Hectares.
- 1.7 These small rural parishes have an overall population of 1145, 751 in Brimfield and 394 in Little Hereford. The Group Parish northern boundary is 9 km from the Downton Gorge SAC and 13km from the River Lugg. The group parish borders with the parishes of Orleton and Richards Castle to the west, Luston Group and Middleton on the Hill and Leysters group along the southern boundary. The northern boundary of the parish borders with Worcestershire.
- 1.8 The vision for Brimfield and Little Hereford in 2031 is supported by six overarching aims:
1. To identify a site (or sites) for small scale housing developments, providing for 58 new homes overall. These homes will be in keeping in both scale and demands of two rural parishes up to 2031, while ensuring that new housing is appropriate in terms of suitability, quantity, phasing, siting and design and having due regards to flooding and water management.
 2. To identify an up to date and appropriate settlement boundary around Brimfield village to ensure that any proposed new development is properly integrated into the existing village envelope and has good access to local services and facilities.
 3. To ensure that transport and communication links such as public transport, pavements, cycle ways, bridle ways and footpaths are incorporated as part of the plan for both villages.
 4. To support local businesses that contribute to the quality of life for residents including support for suitable diversification of new technology.
 5. To protect areas of open space, historic value, and environmental significance throughout both villages.

6. To work together to protect local community facilities and support the local community to identify assets for possible Community Right to Buy initiatives.

Context of Neighbourhood Plans

- 1.9 NDPs are a relatively new type of planning document that form a key part of the Government's localism agenda. They enable local communities to develop plans that reflect local aspirations, in accordance with strategic policies.
- 1.10 The Brimfield and Little Hereford NDP must therefore conform to national planning policy set within the NPPF and the strategic content of the Herefordshire Local Plan (Core Strategy). The Herefordshire Local Plan (Core Strategy) was adopted on 16 October 2015
- 1.11 Table 4.14 of the Local Plan (Core Strategy) lists Brimfield and Little Hereford among the settlements which it considers to be sustainable locations for proportional growth in line with the provisions of Policy RA2. This policy is expected to facilitate the delivery of 5,300 homes across the areas outside Hereford and the Market Towns in accordance with Policy RA1 and it anticipates that NDPs will be the principle mechanism for delivering growth in the rural areas.
- 1.12 Once made (adopted) by Herefordshire Council, the Brimfield and Little Hereford NDP will have a role in guiding future development proposals within the Group Parish, by setting out setting out policies against which planning applications will be determined.

Structure of SEA

- 1.13 The structure of the document is as follows:
 - Section 2 – Explains the SEA methodology and summarises the comments received in respect of the SEA Scoping Report and Draft Environmental Report
 - Section 3 - Introduces the Brimfield and Little Hereford NDP objectives and the SEA framework
 - Section 4 - Appraises the objectives set within the NDP against the SEA framework
 - Section 5 - Appraises the options set within the NDP against the SEA framework
 - Section 6 – Appraises the policies set within the NDP against the SEA framework
 - Section 7 – Discusses the implementation and monitoring of the NDP
 - Section 8 - Concludes the SEA report by outlining next steps

2.0 Methodology

2.1 The SEA process comprised several stages and which are summarised, in some detail, below.

2.2 Stage A involved 4 tasks and culminated in a Scoping Report:

- *Task A1:* Identified and reviewed relevant policies, plans and programmes and environmental protection objectives from European, National and Local sources.
- *Task A2:* Collected baseline information to provide a picture of past, present and likely future conditions within the area. This helped to establish indicators which will be used to monitor the effects and performance of the Brimfield and Little Hereford NDP.
- *Task A3:* Focused on the environmental issues identified from the baseline, highlighting key issues and problems within the neighbourhood area.
- *Task A4:* Used the information gathered from Tasks A1-A3 to develop a set of SEA objectives, sometimes referred to as the 'sustainability framework'.
- *Task A5:* Collated the results of Tasks A1-A4 within a Scoping Report, a document which was subject to a statutory 5 week consultation.

2.3 Stage B involved 4 tasks and assessed the effects of the NDP.

- *Task B1:* Tested NDP Objectives against the SEA Objectives
- *Task B2:* Developed and refined the NDP options and policies.
- *Task B3/B4:* Predicted and evaluated the significant effects of the NDP

2.4 Stage C involved preparing a Draft Environmental Report. This report presented information compiled during Stage B of the SEA process and formed the Draft Environmental Appraisal of the NDP and now following the Regulation 16 consultation and examination Stage D of the SEA process and constitutes the Environmental Appraisal of the NDP. It will accompany the final Plan through to formal of adoption by Herefordshire Council if the Plan is successful at Referendum.

Scoping Report Consultation

2.6 With regard to the SEA scoping assessments, documents A1 to A4 were completed by a Herefordshire Council Planning Officer and sent to the Parish Council for comment, in readiness for a 5 week consultation with statutory bodies, pursuant to the Environmental Assessment of Plans and Programmes Regulations 2004.

2.7 After the document was approved by the Parish Council, the Brimfield and Little Hereford SEA Scoping Report was available to three¹ statutory bodies for consultation from 18 June to 23 July 2014.

2.8 The consultation resulted in 2 responses, both of which are attached at Appendix 3.

2.9 Both responses were collated and incorporated within this document where relevant.

Natural England: Natural England commented on adding further plans, policies and programmes (please refer to appendix 3) to the A1 document. For the A2 section of the scoping report NE suggested to include NE internal information regarding priority habitats should be included within the baseline information in A2. NE stated that Soil and Geodiversity

¹ Statutory consultation bodies: Natural England; English Heritage; Environment Agency

were not considered or covered in the A3 assessment and should be added to the baseline information. For the A4 assessment within particular objectives and topics Landscape character assessment and Water framework directive should be included within the baseline.

Response: The six documents referred to have been added to A1 and further baseline data has been incorporated at A2.

English Heritage: English Heritage comments resulted in minor amendments to wording for A2 and A4 regarding the phrase Heritage assets. All of these comments from English Heritage and Natural England were taken into account and added into each stage of the scoping report process.

Response: Changes to the wording of relevant indicators and targets have been incorporated into A2 and A4.

Environment Agency: No comments received

Response: N/A

Draft Environmental Report consultation

- 2.10 The Draft SEA was consulted on for a 6 week period between 15 December 2014 and 9 February 2015. The three statutory bodies listed above were consulted and comments received from one of these can be found in Appendix 3a, with a summary provided at Appendix 6.
- 2.11 The document was available on Herefordshire Council's website for comment during the period highlighted above, but representations were sent to the Parish Council. However, apart from the comments received from one statutory consultee, none of the representations were directed at content or structure of the Draft Environmental Report.
- 2.12 None of the respondents to the consultation disputed or requested an amendment to the SEA of the Brimfield and Little Hereford NDP and Natural England made clear that the Draft Environmental Report satisfies the requirements of the relevant legislation and regulations, and concur with its conclusions.
- 2.13 As such, there are no suggested changes to the Environmental Report prior to the NDPs adoption.

3.0 The SEA Framework

3.1 As mentioned previously, Stage A of the SEA identifies and reviews relevant policies, plans and programmes and environmental protection objectives from European, National and Local sources (refer to Table A1 in Appendix 2 for details of those documents that were reviewed in completing Stage A of SEA on the Brimfield and Little Hereford NDP).

3.2 The requirement to undertake this 'context review' is contained in Annexes 1(a) and (e) of the SEA Directive which states that an Environmental Report should include:

"...an outline of the contents, main objectives of the plan or programme and relationship with other relevant plans and programmes" and

"...the environmental protection objectives, established at international, Community or Member State level, which are relevant to the plan or programme and the way those objectives and any environmental considerations have been taken into account during its preparation"

Policy context

3.3 The Brimfield and Little Hereford NDP will deliver the Local Plan (Core Strategy) at parish level by adding locally specific detail to strategic policies. As a consequence, the Scoping Report for the NDP was based on the context review Herefordshire Council undertook for its Local Plan (Core Strategy).

3.4 The results of this assessment (context review) provide the source of the local baseline data and have been incorporated into the SEA framework. It should be noted that:

- No list of policies, plans and programmes can ever be exhaustive and that Herefordshire Council has selected those considered to be of particular relevance to the planning system;
- New or revised plans and policies can emerge during the SEA process

3.5 The following plans, policies and programmes have been reviewed and, where appropriate, incorporated within the SEA Framework objectives:

- *The EC Conservation of Habitats and Species Regulations (2010)* - These regulations transpose the Habitats Directive in England, Wales and to a limited extent Scotland by ensuring that activities are carried out in accordance with the Habitats Directive, which is to protect biodiversity through the conservation of natural habitats and species of wild flora and fauna.
- *The EC Water Framework Directive (2000)* - Commits all EU member states to achieve good qualitative and quantitative status of all water courses by 2015
- *The Wildlife and Countryside Act (1981)* - The major legal instrument for wildlife protection in Britain, although other significant acts have been passed since. It has numerous parts and supplementary lists and schedules many of which have been amended since publication.
- *Biodiversity 2020: A strategy for England's wildlife and ecosystem services (2011)* - Forms part of the UK's Post-2010 Biodiversity Framework by setting out England's contribution towards the UK's commitments under the United Nations Convention of Biological Diversity.
- *The Countryside and Right of Way Act (2000)* - Creates a statutory right of access on foot to certain types of open land, to modernise the public rights of way system, to strengthen nature conservation legislation, and to facilitate better management of AONBs

- *The Natural Environment and Rural Communities Act (2006)* - Designed to help achieve a rich and diverse natural environment and thriving rural communities through modernised and simplified arrangements for delivering Government policy.
- *Revised EU Sustainable Development strategy (2009)* - Sets out a single strategy on how the EU will more effectively meet its long-standing commitment to meet the challenges of sustainable development.
- *National Planning Policy Framework (NPPF) (2012)* - Consolidates the suite of PPG/PPS into one succinct planning policy document.
- *Planning Practice Guidance (2013)* - Sets out the vision, objectives and policies for the Herefordshire Local Plan (Core Strategy), which will guide development across the county up to 2031.
- *Herefordshire Local Transport Plan 3 (LTP) 2013-2015* - Sets out the Council's strategy for supporting economic growth, social inclusion and reducing the environmental impacts of transport, as well as the program of investment for the period April 2013 to April 2015.
- *Understanding Herefordshire Report (2014)* - Important to understand the place such as the local economy natural and built environment in which people live, learn and work as part of understanding their quality of life. Enable development for economy and housing to required levels and growth should be supported by sustainable transport measures.
- *Malvern Hills AONB Management Plan 2009-2014 (2009)* - Identifies the issues and challenges facing the special features of the area and contains 24 guiding principles and 46 strategic objectives which will help address them.
- *Wye Valley AONB management Plan 2009-2014 (2009)* - The Management Plan is the prime document which sets out the vision for the area and the priorities for its management.
- *Herefordshire Economic Development Strategy 2011-2016* - Aims to increase the economic wealth of Herefordshire by setting out proposals and to support business growth up to 2016.
- *Herefordshire Employment Land Study (2012)* - Includes employment land assessments for the plan period 2011-2031. The study includes Quantitative and Qualitative assessments of employment land, assessment of market demand and need, as well as providing forecasts and recommendations for future employment need over the plan period.
- *Herefordshire Strategic Housing Land Availability Assessment (SHLAA) (2009)* - The SHLAA aims to justify site allocations in plans by:
 - Identifying sites which are capable of delivering housing development
 - Assessing sites for their housing potential; and
 - Predicting when a site could be developed for housing.
- *Herefordshire Local Housing Market Assessment (LHMA) (2013)* - Builds on an earlier Strategic Housing Market Assessment (SHMA) developed for Herefordshire and Shropshire. Its purpose is to inform the Local Plan's policies regarding housing need and demand (for market and affordable housing) within each of the 7 Housing Market Areas (HMAs) in Herefordshire between 2011 and 2031.

- *Herefordshire Local Housing Requirements Study (2012)* - Technical assessment of the housing market and potential future local housing requirements which supports planning policy regarding the amount of growth, housing tenure and housing type needed within Herefordshire up to 2031.
- *Herefordshire Rural Housing Background Report (2013)* - Provides the justification for the proportional housing growth targets outlined in the Core Strategy
- *Herefordshire Draft Gypsies and Travellers Assessment (2013)* - Assesses the accommodation needs of Gypsies and Travellers across Herefordshire.
- *Herefordshire Local Biodiversity Action Plan (2007)* - Focuses conservation efforts on the areas within Herefordshire that will result in the greatest benefit for ecological networks, habitats and species.
- *Building Biodiversity into the LDF (2009)* - Provides the Council's Local Plan (Core Strategy) with evidence in respect of biodiversity and geodiversity, identifying both opportunities and constraints across Herefordshire.
- *Herefordshire Green Infrastructure Strategy (2010)* - Develops a framework of natural and culturally important features and functions so that planning for a sustainable future is at the heart of planning within Herefordshire.
- *Renewable Energy Study (2010)* - Assesses the energy demand within Herefordshire and the ability for the county to accommodate renewable and low carbon energy technologies.
- *Herefordshire Playing Pitch Assessment (2012)* - Produces a strategic framework, audit and assessment and needs analysis of outdoor sports pitches and facilities for Herefordshire. The document arises as a result of a recommendation in the Herefordshire and Worcestershire Sports Facilities Framework to develop local standards for playing fields and sports pitches throughout Herefordshire.
- *Open Spaces Study (2006)* - The 2006 space audit and assessment of need is a snapshot of the quality, quantity and distribution of open space across Herefordshire.
- *Play Facilities Study (2012)* - The Play Facilities Study 2012 updates the previous play facilities analysis under the Open Spaces Study 2006 and provides guidance and a framework for the development, delivery and continued sustainability of providing new and improved play facilities for children and young people in Herefordshire to 2031.
- *Strategic Flood Risk Assessment (SFRA) and Water Cycle Study (2009)* - The SFRA provides a summary of flood risk in Herefordshire to inform the location of future development. The Water Cycle Study examines how water resources and water supply infrastructure, wastewater treatment, water quality, sewerage and flood risk could constrain growth across Herefordshire.

3.6 Appendix 1 of the Brimfield and Little Hereford Plan Scoping Report provides additional detail on the Plans, Policies and Programmes mentioned above and identifies the implications for the SEA and NDP.

SEA Objectives and baseline characteristics

3.7 The SEA objectives that were used at Stages A and B of the process are listed in the following table.

SEA Objective	
1	To maintain or enhance nature conservation (biodiversity, flora and fauna)
2	To maintain or enhance the quality of landscapes and townscapes
3	To improve the quality of surroundings
4	To conserve or where appropriate enhance the historic environment and cultural heritage
5	To improve air quality
6	To reduce the effect of traffic on the environment
7	To reduce contributions to climate change
8	To reduce vulnerability to climate change
9	To improve water quality
10	To provide for sustainable sources of water supply
11	To avoid, reduce and manage flood risk
12	To conserve soil resources and quality
13	To minimise the production of waste
14	To improve the health of the population
15	To reduce crime and nuisance
16	To conserve natural and manmade resources

- 3.8 The SEA objectives detailed above conform to the SEA Directive, and are derived from the Sustainability Appraisal undertaken for the Herefordshire Local Plan Core Strategy 2011-2031.
- 3.9 Baseline information gathered during Stage A of the SEA process provided details of the current environmental characteristics of the neighbourhood area and the status of its natural assets and features (refer to Appendix 2). This information was analysed as part of Task B2 of SEA, which looked at the extent to which the emerging NDP policies will help or obstruct these characteristics.
- 3.10 Following the completion of Task B2 of SEA it was apparent that the largest environmental issue within the Group Parish and which has an impact on the County as a whole is the potential effect on Downtown Gorge. The NDP policies aim to mitigate against any harmful impact to the surrounding environment and to the Downton Gorge SAC, also the proposals in the Plan are not over and above the Core Strategy and therefore should not have a significant impact.
- 3.11 Whilst the NDP proposes that one site be allocated in Brimfield for housing, the delivery of this site should not exacerbate existing problems regarding water quality or have an unacceptable adverse impact; the basis for this conclusion is discussed, in some detail, in the accompanying HRA Report.

4.0 Assessing the NDP Objectives

4.1 The following are objectives listed in the NDP that aim to realise the vision for Brimfield and Little Hereford in 2031:

1. To identify a site (or sites) for small scale housing developments, providing for 58 new homes overall. These homes will be in keeping in both scale and demands of two rural parishes up to 2031, while ensuring that new housing is appropriate in terms of suitability, quantity, phasing, siting and design and having due regards to flooding and water management.
2. To identify an up to date and appropriate settlement boundary around Brimfield village to ensure that any proposed new development is properly integrated into the existing village envelope and has good access to local services and facilities.
3. To ensure that transport and communication links such as public transport, pavements, cycle ways, bridle ways and footpaths are incorporated as part of the plan for both villages.
4. To support local businesses that contribute to the quality of life for residents including support for suitable diversification of new technology.
5. To protect areas of open space, historic value, and environmental significance throughout both villages.

To work together to protect local community facilities and support the local community to identify assets for possible Community Right to Buy initiatives.

4.2 These NDP objectives were tested against the SEA objectives, with the full results of Task B1 of SEA available at Appendix 4 of this report.

4.3 The majority of those NDP objectives which have a relationship with the SEA framework are positively compatible with it or have a neutral effect.

Key:	
+	Compatible
-	Possible conflict
0	Neutral
X	No relationship between objectives
?	Unclear, more information needed

NDP Objectives	SEA Objectives															
	1	2	3	4	5	6	7	8	9	10	11	12	13	14	15	16
Objective 1	+	+	+	0	?	?	X	X	X	+	+	0	+	+	+	+
Objective 2	+	+	+	+	X	X	X	X	X	X	0	0	+	+	+	0
Objective 3	+	+	+	X	+	+	+	+	X	X	X	+	+	+	+	+
Objective 4	X	+	+	X	+	+	+	+	X	X	X	+	+	+	+	X
Objective 5	+	+	+	+	+	X	X	X	X	X	X	+	+	+	+	+
Objective 6	X	+	+	X	X	X	X	X	X	X	X	X	+	+	+	X

5.0 Assessing the NDP Options

- 5.1 All options that were considered by the NDP steering group during the development of their plan have been assessed as part of the SEA and the summary matrix of the assessment can be found in Table B2 at Appendix 4.
- 5.2 The options were based on perceptions of the likely most important issues for the NDP and feedback from public consultation events across the Group Parish in January, May and July 2014. The results fed into the identification of the preferred options and ultimately NDP policies.
- 5.3 Also of importance was the Call for Sites exercise that helped to site allocations within the NDP. Landowners and agents were given 4 weeks to put forward housing sites for consideration and 13 potential sites were selected. The subsequent site allocations document was handed out throughout the group parish and handed back in via the village shop. A total of 102 comments were received. Option 1 was the preferred option. This was supported by nearly half (49.44%) of respondents, followed by option 2 (27.07%) and then option 3 (23.49%).
- 5.4 The site options had a generally positive impact upon the baseline data and SEA objectives; though Options 2 and 3 in particular would have the most impact upon the environment due to number of site allocations proposed and the attendant rise in problems associated with vehicular movements and water abstraction etc.
- 5.5 The overall effect of the policies was positive and therefore no further options were required to be assessed.

NDP Options	SEA Objectives															
	1	2	3	4	5	6	7	8	9	10	11	12	13	14	15	16
Option 1	?	+	+	?	?	-	?	?	?	?	+	?	+	+	+	?
Option 2	?	+	+	?	?	-	?	?	?	?	+	?	+	+	+	?
Option 3	?	+	+	?	?	-	?	?	?	?	+	?	+	+	+	?

6.0 Appraisal of the policies

- 6.1 A key part of developing a plan such as the Brimfield and Little Hereford NDP is developing range of options and testing these, so that a preferred way forward can be selected.
- 6.2 The plan has been organised with a set of general overarching policies for the whole neighbourhood area and these emerging set of draft policies were appraised for the purposes of Stage B of the SEA:
- Policy BLH1 - New housing within the Brimfield settlement boundary
 - Policy BLH2 - New housing development
 - Policy BLH3 – Housing to meet local needs
 - Policy BLH4 – Ensuring an appropriate range of tenures, types and sizes of housing
 - Policy BLH5 - Criteria for sites for housing sites in Little Hereford
 - Policy BLH6 - Protection Of Community Facilities
 - Policy BLH7 - Local Heritage List
 - Policy BLH8 - Building design principles.
 - Policy BLH9 - Landscape design principles.
 - Policy BLH10 - Local green space designations
 - Policy BLH11 - Allotments and open space
 - Policy BLH12 - Water Management
 - Policy BLH13 - Criteria for assessing the suitability of future potential development sites
 - Policy BLH14 - Development in areas of flood risk
 - Policy BLH15 - Design for flood resilience and resistance
 - Policy BLH16 - Design to reduce surface water run off
 - Policy BLH17 - New communication technologies
 - Policy BLH18 - Developments supporting rural enterprise
 - Policy BLH19 - Supporting public transport, walking and cycling

Stage B of SEA

- 6.3 In the context of Task B1 of SEA, the previous section of this report identified that many of the NDP objectives are compatible with the SEA framework, while others had either a neutral impact, no relationship with the SEA objectives or if needed; further information such as location of development. Additional policy safeguards within the NDP and Local Plan (Core Strategy) would help mitigate any possible conflicts.
- 6.4 With regard to Task B2 of SEA, the NDP policies were measured against both the SEA framework and the baseline characteristics identified during Stage A of the process. Full details of this appraisal are attached at Appendix 4.

NDP Policy	SEA Objectives															
	1	2	3	4	5	6	7	8	9	10	11	12	13	14	15	16
Policy 1	0	+	+	0	0	0	?	?	?	?	+	0	+	+	+	0
Policy 2	x	+	+	x	x	x	x	x	x	x	x	x	+	+	+	x
Policy 3	x	+	+	x	x	x	x	x	x	x	x	x	+	+	+	x
Policy 4	0	+	+	0	0	x	x	x	x	x	x	0	x	+	+	0
Policy 5	0	+	+	+	0	0	x	x	x	x	x	x	+	+	+	+
Policy 6	+	++	+	++	x	x	x	x	x	x	x	+	+	+	+	+
Policy 7	+	+	+	+	x	x	x	x	x	x	x	+	+	+	+	+
Policy 8	++	++	+	++	x	x	x	x	x	x	+	+	+	+	x	++
Policy 9	++	++	+	+	x	x	x	x	x	x	+	++	x	+	+	++
Policy 10	++	+	+	x	x	x	x	x	x	x	+	++	x	+	+	+
Policy 11	+	+	+	x	x	x	x	+	++	x	++	+	+	+	x	+
Policy 12	+	+	+	x	x	x	x	+	++	x	++	+	+	+	x	+
Policy 13	+	+	+	+	x	x	x	+	++	++	++	+	x	+	x	+
Policy 14	+	+	+	+	x	x	x	+	+	x	++	+	x	x	x	+
Policy 15	+	+	+	+	x	x	x	+	+	x	++	+	x	x	x	+
Policy 16	+	+	+	x	+	+	x	x	x	x	x	x	+	x	+	+
Policy 17	0	0	+	x	0	0	x	x	x	x	0	+	+	+	+	0
Policy 18	+	+	+	x	+	+	+	x	x	x	x	x	+	+	+	+

- 6.5 The results of Task B3, as shown at Appendix 4, demonstrate that the cumulative impact of the NDP policies over the course of the plan period is generally positive. Although some policies may have a neutral or uncertain impact during the first 5 years of the plan period, there is no reason why they cannot have a positive effect in the medium to long-term due to policy safeguards included in the Local Plan (Core Strategy); these safeguards should avoid or mitigate against unacceptable adverse impacts.
- 6.6 Task B4 of SEA brings together the results of earlier tasks and thus identifies the cumulative impact of the entire NDP. This task, which is also attached at Appendix 4, reveals that the objectives and policies contained in the Breinton NDP are by and large in general conformity with the Local Plan (Core Strategy), which means that the cumulative effect of the plan will contribute to the achievement of the SEA objectives.
- 6.7 None of the NDP policies are considered to be in direct conflict with or propose greater levels of growth and development than strategic policies contained in the Local Plan (Core Strategy), which themselves have undergone a full Sustainability Appraisal.
- 6.8 Among the environmental issues and problems that could arise from the Brimfield and Little Hereford Group Plan are the loss of some good quality agricultural land as it is Grade 2 and 3 (Very good to moderate), the additional production of waste and water abstraction during the development phases of housing. However, this will be mitigated against to a certain extent by policies in the NDP ensuring that water management is handled properly. Whilst the Downton Gorge SAC runs along the outside the northern boundary of the Neighbourhood Area, it is unlikely that there will be a significant impact upon its quality as the scale of housing within the villages will not exceed the indicative targets set out in Policy RA1 of the Herefordshire Core Strategy.

Regulation 14 Draft Plan consultation

- 6.9 As mentioned previously, two policies were refined following the Draft Plan stage; these changes were necessitated by comments received during the consultation period and the proposed Main Modifications to the Local Plan (Core Strategy) as a result of its Examination in Public.
- 6.10 However, only one of the amended policies was screened for its cumulative impact over the course of the plan period, as the amendments made to the other policy are not considered significant enough to warrant a new screening opinion. The results of this assessment, shown at Appendix 7, reveal that the outcomes Stage B of the SEA process mentioned above were largely unaffected by the refinements to Policy BLH2.

Regulation 16 Consultation and Examination

- 6.11 Following the Draft plan consultation (Regulation 14) and the amended Draft NDP for the Regulation 16 consultation, the Plan has now been subject to an Independent Examination (During February 2016) by Ann Skippers who has submitted her report stating that the NDP will meet the Basic Conditions subject to a number of Minor Modifications to the policies. The recommended modifications can be viewed in Appendix 8.
- 6.12 The policies that underwent examination and subsequently were re-assessed following modification were:
- BLH2 – New Housing Development
 - BLH7 – Local heritage List
 - BLH8 – Building Design principles
 - BLH10 – Local Green Space Designations
 - BLH13 – Criteria for Assessing the suitability of future potential sites
- 6.13 The Modifications have been accepted by Herefordshire Council and have been made to the Plan; the policies that have had modifications made to them have now been re-assessed as part of this SEA process. The modifications were in the main minor wording changes to ensure consistency with the Framework and to provide more clarity for decision makers. Policy BLH10 has had one Greenspace removed as it did not meet the requirements set out in the NPPF.
- 6.14 It has been concluded that the modifications made will not have a significant adverse impact on the SEA objectives and therefore the conclusions of the SEA remain the same as with the Draft Plan, no significant effect is likely from the implementation of the Brimfield and Little Hereford Group NDP policies.
- 6.15 The full results of the re-assessed policies can be found in Appendix 9 of this Environmental Report.

7.0 Implementation and monitoring

- 7.1 Herefordshire Council as the Local Planning Authority should make arrangements to monitor the significant effects of implementing a neighbourhood plan.
- 7.2 Indeed, Regulation 17 of the Environmental Assessment of Plans and Programmes Regulations 2004 requires the Local Planning Authority to monitor the significant environmental effects of the implementation of any NDP that was subject to SEA, in order to identify unforeseen adverse effects at an early stage and to enable appropriate remedial actions.
- 7.3 Accordingly, Herefordshire Council will monitor outcomes from the NDP policies and the results of these will be reported in the Council's Authority Monitoring Report (AMR).
- 7.4 The AMR runs from 1 April to 31 March each year and the topics covered therein include the following:
- Housing delivery;
 - Previously developed land
 - Housing completions
 - Affordable housing conditions
 - Employment land delivery.

Appendix 1

**Initial Habitat Regulations Assessment and Strategic Environmental
Assessment Screening Notification**

The Neighbourhood Planning (General) Regulation 2012 (Reg. 32)

Conservation of Habitats and Species Regulations 2010 (d)

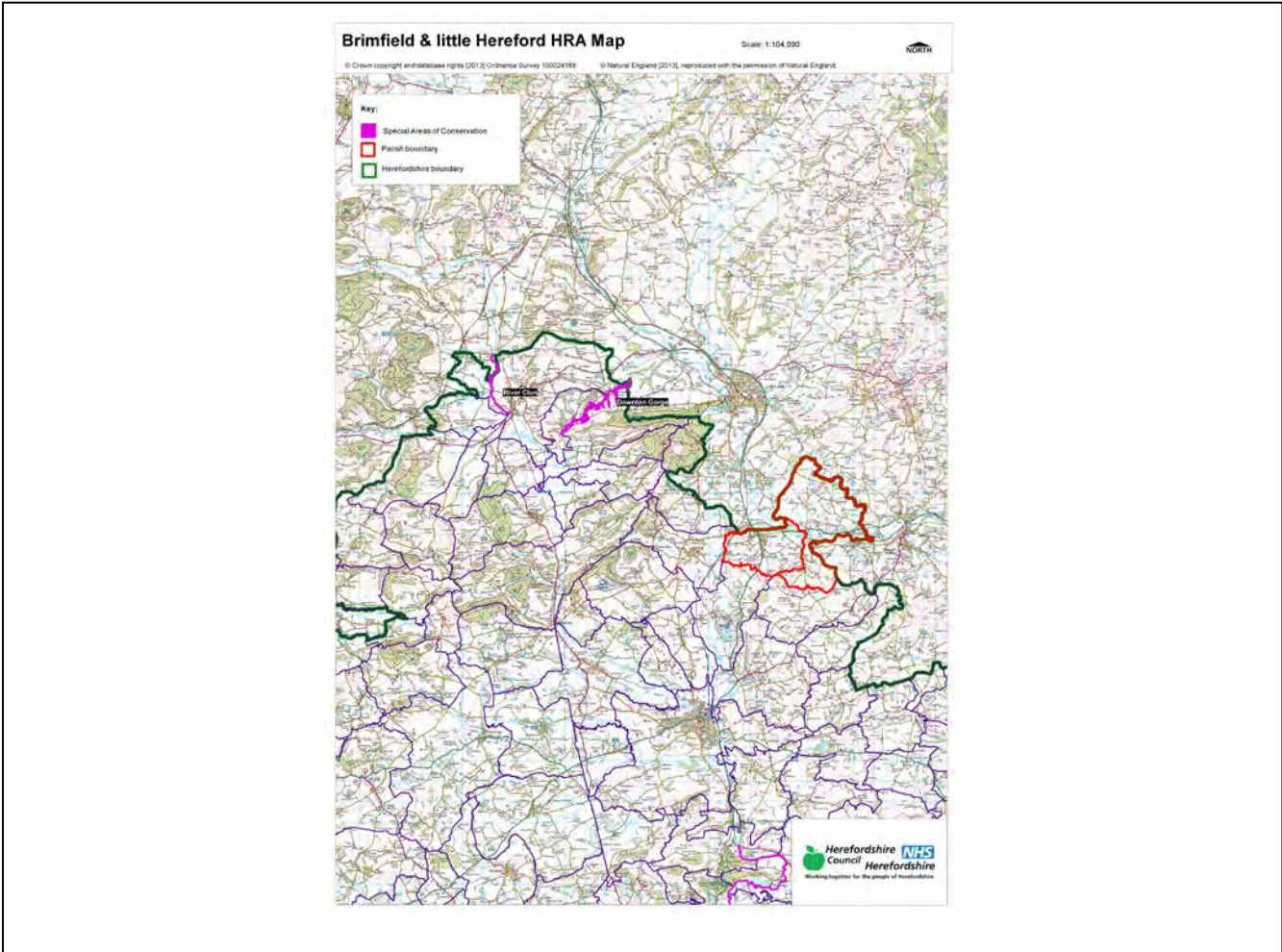
Neighbourhood Area:	Brimfield & Little Hereford Group Neighbourhood Area
Parish Council:	Brimfield & Little Hereford Group Parish Council
Neighbourhood Area Designation Date:	03/07/2013

Introduction

This Initial Habitat Regulations Assessment (HRA) and Strategic Environmental Assessment (SEA) Screening has been undertaken to assess whether any European sites exist within or in proximity to the neighbourhood area which could be affected by any future proposals or policies.

Through continual engagement the outcomes of any required assessments will help to ensure that proposed developments will not lead to Likely Significant Effects upon a European Site or cause adverse impacts upon other environmental assets, such as the built historic or local natural environment.

**HRA Initial Screening: Map showing relationship of Neighbourhood Area with European Sites
(not to scale)**



Initial HRA Screening

River Wye (including the River Lugg) SAC:

Does the Neighbourhood Area have the River Wye (including the River Lugg) in or next to its boundary?	N	The River Lugg is 13km away from the Group Parish
Is the Neighbourhood Area in the hydrological catchment of the River Wye (including the River Lugg) SAC?	N	The Group Parish is not within the River Wye hydrological catchment area.
If yes above, does the Neighbourhood Area have mains drainage to deal with foul sewage?	N/A	

Downton Gorge SAC:

Is the Neighbourhood Area within 10km of Downton Gorge SAC?	Y	Downton Gorge is 9km away from the Parishes
---	---	---

River Clun SAC:

Does the Neighbourhood Area include: Border Group Parish Council or Leintwardine Group Parish Council?	N	River Clun does not border the Parishes
--	---	---

Usk Bat Sites SAC:

Is the Neighbourhood Area within 10km of the SAC boundary?	N	Usk Bat Sites are 59km away from the Parishes
--	---	---

Wye Valley & Forest of Dean Bat Sites SAC:

Is the Neighbourhood Area within 10km of any of the individual sites that make up the Wye Valley & Forest of Dean Bat Sites?	N	The Group Parish is 46km away from Wye Valley and Forest of Dean Bat Sites
--	---	--

Wye Valley Woodlands SAC:

Is the Neighbourhood Area within 10km of any of the individual sites that make up the Wye Valley Woodlands Site?	N	The Parish is 51km away from the Wye Valley Woodlands
--	---	---

HRA Conclusion:

The assessment above highlights that the following European Sites will need to be taken into account in the future Neighbourhood Development Plan for the Brimfield & Little Hereford Neighbourhood Area and a Full HRA Screening will be required.

European Site

(List only those which are relevant from above)

Downton Gorge SAC

Strategic Environmental Assessment Initial Screening for nature conservation landscape and heritage features

The following environmental features are within or in general proximity to the Brimfield & Little Hereford Neighbourhood Area and would need to be taken into account within a Strategic Environmental Assessment. In addition, the NDP will also need to consider the other SEA topics set out in Guidance Note 9a to ensure that the plan does not cause adverse impacts.

SEA features	Total	Explanation	SEA required
Air Quality Management Areas	0	There are no AQMA's within the Group Parish	N
Ancient Woodland	7	Ingham Coppice (border); Bleathwood Coppice; Deadnal Coppice; Gravel Croft Coppice (border); Upton Court Wood; Park Wood (border); Bathurst Coppice (border)	Y
Areas of Archaeological Interest	0	There are no AAI's within the Group Parish	N
Areas of Outstanding Natural Beauty	0	There are no AONB's within the Group Parish	N
Conservation Areas	0	There are no Conservation Areas within the Group Parish	N
European Sites	0	There are no SAC's within the Group Parish	N
Flood Areas		There are Flood Zones following the River Teme, and also along the Ledwyche Brook. There is also a Flood Zone through Brimfield and out to the west of the Parish	Y
Listed Buildings	Numerous	There are numerous Listed Buildings throughout the Group Parish	Y
Local Sites (SWS/SINCs/RIGS)	11 (SWS)	Woodlands adjoining Ledwych; Land at Temple Farm; Land at Temple Meadow; River Teme; Land at The Grove; Woodland near Upton Hill; Land adjacent to Upton Brook; Land at Blakes Bridge; Pulpits Fingers; Brimfield Common; The Brooches and adjoining Woodlands (border)	
Long distance footpaths/trails	0	There are no Trails within the Group Parish	N
Mineral Reserves	0	There are no Minerals Reserves Sites within the Group Parish	N
National Nature Reserve	0	There are no NNR's within the Group Parish	N
Registered & Unregistered parks and gardens	1 Unregistered	Easton Court	Y
Scheduled Ancient Monuments	0	There are no SAM's within the Group Parish	N
Sites of Special Scientific Interest	1	River Teme (Unfavourable No Change)	Y

Decision Notification:

The initial screening highlights that the Neighbourhood Development Plan for the Brimfield & Little Hereford Neighbourhood Area:

- a) Will require further environmental assessment for Habitat Regulations Assessment and Strategic Environmental Assessment.

Assessment date: 07/06/2013

Assessed by: James Latham

Appendix 1: European Sites

The table below provides the name of each European Site, which has been screened in for the purposes of neighbourhood planning in Herefordshire; includes their site features of integrity; and vulnerability data. This is based on the sites individual features of integrity and their vulnerabilities, which could include distance criteria. This has been used in identifying which parishes are likely to require a full HRA Screening of their future Neighbourhood Development Plan, to establish if their plan might have Likely Significant Effects on a European Site.

Downton Gorge
Site Features: <i>Tilio-Acerion</i> forests of slopes, screes and ravines
Vulnerability data: 10km for air quality associated with poultry units or other intensive agricultural practices.
River Clun
Site Features: Freshwater pearl mussel <i>Margaritifera margaritifera</i>
Vulnerability data: Water quality is important to maintain the site feature. Parishes either side of the River Clun will be affected.
River Wye
Site Features: Water courses of plain to montane levels with the <i>Ranunculion fluitantis</i> and <i>Callitricho-Batrachion</i> vegetation. Transition mires and quaking bogs. White-clawed (or Atlantic Stream) crayfish <i>Austropotamobius pallipes</i> . Sea lamprey <i>Petromyzon marinus</i> . Brook lamprey <i>Lampetra planeri</i> . River lamprey <i>Lampetra fluviatilis</i> . Twaite shad <i>Alosa fallax</i> . Atlantic salmon <i>Salmo salar</i> . Bullhead <i>Cottus gobio</i> . Otter <i>Lutra lutra</i> . Allis shad <i>Alosa alosa</i>
Vulnerability data: Proximity: Developments should not be within 100m of the designated bank. Some developments beyond 100m may also have impacts based on proximity and these issues should be addressed where possible when developing NDP policy and choosing site allocations. Water Quality: Within the whole catchment of the River Wye, which includes the River Lugg, mains drainage issues with regards to water quality are being resolved through the Core Strategy / Local Plan and development of a Nutrient Management Plan. Welsh Water should be consulted to ensure that the proposed growth will be within the limit of their consents. Otters: "An otter will occupy a 'home range', which on fresh waters usually includes a stretch of river as well as associated tributary streams, ditches, ponds, lakes and woodland. The size of a home range depends largely on the availability of food and shelter, and the presence of neighbouring otters. On rivers, a male's home range may be up to 40km or more of watercourse and associated areas; females have smaller ranges (roughly half the size) and favour quieter locations for breeding, such as tributary streams. Otters without an established home range are known as 'transients'. They are mostly juveniles looking for a territory of their own, or adults that have been pushed out of their territories. Transient otters may use an area for a short while, but they will move on if conditions are not suitable or if they are driven away by resident otters. Transients will have been important in extending the range of otters, but they are very difficult to identify from field signs. Within a home range an otter may use many resting sites. These include above-ground shelters, such as stands of scrub or areas of rank grass, and underground 'holts' – for example, cavities under tree roots and dry drainage pipes." (Source: EA website: http://www.environmentagency.gov.uk/static/documents/Business/Otters_the_facts.pdf accessed 09/04/2013)

Usk Bat Site

Site Features: Annex I habitats present as a qualifying feature, but not a primary reason for site selection: European dry heaths, Degraded raised bogs still capable of natural regeneration, Blanket bogs, Calcareous rocky slopes with chasmophytic vegetation, Caves not open to the public, *Tilio-Acerion* forests of slopes, screes and ravines. Annex II species of primary reason for site selection: Lesser horseshoe bat *Rhinolophus hipposideros*, UK population 5%, although it is suggested this is an underestimate.

Vulnerability data: Lesser Horseshoe bats are known to migrate between 5km and 10km between their summer and winter roosts. The Lesser Horseshoe Bat is vulnerable to disturbance; light pollution; and habitat loss. Check with the planning ecologist for other issues.

Wye Valley and Forest of Dean Bat Sites

Site Features: Annex II species that are a primary reason for site selection: Lesser horseshoe bat *Rhinolophus hipposideros*. Greater horseshoe bat *Rhinolophus ferrumequinum*

Vulnerability data: Lesser Horseshoe bats are known to migrate between 5km and 10km between their summer and winter roosts. The Lesser Horseshoe Bat is vulnerable to disturbance; light pollution; and habitat loss. Check with the planning ecologist for other issues.

Greater Horseshoe bats are known to migrate between 20-30km between their summer and winter roosts.

NDPs closest to the European Site will need to consider:
Woodland habitat buffer.

Lesser Horseshoe Bat: Old buildings; woodland locations; sheltered valleys, extensive deciduous woods or dense scrub, close to roost sites. In areas of fragmented habitats, linear habitats such as hedgerows are important corridors. Vulnerable to loss or disturbance of both summer and winter roosts and removal of linear habitat.

Greater Horseshoe Bat: Large buildings, pasture, edge of mixed deciduous woodland and hedgerows. Mixed land-use especially south-facing slopes, favours beetles, moths and insects they feed on. During the winter they depend on caves, abandoned mines and other underground sites for undisturbed hibernation. A system/series of sites required. Vulnerable to loss of insect food supply, due to insecticide use, changing farming practices and loss of broad-leaved tree-cover and loss / disturbance of underground roosts sites.

Wye Valley Woodlands

Site Features: Annex I habitats that are a primary reason for site selection: Beech forests *Asperulo-Fagetum*, *Tilio-Acerion* forests of slopes, screes and ravines, *Taxus baccata* woods of the British Isles. Annex II species present as a qualifying feature, but not a primary reason for site selection: Lesser horseshoe bat *Rhinolophus hipposideros*, 51-100 residents

Vulnerability data: Lesser Horseshoe bats are known to migrate between 5km and 10km between their summer and winter roosts. The Lesser Horseshoe Bat is vulnerable to disturbance; light pollution; and habitat loss. Check with the planning ecologist for other issues. NDPs closest to the European Site will need to consider: Woodland habitat buffer. Lesser Horseshoe Bat: Old buildings; woodland locations; sheltered valleys, extensive deciduous woods or dense scrub, close to roost sites. In areas of fragmented habitats, linear habitats such as hedgerows are important corridors. Vulnerable to loss or disturbance of both summer and winter roosts and removal of linear habitat.

Appendix 2: Wye Catchment Map

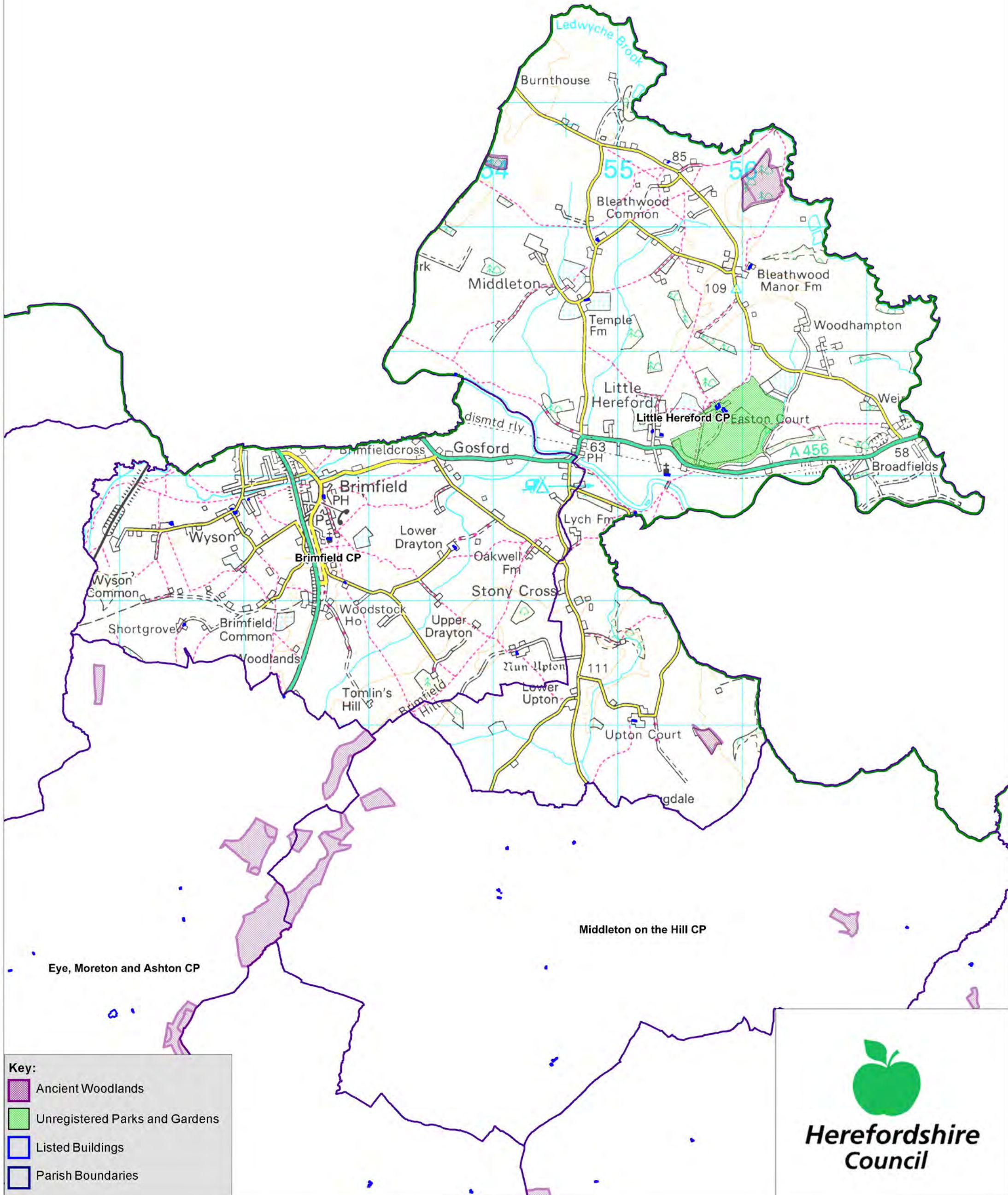


Brimfield & Little Hereford SEA Map 1

Scale: 1:25,000



Contains, or is based upon, English Heritage's National Heritage List for England data © English Heritage.
© Crown copyright and database rights [2013] Ordnance Survey 100024168
© Natural England [2013], reproduced with the permission of Natural England.
© Environment Agency copyright and/or database right 2013. All rights reserved.



Brimfield and Little Hereford SEA Map 2

Scale: 1:28,000



Contains, or is based upon, English Heritage's National Heritage List for England data © English Heritage.
© Crown copyright and database rights [2013] Ordnance Survey 100024168
© Natural England [2013], reproduced with the permission of Natural England.
© Environment Agency copyright and/or database right 2013. All rights reserved.



Key:

- Sites of Special Scientific Interest
- Special Wildlife Sites
- Flood Zone 2
- Flood Zone 3
- Parish Boundaries

Herefordshire Council

Appendix 2

Strategic Environmental Assessment



Brimfield & Little Hereford Neighbourhood Area

Scoping Report

October 2014

Consultation on the Scoping Report

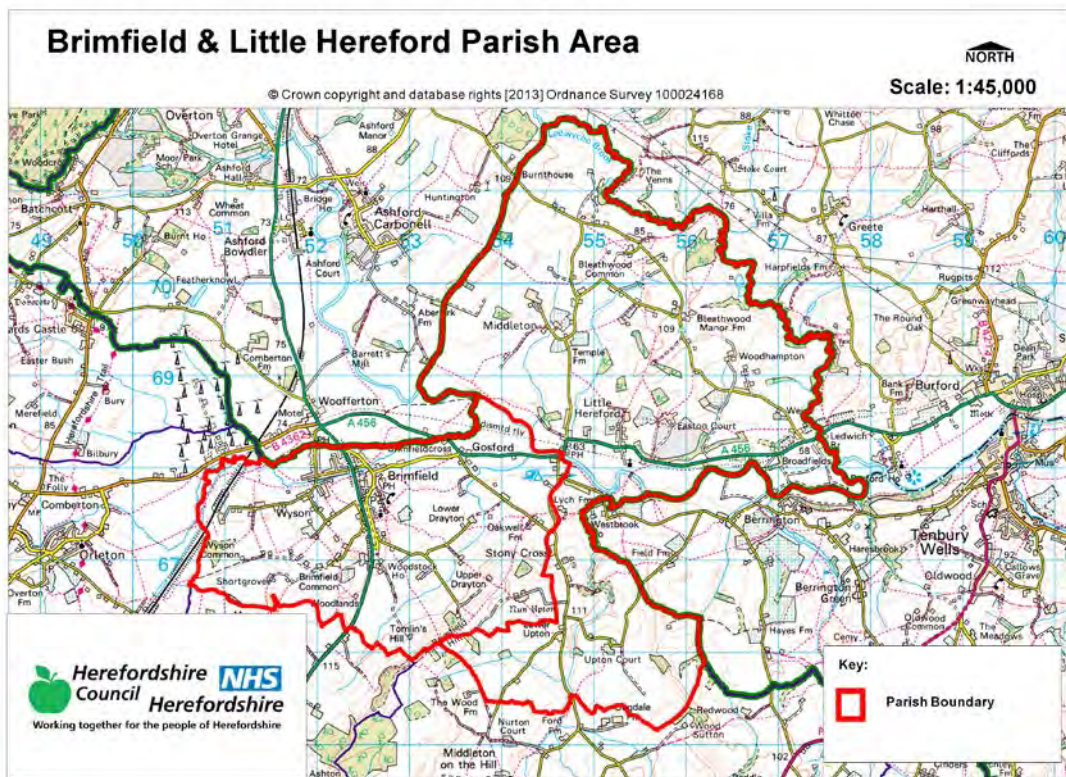
The aim of the consultation process is to involve and engage with statutory consultees and other relevant bodies on the scope of the appraisal. In particular, it seeks to:

- Ensure the SEA is both comprehensive and sufficiently robust to support the Neighbourhood Development Plan during the later stages of full public consultation;
- Seek advice on the completeness of the plan review and baseline data and gain further information where appropriate;
- Seek advice on the suitability of key sustainability issues;
- Seek advice on the suitability of the sustainability objectives.

Comments on this Scoping Report have been invited from the three consultation bodies as required by the SEA regulations, together with the Natural Resources Wales.

The three consultation bodies are as follows:

1. Natural England;
2. English Heritage;
3. Environment Agency.



Template A1: Identification and review of local Neighbourhood Area relevant plans, policies and programmes

Parish Council Name: Brimfield and Little Hereford

Neighbourhood Development Plan Name: Brimfield and Little Hereford

Date completed: May 2014

Plans and Programmes	Type of document	Date	Overview	Key message, target/objective/indicator	SEA topic(s) ¹	Implications for the NDP and SEA
Revised EU Sustainable Development strategy	European Union Strategy	2009	Sets out a single strategy on how the EU will more effectively meet its long-standing commitment to meet the challenges of sustainable development.	Recognises the need to gradually change current unsustainable consumption and production patterns and move towards a better integrated approach to policy making. The Strategy sets overall objectives, targets and concrete actions for seven key priority challenges, predominantly environmental: <ul style="list-style-type: none"> • Climate change and clean energy; • Sustainable transport • Sustainable production and consumption; • Public health threats; • Better management 	<ul style="list-style-type: none"> • Air • Climate factors • Cultural heritage and the landscape • Population and human health 	The Neighbourhood Plans should take into account the objectives of the strategy. The aim of sustainable development should be implicit in its approach.

¹ Derived from the LDF General Scoping Report (June 2007)

This document is copyright of Herefordshire Council, please contact the Neighbourhood Planning team if you wish to reuse it in whole or part.

Plans and Programmes	Type of document	Date	Overview	Key message, target/objective/indicator	SEA topic(s) ¹	Implications for the NDP and SEA
				<p>of natural resources;</p> <ul style="list-style-type: none"> • Social inclusion, demography and migration; • Fighting global poverty. 		
The EC Conservation of Habitats and Species Regulations	European Union Legislation	2010	These regulations transpose the Habitats Directive in England, Wales and to a limited extent Scotland by ensuring that activities are carried out in accordance with the Habitats Directive, which is to protect biodiversity through the conservation of natural habitats and species of wild flora and fauna.	The Regulations make it an offence (subject to exceptions) to deliberately capture, kill, disturb, or trade in the animals listed in Schedule 2, or pick, collect, cut, uproot, destroy, or trade in the plants listed in Schedule 4. However, these actions can be made lawful through the granting of licenses by the appropriate authorities.	<ul style="list-style-type: none"> • Biodiversity • Cultural heritage and the landscape 	The Neighbourhood Plan should be compliant with all the relevant legislation and regulations.
The EC Water Framework Directive	European Union	2000	Commits all EU member states to achieve good qualitative and quantitative status of all water	Aims for 'good status' for all ground and surface waters (rivers, lakes, transitional waters, and coastal waters) in the EU	<ul style="list-style-type: none"> • Water 	The Neighbourhood Plan should be compliant with all the relevant legislation and regulations.

This document is copyright of Herefordshire Council, please contact the Neighbourhood Planning team if you wish to reuse it in whole or part.

Plans and Programmes	Type of document	Date	Overview	Key message, target/objective/indicator	SEA topic(s) ¹	Implications for the NDP and SEA
			courses by 2015			
The Wildlife and Countryside Act (1981)	Domestic Legislation	1981	The major legal instrument for wildlife protection in Britain, although other significant acts have been passed since. It has numerous parts and supplementary lists and schedules many of which have been amended since publication.	The principle mechanism for the legislative protection of wildlife in Great Britain.	<ul style="list-style-type: none"> • Biodiversity • Cultural heritage and the landscape • Flora and fauna • Material assets • Soil 	The Neighbourhood Plan should be compliant with all the relevant legislation and regulations.
The Countryside and Right of Way Act (2000)	Domestic Legislation	2000	Creates a statutory right of access on foot to certain types of open land, to modernise the public rights of way system, to strengthen nature conservation legislation, and to facilitate better management of AONBs.	<p>The Act provides for a new right of access on foot to areas of open land comprising: Mountain (land over 600 metres); Moorland; Heath; Downland; Registered common land.</p> <p>There are provisions to consider extending the right in the future to coastal land, but not woodland despite some early publicity suggesting this.</p>	<ul style="list-style-type: none"> • Biodiversity • Cultural heritage and the landscape • Flora and fauna • Material assets • Soil 	The Neighbourhood Plan should be compliant with all the relevant legislation and regulations.
The Natural	Domestic	2006	Designed to help	Provides that any public	<ul style="list-style-type: none"> • Biodiversity 	The Neighbourhood

This document is copyright of Herefordshire Council, please contact the Neighbourhood Planning team if you wish to reuse it in whole or part.

Plans and Programmes	Type of document	Date	Overview	Key message, target/objective/indicator	SEA topic(s) ¹	Implications for the NDP and SEA
Environment and Rural Communities Act (2006)	Legislation		achieve a rich and diverse natural environment and thriving rural communities through modernised and simplified arrangements for delivering Government policy.	body or statutory undertaker in England and Wales must have regard to the purpose of conservation of biological diversity in the exercise of their functions.	<ul style="list-style-type: none"> • Cultural heritage and the landscape • Flora and fauna • Material assets • Soil 	Plan should be compliant with all the relevant legislation and regulations.
Biodiversity 2020: A strategy for England's wildlife and ecosystem services	National Strategy	2011	Forms part of the UK's Post-2010 Biodiversity Framework by setting out England's contribution towards the UK's commitments under the United Nations Convention of Biological Diversity.	Sets out to halt overall biodiversity loss, support healthy well-functioning ecosystems and establish coherent ecological networks, with more and better places for nature for the benefit of wildlife and people.	<ul style="list-style-type: none"> • Biodiversity 	The NDP should take account of the provisions of the strategy, making the most of opportunities to enhance wildlife habitats or restore degraded ecosystems in the process.
National Planning Policy Framework (NPPF)	National planning policy.	2012	Consolidates the suite of PPG/PPS into one succinct planning policy document.		<ul style="list-style-type: none"> • Air • Biodiversity • Climate factors • Cultural heritage and the landscape • Flora and fauna 	The NDP should take into account the relevant policies set within the NPPF.

This document is copyright of Herefordshire Council, please contact the Neighbourhood Planning team if you wish to reuse it in whole or part.

Plans and Programmes	Type of document	Date	Overview	Key message, target/objective/indicator	SEA topic(s) ¹	Implications for the NDP and SEA
					<ul style="list-style-type: none"> • Material assets • Population and human health • Soil • Water 	
Planning Practice Guidance	Government Guidance	2014	Provides guidance to local planning authorities and others on the operation of the planning system.		<ul style="list-style-type: none"> • Air • Biodiversity • Climate factors • Cultural heritage and the landscape • Flora and fauna • Material assets • Population and human health • Soil • Water 	The NDP should take into account the planning guidance provided within these documents.
Herefordshire Core Strategy, Pre-submission document 2011-2031	Development Plan Document (DPD)	2013	Sets out the vision, objectives and policies for the Herefordshire Local Plan (Core Strategy), which will guide development across the county up to 2031.	<p>Outlines the emerging suite of countywide planning policies relating to housing, economic development and the environment, which the NDP will need to be in conformity with where relevant.</p> <p>The Pre-Submission Core Strategy includes a range of objectives, five of which directly relate to rural areas:</p>	<ul style="list-style-type: none"> • Air • Biodiversity • Climate factors • Cultural heritage and the landscape • Flora and fauna • Material assets • Population and human health • Soil • Water 	<p>The NDP should take account of relevant policies set within in the Core Strategy.</p> <p>Where necessary, the NDP should provide services, facilities and employment opportunities that are accessible to both local and neighbouring communities.</p> <p>Approx 35 dwellings will need to be delivered</p>

This document is copyright of Herefordshire Council, please contact the Neighbourhood Planning team if you wish to reuse it in whole or part.

Plans and Programmes	Type of document	Date	Overview	Key message, target/objective/indicator	SEA topic(s) ¹	Implications for the NDP and SEA
				<ul style="list-style-type: none"> • To meet the housing needs of all sections of the community • To improve access to services in rural areas • To strengthen the economic viability of the villages and their rural hinterlands • To achieve sustainable communities and protect the environment • To conserve, promote, utilise and enjoy our natural, built, historic and cultural assets for the fullest benefit of the whole community <p>To achieve a thriving rural Herefordshire, the Core Strategy seeks to enhance the role the villages have traditionally played in as accessible, sustainable centres for their rural catchments.</p> <p>Seeks proportional growth of up to 14% in Brimfield, (Leominster HMA) over the plan period.</p>		<p>within the village of Brimfield, unless there is robust and sound evidence to demonstrate the existence of unavoidable constraints on site delivery.</p>

This document is copyright of Herefordshire Council, please contact the Neighbourhood Planning team if you wish to reuse it in whole or part.

Plans and Programmes	Type of document	Date	Overview	Key message, target/objective/indicator	SEA topic(s) ¹	Implications for the NDP and SEA
Herefordshire Local Transport Plan 3 (LTP) 2013-2015	Corporate	2013	Sets out the Council's strategy for supporting economic growth, social inclusion and reducing the environmental impacts of transport, as well as the program of investment for the period April 2013 to April 2015.	The document includes three key objectives, one which seeks to maintain access for rural residents and people without access to a car. Intrinsic to this is the retention of a 'core network' of bus services which focus on journeys between Hereford and the market towns, along with main transport corridors close to larger rural settlements. To this end, the strategy aims to increase the number of bus users by 1.3% (4,700 journeys) by 2015.	<ul style="list-style-type: none"> • Air • Climate factors • Population and human health 	The LTP does not explore current transport issues in the Brimfield and Little Hereford Group Plan neighbourhood area, but any new development proposed through the NDP should seek to reduce the environmental impacts of transport.
Malvern Hills AONB Management Plan 2009-2014	Corporate	2009	Identifies the issues and challenges facing the special features of the area and contains 24 guiding principles and 46 strategic objectives which will help address them.		<ul style="list-style-type: none"> • Air • Biodiversity • Climate factors • Cultural heritage and the landscape • Flora and fauna • Material assets • Population and human health • Soil • Water 	The Brimfield and Little Hereford Group Plan neighbourhood Area is not within or adjacent to the Malvern Hills AONB.

This document is copyright of Herefordshire Council, please contact the Neighbourhood Planning team if you wish to reuse it in whole or part.

Plans and Programmes	Type of document	Date	Overview	Key message, target/objective/indicator	SEA topic(s) ¹	Implications for the NDP and SEA
Wye Valley AONB management Plan 2009-2014	Corporate	2009	The Management Plan is the prime document which sets out the vision for the area and the priorities for its management.		<ul style="list-style-type: none"> • Air • Biodiversity • Climate factors • Cultural heritage and the landscape • Flora and fauna • Material assets • Population and human health • Soil • Water 	The Brimfield and Little Hereford Group Plan neighbourhood Area is not within or adjacent to the Wye Valley AONB.

Plans and Programmes	Type of document	Date	Overview	Key message, target/objective/indicator	SEA topic(s) ¹	Implications for the NDP and SEA
Herefordshire Economic Development Strategy 2011-2016	Corporate	2011	Aims to increase the economic wealth of Herefordshire by setting out proposals and to support business growth up to 2016.	<p>The document outlines the path and direction to foster economic vitality within Herefordshire. Key objectives therefore include:</p> <ul style="list-style-type: none"> • Sustaining business survival and growth • Increasing wage levels, range and quality of jobs • Having a skilled population to meet future work needs • Developing the county's built infrastructure so enterprise can flourish. 	<ul style="list-style-type: none"> • Cultural heritage and the landscape • Material assets • Population and human health 	None of merit.

Plans and Programmes	Type of document	Date	Overview	Key message, target/objective/indicator	SEA topic(s) ¹	Implications for the NDP and SEA
Herefordshire Employment Land Study	Evidence	2012	Includes employment land assessments for the plan period 2011-2031. The study includes Quantitative and Qualitative assessments of employment land, assessment of market demand and need, as well as providing forecasts and recommendations for future employment need over the plan period.	<p>This study covers existing employment sites in Hereford, the five market towns and their rural hinterlands.</p> <p>There is a small rural employment site adjacent to the A49 in Brimfield which is considered to be of a relatively attractive site with new units.</p>	<ul style="list-style-type: none"> • Material assets • Population and human health 	<p>To protect the existing employment site from re-development.</p> <p>The NDP process may want to explore whether there is any additional employment need locally and if so whether there is any scope for extending the employment site.</p>

Plans and Programmes	Type of document	Date	Overview	Key message, target/objective/indicator	SEA topic(s) ¹	Implications for the NDP and SEA
Herefordshire Strategic Housing Land Availability Assessment (SHLAA)	Evidence	2009	<p>The SHLAA aims to justify site allocations in plans by:</p> <ul style="list-style-type: none"> Identifying sites which are capable of delivering housing development Assessing sites for their housing potential; and Predicting when a site could be developed for housing. 	<p>In terms of Brimfield the previous SHLAA identifies that:</p> <ul style="list-style-type: none"> 127 additional dwellings could be provided on 10 sites in and around the existing settlement, however it is unlikely that this number would materialise due to significant constraints. Of the 127 dwellings, only 20 possible dwellings are located on sites of minor constraints There is the potential for further minor constrained smaller sites, however these were not assessed as part of the SHLAA in 2009 	<ul style="list-style-type: none"> Air Biodiversity Climate factors Cultural heritage and the landscape Flora and fauna Population and human health Soil Water 	<p>The SHLAA assesses the potential availability of land for housing in Brimfield.</p> <p>The Brimfield and Little Hereford Group NDP should be informed by the findings of the SHLAA.</p> <p>A local site assessment exercise should be undertaken for Brimfield to provide an update to the SHLAA</p>

Plans and Programmes	Type of document	Date	Overview	Key message, target/objective/indicator	SEA topic(s) ¹	Implications for the NDP and SEA
Herefordshire Local Housing Market Assessment (LHMA)	Evidence	2013	Builds on an earlier Strategic Housing Market Assessment (SHMA) developed for Herefordshire and Shropshire. Its purpose is to inform the Local Plan's policies regarding housing need and demand (for market and affordable housing) within each of the 7 Housing Market Areas (HMAs) in Herefordshire between 2011 and 2031.	<p>Brimfield falls within the Leominster HMA. Here, the study reveals that:</p> <ul style="list-style-type: none"> • 55% of households are unable to afford market housing. • There is an annual requirement for 22 affordable dwellings between 2012 and 2017. <p>The study identifies that, in rural parts of the HMA, there is a need for:</p> <ul style="list-style-type: none"> • 548 market houses • 183 affordable houses. <p>The study highlights that within the Leominster HMA the overall estimated housing need by size 2012-2017 is as follows: 1 Bed - 77.1%, 2 bed - 21.6%, 3 bed – -10.4%, 4 bed – 11.7%</p>	<ul style="list-style-type: none"> • Air • Biodiversity • Climate factors • Cultural heritage and the landscape • Flora and fauna • Population and human health • Soil • Water 	<p>The LHMA provides an indication of housing needs and affordability within the Leominster HMA.</p> <p>It provides evidence that could be used to inform policies or market and affordable housing requirements in the NDP.</p>
Herefordshire	Evidence	2012	Technical	The delivery of 5,300	<ul style="list-style-type: none"> • Air 	This study provides an

This document is copyright of Herefordshire Council, please contact the Neighbourhood Planning team if you wish to reuse it in whole or part.

Plans and Programmes	Type of document	Date	Overview	Key message, target/objective/indicator	SEA topic(s) ¹	Implications for the NDP and SEA
Local Housing Requirements Study			assessment of the housing market and potential future local housing requirements which supports planning policy regarding the amount of growth, housing tenure and housing type needed within Herefordshire up to 2031.	<p>homes in the rural areas would:</p> <ul style="list-style-type: none"> • Support growth in the rural population by 6% • Increase the number of households by 14.5% <p>Forecasts also predict that growth in the population of the rural areas is likely to be primarily through an increase in those aged over 75.</p> <p>Moderate growth is expected in the 30-44 and 60-74 age brackets.</p> <p>The Local Housing Requirements Study therefore anticipates continuing improvements in life expectancy; significant growth is expected of those in their 80s, with the existing population in their 40s and 50s moving into retirement. As a consequence, the rural areas will face an increasing urgency to provide more 3 bedroom</p>	<ul style="list-style-type: none"> • Biodiversity • Climate factors • Cultural heritage and the landscape • Flora and fauna • Material assets • Population and human health • Soil • Water 	<p>indication of housing requirements in the rural areas and the Leominster HMA.</p> <p>This evidence can be used to inform the content of the Brimfield and Little Hereford Group NDP, which could include policies to facilitate the provision of the right types of homes in the right places.</p>

This document is copyright of Herefordshire Council, please contact the Neighbourhood Planning team if you wish to reuse it in whole or part.

Plans and Programmes	Type of document	Date	Overview	Key message, target/objective/indicator	SEA topic(s) ¹	Implications for the NDP and SEA
				homes, with more 1 and 2 bed homes required in the affordable sector.		
Herefordshire Rural Housing Background Report	Evidence	2013	Provides the justification for the proportional housing growth targets outlined in the Core Strategy	<p>The village of Brimfield are listed as RA1 settlements, which means they are considered a sustainable location for proportional growth of up to 14%.</p> <p>Little Hereford Village is listed as a RA2 settlement which is for proportional residential growth for local needs only.</p>	<ul style="list-style-type: none"> • Air • Biodiversity • Climate factors • Cultural heritage and the landscape • Flora and fauna • Material assets • Population and human health • Soil • Water 	The Brimfield and Little Hereford Group NDP will need to be in conformity with the provisions of Policy RA2.

Plans and Programmes	Type of document	Date	Overview	Key message, target/objective/indicator	SEA topic(s) ¹	Implications for the NDP and SEA
Herefordshire Draft Gypsies and Travellers Assessment	Evidence	2013	Assesses the accommodation needs of Gypsies and Travellers across Herefordshire.	<p>Key findings from the survey of Gypsy and Traveller households in 2012 found that:</p> <ul style="list-style-type: none"> • 31% of households surveyed have some sort of accommodation need • Of the 17 households with an accommodation need, 7 had a requirement for at least one additional pitch • 10 households had a requirement for bricks and mortar housing • There is an additional requirement for 7 pitches and 9 units of Registered Social Landlord accommodation within Herefordshire. 	<ul style="list-style-type: none"> • Air • Biodiversity • Climate factors • Cultural heritage and the landscape • Flora and fauna • Material assets • Population and human health • Soil • Water 	The Brimfield and Little Hereford Group NDP must establish whether any of the need identified in this assessment falls within the neighbourhood area and make appropriate provisions for it.

Plans and Programmes	Type of document	Date	Overview	Key message, target/objective/indicator	SEA topic(s) ¹	Implications for the NDP and SEA
Building Biodiversity into the LDF	Evidence	2009	Provides the Council's Local Plan (Core Strategy) with evidence in respect of biodiversity and geodiversity, identifying both opportunities and constraints across Herefordshire.	This document provides useful information in respect of Hereford and the market towns only.	<ul style="list-style-type: none"> • Air • Biodiversity • Climate factors • Cultural heritage and the landscape • Flora and fauna • Material assets • Population and human health • Soil • Water 	There is a lack of information about rural areas which means it will be necessary to gather and assess existing biodiversity and geodiversity data, in order to ensure that the Brimfield and Little Hereford Group NDP can overcome any existing constraints and capitalise on opportunities to enhance habitats and their networks.
Herefordshire Local Biodiversity Action Plan	Evidence	2007	Focuses conservation efforts on the areas within Herefordshire that will result in the greatest benefit for ecological networks, habitats and species.	Integrating biodiversity objectives with other environmental, social and economic needs can provide a sustainable living and working environment that benefits both people and nature.	<ul style="list-style-type: none"> • Biodiversity 	The NDP can help to achieve the LBAP priorities.

This document is copyright of Herefordshire Council, please contact the Neighbourhood Planning team if you wish to reuse it in whole or part.

Plans and Programmes	Type of document	Date	Overview	Key message, target/objective/indicator	SEA topic(s) ¹	Implications for the NDP and SEA
Herefordshire Green Infrastructure Strategy	Evidence	2010	Develops a framework of natural and culturally important features and functions so that planning for a sustainable future is at the heart of planning within Herefordshire.	Establishes policies and principles for the protection and enhancement of those features and functions that contributes to the environment of Herefordshire across a range of scales.	<ul style="list-style-type: none"> • Air • Biodiversity • Climate factors • Cultural heritage and the landscape • Flora and fauna • Material assets • Population and human health • Soil • Water 	The study provides evidence that could be taken into account when preparing policies for the Brimfield and Little Hereford Group NDP.
Renewable Energy Study	Evidence	2010	Assesses the energy demand within Herefordshire and the ability for the county to accommodate renewable and low carbon energy technologies.	<p>The total energy demand excluding transport for Herefordshire, at that point in time, was calculated as being:</p> <ul style="list-style-type: none"> • Electrical: 731 GWh/yr • Heat: 1,810 GWh/yr • Total: 2,541 GWh/yr <p>There is scope for all types of renewable energy production.</p>	<ul style="list-style-type: none"> • Air • Biodiversity • Climate factors • Cultural heritage and the landscape • Flora and fauna • Material assets • Population and human health • Soil • Water 	The study provides evidence that could be taken into account when preparing policies for the Brimfield and Little Hereford Group NDP.

Plans and Programmes	Type of document	Date	Overview	Key message, target/objective/indicator	SEA topic(s) ¹	Implications for the NDP and SEA
Herefordshire Playing Pitch Assessment	Evidence	2012	Produces a strategic framework, audit and assessment and needs analysis of outdoor sports pitches and facilities for Herefordshire. The document arises as a result of a recommendation in the Herefordshire and Worcestershire Sports Facilities Framework to develop local standards for playing fields and sports pitches throughout Herefordshire.	<p>The study updates components of the Herefordshire and Worcestershire Sports Facilities Framework 2010 such as updating population forecasts, setting local standards for synthetic turf pitches and grass playing fields within Herefordshire. It identifies any current gaps in provision, and looks forward to 2031 to assess what facilities are likely to be required by that date.</p> <p>In terms of Brimfield and Little Hereford group parish itself, the study reveals that there is:</p> <ul style="list-style-type: none"> • A secured sports ground, which includes two football pitches and a bowling pitch, totalling 2.26ha, with excellent quality facilities 	<ul style="list-style-type: none"> • Biodiversity • Cultural heritage and the landscape • Flora and fauna • Material assets • Population and human health 	The study provides evidence that could be taken into account when preparing policies for the Brimfield and Little Hereford Group NDP.

This document is copyright of Herefordshire Council, please contact the Neighbourhood Planning team if you wish to reuse it in whole or part.

Plans and Programmes	Type of document	Date	Overview	Key message, target/objective/indicator	SEA topic(s) ¹	Implications for the NDP and SEA
Open Spaces Study	Evidence	2006	The 2006 space audit and assessment of need is a snapshot of the quality, quantity and distribution of open space across Herefordshire.	<p>The study reveals that within the Leominster Area, to which Upton Ward is a part, there is:</p> <ul style="list-style-type: none"> • Extensive under provision of parks and gardens • Extensive over provision of natural and semi-natural green space • Under provision of amenity green space and good provision for outdoor sport • Average provision for children and young people. 	<ul style="list-style-type: none"> • Biodiversity • Climate factors • Cultural heritage and the landscape • Flora and fauna • Material assets • Population and human health 	The open space audit and assessment of does not give a specific indication of open space shortfalls and surpluses in Brimfield and Little Hereford Group Parish.

Plans and Programmes	Type of document	Date	Overview	Key message, target/objective/indicator	SEA topic(s) ¹	Implications for the NDP and SEA
Play Facilities Study	Evidence	2012	The Play Facilities Study 2012 updates the previous play facilities analysis under the Open Spaces Study 2006 and provides guidance and a framework for the development, delivery and continued sustainability of providing new and improved play facilities for children and young people in Herefordshire to 2031.	In terms of Brimfield itself, the study reveals that there is a local play facility for infants only at the village hall.	<ul style="list-style-type: none"> • Biodiversity • Climate factors • Cultural heritage and the landscape • Flora and fauna • Material assets • Population and human health 	The study provides evidence that could be taken into account when preparing policies for the Brimfield and Little Hereford Group NDP.

Plans and Programmes	Type of document	Date	Overview	Key message, target/objective/indicator	SEA topic(s) ¹	Implications for the NDP and SEA
Strategic Flood Risk Assessment (SFRA) and Water Cycle Study	Evidence	2009	<p>The Strategic Flood Risk Assessment (SFRA) provides a summary of flood risk in Herefordshire to inform the location of future development.</p> <p>The Water Cycle Study examines how water resources and water supply infrastructure, wastewater treatment, water quality, sewerage and flood risk could constrain growth across Herefordshire.</p>	<p>Brimfield and Little Hereford are within the Severn River Basin. There are reported issues at Brimfield due to Gosford Brook.</p> <p>The Mid Teme is the second highest catchment by Flood reports, this includes the village of Brimfield.</p> <p>The overall Water Directive Framework status of the River Teme is moderate.</p>	<ul style="list-style-type: none"> • Biodiversity • Climate factors • Material assets • Population and human health • Water 	<p>New development proposed through the Brimfield and Little Hereford Group NDP should be assessed against the capacity of local infrastructure.</p> <p>Up-to-date flood risk information should be gathered from the Environment Agency, in order to ensure that any flood risks are considered when preparing the Brimfield and Little Hereford Group NDP.</p> <p>There may be a need for mini-Surface water management plans to be undertaken for Brimfield to mitigate housing.</p>

Appendix A2 – Baseline information for Brimfield and Little Hereford

N.B. This is based on countywide baseline information with some additions relevant to Brimfield and Little Hereford (in red). Where no locally specific data is available for current status, trends and targets, only countywide data is reported. Any gaps in data may be filled following additional research.

SA Objective ¹	SA Theme	Proposed indicator	Current status	Trends	Targets	Issues and constraints	Baseline (information) source
SEA Topic covered by objective: <i>Biodiversity, flora and fauna</i>							
13. Value, maintain, restore and expand county biodiversity.	Natural environment	Net change in condition of SSSIs across Herefordshire.	<p>The 2011-2013 AMR does not contain updated conservation data.</p> <p>2010/11: 27% of Herefordshire's SSSI land was in favourable condition.</p> <p>04/08/14 sites were as follows:</p> <p>Hill Hole Dingle – unfavourable recovering</p> <p>River Lugg – Unfavourable Recovering</p>	<p>2006: 22%</p> <p>2007: 22%</p> <p>2008: 22%</p> <p>2010: 24 %</p> <p>Proportion of SSSI land that was in unfavourable condition but recovering increased between 2010 and 2012 going from 41% to 65%.</p> <p>Proportion in unfavourable and declining condition had also decreased from 4% to 1%.</p>	<p>% of SSSI land in favourable condition (Increase)</p> <p>% of SSSI land in unfavourable condition but recovering (Increase)</p> <p>% of SSSI land in unfavourable condition and declining (Decrease)</p>	<p>Herefordshire's SSSIs are in extremely poor condition relative to England as whole, where 96.1% of all SSSI land was in favourable condition in April 2014.</p> <p>The proportion of SSSI in unfavourable condition but recovering is greater than England as a whole, where the figure currently stands at 58.6%.</p>	<p>Understanding Herefordshire: An integrated needs assessment (June 2013).</p> <p>Natural England SSSI database (August 2014)</p>

¹ Derived from the Pre Submission Core Strategy Sustainability Appraisal Assessment (May 2014)

SA Objective ¹	SA Theme	Proposed indicator	Current status	Trends	Targets	Issues and constraints	Baseline (information) source
13. Value, maintain, restore and expand county biodiversity.	Natural environment	After use of mineral sites especially wildlife habitat creation	<i>There is no countywide or locally specific data available at present.</i>	-	Percentage of opportunities taken	Should be monitored through AMR following the adoption of the Core Strategy, in line with SA recommendations.	-
13. Value, maintain, restore and expand county biodiversity.	Natural environment	Phosphate levels within the River Wye SAC and adjoining tributaries that receive increased phosphates from proportional growth.	Countywide data is available, but this indicator would not apply to this Neighbourhood Area, as the parish falls outside the catchment area for the River Wye SAC.	N/A	N/A	N/A	N/A

SA Objective ¹	SA Theme	Proposed indicator	Current status	Trends	Targets	Issues and constraints	Baseline (information) source
13. Value, maintain, restore and expand county biodiversity.	Natural environment	Changes to protected habitats and impacts of species within the Herefordshire Local Biodiversity Action Plan.	<p>The 2011-2013 AMR does not contain updated conservation data.</p> <p>2010/11: 17 Habitat Action Plans and 14 Species Action Plans are currently in operation across Herefordshire.</p> <p><i>There is no locally specific data available at present.</i></p>	<p>There are no formal records of any unacceptable adverse impacts on habitats or protected species.</p> <p>Originally 156 Priority Species were identified for inclusion in Herefordshire's LBAP.</p> <p>Similarly Herefordshire's LBAP covered 23 habitats with Action Plans.</p>	<p>To protect and where possible enhance the habitats of protected species identified.</p> <p>No net losses.</p>	<p>Herefordshire Biological Records Centre (HBRC) holds limited data on some individual sites.</p>	<p>Herefordshire Council AMR (2010/11)</p>

SA Objective ¹	SA Theme	Proposed indicator	Current status	Trends	Targets	Issues and constraints	Baseline (information) source
13. Value, maintain, restore and expand county biodiversity.	Natural environment	Changes in the areas of designated nature conservation sites as a consequence of planning permission.	<p>Brimfield and Little Hereford Parish has:</p> <p>SSSI: 1 SWS: 10</p> <p>The Neighbourhood Area is 9km away from Downton Gorge SAC.</p> <p>There are no NNRs, SINC and LNRs within the parish.</p>	As of 2012, there had been no change in the areas of designated nature conservation sites as a consequence of the planning permissions granted.	To capitalise on opportunities to enhance the areas of value to nature conservation as much as possible.	Herefordshire Biological Records Centre (HBRC) holds limited data on some individual sites.	Herefordshire Council Initial Screening Report for the Neighbourhood Plan 2013
13. Value, maintain, restore and expand county biodiversity.	Natural environment	Proportion of local sites where positive conservation management has or is being implemented.	<p>The Parish Area has the following landscape types:</p> <p>Principle wooded hills and settled farmlands on river terrace on the outskirts.</p>	-	No specific targets identified.	Should be monitored through AMR following the adoption of the Core Strategy, in line with SA recommendations.	Herefordshire Landscape Character Assessment (2004 updated 2009)

SA Objective ¹	SA Theme	Proposed indicator	Current status	Trends	Targets	Issues and constraints	Baseline (information) source
SEA Topic covered by objectives: <i>Material assets</i>							
14. Use natural resources and energy more efficiently.	Resource consumption and climate change	Maintaining Herefordshire Council's County Site and Monuments Register.	Countywide data would be too large to incorporate into this template. There is no qualitative, locally specific data available at present.	-	No specific targets identified, but need to ensure that the register is kept up to date.	Should be monitored through AMR following the adoption of the Core Strategy, in line with SA recommendations.	Herefordshire Environmental Records Register (search May 2014).
14. Use natural resources and energy more efficiently.	Resource consumption and climate change	Monitoring changes to historic landscapes.	Historic Landscape Character assessments have only been undertaken for Hereford City. Rapid townscape Assessments (2010) were only undertaken for Hereford, Ledbury and Ross.	-	No specific targets identified.	Should be monitored through AMR following the adoption of the Core Strategy, in line with SA recommendations.	Historic Landscape Character Assessment for Hereford. Rapid townscape Assessments (2010)
SEA Topic covered by objective: <i>Population, Biodiversity, Flora and Fauna</i>							

SA Objective ¹	SA Theme	Proposed indicator	Current status	Trends	Targets	Issues and constraints	Baseline (information) source
15. Value, protect, enhance and restore the landscape quality of Herefordshire, including its rural areas and open spaces.	Natural environment	Number of developments meeting and surpassing national design standards.	<i>There is no countywide or locally specific data available at present.</i>	-	No specific targets identified.	Should be monitored through AMR following the adoption of the Core Strategy, in line with SA recommendations.	-

SA Objective ¹	SA Theme	Proposed indicator	Current status	Trends	Targets	Issues and constraints	Baseline (information) source
15. Value, protect, enhance and restore the landscape quality of Herefordshire, including its rural areas and open spaces.	Natural environment	The need for, frequency and outcomes of planning enforcement investigations/ planning appeals concerning the aspects of local loss of heritage assets and locally important buildings particularly within a conservation area	<p>Countywide data would be too large to incorporate into this template.</p> <p>There are no outstanding enforcement actions or appeals concerning local loss of heritage assets and locally important buildings within Brimfield and Little Hereford at present.</p> <p>There is no Conservation Area within Brimfield or Little Hereford.</p>	No historic records of any planning enforcement action or appeals concerning locally important buildings.	No specific targets identified as the Neighbourhood Area does not contain a conservation area	Current status must be verified by Dvt Mgt and Enforcement Officers, but the NDP can help to avoid enforcement action and appeals during the plan period.	Council Dvt Mgt records (searched June 2014)
SEA Topic covered by objective: <i>Climatic Factors</i>							

SA Objective ¹	SA Theme	Proposed indicator	Current status	Trends	Targets	Issues and constraints	Baseline (information) source
16. Reduce Herefordshire's vulnerability to the impacts of climate change as well as its contribution to the problem.	Resource consumption and climate change.	Transport patronage by mode	<p>% of Herefordshire residents who travel to work by:</p> <p>Car: 70.1% Foot: 14.7% Bicycle: 4.3% Bus: 2% Train: 0.8% Motorbike: 0.8% Taxi: 0.3% Other: 7%</p> <p><i>There is no locally specific data available at present</i></p>	The number of people cycling or travelling by bus as the main form transport to get to work declined between 2001 and 2011 – across England and Wales there was little change in either. Walking or driving a car or van on the other hand increased.	To increase the take up of alternative modes to the private car.	There are a lack of transport options for many rural communities and therefore high car ownership and dependency – the last decade has seen a 15 per cent increase in household car ownership, although this is not reflected in traffic flows of recent years with volumes in Hereford City and wider county having decreased. The proportion of people working from home increased over the decade from 15 per cent in 2001 to 17 per cent in 2011.	2011 Census

SA Objective ¹	SA Theme	Proposed indicator	Current status	Trends	Targets	Issues and constraints	Baseline (information) source
16. Reduce Herefordshire's vulnerability to the impacts of climate change as well as its contribution to the problem.	Resource consumption and climate change.	Number of decentralised energy schemes granted permission.	<i>There is no countywide or locally specific data available at present.</i>	-	To contribute towards the national target.	Should be monitored through AMR following the adoption of the Core Strategy, in line with SA recommendations.	-

SA Objective ¹	SA Theme	Proposed indicator	Current status	Trends	Targets	Issues and constraints	Baseline (information) source
16. Reduce Herefordshire's vulnerability to the impacts of climate change as well as its contribution to the problem.	Resource consumption and climate	Total CO2 emissions per capita	<p>Latest figure dates back to 2010: 1.61 million tonnes (mtCO₂)</p> <p><i>There is no locally specific data available at present.</i></p>	<p>Between 2005 and 2010 Herefordshire's total and per capita carbon emission reduced by 7% and 8% respectively; while UK's total and per capita carbon emission reduced by 8% and 12% respectively within the same period. This trend hides an increase in emissions between 2009 and 2010 when total emissions in the county increased by 5% the same as across the UK (+5%).</p>	To reduce the overall carbon emissions.	CO ₂ emissions produced are decreasing.	Understanding Herefordshire: An integrated needs assessment (June 2013).

SA Objective ¹	SA Theme	Proposed indicator	Current status	Trends	Targets	Issues and constraints	Baseline (information) source
SEA Topic covered by objective: <i>Water</i>							
17. Reduce the risk of flooding and the resulting detriment to public wellbeing, the economy and the environment.	Natural environment	Number of planning permissions granted contrary to the advice of the Environment Agency on flood defence grounds.	The 2011-2013 AMR does not contain updated conservation data. 2010/11: None <i>There is no locally specific data available at present.</i>	There have been no approvals contrary to EA advice since reporting began in 2004.	To have no applications permitted contrary to EA advice.	None identified.	Herefordshire Council AMR (2010/11)
SEA Topic covered by objective: <i>Water, air, soil, material assets</i>							
18. Minimise local and global pollution and protect or enhance environmental resources.	Natural environment	Agricultural land usage by quality. LA to monitor the number of hectares of the best and most versatile agricultural land (grades 3a and higher) lost to development.	The soil classification around the Group Parish is Grades 2 very good and 3 good to moderate.	-	Measure the number of hectares of best and most versatile soil lost through development	Should be monitored through AMR following the adoption of the Core Strategy, in line with SA recommendations.	DEFRA 'Magic' website for land classification

SA Objective ¹	SA Theme	Proposed indicator	Current status	Trends	Targets	Issues and constraints	Baseline (information) source
18. Minimise local and global pollution and protect or enhance environmental resources.	Natural environment	Percentage of river length assessed as good or very good chemical quality and ecological quality as required by the Water Framework Directive	Latest figure dates back to 2005: 84% <i>There is no locally specific data available at present.</i>	Figure steadily improved before going into decline: Herefordshire 1999 85.9%, 2000 89.5%, 2001 92.2%, 2002 91.8%	To ensure that rivers meet their conservation objectives and do not fall below the required standard of quality.	None identified.	The State of Herefordshire Report (2007) Water Framework Directive (2000)
SEA Topic covered by objective: <i>Soil</i>							
19. Ensure integrated, efficient and balanced land use.	Built environment	Percentage of all new development completed on previously developed land.	2010/11: 67% 2011-13: 57% <i>There is no locally specific data available at present.</i>	Completions on PDL had risen to 71% by 2005.	To increase the number of homes built on PDL in line with the provisions of national planning policy.	The number of brownfield completions has fallen slightly in recent years, though this is probably the offshoot of tough market conditions.	Herefordshire Council AMR (2010/11) and (2011-2013)
19. Ensure integrated, efficient and balanced land use.	Built environment	Housing densities in urban and rural areas	<i>There is no countywide or locally specific data available at present.</i>	-	No specific targets identified.	Should be monitored through AMR following the adoption of the Core Strategy, in line with SA recommendations.	-

SA Objective ¹	SA Theme	Proposed indicator	Current status	Trends	Targets	Issues and constraints	Baseline (information) source
19. Ensure integrated, efficient and balanced land use.	Built environment	Level of development in urban areas compared to rural.	<p><i>There is no countywide or locally specific data available at present.</i></p> <p>This indicator would not be applicable to rural NDPs.</p>	N/A	N/A	N/A	N/A
SEA Topic covered by objective: <i>Cultural heritage</i>							
20. Value, protect and enhance the character and built quality of settlements and neighbourhoods and the county's heritage assets, including conservation areas, historic environment and cultural heritage.	Built environment	Number and percentage of listed buildings and Scheduled Ancient Monuments on Buildings at Risk Register (English Heritage).	<p>This data would be too large to incorporate into this template.</p> <p>There are no Scheduled Ancient Monuments within this Neighbourhood Area.</p> <p>There are numerous listed buildings within the parish. None are currently recorded in the Buildings at Risk Register.</p>	There were 58 heritage assets in Herefordshire that were considered to be at high risk and included in the Heritage at Risk Register 2011.	To wherever possible improve upon or otherwise maintain current status.	None of Brimfield and Little Hereford's listed buildings are considered to be at risk at present.	Buildings at Risk Register (English Heritage; search May 2014)

SA Objective ¹	SA Theme	Proposed indicator	Current status	Trends	Targets	Issues and constraints	Baseline (information) source
20. Value, protect and enhance the character and built quality of settlements and neighbourhoods and the county's heritage assets, including conservation areas, historic environment and cultural heritage.	Built environment	The need for, frequency and outcomes of planning enforcement investigations/ planning appeals concerning aspects of local loss of heritage assets locally important buildings within the parish and particularly within a conservation area	<p>Countywide data would be too large to incorporate into this template.</p> <p>There are no outstanding enforcement actions or appeals concerning local loss of heritage assets locally important buildings particularly within a conservation area within Brimfield and Little Hereford.</p> <p>There is no Conservation Area within Brimfield or Little Hereford.</p>	No historic records of any planning enforcement action or appeals concerning locally important buildings.	No specific targets identified as the Neighbourhood Area does not contain a conservation area	Current status must be verified by Dvt Mgt and Enforcement Officers, but the NDP can help to avoid enforcement action and appeals during the plan period.	Council Dvt Mgt records (searched April 2014)

Appendix A3 – Environmental issues identified from the Brimfield and Little Hereford Group baseline

These environmental issues are the same as most of those identified for the Herefordshire Core Strategy¹

SEA Topic		Environmental issue	SA objectives
1	Air	High reliance upon the private car causing high levels of air pollution and in Hereford in particular	Objective 16
		Need to reduce carbon emissions by encouraging alternative modes of travel.	
2	Biodiversity	Habitats and species of national, regional and local importance are under pressure from the adaptation and diversification of farming and forestry employment.	Objectives 13 & 15
		Habitats and species of national, regional and local importance are under pressure from development	
		Minimise loss of biodiversity and expand opportunities for wildlife everywhere.	
3	Climatic factors	Reduce greenhouse gas emissions through planning, design and build.	Objective 16
4	Cultural heritage	Brimfield and Little Hereford Group have numerous listed buildings, all of which require ongoing protection and many in need of high levels of maintenance.	Objective 20
5	Flora and fauna	Conserve and enhance the character and quality of historic landscapes, including all types of natural flora and fauna.	Objective 15
6	Material assets	How the countryside can continue to be managed in an economically, socially and environmentally beneficial way in the face of continuing pressures on traditional farming.	Objectives 14 & 18
7	Population	Minimise energy waste through good designs, which help to reduce energy consumption and maximise efficiency.	Objective 15
		Need to avoid enforcement investigations/action concerning locally important buildings and those within conservation areas in particular.	
8	Soil	Promoting development of previously developed land and buildings as opposed to greenfield sites or agricultural land of the highest quality.	Objectives 18 & 19
9	Water	Issues relating to availability of resources, foul drainage, pollution, and abstraction in a county which supports water dependent biodiversity of international and national importance, given the predicted climate change consequences for water availability and demanding projections for new housing.	Objectives 17 & 18
		Steady decline in the chemical quality of rivers over the last 10 years.	

¹ Derived from the Pre-submission Core Strategy Sustainability Appraisal Assessment (May 2014) and LDF General Scoping Report (June 2007)

Template A4: SEA Framework

SEA Scoping Stage A, Task A4 - SEA Framework SEA Objectives, Indicators, Targets

Parish Council Name: **Brimfield and Little Hereford Group**

Neighbourhood Development Plan Name: **Brimfield and Little Hereford Group**

Date completed: **May 2014**

SEA Topics	SA Objective	SEA Objective	Sub-objectives / Appraisal Questions (Will the option/proposal/site...)	Indicators	Targets
Nature Conservation (Biodiversity, flora and fauna)	Value, maintain, restore or expand county biodiversity. Value, protect, enhance or restore the landscape quality of Herefordshire, including its rural areas and open spaces.	To maintain and enhance nature conservation (biodiversity, flora and fauna)	<ul style="list-style-type: none"> Protect or enhance habitats of international, national, regional or local importance. Protect international, national, regional or locally important terrestrial or aquatic species. Maintain wildlife corridors and minimise fragmentation of ecological areas and green spaces. Manage access to sites in a sustainable way that protects or enhances their nature conservation value. Create new appropriate habitats. Value, enhance and protect natural environmental assets including AONB's, historic landscapes, 	<p>Net change in condition of SSSIs across Herefordshire.</p> <p>After use of mineral sites especially wildlife habitat creation</p> <p>Changes to protected habitats and impacts of species within the Herefordshire Local Biodiversity Action Plan.</p>	<p>% of SSSI land in favourable condition (Increase)</p> <p>% of SSSI land in unfavourable condition but recovering (Increase)</p> <p>% of SSSI land in unfavourable condition and declining (Decrease)</p> <p>Percentage of opportunities taken</p> <p>To protect and where possible enhance the habitats of protected species identified. No net losses</p>

SEA Topics	SA Objective	SEA Objective	Sub-objectives / Appraisal Questions (Will the option/proposal/site...)	Indicators	Targets
			<p>open spaces, parks and gardens and their settings</p> <ul style="list-style-type: none"> • Encourage local stewardship of local environments, for example by promoting best practices in agricultural management • Ensure that environmental impacts caused by mineral operations and the transport of minerals are minimised. • Promote the use of rural areas and open space by all, encourage easy non-car based access, and accommodate the needs of disabled users. 		
Landscape	Not covered in SA	<p>To maintain and enhance the quality of landscapes and townscapes</p> <p>To improve quality of surroundings</p>	<ul style="list-style-type: none"> • Protect and enhance the landscape everywhere and particularly in designated areas • Value and protect diversity and local distinctiveness • Improve landscape and ecological quality and character of the countryside • Improve the quantity and quality of publicly accessible open space • Improve satisfaction of people with their 	<p>Changes in the areas of designated nature conservation sites as a consequence of planning permission.</p> <p>Proportion of local sites where positive conservation management has or is being implemented.</p> <p>Monitoring changes to historic landscapes.</p> <p>Area resulting in a loss of open space as a result of planning permission</p>	<p>To capitalise on opportunities to enhance the areas of value to nature conservation as much as possible.</p> <p>No specific targets identified.</p> <p>No specific targets identified.</p> <p>No specific targets identified</p>

SEA Topics	SA Objective	SEA Objective	Sub-objectives / Appraisal Questions (Will the option/proposal/site...)	Indicators	Targets
			<p>neighbourhoods as places to live</p> <ul style="list-style-type: none"> • Decrease litter and graffiti in towns and countryside • Result in the loss of open space 		
Heritage	Value, protect or enhance the character and built quality of settlements and neighbourhoods and the county's heritage assets, historic environment and cultural heritage.	To conserve and where appropriate enhance the historic environment , heritage assets and culture heritage	<ul style="list-style-type: none"> • Preserve, protect and enhance heritage assets including conservation areas, listed buildings, archaeological sites and other culturally important features in both urban and rural settings. • Prevent development which is inappropriate in scale, form or design to its setting or to its function or local area. • Encourage development that creates and sustains well-designed, high quality built environments that incorporate green space, encourage biodiversity and promote local distinctiveness and sense of place. • Encourage cleanliness and/or improve the general 	<p>The need for, frequency and outcomes of planning enforcement investigations/ planning appeals concerning the aspects of local loss of locally important buildings within a conservation area.</p> <p>Number and percentage of listed buildings and Scheduled Ancient Monuments on Buildings at Risk Register (English Heritage).</p> <p>Ensure that Herefordshire Council's Sites and Monuments Register is kept up to date.</p>	<p>To improve upon or otherwise maintain current status.</p> <p>To improve upon or otherwise maintain current status.</p> <p>No specific targets identified, but need to ensure that the register is kept up to date.</p>

SEA Topics	SA Objective	SEA Objective	Sub-objectives / Appraisal Questions (Will the option/proposal/site...)	Indicators	Targets
			appearance of the area.		
Air and Climate	<p>Minimise local and global pollution and protect or enhance environmental resources.</p> <p>Reduce Herefordshire's vulnerability to the impacts of climate change as well as its contribution to the problem.</p>	<p>To improve air quality</p> <p>To reduce the effect of traffic on the environment</p> <p>To reduce contributions to climate change</p> <p>To reduce vulnerability to climate change</p>	<ul style="list-style-type: none"> Minimise water, air, soil, groundwater, noise and light pollution from current activities and the potential for such pollution. Protect or enhance the quality of watercourses. Provide opportunities to improve soil quality or reduce contaminated land. Reduce the county's contribution to climate change by reducing greenhouse gas emissions from transport, domestic, commercial and industrial sources. Increase the proportion of energy generated from renewable and low carbon sources including by micro-generation, Combined Heat and Power (CHP), district heating and in transportation. 	<p>Transport patronage by mode</p> <p>Number of decentralised energy schemes granted permission.</p> <p>Total CO2 emissions per capita</p>	<p>To increase the take up of alternative modes to the private car.</p> <p>To contribute towards the national target.</p> <p>To reduce the overall carbon emissions.</p>

SEA Topics	SA Objective	SEA Objective	Sub-objectives / Appraisal Questions (Will the option/proposal/site...)	Indicators	Targets
Water	<p>Reduce the risk of flooding and the resulting detriment to public well-being, the economy and the environment.</p> <p>Minimise local and global pollution and protect or enhance environmental resources.</p>	<p>To improve water quality</p> <p>To provide for sustainable sources of water supply</p> <p>To avoid, reduce and manage flood risk</p>	<ul style="list-style-type: none"> • Reduce flood risk both presently and taking into account climate change. • Prevent inappropriate development of the floodplain, and include flood protection systems. • Include sustainable urban drainage systems where appropriate. • Minimise water, air, soil, groundwater, noise and light pollution from current activities and the potential for such pollution. • Protect or enhance the quality of watercourses. 	<p>Number of planning permissions granted contrary to the advice of the Environment Agency on flood defence grounds.</p> <p>Percentage of river length assessed as good or very good chemical quality and ecological quality</p> <p>Phosphate levels within the River Wye SAC and adjoining tributaries that receive increased phosphates from proportional growth.</p>	<p>To have no applications permitted contrary to EA advice.</p> <p>To ensure that rivers meet their conservation objectives and do not fall below the required standard of quality as set out in the Water Framework Directive.</p> <p>To meet the targets set out in the Nutrient Management Plan (2014)</p>
Soil	<p>Minimise local and global pollution and protect or enhance environmental resources.</p>	<p>To conserve soil resources and quality</p> <p>Ensure integrated, efficient and balanced land use.</p>	<ul style="list-style-type: none"> • Minimise water, air, soil, groundwater, noise and light pollution from current activities and the potential for such pollution. • Provide opportunities to improve soil quality or reduce contaminated land. 	<p>Percentage of all new development completed on previously developed land.</p> <p>Amount of land identified as best and most versatile agricultural land lost to development.</p>	<p>To increase the number of homes built on PDL in line with the provisions of national planning policy.</p> <p>Measure the number of hectares of best and most versatile soil lost through development.</p>

This document is copyright of Herefordshire Council, please contact the Neighbourhood Planning team if you wish to reuse it in whole or part.

SEA Topics	SA Objective	SEA Objective	Sub-objectives / Appraisal Questions (Will the option/proposal/site...)	Indicators	Targets
	Ensure integrated, efficient and balanced land use.		<ul style="list-style-type: none"> • Ensure new developments are in appropriate locations, optimising the use of previously developed land and buildings, primarily focussed on the urban areas and are accessible by walking, cycling or sustainable transport and/or will increase the share of these transport modes, thereby reducing the need to travel. 		
Population and Human Health	Value, protect, enhance or restore the landscape quality of Herefordshire, including its rural areas and open spaces.	<p>To improve health of the population</p> <p>To reduce crime and nuisance</p>	<ul style="list-style-type: none"> • Value, enhance and protect natural environmental assets including AONB's, historic landscapes, open spaces, parks and gardens and their settings. • Encourage local stewardship of local environments, for example by promoting best practices in agricultural management. • Ensure that environmental impacts caused by mineral operations and the transport of minerals are minimised. • Promote the use of 	Number of developments meeting and surpassing national design	No specific targets identified.

SEA Topics	SA Objective	SEA Objective	Sub-objectives / Appraisal Questions (Will the option/proposal/site...)	Indicators	Targets
			rural areas and open space by all, encourage easy non-car based access, and accommodate the needs of disabled users.		
Material Assets	<p>Use natural resources and energy more efficiently.</p> <p>Minimise local and global pollution and protect or enhance environmental resources.</p>	To conserve natural and manmade resources	<ul style="list-style-type: none"> • Maximise energy efficiency and minimise the consumption of non-renewable energy i.e. from fossil fuels. • Minimise the consumption of water, land, soil, minerals, aggregates and other raw materials by all? E.g. through integrated transport, sustainable resource-efficient design, local sourcing of food, goods, materials. • Encourage the re-use/enhancement (to high standards of sustainable resource-efficient design) of existing buildings and minimise the need for new build. • Encourage the use of clean technologies and water minimisation techniques. 	<p>The need for, frequency and outcomes of planning enforcement investigations/ planning appeals concerning the aspects of local loss of locally important buildings within a conservation area.</p> <p>Maintaining Herefordshire Council's County Site and Monuments Register.</p> <p>Monitoring changes to historic landscapes.</p> <p>Agricultural land usage by quality</p>	<p>Measure the number of hectares of best and most versatile soil lost through development. No specific targets identified.</p> <p>No specific targets identified, but need to ensure that the register is kept up to date.</p> <p>No specific targets identified.</p> <p>Measure the number of hectares of best and most versatile soil lost through development.</p>

Appendix 3



ENGLISH HERITAGE

WEST MIDLANDS REGION

Neighbourhood Planning Team
Herefordshire Council
Planning Services
PO Box 230
Blueschool House
Blueschool Street
Hereford
HR1 2ZB.

Our ref:
Your ref:

Telephone 0121 625 6887
Fax 0121 625 6820

15 August 2014

Dear Sir or Madam

CONSULTATION ON SEA SCOPING REPORTS FOR NEIGHBOURHOOD PLANS IN:

(Bartestree & Lugwardine; Breinton; Brimfield little Hereford; Callow & Haywood; Dorstone; Eardisley; Lyonshall; Peterchurch; Staunton on Wye; Stretton Sugwas; Sutton St. Nicholas; Wellington; Whitbourne; Withington).

Thank you for your e-mails and the invitation to comment on the SEA Scoping Reports for the Neighbourhood Plans listed above. We have no substantive objection to the contents of the documents but have the following comments and recommendations which we urge you to consider before finalizing the reports.

Firstly, as regards terminology there appears to be very little reference made to “heritage assets” generally which leaves a perhaps undue emphasis upon designated assets such as conservation areas, listed buildings and SAMs. This is at variance with the Government’s objective, expressed as a core planning principle in the National Planning Policy Framework (NPPF) to “conserve heritage assets in a manner appropriate to their significance, so that they can be enjoyed for their contribution to the quality of life of this and future generations”. No distinction is made here between designated and undesignated assets. The accompanying Planning Practice Guidance also states (inter alia) that local planning authorities should identify specific opportunities within their area for the conservation and enhancement of heritage assets and equally this applies to all such assets.

We strongly encourage you, therefore, to weave the term “heritage assets” into the SEA templates wherever reference is made to the cultural heritage. It is difficult to be more specific as there is a degree of variation in the template content across the range of

Neighbourhood Plans covered, presumably due to differing authorships. Nevertheless in English Heritage's view some templates are more successful at reflecting historic environment concerns than others. In this regard we would particularly endorse the approach taken in relation to Dorstone, Breinton, Stretton Sugwas, Peterchurch, Brimfield and Whitbourne and suggest similar wording is applied to the other NP templates. That said, however, we would also suggest slight rewording and additions to those preferred templates.

Taking the Dorstone "Task 4" template (page 3 of 7) and the Cultural heritage SA Objective as an example, we would suggest "Value protect and enhance the character and built quality of settlements and neighbourhoods and the county's *heritage assets*, historic environment and cultural heritage". Similarly under Sub-objectives consider "Preserve, protect and enhance *heritage assets*, including Conservation Areas....." Under Indicators please consider ".....aspects of local loss of *heritage assets and* locally important buildings across the Parish *and particularly* within a conservation area. Under Targets we would suggest "To *wherever possible improve upon or otherwise* maintain current status...". This reflects (inter alia) the repeated statement for each Parish under Environmental Issues that many listed buildings are in need of high levels of maintenance and there may eg be the potential for grant schemes. In the same vein, where applicable (eg Lyonshall) it should we believe be a target to "*Promote opportunities to achieve the removal of heritage assets from the At Risk Register*".

A further Indicator and Target that features in some templates (eg Staunton on Wye, Brimfield and Withington and we suggest should apply to all is "*Maintaining Herefordshire Council's Sites and Monuments Register*" with a target of "*Ensure that the Herefordshire Council Sites and Monuments Register is kept up to date*". It should in fact be possible to use the Register as an effective monitoring tool in relation to the changing status of heritage assets and the effectiveness of planning tools in achieving their conservation and enhancement. We would strongly suggest that you hold detailed discussions in this respect with your own Council historic environment specialists in order to achieve an effective indicator for the wider historic environment beyond designated heritage assets.

A final minor comment is that there are apparently stray references to "Huntingdon and Broomy Hill" that appear in the templates for Breinton and Stretton Sugwas and presumably these need editing out.

I hope you find this advice helpful.

Yours faithfully



Pete Boland
Historic Places Adviser
E-mail: peter.boland@english-heritage.org.uk

Date: 23 July 2014
Our ref: 126879
Your ref: None



James Latham
Technical Support Officer
Neighbourhood Planning, Strategic Planning & Conservation teams
Herefordshire Council

Customer Services
Hornbeam House
Crewe Business Park
Electra Way
Crewe
Cheshire
CW1 6GJ

T 0300 060 3900

BY EMAIL ONLY

neighbourhoodplanning@herefordshire.gov.uk

Dear Mr Latham

Brimfield & Little Hereford Group Neighbourhood Plan Strategic Environmental Assessment Scoping and Habitat Regulations Assessment Screening

Thank you for your consultation on the above dated 20 June 2014 which was received by Natural England on the same date.

Natural England is a non-departmental public body. Our statutory purpose is to ensure that the natural environment is conserved, enhanced, and managed for the benefit of present and future generations, thereby contributing to sustainable development.

Where Neighbourhood Plans could have significant environmental effects, they may require a Strategic Environmental Assessment (SEA) under the Environment Assessment of Plans and Programmes Regulations 2004.

Further guidance on deciding whether the proposals are likely to have significant environmental effects and the requirements for consulting Natural England on SEA are set out in the National Planning Practice Guidance at:

<http://planningguidance.planningportal.gov.uk/blog/guidance/strategic-environmental-assessment-and-sustainability-appraisal/does-a-neighbourhood-plan-require-a-sustainability-appraisal/>

We welcome the production of this SEA Scoping report. The following comments are intended to further improve the SEA and its usefulness in assessing the Neighbourhood Plan.

Appendix A1 – Plans, policies and programmes

In addition to the plans, policies and programmes listed, we suggest that the following are relevant and should be added:

- The EC Conservation of Habitats and Species Regulations 2010
- The EC Water Framework Directive 2000
- The Wildlife and Countryside Act 1981
- The Countryside and Rights of Way Act 2000
- The Natural Environment and Rural Communities Act 2006
- Herefordshire Local Biodiversity Action Plan

Appendix A2 – Baseline information for Brimfield and Little Hereford

Biodiversity, flora and fauna

Against the proposed indicator “*Net change in condition of SSSIs across Herefordshire*”, under “*current status*” the table states that there is no data available. Natural England is able to provide up to date information on the condition of SSSI’s. Please contact us for this information as and when required.

Under the proposed indicator “*Changes to protected habitats and impacts of species within the Herefordshire Local Biodiversity Action Plan*”, no baseline information source has been identified. Maps of priority habitats and species are available on *Magic*, Defra’s GIS package for environmental assets (www.natureonthemap.naturalengland.org.uk).

According to our internal data there is an area of Wood Pasture and Parkland priority habitat in Little Hereford Parish, around Easton Court. There are also areas of traditional orchard and deciduous woodland, including areas of ancient semi-natural woodland, in both Little Hereford and Brimfield parish’s. We would welcome it if these priority habitats were recognised in the SEA, with information provided in the baseline information and targets included for their protection and enhancement (NPPF paragraph 117).

Baseline information on the landscape and open spaces needs to be included under SA objective 15: “*Value, protect, enhance and restore the landscape quality of Herefordshire, including its rural areas and open spaces*”. Reference could be made to the county Landscape Character Assessment and Landscape Characterisation studies including Historic Landscape Characterisation if this has been carried out.

Water, air, soil and material assets

This section (or suitable alternative) should include information on geodiversity. The baseline and assessment should make reference to geological conservation and the need to conserve, interpret and manage geological sites and features, both in the wider environment and in relation to designated features. The Herefordshire & Worcestershire Earth Heritage Trust may be of assistance.

The proposed indicator “*Agricultural land usage by quality*” has no countywide data identified. Agricultural land classification maps are available via *Magic* (website above). We suggest as an indicator that the Local Planning Authority could monitor and report on the number of hectares of best and most versatile agricultural land (grades 3a and higher) lost to development.

Appendix A3 – Environmental issues identified from the Brimfield and Little Hereford baseline

We note that landscape, soil and geodiversity are not covered. These issues should be added to the SEA baseline information, so that significant impacts on these aspects of the environment can be given appropriate consideration.

Under the SEA topic “Biodiversity”, we suggest that development should be noted as an additional pressure.

Appendix A4 – SEA framework (objectives, indicators and targets)

Under the SEA topic “*Nature Conservation (Biodiversity, flora and fauna)*”, we would welcome the inclusion of an indicator/target around the impact/benefit to ecological networks (NPPF paragraph 109, 113 and 117). We note that no targets have been identified against the indicator “*After use of*

mineral sites especially wildlife habitat creation"; we suggest that perhaps the percentage of opportunities taken could be monitored.

Under the SEA topic "*Landscape*" we suggest that reference could be made to the county Landscape Character Assessment and Landscape Characterisation studies including Historic Landscape Characterisation if this has been carried out. Applications resulting in the loss of open space could be monitored.

Under the SEA topic "*water*", the indicator "*Percentage of river length assessed as good or very good chemical quality*" should also refer to ecological quality. Reference could be made to the Water Framework Directive.

Under the SEA topic "*Soil*", the second objective listed looks to be incomplete. Additional indicators or targets could be included around hectares of the best and most versatile agricultural land lost to development.

Habitats Regulations Assessment Screening

We note the recommendation that a full Habitat Regulations Assessment Screening is undertaken due to proximity to the River Wye Special Area of Conservation (SAC) and Downton Gorge SAC.

We would be happy to comment further should the need arise but if in the meantime you have any queries please do not hesitate to contact us.

For any queries relating to the specific advice in this letter only please contact Hayley Fleming on 0300 060 1594. For any new consultations, or to provide further information on this consultation please send your correspondences to consultations@naturalengland.org.uk.

We really value your feedback to help us improve the service we offer. We have attached a feedback form to this letter and welcome any comments you might have about our service.

Yours sincerely

Hayley Fleming
South Mercia area team

Appendix 3a

Date: 4th February 2015

Our ref: 139491

Your ref:



neighbourhoodplanning@herefordshire.gov.uk
Herefordshire Council

kd.yates@virgin.net
Brimfield & Little Hereford Group Parish Council

Customer Services
Hornbeam House
Crewe Business Park
Electra Way
Crewe
Cheshire
CW1 6GJ

T 0300 060 3900

BY EMAIL ONLY

Dear Sir/Madam,

Re: Brimfield Brimfield & Little Hereford Group draft Neighbourhood Development Plan.

Many thanks for the above consultation. Natural England is a statutory consultee in neighbourhood planning and must be consulted on draft neighbourhood development plans by the Parish/Town Councils or Neighbourhood Forums where they consider our interests would be affected by the proposals made.

Having looked at the policies in the plan, Natural England does not consider that this plan poses any likely significant risk to internationally or nationally designated nature conservation or landscape sites and so does not wish to make specific comments on the plan.

The lack of more detailed comment from Natural England should not be interpreted as a statement that there are no impacts on the natural environment. Other bodies and individuals may make comments that will help the Parish/Town Council or Neighbourhood Forum to fully take account of the natural environment in the plan-making process.

We have reviewed the Habitats Regulation Brimfield and Little Hereford HRA November 2014, and concur with its conclusion namely that

8.5 It is therefore concluded that the Brimfield and Little Hereford Plan will not have a likely significant effect on the Downton Gorge SAC.

(Other sites having been ruled out at initial screening stage).

We have no comments to make on the Strategic Environmental Assessment.

If, as you develop your plan, you consider that it will significantly impact on designated nature conservation sites or protected species or has other significant impacts on the natural environment then you should consult Natural England again.

For information, Natural England, together with the Environment Agency, English Heritage and Forestry Commission has published joint advice on neighbourhood planning which sets out sources of environmental information and ideas on incorporating the environment into plans. This is available at: <http://www.woodlandtrust.org.uk/mediafile/100097965/natural-and-historic-environmental-guidance.pdf>

For any correspondence or queries relating to this consultation only, please contact Charles Routh on 07990 773630. For any new consultations or issues, please contact consultations@naturalengland.org.uk.

We really value your feedback to help us improve the service we offer. We have attached a feedback form to this letter and welcome any comments you might have about our service.

Yours sincerely

Charles Routh

Lead Adviser, on behalf of South Mercia Area Team, Natural England.

Appendix 4

Template B1: Brimfield and Little Hereford **NDP Objectives review against SEA objectives**

Parish Council Name: Brimfield and Little Hereford

Neighbourhood Development Plan Name: Brimfield and Little Hereford Neighbourhood Plan

Date completed: November 2014

Objectives verses SEA Objectives (SMART and Compatibility Test)				
SEA Stage B1	Key:	SMART criteria:		
+ =	Compatible	S – Specific:	NDP objectives should specify what is intended to be done in detail and should not be open to a wide range of misinterpretations	The following matrix appraises the emerging Brimfield and Little Hereford NDP Objectives in terms of their SMART criteria and their compatibility with the SEA Objectives. These have been developed from Government guidance on SEA and from the local evidence base gathered for identifying the NDP issues.
- =	Possible conflict	M – Measurable:	It should be possible to monitor NDP objectives in a quantifiable way, by the use of indicators. Indicators should be measurable with limited resource implications.	
0 =	Neutral	A – Attainable/achievable:	NDP objectives should be achievable and deliverable, related to the scale of growth proposed	
X =	No relationship between objectives	R – Realistic:	NDP objectives should relate to the overall vision of the plan. Likewise, chosen indicators should relate to objectives and their outcomes.	
? =	Unclear, more information needed	T – Time-Bound:	Objectives should be specific to the NDP period or another specified time-frame. Objectives should be associated with a target and indicators should specify when the target should be achieved.	

SEA Objectives

- 1- To maintain and enhance nature conservation (biodiversity, flora and fauna)
- 2- To maintain and enhance the quality of landscapes and townscapes
- 3- To improve quality of surroundings
- 4- To conserve and where appropriate enhance the historic environment and culture heritage
- 5- To improve air quality
- 6- To reduce the effect of traffic on the environment
- 7- To reduce contributions to climate change
- 8- To reduce vulnerability to climate change
- 9- To improve water quality
- 10- To provide for sustainable sources of water supply
- 11- To avoid, reduce and manage flood risk
- 12- To conserve soil resources and quality
- 13- To minimise the production of waste
- 14- To improve health of the population
- 15- To reduce crime and nuisance
- 16- To conserve natural and manmade resources

NDP objectives	SEA Objectives																Conclusions	Recommendations	SMART Test of NDP objective	After SMART objectives
	1	2	3	4	5	6	7	8	9	10	11	12	13	14	15	16				
<p>Objective 1-To identify a site (or sites) for small scale housing developments, providing for 35 new homes overall. These homes will be in keeping in both scale and demands of two rural parishes up to 2031, while ensuring that new housing is appropriate in terms of suitability, quantity, phasing, siting and design and having due regards to flooding and water management.</p>	+	+	+	0	?	?	X	X	X	+	+	0	+	+	+	+	Overall the objective to identify a site (or sites) for small scale housing developments, providing for 30 new homes. These homes will be in keeping in both scale and demands of two rural parishes up to 2031, while ensuring that new housing is appropriate in terms of suitability, quantity, phasing, siting and design and having due regards to flooding and water management, meets all the relevant SEA criteria.	New development could potentially impact on traffic and congestion throughout the group parish. Therefore sustainable transport measures should be considered throughout the all stages of development.	This objective meets all of the SMART criteria except specifying a time frame in which the objective will be achieved; a time frame will strengthen the objective.	To identify a site (or sites) for small scale housing developments, providing for 30 new homes. These homes will be in keeping in both scale and demands of two rural parishes up to 2031, while ensuring that new housing is appropriate in terms of suitability, quantity, phasing, siting and design and having due regards to flooding and water management, within the plan period.
<p>Objective 2-To identify an up to date and appropriate settlement boundary around Brimfield village to ensure that any proposed new development is properly integrated into the existing village envelope and has good access to local services and facilities.</p>	+	+	+	+	X	X	X	X	X	X	0	0	+	+	+	0	Overall the objective to identify an up to date and appropriate settlement boundary around Brimfield village to ensure that any proposed new development is properly integrated into the existing village envelope and has good access to local services and facilities, meets all the relevant SEA criteria.	-	This objective meets all of the SMART criteria except specifying a time frame in which the objective will be achieved; a time frame will strengthen the objective.	To identify an up to date and appropriate settlement boundary around Brimfield village to ensure that any proposed new development is properly integrated into the existing village envelope and has good access to local services and facilities, within the plan period.

<p>Objective 3- To ensure that transport and communication links such as public transport, pavements, cycle ways, bridle ways and footpaths are incorporated as part of the plan for both villages.</p>	+	+	+	X	+	+	+	+	X	X	X	+	+	+	+	+	<p>Overall the objective to ensure that transport and communication links such as public transport, pavements, cycle ways, bridle ways and footpaths are incorporated as part of the plan for both villages, meets all the relevant SEA criteria.</p>	-	<p>This objective meets all of the SMART criteria except specifying a time frame in which the objective will be achieved; a time frame will strengthen the objective.</p>	<p>To ensure that transport and communication links such as public transport, pavements, cycle ways, bridle ways and footpaths are incorporated as part of the plan for both villages, within the plan period.</p>
<p>Objective 4- To support local businesses that contribute to the quality of life for residents including support for suitable diversification of new technology.</p>	X	+	+	X	+	+	+	+	X	X	X	+	+	+	+	X	<p>Overall the objective To support local businesses that contribute to the quality of life for residents including support for suitable diversification of new technology meets all the relevant SEA criteria.</p>	-	<p>This objective meets all of the SMART criteria except specifying a time frame in which the objective will be achieved; a time frame will strengthen the objective.</p>	<p>To support local businesses that contributes to the quality of life for residents including support for suitable diversification of new technology, within the plan period.</p>
<p>Objective 5- To protect areas of open space, historic value, and environmental significance throughout both villages.</p>	+	+	+	+	X	X	X	X	X	X	X	+	+	+	+	+	<p>Overall the objective to protect areas of open space, historic value, and environmental significance throughout both villages meets all the relevant SEA criteria.</p>	-	<p>This objective meets all of the SMART criteria except specifying a time frame in which the objective will be achieved; a time frame will strengthen the objective.</p>	<p>To protect areas of open space, historic value, and environmental significance throughout both villages within the plan period.</p>
<p>Objective 6- To work together to protect local community facilities and support the local community to identify assets for possible Community Right to Buy initiatives.</p>	X	+	+	X	X	X	X	X	X	X	X	X	+	+	+	X	<p>Overall the objective to work together to protect local community facilities and support the local community to identify assets for possible Community Right to Buy initiatives meets all the relevant SEA criteria.</p>	-	<p>This objective meets all of the SMART criteria except specifying a time frame in which the objective will be achieved; a time frame will strengthen the objective.</p>	<p>To work together to protect local community facilities and support the local community to identify assets for possible Community Right to Buy initiatives, within the plan period.</p>

Template B2: Develop and Refinement of NDP policies – Brimfield and Little Hereford NDP

Parish Council Name: Brimfield and Little Hereford parish.

Neighbourhood Development Plan Name: Brimfield and Little Hereford Neighbourhood development Plan

Date completed: November 2014

Objectives verses SEA Objectives (SMART and Compatibility Test)				
SEA Stage B1	Key:	SMART criteria:		
+ =	Compatible	S – Specific:	NDP objectives should specify what is intended to be done in detail and should not be open to a wide range of misinterpretations	The following matrix appraises the emerging Brimfield and Little Hereford NDP Objectives in terms of their SMART criteria and their compatibility with the SEA Objectives. These have been developed from Government guidance on SEA and from the local evidence base gathered for identifying the NDP issues.
- =	Possible conflict	M – Measurable:	It should be possible to monitor NDP objectives in a quantifiable way, by the use of indicators. Indicators should be measurable with limited resource implications.	
0 =	Neutral	A – Attainable/achievable:	NDP objectives should be achievable and deliverable, related to the scale of growth proposed	
X =	No relationship between objectives	R – Realistic:	NDP objectives should relate to the overall vision of the plan. Likewise, chosen indicators should relate to objectives and their outcomes.	
? =	Unclear, more information needed	T – Time-Bound:	Objectives should be specific to the NDP period or another specified time-frame. Objectives should be associated with a target and indicators should specify when the target should be achieved.	

SEA Objectives	Baseline carried over from Stage A
<p>1- To maintain and enhance nature conservation (biodiversity, flora and fauna)</p> <p>2- To maintain and enhance the quality of landscapes and townscapes</p> <p>3- To improve quality of surroundings</p> <p>4- To conserve and where appropriate enhance the historic environment and culture heritage</p> <p>5- To improve air quality</p> <p>6- To reduce the effect of traffic on the environment</p> <p>7- To reduce contributions to climate change</p> <p>8- To reduce vulnerability to climate change</p> <p>9- To improve water quality</p> <p>10- To provide for sustainable sources of water supply</p> <p>11- To avoid, reduce and manage flood risk</p> <p>12- To conserve soil resources and quality</p> <p>13- To minimise the production of waste</p> <p>14- To improve health of the population</p> <p>15- To reduce crime and nuisance</p> <p>16- To conserve natural and manmade resources</p>	<p>1-The 2011-2013 AMR does not contain updated conservation data.2010/11: 27% of Herefordshire’s SSSI land was in favourable condition. 04/08/14 – status of the SSSIs were as follows:Hill Hole Dingle – unfavourable recovering. River Lugg – Unfavourable Recovering. The 2011-2013 AMR does not contain updated conservation data. 2010/11: 17 Habitat Action Plans and 14 Species Action Plans are currently in operation across Herefordshire. Brimfield and Little Hereford Group has: 1 SSSI, 10 SWS. The Neighbourhood Area is 9km away from Downton Gorge SAC. There are no NNRs, LNRs and SINC’s within the parish.</p> <p>2-There are no outstanding enforcement actions or appeals concerning locally important buildings within Brimfield and Little Hereford at present. Brimfield and Little Hereford do not have a conservation area.</p> <p>3-In terms of Brimfield and Little Hereford itself, the play facilities study reveals there is a local play facility for infants only at the village hall. Brimfield and Little Hereford group parish itself, there is one secured sports ground, which includes two football pitches and a bowling pitch, totalling 2.26ha, with excellent quality facilities</p> <p>4- There are no Scheduled Ancient Monuments within this Brimfield and Little Hereford, there are numerous listed buildings within the parish. None are currently recorded in the Buildings at Risk Register.</p> <p>5-Between 2005 and 2010 Herefordshire’s total and per capita carbon emission reduced by 7% and 8% respectively; while UK’s total and per capita carbon emission reduced by 8% and 12% respectively within the same period. This suggests that air quality is improving.</p> <p>6-% of Herefordshire residents who travel to work by: Car: 70.1%, Foot: 14.7%;Bicycle: 4.3%,Bus: 2%, Train: 0.8%,Motorbike: 0.8%,Taxi: 0.3%,Other: 7%.</p> <p>7-Herefordshire latest figure of CO2 emissions per capita-dates back to 2010: 1.61 million tonnes (mtCO²)</p> <p>8-Reduce the risk of flooding-There have been no approvals contrary to EA advice since reporting began in 2004.The 2011-2013 AMR does not contain updated conservation data.</p> <p>9-Percentage of river length assessed as good or very good chemical quality and ecological quality as required by the Water Framework Directive. Latest figure dates back to 2005: 84%.</p> <p>10- Brimfield and Little Hereford are within the Severn River Basin. There are reported issues at Brimfield due to Gosford Brook. The Mid Teme is the second highest catchment by Flood reports, this includes the village of Brimfield. The overall Water Directive Framework status of the River Teme is moderate.</p> <p>11-Number of planning permissions granted contrary to the advice of the Environment Agency on flood defence grounds. The 2011-2013 AMR does not contain updated conservation data.</p> <p>12- The soil classification around the Group Parish is Grades 2 very good and 3 good to moderate. Percentage of all new development completed on previously developed land.2010/11: 67%2011-13: 57%.</p> <p>13-There are numerous listed buildings within the group parish and no SAM’s. There are no outstanding enforcement actions or appeals concerning locally important buildings within Brimfield and Little Hereford Group parish at present. The Parish Area has the following landscape types: Principle wooded hills and settled farmlands on river terrace on the outskirts.</p>

NDP Options	SEA objectives																Summary in relation to baseline	Overall commentary and any initial cumulative effects/ Recommendations	Conformity with Core Strategy
	1	2	3	4	5	6	7	8	9	10	11	12	13	14	15	16			
Baseline	1	2	3	4	5	6	7	8	9	10	11	12	NA	NA	NA	13			
Option 1- Site 7 Paddocks Orchard, Tenbury Road. Development of 15 properties by landowner up to 40 houses.	?	+	+	?	?	-	?	?	?	?	+	?	+	+	+	?	Overall this policy has mainly an uncertain impact on the baseline data. It is unclear what effect a large development will have on the natural and manmade resources as well as water supply and vulnerability to climate change. A large development is likely to increase car usage and produce more emissions, however sustainable measures for transport and waste can be implemented.	Overall this policy does not meet the SEA baseline. Therefore measures should be taken to ensure development is sustainable and has a minimal impact on land.	This policy meets the Core Strategy requirements for the purposes of the SEA.
Option 2- Sites 8,9,10,11 Suggested development of 14 properties-16 in total.	?	+	+	?	?	-	?	?	?	?	+	?	+	+	+	?	Overall this policy has mainly an uncertain impact on the baseline data. It is unclear what effect a large development will have on the natural and manmade resources as well as water supply and vulnerability to climate change. A large development is likely to increase car usage and produce more emissions, however sustainable measures for transport and waste can be implemented.	Overall this policy meets the SEA baseline.	This policy meets the Core Strategy requirements for the purposes of the SEA.
Option 3- Sites 4 and 5 .No indication of numbers of properties given by either landowner -potential 55 houses.	?	+	+	?	?	-	?	?	?	?	+	?	+	+	+	?	Overall this policy has mainly an uncertain impact on the baseline data. It is unclear what effect a large development will have on the natural and manmade resources as well as water supply and vulnerability to climate change. A large development is likely to increase car usage and produce more emissions, however sustainable measures for transport and waste can be implemented.	Overall this policy meets the SEA baseline.	This policy meets the Core Strategy requirements for the purposes of the SEA.

NDP Policies	SEA objectives																Summary in relation to baseline	Overall commentary and any initial cumulative effects/ Recommendations	Conformity with Core Strategy
	1	2	3	4	5	6	7	8	9	10	11	12	13	14	15	16			
Baseline	1	2	3	4	5	6	7	8	9	10	11	12	NA	NA	NA	13			
Policy BLH1-New housing within the Settlement Boundary	0	+	+	0	0	0	?	?	?	?	+	0	+	+	+	0	Overall this policy has mainly a neutral/impact on the baseline data.	Overall this policy meets the SEA baseline.	This policy meets the Core Strategy requirements for the purposes of the SEA.
Policy BLH2-New housing development	X	+	+	X	X	X	X	X	X	X	X	X	+	+	+	X	Overall this policy has mainly a positive impact on the baseline data.	Overall this policy meets the SEA baseline.	This policy meets the Core Strategy requirements for the purposes of the SEA.
Policy BLH3-Local needs housing and ensuring an appropriate range of tenures, types and sizes of houses	X	+	+	X	X	X	X	X	X	X	X	X	+	+	+	X	Overall this policy has mainly a positive impact on the baseline data.	Overall this policy meets the SEA baseline.	This policy meets the Core Strategy requirements for the purposes of the SEA.
Policy BLH4-Criteria for sites for sites for local needs housing in Little Hereford	0	+	+	0	0	X	X	X	X	X	X	0	X	+	+	0	Overall this policy has mainly a positive impact on the baseline data.	Overall this policy meets the SEA baseline.	This policy meets the Core Strategy requirements for the purposes of the SEA.
Policy BLH5-Protection Of Community Facilities	0	+	+	+	0	0	X	X	X	X	X	X	+	+	+	+	Overall this policy to protect community facilities has mainly a positive impact on the baseline data. Provision of more car parks may increase level of vehicular traffic which could have a detrimental impact of air pollution. However provision for sustainable means of transport may counteract this.	Overall this policy meets the SEA baseline.	This policy meets the Core Strategy requirements for the purposes of the SEA.

Policy BLH6- Local Heritage List	+	+	+	+	X	X	X	X	X	X	X	+	+	+	+	+	Overall this policy protects or enhancing buildings and structures local heritage list has mainly a positive impact on the baseline data.	Overall this policy meets the SEA baseline.	This policy meets the Core Strategy requirements for the purposes of the SEA.
Policy BLH7- Building design principles.	+	+	+	+	X	X	X	X	X	X	X	+	+	+	+	+	Overall this policy to ensure new development uses appropriate building design has mainly a positive impact on the baseline data.	Overall this policy meets the SEA baseline.	This policy meets the Core Strategy requirements for the purposes of the SEA.
Policy BLH8- Landscape design principles.	+	+	+	+	X	X	X	X	X	X	+	+	+	+	X	+	Overall this policy to ensure new development follows landscape design principles has mainly a positive impact on the baseline data.	Overall this policy meets the SEA baseline.	This policy meets the Core Strategy requirements for the purposes of the SEA.
Policy BLH9- Local green space designations	+	+	+	+	X	X	X	X	X	X	+	+	X	+	+	+	Overall this policy designating local green space has mainly a positive impact on the baseline data. This policy may also help support biodiversity and help to enhance natural landscapes within Brimfield and Little Hereford.	Overall this policy meets the SEA baseline.	This policy meets the Core Strategy requirements for the purposes of the SEA.
Policy BLH10- Allotments and open space	+	+	+	X	X	X	X	X	X	X	+	+	X	+	+	+	Overall this policy to ensure development contributes towards improvement of existing or creating new allotments has mainly a positive impact on the baseline data. The green infrastructure approach moves towards SEA objectives.	Overall this policy meets the SEA baseline.	This policy meets the Core Strategy requirements for the purposes of the SEA.
Policy BLH11- Water Management	+	+	+	X	X	X	X	+	+	X	+	+	+	+	X	+	Overall this policy insures that new development will incorporate sustainable urban drainage measures and has mainly a positive impact on the baseline data.	Overall this policy meets the SEA baseline.	This policy meets the Core Strategy requirements for the purposes of the SEA.
Policy BLH12- Criteria for assessing the suitability of future potential development sites	+	+	+	X	X	X	X	+	+	X	+	+	+	+	X	+	Overall this policy for assessing the suitability of future potential development sites has mainly a positive impact on the baseline data. This ensures the appropriate sites have been selected for development in line with regulatory requirements to minimise potential impacts on water quality and flood risk.	Overall this policy meets the SEA baseline.	This policy meets the Core Strategy requirements for the purposes of the SEA.
Policy BLH13- Development in areas	+	+	+	+	X	X	X	+	+	+	+	+	+	X	+	X	Overall this policy to ensure development in flood risk areas will have appropriate surface water drainage measures to protect existing and future development this has mainly a	Overall this policy meets the SEA baseline.	This policy meets the Core Strategy requirements for the purposes of the SEA.

of flood risk																		positive impact on the baseline data.		
Policy BLH14- Design for flood resilience and resistance	+	+	+	+	X	X	X	+	+	X	+	+	X	X	X	+	Overall this policy to design for flood resistance and resilience has mainly a positive impact on the baseline data. And will help to protect and enhance the natural and built environment around Brimfield and Little Hereford.	Overall this policy meets the SEA baseline.	This policy meets the Core Strategy requirements for the purposes of the SEA.	
Policy BLH15- Design to reduce surface water run off	+	+	+	+	X	X	X	+	+	X	+	+	X	X	X	+	Overall this policy design to reduce surface water runoff has mainly a positive impact on the baseline data. Overall this will help to protect prone to surface water flooding.	Overall this policy meets the SEA baseline.	This policy meets the Core Strategy requirements for the purposes of the SEA.	
Policy BLH16- New communication technologies	+	+	+	X	+	+	X	X	X	X	X	X	+	X	+	+	Overall this policy to provide new communications and support high speed broadband has mainly a positive impact on the baseline data.	Overall this policy meets the SEA baseline.	This policy meets the Core Strategy requirements for the purposes of the SEA.	
Policy BLH17- Developments supporting rural enterprise	0	0	+	X	0	0	X	X	X	X	0	+	+	+	+	0	Overall this policy developments to support rural enterprise has mainly a positive impact on the baseline data.	Overall this policy meets the SEA baseline.	This policy meets the Core Strategy requirements for the purposes of the SEA.	
Policy BLH18- Supporting public transport, walking and cycling	+	+	+	X	+	+	+	X	X	X	X	X	+	+	+	+	Overall this policy supporting public transport, walking and cycling has mainly a positive impact on the baseline data.	Overall this policy meets the SEA baseline.	This policy meets the Core Strategy requirements for the purposes of the SEA.	

Template B3: Predict and evaluate the effects of the policies and sites within the Neighbourhood Development Plan

Parish Council Name: Brimfield and Little Hereford Plan

Neighbourhood Development Plan Name: Brimfield and Little Hereford Plan

Date completed: November 2014

Key:

++ Move towards significantly	+ Move towards Marginally	- - Move away significantly	- Move away marginally	0 Neutral	? Uncertain	N/A No relationship
-------------------------------	---------------------------	-----------------------------	------------------------	-----------	-------------	---------------------

Policy BLH1-New housing within the Settlement Boundary

SEA Objective	Assessment of effect (consider cumulative effects, significance of the effect and magnitude of the effect in terms of the three time periods)			Summary Explanation	Enhancement and mitigation opportunities
	Short term (1 – 5 years)	Medium term (6 – 10 years)	Long term (11 years +)		
To maintain and enhance nature conservation (biodiversity, flora and fauna)	0	0	0	This Policy is not over and above the Core Strategy.	N/A
To maintain and enhance the quality of landscapes and townscapes	+	+	+	This Policy is not over and above the Core Strategy.	N/A

This document is copyright of Herefordshire Council, please contact the Neighbourhood Planning team if you wish to reuse it in whole or part.

To improve quality of surroundings	+	+	+	This Policy is not over and above the Core Strategy.	N/A
To conserve and where appropriate enhance the historic environment and cultural heritage	0	0	0	This Policy is not over and above the Core Strategy.	N/A
To improve air quality	0	0	0	This Policy is not over and above the Core Strategy.	N/A
To reduce the effect of traffic on the environment	0	0	0	This Policy is not over and above the Core Strategy.	N/A
To reduce contributions to climate change	?	?	?	This Policy is not over and above the Core Strategy.	N/A
To reduce vulnerability to climate change	?	?	?	This Policy is not over and above the Core Strategy.	N/A
To improve water quality	?	?	?	This Policy is not over and above the Core Strategy.	N/A
To provide for sustainable sources of water supply	?	?	?	This Policy is not over and above the Core Strategy.	N/A
To avoid, reduce and manage flood risk	+	+	+	This Policy is not over and above the Core Strategy.	N/A

This document is copyright of Herefordshire Council, please contact the Neighbourhood Planning team if you wish to reuse it in whole or part.

To conserve soil resources and quality	0	0	0	This Policy is not over and above the Core Strategy.	N/A
To minimise the production of waste	+	+	+	This Policy is not over and above the Core Strategy.	N/A
To improve health of the population	+	+	+	This Policy is not over and above the Core Strategy.	N/A
To reduce crime and nuisance	+	+	+	This Policy is not over and above the Core Strategy.	N/A
To conserve natural and manmade resources	0	0	0	This Policy is not over and above the Core Strategy.	N/A
Overall commentary and any cumulative effects	Overall this Policy is not over and above the Core Strategy. The impact of new housing is uncertain in relation to the impact to vulnerability to climate change as well as water quality and supply. This will depend on each individual development in order to assess this.				

Policy BLH2-New housing development

SEA Objective	Assessment of effect (consider cumulative effects, significance of the effect and magnitude of the effect in terms of the three time periods)			Summary Explanation	Enhancement and mitigation opportunities
	Short term (1 – 5 years)	Medium term (6 – 10 years)	Long term (11 years +)		
To maintain and enhance nature conservation (biodiversity, flora and fauna)	X	X	X	This Policy is not over and above the Core Strategy.	N/A
To maintain and enhance the quality of landscapes and townscapes	+	+	+	This Policy is not over and above the Core Strategy.	N/A
To improve quality of surroundings	+	+	+	This Policy is not over and above the Core Strategy.	N/A
To conserve and where appropriate enhance the historic environment and cultural heritage	X	X	X	This Policy is not over and above the Core Strategy.	N/A
To improve air quality	X	X	X	This Policy is not over and above the Core Strategy.	N/A

To reduce the effect of traffic on the environment	X	X	X	This Policy is not over and above the Core Strategy.	N/A
To reduce contributions to climate change	X	X	X	This Policy is not over and above the Core Strategy.	N/A
To reduce vulnerability to climate change	X	X	X	This Policy is not over and above the Core Strategy.	N/A
To improve water quality	X	X	X	This Policy is not over and above the Core Strategy.	N/A
To provide for sustainable sources of water supply	X	X	X	This Policy is not over and above the Core Strategy.	N/A
To avoid, reduce and manage flood risk	X	X	X	This Policy is not over and above the Core Strategy.	N/A
To conserve soil resources and quality	X	X	X	This Policy is not over and above the Core Strategy.	N/A
To minimise the production of waste	+	+	+	This Policy is not over and above the Core Strategy.	N/A
To improve health of the population	+	+	+	This Policy is not over and above the Core Strategy.	N/A
To reduce crime and nuisance	+	+	+	This Policy is not over and above the Core Strategy.	N/A

To conserve natural and manmade resources	X	X	X	This Policy is not over and above the Core Strategy.	N/A
Overall commentary and any cumulative effects	Overall this Policy is not over and above the Core Strategy.				

Policy BLH3-Local needs housing and ensuring an appropriate range of tenures, types and sizes of houses

SEA Objective	Assessment of effect (consider cumulative effects, significance of the effect and magnitude of the effect in terms of the three time periods)			Summary Explanation	Enhancement and mitigation opportunities
	Short term (1 – 5 years)	Medium term (6 – 10 years)	Long term (11 years +)		
To maintain and enhance nature conservation (biodiversity, flora and fauna)	X	X	X	This Policy is not over and above the Core Strategy.	N/A
To maintain and enhance the quality of landscapes and townscapes	+	+	+	This Policy is not over and above the Core Strategy.	N/A
To improve quality of surroundings	+	+	+	This Policy is not over and above the Core Strategy.	N/A

To conserve and where appropriate enhance the historic environment and cultural heritage	X	X	X	This Policy is not over and above the Core Strategy.	N/A
To improve air quality	X	X	X	This Policy is not over and above the Core Strategy.	N/A
To reduce the effect of traffic on the environment	X	X	X	This Policy is not over and above the Core Strategy.	N/A
To reduce contributions to climate change	X	X	X	This Policy is not over and above the Core Strategy.	N/A
To reduce vulnerability to climate change	X	X	X	This Policy is not over and above the Core Strategy.	N/A
To improve water quality	X	X	X	This Policy is not over and above the Core Strategy.	N/A
To provide for sustainable sources of water supply	X	X	X	This Policy is not over and above the Core Strategy.	N/A
To avoid, reduce and manage flood risk	X	X	X	This Policy is not over and above the Core Strategy.	N/A
To conserve soil resources and quality	X	X	X	This Policy is not over and above the Core Strategy.	N/A
To minimise the production of waste	+	+	+	This Policy is not over and above the Core Strategy.	N/A

This document is copyright of Herefordshire Council, please contact the Neighbourhood Planning team if you wish to reuse it in whole or part.

To improve health of the population	+	+	+	This Policy is not over and above the Core Strategy.	N/A
To reduce crime and nuisance	+	+	+	This Policy is not over and above the Core Strategy.	N/A
To conserve natural and manmade resources	X	X	X	This Policy is not over and above the Core Strategy.	N/A
Overall commentary and any cumulative effects	Overall this Policy is not over and above the Core Strategy.				

Policy BLH4-Criteria for sites for local needs housing in Little Hereford

SEA Objective	Assessment of effect (consider cumulative effects, significance of the effect and magnitude of the effect in terms of the three time periods)			Summary Explanation	Enhancement and mitigation opportunities
	Short term (1 – 5 years)	Medium term (6 – 10 years)	Long term (11 years +)		
To maintain and enhance nature conservation (biodiversity, flora and fauna)	0	0	0	This Policy is not over and above the Core Strategy.	N/A
To maintain and enhance the quality of landscapes and	+	+	+	This Policy is not over and above the Core Strategy.	N/A

townscapes					
To improve quality of surroundings	+	+	+	This Policy is not over and above the Core Strategy.	N/A
To conserve and where appropriate enhance the historic environment and cultural heritage	+	+	+	This Policy is not over and above the Core Strategy.	N/A
To improve air quality	0	0	0	This Policy is not over and above the Core Strategy.	N/A
To reduce the effect of traffic on the environment	0	0	0	This Policy is not over and above the Core Strategy.	N/A
To reduce contributions to climate change	X	X	X	This Policy is not over and above the Core Strategy.	N/A
To reduce vulnerability to climate change	X	X	X	This Policy is not over and above the Core Strategy.	N/A
To improve water quality	X	X	X	This Policy is not over and above the Core Strategy.	N/A
To provide for sustainable sources of water supply	X	X	X	This Policy is not over and above the Core Strategy.	N/A
To avoid, reduce and manage flood risk	X	X	X	This Policy is not over and above the Core Strategy.	N/A

This document is copyright of Herefordshire Council, please contact the Neighbourhood Planning team if you wish to reuse it in whole or part.

To conserve soil resources and quality	0	0	0	This Policy is not over and above the Core Strategy.	N/A
To minimise the production of waste	X	X	X	This Policy is not over and above the Core Strategy.	N/A
To improve health of the population	+	+	+	This Policy is not over and above the Core Strategy.	N/A
To reduce crime and nuisance	+	+	+	This Policy is not over and above the Core Strategy.	N/A
To conserve natural and manmade resources	0	0	0	This Policy is not over and above the Core Strategy.	N/A
Overall commentary and any cumulative effects	Overall this Policy is not over and above the Core Strategy.				

Policy BLH5-Protection Of Community Facilities

SEA Objective	Assessment of effect (consider cumulative effects, significance of the effect and magnitude of the effect in terms of the three time periods)			Summary Explanation	Enhancement and mitigation opportunities
	Short term (1 – 5 years)	Medium term (6 – 10 years)	Long term (11 years +)		

To maintain and enhance nature conservation (biodiversity, flora and fauna)	0	0	0	This Policy is not over and above the Core Strategy.	N/A
To maintain and enhance the quality of landscapes and townscapes	+	+	+	This Policy is not over and above the Core Strategy.	N/A
To improve quality of surroundings	+	+	+	This Policy is not over and above the Core Strategy.	N/A
To conserve and where appropriate enhance the historic environment and cultural heritage	+	+	+	This Policy is not over and above the Core Strategy.	N/A
To improve air quality	0	0	0	This Policy is not over and above the Core Strategy.	N/A
To reduce the effect of traffic on the environment	0	0	0	This Policy is not over and above the Core Strategy.	N/A
To reduce contributions to climate change	X	X	X	This Policy is not over and above the Core Strategy.	N/A
To reduce vulnerability to climate change	X	X	X	This Policy is not over and above the Core Strategy.	N/A

To improve water quality	X	X	X	This Policy is not over and above the Core Strategy.	N/A
To provide for sustainable sources of water supply	X	X	X	This Policy is not over and above the Core Strategy.	N/A
To avoid, reduce and manage flood risk	X	X	X	This Policy is not over and above the Core Strategy.	N/A
To conserve soil resources and quality	X	X	X	This Policy is not over and above the Core Strategy.	N/A
To minimise the production of waste	+	+	+	This Policy is not over and above the Core Strategy.	N/A
To improve health of the population	+	+	+	This Policy is not over and above the Core Strategy.	N/A
To reduce crime and nuisance	+	+	+	This Policy is not over and above the Core Strategy.	N/A
To conserve natural and manmade resources	+	+	+	This Policy is not over and above the Core Strategy.	N/A
Overall commentary and any cumulative effects	Overall this Policy is not over and above the Core Strategy.				

Policy BLH6-Local Heritage List

This document is copyright of Herefordshire Council, please contact the Neighbourhood Planning team if you wish to reuse it in whole or part.

SEA Objective	Assessment of effect (consider cumulative effects, significance of the effect and magnitude of the effect in terms of the three time periods)			Summary Explanation	Enhancement and mitigation opportunities
	Short term (1 – 5 years)	Medium term (6 – 10 years)	Long term (11 years +)		
To maintain and enhance nature conservation (biodiversity, flora and fauna)	+	+	+	This Policy is not over and above the Core Strategy.	N/A
To maintain and enhance the quality of landscapes and townscapes	++	++	++	This Policy is not over and above the Core Strategy.	N/A
To improve quality of surroundings	+	+	+	This Policy is not over and above the Core Strategy.	N/A
To conserve and where appropriate enhance the historic environment and cultural heritage	++	++	++	This Policy is not over and above the Core Strategy.	N/A
To improve air quality	X	X	X	This Policy is not over and above the Core Strategy.	N/A
To reduce the effect of traffic on the	X	X	X	This Policy is not over and above the Core Strategy.	N/A

This document is copyright of Herefordshire Council, please contact the Neighbourhood Planning team if you wish to reuse it in whole or part.

environment					
To reduce contributions to climate change	X	X	X	This Policy is not over and above the Core Strategy.	N/A
To reduce vulnerability to climate change	X	X	X	This Policy is not over and above the Core Strategy.	N/A
To improve water quality	X	X	X	This Policy is not over and above the Core Strategy.	N/A
To provide for sustainable sources of water supply	X	X	X	This Policy is not over and above the Core Strategy.	N/A
To avoid, reduce and manage flood risk	X	X	X	This Policy is not over and above the Core Strategy.	N/A
To conserve soil resources and quality	+	+	+	This Policy is not over and above the Core Strategy.	N/A
To minimise the production of waste	+	+	+	This Policy is not over and above the Core Strategy.	N/A
To improve health of the population	+	+	+	This Policy is not over and above the Core Strategy.	N/A
To reduce crime and nuisance	+	+	+	This Policy is not over and above the Core Strategy.	N/A
To conserve natural and manmade resources	+	+	+	This Policy is not over and above the Core Strategy.	N/A

This document is copyright of Herefordshire Council, please contact the Neighbourhood Planning team if you wish to reuse it in whole or part.

Overall commentary and any cumulative effects	Overall this Policy is not over and above the Core Strategy.
--	--

Policy BLH7-Building design principles.

SEA Objective	Assessment of effect (consider cumulative effects, significance of the effect and magnitude of the effect in terms of the three time periods)			Summary Explanation	Enhancement and mitigation opportunities
	Short term (1 – 5 years)	Medium term (6 – 10 years)	Long term (11 years +)		
To maintain and enhance nature conservation (biodiversity, flora and fauna)	+	+	+	This Policy is not over and above the Core Strategy.	N/A
To maintain and enhance the quality of landscapes and townscapes	+	+	+	This Policy is not over and above the Core Strategy.	N/A
To improve quality of surroundings	+	+	+	This Policy is not over and above the Core Strategy.	N/A
To conserve and where appropriate enhance the historic environment and cultural heritage	+	+	+	This Policy is not over and above the Core Strategy.	N/A

To improve air quality	X	X	X	This Policy is not over and above the Core Strategy.	N/A
To reduce the effect of traffic on the environment	X	X	X	This Policy is not over and above the Core Strategy.	N/A
To reduce contributions to climate change	X	X	X	This Policy is not over and above the Core Strategy.	N/A
To reduce vulnerability to climate change	X	X	X	This Policy is not over and above the Core Strategy.	N/A
To improve water quality	X	X	X	This Policy is not over and above the Core Strategy.	N/A
To provide for sustainable sources of water supply	X	X	X	This Policy is not over and above the Core Strategy.	N/A
To avoid, reduce and manage flood risk	X	X	X	This Policy is not over and above the Core Strategy.	N/A
To conserve soil resources and quality	+	+	+	This Policy is not over and above the Core Strategy.	N/A
To minimise the production of waste	+	+	+	This Policy is not over and above the Core Strategy.	N/A
To improve health of the population	+	+	+	This Policy is not over and above the Core Strategy.	N/A

To reduce crime and nuisance	+	+	+	This Policy is not over and above the Core Strategy.	N/A
To conserve natural and manmade resources	+	+	+	This Policy is not over and above the Core Strategy.	N/A
Overall commentary and any cumulative effects	Overall this Policy is not over and above the Core Strategy.				

Policy BLH8-Landscape design principles.

SEA Objective	Assessment of effect (consider cumulative effects, significance of the effect and magnitude of the effect in terms of the three time periods)			Summary Explanation	Enhancement and mitigation opportunities
	Short term (1 – 5 years)	Medium term (6 – 10 years)	Long term (11 years +)		
To maintain and enhance nature conservation (biodiversity, flora and fauna)	++	++	++	This Policy is not over and above the Core Strategy.	N/A
To maintain and enhance the quality of landscapes and townscapes	++	++	++	This Policy is not over and above the Core Strategy.	N/A

To improve quality of surroundings	+	+	+	This Policy is not over and above the Core Strategy.	N/A
To conserve and where appropriate enhance the historic environment and cultural heritage	++	++	++	This Policy is not over and above the Core Strategy.	N/A
To improve air quality	X	X	X	This Policy is not over and above the Core Strategy.	N/A
To reduce the effect of traffic on the environment	X	X	X	This Policy is not over and above the Core Strategy.	N/A
To reduce contributions to climate change	X	X	X	This Policy is not over and above the Core Strategy.	N/A
To reduce vulnerability to climate change	X	X	X	This Policy is not over and above the Core Strategy.	N/A
To improve water quality	X	X	X	This Policy is not over and above the Core Strategy.	N/A
To provide for sustainable sources of water supply	X	X	X	This Policy is not over and above the Core Strategy.	N/A
To avoid, reduce and manage flood risk	X	X	X	This Policy is not over and above the Core Strategy.	N/A
To conserve soil resources and quality	X	X	X	This Policy is not over and above the Core Strategy.	N/A

This document is copyright of Herefordshire Council, please contact the Neighbourhood Planning team if you wish to reuse it in whole or part.

To minimise the production of waste	X	X	X	This Policy is not over and above the Core Strategy.	N/A
To improve health of the population	X	X	X	This Policy is not over and above the Core Strategy.	N/A
To reduce crime and nuisance	+	+	+	This Policy is not over and above the Core Strategy.	N/A
To conserve natural and manmade resources	++	++	++	This Policy is not over and above the Core Strategy.	N/A
Overall commentary and any cumulative effects	Overall this Policy is not over and above the Core Strategy.				

Policy BLH9-Local green space designations

SEA Objective	Assessment of effect (consider cumulative effects, significance of the effect and magnitude of the effect in terms of the three time periods)			Summary Explanation	Enhancement and mitigation opportunities
	Short term (1 – 5 years)	Medium term (6 – 10 years)	Long term (11 years +)		
To maintain and enhance nature conservation (biodiversity, flora and fauna)	++	++	++	This Policy is not over and above the Core Strategy.	N/A

To maintain and enhance the quality of landscapes and townscapes	++	++	++	This Policy is not over and above the Core Strategy.	N/A
To improve quality of surroundings	+	+	+	This Policy is not over and above the Core Strategy.	N/A
To conserve and where appropriate enhance the historic environment and cultural heritage	+	+	+	This Policy is not over and above the Core Strategy.	N/A
To improve air quality	X	X	X	This Policy is not over and above the Core Strategy.	N/A
To reduce the effect of traffic on the environment	X	X	X	This Policy is not over and above the Core Strategy.	N/A
To reduce contributions to climate change	X	X	X	This Policy is not over and above the Core Strategy.	N/A
To reduce vulnerability to climate change	X	X	X	This Policy is not over and above the Core Strategy.	N/A
To improve water quality	X	X	X	This Policy is not over and above the Core Strategy.	N/A
To provide for sustainable sources of water supply	X	X	X	This Policy is not over and above the Core Strategy.	N/A

To avoid, reduce and manage flood risk	+	+	+	This Policy is not over and above the Core Strategy.	N/A
To conserve soil resources and quality	++	++	++	This Policy is not over and above the Core Strategy.	N/A
To minimise the production of waste	X	X	X	This Policy is not over and above the Core Strategy.	N/A
To improve health of the population	+	+	+	This Policy is not over and above the Core Strategy.	N/A
To reduce crime and nuisance	+	+	+	This Policy is not over and above the Core Strategy.	N/A
To conserve natural and manmade resources	++	++	++	This Policy is not over and above the Core Strategy.	N/A
Overall commentary and any cumulative effects	Overall this Policy is not over and above the Core Strategy.				

Policy BLH10-Allotments and open space

SEA Objective	Assessment of effect (consider cumulative effects, significance of the effect and magnitude of the effect in terms of the three time periods)			Summary Explanation	Enhancement and mitigation opportunities
	Short term (1 – 5 years)	Medium term (6 – 10 years)	Long term (11 years +)		

To maintain and enhance nature conservation (biodiversity, flora and fauna)	++	++	++	This Policy is not over and above the Core Strategy.	N/A
To maintain and enhance the quality of landscapes and townscapes	+	+	+	This Policy is not over and above the Core Strategy.	N/A
To improve quality of surroundings	+	+	+	This Policy is not over and above the Core Strategy.	N/A
To conserve and where appropriate enhance the historic environment and cultural heritage	X	X	X	This Policy is not over and above the Core Strategy.	N/A
To improve air quality	X	X	X	This Policy is not over and above the Core Strategy.	N/A
To reduce the effect of traffic on the environment	X	X	X	This Policy is not over and above the Core Strategy.	N/A
To reduce contributions to climate change	X	X	X	This Policy is not over and above the Core Strategy.	N/A
To reduce vulnerability to climate change	X	X	X	This Policy is not over and above the Core Strategy.	N/A

To improve water quality	X	X	X	This Policy is not over and above the Core Strategy.	N/A
To provide for sustainable sources of water supply	X	X	X	This Policy is not over and above the Core Strategy.	N/A
To avoid, reduce and manage flood risk	+	+	+	This Policy is not over and above the Core Strategy.	N/A
To conserve soil resources and quality	+++	+++	+++	This Policy is not over and above the Core Strategy.	N/A
To minimise the production of waste	X	X	X	This Policy is not over and above the Core Strategy.	N/A
To improve health of the population	+	+	+	This Policy is not over and above the Core Strategy.	N/A
To reduce crime and nuisance	+	+	+	This Policy is not over and above the Core Strategy.	N/A
To conserve natural and manmade resources	+	+	+	This Policy is not over and above the Core Strategy.	N/A
Overall commentary and any cumulative effects	Overall this Policy is not over and above the Core Strategy.				

Policy BLH11-Water Management

SEA Objective	Assessment of effect (consider cumulative effects, significance of the effect and magnitude of the effect in terms of the three time periods)			Summary Explanation	Enhancement and mitigation opportunities
	Short term (1 – 5 years)	Medium term (6 – 10 years)	Long term (11 years +)		
To maintain and enhance nature conservation (biodiversity, flora and fauna)	+	+	+	This Policy is not over and above the Core Strategy.	N/A
To maintain and enhance the quality of landscapes and townscapes	+	+	+	This Policy is not over and above the Core Strategy.	N/A
To improve quality of surroundings	+	+	+	This Policy is not over and above the Core Strategy.	N/A
To conserve and where appropriate enhance the historic environment and cultural heritage	X	X	X	This Policy is not over and above the Core Strategy.	N/A
To improve air quality	X	X	X	This Policy is not over and above the Core Strategy.	N/A

To reduce the effect of traffic on the environment	X	X	X	This Policy is not over and above the Core Strategy.	N/A
To reduce contributions to climate change	X	X	X	This Policy is not over and above the Core Strategy.	N/A
To reduce vulnerability to climate change	+	+	+	This Policy is not over and above the Core Strategy.	N/A
To improve water quality	++	++	++	This Policy is not over and above the Core Strategy.	N/A
To provide for sustainable sources of water supply	X	X	X	This Policy is not over and above the Core Strategy.	N/A
To avoid, reduce and manage flood risk	++	++	++	This Policy is not over and above the Core Strategy.	N/A
To conserve soil resources and quality	+	+	+	This Policy is not over and above the Core Strategy.	N/A
To minimise the production of waste	+	+	+	This Policy is not over and above the Core Strategy.	N/A
To improve health of the population	+	+	+	This Policy is not over and above the Core Strategy.	N/A
To reduce crime and nuisance	X	X	X	This Policy is not over and above the Core Strategy.	N/A

To conserve natural and manmade resources	+	+	+	This Policy is not over and above the Core Strategy.	N/A
Overall commentary and any cumulative effects	Overall this Policy is not over and above the Core Strategy.				

Policy BLH12-Criteria for assessing the suitability of future potential development sites.

SEA Objective	Assessment of effect (consider cumulative effects, significance of the effect and magnitude of the effect in terms of the three time periods)			Summary Explanation	Enhancement and mitigation opportunities
	Short term (1 – 5 years)	Medium term (6 – 10 years)	Long term (11 years +)		
To maintain and enhance nature conservation (biodiversity, flora and fauna)	+	+	+	This Policy is not over and above the Core Strategy.	N/A
To maintain and enhance the quality of landscapes and townscapes	+	+	+	This Policy is not over and above the Core Strategy.	N/A
To improve quality of surroundings	+	+	+	This Policy is not over and above the Core Strategy.	N/A

To conserve and where appropriate enhance the historic environment and cultural heritage	X	X	X	This Policy is not over and above the Core Strategy.	N/A
To improve air quality	X	X	X	This Policy is not over and above the Core Strategy.	N/A
To reduce the effect of traffic on the environment	X	X	X	This Policy is not over and above the Core Strategy.	N/A
To reduce contributions to climate change	X	X	X	This Policy is not over and above the Core Strategy.	N/A
To reduce vulnerability to climate change	+	+	+	This Policy is not over and above the Core Strategy.	N/A
To improve water quality	++	++	++	This Policy is not over and above the Core Strategy.	N/A
To provide for sustainable sources of water supply	X	X	X	This Policy is not over and above the Core Strategy.	N/A
To avoid, reduce and manage flood risk	++	++	++	This Policy is not over and above the Core Strategy.	N/A
To conserve soil resources and quality	+	+	+	This Policy is not over and above the Core Strategy.	N/A
To minimise the production of waste	+	+	+	This Policy is not over and above the Core Strategy.	N/A

This document is copyright of Herefordshire Council, please contact the Neighbourhood Planning team if you wish to reuse it in whole or part.

To improve health of the population	+	+	+	This Policy is not over and above the Core Strategy.	N/A
To reduce crime and nuisance	X	X	X	This Policy is not over and above the Core Strategy.	N/A
To conserve natural and manmade resources	+	+	+	This Policy is not over and above the Core Strategy.	N/A
Overall commentary and any cumulative effects	Overall this Policy is not over and above the Core Strategy.				

Policy BLH13-Development in areas of flood risk

SEA Objective	Assessment of effect (consider cumulative effects, significance of the effect and magnitude of the effect in terms of the three time periods)			Summary Explanation	Enhancement and mitigation opportunities
	Short term (1 – 5 years)	Medium term (6 – 10 years)	Long term (11 years +)		
To maintain and enhance nature conservation (biodiversity, flora and fauna)	+	+	+	This Policy is not over and above the Core Strategy.	N/A
To maintain and enhance the quality of landscapes and	+	+	+	This Policy is not over and above the Core Strategy.	N/A

townscapes					
To improve quality of surroundings	+	+	+	This Policy is not over and above the Core Strategy.	N/A
To conserve and where appropriate enhance the historic environment and cultural heritage	+	+	+	This Policy is not over and above the Core Strategy.	N/A
To improve air quality	X	X	X	This Policy is not over and above the Core Strategy.	N/A
To reduce the effect of traffic on the environment	X	X	X	This Policy is not over and above the Core Strategy.	N/A
To reduce contributions to climate change	X	X	X	This Policy is not over and above the Core Strategy.	N/A
To reduce vulnerability to climate change	+	+	+	This Policy is not over and above the Core Strategy.	N/A
To improve water quality	++	++	++	This Policy is not over and above the Core Strategy.	N/A
To provide for sustainable sources of water supply	++	++	++	This Policy is not over and above the Core Strategy.	N/A
To avoid, reduce and manage flood risk	++	++	++	This Policy is not over and above the Core Strategy.	N/A

This document is copyright of Herefordshire Council, please contact the Neighbourhood Planning team if you wish to reuse it in whole or part.

To conserve soil resources and quality	+	+	+	This Policy is not over and above the Core Strategy.	N/A
To minimise the production of waste	X	X	X	This Policy is not over and above the Core Strategy.	N/A
To improve health of the population	+	+	+	This Policy is not over and above the Core Strategy.	N/A
To reduce crime and nuisance	X	X	X	This Policy is not over and above the Core Strategy.	N/A
To conserve natural and manmade resources	+	+	+	This Policy is not over and above the Core Strategy.	N/A
Overall commentary and any cumulative effects	Overall this Policy is not over and above the Core Strategy.				

Policy BLH14-Design for flood resilience and resistance

SEA Objective	Assessment of effect (consider cumulative effects, significance of the effect and magnitude of the effect in terms of the three time periods)			Summary Explanation	Enhancement and mitigation opportunities
	Short term (1 – 5 years)	Medium term (6 – 10 years)	Long term (11 years +)		

To maintain and enhance nature conservation (biodiversity, flora and fauna)	+	+	+	This Policy is not over and above the Core Strategy.	N/A
To maintain and enhance the quality of landscapes and townscapes	+	+	+	This Policy is not over and above the Core Strategy.	N/A
To improve quality of surroundings	+	+	+	This Policy is not over and above the Core Strategy.	N/A
To conserve and where appropriate enhance the historic environment and cultural heritage	+	+	+	This Policy is not over and above the Core Strategy.	N/A
To improve air quality	X	X	X	This Policy is not over and above the Core Strategy.	N/A
To reduce the effect of traffic on the environment	X	X	X	This Policy is not over and above the Core Strategy.	N/A
To reduce contributions to climate change	X	X	X	This Policy is not over and above the Core Strategy.	N/A
To reduce vulnerability to climate change	+	+	+	This Policy is not over and above the Core Strategy.	N/A

To improve water quality	+	+	+	This Policy is not over and above the Core Strategy.	N/A
To provide for sustainable sources of water supply	X	X	X	This Policy is not over and above the Core Strategy.	N/A
To avoid, reduce and manage flood risk	+++	+++	+++	This Policy is not over and above the Core Strategy.	N/A
To conserve soil resources and quality	+	+	+	This Policy is not over and above the Core Strategy.	N/A
To minimise the production of waste	X	X	X	This Policy is not over and above the Core Strategy.	N/A
To improve health of the population	X	X	X	This Policy is not over and above the Core Strategy.	N/A
To reduce crime and nuisance	X	X	X	This Policy is not over and above the Core Strategy.	N/A
To conserve natural and manmade resources	+	+	+	This Policy is not over and above the Core Strategy.	N/A
Overall commentary and any cumulative effects	Overall this Policy is not over and above the Core Strategy.				

Policy BLH15-Design to reduce surface water run off

SEA Objective	Assessment of effect (consider cumulative effects, significance of the effect and magnitude of the effect in terms of the three time periods)			Summary Explanation	Enhancement and mitigation opportunities
	Short term (1 – 5 years)	Medium term (6 – 10 years)	Long term (11 years +)		
To maintain and enhance nature conservation (biodiversity, flora and fauna)	+	+	+	This Policy is not over and above the Core Strategy.	N/A
To maintain and enhance the quality of landscapes and townscapes	+	+	+	This Policy is not over and above the Core Strategy.	N/A
To improve quality of surroundings	+	+	+	This Policy is not over and above the Core Strategy.	N/A
To conserve and where appropriate enhance the historic environment and cultural heritage	+	+	+	This Policy is not over and above the Core Strategy.	N/A
To improve air quality	X	X	X	This Policy is not over and above the Core Strategy.	N/A

To reduce the effect of traffic on the environment	X	X	X	This Policy is not over and above the Core Strategy.	N/A
To reduce contributions to climate change	X	X	X	This Policy is not over and above the Core Strategy.	N/A
To reduce vulnerability to climate change	+	+	+	This Policy is not over and above the Core Strategy.	N/A
To improve water quality	+	+	+	This Policy is not over and above the Core Strategy.	N/A
To provide for sustainable sources of water supply	X	X	X	This Policy is not over and above the Core Strategy.	N/A
To avoid, reduce and manage flood risk	+++	+++	+++	This Policy is not over and above the Core Strategy.	N/A
To conserve soil resources and quality	+	+	+	This Policy is not over and above the Core Strategy.	N/A
To minimise the production of waste	X	X	X	This Policy is not over and above the Core Strategy.	N/A
To improve health of the population	X	X	X	This Policy is not over and above the Core Strategy.	N/A
To reduce crime and nuisance	X	X	X	This Policy is not over and above the Core Strategy.	N/A

To conserve natural and manmade resources	+	+	+	This Policy is not over and above the Core Strategy.	N/A
Overall commentary and any cumulative effects	Overall this Policy is not over and above the Core Strategy.				

Policy BLH16-New communication technologies

SEA Objective	Assessment of effect (consider cumulative effects, significance of the effect and magnitude of the effect in terms of the three time periods)			Summary Explanation	Enhancement and mitigation opportunities
	Short term (1 – 5 years)	Medium term (6 – 10 years)	Long term (11 years +)		
To maintain and enhance nature conservation (biodiversity, flora and fauna)	+	+	+	This Policy is not over and above the Core Strategy.	N/A
To maintain and enhance the quality of landscapes and townscapes	+	+	+	This Policy is not over and above the Core Strategy.	N/A
To improve quality of surroundings	+	+	+	This Policy is not over and above the Core Strategy.	N/A

To conserve and where appropriate enhance the historic environment and cultural heritage	X	X	X	This Policy is not over and above the Core Strategy.	N/A
To improve air quality	+	+	+	This Policy is not over and above the Core Strategy.	N/A
To reduce the effect of traffic on the environment	+	+	+	This Policy is not over and above the Core Strategy.	N/A
To reduce contributions to climate change	X	X	X	This Policy is not over and above the Core Strategy.	N/A
To reduce vulnerability to climate change	X	X	X	This Policy is not over and above the Core Strategy.	N/A
To improve water quality	X	X	X	This Policy is not over and above the Core Strategy.	N/A
To provide for sustainable sources of water supply	X	X	X	This Policy is not over and above the Core Strategy.	N/A
To avoid, reduce and manage flood risk	X	X	X	This Policy is not over and above the Core Strategy.	N/A
To conserve soil resources and quality	X	X	X	This Policy is not over and above the Core Strategy.	N/A
To minimise the production of waste	+	+	+	This Policy is not over and above the Core Strategy.	N/A

This document is copyright of Herefordshire Council, please contact the Neighbourhood Planning team if you wish to reuse it in whole or part.

To improve health of the population	X	X	X	This Policy is not over and above the Core Strategy.	N/A
To reduce crime and nuisance	+	+	+	This Policy is not over and above the Core Strategy.	N/A
To conserve natural and manmade resources	+	+	+	This Policy is not over and above the Core Strategy.	N/A
Overall commentary and any cumulative effects	Overall this Policy is not over and above the Core Strategy.				

Policy BLH17-Developments supporting rural enterprise

SEA Objective	Assessment of effect (consider cumulative effects, significance of the effect and magnitude of the effect in terms of the three time periods)			Summary Explanation	Enhancement and mitigation opportunities
	Short term (1 – 5 years)	Medium term (6 – 10 years)	Long term (11 years +)		
To maintain and enhance nature conservation (biodiversity, flora and fauna)	0	0	0	This Policy is not over and above the Core Strategy.	N/A
To maintain and enhance the quality of landscapes and	0	0	0	This Policy is not over and above the Core Strategy.	N/A

townscapes					
To improve quality of surroundings	+	+	+	This Policy is not over and above the Core Strategy.	N/A
To conserve and where appropriate enhance the historic environment and cultural heritage	X	X	X	This Policy is not over and above the Core Strategy.	N/A
To improve air quality	0	0	0	This Policy is not over and above the Core Strategy.	N/A
To reduce the effect of traffic on the environment	0	0	0	This Policy is not over and above the Core Strategy.	N/A
To reduce contributions to climate change	X	X	X	This Policy is not over and above the Core Strategy.	N/A
To reduce vulnerability to climate change	X	X	X	This Policy is not over and above the Core Strategy.	N/A
To improve water quality	X	X	X	This Policy is not over and above the Core Strategy.	N/A
To provide for sustainable sources of water supply	X	X	X	This Policy is not over and above the Core Strategy.	N/A
To avoid, reduce and manage flood risk	0	0	0	This Policy is not over and above the Core Strategy.	N/A

To conserve soil resources and quality	+	+	+	This Policy is not over and above the Core Strategy.	N/A
To minimise the production of waste	+	+	+	This Policy is not over and above the Core Strategy.	N/A
To improve health of the population	+	+	+	This Policy is not over and above the Core Strategy.	N/A
To reduce crime and nuisance	+	+	+	This Policy is not over and above the Core Strategy.	N/A
To conserve natural and manmade resources	0	0	0	This Policy is not over and above the Core Strategy.	N/A
Overall commentary and any cumulative effects	Overall this Policy is not over and above the Core Strategy.				

Policy BLH18-Supporting public transport, walking and cycling

SEA Objective	Assessment of effect (consider cumulative effects, significance of the effect and magnitude of the effect in terms of the three time periods)			Summary Explanation	Enhancement and mitigation opportunities
	Short term (1 – 5 years)	Medium term (6 – 10 years)	Long term (11 years +)		

To maintain and enhance nature conservation (biodiversity, flora and fauna)	+	+	+	This Policy is not over and above the Core Strategy.	N/A
To maintain and enhance the quality of landscapes and townscapes	+	+	+	This Policy is not over and above the Core Strategy.	N/A
To improve quality of surroundings	+	+	+	This Policy is not over and above the Core Strategy.	N/A
To conserve and where appropriate enhance the historic environment and cultural heritage	X	X	X	This Policy is not over and above the Core Strategy.	N/A
To improve air quality	+	+	+	This Policy is not over and above the Core Strategy.	N/A
To reduce the effect of traffic on the environment	+	+	+	This Policy is not over and above the Core Strategy.	N/A
To reduce contributions to climate change	+	+	+	This Policy is not over and above the Core Strategy.	N/A
To reduce vulnerability to climate change	X	X	X	This Policy is not over and above the Core Strategy.	N/A

To improve water quality	X	X	X	This Policy is not over and above the Core Strategy.	N/A
To provide for sustainable sources of water supply	X	X	X	This Policy is not over and above the Core Strategy.	N/A
To avoid, reduce and manage flood risk	X	X	X	This Policy is not over and above the Core Strategy.	N/A
To conserve soil resources and quality	X	X	X	This Policy is not over and above the Core Strategy.	N/A
To minimise the production of waste	+	+	+	This Policy is not over and above the Core Strategy.	N/A
To improve health of the population	+	+	+	This Policy is not over and above the Core Strategy.	N/A
To reduce crime and nuisance	+	+	+	This Policy is not over and above the Core Strategy.	N/A
To conserve natural and manmade resources	+	+	+	This Policy is not over and above the Core Strategy.	N/A
Overall commentary and any cumulative effects	Overall this Policy is not over and above the Core Strategy.				

Template B4: Assessment of cumulative impacts of the Neighbourhood Development Plan

Parish Council Name: Brimfield and Little Hereford

Neighbourhood Development Plan Name: Brimfield and Little Hereford Neighbourhood Plan

Date completed: November 2014

Key:

++ Move towards significantly	+ Move towards marginally	-- Move away Significantly	- Move away marginally	0 Neutral	? Uncertain	X No relationship
--------------------------------------	----------------------------------	-----------------------------------	-------------------------------	------------------	--------------------	--------------------------

SEA Objective / Objective / Policy	1. To maintain and enhance nature conservation (biodiversity, flora and fauna)	2. To maintain and enhance the quality of landscapes and townscapes	3. To improve quality of surroundings	4. To conserve and where appropriate enhance the historic environment and culture heritage	5. To improve air quality	6. To reduce the effect of traffic on the environment	7. To reduce contributions to climate change	8. To reduce vulnerability to climate change	9. To improve water quality	10. To provide for sustainable sources of water supply	11. To avoid, reduce and manage flood risk	12. To conserve soil resources and quality	13. To minimise the production	14. To improve health of the population	15. To reduce crime and nuisance	16. To conserve natural and manmade resources
Objective 1- To identify a site (or sites) for small scale housing developments, providing for 35 new homes. These homes will be in keeping in both scale and demands of two rural parishes up to 2031, while ensuring that new housing is appropriate in terms of suitability, quantity, phasing, siting and design and having due regards to flooding and water management.	+	+	+	0	?	?	X	X	X	+	+	0	+	+	+	+

Objective 2- To identify an up to date and appropriate settlement boundary around Brimfield village to ensure that any proposed new development is properly integrated into the existing village envelope and has good access to local services and facilities.	+	+	+	+	X	X	X	X	X	X	0	0	+	+	+	0
Objective 3- To ensure that transport and communication links such as public transport, pavements, cycle ways, bridle ways and footpaths are incorporated as part of the plan for both villages.	+	+	+	X	+	+	+	+	X	X	X	+	+	+	+	+
Objective 4- To support local businesses that contribute to the quality of life for residents including support for suitable diversification of new technology.	X	+	+	X	+	+	+	+	X	X	X	+	+	+	+	X
Objective 5- To protect areas of open space, historic value, and environmental significance throughout both villages.	+	+	+	+	+	X	X	X	X	X	X	+	+	+	+	+
Objective 6- To work together to protect local community facilities and support the local community to identify assets for	X	+	+	X	X	X	X	X	X	X	X	X	+	+	+	X

possible Community Right to Buy initiatives.																
Policy BLH1- New housing within the Settlement Boundary	0	+	+	0	0	0	?	?	?	?	+	0	+	+	+	0
Policy BLH2- New housing development	X	+	+	X	X	X	X	X	X	X	X	X	+	+	+	X
Policy BLH3- Local needs housing and ensuring an appropriate range of tenures, types and sizes of houses	X	+	+	X	X	X	X	X	X	X	X	X	+	+	+	X
Policy BLH4- Criteria for sites for sites for local needs housing in Little Hereford	0	+	+	0	0	X	X	X	X	X	X	0	X	+	+	0
Policy BLH5- Protection Of Community Facilities	0	+	+	+	0	0	X	X	X	X	X	X	+	+	+	+
Policy BLH6- Local Heritage List	+	++	+	++	X	X	X	X	X	X	X	+	+	+	+	+
Policy BLH7- Building design principles.	+	+	+	+	X	X	X	X	X	X	X	+	+	+	+	+
Policy BLH8- Landscape design principles.	++	++	+	++	X	X	X	X	X	X	+	+	+	+	X	++
Policy BLH9- Local green space	++	++	+	+	X	X	X	X	X	X	+	++	X	+	+	++

designations																	
Policy BLH10- Allotments and open space	++	+	+	X	X	X	X	X	X	X	+	++	X	+	+	+	
Policy BLH11- Water Management	+	+	+	X	X	X	X	+	++	X	++	+	+	+	X	+	
Policy BLH12- Criteria for assessing the suitability of future potential development sites	+	+	+	X	X	X	X	+	++	X	++	+	+	+	X	+	
Policy BLH13- Development in areas of flood risk	+	+	+	+	X	X	X	+	++	++	++	+	X	+	X	+	
Policy BLH14- Design for flood resilience and resistance	+	+	+	+	X	X	X	+	+	X	++	+	X	X	X	+	
Policy BLH15- Design to reduce surface water run off	+	+	+	+	X	X	X	+	+	X	++	+	X	X	X	+	
Policy BLH16- New communication technologies	+	+	+	X	+	+	X	X	X	X	X	X	+	X	+	+	
Policy BLH17- Developments supporting rural enterprise	0	0	+	X	0	0	X	X	X	X	0	+	+	+	+	0	
Policy BLH18- Supporting public transport, walking and	+	+	+	X	+	+	+	X	X	X	X	X	+	+	+	+	

cycling																	
Summary of effects of whole plan on each SEA Objective	+ Overall the effects of the NDP policies and objectives have a positive effect on maintaining and enhancing nature conservation.	+ Overall the effects of the NDP policies and objectives have a positive effect on maintaining and enhancing the quality of landscapes.	+ Overall the effects of the NDP policies and objectives have a positive effect on improving quality of surroundings.	+ Overall the effects of the NDP policies and objectives have a positive effect on conserve and enhance the historic environment and cultural heritage.	+ Overall the effects of the NDP policies and objectives have a positive effect onto improve air quality.	+ Overall the effects of the NDP policies and objectives have a positive effect on reducing the effect of traffic on the environment.	+ Overall the effects of the NDP policies and objectives have a positive effect on to reduce and manage flood risk.	+ Overall the effects of the NDP policies and objectives have a positive effect to conserve soil resources of water supply.	+ Overall the effects of the NDP policies and objectives have a positive effect to provide for sustainable sources of water supply.	+ Overall the effects of the NDP policies and objectives have a positive effect to conserve soil resources and quality.	+ Overall the effects of the NDP policies and objectives have a positive effect on the production of waste.	+ Overall the effects of the NDP policies and objectives have a positive effect on	+ Overall the effects of the NDP policies and objectives have a positive effect on	+ Overall the effects of the NDP policies and objectives have a positive effect on	+ Overall the effects of the NDP policies and objectives have a positive effect on	+ Overall the effects of the NDP policies and objectives have a positive effect on	
Cumulative effects of whole plan (1 + 2 + 3...)	Consider all the summaries together to give an assessment of how the plan as a whole will cumulatively impact on environmental assets. In general the objectives and the policies within the NDP do not go over and above the requirements within the Core Strategy; therefore the cumulative impact is generally positive. The majority of the policies will have a positive impact as the development objectives proposed are balanced with polices which aim to minimise environmental impact. There are a few of uncertain effects from new development within the settlement boundary as to assess this outcome will be based on the scheme itself and is likely to understand a developments true impact on a case by case basis.																
Commentary for significant cumulative effects	This should highlight the significant elements of the plan whether negative or positive and include recommendations for amendments to the plans objectives, policies and sites to maximise any beneficial effects or mitigate any adverse effects. Additional development for housing and retail may increase waste and traffic within the area and may require additional car parking. Sustainable transport schemes to alleviate the impact of the private car could be considered in more detail within the NDP plan. The development to alleviate flood risk will have a beneficial impact and help conserve the natural and manmade landscape. A majority of the polices contained within the Brimfield and Little Hereford Plan help reduce vulnerability to climate change as well as reducing contributions to climate change too. Overall the policies and objectives aim to have minimal impact on townscape, landscape and environment.																

Appendix 5

Template C2: SEA Quality Assurance Checklist

March 2016

Parish Council Name: Brimfield and Little Hereford Group

Objectives and context	Where are the points covered in Neighbourhood Development Plan SEA
<ul style="list-style-type: none"> • The Neighbourhood Development Plan's purpose and objectives are made clear. • The Neighbourhood Area's environmental issues and constraints, including acknowledgement of those in the Local Plan (Core Strategy) SA, where relevant, and local environmental protection objectives, are considered in developing objectives and targets. • SEA objectives are clearly set out and linked to indicators and targets where appropriate. • Links with other locally related plans, programmes and policies are identified, explained and acknowledgement for those set out in the SA of the Local Plan (Core Strategy) is given, where relevant. • Conflicts that exist between SEA objectives; between SEA and Neighbourhood Development Plan objectives; and between SEA objectives and other local plan objectives are identified and described. 	<p>Chapter 1, 1.3-1.8</p> <p>Chapter 2 Methodology, chapter 3 and tables A2 and A3</p> <p>Chapter 1 paragraph 1.8</p> <p>Chapter 3, paragraph 3.1</p> <p>Chapter 3</p>
<p>Scoping</p> <ul style="list-style-type: none"> • Statutory Consultees are consulted in appropriate ways and at appropriate times on the content and scope of the Environmental Report. • The assessment focuses on significant issues. • Technical, procedural and other difficulties encountered are discussed; assumptions and uncertainties are made explicit. • Reasons are given for eliminating issues from further consideration. 	<p>Chapter 2, paragraphs 2.5-2.9</p> <p>Chapter 2 and chapter 4</p> <p>Chapter 2</p> <p>Chapter 2 and chapter 4</p>
<p>Alternatives</p> <ul style="list-style-type: none"> • Realistic alternatives are considered for key issues, and the reasons for choosing them are documented. • Alternatives include 'do minimum' and/or 'business as usual' scenarios wherever relevant. • The environmental effects (both adverse and beneficial) of 	<p>Chapter 4</p> <p>Paragraph 4.3</p> <p>Chapter 4</p>

<p>each alternative are identified and compared.</p> <ul style="list-style-type: none"> • Inconsistencies between the alternatives and other relevant local plans, programmes or policies are identified and explained. • Reasons are given for selection or elimination of alternatives. 	<p>Chapter 4</p> <p>Chapter 4</p>
<p>Baseline information</p> <ul style="list-style-type: none"> • Relevant aspects of the current state of the local, neighbourhood area environment and their likely evolution without the Neighbourhood Development Plan are described. Acknowledgement to the information in the SA of the Local Plan (Core Strategy) is given, where relevant. • Environmental characteristics of the local, neighbourhood area, likely to be significantly affected are described, including areas wider than the physical boundary of the designated neighbourhood area, where it is likely to be affected by the Neighbourhood Development Plan. • Difficulties such as deficiencies in information or methods are explained. 	<p>Chapter 1, Chapter 4</p> <p>Initial screening report and Chapter 1</p> <p>Chapter 2</p>
<p>Prediction and evaluation of likely significant environmental effects</p> <ul style="list-style-type: none"> • Effects identified include the types listed in the Directive (biodiversity, population, human health, fauna, flora, soil, water, air, climate factors, material assets, cultural heritage and landscape), as relevant; and other local likely environmental effects are also covered, as appropriate. • Both positive and negative effects are considered, and the duration of effects (short, medium or long-term) is addressed. • Likely secondary, cumulative (growing in quantity and strength) and synergistic (acting together) effects are identified, where practicable. • Inter-relationships between effects are considered, where practicable. • The prediction and evaluation of effects makes use of relevant accepted standards, regulations, and thresholds (i.e. data gathered for the evidence base). • Methods used to evaluate the effects are described. 	<p>Tables A2, A3 and A4</p> <p>Tables B2 and B3</p> <p>Tables B4</p> <p>Chapter 5</p> <p>Chapter 5</p> <p>Chapter 2</p>
<p>Mitigation measures</p> <ul style="list-style-type: none"> • Measures envisaged to prevent, reduce and offset any 	<p>Chapter 5, paragraph</p>

<p>significant adverse effects of implementing the Neighbourhood Development Plan are indicated.</p> <ul style="list-style-type: none"> • Issues to be taken into account when determining planning applications or other projects, for example funding bids, are identified. 	<p>5.6</p> <p>Chapter 5</p>
<p>The Environmental Report</p> <ul style="list-style-type: none"> • Is clear and concise in its layout and presentation. • Uses simple, clear language and avoids or explains technical terms. • Uses maps and other illustrations, where appropriate. • Explains the methodology used. • Explains who was consulted and what methods of consultation were used. • Identifies sources of information, including expert judgement and matters of opinion. • Contains a non-technical summary covering the overall approach to the SEA, the objectives of the Neighbourhood Development Plan, the main options considered, and any changes to the Neighbourhood Development Plan resulting from the SEA. 	<p>-</p> <p>-</p> <p>-</p> <p>Chapter 2</p> <p>Paragraph 2.5-2.9</p> <p>Paragraph 2.5-2.9</p> <p>Page 2 / Paragraph 0.1-0.8 / Appendix 5 / Chapter 5</p>
<p>Consultation</p> <ul style="list-style-type: none"> • The SEA is consulted on as an integral part of the plan-making process of the Neighbourhood Development Plan. • Consultation Bodies and the public likely to be affected by, or having an interest in, the Neighbourhood Development Plan are consulted in ways and at times, which give them an early and effective opportunity within appropriate time frames to express their opinions on the draft Neighbourhood Development Plan and Environmental Report. 	<p>Paragraph 2.5-2.9</p> <p>Chapter 8</p>
<p>Decision-making and information on the decision</p> <ul style="list-style-type: none"> • The environmental report and the opinions of those consulted are taken into account in finalising and adopting the Neighbourhood Development Plan. • An explanation is given of how they have been taken into account. • Reasons are given for choosing the Neighbourhood Development Plan as adopted, in the light of other reasonable alternatives considered. 	<p>Chapter 8</p> <p>Paragraph 6.9 – 6.15</p>

<p>Monitoring measures</p> <ul style="list-style-type: none"> • Measures proposed for monitoring the Neighbourhood Development Plan are clear, practicable and linked to the indicators and objectives used in the SEA. • Monitoring is used, where appropriate, during implementation of the Neighbourhood Development Plan to make good deficiencies in baseline information in the SEA. • Acknowledgement that monitoring enables unforeseen adverse effects to be identified at an early stage. (These effects may include predictions which prove to be incorrect.) And that • Proposals are made for action in response to significant adverse effects arising from the monitoring of the Neighbourhood Development Plan. 	<p>Chapter 7</p> <p>Chapter 7</p> <p>Chapter 7</p> <p>Chapter 7</p>

Appendix 6

Date: 23 September 2015
Our ref: 162546
Your ref: BrimfieldAnd Little Hereford Neighbourhood Plan



Mr J Latham
Herefordshire Council
Planning Services,
Blueschool House,
Blueschool Street
Hereford,
HR1 2ZB

Customer Services
Hornbeam House
Crewe Business Park
Electra Way
Crewe
Cheshire
CW1 6GJ

BY EMAIL ONLY

T 0300 060 3900

Dear Mr Latham

Re: Brimfield and Little Hereford Neighbourhood Development Plan (NDP), SEA and HRA-Regulation 16

Thank you for your consultation on the above dated and received by Natural England on 12 August 2015.

Natural England is a non-departmental public body. Our statutory purpose is to ensure that the natural environment is conserved, enhanced, and managed for the benefit of present and future generations, thereby contributing to sustainable development.

Brimfield and Little Hereford Neighbourhood Plan

Having looked at the policies in the plan, Natural England does not consider that this plan poses any likely significant risk to internationally or nationally designated nature conservation or landscape sites and so does not wish to make specific comments on the plan.

The lack of more detailed comment from Natural England should not be interpreted as a statement that there are no impacts on the natural environment. Other bodies and individuals may make comments that will help the Parish/Town Council or Neighbourhood Forum to fully take account of the natural environment in the plan-making process.

Habitats Regulations Assessment (HRA) Report and Addendum

Having reviewed the Habitats Regulations Assessment (HRA) Report and Addendum, we agree with the conclusion that the Brimfield and Little Hereford Plan will not have a likely significant effect on the Downton Gorge SAC.

Brimfield and Little Hereford Environment Report

Natural England welcomes the production of an Environmental Report. Having reviewed the report Natural England confirms that it meets the requirements of the Strategic Environmental Assessment (SEA) European Directive and national regulations, and that we concur with its conclusions.

We would be happy to comment further should the need arise but if in the meantime you have any queries please do not hesitate to contact us.

For any queries relating to the specific advice in this letter only please contact Gillian Driver on 0300 060 4335. For any new consultations, or to provide further information on this consultation please send your correspondences to consultations@naturalengland.org.uk.



We really value your feedback to help us improve the service we offer. We have attached a feedback form to this letter and welcome any comments you might have about our service.

Yours sincerely

Gillian Driver

Miss Gillian Driver
Planning Lead Adviser
South Mercia Team

Appendix 7

++ Move towards significantly	+ Move towards Marginally	- - Move away significantly	- Move away marginally	0 Neutral	? Uncertain	N/A No relationship
-------------------------------	---------------------------	-----------------------------	------------------------	-----------	-------------	---------------------

Policy BLH2: New housing development

SEA Objective	Assessment of effect			Summary Explanation	Enhancement and mitigation opportunities
	Short term (1 – 5 years)	Medium term (6 – 10 years)	Long term (11 years +)		
To maintain and enhance nature conservation (biodiversity, flora and fauna)	+	+	+	Depends upon location of the housing, though one sites has been allocated adjacent to the existing built form and there should be a positive impact as development is restricted to sites within the settlement boundary.	
To maintain and enhance the quality of landscapes and townscapes	+	+	+	This policy is not over and above the Core Strategy.	
To improve quality of surroundings	+	+	+	This policy is not over and above the Core Strategy.	
To conserve and where appropriate enhance the historic environment and cultural heritage	+	+	+	This policy is not over and above the Core Strategy.	
To improve air quality	N/A	N/A	N/A		
To reduce the effect of traffic on the environment	?	+	+	There will be alternative modes of transport in place in the long term following the implementation of other policies within the NDP.	
To reduce contributions to climate change	+	+	+	Other policies will help to ensure that new homes are built to the highest standard and designed to be energy efficient.	
To reduce vulnerability to climate change	?	+	+	Other policies will mitigate against flood risk.	
To improve water quality	?	+	+	This policy is not over and above the Core Strategy.	
To provide for sustainable sources of water supply	?	?	?	This policy is not over and above the Core Strategy and roll out of the Nutrient Management Plan should help to avoid any unacceptable adverse impacts in the long-term.	

To avoid, reduce and manage flood risk	?	+	+	This policy is not over and above the Core Strategy.	
To conserve soil resources and quality	?	?	?	Depends upon the location of the new housing.	Brownfield land would help to limit the impact long term.
To minimise the production of waste	?	?	+	Waste would be produced during the development phases, though recycling schemes should be in place in the long-term.	Ensure waste is limited and encourage more waste to be recycled.
To improve health of the population	N/A	N/A	N/A		
To reduce crime and nuisance	N/A	N/A	N/A		
To conserve natural and manmade resources	+	+	+	This policy is not over and above the Core Strategy.	
Overall commentary and any cumulative effects	Overall this policy has a positive effect and helps to reduced uncertainty about where growth will take place to some degree.				

Appendix 8

Appendix 8: Examiner's recommended modifications

Policy	Modification recommended	Justification
Modification 1 Throughout the Plan	Update references to the relevant HC level policies (UDP and CS) as necessary on pages 34, 37, 51, 59 and 64	Update to reflect the adoption of the Core Strategy
Modification 2 Executive Summary	Update as necessary	To follow the passage of time
Modification 3 Introduction and Background	Update paragraphs 1.11 and 1.13 as necessary to reflect the adoption of the Core Strategy	To follow the passage of time
Modification 4 Section 2	Check that the right appendices are referred to in paragraphs 2.5, 2.7 and 2.8	Interests of accuracy
Modification 5 Section 4	Ensure that it is clear in key issue three that the preparation of the Plan has resulted in the identification of assets suitable to be put forward as ACV but that the Plan itself cannot identify such assets	Interests of clarity
Modification 6 Section 5	Delete "...and support the local community to...Right to Buy initiatives." From objective 6 Ensure that any other references to objective 6 throughout the Plan are revised in line with the above modification	Cannot be achieved through or by the plan.
Modification 7 Section 6	Update paragraphs 6.1.1 – 6.1.5 and 6.1.9 to reflect that the CS has now been adopted and Policy H4 of the UDP replaced by CS Policy RA2 and consider whether there is any benefit in retaining Map 3 Delete the last sentence in paragraph 6.1.10	
Policy BLH1	No modifications required	Meets the Basic Conditions
Modification 8 Policy BLH2	The following modifications are therefore recommended: <ul style="list-style-type: none"> • Reword the last sentence in the first paragraph of Policy BLH2 to read: <i>"Development of approximately 20 dwellings will be acceptable. The density of any scheme should be consistent and compatible with the existing and prevailing density and reflect the locally distinctive character of the locality in which the new development is proposed so that the village feel is retained."</i> • Delete the sentence "...subject to other policies in the Brimfield...Core Strategy." from paragraph two of Policy BLH2 • Replace the word "will" in the first sentence of paragraph three of Policy BLH2 to "<i>is encouraged to</i>" 	To ensure flexibility and to be in line with the Core Strategy and the NPPF.

Appendix 8: Examiner's recommended modifications

<p>Modification 9 Policy BLH 3</p>	<p>In order to meet the basic conditions, the following modifications are recommended:</p> <ul style="list-style-type: none"> • Update paragraph 6.1.19 to refer to the adopted CS and the relevant figure in the CS (Figure 4.15) • Add "<i>an element of</i>" after "...where it comprises..." and before "...one or a combination of the following types:..." in the policy • Change the words "the elderly" in criterion 3 of the policy to "<i>older people</i>" 	<p>Policy is currently too restrictive; wording will help to provide a balance between the delivery of housing and addressing local needs.</p>
<p>Policy BLH4</p>	<p>No modifications required</p>	<p>Meets the Basic Conditions</p>
<p>Policy BLH5</p>	<p>No modifications required</p>	<p>Meets the Basic Conditions</p>
<p>Modification 10 Policy BLH6</p>	<p>The following modifications are therefore suggested:</p> <ul style="list-style-type: none"> • Delete the words "as community assets" from the first sentence of the policy • Revise criterion B to read: "<i>There is no longer a need for the facility and this is demonstrated to the satisfaction of the Local Planning Authority advised as appropriate by the Parish Council.</i>" 	<p>To ensure it reflects who the decision makers are and that it must be demonstrated to Herefordshire Council.</p>
<p>Modification 11 Policy BLH7</p>	<p>Therefore the following modifications are recommended:</p> <ul style="list-style-type: none"> • Delete the words "Once the local heritage list for Brimfield and Little Hereford has been adopted by Herefordshire Council" from the start of the policy • Add at the end of the first paragraph of the policy "<i>taking account of the significance of the heritage asset.</i>" • Reword the final sentence of the policy so that it reads: "<i>The whole or partial loss of any locally listed building or structure will normally be resisted.</i>" 	<p>Reflects national policy and guidance, and to enhance clarity and precision.</p>
<p>Modification 12 Policy BLH8</p>	<p>The following modifications are therefore recommended:</p> <ul style="list-style-type: none"> • Change "within design and access statements" at the end of criterion 1 to read "<i>through the submission of a design and access statement or similar evidence.</i>" • Change the word "display" in criterion 2 to "<i>demonstrate</i>" • Delete the sentence which begins "Proposals must not feature designs specific to a generic scheme..." from 	<p>To ensure the policy is future proofed.</p> <p>To make sure the policy is positively worded and provides a practical framework for decision making.</p>

Appendix 8: Examiner's recommended modifications

	<p>criterion 2 and replace it with <i>"Proposals must be designed in such a way that reflects the locally distinctive character of the area in which they are to be sited and design individuality and innovation are strongly encouraged. Proposals which do not demonstrate a locally distinctive design will be resisted."</i></p> <ul style="list-style-type: none"> • Add at the end of criterion 5 <i>"or any successor guidance."</i> 	
Policy BLH9	No modifications required	Meets the Basic Conditions
Modification 13 Policy BLH10	<p>The following modifications are recommended:</p> <ul style="list-style-type: none"> • Delete "...under paragraphs 76...Framework." from the policy • Add after "...on the openness of these sites" in the final paragraph of the policy <i>"or the attributes for which they were designated will not be acceptable other than in very special circumstances."</i> • Delete area 2 St Michael's Gate amenity area as a Local Green Space • Consequential amendments to the text and the maps, including the separate Policies Map, will be needed 	To ensure that the policy meets the requirements for Local Green space as set out in the NPPF.
Policy BLH11	No modifications required	Meets the Basic Conditions
Modification 14 Paragraph 6.4 Map 2	<p>The suggested modifications are:</p> <ul style="list-style-type: none"> • Add a notation to Map 2 that the flood zone information is correct as at [insert date] but reference should always be made to the most up to date information available from the Environment Agency • Review paragraph 6.4.6 to delete references to the "Technical Guidance to the National Planning Policy Framework" and to ensure the most up to date national policy and guidance is included 	To keep up with the passage of time.
Policy BLH12	No modifications required	Meets the Basic Conditions
Modification 15 Policy BLH13	<p>The only modification recommended is:</p> <ul style="list-style-type: none"> • Add to criterion 2 <i>"wherever possible and take account of the sequential approach to the location of development to avoid flood risk" after "...("low probability")..." and before "...and must not increase flooding issues downstream."</i> 	To reflect the sequential approach set out in national policy and guidance.

Appendix 8: Examiner's recommended modifications

Modification 16 Policy BLH14	Change the final paragraph of Policy BLH14 to remove any specific trade name and use a general term for the type of system sought or delete the paragraph as preferred	To ensure no specific trade names are used
Modification 17 Policy BLH15	In order to meet the basic conditions, the following modifications are recommended: <ul style="list-style-type: none"> • Change the word "must" in paragraph one of the policy to "<i>should</i>" • Change the word "must" in the second paragraph to "<i>could</i>" • Change the first "must" in the third paragraph to "<i>should</i>" • Change the word "must" in the final paragraph to "<i>should</i>" 	To remove the prescriptive and onerous element of the policy.
Modification 18 Policy BLH16	<ul style="list-style-type: none"> • Change both appearances of the word "must" in paragraph one of the policy to "<i>should</i>" • Change the word "must" in the second paragraph to "<i>should</i>" • Change the first "must" in the third paragraph to "<i>should</i>" and add "<i>wherever possible</i>" at the end of the paragraph 	To increase flexibility
Policy BLH17	No modifications required	Meets the Basic Conditions
Policy BLH18	No modifications required	Meets the Basic Conditions
Policy BLH19	No modifications required	Meets the Basic Conditions
Modification 19 Section 7	Consider the need to retain this section or at the very least update it	To keep plan updated
Modification 20 Appendices	<ul style="list-style-type: none"> • Add a date to Appendix II i.e. "listed buildings as at XXXX" and a note to remind readers to obtain the most up to date information, perhaps from HC or Historic England (?) • Remove Appendices III, IV, V and VII as this information is now in the Consultation Statement • Remove Appendix VI • Consequential amendments to the appendices in the Plan may be required 	To be future proofed, and to make it more user friendly and manageable

Appendix 9

++ Move towards significantly	+ Move towards Marginally	- - Move away significantly	- Move away marginally	0 Neutral	? Uncertain	N/A No relationship
-------------------------------	---------------------------	-----------------------------	------------------------	-----------	-------------	---------------------

Policy BLH2: New housing development

SEA Objective	Assessment of effect			Summary Explanation	Enhancement and mitigation opportunities
	Short term (1 – 5 years)	Medium term (6 – 10 years)	Long term (11 years +)		
To maintain and enhance nature conservation (biodiversity, flora and fauna)	+	+	+	Depends upon location of the housing, though one site has been allocated adjacent to the existing built form and there should be a positive impact as development is restricted to sites within the settlement boundary.	
To maintain and enhance the quality of landscapes and townscapes	+	+	+	This policy is not over and above the Core Strategy.	
To improve quality of surroundings	+	+	+	This policy is not over and above the Core Strategy.	
To conserve and where appropriate enhance the historic environment and cultural heritage	+	+	+	This policy is not over and above the Core Strategy.	
To improve air quality	N/A	N/A	N/A		
To reduce the effect of traffic on the environment	?	+	+	There will be alternative modes of transport in place in the long term following the implementation of other policies within the NDP.	
To reduce contributions to climate change	+	+	+	Other policies will help to ensure that new homes are built to the highest standard and designed to be energy efficient.	
To reduce vulnerability to climate change	?	+	+	Other policies will mitigate against flood risk.	
To improve water quality	?	+	+	This policy is not over and above the Core Strategy.	
To provide for sustainable sources of water supply	?	?	+	This policy is not over and above the Core Strategy and roll out of the Nutrient Management Plan should help to avoid any unacceptable adverse impacts in the long-term.	

To avoid, reduce and manage flood risk	?	+	+	This policy is not over and above the Core Strategy.	
To conserve soil resources and quality	?	?	?	Depends upon the location of the new housing.	
To minimise the production of waste	?	?	+	Waste would be produced during the development phases, though recycling schemes should be in place in the long-term.	Ensure waste is limited and encourage more waste to be recycled.
To improve health of the population	N/A	N/A	N/A		
To reduce crime and nuisance	N/A	N/A	N/A		
To conserve natural and manmade resources	+	+	+	This policy is not over and above the Core Strategy.	
Overall commentary and any cumulative effects	Overall this policy has a positive effect and helps to reduced uncertainty about where growth will take place to some degree. The examiners modifications made minor wording changes to allow the policy to be more flexible.				

Policy BLH7 – Local Heritage List

SEA Objective	Assessment of effect (consider cumulative effects, significance of the effect and magnitude of the effect in terms of the three time periods)			Summary Explanation	Enhancement and mitigation opportunities
	Short term (1 – 5 years)	Medium term (6 – 10 years)	Long term (11 years +)		
To maintain and enhance nature conservation (biodiversity, flora and fauna)	+	+	+	This Policy is not over and above the Core Strategy.	N/A
To maintain and enhance the quality of landscapes and townscapes	+	+	++	This Policy is not over and above the Core Strategy.	N/A
To improve quality of surroundings	+	+	+	This Policy is not over and above the Core Strategy.	N/A
To conserve and where appropriate enhance the historic environment and cultural heritage	+	++	++	This Policy is not over and above the Core Strategy. The additional wording is helping to protect the local heritage assets.	N/A

To improve air quality	X	X	X	This Policy is not over and above the Core Strategy.	N/A
To reduce the effect of traffic on the environment	X	X	X	This Policy is not over and above the Core Strategy.	N/A
To reduce contributions to climate change	X	X	X	This Policy is not over and above the Core Strategy.	N/A
To reduce vulnerability to climate change	X	X	X	This Policy is not over and above the Core Strategy.	N/A
To improve water quality	X	X	X	This Policy is not over and above the Core Strategy.	N/A
To provide for sustainable sources of water supply	X	X	X	This Policy is not over and above the Core Strategy.	N/A
To avoid, reduce and manage flood risk	X	X	X	This Policy is not over and above the Core Strategy.	N/A
To conserve soil resources and quality	+	+	+	This Policy is not over and above the Core Strategy.	N/A
To minimise the production of waste	+	+	+	This Policy is not over and above the Core Strategy.	N/A
To improve health of the population	+	+	+	This Policy is not over and above the Core Strategy.	N/A
To reduce crime and nuisance	+	+	+	This Policy is not over and above the Core Strategy.	N/A
To conserve natural and manmade resources	+	+	+	This Policy is not over and above the Core Strategy.	N/A
Overall commentary and any cumulative effects	Overall this Policy is not over and above the Core Strategy. The modification made by the examiner is helping to protect the local heritage assets.				

Policy BLH8 – Building Design Principles

SEA Objective	Assessment of effect (consider cumulative effects, significance of the effect and magnitude of the effect in terms of the three time periods)			Summary Explanation	Enhancement and mitigation opportunities
	Short term (1 – 5 years)	Medium term (6 – 10 years)	Long term (11 years +)		
To maintain and enhance nature conservation (biodiversity, flora and fauna)	++	++	++	This Policy is not over and above the Core Strategy.	N/A
To maintain and enhance the quality of landscapes and townscapes	++	++	++	This Policy is not over and above the Core Strategy.	N/A
To improve quality of surroundings	+	+	+	This Policy is not over and above the Core Strategy.	N/A
To conserve and where appropriate enhance the historic environment and cultural heritage	++	++	++	This Policy is not over and above the Core Strategy.	N/A
To improve air quality	X	X	X	This Policy is not over and above the Core Strategy.	N/A
To reduce the effect of traffic on the environment	X	X	X	This Policy is not over and above the Core Strategy.	N/A
To reduce contributions to climate change	X	X	X	This Policy is not over and above the Core Strategy.	N/A
To reduce vulnerability to climate change	X	X	X	This Policy is not over and above the Core Strategy.	N/A
To improve water quality	X	X	X	This Policy is not over and above the Core Strategy.	N/A
To provide for sustainable sources of water supply	X	X	X	This Policy is not over and above the Core Strategy.	N/A
To avoid, reduce and manage flood risk	X	X	X	This Policy is not over and above the Core Strategy.	N/A
To conserve soil resources and quality	X	X	X	This Policy is not over and above the Core Strategy.	N/A

To minimise the production of waste	X	X	X	This Policy is not over and above the Core Strategy.	N/A
To improve health of the population	X	X	X	This Policy is not over and above the Core Strategy.	N/A
To reduce crime and nuisance	+	+	+	This Policy is not over and above the Core Strategy.	N/A
To conserve natural and manmade resources	++	++	++	This Policy is not over and above the Core Strategy.	N/A
Overall commentary and any cumulative effects	Overall this Policy is not over and above the Core Strategy. The minor modifications enhance the wording used within the policy and help to provide clarity.				

Policy BLH10 – Local Greenspace Designations

SEA Objective	Assessment of effect (consider cumulative effects, significance of the effect and magnitude of the effect in terms of the three time periods)			Summary Explanation	Enhancement and mitigation opportunities
	Short term (1 – 5 years)	Medium term (6 – 10 years)	Long term (11 years +)		
To maintain and enhance nature conservation (biodiversity, flora and fauna)	++	++	++	This Policy is not over and above the Core Strategy.	N/A
To maintain and enhance the quality of landscapes and townscapes	+	+	+	This Policy is not over and above the Core Strategy.	N/A
To improve quality of surroundings	+	+	+	This Policy is not over and above the Core Strategy.	N/A
To conserve and where appropriate enhance the historic environment and cultural heritage	X	X	X	This Policy is not over and above the Core Strategy.	N/A
To improve air quality	X	X	X	This Policy is not over and above the Core Strategy.	N/A
To reduce the effect of traffic on the environment	X	X	X	This Policy is not over and above the Core Strategy.	N/A
To reduce contributions to climate change	X	X	X	This Policy is not over and above the Core Strategy.	N/A

To reduce vulnerability to climate change	X	X	X	This Policy is not over and above the Core Strategy.	N/A
To improve water quality	X	X	X	This Policy is not over and above the Core Strategy.	N/A
To provide for sustainable sources of water supply	X	X	X	This Policy is not over and above the Core Strategy.	N/A
To avoid, reduce and manage flood risk	+	+	+	This Policy is not over and above the Core Strategy.	N/A
To conserve soil resources and quality	++	++	++	This Policy is not over and above the Core Strategy.	N/A
To minimise the production of waste	X	X	X	This Policy is not over and above the Core Strategy.	N/A
To improve health of the population	+	+	+	This Policy is not over and above the Core Strategy.	N/A
To reduce crime and nuisance	+	+	+	This Policy is not over and above the Core Strategy.	N/A
To conserve natural and manmade resources	+	+	+	This Policy is not over and above the Core Strategy.	N/A
Overall commentary and any cumulative effects	Overall this Policy is not over and above the Core Strategy. The examiners modifications made the change to remove the St Michael's Gate Local Green Space designation, this did not alter the overall conclusions against the SEA objectives.				

Policy BLH13 - Criteria for assessing the suitability of future potential sites

SEA Objective	Assessment of effect (consider cumulative effects, significance of the effect and magnitude of the effect in terms of the three time periods)			Summary Explanation	Enhancement and mitigation opportunities
	Short term (1 – 5 years)	Medium term (6 – 10 years)	Long term (11 years +)		
To maintain and enhance nature conservation (biodiversity, flora and fauna)	+	+	+	This Policy is not over and above the Core Strategy.	N/A
To maintain and enhance the quality of landscapes and townscapes	+	+	+	This Policy is not over and above the Core Strategy.	N/A

To improve quality of surroundings	+	+	+	This Policy is not over and above the Core Strategy.	N/A
To conserve and where appropriate enhance the historic environment and cultural heritage	+	+	+	This Policy is not over and above the Core Strategy.	N/A
To improve air quality	X	X	X	This Policy is not over and above the Core Strategy.	N/A
To reduce the effect of traffic on the environment	X	X	X	This Policy is not over and above the Core Strategy.	N/A
To reduce contributions to climate change	X	X	X	This Policy is not over and above the Core Strategy.	N/A
To reduce vulnerability to climate change	+	+	+	This Policy is not over and above the Core Strategy.	N/A
To improve water quality	++	++	++	This Policy is not over and above the Core Strategy.	N/A
To provide for sustainable sources of water supply	++	++	++	This Policy is not over and above the Core Strategy.	N/A
To avoid, reduce and manage flood risk	++	++	++	This Policy is not over and above the Core Strategy.	N/A
To conserve soil resources and quality	+	+	+	This Policy is not over and above the Core Strategy.	N/A
To minimise the production of waste	X	X	X	This Policy is not over and above the Core Strategy.	N/A
To improve health of the population	+	+	+	This Policy is not over and above the Core Strategy.	N/A
To reduce crime and nuisance	X	X	X	This Policy is not over and above the Core Strategy.	N/A
To conserve natural and manmade resources	+	+	+	This Policy is not over and above the Core Strategy.	N/A
Overall commentary and any cumulative effects	Overall this Policy is not over and above the Core Strategy. The modification strengthened the policy to ensure that the sequential test is undertaken for any proposal to prevent any flood risk increase.				