

Environmental Report



Kingstone & Thruxton Group Neighbourhood Area

January 2016

Kingstone and Thruxton Neighbourhood Plan Environmental Report

Contents

Non-technical summary

- 1.0 Introduction
- 2.0 Methodology
- 3.0 The SEA Framework
- 4.0 Appraisal of Objectives
- 5.0 Appraisal of Options
- 6.0 Appraisal of Policies
- 7.0 Implementation and monitoring
- 8.0 Next steps

Appendix 1: Initial SEA Screening Report

Appendix 2: SEA Scoping Report incorporating Tasks A1, A2, A3 and A4

Appendix 3: Consultation response to Scoping Report consultation

Appendix 4: SEA Stage B incorporating Tasks B1, B2, B3 and B4

Appendix 5: Feedback on Draft Environmental Report consultation (D1)

Appendix 6: SEA Stage D – assessment of changes

Appendix 7: Environmental Report checklist

Non-technical summary

Strategic Environmental Assessment (SEA) is an important part of the evidence base which underpins Neighbourhood Development Plans (NDP), as it is a systematic decision support process, aiming to ensure that environmental assets, including those whose importance transcends local, regional and national interests, are considered effectively in plan making.

Kingstone and Thruxton Group Parish Council have undertaken to prepare an NDP and this process has been subject to environmental appraisal pursuant to the SEA Directive. The neighbourhood area comprises the Parishes of Kingstone and Thruxton which lie approximately 13km to the southwest of Hereford City.

The Kingstone and Thruxton NDP includes 10 objectives which underpin an overarching vision and it is intended that these objectives will be delivered by 12 criteria based planning policies, 1 policy for the Kingstone and 1 policy for the Thruxton area. There is two site commitments included which acknowledge existing planning permissions within the settlement of Kingstone and 5 alternative options have been tested.

The environmental appraisal of the Kingstone and Thruxton NDP has been undertaken in line with the Environmental Assessment of Plan and Programmes Regulations 2004. Stage A of the SEA process involved Scoping and Stage B provided a review and analysis of the NDP. Stage C involved preparing an Environmental Report and Stage D comprises a formal consultation on both this and the Draft Plan itself.

The NDP was then refined by the NDP Steering Group/Parish Council to reflect feedback from consultation on the Draft Plan and the Draft Environmental and Habitat Regulation Assessments. None of these materially affected the outcomes of the Stage B SEA process in fact in many cases policies were strengthened. An additional policy was added to include green infrastructure, this has been assessed and concluded that no significant effects would result.

On the basis, the conclusion set out in the Draft Environment Report is still valid. That is, the Kingstone and Thruxton NDP is in general conformity with both national planning policy contained in the National Planning Policy Framework and strategic policies set within the Herefordshire Local Plan (Core Strategy). Therefore, no further changes are recommended as a result of this SEA (stage D)

Habitat Regulation Assessment (HRA) screening has been carried out as the parish falls within the hydrological catchment of the River Wye SAC. The HRA assesses the potential effects of the NDP on this European protected site and a report is available separately.

Once made (adopted) by Herefordshire Council, the effects of the policies within the Kingstone and Thruxton NDP will be monitored annually via the Council's Authority Monitoring Report (AMR).

1.0 Introduction

- 1.1 This report forms the Strategic Environmental Assessment (SEA) of the Kingstone and Thruxton Draft Neighbourhood Development Plan (NDP).
- 1.2 The Kingstone and Thruxton NDP has been produced by the parish council. It consists of generic policies for the whole of the neighbourhood area and specific policies for the two settlements: Kingstone and Thruxton. It does propose two housing site allocations; however these are acknowledging sites with existing planning permissions.

Purpose of the SEA

- 1.3 SEA is a requirement of EC Directive 2001/42/EC (the SEA Directive) which requires the assessment of the effects of certain plans and programmes on the environment to ensure that the proposals in that plan or programme contribute to the achievement of sustainable development.
- 1.4 The Directive was transposed into domestic legislation through the Environmental Assessment of Plans and Programmes Regulations 2004 and which applies to plans with significant environmental effects.
- 1.5. A screening opinion was carried out on the Kingstone and Thruxton neighbourhood area and it concluded that due to the range of environmental designations in and around the parish, there may be significant environmental effects and consequently an SEA would be required.

Neighbourhood Plan Context

- 1.6 The neighbourhood area comprises the Parishes of Kingstone and Thruxton and lies approximately 13 km to the southwest of Hereford City.
- 1.7 The neighbourhood area lies between the Wye Valley and the Golden Valley. The village of Kingstone is the main settlement within the parish and has a range of local services including a high school, primary school, doctors, village hall, shop, post office and pub. The smaller settlement of Thruxton comprises of farm buildings and houses around the church. Both villages are highlighted within the Local Plan – Core Strategy for proportionate growth. The remainder of the parish consists of scattered farms and rural dwellings within orchards and pastures.
- 1.8 The neighbourhood area boasts many natural features, including 19 Special Wildlife sites, 2 Sites of Special Scientific Interest, 19 ancient woodlands and 1 registered parks and gardens. There are numerous built heritage assets, too, including listed buildings, Scheduled Monuments and non-designated assets. The neighbourhood area is also within the hydrological catchment of the River Wye SAC.
- 1.9 The vision for the neighbourhood area in 2031 outline within the submission neighbourhood plan (Dec 2015) is;
- ‘The Vision for Kingstone and Thruxton is to support development that maintains the rural character of the region and preserves the rural nature of the parishes of Kingstone and Thruxton.
- To that end all development should proceed in a way to minimise impact on the environment and adjoining parishes
- Development will be encouraged that supports that local community including suitable provision of housing, small scale local business and the development of appropriate infrastructure to support these enterprises’
- 1.10 The NDP objectives (Dec 2015) are as follows:

Neighbourhood Plan objectives

- The principal objective of the Neighbourhood Development Plan is to ensure that the housing and employment needs of the local community are met in such a way that minimises the impact of development on the rural nature of the Parish.
- The plan will provide guidance on how such developments can be designed and implemented in accordance with the wishes of the local community and clearly highlight all areas where special consideration needs to be given.

Housing objective

- To provide a robust and sound planning framework for the delivery of an appropriate growth of housing development within Kingstone and Thruxton's settlement boundaries. This will be over the plan period and in line with the housing growth target for the Ross on Wye Rural Housing Market Area (HMA) as outlined in the Core Strategy. In particular:
 - The overall scale of housing development must be proportionate to the size of Kingstone and Thruxton villages and in line with the need identified in the latest local housing needs survey. Already approved planning applications where development has not yet started will also be taken into account when reviewing any new housing development proposals.
 - Development must ensure an appropriate range of tenures, types and sizes of houses.
 - Development proposals must be sustainable.
 - Development must meet local housing needs as defined in local housing needs surveys.
 - Development must be phased appropriately over the plan period.
 - Housing proposals outside the settlement boundary, but within the Parish boundaries will be resisted unless the criteria in section 1 below are met.

Character of housing in Kingstone

- To ensure that new housing in the Kingstone Parish, is provided in a suitable range of numbers, tenures, types and sizes in a manner as to promote sustainability for future generations as well as accommodating local people of all ages who wish to continue to live in the area. Reuse of previously developed Brownfield Sites is the preferred option protecting key existing environmental assets such as open green spaces and landscapes.

Character of housing in Thruxton

- Housing development in the working agricultural hamlet of Thruxton should contribute to the social wellbeing of Thruxton and must not compromise the quiet rural nature of the Parish.

Local heritage and green spaces

- To identify and protect both Local Heritage Assets and Green Spaces

Provision and protection of community facilities and services

- The role of the Group Parish will be enhanced and improved by protecting valuable services and facilities.

Proposals for new employment

- To provide a robust and sound planning framework for the delivery of an appropriate growth of work unit development for local employment opportunities within Gooses Foot Industrial Estate. The employment uses will be limited to B1 Business (limited to 500 square metres of floor space), B2 General Industrial (limited to 500 square metres of floor space), and B8 Storage and Distribution (limited to 500 square metres of floor space). This will be over the plan period. In particular;

- Planning applications outside the settlement boundary, but within the Parish boundaries will be resisted unless the criteria in Policy KTE1 below are met.
- Outside the settlement boundaries and in the wider countryside, work units must fit with the rural character of the villages and not exceed two storeys.
- Landscaping is provided to screen industrial buildings, parking etc, and the proposed use will not have a detrimental impact on the local landscape.
- Adequate noise attenuation measures and measures to mitigate the effects of light pollution are to be provided.
- A traffic management plan is produced to minimise the impact of traffic and disturbance to local residents.
- Must ensure that proposed developments are sustainable.
- Economic development and investment related to the provision of new communication technologies will be supported to assist with the provision of local employment opportunities within the parish.
- The development of new high speed broadband infrastructure to serve the parish will be supported where it is sympathetically designed and when appropriate camouflaged to take account of the rural character of the Parish.

Flooding

- To ensure that all planning applications for new buildings and change of use of existing buildings have robust flood and surface water alleviation plans. All submitted planning applications will include a full Flood Survey as desktop flood assessments do not provide adequate evidence on the potential flooding impact within the Parish.

Developer Contributions

- To outline developer's contributions for any new development within our Parish. The objective can be clarified using the following documents:
 - a. The 1990 Town and Country Planning Act (as amended by the Planning and Compensation Act 1991& Planning Act 2008)) establish the statutory framework for developer contributions in the form of Section 106 planning obligations.
 - b. Planning Obligations (as amended by the Planning Act 2008 and Community Infrastructure Levy Regulations 2010) outlines the guidance from government on the operation of planning obligations policy.

Context of Neighbourhood Plans

- 1.11 NDPs are a relatively new type of planning document that form a key part of the Government's localism agenda. They enable local communities to develop plans that reflect local aspirations, in accordance with strategic policies.
- 1.12 The Kingstone and Thruxton NDP must therefore conform to national planning policy set within the NPPF and strategic level local policy including the Herefordshire Local Plan (Core Strategy).
- 1.13 The Herefordshire Local Plan (Core Strategy) was adopted on 16 October 2015.
- 1.14 Paragraph 216 of the NPPF and Planning Practice Guidance set out the weight that may be given to relevant policies in emerging plans, including NDPs, and indicated that weight may be given to relevant policies in emerging NDPs according to:
 - The stage of preparation of the emerging plan (the more advanced the preparation, the greater the weight that may be given);

- The extent to which there are unresolved objections to relevant policies (the less significant the unresolved objections, the greater the weight that may be given); and
 - The degree of consistency of the relevant policies in the emerging plan to the policies in this Framework (the closer the policies in the emerging plan to the policies in the Framework, the greater the weight that may be given).
- 1.15 This part of the NPPF is reinforced by Planning Practice Guidance published in March 2014, which is clear that an emerging NDP may be a material planning consideration once it has reached submission/local authorities publication stage (Regulation 16). This is reinforced by recent ministerial statements and case law (West Sussex), all of which have demonstrated that an emerging NDP may be a material consideration at the Regulation 16 stage.
- 1.16 Table 4.15 of the Local Plan (Core Strategy) lists Kingstone and Table 4.16 highlights Thrupton among the settlements which it considers to be sustainable locations for proportional growth in line with the provisions of Policy RA2. Other areas within the neighbourhood area are considered open countryside under the provision of Policy RA3.
- 1.17 Once made (adopted) by Herefordshire Council, the NDP will have a role in guiding future development proposals within the Kingstone and Thrupton Parish area, by setting out setting out policies against which planning applications will be determined.

Structure of SEA

- 1.19 The structure of the document is as follows:
- Section 2 – Explains the SEA methodology and summarises the comments received in respect of the SEA Scoping Report
 - Section 3 - Introduces the Kingstone and Thrupton Neighbourhood Plan objectives and the SEA framework
 - Section 4 - Appraises the objectives contained within the Neighbourhood Plan against the SEA framework
 - Section 5 - Appraises the options considered within the Neighbourhood Plan against the SEA framework
 - Section 6 – Appraises the policies contained within the Neighbourhood Plan against the SEA framework
 - Section 7 – Discusses the implementation and monitoring of the Neighbourhood Plan
 - Section 8 - Concludes the SEA report by outlining next steps

2.0 Methodology

- 2.1 The SEA process comprised several stages and which are summarised, in some detail, below.
- 2.2 Stage A involved 4 tasks and culminated in a Scoping Report:
- *Task A1:* Identified and reviewed relevant policies, plans and programmes and environmental protection objectives from European, National and Local sources.
 - *Task A2:* Collected baseline information to provide a picture of past, present and likely future conditions within the area. This helped to establish indicators which will be used to monitor the effects and performance of the Kingstone and Thrupton NDP.

- *Task A3:* Focused on the environmental issues identified from the baseline, highlighting key issues and problems within the neighbourhood area.
- *Task A4:* Used the information gathered from Tasks A1-A3 to develop a set of SEA objectives, sometimes referred to as the 'sustainability framework'.
- *Task A5:* Collated the results of Tasks A1-A4 within a Scoping Report, a document which was subject to a statutory 5 week consultation.

2.3 Stage B involved 4 tasks and assessed the effects of the NDP.

- *Task B1:* Tested NDP Objectives against the SEA Objectives
- *Task B2:* Tested alternative options and developed and refined the NDP policies.
- *Task B3/B4:* Predicted and evaluated the significant effects of the NDP

2.4 Stage C involved preparing an Environmental Report. This report presents information compiled during Stage B of the SEA process and constitutes the Draft Environmental Appraisal of the NDP. It accompanies the Draft Plan during its formal Regulation 14 consultation with people who live, work and carry out businesses in the neighbourhood area, as well as statutory bodies listed in the Neighbourhood Planning (General) Regulations 2012.

2.5 Producing an Environmental Report was therefore a legal requirement and the submission of this report to Herefordshire Council forms Stage D of the SEA process. This final Environmental Report represents the last stage of the SEA process, save for any changes following the formal Regulation 16 consultation or the Examiners report.

Scoping Report Consultation

- 2.6 With regard to the SEA scoping assessments, documents A1 to A4 were completed by a Herefordshire Council Planning Officer and sent to the Parish Council for comment, in readiness for a 5 week consultation with statutory bodies, pursuant to the Environmental Assessment of Plans and Programmes Regulations 2004.
- 2.7 After the document was approved by the Parish Council, the Kingstone and Thruxton SEA Scoping Report was available to four¹ statutory bodies for consultation from 08 September to 13 October 2014.

Consultation outcomes from Statutory Consultees

- 2.8 The consultation resulted in 2 responses, which is attached at Appendix 3.
- 2.9 Response have been collated and incorporated within this document where relevant.

Natural England: For the A2 section of the scoping report NE suggested to include NE internal information regarding priority habitats should be included within the baseline information in A2. NE stated that Soil and Geodiversity were not considered or covered should be added to the baseline information. For the A4 assessment within particular objectives and topics Landscape character assessment should be included within the baseline.

Response: Changes to the wording of relevant indicators and targets have been incorporated into A2 and A4.

¹ Statutory consultation bodies: Natural England; English Heritage; Environment Agency Natural Resources Wales

English Heritage: Made general comments in relation to a range of Scoping Reports which were consulted on at the same time. However, highlighted with specific reference to the Kingstone and Thrupton SEA that it proposed indicators for locally important buildings in the conservation area but in fact the parish does not have a conservation area and references should be amended to read 'parish'

Response: Changes to the wording of relevant indicators and targets have been incorporated into A2 and A4.

Environment Agency: No comments received

Natural Resources Wales: No comments received

- 2.11 The draft SEA was consulted upon for a 6 week period from 7 September to the 19 October 2015. The four statutory bodies listed above were consulted and 1 response was received.
- 2.12 The document was available on the Herefordshire Council website for comment during the period highlighted but no representations were received directly commenting upon the content or structure of the Draft Environmental Report.

3.0 The SEA Framework

3.1 As mentioned previously, Stage A of the SEA identifies and reviews relevant policies, plans and programmes and environmental protection objectives from European, National and Local sources (refer to Table A1 in Appendix 2 for details of those documents that were reviewed in completing Stage A of SEA on the Kingstone and Thrupton NDP).

3.2 The requirement to undertake this 'context review' is contained in Annexes 1(a) and (e) of the SEA Directive which states that an Environmental Report should include:

"...an outline of the contents, main objectives of the plan or programme and relationship with other relevant plans and programmes" and

"...the environmental protection objectives, established at international, Community or Member State level, which are relevant to the plan or programme and the way those objectives and any environmental considerations have been taken into account during its preparation"

Policy context

3.3 The Kingstone and Thrupton NDP will deliver the Local Plan (Core Strategy) at parish level by adding locally specific detail to strategic policies. As a consequence, the Scoping Report for the NDP was based on the context review Herefordshire Council undertook for its Local Plan (Core Strategy).

3.4 The results of this assessment (context review) provide the source of the local baseline data and have been incorporated into the SEA framework. It should be noted that:

- No list of policies, plans and programmes can ever be exhaustive and that Herefordshire Council has selected those considered to be of particular relevance to the planning system;
- New or revised plans and policies can emerge during the SEA process

3.5 The following strategies and plans have been reviewed and, where appropriate, incorporated within the SA Framework objectives:

- *The EC Conservation of Habitats and Species Regulations (2010)* - These regulations transpose the Habitats Directive in England, Wales and to a limited extent Scotland by ensuring that activities are carried out in accordance with the Habitats Directive, which is to protect biodiversity through the conservation of natural habitats and species of wild flora and fauna.
- *The EC Water Framework Directive (2000)* - Commits all EU member states to achieve good qualitative and quantitative status of all water courses by 2015
- *The Wildlife and Countryside Act (1981)* - The major legal instrument for wildlife protection in Britain, although other significant acts have been passed since. It has numerous parts and supplementary lists and schedules many of which have been amended since publication.
- *Biodiversity 2020: A strategy for England's wildlife and ecosystem services (2011)* - Forms part of the UK's Post-2010 Biodiversity Framework by setting out England's contribution towards the UK's commitments under the United Nations Convention of Biological Diversity.
- *The Countryside and Right of Way Act (2000)* - Creates a statutory right of access on foot to certain types of open land, to modernise the public rights of way system, to

strengthen nature conservation legislation, and to facilitate better management of AONBs

- *The Natural Environment and Rural Communities Act (2006)* - Designed to help achieve a rich and diverse natural environment and thriving rural communities through modernised and simplified arrangements for delivering Government policy.
- *Revised EU Sustainable Development strategy (2009)* - Sets out a single strategy on how the EU will more effectively meet its long-standing commitment to meet the challenges of sustainable development.
- *National Planning Policy Framework (NPPF) (2012)* - Consolidates the suite of PPG/PPS into one succinct planning policy document.
- *Planning Practice Guidance (2013)* - Sets out the vision, objectives and policies for the Herefordshire Local Plan (Core Strategy), which will guide development across the county up to 2031.
- *Herefordshire Local Transport Plan 3 (LTP) 2013-2015* - Sets out the Council's strategy for supporting economic growth, social inclusion and reducing the environmental impacts of transport, as well as the program of investment for the period April 2013 to April 2015.
- *Understanding Herefordshire Report (2014)* - Important to understand the place such as the local economy natural and built environment in which people live, learn and work as part of understanding their quality of life. Enable development for economy and housing to required levels and growth should be supported by sustainable transport measures.
- *Malvern Hills AONB Management Plan 2014-2018 (2014)* - Identifies the issues and challenges facing the special features of the area and contains 24 guiding principles and 46 strategic objectives which will help address them.
- *Draft Wye Valley AONB management Plan 2014-2019 (2014)* - The Management Plan is the prime document which sets out the vision for the area and the priorities for its management.
- *Herefordshire Economic Development Strategy 2011-2016* - Aims to increase the economic wealth of Herefordshire by setting out proposals and to support business growth up to 2016.
- *Herefordshire Employment Land Study (2012)* - Includes employment land assessments for the plan period 2011-2031. The study includes Quantitative and Qualitative assessments of employment land, assessment of market demand and need, as well as providing forecasts and recommendations for future employment need over the plan period.
- *Herefordshire Strategic Housing Land Availability Assessment (SHLAA) (2009)* - The SHLAA aims to justify site allocations in plans by:
 - Identifying sites which are capable of delivering housing development
 - Assessing sites for their housing potential; and
 - Predicting when a site could be developed for housing.
- *Herefordshire Local Housing Market Assessment (LHMA) (2013)* - Builds on an earlier Strategic Housing Market Assessment (SHMA) developed for Herefordshire and Shropshire. Its purpose is to inform the Local Plan's policies regarding housing need and demand (for market and affordable housing) within

each of the 7 Housing Market Areas (HMAs) in Herefordshire between 2011 and 2031.

- *Herefordshire Local Housing Requirements Study (2012)* - Technical assessment of the housing market and potential future local housing requirements which supports planning policy regarding the amount of growth, housing tenure and housing type needed within Herefordshire up to 2031.
- *Herefordshire Rural Housing Background Report (2013)* - Provides the justification for the proportional housing growth targets outlined in the Core Strategy
- *Herefordshire Draft Gypsies and Travellers Assessment (2013)* - Assesses the accommodation needs of Gypsies and Travellers across Herefordshire.
- *Herefordshire Local Biodiversity Action Plan (2007)* - Focuses conservation efforts on the areas within Herefordshire that will result in the greatest benefit for ecological networks, habitats and species.
- *Building Biodiversity into the LDF (2009)* - Provides the Council's Local Plan (Core Strategy) with evidence in respect of biodiversity and geodiversity, identifying both opportunities and constraints across Herefordshire.
- *Herefordshire Green Infrastructure Strategy (2010)* - Develops a framework of natural and culturally important features and functions so that planning for a sustainable future is at the heart of planning within Herefordshire.
- *Renewable Energy Study (2010)* - Assesses the energy demand within Herefordshire and the ability for the county to accommodate renewable and low carbon energy technologies.
- *Herefordshire Playing Pitch Assessment (2012)* - Produces a strategic framework, audit and assessment and needs analysis of outdoor sports pitches and facilities for Herefordshire. The document arises as a result of a recommendation in the Herefordshire and Worcestershire Sports Facilities Framework to develop local standards for playing fields and sports pitches throughout Herefordshire.
- *Open Spaces Study (2006)* - The 2006 space audit and assessment of need is a snap shot of the quality, quantity and distribution of open space across Herefordshire.
- *Play Facilities Study (2012)* - The Play Facilities Study 2012 updates the previous play facilities analysis under the Open Spaces Study 2006 and provides guidance and a framework for the development, delivery and continued sustainability of providing new and improved play facilities for children and young people in Herefordshire to 2031.
- *Strategic Flood Risk Assessment (SFRA) and Water Cycle Study (2009)* - The Strategic Flood Risk Assessment (SFRA) provides a summary of flood risk in Herefordshire to inform the location of future development. The Water Cycle Study examines how water resources and water supply infrastructure, wastewater treatment, water quality, sewerage and flood risk could constrain growth across Herefordshire.

3.6 Appendix 1 of the Kingstone and Thruxton Plan Scoping Report provides additional detail on the Plans, Policies and Programmes mentioned above and identifies the implications for the SEA and NDP.

SEA Objectives and baseline characteristics

- 3.7 The SEA objectives that were used at Stages A and B of the process are listed in the following table.

| SEA Objective | |
|---------------|--|
| 1 | To maintain or enhance nature conservation (biodiversity, flora and fauna) |
| 2 | To maintain or enhance the quality of landscapes and townscapes |
| 3 | To improve the quality of surroundings |
| 4 | To conserve or where appropriate enhance the historic environment and culture heritage |
| 5 | To improve air quality |
| 6 | To reduce the effect of traffic on the environment |
| 7 | To reduce contributions to climate change |
| 8 | To reduce vulnerability to climate change |
| 9 | To improve water quality |
| 10 | To provide for sustainable sources of water supply |
| 11 | To avoid, reduce and manage flood risk |
| 12 | To conserve soil resources and quality |
| 13 | To minimise the production of waste |
| 14 | To improve the health of the population |
| 15 | To reduce crime and nuisance |
| 16 | To conserve natural and manmade resources |

- 3.8 The SEA objectives detailed above conform to the SEA Directive, and are derived from the Sustainability Appraisal undertaken for the Herefordshire Local Plan Core Strategy 2011-2031.
- 3.9 Baseline information gathered during Stage A of the SEA process provided details of the current environmental characteristics of the neighbourhood area and the status of its natural assets and features (refer to Appendix 2). This information was analysed as part of Task B2 of SEA, which looked at the extent to which the emerging NDP policies will help or obstruct these characteristics.
- 3.10 Following the completion of Task B2 of SEA it was apparent that the largest environmental issue within the Parish have is the impact of any development of flooding and water quality.
- 3.11 The NDP propose two site for the residential development (with existing planning permission) and mainly contains criteria-based policies. On this basis, the delivery of the NDP should need to ensure that sufficient criteria policy was in place to support the delivery of development without increasing the risk of flooding and its associated issues.
- 3.12 Baseline characteristics within the SEA detail the current environmental status of environmental characteristics in the neighbourhood plan area from different sources. The source of Baseline Information used in Table A2 in Appendix 2, and analysed in Table B2 can be found in Appendix 4 Baseline characteristics in relation to the neighbourhood area comprises the Parishes of Kingstone and Thruxton Plan SEA objectives are listed below.

| SEA Objective | Baseline Data / Characteristic | Future Baseline trends |
|--|---|---|
| To maintain and enhance nature conservation (biodiversity, flora and fauna) | <p>The 2011-2013 AMR does not contain updated conservation data.</p> <p>2010/11: 27% of Herefordshire's SSSI land was in favourable condition.</p> <p>07/14 – Herefordshire's SSSIs are in extremely poor condition relative to England as whole, where 96.1% of all SSSI land was in favourable condition in April 2014. The proportion of SSSI in unfavourable condition but recovering is greater than England as a whole, where the figure currently stands at 58.6%. The 2011-2013 AMR does not contain updated conservation data.</p> <p>2010/11: 17 Habitat Action Plans and 14 Species Action Plans are currently in operation across Herefordshire.</p> <p>Kingstone has: SWS: 19 SSSI: 2. There are no SINCl, NNRs, and LNRs within the parish.</p> | <p>% of SSSI land in favourable condition (Increase) % of SSSI land in unfavourable condition but recovering (Increase) % of SSSI land in unfavourable condition and declining (Decrease)</p> <p>To capitalise on opportunities to enhance the areas of value to nature conservation as much as possible.</p> |
| To maintain and enhance the quality of landscapes and townscapes | There are no outstanding enforcement actions or appeals concerning local loss of heritage assets and locally important buildings within the neighbourhood area at present. | To wherever possible improve upon or otherwise maintain current status. |
| To improve quality of surroundings | In terms of Kingstone and Thruxton, two play areas are identified; Kingstone Cross Fields Play Area Kingstone Sports Association Play Area. The former is identified as an area in need of refurbishment. | No specific targets identified |
| To conserve and where appropriate enhance the historic environment and cultural heritage | There are numerous listed buildings within the parish and 3 SAMs, none of which are currently recorded in the Buildings at Risk Register | To conserve and where possible enhance historic assets |
| To improve air quality | Between 2005 and 2010 Herefordshire's total and per capita carbon emission reduced by 7% and 8% respectively; while UK's total and per capita carbon emission reduced by 8% and 12% respectively within the same period. This suggests that air quality is improving. | To reduce the overall carbon emissions. |
| To reduce the effect of traffic on the environment | % of Herefordshire residents who travel to work by: Car: 70.1%, Foot: 14.7%, Bicycle: 4.3%, Bus: 2%, Train: 0.8%, Motorbike: 0.8%, Taxi: 0.3%, Other: 7%. | To encourage the take up of lesser polluting modes of transport. |
| To reduce contributions to climate change | Herefordshire latest figure of CO2 emissions per capita dates back to 2010: 1.61 million tonnes (mtCO ²) | To reduce the overall carbon emissions. |
| To reduce vulnerability to climate change | <p>Reduce the risk of flooding-There have been no approvals contrary to EA advice since reporting began in 2004. The 2011-2013 AMR does not contain updated conservation data.</p> <p>Kingstone and Thruxton neighbourhood area is situated in the River Wye catchment. Sub-catchments within this zone are one of the most rapid response flood warning systems in the SFRA area. Sub-catchments within this zone record a</p> | To have no applications permitted contrary to EA advice. |

| | | |
|--|--|---|
| | standard percentage run off of 35-40%, which is potentially highly unsuitable for infiltration source control. The area has a very slow flood response (Tp-time to peak) time at around 11 hours. The WCS identifies 30 sites in the River Wye catchment where current discharge consent licences cannot be shown to have no adverse effect. | |
| To improve water quality | Percentage of river length assessed as good or very good chemical quality and ecological quality as required by the Water Framework Directive. Latest figure dates back to 2005: 84% The River Lugg section of the SAC is currently exceeding phosphate targets. The neighbourhood area is within the River Wye catchment. | To ensure that rivers meet their conservation objectives and do not fall below the required standard of quality. |
| To provide for sustainable sources of water supply | The parish falls into the Herefordshire Conjunctive Use Water Resource Zones (WRZs), one of 6 zones covering Herefordshire. 39% of demand is from non-household use. | No specific targets identified |
| To avoid, reduce and manage flood risk | Number of planning permissions granted contrary to the advice of the Environment Agency on flood defence grounds. The 2011-2013 AMR does not contain updated conservation data. | To have no applications permitted contrary to EA advice. |
| To conserve soil resources and quality | Around Kingston and Thruxton 2011: The majority of land within the neighbourhood area was listed Grade 2 (Good) or Grade 3 (Good to Moderate) for its agricultural quality. | Measure the number of hectares of best and most versatile soil lost through development To increase the number of homes built on PDL in line with the provisions of national planning policy |
| To minimise the production of waste | No baseline data available | No specific targets identified. |
| To improve health of the population | No baseline data available | No specific targets identified. |
| To reduce crime and nuisance | No baseline data available | No specific targets identified. |
| To conserve natural and manmade resources | There are numerous listed buildings within the parish and 3 SAMs. None are currently recorded in the Buildings at Risk Register. There are no outstanding enforcement actions or appeals concerning locally important The Parish Area has the following landscape types: Principal settled farmlands and riverside meadows. | |

3.13 There are three objectives for which there is no local baseline data available and therefore this provides a limitation on the baseline data and whether the NDP policies are able to move towards or away from this data, this also means that there are no future trends to link the SEA objective too.

4.0 Assessing the NDP Objectives

4.1 The objectives listed in the NDP aim to realise the vision for Kingstone and Thruxton. There are a total of 10 objectives, these are listed in para 1.10 above.

4.2 The table below tests these NDP objectives against the SEA objectives, providing a summary of the results of Task B1 of SEA. The full results are available at Appendix 4 of this report.

- 4.3 The majority of those NDP objectives which have a relationship with the SEA framework are positively compatible with it or further clarification is required to fully assess the effects.
- 4.4 Task B1 also required objectives to be SMART assessed. Some objective could benefit for additional reference to time periods and how they will be measured.

| Key: | |
|------|------------------------------------|
| + | Compatible |
| - | Possible conflict |
| 0 | Neutral |
| X | No relationship between objectives |
| ? | Unclear, more information needed |
| | |

| NDP objectives | SEA Objectives | | | | | | | | | | | | | | | |
|---|----------------|---|---|---|---|---|---|---|---|----|----|----|----|----|----|----|
| | 1 | 2 | 3 | 4 | 5 | 6 | 7 | 8 | 9 | 10 | 11 | 12 | 13 | 14 | 15 | 16 |
| General objective 1 | 0 | + | + | + | 0 | 0 | 0 | 0 | ? | + | ? | ? | + | 0 | 0 | 0 |
| General objective 2 | + | + | + | + | + | + | + | + | + | + | + | + | + | + | + | + |
| Housing objective 1 – Housing development | + | + | + | + | + | + | + | + | + | + | + | + | + | + | + | + |
| Housing objective 2 – Character and distribution in Kingstone | + | + | + | + | + | + | x | x | + | + | ? | + | + | + | + | + |
| Housing objective 3 – Character and distribution in Thruxton | 0 | + | + | ? | 0 | ? | x | x | x | x | ? | ? | ? | + | + | 0 |
| Green spaces objective | + | + | + | + | + | X | + | + | x | x | ? | + | + | 0 | 0 | + |
| Community facilities objective | x | + | + | + | x | X | x | x | x | x | x | x | x | + | + | + |
| Employment objective | 0 | + | + | x | 0 | 0 | x | x | 0 | 0 | 0 | 0 | 0 | + | + | 0 |
| Flooding objective | 0 | + | + | x | x | X | + | + | + | + | + | x | x | 0 | 0 | 0 |
| Developer Contribution objective | ? | ? | ? | ? | ? | ? | ? | ? | ? | ? | ? | ? | ? | ? | ? | ? |

5.0 Assessing the NDP Options

- 5.1 The options that were considered during the development of the Kingstone and Thruxton Plan were supplied by the parish councils and have been assessed as part of the SEA. The summary matrix of the assessment can be found in Table B2 options these tables are in Appendix 4.
- 5.2 The options covered were are followed;
- Do nothing.
 - Allocate sites for housing
 - Manage future housing using a settlement boundary
 - Allocate sites and identify a settlement boundary [This is the approach that was adopted]
 - Manage future housing through a development management policy.
- 5.3 A 'do nothing' option was also considered by the Parish Council, i.e. not undertaking a Neighbourhood Development Plan, however this was disregarded at an early stage by the

Parish Council as it was considered the majority of the community would support the work undertaken for a Neighbourhood Plan.

- 5.4 The second option of allocation sites for housing was considered and given the levels of existing commitment within the parish, it was considered unfavourable to allocation any additional land.
- 5.5 Pursuing this 2nd option would have given greater certainty over future development within the area particularly within Kingstone and Thruxton as if required mitigation criteria can be added to site allocations policies to ensure all SEA objectives are achieved.
- 5.6 The third option of designating settlement boundaries would also have seen a positive effect on the baseline. The designation of a settlement boundary will give additional certainty and help define those areas considered as the built form and open countryside. This can aid the direction of further growth to maintain the quality of the landscape and surroundings. There is less certainty over the positive effects on the baseline as any growth will be adjudged by criteria based policy. Within the draft plan a settlement boundary has been designated for Kingstone and Thruxton settlements.
- 5.7 The option to designate a settlement boundary and allocation land was also favourable in terms of the SEA objectives but this was considered and further allocations were rejected by the parish for the reasons outlined within the above two options.
- 5.8 The final option of producing development management criteria policies was chosen by the parish council for the majority of the plan. Criteria based policy does not give the same level of certainty as the other options as it will be more reactionary than proactive in terms of growth proposals. However providing criteria is added to the policies to safeguard or mitigate against any harm, the option will have a positive effect on the baseline.

| NDP Options | SEA Objectives | | | | | | | | | | | | | | | |
|-------------|----------------|----|----|----|----|---|----|----|----|----|----|----|----|----|----|----|
| | 1 | 2 | 3 | 4 | 5 | 6 | 7 | 8 | 9 | 10 | 11 | 12 | 13 | 14 | 15 | 16 |
| Option 1 | x | x | x | x | x | x | X | x | x | x | x | X | | | | x |
| Option 2 | ++ | ++ | ++ | ++ | ++ | + | ++ | ++ | ++ | + | ++ | + | | | | ++ |
| Option 3: | + | + | + | + | + | + | + | + | + | + | + | + | | | | + |
| Option 4 | ++ | ++ | ++ | ++ | ++ | + | ++ | ++ | ++ | + | ++ | + | | | | ++ |
| Option 5 | + | + | + | + | + | + | + | + | + | + | + | + | | | | + |

6.0 Appraisal of the policies

- 6.1 A key part of developing a plan such as the Kingstone and Thruxton NDP is developing a range of options and testing these, so that a preferred way forward can be selected.
- 6.2 The plan has been organised with a set of general overarching policies for the whole neighbourhood area and then specific policies for each of the parish council areas. These emerging set of draft policies have been appraised for the purposes of Stage B of the SEA:
- Policy KTH1 – Housing development buildings and phasing
 - Policy KHT2 – Supporting sustainable development on committed site 1
 - Policy KHT3 – Meeting local housing needs and providing a mix of new housing
 - Policy KHT4 – Character and distribution of housing in Kingstone
 - Policy KHT5 – Character and distribution of housing in Thruxton
 - Policy KTD1 – Protecting heritage assets
 - Policy KTD3 – Protecting Local Green Spaces

- Policy KTCF1 –Provision of protection of community facilities and services
- Policy KTE1 – Proposal for new employment
- Policy KTE2 – Protecting existing employment
- Policy KTF1 – Reducing flood risk
- Policy KTF2 – Flood Resilience
- Policy KTF3 – Reducing surface water flooding
- Policy KTDC 1 – Developer Contribution

Stage B of SEA

- 6.3 In the context of Task B1 of SEA, the previous section of this report identified that many of the NDP objectives are compatible with the SEA framework, while others had either a neutral impact, no relationship with the SEA objectives or if needed; further information such as location of development. Additional policy safeguards within the NDP and Local Plan (Core Strategy) would help mitigate any possible conflicts.
- 6.4 With regard to Task B2 of SEA, the NDP policies were measured against both the SEA framework and the baseline characteristics identified during Stage A of the process; here, there was no baseline data available in respect of SEA Objectives 3 and 9. Full details of this appraisal are attached at Appendix 4.
- 6.5 The policies largely score as positive against the SEA objectives and will not, therefore, have an adverse impact on the baseline characteristics or immediate environmental impacts. This is because they are criteria based policies which only consider schemes on their own merits, as and when planning applications are submitted to the local planning authority.
- 6.6 The Kingstone and Thruxton NDP contains housing allocations which are essentially acknowledgements of existing housing land commitments. Commitment site 1 is for 150 homes on the land to the south of the B4349 / west of the C1221 which was granted in September 2014. Commitment site 2 is for 35 dwellings and on land to the rear of White House Drive. This was granted in August 2013.
- 6.7 Some policies would benefit from some additional criteria in order to strengthen them with regards to water quality issues within the River Wye SAC hydrological catchment area. These are namely Policy KTH1 and KTE1. The neighbourhood area is within the hydrological catchment of the River Wye SAC. Therefore it is important to ensure that no future development has a negative impact on the water quality of the European site or comprise the ability of the Nutrient Management Plan to deliver the necessary overall nutrient reductions along those stretched of the River Wye SAC which are already exceeding water quality targets. For this reason the highlighted policies would benefit from additional criteria to ensure that adverse effects can be avoided.

| NDP Policies | SEA objectives | | | | | | | | | | | | | | | |
|--------------|----------------|---|---|---|---|---|---|---|---|----|----|----|----|----|----|----|
| | 1 | 2 | 3 | 4 | 5 | 6 | 7 | 8 | 9 | 10 | 11 | 12 | 13 | 14 | 15 | 16 |
| Baseline | 1 | 2 | 3 | 4 | 5 | 6 | 7 | 8 | 9 | 10 | 11 | 12 | 13 | 14 | 15 | 13 |
| Policy KTH1 | 0 | + | + | + | 0 | ? | X | + | ? | + | + | + | + | + | + | + |
| Policy KTH2 | + | + | + | + | 0 | 0 | + | + | + | + | + | + | + | + | + | + |
| Policy KTH3 | x | + | + | x | x | ? | X | x | ? | + | x | x | x | + | + | x |

| | | | | | | | | | | | | | | | | |
|--------------|---|----|----|----|---|---|---|---|---|---|----|---|---|---|---|----|
| Policy KTH4 | + | ++ | ++ | + | + | o | + | + | ? | + | ++ | + | + | + | + | + |
| Policy KTH5 | o | ++ | ++ | + | o | ? | X | + | ? | + | + | + | o | + | + | o |
| Policy KTD1 | + | + | ++ | ++ | x | x | X | x | x | x | x | + | + | + | + | ++ |
| Policy KTD2 | + | ++ | ++ | + | + | x | + | + | x | x | + | + | x | + | + | + |
| Policy KTCF1 | x | + | + | + | x | + | X | x | x | x | x | + | x | + | + | + |
| Policy KTE1 | + | + | + | x | o | o | ? | + | ? | + | + | + | + | + | + | + |
| Policy KTE2 | x | + | + | x | + | + | X | x | ? | + | x | + | + | o | o | o |
| Policy KTF1 | + | + | + | + | + | x | + | + | ? | + | ++ | + | + | + | x | + |
| Policy KTF2 | + | + | + | + | + | x | X | + | x | + | ++ | + | + | + | x | x |
| Policy KTF3 | + | + | + | + | + | x | + | + | + | x | ++ | + | + | + | x | + |
| Policy KTDC1 | o | + | + | x | x | + | X | x | + | + | x | x | x | + | + | x |

6.8 The results of Task B3, as shown at Appendix 4, demonstrate that the cumulative impact of the NDP policies over the course of the plan period is generally positive. Although some policies may have a neutral or uncertain impact during the first 5 years of the plan period, there is no reason why they cannot have a positive effect in the medium to long-term due to policy safeguards included in the Local Plan (Core Strategy); these safeguards should avoid or mitigate against unacceptable adverse impacts.

6.9 Task B4 of SEA brings together the results of earlier tasks and thus identifies the cumulative impact of the entire of the NDP. This task, which is also attached at Appendix 4, reveals that the objectives and policies contained in the NDP are by and large in general conformity with the Local Plan (Core Strategy), save those specific mentions as needed a review in further drafts of the plan. If these amendments are made it is considered that the cumulative effect of the plan will contribute to the achievement of the SEA objectives.

Stage D of the SEA – assessment changes to policies

6.10 As mentioned previously, 6 policies were refined following the Draft Plan stage; these changes were necessitated by comments received during the consultation period.

6.11 As additional policy has also been added regarding green infrastructure. Three policies have additional criteria reflect recommendations within the Draft Environmental Report and comments made by Natural England. This has strengthened policies in relation to safeguarding the River Wye SAC. Other policies have received minor amendments to help clarify the policy criteria.

6.12 The results of this further assessment can be seen below and in detail within Appendix 6. They reveal that the outcomes of the Stage B process mentioned above were largely unaffected or strengthened by the refinements to these policies

7.0 Implementation and monitoring

7.1 Herefordshire Council as the Local Planning Authority should make arrangements to monitor the significant effects of implementing a neighbourhood plan.

7.2 Indeed, Regulation 17 of the Environmental Assessment of Plans and Programmes Regulations 2004 requires the Local Planning Authority to monitor the significant environmental effects of the implementation of any NDP that was subject to SEA, in order to

identify unforeseen adverse effects at an early stage and to enable appropriate remedial actions.

7.3 Accordingly, Herefordshire Council will monitor outcomes from the NDP policies and the results of these will be reported in the Council's Annual Monitoring Report (AMR).

7.4 The AMR runs from 1 April to 31 March each year and the topics covered therein include the following:

- Housing delivery;
- Previously developed land
- Housing completions
- Affordable housing conditions
- Employment land delivery.

8.0 Next steps

8.1 This report will be subject to a formal public consultation of 6 weeks duration alongside the submitted Kingstone and Thruxton Draft NDP.

8.2 The next stage will be an independent examination.

8.3 Any changes made to the NDP as a consequence of the Regulation 16 consultation or Examiner's report will result in a review of the SEA, unless they do not materially affect the outcomes of Stage B of the SEA process.

Appendix 1

**Initial Habitat Regulations Assessment and Strategic Environmental
Assessment Screening Notification**

The Neighbourhood Planning (General) Regulation 2012 (Reg. 32)

Conservation of Habitats and Species Regulations 2010 (d)

| | |
|---|--|
| Neighbourhood Area: | Kingstone & Thrupton Group Neighbourhood Area |
| Parish Council: | Kingstone & Thrupton Group Parish Council |
| Neighbourhood Area Designation Date: | 14/05/2014 |

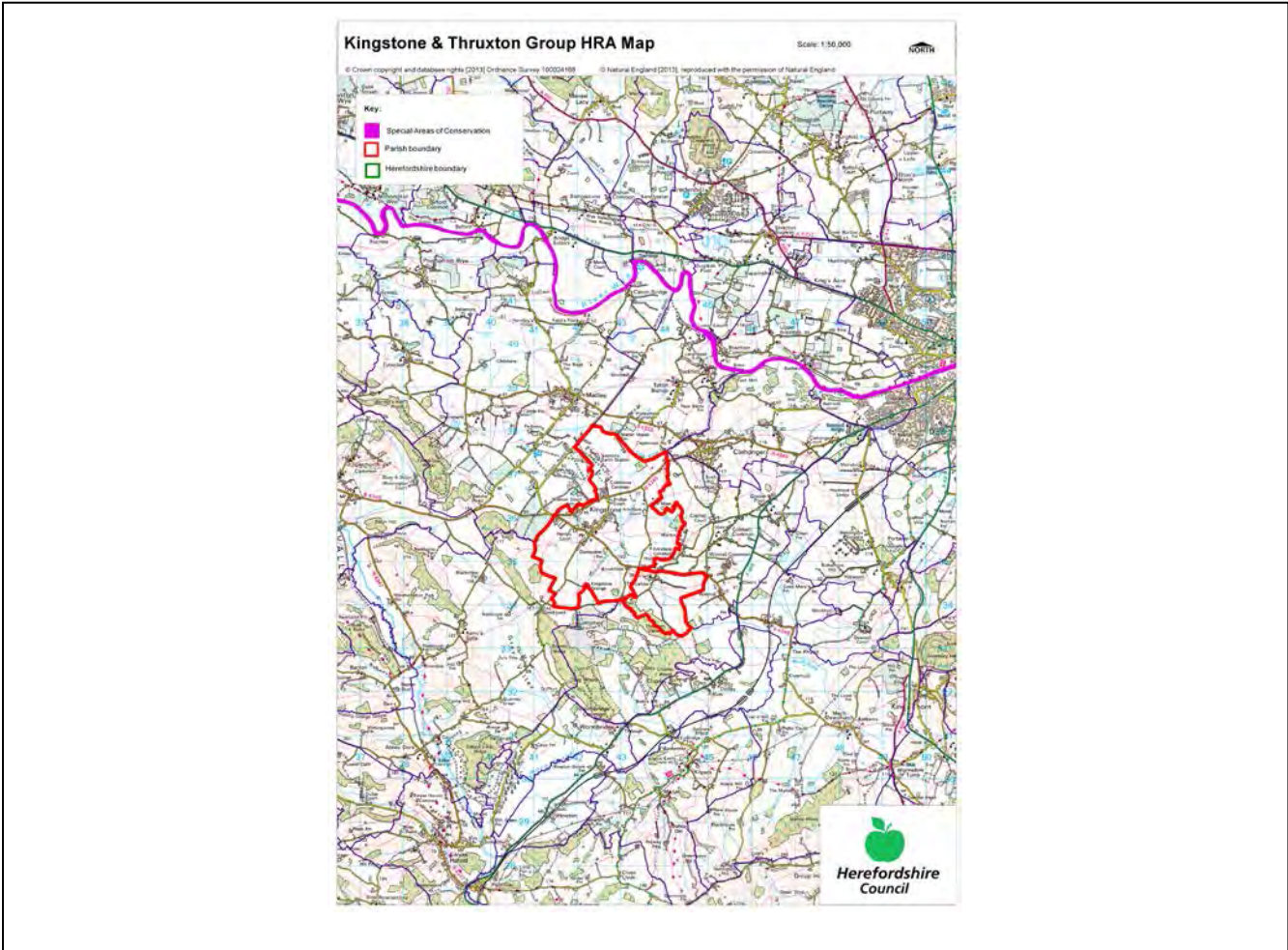
Introduction

This Initial Habitat Regulations Assessment (HRA) and Strategic Environmental Assessment (SEA) Screening has been undertaken to assess whether any European Sites exist within or in proximity to the Neighbourhood Area which could be affected by any future proposals or policies.

Through continual engagement the outcomes of any required assessments will help to ensure that proposed developments will not lead to Likely Significant Effects upon a European Site or cause adverse impacts upon other environmental assets, such as the built historic or local natural environment.

This document is copyright of Herefordshire Council, please contact the Neighbourhood Planning team if you wish to reuse it in whole or part

**HRA Initial Screening: Map showing relationship of Neighbourhood Area with European Sites
(not to scale)**



Initial HRA Screening

River Wye (including the River Lugg) SAC:

| | | |
|--|---|--|
| Does the Neighbourhood Area have the River Wye (including the River Lugg) in or next to its boundary? | N | The River Wye is 2.35km away from the Group Parish. |
| Is the Neighbourhood Area in the hydrological catchment of the River Wye (including the River Lugg) SAC? | Y | The Group Parish is within the hydrological catchment of the River Wye |
| If yes above, does the Neighbourhood Area have mains drainage to deal with foul sewage? | Y | There is mains drainage at Kingstone & Madley |

Downton Gorge SAC:

| | | |
|---|---|---|
| Is the Neighbourhood Area within 10km of Downton Gorge SAC? | N | Downton Gorge is 34.8km away from the Group Parish. |
|---|---|---|

River Clun SAC:

| | | |
|--|---|--|
| Does the Neighbourhood Area include: Border Group Parish Council or Leintwardine Group Parish Council? | N | River Clun does not border the Group Parish. |
|--|---|--|

Usk Bat Sites SAC:

| | | |
|--|---|--|
| Is the Neighbourhood Area within 10km of the SAC boundary? | N | Usk Bat Sites are 28.6km away from the Group Parish. |
|--|---|--|

Wye Valley & Forest of Dean Bat Sites SAC:

| | | |
|--|---|--|
| Is the Neighbourhood Area within 10km of any of the individual sites that make up the Wye Valley & Forest of Dean Bat Sites? | N | Wye Valley and Forest of Dean Bat Sites are 24.6km away from the Group Parish. |
|--|---|--|

Wye Valley Woodlands SAC:

| | | |
|--|---|---|
| Is the Neighbourhood Area within 10km of any of the individual sites that make up the Wye Valley Woodlands Site? | N | Wye Valley Woodlands are 20.6km away from the Group Parish. |
|--|---|---|

HRA Conclusion:

The assessment above highlights that the following European Sites will need to be taken into account in the future Neighbourhood Development Plan for the Kingstone & Thruxton Group Neighbourhood Area and a Full HRA Screening will be required.

European Site

(List only those which are relevant from above)

River Wye (including the River Lugg) SAC

Strategic Environmental Assessment Initial Screening for nature conservation landscape and heritage features

The following environmental features are within or in general proximity to the Kingstone & Thrupton Group Neighbourhood Area and would need to be taken into account within a Strategic Environmental Assessment. In addition, the NDP will also need to consider the other SEA topics set out in Guidance Note 9a to ensure that the plan does not cause adverse impacts.

| SEA features | Total | Explanation | SEA required |
|--|--------------|---|---------------------|
| Air Quality Management Areas (AQMA) | 0 | There are no AQMAs within the Group Parish | N |
| Ancient Woodland | 19 | Wallbrook Wood; Heirons Wood; Thrupton Vallets; Bullocks Wood (border); Square Wood (border); Vallets Wood (border); Lady's Coppice (border); Big Wood (border); Brampton Hill Wood (border); Ravenshoot & Dunsall Woods (border); Lady Coppice & The Birches (border); Bucknells Wood (border); Ruckhall Wood (border); Priors Shell Wood (border); Old Hill Coppice (border); Big Birches Wood (border); Dawn Wood (border); Mill Wood (border); Dippersmoor Wood (border) | Y |
| Areas of Archaeological Interest (AAI) | 0 | There are no AAIs within the Group Parish | N |
| Areas of Outstanding Natural Beauty (AONB) | 0 | There are no AONBs within the Group Parish | N |
| Conservation Areas | 0 | There are no Conservation Areas within the Group Parish | N |
| European Sites (SAC) | 0 | There are no SACs within the Group Parish | N |
| Flood Areas/Zones | | Flood Zones run alongside Cage Brook and tributaries off this | Y |
| Listed Buildings | Numerous | There are numerous sites throughout the Group Parish | Y |
| Local Sites (SWS/SINCS/RIGS) | 19 (SWS) | Kingstone Common; Arkstone Common; Cage Brook; Whitfield; Brampton Hill Wood (border); Littlemarsh Common (border); Honeymoon Common (border); Two farms at Castle Farm (border); Eaton Bishop Church (border); Cage Brook Valley and woodlands (border); Fields near Eaton Camp (border); Clehonger village pond (border); Bucknalls Wood (border); Field near Bage Mill (border); Pond at Allensmore Court x 2 (border); Timberline Wood and adjoining woodlands (border); Eaton Hill Wood (border); River Dore (border); Newbarns, Dunseal, Ravenshot WDS & Pontapina Break (border) | Y |

| | | | |
|---|---------------------------------|--|---|
| Long distance footpaths/trails (e.g. Herefordshire Trail) | 0 | There are no long distance footpaths/trails within the Group Parish | N |
| Mineral Reserves | 6 | Cobhall Farm (border); Cobhall Common (border); Whitehouse Kennels (border); Small area north west of Green Farm (border); Courtlands Farm (border); Hunderton Rough to Clehonger to Allensmore (border) | Y |
| National Nature Reserve (NNR) | 0 | There are no NNRs within the Group Parish | N |
| Registered & Unregistered Parks and Gardens | 1 (Registered) 2 (Unregistered) | Registered: Whitfield Unregistered: Cagebrook House (border); Allensmore Court (border) | Y |
| Scheduled Ancient Monuments (SAM) | 3 | Thrupton Tump, a motte castle at Thrupton Court; Eaton Camp (border); Churchyard Cross at St Mary's Churchyard (border) | Y |
| Sites of Special Scientific Interest (SSSI) | 2 | Littlemarsh Common (Unfavourable Declining) (border); Cage Brook Valley (Favourable (part) Unfavourable No Change (part) Unfavourable Declining (part)) (border) | Y |

Decision Notification:

The initial screening highlights that the Neighbourhood Development Plan for the Kingstone & Thrupton Group Neighbourhood Area:

- a) Will require further environmental assessment for Habitat Regulations Assessment and Strategic Environmental Assessment.

Assessment date: 15/04/2014

Assessed by: James Latham

Appendix 1: European Sites

The table below provides the name of each European Site, which has been screened in for the purposes of neighbourhood planning in Herefordshire; includes their site features of integrity; and vulnerability data. This is based on the sites individual features of integrity and their vulnerabilities, which could include distance criteria. This has been used in identifying which parishes are likely to require a full HRA Screening of their future Neighbourhood Development Plan, to establish if their plan might have Likely Significant Effects on a European Site.

| |
|---|
| Downton Gorge |
| Site Features: <i>Tilio-Acerion</i> forests of slopes, screes and ravines |
| Vulnerability data: 10km for air quality associated with poultry units or other intensive agricultural practices. |
| River Clun |
| Site Features: Freshwater pearl mussel <i>Margaritifera margaritifera</i> |
| Vulnerability data: Water quality is important to maintain the site feature. Parishes either side of the River Clun will be affected. |
| River Wye |
| Site Features: Water courses of plain to montane levels with the <i>Ranunculion fluitantis</i> and <i>Callitricho-Batrachion</i> vegetation. Transition mires and quaking bogs. White-clawed (or Atlantic Stream) crayfish <i>Austropotamobius pallipes</i> . Sea lamprey <i>Petromyzon marinus</i> . Brook lamprey <i>Lampetra planeri</i> . River lamprey <i>Lampetra fluviatilis</i> . Twaite shad <i>Alosa fallax</i> . Atlantic salmon <i>Salmo salar</i> . Bullhead <i>Cottus gobio</i> . Otter <i>Lutra lutra</i> . Allis shad <i>Alosa alosa</i> |
| Vulnerability data: Proximity: Developments should not be within 100m of the designated bank. Some developments beyond 100m may also have impacts based on proximity and these issues should be addressed where possible when developing NDP policy and choosing site allocations. Water Quality: Within the whole catchment of the River Wye, which includes the River Lugg, mains drainage issues with regards to water quality are being resolved through the Core Strategy / Local Plan and development of a Nutrient Management Plan. Welsh Water should be consulted to ensure that the proposed growth will be within the limit of their consents. Otters: "An otter will occupy a 'home range', which on fresh waters usually includes a stretch of river as well as associated tributary streams, ditches, ponds, lakes and woodland. The size of a home range depends largely on the availability of food and shelter, and the presence of neighbouring otters. On rivers, a male's home range may be up to 40km or more of watercourse and associated areas; females have smaller ranges (roughly half the size) and favour quieter locations for breeding, such as tributary streams. Otters without an established home range are known as 'transients'. They are mostly juveniles looking for a territory of their own, or adults that have been pushed out of their territories. Transient otters may use an area for a short while, but they will move on if conditions are not suitable or if they are driven away by resident otters. Transients will have been important in extending the range of otters, but they are very difficult to identify from field signs. Within a home range an otter may use many resting sites. These include above-ground shelters, such as stands of scrub or areas of rank grass, and underground 'holts' – for example, cavities under tree roots and dry drainage pipes." (Source: EA website: http://www.environmentagency.gov.uk/static/documents/Business/Otters_the_facts.pdf accessed 09/04/2013) |

Usk Bat Site

Site Features: Annex I habitats present as a qualifying feature, but not a primary reason for site selection: European dry heaths, Degraded raised bogs still capable of natural regeneration, Blanket bogs, Calcareous rocky slopes with chasmophytic vegetation, Caves not open to the public, *Tilio-Acerion* forests of slopes, screes and ravines. Annex II species of primary reason for site selection: Lesser horseshoe bat *Rhinolophus hipposideros*, UK population 5%, although it is suggested this is an underestimate.

Vulnerability data: Lesser Horseshoe bats are known to migrate between 5km and 10km between their summer and winter roosts. The Lesser Horseshoe Bat is vulnerable to disturbance; light pollution; and habitat loss. Check with the planning ecologist for other issues.

Wye Valley and Forest of Dean Bat Sites

Site Features: Annex II species that are a primary reason for site selection: Lesser horseshoe bat *Rhinolophus hipposideros*. Greater horseshoe bat *Rhinolophus ferrumequinum*

Vulnerability data: Lesser Horseshoe bats are known to migrate between 5km and 10km between their summer and winter roosts. The Lesser Horseshoe Bat is vulnerable to disturbance; light pollution; and habitat loss. Check with the planning ecologist for other issues.

Greater Horseshoe bats are known to migrate between 20-30km between their summer and winter roosts.

NDPs closest to the European Site will need to consider:

Woodland habitat buffer.

Lesser Horseshoe Bat: Old buildings; woodland locations; sheltered valleys, extensive deciduous woods or dense scrub, close to roost sites. In areas of fragmented habitats, linear habitats such as hedgerows are important corridors. Vulnerable to loss or disturbance of both summer and winter roosts and removal of linear habitat.

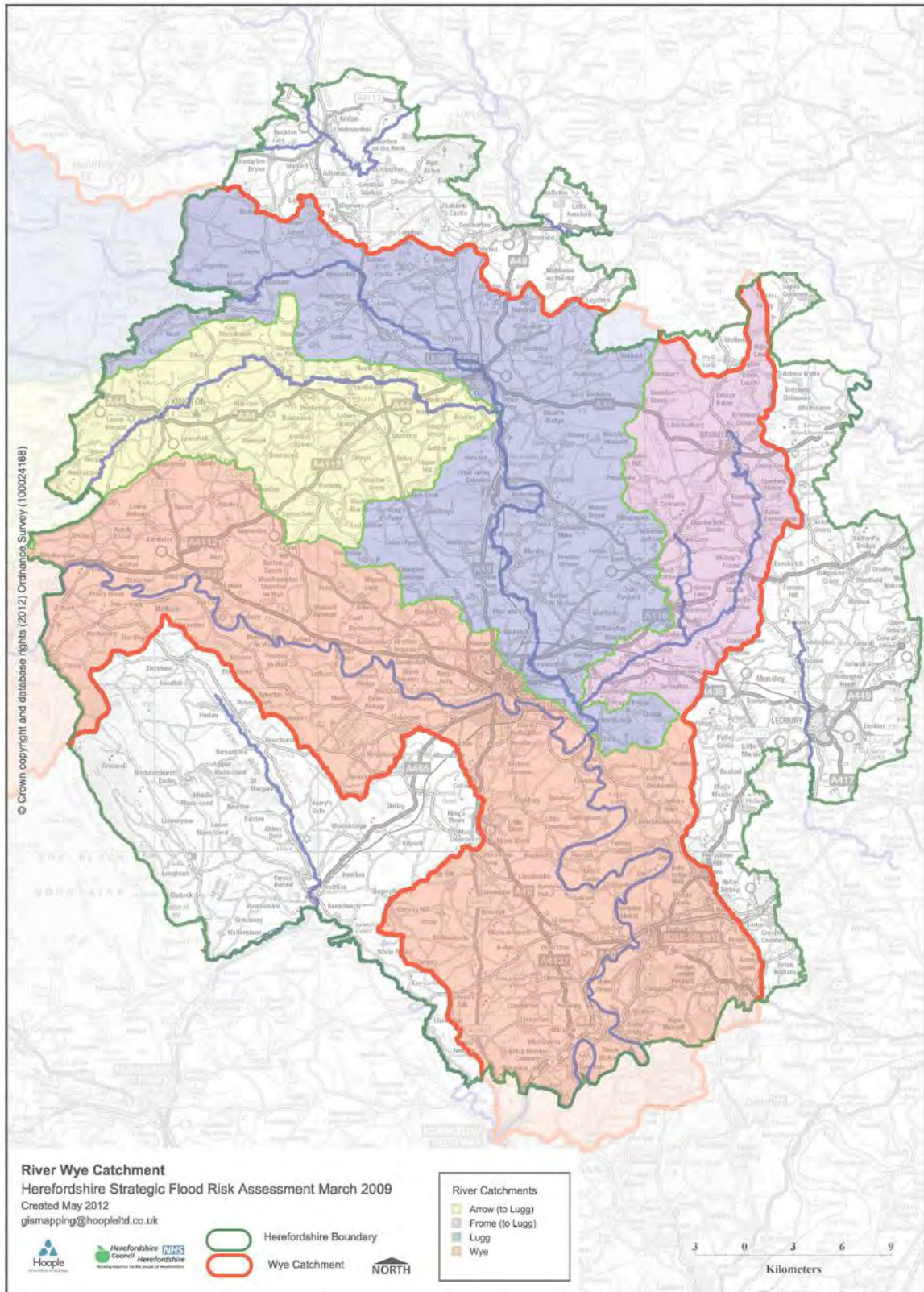
Greater Horseshoe Bat: Large buildings, pasture, edge of mixed deciduous woodland and hedgerows. Mixed land-use especially south-facing slopes, favours beetles, moths and insects they feed on. During the winter they depend on caves, abandoned mines and other underground sites for undisturbed hibernation. A system/series of sites required. Vulnerable to loss of insect food supply, due to insecticide use, changing farming practices and loss of broad-leaved tree-cover and loss / disturbance of underground roosts sites.

Wye Valley Woodlands

Site Features: Annex I habitats that are a primary reason for site selection: Beech forests *Asperulo-Fagetum*, *Tilio-Acerion* forests of slopes, screes and ravines, *Taxus baccata* woods of the British Isles. Annex II species present as a qualifying feature, but not a primary reason for site selection: Lesser horseshoe bat *Rhinolophus hipposideros*, 51-100 residents

Vulnerability data: Lesser Horseshoe bats are known to migrate between 5km and 10km between their summer and winter roosts. The Lesser Horseshoe Bat is vulnerable to disturbance; light pollution; and habitat loss. Check with the planning ecologist for other issues. NDPs closest to the European Site will need to consider: Woodland habitat buffer. Lesser Horseshoe Bat: Old buildings; woodland locations; sheltered valleys, extensive deciduous woods or dense scrub, close to roost sites. In areas of fragmented habitats, linear habitats such as hedgerows are important corridors. Vulnerable to loss or disturbance of both summer and winter roosts and removal of linear habitat.

Appendix 2: Wye Catchment Map

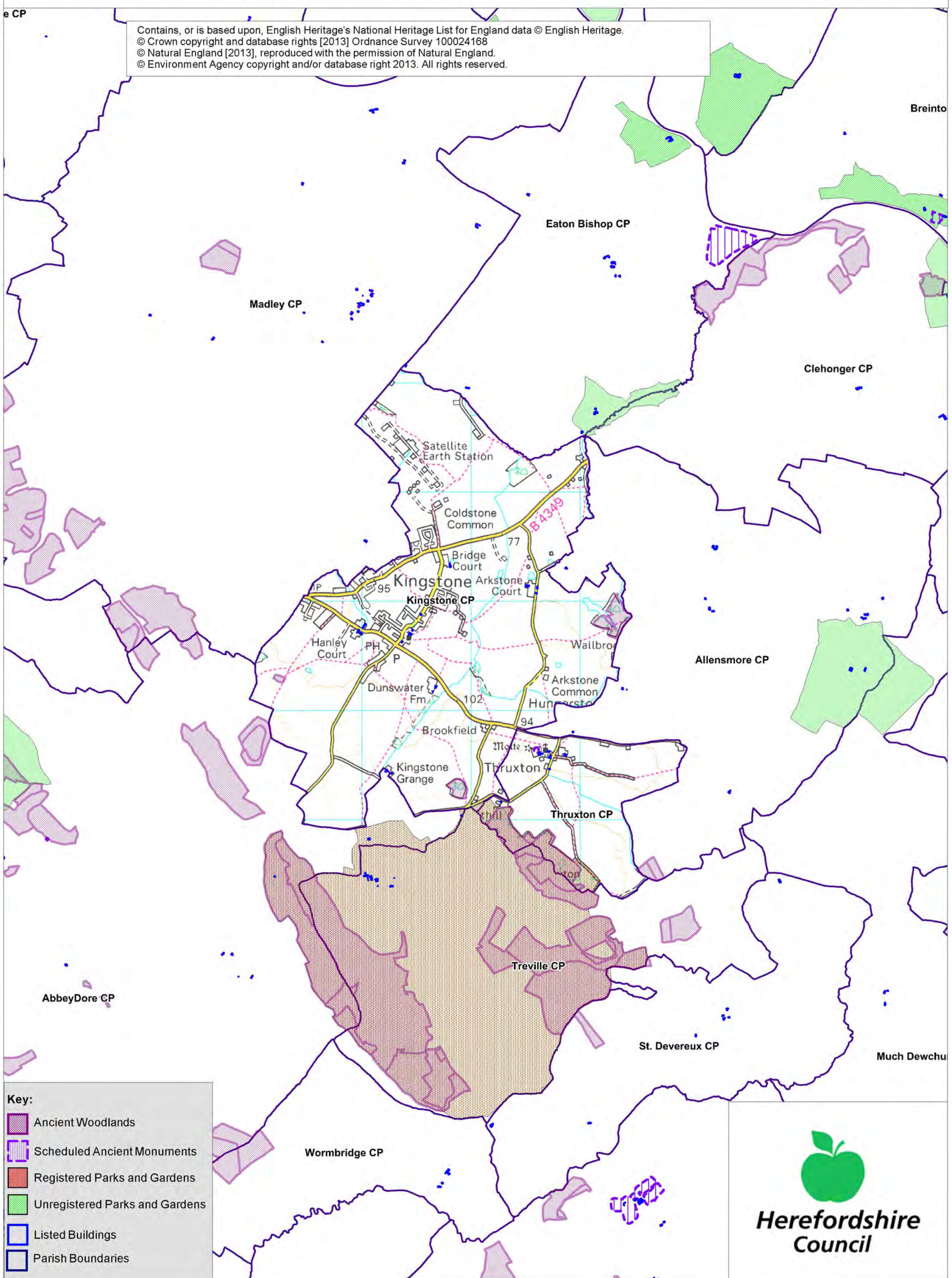


Kingstone and Thruxton SEA Map 1

Scale: 1:30,000



Contains, or is based upon, English Heritage's National Heritage List for England data © English Heritage.
© Crown copyright and database rights [2013] Ordnance Survey 100024168
© Natural England [2013], reproduced with the permission of Natural England.
© Environment Agency copyright and/or database right 2013. All rights reserved.



Key:

- Ancient Woodlands
- Scheduled Ancient Monuments
- Registered Parks and Gardens
- Unregistered Parks and Gardens
- Listed Buildings
- Parish Boundaries

Herefordshire Council

Kingstone & Thruxton SEA Map 2

Scale: 1:30,000



Contains, or is based upon, English Heritage's National Heritage List for England data © English Heritage.
© Crown copyright and database rights [2013] Ordnance Survey 100024168
© Natural England [2013], reproduced with the permission of Natural England.
© Environment Agency copyright and/or database right 2013. All rights reserved.



Key:

- Minerals Sites
- Sites of Special Scientific Interest
- Special Wildlife Sites
- Flood Zone 2
- Flood Zone 3
- Parish Boundaries

Herefordshire Council

Appendix 2

Strategic Environmental Assessment



Kingstone & Thruxton Group Neighbourhood Area

Scoping Report

October 2014

Consultation on the Scoping Report

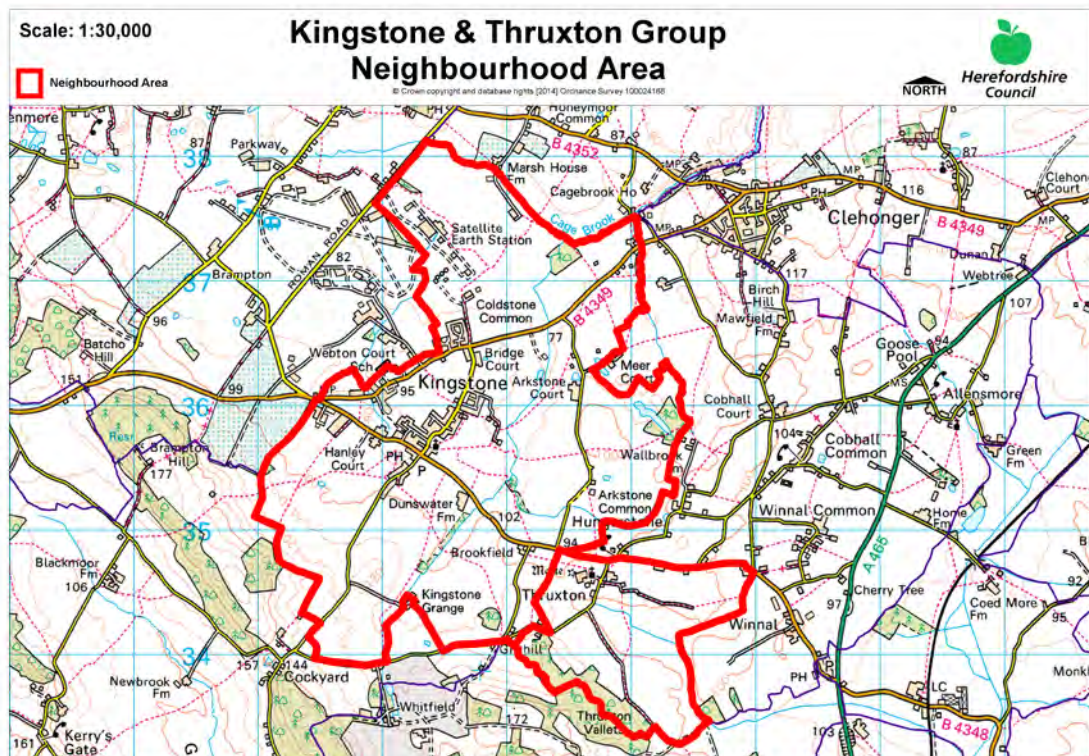
The aim of the consultation process is to involve and engage with statutory consultees and other relevant bodies on the scope of the appraisal. In particular, it seeks to:

- Ensure the SEA is both comprehensive and sufficiently robust to support the Neighbourhood Development Plan during the later stages of full public consultation;
- Seek advice on the completeness of the plan review and baseline data and gain further information where appropriate;
- Seek advice on the suitability of key sustainability issues;
- Seek advice on the suitability of the sustainability objectives.

Comments on this Scoping Report have been invited from the three consultation bodies as required by the SEA regulations, together with the Natural Resources Wales.

The three consultation bodies are as follows:

1. Natural England;
2. English Heritage;
3. Environment Agency.



| Plans and Programmes | Type of document | Date | Overview | Key message, target/objective/indicator | SEA topic(s) | Implications for the NDP and SEA |
|---|----------------------------|------|---|--|---|--|
| The EC Conservation of Habitats and Species Regulations | European Union Legislation | 2010 | These regulations transpose the Habitats Directive in England, Wales and to a limited extent Scotland by ensuring that activities are carried out in accordance with the Habitats Directive, which is to protect biodiversity through the conservation of natural habitats and species of wild flora and fauna. | The Regulations make it an offence (subject to exceptions) to deliberately capture, kill, disturb, or trade in the animals listed in Schedule 2, or pick, collect, cut, uproot, destroy, or trade in the plants listed in Schedule 4. However, these actions can be made lawful through the granting of licenses by the appropriate authorities. | <ul style="list-style-type: none"> Biodiversity Cultural heritage and the landscape | The NDP should be compliant with all the relevant legislation and regulations. |
| The EC Water Framework Directive | European Union | 2000 | Commits all EU member states to achieve good qualitative and quantitative status of all water courses by 2015. | Aims for 'good status' for all ground and surface waters (rivers, lakes, transitional waters, and coastal waters) in the EU. | <ul style="list-style-type: none"> Water | The NDP should be compliant with all the relevant legislation and regulations. |

| Plans and Programmes | Type of document | Date | Overview | Key message, target/objective/indicator | SEA topic(s) | Implications for the NDP and SEA |
|---|----------------------|------|---|---|---|--|
| The Wildlife and Countryside Act (1981) | Domestic Legislation | 1981 | The major legal instrument for wildlife protection in Britain, although other significant acts have been passed since. It has numerous parts and supplementary lists and schedules many of which have been amended since publication. | The principle mechanism for the legislative protection of wildlife in Great Britain. | <ul style="list-style-type: none"> • Biodiversity • Cultural heritage and the landscape • Flora and fauna • Material assets • Soil | The NDP should be compliant with all the relevant legislation and regulations. |
| The Countryside and Right of Way Act (2000) | Domestic Legislation | 2000 | Creates a statutory right of access on foot to certain types of open land, to modernise the public rights of way system, to strengthen nature conservation legislation, and to facilitate better management of AONBs. | <p>The Act provides for a new right of access on foot to areas of open land comprising: Mountain (land over 600 metres); Moorland; Heath; Downland; Registered common land.</p> <p>There are provisions to consider extending the right in the future to coastal land, but not woodland despite some early publicity suggesting this.</p> | <ul style="list-style-type: none"> • Biodiversity • Cultural heritage and the landscape • Flora and fauna • Material assets • Soil | The NDP should be compliant with all the relevant legislation and regulations. |

| Plans and Programmes | Type of document | Date | Overview | Key message, target/objective/indicator | SEA topic(s) | Implications for the NDP and SEA |
|--|----------------------|------|---|--|---|---|
| The Natural Environment and Rural Communities Act (2006) | Domestic Legislation | 2006 | Designed to help achieve a rich and diverse natural environment and thriving rural communities through modernised and simplified arrangements for delivering Government policy. | Provides that any public body or statutory undertaker in England and Wales must have regard to the purpose of conservation of biological diversity in the exercise of their functions. | <ul style="list-style-type: none"> • Biodiversity • Cultural heritage and the landscape • Flora and fauna • Material assets • Soil | The NDP should be compliant with all the relevant legislation and regulations. |
| Revised EU Sustainable Development strategy | EU Strategy. | 2009 | Sets out a single strategy on how the EU will better meet its long-standing commitment to meet the challenges of sustainable development. | Recognises the need to gradually change current unsustainable consumption and production patterns and move towards a better integrated approach to policy making. The Strategy sets overall objectives, targets and concrete actions for seven key priority challenges, predominantly environmental. | <ul style="list-style-type: none"> • Air • Biodiversity • Climatic factors • Cultural heritage • Flora and fauna • Material assets • Population • Soil • Water | The NDP should take account of the objectives of the strategy, making the aim of sustainable development an integral part of its proposals. |

| Plans and Programmes | Type of document | Date | Overview | Key message, target/objective/indicator | SEA topic(s) | Implications for the NDP and SEA |
|---|---------------------------|------|---|--|---|---|
| Biodiversity 2020: A strategy for England's wildlife and ecosystem services | National Strategy | 2011 | Forms part of the UK's Post-2010 Biodiversity Framework by setting out England's contribution towards the UK's commitments under the United Nations Convention of Biological Diversity. | Sets out to halt overall biodiversity loss, support healthy well-functioning ecosystems and establish coherent ecological networks, with more and better places for nature for the benefit of wildlife and people. | <ul style="list-style-type: none"> • Biodiversity | The NDP should take account of the provisions of the strategy, making the most of opportunities to enhance wildlife habitats or restore degraded ecosystems in the process. |
| National Planning Policy Framework (NPPF) | National Planning Policy. | 2012 | Consolidates the suite of PPG/PPS into one succinct planning policy document. | Aims to make the planning system less complex, more accessible and able to promote growth within the ethos of sustainable development. The presumption is in favour of sustainable development. | <ul style="list-style-type: none"> • Air • Biodiversity • Climatic factors • Cultural heritage • Flora and fauna • Material assets • Population • Soil • Water | The guidance contained within the section on Neighbourhood Planning should be borne in mind during the preparation of the NDP. |

| Plans and Programmes | Type of document | Date | Overview | Key message, target/objective/indicator | SEA topic(s) | Implications for the NDP and SEA |
|--|---------------------------------|------|---|---|---|---|
| Planning Practice Guidance | Government Guidance | 2014 | Provides guidance to local planning authorities and others on the operation of the planning system. | Offers up-to-date, electronic guidance on every aspect of planning from air quality and design to land stability and rural housing. | <ul style="list-style-type: none"> • Air • Biodiversity • Climatic factors • Cultural heritage • Flora and fauna • Material assets • Population • Soil • Water | The NDP must be pro-growth and facilitate the provision and development of sustainable development. |
| Herefordshire Pre Submission Core Strategy 2011-2031 | Development Plan Document (DPD) | 2014 | Sets out the vision, objectives and policies for the Herefordshire Local Plan (Core Strategy), which will guide development across the county up to 2031. | Outlines the emerging suite of countywide planning policies relating to housing, economic development and the environment, which the NDP will need to be in conformity with where relevant. | <ul style="list-style-type: none"> • Air • Biodiversity • Climatic factors • Cultural heritage • Flora and fauna • Material assets • Population • Soil • Water | <p>The NDP should take account of relevant policies set within the Core Strategy.</p> <p>Where necessary, the NDP should provide services, facilities and employment opportunities that are</p> |

| Plans and Programmes | Type of document | Date | Overview | Key message, target/objective/indicator | SEA topic(s) | Implications for the NDP and SEA |
|----------------------|------------------|------|----------|---|--------------|---|
| | | | | <p>The Draft Core Strategy includes a range of objectives, five of which directly relate to rural areas:</p> <ul style="list-style-type: none"> • To meet the housing needs of all sections of the community • To improve access to services in rural areas • To strengthen the economic viability of the villages and their rural hinterlands. • To achieve sustainable communities and protect the environment • To conserve, promote, utilise and enjoy our natural, built, historic and cultural assets for the fullest benefit of the whole community | | <p>accessible to both local and neighbouring communities.</p> <p>Approximately 26¹ dwellings will need to be delivered within Kingstone, though this target is indicative and provides a starting point for work on the NDP.</p> |

¹ Figures do not include extant planning permissions from 2011 onwards.

| Plans and Programmes | Type of document | Date | Overview | Key message, target/objective/indicator | SEA topic(s) | Implications for the NDP and SEA |
|----------------------|------------------|------|----------|---|--------------|----------------------------------|
| | | | | <p>To achieve a thriving rural Herefordshire, the Core Strategy seeks to enhance the role the villages have traditionally played in as accessible, sustainable centres for their rural catchments.</p> <p>Seeks proportional growth of up to 14% in Kingstone (Ross on Wye HMA) over the plan period, subject to EiP outcome.</p> | | |

| Plans and Programmes | Type of document | Date | Overview | Key message, target/objective/indicator | SEA topic(s) | Implications for the NDP and SEA |
|--|------------------|------|---|---|---|--|
| Herefordshire Local Transport Plan (LTP) 2013-2015 | Corporate | 2013 | Sets out the Council's strategy for supporting economic growth, social inclusion and reducing the environmental impacts of transport, as well as the program of investment for the period April 2013 to April 2015. | The document includes three key objectives, one of which seeks to maintain access for rural residents and people without access to a car. Intrinsic to this is the retention of a 'core network' of bus services which focus on journeys between Hereford and the market towns, along with main transport corridors close to larger rural settlements. To this end, the strategy aims to increase the number of bus users by 1.3% (4,700 journeys) by 2015. | <ul style="list-style-type: none"> • Air • Climatic factors • Population | The LTP does not explore current transport issues in the Kingstone neighbourhood area. |

| Plans and Programmes | Type of document | Date | Overview | Key message, target/objective/indicator | SEA topic(s) | Implications for the NDP and SEA |
|---|------------------|------|---|---|--|----------------------------------|
| Herefordshire Economic Development Strategy 2011-2016 | Corporate | 2011 | Aims to increase the economic wealth of Herefordshire by setting out proposals and to support business growth up to 2016. | <p>The document outlines the path and direction to foster economic vitality within Herefordshire. Key objectives therefore include:</p> <ul style="list-style-type: none"> • Sustaining business survival and growth • Increasing wage levels, range and quality of jobs • Having a skilled population to meet future work needs • Developing the county's built infrastructure so enterprise can flourish. | <ul style="list-style-type: none"> • Cultural heritage • Material assets • Population | None of merit. |

| Plans and Programmes | Type of document | Date | Overview | Key message, target/objective/indicator | SEA topic(s) | Implications for the NDP and SEA |
|-------------------------------------|------------------|------|---|--|---|---|
| Herefordshire Employment Land Study | Evidence | 2012 | Includes employment land assessments for the plan period 2011-2031. The study includes Quantitative and Qualitative assessments of employment land, assessment of market demand and need, as well as providing forecasts and recommendations for future employment need over the plan period. | <p>This study covers existing employment sites in Hereford, the five market towns and their rural hinterlands.</p> <p>In terms of Kingstone itself, the study assesses the Dene Industrial Site, which is highlighted in table 5.4 with a market attractiveness score of 1 out of 3 and a planning score of 2 (potential top mark 3). It is classified as 'moderate' and therefore only some of the premises/units are worthy of continued protection from non-employment uses.</p> <p>Also assessed is the Gooses Foot Industrial Estate, though as the site is currently allocated for any particular use, there is no recommendation over its future use.</p> | <ul style="list-style-type: none"> • Material assets • Population | <p>The evidence base recommends that the Kingstone and Thruxton NDP protect certain premises on the Dene Industrial Site from alternative uses.</p> <p>Evidence underlying the plan, along with public consultations should be used to determine the extent to which the Gooses Foot Industrial Estate is worth protecting and if so, the policies and criteria against which future planning applications will be decided.</p> |

| Plans and Programmes | Type of document | Date | Overview | Key message, target/objective/indicator | SEA topic(s) | Implications for the NDP and SEA |
|--|------------------|------|--|---|--|--|
| Herefordshire Strategic Housing Land Availability Assessment (SHLAA) | Evidence | 2009 | <p>The SHLAA aims to justify site allocations in plans by:</p> <ul style="list-style-type: none"> Identifying sites which are capable of delivering housing development Assessing sites for their housing potential; and Predicting when a site could be developed for housing. | <p>In terms of Kingstone, previous SHLAA identifies that 479 additional dwellings could be provided on 5 sites in and around the existing settlement, however it is unlikely that this number would materialise due to significant constraints.</p> <p>Neither existing nor previous versions of SHLAA identify sites within or adjacent to Thrupton.</p> | <ul style="list-style-type: none"> Air Biodiversity Climatic factors Cultural heritage Flora and fauna Population Soil Water | <p>If site allocations are pursued then the Kingstone and Thrupton NDP should be informed either by SHLAA or an alternative form of housing land assessment, undertaken in line with Guidance Note 21: Site assessment and allocation sites.</p> |

| Plans and Programmes | Type of document | Date | Overview | Key message, target/objective/indicator | SEA topic(s) | Implications for the NDP and SEA |
|--|------------------|------|---|---|--|--|
| Herefordshire Local Housing Market Assessment (LHMA) | Evidence | 2013 | Builds on an earlier Strategic Housing Market Assessment (SHMA) developed for Herefordshire and Shropshire. Its purpose is to inform the Local Plan's policies regarding housing need and demand (for market and affordable housing) within each of the 7 Housing Market Areas (HMAs) in Herefordshire between 2011 and 2031. | <p>The LHMA uses 7 HMAs as the geography for presenting data. Kingstone and Thruxton falls within the Ross-on-Wye HMA.</p> <p>Here, the study reveals that:</p> <ul style="list-style-type: none"> • 55% of households are unable to afford market housing. • There is an annual requirement for 58 affordable dwellings between 2012 and 2017. <p>The study identifies that, in rural parts of the Ross on Wye HMA between 2011-2031, there is a need for:</p> <ul style="list-style-type: none"> • 690 market houses • 490 affordable houses. | <ul style="list-style-type: none"> • Air • Biodiversity • Climatic factors • Cultural heritage • Flora and fauna • Population • Soil • Water | <p>The LHMA provides an indication of housing needs and affordability within the Ross HMA.</p> <p>It provides evidence that could be used to inform policies or market and affordable housing requirements in the NDP.</p> |

| Plans and Programmes | Type of document | Date | Overview | Key message, target/objective/indicator | SEA topic(s) | Implications for the NDP and SEA |
|--|------------------|------|---|---|---|---|
| Herefordshire Local Housing Requirements Study | Evidence | 2012 | Technical assessment of the housing market and potential future local housing requirements which supports planning policy regarding the amount of growth, housing tenure and housing type needed within Herefordshire up to 2031. | <p>The delivery of 5,300 homes in the rural areas would:</p> <ul style="list-style-type: none"> • Support growth in the rural population by 6% • Increase the number of households by 14.5% <p>Forecasts also predict that growth in the population of the rural areas is likely to be primarily through an increase in those aged over 75.</p> <p>Moderate growth is expected in the 30-44 and 60-74 age brackets.</p> <p>The Local Housing Requirements Study therefore anticipates continuing improvements in life expectancy; significant growth is expected of those in their 80s, with the existing population in their 40s and 50s moving into retirement.</p> | <ul style="list-style-type: none"> • Air • Biodiversity • Climatic factors • Cultural heritage • Flora and fauna • Material assets • Population • Soil • Water | <p>This study provides an indication of housing requirements in the rural areas and the Ross HMA.</p> <p>This evidence can be used to inform the content of the Kingstone and Thruxton NDP.</p> |

| Plans and Programmes | Type of document | Date | Overview | Key message, target/objective/indicator | SEA topic(s) | Implications for the NDP and SEA |
|---|------------------|------|---|---|---|---|
| Herefordshire Rural Housing Background Report | Evidence | 2013 | Provides the background for the proportional housing growth targets outlined in the Core Strategy | The villages within the neighbourhood area are listed among the settlements which are considered to be sustainable locations for growth of up to 14%, in accordance with the EiP outcome. | <ul style="list-style-type: none"> • Air • Biodiversity • Climatic factors • Cultural heritage • Flora and fauna • Material assets • Population • Soil • Water | The Kingstone and Thruxton NDP will need to be in general conformity with the provisions of Local Plan policies concerning the rural areas. |

| Plans and Programmes | Type of document | Date | Overview | Key message, target/objective/indicator | SEA topic(s) | Implications for the NDP and SEA |
|---|------------------|------|--|--|---|---|
| Herefordshire Draft Gypsies and Travellers Assessment | Evidence | 2013 | Assesses the accommodation needs of Gypsies and Travellers across Herefordshire. | <p>Key findings from the survey of Gypsy and Traveller households in 2012 found that:</p> <ul style="list-style-type: none"> • 31% of households surveyed have some sort of accommodation need • Of the 17 households with an accommodation need, 7 had a requirement for at least one additional pitch • 10 households had a requirement for bricks and mortar housing • There is an additional requirement for 7 pitches and 9 units of Registered Social Landlord accommodation within Herefordshire. | <ul style="list-style-type: none"> • Air • Biodiversity • Climatic factors • Cultural heritage • Flora and fauna • Material assets • Population • Soil • Water | The Kingstone and Thruxton NDP should establish whether any of the need identified in this assessment falls within the neighbourhood area and seek appropriate pitches and provision. |

| Plans and Programmes | Type of document | Date | Overview | Key message, target/objective/indicator | SEA topic(s) | Implications for the NDP and SEA |
|--|------------------|------|---|--|---|--|
| Herefordshire Local Biodiversity Action Plan | Evidence | 2007 | Focuses conservation efforts on the areas within Herefordshire that will result in the greatest benefit for ecological networks, habitats and species. | Integrating biodiversity objectives with other environmental, social and economic needs can provide a sustainable living and working environment that benefits both people and nature. | <ul style="list-style-type: none"> Biodiversity | The NDP can help to achieve the priorities set within the LBAP. |
| Building Biodiversity into the LDF | Evidence | 2009 | Provides the Council's Local Plan (Core Strategy) with evidence in respect of biodiversity and geodiversity, identifying both opportunities and constraints across Herefordshire. | The document provides useful information in respect of Hereford and the market towns only. | <ul style="list-style-type: none"> Air Biodiversity Climatic factors Cultural heritage Flora and fauna Material assets Population Soil Water | There is a lack of information about rural areas which means it will be necessary to gather and assess existing biodiversity and geodiversity data, in order to ensure that the Kingstone and Thruxton NDP can overcome any existing constraints and capitalise on opportunities to enhance habitats and their networks. |

| Plans and Programmes | Type of document | Date | Overview | Key message, target/objective/indicator | SEA topic(s) | Implications for the NDP and SEA |
|---|------------------|------|---|---|---|--|
| Urban Fringe Sensitivity Analysis | Evidence | 2010 | Technical Paper which supports the SHLAA by classifying the landscape sensitivity of the urban fringe on the edges of Hereford and the five market towns. | The document provides useful information in respect of Hereford and the market towns only. | <ul style="list-style-type: none"> • Cultural heritage • Flora and fauna | None of merit. |
| Herefordshire Green Infrastructure Strategy | Evidence | 2010 | Develops a framework of natural and culturally important features and functions so that planning for a sustainable future is at the heart of planning within Herefordshire. | Establishes policies and principles for the protection and enhancement of those features and functions that contributes to the environment of Herefordshire across a range of scales. | <ul style="list-style-type: none"> • Air • Biodiversity • Climatic factors • Cultural heritage • Flora and fauna • Material assets • Population • Soil • Water | The study provides evidence that could be taken into account when preparing policies for the Kingstone and Thruxton NDP. |

| Plans and Programmes | Type of document | Date | Overview | Key message, target/objective/indicator | SEA topic(s) | Implications for the NDP and SEA |
|------------------------|------------------|------|---|---|---|--|
| Renewable Energy Study | Evidence | 2010 | Assesses the energy demand within Herefordshire and the ability for the county to accommodate renewable and low carbon energy technologies. | <p>The total energy demand excluding transport for Herefordshire, at that point in time, was calculated as being:</p> <ul style="list-style-type: none"> • Electrical: 731 GWh/yr • Heat: 1,810 GWh/yr • Total: 2,541 GWh/yr <p>There is scope for all types of renewable energy production.</p> | <ul style="list-style-type: none"> • Air • Biodiversity • Climatic factors • Cultural heritage • Flora and fauna • Material assets • Population • Soil • Water | The study provides evidence that could be taken into account when preparing policies for the Kingstone and Thruxton NDP. |

| Plans and Programmes | Type of document | Date | Overview | Key message, target/objective/indicator | SEA topic(s) | Implications for the NDP and SEA |
|--|------------------|------|--|--|---|--|
| Herefordshire Playing Pitch Assessment | Evidence | 2012 | Produces a strategic framework, audit and assessment and needs analysis of outdoor sports pitches and facilities for Herefordshire. The document arises as a result of a recommendation in the Herefordshire and Worcestershire Sports Facilities Framework to develop local standards for playing fields and sports pitches throughout Herefordshire. | <p>The study updates components of the Herefordshire and Worcestershire Sports Facilities Framework 2010 such as updating population forecasts, setting local standards for synthetic turf pitches and grass playing fields within Herefordshire. It identifies any current gaps in provision, and looks forward to 2031 to assess what facilities are likely to be required by that date.</p> <p>In terms of Kingstone itself, the study reveals that there is:</p> <ul style="list-style-type: none"> • 12.44 hectares of playing pitch area • 2.74 (22%) hectares of playing pitch area with secured community access; Kingstone Seven Site Playing Fields. | <ul style="list-style-type: none"> • Biodiversity • Cultural heritage • Flora and fauna • Material assets • Population | The study provides evidence that could be taken into account when preparing policies the Kingstone and Thruxton NDP. |

| Plans and Programmes | Type of document | Date | Overview | Key message, target/objective/indicator | SEA topic(s) | Implications for the NDP and SEA |
|----------------------|------------------|------|--|--|---|--|
| Open Spaces Study | Evidence | 2006 | The 2006 space audit and assessment of need is a snap shot of the quality, quantity and distribution of open space across Herefordshire. | <p>The study reveals that within Valletts Ward, to which Kingstone and Thruxton are a part, there is:</p> <ul style="list-style-type: none"> • Extensive under provision of parks and gardens • Extensive over provision of natural and semi-natural green space • Under provision of amenity green space and outdoor sport • Average provision for children and young people. • Extensive under provision of outdoor sports facilities. <p>In terms of Kingstone and Thruxton, no specific sites are identified.</p> | <ul style="list-style-type: none"> • Biodiversity • Climatic factors • Cultural heritage • Flora and fauna • Material assets • Population | The open space audit and assessment does not give a specific indication of open space shortfalls and surpluses in the Kingstone and Thruxton neighbourhood area. However, there may be a need to include a policy which encourages and facilitates the provision of outdoor recreational facilities. |

| Plans and Programmes | Type of document | Date | Overview | Key message, target/objective/indicator | SEA topic(s) | Implications for the NDP and SEA |
|-----------------------|------------------|------|--|--|---|--|
| Play Facilities Study | Evidence | 2012 | The Play Facilities Study 2012 updates the previous play facilities analysis under the Open Spaces Study 2006 and provides guidance and a framework for the development, delivery and continued sustainability of providing new and improved play facilities for children and young people in Herefordshire to 2031. | In terms of Kingstone and Thruxton, two play areas are identified; Kingstone Cross Fields Play Area and Kingstone Sports Association Play Area. The former is identified as an area in need of refurbishment. | <ul style="list-style-type: none"> • Biodiversity • Climatic factors • Cultural heritage • Flora and fauna • Material assets • Population | The study provides evidence that could be taken into account when preparing policies the Kingstone and Thruxton NDP. |

| Plans and Programmes | Type of document | Date | Overview | Key message, target/objective/indicator | SEA topic(s) | Implications for the NDP and SEA |
|--|------------------|------|--|--|--|--|
| Strategic Flood Risk Assessment (SFRA) and Water Cycle Study | Evidence | 2009 | <p>The Strategic Flood Risk Assessment (SFRA) provides a summary of flood risk in Herefordshire to inform the location of future development.</p> <p>The Water Cycle Study (WCS) examines how water resources and water supply infrastructure, wastewater treatment, water quality, sewerage and flood risk could constrain growth across Herefordshire.</p> | <p>The neighbourhood area is situated in the River Wye catchment.</p> <p>Sub-catchments within this zone are one of the most rapid response flood warning systems in the SFRA area.</p> <p>Sub-catchments within this zone record a standard percentage run off of 35-40%, which is potentially highly unsuitable for infiltration source control.</p> <p>The area has a very slow flood response (Tp-time to peak) time at around 11 hours.</p> <p>The WCS identifies 30 sites in the River Wye catchment where current discharge consent licences cannot be shown to have no adverse effect.</p> | <ul style="list-style-type: none"> • Biodiversity • Climatic factors • Material assets • Population • Water | <p>New development proposed through the Kingstone and Thruxton NDP should be assessed against the capacity of local infrastructure.</p> <p>Up-to-date flood risk information should be gathered from the Environment Agency, in order to ensure that any flood risks are considered when preparing the Kingstone and Thruxton NDP.</p> |

Appendix A2 – Baseline information for Kingstone and Thruxton

N.B. This is based on countywide baseline information with some additions relevant to Kingstone and Thruxton (in red). Where no locally specific data is available for current status, trends and targets, only countywide data is reported. Any gaps in data may be filled following additional research.

| SA Objective ¹ | SA Theme | Proposed indicator | Current status | Trends | Targets | Issues and constraints | Baseline (information) source |
|--|---------------------|--|--|--------|------------------------------------|---|-------------------------------|
| SEA Topic covered by objective: <i>Biodiversity, flora and fauna</i> | | | | | | | |
| 13. Value, maintain, restore and expand county biodiversity. | Natural environment | Net change in condition of SSSIs across Herefordshire. | There are no SSSIs within the Neighbourhood Area. | N/A | N/A | N/A | N/A |
| 13. Value, maintain, restore or expand county biodiversity. | Natural environment | After use of mineral sites especially wildlife habitat creation. | <i>There is no countywide or locally specific data available at present.</i> | - | Percentage of opportunities taken. | Should be monitored through AMR following the adoption of the Core Strategy, in line with SA recommendations. | - |

¹ Derived from the Pre Submission Core Strategy Sustainability Appraisal Assessment (May 2014)

| SA Objective ¹ | SA Theme | Proposed indicator | Current status | Trends | Targets | Issues and constraints | Baseline (information) source |
|---|---------------------|---|---|---|---|---|---------------------------------|
| 13. Value, maintain, restore or expand county biodiversity. | Natural environment | Phosphate levels within the River Wye SAC and adjoining tributaries that receive increased phosphates from proportional growth. | The existing status of the Wye SAC between the Hay and Lugg confluence is currently meeting its phosphate and conservation targets. | The River Wye SAC was subject to a review of consents in 2010, as a number of sections of the river were found to have greater phosphate levels than those identified in Natural England's favourable condition tables. | The roll out of the Nutrient Management Plan will determine future targets. | New development within the area could lead to the water quality failing the phosphate levels and conservation objectives. | Nutrient Management Plan (2014) |

| SA Objective ¹ | SA Theme | Proposed indicator | Current status | Trends | Targets | Issues and constraints | Baseline (information) source |
|---|---------------------|---|--|--|--|--|--|
| 13. Value, maintain, restore or expand county biodiversity. | Natural environment | Changes to protected habitats and impacts of species within the Herefordshire Local Biodiversity Action Plan. | <p>The 2011-2013 AMR does not contain updated conservation data.</p> <p><i>There is no locally specific data available at present.</i></p> | <p>2010/11: 17 Habitat Action Plans and 14 Species Action Plans are currently in operation across Herefordshire.</p> <p>There are no formal records of any unacceptable adverse impacts on habitats or protected species.</p> <p>Originally 156 Priority Species were identified for inclusion in Herefordshire's LBAP.</p> <p>Similarly Herefordshire's LBAP covered 23 habitats with Action Plans.</p> | <p>To protect or enhance the habitats of species identified.</p> <p>Zero net loss of habitats.</p> | <p>Herefordshire Biological Records Centre (HBRC) holds limited data on some individual sites.</p> | <p>NE & Defra website (searched July 2014)</p> |

This document is copyright of Herefordshire Council. Please contact the Neighbourhood Planning team if you wish to reuse it in whole or part.

| SA Objective ¹ | SA Theme | Proposed indicator | Current status | Trends | Targets | Issues and constraints | Baseline (information) source |
|---|---------------------|---|--|---|---|---|--|
| 13. Value, maintain, restore or expand county biodiversity. | Natural environment | Changes in the areas of designated nature conservation sites as a consequence of planning permission. | Kingstone has: SWS: 19 ² SSSI: 2 There are no SINCl, NNRs, and LNRs within the parish. | As of 2012, there had been no change in the areas of designated nature conservation sites as a consequence of the planning permissions granted. | To capitalise on opportunities to protect or enhance the areas of value to nature conservation. | Should be monitored through AMR following the adoption of the Core Strategy, in line with SA recommendations. | NDP SEA/HRA Screening Notification Report (July 2014) |
| 13. Value, maintain, restore or expand county biodiversity. | Natural environment | Proportion of local sites where positive conservation management has or is being implemented. | The neighbourhood area comprises the following types of landscapes: • Riverside meadows • Principal settled farmlands. | - | No specific targets identified. | Should be monitored through AMR following the adoption of the Core Strategy, in line with SA recommendations. | Herefordshire Landscape Character Assessment (2004; updated 2009). |

² View SEA/HRA Screening Notification Report for further details.

| SA Objective ¹ | SA Theme | Proposed indicator | Current status | Trends | Targets | Issues and constraints | Baseline (information) source |
|---|---|---|--|--------|--|---|--|
| SEA Topic covered by objectives: <i>Material assets</i> | | | | | | | |
| 14. Use natural resources and energy more efficiently. | Resource consumption and climate change | Maintaining Herefordshire Council's County Site and Monuments Register. | Countywide data would be too large to incorporate into this template. Whilst there is no locally specific data available at present, there are numerous archaeological and historic sites in Kingstone according to the latest version of the register. | - | No specific targets identified, but need to ensure that the register is kept up to date. | Should be monitored through AMR following the adoption of the Core Strategy, in line with SA recommendations. | Herefordshire Environmental Records Register (searched July 2014). |

| SA Objective ¹ | SA Theme | Proposed indicator | Current status | Trends | Targets | Issues and constraints | Baseline (information) source |
|---|---|--|--|--------|---------------------------------|---|-------------------------------|
| 14. Use natural resources and energy more efficiently. | Resource consumption and climate change | Monitoring changes to historic landscapes. | <p><i>Rapid townscape Assessments (2010) were only undertaken for Hereford, Ledbury and Ross.</i></p> <p><i>Urban Fringe Sensitivity Analysis (2010) only considers sites on the urban fringe of Hereford and the five market towns.</i></p> | - | No specific targets identified. | Should be monitored through AMR following the adoption of the Core Strategy, in line with SA recommendations | - |
| SEA Topic covered by objective: <i>Population, Biodiversity, Flora and Fauna</i> | | | | | | | |
| 15. Value, protect, enhance or restore the landscape quality of Herefordshire, including its rural areas and open spaces. | Natural environment | Number of developments meeting and surpassing national design standards. | <i>There is no countywide or locally specific data available at present.</i> | - | No specific targets identified. | Should be monitored through AMR following the adoption of the Core Strategy, in line with SA recommendations. | - |

| SA Objective ¹ | SA Theme | Proposed indicator | Current status | Trends | Targets | Issues and constraints | Baseline (information) source |
|---|---------------------|---|--|--------|---------|------------------------|-------------------------------|
| 15. Value, protect, enhance or restore the landscape quality of Herefordshire, including its rural areas and open spaces. | Natural environment | The need for, frequency and outcomes of planning enforcement investigations/ planning appeals concerning the aspects of local loss of locally important buildings within a conservation area. | There are no conservation areas within the neighbourhood area. | N/A | N/A | N/A | N/A |

| SA Objective ¹ | SA Theme | Proposed indicator | Current status | Trends | Targets | Issues and constraints | Baseline (information) source |
|---|--|------------------------------|--|---|--|---|-------------------------------|
| SEA Topic covered by objective: <i>Climatic Factors</i> | | | | | | | |
| 16. Reduce Herefordshire's vulnerability to the impacts of climate change as well as its contribution to the problem. | Resource consumption and climate change. | Transport patronage by mode. | % of Herefordshire residents who travel to work by: Car: 70.1% Foot: 14.7% Bicycle: 4.3% Bus: 2% Train: 0.8% Motorbike: 0.8% Taxi: 0.3% Other: 7% <i>There is no locally specific data available at present</i> | The number of people cycling or travelling by bus as the main form transport to get to work declined between 2001 and 2011 – across England and Wales there was little change in either. Walking or driving a car or van on the other hand increased. | To encourage the take up of less polluting forms of transport. | There are a lack of transport options for many rural communities and therefore high car ownership and dependency – the last decade has seen a 15 per cent increase in household car ownership, although this is not reflected in traffic flows of recent years with volumes in Hereford City and wider county having decreased. The proportion of people working from home increased over the decade from 15 per cent in 2001 to 17 per cent in 2011. | 2011 Census |

| SA Objective ¹ | SA Theme | Proposed indicator | Current status | Trends | Targets | Issues and constraints | Baseline (information) source |
|---|--|--|--|--------|--|---|-------------------------------|
| 16. Reduce Herefordshire's vulnerability to the impacts of climate change as well as its contribution to the problem. | Resource consumption and climate change. | Number of decentralised energy schemes granted permission. | <i>There is no countywide or locally specific data available at present.</i> | - | To contribute towards the national target. | Should be monitored through AMR following the adoption of the Core Strategy, in line with SA recommendations. | - |

| SA Objective ¹ | SA Theme | Proposed indicator | Current status | Trends | Targets | Issues and constraints | Baseline (information) source |
|---|----------------------------------|--------------------------------|---|---|---|--|--|
| 16. Reduce Herefordshire's vulnerability to the impacts of climate change as well as its contribution to the problem. | Resource consumption and climate | Total CO2 emissions per capita | <p>Latest figure dates back to 2010: 1.61 million tonnes (mtCO²)</p> <p><i>There is no locally specific data available at present.</i></p> | <p>Between 2005 and 2010 Herefordshire's total and per capita carbon emission reduced by 7% and 8% respectively; while UK's total and per capita carbon emission reduced by 8% and 12% respectively within the same period. This trend hides an increase in emissions between 2009 and 2010 when total emissions in the county increased by 5% the same as across the UK (+5%).</p> | To reduce the overall carbon emissions. | CO ² emissions produced are decreasing. | Understanding Herefordshire: An integrated needs assessment (June 2013). |

| SA Objective ¹ | SA Theme | Proposed indicator | Current status | Trends | Targets | Issues and constraints | Baseline (information) source |
|---|---------------------|---|--|--|--|---|--|
| SEA Topic covered by objective: <i>Water</i> | | | | | | | |
| 17. Reduce the risk of flooding and the resulting detriment to public wellbeing, the economy and the environment. | Natural environment | Number of planning permissions granted contrary to the advice of the Environment Agency on flood defence grounds. | The 2011-2013 AMR does not contain updated conservation data. <i>There is no locally specific data available at present.</i> | 2010/11: None There have been no approvals contrary to EA advice since reporting began in 2004. | To have no applications permitted contrary to EA advice. | Should be monitored through AMR following the adoption of the Core Strategy, in line with SA recommendations. | - |
| SEA Topic covered by objective: <i>Water, air, soil, material assets</i> | | | | | | | |
| 18. Minimise local and global pollution and protect or enhance environmental resources. | Natural environment | Agricultural land usage by quality | <i>There is no countywide data available at present.</i> 2011: The majority of land within the neighbourhood area was listed Grade 2 (Good) or Grade 3 (Good to Moderate) for its agricultural quality. | - | Measure the number of habitats of best and most versatile soil lost through development. | Should be monitored through AMR following the adoption of the Core Strategy, in line with SA recommendations. | West Midland ALC Map (Natural England 2011). |

| SA Objective ¹ | SA Theme | Proposed indicator | Current status | Trends | Targets | Issues and constraints | Baseline (information) source |
|---|---------------------|--|---|---|--|--|--|
| 18. Minimise local and global pollution and protect or enhance environmental resources. | Natural environment | Percentage of river length assessed as good or very good chemical quality and ecological quality as required by the Water Framework Directive. | Latest figure dates back to 2005: 84% <i>There is no locally specific data available at present.</i> | Figure steadily improved before going into decline: Herefordshire 1999 85.9%, 2000 89.5%, 2001 92.2%, 2002 91.8% | To ensure that rivers meet their conservation objectives and do not fall below the required standard of quality. | None identified. | The State of Herefordshire Report (2007) Water Framework Directive (2000) |
| SEA Topic covered by objective: <i>Soil</i> | | | | | | | |
| 19. Ensure integrated, efficient and balanced land use. | Built environment | Percentage of all new development completed on previously developed land. | 2011/13: 57% <i>There is no locally specific data available at present.</i> | 2010/11: 67% Completions on PDL had risen to 71% by 2005. | To increase the number of homes built on PDL in line with the provisions of national planning policy. | The number of brownfield completions has fallen slightly in recent years, though this is probably the offshoot of tough market conditions. | Herefordshire Council AMR (2011/13) |
| 19. Ensure integrated, efficient and balanced land use. | Built environment | Housing densities in urban and rural areas | <i>There is no countywide or locally specific data available at present.</i> | - | No specific targets identified. | Should be monitored through AMR following the adoption of the Core Strategy, in line with SA recommendations. | - |

| SA Objective ¹ | SA Theme | Proposed indicator | Current status | Trends | Targets | Issues and constraints | Baseline (information) source |
|---|-------------------|---|---|--|---|---|---|
| 19. Ensure integrated, efficient and balanced land use. | Built environment | Level of development in urban areas compared to rural. | <i>There is no countywide or locally specific data available at present.</i> | - | No specific targets identified. | Should be monitored through AMR following the adoption of the Core Strategy, in line with SA recommendations. | - |
| SEA Topic covered by objective: <i>Cultural heritage</i> | | | | | | | |
| 20. Value, protect or enhance the character and built quality of settlements and neighbourhoods and the county's heritage assets, historic environment and cultural heritage. | Built environment | Number and percentage of listed buildings and Scheduled Ancient Monuments on Buildings at Risk Register (English Heritage). | The 2011-2013 AMR does not contain updated conservation data. There are numerous listed buildings within the parish and 3 SAMs, none of which are currently recorded in the Buildings at Risk Register. | In 2011, there were 58 heritage assets in Herefordshire that were considered to be at high risk and included in the Heritage at Risk Register. | To maintain or enhance current status. | None of the incumbent listed buildings or SAMs are considered to be at risk at present. | Buildings at Risk Register (English Heritage; searched July 2014) |

| SA Objective ¹ | SA Theme | Proposed indicator | Current status | Trends | Targets | Issues and constraints | Baseline (information) source |
|---|-------------------|---|--|--------|---------|------------------------|-------------------------------|
| 20. Value, protect or enhance the character and built quality of settlements and neighbourhoods and the county's heritage assets, historic environment and cultural heritage. | Built environment | The need for, frequency and outcomes of planning enforcement investigations/ planning appeals concerning the aspects of local loss of heritage assets, locally important buildings across the Parish and particularly within a conservation area. | There are no conservation areas within the neighbourhood area. | N/A | N/A | N/A | N/A |

Appendix A3 – Environmental issues identified from the Kingstone and Thrupton baseline

These environmental issues are the same as most of those identified for the Herefordshire Core Strategy¹

| SEA Topic | | Environmental issue | SA objectives |
|-----------|-------------------|---|--------------------|
| 1 | Air | High reliance upon the private car causing high levels of air pollution and in Hereford in particular | Objective 16 |
| | | Need to reduce carbon emissions by encouraging less polluting forms of transport. | |
| 2 | Biodiversity | Habitats and species of national, regional and local importance are under pressure from the adaptation and diversification of farming and forestry employment. | Objectives 13 &15 |
| | | Habitats and species of national, regional and local importance are under pressure from development | |
| | | Minimise loss of biodiversity and expand opportunities for wildlife everywhere. | |
| 3 | Climatic factors | Reduce greenhouse gas emissions through planning, design and build. | Objective 16 |
| 4 | Cultural heritage | Kingstone and Thrupton have several Scheduled Ancient Monuments and Listed Buildings, all of which require ongoing protection and many in need of high levels of maintenance. | Objective 20 |
| 5 | Flora and fauna | Conserve and enhance the character and quality of historic landscapes, including all types of natural flora and fauna. | Objective 15 |
| 6 | Material assets | How the countryside can continue to be managed in an economically, socially and environmentally beneficial way in the face of continuing pressures on traditional farming. | Objectives 14 & 18 |
| 7 | Population | Minimise energy waste through good designs, which help to reduce energy consumption and maximise efficiency. | Objective 15 |
| | | Need to avoid enforcement investigations/action concerning locally important buildings and those within conservation areas in particular. | |
| 8 | Soil | Promoting development of previously developed land and buildings as opposed to greenfield sites or agricultural land of the highest quality. | Objectives 18 & 19 |
| 9 | Water | Issues relating to availability of resources, foul drainage, pollution, and abstraction in a county which supports water dependent biodiversity of international and national importance, given the predicted climate change consequences for water availability and demanding projections for new housing. | Objectives 17 & 18 |

¹ Derived from the Pre Submission Core Strategy Sustainability Appraisal Assessment (May 2014) and LDF General Scoping Report (June 2007)

| | | |
|--|--|--|
| | Steady decline in the chemical quality of rivers over the last 10 years. | |
|--|--|--|

Appendix A4 – SEA framework (objectives, indicators and targets)

| SEA Topic(s) | SEA Objective(s) | SA Objective(s) | Sub-objectives/Appraisal Questions | Indicators | Targets |
|-------------------------------|---|--|---|---|---|
| Air | <ul style="list-style-type: none"> To improve air quality. To reduce the effect of traffic on the environment | <ul style="list-style-type: none"> Minimise local and global pollution and protect or enhance environmental resources. | <ul style="list-style-type: none"> Minimise water, air, soil, groundwater, noise and light pollution from current activities and the potential for such pollution. Protect and enhance the quality of watercourses. Provide opportunities to improve soil quality or reduce contaminated land. | Transport patronage by mode. | To encourage the take up of less polluting forms of transport. |
| Biodiversity, Flora and fauna | <ul style="list-style-type: none"> To maintain or enhance nature conservation (biodiversity, flora and fauna) | <ul style="list-style-type: none"> Value, maintain, restore or expand county biodiversity. Value, protect, enhance or restore the landscape quality of Herefordshire, including its rural areas and open spaces. | <ul style="list-style-type: none"> Protect or enhance habitats of international, national, regional or local importance. Protect international, national, regional or locally important terrestrial or aquatic species. Maintain wildlife corridors and minimise fragmentation of ecological areas and green spaces. | Net change in condition of SSSIs across Herefordshire. | N/A |
| | | | | After use of mineral sites especially wildlife habitat creation. | Percentage of opportunities taken. |
| | | | | Phosphate levels within the River Wye SAC and adjoining tributaries that receive increased phosphates from proportional growth. | The roll out of the Nutrient Management Plan will determine future targets. |

| SEA Topic(s) | SEA Objective(s) | SA Objective(s) | Sub-objectives/Appraisal Questions | Indicators | Targets |
|--------------|------------------|-----------------|--|---|---|
| | | | <ul style="list-style-type: none"> • Manage access to sites in a sustainable way that protects or enhances their nature conservation value. • Create new appropriate habitats. • Value, enhance and protect natural environmental assets including AONB's, historic landscapes, open spaces, parks and gardens and their settings • Encourage local stewardship of local environments, for example by promoting best practices in agricultural management. • Ensure that environmental impacts caused by mineral operations and the transport of minerals are minimised. • Promote the use of rural areas and open space by all, encourage easy non-car based access, and accommodate the needs of disabled users. | Changes to protected habitats and impacts of species within the Herefordshire Local Biodiversity Action Plan. | To protect or enhance the habitats of species identified. Zero net loss of habitats. |
| | | | | Changes in the areas of designated nature conservation sites as a consequence of planning permission. | To capitalise on opportunities to enhance the areas of value to nature conservation. |
| | | | | Proportion of local sites where positive conservation management has or is being implemented. | The number of local sites under positive conservation management (Increase). |

| SEA Topic(s) | SEA Objective(s) | SA Objective(s) | Sub-objectives/Appraisal Questions | Indicators | Targets |
|------------------|--|---|---|--|--|
| Climatic factors | <ul style="list-style-type: none"> To reduce contributions to climate change To reduce vulnerability to climate change | <ul style="list-style-type: none"> Reduce Herefordshire's vulnerability to the impacts of climate change as well as its contribution to the problem. | <ul style="list-style-type: none"> Reduce the county's contribution to climate change by reducing greenhouse gas emissions from transport, domestic, commercial and industrial sources. Increase the proportion of energy generated from renewable and low carbon sources including by micro-generation, Combined Heat and Power (CHP), district heating and in transportation. | Number of decentralised energy schemes granted permission. | To contribute towards the national target. |
| | | | | Total CO2 emissions per capita. | To reduce the overall carbon emissions. |

| SEA Topic(s) | SEA Objective(s) | SA Objective(s) | Sub-objectives/Appraisal Questions | Indicators | Targets |
|-------------------|---|---|--|---|--|
| Cultural heritage | <ul style="list-style-type: none"> To conserve or enhance the historic environment, heritage assets and cultural heritage. | <ul style="list-style-type: none"> Value, protect or enhance the character and built quality of settlements and neighbourhoods and the county's heritage assets, historic environment and cultural heritage. | <ul style="list-style-type: none"> Preserve, protect and enhance Conservation Areas, Listed Buildings, archaeological remains, and other features and areas of historical heritage and cultural value e.g. locally listed buildings. Prevent development which is inappropriate in scale, form or design to its setting or to its function or local area. Encourage development that creates and sustains well-designed, high quality built environments that incorporate green space, encourage biodiversity and promote local distinctiveness and sense of place. Encourage cleanliness and/or improve the general appearance of the area. | Number and percentage of listed buildings and Scheduled Ancient Monuments on Buildings at Risk Register (English Heritage). | To maintain or enhance current status in Kingstone and Thruxton. |
| | | | | The need for, frequency and outcomes of planning enforcement investigations/ planning appeals concerning the aspects of local loss of heritage assets, locally important buildings across the Parish and particularly within a conservation area. | N/A |

| SEA Topic(s) | SEA Objective(s) | SA Objective(s) | Sub-objectives/Appraisal Questions | Indicators | Targets |
|------------------------------|--|---|--|---|--|
| Material assets Landscape | <ul style="list-style-type: none"> To conserve natural and man-made resources. To improve the quality of surroundings To maintain or enhance the quality of landscapes and townscapes | <ul style="list-style-type: none"> Use natural resources and energy more efficiently. Minimise local and global pollution and protect or enhance environmental resources. | <ul style="list-style-type: none"> Maximise energy efficiency and minimise the consumption of non-renewable energy i.e. from fossil fuels. Minimise the consumption of water, land, soil, minerals, aggregates and other raw materials by all? E.g. through integrated transport, sustainable resource-efficient design, local sourcing of food, goods, materials. Encourage the re-use/enhancement (to high standards of sustainable resource-efficient design) of existing buildings and minimise the need for new build. Encourage the use of clean technologies and water minimisation techniques. | Maintaining Herefordshire Council's County Site and Monuments Register. | No specific targets identified, but need to ensure that the register is kept up to date. |
| | | | | Monitoring changes to historic landscapes. | No specific targets identified. |
| | | | | Agricultural land usage by quality | Measure the number of hectares of best and most versatile soil lost through development. |

| SEA Topic(s) | SEA Objective(s) | SA Objective(s) | Sub-objectives/Appraisal Questions | Indicators | Targets |
|--------------|---|--|---|---|---------------------------------|
| Population | <ul style="list-style-type: none"> To improve the health and well-being of the population. | <ul style="list-style-type: none"> Value, protect, enhance and restore the landscape quality of Herefordshire, including its rural areas and open spaces. | <ul style="list-style-type: none"> Value, enhance and protect natural environmental assets including AONB's, historic landscapes, open spaces, parks and gardens and their settings. Encourage local stewardship of local environments, for example by promoting best practices in agricultural management. Ensure that environmental impacts caused by mineral operations and the transport of minerals are minimised. Promote the use of rural areas and open space by all, encourage easy non-car based access, and accommodate the needs of disabled users. | Number of developments meeting and surpassing national design | No specific targets identified. |
| | | | | The need for, frequency and outcomes of planning enforcement investigations/ planning appeals concerning the aspects of local loss of locally important buildings within a conservation area. | N/A |

| SEA Topic(s) | SEA Objective(s) | SA Objective(s) | Sub-objectives/Appraisal Questions | Indicators | Targets |
|--------------|--|--|---|---|---|
| Soil | <ul style="list-style-type: none"> To conserve soil resources and quality | <ul style="list-style-type: none"> Minimise local and global pollution and protect or enhance environmental resources. Ensure integrated, efficient and balanced land use. | <ul style="list-style-type: none"> Minimise water, air, soil, groundwater, noise and light pollution from current activities and the potential for such pollution. Provide opportunities to improve soil quality or reduce contaminated land. Ensure new developments are in appropriate locations, optimising the use of previously developed land and buildings, primarily focussed on the urban areas and are accessible by walking, cycling or sustainable transport and/or will increase the share of these transport modes, thereby reducing the need to travel. | Percentage of all new development completed on previously developed land. | To increase the number of homes built on PDL in line with the provisions of national planning policy. |
| | | | | Housing densities in urban and rural areas. | No specific targets identified. |

| SEA Topic(s) | SEA Objective(s) | SA Objective(s) | Sub-objectives/Appraisal Questions | Indicators | Targets |
|--------------|--|---|--|---|---|
| Water | <ul style="list-style-type: none"> To improve water quality To provide for sustainable sources of water supply To reduce, avoid and manage flood risk | <ul style="list-style-type: none"> Reduce the risk of flooding and the resulting detriment to public well-being, the economy and the environment. Minimise local and global pollution and protect or enhance environmental resources. | <ul style="list-style-type: none"> Reduce flood risk both presently and taking into account climate change. Prevent inappropriate development of the floodplain, and include flood protection systems. Include sustainable urban drainage systems where appropriate. Minimise water, air, soil, groundwater, noise and light pollution from current activities and the potential for such pollution. Protect and enhance the quality of watercourses. | Number of planning permissions granted contrary to the advice of the Environment Agency on flood defence grounds. | To have no applications permitted contrary to EA advice. |
| | | | | Percentage of river length assessed as good or very good chemical quality and ecological quality. | To ensure that rivers meet their conservation objectives and do not fall below the required standard of quality, as set out in the Water Framework Directive. |

Appendix 3

Date: 19 October 2015
Our ref: 165086
Your ref: Kingstone and Thruxton



Mr J Latham
Herefordshire Council
Planning Services,
Blueschool House,
Blueschool Street
Hereford,
HR1 2ZB

Customer Services
Hornbeam House
Crewe Business Park
Electra Way
Crewe
Cheshire
CW1 6GJ

T 0300 060 3900

BY EMAIL ONLY

Dear Mr Latham

Re: Kingstone and Thruxton Neighbourhood Development Plan SEA and HRA

Thank you for your consultation on the above dated and received by Natural England on 31 August 2015.

Natural England is a non-departmental public body. Our statutory purpose is to ensure that the natural environment is conserved, enhanced, and managed for the benefit of present and future generations, thereby contributing to sustainable development.

THE CONSERVATION OF HABITATS AND SPECIES REGULATIONS 2010 (AS AMENDED) (HABITATS REGULATIONS)

Habitats Regulations Assessment (HRA) Report

The draft Local Plan has not yet been adopted and both it, and its HRA, are therefore potentially subject to further changes until it is adopted. Given this, relying on the draft Local Plan and its HRA to avoid or mitigate for any potential impacts arising from the Neighbourhood Development Plan (NDP) is not considered sufficient at this stage. The NDP's HRA may, of course, rely on the evidence supporting the Local Plan's HRA to draw conclusions as to whether the policies in the plan will have significant effects on the River Wye SAC, and incorporate mitigation measures as necessary.

Natural England agrees with the conclusion that subject to policies KTH1 (Housing Development Building and Phasing) and KTE1 (Proposals for New Employment) in the Kingstone and Thruxton NDP being strengthened with appropriate safeguarding criteria, it can be concluded that likely significant effects can be avoided on the River Wye SAC, and therefore enable the NDP to progress in advance of the Core Strategy.

Draft Kingstone and Thruxton Environment Report

Natural England welcomes the production of an Environmental Report. Having reviewed the report Natural England confirms that it meets the requirements of the Strategic Environmental Assessment (SEA) European Directive and national regulations, and that we concur with its conclusions.



We would be happy to comment further should the need arise but if in the meantime you have any queries please do not hesitate to contact us.

For any queries relating to the specific advice in this letter only please contact Gillian Driver on 0300 060 4335. For any new consultations, or to provide further information on this consultation please send your correspondences to consultations@naturalengland.org.uk.

We really value your feedback to help us improve the service we offer. We have attached a feedback form to this letter and welcome any comments you might have about our service.

Yours sincerely

Gillian Driver

Miss Gillian Driver
Planning Adviser
South Mercia Team

Appendix 4

| Objectives verses SEA Objectives (SMART and Compatibility Test) | | | |
|---|------------------------------------|-----------------------------------|--|
| SEA Stage B1 | Key: | SMART criteria: | |
| + =/++ | Compatible/ Very comp | S – Specific: | NDP objectives should specify what is intended to be done in detail and should not be open to a wide range of misinterpretations |
| - = | Possible conflict | M – Measurable: | It should be possible to monitor NDP objectives in a quantifiable way, by the use of indicators. Indicators should be measurable with limited resource implications. |
| 0 = | Neutral | A – Attainable/achievable: | NDP objectives should be achievable and deliverable, related to the scale of growth proposed |
| X = | No relationship between objectives | R – Realistic: | NDP objectives should relate to the overall vision of the plan. Likewise, chosen indicators should relate to objectives and their outcomes. |
| ? = | Unclear, more information needed | T – Time-Bound: | Objectives should be specific to the NDP period or another specified time-frame. Objectives should be associated with a target and indicators should specify when the target should be achieved. |

The following matrix appraises the emerging Kingstone and Thrupton Group parish NDP objectives in terms of their SMART criteria and their compatibility with the SEA Objectives. These have been developed from Government guidance on SEA and from the local evidence base gathered for identifying the NDP issues.

SEA Objectives

- 1- To maintain and enhance nature conservation (biodiversity, flora and fauna)
- 2- To maintain and enhance the quality of landscapes and townscapes
- 3- To improve quality of surroundings
- 4- To conserve and where appropriate enhance the historic environment and culture heritage
- 5- To improve air quality
- 6- To reduce the effect of traffic on the environment
- 7- To reduce contributions to climate change
- 8- To reduce vulnerability to climate change
- 9- To improve water quality
- 10- To provide for sustainable sources of water supply
- 11- To avoid, reduce and manage flood risk
- 12- To conserve soil resources and quality
- 13- To minimise the production of waste
- 14- To improve health of the population
- 15- To reduce crime and nuisance
- 16- To conserve natural and manmade resources

| NDP objectives | SEA Objectives | | | | | | | | | | | | | | | | Conclusions | Recommendations | SMART Test of NDP objectives | After SMART objectives |
|--|----------------|---|---|---|---|---|---|---|---|----|----|----|----|----|----|----|---|---|---|--|
| | 1 | 2 | 3 | 4 | 5 | 6 | 7 | 8 | 9 | 10 | 11 | 12 | 13 | 14 | 15 | 16 | | | | |
| General objective 1 | 0 | + | + | + | 0 | 0 | 0 | 0 | ? | + | ? | ? | + | 0 | 0 | 0 | Overall this principle objective meets all the relevant SEA criteria. Impact on flood risk and soil resources will be determined in allocation policies | - | This objective meets all of the SMART criteria except specifying a time frame in which the objective will be achieved; a time frame will strengthen the objective. | The principal objective of the Neighbourhood Development Plan is to ensure that the housing and employment needs of the local community are met in such a way that minimises the impact of development on the rural nature of the Parish. |
| General objective 2 | + | + | + | + | + | + | + | + | + | + | + | + | + | + | + | + | Overall this objective meets all the relevant SEA criteria and moves towards the baseline. | - | This objective relates well to the overall vision and has the ability to be monitored, and it is achievable. The timeframe is not indicated but will be for the lifetime of the plan. | The plan will provide guidance on how such developments can be designed and implemented in accordance with the wishes of the local community and clearly highlight all areas where special consideration needs to be given. |
| Housing objective 1 – Housing development | + | + | + | + | + | + | + | + | + | + | + | + | + | + | + | + | Overall this objective moves towards the relevant SEA criteria. | - | This objective meets all of the SMART criteria, it specifies a time frame in which the objective will be achieved and can be measured | To provide a robust and sound planning framework for the delivery of an appropriate and committed growth of housing development within Kingstone and Thrupton's settlement boundaries. |
| Housing objective 2 – Character and distribution in Kingstone | + | + | + | + | + | + | X | X | + | + | ? | + | + | + | + | + | Overall this objective moves towards the relevant SEA criteria. | - | This objective relates well to the overall vision and has the ability to be monitored, and it is achievable. The timeframe is not indicated but will be for the lifetime of the plan. | To ensure that new housing in the Kingstone Parish, is provided in a suitable range of numbers, tenures, types and sizes in a manner as to promote sustainability for future generations as well as accommodating local people of all ages who wish to continue to live in the area. Reuse of previously developed Brownfield Sites is the preferred option protecting key existing environmental assets such as open green spaces and landscapes. |
| Housing objective 3 – Character and distribution in Thrupton | 0 | + | + | ? | 0 | ? | X | X | X | X | ? | ? | ? | + | + | 0 | Overall this objective has a neutral and positive effect on the SEA baseline. | Further details would be required on the location of any new housing but policy safeguards should be included any policy wording for Thrupton within the plan | This objective relates well to the overall vision and has the ability to be monitored, and it is achievable. The timeframe is not indicated but will be for the lifetime of the plan. | Housing development in the working agricultural hamlet of Thrupton should contribute to the social wellbeing of Thrupton and must not compromise the quiet rural nature of the Parish. |

| | | | | | | | | | | | | | | | | | | | | |
|---|---|---|---|---|---|---|---|---|---|---|---|---|---|---|---|---|---|---|--|---|
| Green spaces objective | + | + | + | + | + | X | + | + | X | X | ? | + | + | 0 | 0 | + | Overall this objective has a neutral and positive effect on the SEA baseline. | - | This objective relates well to the overall vision and has the ability to be monitored, and it is achievable. The timeframe is not indicated but will be for the lifetime of the plan. | To identify and protect both Local Heritage Assets and Green Spaces. |
| Community facilities objective | X | + | + | + | X | X | X | X | X | X | X | X | X | + | + | + | Overall this objective moves towards the relevant SEA criteria. | - | This objective meets all the SMART objectives | The role of the Group Parish will be enhanced and improved by protecting valuable services and facilities. |
| Employment objective | 0 | + | + | X | 0 | 0 | X | X | 0 | 0 | 0 | 0 | 0 | + | + | 0 | Overall this objective has mostly a neutral uncertain effect on the SEA criteria. | - | This objective relates well to the overall vision and has the ability to be monitored, and it is achievable. The timeframe is not indicated but will be for the lifetime of the plan. | To provide a robust and sound planning framework for the delivery of an appropriate growth of work unit development for local employment opportunities within Gooses Foot Industrial Estate. This will be over the plan period. |
| Flooding objective | 0 | + | + | X | X | X | + | + | + | + | + | X | X | 0 | 0 | 0 | Overall this objective has a neutral and positive effect on the SEA baseline. | - | This objective meets all the SMART objectives | To ensure that all planning applications for new buildings and change of use of existing buildings have robust flood and surface water alleviation plans. |
| Developer Contribution objective | ? | ? | ? | ? | ? | ? | ? | ? | ? | ? | ? | ? | ? | ? | ? | ? | Overall this policy has an uncertain impact on the baseline data. This can be assessed on a case by case basis at a later stage of the planning application process, to determine what will the developers contributions will be. | Further details would be required on the location of any new community facilities,. | This objective meets the requirements of the SMART analysis as it is relative to the vision and achievable on the ground. Although this objective does not specifically state a timeframe in which it will be delivered, the objective as a whole is for the plan period and will in fact influence the area beyond the Plan period. | To outline developer's contributions for any new development within our Parish. |

| Objectives verses SEA Objectives (SMART and Compatibility Test) | | | | |
|---|------------------------------------|-----------------------------------|--|---|
| SEA Stage B1 | Key: | SMART criteria: | | |
| + =/++ | Compatible/very comp | S – Specific: | NDP objectives should specify what is intended to be done in detail and should not be open to a wide range of misinterpretations | The following matrix appraises the emerging Kingstone and Thruxton Neighbourhood Plan options and alternatives in terms of their SMART criteria and their compatibility with the SEA Objectives. These have been developed from Government guidance on SEA and from the local evidence base gathered for identifying the NDP issues. |
| - = | Possible conflict | M – Measurable: | It should be possible to monitor NDP objectives in a quantifiable way, by the use of indicators. Indicators should be measurable with limited resource implications. | |
| 0 = | Neutral | A – Attainable/achievable: | NDP objectives should be achievable and deliverable, related to the scale of growth proposed | |
| X = | No relationship between objectives | R – Realistic: | NDP objectives should relate to the overall vision of the plan. Likewise, chosen indicators should relate to objectives and their outcomes. | |
| ? = | Unclear, more information needed | T – Time-Bound: | Objectives should be specific to the NDP period or another specified time-frame. Objectives should be associated with a target and indicators should specify when the target should be achieved. | |

| SEA Objectives | Baseline carried over from Stage A |
|--|---|
| 1- To maintain and enhance nature conservation (biodiversity, flora and fauna) 2- To maintain and enhance the quality of landscapes and townscapes 3- To improve quality of surroundings 4- To conserve and where appropriate enhance the historic environment and culture heritage 5- To improve air quality 6- To reduce the effect of traffic on the environment 7- To reduce contributions to climate change 8- To reduce vulnerability to climate change 9- To improve water quality 10- To provide for sustainable sources of water supply 11- To avoid, reduce and manage flood risk 12- To conserve soil resources and quality 13- To minimise the production of waste 14- To improve health of the population 15- To reduce crime and nuisance 16- To conserve natural and manmade resources | 1-The 2011-2013 AMR does not contain updated conservation data.2010/11: 27% of Herefordshire's SSSI land was in favourable condition. 07/14 – Herefordshire’s SSSIs are in extremely poor condition relative to England as whole, where 96.1% of all SSSI land was in favourable condition in April 2014.The proportion of SSSI in unfavourable condition but recovering is greater than England as a whole, where the figure currently stands at 58.6%.The 2011-2013 AMR does not contain updated conservation data. 2010/11: 17 Habitat Action Plans and 14 Species Action Plans are currently in operation across Herefordshire. Kingstone has: SWS: 19 SSSI: 2. There are no SINClis, NNRs, and LNRs within the parish. 2-There are no outstanding enforcement actions or appeals concerning locally important buildings within at present. Kingstone and Thruxton do not have a conservation area. 3- In terms of Kingstone and Thruxton, two play areas are identified; Kingstone Cross Fields Play Area Kingstone Sports Association Play Area. The former is identified as an area in need of refurbishment. 4- There are numerous listed buildings within the parish and 3 SAMs, none of which are currently recorded in the Buildings at Risk Register. 5-Between 2005 and 2010 Herefordshire’s total and per capita carbon emission reduced by 7% and 8% respectively; while UK’s total and per capita carbon emission reduced by 8% and 12% respectively within the same period. This suggests that air quality is improving. 6-% of Herefordshire residents who travel to work by: Car: 70.1%, Foot: 14.7%,Bicycle: 4.3%,Bus: 2%, Train: 0.8%,Motorbike: 0.8%,Taxi: 0.3%,Other: 7%. 7-Herefordshire latest figure of C02 emissions per capita-dates back to 2010: 1.61 million tonnes (mtCO ²) 8-Reduce the risk of flooding-There have been no approvals contrary to EA advice since reporting began in 2004.The 2011-2013 AMR does not contain updated conservation data. 9-Percentage of river length assessed as good or very good chemical quality and ecological quality as required by the Water Framework Directive. Latest figure dates back to 2005: 84%. 10-Kingstone and Thruxton neighbourhood area is situated in the River Wye catchment and is not in a high risk flooding area.Sub-catchments within this zone are one of the most rapid response flood warning systems in the SFRA area.Sub-catchments within this zone record a standard percentage run off of 35-40%, which is potentially highly unsuitable for infiltration source control. The area has a very slow flood response (Tp-time to peak) time at around 11 hours.The WCS identifies 30 sites in the River Wye catchment where current discharge consent licences cannot be shown to have no adverse effect. 11-Number of planning permissions granted contrary to the advice of the Environment Agency on flood defence grounds. The 2011-2013 AMR does not contain updated conservation data. 12-Around Kingston and Thruxton 2011: The majority of land within the neighbourhood area was listed Grade 2 (Good) or Grade 3 (Good to Moderate) for its agricultural quality.1-The 2011-2013 AMR does not contain updated conservation data.2010/11: 27% of Herefordshire's SSSI land was in favourable condition |

| | |
|--|---|
| | 13.14.15-No baseline data available |
| | 16- There are numerous listed buildings within the parish and 3 SAMs, none of which are currently recorded in the Buildings at Risk Register. |

| NDP Options and alternatives | SEA objectives | | | | | | | | | | | | | | | | Summary in relation to baseline | Overall commentary and any initial cumulative effects/ Recommendations | Conformity with Core Strategy in terms of SEA |
|---|----------------|----|----|----|----|---|----|----|----|----|----|----|----|----|----|----|---|---|--|
| | 1 | 2 | 3 | 4 | 5 | 6 | 7 | 8 | 9 | 10 | 11 | 12 | 13 | 14 | 15 | 16 | | | |
| Baseline | 1 | 2 | 3 | 4 | 5 | 6 | 7 | 8 | 9 | 10 | 11 | 12 | NA | NA | NA | 13 | | | |
| Option 1 Do nothing | X | X | X | X | X | X | X | X | X | X | X | X | | | | X | Do nothing option is essential not to produce a neighbourhood plan and rely on the criteria policies within the Core Strategy to guide further development. Specific policies and proposals for the parishes would not exist. | All developments would need to be in conformity with the Core Strategy. The Core Strategy has been subject to a Sustainability Appraisal and policies met the SEA objectives. | n/a |
| Option 2 Allocate sites for housing | ++ | ++ | ++ | ++ | ++ | + | ++ | ++ | ++ | + | ++ | + | | | | ++ | Allocation of sites for housing or other uses would give certainty to future development. Specific environmental issues could be investigated during the site search and be positively addressed within the policy wording. This option could have a positive effect on the baseline. | Pursuing this option would give greater certainty over future development where proportional growth is expected. If required mitigation criteria can be added to site allocations policies to ensure all SEA objectives are achieved. | This option would meet the Core Strategy requirements in terms of the SEA. |
| Option 3 Manage future housing using a settlement boundary | + | + | + | + | + | + | + | + | + | + | + | + | | | | + | The designation of a settlement boundary will give additional certainty and help define those areas considered as the built form and open countryside. This can aid the direction of further growth to maintain the quality of the landscape and surroundings. There is less certainty over the positive effects on the baseline as any growth with be adjudged by criteria based policy. | Any settlement boundary would need to be designated to ensure that sufficient capacity was included to permit the proportional growth requirements within Policy RA2 of the Core Strategy. Criteria would need to be included within the policy to safeguard against effects on any SEA objectives. | This option would meet the Core Strategy requirements in terms of the SEA. |
| Option 4 Allocate sites and identify a settlement boundary | ++ | ++ | ++ | ++ | ++ | + | ++ | ++ | ++ | + | ++ | + | | | | ++ | Allocation of sites for housing or other uses would give certainty to future development. Specific environmental issues could be investigated during the site search and be positively addressed within the policy wording. The | Pursuing this option would give greater certainty over future development within the area where proportional growth is expected. If | This option would meet the Core Strategy requirements in terms of |

| | | | | | | | | | | | | | | | | | | | |
|---|---|---|---|---|---|---|---|---|---|---|---|---|--|--|--|---|---|---|---|
| | | | | | | | | | | | | | | | | | designation of a settlement boundary will give additional certainty and help define those areas considered as the built form and open countryside This option could have a positive effect on the baseline. | required mitigation criteria can be added to site allocations policies to ensure all SEA objectives are achieved. | the SEA. |
| Option 5 Manage future housing through a development management policy | + | + | + | + | + | + | + | + | + | + | + | + | | | | + | Criteria based policy does not give the same level of certainty as the other options as it will be more reactionary than proactive in terms of growth proposals. However provide criteria is added to the policy to safeguard or mitigate against any harm, the option will have a positive effect on the baseline. | Criteria would need to be included within the policy to safeguard against effects on any SEA objectives. | This option would meet the Core Strategy requirements in terms of the SEA |

| Objectives verses SEA Objectives (SMART and Compatibility Test) | | | | |
|---|------------------------------------|-----------------------------------|--|---|
| SEA Stage B1 | Key: | SMART criteria: | | |
| + =/++ | Compatible/very comp | S – Specific: | NDP objectives should specify what is intended to be done in detail and should not be open to a wide range of misinterpretations | The following matrix appraises the emerging Kingstone and Thruxton group NDP Objectives in terms of their SMART criteria and their compatibility with the SEA Objectives. These have been developed from Government guidance on SEA and from the local evidence base gathered for identifying the NDP issues. |
| - = | Possible conflict | M – Measurable: | It should be possible to monitor NDP objectives in a quantifiable way, by the use of indicators. Indicators should be measurable with limited resource implications. | |
| 0 = | Neutral | A – Attainable/achievable: | NDP objectives should be achievable and deliverable, related to the scale of growth proposed | |
| X = | No relationship between objectives | R – Realistic: | NDP objectives should relate to the overall vision of the plan. Likewise, chosen indicators should relate to objectives and their outcomes. | |
| ? = | Unclear, more information needed | T – Time-Bound: | Objectives should be specific to the NDP period or another specified time-frame. Objectives should be associated with a target and indicators should specify when the target should be achieved. | |

| SEA Objectives | Baseline carried over from Stage A |
|--|---|
| <p>1- To maintain and enhance nature conservation (biodiversity, flora and fauna)</p> <p>2- To maintain and enhance the quality of landscapes and townscapes</p> <p>3- To improve quality of surroundings</p> <p>4- To conserve and where appropriate enhance the historic environment and culture heritage</p> <p>5- To improve air quality</p> <p>6- To reduce the effect of traffic on the environment</p> <p>7- To reduce contributions to climate change</p> <p>8- To reduce vulnerability to climate change</p> <p>9- To improve water quality</p> <p>10- To provide for sustainable sources of water supply</p> <p>11- To avoid, reduce and manage flood risk</p> <p>12- To conserve soil resources and quality</p> <p>13- To minimise the production of waste</p> <p>14- To improve health of the population</p> <p>15- To reduce crime and nuisance</p> <p>16 - To conserve natural and manmade resources</p> | <p>1-The 2011-2013 AMR does not contain updated conservation data.2010/11: 27% of Herefordshire's SSSI land was in favourable condition.</p> <p>07/14 – Herefordshire's SSSIs are in extremely poor condition relative to England as whole, where 96.1% of all SSSI land was in favourable condition in April 2014.The proportion of SSSI in unfavourable condition but recovering is greater than England as a whole, where the figure currently stands at 58.6%.The 2011-2013 AMR does not contain updated conservation data. 2010/11: 17 Habitat Action Plans and 14 Species Action Plans are currently in operation across Herefordshire. Kingstone has: SWS: 19¹ SSSI: 2. There are no SINCl, NNRs, and LNRs within the parish.</p> <p>2-There are no outstanding enforcement actions or appeals concerning locally important buildings within at present. Kingstone and Thruxton do not have a conservation area.</p> <p>3- In terms of Kingstone and Thruxton, two play areas are identified; Kingstone Cross Fields Play Area Kingstone Sports Association Play Area. The former is identified as an area in need of refurbishment.</p> <p>4- There are numerous listed buildings within the parish and 3 SAMs, none of which are currently recorded in the Buildings at Risk Register.</p> <p>5-Between 2005 and 2010 Herefordshire's total and per capita carbon emission reduced by 7% and 8% respectively; while UK's total and per capita carbon emission reduced by 8% and 12% respectively within the same period. This suggests that air quality is improving.</p> <p>6-% of Herefordshire residents who travel to work by: Car: 70.1%, Foot: 14.7%,Bicycle: 4.3%,Bus: 2%, Train: 0.8%,Motorbike: 0.8%,Taxi: 0.3%,Other: 7%.</p> <p>7-Herefordshire latest figure of C02 emissions per capita-dates back to 2010: 1.61 million tonnes (mtCO²)</p> <p>8-Reduce the risk of flooding-There have been no approvals contrary to EA advice since reporting began in 2004.The 2011-2013 AMR does not contain updated conservation data.</p> <p>9-Percentage of river length assessed as good or very good chemical quality and ecological quality as required by the Water Framework Directive. Latest figure dates back to 2005: 84%.</p> <p>10-Kingstone and Thruxton neighbourhood area is situated in the River Wye catchment and is not in a high risk flooding area. Sub-catchments within this zone are one of the most rapid response flood warning systems in the SFRA area. Sub-catchments within this zone record a standard percentage run off of 35-40%, which is potentially highly unsuitable for infiltration source control. The area has a very slow flood response (Tp-time to peak) time at around 11 hours. The WCS identifies 30 sites in the River Wye catchment where current discharge consent licences cannot be shown to have no adverse effect.</p> <p>11-Number of planning permissions granted contrary to the advice of the Environment Agency on flood defence grounds. The 2011-2013 AMR does not contain updated conservation data.</p> <p>12-Around Kingston and Thruxton 2011: The majority of land within the neighbourhood area was listed Grade 2 (Good) or Grade 3 (Good to Moderate) for its agricultural quality.</p> |

View SEA/HRA Screening Notification Report for further details.

| NDP Policies | SEA objectives | | | | | | | | | | | | | | | | Summary in relation to baseline | Overall commentary and any initial cumulative effects/ Recommendations | Conformity with Core Strategy |
|---|----------------|---|---|---|---|---|---|---|---|----|----|----|----|----|----|----|---|--|--|
| | 1 | 2 | 3 | 4 | 5 | 6 | 7 | 8 | 9 | 10 | 11 | 12 | 13 | 14 | 15 | 16 | | | |
| Baseline | 1 | 2 | 3 | 4 | 5 | 6 | 7 | 8 | 9 | 10 | 11 | 12 | 13 | 14 | 15 | 13 | | | |
| Policy KTH1 Housing Development Building and Phasing | O | + | + | + | O | ? | X | + | ? | + | + | + | + | + | + | + | Overall this policy has mainly a positive impact on the baseline data. The only uncertain area is with regards to the impact any development would have on the hydrological catchment of the River Wye SAC | Additional safeguards should be included with regards to the River Wye SAC. Suggest 'Development can only proceed where any adverse effects on the European Site can be avoided or mitigated. Development will only be permitted when it does not compromise the ability of the Nutrient Management Plan to deliver the necessary overall reductions along those stretches of the River Wye SAC which are already exceeding water quality targets or at risk of doing so' is added as a criteria. | With the additional suggested, this policy meets the Core Strategy requirements for the purposes of the SEA. |
| Policy KTH2 Supporting Sustainable Development on Committed Site 1 | + | + | + | + | O | O | + | + | + | + | + | + | + | + | + | + | Overall this policy has mainly a positive impact on the baseline data. This policy reflects an existing development commitment within the settlement of Kingstone | Overall this policy meets the SEA baseline. | This policy meets the Core Strategy requirements for the purposes of the SEA. |
| Policy KTH3 Meeting Local Housing Needs and Providing a Mix of New Housing | X | + | + | X | X | ? | X | X | ? | + | X | X | X | + | + | X | Overall this policy has mainly a positive impact on the baseline data. This policy will not lead to development itself but sets the criteria for providing a range and mix of housing on sites. | Overall this policy meets the SEA baseline. | This policy meets the Core Strategy requirements for the purposes of the SEA. |
| KTH4 Character and Distribution of Housing in Kingstone | + | + | + | + | + | O | + | + | ? | + | + | + | + | + | + | + | Overall this policy has mainly a positive impact on the baseline data. With the addition of the suggested criteria to Policy KTH1 regarding the River Wye SAC and the Nutrient Management Plan this will contain the regarded safeguards. | Overall this policy meets the SEA baseline. | This policy meets the Core Strategy requirements for the purposes of the SEA. |

| | | | | | | | | | | | | | | | | | | | |
|--|---|---|---|---|---|---|---|---|---|---|---|---|---|---|---|---|--|--|---|
| <p>Policy KTH5 Character and Distribution of Housing in Thrupton</p> | O | + | + | + | O | ? | X | + | ? | + | + | + | O | + | + | O | <p>Overall this policy has mainly a positive and neutral impact on the baseline data. It is uncertain if housing production will increase construction traffic and traffic in the short to long term. This can be mitigated through a sustainable transport policy. Concerns regarding water quality can be mitigated by the inclusion of the suggested policy criteria in KTH1.</p> | <p>Overall this policy meets the SEA baseline.</p> | <p>This policy meets the Core Strategy requirements for the purposes of the SEA.</p> |
| <p>Policy KTD1 Protecting Heritage Assets</p> | + | + | + | + | X | X | X | X | X | X | X | + | + | + | + | + | <p>Overall this policy has mainly a positive impact on the baseline data and seeks to conserve heritage assets for the future</p> | <p>Overall this policy meets the SEA baseline.</p> | <p>This policy meets the Core Strategy requirements for the purposes of the SEA.</p> |
| <p>Policy KTD2 Protecting Local Green Spaces</p> | + | + | + | + | + | X | + | + | X | X | + | + | X | + | + | + | <p>Overall this policy has mainly a positive impact on the baseline data is seeks to protect areas of open space which has a positive effect on the character and surrounding of the area, improves health and wellbeing and depending on location can reduce the effects of flooding and climate changes on residential properties</p> | <p>Overall this policy meets the SEA baseline.</p> | <p>This policy meets the Core Strategy requirements for the purposes of the SEA.</p> |
| <p>Policy KTCF1 Provision and Protection of Community Facilities and Services</p> | X | + | + | + | X | + | X | X | X | X | X | + | X | + | + | + | <p>Overall this policy has mainly a positive impact on the baseline data. The policy seeks to retain service and facilities within the village which will help to reduce the need to travel and enhance the surrounds and townscape.</p> | <p>Overall this policy meets the SEA baseline.</p> | <p>This policy meets the Core Strategy requirements for the purposes of the SEA.</p> |
| <p>KTE1 Proposals for New Employment</p> | + | + | + | X | O | O | ? | + | ? | + | + | + | + | + | + | + | <p>Overall this policy has mainly a positive impact on the baseline data. The only uncertain area is with regards to the impact any development would have on the hydrological catchment of the River Wye SAC</p> | <p>Additional safeguards should be included with regards to the River Wye SAC. Suggest 'Development can only proceed where any adverse effects on the European Site can be avoided or mitigated. Development will only be permitted when it does not compromise the ability of the Nutrient Management Plan to deliver the necessary overall reductions along those stretches of the River Wye SAC which are already exceeding water quality targets or at risk of doing so' is added as a criteria.</p> | <p>With the suggested addition, this policy meets the Core Strategy requirements for the purposes of the SEA.</p> |
| <p>KTE2 Protect existing employment</p> | X | + | + | X | + | + | X | X | ? | + | X | + | + | O | O | O | <p>Overall this policy has mainly a positive impact on the baseline data. The only uncertain area is with regards to the impact any development would have on the hydrological catchment of the River Wye SAC</p> | <p>The addition of the suggested additional criteria either within this policy or policy KTE1 would help to safeguard against effects on water quality.</p> | <p>With the suggested addition, this policy meets the Core Strategy requirements for the purposes of the SEA.</p> |
| <p>Policy KTF1 Reducing Flood Risk</p> | + | + | + | + | + | X | + | + | ? | + | + | + | + | + | X | + | <p>Overall this policy has mainly a positive impact on the baseline data as it aims to reduce the risk of flooding within the parish.</p> | <p>Overall this policy meets the SEA baseline.</p> | <p>This policy meets the Core Strategy requirements for the purposes of the SEA.</p> |

Key:

| | | | | | | |
|-------------------------------|---------------------------|-----------------------------|------------------------|-----------|-------------|-------------------|
| ++ Move towards significantly | + Move towards Marginally | - - Move away significantly | - Move away marginally | 0 Neutral | ? Uncertain | X No relationship |
|-------------------------------|---------------------------|-----------------------------|------------------------|-----------|-------------|-------------------|

Policy KTH1 – Housing Development Building and Phasing

| SEA Objective | Assessment of effect (consider cumulative effects, significance of the effect and magnitude of the effect in terms of the three time periods) | | | Summary Explanation | Enhancement and mitigation opportunities |
|---|---|----------------------------|------------------------|--|--|
| | Short term (1 – 5 years) | Medium term (6 – 10 years) | Long term (11 years +) | | |
| To maintain and enhance nature conservation (biodiversity, flora and fauna) | - | 0 | 0 | This Policy is not over and above the Core Strategy. | N/A |
| To maintain and enhance the quality of landscapes and townscapes | 0 | + | + | This Policy is not over and above the Core Strategy. | N/A |
| To improve quality of surroundings | 0 | + | + | This Policy is not over and above the Core Strategy. | N/A |
| To conserve and where appropriate enhance the historic environment and | 0 | + | + | This Policy is not over and above the Core Strategy. | N/A |

| | | | | | |
|--|---|---|---|---|---|
| cultural heritage | | | | | |
| To improve air quality | 0 | 0 | 0 | This Policy is not over and above the Core Strategy. | N/A |
| To reduce the effect of traffic on the environment | ? | ? | ? | This Policy is not over and above the Core Strategy. | N/A |
| To reduce contributions to climate change | x | x | x | - | N/A |
| To reduce vulnerability to climate change | + | + | + | This Policy is not over and above the Core Strategy. | N/A |
| To improve water quality | ? | + | + | The implementation of the Nutrient Management Plan and additional policy criteria will assist this movement in a positive direction | Additional criteria within the policy referencing the NMP |
| To provide for sustainable sources of water supply | + | + | + | Welsh Water have confirmed available water supply during the period | N/A |
| To avoid, reduce and manage flood risk | + | + | + | This Policy is not over and above the Core Strategy. | N/A |
| To conserve soil resources and quality | + | + | + | This Policy is not over and above the Core Strategy. | N/A |
| To minimise the production of waste | 0 | + | + | This Policy is not over and above the Core Strategy. | N/A |
| To improve health of the | 0 | + | + | This Policy is not over and above | N/A |

| | | | | | |
|--|--|---|---|--|-----|
| population | | | | the Core Strategy. | |
| To reduce crime and nuisance | 0 | + | + | This Policy is not over and above the Core Strategy. | N/A |
| To conserve natural and manmade resources | + | + | + | This Policy is not over and above the Core Strategy. | N/A |
| Overall commentary and any cumulative effects | Overall this Policy is not over and above the Core Strategy and the policy moves towards the relevant SEA objectives. The implementation of the Nutrient Management Plan and additional policy criteria will provide additional safeguards | | | | |

Policy KTH2 – Supporting Sustainable Development on Committed Site 1

| SEA Objective | Assessment of effect (consider cumulative effects, significance of the effect and magnitude of the effect in terms of the three time periods) | | | Summary Explanation | Enhancement and mitigation opportunities |
|---|---|----------------------------|------------------------|---|--|
| | Short term (1 – 5 years) | Medium term (6 – 10 years) | Long term (11 years +) | | |
| To maintain and enhance nature conservation (biodiversity, flora and fauna) | 0 | + | + | This Policy is reflecting a current commitment. | N/A |
| To maintain and enhance the quality of landscapes and townscapes | 0 | + | ++ | This Policy is reflecting a current commitment. | N/A |

| | | | | | |
|--|---|---|---|---|-----|
| To improve quality of surroundings | + | + | + | This Policy is reflecting a current commitment. | N/A |
| To conserve and where appropriate enhance the historic environment and cultural heritage | + | + | + | This Policy is reflecting a current commitment. | N/A |
| To improve air quality | o | o | o | This Policy is reflecting a current commitment. | N/A |
| To reduce the effect of traffic on the environment | ? | + | + | This Policy is reflecting a current commitment. | N/A |
| To reduce contributions to climate change | ? | + | + | This Policy is reflecting a current commitment. | N/A |
| To reduce vulnerability to climate change | ? | + | + | This Policy is reflecting a current commitment. | N/A |
| To improve water quality | o | + | + | This Policy is reflecting a current commitment. | N/A |
| To provide for sustainable sources of water supply | + | + | + | This Policy is reflecting a current commitment. | N/A |
| To avoid, reduce and manage flood risk | + | + | + | This Policy is reflecting a current commitment. | N/A |
| To conserve soil resources and quality | + | + | + | This Policy is reflecting a current commitment. | N/A |
| To minimise the production of waste | - | o | + | This Policy is reflecting a current | N/A |

| | | | | | |
|--|--|---|---|---|-----|
| | | | | commitment. | |
| To improve health of the population | + | + | + | This Policy is reflecting a current commitment. | N/A |
| To reduce crime and nuisance | + | + | + | This Policy is reflecting a current commitment. | N/A |
| To conserve natural and manmade resources | + | + | + | This Policy is reflecting a current commitment. | N/A |
| Overall commentary and any cumulative effects | This policy reflects the current commitment for development of the site to the south of the B4349. | | | | |

Policy KTH3 - Meeting Local Housing Needs and Providing a Mix of New Housing

| SEA Objective | Assessment of effect (consider cumulative effects, significance of the effect and magnitude of the effect in terms of the three time periods) | | | Summary Explanation | Enhancement and mitigation opportunities |
|---|---|----------------------------|------------------------|---|--|
| | Short term (1 – 5 years) | Medium term (6 – 10 years) | Long term (11 years +) | | |
| To maintain and enhance nature conservation (biodiversity, flora and fauna) | x | x | x | This Policy does not lead to development but is a criteria policy to guide the range and mix of housing | |

| | | | | | |
|--|---|---|---|---|--|
| To maintain and enhance the quality of landscapes and townscapes | o | + | + | This Policy does not lead to development but is a criteria policy to guide the range and mix of housing | |
| To improve quality of surroundings | o | + | + | This Policy does not lead to development but is a criteria policy to guide the range and mix of housing | |
| To conserve and where appropriate enhance the historic environment and cultural heritage | x | x | x | This Policy does not lead to development but is a criteria policy to guide the range and mix of housing | |
| To improve air quality | x | x | x | This Policy does not lead to development but is a criteria policy to guide the range and mix of housing | |
| To reduce the effect of traffic on the environment | ? | ? | ? | This Policy does not lead to development but is a criteria policy to guide the range and mix of housing | |
| To reduce contributions to climate change | x | x | x | This Policy does not lead to development but is a criteria policy to guide the range and mix of housing | |
| To reduce vulnerability to climate change | x | x | x | This Policy does not lead to development but is a criteria policy to guide the range and mix of housing | |

| | | | | | |
|--|---|---|---|---|--|
| | | | | housing | |
| To improve water quality | ? | ? | ? | This Policy does not lead to development but is a criteria policy to guide the range and mix of housing | |
| To provide for sustainable sources of water supply | + | + | + | This Policy does not lead to development but is a criteria policy to guide the range and mix of housing | |
| To avoid, reduce and manage flood risk | x | + | + | This Policy does not lead to development but is a criteria policy to guide the range and mix of housing | |
| To conserve soil resources and quality | x | x | x | This Policy does not lead to development but is a criteria policy to guide the range and mix of housing | |
| To minimise the production of waste | x | x | x | This Policy does not lead to development but is a criteria policy to guide the range and mix of housing | |
| To improve health of the population | o | + | + | This Policy does not lead to development but is a criteria policy to guide the range and mix of housing | |

| | | | | | |
|--|---|---|---|---|--|
| To reduce crime and nuisance | o | o | + | This Policy is not over and above the Core Strategy. | |
| To conserve natural and manmade resources | x | x | x | This Policy does not lead to development but is a criteria policy to guide the range and mix of housing | |
| Overall commentary and any cumulative effects | Overall this Policy is not over and above the Core Strategy and the policy moves towards the relevant SEA objectives. This Policy does not lead to development but is a criteria policy to guide the range and mix of housing | | | | |

KTH4 - Character and Distribution of Housing in Kingstone

| SEA Objective | Assessment of effect (consider cumulative effects, significance of the effect and magnitude of the effect in terms of the three time periods) | | | Summary Explanation | Enhancement and mitigation opportunities |
|---|---|----------------------------|------------------------|--|--|
| | Short term (1 – 5 years) | Medium term (6 – 10 years) | Long term (11 years +) | | |
| To maintain and enhance nature conservation (biodiversity, flora and fauna) | + | + | ++ | This Policy is not over and above the Core Strategy. | |
| To maintain and enhance the quality of landscapes | + | + | ++ | This Policy is not over and above the Core Strategy. | |

| | | | | | |
|--|---|---|----|--|--|
| and townscapes | | | | | |
| To improve quality of surroundings | + | + | ++ | This Policy is not over and above the Core Strategy. | |
| To conserve and where appropriate enhance the historic environment and cultural heritage | + | + | + | This Policy is not over and above the Core Strategy. | |
| To improve air quality | + | + | + | This Policy is not over and above the Core Strategy. | |
| To reduce the effect of traffic on the environment | 0 | 0 | 0 | This Policy is not over and above the Core Strategy. | |
| To reduce contributions to climate change | + | + | + | This Policy is not over and above the Core Strategy | |
| To reduce vulnerability to climate change | 0 | + | + | This Policy is not over and above the Core Strategy. | |
| To improve water quality | x | x | x | - | |
| To provide for sustainable sources of water supply | x | x | x | - | |
| To avoid, reduce and manage flood risk | + | + | + | This Policy is not over and above the Core Strategy. | |
| To conserve soil resources and quality | 0 | + | + | This Policy is not over and above the Core Strategy. | |

| | | | | | |
|--|---|---|---|--|-----|
| To minimise the production of waste | o | + | + | This Policy is not over and above the Core Strategy. | N/A |
| To improve health of the population | + | + | + | This Policy is not over and above the Core Strategy. | N/A |
| To reduce crime and nuisance | o | + | + | This Policy is not over and above the Core Strategy. | N/A |
| To conserve natural and manmade resources | o | + | + | This Policy is not over and above the Core Strategy. | N/A |
| Overall commentary and any cumulative effects | Overall this Policy is not over and above the Core Strategy and the policy moves towards the relevant SEA objectives. | | | | |

Policy KTH5 - Character and Distribution of Housing in Thruxton

| SEA Objective | Assessment of effect (consider cumulative effects, significance of the effect and magnitude of the effect in terms of the three time periods) | | | Summary Explanation | Enhancement and mitigation opportunities |
|---|---|----------------------------|------------------------|--|--|
| | Short term (1 – 5 years) | Medium term (6 – 10 years) | Long term (11 years +) | | |
| To maintain and enhance nature conservation (biodiversity, flora and fauna) | o | o | + | This Policy is not over and above the Core Strategy. | |

| | | | | | |
|--|---|---|----|--|--|
| To maintain and enhance the quality of landscapes and townscapes | + | + | ++ | This Policy is not over and above the Core Strategy. | |
| To improve quality of surroundings | + | + | ++ | This Policy is not over and above the Core Strategy. | |
| To conserve and where appropriate enhance the historic environment and cultural heritage | o | o | + | This Policy is not over and above the Core Strategy. | |
| To improve air quality | o | + | + | This Policy is not over and above the Core Strategy. | |
| To reduce the effect of traffic on the environment | ? | ? | ? | This Policy is not over and above the Core Strategy. | |
| To reduce contributions to climate change | x | x | x | - | |
| To reduce vulnerability to climate change | o | + | + | This Policy is not over and above the Core Strategy. | |
| To improve water quality | + | + | + | This Policy is not over and above the Core Strategy. | |
| To provide for sustainable sources of water supply | x | x | x | - | |
| To avoid, reduce and manage flood risk | + | + | + | This Policy is not over and above the Core Strategy. | |

| | | | | | |
|--|---|---|---|--|--|
| To conserve soil resources and quality | + | + | + | This Policy is not over and above the Core Strategy. | |
| To minimise the production of waste | o | o | + | This Policy is not over and above the Core Strategy. | |
| To improve health of the population | + | + | + | This Policy is not over and above the Core Strategy. | |
| To reduce crime and nuisance | o | + | + | This Policy is not over and above the Core Strategy. | |
| To conserve natural and manmade resources | o | o | o | This Policy is not over and above the Core Strategy. | |
| Overall commentary and any cumulative effects | Overall this Policy is not over and above the Core Strategy and the policy moves towards the relevant SEA objectives. | | | | |

Policy KTD1– Protecting Heritage Assets

| SEA Objective | Assessment of effect (consider cumulative effects, significance of the effect and magnitude of the effect in terms of the three time periods) | | | Summary Explanation | Enhancement and mitigation opportunities |
|---------------|---|----------------------------|------------------------|---------------------|--|
| | Short term (1 – 5 years) | Medium term (6 – 10 years) | Long term (11 years +) | | |
| | | | | | |

| | | | | | |
|--|---|----|----|--|--|
| To maintain and enhance nature conservation (biodiversity, flora and fauna) | + | + | + | This Policy is not over and above the Core Strategy. | |
| To maintain and enhance the quality of landscapes and townscapes | + | + | ++ | This Policy is not over and above the Core Strategy. | |
| To improve quality of surroundings | + | ++ | ++ | This Policy is not over and above the Core Strategy. | |
| To conserve and where appropriate enhance the historic environment and cultural heritage | + | + | ++ | This Policy is not over and above the Core Strategy. | |
| To improve air quality | x | x | x | - | |
| To reduce the effect of traffic on the environment | x | x | x | - | |
| To reduce contributions to climate change | x | x | x | - | |
| To reduce vulnerability to climate change | x | x | x | - | |
| To improve water quality | x | x | x | - | |
| To provide for sustainable sources of water supply | x | x | x | - | |

| | | | | | |
|--|---|---|---|--|--|
| To avoid, reduce and manage flood risk | x | x | x | - | |
| To conserve soil resources and quality | o | + | + | This Policy is not over and above the Core Strategy. | |
| To minimise the production of waste | + | + | + | This Policy is not over and above the Core Strategy. | |
| To improve health of the population | + | + | + | This Policy is not over and above the Core Strategy. | |
| To reduce crime and nuisance | o | + | + | This Policy is not over and above the Core Strategy. | |
| To conserve natural and manmade resources | + | + | + | This Policy is not over and above the Core Strategy. | |
| Overall commentary and any cumulative effects | Overall this Policy is not over and above the Core Strategy and the policy moves towards the relevant SEA objectives. | | | | |

Policy KTD2 – Protecting Local Green Spaces

| SEA Objective | Assessment of effect (consider cumulative effects, significance of the effect and magnitude of the effect in terms of the three time periods) | | | Summary Explanation | Enhancement and mitigation opportunities |
|---------------|---|----------------------------|------------------------|---------------------|--|
| | Short term (1 – 5) | Medium term (6 – 10 years) | Long term (11 years +) | | |
| | | | | | |

| | years) | | | | |
|--|--------|----|----|--|--|
| To maintain and enhance nature conservation (biodiversity, flora and fauna) | + | + | ++ | This Policy is not over and above the Core Strategy. | |
| To maintain and enhance the quality of landscapes and townscapes | + | ++ | ++ | This Policy is not over and above the Core Strategy. | |
| To improve quality of surroundings | + | ++ | ++ | This Policy is not over and above the Core Strategy. | |
| To conserve and where appropriate enhance the historic environment and cultural heritage | + | + | + | This Policy is not over and above the Core Strategy. | |
| To improve air quality | o | + | + | This Policy is not over and above the Core Strategy. | |
| To reduce the effect of traffic on the environment | x | x | x | - | |
| To reduce contributions to climate change | + | + | + | This Policy is not over and above the Core Strategy. | |
| To reduce vulnerability to climate change | + | + | + | This Policy is not over and above the Core Strategy. | |
| To improve water quality | x | x | x | - | |

| | | | | | |
|--|---|---|---|--|--|
| To provide for sustainable sources of water supply | x | x | x | - | |
| To avoid, reduce and manage flood risk | o | + | + | This Policy is not over and above the Core Strategy. | |
| To conserve soil resources and quality | + | + | + | This Policy is not over and above the Core Strategy. | |
| To minimise the production of waste | x | x | x | - | |
| To improve health of the population | + | + | + | This Policy is not over and above the Core Strategy. | |
| To reduce crime and nuisance | o | + | + | This Policy is not over and above the Core Strategy. | |
| To conserve natural and manmade resources | + | + | + | This Policy is not over and above the Core Strategy. | |
| Overall commentary and any cumulative effects | Overall this Policy is not over and above the Core Strategy and the policy moves towards the relevant SEA objectives. | | | | |

Policy KTCF1 – Provision and Protection of Community Facilities and Services

| SEA Objective | Assessment of effect (consider cumulative effects, significance of the effect and magnitude of the effect in terms of the three time periods) | | | Summary Explanation | Enhancement and mitigation opportunities |
|---------------|---|-------------|-----------|---------------------|--|
| | Short term | Medium term | Long term | | |
| | | | | | |

| | (1 – 5 years) | (6 – 10 years) | (11 years +) | | |
|--|---------------|----------------|--------------|--|--|
| To maintain and enhance nature conservation (biodiversity, flora and fauna) | x | x | x | | |
| To maintain and enhance the quality of landscapes and townscapes | + | + | + | This Policy is not over and above the Core Strategy. | |
| To improve quality of surroundings | + | + | + | This Policy is not over and above the Core Strategy. | |
| To conserve and where appropriate enhance the historic environment and cultural heritage | + | + | + | This Policy is not over and above the Core Strategy. | |
| To improve air quality | x | x | x | - | |
| To reduce the effect of traffic on the environment | + | + | + | This Policy is not over and above the Core Strategy. | |
| To reduce contributions to climate change | x | x | x | - | |
| To reduce vulnerability to climate change | x | x | x | - | |
| To improve water quality | x | x | x | - | |

| | | | | | |
|--|---|---|---|--|--|
| To provide for sustainable sources of water supply | x | x | x | - | |
| To avoid, reduce and manage flood risk | x | x | x | - | |
| To conserve soil resources and quality | + | + | + | This Policy is not over and above the Core Strategy. | |
| To minimise the production of waste | x | x | x | - | |
| To improve health of the population | + | + | + | This Policy is not over and above the Core Strategy. | |
| To reduce crime and nuisance | o | + | + | This Policy is not over and above the Core Strategy. | |
| To conserve natural and manmade resources | + | + | + | This Policy is not over and above the Core Strategy. | |
| Overall commentary and any cumulative effects | Overall this Policy is not over and above the Core Strategy and the policy moves towards the relevant SEA objectives. | | | | |

KTE1 – Proposals for New Employment

| SEA Objective | Assessment of effect (consider cumulative effects, significance of the effect and magnitude of the effect in terms of the three time periods) | | | Summary Explanation | Enhancement and mitigation opportunities |
|---------------|---|-------------|-----------|---------------------|--|
| | Short term | Medium term | Long term | | |
| | | | | | |

| | (1 – 5 years) | (6 – 10 years) | (11 years +) | | |
|--|---------------|----------------|--------------|--|--|
| To maintain and enhance nature conservation (biodiversity, flora and fauna) | o | + | + | This Policy is not over and above the Core Strategy. | |
| To maintain and enhance the quality of landscapes and townscapes | o | + | + | This Policy is not over and above the Core Strategy. | |
| To improve quality of surroundings | + | + | + | This Policy is not over and above the Core Strategy. | |
| To conserve and where appropriate enhance the historic environment and cultural heritage | x | x | x | - | |
| To improve air quality | o | o | o | This Policy is not over and above the Core Strategy. | |
| To reduce the effect of traffic on the environment | o | o | o | This Policy is not over and above the Core Strategy. | |
| To reduce contributions to climate change | ? | ? | ? | - | |
| To reduce vulnerability to climate change | + | + | + | This Policy is not over and above the Core Strategy. | Additional criteria wording within Policy KTE1 |

| | | | | | |
|--|--|---|---|--|--|
| To improve water quality | ? | + | + | The implementation of the Nutrient Management Plan and additional safeguarding criteria will assist this move in a positive direction against the baseline | |
| To provide for sustainable sources of water supply | + | + | + | This Policy is not over and above the Core Strategy. | |
| To avoid, reduce and manage flood risk | o | + | + | This Policy is not over and above the Core Strategy. | |
| To conserve soil resources and quality | + | + | + | This Policy is not over and above the Core Strategy. | |
| To minimise the production of waste | o | + | + | This Policy is not over and above the Core Strategy. | |
| To improve health of the population | + | + | + | This Policy is not over and above the Core Strategy. | |
| To reduce crime and nuisance | o | + | + | This Policy is not over and above the Core Strategy. | |
| To conserve natural and manmade resources | + | + | + | This Policy is not over and above the Core Strategy. | |
| Overall commentary and any cumulative effects | Overall this Policy is not over and above the Core Strategy and the policy moves towards the relevant SEA objectives. The implementation of the Nutrient Management Plan and additional policy criteria will provide additional safeguards | | | | |

KTE2 – Protect existing employment

| SEA Objective | Assessment of effect (consider cumulative effects, significance of the effect and magnitude of the effect in terms of the three time periods) | | | Summary Explanation | Enhancement and mitigation opportunities |
|--|--|--------------------------------------|----------------------------------|--|---|
| | Short term (1 – 5 years) | Medium term (6 – 10 years) | Long term (11 years +) | | |
| To maintain and enhance nature conservation (biodiversity, flora and fauna) | x | x | x | - | |
| To maintain and enhance the quality of landscapes and townscapes | o | + | + | This Policy is not over and above the Core Strategy. | |
| To improve quality of surroundings | + | + | + | This Policy is not over and above the Core Strategy. | |
| To conserve and where appropriate enhance the historic environment and cultural heritage | x | x | x | - | |
| To improve air quality | o | + | + | This Policy is not over and above the Core Strategy. | |

| | | | | | |
|--|---|---|---|--|--|
| To reduce the effect of traffic on the environment | o | + | + | This Policy is not over and above the Core Strategy. | |
| To reduce contributions to climate change | x | x | x | - | |
| To reduce vulnerability to climate change | x | x | x | - | |
| To improve water quality | ? | + | + | The implementation of the Nutrient Management Plan and the additional policy criteria to KTE1 should move this positively against the baseline | |
| To provide for sustainable sources of water supply | + | + | + | This Policy is not over and above the Core Strategy. | |
| To avoid, reduce and manage flood risk | x | x | x | | |
| To conserve soil resources and quality | o | + | + | This Policy is not over and above the Core Strategy. | |
| To minimise the production of waste | o | + | + | This Policy is not over and above the Core Strategy. | |
| To improve health of the population | o | o | + | This Policy is not over and above the Core Strategy. | |
| To reduce crime and nuisance | o | o | + | This Policy is not over and above the Core Strategy. | |

| | | | | | |
|--|---|---|---|--|--|
| To conserve natural and manmade resources | o | o | + | This Policy is not over and above the Core Strategy. | |
| Overall commentary and any cumulative effects | Overall this Policy is not over and above the Core Strategy and the policy moves towards the relevant SEA objectives. | | | | |

Policy KTF1 – Reducing Flood Risk

| SEA Objective | Assessment of effect (consider cumulative effects, significance of the effect and magnitude of the effect in terms of the three time periods) | | | Summary Explanation | Enhancement and mitigation opportunities |
|---|---|----------------------------|------------------------|--|--|
| | Short term (1 – 5 years) | Medium term (6 – 10 years) | Long term (11 years +) | | |
| To maintain and enhance nature conservation (biodiversity, flora and fauna) | ++ | + | + | This Policy is not over and above the Core Strategy. | |
| To maintain and enhance the quality of landscapes and townscapes | + | + | + | This Policy is not over and above the Core Strategy. | |
| To improve quality of surroundings | + | + | ++ | This Policy is not over and above the Core Strategy. | |
| To conserve and where appropriate enhance the | + | + | ++ | This Policy is not over and above | |

| | | | | | |
|--|----|----|----|--|--|
| historic environment and cultural heritage | | | | the Core Strategy. | |
| To improve air quality | o | + | + | This Policy is not over and above the Core Strategy. | |
| To reduce the effect of traffic on the environment | x | x | x | - | |
| To reduce contributions to climate change | + | + | + | This Policy is not over and above the Core Strategy. | |
| To reduce vulnerability to climate change | ++ | + | + | This Policy is not over and above the Core Strategy. | |
| To improve water quality | ? | + | + | This Policy is not over and above the Core Strategy. | |
| To provide for sustainable sources of water supply | + | + | + | This Policy is not over and above the Core Strategy. | |
| To avoid, reduce and manage flood risk | + | ++ | ++ | This Policy is not over and above the Core Strategy. | |
| To conserve soil resources and quality | + | + | ++ | This Policy is not over and above the Core Strategy. | |
| To minimise the production of waste | + | + | + | This Policy is not over and above the Core Strategy. | |
| To improve health of the population | o | + | + | This Policy is not over and above the Core Strategy. | |

| | | | | | |
|--|---|---|---|--|--|
| To reduce crime and nuisance | o | + | + | This Policy is not over and above the Core Strategy. | |
| To conserve natural and manmade resources | + | + | + | This Policy is not over and above the Core Strategy. | |
| Overall commentary and any cumulative effects | Overall this Policy is not over and above the Core Strategy and the policy moves towards the relevant SEA objectives. | | | | |

KTF2 – Flood Resilience

| SEA Objective | Assessment of effect (consider cumulative effects, significance of the effect and magnitude of the effect in terms of the three time periods) | | | Summary Explanation | Enhancement and mitigation opportunities |
|---|---|----------------------------|------------------------|--|--|
| | Short term (1 – 5 years) | Medium term (6 – 10 years) | Long term (11 years +) | | |
| To maintain and enhance nature conservation (biodiversity, flora and fauna) | + | + | + | This Policy is not over and above the Core Strategy. | |
| To maintain and enhance the quality of landscapes and townscapes | + | + | + | This Policy is not over and above the Core Strategy. | |

| | | | | | |
|--|---|----|----|--|--|
| To improve quality of surroundings | + | + | + | This Policy is not over and above the Core Strategy. | |
| To conserve and where appropriate enhance the historic environment and cultural heritage | + | + | + | This Policy is not over and above the Core Strategy. | |
| To improve air quality | 0 | + | + | This Policy is not over and above the Core Strategy. | |
| To reduce the effect of traffic on the environment | x | x | x | - | |
| To reduce contributions to climate change | x | x | x | - | |
| To reduce vulnerability to climate change | + | + | ++ | This Policy is not over and above the Core Strategy. | |
| To improve water quality | x | x | x | - | |
| To provide for sustainable sources of water supply | + | + | ++ | This Policy is not over and above the Core Strategy. | |
| To avoid, reduce and manage flood risk | + | ++ | ++ | This Policy is not over and above the Core Strategy. | |
| To conserve soil resources and quality | + | + | + | This Policy is not over and above the Core Strategy. | |
| To minimise the production of waste | o | + | + | This Policy is not over and above the Core Strategy. | |

| | | | | | |
|--|---|---|---|--|--|
| To improve health of the population | o | + | + | This Policy is not over and above the Core Strategy. | |
| To reduce crime and nuisance | x | x | x | - | |
| To conserve natural and manmade resources | x | x | x | - | |
| Overall commentary and any cumulative effects | Overall this Policy is not over and above the Core Strategy and the policy moves towards the relevant SEA objectives. | | | | |

KTF3 – Reducing Surface Water Flooding

| SEA Objective | Assessment of effect (consider cumulative effects, significance of the effect and magnitude of the effect in terms of the three time periods) | | | Summary Explanation | Enhancement and mitigation opportunities |
|---|---|----------------------------|------------------------|--|--|
| | Short term (1 – 5 years) | Medium term (6 – 10 years) | Long term (11 years +) | | |
| To maintain and enhance nature conservation (biodiversity, flora and fauna) | + | + | + | This Policy is not over and above the Core Strategy. | |

| | | | | | |
|--|---|----|----|--|--|
| To maintain and enhance the quality of landscapes and townscapes | + | + | ++ | This Policy is not over and above the Core Strategy. | |
| To improve quality of surroundings | + | + | + | This Policy is not over and above the Core Strategy. | |
| To conserve and where appropriate enhance the historic environment and cultural heritage | + | + | + | This Policy is not over and above the Core Strategy. | |
| To improve air quality | o | + | + | This Policy is not over and above the Core Strategy. | |
| To reduce the effect of traffic on the environment | x | x | x | - | |
| To reduce contributions to climate change | x | x | x | - | |
| To reduce vulnerability to climate change | + | + | ++ | This Policy is not over and above the Core Strategy. | |
| To improve water quality | x | x | x | - | |
| To provide for sustainable sources of water supply | + | + | + | This Policy is not over and above the Core Strategy. | |
| To avoid, reduce and manage flood risk | + | ++ | ++ | This Policy is not over and above the Core Strategy. | |
| To conserve soil | + | + | + | This Policy is not over and above | |

| | | | | | |
|--|---|---|---|--|---|
| resources and quality | | | | the Core Strategy. | |
| To minimise the production of waste | + | + | + | This Policy is not over and above the Core Strategy. | |
| To improve health of the population | + | + | + | This Policy is not over and above the Core Strategy. | N |
| To reduce crime and nuisance | x | x | x | - | |
| To conserve natural and manmade resources | + | + | + | This Policy is not over and above the Core Strategy. | |
| Overall commentary and any cumulative effects | Overall this Policy is not over and above the Core Strategy and the policy moves towards the relevant SEA objectives. | | | | |

Policy KTDC1 – Developer Contributions

| SEA Objective | Assessment of effect (consider cumulative effects, significance of the effect and magnitude of the effect in terms of the three time periods) | | | Summary Explanation | Enhancement and mitigation opportunities |
|---------------|---|----------------------------|------------------------|---------------------|--|
| | Short term (1 – 5 years) | Medium term (6 – 10 years) | Long term (11 years +) | | |
| | | | | | |

| | | | | | |
|--|---|---|---|--|--|
| To maintain and enhance nature conservation (biodiversity, flora and fauna) | o | o | o | This Policy is not over and above the Core Strategy. | |
| To maintain and enhance the quality of landscapes and townscapes | o | + | + | This Policy is not over and above the Core Strategy. | |
| To improve quality of surroundings | + | + | + | This Policy is not over and above the Core Strategy. | |
| To conserve and where appropriate enhance the historic environment and cultural heritage | x | x | x | - | |
| To improve air quality | x | x | x | - | |
| To reduce the effect of traffic on the environment | o | + | + | This Policy is not over and above the Core Strategy. | |
| To reduce contributions to climate change | x | x | x | - | |
| To reduce vulnerability to climate change | x | x | x | - | |
| To improve water quality | + | + | + | This Policy is not over and above the Core Strategy. | |

| | | | | | |
|--|---|---|---|--|--|
| To provide for sustainable sources of water supply | + | + | + | This Policy is not over and above the Core Strategy. | |
| To avoid, reduce and manage flood risk | x | x | x | - | |
| To conserve soil resources and quality | x | x | x | - | |
| To minimise the production of waste | x | x | x | - | |
| To improve health of the population | o | + | + | This Policy is not over and above the Core Strategy. | |
| To reduce crime and nuisance | o | + | + | This Policy is not over and above the Core Strategy. | |
| To conserve natural and manmade resources | x | x | x | - | |
| Overall commentary and any cumulative effects | Overall this Policy is not over and above the Core Strategy and the policy moves towards the relevant SEA objectives. | | | | |

Key:

| | | | | | | |
|--------------------------------------|----------------------------------|-----------------------------------|-------------------------------|------------------|--------------------|--------------------------|
| ++ Move towards significantly | + Move towards marginally | -- Move away Significantly | - Move away marginally | 0 Neutral | ? Uncertain | X No relationship |
|--------------------------------------|----------------------------------|-----------------------------------|-------------------------------|------------------|--------------------|--------------------------|

| SEA Objective Objective / Policy | 1. To maintain and enhance nature conservation (biodiversity, flora and fauna) | 2. To maintain and enhance the quality of landscapes and townscapes | 3. To improve quality of surroundings | 4. To conserve and where appropriate enhance the historic environment and culture heritage | 5. To improve air quality | 6. To reduce the effect of traffic on the environment | 7. To reduce contributions to climate change | 8. To reduce vulnerability to climate change | 9. To improve water quality | 10. To provide for sustainable sources of water supply | 11. To avoid, reduce and manage flood risk | 12. To conserve soil resources and quality | 13. To minimise the production | 14. To improve health of the population | 15. To reduce crime and nuisance | 16. To conserve natural and manmade resources |
|--|--|---|---------------------------------------|--|---------------------------|---|--|--|-----------------------------|--|--|--|--------------------------------|---|----------------------------------|---|
| General Objective 1 | 0 | + | + | + | 0 | 0 | 0 | 0 | ? | + | ? | ? | + | 0 | 0 | 0 |
| General objective 2 | + | + | + | + | + | + | + | + | + | + | + | + | + | + | + | + |
| Housing Objective 1 | + | + | + | + | + | + | + | + | + | + | + | + | + | + | + | + |
| Housing Objective 2 – Character and distribution in Kingstone | + | + | + | + | + | + | X | X | + | + | ? | + | + | + | + | + |
| Housing Objective 3 – Character and distribution in Thruxton | 0 | + | + | ? | 0 | ? | X | X | X | X | ? | ? | ? | + | + | 0 |
| Heritage Objective - Local Heritage Assets and Green Spaces | + | + | + | + | + | X | + | + | X | X | ? | + | + | 0 | 0 | + |

| | | | | | | | | | | | | | | | | |
|--|----------|-----------|-----------|-----------|----------|----------|----------|----------|----------|----------|-----------|----------|----------|----------|----------|-----------|
| Community facilities Objective | X | + | + | + | X | X | X | X | X | X | X | X | X | + | + | + |
| Employment Objective | 0 | + | + | X | 0 | 0 | X | X | 0 | 0 | 0 | 0 | 0 | + | + | 0 |
| Flooding Objective | 0 | + | + | X | X | X | + | + | + | + | + | X | X | 0 | 0 | 0 |
| Developer Contributions Objective | ? | ? | ? | ? | ? | ? | ? | ? | ? | ? | ? | ? | ? | ? | ? | ? |
| Policy KTH1 – Housing Development Building and Phasing | 0 | + | + | + | 0 | ? | X | + | ? | + | + | + | + | + | + | + |
| Policy KTH2 – Supporting Sustainable Development on Committed Site 1 | + | + | + | + | 0 | 0 | + | + | + | + | + | + | + | + | + | + |
| Policy KTH3 - Meeting Local Housing Needs and Providing a Mix of New Housing | X | + | + | X | X | ? | X | X | ? | + | X | X | X | + | + | X |
| KTH4 - Character and Distribution of Housing in Kingstone | + | ++ | ++ | + | + | 0 | + | + | ? | + | ++ | + | + | + | + | + |
| Policy KTH5 - Character and Distribution of Housing in Thruxton | 0 | ++ | ++ | + | 0 | ? | X | + | ? | + | + | + | 0 | + | + | 0 |
| Policy KTD1– Protecting Heritage Assets | + | + | ++ | ++ | X | X | X | X | X | X | X | + | + | + | + | ++ |

| | | | | | | | | | | | | | | | | |
|--|--|--|--|--|--|--|--|--|---|--|--|--|--|--|--|--|
| Policy KTD2 – Protecting Local Green Spaces | + | ++ | ++ | + | + | X | + | + | X | X | + | + | X | + | + | + |
| Policy KTCF1 – Provision and Protection of Community Facilities and Services | X | + | + | + | X | + | X | X | X | X | X | + | X | + | + | + |
| KTE1 – Proposals for New Employment | + | + | + | X | 0 | 0 | ? | + | ? | + | + | + | + | + | + | + |
| KTE2 – Protect existing employment | X | + | + | X | + | + | X | X | ? | + | X | + | + | 0 | 0 | 0 |
| Policy KTF1 – Reducing Flood Risk | + | + | + | + | + | X | + | + | ? | + | ++ | + | + | + | X | + |
| KTF2 – Flood Resilience | + | + | + | + | + | X | X | + | X | + | ++ | + | + | + | X | X |
| KTF3 – Reducing Surface Water Flooding | + | + | + | + | + | X | + | + | + | X | ++ | + | + | + | X | + |
| Policy KTDC1 – Developer Contributions | 0 | + | + | X | X | + | X | X | + | + | X | X | X | + | + | X |
| Summary of effects of whole plan on each SEA Objective | <p>+ Overall the NDP does not go over and above the Core Strategy. The objectives and policy move towards the SEA Objective</p> | <p>+ Overall the NDP does not go over and above the Core Strategy. The objectives and policy move towards the SEA Objective</p> | <p>+ Overall the NDP does not go over and above the Core Strategy. The objectives and policy move towards the SEA Objective</p> | <p>+ Overall the NDP does not go over and above the Core Strategy. The objectives and policy move towards the SEA Objective</p> | <p>+ Overall the NDP does not go over and above the Core Strategy. The objectives and policy move towards the SEA Objective</p> | <p>+ Overall the NDP does not go over and above the Core Strategy. The objectives and policy move towards the SEA Objective</p> | <p>+ Overall the NDP does not go over and above the Core Strategy. The objectives and policy move towards the SEA Objective</p> | <p>+ Overall the NDP does not go over and above the Core Strategy. The objectives and policy move towards the SEA Objective</p> | <p>? There is still some uncertainty surrounding water quality. However, the addition of policy criteria will help to safeguard this baseline.</p> | <p>+ Overall the NDP does not go over and above the Core Strategy. The objectives and policy move towards the SEA Objective</p> | <p>+ Overall the NDP does not go over and above the Core Strategy. The objectives and policy move towards the SEA Objective</p> | <p>+ Overall the NDP does not go over and above the Core Strategy. The objectives and policy move towards the SEA Objective</p> | <p>+ Overall the NDP does not go over and above the Core Strategy. The objectives and policy move towards the SEA Objective</p> | <p>+ Overall the NDP does not go over and above the Core Strategy. The objectives and policy move towards the SEA Objective</p> | <p>+ Overall the NDP does not go over and above the Core Strategy. The objectives and policy move towards the SEA Objective</p> | <p>+ Overall the NDP does not go over and above the Core Strategy. The objectives and policy move towards the SEA Objective</p> |
| Cumulative effects of | On the whole policies and objectives will have a positive effect on the baseline. The plan is reflecting commitment and development with existing planning permission and ensuring criteria policies exist for the future sustainable growth of the parish. There is an area of uncertainty regarding the effect on water quality during the plan period. The Nutrient | | | | | | | | | | | | | | | |

| | |
|--|---|
| whole plan (1 + 2 + 3...) | Management Plan has been developed to help mitigate and avoid any further negative impacts on the River Wye SAC and its hydrological catchment. It is suggested that additional criteria is considered to some policies to indicate that development should not comprise the ability of the NMP or target reductions. |
| Commentary for significant cumulative effects | Overall the objectives and policies of the Kingstone and Thruxton Neighbourhood Plan have a positive effect towards the SEA baseline data. No significant cumulative effect has been identified. |

Appendix 5

Consultation date: 7 September to 19 October 2015

Consultation title: Kingstone and Thruxton Neighbourhood Plan Regulation 14

*N.B. This consultation feedback is **only** for comments received on the HRA of the draft Neighbourhood Development Plan (July 2015)*

| Consultee | Summary of Comments | Response to Comments |
|-------------------------------------|--|----------------------|
| Natural England | Having reviewed the report, Natural England confirms that it meets the requirements of the Strategic Environmental Assessment Directive and national regulations and concur with it conclusions. | Noted |
| English Heritage / Heritage England | Comments received to policy text but not specifically regarding the SEA | |
| Environment Agency | Comments received to policy text but not specifically regarding the SEA | |
| Natural Resources Wales | No comments received | |

Appendix 6

Key:

| | | | | | | |
|-------------------------------|---------------------------|-----------------------------|------------------------|-----------|-------------|-------------------|
| ++ Move towards significantly | + Move towards Marginally | - - Move away significantly | - Move away marginally | 0 Neutral | ? Uncertain | X No relationship |
|-------------------------------|---------------------------|-----------------------------|------------------------|-----------|-------------|-------------------|

Policy KTH1 – Housing Development Building and Phasing

| SEA Objective | Assessment of effect (consider cumulative effects, significance of the effect and magnitude of the effect in terms of the three time periods) | | | Summary Explanation | Enhancement and mitigation opportunities |
|--|---|----------------------------|------------------------|--|--|
| | Short term (1 – 5 years) | Medium term (6 – 10 years) | Long term (11 years +) | | |
| To maintain and enhance nature conservation (biodiversity, flora and fauna) | + | + | + | Inclusion of additional criteria to safeguard River Wye SAC. | N/A |
| To maintain and enhance the quality of landscapes and townscapes | + | + | + | Additional criteria regard the conversion and reuse of existing buildings | N/A |
| To improve quality of surroundings | + | + | + | Additional criteria regarding the conversion and reuse of existing buildings | N/A |
| To conserve and where appropriate enhance the historic environment and cultural heritage | + | + | + | Additional criteria regarding the conversion and reuse of existing buildings | N/A |

D3 – Predict and evaluate the effect of the modifications to the policies within the NDP (Kingstone and Thruxton Neighbourhood Development Plan Dec 15)

| | | | | | |
|--|---|---|---|---|-----|
| To improve air quality | 0 | 0 | 0 | | N/A |
| To reduce the effect of traffic on the environment | ? | ? | ? | | N/A |
| To reduce contributions to climate change | x | x | x | | N/A |
| To reduce vulnerability to climate change | + | + | + | | N/A |
| To improve water quality | ? | + | + | The implementation of the Nutrient Management Plan and additional policy criteria will assist this movement in a positive direction. Inclusion of additional criteria to safeguard the River Wye SAC. | N/A |
| To provide for sustainable sources of water supply | + | + | + | | N/A |
| To avoid, reduce and manage flood risk | + | + | + | | N/A |
| To conserve soil resources and quality | + | + | + | | N/A |
| To minimise the production of waste | 0 | + | + | | N/A |
| To improve health of the population | 0 | + | + | | N/A |
| To reduce crime and nuisance | 0 | + | + | | N/A |

D3 – Predict and evaluate the effect of the modifications to the policies within the NDP (Kingstone and Thruxton Neighbourhood Development Plan Dec 15)

| | | | | | |
|--|---|---|---|---|-----|
| To conserve natural and manmade resources | + | + | + | Additional criteria added to safeguard natural and manmade resources. | N/A |
| Overall commentary and any cumulative effects | Overall this Policy is not over and above the Core Strategy and the policy moves towards the relevant SEA objectives. The implementation of the Nutrient Management Plan and the additional policy criteria has provide additional safeguards | | | | |

Policy KTH3 - Meeting Local Housing Needs and Providing a Mix of New Housing

| SEA Objective | Assessment of effect (consider cumulative effects, significance of the effect and magnitude of the effect in terms of the three time periods) | | | Summary Explanation | Enhancement and mitigation opportunities |
|---|---|-------------------------------|---------------------------|---------------------|--|
| | Short term (1 – 5 years) | Medium term (6 – 10 years) | Long term (11 years +) | | |
| To maintain and enhance nature conservation (biodiversity, flora and fauna) | x | x | x | | |
| To maintain and enhance the quality of landscapes and townscapes | o | + | + | | |
| To improve quality of surroundings | o | + | + | | |
| To conserve and where appropriate enhance the | x | x | x | | |

D3 – Predict and evaluate the effect of the modifications to the policies within the NDP (Kingstone and Thruxton Neighbourhood Development Plan Dec 15)

| | | | | | |
|--|---|---|---|--|--|
| historic environment and cultural heritage | | | | | |
| To improve air quality | x | x | x | | |
| To reduce the effect of traffic on the environment | ? | ? | ? | | |
| To reduce contributions to climate change | x | x | x | | |
| To reduce vulnerability to climate change | x | x | x | | |
| To improve water quality | ? | ? | ? | | |
| To provide for sustainable sources of water supply | + | + | + | | |
| To avoid, reduce and manage flood risk | x | + | + | | |
| To conserve soil resources and quality | x | x | x | | |
| To minimise the production of waste | x | x | x | | |
| To improve health of the population | o | + | + | | |
| To reduce crime and nuisance | o | o | + | | |
| To conserve natural and manmade resources | x | x | x | | |

D3 – Predict and evaluate the effect of the modifications to the policies within the NDP (Kingstone and Thrupton Neighbourhood Development Plan Dec 15)

| | |
|--|--|
| Overall commentary and any cumulative effects | The policy amendment is regarding the inclusion of 2 bed bungalows which will not affect the outcomes of the SEA objectives. |
|--|--|

KTH4 - Character and Distribution of Housing in Kingstone

| SEA Objective | Assessment of effect (consider cumulative effects, significance of the effect and magnitude of the effect in terms of the three time periods) | | | Summary Explanation | Enhancement and mitigation opportunities |
|--|---|-------------------------------|---------------------------|--|--|
| | Short term (1 – 5 years) | Medium term (6 – 10 years) | Long term (11 years +) | | |
| To maintain and enhance nature conservation (biodiversity, flora and fauna) | + | + | ++ | Inclusion of additional criteria to safeguard River Wye SAC. | |
| To maintain and enhance the quality of landscapes and townscapes | + | + | ++ | | |
| To improve quality of surroundings | + | + | ++ | | |
| To conserve and where appropriate enhance the historic environment and cultural heritage | + | + | + | | |

This document is copyright of Herefordshire Council, please contact the Neighbourhood Planning team if you wish to reuse it in whole or part.

D3 – Predict and evaluate the effect of the modifications to the policies within the NDP (Kingstone and Thruxton Neighbourhood Development Plan Dec 15)

| | | | | | |
|--|---|---|---|--|--|
| To improve air quality | + | + | + | | |
| To reduce the effect of traffic on the environment | 0 | 0 | 0 | | |
| To reduce contributions to climate change | + | + | + | | |
| To reduce vulnerability to climate change | 0 | + | + | | |
| To improve water quality | x | x | x | | |
| To provide for sustainable sources of water supply | x | x | x | | |
| To avoid, reduce and manage flood risk | + | + | + | | |
| To conserve soil resources and quality | 0 | + | + | | |
| To minimise the production of waste | 0 | + | + | | |
| To improve health of the population | + | + | + | | |
| To reduce crime and nuisance | 0 | + | + | | |
| To conserve natural and manmade resources | 0 | + | + | | |
| Overall commentary and any cumulative | Overall this Policy is not over and above the Core Strategy and the policy moves towards the relevant SEA objectives. The implementation of the Nutrient Management Plan and the additional policy criteria has provide | | | | |

D3 – Predict and evaluate the effect of the modifications to the policies within the NDP (Kingstone and Thruxton Neighbourhood Development Plan Dec 15)

| | |
|----------------|------------------------|
| effects | additional safeguards. |
|----------------|------------------------|

Policy KTD3 – Green Infrastructure

| SEA Objective | Assessment of effect (consider cumulative effects, significance of the effect and magnitude of the effect in terms of the three time periods) | | | Summary Explanation | Enhancement and mitigation opportunities |
|--|--|--------------------------------------|----------------------------------|--|---|
| | Short term (1 – 5 years) | Medium term (6 – 10 years) | Long term (11 years +) | | |
| To maintain and enhance nature conservation (biodiversity, flora and fauna) | ++ | ++ | ++ | This Policy is not over and above the Core Strategy. | |
| To maintain and enhance the quality of landscapes and townscapes | ++ | ++ | ++ | This Policy is not over and above the Core Strategy. | |
| To improve quality of surroundings | + | ++ | ++ | This Policy is not over and above the Core Strategy. | |
| To conserve and where appropriate enhance the historic environment and cultural heritage | + | + | + | This Policy is not over and above the Core Strategy. | |
| To improve air quality | o | + | + | This Policy is not over and above the Core Strategy. | |

D3 – Predict and evaluate the effect of the modifications to the policies within the NDP (Kingstone and Thruxton Neighbourhood Development Plan Dec 15)

| | | | | | |
|--|---|---|---|--|--|
| To reduce the effect of traffic on the environment | x | x | x | - | |
| To reduce contributions to climate change | + | + | + | This Policy is not over and above the Core Strategy. | |
| To reduce vulnerability to climate change | + | + | + | This Policy is not over and above the Core Strategy. | |
| To improve water quality | x | x | x | - | |
| To provide for sustainable sources of water supply | x | x | x | - | |
| To avoid, reduce and manage flood risk | o | + | + | This Policy is not over and above the Core Strategy. | |
| To conserve soil resources and quality | + | + | + | This Policy is not over and above the Core Strategy. | |
| To minimise the production of waste | x | x | x | - | |
| To improve health of the population | + | + | + | This Policy is not over and above the Core Strategy. | |
| To reduce crime and nuisance | o | + | + | This Policy is not over and above the Core Strategy. | |
| To conserve natural and manmade resources | + | + | + | This Policy is not over and above the Core Strategy. | |
| Overall commentary and any cumulative effects | Overall this Policy is not over and above the Core Strategy and the policy moves towards the relevant SEA objectives. | | | | |

Policy KTCF1 – Provision and Protection of Community Facilities and Services

| SEA Objective | Assessment of effect (consider cumulative effects, significance of the effect and magnitude of the effect in terms of the three time periods) | | | Summary Explanation | Enhancement and mitigation opportunities |
|--|---|----------------------------|------------------------|--|--|
| | Short term (1 – 5 years) | Medium term (6 – 10 years) | Long term (11 years +) | | |
| To maintain and enhance nature conservation (biodiversity, flora and fauna) | x | x | x | | |
| To maintain and enhance the quality of landscapes and townscapes | + | + | + | This Policy is not over and above the Core Strategy. | |
| To improve quality of surroundings | + | + | + | This Policy is not over and above the Core Strategy. | |
| To conserve and where appropriate enhance the historic environment and cultural heritage | + | + | + | This Policy is not over and above the Core Strategy. | |
| To improve air quality | x | x | x | - | |
| To reduce the effect of traffic on the environment | + | + | + | This Policy is not over and above the Core Strategy. | |
| To reduce contributions to climate change | x | x | x | - | |

D3 – Predict and evaluate the effect of the modifications to the policies within the NDP (Kingstone and Thruxton Neighbourhood Development Plan Dec 15)

| | | | | | |
|--|---|---|---|--|--|
| To reduce vulnerability to climate change | x | x | x | - | |
| To improve water quality | x | x | x | - | |
| To provide for sustainable sources of water supply | x | x | x | - | |
| To avoid, reduce and manage flood risk | x | x | x | - | |
| To conserve soil resources and quality | + | + | + | This Policy is not over and above the Core Strategy. | |
| To minimise the production of waste | x | x | x | - | |
| To improve health of the population | + | + | + | This Policy is not over and above the Core Strategy. | |
| To reduce crime and nuisance | o | + | + | This Policy is not over and above the Core Strategy. | |
| To conserve natural and manmade resources | + | + | + | This Policy is not over and above the Core Strategy. | |
| Overall commentary and any cumulative effects | Overall this Policy is not over and above the Core Strategy and the policy moves towards the relevant SEA objectives. | | | | |

KTE1 – Proposals for New Employment

| SEA Objective | Assessment of effect (consider cumulative effects, significance of the effect and magnitude of the effect in terms of the three | Summary Explanation | Enhancement and mitigation |
|----------------------|--|----------------------------|-----------------------------------|
|----------------------|--|----------------------------|-----------------------------------|

D3 – Predict and evaluate the effect of the modifications to the policies within the NDP (Kingstone and Thruxton Neighbourhood Development Plan Dec 15)

| | time periods) | | | | opportunities |
|--|------------------------------------|--------------------------------------|----------------------------------|--|----------------------|
| | Short term (1 – 5 years) | Medium term (6 – 10 years) | Long term (11 years +) | | |
| To maintain and enhance nature conservation (biodiversity, flora and fauna) | + | ++ | ++ | Inclusion of additional criteria to safeguard River Wye SAC. | |
| To maintain and enhance the quality of landscapes and townscapes | o | + | + | | |
| To improve quality of surroundings | + | + | + | | |
| To conserve and where appropriate enhance the historic environment and cultural heritage | x | x | x | | |
| To improve air quality | o | o | o | | |
| To reduce the effect of traffic on the environment | o | o | o | | |
| To reduce contributions to climate change | ? | ? | ? | | |
| To reduce vulnerability to climate change | + | + | + | Inclusion of additional criteria to safeguard River Wye SAC. | |

D3 – Predict and evaluate the effect of the modifications to the policies within the NDP (Kingstone and Thruxton Neighbourhood Development Plan Dec 15)

| | | | | | |
|--|---|---|---|--|--|
| To improve water quality | ? | + | + | The implementation of the Nutrient Management Plan and additional safeguarding criteria will assist this move in a positive direction against the baseline | |
| To provide for sustainable sources of water supply | + | + | + | | |
| To avoid, reduce and manage flood risk | o | + | + | | |
| To conserve soil resources and quality | + | + | + | | |
| To minimise the production of waste | o | + | + | | |
| To improve health of the population | + | + | + | | |
| To reduce crime and nuisance | o | + | + | | |
| To conserve natural and manmade resources | + | + | + | Inclusion of additional criteria to safeguard River Wye SAC. | |
| Overall commentary and any cumulative effects | Overall this Policy is not over and above the Core Strategy and the policy moves towards the relevant SEA objectives. The implementation of the Nutrient Management Plan and additional policy criteria has provide additional safeguards | | | | |

Appendix 7

| Objectives and context | Where referenced in NDP/SEA |
|---|---|
| <ul style="list-style-type: none"> • The Neighbourhood Development Plan's purpose and objectives are made clear. • The Neighbourhood Area's environmental issues and constraints, including acknowledgement of those in the Local Plan (Core Strategy) SA, where relevant, and local environmental protection objectives, are considered in developing objectives and targets. • SEA objectives are clearly set out and linked to indicators and targets where appropriate. • Links with other locally related plans, programmes and policies are identified, explained and acknowledgement for those set out in the SA of the Local Plan (Core Strategy) is given, where relevant. • Conflicts that exist between SEA and Neighbourhood Development Plan objectives; and between SEA objectives and other local plan objectives are identified and described. | <ul style="list-style-type: none"> • Section 1 (paras 1.10 – 1.18). • Sections 2 and 3; and Tables A2 and A3 • Section 3 (para 3.7). • Section 3 (para 3.1). • Section 4 (paras 4.4) |
| Scoping | |
| <ul style="list-style-type: none"> • Statutory Consultees are consulted in appropriate ways and at appropriate times on the content and scope of the Environmental Report. • The assessment focuses on significant issues. • Technical, procedural and other difficulties encountered are discussed; assumptions and uncertainties are made explicit. | <ul style="list-style-type: none"> • Section 2 (paras 2.6 – 2.9) & Appendix 3 • Sections 2 and 6 • Sections 2 and 6 |

| Alternatives | |
|--|---|
| <ul style="list-style-type: none"> Realistic alternatives are considered for key issues, and the reasons for choosing them are documented. Alternatives include 'do minimum' and/or 'business as usual' scenarios wherever relevant. The environmental effects (both adverse and beneficial) of each alternative are identified and compared. Inconsistencies between the alternatives and other relevant local plans, programmes or policies are identified and explained. Reasons are given for selection or elimination of alternatives. | <ul style="list-style-type: none"> Section 5. Section 5 (paras 5.2 – 5.8). Section 5 & Appendix 5 N/A Section 5 (paras 5.2 – 5.8). |
| Baseline information | |
| <ul style="list-style-type: none"> Relevant aspects of the current state of the local, neighbourhood area environment and their likely evolution without the Neighbourhood Development Plan are described. Acknowledgement to the information in the SA of the Local Plan (Core Strategy) is given, where relevant. Environmental characteristics of the local, neighbourhood area, likely to be significantly affected are described, including areas wider than the physical boundary of the designated neighbourhood area, where it is likely to be affected by the Neighbourhood Development Plan. Difficulties such as deficiencies in information or methods are explained. | <ul style="list-style-type: none"> Section 1 and 6. Initial screening report and Section 1. Section 2. |

| Prediction and evaluation of likely significant environmental effects | |
|---|--|
| <ul style="list-style-type: none"> • Effects identified include the types listed in the Directive (biodiversity, population, human health, fauna, flora, soil, water, air, climate factors, material assets, cultural heritage and landscape), as relevant; and other local likely environmental effects are also covered, as appropriate. • Both positive and negative effects are considered, and the duration of effects (short, medium or long-term) is addressed. • Likely secondary, cumulative (growing in quantity and strength) and synergistic (acting together) effects are identified, where practicable. • Inter-relationships between effects are considered, where practicable. • The prediction and evaluation of effects makes use of relevant accepted standards, regulations, and thresholds (i.e. data gathered for the evidence base). • Methods used to evaluate the effects are described. | <ul style="list-style-type: none"> • Tables A2, A3 and A4 (Appendix 2) • Tables B2 and B3 (Appendix 4) • Table B4 (Appendix 4) • Section 6 • Section 6 • Section 2 |
| Mitigation measures | |
| <ul style="list-style-type: none"> • Measures envisaged to prevent, reduce and offset any significant adverse effects of implementing the Neighbourhood Development Plan are indicated. • Issues to be taken into account when determining planning applications or other projects, for example funding bids, are identified. | <ul style="list-style-type: none"> • Section 6 (paras 6.5. – 6.8) • Section 6. |

| The Environmental Report | |
|--|--|
| <ul style="list-style-type: none"> • Is clear and concise in its layout and presentation. • Uses simple, clear language and avoids or explains technical terms. • Uses maps and other illustrations, where appropriate. • Explains the methodology used. • Explains who was consulted and what methods of consultation were used. • Identifies sources of information, including expert judgement and matters of opinion. • Contains a non-technical summary covering the overall approach to the SEA, the objectives of the Neighbourhood Development Plan, the main options considered, and any changes to the Neighbourhood Development Plan resulting from the SEA. | <ul style="list-style-type: none"> • N/A • N/A • N/A • Section 2 • Section 2 • Section 2 • Included at page 1 |
| Consultation | |
| <ul style="list-style-type: none"> • The SEA is consulted on as an integral part of the plan-making process of the Neighbourhood Development Plan. • Consultation Bodies and the public likely to be affected by, or having an interest in, the Neighbourhood Development Plan are consulted in ways and at times, which give them an early and effective opportunity within appropriate time frames to express their opinions on the draft Neighbourhood Development Plan and Environmental Report. | <ul style="list-style-type: none"> • Section 2 (paras 2.4 – 2.5). • Section 7. |

| Decision-making and information on the decision | |
|---|---|
| <ul style="list-style-type: none"> • The environmental report and the opinions of those consulted are taken into account in finalising and adopting the Neighbourhood Development Plan. • An explanation is given of how they have been taken into account. • Reasons are given for choosing the Neighbourhood Development Plan as adopted, in the light of other reasonable alternatives considered. | <ul style="list-style-type: none"> • Sections 2 and 8. • Following draft consultation • Following draft consultation |
| Monitoring measures | |
| <ul style="list-style-type: none"> • Measures proposed for monitoring the Neighbourhood Development Plan are clear, practicable and linked to the indicators and objectives used in the SEA. • Monitoring is used, where appropriate, during implementation of the Neighbourhood Development Plan to make good deficiencies in baseline information in the SEA. • Acknowledgement that monitoring enables unforeseen adverse effects to be identified at an early stage. (These effects may include predictions which prove to be incorrect.) • Proposals are made for action in response to significant adverse effects arising from the monitoring of the Neighbourhood Development Plan. | <ul style="list-style-type: none"> • Section 7. • Section 7. • Section 7. • Section 7. |