

Habitats Regulations Assessment



Leintwardine Group Neighbourhood Area

November 2015

Leintwardine Group HRA

HRA Screening Assessment

Contents

- 1 Introduction**
Map of the Neighbourhood Area with European sites shown
- 2 The requirement to undertake Habitats Regulations Assessment of Neighbourhood Plans**
- 3 Methodology**
- 4 Results of the Initial Screening Report and options**
- 5 Description of the Leintwardine Group Neighbourhood Plan**
- 6 Identification of other plans and projects which may have ‘in-combination’ effects**
- 7 Assessment of the ‘likely significant effects’ of the Leintwardine Group NDP**
Table 1 - Colour coding key for Matrix
- 8 Conclusions from the Screening Matrix**

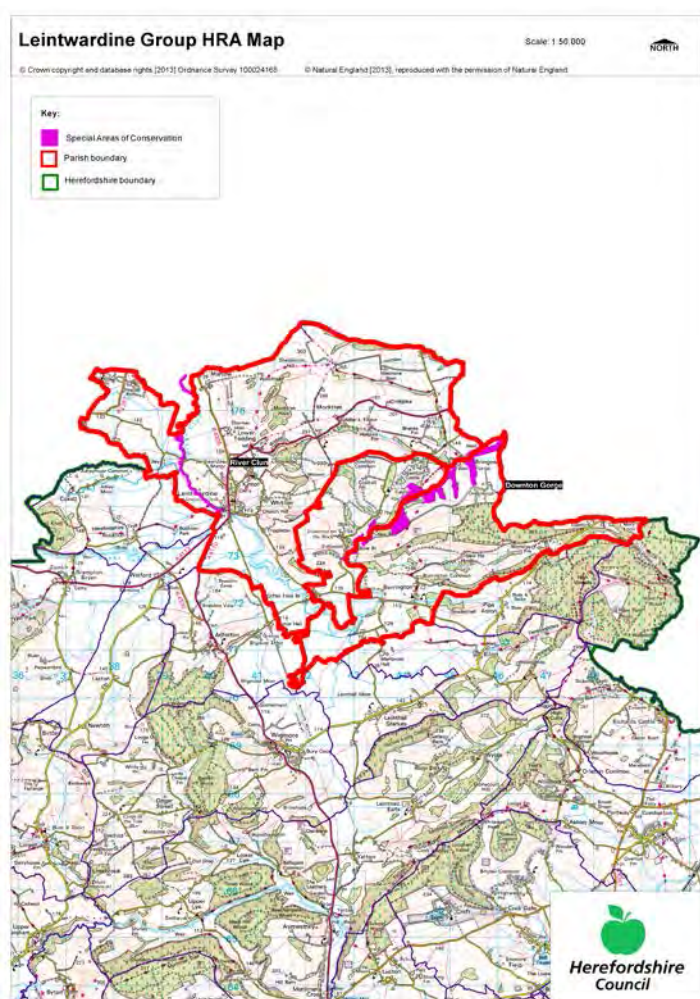
Appendix 1 – List of options assessed

Appendix 2 – Options Assessment and Full Screening matrix

Appendix 3 – Initial Screening Report (September 2014)

1 Introduction

- 1.1 This Screening Assessment relates to a Neighbourhood Development Plan that is considered to be in general conformity with higher level strategic plans, such as the Herefordshire Core Strategy and the National planning Policy Framework. The screening stage involves assessing broadly whether the Draft Neighbourhood Plan is likely to have a significant effect on any European site(s).
- 1.2 Leintwardine Group Parish Council is producing a Neighbourhood Development Plan for Leintwardine Group Parish, in order to set out the vision, objectives and policies for the development of the Parish up to 2031. This HRA reviews the Draft Leintwardine Plan November 2015.
- 1.3 The NDP is criteria based and allocates one site to the north of the village. It provides general policies that clarify and provide detail to the policies within the Herefordshire Core Strategy therefore it requires a high level screening assessment to build upon the HRA Screening Assessment Report for the Herefordshire Core Strategy. This high level screening assessment should be read in combination with the Herefordshire Pre-submission publication of the Local Plan-Core Strategy Habitat Regulations Assessment Report (April 2014) and ensures that there will not be any significant impacts upon Natura 2000 sites.
- 1.4 The map below shows Leintwardine Group Neighbourhood Area with the European Site highlighted.



2 The requirement to undertake Habitats Regulations Assessment of neighbourhood plans

- 2.1 The requirement to undertake HRA of development plans was confirmed by the amendments to the "Habitats Regulations" published for England and Wales in July 2007 and updated in 2013. Therefore, when preparing its NDP, Leintwardine Group Parish Council is required by law to carry out an assessment known as "Habitats Regulations Assessment". It is also a requirement in Regulation 32 schedule 2 of the Neighbourhood Planning Regulations 2012.
- 2.2 Article 6(3) of the EU Habitats Directive provides that:
Any plan or project not directly connected with or necessary to the management of the [European] site but likely to have a significant effect thereon, either individually or in combination with other plans or projects, shall be subject to appropriate assessment of its implications for the site in view of the site's conservation objectives. In the light of the conclusions of the assessment of the implications for the site and subject to the provisions of paragraph 4, the competent national authorities shall agree to the plan or project only after having ascertained that it will not adversely affect the integrity of the site concerned and, if appropriate, after having obtained the opinion of the general public.
- 2.3 HRA is an impact-led assessment and refers to the assessment of the potential effects of a neighbourhood plan on one or more European sites, including Special Protection Areas (SPAs) and Special Areas of Conservation (SACs):
- **SPAs** are classified under the European Council Directive 'on the conservation of wild birds' (79/409/EEC; 'Birds Directive') for the protection of **wild birds and their habitats** (including particularly rare and vulnerable species listed in Annex 1 of the Birds Directive, and migratory species).
 - **SACs** are designated under the Habitats Directive and target **particular habitats** (Annex 1) and/or species (Annex II) identified as being of European importance.
- 2.4 For ease of reference during HRA, general practice has been that these three designations are collectively referred to as either **Natura 2000** or **European sites**. This means that a Screening Assessment is carried out with regard to the Conservation Objectives of the European Sites and with reference to other plans or projects to identify if any significant effect is likely for any European Site.

3 Methodology

- 3.1 As the Leintwardine Group NDP is not directly connected with the management of any European sites, and includes proposals for development which may affect European sites, it is necessary under Regulation 102(1)(a) of the Habitats Regulations 2010 to undertake screening for likely significant effects on European sites.
- 3.2 The HRA of neighbourhood plans is undertaken in stages and should conclude whether or not a proposal or policy in a neighbourhood plan would adversely affect the integrity of the site in question. This is judged in terms of the implications of the plan for a site's 'qualifying features' (i.e. those Annex I habitats, Annex II species, and Annex I bird populations for which it has been designated) and are measured with reference to the conservation objectives for those qualifying features as defined by Natural England.
- 3.3 The first process is to undertake an initial screening report to determine the need to undertake the requirement for a HRA, this initial screening identifies whether the Plan could impact upon any European site that could be within the Neighbourhood Area or nearby.
- 3.4 If a European Site is within the Neighbourhood Area or the Neighbourhood Area could impact upon a European site then this will need to be taken into account and a full screening assessment will need to be undertaken.

3.5 The full screening stage consists of a description of the plan, identification of potential effects on European Sites, assessing the effects on European Sites (taking into account potential mitigation provided by other policies in the plan). For Neighbourhood Plans the outcome should demonstrate there are no likely effects upon the European sites. If any likely effects occur then there will need to be amendments to the NDP made and be re-screened until all likely effects have been mitigated.

4 Results of the Initial Screening Report and options

- 4.1 The initial Screening report (September 2014) found that the River Clun SAC is located to the south west of the village of Leintwardine and Downton Gorge SAC to the east of the village of Leintwardine and therefore a full screening assessment is required.
- 4.2 For full details of the River Clun's attributes which contribute to and define their integrity and vulnerable data see Appendix 1 of the Leintwardine Group Initial Screening Report. The Initial Screening Report, September 2014, can be found in Appendix 3 of this HRA report. This information made it possible to identify the features of each site which determine site integrity, as well as the specific sensitivities of each site, therefore enabling later analysis of how the potential impacts of the Leintwardine Group Neighbourhood Plan may affect site integrity.
- 4.3 The initial options for the NDP were assessed to determine their environmental impact that could affect the River Clun SAC. Of the three options put forward the no NDP option was not considered viable for the Parish. The remaining two options both proposed growth however they would both be within the proportional growth targets of the Core strategy and are therefore unlikely to have a significant impact on the SAC.
- 4.4 As Leintwardine Group progresses from options onto their NDP policies, the Plan will need to identify ways in which the least effect on the River Clun SAC and Downton Gorge SAC could be achieved, alongside taking forward the preferred option from the consultation from the community. A list of the options assessed can be found in Appendix 1, and the Assessment matrix for the options can be found Appendix 2.

5 Description of the Leintwardine Group Neighbourhood Development Plan

- 5.1 The Draft Leintwardine NDP presents detailed policies for development in the Neighbourhood Area, which is equivalent to the group parish boundary, up to 2031. The first part of the Plan introduces the Plan and its preparation and discusses the background of the village.
- 5.2 The NDP then details the vision for the Group Parish over the Plan period and nine objectives of how this will be achieved. The objectives cover the following topics:
- Environment and heritage protection
 - Protection of views into and out of the village
 - Measures to mitigate and adapt to climate change
 - Ensure traffic travelling through the village is responsive to speed limits
 - Proportionate housing growth
 - Encourage existing small business, tourism and services
 - Welcome new residents, allowing people to feel safe and encourage community involvement
 - Enhance local facilities
 - Green space protection and provision

5.3 The NDP also sets out 18 general policies on various topics based on the objective headings above and also for the village, these include:

- Promoting Sustainable Community
- Protecting Heritage Assets
- Retaining the natural environment and landscape
- Development within Leintwardine Conservation Area
- Design appearance
- Sustainable Design
- Highways and Transport infrastructure
- Highway requirements
- New homes in Leintwardine
- Leintwardine Settlement Boundary
- Housing land adjacent to the surgery
- Supporting local businesses
- Renewable energy
- Broadband infrastructure
- Protection and enhancement of services and facilities
- Safeguarding local greenspace
- Provision of local sports area
- Use of Community Infrastructure Levy

6 Identification of other plans and projects which may have ‘in-combination’ effects

6.1 Regulation 102 of the Habitats Regulations 2010 requires an appropriate assessment where a land use plan (not directly connected with or necessary to the management of the site) is likely to have a significant effect on a European site, either alone or in combination with other plans or projects. In addition, in accordance with the Neighbourhood Planning Regulation 2012 a NDP cannot have a significant effect on any European Site whether alone or in combination with another Plan.

6.2 There are a number of potentially relevant plans and projects which may result in in-combination effects with the Core Strategy across Herefordshire, these plans have been reviewed and can be found in Appendix 2 of the pre-submission publication of the Herefordshire Local Plan – Core Strategy Habitats Regulations Assessment (May 2014). It is seen that as this NDP does not go over and beyond the requirements set out in the Core Strategy this review will also be substantial for the NDP.

6.3 The HRA for the Core Strategy also identifies that both the Water Cycle Study for Herefordshire, which indicates the potential for planned water abstraction requirements combined with pressures on European Sites from the Core Strategy policies, and the work on the Nutrient Management Plan, to ensure the favourable conservation status of the SAC in respect of phosphate levels as soon as possible and at the latest by 2027, have both been considered as part of the in-combination assessment.

7 Assessment of the ‘likely significant effects’ of the Leintwardine Group NDP

7.1 As required under Regulation 102 of the Habitats Regulations 2010, a screening assessment has been undertaken to identify the ‘likely significant effects’ of the NDP. A screening matrix was prepared in order to identify whether any of the policies in the Plan would be likely to have a significant effect on the River Clun SAC and Downton Gorge SAC.

7.2 The findings of the screening matrix can be found in the Screening Matrix in Appendix 2 of this report. Colour coding was used to record the likely impacts of the policies on the European site and its qualifying habitats and species as shown in the table 1 below.

Red	There are likely to be significant effects
Green	Significant effects are unlikely

7.3 The Screening matrix took the approach of screening each policy individually, which is consistent with current guidance documents. The results from the HRA report for the pre-submission version of the Herefordshire Core Strategy was also taking into consideration.

7.4 Mitigation of some of the identified potential effects could be achieved through implementation of the other policies within the NDP which require good practice measures during and after construction phases, such as more efficient use of water, reduction in waste, encouragement of recycling and supporting energy conservation measures. The provision and encouragement of use of more sustainable transport measures when improving the transport infrastructure will also help to reduce car traffic around the parish and surrounding areas, and encourage walking and use of public transport.

8 Conclusions from the Screening Matrix

- 8.1 None of the Draft Leintwardine Group NDP (November 2015) policies were concluded to be likely to have a significant effect on the River Clun SAC or Downton Gorge SAC. Based on assumptions and information contained within the Leintwardine Group NDP, Herefordshire Core Strategy and the Pre-submission version / proposed modifications addendum of the HRA for the Core Strategy all of the NDP policies were found to be unlikely to result in significant effects on the River Clun SAC and the Downton Gorge SAC.
- 8.2 In many cases this is because the policy itself would not result in development, i.e., it related instead to criteria for development. In a number of cases the policies also included measures to help support the natural environment, including biodiversity. In addition, these policies have the potential to mitigate some of the possible adverse effects arising from other policies.
- 8.3 The plan is very much criteria based, and only allocates one site for development to the north of the village of Leintwardine which the policy itself contains mitigation methods against the housing development to ensure it has no significant impact.
- 8.4 In the HRA for the pre-submission publication of the Core Strategy it states that only 1km of the River Clun SAC is within Herefordshire, and as no STWs serving Herefordshire discharge into the River then no policies included in the Core Strategy will affect the River Clun SAC, as the policies within the Leintwardine Group NDP are not over and above the Core Strategy then it is acknowledged that the NDP policies will not have an adverse impact upon the River Clun SAC.
- 8.5 It is unlikely that the Leintwardine NDP will have any in-combination effects with any Plans from neighbouring parish councils as the level of growth proposed is the same as that proposed for the Housing Market Area in the Herefordshire Core Strategy and all of the proposed housing sites will be of a fairly small scale.
- 8.6 It is therefore concluded that the Leintwardine Group will not have a likely significant effect on the River Clun SAC and the Downton Gorge SAC.
- 8.7 Any further amendments to policies (post November 2015) will be rescreened if required and an addendum to this report will be produced.

Appendix 1

Leintwardine options

- a) Relying upon Herefordshire Local Plan (Core Strategy) and not preparing a Neighbourhood Plan – this was considered to be contrary to the needs of the local community with housing development, in particular, coming forward in an ad-hoc fashion and potentially in significant numbers through developers, with no community input and until Herefordshire Council produced its Rural Areas Plan that might set a limit.
- b) Relying upon Neighbourhood Plan policies only that gave a broad indication of where development might take place – this was considered to provide residents with a similar level of uncertainty and result in potentially the same problems as the first option.
- c) Producing a Neighbourhood Plan that indicated a settlement boundary and allocated sufficient land to meet, in particular, the housing target set for the village – this was considered the preferred approach in that the process of preparing the plan would enable residents to express their opinion upon how the required new housing could best be accommodated. It would then create greater certainty for residents for the plan period.

Appendix 2

NDP options / objectives / policies	HRA Screening of NDP objectives and policies				
	Likely activities (operations) to result as a consequence of the objective/policy	Likely effect if objective/policy implemented. Could they have Likely Significant Effects on European Sites?	European Sites potentially affected	Mitigation measures to be considered, as necessary, through redraft of objective/option/policy.	Could the policy have any likely significant effects on European sites (taking mitigation into account)?
Option 1 Do nothing.	No NDP to determine planning applications.	Criteria policies within the Core Strategy would guide further development. Specific policies and proposals for the parish would not exist.	N/A	N/A	N/A
Option 2 Manage future housing through a development management policy.	Small scale proportionate growth where the location would be determined by criteria based policy.	Uncertain as to the impact on the European sites as dependant on the location of the development.	River Clun SAC & Downton Gorge	Criteria based housing policy would require to include reference to mitigation measures to avoid any non-disturbance effects on the River Clun via its catchment.	No, development in line with the Local Plan (Core Strategy) and the policy safeguards which exist within the Core Strategy should avoid or mitigate any likely significant effects. Policy criteria should be included within the NDP which reflects this. Further assessments will be undertaken at draft policy stage.
Option 3 (Preferred option) Allocate sites and identify a settlement boundary.	Small scale proportionate growth on specific sites identified on a proposals map and within a defined settlement boundary area.	Greater degree of certainty over the impact of future development on the European sites, as the location of housing would be pre-determined and the settlement boundary would provide a clear distinction between open countryside and the built environment.	River Clun SAC & Downton Gorge	Specific environmental issues could be investigated during the site search and be positively addressed within the policy wording. Additional criteria would be required when formulating the accompanying settlement boundary policy to ensure that no likely significant effects could occur.	No, development in line with the Local Plan (Core Strategy) and the policy safeguards which exist within the Core Strategy should avoid or mitigate any likely significant effects. Policy criteria should be included within the NDP which reflects this. Further assessments will be undertaken at draft policy stage.
NDP Objectives					
Objective 1 Safeguard environment and heritage	Promoting measures to ensure the historic, cultural and ecological heritage of the Parish remains or is enhanced.	If objective is realised then the policies that deliver it could have a positive impact upon European sites.	N/A	N/A	No, the policies involved in delivering this objective would only have positive impacts upon the European sites if they are successfully implemented.
Objective 2 Retain views into and out of village	Promote measures to retain the existing views throughout the village by limiting development in these areas and encouraging good design	N/A	N/A	N/A	No, this objective is unlikely to result in development itself.
Objective 3 Mitigate and adapt to climate change measures promoted	Encourage renewable energy schemes and promote energy efficient housing	N/A	Downton Gorge SAC	There are additional policies in place within the Core strategy to ensure that schemes are not of a disproportionate scale.	No, the policies arising from this objective will seek to reduce the carbon footprint which will also help with air quality.

NDP options / objectives / policies	HRA Screening of NDP objectives and policies				
	Likely activities (operations) to result as a consequence of the objective/policy	Likely effect if objective/policy implemented. Could they have Likely Significant Effects on European Sites?	European Sites potentially affected	Mitigation measures to be considered, as necessary, through redraft of objective/option/policy.	Could the policy have any likely significant effects on European sites (taking mitigation into account)?
Objective 4 Traffic through village to take account of speed limits	Promote measures to slow traffic down through the village	Unlikely to have a likely significant effect on the SACs, due to minimal development and potential reduction of traffic through village which could decrease air pollution	N/A	N/A	No as the level of development is likely to only be small scale and should help with the overall aim of reducing traffic and thereby improving air pollution
Objective 5 Ensure sufficient housing to meet the needs of local people	Proportional growth in line with Policy RA2 of the Local Plan (Core Strategy).	N/A	N/A	N/A	No, this objective will not lead to development; rather it acknowledges that proportional growth will occur across the neighbourhood area in line with the Local Plan (Core Strategy).
Objective 6 Encourage existing small businesses; tourism and services	Business development and encourage existing businesses to remain in the parish Increased tourism could have the potential to increase in car use across the parish	There is enough emphasis within the related policies on limiting pollution from business activity/attracting non-polluting activity to avoid adverse impacts on the European sites.	River Clun SAC and Downton Gorge SAC	N/A	No, potential damage to the interests of species using the SAC would be significantly reduced by the criteria within various policies.
Objective 7 New residents welcomed, ensure people feel safe encourage community spirit	N/A	Additional residents encouraged to the parish through the development of the new housing	N/A	N/A	No as this objective is unlikely to lead to development itself
Objective 8 Ensure local facilities are well used and enhanced	Promote improvement of services and facilities for all members of the community	N/A	N/A	N/A	No This objective will not seek to provide development but more to enhance the facilities that are currently in existence.
Objective 9 Additional green space to match housing growth provided	Promote and encourage the protection of the existing green spaces as well as encourage new green spaces	N/A	N/A	N/A	No this objective is unlikely to lead to development itself, and will help to mitigate against any adverse impact
Policies					
Policy LG1: Promoting a Sustainable Community	Encourages sustainable development and communities	No likely significant effect on the River Clun SAC or Downton Gorge SAC	N/A	N/A	No. The policy would itself not lead to development; instead it relates to criteria for encouraging sustainable development and sustainable communities.
Policy LG2: Protecting Heritage Assets	N/A	No likely significant effect on the River Clun SAC or Downton Gorge SAC	N/A	N/A	No. This policy will not lead to new development; rather it aims to ensure that any development proposed within the Neighbourhood Area will conserve and

NDP options / objectives / policies	HRA Screening of NDP objectives and policies				
	Likely activities (operations) to result as a consequence of the objective/policy	Likely effect if objective/policy implemented. Could they have Likely Significant Effects on European Sites?	European Sites potentially affected	Mitigation measures to be considered, as necessary, through redraft of objective/option/policy.	Could the policy have any likely significant effects on European sites (taking mitigation into account)?
					enhance the local Historic Assets.
Policy LG3: Retaining the Natural Environment and Landscape	N/A	No likely significant effect on the River Clun SAC or Downton Gorge SAC	N/A	N/A	No. This policy will not lead to new development; rather it aims to ensure that any development proposed within the Neighbourhood Area will conserve and enhance the natural environment. Indeed, this policy will also help to provide mitigation methods to protect the two SACs.
Policy LG4: Development within Leintwardine Conservation Area	N/A	No likely significant effect on the River Clun SAC or Downton Gorge SAC	N/A	N/A	No. This policy will not lead to new development; rather it aims to ensure that any development proposed will preserve and enhance the conservation area
Policy LG5: Design appearance	N/A	No likely significant effect on the River Clun SAC or Downton Gorge SAC	N/A	This policy should help to mitigate the potential effects of future development, by ensuring the appearance and character of the area is maintained and enhanced.	No. This policy will not lead to new development; rather it specifically aims to ensure that any development proposed will protect and enhance the character and appearance of the village. As such this policy could help to provide mitigation against the potential of other NDP policies.
Policy LG6: Sustainable Design	N/A	No likely significant effect on the River Clun SAC or Downton Gorge SAC	N/A	This policy will help to mitigate the potential effects of any future development by encouraging sustainable design methods including reducing the carbon footprint of any development.	No. This policy will not lead to new development; rather it specifically aims to ensure that any development proposed will be sustainable. As such this policy could help to provide mitigation against the potential of other NDP policies.
Policy LG7: Highways and Transportation infrastructure	Improve footpaths / pavements Reduction in traffic	No likely significant effect on the River Clun SAC or Downton Gorge SAC	N/A	N/A	No. This policy will not lead to new development; rather it aims to ensure improvements to traffic through the village, in particular encouraging walking and public transport use.
Policy LG8: Highway Requirements	Highway improvements	No likely significant effect on the River Clun SAC or Downton Gorge SAC	N/A	N/A	No. This policy will not lead to new development; rather it aims to ensure improvements to traffic and highways through the village.
Policy LG9: New homes in Leintwardine	Housing development Increased vehicle traffic	No likely significant effect on the River Clun SAC or Downton Gorge SAC	N/A	The measures set out in the Core Strategy policies and also the NDP policies should help to avoid adverse impacts upon the	This figure remains within the figure set out in the Core Strategy RA2 policy and therefore is not over and above the proposed. Although it is acknowledged that there will be an increase in the demand for water abstraction and

NDP options / objectives / policies	HRA Screening of NDP objectives and policies				
	Likely activities (operations) to result as a consequence of the objective/policy	Likely effect if objective/policy implemented. Could they have Likely Significant Effects on European Sites?	European Sites potentially affected	Mitigation measures to be considered, as necessary, through redraft of objective/option/policy.	Could the policy have any likely significant effects on European sites (taking mitigation into account)?
				European site.	sewage treatment the River Clun has no STWs serving Herefordshire discharging to it, therefore this will not affect the River Clun SAC.
Policy LG10: Leintwardine Settlement Boundary	Highlights the boundary for the village core of where development would be acceptable	No likely significant effect on the River Clun SAC or Downton Gorge SAC	N/A	N/A	No. The policy would itself not lead to development; instead it relates to criteria for where the village core is and therefore where development is demonstrated as acceptable.
Policy LG11: Housing Land adjacent to the Surgery	Housing Development Increased in vehicle traffic	This policy does propose a site to the north of the village for approx. 25 dwellings; this is still within the threshold of the Core Strategy. This is not directly adjacent to either of the SACs within the Parish.	No likely significant effect on the River Clun SAC or Downton Gorge SAC	Within this policy there are mitigation methods to help reduce the potential impacts arising from this development. Ensure during development phase that there are mitigation methods in place to reduce any adverse impact that could occur during the development.	No. Although this policy is identifying a site for housing development within the village, it does include mitigation methods as well as the additional policies within the NDP and Core Strategy that have measures to mitigate against the impact of the development. In addition, the development is not over and above the Core Strategy requirement which has been identified as not having a significant effect on the River Clun SAC and Downton Gorge SAC.
Policy LG12: Supporting Local Businesses	Increase in home working Small work premises Reduced vehicle traffic Retaining existing employment sites	No likely significant effect on the River Clun SAC or Downton Gorge SAC	N/A	This policy should help to mitigate the potential impacts of other NDP policies in relation to increased traffic due to reducing the extent to which people need to travel for work.	No. Although this policy encourages some development it is of small scale and encourages home working thereby reducing the need to travel in both instances. There are measures in other policies in the Plan that will help to mitigate against any negative impact the policy may have.
Policy LG13: Renewable Energy	Development of renewable energy infrastructure	No likely significant effect on the River Clun SAC or Downton Gorge SAC	N/A	N/A	No, most of this policy will not lead to development, rather it sets out criteria aiming to ensure that new development reduces Leintwardine parish's contribution to climate change. The policy could however result in the development of renewable energy infrastructure but this is unlikely to have a significant effect on the River Clun SAC or Downton Gorge SAC.
Policy LG14: Broadband Infrastructure	New infrastructure for Broadband development	No likely significant effect on the River Clun SAC or Downton Gorge SAC	N/A	This policy should help to mitigate the potential impacts of other NDP policies in relation to increased traffic, and new business developments due to	No. Although this policy may lead to some new development this will be small scale to allow for the implementation of high speed broadband across the Parish. This in turn can allow new types of businesses to occupy the

NDP options / objectives / policies	HRA Screening of NDP objectives and policies				
	Likely activities (operations) to result as a consequence of the objective/policy	Likely effect if objective/policy implemented. Could they have Likely Significant Effects on European Sites?	European Sites potentially affected	Mitigation measures to be considered, as necessary, through redraft of objective/option/policy.	Could the policy have any likely significant effects on European sites (taking mitigation into account)?
				reducing the extent to which people need to travel for work.	Parish and also allow for home working, thereby reducing the need vehicle traffic travelling across the County.
Policy LG15: Protection and Enhancement of Services and Facilities	Development of social and community facilities and infrastructure	No likely significant effect on the River Clun SAC or Downton Gorge SAC	N/A	The measures in this policy will help to ensure that any potential adverse impact will be mitigated against. In addition the measures set out in other policies within the NDP will mitigate against any potential adverse impact.	No. The scale and extent of such development is not likely to be significant. It also relates to the criteria for the protection of existing community facility or any new community development, which ensures that mitigation methods are put in place for any adverse impacts that may arise.
Policy LG16: Safeguarding local greenspace	N/A	No likely significant effect on the River Clun SAC or Downton Gorge SAC	N/A	N/A	No. This policy will not lead to new development; rather it specifically aims to protect existing local green space.
Policy LG17: Provision of local sports area	Playing area provision	No likely significant effect on the River Clun SAC or Downton Gorge SAC	N/A	N/a	No. Although this policy could lead to some small scale development these will be ancillary to the playing pitch area.
Policy LG18: Use of Community Infrastructure Levy	New infrastructure for Broadband development	No significant effect on the River Wye (including the River Lugg) SAC.	N/A	This policy should help to mitigate the potential impacts of other NDP policies in relation to increased traffic, and new business developments due to reducing the extent to which people need to travel for work.	No. Although this policy may lead to some new development this will be small scale to allow for the implementation of high speed broadband across the Parish. This in turn can allow new types of businesses to occupy the Parish and also allow for home working, thereby reducing the need vehicle traffic travelling across the County.

Proposed Site Allocations	Characteristics of development, such as size	Location of proposed site allocation	HRA Screening of NDP Proposed Site Allocations			
			European Sites potentially affected	Likely effect if proposed site allocation is developed. Could the site result in LSE on European Sites?	Mitigation measures to be considered to avoid any impacts	If recommendations are implemented, would it be possible that it would result in likely significant effect?
<p>Site 5: Adjacent to and to the north of the surgery</p>	<p>The size of the development would yield approx. 25 dwellings.</p> <p>The construction and occupancy of 25 new houses will involve use of timber, aggregates, metals and plastics. There would also be increased demand for water abstraction and sewage treatment.</p> <p>Construction waste will involve mainly inert and managed materials such as timber, aggregates, metals, bricks/blocks and plastics.</p> <p>Occupancy waste will generate mainly managed general rubbish for landfill, recyclates and sewerage;</p> <p>Pollution and nuisances: mainly from increased traffic, a potential exists from sewage arising.</p> <p>Housing will lead to increase in noise and light pollution than exists at present;</p> <p>The risk of accidents; as development is residential there are no large quantities of hazardous substances or technologies involved.</p>	<p>The existing land use is agricultural (pasture). The vast majority of land was listed Grade 3 (Good to Moderate) or Grade 4 (Poor) for its agricultural quality.</p> <p>The site is to the north of the village.</p>	<p>The River Clun SAC and Downton Gorge SAC.</p>	<p>No: the scale of development proposed would not give rise to likely significant effects.</p>	<p>There are sufficient safeguards within NDP policy LG11, and other policies within the NDP to avoid any adverse impacts.</p> <p>The 2015 HRA Report confirms that the River Clun SAC, only has around 1km of the River in Herefordshire, with no STWs serving Herefordshire discharging to it. Therefore it was concluded that the policies within the Core Strategy (with which RA2 proposes proportional growth within the villages) will not affect the River Clun SAC.</p> <p>This site has been identified in direct response to the proportional growth target within that policy and its development, either in isolation or in tandem with the other proposed site allocations, would not exceed the Local Plan's requirements.</p>	<p>No: the latest iteration of the HRA for the Local Plan (Core Strategy) confirms that the of 5,300 dwellings in rural areas and the proposed site allocation, in combination with the others, will not exceed the proportional growth target for the settlement, and the effects of this will not have a significant effect on the River Clun SAC.</p>

Appendix 3

**Initial Habitat Regulations Assessment and Strategic Environmental
Assessment Screening Notification**

The Neighbourhood Planning (General) Regulation 2012 (Reg. 32)

Conservation of Habitats and Species Regulations 2010 (d)

Neighbourhood Area:	Leintwardine Group Neighbourhood Area
Parish Council:	Leintwardine Group Parish Council
Neighbourhood Area Designation Date:	13/10/2014

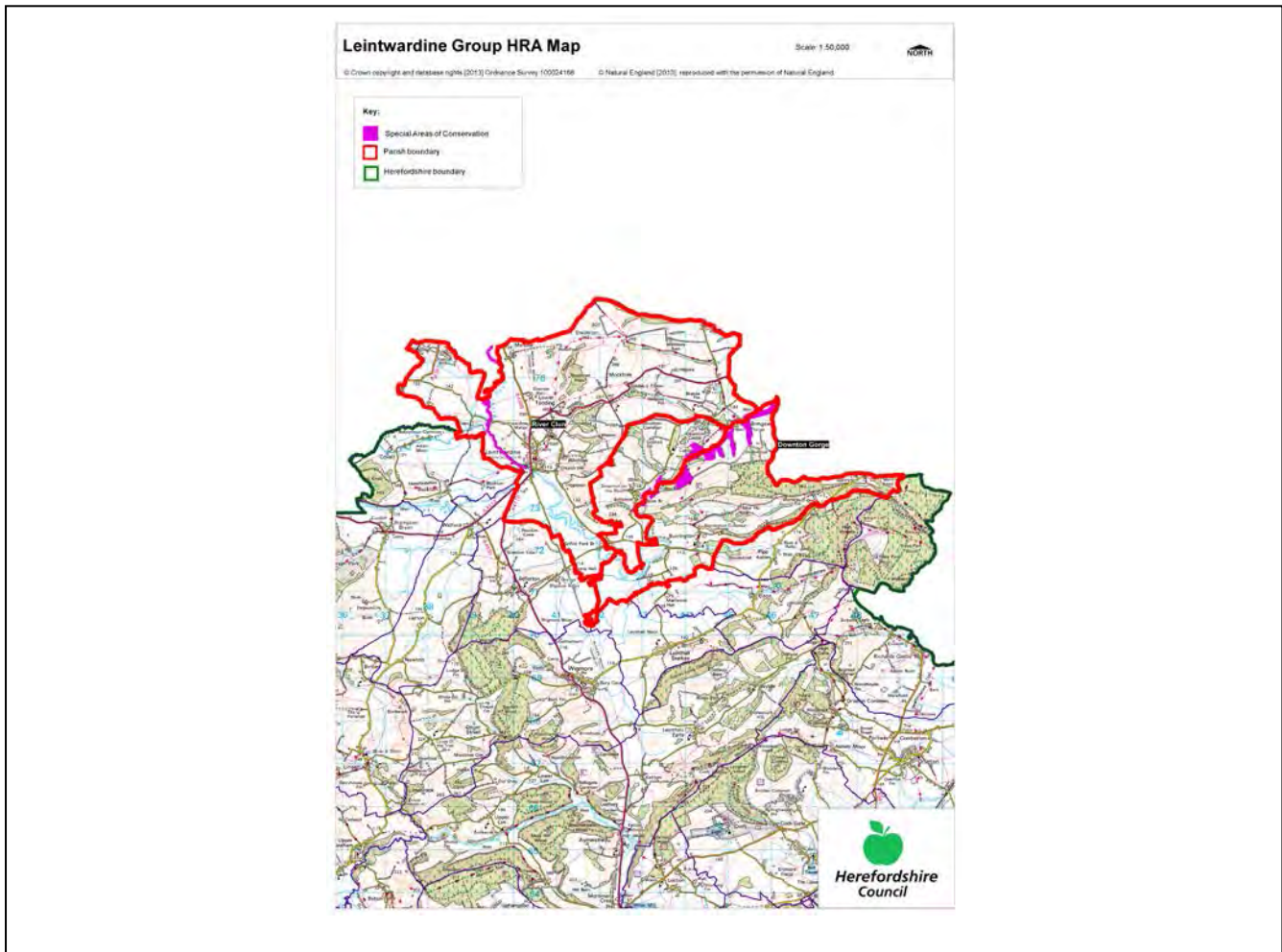
Introduction

This Initial Habitat Regulations Assessment (HRA) and Strategic Environmental Assessment (SEA) Screening has been undertaken to assess whether any European sites exist within or in proximity to the Neighbourhood Area which could be affected by any future proposals or policies.

Through continual engagement the outcomes of any required assessments will help to ensure that proposed developments will not lead to Likely Significant Effects upon a European site or cause adverse impacts upon other environmental assets, such as the built historic or local natural environment.

HRA Initial Screening

Map showing relationship of Neighbourhood Area with European Sites (not to scale)



River Wye (including the River Lugg) Special Area of Conservation (SAC):

Does the Neighbourhood Area have the River Wye (including the River Lugg) in or next to its boundary?	N	The River Wye/Lugg SAC is 20.2km away from the Group Parish.
Is the Neighbourhood Area in the hydrological catchment of the River Wye (including the River Lugg) SAC?	N	The Group Parish is not within the hydrological catchment of the River Wye.
If yes above, does the Neighbourhood Area have mains drainage to deal with foul sewage?	N	There is no mains drainage in Leintwardine Group.

Downton Gorge SAC:

Is the Neighbourhood Area within 10km of Downton Gorge SAC?	Y	Downton Gorge is within Downton Parish.
---	---	---

River Clun SAC:

Does the River Clun border the Neighbourhood Area	Y	River Clun runs through Leintwardine Parish.
---	---	--

Wye Valley & Forest of Dean Bat Sites SAC:

Is the Neighbourhood Area within 10km of any of the individual sites that make up the Wye Valley & Forest of Dean Bat Sites?	N	Wye Valley and Forest of Dean Bat Sites are 55.6km away from the Group Parish.
--	---	--

Wye Valley Woodlands SAC:

Is the Neighbourhood Area within 10km of any of the individual sites that make up the Wye Valley Woodlands Site?	N	Wye Valley Woodlands are 55.7km away from the Group Parish.
--	---	---

HRA Conclusion:

The assessment above highlights that the following European Sites will need to be taken into account in the future Neighbourhood Development Plan for the Leintwardine Group Neighbourhood Area and a Full HRA Screening will be required.

European Site

(List only those which are relevant from above)

Downton Gorge SAC

River Clun SAC

Strategic Environmental Assessment Initial Screening for nature conservation landscape and heritage features

The following environmental features are within or in general proximity to the Leintwardine Group Neighbourhood Area and would need to be taken into account within a Strategic Environmental Assessment. In addition, the NDP will also need to consider the other SEA topics set out in Guidance Note 9a to ensure that the plan does not cause adverse impacts.

SEA features	Within Neighbourhood Area		Bordering Neighbourhood Area	
	Total number	Name(s)	Total number	Name(s)
Ancient Woodland	13	Mocktree Hays; Lower Wassell Wood; Coles Wood; Haregrove Wood; Stonepits Coppice; Downton Gorge; Tinmill Wood (part); The Brakes; Deep Wood; Burrington Hays; Owney Wood; Well Wood; Whitcliffe Wood.	24	Hall Wood; Brush Wood; Burrel Wood; Petchfield Copse; Goggin Copse & Green Wood; Gatley Long Coppice; Barnett Wood; Newton Wood; Pedwardine Wood; Coxall Knoll; Hagley Wood; Chatshill Wood; Mynd Scrubs; Hopton Park; Hill Coppice; Purslow Wood; Well Wood; Norden Wood; Saddlehill Coppice; Doctors Coppice; Yelds Wood; Stoke Wood; Cookeridge Wood; Scotts Wood.

Areas of Outstanding Natural Beauty (AONB)	0	-	0	-
Conservation Areas	1	Leintwardine.	0	-
Flood Areas	Flood Zones 2 & 3 follow the Rivers Teme and Clun and also tributaries off these rivers.			
Geoparks	0	-	0	-
Listed Buildings	There are numerous Listed Buildings throughout the Group Parish.			
Mineral Reserves	7	Small area west of Stormer Hall; Off Jay Lane north west of Leintwardine; Burrington to Downton – Tatteridge Hall; Burrington to Downton; Richard's Castle – Bringewood; Mary Knoll to Haye Park; Upper Lye to Wigmore to Leinthall Starkses to Leintwardine.	0	-
National Nature Reserve (NNR)	1	Downton Gorge.	0	-
Nature Trails	2	Herefordshire Trail; Shropshire Way.	1	Mortimer Trail.
Regionally Important Geological Sites (RIGS)	1	Tripleton Lane.	3	Goggin Road Section; Sunnyhill Section; Deer Park Road Section.
Registered Parks and Gardens	2	Ferny Hall; Downton Castle.	2	Brampton Bryan; Gatley Park.
Sites of Importance in Nature Conservation (SINCs)	0	-	0	-
Special Areas of Conservation (SAC)	2	River Clun; Downton Gorge.	0	-
Special Wildlife Sites (SWS)	27	Churchill Quarry; Land at Kinton Farm; Billings, Coles and Hangrove Woods; Toddington Lane Section; Land at Wassell Barn;	16	Buckton Bog; Adley Moor Common; The Marl Pit, Buckton; Shelder Meadow; Land adjacent to Coxall Knoll;

		Land at Lawnwell Dingle; Rookery & Mocktree Hays; Stonepits & Jay Coppices; Stubbs Coppice; Land at Hollows Farm; Downton Gorge; Land at Downton Castle; Land at New House (1); Land at New House (2); Land at New House (3); Land at New House (4); Land at New House (5); Land at New House (6); Land at New House (7); Land at New House (8); Land at New House (9); Land at Burrington Pool; Burrington Meadow; Land at Burrington Bridge; Land at Downton Bridge; Tatteridge Hall; River Teme.		Coxall Knoll; Land adjacent to Pit Coppice; Field at Bowburnet; Kingacre & Hall Woods, and Aston Copse; Land at Elton; Land at Limebrook; Petchfield Copse & woodland to the north; Land at Leinthall Starkes; Green Hill Common; Wigmore Rolls; Land at Chapel Farm.		
Unregistered parks and gardens	2	Seedley House; Downton Castle.	2	Elton Hall; Haye Park.		
			SSSI Status		SSSI Status	
Sites of Special Scientific Interest (SSSI)	7	Mocktree Quarries; Downton Gorge; Churchill Quarry; River Teme;	Favourable; Unfavourable No Change; Favourable; Unfavourable No Change (part), Unfavourable Declining (part);	2	Brampton Bryan Park; Elton Lane Cutting.	Unfavourable Recovering; Favourable.

		Burrington Sections; Burrington Meadow; Mortimer Forest	Favourable; Unfavourable Recovering; Favourable.			
--	--	---	---	--	--	--

Decision Notification:

The initial screening highlights that the Neighbourhood Development Plan for the Leintwardine Group Neighbourhood Area:

- a) Will require further environmental assessment for Habitat Regulations Assessment and Strategic Environmental Assessment.

Assessment date: 11/09/2014

Assessed by: James Latham

Appendix 1: European Sites

The table below provides the name of each European Site, which has been screened in for the purposes of neighbourhood planning in Herefordshire; includes their site features of integrity; and vulnerability data. This is based on the sites individual features of integrity and their vulnerabilities, which could include distance criteria. This has been used in identifying which parishes are likely to require a full HRA Screening of their future Neighbourhood Development Plan, to establish if their plan might have Likely Significant Effects on a European Site.

Downton Gorge
Site Features: <i>Tilio-Acerion</i> forests of slopes, screes and ravines
Vulnerability data: 10km for air quality associated with poultry units or other intensive agricultural practices.

River Clun
Site Features: Freshwater pearl mussel <i>Margaritifera margaritifera</i>
Vulnerability data: Water quality is important to maintain the site feature. Parishes either side of the River Clun will be affected.

River Wye
Site Features: Water courses of plain to montane levels with the <i>Ranunculion fluitantis</i> and <i>Callitricho-Batrachion</i> vegetation. Transition mires and quaking bogs. White-clawed (or Atlantic Stream) crayfish <i>Austropotamobius pallipes</i> . Sea lamprey <i>Petromyzon marinus</i> . Brook lamprey <i>Lampetra planeri</i> . River lamprey <i>Lampetra fluviatilis</i> . Twaite shad <i>Alosa fallax</i> . Atlantic salmon <i>Salmo salar</i> . Bullhead <i>Cottus gobio</i> . Otter <i>Lutra lutra</i> . Allis shad <i>Alosa alosa</i>
Vulnerability data: Proximity: Developments should not be within 100m of the designated bank. Some developments beyond 100m may also have impacts based on proximity and these issues should be addressed where possible when developing NDP policy and choosing site allocations. Water Quality: Within the whole catchment of the River Wye, which includes the River Lugg, mains drainage issues with regards to water quality are being resolved through the Core Strategy / Local Plan and development of a Nutrient Management Plan. Welsh Water should be consulted to ensure that the proposed growth will be within the limit of their consents. Otters: "An otter will occupy a 'home range', which on fresh waters usually includes a stretch of river as well as associated tributary streams, ditches, ponds, lakes and woodland. The size of a home range depends largely on the availability of food and shelter, and the presence of neighbouring otters. On rivers, a male's home range may be up to 40km or more of watercourse and associated areas; females have smaller ranges (roughly half the size) and favour quieter locations for breeding, such as tributary streams. Otters without an established home range are known as 'transients'. They are mostly juveniles looking for a territory of their own, or adults that have been pushed out of their territories. Transient otters may use an area for a short while, but they will move on if conditions are not suitable or if they are driven away by resident otters. Transients will have been important in extending the range of otters, but they are very difficult to identify from field signs. Within a home range an otter may use many resting sites. These include above-ground shelters, such as stands of scrub or areas of rank grass, and underground 'holts' – for example, cavities under tree roots and dry drainage pipes." (Source: EA website: http://www.environmentagency.gov.uk/static/documents/Business/Otters_the_facts.pdf accessed 09/04/2013)

Wye Valley and Forest of Dean Bat Sites

Site Features: Annex II species that are a primary reason for site selection: Lesser horseshoe bat *Rhinolophus hipposideros*. Greater horseshoe bat *Rhinolophus ferrumequinum*

Vulnerability data: Lesser Horseshoe bats are known to migrate between 5km and 10km between their summer and winter roosts. The Lesser Horseshoe Bat is vulnerable to disturbance; light pollution; and habitat loss. Check with the planning ecologist for other issues.

Greater Horseshoe bats are known to migrate between 20-30km between their summer and winter roosts.

NDPs closest to the European Site will need to consider:

Woodland habitat buffer.

Lesser Horseshoe Bat: Old buildings; woodland locations; sheltered valleys, extensive deciduous woods or dense scrub, close to roost sites. In areas of fragmented habitats, linear habitats such as hedgerows are important corridors. Vulnerable to loss or disturbance of both summer and winter roosts and removal of linear habitat.

Greater Horseshoe Bat: Large buildings, pasture, edge of mixed deciduous woodland and hedgerows. Mixed land-use especially south-facing slopes, favours beetles, moths and insects they feed on. During the winter they depend on caves, abandoned mines and other underground sites for undisturbed hibernation. A system/series of sites required. Vulnerable to loss of insect food supply, due to insecticide use, changing farming practices and loss of broad-leaved tree-cover and loss / disturbance of underground roosts sites.

Wye Valley Woodlands

Site Features: Annex I habitats that are a primary reason for site selection: Beech forests *Asperulo-Fagetum*, *Tilio-Acerion* forests of slopes, screes and ravines, *Taxus baccata* woods of the British Isles. Annex II species present as a qualifying feature, but not a primary reason for site selection: Lesser horseshoe bat *Rhinolophus hipposideros*, 51-100 residents

Vulnerability data: Lesser Horseshoe bats are known to migrate between 5km and 10km between their summer and winter roosts. The Lesser Horseshoe Bat is vulnerable to disturbance; light pollution; and habitat loss. Check with the planning ecologist for other issues. NDPs closest to the European Site will need to consider: Woodland habitat buffer. Lesser Horseshoe Bat: Old buildings; woodland locations; sheltered valleys, extensive deciduous woods or dense scrub, close to roost sites. In areas of fragmented habitats, linear habitats such as hedgerows are important corridors. Vulnerable to loss or disturbance of both summer and winter roosts and removal of linear habitat.