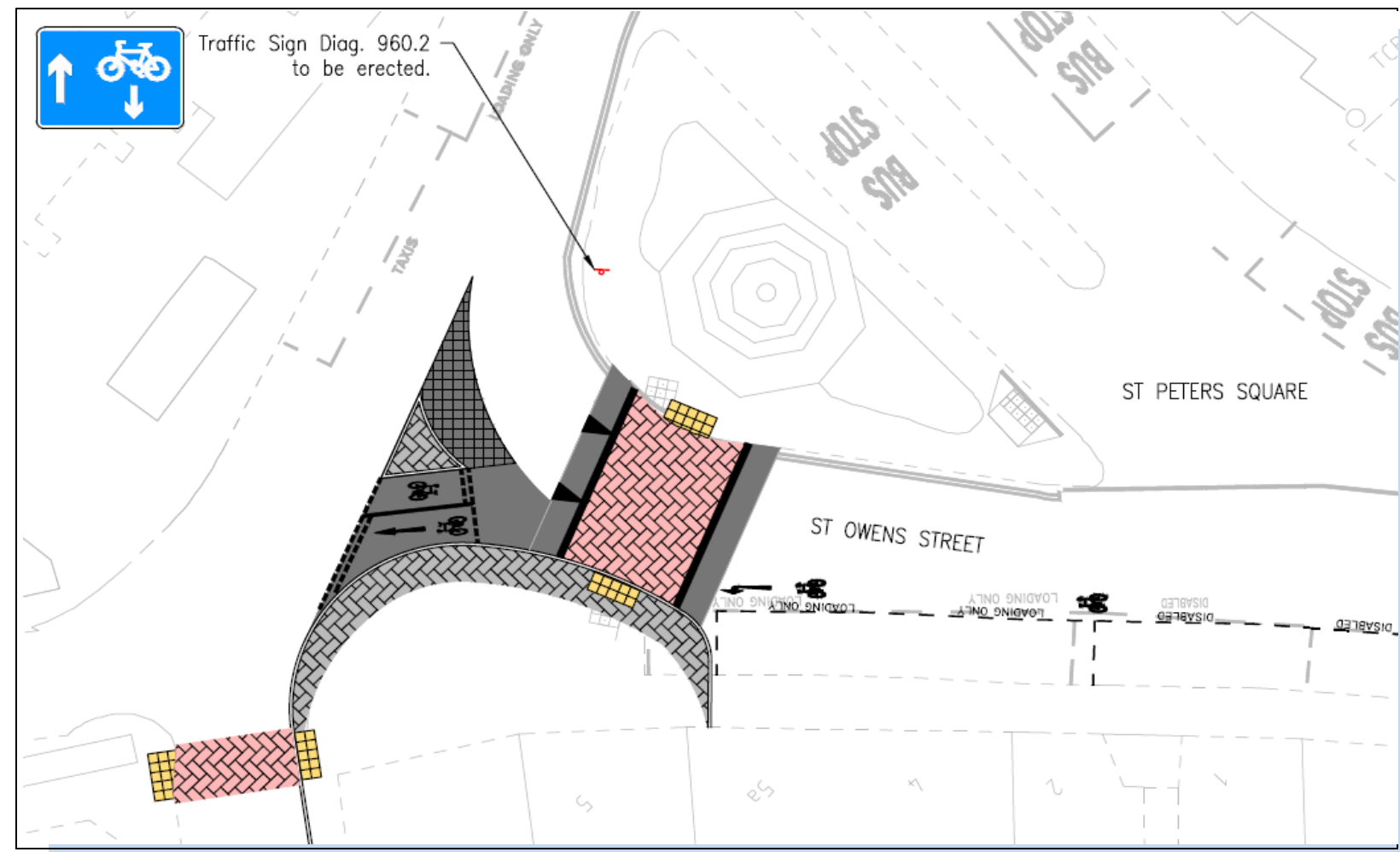
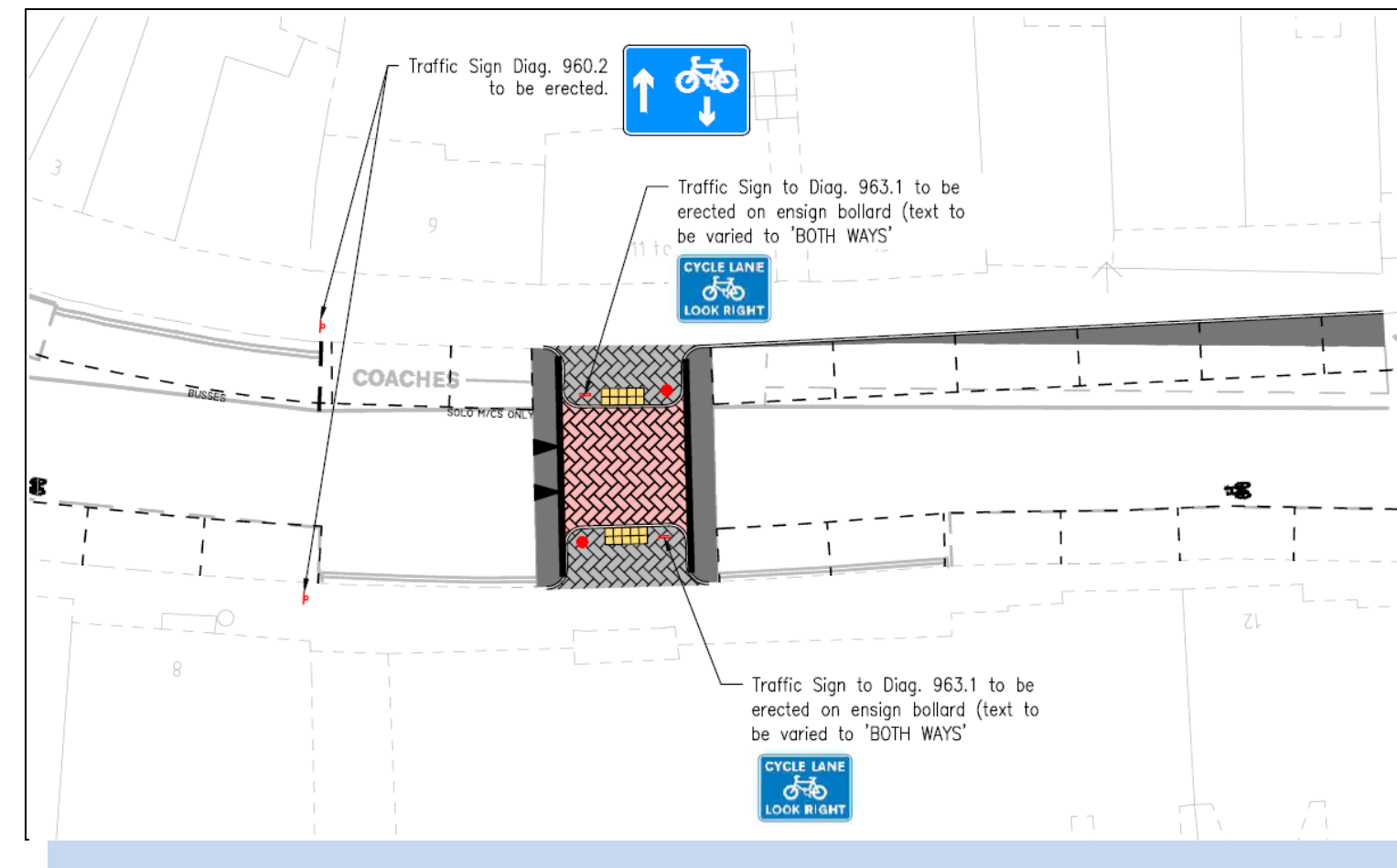


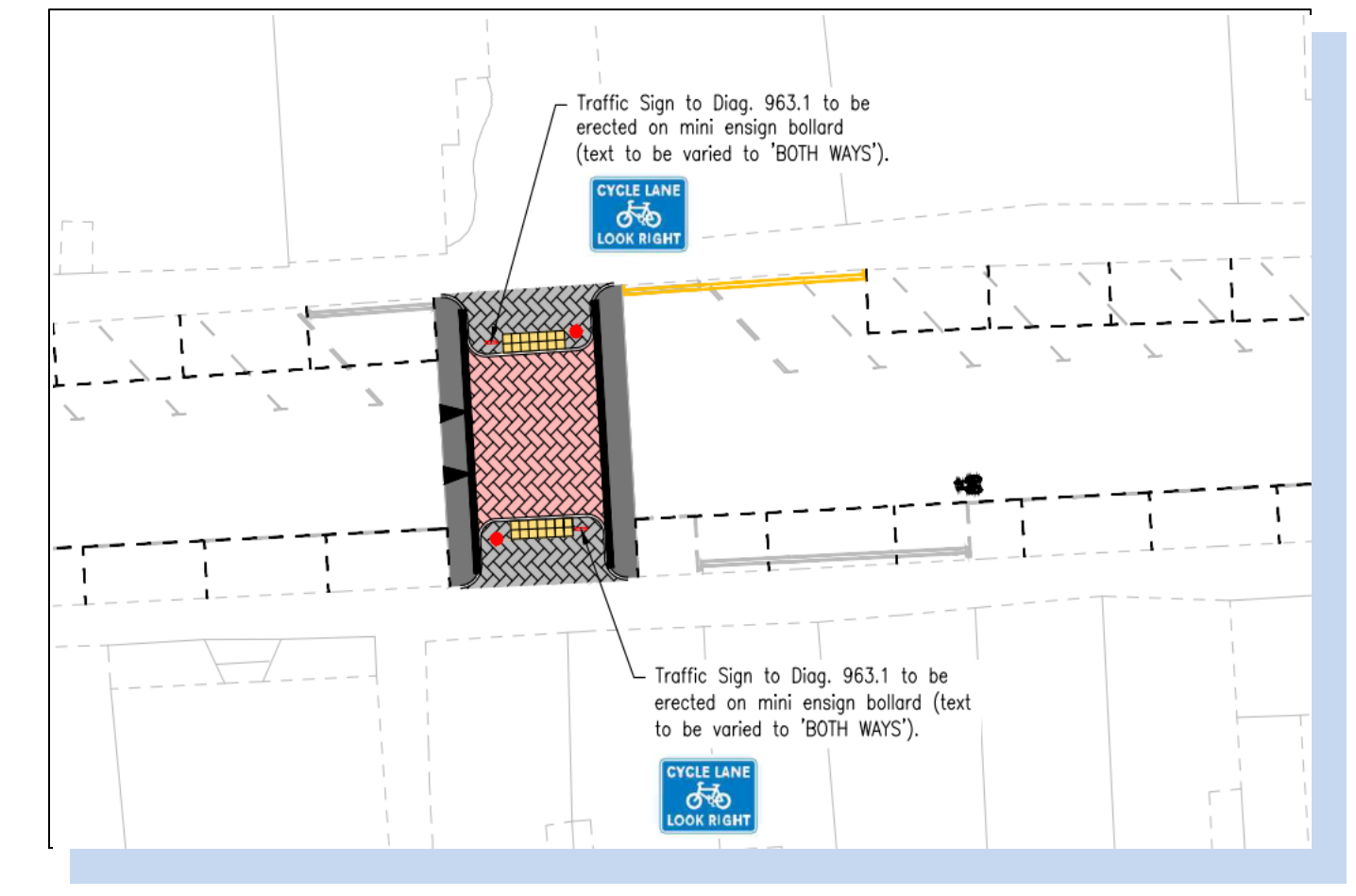
Key Features of the Scheme



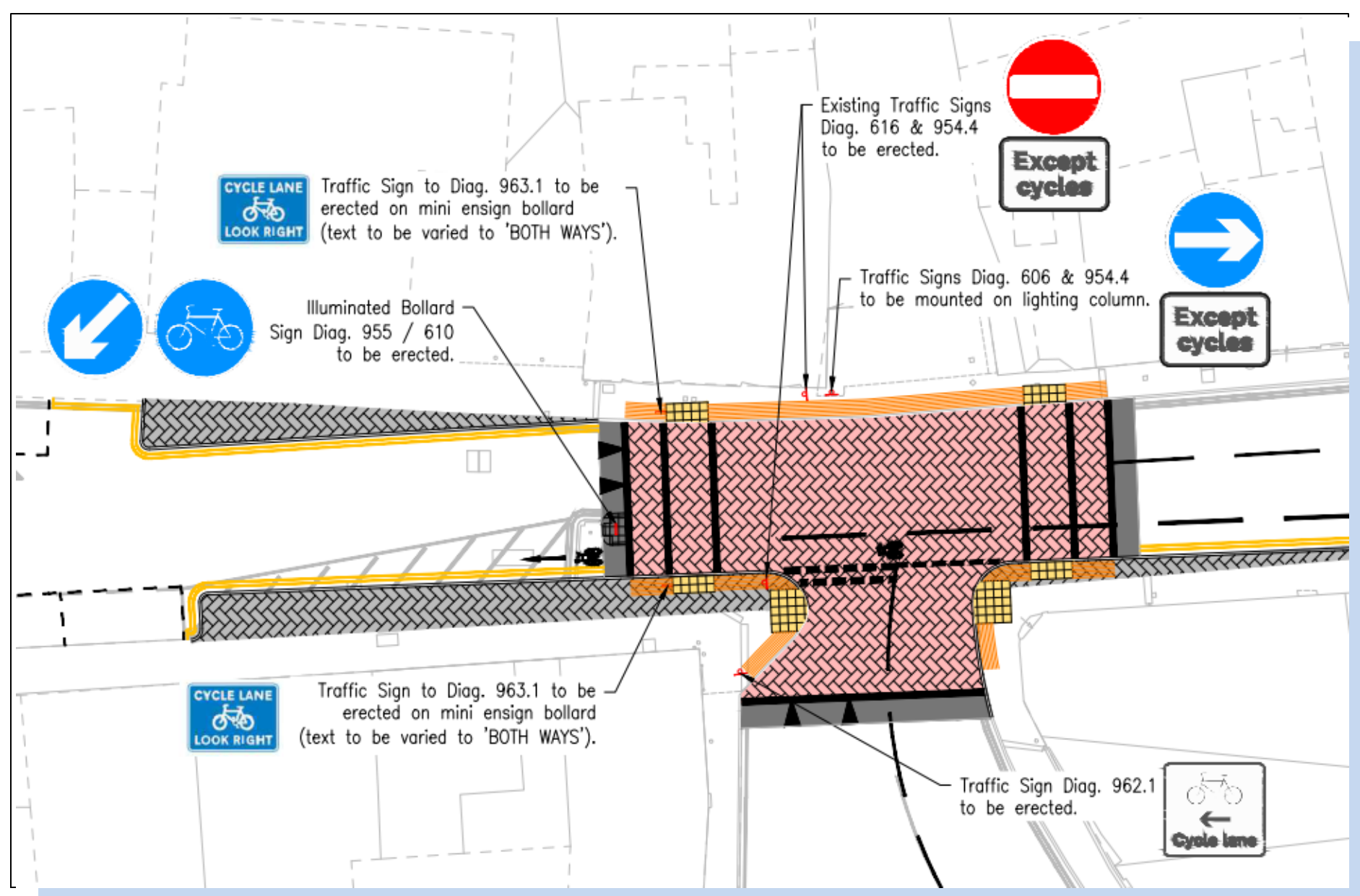
Pedestrian crossing point to War Memorial and bus stops. Cycle lane markings indicating end of contraflow and directing cycles from High Town across St Owen Street.



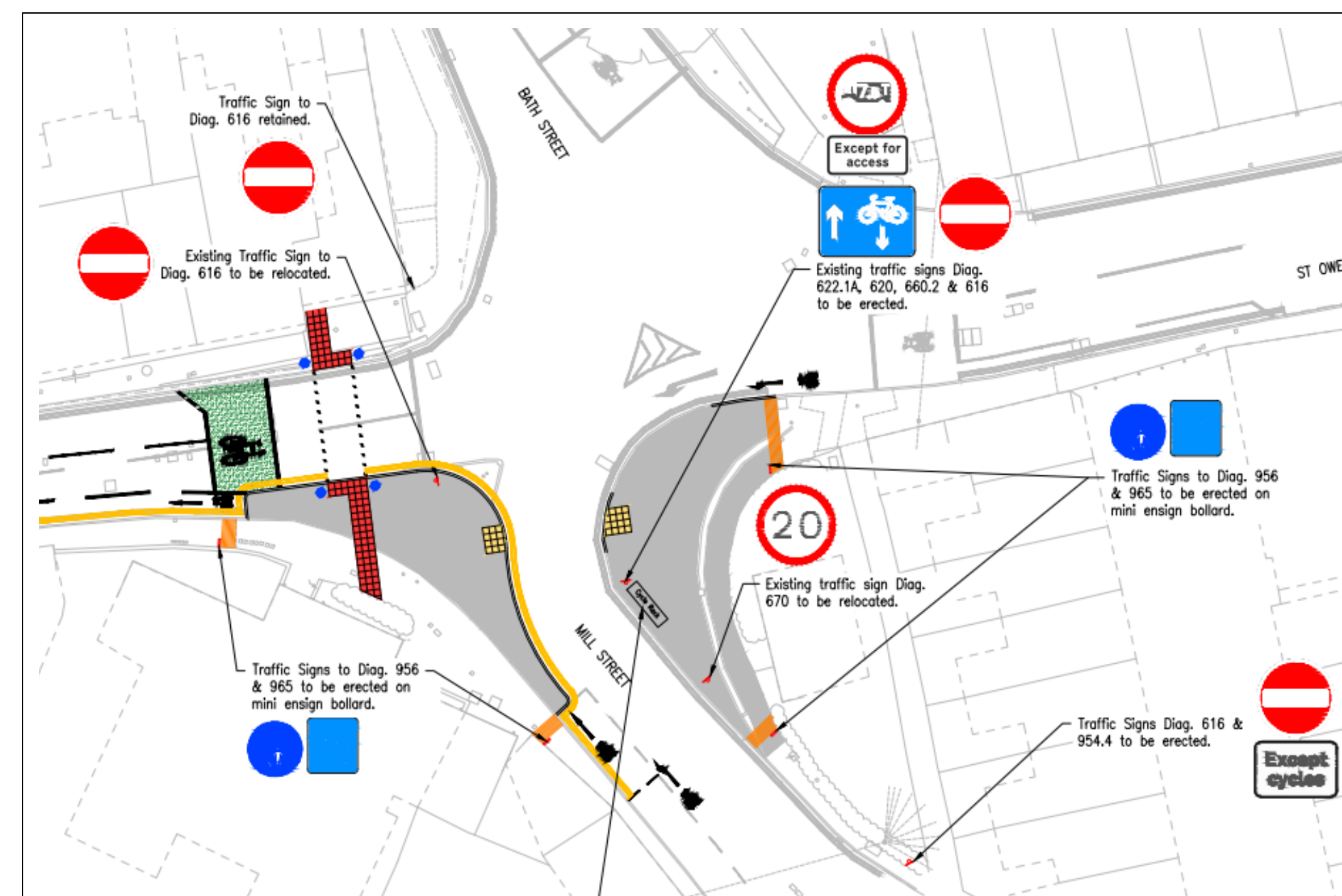
Raised pedestrian crossing point with build out at Town Hall to improve pedestrian connectivity and provide shorter and safer crossing for pedestrians. Northern kerb realigned to improve parking bay layout.



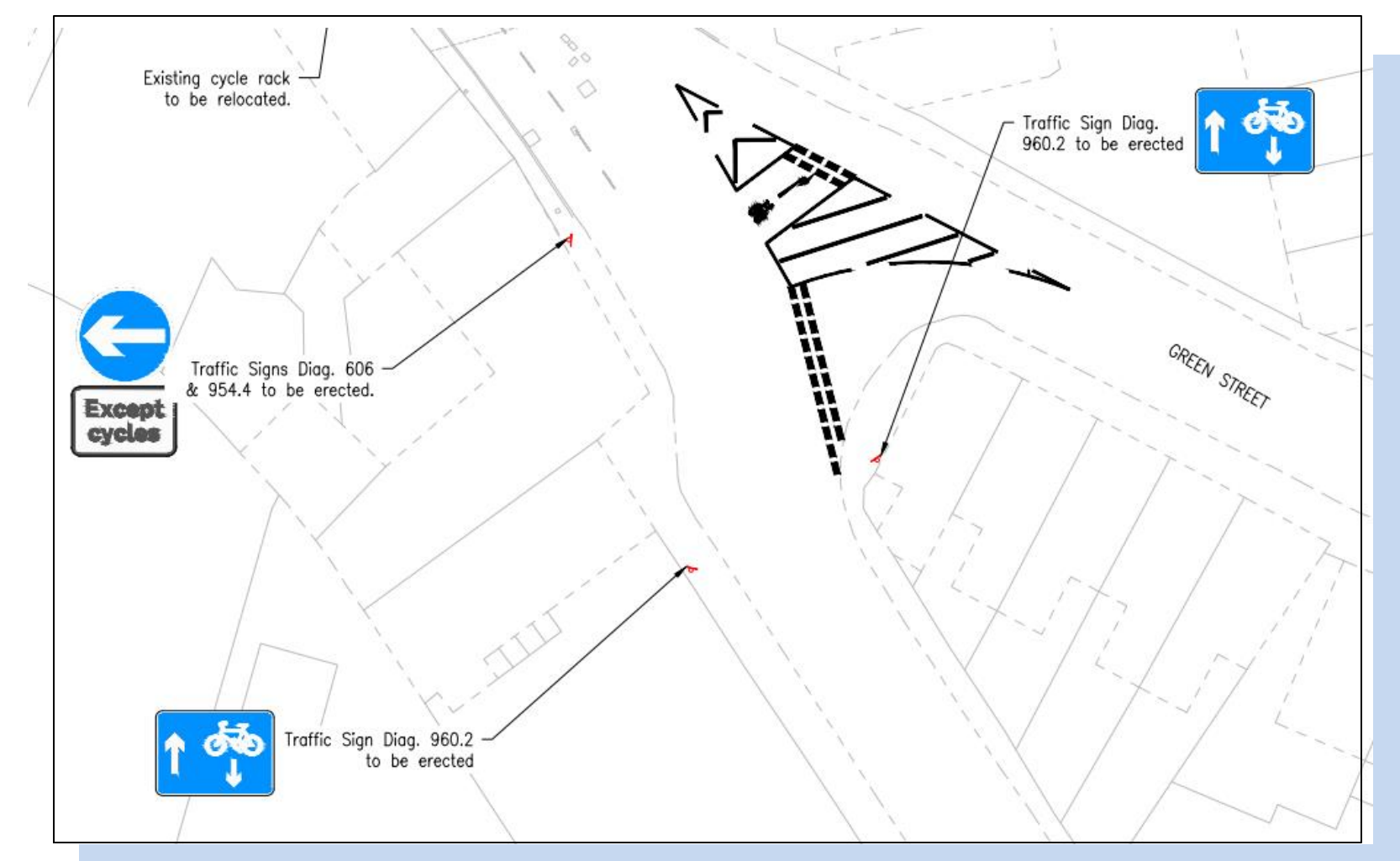
Raised pedestrian crossing point with build out at St Owens Mews to provide shorter and safer crossing for pedestrians and improve pedestrian connectivity from Gaol St car park.



Raised junction table at Cantilupe Street to improve pedestrian connectivity. Additional markings and signage at Cantilupe Street to inform motorists of contraflow cycle lane. End of marked cycle lane.



Signal controlled pedestrian crossing over shorter width at junction with Bath Street to improve safety for pedestrians. Cycle lane connectivity from Bath Street across Mill Street onto contraflow cycle lane. Contraflow cycle provision on Mill Street.



Contraflow cycle provision on Mill Street and connection to Green Street.