

Strategic Environmental Assessment



Colwall Neighbourhood Area

Scoping Report

October 2014

Consultation on the Scoping Report

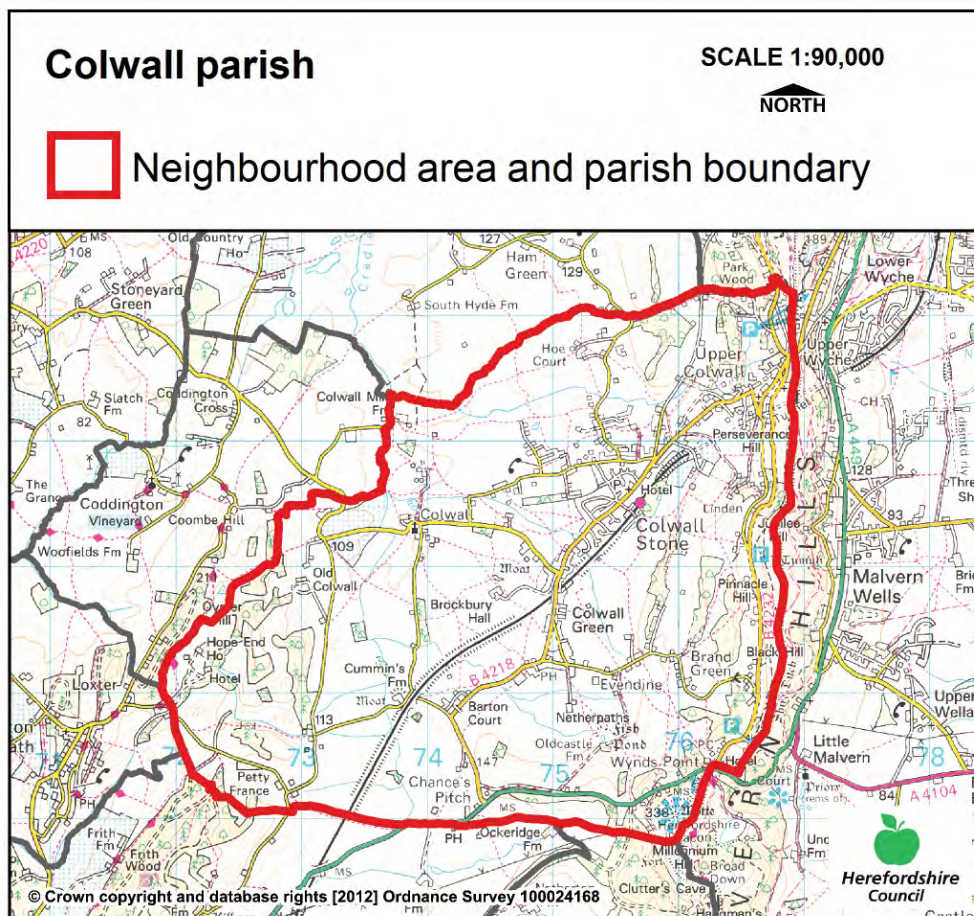
The aim of the consultation process is to involve and engage with statutory consultees and other relevant bodies on the scope of the appraisal. In particular, it seeks to:

- Ensure the SEA is both comprehensive and sufficiently robust to support the Neighbourhood Development Plan during the later stages of full public consultation;
- Seek advice on the completeness of the plan review and baseline data and gain further information where appropriate;
- Seek advice on the suitability of key sustainability issues;
- Seek advice on the suitability of the sustainability objectives.

Comments on this Scoping Report have been invited from the three consultation bodies as required by the SEA regulations, together with the Natural Resources Wales.

The three consultation bodies are as follows:

1. Natural England;
2. English Heritage;
3. Environment Agency.



Template A1: Identification and review of local Neighbourhood Area relevant plans, policies and programmes

Parish Council Name: Colwall Parish Council

Neighbourhood Development Plan Name: Colwall Neighbourhood Plan

Date completed: July 2014

Plans and Programmes	Type of document	Date	Overview	Key message, target/objective/indicator	SEA topic(s) ¹	Implications for the NDP and SEA
Revised EU Sustainable Development strategy	European Union Strategy	2009	Sets out a single strategy on how the EU will more effectively meet its long-standing commitment to meet the challenges of sustainable development.	Recognises the need to gradually change current unsustainable consumption and production patterns and move towards a better integrated approach to policy making. The Strategy sets overall objectives, targets and concrete actions for seven key priority challenges, predominantly environmental: <ul style="list-style-type: none"> • Climate change and clean energy; • Sustainable transport • Sustainable production and consumption; • Public health threats; • Better management 	<ul style="list-style-type: none"> • Air • Climate factors • Cultural heritage and the landscape • Population and human health 	The Neighbourhood Plans should take into account the objectives of the strategy. The aim of sustainable development should be implicit in its approach.

¹ Derived from the LDF General Scoping Report (June 2007)

This document is copyright of Herefordshire Council, please contact the Neighbourhood Planning team if you wish to reuse it in whole or part.

Plans and Programmes	Type of document	Date	Overview	Key message, target/objective/indicator	SEA topic(s) ¹	Implications for the NDP and SEA
				<p>of natural resources;</p> <ul style="list-style-type: none"> • Social inclusion, demography and migration; • Fighting global poverty. 		
National Planning Policy Framework (NPPF)	National planning policy.	2012	Consolidates the suite of PPG/PPS into one succinct planning policy document.		<ul style="list-style-type: none"> • Air • Biodiversity • Climate factors • Cultural heritage and the landscape • Flora and fauna • Material assets • Population and human health • Soil • Water 	The NDP should take into account the relevant policies set within the NPPF.
Planning Practice Guidance	Government Guidance	2014	Provides guidance to local planning authorities and others on the operation of the planning system.		<ul style="list-style-type: none"> • Air • Biodiversity • Climate factors • Cultural heritage and the landscape • Flora and fauna • Material assets • Population and human health • Soil • Water 	The NDP should take into account the planning guidance provided within these documents.
Pre-submission Herefordshire	Development Plan Document	2014	Sets out the vision, objectives and policies for	Outlines the emerging suite of countywide planning policies relating to	<ul style="list-style-type: none"> • Air • Biodiversity 	The NDP should take account of relevant policies set within in the

This document is copyright of Herefordshire Council, please contact the Neighbourhood Planning team if you wish to reuse it in whole or part.

Plans and Programmes	Type of document	Date	Overview	Key message, target/objective/indicator	SEA topic(s) ¹	Implications for the NDP and SEA
Core Strategy 2011-2031	(DPD)		the Herefordshire Local Plan (Core Strategy), which will guide development across the county up to 2031.	<p>housing, economic development and the environment, which the NDP will need to be in conformity with where relevant.</p> <p>The Pre-submission Core Strategy includes a range of objectives, five of which directly relate to rural areas:</p> <ul style="list-style-type: none"> • To meet the housing needs of all sections of the community • To improve access to services in rural areas • To strengthen the economic viability of the villages and their rural hinterlands • To achieve sustainable communities and protect the environment • To conserve, promote, utilise and enjoy our natural, built, historic and cultural assets for the fullest benefit of the whole community 	<ul style="list-style-type: none"> • Climate factors • Cultural heritage and the landscape • Flora and fauna • Material assets • Population and human health • Soil • Water 	<p>Core Strategy.</p> <p>Where necessary, the NDP should provide services, facilities and employment opportunities that are accessible to both local and neighbouring communities.</p> <p>The Core Strategy highlights that Colwall should accommodate 14 % growth by 2031. This is approximately 118 dwellings in accordance with the Rural Housing Background Paper March 2013, unless there is robust and sound evidence to demonstrate a more accurate existing built form figure or the existence of unavoidable constraints on site delivery.</p>

This document is copyright of Herefordshire Council, please contact the Neighbourhood Planning team if you wish to reuse it in whole or part.

Plans and Programmes	Type of document	Date	Overview	Key message, target/objective/indicator	SEA topic(s) ¹	Implications for the NDP and SEA
				<p>To achieve a thriving rural Herefordshire, the Core Strategy seeks to enhance the role the villages have traditionally played in as accessible, sustainable centres for their rural catchments.</p> <p>Seeks proportional growth of up to 14% in Colwall (Ledbury HMA) over the plan period.</p>		
Herefordshire Local Transport Plan 3 (LTP) 2013-2015	Corporate	2013	Sets out the Council's strategy for supporting economic growth, social inclusion and reducing the environmental impacts of transport, as well as the program of investment for the period April 2013 to April 2015.	The document includes three key objectives, one which seeks to maintain access for rural residents and people without access to a car. Intrinsic to this is the retention of a 'core network' of bus services which focus on journeys between Hereford and the market towns, along with main transport corridors close to larger rural settlements. To this end, the strategy aims to increase the number of bus users by 1.3% (4,700 journeys) by 2015.	<ul style="list-style-type: none"> • Air • Climate factors • Population and human health 	The LTP does not explore current transport issues in the Colwall Neighbourhood Area, but any new development proposed through the NDP should seek to reduce the environmental impacts of transport.

This document is copyright of Herefordshire Council, please contact the Neighbourhood Planning team if you wish to reuse it in whole or part.

Plans and Programmes	Type of document	Date	Overview	Key message, target/objective/indicator	SEA topic(s)¹	Implications for the NDP and SEA
Malvern Hills AONB Management Plan 2009-2014	Corporate	2009	Identifies the issues and challenges facing the special features of the area and contains 24 guiding principles and 46 strategic objectives which will help address them.		<ul style="list-style-type: none"> • Air • Biodiversity • Climate factors • Cultural heritage and the landscape • Flora and fauna • Material assets • Population and human health • Soil • Water 	The Colwall Neighbourhood Area is within or adjacent to the Malvern Hills AONB.
Wye Valley AONB management Plan 2009-2014	Corporate	2009	The Management Plan is the prime document which sets out the vision for the area and the priorities for its management.		<ul style="list-style-type: none"> • Air • Biodiversity • Climate factors • Cultural heritage and the landscape • Flora and fauna • Material assets • Population and human health • Soil • Water 	The Colwall Neighbourhood Area is not within or adjacent to the Wye Valley AONB.

This document is copyright of Herefordshire Council, please contact the Neighbourhood Planning team if you wish to reuse it in whole or part.

Plans and Programmes	Type of document	Date	Overview	Key message, target/objective/indicator	SEA topic(s) ¹	Implications for the NDP and SEA
Herefordshire Economic Development Strategy 2011-2016	Corporate	2011	Aims to increase the economic wealth of Herefordshire by setting out proposals and to support business growth up to 2016.	<p>The document outlines the path and direction to foster economic vitality within Herefordshire. Key objectives therefore include:</p> <ul style="list-style-type: none"> • Sustaining business survival and growth • Increasing wage levels, range and quality of jobs • Having a skilled population to meet future work needs • Developing the county's built infrastructure so enterprise can flourish. 	<ul style="list-style-type: none"> • Cultural heritage and the landscape • Material assets • Population and human health 	None of merit.

This document is copyright of Herefordshire Council, please contact the Neighbourhood Planning team if you wish to reuse it in whole or part.

Plans and Programmes	Type of document	Date	Overview	Key message, target/objective/indicator	SEA topic(s) ¹	Implications for the NDP and SEA
Herefordshire Employment Land Study	Evidence	2012	Includes employment land assessments for the plan period 2011-2031. The study includes Quantitative and Qualitative assessments of employment land, assessment of market demand and need, as well as providing forecasts and recommendations for future employment need over the plan period.	<p>This study covers existing employment sites in Hereford, the five market towns and their rural hinterlands.</p> <p>This study makes reference to the Colwall Industrial Estate in Colwall Stone. It highlights this 0.57 ha site is operating well.</p>	<ul style="list-style-type: none"> • Material assets • Population and human health 	The NDP process may want to explore whether there is any additional employment need locally and if so whether there is any scope for providing employment land and premises.

Plans and Programmes	Type of document	Date	Overview	Key message, target/objective/indicator	SEA topic(s) ¹	Implications for the NDP and SEA
Herefordshire Strategic Housing Land Availability Assessment (SHLAA)	Evidence	2009	<p>The SHLAA aims to justify site allocations in plans by:</p> <ul style="list-style-type: none"> Identifying sites which are capable of delivering housing development Assessing sites for their housing potential; and Predicting when a site could be developed for housing. 	<p>In terms of Colwall, previous SHLAA identifies that:</p> <ul style="list-style-type: none"> 15 sites have been assessed within the 2012 SHLAA. This highlighted that 2 had minor constraints, 2 had significant constraint, with the others are not potential. 	<ul style="list-style-type: none"> Air Biodiversity Climate factors Cultural heritage and the landscape Flora and fauna Population and human health Soil Water 	<p>The SHLAA assesses the potential availability of land for housing in Colwall.</p> <p>The Colwall NDP should be informed by the findings of the SHLAA or undertake its own locally site search assessments.</p>

Plans and Programmes	Type of document	Date	Overview	Key message, target/objective/indicator	SEA topic(s) ¹	Implications for the NDP and SEA
Herefordshire Local Housing Market Assessment (LHMA)	Evidence	2013	Builds on an earlier Strategic Housing Market Assessment (SHMA) developed for Herefordshire and Shropshire. Its purpose is to inform the Local Plan's policies regarding housing need and demand (for market and affordable housing) within each of the 7 Housing Market Areas (HMAs) in Herefordshire between 2011 and 2031.	<p>Colwall falls within the Ledbury HMA. Here, the study reveals that:</p> <ul style="list-style-type: none"> • 54.6% of households are unable to afford market housing. • It is estimated that 101 existing households will fall into housing need over the next 5 years. • There is an annual requirement for 68 affordable dwellings between 2012 and 2017. <p>The study identifies that, in rural parts of the HMA, there is a need for:</p> <ul style="list-style-type: none"> • 339 market houses • 226 affordable houses. <p>The study highlights that within the Ledbury HMA the overall estimated housing need by size 2012-2017 is as follows: 1 Bed - 47%, 2 bed –22% 3 bed – 23%, 4 bed or more - 8%</p>	<ul style="list-style-type: none"> • Air • Biodiversity • Climate factors • Cultural heritage and the landscape • Flora and fauna • Population and human health • Soil • Water 	<p>The LHMA provides an indication of housing needs and affordability within the Ledbury HMA.</p> <p>It provides evidence that could be used to inform policies or market and affordable housing requirements in the NDP.</p>

This document is copyright of Herefordshire Council, please contact the Neighbourhood Planning team if you wish to reuse it in whole or part.

Plans and Programmes	Type of document	Date	Overview	Key message, target/objective/indicator	SEA topic(s) ¹	Implications for the NDP and SEA
Herefordshire Local Housing Requirements Study	Evidence	2012	Technical assessment of the housing market and potential future local housing requirements which supports planning policy regarding the amount of growth, housing tenure and housing type needed within Herefordshire up to 2031.	<p>The delivery of 5,300 homes in the rural areas would:</p> <ul style="list-style-type: none"> • Support growth in the rural population by 6% • Increase the number of households by 14.5% <p>Forecasts also predict that growth in the population of the rural areas is likely to be primarily through an increase in those aged over 75.</p> <p>Moderate growth is expected in the 30-44 and 60-74 age brackets.</p> <p>The Local Housing Requirements Study therefore anticipates continuing improvements in life expectancy; significant growth is expected of those in their 80s, with the existing population in their 40s and 50s moving into retirement. As a consequence, the rural areas will face an increasing urgency to</p>	<ul style="list-style-type: none"> • Air • Biodiversity • Climate factors • Cultural heritage and the landscape • Flora and fauna • Material assets • Population and human health • Soil • Water 	<p>This study provides an indication of housing requirements in the rural areas and the Ledbury HMA.</p> <p>This evidence can be used to inform the content of the Colwall NDP, which could include policies to facilitate the provision of the right types of homes in the right places.</p>

This document is copyright of Herefordshire Council, please contact the Neighbourhood Planning team if you wish to reuse it in whole or part.

Plans and Programmes	Type of document	Date	Overview	Key message, target/objective/indicator	SEA topic(s) ¹	Implications for the NDP and SEA
				provide more 3 bedroom homes, with more 1 and 2 bed homes required in the affordable sector.		
Herefordshire Rural Housing Background Report	Evidence	2013	Provides the justification for the proportional housing growth targets outlined in the Core Strategy	The village of Colwall is listed as RA1 settlements, which means they are considered a sustainable location for proportional growth of up to 14%.	<ul style="list-style-type: none"> • Air • Biodiversity • Climate factors • Cultural heritage and the landscape • Flora and fauna • Material assets • Population and human health • Soil • Water 	The Colwall NDP will need to be in conformity with the provisions of Policy RA1.

Plans and Programmes	Type of document	Date	Overview	Key message, target/objective/indicator	SEA topic(s) ¹	Implications for the NDP and SEA
Herefordshire Draft Gypsies and Travellers Assessment	Evidence	2013	Assesses the accommodation needs of Gypsies and Travellers across Herefordshire.	<p>Key findings from the survey of Gypsy and Traveller households in 2012 found that:</p> <ul style="list-style-type: none"> • 31% of households surveyed have some sort of accommodation need • Of the 17 households with an accommodation need, 7 had a requirement for at least one additional pitch • 10 households had a requirement for bricks and mortar housing • There is an additional requirement for 7 pitches and 9 units of Registered Social Landlord accommodation within Herefordshire. 	<ul style="list-style-type: none"> • Air • Biodiversity • Climate factors • Cultural heritage and the landscape • Flora and fauna • Material assets • Population and human health • Soil • Water 	The Colwall NDP must establish whether any of the need identified in this assessment falls within the neighbourhood area and make appropriate provisions for it.

Plans and Programmes	Type of document	Date	Overview	Key message, target/objective/indicator	SEA topic(s) ¹	Implications for the NDP and SEA
Building Biodiversity into the LDF	Evidence	2009	Provides the Council's Local Plan (Core Strategy) with evidence in respect of biodiversity and geodiversity, identifying both opportunities and constraints across Herefordshire.	This document provides useful information in respect of Hereford and the market towns only.	<ul style="list-style-type: none"> • Air • Biodiversity • Climate factors • Cultural heritage and the landscape • Flora and fauna • Material assets • Population and human health • Soil • Water 	There is a serious lack of information about rural areas which means it will be necessary to gather and assess existing biodiversity and geodiversity data, in order to ensure that the Colwall NDP can overcome any existing constraints and capitalise on opportunities to enhance habitats and their networks.
Herefordshire Green Infrastructure Strategy	Evidence	2010	Develops a framework of natural and culturally important features and functions so that planning for a sustainable future is at the heart of planning within Herefordshire.	Establishes policies and principles for the protection and enhancement of those features and functions that contributes to the environment of Herefordshire across a range of scales.	<ul style="list-style-type: none"> • Air • Biodiversity • Climate factors • Cultural heritage and the landscape • Flora and fauna • Material assets • Population and human health • Soil • Water 	The study provides evidence that could be taken into account when preparing policies for the Colwall NDP.

This document is copyright of Herefordshire Council, please contact the Neighbourhood Planning team if you wish to reuse it in whole or part.

Plans and Programmes	Type of document	Date	Overview	Key message, target/objective/indicator	SEA topic(s) ¹	Implications for the NDP and SEA
Renewable Energy Study	Evidence	2010	Assesses the energy demand within Herefordshire and the ability for the county to accommodate renewable and low carbon energy technologies.	<p>The total energy demand excluding transport for Herefordshire, at that point in time, was calculated as being:</p> <ul style="list-style-type: none"> • Electrical: 731 GWh/yr • Heat: 1,810 GWh/yr • Total: 2,541 GWh/yr <p>There is scope for all types of renewable energy production.</p>	<ul style="list-style-type: none"> • Air • Biodiversity • Climate factors • Cultural heritage and the landscape • Flora and fauna • Material assets • Population and human health • Soil • Water 	The study provides evidence that could be taken into account when preparing policies for the Colwall NDP.

Plans and Programmes	Type of document	Date	Overview	Key message, target/objective/indicator	SEA topic(s) ¹	Implications for the NDP and SEA
Herefordshire Playing Pitch Assessment	Evidence	2012	Produces a strategic framework, audit and assessment and needs analysis of outdoor sports pitches and facilities for Herefordshire. The document arises as a result of a recommendation in the Herefordshire and Worcestershire Sports Facilities Framework to develop local standards for playing fields and sports pitches throughout Herefordshire.	<p>The study updates components of the Herefordshire and Worcestershire Sports Facilities Framework 2010 such as updating population forecasts, setting local standards for synthetic turf pitches and grass playing fields within Herefordshire. It identifies any current gaps in provision, and looks forward to 2031 to assess what facilities are likely to be required by that date.</p> <p>In terms of Colwall parish itself, the study reveals that there is:</p> <p>8ha of playing pitches, 6.2 ha of which is with secured community access.</p> <p>This includes Colwall Primary School, The Downs School, Colwall Playing fields and Colwall Cricket Ground.</p> <p>All pitches are assessed as excellent apart from Colwall playing fields which falls below Sport England minimum standard</p>	<ul style="list-style-type: none"> • Biodiversity • Cultural heritage and the landscape • Flora and fauna • Material assets • Population and human health 	The study provides evidence that could be taken into account when preparing policies for the Colwall NDP.

This document is copyright of Herefordshire Council, please contact the Neighbourhood Planning team if you wish to reuse it in whole or part.

Plans and Programmes	Type of document	Date	Overview	Key message, target/objective/indicator	SEA topic(s) ¹	Implications for the NDP and SEA
Open Spaces Study	Evidence	2006	The 2006 space audit and assessment of need is a snapshot of the quality, quantity and distribution of open space across Herefordshire.	<p>The study reveals that within the Ledbury Area, there is:</p> <ul style="list-style-type: none"> • Extensive under provision of parks and gardens • Extensive over provision of natural and semi-natural green space • Average provision of amenity green space and extensive over provision for outdoor sport • Average provision for children and young people. 	<ul style="list-style-type: none"> • Biodiversity • Climate factors • Cultural heritage and the landscape • Flora and fauna • Material assets • Population and human health 	The open space audit and assessment of does not give a specific indication of open space shortfalls and surpluses in Colwall Parish.

Plans and Programmes	Type of document	Date	Overview	Key message, target/objective/indicator	SEA topic(s) ¹	Implications for the NDP and SEA
Play Facilities Study	Evidence	2012	The Play Facilities Study 2012 updates the previous play facilities analysis under the Open Spaces Study 2006 and provides guidance and a framework for the development, delivery and continued sustainability of providing new and improved play facilities for children and young people in Herefordshire to 2031.	<p>In terms of Colwall itself, the study reveals that there are 5 play facilities</p> <p>Colwall Green - rated as average condition but close to school</p> <p>Orlin Road – equipment mid life</p> <p>Brookmill Close – too small but in reasonable condition</p> <p>Walwyn Library – rolling programme of replacements when needed.</p> <p>Wyche Bank – recommend removal. Poor position and old facilities.</p>	<ul style="list-style-type: none"> • Biodiversity • Climate factors • Cultural heritage and the landscape • Flora and fauna • Material assets • Population and human health 	The study provides evidence that could be taken into account when preparing policies for the Colwall NDP.

Plans and Programmes	Type of document	Date	Overview	Key message, target/objective/indicator	SEA topic(s) ¹	Implications for the NDP and SEA
Strategic Flood Risk Assessment (SFRA) and Water Cycle Study	Evidence	2009	<p>The Strategic Flood Risk Assessment (SFRA) provides a summary of flood risk in Herefordshire to inform the location of future development.</p> <p>The Water Cycle Study examines how water resources and water supply infrastructure, wastewater treatment, water quality, sewerage and flood risk could constrain growth across Herefordshire.</p>	<p>Cradley Brook catchment is highlighted as one of the 26 least flood hazard potential areas in the county.</p> <p>There may be significant development pressure in the Cradley Brook catchment. Improvements to the receiving watercourse (Cradley Brook) are desirable in preference to attenuation as part of an optimised drainage strategy.</p>	<ul style="list-style-type: none"> • Biodiversity • Climate factors • Material assets • Population and human health • Water 	<p>New development proposed through the Colwall NDP should be assessed against the capacity of local infrastructure.</p> <p>Up-to-date flood risk information should be gathered from the Environment Agency, in order to ensure that any flood risks are considered when preparing the Colwall NDP.</p>

Appendix A2 – Baseline information for Colwall

N.B. This is based on countywide baseline information with some additions relevant to Colwall (in red). Where no locally specific data is available for current status, trends and targets, only countywide data is reported. Any gaps in data may be filled following additional research.

SA Objective ¹	SA Theme	Proposed indicator	Current status	Trends	Targets	Issues and constraints	Baseline (information) source
SEA Topic covered by objective: <i>Biodiversity, flora and fauna</i>							
13. Value, maintain, restore and expand county biodiversity.	Natural environment	Net change in condition of SSSIs across Herefordshire.	Up-to-date countywide information will be presented in the next AMR and which is due to be published in 2014. 2010/11: 27% of Herefordshire's SSSI land was in favourable condition. <i>There is no locally specific data available at present.</i>	2006: 22% 2007: 22% 2008: 22% 2010: 24 % Proportion of SSSI land that was in unfavourable condition but recovering increased between 2010 and 2012 going from 41% to 65%. Proportion in unfavourable and declining condition had also decreased from 4% to 1%.	% of SSSI land in favourable condition (Increase) % of SSSI land in unfavourable condition but recovering (Increase) % of SSSI land in unfavourable condition and declining (Decrease)	Herefordshire's SSSIs are in extremely poor condition relative to England as whole, where 96.1% of all SSSI land was in favourable condition in April 2014. The proportion of SSSI in unfavourable condition but recovering is greater than England as a whole, where the figure currently stands at 58.6%.	Understanding Herefordshire: An integrated needs assessment (June 2013).

¹ Derived from the Draft Core Strategy Sustainability Appraisal Assessment (March 2013)

SA Objective ¹	SA Theme	Proposed indicator	Current status	Trends	Targets	Issues and constraints	Baseline (information) source
13. Value, maintain, restore and expand county biodiversity.	Natural environment	After use of mineral sites especially wildlife habitat creation	<i>There is no countywide or locally specific data available at present.</i>	-	No specific targets identified.	Should be monitored through AMR following the adoption of the Core Strategy, in line with SA recommendations.	-
13. Value, maintain, restore and expand county biodiversity.	Natural environment	Phosphate levels within the River Wye SAC and adjoining tributaries that receive increased phosphates from proportional growth.	Countywide data is available. The existing status of the Wye SAC between Hay and the Lugg confluence is currently meeting its phosphate target and is meeting the conservation targets.	N/A	Successful completion of the Nutrient Management Plan will provide future targets	Colwall is not within a river catchment area flowing into the River Wye.	Nutrient Management Plan (2014)

SA Objective ¹	SA Theme	Proposed indicator	Current status	Trends	Targets	Issues and constraints	Baseline (information) source
13. Value, maintain, restore and expand county biodiversity.	Natural environment	Changes to protected habitats and impacts of species within the Herefordshire Local Biodiversity Action Plan.	<p>Up-to-date countywide information will be presented in the next AMR and which is due to be published in 2014.</p> <p>2010/11: 17 Habitat Action Plans and 14 Species Action Plans are currently in operation across Herefordshire.</p> <p><i>There is no locally specific data available at present.</i></p>	<p>There are no formal records of any unacceptable adverse impacts on habitats or protected species.</p> <p>Originally 156 Priority Species were identified for inclusion in Herefordshire's LBAP.</p> <p>Similarly Herefordshire's LBAP covered 23 habitats with Action Plans.</p>	No specific targets identified.	Herefordshire Biological Records Centre (HBRC) holds limited data on some individual sites.	Herefordshire Council AMR (2010/11)

SA Objective ¹	SA Theme	Proposed indicator	Current status	Trends	Targets	Issues and constraints	Baseline (information) source
13. Value, maintain, restore and expand county biodiversity.	Natural environment	Changes in the areas of designated nature conservation sites as a consequence of planning permission.	Up-to-date countywide information will be presented in the next AMR and which is due to be published in 2014. Colwall has: AONB: Malvern Hills SSSI: Malvern Hills SWS: 11 RIGS: 3 Ancient woodlands:24 2 Registered Parks and Gardens	As of 2012, there had been no change in the areas of designated nature conservation sites as a consequence of the planning permissions granted.	To capitalise on opportunities to enhance the areas of value to nature conservation as much as possible.	Herefordshire Biological Records Centre (HBRC) holds limited data on some individual sites.	Herefordshire Council AMR (2010/11)

SA Objective ¹	SA Theme	Proposed indicator	Current status	Trends	Targets	Issues and constraints	Baseline (information) source
13. Value, maintain, restore and expand county biodiversity.	Natural environment	Proportion of local sites where positive conservation management has or is being implemented.	<i>There is no countywide or locally specific data available at present.</i>	-	No specific targets identified.	Should be monitored through AMR following the adoption of the Core Strategy, in line with SA recommendations.	-
SEA Topic covered by objectives: <i>Material assets</i>							
14. Use natural resources and energy more efficiently.	Resource consumption and climate change	Maintaining Herefordshire Council's County Site and Monuments Register.	Countywide data would be too large to incorporate into this template. <i>Whilst there is no qualitative, locally specific data available at present, there are 4 Scheduled Ancient Monuments in Colwall Parish according to the latest version of the</i>	-	No specific targets identified, but need to ensure that the register is kept up to date.	Should be monitored through AMR following the adoption of the Core Strategy, in line with SA recommendations.	Herefordshire Environmental Records Register (search April 2014).

SA Objective ¹	SA Theme	Proposed indicator	Current status	Trends	Targets	Issues and constraints	Baseline (information) source
			register.				
14. Use natural resources and energy more efficiently.	Resource consumption and climate change	Monitoring changes to historic landscapes.	<i>There is no countywide or locally specific data available at present.</i>	-	No specific targets identified.	Should be monitored through AMR following the adoption of the Core Strategy, in line with SA recommendations.	-
SEA Topic covered by objective: <i>Population, Biodiversity, Flora and Fauna</i>							
15. Value, protect, enhance and restore the landscape quality of Herefordshire, including its rural areas and open spaces.	Natural environment	Number of developments meeting and surpassing national design standards.	<i>There is no countywide or locally specific data available at present.</i>	-	No specific targets identified.	Should be monitored through AMR following the adoption of the Core Strategy, in line with SA recommendations.	-

SA Objective ¹	SA Theme	Proposed indicator	Current status	Trends	Targets	Issues and constraints	Baseline (information) source
15. Value, protect, enhance and restore the landscape quality of Herefordshire, including its rural areas and open spaces.	Natural environment	The need for, frequency and outcomes of planning enforcement investigations/ planning appeals concerning aspects of local loss of heritage assets and locally important buildings particularly within a conservation area.	Countywide data would be too large to incorporate into this template.	No historic records of any planning enforcement action concerning locally important buildings within the conservation area within Colwall.	To wherever possible improve upon or otherwise maintain current status.	Current status must be verified by Development Management and Enforcement Officers, but the NDP can help to avoid enforcement action and appeals during the plan period.	Council Development Management records (searched July 2014)
SEA Topic covered by objective: <i>Climatic Factors</i>							

SA Objective ¹	SA Theme	Proposed indicator	Current status	Trends	Targets	Issues and constraints	Baseline (information) source
16. Reduce Herefordshire's vulnerability to the impacts of climate change as well as its contribution to the problem.	Resource consumption and climate change.	Transport patronage by mode	<p>% of Herefordshire residents who travel to work by:</p> <p>Car: 70.1% Foot: 14.7% Bicycle: 4.3% Bus: 2% Train: 0.8% Motorbike: 0.8% Taxi: 0.3% Other: 7%</p> <p><i>There is no locally specific data available at present</i></p>	The number of people cycling or travelling by bus as the main form transport to get to work declined between 2001 and 2011 – across England and Wales there was little change in either. Walking or driving a car or van on the other hand increased.	To increase the take up of alternative modes to the private car.	There are a lack of transport options for many rural communities and therefore high car ownership and dependency – the last decade has seen a 15 per cent increase in household car ownership, although this is not reflected in traffic flows of recent years with volumes in Hereford City and wider county having decreased. The proportion of people working from home increased over the decade from 15 per cent in 2001 to 17 per cent in 2011.	2011 Census

SA Objective ¹	SA Theme	Proposed indicator	Current status	Trends	Targets	Issues and constraints	Baseline (information) source
16. Reduce Herefordshire's vulnerability to the impacts of climate change as well as its contribution to the problem.	Resource consumption and climate change.	Number of decentralised energy schemes granted permission.	<i>There is no countywide or locally specific data available at present.</i>	-	To contribute towards the national target.	Should be monitored through AMR following the adoption of the Core Strategy, in line with SA recommendations.	-

SA Objective ¹	SA Theme	Proposed indicator	Current status	Trends	Targets	Issues and constraints	Baseline (information) source
16. Reduce Herefordshire's vulnerability to the impacts of climate change as well as its contribution to the problem.	Resource consumption and climate	Total CO2 emissions per capita	<p>Latest figure dates back to 2010: 1.61 million tonnes (mtCO²)</p> <p><i>There is no locally specific data available at present.</i></p>	<p>Between 2005 and 2010 Herefordshire's total and per capita carbon emission reduced by 7% and 8% respectively; while UK's total and per capita carbon emission reduced by 8% and 12% respectively within the same period. This trend hides an increase in emissions between 2009 and 2010 when total emissions in the county increased by 5% the same as across the UK (+5%).</p>	To reduce the overall carbon emissions.	CO ² emissions produced are decreasing.	Understanding Herefordshire: An integrated needs assessment (June 2013).

SA Objective ¹	SA Theme	Proposed indicator	Current status	Trends	Targets	Issues and constraints	Baseline (information) source
SEA Topic covered by objective: <i>Water</i>							
17. Reduce the risk of flooding and the resulting detriment to public wellbeing, the economy and the environment.	Natural environment	Number of planning permissions granted contrary to the advice of the Environment Agency on flood defence grounds.	Up-to-date countywide information does not appear within the 2011/13 AMR. Therefore data from 2010/11 has been used. 2010/11: None <i>There is no locally specific data available at present.</i>	There have been no approvals contrary to EA advice since reporting began in 2004.	To have no applications permitted contrary to EA advice.	None identified.	Herefordshire Council AMR (2010/11)
SEA Topic covered by objective: <i>Water, air, soil, material assets</i>							
18. Minimise local and global pollution and protect or enhance environmental resources.	Natural environment	Agricultural land usage by quality	<i>There is no countywide or locally specific data available at present.</i>	-	No specific targets identified.	Should be monitored through AMR following the adoption of the Core Strategy, in line with SA recommendations.	-

SA Objective ¹	SA Theme	Proposed indicator	Current status	Trends	Targets	Issues and constraints	Baseline (information) source
18. Minimise local and global pollution and protect or enhance environmental resources.	Natural environment	Percentage of river length assessed as good or very good chemical quality	Latest figure dates back to 2005: 84% <i>There is no locally specific data available at present.</i>	Figure steadily improved before going into decline: Herefordshire 1999 85.9%, 2000 89.5%, 2001 92.2%, 2002 91.8%	To ensure that rivers meet their conservation objectives and do not fall below the required standard of quality.	None identified.	The State of Herefordshire Report (2007)
SEA Topic covered by objective: <i>Soil</i>							
19. Ensure integrated, efficient and balanced land use.	Built environment	Percentage of all new development completed on previously developed land.	2011/13: 67% <i>There is no locally specific data available at present.</i>	Completions on PDL had risen to 71% by 2005.	To increase the number of homes built on PDL in line with the provisions of national planning policy.	The number of brownfield completions has fallen slightly in recent years, though this is probably the offshoot of tough market conditions.	Herefordshire Council AMR (2011/13)
19. Ensure integrated, efficient and balanced land use.	Built environment	Housing densities in urban and rural areas	<i>There is no countywide or locally specific data available at present.</i>	-	No specific targets identified.	Should be monitored through AMR following the adoption of the Core Strategy, in line with SA recommendations.	-

SA Objective ¹	SA Theme	Proposed indicator	Current status	Trends	Targets	Issues and constraints	Baseline (information) source
19. Ensure integrated, efficient and balanced land use.	Built environment	Level of development in urban areas compared to rural.	<p><i>There is no countywide or locally specific data available at present.</i></p> <p>This indicator would not be applicable to rural NDPs.</p>	N/A	N/A	N/A	N/A
SEA Topic covered by objective: <i>Cultural heritage</i>							
20. Value, protect and enhance the character and built quality of settlements and neighbourhoods and the county's heritage assets, including conservation areas, historic environment and cultural heritage.	Built environment	Number and percentage of listed buildings and Scheduled Ancient Monuments on Buildings at Risk Register (English Heritage).	<p>Up-to-date countywide information will be presented in the next AMR and which is due to be published in 2014. However, this data would be too large to incorporate into this template.</p> <p>There are 80 listed buildings within the parish and 4 SAMs. None are currently recorded in the Buildings at Risk Register.</p>	There were 58 heritage assets in Herefordshire that were considered to be at high risk and included in the Heritage at Risk Register 2011.	To wherever possible improve upon or otherwise maintain current status.	None of Colwall's listed buildings or SAMs are considered to be at risk at present.	Buildings at Risk Register (English Heritage; search July 2014)

SA Objective ¹	SA Theme	Proposed indicator	Current status	Trends	Targets	Issues and constraints	Baseline (information) source
20. Value, protect and enhance the character and built quality of settlements and neighbourhoods and the county's heritage assets, including conservation areas, historic environment and cultural heritage.	Built environment	The need for, frequency and outcomes of planning enforcement investigations/ planning appeals concerning aspects of local loss of heritage assets, locally important buildings within the parish and particularly within a conservation area.	Countywide data would be too large to incorporate into this template. There are no outstanding enforcement actions concerning local loss of heritage assets locally important buildings particularly within a conservation area within the Colwall. However, there is one outstanding appeal.	No historic records of any planning enforcement action concerning locally important buildings within the group parish	To wherever possible improve upon or otherwise maintain current status.	Current status must be verified by Development Management and Enforcement Officers, but the NDP can help to avoid enforcement action and appeals during the plan period.	Council Development Management records (searched July 2014)

Appendix A3 – Environmental issues identified from the Colwall Neighbourhood Plan baseline

These environmental issues are the same as most of those identified for the Herefordshire Core Strategy¹

SEA Topic		Environmental issue	SA objectives
1	Air	High reliance upon the private car causing high levels of air pollution and in Hereford in particular	Objective 16
		Need to reduce carbon emissions by encouraging alternative modes of travel.	
2	Biodiversity	Habitats and species of national, regional and local importance are under pressure from the adaptation and diversification of farming and forestry employment.	Objectives 13 & 15
		Minimise loss of biodiversity and expand opportunities for wildlife everywhere.	
3	Climatic factors	Reduce greenhouse gas emissions through planning, design and build.	Objective 16
4	Cultural heritage	Colwall has numerous Scheduled Ancient Monuments and listed buildings, all of which require ongoing protection and many in need of high levels of maintenance.	Objective 20
5	Flora and fauna	Conserve and enhance the character and quality of historic landscapes, including all types of natural flora and fauna.	Objective 15
6	Material assets	How the countryside can continue to be managed in an economically, socially and environmentally beneficial way in the face of continuing pressures on traditional farming.	Objectives 14 & 18
7	Population	Minimise energy waste through good designs, which help to reduce energy consumption and maximise efficiency.	Objective 15
		Need to avoid enforcement investigations/action concerning locally important buildings and those within conservation areas in particular.	
8	Soil	Promoting development of previously developed land and buildings as opposed to greenfield sites or agricultural land of the highest quality.	Objectives 18 & 19
9	Water	Issues relating to availability of resources, foul drainage, pollution, and abstraction in a county which supports water dependent biodiversity of international and national importance, given the predicted climate change consequences for water availability and demanding projections for new housing.	Objectives 17 & 18
		Steady decline in the chemical quality of rivers over the last 10 years.	

¹ Derived from the Pre-submission Core Strategy Sustainability Appraisal Assessment (May 2014) and LDF General Scoping Report (June 2007)

Appendix A4: SEA Framework

SEA Scoping Stage A, Task A4 - SEA Framework SEA Objectives, Indicators, Targets

Parish Council Name: Colwall

Neighbourhood Development Plan Name: Colwall Neighbourhood Plan

Date completed: September 2014

SEA Topics	SEA Objective (These objectives are strategic overall SEA objectives, which you may need to refine, based on your local evidence, to make them locally relevant)	Sub-objectives / Appraisal Questions (Will the option/proposal/site...) (These sub-objectives are strategic overall SEA sub-objectives, which you may need to refine, based on your local evidence, to make them locally relevant)	Indicators (Insert indicators, based on evidence, to test and monitor whether your NDP proposals and policies are working. These should relate to the sub-objectives and be taken from Template A2)	Targets (Insert targets, based on evidence, to monitor whether the NDP proposals and policies are working. These should relate to the sub-objectives indicators and be taken from Template A2)
Nature Conservation (Biodiversity, flora and fauna)	To maintain and enhance nature conservation (biodiversity, flora and fauna)	<ul style="list-style-type: none"> • Conserve and enhance natural / semi-natural habitats • Conserve and enhance species diversity • Avoid harm to protected species • Avoid damage to wildlife and geological sites designated for their conservation interest • Maintain and enhance woodland cover and management • Maintain biodiversity, avoiding irreversible losses • Restore the full range of characteristic habitats and species to viable levels • Reverse the long term decline in farmland birds • Ensure the sustainable management of key wildlife sites and the ecological processes on which they depend • Provide opportunities for people to come into contact with and appreciate wildlife and wild place 	<p>Net change in condition of SSSIs across Herefordshire.</p> <p>After use of mineral sites especially wildlife habitat creation</p> <p>Changes to protected habitats and impacts of species within the Herefordshire Local Biodiversity Action Plan.</p>	<p>% of SSSI land in favourable condition (Increase)</p> <p>% of SSSI land in unfavourable condition but recovering (Increase)</p> <p>% of SSSI land in unfavourable condition and declining (Decrease)</p> <p>No specific targets identified.</p> <p>No specific targets identified.</p>

SEA Topics	SEA Objective (These objectives are strategic overall SEA objectives, which you may need to refine, based on your local evidence, to make them locally relevant)	Sub-objectives / Appraisal Questions (Will the option/proposal/site...) (These sub-objectives are strategic overall SEA sub-objectives, which you may need to refine, based on your local evidence, to make them locally relevant)	Indicators (<i>Insert indicators, based on evidence, to test and monitor whether your NDP proposals and policies are working. These should relate to the sub-objectives and be taken from Template A2</i>)	Targets (<i>Insert targets, based on evidence, to monitor whether the NDP proposals and policies are working. These should relate to the sub-objectives indicators and be taken from Template A2</i>)
Landscape	<p>To maintain and enhance the quality of landscapes and townscapes</p> <p>To improve quality of surroundings</p>	<ul style="list-style-type: none"> • Protect and enhance the landscape everywhere and particularly in designated areas • Value and protect diversity and local distinctiveness • Improve landscape and ecological quality and character of the countryside • Improve the quantity and quality of publicly accessible open space • Improve satisfaction of people with their neighbourhoods as places to live • Decrease litter and graffiti in towns and countryside • Result in the loss of open space 	<p>Changes in the areas of designated nature conservation sites as a consequence of planning permission.</p> <p>Proportion of local sites where positive conservation management has or is being implemented.</p> <p>Monitoring changes to historic landscapes.</p> <p>Area resulting in a loss of open space as a result of planning permission</p>	<p>To capitalise on opportunities to enhance the areas of value to nature conservation as much as possible.</p> <p>No specific targets identified.</p> <p>No specific targets identified.</p> <p>No specific targets identified</p>
Heritage	<p>To conserve and where appropriate enhance the historic environment , heritage assets and culture heritage</p>	<ul style="list-style-type: none"> • Preserve, protect and enhance heritage assets including conservation areas, historic buildings, archaeological sites and other culturally important features in both urban and rural settings. • Create places, spaces and buildings that work well, wear well and look well 	<p>The need for, frequency and outcomes of planning enforcement investigations/ planning appeals concerning aspects of local loss of locally important buildings within a conservation area.</p> <p>Number and percentage of listed buildings and Scheduled Ancient Monuments on Buildings at Risk Register (English Heritage).</p> <p>Ensure that Herefordshire Council's Sites and Monuments Register is kept up to date.</p>	<p>To improve upon or otherwise maintain current status.</p> <p>To improve upon or otherwise maintain current status.</p> <p>No specific targets identified, but need to ensure that the register is kept up to date.</p>

SEA Topics	SEA Objective (These objectives are strategic overall SEA objectives, which you may need to refine, based on your local evidence, to make them locally relevant)	Sub-objectives / Appraisal Questions (Will the option/proposal/site...) (These sub-objectives are strategic overall SEA sub-objectives, which you may need to refine, based on your local evidence, to make them locally relevant)	Indicators (<i>Insert indicators, based on evidence, to test and monitor whether your NDP proposals and policies are working. These should relate to the sub-objectives and be taken from Template A2</i>)	Targets (<i>Insert targets, based on evidence, to monitor whether the NDP proposals and policies are working. These should relate to the sub-objectives indicators and be taken from Template A2</i>)
Air and Climate	<p>To improve air quality</p> <p>To reduce the effect of traffic on the environment</p> <p>To reduce contributions to climate change</p> <p>To reduce vulnerability to climate change</p>	<ul style="list-style-type: none"> • Limit air pollution, including greenhouse gas emissions and ozone depleting substances • Improve air quality • Reduce the need to travel • Reduce traffic volumes and congestion • Reduce road traffic accidents • Reduce commuting and improve accessibility by public transport walking and cycling • Increase proportion of journeys using modes other than the car • Reduce the effects of heavy goods traffic (freight) on people and the environment • Reduce respiratory illnesses • Reduce energy consumption and improve energy efficiency • Increase proportion of energy needs being met from renewable sources • Reduce vulnerability to the effects of climate change e.g. flooding, disruption to travel by extreme weather 	<p>Transport patronage by mode</p> <p>Number of decentralised energy schemes granted permission.</p> <p>Total CO2 emissions per capita</p>	<p>To encourage the take up of lesser polluting form of transport</p> <p>To contribute towards the national target.</p> <p>To reduce the overall carbon emissions.</p>

SEA Topics	SEA Objective (These objectives are strategic overall SEA objectives, which you may need to refine, based on your local evidence, to make them locally relevant)	Sub-objectives / Appraisal Questions (Will the option/proposal/site...) (These sub-objectives are strategic overall SEA sub-objectives, which you may need to refine, based on your local evidence, to make them locally relevant)	Indicators (Insert indicators, based on evidence, to test and monitor whether your NDP proposals and policies are working. These should relate to the sub-objectives and be taken from Template A2)	Targets (Insert targets, based on evidence, to monitor whether the NDP proposals and policies are working. These should relate to the sub-objectives indicators and be taken from Template A2)
Water	<p>To improve water quality</p> <p>To provide for sustainable sources of water supply</p> <p>To avoid, reduce and manage flood risk</p>	<ul style="list-style-type: none"> • Improve the quality of inland water: rivers, lakes and ponds • Limit water pollution • Maintain water abstraction, run-off and recharge within carrying capacity (including future capacity) • Reduce water consumption and improve water efficiency • Minimise the risk of flooding from rivers and watercourses to people and property • Minimise risk of subsidence • Reduce risk of damage to property from storm events 	<p>Number of planning permissions granted contrary to the advice of the Environment Agency on flood defence grounds.</p> <p>Percentage of river length assessed as good or very good chemical quality and ecological quality</p> <p>Phosphate levels within the River Wye SAC and adjoining tributaries that receive increased phosphates from proportional growth.</p>	<p>To have no applications permitted contrary to EA advice.</p> <p>To ensure that rivers meet their conservation objectives and do not fall below the required standard of quality as set out in the Water Framework Directive.</p> <p>To meet the targets set out in the Nutrient Management Plan (2014)</p>
Soil	<p>To conserve soil resources and quality</p> <p>Ensure integrated, efficient and balanced land use.</p>	<ul style="list-style-type: none"> • Reduce contamination, and safeguard soil quality and quantity • Minimise loss of greenfield land / maximise development on brownfield land • Reduce the amount of derelict and underused land • Minimise waste generation and increase re-use or recovery through recycling, composting or energy recovery • Maximise the amount of waste diverted from landfill through recovery and recycling • Reduce household waste going to landfill • Reduce hazardous waste • Reduce waste in the construction of developments 	<p>Percentage of all new development completed on previously developed land.</p> <p>Amount of land identified as best and most versatile agricultural land lost to development.</p>	<p>To increase the number of homes built on PDL in line with the provisions of national planning policy.</p> <p>No specific targets identified.</p>

SEA Topics	SEA Objective (These objectives are strategic overall SEA objectives, which you may need to refine, based on your local evidence, to make them locally relevant)	Sub-objectives / Appraisal Questions (Will the option/proposal/site...) (These sub-objectives are strategic overall SEA sub-objectives, which you may need to refine, based on your local evidence, to make them locally relevant)	Indicators (Insert indicators, based on evidence, to test and monitor whether your NDP proposals and policies are working. These should relate to the sub-objectives and be taken from Template A2)	Targets (Insert targets, based on evidence, to monitor whether the NDP proposals and policies are working. These should relate to the sub-objectives indicators and be taken from Template A2)
Population and Human Health	To improve health of the population To reduce crime and nuisance	<ul style="list-style-type: none"> • Create conditions to improve health and reduce health inequalities in those areas most affected • Promote healthy living and lifestyles • Reduce death rates • Protect and enhance human health • Reduce and prevent crime, reduce fear of crime • Decrease noise and vibration • Increase opportunities for indoor recreation and exercise 	Number of developments meeting and surpassing national design standards.	No specific targets identified.
Material Assets	To conserve natural and manmade resources	<ul style="list-style-type: none"> • Protect built assets, property, infrastructure and services • Increase proportion of building materials from sustainable sources • Promote the development of a sustainable settlement pattern and physical infrastructure • Promote the efficient use of land and resources • Reduce consumption of materials and resources 	<p>Agricultural land usage by quality</p> <p>Housing densities in urban and rural areas</p> <p>Level of development in urban areas compared to rural.</p>	<p>No specific targets identified.</p> <p>No specific targets identified.</p> <p>N/A</p>

**Initial Habitat Regulations Assessment and Strategic Environmental
Assessment Screening Notification**

The Neighbourhood Planning (General) Regulation 2012 (Reg. 32)

Conservation of Habitats and Species Regulations 2010 (d)

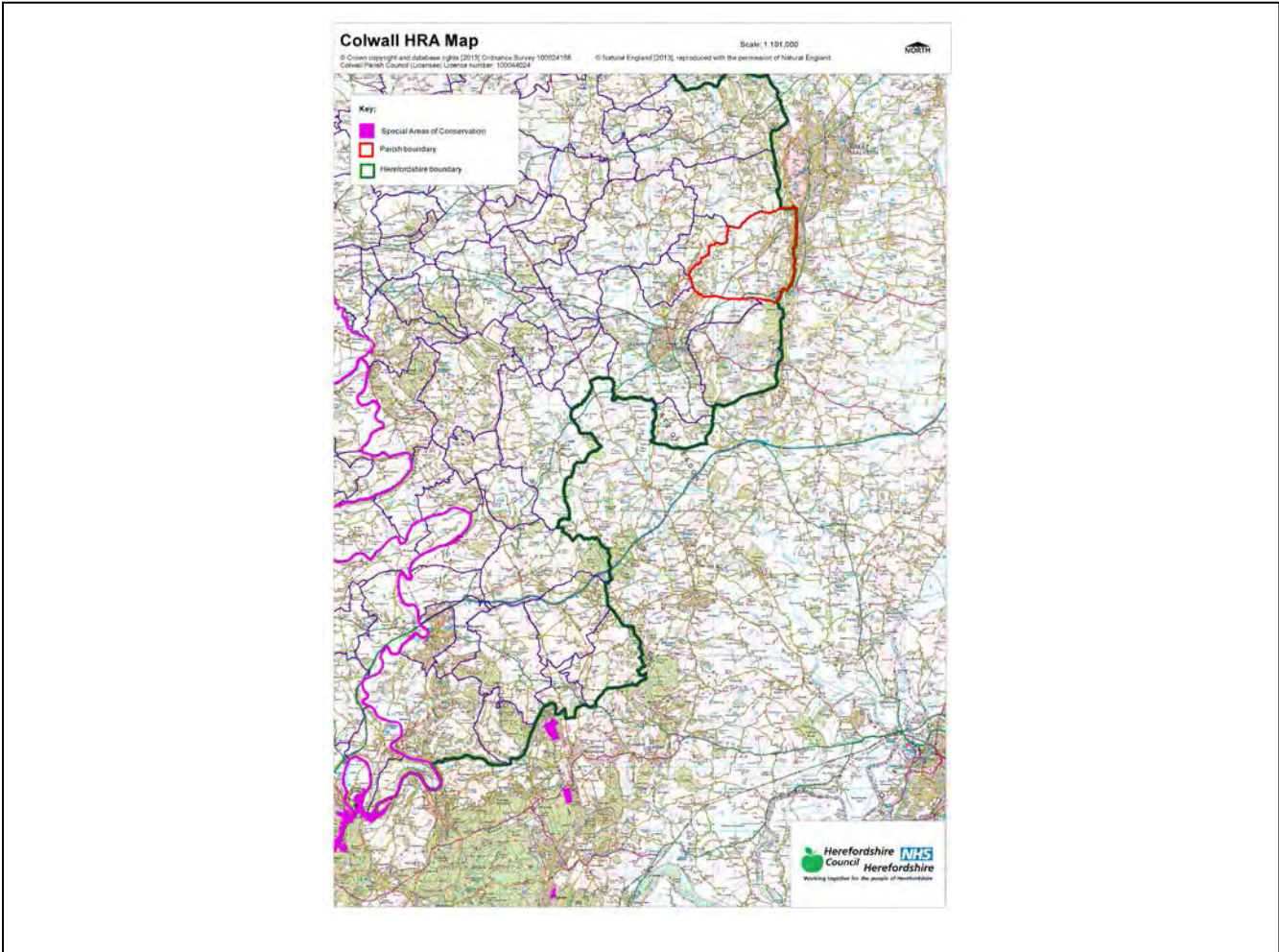
Neighbourhood Area:	Colwall Neighbourhood Area
Parish Council:	Colwall Parish Council
Neighbourhood Area Designation Date:	17/09/2012

Introduction

This Initial Habitat Regulations Assessment (HRA) and Strategic Environmental Assessment (SEA) Screening has been undertaken to assess whether any European Sites exist within or in proximity to the Neighbourhood Area which could be affected by any future proposals or policies.

Through continual engagement the outcomes of any required assessments will help to ensure that proposed developments will not lead to Likely Significant Effects upon a European Site or cause adverse impacts upon other environmental assets, such as the built historic or local natural environment.

**HRA Initial Screening: Map showing relationship of Neighbourhood Area with European Sites
(not to scale)**



Initial HRA Screening

River Wye (including the River Lugg) SAC:

Does the Neighbourhood Area have the River Wye (including the River Lugg) in or next to its boundary?	N	The River Wye/Lugg does not run through or border the Parish
Is the Neighbourhood Area in the hydrological catchment of the River Wye (including the River Lugg) SAC?	N	The Parish is not within the hydrological catchment of the River Wye/Lugg
If yes above, does the Neighbourhood Area have mains drainage to deal with foul sewage?		Not Applicable

Downton Gorge SAC:

Is the Neighbourhood Area within 10km of Downton Gorge SAC?	N	Downton Gorge is 42.8km away from the Parish
---	---	--

River Clun SAC:

Does the Neighbourhood Area include: Border Group Parish Council or Leintwardine Group Parish Council?	N	The Parish does not border the River Clun
--	---	---

Usk Bat Sites SAC:

Is the Neighbourhood Area within 10km of the SAC boundary?	N	Usk Bat Sites are 58.5km away from the Parish
--	---	---

Wye Valley & Forest of Dean Bat Sites SAC:

Is the Neighbourhood Area within 10km of any of the individual sites that make up the Wye Valley & Forest of Dean Bat Sites?	N	Wye Valley and Forest of Dean Bat Sites are 21.1km away from the Parish
--	---	---

Wye Valley Woodlands SAC:

Is the Neighbourhood Area within 10km of any of the individual sites that make up the Wye Valley Woodlands Site?	N	Wye Valley Woodlands are 30.9km away from the Parish
--	---	--

HRA Conclusion:

The assessment above highlights that there are no European Sites which will need to be taken into account in the future Neighbourhood Development Plan for the Colwall Neighbourhood Area and a Full HRA Screening will not be required.

Strategic Environmental Assessment Initial Screening for nature conservation landscape and heritage features

The following environmental features are within or in general proximity to the Colwall Neighbourhood Area and would need to be taken into account within a Strategic Environmental Assessment. In addition, the NDP will also need to consider the other SEA topics set out in Guidance Note 9a to ensure that the plan does not cause adverse impacts.

SEA features	Total	Explanation	SEA required
Air Quality Management Areas	0	There are no AQMA's in the Parish	N
Ancient Woodland	24	Park Wood; Brockhill Copse; Pen Copes; Evendine Wood; Perry Cot Park; Evendine Court Wood; Herrings Coppice; Wynds Point Wood; Hatfield Coppice; Frith Wood; Hope End Wood; Sparrow Hill Wood; Oyster Hill Wood; Loxter Wood; Berrington Wood; 1 x unlabelled south of Park Wood; 1 x unlabelled north of Brockhill Copse (border); Broomhill Coppice (border); Raven Hill Wood (border); Canon Heath Wood (border); Tunners Wood (border); Mayfields Wood (border); Slatch Farm (border); Old Country Wood (border)	Y
Areas of Archaeological Interest	0	There are no AAI's in the Parish	N
Areas of Outstanding Natural Beauty	1	The Malvern Hills AONB covers the entire Parish	Y
Conservation Areas	2	Malvern Wells; Colwall Stone/Upper Colwall	Y
European Sites	0	There are no European Sites within the Parish	N
Flood Areas		Floods Zones 2 and 3 run from the north of the Parish southwards and end just past Cummins Farm	Y
Geoparks	1	Malvern Hills Geopark	Y
Listed Buildings	Numerous	There are numerous listed buildings around the Parish	Y
Local Sites (SWS/SINCs/RIGS)	3 RIGS 11 SWS	RIGS: Brockhill Stream Section; Brockhill Quarry; Gardiners Quarry. SWS: Ballards Lane; Perrycroft; Fields near Brockhill Farm; Brockhill Coppice; Pond near Lugg's Mill Farm; Pool on Hope End Estate; Roadside verges above Chances Pitch on A449; Malvern Hills and adjoining sites; Herrings Coppice and Hambleton Meadow; Frith Wood, Bradlow Knoll and Dog Hill; Park Wood and adjoining woodland and grassland	Y
Long distance footpaths/trails	4	Geopark Way; Worcester Way; Mile without Stiles; Herefordshire Trail	Y
Mineral Reserves	13	There are 13 sites scattered around the Parish	Y

National Nature Reserve	0	There are no NNR's within the Parish	N
Registered & unregistered parks and gardens	2 Registered 8 unregistered	Registered: Hope End; Eastnor Castle. Unregistered: Old Colwall; Barton Court; Hoe Court; The Winnings; Linden; Perrycroft; Brand Lodge; Wynds Point	Y
Scheduled Ancient Monuments	4	Dovecote at Barton Court; Herefordshire Beacon Camp; The Shire Ditch; Barrows adjoining County boundary east of Gardners Common	Y
Sites of Special Scientific Interest	1	Malvern Hills (Unfavourable Recovering (part) Favourable (part)); Ridgeway Wood (Favourable)	Y

Decision Notification:

The initial screening highlights that the Neighbourhood Development Plan for the Colwall Neighbourhood Area:

- a) Will require further environmental assessment for Strategic Environmental Assessment.

Assessment date: 15/05/2013

Assessed by: James Latham

Appendix 1: European Sites

The table below provides the name of each European Site, which has been screened in for the purposes of neighbourhood planning in Herefordshire; includes their site features of integrity; and vulnerability data. This is based on the sites individual features of integrity and their vulnerabilities, which could include distance criteria. This has been used in identifying which parishes are likely to require a full HRA Screening of their future Neighbourhood Development Plan, to establish if their plan might have Likely Significant Effects on a European Site.

Downton Gorge
Site Features: <i>Tilio-Acerion</i> forests of slopes, screes and ravines
Vulnerability data: 10km for air quality associated with poultry units or other intensive agricultural practices.
River Clun
Site Features: Freshwater pearl mussel <i>Margaritifera margaritifera</i>
Vulnerability data: Water quality is important to maintain the site feature. Parishes either side of the River Clun will be affected.
River Wye
Site Features: Water courses of plain to montane levels with the <i>Ranunculion fluitantis</i> and <i>Callitricho-Batrachion</i> vegetation. Transition mires and quaking bogs. White-clawed (or Atlantic Stream) crayfish <i>Austropotamobius pallipes</i> . Sea lamprey <i>Petromyzon marinus</i> . Brook lamprey <i>Lampetra planeri</i> . River lamprey <i>Lampetra fluviatilis</i> . Twaite shad <i>Alosa fallax</i> . Atlantic salmon <i>Salmo salar</i> . Bullhead <i>Cottus gobio</i> . Otter <i>Lutra lutra</i> . Allis shad <i>Alosa alosa</i>
Vulnerability data: Proximity: Developments should not be within 100m of the designated bank. Some developments beyond 100m may also have impacts based on proximity and these issues should be addressed where possible when developing NDP policy and choosing site allocations. Water Quality: Within the whole catchment of the River Wye, which includes the River Lugg, mains drainage issues with regards to water quality are being resolved through the Core Strategy / Local Plan and development of a Nutrient Management Plan. Welsh Water should be consulted to ensure that the proposed growth will be within the limit of their consents. Otters: "An otter will occupy a 'home range', which on fresh waters usually includes a stretch of river as well as associated tributary streams, ditches, ponds, lakes and woodland. The size of a home range depends largely on the availability of food and shelter, and the presence of neighbouring otters. On rivers, a male's home range may be up to 40km or more of watercourse and associated areas; females have smaller ranges (roughly half the size) and favour quieter locations for breeding, such as tributary streams. Otters without an established home range are known as 'transients'. They are mostly juveniles looking for a territory of their own, or adults that have been pushed out of their territories. Transient otters may use an area for a short while, but they will move on if conditions are not suitable or if they are driven away by resident otters. Transients will have been important in extending the range of otters, but they are very difficult to identify from field signs. Within a home range an otter may use many resting sites. These include above-ground shelters, such as stands of scrub or areas of rank grass, and underground 'holts' – for example, cavities under tree roots and dry drainage pipes." (Source: EA website: http://www.environmentagency.gov.uk/static/documents/Business/Otters_the_facts.pdf accessed 09/04/2013)

Usk Bat Site

Site Features: Annex I habitats present as a qualifying feature, but not a primary reason for site selection: European dry heaths, Degraded raised bogs still capable of natural regeneration, Blanket bogs, Calcareous rocky slopes with chasmophytic vegetation, Caves not open to the public, *Tilio-Acerion* forests of slopes, screes and ravines. Annex II species of primary reason for site selection: Lesser horseshoe bat *Rhinolophus hipposideros*, UK population 5%, although it is suggested this is an underestimate.

Vulnerability data: Lesser Horseshoe bats are known to migrate between 5km and 10km between their summer and winter roosts. The Lesser Horseshoe Bat is vulnerable to disturbance; light pollution; and habitat loss. Check with the planning ecologist for other issues.

Wye Valley and Forest of Dean Bat Sites

Site Features: Annex II species that are a primary reason for site selection: Lesser horseshoe bat *Rhinolophus hipposideros*. Greater horseshoe bat *Rhinolophus ferrumequinum*

Vulnerability data: Lesser Horseshoe bats are known to migrate between 5km and 10km between their summer and winter roosts. The Lesser Horseshoe Bat is vulnerable to disturbance; light pollution; and habitat loss. Check with the planning ecologist for other issues.

Greater Horseshoe bats are known to migrate between 20-30km between their summer and winter roosts.

NDPs closest to the European Site will need to consider:

Woodland habitat buffer.

Lesser Horseshoe Bat: Old buildings; woodland locations; sheltered valleys, extensive deciduous woods or dense scrub, close to roost sites. In areas of fragmented habitats, linear habitats such as hedgerows are important corridors. Vulnerable to loss or disturbance of both summer and winter roosts and removal of linear habitat.

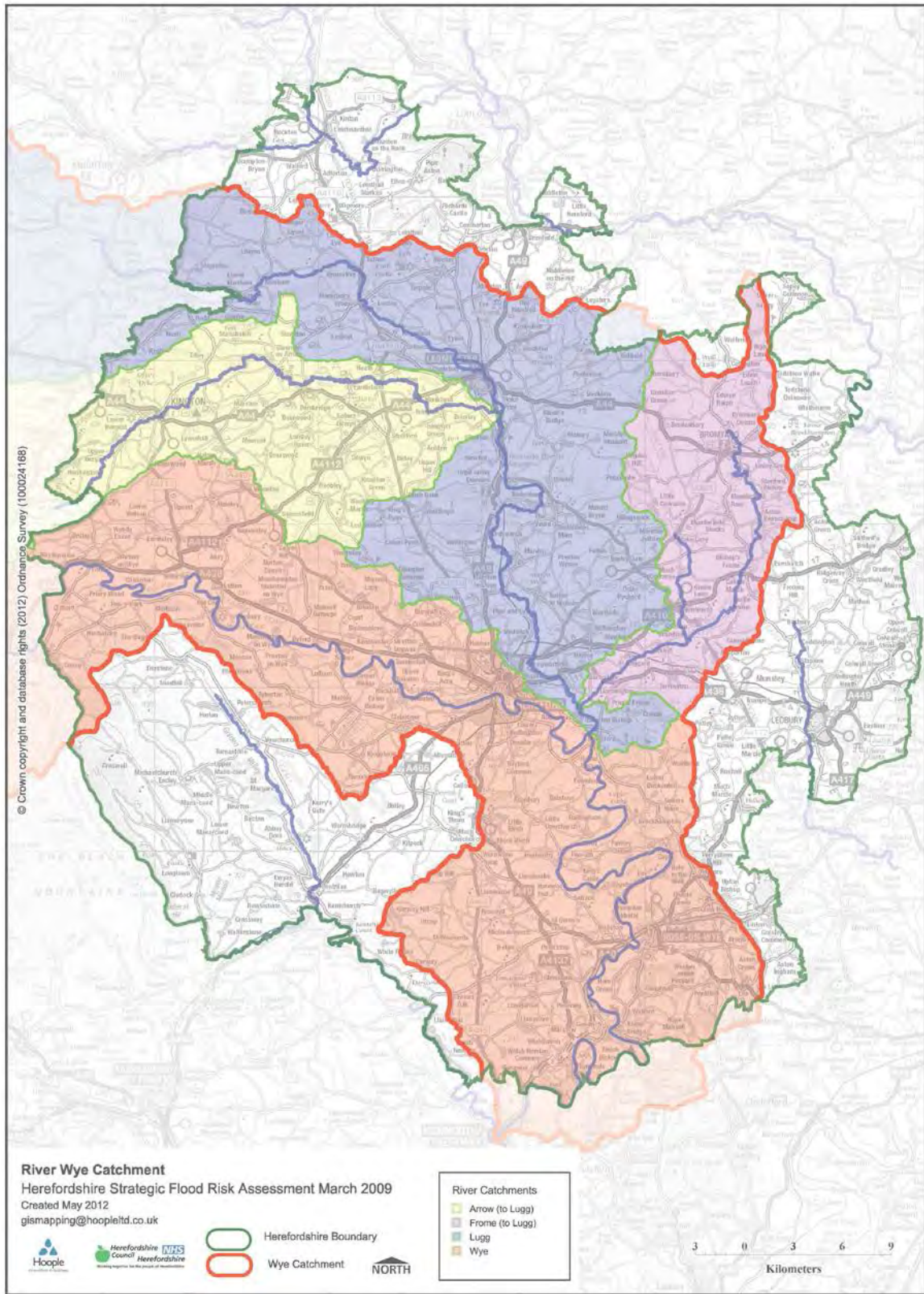
Greater Horseshoe Bat: Large buildings, pasture, edge of mixed deciduous woodland and hedgerows. Mixed land-use especially south-facing slopes, favours beetles, moths and insects they feed on. During the winter they depend on caves, abandoned mines and other underground sites for undisturbed hibernation. A system/series of sites required. Vulnerable to loss of insect food supply, due to insecticide use, changing farming practices and loss of broad-leaved tree-cover and loss / disturbance of underground roosts sites.

Wye Valley Woodlands

Site Features: Annex I habitats that are a primary reason for site selection: Beech forests *Asperulo-Fagetum*, *Tilio-Acerion* forests of slopes, screes and ravines, *Taxus baccata* woods of the British Isles. Annex II species present as a qualifying feature, but not a primary reason for site selection: Lesser horseshoe bat *Rhinolophus hipposideros*, 51-100 residents

Vulnerability data: Lesser Horseshoe bats are known to migrate between 5km and 10km between their summer and winter roosts. The Lesser Horseshoe Bat is vulnerable to disturbance; light pollution; and habitat loss. Check with the planning ecologist for other issues. NDPs closest to the European Site will need to consider: Woodland habitat buffer. Lesser Horseshoe Bat: Old buildings; woodland locations; sheltered valleys, extensive deciduous woods or dense scrub, close to roost sites. In areas of fragmented habitats, linear habitats such as hedgerows are important corridors. Vulnerable to loss or disturbance of both summer and winter roosts and removal of linear habitat.

Appendix 2: Wye Catchment Map

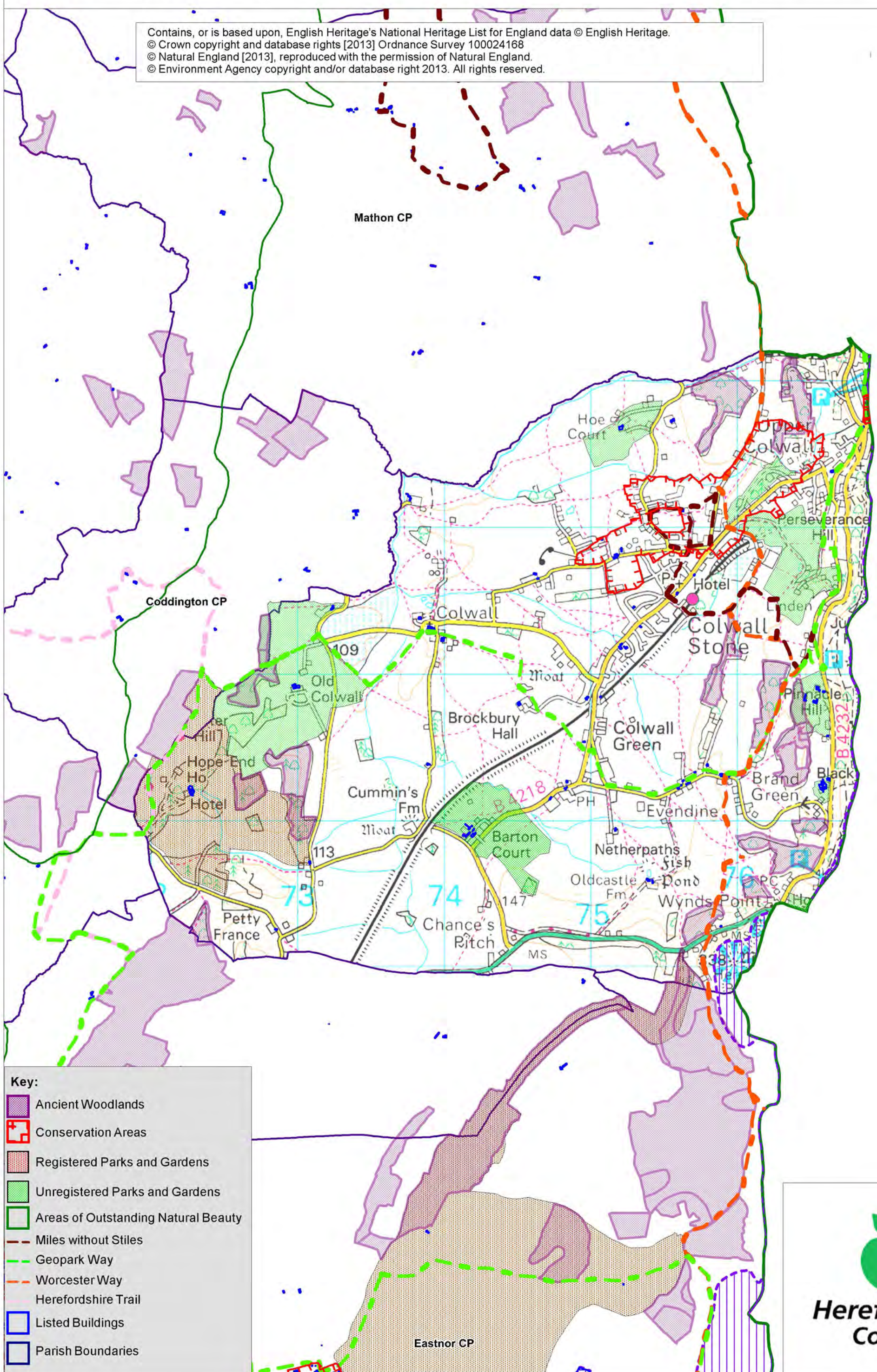


Colwall SEA Map 1

Scale: 1:24,000



Contains, or is based upon, English Heritage's National Heritage List for England data © English Heritage.
 © Crown copyright and database rights [2013] Ordnance Survey 100024168
 © Natural England [2013], reproduced with the permission of Natural England.
 © Environment Agency copyright and/or database right 2013. All rights reserved.



Key:

- Ancient Woodlands
- Conservation Areas
- Registered Parks and Gardens
- Unregistered Parks and Gardens
- Areas of Outstanding Natural Beauty
- Miles without Stiles
- Geopark Way
- Worcester Way
- Herefordshire Trail
- Listed Buildings
- Parish Boundaries

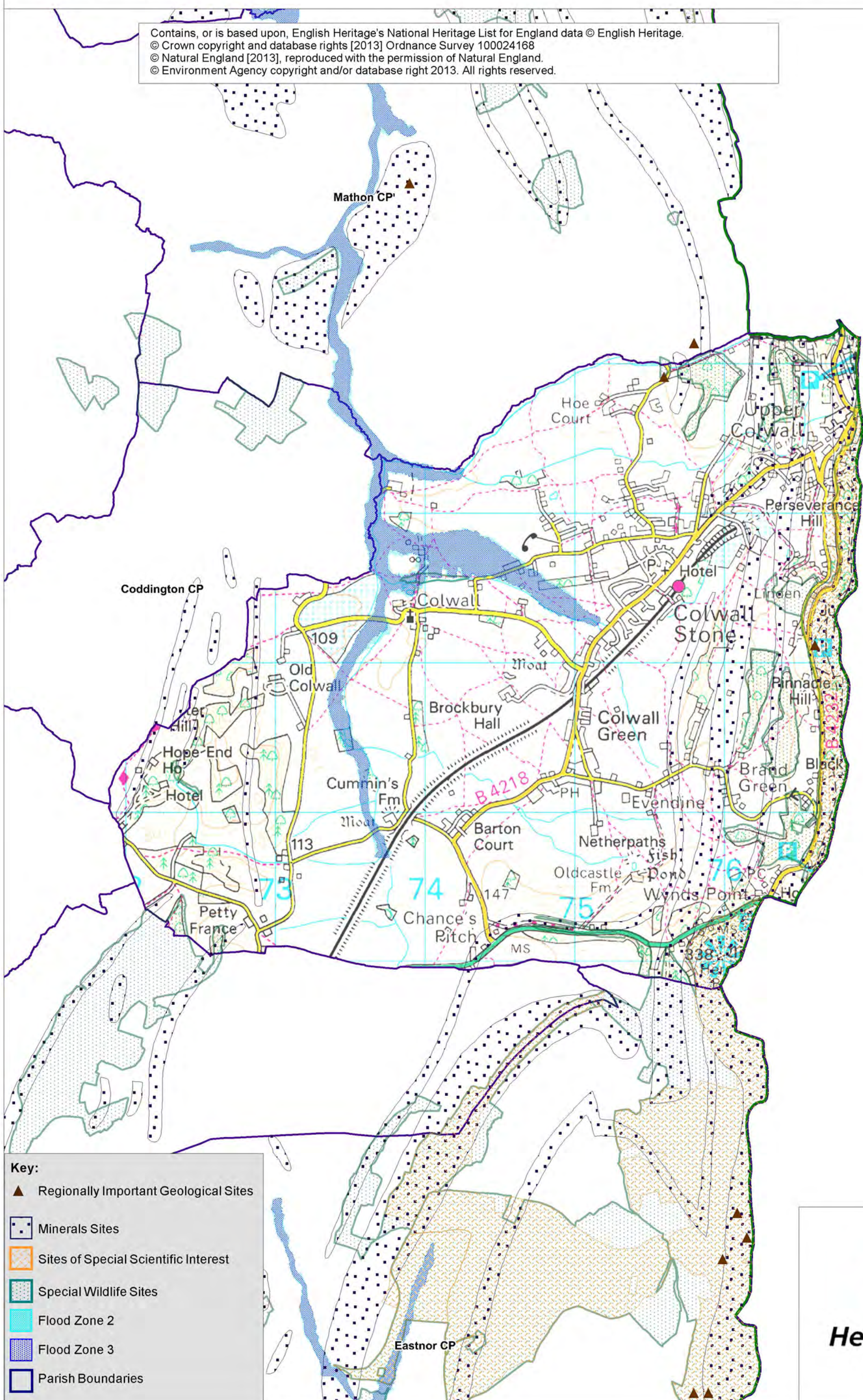


Colwall SEA Map 2

Scale: 1:24,000



Contains, or is based upon, English Heritage's National Heritage List for England data © English Heritage.
© Crown copyright and database rights [2013] Ordnance Survey 100024168
© Natural England [2013], reproduced with the permission of Natural England.
© Environment Agency copyright and/or database right 2013. All rights reserved.



Key:

- ▲ Regionally Important Geological Sites
- Minerals Sites
- Sites of Special Scientific Interest
- Special Wildlife Sites
- Flood Zone 2
- Flood Zone 3
- Parish Boundaries

